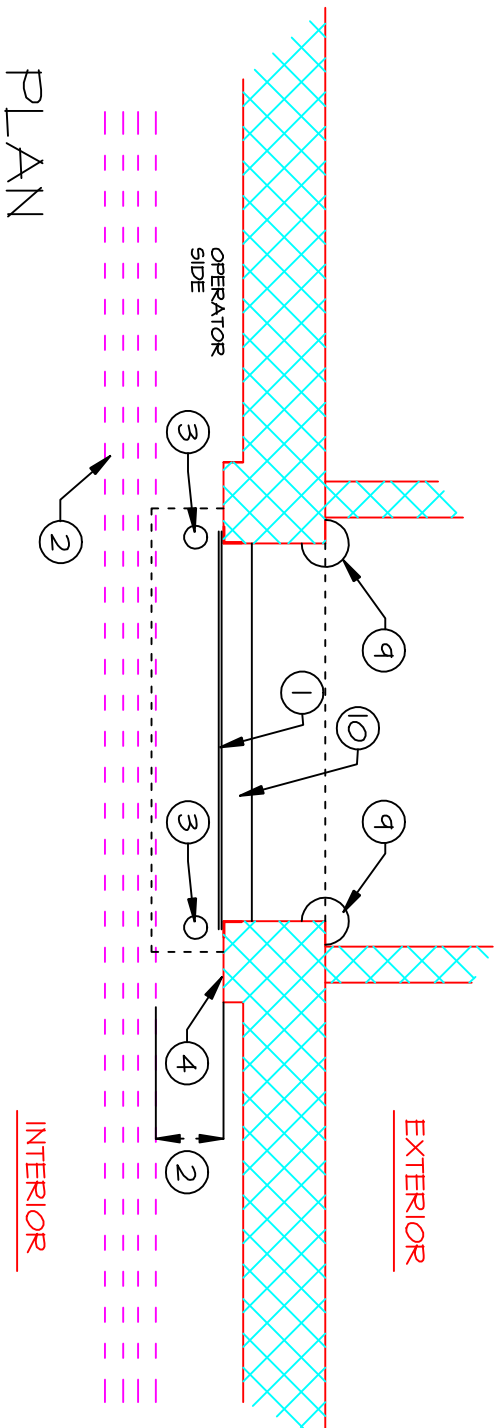


ELEVATION

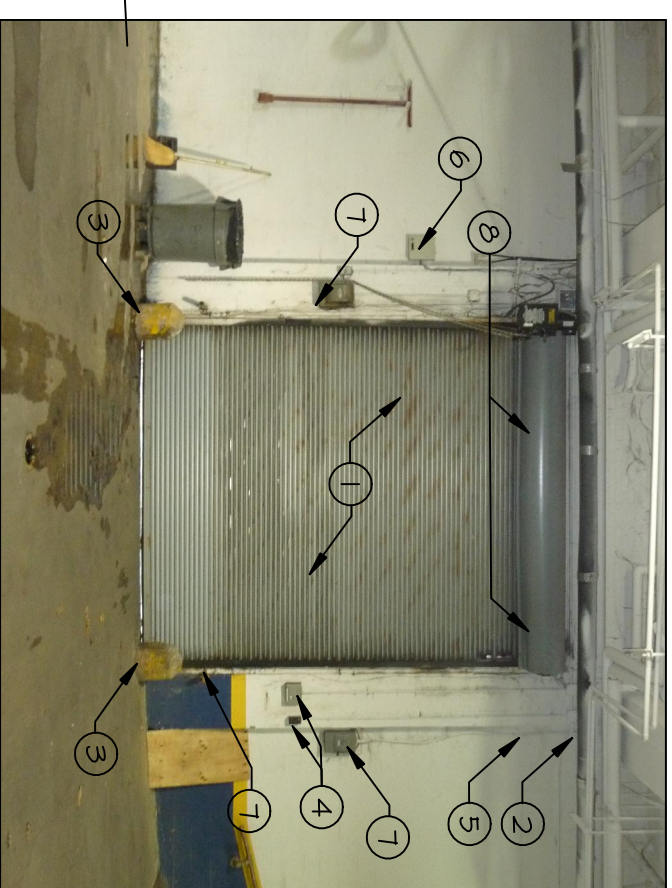


PLAN

EAST DOCK DOOR

0 1' 2' 3' 4' 5' 10'

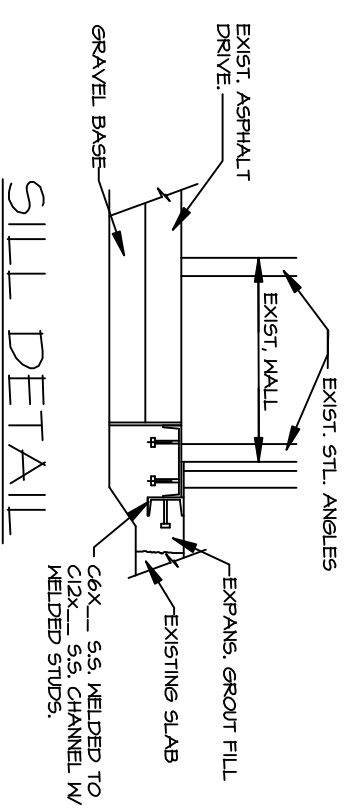
SCALE 3/16" = 1'-0" WHEN PLOTTED ON 11" X 17"



OPERATOR SIDE
OF DOOR

GENERAL NOTES:

1. NEW INSULATED ROLLING DOOR.
2. VERIFY EXISTING PIPE CLEARANCES AT DOOR HEAD. NOTE THAT CONFIGURATION, HEIGHT AND DISTANCE FROM WALL DIFFERS AT EACH DOOR.
3. REPLACE INTERIOR BOLLARDS WITH NEW 3 FOOT HIGH BY 8 INCH DIAMETER CONCRETE FILLED STEEL PIPE. PAINT SAFETY YELLOW.
4. LOCATION OF EXISTING CARD READER AND CALL BOX.
5. LOCATION OF NEW WARNING LIGHT / HORN.
6. CONNECT OPENER INTO EXISTING PROTECTIVE SERVICES SYSTEM FOR REMOVE OPENING FROM CAPITAL COMMAND CENTER OR PASS-CARD SYSTEM. PROVIDE EMERGENCY OPERATION NEAR DOOR.
7. REMOVE EXISTING WIRING.
8. NEW HEIGHT ALARM SYSTEM TO WARN VEHICLE OPERATORS WHEN OVERSIZE TRUCKS OR VEHICLES ATTEMPT TO ENTER BUILDING WHEN DOOR IS NOT FULLY RAISED.
9. REPAINT EXTERIOR BOLLARDS AND STEEL ANGLES SAFETY YELLOW.
10. PROVIDE NEW 5.5. SILL AS INDICATED IN THE ATTACHED SKETCH.



SILL DETAIL

GSD 106429
DRAWING SK-2