



State of West Virginia
 Department of Administration
 Purchasing Division
 2019 Washington Street East
 Post Office Box 50130
 Charleston, WV 25305-0130

Request for Quotation

RFQ NUMBER
ADJ1004

PAGE
1

ADDRESS CORRESPONDENCE TO ATTENTION OF:
BUYER 32 304-558-2544

KINGWOOD

RFQ COPY
 TYPE NAME/ADDRESS HERE

SHIP TO

ADJUTANT GENERAL'S DEPARTMENT
 MOUNTAINEER CHALLENGE PROGRAM
 CAMP DAWSON
 240 ARMY ROAD
 KINGWOOD, WV
 26537
 304-341-6406

DATE PRINTED	TERMS OF SALE	SHIP VIA	F.O.B	FREIGHT TERMS
04/22/2010				

BID OPENING DATE: 05/05/2010 BID OPENING TIME 01:30PM

LINE	QUANTITY	UOP	CAT NO	ITEM NUMBER	UNIT PRICE	AMOUNT
ADDENDUM NO. 5						
TO RESPOND TO QUESTIONS SUBMITTED PRIOR TO THE 3/29/10 CUT-OFF DATE AND TO REVISE SPECIFICATIONS PER THE ATTACHED.						
0001	1	LS		840-84		
VIDEO SURVEILLANCE SYSTEMS						
***** THIS IS THE END OF RFQ ADJ1004 ***** TOTAL:						

SEE REVERSE SIDE FOR TERMS AND CONDITIONS

SIGNATURE	TELEPHONE	DATE
TITLE	FEIN	ADDRESS CHANGES TO BE NOTED ABOVE

WHEN RESPONDING TO RFQ, INSERT NAME AND ADDRESS IN SPACE ABOVE LABELED 'VENDOR'

GENERAL TERMS & CONDITIONS
REQUEST FOR QUOTATION (RFQ) AND REQUEST FOR PROPOSAL (RFP)

1. Awards will be made in the best interest of the State of West Virginia.
2. The State may accept or reject in part, or in whole, any bid.
3. Prior to any award, the apparent successful vendor must be properly registered with the Purchasing Division and have paid the required \$125 fee.
4. All services performed or goods delivered under State Purchase Order/Contracts are to be continued for the term of the Purchase Order/Contracts, contingent upon funds being appropriated by the Legislature or otherwise being made available. In the event funds are not appropriated or otherwise available for these services or goods this Purchase Order/Contract becomes void and of no effect after June 30.
5. Payment may only be made after the delivery and acceptance of goods or services.
6. Interest may be paid for late payment in accordance with the *West Virginia Code*.
7. Vendor preference will be granted upon written request in accordance with the *West Virginia Code*.
8. The State of West Virginia is exempt from federal and state taxes and will not pay or reimburse such taxes.
9. The Director of Purchasing may cancel any Purchase Order/Contract upon 30 days written notice to the seller.
10. The laws of the State of West Virginia and the *Legislative Rules* of the Purchasing Division shall govern the purchasing process.
11. Any reference to automatic renewal is hereby deleted. The Contract may be renewed only upon mutual written agreement of the parties.
12. **BANKRUPTCY:** In the event the vendor/contractor files for bankruptcy protection, the State may deem this contract null and void, and terminate such contract without further order.
13. **HIPAA BUSINESS ASSOCIATE ADDENDUM:** The West Virginia State Government HIPAA Business Associate Addendum (BAA), approved by the Attorney General, is available online at www.state.wv.us/admin/purchase/vrc/hipaa.htm and is hereby made part of the agreement. Provided that the Agency meets the definition of a Cover Entity (45 CFR §160.103) and will be disclosing Protected Health Information (45 CFR §160.103) to the vendor.
14. **CONFIDENTIALITY:** The vendor agrees that he or she will not disclose to anyone, directly or indirectly, any such personally identifiable information or other confidential information gained from the agency, unless the individual who is the subject of the information consents to the disclosure in writing or the disclosure is made pursuant to the agency's policies, procedures, and rules. Vendor further agrees to comply with the Confidentiality Policies and Information Security Accountability Requirements, set forth in <http://www.state.wv.us/admin/purchase/privacy/noticeConfidentiality.pdf>.
15. **LICENSING:** Vendors must be licensed and in good standing in accordance with any and all state and local laws and requirements by any state or local agency of West Virginia, including, but not limited to, the West Virginia Secretary of State's Office, the West Virginia Tax Department, and the West Virginia Insurance Commission. The vendor must provide all necessary releases to obtain information to enable the director or spending unit to verify that the vendor is licensed and in good standing with the above entities.
16. **ANTITRUST:** In submitting a bid to any agency for the State of West Virginia, the bidder offers and agrees that if the bid is accepted the bidder will convey, sell, assign or transfer to the State of West Virginia all rights, title and interest in and to all causes of action it may now or hereafter acquire under the antitrust laws of the United States and the State of West Virginia for price fixing and/or unreasonable restraints of trade relating to the particular commodities or services purchased or acquired by the State of West Virginia. Such assignment shall be made and become effective at the time the purchasing agency tenders the initial payment to the bidder.

I certify that this bid is made without prior understanding, agreement, or connection with any corporation, firm, limited liability company, partnership, or person or entity submitting a bid for the same material, supplies, equipment or services and is in all respects fair and without collusion or Fraud. I further certify that I am authorized to sign the certification on behalf of the bidder or this bid.

INSTRUCTIONS TO BIDDERS

1. Use the quotation forms provided by the Purchasing Division. Complete all sections of the quotation form.
2. Items offered must be in compliance with the specifications. Any deviation from the specifications must be clearly indicated by the bidder. Alternates offered by the bidder as **EQUAL** to the specifications must be clearly defined. A bidder offering an alternate should attach complete specifications and literature to the bid. The Purchasing Division may waive minor deviations to specifications.
3. Unit prices shall prevail in case of discrepancy. All quotations are considered F.O.B. destination unless alternate shipping terms are clearly identified in the quotation.
4. All quotations must be delivered by the bidder to the office listed below prior to the date and time of the bid opening. Failure of the bidder to deliver the quotations on time will result in bid disqualifications: Department of Administration, Purchasing Division, 2019 Washington Street East, P.O. Box 50130, Charleston, WV 25305-0130.
5. Communication during the solicitation, bid, evaluation or award periods, except through the Purchasing Division, is strictly prohibited (W.Va. C.S.R. §148-1-6.6).

Addendum for Camera purchase

1. Cameras in the latrines and nurse's office must be on a separate DVR from all other cameras and have a lockable limited controlled access container
2. The total camera count is 80, 17 PTZ's and 63 other PTZ's will have a 18x zoom capability.
3. PTZ's programming must be able to return the camera to the default position and tour the area on a selected time interval
4. Part 1.4c add contractor will provide on site parts and labor and software updates and tech support for one year. Delete "contractor will provide on for 1 year"
5. Part 2.10 delete
6. Part 2.11 delete
7. 2.14 delete
8. 2.14 The contractor will provide and be responsible for all necessary cable, equipment and hardware not presently on site to provide a complete and functional system.
9. PDF file copies of the building plan are attached.
10. Equipment list corrections or clarifications
 - a. change avigilon S24 to SRW2024p w/mgbx1 modules as needed
 - b. change ERK-2725 to WMRK-2436SVR w/CBS WMRK-36 caster base
 - c. change quantity of UPS to 2

Mountaineer Challenge Academy Surveillance Camera Schedule

Notes:

1. Cable length is indicated only if length exceeds 300 feet.
2. For lengths greater than 300 feet provide a signal boosting device capable of operating from the power provided by the communication cable and capable of being installed in plenum space. Signal boosting device shall be similar to, "Outreach" manufactured by "Veracity".
3. CAT-6 cable has been provided and are installed to designated locations. Surveillance Camera Contractor shall terminate all cabling at both ends.

Camera Types:

Camera Type A: Avigilon (or approved equal) 1.0MP-HD-DOME-DN with lens, see below, mounted in acoustical panel ceiling or to 4" electrical box provided.

Camera Type B: Avigilon (or approved equal) 2.0MP-HD-DOME-DN with lens, see below, mounted in acoustical panel ceiling or to 4" electrical box provided.

Camera Type C: Avigilon (or approved equal) 3.0MP-HD-DOME-DN with lens, see below, mounted in acoustical panel ceiling or to 4" electrical box provided.

Camera Type D: Avigilon (or approved equal) 5.0MP-HD-DOME-DN with lens, see below, mounted in acoustical panel ceiling or to 4" electrical box provided.

Camera Type E: Samsung (or approved equal) SNC-C7478 Outdoor with lens, see below mounted in acoustical panel or to 4" electrical box provided. Outside PTZ must be mounted on corner of building for all outside corners.

Camera Type F: Samsung (or approved equal) SNC-C6225 Indoor with lens, see below, mounted in acoustical panel or to 4" electrical box provided.

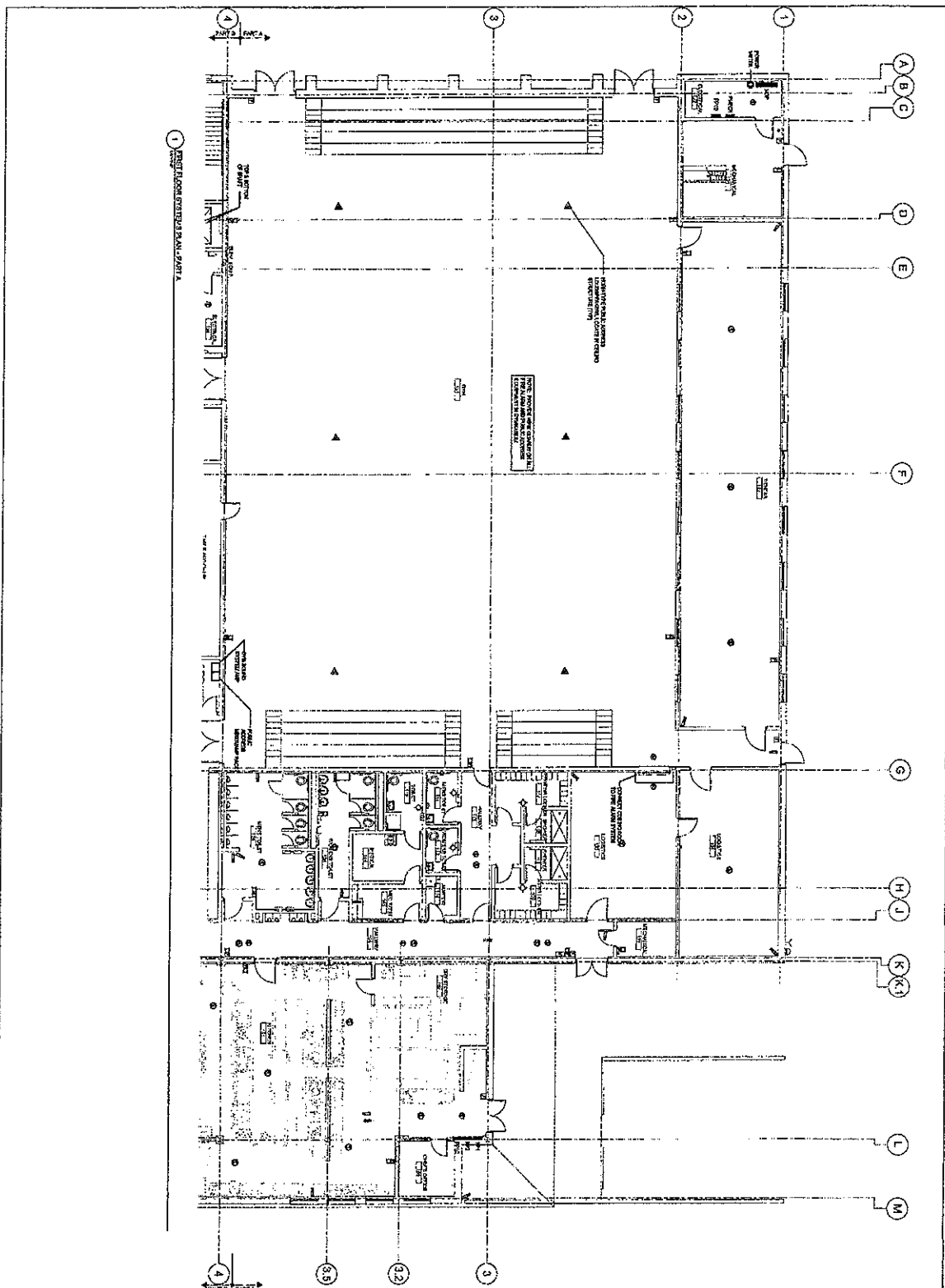
Lens Types:

Lens Type A: Tamron (or approved equal), M13VG308, 1/3", 3-8mm, f/1.0, Auto Iris (DC), CS mount, manual zoom w/lock, manual focus w/lock

Lens Type B: Tamron (or approved equal), M13VG550, 1/3", 5-50mm, f/1.4, Auto Iris (DC), CS mount, manual zoom w/lock, manual focus w/lock

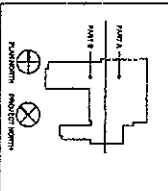
Drawing Sheet	Room Number	Camera	Type	Lens	Cable Length
EY101B - First Floor Plan - Part B	245	1	A	B	
	101	2	D	B	
	102	3	D	B	
	101	4	B	A	
	171	5	C	A	
	106	6	D	B	
	171	7	C	A	
	173	8	C	A	
	173	9	C	A	
	175	10	C	A	
	175	11	C	A	
	178	12	C	A	
	178	13	C	A	
	141	14	C	B	
	172	15	C	A	
EY101B - First Floor Plan - Part B		16	E	18X	
	172	17	C	A	
	174	18	C	A	
	174	19	C	A	
	176	20	C	A	
	176	21	C	A	
	177	22	C	A	
	177	23	C	A	
	179	24	C	A	
	106	25	D	B	
	179	26	C	A	
		27	E	18X	300'
	102	28	D	B	
	102	29	A	B	
	104	30	B	B	
	141	31	C	A	
	143	32	A	A	
	144	33	A	A	
	161	34	D	B	
	161	35	D	B	
	102	36	B	B	
		37	E	18X	
	161	38	D	B	
	161	39	C	B	
	161	40	D	B	335'
	161	41	F	18X	340'
		42	E	18X	340'
		43	E	18X	360'
102	80	A	A		

Drawing Sheet	Room Number	Camera	Type	Lens	Cable Length
EY101A - First Floor Plan - Part A	132	44	C	B	530'
		45	A	A	
	134	46	A	A	370'
		47	E	18X	370'
	132	48	C	B	
	104	49	A	A	
	133	50	C	A	
	104	51	B	B	
	145	52	A	A	
	108	53	A	A	
	108	54	A	A	300'
	109	55	A	A	
	109	56	A	A	
	109	57	A	B	
		58	E	18x	
	151	59	B	A	
	151	60	B	A	
	61	B	B		
EY102B - Second Floor Plan - Part B		62	E	18X	
	202	63	B	B	
	202	64	A	A	
		65	E	18X	
	204	66	D	B	
	236	67	A	A	
	204	68	D	B	
		69	E	18X	326'
	70	E	18X	328'	
EY102A - Second Floor Plan - Part A		71	E	18X	352+'
		72	E	18X	352+'
	131	73	D	B	352'
	131	74	D	B	426'
		75	E	18X	426'
	161	76	E	18x	310'
	161	77	E	18x	378'
	131	78	D	B	
	131	79	D	B	342'



ASSEMBLAGE ARCHITECTS
 1400 W. 10TH AVE. SUITE 100
 DENVER, CO 80202
 TEL: 303.733.1111
 FAX: 303.733.1112
 MCHOLEY and Associates
 1400 W. 10TH AVE. SUITE 100
 DENVER, CO 80202
 TEL: 303.733.1111
 FAX: 303.733.1112

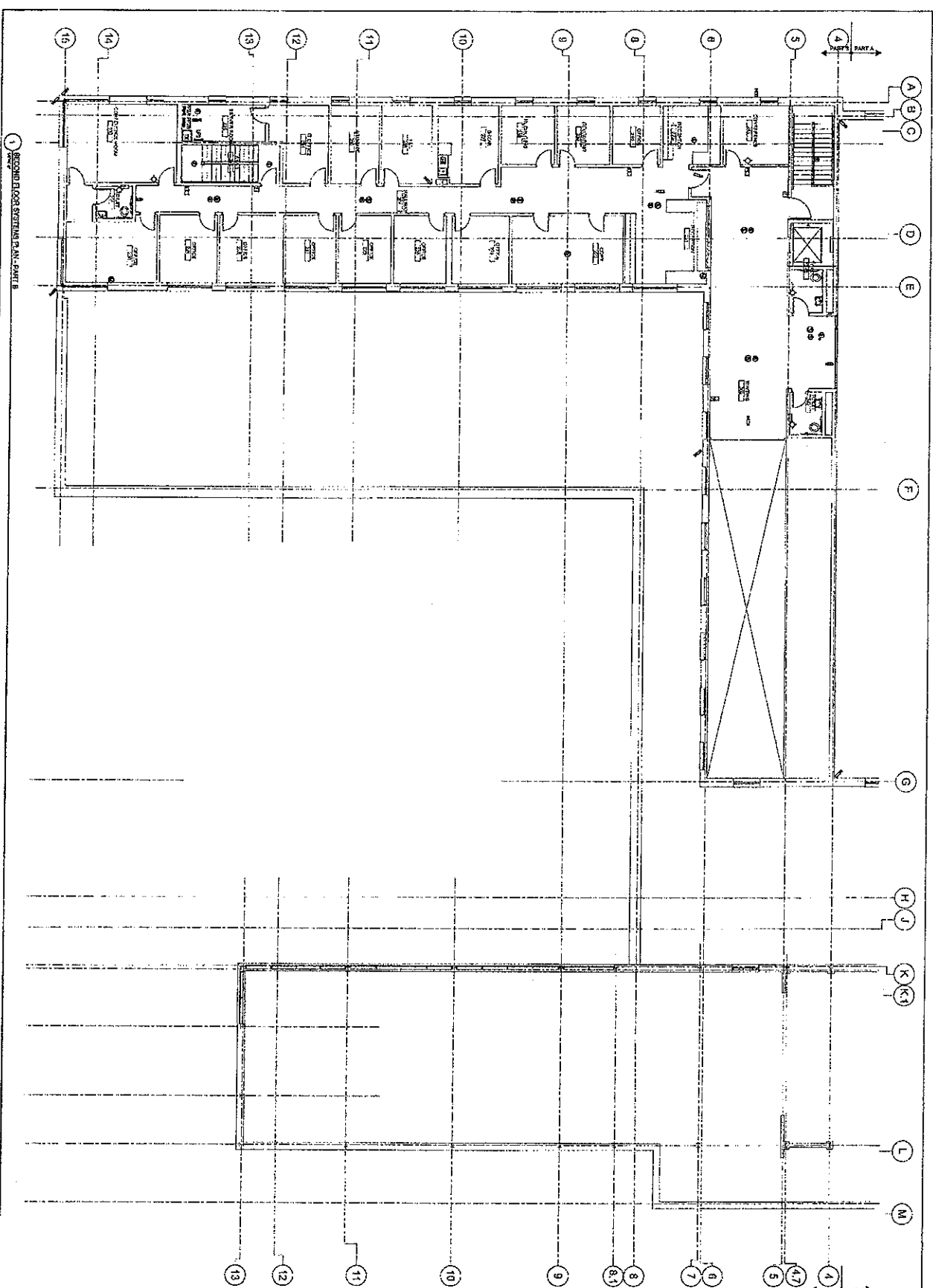
BID SET



Mountaineer Challenge Academy
 West Virginia Army National Guard
 Camp Sherman, Weirton, WV

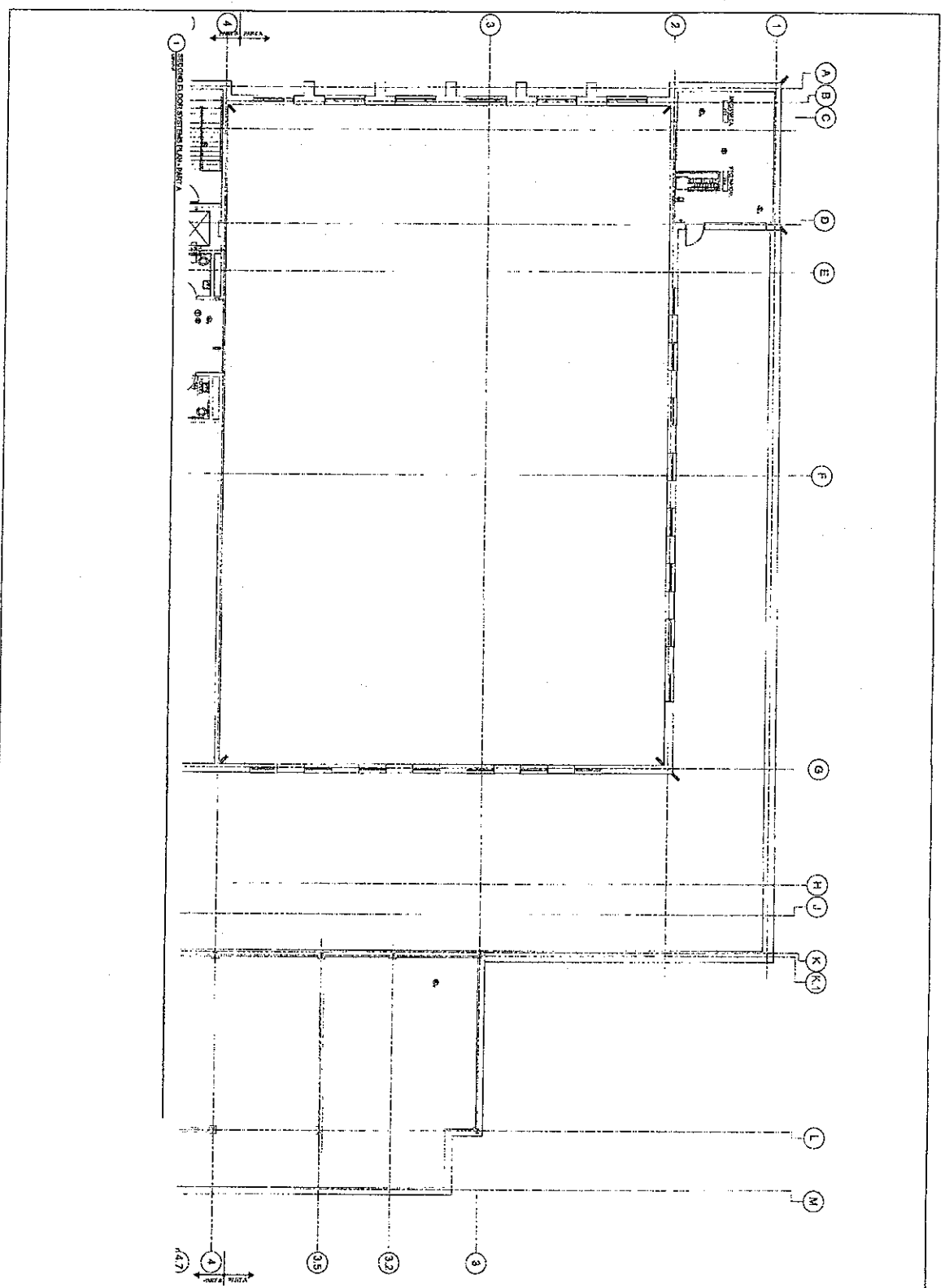
NO.	DESCRIPTION	DATE
1	ISSUED FOR BIDDING	05/11/07
2	REVISION	
3	REVISION	
4	REVISION	
5	REVISION	
6	REVISION	
7	REVISION	
8	REVISION	
9	REVISION	
10	REVISION	
11	REVISION	
12	REVISION	
13	REVISION	
14	REVISION	
15	REVISION	
16	REVISION	
17	REVISION	
18	REVISION	
19	REVISION	
20	REVISION	
21	REVISION	
22	REVISION	
23	REVISION	
24	REVISION	
25	REVISION	
26	REVISION	
27	REVISION	
28	REVISION	
29	REVISION	
30	REVISION	
31	REVISION	
32	REVISION	
33	REVISION	
34	REVISION	
35	REVISION	
36	REVISION	
37	REVISION	
38	REVISION	
39	REVISION	
40	REVISION	
41	REVISION	
42	REVISION	
43	REVISION	
44	REVISION	
45	REVISION	
46	REVISION	
47	REVISION	
48	REVISION	
49	REVISION	
50	REVISION	

FIRST FLOOR SYSTEMS
 PLAN - PART A
 DATE: 05/11/07
 DRAWN BY: BLM
 CHECKED BY: CSD
 PROJECT NO: EY101A

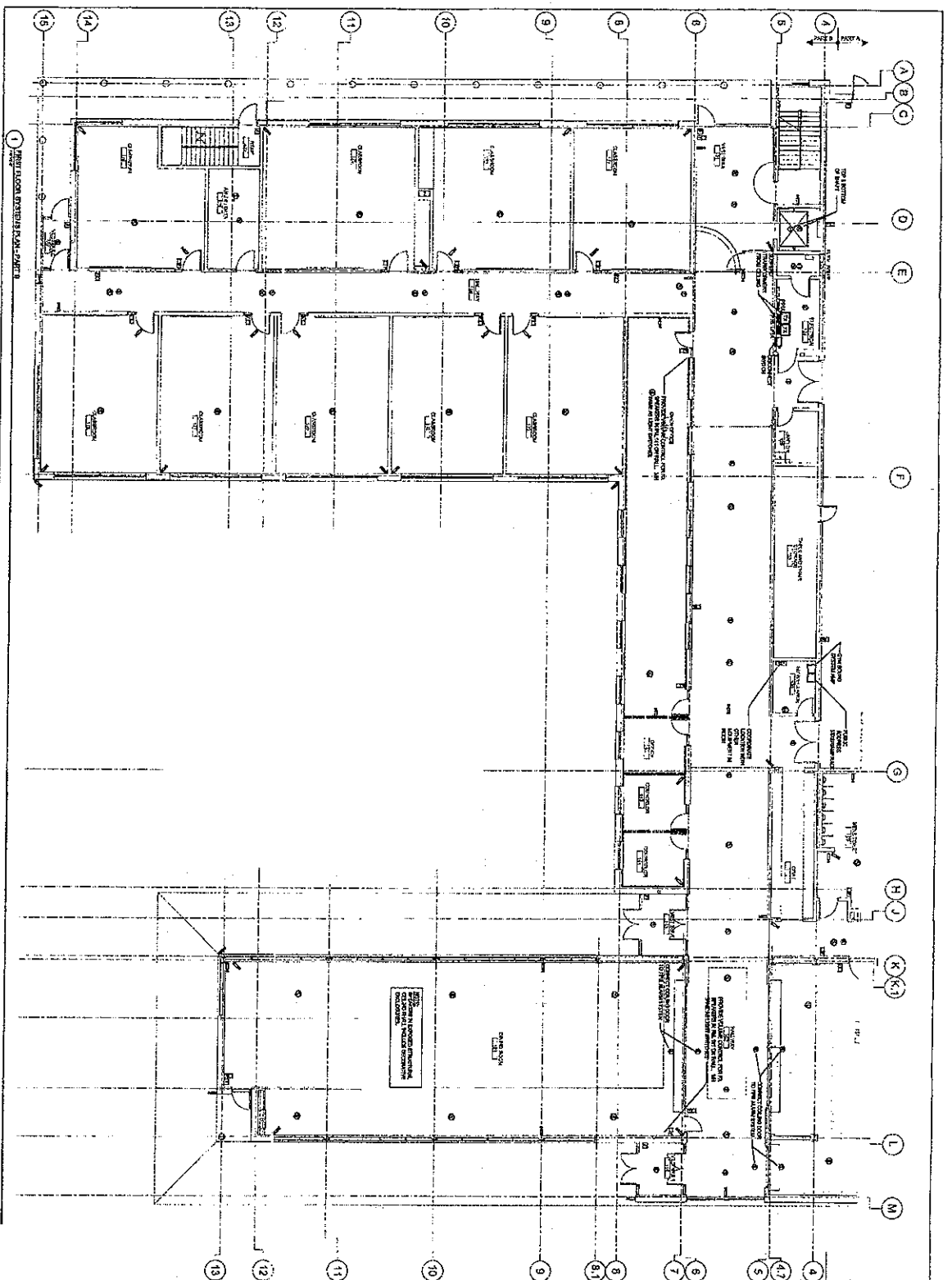


1 SECOND FLOOR SYSTEMS PLAN - PART B

ASSEMBLAGE ARCHITECTS 4020 Park Drive Raleigh, NC 27607 Phone: 919.877.1500 Fax: 919.877.1501																																		
McKinley and Associates 1000 North Salisbury Street Raleigh, NC 27605 Phone: 919.877.1500 Fax: 919.877.1501																																		
BID SET																																		
PART A - [Diagram] PART B - [Diagram]																																		
RAB/MSB: [Symbol] RAB/MSB: [Symbol]																																		
Mountaineer Challenge Academy West Virginia Army National Guard Camp Sherman, Shepherd, WV																																		
<table border="1" style="width: 100%; border-collapse: collapse;"> <thead> <tr> <th>No.</th> <th>Description</th> <th>Date</th> </tr> </thead> <tbody> <tr><td> </td><td> </td><td> </td></tr> <tr><td> </td><td> </td><td> </td></tr> <tr><td> </td><td> </td><td> </td></tr> <tr><td> </td><td> </td><td> </td></tr> <tr><td> </td><td> </td><td> </td></tr> <tr><td> </td><td> </td><td> </td></tr> <tr><td> </td><td> </td><td> </td></tr> <tr><td> </td><td> </td><td> </td></tr> <tr><td> </td><td> </td><td> </td></tr> <tr><td> </td><td> </td><td> </td></tr> </tbody> </table>		No.	Description	Date																														
No.	Description	Date																																
<table border="1" style="width: 100%; border-collapse: collapse;"> <tr> <td colspan="2" style="text-align: center;">SECOND FLOOR SYSTEMS PLAN - PART B</td> </tr> <tr> <td>Project No.</td> <td>20020202</td> </tr> <tr> <td>Drawn by</td> <td>RAM</td> </tr> <tr> <td>Checked by</td> <td>JAN 7, 2002</td> </tr> <tr> <td>Date</td> <td> </td> </tr> <tr> <td>Scale</td> <td>1/8" = 1'-0"</td> </tr> </table>		SECOND FLOOR SYSTEMS PLAN - PART B		Project No.	20020202	Drawn by	RAM	Checked by	JAN 7, 2002	Date		Scale	1/8" = 1'-0"																					
SECOND FLOOR SYSTEMS PLAN - PART B																																		
Project No.	20020202																																	
Drawn by	RAM																																	
Checked by	JAN 7, 2002																																	
Date																																		
Scale	1/8" = 1'-0"																																	
EY102B																																		



ASSEMBLAGE ARCHITECTS ARCHITECTS 1000 W. 10th Street, Suite 100 Lincoln, NE 68502 (402) 441-1111 www.assemblage.com	
McKinley and Associates ARCHITECTS 1000 W. 10th Street, Suite 100 Lincoln, NE 68502 (402) 441-1111 www.mckinleyand.com	
BID SET	
Part A PART A PART B PART C PART D PART E PART F PART G PART H PART I PART J PART K PART L PART M PART N PART O PART P PART Q PART R PART S PART T PART U PART V PART W PART X PART Y PART Z PART AA PART AB PART AC PART AD PART AE PART AF PART AG PART AH PART AI PART AJ PART AK PART AL PART AM PART AN PART AO PART AP PART AQ PART AR PART AS PART AT PART AU PART AV PART AW PART AX PART AY PART AZ PART BA PART BB PART BC PART BD PART BE PART BF PART BG PART BH PART BI PART BJ PART BK PART BL PART BM PART BN PART BO PART BP PART BQ PART BR PART BS PART BT PART BU PART BV PART BW PART BX PART BY PART BZ PART CA PART CB PART CC PART CD PART CE PART CF PART CG PART CH PART CI PART CJ PART CK PART CL PART CM PART CN PART CO PART CP PART CQ PART CR PART CS PART CT PART CU PART CV PART CW PART CX PART CY PART CZ PART DA PART DB PART DC PART DD PART DE PART DF PART DG PART DH PART DI PART DJ PART DK PART DL PART DM PART DN PART DO PART DP PART DQ PART DR PART DS PART DT PART DU PART DV PART DW PART DX PART DY PART DZ PART EA PART EB PART EC PART ED PART EE PART EF PART EG PART EH PART EI PART EJ PART EK PART EL PART EM PART EN PART EO PART EP PART EQ PART ER PART ES PART ET PART EU PART EV PART EW PART EX PART EY PART EZ PART FA PART FB PART FC PART FD PART FE PART FF PART FG PART FH PART FI PART FJ PART FK PART FL PART FM PART FN PART FO PART FP PART FQ PART FR PART FS PART FT PART FU PART FV PART FW PART FX PART FY PART FZ PART GA PART GB PART GC PART GD PART GE PART GF PART GG PART GH PART GI PART GJ PART GK PART GL PART GM PART GN PART GO PART GP PART GQ PART GR PART GS PART GT PART GU PART GV PART GW PART GX PART GY PART GZ PART HA PART HB PART HC PART HD PART HE PART HF PART HG PART HH PART HI PART HJ PART HK PART HL PART HM PART HN PART HO PART HP PART HQ PART HR PART HS PART HT PART HU PART HV PART HW PART HX PART HY PART HZ PART IA PART IB PART IC PART ID PART IE PART IF PART IG PART IH PART II PART IJ PART IK PART IL PART IM PART IN PART IO PART IP PART IQ PART IR PART IS PART IT PART IU PART IV PART IW PART IX PART IY PART IZ PART JA PART JB PART JC PART JD PART JE PART JF PART JG PART JH PART JI PART JJ PART JK PART JL PART JM PART JN PART JO PART JP PART JQ PART JR PART JS PART JT PART JU PART JV PART JW PART JX PART JY PART JZ PART KA PART KB PART KC PART KD PART KE PART KF PART KG PART KH PART KI PART KJ PART KL PART KM PART KN PART KO PART KP PART KQ PART KR PART KS PART KT PART KU PART KV PART KW PART KX PART KY PART KZ PART LA PART LB PART LC PART LD PART LE PART LF PART LG PART LH PART LI PART LJ PART LK PART LL PART LM PART LN PART LO PART LP PART LQ PART LR PART LS PART LT PART LU PART LV PART LW PART LX PART LY PART LZ PART MA PART MB PART MC PART MD PART ME PART MF PART MG PART MH PART MI PART MJ PART MK PART ML PART MN PART MO PART MP PART MQ PART MR PART MS PART MT PART MU PART MV PART MW PART MX PART MY PART MZ PART NA PART NB PART NC PART ND PART NE PART NF PART NG PART NH PART NI PART NJ PART NK PART NL PART NM PART NO PART NP PART NQ PART NR PART NS PART NT PART NU PART NV PART NW PART NX PART NY PART NZ PART OA PART OB PART OC PART OD PART OE PART OF PART OG PART OH PART OI PART OJ PART OK PART OL PART OM PART ON PART OO PART OP PART OQ PART OR PART OS PART OT PART OU PART OV PART OW PART OX PART OY PART OZ PART PA PART PB PART PC PART PD PART PE PART PF PART PG PART PH PART PI PART PJ PART PK PART PL PART PM PART PN PART PO PART PP PART PQ PART PR PART PS PART PT PART PU PART PV PART PW PART PX PART PY PART PZ PART QA PART QB PART QC PART QD PART QE PART QF PART QG PART QH PART QI PART QJ PART QK PART QL PART QM PART QN PART QO PART QP PART QQ PART QR PART QS PART QT PART QU PART QV PART QW PART QX PART QY PART QZ PART RA PART RB PART RC PART RD PART RE PART RF PART RG PART RH PART RI PART RJ PART RK PART RL PART RM PART RN PART RO PART RP PART RQ PART RR PART RS PART RT PART RU PART RV PART RW PART RX PART RY PART RZ PART SA PART SB PART SC PART SD PART SE PART SF PART SG PART SH PART SI PART SJ PART SK PART SL PART SM PART SN PART SO PART SP PART SQ PART SR PART SS PART ST PART SU PART SV PART SW PART SX PART SY PART SZ PART TA PART TB PART TC PART TD PART TE PART TF PART TG PART TH PART TI PART TJ PART TK PART TL PART TM PART TN PART TO PART TP PART TQ PART TR PART TS PART TT PART TU PART TV PART TW PART TX PART TY PART TZ PART UA PART UB PART UC PART UD PART UE PART UF PART UG PART UH PART UI PART UJ PART UK PART UL PART UM PART UN PART UO PART UP PART UQ PART UR PART US PART UT PART UY PART UZ PART VA PART VB PART VC PART VD PART VE PART VF PART VG PART VH PART VI PART VJ PART VK PART VL PART VM PART VN PART VO PART VP PART VQ PART VR PART VS PART VT PART VU PART VV PART VW PART VX PART VY PART VZ PART WA PART WB PART WC PART WD PART WE PART WF PART WG PART WH PART WI PART WJ PART WK PART WL PART WM PART WN PART WO PART WP PART WQ PART WR PART WS PART WT PART WU PART WV PART WX PART WY PART WZ PART XA PART XB PART XC PART XD PART XE PART XF PART XG PART XH PART XI PART XJ PART XK PART XL PART XM PART XN PART XO PART XP PART XQ PART XR PART XS PART XT PART XU PART XV PART XW PART XX PART XY PART XZ PART YA PART YB PART YC PART YD PART YE PART YF PART YG PART YH PART YI PART YJ PART YK PART YL PART YM PART YN PART YO PART YP PART YQ PART YR PART YS PART YT PART YU PART YV PART YW PART YX PART YY PART YZ PART ZA PART ZB PART ZC PART ZD PART ZE PART ZF PART ZG PART ZH PART ZI PART ZJ PART ZK PART ZL PART ZM PART ZN PART ZO PART ZP PART ZQ PART ZR PART ZS PART ZT PART ZU PART ZV PART ZW PART ZX PART ZY PART ZZ	
SECOND FLOOR SYSTEMS PLAN - PART A	
Project No. 2000-0010 Client: USMC Date: 01/17/02 Designer: DSO Scale: 1/8"=1'-0" EY102A	



ASSEMBLAGE ARCHITECTS 1000 S. W. 10th St. Fort Lauderdale, FL 33304 Phone: (305) 555-1234 Fax: (305) 555-1235																			
McKinley and Associates 1000 S. W. 10th St. Fort Lauderdale, FL 33304 Phone: (305) 555-1234 Fax: (305) 555-1235																			
BID SET PROJECT NO. 03-10-110 DATE: 10/15/03																			
<p> Mountaineer Challenge Academy West Virginia Army National Guard Camp Danner, Raymond, WV </p>																			
<table border="1"> <thead> <tr> <th>No.</th> <th>Description</th> <th>Rev.</th> </tr> </thead> <tbody> <tr> <td> </td> <td> </td> <td> </td> </tr> <tr> <td> </td> <td> </td> <td> </td> </tr> </tbody> </table>	No.	Description	Rev.							<table border="1"> <thead> <tr> <th>Author</th> <th>Checked</th> <th>Date</th> </tr> </thead> <tbody> <tr> <td> </td> <td> </td> <td> </td> </tr> <tr> <td> </td> <td> </td> <td> </td> </tr> </tbody> </table>	Author	Checked	Date						
No.	Description	Rev.																	
Author	Checked	Date																	
FIRST FLOOR SYSTEMS PLAN - PART B Project No: 03-10-110 Drawing No: 03-10-110-030 Date: 10/15/03 Scale: AS SHOWN Designer: JML/STP Checker: JML/STP Title Block: JML/STP Plot No: 10/15/03																			
EY101B																			

Questions from Mon Valley Technologies dtd March 12, 2010

Question 1 Is the cat 6 cabling serving the camera locations part of this proposal....

Answer: 1. No.

Question 2. Please clarify part 1-1.4c warranty....

Answer 2. Software updates will be covered by industry practice.

Questions from ASCC Inc

Question 1. Please confirm how AC power is supplied to exterior PTZ cameras....

Answer 1. A secondary cable is provided you provide a power source at the head end.

Question 2. Considering there are approximately 30 cameras that exceed maximum distance....

Answer 2. Camera schedule will address this question

Question 3. Have job prints been made available on line...

Answer 3. No. However attached are TIF files that can be printed by you. For hard copies you may contact assemblage Architects at 608-827-5047

Questions from Communications Consulting Inc.

Question 1. Request for full size blueprints..

Answer 1. A PDF file of camera locations is attached. These file can be printed in a larger format.

Question 2A. On page 11 under new facility cctv....

Answer 2A. The requirement is for the avigilon system or equal. The bidded system must be equal in all capabilities..

Question 2B. If an item is not listed on this page...

Answer 2B. The winning vendor will be required to provide a totally operational system that provides the requirements as listed

Question 3. It was mentioned in the pre-bid meeting that all of the camera's are to be digital....

Answer 3. This issue is addressed in the camera schedule..

Question 4. At the pre-bid meeting there was an electrical contractor...

Answer 4. Sec 2-14 is deleted

Question 5. It was also strongly suggested by one of the vendors....

Answer 5. Contractor can assume that cable has been tested, however the vendor had responsibility for a working system..

Question 6. We believe due to all the questions....

Answer 6. Question is no longer germane..

Questions from Electronic Specialty Co.

Question 1. How many days of storage are required....

Answer 1. The storage requirement is 20TB.

Question 2. Material's list, page 11

Answer 2 This question is covered in the camera schedule.

Question 3. Vendor will provide enough 42" monitor to allow viewing of all cameras at the same time. Key boards and mouse also required for each DVR.

Question 4. Pelco power supply units are used for....

Answer 4. These are used to power the PTZ cameras

Questions from Kevin Mercer@electronicspecialty.com

Question 1. How many days of storage are required?....

Answer 1. The requirement is for 20TB of storage, and it is not a problem if this provides additional days.

Question 2. What is the frame rate and resolution do you require to be stored at?

Answer 2. Frame rates and image quality settings must be fine tuned once the system is operational. Bottom line image quality must be such as to provide facial recognition.

Question 3. Material's list, page 11 calls for

Answer 3. The camera schedule covers this question and matches cameras with lens.

Question 4. 5-50mm, 24-70mm, and 70-200 lenses... where are these lenses going....

Answer 4 The camera schedule covers this question and matches cameras with lenses.

Question 5. Page 26 mentions an analog Video encoder....

Answer 5. The analog video encoder allows for the incorporation of conventional analog cameras into the system. This will ensure the system can have this capability in the future

Question 6. Page 26 mentions analog camera on page 11....

Answer 6. See the answer to #5 above.

Question 7. Page 26 mentions a 42" LCD monitor....

Answer 7. 42" monitors are required as part of this purchase. Vendor will provide enough monitors to view all cameras at the same time. Latrine cameras must be separated from all other DVRs and monitors.

Question 8. Page 11 of the material list....

Answer 8. These items provide power to the PTZ cameras