



State of West Virginia
 Department of Administration
 Purchasing Division
 2019 Washington Street East
 Post Office Box 50130
 Charleston, WV 25305-0130

Request for Quotation

RFQ NUMBER
 PTR09022

PAGE
 1

ADDRESS CORRESPONDENCE TO ATTENTION OF:
 FRANK WHITTAKER
 304-558-2316

VENDOR

RFQ COPY
 TYPE NAME/ADDRESS HERE

SHIP TO

DIVISION OF PUBLIC TRANSIT
 BUILDING 5, ROOM 906
 1900 KANAWHA BOULEVARD, EAST
 CHARLESTON, WV
 25305-0432 304-558-0428

DATE PRINTED	TERMS OF SALE	SHIP VIA	F.O.B.	FREIGHT TERMS
03/03/2009				

BID OPENING DATE: 03/18/2009 BID OPENING TIME 01:30PM

LINE	QUANTITY	UOP	CAT NO.	ITEM NUMBER	UNIT PRICE	AMOUNT
***** ADDENDUM NO. 2 *****						
THIS ADDENDUM IS ISSUED TO PROVIDE THE ATTACHED AGENCY RESPONSES AND CLARIFICATIONS FOR THE REQUESTS FOR APPROVED EQUALS.						
THE BID OPENING REMAINS 03/18/2009 AT 1:30 PM						
0001	1	EA		557-60		
LOW-FLOOR TRANSIT VEHICLE WITH WINDOWS WITH A/C						
***** THIS IS THE END OF RFQ PTR09022 ***** TOTAL: _____						

SEE REVERSE SIDE FOR TERMS AND CONDITIONS

SIGNATURE	TELEPHONE	DATE
TITLE	FEIN	ADDRESS CHANGES TO BE NOTED ABOVE

WHEN RESPONDING TO RFQ, INSERT NAME AND ADDRESS IN SPACE ABOVE LABELED 'VENDOR'

GENERAL TERMS & CONDITIONS REQUEST FOR QUOTATION (RFQ) AND REQUEST FOR PROPOSAL (RFP)

1. Awards will be made in the best interest of the State of West Virginia.
2. The State may accept or reject in part, or in whole, any bid.
3. All quotations are governed by the *West Virginia Code* and the *Legislative Rules* of the Purchasing Division.
4. Prior to any award, the apparent successful vendor must be properly registered with the Purchasing Division and have paid the required \$125 fee.
5. All services performed or goods delivered under State Purchase Order/Contracts are to be continued for the term of the Purchase Order/Contracts, contingent upon funds being appropriated by the Legislature or otherwise being made available. In the event funds are not appropriated or otherwise available for these services or goods, this Purchase Order/Contract becomes void and of no effect after June 30.
6. Payment may only be made after the delivery and acceptance of goods or services.
7. Interest may be paid for late payment in accordance with the *West Virginia Code*.
8. Vendor preference will be granted upon written request in accordance with the *West Virginia Code*.
9. The State of West Virginia is exempt from federal and state taxes and will not pay or reimburse such taxes.
10. The Director of Purchasing may cancel any Purchase Order/Contract upon 30 days written notice to the seller.
11. The laws of the State of West Virginia and the *Legislative Rules* of the Purchasing Division shall govern all rights and duties under the Contract, including without limitation the validity of this Purchase Order/Contract.
12. Any reference to automatic renewal is hereby deleted. The Contract may be renewed only upon mutual written agreement of the parties.
13. **BANKRUPTCY:** In the event the vendor/contractor files for bankruptcy protection, this Contract may be deemed null and void, and terminated without further order.
14. **HIPAA BUSINESS ASSOCIATE ADDENDUM:** The West Virginia State Government HIPAA Business Associate Addendum (BAA), approved by the Attorney General, and available online at the Purchasing Division's web site (<http://www.state.wv.us/admin/purchase/vrc/hipaa.htm>) is hereby made part of the agreement. Provided that, the Agency meets the definition of a Cover Entity (45 CFR §160.103) and will be disclosing Protected Health Information (45 CFR §160.103) to the vendor.
15. **WEST VIRGINIA ALCOHOL & DRUG-FREE WORKPLACE ACT:** If this Contract constitutes a public improvement construction contract as set forth in Article 1D, Chapter 21 of the West Virginia Code ("The West Virginia Alcohol and Drug-Free Workplace Act"), then the following language shall hereby become part of this Contract: "The contractor and its subcontractors shall implement and maintain a written drug-free workplace policy in compliance with the West Virginia Alcohol and Drug-Free Workplace Act, as set forth in Article 1D, Chapter 21 of the West Virginia Code. The contractor and its subcontractors shall provide a sworn statement in writing, under the penalties of perjury, that they maintain a valid drug-free work place policy in compliance with the West Virginia and Drug-Free Workplace Act. It is understood and agreed that this Contract shall be cancelled by the awarding authority if the Contractor: 1) Fails to implement its drug-free workplace policy; 2) Fails to provide information regarding implementation of the contractor's drug-free workplace policy at the request of the public authority; or 3) Provides to the public authority false information regarding the contractor's drug-free workplace policy."

INSTRUCTIONS TO BIDDERS

1. Use the quotation forms provided by the Purchasing Division
2. **SPECIFICATIONS:** Items offered must be in compliance with the specifications. Any deviation from the specifications must be clearly indicated by the bidder. Alternates offered by the bidder as **EQUAL** to the specifications must be clearly defined. A bidder offering an alternate should attach complete specifications and literature to the bid. The Purchasing Division may waive minor deviations to specifications.
3. Complete all sections of the quotation form.
4. Unit prices shall prevail in case of discrepancy.
5. All quotations are considered F.O.B. destination unless alternate shipping terms are clearly identified in the quotation.
6. **BID SUBMISSION:** All quotations must be delivered by the bidder to the office listed below prior to the date and time of the bid opening. Failure of the bidder to deliver the quotations on time will result in bid disqualifications: Department of Administration, Purchasing Division, 2019 Washington Street East, P.O. Box 50130, Charleston, WV 25305-0130

State of West Virginia - Equals Requests

PTR09022 Approved Equals

2/16/2009

Sections	As Specified	Request	Remarks
EXHIBIT 2	<p>Life of Contract (1) year ... Unless specific provisions are stipulated in this contract document, the terms, conditions and pricing set herein are firm for the life of the contract</p>	<p>EIDorado National requests the following additional language be added: If the cost of the vehicle changes upwards due to mandates of federal or state legislation and/or regulation that are promulgated and that take effect after contract award, and impact the price of the vehicle during the contract period, the actual cost increases will be added in the unit price of the vehicle. The addition of this clause protects the bus manufacturer from the price increases necessary to meet regulatory changes, as mandated by EPA as well as other federal agencies during the life of the contract.</p>	
PART 1 - 8.1	<p>Has similar vehicles in operation in comparable service for a minimum of one (1) year</p>	<p>EIDorado National requests acceptance of similar vehicles in comparable service for less than (1) year. EIDorado National - California has been building heavy-duty low-floor buses since 1996, however, the proposed Passport model is a new product. Passport vehicles have only been in service since the fall of 2008. The Passport is manufactured with many of the same processes as our 12-year heavy-duty buses. Certified shaker test results are not available for the Passport.</p>	
PART 1 - 8.5.9	<p>A list of five users' names, addresses, and telephone numbers, e-mail address who have been provided similar equipment by the vendor</p>	<p>EIDorado National requests acceptance of a list of less than five users who have been provided similar equipment by the vendor. The proposed Passport model is a new product. We can provide a list of three users that are operating Passport vehicles and three users that have Passport buses currently on order.</p>	
PART 2 - 1.3	<p>Overall Length (Max) 348"</p>	<p>355.5" (29'-7.5")</p>	
PART 2 - 1.3	<p>Step Height 12"</p>	<p>14.5" note: kneeling not available</p>	

State of West Virginia - Equals Requests

Approved Equals

PTR09022

2/16/2009

Sections	As Specified	Request	Remarks
PART 2 - 1.3	Seat/wheelchair capacity 25 and up to 2 w/c spaces	22 seated or 16 plus 2 w/c with Freedman 3PT seats per specifications. As a point of information, 26 seated or 18 plus 2 w/c is available with the following alternate seat models: Freedman Seating Angel, Citipro, Featherweight mid-back, Featherweight low-back or Citiseat models; 4One Mariella or Aries models; American Seating Metropolitan or 6468 models	
PART 2 - 1.3	Engine type International DT-365 diesel	GM Duramax 6.6 L diesel	
PART 2 - 1.3	Passenger Heat 130,000 BTU	EIDorado National wishes to clarify if the agency wants a diesel fired auxiliary heater.	
PART 2 - 2.0	Engine International DT-365	GM Duramax 6.6 L diesel 300 HP	
PART 2 - 2.2	Fleetguard fuel filter	GM engine fuel filter	
PART 2 - 2.5	Exhaust discharge on street side	Exhaust discharge on curb side	
PART 2 - 2.7	Fuel system capacity 65 gallons	Fuel system capacity 40 gallons	
PART 2 - 3.5	Option A. Telma Retarder	Telma retarder is not available; if the agency wants we can offer a GM exhaust brake	
PART 2 - 4.1.2	Emerg/Parking brake mounted on the right side of the dash	Foot operated transmission mounted drum brake	
PART 2 - 4.3.2	Front suspension with kneeling	Kneeling is not available with the GM 5500 chassis	
PART 2 - 4.4.1	Wheels 19.50 X 7.5, 10 bolt	Wheels 19.50 X 6.75 hub piloted 8 bolts	
PART 2 - 5.1	Alternator 270 amp Leece Neville	Delco dual 150 amps w/Duramax diesel engine	
PART 2 - 5.2	Dual batteries CCA capacity 1950	Dual batteries CCA capacity 1500	
PART 2 - 5.2	Enclosed stainless steel battery tray	GM OEM steel pull-out tray	

State of West Virginia - Equals Requests

Approved Equals

PTR09022

2/16/2009

Sections	As Specified	Request	Remarks
PART 2 - 5.2	Two master cut off switches shall be provided, one switch to cut off service to body electrical panel, the second to cut off service to the ramp, chassis & telma retarder.	One dual master switch located adjacent to battery compartment; one side of the switch removes power from body electrical panel which includes the door and ramp. The other side removes power from the chassis including engine ECM.	
PART 2 - 5.3.15	Truck-Lite products to be used	Standard exterior lights: Rear tail, brake, turn & back-up lights are LED 4" round made by Optronics. Front & rear identification and clearance & side turn signal lights are LED 4"x 1.25" made by Optronics. Step & W/C lights are LED type and made by Hamsar.	
PART 2 - 5.4.3	Interior LED lighting system shall be provided.	EIDorado National can provide either Pretoria fluorescent or Pretoria LED passenger lighting systems.	
PART 2 - 6.1.4	The windshield defrosting shall have extra adjustable outlets. A screen to be added under the defrost outlets	The windshield defrosting system offered is a GM OEM system.	
PART 2 - 9.1.3	All non-anodized metal body part..... Shall be treated with zinc chromate.	The steel cage is painted using PPG'S corrosion resistant epoxy primer/sealer #CRE 904; zinc chromate is not allowed in California	
PART 2 - 9.1.10	Lower skirts to be molded fiberglass	EIDorado National is offering a low floor bus. The exterior aluminum panel is a one piece section from the window level down; removable fiberglass skirts are not offered.	
PART 2 - 9.2.2	Skirt panels below the floorline shall be detachable	EIDorado National is offering a low floor bus. The exterior aluminum panel is a one piece section from the window level down. The skirt panels are not detachable.	

State of West Virginia - Equals Requests

PTR09022 Approved Equals

2/16/2009

Sections	As Specified	Request	Remarks
PART 2 - 9.2.3	A galvanized steel or aluminum under floor shall be provided.	EiDorado National requests to delete this requirement because the panels under the plywood floor of the bus keep the moisture between the panel and the plywood. EiDorado National seals the bottom side and edges of the plywood floor with BASF undercoating material before installation, then when the bus is completed the entire under floor of the bus is undercoated.	
PART 2 - 9.2.5	A one piece roof panel shall be provided.	Roof aluminum panels are in three (3) sections. The center panel is installed as one continuous piece along the center with structural sealing and rivets around the perimeter edge seam. The roof corner panels are contoured formed aluminum full length panels that are installed with structural sealing and rivets.	
PART 2 - 9.5.5	Entrance area shall be covered with 3/16" ribbed rubber floor covering.	EiDorado National is offering a low floor transit bus. A ramp is installed in the entrance area. The ramp surfaces are covered with 3M anti-skid material.	
PART 2 - 10.1	The vehicle shall have a kneeling system	GM does not offer kneeling system.	
PART 2 - 10.1	The ramp control shall be mounted on the exterior sidewall.	The ramp control switch is located inside on front door modesty panel.	
PART 2 - 10.3	The intelligent interlock system.... Shall be used	EiDorado National wishes to clarify, if the agency is referring to "Intelligent" as a brand name. We offer the Intermotive interlock system.	
PART 2 - 12.1	Windshield shall be 2 piece	Our OEM windshield is a single piece	
PART 2 - 13.1	Exterior, two 8 1/2 x 13 1/2 fully in two planes adjustable shall be provided.	Exterior mirrors are electric remote control, lighted, heated 102" wide load, integral arm, integral convex mirror and black molded composite 7" x 12" with a 6" x 7" convex section. Heated mirrors only heat the upper flat glass portion. The lower convex portion is not heated.	

State of West Virginia - Equals Requests

Approved Equals

2/16/2009

Sections	As Specified	Request	Remarks
PART 2 - 19.1	Destination signs all LED: Front 16 x 160 case size 8.9 x 49.9 x 2.75 Side 14 x 72 case size 6.9 x 30.75 x 2.5	Destination signs all LED: Front 14 x 108 case size 6.9 x 44.9 x 2.5 Rear 14 x 108 case size 6.9 x 44.9 x 2.5	
PART 3 - 2.1	Complete vehicle warranty (5) years or 75,000 miles	Standard body coverage (1) year or 50,000 miles; body structure coverage (4) years or 100,000 miles; the GM chassis is warranted directly to the first purchaser from GM. Basic chassis coverage is (2) years or unlimited miles.	
PART 3 - 2.2	Warranty of basic vehicle structure: frame and suspension members for (3) years or unlimited miles	The GM suspension warranty is (2) years or unlimited miles; the GM frame rail and cross member warranty is (5) years or unlimited miles; we would also propose a Morryde rear suspension which has a (3) year or 70,000 mile warranty	
PART 3 - 2.3	Engine warranty (3) years or 150,000 miles	Duramax 6.6L diesel engine (5) years or 100,000 miles	
PART 3 - 2.3	Transmission warranty (3) years or unlimited miles	Allison 2200 PTS transmission (3) years or 100,000 miles	
PART 3 - 2.3	Drive axle warranty (3) years or unlimited miles	(2) years or unlimited miles	
PART 3 - 2.3	Brake system warranty (3) years or unlimited miles	(2) years or unlimited miles	
PART 3 - 2.3	Basic body structure integrity warranty (5) years or 75,000 miles	(4) years or 100,000 miles	

PTR09022
Request for Approved Equals
Addendum #2

National Bus Sales and Leasing

Item(s)

- 1 Denied
- 2 Approved
- 3 Denied
- 4 Approved
- 5 Approved
- 6 Approved- as long as area is stainless steel
- 7 Approved
- 8 Approved
- 9 Approved- NO honeycomb fiberglass to be used
- 10 Approved
- 11 Approved- NBS model to be bid
- 12 Approved- NBS model to be bid
- 13 Approved- NBS model to be bid
- 14 Approved
- 15 Approved
- 16 Approved
- 17 Approved
- 18 Approved
- 19 Approved- NBS model to be bid
- 20 Approved- NBS model to be bid
- 21 Approved
- 22 Approved
- 23 Approved
- 24 Approved- NBS model to be bid
- 25 Approved

Approved the request to add option L: Credit to delete front air suspension & Kneeling Feature

See updated Price and Option sheet to be used with bid.

Frank Whitaker FAX (304) 558-4115
 Tim Thomas cc: (304) 558-0174

From David Clawson
 National Bus

Previously emailed
 in different
 format

RECEIVED

FEB 18 2009

DIVISION OF PUBLIC TRANSIT

State of West Virginia Bid No. PTR09022 - Request for Exception/Clarification-Low Floor Transit Vehicle		Request/Clarification
Item	Page Section	Request/Clarification
1	29 1.3	We are requesting approval to supply based on the attached chassis specifications for this procurement.
2	30-31 1.3, 2.0	We request approval to supply post 2007 engine Maxforce 7 V8 Diesel engine
3	29 1.3	We request approval dimensions to be GVWR to specify a minimum of 23,000 lbs
4	32 2.7	We request approval to provide a fuel tank capacity of 55 gallon between the rails behind axle. This is the only tank available on this low floor chassis
5	33 3.5	We request this Option A: Telma Brake Retarder be omitted from this procurement. By design the low floor will not fit
6	36 5.2	We request the batteries stay in the OEM detachable tray mounted under the passenger step. No battery tray can be mounted in the body.
7	37 5.3.14	We request the fog lights be mounted under the bumper or omitted from this procurement. This option is available from the chassis vender. If we mount above this will not allow the tilt hood to be utilized. Please approve our request.
8	43 9.1.1	We request approval of our floor frame construction: The floor frame is constructed of 11-gauge, 2" x 2.88" x 2" channel cross members, on a maximum 24" center, with an outer 14-gauge angle steel impact rail. 11-gauge, 4" wide flat steel is provided to support the floor track. The floor frame is secured to the chassis frame in accordance with Ford's QVM requirements which are considered best practices.

<p>We request approval to utilize our construction as followed. The body has a steel cage construction. When the sidewalls, floor, and roof are welded together, they form a strong, durable structure.</p>	<p>The sidewalls are constructed of 1.5" x 1.5" 16-gauge tubular steel studs and corner posts on maximum 48" centers. A 14-gauge, 1-1/2" x 2" tubular horizontal stringer is welded to the top of the studs. A 16-gauge Z-rail is welded to the studs at the bottom of the sidewall. The window corners are reinforced with corner gussets. The roof consists of 1.5" x 1.5" 16-gauge tubular steel rafters installed on maximum 48" centers. The roof rafters are welded into two 16-gauge steel "U" shaped sidewall caps. The rafters, in conjunction with two 3" 16-gauge flat longitudinal stringers, form a "steel cage" type of construction. The back wall has a 1.5" x 1.5" 16-gauge tubular steel frame, reinforced with 16-gauge "C" channel. A section of 16-gauge Z-channel is welded to the bottom of the back wall. The floor frame is constructed of 11-gauge, 2"x2.8"x2" channel cross members, on maximum 34" centers, with an outer 14-gauge channel steel impact rail. 11-gauge, 4" flat steel is provided to support the floor track. The wheel wells consist of 14-gauge steel welded to the floor cross members. Any wheelchair tie downs are attached through 11-gauge 4" flat steel welded in the appropriate locations on the floor. The floor frame is secured to the chassis frame in accordance with the chassis manufacturer's requirements.</p> <p>When the sidewalls, floor, and roof are welded together, they form a continuous "hoop" structure, which is extremely strong and durable</p>	<p>9 43 9.1.1</p>
<p>We request approval to omit the requirement for belly pan. We feel using an exterior grade pressure treated plywood flooring without underbelly steel will eliminate any possible vapor lock which will cause more damage to the deterrent of the flooring.</p>	<p>10 45 9.2.3</p>	
<p>We request approval to change the current specifications to read stepwell shall be minimum of 14 gage stainless steel stepwell. We feel this is pertinent and nessessary to insure the longevity of the vehcles stepwells in climates with high moisture area with snow and salt are present. Please consider updating the current specification to require this construction as the standard.</p>	<p>11 45 8.2.6</p>	
<p>We request that the molded fiberglass skirts be omitted. The Low floor design has no skirt panel breaks that separate the sidewalls like a normal cutaway.</p>	<p>12 45 9.1.10</p>	
<p>We request approval to eliminate the requirement for detachable skirts due to our low floor body design.</p>	<p>13 45 9.2.2</p>	
<p>We request approval have a first step height of no higher than 12" when fully kneeled. The Low Floor design has no stepwell so no risers or tread is applicable for the design. The ramp is design from Stainless Steel and attached to the body and chassis as an integral design. Requesting approval.</p>	<p>14 46 9.4.2</p>	

15	45 9.2.5	We are requesting approval to supply a roof with the exterior skin consist of three sheets of galvanized steels .020 (25-gauge) steel, two side galvanized. The skin of the roof is laminated to 1/8" Iauan down the center and bonded to the structure using urethane foam insulation. The construction methodology provides an exterior look with no visible fasteners, which is assembled with a series of "S" locks to form a watertight seal. The roof skin is continue over the sidewalls and between the windows to create a smooth transition between the roof and the sidewalls. We will warrant and guarantee free from water leakage throughout the life of the vehicle. The single piece roof cannot be met do to the width of the vehicle.
16	45,47 6.1	We request the approval to use a minimum of 1" thick urethan foam insulation sprayed between the exterior skin and the interior panels. Insulation shall be moisture proof and have excellent thermal and acoustic insulating characteristics. We request thls be approved for the insulation content throught the specifications
17	46 9.4.6	Option C: We request the approval to supply a rear exit door when optioned a clear opening of 37" x 56"
18	47 9.5.4	We request the approval to use in the replacement of RCA, Rubber Solutions flooring.
19	47 9.5.8	We request the approval to omit the step nosing because we have no step. The ramp has a yellow outline. Please approve.
20	49 11	We request the approval to accommodate the wheel wells in the body we need to install aisle facing seats over the wheelwells to maximize capacity. These seats are low back freedman featherweight. We are requesting approval to use those seats if seats are needed over the wheelwells.
21	49 11.1.8	We request approval to use an Air Ride seat by National Seating for the requirement of the option of the International.
22	51 12.2	We request approval to supply our main passenger side windows are 36" high by 46" wide.
23	52 12.1	We request approval to use an OEM supplied single pice windshield for the International Options.
24	58 23	We request the specification to add OEM Air suspension or approved equal.
25	57 22	We request Option F: Automatic Tire Chains be removed from this procurement due to the design of the low floor

Thomas, Timothy P

From: Whittaker, Frank M
Sent: Tuesday, February 17, 2009 2:17 PM
To: Thomas, Timothy P
Subject: FW: Additional request to ammend specifications for PTR 09022
Attachments: image001.jpg

From: Clawson, David [mailto:DClawson@nationalbussales.com]
Sent: Tuesday, February 17, 2009 10:56 AM
To: Whittaker, Frank M
Cc: Thomas, Timothy P
Subject: Additional request to ammend specifications for PTR 09022

Frank,

Would purchasing consider adding an additional option?

Credit to delete front air suspension and kneeling feature <\$ >

This happens to be a standard item for our manufacturer but is not available for our competition.

By having this option, an apples to apples comparison of base price can be made.

David M. Clawson, Jr.
Regional Manager - Transit Sales
National Bus Sales & Leasing, Inc.
(800) 282-7981 x4258
Cell (540) 729-3751



From: Clawson, David
Sent: Tuesday, February 17, 2009 10:49 AM
To: 'frank.m.whittaker@wv.gov'
Cc: 'Thomas, Timothy P'
Subject: FW: WV approved equals/Questions
Importance: High

Frank,

See attached requests for approved equals regarding PTR09022

David M. Clawson, Jr.
Regional Manager - Transit Sales
National Bus Sales & Leasing, Inc.
(800) 282-7981 x4258
Cell (540) 729-3751

From: Jamie JL Lipka [mailto:jlipka@championbus.com]
Sent: Friday, January 30, 2009 11:32 AM
To: David Clawson; Clawson, David
Cc: Jamie JL Lipka
Subject: WV approved equals/Questions
Importance: High

David

I've attached the approved equals or question I have for West Virginia. Attached are the specifications for the chassis as well.

Let me know if I can do anything else.

Thanks.

Jamie J. Lipka
Champion Bus, Inc.
General Coach America, Inc

Request for Approved Equals
Addendum #3

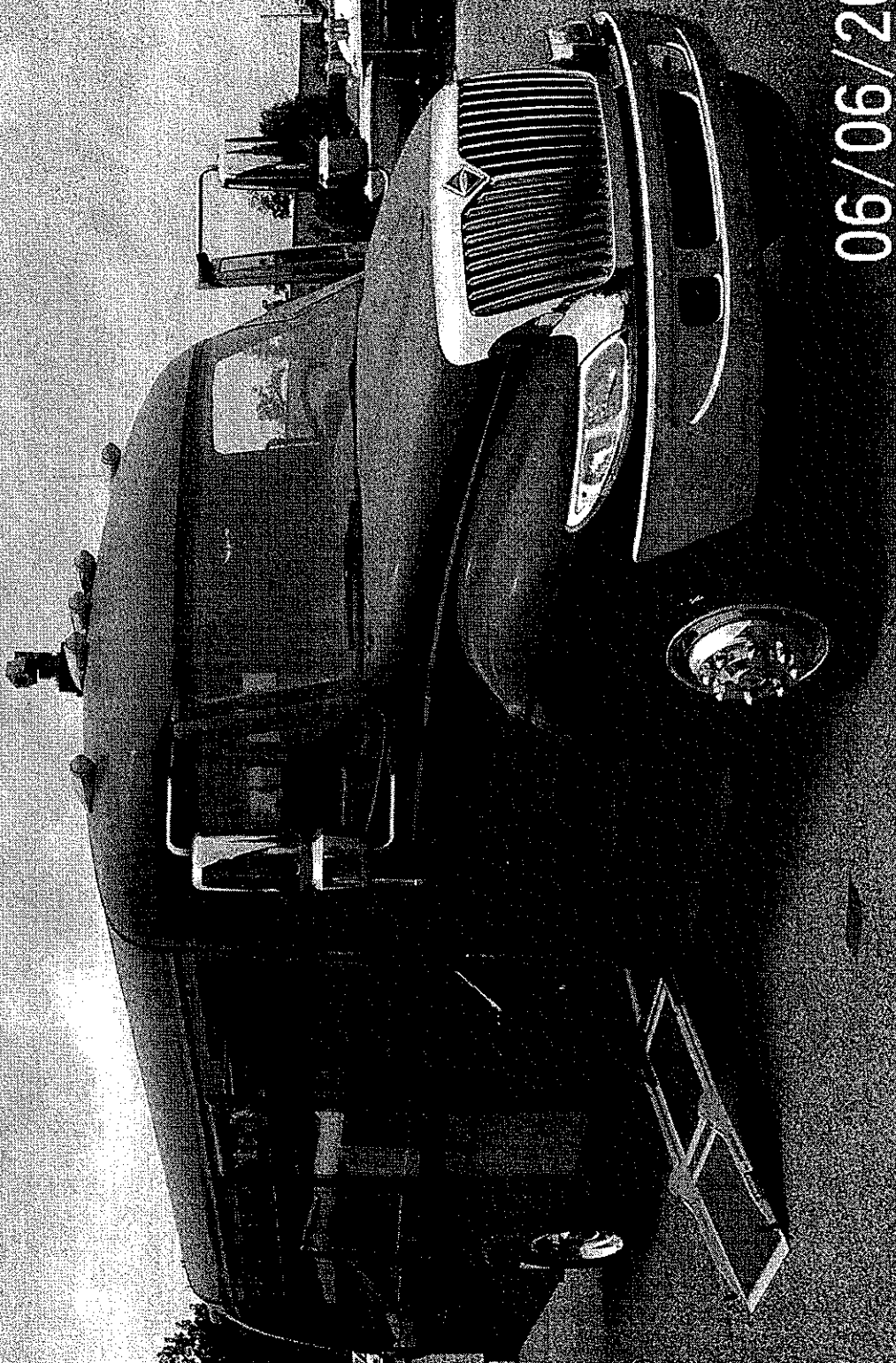
ADD OPTION M: Exterior Retro Package: See attached Photos of examples.

Manufacturer will use a combination of additional body parts, paint and graphics to replicate a 1950 era transit bus. Proposed drawings of the manufacturer's package must be submitted with the bid.

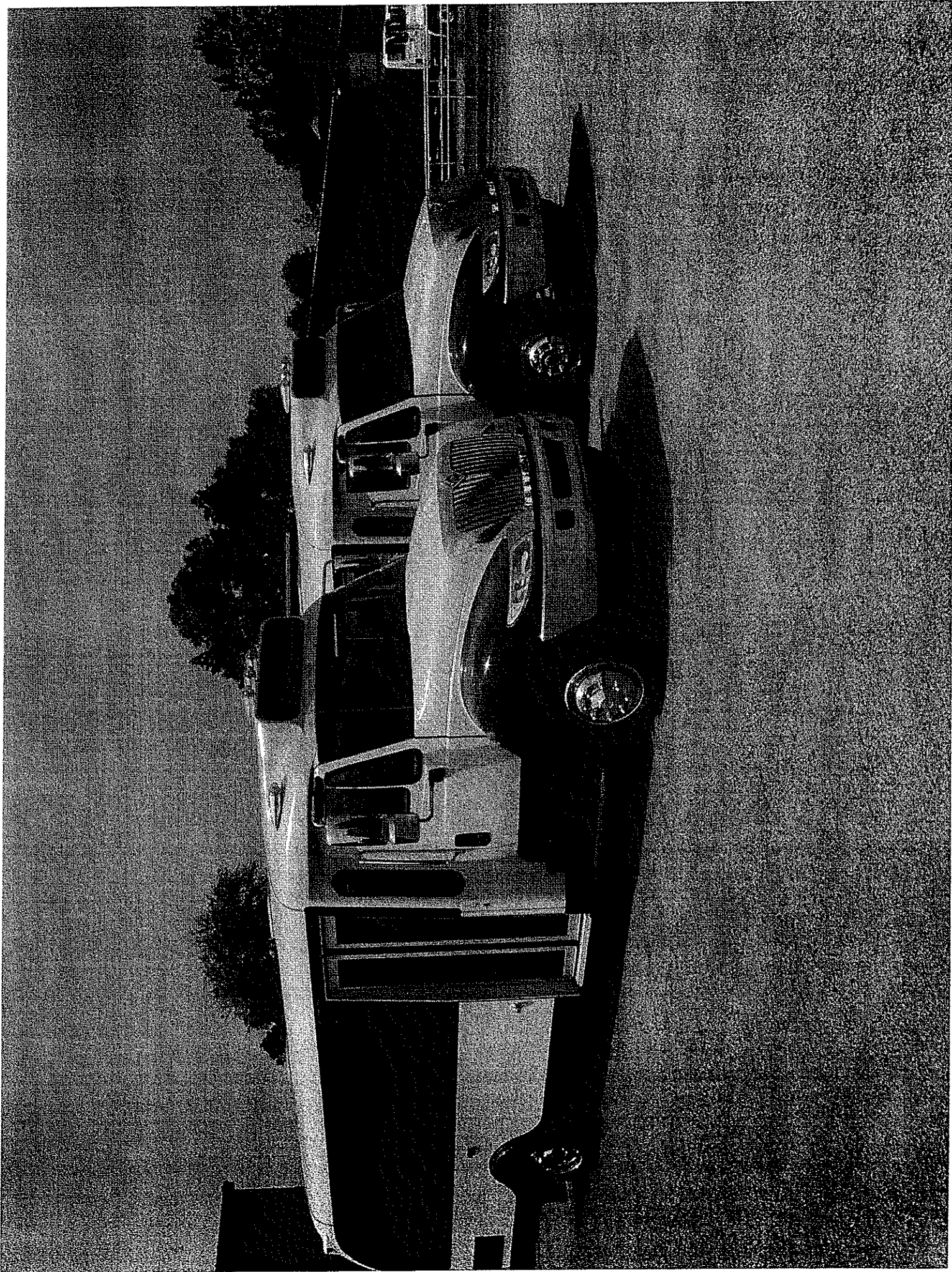
See updated Price and Option sheet to be used with bid.

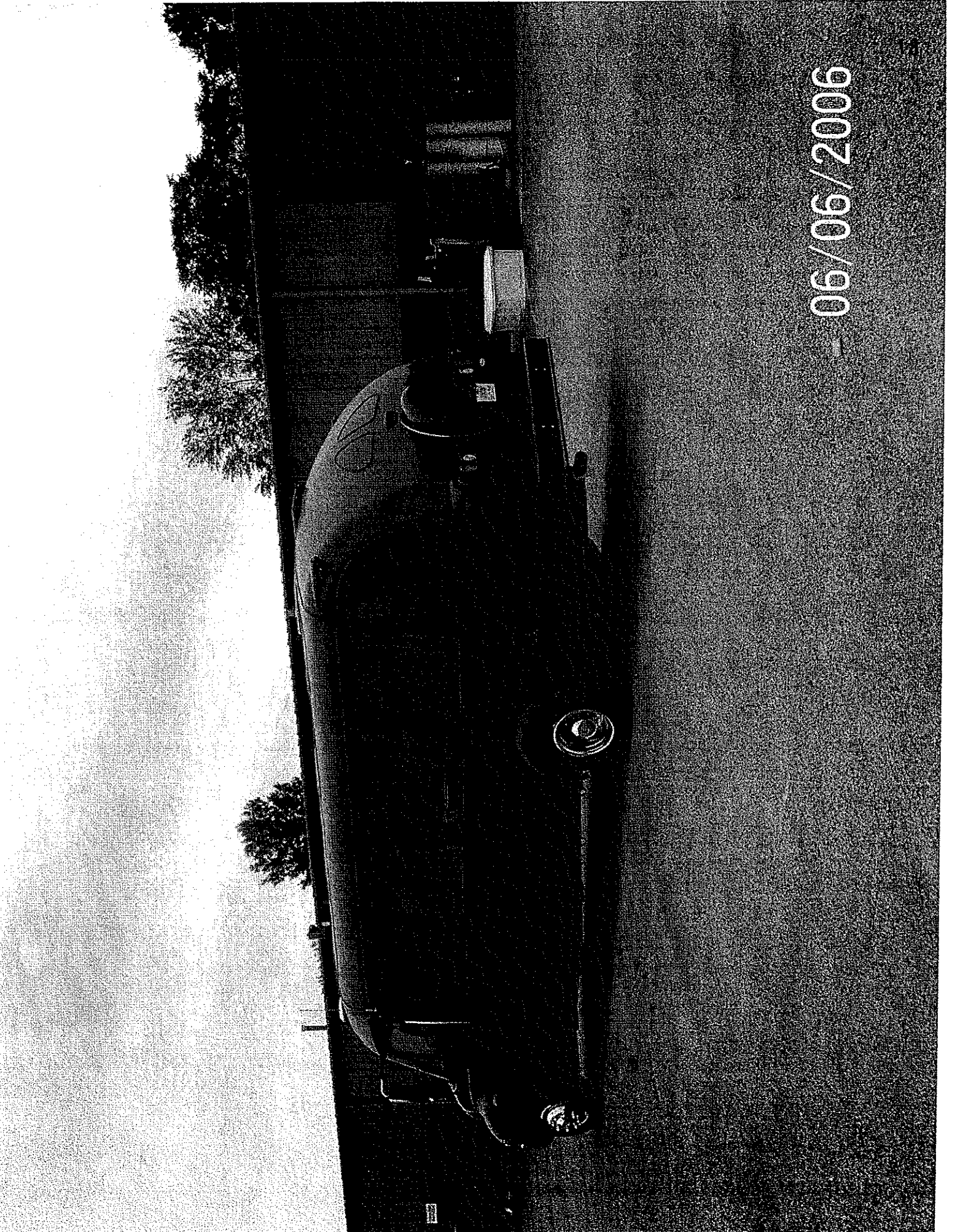
BUYER: FW-44 PAGE PTR#09022
 Spending Unit: Division of Public Transit
 Department of Transportation
 Low-Floor Transit Bus

Model Year:	Model:	Manufacturer:	
Price for each completed vehicle with 2 wheelchair spaces:	\$	15	\$
OPTION A: Brake Retarder	\$	15	\$
OPTION B: Roof Mount A/C Condenser System	\$	15	\$
OPTION C: Emergency Rear Exit Door	\$	15	\$
OPTION D: Child Restraint Seat	\$	15	\$
OPTION E: Cloth Passenger Seats	\$	15	\$
OPTION F: Automatic Tire Chain Device	\$	15	\$
OPTION G: Security Camera System (CREDIT)	(\$		(\$
OPTION H: Security Camera Playback System	\$	15	\$
OPTION I: Vehicle Skirt Painting	\$	15	\$
OPTION J: Full Bus Body Paint	\$	15	\$
OPTION K: Hybrid Drive System Bus	\$	15	\$
OPTION L: Credit to delete Front Air Suspension and Kneeling Feature	\$	15	\$
OPTION M: Exterior Retro Package	\$	15	\$



06/06/2006





— 06/06/2006