

SYMBOL	DESCRIPTION
—	COLD WATER (CW)
—	HOT WATER (HW)
—	HOT WATER RETURN (HWR)
—	STANDARD SINK
—	VEHICLE
—	DRINK FOUNTAIN
—	FLOOR CLEANOUT
—	PIPE DOWN
—	PIPE UP
—	RELIEF VALVE
—	PRESSURE REDUCING VALVE
—	VENT THROUGH ROOF
—	MINI
—	CLEAN OUT
—	VENT FOR CONNECTION DW. 15 WITH DW. 2 FLOOR SINK
—	IS

PLUMBING SYMBOLS

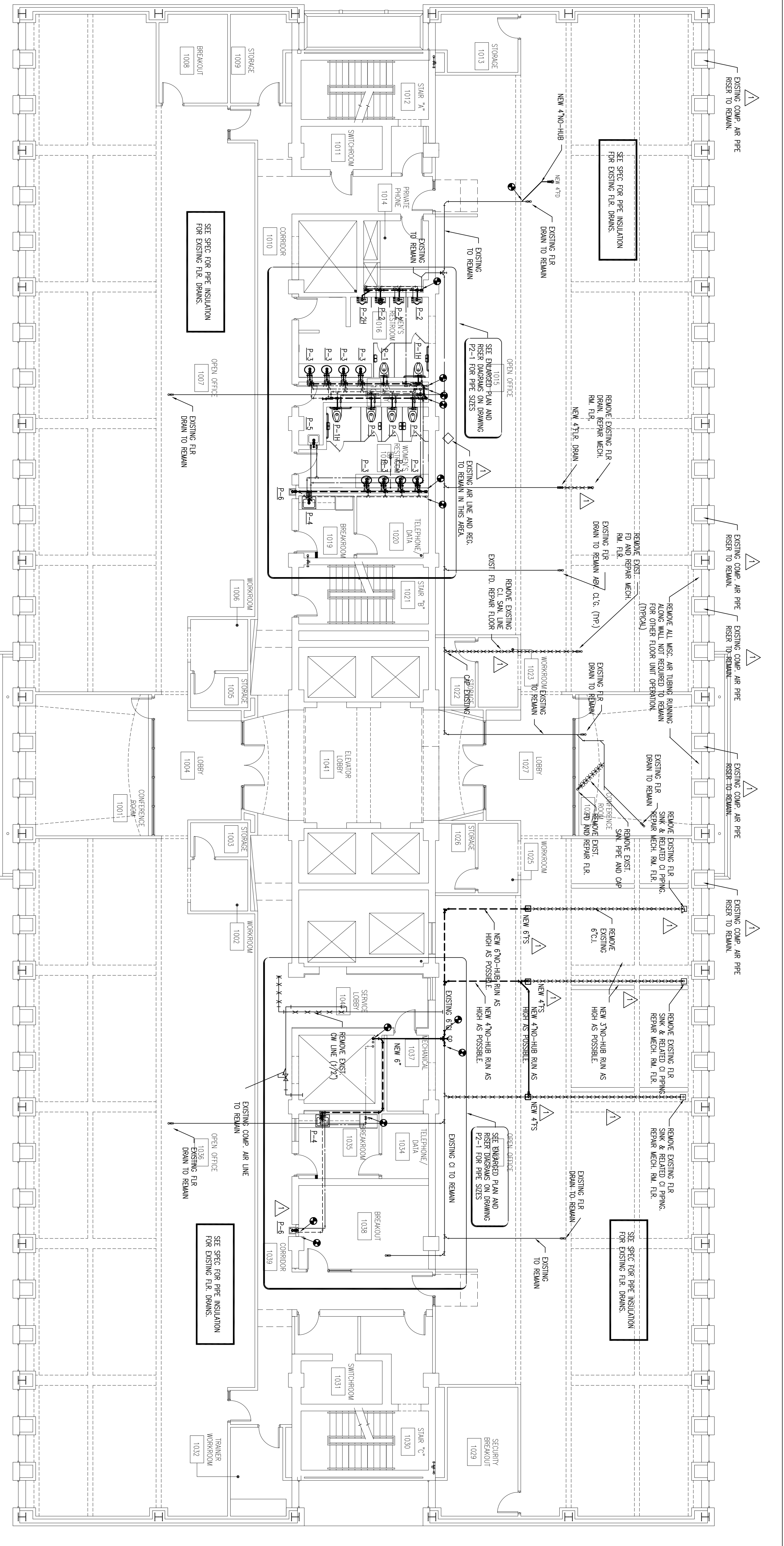
- NOTES**
1. ALL PLUMBING WORK IS TO BE DONE IN ACCORDANCE WITH THE 2015 INTERNATIONAL PLUMBING CODE.
 2. VERIFY ALL MEASUREMENTS BEFORE PROCEEDING WITH WORK.

MARK	DESCRIPTION	TP	TW	CW	SAN	VENT	REMARKS
P-1	WATER CLOSET	---	---	1"	4"	2"	WALL HANG W/ HIGH EFF. DUAL FLUSH MANUAL VALVE
P-1H	WATER CLOSET - ADA	---	---	4"	2"	---	WALL HANG W/ HIGH EFF. DUAL FLUSH MANUAL VALVE
P-2	URINAL	---	---	1/2"	2"	1-1/2"	WALL HANG EFF. MANUAL VALVE
P-2H	URINAL	---	---	1/2"	2"	1-1/2"	WALL HANG EFF. MANUAL VALVE
P-3	LAUNDRY - ADA	---	---	1/2"	1-1/4"	1-1/2"	UNDER COUNTER MOUNT
P-4	WORKTOP SINK (SINCE BOWL COUNTER TOP)	---	---	1/2"	1-1/2"	1-1/2"	CONNECT TO NEW HOT AND COLD WATER LINES
P-5	EXISTING SERVICE SINK (REMAIN)	---	---	1/2"	1-1/2"	1-1/2"	---
P-6	ELECTRIC WATER COOLER ADA	---	---	1/2"	1-1/2"	1-1/4"	---

PLUMBING FIXTURE SCHEDULE

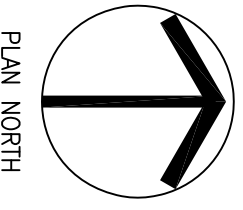
GENERAL NOTES

1. CONTRACTOR SHALL REFER TO SECTIONS ON DWG. M-1.1 FOR GENERAL COORDINATION OF WORK. CONTRACTOR SHALL COORDINATE WORK WITH OTHER TRADES IN LOCATIONS THAT DO NOT CONFLICT WITH TRADES ALREADY SHOWN ON SECTION AND ADJUST IN ACCORDANCE THEREWITH.
2. CONTRACTOR SHALL INSTALL WATER HAMMER ARRESTORS AS PER MANUFACTURERS RECOMMENDATIONS.
3. WALL BOXES INSTALLED BY DW. 15 CONTAIN SIZE ACCESS PANELS. SPRINKLER ACCESS PANELS SHALL BE INSTALLED AS SHOWN ON DWG. 15 WITH DW. 2. ANY OBSTRUCTIONS, COORDINATE WORK WITH DW. 15 CONTRACTOR PRIOR TO INSTALLATION.
4. ALL PIPING TO BE RIM ABOVE FLOOR.
5. INSTANT CLEANOUTS AT THE BASE OF ALL WARMWATER LEADERS. CLEANOUT LOCATIONS FOR ALL TO BE SHOWN ON DWG. 15 WITH DW. 2.
6. ALL EXISTING ROOF PIPING AND RELATED PIPING ARE TO REMAIN IN OPERATION, WEATHER SHOWN ON DRAWINGS OR NOT.
7. ALL EXISTING PLUMBING SYSTEMS RELATED TO OTHER FLOORS ARE TO REMAIN IN OPERATION, WEATHER SHOWN ON DRAWINGS OR NOT.
8. SET DRAWING P1-1 FOR HANGING PIPE LOCATIONS THEIR TENTH FLOOR TO BE INSTALLED.
9. INSULATE ALL NEW AND EXISTING SWIMMER PIPE FROM FLOOR DRAINS AND FLOOR SINKS.
10. NEW FLOOR SINKS "WAD35580" VJ "DUALITE" FROM GAINE, INSIDE CALC. OUTLET, WITHOUT BUCKET.
11. REMOVE EXIST. AIR DRAIN PIPING AND ALL OTHER EXISTING PIPING FROM ALONG CORB TO NEW DRAIN LOCATIONS. INSERT EXIST. DOWN PIPING INTO DRAIN NECK.
12. REPAIR OR MECH. ROOM FLOOR SLAB AT EXISTING FLOOR SINK REMOVAL. FILL OPENINGS IN TYP. FLOOR CONCRETE WITH CONCRETE (4" AND 2" STEEL REINFORCING BARS SPACED @ 12" ON CENTER). REPAIR AND PATCH WITH PATCH AND PATCH. PATCH BARS @ 18" O.C. OF CONCRETE PATCH AND IN W/D. PATCH.



10th LEVEL PLUMBING FLOOR PLAN

SCALE: 1/8" = 1'-0"



PLAN NORTH

TENTH FLOOR PLUMBING PLAN

Renovations To STATE OFFICE BUILDING NO. 5, 10th FLOOR
West Virginia Capital Complex
Charleston, West Virginia

CONSTRUCTION DOCUMENTS

REVISIONS NO.	DATE	DESCRIPTION
1	3/10/09	REVISED MECH. RM. FLOOR DRAINS AND PIPING ADDED. SELECTIVE DEMO. ADDED P-6 (ADD.#2)

ZMM ARCHITECTS & ENGINEERS
 222 Lee Street, West Charleston, West Virginia 25302
 Phone: 304.342.0159
 Fax: 304.345.5144
 www.zmm.com

P1-1P1

DRAWN	PCQ
CHECKED	PCQ
DATE	02.04.09
COMM. NO.	0 8 2 1

M:\0821\10thFloor\10th Floor\10thFloor7-1.dwg