



State of West Virginia
 Department of Administration
 Purchasing Division
 2019 Washington Street East
 Post Office Box 50130
 Charleston, WV 25305-0130

Request for Quotation

RFQ NUMBER
GSD096431

PAGE
1

ADDRESS CORRESPONDENCE TO ATTENTION OF
KRISTA FERRELL 304-558-2596

VENDOR

RFQ COPY
 TYPE NAME/ADDRESS HERE

SHIP TO

DEPARTMENT OF ADMINISTRATION
 GENERAL SERVICES DIVISION
 BUILDING FIVE - HIGHWAYS
 1900 KANAWHA BOULEVARD, EAST
 CHARLESTON, WV
 25305 304-558-2317

DATE PRINTED	TERMS OF SALE	SHIP VIA	F.O.B.	FREIGHT TERMS
03/26/2009				

BID OPENING DATE: 04/07/2009 BID OPENING TIME: 01:30PM

LINE	QUANTITY	UOP	CAT NO.	ITEM NUMBER	UNIT PRICE	AMOUNT
				ADDENDUM NO. 3		
				THIS ADDENDUM IS ISSUED TO:		
				1.) PROVIDE CLARIFICATIONS/ADDITIONS/AND CHANGES TO THE SPECIFICATIONS AND DRAWING AS ATTACHED,		
				2.) EXTEND THE BID OPENING DATE		
				BID OPENING DATE IS EXTENDED TO: 04/07/2009		
				BID OPENING TIME REMAINS: 1:30 PM		
				***** END ADDENDUM NO. 3 *****		
0001	1	JB		968-42		
				RENOVATIONS TO 10TH FLOOR, BLDG#5		
				***** THIS IS THE END OF RFQ GSD096431 ***** TOTAL:		

SEE REVERSE SIDE FOR TERMS AND CONDITIONS

SIGNATURE	TELEPHONE	DATE
-----------	-----------	------

TITLE	FEIN	ADDRESS CHANGES TO BE NOTED ABOVE
-------	------	-----------------------------------

WHEN RESPONDING TO RFQ, INSERT NAME AND ADDRESS IN SPACE ABOVE LABELED 'VENDOR'

GENERAL TERMS & CONDITIONS REQUEST FOR QUOTATION (RFQ) AND REQUEST FOR PROPOSAL (RFP)

1. Awards will be made in the best interest of the State of West Virginia.
2. The State may accept or reject in part, or in whole, any bid.
3. All quotations are governed by the *West Virginia Code* and the *Legislative Rules* of the Purchasing Division.
4. Prior to any award, the apparent successful vendor must be properly registered with the Purchasing Division and have paid the required \$125 fee.
5. All services performed or goods delivered under State Purchase Order/Contracts are to be continued for the term of the Purchase Order/Contracts, contingent upon funds being appropriated by the Legislature or otherwise being made available. In the event funds are not appropriated or otherwise available for these services or goods, this Purchase Order/Contract becomes void and of no effect after June 30.
6. Payment may only be made after the delivery and acceptance of goods or services.
7. Interest may be paid for late payment in accordance with the *West Virginia Code*.
8. Vendor preference will be granted upon written request in accordance with the *West Virginia Code*.
9. The State of West Virginia is exempt from federal and state taxes and will not pay or reimburse such taxes.
10. The Director of Purchasing may cancel any Purchase Order/Contract upon 30 days written notice to the seller.
11. The laws of the State of West Virginia and the *Legislative Rules* of the Purchasing Division shall govern all rights and duties under the Contract, including without limitation the validity of this Purchase Order/Contract.
12. Any reference to automatic renewal is hereby deleted. The Contract may be renewed only upon mutual written agreement of the parties.
13. **BANKRUPTCY:** In the event the vendor/contractor files for bankruptcy protection, this Contract may be deemed null and void, and terminated without further order.
14. **HIPAA BUSINESS ASSOCIATE ADDENDUM:** The West Virginia State Government HIPAA Business Associate Addendum (BAA), approved by the Attorney General, and available online at the Purchasing Division's web site (<http://www.state.wv.us/admin/purchase/vrc/hipaa.htm>) is hereby made part of the agreement. Provided that, the Agency meets the definition of a Cover Entity (45 CFR §160.103) and will be disclosing Protected Health Information (45 CFR §160.103) to the vendor.
15. **WEST VIRGINIA ALCOHOL & DRUG-FREE WORKPLACE ACT:** If this Contract constitutes a public improvement construction contract as set forth in Article 1D, Chapter 21 of the West Virginia Code ("The West Virginia Alcohol and Drug-Free Workplace Act"), then the following language shall hereby become part of this Contract: "The contractor and its subcontractors shall implement and maintain a written drug-free workplace policy in compliance with the West Virginia Alcohol and Drug-Free Workplace Act, as set forth in Article 1D, Chapter 21 of the West Virginia Code. The contractor and its subcontractors shall provide a sworn statement in writing, under the penalties of perjury, that they maintain a valid drug-free work place policy in compliance with the West Virginia and Drug-Free Workplace Act. It is understood and agreed that this Contract shall be cancelled by the awarding authority if the Contractor: 1) Fails to implement its drug-free workplace policy; 2) Fails to provide information regarding implementation of the contractor's drug-free workplace policy at the request of the public authority; or 3) Provides to the public authority false information regarding the contractor's drug-free workplace policy."

INSTRUCTIONS TO BIDDERS

1. Use the quotation forms provided by the Purchasing Division.
2. **SPECIFICATIONS:** Items offered must be in compliance with the specifications. Any deviation from the specifications must be clearly indicated by the bidder. Alternates offered by the bidder as **EQUAL** to the specifications must be clearly defined. A bidder offering an alternate should attach complete specifications and literature to the bid. The Purchasing Division may waive minor deviations to specifications.
3. Complete all sections of the quotation form.
4. Unit prices shall prevail in case of discrepancy.
5. All quotations are considered F.O.B. destination unless alternate shipping terms are clearly identified in the quotation.
6. **BID SUBMISSION:** All quotations must be delivered by the bidder to the office listed below prior to the date and time of the bid opening. Failure of the bidder to deliver the quotations on time will result in bid disqualifications: Department of Administration, Purchasing Division, 2019 Washington Street East, P.O. Box 50130, Charleston, WV 25305-0130



ARCHITECTS & ENGINEERS

March 20, 2009

ADDENDUM NO. 3

RE: Renovations To State Office Building No. 5
10th Floor Office Of Technology
West Virginia Capital Complex
Charleston, WV
Architect's Project No. 0821

TO: Prospective Bidders

FROM: ZMM, Inc. Architects And Engineers

This Addendum forms a part of the Contract Documents and modifies the original Bidding Documents.

ATTACH THIS ADDENDUM TO THE FRONT COVER OF THE PROJECT MANUAL AND ACKNOWLEDGE RECEIPT OF THIS ADDENDUM IN THE SPACE PROVIDED ON THE BID FORM.

See Addendum No. 3 for the captioned project with State RFQ No. GSD096431 as issued by the State Of West Virginia Department Of Administration Purchasing Division as attached.

CHANGES TO SPECIFICATIONS:

- 1. ADD Section 05120 – Structural Steel as attached to this Addendum.
- 2. Section 06202 – Interior Finish Carpentry: Make the following revisions:
 - A. ADD Subparagraph 1.2.A.2 to read: Laminate Clad Wall Paneling.
 - B. ADD Paragraph 2.2.C to read as follows:
 - C. Laminate Clad Wall Paneling to be constructed of the following materials:
 - 1. Core: Softwood Plywood: DOC PS 1.
 - 2. Plastic Laminate: High-pressure decorative laminate complying with NEMA LD 3.
 - a. Manufacturers: Subject to compliance with requirements, provide products by one of the following:
 - 1) Formica Corporation.
 - 2) Nevamar Company, LLC; Decorative Products Div. (Basis-of-Design)
 - 3) Wilsonart International; Div. of Premark International, Inc.
 - b. Color and pattern to be selected by Architect from manufacturer's full range.



3. Exposed Metal Fasteners are to be Stainless Steel with 1 inch diameter stainless steel washers. Fastener shaft diameter as required for loading.
3. Section 08712 – Door Hardware: ADD to Door Hardware Set No. 8 the following:
 - 1 Closer Surface-mounted, heavy-duty with cover, parallel arm mounting, finish 689 (sprayed aluminum)
 2. Section 09310 – Ceramic Tile: Make the following revisions:
 - A. ADD Paragraph 2.4.B to read as follows:
 - B. Portland Cement Mortar (Thickset) Installation Materials (at scheduled floors): ANSI A108.02.
 4. Cleavage Membrane: Asphalt felt, ASTM D 226, Type I (No. 15); or polyethylene sheeting, ASTM D 4397, 4.0 mils thick.
 5. Reinforcing Wire Fabric: Galvanized, welded wire fabric, 2 by 2 inches by 0.062-inch diameter; comply with ASTM A 185 and ASTM A 82 except for minimum wire size.
 6. Latex Additive: Manufacturer's standard water emulsion, serving as replacement for part or all of gauging water, of type specifically recommended by latex-additive manufacturer for use with field-mixed portland cement and aggregate mortar bed.
 - B. ADD Paragraph 3.2.A.1 to read as follows:
 1. Inspect existing grout remnants on wall surfaces designated to receive new ceramic tile. Remove all remnants that are loose or are otherwise unsuitable as a substrate for new wall tile installation. Fill all cavities and other imperfections with thick-set grout materials to achieve a smooth, even, and plumb substrate suitable to receive thin-set grouted ceramic tile. Allow thick-set grout patching to cure sufficiently before applying thin-set ceramic wall tile.
 - C. ADD Paragraph 3.3.J to read as follows:
 - J. Floor Tile Installation F111: Cement mortar bed (thickset) with cleavage membrane; Tile Council Of America (TCA) F111 and ANSI A108.1A.
 1. Thick-Set Mortar for Cured-Bed Method: portland cement mortar.
 2. Grout: Sand-portland cement grout.
 3. Section 09652 – Resilient Terrazzo Floor Tile – REVISE Paragraph 2.1.B to read: "12 inches by 12 inches by 1/8 inch thick."
 4. Section 09843 – Acoustical Ceiling Clouds – Article 2.2: Make the following revisions:
 - A. REVISE Paragraph A to read D.
 - B. REVISE Paragraph B to read A.
 - C. REVISE Paragraph C to read B.
 - D. REVISE Paragraph D to read C.

**CHANGES TO DRAWINGS:**

1. Drawing AD1-1: ADD the General Note No. 1 to read: "Existing vinyl wall covering on walls of existing corridors, and wherever else encountered, is to be removed."
2. Drawing A6-1 – Detail 3 – REVISE reference to Motorized Window Shade to read: "Motorized Window Shade By Separate Contract."
3. ADD Supplemental Drawing Nos. S1-1 and S1-2 as attached to this Addendum.
4. Drawing E1-1 – Conference Room Nos. 1001 and 1024: ADD note to read: "Provide overhead junction box, wall-mounted switch box, and conduit for future 120 volt motorized roller shade for window to Lobby Nos. 1004 and 1027 respectively."

<i>Attachments:</i>	<i>Specification Section 05120</i>	<i>5 pages</i>
	<i>Drawing S1-1</i>	<i>8 ½" x 11"</i>
	<i>Drawing S1-2</i>	<i>8 ½" x 11"</i>

End Of Addendum

SECTION 05120 - STRUCTURAL STEEL

PART 1 - GENERAL

1.1 RELATED DOCUMENTS

- A. Drawings and general provisions of the Contract, including General and Supplementary Conditions and Division 1 Specification Sections, apply to this Section.

1.2 SUMMARY

- A. This Section includes structural steel.
- B. Related Sections:
 - 1. Section 05500 - Metal Fabrications for loose steel bearing plates and miscellaneous steel framing.
 - 2. Section 07811 - Sprayed Fire-Resistive Materials.

1.3 SUBMITTALS

- A. Product Data: For each type of product specified.
- B. Shop Drawings: Detailing fabrication of structural steel components.
 - 1. Include details of cuts, connections, splices, camber, holes, and other pertinent data.
 - 2. Indicate welds by standard AWS symbols, distinguishing between shop and field welds, and show size, length, and type of each weld.
 - 3. Indicate type, size, and length of bolts, distinguishing between shop and field bolts. Identify high-strength bolted slip-critical, direct-tension, or tensioned shear/bearing connections.
 - 4. Include Shop Drawings signed and sealed by a qualified professional engineer responsible for their preparation.
- C. Qualification Data: For firms and persons specified in the "Quality Assurance" Article to demonstrate their capabilities and experience. Include lists of completed projects with project names and addresses, names and addresses of architects and owners, and other information specified.

1.4 QUALITY ASSURANCE

- A. Installer Qualifications: Engage an experienced installer who has completed structural steel work similar in material, design, and extent to that indicated for this Project and with a record of successful in-service performance.

- B. Fabricator Qualifications: Engage a firm experienced in fabricating structural steel similar to that indicated for this Project and with a record of successful in-service performance, as well as sufficient production capacity to fabricate structural steel without delaying the Work.
- C. Comply with applicable provisions of the following specifications and documents:
 1. AISC's "Specification for Structural Steel Buildings".
 2. AISC's "Seismic Provisions for Structural Steel Buildings."
 3. ASTM A 6 "Specification for General Requirements for Rolled Steel Plates, Shapes, Sheet Piling, and Bars for Structural Use."
 4. Research Council on Structural Connections' (RCSC) "Specification for Structural Joints Using ASTM A 325 or A 490 Bolts."
- D. Professional Engineer Qualifications: A professional engineer who is legally authorized to practice in the jurisdiction where Project is located and who is experienced in providing engineering services of the kind indicated. Engineering services are defined as those performed for projects with structural steel framing that are similar to that indicated for this Project in material, design, and extent.
- E. Welding Standards: Comply with applicable provisions of AWS D1.1 "Structural Welding Code-Steel."

1.5 DELIVERY, STORAGE, AND HANDLING

- A. Store materials to permit easy access for inspection and identification. Keep steel members off ground by using pallets, platforms, or other supports. Protect steel members and packaged materials from erosion and deterioration.

1.6 SEQUENCING

- A. Supply anchorage items to be embedded in or attached to other construction without delaying the Work. Provide setting diagrams, templates, instructions, and directions, as required, for installation.

PART 2 - PRODUCTS

2.1 STRUCTURAL-STEEL MATERIALS

- A. Angles: ASTM A 36.
- B. Plate and Bar: ASTM A 36.
- C. Bolts: ASTM A325.
- D. Welding Electrodes: Comply with AWS requirements.

2.2 GROUT

- A. Nonmetallic, Shrinkage-Resistant Grout: Premixed, nonmetallic, noncorrosive, nonstaining grout containing selected silica sands, portland cement, shrinkage compensating agents, plasticizing and water-reducing agents, complying with ASTM C 1107, of consistency suitable for application, and a 30-minute working time.

2.3 FABRICATION

- A. Fabricate and assemble structural steel in shop to greatest extent possible. Fabricate structural steel according to AISC specifications referenced in this Section and in Shop Drawings.
1. Identify high-strength structural steel according to ASTM A 6 and maintain markings until steel has been erected.
 2. Mark and match-mark materials for field assembly.
 3. Complete structural steel assemblies, including welding of units, before starting shop-priming operations.
 4. Comply with fabrication tolerance limits of AISC's "Code of Standard Practice for Steel Buildings and Bridges" for structural steel.
- B. Thermal Cutting: Perform thermal cutting by machine to greatest extent possible.
1. Plane thermally cut edges to be welded.
- C. Shear Connectors: Prepare steel surfaces as recommended by manufacturer of shear connectors. Use automatic end welding of headed-stud shear connectors according to AWS D1.1 and manufacturer's printed instructions.
- D. Holes: Provide holes required for securing other work to structural steel framing and for passage of other work through steel framing members, as shown on Shop Drawings.
1. Cut, drill, or punch holes perpendicular to metal surfaces. Do not flame-cut holes or enlarge holes by burning. Drill holes in bearing plates.
 2. Weld threaded nuts to framing and other specialty items as indicated to receive other work.
- E. Finishing:
1. Do not apply coatings of any kind to structural steel covered in this Section. Prepare steel for application of sprayed fire-resistive materials.
 2. Accurately mill ends of members transmitting loads in bearing.

2.4 SHOP CONNECTIONS

- A. Shop install and tighten high-strength bolts according to RCSC's "Specification for Structural Joints Using ASTM A 325 or A 490 Bolts."
1. Bolts: ASTM A 325 high-strength bolts, unless otherwise indicated.
 2. Connection Type: Snug tightened, unless indicated as slip-critical, direct-tension, or tensioned shear/bearing connections.
- B. Weld Connections: Comply with AWS D1.1 for procedures, appearance and quality of welds, and methods used in correcting welding work.
1. Verify that weld sizes, fabrication sequence, and equipment used for architecturally exposed structural steel will limit distortions to allowable tolerances. Prevent surface bleeding of back-side welding on exposed steel surfaces. Grind smooth exposed fillet welds 1/2 inch and larger. Grind flush butt welds. Dress exposed welds.

2.5 SOURCE QUALITY CONTROL

- A. Materials and fabrication procedures are subject to inspection in mill, shop, and field. Such inspections will not relieve Contractor of responsibility for providing materials and fabrication procedures in compliance with specified requirements.
 - 1. Promptly remove and replace materials or fabricated components that do not comply.
- B. Design of Members and Connections: Details shown are typical; similar details apply to similar conditions, unless otherwise indicated on Drawings. Verify dimensions at site whenever possible without causing delay in the work.
 - 1. Promptly notify Architect whenever design of members and connections for any portion of structure are not clearly indicated.

PART 3 - EXECUTION

3.1 EXAMINATION

- A. Before erection proceeds, and with the steel erector present, verify locations of anchorages for compliance with requirements.
- B. Do not proceed with erection until unsatisfactory conditions have been corrected.

3.2 ERECTION

- A. Set structural steel accurately in locations and to elevations indicated and according to AISC specifications referenced in this Section.
- B. Maintain erection tolerances of structural steel within AISC's "Code of Standard Practice for Steel Buildings and Bridges."
 - 1. Maintain erection tolerances of architecturally exposed structural steel within AISC's "Code of Standard Practice for Steel Buildings and Bridges."
- C. Align and adjust various members forming part of complete frame or structure before permanently fastening. Before assembly, clean bearing surfaces and other surfaces that will be in permanent contact. Perform necessary adjustments to compensate for discrepancies in elevations and alignment.
 - 1. Level and plumb individual members of structure.
- D. Splice members only where indicated.
- E. Remove erection bolts on welded, architecturally exposed structural steel; fill holes with plug welds; and grind smooth at exposed surfaces.
- F. Finish sections thermally cut during erection equal to a sheared appearance.

- G. Do not enlarge unfair holes in members by burning or by using drift pins. Ream holes that must be enlarged to admit bolts.

3.3 FIELD CONNECTIONS

- A. Install and tighten high-strength bolts according to RCSC's "Specification for Structural Joints Using ASTM A 325 or A 490 Bolts."
 - 1. Bolts: ASTM A 325 high-strength bolts, unless otherwise indicated.
 - 2. Connection Type: Snug tightened, unless indicated as slip-critical, direct-tension, or tensioned shear/bearing connections.
- B. Weld Connections: Comply with AWS D1.1 for procedures, appearance and quality of welds, and methods used in correcting welding work.
 - 1. Comply with AISC specifications referenced in this Section for bearing, adequacy of temporary connections, alignment, and removal of paint on surfaces adjacent to field welds.
 - 2. Verify that weld sizes, fabrication sequence, and equipment used for architecturally exposed structural steel will limit distortions to allowable tolerances. Prevent surface bleeding of back-side welding on exposed steel surfaces. Grind smooth exposed fillet welds 1/2 inch and larger. Grind flush butt welds. Dress exposed welds.

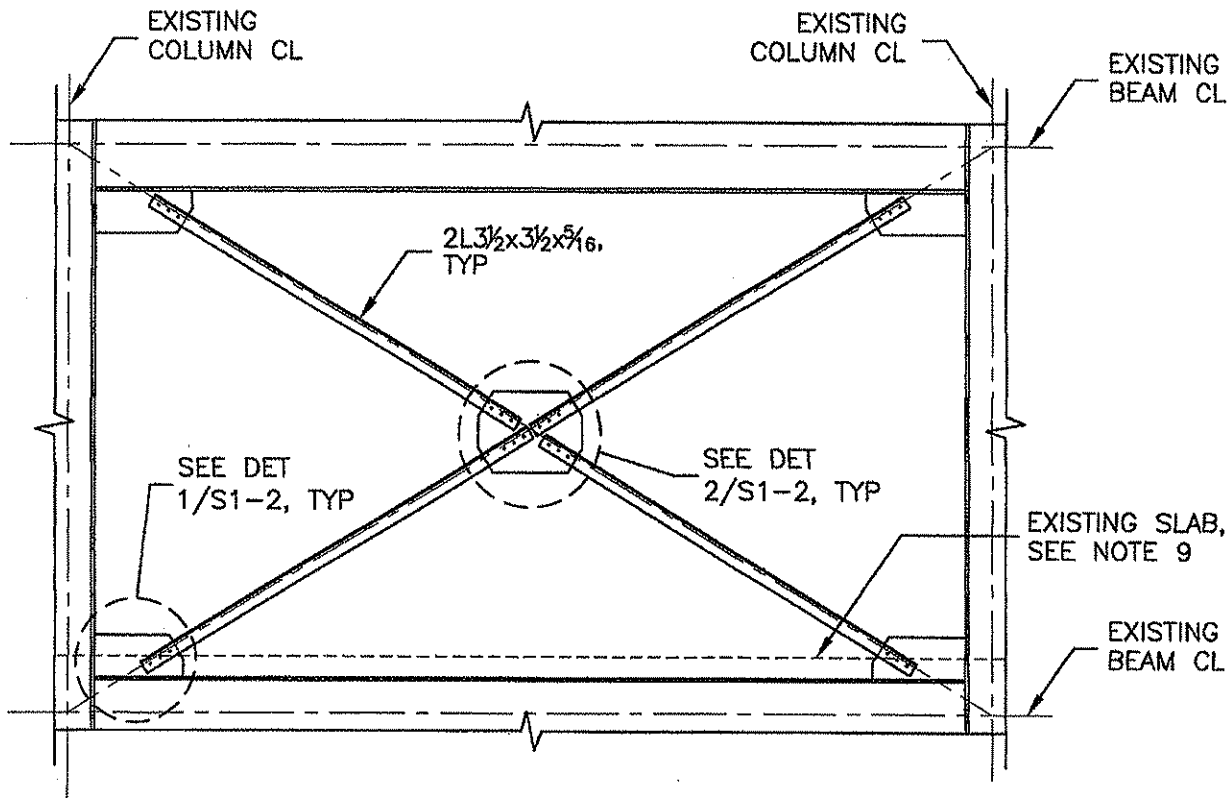
3.4 FIELD QUALITY CONTROL

- A. Owner may, at Owner's option, engage an independent testing and inspecting agency to perform field inspections and tests and to prepare test reports.
 - 1. Testing agency will conduct and interpret tests and state in each report whether tested Work complies with or deviates from requirements.
- B. Correct deficiencies in or remove and replace structural steel that inspections and test reports indicate do not comply with specified requirements.
- C. Additional testing, at Contractor's expense, will be performed to determine compliance of corrected Work with specified requirements.

3.5 CLEANING

- A. Touchup Painting: Immediately after erection, clean field welds, bolted connections, and abraded areas of shop paint. Apply paint to exposed areas using same material as used for shop painting.
 - 1. Apply by brush or spray to provide a minimum dry film thickness of 1.5 mils.

END OF SECTION



1
S1-1

TYPICAL BRACED FRAME

SCALE : 1/4" = 1'-0"

STRUCTURAL NOTES

1. THESE STRUCTURAL DRAWINGS ARE TO BE USED IN CONJUNCTION WITH ALL OTHER DRAWINGS, SPECIFICATIONS, AND CONTRACT DOCUMENTS.
2. THE DESIGN, CONSTRUCTION, QUALITY CONTROL, AND SAFETY OF ALL WORK PERFORMED ON THE PROJECT SHALL CONFORM TO THE REFERENCED CODES AND STANDARDS AND THE LATEST EDITION OF THE SPECIFICATIONS UNLESS NOTED.
3. CONSTRUCTION METHODS, PROCEDURES, AND SEQUENCES ARE THE RESPONSIBILITY OF THE CONTRACTOR. THE CONTRACTOR SHALL TAKE ALL NECESSARY MEANS TO MAINTAIN AND PROTECT THE STRUCTURAL INTEGRITY OF ALL CONSTRUCTION AT ALL STAGES.
4. IMPLEMENTING JOB SITE SAFETY AND CONSTRUCTION PROCEDURES ARE THE SOLE RESPONSIBILITY OF THE CONTRACTOR.
5. IN CASE OF CONFLICT BETWEEN THE GENERAL NOTES, DETAILS, AND SPECIFICATIONS, THE MOST RIGID REQUIREMENTS SHALL GOVERN.
6. THE STEEL X-BRACING AT THE EAST AND WEST FACES OF THE TENTH FLOOR SHALL BE REPLACED. BRACES SHOWN ARE TO REPLACE EXISTING BRACES AT (8) LOCATIONS.
7. REPLACE BRACES ONE AT A TIME. WORK ON THE NEXT BAY MAY NOT BEGIN UNTIL WORK ON THE PREVIOUS BAY IS FULLY COMPLETED.
8. WHEN REMOVING EXISTING BRACES AND CONNECTIONS, DO NOT DAMAGE THE EXISTING STRUCTURAL BEAMS AND COLUMNS.
9. REMOVE CONCRETE AS NECESSARY AT BASE OF BRACES. REMOVE CONCRETE WITHOUT DAMAGING STRUCTURAL STEEL, STEEL REINFORCING, METAL DECK, OR SURROUNDING CONCRETE. REPAIR USING 3000 PSI CONCRETE. CONCRETE DOES NOT NEED TO BE FULLY CURED IN ORDER TO PROCEED TO WORK ON THE NEXT BAY.
10. ALL STRUCTURAL STEEL SHALL COMPLY WITH THE REQUIREMENTS OF THE FOLLOWING CODES:
 "MANUAL OF STEEL CONSTRUCTION - LOAD AND RESISTANCE FACTOR DESIGN", THIRD EDITION, 2001, AMERICAN INSTITUTE OF STEEL CONSTRUCTION.
 "DETAILING FOR STEEL CONSTRUCTION", AMERICAN INSTITUTE OF STEEL CONSTRUCTION.
 "SEISMIC PROVISIONS FOR STRUCTURAL STEEL BUILDINGS", 2005, AMERICAN INSTITUTE OF STEEL CONSTRUCTION.
 "STRUCTURAL WELDING CODE ANSI/AWS D1.1", AMERICAN WELDING SOCIETY.
11. THE FOLLOWING MATERIALS SHALL BE USED UNLESS NOTED OTHERWISE:
 PLATES AND OTHER SHAPES ASTM A36
 HIGH-STRENGTH BOLTS ASTM A325-N
 WELDING ELECTRODES AWS A5.1 OR A5.5 E70XX



Z M M , INC.
 ARCHITECTS • ENGINEERS
 222 LEE STREET W
 CHARLESTON, WV 25302
 PHONE (304) 342-0159
 FAX (304) 345-8144

SUPPLEMENTAL DRAWING

- NEW DRAWING or DETAIL _____ on sheet _____
- REVISION OF DRAWING or DETAIL _____ on sheet _____
- CLARIFICATION OF DRAWING or DETAIL _____ on sheet _____

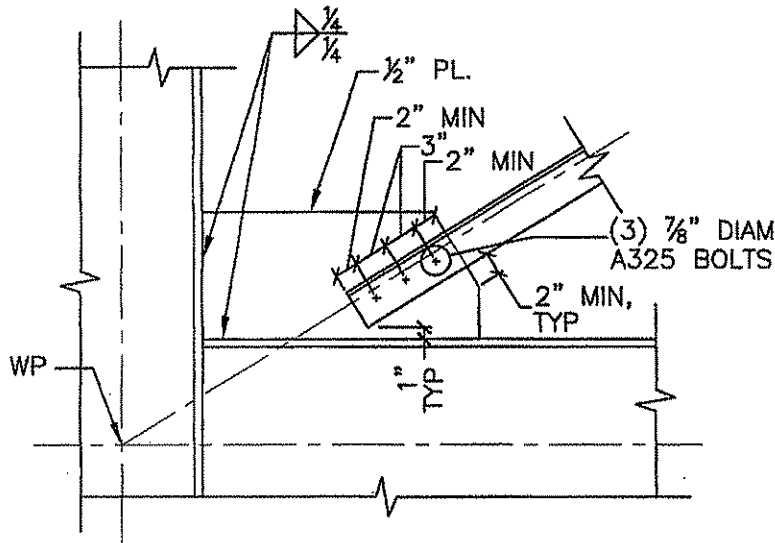
ATTACHMENT TO:
 ADDENDUM NO. 3
 CHANGE ORD. NO. _____
 C.C.D. NO. _____

BY: **ELK**

COMM. NO.
0821

State Office Building No. 5, 10th Floor
Charleston, West Virginia

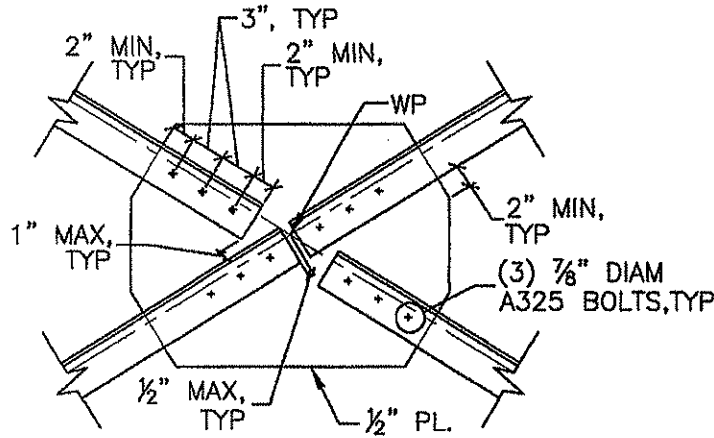
DWG. NO.
S1-1



**TYPICAL BRACED FRAME
CORNER CONNECTION**

1
SI-2

SCALE : 3/4" = 1'-0"



**TYPICAL BRACED FRAME
INTERMEDIATE CONNECTION**

2
SI-2

SCALE : 3/4" = 1'-0"

SUPPLEMENTAL DRAWING



Z M M , INC.
ARCHITECTS • ENGINEERS
222 LEE STREET W
CHARLESTON, WV 25302
PHONE (304) 342-0159
FAX (304) 345-8144

- NEW DRAWING or DETAIL _____ on sheet _____
- REVISION OF DRAWING or DETAIL _____ on sheet _____
- CLARIFICATION OF DRAWING or DETAIL _____ on sheet _____

ATTACHMENT TO:
 ADDENDUM NO. 3
 CHANGE ORD. NO. _____
 C.C.D. NO. _____

BY: **ELK**

COMM. NO.
0821

State Office Building No. 5, 10th Floor
Charleston, West Virginia

DWG. NO.
S1-2