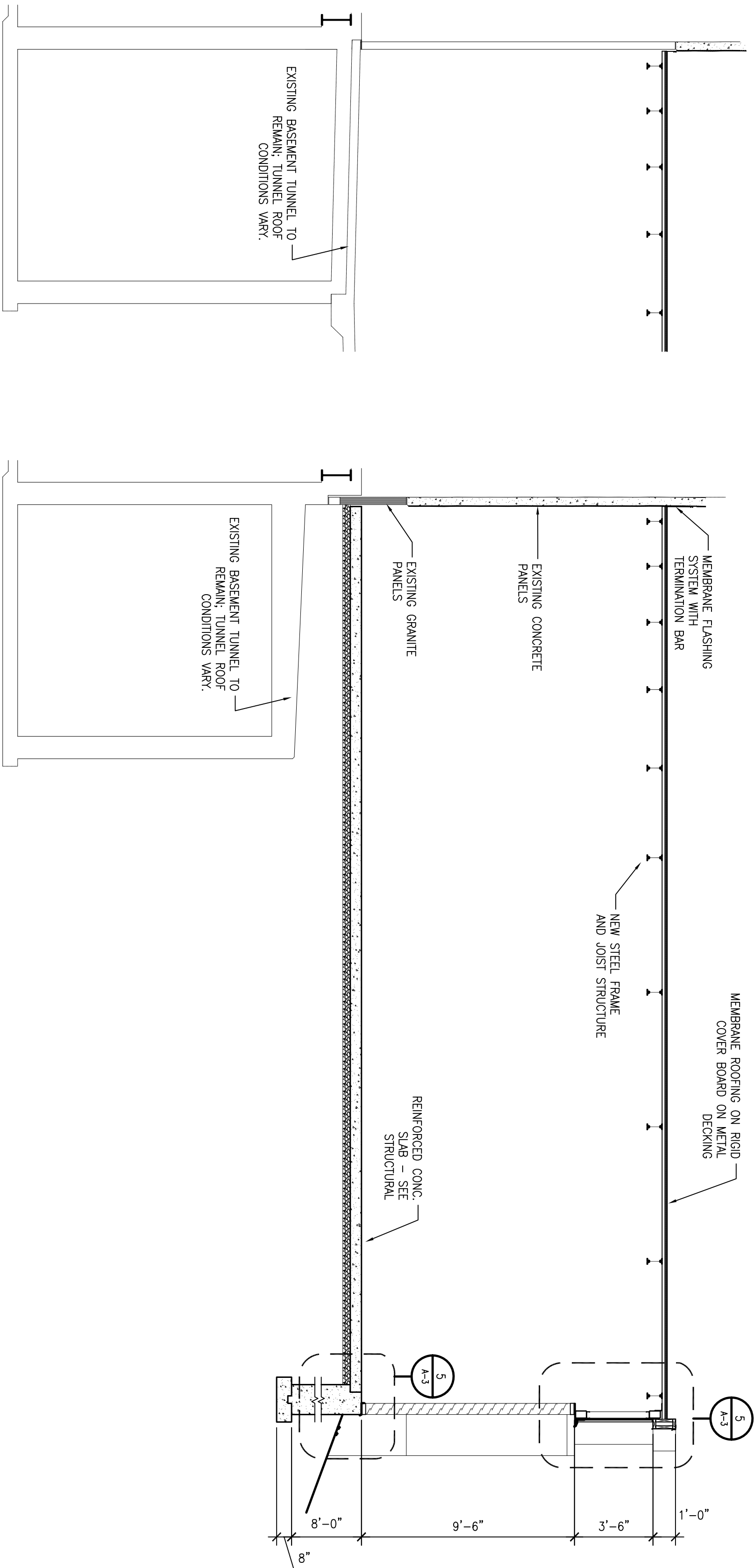
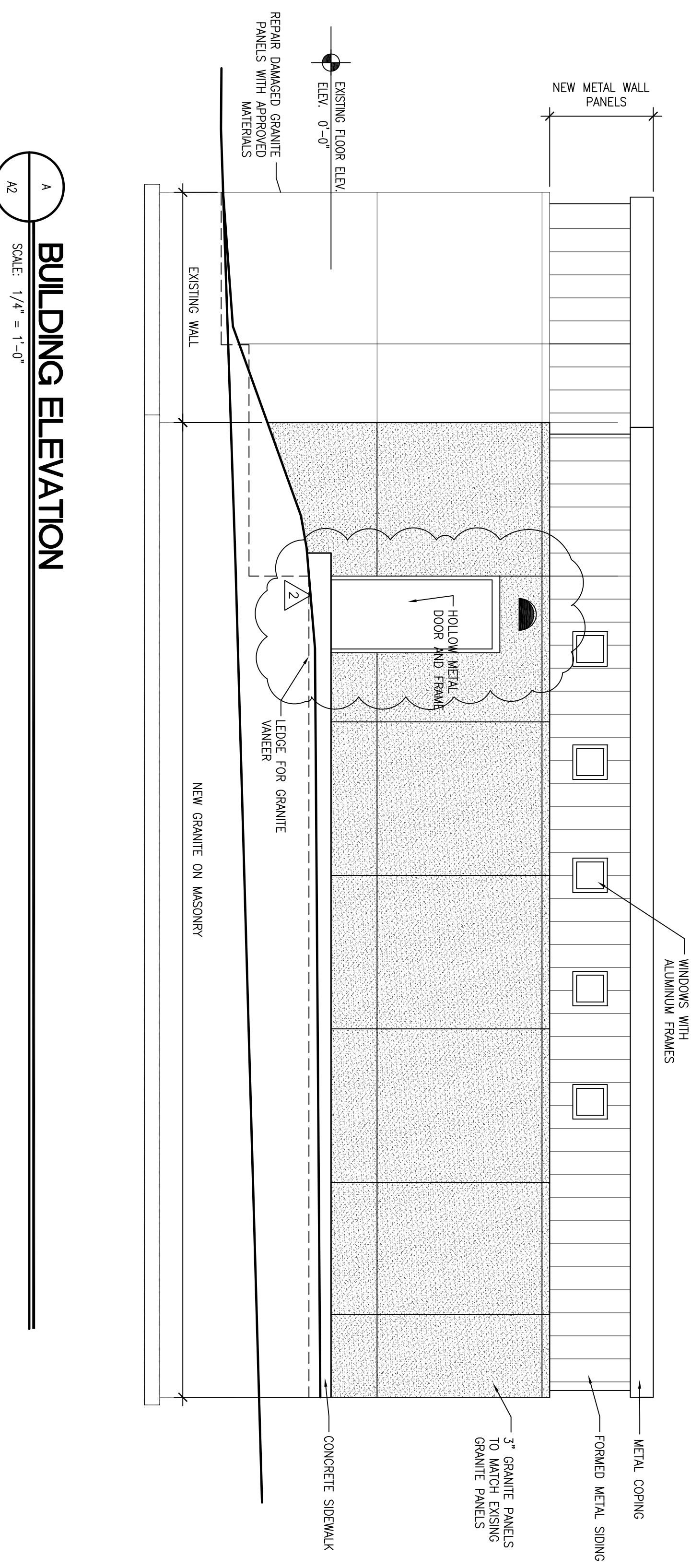


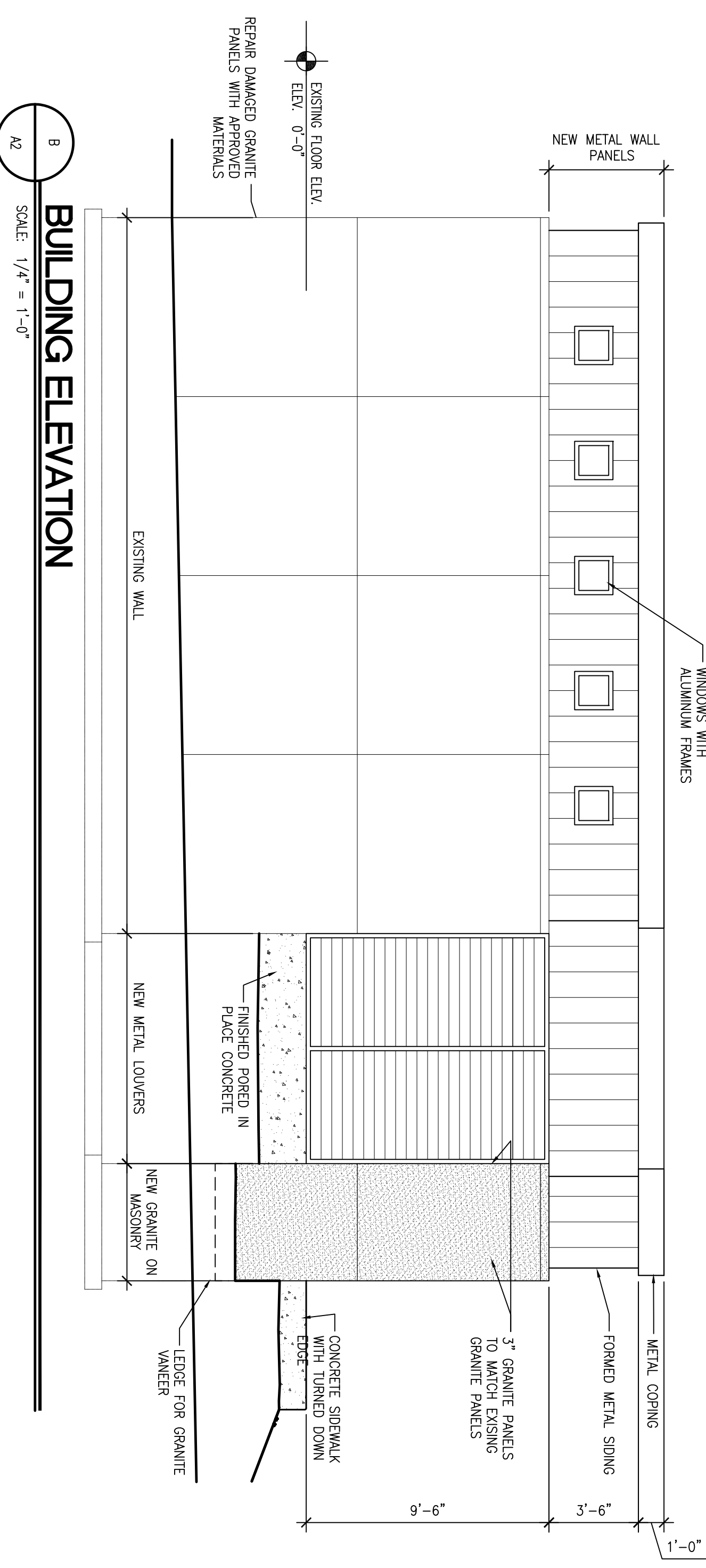
**1 BUILDING SECTION**  
SCALE: 1/4" = 1'-0"



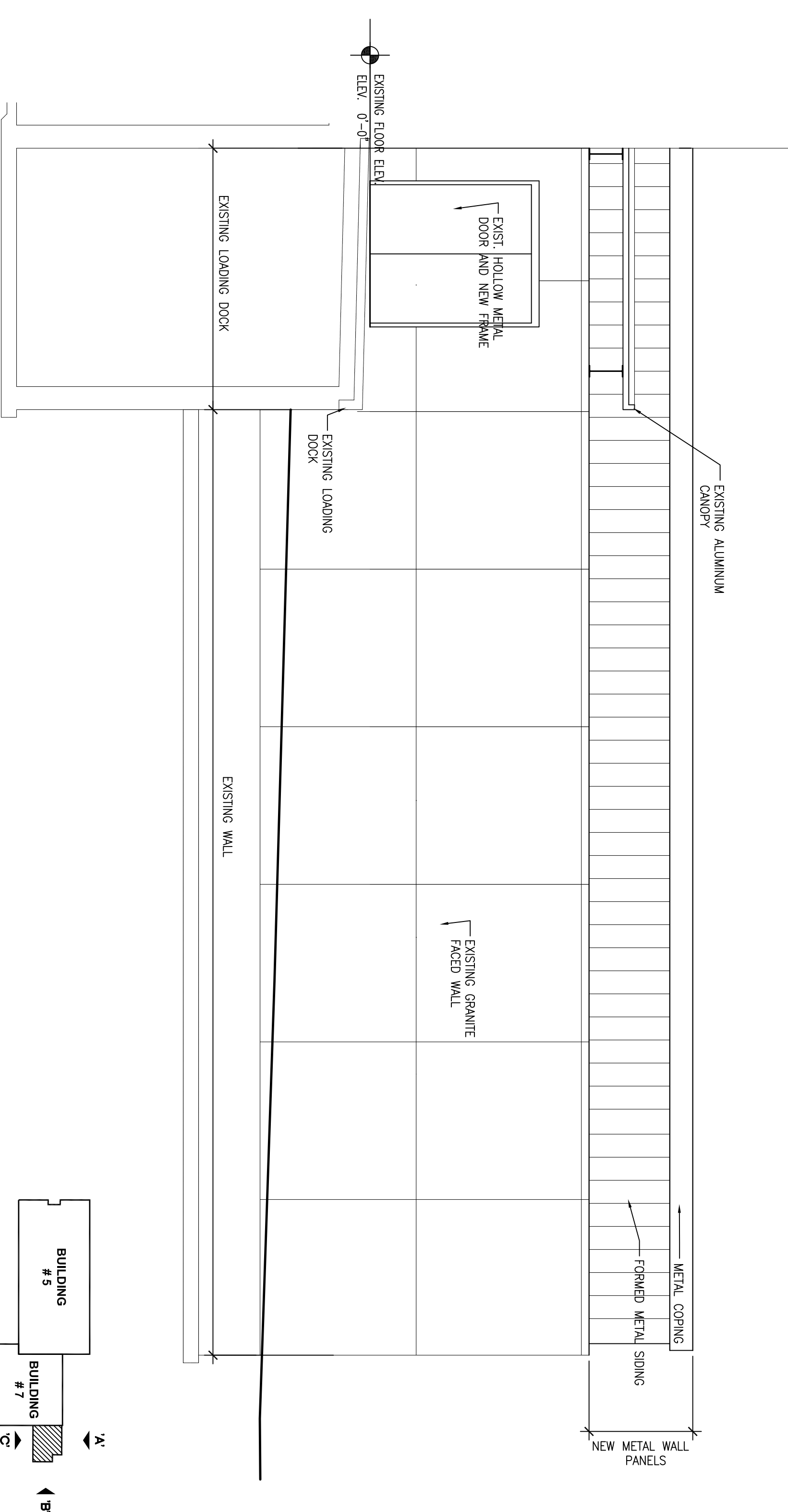
**2 BUILDING SECTION**  
SCALE: 1/4" = 1'-0"



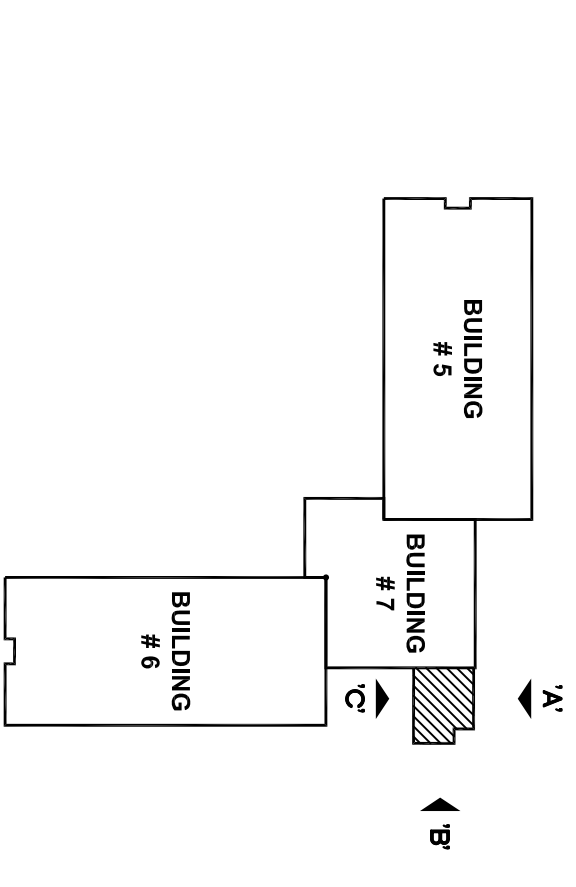
**A BUILDING ELEVATION**  
SCALE: 1/4" = 1'-0"



**B BUILDING ELEVATION**  
SCALE: 1/4" = 1'-0"



**C BUILDING ELEVATION**  
SCALE: 1/4" = 1'-0"



**KEY PLAN**  
NOT TO SCALE

REVISIONS NO.	DATE	DESCRIPTION
1	2/11/09	GENERAL REVISION - REVISED LOCATION AND ARRANGEMENT OF MEDIUM VOLTAGE SWITCHGEAR AND ISOR LOCATION

**ZMM**  
ARCHITECTS & ENGINEERS  
222 Lee Street, West  
Charleston, West Virginia 25302  
Phone: 304.342.0159  
Fax: 304.345.9144  
www.zmm.com

**ELECTRICAL COURTYARD EXPANSION  
STATE OFFICE BUILDINGS 5, 6, AND 7  
WEST VIRGINIA STATE CAPITAL COMPLEX  
Charleston, West Virginia**

**CONSTRUCTION DOCUMENTS**

**BUILDING SECTIONS / ELEVATIONS**

DRAWN	CHECKED
DATE	DATE
COM. NO.	COM. NO.

**A2-R1**