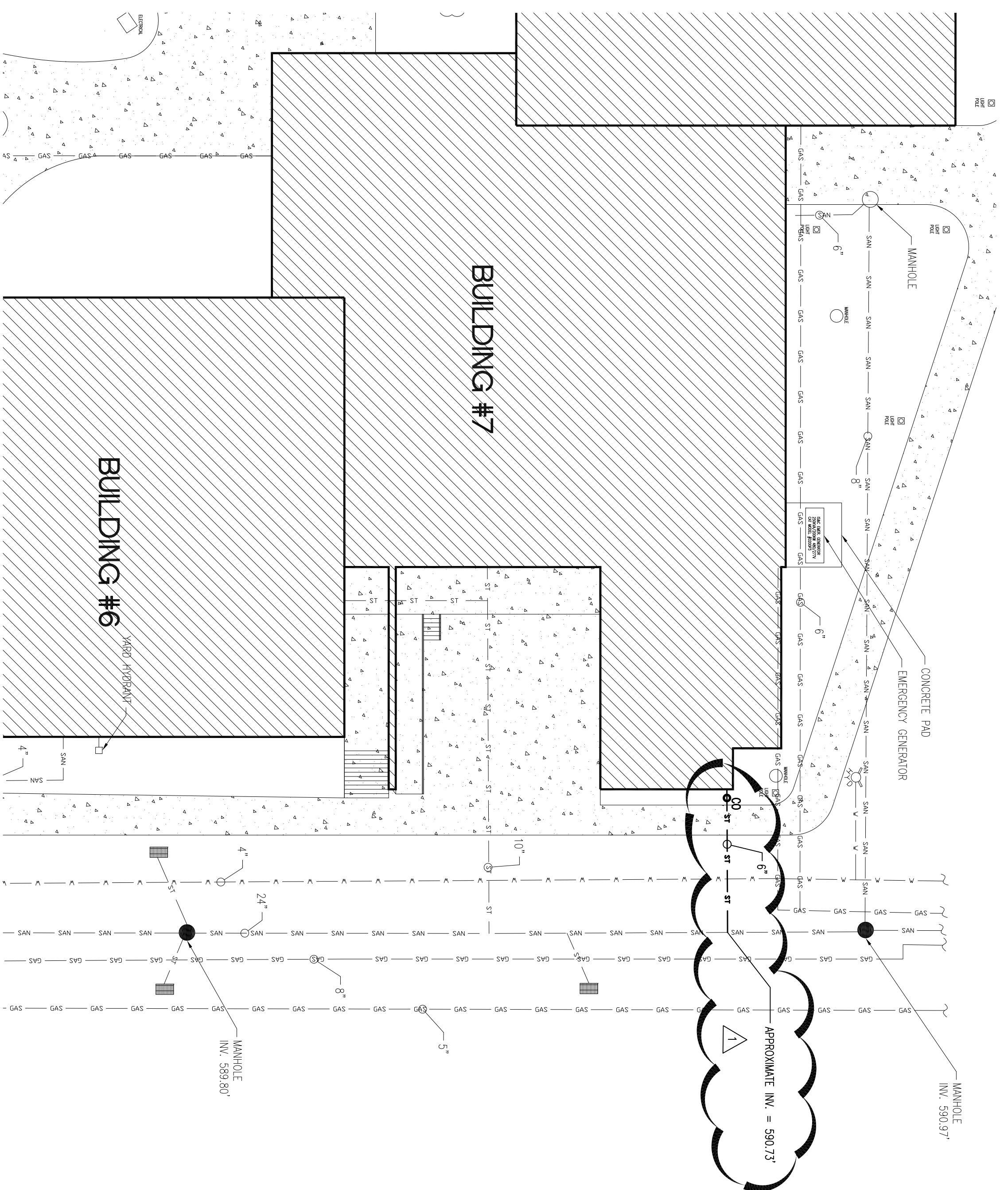
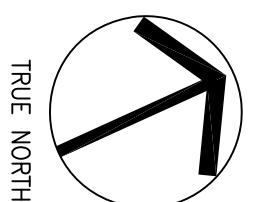


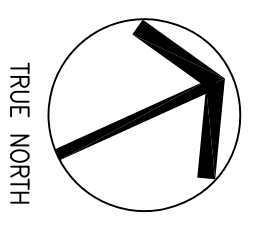
ELECTRICAL COURTYARD EXPANSION PLAN

SCALE: 1/4" = 1'-0"



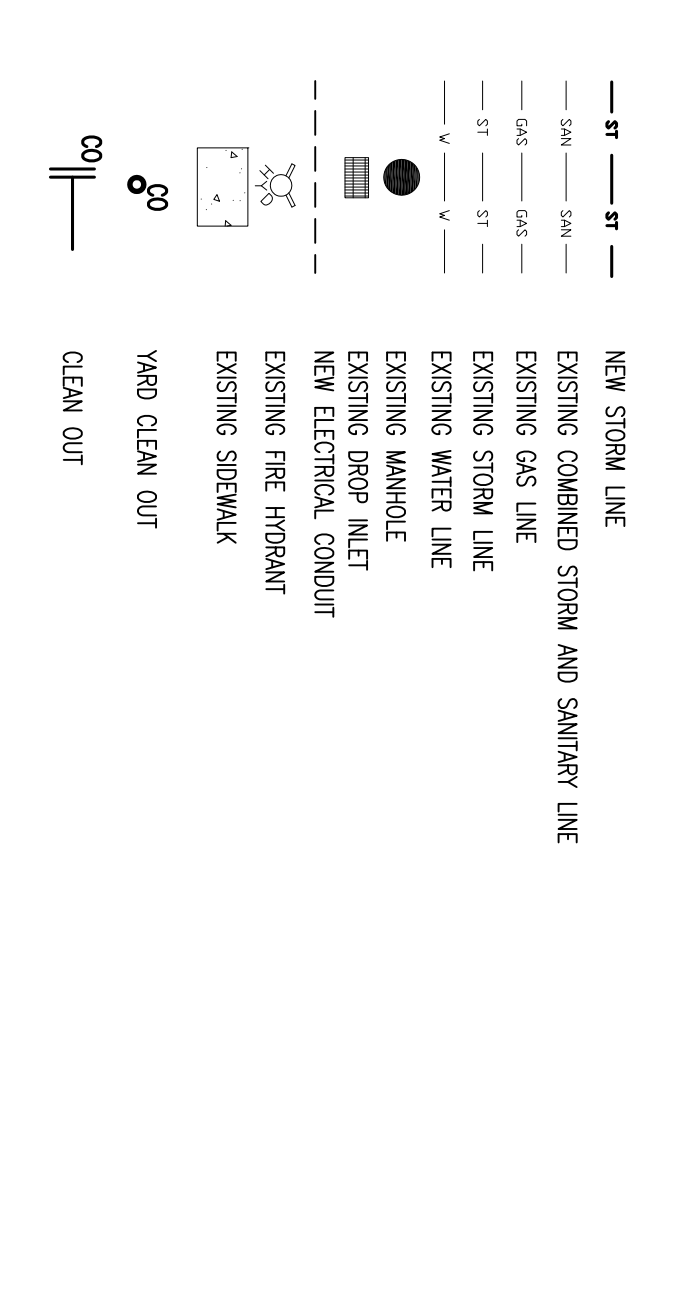
SITE PLAN

SCALE: 1" = 20'



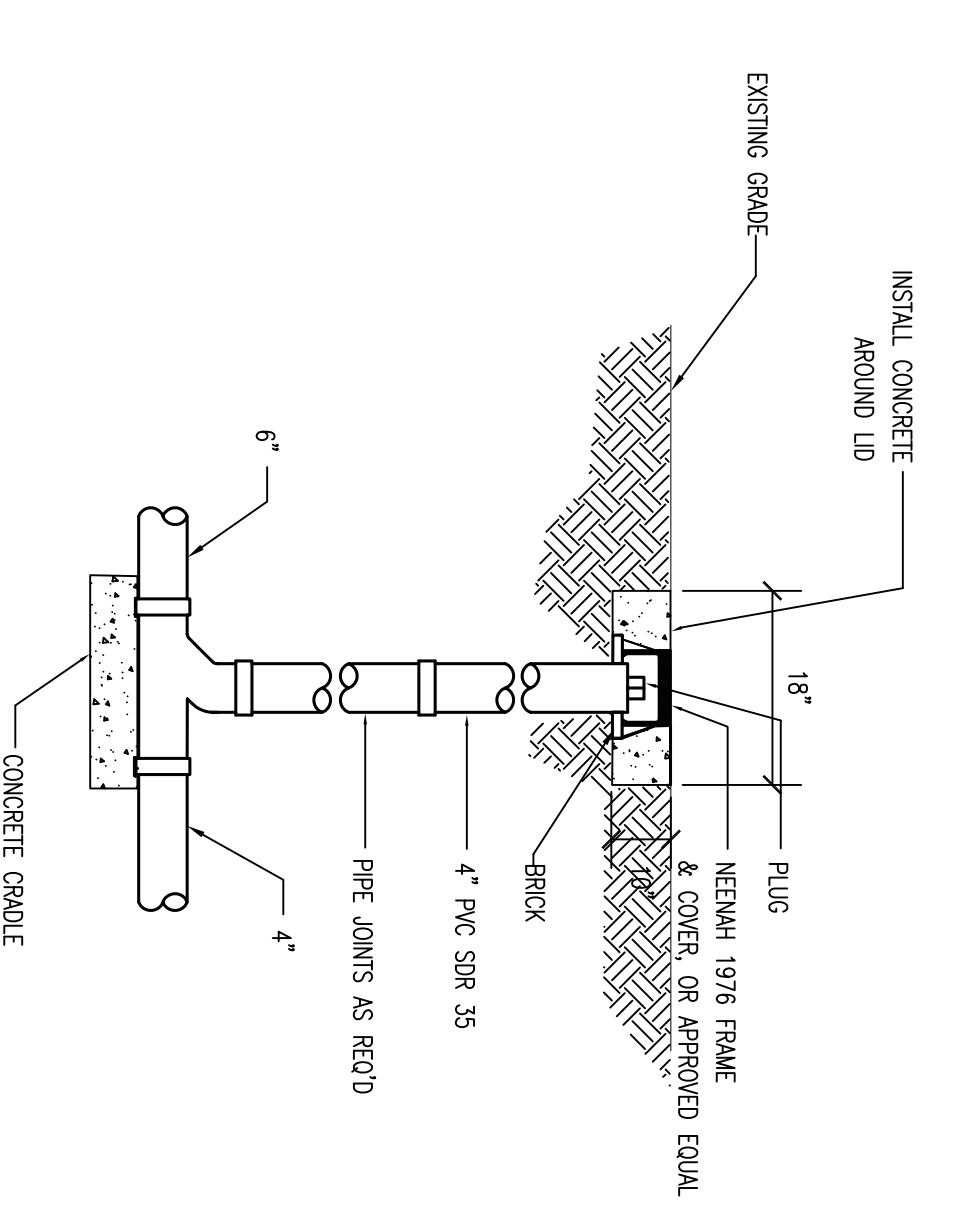
- GENERAL NOTES**
1. MAINTAIN EXISTING GRADIENT IN ALL LOCATIONS UNLESS ALL PORTS OF CONSTRUCTION.
 2. RESTORE ALL EXISTING UTILITIES TO ORIGINAL OR BETTER CONDITION.
 3. RESTORE AND SEED ALL LAWN AREAS DISTURBED BY CONSTRUCTION.
 4. FIELD VERIFY SITE ELEVATION AND LOCATION OF EACH POINT OF CONNECTION OF EXISTING UTILITIES.
 5. FIELD VERIFY EXISTING CONDUIT SIZES AND LOCATIONS FOR TELEPHONE, CABLE, FIBER, AND OTHER AND RECORDING OF ALL UNIDENTIFIED PIPES AND SERVICES.
 6. CONTRACTOR IS RESPONSIBLE FOR ALL PIPE FEES AND OTHER EXPENSES ASSOCIATED WITH UTILITY.
 7. CONTRACTOR SHALL COORDINATE ALL WORK WITH ASSOCIATED UTILITY COMPANY PRIOR TO BEGINNING OF WORK AND SHALL FURNISH AND INSTALL ANY ADDITIONAL TIE-IN TO UTILITY LINES BY REQUEST OF WORK.
 8. EXISTING SITE UTILITIES AND SERVICES LOCATIONS ARE APPROXIMATE. CONTRACTOR SHALL VERIFY ALL DIMENSIONS BEFORE BEGINNING SITE UTILITY CONSTRUCTION.
 9. EXISTING UTILITIES ARE SHOWN AS SHOWN IN THESE PLANS AND AS SHOWN IN THE FIELD.
 10. EXISTING UTILITIES ARE SHOWN AS SHOWN IN THESE PLANS AND AS SHOWN IN THE FIELD.

LEGEND



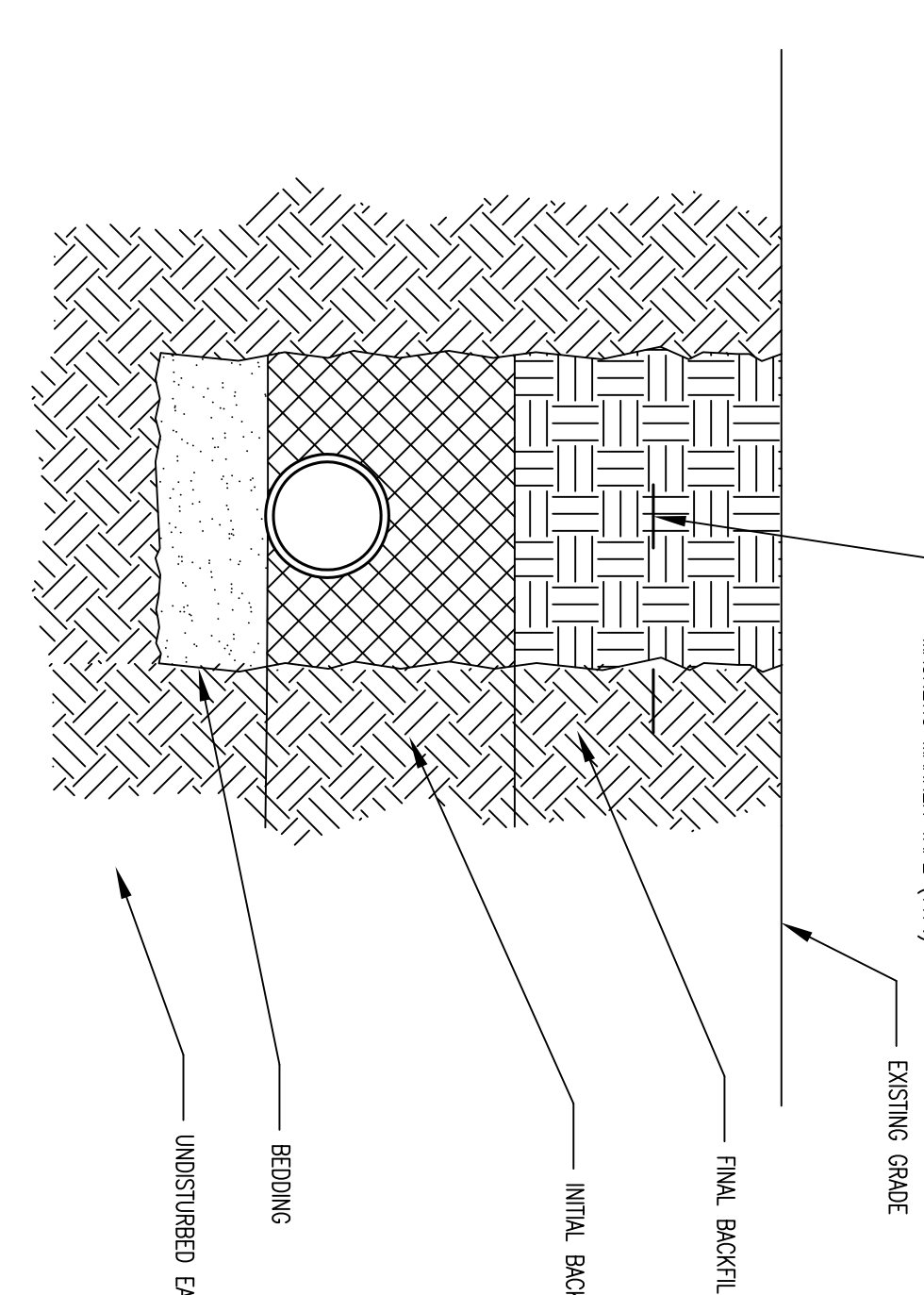
UTILITY CONTACTS

SANITARY SIGN: CHARLESTON SANITARY BOARD, 304-346-1084 EXT. 220



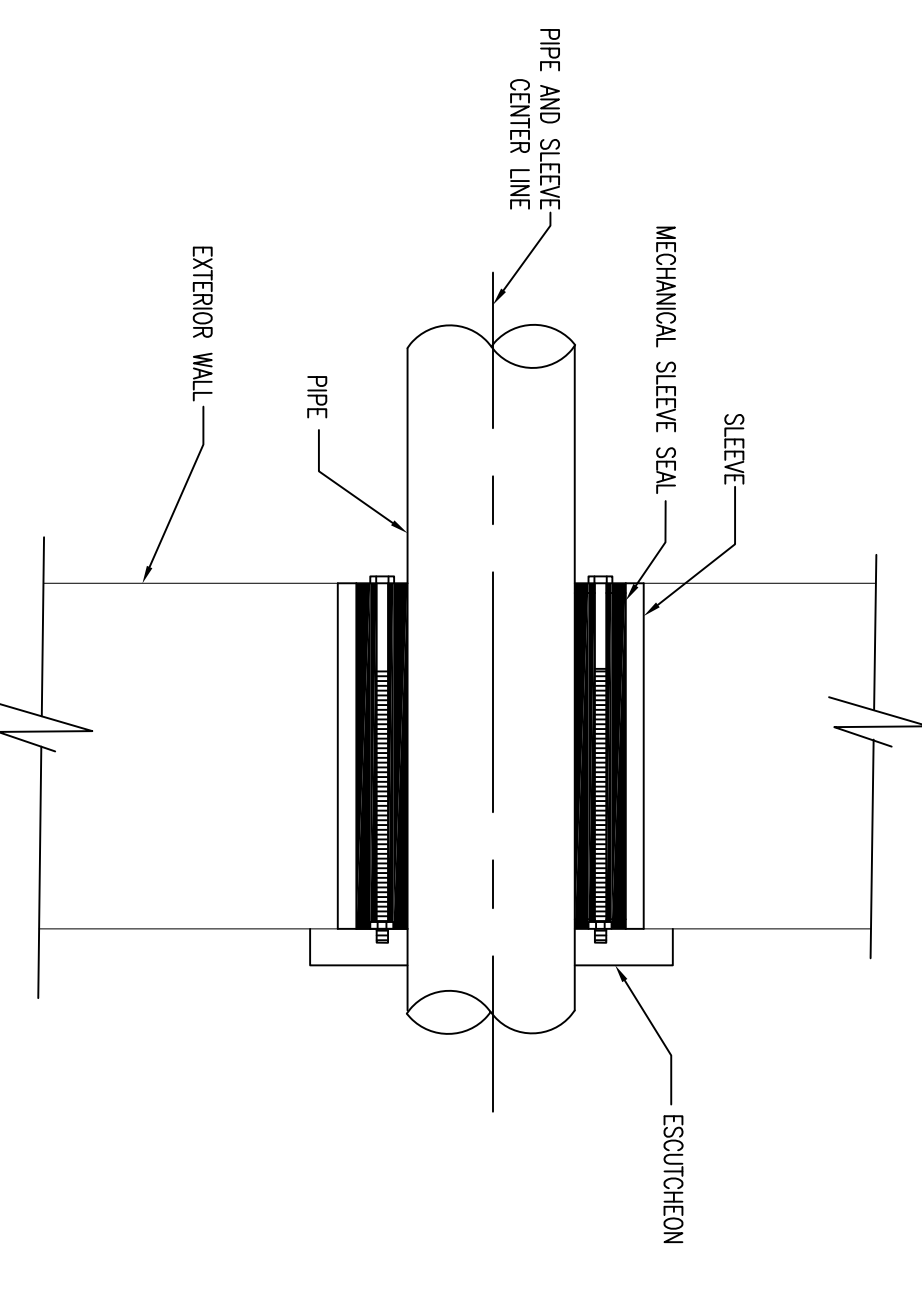
1 YARD CLEANOUT DETAIL

SD1 NOT TO SCALE



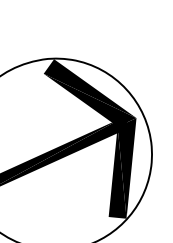
2 PIPE TRENCH DETAIL

SD1 NOT TO SCALE



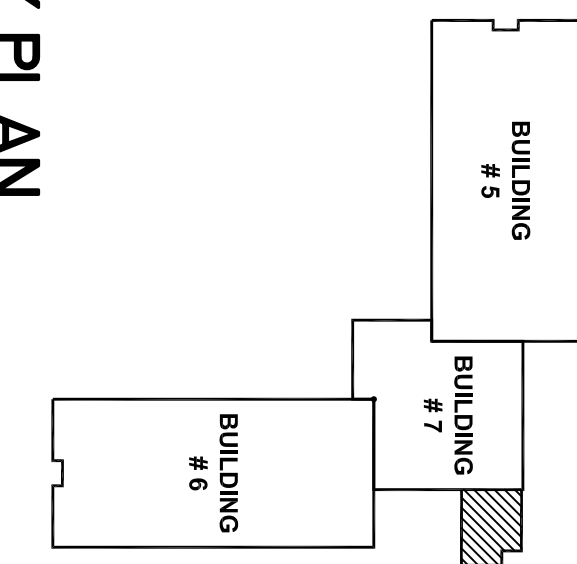
3 EXTERIOR WALL PENETRATION DETAIL

SD1 NOT TO SCALE



KEY PLAN

NOT TO SCALE



NO.	DATE	DESCRIPTION
02.04.09	ADDENDUM 3 - NEW DRAWING	

ZMM ARCHITECTS & ENGINEERS
 222 Lee Street, West
 Charleston, West Virginia 25302
 Phone: 304.342.0159
 Fax: 304.345.8144
 www.zmm.com

ELECTRICAL COURTYARD EXPANSION
STATE OFFICE BUILDINGS 5, 6, AND 7
WEST VIRGINIA STATE CAPITAL COMPLEX
 Charleston, West Virginia

SD1	DRAWN	CHECKED
	MJC	BS
	DATE	COM. NO.
	08/08/08	0807

0807/rev/plan/0807/0807.dwg