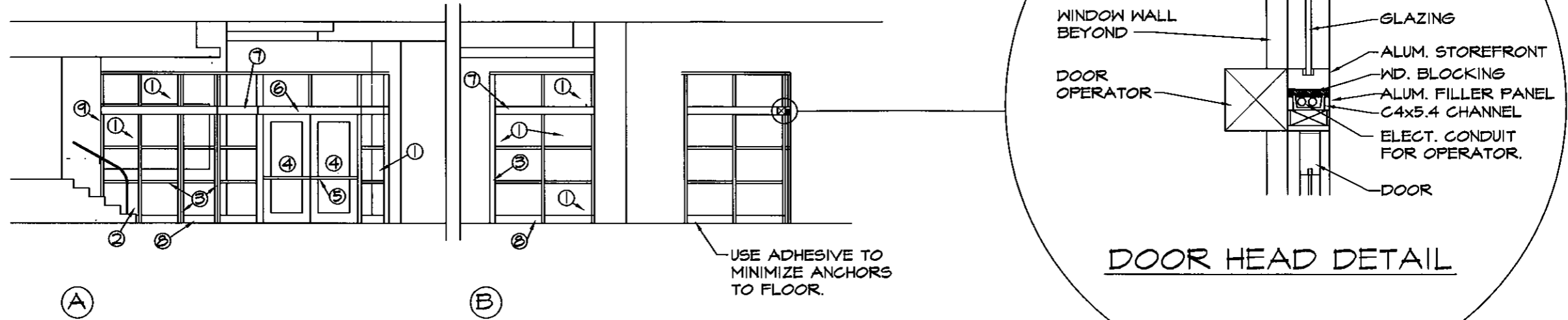


**DOOR OPERATOR SEQUENCE:**

1. VISITOR ACCESS BY REMOTE BUTTON LOCATED IN SECURITY OFFICE.
2. HANDICAPPED EMPLOYEE ACCESS BY EXISTING EXTERIOR HANDICAPPED DOORS AND ACCESS THROUGH NEW DOORS WITH ACCESS CARD READER.
3. EXITING OPERATION ACTIVATED BY PANIC BAR.
4. IN CASE OF POWER FAILURE, PROVIDE SIX (6) HOUR BATTERY OPERATION.



**GENERAL NOTES:**

- 1 1/4" TEMPERED GLAZING (TYPICAL).
- 2 BLANK 1/4" PANEL AT STAIR - ANODIZED ALUMINUM TO MATCH STOREFRONT.
- 3 4" ALUM STOREFRONT SYSTEM -
- 4 AUTOMATIC DOORS (HANDICAPPED ACCESSABLE) CONTROLLED WITH SWIPE CARD OPERATION IN LOBBY OR PUSH BUTTON BEHIND SECURITY COUNTER ON ENTRANCE SIDE. PUSH BUTTON WITH PANIC BAR OVERRIDE ON EXIT SIDE.
- 5 DOOR HARDWARE - PANIC BARS, HINGES BY DOOR SUPPLIER, AUTOMATIC SWING DOOR SYSTEM.
- 6 AUTOMATIC SWING DOOR SYSTEM - PROVIDE CONCEALED WIRING THROUGH CONTINUOUS HEADER.
- 7 CONTINUOUS STEEL REINFORCED HEADER. MATCH HEIGHT TO DOOR OPENER.
- 8 8 INCH HIGH SILL.
9. MINIMIZE DAMAGE TO MARBLE WALL. INSTALL ANCHORS AT MASONRY JOINTS.

**WALL ELEVATION & DETAILS**  
**BUILDING 4 - LOBBY**