



State of West Virginia  
 Department of Administration  
 Purchasing Division  
 2019 Washington Street East  
 Post Office Box 50130  
 Charleston, WV 25305-0130

# Request for Quotation

RFQ NUMBER
DNR209149

PAGE
1

ADDRESS CORRESPONDENCE TO ATTENTION OF
FRANK WHITTAKER 304-558-2316

RFQ COPY  
 TYPE NAME/ADDRESS HERE

VENDOR

SHIP TO

DIVISION OF NATURAL RESOURCES  
 CASS SCENIC RAILROAD ST PARK  
 ATTN: PARK SUPERINTENDENT  
 BOX 107  
 CASS, WV  
 24927 456-4300

DATE PRINTED	TERMS OF SALE	SHIP VIA	F.O.B.	FREIGHT TERMS
05/12/2009				

BID OPENING DATE: 06/17/2009 BID OPENING TIME 01:30PM

LINE	QUANTITY	UOP	CAT. NO.	ITEM NUMBER	UNIT PRICE	AMOUNT
0001	1	LS		650-38		
PLAYGROUND EQUIPMENT (NOT OTHERWISE CLASSIFIED)						
<p>THE WEST VIRGINIA PURCHASING DIVISION, FOR THE AGENCY, THE WEST VIRGINIA DIVISION OF NATURAL RESOURCES IS SOLICITING BIDS FOR PLAYGROUND EQUIPMENT FOR CASS SCENIC RAILROAD STATE PARK PER THE ATTACHED SPECIFICATIONS.</p> <p>A MANDATORY PRE-BID MEETING WILL BE HELD MAY 21, 2009 AT 10:00 AM AT PARK HEADQUARTERS. FAILURE TO ATTEND THE MANDATORY MEETING WILL RESULT IN BID DISQUALIFICATION. AN INDIVIDUAL MAY NOT REPRESENT MORE THAN ONE VENDOR AT THE PRE-BID MEETING.</p> <p>TECHNICAL QUESTIONS MUST BE SUBMITTED IN WRITING TO FRANK WHITTAKER IN THE PURCHASING DIVISION VIA FAX AT 304-558-4115 OR VIA EMAIL AT FRANK.M.WHITTAKER@WV.GOV DEADLINE FOR TECHNICAL QUESTIONS IS 05/22/09 AT 3:00 PM ALL TECHNICAL QUESTIONS WILL BE RESPONDED TO BY ADDENDUM AFTER THE DEADLINE.</p> <p>BANKRUPTCY: IN THE EVENT THE VENDOR/CONTRACTOR FILES FOR BANKRUPTCY PROTECTION, THIS CONTRACT MAY BE DEEMED NULL AND VOID, AND TERMINATED WITHOUT FURTHER ORDER.</p> <p>THE MODEL/BRAND/SPECIFICATIONS NAMED HEREIN ESTABLISH THE ACCEPTABLE LEVEL OF QUALITY ONLY AND ARE NOT INTENDED TO REFLECT A PREFERENCE OR FAVOR ANY PARTICULAR BRAND OR VENDOR. VENDORS WHO ARE BIDDING</p>						

SEE REVERSE SIDE FOR TERMS AND CONDITIONS

SIGNATURE	TELEPHONE	DATE
TITLE	FEIN	ADDRESS CHANGES TO BE NOTED ABOVE

WHEN RESPONDING TO RFQ, INSERT NAME AND ADDRESS IN SPACE ABOVE LABELED 'VENDOR'

**GENERAL TERMS & CONDITIONS**  
**REQUEST FOR QUOTATION (RFQ) AND REQUEST FOR PROPOSAL (RFP)**

1. Awards will be made in the best interest of the State of West Virginia.
2. The State may accept or reject in part, or in whole, any bid.
3. All quotations are governed by the *West Virginia Code* and the *Legislative Rules* of the Purchasing Division.
4. Prior to any award, the apparent successful vendor must be properly registered with the Purchasing Division and have paid the required \$125 fee.
5. All services performed or goods delivered under State Purchase Order/Contracts are to be continued for the term of the Purchase Order/Contracts, contingent upon funds being appropriated by the Legislature or otherwise being made available. In the event funds are not appropriated or otherwise available for these services or goods, this Purchase Order/Contract becomes void and of no effect after June 30.
6. Payment may only be made after the delivery and acceptance of goods or services.
7. Interest may be paid for late payment in accordance with the *West Virginia Code*.
8. Vendor preference will be granted upon written request in accordance with the *West Virginia Code*.
9. The State of West Virginia is exempt from federal and state taxes and will not pay or reimburse such taxes.
10. The Director of Purchasing may cancel any Purchase Order/Contract upon 30 days written notice to the seller.
11. The laws of the State of West Virginia and the *Legislative Rules* of the Purchasing Division shall govern all rights and duties under the Contract, including without limitation the validity of this Purchase Order/Contract.
12. Any reference to automatic renewal is hereby deleted. The Contract may be renewed only upon mutual written agreement of the parties.
13. **BANKRUPTCY:** In the event the vendor/contractor files for bankruptcy protection, this Contract may be deemed null and void, and terminated without further order.
14. **HIPAA BUSINESS ASSOCIATE ADDENDUM:** The West Virginia State Government HIPAA Business Associate Addendum (BAA), approved by the Attorney General, and available online at the Purchasing Division's web site (<http://www.state.wv.us/admin/purchase/vrc/hipaa.htm>) is hereby made part of the agreement. Provided that, the Agency meets the definition of a Cover Entity (45 CFR §160.103) and will be disclosing Protected Health Information (45 CFR §160.103) to the vendor.
15. **WEST VIRGINIA ALCOHOL & DRUG-FREE WORKPLACE ACT:** If this Contract constitutes a public improvement construction contract as set forth in Article 1D, Chapter 21 of the West Virginia Code ("The West Virginia Alcohol and Drug-Free Workplace Act"), then the following language shall hereby become part of this Contract: "The contractor and its subcontractors shall implement and maintain a written drug-free workplace policy in compliance with the West Virginia Alcohol and Drug-Free Workplace Act, as set forth in Article 1D, Chapter 21 of the West Virginia Code. The contractor and its subcontractors shall provide a sworn statement in writing, under the penalties of perjury, that they maintain a valid drug-free work place policy in compliance with the West Virginia and Drug-Free Workplace Act. It is understood and agreed that this Contract shall be cancelled by the awarding authority if the Contractor: 1) Fails to implement its drug-free workplace policy; 2) Fails to provide information regarding implementation of the contractor's drug-free workplace policy at the request of the public authority; or 3) Provides to the public authority false information regarding the contractor's drug-free workplace policy."

---

**INSTRUCTIONS TO BIDDERS**

1. Use the quotation forms provided by the Purchasing Division.
2. **SPECIFICATIONS:** Items offered must be in compliance with the specifications. Any deviation from the specifications must be clearly indicated by the bidder. Alternates offered by the bidder as **EQUAL** to the specifications must be clearly defined. A bidder offering an alternate should attach complete specifications and literature to the bid. The Purchasing Division may waive minor deviations to specifications.
3. Complete all sections of the quotation form.
4. Unit prices shall prevail in case of discrepancy.
5. All quotations are considered F.O.B. destination unless alternate shipping terms are clearly identified in the quotation.
6. **BID SUBMISSION:** All quotations must be delivered by the bidder to the office listed below prior to the date and time of the bid opening. Failure of the bidder to deliver the quotations on time will result in bid disqualifications: Department of Administration, Purchasing Division, 2019 Washington Street East, P.O. Box 50130, Charleston, WV 25305-0130



State of West Virginia  
 Department of Administration  
 Purchasing Division  
 2019 Washington Street East  
 Post Office Box 50130  
 Charleston, WV 25305-0130

# Request for Quotation

RFQ NUMBER
DNR209149

PAGE
2

ADDRESS CORRESPONDENCE TO ATTENTION OF:
FRANK WHITTAKER 304-558-2316

RFQ COPY  
 TYPE NAME/ADDRESS HERE

VENDOR

SHIP TO

DIVISION OF NATURAL RESOURCES  
 CASS SCENIC RAILROAD ST PARK  
 ATTN: PARK SUPERINTENDENT  
 BOX 107  
 CASS, WV  
 24927 456-4300

DATE PRINTED	TERMS OF SALE	SHIP VIA	F.O.B.	FREIGHT TERMS
05/12/2009				

BID OPENING DATE: 06/17/2009 BID OPENING TIME 01:30PM

LINE	QUANTITY	UOP	CAT NO.	ITEM NUMBER	UNIT PRICE	AMOUNT
<p>ALTERNATES SHOULD SO STATE AND INCLUDE PERTINENT LITERATURE AND SPECIFICATIONS. FAILURE TO PROVIDE INFORMATION FOR ANY ALTERNATES MAY BE GROUNDS FOR REJECTION OF THE BID. THE STATE RESERVES THE RIGHT TO WAIVE MINOR IRREGULARITIES IN BIDS OR SPECIFICATIONS IN ACCORDANCE WITH SECTION 148-1-4(F) OF THE WEST VIRGINIA LEGISLATIVE RULES AND REGULATIONS.</p> <p>NOTICE</p> <p>A SIGNED BID MUST BE SUBMITTED TO:</p> <p>DEPARTMENT OF ADMINISTRATION            PURCHASING DIVISION            BUILDING 15            2019 WASHINGTON STREET, EAST            CHARLESTON, WV 25305-0130</p> <p>THE BID SHOULD CONTAIN THIS INFORMATION ON THE FACE OF THE ENVELOPE OR THE BID MAY NOT BE CONSIDERED:</p> <p>SEALED BID</p> <p>BUYER: 44</p> <p>RFQ. NO.: DNR209149</p> <p>BID OPENING DATE: 06/17/09</p> <p>BID OPENING TIME: 1:30 PM</p>						

SEE REVERSE SIDE FOR TERMS AND CONDITIONS

SIGNATURE	TELEPHONE	DATE
TITLE	FEIN	ADDRESS CHANGES TO BE NOTED ABOVE

WHEN RESPONDING TO RFQ, INSERT NAME AND ADDRESS IN SPACE ABOVE LABELED 'VENDOR'



State of West Virginia  
 Department of Administration  
 Purchasing Division  
 2019 Washington Street East  
 Post Office Box 50130  
 Charleston, WV 25305-0130

# Request for Quotation

RFQ NUMBER  
**DNR209149**

PAGE  
**3**

ADDRESS CORRESPONDENCE TO ATTENTION OF:  
**FRANK WHITTAKER**  
**804-558-2316**

RFQ COPY  
 TYPE NAME/ADDRESS HERE

VENDOR

SHIP TO

DIVISION OF NATURAL RESOURCES  
 CASS SCENIC RAILROAD ST PARK  
 ATTN: PARK SUPERINTENDENT  
 BOX 107  
 CASS, WV  
 24927 456-4300

DATE PRINTED	TERMS OF SALE	SHIP VIA	F.O.B.	FREIGHT TERMS
05/12/2009				

BID OPENING DATE: **06/17/2009** BID OPENING TIME **01:30PM**

LINE	QUANTITY	UOP	CAT NO.	ITEM NUMBER	UNIT PRICE	AMOUNT
PLEASE PROVIDE A FAX NUMBER IN CASE IT IS NECESSARY TO CONTACT YOU REGARDING YOUR BID: ----- CONTACT PERSON (PLEASE PRINT CLEARLY): -----  ***** THIS IS THE END OF RFQ DNR209149 ***** TOTAL: _____						

SEE REVERSE SIDE FOR TERMS AND CONDITIONS

SIGNATURE		TELEPHONE		DATE
TITLE	FEIN	ADDRESS CHANGES TO BE NOTED ABOVE		

WHEN RESPONDING TO RFQ, INSERT NAME AND ADDRESS IN SPACE ABOVE LABELED 'VENDOR'

4

**WVDNR209149**  
**Cass Scenic Railroad State Park**

To supply playground equipment to offer play activities for children ages two (2) to twelve (12) at Cass Scenic Railroad State Park, Cass, West Virginia. Playground equipment will be purchased for two separate areas in the park. Park personnel will install all playground equipment. The award may be split if it is in the best interest of the West Virginia Division of Natural Resources. All items must be F.O.B. Destination. Freight or delivery charges must be included in the price of the goods. Delivery must be made within sixty (60) days of purchase order award.

**AREA 1 - DEPOT AREA**

PrimeTime custom modular unit or equal. The structure must include the following components:

- Three (3) PrimeTime 3 ½" OD upright assembly, Model #12024, or equal. Upright must be a minimum of 9' in height and composed of aluminum.
- Seven (7) PrimeTime 3 ½" OD upright assembly, Model #12026, or equal. Uprights must be a minimum of 11' in height and constructed of aluminum.
- One PrimeTime D ring package, Model #12049, or equal.
- Four (4) PrimeTime 3 and ½" OD upright assembly, Model # 12077. Uprights must be a minimum of 15' in height and constructed of aluminum.
- One (1) PrimeTime dna climber, Model #2113, or equal. Climber must be a minimum of 5' in height.
- One (1) PrimeTime crunch bar, Model #12215, or equal. Bar must be constructed of metal.
- One (1) PrimeTime straight horizontal loop ladder attachment, Model #12219, or equal.
- One (1) PrimeTime rung access, Model #12615, or equal. Access must be a minimum of 5' 0"/6' 0" in height.
- One (1) PrimeTime therapeutic ring attachment, Model #12704, or equal.
- One (1) PrimeTime single seat P/T, Model #12728, or equal.
- One (1) PrimeTime Turning bar P/T, Model #12729, or equal.

**Cass Scenic Railroad State Park**

- One (1) PrimeTime Rock Wall Climber, Model #12913, or equal. Climber must have a minimum 45 ½" deck.
- Two (2) square punched deck P/T 1.3125, Model 18200, or equal. Deck must be a minimum of 36".
- One (1) PrimeTime rectangular punched deck P/T, Model #18202, or equal.
- One (1) transfer point, Model #18251, or equal. Transfer point must be a minimum of 3' in height and a minimum of 36" in width.
- One (1) PrimeTime step link, Model #18259, or equal. Step link must be a minimum of 2' in height and with a deck a minimum of 36".
- One (1) PrimeTime access attachment, Model #18273, or equal. Attachment must be a maximum of 8" in height.
- One (1) PrimeTime suspension bridge, Model #18340, or equal. Bridge must be a minimum 36" in length.
- One (1) PrimeTime cosmix climber, Model #18361, or equal. Climber must be a minimum of 8' in height with a minimum of 36" deck.
- One (1) PrimeTime double zip slide, Model #18378, or equal. Slide must be a minimum of 5' in height.
- One (1) PrimeTime curved zip slide, Model #18387, or equal. Slide must be a minimum of 3' in height with a minimum 36" deck.
- One (1) PrimeTime shingle roof, Model #18671, or equal.
- One (1) PrimeTime 3 and 1/2" OD upright assembly, Model #G12026. Upright must be a minimum of 11' in height and must be constructed of galvanized steel.
- One (1) PrimeTime train whistle, Model #81695, or equal.
- One (1) GameTime owner's kit, Model #17849, or equal.

**Cass Scenic Railroad State Park****AREA 2 - WHITTAKER AREA**

GameTime PowerScape plus modular unit or equal. Structure must be composed of the following components:

- Three (3) PowerScape punched steel deck, Model #80000, or equal. Deck must be a minimum of 49" in height or width?
- Four (4) PowerScape upright assembly, Model #80016, or equal. Upright must be a minimum of 9' in height and constructed of aluminum.
- Two (2) PowerScape upright assembly, Model #80017, or equal. Upright must be a minimum of 10' in height and constructed of aluminum.
- Seven (7) PowerScape upright assembly, Model #80018, or equal. Upright must be a minimum of 11' in height and constructed of aluminum.
- Four (4) upright assembly, Model #80019, or equal. Upright must be a minimum of 12' in height and constructed of aluminum.
- One (1) PowerScape perforated metal roof, Model #80104, or equal.
- One (1) PowerScape loop ladder, Model # 80311, or equal. Ladder must be a minimum of 5' in height.
- One (1) PowerScape leaning wall climber, Model #80395, or equal. Climber must be a minimum of 2' in height.
- One (1) PowerScape transfer point, Model #80653, or equal. Transfer point must be a minimum of 3' in height.
- One (1) PowerScape Access attachment, Model #80656, or equal. Attachment must be a minimum of 25 ½" wide x 14 ¾" deep x 8" high.
- One (1) PowerScape handhold/kick plate package, Model #80687, or equal.
- One (1) 80694-stepped platform, Model #80694, or equal. Platform must be a minimum of 12" in height.
- One (1) tunnel-up crawl tube, Model #80715, or equal. Tube must be a minimum of 8' in length.
- One (1) PowerScape choo panel, Model #80936, or equal.

## Cass Scenic Railroad State Park

- Two (2) PowerScape train cabin, Model # 80945, or equal.
- One (1) PowerScape funnel bridge, Model #81108, or equal. Bridge must be a minimum of 49" in length.
- One (1) PowerScape Giant wave climber link, Model #81143, or equal.
- One (1) PowerScape wildslide exit section, Model #81274, or equal.
- One (1) PowerScape wildslide 135 degree section, Model #81324, or equal.
- One (1) PowerScape wildslide entrance section, Model #81325, or equal.
- One (1) PowerScape double zipline, Model #81344, or equal. Slide must be a minimum of 5' in height.
- One (1) PowerScape horizontal loop attachment, Model #81507, or equal. Attachment must be a minimum of 84" in height as measured from grasping device to protective surface and a minimum of 98" in length.
- One (1) PowerScape hand cycler, Model #81669, or equal.
- One (1) PowerScape train locomotive, Model # 81686, or equal.
- One (1) PowerScape single steering wheel, Model #81691, or equal.
- One (1) PowerScape upright assembly, Model #G80018, or equal. Upright must be a minimum of 11' in height and constructed of galvanized steel.
- One (1) PowerScape train whistle, Model #81695, or equal.

PrimeTime swing, Item #12583, or equal. Top rail and arch must have a minimum 3 ½ inch OD; arch must be a minimum of 11 gauge galvanized steel tubing; must include a minimum of 3 ½ inch O.D. galvanized steel sleeve; must be polyester powder coat; must be a minimum of 8 foot high with finished surface; and must accommodate two (2) free standing swings.

PrimeTime swing add-a-bay, Item #12584, or equal. Top rail and arch must have a minimum 3 ½ inch OD; arch must be a minimum of 11 gauge galvanized steel tubing; must include a minimum of 3 ½ inch O.D. galvanized steel sleeve; must be polyester powder coat; must be a minimum of 8 foot high with a finished surface; and must accommodate two (2) free standing swings.



**WVDNR209149**  
**Cass Scenic Railroad State Park**

PrimeTime swing belt seat package 3 ½" OD, item #8910, or equal. Package must include all hardware necessary to attach to a minimum of a 3 ½ inch top rail.

One (1) GameTime owner's kit, Model #17849, or equal.

**ITEMS FOR BOTH PLAYGROUND AREAS**

Engineered wood fiber or equal @ 8" compacted depth. Material must be recently harvested and debarked; free of chemical treatments and additives; free of soil, twigs, leaves and other contaminants.

Geo-textile fabric, 2,250 square foot roll, or equal. Fabric must provide a water permeable separation between the earth and the wood fiber and at least 150 gallons per square foot per minute. Installation to be completed by park personnel

## Cass Scenic Railroad State Park

All playground equipment and engineered wood fiber must meet the following requirements:

- Compliance with U.S. Consumer Product Safety Commission, Handbook for Public Playground Safety.
- Compliance with ASTM Standard F 1487.
- Compliance with Architectural and Transportation Barriers Compliance Board, Americans with Disabilities Act (ADA) Accessibility Guidelines for Buildings and Facilities; Play Areas.

Vendors must submit the following attachments:

- Complete manufacturer's parts specifications and warranties.
- Layout drawing to scale of the proposed play structure or equipment.
- ASTM and CPSC Statement of Compliance

Warranties:

- All equipment and engineered wood fiber must be guaranteed to be free of defects in workmanship and material for a minimum of one year from date of acceptance. However, if manufacturer warranty periods are longer than the required minimum one year warranty, those warranties shall apply.

Structural steel members and play surfaces must be treated for rust prevention and painted with a suitable powder coat finish. All molded plastics and vinyl coatings must have UV protection

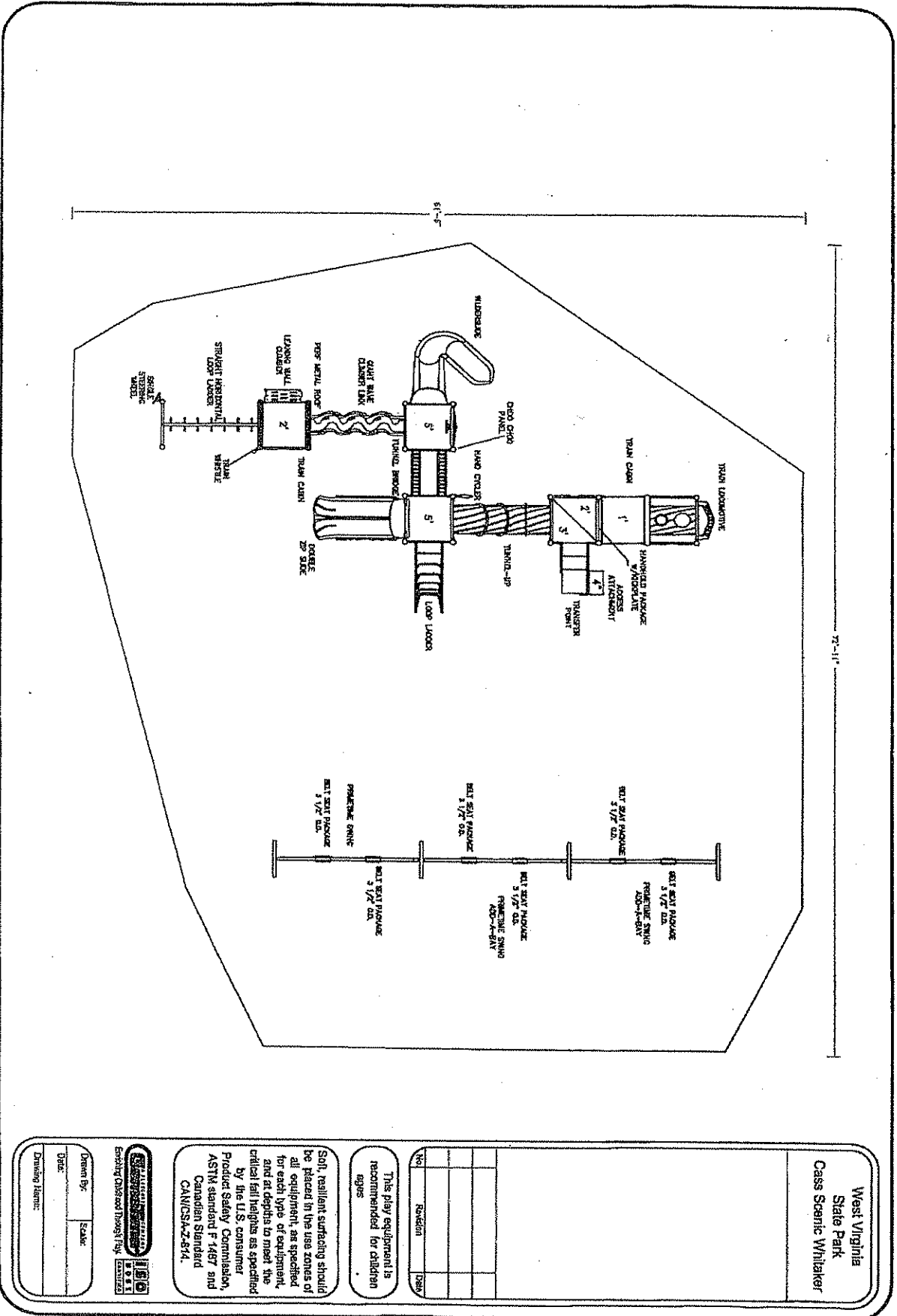
Vendor must provide complete installation instructions, parts specifications, touch-up paint sufficient for initial installation, and warranties.

Color scheme of equipment must be coordinated with Cass Scenic Railroad State Park. Color of items will be selected from manufacturer's standard colors.

A mandatory pre-bid conference will be held on May 21, 2009, at Cass Scenic Railroad State Park at 10:00 a.m. at Park Headquarters. A failure to attend the mandatory pre-bid conference

**Cass Scenic Railroad State Park**

will result in bid disqualification. An individual may not represent more than one firm at the pre-bid conference.



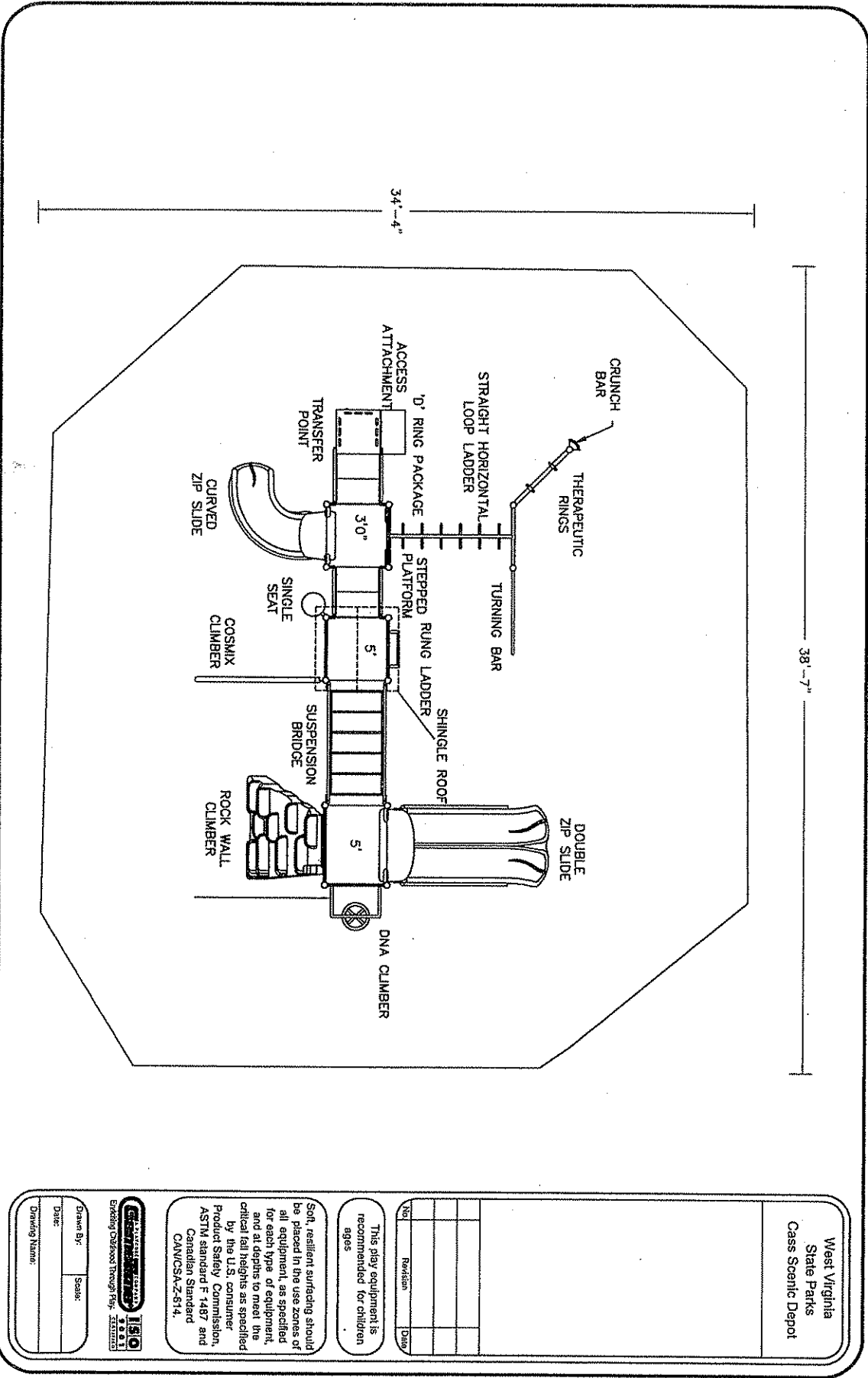
West Virginia  
State Park  
Cass Scenic Whitaker

No.	Revision	Date

This play equipment is recommended for children ages

Soft, resilient surfacing should be placed in the use zones of all equipment, as specified for each type of equipment, and at depths to meet the critical fall heights as specified by the U.S. consumer Product Safety Commission, ASTM standard F 1487 and Canadian Standard CANCSA-2-87A.

Drawn By: \_\_\_\_\_ Scale: \_\_\_\_\_  
 Date: \_\_\_\_\_  
 Drawing Name: \_\_\_\_\_



West Virginia  
State Parks  
Cass Scenic Depot

No.	Revision	Date

This play equipment is recommended for children ages

Soft, resilient surfacing should be placed in the use zones of all equipment, as specified for each type of equipment, and at depths to meet the critical fall heights as specified by the U.S. consumer Product Safety Commission, ASTM standard F 1487 and Canadian Standard CAN/CSA-Z-614.



Drawn By: \_\_\_\_\_  
 Date: \_\_\_\_\_  
 Sealer: \_\_\_\_\_  
 Drawing Name: \_\_\_\_\_

**Cass Scenic Railroad State Park  
PLAYGROUND EQUIPMENT SHEET**

Please complete the below information concerning the brand(s) of equipment being bid in relation to this project. If bidding in or equal inch brands, please attach manufacturer's literature documenting that it meets the mandatory requirements stated in the specifications. Vendors should note the areas of the provided manufacturer's literature that adheres to the mandatory requirements outlined in the Request For Quotation.

Item No.	Equipment	Manufacturer	Model
1	Depot Area Playground - PrimeTime custom modular unit, or equal. The structure must include the following components:		
	Depot Area Playground - Three (3) PrimeTime 3 ½" OD upright assembly, Model #12024, or equal.		
	Depot Area Playground - Seven (7) PrimeTime 3 ½" OD upright assembly, Model #12026, or equal.		
	Depot Area Playground - one (1) PrimeTime D ring package, Model #12049, or equal.		
	Depot Area Playground - four (4) PrimeTime 3 ½" OD upright assembly, Model # 12077.		
	Depot Area Playground - one (1) PrimeTime dna climber, Model #2113, or equal.		
	Depot Area Playground - one (1) PrimeTime crunch bar, Model #12215, or equal.		
	Depot Area Playground - one (1) PrimeTime straight horizontal loop ladder attachment, Model #12219, or equal.		

Cass Scenic Railroad State Park  
**PLAYGROUND EQUIPMENT SHEET**

Item No.	Equipment	Manufacturer	Model
	Depot Area Playground - one (1) PrimeTime rung access, Model #12615, or equal.		
	Depot Area Playground - one (1) PrimeTime therapeutic ring attachment, Model #12704, or equal.		
	Depot Area Playground - one (1) PrimeTime single seat p/t, Model #12728, or equal.		
	Depot Area Playground - one (1) PrimeTime turning bar P/T, Model #12729, or equal.		
	Depot Area Playground - one (1) PrimeTime rock wall climber, Model #12913, or equal.		
	Depot Area Playground - two (2) square punched deck P/T 1.3125, Model #18200, or equal.		
	Depot Area Playground - one (1) PrimeTime rectangular punched deck p.t, Model #18202, or equal.		
	Depot Area Playground - one (1) transfer point, Model #18251, or equal.		
	Depot Area Playground - one (1) PrimeTime step link, Model #18259, or equal.		
	Depot Area Playground - one (1) PrimeTime 18273- 3' and 5' access attachment, Model #18273, or equal.		

Cass Scenic Railroad State Park  
**PLAYGROUND EQUIPMENT SHEET**

Item No.	Equipment	Manufacturer	Model
	Depot Area Playground - one (1) PrimeTime suspension bridge, Model #18340, or equal.		
	Depot Area Playground - one (1) PrimeTime cosmix climber, Model #18361, or equal.		
	Depot Area Playground - one (1) PrimeTime double zip slide, Model #18378, or equal.		
	Depot Area Playground - one (1) PrimeTime curved zip slide, Model #18387, or equal.		
	Depot Area Playground - one (1) PrimeTime shingle roof, Model #18671, or equal.		
	Depot Area Playground - one (1) PrimeTime 3 1/2"OD upright assembly, Model #G12026.		
	Depot Area Playground - one (1) PrimeTime train whistle, Model #81695, or equal.		
2	Depot Area Playground - one (1) GameTime owner's kit, Model #17849, or equal.		
3	Whittaker Area Playground - PowerScape plus modular unit, or equal. Structure must be composed of the following components:		
	Whittaker Area Playground - Three (3) PowerScape punched steel deck, Model #80000, or equal.		



Cass Scenic Railroad State Park  
**PLAYGROUND EQUIPMENT SHEET**

Item No.	Equipment	Manufacturer	Model
	Whittaker Area Playground - four (4) PowerScape upright assembly, Model #80016, or equal.		
	Whittaker Area Playground - two (2) PowerScape upright assembly, Model #80017, or equal.		
	Whittaker Area Playground - Seven (7) PowerScape upright assembly, Model #80018, or equal.		
	Whittaker Area Playground - four (4) 80019- 12' upright assembly, aluminum.		
	Whittaker Area Playground - one (1) PowerScape perforated metal roof, Model #80104, or equal.		
	Whittaker Area Playground - one (1) PowerScape loop ladder, Model # 80311, or equal.		
	Whittaker Area Playground - one (1) PowerScape leaning wall climber, Model #80395, or equal.		
	Whittaker Area Playground - one (1) PowerScape transfer point, Model #80653, or equal.		
	Whittaker Area Playground - one (1) PowerScape Access attachment, Model #80656, or equal.		
	Whittaker Area Playground - one (1) PowerScape handhold/kick plate package, Model #80687, or equal.		

Cass Scenic Railroad State Park  
**PLAYGROUND EQUIPMENT SHEET**

Item No.	Equipment	Manufacturer	Model
	Whittaker Area Playground - one (1) PowerScape stepped platform, Model # 80694, or equal.		
	Whittaker Area Playground - one (1) PowerScape tunnel-up crawl tube, Model # 80715 , or		
	Whittaker Area Playground - one (1) PowerScape choo panel, Model #80936, or equal.		
	Whittaker Area Playground - two (2) PowerScape train cabin, Model # 80945, or equal.		
	Whittaker Area Playground - one (1) PowerScape funnel bridge, Model #81108, or		
	Whittaker Area Playground - one (1) PowerScape Giant wave climber link, Model #81143, or equal.		
	Whittaker Area Playground - one (1) PowerScape wildslide exit section, Model #81274, or equal.		
	Whittaker Area Playground - one (1) PowerScape wildslide 135 degree section, Model		
	Whittaker Area Playground - one (1) PowerScape wildslide entrance section, Model #81325, or equal.		
	Whittaker Area Playground - one (1) PowerScape double zipslide, Model #81344, or equal.		

Cass Scenic Railroad State Park  
**PLAYGROUND EQUIPMENT SHEET**

Item No.	Equipment	Manufacturer	Model
	Whittaker Area Playground - one (1) PowerScape horizontal loop attachment, Model #81507, or equal.		
	Whittaker Area Playground - one (1) PowerScape hand cycler, Model #81669, or equal.		
	Whittaker Area Playground - one (1) PowerScape train locomotive, Model # 81686, or equal.		
	Whittaker Area Playground - one (1) PowerScape single steering wheel, Model #81691, or equal.		
	Whittaker Area Playground - one (1) PowerScape upright assembly, Model #G80018, or equal.		
	Whittaker Area Playground - one (1) PowerScape train whistle, Model #81695, or equal.		
4	Whittaker Area Playground - one (1) PrimeTime 2 seat swing, Model #12583.		
5	Whittaker Area Playground - two (2) 2 seat Primetime swing add-a-bay, Model #12584, or equal.		
6	Whittaker Area Playground - PrimeTime 3 1/2" belt seat with galvanized chain, Model #8910, or equal.		
7	Whittaker Area Playground - one (1) GameTime owner's kit, Model #17849, or equal.		

Cass Scenic Railroad State Park  
**PLAYGROUND EQUIPMENT SHEET**

Item No.	Equipment	Manufacturer	Model
8	Depot Area Playground (2,396 Square Feet) and Whittaker Area Playground (3,615) - engineered wood fiber or equal @ 8" compacted depth.		
9	Depot Area Playground Whittaker Area Playground geotextile fabric, 2,250 square foot roll, or equal.		

## Cass Scenic Railroad Playground Equipment

## PRICING SHEET

Item No.	Quantity	Description	Unit Price	Amount
1	1	Depot Area Playground - PrimeTime custom modular unit or equal.		
2	1	Depot Area Playground - one (1) GameTime owner's kit, Model #17849, or equal.		
3	1	Whittaker Area Playground - PowerScape plus modular unit, or equal. Structure must be composed of the following components:		
4	1	Whittaker Area Playground - one (1) PrimeTime 2 seat swing, Model #12583.		
5	2	Whittaker Area Playground - Primetime swing add-a-bay, Model #12584, or equal.		
6	6	Whittaker Area Playground - PrimeTime 3 1/2" belt seat with galvanized chain, Model #8910, or equal.		
7	1	Whittaker Area Playground - one (1) GameTime owner's kit, Model #17849, or equal.		
8	6,011 Square Feet	Depot Area Playground (2,396 Square Feet) and Whittaker Area Playground (3,615) - engineered wood fiber or equal @ 8" compacted depth.		
9	3 Rolls	Depot Area Playground and Whittaker Area Playground geo-textile fabric, 2250 square foot roll, or equal.		

# VENDOR PREFERENCE CERTIFICATE

Certification and application\* is hereby made for Preference in accordance with *West Virginia Code*, §5A-3-37. (Does not apply to construction contracts). *West Virginia Code*, §5A-3-37, provides an opportunity for qualifying vendors to request (at the time of bid) preference for their residency status. Such preference is an evaluation method only and will be applied only to the cost bid in accordance with the *West Virginia Code*. This certificate for application is to be used to request such preference. The Purchasing Division will make the determination of the Resident Vendor Preference, if applicable.

- 1. **Application is made for 2.5% resident vendor preference for the reason checked:**  
 Bidder is an individual resident vendor and has resided continuously in West Virginia for four (4) years immediately preceding the date of this certification; or,  
 Bidder is a partnership, association or corporation resident vendor and has maintained its headquarters or principal place of business continuously in West Virginia for four (4) years immediately preceding the date of this certification; or 80% of the ownership interest of Bidder is held by another individual, partnership, association or corporation resident vendor who has maintained its headquarters or principal place of business continuously in West Virginia for four (4) years immediately preceding the date of this certification; or,  
 Bidder is a nonresident vendor which has an affiliate or subsidiary which employs a minimum of one hundred state residents and which has maintained its headquarters or principal place of business within West Virginia continuously for the four (4) years immediately preceding the date of this certification; or,
- 2. **Application is made for 2.5% resident vendor preference for the reason checked:**  
 Bidder is a resident vendor who certifies that, during the life of the contract, on average at least 75% of the employees working on the project being bid are residents of West Virginia who have resided in the state continuously for the two years immediately preceding submission of this bid; or,
- 3. **Application is made for 2.5% resident vendor preference for the reason checked:**  
 Bidder is a nonresident vendor employing a minimum of one hundred state residents or is a nonresident vendor with an affiliate or subsidiary which maintains its headquarters or principal place of business within West Virginia employing a minimum of one hundred state residents who certifies that, during the life of the contract, on average at least 75% of the employees or Bidder's affiliate's or subsidiary's employees are residents of West Virginia who have resided in the state continuously for the two years immediately preceding submission of this bid; or,
- 4. **Application is made for 5% resident vendor preference for the reason checked:**  
 Bidder meets either the requirement of both subdivisions (1) and (2) or subdivision (1) and (3) as stated above; or,
- 5. **Application is made for 3.5% resident vendor preference who is a veteran for the reason checked:**  
 Bidder is an individual resident vendor who is a veteran of the United States armed forces, the reserves or the National Guard and has resided in West Virginia continuously for the four years immediately preceding the date on which the bid is submitted; or,
- 6. **Application is made for 3.5% resident vendor preference who is a veteran for the reason checked:**  
 Bidder is a resident vendor who is a veteran of the United States armed forces, the reserves or the National Guard, if, for purposes of producing or distributing the commodities or completing the project which is the subject of the vendor's bid and continuously over the entire term of the project, on average at least seventy-five percent of the vendor's employees are residents of West Virginia who have resided in the state continuously for the two immediately preceding years.

Bidder understands if the Secretary of Revenue determines that a Bidder receiving preference has failed to continue to meet the requirements for such preference, the Secretary may order the Director of Purchasing to: (a) reject the bid; or (b) assess a penalty against such Bidder in an amount not to exceed 5% of the bid amount and that such penalty will be paid to the contracting agency or deducted from any unpaid balance on the contract or purchase order.

By submission of this certificate, Bidder agrees to disclose any reasonably requested information to the Purchasing Division and authorizes the Department of Revenue to disclose to the Director of Purchasing appropriate information verifying that Bidder has paid the required business taxes, provided that such information does not contain the amounts of taxes paid nor any other information deemed by the Tax Commissioner to be confidential.

Under penalty of law for false swearing (*West Virginia Code*, §61-5-3), Bidder hereby certifies that this certificate is true and accurate in all respects; and that if a contract is issued to Bidder and if anything contained within this certificate changes during the term of the contract, Bidder will notify the Purchasing Division in writing immediately.

Bidder: \_\_\_\_\_ Signed: \_\_\_\_\_

Date: \_\_\_\_\_ Title: \_\_\_\_\_

\*Check any combination of preference consideration(s) indicated above, which you are entitled to receive.

STATE OF WEST VIRGINIA  
Purchasing Division

**PURCHASING AFFIDAVIT**

**VENDOR OWING A DEBT TO THE STATE:**

*West Virginia Code* §5A-3-10a provides that: No contract or renewal of any contract may be awarded by the state or any of its political subdivisions to any vendor or prospective vendor when the vendor or prospective vendor or a related party to the vendor or prospective vendor is a debtor and the debt owed is an amount greater than one thousand dollars in the aggregate.

**PUBLIC IMPROVEMENT CONTRACTS & DRUG-FREE WORKPLACE ACT:**

If this is a solicitation for a public improvement construction contract, the vendor, by its signature below, affirms that it has a written plan for a drug-free workplace policy in compliance with Article 1D, Chapter 21 of the *West Virginia Code*. The vendor **must** make said affirmation with its bid submission. Further, public improvement construction contract may not be awarded to a vendor who does not have a written plan for a drug-free workplace policy in compliance with Article 1D, Chapter 21 of the *West Virginia Code* and who has not submitted that plan to the appropriate contracting authority in timely fashion. For a vendor who is a subcontractor, compliance with Section 5, Article 1D, Chapter 21 of the *West Virginia Code* may take place before their work on the public improvement is begun.

**ANTITRUST:**

In submitting a bid to any agency for the state of West Virginia, the bidder offers and agrees that if the bid is accepted the bidder will convey, sell, assign or transfer to the state of West Virginia all rights, title and interest in and to all causes of action it may now or hereafter acquire under the antitrust laws of the United States and the state of West Virginia for price fixing and/or unreasonable restraints of trade relating to the particular commodities or services purchased or acquired by the state of West Virginia. Such assignment shall be made and become effective at the time the purchasing agency tenders the initial payment to the bidder.

I certify that this bid is made without prior understanding, agreement, or connection with any corporation, firm, limited liability company, partnership or person or entity submitting a bid for the same materials, supplies, equipment or services and is in all respects fair and without collusion or fraud. I further certify that I am authorized to sign the certification on behalf of the bidder or this bid.

**LICENSING:**

Vendors must be licensed and in good standing in accordance with any and all state and local laws and requirements by any state or local agency of West Virginia, including, but not limited to, the West Virginia Secretary of State's Office, the West Virginia Tax Department, West Virginia Insurance Commission, or any other state agencies or political subdivision. Furthermore, the vendor must provide all necessary releases to obtain information to enable the Director or spending unit to verify that the vendor is licensed and in good standing with the above entities.

**CONFIDENTIALITY:**

The vendor agrees that he or she will not disclose to anyone, directly or indirectly, any such personally identifiable information or other confidential information gained from the agency, unless the individual who is the subject of the information consents to the disclosure in writing or the disclosure is made pursuant to the agency's policies, procedures and rules. Vendor further agrees to comply with the Confidentiality Policies and Information Security Accountability Requirements, set forth in <http://www.state.wv.us/admin/purchase/privacy/noticeConfidentiality.pdf>.

Under penalty of law for false swearing (*West Virginia Code* §61-5-3), it is hereby certified that the vendor affirms and acknowledges the information in this affidavit and is in compliance with the requirements as stated.

Vendor's Name: \_\_\_\_\_

Authorized Signature: \_\_\_\_\_ Date: \_\_\_\_\_