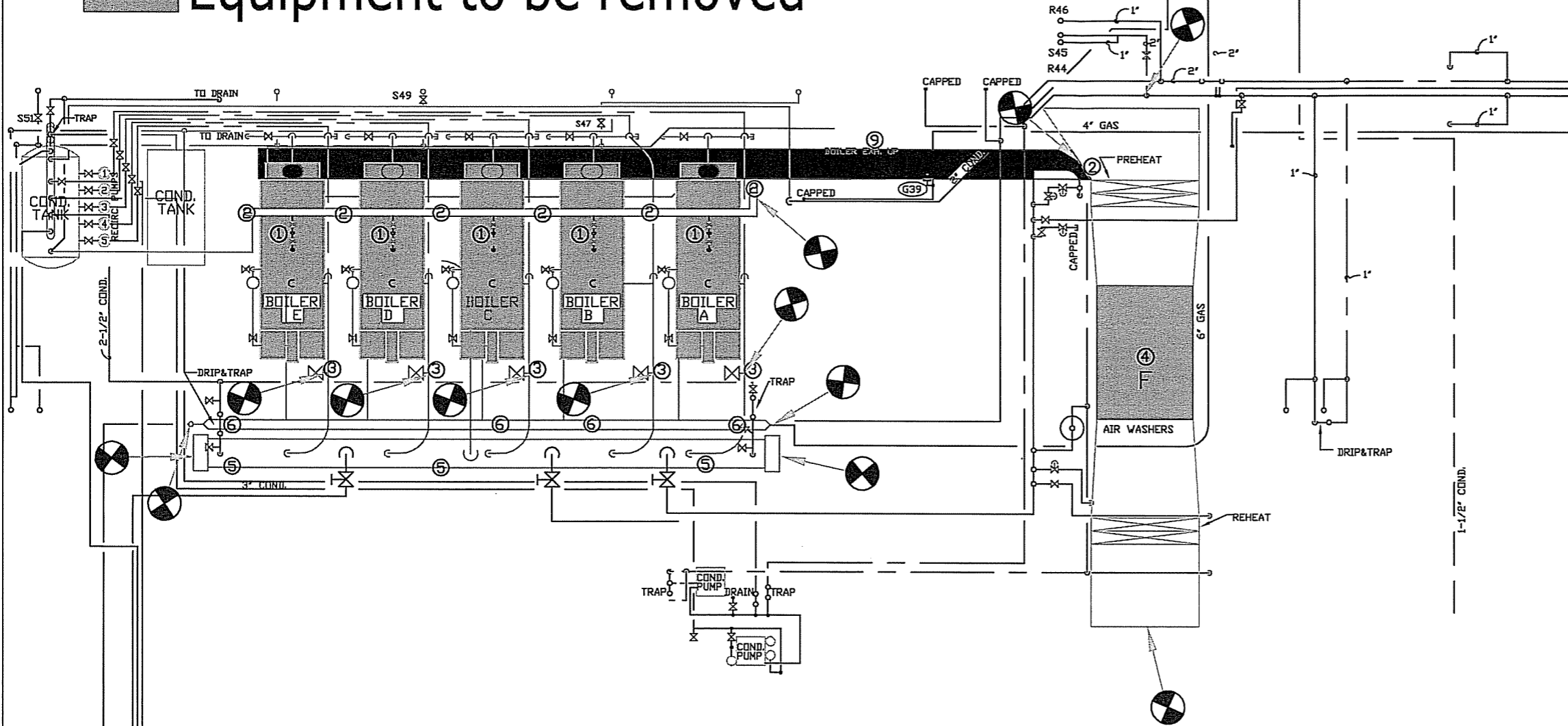


Equipment to be removed



LEGEND

- ① DISASSEMBLE AND REMOVE SAFETY VALVE LINES & CAP
- ② DISASSEMBLE & REMOVE BOILER BREACHING AND CAP WITH 1/4\"/>
- ③ DISASSEMBLE & REMOVE PIPING AT VALVES & CAP
- ④ DISASSEMBLE AIR HANDLER & ATTACHED DUCTWORK
- ⑤ DISASSEMBLE & REMOVE GAS SUPPLY LINE TO BOILER & CAP AT GAS MAIN
- ⑥ DISASSEMBLE & REMOVE 2\"/>
- ⑦ ELECTRICAL DISCONNECTS
- ⑧ DISCONNECT ELECTRICAL POWER TO EQUIPMENT TO BE REMOVED. REMOVE CONDUIT & WIRE TO DISCONNECT . DISCONNECT TO REMAIN.
- ⑨ BOILER BRECHING TO BE REMOVED.

EQUIPMENT	
A. AMERICAN-STANDARD MOD #941777A HEAT GENERATOR DISASEMBLE AND REMOVE SAFETY VALVES LINES AND CAP	D. KEWANEE BOILER Co. MOD # M505-KC HEAT GENERATOR DISASEMBLE AND REMOVE SAFETY VALVES LINES AND CAP
B. AMERICAN-STANDARD MOD #941777A HEAT GENERATOR DISASEMBLE AND REMOVE SAFETY VALVES LINES AND CAP	E. AMERICAN-STANDARD MOD #941777A HEAT GENERATOR DISASEMBLE AND REMOVE SAFETY VALVES LINES AND CAP
C. KEWANEE BOILER Co. MOD # M505-G HEAT GENERATOR DISASEMBLE AND REMOVE SAFETY VALVES LINES AND CAP	F. TRANE MOD # F5817 DISASSEMBLE AIR HANDLER & ATTACHED DUCTWORK

⑧ DISASSEMBLE & REMOVE
ELECTRIC AS NOTED

STATE OF WEST VIRGINIA
DEPARTMENT OF
ADMINISTRATION
GENERAL SERVICES DIVISION
CHARLESTON, WEST VIRGINIA

LOCATION:
WEST VIRGINIA STATE CAPITOL

BUILDING:
BUILDING 1

PROJECT:
EQUIPMENT REMOVAL

DRAWING TITLE: BOILER REMOVAL		DRAWING NO: EQ-B1-BR	
DRAWN BY: BMG	SCALE: NONE	DATE: 05/21/07	CAD PATH SEQUENCE:
APPROVED BY: SCOTT MASON			