



The following documentation is an electronically-submitted vendor response to an advertised solicitation from the *West Virginia Purchasing Bulletin* within the Vendor Self-Service portal at ***wvOASIS.gov***. As part of the State of West Virginia's procurement process, and to maintain the transparency of the bid-opening process, this documentation submitted online is publicly posted by the West Virginia Purchasing Division at ***WVPurchasing.gov*** with any other vendor responses to this solicitation submitted to the Purchasing Division in hard copy format.

Header @ 1

[List View](#)

[General Information](#) | [Contact](#) | [Default Values](#) | [Discount](#) | [Document Information](#) | [Clarification Request](#)

Procurement Folder: 1733931

Procurement Type: Central Purchase Order

Vendor ID: VS0000048680

Legal Name: Garver, LLC

Alias/DBA: Garver, LLC

Total Bid: \$0.00

Response Date: 07/22/2025

Response Time: 12:37

Responded By User ID: GarverUSA

First Name: Richard

Last Name: Marsch

Email: rmarsch@garverusa.com

Phone: 7142271971

SO Doc Code: CEOI

SO Dept: 0603

SO Doc ID: ADJ2600000001

Published Date: 7/7/25

Close Date: 7/22/25

Close Time: 13:30

Status: Closed

Solicitation Description: EOJ- BUILDER Site Assessments & Facility Inspections 2025

Total of Header Attachments: 1

Total of All Attachments: 1



Department of Administration
Purchasing Division
2019 Washington Street East
Post Office Box 50130
Charleston, WV 25305-0130

State of West Virginia
Solicitation Response

Proc Folder: 1733931
Solicitation Description: EOI- BUILDER Site Assessments & Facility Inspections 2025
Proc Type: Central Purchase Order

Solicitation Closes	Solicitation Response	Version
2025-07-22 13:30	SR 0603 ESR07222500000000361	1

VENDOR
VS0000048680
Garver, LLC

Solicitation Number: CEOI 0603 ADJ2600000001
Total Bid: 0
Response Date: 2025-07-22
Response Time: 12:37:21
Comments:

FOR INFORMATION CONTACT THE BUYER
David H Pauline
304-558-0067
david.h.pauline@wv.gov

Vendor
Signature X **FEIN#** **DATE**

All offers subject to all terms and conditions contained in this solicitation

Line	Comm Ln Desc	Qty	Unit Issue	Unit Price	Ln Total Or Contract Amount
1	EOI- BUILDER Site Assessments & Facility Inspections 2025				0.00

Comm Code	Manufacturer	Specification	Model #
81101508			

Commodity Line Comments:

Extended Description:

Provide professional engineering services for the BUILDER Sustainment Management System Implementation, including Site Assessments & Facility Inspections, for facilities throughout WV, per the attached documentation.

EXPRESSION OF INTEREST

BUILDER Site Assessments & Facility Inspections 2025

CEOI-0603-ADJ2600000001

22 July 2025





Department of Administration
Purchasing Division
2019 Washington Street East
Post Office Box 50130
Charleston, WV 25305-0130

State of West Virginia
Centralized Expression of Interest
Architect/Engr

Proc Folder: 1733931			Reason for Modification:
Doc Description: EOI- BUILDER Site Assessments & Facility Inspections 2025			
Proc Type: Central Purchase Order			
Date Issued	Solicitation Closes	Solicitation No	Version
2025-07-07	2025-07-22 13:30	CEOI 0603 ADJ2600000001	1

BID RECEIVING LOCATION

BID CLERK
DEPARTMENT OF ADMINISTRATION
PURCHASING DIVISION
2019 WASHINGTON ST E
CHARLESTON WV 25305
US

VENDOR

Vendor Customer Code: VS0000048680
Vendor Name : Garver, LLC
Address : 12980 Foster Street, Suite 420
Street :
City : Overland Park
State : KS **Country :** USA **Zip :** 66213
Principal Contact : Daniel Lamberger, PE, Project Manager
Vendor Contact Phone: 913-696-9755 **Extension:**

FOR INFORMATION CONTACT THE BUYER

David H Pauline
304-558-0067
david.h.pauline@wv.gov

Vendor
Signature X

FEIN# 01-0733400

DATE 7/22/2025

All offers subject to all terms and conditions contained in this solicitation

DESIGNATED CONTACT: Vendor appoints the individual identified in this Section as the Contract Administrator and the initial point of contact for matters relating to this Contract.

(Printed Name and Title) Daniel Lamberger, PE, Project Manager

(Address) 12980 Foster Street, Suite 420, Overland Park, KS 66213

(Phone Number) / (Fax Number) 913-696-9755 / 501-372-8042

(email address) DJLamberger@GarverUSA.com

CERTIFICATION AND SIGNATURE: By signing below, or submitting documentation through wvOASIS, I certify that: I have reviewed this Solicitation/Contract in its entirety; that I understand the requirements, terms and conditions, and other information contained herein; that this bid, offer or proposal constitutes an offer to the State that cannot be unilaterally withdrawn; that the product or service proposed meets the mandatory requirements contained in the Solicitation/Contract for that product or service, unless otherwise stated herein; that the Vendor accepts the terms and conditions contained in the Solicitation, unless otherwise stated herein; that I am submitting this bid, offer or proposal for review and consideration; that this bid or offer was made without prior understanding, agreement, or connection with any entity submitting a bid or offer for the same material, supplies, equipment or services; that this bid or offer is in all respects fair and without collusion or fraud; that this Contract is accepted or entered into without any prior understanding, agreement, or connection to any other entity that could be considered a violation of law; that I am authorized by the Vendor to execute and submit this bid, offer, or proposal, or any documents related thereto on Vendor's behalf; that I am authorized to bind the vendor in a contractual relationship; and that to the best of my knowledge, the vendor has properly registered with any State agency that may require registration.

By signing below, I further certify that I understand this Contract is subject to the provisions of West Virginia Code § 5A-3-62, which automatically voids certain contract clauses that violate State law; and that pursuant to W. Va. Code 5A-3-63, the entity entering into this contract is prohibited from engaging in a boycott against Israel.

Garver, LLC

(Company)

(Signature of Authorized Representative)

Daniel Lamberger, PE, Project Manager / July 21, 2025

(Printed Name and Title of Authorized Representative) (Date)

913-696-9755 / 501-372-8042

(Phone Number) (Fax Number)

DJLamberger@GarverUSA.com

(Email Address)

Revised 8/24/2023



POINT OF CONTACT

Daniel Lamberger, PE
12980 Foster Street, Suite 420
Overland Park, KS 66213
913-696-9755
DJLamberger@GarverUSA.com

22 July 2025

West Virginia Army National Guard
c/o Department of Administration, Purchasing Division
Attn: David Pauline
2019 Washington Street East
Charleston, WV 25305-0130

RE: BUILDER Site Assessments & Facility Inspections 2025 (CEOI-0603-ADJ2600000001)

Dear Mr. Pauline and Selection Committee Members,

Per the Solicitation #CEOI-0603-ADJ2600000001, Garver is pleased to submit the attached bid documentation for the BUILDER SMS Site Assessments & Facility Inspections 2025 for the West Virginia Army National Guard (WVARNG). Our proposal is based on evaluating the Facility Condition Assessment data for the WVARNG, while ensuring that this data is correct and updated per the most recent Army Assessment Guide and the National Guard Bureau (NGB) standards.

It is our understanding that the selected engineering firm will perform facility building asset inventories and site inspections of the facilities in accordance with the latest version of the BUILDER SMS User Manual and the BUILDER Condition Assessment Manual for Building Component Sections. Garver has extensive experience performing these same services across multiple states for Army National Guard clients. **The Assessment Team that will be assigned to this project has previously completed over 13 million square feet (SF) of BUILDER Assessments on nearly 1,400 different facilities spread across 150+ military installations.**

Garver offers an experienced Assessment Team as well as a QA/QC Team who will work closely with each other to ensure all data is collected, reviewed, and inputted into BUILDER per NGB requirements. Due to the scope of work, Garver plans to self-perform this work as noted. We will use all in-house staff for the facility data review, deliverable reports produced, and annual site visits. This allows our teams to collaborate and produce a high-quality product on schedule, while also adapting to any changes that may be required.

Attachments include Garver's statement of qualifications and performance data, as well as additional supporting documentation. Please do not hesitate to contact me with any questions or concerns.

Very Respectfully,

Garver, LLC
Daniel Lamberger, PE, Project Manager

TABLE OF CONTENTS



- 1** **Staff Qualifications and Experience**
Page 5
- 2** **References**
Page 9
- 3** **Staff Certifications**
Page 10
- 4** **Staffing Plan**
Page 13
- 5** **Past Projects**
Page 14
- 6** **Project Management Plan/Quality Control**
Page 30

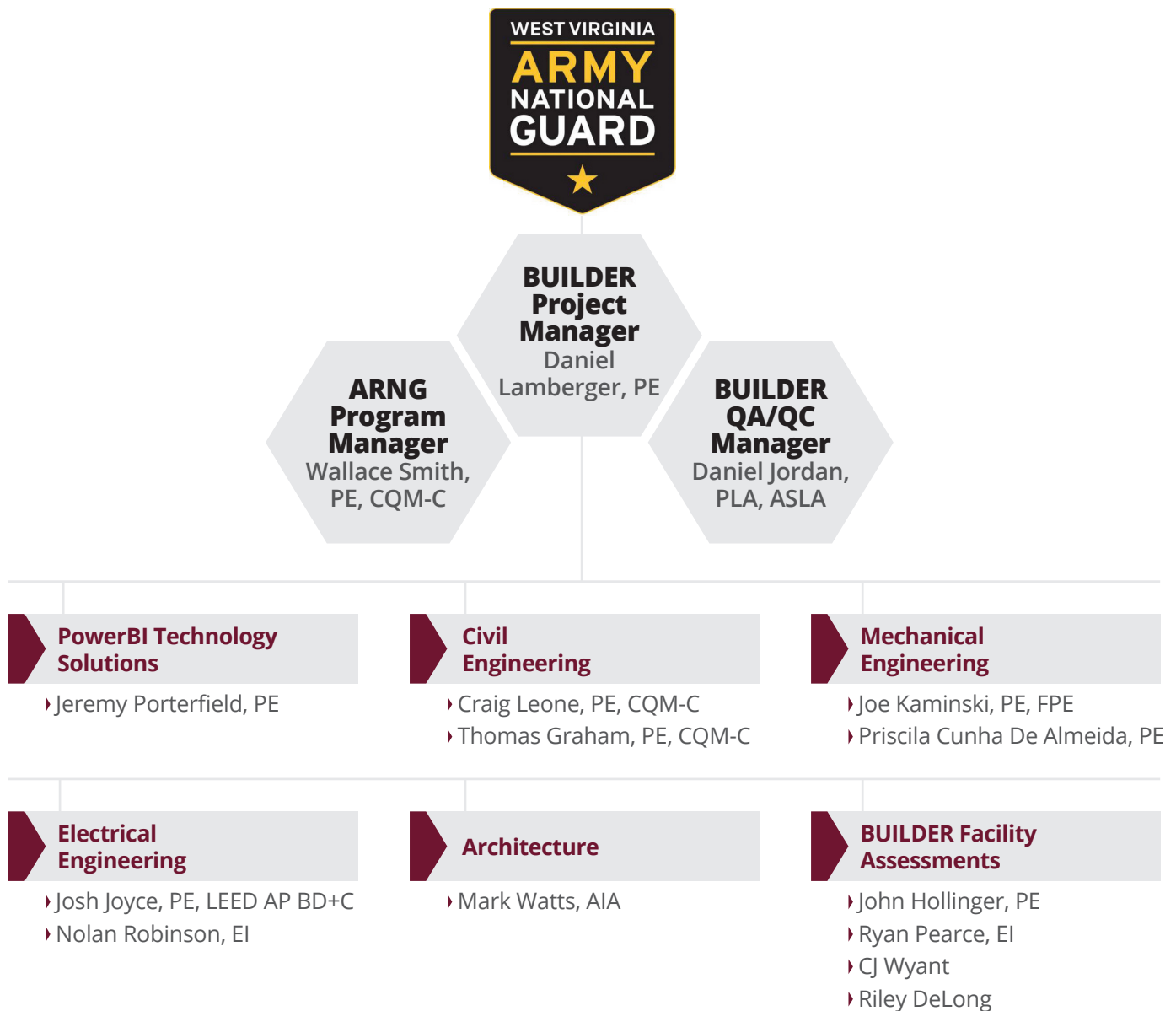
Staff Qualifications and Experience

Organizational Chart

Garver has assembled a dedicated in-house team of experts that are uniquely qualified and organized to efficiently execute your BUILDER Site Assessments & Facility Inspections 2025. This team includes staff with specialized experience in facility condition assessments; design and planning for military facilities; GIS analyses; and BUILDER SMS implementation.

Resumes of Key Staff

In this section, we have provided resumes that detail the relevant experience and qualifications of our team members. Our team features the professionals needed to meet each project phase—plus the support personnel available to make your project run smoothly.





Daniel Lamberger, PE

PROJECT MANAGER

Daniel is an experienced Civil Engineer on Garver's Federal Team. He specializes in horizontal site development for a variety of military clientele across the country. In addition, he has served as the BUILDER Team Leader for BUILDER site assessments and implementation for multiple Army National Guard clients. BUILDER is an asset management program that includes a building's architecture, mechanical, plumbing, and electrical systems. Garver employs the BUILDER software to help assess building conditions and provide U.S. military clients with the most efficient and cost-effective methods for maintaining their facilities. Daniel has participated in seven iterations of these assessments in Arkansas and five phases of these assessments in Texas. Garver is currently under contract for an eighth iteration in Arkansas and a fifth phase in Texas.

EDUCATION

BS, Civil Engineering

REGISTRATION

Professional Engineer:
AR, IA, KS, MO

CERTIFICATION

BUILDER SMS Training

RELEVANT EXPERIENCE

ARARNG BUILDER SMS Implementation for Standalone Facilities (Phases 1-6; FY23; FY24) | *Statewide, AR*

Project Manager and Facility Assessor responsible for conducting BUILDER SMS assessments for existing facilities totaling 7,422,151 square feet across the state of Arkansas for the Arkansas Army National Guard (ARARNG). These facilities range in size and in building function from readiness centers, military support, and range buildings. Building assessments compare real property data and any as built information supplied by the facilities manager to what the assessor finds in the building during the facility assessment. A facility assessment includes collecting building data and identifying distresses for building components in architectural, mechanical, and electrical disciplines for each building. Garver has completed seven iterations of these assessments statewide and is under contract for an eighth iteration to be completed in FY24.

TXARNG BUILDER SMS Implementation (Phases 1-5) | *Statewide, TX*

Project Manager and Facility Assessor responsible for conducting BUILDER SMS assessments for existing facilities totaling 4,592,272 square feet across the state of Texas for the Texas Army National Guard (TXARNG). These facilities range in size and in building function from readiness centers, armories, military support, and range buildings. Building assessments compare real property data and any as built information supplied by the facilities manager to what the assessor finds in the building during the facility assessment. A facility assessment includes collecting building data and identifying distresses for building components in architectural, mechanical, and electrical disciplines for each building. Garver has completed four phases of these assessments statewide and is under contract for a fifth phase to be completed in FY25.

IAARNG BUILDER SMS Management (FY23-FY25) | *Statewide, IA*

Project Manager and Facility Assessor responsible for conducting BUILDER SMS assessments for new construction buildings and renovated existing facilities across the state of Iowa for the Iowa Army National Guard (IAARNG). These facilities range in size and in building function from readiness centers, armories, military support, and range buildings. Data management of the IAARNG BUILDER database includes producing data reports of condition indexes and performing quality control of existing data. In addition, Garver is updating existing data using contracted work orders to keep real property as up to date as the buildings are maintained. Technology solutions consist of creating a PowerBI Dashboard to convey data in different ways as well as show future work orders and funding requirements through FY26 for the IAARNG facility list. Garver has completed two phases of these assessments statewide and is under contract for a third phase to be completed in FY25.



Daniel Jordan, PLA, ASLA

QA/QC MANAGER

Daniel is an experienced Landscape Architect on Garver's Federal Team. He specializes in landscape architectural design for a variety of federal clientele across the country. In addition, he has served as the BUILDER Mechanical Team Lead for BUILDER site assessments and implementation for multiple Army National Guard clients. BUILDER is an asset management program that includes a building's architecture, mechanical, plumbing, and electrical systems. Garver employs the BUILDER software to help assess building conditions and provide U.S. military clients with the most efficient and cost-effective methods for maintaining their facilities. Daniel has participated in five iterations of these assessments in Arkansas and five phases of these assessments in Texas. Garver is currently under contract for an eighth iteration in Arkansas and a fifth phase in Texas.

EDUCATION

BA, Landscape Architecture
BS, Landscape Mgmt.

REGISTRATION

Professional Landscape Architect: CO, KS, OK

CERTIFICATION

BUILDER SMS Training

RELEVANT EXPERIENCE

ARARNG BUILDER SMS Implementation for Standalone Facilities (Phases 3-6; FY23; FY24) | *Statewide, AR*

Facility Assessor responsible for conducting BUILDER SMS assessments for existing facilities totaling 7,422,151 square feet across the state of Arkansas for the Arkansas Army National Guard (ARARNG). These facilities range in size and in building function from readiness centers, military support, and range buildings. Building assessments compare real property data and any as built information supplied by the facilities manager to what the assessor finds in the building during the facility assessment. A facility assessment includes collecting building data and identifying distresses for building components in architectural, mechanical, and electrical disciplines for each building. Garver has completed seven iterations of these assessments statewide and is under contract for an eighth iteration to be completed in FY24.

TXARNG BUILDER SMS Implementation (Phases 1-5) | *Statewide, TX*

QA/QC Manager and Facility Assessor responsible for conducting BUILDER SMS assessments for existing facilities totaling 4,592,272 square feet across the state of Texas for the Texas Army National Guard (TXARNG). These facilities range in size and in building function from readiness centers, armories, military support, and range buildings. Building assessments compare real property data and any as built information supplied by the facilities manager to what the assessor finds in the building during the facility assessment. A facility assessment includes collecting building data and identifying distresses for building components in architectural, mechanical, and electrical disciplines for each building. Garver has completed four phases of these assessments statewide and is under contract for a fifth phase to be completed in FY25.

IAARNG BUILDER SMS Data Management (FY23-FY25) | *Statewide, IA*

QA/QC Manager and Facility Assessor responsible for conducting BUILDER SMS assessments for new construction buildings and renovated existing facilities across the state of Iowa for the Iowa Army National Guard (IAARNG). These facilities range in size and in building function from readiness centers, armories, military support, and range buildings. Data management of the IAARNG BUILDER database includes producing data reports of condition indexes and performing quality control of existing data. In addition, Garver is updating existing data using contracted work orders to keep real property as up to date as the buildings are maintained. Technology solutions consist of creating a PowerBI Dashboard to convey data in different ways as well as show future work orders and funding requirements through FY26 for the IAARNG facility list. Garver has completed two phases of these assessments statewide and is under contract for a third phase to be completed in FY25.



Jeremy Porterfield, PE

POWERBI TECHNOLOGY SOLUTIONS SPECIALIST

EDUCATION

BS, Civil Engineering

REGISTRATION

Professional Engineer: AR

CERTIFICATION

PAVER Training

Jeremy is an experienced Civil Engineer with extensive pavement analysis experience, as well as expertise implementing custom technology solutions that solve a client's real-world challenges. His experience includes program design and management, inspections and inspector training, pavement thickness evaluations, automated pavement data collection, and developing custom deliverables to suit a client's needs. Jeremy is passionate about innovation and helping Garver to continue to incorporate innovation as a key part of our client service efforts. He has served as the PowerBi Technology Solutions expert for BUILDER site assessments and implementation for the Iowa Army National Guard. BUILDER is an asset management program that includes a building's architecture, mechanical, plumbing, and electrical systems. Garver employs the BUILDER software to help assess building conditions and provide U.S. military clients with the most efficient and cost-effective methods for maintaining their facilities.

RELEVANT EXPERIENCE

Iowa Army National Guard (IAARNG) BUILDER SMS Data Management (FY23-FY25) | *Statewide, IA*

PowerBi Technology Solutions Specialist responsible for data management of the IAARNG BUILDER database, including producing data reports of condition indexes and performing quality control of existing data. Garver is conducting BUILDER SMS assessments for new construction buildings and renovated existing facilities across the state of Iowa for the IAARNG. These facilities range in size and in building function from readiness centers, armories, military support, and range buildings. In addition, Garver is updating existing data using contracted work orders to keep real property as up to date as the buildings are maintained. Technology solutions consist of creating a PowerBI Dashboard to convey data in different ways as well as show future work orders and funding requirements through FY26 for the IAARNG facility list. Garver has completed two phases of these assessments statewide and is under contract for a third phase to be completed in FY25.

Kansas Department of Transportation (KDOT) Pavement Management Plan | *Statewide, KS*

PowerBi Technology Solutions Specialist responsible for data ingestion, analysis, transformation, and utilization in PowerPM deliverables. Served as technology development and integration lead which included partnering with the client to capture designed maintenance strategies and translating those strategies into a digital workflow. The project included preparation of a Pavement Management Plan (PMP) for over 78 airports identified in the National Plan of Integrated Airport System (NPAIS) throughout the State of Kansas. To monitor project progress, Garver developed a web-based progress dashboard. In real-time, this progress dashboard visually and interactively displays the mapping and inspection progress.

Kentucky Department of Aviation (KDA) Pavement Management Plan | *Statewide, KY*

PowerBi Technology Solutions Specialist responsible for compiling provided data into a cohesive, accurate database, as well as development and deployment of the PowerPM dashboard, a tool that leverages GIS and PowerBI tools to allow the client to efficiently manage pavement condition data while maximizing the funding benefits. The project included creating an interactive web-based pavement management dashboard to assist the Kentucky Department of Aviation (KDA) with the management of its statewide system of aviation pavements. Garver compiled PAVER data from prior pavement inspections for over 50 airports across the state. Using this data, Garver created a web-based dashboard which will interactively display conditions of the exiting statewide airport pavement inventory. Additionally, using the existing data in conjunction with client specific pavement management preferences, Garver integrated a real-time capitol planning tool into the dashboard.

References

Garver focuses on providing long-lasting infrastructure, meeting budgets, and finishing projects on time. We recognize that our reputation is not based on what we say about ourselves but on what our clients and peers say about us.

Please contact the following references regarding projects of similar scope to hear firsthand about our team's unwavering commitment to our clients and their projects.

Arkansas Department of the Military

MAJ Johnny Douglas

ARARNG BUILDER Project Manager

Camp Joseph T. Robinson, FMO-E
11030 Nebraska Avenue, North Little Rock, AR 72199
501-212-5816
johnny.n.douglas.mil@mail.mil

Iowa Department of Public Defense

Tammy Avery

IAARNG BUILDER Project Manager

Camp Dodge Joint Maneuver Training Center
7105 NW 70th Avenue, Building 3465, Johnston, IA 50131
515-252-4587
tamera.m.avery.nfg@army.mil

Texas Military Department

David Hunter

TXARNG BUILDER Project Manager

Camp Mabry
2200 W. 35th Street, Building 37, Austin, TX 78703
512-560-7275
david.r.hunter9.mil@cfmo.mil.texas.gov



Staff Certifications

The matrix below provides an overview of our key staff's experience and qualifications, including education, registrations/certifications, and BUILDER SMS software training. **Copies of our staff's BUILDER training certifications are attached on the following pages.** See Section 1: Staff Qualifications and Experience for additional information regarding our key staff.

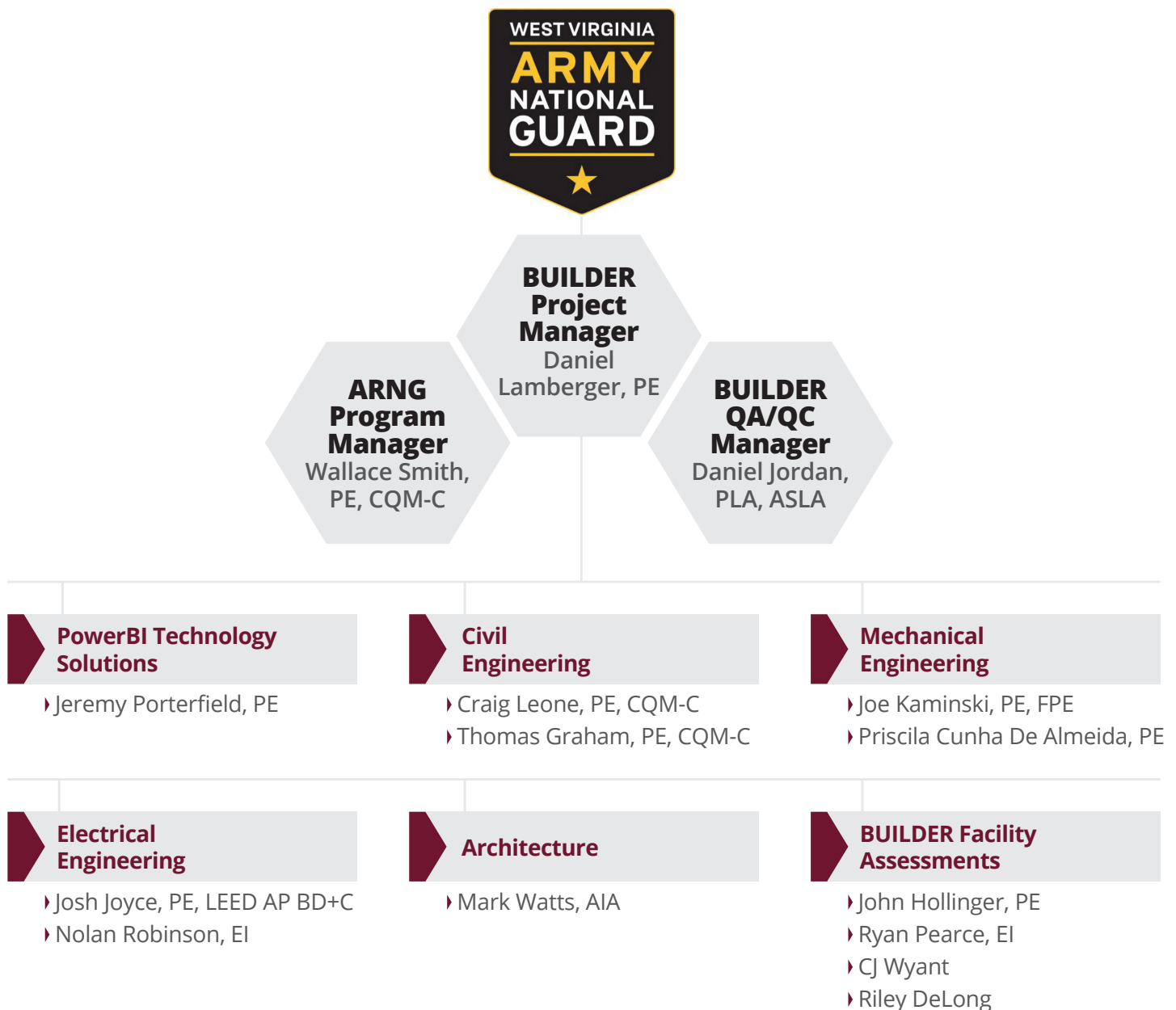
Name	Education	Registration	SUMMARY OF QUALIFICATIONS					
			Army National Guard (ARNG)	ARNG BUILDER Project Experience	BUILDER SMS Software Training	Cost Estimating	DoD/Federal Requirements	Facility Condition Assessments
Daniel Lamberger	BS, Civil Engineering	PE	☑	☑	☑	☑	☑	☑
Wallace Smith	BS, Civil Engineering	PE, CQM-C	☑	☑	☑	☑	☑	☑
Daniel Jordan	BA, Landscape Architecture BS, Landscape Management	PLA, ASLA	☑	☑	☑	☑	☑	☑
Jeremy Porterfield	BS, Civil Engineering	PE	☑	☑			☑	☑
Craig Leone	BS, Civil Engineering	PE, CQM-C	☑	☑	☑	☑	☑	☑
Thomas Graham	BS, Civil Engineering	PE, CQM-C	☑	☑	☑	☑	☑	☑
Joe Kaminski	BS, Mechanical Engineering	PE, FPE	☑	☑	☑	☑	☑	☑
Priscila Cunha De Almeida	BS, Mechanical Engineering	PE	☑	☑	☑	☑	☑	☑
Josh Joyce	BS, Electrical Engineering	PE, LEED AP BD+C	☑	☑	☑	☑	☑	☑
Nolan Robinson	BS, Electrical Engineering	EI	☑	☑	☑		☑	☑
Mark Watts	BA, Architecture	RA, NCARB	☑	☑	☑	☑	☑	☑
John Hollinger	BS, Civil Engineering	PE	☑	☑	☑	☑	☑	☑
Ryan Pearce	BS, Civil Engineering	EI	☑	☑	☑		☑	☑
CJ Wyant	AS, Computer Drafting Technologies	-	☑	☑	☑		☑	☑
Riley DeLong	BS, Outdoor and Community Recreation	-	☑	☑			☑	☑





Staffing Plan

Structured for success, the Garver Team's Staffing Plan allows us to adapt and manage our staff to secure project completion. **To provide WVARNG with the right resources needed to meet expectations, our team's staffing plan includes a combination of staff with specialized experience in facility condition assessments; design and planning for military facilities; GIS analyses; and BUILDER SMS implementation.** This same team has worked together on all of the relevant projects shown in this submittal and are available for this BUILDER effort. The organizational chart below graphically shows our proposed staff for this project.

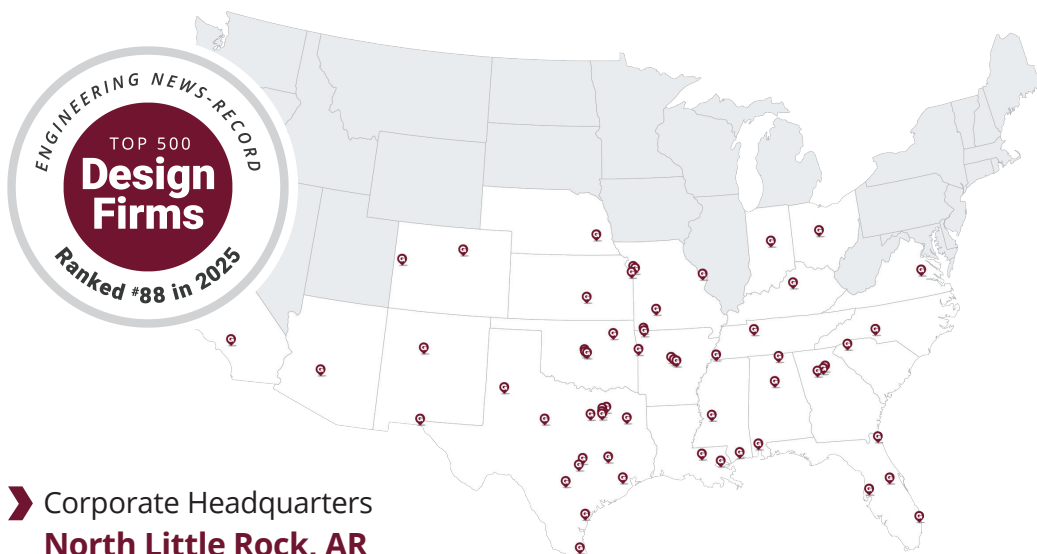


Past Projects

Garver sits in the Top 100 of the *Engineering News-Record's* prestigious Top 500 Design Firms list. Established in 1919, Garver provides in-house multidiscipline design teams with civil, structural, and MEP/FP engineering; as well as master planning, environmental, cost estimating, surveying, and construction management expertise all under one roof. **The Garver Team has extensive federal and military project experience, backed by individuals who routinely work together and are knowledgeable in the criteria that shape A-E military design and construction practices.** With over 1,500 staff and 60+ offices located throughout the United States, Garver has the broad design expertise to successfully execute any projects in support of the federal government, the Department of Defense, and specifically the Army National Guard (ARNG).

Our team members offers in-depth knowledge supported by experience with codes and regulations utilized by the National Guard, including ARs/AFRs, ARNG PAM/NG PAMs, ETLs, UFCs, and specifically NGR 210-20. This specific NGB expertise combined with our extensive experience in BUILDER software for the National Guard makes us uniquely qualified to execute the WVARNG BUILDER Site Assessments & Facility Inspections 2025.

Within the past 3 years alone, Garver has completed more than 120 military task orders totaling nearly \$424 million through design-build and design-bid-build delivery methods. In addition to our extensive experience delivering professional services to the federal government, Garver has been working with numerous military departments nationally delivering every service type for almost every facility type in the National Guard inventory. This experience dates back more than three decades. Garver currently holds separate Department of Military Affairs State IDIQ-type contracts supporting the Army National Guard in AR, FL, KS, IA, MS, NM, OK, and TX. As a subconsultant, we also support NGB for the nationwide vertical and horizontal IDIQ contracts.



105+
Years in Business

1,500+
Valued Employees

60+
US Offices

The Garver Team has provided over 13 million square feet of BUILDER condition assessments for the ARNG.

Garver employs the BUILDER SMS software to help assess building condition and provide U.S. military clients with the most efficient and cost-effective methods for maintaining their facilities. As the statewide BUILDER Facility Assessors for the ARNG in Arkansas, Texas, and Iowa, Garver provides unparalleled expertise with BUILDER SMS implementation and sustainment. Below is a snapshot of each contract's relevancy followed by descriptions of our past projects. **See Section 2: References for the project manager and contact information for each project.**

Project Title — Location	PROJECT RELEVANCY				
	Army National Guard	BUILDER SMS Software	Cost Estimating	DoD/Federal Requirements	Facility Condition Assessments
ARARNG BUILDER SMS Implementation for Standalone Facilities (Iterations 1-2) — <i>Camp Robinson, AR</i>	☑	☑	☑	☑	☑
ARARNG BUILDER SMS Implementation for Standalone Facilities (Iterations 3-5) — <i>Statewide, AR</i>	☑	☑	☑	☑	☑
ARARNG BUILDER SMS Implementation for Standalone Facilities (FY2023-FY2025) — <i>Camp Robinson, AR</i>	☑	☑	☑	☑	☑
IAARNG BUILDER SMS Implementation and Sustainment Program (FY2024-FY2025) — <i>Statewide, IA</i>	☑	☑	☑	☑	☑
TXARNG Hurricane Harvey Facility Type "A" Assessments — <i>Statewide, TX</i>	☑	☑	☑	☑	☑
TXARNG BUILDER SMS Implementation and Sustainment Program (Phases 1-3) — <i>Statewide, TX</i>	☑	☑	☑	☑	☑
TXARNG BUILDER SMS Implementation and Sustainment Program (FY2024-FY2025) — <i>Statewide, TX</i>	☑	☑	☑	☑	☑

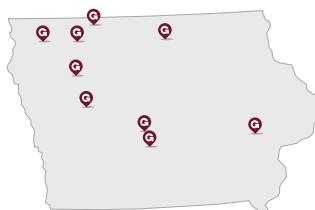


ARKANSAS

7,422,151 sq. ft.

Total assessment square footage for first assessment input and reassessments

842 facilities spread across
42 military installations
throughout Arkansas

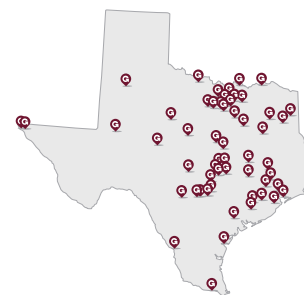


IOWA

368,101 sq. ft.

Total assessment square footage for new buildings, renovations, or additions

54 facilities reassessed on
9 military installations
throughout Iowa



TEXAS

5,539,790 sq. ft.

Total assessment square footage for first assessment input

499 facilities spread across
99 military installations
throughout Texas

ITERATION 1

ARARNG BUILDER SMS Implementation for Standalone Facilities

Camp Robinson, AR

Client

Arkansas Department of the Military

Completion

2/28/2019

Fee

\$459,000.00

Under a task order stemming from an IDIQ Contract for the Arkansas Department of the Military, Garver provided A-E services to conduct **BUILDER SMS assessments for existing facilities totaling 1,269,358 square feet, including 129 facilities spread across Camp Robinson.** These Arkansas Army National Guard (ARARNG) facilities range in size and in building function from readiness centers and armories to military support and range buildings.

Building assessments compare real property data and any as built information supplied by the facilities manager to what the assessor finds in the building during the facility assessment. A facility assessment includes collecting building data and identifying distresses for building components in architectural, mechanical, and electrical disciplines for each building.

Garver uses BUILDER software to enter the data collected producing inventory and inspection summaries for the buildings, while creating key-life cycles for the building components based on age, material, capacity, and condition.



**Graphic includes all Arkansas military installations assessed by Garver*



ITERATION 2

ARARNG BUILDER SMS Implementation for Standalone Facilities

Camp Robinson, AR

Client

Arkansas Department of the Military

Completion

7/31/2019

Fee

\$450,927.00

Under a task order stemming from an IDIQ Contract for the Arkansas Department of the Military, Garver provided A-E services to conduct **BUILDER SMS assessments for existing facilities totaling 997,646 square feet, including 108 facilities spread across Camp Robinson.** These Arkansas Army National Guard (ARARNG) facilities range in size and in building function from readiness centers and armories to military support and range buildings.

Building assessments compare real property data and any as built information supplied by the facilities manager to what the assessor finds in the building during the facility assessment. A facility assessment includes collecting building data and identifying distresses for building components in architectural, mechanical, and electrical disciplines for each building.

Garver uses BUILDER software to enter the data collected producing inventory and inspection summaries for the buildings, while creating key-life cycles for the building components based on age, material, capacity, and condition.



**Graphic includes all Arkansas military installations assessed by Garver*



ITERATIONS 3-5

ARARNG BUILDER SMS Implementation for Standalone Facilities

Statewide, AR

Client

Arkansas Department of the Military

Completion

11/23/2022

Fee

\$1,400,122.08



*Graphic includes all Arkansas military installations assessed by Garver

Under a task order stemming from an IDIQ Contract for the Arkansas Department of the Military, Garver provided A-E services to conduct **BUILDER SMS assessments for existing facilities totaling 2,918,129 square feet throughout the state of Arkansas, including 716 facilities.** These Arkansas Army National Guard (ARARNG) facilities range in size and in building function from readiness centers and armories to military support and range buildings.

Building assessments compare real property data and any as built information supplied by the facilities manager to what the assessor finds in the building during the facility assessment. A facility assessment includes collecting building data and identifying distresses for building components in architectural, mechanical, and electrical disciplines for each building.

Garver uses BUILDER software to enter the data collected producing inventory and inspection summaries for the buildings, while creating key-life cycles for the building components based on age, material, capacity, and condition.



FY 2023 ARARNG BUILDER SMS Implementation for Standalone Facilities

Camp Robinson, AR

Client

Arkansas Department of the Military

Completion

8/16/2024

Fee

\$350,000.00

Under a task order stemming from an IDIQ Contract for the Arkansas Department of the Military, Garver provided A-E services to conduct **BUILDER SMS reassessments for existing facilities totaling 1,000,000 square feet throughout the state of Arkansas, including 26 facilities spread across Camp Robinson.** These Arkansas Army National Guard (ARARNG) facilities range in size and in building function from readiness centers and armories to military support and range buildings.

Building assessments compare real property data and any as built information supplied by the facilities manager to what the assessor finds in the building during the facility assessment. A facility assessment includes collecting building data and identifying distresses for building components in architectural, mechanical, and electrical disciplines for each building.

Garver uses BUILDER software to enter the data collected producing inventory and inspection summaries for the buildings, while creating key-life cycles for the building components based on age, material, capacity, and condition.



**Graphic includes all Arkansas military installations assessed by Garver*



FY2024 + ENERGY AUDIT ARARNG BUILDER SMS Implementation for Standalone Facilities

Statewide, AR

Client

Arkansas Department of the Military

Completion

3/31/2025

Fee

\$555,000.00

Under a task order stemming from an IDIQ Contract for the Arkansas Department of the Military, Garver provided A-E services to conduct **BUILDER SMS reassessments for existing facilities totaling 417,500 square feet throughout the state of Arkansas, including 50 facilities spread across 36 military installations.** These Arkansas Army National Guard (ARARNG) facilities range in size and in building function from readiness centers and armories to military support and range buildings.

Energy audits were also performed based on requirements outlined by the reporting of Comprehensive Energy and Water Evaluations (CEWE) for the Army Energy and Water Reporting System (AEWRS). Garver performed facility assessments in conjunction with BUILDER SMS assessments to gain additional information energy and water consuming components throughout the facilities. Energy modeling software was used to model the components along with inputting utility bill information for each facility. Garver delivered a spreadsheet and a facility summary report that informed the ARARNG on its energy and water usage along with recommendations of components that could be replaced to gain efficiencies in energy and water consumptions.



*Graphic includes all Arkansas military installations assessed by Garver



FY 2025 ARARNG BUILDER SMS Implementation for Standalone Facilities

Statewide, AR

Client

Arkansas Department of the Military

Completion

8/31/2025 (Est.)

Fee

\$351,000.00

Under a task order stemming from an IDIQ Contract for the Arkansas Department of the Military, Garver is providing A-E services to conduct **BUILDER SMS reassessments for existing facilities totaling 819,518 square feet throughout the state of Arkansas, including 50 facilities spread across 39 military installations.** These Arkansas Army National Guard (ARARNG) facilities range in size and in building function from readiness centers and armories to military support and range buildings.

Building assessments compare real property data and any as built information supplied by the facilities manager to what the assessor finds in the building during the facility assessment. A facility assessment includes collecting building data and identifying distresses for building components in architectural, mechanical, and electrical disciplines for each building.

Garver uses BUILDER software to enter the data collected producing inventory and inspection summaries for the buildings, while creating key-life cycles for the building components based on age, material, capacity, and condition.



*Graphic includes all Arkansas military installations assessed by Garver



FY 2024 IAARNG BUILDER SMS Implementation and Sustainment Program

Statewide, IA

Client

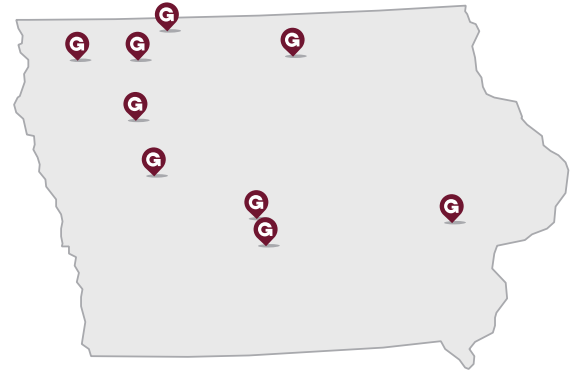
Iowa Department of Public Defense

Completion

12/31/2024

Fee

\$151,292.64



*Graphic includes all Iowa military installations assessed by Garver

Under a task order stemming from an IDIQ Contract for the Iowa Department of Public Defense, Garver provided A-E services to conduct **BUILDER SMS assessments for existing facilities totaling 239,955 square feet throughout the state of Iowa, including 35 facilities spread across 5 military installations.** These Iowa Army National Guard (IAARNG) facilities range in size and in building function from readiness centers and armories to military support and range buildings.

Building assessments compare real property data and any as built information supplied by the facilities manager to what the assessor finds in the building during the facility assessment. A facility assessment includes collecting building data and identifying distresses for building components in architectural, mechanical, and electrical disciplines for each building.

Garver uses BUILDER software to enter the data collected producing inventory and inspection summaries for the buildings, while creating key-life cycles for the building components based on age, material, capacity, and condition. Technology solutions consist of creating a PowerBI Dashboard to convey data in different ways as well as show future work orders and funding requirements through the FY for the IAARNG facility list.



FY 2025 IAARNG BUILDER SMS Implementation and Sustainment Program

Statewide, IA

Client

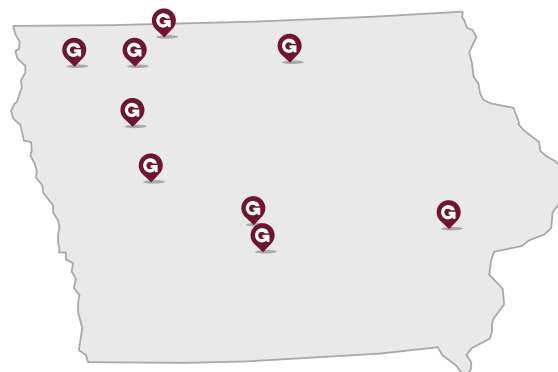
Iowa Department of Public Defense

Completion

12/31/2025 (Est.)

Fee

\$151,292.64



*Graphic includes all Iowa military installations assessed by Garver

Under a task order stemming from an IDIQ Contract for the Iowa Department of Public Defense, Garver is providing A-E services to conduct **BUILDER SMS assessments for existing facilities totaling 128,146 square feet throughout the state of Iowa, including 19 facilities spread across 4 military installations.** These Iowa Army National Guard (IAARNG) facilities range in size and in building function from readiness centers and armories to military support and range buildings.

Building assessments compare real property data and any as built information supplied by the facilities manager to what the assessor finds in the building during the facility assessment. A facility assessment includes collecting building data and identifying distresses for building components in architectural, mechanical, and electrical disciplines for each building.

Garver uses BUILDER software to enter the data collected producing inventory and inspection summaries for the buildings, while creating key-life cycles for the building components based on age, material, capacity, and condition. Technology solutions consist of creating a PowerBI Dashboard to convey data in different ways as well as show future work orders and funding requirements through the FY for the IAARNG facility list.



EMERGENCY SERVICES TXARNG Hurricane Harvey Facility Type “A” Assessments

Statewide, TX

Client

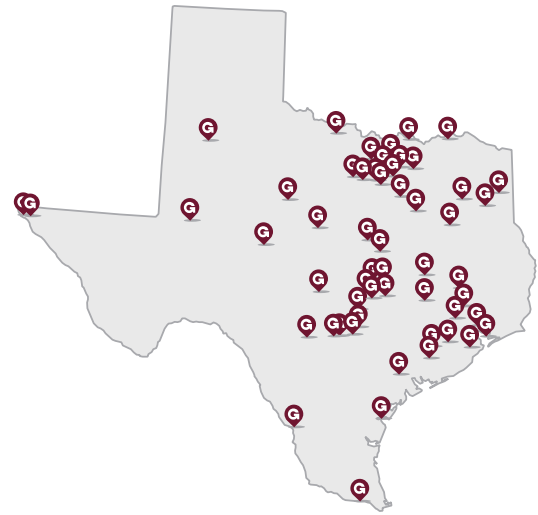
Texas Military Department

Completion

11/30/2018

Fee

\$3,150,000.00



*Graphic includes all Texas military installations assessed by Garver

Hurricane Harvey, which dumped an estimated 27 trillion gallons of water on Texas and Louisiana, is likely to go down as one of the most damaging and expensive natural disasters in U.S. history with over \$190 billion in damages. The Texas Military Department had dozens of facilities located within the Hurricane Harvey affected area. Garver provided A-E services to conduct complete facility assessments which encompassed **BUILDER SMS assessments for existing facilities totaling 585,989 square feet, including 49 facilities spread across 21 military installations throughout the impacted area.** These Texas Army National Guard (TXARNG) facilities range in size and in building function from readiness centers and armories to military support and range buildings.

The facility assessment included collecting data and assessing the condition of each building's components in architectural, mechanical, and electrical disciplines. An assessment report was developed for each site in conjunction with inputting the collected data into BUILDER SMS. Each assessment report included site maps and surveys of existing infrastructure and utilities; photos of the sites and damages; asbestos, lead, mold, and life safety reports for each installation; and cost estimates to fix the identified deficiencies. These reports were used to facilitate requests for improvement funds.



PHASE 1 TXARNG BUILDER SMS Implementation and Sustainment Program

Statewide, TX

Client

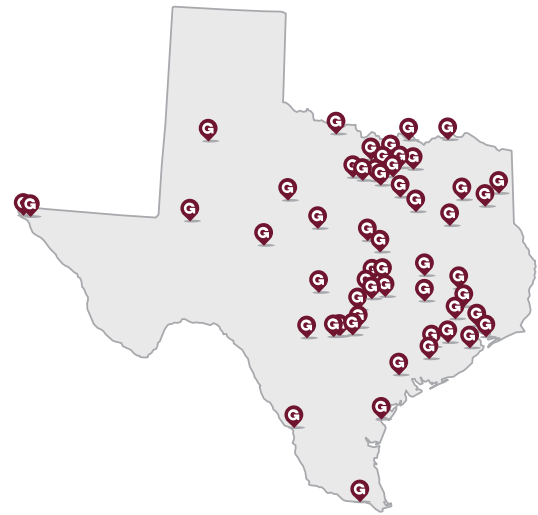
Texas Military Department

Completion

1/21/2022

Fee

\$499,000.00



*Graphic includes all Texas military installations assessed by Garver

Under a task order stemming from an IDIQ Contract for the Texas Military Department, Garver provided A-E services to conduct **BUILDER SMS assessments for existing facilities totaling 890,411 square feet throughout the state of Texas, including 290 facilities spread across 9 military installations.** These Texas Army National Guard (TXARNG) facilities range in size and in building function from readiness centers and armories to military support and range buildings.

Building assessments compare real property data and any as built information supplied by the facilities manager to what the assessor finds in the building during the facility assessment. A facility assessment includes collecting building data and identifying distresses for building components in architectural, mechanical, and electrical disciplines for each building.

Garver uses BUILDER software to enter the data collected producing inventory and inspection summaries for the buildings, while creating key-life cycles for the building components based on age, material, capacity, and condition.



PHASE 2 TXARNG BUILDER SMS Implementation and Sustainment Program

Statewide, TX

Client

Texas Military Department

Completion

12/30/2022

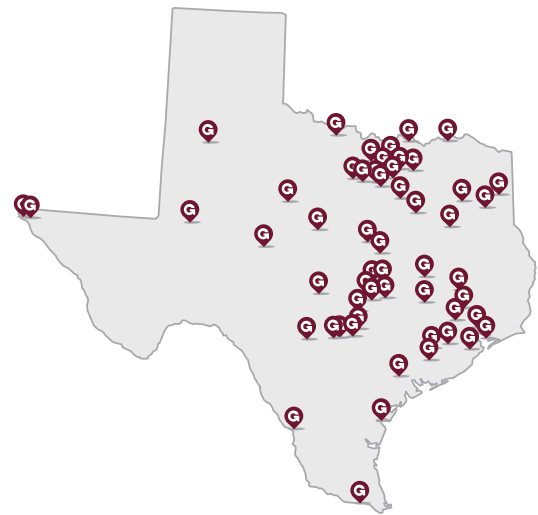
Fee

\$674,000.00

Under a task order stemming from an IDIQ Contract for the Texas Military Department, Garver provided A-E services to conduct **BUILDER SMS assessments for existing facilities totaling 1,194,137 square feet throughout the state of Texas, including 40 facilities spread across 20 military installations.** These Texas Army National Guard (TXARNG) facilities range in size and in building function from readiness centers and armories to military support and range buildings.

Building assessments compare real property data and any as built information supplied by the facilities manager to what the assessor finds in the building during the facility assessment. A facility assessment includes collecting building data and identifying distresses for building components in architectural, mechanical, and electrical disciplines for each building.

Garver uses BUILDER software to enter the data collected producing inventory and inspection summaries for the buildings, while creating key-life cycles for the building components based on age, material, capacity, and condition.



*Graphic includes all Texas military installations assessed by Garver



PHASE 3 TXARNG BUILDER SMS Implementation and Sustainment Program

Statewide, TX

Client

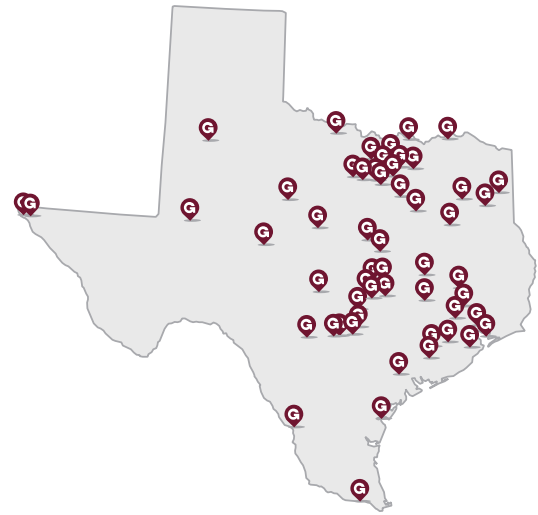
Texas Military Department

Completion

6/27/2025

Fee

\$535,000.00



*Graphic includes all Texas military installations assessed by Garver

Under a task order stemming from an IDIQ Contract for the Texas Military Department, Garver provided A-E services to conduct **BUILDER SMS assessments for existing facilities totaling 945,286 square feet throughout the state of Texas, including 42 facilities spread across 19 military installations.** These Texas Army National Guard (TXARNG) facilities range in size and in building function from readiness centers and armories to military support and range buildings.

Building assessments compare real property data and any as built information supplied by the facilities manager to what the assessor finds in the building during the facility assessment. A facility assessment includes collecting building data and identifying distresses for building components in architectural, mechanical, and electrical disciplines for each building.

Garver uses BUILDER software to enter the data collected producing inventory and inspection summaries for the buildings, while creating key-life cycles for the building components based on age, material, capacity, and condition.



FY 2024 TXARNG BUILDER SMS Implementation and Sustainment Program

Statewide, TX

Client

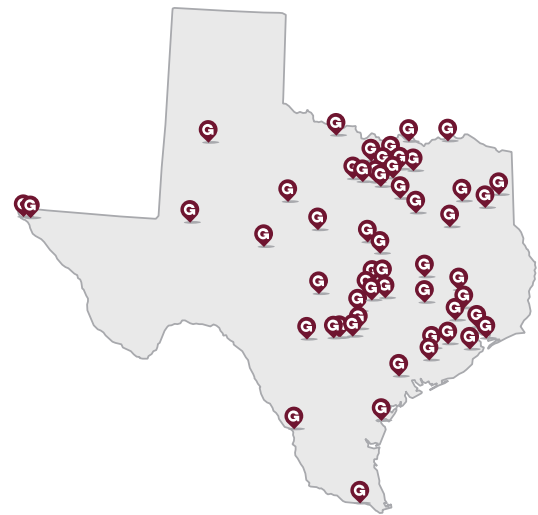
Texas Military Department

Completion

2/28/2025

Fee

\$555,000.00



*Graphic includes all Texas military installations assessed by Garver

Under a task order stemming from an IDIQ Contract for the Texas Military Department, Garver provided A-E services to conduct **BUILDER SMS assessments for existing facilities totaling 976,449 square feet throughout the state of Texas, including 63 facilities spread across 14 military installations.** These Texas Army National Guard (TXARNG) facilities range in size and in building function from readiness centers and armories to military support and range buildings.

Building assessments compare real property data and any as built information supplied by the facilities manager to what the assessor finds in the building during the facility assessment. A facility assessment includes collecting building data and identifying distresses for building components in architectural, mechanical, and electrical disciplines for each building.

Garver uses BUILDER software to enter the data collected producing inventory and inspection summaries for the buildings, while creating key-life cycles for the building components based on age, material, capacity, and condition.



FY 2025 TXARNG BUILDER SMS Implementation and Sustainment Program

Statewide, TX

Client

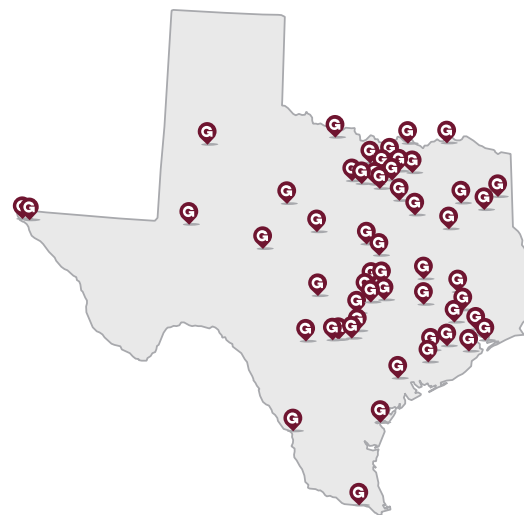
Texas Military Department

Completion

1/31/2026 (Est.)

Fee

\$497,000.00



*Graphic includes all Texas military installations assessed by Garver

Under a task order stemming from an IDIQ Contract for the Texas Military Department, Garver is providing A-E services to conduct **BUILDER SMS assessments for existing facilities totaling 947,518 square feet throughout the state of Texas, including 52 facilities spread across 18 military installations.** These Texas Army National Guard (TXARNG) facilities range in size and in building function from readiness centers and armories to military support and range buildings.

Building assessments compare real property data and any as built information supplied by the facilities manager to what the assessor finds in the building during the facility assessment. A facility assessment includes collecting building data and identifying distresses for building components in architectural, mechanical, and electrical disciplines for each building.

Garver uses BUILDER software to enter the data collected producing inventory and inspection summaries for the buildings, while creating key-life cycles for the building components based on age, material, capacity, and condition.





Project Management Plan/Quality Control

Methodology and Management

The Garver Team has extensive experience performing multiple task order projects concurrently and providing multiple design teams for simultaneous execution of task orders. The majority of Garver's federal government planning, design, and construction support workload is executed under MATOC/IDC/IDIQ multi-task order type contracts. As such, the Garver Team has developed the skills to collaborate effectively and perform seamlessly on widespread task order contracts both CONUS and OCONUS. Our proven, tested systems have been developed and are organized to facilitate multidiscipline, multi-task order, and multi-office delivery. The outcome of this is evident through Garver's successful history of completing task order type projects and awarded repeat open-end contracts, while consistently meeting design project deadlines. This experience in delivering work for the federal government allows Garver's Federal Team to quickly evaluate the capabilities and capacity of our staff to support this effort.

Garver offers the benefits of a firm with region-wide expertise and capacity, a team that has worked together on numerous federal projects, and enough reserves to get the job done right and right when you need it. The Garver Team will include the core personnel proposed for this contract along with additional staff resources and subject matter experts from our large, federal-focused delivery teams. Our approach will begin with a full analysis of the current conditions of the existing facilities. Our team will analyze the current conditions of the facilities, including ABA compliance, building envelope, existing utilities, infrastructure, and facility components. **Garver's in-house BUILDER Team will provide a full review and inspection of the existing BUILDER Sustainment Management System (SMS) software data and the current on-site conditions to ensure that the BUILDER data is current and accurate.**

Since 2017, Garver's Federal Team has completed over 13 million square feet of BUILDER assessments across multiple states to provide U.S. military clients with the most efficient

and cost-effective methods for maintaining their facilities. From our previous experience, Garver has learned that the information contained in most BUILDER data is outdated or not fully compliant with current BUILDER standards.

Quality Control

Garver has established quality assurance/quality control processes and procedures to maximize the quality of our services and products, allowing our team to detect and prevent deficiencies early on. At the outset of the project and after the completion of the kickoff meeting, Garver will develop a specific Design Quality Control Plan (DQCP) to define the requirements for the project team. The DQCP will identify the project team members and independent technical review (ITR) team, along with their assigned duties. It will also clearly identify the WVARNG project objectives and timeline as well as document all applicable criteria such as version of BUILDER and Army Assessment Guide.

Garver's DQCP is a living reference document that establishes a clear path forward for the project and documents compliance with the project requirements. The Garver Team will implement ITRs for all WVARNG BUILDER data prior to uploading into the BUILDER database, all reports and data software creations.

The project team will coordinate all scope of work activities with WVARNG to ensure that all activities are performed at an efficient standard. The team will coordinate any field assessments with WVARNG while providing details on logistics and suggestions to maximize our teams time out in the field collecting data. Garver will coordinate any existing facility data with WVARNG, review, and in some cases ask questions on the facilities to gain a level of understanding prior to stepping foot onsite. This allows our teams to be more efficient moving through the facilities by knowing and understanding the facilities historical information.

Our **Project Manager, Daniel Lamberger, PE**, and **QA/QC Manager, Daniel Jordan, PLA, ASLA**, will ensure the documents are complete for all planned activities and will monitor the various planning courses of action for

field assessments, data software creations, and final data uploads into BUILDER. Garver's assessment team reviews, summarizes, and names all collected field data based on the Army Assessment Guide prior to Bred software input. The assessment team works directly with the ITR reviewers to answer all questions related to the collected field data, as-built information, photos, and reports from local personnel on the conditions of the facilities. All facilities are reviewed twice by two different reviewers to ensure the quality of the BRED data.

Garver typically sees the following errors when reviewing previously assessed data: missing components that are in the building and not inventoried or conditioned, incorrect section names or install years, missing photos, no section details, and issues with distresses. The Army Assessment Guide has standards that address all of these issues. Our assessment team is trained to address these common issues both in our assessments and on the technical review teams.

Our **QA/QC Manager, Daniel Jordan, PLA, ASLA**, will be responsible for making sure all these items have been coordinated, completed, and verified before the documents are delivered to WVARNG. This process of review documentation, and verification gives multiple layers of quality control and accountability for technical planning and project coordination making sure you receive the best possible product. This process is proven and tested as evidenced by our superior Contractor Performance Assessment Reporting System (CPARS) and Past Performance Questionnaires (PPQ) ratings shown to the right.

SUPERIOR PERFORMANCE EVALUATIONS ON RECENTLY COMPLETED DOD CONTRACTS

We recognize that our quality of work, compliance with performance schedules, project cost estimating control, and reputation is not based on what we say about ourselves but on what our clients and peers say about us. Garver's federal clients consistently rate us high on our completed projects, with our designs earning "Exceptional" or "Very Good" CPARS ratings for design excellence, innovation, and time savings. In fact, **Garver has received industry-leading ratings of Exceptional and/or Very Good on 99% of all CPARS without any unsatisfactory or marginal ratings. See Table 1 to the right.** This is a clear indication that we consistently deliver quality deliverables—on time and within budget. In addition to Garver's work as a prime A-E firm providing services to the federal government, Garver has a significant amount of work as the designer of record under design-build delivery to the federal government.

TABLE 1: TEN YEARS OF CPARS RATINGS

CPARS Rating	Overall Percentage
Exceptional	18.18%
Very Good	81.82%
Satisfactory	0%
Marginal	0%
Unsatisfactory	0%

Over the last 10 years, Garver has received 63 PPQs. Of these ratings, 96.8% received "Exceptional" or "Very Good" ratings with no marginals or unsatisfactory ratings. See Table 2 below. This is a clear indication that we deliver quality, timely, and cost-management designs, resulting in highly satisfied end users. These high ratings can only be achieved by meeting or exceeding client's expectations and contract requirements.

TABLE 2: TEN YEARS OF PPQ RATINGS

PPQ Rating	Overall Percentage
Exceptional	58.73%
Very Good	38.1%
Satisfactory	3.17%
Marginal	0%
Unsatisfactory	0%

See Table 3 below. Specifically for quality of work, cost control, and schedule, Garver has received the following ratings as percentage of Exceptional or Very Good as proof of our commitment to clients.

TABLE 3: QUALITY, COST, AND SCHEDULE RATINGS

Category	CPARS Rating	PPQ Rating
Quality of Work	100%	93.6%
Cost Control	100%	91.5%
Schedule	90.9%	90.5%