



The following documentation is an electronically-submitted vendor response to an advertised solicitation from the *West Virginia Purchasing Bulletin* within the Vendor Self-Service portal at ***wvOASIS.gov***. As part of the State of West Virginia's procurement process, and to maintain the transparency of the bid-opening process, this documentation submitted online is publicly posted by the West Virginia Purchasing Division at ***WVPurchasing.gov*** with any other vendor responses to this solicitation submitted to the Purchasing Division in hard copy format.

Header @ 1

[List View](#)

**General Information** [Contact](#) [Default Values](#) [Discount](#) [Document Information](#) [Clarification Request](#)

Procurement Folder: 1733931

Procurement Type: Central Purchase Order

Vendor ID: 000000209931

Legal Name: NEW RIVER ENGINEERS INC

Alias/DBA:

Total Bid: \$0.00

Response Date: 07/21/2025

Response Time: 20:52

Responded By User ID: Dshook

First Name: Deborah

Last Name: Shook

Email: dshook@nrnginc.com

Phone: 614-580-3080

SO Doc Code: CEOI

SO Dept: 0603

SO Doc ID: ADJ2600000001

Published Date: 7/7/25

Close Date: 7/22/25

Close Time: 13:30

Status: Closed

Solicitation Description: EOJ-BUILDER Site Assessments & Facility Inspections 2025

Total of Header Attachments: 1

Total of All Attachments: 1



Department of Administration  
Purchasing Division  
2019 Washington Street East  
Post Office Box 50130  
Charleston, WV 25305-0130

State of West Virginia  
Solicitation Response

**Proc Folder:** 1733931  
**Solicitation Description:** EOI- BUILDER Site Assessments & Facility Inspections 2025  
**Proc Type:** Central Purchase Order

Solicitation Closes	Solicitation Response	Version
2025-07-22 13:30	SR 0603 ESR07212500000000349	1

**VENDOR**  
000000209931  
NEW RIVER ENGINEERS INC

**Solicitation Number:** CEOI 0603 ADJ2600000001  
**Total Bid:** 0  
**Response Date:** 2025-07-21  
**Response Time:** 20:52:58  
**Comments:**

**FOR INFORMATION CONTACT THE BUYER**  
David H Pauline  
304-558-0067  
david.h.pauline@wv.gov

**Vendor**  
**Signature X** **FEIN#** **DATE**

All offers subject to all terms and conditions contained in this solicitation

Line	Comm Ln Desc	Qty	Unit Issue	Unit Price	Ln Total Or Contract Amount
1	EOI- BUILDER Site Assessments & Facility Inspections 2025				0.00

Comm Code	Manufacturer	Specification	Model #
81101508			

**Commodity Line Comments:**

**Extended Description:**

Provide professional engineering services for the BUILDER Sustainment Management System Implementation, including Site Assessments & Facility Inspections, for facilities throughout WV, per the attached documentation.

# **BUILDER Site Assessment & Facility Inspections 2025**

**Solicitation No: CEOI 0603 ADJ2600000001**

**Centralized Expression of Interest  
for Architect/Engineering Consulting Services**

for the

**West Virginia Army National Guard  
Construction and Facilities Management Office**

July 2025



Presented by:

**NEW RIVER ENGINEERS, INC.**

3041 University Avenue, Suite 6  
Morgantown, WV 26505  
681.668.1809



# New River Engineers, Inc.



July 22, 2025

Department of Administration  
Purchasing Division  
2019 Washington Street East  
Charleston, WV 25305-0130

Re: BUILDER Site Assessment & Facility Inspections 2025  
Solicitation No: CEOI 0603 ADJ2600000001

Dear Administrator(s):

New River Engineers, Inc. (NREI) is a highly qualified and experienced civil engineering, architectural, environmental and surveying firm providing services for municipal, federal, state, industrial, and commercial clients throughout the states of West Virginia, Ohio, Kentucky, and Virginia.

For over 45 years NREI has a history of completing projects on time, under budget and without any successful litigation against us or our client, a record no other firm can match.

We would appreciate an opportunity to present our detailed qualifications at a mutually convenient date and time.

Please call if you have any questions or need further information.

Very Truly Yours,  
NEW RIVER ENGINEERS, INC.

Joshua D. Cook, P.E., PMP  
President  
jdc@nrenginc.com.com

Enclosure

**BUILDER SITE ASSESSMENT & FACILITY INSPECTIONS 2025**  
**SOLICITATION NO: CEOI 0603 ADJ2600000001**

**TABLE OF CONTENTS**

SCOPE OF WORK .....1

FIRM OVERVIEW .....2

METHOD OF APPROACH.....3

QUALITY & COST CONTROL PLAN .....7

PROJECT EXPERIENCE.....8

WWANG PROJECT EXPERIENCE ..... 10

ORGANIZATIONAL CHART ..... 11

RESUMES OF KEY PERSONNEL ..... 12

ADDITIONAL SERVICES..... 18



## SCOPE OF WORK

The West Virginia Purchasing Division, for the agency, the West Virginia Army National Guard, Construction and Facilities Management Office, seeks Expressions of Interest from qualified firms to provide professional engineering services for the BUILDER™ Sustainment Management System Implementation (BUILDER™ SMS) for Phase 3 (2025), including Site Assessments & Facility Inspections, for all facilities located in the State of West Virginia and belonging to the Army National Guard, in partnership with the Construction and Facilities Management Office (“CFMO”).

BUILDER™ SMS was developed by U.S. Army Corps of Engineers - Engineer Research Development Center - Construction Engineering Research Laboratory (“USACE-ERDCCERL”). BUILDER™ is a software application for building asset life-cycle management. The project includes inventories and inspections to be performed by qualified engineering personnel to assess the current condition of system components and assist in life-cycle investment strategies. The selected engineering firm will perform facility building asset inventories and site inspections of the facilities in accordance with the latest version of the BUILDER™ SMS User Manual, BUILDER™ condition Assessment Manual for Building Component-Sections, and other relevant instruction or reference manuals.

### **Project Goals:**

- The Architect-Engineer shall populate the building asset life-cycle system inventory of components into the latest version of BUILDER™ SMS for buildings as designated by award of this Contract in accordance with the latest BUILDER™ Manual.
- The Architect-Engineer shall perform baseline visual inspections of building components inventoried using BUILDER™ methodology, conduct site assessments at Army National Guard locations around the state.
- The Architect-Engineer shall create a user-customizable Power BI dashboard to enable data-drive decisions. The dashboard shall be capable of integrating with multiple data systems, such as BUILDER, PRIDE and ePrisms.
- The Architect-Engineer shall provide all deliverables in accordance with the submittal schedule which will be provided to the selected vendor; tasks include, but are not limited to, providing a work action plan, monthly execution schedule, data analysis, data entry of inspections and site assessments into the BUILDER SMS database, in addition to several other deliverables.





## FIRM OVERVIEW

New River Engineers, Inc. (NREI) is an engineering, architectural, surveying and consulting firm that has been providing quality service to our clients and the industries for over 45 years. Mutual respect and trust are the cornerstones in the relationships established and maintained with our clients. NREI strives to perform all work in a professional and cost-effective manner, while providing our clients with quality and excellence.

The firm is managed by Joshua D. Cook, PE, PMP, President and Eric Hartwell, PE, Vice President. NREI has successfully provided an integrated approach to publicly funded projects for our clients. NREI provides professional services to owners and operators, and contractors throughout West Virginia, Ohio, Virginia, Kentucky and North Carolina and many others. NREI services range through all facets of civil engineering design as well as construction administration and project management.

Our staff combines advanced technology with many decades of surveying, mining, engineering and architectural experience and includes five professional engineers, two architects two professional surveyors, eight degreed engineers, AutoCAD/engineer technicians and ten full-time survey crews.

As a full-service engineering and surveying firm, NREI can provide a whole host of services to our clients including, but not limited to the following:

- Construction Design, Management and Surveying
- Geotechnical Engineering & Drilling Management
- Architectural Design
- Environmental Permitting (DEP, NPDES, OAQ and USACOE)
- Underground / Surface Mine Engineering
- Civil Site Design / Engineering / Planning
- Drainage Design / Engineering / HECRAS
- Compaction Testing with Nuclear Density Gauge
- Subsurface Utility Locate Surveys with GPR & Pipe and Cable Locators
- Oil & Gas Surveying
- Boundary & Property/Topographical Surveying
- Aerial Mapping, GPS RTK & Static Surveying
- Reserve Studies

NREI has developed the following philosophy to guide the performance of its services:

- Provide superlative design services to our clients in new construction, improvements, and daily operations.
- Perform work in a timely, accurate and professional manner.
- Present multiple alternatives and solutions whenever possible.
- Work with our clients to control project costs.
- Be a technical sounding board for our clients in all situations.
- Strive to maintain professional competence through continuing education and training.
- NREI utilizes a practical application approach to all projects throughout the design process to provide a well-rounded result. This methodology emphasizes the best overall solution, meeting all the client's needs, instead of just the best technical solution. We believe our small size provides a distinct advantage to our clients and affords us the freedom to easily team with the clients to achieve the overall best possible result.



## **METHOD OF APPROACH**

NREI believes in a team approach for the development of projects. Therefore, our first task will be to meet with the West Virginia Army National Guard (WVANG) to review existing data, reports, etc., and to ascertain the need of the specific project. Following data gathering, we will then evaluate alternatives and develop a cost-effective proposal that meets existing and future needs of a specific project. Throughout the process, WVANG officials will be kept informed and involved in all important matters.

NREI will assist the WVANG in preparation and submission of any funding application needs. Once the funding has been secured, we will then begin to develop detailed engineering drawings and specifications for the project. As information is gathered, it will be reviewed with WVANG officials to allow comment and coordination as the project progresses. The project engineer will be involved during all phases of developing a project, obtaining funding, design, and construction to assure coordination with WVANG personnel, and regulatory and funding agencies.

## **PRELIMINARY ENGINEERING REPORT**

Our next task will be the preparation of a Preliminary Engineering Report. Specifically, the report will be organized in accordance with regulatory and funding agency requirements as follows:

1. Introduction and Overview
2. Planning Area and Future Needs
3. Evaluation of the Existing System
4. Proposed Improvements/Upgrades
5. Alternate Solutions
6. Cost Estimates – Capital and O & M
7. Environmental Issues
8. Public Participation
9. Final Plan Selection
10. Implementation

Prior to publication of the final report, all information will be shared and reviewed with WVANG officials to ensure that concerns are addressed.

## **DESIGN PHASE**

NREI will prepare contract documents including plans and specifications conforming to funding agencies requirements. Our design phase will be carried out as follows:

1. Define Existing Conditions
  - a. Assemble and evaluate data to eliminate conflicts and redundancy.
  - b. All major decisions regarding data will be discussed with WVANG officials. Important data sources include, but are not limited to the following:
    - i. WVANG Officials
    - ii. WV Department of Environmental Protection
    - iii. USDA Rural Development
    - iv. Soil Conservation Service
    - v. Local Citizens and Groups



2. Identify Project Work
  - a. Evaluate existing data, reports, and design drawings, if available
  - b. Evaluate existing site.
  - c. Evaluate environmental aspects.
  - d. Summarize existing problems and make presentation.
3. Preliminary Design
  - a. Preliminary layout of proposed project
  - b. Land surveys for mapping, rights-of-way, and / or land acquisitions
  - c. Coordination with the WV DEP and DOH with USDA-RD
  - d. Preliminary Cost Estimates
  - e. Preliminary review with the WVANG.
4. Final Design
  - a. Incorporate review comments from the WVANG, WV DEP, USDA-RD, and other agencies
  - b. Prepare detailed specifications and final design report in accordance with state and federal guidelines.
  - c. Attend public meetings.
  - d. Prepare final cost estimates.
  - e. Secure permits from officiating WV DEP and DOH, and other agencies
  - f. Prepare bid documents.
  - g. Conduct pre-bid conference.
  - h. Assist in advertising for bids, attend bid opening and assist in evaluation of bids with recommendations for awarding the construction of the project(s)

## **CONSTRUCTION PHASE**

NREI will provide the following services during the construction phase of the project:

1. Administrative Services
  - a. Assist and advise the WVANG in the preparation of construction contracts for signature(s)
  - b. Issue a "Notice to Proceed" to the appropriate Contractor(s)
  - c. Provide consultation and advise the WVANG during construction
  - d. Preparation of elementary and supplementary sketches and / or drawings required to resolve problems arising from actual field conditions encountered.
  - e. Review and approve shop drawings, diagrams, illustrations, brochures, catalog data, schedules, and samples, results of tests and inspections, other data which the contractor(s) is required to submit, but only for conformance with the design concept of the Project and compliance with the information given in the contract documents.
  - f. Receive and review maintenance and operating instructions, schedules, guarantees, bond, and certificates of inspections which are to be assembled by the contractor(s) in accordance with the contract documents.
  - g. Review and approve requests for periodic and final payments to the contractor(s)
  - h. Issue certificates of completion to the WVANG for completed construction contracts.



- i. Review original drawings and provide to the WVANG a digital copy on disk and two (2) sets of black line prints of “as-built” plans
  - j. Advise the WVANG whether the project can meet the project performance standards.
  - k. Attend monthly meetings during the construction period.
  - l. Represent the WVANG in technical matters and litigation, if required
  - m. Provide engineering services during start-up of the facility.
  - n. Provide training to WVANG employees for the operation of the new facility.
  - o. Provide one (1) year project performance certification.
2. Field Services
- a. A Qualified Design Professional will make periodic visits to the site to observe the progress and quality of the executed work, and determine, in general, if the work is proceeding in accordance with the contract documents.
  - b. Efforts will be directed toward providing assurance to the WVANG that the completed project will conform to the requirements of the contract documents.
  - c. Make general monthly construction progress reports to the WVANG.
  - d. Observe initial operation of the project, or any performance tests as required by the specifications.
  - e. Make final inspection and report on the completed project.
  - f. Advise the WVANG of any special test or necessary outside services that may be required to assist construction of the project.
  - g. On the date, one (1) year after the initiation of the operation of the project, a Professional Engineer shall certify to the WVANG whether the project can meet the project performance standards in accordance with requirements for the project.
3. Resident Inspection Services During Construction
- a. A Resident Project Representative(s) will be furnished for each construction contract (as a minimum) to provide extensive representation at the project site during the construction phase.
  - b. Through more extensive on-site observations of the work in progress and field checks of materials and equipment by the Resident Project Representative(s), the WVANG will be provided further protection against defects and deficiencies in the work
  - c. In addition to the general duties outlined above, the Resident Project Representative(s) will:
    - i. Observe the installation of approved materials and equipment and construction techniques and procedures in accordance with contract documents.
    - ii. Aid in public relations activities as the construction progresses through private property.
    - iii. Monitor the construction schedule and report conditions which may cause delay in completion.
    - iv. Review contract documents with the contractor’s superintendent
    - v. Obtain necessary interpretations and transmit them to the contractor.
    - vi. Consider the contractor’s suggestions and recommendations, evaluate them, and submit them with recommendations for a final decision.



- vii. Attend field meetings as directed and report on the proceedings.
- viii. Observe tests required by the contract documents, and record and report test procedures and, where applicable, the results
- ix. Maintain records at the construction site in an orderly manner, including correspondence, change orders, supplementary drawings, requests for payment, and names and addresses of contractors, subcontractors, and principal material suppliers.
- x. Keep a journal or logbook recording time and activities related to the project, weather conditions, nature and location of work being performed, verbal instructions and interpretations given to the contractor, and specific observations, record any occurrence of work that might result in a claim for a change of contract sum or contract time, and maintain a list of visitors, their titles, and time and purpose of their visit.
- xi. Review applications for payment submitted by the contractor and forward them with recommendations for disposition.
- xii. Prepare a punch list as construction nears completion and inform contractor of items on punch list.
- xiii. Assist in final inspection of the work.

### **SPECIAL SERVICES**

- 1. Land Surveys
  - a. Easements and right-of-way plat maps
  - b. Verify existing aboveground and underground utilities.
  - c. Construction stakeout of proposed improvements of connection with existing utilities
- 2. Attendance at Public Meetings to represent the WVANG on technical matters.
- 3. Attendance at Technical Meetings with the WVANG, DEP, etc.
- 4. Furnish technical assistance to the accountant and legal staff.
- 5. Provide technical testimony before courts and / or administrative hearings related to the project.



## QUALITY & COST CONTROL PLAN

### QUALITY ASSURANCE / QUALITY CONTROL

NREI quality assurance process requires a secondary review of all documents, assessments, and cost estimates before they are issued to the client. This plan guides our activities to ensure we meet client expectations and requirements. Our plan is flexible and can be administered as it is presented or, if desired, we can tailor it further to accommodate specific needs and expectations.

NREI quality control includes a series of independent reviews at specific checkpoints within our services program. The project manager (PM) provides general oversight perspective of assuring technical, process, and content quality. The PM has direct management responsibility for all technical personnel, allowing for quick and effective implementation of quality assurance measures, both at project inception and throughout the project.

Quality assurance of spot checking and random report reviews is performed by executive staff by selecting a sample of barriers in each phase of the process including the assessment/fieldwork stages, report preparations stages, review stages, and data validation (software) stages. The PM may assign various personnel to assist in the review at each of these phases with these team members having not contributed to the project being reviewed, but members have been cross-functionally trained and are multi-disciplined. Team members that have contributed to the project will be assigned peer review for a subset of the assets. A "Stop Work" order can be issued at any time in the process, specifically if the executive in charge, the PM or peer-review feels the protocol, standards, or requirements are not being met.

### COST CONTROL

NREI generally quotes Lump Sum for contracts which ensures meeting budgets. Our firm only generates change orders when additional services are required that are beyond the original scope of services.

NREI has a track record of making deadlines for engineering services. Much of our work is due diligence purposes and we generally are working on a very tight deadline of less than 10 business days.





## PROJECT EXPERIENCE

### **WV Division of Corrections, St. Mary's Correctional Center Unit 80 Subsidence, Pleasants County, WV**

NREI provided foundation repairs and geotechnical recommendations, by American Geotech Inc., helical piles were designed and implemented to correct the subsidence to the foundation of Unit 80. Investigation included two boreholes around the corners of the building and one corehole inside. This projects was within a larger contract that NREI obtained that included sanitary sewer system, water system, grease traps, fencing/lighting and separation of storm and sanitary sewer upgrades, replacements and improvements.

- **Reference:** Philip K. Farley, II, Director of Engineering Construction & Maintenance, WV Division of Corrections and Rehabilitation, 1409 Greenbrier Street, Charleston, WV 25311, 304.558.2036, philip.k.farley@wv.gov

### **City of Jackson Salt Lick Creek Hydrologic & Hydraulic Flood Study, Jackson, OH**

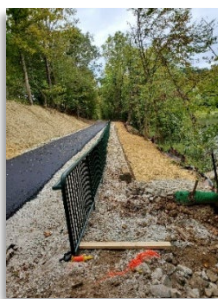
NREI is providing an engineering study along Salt Lick Creek in the City of Jackson to determine recommendations/improvements to mitigate excessive and chronic flooding that occurs in this area. Services included data collection, public outreach, hydrologic & hydraulic analysis and alternative analysis. Design Cost is approximately \$200,000.

- **Reference:** Hon. Randy Evans, Mayor, City of Jackson, 145 Broadway Street, Jackson, OH 45640, Office 740.286.3492

### **Elk River Flood Repairs and Coonskin Park Trail Replacement, Kanawha County, WV**

Planning, design, geotechnical, estimating, and construction management of 160 LF of H-Pile wall, a 40 LF H-Pile wall, Replacement of three 18" culverts, Paving of approx. 2,800 LF of Elk River Trail, and replacement of 105 LF of 36" HDPE storm pipe. Project cost of approx. \$1.85 million.

- **Reference:** Jeff Hutchinson, Executive Director, Kanawha County Parks and Recreation, 375 Henry C Hoppy Shores Drive, Charleston, WV 25302, 304.341.8000, jeff@kcprc.com



### **CRW Yeager Airport, Runway 5 Slope Failure, Charleston, WV**

Surveying and engineering services of slope failure emergency materials removal, storage and stabilization plans. Provided runway safety area monitoring surveys, quantity surveys, and stormwater construction USACE 404 and WVDEP 401 Permits. Work completed in 2020.

- **Reference:** Allen Cadden, PE, DGE, Principal, Schnabel Engineering, 3 Dickinson Dr #200, Chadds Ford, PA 19317, 610.696.6066, acadden@schnabel-eng.com

### West Virginia Water Department Authority, Riverbank Slope Erosion Repair, Charleston, WV

NREI provided CADD Design along Spring Street suggesting an H-pile retaining wall.

### Big Bend Golf Course Slope and Coonskin Park Trail Wall Flood, Kanawha County WV

Planning, design, geotechnical, estimating, construction management of Elk River Road embankment failure at two locations of approximately 170 ft and 50ft with another 1,900 ft pavement failure along Elk River Road. Replacement of 30" drainage culvert under an access road to the Riverside Shelter facility. Relocation of the irrigation pump house that was inundated with flood water to above the 100-year flood level.

- **Reference:** Kanawha County Parks & Recreation Commission, 375 Henry C. Shores Drive, Charleston, WV 25302



### Blue Creek Slip Repairs, Kanawha County, WV

Previous pipeline construction resulted in a slip adjacent to Blue Creek Road in Elkview, WV. S & S/NREI was tasked to monitor the slope mitigation project from start to finish and complete weekly progress reports. Planning, design, geotechnical, estimating, and construction management of 160 LF of H-Pile wall, a 40 LF H-Pile wall, Replacement of three 18" culverts, Paving of approx. 2,800 LF of Elk River Trail, and replacement of 105 LF of 36" HDPE storm pipe. Project cost of approx. \$1.85 million.

- **Reference:** Kanawha County Commission, 409 Virginia St E #230, Charleston, WV 25301, 304.357.0101

### Paint Creek Recreational Trail, Slip Repairs, Ross County, Ohio

This 32 mile trail is undergoing slip and erosion repairs with this current project (slip 31) designed with 12-18 foot Gabion retaining wall to be backfilled and rip-rap will be installed up and down the stream. The trail remains open during repairs.

**Reference:** Erin Stanley, Project Development/Grant Coordinator, Ross County Park District, 15 N Paint St #301, Chillicothe, OH 45601, 740-773-8794, [erinstanley@rosscountyohio.gov](mailto:erinstanley@rosscountyohio.gov)

### Cathedral Falls Flood Repairs, Gauley Bridge, WV

Cathedral Falls washed out stream below the falls. NREI provided preliminary review drawings, design, permitting, and construction administrations for the repairs of the stream below Cathedral Falls that washed out the banks and created a slip onto the baseball fields

**Reference:** Mayor Robert 'Bob' Scott, Town of Guley Bridge, PO Box 490, Gauley Bridge, WV 25085, 304.632.2505



### Cross Lanes Radio Tower Slip Repair, Kanawha County, WV

Description: Planning, design, geotechnical, and construction management of 50 LF of H-Pile wall, 25 LF H-Pile wall, and approx. 210 LF of rock lined drainage ditch to repair slips under a radio tower building and guy wire structures for the tower.



## WVANG PROJECT EXPERIENCE

### **WV Army National Guard, Charleston, WV**

Survey for new Coonskin Drive gate house and parking lot project. Work included the location of utilities, ground topography and security fence installations.

- **Project Status:** Completed 2017
- **Reference:** David R. Unrue, david.r.unrue.nfg@mail.mil

### **WV Army National Guard, Charleston, WV**

Site survey and engineering design for new parking layout and ADA ramp to access Building 130, and engineering design of a new fire water service line to Building 130.

- **Project Status:** Completed 2019
- **Reference:** Robert Fritz, PE, Mott McDonald, robert.fritz@mottmac.com

### **WV Air National Guard, Charleston, WV**

Site Surveys for new fire station at CRW Yeager Airport and wind shear tower near Building 130. Work included the location of utilities and ground topography.

- **Project Status:** Completed 2005
- **Reference:** Tom Mertz, Benham Group, tom.mertz@benham.com

### **WV Air National Guard, Charleston, WV**

Site Surveys for new wind shear towers at four locations near runway approaches at CRW Yeager Airport. Work included the location of utilities, ground topography and land acquisition.

- **Project Status:** Completed 2002
- **Reference:** G & L Electric

### **WV Army National Guard, Charleston, WV**

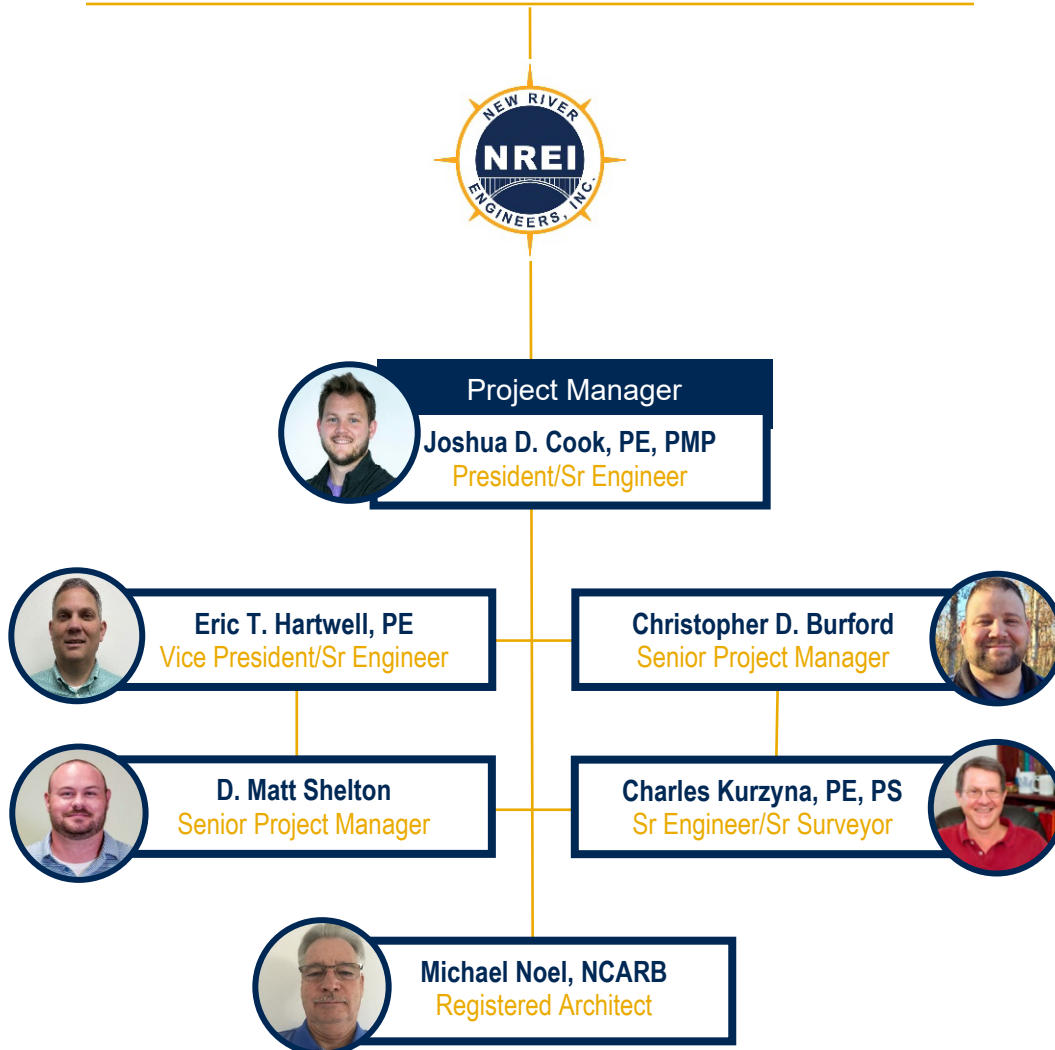
Engineering services for package wastewater treatment plants, NPDES renewal and oil/water separators for Charleston and Salem Armory.

### **WV Army National Guard, Camp Dawson, Kingwood, WV**

Engineering services for planning, design and construction administration of groundwater wells and water treatment plant.

## ORGANIZATIONAL CHART

### West Virginia Army National Guard Construction and Facilities Management Office



## RESUMES OF KEY PERSONNEL



**Joshua D. Cook, PE, PMP**

**Project Manager  
President / Senior Engineer**

### EDUCATION

**Bachelor of Science**

Civil Engineering  
West Virginia University Institute of  
Technology

**Master of Science**

Engineering  
Marshall University

### CERTIFICATIONS

Professional Engineer — WV, OH  
Project Management Professional  
(PMP)

### PROFESSIONAL AFFILIATIONS

American Society of Civil Engineers  
West Virginia Rural Water  
Association

Business Networking International  
(BNI)

Project Management Institute (PMI)

Josh began his professional career in 2012 and has worked on a variety of civil engineering projects throughout West Virginia, Ohio, Virginia, Maryland, and Pennsylvania. During his career, Josh has served as project engineer, project manager and engineering manager for coal and natural gas companies and municipal engineering consulting firms, including New River Engineers.

Josh has experience in environmental remediation, groundwater protection plans (including spill prevention, control and countermeasure plans), stormwater permitting and design, construction management, water, wastewater, storm water and a variety of natural gas experience.

Josh has been successful in managing a variety of projects to remain on-time, on-budget and compliant.

### PROJECT EXPERIENCE

Paint Creek Recreational Trail, Slip Repair, Ross County, OH

City of Jackson and Ross County Parks District, AMLER Salk Lick Creek, Jackson, OH

Town of Ansted, Gauley Mountain Bike Trail and Fox Branch Creek Bridge Trestle, Ansted, WV

Fayette County Park Pool Project, Fayetteville, WV

Fayette County Fireman's Association, New Hawks Nest Fire Training Center, Fayette County, WV

Hargrove Student Housing, Golden Bear Properties, LLC, Beckley, WV

Meadow Bridge Community Center, WV

Boomer Fire Department House Addition, WV



## **Eric T. Hartwell, PE**

### **Vice President / Senior Engineer**

Eric has over 25 years of experience in planning, design, and construction of environmental projects. The majority of his experience is in the design and construction of wastewater treatment and collection systems, water treatment and distribution systems and industrial oil water separators.

Eric was an integral part of the design team for several wastewater treatment plant upgrade projects and over 70 pump stations ranging in size from 5 to 7000 gallons per minute. He has also been involved in the design of multiple water treatment plants and pumping stations.

Eric oversees the design and construction of water storage tanks and pressure reducing valve stations. He has worked on environmental projects throughout West Virginia. His responsibilities include planning, design, construction administration, preparation of operation and maintenance manuals and operator training for water supply and distribution, wastewater collection and treatment, water loss and infiltration and inflow reduction projects.

Eric also has experience in construction management, payment request review and approval, quantity and cost estimates. His thorough and committed communication skills has earned him repeat clients throughout his career with municipal, PSD personnel, regulatory agencies and contractors.

### **PROJECT EXPERIENCE**

City of Jackson and Ross County Parks District,  
AMLER Salk Lick Creek, Jackson, OH

Mill Street Water & Sanitary Sewer Replacement,  
Jackson, OH

Glasgow New Fire House, Glasgow, WV

WWTP Improvements, Ronceverte, WV

WWTP Improvements, Chapmanville, WV

### **EDUCATION**

#### **Bachelor of Science**

Civil Engineering  
West Virginia University Institute of  
Technology

#### **Master of Science**

Civil Engineering  
West Virginia University

### **CERTIFICATIONS**

Professional Engineer — WV

### **PROFESSIONAL AFFILIATIONS**

Contractors Association of West  
Virginia



## **Christopher D. Burford**

### **Senior Project Manager**

Chris has been with NREI for over fifteen years. As a Senior Project Manager, he oversees surface and underground mining permit applications, is the manager of surveying crews, manages State and Federal safety plans and permits, oversees construction oversight and construction management and mine planning.

Green and Associates, LLC, St. Clairsville OH – manager and supervisor of survey crews and office personnel, business development, and coordination with clients on various projects.

New River Safety, LLC – manager and supervisor of safety instructors, electrical inspectors, and office personnel, business development and coordination with clients and government entities.

Ellison Ridge Mining, LLC – management and oversight of various sub-contractors over mining, reclamation and civil site construction projects, business development, and coordination with clients and government entities.

### **EDUCATION**

#### **Associate of Science**

Civil Engineering Technology  
West Virginia University Institute of Technology

### **CERTIFICATIONS**

Certified Underground Coal Miner

Certified Surface Coal Miner

MSHA Certified Limited Instructor

MSHA Certified Gravimetric Dust Sampling

MSHA Certified Gravimetric Dust Calibration & Maintenance

Safe Land USA PEC Safety

MSHA – Methane / Oxygen Deficiency Qualified

APNGA Portable Nuclear Gauge Safety & USDOT Hazmat Certified  
#299-160-926-311

APNGA Certificate of Achievement, Radiation Safety Officer Class #299-160-994-3161

Heartsaver First Aid, CPR & AED Certified

### **PROFESSIONAL AFFILIATIONS**

Contractors Association of West Virginia

West Virginia Rural Waters Association

West Virginia Coal Association

Friends of Coal Association

### **PROJECT EXPERIENCE**

Hargrove Student Housing, Golden Bear Properties, LLC, Beckley, WV

Meadow Bridge Community Center, WV

City of Montgomery Pavillion, Montgomery, WV

Town of Ansted, Gauley Mountain Bike Trail and Fox Branch Creek Bridge Trestle, Ansted, WV

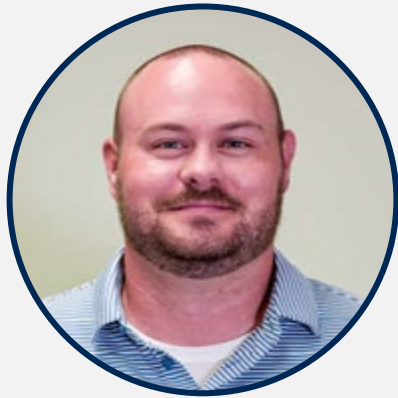
Boomer Fire Department House Addition, WV

Fayette County Park Pool Project, Fayetteville, WV

Fayette County Fireman's Association, New Hawks Nest Fire Training Center, Fayette County, WV

Fayette County Shooting Range and Training Center, Fayetteville, WV





## **D. Matt Shelton**

### **Senior Project Manager**

#### **EDUCATION**

##### **Bachelor of Science**

Civil Engineering Technology  
West Virginia University Institute of  
Technology

#### **CERTIFICATIONS**

Environmental Site Assessment  
Commercial Real Estate

#### **PROFESSIONAL AFFILIATIONS**

Water Environment Federation  
Contractors Association of West  
Virginia

Matt began his career in the field as a surveyor and has progressed to successfully earning a civil engineering degree. It's with this eventual process that makes his skills superior with overseeing site development, water supply, wastewater, storm water and drainage projects. His skills include construction management, record keeping, quantity and payment reviews. His attention to detail and great communication skills has earned him much respect among general contractors, subcontractors, community representatives and residents. His solid techniques move projects in a professional, cost-effective and timely manner.

Matt is experienced in site grading, surveying, building layouts, water & sewer system design and construction inspection on civil engineering projects.

Matt's experience as an Engineering Technician includes design of water line extensions, water booster stations, water storage tanks, wastewater pump stations, sewer line extensions, manholes, drainage calculations, and preparation of quantity and cost estimates.

Matt's experience as a Survey Technician/ Instrument team member includes topographic surveys, construction stakeout for water and sewer systems and highways, building layout, cut sheets for sewer systems and GPS surveying for field control work, etc.

#### **PROJECT EXPERIENCE**

Elk River Flood Repairs and Coonskin Park Trail Replacement, Kanawha County, WV

Big Bend Golf Course Slope and Coonskin Park Trail Wall Flood Repair, Kanawha County, WV

City of Jackson and Ross County Parks District, AMLER Salk Lick Creek, Jackson, OH

CRW Yeager Airport, Runway 5 Slope Failure, Charleston, WV





**Charles "Chuck" Kurzyna, P.E., P.S.**

**Senior Engineer / Senior Surveyor**

Chuck has over 30 years of engineering and management experience in the mining industry and consulting business. He specializes in surface and underground mine design, planning, and surveying; environmental and safety permitting; project and construction management.

Project Manager for a consulting engineering firm, responsible for job estimates and bidding, supervise office staff in engineering related projects including surface mine surveying, reclamation and permitting, reserve studies, etc.

Chief Engineer for a small mining and construction company, responsible for mine planning, production tracking, construction job bidding, construction engineering, etc.

Chief Engineer, Senior Engineer for the Lady Dunn Surface Mine & Preparation Plant; coal reserve evaluations; project engineering for mine related facilities; environmental permits for large surface and deep mining operation; etc.

**EDUCATION**

**Bachelor of Science**

Mine Engineering Technology  
West Virginia University Institute of Technology

**Associate of Science**

West Virginia University Institute of Technology

**CERTIFICATIONS**

Professional Engineer — WV, OH, PA, VA, KY, GA

Professional Surveyor — WV

Underground Mine Foreman

Surface Mine Foreman

**PROFESSIONAL AFFILIATIONS**

Contractors Association of West Virginia

West Virginia Coal Association

Friends of Coal Association

Society of Mining Engineers

**PROJECT EXPERIENCE**

City of Jackson and Ross County Parks District,  
AMLER Salk Lick Creek, Jackson, OH

CRW Yeager Airport, Runway 5 Slope Failure,  
Charleston, WV



**Michael Noel, NCARB**  
**Registered Architect**

Mike has recently joined the NREI team as of July 2025 along with his team including architects and CAD drafters. Mike was previously the Principal of Michael Noel Architect, LLC for the past four years. Before establishing his firm, he was Senior Principal with Panich, Noel and Associates for 32 years.

**EXPERIENCE REGISTERED ARCHITECT**

Responsible for day-to-day design and management of various construction types for the firm.

**CONSTRUCTION DOCUMENTS**

As the Partner in charge Mr. Noel has been partnered to oversee more than \$300 million dollars of construction documents varying from hotels, industrial buildings, churches, prisons, and higher and lower education.

**PROJECT EXPERIENCE**

Hotels: Morgantown-Holiday Inn - \$20,000,000  
Portsmouth- Holiday Inn Remodel - \$6,000,000

Industrial: RXQ Compounding - \$5,000,000  
Logan Goodyear Plant - \$3,000,000

Prisons: Septa Correctional Facility - \$4,500,000  
HVCRC Youth Prison and School - \$3,000,000

Education: Athens City Schools Renovations, Roof Replacement, Additions, Bus Garage and Athlete Facilities Buildings - \$15,000,000.

Trimble Schools Building Additions and Remodeling - \$400,000. Alexander Schools Renovations and Maintenance Facility - \$500,000. HVCRC Gymnasium and Classroom Design - \$3,000,000.

Federal Hocking Local Schools- Feasibility Study.

Alexander Local Schools-Field House and Fitness Center, Bus/Maintenance Garage.

**EDUCATION**

**Bachelor of Arts**  
Architecture  
Ohio University

**Register NCARB**

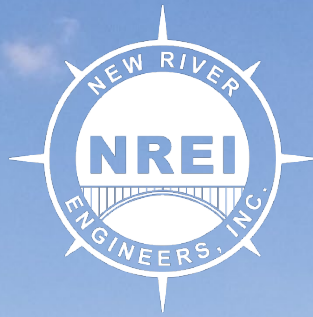
**CERTIFICATIONS**

Professional Architect —OH, WV, IL, FL

**PROFESSIONAL AFFILIATIONS**

Athens Rotary Club  
Boy Scouts of America  
Athletes in Action





## ADDITIONAL SERVICES





# Water Supply, Treatment, Storage and Distribution Systems

With over forty years of experience, NREI is your one stop shop for water supply, treatment, storage, and distribution systems. We implement our four-step process to each project to develop a better understanding of our client's needs and expectations: 1. Preliminary Engineering Report; 2. Design Phase; 3. Bidding Phase; 4. Construction Administration. We are "hands on" during all phases to ensure our clients obtain what they want in every project.

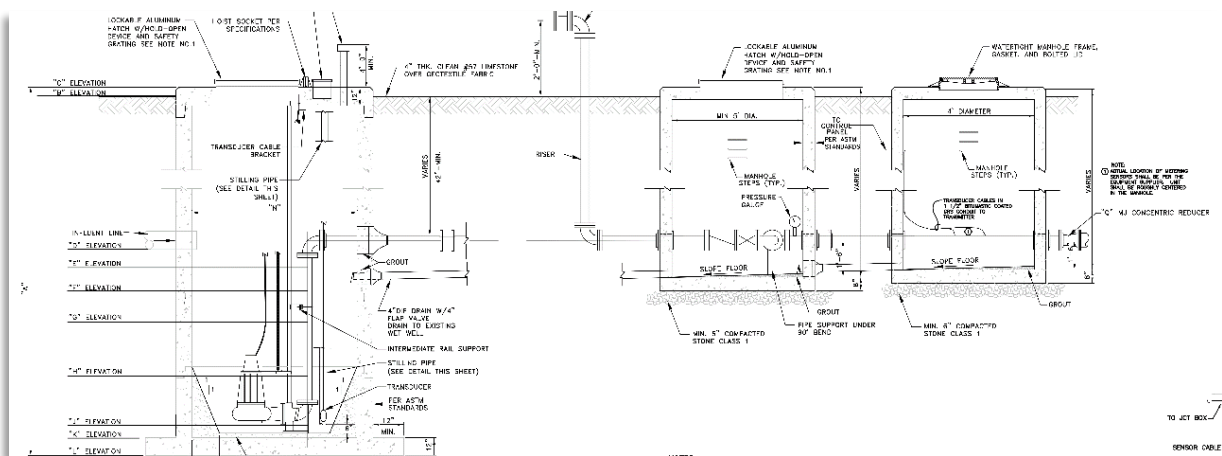
As a locally owned "small family" consulting firm, our clients get more for their money and receive more one-on-one time with our employees, which yields a more pleasurable experience. We excel in helping our clients ascertain funding from various governmental agencies to assist in the financing of the project.



# Wastewater Collection & Treatment Systems / Industrial & Hazardous Waste Treatment Systems

We recognize the importance and understand the hurdles that our clients must maneuver to offer wastewater service to their customers. We have a proven track record with a vast knowledge of local conditions and an excellent reputation with all regulatory, funding, permitting and enforcement agencies. Our crew, from CAD Techs to the President, is included in all phases of the project. We have the knowledge and capacity to carry out the workload in a timely manner.

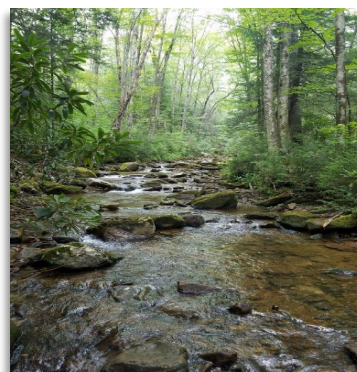
We have a full understanding of wastewater systems from small treatment facilities to municipalities, all the way to industrial wastewater systems. We are thoroughly knowledgeable in obtaining federal, state, and local funding and are available to you 24/7. We will see your projects from conception to completion.





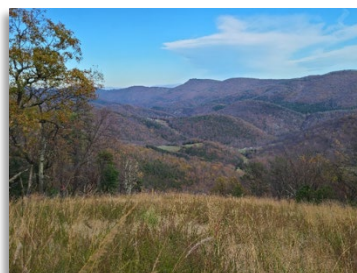
# Environmental Permitting

NREI's team assists with an efficient and thorough team of environmental consultants making sure permitting, regulatory compliance, construction monitoring and biological surveying are done with the utmost quality and cost effectiveness. This saves your project time and money from the start and avoids costly delays in the future. Compliance with Clean Air and Water Acts, NEPA and other state and federal requirements is invaluable to every project. Our environmental permitting team provides attention to detail and practical solutions to complex issues to keep your project going forward and within budget.



## SERVICES

- Storm Water Permitting, Design & Management
- Water Quality Monitoring
- Flood Plan Determination & Flood Elevation Certificates
- Groundwater Protection Plans
- Stream & Wetland Delineation
- Environmental Site Assessment
- Spill Prevention Control & Countermeasures Plan (SPCC)
- Article 3 Mining Permits
- Article 11 NPDES Permits
- West Virginia 401 Certification Permitting
- Wastewater Permitting, Design & Management
- Clean Water Act Section 402 Permitting (NPDES Permit)
- United States Army Corps of Engineers 404 Permitting
- Air Quality Permitting Best Management Practices (BMP)



## AGENCY EXPERIENCE

- US Environmental Protection Agency (EPA)
- National Environmental Policy Act (NEPA)
- US Fish & Wildlife
- National Conservation Planning Partnership (NRCS) & Forest Service
- United States Department of Agriculture (USDA) – Rural Development
- Federal Aviation Administration (FAA)
- West Virginia Public Lands
- WV Department of Natural Resources (DNR)
- WV Culture & History
- EPA & WV DEP Compliance
- Ohio State Historic Preservation Office (SHPO)
- Ohio Department of Natural Resources (DNR)
- Ohio Environmental Protection Agency (EPA)
- Ohio Public Works Commission (OPWC)
- Ohio Department of Commerce/Division of Industrial Compliance
- Virginia Department of Environmental Quality (DEQ)



# STRUCTURAL ENGINEERING

We offer a full range of structural engineering services to help meet the needs of our clients. In addition to professional training, our structural capabilities are bolstered by a depth and breadth of experience developed through solving unique and complex engineering challenges. We have experience with projects in the private, public, commercial and industrial sectors. Whether designing new structures, retrofitting existing structures, addressing overstressed conditions, or assessing structural integrity, our clients can rest assured that we are capable of meeting their specific needs.

- Structural Analysis
- Steel Structures and Building Enclosures
- Modular Design
- Pilings and Foundations
- Concrete Containment Structures
- Retrofit of Existing Overstressed Structures
- Building Permits and Code Analysis
- Bridge Cranes, Monorails, Jibs, etc.
- Truck/Rail Unloading Stations
- Lifting Beams and Rigging
- Industrial Architectural Design
- Structural Inspections and Assessments



# Construction Management and Civil Site Design

NREI is established as one of the leading construction engineering consulting firms in the region with experienced staff that are committed to and dedicated to your project from initial site design and bid package development to inspections and certifications.

NREI offers Civil Site Design services including sub-division layouts, commercial development and design, HCA project areas, well pads, impoundments, street paving, drainage control, solid waste landfill and impoundment design. We know and understand the value and importance of properly designed sites that offer cost effective solutions.

- 3D Site Design
- Haulage & Access Road Design
- Excess Spoil Disposal Site Design
- Drainage Design and Runoff Calculations
- Solid Wastewater Management and Landfill Design
- Subdivision Design and Permit Applications
- Site Development Plans
- Pre, During & Post Construction Surveying
- HECRAS Modeling
- Stability Analysis
- Site inspections/Project Management
- Certifications
- Cost Estimates
- Street Paving Design and Drainage Control
- Construction Management
- Earth Work Quantity Estimates
- Construction Staking
- Concrete Testing & Inspection





# Geotechnical Engineering

NREI's professional engineers and engineering technicians have extensive geotechnical engineering experience specializing in compaction testing, foundation design, slope failure remediation and embankment design. We focus on identifying the needs of clients and providing cost-effective solutions with real results.

- Drilling Oversight, Management and Inspection
- Slope failure Remediation
- Slope Stability Analysis
- Gabion Basket Wall Design
- Compaction Testing
- Foundation Design
- Embankment Design
- Drainage Analysis
- Soldier Pile Wall Design



# Surveying

NREI is established as one of the area's leading surveying firms with our 45 years of experience in property, boundary and topographic mapping. Our team is skilled in courthouse research, finding property evidence, providing quality property surveys and construction stake-outs.

Additionally, we offer aerial mapping utilizing drone surveys. Our aerial mapping has proven to be invaluable for construction progress mapping, well pad progression, subdivision layouts and civil site designs.

- Property Abstract & Research
- Boundary Surveys
- Survey Plats
- Subdivision Design & Layout
- Construction Surveying & Stakeout
- Underground Mining Surveying
- Right-of-Way & Land Acquisition
- GPS Services
- Aerial Mapping / Control
- Drone Flight & Surveying
- Topographical Surveys
- ALTA / ACSM Land Title Surveys
- Unit Surveys
- Surface Mining Surveying
- Computer Mapping
- GIS Services





# Subsurface Utility Survey

NREI uses some of the most advanced technology in Ground Penetrating Radar (GPR), pipe and cable locators and smoke testing machines to accurately survey, map and inspect subsurface utilities. These services have been extensively used by our clients in the construction, oil and gas industries, as well as public service districts.

- Pipe and Cable Location
- Sewer Line Smoke Testing
- Ground Penetrating Radar (GPR)
- Internal Video Pipe Inspection

