



The following documentation is an electronically-submitted vendor response to an advertised solicitation from the *West Virginia Purchasing Bulletin* within the Vendor Self-Service portal at ***wvOASIS.gov***. As part of the State of West Virginia's procurement process, and to maintain the transparency of the bid-opening process, this documentation submitted online is publicly posted by the West Virginia Purchasing Division at ***WVPurchasing.gov*** with any other vendor responses to this solicitation submitted to the Purchasing Division in hard copy format.

Header 2

List View

General Information [Contact](#) [Default Values](#) [Discount](#) [Document Information](#) [Clarification Request](#)

Procurement Folder: 1848355

Procurement Type: Central Purchase Order

Vendor ID:

Legal Name: ROYAL MEDIA NETWORK INC

Alias/DBA:

Total Bid: \$139,000.00

Response Date:

Response Time:

Responded By User ID:

First Name:

Last Name:

Email:

Phone:

SO Doc Code: CRFQ

SO Dept: 0313

SO Doc ID: DEP2600000016

Published Date: 12/16/25

Close Date: 12/23/25

Close Time: 13:30

Status: Closed

Solicitation Description:

Total of Header Attachments: 2

Total of All Attachments: 2



Department of Administration
Purchasing Division
2019 Washington Street East
Post Office Box 50130
Charleston, WV 25305-0130

State of West Virginia
Solicitation Response

Proc Folder: 1848355
Solicitation Description: PIPE CRAWLER
Proc Type: Central Purchase Order

Solicitation Closes	Solicitation Response	Version
2025-12-23 13:30	SR 0313 ESR12192500000003608	1

VENDOR
VS0000009845
ROYAL MEDIA NETWORK INC

Solicitation Number: CRFQ 0313 DEP2600000016
Total Bid: 139000
Response Date: 2025-12-19
Response Time: 18:51:06
Comments:

FOR INFORMATION CONTACT THE BUYER
Joseph (Josh) E Hager III
(304) 558-2306
joseph.e.hageriii@wv.gov

Vendor		
Signature X	FEIN#	DATE

All offers subject to all terms and conditions contained in this solicitation

Line	Comm Ln Desc	Qty	Unit Issue	Unit Price	Ln Total Or Contract Amount
1	Pipe Crawler with Components	1.00000	EA	139000.000000	139000.00

Comm Code	Manufacturer	Specification	Model #
20143302			

Commodity Line Comments:

Extended Description:

Pipe Crawler with Components

Line	Comm Ln Desc	Qty	Unit Issue	Unit Price	Ln Total Or Contract Amount
2	Training				0.00

Comm Code	Manufacturer	Specification	Model #
20143302			

Commodity Line Comments:

Extended Description:

Training per Section 3.1.13

Line	Comm Ln Desc	Qty	Unit Issue	Unit Price	Ln Total Or Contract Amount
3	Shipping	1.00000	EA	0.000000	0.00

Comm Code	Manufacturer	Specification	Model #
78121603			

Commodity Line Comments:

Extended Description:

Shipping per Section 3.1.14



Royal Media Network, Inc.

Date 12/19/2025
Quotation Number 681-2600000016
Lead Time 8-12 WEEKS ARO
OR SOONER

Quotation Valid Until 1/18/2026
Prepared by GELO CALDERON

DBA: Royal Imaging Solutions
2603 N. Rolling Rd. Ste. 304
Windsor Mill, MD 21244
PH: 410-202-0647 ext.122 Fax: 443-927-7378

SHIP TO:
ENVIRONMENTAL
PROTECTION
DIVISION OF WATER AND
WASTE MGT
601 57TH ST SE
CHARLESTON WV , 25304
JOSEPH.E.HAGERIII@WV.GOV

E:
PH: (304) 558-2306

BUSINESS SIZE SMALL
GSA # GS-02F-0043V
FEDERAL I.D. # 20-2852520
FEDMALL # GS02F0043V

DUNS # 809844538

CAGE # 50YY0
SAM UEI # YZN9GXTG2QL7

Gov Standard Quote Form 2020 v. 2

SOLICITATION NUMBER	TITLE	POINT OF CONTACT
CRFQ 0313 DEP2600000016	PIPE CRAWLER	JOSEPH HAGER III

ITEM #	DESCRIPTION	PART NUMBER	QUANTITY	UOM	QUOTE TYPE	UNIT PRICE	EXTENDED PRICE
1	<p>PANTHER HD ADJUSTABLE PIPE CRAWLER SYSTEM PANTHER 205 HD ADJ. PIPE EXT CRAWLER - PIPE ID 8" DEPTH RATED TO 60M/200FT. INCLUDES:</p> <ul style="list-style-type: none">• XTRAX OMNI MICRO CONTROL EXT LENGTH STD TORQUE AL 150M DEPTH<ul style="list-style-type: none">• MONIC MINICAM - AL• SCOPE 89 - HD PTZ CAMERA - DEPTH 60M - AL: 89MM (3.5IN) DIAMETER, 360° CONTINUOUS PAN, 260° TILT, 1080P RESOLUTION, 10X OPTICAL ZOOM, 12X DIGITAL ZOOM, ANODISED ALUMINIUM BODY, LED LIGHTING ARC ADVANCED ROBOTIC CONTROL SOFTWARE - PANTHER SOFTWARE SPECIALISED FOR ROBOTIC OPERATION: PANTHER PROFILE LOADED (EXTRAS CAN BE LOADED AS ADD-ONS), GUIDED INSPECTION WORKFLOW, ROBOTICS CONTROL, CAMERA CONTROL, VIDEO & IMAGE CAPTURE/ANNOTATION, TETHER DISTANCE, DATA EXPORT, PERPETUAL SOFTWARE LICENSE. <p>JUICEBOX PORTABLE CONTROLLER 21" INCLUDES 21.5" LED, WET KEYBOARD, CONTROL PAD, GAMING CONTROLLER, REMOTE OPERATION NETWORK READY, BREAK OUT CONNECTIVITY HDMI AND USB PORTS. 100M FIBRE TETHER ON S-SERIES REEL W/ENCODER, 18 PIN CRAWLER LAB61 - FAMILIARISATION SUPPORT FOR CRAWLERS</p>	S-NX-CRWL-210	1	EA	OPEN MARKET	\$ 139,000.00	\$ 139,000.00

<p>NOTES: ALL COMPONENTS , FREIGHT , TRAINING AND TAX ARE INCLUDED. MANUFACTURER: NEXXIS LEAD TIME: 8-12 WEEKS ARO OR SOONER COUNTRY OF ORIGIN: AUSTRALIA</p>							
---	--	--	--	--	--	--	--

1. Quantities indicated are based on the number of items required by the requestor and/or the number of items available at the time of quotation. Please contact us if there would be any changes to modify this quotation.
2. Sales taxes vary per state. The sales taxes indicated herewith are based on the location of the shipping address. Please note that tax exemptions are honored given that supporting documents are provided.
3. Unless stated otherwise, this quotation is valid for a period of 30 days from the date of issuance.
4. Unopened and No damage item/s that will be returned will occur 25% Restocking fee.

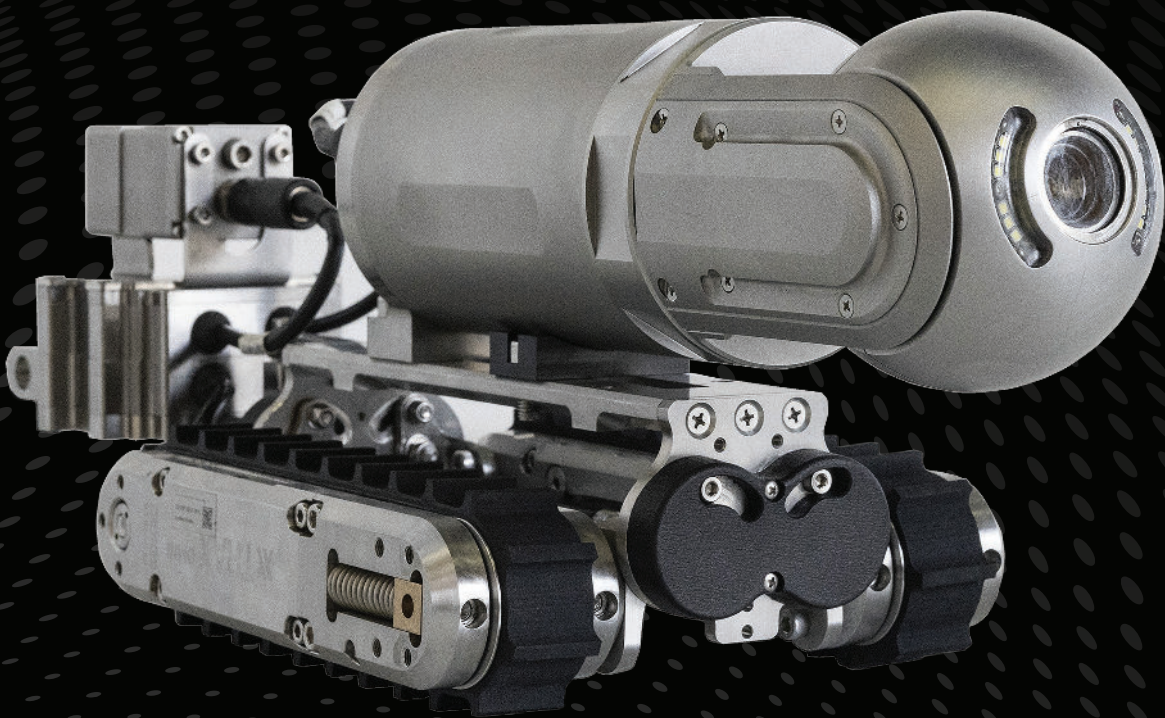
SUBTOTAL	\$ 139,000.00
FREIGHT	\$ -
SALES TAX	\$ -
GRAND TOTAL	\$ 139,000.00

If you have any questions concerning this quotation, contact GELO@ROYALIMAGINGSOLUTIONS.COM 410-202-0647

THANK YOU FOR YOUR BUSINESS!

PANTHER PIPE CRAWLER

Technical Specifications



nexxis

VER 1.0

NEXXIS.COM

EASILY CUSTOMIZED WITH A RANGE OF EQUIPMENT

With a variety of configurations that can inspect almost any confined space or pipeline application.

Offering full modularity, the Panther series crawler can be equipped with a magnetic attachment for vertical and inverted travel on ferrous surfaces. Small size is a key feature with options that include multiple cameras, longer tethers, advanced reporting software and image enhancement systems for endless possibilities.

EASILY CUSTOMIZED WITH A RANGE OF EQUIPMENT

Capable of operating over long distances and a wide range of diameters, the Panther Pipe Crawler system is a state-of-the-art pipe inspection system with advanced capabilities. The system comes standard with a 100 m tether cable, with options for longer lengths available. Operators can examine pipes from 8" in diameter. The Panther comes with a full HD PTZ cameras with 4 LEDs.

Customizable with an array of optional equipment including retrieval tools, laser measurement & profiling systems and other Non-Destructive Testing (NDT) sensors. Nexxis designed software provides the operator with mouse and joystick controls for all vehicle functions. All sensor data is automatically logged during inspection operation and can be included with the final video (or images) using the intuitive reporting software.

INDUSTRIES

- Mining
- Utilities (Sewer / Water)
- Oil & Gas (Offshore / Onshore)
- Petrochemical
- Power Generation (Hydroelectric & Nuclear)

KEY APPLICATIONS

- Small Diameter pipelines
- Unpiggable pipelines
- Subsea vessel inspections
- Fresh water line
- Sewer systems
- FOSAR



JuiceBox Controller

Easily portable, this best-in-industry solution seamlessly connects and operates a range of HD or SD remote visual inspection cameras and equipment.

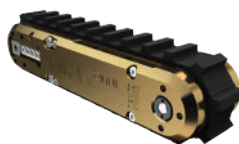


Panther with Scope HD

Fitted with the Scope HD camera which has pan, tilt and zoom, and driven by the aluminium XTRAX Omni, this configuration is a versatile inspection solution.



XTRAX Omni [Aluminium]



XTRAX Omni [Brass]



XTRAX Omni [Stainless Steel]

BUILD QUALITY OFFERS UNSURPASSED RELIABILITY



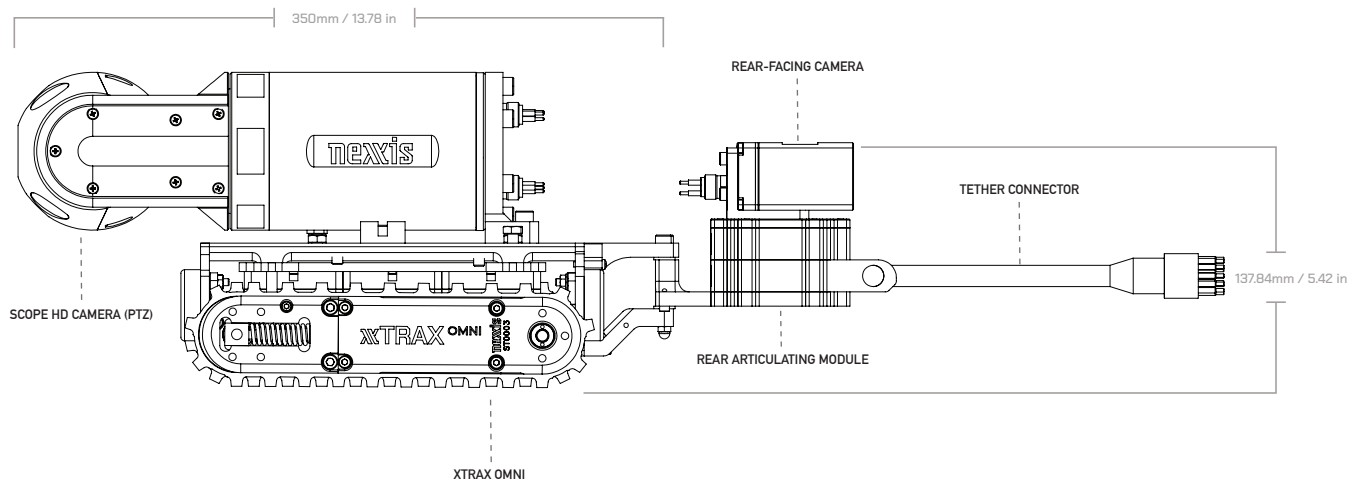
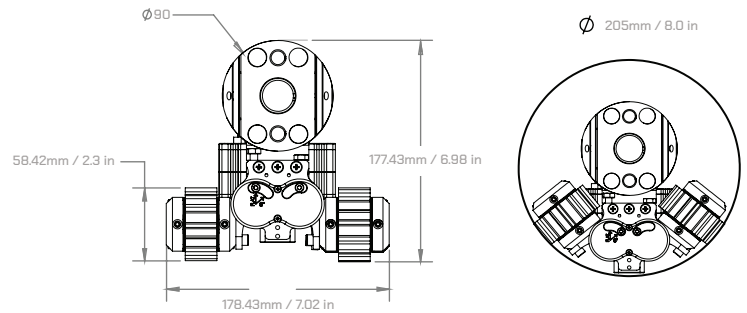
PANTHER PIPE CRAWLER SPECIFICATIONS

INTERNAL PIPE SIZE	Minimum	205 mm (8"0)
	Maximum	Flat (180°)
EXTERNAL PIPE SIZE	Minimum	500 mm / 19.68 in
TETHER LENGTH	100 m (328 ft) standard	
CAMERAS	Front & Rear, multiple range of HD options	
WEIGHT	From 6.8 kg / 15 lbs (depending on material and accessories)	
PULLING CAPACITY	9 kg / 19.8 lbs	
PAYLOAD	16 kg / 35.7 lbs	
TEMPERATURE RATING	Standard	0 - 50 °C / 32 - 122 F
DEPTH RATING	Standard	Up to 150 m / 492 ft
MATERIAL OPTIONS	Aluminium, Stainless Steel, Other custom options	
CONTROL SYSTEM	Power Supply	110 - 240 V AC, 500 W
	Controller	JuiceBox

CAMERA SPECIFICATIONS

Aluminium anodized, high-resolution camera for detailed imaging with integrated LED lighting and pan & tilt function.

ZOOM LENS	10x Optical / 12x Digital
DEPTH RATING	60 m -150 m / 196.85 - 492.12 ft
LIGHTS	4x High Intensity LED Floods built into camera
TEMPERATURE RATING	0 - 50 °C / 32 - 122 F
WEIGHT	3 kg / 6.6 lbs



HOUSTON

315 Odyssey, Suite D
Webster, TX 77598
United States

Ph: +1 (713) 258-6061

AUSTRALIA

35 Peel Road
O'Connor, WA 6163
Australia

Ph: +61 (08) 9418 4952

SINGAPORE

37 Jalan Pemimpin
#03-02 MAPEX
Singapore 577177

Ph: +65 3158 5772

GET IN CONTACT