



# EXPRESSION OF INTEREST

## AML - Pre-Qualification for Consultants

CEOI 0313 DEP2600000001

West Virginia Department  
of Environmental Protection  
Abandoned Mine Lands

RECEIVED

2025 AUG 20 AM 11:12

WV PURCHASING

Project contact:

**Eric J. Coberly, P.E.**

5088 Washington Street, West

Charleston, WV 25313

304.776.7473



**E.L. ROBINSON**  
ENGINEERING

[www.elrobinsonengineering.com](http://www.elrobinsonengineering.com)



# E.L. ROBINSON ENGINEERING

5088 Washington Street, West • Charleston, WV 25313 • T: 800.856.6485

elrobinsonengineering.com

August 20, 2025

West Virginia Department of Environmental Protection  
Office of AML  
c/o Joseph E. Hager III  
Department of Administration, Purchasing Division  
2019 Washington Street, East  
Charleston, WV 25305

Dear Mr. Hager,

E.L. Robinson Engineering (ELR) is pleased to have the opportunity to submit our Expression of Interest of our **Pre-Qualifications for Consultants** to the West Virginia Department of Environmental Protection - Office of AML.

Over the last 25 years, ELR has completed plans and specifications for numerous reclamation projects for WVDEP-AML, in addition to several projects with ODNR and Maryland AML. We have included descriptions of our **profession and project experience**, including a **detailed project matrix**, later in this proposal. The ELR staff has combined experience in the design of more than **284 AML projects**.

The Charleston office has:

- A. Fourteen (14) registered professional engineers (civil or mining), 1 geologist, 3 landscape architects, 6 engineers-in-training as well as several CADD technicians that may be used on these projects.
- B. ELR Corporate experience in designing 160 abandoned mine land remediation projects. Personal experience of my own in over 20 years at AML designing and managing construction projects. This number does not include surveying/mapping/drilling projects.

E.L. Robinson Engineering has grown from 13 employees in 1996 to nearly 150 employees today. Throughout this growth period, we have continued to meet project deadlines while providing a high quality engineering product. Our office location in Charleston is centrally and conveniently located in respect to the WVDEP offices and the referenced project areas.

We at E.L. Robinson Engineering look forward to serving your agency under this contract. If you have any questions or need clarification, please feel free to contact me at (304) 776-7473.

Sincerely,



Eric J. Coberly, P.E.  
ELR President & Project Manager  
E.L. Robinson Engineering



## WHO WE ARE.

E.L. Robinson Engineering Co. (ELR) provides a full range of quality engineering services, from planning and analysis to design and implementation. For over 45 years, ELR has grown to be a highly respected firm offering a diverse scope of services.

Founded in 1978 by Edward L. Robinson, a registered Professional Engineer (PE) and a Professional Surveyor (PS), the company started from humble beginnings. ELR began as a small surveying firm with four employees and has expanded to locations in three states as a highly-diversified engineering, planning and design and surveying firm with over 150 employees.

In 2023, Eric Coberly, PE, was named ELR President when Mr. Robinson retired. Mr. Coberly has 40 years engineering experience, specifically in the mining, utility and site/civil sectors. He has over 20 years with the WV AML Program serving in construction and design sections, as well as AML Office Chief.

## WE'VE GOT YOU COVERED.

ELR professionals fill **7 offices** within an easy drive to project locations. Staff are readily available for phone and email correspondence, video calls, and in-person meetings.

## WHAT WE ARE.

nearly  
**150**  
employees

**100%**  
employee  
owned

nearly  
**50**  
licensed PEs

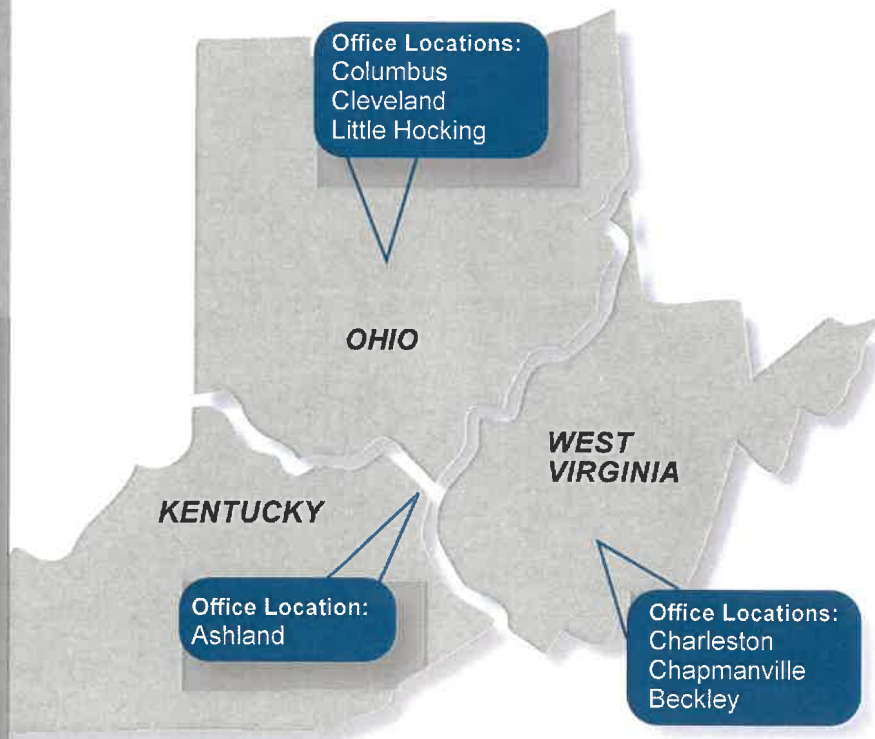
### TOP 500 DESIGN FIRMS

2019 • 2020  
2021 • 2022  
2023 • 2024  
2025

E.L. Robinson  
Engineering Co.



## WHERE WE ARE.



**Address:** 5088 Washington Street, West • Charleston, WV 25313  
800.856.6485 • [elrobinsonengineering.com](http://elrobinsonengineering.com)



## **Our Story**

NGE offers the advantages of a small business experience, including direct access to owners, faster response times to client needs, and the ability to provide ongoing personal service to clients coupled with the sophistication of a much larger firm such as robust management, comprehensive insurance coverage, and extensive systems & processes for much of our work.

NGE is a niche firm with experts specializing in geotechnical engineering and drilling services, environmental compliance services, and environmental field services.

Our founders have fostered this mission for NGE from the beginning. NGE was established in 2002 by the sibling team of Amy Veltri and John Nottingham. They drew on their experience at established companies to create a unique firm that embodies the feel of a small business without sacrificing capability. Amy and John have established and maintained a superior firm with a top-notch reputation for technical skills and integrity while providing a compassionate atmosphere for their employees and their families.

## **Our Leadership**

Amy Veltri has over twenty-five years of experience as a civil engineer and consultant. After earning both a bachelor's and master's degrees in civil engineering, Amy developed a unique skillset working her way from a staff engineer through project engineer and regional environmental coordinator to a senior project manager. Now Amy serves as CEO of NGE, drawing on her past experiences managing projects and personnel to ensure that we exceed our client's expectations.

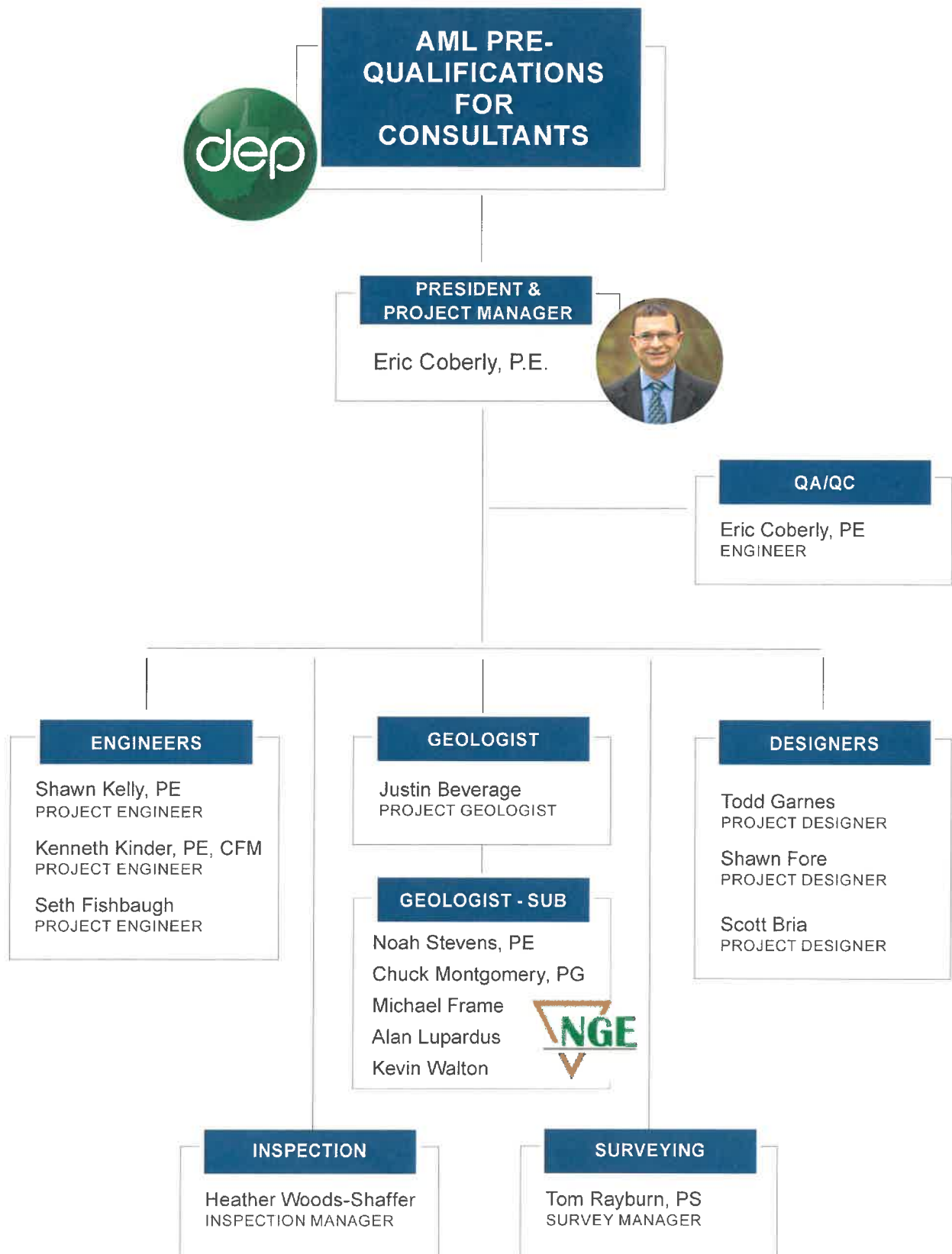
John Nottingham earned his bachelor's and master's degrees in civil engineering and then served as the lead geotechnical engineer in various government and commercial design and construction projects. During his tenure at another firm, he moved through the ranks from staff engineer to senior engineer to vice president and geotechnical services manager. At NGE, John serves as the President and Principal Engineer. He leads our highly skilled employees with his deep understanding of geotechnical engineering.

## **NGE is Now Employee-Owned**

We are excited to announce that NGE has been reorganized as a 100% Employee Stock Ownership Plan organization, or an ESOP as of November 2022. This reorganization will greatly benefit our employees, maintaining job stability while reinforcing generational strength within our company and continuing NGE's tradition of excellence.

As the founders were looking toward the future of NGE, they decided to continue this legacy by placing NGE in the hands of their trusted employees. NGE will continue to be led by CEO Amy Veltri and President John Nottingham, who look forward to helping guide NGE to growth and success as an ESOP.

# ORGANIZATIONAL CHART



# ERIC COBERLY, PE

## ELR President

### Professional overview

Mr. Coberly has decades of experience as an infrastructure and civil engineer. His extensive experience as a Project Manager in various engineering disciplines includes site development, infrastructure planning, water, sewer, geotechnical analysis, abandoned mine reclamation, building construction, active surface mining, insurance investigations, and various post mining land use projects.

Additionally, Mr. Coberly served as the Chief for the West Virginia Department of Environmental Protection Abandoned Mine Lands Division for more than 4 years. In this position, he was responsible for managing and directing all operations. Mr. Coberly has spent his career working to better the State of West Virginia in both the private and public sectors.

### Relevant experience

#### Wastewater:

- Morgantown Utility Board Mountaintop Beverage Sewer Extension
- Frank-Bartow Sanitary Sewer Extension
- Town of Beverly Sewer
- Bergoo Wastewater Collection and Treatment System Project
- WVDNR Watoga and Chief Logan State Parks Sewer Plant Upgrades
- Putnam PSD Deer Valley Sewer Extension
- City of Philippi - Rt. 119 Sewer Extension
- Webster Springs PSD Bergoo Sewer System

#### Water:

- MUB Mountaintop Beverage Waterline Extension
- Heaters-Weyerhaeuser Waterline Upgrade
- Scott Findley Road Waterline Extension Project
- Exchange Road Phase I Waterline Extension
- Exchange Road Phase II Waterline Extension
- Kenova Downtown School Waterline Improvements
- Prichard Waterline Upgrade
- Route 18 South-Snowbird Road Waterline Extension Project
- Town of Clay Water Storage Tank Replacement
- Blue Knob Waterline Extension Project
- White Sulphur Springs Big Draft Waterline Extension
- Cow Creek Waterline Extension Project
- Blandville West Union Waterline Extension Project
- WVDNR Waterline Improvements - North Bend, Watoga, Babcock and Chief Logan State Parks
- Putnam PSD Water Plant Upgrades

#### Economic Development:

- City of Bluefield Commercialization Center
- Greenfield Cabinetry Building Expansion
- Putnam Business Park Utility Extension Phase II
- Raleigh County Memorial Airport Industrial Park Site Preparation Project
- Mingo County Wood Park Industrial Site
- Mingo County Belo Industrial Park



### Education

M.S. Engineering of Mines,  
West Virginia University,  
1990

B.S. Engineering of Mines,  
West Virginia University,  
1983

### Registrations

Registered Professional  
Engineer in West Virginia,  
Ohio, and Maryland

### Years experience

39



# SHAWN KELLY, PE

## Project Engineer

### Professional overview

Shawn Kelly, PE, brings over 20 years of experience to E.L. Robinson. His knowledge of site development has taken him all across West Virginia, working for both public and private clients. Mr. Kelly's understanding of drainage calculating, stormwater management plans, and site development planning have helped improve countless places in the state. Mr. Kelly has experience in the development of erosion and sediment control design. He has provided his expertise for the design of roadway drainage and erosion and sediment control for the roads around the complex. Shawn has vast experience working with the WV Department of Transportation, Division of Highways and WV Department of Environmental Protection to successfully permit many projects throughout the state.

### Professional experience

- Boy Scouts of America Brenda L. Murray Drive - Roadway Drainage - Fayette County, WV
- Boy Scouts of America JW Marriott JR Leadership Center Roadway Drainage
- Boy Scouts of America Bunkhouse and Dining Hall Site Design - Fayette County, WV
- WVU Medicine Building Site Design - Greene County, PA
- Pad 1A4 in Westridge Commercial and Retail Development - Monongalia County, WV
- Corridor H Davis to Bismark E&S Control - Grant County, WV
- Upshur County Industrial Park Drainage Calculations- Upshur County, WV
- US Route 35 - Couch to Little Five mile - Putnam County, WV
- Putnam Public Service District Sewer Extension Project - Putnam County, WV
- Putnam Public Service District Water Line Replacement - Putnam County, WV
- Corridor H Kerens to US 219 Connector Design-Build
- Cow Creek Water Line Project - Putnam County, WV
- Coalfields Expressway – Welch to WV 16 Interchange
- City of Beckley New Fire Station - Raleigh County, WV
- West Village Senior Housing - Cabell County, WV
- Signet Real Estate Group WVU Beckley Housing Project - Raleigh County, WV
- Clear Mountain Bank New Branch - Harrison County, WV
- McDowell County Schools Riverview High School Renovations - McDowell County, WV
- Baker Heights New Fire Station - Berkeley County, WV
- St. Marys High School Stormwater Drainage- Pleasants County, WV
- WVDOT Coalfields Expressway – Welch to WV 16 Interchange (SWPPP) - McDowell County, WV
- P3 Housing WVU Beckley Stormwater Management - Raleigh County, WV
- City of Wellsburg Stormwater Management - Brooke County, WV
- The Bend at Meadow Valley Storm Sewer Design - Putnam County, WV
- City of Huntington West Village Stormwater - Cabell County, WV



### Education

Bachelor of Science,  
Civil Engineering  
West Virginia University  
2001

### Registrations

Professional Engineer  
West Virginia  
Virginia  
Kentucky  
Maryland  
North Carolina  
South Carolina

### Years experience

20+

# KENNETH KINDER, PE, CFM

## Project Engineer

### Professional overview

Mr. Kinder has experience in many facets of civil engineering. Mr. Kinder began his career as a staff engineer where he became proficient in the designing of projects and project management assistance. He has worked on an array of projects including civil site design, erosion and sediment control, stormwater management, hydraulic modeling, floodplain permitting, wastewater treatment, water treatment and distribution, geotechnical solutions, surface and underground coal permitting, limestone quarry permitting and solid waste landfill design. Mr. Kinder then moved into the role of Project Manager and served as an Office Leader while employed with a previous firm. Since joining ELR, Mr. Kinder has taken on the role of Project Manager on several notable projects.

### Relevant experience

- Town of Rupert Stormwater Mitigation – Project Manager
- White Sulphur Springs - Stormwater Improvement - Project Manager
- Bluefield Sanitary Board Midway Sewer Replacement – Project Manager
- Bluefield Sanitary Board Thompson Pump Station and Nichols Road Sewer Extension - Project Manager
- City of Princeton Rogers Street Drainage Improvements – Project Manager
- Birch River PSD Wilson Ridge Waterline Extension Phase 2 – Project Manager
- Birch River PSD Mill Creek Waterline Extension – Project Manager
- Town of Rainelle Water Improvements – Project Manager
- Town of Rainelle - Clinic Hill Water Tank - Project Manager
- Danese PSD - Maplewood Water System Improvement - Project Manager
- Armstrong PSD Deepwater and Powellton Water Improvements – Project Manager
- Oakvale Road PSD Christian Fork Sewerline Repair – Project Manager
- Birch River PSD Emergency Standby Generators - Project manager
- Town of Rainelle - Emergency Standby Generator's - Project Manager
- Harbor Freight Retail Store Site Development – Civil Design Task Manager
- 13 individual WVDOH ADA Design-build Curb Ramp – Project Manager
- Kanawha County, Clendenin, Logan County, and Richwood FEMA HMGP Flood Mitigation – Project Manager
- WV Conservation Agency Elk Twomile Dam Seep Repair – Project Manager
- Kanawha County FEMA Flood Map Update Review – Project Manager
- Buffalo Creek and Gauley Recreational Trail – Flood Damage Assessments – Project Manager
- Nitro City Park Riverbank Restoration and Recreational Trail – Project Manager
- WVDEP LCAP Wheeling Landfill Closure Cap Design – Lead Design Engineer, Civil Task Manager, Assistant Project Manager
- 90 MW Solar Generation Facility in Raleigh County, WV –Stormwater and E&S Design Task Manager and Assistant Project Manager



### Education

B.S. Civil Engineering,  
West Virginia Institute of  
Technology, 2003

### Registrations

Registered Professional  
Engineer - WV and VA

### Certifications

Certified Floodplain Manager  
(CFM)

### Experience since

2003



# SETH FISHBAUGH, EIT

## Project Engineer

### Professional overview

Mr. Fishbaugh has 2 years of experience as an engineering intern and civil designer. His experience includes the evaluation and design of water distribution systems, storm sewer systems, preparation of bid documents and specifications, various permit and funding applications, and environmental assessments. Further, he is proficient in several drafting platforms including Civil 3D and WaterCAD.

### Relevant experience

- PCPSD Snowshoe Water Plant
- RCPSD Airport Water Storage Tanks
- Town of Rainelle Water Improvements
- Hanover Waterline Extension
- City of Bluefield Stormwater Study
- House Branch Drainage Basin Stormwater Project
- Brushy Meadow Creek Highwall "A"
- Brushy Meadow Creek Highwall "B"
- Green Valley Highwall "A" and Draining Portals
- Green Valley Highwall "D" and Refuse
- Tioga Strip Highwalls
- Big Run Landslide
- Shant Portals



### Education

B.S. Civil Engineering -  
Marshall University, 2023

### Experience since

2023

# JUSTIN BEVERAGE

## Project Geologist

### Professional overview

Mr. Beverage is an Engineering Geologist with experience providing geotechnical and engineering geologic consulting services to a range of clients, including state and federal agencies, municipalities, and private developers. His background includes planning and executing geotechnical investigations for infrastructure and development projects, such as highways, bridges, hazard mitigation, mining reclamation, buildings, and site development.

As Project Geologist, Mr. Beverage has coordinated field investigations, subsurface explorations, and laboratory testing designed to evaluate soil, rock, and groundwater conditions. His technical expertise lies in interpreting complex geologic and geotechnical data to provide practical recommendations that support safe and efficient design solutions.

Mr. Beverage works closely with engineers, project managers, and regulatory agencies to ensure compliance with design specifications, environmental requirements, and industry standards. He is skilled in preparing detailed geotechnical reports, developing site-specific foundation and slope stability recommendations, and assisting with construction-phase support such as subgrade evaluation and materials inspection.

### Relevant experience

- City of Hinton – HUD CDBG Stormwater Mitigation – Hinton, WV
- Corridor H2 Design Build – Randolph Co, WV
- DCPSD Route 23/Big Flint Waterline Extension Project – Salem, WV
- PCPSD Snowshoe WTP – Snowshoe, WV
- White Hall Winston – Subsidence WVDEP AML - Bridgeport, WV
- White Hall Mine Fire II - WVDEP AML- Bridgeport, WV
- WVDOH King Coal Highway – Sections 1, 2, 3.1 – Mercer Co,
- WV WVDEP Mt Clare Knapp - WVDEP AML Reclamation - Bridgeport, WV
- WVU Tech Campus Corridor Project – Beckley, WV



### Education

B.S. Environmental  
Geoscience -  
Geology, Concord  
University, 2017

### Registrations

KY GIT Certification

### Experience since 2023

# TODD GARNES

## CAD Manager, Civil Designer

### Professional overview

Mr. Garnes has decades of experience as a civil draftsman and designer. He is proficient in numerous drafting and mapping software platforms including Civil 3D, AutoCAD, and ArcMap. Mr. Garnes has experience in GIS, construction inspection, waterline planning and design, wastewater planning and design, site development, cathodic protection planning, county-wide planning, permitting, and construction document preparation.

### Professional experience

- Bluefield Commercialization Station
- Mercer County PSD: Town of Matoaka Wastewater System Improvements
- Village of Bowerston Water System and Tank Improvements
- Village of Jewett Water System Improvements
- Putnam PSD Water Treatment Plant Upgrade
- Putnam PSD Olympia Fields Booster Station Replacement
- Pocahontas County PSD Wastewater Treatment Plant Upgrade Projects
- Pocahontas County PSD: Frank-Bartow Sanitary Sewer Extension
- Town of Durbin Sanitary and Storm Improvements
- West Virginia Division of Natural Resources:
  - Watoga State Park – Riverside Campground Wastewater Treatment Plant
  - Watoga State Park – Water System Improvements Project
  - Watoga State Park – Wastewater System Improvements
  - North Bend State Park Water System Improvements
  - Babcock State Park Water System Improvements
  - Chief Logan State Park Water System Improvements
  - Chief Logan State Park Campground Sanitary Sewer Extension
- First Tracts Realty – Forever Wild Site Development Project at Snowshoe Resort
- Western Pocahontas Properties, LLC – Thomas River View Development
- Village of Rio Grande Wastewater System Improvements and Wastewater Treatment Plant
- Camp Caesar Infrastructure Improvements Project
- Doddridge County PSD 2015 County Wide Water Study
- Pocahontas County PSD: Cheat Mountain Water Acquisition; Dominion Waterline Extension
- Village of Cadiz Water System Improvements Project
- WVDNR North Bend State Park Waterline Extension
- Rahall Transportation Institute Land Use Master Plans – Boone, Clay, Fayette, Lincoln, Logan, McDowell, Mercer, Wayne, Wyoming, Raleigh, Upshur, Webster, and Marshall Counties
- Webster County PSD Bergoo Wastewater System and Wastewater Treatment Plant Improvement
- Town of Gilbert: Slabtown, Tamcliff and Paynter Bottom Waterline Extension Project; Horsepen, Gilbert Creek and Browning Fork Waterline Extension; River Bend Road Waterline Extension; Upper Gilbert Creek Waterline Extension
- Logan County PSD: Upper Little Harts Creek Waterline Extension; Big Harts Creek Waterline Extension; Marsh Fork Waterline Extension; Hidden Valley/Airport Road Waterline Extension; Ridgeview Sewer – Railroad Permits
- Lincoln EDA Lower Mud River Waterline Extension
- Town of Chapmanville Water Upgrade Project
- City of Charleston Lee Street Sidewalk Enhancements
- King Coal Highway Water and Sewer Project
- Putnam County Business Park Utilities Extension Project
- Norton Harding Jimtown PSD Scott Run/Findley Road Waterline Extension Project



### Education

A.A.S. Architectural Drafting Technology. West Virginia State College, 1999

A.A.S. Computer Aided Drafting and Design  
West Virginia State College, 1999

### Years experience

25

# SCOTT BRIA

## Project Designer

### Professional overview

Mr. Bria has decades of experience as a project designer in the fields of civil and environmental engineering. His representative experience includes civil site development; abandoned mine lands; ash disposal landfills; solid waste landfill expansions and closures; water and wastewater system and plant design; site characterization and remediation; landscape master plans; and rails to trails.

### Professional experience

- Kanawha Falls PSD - Wastewater Systems Improvements - FEMA project
- Kanawha Falls PSD - Miscellaneous Wastewater Systems - Bar Design
- Village of Cadiz Water System Improvements Project Phase II
- Village of Harrisville Wastewater Treatment Plant Improvements Project
- City of Hinton Phase I Sewer Project
- I-64 Cable Median Barrier
- Jefferson Road Design Build
- Village of Woodsfield Asset Management Plan
- Town of Belle Wastewater Treatment Plant Upgrade
- Village of Rutland, OH Wastewater System Improvements
- Village of Holloway, OH Water System Improvements
- Village of Jewett, OH Water Treatment Plant Upgrade
- Town of Glenville State College, Pioneer Center Site Development
- City of Charleston Coliseum and Convention Center Renovation and Expansion
- City of Charleston Coliseum and Convention Center Sanitary Sewer Relocation
- City of Charleston 40th Street Streetscape
- Cabela's Site Development
- Putnam County Commission, Valley Park Improvements
- AEP Ravenswood, WV Sub-Station Expansion
- NRG Keystone Generating Station, Ash Filter Pond Replacement
- First Energy, Fort Martin Power Station CCR Landfill Expansion
- Nicholas County Landfill Expansion
- WVDEP LCAP, Fleming Landfill Closure
- Boyd County Courthouse Sanitary Trash Screen
- Bluestone Wastewater Treatment Plant Upgrade
- Wilderness PSD Water System Upgrade - Phase 1



### Education

Drafting CADD Certificate  
Ben Franklin Career and  
Technical Center, 1997

Autodesk Civil 3D  
Essentials Course  
Certificate

### Years experience

26



# SHAWN FORE

## Project Designer

### Professional overview

Mr. Fore has two decades of experience as a CAD Designer in numerous areas of civil engineering. His representative experience includes civil site development, water and wastewater lines, line treatment plants, abandoned mine lands reclamation, highway design, bridge inspection, utility location and mapping, hydrographic surveying, land surveying, environmental, wind energy, water sampling, GPS and RTK.

He is adept in AutoCad Civil 3D (Version 2006 thru 2019). Further proficiency includes Autocad Land Desktop, Microstation, Inroads, Autodesk Vault Explorer, Eagle Point, TGO, Pathfinder Office, Hydro-Pro, Microsoft Access, Excel and Word. He provides training/support and workstation configuration, as well as data management of CAD and GIS related material.

### Professional experience

- Bluefield Sanitary Board Midway Sewer Replacement
- Bluefield Sanitary Board Thompson Pump Station and Nichols Road Sewer Extension
- White Sulphur Springs Rt 60 East Wastewater System Replacement
- Burnsville Wastewater Collection System Rehabilitation
- Ashland-Crumpler Wastewater Collection and Treatment System
- Town of Bradshaw Collection System Upgrade
- Town of Bradshaw Pump Stations & WWTP Upgrade
- Village of Woodsfield WWTP Improvements and Dedicated Storm Sewers
- Village of Bowerston Wastewater Collection System Improvements
- Village of Bowerston Wastewater Treatment Plant Improvements
- Green Valley Glenwood PSD Raw Water System Upgrade
- Village of Cadiz South and Center Collection System Improvements
- City of Catlettsburg Wastewater Treatment Plant Upgrade
- Kanawha Falls PSD Wastewater Treatment Plant Improvements
- Kanawha Falls PSD Wastewater Collection System Improvements
- Kanawha Falls PSD Gauley River Waterline Crossing Replacement
- Village of Woodsfield Long Term Control Plan Phase 3
- City of Salem Stormwater Elimination Project
- Logan County PSD Holden Wastewater System Extension and Upgrade
- Logan County PSD Mud Fork Wastewater System Extension and Upgrade
- Excelsa Westmoreland Hospital Secondary Disinfection System
- Buffalo Creek PSD Wastewater System Improvements
- Lincoln County PSD Alum Creek Sewer
- McDowell County PSD Elkhorn Creek Clean Stream and Trout Habitat Initiative



### Education

Drafting CADD Certificate (Microstation), Ben Franklin Career and Technical Center, 2000

CADD Certificate (Autocad), Carver Career and Technical Center, 1999

CADD Certificate (Civil 3D)

### Years experience

22

# TOM RAYBURN, PS

## Surveying Manager

### Professional overview

Mr. Rayburn currently serves as Manager of Surveying for E.L. Robinson Engineering and has more than four decades of design surveying and construction surveying experience. His responsibilities include management of surveying and control for various design projects, including highways, buildings, and bridges. In addition, Mr. Rayburn manages and performs work consisting of courthouse research for property ownership resolution for the above mentioned project types. This includes preparation of property resolution maps, deed descriptions for property acquisitions required for project plan preparation. Mr. Rayburn has experience in Geodetic Control Surveys, 3D Laser Scanning, Photogrammetric Control, Topographic Surveys, Cemetery Surveys, Boundary Surveys, Construction Stakeout, Subdivision Surveys, along with Hydrographic surveys of river and lake bottoms. A few of the more notable surveying projects performed by ELR under the supervision of Mr. Rayburn, have been the Blennerhassett Bridge Project, 11 continuous miles of Corridor H design surveys, GPS Control for the West Virginia Statewide Mapping and Addressing PSD Project, 3D Laser Scan and mapping of the CAMC Parking Garage partial collapse, and 3D Laser Scanning of I64/I77 Retaining Wall for Monitoring.

### Professional experience

- City of Flatoods, KY - Oaks Water Tank Topo, Boundary Survey
- City of Russell, KY - WTP Site Topo Survey
- City of Catlettsburg, KY - WWTP Site Topo, FEMA Flood Wall - Levy Survey
- City of Olive Hill, KY - Tygert's Creek Flood Mitigation Survey
- Grayson, KY Utilities - Damron Mayor Sanitary Sewer Level Survey
- Boyd Co, KY Sanitary District - Daniels Fork Sanitary Sewer
- City of Ironton, Ohio - CSO Separation Phases 1 -4
- City of Ironton, OH Riverfront Dock Ohio River Soundings
- ODOT - Ironton/ Russell Bridge OH River Soundings
- WV Rt. 10 (City of Man, Logan County) & Rt. 19 (Mercer Co)
- WVDOH St. Project S331-79-155 50.00 Blue Horizon Dr. (PA State Line)
- WVDOH Wellsburg Bridge Project
- WVDOH I-81 Widening Project
- Corridor H Kerens to US 219 Connector
- WVDOH I-70 Mining Project
- WVDOH WV Route 10 Operational Improvements
- Mingo County Redevelopment Wood Park WVDOH Access Road ROW Plans
- Chief Logan Recreational Center- Logan, WV
- WVDOH Median Improvement Surveys I-64 and I-77
- Surveys for Huntington Tri-State Airport Improvements
- Huntington Federal Building/USACOE Seven Floor Reconstruction Surveys
- Gallipolis Ohio Waterfront Survey



### Education

A.S. Mechanical Engineering, West Virginia Institute of Technology, 1971

### Registrations

Registered Professional Surveyor in West Virginia, Kentucky, North Carolina

Current Secretary for the West Virginia Board of Professional Surveyors

Member of National Society of Professional Surveyors

### Years experience

46

# HEATHER WOODS-SHAFFER

## Construction Inspection Manager

### Professional overview

Mrs. Woods-Shaffer has experience in all phases of construction projects. Mrs. Woods-Shaffer has managed numerous WV highway and bridge projects throughout the state and has extensive knowledge in all aspects of the construction process. For nearly 15 years, she has worked as E.L. Robinson's Construction Inspection Manager/Safety Officer. As the Construction Inspection Manager her duties include the management of all construction inspection operations; estimation, preparation and securing of construction inspection and material testing projects throughout the State of West Virginia; assignment of personnel, preparation of invoices for reimbursement, coordination and communication between field inspectors, designers, contractors and clients; approval of sub contractor and vendor invoices, material and cost tracking; and ensuring that ELR has a core group of inspectors capable of handling all future assignments.

Further, Mrs. Woods-Shaffer serves as ELR's Safety Officer. Her duties include the evaluation and monitoring of safety protocols and guidelines associated with ELR's day to day construction/oil and gas operations; orientation and education of new construction hires regarding ELR's safety policies along with planning and facilitating required annual occupational health and safety training programs for all employees; selecting, ordering and training employees on the appropriate PPE use and care; and conducting accident and incident investigations, along with reporting accident statistics, running OSHA audits and providing corrective action recommendations.

### Relevant experience

- WV 2 Proctor to Kent
- Corridor H US 219 to WV 72
- I-70 Mining, Wheeling, WV
- Corridor H Kerens to US 219 Connector
- Junior Bridge, Junior, WV
- Harmon Creek Bridge, Weirton, WV
- Various WVDOH Statewide contracts
- Cottageville T-Beam Bridge, Cottageville, WV
- South Fork Lee Exxon Bridge, Lubeck, WV
- I-77 Bridges: Surface Drive Overpass Bridges, Sissonville, WV
- McQuain Brothers Bridge, Clendenin, WV
- US Route 35 Design Build (CR 34 – Hurricane Creek), Winfield, WV
- US Route 35 Couch to Little Five Mile, Mason, WV
- Big Tyler Widening Project, Cross Lanes, WV
- Corridor D Ballfield relocation, Parkersburg, WV
- Corridor D Soccer field complex, Parkersburg, WV
- Garden Ground Highwall Phase II, Beckley, WV
- Hamlin Public Service District, Hamlin, WV



### Certifications

Radiation Safety Officer (RSO)

West Virginia Department of Transportation HazMat

West Virginia Division of Highways Aggregate Sampling Inspector

WV Transportation Engineering Technician Certification Level III

OSHA 10-hour Occupational Safety & Health Training Course

OSHA 30-hour Occupational Safety & Health Training Course in Construction

First Aid/CPR - Adult/AED/ Blood Borne Pathogens Training

Safe Gulf/Safe Land USA

### Years experience

27

## Noah Stevens, P.E.



Mr. Stevens has worked on numerous projects for clients in private industry as well as for state and federal agencies. He has performed a variety of roles in various projects from office management activities to coordination of field activities. Duties on these projects have included foundation investigation report production, foundation and retaining wall design, slope stability analysis, fill embankment and cut slope design, AutoCAD drafting, supervision of drilling programs, field activity coordination, operation and maintenance of groundwater extraction and remediation systems, laboratory data computation and processing, performance of fieldwork, client relations, and supervision of technical staff.

### Fields of Competence

- Subsurface Investigations
- Slope Stability Analysis
- Bridge & Building Foundation Analysis
- Retaining Wall Design
- Landslide Analysis and Remedial Design
- Site Development Earthwork Design
- Foundation Investigations
- Seismic Site Class evaluation, per International Building Code (IBC) 2000 edition
- Personnel Management
- Project Estimating
- Construction Monitoring

### Education

- BS, Civil Engineering Technology, West Virginia University Institute of Technology, 2011

### Registration/Certifications

- Registered Professional Engineer, West Virginia
- OSHA 1910.120 40-hour HAZWOPER Training, 2011
- Certified WVDOT-DOH Compaction Inspector
- OSHA 10 Hour Construction Industry Outreach Training, 2012

### Employment History

- June 2018 – Present  
Project Engineer, NGE, LLC
- May 2011 – June 2018  
Staff Engineer, NGE, LLC
- Summers of 2009 & 2010  
Resurfacing Inspector Intern, WVDOH



## Chuck Montgomery, P.G.



Mr. Montgomery is currently serving as Laboratory Services Manager, as well as Project Manager and/or Project Geologist on numerous projects for clients in private industry as well as for state and federal agencies. He has performed a variety of roles in various projects from office management activities to coordination of field activities. Duties on these projects have included foundation investigation report production, mine subsidence evaluation and assessment, supervision of subsurface drilling programs, field activity coordination, laboratory testing, data computation and processing, performance of fieldwork, client relations, and supervision of staff. Mr. Montgomery also coordinates and performs Crosshole Sonic Logging (CSL) testing, a non-destructive method of analyzing the integrity of concrete shafts.

### Fields of Competence

- Foundation Investigations
- Landslide Analysis
- Mine Subsidence Investigations
- Seismic Site Class evaluation, per International Building Code (IBC) 2000 edition.
- Forensic & Insurance Investigations
- Crosshole Sonic Logging (CSL)
- Personnel Management
- Project Management (schedule and budget)
- Project Estimating

### Education

- B.S., Geology, Marshall University - 1991
- OSHA 1910.120 40-hour HAZWOPER Training

### Registration/Certifications

- Registered Professional Geologist in Kentucky. Registration No. KY-2258 (since 1999)
- Certified Monitoring Well Driller in West Virginia
- OSHA 1910.120 40-hour HAZWOPER Training

### Employment History

- February 2004 - Present  
Project Manager, NGE, LLC
- 1996 - February 2004  
Project Geologist, Triad Engineering, Inc.
- 1992 -1996  
Staff Geologist, Triad Engineering, Inc.

# Michael D. Frame



Mr. Frame has worked on numerous projects for clients in private industry as well as for state and federal agencies. He has performed a variety of roles in various projects from office management activities to coordination of field activities. Duties on these projects have included foundation investigation report production, slope stability analysis, AutoCAD drafting, supervision of subsurface drilling programs, field portion of environmental site assessments, structural inspections, GPS and conventional surveys, laboratory data computation and processing, performance of fieldwork, and client relations.

## Fields of Competence

- Foundation Investigations
- Construction Monitoring
- Personnel Management
- Project Management (schedule and budget)
- Project Estimating

## Education

- BS, Civil Engineering Technology, West Virginia University Institute of Technology, 2010

## Registration/Certifications

- OSHA 1910.120 40-hour HAZWOPER Training, 2010

## Employment History

- January 2015 – Present  
Drilling Services Manager, NGE, LLC
- December 2010 – January 2015  
Staff Engineer, NGE, LLC
- March 2010 – December 2010  
Engineering Intern, NGE, LLC
- 2004 – Present  
Structural Journeyman, Civil Engineering Squadron  
West Virginia Air National Guard
- 2009  
Resurfacing Inspector Intern, WVDOH

# Alan Lupardus



Mr. Lupardus has worked on numerous projects over the past 30 years as a drilling assistant and drill crew chief, providing drilling services for geotechnical, environmental, and construction projects. He now supervises all field activities. He has worked for industrial clients and for state and federal agencies. He has applied diversified knowledge of geotechnical drilling principles and practices to a broad array of assignments and field tasks and has the knowledge to correspond with team members to make decisions on geotechnical drilling issues and methods encountered in the field. He has provided training, supervision, and guidance to driller assistants in their development to become drillers.

## Fields of Competence

- Responsible for supervising day to day field activity.
- Responsible for loading and mobilizing equipment to project site
- Complies with NGE's daily Tailgate Safety Plan, as provided by the Geotechnical Drilling Division Manager.
- Performs preventative maintenance of drill rigs and associated equipment.
- Remains up to date with current industry and governmental specifications and standards affecting geotechnical drilling.
- Communicates well with on-site engineering consultants in a professional manor.
- Trains and develops junior operators/assistants.

## Registration/Certifications

- First Aid/CPR
- Safeland Training PEC
- OSHA 10 Hour Construction Industry Outreach Training, 2012

## Employment History

- 2018 – Present  
Drilling Field Supervisor, NGE
- 2017 – 2018  
Driller, TRIAD Engineering
- 2015 – 2017  
Driller, SLS
- 1988 – 2015  
Driller, TRIAD Engineering
- 1986 – 1988  
Driller's Assistant, TRIAD Engineering

# Kevin Walton



Mr. Walton has worked on numerous projects over the years as a drill crew chief, providing drilling services for geotechnical, environmental, and construction projects. He has worked for clients in private industry as well as for state and federal agencies. He has applied intensive and diversified knowledge of geotechnical drilling principles and practices to various assignments and field tasks. He has the knowledge to correspond with team members to make decisions on geotechnical drilling issues and methods encountered in the field. He has provided training, supervision, and guidance to numerous driller assistants in their development to become drillers.

## Fields of Competence

- Responsible for performing and documenting drilling project tasks (drilling logs).
- Responsible for loading and mobilizing equipment to the project site.
- Complies with NGE's daily Tailgate Safety Plan, as provided by the Geotechnical Drilling Manager.
- Performs preventative maintenance of drill rigs and associated equipment.
- Remains up to date with current industry and governmental specifications and standards affecting geotechnical drilling.
- Communicates well with on-site engineering consultants in a professional manor.
- Trains and develops junior operators/assistants.

## Registration/Certifications

- Safeland Training PEC - 2013
- OSHA 10-Hour Construction Industry Outreach Training, 2012

## Employment History

- November 2021 – Present  
Drill Crew Chief, NGE
- January 2014 – November 2021  
Lead Driller, Triad Engineering



Over the past 45 years, E.L. Robinson Engineering has focused its efforts on delivering quality projects to our clients and building strong relationships based on trust and partnership. We believe building lasting relationships with our clients is key to delivering exceptional service for many years to come.

E.L. Robinson provides WVDEP-AML with the capabilities, expertise and resources of one of the top-notch civil engineering firms in the region. Our offices are staffed with professionals experienced in AML reclamation mapping, permitting, design and construction monitoring. Further, we are very familiar with the requirements of the permitting and regulatory agencies which expedites the completion of projects.

As part of our commitment to quality, E.L. Robinson realizes that every project, client and location is very different. As a result, we look at each project independently to determine the most feasible and functional solution. Specifically, we look at ways we can maximize the project benefit and minimize the construction cost while at the same time completing projects on time and within budget. We have demonstrated abilities in developing practical and cost-effective reclamation and improvement projects and are dedicated to meeting project schedules and budgets.

### Maryland Shallmar Landslide Emergency

Project Location: Garrett County, Maryland  
Completion Date: September 2018  
Client: Maryland Department of the Environment

Project Description: Landslide Abatement Design

### Maryland Scenic Railroad Landslide

Project Location: Frostburg, Maryland  
Completion Date: August 2016  
Client: Maryland Department of the Environment

Project Description: Landslide Abatement Design

### Red Warrior Gob & Slide

Project Location: Kanawha County, West Virginia  
Completion Date: June 2015  
Client: WVDEP-AML, Charleston, WV

Project Description: Performed surveying, drilling and design for a potential blowout area. Designed horizontal bore for dewatering.

### North Matewan (Akers) Landslide

Project Location: Mingo County, WV  
Completion Date: June 2013  
Client: WVDEP-AML, Charleston, WV

Project Description: Performed surveying, drilling and emergency design for stabilizing landslide.

### Branchland (Blankenship) Landslide

Project Location: Lincoln County, West Virginia  
Completion Date: May 2014  
Client: WVDEP-AML, Charleston, WV

Project Description: Performed surveying, drilling and emergency design for stabilizing landslide.

### Coburns Creek Landslide

Project Location: Preston County, West Virginia  
Completion Date: May 2014  
Client: WVDEP-AML, Bridgeport, WV

Project Description: Performed surveying, drilling and emergency design for stabilizing landslide.

### Sauls Run Landslide

Project Location: Lewis County, West Virginia  
Completion Date: May 2015  
Client: WVDEP-AML, Charleston, WV

Project Description: Performed surveying and emergency design for stabilizing landslide.

### Missouri Fork Landslide

Project Location: Boone County, West Virginia  
Completion Date: May 2015  
Client: WVDEP-AML, Charleston, WV

Project Description: Performed surveying and emergency design for stabilizing landslide.

### Worthington (Hess) Landslide

Project Location: Marion County, West Virginia  
Completion Date: May 2015  
Client: WVDEP-AML, Bridgeport, WV

Project Description: Performed surveying, drilling and emergency design for mine blowout and landslide abatement.

### Copen Road Landslide

Project Location: Braxton County, West Virginia  
Completion Date: July 2015  
Client: WVDEP-AML, Bridgeport, WV

Project Description: Performed surveying, drilling and emergency design for stabilizing landslide.

### Dans Branch (Dillon) Landslide

Project Location: Kanawha County, West Virginia  
Completion Date: June 2015  
Client: WVDEP-AML, Charleston, WV

Project Description: Performed surveying, drilling and design for a potential blowout area. Designed horizontal bore for dewatering.

### Pendleton Creek Highwall

Project Location: Tucker County, West Virginia  
Completion Date: September, 2018  
Client: WVDEP-AML

Project Description: Highwall Backfill

**Maryland Barton Mine Pool**

Project Location: Allegany County, Maryland  
 Completion Date: June 2018  
 Client: Maryland Department of the Environment

Project Description: Mine Pool Evaluation and Design

**Glen Alum Complex**

Project Location: Mingo County, West Virginia  
 Completion Date: September 2014  
 Client: WVDEP-AML, Charleston, WV

Project Description: Performed surveying and design for large refuse area and upgrading of surface drainage.

**Carson One Special Reclamation Project**

Project Location: Upshur County, West Virginia  
 Completion Date: June 2015  
 Client: WVDEP-Special Reclamation, Philippi, WV

Project Description: Performed surveying, drilling and design for regrading refuse, sealing mine shafts and slopes and upgrading drainage structures.

**Vickers Branch (Butcher) Drainage**

Project Location: Logan County, West Virginia  
 Completion Date: 2013  
 Client: WVDEP-AML, Charleston, WV

Project Description: Performed survey, drilling, design for mine seals and mine drainage control.

**Sugarcamp Run Burning Refuse Phase II**

Project Location: Nicholas County, West Virginia  
 Completion Date: 2013  
 Client: WVDEP-AML, Oak Hill, WV

Project Description: Performed site survey, drilling and prepared burning refuse abatement design.

**Craigmoor (Strader) Landslide Emergency**

Project Location: Harrison County, West Virginia  
 Completion Date: 2017  
 Client: WVDEP-AML

Project Description: Landslide abatement design

**Maryland G&S Landslide Study**

Project Location: Kitzmiller, Maryland  
 Completion Date: 2019  
 Client: Maryland AML

Project Description: Landslide causation study

**Sauls Run (Bennett) Landslide**

Project Location: Lewis County, West Virginia  
 Completion Date: 2017  
 Client: WVDEP-AML

Project Description: Landslide abatement design

**West Milford (Chapman) Landslide**

Project Location: Harrison County, West Virginia  
 Completion Date: 2019  
 Client: WVDEP-AML

Project Description: Landslide abatement design

**Roderfield (Simpson) Landslide**

Project Location: McDowell County, West Virginia  
 Completion Date: 2017  
 Client: WVDEP-AML

Project Description: Landslide abatement design

**Scotch Hill Mine Fire**

Project Location: Preston County, West Virginia  
 Completion Date: 2019  
 Client: WVDEP-AML

Project Description: Mine fire abatement design

**Mammoth (Shamblin) Landslide**

Project Location: Kanawha County, West Virginia  
 Completion Date: 2017  
 Client: WVDEP-AML

Project Description: Landslide abatement design

**Delbarton (Curry) Landslide**

Project Location: Mingo County, West Virginia  
 Completion Date: 2019  
 Client: WVDEP-AML

Project Description: Landslide abatement design

**Big Creek (Surgoine) Landslide**

Project Location: Logan County, West Virginia  
 Completion Date: 2019  
 Client: WVDEP-AML

Project Description: Landslide abatement design

**Crooked Run (Davis) Landslide**

Project Location: Harrison County, West Virginia  
 Completion Date: 2017  
 Client: WVDEP-AML

Project Description: Landslide abatement design

**Procious (Doughty) Landslide**

Project Location: Clay County, West Virginia  
 Completion Date: 2017  
 Client: WVDEP-AML

Project Description: Landslide abatement design

**Rivesville (Parker) Landslide**

Project Location: Marion County, West Virginia  
 Completion Date: 2018  
 Client: WVDEP-AML

Project Description: Landslide abatement design

**Bridgeport (Ridgeway) Landslide**

Project Location: Harrison County, West Virginia  
 Completion Date: 2019  
 Client: WVDEP-AML

Project Description: Landslide abatement design

**North Matewan (Ross) Landslide**

Project Location: Mingo County, West Virginia  
 Completion Date: 2019  
 Client: WVDEP-AML

Project Description: Landslide abatement design

**Summerlee Refuse Phase II**

Project Location: Fayette County, West Virginia  
 Completion Date: 2019  
 Client: WVDEP-AML

Project Description: Refuse and drainage design

**Weston (Williams) Landslide**

Project Location: Fayette County, West Virginia  
 Completion Date: 2019  
 Client: WVDEP-AML

Project Description: Landslide abatement design

**Smithers Landslide**

Project Location: Fayette County, West Virginia  
 Completion Date: Current  
 Client: WVDEP-AML

Project Description: Landslide abatement design



**Abney Refuse Pile**

Project Location: Raleigh County, West Virginia  
 Completion Date: 2011-2013  
 Client: WVDEP-AML, Oak Hill, WV

Project Description: Field surveying and mapping, subsurface investigation, design work for refuse regrading, mine seals, and drainage.

**Cartright Branch Refuse Pile**

Project Location: Logan County, West Virginia  
 Completion Date: 2011-2012  
 Client: WVDEP-AML, Charleston, WV

Project Description: Performed survey, drilling, design for refuse regrading and mine drainage control.

**Milam Ridge**

Project Location: Wyoming County, West Virginia  
 Completion Date: December 2012  
 Client: WVDEP-AML, Charleston, WV

Project Description: Performed surveying, drilling and design for numerous mine portals.

**Squires Creek (Moats) Portal and Refuse**

Project Location: Preston County, West Virginia  
 Completion Date: December 2014  
 Client: WVDEP-AML, Bridgeport, WV

Project Description: Performed surveying, drilling and design of refuse area and portals.

**Preston Energy/Rockville/Viking Coal Special Reclamation**

Project Location: Preston County, West Virginia  
 Completion Date: October 2015  
 Client: WVDEP-Special Reclamation, Philippi, WV

Project Description: Performed surveying and design for design of reclamation of portals and piping system to convey mine water to treatment plant.

**McGraws Vertical Opening**

Project Location: Wyoming County, West Virginia  
 Completion Date: July 2013  
 Client: WVDEP-AML, Charleston, WV

Project Description: Performed emergency design for mine shaft cap.

**New Cumberland Mine Blowout**

Project Location: Hancock County, West Virginia  
 Completion Date: June 2013  
 Client: WVDEP-AML, Bridgeport, WV

Project Description: Performed surveying, drilling and design for mine blowout abatement.

**Fairview Mine Shaft**

Project Location: Marion County, West Virginia  
 Completion Date: October 2013  
 Client: WVDEP-AML, Bridgeport, WV

Project Description: Performed emergency design for mine shaft cap.

**Whitehall Mine Fire**

Project Location: Marion County, West Virginia  
 Completion Date: October 2013  
 Client: WVDEP-AML, Bridgeport, WV

Project Description: Performed surveying, drilling and design for extinguishment of mine fire.

**Lynch Run Mine Blowout**

Project Location: Gilmer County, West Virginia  
 Completion Date: May 2015  
 Client: WVDEP-AML, Bridgeport, WV

Project Description: Performed surveying, drilling and emergency design for mine blowout and landslide abatement.

**Marsh Run Portals**

Project Location: Braxton County, West Virginia  
 Completion Date: 2013  
 Client: WVDEP-AML, Charleston, WV

Project Description: Performed survey, drilling and design for mine seals and regrading.

**Donnie Thorn Highwall**

Project Location: Preston County, West Virginia  
 Completion Date: 2013  
 Client: WVDEP-AML, Bridgeport, WV

Project Description: Field surveying and mapping, subsurface investigation, design work for refuse regrading, mine seals, and drainage.

**Glen Rogers Emergency**

Project Location: Wyoming County, West Virginia  
 Completion Date: 2012  
 Client: WVDEP-AML, Charleston, WV

Project Description: Performed survey, drilling, and design for shaft seals.

**Morgan #46 Highwall**

Project Location: Preston County, West Virginia  
 Completion Date: 2013  
 Client: WVDEP-AML, Bridgeport, WV

Project Description: Performed survey and design for refuse and spoil regrading and drainage control.

**Thorpe Refuse Pile**

Project Location: McDowell County, West Virginia  
 Completion Date: 2011-2012  
 Client: WVDEP-AML, Oak Hill, WV

Project Description: Performed survey, drilling, design for refuse and spoil regrading and mine drainage control.

**Shinnston Lumberport Subsidence**

Project Location: Harrison County, West Virginia  
 Completion Date: 2010-2012  
 Client: WVDEP-AML, Philippi, WV

Project Description: Performed site survey, drilling and prepared subsidence abatement design.

**Newtown (Kinder) Portals Design**

Project Location: Mingo County, West Virginia  
 Completion Date: 2010-2012  
 Client: WVDEP-AML, Charleston, WV

Project Description: Performed site survey, and prepared design for portals reclamation and drainage abatement design.

**Gordon "C" Refuse Pile**

Project Location: Boone County, West Virginia  
 Completion Date: 2010-2012  
 Client: WVDEP-AML, Oak Hill, WV

Project Description: Field surveying and mapping, subsurface investigation, design work for mine seals, drainage, and refuse reclamation.

**Keaton Branch Complex**

Project Location: Raleigh County, West Virginia  
 Completion Date: 2010-2011  
 Client: WVDEP-AML, Oak Hill, WV

Project Description: Performed survey, drilling, design for refuse, regrading and mine drainage control.

**Dunloup Creek Complex**

Project Location: Raleigh County, West Virginia  
 Completion Date: 2009-2011  
 Client: WVDEP-AML, Oak Hill, WV

Project Description: Performed survey, drilling, design for refuse and spoil regrading and mine drainage control.

**Brownton (McCord) Landslide**

Project Location: Barbour County, West Virginia  
 Completion Date: 2009-2011  
 Client: WVDEP-AML, Philippi, WV

Project Description: Performed site survey, drilling and prepared landslide abatement design.

**Keystone (Avery) Landslide Portal**

Project Location: McDowell County, West Virginia  
 Completion Date: 2009-2011  
 Client: WVDEP-AML, Charleston, WV

Project Description: Performed site survey and prepared landslide abatement design, portals reclamation, and drainage control.

**Dan's Branch (Pennington) Landslide Emergency**

Project Location: Mingo County, West Virginia  
 Completion Date: 2011  
 Client: WVDEP-AML, Charleston, WV

Project Description: Field surveying and mapping, subsurface investigation, design work for landslide reclamation.

**East Bank (Willis) Mine Blowout**

Project Location: Kanawha County, West Virginia  
 Completion Date: 2009  
 Client: WVDEP-AML, Charleston, WV

Project Description: Field surveying and mapping, design work for mine seal and drainage control.

**Island Creek #18 Mine Complex**

Project Location: Logan County, West Virginia  
 Completion Date: 2009-2011  
 Client: WVDEP-AML, Oak Hill, WV

Project Description: Field surveying and mapping, subsurface investigation, design work for mine seals, drainage, and refuse reclamation.

**Jacob's Fork Complex**

Project Location: Boone County, West Virginia  
 Completion Date: 2008-2009  
 Client: WVDEP-AML, Charleston, WV

Project Description: Field surveying and mapping, subsurface investigation, design work for mine seals, drainage, and reclamation.

**Gilmer B Site 3.8**

Project Location: Gilmer County, West Virginia  
 Completion Date: 2008  
 Client: WVDEP-AML, Charleston, WV

Project Description: Performed survey, drilling, design for refuse and spoil regarding and mine drainage control.

**Rhodell Refuse & Portals**

Project Location: Wyoming County, West Virginia  
 Completion Date: 2008  
 Client: WVDEP-AML, Charleston, WV

Project Description: Performed survey, drilling, design for refuse and spoil regarding and mine drainage control.

**Gouge Landslide Emergency**

Project Location: Scottown, Ohio  
 Completion Date: 2007  
 Client: ODNR-AML, Columbus, OH

Project Description: Performed site survey, drilling and prepared landslide abatement design.

**Rodgers Subsidence Emergency**

Project Location: Logan County, West Virginia  
 Completion Date: 2011-2012  
 Client: WVDEP-AML, Charleston, WV

Project Description: Performed survey, drilling, design for refuse regrading and mine drainage control.

**McAdams Subsidence Emergency**

Project Location: Stark County, Ohio  
 Completion Date: 2006  
 Client: ODNR-AML, Columbus, OH

Project Description: Performed investigation and prepared report of findings.

**Athens Rt. 13 Refuse Fire Emergency**

Project Location: Athens County, Ohio  
 Completion Date: 2006  
 Client: ODNR-AML, Columbus, OH

Project Description: Performed site survey, prepared abatement design and monitored on site construction for fire extinguishment.

**Brown Landslide Emergency**

Project Location: Rayland, OH  
 Completion Date: 2007  
 Client: ODNR-AML, Columbus, OH

Project Description: Performed site survey and prepared landslide abatement design.



**Toney Fork Landslide Emergency**

Project Location: Boone County, West Virginia  
 Completion Date: 2006  
 Client: WVDEP-AML, Charleston, WV

Project Description: Performed site survey, drilling and prepared plans and specifications to stabilize an emergency landslide area.

**Lavender Refuse Fire Emergency**

Project Location: Meigs County, Ohio  
 Completion Date: 2005  
 Client: ODNR-AML, Columbus, OH

Project Description: Performed abatement plan and monitored construction.

**Goetz Subsidence Emergency**

Project Location: Columbiana County, Ohio  
 Completion Date: 2005  
 Client: ODNR-AML, Columbus, OH

Project Description: Performed investigation and prepared report of findings.

**Cox Refuse Fire Emergency**

Project Location: Gallia County, Ohio  
 Completion Date: 2005  
 Client: ODNR-AML, Columbus, OH

Project Description: Performed abatement design for fire extinguishment.

**North Matewan (Sipple Drainage)**

Project Location: Mingo County, West Virginia  
 Completion Date: 2005  
 Client: WVDEP-AML

Project Description: Performed surveying, drilling and design for drainage project abatement.

**Phalen Landslide Emergency**

Project Location: Martins Ferry, Ohio  
 Completion Date: 2005  
 Client: ODNR-AML, Columbus, OH

Project Description: Performed site surveying and landslide abatement design.

**Adkins Landslide Emergency**

Project Location: Gallia County, Ohio  
 Completion Date: 2005  
 Client: ODNR-AML, Columbus, OH

Project Description: Performed surveying, drilling, landslide abatement and construction monitoring.

**Baisden Subsidence Emergency**

Project Location: Jackson County, Ohio  
 Completion Date: 2005  
 Client: ODNR-AML, Columbus, OH

Project Description: Performed drilling to develop subsidence abatement solutions.

**Treadway Landslide Emergency**

Project Location: Rayland, Ohio  
 Completion Date: 2004  
 Client: ODNR-AML, Columbus, OH

Project Description: Performed site surveying, drilling and landslide abatement design.

**Big Creek "C" Refuse**

Project Location: Logan County, West Virginia  
 Completion Date: 2004  
 Client: WVDEP-AML

Project Description: Performed surveying and drilling for design.

**Imboden Landslide Emergency**

Project Location: Rutland, Ohio  
 Completion Date: 2004  
 Client: ODNR-AML, Columbus, OH

Project Description: Performed drilling and surveying to develop landslide abatement solutions and cost estimates.

**Parsons Landslide Emergency**

Project Location: New Philadelphia, Ohio  
 Completion Date: 2004  
 Client: ODNR-AML, Columbus, OH

Project Description: Performed site review and report concerning landslides relation to mining and potential solutions.

**Jefferson County Road 26 Landslide Emergency**

Project Location: Weinterville, Ohio  
 Completion Date: 2004  
 Client: ODNR-AML, Columbus, OH

Project Description: Performed surveying, drilling and prepared plans and specifications to stabilize and emergency landslide area.

**Charleston Romeo Landslide**

Project Location: Kanawha County, West Virginia  
 Completion Date: 2004  
 Client: WVDEP-AML

Project Description: Performed surveying, drilling and design of landslide abatement.

**Titus Road Landslide Emergency**

Project Location: Rutland, Ohio  
 Completion Date: 2004  
 Client: ODNR-AML, Columbus, OH

Project Description: Performed surveying, drilling and prepared plans and specifications to stabilize and emergency landslide area.

**Lewis Landslide Emergency**

Project Location: Pomeroy, Ohio  
 Completion Date: 2004  
 Client: ODNR-AML, Columbus, OH

Project Description: Performed surveying, drilling, prepared plans and specifications to stabilize an emergency landslide area, and provided construction monitoring.

**Roush Landslide Emergency**

Project Location: Pomeroy, Ohio  
 Completion Date: 2004  
 Client: ODNR-AML, Columbus, OH

Project Description: Prepared plans and specifications to stabilize an emergency landslide area.

**Moran Subsidence**

Project Location: Clinton, Ohio  
 Completion Date: 2004  
 Client: ODNR-AML, Columbus, OH

Project Description: Prepared plans and specifications to stabilize an emergency subsidence area.

**Ron Bobar Subsidence**

Project Location: Flushing, Ohio  
 Completion Date: 2004  
 Client: ODNR-AML, Columbus, OH

Project Description: Investigation and report of an emergency subsidence area.

**Gooney Otter Refuse**

Project Location: Wyoming County, West Virginia  
 Completion Date: 2004  
 Client: WVDEP-AML

Project Description: Performed surveying, drilling and site design for refuse regarding project.

**Chapmanville (Gorby) Mine Blowout**

Project Location: Logan County, West Virginia  
 Completion Date: 2003  
 Client: WVDEP-AML

Project Description: Performed surveying, drilling and design of landslide regrading and retaining wall design.

**Tuppers Creek (Layne) Landslide**

Project Location: Kanawha County, West Virginia  
 Completion Date: 2003  
 Client: WVDEP-AML

Project Description: Performed surveying, drilling and design of landslide abatement.



## PROJECT EXPERIENCE

### Maidsville (Tennant) Landslide

Project Location: Monongalia County, West Virginia  
Completion Date: 2003  
Client: WVDEP-AML

Project Description: Performed surveying, drilling and design of landslide abatement.

### Whittington Hill (Walker Landslide)

Project Location: Kanawha County, West Virginia  
Completion Date: 2002  
Client: WVDEP-AML

Project Description: Performed surveying, drilling and design for an emergency landslide.

### Minden Refuse Pile Reclamation Project

Project Location: Fayette County, West Virginia  
Completion Date: 2001  
Client: WVDEP-AML

Project Description: Performed surveying and design for emergency project to upgrade drainage control.

### Jeffrey Mine Complex Reclamation Project

Project Location: Boone County, West Virginia  
Completion Date: 2001  
Client: WVDEP-AML

Project Description: Performed surveying and design regrading refuse.

### Hot Coal Reclamation Project

Project Location: Raleigh County, West Virginia  
Completion Date: 2000  
Client: WVDEP-AML

Project Description: Performed surveying and design for regrading refuse.

### Bull Run #27

Project Location: Preston County, West Virginia  
Completion Date: 2000  
Client: WVDEP-AML

Project Description: Performed surveying and design for regrading refuse.

### Rich Fork (Thaxton) Landslide

Project Location: Kanawha County, West Virginia  
Completion Date: 2003  
Client: WVDEP-AML

Project Description: Performed surveying, drilling and design of landslide abatement.

### Riffe Branch Impoundment

Project Location: Fayette County, West Virginia  
Completion Date: 2000  
Client: WVDEP-AML

Project Description: Performed surveying and design for regrading refuse and drainage control.

### Ven's Run Landslide

Project Location: Harrison County, West Virginia  
Completion Date: 1999  
Client: WVDEP-AML

Project Description: Performed surveying and design for regraded landslide area.

### Bull Run #35

Project Location: Preston County, West Virginia  
Completion Date: 1999  
Client: WVDEP-AML

Project Description: Performed surveying and design for refuse and spoil regrading.

### Securro Mine Drainage Site 1 & 2

Project Location: Fairmont, West Virginia  
Completion Date: 1998  
Client: WVDEP-AML

Project Description: Performed surveying and design for mine drainage system.

### **Geotechnical/Soil Analysis**

Performed geotechnical analysis on 135 projects over the past 20 years. These project involved slope stability, mine pool locations and mine subsidence.

**US 35 Design Build:** Utilized provided core boring data, coordinated drilling of over 100 additional core borings to design 7.5 miles of 4 lane highway in Putnam County, West Virginia. This included the foundation designs of bridge piers and abutments for 2 bridges carrying the 4 lane roadway over a major stream and an existing roadway.

**WVDOT-District 2 Mingo County:** Solicited core borings, provided field personnel to log core samples, designed 4 pile retaining walls for landslides effecting existing roadways. Including analyzing piling, lagging and other aspects of each wall. Developed plans with profile, traffic control, estimated quantities, drainage controls, etc. in a bid package suitable for WVDOT to solicit bids.

**WVDOT-District 2 Logan County:** Solicited core borings, provided field personnel to log core samples, designed 5 pile retaining walls for landslides effecting existing roadways. Including analyzing piling, lagging and other aspects of each wall. Developed plans with profile, traffic control, estimated quantities, drainage controls, etc. in a bid package suitable for WVDOT to solicit bids.

**WVDOT-District 2 Lincoln County:** Solicited core borings, provided field personnel to log core samples, designed 14 pile retaining walls for landslides effecting existing roadways. Including analyzing piling, lagging and other aspects of each wall. Developed plans with profile, traffic control, estimated quantities, drainage controls, etc. in a bid package suitable for WVDOT to solicit bids.

**WVDOT Cottageville Bridge:** Solicited bids from drilling contractors, coordinated drilling for a bridge replacement in Jackson and Mason County, West Virginia. The geotechnical testing performed consisted of five hydrometer analysis and rock core compression testing. The design included pile foundations for the piers and abutments, sonar analysis of the creek channel as it relates to the soil materials and slope stability analysis for each abutment.

**WVDEP-AML Dans Branch:** Performed geotechnical investigation of an AML emergency landslide. Performed core borings and geotechnical testing of soil samples obtained from the borings. Designed pile retaining wall to support embankment and existing home below pre-law mining.

**Dempsey Bottom Beam Span:** The subsurface investigation consisted of 6 test borings, all of which encountered bedrock. Four of the core borings were located at the site of the two proposed abutments, while the other two were drilled at the site of the proposed retaining wall. Hollow stem augers were utilized to drill the holes through the overburden. The Standard Penetration Test method utilizing split-spoon sampler was also used to sample the overburden soils.

**Guyandotte River Bridge:** ELR performed geotechnical design including future mine subsidence remediation for this bridge. During the design process a check of the mining records determined the presence of a coal seam in the vicinity of the bridge. After review of the mine maps and additional drilling, presence of mine voids was confirmed. Using the depths from the ground surface to the mine level a limit of grout protection was developed. The grouting program developed included some down hole camera work and confirmation borings to confirm the grout effectiveness. Grouting of the mine void eliminated the possibility of future mine subsidence in the vicinity of the substructure and allowed the bridge to be supported on conventional caissons.

## Hydraulics/Hydrology

E.L. Robinson has worked with various clients, both private firms and public entities, in developing hydrology and hydraulics studies to determine effects that developments would have on floodplains and how they might adversely affect the surrounding communities.

- East Fork Bridge
- South Cuba Bridge
- WV 10 Operational Improvements
  - Jesse Bridge
  - Herndon Slab Bridge
  - Car Wash Bridge
  - Matoaka Bridge No. 1
  - Matoaka Bridge No 2
  - SSG Gene Arden Vance Jr Memorial Bridge
  - Toney Fork Slab Bridge
  - Road Branch Bridge
  - Beech Branch Bridge
  - Giatto Overpass Bridge
  - Hiawatha Overpass Bridge
  - U.S. Army Sp4 Jackie (Hearn) Mcmillion Memorial Bridge
- Blue Creek Bridge
- Marsh Fork Bridge
- Junior Bridge
- Corridor H – Kerens to Parsons
  - Baldlick Fork Bridge (Bridge #1)
  - Panther Run Bridge (Bridge #2)
  - South Branch of Haddix Run Bridge (Bridge #3)
  - Unnamed Trib of Haddix Run Bridge (Bridge #4)
  - Bridge over Haddix Run and US 219 (Bridge #5)
- Cherry Tree Bridge
- Laurel Creek Girder Bridge

## Aerial Photography/Mapping

E.L. Robinson Engineering has worked with various clients to develop contour mapping of sites and areas that otherwise could not be determined. With the use of aerial photography and state of the art technology, ELR has developed maps from photographs for numerous projects including but not limited to:

- City of Beckley
- City of Charleston
- Corridor D
- Corridor H
- Cross Lanes Connector
- Eldora
- Frazier's Bottom
- Glenwood
- Hatfield Cemetery
- I-70 Washington Avenue (Wheeling, WV)
- I-64 Glade Creek
- Jackson Mill
- King Coal
- KY 40 Connector
- Logan Run
- New River Parkway
- Ohio River Crossing
- Pinegrove
- Parkersburg
- Powell Creek
- Prince
- PSI-Baker/Ft. Henry Bridges
- Racetrack
- White Sulphur Springs

## Aerial Photography/Mapping

E.L. Robinson Engineering has completed the preliminary mapping for the WVDEP for all of the AML projects located in Northern West Virginia since 2012. In addition, ELR has completed either preliminary or final mapping for the following:

### **2003-Present**

All ELR AML Projects WV and OH

### **2002**

Community of Preston  
Rhodell Refuse Portals  
Vivian Refuse Maintenance  
Glen Rogers Waterline  
Sundial (Hatfield) Refuse Pile  
Jacob Fork Complex  
Thomas (NE) Subsidence

### **2001**

Bartley Mine Dump  
Beckley Soccer Complex  
Holden Portals/Structures  
Jeffrey Complex  
Minden Refuse Drainage  
Roach Branch Refuse

Sauls Run Strip  
Stonecoal Creek Complex  
Waterline Photography  
Weaver Portals/Mine Drain

### **2000**

Micajah Refuse Pile  
McAlphin Eroding Dump  
Flemington Portals/Drainage  
Minden "C" Refuse Pile  
National Mine Complex  
Linger Clogged Stream  
Hotcoal Mine Dump  
Layton Mine Drainage  
Quintain Development

### **1999**

Bull Run #27  
8th Street-Warwood Avenue

Mabie Highwall  
Coal Branch  
Matoaka Subsidence  
Elkins Coal  
Springton Refuse  
Veins Run

### **1998**

Bull Run #35  
Fickey Run

### **1997**

Browns Creek  
Marrowbone  
Matewan  
Pigeon Creek

## Abandoned Mine Lands & Reclamation Projects



NGE has provided drilling and engineering services on over 100 AML related projects, both for the West Virginia Department of Environmental Protection and private engineering firms working for the WVDEP. The following is a sampling of some of the projects NGE has completed in the past five years.

**Project:** *AML Green Valley Road Landslide*  
**Client:** *EL Robinson Engineering*  
**Location:** *Harrison County, West Virginia*

---

NGE provided complete drilling services for the client to provide subsurface data necessary for remedial designs. Borings were drilled in critical areas to determine previous mine activity. PVC piezometers were installed in the borings which intercepted mine workings to allow for the monitoring of mine pool levels.

**Project:** *Francis AMD Maintenance*  
**Client:** *CEC*  
**Location:** *Harrison County, West Virginia*

---

NGE drilled a series of test borings at the project site to provide subsurface data necessary for use in design. The results of the field investigation and laboratory testing was used to reduce the size of an Acid Mine Drainage pond in the area.

**Project:** *Falls Run (Abruzzino) AML*  
**Client:** *Dieffenbach & Hritz*  
**Location:** *Harrison County, West Virginia*

---

NGE provided complete drilling and engineering services for the client to provide data necessary for remedial designs. The project required design of remedial measures for slope instability issues caused by historic mining activity in the area and the reclamation of an existing highwall..

**Project:** *Owl Creek Highwall*  
**Client:** *Thrasher Engineering*  
**Location:** *Monongalia County, West Virginia*

---

NGE provided complete drilling services for the client to provide subsurface data necessary for remedial designs. Borings were drilled around the high wall and an engineering analysis was performed for the slope stability and backfill around the high wall.

**Project:** *West Fork AML*  
**Client:** *Kleinfelder*  
**Location:** *Harrison County, West Virginia*

---

NGE drilled a series of test borings at the project site to provide subsurface data necessary for use in design of remedial measures for a landslide and multiple draining mine portals. The results of the field investigation and aided the team to analyze the slide and develop typical cross-sections which illustrated their recommended method of repair for stabilization.

**Project:** *Wades Run AML*  
**Client:** *RESPEC*  
**Location:** *Monongalia County, West Virginia*

---

The client required subsurface data to assist in the design of a remedial measure for an unstable refuse area and multiple draining/collapsing portals. NGE drilled a series of borings and provided the necessary subsurface data to aid in the design.

# **CCQQ**

## **Attachment A**



**WEST VIRGINIA DEPARTMENT OF ENVIRONMENTAL PROTECTION  
AML CONSULTANT CONFIDENTIAL QUALIFICATION QUESTIONNAIRE**

**Attachment "B"**

PROJECT NAME AML PreQualifications CEOI 0313 DEP2600000001		DATE (DAY, MONTH, YEAR) August 20, 2025		FEIN 55-0594633																																					
1. FIRM NAME E.L. Robinson Engineering Co.		2. HOME OFFICE BUSINESS ADDRESS 5088 Washington Street, West Charleston, WV 25313		3. FORMER FIRM NAME																																					
4. HOME OFFICE TELEPHONE 304-776-7473	5. ESTABLISHED (YEAR) 1978	6. TYPE OWNERSHIP Individual    x Corporation Partnership    Joint-Venture		6a. WV REGISTERED DBE (Disadvantaged Business Enterprise) YES                      x NO																																					
7. PRIMARY AML DESIGN OFFICE: ADDRESS/ TELEPHONE/ PERSON IN CHARGE/ NO. AML DESIGN PERSONNEL EACH OFFICE 5088 Washington Street, West    304-776-7473/Eric Coberly, P.E./54 Staff in Charleston Area Charleston, WV 25313																																									
8. NAMES OF PRINCIPAL OFFICERS OR MEMBERS OF FIRM Eric Coberly, P.E. 304 776-7473		8a. NAME, TITLE, & TELEPHONE NUMBER - OTHER PRINCIPALS																																							
9. PERSONNEL BY DISCIPLINE																																									
<table border="0"> <tr> <td>4 ADMINISTRATIVE</td> <td>— ECOLOGISTS</td> <td>4 LANDSCAPE ARCHITECTS</td> <td>7 STRUCTURAL ENGINEERS</td> </tr> <tr> <td>ARCHITECTS</td> <td>— ECONOMISTS</td> <td>— MECHANICAL ENGINEERS</td> <td>7 SURVEYORS</td> </tr> <tr> <td>BIOLOGIST</td> <td>— ELECTRICAL ENGINEERS</td> <td>1 MINING ENGINEERS</td> <td>— TRAFFIC ENGINEERS</td> </tr> <tr> <td>6 CADD OPERATORS</td> <td>— ENVIRONMENTALISTS</td> <td>— PHOTOGRAMMETRISTS</td> <td>— OTHER</td> </tr> <tr> <td>— CHEMICAL ENGINEERS</td> <td>— ESTIMATORS</td> <td>PLANNERS: URBAN/REGIONAL</td> <td></td> </tr> <tr> <td>22 CIVIL ENGINEERS</td> <td>1 GEOLOGISTS</td> <td>— SANITARY ENGINEERS</td> <td></td> </tr> <tr> <td>25 CONSTRUCTION INSPECTORS</td> <td>— HISTORIANS</td> <td>1 SOILS ENGINEERS</td> <td></td> </tr> <tr> <td>— DESIGNERS</td> <td>— HYDROLOGISTS</td> <td>— SPECIFICATION</td> <td>87 TOTAL PERSONNEL</td> </tr> <tr> <td>DRAFTSMEN</td> <td></td> <td>WRITERS</td> <td></td> </tr> </table>						4 ADMINISTRATIVE	— ECOLOGISTS	4 LANDSCAPE ARCHITECTS	7 STRUCTURAL ENGINEERS	ARCHITECTS	— ECONOMISTS	— MECHANICAL ENGINEERS	7 SURVEYORS	BIOLOGIST	— ELECTRICAL ENGINEERS	1 MINING ENGINEERS	— TRAFFIC ENGINEERS	6 CADD OPERATORS	— ENVIRONMENTALISTS	— PHOTOGRAMMETRISTS	— OTHER	— CHEMICAL ENGINEERS	— ESTIMATORS	PLANNERS: URBAN/REGIONAL		22 CIVIL ENGINEERS	1 GEOLOGISTS	— SANITARY ENGINEERS		25 CONSTRUCTION INSPECTORS	— HISTORIANS	1 SOILS ENGINEERS		— DESIGNERS	— HYDROLOGISTS	— SPECIFICATION	87 TOTAL PERSONNEL	DRAFTSMEN		WRITERS	
4 ADMINISTRATIVE	— ECOLOGISTS	4 LANDSCAPE ARCHITECTS	7 STRUCTURAL ENGINEERS																																						
ARCHITECTS	— ECONOMISTS	— MECHANICAL ENGINEERS	7 SURVEYORS																																						
BIOLOGIST	— ELECTRICAL ENGINEERS	1 MINING ENGINEERS	— TRAFFIC ENGINEERS																																						
6 CADD OPERATORS	— ENVIRONMENTALISTS	— PHOTOGRAMMETRISTS	— OTHER																																						
— CHEMICAL ENGINEERS	— ESTIMATORS	PLANNERS: URBAN/REGIONAL																																							
22 CIVIL ENGINEERS	1 GEOLOGISTS	— SANITARY ENGINEERS																																							
25 CONSTRUCTION INSPECTORS	— HISTORIANS	1 SOILS ENGINEERS																																							
— DESIGNERS	— HYDROLOGISTS	— SPECIFICATION	87 TOTAL PERSONNEL																																						
DRAFTSMEN		WRITERS																																							
<p><b>TOTAL NUMBER OF WV REGISTERED PROFESSIONAL ENGINEERS IN PRIMARY OFFICE: <u>13</u></b></p> <p><b>*RPes other than Civil and Mining must provide supporting documentation that qualifies them to supervise and perform this type of work.</b></p>																																									
10. HAS THIS JOINT-VENTURE WORKED TOGETHER BEFORE? <input type="checkbox"/> YES                      NO    X This is not applicable																																									

11. OUTSIDE KEY CONSULTANTS/SUB-CONSULTANTS ANTICIPATED TO BE USED. Attach "AML Consultant Confidential Qualification Questionnaire" for each if copy is not on file with AML.

[illegible]

12. A. Is your firm experienced in Abandoned Mine Lands Remediation/Mine Reclamation Engineering?  
☒ YES Description and Number of Projects: One hundred twenty one (132) Projects - See Attached Sheet

☐ NO

B. Is your firm experienced in Soil Analysis?  
☒ YES Description and Number of Projects: Ten (10) Projects Listed - See attached Sheet

☐ NO

C. Is your firm experienced in hydrology and hydraulics?  
☒ YES Description and Number of Projects: Ten (10) Projects Listed - See attached sheet

☐ NO

D. Does your firm produce its own Aerial Photography and Develop Contour Mapping?  
☒ YES Description and Number of Projects: > 200 - in Firm History - 65 Recent Projects Listed  
All ELR WV & OH AML Projects since 2003 have been surveyed with ELR Surveying Staff

☐ NO

E. Is your firm experienced in domestic waterline design? (Include any experience your firm has in evaluation of aquifer degradation as a result of mining.)  
☒ YES Description and Number of Projects: Ninety-seven (97) Total  
Twelve (12) Domestic Waterline Experience (AML Related)  
Thirty-five (35) Evaluation of Aquifer Degradation  
Seventy (70) Non-AML Domestic Water Lines

☐ NO

F. Is your firm experienced in Acid Mine Drainage Evaluation and Abatement Design?  
☒ YES Description and Number of Projects: Seven (7) Projects

☐ NO

13. PERSONAL HISTORY STATEMENT OF PRINCIPALS AND ASSOCIATES <b>RESPONSIBLE FOR AML PROJECT DESIGN</b> (Furnish complete data but keep to essentials)			
NAME & TITLE (Last, First, Middle Int.)  <b>Coberly, Eric J., President, Project Manager</b>	YEARS OF EXPERIENCE		
	YEARS OF AML DESIGN EXPERIENCE:  37	YEARS OF AML RELATED DESIGN EXPERIENCE:  37	YEARS OF DOMESTIC WATERLINE DESIGN EXPERIENCE:  17
Brief Explanation of Responsibilities Mr. Coberly has performed AML Grant and Emergency project designs since 1984. Projects have included highwall backfill, refuse regarding, portals, mine drainage, subsidence, refuse and mine fire abatement. Mr. Coberly has participated in the design of over 100 such project while working for WVDEP or at ELR. Included in that total is over 30 emergency project designs completed in Ohio and West Virginia. Mr. Coberly has served in various capacities with the WV AML Program including construction and design administrator as well as the Chief of the Office. This involved the review of hundreds of additional projects in the 22 years spent with AML program.			
EDUCATION (Degree, Year, Specialization)  B.S. Engineering of Mines, 1983 M.S. Engineering of Mines, 1990			
MEMBERSHIP IN PROFESSIONAL ORGANIZATIONS		REGISTRATION (Type, Year, State)  Professional Engineer: WV, OH, MD	

13. PERSONAL HISTORY STATEMENT OF PRINCIPALS AND ASSOCIATES <b>RESPONSIBLE FOR AML PROJECT DESIGN</b> (Furnish complete data but keep to essentials)			
NAME & TITLE (Last, First, Middle Int.)  <b>Kelly, Shawn, PE - Project Engineer</b>	YEARS OF EXPERIENCE		
	YEARS OF AML DESIGN EXPERIENCE:  2	YEARS OF AML RELATED DESIGN EXPERIENCE:  2	YEARS OF DOMESTIC WATERLINE DESIGN EXPERIENCE:  11
Brief Explanation of Responsibilities Shawn Kelly, PE, brings over 20 years of experience to E.L. Robinson. His knowledge of site development has taken him all across West Virginia, working for both public and private clients. Mr. Kelly's understanding of drainage calculating, stormwater management plans, and site development planning have helped improve countless places in the state. Mr. Kelly has experience in the development of erosion and sediment control design. He has provided his expertise for the design of roadway drainage and erosion and sediment control for the roads around the complex. Shawn has vast experience working with the WV Department of Transportation, Division of Highways and WV Department of Environmental Protection to successfully permit many projects throughout the state.			
EDUCATION (Degree, Year, Specialization) B.S. Civil Engineering, 2001			
MEMBERSHIP IN PROFESSIONAL ORGANIZATIONS		REGISTRATION (Type, Year, State) Professional Engineer: WV	

13. PERSONAL HISTORY STATEMENT OF PRINCIPALS AND ASSOCIATES RESPONSIBLE FOR AML PROJECT DESIGN (Furnish complete data but keep to essentials)			
NAME & TITLE (Last, First, Middle Int.)	YEARS OF EXPERIENCE		
	YEARS OF AML DESIGN EXPERIENCE:	YEARS OF AML RELATED DESIGN EXPERIENCE:	YEARS OF DOMESTIC WATERLINE DESIGN EXPERIENCE:
<b>Kinder, Kenneth W., PE, CFM - Project Engineer</b>	5	20	5
<p><b>Brief Explanation of Responsibilities</b></p> <p>Kenneth Kinder, PE has experience in many facets of civil engineering. Mr. Kinder began his career as a staff engineer where he became proficient in the designing of projects and project management assistance. He has worked on an array of projects including civil site design, erosion and sediment control, stormwater management, hydraulic modeling, floodplain permitting, wastewater treatment, water treatment and distribution, geotechnical solutions, surface and underground coal permitting, limestone quarry permitting and solid waste landfill design. Mr. Kinder then moved into the role of Project Manager and served as an Office Leader while employed with a previous firm. Since joining ELR, Mr. Kinder has taken on the role of Project Manager on several notable projects.</p>			
<p><b>EDUCATION (Degree, Year, Specialization)</b></p> <p>B.S. Civil Engineering, 2003</p>			
<p><b>MEMBERSHIP IN PROFESSIONAL ORGANIZATIONS</b></p>		<p><b>REGISTRATION (Type, Year, State)</b></p> <p>Professional Engineer: WV</p>	

13. PERSONAL HISTORY STATEMENT OF PRINCIPALS AND ASSOCIATES RESPONSIBLE FOR AML PROJECT DESIGN (Furnish complete data but keep to essentials)			
NAME & TITLE (Last, First, Middle Int.)	YEARS OF EXPERIENCE		
	YEARS OF AML DESIGN EXPERIENCE:	YEARS OF AML RELATED DESIGN EXPERIENCE:	YEARS OF DOMESTIC WATERLINE DESIGN EXPERIENCE:
<b>Fishbaugh, Seth, EIT, Project Engineer</b>	2	2	2
<p><b>Brief Explanation of Responsibilities</b></p> <p>Mr. Fishbaugh is a Project Engineer with 2 years of experience in design and permitting for several site development projects in West Virginia.</p>			
<p><b>EDUCATION (Degree, Year, Specialization)</b></p> <p>B.S. Civil Engineering, Marshall Universtiy 2023</p>			
<p><b>MEMBERSHIP IN PROFESSIONAL ORGANIZATIONS</b></p>		<p><b>REGISTRATION (Type, Year, State)</b></p> <p>WV: Engineer-in-Training</p>	



13. PERSONAL HISTORY STATEMENT OF PRINCIPALS AND ASSOCIATES **RESPONSIBLE FOR AML PROJECT DESIGN** (Furnish complete data but keep to essentials)

NAME & TITLE (Last, First, Middle Int.)	YEARS OF EXPERIENCE		
	YEARS OF AML DESIGN EXPERIENCE:	YEARS OF AML RELATED DESIGN EXPERIENCE:	YEARS OF DOMESTIC WATERLINE DESIGN EXPERIENCE:
<b>Rayburn, James T, Surveying Manager</b>		41	45
<p><b>Brief Explanation of Responsibilities</b>            Mr. Rayburn has experience in mine mapping and surveying, formulated short term and long-range mining plans for all types of coal mining, designed mine drainage and water supply systems for underground and surface mines, designed mine ventilation plans and systems which include precision pressure quality surveys and computer simulation of ventilation systems.            He has performed slope stability analysis and hydrology calculations, provides computer analysis for mining applications, work with leases and land management as well as reclamation and environmental permits.            By utilizing "state of the art" electronic total stations and/or GPS (Satellite) equipment, he performs control surveys for aerial mapping and collects data and develops GIS for utility mapping.            Mr. Rayburn has also performed surveying and mapping for large scale highway projects.</p>			
<p><b>EDUCATION (Degree, Year, Specialization)</b>            A.S. Mechanical Engineering, 1970</p>			
<p><b>MEMBERSHIP IN PROFESSIONAL ORGANIZATIONS</b></p>		<p><b>REGISTRATION (Type, Year, State)</b>            Professional Surveyor: WV</p>	

13. PERSONAL HISTORY STATEMENT OF PRINCIPALS AND ASSOCIATES **RESPONSIBLE FOR AML PROJECT DESIGN** (Furnish complete data but keep to essentials)

NAME & TITLE (Last, First, Middle Int.)	YEARS OF EXPERIENCE		
	YEARS OF AML DESIGN EXPERIENCE:	YEARS OF AML RELATED DESIGN EXPERIENCE:	YEARS OF DOMESTIC WATERLINE DESIGN EXPERIENCE:
<b>Garnes, J. Todd, Project Designer</b>	9	9	9
<p><b>Brief Explanation of Responsibilities</b>            Mr. Garnes experience surveying and providing CADD Design for mine reclamation projects and waterline and sewer extrusions. He has provided construction inspection services for landsides and subsidence projects in Ohio.            Mr. Garnes has performed numerous water feasibility studies, which involved interviews, water sampling and analysis, mapping, mine research, and development of final reports.</p>			
<p><b>EDUCATION (Degree, Year, Specialization)</b>            A.S. Architectural Design, 1999            A.S. Computer Aided Drafting and Design, 1999</p>			
<p><b>MEMBERSHIP IN PROFESSIONAL ORGANIZATIONS</b></p>		<p><b>REGISTRATION (Type, Year, State)</b></p>	

13. PERSONAL HISTORY STATEMENT OF PRINCIPALS AND ASSOCIATES <b>RESPONSIBLE FOR AML PROJECT DESIGN</b> (Furnish complete data but keep to essentials)			
NAME & TITLE (Last, First, Middle Int.)	YEARS OF EXPERIENCE		
	YEARS OF AML DESIGN EXPERIENCE:	YEARS OF AML RELATED DESIGN EXPERIENCE:	YEARS OF DOMESTIC WATERLINE DESIGN EXPERIENCE:
<b>Fore, Shawn, Project Designer</b>	9	9	9
Brief Explanation of Responsibilities Mr. Fore has two decades of experience as a CAD Designer in numerous areas of civil engineering. His representative experience includes civil site development, water and wastewater lines, line treatment plants, abandoned mine lands reclamation, highway design, bridge inspection, utility location and mapping, hydrographic surveying, land surveying, environmental, wind energy, water sampling, GPS and RTK.			
EDUCATION (Degree, Year, Specialization)			
CADD certificates - Ben Franklin Career Center 2000; Carver Career Center 1999			
MEMBERSHIP IN PROFESSIONAL ORGANIZATIONS		REGISTRATION (Type, Year, State)	

13. PERSONAL HISTORY STATEMENT OF PRINCIPALS AND ASSOCIATES <b>RESPONSIBLE FOR AML PROJECT DESIGN</b> (Furnish complete data but keep to essentials)			
NAME & TITLE (Last, First, Middle Int.)	YEARS OF EXPERIENCE		
	YEARS OF AML DESIGN EXPERIENCE:	YEARS OF AML RELATED DESIGN EXPERIENCE:	YEARS OF DOMESTIC WATERLINE DESIGN EXPERIENCE:
<b>Bria, Scott, Project Designer</b>	6	9	26
Brief Explanation of Responsibilities Mr. Bria has decades of experience as a project designer in the fields of civil and environmental engineering.			
EDUCATION (Degree, Year, Specialization)			
CADD certificates - Ben Franklin Career Center 2000; Carver Career Center 1997 Autodesk Civil 3D Essentials Course Certificate			
MEMBERSHIP IN PROFESSIONAL ORGANIZATIONS		REGISTRATION (Type, Year, State)	

14. PROVIDE A LIST OF SOFTWARE AND EQUIPMENT AVAILABLE IN THE PRIMARY OFFICE WHICH WILL BE USED TO COMPLETE AML DESIGN SERVICES

Various computer hardware and software including: Microstation, InRoads, AutoCAD, ELRSoil, Microsoft Office applications, Haested, Water CADD, Culvert Master, Flow Master/Civil 3D

Various surveying equipment:

Instruments - Topcon Total Station (6), Trimble Robotic DR200+ (2)

GPS Equipment - Trimble 5700 Receiver (6), Trimble TSCe Controller/Handheld (5)

\*all equipment lists have various misc. survey equipment to go along (poles, tape measures, data collectors, etc.)

Riegl LMS - 360 3D Laser Scanner - surface imaging system based upon accurate distance measurement by means of electro-optical range measurement and a two-axis scanning mechanism.

15. CURRENT ACTIVITIES ON WHICH YOUR FIRM IS THE DESIGNATED ENGINEER OF RECORD

PROJECT NAME, TYPE AND LOCATION	NAME AND ADDRESS OF OWNER	NATURE OF YOUR FIRM'S RESPONSIBILITY	ESTIMATED CONSTRUCTION COST	PERCENT COMPLETE
Weston (Williams) Landslide AML Lewis County	WVDEP/AML	Landslide Abatement Design	\$1,220,000	80
Smithers Landslide AML Fayette County	WVDEP/AML	Landslide Abatement Design	\$1,000,000	75
Willis Branch Sewer Extension Wastewater Pax, WV	Town of Pax	Design and Construction Inspection	\$2,291,000	95
West Virginia Great Barrel Company Project Site Development Greenbrier County, WV	West Virginia Great Barrel Company, LLC	Surveying, Design and Construction Inspection	\$1,500,000	95
Route 60 East Sewer Wastewater White Sulphur Springs, WV	City of White Sulphur Springs	Design and Construction Inspection	\$1,500,000	40
City of Hinton CSO Abatement Project Phase I Wastewater Hinton, WV	City of Hinton	Testing, Design, Construction Inspection	\$3,500,000	50
City of Ronceverte Water Distribution System Rehab Water Ronceverte, WV	City of Ronceverte	Design and Construction Inspection	\$2,000,000	50
TOTAL NUMBER OF PROJECTS:		TOTAL ESTIMATED CONSTRUCTION COSTS: \$		

15. CURRENT ACTIVITIES ON WHICH YOUR FIRM IS THE DESIGNATED ENGINEER OF RECORD

PROJECT NAME, TYPE AND LOCATION	NAME AND ADDRESS OF OWNER	NATURE OF YOUR FIRM'S RESPONSIBILITY	ESTIMATED CONSTRUCTION COST	PERCENT COMPLETE
Iaeger Regional Sewer Project Wastewater McDowell County PSD	McDowell County PSD	Design and Construction Inspection	\$7,900,000	40
Heaters-Weyerhaeuser Waterline Upgrade Water Braxton County, WV	Flatwoods-Canoe Run PSD	Design and Construction Inspection	\$8,000,000	90
Frank-Bartow Sanitary Sewer Extension Wastewater Pocahontas County, WV	Pocahontas County PSD	Design and Construction Inspection	\$2,766,000	80
Deep Water & Powellton Water Distribution Water Fayette County, WV	Fayette County, WV	Design and Construction Management	\$2,515,000	40
Harts Run Waterline Extension Project Water White Sulphur Springs, WV	City of White Sulphur Springs	Design and Construction Management	\$2,000,000	95
Berwind Water Treatment Plant Improvements Water McDowell County, WV	McDowell County PSD	Design and Construction Management	\$243,000	70
Coalwood Sewer Project Phase I Wastewater McDowell County	McDowell County PSD	Design and Construction Management	\$3,250,000	80
TOTAL NUMBER OF PROJECTS:		TOTAL ESTIMATED CONSTRUCTION COSTS: \$		



## 15. CURRENT ACTIVITIES ON WHICH YOUR FIRM IS THE DESIGNATED ENGINEER OF RECORD

PROJECT NAME, TYPE AND LOCATION	NAME AND ADDRESS OF OWNER	NATURE OF YOUR FIRM'S RESPONSIBILITY	ESTIMATED CONSTRUCTION COST	PERCENT COMPLETE
Snowshoe Regional Wastewater Project Pocahontas County, WV	Pocahontas County PSD	Design and Construction Management	\$5,000,000	40
Corridor H Design Build Kerens-Parsons Roadway/Structures Randolph/Tucker County, WV	WVDOT-DOH	Surveying, Design and Construction Management	\$200,000,000	40
Corridor H Design Build US 219-WV 72 Roadway/Structures Randolph/Tucker County, WV	WVDOT-DOH	Surveying, Design and Construction Management	\$176,000,000	0
WV Route 10 Operational Improvements (Con 2) Roadway/Structures Mercer/Wyoming County, WV	WVDOT-DOH	Surveying, Design and Construction Management	\$17,000,000	30
WV Route 10 Operational Improvements (Con 5) Roadway/Structures Mercer/Wyoming County, WV	WVDOT-DOH	Surveying, Design and Construction Management	\$33,000,000	50
WV Route 10 Operational Improvements (Con 3) Roadway/Structures Mercer/Wyoming County, WV	WVDOT-DOH	Surveying, Design and Construction Management	\$31,000,000	50
TOTAL NUMBER OF PROJECTS:		TOTAL ESTIMATED CONSTRUCTION COSTS:		

17. COMPLETED WORK WITHIN LAST 5 YEARS ON WHICH YOUR FIRM WAS THE DESIGNATED ENGINEER OF RECORD				
PROJECT NAME, TYPE AND LOCATION	NAME AND ADDRESS OF OWNER	ESTIMATED CONSTRUCTION COST	YEAR	CONSTRUCTED (YES OR NO)
Route 18 South-Snowbird Road Waterline Extension Water Doddridge County, WV	Doddridge County PSD	969,500	2019	Yes
Cheat Mountain Water System Acquisition Water Pocahontas County, WV	Pocahontas County PSD	\$2,109,000	2018	Yes
Airport-Ameagle Water Project Water Raleigh County, WV	Raleigh County PSD	\$5,100,000	2016	Yes
Blue Knob Waterline Extension Project Water Clay County, WV	Clay Municipal Water Works	\$2,321,000	2019	Yes
City of Salem Sanitary Sewer Evaluation Survey Wastewater Salem, WV	City of Salem	\$96,000	2016	Yes
Emergency Intake Construction Project Water Mingo County, WV	Mingo County PSD	\$500,000	2018	Yes
Besoco-Pickshin Water Extension Project Water Raleigh County, WV	Raleigh County PSD	\$369,939	2019	Yes
Kenova Downtown School Waterline Improvements Project Water Kenova, WV	City of Kenova	\$1,961,000	2018	Yes

17. COMPLETED WORK WITHIN LAST 5 YEARS ON WHICH YOUR FIRM WAS THE DESIGNATED ENGINEER OF RECORD				
PROJECT NAME, TYPE AND LOCATION	NAME AND ADDRESS OF OWNER	ESTIMATED CONSTRUCTION COST	YEAR	CONSTRUCTED (YES OR NO)
Cheat Mountain Water Post Acquisition Project Water Pocahontas County, WV	Pocahontas County PSD	\$2,300,000	2019	Yes
Scott Road-Findley Road Waterline Extension Water Randolph County, WV	Norton Harding Jimtown PSD	\$1,300,000	2016	Yes
Otsego/Pierpoint/Maben Waterline Extension Water Wyoming County, WV	Eastern Wyoming PSD	\$9,800,000	2018	Yes
Covel Waterline Extension Project Water Wyoming County, WV	Eastern Wyoming PSD	\$5,600,000	2016	Yes
Barkers Ridge Basin Waterline Extension Ph 1 Water Wyoming County, WV	Eastern Wyoming PSD	\$5,600,000	2017	Yes
Mozart Sanitary Sewer Project Wastewater Marshall County, WV	Marshall County Sewerage District	\$9,500,000	2019	Yes
Green Valley Glenwood PSD Water System Improvements Water Mercer County, WV	Green Valley Glenwood PSD	\$15,711,000	2019	Yes
Cow Creek Waterline Replacement Project Water Putnam County, WV	Putnam PSD	\$500,000	2018	Yes

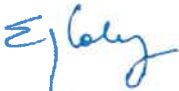
17. COMPLETED WORK WITHIN LAST 5 YEARS ON WHICH YOUR FIRM WAS THE DESIGNATED ENGINEER OF RECORD				
PROJECT NAME, TYPE AND LOCATION	NAME AND ADDRESS OF OWNER	ESTIMATED CONSTRUCTION COST	YEAR	CONSTRUCTED (YES OR NO)
Maryland Consol Shaft AML Frostburg, MD	Maryland AML	\$200,000	2017	Yes
Craigmoor (Strader) Landslide Emergency AML Randolph County, WV	WVDEP-AML	\$400,000	2017	Yes
Sauls Run (Bennett) Landslide AML Lewis County, WV	WVDEP-AML	\$500,000	2017	Yes
Shaffer Investigation AML Harrison County, WV	WVDEP-AML	\$50,000	2017	Yes
West Milford (Chapman) Landslide AML Harrison County, WV	WVDEP-AML	\$1,000,000	2019	Yes
Roderfield (Simpson) Landslide AML McDowell County, WV	WVDEP-AML	\$250,000	2017	Yes
Scotch Hill Mine Fire AML Preston County, WV	WVDEP-AML	\$1,000,000	2019	Yes
Mammoth (Shamblin) Landslide AML Kanawha County, WV	WVDEP-AML	\$500,000	2017	Yes

17. COMPLETED WORK WITHIN LAST 5 YEARS ON WHICH YOUR FIRM WAS THE DESIGNATED ENGINEER OF RECORD				
PROJECT NAME, TYPE AND LOCATION	NAME AND ADDRESS OF OWNER	ESTIMATED CONSTRUCTION COST	YEAR	CONSTRUCTED (YES OR NO)
Delbarton (Curry) Landslide AML Mingo County, WV	WVDEP-AML	\$500,000	2019	Yes
Big Creek (Surgoine) Landslide AML Logan County, WV	WVDEP-AML	\$400,000	2019	Yes
Crooked Run (Davis) Landslide AML Harrison County, WV	WVDEP-AML	\$300,000	2017	Yes
Procious (Doughty)Landslide AML Clay County, WV	WVDEP-AML	\$350,000	2017	Yes
Rivesville (Parker) Landslide AML Marion County, WV	WVDEP-AML	\$400,000	2018	Yes
Bridgeport (Ridgeway) Landslide AML Harrison County, WV	WVDEP-AML	\$900,000	2019	Yes
North Matewan (Ross) Landslide AML Mingo County, WV	WVDEP-AML	\$500,000	2019	Yes
Summerlee Refuse Phase II AML Fayette County, WV	WVDEP-AML	\$900,000	2019	Yes



18. COMPLETED WORK WITHIN LAST 5 YEARS ON WHICH YOUR FIRM HAS BEEN A SUB-CONSULTANT TO OTHER FIRMS (INDICATE PHASE OF WORK FOR WHICH YOUR FIRM WAS RESPONSIBLE)					
PROJECT NAME, TYPE AND LOCATION	NAME AND ADDRESS OF OWNER	ESTIMATED CONSTRUCTION COST OF YOUR FIRM'S PORTION	YEAR	CONSTRUCTED (YES OR NO)	FIRM ASSOCIATED WITH
Linmont Bridge Replacement Cabell County	WV Dept of Transportation Engineering Division Charleston, WV 25301	Bridge Design (VE)	2011	Yes	Paul's Concrete
Clothier Bridge Logan County	WV Dept of Transportation Engineering Division Charleston, WV 25301	Bridge Design (VE)	2011	Yes	Paul's Concrete
Market Street Bridge Brooks County, WV	WV Dept of Transportation Engineering Division Charleston, WV	Post Design Services	2011	Yes	Ahern & Assoc.
Leon Thru Girder Bridge Mason County, WV	WV Dept of Transportation Engineering Division Charleston, WV	Plans for Bridge (VE) Hydraulics Post Design	2010	Yes	Triton Construction
Holley Grove Bridge Kanawha County	WV Dept of Transportation Engineering Division Charleston, WV	\$500,000	2010	Yes	Triton Construction

19. Use this space to provide any additional information or description of resources supporting your firm's qualifications to perform work for the West Virginia Abandoned Mine Lands Program.  
**E. L. Robinson Engineering Co. is committed to the WVDEP/AML program to provide professional design, surveying and mapping and construction monitoring services in a timely and cost-efficient manner. Our business plan relies heavily on the work offered by the WVDEP/AML program.**

20. The foregoing is a statement of facts.  Signature: Title: President, & PROJECT MANAGER Printed Name: Eric J. Coberly, P.E.	Date: August 20, 2025
--	--------------------------

NOTE: THIS DOCUMENT WILL BECOME VOID AFTER DECEMBER 31 IN CALENDAR YEAR OF DATE HEREON.

# **Project Matrix**

**Attachment B**

PROJECT	Experience Basis Corporate-C Personal-P	Additional Information in Section	Abandoned Surface Mine Reclamation	Abandoned Deep Mine Reclamation	Portal/Shaft Closure	Hydrological/Hydraulic Design/Eval	Remining Evaluation	Mine/Refuse Fire Abatement	Subsidence Investigation Mitigation	Hazardous Waste Disposal	Project Specifications	Water Quality Evaluation/Mitigation/Replacement	Construction Inspection/Management	Water Treatment	Equipment/Structure Removal	Stream Restoration	Geotechnical/Stability	Eric Coberly	Shawn Kelly	Seth Fishbaugh	Jacob Trogdon
Jacob's Fork Complex	C	YES		X	X	X					X					X	X				
Rhodell Refuse & Portals	C	YES		X	X	X					X					X	X				
Gilmer B Sites 3-8	C	YES		X	X	X					X					X	X				
Morrisvale/Cameo/Big Horse Creek Waterline Feasibility Study	C	YES										X									
Camp Creek Waterline Feasibility Study	C	YES										X									
Lick Creek Waterline Feasibility Study	C	YES										X									
Ragland Waterline Feasibility Study	C	YES										X						P			
Beech Creek and Ben It Waterline Feasibility Study	C	YES										X									
Dingess Waterline Feasibility Study	C	YES										X						P			
Sharon Heights Waterline Feasibility Study	C	YES										X						P			
Amhesdale Water Feasibility Study	C	YES										X						P			
Mercer County Commission	C	YES										X						P			
Danese PSD Waterline Feasibility Study	C	YES										X						P			
New Haven Waterline Feasibility Nubbin Ridge/Camp Creek Waterline Feasibility Study	C	YES										X						P			
Bramwell Hill Waterline Feasibility Study	C	YES										X									
Coaldale and Coaldale Mountain Waterline Feasibility Study	C	YES										X									
Jennie Creek Waterline Feasibility Study	C	YES										X									
Beech Creek and Ben Areas Waterline Feasibility Study	C	YES										X									
Blair/Sharples Area Waterline Feasibility Study	C	YES										X									
Brown's Creek #10	C	YES	X	X	X	X	X				X				X	X	X				
Bull Run #35	C	YES	X	X	X	X	X				X	X		X	X	X	X				
Securo Mine Drainage	C	YES		X	X	X					X				X						
Fickey Run	C	YES	X	X	X	X	X				X	X		X		X					
Ven's Run	C	YES	X			X					X						X				
Bull Run #27	C	YES	X	X	X	X	X				X	X				X	X				
Riffe Branch	C	YES	X	X	X	X	X				X			X		X	X				
Hot Coal	C	YES		X	X	X	X				X					X	X				
Minden Refuse Pile	C	YES		X		X					X					X					
Jeffrey Mine Complex	C	YES		X	X	X	X				X										
Pigeon Creek Waterline	C	YES				X					X	X	X				X				
Red Jacket, Matewan, Newtown Waterline	C	YES				X					X	X									
Marrowbone Waterline	C	YES				X					X	X	X								
Mount Zion Waterline	C	YES				X					X	X									
Coopers Rock, Pisgah, and Laurel Run Waterline	C	YES				X					X	X									
Davis Water Tank	C	YES				X					X	X									
Whittington Hill (Walker) Slide	C	YES		X	X	X					X						X	P/M			
Maldsville Landslide	C	YES	X								X						X	P			
Rich Fork Landslide	C	YES	X	X							X						X	P			

PROJECT	Experience Basis Corporate-C Personal-P	Additional Information in Section	Abandoned Surface Mine Reclamation	Abandoned Deep Mine Reclamation	Portal/Shaft Closure	Hydrological/Hydraulic Design/Eval.	Remining Evaluation	Mine/Refuse Fire Abatement	Subsidence Investigation Mitigation	Hazardous Waste Disposal	Project Specifications	Water Quality Evaluation/Mitigation/Replacement	Construction Inspection/Management	Water Treatment	Equipment/Structure Removal	Stream Restoration	Geotechnical/Stability	Eric Goberly	Shawn Kelly	Seth Fishbaugh	Jacob Trogdon
Tuppers Creek Landslide	C	YES	X	X							X						X	P			
Glen Rogers Waterline	C	YES				X					X	X									
Gooney Otter Refuse	C	YES	X	X	X	X	X				X						X	P			
Chapmanville Mine Blowout	C	YES																P			
Charleston Romeo Landslide	C	YES		X	X	X					X						X	P			
Big Creek C Refuse	C	YES		X													X	P			
North Matewan Sipple	C	YES		X	X	X					X						X	P			
Moran Subsidence	C	YES		X					X		X						X	P			
Lewis Landslide	C	YES		X		X					X		X				X	P			
Roush Landslide	C	YES		X		X					X			X			X	P			
Jefferson 26 Landslide	C	YES		X		X					X		X				X	P			
Titus Road Landslide	C	YES	X	X		X					X						X	P			
Imboden Landslide	C	YES	X	X							X						X	P			
Balsden Subsidence	C	YES		X					X								X	P			
Parsons Landslide	C	YES		X													X	P			
Treadway Landslide	C	YES	X	X		X					X						X	P			
Phalen Landslide	C	YES		X		X					X						X	P			
Adkins Landslide	C	YES	X	X		X					X						X	P			
Goetz Subsidence	C	YES		X					X									P			
Lavender Refuse Fire	C	YES		X				X			X		X					P			
Cox Refus Fire	C	YES		X				X			X		X					P			
Toney Fork Landslide	C	YES		X		X					X			X				P			
Athens Rt. 13 Refuse Fire	C	YES		X				X			X		X					P			
McAdams Subsidence Emer	C	YES		X					X		X			X				P			
Rodgers Subsidence	C	YES		X					X		X							P			
Brown Landslide	C	YES		X		X					X		X					P			
Town Run	P	NO										X									
Witcher Creek	P	NO										X									
Pond Gap, Hitop & Spangler	P	NO										X									
Elk City	P	NO										X									
Little Fork Refuse Pile	P			X		X	X	X								X	X				
Clear Fork	C	2009										X				X					
Coal Mountain	C	2009										X									
Naugatuck/East Kermit	C	2009										X									
Island Creek #18	C	2009		X	X	X					X	X			X		X				
Brownston Landslide	C	2009		X	X	X					X	X			X		X				
East Bank Emergency	C	2009																			
Dunlop Creek	C	2010	X	X	X	X					X	X			X	X	X				
Otsego/Pierpoint/Maben	C	2010										X									
Barkers Ridge/Basin	C	2010										X									
Hemdon/Covel/Garwood	C	2010										X									
Bud/Alpoca/Milli Branch	C	2010										X									
Keystone (Avery)	C	2010																			
Keystone (Emergency)	C	2010																			
Cane Branch	C	2010										X									
Spy Rock/Edmond/ Flanagan Mountain	C	2010										X									
Wilderness PSD	C	2010										X									
Gordon C	C	2010		X	X	X					X						X				
Keaton Branch	C	2010		X	X	X					X						X				
Verner Grimmer Burning Refuse	C	2010						X			X										
Shinnston-Lumberport	C	2011							X		X										



PROJECT	Experience Basis Corporate-C Personal-P	Additional Information in Section	Abandoned Surface Mine Reclamation	Abandoned Deep Mine Reclamation	Portal/Shaft Closure	Hydrological/Hydraulic Design/Eval.	Remining Evaluation	Mine/Refuse Fire Abatement	Subsidence Investigation Mitigation	Hazardous Waste Disposal	Project Specifications	Water Quality Evaluation/Mitigation/Replacement	Construction Inspection/Management	Water Treatment	Equipment/Structure Removal	Stream Restoration	Geotechnical/Stability	Eric Coberly	Shawn Kelly	Seth Fishbaugh	Jacob Trogdon
Newtown-Kinder	C	2011		X	X	X					X						X				
Dan's Branch Emergency	C	2011		X	X	X					X						X				
Cartright Branch	C	2011		X	X	X					X						X				
Thorpe Refuse Pile	C	2011		X	X	X					X						X				
Glen Rogers Emergency	C	2012		X	X						X										
Abney Refuse Piles	C	2012		X	X	X					X						X				
Milam Ridge Refuse	C	2012		X	X	X					X						X				
West Columbia "B"	C	2012		X	X	X					X						X				
Coburn Invest.	P			X					X								X	P			
Gouge Landslide	P		X			X					X		X				X	P			
Adamsville	P		X	X	X	X			X		X		X					P			
Mount Pisgah	P		X			X					X		X					P			
Pleasant Valley Church	P			X	X	X					X		X					P			
Hodgesville B	P			X	X	X					X		X		X		X	P			
Lynch Chapel	P			X	X	X					X		X					P			
Snider Portals	P			X	X	X					X		X			X		P			
Wash Run	P			X	X	X					X		X					P			
Junior Sewage Plant	P		X	X	X	X					X	X	X		X			P			
Shavers Fork/Stonecoal	P			X	X	X					X	X	X					P			
Vargo Drainage	P			X	X	X					X	X	X					P			
Fairhills Plaza Subsidence	P			X					X		X		X					P			
Karen Vance AMD	P		X	X	X	X					X		X					P			
Leroy Wilmoth Drainage	P			X	X	X					X		X					P			
Big Knob Acid Mine Drainage	P		X	X	X	X					X	X	X	X				P			
Matthew Smith Subsidence	P			X		X			X		X		X					P			
Worthington Portals	P		X	X	X	X					X		X					P			
Red Rock Drainage	P		X	X	X	X					X		X					P			
Blackwater Manor	P		X	X	X	X	X				X	X		X	X			P			
Buckhannon River Refuse	P			X	X	X					X		X		X			P			
Hutcheson AMD	P			X	X	X					X		X					P			
Nutter Fort Trestle - 7th	P										X		X					P			
East Bank Portals - A# 2	P			X	X	X					X		X					P			
Manilla Creek - A#2	P			X	X	X					X		X				X	P			
Big Creek C	P			X	X	X					X		X					P			
Covey Creek Refuse	P			X	X	X					X		X					P			
Omar Drainage G2	P			X	X	X					X		X					P			
Crooked Ck Refuse & Portals	P			X	X	X					X		X		X			P			
Jims Br. (Tyree) LS	P			X	X	X					X		X				X	P			
Galloway Mine Portal/Refuse	P			X	X	X					X		X			X	X	P			
Newtown (Harmon) Drainage	P			X	X	X					X							P			
Whitman Ck. (Williams) VO	P			X	X						X							P			
Coal Branch (Cantrell)	P			X	X	X					X							P			
Jordanville Tipple/Refuse	P		X			X				X	X				X			P			
Helzer Creek A Maintenance	P			X	X	X					X			X				P			
Orlando Mining Facility	P		X			X				X	X				X			P			
Verdunville Drainage	P			X	X	X					X				X			P			
Holden Portals	P			X	X	X					X							P			
Molinar Subsidence	P			X					X		X		X				X	P/M			
Smith Landslide	P		X	X	X	X					X		X				X	P/M			
Lutz Vertical Opening	P			X	X						X		X					P/M			
Swiger Mine Blowout	P			X	X	X					X		X			X		P/M			
Blair Wolfe Subsidence	P			X					X		X		X					P/M			



PROJECT	Experience Basis Corporate-C Personal-P	Additional Information in Section	Abandoned Surface Mine Reclamation	Abandoned Deep Mine Reclamation	Portal/Shaft Closure	Hydrological/Hydraulic Design/Eval.	Remining Evaluation	Mine/Refuse Fire Abatement	Subsidence Investigation Mitigation	Hazardous Waste Disposal	Project Specifications	Water Quality Evaluation/Mitigation/Replacement	Construction Inspection/Management	Water Treatment	Equipment/Structure Removal	Stream Restoration	Geotechnical/Stability	Eric Coberly	Shawn Kelly	Seth Fishbaugh	Jacob Trogdon
Lake (Winkler) Phase II	P			X		X					X						X	P/M			
Preston County PSD #4	C											X									
Marsh Run Portals	C		X	X	X	X					X						X	P			
Donnie Thom HW	C		X	X	X	X					X							P			
Vickers Branch Drainage	C		X	X	X	X					X						X	P			
Morgan HW	C		X			X					X							P			
Sugarcamp Run Burning Ref	C		X			X		X			X						X	P			
Glen White-Trap Hill PSD	C											X						P			
North Malewan Akers LS	C			X		X					X						X	P			
Fairview Laurel Run Shaft	C			X	X	X					X						X	P			
McGraws Shaft	C			X	X						X						X	P			
Meadow Creek PSD	C											X									
Squires Creek (Moats) Portal and Refuse	C		X	X	X	X					X						X	P			
Red Warrior Gob & Slide	C			X	X	X					X						X	P			
Glen Alum Complex	C			X		X					X							P			
West Columbia "B"	C		X	X	X	X					X						X				
Milam Ridge	C		X	X	X	X															
Carson One Special Rec	C			X	X	X			X				X		X		X	P			
Preston Energy/Rockville/ Viking Coal Spec Rec	C		X	X	X	X												P			
Branchland (Blankenship) Landslide	C			X	X	X											X	P			
Coburns Creek Landslide	C		X		X	X											X	P			
New Cumberland Mine Blowout	C			X	X	X											X	P			
Whitehall Mine Fire	C			X		X		X									X	P			
Sauls Run Landslide	C		X	X		X												P			
Missouri Fork Landslide	C			X	X	X											X	P			
Worthington (Hess) Landslide	C			X	X	X											X	P			
Copen Road Landslide	C			X	X	X											X	P			
Lynch Run Mine Blowout	C		X	X	X	X															
Dans Branch (Dillon) Landslide	C			X	X	X											X	P			
Pendleton Creek Highwall	C		X	X	X	X					X							P			
Maryland Matthew Run	C		X			X						X					X	P			
Maryland Scenic RR Landslide	C		X	X	X	X					X		X				X	P			
Maryland Barton Mine Pool	C			X	X	X					X						X	P			
Maryland G&S Landslide Study	C		X														X	P			
Maryland Consol Shaft	C			X							X				X			P			
Maryland Shallmar Landslide	C			X		X					X		X				X	P			
Craigmoor Landslide Emer	C		X			X					X			X			X	P			
Coburn Creek Landslide Emer	C		X			X					X						X	P			
Gilmer Blowout Emer	C		X	X	X	X					X							P			
Mary Ruth Spec Reclamation	C		X	X		X					X	X		X				P			
Sauls Run Bennett Landslide	C		X			X			X		X						X	P			
Shaffer Investigation	C			X					X									P			
West Milford Landslide Emer	C		X			X					X						X	P			
Roderfield Landslide Emer	C			X	X	X					X							P			
Scotch Hill Mine Fire	C		X	X				X			X						X	P			
Mammoth(Shamlin) Landslide	C			X	X	X					X						X	P			
Delbarton (Curry) Landslide	C			X		X					X						X	P			
Big Creek (Surgoine) Landslide	C			X	X	X					X						X	P			
Crooked Run (Davis) Landslide	C			X		X					X						X	P			
Prociuous (Doughty) Landslide	C			X		X					X						X	P			

[illegible]

# **AML and RELATED PROJECT EXPERIENCE MATRIX**

PROJECT	Exp. Basis C=Corp. P=Personnel	Additional Info Provided in Section (s) **	PROJECT EXPERIENCE REQUIREMENTS															PRIMARY STAFF PARTICIPATION/CAPACITY *** M=Management P=Professional					
			Abandoned Surface Mine Reclamation	Abandoned Deep Mine Reclamation	Portal/Shaft Closure	Hydrologic/Hydraulic Design/Eval	Remining Evaluation	Mine/Refuse Fire Abatement	Subsidence Investigation Mitigation	Hazardous Waste Disposal	Project Specifications	Water Quality Evaluation/Mitigation/ Replacement	Construction Inspection/Managem ent	Water Treatment	Equipment/Structure Removal	Stream Restoration	Geotechnical/Stability	John Nottingham	Gene Brown	Noah Stevens	Mike Frame	Chuck Montgomery	Alan Lupardus
AML Green Valley	P		x	x	x				x								x	M	M	P	P	P	P
Francis AMD	P			x					x								x	M	M	P	P	P	P
Falls Run AML	P			x	x				x								x	M	P	P	P	P	P
Owl Creek Highwall	P		x						x								x	M	P	P	P	P	P
West Fork AML	P			x	x				x								x		M	P	P	P	P
Wades Run AML	P		x		x				x								x	M	P	P	P	P	P
Nutter Fort AML	P		x	x	x				x								x	M	P	P	P	P	P
Gary WV Emergency AML	P		x						x								x		M	P	P	P	P
Glade Run AML	P		x		x				x								x	M	M	P	P	P	P
Bridgeport Landslide AML	P		x						x								x		M	P	P	P	P
Cadbury AML	P		x						x								x		M	P	P	P	P
Burl Gould AML	P		x						x								x		M	P	P	P	P
Miller Mine Drainage AML	P		x		x				x								x		M	P	P	P	P

\* List whether project experience is corporate or personnel based or both.

\*\* Use this area to provide specific sections or pages if needed for reference.

\*\*\* List Primary Design personnel and their functional capacity for the projects listed.

Attachment "B"

# **Required Forms**

**Attachment C**





Department of Administration  
Purchasing Division  
2019 Washington Street East  
Post Office Box 50130  
Charleston, WV 25305-0130

State of West Virginia  
Centralized Expression of Interest

<b>Proc Folder:</b> 1717189			<b>Reason for Modification:</b>
<b>Doc Description:</b> AML - EOI Pre-Qualification for Consultants			
<b>Proc Type:</b> Central Purchase Order			
<b>Date Issued</b>	<b>Solicitation Closes</b>	<b>Solicitation No</b>	<b>Version</b>
2025-08-01	2025-08-20 13:30	CEOI 0313 DEP2600000001	1

**BID RECEIVING LOCATION**

BID CLERK  
DEPARTMENT OF ADMINISTRATION  
PURCHASING DIVISION  
2019 WASHINGTON ST E  
CHARLESTON WV 25305  
US

**VENDOR**

**Vendor Customer Code:**

**Vendor Name :** EL Robinson Engineering

**Address :**

**Street :** 5088 Washington Street, West

**City :** Charleston

**State :** West Virginia

**Country :** United States

**Zip :** 25313

**Principal Contact :** Eric Coberly, PE, Project Manager

**Vendor Contact Phone:** 304.833.9021

**Extension:**

**FOR INFORMATION CONTACT THE BUYER**

Joseph (Josh) E Hager III  
(304) 558-2306  
joseph.e.hageriii@wv.gov

Vendor  
Signature X

**FEIN#** 55-0594633

**DATE** 8/20/2025

All offers subject to all terms and conditions contained in this solicitation



**DESIGNATED CONTACT:** Vendor appoints the individual identified in this Section as the Contract Administrator and the initial point of contact for matters relating to this Contract.

(Printed Name and Title) Eric Coberly, PE, Project Manager

(Address) 5088 Washington Street, West | Charleston, WV 25313

(Phone Number) / (Fax Number) 304.833.9021 / 304.776.6426

(email address) ecoberly@elrobinson.com

**CERTIFICATION AND SIGNATURE:** By signing below, or submitting documentation through wvOASIS, I certify that: I have reviewed this Solicitation/Contract in its entirety; that I understand the requirements, terms and conditions, and other information contained herein; that this bid, offer or proposal constitutes an offer to the State that cannot be unilaterally withdrawn; that the product or service proposed meets the mandatory requirements contained in the Solicitation/Contract for that product or service, unless otherwise stated herein; that the Vendor accepts the terms and conditions contained in the Solicitation, unless otherwise stated herein; that I am submitting this bid, offer or proposal for review and consideration; that this bid or offer was made without prior understanding, agreement, or connection with any entity submitting a bid or offer for the same material, supplies, equipment or services; that this bid or offer is in all respects fair and without collusion or fraud; that this Contract is accepted or entered into without any prior understanding, agreement, or connection to any other entity that could be considered a violation of law; that I am authorized by the Vendor to execute and submit this bid, offer, or proposal, or any documents related thereto on Vendor's behalf; that I am authorized to bind the vendor in a contractual relationship; and that to the best of my knowledge, the vendor has properly registered with any State agency that may require registration.

By signing below, I further certify that I understand this Contract is subject to the provisions of West Virginia Code § 5A-3-62, which automatically voids certain contract clauses that violate State law; and that pursuant to W. Va. Code 5A-3-63, the entity entering into this contract is prohibited from engaging in a boycott against Israel.

**EL Robinson Engineering**

(Company)

(Signature of Authorized Representative)

Eric Coberly, PE, President & Project Manager - 8/20/25

(Printed Name and Title of Authorized Representative) (Date)

304.833.9021 / 304.776.6426

(Phone Number) (Fax Number)

ecoberly@elrobinson.com

(Email Address)

ABANDONED MINE LANDS (AML) CONTRACTOR INFORMATION FORM

You must complete this form for your AML contracting officer to request an eligibility evaluation from the Office of Surface Mining Reclamation and Enforcement (OSMRE) to determine if you are eligible to receive an AML contract. This requirement can be found under OSMRE's regulations at 30 CFR 874.16. **NOTE:** This form must be signed and **dated within 30 days** of submission to be considered for a current bid.

**Part A: General Information**

Business Name: EL Robinson Engineering

Tax ID #: 55-0594633

Address: 5088 Washington Street, West

City, State, & Zip: Charleston, WV 25313

Phone Number: 304.776.7473

Email Address: ecoberly@elrobinson.com

**Part B: Obtain an Organizational Family Tree (OFT) from the Applicant Violator System (AVS)**

If you plan to certify the existing AVS information or submit updates under Part C, you must include an OFT. Instructions for downloading an OFT from the AVS can be found at: <https://www.osmre.gov/sites/default/files/2022-02/OMB%201029-0119%20instructions.pdf>. If you require assistance you may contact the AVS Office by phone at: 800-643-9748, or by email at: [avshelp@osmre.gov](mailto:avshelp@osmre.gov).

**Part C: Certifying and updating information in the AVS**

Select one of the options, follow the instructions for the selected option, sign, and date below.

I, Eric Coberly, PE, President & Project Manager, have express authority to certify that:  
(Print Name)

- ☒ 1. Our business is listed in the AVS. The information is accurate, complete, and up to date. (If you select this option, you must attach an Entity OFT from the AVS to this form). Do not complete Part D.
- ☐ 2. Our business is in the AVS. The information needs to be updated. (If you select this option, you must attach an Entity OFT from the AVS to this form). Complete Part D to provide the missing or corrected information.
- ☐ 3. Our business is not listed in the AVS. The information needs to be added. Complete Part D to provide the information.

8/20/2025

Date

E Coberly  
Signature

PRESIDENT  
Title

## ADDENDUM ACKNOWLEDGEMENT FORM

SOLICITATION NO.: **CEOI 0313 DEP2600000001**

Instructions: Please acknowledge receipt of all addenda issued with this solicitation by completing this addendum acknowledgment form. Check the box next to each addendum received and sign below. Failure to acknowledge addenda may result in bid disqualification.

Acknowledgment: I hereby acknowledge receipt of the following addenda and have made the necessary revisions to my proposal, plans and/or specification, etc.

Addendum Numbers Received:

*(Check the box next to each addendum received)*

- |  |  |
|--|--|
| <input checked="" type="checkbox"/> Addendum No. 1 | <input type="checkbox"/> Addendum No. 6  |
| <input type="checkbox"/> Addendum No. 2            | <input type="checkbox"/> Addendum No. 7  |
| <input type="checkbox"/> Addendum No. 3            | <input type="checkbox"/> Addendum No. 8  |
| <input type="checkbox"/> Addendum No. 4            | <input type="checkbox"/> Addendum No. 9  |
| <input type="checkbox"/> Addendum No. 5            | <input type="checkbox"/> Addendum No. 10 |

I understand that failure to confirm the receipt of addenda may be cause for rejection of this bid. I further understand that any verbal representation made or assumed to be made during any oral discussion held between Vendor's representatives and any state personnel is not binding. Only the information issued in writing and added to the specifications by an official addendum is binding.

**EL Robinson Engineering**

Company

  
Authorized Signature

**8/20/2025**

Date

NOTE: This addendum acknowledgment should be submitted with the bid to expedite document processing.



Department of Administration  
Purchasing Division  
2019 Washington Street East  
Post Office Box 50130  
Charleston, WV 25305-0130

State of West Virginia  
Centralized Expression of Interest

<b>Proc Folder:</b> 1717189			<b>Reason for Modification:</b> Addendum #1 issued to publish agency responses to vendor submitted questions.
<b>Doc Description:</b> AML - EOI Pre-Qualification for Consultants			
<b>Proc Type:</b> Central Purchase Order			
<b>Date Issued</b>	<b>Solicitation Closes</b>	<b>Solicitation No</b>	<b>Version</b>
2025-08-13	2025-08-20 13:30	CEOI 0313 DEP2600000001	2

**BID RECEIVING LOCATION**

BID CLERK  
DEPARTMENT OF ADMINISTRATION  
PURCHASING DIVISION  
2019 WASHINGTON ST E  
CHARLESTON WV 25305  
US

**VENDOR**

**Vendor Customer Code:**

**Vendor Name :** EL Robinson Engineering

**Address :**

**Street :** 5088 Washington Street, West

**City :** Charleston

**State :** West Virginia **Country :** United States **Zip :** 25313

**Principal Contact :** Eric Coberly, PE, Project Manager

**Vendor Contact Phone:** 304.833.9021 **Extension:**

**FOR INFORMATION CONTACT THE BUYER**

Joseph (Josh) E Hager III  
(304) 558-2306  
joseph.e.hageriii@wv.gov

Vendor  
Signature X

FEIN# 55-0594633

DATE 8/20/2025

All offers subject to all terms and conditions contained in this solicitation

# **Addendum #1**



Department of Administration  
Purchasing Division  
2019 Washington Street East  
Post Office Box 50130  
Charleston, WV 25305-0130

State of West Virginia  
Centralized Expression of Interest

<b>Proc Folder:</b> 1717189			<b>Reason for Modification:</b> Addendum #1 issued to publish agency responses to vendor submitted questions.
<b>Doc Description:</b> AML - EOI Pre-Qualification for Consultants			
<b>Proc Type:</b> Central Purchase Order			
<b>Date Issued</b>	<b>Solicitation Closes</b>	<b>Solicitation No</b>	<b>Version</b>
2025-08-13	2025-08-20 13:30	CEOI 0313 DEP2600000001	2

<b>BID RECEIVING LOCATION</b>
BID CLERK DEPARTMENT OF ADMINISTRATION PURCHASING DIVISION 2019 WASHINGTON ST E CHARLESTON WV 25305 US

<b>VENDOR</b>		
<b>Vendor Customer Code:</b>		
<b>Vendor Name :</b> EL Robinson Engineering		
<b>Address :</b>		
<b>Street :</b> 5088 Washington Street, West		
<b>City :</b> Charleston		
<b>State :</b> West Virginia	<b>Country :</b> United States	<b>Zip :</b> 25313
<b>Principal Contact :</b> Eric Coberly, PE, Project Manager		
<b>Vendor Contact Phone:</b> 304.833.9021	<b>Extension:</b>	

<b>FOR INFORMATION CONTACT THE BUYER</b>
Joseph (Josh) E Hager III (304) 558-2306 joseph.e.hageriii@wv.gov

<b>Vendor Signature X</b> 	<b>FEIN#</b> 55-0594633	<b>DATE</b> 8/20/2025
---	-------------------------	-----------------------

All offers subject to all terms and conditions contained in this solicitation