



The following documentation is an electronically-submitted vendor response to an advertised solicitation from the *West Virginia Purchasing Bulletin* within the Vendor Self-Service portal at ***wvOASIS.gov***. As part of the State of West Virginia's procurement process, and to maintain the transparency of the bid-opening process, this documentation submitted online is publicly posted by the West Virginia Purchasing Division at ***WVPurchasing.gov*** with any other vendor responses to this solicitation submitted to the Purchasing Division in hard copy format.

Header # 1

List View

General Information | Contact | Default Values | Discount | Document Information | Clarification Request

Procurement Folder: 1717189

Procurement Type: Central Purchase Order

Vendor ID: 000000209931

Legal Name: NEW RIVER ENGINEERS INC

Alias/DBA:

Total Bid: \$0.00

Response Date: 08/20/2025

Response Time: 12:59

Responded By User ID: kparker

First Name: Mackenzie

Last Name: Parker

Email: kp@nreivv.com

Phone: 3043427168

SO Doc Code: CEOI

SO Dept: 0313

SO Doc ID: DEP2600000001

Published Date: 8/13/25

Close Date: 8/20/25

Close Time: 13:30

Status: Closed

Solicitation Description: AML - EOI Pre-Qualification for Consultants

Total of Header Attachments: 1

Total of All Attachments: 1



Department of Administration  
Purchasing Division  
2019 Washington Street East  
Post Office Box 50130  
Charleston, WV 25305-0130

State of West Virginia  
Solicitation Response

**Proc Folder:** 1717189  
**Solicitation Description:** AML - EOI Pre-Qualification for Consultants  
**Proc Type:** Central Purchase Order

Solicitation Closes	Solicitation Response	Version
2025-08-20 13:30	SR 0313 ESR08202500000001209	1

**VENDOR**  
000000209931  
NEW RIVER ENGINEERS INC

**Solicitation Number:** CEOI 0313 DEP2600000001  
**Total Bid:** 0  
**Response Date:** 2025-08-20  
**Response Time:** 12:59:23  
**Comments:**

**FOR INFORMATION CONTACT THE BUYER**  
Joseph (Josh) E Hager III  
(304) 558-2306  
joseph.e.hageriii@wv.gov

<b>Vendor</b>		
<b>Signature X</b>	<b>FEIN#</b>	<b>DATE</b>

All offers subject to all terms and conditions contained in this solicitation

Line	Comm Ln Desc	Qty	Unit Issue	Unit Price	Ln Total Or Contract Amount
1	EOI Engineering Design Services				0.00

Comm Code	Manufacturer	Specification	Model #
81100000			

Commodity Line Comments:

Extended Description:

EOI Engineering Design Services



Department of Administration  
Purchasing Division  
2019 Washington Street East  
Post Office Box 50130  
Charleston, WV 25305-0130

State of West Virginia  
Centralized Expression of Interest

**Proc Folder:** 1717189

**Doc Description:** AML - EOI Pre-Qualification for Consultants

**Reason for Modification:**

Addendum #1 issued to publish agency responses to vendor submitted questions.

**Proc Type:** Central Purchase Order

Date Issued	Solicitation Closes	Solicitation No	Version
2025-08-13	2025-08-20 13:30	CEOI 0313 DEP2600000001	2

**BID RECEIVING LOCATION**

BID CLERK  
DEPARTMENT OF ADMINISTRATION  
PURCHASING DIVISION  
2019 WASHINGTON ST E  
CHARLESTON WV 25305  
US

**VENDOR**

**Vendor Customer Code:** Vendor Name :

New River Engineers, Inc

**Address :**

**Street :** 501 Eagle Mountain Rd

**City :** Charleston

**State :** WV

**Country :** USA

**Zip :** 25311

**Principal Contact :** Joshua D. Cook

**Vendor Contact Phone:** 304-342-7168

**Extension:**

**FOR INFORMATION CONTACT THE BUYER**

Joseph (Josh) E Hager III  
(304) 558-2306  
joseph.e.hageriii@wv.gov

Vendor  
Signature X

**FEIN#:** 55-0764054

**DATE:** 08/18/2025

All offers subject to all terms and conditions contained in this solicitation

# AML – Pre-Qualifications

Expression of Interest – Engineering Services

for

WVDEP - AML

---

August 2025



Presented by:

**NEW RIVER ENGINEERS, INC.**

3041 University Avenue, Suite 6  
Morgantown, WV 26505  
681.668.1809



# New River Engineers, Inc.



August 18<sup>th</sup>, 2025

WVDEP - AML

Re: AML Pre-Qualifications  
Expression of Interest — Engineering Services

To Whom It May Concern

New River Engineers, Inc. (NREI) is pleased to submit our statement of qualifications to provide consulting services for the WVDEP AML EOI for Pre-Qualifications

NREI is a highly qualified and experienced environmental/civil engineering firm providing services for municipal, federal, state, industrial and commercial clients throughout the states of West Virginia, Ohio, Kentucky, and Virginia.

For over 45 years, NREI has completed projects on time, under budget and without any successful litigation against us or our client, a record no other firm can match.

We would appreciate an opportunity to present our detailed qualifications at a mutually convenient date and time.

Please call if you have any questions or need further information.

Very Truly Yours,  
NEW RIVER ENGINEERS, INC.

Joshua D. Cook, P.E., PMP  
President  
jdc@nrenginc.com.c

Enclosure

WVDEP

TABLE OF CONTENTS

EXPRESSION OF INTEREST .....	1
FIRM OVERVIEW .....	2
PLAN OF APPROACH .....	3
PROJECT EXPERIENCE .....	8
ORGANIZATIONAL CHART .....	11
RESUMES OF KEY PERSONNEL .....	12
ADDITIONAL SERVICES .....	19





## EXPRESSION OF INTEREST

New River Engineers Inc. (NREI) is pleased to express our interest in providing environmental, engineering, architecture, and surveying services to the WVDEP. Our team is a civil engineering, architectural, environmental services, and surveying firm and is noted for design excellence and client focus. Our team's integrated design approach, our commitment to design quality, as well as our architectural and construction experience will help to ensure the quality of services that we will provide to the WVDEP. Below, please find additional qualifications that make our team uniquely qualified to assist you with your potential needs.

We have a history of providing high quality design and engineering management services throughout West Virginia, Ohio, Kentucky, Virginia and North Carolina. This quality has been recognized by the quantity of our repeat clients. We will use our engineering abilities and extensive design experience to aid the WVDEP as any need would arise.

As President of our firm, **Joshua D. Cook, PE, PMP** will lead projects for the WVDEP. He can be reached at **681.668.1809** or **jdc@nrenginc.com**. Josh has a Master of Science in Engineering from Marshall University and a Bachelor of Science in Civil Engineering from WVU Institute of Technology. Josh has served as a Projects Engineer, Project Manager and Engineering Manager for municipal engineering consulting, and the coal and natural gas industry. Josh will be assisted by Mike Yandrich, P.E., Matt Shelton, Chris Burford, Mike Green, P.S., and the rest of our staff.

We have the training, experience, and multi-discipline support to meet the needs of our clients. Due to our small size, our engineers become well rounded and deeply involved with each project. Our engineers are able to put their heads together to create an excellent working knowledge of projects, creating high quality, personalized, and professional services.



## FIRM OVERVIEW

New River Engineers, Inc. (NREI) is an engineering, architectural surveying and consulting firm that has been providing quality service to our clients and the industries for over 45 years. Mutual respect and trust are the cornerstones in the relationships established and maintained with our clients. NREI strives to perform all work in a professional and cost-effective manner, while providing our clients with quality and excellence.

The firm is managed by Joshua D. Cook, PE, PMP, President and Eric Hartwell, PE, Vice President. NREI has successfully provided an integrated approach to publicly funded projects for our clients. NREI provides professional services to owners and operators, and contractors throughout Ohio, West Virginia, Virginia, Kentucky and North Carolina and many others. NREI services range through all facets of civil engineering design as well as construction administration and project management.

Our staff combines advanced technology with many decades of surveying, mining, engineering and architectural experience and includes five professional engineers, two architects, two professional surveyors, eight degreed engineers, AutoCAD/engineer technicians and ten full-time survey crews.

As a full-service engineering and surveying firm, NREI can provide a whole host of services to our clients including, but not limited to the following:

- Construction Design, Management and Surveying
- Geotechnical Engineering & Drilling Management
- Architectural and Interior Design
- Environmental Permitting (DEP, NPDES, OAQ and USACOE)
- Underground / Surface Mine Engineering
- Civil Site Design / Engineering / Planning
- Drainage Design / Engineering / HECRAS
- Compaction Testing with Nuclear Density Gauge
- Subsurface Utility Locate Surveys with GPR & Pipe and Cable Locators
- Oil & Gas Surveying
- Boundary & Property/Topographical Surveying
- Aerial Mapping, GPS RTK & Static Surveying
- Reserve Studies

NREI has developed the following philosophy to guide the performance of its services:

- Provide superlative design services to our clients in new construction, improvements, and daily operations.
- Perform work in a timely, accurate and professional manner.
- Present multiple alternatives and solutions whenever possible.
- Work with our clients to control project costs.
- Be a technical sounding board for our clients in all situations.
- Strive to maintain professional competence through continuing education and training.
- NREI utilizes a practical application approach to all projects throughout the design process to provide a well-rounded result. This methodology emphasizes the best overall solution, meeting all the client's needs, instead of just the best technical solution. We believe our small size provides a distinct advantage to our clients and affords us the freedom to easily team with the clients to achieve the overall best possible result.





RESPEC Company, LLC (RESPEC) has supported Abandoned Mine Land (AML) and Abandoned Mine Reclamation (AMR) programs for nearly 40 years, completing more than 100 AML projects for state and federal agencies nationwide. Our dedicated AML team specializes exclusively in addressing hazards associated with historic mining and is committed to delivering cost-effective, compliant, and innovative engineering solutions.

Founded in 1969, RESPEC integrates applied science and technology to provide advanced solutions across multiple sectors. As a 100 percent employee-owned company with more than 650 employee-owners across 37 offices, we serve clients in the Mining & Energy, Water, Data & Technology Solutions, Facilities, Transportation, and Land Development Services market sectors. In 2024, we acquired EARTHRES to expand our mining, energy, and environmental solutions expertise in the Appalachian region.

To meet the increasing demand for effective AML/AMR services, RESPEC's Mining & Energy division established a dedicated Abandoned Mine Reclamation subdivision in 2023. This multidisciplinary team operates across several states and delivers responsive, schedule-driven solutions with minimal oversight required.

Currently, we are actively working on AML projects in West Virginia, Pennsylvania, Wyoming, Colorado, Montana, and New Mexico, where we conduct site investigations, features inventory assessments, mitigation designs, and construction oversight. In West Virginia, our team has supported AML work in coordination with the West Virginia Department of Environmental Protection (WVDEP), gaining direct experience with the agency's project expectations, permitting processes, and field requirements.

RESPEC Specializes in the following:

- / AML Reclamation
- / Subsidence
- / Acid Mine Drainage
- / Hazardous Water Bodies
- / Highwall Stabilization
- / Portal Closures
- / NEPA Permitting
- / Road Design
- / Slope Stabilization
- / Construction Services
- / Stream Design
- / Water/Wastewater Treatment
- / Geotechnical evaluation
- / Impoundment Design
- / Waterlines

146 EAST THIRD STREET  
LEXINGTON, KY 40508  
P.O. BOX 888 // LEXINGTON, KY 40588  
859.259.0959

## **PLAN OF APPROACH**

NREI believes in a team approach for the development of projects. Therefore, our first task will be to meet with the WVDEP to review existing data, reports, etc., and to ascertain the need of the specific project. Following data gathering, we will then evaluate alternatives and develop a cost-effective proposal that meets existing and future needs of a specific project. Throughout the process, WVDEP officials will be kept informed and involved in all important matters.

NREI will assist the WVDEP in preparation and submission of any funding application needs. Once the funding has been secured, we will then begin to develop detailed engineering drawings and specifications for the project. As information is gathered, it will be reviewed with WVDEP officials to allow comment and coordination as the project progresses. The project engineer will be involved during all phases of developing a project, obtaining funding, design, and construction to assure coordination with WVDEP personnel, and regulatory and funding agencies.

## **PRELIMINARY ENGINEERING REPORT**

Our next task will be the preparation of a Preliminary Engineering Report. Specifically, the report will be organized in accordance with regulatory and funding agency requirements as follows:

1. Introduction and Overview
2. Planning Area and Future Needs
3. Evaluation of the Existing System
4. Proposed Improvements/Upgrades
5. Alternate Solutions
6. Cost Estimates – Capital and O & M
7. Environmental Issues
8. Public Participation
9. Final Plan Selection
10. Implementation

Prior to publication of the final report, all information will be shared and reviewed with WVDEP officials to ensure that concerns are addressed.

## DESIGN PHASE

NREI will prepare contract documents including plans and specifications conforming to funding agencies requirements. Our design phase will be carried out as follows:

1. Define Existing Conditions
  - a. Assemble and evaluate data to eliminate conflicts and redundancy.
  - b. All major decisions regarding data will be discussed with WVDEP officials. Important data sources include, but are not limited to the following:
    - i. WVDEP Officials
    - ii. WV Department of Environmental Protection
    - iii. USDA Rural Development
    - iv. Soil Conservation Service
    - v. Local Citizens and Groups
2. Identify Project Work
  - a. Evaluate existing data, reports, and design drawings, if available
  - b. Evaluate existing site.
  - c. Evaluate environmental aspects.
  - d. Summarize existing problems and make presentation.
3. Preliminary Design
  - a. Preliminary layout of proposed project
  - b. Land surveys for mapping, rights-of-way, and / or land acquisitions
  - c. Coordination with the WV DEP and DOH with USDA-RD
  - d. Preliminary Cost Estimates
  - e. Preliminary review with the WVDEP.
4. Final Design
  - a. Incorporate review comments from the WV DEP, USDA-RD, and other agencies
  - b. Prepare detailed specifications and final design report in accordance with state and federal guidelines.
  - c. Attend public meetings.
  - d. Prepare final cost estimates.
  - e. Secure permits from officiating WV DEP and DOH, and other agencies
  - f. Prepare bid documents.
  - g. Conduct pre-bid conference.
  - h. Assist in advertising for bids, attend bid opening and assist in evaluation of bids with recommendations for awarding the construction of the project(s)

## CONSTRUCTION PHASE

NREI will provide the following services during the construction phase of the project:

1. Administrative Services
  - a. Assist and advise the WVDEP in the preparation of construction contracts for signature(s)
  - b. Issue a "Notice to Proceed" to the appropriate Contractor(s)
  - c. Provide consultation and advise the WVDEP during construction
  - d. Preparation of elementary and supplementary sketches and / or drawings required to resolve problems arising from actual field conditions encountered.
  - e. Review and approve shop drawings, diagrams, illustrations, brochures, catalog data, schedules, and samples, results of tests and inspections, other data which the contractor(s) is required to submit, but only for conformance with the design concept of the Project and compliance with the information given in the contract documents.
  - f. Receive and review maintenance and operating instructions, schedules, guarantees, bond, and certificates of inspections which are to be assembled by the contractor(s) in accordance with the contract documents.
  - g. Review and approve requests for periodic and final payments to the contractor(s)
  - h. Issue certificates of completion to the WVDEP for completed construction contracts.
  - i. Review original drawings and provide to the WVDEP a digital copy on disk and two (2) sets of black line prints of "as-built" plans
  - j. Advise the WVDEP whether the project can meet the project performance standards.
  - k. Attend monthly meetings during the construction period.
  - l. Represent the WVDEP in technical matters and litigation, if required
  - m. Provide engineering services during start-up of the facility.
  - n. Provide training to WVDEP employees for the operation of the new facility.
  - o. Provide one (1) year project performance certification.
2. Field Services
  - a. A Qualified Design Professional will make periodic visits to the site to observe the progress and quality of the executed work, and determine, in general, if the work is proceeding in accordance with the contract documents.
  - b. Efforts will be directed toward providing assurance to the WVDEP that the completed project will conform to the requirements of the contract documents.
  - c. Make general monthly construction progress reports to the WVDEP.
  - d. Observe initial operation of the project, or any performance tests as required by the specifications.
  - e. Make final inspection and report on the completed project.
  - f. Advise the WVDEP of any special test or necessary outside services that may be required to assist construction of the project.



- g. On the date, one (1) year after the initiation of the operation of the project, a Professional Engineer shall certify to the WVDEP whether the project can meet the project performance standards in accordance with requirements for the project.
- 3. Resident Inspection Services During Construction
  - a. A Resident Project Representative(s) will be furnished for each construction contract (as a minimum) to provide extensive representation at the project site during the construction phase.
  - b. Through more extensive on-site observations of the work in progress and field checks of materials and equipment by the Resident Project Representative(s), the WVDEP will be provided further protection against defects and deficiencies in the work
  - c. In addition to the general duties outlined above, the Resident Project Representative(s) will:
    - i. Observe the installation of approved materials and equipment and construction techniques and procedures in accordance with contract documents.
    - ii. Aid in public relations activities as the construction progresses through private property.
    - iii. Monitor the construction schedule and report conditions which may cause delay in completion.
    - iv. Review contract documents with the contractor's superintendent
    - v. Obtain necessary interpretations and transmit them to the contractor.
    - vi. Consider the contractor's suggestions and recommendations, evaluate them, and submit them with recommendations for a final decision.
    - vii. Attend field meetings as directed and report on the proceedings.
    - viii. Observe tests required by the contract documents, and record and report test procedures and, where applicable, the results
    - ix. Maintain records at the construction site in an orderly manner, including correspondence, change orders, supplementary drawings, requests for payment, and names and addresses of contractors, subcontractors, and principal material suppliers.
    - x. Keep a journal or logbook recording time and activities related to the project, weather conditions, nature and location of work being performed, verbal instructions and interpretations given to the contractor, and specific observations, record any occurrence of work that might result in a claim for a change of contract sum or contract time, and maintain a list of visitors, their titles, and time and purpose of their visit.
    - xi. Review applications for payment submitted by the contractor and forward them with recommendations for disposition.
    - xii. Prepare a punch list as construction nears completion and inform contractor of items on punch list.
    - xiii. Assist in final inspection of the work.



## **SPECIAL SERVICES**

1. Land Surveys
  - a. Easements and right-of-way plat maps
  - b. Verify existing aboveground and underground utilities.
  - c. Construction stakeout of proposed improvements of connection with existing utilities
2. Attendance at Public Meetings to represent the WVDEP on technical matters.
3. Attendance at Technical Meetings with the WVDEP, DEP, etc.
4. Furnish technical assistance to the accountant and legal staff.
5. Provide technical testimony before courts and / or administrative hearings related to the project.





## PROJECT EXPERIENCE

1. **AML Carbondale (Hill) Portals Phase II – Recently Awarded (2022)**
  - **Description:** Engineering, Environmental Permitting, Design & Construction Management, Inspection, and Technical Services for a developing project to raise salmon utilizing the water stored in the abandoned Maple Meadow Mine.
2. **Maple Eagle Complex, Fayette / Kanawha County, WV**
  - **Description:** Engineering, Environmental Permitting, Design & Construction Management for a Surface Mine and Deep Mine Facility. Activities include: Environmental Permitting, Pond Design & Construction, Primary Haulroad / IUAR Design & Construction, Preparation of Mine Plans, Prospecting / Drilling Operations, Valley Fill Designs & Certifications, Excess Spoil Disposal Areas, Surface Mine Surveying Activities, Sediment Control Structures, Support for Excavation of Overburden & Removal of Coal, Underground Deep Mine Surveying, Preparation of Underground Mine Mapping, WVOMHS&T & MSHA Plans (including Ventilation, Ground Control, & Roof Control Plans), Underground Mine Seal Plans, SWORA Evaluations, Phase Maps, and Site Supervisor / Project Manager.
  - **Funding Source:** Maple Coal Co., Western Coal, Walter Resources, ERP Fuels, and currently Blackhawk Mining
  - **Project Cost:** Approximately \$8,500,000 to Current
  - **Project Status:** Started December 2005 and continues currently
3. **American Mining Group, Fayette County, WV**
  - **Description:** Engineering, Environmental Permitting, Design & Construction Management for a Surface Mine Facility. Activities include Environmental Permitting, Pond Design & Construction, Primary Haulroad / IUAR Design & Construction, Preparation of Mine Plans, Prospecting / Drilling Operations, Excess Spoil Disposal Areas, Surface Mine Surveying Activities, Sediment Control Structures, Support for Excavation of Overburden & Removal of Coal, WVOMHS&T & MSHA Plans (including Ground Control, Plans), SWORA Evaluations, Phase Maps, and Site Supervisor / Project Manager.
  - **Funding Source:** American Mining Group
  - **Project Cost:** Approximately \$850,000 to Current
  - **Project Status:** Started Circa 2018 and continues currently
4. **Marshall County Coal Preparation Plant Geotechnical Investigation (2022)**
  - **Description:** Oversaw and performed a geotechnical investigation for an expansion to the Marshall County coal preparation plant. Provided structural designers geotechnical parameters for shallow and deep foundations, included drilled caissons and driven piles.

5. **Cyprus Kanawha Corp, Fayette County, WV**
  - **Description:** Completed USACOE permitting requirements to expand a coal barge loading facility located on the Kanawha River. The expansion consisted of the construction of additional steel pile mooring cells, additional barge storage and increased loading speed of barges.
  - **Funding Source:** Cyprus Kanawha Corp
  - **Project Cost:** \$1,000,000
  - **Project Status:** Completed 1990 on Schedule
6. **United Coal Company, LLC (including Pocahontas Coal Company, LLC & Carter Road Coal Company), Raleigh, Wyoming, Randolph, & Upshur County, WV**
  - **Description:** Coal Mining/Environmental Planning, Permitting, and Coordination including; engineer site review and reconnaissance; mine layout and design; drainage design; haulage layout and design; spoil balance and reclamation design; stream delineation and USACE permitting and approvals; WVDEP permit submittals and approvals including Article 3, Article 11, and Storm Water Construction; on-site construction stakeout; surveying, both surface and underground; field management and on-site project coordination; as-built certifications; coal slurry impoundment and coarse refuse disposal management, coordination, surveying, and design; and daily contact and coordination between the company, field personnel, and office personnel to ensure the proper running of daily mining and environmental activities and needs for various on-going mining and environmental projects.
  - **Funding Source:** Private Business Coal Extraction & Sales
  - **Project Cost:** \$13,400,000 average for completed and on-going services
  - **Project Status:** Began Circa August 2006 and continues currently
7. **TC Energy, Various Locations, WV, OH, VA, PA, KY, MI, NY, NJ & Etc.**
  - **Description:** Engineering, Surveying and Drafting for Multiple Projects Across the Eastern United States. Provide Surveying, Engineering and Drafting Support for the Long Wall Program, HCA Wire-Line Program, HCA-Dig Program, HCA-Hydro Test Programs, and Right-Of-Way Program. Provide Engineering & Geotechnical for Hazardous Steep Slope Winch Plans for Construction Operations.
  - **Funding Source:** Private Business / TC Energy
  - **Project Cost:** Approximately \$3,500,000 and on-going
  - **Project Status:** Started Circa 2017 and continues currently



**8. Pocahontas Coal Company, Raleigh County, WV**

- **Description:** Planning and design of a water and sewer line extension project which also included wastewater pump station.
- **Funding Source:** Pocahontas Coal Company
- **Project Cost:** \$400,000
- **Project Status:** Completed 2010

**9. WVDOC Denmar Correctional Center, Pocahontas County, WV**

- **Description:** Planning, design, and construction management of the replacement of two (2) water storage tanks with one 300,000-gallon water storage tank.
- **Funding Source:** WVDOC
- **Project Cost:** \$600,000
- **Project Status:** Completed March 2015

**10. WVDNR Bluestone State Park, Summers County, WV**

- **Description:** Planning, design, and construction management of the replacement of water line which also included the two (2) pressure reducing stations.
- **Funding Source:** WVDNR
- **Project Cost:** \$450,000
- **Project Status:** Completed 2011

**11. Coonskin Park Flood Repairs, Kanawha County, WV**

- **Description:** Planning, design, and construction management of 160 LF of H-Pile wall, a 40 LF H-Pile wall, Replacement of three 18" culverts, Paving of approx. 2,800 LF of Elk River Trail, and Replacement of 105 LF of 36" HDPE storm pipe. Project cost of approx. \$1.85 million.

**12. Big Bend / Coonskin, Kanawha County, WV**

- **Description:** Planning and design for an embankment repair to address failed slope along the trail on the Elk River. Planning and design for an embankment repair to address failed slope that is adjacent to the Coal River in Tornado, WV

## ORGANIZATIONAL CHART

WVDEP



## RESUMES OF KEY PERSONNEL



**Joshua D. Cook, PE, PMP**

**Project Manager  
President / Senior Engineer**

### EDUCATION

**Bachelor of Science**

Civil Engineering  
West Virginia University Institute of  
Technology

**Master of Science**

Engineering  
Marshall University

### CERTIFICATIONS

Professional Engineer — WV, OH, MI,  
KY, MD, TN, VA

Project Management Professional  
(PMP)

### PROFESSIONAL AFFILIATIONS

American Society of Civil Engineers

West Virginia Rural Water  
Association

Business Networking International  
(BNI)

Project Management Institute (PMI)

Josh began his professional career in 2012 and has worked on a variety of civil engineering projects throughout West Virginia, Ohio, Virginia, Maryland, and Pennsylvania. During his career, Josh has served as project engineer, project manager and engineering manager for coal and natural gas companies and municipal engineering consulting firms, including New River Engineers.

Josh has experience in environmental remediation, groundwater protection plans (including spill prevention, control and countermeasure plans), stormwater permitting and design, construction management, water, wastewater, storm water and a variety of natural gas experience.

Josh has been successful in managing a variety of projects to remain on-time, on-budget and compliant.

### PROJECT EXPERIENCE

Paint Creek Recreational Trail, Slip Repair, Ross  
County, OH

City of Jackson and Ross County Parks District,  
AMLER Salk Lick Creek, Jackson, OH

Town of Ansted, Gauley Mountain Bike Trail and Fox  
Branch Creek Bridge Trestle, Ansted, WV

Fayette County Park Pool Project, Fayetteville, WV

Fayette County Fireman's Association, New Hawks  
Nest Fire Training Center, Fayette County, WV

Hargrove Student Housing, Golden Bear Properties,  
LLC, Beckley, WV

Meadow Bridge Community Center, WV

Boomer Fire Department House Addition, WV



## **Eric T. Hartwell, PE**

### **Vice President / Senior Engineer**

Eric has over 25 years of experience in planning, design, and construction of environmental projects. The majority of his experience is in the design and construction of wastewater treatment and collection systems, water treatment and distribution systems and industrial oil water separators.

Eric was an integral part of the design team for several wastewater treatment plant upgrade projects and over 70 pump stations ranging in size from 5 to 7000 gallons per minute. He has also been involved in the design of multiple water treatment plants and pumping stations.

Eric oversees the design and construction of water storage tanks and pressure reducing valve stations. He has worked on environmental projects throughout West Virginia. His responsibilities include planning, design, construction administration, preparation of operation and maintenance manuals and operator training for water supply and distribution, wastewater collection and treatment, water loss and infiltration and inflow reduction projects.

Eric also has experience in construction management, payment request review and approval, quantity and cost estimates. His thorough and committed communication skills has earned him repeat clients throughout his career with municipal, PSD personnel, regulatory agencies and contractors.

### **PROJECT EXPERIENCE**

City of Jackson and Ross County Parks District,  
AMLER Salk Lick Creek, Jackson, OH

Mill Street Water & Sanitary Sewer Replacement,  
Jackson, OH

Glasgow New Fire House, Glasgow, WV

WWTP Improvements, Ronceverte, WV

WWTP Improvements, Chapmanville, WV

### **EDUCATION**

#### **Bachelor of Science**

Civil Engineering  
West Virginia University Institute of  
Technology

#### **Master of Science**

Civil Engineering  
West Virginia University

### **CERTIFICATIONS**

Professional Engineer — WV

### **PROFESSIONAL AFFILIATIONS**

Contractors Association of West  
Virginia





## **Michael Noel, NCARB**

### **Registered Architect**

Mike has recently joined the NREI team as of July 2025 along with his team including architects and CAD drafters. Mike was previously the Principal of Michael Noel Architect, LLC for the past four years. Before establishing his firm, he was Senior Principal with Panich, Noel and Associates for 32 years.

### **EXPERIENCE REGISTERED ARCHITECT**

Responsible for day-to-day design and management of various construction types for the firm.

### **CONSTRUCTION DOCUMENTS**

As the Partner in charge Mike has been partnered to oversee more than \$300 million dollars of construction documents varying from hotels, industrial buildings, churches, prisons, and higher and lower education.

### **PROJECT EXPERIENCE**

Trimble Schools Building Additions and Remodeling - \$400,000.

Alexander Schools Renovations and Maintenance Facility - \$500,000. HVCRC Gymnasium and Classroom Design - \$3,000,000.

Federal Hocking Local Schools-Feasibility Study.

Athens City Schools Renovations, Roof Replacement, Additions, Bus Garage and Athlete Facilities Buildings - \$15,000,000.

Athens High School Baseball Stands, Press Box and Concessions Venue

Vinton County School Stadium Renovations and Concession Stands

Master Plan Gallia Fair Grounds Multipurpose / Athletic Building

Ohio University Track Stadium ADA Renovations

First Baptist Church, Sanctuary and Classrooms

River City Fellowship Church Renovation

Athens County Engineering Depot, Athens County, OH

Rustic Charm Event Center, New Lexington, OH

### **EDUCATION**

#### **Bachelor of Arts**

Architecture  
Ohio University

#### **Register NCARB**

### **CERTIFICATIONS**

Professional Architect —OH, WV, IL, FL

### **PROFESSIONAL AFFILIATIONS**

Athens Rotary Club

Boy Scouts of America

Athletes in Action



## **Christopher D. Burford**

### **Senior Project Manager**

Chris has been with NREI for over fifteen years. As a Senior Project Manager, he oversees surface and underground mining permit applications, is the manager of surveying crews, manages State and Federal safety plans and permits, oversees construction oversight and construction management and mine planning.

Green and Associates, LLC, St. Clairsville OH – manager and supervisor of survey crews and office personnel, business development, and coordination with clients on various projects.

New River Safety, LLC – manager and supervisor of safety instructors, electrical inspectors, and office personnel, business development and coordination with clients and government entities.

Ellison Ridge Mining, LLC – management and oversight of various sub-contractors over mining, reclamation and civil site construction projects, business development, and coordination with clients and government entities.

### **EDUCATION**

#### **Associate of Science**

Civil Engineering Technology  
West Virginia University Institute of Technology

### **CERTIFICATIONS**

Certified Underground Coal Miner

Certified Surface Coal Miner

MSHA Certified Limited Instructor

MSHA Certified Gravimetric Dust Sampling

MSHA Certified Gravimetric Dust Calibration & Maintenance

Safe Land USA PEC Safety

MSHA – Methane / Oxygen Deficiency Qualified

APNGA Portable Nuclear Gauge Safety & USDOT Hazmat Certified  
#299-160-926-311

APNGA Certificate of Achievement, Radiation Safety Officer Class #299-160-994-3161

Heartsaver First Aid, CPR & AED Certified

### **PROFESSIONAL AFFILIATIONS**

Contractors Association of West Virginia

West Virginia Rural Waters Association

West Virginia Coal Association

Friends of Coal Association

### **PROJECT EXPERIENCE**

Hargrove Student Housing, Golden Bear Properties, LLC, Beckley, WV

Meadow Bridge Community Center, WV

City of Montgomery Pavillion, Montgomery, WV

Town of Ansted, Gauley Mountain Bike Trail and Fox Branch Creek Bridge Trestle, Ansted, WV

Boomer Fire Department House Addition, WV

Fayette County Park Pool Project, Fayetteville, WV

Fayette County Fireman's Association, New Hawks Nest Fire Training Center, Fayette County, WV

Fayette County Shooting Range and Training Center, Fayetteville, WV





## **D. Matt Shelton**

### **Senior Project Manager**

#### **EDUCATION**

##### **Bachelor of Science**

Civil Engineering Technology  
West Virginia University Institute of  
Technology

#### **CERTIFICATIONS**

Environmental Site Assessment  
Commercial Real Estate

#### **PROFESSIONAL AFFILIATIONS**

Water Environment Federation  
Contractors Association of West  
Virginia

Matt began his career in the field as a surveyor and has progressed to successfully earning a civil engineering degree. It's with this eventual process that makes his skills superior with overseeing site development, water supply, wastewater, storm water and drainage projects. His skills include construction management, record keeping, quantity and payment reviews. His attention to detail and great communication skills has earned him much respect among general contractors, subcontractors, community representatives and residents. His solid techniques move projects in a professional, cost-effective and timely manner.

Matt is experienced in site grading, surveying, building layouts, water & sewer system design and construction inspection on civil engineering projects.

Matt's experience as an Engineering Technician includes design of water line extensions, water booster stations, water storage tanks, wastewater pump stations, sewer line extensions, manholes, drainage calculations, and preparation of quantity and cost estimates.

Matt's experience as a Survey Technician/ Instrument team member includes topographic surveys, construction stakeout for water and sewer systems and highways, building layout, cut sheets for sewer systems and GPS surveying for field control work, etc.

#### **PROJECT EXPERIENCE**

Elk River Flood Repairs and Coonskin Park Trail Replacement, Kanawha County, WV

Big Bend Golf Course Slope and Coonskin Park Trail Wall Flood Repair, Kanawha County, WV

City of Jackson and Ross County Parks District, AMLER Salk Lick Creek, Jackson, OH

CRW Yeager Airport, Runway 5 Slope Failure, Charleston, WV



**Randy B. Crace, P.S.**

**Senior Surveyor**

Randy began his career in 1983 working on a variety of surveying and engineering projects. Areas of concentration in boundary surveys, mapping, topography, subdivisions, annexations, right of ways, subdivision development, construction stakeout, aerial mapping controls, GPS-RTK survey control networks, oil and gas well locations, surface and underground mining permits, construction stakeout, hydrology, erosion and sediment control plans, storm water retention systems, site grading plans, parking lot layout, WVDOH driveway permits, CAD software programs, Geographic Information Systems, Phase I - ASTM environmental site assessment and expert witness testimony in the surveying field.

**EDUCATION**

**Bachelor of Science**

Industrial Technology  
West Virginia State College

**Master of Science Environmental Studies**

MUCGS, Institute of WV, Partial Course Work

**CERTIFICATIONS**

Professional Surveyor — KY, WV, OH

Environmental Site Assessment  
Commercial Real Estate Certification

ASTM E-1527 & E-1528

ACSM Surveying Instrumentation and  
Coordinate Computation Certification

Center College, Charleston, WV  
Technical Degree, Drafting

**PROFESSIONAL AFFILIATIONS**

West Virginia Association of Land  
Surveyors

American Congress of Surveying &  
Mapping

National Society of Professional  
Surveyors

American Institute of Architects, WV

**U.S. Army - SP4**

**Honorable Discharge - 1974**



**PROJECT EXPERIENCE**

Town of Fort Gay Sewer Lines, Wayne County, WV

City of Jackson, Salt Lick Creek Hydrologic &  
Hydraulic Flood Study, Jackson, OH

CWVRAA Yeager Airport, Stormwater  
Improvements, Charleston, WV

Hargrove Student Housing Renovation, Beckley,  
WV

Boomer Fire House Addition, Boomer, WV

Glasgow Fire Department New Fire Station,  
Glasgow, WV

New River Engineers, Inc. Headquarters Building,  
Teays Valley, WV

Thomas Hospita Environmental Site Assessments,  
Kanawha County, WV

WVDOC Denmar Correctional Center, Pocahontas  
County, WV





## **Charles "Chuck" Kurzyna, P.E., P.S.**

### **Senior Engineer / Senior Surveyor**

Chuck has over 30 years of engineering and management experience in the mining industry and consulting business. He specializes in surface and underground mine design, planning, and surveying; environmental and safety permitting; project and construction management.

Project Manager for a consulting engineering firm, responsible for job estimates and bidding, supervise office staff in engineering related projects including surface mine surveying, reclamation and permitting, reserve studies, etc.

Chief Engineer for a small mining and construction company, responsible for mine planning, production tracking, construction job bidding, construction engineering, etc.

Chief Engineer, Senior Engineer for the Lady Dunn Surface Mine & Preparation Plant; coal reserve evaluations; project engineering for mine related facilities; environmental permits for large surface and deep mining operation; etc.

### **EDUCATION**

#### **Bachelor of Science**

Mine Engineering Technology  
West Virginia University Institute of Technology

#### **Associate of Science**

West Virginia University Institute of Technology

### **CERTIFICATIONS**

Professional Engineer — WV, OH, PA, VA, KY, GA

Professional Surveyor — WV

Underground Mine Foreman

Surface Mine Foreman

### **PROFESSIONAL AFFILIATIONS**

Contractors Association of West Virginia

West Virginia Coal Association

Friends of Coal Association

Society of Mining Engineers

### **PROJECT EXPERIENCE**

City of Jackson and Ross County Parks District,  
AMLER Salk Lick Creek, Jackson, OH

CRW Yeager Airport, Runway 5 Slope Failure,  
Charleston, WV



## DUSTIN W. MORIN

MARKET SECTOR LEAD, RECLAMATION

### OVERVIEW

With more than 24 years of experience in abandoned mine reclamation (AML) and environmental restoration, Dustin Morin possesses a specialized skill set centered around leadership, program and project management, grant administration, and National Environmental Policy Act (NEPA) expertise. Since 2021, he has served as the Director of the Alabama Department of Labor's Mining and Reclamation Division, overseeing the AML Section, State Mine Safety & Inspection Section, and Surface Mine permitting and inspection of the Non-Fuel Minerals Section. With more than a decade of experience with the Department of Labor, Dustin has a diverse background in land restoration, environmental science, and construction project management. His career includes leadership roles as a primary responder on the U.S. Environmental Protection Agency's (EPA's) Superfund Technical Assessment and Response Team (START), where he gained expertise in environmental science, emergency response, risk management, and large-scale environmental restoration projects. Dustin served on the National Association of Abandoned Mine Land Programs executive cabinet, recently completing his term as president in 2024. He has represented the State of Alabama as the Governor's delegate to the Interstate Mining Compact Commission since 2019. Dustin's work is driven by a commitment to public service, safety, sustainability, and positive community impact.

### TECHNICAL EXPERIENCE

**Abandoned Mine Reclamation.** While working as an inspector, program supervisor, and division director, Dustin has experience in all facets of abandoned mine reclamation, including field inventory collection and hazard prioritization of AML features, site investigation, survey and mapping, reclamation design, and construction. Throughout his career, Dustin has conducted oversight and provided technical expertise on a variety of AML reclamation projects involving portal closures, highwall reclamations, subsidence stabilizations, and coal fire mitigation.

**Staff Training and Development.** For more than 10 years, Dustin served as part of the instructor cadre for the U.S. Office of Surface Mining Reclamation and Enforcement, National Technical Training Program. Using his practical knowledge and expertise, Dustin has provided training and mentorship to state and federal personnel in the areas of Erosion and Sediment Control, Mine Gas Safety and Inspection, Wetlands Awareness, Soils, and Revegetation and served as the Lead Instructor for the Abandoned Mine Reclamation Projects training course.

**Program, Project, and Consultant Management.** Dustin has managed personnel, projects, and contractors at all levels of his career. He has managed the Mining and Reclamation Division, which includes three critical mining-related programs: AML, Underground Mine Safety and Inspection, and Non-Fuel Surface Mine Permitting. He has been responsible for effectively communicating and coordinating overall program and project functions while ensuring that programmatic goals and project execution were achieved on time and on budget.

**Environmental Assessment.** As a consultant and program manager, Dustin has conducted environmental assessments on multiple mine reclamation, environmental removal, and contamination remediation projects. He has consulted with multiple federal and state agencies to ensure compliance with NEPA and minimize impacts on threatened and endangered species, cultural resources, and waters of the U.S. while restoring the affected lands and waters to beneficial use.

**Mine Safety and Rescue.** In his role as a Division Director for Mining and Reclamation on behalf of the State of Alabama, Dustin effectively managed the mine safety and inspection program. He directed the

### TECHNICAL EXPERTISE

- / Abandoned Mine Reclamation
- / Staff Training and Development
- / Program, Project, and Consultant Management
- / Environmental Assessment
- / Mine Safety and Rescue
- / Communications and Public Relations
- / Surface Mining
- / Endangered Species Act

### EDUCATION

- / MS in Biology, Jacksonville State University, Jacksonville, AL (2005)
- / BS in Biology, Jacksonville State University, Jacksonville, AL (2003)

### PROFESSIONAL MEMBERSHIPS/COMMITTEES

- / NAAML President
- / IMCC
- / OSMRE National Training Program Steering Committee
- / OSMRE National Technology Transfer Team
- / IMCC Mine Health and Safety Committee
- / IMCC Abandoned Mine Land Committee
- / NAAML Training Committee
- / NAAML Finance Committee

### HONORS & AWARDS

- / OSMRE AML Reclamation Small Project Award: *Ruffner Mountain Portals Project Jefferson County, Alabama* (2004)
- / OSMRE AML Reclamation Small Project Award: *Ruffner Mountain Portals Project Jefferson County, Alabama* (2020)
- / OSMRE AML Reclamation Small Project Award: *Marvel Gob Fire Emergency Project – Bibb County, Alabama* (2019)

### WORK HISTORY

- / RESPEC (2025–Present)
- / Alabama Department of Labor (2019–2024)
- / Oneida Total Integrated Enterprises (2006–2012)

training and performance of the state-funded underground mine rescue teams. He has managed multiple underground rescue operations in cooperation with the Mine Health and Safety Administration. Under his leadership, the mine rescue teams consistently placed in the top five at multiple National Mine Rescue competitions.

**Communication and Public Relations.** Dustin has developed excellent communication and public relations skills while leading the Mining and Reclamation Division for the State of Alabama and serving as an officer of the National Association of AML Programs. Dustin has provided congressional testimony on behalf of the state AML programs and coordinated routinely with other state program administrators, state and federal legislators, federal agency counterparts, and the public on issues surrounding abandoned mine reclamation.

## PROJECT EXPERIENCE

**START, Gulf States Steel Removal/Demolition, EPA, Gadsden, Alabama.** Dustin was the Project Manager on this project from 2008 to 2012. He profitably and effectively managed one of the largest contamination removal/land reclamation actions conducted in Alabama at the formerly abandoned Gulf States Steel facility in Gadsden, Alabama. This removal project encompassed hazardous waste characterization, soil, water, and air sampling, oversight of the removal and treatment of large volumes of abandoned chemical contaminants, and the structural demolition of numerous buildings and process vessels. As the project manager and technical consultant, Dustin was responsible for overseeing all project activities and ensuring adherence to federal and state Resource Conservation and Recovery Act and Comprehensive Environmental Response, Compensation, and Liability Act regulatory guidelines on behalf of EPA.

**Piper Mine Reclamation Project, Cahaba National Wildlife Refuge, Alabama AML Program, Bibb County, Alabama.** Dustin was the Division Director/Program Manager for this project, which involved mitigating the physical and environmental hazards associated with an abandoned early 1800s surface and underground coal mine. Work included survey, mapping, and design to reclaim 4,830 linear feet of dangerous highwall with an average height of 60 feet, 59 acres of abandoned spoil area, three hazardous impoundments, 6 acres of gob refuse, and 3 acres of slump on a U.S. Fish and Wildlife (USFW) Wildlife Refuge. This project required moving just under 550,000 cubic yards of AML overburden and provided expanded access to the wildlife refuge and numerous recreational amenities, including the creation of a new 10-acre pond/lake stocked for fishing with canoe launch/boat ramp access to control drainage; improvement and expansion of the existing trail system to include multiple new trails and a landing from trail system at the fishing area; updated informational and interpretive signage throughout the project area of the refuge, two new gravel parking areas, including handicapped-accessible parking at the fishing lake area; access control gates to allow different areas to be open/closed to the public at the discretion of refuge managers; and access roads from the front to the back of the refuge allowing expanded access to USFW staff. Dustin's primary responsibilities included site investigation, water sampling, survey and mapping, environmental assessment and consultation, engineering cost estimates, review and approval of construction plans and specifications, and construction management and post-construction monitoring.

**Ruffner Mountain Portals Project, Alabama AML Program, Birmingham, Alabama.** Dustin was the Project Manager and provided construction management for this project, which involved mitigating and eliminating the physical safety hazards associated with two open underground iron ore portals located 1.5 miles apart within an urban nature preserve within the city limits of Birmingham, Alabama. Both portals were within 50 feet of frequently used hiking trails and had visible evidence of people entering the underground works, posing an extreme danger to visitors to the nature preserve. Work consisted of site investigation, access road construction, environmental assessment and consultation, engineering design plans and specifications, construction management, and fabrication and installation of bat-compatible closures. After securing the portals with bat-compatible closures, Ruffner staff discovered a roosting colony of approximately 500 Tricolored bats. As a result of the work completed by AML, securing the mine portals from human entry, the site was selected by Bat Conservation International as a research site for the potential treatment of white-nose syndrome.

**Marvel Gob Fire II Emergency Project, Alabama AML Program, Marvel, Alabama.** Dustin was the project manager and provided construction management for this project, which involved mitigating and eliminating the physical and environmental hazards associated with surface burning associated with a refuse pile from an abandoned underground coal mine in the early 1900s. Work included excavation, extinguishing the smoldering gob, and covering and encapsulation with clay. Dustin's primary responsibilities included air and thermal monitoring of the smoldering gob, environmental assessment and consultation, engineering design and specifications, and construction management.

**Three Forks South Reclamation Project, Alabama AML Program, Tuscaloosa County, Alabama.** Dustin was the Project Manager and provided construction management for this project, which involved mitigating and eliminating the extreme physical and environmental hazards associated with abandoned surface mining activities dating back to the early 1960s. Work included



survey, mapping, and design for reclamation of 3,400 linear feet of dangerous highwall with an average height of 60 feet, 60 acres of associated spoil area, and two dangerous impoundments, all within 300 feet of several primary residences. Dustin's primary responsibilities included site investigation, water sampling, drone survey and mapping, environmental assessment and consultation, engineering cost estimates, engineering design plans and specifications, and construction management.

**Labuco Gob Fire Emergency Project, Alabama AML Program, West Jefferson, Alabama.** Dustin was the Project Manager and provided construction management for this project, which involved mitigating and eliminating the physical and environmental hazards associated with surface burning associated with a refuse pile from an abandoned underground coal mine impacting a county road and water line. Work included excavation and extinguishing the smoldering gob and cover and encapsulation with clay, rerouting the road, and relocating the county water line. Dustin's primary responsibilities included air and thermal monitoring of the smoldering gob, coordination with the county engineers, environmental assessment and consultation, engineering design and specifications, and construction management.

**Sicard Hollow Reclamation Project, Alabama AML Program, Vestavia Hills, Alabama.** Dustin was the Project Manager and provided construction management for this project, which involved mitigating and eliminating the extreme physical and environmental hazards associated with an abandoned surface mine adjacent to a residential community and athletic sports complex. Work included survey, mapping, and design for reclamation of 4,500 linear feet of dangerous highwall with an average height of 50 feet, 65 acres of associated spoil area, and four dangerous water impoundments, all within 300 feet of a youth athletic complex. After reclamation, the AML Program coordinated with the City of Vestavia Hills to install walking trails, pickleball courts, a pavilion, and a dog park on the previously reclaimed AML site. Dustin's primary responsibilities included site investigation, water sampling, drone survey and mapping, environmental assessment and consultation, engineering cost estimates, engineering design plans and specifications, and construction management.

**Shaft No. 6 Evaluation and Stabilization, Pennsylvania Department of Environmental Protection, Bureau of Abandoned Mine Reclamation, Newport Township, Pennsylvania.** Dustin is the Principal – Reclamation Sector Lead for The Shaft No. 6 project involves a geophysical evaluation of the No. 6 Shaft in Newport Township, Luzerne County, Pennsylvania. This abandoned mine shaft, located near public housing, has a history of subsidence events. The evaluation aims to assess the shaft's condition and identify any voids or anomalies within it. Additional tasks include developing a conceptual plan to eliminate the hazards associated with shaft subsidence and overseeing implementation and construction management to stabilize the shaft and prevent future continues subsidence. Dustin's primary responsibilities include site investigation, engineering design plans and specifications, cement grouting and stabilization of the shaft, and construction management.





# JESSE HATTER, PE

## PROJECT MANAGER

### OVERVIEW

Jesse Hatter is an accomplished engineer with 15 years of demonstrated expertise in engineering design, project management, and environmental oversight. He has a track record of success in steering intricate projects through the entire lifecycle, from conceptualization to execution and implementation. Jesse's leadership approach integrates analytical ingenuity and creative insight to effectively oversee projects. Leading abandoned mine land projects from scope and budgeting to site investigation, environmental assessment, data collection and analysis, design, permitting, and bidding.

### TECHNICAL EXPERIENCE

**Abandoned Mine Reclamation.** Jesse has extensive experience managing all phases of abandoned mine land (AML) reclamation projects, from initial site assessments through design, permitting, and construction oversight. He has led efforts to remediate hazardous highwalls, subsidence features, mine openings, and acid mine drainage impacts across diverse terrains. Jesse applies a multidisciplinary approach that integrates geotechnical analysis, hydrologic modeling, and environmental compliance to develop effective, site-specific solutions. His work emphasizes public safety, environmental restoration, and long-term sustainability, coordinating with state and federal agencies, local stakeholders, and contractors to ensure successful project outcomes.

**Project Management.** Jesse has established clear objectives, deliverables, and schedules for a variety of projects. He assembled teams and provided clear direction and support for successful project completion. Throughout these projects, he monitored progress and proactively addressed potential roadblocks to maintain adherence to project timelines. Jesse maintains clear and effective communication among all stakeholders to balance all resources, timelines, and tasks to keep projects on track. This approach has consistently facilitated the smooth execution and timely completion of projects. Attribute

**Civil Engineering.** Jesse has developed and overseen numerous civil site projects from conception to completion, ranging from single-use commercial projects to large multi-unit residential developments and large mine projects. Working with surveyors to collect the necessary existing condition data through both conventional field surveys and LiDAR flights. Jesse prepares site 3D models of the site and designs plans, ensuring constructability and design optimization.

**Stormwater Management.** Jesse has extensive experience in stormwater management, successfully leading projects that mitigate flooding and improve water quality. He has designed and implemented both green and gray infrastructure solutions, including mitigated wetlands, permeable pavements, and advanced drainage systems. Jesse's expertise in stormwater modeling allows him to predict runoff patterns and optimize system performance. His proactive approach ensures compliance with environmental regulations and promotes sustainable urban development.

### PROJECT EXPERIENCE

**Shaft No. 6 Evaluation, Pennsylvania Department of Environmental Protection, Bureau of Abandoned Mine Reclamation, Newport Township, Pennsylvania.** Jesse served as the project manager and technical lead for the evaluation of the Glen Lyon No. 6 Shaft, a historically significant and geotechnically complex abandoned mine feature located adjacent to public housing. Jesse led the development of a comprehensive work plan, including site safety protocols, utility coordination, and environmental compliance measures. The project will provide a safe and stable environment to allow drilling for geophysical evaluation of the shaft's current condition and to prevent future subsidence events.

**Northwest Milton Reclamation Project, Pennsylvania Department of Environmental Protection, Bureau of Abandoned Mine Reclamation, Redbank Township, Armstrong County, Pennsylvania.** Jesse served as the project

#### TECHNICAL EXPERTISE

- / Abandoned Mine Reclamation
- / Project Management
- / Civil Engineering
- / Stormwater Management
- / Surface and Underground Mining
- / Construction Permitting
- / Surveying
- / Staff Training

#### EDUCATION

- / BS in Mining Engineering, University of Kentucky, Lexington, KY (2010)

#### REGISTRATIONS & LICENSES

- / Professional Engineer in Kentucky, West Virginia, and Virginia

#### CERTIFICATIONS & TRAINING

- / KEPSC Inspector Qualification

#### WORK HISTORY

- / RESPEC (2024–Present)
- / AGE Engineering Services, Inc (2017–2024)
- / Alliance Resource Partners, L.P. (2013–2017)
- / Patriot Coal Corporation (2010–213)



manager for the design and permitting of a comprehensive AML reclamation effort addressing a 1,400-foot dangerous highwall and a 9-acre spoil pile. The project required careful environmental, geotechnical, and regulatory coordination, including wetland delineation and mitigation planning, utility verification, and stakeholder engagement. Jesse led the development of bid-ready construction documents, including detailed grading plans, erosion and sediment control measures, technical specifications, and all permitting requirements. He worked closely with property owners and regulatory agencies to ensure that all parties were satisfied with the project. His leadership ensured the project advanced efficiently through the design phases, culminating in a fully permitted, construction-ready package that addressed both public safety and environmental restoration goals.

**Commissioners Lake Reclamation Project, Pennsylvania Department of Environmental Protection, Bureau of Abandoned Mine Reclamation, Mount Carmel Township, Northumberland County, Pennsylvania.** Jesse led the planning and design of one of Pennsylvania's largest and most complex AML reclamation projects, encompassing over 240 acres of disturbed land, including a 4,000-foot dangerous highwall, extensive spoil areas, and a hazardous water body known as Commissioners Lake. The project required a multidisciplinary approach to address public safety, environmental restoration, and long-term site stability. Jesse coordinated detailed site investigations, wetland delineations, and water quality assessments, and managed the development of a comprehensive grading plan involving over 4.5 million cubic yards of earthwork. He oversaw the integration of stormwater management strategies, environmental permitting, and stakeholder engagement with local municipalities, regulatory agencies, and property owners. Jesse also directed the preparation of bid-ready construction documents, technical specifications, and cost estimates, ensuring compliance with federal infrastructure funding requirements.

**Buffalo Creek Highwall, West Virginia Department of Environmental Protection, Division of Land Restoration, Brooke County, West Virginia.** Jesse managed the design and planning of a high-priority AML reclamation project focused on mitigating multiple hazards across a 30-acre site impacted by historic surface and underground mining. The project addressed nearly 5,000 linear feet of dangerous highwall, a hazardous underground mine impoundment, and an active landslide area contributing to sedimentation and acid mine drainage (AMD) in Buffalo Creek. Jesse led the development of a comprehensive reclamation plan that included access road upgrades, sediment control structures, wet seal installation, drainage channel construction, and regrading of highwall and subsidence-prone areas. He coordinated geotechnical investigations, environmental assessments, and stakeholder engagement, ensuring the project met all regulatory requirements and environmental performance goals. His responsibilities also included cost estimating, construction specifications, and post-construction monitoring strategies. The project significantly improved site stability, reduced AMD discharge, and restored the area to a safer and more sustainable condition.

**Beech Bottom, WVDEP, West Virginia.** Jesse conducted site investigation visits on a 215-acre AML project, working to confirm existing AML features and identify additional unknown features. Jesse used GIS tools to log and capture data in the field to incorporate design solutions. The site includes over 13,000 feet of highwall, several portals, spoil piles, and dangerous impoundments.

**Electric Utility Transmission Line Replacement, AEP Kentucky Power, Kentucky.** Jesse developed construction plans for access roads and secured the necessary permits for a transmission line replacement project. He provided environmental oversight and conducted thorough inspections throughout the project's duration. Jesse also trained company personnel in stormwater inspections and reporting procedures.

**Civil Site Projects, Private Equity, Central Kentucky.** Jesse oversaw projects from the feasibility study and conceptual design stages through to grading and drainage design, erosion and sedimentation control planning, utility layout, stormwater management, and construction specifications. He also served as the technical representative for planning and zoning matters. Jesse was also responsible for acquiring the necessary permits to ensure project completion.

**Lexington Underground 69KV, LG&E KU, Lexington, Kentucky.** Jesse assisted with the conceptual design and alternative routing for a proposed underground transmission line through downtown Lexington. He collected and mapped underground utility locations to guide route selection. Jesse engineered the vertical and horizontal alignment, construction plans, quantities, and specifications. He also provided project management for survey services during the construction phase.

**Mine Shaft Projects, Patriot Coal Company and River View Coal, Waverly, Kentucky.** Jesse provided project management and oversaw underground services for the installation of three ventilation shafts for underground coal mines in Western Kentucky. His role ensured that the critical infrastructure was implemented efficiently and safely, enhancing the mines' operational capabilities.





## WHITNEY FAULKNER, PE

DEVELOPMENT MANAGER, AML

### TECHNICAL EXPERTISE

- / Permitting
- / Project Management
- / Stormwater Management
- / Site Development

### EDUCATION

- / BS in Civil Engineering, University of Kentucky, Lexington, KY (2002)

### REGISTRATIONS & LICENSES

- / Professional Engineer in Kentucky, West Virginia, Pennsylvania, Oregon, Indiana and Illinois

### WORK HISTORY

- / RESPEC (2018–Present)
- / Kentucky DNR Division of Mine Permits (2009–2018)
- / Cambridge Homes (2006–2008)
- / Bollinger, Lach & Associates (2002–2006)
- / H. W. Lochner (1998–2002)

### OVERVIEW

Whitney Faulkner has 23 years of experience in civil and environmental engineering. She is the manager of Reclamation Services and is currently working on Abandoned Mine Land (AML) projects in West Virginia and Pennsylvania. These projects include subsidence mitigation, acid mine drainage, reclamation of dangerous highwalls, and closure of underground mine portals. She worked as an engineer permit reviewer for 9 years for the Kentucky Department of Natural Resources (DNR) Division of Mine Permits, which included reclamation of mining sites, backfill and grading, excess spoil structures, sediment-control structures, and coal waste-disposal areas. She also has experience in stormwater detention design, sanitary sewer and watermain design, project management, and stormwater modeling. She can collaborate and work with multiple agencies to secure permits in a timely manner. As a land-development engineer, Whitney managed professional consultants on 1,500-acre projects that involved working closely with city officials and maintaining a \$140 million budget. Whitney has experience working with various software programs, including SEDCAD, GeoStudio, REAME, AutoCAD, Carlson, and ArcMAP.

### TECHNICAL EXPERIENCE

**Mine Site Reclamation.** Whitney is working on (AML) projects in West Virginia and Pennsylvania. She is the project manager on these projects. The reclamation includes subsidence mitigation of 150 acres, closures of collapsed and draining underground mine portals, acid mine drainage ponds, and reclaiming dangerous highwalls and slides. She is responsible for preparing the scope of services, budget, and communication with state officials and subcontractors.

**Project Management.** Whitney serves as the project manager for the Kentucky Department of Fish & Wildlife Resources (Fish & Wildlife). She manages a team of professionals responsible for mitigating and rehabilitation of streams and wetlands. Her responsibilities include scoping of work and budget, scheduling subcontractors, communication with Fish & Wildlife, and invoicing.

Whitney served as project manager for a 1,500-acre construction project. She managed a large, multidisciplinary team, led communications with internal and external consultants, and worked closely with city officials to obtain the necessary permits and record survey plats. She maintained a \$140 million budget. She also completed quality assurance/quality control (QA/QC) and time-and-cost budgeting.

**Permitting.** Whitney works directly with mining companies in Kentucky, West Virginia, and Indiana to submit and obtain numerous mining applications and permits. She has been responsible for permitting surface- and underground mining operations. These mining operations required additional permits from the U.S. Army Corps of Engineers (USACE) and National Pollutant Discharge Elimination permits.

While working at the Kentucky DNR Division of Mine Permits, Whitney reviewed surface mining permits to ensure they met the appropriate regulations. She was responsible for reviewing each application that contained a coal waste-disposal impoundment, high-hazard dams, breakthrough potential, or mining near an impoundment, evaluating the proposal based on its complexity, and assigning the application to the most qualified reviewer. Whitney also maintained the “slurry list,” which listed each permitting action currently under review and all of the approved permitting actions. During her tenure with the Division of Mine Permits, Whitney reviewed approximately 115 applications dealing with coal waste structures and disposal. These permitting actions required reviewing stability analyses, seepage analyses, hydraulic modeling, dynamic analyses, pipe deflection analyses, and breakthrough analyses.



**Stormwater Management.** Whitney designed and permitted stormwater management features for land-development projects. Her work included reviewing governing agency regulations and designing detention and retention ponds based on those regulations. She developed a stormwater detention model for various phases of an ongoing construction project and was responsible for permitting Stormwater Pollution Prevention Plans.

**Site Development.** Whitney designed and permitted site plans for private developers, which included grading plans and storm sewer, sanitary sewer, and water main designs. She coordinated with city officials to obtain permits and approvals. Whitney also conducted QA/QC for engineering plans to ensure that the most cost-effective designs were implemented.

## PROJECT EXPERIENCE

**Civil Engineer Fee in Lieu of Eastern Kentucky, Department of Fish & Wildlife Resources, Kentucky.** Whitney serves as the project manager for Fish & Wildlife. She manages a team of professionals responsible for mitigating and rehabilitation of streams and wetlands. Her responsibilities include scoping of work and budget, scheduling subcontractors, communication with Fish & Wildlife, and invoicing. She also assists in an After-Action Review. This includes reviewing previous stream and wetland mitigation designs and monitoring to determine the success of each site.

**Security and Exchange Commission (SEC) SK-300 Technical Report Summary, Alliance Coal, LLC, Lexington, Kentucky.** Whitney assisted in the preparation of 6 SK-1300 Technical Report Summary (TRS) required by the SEC. The TRS was required under Federal Regulations to report exploration results, mineral resources, and mineral reserves. The report included a detailed history of each site, mineral resource and reserve estimates, environmental requirements, and an economic analysis of the viability of each site. Whitney served as one of the Qualified Persons validating the information.

**Calculation of Asset Retirement Obligations, Confidential Client, West Virginia.** Whitney assisted in estimating the Asset Retirement Obligations for a coal company in West Virginia. The ongoing operations are covered by 59 Surface Mining Control and Reclamation Act (SMCRA) permits. She estimated the direct reclamation costs to satisfy the SMCRA, 402, and 404 permit conditions for those operations, which included surface mines, underground mines, processing facilities, and mine support structures. The estimate components included consideration for grading to achieve the Approximate Original Contour, pond removal, continued water monitoring with scheduled reductions in frequency, revegetation, costs for perpetual monitoring, stream reconstruction, and road removal.

**Illinois Coal Basin Due Diligence, Confidential Client, Confidential.** Whitney assisted in the due diligence of approximately 20 coal mine sites for possible purchase. The due diligence included researching each site to determine the extent of reclamation. This allowed her to calculate the direct reclamation cost for each site. The estimation components included consideration for grading, pond removal, continued water monitoring with scheduled reductions in frequency, revegetation, stream reconstruction, road construction, and removal.

**Hominy No. 2 Surface Mine, Quinwood Coal Company, West Virginia.** Whitney served as a project engineer who was responsible for all of the permitting required before mining. Permits from the West Virginia Department of Environmental Protection (WVDEP) Division of Mining Reclamation and USACE were required. To obtain these permits, a mining plan had to be designed that included a reclamation plan, sediment structure designs, excess spoil structures, water quality samples, and wetland and stream determination.

**Quinwood No. 1 Haul Road, Quinwood Coal Company, West Virginia.** Whitney served as a project engineer who was responsible for all of the permitting requirements for a proposed haul road. Permits from the WVDEP Division of Mining Reclamation and USACE were required. The haul road will be used to connect a surface and underground mining job. This project required coordination between all of the permits to ensure that the mining plans were feasible and the timing was accurate.

**Carlisle Mine, Sunrise Coal, LLC, Sullivan County, Indiana.** Whitney served as a project engineer who was responsible for permitting a 4,600-acre underground permit through the Indiana DNR. This project involved ensuring that the application met all of the current SMCRA regulations, the subsidence-control plan, water quality data, and groundwater protection.

**Alden Resources, LLC, Corbin, Kentucky.** Whitney is responsible for designing the sediment-control structures on Alden Resources, LLC mining permits. She works closely with the client to provide a suitable design that is feasible in the field and meets all SMCRA regulations.



**Buckeye Impoundment Crest Raise Review, Kentucky DNR Division of Mine Permits, Perry County, Kentucky.** Whitney was the engineer permitting reviewer who reviewed and ultimately approved a 100-foot stage increase to a slurry impoundment that did not have a working decant system. The proposal was for two 50-foot increases. Stability analyses for both stages were verified and reviewed to ensure that each stage met the required safety factor for the static and pseudostatic conditions. Hydraulic modeling for the probable maximum precipitation (PMP) event was reviewed to ensure that the impoundment had 3.0 feet of freeboard and could decant 90 percent of the PMP storm volume within 10 days per regulation. A pipe deflection analysis had to be conducted to ensure that the proposed decant pipe would not deflect more than 5 percent under the weight of the 100-foot impoundment raise.

**Stacy Branch Mine Review, Kentucky DNR Division of Mine Permits, Perry County, Kentucky.** Whitney was the engineer permitting reviewer who reviewed and approved a permit that proposed the fill placement optimization process. This process maximized the amount of spoil returned to the mine area while minimizing the amount of spoil placed into excess spoil disposal sites. This protocol was used to facilitate issuing a corresponding USACE 404 permit.

**Camp 9 Slurry Impoundment Review, Kentucky DNR Division of Mine Permits, Union County, Kentucky.** Whitney reviewed a horizontal and vertical expansion of a four-sided diked impoundment and the associated closure plan. Her review included stability analysis, seepage analysis, groundwater analysis, and hydraulic modeling.

**Big Branch Impoundment, Kentucky DNR Division of Mine Permits, Knott County, Kentucky.** Whitney reviewed a crest increase of an upstream impoundment. The review required that she conduct a finite element quake analysis to ensure that the impoundment met the regulatory requirements of the pseudostatic safety factor.



## JAKE L. STEPHENS, PE

### PROJECT ENGINEER

#### OVERVIEW

Jake Stephens is a seasoned Professional Engineer with experience in project and construction management, engineering design and design review, construction management, and safety and risk consulting. Jake has managed a wide range of projects throughout his career, including active and abandoned mine land projects, road-related and shared-use path projects, warehouse material handling and storage solutions, and residential and commercial construction projects. His expertise includes overseeing projects from inception to completion, construction oversight and inspector management, managing project budgeting, installation inspection and quality control, ensuring compliance with safety and environmental regulations, and collaborating with various stakeholders to achieve project goals. Jake has demonstrated strong leadership in developing accurate design plans, providing holistic designs that balance construction costs with maintenance, and ensuring installation meets design plans and specifications. With a comprehensive background in both the public and private sectors, Jake brings a wealth of knowledge and a proactive approach to every project he undertakes.

#### TECHNICAL EXPERTISE

- / Project Management
- / Engineering Design and Design Review
- / Construction Management and Oversight
- / Safety and Risk Consulting

#### EDUCATION

- / BS in Mining Engineering, University of Kentucky, Lexington, KY (2010)

#### REGISTRATIONS & LICENSES

- / Professional Engineer in Kentucky

#### CERTIFICATIONS & TRAINING

- / WV Underground Experienced Coal Miner
- / WV Surface Experienced Coal Miner
- / MSHA Approved Instructor (Unlimited, Surface and Underground)
- / OSHA 10-Hour Construction Industry
- / OSHA 10-Hour General Industry
- / Arkansas Workers' Compensation Commission Field Safety Representative
- / Texas Department of Insurance Loss Control Representative

#### WORK HISTORY

- / RESPEC (2024–Present)
- / Lexington-Fayette Urban County Government (2022–2024)
- / Advanced Handling Systems, LLC (2020–2022)
- / Lexington-Fayette Urban County Government (2018–2020)
- / RAME Contracting (2017–2018)
- / Central Mine Services, Inc. (2013–2017)
- / Alpha Natural Resources, Inc. (2011–2013)
- / Massey Energy Company (2007–2011)

#### TECHNICAL EXPERIENCE

**Project Management.** Jake has successfully managed projects of various types and sizes, from single multi-million-dollar projects to multiple projects at different stages of completion, all at once. Project management has included client coordination, estimating costs and obtaining project funding, obtaining and managing consultants and internal engineering staff to complete project design, design review for adherence to local, state, and federal regulations and guidelines, construction material submittal and review, managing construction inspectors and inspecting projects for adherence to design plans and specifications, project budgeting, invoicing, and change orders, and project closeout.

**Engineering Design and Design Review.** Jake has designed and estimated costs and reviewed project designs for abandoned mine land reclamation, coal slurry impoundments, active and future mining operations, commercial and residential construction, and warehouse material storage and handling projects. He has valuable experience reviewing project designs for accuracy and completeness, designing with consideration of construction and maintenance operations, and conformance with local, state, and federal regulations and design guidelines. His experience with projects from various industries has given him the ability to provide creative solutions and strategies for project designs.

**Construction Management.** Jake has experience managing material suppliers, site managers, inspectors, and contractors to ensure materials are received in a timely manner and installed per project drawings and specifications. He has experience coordinating installation on multi-disciplinary projects to ensure project completion, limiting hindrances to and from other trades. Jake has managed client relationships during installation to ensure satisfaction with the installation and facilitate any necessary design modifications or change orders while considering project budget and schedule considerations.

**Safety and Risk Consulting.** Jake has conducted numerous safety and risk audits within the mining and mining-related industries throughout the U.S. Safety and risk audits included interviewing safety management personnel, reviewing job safety processes and safety and risk programs, analyzing safety and insurance claim data, observing workplace conditions, and interviewing personnel and observing work habits. He has developed safety topics and training information and completed training for production and safety personnel for various clients.

## PROJECT EXPERIENCE

**Commissioners Lake, Pennsylvania Department of Environmental Protection (PA DEP) Bureau of Abandoned Mine Reclamation.** As the Project Engineer, Jake is responsible for designing a reclamation plan for this 275-acre property located near Mt. Carmel, PA with a history of significant underground and surface mining. Jake has collected and reviewed 100s of mine maps to identify possible abandoned mine land (AML) features and conducted field surveys to verify existence and location. Project design includes moving approximately 4 million cubic yards of material from 100+ acres of spoils to fill in a 140' deep, 20-acre lake to return the topography near to pre-mining conditions, and mitigating any observed mine adits, shafts, open portals, subsidence areas, dilapidated structures, open pits, hazardous water bodies, or any other abandoned mine-related features.

**MacArthur Subsidence Phase III, West Virginia Department of Environmental Protection (WVDEP) Office of Abandoned Mine Lands and Reclamation.** This project, located in MacArthur, WV, includes reducing the potential of subsidence of structures from abandoned underground mining located as close as 20' to the surface. Jake is the Project Engineer and is responsible for project design, assisting WVDEP with bidding and contractor procurement, and monitoring construction representatives. He has assisted with analysis of subsurface drilling data for FLAC3D modeling to determine where subsidence is likely to occur and designed a drilling and grouting plan to help protect more than 250 structures that may be affected. Jake managed the completion of project documentation including drawings, specifications, realty agreements, and an engineer's estimate.

**Sherwin North II, PA DEP Bureau of Abandoned Mine Reclamation.** Jake serves as the Project Engineer responsible for analysis and design of reclamation of the Sherwin North II AML project located near Butler, PA. This project includes reclamation of an approximate 1-acre hazardous water body and 13-acre spoil area, where spoils will be used to fill in the hazardous water body and the site regrading to near pre-mining conditions. Jake coordinated with the property owner to ensure the design met the owners expectations while avoiding areas of concern.

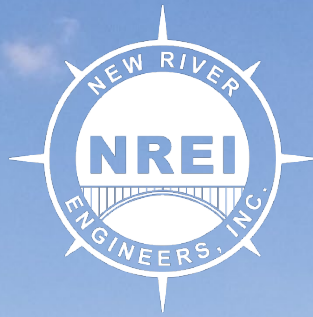
**Beckley Soccer Complex, WVDEP Office of Abandoned Mine Lands and Reclamation.** The Beckley Soccer Complex project is an AML project located near Beckley, WV. The project includes injecting grout beneath a parking lot to mitigate subsidence due to underground coal mining below. Jake conducted an in-depth review of design plans, project specifications, and the engineer's estimate for design accuracy and completeness. Review included erosion and sediment controls, stormwater conveyance piping and structures, earthwork, parking lot ADA compliance, drawings, specifications, and estimated project quantities and costs.

**Summerlee Water Treatment, WVDEP Office of Abandoned Mine Lands and Reclamation.** This project includes remediation of an existing acid mine drainage (AMD) passive treatment system that was no longer effectively treating water and releasing poor quality water with low pH and high metal concentrations. Jake evaluated the existing treatment system, which included limestone conveyance ditches and auto flushing vertical flush ponds, and analyzed water monitoring data to develop improvements and additions. Jake was responsible for developing design plans, project specifications, estimating project costs, assisting WVDEP with bidding and procurement, and monitoring construction representatives.

**Morris Creek Water Treatment, WVDEP Office of Abandoned Mine Lands and Reclamation.** As Project Engineer, Jake is responsible for analysis, design, and construction management of the Morris Creek Water Treatment project. This project includes wet mine seals and seeps through mine refuse along a hillside that are discharging AMD into the nearby creek. Jake was responsible for reviewing the existing passive treatment system failures and designing improvements or additions and a maintenance plan to treat the AMD effectively. The existing system process and water monitoring data were analyzed to determine an effective treatment system and adequate sizing. Jake also managed realty work, permitting, assisting WVDEP with pre-bid and pre-construction conferences and construction procurement, and managed construction representatives to project completion.

**Logan Run Highwall, WVDEP Office of Abandoned Mine Lands and Reclamation.** This project includes reclamation design of approximately 3,000 LF of dangerous highwall averaging 50' in height utilizing adjacent spoil areas as backfill, created from an abandoned surface mining operation. Jake is responsible for managing the completion of an environmental assessment and associated surveys and studies, realty work, analysis and design, project specifications, project costs, assisting with bidding and construction procurement, and managing construction representatives to project completion.





## ADDITIONAL SERVICES





# Water Supply, Treatment, Storage and Distribution Systems

---

With over forty years of experience, NREI is your one stop shop for water supply, treatment, storage, and distribution systems. We implement our four-step process to each project to develop a better understanding of our client's needs and expectations: 1. Preliminary Engineering Report; 2. Design Phase; 3. Bidding Phase; 4. Construction Administration. We are "hands on" during all phases to ensure our clients obtain what they want in every project.

As a locally owned "small family" consulting firm, our clients get more for their money and receive more one-on-one time with our employees, which yields a more pleasurable experience. We excel in helping our clients ascertain funding from various governmental agencies to assist in the financing of the project.

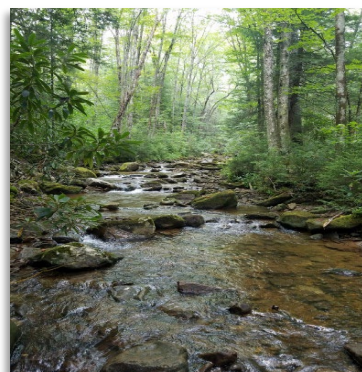






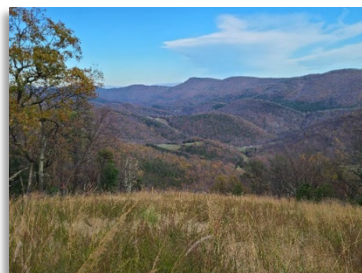
# Environmental Permitting

NREI's team assists with an efficient and thorough team of environmental consultants making sure permitting, regulatory compliance, construction monitoring and biological surveying are done with the utmost quality and cost effectiveness. This saves your project time and money from the start and avoids costly delays in the future. Compliance with Clean Air and Water Acts, NEPA and other state and federal requirements is invaluable to every project. Our environmental permitting team provides attention to detail and practical solutions to complex issues to keep your project going forward and within budget.



## SERVICES

- Storm Water Permitting, Design & Management
- Water Quality Monitoring
- Flood Plan Determination & Flood Elevation Certificates
- Groundwater Protection Plans
- Stream & Wetland Delineation
- Environmental Site Assessment
- Spill Prevention Control & Countermeasures Plan (SPCC)
- Article 3 Mining Permits
- Article 11 NPDES Permits
- West Virginia 401 Certification Permitting
- Wastewater Permitting, Design & Management
- Clean Water Act Section 402 Permitting (NPDES Permit)
- United States Army Corps of Engineers 404 Permitting
- Air Quality Permitting Best Management Practices (BMP)



## AGENCY EXPERIENCE

- US Environmental Protection Agency (EPA)
- National Environmental Policy Act (NEPA)
- US Fish & Wildlife
- National Conservation Planning Partnership (NRCS) & Forest Service
- United States Department of Agriculture (USDA) – Rural Development
- Federal Aviation Administration (FAA)
- West Virginia Public Lands
- WV Department of Natural Resources (DNR)
- WV Culture & History
- EPA & WV DEP Compliance
- Ohio State Historic Preservation Office (SHPO)
- Ohio Department of Natural Resources (DNR)
- Ohio Environmental Protection Agency (EPA)
- Ohio Public Works Commission (OPWC)
- Ohio Department of Commerce/Division of Industrial Compliance
- Virginia Department of Environmental Quality (DEQ)

# Structural Engineering

We offer a full range of structural engineering services to help meet the needs of our clients. In addition to professional training, our structural capabilities are bolstered by a depth and breadth of experience developed through solving unique and complex engineering challenges. We have experience with projects in the private, public, commercial and industrial sectors. Whether designing new structures, retrofitting existing structures, addressing overstressed conditions, or assessing structural integrity, our clients can rest assured that we are capable of meeting their specific needs.

- Structural Analysis
- Steel Structures and Building Enclosures
- Modular Design
- Pilings and Foundations
- Concrete Containment Structures
- Retrofit of Existing Overstressed Structures
- Building Permits and Code Analysis
- Bridge Cranes, Monorails, Jibs, etc.
- Truck/Rail Unloading Stations
- Lifting Beams and Rigging
- Industrial Architectural Design
- Structural Inspections and Assessments



# Construction Management and Civil Site Design

NREI is established as one of the leading construction engineering consulting firms in the region with experienced staff that are committed to and dedicated to your project from initial site design and bid package development to inspections and certifications.

NREI offers Civil Site Design services including sub-division layouts, commercial development and design, HCA project areas, well pads, impoundments, street paving, drainage control, solid waste landfill and impoundment design. We know and understand the value and importance of properly designed sites that offer cost effective solutions.

- 3D Site Design
- Haulage & Access Road Design
- Excess Spoil Disposal Site Design
- Drainage Design and Runoff Calculations
- Solid Wastewater Management and Landfill Design
- Subdivision Design and Permit Applications
- Site Development Plans
- Pre, During & Post Construction Surveying
- HECRAS Modeling
- Stability Analysis
- Site inspections/Project Management
- Certifications
- Cost Estimates
- Street Paving Design and Drainage Control
- Construction Management
- Earth Work Quantity Estimates
- Construction Staking
- Concrete Testing & Inspection





# Geotechnical Engineering

NREI's professional engineers and engineering technicians have extensive geotechnical engineering experience specializing in compaction testing, foundation design, slope failure remediation and embankment design. We focus on identifying the needs of clients and providing cost-effective solutions with real results.

- Drilling Oversight, Management and Inspection
- Slope failure Remediation
- Slope Stability Analysis
- Gabion Basket Wall Design
- Compaction Testing
- Foundation Design
- Embankment Design
- Drainage Analysis
- Soldier Pile Wall Design



# Surveying

NREI is established as one of the area's leading surveying firms with our 45 years of experience in property, boundary and topographic mapping. Our team is skilled in courthouse research, finding property evidence, providing quality property surveys and construction stake-outs.

Additionally, we offer aerial mapping utilizing drone surveys. Our aerial mapping has proven to be invaluable for construction progress mapping, well pad progression, subdivision layouts and civil site designs.

- Property Abstract & Research
- Boundary Surveys
- Survey Plats
- Subdivision Design & Layout
- Construction Surveying & Stakeout
- Underground Mining Surveying
- Right-of-Way & Land Acquisition
- GPS Services
- Aerial Mapping / Control
- Drone Flight & Surveying
- Topographical Surveys
- ALTA / ACSM Land Title Surveys
- Unit Surveys
- Surface Mining Surveying
- Computer Mapping
- GIS Services

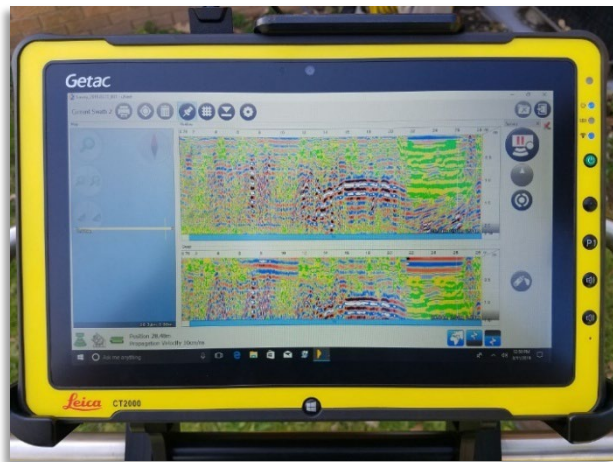




# Subsurface Utility Survey

NREI uses some of the most advanced technology in Ground Penetrating Radar (GPR), pipe and cable locators and smoke testing machines to accurately survey, map and inspect subsurface utilities. These services have been extensively used by our clients in the construction, oil and gas industries, as well as public service districts.

- Pipe and Cable Location
- Sewer Line Smoke Testing
- Ground Penetrating Radar (GPR)
- Internal Video Pipe Inspection



## WEST VIRGINIA DEPARTMENT OF ENVIRONMENTAL PROTECTION

## AML CONSULTANT QUALIFICATION QUESTIONNAIRE

Attachment "A"

PROJECT NAME AML - EOI		DATE (DAY, MONTH, YEAR) 18, August, 2025		FEIN 55-0764054																																					
1. FIRM NAME New River Engineers, Inc.		2. HOME OFFICE BUSINESS ADDRESS 501 Eagle Mountain Rd Charleston WV 25311		3. FORMER FIRM NAME																																					
4. HOME OFFICE TELEPHONE  304-342-7168	5. ESTABLISHED (YEAR)  1998	6. TYPE OWNERSHIP Individual Corporation X Partnership Joint-Venture		6a. WV REGISTERED DBE (Disadvantaged Business Enterprise) YES NO X																																					
7. PRIMARY AML DESIGN OFFICE: ADDRESS/ TELEPHONE/ PERSON IN CHARGE/ NO. AML DESIGN PERSONNEL EACH OFFICE  501 Eagle Mountain Road, Charleston WV 25311 / 304-342-7168 / Joshua D. Cook																																									
8. NAMES OF PRINCIPAL OFFICERS OR MEMBERS OF FIRM  See attached			8a. NAME, TITLE, & TELEPHONE NUMBER - OTHER PRINCIPALS																																						
9. PERSONNEL BY DISCIPLINE																																									
<table><tbody><tr><td><u>15</u> ADMINISTRATIVE</td><td>— ECOLOGISTS</td><td>— LANDSCAPE ARCHITECTS</td><td><u>1</u> STRUCTURAL ENGINEERS</td></tr><tr><td><u>2</u> ARCHITECTS</td><td>— ECONOMISTS</td><td><u>1</u> MECHANICAL ENGINEERS</td><td><u>20</u> <b>SURVEYORS</b></td></tr><tr><td><u>5</u> <b>BIOLOGIST</b></td><td>— ELECTRICAL ENGINEERS</td><td><u>2</u> <b>MINING ENGINEERS</b></td><td>— TRAFFIC ENGINEERS</td></tr><tr><td><u>5</u> <b>CADD OPERATORS</b></td><td><u>1</u> ENVIRONMENTALISTS</td><td>— PHOTOGRAMMETRISTS</td><td>— OTHER</td></tr><tr><td>— CHEMICAL ENGINEERS</td><td>— ESTIMATORS</td><td><u>2</u> PLANNERS: URBAN/REGIONAL</td><td>1 - GIS Analyst</td></tr><tr><td><u>6</u> <b>CIVIL ENGINEERS</b></td><td>— <b>GEOLOGISTS</b></td><td><u>2</u> SANITARY ENGINEERS</td><td></td></tr><tr><td><u>3</u> CONSTRUCTION INSPECTORS</td><td>— HISTORIANS</td><td>— SOILS ENGINEERS</td><td></td></tr><tr><td>— DESIGNERS</td><td>— HYDROLOGISTS</td><td>— SPECIFICATION WRITERS</td><td>TOTAL PERSONNEL</td></tr><tr><td>— DRAFTSMEN</td><td></td><td></td><td></td></tr></tbody></table>						<u>15</u> ADMINISTRATIVE	— ECOLOGISTS	— LANDSCAPE ARCHITECTS	<u>1</u> STRUCTURAL ENGINEERS	<u>2</u> ARCHITECTS	— ECONOMISTS	<u>1</u> MECHANICAL ENGINEERS	<u>20</u> <b>SURVEYORS</b>	<u>5</u> <b>BIOLOGIST</b>	— ELECTRICAL ENGINEERS	<u>2</u> <b>MINING ENGINEERS</b>	— TRAFFIC ENGINEERS	<u>5</u> <b>CADD OPERATORS</b>	<u>1</u> ENVIRONMENTALISTS	— PHOTOGRAMMETRISTS	— OTHER	— CHEMICAL ENGINEERS	— ESTIMATORS	<u>2</u> PLANNERS: URBAN/REGIONAL	1 - GIS Analyst	<u>6</u> <b>CIVIL ENGINEERS</b>	— <b>GEOLOGISTS</b>	<u>2</u> SANITARY ENGINEERS		<u>3</u> CONSTRUCTION INSPECTORS	— HISTORIANS	— SOILS ENGINEERS		— DESIGNERS	— HYDROLOGISTS	— SPECIFICATION WRITERS	TOTAL PERSONNEL	— DRAFTSMEN			
<u>15</u> ADMINISTRATIVE	— ECOLOGISTS	— LANDSCAPE ARCHITECTS	<u>1</u> STRUCTURAL ENGINEERS																																						
<u>2</u> ARCHITECTS	— ECONOMISTS	<u>1</u> MECHANICAL ENGINEERS	<u>20</u> <b>SURVEYORS</b>																																						
<u>5</u> <b>BIOLOGIST</b>	— ELECTRICAL ENGINEERS	<u>2</u> <b>MINING ENGINEERS</b>	— TRAFFIC ENGINEERS																																						
<u>5</u> <b>CADD OPERATORS</b>	<u>1</u> ENVIRONMENTALISTS	— PHOTOGRAMMETRISTS	— OTHER																																						
— CHEMICAL ENGINEERS	— ESTIMATORS	<u>2</u> PLANNERS: URBAN/REGIONAL	1 - GIS Analyst																																						
<u>6</u> <b>CIVIL ENGINEERS</b>	— <b>GEOLOGISTS</b>	<u>2</u> SANITARY ENGINEERS																																							
<u>3</u> CONSTRUCTION INSPECTORS	— HISTORIANS	— SOILS ENGINEERS																																							
— DESIGNERS	— HYDROLOGISTS	— SPECIFICATION WRITERS	TOTAL PERSONNEL																																						
— DRAFTSMEN																																									
TOTAL NUMBER OF WV REGISTERED PROFESSIONAL ENGINEERS IN PRIMARY OFFICE: <u>2</u>																																									
*RPEs other than Civil and Mining must provide supporting documentation that qualifies them to supervise and perform this type of work.																																									
10. HAS THIS JOINT-VENTURE WORKED TOGETHER BEFORE? <input type="checkbox"/> YES <input type="checkbox"/> NO																																									





12.	A.	Is your firm's personnel experienced in Abandoned Mine Lands Remediation/Mine Reclamation Engineering?
	X YES	Description and Number of Projects: <u>Various Projects/Daily We work daily with various mining clients</u> to produce mining and reclamation plans. NREI has worked with Esmer and Assoc. on several AML jobs. NREI has worked with Special Rec on Fall Rock Surface Mine. NREI has recently been awarded the Carbondale Portals Project.
		NO
	B.	Is your firm experienced in Soil Analysis?
	X YES	Description and Number of Projects: <u>Various Projects/Daily-Retaining Wall Design, Slope Reformation,</u> Foundation Design, Slope Stability, Soil Classification.
		NO
	C.	Is your firm experienced in hydrology and hydraulics?
	X YES	Description and Number of Projects: <u>Various/Daily-SWORA Assessments, HECRAS Modeling, Storm Water</u> Collection Systems, Water Transportation System, Sanitary Sewer Collection, Treating & Pumping Systems.
		NO
	D.	Does your firm produce its own Aerial Photography and Develop Contour Mapping?
	X YES	Description and Number of Projects: <u>Daily Activity-NREI currently operates 2 Aerial Drone Systems</u> to produce Aerial Mapping for our clients.
		NO
	E.	Is your firm experienced in domestic waterline design? (Include any experience your firm has in evaluation of aquifer degradation as a result of mining.)
	X YES	Description and Number of Projects: <u>Various/Daily-Engineering/Desing/Construction of water treatment</u> systems and water transportation systems (i.e. City o Sistersvill, Nitro, Fort Gay, etc.
		NO
	F.	Is your firm experienced in Acid Mine Drainage Evaluation and Abatement Design?
	X YES	Description and Number of Projects: <u>Numerous-NREI has been involved in the design, engineering, carts</u> of selenium Bic Reactor treatment systems, Iron/PH Retention Pumps and Aluminum Translator with several of our including: Maple Coal Company, Walter Resources, WWMV LLC, Blackhawk Mining, Met Inc., etc.
		NO

13. PERSONAL HISTORY STATEMENT OF PRINCIPALS AND ASSOCIATES **RESPONSIBLE FOR AML PROJECT DESIGN** (Furnish complete data but keep to essentials)

NAME & TITLE (Last, First, Middle Int.)	YEARS OF EXPERIENCE		
	YEARS OF AML DESIGN EXPERIENCE:	YEARS OF AML RELATED DESIGN EXPERIENCE:	YEARS OF DOMESTIC WATERLINE DESIGN EXPERIENCE:
Cook, Joshua D., P.E., PMP - President		4	4

Brief Explanation of Responsibilities

Energy and municipal project manager including design and construction oversight

EDUCATION (Degree, Year, Specialization)

Bachelors of Civil Engineering, 2011      Masters of Engineering , 2014

MEMBERSHIP IN PROFESSIONAL ORGANIZATIONS

REGISTRATION (Type, Year, State)

P.E., WV-2024, OH-2023, MI-2024, MD-2024

13. PERSONAL HISTORY STATEMENT OF PRINCIPALS AND ASSOCIATES **RESPONSIBLE FOR AML PROJECT DESIGN** (Furnish complete data but keep to essentials)

NAME & TITLE (Last, First, Middle Int.)	YEARS OF EXPERIENCE		
	YEARS OF AML DESIGN EXPERIENCE:	YEARS OF AML RELATED DESIGN EXPERIENCE:	YEARS OF DOMESTIC WATERLINE DESIGN EXPERIENCE:
Proctor, Michael, L Senior Engineer		16	1

Brief Explanation of Responsibilities

Worked on technical areas for surface mines and designed final reclamation for surface mines

EDUCATION (Degree, Year, Specialization)

Bachelor of Science 2005 Civil Engineering Technology    WVU Institute of Technology

MEMBERSHIP IN PROFESSIONAL ORGANIZATIONS

REGISTRATION (Type, Year, State)

13. PERSONAL HISTORY STATEMENT OF PRINCIPALS AND ASSOCIATES **RESPONSIBLE FOR AML PROJECT DESIGN** (Furnish complete data but keep to essentials)

NAME & TITLE (Last, First, Middle Int.)	YEARS OF EXPERIENCE		
	YEARS OF AML DESIGN EXPERIENCE:	YEARS OF AML RELATED DESIGN EXPERIENCE:	YEARS OF DOMESTIC WATERLINE DESIGN EXPERIENCE:
Charles B.Kurzyna	2	15	2

Brief Explanation of Responsibilities

Owner/Principal of New River Engineering, Inc.1998-2021 managed surveying and engineering staff of 20-30 employees working for the mining, construction, and oil and gas industries. Prior experience with various coal mining and construction companies for approximately 20 years.

EDUCATION (Degree, Year, Specialization)

BS Mining Engineering,1979 Specializing in environmental permitting ans surface and underground mine design.

MEMBERSHIP IN PROFESSIONAL ORGANIZATIONS

Friends of Coal Association,WV Coal Association  
SME , Contractors Association of WV

REGISTRATION (Type, Year, State)

**PE (WV, Ohio, Virginia, Kentucky, Pennsylvania, Georgia  
PS (WV)**

13. PERSONAL HISTORY STATEMENT OF PRINCIPALS AND ASSOCIATES **RESPONSIBLE FOR AML PROJECT DESIGN** (Furnish complete data but keep to essentials)

NAME & TITLE (Last, First, Middle Int.)	YEARS OF EXPERIENCE		
	YEARS OF AML DESIGN EXPERIENCE:	YEARS OF AML RELATED DESIGN EXPERIENCE:	YEARS OF DOMESTIC WATERLINE DESIGN EXPERIENCE:
Scriptunas II,Vincent W.	2	41	2

Brief Explanation of Responsibilities

Worked ontechnical areas of underground and surface mines.Design mine seals for deep mines to final reclamation of surface mine

EDUCATION (Degree, Year, Specialization)

MEMBERSHIP IN PROFESSIONAL ORGANIZATIONS

Bachelor of Science,1981,Engineering of Mines

REGISTRATION (Type, Year, State)

13. PERSONAL HISTORY STATEMENT OF PRINCIPALS AND ASSOCIATES **RESPONSIBLE FOR AML PROJECT DESIGN** (Furnish complete data but keep to essentials)

NAME & TITLE (Last, First, Middle Int.)	YEARS OF EXPERIENCE		
	YEARS OF AML DESIGN EXPERIENCE:	YEARS OF AML RELATED DESIGN EXPERIENCE:	YEARS OF DOMESTIC WATERLINE DESIGN EXPERIENCE:
Treadway, Benjamin E.	2 years	16 years	2 years

Brief Explanation of Responsibilities

Plan and design various coal mining related items including spoil fills, drainage ponds and ditches, culvert pipes, roadways, mine sites, regrade, etc.

EDUCATION (Degree, Year, Specialization)

Bachelor of Science, 2005, Civil Engineering Technology

MEMBERSHIP IN PROFESSIONAL ORGANIZATIONS	REGISTRATION (Type, Year, State)
Contractors Association of West Virginia West Virginia Coal Association & Friends of Coal Association	EIT, 2008, WV

13. PERSONAL HISTORY STATEMENT OF PRINCIPALS AND ASSOCIATES **RESPONSIBLE FOR AML PROJECT DESIGN** (Furnish complete data but keep to essentials)

NAME & TITLE (Last, First, Middle Int.)	YEARS OF EXPERIENCE		
	YEARS OF AML DESIGN EXPERIENCE:	YEARS OF AML RELATED DESIGN EXPERIENCE:	YEARS OF DOMESTIC WATERLINE DESIGN EXPERIENCE:
Shelton, David, M.			18

Brief Explanation of Responsibilities

Surveying, construction stakeout, construction inspection, project design, project estimation, project management

EDUCATION (Degree, Year, Specialization)

A.S., 2004, Civil Engineering Technology  
B.S., 2005, Civil Engineering Technology

MEMBERSHIP IN PROFESSIONAL ORGANIZATIONS	REGISTRATION (Type, Year, State)
WEF, CAWV, WVRWA	

13. PERSONAL HISTORY STATEMENT OF PRINCIPALS AND ASSOCIATES **RESPONSIBLE FOR AML PROJECT DESIGN** (Furnish complete data but keep to essentials)

NAME & TITLE (Last, First, Middle Int.)	YEARS OF EXPERIENCE		
	YEARS OF AML DESIGN EXPERIENCE:	YEARS OF AML RELATED DESIGN EXPERIENCE:	YEARS OF DOMESTIC WATERLINE DESIGN EXPERIENCE:
Burford, Chris D	2	15	2

Brief Explanation of Responsibilities

Mining Cards with State and Federal Agencies. Management and oversight of subcontractors performing mining activities. Reclamation Act & Civil Site Construction.

Management of surface and underground mining permitting, plan and reclamation services. Over 10 survey crews, and daily activities.

EDUCATION (Degree, Year, Specialization)

REGISTRATION (Type, Year, State)

N/A

Associate of Science, Civil Engineering, 2004

MEMBERSHIP IN PROFESSIONAL ORGANIZATIONS

Contractors Association of West Virginia, West Virginia Rural Waters Association, West Virginia Coal Association, Friends of Coal Association

13. PERSONAL HISTORY STATEMENT OF PRINCIPALS AND ASSOCIATES **RESPONSIBLE FOR AML PROJECT DESIGN** (Furnish complete data but keep to essentials)

NAME & TITLE (Last, First, Middle Int.)	YEARS OF EXPERIENCE		
	YEARS OF AML DESIGN EXPERIENCE:	YEARS OF AML RELATED DESIGN EXPERIENCE:	YEARS OF DOMESTIC WATERLINE DESIGN EXPERIENCE:

Brief Explanation of Responsibilities

EDUCATION (Degree, Year, Specialization)

MEMBERSHIP IN PROFESSIONAL ORGANIZATIONS

REGISTRATION (Type, Year, State)

14. PROVIDE A LIST OF SOFTWARE AND EQUIPMENT AVAILABLE IN THE PRIMARY OFFICE WHICH WILL BE USED TO COMPLETE AML DESIGN SERVICES

Equipment : Trimble R10 GPS / RTK survey grade GPS Systems, TopCon / Nikon total stations, Phantom Drone Systems, Leica GPR Cort, Leica Pipe and Cable Locaters,

Robotic Total Stations, Trexler Nuclear Density Gauge, various surveying support tools, pick-up trucks, geothermal drill riggs, and laboratory support.

Software : Microsoft Office Suites, AutoCAD Map 3D, AutoCAD Civil 3D, Carlson SurvCAD, Rec Science Slide 2D, Adobe, SedCAD (hydrology),

Reme 2K , HECRAS, Trimble Business Cutter, Drone Processing, Leica Overture.



## 15. CURRENT ACTIVITIES ON WHICH YOUR FIRM IS THE DESIGNATED ENGINEER OF RECORD

PROJECT NAME, TYPE AND LOCATION	NAME AND ADDRESS OF OWNER	NATURE OF YOUR FIRM'S RESPONSIBILITY	ESTIMATED CONSTRUCTION COST	PERCENT COMPLETE
Maple Eagle Complex Fayette/Kanawha County, WV	Currently Blackhawk Mining	Engineering, Design, Survey Permitting for surface/ underground/ reclamation active	\$8,500,000 Currently	Daily/On-Going
American Mining Group	Kevin Jordan PO Box 33 Spring Dale, WV 25986	Engineering, Design, Survey Permitting for surface/ underground/reclamation active	\$950,000 Currently	Daily/On-Going
United Coal	109 Appalachian Drive Beckley, WV 25801	Engineering, Design, Survey Permitting for surface/ underground/reclamation active	\$13,500,000 Currently	Daily/On-going
Marshall County Coal Co.	46226 National Road West St.Clairsville, OH 43950	Overseen and Performed a geotechnical investigation for expansion of plat	\$40,000 Currently	Complete
AML Carbondale	WV DEP	Engineering, Design of mine portal Reclamation	TBD	Design :100% Complete Under Construction
Nitro Regional	City of Nitro PO Box 607 Nitro, WV 25143	Engineering, Design, Construction Management	\$3,600,000	Design: 100% Complete Bidding/Negotiation Construction
City of Sistersville	Hon. Bill Rice, Mayor 200 Diamond Street Sistersville, WV 26175	Replacement of 3600 ft water line. Installation of 250 Gallon water booster station	\$3,000,000	Complete
TOTAL NUMBER OF PROJECTS:		TOTAL ESTIMATED CONSTRUCTION COSTS: \$		
Various/Numerous		Ongoing		

[illegible]

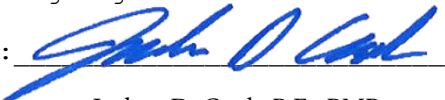
17. COMPLETED WORK WITHIN LAST 5 YEARS ON WHICH YOUR FIRM WAS THE DESIGNATED ENGINEER OF RECORD				
PROJECT NAME, TYPE AND LOCATION	NAME AND ADDRESS OF OWNER	ESTIMATED CONSTRUCTION COST	YEAR	CONSTRUCTED (YES OR NO)
Coonskin Wall	Kanawha County Parks & Recreation Commission 375 Henry C Hoppy Shores Drive Charleston, WV 25302	\$2,500,000	2023	Yes
Orchard Hills anitary Sewer Project	BCPSSD	\$1,750,000	2021	Yes
TC Energy	700 MacCorkle Ave, SE Charleston, WV 25314-1515	\$1,900,000	2024	Yes
Valley PK-8 Retaining Wall	Fayette County Board of Education	\$2,500,000	2023	Yes
American Tower Corporation	1222 Harmony Rd, Gandeeville, WV 25243	\$750,000	2020	Yes

18. COMPLETED WORK WITHIN LAST 5 YEARS ON WHICH YOUR FIRM HAS BEEN A SUB-CONSULTANT TO OTHER FIRMS (INDICATE PHASE OF WORK FOR WHICH YOUR FIRM WAS RESPONSIBLE)

PROJECT NAME, TYPE AND LOCATION	NAME AND ADDRESS OF OWNER	ESTIMATED CONSTRUCTION COST OF YOUR FIRM'S PORTION	YEAR	CONSTRUCTED (YES OR NO)	FIRM ASSOCIATED WITH
N/A					

19. Use this space to provide any additional information or description of resources supporting your firm's qualifications to perform work for the West Virginia Abandoned Mine Lands Program.

20. The foregoing is a statement of facts.

Signature:  Title: President

Printed Name: Joshua D. Cook, P.E., PMP

Date: 08/18/2025

**AML and RELATED PROJECT EXPERIENCE MATRIX**

PROJECT	Exp. Basis C=Corp. P=Personnel *	Additional Info Provided in Section (s) **	PROJECT EXPERIENCE REQUIREMENTS															PRIMARY STAFF PARTICIPATION/CAPACITY *** M=Management P=Professional					
			Abandoned Surface Mine Reclamation	Abandoned Deep Mine Reclamation	Portal/Shaft Closure	Hydrologic/Hydraulic Design/Eval.	Remining Evaluation	Mine/Refuse Fire Abatement	Subsidence Investigation Mitigation	Hazardous Waste Disposal	Project Specifications	Water Quality Evaluation/Nitigation/ Replacement	Construction Inspection/Managem ent	Water Treatment	Equipment/Structure Removal	Stream Restoration	Geotechnical/Stability	CHRIS BURFORD	CHUCK KURZYNA	BEN TREADWAY	VINCE SCRIPTUNAS	CHARLES STROPE	JESSIE PARKER
Maple Eagle			Y	Y	Y	Y	Y	N	Y	Y	Y	Y	Y	Y	Y	N	Y	M	P	M	M	P	
AMG			N	N	N	Y	Y	N	Y	Y	Y	Y	Y	Y	Y	N	Y	M	P	M	M	M	
Marshall Coal Co.			N	N	N	Y	N	N	Y	N	Y	N	Y	N	Y	N	Y	M		M	M	P	P
AML Carbondale			TBD	TBD	TBD	TBD	TBD	TBD	TBD	TBD	TBD	TBD	TBD	TBD	TBD	TBD	TBD	TBD	TBD	TBD	TBD	TBD	TBD
Cyprus Kanawha			Y	Y	Y	Y	Y	N	Y	Y	Y	Y	Y	Y	Y	N	Y		P		M		
United Coal			Y	Y	Y	Y	Y	N	Y	Y	Y	Y	Y	Y	Y	N	Y	M	P	M	M	P	
TC Energy			N	N	N	Y	N	N	Y	Y	Y	Y	Y	Y	N	N	Y	M	P	M	M	P	P
Nitro Regional			N	N	N	Y	N	N	N	N	Y	Y	Y	N	N	N	Y	M				M	P
City of Sistersville			N	N	N	Y	N	N	N	N	Y	Y	Y	Y	N	N	Y	M				P	P
KPSD			N	N	N	Y	N	N	N	N	Y	Y	Y	Y	N	N	Y	M				M	P
Patriot Coal Co.			N	N	N	Y	N	N	N	N	Y	Y	Y	Y	N	N	Y	M					P

\* List whether project experience is corporate or personnel based or both.

\*\* Use this area to provide specific sections or pages if needed for reference.

\*\*\* List Primary Design personnel and their functional capacity for the projects listed.

Attachment "B"

WEST VIRGINIA DEPARTMENT OF ENVIRONMENTAL PROTECTION AML CONSULTANT QUALIFICATION QUESTIONNAIRE			Attachment "A"	
PROJECT NAME EOI – AML Engineering Design Services		DATE (DAY, MONTH, YEAR) 08/20/2025		FEIN 83-2898293
1. FIRM NAME RESPEC Company, LLC		2. HOME OFFICE BUSINESS ADDRESS 3824 Jet Drive, Rapid City, South Dakota, 57703		3. FORMER FIRM NAME RE/SPEC Inc.
4. HOME OFFICE TELEPHONE 605.394.6400	5. ESTABLISHED (YEAR) 1969	6. TYPE OWNERSHIP <input type="checkbox"/> Individual <input checked="" type="checkbox"/> Corporation <input type="checkbox"/> Partnership <input type="checkbox"/> Joint-Venture		6a. WV REGISTERED DBE (Disadvantaged Business Enterprise) <input type="checkbox"/> YES <input checked="" type="checkbox"/> NO
7. PRIMARY AML DESIGN OFFICE: ADDRESS/ TELEPHONE/ PERSON IN CHARGE/ NO. AML DESIGN PERSONNEL EACH OFFICE 146 East Third Street, Lexington, Kentucky 40508				
8. NAMES OF PRINCIPAL OFFICERS OR MEMBERS OF FIRM Jason Love – President/CEO; Phil Welling – CFO; Jay Nopola – Senior Vice President, Dustin Morin – Market Sector Lead		8a. NAME, TITLE, & TELEPHONE NUMBER - OTHER PRINCIPALS Whitney Faulker: Project Manager 773.218.5866, Jesse Hatter; Project Manager 606.669.2633		
9. PERSONNEL BY DISCIPLINE				
<u>75</u> ADMINISTRATIVE <u>1</u> ARCHITECTS <u>6</u> BIOLOGIST <u>15</u> CADD OPERATORS <u>2</u> CHEMICAL ENGINEERS <u>101</u> CIVIL ENGINEERS <u>7</u> CONSTRUCTION INSPECTORS   DESIGNERS DRAFTSMEN	<u>2</u> ECOLOGISTS  ECONOMISTS <u>14</u> ELECTRICAL ENGINEERS  ENVIRONMENTALISTS  ESTIMATORS <u>45</u> GEOLOGISTS  HISTORIANS <u>7</u> HYDROLOGISTS	 LANDSCAPE ARCHITECTS <u>38</u> MECHANICAL ENGINEERS <u>46</u> MINING ENGINEERS  PHOTOGRAMMETRISTS <u>5</u> PLANNERS: URBAN/REGIONAL  SANITARY ENGINEERS <u>1</u> SOILS ENGINEERS  SPECIFICATION WRITERS	<u>14</u> STRUCTURAL ENGINEERS <u>6</u> SURVEYORS  TRAFFIC ENGINEERS <u>75</u> COMPUTER PROGRAMMERS <u>37</u> ENVIRONMENTAL ENGINEER / SCIENTIST  <u>7</u> GIS SPECIALIST <u>17</u> WATER RESOURCE ENGINEER <u>85</u> OTHER <u>606</u> TOTAL PERSONNEL	
TOTAL NUMBER OF WV REGISTERED PROFESSIONAL ENGINEERS IN PRIMARY OFFICE: <u>5</u>				
*RPEs other than Civil and Mining must provide supporting documentation that qualifies them to supervise and perform this type of work.				

**13. PERSONAL HISTORY STATEMENT OF PRINCIPALS AND ASSOCIATES RESPONSIBLE FOR AML PROJECT DESIGN (Furnish complete data but keep to essentials)**

NAME & TITLE (Last, First, Middle Int.)	YEARS OF EXPERIENCE		
	YEARS OF AML DESIGN EXPERIENCE:	YEARS OF AML RELATED DESIGN EXPERIENCE:	YEARS OF DOMESTIC WATERLINE DESIGN EXPERIENCE:
Morin, Dustin W. Marekt Sector Lead, Reclamation	15	15	2
<b>Brief Explanation of Responsibilities</b> Dustin is the Market Sector Lead, Reclamation. He will provide strategic oversight, project governance, and team leadership and support. He has more than 20 experience in AML reclamation, environmental assessment, and public-sector program leadership. He has managed and overseen projects involving portal closures, highwall stabilization, coal refuse fires, and large-scale site restoration in urban, rural, and environmentally sensitive areas. Dustin has directed full-lifecycle AML projects, from site investigation and hazard prioritization to design, permitting, construction oversight, and post-reclamation monitoring.			
<b>EDUCATION (Degree, Year, Specialization)</b> MS, 2005, Biology			
<b>MEMBERSHIP IN PROFESSIONAL ORGANIZATIONS</b> National Association of Abandoned Mine Land Programs, Past President		<b>REGISTRATION (Type, Year, State)</b> NA	

**13. PERSONAL HISTORY STATEMENT OF PRINCIPALS AND ASSOCIATES RESPONSIBLE FOR AML PROJECT DESIGN (Furnish complete data but keep to essentials)**

NAME & TITLE (Last, First, Middle Int.)	YEARS OF EXPERIENCE		
	YEARS OF AML DESIGN EXPERIENCE:	YEARS OF AML RELATED DESIGN EXPERIENCE:	YEARS OF DOMESTIC WATERLINE DESIGN EXPERIENCE:
Hatter, Jesse C. Technical Manager, AML East	1.5	13	1.5
<b>Brief Explanation of Responsibilities</b> Jesse is the Technical Manager of our AML East sector. He brings over 15 years of experience in mining and civil engineering, with a strong background in AML reclamation. As the Technical Manager of RESPEC East's AML services, Jesse has successfully led a variety of projects for the West Virginia and Pennsylvania Departments of Environmental Protection. His work has addressed complex site hazards, including highwalls, subsidence areas, mine portals, and AMD. With his deep technical expertise and practical understanding of AML challenges, Jesse is well-equipped to manage the project from initial site assessment through construction completion.			
<b>EDUCATION (Degree, Year, Specialization)</b> BS, 2010, Mining Engineering			
<b>MEMBERSHIP IN PROFESSIONAL ORGANIZATIONS</b> NA		<b>REGISTRATION (Type, Year, State)</b> <b>PE, 2018, WV; 2017, KY; 2023, VA</b>	



**13. PERSONAL HISTORY STATEMENT OF PRINCIPALS AND ASSOCIATES RESPONSIBLE FOR AML PROJECT DESIGN (Furnish complete data but keep to essentials)**

NAME & TITLE (Last, First, Middle Int.)	YEARS OF EXPERIENCE		
Faulkner, Whitney E. Development Manager, AML	YEARS OF AML DESIGN EXPERIENCE: 4	YEARS OF AML RELATED DESIGN EXPERIENCE: 20	YEARS OF DOMESTIC WATERLINE DESIGN EXPERIENCE: N/A
Brief Explanation of Responsibilities Whitney Faulkner is the Development Manager of our AML divisions. With more than 23 years of experience in civil engineering, mine permitting, and AML reclamation. As Development Manager of RESPEC's Reclamation Services, she leads AML projects in West Virginia and Pennsylvania, addressing hazards such as portal closures, subsidence, landslides, and AMD. Her expertise spans regulatory compliance, multi-agency permitting, and technical design. Whitney's practical approach, strong communication, and deep understanding of mining and state government make her highly effective in managing complex projects from site evaluation through construction.			
EDUCATION (Degree, Year, Specialization) BS, 2002, Civil Engineering			
MEMBERSHIP IN PROFESSIONAL ORGANIZATIONS NA		REGISTRATION (Type, Year, State) PE, 2019, WV; 2009, KY; 2023, PA; 2008, IL; 2025, IN; 2025, OH; 2023, OR	

**13. PERSONAL HISTORY STATEMENT OF PRINCIPALS AND ASSOCIATES RESPONSIBLE FOR AML PROJECT DESIGN (Furnish complete data but keep to essentials)**

NAME & TITLE (Last, First, Middle Int.)	YEARS OF EXPERIENCE		
Stephens, Jake L. Senior Project Engineer	YEARS OF AML DESIGN EXPERIENCE: 1	YEARS OF AML RELATED DESIGN EXPERIENCE: 1	YEARS OF DOMESTIC WATERLINE DESIGN EXPERIENCE: NA
Brief Explanation of Responsibilities Jake Stephens is a senior project engineer. He is a licensed mining engineer with 15 years of experience in project management, engineering design, construction oversight, and risk consulting. He has led reclamation efforts across West Virginia and Pennsylvania, addressing AML hazards such as subsidence, highwalls, mine portals, and AMD treatment systems. Jake's expertise spans the full project lifecycle—from identification and permitting to closeout—supported by strong skills in regulatory compliance and field-based AML feature evaluation. His underground and surface coal mining certifications, hands-on experience, and technical rigor enable him to deliver practical, compliant solutions for complex reclamation projects.			
EDUCATION (Degree, Year, Specialization) BS, 2010, Mining Engineering			
MEMBERSHIP IN PROFESSIONAL ORGANIZATIONS NA		REGISTRATION (Type, Year, State) PE, 2025, WV; 2016, KY;	

**DESIGNATED CONTACT:** Vendor appoints the individual identified in this Section as the Contract Administrator and the initial point of contact for matters relating to this Contract.

(Printed Name and Title) \_\_\_\_\_

(Address) \_\_\_\_\_

(Phone Number) / (Fax Number) \_\_\_\_\_

(email address) \_\_\_\_\_

**CERTIFICATION AND SIGNATURE:** By signing below, or submitting documentation through WV OASIS, I certify that: I have reviewed this Solicitation/Contract in its entirety; that I understand the requirements, terms and conditions, and other information contained herein; that this bid, offer or proposal constitutes an offer to the State that cannot be unilaterally withdrawn; that the product or service proposed meets the mandatory requirements contained in the Solicitation/Contract for that product or service, unless otherwise stated herein; that the Vendor accepts the terms and conditions contained in the Solicitation, unless otherwise stated herein; that I am submitting this bid, offer or proposal for review and consideration; that this bid or offer was made without prior understanding, agreement, or connection with any entity submitting a bid or offer for the same material, supplies, equipment or services; that this bid or offer is in all respects fair and without collusion or fraud; that this Contract is accepted or entered into without any prior understanding, agreement, or connection to any other entity that could be considered a violation of law; that I am authorized by the Vendor to execute and submit this bid, offer, or proposal, or any documents related thereto on Vendor's behalf; that I am authorized to bind the vendor in a contractual relationship; and that to the best of my knowledge, the vendor has properly registered with any State agency that may require registration.

By signing below, I further certify that I understand this Contract is subject to the provisions of West Virginia Code § 5A-3-62, which automatically voids certain contract clauses that violate State law; and that pursuant to W. Va. Code 5A-3-63, the entity entering into this contract is prohibited from engaging in a boycott against Israel.

\_\_\_\_\_  
(Company) 

\_\_\_\_\_  
(Signature of Authorized Representative)

\_\_\_\_\_  
(Printed Name and Title of Authorized Representative) (Date)

\_\_\_\_\_  
(Phone Number) (Fax Number)

\_\_\_\_\_  
(Email Address)

**ADDENDUM ACKNOWLEDGEMENT FORM**  
**SOLICITATION NO.:** \_\_\_\_\_

**Instructions:** Please acknowledge receipt of all addenda issued with this solicitation by completing this addendum acknowledgment form. Check the box next to each addendum received and sign below. Failure to acknowledge addenda may result in bid disqualification.

**Acknowledgment:** I hereby acknowledge receipt of the following addenda and have made the necessary revisions to my proposal, plans and/or specification, etc.

**Addendum Numbers Received:**

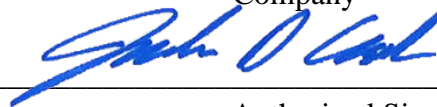
(Check the box next to each addendum received)

<input checked="" type="checkbox"/> Addendum No. 1	<input type="checkbox"/> Addendum No. 6
<input type="checkbox"/> Addendum No. 2	<input type="checkbox"/> Addendum No. 7
<input type="checkbox"/> Addendum No. 3	<input type="checkbox"/> Addendum No. 8
<input type="checkbox"/> Addendum No. 4	<input type="checkbox"/> Addendum No. 9
<input type="checkbox"/> Addendum No. 5	<input type="checkbox"/> Addendum No. 10

I understand that failure to confirm the receipt of addenda may be cause for rejection of this bid. I further understand that any verbal representation made or assumed to be made during any oral discussion held between Vendor's representatives and any state personnel is not binding. Only the information issued in writing and added to the specifications by an official addendum is binding.

\_\_\_\_\_  
New River Engineers, Inc

\_\_\_\_\_  
Company

\_\_\_\_\_  


\_\_\_\_\_  
Authorized Signature

\_\_\_\_\_  
08/18/2025

\_\_\_\_\_  
Date

**NOTE:** This addendum acknowledgment should be submitted with the bid to expedite document processing.

Revised 6/8/2012

ABANDONED MINE LANDS (AML) CONTRACTOR INFORMATION FORM

You must complete this form for your AML contracting officer to request an eligibility evaluation from the Office of Surface Mining Reclamation and Enforcement (OSMRE) to determine if you are eligible to receive an AML contract. This requirement can be found under OSMRE's regulations at 30 CFR 874.16. **NOTE:** This form must be signed and **dated within 30 days** of submission to be considered for a current bid.

**Part A: General Information**

Business Name: New River Engineers, Inc

Tax ID #: 55-0764054

Address: 501 Eagle Mountain Road

City, State, &amp; Zip: Charleston, WV 25311

Phone Number: 304-342-7168

Email Address:

**Part B: Obtain an Organizational Family Tree (OFT) from the Applicant Violator System (AVS)**

If you plan to certify the existing AVS information or submit updates under Part C, you must include an OFT. Instructions for downloading an OFT from the AVS can be found at: <https://www.osmre.gov/sites/default/files/2022-02/OMB%201029-0119%20instructions.pdf>. If you require assistance you may contact the AVS Office by phone at: 800-643-9748, or by email at: [avshelp@osmre.gov](mailto:avshelp@osmre.gov).

**Part C: Certifying and updating information in the AVS**

Select one of the options, follow the instructions for the selected option, sign, and date below.

I, \_\_\_\_\_, have express authority to certify that:  
(Print Name)

- ☐ 1. Our business is listed in the AVS. The information is accurate, complete, and up to date. (If you select this option, you must attach an Entity OFT from the AVS to this form). Do not complete Part D.
- ☒ 2. Our business is in the AVS. The information needs to be updated. (If you select this option, you must attach an Entity OFT from the AVS to this form). Complete Part D to provide the missing or corrected information.
- ☐ 3. Our business is not listed in the AVS. The information needs to be added. Complete Part D to provide the information.

08/18/2025

Date

  
Signature

President

Title

**Part D: OFT Information**Contractor's Business Name: New River Engineers, Inc

If the current Entity OFT information for your business is incomplete in the AVS, or if there is no information in the AVS for your business, you must provide all of the following information as it applies to your business. Please include additional copies of this page if the space below is not sufficient to capture all information.

- Every officer (President, Vice President, Secretary, Treasurer, etc.);
- All Directors, Partners, and Members;
- All persons performing a function similar to a Director;
- Every person or business that owns 10% or more of the voting stock in your business;
- Any other person(s) who has the ability to determine the manner in which the AML reclamation project is being conducted.
- **Please list an end date for any person who is no longer with your business.**

Name: Joshua D. Cook  
 Address: 3041 University Avenue, Suite 6  
 City, State, Zip: Morgantown, WV 26505  
 Begin Date: \_\_\_\_\_  
 End Date: \_\_\_\_\_  
 % Ownership: \_\_\_\_\_  
 Position/Title: President  
 Phone Number: 681-668-1809

Name: Eric Hartwell  
 Address: 501 Eagle Mountain Rd  
 City, State, Zip: Charleston, WV 25311  
 Begin Date: \_\_\_\_\_  
 End Date: \_\_\_\_\_  
 % Ownership: \_\_\_\_\_  
 Position/Title: Vice President  
 Phone Number: 304-342-7168

Name: \_\_\_\_\_  
 Address: \_\_\_\_\_  
 City, State, Zip: \_\_\_\_\_  
 Begin Date: \_\_\_\_\_  
 End Date: \_\_\_\_\_  
 % Ownership: \_\_\_\_\_  
 Position/Title: \_\_\_\_\_  
 Phone Number: \_\_\_\_\_

Name: \_\_\_\_\_  
 Address: \_\_\_\_\_  
 City, State, Zip: \_\_\_\_\_  
 Begin Date: \_\_\_\_\_  
 End Date: \_\_\_\_\_  
 % Ownership: \_\_\_\_\_  
 Position/Title: \_\_\_\_\_  
 Phone Number: \_\_\_\_\_

**PAPERWORK REDUCTION STATEMENT**

The Paperwork Reduction Act of 1995 (44 U.S.C 3501) requires us to inform you that: Federal Agencies may not conduct or sponsor, and a person is not required to respond to, a collection of information unless it displays a current valid OMB control number. This information is necessary for all successful bidders prior to the distribution of AML funds, and is required to obtain a benefit.

Public reporting burden for this form is estimated to range from 15 minutes to one hour, with an average of 30 minutes per response, including time for reviewing instructions, gather and maintaining data, and completing and reviewing the form. You may direct comments regarding the burden estimate or any other aspect of this form to the Information Collection Clearance Officer, Office of Surface Mining Reclamation and Enforcement, 1849 C Street, NW, Room 4559, Washington, DC 20240.