



The following documentation is an electronically-submitted vendor response to an advertised solicitation from the *West Virginia Purchasing Bulletin* within the Vendor Self-Service portal at ***wvOASIS.gov***. As part of the State of West Virginia's procurement process, and to maintain the transparency of the bid-opening process, this documentation submitted online is publicly posted by the West Virginia Purchasing Division at ***WVPurchasing.gov*** with any other vendor responses to this solicitation submitted to the Purchasing Division in hard copy format.

Header @ 1

List View

General Information [Contact](#) [Default Values](#) [Discount](#) [Document Information](#) [Clarification Request](#)

Procurement Folder: 1717189

Procurement Type: Central Purchase Order

Vendor ID: 000000204787

Legal Name: THE THRASHER GROUP INC

Alias/DBA:

Total Bid: \$0.00

Response Date: 08/20/2025

Response Time: 12:13

Responded By User ID: Thrasher

First Name: Thrasher

Last Name: Thrasher

Email: thrasherevents@thethrashen

Phone: 304-288-7644

SO Doc Code: CEOI

SO Dept: 0313

SO Doc ID: DEP2600000001

Published Date: 8/13/25

Close Date: 8/20/25

Close Time: 13:30

Status: Closed

Solicitation Description: AML - EOI Pre-Qualification for Consultants

Total of Header Attachments: 1

Total of All Attachments: 1





Department of Administration  
Purchasing Division  
2019 Washington Street East  
Post Office Box 50130  
Charleston, WV 25305-0130

State of West Virginia  
Solicitation Response

**Proc Folder:** 1717189  
**Solicitation Description:** AML - EOI Pre-Qualification for Consultants  
**Proc Type:** Central Purchase Order

Solicitation Closes	Solicitation Response	Version
2025-08-20 13:30	SR 0313 ESR08202500000001200	1

**VENDOR**  
000000204787  
THE THRASHER GROUP INC

**Solicitation Number:** CEOI 0313 DEP2600000001  
**Total Bid:** 0  
**Response Date:** 2025-08-20  
**Response Time:** 12:13:49  
**Comments:** N/A

**FOR INFORMATION CONTACT THE BUYER**  
Joseph (Josh) E Hager III  
(304) 558-2306  
joseph.e.hageriii@wv.gov

<b>Vendor Signature X</b>	<b>FEIN#</b>	<b>DATE</b>
---------------------------	--------------	-------------

All offers subject to all terms and conditions contained in this solicitation

Line	Comm Ln Desc	Qty	Unit Issue	Unit Price	Ln Total Or Contract Amount
1	EOI Engineering Design Services				0.00

Comm Code	Manufacturer	Specification	Model #
81100000			

Commodity Line Comments: N/A

Extended Description:  
EOI Engineering Design Services





THRASHER

# WEST VIRGINIA DEPARTMENT OF ENVIRONMENTAL PROTECTION

CEOI 0313 DEP26\*1 - AML Pre-Qualification for Consultants

**Submitted by:**  
The Thrasher Group, Inc.  
August 20, 2025



August 20, 2025

Attn: Mr. Joseph E Hager III, Department of Administration, Purchasing Division

RE: WV Department of Environmental Protection: CEOI 0313 DEP26\*1 - AML Pre-Qualification for Consultants

Dear Members of the Selection Committee:

The Thrasher Group is pleased to submit this Expression of Interest for prequalification as a full-service architectural and engineering (A/E) partner for the West Virginia Department of Environmental Protection's Abandoned Mine Lands (AML) Program. With over 40 years of experience serving communities across West Virginia, Thrasher has a long-standing record of delivering sustainable, high-quality engineering solutions for complex land reclamation, permitting, design, and construction projects.

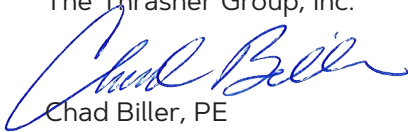
We understand that the WVDEP seeks prequalified firms capable of providing comprehensive A/E services — including planning, realty, design, and construction oversight — with minimal supervision and consistent adherence to schedules and deliverables. Thrasher's team is uniquely positioned to meet and exceed these expectations for the following reasons:

- » **Proven AML Expertise:** Our engineers, surveyors, and environmental specialists have successfully executed numerous reclamation and restoration projects throughout West Virginia, with demonstrated experience in realty, permitting, site assessment, design, and construction oversight.
- » **Full-Service Capabilities:** Thrasher maintains an in-house team across multiple disciplines and leverages trusted subcontractors when specialized expertise is required, ensuring all project components—from initial planning through construction completion—are delivered efficiently and to the highest standards.
- » **Integrated Project Management:** We implement structured scheduling, progress tracking, and reporting protocols, providing regular updates with minimal oversight while maintaining alignment with project milestones, objectives, budgets, and regulatory requirements.
- » **Commitment to Community and Compliance:** Beyond technical expertise, Thrasher prioritizes stakeholder engagement, environmental stewardship, and long-term sustainability—values that align closely with the WVDEP's mission to restore and protect West Virginia's lands.

Our proposed approach emphasizes **proactive collaboration, efficient resource allocation, and innovative solutions** tailored to the unique challenges of AML projects. By combining experienced personnel, proven processes, and a deep understanding of West Virginia's regulatory and environmental landscape, Thrasher offers the WVDEP a reliable, capable, and responsive partner.

Thank you for considering The Thrasher Group for these important projects. We welcome the opportunity to contribute our expertise to the AML Program and look forward to supporting the West Virginia Department of Environmental Protection in achieving their reclamation goals.


Sincerely,  
The Thrasher Group, Inc.



Chad Biller, PE  
QA/QC



Brian Knight  
Program Manager  
and AML South Lead



RJ Hovatter, PE  
Program Engineer  
and AML North Lead



## 350+

### EMPLOYEES

- 35 Licensed Professional Engineers
- 7 Licensed Professional Surveyors
- 7 Licensed Professional Architects
- 3 Licensed Professional Landscape Architects

### MAIN POINT OF CONTACT:

Brian Knight  
 Program Manager and AML South Lead  
 bknight@thethrashergroup.com  
 Cell: 304-677-3572  
 Office: 304-431-7800



## 40+

### YEARS

of delivering successful projects



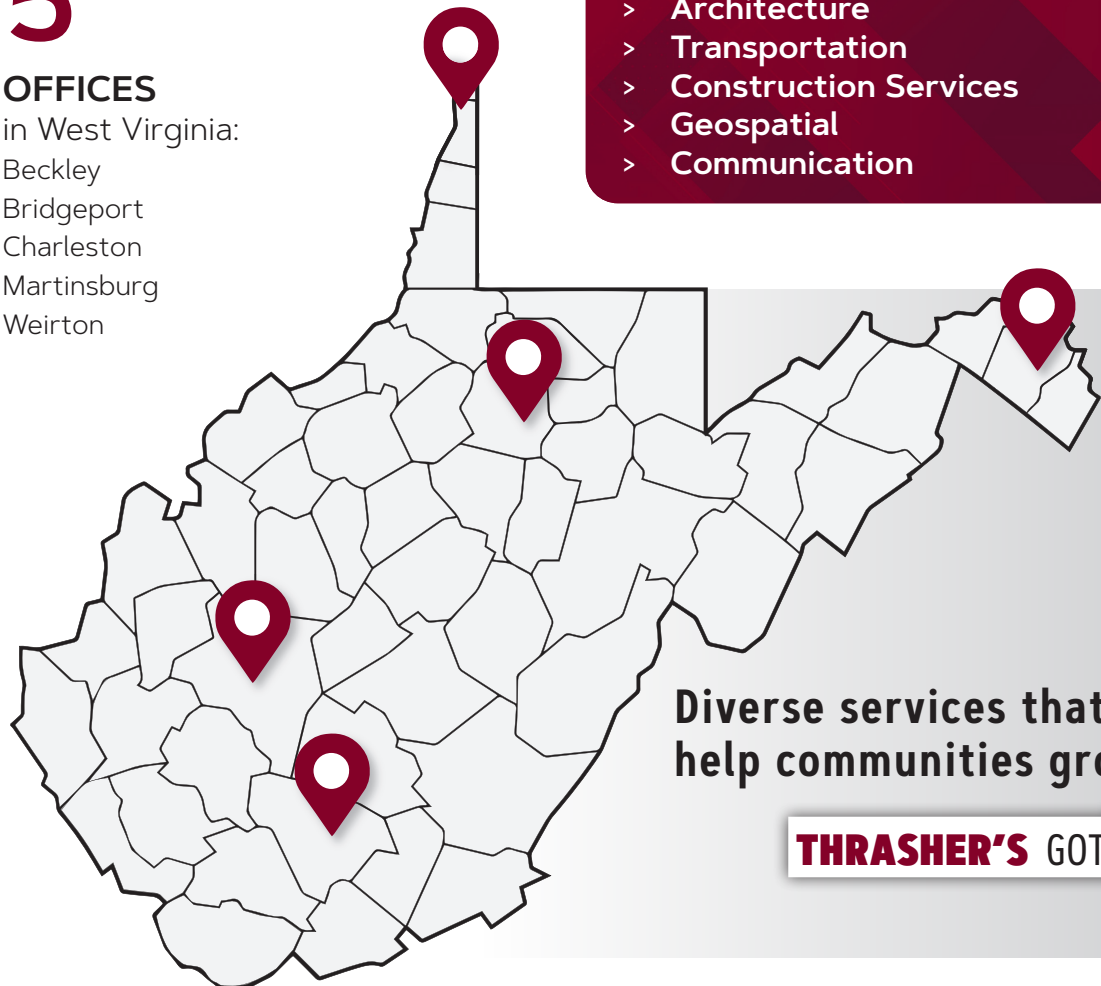
## 5

### OFFICES

in West Virginia:  
 Beckley  
 Bridgeport  
 Charleston  
 Martinsburg  
 Weirton

### OUR SERVICES

- > Site Engineering
- > Environmental
- > Survey
- > Utility Engineering
- > Architecture
- > Transportation
- > Construction Services
- > Geospatial
- > Communication



Diverse services that  
 help communities grow.

**THRASHER'S** GOT IT

A critical step in meeting your goals is first ensuring we understand them. Thrasher's team has thoroughly reviewed the Expression of Interest request and is confident in our ability to deliver the highest-quality solutions to your problems. We have a proven capability of meeting each goal/objective you have outlined and feel strongly that we will continue to deliver successful projects.

**Our team is prepared to complete all of the following services:**

- > Realty
- > Design
- > Permitting
- > Environmental
- > Construction Services

We understand your goals for the project in this contract and will handle them in the following manner:

## **Goal 1: Compliance with IIJA, Davis-Bacon, BABA, and All Applicable Laws**

Thrasher will ensure all work fully complies with the Infrastructure Investment and Jobs Act (IIJA), including Davis-Bacon prevailing wage requirements and Build America, Buy America (BABA) provisions. Our team is experienced in adhering to federal, state, and local regulations, maintaining thorough documentation, and coordinating with regulatory agencies to ensure every step meets compliance standards.

## **Goal 2: Planning Work**

Our multidisciplinary team will lead all planning efforts, including required consultations and investigations with NEPA, WVDNR, SHPO, USFWS, US Forest Service, and other agencies. We will manage bat habitat assessments, threatened and endangered species evaluations, water quality sampling, and other environmental analyses, delivering clear, accurate reports to keep the project moving forward without delays.

## **Goal 3: Realty Work**

Thrasher will conduct detailed courthouse research to confirm legal property ownership and document findings. We will secure Exploratory Rights of Entry (EROE) and Construction Rights of Entry (CROE) from

all affected landowners, ensuring that WVDEP-DLR-AML, OSMRE, and our team have legal site access before fieldwork begins. All landowner communications will be logged, and compiled in a report including all additional documentation such as tax maps, USGS Quad maps, and deeds. Our team of professional land surveyors can complete boundary surveys upon request.

## **Goal 4: Design Work**

Our in-house engineering disciplines—including civil, geotechnical, hydrological, structural, and electrical—will deliver stamped, fully compliant designs that eliminate hazards without introducing new risks. We will produce construction-ready plans, specifications, and bid documents for mine reclamation, drainage systems, slope stabilization, stream restoration, access roads, stormwater management, and revegetation.

## **Goal 5: Permitting and Regulatory Coordination**

We will secure all necessary permits, including NPDES, WVDOH, USACE, Department of Health, and floodplain permits. We will proactively obtain, maintain, and release all required permits, working closely with WVDEP and applicable agencies to streamline the process. Our team will track permit timelines and approvals to prevent bottlenecks and ensure full regulatory compliance throughout design and construction.

## **Goal 6: Construction Oversight Work**

Thrasher's inspection and engineering staff will provide daily on-site documentation, review contractor as-builts, and deliver a Final Engineer's Certification Report. Our oversight extends through the one-year warranty period to ensure the project meets specifications, maintains performance, and achieves final release without deficiencies.

## **Goal 7: Meeting Deadlines for AML Projects**

Understanding the time-sensitive nature of AML reclamation, Thrasher will develop a detailed project schedule aligned with WVDEP milestones, using project management tools to track progress and anticipate challenges. Our history of delivering complex projects on schedule ensures we will meet every deadline without compromising quality or compliance.

Brian Knight and RJ Hovatter will be overseeing the teams for this project. They will be supported by a qualified staff to perform the necessary tasks such as survey, geotechnical engineering, realty, design, permitting, and bid documents as required for a complete design set and project.

Brian and RJ will communicate with the AML team to determine the preferred communication method and establish the most realistic and efficient schedule for the project.

**The general project approach we will follow for your project is outlined below:**

## **Step 1: Land Rights Acquisition**

Thrasher will identify property owners within the project area. This will be completed through a deed search. We will also reach out to the property owners to obtain the needed permissions to be on property to design and construct the projects.

## **Step 2: Site Visit**

Our assembled team of engineers and the WVDEP will conduct a site visit. This group will evaluate the project conditions and identify and document potential problem areas. Thrasher will call the necessary utilities prior to being on-site to help identify any known utility locations. We will coordinate with your team and project owners to take all the facts into consideration during this process.

## **Step 3: Exploratory Investigation**

Thrasher will survey the site(s) for existing structures, utilities, topography, mine portals, and/or other identified items on-site. In addition, subsurface geological investigation, if required, will be completed to identify rock, refuse, and/or void locations.

## **Step 4: Conceptual Design**

Thrasher will prepare a conceptual design for the project at hand. Where applicable, we will also provide design alternatives for consideration. We will conduct a conceptual plan review on-site to ensure the identified issues are addressed.

## **Step 5: Construction Documents**

Our team will provide design solutions and construction documents to the WVDEP-AML for the project. These plans will be carried forward to final design based upon the conceptual plans. In addition, with Thrasher's experience working on various similar projects, specifications will be developed and reviewed with the WVDEP-AML to ensure an efficient and successful project during construction.

We will complete the final design documents based on comments received and conclusions throughout the design review process. Our field evaluations and design approach will specifically address these issues in the construction documents.

## **Step 6: Cost and Time Estimates**

Our project team will provide an itemized cost estimate based on current information. A project construction estimate will be prepared.

## **Step 7: Bid Process**

We will assist the WVDEP-AML in preparation of the bid documents, attend pre-bid meetings, and assist in issuance of addenda.

## **Step 8: Construction Administration**

The project team will review project submittals, attend project meetings, and provide a Resident Project Representative to inspect the construction being completed. The project team will also provide final punch list inspection at project completion.

Daily project reports, with photos, will be uploaded to the appropriate file location for your team to have easy access to.

## **Step 9: Project Close Out**

Upon completion of the project, the Thrasher team will review and comment or approve contractor's as-builts and final quantities. All permits will be closed/terminated at the completion of the one-year warranty period.





## AML DESIGN

The Thrasher Group has provided design services to a number of Abandoned Mine Lands projects over the years. We are leaders in the industry, having completed projects for emergency repairs, using AML grants, and as part of the Abandoned Mine Lands Economic Revitalization.

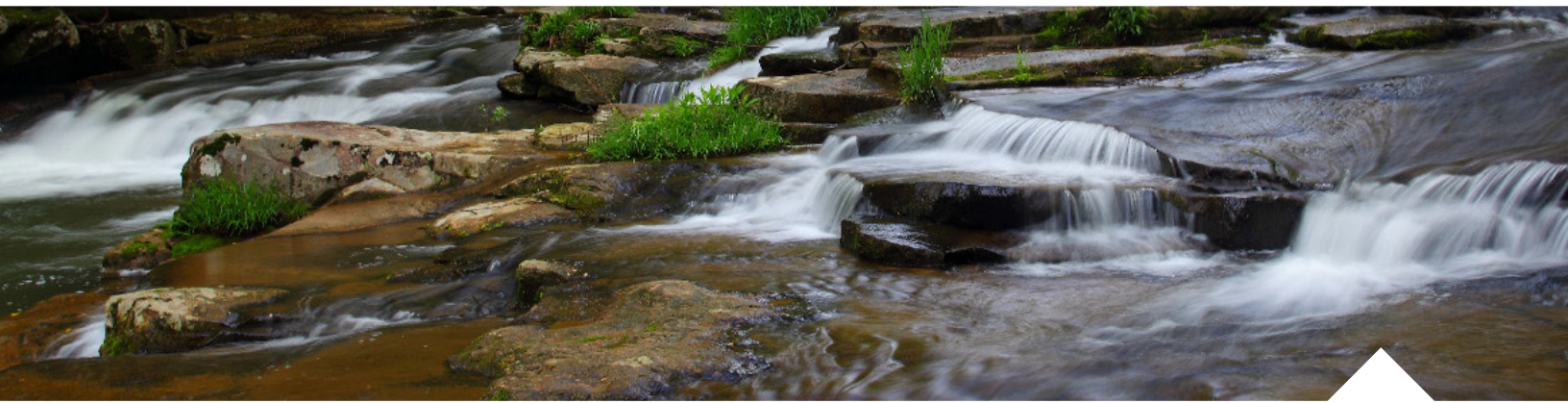
**Our team has been a part of all types of AML work, including, but not limited to:**

- » Highwalls
- » Portals
- » Slope Stabilization
- » Landslides
- » AMD Treatment
- » Refuse and Dump Improvements
- » Drainage Control
- » Burning Refuse Remediation

**Drainage Design:** All AML projects completed by Thrasher have required design of drainage structures. These have included vegetated, grouted, and riprap channels, as well as culverts and storm sewers. Drainage calculations are completed to properly size all conveyances.

**Permitting:** the permitting process can delay projects if they are not submitted correctly or in a timely manner. Thrasher takes pride in our ability to quickly obtain permits for our clients. We are able to utilize our excellent relationship with the WVDEP for NPDES permits as well as our relationship with the West Virginia Division of Highways for entrance and drainage permits. We are also experienced in obtaining Army Corp of Engineers permits from both the Pittsburgh and Huntington District Offices for stream bank restoration, wetland mitigation, and construction, linear transportation, and utility line projects, temporary construction access, and dewatering.





## ENVIRONMENTAL SERVICES

In today's ever-changing regulatory landscape, compliance with federal and state environmental laws is critical to the success of projects. Compliance can often seem at odds with the project vision and financial constraints. The Thrasher team partners as a technical and regulatory advocate to overcome obstacles and guide our clients through complicated policies to achieve their goals. From initial investigations to final design, our environmental experts are there to assist in all facets of our clients' projects. Our team has developed relationships with academic consultants from multiple universities that are here to aid in specialized assessments.

Thrasher offers a range of environmental services, from abandoned mine land reclamation to stream and wetland delineations and everything in between. We have extensive experience with site assessments, permitting, and every aspect of environmental work that your project will encompass.

In addition, our team has a host of experience with Abandoned Mine Land (AML) projects and are familiar with the intricacies involved.

### Environmental Services:

- > All Appropriate Inquiry (AAI)
- > Environmental Site Assessments
- > NEPA Compliance for Publicly Funded Projects
- > Ecological Studies
- > Brownfield Redevelopment
- > Industrial Hygiene and Demolition Planning
- > Underground Storage Tank (UST) Consulting Services
- > Wetland Delineation, Design, and Mitigation
- > Remediation Investigation, Feasibility Studies, and Design
- > Hydrogeologic and Geologic Investigations
- > Groundwater Monitoring
- > Sampling and Laboratory Analysis
- > Solid and Hazardous Waste Management
- > SPCC, GPP, SWPPP, GWPP, SWPPP Environmental Compliance
- > Coal Combustion Residuals Rule Compliance (CCR)
- > Stream Assessments, Design, and Mitigation
- > Erosion and Sediment Control Plans
- > Voluntary Remediation Program
- > Uniform Environmental
- > Covenants Act
- > CERCLA Preliminary Assessment
- > CERCLA Site Investigation



## ENVIRONMENTAL PERMITTING

The Environmental Division of the Thrasher Group provides permitting, consulting, and assessment services to a multitude of clients spanning the Mid-Atlantic region. With a combined 40 years of permitting experience, Thrasher's Environmental Scientists, Permitting Leads, and Project Managers are able to take even the most complex and time restrictive projects and provide clients with cost effective and timely solutions.

### Federal Permitting

- > National Historic Preservation Act - Section 106 Consultation
  - > *State Historic Preservation Office or Division of Culture and History*
- > Endangered Species Act - Section 7 and Section 9 Consultations
  - > *United States Fish and Wildlife Service*
- > Clean Water Act - Section 404 Permits
  - > *United States Army Corps of Engineers*

- > National Environmental Policy Act - Categorical Exclusions, Environmental Assessments, and Short Environmental Assessment Forms
  - > *United States Army Corps of Engineers; Federal Aviation Administration; Division of Transportation; and Federal Communications Commission*

### State and Local Permitting

- > State Responsible Regulations of the Clean Water Act - Section 401 and 402 Permits
- > State Level Rare, Threatened, or Endangered Species Consultations
- > State Level Aquatic Resource Encroachment and Impact Permits
- > State Level Roadway Encroachment, Crossing, and Occupancy Permits
- > State Level Industrial Waste Discharge Permits
- > Local Level Floodplain or Building Permits





## QA/QC Procedure

Thrasher has an internal Quality Control Policy to ensure our projects move forward efficiently and effectively. The objectives of this manual are to continually improve the quality of the design and technical deliverables Thrasher provides to its internal and external clients. This manual illustrates the basic requirements for quality control in our projects. It describes the methods for checking and reviewing product elements and client deliverables and includes rigorous comprehensive written check-lists for each stage of the design process, document production, and construction activities.

The purpose of these QC methodologies is to reduce or eliminate the potential for errors, omissions, ambiguities, and inconsistencies.

### The policy outlines three main areas:

#### » General

Defines the purpose, intent and limitations, definitions, and implementation

#### » Project Management Procedures

Presents required procedures specific to this practice that allow for the efficient and accurate management of projects

#### » Check and Final Review Procedures

Presents required procedures specific to this practice that are used to insure technical accuracy of the work product

As QA/QC, Chad Biller will combine his experience and the quality control policy to ensure that all projects are reviewed to adhere to the highest standard.





## Budgeting

Construction estimating and budgeting is one of the most important parts of what Thrasher can provide you. Without accurate budgets, there is no tool to guide the design process and issues will be inevitable. By including cost estimating as a part of the project scope from day one, we are able to avoid issues before they arise and keep your project within a reasonable cost.

Our estimates go beyond the typical system — rather than simply providing cost per foot or lump sum price, Thrasher will provide contractor-grade estimates that look at every part of the project. We do detailed take-offs of materials and look at every man hour needed to complete a project and factor this in accordingly. Then, we use our thorough understanding of the local market and material costs to accurately design within your budget.



## Scheduling

Thrasher realizes the importance of establishing and maintaining project schedules. Time means money and making sure we help you allocate your money wisely is our number one goal. Because of this, our team puts an emphasis on ensuring project timetables are met and communication is upheld throughout the process.

To accomplish these goals, Thrasher utilizes scheduling to track every stage of a project - from design and bidding through construction completion. We also require contractors working on our projects to regularly update their project schedules and give a detailed progress report at each job meeting, again focusing on the communication component of scheduling. This helps to ensure all parties are informed and aware of potential delays. Keeping our client up to speed with progress is always our priority and ensures construction and project close-out are scheduled accordingly.





## Communication

Communication throughout any project is a primary key to success. To that end, Thrasher will begin communication with the West Virginia Department of Environmental Protection (WVDEP) immediately upon notification of award and will maintain consistent lines of communication for the duration of the project. This will ensure all parties involved - owner, contractor, and engineer - will always be apprised of the project happenings.

The two main components of the project approach will be design and construction. Each will have its own plan for communication.

### **Communication During Design**

Prior to the initiation of design services, Thrasher's Program Manager, Brian Knight, will discuss preferred methods of communication with the WVDEP's point of contact. Updates during the design phase can occur in numerous ways:

- » Weekly status updates via email
- » Weekly conference calls
- » Monthly progress meetings

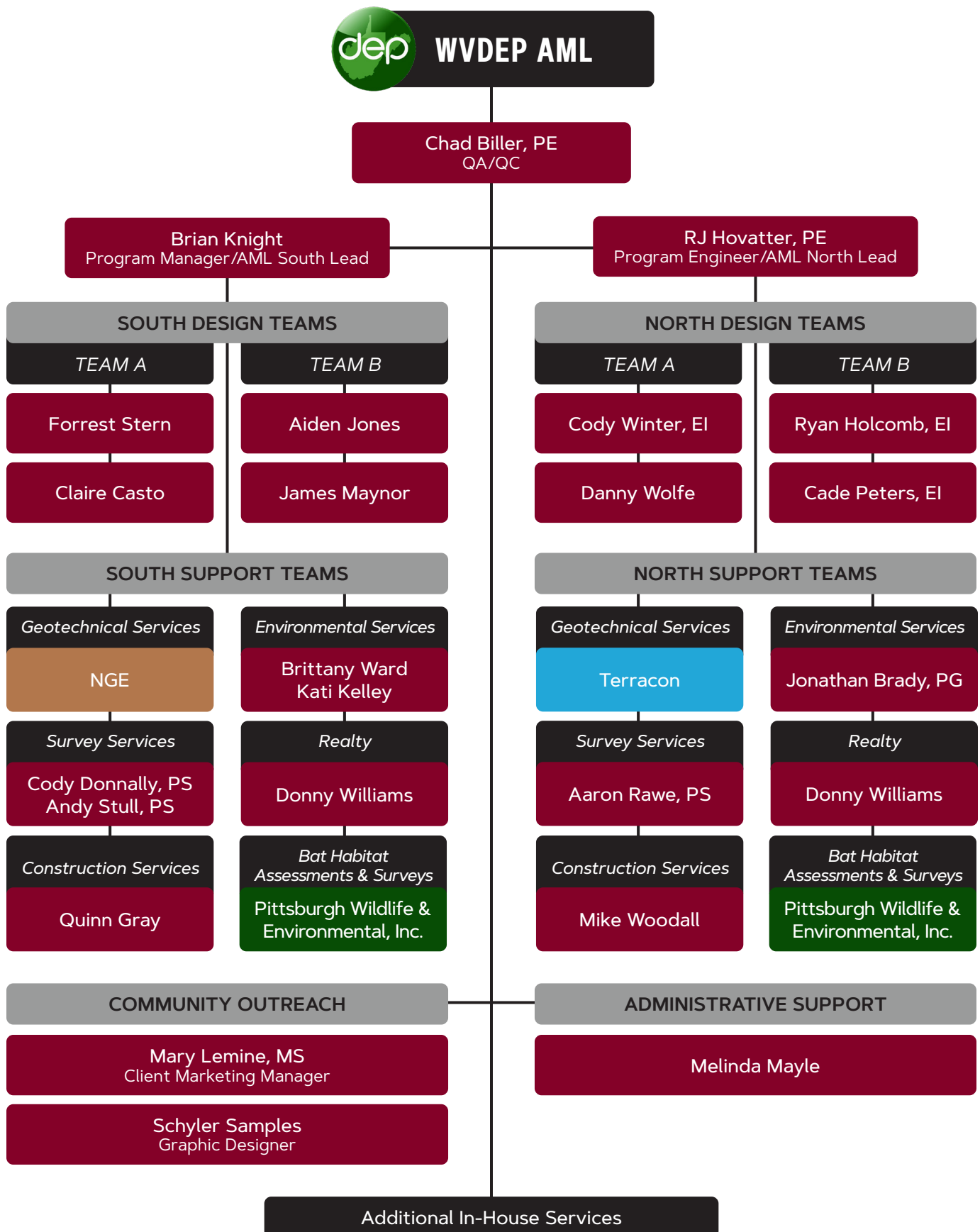
No matter the methods preferred, our project teams are well-versed in keeping our clients abreast of project status. We can customize your project's communication plans to best fit your teams' wants and needs.

### **Communication During Construction**

Before construction begins, Brian will again meet with the WVDEP to determine preferred communication tools for this phase of the project. Open, consistent communication will be paramount to keep the project on time and within budget.

Additionally, Thrasher will conduct monthly progress meetings with the contractor, the WVDEP, and key project stakeholders throughout the duration of the project. Meeting minutes will be distributed to all attendees and any other agents identified by the WVDEP. Action items will be documented within the meeting minutes.

Throughout construction, Thrasher will have team members on-site for project representation as well as material testing. Anytime a Thrasher employee is on-site during construction, a field report will be prepared. Field reports will be reviewed by the engineering team and distributed to the WVDEP's construction representative on a pre-determined basis.





## CHAD BILLER, PE

QA/QC

### Education

Bachelor of Science,  
Civil Engineering  
West Virginia University

### Registrations

Professional Engineer:

- > West Virginia
- > Ohio

### Affiliations

- > American Society of Highway Engineers
- > American Society of Civil Engineers
- > National Society of Professional Engineers

### Certifications

- > ODOT Non-complex Roadway Design prequalification
- > ODOT Complex Roadway Design prequalification
- > ODOT Bridge Design Level 1.1/1.2 prequalification

## PROFESSIONAL OVERVIEW

Chad Biller, PE, has held a wide variety of positions for Thrasher throughout his 25-year career at the firm. A talented civil engineer, Chad has a deep understanding of the infrastructure world. His portfolio includes work in land development, abandoned mine lands, roadways, bridges, airports, industrial parks, stormwater, sidewalks, trails, and more. This wide breadth of experience means He brings a diverse perspective to his projects and a depth of technical knowledge.

As a manager, Chad provides detailed updates to clients and strong relationships with state agencies. He recognizes the importance of working as an extension of his clients' team, providing guidance in their best interest throughout the course of each project. Chad's long history with West Virginia regulatory and funding agencies allows him to navigate projects through complicated steps seamlessly, collaborating with each entity for the most successful outcome possible. The same rings true during construction, where he provides a hands-on approach to keep projects on track for positive outcomes.

## EXPERIENCE

### WVDEP AML Isaac Creek Landslide

QA/QC | Harrison County, WV

### WVDEP AML Squires Creek

QA/QC | Preston County, WV

### WVDEP AML Anglins Run

Principal | Nicholas County, WV

### WVDEP AML Stowe Landslide

QA/QC | Logan County, WV

### WVDEP AML Landgraph Refuse Pile

QA/QC | McDowell County, WV

### WVDEP AML Owl Creek Highwall #2

QA/QC | Monongalia County, WV

### WVDEP AML Clarksburg Landslide

Project Manager | Harrison County, WV

### Town of Nutter Fort AML Sewer System

QA/QC | Harrison County, WV



# CHAD BILLER, PE

QA/QC

<b>Name:</b>	CHADWICK D. BILLER
<b>WV Professional Engineer:</b>	<b>PE License Number:</b> 013620
	<b>PE License Status:</b> Active
	<b>PE Issue Date:</b> 02/23/1998
	<b>PE Expiration Date:</b> 12/31/2026
<b>Continuing Education Claim:</b>	<b>Qualifying Hours from Last Renewal or Reinstatement:</b> 35.00
	<b>Carryover Hours for Next Renewal:</b> 5.00
	<b>Last Renewal or Reinstatement Date*:</b> 12/23/2024
<b>WV Engineer Intern:</b>	<b>EI Certification Number:</b>
	<b>EI Issue Date:</b>
<b>Primary Address of Record:</b>	150 SERENITY DRIVE BRIDGEPORT, WV 26330
<b>Primary Employer of Record:</b>	THE THRASHER GROUP, INC.





# BRIAN KNIGHT

PROGRAM MANAGER & AML SOUTH LEAD

## Certifications

- > Project Management Course Specialization
- > Leadership Development for Engineers - Rice University
- > Engineering Project Management - Rice University

## Trainings

- > OSHA 10 Hour
- > Construction Work Training
- > CPR and First-Aid

## PROFESSIONAL OVERVIEW

Brian Knight is a multi-talented member of the team at Thrasher. He has over 20 years of experience as a drafter, project engineer/manager, and project administrator with small engineering firms and large consulting firms. During that time, he has been responsible for bidding, billing, reporting various projects, coordinating with vendors for material shipments, and meeting with state officials. Those skills serve him and his clients well at Thrasher, where he is diligent in providing high-quality and accurate project design and construction that meet deadlines and maintain budgets.

## EXPERIENCE

**WVDEP AML Sullivan Refuse/Clogged Stream**  
Project Manager | Raleigh County, WV

**WVDEP Emergency AML Branchland Portals**  
Project Manager | Fayette County, WV

**WVDEP Emergency AML Belcher Hollow UMF**  
Project Manager | Kanawha County, WV

**WVDEP Emergency AML Bloomingrose Burning Refuse Project**  
Project Manager | Boone County, WV

**WVDEP Glenn Alum Refuse Pile**  
Construction Manager | Mingo County, WV

**WVDEP Len's Creek Portals**  
Construction Manager | Boone County, WV

**WVDEP Monarch Portals**  
Construction Manager | Fayette County, WV

**WVDEP Big Creek Portals**  
Construction Manager | Fayette County, WV

**WVDEP Broad Run Portals**  
Construction Manager | Kanawha County, WV

**WVDEP Conley Branch (Whitt) Landslide**  
Construction Manager | Logan County, WV

**WVDEP Switzer (Ellis) Drainage**  
Construction Manager | Logan County, WV

**WVDEP AML Guyan River Refuse**  
Project Manager | Lincoln County, WV



# RICHARD HOVATTER, PE

PROGRAM ENGINEER & AML NORTH LEAD

## Education

Bachelor of Science,  
Civil Engineering  
Fairmont State University

## Registrations

Professional Engineer:

- > West Virginia
- > Pennsylvania

## Certifications

- > Level I Rosgen Natural Stream Construction
- > Level II Rosgen Natural Stream Construction
- > HEC—RAS Operator Short Course
- > Review of ESCGP-1
- > MSHA

## Trainings

- > Annual Oil & Gas Training  
Pennsylvania—Expedited

## PROFESSIONAL OVERVIEW

Richard “RJ” Hovatter, PE, is an experienced Project Manager in Thrasher’s Land Development Market. RJ brings expertise in a range of civil engineering work, including site design, slip repair, well pad design, pipeline routing, stormwater management, utility extensions, and Abandoned Mine Land reclamation. He has spent a large portion of his career evaluating and solving problems for both public and private clients, developing feasible, sustainable, and economically friendly solutions.

A large portion of RJ’s career has revolved around the design and management of Abandoned Mine Land projects. With an understanding of both the traditional AML projects and the emerging AMLR grants, RJ has handled dozens of these projects in West Virginia, with several spanning into Maryland and Ohio as well. His has a deep respect for the importance these projects play in providing safe environments for residents and strives to provides his clients with an experience that revitalizes their property and renews its possibilities.

## EXPERIENCE

### Town of Nutter Fort AML Sewer System

Project Manager | Harrison County, WV

### WVDEP AML Lyons Landslide

Project Manager | Harrison County, WV

### WVDEP AML Shinns Run Portals

Project Engineer | Harrison County, WV

### WVDEP AML Isaac Creek Landslide

Principal | Harrison County, WV

### WVDEP AML Canyon Refuse and Dump

Project Manager | Monongalia County, WV

### WVDEP Subsidence Depressions

Project Manager | Various Locations — WV

### WVDEP AML Dansbranch Landslide Emergency Project

Project Manager | Mingo County, WV

### WVDEP AML Bloomingrose (Tincher) Burning Refuse Project

QA/QC | Boone County, WV

### WVDEP AML Landgraff Refuse Pile Design

Project Manager | McDowell County, WV



# RICHARD HOVATTER, PE

PROGRAM ENGINEER & AML NORTH LEAD

<b>Name:</b>	RICHARD G. HOVATTER, JR
<b>WV Professional Engineer:</b>	<b>PE License Number:</b> 018460
	<b>PE License Status:</b> Active
	<b>PE Issue Date:</b> 12/17/2009
	<b>PE Expiration Date:</b> 12/31/2026
<b>Continuing Education Claim:</b>	<b>Qualifying Hours from Last Renewal or Reinstatement:</b> 41.17
	<b>Carryover Hours for Next Renewal:</b> 11.17
	<b>Last Renewal or Reinstatement Date*:</b> 12/18/2024
<b>WV Engineer Intern:</b>	<b>EI Certification Number:</b> 8494
	<b>EI Issue Date:</b> 12/15/2005
<b>Primary Address of Record:</b>	74 FAWN RIDGE ROAD MANNINGTON, WV 26582
<b>Primary Employer of Record:</b>	THE THRASHER GROUP, INC.



# FORREST STERN

DESIGN TEAM A – SOUTH

## Education

Bachelor of Science  
Environmental Engineering  
Shepherd University

## Trainings

> OSHA 10 Certified

## PROFESSIONAL OVERVIEW

Forrest Stern serves as a Staff Engineer in the Land Development market at Thrasher, where he contributes to a wide range of projects across the region. His portfolio includes corporate and retail centers, residential developments, tank pads, and access roads. He brings a solid understanding of site layout, design, and permitting requirements, along with hands-on field experience as a Resident Project Representative. He is actively engaged in the preparation of site plans, grading plans, erosion and sediment control measures, and project specifications.

Based in close proximity to many of Thrasher's clients, Forrest is well-positioned to provide timely, on-the-ground support throughout the life of a project. His local presence enables him to respond quickly to client needs, attend site meetings with minimal notice, and ensure that issues are addressed in real-time. This accessibility, combined with his technical expertise, makes him a reliable and responsive partner in delivering high-quality solutions.

## EXPERIENCE

**Berkeley County Public Service Sewer District Collapsed Manhole)**  
Project Representative | Berkeley County, WV

**City of Charles Town Jefferson Memorial Park Pool Renovations**  
Staff Engineer | Jefferson County, WV

**Berkeley County Development Authority General Services**  
Project Engineer | Berkeley County, WV

**Berkeley County Public Service Sewer District  
Whitebush Landing Pump Station**  
Resident Project Representative | Berkeley County, WV

**Berkeley County Public Service Sewer District Collapsed Manhole**  
Resident Project Representative | Berkeley County, WV

**City of Beckley City Hall Parking Lot Repairs**  
Staff Engineer | Berkeley County, WV

**APM Mountainview Subdivision**  
Staff Engineer | Berkeley County, WV

**City of Charleston LIFT Center**  
Staff Engineer | Kanawha County, WV

**Town of Farmington Water Association Acquisition Contract #2**  
Staff Engineer | Marion County, WV



# CLAIRE CASTO

DESIGN TEAM A – SOUTH

## Education

Bachelor of Science,  
Mechanical Engineering  
Fairmont State University

## PROFESSIONAL OVERVIEW

Claire Casto brings a strong focus on land development projects, where she has played a key role in improving design efficiency and streamlining processes to allow greater capacity for additional work. Her experience extends across grading, stormwater management, and road design, giving her a well-rounded civil engineering background. She also developed standard operating procedures (SOPs) for AEP projects to ensure consistency and quality across deliverables. With a background in architecture and a degree from Fairmont State University, she combines technical expertise with design insight to deliver effective, practical solutions for complex infrastructure projects.

## EXPERIENCE

### **Rustic Ravines AMLER Phase II**

Staff Engineer | Wayne County, WV

### **Woodlands Development Group Fiber**

Staff Engineer | Marshall County, WV

### **Thundercloud, Inc. Broadband Deployment**

Staff Engineer | Cabell County, WV

### **Town of Marlinton Storm Sewer Project (D2112)**

Staff Engineer | Pocahontas County, WV

### **Roane County Residential Housing**

Staff Engineer | Roane County, WV

### **Mason County DA – Henderson Development**

Staff Engineer | Mason County, WV

### **Confidential Client Rural Broadband – Holden**

Staff Engineer | Logan County, WV

### **Confidential Client Rural Broadband – Ambler Ridge**

Staff Engineer | Kanawha/Roane County, WV

### **Confidential Client Rural Broadband – Chestnutburg FCE**

Staff Engineer | Monroe County, WV

### **Confidential Client Rural Broadband – North Charleston**

Staff Engineer | Kanawha County, WV

### **Confidential Client Rural Broadband – Tygart FCE**

Staff Engineer | Scioto County, OH

### **Confidential Client Rural Broadband – Olive Hill Station**

Staff Engineer | Carter County, KY



# AIDEN JONES

DESIGN TEAM B – SOUTH

## Education

Bachelor of Science,  
Computer Engineering  
WVU Tech

## Trainings

> OSHA 10 Hour

## PROFESSIONAL OVERVIEW

Aiden Jones is a graduate of WVU Tech who joined Thrasher in 2024 as a Staff Engineer, bringing fresh technical skills and a strong foundation in engineering principles. Specializing in AutoCAD and drafting, Aiden plays a key role in producing accurate and detailed drawings for a wide range of projects within the Site and Water Resources departments. His work includes creating and modifying site layouts, utility plans, grading designs, and erosion and sediment control measures, ensuring that each plan meets project specifications and regulatory standards.

In addition to his drafting responsibilities, Aiden collaborates closely with project managers and senior engineers to incorporate design changes, resolve technical challenges, and maintain project schedules. His attention to detail and ability to adapt designs to evolving project needs make him a valuable asset to the team. Aiden's enthusiasm for learning and applying new design techniques helps drive the delivery of high-quality, buildable plans that contribute to the success of Thrasher's clients.

## EXPERIENCE

### WVDEP Branchland Portals

Project Engineer | Lincoln County, WV

### WVDEP Branchland Portals Rt 10

Project Engineer | Lincoln County, WV

### WVDEP Branchland Hubball A

Project Engineer | Lincoln County, WV

### WVDEP Branchland Crum Drainage

Project Engineer | Lincoln County, WV

### WVDEP Branchland Blankenship Drainage

Project Engineer | Lincoln County, WV

### WVDEP Belcher Hollow Auger Holes

Project Engineer | Kanawha County, WV

### WVDEP Middle Fork Portals

Project Engineer | Kanawha County, WV

### WVDEP West Columbia B Phase II

Project Engineer | Mason County, WV

### WVDEP Lanham Portals

Project Engineer | Putnam County, WV

### WVDEP Harmonds Creek Portals Phase II

Project Engineer | Putnam County, WV





## J.R. MAYNOR, EI

DESIGN TEAM B – SOUTH

### Education

Bachelor of Science,  
Civil Engineering  
WVU Tech

### Registrations

Engineering Intern:  
> West Virginia

### Trainings

> OSHA 10

## PROFESSIONAL OVERVIEW

James “J.R.” Maynor, EI, graduated from WVU Tech with a degree in civil engineering and joined Thrasher as a full-time employee the same year. Prior to that, he gained hands-on experience as a summer intern with Thrasher’s Water Resources Department, where he assisted with design tasks and project documentation. In his current role within the Site Department, James primarily focuses on AutoCAD design work, developing and refining detailed plans for a variety of site development and infrastructure projects. His responsibilities include modifying existing layouts, creating new designs from concept to completion, and collaborating closely with engineers and project managers to ensure accuracy and efficiency in every deliverable.

## EXPERIENCE

**WV Department of Environmental Protection AML Emergency Maitland**  
Project Engineer | McDowell County, WV

**Confidential Client Rural Broadband - Kenova FCE**  
Project Engineer | Wayne County, WV

**Confidential Client Rural Broadband - Mariett FCE**  
Project Engineer | Wayne County, WV

**Confidential Client Rural Broadband - Cabin Creek**  
Project Engineer | Kanawha County, WV

**WV School of Osteopathic Medicine Campus Improvements**  
Project Engineer | Greenbrier County, WV



## CODY WINTER, EI

DESIGN TEAM A – NORTH

### Education

Bachelor of Science,  
Civil Engineering Technology  
Fairmont State University

### Registrations

Engineering Intern:

- > West Virginia

### Certifications

- > ACI Field Testing Technician
- > ACI Aggregate Base
- > WVDOH S.A.C. Technician
- > WVDOH PCC Inspector
- > WVDOH TRET - Level III
- > OSHA 10
- > SafeLand USA Training
- > First-Aid / CPR
- > Radiation Safety
- > Antero Safety 2017
- > AEP Safety 2017
- > UTV Safety Training
- > FE Exam

## PROFESSIONAL OVERVIEW

Cody Winter, EI currently serves as a Project Engineer in The Thrasher Group's Land Development Market. Cody has an impressive background in the site design of industrial parks with airport access, runway rehabilitations, taxiway lighting upgrades, tree clearing and earth work for approach and departure surfaces, site permitting, and commercial site layouts. He has a familiarity with FAA standards, and is working directly under Thrasher's aeronautical experts to learn permitting and regulatory standards. He effectively communicates with clients, project's contractors, and the project team regarding site designs generated in the AutoDesk Suite.

Prior to becoming a Project Engineer, Cody spent time working on various project sites as a Project Representative. His time in this role gave him invaluable experience and familiarity with the construction process — giving him the ability to recognize potential issues before they have the opportunity to manifest into construction sets backs.

## EXPERIENCE

**Marion County Economic Development Council Palatine Park Boat Ramp**  
Project Engineer | Marion County, WV

**WestRidge Multi-Use Development**  
Project Engineer | Monongalia County, WV

**Fairmont State University Paving Projects**  
Project Engineer | Marion County, WV

**Enrout Properties Harmony Grove Interchange**  
Project Engineer | Monongalia County, WV

**Harrison County Commission Industrial Park**  
Project Engineer | Harrison County, WV

**Hatfield-McCoy Regional Recreation Authority Ashland Resort**  
Project Engineer | McDowell County, WV

**Hazel Ruby McQuain Riverfront Park Improvements**  
Project Engineer | Monongalia County, WV

**North Central West Virginia Airport Environmental Services**  
Project Engineer | Harrison County, WV

**Grant County Development Authority Broadband Expansion**  
Project Engineer | Grant County, WV





# DANNY WOLFE

DESIGN TEAM A – NORTH

## Education

2-Year Drafting & Design Course,  
Monongalia County Technical  
Education Center

## PROFESSIONAL OVERVIEW

Danny Wolfe serves as the Computer Aided Site Designer/Manager for the Energy Market at The Thrasher Group, where he plays a vital role in the successful execution of site development projects. With over 20 years of experience, he brings a deep understanding of site design principles, grading, erosion and sediment control, access planning, and stormwater management — tailored specifically for energy sector developments such as natural gas facilities, well pads, compressor stations, and access roads.

Danny specializes in translating complex client requirements into detailed and efficient CAD-based site layouts, balancing technical precision with constructability and cost-effectiveness. He collaborates closely with engineers, project managers, surveyors, and environmental specialists to ensure each design meets regulatory standards and aligns with the project's schedule and budget. His experience spans all phases of project development, from concept planning and permitting support to final construction documentation.

Danny's commitment to responsive design and attention to detail makes him an integral part of Thrasher's Energy Market team, consistently delivering tailored solutions that help clients achieve compliance, efficiency, and long-term operational success.

## EXPERIENCE

### **WVDEP AML Kempton Refuse Rehabilitation**

Design and Permitting | Tucker County, WV

### **WVDEP AML Kuhns Run Park Portals**

Design and Permitting | Marion County, WV

### **City of Fairmont Stormwater AML IGT Project**

Design and Permitting | Marion County, WV

### **Valley View Wellness Center**

Design and Permitting | Tucker County, WV

### **Hatfield-McCoy Regional Recreation Authority Drawdy Fall Parking Lot**

Design and Permitting | Boone County, WV

### **City of McMechen Storm Sewer Improvements**

Stormwater Design | Marshall County, WV

### **City of Fairmont Culvert Design**

Design and Permitting | Marion County, WV



## RYAN HOLCOMB, EI

DESIGN TEAM B – NORTH

### Education

Bachelor of Science  
Civil Engineering Technology  
Fairmont State University

Bachelor of Science  
Petroleum and Natural Gas  
Geophysics  
West Virginia Wesleyan College

### Registrations

Engineer in Training:

- > West Virginia
- > Maryland

### Certifications

- > ACI Field Testing Technician – Level I
- > WVDOH Soil and Aggregate Compaction Technician (S.A.C.T.)
- > WVDOH PCC Inspector
- > WVDOH Aggregate Sampling Inspector
- > Transportation Engineering Technician – WVDOH TRET Level III

### Affiliations

- > Infrastructure WV Board of Directors

## PROFESSIONAL OVERVIEW

Ryan Holcomb, EI, serves as a Project Manager for the Water Resources Market at Thrasher. Ryan has been involved with the design and management of numerous projects for Thrasher's various utility clients including water, sanitary sewer, and stormwater projects across the state of West Virginia. He has also been involved with the project inspection, providing insight throughout the process.

Ryan has excelled since joining Thrasher as a field inspector. Since then, his role has evolved to managing projects of various sizes with multiple funding sources. His presence both in the office and in the field has provided him with the knowledge to succeed. Ryan has been able learn how to communicate effectively with all stakeholders associated with each project to deliver successful projects that meet the needs of his clients.

## EXPERIENCE

**Town of Nutter Fort Phase I AMD Stormwater Emergency Project**  
Project Manager | Harrison County, WV

**Town of Nutter Fort Phase II AMD Stormwater Project**  
Project Manager | Harrison County, WV

**City of Fairmont AMD Stormwater Improvements**  
Project Engineer | Marion County, WV

**City of Grafton Sewer Separation Project**  
Project Manager | Taylor County, WV

**City of Bridgeport Stormwater Study and Improvements**  
Project Manager | Harrison County, WV

**Norton-Harding-Jimtown Public Service District Water System Improvements**  
Project Manager | Randolph County, WV

**Town of Masontown Water System Improvements**  
Project Manager | Preston County, WV

**Town of Ellenboro Water System Improvements**  
Project Manager | Ritchie County, WV

**Hughes River Water Board New Water Tank**  
Project Manager | Ritchie County, WV



## CADE PETERS, EI

DESIGN TEAM B – NORTH

### Education

Bachelor of Science,  
Civil Engineering  
West Virginia University

Bachelor of Science,  
Mechanical Engineering  
West Virginia University

### Registrations

Engineering Intern:  
> West Virginia

## PROFESSIONAL OVERVIEW

Cade Peters, EI, began his career at Thrasher in 2022 as an intern with the Water Resources Department, where he quickly demonstrated a strong work ethic and a passion for solving infrastructure challenges. After earning his degree in Civil Engineering in December 2023, he transitioned into a full-time role, continuing his work with public utility clients throughout the Mid-Atlantic region.

Cade's responsibilities include the development of preliminary engineering reports, facility plans, detailed design work, and construction management support for water, sanitary sewer, and stormwater infrastructure projects. He plays an integral role in helping municipalities and utility providers navigate the complexities of planning and executing essential infrastructure improvements.

With hands-on experience across all phases of a project, Cade has developed a comprehensive understanding of public utility systems and the regulatory, environmental, and technical requirements that govern them. His growing expertise and attention to detail make him a reliable and resourceful team member who is committed to delivering solutions that improve the quality of life in the communities he serves.

## EXPERIENCE

### Town of Nutter Fort Phase I AMD Stormwater Emergency Project

Project Engineer | Harrison County, WV

### Town of Nutter Fort Phase II AMD Stormwater Project

Project Engineer | Harrison County, WV

### City of Fairmont AMD Stormwater Improvements

Staff Engineer | Marion County, WV

### City of Bridgeport Stormwater Study and Improvements

Staff Engineer | Harrison County, WV

### Midland Public Service District Faulkner Road Water Line Extension

Project Engineer | Randolph County, WV

### Mountain Top Public Service District Water System Improvements

Project Engineer | Grant County, WV

### Hughes River Water Board Water Storage Systems Improvements

Staff Engineer | Ritchie County, WV

### City of Grafton Phase I Water System Improvements

Project Engineer | Taylor County, WV

**Brittany Ward | Environmental Services — South**

Brittany will lead environmental project oversight — managing field teams, coordinating with contractors, and ensuring data collection for wetlands, streams, and general site conditions meets permitting needs. She would guide the project through federal, state, and local environmental permitting, oversee NEPA documentation, manage budgets and timelines, and ensure deliverables meet WVDEP standards.

**Kati Kelley | Environmental Services — South**

Kati will handle much of the on-the-ground environmental fieldwork for the AML site — conducting field assessments, assisting in wetland delineations, collecting soil and water data, and performing historical property research. She would prepare portions of Phase I/II ESA reports, help draft NEPA documents, and coordinate agency correspondence, especially for permits like Section 401/404 and USACE Nationwide permits.

**Jonathan Brady, PG | Environmental Services — North**

Jonathan will contribute his geological expertise to assess AML site geology, evaluate subsurface conditions, and interpret impacts of past mining activity. He would oversee drilling or sampling efforts if needed, map site geology, and coordinate directly with WVDEP and other agencies on technical reporting requirements. His role would focus on integrating geologic data into the environmental analysis, supporting permitting, and ensuring technical accuracy for reclamation or remediation design.

**Cody Donnally, PS | Survey Services — South**

Cody will lead specialized survey tasks, including boundary determination, topographic mapping, underground utility location, and construction stakeout for reclamation work. His FAA UAS pilot certification enables him to conduct drone-based aerial surveys and mapping—ideal for capturing large AML sites efficiently. He would also apply GNSS technology and 3D scanning to produce precise site models, supporting both design and monitoring of reclamation progress.

**Andy Stull | Survey Services — South**

Andy will support the AML project's surveying needs through field data collection, assisting with topographic and boundary surveys, construction staking, and mapping of site features. His responsibilities would likely include operating survey equipment (total stations, GPS units, drones if certified), verifying site measurements, and collaborating with project managers to ensure survey data is accurate and complete for engineering and permitting use.

**Aaron Rawe, PS | Survey Services — North**

Aaron will oversee all surveying operations, from coordinating field crews and managing data collection to performing subsidence and topographic surveys essential for mine reclamation. He would work closely with WVDEP representatives, stakeholders, and engineers to keep progress on schedule and ensure survey results meet specifications. His role also includes QA/QC of field data, coordinating with photogrammetry teams for aerial mapping, and ensuring photo control and site layout accuracy for design and construction.





## **Mike Woodall | Construction Services — North**

Mike will oversee construction activities in southern project areas, drawing on decades of field management experience to anticipate and address site issues. He and his team would closely monitor progress, verify compliance with design documents, and work with contractors to maintain quality and keep the project on track for successful completion.



## **Quinn Gray | Construction Services — South**

Quinn will oversee construction activities in the southern region, ensuring work meets project specifications, safety standards, and regulatory requirements. He would manage field personnel, coordinate material testing and quality control through the laboratory, and provide accurate documentation and reporting to support project compliance. With his background in physics, mathematics, and lab procedures, Quinn would play a key role in monitoring construction quality, controlling project costs, and keeping stakeholders informed of progress.



## **Donald Williams, PE | Realty Services**

Donald will apply his decades of experience with WVDOT procedures to manage property-related aspects of the work. This could include reviewing and preparing right-of-way plans, assisting with property acquisition or access coordination, ensuring compliance with applicable regulations, and supporting permitting efforts. His expertise would help streamline plan preparation, verify project documentation accuracy, and facilitate smooth coordination between property owners, contractors, and WVDEP.



## **Mary Lemine | Communications Specialist**

Mary will manage communication efforts, ensuring clear and timely updates to the public, stakeholders, and WVDEP. She could prepare technical and informational materials, assist in organizing and participating in public meetings, and help address community concerns. Her role would focus on keeping all parties informed and engaged to support smooth project progress.



## **Schyler Samples | Graphic Designer**

Schyler will develop clear, visually engaging materials to support project communication and outreach, such as maps, infographics, presentations, and public meeting displays. She would ensure all visual content aligns with WVDEP standards and the project's goals, helping convey complex technical information in an accessible, professional way.



## **Melinda Mayle | Administrative Support**

Melinda will provide essential administrative support to the project teams, including organizing project documentation, managing schedules, coordinating meetings, and maintaining communication with stakeholders. Her role ensures that project operations run smoothly and efficiently, allowing engineers, managers, and field staff to focus on technical and on-site work.



NGE offers the advantages of a small business experience, including direct access to owners, faster response times to client needs, and the ability to provide ongoing personal service to clients coupled with the sophistication of a much larger firm such as robust management, comprehensive insurance coverage, and extensive systems & processes for much of our work.

NGE is a niche firm with experts specializing in geotechnical engineering and drilling services, environmental compliance services, and environmental field services.

Our founders have fostered this mission for NGE from the beginning. NGE was established in 2002 by the sibling team of Amy Veltri and John Nottingham. They drew on their experience at established companies to create a unique firm that embodies the feel of a small business without sacrificing capability. Amy and John have established and maintained a superior firm with a top-notch reputation for technical skills and integrity while providing a compassionate atmosphere for their employees and their families.

### OUR LEADERSHIP

Amy Veltri has over twenty-five years of experience as a civil engineer and consultant. After earning both a bachelor's and master's degrees in civil engineering, Amy developed a unique skillset working her way from a staff engineer through project engineer and regional environmental coordinator to a senior project manager. Now Amy serves as CEO of NGE, drawing on her past experiences managing projects and personnel to ensure that we exceed our client's expectations.

John Nottingham earned his bachelor's and master's degrees in civil engineering and then served as the lead geotechnical engineer in various government and commercial design and construction projects. During his tenure at another firm, he moved through the ranks from staff engineer to senior engineer to vice president and geotechnical services manager. At NGE, John serves as the President and Principal Engineer. He leads our highly skilled employees with his deep understanding of geotechnical engineering.

### NGE IS NOW EMPLOYEE-OWNED

We are excited to announce that NGE has been reorganized as a 100% Employee Stock Ownership Plan organization, or an ESOP as of November 2022. This reorganization will greatly benefit our employees, maintaining job stability while reinforcing generational strength within our company and continuing NGE's tradition of excellence.

As the founders were looking toward the future of NGE, they decided to continue this legacy by placing NGE in the hands of their trusted employees. NGE will continue to be led by CEO Amy Veltri and President John Nottingham, who look forward to helping guide NGE to growth and success as an ESOP.

### EXPERIENCE

#### AML Green Valley Road Landslide

- Harrison County, WV

#### Francis AMD Maintenance

- Harrison County, WV

#### Falls Run (Abruzzino) AML

- Harrison County, WV

#### Owl Creek Highwall

- Monongalia County, WV

#### West Fork AML

- Harrison County, WV

#### Wades Run AML

- Monongalia County, WV



Terracon will provide geotechnical engineering services for this project. Terracon consistently ranks as a top 25 design firm by Engineering News-Record. Terracon currently has more than 4,500 employees in more than 150 offices and 50 states nationwide. With more than 130 drill rigs, Terracon owns and operates the largest drilling fleet of any geotechnical engineering firm in the U.S. Our successful growth has included organic expansion and innovation as well as the acquisition of more than 60 firms with specialized capabilities.

Terracon's Charleston office has provided geotechnical services for hundreds of WVDOH projects since opening the Charleston office in 1981. The geotechnical staff located at the WV office have personally performed geotechnical investigations for projects ranging from 50-ft single-lane bridges to a 4,000-ft four-lane structure spanning the Ohio River. The local office also contains a fully accredited soil, rock, and materials laboratory. Terracon's other offices in nearby states include several with fully accredited laboratories that can be utilized to meet schedule

demands when required. When called upon to perform geotechnical drilling services, Terracon can utilize its local drill rigs and pool from its fleet of over 130 fully manned geotechnical drill rigs to perform any required drilling in the most expeditious manner possible.

Designing and constructing reliable foundations and infrastructure require a thorough understanding of soil, rock, and groundwater conditions. Terracon utilizes their nationwide network of geotechnical professionals, a vast company roster of Subject Matter Experts (SMEs), including karst, deep foundation, and rock mechanics SMEs, access to historical subsurface exploration data from thousands of locations across the country, and GIS-enabled geology mapping, to develop the right geotechnical program for the site and geologic conditions. Our innovative technologies and collaborative approach allow us to provide practical design recommendations. Terracon's capability to manage and deliver the geotechnical components for WVDOH projects are unmatched.



Pittsburgh Wildlife & Environmental, Inc. (PWE) specializes in Endangered Species Act and state regulation compliance for the Indiana bat (*Myotis sodalis*), northern long-eared bat (*Myotis septentrionalis*), and various other bat species of concern. Our services include: initial project siting/project reviews, agency consultation, habitat assessments, potential roost tree identification, emergence surveys, Conservation Plans/Protection and Enhancement Plans, acoustic and mist-net presence/absence surveys, telemetry studies, mitigation design and construction, mitigation monitoring, phase I and II portal surveys, and formal Section 7 and 10 consultation. PWE works with our clients to identify and mitigate permitting constraints, streamline the consultation process, and ensure compliance with both federal and state regulations.

PWE has specialized in listed bats since 2010 and has successfully helped our clients with listed bat compliance from Vermont to Illinois to Texas.

During the 2018 summer mist-netting season PWE completed 145 mist-net sites for a total of 1,331 net nights. We caught over 1,100 bats, including 111 northern long-eared bats and 4 Indiana bats. Below you will find a sample of projects PWE has completed pertaining to protected bats.

## EXPERIENCE

### Indiana Bat Surveys

- West Virginia Transmission Line

### Sensitive Species Lead

- Pennsylvania Stone Quarry

### Bat Diversity Survey

- West Point Military Reservation

### Mist-Net Survey

- Pennsylvania, West Virginia Pipeline

### Mist-Net Survey

- Illinois Wind Farm

### Mist-Net Survey

- West Virginia Transmission Line





Our team's project management system allows for flexibility and project integration such that we can provide an immediate response to project milestones from scope development and site visits to progress meetings and pre-bids.

We understand our role to be an extension of your staff, working closely to provide quality work in a timely manner. We also understand that turnaround time on a task may be short and that timely service is critical. Thrasher routinely meets aggressive deadlines. We have assembled a team of responsive professionals who possess the qualifications and experience necessary to handle all aspects of this project.

Thrasher is fully staffed with architectural, engineering, survey, environmental, construction management, and materials testing personnel to meet your needs. The employees identified as key personnel on your projects bring specific areas of expertise to the team.

**Why Thrasher?** Our team has technical qualifications, skills, experience, and resources that are integrated with a proven management infrastructure. We want to perform projects for the West Virginia Department of Environmental Protection and will provide high-quality engineering services in a timely and cost effective manner.



## **AS Holdings, Inc. — Appalachian Salmon**

Mr. Austin Caperton, President  
1319 Lake Drive  
Daniels, WV 25832  
304-923-1126

## **Hatfield McCoy Regional Recreation Authority**

Mr. Jeffrey Lusk, Executive Director  
State Route 16, Building 2  
John D Rockefeller Industrial Park  
Pineville, WV 24874  
304-752-3255

## **City of Fairmont**

Mr. John Carson, Senior City Engineer  
200 Jackson Street  
Fairmont, WV 26554  
304-366-0540 ext. 248

## **Town of Nutter Fort**

Ms. Leslie Cummings, Treasurer  
1415 Buckhannon Pike  
Nutter Fort, WV 26301  
304-622-7719





### HATFIELD MCCOY REGIONAL RECREATION AUTHORITY Ivy Branch Phase I Portal Closures

#### Client Contact:

Mr. Jeffrey Lusk, Executive Director  
179 Rita Mall Road | Man, WV 25635  
304-752-3255

Thrasher was hired to locate and survey nine open mine portals within the property being purchased by Hatfield McCoy Regional Recreation Authority (HMRRA) for the reopening of the Ivy Branch Trail System. Our team developed, submitted, and received approval for the required NEPA EA documents to perform the closures. We designed the closures, drainage collection, and E&S controls for each of the 9 portal locations, developed contract bidding documents, and assisted HMRRA with pre-bid and bid opening conferences.

Thrasher administered the contract documents through AML and OSM to sign a construction agreement with the Contractor and we provided construction administration and construction inspection throughout the construction of the project. We also prepared and administered the project closeout documents with the Owner, AML, and OSM.







### **WVDEP AML** **Anglins Run Portal**

#### **Client Contact:**

Mr. Gregory Smith, PE  
101 Cambridge Place | Bridgeport, WV 26330  
304-842-1900

The project area included a total of eight collapsed mine portals with at least five of them having discharges ranging from 1 to 10 gpm. Total flows were estimated to be between 25 and 30 gpm. Thrasher's scope and plans for this project included construction of an access road into the site, excavation and wet seal of at least eight deep mine portals and the re-grade and fill of subsidence sinkholes. To carry water safely off site, drainage control channels, conveyance pipe and under drain were constructed. All areas disturbed by construction were soil covered, conditioned and re-vegetated.





### **WVDEP AML** **Dans Branch**

#### **Client Contact:**

Mr. Jason Foster,  
Emergency Program Administrator  
601 57th St. SE, Box 20 | Charleston, WV 25304  
304-926-0499

Dansbranch was the site of an AML emergency landslide that Thrasher worked to remediate. Some of the major steps of the project included the following: site preparation (clearing and grubbing, removing existing structures and debris), construction and installation of support areas, maintenance of access roads, construction and installation of drainage control items to convey stormwater off-site, ensure sediment control compliance with the NPDES permit, and re-vegetation of disturbed areas. Thrasher also had to protect existing structures during grading operations and the installation of permanent rock fall protection above structures. Construction on this project cost approximately \$352,370



### **WVDEP AML** **Lambert's Run Site #7**

#### **Client Contact:**

Guardians of the West Fork  
Mr. John Eleyette  
830 Benoni Avenue | Fairmont, WV 26554  
304-627-1019

This project located in Clarksburg, WV involved 3 wet-seal portals that drain into a 0.7 acre impoundment. The three portals discharge approximately 500 to 3,000

gallons per minute of iron laden water into the main stem of Lambert Run. This project is another in a series of projects aimed at removing Lambert Run (WV MW-16) from the state's 303(d) list of impaired watersheds. This is a project which will combat acid mine drainage emanating from three portals in the central region of the Lambert Run watershed.

Thrasher's plan for the project included, constructing, aeration channels and approximately 4 acres of aerobic wetlands to provide passive treatment of AMD. The proposed treatments have been designed to remove approximately 80% of the acid load.





### WVDEP AML Laurel Run #1

#### Client Contact:

Mr. Gregory Smith, PE  
101 Cambridge Place | Bridgeport, WV 26330  
304-842-1900

This project site consisted of seven sections of highwall that totaled approximately 5,700 feet in length and averaged 20 feet in height. There were three collapsed portals adjacent to one another discharging approximately 25 gpm. One open portal entrance measured 2 foot by 3 foot and had no known discharge associated with it. Approximately 230 feet of abandoned railroad tracks remained on the project site and they did not connect to any existing tracks. The project site covered a total area of six acres and suffered from a lack of vegetation and toeing into Laurel Run.





### **WVDEP AML Roaring Creek**

#### **Client Contact:**

Greenbrier County PSD #2  
Mr. Kevin Williams, Manager  
PO Box 673 | Rainelle, WV 25962  
304-438-9283

This project involved the elimination of subsidence depressions, the closure of open portals and the treatment of AMD. The Roaring Creek Watershed was heavily deep mined and surfaced mined prior to 1977. The project area consisted of three open and three

closed portals discharging AMD. The AMD seeped along the unnamed tributary and an area of subsidence, which drained surface water into the mine workings. AMD flow from the deep mine portals ranged from 10 gpm to 100 gpm with PH ranging from 3.1 to 5.0. The seeps along the UNT showed an average PH of 3.3.

Thrasher's design plans called for the construction and rehabilitation of access roads to the site, and installation of wet seals at the portal locations. The plans also included re-grading the subsidence area to prevent surface water from entering the mine workings, and installing an emergency spillway on the existing pond which was designed to handle the additional flow.





### **WVDEP AML** **Owl Creek Highwall #2**

This Morgantown, WV project involved three main sites which includes dangerous highwalls with heights between 20 and 70 feet, AMD water impoundments on highwall benches, exposed refuse on Booths Creek stream bank, open and collapsed portals, and existing non-functioning wet mine seal.

The scope of work included regrading the highwall bench and adjoining spoil piles to reclaim the highwalls, installing new or replacing the existing wet/modified mine seals for the portals producing AMD, and installing bate gates in the open portals. Additionally, Thrasher installed underdrains or seep collectors to eliminate ponding areas and construct conveyances to safely transport stormwater and mine water in and around the site. An Army Core of Engineers permit was applied for stream bank restoration/repair of Booths Creek and a temporary construction access across the stream. The project site covered a total area of 24.5 acres and reclamation included  $\pm$  113,000 cubic yards of earthwork.





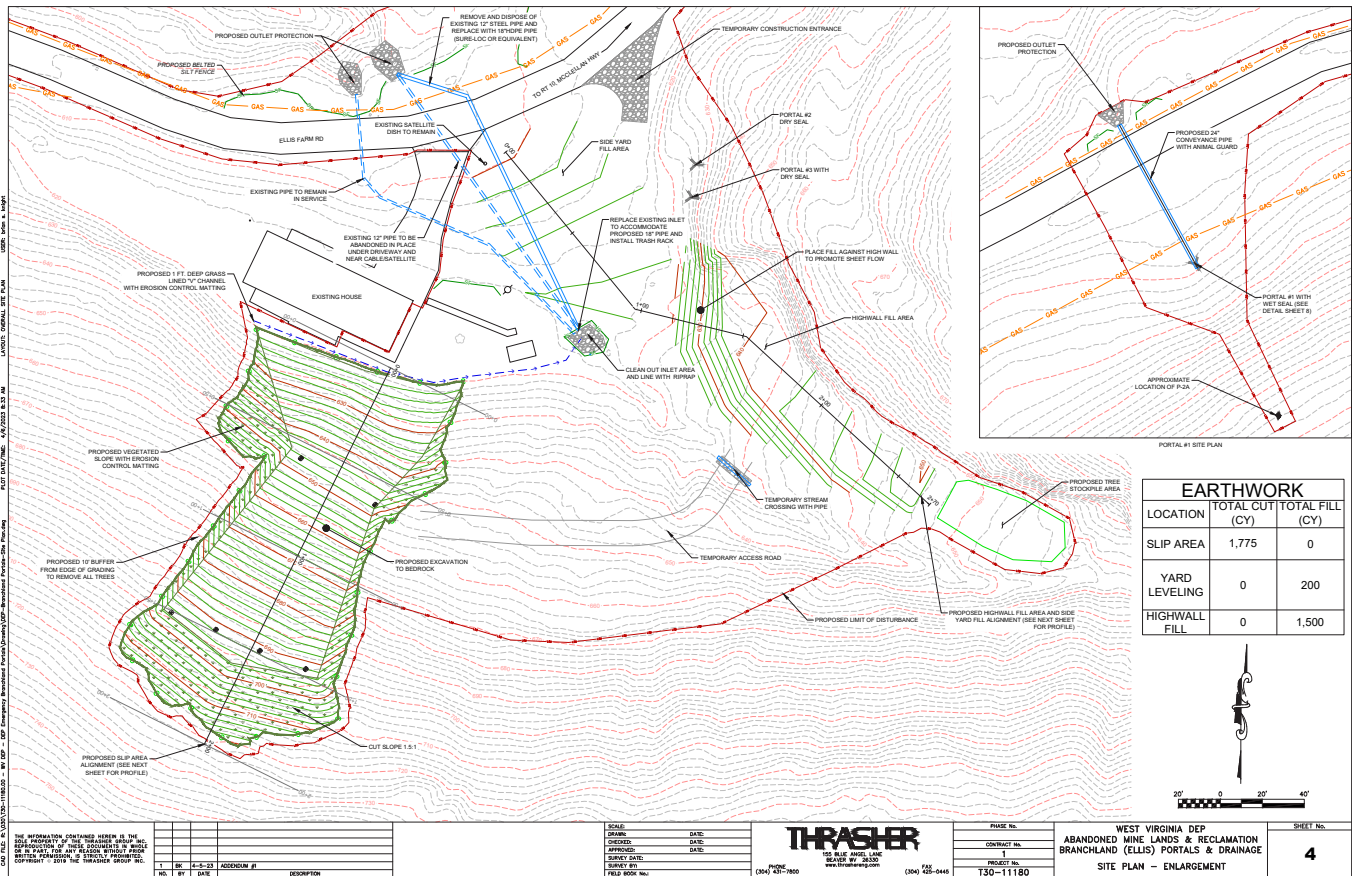
**WVDEP AML**  
**Bloomingrose (Tincher)**  
**Burning Refuse**

**Client Contact:**

Mr. Patrick Murphy, Southern Emergency Engineer  
1159 Nick Rahall Greenway | Fayetteville, WV 25840  
304-574-4465

Bloomingrose was a surface refuse fire that was affecting air quality in the community. Thrasher produced the design plans and specifications to mitigate the burning refuse pile, temporary stream crossings, erosion control, surveying, and utility coordination. Thrasher also conducted the pre-bid meeting for this project.





## WVDEP AML EMERGENCY Branchland (Ellis) Portals and Landslide

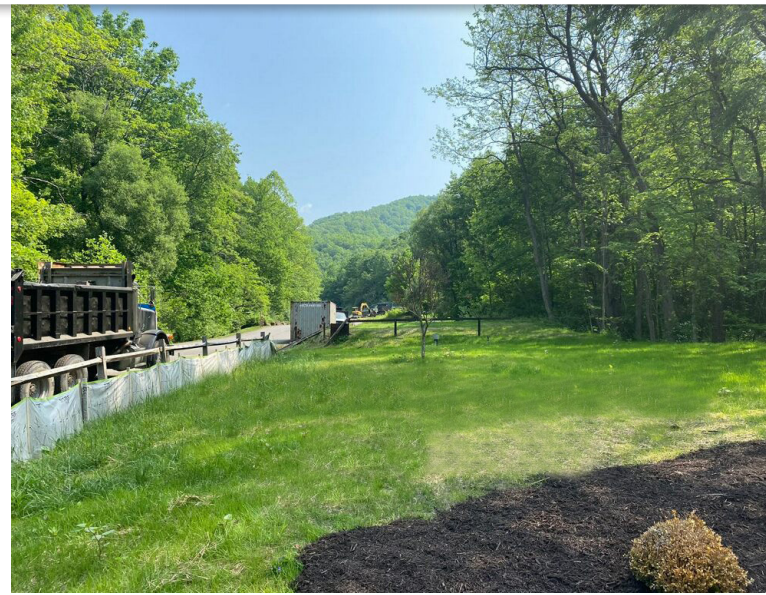
### Client Contact:

Mr. Chris Matkins, PE  
1159 Nick Rahall Greenway | Fayetteville, WV 25840  
304-574-4465

**Project Description:** The project area included excavating a landslide to bedrock behind a residential home, backfilling a high wall, installing two dry mine seals, one wet mine seal, and drainage pipes. The project area was located in close proximity to the residence. Design aspects for this project included - geotechnical investigation, survey with survey crew and drone for topography, bat habitat investigation, remediation design, and specifications. Thrasher conducted the pre-bid meeting and responded to questions prior to bid.







## **ASHLAND SCENIC CAMPGROUND, LLC** Ashland Resort

### **Client Contact:**

Ashland Scenic Campground, LLC  
246 Totem Pole Rd, | Northfork, WV 24868  
304-862-2322

The Thrasher Group worked with Ashland Scenic Campground on an AML Pilot Program project to perform reclamation of historically mined areas adjacent to the existing Ashland Resort Campground. In addition to the reclamation work that is taking place, funds were awarded for various infrastructure upgrades to support expansion of the existing campground facility. Thrasher worked with the client

to develop a master plan of all desired improvements so that infrastructure improvements would support continue expansion following completion of the grant program. The project calls for development of a new general store, restaurant, outdoor entertainment venue, playground, an ATV wash, walking trails and ample parking for visitors.

Thrasher has played a major role in making these plans come to life. Our team has provided infrastructure improvements, including water, sewer, and power extensions, a new wastewater treatment package plant, two bridges, and road improvements. Thrasher also conducted and obtained approval of the environmental assessment and all necessary permitting at a very efficient pace, allowing the client to move forward with construction. Thrasher is also handling construction documents, bidding, and construction administration for this project.





## WEST VIRGINIA YOUNG LIFE CAMP

### Wild Ridge Camp Master Plan

#### Client Contact:

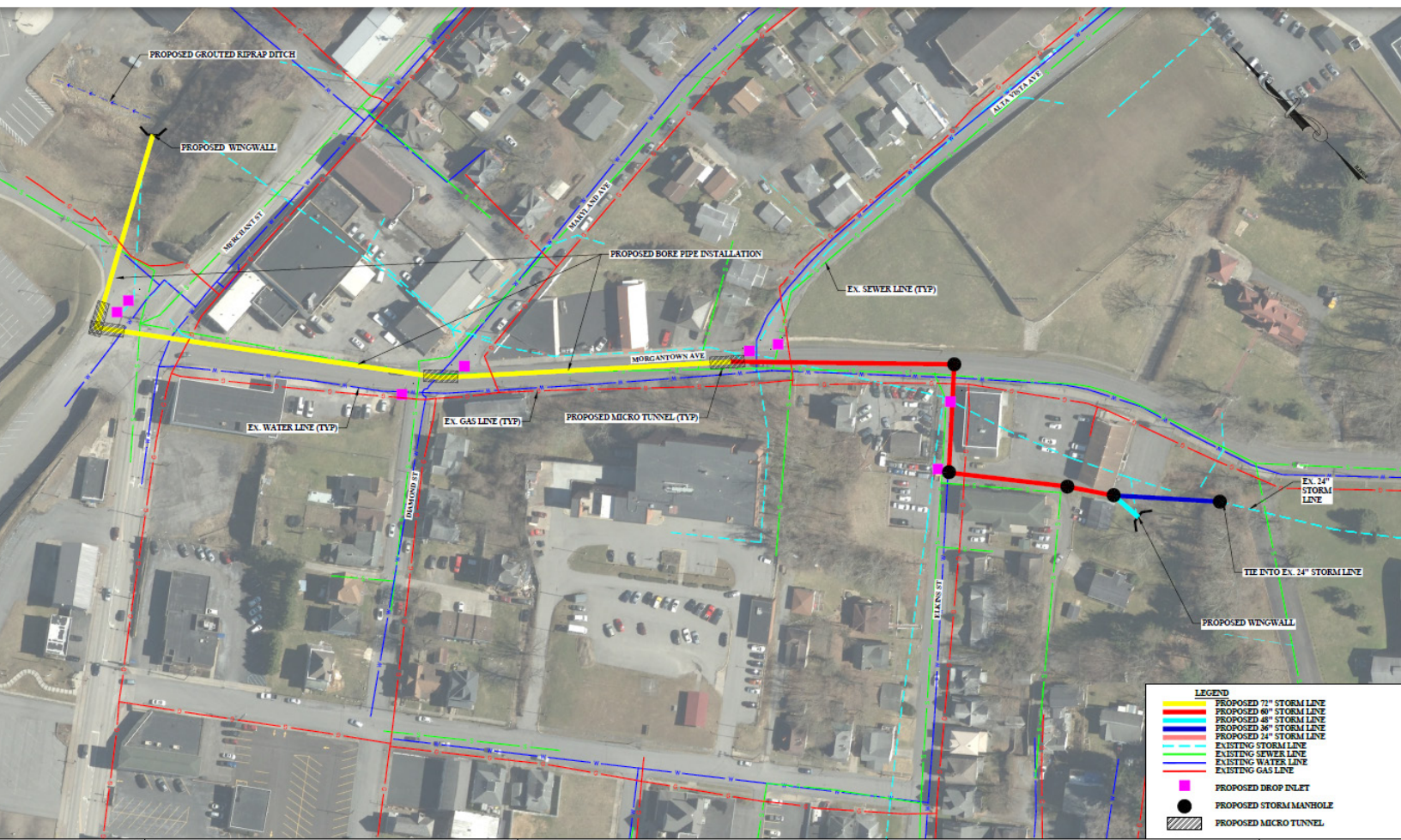
Mr. Corey McGrail, Project Manager  
247 Mohican Lake Road | Glen Spey, NY 12737  
845-582-7755

The Thrasher Group is working with Young Life on a master plan of their new Wild Ridge Camp that will sit adjacent to the canyon rim of the Gauley River in West Virginia. The camp will support events all year long including eleven weeks of summer camp which will have 500+ campers and support staff every week. The

camp will serve similar sizes on the weekends during the school season and also cater to local school and church groups for special event use.

The camp will have multiple housing facilities and dorms, a dining hall, a covered sports court, a club room, a swimming pool and snack bar, laundry facilities, maintenance facilities as well as multiple recreational opportunities such as trails, zip lines, and a 17 acre lake for small craft boating and fishing. Thrasher is currently working on developing the initial schematics into detailed conceptual plans for purposes of estimating and securing final funding for the first phase of the camp. Thrasher's current work with Young Life involves surveying, geotechnical investigation, civil engineering, and master planning.





## CITY OF FAIRMONT AMD Stormwater Project

### Client Contact:

Mr. John Carson, Senior City Engineer  
200 Jackson Street | Fairmont, WV 26554  
304-366-0540 ext. 248

The City of Fairmont hired The Thrasher Group to assist with an ongoing Acid Mine Drainage (AMD) issue impacting one of the busiest areas of town. Stormwater pipe running along Morgantown Avenue has deteriorated due to the inflow of AMD, with some sections of pipe having a hole eaten through the material. To address the problem, Thrasher

is designing a stormwater collection system replacement and using wet mine seal and horizontal bores to de-water the mine upstream.

This project provides a wide range of obstacles because of its location on one of the City's main thoroughfares. A heavily trafficked area, Thrasher has had to get creative in determining how to handle the construction of this project. Our team has settled on a highly innovative solution – micro-tunneling. Rather than tearing up the entirety of the street or needing to shut down large sections at a time, this project is intended to be handled section by section. Thrasher has proposed installing a new 72" line that will be encased in an approximately 100" casing. This will minimize disruption to the area and solve the issue at hand quickly and effectively.





### TOWN OF NUTTER FORT AMD Stormwater Project

#### Client Contact:

Ms. Leslie Cummings, Treasurer  
1415 Buckhannon Pike | Nutter Fort, WV 26301  
304-622-7719

The Town of Nutter Fort has seen the effects of Acid Mine Drainage (AMD) all across its stormwater system, causing issues throughout town. They hired The Thrasher Group to address this growing concern, looking to de-water a pre-law mine and restore the deteriorating stormwater collection system downstream of the mine.

While Thrasher was in the early stages of planning for this project, a failure occurred in the system, creating an immediate need for replacement of a portion of stormwater line. Thrasher secured funding upfront to fix this specific problem, with plans to install approximately 250 LF of 48" HDPE pipe 15

feet in the ground and addressing the sink hole that resulted from the failure. Approximately \$1 million was secured from the West Virginia Department of Environmental Protection's Abandoned Mine Lands group for this portion of the project.

Once a plan for this emergency occurrence was in place, Thrasher continued working with Nutter Fort on the second phase of the project, which is aimed at handling the issues throughout the remainder of the collection system and the mine. The team is in the early stages of the design process for an entirely new stormwater system, with appurtenances included that can handle the corrosiveness of AMD. Plans are being created to de-water the mine as well, with a focus on wet mine seals and horizontal bores to address this issue. The overall project to handle both the system design and de-watering process has been awarded approximately \$12.6 million from the WVDEP AML. The results of the project will bring a more cohesive system in place that can handle the AMD and will allow the AMD to enter the system in specific places rather than having mine runoff surfacing randomly throughout town.



**WVDEP AML****Sullivan Refuse and Clogged Stream****Client Contact:**

Chris Matkins, PE., Regional Engineer  
1159 Nick Rahall Greenway | Fayetteville, WV 25840  
304-574-4465

Thrasher was hired by the WVDEP to design construction plans and specifications for the closure of six (6) portals, regrade four (4) refuse piles, install riprap drainage channels, dewater an impoundment, repair a residential driveway prone to flooding, and re-construct two thousand two hundred (2,200) feet of Take-In Creek. We prepared the application and documents for the required NPDES permit and Army Corp of Engineers permit. As part of the design package, we prepared a construction



estimate, bid sheet with line items and quantities, and a construction time estimate. This pre-bid meeting for this project was held on January 15, 2025 with a bid date of January 29, 2025, and approximate construction start date of March 2025.



# CERTIFICATE OF *Authorization*

STATE BOARD OF REGISTRATION FOR PROFESSIONAL ENGINEERS

*The West Virginia State Board of Registration for Professional Engineers  
having verified the person in responsible charge is registered in  
West Virginia as a professional engineer for the noted firm, hereby certifies*

**THE THRASHER GROUP, INC.**

**C00517-00**

**Engineer in Responsible Charge: CHAD M. RILEY - WV PE 015189**

*has complied with section §30-13-17 of the West Virginia Code governing  
the issuance of a Certificate of Authorization. The Board hereby notifies you of its  
certification with issuance of this Certification of Authorization for the period of:*

**January 1, 2024 - December 31, 2025**

*providing for the practice of engineering services in the State of West Virginia.*

IF YOU ARE REQUIRED TO REGISTER WITH THE SECRETARY OF STATE'S OFFICE,  
PLEASE SUBMIT THIS CERTIFICATE WITH YOUR APPLICATION.



IN TESTIMONY WHEREOF, THE WEST VIRGINIA STATE BOARD OF  
REGISTRATION FOR PROFESSIONAL ENGINEERS HAS ISSUED THIS COA  
UNDER ITS SEAL, AND SIGNED BY THE PRESIDENT OF SAID BOARD.

*Scott E. Thomas Jr.*

BOARD PRESIDENT

# ATTACHMENTS



THRASHER

**DESIGNATED CONTACT:** Vendor appoints the individual identified in this Section as the Contract Administrator and the initial point of contact for matters relating to this Contract.

(Printed Name and Title) Brian Knight, Program Manager

(Address) 220 N Kanawha Street | Beckley, WV 25001

(Phone Number) / (Fax Number) 304-431-7800 / 304-425-0445

(email address) bknight@thethrashergroup.com

**CERTIFICATION AND SIGNATURE:** By signing below, or submitting documentation through wvOASIS, I certify that: I have reviewed this Solicitation/Contract in its entirety; that I understand the requirements, terms and conditions, and other information contained herein; that this bid, offer or proposal constitutes an offer to the State that cannot be unilaterally withdrawn; that the product or service proposed meets the mandatory requirements contained in the Solicitation/Contract for that product or service, unless otherwise stated herein; that the Vendor accepts the terms and conditions contained in the Solicitation, unless otherwise stated herein; that I am submitting this bid, offer or proposal for review and consideration; that this bid or offer was made without prior understanding, agreement, or connection with any entity submitting a bid or offer for the same material, supplies, equipment or services; that this bid or offer is in all respects fair and without collusion or fraud; that this Contract is accepted or entered into without any prior understanding, agreement, or connection to any other entity that could be considered a violation of law; that I am authorized by the Vendor to execute and submit this bid, offer, or proposal, or any documents related thereto on Vendor's behalf; that I am authorized to bind the vendor in a contractual relationship; and that to the best of my knowledge, the vendor has properly registered with any State agency that may require registration.

By signing below, I further certify that I understand this Contract is subject to the provisions of West Virginia Code § 5A-3-62, which automatically voids certain contract clauses that violate State law; and that pursuant to W. Va. Code 5A-3-63, the entity entering into this contract is prohibited from engaging in a boycott against Israel.

The Thrasher Group, Inc.

(Company)

(Signature of Authorized Representative)

Chad Riley, Principal 08/19/2025

(Printed Name and Title of Authorized Representative) (Date)

304-624-4108 / 304624-7831

(Phone Number) (Fax Number)

criley@thethrashergroup.com

(Email Address)



ADDENDUM ACKNOWLEDGEMENT FORM  
SOLICITATION NO.: CEOI 0313 DEP26\*1

Instructions: Please acknowledge receipt of all addenda issued with this solicitation by completing this addendum acknowledgment form. Check the box next to each addendum received and sign below. Failure to acknowledge addenda may result in bid disqualification.

Acknowledgment: I hereby acknowledge receipt of the following addenda and have made the necessary revisions to my proposal, plans and/or specification, etc.

Addendum Numbers Received:

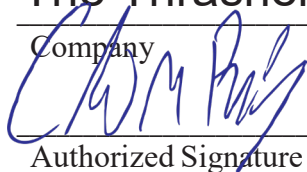
*(Check the box next to each addendum received)*

- |  |  |
|--|--|
| <input checked="" type="checkbox"/> Addendum No. 1 | <input type="checkbox"/> Addendum No. 6  |
| <input type="checkbox"/> Addendum No. 2            | <input type="checkbox"/> Addendum No. 7  |
| <input type="checkbox"/> Addendum No. 3            | <input type="checkbox"/> Addendum No. 8  |
| <input type="checkbox"/> Addendum No. 4            | <input type="checkbox"/> Addendum No. 9  |
| <input type="checkbox"/> Addendum No. 5            | <input type="checkbox"/> Addendum No. 10 |

I understand that failure to confirm the receipt of addenda may be cause for rejection of this bid. I further understand that any verbal representation made or assumed to be made during any oral discussion held between Vendor's representatives and any state personnel is not binding. Only the information issued in writing and added to the specifications by an official addendum is binding.

**The Thrasher Group, Inc.**

Company



Authorized Signature

**08-19-2025**

Date

NOTE: This addendum acknowledgment should be submitted with the bid to expedite document processing.

## WEST VIRGINIA DEPARTMENT OF ENVIRONMENTAL PROTECTION

## AML CONSULTANT QUALIFICATION QUESTIONNAIRE

Attachment "A"

PROJECT NAME CEOI 0313 DEP26*1 AML Pre-Qualification for Consultants		DATE (DAY, MONTH, YEAR) August 19, 2025		FEIN 55-0633596-6	
1. FIRM NAME The Thrasher Group, Inc		2. HOME OFFICE BUSINESS ADDRESS 600 White Oaks Blvd. Bridgeport, WV 26330		3. FORMER FIRM NAME Thrasher Engineering	
4. HOME OFFICE TELEPHONE 304-624-4108	5. ESTABLISHED (YEAR) 1983	6. TYPE OWNERSHIP Individual Corporation X Partnership Joint-Venture		6a. WV REGISTERED DBE (Disadvantaged Business Enterprise) YES NO X	
7. PRIMARY AML DESIGN OFFICE: ADDRESS/ TELEPHONE/ PERSON IN CHARGE/ NO. AML DESIGN PERSONNEL EACH OFFICE 600 White Oaks Boulevard. Bridgeport, WV 26330 / 304-624-4108 / RJ Hovatter					
8. NAMES OF PRINCIPAL OFFICERS OR MEMBERS OF FIRM  Clayton White - President and CEO		8a. NAME, TITLE, & TELEPHONE NUMBER - OTHER PRINCIPALS  <div style="display: flex; justify-content: space-between;"> <div> <b>Aaron Rawe, PS</b> - Shareholder 304-677-1800  <b>Amanda Cheuvront, AIA</b> - Shareholder 304-444-0360  <b>Chad M. Riley, PE</b> - Shareholder 304-326-6120  <b>Clay P. Riley, PE</b> - Shareholder 304-288-5011  <b>Cole Anderson</b> - Shareholder 304-326-6112  <b>Craig Baker, ALEP</b> - Shareholder 304-669-3022  <b>Dan Ferrell, PE</b> - Shareholder 304-288-7755  <b>Doug Smith, PE, MBA</b> - Shareholder 304-326-6372  <b>Duane Perkins</b> - Shareholder 304-288-7137  <b>Eric Sherrard, EI</b> - Shareholder 304-918-4317  <b>H. Wood Thrasher, PE</b> - 304-624-4108  <b>Heidi Handley</b> - Shareholder 304-612-6002  <b>James Howes</b> - Shareholder 304-288-7888  <b>Jeff Gola, PE</b> - Shareholder 304-677-9830  <b>Jeffrey Hartley</b> - Shareholder 304-672-3481  <b>Jenny Weaver, SPHR</b> - Shareholder 304-288-7839  <b>Jesse Alden, PE</b> - Shareholder 304-476-8488  <b>Joe Lowther, PS</b> - Shareholder 304-677-5314  <b>Jonathan Brady, PG</b> - Shareholder 304-923-2372  <b>Jonathan Carpenter, PE</b> - Shareholder 304-343-7601  <b>Joseph Gray, PLS</b> - Shareholder 704-739-1644  <b>Kylea Radcliff, EI</b> - Shareholder 304-476-8033  <b>Marcus Carnegie, PLA</b> - Shareholder 681-285-8460 </div> <div> <b>Marsha Benson, AIA</b> - Shareholder 304-641-1964  <b>Mary Lemine</b> - Shareholder 304-288-7644  <b>Matthew Breakey, AIA</b> - Shareholder 304-641-3741  <b>Michael Tyler, PE</b> - Shareholder 304-343-7601  <b>Mike Woodall</b> - Shareholder 304-288-9699  <b>Nicole Price, PE</b> - Shareholder 304-476-3655  <b>Philip Lantz</b> - Shareholder 304-931-3580  <b>RJ Hovatter, PE</b> - Shareholder 304-669-6848  <b>Robert Stowers</b> - Shareholder 304-205-8808  <b>Ryan Boustany</b> - Shareholder 304-826-6257  <b>Ryan Holcomb, EI</b> - Shareholder 304-476-4125  <b>Sam Rich, PLA</b> - Shareholder 304-575-8553  <b>Steve Haynes, EI</b> - Shareholder 304-288-4441  <b>William R. Watson</b> - Shareholder 304-326-6129  <b>Zackary Gain</b> - Shareholder 304-918-4716  <i>* H. Wood Thrasher Sons 2018 Trust</i> </div> </div>			
9. PERSONNEL BY DISCIPLINE					
9 ADMINISTRATIVE	— ECOLOGISTS	3 LANDSCAPE ARCHITECTS	2 STRUCTURAL ENGINEERS		
14 ARCHITECTS	— ECONOMISTS	1 MECHANICAL ENGINEERS	46 SURVEYORS		
— BIOLOGIST	1 ELECTRICAL ENGINEERS	— MINING ENGINEERS	— TRAFFIC ENGINEERS		
26 CADD OPERATORS	14 ENVIRONMENTALISTS	3 PHOTOGRAMMETRISTS	73 OTHER		
— CHEMICAL ENGINEERS	— ESTIMATORS	2 PLANNERS: URBAN/REGIONAL			
36 CIVIL ENGINEERS	3 GEOLOGISTS	44 SANITARY ENGINEERS			
74 CONSTRUCTION INSPECTORS	— HISTORIANS	— SOILS ENGINEERS			
3 DESIGNERS	1 HYDROLOGISTS	— SPECIFICATION	358 TOTAL PERSONNEL		
— DRAFTSMEN		4 WRITERS			
TOTAL NUMBER OF WV REGISTERED PROFESSIONAL ENGINEERS IN PRIMARY OFFICE: 27					
*RPEs other than Civil and Mining must provide supporting documentation that qualifies them to supervise and perform this type of work.					
10. HAS THIS JOINT-VENTURE WORKED TOGETHER BEFORE? <input type="checkbox"/> YES <input type="checkbox"/> NO N/A					

11. OUTSIDE KEY CONSULTANTS/SUB-CONSULTANTS ANTICIPATED TO BE USED. Attach "AML Consultant Qualification Questionnaire".

[illegible]



12.	A.	Is your firm's personnel experienced in Abandoned Mine Lands Remediation/Mine Reclamation Engineering?
	<input checked="" type="checkbox"/> YES	Description and Number of Projects: Thrasher performs engineering design services to the WV DEP for drainage, portal seals, highwall and other remediation projects, as well as water line and water treatment plant projects related to AML. Numerous projects involving land remediation, storm water drainage, slip repair, mass grading in relations to site development and highway projects are engineered by the firm on a regular basis.
		NO
	B.	Is your firm experienced in Soil Analysis?
	<input checked="" type="checkbox"/> YES	Description and Number of Projects: Thrasher maintains an AASHTO Certified materials testing lab at both the Bridgeport and Beckley offices. Soil analysis experience is specifically in gradation and classification.
		NO
	C.	Is your firm experienced in hydrology and hydraulics?
	<input checked="" type="checkbox"/> YES	Description and Number of Projects: Throughout the state, Thrasher has done planning and design of bridges for the West Virginia Department of Highways and the design of multiple private and municipal development projects located within floodplains. Thus, Thrasher has extensive experience in hydrology. We also have a vast amount of experience in hydraulic modeling for water and wastewater projects throughout West Virginia.
		NO
	D.	Does your firm produce its own Aerial Photography and Develop Contour Mapping?
	<input checked="" type="checkbox"/>	Description and Number of Projects: Thrasher acquires aerial imagery using in-house resources on smaller area projects. We own and operate three UAS (unmanned aerial systems) for a variety of imagery missions for projects up to approximately 500 acres. For large mapping projects, we use commercial flying service. Thrasher has three FAA Certified pilots. Thrasher has expertise and software in-house and routinely performs aero triangulation, planimetric compilation, surface modeling, contour mapping and digitally rectified imagery. Thrasher has mapped and flown hundreds of projects within the last year.
		NO
	E.	Is your firm experienced in domestic waterline design? (Include any experience your firm has in evaluation of aquifer degradation as a result of mining.)
	<input checked="" type="checkbox"/> YES	Description and Number of Projects: Thrasher has designed more water line systems than any other West Virginia firm. Projects include new systems, extensions, and replacements of water line distribution systems, many of which have been affected by AML. Design of the projects includes lines, booster stations, water treatment plants, and storage facilities. Thrasher's analysis and design also includes improvements and alternatives for water sources deemed ground water under the direct effect of surface water.
		NO

F. Is your firm experienced in Acid Mine Drainage  
Evaluation and Abatement Design?

✓ YES Description and Number of Projects: Thrasher has been awarded and has successfully completed numerous reclamation projects for the WV DEP related specifically to acid mine drainage and abatement, as well as multiple passive treatment systems designed to watershed protection groups. The Charleston, WV branch of our company designed an award-winning water treatment plant for Martinka mines in Marion County, West Virginia to treat mine drainage.

NO

G. Is your firm experienced in construction oversight?

✓ YES Description and Number of Projects: Thrasher has completed construction oversight on numerous domestic water lines, sewer, and site development projects. All resident project representatives are OSHA, CPR, and First-Aid certified and use Dash Pivot software for daily reports.

NO



13. PERSONAL HISTORY STATEMENT OF PRINCIPALS AND ASSOCIATES **RESPONSIBLE FOR AML PROJECT DESIGN** (Furnish complete data but keep to essentials)

NAME & TITLE (Last, First, Middle Int.)	YEARS OF EXPERIENCE		
	YEARS OF AML DESIGN EXPERIENCE:	YEARS OF AML RELATED DESIGN EXPERIENCE:	YEARS OF DOMESTIC WATERLINE DESIGN EXPERIENCE:
Chadwick Biller, PE QA/QC	22	27	27

Brief Explanation of Responsibilities

Chad will provide quality control adherence, internal oversight, and strategic direction to ensure the AML program aligns with WVDEP's goals. He will serve as the senior point of accountability, guiding priorities, reviewing key deliverables, and ensuring resources are effectively allocated. Chad will support communication with WVDEP leadership and offer high-level guidance on regulatory, financial, and technical matters. His leadership will keep complex, multi-stakeholder efforts coordinated and focused, ensuring successful, high-quality outcomes for the program and the communities it serves.

EDUCATION (Degree, Year, Specialization)

Bachelor of Science, 1992, Civil Engineering, West Virginia University

MEMBERSHIP IN PROFESSIONAL ORGANIZATIONS

American Society of Civil Engineers, Society of American Military Engineers, National Society of Professional Engineer

REGISTRATION (Type, Year, State)

Professional Engineer: West Virginia, Pennsylvania, and Ohio

13. PERSONAL HISTORY STATEMENT OF PRINCIPALS AND ASSOCIATES **RESPONSIBLE FOR AML PROJECT DESIGN** (Furnish complete data but keep to essentials)

NAME & TITLE (Last, First, Middle Int.)	YEARS OF EXPERIENCE		
	YEARS OF AML DESIGN EXPERIENCE:	YEARS OF AML RELATED DESIGN EXPERIENCE:	YEARS OF DOMESTIC WATERLINE DESIGN EXPERIENCE:
Brian Knight Program Manager and AML South Lead	4	11	13

Brief Explanation of Responsibilities

Brian's role as Program Manager and AML South Lead, Brian will oversee all aspects of the program—from initial planning through design, construction, and final completion—while ensuring compliance with WVDEP standards. He will serve as the primary liaison between WVDEP, regulatory agencies, contractors, and the project team, providing strategic guidance and navigating complex regulatory and funding processes. Brian's extensive engineering background and hands-on management style enable him to address challenges, manage schedules and budgets, and ensure smooth coordination across all stakeholders. He will lead the team in delivering accurate, high-quality work, prepare and submit required reports, and provide timely updates that keep projects on track.

EDUCATION (Degree, Year, Specialization)

N/A

MEMBERSHIP IN PROFESSIONAL ORGANIZATIONS

N/A

REGISTRATION (Type, Year, State)

N/A

13. PERSONAL HISTORY STATEMENT OF PRINCIPALS AND ASSOCIATES **RESPONSIBLE FOR AML PROJECT DESIGN** (Furnish complete data but keep to essentials)

NAME & TITLE (Last, First, Middle Int.)	YEARS OF EXPERIENCE		
	YEARS OF AML DESIGN EXPERIENCE:	YEARS OF AML RELATED DESIGN EXPERIENCE:	YEARS OF DOMESTIC WATERLINE DESIGN EXPERIENCE:
Richard "RJ" Hovatter, PE AML North Lead	19	19	19

Brief Explanation of Responsibilities

RJ's responsibilities as the North Team Lead would include directing project design and management efforts for reclamation sites in the northern region. He would oversee evaluations, develop practical and sustainable solutions, and coordinate resources to ensure timely, cost-effective completion. Drawing on his extensive AML and AMLR grant experience, he would guide his team in meeting regulatory requirements, addressing environmental and safety concerns, and delivering results that restore site safety and usability for local communities.

EDUCATION (Degree, Year, Specialization)

Bachelor of Science, 2002, Civil Engineering Technology, Fairmont State University

MEMBERSHIP IN PROFESSIONAL ORGANIZATIONS

N/A

REGISTRATION (Type, Year, State)

Professional Engineer: West Virginia and Pennsylvania

13. PERSONAL HISTORY STATEMENT OF PRINCIPALS AND ASSOCIATES **RESPONSIBLE FOR AML PROJECT DESIGN** (Furnish complete data but keep to essentials)

NAME & TITLE (Last, First, Middle Int.)	YEARS OF EXPERIENCE		
	YEARS OF AML DESIGN EXPERIENCE:	YEARS OF AML RELATED DESIGN EXPERIENCE:	YEARS OF DOMESTIC WATERLINE DESIGN EXPERIENCE:
Forrest Stern Design Team A - South	N/A	2	2

Brief Explanation of Responsibilities

Forrest's role will involve developing site layouts, grading plans, erosion and sediment control measures, and project specifications that meet regulatory requirements. He would apply his permitting knowledge and field experience to create accurate, buildable designs while coordinating closely with other team members. His proximity to project sites would allow him to provide timely field support, attend site meetings, and address design-related issues as they arise, ensuring smooth progress from planning through construction.

EDUCATION (Degree, Year, Specialization)

Bachelor of Science, 2023, Environmental Engineering, Shepherd University

MEMBERSHIP IN PROFESSIONAL ORGANIZATIONS

N/A

REGISTRATION (Type, Year, State)

N/A



13. PERSONAL HISTORY STATEMENT OF PRINCIPALS AND ASSOCIATES **RESPONSIBLE FOR AML PROJECT DESIGN** (Furnish complete data but keep to essentials)

NAME & TITLE (Last, First, Middle Int.)

Claire Casto  
Design Team A - South

YEARS OF EXPERIENCE

YEARS OF AML DESIGN EXPERIENCE:

3 mo.

YEARS OF AML RELATED DESIGN  
EXPERIENCE:

N/A

YEARS OF DOMESTIC  
WATERLINE DESIGN  
EXPERIENCE: N/A

Brief Explanation of Responsibilities

Claire will support the design team by assisting with CAD drafting, plan development, technical calculations, and coordination with engineers, surveyors, and environmental staff. She will help ensure project designs are accurate, compliant, and ready for permitting and construction.

EDUCATION (Degree, Year, Specialization)

Bachelor of Science, 2024, Mechanical Engineering, Fairmont State University

MEMBERSHIP IN PROFESSIONAL ORGANIZATIONS

N/A

REGISTRATION (Type, Year, State)

N/A

13. PERSONAL HISTORY STATEMENT OF PRINCIPALS AND ASSOCIATES **RESPONSIBLE FOR AML PROJECT DESIGN** (Furnish complete data but keep to essentials)

NAME & TITLE (Last, First, Middle Int.)

Aiden Jones  
Design Team B - South

YEARS OF EXPERIENCE

YEARS OF AML DESIGN EXPERIENCE:

1

YEARS OF AML RELATED DESIGN  
EXPERIENCE:

1

YEARS OF DOMESTIC  
WATERLINE DESIGN  
EXPERIENCE: N/A

Brief Explanation of Responsibilities

Aiden will produce accurate and detailed AutoCAD drawings for AML site layouts, grading, erosion and sediment control, and utility plans. He will collaborate with engineers and project managers to incorporate design changes, resolve technical challenges, and ensure plans meet project specifications and regulatory requirements.

EDUCATION (Degree, Year, Specialization)

Bachelor of Science, 2023, Computer Engineering, WVU Tech

MEMBERSHIP IN PROFESSIONAL ORGANIZATIONS

N/A

REGISTRATION (Type, Year, State)

N/A

13. PERSONAL HISTORY STATEMENT OF PRINCIPALS AND ASSOCIATES **RESPONSIBLE FOR AML PROJECT DESIGN** (Furnish complete data but keep to essentials)

NAME & TITLE (Last, First, Middle Int.)	YEARS OF EXPERIENCE		
	YEARS OF AML DESIGN EXPERIENCE:	YEARS OF AML RELATED DESIGN EXPERIENCE:	YEARS OF DOMESTIC WATERLINE DESIGN EXPERIENCE:
J.R. Maynor, EI Design Team B - South	1	1	1

Brief Explanation of Responsibilities

J.R. will focus on creating and refining detailed AutoCAD plans for site development and infrastructure components of AML projects. His work will include modifying existing layouts, developing new designs, and coordinating with engineers and project managers to maintain accuracy, efficiency, and adherence to project standards.

EDUCATION (Degree, Year, Specialization)  
Bachelor of Science, 2025, Civil Engineering, WVU Tech

MEMBERSHIP IN PROFESSIONAL ORGANIZATIONS  
N/A

REGISTRATION (Type, Year, State)  
Engineering Intern:  
West Virginia

13. PERSONAL HISTORY STATEMENT OF PRINCIPALS AND ASSOCIATES **RESPONSIBLE FOR AML PROJECT DESIGN** (Furnish complete data but keep to essentials)

NAME & TITLE (Last, First, Middle Int.)	YEARS OF EXPERIENCE		
	YEARS OF AML DESIGN EXPERIENCE:	YEARS OF AML RELATED DESIGN EXPERIENCE:	YEARS OF DOMESTIC WATERLINE DESIGN EXPERIENCE:
Cody Winter, EI Design Team A - North	4	4	10

Brief Explanation of Responsibilities

Cody will oversee AML site designs, ensuring constructability and compliance with regulatory standards. He will coordinate with clients, contractors, and the project team, leveraging his site development and permitting knowledge to identify and resolve potential issues before construction, and assist in producing comprehensive AutoDesk-based site plans.

EDUCATION (Degree, Year, Specialization)  
Bachelor of Science, 2016, Civil Engineering Technology, Fairmont State University

MEMBERSHIP IN PROFESSIONAL ORGANIZATIONS  
N/A

REGISTRATION (Type, Year, State)  
Engineering Intern: West Virginia



13. PERSONAL HISTORY STATEMENT OF PRINCIPALS AND ASSOCIATES **RESPONSIBLE FOR AML PROJECT DESIGN** (Furnish complete data but keep to essentials)

NAME & TITLE (Last, First, Middle Int.)

Danny Wolfe  
Design Team A - North

YEARS OF EXPERIENCE

YEARS OF AML DESIGN EXPERIENCE:

5

YEARS OF AML RELATED DESIGN  
EXPERIENCE:

10

YEARS OF DOMESTIC  
WATERLINE DESIGN  
EXPERIENCE: 2

Brief Explanation of Responsibilities

Danny will translate AML project requirements into detailed CAD site layouts, including grading, stormwater management, access planning, and erosion control. He will collaborate with engineers, surveyors, environmental specialists, and project managers to produce technically precise, constructible designs that align with schedules, budgets, and regulatory standards.

EDUCATION (Degree, Year, Specialization)

2-Year Drafting & Design Course, Monongalia County Technical Education Center

MEMBERSHIP IN PROFESSIONAL ORGANIZATIONS

N/A

REGISTRATION (Type, Year, State)

N/A

13. PERSONAL HISTORY STATEMENT OF PRINCIPALS AND ASSOCIATES **RESPONSIBLE FOR AML PROJECT DESIGN** (Furnish complete data but keep to essentials)

NAME & TITLE (Last, First, Middle Int.)

Ryan Holcomb, EI  
Design Team B - North

YEARS OF EXPERIENCE

YEARS OF AML DESIGN EXPERIENCE:

3

YEARS OF AML RELATED DESIGN  
EXPERIENCE:

5

YEARS OF DOMESTIC  
WATERLINE DESIGN  
EXPERIENCE: 6

Brief Explanation of Responsibilities

Ryan will manage design aspects of AML projects involving water, sewer, and stormwater systems. He will provide insight from field and office experience, communicate effectively with all stakeholders, and oversee the integration of utility and infrastructure design elements to ensure successful, compliant project delivery.

EDUCATION (Degree, Year, Specialization)

Bachelor of Science, 2020, Civil Engineering Technology, Fairmont State University

Bachelor of Science, 2017, Petroleum and Natural Gas Geophysics, West Virginia Wesleyan College

MEMBERSHIP IN PROFESSIONAL ORGANIZATIONS

N/A

REGISTRATION (Type, Year, State)

Engineer in Training: West Virginia and Maryland

13. PERSONAL HISTORY STATEMENT OF PRINCIPALS AND ASSOCIATES **RESPONSIBLE FOR AML PROJECT DESIGN** (Furnish complete data but keep to essentials)

NAME & TITLE (Last, First, Middle Int.)

Cade Peters, EI  
Design Team B - North

YEARS OF EXPERIENCE

YEARS OF AML DESIGN EXPERIENCE:

2

YEARS OF AML RELATED DESIGN  
EXPERIENCE:

3

YEARS OF DOMESTIC  
WATERLINE DESIGN  
EXPERIENCE: 3

Brief Explanation of Responsibilities

Cade will develop preliminary engineering reports, facility plans, and detailed designs for water, sanitary sewer, and stormwater infrastructure related to AML sites. He will support construction management, help municipalities navigate regulatory requirements, and ensure designs are technically sound and buildable.

EDUCATION (Degree, Year, Specialization)

Bachelor of Science, 2023, Civil Engineering, West Virginia University

MEMBERSHIP IN PROFESSIONAL ORGANIZATIONS

N/A

REGISTRATION (Type, Year, State)

Engineering Intern:  
West Virginia

13. PERSONAL HISTORY STATEMENT OF PRINCIPALS AND ASSOCIATES **RESPONSIBLE FOR AML PROJECT DESIGN** (Furnish complete data but keep to essentials)



14. PROVIDE A LIST OF SOFTWARE AND EQUIPMENT AVAILABLE IN THE PRIMARY OFFICE WHICH WILL BE USED TO COMPLETE AML DESIGN SERVICES

The Thrasher Group, Inc. will design work for AML utilizing one of the largest networks of computer aided design (CAD) equipment, software and trained personnel in the state of West Virginia.

Connected through a virtual private network, our cad staff has the ability to share necessary plans among our locations. This will allow work designed for AML to be prepared and updated at the office location that best meets the needs of the scope of services.

Civil 3D, Carlson and Microstation V8 Software is utilized at 35 CAD stations throughout our locations. Additionally, equipment includes 10 large format (Size E) plotters and 5 large format plotter / scanners. CAD plans are prepared by both dedicated cad employees and by staff engineers and engineering technicians in each of the firm's offices.

Thrasher also utilizes top-of-the line survey equipment. Our survey work is accomplished with global positioning systems (GPS) and electronic distance measuring (EDM) survey stations with data gathering capabilities. The survey crews and office support staff generate mapping deliverables in virtually any digital format referenced to specified projection systems.

Additional survey services include: high accuracy monumentation, astronomic observations / orientation, NGS blue booking, hydrographic, terrestrial scanning, 3D asbuilts, 3d monitoring, sub-surface utility location / designation. The field crews are all equipped with late model four-wheel drive vehicles stocked with the most modern equipment available to perform professional land surveying services.

- 111 TRIMBLE GNSS UNITS
- 68 TRIMBLE ROBOTS
- 2 PRECISE DIGITAL FIRST ORDER LEVELS WITH INVAR RODS
- 39 LEICA, NIKON OR TOPCON TOTAL STATIONS ALL MANAGED BY
- TRIMBLE TSC3 FIELD COMPUTERS
- 2 REMOTE CONTROLLED/UNMANNED MAPPING AERIAL PLATFORM
- HYDROGRAPHIC SURVEY VESSEL
- CIVIL 3D
- CARLSON AND MICROSTATION V8 SOFTWARE
- 35 CAD STATIONS
- 10 LARGE FORMAT (SIZE E) PLOTTERS AND
- 5 LARGE FORMAT PLOTTER / SCANNERS
- 7 3D SUB-SURFACE UTILITY LOCATORS

15. CURRENT ACTIVITIES ON WHICH YOUR FIRM IS THE DESIGNATED ENGINEER OF RECORD

PROJECT NAME, TYPE AND LOCATION	NAME AND ADDRESS OF OWNER	NATURE OF YOUR FIRM'S RESPONSIBILITY	ESTIMATED CONSTRUCTION COST	PERCENT COMPLETE
DESIGN GROUP B AML - REFUSE, PORTALS, RECLAMATION, LANDSLIDE OHIO, MARION, AND TAYLOR COUNTIES, WV	ENVIRONMENTAL PROTECTION OFFICE OF AML&R 601 57TH ST SE CHARLESTON WV 25304	PROVIDE ENGINEERING SERVICES TO MITIGATE MINING RELATED PROBLEMS ASSOCIATED WITH ABANDONED MINE LANDS (PERMITTING, DESIGN, CONSTRUCTION MONITORING)	TBD	80%
KEMPTON REFUSE REHABILITATION TUCKER COUNTY, WV NEAR THOMAS	ENVIRONMENTAL PROTECTION OFFICE OF AML&R 601 57TH ST SE CHARLESTON WV 25304	PROVIDE ENGINEERING SERVICES TO MITIGATE MINING RELATED PROBLEMS ASSOCIATED WITH ABANDONED MINE LANDS (PERMITTING, DESIGN, CONSTRUCTION MONITORING)	TBD	0%
HATFIELD-MCCOY REGIONAL RECREATION AUTHORITY TWIN HOLLOW CAMPGROUND AML PILOT LOGAN COUNTY, WV	MR. JEFFREY LUSK, EXECUTIVE DIRECTOR 179 RITA MALL ROAD   MAN, WV 2563 304-692-6782	PROVIDE ENGINEERING SERVICES TO MITIGATE MINING RELATED PROBLEMS ASSOCIATED WITH ABANDONED MINE LANDS (PERMITTING, DESIGN, CONSTRUCTION MONITORING)	TBD	30%
2023 AML Contract S4				
AML - Reuse, portals, reclamation, highwalls, Lincoln, Kanawha, Putnam, Mason Counties - WV	Environmental Protection Office of AML&R 601 57th St SE Charleston, WV 25304	PROVIDE ENGINEERING SERVICES TO MITIGATE MINING RELATED PROBLEMS ASSOCIATED WITH ABANDONED MINE LANDS (PERMITTING, DESIGN, CONSTRUCTION MONITORING)	TBD	20%
TOTAL NUMBER OF PROJECTS: 4 of our current projects listed			TOTAL ESTIMATED CONSTRUCTION COSTS: \$ N/A	

16. CURRENT ACTIVITIES ON WHICH YOUR FIRM IS SERVING AS A SUB-CONSULTANT TO OTHERS

PROJECT NAME, TYPE AND LOCATION	NATURE OF FIRMS RESPONSIBILITY	NAME AND ADDRESS OF OWNER	ESTIMATED COMPLETION DATE	ESTIMATED CONSTRUCTION COST	
				ENTIRE PROJECT	YOUR FIRMS RESPONSIBILITY
		N/A			



17. COMPLETED WORK WITHIN LAST 5 YEARS ON WHICH YOU WERE THE DESIGNATED ENGINEER OF RECORD:

**AML RELATED PROJECTS FOR THE WVDEP AND WATERSHED PROTECTION GROUPS**

PROJECT NAME, TYPE AND LOCATION	NAME AND ADDRESS OF OWNER	ESTIMATED CONSTRUCTION COST	YEAR	CONSTRUCTED (YES OR NO)
NUTTER RUN LANDSLIDE EMERGENCY AML HARRISON COUNTY, WV	WV DEP, NORTHERN EMERGENCY 101 CAMBRIDGE PLACE   BRIDGEPORT, WV 26330 304-842-1900	\$10,000,000	2017	YES
RIDGEWAY DRIVE LANDSLIDE EMERGENCY AML HARRISON COUNTY, WV	WV DEP, NORTHERN EMERGENCY 101 CAMBRIDGE PLACE   BRIDGEPORT, WV 26330 304-842-1900	\$20,000,000	2018	YES
ED GOWER HIGHWALL AML GRANT UPSHUR COUNTY, WV	WV DEP, OFFICE OF AMLER 601 57th Street, SE   Charleston, WV 25304	\$11,080,655	2019	YES
ASHLAND RESORT AML PILOT MCDOWELL COUNTY, WV	MR. JEFFREY LUSK, EXECUTIVE DIRECTOR 179 RITA MALL ROAD   MAN, WV 2563 304-692-6782	MASTER PLANNING, RECLAMATION WORK, UTILITY EXTENSIONS, BRIDGE DESIGN, ROAD IMPROVEMENTS, ENVIRONMENTAL ASSESSMENTS, PERMITTING	\$1,700,000	YES
ISAAC CREEK LANDSLIDE ABANDONED MINE LANDS AND RECLAMATION NEAR DOLA WV - HARRISON COUNTY	ENVIRONMENTAL PROTECTION OFFICE OF AML&R 601 57TH ST SE CHARLESTON WV 25304	DEVELOP CONSTRUCTION AND EROSION AND SEDIMENT PLANS ALONG WITH TECHNICAL SPECIFICATIONS TO STABILIZE THE LANDSLIDE AND RE-ESTABLISH THE ALIGNMENT OF ISAAC CREEK ROAD (CR 16-1)	\$890,000	YES
HATFIELD-MCCOY REGIONAL RECREATION AUTHORITY IVY BRANCH AML PILOT PROJECT BOONE COUNTY, WV	MR. JEFFREY LUSK, EXECUTIVE DIRECTOR 179 RITA MALL ROAD   MAN, WV 2563 304-692-6782	ENVIRONMNETAL PERMITTING AND ASSESSMENTS, NEPA DOCUMENTATION, ENGINEERING DESIGN, BIDDING, CONSTRUCTION ADMINISTRATION	\$350,000	YES
SULLIVAN REFUSE AND CLOGGED STREAM SULLIVAN RALEIGH COUNTY, WV	MR. CHRIS MATKINS, PE 1156 NICK RAHALL GREENWAY FAYETTEVILLE, WV 25840 304-574-4465	\$617,500.00	2022	YES
OWL CREEK HIGHWALL #2 MORGANTOWN WV MONONGALIA COUNTY	WV DEP, NORTHERN EMERGENCY 101 CAMBRIDGE PLACE   BRIDGEPORT, WV 26330 304-842-1900	\$2,159,917.25	2023	NO
Branchland (Ellis) Portals and Landslide LINCOLN COUNTY	Mr. Chris Matkins, PE 1159 Nick Rahall Greenway Fayetteville, WV 25840 304-574-4465	\$123,950.00	2023	YES
Bloomingrose Burning Refuse BOONE COUNTY	MR. CHRIS MATKINS, PE 1156 NICK RAHALL GREENWAY FAYETTEVILLE, WV 25840 304-574-4465	\$88,000.00	2022	YES

18. COMPLETED WORK WITHIN LAST 5 YEARS ON WHICH YOUR FIRM HAS BEEN A SUB-CONSULTANT TO OTHER FIRMS (INDICATE PHASE OF WORK FOR WHICH YOUR FIRM WAS RESPONSIBLE)

PROJECT NAME, TYPE AND LOCATION	NAME AND ADDRESS OF OWNER	ESTIMATED CONSTRUCTION COST OF YOUR FIRM'S PORTION	YEAR	CONSTRUCTED (YES OR NO)	FIRM ASSOCIATED WITH
		N/A			

19. Use this space to provide any additional information or description of resources supporting your firm's qualifications to perform work for the West Virginia Abandoned Mine Lands Program.

20. The foregoing is a statement of facts.

Signature: 

Title: Principal

Date: August 19, 2025

Printed Name: Chad Riley, PE

AML and RELATED PROJECT EXPERIENCE MATRIX																					
PROJECT	Exp. Basis C=Corp P=Personal *	Additional info provided in Section (s) **	PROJECT EXPERIENCE REQUIREMENTS																Primary staff participation/ capacity *** M-Management P-Professional		
			Abandoned Surface Mine Reclamation	Abandoned Deep Mine Reclamation	Portal/shaft closure	Hydrologic/ Hydraulic design/Eval.	Remaining Evaluation	Mine/refuse fire abatement	Subsidence investigation/mitigation	Hazard waste disposal	Project specifications	Water quality evaluation/ mitigation replacement	Construction inspection/management	Water treatment	Active/Passive Water Treatment Systems	Equipment/ structure removal	Stream restoration	Geotechnical/stability	Chad Biller	Richard Hovatter	Brian Knight
Anglins Run Portals	C				X	X					X							M			
Roaring Creek	C		X	X		X			X		X							M			
Shinns Run Portals	P			X		X			X		X								M/P		
Squire’s Creek Portals	C		X		X	X					X				X			M			
Overfield (Laferty) CS&P	C		X		X	X					X						X	M			
Laurel Run	C		X		X	X					X							M			
Clarksburg Lyons Landslide	C		X			X					X						X	M			
Pleasant Valley	C		X		X	X					X							M			
Roger Camp Hill	C		X			X					X							M			
Owl Creek Highwall #2	C		X		X	X					X					X		M	P		
Landgraff Refuse	C		X			X					X							M			
Canyon Refuse & Dump	C		X		X	X					X				X			M			
Stowe (Prince) Landslide	C					X					X						X	M	P		
Lamberts Run Site 7	C		X			X					X	X	X	X		X		M			
Swamp Run #1	C		X			X					X	X	X	X		X		M			
Dans Branch	C					X					X						X	M			
Ed Gower Highwall #2	C		X		X	X					X							M	P		
Martinka Mine	C		X			X					X	X	X	X				M			
Kempton Rehabilitation	C		X			X					X	X	X	X		X	X	M	P		
Design Group B	C		X	X	X	X					X	X	X			X	X	M	P		

\*List whether project experience is corporate or personnel based or both

\*\* Use this area to provide specific sections or pages if needed for reference

\*\*\* List primary design personnel and their functional capacity for the projects listed.

Attachment "B"



AML and RELATED PROJECT EXPERIENCE MATRIX																								
PROJECT	Exp. Basis C=Corp. P=Personnel *	Additional Info Provided in Section (s) **	PROJECT EXPERIENCE REQUIREMENTS															PRIMARY STAFF PARTICIPATION/CAPACITY *** M=Management P=Professional						
			Abandoned Surface Mine Reclamation	Abandoned Deep Mine Reclamation	Portal/Shaft Closure	Hydrologic/Hydraulic Design/Eval.	Remining Evaluation	Mine/Refuse Fire Abatement	Subsidence Investigation Mitigation	Hazardous Waste Disposal	Project Specifications	Water Quality Evaluation/Nitigation/ Replacement	Construction Inspection/Managem ent	Water Treatment	Equipment/Structure Removal	Stream Restoration	Geotechnical/Stability	John Nottingham	Gene Brown	Noah Stevens	Mike Frame	Chuck Montgomery	Alan Lupardus	
AML Green Valley	P		x	x	x				x								x	M	M	P	P	P	P	
Francis AMD	P			x					x								x	M	M	P	P	P	P	
Falls Run AML	P			x	x				x								x	M	P	P	P	P	P	
Owl Creek Highwall	P		x						x								x	M	P	P	P	P	P	
West Fork AML	P			x	x				x								x		M	P	P	P	P	
Wades Run AML	P		x		x				x								x	M	P	P	P	P	P	
Nutter Fort AML	P		x	x	x				x								x	M	P	P	P	P	P	
Gary WV Emergency AML	P		x						x								x		M	P	P	P	P	
Glade Run AML	P		x		x				x								x	M	M	P	P	P	P	
Bridgeport Landslide AML	P		x						x								x		M	P	P	P	P	
Cadbury AML	P		x						x								x		M	P	P	P	P	
Burl Gould AML	P		x						x								x		M	P	P	P	P	
Miller Mine Drainage AML	P		x		x				x								x		M	P	P	P	P	

\* List whether project experience is corporate or personnel based or both.

\*\* Use this area to provide specific sections or pages if needed for reference.

\*\*\* List Primary Design personnel and their functional capacity for the projects listed.

Attachment "B"



ABANDONED MINE LANDS (AML) CONTRACTOR INFORMATION FORM

You must complete this form for your AML contracting officer to request an eligibility evaluation from the Office of Surface Mining Reclamation and Enforcement (OSMRE) to determine if you are eligible to receive an AML contract. This requirement can be found under OSMRE's regulations at 30 CFR 874.16. **NOTE:** This form must be signed and **dated within 30 days** of submission to be considered for a current bid.

**Part A: General Information**

Business Name: The Thrasher Group, Inc.  
Tax ID #: 55-0633596  
Address: 600 White Oaks Blvd.  
City, State, & Zip: Bridgeport, WV 26330  
Phone Number: 304-624-4108  
Email Address: CRiley@thethrashergroup.com

**Part B: Obtain an Organizational Family Tree (OFT) from the Applicant Violator System (AVS)**

If you plan to certify the existing AVS information or submit updates under Part C, you must include an OFT. Instructions for downloading an OFT from the AVS can be found at: <https://www.osmre.gov/sites/default/files/2022-02/OMB%201029-0119%20instructions.pdf>. If you require assistance you may contact the AVS Office by phone at: 800-643-9748, or by email at: [avshelp@osmre.gov](mailto:avshelp@osmre.gov).

**Part C: Certifying and updating information in the AVS**

Select one of the options, follow the instructions for the selected option, sign, and date below.

I, Chad Riley, have express authority to certify that:  
(Print Name)

- ☐ 1. Our business is listed in the AVS. The information is accurate, complete, and up to date. (If you select this option, you must attach an Entity OFT from the AVS to this form). Do not complete Part D.
- ☒ 2. Our business is in the AVS. The information needs to be updated. (If you select this option, you must attach an Entity OFT from the AVS to this form). Complete Part D to provide the missing or corrected information.
- ☐ 3. Our business is not listed in the AVS. The information needs to be added. Complete Part D to provide the information.

08/19/2025

Date

  
Signature

Vice President

Title

**Part D: OFT Information**Contractor's Business Name: The Thrasher Group, Inc.

If the current Entity OFT information for your business is incomplete in the AVS, or if there is no information in the AVS for your business, you must provide all of the following information as it applies to your business. Please include additional copies of this page if the space below is not sufficient to capture all information.

- Every officer (President, Vice President, Secretary, Treasurer, etc.);
- All Directors, Partners, and Members;
- All persons performing a function similar to a Director;
- Every person or business that owns 10% or more of the voting stock in your business;
- Any other person(s) who has the ability to determine the manner in which the AML reclamation project is being conducted.
- **Please list an end date for any person who is no longer with your business.**

Name: Henry Wood Thrasher  
 Address: 600 White Oaks Blvd  
 City, State, Zip: Bridgeport, WV 26330  
 Begin Date: 04/01/2022  
 End Date: N/A  
 % Ownership: 19.61%  
 Position/Title: President  
 Phone Number: 304-624-4108

Name: Chad Riley  
 Address: 600 White Oaks Blvd  
 City, State, Zip: Bridgeport, WV 26330  
 Begin Date: 04/01/2022  
 End Date: N/A  
 % Ownership: 2.65%  
 Position/Title: Vice President  
 Phone Number: 304-624-4108

Name: \_\_\_\_\_  
 Address: \_\_\_\_\_  
 City, State, Zip: \_\_\_\_\_  
 Begin Date: \_\_\_\_\_  
 End Date: \_\_\_\_\_  
 % Ownership: \_\_\_\_\_  
 Position/Title: \_\_\_\_\_  
 Phone Number: \_\_\_\_\_

Name: Clayton White  
 Address: 600 White Oaks Blvd  
 City, State, Zip: Bridgeport, WV 26330  
 Begin Date: 04/01/2022  
 End Date: N/A  
 % Ownership: 0.83%  
 Position/Title: Secretary & Treasurer  
 Phone Number: 304-624-4108

**PAPERWORK REDUCTION STATEMENT**

The Paperwork Reduction Act of 1995 (44 U.S.C 3501) requires us to inform you that: Federal Agencies may not conduct or sponsor, and a person is not required to respond to, a collection of information unless it displays a current valid OMB control number. This information is necessary for all successful bidders prior to the distribution of AML funds, and is required to obtain a benefit.

Public reporting burden for this form is estimated to range from 15 minutes to one hour, with an average of 30 minutes per response, including time for reviewing instructions, gather and maintaining data, and completing and reviewing the form. You may direct comments regarding the burden estimate or any other aspect of this form to the Information Collection Clearance Officer, Office of Surface Mining Reclamation and Enforcement, 1849 C Street, NW, Room 4559, Washington, DC 20240.



ABANDONED MINE LANDS (AML) CONTRACTOR INFORMATION FORM

You must complete this form for your AML contracting officer to request an eligibility evaluation from the Office of Surface Mining Reclamation and Enforcement (OSMRE) to determine if you are eligible to receive an AML contract. This requirement can be found under OSMRE's regulations at 30 CFR 874.16. **NOTE:** This form must be signed and **dated within 30 days** of submission to be considered for a current bid.

**Part A: General Information**

Business Name: Novel Geo-Environmental, Inc.

Tax ID #: 52-2365940

Address: 171 Montour Run Road

City, State, &amp; Zip: Moon Township, PA 15108

Phone Number: 412-722-1970

Email Address: jnottingham@ngeconsulting.com

**Part B: Obtain an Organizational Family Tree (OFT) from the Applicant Violator System (AVS)**

If you plan to certify the existing AVS information or submit updates under Part C, you must include an OFT. Instructions for downloading an OFT from the AVS can be found at: <https://www.osmre.gov/sites/default/files/2022-02/OMB%201029-0119%20instructions.pdf>. If you require assistance you may contact the AVS Office by phone at: 800-643-9748, or by email at: [avshelp@osmre.gov](mailto:avshelp@osmre.gov).

**Part C: Certifying and updating information in the AVS**

Select one of the options, follow the instructions for the selected option, sign, and date below.

I, John Nottingham, have express authority to certify that:  
(Print Name)

- ☒ 1. Our business is listed in the AVS. The information is accurate, complete, and up to date. (If you select this option, you must attach an Entity OFT from the AVS to this form). Do not complete Part D.
- ☐ 2. Our business is in the AVS. The information needs to be updated. (If you select this option, you must attach an Entity OFT from the AVS to this form). Complete Part D to provide the missing or corrected information.
- ☐ 3. Our business is not listed in the AVS. The information needs to be added. Complete Part D to provide the information.

8-14-25

Date



Signature

President

Title

ABANDONED MINE LANDS (AML) CONTRACTOR INFORMATION FORM

You must complete this form for your AML contracting officer to request an eligibility evaluation from the Office of Surface Mining Reclamation and Enforcement (OSMRE) to determine if you are eligible to receive an AML contract. This requirement can be found under OSMRE's regulations at 30 CFR 874.16. **NOTE:** This form must be signed and **dated within 30 days** of submission to be considered for a current bid.

**Part A: General Information**

Business Name: Pittsburgh Wildlife &amp; Environmental, Inc.

Tax ID #: 27-1835528

Address: 739 Robinson Hwy

City, State, &amp; Zip: McDonald, Pa 15057

Phone Number: 717-860-7679

Email Address: nbossart@pwenv.com

**Part B: Obtain an Organizational Family Tree (OFT) from the Applicant Violator System (AVS)**

If you plan to certify the existing AVS information or submit updates under Part C, you must include an OFT. Instructions for downloading an OFT from the AVS can be found at: <https://www.osmre.gov/sites/default/files/2022-02/OMB%201029-0119%20instructions.pdf>. If you require assistance you may contact the AVS Office by phone at: 800-643-9748, or by email at: [avshelp@osmre.gov](mailto:avshelp@osmre.gov).

**Part C: Certifying and updating information in the AVS**

Select one of the options, follow the instructions for the selected option, sign, and date below.

I, Neil Bossart, have express authority to certify that:  
(Print Name)

- ☐ 1. Our business is listed in the AVS. The information is accurate, complete, and up to date. (If you select this option, you must attach an Entity OFT from the AVS to this form). Do not complete Part D.
- ☐ 2. Our business is in the AVS. The information needs to be updated. (If you select this option, you must attach an Entity OFT from the AVS to this form). Complete Part D to provide the missing or corrected information.
- ☒ 3. Our business is not listed in the AVS. The information needs to be added. Complete Part D to provide the information.

8/18/2025

Date

*Neil Bossart*

Signature

President

Title

**Part D: OFT Information**Contractor's Business Name: Pittsburgh Wildlife and Environmental, Inc.

If the current Entity OFT information for your business is incomplete in the AVS, or if there is no information in the AVS for your business, you must provide all of the following information as it applies to your business. Please include additional copies of this page if the space below is not sufficient to capture all information.

- Every officer (President, Vice President, Secretary, Treasurer, etc.);
- All Directors, Partners, and Members;
- All persons performing a function similar to a Director;
- Every person or business that owns 10% or more of the voting stock in your business;
- Any other person(s) who has the ability to determine the manner in which the AML reclamation project is being conducted.
- **Please list an end date for any person who is no longer with your business.**

Name: Neil Bossart  
 Address: 853 Beagle Club Road  
 City, State, Zip: McDonald, Pa 15057  
 Begin Date: 8/20/2025  
 End Date: NA  
 % Ownership: 100  
 Position/Title: President  
 Phone Number: 717-860-7679

Name: \_\_\_\_\_  
 Address: \_\_\_\_\_  
 City, State, Zip: \_\_\_\_\_  
 Begin Date: \_\_\_\_\_  
 End Date: \_\_\_\_\_  
 % Ownership: \_\_\_\_\_  
 Position/Title: \_\_\_\_\_  
 Phone Number: \_\_\_\_\_

Name: \_\_\_\_\_  
 Address: \_\_\_\_\_  
 City, State, Zip: \_\_\_\_\_  
 Begin Date: \_\_\_\_\_  
 End Date: \_\_\_\_\_  
 % Ownership: \_\_\_\_\_  
 Position/Title: \_\_\_\_\_  
 Phone Number: \_\_\_\_\_

Name: \_\_\_\_\_  
 Address: \_\_\_\_\_  
 City, State, Zip: \_\_\_\_\_  
 Begin Date: \_\_\_\_\_  
 End Date: \_\_\_\_\_  
 % Ownership: \_\_\_\_\_  
 Position/Title: \_\_\_\_\_  
 Phone Number: \_\_\_\_\_

**PAPERWORK REDUCTION STATEMENT**

The Paperwork Reduction Act of 1995 (44 U.S.C 3501) requires us to inform you that: Federal Agencies may not conduct or sponsor, and a person is not required to respond to, a collection of information unless it displays a current valid OMB control number. This information is necessary for all successful bidders prior to the distribution of AML funds, and is required to obtain a benefit.

Public reporting burden for this form is estimated to range from 15 minutes to one hour, with an average of 30 minutes per response, including time for reviewing instructions, gather and maintaining data, and completing and reviewing the form. You may direct comments regarding the burden estimate or any other aspect of this form to the Information Collection Clearance Officer, Office of Surface Mining Reclamation and Enforcement, 1849 C Street, NW, Room 4559, Washington, DC 20240.



ABANDONED MINE LANDS (AML) CONTRACTOR INFORMATION FORM

You must complete this form for your AML contracting officer to request an eligibility evaluation from the Office of Surface Mining Reclamation and Enforcement (OSMRE) to determine if you are eligible to receive an AML contract. This requirement can be found under OSMRE's regulations at 30 CFR 874.16. **NOTE:** This form must be signed and **dated within 30 days** of submission to be considered for a current bid.

**Part A: General Information**

Business Name: Terracon Consultants, Inc.  
Tax ID #: 42-1249917  
Address: 912 Morris Street  
City, State, & Zip: Charleston, West Virginia 25301  
Phone Number: 304-344-0821  
Email Address: bob.barclay@terracon.com

**Part B: Obtain an Organizational Family Tree (OFT) from the Applicant Violator System (AVS)**

If you plan to certify the existing AVS information or submit updates under Part C, you must include an OFT. Instructions for downloading an OFT from the AVS can be found at: <https://www.osmre.gov/sites/default/files/2022-02/OMB%201029-0119%20instructions.pdf>. If you require assistance you may contact the AVS Office by phone at: 800-643-9748, or by email at: [avshelp@osmre.gov](mailto:avshelp@osmre.gov).

**Part C: Certifying and updating information in the AVS**

Select one of the options, follow the instructions for the selected option, sign, and date below.

I, Bob Barclay, have express authority to certify that:  
(Print Name)

- ☒ 1. Our business is listed in the AVS. The information is accurate, complete, and up to date. (If you select this option, you must attach an Entity OFT from the AVS to this form). Do not complete Part D.
- ☐ 2. Our business is in the AVS. The information needs to be updated. (If you select this option, you must attach an Entity OFT from the AVS to this form). Complete Part D to provide the missing or corrected information.
- ☐ 3. Our business is not listed in the AVS. The information needs to be added. Complete Part D to provide the information.

8/20/2025

Date

  
SignatureOperations Manager

Title

The image features the Thrasher logo, which consists of the word "THRASHER" in a stylized, white, outlined font. The logo is centered horizontally and vertically. The background is a solid dark red color, overlaid with a complex pattern of thin, light red lines that form various geometric shapes, including rectangles and triangles, some of which are tilted. The overall effect is a modern, abstract design.

THRASHER