



The following documentation is an electronically-submitted vendor response to an advertised solicitation from the *West Virginia Purchasing Bulletin* within the Vendor Self-Service portal at ***wvOASIS.gov***. As part of the State of West Virginia's procurement process, and to maintain the transparency of the bid-opening process, this documentation submitted online is publicly posted by the West Virginia Purchasing Division at ***WVPurchasing.gov*** with any other vendor responses to this solicitation submitted to the Purchasing Division in hard copy format.

Header @ 1

List View

General Information | Contact | Default Values | Discount | Document Information | Clarification Request

Procurement Folder: 1834025

Procurement Type: Central Contract - Fixed Amt

Vendor ID:

Legal Name: NAVIGATOR ENVIRONMENTAL & TECHNICAL SERVICES INC

Alias/DBA:

Total Bid: \$0.00

Response Date:

Response Time:

Responded By User ID:

First Name:

Last Name:

Email:

Phone:

SO Doc Code: CEOI

SO Dept: 0310

SO Doc ID: DNR2600000003

Published Date: 11/10/25

Close Date: 12/3/25

Close Time: 13:30

Status: Closed

Solicitation Description:

Total of Header Attachments: 1

Total of All Attachments: 1



Department of Administration  
Purchasing Division  
2019 Washington Street East  
Post Office Box 50130  
Charleston, WV 25305-0130

State of West Virginia  
Solicitation Response

**Proc Folder:** 1834025  
**Solicitation Description:** A&E - Meadow River WMA Wetlands Project  
**Proc Type:** Central Contract - Fixed Amt

Solicitation Closes	Solicitation Response	Version
2025-12-03 13:30	SR 0310 ESR12032500000003362	1

**VENDOR**  
VS0000018970  
NAVIGATOR ENVIRONMENTAL & TECHNICAL SERVICES INC

**Solicitation Number:** CEOI 0310 DNR2600000003  
**Total Bid:** 0  
**Response Date:** 2025-12-03  
**Response Time:** 09:30:00  
**Comments:**

**FOR INFORMATION CONTACT THE BUYER**  
Joseph (Josh) E Hager III  
(304) 558-2306  
joseph.e.hageriii@wv.gov

**Vendor**  
**Signature X** **FEIN#** **DATE**

All offers subject to all terms and conditions contained in this solicitation

Line	Comm Ln Desc	Qty	Unit Issue	Unit Price	Ln Total Or Contract Amount
1	Civil engineering				

Comm Code	Manufacturer	Specification	Model #
81101500			

**Commodity Line Comments:** EOI attached for wetland design and construction.

**Extended Description:**

Design and Contract Administration of a new wetlands area at Meadow River Wildlife Management Area.



EXPRESSION OF INTEREST  
WEST VIRGINIA DEPARTMENT OF NATURAL RESOURCES  
MEADOW RIVER WMA WETLANDS PROJECT

Solicitation No. CEOI 0310 DNR2600000003

*December 3, 2025*

**Prepared by:**  
Navigator Environmental &  
Technical Services, Inc.  
3908 Teays Valley Road  
Hurricane, WV 25526

## COVER LETTER

Joseph (Josh) E. Hager III  
Department of Administration – Purchasing Division  
2019 Washington Street East  
Charleston, WV 25305

### Via Electronically through wvOASIS System

**Subject:** Expression of Interest – CEOI 0310 DNR2600000003 – Meadow River WMA Wetlands Project

Dear Mr. Hager:

Navigator Environmental & Technical Services, Inc. (Navigator) appreciates the opportunity to submit this Expression of Interest (EOI) to provide professional architectural and engineering services to the West Virginia Division of Natural Resources for the Meadow River Wildlife Management Area Wetlands Project in Greenbrier County, West Virginia.

Our team offers extensive experience in hydrologic and ecological design, wetland restoration, stream restoration, and water treatment engineering throughout West Virginia. Navigator has completed multiple projects requiring integrated wetland creation, habitat restoration, and construction administration in coordination with WVDEP, USACE, and DNR. Our experience in the area and surrounding watersheds demonstrates a clear understanding of local hydrology and site conditions relevant to this project.

Navigator maintains active registration with the WV Secretary of State and a current Certificate of Authorization (C05210-00) with the WV Board of Professional Engineers. The firm's insurance coverages meet or exceed all WV Purchasing Division requirements.

We appreciate your consideration and look forward to the opportunity to discuss this important project.

Sincerely,

**James W. Fisher**

Project Manager

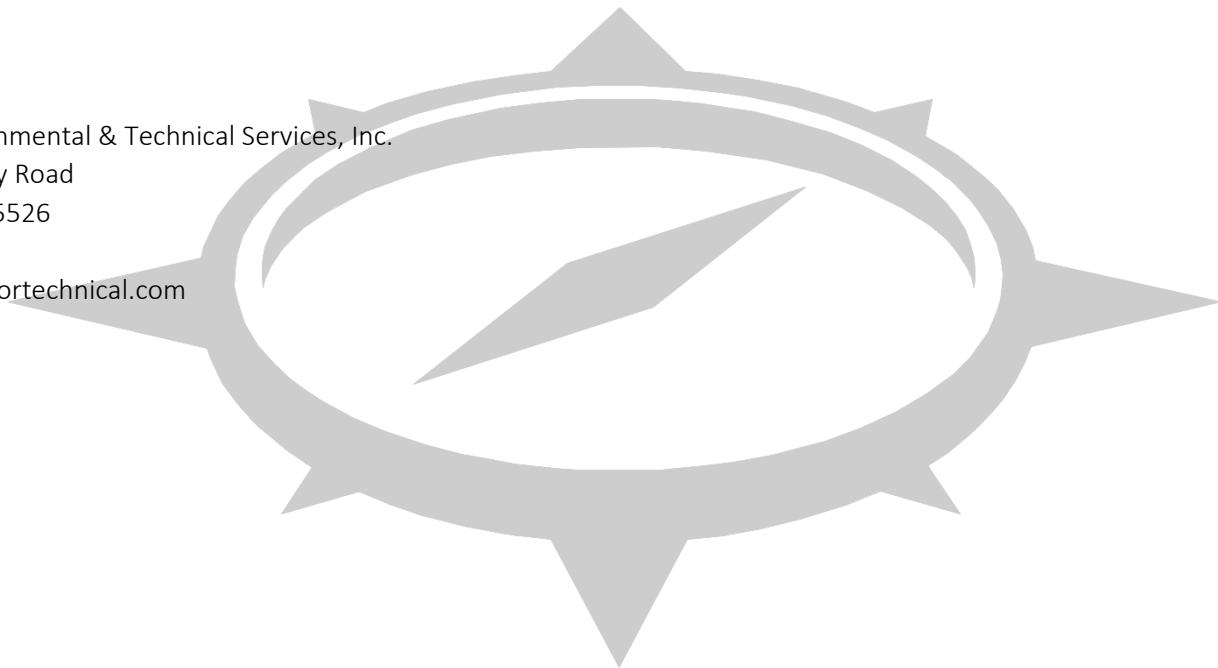
Navigator Environmental & Technical Services, Inc.

3908 Teays Valley Road

Hurricane, WV 25526

(304) 586-6280

wfisher@navigatortechnical.com



## **EXECUTIVE SUMMARY**

Navigator Environmental & Technical Services, Inc. (Navigator) is a multidisciplinary environmental engineering firm based in West Virginia with extensive experience designing and constructing wetlands, shallow-water habitat systems, and floodplain hydrologic improvements. Navigator offers a comprehensive approach integrating ecological restoration, hydrology, and land management principles to support the Division of Natural Resources (DNR) in creating a self-sustaining wetland complex within the Meadow River Wildlife Management Area (WMA).

Our team specializes in hydrologic modeling, wetland grading design, habitat enhancement, and field-verified ecological assessment. We apply hydraulic modeling, topographic analysis, and wetland functional assessment to produce designs that maximize habitat diversity while maintaining long-term stability and resilience to overbank floods.

Navigator's work on stream and wetland restoration throughout West Virginia, combined with our regulatory experience with USACE, WVDEP, and DNR, ensures that the Meadow River WMA Wetlands Project will be designed to meet ecological objectives, regulatory requirements, and construction feasibility standards. Our workflow provides detailed grading models, wetland designs, and clear construction documentation that allows the agency to visualize the final system before construction begins.

Navigator is committed to delivering a cost-effective, ecologically functional wetland system that enhances waterfowl habitat, expands aquatic resources, and improves the long-term environmental value of the Meadow River WMA.

## **KEY DIFFERENTIATORS**

Navigator brings a combination of hydrologic engineering, ecological design, and practical construction experience that directly aligns with DNR's goals for a functional, self-sustaining wetland system at the Meadow River WMA. Our differentiators include:

1. Integrated Hydrology and Ecology Design
  - In-house hydrologic modeling
  - Wetland habitat design incorporates seasonal inundation, sediment deposition patterns, groundwater and surface water interactions.
2. Proven Experience Creating Wetlands in Floodplain Settings
  - Multiple mitigation and restoration projects with similar grading, outlet, and storage design requirements.
  - Ability to design wetlands that withstand high-flow Meadow River overbank events.
3. Wildlife-Focused Habitat Design
  - Use of topography, shallow benches, brood habitat shelves, woody structure, and native emergent/shrub plantings.
  - Designs consistent with the West Virginia State Wildlife Action Plan.

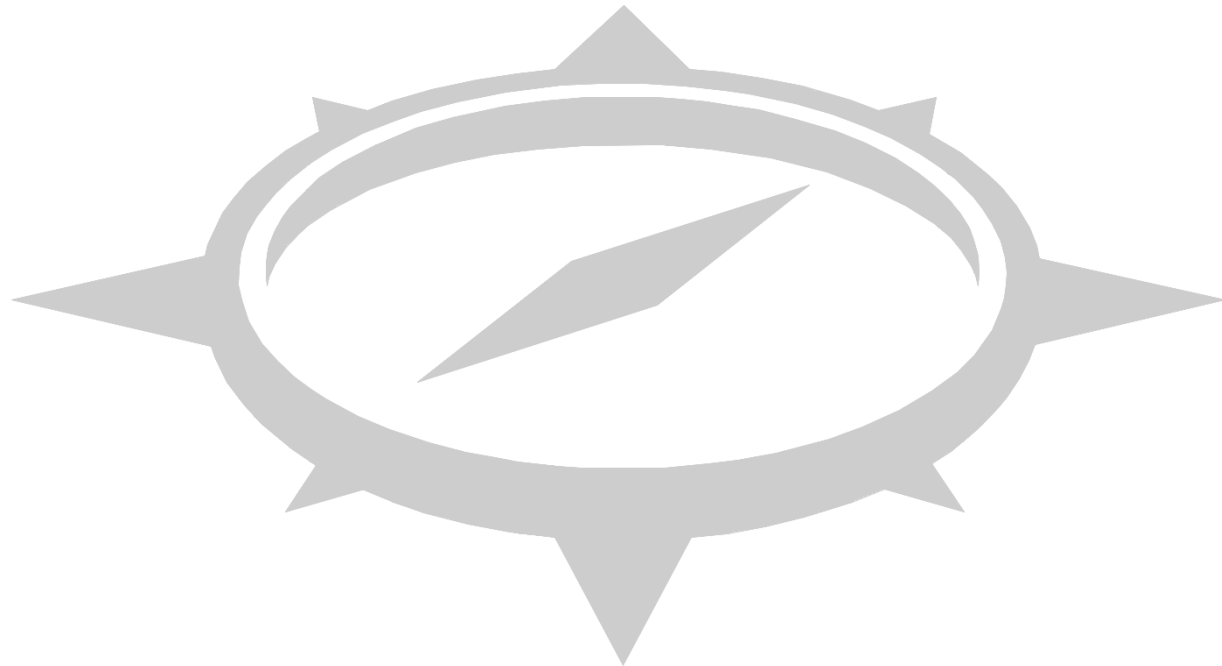
4. Efficient, Low-Maintenance Construction Approaches
  - Minimize earthwork through careful use of existing hydrology.
  - Proven QA/QC procedures reduce change orders and long-term maintenance needs.
5. Strong Regulatory Coordination Experience
  - Extensive coordination with USACE, WVDEP, and DNR for habitat, wetland, and 404/401 approvals. Seamless integration of permitting into design workflow.
6. Local Knowledge and Rapid Field Response
  - Offices in Summersville, Beaver, and Hurricane allow for rapid site visits and construction inspections.
  - Team members have extensive experience working in the area and surrounding regions.





## TABLE OF CONTENTS

COVER LETTER .....	II
EXECUTIVE SUMMARY.....	III
1. INTRODUCTION .....	3
2. TECHNICAL APPROACH .....	3
3. PROJECT MANAGEMENT SUMMARY .....	4
4. KEY PERSONNEL.....	5
5. ORGANIZATIONAL CHART.....	6
6. QUALIFICATIONS AND EXPERIENCE .....	6
7. RELEVANT EXPERIENCE .....	7
8. CONCLUSION .....	9



## **APPENDICES**

APPENDIX A – WV STATE BOARD OF PROFESSIONAL ENGINEERS CERTIFICATE OF AUTHORIZATION

APPENDIX B – WV STATE BOARD OF PROFESSIONAL ENGINEERS REGISTRATION CERTIFICATED

APPENDIX C – CERTIFICATE OF LIABILITY INSURANCE



## 1. Introduction

The Meadow River WMA Wetlands Project will establish a new wetland area in Greenbrier County to improve aquatic habitat, waterfowl resources, and floodplain hydrology. The site lies within the Meadow River floodplain, characterized by sandy alluvial soils and seasonal inundation. Restoration efforts should enhance shallow emergent marsh habitats consistent with DNR's State Wildlife Action Plan.

Navigator understands that the project goals include:

- Designing a self-sustaining wetland system with seasonal ponding.
- Enhancing aquatic and waterfowl habitat diversity.
- Supporting flood storage and sediment control.
- Ensuring long-term ecological stability and regulatory compliance.

## 2. Technical Approach

### A. Site Evaluation and Data Collection

- i. Conduct field surveys to assess hydrology, soils, and vegetation.
- ii. Collect topographic data and delineate inflow/outflow systems.
- iii. Evaluate potential wetland hydroperiod and watershed boundaries.

### B. Conceptual and Final Design

- i. Modeling hydrology and floodplain interaction.
- ii. Design grading, berms, weirs, and outlet structures to achieve target inundation levels.
- iii. Integrate native planting design for emergent and scrub-shrub wetland zones.

### C. Permitting and Coordination

- i. Prepare Section 404/401 applications and coordinate with WVDEP, USACE, and DNR.
- ii. Provide hydrologic justification and design documentation to regulators.

### D. Construction and Post-Construction Administration

- i. Conduct pre-bid meetings, site inspections, and contractor coordination.
- ii. Provide progress reports, submittal reviews, and change management.
- iii. Prepare a one-year post-construction monitoring plan to evaluate hydrologic and vegetative success.

### E. Ecological and Habitat Design

- i. Develop a planting plan based on native emergent, scrub-shrub, and herbaceous species consistent with the WV State Wildlife Action Plan.
- ii. Incorporate habitat structures such as shallow shelves, brood habitat, woody debris clusters, and amphibian refuge areas.
- iii. Design microtopography to create variable inundation zones supporting high biodiversity.
- iv. Prepare long-term invasive species and vegetation establishment strategies.

### F. Construction Phase Services

- i. Provide contractor coordination, request for information, submittal reviews, and change order evaluations.

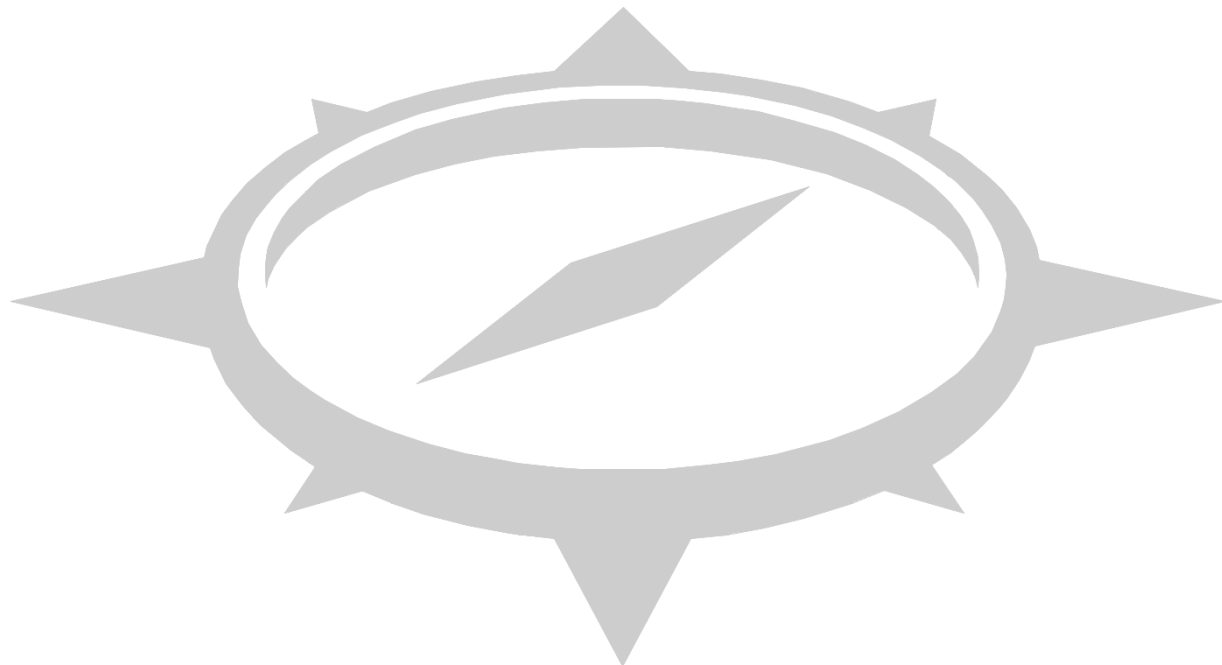
- ii. Conduct routine field inspections to verify grading elevations, water control structures, and planting installation.
- iii. Prepare as-built surveys and hydrologic confirmation after initial inundation periods.
- iv. Provide one-year monitoring that includes vegetation success evaluation, hydrology confirmation, and adaptive management recommendations.

### 3. Project Management Summary

Project management will be led by **James W. Fisher**, supported by **David M. Bennett, P.E.**, as Engineer of Record. The team includes licensed engineers, geologists, and biologists with specific expertise in ecological restoration and wetland design.

Navigator's management approach emphasizes:

- Clear and consistent communication with DNR.
- Proactive schedule and quality control.
- Internal technical peer review of all deliverables.
- Strong contractor coordination and documentation.
- Weekly or bi-weekly progress meetings with DNR during design.
- Defined QC/QA plan including internal peer review by a senior PE.
- On-site kickoff meeting, pre-bid meeting, and pre-construction meeting.



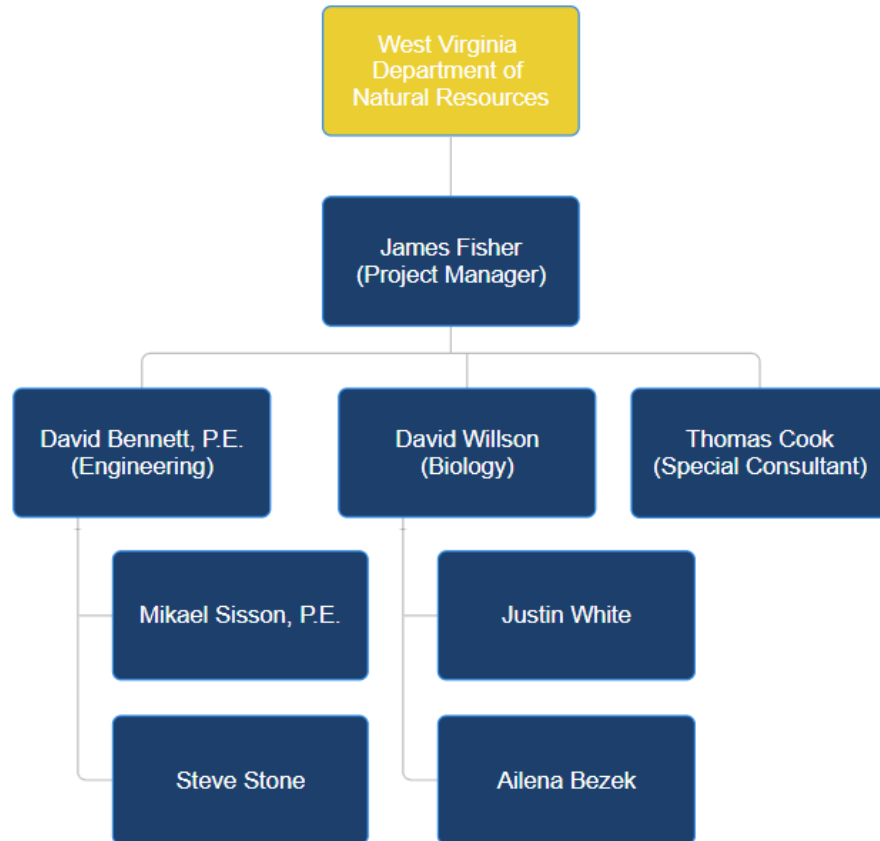
#### 4. Key Personnel

Navigator has staff and offices in Hurricane, Beaver, and Summersville, West Virginia. Navigator has two Professional Engineers registered with the WV PE Board and other various state boards. The key personnel are described in the table below.

Employee	Position	Experience
David Willson	President	<ul style="list-style-type: none"> <li>▪ Mitigation Planning and Reporting</li> <li>▪ Stream/Wetland Mitigation Design and Construction Project Management</li> <li>▪ Aquatic biology sampling and reporting</li> <li>▪ Jurisdictional determinations and wetland determinations and reporting</li> </ul>
James W. Fisher	Project Manager	<ul style="list-style-type: none"> <li>▪ Environmental/Regulatory compliance permitting</li> <li>▪ Project Management</li> <li>▪ Technical Reporting</li> </ul>
David Bennett, PE	Senior Engineer	<ul style="list-style-type: none"> <li>▪ Surface mine/Civil design and permitting</li> <li>▪ CAD drafting</li> <li>▪ Hydrologic and Hydraulic design and evaluations</li> <li>▪ Construction Management and Monitoring</li> </ul>
Mikael Sisson, PE	Senior Engineer	<ul style="list-style-type: none"> <li>▪ Surface mine/Civil design and permitting</li> <li>▪ CAD drafting</li> <li>▪ Hydrologic and Hydraulic design and evaluations</li> <li>▪ Construction/Project Management and Monitoring</li> </ul>
Steven Stone	Senior Engineer	<ul style="list-style-type: none"> <li>▪ Surface mine/Civil design and permitting</li> <li>▪ CAD drafting</li> <li>▪ Coal Reserve Modeling and Evaluations</li> </ul>
Justin White	Aquatic Biologist	<ul style="list-style-type: none"> <li>▪ Field aquatic biology sampling and fish surveys</li> <li>▪ Jurisdictional determinations and wetland determinations and reporting</li> <li>▪ Stream Channel Restoration Design and Monitoring</li> </ul>
Ailena Bezek	Biologist	<ul style="list-style-type: none"> <li>▪ Field aquatic biology sampling</li> <li>▪ Jurisdictional determinations and wetland determinations and reporting</li> </ul>
Thomas Cook	Special Consultant	<ul style="list-style-type: none"> <li>▪ Responsible for over 1,000 mining permits in WV, PA, KY, VA, TN, and WY.</li> <li>▪ Responsible for design and construction of over \$40 million in selenium treatment</li> <li>▪ Responsible for water treatment across Alpha Natural Resources and Massey Energy</li> <li>▪ Specialty environmental and operational management services</li> </ul>

## 5. Organizational Chart

The project organizational chart below illustrates the communication and reporting relationships between the Navigator team and the WVDNR. The organizational structure ensures clear and direct communication.



## 6. Qualifications and Experience

Navigator has held a Certificate of Authorization (COA) with the West Virginia Board of Professional Engineers (WV PE Board) since its inception in 2015. Navigator currently has two registered Professional Engineers with the WV PE Board who will oversee the work and certify all design documents and plans.

Navigator has extensive experience in all facets of coal mining related permitting, engineering, water treatment, and project management. Navigator has successfully completed projects in West Virginia, Pennsylvania, Kentucky, Virginia, Wyoming, Alberta, and British Columbia.

## 7. Relevant Experience

Navigator has completed numerous restoration and mitigation projects involving wetland creation, shallow-water habitat development, and floodplain hydrology improvement. These projects include integrated ecological design, native planting plans, microtopography development, and hydraulic modeling to ensure seasonal ponding and long-term habitat stability.

### A. Representative wetland-related work includes:

- Stream and Wetland Mitigation Design Projects (multiple WV counties)
- Constructed and restored wetlands as part of mitigation packages.
- Designed microtopography, hydric soil zones, emergent vegetation communities, and seasonal ponding benches.

### B. Turkey Foot, Horse Creek, and Kingston Mitigation Sites

- Included large-scale floodplain reconnection and wetland development.
- Models used to establish water depths supporting amphibians, waterfowl, and macroinvertebrates.

### C. Indian Creek Mitigation Bank

- Wetlands integrated into stream restoration corridor.
- Design included grade controls, wetland benches, and hydrologic connectivity.

### D. Mine Land Reclamation Wetlands (multiple sites)

- Converted reclaimed land areas into functional wetland systems.
- Applied hydrologic and ecological design principles to achieve stable hydroperiods.

These projects demonstrate our capability to design and construct a wetland system that meets DNR's habitat and water-quality objectives.

Although many of Navigator's projects are associated with mining, the hydrology, floodplain design, wetland development, and habitat creation components of these projects are directly applicable to the Meadow River WMA Wetlands Project. Navigator's major projects are described in the following table.



**EXPRESSION OF INTEREST  
MEADOW RIVER WMA WETLANDS PROJECT**

Project	Owner / Location
Kingston Sewell Mine Mitigation Work, Project Management, Stream Creation and Enhancement Design, Construction Monitoring	Kingston Mining, LLC West Virginia
Turkey Foot Mitigation Work, Project Management, Stream/Wetland Restoration Design, Construction Monitoring	Republic Energy, LLC West Virginia
Horse Creek Surface Mine Mitigation Work, Project Management, Stream Restoration Design, Construction Monitoring	Pioneer Fuels, LLC West Virginia
Laxare East Surface Mine Mitigation Work, Project Management, Stream Restoration Design, Construction Monitoring	Black Castle Mining, LLC West Virginia
Ewing Fork Surface Mine Mitigation Work, Project Management, Stream Restoration Design, Construction Monitoring	Republic Energy, LLC West Virginia
Right Hand Surface Mine Mitigation Work, Project Management, Stream Restoration Design, Construction Monitoring	Republic Energy, LLC West Virginia
Camp Branch Surface Mine Mitigation Work, Project Management, Stream Restoration Design, Construction Monitoring	Republic Energy, LLC West Virginia
Indian Creek Mitigation Bank Work, Project Management, Stream Restoration Design, Construction Monitoring	Mountain State Mitigation Credits Company West Virginia
WVDEP DMR Article 3 Surface Mine Applications and Article 11 NPDES New Permit Applications. (10)	Republic Energy, LLC West Virginia
WVDEP DMR Article 3 Surface Mine Applications and Article 11 NPDES New Permit Applications. (2)	Ramaco Resources, LLC West Virginia
WVDEP DMR Article 3 Surface Mine Applications and Article 11 NPDES New Permit Applications. (2)	Maben Coal, LLC West Virginia
USACE Individual and Nation Wide Permit Applications for Surface Mining Project Impacts to Jurisdictional Waters of the USA (5)	Republic Energy, LLC West Virginia
USACE Individual Permit Application for Wild Cat Mine Project Impacts to Jurisdictional Waters of the USA	Kingston Mining, LLC West Virginia
USACE Individual and Nation Wide Permit Applications for Surface Mining Project Impacts to Jurisdictional Waters of the USA (2)	Ramaco Resources, LLC West Virginia
Biochemical Reactor Water Treatment System Design, WVDEP Permitting Application, Project Management, Construction Monitoring (3)	Black Castle Mining, LLC West Virginia
Biochemical Reactor Water Treatment System Design, WVDEP Permitting Application, Project Management, Construction Monitoring (1)	Pioneer Fuels, LLC West Virginia
USACE Nation Wide Permit Application for Shiloh Development Project Impacts to Jurisdictional Waters of the USA	Stanley Industries, Inc West Virginia
Badger Creek Reservoir Design, Permitting, Project Management, Construction Monitoring	Seneca Industries, Inc Wyoming
Pangburn Mine Reserve Evaluation, Planning, Design, Permitting	Coronado Coal, LLC Pennsylvania
Phase II Mining Expansion, Project Management	Bighorn Mining Alberta, Canada
Biochemical Reactor System 1, Evaluation, Re-Design, Project Management, Construction Monitoring	Conuma Resources British Columbia, Canada

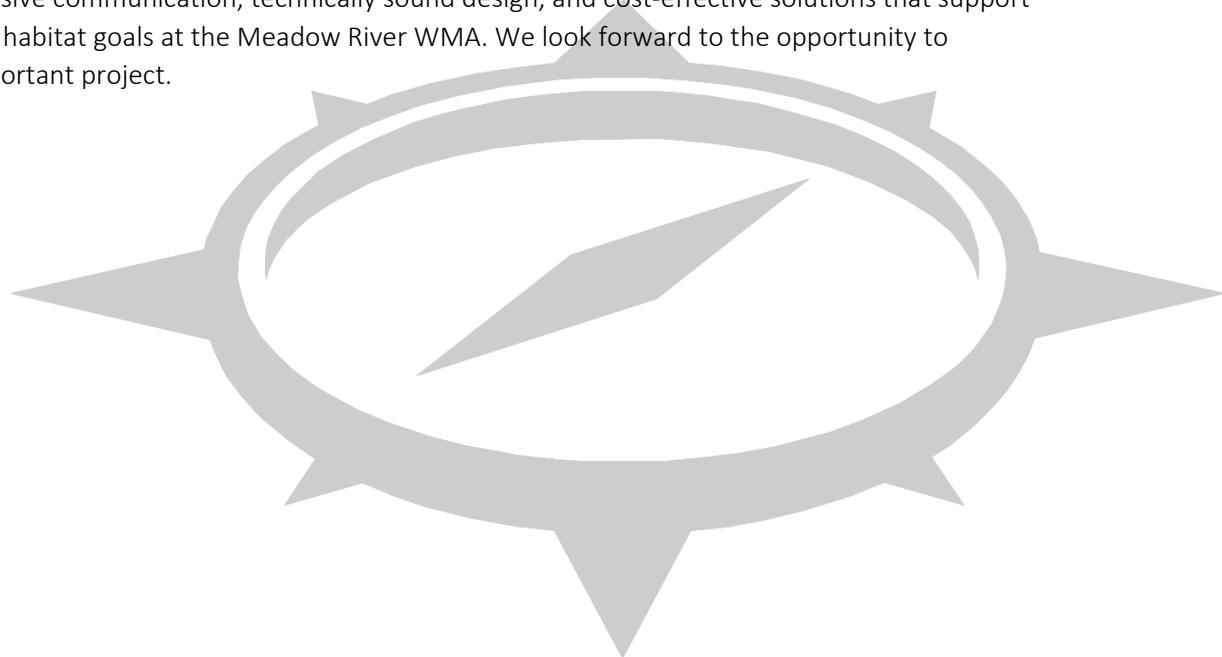


**EXPRESSION OF INTEREST  
MEADOW RIVER WMA WETLANDS PROJECT**

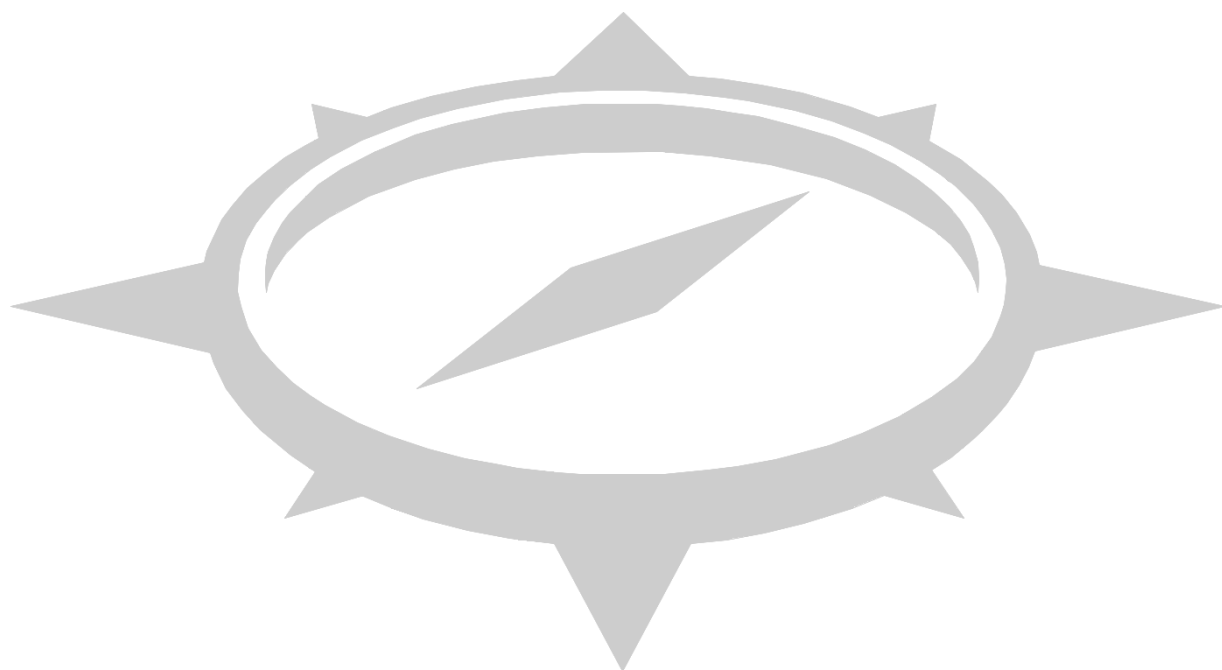
Biochemical Reactor System 2, Evaluation, Re-Design, Project Management, Construction Monitoring	Conuma Resources British Columbia, Canada
Biochemical Reactor System 3 & 4, Design, Permitting, Project Management, Construction Monitoring	Conuma Resources British Columbia, Canada
Deep Water Mine Complex, Reclamation Liability Study, Remining Evaluation, WVDEP Reclamation Agreement Plan	Resilient Mining, LLC West Virginia
Waterline Extension Evaluation	City of Summersville West Virginia
Mine Discharge Water Pipeline and Alternative Treatment System, Design and Permitting	Dana Mining Co. of PA, LLC West Virginia/Pennsylvania
Water Management System and Advance Treatment System, Design and Permitting	Cumberland Contura, LLC Pennsylvania
Surface Mine Discharge Effluent Limitations Impact Assessment	Cutlass Collieries, LLC Alberta, Canada
Surface Mine Complex Reclamation Assessment and Water Treatment Evaluation	Liberty Management, LLC Kentucky
Expert report in mine hydrology for Southern Appalachian Mountain Stewards v. Penn Virginia Operating Co., LLC, in Civil Action No. 2:14-v-4, in the United States District Court for the Western District of Virginia.	Jackson Kelly, PLLC Virginia
Produced an expert report in mining and hydrology in Ohio Valley Environmental Coalition, et al. v. Pocahontas Land Corporation in Civil Action No. 2:15-cv-15515, in the United States District Court for the Southern District of West Virginia	Jackson Kelly, PLLC West Virginia

## 8. Conclusion

Navigator Environmental & Technical Services, Inc. appreciates the opportunity to submit this Expression of Interest for the Meadow River WMA Wetlands Project. Our team brings the combined strengths of hydrologic engineering, ecological restoration, and construction oversight necessary to deliver a resilient and biologically valuable wetland system for the Division of Natural Resources. Navigator is committed to providing responsive communication, technically sound design, and cost-effective solutions that support DNR's long-term habitat goals at the Meadow River WMA. We look forward to the opportunity to advance this important project.



Appendix A



# CERTIFICATE OF *Authorization*

STATE BOARD OF REGISTRATION FOR PROFESSIONAL ENGINEERS

*The West Virginia State Board of Registration for Professional Engineers  
having verified the person in responsible charge is registered in  
West Virginia as a professional engineer for the noted firm, hereby certifies*

*has complied with section §30-13-17 of the West Virginia Code governing  
the issuance of a Certificate of Authorization. The Board hereby notifies you of its  
certification with issuance of this Certification of Authorization for the period of:*

*providing for the practice of engineering services in the State of West Virginia.*

IF YOU ARE REQUIRED TO REGISTER WITH THE SECRETARY OF STATE'S OFFICE,  
PLEASE SUBMIT THIS CERTIFICATE WITH YOUR APPLICATION.

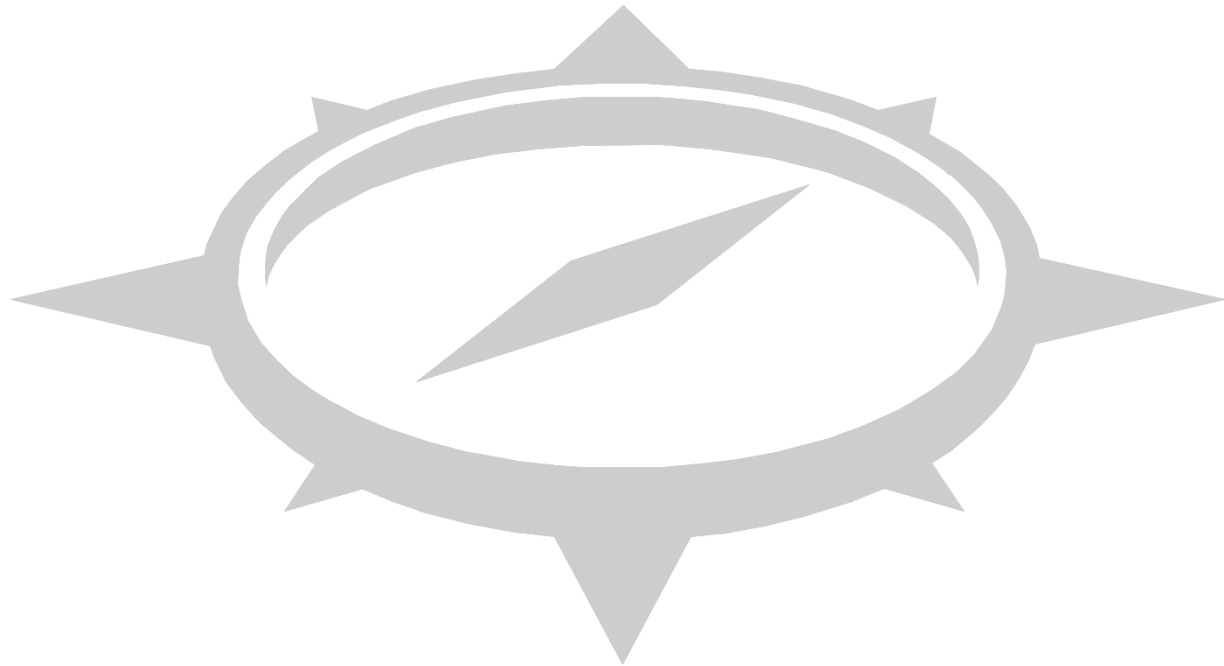


IN TESTIMONY WHEREOF, THE WEST VIRGINIA STATE BOARD OF  
REGISTRATION FOR PROFESSIONAL ENGINEERS HAS ISSUED THIS COA  
UNDER ITS SEAL, AND SIGNED BY THE PRESIDENT OF SAID BOARD.

*Scott E. Thomas Jr.*

BOARD PRESIDENT

Appendix B







STATE BOARD OF REGISTRATION FOR PROFESSIONAL ENGINEERS

To all to whom these presents shall come Greeting  
"Know Ye" That The State Board of Registration for Professional Engineers  
of the State of West Virginia, reposing special confidence in  
the Intelligence, Integrity and Discretion of

David Bennett

DOES IN PURSUANCE OF AUTHORITY VESTED IN IT  
by law hereby certify that he having submitted  
satisfactory evidence of his ability and experience is a

**REGISTERED PROFESSIONAL ENGINEER**

Registration Number 21952

(To Hold) and use such title in the practice of his profession,  
subject to the conditions prescribed by law.



Given under the hand of the  
Seal of the Board at the Capitol in the  
City of Charleston,  
This 6th day of June  
in the year of our Lord 2016  
and of the State  
the One Hundred Fifty-Second

Members of the Board

Lester D. Timms, Jr. Richard E. Dwyer

Blair S. Smith William E. Viersen





STATE BOARD OF REGISTRATION FOR PROFESSIONAL ENGINEERS

To all to whom these presents shall come Greeting  
"Know Ye" That The State Board of Registration for Professional Engineers  
of the State of West Virginia, reposing special confidence in  
the Intelligence, Integrity and Discretion of

Mikael Sisson

DOES IN PURSUANCE OF AUTHORITY VESTED IN IT  
by law hereby certify that he having submitted  
satisfactory evidence of his ability and experience is a

**REGISTERED PROFESSIONAL ENGINEER**

Registration Number 21973

"To Hold" and use such title in the practice of his profession,  
subject to the conditions prescribed by law.



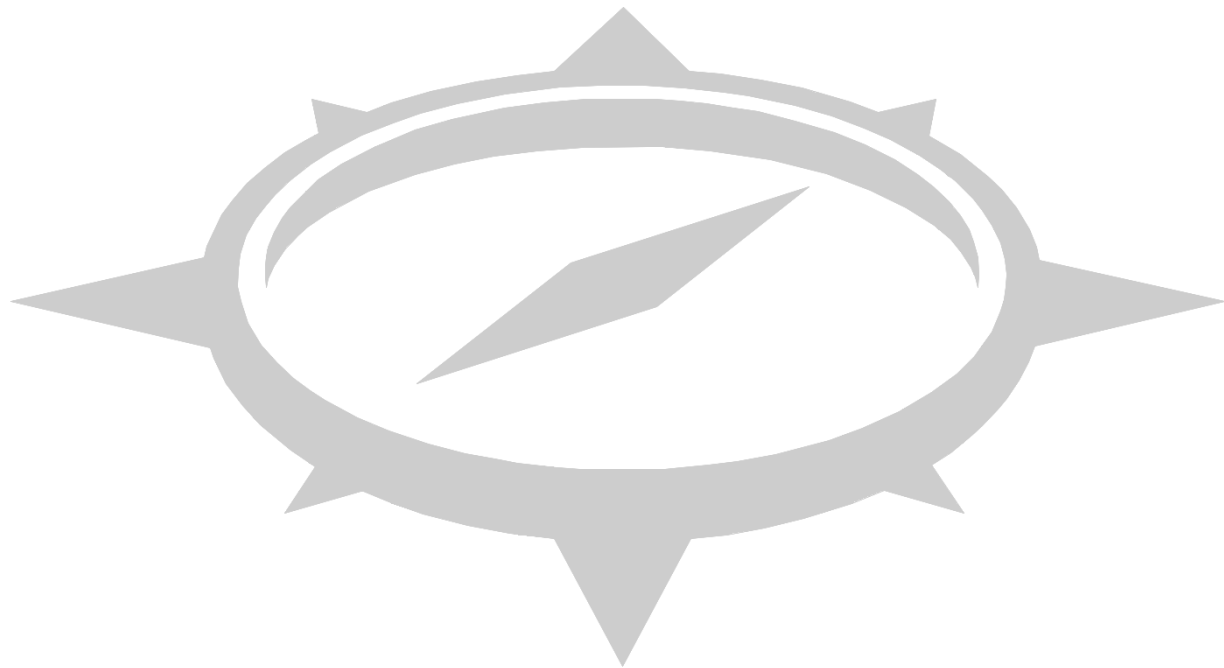
Given under the hand of the  
Seal of the Board at the Capitol in the  
City of Charleston,  
This 3rd day of June  
in the year of our Lord 2016  
and of the State  
the One Hundred Fifty-Second

Members of the Board

Lorand D. Timms, Jr. Richard E. Dignall  
Blayne S. Schjor William E. Dierman



Appendix C



**ACORD**<sup>TM</sup>**CERTIFICATE OF LIABILITY INSURANCE**

DATE (MM/DD/YYYY)

7/31/2025

THIS CERTIFICATE IS ISSUED AS A MATTER OF INFORMATION ONLY AND CONFERS NO RIGHTS UPON THE CERTIFICATE HOLDER. THIS CERTIFICATE DOES NOT AFFIRMATIVELY OR NEGATIVELY AMEND, EXTEND OR ALTER THE COVERAGE AFFORDED BY THE POLICIES BELOW. THIS CERTIFICATE OF INSURANCE DOES NOT CONSTITUTE A CONTRACT BETWEEN THE ISSUING INSURER(S), AUTHORIZED REPRESENTATIVE OR PRODUCER, AND THE CERTIFICATE HOLDER.

**IMPORTANT:** If the certificate holder is an **ADDITIONAL INSURED**, the policy(ies) must have **ADDITIONAL INSURED** provisions or be endorsed. If **SUBROGATION IS WAIVED**, subject to the terms and conditions of the policy, certain policies may require an endorsement. A statement on this certificate does not confer any rights to the certificate holder in lieu of such endorsement(s).

<b>PRODUCER</b> <b>USI Insurance Services LLC-CL</b> <b>2365 Harrodsburg Road</b> <b>Suite A300</b> <b>Lexington, KY 40504</b>	<b>CONTACT NAME:</b> Chase Bentley <b>PHONE (A/C, No, Ext):</b> <b>FAX (A/C, No):</b> <b>E-MAIL ADDRESS:</b> chase.bentley@usi.com														
<b>INSURED</b> <b>Navigator Environmental &amp; Technical Svc</b> <b>3908 Teays Valley Road</b> <b>Hurricane, WV 25526</b>	<table border="1"> <thead> <tr> <th data-bbox="803 430 1437 451">INSURER(S) AFFORDING COVERAGE</th> <th data-bbox="1437 430 1575 451">NAIC #</th> </tr> </thead> <tbody> <tr> <td data-bbox="803 451 1437 472"><b>INSURER A : Imperium Insurance Company</b></td> <td data-bbox="1437 451 1575 472"><b>35408</b></td> </tr> <tr> <td data-bbox="803 472 1437 493"><b>INSURER B : Great Midwest Insurance Company</b></td> <td data-bbox="1437 472 1575 493"><b>18694</b></td> </tr> <tr> <td data-bbox="803 493 1437 514"><b>INSURER C : BrickStreet Mutual Insurance Company</b></td> <td data-bbox="1437 493 1575 514"><b>12372</b></td> </tr> <tr> <td data-bbox="803 514 1437 535"><b>INSURER D : Lloyd's of London</b></td> <td data-bbox="1437 514 1575 535"><b>SURPLU</b></td> </tr> <tr> <td data-bbox="803 535 1437 556"><b>INSURER E :</b></td> <td data-bbox="1437 535 1575 556"></td> </tr> <tr> <td data-bbox="803 556 1437 577"><b>INSURER F :</b></td> <td data-bbox="1437 556 1575 577"></td> </tr> </tbody> </table>	INSURER(S) AFFORDING COVERAGE	NAIC #	<b>INSURER A : Imperium Insurance Company</b>	<b>35408</b>	<b>INSURER B : Great Midwest Insurance Company</b>	<b>18694</b>	<b>INSURER C : BrickStreet Mutual Insurance Company</b>	<b>12372</b>	<b>INSURER D : Lloyd's of London</b>	<b>SURPLU</b>	<b>INSURER E :</b>		<b>INSURER F :</b>	
INSURER(S) AFFORDING COVERAGE	NAIC #														
<b>INSURER A : Imperium Insurance Company</b>	<b>35408</b>														
<b>INSURER B : Great Midwest Insurance Company</b>	<b>18694</b>														
<b>INSURER C : BrickStreet Mutual Insurance Company</b>	<b>12372</b>														
<b>INSURER D : Lloyd's of London</b>	<b>SURPLU</b>														
<b>INSURER E :</b>															
<b>INSURER F :</b>															

**COVERAGES****CERTIFICATE NUMBER:****REVISION NUMBER:**

THIS IS TO CERTIFY THAT THE POLICIES OF INSURANCE LISTED BELOW HAVE BEEN ISSUED TO THE INSURED NAMED ABOVE FOR THE POLICY PERIOD INDICATED. NOTWITHSTANDING ANY REQUIREMENT, TERM OR CONDITION OF ANY CONTRACT OR OTHER DOCUMENT WITH RESPECT TO WHICH THIS CERTIFICATE MAY BE ISSUED OR MAY PERTAIN, THE INSURANCE AFFORDED BY THE POLICIES DESCRIBED HEREIN IS SUBJECT TO ALL THE TERMS, EXCLUSIONS AND CONDITIONS OF SUCH POLICIES. LIMITS SHOWN MAY HAVE BEEN REDUCED BY PAID CLAIMS.

INSR LTR	TYPE OF INSURANCE	ADDL INSR	SUBR WVD	POLICY NUMBER	POLICY EFF (MM/DD/YYYY)	POLICY EXP (MM/DD/YYYY)	LIMITS
<b>A</b>	<input checked="" type="checkbox"/> <b>COMMERCIAL GENERAL LIABILITY</b> <input type="checkbox"/> CLAIMS-MADE <input checked="" type="checkbox"/> OCCUR <input checked="" type="checkbox"/> <b>BI/PD Ded:10,000</b> GEN'L AGGREGATE LIMIT APPLIES PER: <input type="checkbox"/> POLICY <input type="checkbox"/> PRO-JECT <input type="checkbox"/> LOC OTHER:			<b>MNGIICGL000056704</b>	<b>11/01/2024</b>	<b>11/01/2025</b>	EACH OCCURRENCE <b>\$1,000,000</b> DAMAGE TO RENTED PREMISES (Ea occurrence) <b>\$100,000</b> MED EXP (Any one person) <b>\$5,000</b> PERSONAL & ADV INJURY <b>\$1,000,000</b> GENERAL AGGREGATE <b>\$2,000,000</b> PRODUCTS - COMP/OP AGG <b>\$2,000,000</b> \$
	<b>AUTOMOBILE LIABILITY</b> <input type="checkbox"/> ANY AUTO OWNED AUTOS ONLY <input type="checkbox"/> SCHEDULED AUTOS NON-OWNED AUTOS ONLY <input type="checkbox"/> HIRED AUTOS ONLY						COMBINED SINGLE LIMIT (Ea accident) \$ BODILY INJURY (Per person) \$ BODILY INJURY (Per accident) \$ PROPERTY DAMAGE (Per accident) \$ \$
<b>B</b>	<input type="checkbox"/> <b>UMBRELLA LIAB</b> <input checked="" type="checkbox"/> OCCUR <input checked="" type="checkbox"/> <b>EXCESS LIAB</b> <input type="checkbox"/> CLAIMS-MADE DED RETENTION \$			<b>MNGGMCX000011503</b>	<b>11/01/2024</b>	<b>11/01/2025</b>	EACH OCCURRENCE <b>\$5,000,000</b> AGGREGATE <b>\$5,000,000</b> \$
<b>C</b>	<b>WORKERS COMPENSATION AND EMPLOYERS' LIABILITY</b> ANY PROPRIETOR/PARTNER/EXECUTIVE/OFFICER/MEMBER EXCLUDED? <input checked="" type="checkbox"/> Y <input checked="" type="checkbox"/> N (Mandatory in NH) If yes, describe under DESCRIPTION OF OPERATIONS below		N/A	<b>WCB1030094</b> <b>WV Broad Form Endt</b>	<b>11/01/2024</b>	<b>11/01/2025</b>	<input checked="" type="checkbox"/> PER STATUTE <input type="checkbox"/> OTH-ER E.L. EACH ACCIDENT <b>\$1,000,000</b> E.L. DISEASE - EA EMPLOYEE <b>\$1,000,000</b> E.L. DISEASE - POLICY LIMIT <b>\$1,000,000</b>
<b>D</b>	<b>Pollution/Prof</b>			<b>PNAVI003425</b>	<b>08/01/2025</b>	<b>08/01/2026</b>	<b>2,000,000</b>
<b>D</b>	<b>Excess Pol./Prof.</b>			<b>PNAVI003525</b>	<b>08/01/2025</b>	<b>08/01/2026</b>	<b>3,000,000</b>

DESCRIPTION OF OPERATIONS / LOCATIONS / VEHICLES (ACORD 101, Additional Remarks Schedule, may be attached if more space is required)

**Additional Named Insureds: NAVANA Services, LLC; NAVANA Labs, LLC; NAVANA Capital, LLC****Certificate issued for Bidding Purposes Only****CERTIFICATE HOLDER****CANCELLATION**

**Navigator Environmental & Technical Services**  
**3908 Teays Valley Rd.**  
**Hurricane, WV 25526**

SHOULD ANY OF THE ABOVE DESCRIBED POLICIES BE CANCELLED BEFORE THE EXPIRATION DATE THEREOF, NOTICE WILL BE DELIVERED IN ACCORDANCE WITH THE POLICY PROVISIONS.

AUTHORIZED REPRESENTATIVE

