



The following documentation is an electronically-submitted vendor response to an advertised solicitation from the *West Virginia Purchasing Bulletin* within the Vendor Self-Service portal at ***wvOASIS.gov***. As part of the State of West Virginia's procurement process, and to maintain the transparency of the bid-opening process, this documentation submitted online is publicly posted by the West Virginia Purchasing Division at ***WVPurchasing.gov*** with any other vendor responses to this solicitation submitted to the Purchasing Division in hard copy format.

Header 1

List View

General Information [Contact](#) [Default Values](#) [Discount](#) [Document Information](#) [Clarification Request](#)

Procurement Folder: 1834025

Procurement Type: Central Contract - Fixed Amt

Vendor ID:

Legal Name: NEW RIVER ENGINEERS INC

Alias/DBA:

Total Bid: \$0.00

Response Date:

Response Time:

Responded By User ID:

First Name:

Last Name:

Email:

Phone:

SO Doc Code: CEOI

SO Dept: 0310

SO Doc ID: DNR2600000003

Published Date: 11/10/25

Close Date: 12/3/25

Close Time: 13:30

Status: Closed

Solicitation Description:

Total of Header Attachments: 1

Total of All Attachments: 1



Department of Administration
Purchasing Division
2019 Washington Street East
Post Office Box 50130
Charleston, WV 25305-0130

State of West Virginia
Solicitation Response

Proc Folder: 1834025
Solicitation Description: A&E - Meadow River WMA Wetlands Project
Proc Type: Central Contract - Fixed Amt

Solicitation Closes	Solicitation Response	Version
2025-12-03 13:30	SR 0310 ESR12032500000003358	1

VENDOR
000000209931
NEW RIVER ENGINEERS INC

Solicitation Number: CEOI 0310 DNR2600000003
Total Bid: 0
Response Date: 2025-12-03
Response Time: 07:28:03
Comments:

FOR INFORMATION CONTACT THE BUYER
Joseph (Josh) E Hager III
(304) 558-2306
joseph.e.hageriii@wv.gov

Vendor		
Signature X	FEIN#	DATE

All offers subject to all terms and conditions contained in this solicitation

Line	Comm Ln Desc	Qty	Unit Issue	Unit Price	Ln Total Or Contract Amount
1	Civil engineering				0.00

Comm Code	Manufacturer	Specification	Model #
81101500			

Commodity Line Comments:

Extended Description:

Design and Contract Administration of a new wetlands area at Meadow River Wildlife Management Area.

Meadow River WMA Wetlands Project

Request for A/E Services

for

West Virginia Division of Natural Resources

December 3rd, 2025



Presented by:

NEW RIVER ENGINEERS, INC.

501 Eagle Mountain Road

Charleston, WV 25311

304.342.7168

New River Engineers, Inc.



December 3rd, 2025

Department of Administration
Purchasing Division
2019 Washington Street East
Charleston, WV 25305-0130
Via: wvOASIS

Re: Meadow River WMA Wetlands Project
A/E Services
WVDNR Solicitation No: CEOI 0310 DNR2600000003

Distinguished Selection Committee Members:

New River Engineers, Inc. (NREI) is pleased to submit our statement of qualifications to provide engineering services to assist the Division of Natural Resources with the evaluation, design, specify and provide construction administration for the establishment of a natural wetland area located on the Meadow River Wildlife Management Area located in the Greenbrier County, WV.

NREI is a highly qualified and experienced environmental/civil engineering firm providing services for municipal, federal, state, industrial and commercial clients throughout the states of West Virginia, Ohio, Kentucky, and Virginia.

For over 45 years, NREI has completed projects on time, under budget and without any successful litigation against us or our client, a record no other firm can match.

We would appreciate an opportunity to present our detailed qualifications at a mutually convenient date and time.

Please call if you have any questions or need further information.

Very Truly Yours,
NEW RIVER ENGINEERS, INC.

Joshua D. Cook, P.E., PMP
President
jdc@nrenginc.com

Enclosure

**MEADOW RIVER WMA WETLANDS PROJECT
REQUEST FOR A/E SERVICES**

TABLE OF CONTENTS

EXPRESSION OF INTEREST..... 1

FIRM OVERVIEW • NEW RIVER ENGINEERS, INC..... 2

FIRM OVERVIEW • KEMRON 3

PLAN OF APPROACH 4

PROJECT EXPERIENCE..... 9

ORGANIZATIONAL CHART 13

RESUMES OF KEY PERSONNEL 14

ADDITIONAL SERVICES..... 22



EXPRESSION OF INTEREST

New River Engineers Inc. (NREI) is pleased to express our interest in providing environmental, engineering, architecture, and surveying services to the WVDNR. Our team is a civil / environmental engineering firm and is noted for design excellence and client focus. Our team's integrated design approach, our commitment to design quality, as well as our architectural and construction experience will help to ensure the quality of services that we will provide to the WVDNR. Below, please find additional qualifications that make our team uniquely qualified to assist you with your potential needs.

We have a history of providing high quality design and engineering management services throughout West Virginia, Ohio, Kentucky, Virginia and North Carolina. This quality has been recognized by the quantity of our repeat clients. We will use our engineering abilities and extensive design experience to aid the WVDNR as any need would arise.

As President of our firm, **Joshua D. Cook, PE, PMP** will lead projects for the WVDNR. He can be reached at **681.668.1809** or **jdc@nrenginc.com**. Josh has a Master of Science in Engineering from Marshall University and a Bachelor of Science in Civil Engineering from WVU Institute of Technology. Josh has served as a Projects Engineer, Project Manager and Engineering Manager for the coal and natural gas industry, municipal engineering consulting. Josh will be assisted by Eric Hartwell, P.E., Christopher Burford, PM, Matt Shelton, PM, Charles Kurzyna P.E., P.S, and the rest of our staff.

We have the training, experience, and multi-discipline support to meet the needs of our clients. Due to our small size, our engineers become well rounded and deeply involved with each project. Our engineers are able to put their heads together to create an excellent working knowledge of projects, creating high quality, personalized, and professional services.



FIRM OVERVIEW • NEW RIVER ENGINEERS, INC.



New River Engineers, Inc. (NREI) is an engineering, architectural surveying and consulting firm that has been providing quality service to our clients and the industries for over 45 years. Mutual respect and trust are the cornerstones in the relationships established and maintained with our clients. NREI strives to perform all work in a professional and cost-effective manner, while providing our clients with quality and excellence.

The firm is managed by Joshua D. Cook, PE, PMP, President and Eric Hartwell, PE, Vice President. NREI has successfully provided an integrated approach to publicly funded projects for our clients. NREI provides professional services to owners and operators, and contractors throughout Ohio, West Virginia, Virginia, Kentucky and North Carolina and many others. NREI services range through all facets of civil engineering design as well as construction administration and project management.

Our staff combines advanced technology with many decades of surveying, mining, engineering and architectural experience and includes five professional engineers, two architects, two professional surveyors, eight degreed engineers, AutoCAD/engineer technicians and ten full-time survey crews.

As a full-service engineering and surveying firm, NREI can provide a whole host of services to our clients including, but not limited to the following:

- Construction Design, Management and Surveying
- Geotechnical Engineering & Drilling Management
- Architectural and Interior Design
- Environmental Permitting (DEP, NPDES, OAQ and USACOE)
- Underground / Surface Mine Engineering
- Civil Site Design / Engineering / Planning
- Drainage Design / Engineering / HECRAS
- Compaction Testing with Nuclear Density Gauge
- Subsurface Utility Locate Surveys with GPR & Pipe and Cable Locators
- Oil & Gas Surveying
- Boundary & Property/Topographical Surveying
- Aerial Mapping, GPS RTK & Static Surveying
- Reserve Studies

NREI has developed the following philosophy to guide the performance of its services:

- Provide superlative design services to our clients in new construction, improvements, and daily operations.
- Perform work in a timely, accurate and professional manner.
- Present multiple alternatives and solutions whenever possible.
- Work with our clients to control project costs.
- Be a technical sounding board for our clients in all situations.
- Strive to maintain professional competence through continuing education and training.
- NREI utilizes a practical application approach to all projects throughout the design process to provide a well-rounded result. This methodology emphasizes the best overall solution, meeting all the client's needs, instead of just the best technical solution. We believe our small size provides a distinct advantage to our clients and affords us the freedom to easily team with the clients to achieve the overall best possible result.



FIRM OVERVIEW • KEMRON

Celebrating the start of our 50th year of excellence, KEMRON Environmental Services, Inc. is a 100% employee-owned small business dedicated to advancing our employees while providing top-tier environmental solutions. We serve federal, state, and local governments, as well as private industries like manufacturing, utilities, and transportation. Our services include environmental assessment, investigation and engineering, site remediation, professional consulting, munitions response, and emergency response, ensuring comprehensive environmental management.

KEMRON integrates detailed investigations and advanced engineering to design effective remediation strategies. Our commitment to environmental stewardship helps us minimize liabilities and reduce costs for our clients. Our expert team handles regulatory compliance and emergency spill response with efficiency and expertise.

Environmental assessment, investigation, and engineering are foundational to guiding all subsequent decisions in our projects at KEMRON. Our detailed investigations are critical for accurately defining environmental liabilities and understanding potential risks. This allows us to quantify these risks effectively and develop predictive models to mitigate them. The insights gained from our investigative phase empower us to design cost-effective solutions for environmental remediation and mitigation. Our clients rely on our extensive technical expertise, regulatory knowledge and deep industry experience for both comprehensive remediation designs and standalone investigative services. We aim to minimize environmental liabilities and reduce remediation costs, which is central to our approach.

At KEMRON, our team of dedicated professionals, including engineers, geologists, hydrogeologists, risk assessors, environmental scientists, forms the backbone of our environmental services. These Subject Matter Experts bring a wealth of knowledge and experience, ensuring that all project decisions are informed by thorough and accurate environmental characterizations. Our geologists and hydrogeologists play a critical role in site assessments, employing advanced techniques to understand subsurface conditions and groundwater flow dynamics. This expertise is crucial for identifying and quantifying environmental liabilities accurately.

Our engineers design solutions that are not only cost-effective but also compliant with all relevant regulations. They work closely with the rest of the team to ensure that remediation and mitigation strategies are seamlessly integrated into overall project planning.

KEMRON's approach is to identify, mitigate, or minimize environmental liabilities and reduce remediation costs. Our track record speaks to a combination of thoroughness, accuracy, sophistication, and affordability, providing our customers with value-added services.

PLAN OF APPROACH

NREI believes in a team approach for the development of projects. Therefore, our first task will be to meet with the West Virginia Division of Natural Resources to review existing data, reports, etc., and to ascertain the need of the specific project. Following data gathering, we will then evaluate alternatives and develop a cost-effective proposal that meets existing and future needs of a specific project. Throughout the process, WVDNR officials will be kept informed and involved in all important matters.

NREI will assist the WVDNR in preparation and submission of any funding application needs. Once the funding has been secured, we will then begin to develop detailed engineering drawings and specifications for the project. As information is gathered, it will be reviewed with WVDNR officials to allow comment and coordination as the project progresses. The project engineer will be involved during all phases of developing a project, obtaining funding, design, and construction to assure coordination with WVDNR personnel, and regulatory and funding agencies.

PRELIMINARY ENGINEERING REPORT

Our next task will be the preparation of a Preliminary Engineering Report. Specifically, the report will be organized in accordance with regulatory and funding agency requirements as follows:

1. Introduction and Overview
2. Planning Area and Future Needs
3. Evaluation of the Existing System
4. Proposed Improvements/Upgrades
5. Alternate Solutions
6. Cost Estimates – Capital and O & M
7. Environmental Issues
8. Public Participation
9. Final Plan Selection
10. Implementation

Prior to publication of the final report, all information will be shared and reviewed with WVDNR officials to ensure that concerns are addressed.

DESIGN PHASE

NREI will prepare contract documents including plans and specifications conforming to funding agencies requirements. Our design phase will be carried out as follows:

1. Define Existing Conditions
 - a. Assemble and evaluate data to eliminate conflicts and redundancy.
 - b. All major decisions regarding data will be discussed with WVDNR officials. Important data sources include, but are not limited to the following:
 - i. WVDNR Officials
 - ii. WV Department of Environmental Protection
 - iii. USDA Rural Development
 - iv. Soil Conservation Service
 - v. Local Citizens and Groups
2. Identify Project Work
 - a. Evaluate existing data, reports, and design drawings, if available
 - b. Evaluate existing site.
 - c. Evaluate environmental aspects.
 - d. Summarize existing problems and make presentation.
3. Preliminary Design
 - a. Preliminary layout of proposed project
 - b. Land surveys for mapping, rights-of-way, and / or land acquisitions
 - c. Coordination with the WV DEP and DOH with USDA-RD
 - d. Preliminary Cost Estimates
 - e. Preliminary review with the WVDNR.
4. Final Design
 - a. Incorporate review comments from the WVDNR, WV DEP, USDA-RD, and other agencies
 - b. Prepare detailed specifications and final design report in accordance with state and federal guidelines.
 - c. Attend public meetings.
 - d. Prepare final cost estimates.
 - e. Secure permits from officiating WV DEP and DOH, and other agencies
 - f. Prepare bid documents.
 - g. Conduct pre-bid conference.
 - h. Assist in advertising for bids, attend bid opening and assist in evaluation of bids with recommendations for awarding the construction of the project(s)



CONSTRUCTION PHASE

NREI will provide the following services during the construction phase of the project:

1. Administrative Services
 - a. Assist and advise the WVDNR in the preparation of construction contracts for signature(s)
 - b. Issue a "Notice to Proceed" to the appropriate Contractor(s)
 - c. Provide consultation and advise the WVDNR during construction
 - d. Preparation of elementary and supplementary sketches and / or drawings required to resolve problems arising from actual field conditions encountered.
 - e. Review and approve shop drawings, diagrams, illustrations, brochures, catalog data, schedules, and samples, results of tests and inspections, other data which the contractor(s) is required to submit, but only for conformance with the design concept of the Project and compliance with the information given in the contract documents.
 - f. Receive and review maintenance and operating instructions, schedules, guarantees, bond, and certificates of inspections which are to be assembled by the contractor(s) in accordance with the contract documents.
 - g. Review and approve requests for periodic and final payments to the contractor(s)
 - h. Issue certificates of completion to the WVDNR for completed construction contracts.
 - i. Review original drawings and provide to the WVDNR a digital copy on disk and two (2) sets of black line prints of "as-built" plans
 - j. Advise the WVDNR whether the project can meet the project performance standards.
 - k. Attend monthly meetings during the construction period.
 - l. Represent the WVDNR in technical matters and litigation, if required
 - m. Provide engineering services during start-up of the facility.
 - n. Provide training to WVDNR employees for the operation of the new facility.
 - o. Provide one (1) year project performance certification.
2. Field Services
 - a. A Qualified Design Professional will make periodic visits to the site to observe the progress and quality of the executed work, and determine, in general, if the work is proceeding in accordance with the contract documents.
 - b. Efforts will be directed toward providing assurance to the WVDNR that the completed project will conform to the requirements of the contract documents.
 - c. Make general monthly construction progress reports to the WVDNR.
 - d. Observe initial operation of the project, or any performance tests as required by the specifications.
 - e. Make final inspection and report on the completed project.
 - f. Advise the WVDNR of any special test or necessary outside services that may be required to assist construction of the project.



- g. On the date, one (1) year after the initiation of the operation of the project, a Professional Engineer shall certify to the WVDNR whether the project can meet the project performance standards in accordance with requirements for the project.
- 3. Resident Inspection Services During Construction
 - a. A Resident Project Representative(s) will be furnished for each construction contract (as a minimum) to provide extensive representation at the project site during the construction phase.
 - b. Through more extensive on-site observations of the work in progress and field checks of materials and equipment by the Resident Project Representative(s), the WVDNR will be provided further protection against defects and deficiencies in the work
 - c. In addition to the general duties outlined above, the Resident Project Representative(s) will:
 - i. Observe the installation of approved materials and equipment and construction techniques and procedures in accordance with contract documents.
 - ii. Aid in public relations activities as the construction progresses through private property.
 - iii. Monitor the construction schedule and report conditions which may cause delay in completion.
 - iv. Review contract documents with the contractor's superintendent
 - v. Obtain necessary interpretations and transmit them to the contractor.
 - vi. Consider the contractor's suggestions and recommendations, evaluate them, and submit them with recommendations for a final decision.
 - vii. Attend field meetings as directed and report on the proceedings.
 - viii. Observe tests required by the contract documents, and record and report test procedures and, where applicable, the results
 - ix. Maintain records at the construction site in an orderly manner, including correspondence, change orders, supplementary drawings, requests for payment, and names and addresses of contractors, subcontractors, and principal material suppliers.
 - x. Keep a journal or logbook recording time and activities related to the project, weather conditions, nature and location of work being performed, verbal instructions and interpretations given to the contractor, and specific observations, record any occurrence of work that might result in a claim for a change of contract sum or contract time, and maintain a list of visitors, their titles, and time and purpose of their visit.
 - xi. Review applications for payment submitted by the contractor and forward them with recommendations for disposition.
 - xii. Prepare a punch list as construction nears completion and inform contractor of items on punch list.
 - xiii. Assist in final inspection of the work.



SPECIAL SERVICES

1. Land Surveys
 - a. Easements and right-of-way plat maps
 - b. Verify existing aboveground and underground utilities.
 - c. Construction stakeout of proposed improvements of connection with existing utilities
2. Attendance at Public Meetings to represent the WVDNR on technical matters.
3. Attendance at Technical Meetings with the WVDNR, DEP, etc.
4. Furnish technical assistance to the accountant and legal staff.
5. Provide technical testimony before courts and / or administrative hearings related to the project.



PROJECT EXPERIENCE

City of Winfield, Stormwater System Improvement Projects, Winfield, WV

Installation of approximately 6,000 LF of storm sewer ranging in size from 12" to 48" in diameter, six (6) concrete headwalls with rock rip rap, 47 concrete catch basins and 2,000 square yards of concrete street replacement throughout the City.

- **Reference:** Randy Barrett, Mayor, City of Winfield, 12448 Windfield Road, Winfield, WV 25213, Office 304.586.2122 mayor@cityofwinfield.net



Town of Franklin Wastewater Treatment Facility Improvements, Franklin, WV

Replacement of the existing wastewater treatment ponds with a conventional extended air biological treatment train for enhanced nitrogen removal. The headworks, existing disinfection system will remain as-is and with the existing ponds utilized for sludge disposal. NREI is providing preliminary engineering report and design, final design, permitting, construction administration and RPR services.

- **Reference:** Frank Wehrle, Business Manager, Town of Franklin, 305 North High Street, Franklin, WV 26807, 304.358.7525

Berkley County PSSD, Berkley County, WV

Design of improvements at the wastewater treatment plant which included replacement of two pump stations and gravity sewer lines

- **Funding Source:** BCPSSD
- **Project Cost:** \$1,000,000
- **Reference:** Rob Palmatier, Capital Projects Manager, Berkeley County Public Service Sewer District, PO Box 944, Martinsburg, WV 25402, Office 304.263.8344

Ellenboro-Lamberton PSD, Ritchie County, WV

Planning, design, and construction management of extension of water and sewer lines and a 150,000-gallon water storage tank to serve a proposed industrial park.

- **Funding Source:** ARC (Administered by USDA-RD)
- **Project Cost:** \$1,260,000, completed project approximately \$46,000 under budget and used savings to purchase equipment

West Virginia Water Department Authority, Riverbank Slope Erosion Repair, Charleston, WV

NREI provided CADD Design along Spring Street suggesting an H-pile retaining wall.

WVDNR Coopers Rock Wastewater & Water Improvement, Monongalia County, WV

State Park rehabilitation of the wastewater plant that serves the overlook area, modifications to the water plant intake to repair damage with the intake pump and improve aesthetics and replace the campground wastewater dump station. NREI provided architectural and engineering design services and construction contract administration including evaluation, surveying, mapping, design and permitting services. For water improvements, NREI evaluated existing 132,000-gallon water storage tank and proposed improvements; replaced variable frequency drive (VFD) in the water plant, replaced raw water line to prevent freezing to allow for operation during winter months and evaluated water distribution system for upgrade/improvements. For wastewater improvements, NREI evaluated the WWTP and determined improvements needed or convert to septic-type system, along with evaluating McCollum Campground for replacement to match the need for future expansion and replaced the existing RV sewage dump station. Construction administration oversight included attending preconstruction meetings, reviewed shop drawings, contractor submittals, weekly site visits by the project manager and reviewed contractor's monthly pay estimates.



- **Reference:** Roger Wolfe, Engineer Associate, WV Division of Natural Resources, 324 4th Avenue, South Charleston, WV 25303, 304.550.8137, roger.c.wolfe@wv.gov

WV Division of Natural Resources, Canaan Valley Resort State Park Wastewater System Improvements, Tucker County, WV

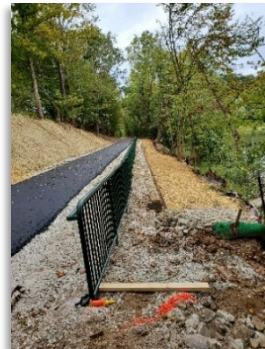
Proposed evaluation of the existing park lodge wastewater treatment plant, campground wastewater treatment plant, and ski lodge wastewater treatment plant and associative collection system and recommend and design of improvements.

- **Reference:** Roger Wolfe, Engineer Associate, WV Division of Natural Resources, 324 4th Avenue, South Charleston, WV 25303, 304.550.8137, roger.c.wolfe@wv.gov

Elk River Flood Repairs and Coonskin Park Trail Replacement, Kanawha County, WV

Planning, design, geotechnical, estimating, and construction management of 160 LF of H-Pile wall, a 40 LF H-Pile wall, Replacement of three 18" culverts, Paving of approx. 2,800 LF of Elk River Trail, and replacement of 105 LF of 36" HDPE storm pipe. Project cost of approx. \$1.85 million.

- **Reference:** Jeff Hutchinson, Executive Director, Kanawha County Parks and Recreation, 375 Henry C Hoppy Shores Drive, Charleston, WV 25302, 304.341.8000, jeff@kcprc.com



Big Bend Golf Course Slope and Coonskin Park Trail Wall Flood, Kanawha County WV

Planning, design, geotechnical, estimating, construction management of Elk River Road embankment failure at two locations of approximately 170 ft and 50ft with another 1,900 ft pavement failure along Elk River Road. Replacement of 30" drainage culvert under an access road to the Riverside Shelter facility. Relocation of the irrigation pump house that was inundated with flood water to above the 100-year flood level.

- **Reference:** Kanawha County Parks & Recreation Commission, 375 Henry C. Shores Drive, Charleston, WV 25302



Blue Creek Slip Repairs, Kanawha County, WV

Previous pipeline construction resulted in a slip adjacent to Blue Creek Road in Elkview, WV. S & S/NREI was tasked to monitor the slope mitigation project from start to finish and complete weekly progress reports. Planning, design, geotechnical, estimating, and construction management of 160 LF of H-Pile wall, a 40 LF H-Pile wall, Replacement of three 18" culverts, Paving of approx. 2,800 LF of Elk River Trail, and replacement of 105 LF of 36" HDPE storm pipe. Project cost of approx. \$1.85 million.

- **Reference:** Kanawha County Commission, 409 Virginia St E #230, Charleston, WV 25301, 304.357.0101

CRW Yeager Airport, Runway 5 Slope Failure, Charleston, WV

Surveying and engineering services of slope failure emergency materials removal, storage and stabilization plans. Provided runway safety area monitoring surveys, quantity surveys, and stormwater construction USACE 404 and WVDEP 401 Permits. Work completed in 2020.

Reference: Allen Cadden, PE, DGE, Principal, Schnabel Engineering, 3 Dickinson Dr #200, Chadds Ford, PA 19317, 610.696.6066, acadden@schnabel-eng.com

Paint Creek Recreational Trail, Slip Repairs, Ross County, Ohio

This 32 mile trail is undergoing slip and erosion repairs with this current project (slip 31) designed with 12-18 foot Gabion retaining wall to be backfilled and rip-rap will be installed up and down the stream. The trail remains open during repairs.

Reference: Erin Stanley, Project Development/Grant Coordinator, Ross County Park District, 15 N Paint St #301, Chillicothe, OH 45601, 740-773-8794, erinstanley@rosscountyoiohio.gov

Cathedral Falls Flood Repairs, Gauley Bridge, WV

Cathedral Falls washed out stream below the falls. NREI provided preliminary review drawings, design, permitting, and construction administrations for the repairs of the stream below Cathedral Falls that washed out the banks and created a slip onto the baseball fields

Reference: Mayor Robert 'Bob' Scott, Town of Guley Bridge, PO Box 490, Gauley Bridge, WV 25085, 304.632.2505



Cross Lanes Radio Tower Slip Repair, Kanawha County, WV

Description: Planning, design, geotechnical, and construction management of 50 LF of H-Pile wall, 25 LF H-Pile wall, and approx. 210 LF of rock lined drainage ditch to repair slips under a radio tower building and guy wire structures for the tower.

Paint Creek Recreational Trail, Slip Repairs, Ross County, OH

This 32 mile trail is undergoing slip and erosion repairs with this current project (slip 31) designed with 12-18foot Gabion retaining wall to be backfilled while rip-rap will be installed up and down stream. The trail remains open during repairs.

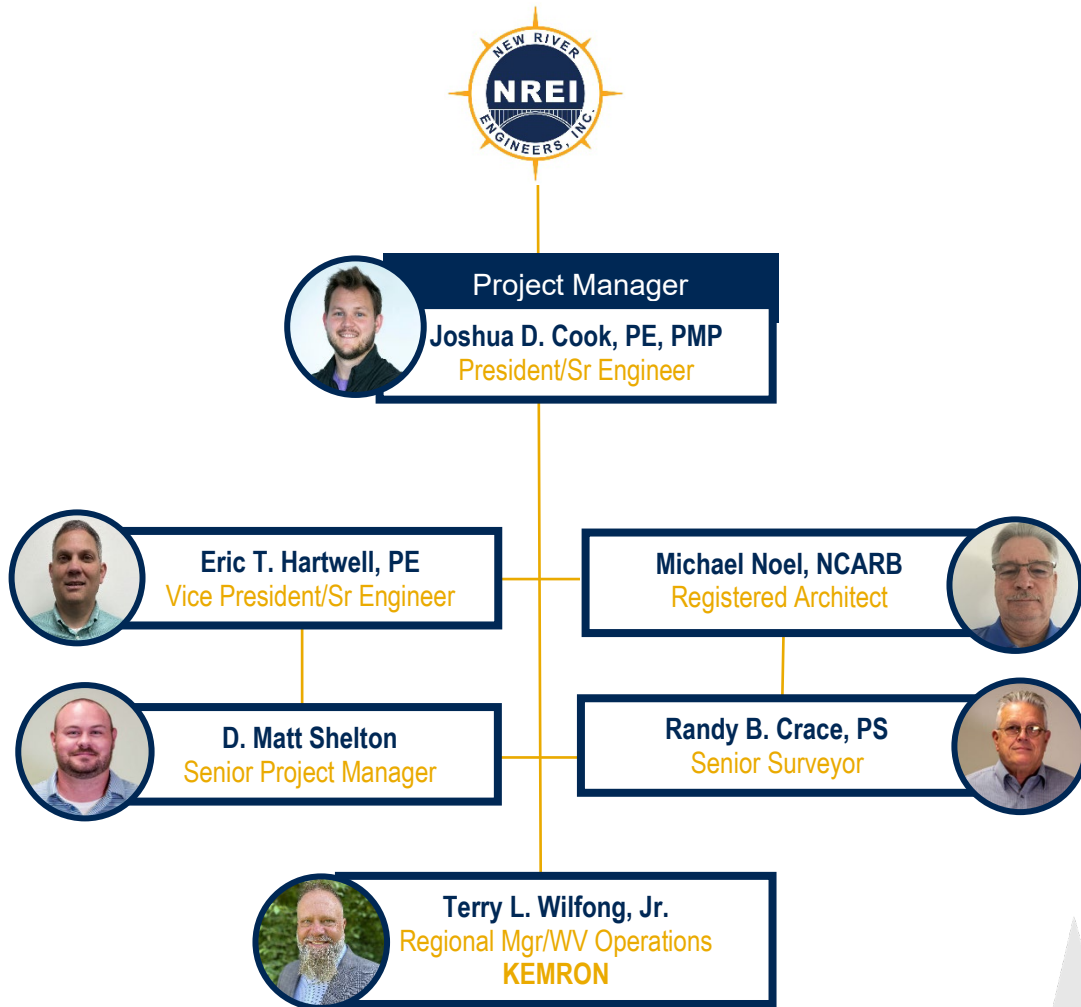
Reference: Erin Stanley, Project Development/Grant Coordinator, Ross County Park District, 15 N Paint St #301, Chillicothe, OH 45601, 937.509.0774, erinstanley@rosscountyohio.gov

West Virginia Water Department Authority, Riverbank Slope Erosion Repair, Charleston, WV

NREI provided CADD Design along Spring Street suggesting an H-pile retaining wall.

ORGANIZATIONAL CHART

West Virginia Division of Natural Resources



RESUMES OF KEY PERSONNEL



Joshua D. Cook, PE, PMP
Project Manager
President / Senior Engineer

EDUCATION

Bachelor of Science

Civil Engineering
West Virginia University Institute of
Technology

Master of Science

Engineering
Marshall University

CERTIFICATIONS

Professional Engineer — WV, OH, MI,
KY, MD, TN, VA

Project Management Professional
(PMP)

PROFESSIONAL AFFILIATIONS

American Society of Civil Engineers

West Virginia Rural Water
Association

Business Networking International
(BNI)

Project Management Institute (PMI)

Josh began his professional career in 2012 and has worked on a variety of civil engineering projects throughout West Virginia, Ohio, Virginia, Maryland, and Pennsylvania. During his career, Josh has served as project engineer, project manager and engineering manager for coal and natural gas companies and municipal engineering consulting firms, including New River Engineers.

Josh has experience in environmental remediation, groundwater protection plans (including spill prevention, control and countermeasure plans), stormwater permitting and design, construction management, water, wastewater, storm water and a variety of natural gas experience.

Josh has been successful in managing a variety of projects to remain on-time, on-budget and compliant.

PROJECT EXPERIENCE

Paint Creek Recreational Trail, Slip Repair, Ross
County, OH

City of Jackson and Ross County Parks District,
AMLER Salk Lick Creek, Jackson, OH

Town of Ansted, Gauley Mountain Bike Trail and Fox
Branch Creek Bridge Trestle, Ansted, WV

Fayette County Park Pool Project, Fayetteville, WV

Fayette County Fireman's Association, New Hawks

Nest Fire Training Center, Fayette County, WV

Hargrove Student Housing, Golden Bear Properties,
LLC, Beckley, WV

Meadow Bridge Community Center, WV

Boomer Fire Department House Addition, WV



Eric T. Hartwell, PE
Vice President / Senior Engineer

EDUCATION

Bachelor of Science

Civil Engineering
West Virginia University Institute of
Technology

Master of Science

Civil Engineering
West Virginia University

CERTIFICATIONS

Professional Engineer – WV

PROFESSIONAL AFFILIATIONS

Contractors Association of West
Virginia

Eric has over 25 years of experience in planning, design, and construction of environmental projects. The majority of his experience is in the design and construction of wastewater treatment and collection systems, water treatment and distribution systems and industrial oil water separators.

Eric was an integral part of the design team for several wastewater treatment plant upgrade projects and over 70 pump stations ranging in size from 5 to 7000 gallons per minute. He has also been involved in the design of multiple water treatment plants and pumping stations.

Eric oversees the design and construction of water storage tanks and pressure reducing valve stations. He has worked on environmental projects throughout West Virginia. His responsibilities include planning, design, construction administration, preparation of operation and maintenance manuals and operator training for water supply and distribution, wastewater collection and treatment, water loss and infiltration and inflow reduction projects.

Eric also has experience in construction management, payment request review and approval, quantity and cost estimates. His thorough and committed communication skills has earned him repeat clients throughout his career with municipal, PSD personnel, regulatory agencies and contractors.

PROJECT EXPERIENCE

City of Jackson and Ross County Parks District,
AMLER Salk Lick Creek, Jackson, OH

Mill Street Water & Sanitary Sewer Replacement,
Jackson, OH

Glasgow New Fire House, Glasgow, WV

WWTP Improvements, Ronceverte, WV

WWTP Improvements, Chapmanville, WV



EDUCATION

Bachelor of Arts
Architecture

Ohio University

Register NCARB

CERTIFICATIONS

Professional Architect —OH, WV, IL,
FL

PROFESSIONAL AFFILIATIONS

Athens Rotary Club

Boy Scouts of America

Athletes in Action

Michael Noel, NCARB

Registered Architect

Mike has recently joined the NREI team as of July 2025 along with his team including architects and CAD drafters. Mike was previously the Principal of Michael Noel Architect, LLC for the past four years. Before establishing his firm, he was Senior Principal with Panich, Noel and Associates for 32 years.

EXPERIENCE REGISTERED ARCHITECT

Responsible for day-to-day design and management of various construction types for the firm.

CONSTRUCTION DOCUMENTS

As the Partner in charge Mike has been partnered to oversee more than \$300 million dollars of construction documents varying from hotels, industrial buildings, churches, prisons, and higher and lower education.

PROJECT EXPERIENCE

Trimble Schools Building Additions and Remodeling
- \$400,000.

Alexander Schools Renovations and Maintenance
Facility - \$500,000. HVCRC Gymnasium and
Classroom Design - \$3,000,000.

Federal Hocking Local Schools-Feasibility Study.

Athens City Schools Renovations, Roof
Replacement, Additions, Bus Garage and Athlete
Facilities Buildings - \$15,000,000.

Athens High School Baseball Stands, Press Box and
Concessions Venue

Vinton County School Stadium Renovations and
Concession Stands

Master Plan Gallia Fair Grounds Multipurpose /
Athletic Building

Ohio University Track Stadium ADA Renovations

First Baptist Church, Sanctuary and Classrooms

River City Fellowship Church Renovation

Athens County Engineering Depot, Athens County,
OH

Rustic Charm Event Center, New Lexington, OH



Christopher D. Burford
Senior Project Manager

Chris has been with NREI for over fifteen years. As a Senior Project Manager, he oversees surface and underground mining permit applications, is the manager of surveying crews, manages State and Federal safety plans and permits, oversees construction oversight and construction management and mine planning.

Green and Associates, LLC, St. Clairsville OH – manager and supervisor of survey crews and office personnel, business development, and coordination with clients on various projects.

New River Safety, LLC – manager and supervisor of safety instructors, electrical inspectors, and office personnel, business development and coordination with clients and government entities.

Ellison Ridge Mining, LLC – management and oversight of various sub-contractors over mining, reclamation and civil site construction projects, business development, and coordination with clients and government entities.

EDUCATION

Associate of Science

Civil Engineering Technology
West Virginia University Institute of Technology

CERTIFICATIONS

Certified Underground Coal Miner

Certified Surface Coal Miner

MSHA Certified Limited Instructor

MSHA Certified Gravimetric Dust Sampling

MSHA Certified Gravimetric Dust Calibration & Maintenance

Safe Land USA PEC Safety

MSHA – Methane / Oxygen Deficiency Qualified

APNGA Portable Nuclear Gauge Safety & USDOT Hazmat Certified
#299-160-926-311

APNGA Certificate of Achievement, Radiation Safety Officer Class #299-160-994-3161

Heartsaver First Aid, CPR & AED Certified

PROFESSIONAL AFFILIATIONS

Contractors Association of West Virginia

West Virginia Rural Waters Association

West Virginia Coal Association

Friends of Coal Association

PROJECT EXPERIENCE

Hargrove Student Housing, Golden Bear Properties, LLC, Beckley, WV

Meadow Bridge Community Center, WV
City of Montgomery Pavillion, Montgomery, WV

Town of Ansted, Gauley Mountain Bike Trail and Fox Branch Creek Bridge Trestle, Ansted, WV
Boomer Fire Department House Addition, WV
Fayette County Park Pool Project, Fayetteville, WV
Fayette County Fireman's Association, New Hawks Nest Fire Training Center, Fayette County, WV
Fayette County Shooting Range and Training Center, Fayetteville, WV





D. Matt Shelton
Senior Project Manager

EDUCATION

Bachelor of Science

Civil Engineering Technology
West Virginia University Institute of
Technology

CERTIFICATIONS

Environmental Site Assessment
Commercial Real Estate

PROFESSIONAL AFFILIATIONS

Water Environment Federation
Contractors Association of West
Virginia

Matt began his career in the field as a surveyor and has progressed to successfully earning a civil engineering degree. It's with this eventual process that makes his skills superior with overseeing site development, water supply, wastewater, storm water and drainage projects. His skills include construction management, record keeping, quantity and payment reviews. His attention to detail and great communication skills has earned him much respect among general contractors, subcontractors, community representatives and residents. His solid techniques move projects in a professional, cost-effective and timely manner.

Matt is experienced in site grading, surveying, building layouts, water & sewer system design and construction inspection on civil engineering projects.

Matt's experience as an Engineering Technician includes design of water line extensions, water booster stations, water storage tanks, wastewater pump stations, sewer line extensions, manholes, drainage calculations, and preparation of quantity and cost estimates.

Matt's experience as a Survey Technician/ Instrument team member includes topographic surveys, construction stakeout for water and sewer systems and highways, building layout, cut sheets for sewer systems and GPS surveying for field control work, etc.

PROJECT EXPERIENCE

Elk River Flood Repairs and Coonskin Park Trail Replacement, Kanawha County, WV

Big Bend Golf Course Slope and Coonskin Park Trail Wall Flood Repair, Kanawha County, WV

City of Jackson and Ross County Parks District, AMLER Salk Lick Creek, Jackson, OH

CRW Yeager Airport, Runway 5 Slope Failure, Charleston, WV



EDUCATION

Bachelor of Science

Industrial Technology
West Virginia State College

Master of Science Environmental Studies

MUCGS, Institute of WV, Partial
Course Work

CERTIFICATIONS

Professional Surveyor – KY, WV, OH

Environmental Site Assessment
Commercial Real Estate Certification
ASTM E-1527 & E-1528

ACSM Surveying Instrumentation and
Coordinate Computation Certification

Center College, Charleston, WV
Technical Degree, Drafting

PROFESSIONAL AFFILIATIONS

West Virginia Association of Land
Surveyors

American Congress of Surveying &
Mapping

National Society of Professional
Surveyors


American Institute of Architects, WV

Randy B. Crace, P.S.

Senior Surveyor

Randy began his career in 1983 working on a variety of surveying and engineering projects. Areas of concentration in boundary surveys, mapping, topography, subdivisions, annexations, right of ways, subdivision development, construction stakeout, aerial mapping controls, GPS-RTK survey control networks, oil and gas well locations, surface and underground mining permits, construction stakeout, hydrology, erosion and sediment control plans, storm water retention systems, site grading plans, parking lot layout, WVDOH driveway permits, CAD software programs, Geographic Information Systems, Phase I - ASTM environmental site assessment and expert witness testimony in the surveying field.

U.S. Army - SP4

Honorable Discharge - 1974 

PROJECT EXPERIENCE

Town of Fort Gay Sewer Lines, Wayne County, WV

City of Jackson, Salt Lick Creek Hydrologic &
Hydraulic Flood Study, Jackson, OH

CWVRAA Yeager Airport, Stormwater
Improvements, Charleston, WV

Hargrove Student Housing Renovation, Beckley,
WV

Boomer Fire House Addition, Boomer, WV

Glasgow Fire Department New Fire Station,
Glasgow, WV

New River Engineers, Inc. Headquarters Building,
Teays Valley, WV

Thomas Hospita Environmental Site Assessments,
Kanawha County, WV

WVDOC Denmar Correctional Center, Pocahontas
County, WV



**Charles "Chuck" Kurzyna, P.E., P.S.
Senior Engineer / Senior Surveyor**

Chuck has over 30 years of engineering and management experience in the mining industry and consulting business. He specializes in surface and underground mine design, planning, and surveying; environmental and safety permitting; project and construction management.

Project Manager for a consulting engineering firm, responsible for job estimates and bidding, supervise office staff in engineering related projects including surface mine surveying, reclamation and permitting, reserve studies, etc.

Chief Engineer for a small mining and construction company, responsible for mine planning, production tracking, construction job bidding, construction engineering, etc.

Chief Engineer, Senior Engineer for the Lady Dunn Surface Mine & Preparation Plant; coal reserve evaluations; project engineering for mine related facilities; environmental permits for large surface and deep mining operation; etc.

EDUCATION

Bachelor of Science

Mine Engineering Technology
West Virginia University Institute of Technology

Associate of Science

West Virginia University Institute of Technology

CERTIFICATIONS

Professional Engineer – WV, OH,
PA, VA, KY, GA

Professional Surveyor – WV

Underground Mine Foreman

Surface Mine Foreman

PROFESSIONAL AFFILIATIONS

Contractors Association of West Virginia

West Virginia Coal Association

Friends of Coal Association

Society of Mining Engineers

PROJECT EXPERIENCE

City of Jackson and Ross County Parks District,
AMLER Salk Lick Creek, Jackson, OH

CRW Yeager Airport, Runway 5 Slope Failure,
Charleston, WV

Terry Wilfong serves as the Regional Manager in charge of the management of technical and administrative issues at KEMRON's Charleston office. He is also responsible for business development, quality assurance, and customer relations issues associated with the office. Mr. Wilfong's specialties include due diligence, underground storage tanks, and management of multi project portfolios. Mr. Wilfong is responsible for direction, preparation, scheduling, and implementation of field activities at several retail petroleum facilities, industrial sites and commercial facilities, WV Voluntary Remediation and Redevelopment Sites, US EPA Brownfields Sites and CERCLA Superfund Sites throughout the United States. Mr. Wilfong has extensive experience in coordination and evaluation of site investigation activities including assessment of adsorbed dissolved, LNAPL, DNAPL and vapor-phase impacts. His responsibilities include installation, monitoring, and maintenance of remediation systems including pump and treat, LNAPL recovery, soil vapor extraction, air sparging bioremediation systems and mobile enhanced vacuum extraction units. Field work includes RCRA, CERCLA and LUST field investigation, field screening, monitoring well installation, UST removal and contractor oversight during remediation activities. Mr. Wilfong also has experience with remedial testing, pump tests, vacuum extraction tests, sparge tests, and rising head tests. Mr. Wilfong has also performed numerous Phase I ESAs and Phase II assessments for various private clients for potential real estate transactions in several states. As a WVDEP UST Certified Class B Remover, Mr. Wilfong has provided oversight or coordinated >50 UST system removal/closures. Mr. Wilfong began his professional career as an Environmental Technician in 1998 and has managed the investigation, remedial strategy, implementation of corrective actions and closure of >100 Leaking UST sites in his career.

Terry began his environmental career at KEMRON in 1999 as a Staff Scientist and currently serves as Regional Manager at KEMRON's Charleston, WV office. With experience in various regulatory programs and diverse clientele, he specializes in due diligence, UST/AST compliance and remediation, site investigation, remediation system design, in-situ remedial injections, and management of multi-project portfolios. As a seasoned

Project/Program Manager, Terry has addressed environmental liabilities and provided regulatory guidance for numerous private and government clients. As Regional Manager, Mr. Wilfong is responsible for business development, career development, project budgeting, project scheduling, work scope development, project billing issues, report review, regulatory agency negotiations, and client relations and business development. Mr. Wilfong's technical experience also includes management, direction, and implementation of Voluntary

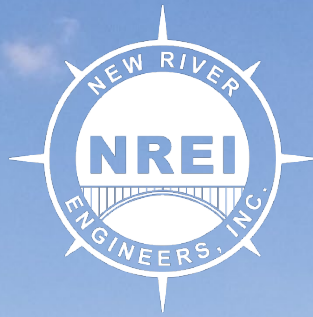
Remediation/Brownfields sites; RCRA Facility Investigations under RCRA Corrective Action programs and management of field activities at a CERCLA Superfund site. Terry is also responsible for personnel scheduling, site management, site health and safety officer and participation in the KEMRON Quality Control Group. Mr. Wilfong currently serves as a Licensed Remediation Specialist under the West Virginia Voluntary Remediation and Redevelopment program and has extensive experience with risk-based corrective action and remedial evaluation including the use of fate and transport modeling, vapor intrusion modeling and development of site-specific target levels.

Education

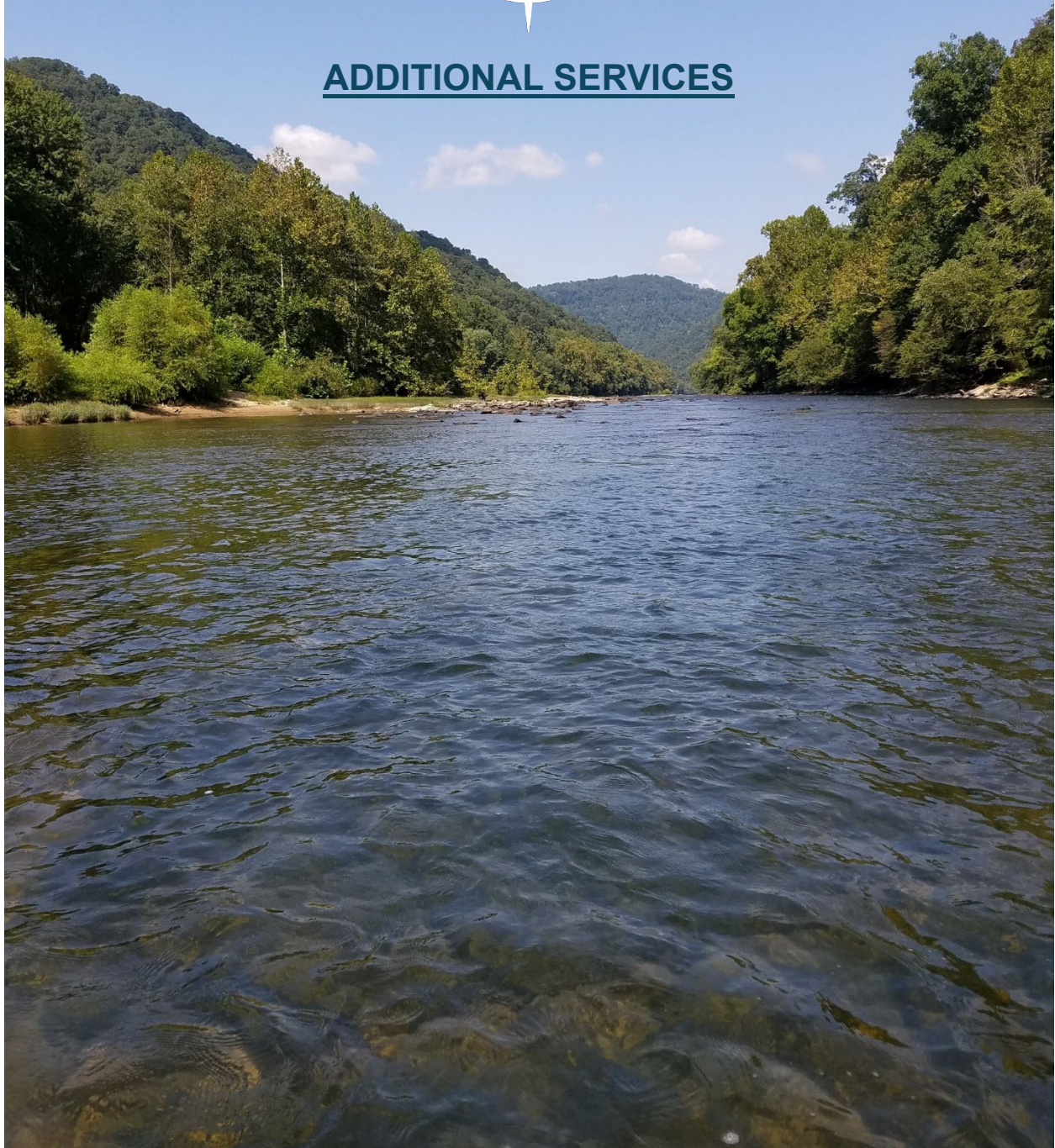
BS, Environmental Protection/ Science,
West Virginia University, 1997
MS Environmental Science, anticipated
graduation - 2025, Marshall University

Registrations / Certifications / Training

- Licensed Remediation Specialist (LRS) under West Virginia Voluntary Remediation and Redevelopment Act (#169)
- 40 Hour OSHA Hazardous Waste 29 CFR 1910.120
- 16-Hour OSHA Refresher Course 29 CFR 1910.120
- 8-Hour OSHA Refresher Course 29 CFR 1910.120
- 8-Hour Management/Supervisory OSHA 29 CFR 1910.120 (e)(4)
- Cross-connection Backflow Prevention
- First Aid, Adult CPR
- WV Department of Environmental Protection Well Driller Certification (#WV00314)
- WVDEP Class on EPA Method 5035
- Kentucky Certified Remediation Contractor (#1385)
- IATA Hazardous Material Shipping
- Cross-connection Backflow Prevention
- First Aid, Adult CPR



ADDITIONAL SERVICES



Water Supply, Treatment, Storage and Distribution Systems

With over forty years of experience, NREI is your one stop shop for water supply, treatment, storage, and distribution systems. We implement our four-step process to each project to develop a better understanding of our client's needs and expectations: 1. Preliminary Engineering Report; 2. Design Phase; 3. Bidding Phase; 4. Construction Administration. We are "hands on" during all phases to ensure our clients obtain what they want in every project.

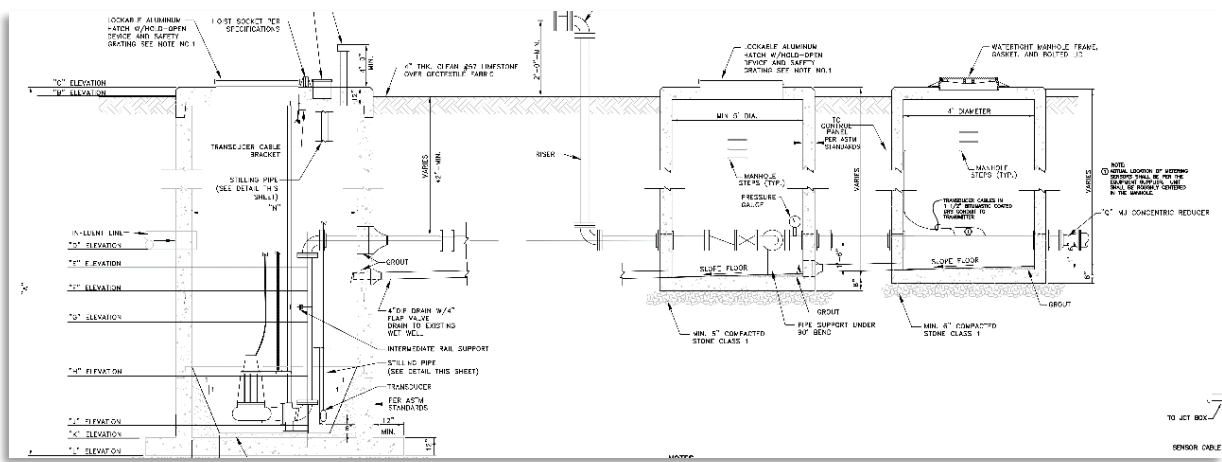
As a locally owned "small family" consulting firm, our clients get more for their money and receive more one-on-one time with our employees, which yields a more pleasurable experience. We excel in helping our clients ascertain funding from various governmental agencies to assist in the financing of the project.



Wastewater Collection & Treatment Systems / Industrial & Hazardous Waste Treatment Systems

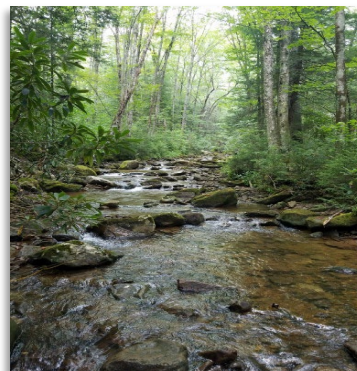
We recognize the importance and understand the hurdles that our clients must maneuver to offer wastewater service to their customers. We have a proven track record with a vast knowledge of local conditions and an excellent reputation with all regulatory, funding, permitting and enforcement agencies. Our crew, from CAD Techs to the President, is included in all phases of the project. We have the knowledge and capacity to carry out the workload in a timely manner.

We have a full understanding of wastewater systems from small treatment facilities to municipalities, all the way to industrial wastewater systems. We are thoroughly knowledgeable in obtaining federal, state, and local funding and are available to you 24/7. We will see your projects from conception to completion.



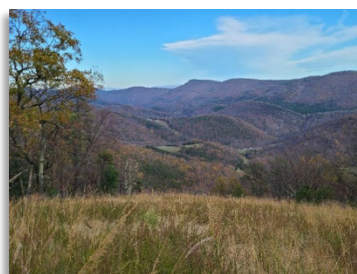
Environmental Permitting

NREI's team assists with an efficient and thorough team of environmental consultants making sure permitting, regulatory compliance, construction monitoring and biological surveying are done with the utmost quality and cost effectiveness. This saves your project time and money from the start and avoids costly delays in the future. Compliance with Clean Air and Water Acts, NEPA and other state and federal requirements is invaluable to every project. Our environmental permitting team provides attention to detail and practical solutions to complex issues to keep your project going forward and within budget.



SERVICES

- Storm Water Permitting, Design & Management
- Water Quality Monitoring
- Flood Plan Determination & Flood Elevation Certificates
- Groundwater Protection Plans
- Stream & Wetland Delineation
- Environmental Site Assessment
- Spill Prevention Control & Countermeasures Plan (SPCC)
- Article 3 Mining Permits
- Article 11 NPDES Permits
- West Virginia 401 Certification Permitting
- Wastewater Permitting, Design & Management
- Clean Water Act Section 402 Permitting (NPDES Permit)
- United States Army Corps of Engineers 404 Permitting
- Air Quality Permitting Best Management Practices (BMP)



AGENCY EXPERIENCE

- US Environmental Protection Agency (EPA)
- National Environmental Policy Act (NEPA)
- US Fish & Wildlife
- National Conservation Planning Partnership (NRCS) & Forest Service
- United States Department of Agriculture (USDA) – Rural Development
- Federal Aviation Administration (FAA)
- West Virginia Public Lands
- WV Department of Natural Resources (DNR)
- WV Culture & History
- EPA & WV DEP Compliance
- Ohio State Historic Preservation Office (SHPO)
- Ohio Department of Natural Resources (DNR)
- Ohio Environmental Protection Agency (EPA)
- Ohio Public Works Commission (OPWC)
- Ohio Department of Commerce/Division of Industrial Compliance
- Virginia Department of Environmental Quality (DEQ)

Structural Engineering

We offer a full range of structural engineering services to help meet the needs of our clients. In addition to professional training, our structural capabilities are bolstered by a depth and breadth of experience developed through solving unique and complex engineering challenges. We have experience with projects in the private, public, commercial and industrial sectors. Whether designing new structures, retrofitting existing structures, addressing overstressed conditions, or assessing structural integrity, our clients can rest assured that we are capable of meeting their specific needs.

- Structural Analysis
- Steel Structures and Building Enclosures
- Modular Design
- Pilings and Foundations
- Concrete Containment Structures
- Retrofit of Existing Overstressed Structures
- Building Permits and Code Analysis
- Bridge Cranes, Monorails, Jibs, etc.
- Truck/Rail Unloading Stations
- Lifting Beams and Rigging
- Industrial Architectural Design
- Structural Inspections and Assessments



Construction Management and Civil Site Design

NREI is established as one of the leading construction engineering consulting firms in the region with experienced staff that are committed to and dedicated to your project from initial site design and bid package development to inspections and certifications.

NREI offers Civil Site Design services including sub-division layouts, commercial development and design, HCA project areas, well pads, impoundments, street paving, drainage control, solid waste landfill and impoundment design. We know and understand the value and importance of properly designed sites that offer cost effective solutions.

- 3D Site Design
- Haulage & Access Road Design
- Excess Spoil Disposal Site Design
- Drainage Design and Runoff Calculations
- Solid Wastewater Management and Landfill Design
- Subdivision Design and Permit Applications
- Site Development Plans
- Pre, During & Post Construction Surveying
- HECRAS Modeling
- Stability Analysis
- Site inspections/Project Management
- Certifications
- Cost Estimates
- Street Paving Design and Drainage Control
- Construction Management
- Earth Work Quantity Estimates
- Construction Staking
- Concrete Testing & Inspection



Geotechnical Engineering

NREI's professional engineers and engineering technicians have extensive geotechnical engineering experience specializing in compaction testing, foundation design, slope failure remediation and embankment design. We focus on identifying the needs of clients and providing cost-effective solutions with real results.

- Drilling Oversight, Management and Inspection
- Slope failure Remediation
- Slope Stability Analysis
- Gabion Basket Wall Design
- Compaction Testing
- Foundation Design
- Embankment Design
- Drainage Analysis
- Soldier Pile Wall Design



Surveying

NREI is established as one of the area's leading surveying firms with our 45 years of experience in property, boundary and topographic mapping. Our team is skilled in courthouse research, finding property evidence, providing quality property surveys and construction stake-outs.

Additionally, we offer aerial mapping utilizing drone surveys. Our aerial mapping has proven to be invaluable for construction progress mapping, well pad progression, subdivision layouts and civil site designs.

- Property Abstract & Research
- Boundary Surveys
- Survey Plats
- Subdivision Design & Layout
- Construction Surveying & Stakeout
- Underground Mining Surveying
- Right-of-Way & Land Acquisition
- GPS Services
- Aerial Mapping / Control
- Drone Flight & Surveying
- Topographical Surveys
- ALTA / ACSM Land Title Surveys
- Unit Surveys
- Surface Mining Surveying
- Computer Mapping
- GIS Services



Subsurface Utility Survey

NREI uses some of the most advanced technology in Ground Penetrating Radar (GPR), pipe and cable locators and smoke testing machines to accurately survey, map and inspect subsurface utilities. These services have been extensively used by our clients in the construction, oil and gas industries, as well as public service districts.

- Pipe and Cable Location
- Sewer Line Smoke Testing
- Ground Penetrating Radar (GPR)
- Internal Video Pipe Inspection

