



The following documentation is an electronically-submitted vendor response to an advertised solicitation from the *West Virginia Purchasing Bulletin* within the Vendor Self-Service portal at ***wvOASIS.gov***. As part of the State of West Virginia's procurement process, and to maintain the transparency of the bid-opening process, this documentation submitted online is publicly posted by the West Virginia Purchasing Division at ***WVPurchasing.gov*** with any other vendor responses to this solicitation submitted to the Purchasing Division in hard copy format.

Header 1

List View

General Information

Contact

Default Values

Discount

Document Information

Clarification Request

Procurement Folder: 1523821

Procurement Type: Central Purchase Order

Vendor ID: 000000204737



Legal Name: CTL ENGINEERING OF WV INC

Alias/DBA:

Total Bid: \$0.00

Response Date: 10/29/2024



Response Time: 10:38

Responded By User ID: ct leng



First Name: Joe

Last Name: Stanley

Email: jstanley@ctleng.com

Phone: 304-292-1135

SO Doc Code: CEOI

SO Dept: 0313

SO Doc ID: DEP2500000001

Published Date: 10/8/24

Close Date: 10/29/24

Close Time: 13:30

Status: Closed

Solicitation Description: AML - EOI Morgantown Airport Subsidence Phase II

Total of Header Attachments: 1

Total of All Attachments: 1



Department of Administration
Purchasing Division
2019 Washington Street East
Post Office Box 50130
Charleston, WV 25305-0130

State of West Virginia
Solicitation Response

Proc Folder: 1523821
Solicitation Description: AML - EOI Morgantown Airport Subsidence Phase II
Proc Type: Central Purchase Order

Solicitation Closes	Solicitation Response	Version
2024-10-29 13:30	SR 0313 ESR10292400000003098	1

VENDOR
000000204737
CTL ENGINEERING OF WV INC

Solicitation Number: CEOI 0313 DEP2500000001
Total Bid: 0
Response Date: 2024-10-29
Response Time: 10:38:11
Comments: EOI

FOR INFORMATION CONTACT THE BUYER
Joseph E Hager III
(304) 558-2306
joseph.e.hageriii@wv.gov

Vendor		
Signature X	FEIN#	DATE

All offers subject to all terms and conditions contained in this solicitation

Line	Comm Ln Desc	Qty	Unit Issue	Unit Price	Ln Total Or Contract Amount
1	EOI Engineering Design Services				0.00

Comm Code	Manufacturer	Specification	Model #
81100000			

Commodity Line Comments: EOI

Extended Description:
EOI Engineering Design Services



Department of Administration
Purchasing Division
2019 Washington Street East
Post Office Box 50130
Charleston, WV 25305-0130

State of West Virginia
Centralized Expression of Interest
Architect/Engr

Proc Folder: 1523821			Reason for Modification:
Doc Description: AML - EOI Morgantown Airport Subsidence Phase II			
Proc Type: Central Purchase Order			
Date Issued	Solicitation Closes	Solicitation No	Version
2024-10-08	2024-10-29 13:30	CEOI 0313 DEP2500000001	1

BID RECEIVING LOCATION

BID CLERK
DEPARTMENT OF ADMINISTRATION
PURCHASING DIVISION
2019 WASHINGTON ST E
CHARLESTON WV 25305
US

VENDOR

Vendor Customer Code:

Vendor Name :

Address :

Street :

City :

State : **Country :** **Zip :**

Principal Contact :

Vendor Contact Phone: **Extension:**

FOR INFORMATION CONTACT THE BUYER

Joseph E Hager III
(304) 558-2306
joseph.e.hageriii@wv.gov

**Vendor
Signature X**

FEIN#

DATE

All offers subject to all terms and conditions contained in this solicitation

west virginia



EXPRESSION OF INTEREST

EOI – Morgantown Airport Subsidence Phase II

CEOI 0313 DEP2500000001

October 29, 2024



EXPRESSION OF INTEREST

Engineering Services

EOI – Morgantown Airport Subsidence Phase II

Table of Contents

Section 1 - Introduction

- Letter of Interest

Section 2 - Firm and Sub Consultant Information

- Profile of Firm
- Technical areas of strength

Section 3 - Project Overview

- Project Overview
- Project Management Plan
- Project Goals
- Ability to Complete Project

Section 4 - Project Personnel

- CTL Organizational Chart
- Resumes

Section 5 - Past Performance

- AML and Relevant Project Experience
- AML / Mine Related Past Performance Matrix
- Past Project Experience

Section 6 - Attachments

- CCQQ Attachment B
- RPEM Attachment C



SECTION 1 INTRODUCTION



October 29, 2024

West Virginia Department of Environmental Protection

Division of Land Restoration

Office of Abandoned Mine Lands & Reclamation

(WVDEP-DLR-AML)

601 57th Street SE

Charleston, WV 25304

Re: CEOI 0313 DEP2500000001

Expression of Interest

Professional Services for Design and Construction Oversight Services

EOI – Morgantown Subsidence Phase II

Joseph E. Hager III,

CTL Engineering, Inc. (CTL) is very pleased to present this Letter of Interest to provide professional design construction oversight services for WVDEP-DLR-AML. With over 97 years in the business, we feel our team can provide the professionals and facilities that the State of West Virginia is looking for.

CTL has evolved into a recognized leader in the Abandoned Mine Lands Engineering Design, Investigation and Restoration field. We offer the services necessary to provide a quality service to support your program. Our capabilities include laboratory facilities, drilling rigs, surveying systems, design equipment, and a qualified team of professionals. Our West Virginia staff leading our in-house disciplines have direct AML design and construction oversight experience. Our professional staff include: Civil & Mining Engineers, Geotechnical Engineers, CAD Designers, Surveyors, Environmental Experts including Geologists, Hydrologists and Biologists. We are experienced in completing more than 50 diverse projects annually that require aerial mapping, support surveying with a variety of modern surveying equipment, such as advanced Global Navigation Satellite System (GNSS), Robotic Total Stations, Data collector, and GPS, and final contouring for design.

Our in-house ability reaches beyond simply being an AML design and reclamation firm. We also have extensive contract administration, and management experience with the procedures of the state of West Virginia. Our invoicing procedures and accounting software have been accepted, used, and audited by various state agencies. With offices in Charleston and Morgantown, CTL has the ability to cover projects in all areas of the State.

With these contracts having multiple projects and multiple services beyond design, CTL has thrived on collaboration with a team of local firms and professionals to provide consistent and comprehensive services throughout the project duration.

In line with the above approach, CTL has added **Dieffenbach and Hritz (D&H)** to our design and construction oversight team for this project. D&H will be responsible for the



survey and mapping on the projects and assist with the construction services. D&H has a local office and staff in Morgantown. D&H has experienced reclamation staff and a long history of providing these services to the State of West Virginia. D&H and CTL have partnered on many projects in WV.

CTL, as the lead for the project, has a primary staff with over 125 years of experience with abandoned mine reclamation engineering on both a national and international level. Our qualifications and facilities are unsurpassed when it comes to Abandoned Mine Land Reclamation Design and Construction Oversight. With offices in Charleston and Morgantown, we can effectively respond to any AML Design and Construction Oversight tasks throughout West Virginia. Our staff members have extensive experience relative to reclamation design, highwall elimination, abandoned portal seals and drainage control structures.

CTL also has working experience at the Morgantown Airport as we are currently providing construction management for the airport runway extension. CTL also completed prior subsidence and grouting projects at the airport. In addition, CTL has provided services to the WVDEP for several subsidence grouting projects through the years, such as the Fairmont Jackson Addition project and the town of Thomas project. These project profiles are included in the past performance section along with other similar projects.

CTL has a strong Geotechnical group with multiple drilling fleets and testing laboratories that have strong experience in subsidence reclamation projects. The general engineering requirements in your request actually aligns well with the areas of expertise and experience of the CTL team. CTL has also provided designs, construction oversight and specifications for Public Projects and Private throughout the region.

We sincerely appreciate the opportunity to submit these qualifications to you for consideration. Should you have any questions or need additional information, please contact our office at (304) 292-1135.

Respectfully submitted,
CTL Engineering of West Virginia, Inc.

A handwritten signature in blue ink, which appears to read 'Joe Stanley', is positioned above the printed name of the signatory.

Joseph Stanley
Business Development Manager



SECTION 2 FIRM AND SUBCONSULTANT INFORMATION



FIRM INFORMATION – CTL Engineering

CTL WV is part of CTL Engineering, Inc. (formerly known as Columbus Testing Laboratory), which was established in Columbus, Ohio in 1927 as an independent engineering testing laboratory serving the local community. CTL WV is a full-service civil & geotechnical engineering, drilling, materials testing and construction observation services consulting company. CTL WV was founded in 1983 to provide regional services to West Virginia, Maryland and Pennsylvania. Since 1927 our expertise has expanded and focused mainly on foundation engineering, construction testing and inspection services.

CTL WV has a state-wide staff of over 20 people; including licensed professional engineers, licensed land surveyors, environmental scientists, geologists and certified engineering technicians. Nationwide CTL Engineering sustains a staff of over 450 employees, providing additional professional expertise as well as staff and equipment resources for meeting project needs and goals.

Over our 40 years in West Virginia, CTL WV has provided numerous civil site designs, geotechnical designs, stormwater plans and surveys for abandoned mine land reclamation, commercial and residential developments and roadway projects. We have successfully prepared State and Federal 401 and 404 Permit submittals, Ms4 Phase II stormwater permits and conducted Environmental Site Assessments. CTL WV also has significant experience working on mining related projects including mine plans and permitting, mine refuse reclamation and subsidence evaluations. These projects were completed by conscientious interaction with Architects, Engineers, State and Federal Agencies and Owners.



CTL WV has certified engineering and laboratory technicians providing material testing and construction observation services. Our Morgantown lab is annually inspected by the West Virginia Division of Highways. CTL WV maintains a fleet of four (4) drill rigs including truck and rubberized track mounted. Our crews have experience in steep terrain and barge drilling and deep boring exploration to depths greater than 300 feet. Additionally, CTL Engineering has a total of 13 drill rigs allowing CTL to place multiple rigs on one site, if project schedule demands.



FIRM INFORMATION – Sub consultants

While CTL WV can provide the anticipated services in-house, we have also added the following highly qualified and experienced firm to our Team to augment our capabilities and capabilities.

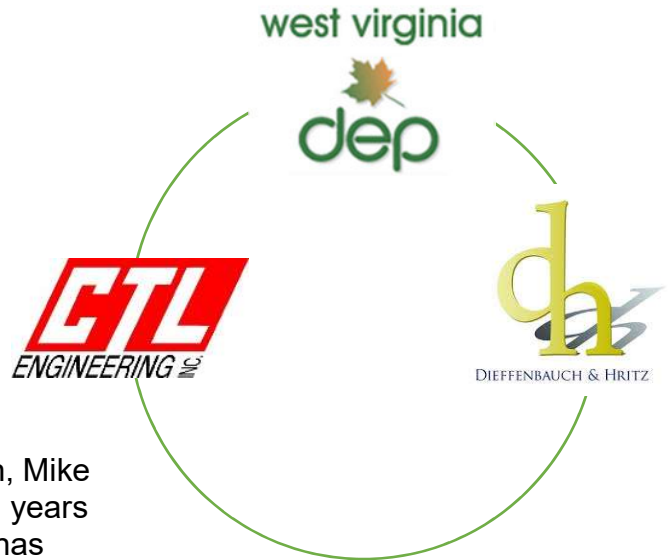
Strategic Team Partners	
Firm Name	Role
Dieffenbach & Hritz	Survey / Construction Services

CTL will lead the Team and will provide the required design and construction oversight services as a seamlessly integrated Team.

The leadership team of D&H, including Chris Dieffenbach, Mike Hritz, Herbert Parsons, and Eric Stewart, brings over 100 years of combined civil engineering experience. To date, D&H has designed over 2,000 well pads, 20 water/wastewater management facilities and permitted over 500 miles of pipelines for the oil and gas industry. D&H is currently providing routine monitoring on completed facilities, design and construction monitoring for maintenance projects and mechanical design services. D&H has provided design and construction management for stormwater projects ranging from K-12 schools, car dealerships, and federal waterline projects among others.

D&H leadership also has over 50 years of combined experience on Abandoned Mine Land (AML) and Acid Mine Drainage (AMD) projects. In September 2022, D&H was awarded two projects for the WV Department of Environmental Protection (WVDEP), both located in Lewis County. The projects include stabilization of dangerous landslides, road stabilization, and installation, repair and/or replacement of proposed and/or existing drainage controls and features including the installation of a new highway culvert, and utility relocation, all of which takes place around multiple residences.

Survey services are handled by our in-house staff of experienced surveyors who combine the technical expertise necessary to ensure successful project completion. Quality and accuracy are critical for every land survey project we undertake, regardless of its size or complexity. Service features include: Boundary Surveying, Plats, and Legal Descriptions; ALTA/ACSM Land Title Surveys; Topographic and Planimetric Surveys; Corridor and Alignment Surveying; Utility/Infrastructure As-Built Surveys; Wetland Delineation Surveys; and Ground Control for Aerial Mapping among others.





TECHNICAL AREAS OF STRENGTH FOR THE TEAM

Engineering Categories	Technical Areas of Strength
Geotechnical Engineering Services	✓
Civil Site Design (Mining and Reclamation)	✓
Professional Surveying Services	✓
Construction Inspection/Administration & Materials Testing	✓
Environmental	✓

Geotechnical Capabilities - CTL

CTL's Routinely Performs Subsurface Explorations and Soil and Rock Testing

CTL annually performs over 350 geotechnical explorations, including soil and rock testing, for highway, bridge and geohazard projects throughout the states of West Virginia, Ohio, Indiana and Kentucky. CTL owns and operates its own fleet of 13 drill rigs, the largest of which can drill, core rock, and take samples up to 300 feet deep. Our rigs are capable of accessing difficult locations since many of them are track-mounted, ATV or 4-wheel drive truck-mounted rigs.

In addition, CTL utilizes in-house geophysical equipment and software to evaluate variations in subsurface conditions such as the identification of the bedrock surface. These capabilities include Refraction Microtremor (ReMi), Electrical Resistivity Imaging (ERI) along with Ground Penetrating Radar (GPR) equipment to locate voids or other anomalies. CTL also has Pile Driving Analyzer (PDA) equipment for performing dynamic testing of driven piles.



CTL houses AASHTO–Accredited geotechnical testing laboratories in several office locations, which are each managed by Professional Engineers specializing in geotechnical engineering. These laboratories provide a detailed analysis of the surface and subsurface composition and chemistry of soils and rock encountered during geotechnical explorations and are equipped to conduct Consolidation, Tri-axial Shear, Unconfined Compressive Strength, Direct Shear, Moisture Density Relationship (Proctor Tests), and CBR tests.

CTL is well-known for providing cost-effective, yet safe solutions to difficult subsurface conditions. We review a significant number of geotechnical reports prepared by others for the purpose of providing alternative recommendations that are more constructible, less conservative, yet maintain an appropriate factor of safety.

CTL has 20 geotechnical engineers with a majority of the engineers with Master's degrees and Professional Engineer Registration.



Civil Site Design – CTL

CTL's Design Team has the capabilities to handle any size project.

The main goals of civil site design are functionality, quality and efficient use of space, and overall appearance. Our design team consist of qualified people who live and work in the area and take pride in seeing their designs benefit the community. We have performed civil site design services for a wide variety of projects throughout West Virginia, Pennsylvania and Ohio. These projects consist of **mining and AML related projects**, medical facilities, restaurants, and shopping centers. In addition, we have performed engineering for local school districts and universities. In our efforts to be a full-service company, we provide assistance through the funding process, design every element of a site, and manage the construction process, ensuring not only a quality product, but also the success of our clients. These are some civil site design services we can offer:



CTL WV provides the following Civil Design services:

Complete Site Development	Infrastructure Planning and Design
Conceptual Design / Presentations	Reclamation Design
Stormwater Management	Permitting (NPDES)
Erosion and Sediment Control	As-Built Surveys and Drawings

Professional Surveying Services – D&H

D&H Maintains a Full-Service In-house Surveying and Mapping Team



D&H offers comprehensive surveying and mapping services tailored to the mining, oil and gas, land development, transportation, and environmental sectors. We prioritize precision and quality in every project, regardless of scope or complexity. Our team of experienced professionals blends technical expertise with practical know-how to deliver successful results. By leveraging the latest technology, including GPS, LiDAR, and remote sensing, we enhance the accuracy, efficiency, and detail of our surveys. This advanced technology allows us to provide our clients with precise data and insights, enabling better

decision-making and streamlined project execution. Our commitment to innovation ensures that we deliver cost-effective survey solutions of the highest quality, on time and within budget. Boundary Surveying, Plats & Legal Descriptions
Subdivision Plats

D&H provides the following surveying services:

ALTA/ACSM Land Title Surveys	Corridor and Alignment Surveying
Topographic and Planimetric Surveys	Utility/Infrastructure As-Built Surveys
Ground Control for Aerial Mapping	Route or Right of Way Surveys, Plats & Plans
Global Positioning System	As-Built Surveys and Drawings
	Wetland Delineation Surveys

Construction Administration & Inspection – CTL and D&H

CTL WV's Construction Administration Services Include On-site Daily Inspections

Federal, State, and Locally funded Construction Projects require a high level of administration and quality control to meet the project's demands. Counties and Municipalities, as well as private owners, developers, and contractors have selected CTL WV for Construction Administration, knowing that we have the experienced staff to be accurate, dependable, and perform these services in a timely manner. Our experienced engineers, inspectors, and technicians are your partners in construction. We help in completing these projects successfully and meeting the specific project requirements.



CTL WV's qualified construction oversight inspectors will observe and inspect your construction project and complete the necessary daily documentation required by the Federal, State, and Local funding agencies participating in the project. CTL WV also provides in-house testing services such as concrete, asphalt, and sub-grade compaction, as well as daily on-site inspection services.

CTL Team provides the following CA services:	The on-site inspector provides and/or participates
Conduct Pre-Construction Conference	in the following daily on-site Inspection services:
Project Team Coordination	Pre-Construction Conference
Field Reports & Construction Documents' Admin	Prepare Field Inspection & Quantities Reports
Field Engineering and Inspections	Prepare Construction Docs & provide to Construction Admin
Material Certification and Shop Drawing Reviews	Field Engineering in conjunction with Construction Administrator
Progress Meetings and Schedule Tracking	Observe & verify materials being used for the project
Payments and Reimbursements	Observe, identify and notify Construction Admin of deficiencies
Change Order Reviews	Provide Admin w/ monthly quantities for payment prep
Prevailing Wage Compliance	Material Testing, i.e., compaction, concrete, asphalt, etc.
EEO/DBE Contract Requirements	
Project Closeout Activities	

CTL also added **D&H** to the team for added depth for construction oversight services

D&H - Construction Management and Inspection Services

D&H provides peace of mind for our clients with our comprehensive construction services tailored to meet every need. From meticulous inspections to efficient project management, we ensure every aspect of the construction endeavor is handled with precision and care. Our expert team diligently oversees every phase, from pre-construction document preparation to final execution, guaranteeing seamless progress and superior results. D&H has the experience needed to navigate the complexities of any construction project, delivering unparalleled quality and exceeding expectations every step of the way. With our commitment to excellence, our clients' construction vision becomes a reality.

Materials Testing and Laboratory Services

CTL WV is a Leader in Providing Testing Services to the Construction Industry

We maintain a staff of experienced personnel and accurate equipment to provide dependable results. We evaluate all types of construction materials. Additionally, CTL can prepare and test Portland Cement and bituminous concrete mixes for optimization studies to determine the proper mix design for specific jobs.

CTL offers petrographic examination of construction materials. These specialized microscopic evaluations allow us to closely evaluate concrete quality and determine the causes and extent of failures in concrete, in addition to potential future performance.



In addition to the standard ASTM tests of strength, absorption, dimensions unit weights etc., CTL provides several specialty tests on concrete block and brick, including the fire rating test, specified by the BOCA, and efflorescence testing required by many architectural firms

Environmental Services - CTL

CTL Provides Environmental Services for Projects Varying in Complexities for Diversified Clients

CTL's environmental staff has a combined total of 144 years of experience in managing and conducting environmental projects of varying complexities. CTL performs over 500 environmental projects per year and follows the various ASTM standards, BUSTR and EPA regulations, and ODOT Guidelines for ESA Screening, Phase I and Phase II ESAs, UST Closures, Tier I & II Assessments, HazMat management and remediation. We also perform wetland delineation, permitting, and mitigation; asbestos, lead-based paint, and hazardous materials surveys, sampling, evaluation, as well as abatement project design & monitoring; waste management and disposal; GPR surveys; environmental monitoring/inspections during construction.





SECTION 3

PROJECT OVERVIEW



Project Overview

AML – Morgantown Airport Subsidence

The Acquisitions and Contract Administration Section of the Purchasing Division is soliciting Expression(s) of Interest for West Virginia Department of Environmental Protection, Division of Land Restoration, Office of Abandoned Mine Lands and Reclamation (WVDEP-DLR-AML), from qualified firms to provide the professional services for design, and construction oversight aspects as needed for the Morgantown Airport Subsidence Phase II project per the attached specifications and terms and conditions.

The purpose of the project for which bids are being solicited is to provide the professional services for design, and construction oversight aspects as needed for the Morgantown Airport Subsidence Phase II project:

Morgantown Airport is constructed over an Abandoned Mine Lands (AML) eligible coal mine, which is susceptible to subsidence that could result in catastrophic impacts to the airport facilities and the public. No mine maps have been located to date for the deep mine, so at a minimum, a geotechnical investigation will be required during the design process to determine coal seam thicknesses, coal pavement elevations, subsurface open and collapsed mine workings, etc.

- Drilling and grouting of mine workings to stabilize specified areas at the airport.
- Temporary batch plant location(s), access routes, etc.
- Federal and other agencies coordination, permitting, etc.
- Safety plans, scheduling, restrictions, etc., as required by the Airport and FAA.

Project Management Plan

Our approach to the Morgantown Subsidence Phase II project will be similar to our other AML projects. The Project Management Plan we have developed for the project are as follows:

The project manager will be solely responsible for the coordinated, expedient and accurate completion of each phase of the project performed under this contract. He will review the project site and discuss the specific scope of work for the project with the project representative from the WVDEP. A fee/cost proposal with scope and schedule will be prepared, in accordance with contract unit rates, based upon an estimate of manpower, equipment, and laboratory needs.

CTL will then mobilize a fully equipped survey crew from D&H to set survey control and map the project site. Permanent control monuments will be established to ensure that the construction contractor can tie into the necessary baselines. The project manager will coordinate and supervise the surveying tasks and provide budgetary control for this portion of the work.

A geotechnical exploration and analysis will be performed to determine the size and location of the mine void under the project area. This exploration will be performed with a focus on safety for the safety of



the local inhabitants and dwellings as well as the safety of the drilling and geotechnical personnel. We will prepare a geotechnical report which will include proposed alternatives for the repair of the slip.

Should field conditions dictate that additional work or a major modification is required, the project manager will contact the WVDEP representative immediately to confirm the changed conditions.

Following completion of the surveying, geotechnical exploration and any material sampling, the analytical design work will begin. The Project Manager and Engineer will review the project data, evaluate the feasible alternatives and prepare a preliminary set of construction documents. The documents will include as appropriate :

1. A site map indicating existing conditions;
 2. A tax map overlay with the parcels identified that may be impacted by the proposed design;
 3. Existing conditions map showing the extent of the mine workings and surface conditions.
 4. Reclamation plan showing the mine workings and grout stabilization plan
 5. Reclamation plan showing grout phasing and batch plant locations
 6. Provide Sedimentation and Erosion Control Plan
 7. Grout table showing quantities
 8. Construction Details
 9. NPDES Permit
 10. MM109 Permit
 11. Survey control points
 12. Miscellaneous Site details
- CTL will also provide necessary data for the MM109 and NPDES permit including E&S Control Plans as required for the site construction and if deemed necessary, perform environmental assessments. CTL will scope out and make submittals for the NPDES permit.
 - In addition to preparation of the above-described drawings, a complete set of specifications will be prepared and outlined to describe in detail the scope and methods of work to be accomplished. Engineer's estimate of construction costs and the design calculations will also be submitted to the WVDEP for review and future reference.
 - Following the submission of the construction documents, a project design review meeting will be coordinated with the WVDEP, CTL, and appropriate individuals to review the proposed plans.
 - Recommendations for plan revisions will be discussed and implemented, as necessary, into the final design documents. Upon completion, all final documents, drawings, plans and specifications will be forwarded to the WVDEP for bidding purposes.
 - CTL will scope out and assist the WVDEP in the bidding process with any design or constructability questions.
 - CTL will scope out and provide engineering technicians to provide QA/QC and materials testing throughout construction activities.



- CTL will scope out and provide daily reports and document the construction process and assist the WVDEP in the project closeout.

Project Goals

AML Contract Project N4

Project and Goals: As outlined in the EOI

It is understood that the project goals and objectives include but are not limited to those listed below. Vendors should discuss any anticipated concepts and proposed methods of approach for achieving each of the listed goals and objectives:

Aspects of all Work shall comply with Infrastructure Investment Jobs Act (IIJA), including compliance with the Davis-Bacon and Build America, Buy America (BABA), as applicable and all Federal, State, and Local laws.

Aspects of the Design Work may include, but may not be limited to: Civil, Geological, Hydrological, Survey (mapping), Process, Structural, Electrical, etc., as applicable. This encompasses all required engineering and survey (including current mapping and other related services) necessary to successfully design an engineered, permanent solution that fully addresses the issues / problems that the project presents. This also includes site and geotechnical investigations. Each design must fully remove / mitigate dangers to private individuals or the public that are currently present, not introduce new dangers, and be certified by a Registered Professional Engineer in the State of West Virginia for design and Registered Professional Surveyor in the State of West Virginia for survey for deliverables. Design Work may include but is not limited to: Federal Aviation Administration (FAA) requirements and permits, National Pollutant Discharge Elimination System (NPDES) construction stormwater General Permit registration, West Virginia Department of Highways (WVDOT) MM-109 encroachment permits, Army Corps of Engineers (USACE) consultations, Department of Health Permits (for water lines, if applicable), and city and county permits as applicable, including floodplain permits. Design Work could include but is not limited to; developing construction plans and technical specifications for all aspects to stabilizing mine workings and the overburden, drainage controls and systems, subsidence repair, temporary and permanent access or accesses for construction, storm water and erosion and sediment control, regrading and revegetation, and any remediation for all other conditions encountered on the project site(s). Obtain/maintain/release all required permits.

Aspects of the Construction Oversight Work may include but may not be limited to: Daily Inspection with documentation for the duration of the Construction and through the warranty period until final release, Engineering Oversight / Support, review, and approval of contractor-provided as-builts, and Final Engineer's Certification Report of the project.

CTL's abilities to complete the project scope and goals:

Mr. Ababu Gelaye will be the project manager for CTL. All communication through the owner for the duration of the project will be through Mr. Gelaye. Mr. Gelaye has the authority to engage any of CTL's staff or services for the completion of the project.



CTL has referenced several projects in (section 5) that were completed on time and on budget. CTL provides engineering services to a wide variety of projects with similar challenges as laid out in the EOI. We have a vast history providing engineering services to AML projects in WV and the surrounding states.

CTL will use the following project Management outline. CTL has accounting software that can provide work in progress reports weekly.

Plan Schedule Management

- **Define Scope**
- **Sequence scope tasks**
- **Estimate Resources and fees/cost**
- **Estimate Durations and fee/cost to complete tasks**
- **Develop Schedule**
- **Control Schedule**

CTL provides services to several projects throughout the year that are designed, permitted and constructed timely and efficient.

Construction Management Plan

- **Project Organization**
- **Project Planning**
- **Project Monitoring**
- **Project Control**

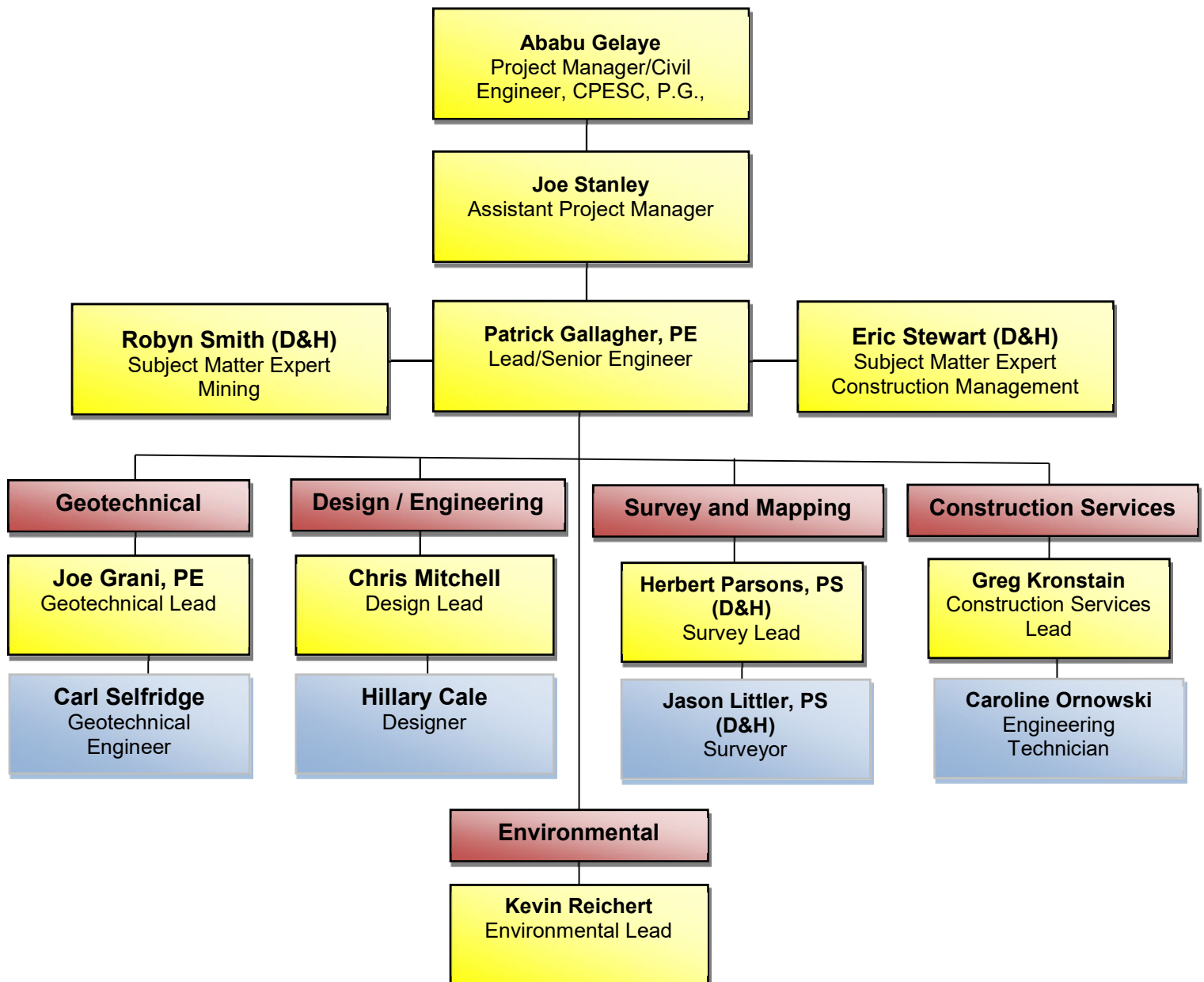
CTL completes numerous geotechnical and construction oversight projects a year that contain similar tasks.



SECTION 4

PROJECT PERSONNEL

west virginia





Mr. Ababu Gelaye, CPESC, P.G.

Reginal Manager / Civil Site Desing & Surveying

Mr. Gelaye is a Regional Manager for CTL Engineering, Inc. and leads the Civil Site and Land Surveying Service Business Line for CTL's West Virginia, Ohio, Pennsylvania, Kentucky and Indiana operations. He is a Civil Engineer and a Geologist by training, a Certified

Professional in Erosion and Sediment Control and a licensed professional geologist. He brings more than twenty-eight (28) years of practical experience and in-depth knowledge of engineering, scientific and standard practices, as well as applicable Federal and State environmental regulations related to the mining and energy infrastructure development and improvement projects.

Education

B.S, Civil Engineering, Old Dominion University

Two M.S., Degrees - Hydrology/Hydrogeology,
The University of Tuebingen/Akron.

B.S., Geology, Addis Ababa University

Professional Registration / Certification

Professional Geologist, IN 2306

CPESC - 5530

Over the last several years Mr. Gelaye has been directly involved in and has been in charge of numerous mining and energy infrastructure development projects for both private and public entities. He has a record of demonstrated competence, in leading site work efforts to design and permit mining and energy infrastructure development projects that include reclamation plans, green field development and site improvement pads, impoundments, access road infrastructures. These efforts included site layout, grading and earthwork, stormwater management, erosion and sedimentation control design and inspection services, and right-of way (ROW) routing assistance.

Mr. Gelaye also has diverse experience in broad facets of environmental permitting, engineering, land surveying, hydrogeology and environmental science, including site investigations and analysis, due diligence and compliance assessments. Mr. Gelaye worked in one of the **largest Gypsum Mine Subsidence related Geotechnical Exploration and State Route Alignment/Design Project**, where the project activities included sending borehole camera into the Gypsum mine, Rock Quality Designations (RQD) and other mission critical geotechnical explorations, analysis and design was performed. Mr. Gelaye worked with Mr. Patrick Gallagher, P.E., who was the Principal-In-Charge for the mega project, to successfully deliver the needed services.

Project Experience

Department of Transportation (DOT) Projects - HAM-75-2.30, MED-18-1608, MUS-70-25.98, District 5, HAN-75-14.39, District 1, STA-153-14.35, District 4, WAR-73-(5.01)(5.66), District 8, HAM-22-10.22, District 8, T CLE-232-(6.07)(6.34), District 8, HAM- 50-31.95, ODOT District 8, Transmission and Midstream Pipeline Clients:, Kinder Morgan, Access Midstream Partners, LLC, a legacy subsidiary of Williams, MarkWest Energy Partners, L.P , M3 Midstream, LLC, TransCanada/Colombia Gas Transmission a NiSource Company, Antero Midstream, LLC, CNX/CONSOL Gas Corporation, LLC, HG Energy, LLC, Hall Drilling, LLC., OH, WV and PA

Role: Principal-In-Charge and Project Manager

Mr. Gelaye has managed and been involved in the development and improvement projects of numerous miles of infrastructure ROWs, hundreds of civil/site development projects, etc. and provided review of route development and reclamation plans, permitting packages, erosion and sedimentation control designs and field inspections of these installations located in WV and adjacent States. Responsible for developing fit-for-

purpose and performance-based solutions for projects with sound understanding of the broad facets of site optimization and site/project development efforts to design, permit, reclaim and construct infrastructure sites and corridors. Review technical site layout, grading and earthwork, slope stability and compaction; secondary containment, storm water/drainage management, erosion and sedimentation control design, inspection, environmental due diligence/compliance services. In charge of solving technical challenges and help generate opportunities to address environmental performance/compliance issues. Direct, manage and provide oversight to all relevant site development related business partners, functional support teams/interfaces, management of governmental agency interfaces, Perform review of site due diligence, land use permits, dealing with non-environmental and environmental permitting and interfacing with regulatory agencies. Provide technical, strategic and regulatory expertise support during a start-up and risk analysis of a drill cuttings management project, providing Environmental Safety and Health insights in accordance with project scope, schedule, and costs. Possesses solid working knowledge of OSHA, State & Federal safety requirements and standard practices. Capture, track and report project execution costs, savings and cost control, evaluated overall project efficiently, forecasted and addressed deviations to the schedule. Recognize team's, business partner's performance and communicate successes, opportunities and lessons learned across project teams. Coordinate Incident Free Operation & business development meetings including preparation of meeting outlines, coordinating with Contractor Companies and presentation for employees and sub-consultants/contractors.

Upstream/E&P Oil and Gas Clients:, Chesapeake Exploration, LLC, Antero Resources Corporation, HG Energy, LLC, Enervest Operating, LLC, Hall Drilling, LLC, PDC Energy, Inc., EQT Corporation, Consol Energy, etc., OH, WV and PA

Role: Principal-In-Charge

Mr. Gelaye has managed and been involved in numerous unconventional Oil and Gas Development Projects in the Marcellus and Utica Shale Plays in OH, WV and PA. The overall scope of services included taking project sites from initial siting, through various kinds of permitting and due diligence activities to final constructions and quality controls and assurances. The types of services managed include: Well Pad/Civil Site Design, which consists of Erosion and Sediment Control (E&S) Best Management Practices (BMPs), Preparation of surveyed topographic maps and survey plats for site design, and oil & gas well permitting purposes, Preliminary Jurisdictional Waters Delineation (PJWD), and Threatened and/or Endangered Species Habitat Surveys, and Geotechnical Investigations, Construction QA/QC and E & S BMP inspections. Manager-in-charge for the design and permitting of multiple fresh water impoundments. The services utilized during the design and permitting of these impoundments included site layout and grading, permit document preparation, geotechnical investigation, and construction quality assurance. Actively adjusted to Client needs as the projects or the schedule progress. Project management responsibilities included taking project sites from initial siting, through various kinds of permitting and due diligence activities to final constructions and restorations with quality control and assurance.

Multiple Other Clients:, The Ohio State University, Verizon Wireless, AT&T, ODOT, Multiple Private Developers, etc., OH and WV*

Role: Project Manager/Lead

Mr. Gelaye managed and completed various types of environmental assessment and due diligence (Phase I and II ESAs, Tier I and II Investigations, etc) geotechnical and design projects. These tasks entailed completion and review of 100s of Phase I ESAs, Field Soil Resistivity Tests, numerous Phase II ESAs, Tier 1, Tier 2, UST Closure, and unique kinds of projects (i.e., groundwater flow rate calculations, remedial design). These services were provided for Communication Tower sites, commercial real estate developments and

various UST sites located in commercial, industrial and rural settings throughout Ohio, Kentucky and West Virginia. Managed and conducted a large-scale aquifer pumping test as a part of detailed subsurface investigation for a \$1.2 billion Clinical Expansion Project. The objective of the test was to determine the aquifer properties and groundwater flow rates, which were needed to design dewatering systems of a proposed 18-story Medical Center Building. The task involved installation of ten (10) groundwater monitoring wells and one (1) pumping/production well, programming and installation of numerous pressure transducers to monitor ground water and surface water levels, conducting a 48-hours aquifer pumping test, analysis of data for normal river stage and 100-years flood stage conditions, and prepared a report that consisted of aquifer parameters and groundwater flow rates.

TRAINING

TRAININGOSHA HAZWOPER 40 Hour HAZWOPER Certification with Current 8 Hr. Refresher,
SafeLand PEC Basic Orientation - PEC100472838, and RigPASS Trained
Veriforce Operator Qualification (OQ) Authorized Evaluator

Attended FERC's Three (3) Days of Environmental Review and Compliance Training/Seminar For Natural Gas Facilities, two (2) times in the last few years.



Mr. Joseph Stanley
*Client Manager
Project Manager
Business Development
Manager*

Mr. Joe Stanley currently serves as the Business Development Manager and a client manager for select clients in the Morgantown, West Virginia office of CTL Engineering, Inc. His

responsibilities as a project manager include assisting in the planning and design of civil site design projects involving land planning and site development aspects. His projects vary from commercial and residential properties, mine and energy sites, and also includes state, county, and local roads.

Mr. Stanley has shown his dependability and increased his depth of experience by working with several of his clients for years during the long term development of commercial property developments. He has worked closely with the client, contractors, and developers of these long term projects. As with most of West Virginia, a large number of these developments were once on mine property if not once mined. He is familiar with the assets and potential difficulties of developing sites and long term planning in West Virginia.

Education

A.S. Drafting and Design
Fairmont State College, Fairmont West Virginia 2001

Technical Programs

AutoCad
Civil 3D

Professional Registration / Certification

Advanced GPS Training Course

CTL Project Experience

CTL Engineering of West Virginia, Inc., Morgantown, WV (May 2000 – Current)

As a project manager, Mr. Stanley is responsible for being a primary client contact and coordinator for our team with all interested parties. He maintains relationships with the contractors, developers, and regulatory agencies promoting open communication and prompt management of complications. His experience as a Surveyor, CAD Designer, Project Manager, and Staff Engineer enables him to advise and handle changes in a timely manner.

Infrastructure Development

CTL Engineering used the latest GPS technologies to develop accurate plans of the current conditions. The plans were then made for the various requirements of the projects. In some cases, the existing road conditions were just

widened, and in other cases grading and access needs had to be changed to allow for current and future development.

Infrastructure Development (continued)

Dorsey Knob Park Road Improvements, Morgantown, West Virginia

Country Road 5/5 Relocation, Logan County, West Virginia
Morgantown Airport Alternative Access Road, Morgantown, West Virginia

Charles Point Roadway Cut Evaluation, Harrison County, West Virginia

Osage Bridge, Monongalia County, West Virginia

Mining

CTL Engineering is responsible for improving the safety, landscape, and water quality for abandoned mine lands. We develop plans to use the spoil and old stock piles available on site for slopes and regrading enabling seeding of the land as well as improving safety. CTL is also engaged to develop plans for sealing open mines while allowing for water drainage and ensuring bat habitats.

Fairmont Subsidence – Abandoned Mine Land Reclamation, Marion County, West Virginia

Morgantown Anderson Highwalls – Abandoned Mine Land Reclamation Design, Monongalia County, West Virginia
Shinns Run Portals – Abandoned Mine Land Reclamation & Portal Closure, Harrison County, West Virginia

Hopewell Church Refuse – Abandoned Mine Drainage, Preston County, West Virginia

Peninsula Highwalls – Abandoned Mine Land Reclamation, Monongalia County, West Virginia

Cheat Neck Landslide, Monongalia County, West Virginia

Energy

CTL Engineering developed plans for grading, clean water ditches, leachate collection, and also calculated volumes for ponds.

Harrison Power Station, Harrison County, West Virginia
Overland Conveyor Permitting, Monongalia County, West Virginia

Harrison Power Station Landfill, Harrison County, West Virginia

Longview Power Plant, Monongalia County, West Virginia

Pleasant Power Station, Pleasant County, West Virginia

Community and Municipal Development

CTL Engineering was involved in the planning for the current use and future development of these longer term projects. CTL created civil site plans, located utilities, worked on access roads, and also developed stormwater management plans.

Commercial Development, Monongalia County, West Virginia
University Park, Morgantown, West Virginia

Student living facilities in conjunction with West Virginia University.

Hornbeck Road Development, Morgantown, West Virginia
Residential planned community.

University Town Centre, Morgantown, West Virginia



**Mr. Patrick E. Gallagher P.E.,
CPGS**

CTL Engineering of West Virginia,
Inc.

Projects successfully completed under Mr. Gallagher's direction include: Civil Site Design, Foundation Design, Storm Water Management, Waste Water Design, Roadway Design, Parking Lot Design, Geotechnical Investigations & Design, Site Stability Analyses, Mine Subsidence Evaluations, Failure Investigations and Environmental Investigations and Expert Witness Testimony. Prior to joining CTL Engineering, Mr. Gallagher was the chief of the Abandoned Mine Reclamation Program for the State of Maryland, Department of Natural Resources, and Bureau of Mines. In addition, he was also responsible for overall engineering/geologic support to the Maryland Bureau of Mines Program. His career began in Pittsburgh as a project geotechnical engineer with Orbital Engineering.

Education

B.S., Civil Engineering, 1975, Virginia Polytechnic Institute and State University, Blacksburg, Virginia
Geology (Minor), 1975 Virginia Polytechnic Institute and State University, Blacksburg, Virginia

Professional Registration / Certification

- Registered Professional Engineer: Ohio - [REDACTED]
Maryland - #13256 (1982); West Virginia - # [REDACTED]
Pennsylvania - #PE-044930-R (1993); Wyoming - #1 [REDACTED]
(2010); North Carolina - #032503 (2005); Kentucky - # [REDACTED]
(2005)
- Certified Professional Geological Scientist, # [REDACTED]
- Professional Surveyor: West Virginia (1983)
- Adjunct Professor – Civil Engineering
Fairmont State College, 2001 – Present

CTL project Experience

Energy and Mining

Mr. Gallagher has served as principal-in-charge and chief engineer for numerous energy projects located throughout the tristate region. Mr. Gallagher is a recognized geotechnical expert in the region and has extensive experience with design for pads, access roads, slope failure evaluation and repair, rock cut slopes, and pipeline embankments.

He was responsible for the Deep Mine Permitting program in Maryland including Mining, reclamation and abandonment plans. His experience involves application of various geotechnical design and construction techniques for energy sites including geogrid reinforcement, soil cement stabilization, rock buttressing, and retaining wall systems. His energy experience includes:

- I-79 Interchange Morgantown – Geotechnical Project Manager on this Design Build to the Town Centre
- I-81 Martinsburg to Marlow Interchange-Design Build, Martinsburg, West Virginia

Transportation (continued)

Morgantown Municipal Airport, Morgantown, West Virginia
Black Water Bridge Abutments-Surveying & Design Services, Tucker County, West Virginia

Healthcare

Mon General Site Development-Site Design, Morgantown, West Virginia
Ambulatory Care Center-Geotechnical Services, Morgantown, West Virginia
Preston Memorial Hospital Construction Services, Preston County, West Virginia
WVUH Data Center-Geotechnical Services. Morgantown, West Virginia
Fresenius Medical Center-Geotechnical Services, Preston County, West Virginia

Power Generation

Harrison Step II Construction Monitoring, Harrison County, West Virginia
Harrison Power Station Phase V Step I, Harrison County, West Virginia
Harrison Power Station Cell A Repair, Harrison County, West Virginia
Overland Conveyor Permitting, Monongalia County, West Virginia
Harrison Power Station Landfill QA/QC Leachate Collection Layer Expansion, Harrison County, West Virginia

Building Development

University Place-Site, Civil & Geotechnical Services, Morgantown, West Virginia
Grand Central Apartments-Geotechnical Services, Morgantown, West Virginia
Gateway Development-Site & Civil Services, Morgantown, West Virginia
Federal Correctional Institute-Variou Services, Hazelton, West Virginia
Parkview Heights Retaining Wall-Geotechnical Services, Bridgeport, West Virginia

Mine Related

Morgantown Anderson Highwalls - AML Reclamation Design, Morgantown, West Virginia
Thomas Northeast – AML Mine Grouting Reclamation Design, Thomas, West Virginia
Terra Haute Airport – AML Mine Grouting Reclamation Design, Indiana
Schramm, Gordon, East Franklin Landslide-AML Reclamation, Maryland.
Douglas Avenue Stormwater System-Geotechnical & Hydrologic Services. Allegheny County, Maryland
Fairmont (Jackson Addition) Subsidence-AML Reclamation & Geotechnical Services, Fairmont, West Virginia
Ottawa State Route 2 Mine Subsidence-Geotechnical Services & Grouting Plan, Ottawa County, Ohio

Joseph Grani, M.S., P.E.
Branch Manager, Geotechnical Engineer



Mr. Joseph Grani, P.E. presently serves as a Geotechnical Engineer and Branch Manager of CTL's Morgantown, WV office. His work covers foundation analyses and recommendations for retaining walls, roadways, bridges, landslides, sewers, buildings, towers, and tanks. In addition, Mr. Grani is responsible for the supervision of all subsurface explorations. Mr. Grani formerly served as the Manager of

Geotechnical Services in CTL's Columbus Office.

Other experience includes foundation design recommendations for bridges, soils subgrade evaluations for pavements, slope stability evaluations for highway embankments and earth dams, design of parking lot dewatering systems, and design recommendations for earth retention structures and noise barrier walls. He utilizes many geotechnical programs, including Driven, Slide, and Lpile.

EDUCATION

Master of Science

The Ohio State University, Columbus, Ohio 1994

Bachelor of Science, Civil Engineering

The Ohio State University, Columbus, Ohio 1991

PROFESSIONAL REGISTRATION / CERTIFICATION

Registered Professional Engineer, Ohio (REDACTED)

Registered Professional Engineer, West Virginia (REDACTED)

Member American Society of Highway Engineers

CTL PROJECT EXPERIENCE
TRANSPORTATION

Richland Ave. Pedestrian Tunnel & Ret. Walls, Athens, OH

West Run Rd. Relocation and Ret. Walls, Morgantown, WV

Various FEMA Slip Repairs, Jefferson County, Ohio

Various FEMA Slip Repairs, Scioto County, Ohio

Various FEMA Slip Repairs, Noble County, Ohio

Various FEMA Slip Repairs, Athens County, Ohio

BUT-129

COS-541-19.18

SR 315 SB Interchange Improvements

WAS-T394-0.86

BRO-221-6.80

HAM-74-17.71

ADA-125-10.80

LAW-217-7.8

US Route 33 & Three Creeks Metro Park, Columbus, Ohio

Walnut Hill Rd., Scioto County, Ohio

BEL-7-11.05

BRO-763-0.65

BRO-32-3.75

LAW-243-10.3-10.4

County Road 3 Landslide Exploration, Belmont County, Ohio

COL-517-6.65

LIC-161.2.30

HEN-110-0.66-Slip

2nd Ave Corridor Improvements, Columbus, Ohio

SCI-104-8.15

MOE-CR81-2.87

Richland Ave. Pedestrian Safety Improvement, Athens, Ohio

Middleport-Slip Repair, Meigs County, Ohio

COL-14-7.58

Olentangy Trail to Bethel Rd Connector, Columbus, Ohio

LAW-217-9.8

E Broad St. Widening, Columbus, Ohio

BEL-40-24.76

JEF-646-4.53

SEN-Miami Street

BEL-70-1445

MAD-70-8.62 Design Build

BRO-763-1.02-Bridge Replacement

LIC-62-14-72

LOG-CR21-1.00

MRW-TR82-0.94

HIG-50-6.87

LAW-775-15.45/15.70

WAS-CR 111

WAS-676-24.00

JEF-164-5.25

Parsons Ave-Franklin Ave to Broad Street Arterial Street

Rehabilitation, Columbus, Ohio

BRO-221-5.54

LIC-310-1.72

DEL-3-5.41

PIK-CR4-3.98

LAW-93-15.39

CUY-175-12.35

MUS-313-2.47

CLA-CR362-2.95

BEL-147-22.93

BEL-800-16.93

SR 619 and Pickle Rd. Roundabout, Summit County, Ohio



Mrs. Hillary Cale
CAD Designer
Civil Site Design Department

Hillary Cale serves as a CAD and Civil Site designer for municipal, commercial and private developer projects throughout our area. Her design services include layout plans, grading plans, and storm water plans, as well as support in permitting and survey. Mrs. Cale has over 18 years' experience working at CTL.

Mrs. Cale's has a vast experience in reclamation design and permitting. She has assisted our project managers on very large grouting projects throughout the region. She is a respected member of our Design Team and is willing to stay until a task is finished.

CTL Project Experience

Ottawa State Route 2, Mine Subsidence Mitigation

Ottawa County, Ohio

Estimated cost \$20,000,000

ODOT Project consisting of remediation of existing gypsum mine adjacent to State Route 2.

CAD Designer responsible for generating construction drawings, quantities and engineer's estimate.

Assistant Project Manager responsible for submitting grout quantities and assisting with the OEPA permitting

Guernsey Power Station and Switch Yard

Gemma Power Systems, Inc.

Guernsey County, Ohio

Estimated cost \$1,000,000,000

Private Contractor Project consisting of remediation of abandoned inundated underground mines. CAD Designer responsible for generating construction drawings, specifications, quantities, compilation of daily logs during construction as well as OEPA reporting.

St. Clair Portals

WVDEP

Monongalia County, West Virginia

Estimated cost \$1,500,000

WVDEP AML Project consisting of regarding highwalls and mine spoil, mine seals, drainage structures, natural stream designs and wetlands. The site consisted of 48 acres and required Corp permitting. GPS Surveyor responsible for providing survey control to generate aerial mapping and establish control points to be used during construction. Staff Engineer and CAD Designer responsible for generating construction drawings and construction specifications.



Mr. Christopher Mitchell
CAD Designer
Civil Site Design Department

Chris Mitchell serves as a CAD and Civil Site designer for municipal, commercial and private developer projects throughout our area. The design services he provides include

layout plans, grading plans, and storm water plans, as well as 3D modeling. He is also involved in the permitting process for the sites designed.

Mr. Mitchell's experience as a CAD Designer enables him to explain concepts and ideas to clients, as well as modify plans for the client's specific needs. He is adept at evaluating current conditions of a site to make them more self-sustainable increasing performance, optimizing profits, and reducing costs. He is a respected member of our Design Team and is willing to stay until a task is finished.

Education

B.S. Landscape Architecture
West Virginia University, Morgantown, West Virginia 2011

Technical Programs

AutoCad Civil 3D
SketchUp
Photoshop
InDesign
ArcGIS
LandFX

Professional Registration / Certification

American Society of Landscape Architects

Professional Experience

3D Modeling Independent Contractor
Responsible for creating 3D models of high end homes from Architectural Blueprints

Landscape Architecture Intern – Rich Farms
Responsibilities included restructuring design ideas to provide more eco-friendly and self-sustainable landscapes, consulting and advising clients, providing estimates, and working on the installation crew.

CTL Project Experience

CTL Engineering of West Virginia, Inc., Morgantown, WV (April 2013 – Current)

As a CAD Designer, Mr. Chris Mitchell is responsible for Stormwater Management Plans, Civil Site Design, Grading and Drainage Plans, Site Analysis, Planting Plans, Composite Analysis, Lynch Diagrams, Landscape Designs, Land Use Planning and Development, Hand Rendering, and Site Plans.

WVAML Contract North 3

CTL Engineering was retained to provide the following design services: The N3 contract consisted of eight individual projects with an estimated construction cost of \$8,500,000. Project features consist of Highwalls, Portals, Vertical openings, Refuse Piles and Subsidence. CAD Designer responsible for generating construction drawings and construction specifications

ODNR TR289 Highwall

CTL Engineering was retained to provide the following design services: The project will consist of potentially 2, 000, 000 cubic feet of moving dirt to backfill highwall and associated areas, with an estimated construction cost of \$2 to \$4 million. CAD Designer responsible for generating construction drawings and construction specifications.

Various Natural Gas Pads

Responsible for designing useable potential site locations for drill pads and access roads, grading plans, road easements, permits, and balancing earthwork quantities utilizing surveys and topographic maps

Fremont City Schools

CTL Engineering was responsible for the site survey, existing conditions plan, demolition plan, site plan, grading plan, stormwater design, CTL coordinated with the City of Fremont and OEPA for permitting for the new facilities.

University Place, Morgantown, West Virginia

Design and construction of a new student housing complex for West Virginia University in partnership with the developer and West Virginia University including stormwater management planning, bio-retention cell sizing and installation, and a utility coordination plan.

Boyers Avenue Streetscape Revitalization and Street Widening, Monongalia County, West Virginia

Street widening with sidewalk plan addition, stormwater design, and utility plan.

Mon General Medical Park Development and Maple Drive Widening, Morgantown, West Virginia

CTL Engineering was responsible for the redesign and permitting of Maple Drive. CTL was retained to develop plans and specifications in coordination with the WVDOT to widen 1,400 feet of the existing Maple Drive from a narrow two lane road to a 22' road with a sidewalk. The project also included a new stormwater system and the coordination and design for the relocation of all existing overhead utilities to underground lines. CTL also provided documents and staff support throughout the bidding process.



Gregory Kronstain, P.E.

Mr. Kronstain is a Construction Service Line Manager for Construction Administration and Construction Inspection Services for transportation and infrastructure projects. He is responsible for actively managing field and office staff providing construction administration, inspection, and testing services on State, County, and Local transportation, aviation, and utility infrastructure projects in Ohio and West Virginia. He has 37 years of construction experience in the industry. He has worked at the Ohio Department of Transportation in positions ranging from field Project Engineer, District Construction Administrator, and most recently, Capital Programs Administrator. He has managed an \$850 million program with over 100 active construction projects. In Construction, his responsibilities included coordinating, managing, and supervising all construction-related activities. His responsibilities in the Construction Department at ODOT included coordination, management, and supervision of all construction-related activities. He has experience with alternative bidding methods, including significant experience with Design-Build projects.

Firm

CTL Engineering, Inc.

Education

Cleveland State University, Master of Business Administration, 1998

Ohio University, B.S. Civil Engineering, 1987

Professional Registration/ Certification/ Affiliations

Professional Engineer, State of Ohio - No.59386

ODOT/ACEC Construction Inspection/ Administration Committee –past sub-committee chair

ACEC OHIO/OTIC Liaison Committee, Member
ABCD Association for Bridge Construction and Design, Past President and Member- Northeast Ohio Chapter

ASCE American Society of Civil Engineers, 30+ years- Member

ASHE American Society of Highway Engineers- Member

ODOT Prequalifications

ODOT Construction Engineer Level 2

Select Relevant Experience with ODOT District 12

ODOT District 12 Capital Programs Administrator

Responsibilities included leading and managing all District Planning, Engineering, and Construction department functions—developed and implemented policies and procedures to allocate all resources efficiently.

ODOT District 12 Construction Administrator for the following significant projects.

Responsibilities included staff administration for coordinating, managing, supervising, and reporting all construction-related activities to ensure successful project completion.

- ODOT CCG2 Cuy-90-14.90 Innerbelt (Design Build), \$273M
- ODOT Opportunity Corridor 1 and Opportunity Corridor 2 and 3 (Design Build), \$210M
- ODOT Valley View Bridge, CUY- 480- 18.42 (Design Build), \$228M
- ODOT CUY/SUM-271-0.00/14.87, \$120M

ODOT 060372 CUY-Fulton Road Bridge, Cleveland, Ohio (\$50M)

ODOT Project Engineer responsible for all project construction administration duties of a six-span precast post-tensioned segmental concrete arch structure. Includes overhead signing and lighting.

ODOT, Various Construction Inspection Agreements

ODOT District Construction Administrator from 2013 to 2017, overseeing management and administration of all Construction Inspection contracts at the District 12 office.

ODOT District 12 Dispute Resolution Committee-chair

Responsibilities included leading and managing the dispute resolution process by seeking fair and reasonable decisions and resolutions within the bounds of the contract.

Select Relevant Experience with CTL Engineering

WVDOH -Northern Connector +1, US522 Berkeley Springs By-Pass

Greg is currently serving as the Project Manager for Construction Administration and Inspection for this \$35M Design-Build project that will begin this season.

ODOT Districts 3, 4, 12 Construction Administration and Inspection Agreements

Greg has served as CTL's Project Manager for various Task Order Agreements to provide Construction Administration and Inspection services throughout ODOT Districts with agreements of \$1M to \$2M.

Ohio Turnpike and Infrastructure Commission; OTIC Project 43-18-05

Part B – Bridge Replacement of Ohio Turnpike over Mill Creek Bikeway, M.P. 223 Mahoning County, Ohio

Served as the Project Manager for this OTIC Project, Part B. This work consists of removal of the existing twin structures and replacing them with a single precast concrete culvert, placement of asphalt pavement, maintenance of traffic, and all other items incidental to the completion of the Work.

Ohio Turnpike and Infrastructure Commission; OTIC Project 99-23-06

Bridge Repairs (Phase A) State Route 15 over Ohio Turnpike MP 13.2 Williams County, Ohio

Served as the Project Manager for this OTIC Project. This work includes structural steel repairs, jacking and temporary superstructure support, removal, and replacement of bridge bearings, MOT, and other incidental work.

LPA Project Experience with CTL Engineering, Inc.

Mahoning County Engineers - MAH-Bridge Rehabilitation/Painting PID 104591

Greg is serving as the project manager for this improvement project that consists of rehabilitating four (4) large-span steel beam structures in Mahoning County. The rehabilitation will include painting the steel, repairing/replacing the expansion joints & bearings, deck repairs, and other miscellaneous structural repairs.

LOR-CR32/53- Middle Ridge Road - Lorain County Engineer's Office - PID 99580

Greg was the Project Manager/Construction Engineer 2 for this intersection improvement project, performing Construction Administration, Construction Inspection, and testing services. The project includes adding signalization, full-depth pavement widening for a left turn lane on West Ridge Road, pavement resurfacing, drainage improvements, signing, and pavement markings.

Kevin Reichert, V.P., C.P.G.
Principal



Mr. Kevin Reichert, C.P.G. is experienced in coordination and management of Phase I and II Environmental Assessments, Contamination Delineation, Underground Storage Tank Closure/Assessment/Corrective Action, Wetlands Projects, development of Health and Safety Plans for hazardous waste sites,

and design and supervision of groundwater and methane gas monitoring.

Mr. Reichert has supervised environmental investigations and site assessments throughout the Midwest for large clients such as The Ohio Department of Transportation, Indiana Department of Transportation, Wal-Mart Stores, Verizon, Bob Evans, Owens Corning, Crane Group, and Central Investments.

EDUCATION

B.S. / 1985 / Geology, Ohio Wesleyan University

PROFESSIONAL REGISTRATION / CERTIFICATION

Certified Professional Geologist, 1995

Hazardous Waste Safety Training, 40-Hour, OSHA 1910.120

Hazardous Waste Supervisor Training, OSHA 1910.120

CTL PROJECT EXPERIENCE

HEALTHCARE

Professional Medical Office Building, Phase I ESA, Troy, Ohio

Grand Lake Health Systems, Phase I ESA on proposed 10 acre development site, Wapakoneta, Ohio

EDUCATIONAL FACILITIES

Bellville Elementary School Site - Phase I ESA, Bellville, Ohio

Bulter Elementary School Site - Phase I ESA, Butler, Ohio

New PK-K School Site - Phase I ESA, Sandusky, Ohio

New 1-2 School Site - Phase I ESA, Sandusky, Ohio

New 3-6 School Site - Phase I ESA, Sandusky, Ohio

Sandusky City Schools New 3-6 School Site - Limited Phase II ESA, Sandusky, Ohio

Clyde-Green Springs Ex Village Schools, Middle School Site, Clyde, Ohio

Buckeye Central Local Schools, New Washington, Ohio

Defiance City Schools – New Elementary, Defiance, Ohio

Columbus Grove Local Schools, Columbus Grove, Ohio

Allen East Local Schools, Harrod, Ohio

Wauseon Exempted Village Schools, Wauseon, Ohio

Hardin-Houston Local Schools, Houston, Ohio

Pandora-Gilboa Local Schools, Pandora, Ohio

Riverdale Local Schools, Mt. Blanchard, Ohio

Lima City Schools, Lima, Ohio

Wapakoneta City Schools, Wapakoneta, Ohio

St. Mary City Schools, St. Marys, Ohio

Findlay City Schools, Findlay, Ohio

Ross Local Schools, Ross/Hamilton, Ohio

Urbana City Schools, Urbana, Ohio

Piqua City Schools, Piqua, Ohio

Parkway Local Schools, Rockford, Ohio

Colonel Crawford Local Schools, North Robinson, Ohio

Six Proposed School Sites Proposal, New Carlisle, Ohio

Existing High/Middle/Elementary Schools, Ashland, Ohio

New PK-8 School Site Investigation, North Robinson, Ohio

New Bremen Local Schools, New Bremen, Ohio

BUILDING DEVELOPMENT

Former Van Dyne Crotty Property - PH1, Delphos, Ohio

Media Source Inc. Site, Plain City, Ohio

Wetland Consulting - South Campus West Central Industrial Park, Wapakoneta, Ohio

Fort Ball RV & Auto Sales, Tiffin, Ohio

Lima Convalescent Home Foundation, Lima, Ohio

Limited Phase II ESA - Lima Convalescent Home, Lima, Ohio

Superior Coach Company - Phase I ESA, Lima, Ohio

Former Gas Station - Abandoned UST Removal - 141 E. Elm Street, Lima, OH, Lima, Ohio

Alumacast Property, Celina, Ohio

Nidec Minster Foundry Site, Minster, Ohio

Former Pam's Pantry - Abandoned Gas Station Cleanup Grant Program, New Hampshire, Ohio

City of St. Mary's, Ohio

Franklin Township Trustees, Mercer County, Ohio

Real Estate Firm, Centerville, Ohio

Future Hotel Site, Columbus, Ohio

Former Fosters Canning Facility, Napoleon, Ohio,

RG Properties, Dayton, Ohio

Gobbell Hays Partners, Inc., Westlake, Ohio

Superior Tube Company, Germantown, Pennsylvania

General Casting Company, Delaware, Ohio

Crane Plastics Company, Columbus, Ohio

Water Color Estates, Permitting & Mitigation, Montezuma, Ohio

Profile Solutions Industries / Phase I ESA, Jacksboro, Tennessee

Independence Square, Findlay, Ohio-Compaction

Wal-Mart Stores, Bentonville, AK

Pratt Cardboard Recycling Facility, Wapakoneta, Ohio

Vice President of Engineering

Eric N. Stewart, P.E.



DIEFFENBAUCH & HRITZ

Mr. Stewart has over 20 years of experience in the civil and environmental engineering field. As the Vice President of Engineering for Dieffenbach & Hritz, Mr. Stewart uses his broad experience base to expand project development with both public and private sector clients. Mr. Stewart has accumulated an extensive range of experience in the regulatory, planning, well permitting, location construction, pipeline, and midstream facility of the oil & gas industry in the Marcellus and Utica Shale. Also, through his career he has gained valuable experience with projects in the transportation, environmental compliance, mining, water resources and commercial site development fields in many states.

Company Role, Vice President of Engineering:

As VP of Engineering, he manages a diverse engineering team and is responsible for ensuring that design requirements are met, oversees the consistency of client experiences, and manages a team of engineers and designers. He coordinates procedures as well as working closely with clients and regulatory agencies to ensure the company is at the forefront of design and regulatory adherence.

Project Role, Professional Charge:

Mr. Stewart is assigned professional charge on many projects for the engineering and construction management departments. For this project he will be responsible for ensuring that the product vision is realized through excellence in execution. A critical key to quality control includes redundant professional reviews. D&H has a Client Manager in charge of projects and a designated Professional will provide independent review of each deliverable. This process assures unbiased results and quality deliverables. Professional charge assignments include permitting, engineering, survey, and construction management deliverables for a variety of projects.

Summary of Experience:

Upland Run AMD, WVDEP Office of Abandoned Mine Lands and Reclamation, Weston, Lewis County, West Virginia

This project is currently in an active status with the WVDEP (D&H received notice to proceed on July 26, 2023). Mr. Stewart has been assigned the Project Engineer Role. He will oversee the engineering design plan and review and certification of the final project. This project involves 5 slip areas requiring stabilization on 15 acres and repair/replacement of a deteriorating drainage system with sediment transport to eliminate flooding issues affecting structures and a state road.

DETAILS AND ACHIEVEMENTS

Experience

Total: 20 years

With D&H: 9 years

Education

B.S. Civil Engineering, West Virginia University

PROFESSIONAL REGISTRATIONS

Professional Engineer

WV – No. 17972

NC – No. 056025

OH – No. E-84089

PA – No. PE088625

TN – No. 128163

CORPORATE AFFILIATIONS

- GPA Midstream Appalachian Basin (ABGPA Midstream)
- Gas & Oil Association of West Virginia (GO-WV)
- Pennsylvania Independent Oil and Gas Association (PIOGA)

Weston (Curtis) Landslide, WVDEP Office of Abandoned Mine Lands and Reclamation, Weston, Lewis County, West Virginia

This project is currently in an active status with the WVDEP (D&H received notice to proceed on July 26, 2023). Mr. Stewart has been assigned the Project Engineer Role. He will oversee the engineering design plan and review and certification of the final project. This project involves three slip areas requiring stabilization on 5 acres, road stabilization, and the installation, repair and/or replacement of various drainage controls and features.

2023 AML Contract N2, Marion County and Harrison County, West Virginia

This project is currently in an award status with the WVDEP (D&H received notice of award on December 7, 2023). Mr. Stewart has been assigned the Project Coordinator Role and will be the Engineer of Record for design. He will participate in the initial site planning meetings, scoping meetings, cost negotiations, surveying, subsurface investigation review, Realty contacts and negotiations, engineering design plan and review and construction administration and certification of the final project. Multiple projects are included in this award over 6 unique sites in two counties. One project is the stabilization of subsidence that threatens multiple residences. The remaining projects are slip stabilization and highwall reclamation.

NV113 Engineering & Design, Monongalia County, West Virginia

Engineering Manager responsible for the structural design, construction inspection and survey services for a 30-foot pre-cast, pre-stressed box beam bridge deck to span an existing pipeline. The structural design consisted of engineering plans, structural calculations for the concrete bridge beams, abutments, approach/sleeper slabs and wing walls for the project.

Energy Cynic to Soles Waterline, Wetzel County, West Virginia

Engineering Manager responsible for the completion of survey, engineering, permitting, and construction services associated with the installation of approximately 27,500 LF a 20-inch HDPE waterline located between Littleton, West Virginia and Springhill Township, Greene County Pennsylvania. Coordinated activities between disciplines, performed design calculations and provided construction administration services.

MAJ10 Tank Containment Wall Design, Monongalia County, West Virginia

Engineering Manager responsible for the structural design, construction inspection and survey services for a secondary containment wall for two 132 feet diameter storage tanks. This secondary containment has a cumulative volume of 7.2 million gallons and the steel lagging wall stands 12 feet in height.

Titan Impaired Waterlines, Belmont County, Ohio

Engineering Manager responsible for hydraulic models, pump head curve, helical pile spacing, surge calculations and hydrostatic testing parameters associated with the installation of approximately 740 LF of 12" HDPE DR11 waterline located in Belmont County, Ohio.

Construction Services Manager

Robyn E. Smith



DIEFFENBAUCH & HRITZ

Mr. Smith has over 35 years of experience in the civil, mining, and construction management fields. Mr. Smith has accumulated a broad range of experience in the regulatory, planning, location construction, drilling, geotechnical and construction management phases of the oil & gas industry in the Utica and Marcellus Shale. Also, throughout his career he has gained valuable experience with projects in the transportation, environmental compliance, mining, water resources, geotechnical and commercial site development fields in KY, OH, PA, VA, and WV.

Project Role, Construction Services Manager:

Responsible for managing the design, permitting, construction management and certification activities associated with client's projects. Projects may include but are not limited to: oil & gas well pads, fresh and reuse water impoundments. Primary role includes; managing company operations, management of oil & gas development planning and regulatory reporting, management of construction services including construction compliance and inspection, construction management, construction sequencing and optimization, contractor management, project development and management and project completion, and planning, design, permitting, and construction phase services for water resources, environmental, mining, transportation, geotechnical and commercial site development projects.

Summary of Projects:

Oil & Gas Well Pad Projects:

Over the past 5 years, Mr. Smith has managed hundreds of designs, permitting, construction management, and certification for natural gas well sites, above ground storage facilities, centralized impoundments, pipelines, and metering facilities for various natural gas companies at locations throughout PA, OH and WV.

Mining Experience:

Underground/Surface Mining Complex: As Chief Engineer responsibilities included the preparation of all mine plans, budget preparation for mining as well as capital projects, coordination with all state and federal agencies, and project management of all capital construction projects.

DETAILS AND ACHIEVEMENTS

Experience

Total: 35 years

With D&H: 8 years

Education

B.S. Mining

Engineering,

West Virginia Institute
of Technology

Safety Training

PEC Training

CORPORATE AFFILIATIONS

- Gas & Oil Association
of West Virginia (GO-
WV)

- Pennsylvania
Independent Oil and
Gas Association
(PIOGA)

Construction Services Manager

Robyn E. Smith



DIEFFENBAUCH & HRITZ

Senior Mining Engineer/Construction Manager for a \$125M Highway Construction Surface Mine Design Build project as well as 2 large surface mine operations in Southern West Virginia for Alpha Natural Resources. The highway project consists of the construction of approximately 15 miles of the I-73/74 corridor. The project consists of some 70,000,000 cubic yards of excavation and fill placement. As the project manager responsibilities included for over-sight of the design process, schedule and budget preparation and maintenance, management of all environmental permit activities, quality control, mine planning, tracking pay item quantities and submitting payment requests to the WVDOH.

President

Herbert L. Parsons III, PE, PLS



DIEFFENBAUCH & HRITZ

Mr. Parsons has accumulated more than 25 years of project management experience in civil engineering and surveying. As a Senior Project Manager, he has developed a broad experience base and extensive project development with public and private sector clients. He has led teams on complex projects that require coordination of disciplines, technical studies, environmental permitting, and multiple agencies and stakeholders. Specific areas of engineering design and surveying include, renewable energy, conventional energy, transportation projects, utilities, hydrologic and hydraulic studies, commercial and residential site planning, erosion and sediment control plans and permit documents.

Company Role, President:

As the Company President, Mr. Parsons is the professional responsible in charge for engineering and survey projects. As the responsible charge, he oversees and assures the quality of deliverables and the management practices of all disciplines within the Company which includes overseeing critical events, attending client and / or stockholder meetings as well as participating in kick-off and milestone meetings, prepares project specific quality control plans and project execution plans.

Summary of Experience:

Upland Run AMD, WVDEP Office of Abandoned Mine Lands and Reclamation, Weston, Lewis County, WV

This project is currently in an active status with the WVDEP (D&H received notice to proceed on July 26, 2023). Mr. Parsons has been assigned the Project Coordinator Role and will be the Engineer of Record for design. He will participate in the initial site planning meetings, scoping meetings, cost negotiations, surveying, subsurface investigation review, Realty contacts and negotiations, engineering design plan and review and construction administration and certification of the final project.

Weston (Curtis) Landslide, WVDEP Office of Abandoned Mine Lands and Reclamation, Weston, Lewis County, WV

This project is currently in an active status with the WVDEP. Mr. Parsons is assigned the Project Coordinator Role and will be the Engineer of Record for design. He will participate in the initial site planning meetings, scoping meetings, cost negotiations, surveying, subsurface investigation review, Realty contacts and negotiations, engineering design plan and review and construction administration and certification of the final project.

DETAILS AND ACHIEVEMENTS

Experience

Total: 25 years

With D&H: 10 years

Education

B.S. Civil Engineering,
Virginia Military Institute

PROFESSIONAL REGISTRATIONS

Professional Surveyor

WV – No. 2361

VA – No. 002895

PA – No. SU75498

NC – No. L-5100

Professional Engineer

WV – No. 15279

VA – No. 33680

PA – No. PE70521

OH – No. 85335

CORPORATE AFFILIATIONS

- WV Society of Professional Surveyors
- Gas & Oil Association of West Virginia (GO-WV)
- Pennsylvania Independent Oil and Gas Association (PIOGA)

President

Herbert L. Parsons III, PE, PLS



DIEFFENBAUCH & HRITZ

WVDEP AML Project Experience *

Record Engineer and Project Manager:

Prepared PS&E, attended Pre-Bid / Pre-Construction meetings, signed sealed documents as PE and submitted invoices.

- Sauls Run (Carpenter) Landslide
- Tunnelton (Dillsworth) Landslide
- Church Creek/Manown Highwall
- Hampton Number Four Maintenance
- Pageton (Lambert) Portals
- Sandy Run Highwall & Portals
- Tub Run Highwall & Refuse
- Birds Creek No. 4

Coalfields Expressway, eleven-mile four lane limited access highway, Buchanan County Virginia

Lead Drainage Engineer for the preliminary design, overseeing design of all stormwater conveyance and stormwater management, E&S control plan and detention facilities.

Coalfields Expressway PIE Study, thirteen-mile four lane limited access highway, WV16 to Mullens Section, Wyoming County, West Virginia

Lead Survey Project Manager in support of preliminary plan. Overseeing project control, boundary surveys in support of RW1's and RW2's, staking geotechnical boring and providing supplemental mapping.

City of Bristol Bridge Replacement Projects, Bristol, Virginia

Project manager and Lead Surveyor for three bridge replacement Projects as well as QC Engineer for Civil plans and Maintenance of Traffic plans. Overseeing survey and engineering design teams.

Responsible Charge Manager, 20" Pipeline Project, Greene County, Pennsylvania [2016 – present]

Responsible Charge Manager for 4 miles of proposed pipeline. Services include access roads site development, environmental permitting, alignment sheet development, and coordination of field routing.

Quality Control Manager, Gas Pipeline Survey, Marshall, Ohio & Brooke Counties, WV,

Responsible Charge Manager for a 70 mile gas pipeline construction project. Project scope included new construction of an 8" propane pipeline that included 45 miles of reroutes. Project land acquisition, signed land owners exhibits, alignment sheets, permitting, and LOD stakeout were delivered in a 6 m

** Work performed prior to joining Dieffenbach & Hritz, LLC.*



Survey Services Manager

Jason H. Littler, PS

Mr. Littler has accumulated more than 25 years of project management experience in civil engineering and surveying. As a Senior Project Manager, he has developed a broad experience base and extensive project development with public and private sector clients. He has led teams on complex projects that require coordination of disciplines, technical studies, environmental permitting, and multiple agencies and stakeholders. Specific areas of surveying include renewable energy, conventional energy, transportation projects, utilities, abandoned mine lands, commercial and residential site planning, erosion and sediment control plans and permit documents. He has been professional in charge of several boundary surveys ranging in size from small lot and partition surveys to large multi-tract 1000-acre surveys. He has performed numerous ALTA/ASCM land title surveys all throughout West Virginia for various banks, title insurance companies and development companies.

Company Role, Survey Services Manager:

In his current position, Mr. Littler is responsible professional in charge of overseeing survey projects including but not limited to crew and staff coordination, boundary, mapping, as-builts, quantities and geodetic control. He is also responsible for overseeing and assuring the quality of all deliverables and management practices of the survey discipline.

Project Role, Survey Services Coordinator:

Mr. Littler will be responsible professional in charge of overseeing survey field and CAD design work completed assuring the quality of all deliverables and practices of the survey. Mr. Littler attend client or project meetings, participate in kick-off and milestone meetings, and oversee the preparation a project specific quality control plans.

Summary of Projects:

Upland Run AMD, WVDEP Office of Abandoned Mine Lands and Reclamation, Weston, Lewis County, WV

This project is currently in an active status with the WVDEP, which D&H received notice to proceed on July 26, 2023. Mr. Littler has been involved with the initial site planning meetings, scoping meetings, cost negotiations, surveying, subsurface investigation review, Realty contacts and negotiations, 30% engineering design plan and review.

Weston (Curtis) Landslide, WVDEP Office of Abandoned Mine Lands and Reclamation, Weston, Lewis County, WV

This project is currently in an active status with the WVDEP, which D&H received notice to proceed on July 26, 2023. Mr. Littler has been involved with the initial site planning meetings, scoping meetings, cost negotiations, surveying, subsurface investigation review, Realty contacts and negotiations, 30% engineering design plan and review.

DETAILS AND ACHIEVEMENTS

Experience

Total: 26 years
With D&H: 1 year

Education:

B.S. Engineering
Technology/Surveying,
West Virginia Institute of
Technology
A.S. Civil Engineering
Technology,
West Virginia Institute of
Technology

Safety Training

Safeland (PEC)
OSHA 10

PROFESSIONAL REGISTRATION(S):

Professional Surveyor

WV – No. 2139
PA – No. SU075719

CORPORATE AFFILIATIONS:

West Virginia Society of
Professional Surveyors



Survey Services Manager

Jason H. Littler, PS

WVDEP Office of Abandoned Mine Lands and Reclamation Northern Mapping Services, northern counties of West Virginia*

Mr. Littler served as Survey Project Manager in charge of surveying and mapping on these individual Projects with the West Virginia Department of Environmental Protection, Division of Land Restoration, Office of Abandoned Mine Lands. This contract consisted of a 3-year assignment with the WVDEP and involved surveying and mapping services to be used for the design and construction of Abandoned mine lands projects located throughout the northern counties of West Virginia. Currently in the Northern contract, Mr. Littler has overseen the successful completion of the mapping for 40 individual projects with a total mapped acreage of 5,800 acres. Mr. Littler was responsible for the client maintenance, field visits, billing, invoicing, and oversight for this 3-year assignment.

WVDEP Office of Abandoned Mine Lands and Reclamation Southern Mapping Services, southern counties of West Virginia*

Mr. Littler served as Survey Project Manager in charge of surveying and mapping on these individual Projects with the West Virginia Department of Environmental Protection, Division of Land Restoration, Office of Abandoned Mine Lands. This contract consisted of a 3-year assignment with the WVDEP and involved surveying and mapping services to be used for the design and construction of Abandoned mine lands projects located throughout the southern counties of West Virginia. Currently in the southern contract, Mr. Littler has overseen the successful completion of the mapping for 53 individual projects with a total mapped acreage of 5,000 acres. Mr. Littler was responsible for the client maintenance, field visits, billing, invoicing and oversight for this 3-year assignment.

Pine Bluff Tipple Complex, Pine Bluff, WV*

This project is a Bond Forfeiture site located in Pine Bluff, WV. Mr. Littler produced all original ground sections and monthly pay volumes for submittal to the State of West Virginia. He also constructed an as-built map of the completed site.

Taylor Creek Impoundment, Widen, WV*

Mr. Littler was involved in this Abandoned Mine Land (AML) project. The project consisted of two (2) sites of which all original ground sections were produced and monthly pay volumes were submitted for approval.

Robinson Run Preparation Plant, Harrison County, WV*

Mr. Littler served as Survey Project Manager in charge of surveying on this 2200 TPH coal preparation plant being constructed for CONSOL Energy. This plant was built to replace the existing plant which had served its time. This project was unique in that the new prep plant was positioned directly behind the existing plant and the existing conveyor feed line to the plant was to only be extended from the old plant into the new plant. The tolerances on alignment tie in was minimal and final tie-in between the old conveyor feed line and the new conveyor feed line was accomplished in a couple of days with no misalignment problems.

Robinson Run Overland Conveyor Project, Harrison County, WV*

Mr. Littler served as Survey Project Manager in charge of surveying on this 4.1-mile, overland conveyor belt line being constructed for CONSOL Energy. This project consisted of the survey layout, volume computations, and as-built mapping of the 4.1-mile overland conveyor along with over 4 miles of access roads and over 500,000 cubic yards of excavation. Mr. Littler was responsible for the crew scheduling, reviewing of all data, final cross section data, checking of all computations.

* Work performed prior to joining Dieffenbach & Hritz, LLC



SECTION 5 PAST PERFORMANCE



AML & Relevant Project Experience

MINE SUBSIDENCE

- Fairmont Subsidence, WV DEP
- Town of Thomas, WV DEP
- Lower Consol Road MDE, AMLD
- Terra Haute Airport, IN AML
- Farmington UMC, WV DEP Emergency
- Morningside Baptist, WV DEP Emergency
- Eccles Subsidence, WV DEP
- McArthur Subsidence, WV DEP
- Mark Kempner, NJ Private
- WV BRIM
- OMSIUA

HIGHWALLS

- Anderson Highwalls, WVDEP
- Peninsula Highwalls, WVDEP
- St. Clair Portals, WVDEP
- Collins Mining, ODNR
- Miller Mining, ODNR

OPEN PITS

- Shinn's Run Portals, WVDEP
- Jones Trucking, ODNR
- General Clay #1 & #2, ODNR

OPEN MINE SHAFTS

- Kennel Mine Closure, MDE, AMLD
- Frostburg North Closure, MDE, AMLD
- Zilman Closure, MDE, AMLD

REFUSE PILES

- Hopewell Church Refuse & AMD, WVDEP
- Ream Refuse Pile, WVDEP
- Williams Refuse Pile, Private
- Harrison Power Plant, Allegheny Power



MINE DRAINAGE/STREAM RESTORATION

- St. Clair Portals, WV DEP
- Aarons Run, MDE, AMLD
- Deckers Creek, WVDEP

LANDSLIDES

- Douglas Avenue Landslide, MDE, AMLD
- Schramm Landslide, MDE, AMLD
- Gordon Landslide, MDE, AMLD
- East Franklin Landslide, MDE, AMLD
- Cheat Neck Landslide, WV DEP
- McCourt Landslide, ODNr
- Caldonia Hill Slope Stability, MDE, AMLD

WATER SUPPLY REPLACEMENT

- Douglas Avenue Stormwater System Repair, MDE, AMLD
- Bald Knob & Potomac Hollow Water Investigations, MDE, AMLD
- Pee Wee Hill Supply Design, MDE, AMLD
- Pee Wee Will Water Feasibility Study, MDE, AMLD
- Fairview Water Feasibility, WV DEP
- Tioga Water Feasibility, WV DEP

Past Project Experience

Project: Morgantown Airport Terminal Mine Stabilization

Client: WVDEP AML

Contact: AML Division

Phone: (304) 926-0499

Location: Monongalia County, West Virginia

Project Description: CTL Engineering completed an extensive subsurface investigation and final design documents for the grout stabilization program beneath the airport terminal. The terminal was approximately 60 feet above an abandoned deep mine complex in the Pittsburgh Coal Seam that historically caused structural damage to the airport buildings.



Project: Ottawa State Route 2

Client: Ohio Department of Transportation

Contact: Doug Rogers

Phone: 419-373-4397

Location: Ottawa County, OH

Project Description: Underground mining for gypsum has been active in this area of Ohio for over 100 years. The gypsum seam has been extracted with seam heights up to fifteen feet in height and at depths below surface level of less than 60 feet.

Subsidence features have presented causing failure to highway and highway structures.

CTL Phase 1

In 2005 CTL Engineering was engaged by ODOT to perform a Mine Subsidence Risk Evaluation. Thirty-five test borings were drilled to determine the mine conditions and depth from surface and assess the subsidence risk. The findings of this evaluation had this project site declared as an emergency program.

CTL Phase 2

In 2010 CTL was engaged to design and evaluate a two acre Pilot Project to determine three parameters that would become part of the final remediation and stabilization for the mine area effecting the roadways.

The three parameters, in sequence, were

1. Evaluate different drilling methods to maintain stability of grout injections holes through thick glacial till material.
2. Design and Evaluate different grout mixes to create a solid barrier around the project area that would contain the grout to be used within the mine voids.
3. Design and Evaluate grout mixes that could be injected under water and fill the fifteen-foot voids present in the gypsum mines

CTL Phase 3

In 2012 CTL completed the design of the final grouting plan, provided construction documents and specifications for the final mitigation project that will begin in 2013.



Project: Guernsey Power Station

Client: Guernsey Power Station, LLC

Contact: John Wanalista

Phone: (212) 782-0531

Location: Guernsey County Ohio

Project Description: CTL was contracted by Guernsey Power Station, LLC to prepare OEPA's required Underground Injection Control (UIC) permitting to allow for the drilling and grouting operations associated with mine stabilization. Part of that process was the design of grid pattern to adequately stabilize the abandoned mines beneath the project areas. There were two separate sites within this project. The first site was to be utilized for building a power generating facility and the other site was to be utilized to construct a 765KV switch yard facility.

Once grouting operations commenced, CTL was retained to provide Quality Assurance and Quality Control (QA/QC) for the client. Duties included recording of drilling logs and quantities of inject grout, grout sample collection and laboratory strength testing.

After mine stabilization had concluded, CTL's drilling crews drilled numerous sampled confirmation boreholes to verify competence of the project.

All field data was maintained and submitted to OEPA on a monthly basis as part of the approved permitting process.



Project: Terra Haute Regional Airport

Client: Indiana Division of Natural Resources

Contact: Marvin Ellis

Phone: (812) 665-2207

Location: Terra Haute, Indiana

Project Description: The project consisted of an investigation into the presence or lack of mine voids beneath the Airport improved property (terminal, main runway, hangers and fire station). The investigation determined that the airport was above an area-wide abandoned deep mine that threatened the facility with potential subsidence stresses.

CTL Engineering Inc. performed a subsurface investigation including 58 test borings using 3.25-inch hollow stem augers and NQ size rock coring. The borings allowed for use of a down-hole camera system to inspect the mines, determine their condition and the current state of collapse.

From this investigation, CTL designed a method to stabilize the underground mine voids beneath the airport through a systematic grout injection program of 60,000 cy of a cement / fly ash mix. CTL provided construction observation to verify quantities, depths and pay items of the contractor. This \$8.5million grouting project was one of the largest of its kind in the United States.



Project: Fairmont Subsidence

Client: WVDEP AML

Contact: AML Division (Bridgeport Office)

Phone: (304) 926-0499

Location: Harrison County, West Virginia

Project Description: CTL Engineering provided surveying, reclamation design and subsurface investigations for this Abandoned Mine Lands and Reclamation project. The surveying was completed in order to establish the areas that will be reclaimed and to locate utilities that were not apparent on the mapping provided for the job. CTL provided drilling services near the mine entries to determine the mine pool as well as near a bridge on site to determine the foundation depth and bearing capacity. CTL also developed sedimentation and erosion control plans for all disturbed sites.



Project: Thomas Subsidence

Client: WVDEP AML

Contact: AML Division

Phone: (304) 926-0499

Location: Tucker County, West Virginia

Project Description: CTL Engineering of West Virginia, Inc. provided Engineering Design Services and construction documents necessary for the mine subsidence stabilization for the residents located on the west side of Route 32 in Thomas, West Virginia.

This project included 59 acres of reclamation on abandoned surface mines, 153,000 cubic yards of excavation and the stabilization of 37 structures using 30,000 cubic yards of grout and 25,000 lineal feet of drilling. This project also included the regrading of an inactive mined area to redirect surface drainage away from abandoned deep mine sinkholes. Phase 2 added 33 more structures and an additional 28,500 cubic yards of grout.



Project: University High School

Client: Monongalia County Board of Education

Contact: Frank Devano

Phone: 304-291-9210

Location: Monongalia County, WV

Project Description: CTL Engineering of West Virginia, Inc. provided a preliminary geotechnical investigation to assess the feasibility of site selection. The study identified the presence of abandoned coal mines within the desired facility location. A foundation design and mine mitigation plan was developed to use grout injection technology and a deep foundation design.

This project involved 29,823 feet of drilling and the injection of 21,045 cubic yards of concrete to stabilize the 8 acre building zone. CTL is also providing construction supervision for the entire school site including earthwork, utilities, and structure.



Project: Morgantown Airport Runway Extension

Client: City of Morgantown

Contact: Michael Baker

Phone: (304) 284-7405

Location: Monongalia, West Virginia

Project Description: The Runway Extension Project is a five-year initiative taking place at the Morgantown Municipal Airport – the busiest airport in West Virginia. The scope of work for this project

is to extend the existing runway by 1,001 feet, creating a safer takeoff and landing space for outgoing and incoming flights. Over 100,000 CY of rock excavation was part of the scope of the PH-1 project.



Project: Anderson Highwall

Client: WVDEP AML

Contact: AML Division (Bridgeport Office)

Phone: (304) 926-0499

Location: Monongalia County, West Virginia

Project Description: The site consisted of dangerous highwalls, seven or more open or partially open portals and a dangerous scrap yard with potentially dangerous materials. CTL provided surveying, geotechnical investigation, civil design and construction bidding documents.



Project: Peninsula Highwall

Client: WVDEP AML

Contact: AML Division (Bridgeport Office)

Phone: (304) 926-0499

Location: Monongalia County, West Virginia

Project Description: This site contained 1,800 LF of vertical to sloughed highwalls 15 to 25 feet high, 7 partially or totally collapsed mine portals, 1 open mine portal, subsidence depressions behind the portals and water present at or flowing from the portals. CTL Engineering of West Virginia, Inc. was retained to provide the design for the access road into the site, wet seal 2 portals, regrade face of 2 portals, riprap channel and additional channel to carry water off site, backfill of highwalls and subsidence areas, restoration of golf path asphalt, and conditioning and revegetation of all disturbed areas.



Project: St. Clair Portals

Client: WVDEP AML

Contact: AML Division (Bridgeport Office)

Phone: (304) 926-0499

Location: Monongalia County, West Virginia

Project Description: The site consisted of coal refuse, acid mine drainage with impounded water, collapsed mine portals and highwalls. 17 portals were found along the highwall bench. Three impoundments of approximately 70,000 sq.ft. had water flowing at 300 gpm with a pH value of 3.1 and iron >10 mg/l. A 35' to 45' high refuse pile was in the middle of the site as well as scattered refuse throughout the site.



CTL Engineering of West Virginia, Inc. was retained to provide the design for excavation and wet seal of at least 17 mine portals, dewater three impoundments, 2000 LF of stream reconstruction, regrade and cover of coal refuse and spoil areas on mine bench, drainage control channels to carry water off site. CTL was also responsible for the backfill of highwalls using spoil material to original contour and conditioning and revegetation of all disturbed areas.

Project: Shinns Run

Client: WVDEP AML

Contact: AML Division (Bridgeport Office)

Phone: (304) 926-0499

Location: Harrison County, West Virginia

Project Description: CTL Engineering provided surveying, reclamation design and subsurface investigations for this Abandoned Mine Lands and Reclamation project. The surveying was completed in order to establish the areas that will be reclaimed and to locate utilities that were not apparent on the mapping provided for the job. CTL provided drilling services near the mine entries to determine the mine pool as well as near a bridge on site to determine the foundation depth and bearing capacity. CTL also developed sedimentation and erosion control plans for all disturbed sites.



Project: Maryland Deep Mine Closures

Client: Maryland Department of Environment – AML Division

Contact: Tim Miller

Phone: (301) 689-1440

Location: Allegheny and Garrett County, Maryland

Project Description: CTL Engineering of West Virginia, Inc. was retained to provide the develop detailed engineering design plans and construction plans including; cost estimates, bid documents, project drawings, maps, plans & specifications for the reclamation construction of multiple mine mouth closures. Design and Plans included dry and wet mine seals, bat gates, regrading, drainage structures and site reclamation.





SECTION 6
CCQQ
RPEM

WEST VIRGINIA DEPARTMENT OF ENVIRONMENTAL PROTECTION
AML CONSULTANT CONFIDENTIAL QUALIFICATION QUESTIONNAIRE **"Attachment B"**

PROJECT NAME Morgantown Airport Subsidence Phase 2		DATE (DAY, MONTH, YEAR) 10/25/2024		FEIN 55-063-1834	
1. FIRM NAME CTL Engineering, Inc.		2. HOME OFFICE BUSINESS ADDRESS 2860 Fisher Road Columbus, OH 43204		3. FORMER FIRM NAME Columbus Testing Laboratories	
4. HOME OFFICE TELEPHONE (614)276-8123	5. ESTABLISHED (YEAR) CTL-1927 CTL-WV 1983	6. TYPE OWNERSHIP Individual <u>Corporation</u> Partnership Joint-Venture		6a. WV REGISTERED DBE (Disadvantaged Business Enterprise) YES <u>NO</u>	
6. PRIMARY AML DESIGN OFFICE: ADDRESS/ TELEPHONE/ PERSON IN CHARGE/ NO. AML DESIGN PERSONNEL EACH OFFICE 1091 Chaplin Road, Morgantown, WV 26501/ 304-292-1135/ CK Satyapriya, President / Morgantown - 10					
7. NAMES OF PRINCIPAL OFFICERS OR MEMBERS OF FIRM C. K. Satyapriya – CEO Ali Jamshidi – CFO Bipender Jindal – Secretary Hassan Zahran – Principal Ali Karaki – Principal Marc Montgomery – Principal Kevin Reichert – Principal			8a. NAME, TITLE, & TELEPHONE NUMBER – OTHER PRINCIPALS Joe Grani – President – Geotechnical and Branch Manager of CTL Engineering of WV Ababu Gelaye – Civil Design and Survey Regional Manager Office Telephone: 304-292-1135		
9. PERSONNEL BY DISCIPLINE					
<u>52</u> ADMINISTRATIVE <u>2</u> ARCHITECTS - BIOLOGIST <u>6</u> CADD DESIGNERS <u>1</u> CHEMICAL ENGINEERS <u>15</u> CIVIL ENGINEERS <u>15</u> CONSTRUCTION INSPECTORS - DESIGNERS <u>1</u> DRAFTSMEN	- ECOLOGISTS - ECONOMISTS - ELECTRICAL ENGINEERS <u>6</u> ENVIRONMENTALISTS - ESTIMATORS <u>3</u> GEOLOGISTS - HISTORIANS - HYDROLOGISTS	- LANDSCAPE ARCHITECTS - MECHANICAL ENGINEERS <u>1</u> MINING ENGINEERS - PHOTOGRAMMETRISTS - PLANNERS: URBAN/REGIONAL - SANITARY ENGINEERS <u>19</u> SOILS ENGINEERS - SPECIFICATION WRITERS	- STRUCTURAL ENGINEERS <u>4</u> SURVEYORS/RODMEN - TRAFFIC ENGINEERS <u>X</u> OTHER, <u>31</u> Project Managers <u>102</u> Technicians/Drillers		
TOTAL NUMBER OF WV REGISTERED PROFESSIONAL ENGINEERS IN PRIMARY OFFICE: <u>3</u> *RPES other than Civil and Mining must provide supporting documentation that qualifies them to supervise and perform this type of work.			<u>258</u> TOTAL PERSONNEL		
10. HAS THIS JOINT-VENTURE WORKED TOGETHER BEFORE? <input type="checkbox"/> YES <input type="checkbox"/> NO					

11. OUTSIDE KEY CONSULTANTS/SUB-CONSULTANTS ANTICIPATED TO BE USED. Attach "AML Consultant Confidential Qualification Questionnaire" for each if copy is not on file with AML.

[illegible]

12. A. Are your firm's personnel experienced in Abandoned Mine Lands Remediation/Mine Reclamation Engineering?

YES Description and Number of Projects: CTL Engineering has completed more than 800 AML related projects nationally and internationally. See attached "AML Past Project Experience" for some specific examples. CTL completes un excess of 100 testing projects each year.

NO

B. Is your firm experienced in Soil Analysis?

YES Description and Number of Projects: Our in-house laboratories perform all ASTM mechanical, organic and in-organic analyses for soils. Our labs are certified by WVDOH, OEPA and US Corps of Engineers.

NO

C. Is your firm experienced in hydrology and hydraulics?

YES Description and Number of Projects: Each of our site design and AML projects require hydrology & hydraulic evaluations. We estimate that annually, we complete more than 100 projects requiring hydrology design.

NO

D. Does your firm produce its own Aerial Photography and Develop Contour Mapping?

YES Description and Number of Projects:

NO However, we annually complete more than 25 projects requiring aerial photography & mapping. While we

E. Is your firm experienced in domestic waterline design? (Include any experience your firm has in evaluation of aquifer degradation as a result of mining.)

YES Description and Number of Projects: We have completed numerous waterline design projects and our in-house staff has more than 50 years of combined experience with aquifer degradation.

NO

F. Is your firm experienced in Acid Mine Drainage Evaluation and Abatement Design?

YES Description and Number of Projects: CTL has developed more than 20 active and passive treatment systems for AMD. More than 50 of our AML Design projects required some form of AMD evaluation and design.

NO

13. PERSONAL HISTORY STATEMENT OF PRINCIPALS AND ASSOCIATES **RESPONSIBLE FOR AML PROJECT DESIGN** (Furnish complete data but keep to essentials)

NAME & TITLE (Last, First, Middle Int.) Gallagher, Patrick E., PE President, Project Manager	YEARS OF EXPERIENCE		
	YEARS OF AML DESIGN EXPERIENCE: 40	YEARS OF AML RELATED DESIGN EXPERIENCE: 40	YEARS OF DOMESTIC WATERLINE DESIGN EXPERIENCE: 32

Brief Explanation of Responsibilities
President of CTL Engineering of WV, Inc.; responsible for the overall administration of the Morgantown, WV office along with the management of the individual engineering projects. His administration and management responsibilities include marketing, proposal preparation, client contact, supervision of design personnel, scheduling, budget control, and report preparation. Projects successfully completed by Mr. Gallagher include: Geotechnical Investigations, Foundation Design Investigations, Dam Stability Analyses, Mine Subsidence Evaluations, Mineral Reserve Studies, Landslide Investigations, Mine Reclamation Designs, Failure Investigations, and Mining Permits.

EDUCATION (Degree, Year, Specialization)

B.S., 1975, Civil Engineering
B.S., 1975, Equivalent, Geology

MEMBERSHIP IN PROFESSIONAL ORGANIZATIONS

American Society of Civil Engineers
Society of Mining Engineers of A.I.M.E.
Triangle Fraternity of Engineers, Architects and Scientists
International Society of Soil Mechanics and Foundation Engineers
American Institute of Professional Geologists

REGISTRATION (Type, Year, State)

Registered Professional Engineer; 1983-West Virginia, 1984-Ohio, 1983-Maryland, 1993-Pennsylvania, 2006-Wyoming, 2006-North Carolina
Certified Professional Geological Scientist - 1984
Professional Surveyor, 1995-West Virginia

13. PERSONAL HISTORY STATEMENT OF PRINCIPALS AND ASSOCIATES **RESPONSIBLE FOR AML PROJECT DESIGN** (Furnish complete data but keep to essentials)

NAME & TITLE (Last, First, Middle Int.) Selfridge, Carl G. Department Head, Geotechnical Services	YEARS OF EXPERIENCE		
	YEARS OF AML DESIGN EXPERIENCE: 11	YEARS OF AML RELATED DESIGN EXPERIENCE: 11	YEARS OF DOMESTIC WATERLINE DESIGN EXPERIENCE:

Brief Explanation of Responsibilities
Deartment Head Geotechnical Engineering. Responsible for subsurface investigations, geotechnical reporting, foundation analysis & recommendations, program development for investigative and laboratory analysis.

EDUCATION (Degree, Year, Specialization)

Graduate Studies, 1996-1999, Civil Engineering (Geotechnical)
B.S., 1996, Civil Engineering, Geotechnical and Structural
A.S., 1994, Engineering Science
A.A.S., 1991, Mechanical Technology - Design & Drafting

MEMBERSHIP IN PROFESSIONAL ORGANIZATIONS

Fellow of the American Society of Civil Engineers, The GEO-Institute, Timber Framers Guild, Construction Institute (ASCE)

REGISTRATION (Type, Year, State)

Engineering Intern (EI), 1996, New York
Level II Drilling Inspector, 1999, PennDOT

13. PERSONAL HISTORY STATEMENT OF PRINCIPALS AND ASSOCIATES **RESPONSIBLE FOR AML PROJECT DESIGN** (Furnish complete data but keep to essentials)

NAME & TITLE (Last, First, Middle Int.)	YEARS OF EXPERIENCE		
	YEARS OF AML DESIGN EXPERIENCE:	YEARS OF AML RELATED DESIGN EXPERIENCE:	YEARS OF DOMESTIC WATERLINE DESIGN EXPERIENCE
Gelaye, Ababu Civil Site Dept. Mgr., Project Manager	2	13	14

Brief Explanation of Responsibilities
Mr. Gelaye is a Regional Manager for CTL Engineering, Inc. and leads the Civil Site and Land Surveying Service Business Line for CTL's West Virginia, Ohio, Pennsylvania, Kentucky and Indiana operations. He is a Civil Engineer and a Geologist by training, a Certified Professional in Erosion and Sediment Control and a licensed professional geologist. He brings more than twenty-eight (28) years of practical experience and in-depth knowledge of engineering, scientific and standard practices, as well as applicable Federal and State environmental regulations related to the mining and energy infrastructure development and improvement projects.

EDUCATION (Degree, Year, Specialization)
B.S, Civil Engineering, Old Dominion University

Two M.S., Degrees - Hydrology/Hydrogeology,
The University of Tuebingen/Akron.

B.S., Geology, Addis Ababa University

MEMBERSHIP IN PROFESSIONAL ORGANIZATIONS
Professional Geologist, IN 2306
CPESC - 5530

REGISTRATION (Type, Year, State)

13. PERSONAL HISTORY STATEMENT OF PRINCIPALS AND ASSOCIATES **RESPONSIBLE FOR AML PROJECT DESIGN** (Furnish complete data but keep to essentials)

NAME & TITLE (Last, First, Middle Int.)	YEARS OF EXPERIENCE		
	YEARS OF AML DESIGN EXPERIENCE:	YEARS OF AML RELATED DESIGN EXPERIENCE:	YEARS OF DOMESTIC WATERLINE DESIGN EXPERIENCE:
Stanley, Joseph Project Manager	12	12	9

Brief Explanation of Responsibilities
Mr. Stanley is responsible for Reclamation Design, Drafting Hydrology, Quantity Calculations, Stability Analysis, Residential Development, Valley Fill Footprinting, Surveying, Subsidence Surveys, Pre-Blast Surveys, Acid Base Accounts, Groundwater Inventory. PC Software includes Hydrologic TR-20, TR-55, Excel, Harstad Methods, Word, AutoCADD Land, Quarttro, Access.

EDUCATION (Degree, Year, Specialization)

A.S., 2001 Civil -Engineering Technology Drafting & Design

MEMBERSHIP IN PROFESSIONAL ORGANIZATIONS	REGISTRATION (Type, Year, State)

13. PERSONAL HISTORY STATEMENT OF PRINCIPALS AND ASSOCIATES RESPONSIBLE FOR AML PROJECT DESIGN (Furnish complete data but keep to essentials)			
NAME & TITLE (Last, First, Middle Int.) Grani, Joe Branch Manager (WV) Geotechnical Manager	YEARS OF EXPERIENCE		
	YEARS OF AML DESIGN EXPERIENCE: 0	YEARS OF AML RELATED DESIGN EXPERIENCE: 28	YEARS OF DOMESTIC WATERLINE DESIGN EXPERIENCE: 0
Brief Explanation of Responsibilities			
Mr. Grani is the Branch Manager of the WV office and also responsible for field review and exploration for the Geotechnical Engineering Department for CTL Engineering of West Virginia. Joe is involved in the management of field drilling, classification of soil and rock, field safety procedures, assignment of project specific lab testing, and performing geotechnical evaluations. Engineering evaluations include subsidence evaluation, foundation recommendations, settlement analysis, slope stability analysis, earth pressure coefficients and report preparation.			
EDUCATION (Degree, Year, Specialization)			
B.S., 1991, The Ohio State University, Civil Engineering M.S., 1994, The Ohio State University, Civil Engineering			
MEMBERSHIP IN PROFESSIONAL ORGANIZATIONS	REGISTRATION (Type, Year, State)		
ASHE ACEC	Civil Engineering Professional Engineer, #E-60435 Ohio		

14. PROVIDE A LIST OF SOFTWARE AND EQUIPMENT AVAILABLE IN THE PRIMARY OFFICE WHICH WILL BE USED TO COMPLETE AML DESIGN SERVICES.

OFFICE EQUIPMENT

3 HP Color Plotters
HP Color Scanner
Duplicating equipment, copiers, blueprinting, laser printers, etc.
Facsimile Machine

DESIGN SOFTWARE

Windows XP & 2000 based operating systems

Microsoft Office 2000 & 2002 is used for word processing, spreadsheet creation, data processing, and presentation creation. Alternative software including Corel Suite is available, if necessary Project designs and specifications are produced in our Computer Aided Drafting and Design (CADD) section using all versions of AutoCAD including Release current civil 3d version.

Hydrogeologic Studies

MODFLO

MODPATH

SURFER

CAPZONE

GWPATH

SKUGIS

PHREEQCI

WATEQ4F

Groundwater for Windows

Civil Engineering Software

Civil 3D

Profiling

Civilsoft

TR-20 & TR-55

SEDCAD

HEC 1 & 2

HEC-RAS

Arc GIS

ArcPAD

Carson Software

Geotechnical

GINT

STABL6

SHAFT

WSPRO

Various Bridge, Pavement, Pile and Foundation Software

SURVEY EQUIPMENT

- 8 - Trimble GPS Systems - 6-R8 Receivers & 2- R10 Receiver
- 6 Total Stations (2- Robotics)
- DJI Inspire II Drone
- NAK Micrometer Level System & Direct Levels
- 4X4 Vehicles, including ATV for off-road use
- 2-Way Radios

SUBSURFACE INVESTIGATION EQUIPMENT

SUBSURFACE INVESTIGATION EQUIPMENT

CTL Engineering Inc. owns and operates a fleet of geotechnical drill rigs and support vehicles. Our drill rigs are suitable to be used in a verity of terrains and under a verity of conditions including steep terrain, limited access, over water barge drilling. CTL can mobilize special equipment or a fleet of drilling rigs to a particular project requiring multiple units.

CTL's drill rigs are rotary drilling rigs equipped to conduct standard penetration testing (SPT) with calibrated hammers for split-spoon sampling and undisturbed Shelby tube samplers. Borings may be advanced through soil overburden and rock using various sizes of hollow stem augers (typically 3.25 inch), solid stem augers, spin casing with casing advancer, air and mud rotary, down-hole hammer, etc. Our rigs are also equipped to perform rock core sampling with Moyno pumps, wire-line or conventional rock coring equipment (typically NWL (NQ) - 2 inch double tube core barrels) for proper and efficient execution of a subsurface exploration program.

CTL current owns and operates eleven (11) geotechnical drill rigs listed as follow, with some having the capacity of drilling to depths greater than 500 feet and select rigs having angle drilling capability:

- 1996 CME 45C Skid, trailer, and/or Truck Mounted Drill Rig System
- 1988 CME 55 Truck Mounted Rig
- 2001 CME 55 Truck Mounted Rig
- 2001 CME 45C Rubber Track Mounted Rig
- 1987 CME 75 Truck Mounted Rig
- 2012 CME 550X Rubber Tired ATV Mounted Rig
- 2016 CME 550X Rubber Tired ATV Mounted Rig
- 2017 Mobile B-57 Truck Mounted Rig
- 2002 CME 55 Rubber Track Mounted Rig
- 2004 CME 45C Rubber Track Mounted Rig
- 2017 Mobile B-57 Rubber Track Mounted Rig

Some of CTL's more specialized drilling, sampling, and testing exploration equipment include:

- Mobile "Minuteman" small portable drilling rig, for limited and tight access drilling, used with tripod and powered cat and hammer system.
- Portable electric core drills with stands and truck mount system
- GeoVision Color Borehole video camera system with 300 foot range
- Inclinator testing equipment
- Packer test equipment with vibrating wire piezometers for determining transmissivity and storage coefficient of low permeability rock strata

- Borehole field shear vanes systems
- GUS Sampler (Gregory Undisturbed Sampler)
- Denison Core Barrel Sampler
- CME stabilized continuous sample tube system
- CME bearing head continuous sample tube system
- Acker pitcher sampler
- GEOTECH bladder pump with Geocontrol 2 Logic Unit
- NUMA "Super Jaw" down hole hammer
- CBR equipment
- Hand Augers
- Pump testing equipment
- Decontamination Equipment - Steam cleaners, drums, generators, etc
- Soil-gas survey equipment
- Ground Penetrating Radar
- Field and Lab electrical resistivity testing
- Geophysical refraction microtremor (REMI) surveying
- Geophysical 2D and 3D electrical resistivity and induced polarization surveying imaging
- Down hole temperature gauges, PID, FID, CGI and various field monitoring equipment

Drill crews have a wide verity of experiences drilling in different conditions, both surface and subsurface, installing monitoring wells, piezometers, inclinometers, along with other field sampling and testing equipment.

15. CURRENT ACTIVITIES ON WHICH YOUR FIRM IS THE DESIGNATED ENGINEER OF RECORD

PROJECT NAME, TYPE AND LOCATION	NAME AND ADDRESS OF OWNER	NATURE OF YOUR FIRM'S RESPONSIBILITY	ESTIMATED CONSTRUCTION COST	PERCENT COMPLETE
WV AML Contract North 3	WVDEP	Reclamation Design	\$8,500,000	awaiting contract
ODNR TR 289	ODNR	Reclamation Design	\$4,000,000	ongoing design
WVDOH Northern Connector	WVDOH	Contract Administration Construction Inspection	\$30,000,000	1%
Arsenal Hallys Well Dieffenbauch & Hritz	Arsenal Resources	Geotechnical Engineering	NA CTL - \$46,000	Awaiting ntp
Ashbrooke Liquor Outlet	Moser Enterprises 300 Beechurst Ave. Morgantown, WV 26505	Geotechnical Engineering	NA CTL - \$50,000	90%
TOTAL NUMBER OF PROJECTS: CTL is currently working on multiple projects, for the purpose of this EOI,a sample of recent projects are listed.				

16. CURRENT ACTIVITIES ON WHICH YOUR FIRM IS SERVING AS A SUB-CONSULTANT TO OTHERS

PROJECT NAME, TYPE AND LOCATION	NATURE OF FIRMS RESPONSIBILITY	NAME AND ADDRESS OF OWNER	ESTIMATED COMPLETION DATE	ESTIMATED CONSTRUCTION COST	
				ENTIRE PROJECT	YOUR FIRMS RESPONSIBILITY
Morgantown Airport Expansion	Construction Management and Inspection	Michael Baker	2027	\$40,000,000	\$600,000
WVDOH Crosslanes	Construction Management and Inspection	WRA	2025	NA	\$360,000
WVDOH Statewide Inspection	Construction Management and Inspection	CDM Smith	2025	NA	Task orders
Enslow Bridge	Geotechnical	WVDOH Rettew	2025	NA	\$40,000.00
Texas Infrastructure Project Civil Site Design	Civil Design	Army Corp of Engineers, CBP	2025	NA	T&M
WVDOH Davis Lick Culvert	Geotechnical	Markosky Group PA	2026	NA	\$40,000

17. COMPLETED WORK WITHIN LAST 5 YEARS ON WHICH YOUR FIRM WAS THE DESIGNATED ENGINEER OF RECORD				
PROJECT NAME, TYPE AND LOCATION	NAME AND ADDRESS OF OWNER	ESTIMATED CONSTRUCTION COST	YEAR	CONSTRUCTED (YES OR NO)
City of Fairmont Morgantown Ave Storm Fairmont, WV	City of Fairmont, WV	\$5,000,000	2022	no
Guernsey Power Plant Mine Grout Project Cambridge, Ohio	Gemma Power Systems Glastonbury, CT	\$1,000,000,000	2018- 2020	YES
Red Oak Development Amherst, Ohio	ESa Architecture & Planning 1033 Demonbreun Street, Suite 800 Nashville, TN	NA	2022	yes
RPG Management Storage Morgantown, WV	RPG Management, LLC PO Box 473 Racine, OH	NA	2021	yes
Clear Mountain Bank Mills Group Morgantown WV	Clear Mountain Bank Maple Drive Morgantown WV	NA	2020	yes
ODOT D 12 Construction Inspection/Construction Administration	Ohio Department of Transportation 5500 Transportation Blvd Cleveland, Ohio 44125	\$2,400,000	2022- 2023	YES
Tyler County 911 Center Middlebourne WV	WYK Associates	NA	2021	Ongoing construction

18. COMPLETED WORK WITHIN LAST 5 YEARS ON WHICH YOUR FIRM HAS BEEN A SUB-CONSULTANT TO OTHER FIRMS (INDICATE PHASE OF WORK FOR WHICH YOUR FIRM WAS RESPONSIBLE)					
PROJECT NAME, TYPE AND LOCATION	NAME AND ADDRESS OF OWNER	ESTIMATED CONSTRUCTION COST OF YOUR FIRM'S PORTION	YEAR	CONSTRUCTED (YES OR NO)	FIRM ASSOCIATED WITH
Fremont City Schools 4 elementary schools	Fremont City Schools Fremont Ohio	\$52,000,000	2020	yes	SSOE Group, 1001 Madison Ave. Toledo, Ohio
Arizona Infrastructure Project Civil Site Design	Army Corps of Engineers	NA	2020	yes	Rizzo International
West Run Widening Morgantown, WV Surveying and Geotechnical	Surveying and Geotechnical	\$28,000,0000	2020	no	Herbert, Rowland and Grubic, Inc 829 Fairmont Road Morgantown, WV
ODOT D07 Construction Inspection	Ohio Department of Transportation	\$100,000	2020-2022	YES	American Structurepoint
City of Columbus Roadway Material and Inspection 2021-2022	City of Columbus	\$100,000	2022-2023	YES	DLZ Ohio

19. Use this space to provide any additional information or description of resources supporting your firm's qualifications to perform work for the West Virginia Abandoned Mine Lands Program.
For the past 30 years, CTL has successfully designed more than 200 AML projects. We have worked nationally and internationally on a variety of AML problem sites. We have developed unique solutions that have been applied to site development, AMD Treatment, Mine Subsidence Abatement, Mine Fires and Highwall Elimination. Routinely, CTL is involved with highwall and refuse pile stabilization, extinguishment and landslides.

20. The foregoing is a statement of facts.

Signature: _____ Title: <u>Business Development</u> Printed Name: <u>Joseph Stanley</u>	Date: <u>10/25/2024</u>
--------------------------------------------------------------------------------------------	-------------------------

NOTE: THIS DOCUMENT WILL BECOME VOID AFTER DECEMBER 31 IN CALENDAR YEAR OF DATE HEREON.

WEST VIRGINIA DEPARTMENT OF ENVIRONMENTAL PROTECTION

AML CONSULTANT QUALIFICATION QUESTIONNAIRE

Attachment "A"

PROJECT NAME AML - EOI Morgantown Airport Subsidence Phase II		DATE (DAY, MONTH, YEAR) 29, October 2024		FEIN 65-1257247	
1. FIRM NAME Dieffenbach & Hritz, LLC		2. HOME OFFICE BUSINESS ADDRESS 1095 Chaplin Rd, Ste. 200 Morgantown, WV 26501		3. FORMER FIRM NAME N/A	
4. HOME OFFICE TELEPHONE 304-985-5555	5. ESTABLISHED (YEAR) 2005	6. TYPE OWNERSHIP Individual Corporation Partnership Joint-Venture		6a. WV REGISTERED DBE (Disadvantaged Business Enterprise) YES NO	
7. PRIMARY AML DESIGN OFFICE: ADDRESS/ TELEPHONE/ PERSON IN CHARGE/ NO. AML DESIGN PERSONNEL EACH OFFICE 1095 Chaplin Rd., Ste. 200 Morgantown, WV 26501 / Herbert Parsons / 10					
8. NAMES OF PRINCIPAL OFFICERS OR MEMBERS OF FIRM Michael D. Hritz, PE - CEO John C Dieffenbach, PE - CFO / Vice President			8a. NAME, TITLE, & TELEPHONE NUMBER - OTHER PRINCIPALS Herbert Parsons, III, PE, PLS - President - 304-985-5555 Eric Stewart, PE - Vice President of Engineering 304-985-5555		
9. PERSONNEL BY DISCIPLINE					
<u>3</u> ADMINISTRATIVE	<u>2</u> ECOLOGISTS	<u>2</u> LANDSCAPE ARCHITECTS	<u>1</u> STRUCTURAL ENGINEERS		
<u> </u> ARCHITECTS	<u> </u> ECONOMISTS	<u>3</u> MECHANICAL ENGINEERS	<u>8</u> SURVEYORS		
<u>5</u> BIOLOGIST	<u> </u> ELECTRICAL ENGINEERS	<u>2</u> MINING ENGINEERS	<u>2</u> TRAFFIC ENGINEERS		
<u>8</u> CADD OPERATORS	<u>2</u> ENVIRONMENTALISTS	<u>3</u> PHOTOGRAMMETRISTS	<u> </u> OTHER		
<u> </u> CHEMICAL ENGINEERS	<u>2</u> ESTIMATORS	<u> </u> PLANNERS:			
<u>8</u> CIVIL ENGINEERS	<u>2</u> GEOLOGISTS	URBAN/REGIONAL			
<u>4</u> CONSTRUCTION	<u> </u> HISTORIANS	<u>1</u> SANITARY ENGINEERS			
<u> </u> INSPECTORS	<u>3</u> HYDROLOGISTS		<u>65</u> TOTAL PERSONNEL		
<u>5</u> DESIGNERS		<u>3</u> SOILS ENGINEERS			
<u>4</u> DRAFTSMEN		<u> </u> SPECIFICATION			
		WRITERS			
TOTAL NUMBER OF WV REGISTERED PROFESSIONAL ENGINEERS IN PRIMARY OFFICE: <u>4</u>					
*RPEs other than Civil and Mining must provide supporting documentation that qualifies them to supervise and perform this type of work.					
10. HAS THIS JOINT-VENTURE WORKED TOGETHER BEFORE? <input checked="" type="checkbox"/> YES <input type="checkbox"/> NO					

12. A. Is your firm's personnel experienced in Abandoned Mine Lands Remediation/Mine Reclamation Engineering?

YES Description and Number of Projects: Two current AML projects: Weston (Curtis) Landslide and Upland Harrison AMD & Drainage; 2023 Contract N2, White Hall Emergency project, and key personnel has previous AML experience and knowledge.

NO

B. Is your firm experienced in Soil Analysis?

YES Description and Number of Projects: Over 100 projects conducting soils analysis in support of water quality and design.

NO

C. Is your firm experienced in hydrology and hydraulics?

YES Description and Number of Projects: Over 100 projects with storm water analysis, sediment and impoundment facilities and selenium treatment facilities.

NO

D. Does your firm produce its own Aerial Photography and Develop Contour Mapping?

YES Description and Number of Projects: Over 200 projects that utilized aerial photography & contour mapping.

NO

E. Is your firm experienced in domestic waterline design? (Include any experience your firm has in evaluation of aquifer degradation as a result of mining.)

YES Description and Number of Projects: Ten projects in recent years associated with domestic waterline design.

NO

F. Is your firm experienced in Acid Mine Drainage Evaluation and Abatement Design?

YES Description and Number of Projects: No active or recent projects, however, several key personnel on this proposal have AMD experience and knowledge.

NO

13. PERSONAL HISTORY STATEMENT OF PRINCIPALS AND ASSOCIATES RESPONSIBLE FOR AML PROJECT DESIGN (Furnish complete data but keep to essentials)			
NAME & TITLE (Last, First, Middle Int.) Parsons, Herbert L. President	YEARS OF EXPERIENCE		
	YEARS OF AML DESIGN EXPERIENCE: 5+	YEARS OF AML RELATED DESIGN EXPERIENCE: 10+	YEARS OF DOMESTIC WATERLINE DESIGN EXPERIENCE: 20+
<p>Brief Explanation of Responsibilities</p> <p>With over 20 years' experience in civil engineering and surveying, Mr. Parsons has developed a broad experience in the public and private sectors and has lead teams on complex projects that have required coordination of multiple disciplines, agencies, and stakeholders. Examples of his technical competency include: water resources, stormwater management, road design, and survey expertise.</p>			
<p>EDUCATION (Degree, Year, Specialization)</p> <p>Bachelor of Science, 1994, Civil Engineering</p>			
MEMBERSHIP IN PROFESSIONAL ORGANIZATIONS WV Society of Professional Surveyors West Virginia Gas and Oil Association (GO-WV)		REGISTRATION (Type, Year, State) Professional Engineer:1999 VA/2002 WV/2002 PA/2020 OH Professional Surveyor: 2007 VA/2013 NC/2015 PA/2017 WV	
13. PERSONAL HISTORY STATEMENT OF PRINCIPALS AND ASSOCIATES RESPONSIBLE FOR AML PROJECT DESIGN (Furnish complete data but keep to essentials)			
NAME & TITLE (Last, First, Middle Int.) Stewart, Eric N. Vice President of Engineering	YEARS OF EXPERIENCE		
	YEARS OF AML DESIGN EXPERIENCE: 0	YEARS OF AML RELATED DESIGN EXPERIENCE: 10+	YEARS OF DOMESTIC WATERLINE DESIGN EXPERIENCE: 5+
<p>Brief Explanation of Responsibilities</p> <p>With 20 years' experience in civil and environmental engineering field with 16 years of project management experience,</p> <p>Mr. Stewart is assigned professional charge and is responsible for all aspects of engineering and design. He coordinates procedures as well as works closely with clients & regulatory agencies to ensure D&H is at the forefront design and regulatory adherence.</p>			
<p>EDUCATION (Degree, Year, Specialization)</p> <p>Bachelor of Science, 2003, Civil Engineering</p>			
MEMBERSHIP IN PROFESSIONAL ORGANIZATIONS West Virginia Gas and Oil Association (GO-WV) Pennsylvania Independent Oil and Gas Association (PIOGA)		REGISTRATION (Type, Year, State) Professional Engineer: 2007 VA / 2009 WV / 2010 NC 2019 OH / 2018 PA /2023 TN / 2023 MD / 2023 SC	

13. PERSONAL HISTORY STATEMENT OF PRINCIPALS AND ASSOCIATES RESPONSIBLE FOR AML PROJECT DESIGN (Furnish complete data but keep to essentials)			
NAME & TITLE (Last, First, Middle Int.) Attardi, Vincent J. Environmental Services Manager	YEARS OF EXPERIENCE		
	YEARS OF AML DESIGN EXPERIENCE: 5	YEARS OF AML RELATED DESIGN EXPERIENCE: 20+	YEARS OF DOMESTIC WATERLINE DESIGN EXPERIENCE: 5+
Brief Explanation of Responsibilities			
Mr. Attardi has over 40 years' experience conducting environmental and ecological investigations. As the environmental services			
manager, Mr. Attardi has overseen more than 150 environmental investigation. A leading expert in project permitting under			
Sections 404 & 401 of the Clean water Act (CWA). He is proficient in wetland and stream delineation, endangered species			
habitat assessments, botanical surveys, soil assessments, NEPA documents and other natural resource investigations.			
EDUCATION (Degree, Year, Specialization)			
Bachelor of Science, 1981, Marine Science / Biology			
Master of Science, 1992, Biology			
MEMBERSHIP IN PROFESSIONAL ORGANIZATIONS		REGISTRATION (Type, Year, State)	
Society of Wetland Scientist Pennsylvania Association of Sewage Enforcement Officers		Sewage Enforcement Officer, 2015, Pennsylvania	
13. PERSONAL HISTORY STATEMENT OF PRINCIPALS AND ASSOCIATES RESPONSIBLE FOR AML PROJECT DESIGN (Furnish complete data but keep to essentials)			
NAME & TITLE (Last, First, Middle Int.) Smith, Robyn E Construction Services Manager	YEARS OF EXPERIENCE		
	YEARS OF AML DESIGN EXPERIENCE: 5+	YEARS OF AML RELATED DESIGN EXPERIENCE: 25+	YEARS OF DOMESTIC WATERLINE DESIGN EXPERIENCE: 5+
Brief Explanation of Responsibilities			
Mr. Smith has over 35 years' experience in the civil, mining and construction management fields. As the construction manager,			
Mr. Smith is responsible for the management of construction services including construction compliance, inspections,			
construction management, construction sequencing and optimization, contractor management, project management and project			
completion of the construction phase.			
EDUCATION (Degree, Year, Specialization)			
Bachelor of Science, 1984, Mining Engineering			
MEMBERSHIP IN PROFESSIONAL ORGANIZATIONS		REGISTRATION (Type, Year, State)	

13. PERSONAL HISTORY STATEMENT OF PRINCIPALS AND ASSOCIATES RESPONSIBLE FOR AML PROJECT DESIGN (Furnish complete data but keep to essentials)			
NAME & TITLE (Last, First, Middle Int.) Littler, Jason H. Survey Services Manager	YEARS OF EXPERIENCE		
	YEARS OF AML DESIGN EXPERIENCE: 5+	YEARS OF AML RELATED DESIGN EXPERIENCE: 10+	YEARS OF DOMESTIC WATERLINE DESIGN EXPERIENCE: 0
Brief Explanation of Responsibilities With more than 15 years' of project management experience in civil engineering and survey, Mr. Littler has lead teams on a variety complex projects. Specific areas of focus include surveying renewable & conventional energy, utilities, & transportation. He has been responsible charge on multiple survey projects including ALTA/ASCM title survey & boundary.			
EDUCATION (Degree, Year, Specialization) Bachelor of Science, 1996, Engineering Technology and Surveying Associates of Science, 1995, Civil Engineering Technology			
MEMBERSHIP IN PROFESSIONAL ORGANIZATIONS West Virginia Society of Professional Surveyors		REGISTRATION (Type, Year, State) Professional Surveyor: 2019 WV, 2022 PA	
13. PERSONAL HISTORY STATEMENT OF PRINCIPALS AND ASSOCIATES RESPONSIBLE FOR AML PROJECT DESIGN (Furnish complete data but keep to essentials)			
NAME & TITLE (Last, First, Middle Int.) Hritz, Michael D CEO / QA/QC	YEARS OF EXPERIENCE		
	YEARS OF AML DESIGN EXPERIENCE: 3+	YEARS OF AML RELATED DESIGN EXPERIENCE: 10+	YEARS OF DOMESTIC WATERLINE DESIGN EXPERIENCE: 25+
Brief Explanation of Responsibilities Mr. Hritz is responsible for overseeing and assuring the quality of deliverables. As assigned professional charge, Mr. Hritz provides an independent review of deliverables. This process assures unbiased results and quality deliverables.			
EDUCATION (Degree, Year, Specialization) Bachelor of Science, 1991, Civil Engineering			
MEMBERSHIP IN PROFESSIONAL ORGANIZATIONS Gas and Oil Association of WV (GO-WV) Pennsylvania Independent Oil and Gas Association (PIOGA)		REGISTRATION (Type, Year, State) Professional Engineer: 1997 PA / 1999 WV / 2013 NC	

13. PERSONAL HISTORY STATEMENT OF PRINCIPALS AND ASSOCIATES RESPONSIBLE FOR AML PROJECT DESIGN (Furnish complete data but keep to essentials)			
NAME & TITLE (Last, First, Middle Int.) Osborne, James R. Project Manager	YEARS OF EXPERIENCE		
	YEARS OF AML DESIGN EXPERIENCE: 5	YEARS OF AML RELATED DESIGN EXPERIENCE: 15+	YEARS OF DOMESTIC WATERLINE DESIGN EXPERIENCE: 5+
Brief Explanation of Responsibilities			
With over 20 years' experience, Mr. Osborne has a broad range of experience in the field of mining, architecture, civil and structural engineering which include strip mine permitting and mapping, planning and feasibility studies, construction estimates, environmental permitting and retaining wall design. As a project manager, Mr. Osborne will oversee all aspects of the project development including client meetings, staff coordination and quality assurance.			
EDUCATION (Degree, Year, Specialization) Associates of Applied Science, 1999, Design and Drafting Technology Bachelor of Science, 2010, Engineering Technology			
MEMBERSHIP IN PROFESSIONAL ORGANIZATIONS		REGISTRATION (Type, Year, State) Professional Engineer: 2020 VA Register Architect: 2022 WV/2020 VA/2021 TN/ 2017 MD	
13. PERSONAL HISTORY STATEMENT OF PRINCIPALS AND ASSOCIATES RESPONSIBLE FOR AML PROJECT DESIGN (Furnish complete data but keep to essentials)			
NAME & TITLE (Last, First, Middle Int.) Martin, Jordan L. Project Manager	YEARS OF EXPERIENCE		
	YEARS OF AML DESIGN EXPERIENCE: 0	YEARS OF AML RELATED DESIGN EXPERIENCE: 5+	YEARS OF DOMESTIC WATERLINE DESIGN EXPERIENCE: 5+
Brief Explanation of Responsibilities			
With over ten years' experience, Mr. Martin has gained valuable experience in civil, environmental and transportation engineering. Mr. Martin is one of the lead project design engineers and project managers. He has accumulated a broad range of experience in regulatory, planning, site construction and design. Throughout his career he has gained valuable experience in transporation, environmental compliance, water resources, and geotechnical in OH, PA & WV.			
EDUCATION (Degree, Year, Specialization) Associates of Science, 2010, Computerized Drafting and Design Bachelor of Science, 2012, Civil Engineering Technology			
MEMBERSHIP IN PROFESSIONAL ORGANIZATIONS		REGISTRATION (Type, Year, State) Professional Engineer: 2020 WV	

13. PERSONAL HISTORY STATEMENT OF PRINCIPALS AND ASSOCIATES RESPONSIBLE FOR AML PROJECT DESIGN (Furnish complete data but keep to essentials)			
NAME & TITLE (Last, First, Middle Int.) Bailes, Brent K. Project Manager	YEARS OF EXPERIENCE		
	YEARS OF AML DESIGN EXPERIENCE: 0	YEARS OF AML RELATED DESIGN EXPERIENCE: 15+	YEARS OF DOMESTIC WATERLINE DESIGN EXPERIENCE: 10+
Brief Explanation of Responsibilities With over ten years' of project management experience in civil design, Mr. Bailes has developed a broad base and extensive project development with publice and private sector clients. He has led teams of designers on complex projects that require coordination of disciplines, technical studies and environmental permitting.			
EDUCATION (Degree, Year, Specialization) Bachelor of Science, 2005, Landscape Architecture			
MEMBERSHIP IN PROFESSIONAL ORGANIZATIONS		REGISTRATION (Type, Year, State)	
13. PERSONAL HISTORY STATEMENT OF PRINCIPALS AND ASSOCIATES RESPONSIBLE FOR AML PROJECT DESIGN (Furnish complete data but keep to essentials)			
NAME & TITLE (Last, First, Middle Int.)	YEARS OF EXPERIENCE		
	YEARS OF AML DESIGN EXPERIENCE: 0	YEARS OF AML RELATED DESIGN EXPERIENCE: 	YEARS OF DOMESTIC WATERLINE DESIGN EXPERIENCE:
Brief Explanation of Responsibilities _____ _____ _____			
EDUCATION (Degree, Year, Specialization)			
MEMBERSHIP IN PROFESSIONAL ORGANIZATIONS		REGISTRATION (Type, Year, State)	

13. PERSONAL HISTORY STATEMENT OF PRINCIPALS AND ASSOCIATES RESPONSIBLE FOR AML PROJECT DESIGN (Furnish complete data but keep to essentials)			
NAME & TITLE (Last, First, Middle Int.) Carpenter, Stacy A. Survey Project Manager	YEARS OF EXPERIENCE		
	YEARS OF AML DESIGN EXPERIENCE: 5+	YEARS OF AML RELATED DESIGN EXPERIENCE: 5+	YEARS OF DOMESTIC WATERLINE DESIGN EXPERIENCE: 0
Brief Explanation of Responsibilities Mr. Carpenter has accumulated more than 20 years' of survey experience. As the survey project manager, Mr. Carpenter will serve as a liaison between clients, agencies, subcontractor and the survey team for all survey related project tasks. He will manage the survey related tasks to ensure quality and efficiency and provide oversight to the survey team.			
EDUCATION (Degree, Year, Specialization)			
MEMBERSHIP IN PROFESSIONAL ORGANIZATIONS		REGISTRATION (Type, Year, State)	
13. PERSONAL HISTORY STATEMENT OF PRINCIPALS AND ASSOCIATES RESPONSIBLE FOR AML PROJECT DESIGN (Furnish complete data but keep to essentials)			
NAME & TITLE (Last, First, Middle Int.) Duritsky, Gabriella L. Construction Coordinator	YEARS OF EXPERIENCE		
	YEARS OF AML DESIGN EXPERIENCE: 0+	YEARS OF AML RELATED DESIGN EXPERIENCE: 5+	YEARS OF DOMESTIC WATERLINE DESIGN EXPERIENCE: 0
Brief Explanation of Responsibilities Ms. Duritsky will serve as the construction coordinator. As the construction coordinator, Ms. Duritsky will provide oversight of the inspectors performance, provide weekly field visits and providing updates of project status to the project coordinator.			
EDUCATION (Degree, Year, Specialization) Associates of Science, 2010, Animal Science			
MEMBERSHIP IN PROFESSIONAL ORGANIZATIONS		REGISTRATION (Type, Year, State)	

13. PERSONAL HISTORY STATEMENT OF PRINCIPALS AND ASSOCIATES RESPONSIBLE FOR AML PROJECT DESIGN (Furnish complete data but keep to essentials)			
NAME & TITLE (Last, First, Middle Int.) Brown, Kelly J. Environmental Scientist	YEARS OF EXPERIENCE		
	YEARS OF AML DESIGN EXPERIENCE: 0+	YEARS OF AML RELATED DESIGN EXPERIENCE: 5+	YEARS OF DOMESTIC WATERLINE DESIGN EXPERIENCE: 0
Brief Explanation of Responsibilities Ms. Brown will complete necessary field work and reporting for this project including stream/wetland delineation, habitat assessments; prepare biological inventories and NEPA documentation and permit applications as needed. 			
EDUCATION (Degree, Year, Specialization) Masters of Science, 2019, Agriculture Natural Resources and Design Bachelor of Science, 2009, Biology			
MEMBERSHIP IN PROFESSIONAL ORGANIZATIONS		REGISTRATION (Type, Year, State)	
13. PERSONAL HISTORY STATEMENT OF PRINCIPALS AND ASSOCIATES RESPONSIBLE FOR AML PROJECT DESIGN (Furnish complete data but keep to essentials)			
NAME & TITLE (Last, First, Middle Int.)	YEARS OF EXPERIENCE		
	YEARS OF AML DESIGN EXPERIENCE:	YEARS OF AML RELATED DESIGN EXPERIENCE:	YEARS OF DOMESTIC WATERLINE DESIGN EXPERIENCE:
Brief Explanation of Responsibilities 			
EDUCATION (Degree, Year, Specialization)			
MEMBERSHIP IN PROFESSIONAL ORGANIZATIONS		REGISTRATION (Type, Year, State)	

14. PROVIDE A LIST OF SOFTWARE AND EQUIPMENT AVAILABLE IN THE PRIMARY OFFICE WHICH WILL BE USED TO COMPLETE AML DESIGN SERVICES

Autodesk AEC Software (AutoCAD Map 2022, Civil 3D 2022)

Carlson Software

Microstation V8i Select Series 4

InRoads Select Series 2

HydroCAD

HY8

ESRI Arcmap 10.5

Trimble Business Center

Trimble Path Finder Office

Adobe Acrobat Standard

Microsoft Office

Pix4D

UGCS

Timble R-8, R-10, and R-12 GPS's

Trimble S5 and S6 Robotic Total Station

Nicon Total Station

Topcon Total Station

15. CURRENT ACTIVITIES ON WHICH YOUR FIRM IS THE DESIGNATED ENGINEER OF RECORD

PROJECT NAME, TYPE AND LOCATION	NAME AND ADDRESS OF OWNER	NATURE OF YOUR FIRM'S RESPONSIBILITY	ESTIMATED CONSTRUCTION COST	PERCENT COMPLETE
2022 AML Contract 7 - Weston (Curtis) Landslide Weston, WV	WV DEP - Office of Abandoned Mine Lands & Reclamation Bridgeport, WV	Engineering design, environmental, realty, survey & construction management.	\$820,350	30%
2022 AML Contract 7 - Upland Run (Harrison) AMD & Drainage Weston, WV	WV DEP - Office of Abandoned Mine Lands & Reclamation Bridgeport, WV	Engineering design, environmental, realty, survey & construction management.	\$713,228	30%
US Route 33 Repave Roadway Construction Upshur County, WV	JF Allen Company 2133 Old Weston Road Buckhannon, WV	Engineering Design and Permitting, Survey Layout & Mobile LiDar Scanning Services.	\$11,000,000	30%
2023 AGS and SGS Slip Repair Slip Repair Permitting Various Counties, WV	DT Midstream One Energy Plaza Detroit, MI	Storm water permitting, environmental field investigations.	N/A	20%
2023 Stockpile UAV Survey Flight mapping Monongalia County, WV	Longview Power, LLC 1000 Fort Martin Industrial Park Road Maidsville, WV	Volume survey, aerial data collection, flight mapping	N/A	50%
NV113 Well Site Engineering Services Air Bridge Design Greene County, PA	CNX Gas Company, LLC 1000 CONSOL Energy Dr. Canonsburg, PA	Civil and structural engineering design of air bridge.	\$75,000	75%
Morris to McQuary Pipeline Highwall Remediation Greene County, PA	CNX Gas Company, LLC 1000 CONSOL Energy Dr. Canonsburg, PA	Site & traffic maintenance, construction inspection.	\$500,000	95%
TOTAL NUMBER OF PROJECTS:			TOTAL ESTIMATED CONSTRUCTION COSTS: \$	

15. CURRENT ACTIVITIES ON WHICH YOUR FIRM IS THE DESIGNATED ENGINEER OF RECORD

PROJECT NAME, TYPE AND LOCATION	NAME AND ADDRESS OF OWNER	NATURE OF YOUR FIRM'S RESPONSIBILITY	ESTIMATED CONSTRUCTION COST	PERCENT COMPLETE
2023 Survey & Design Services Pipeline Replacement Various locations, WV	Hope Gas, Inc. 8151 Webster Road Summersville, WV	Pipeline survey and design of replacement pipeline.	Varies	85%
2023 Landslide Plans Williams Slip Repair Various Locations, WV	Williams Ohio Valley Midstream 200 Commerce Drive Pittsburgh, PA	Engineering and environmental services for landslide slip repairs.	Varies	80%
2023 Magnetometer & Anomaly Survey Various Locations, WV & PA	EQT Production 400 Woodcliff Drive Canonsburg, PA	UAV investigation of abandoned gas wells.	Varies	10%
Morgantown Connector Environmental Permitting Marion / Mon County, WV	Private	Environmental Permitting and Inspection Services	\$50,000,000	25%
MAJ10 Retaining Wall Engineering design Marshall County, WV	CNX Gas Company, LLC 1000 CONSOL Energy Dr. Canonsburg, PA	Civil, survey and structural design of retaining wall	\$950,000	75%
NV-113 Bridge Civil Design Greene County, PA	CNX Gas Company, LLC 1000 CONSOL Energy Dr. Canonsburg, PA	Civil, survey, permitting, structural design 30' span bridge.	\$1,250,000	75%
DTM Slope Repairs Slope repair & permitting Various Locations , WV	DT Midstream One Energy Plaza Detroit, MI	Engineering and environmental services for landslide slip repairs	Varies	50%
TOTAL NUMBER OF PROJECTS: D&H is currently working on multiple projects, for the purpose of this EOI,a sample of recent projects are listed.			TOTAL ESTIMATED CONSTRUCTION COSTS: \$	

16. CURRENT ACTIVITIES ON WHICH YOUR FIRM IS SERVING AS A SUB-CONSULTANT TO OTHERS

PROJECT NAME, TYPE AND LOCATION	NATURE OF FIRMS RESPONSIBILITY	NAME AND ADDRESS OF OWNER	ESTIMATED COMPLETION DATE	ESTIMATED CONSTRUCTION COST	
				ENTIRE PROJECT	YOUR FIRMS RESPONSIBILITY
CFX - WV 16 - Pinevilleville Transportation Wyoming County, WV	Engineering design and survey services.	TRC Engineering 135 Corporate Center Drive Scott Depot, WV	12/2023	Unknown	\$250,000
NV110 Waterline Inspection Services Greene County, PA	Construction management oversight inspection	NGE, Inc. 171 Montour Run Road Moon Township, PA	2023	Unknown	\$55,000

17. COMPLETED WORK WITHIN LAST 5 YEARS ON WHICH YOUR FIRM WAS THE DESIGNATED ENGINEER OF RECORD				
PROJECT NAME, TYPE AND LOCATION	NAME AND ADDRESS OF OWNER	ESTIMATED CONSTRUCTION COST	YEAR	CONSTRUCTED (YES OR NO)
EQT WV Waterline System Waterline Project Marion & Wetzel Counties, WV	EQT Production 400 Woodcliff Drive Canonsburg, PA	\$16 Million	2021- 2022	No
Dominion Survey & Design Services Oil & Gas Various Counties, WV	Dominion Energy WV 8151 Webster Road Summersville, WV	Unknown	2020- 2022	Yes
Uppers Decker's Creek Dam Rehabilitation Preston County, WV	Triton Construction, Inc. 47443 National Rd., Ste 3 St. Clairsville, OH	Unknown	2020	Yes
Premier Nissan Land Development Monongalia County, WV	Premier Nissan Automotive Group 5392 University Town Center Drive Morgantown, WV	1.2 Million	2019- 2022	Yes
EQT (50+) Well Pad Projects / Oil & Gas Various counties: PA & WV	EQT Production 400 Woodcliff Drive Canonsburg, PA	Varies	2016- 2022	
CNX (150+) Well Pad Projects / Oil & Gas Various counties: PA & WV	CNX Gas Company, LLC 1000 Consol Energy Drive Canonsburg, PA	Varies	2012- 2022	
CNX Pipeline Design and Modification (30+ miles) Various counties: PA & WV	CNX Midstream Operating Group 1000 Consol Energy Drive Canonsburg, PA	Varies	2014- 2022`	
Landslide Plans Williams Slip Repair Various Locations: WV	Williams Ohio Valley Midstream 200 Commerce Drive Pittsburgh, PA	Varies	2019- 2022	Yes

18. COMPLETED WORK WITHIN LAST 5 YEARS ON WHICH YOUR FIRM HAS BEEN A SUB-CONSULTANT TO OTHER FIRMS (INDICATE PHASE OF WORK FOR WHICH YOUR FIRM WAS RESPONSIBLE)

PROJECT NAME, TYPE AND LOCATION	NAME AND ADDRESS OF OWNER	ESTIMATED CONSTRUCTION COST OF YOUR FIRM'S PORTION	YEAR	CONSTRUCTED (YES OR NO)	FIRM ASSOCIATED WITH
CFX, WV16 to Mullens #1 Transportation McDowell/Wyoming, WV	WV DOH	\$800,000	2021 - 2022	No	TRC Engineering
Goodson Street Bridge Structure / Transportation Bristol, VA	City of Bristol, VA	\$36,000	2021	No	Whitman, Requardt & Associates
Oak Street Structure / Transportation Bristol, VA	City of Bristol, VA	\$36,000	2021	No	Whitman, Requardt & Associates
MLK, Jr. Blvd. Transportation Bristol, VA	City of Bristol, VA	\$60,000	2021	No	Whitman, Requardt & Associates
Stuart Recreation Waterline Design / Permitting Randolph County, WV	USFS	\$17,000	2019-2021	Yes	AJ Burk
Hampshire Gas Pipeline Replacement Oil & Gas Hampshire County, WV	Hampshire Gas	\$54,000	2019	Yes	Ryan Environmental, LLC

19. Use this space to provide any additional information or description of resources supporting your firm's qualifications to perform work for the West Virginia Abandoned Mine Lands Program.

20. The foregoing is a statement of facts.

Signature: 

Title: President

Date: 10/29/2024

Printed Name: Herbert L. Parsons, III PE, PLS

AML and RELATED PROJECT EXPERIENCE MATRIX (2008 - 2024)																						
PROJECT	Exp. Basis C=Corp. P=Personal *	Additional Info Provided in Section (s) **	PROJECT EXPERIENCE REQUIREMENTS															PRIMARY STAFF PARTICIPATION/CAPACITY *** M=Management P=Professional				
			Abandoned Surface Mine Reclamation	Abandoned Deep Mine Reclamation	Portal/Shaft Closure	Hydrologic/Hydraulic Design/Eval.	Remining Evaluation	Mine Refuse/ Fire Abatement	Subsidence Investigation Mitigation	Hazardous Waste Disposal	Project Specifications	Water Quality Evaluation/Mitigation/ Replacement	Construction Inspection/Management	Water Treatment	Equipment/ Structure Removal	Stream Restoration	Geotechnical/Stability	PATRICK GALLAGHER, PE		JOSEPH STANLEY	CARL SELFRIEDGE	Hillary Cale
MORGANTOWN ANDERSON HIGHWALLS (WV AML '12)	C	Profile		X	X	X					X							MP		P		P
SCHRAMM - GORDON -EAST FRANKLIN LANDSLIDES (MD AML '12)	C		X	X							X						X	MP		P	P	
DOUGLAS AVENUE STORMWATER SYSTEM (MD AML '12)	C					X						X						MP				
FAIRMONT SUBSIDENCE (WV AML '12)	C	Profile		X					X		X						X	MP		P	P	P
DOUGLAS AVENUE LANDSLIDE (MD AML '12)	C			X		X			X		X						X	MP		P	P	
LOWER CONSOL ROAD SUBSIDENCE (MD AML '11)	C		X	X					X		X						X	MP		P	P	
BALD KNOB WATER SUPPLY STUDY (MD AML '12)	C					X						X						MP				
SHINNS RUN PORTALS (WV AML '11)	C	Profile		X	X												X	MP		P	P	P
REAM REFUSE PILE (WV AML '10)	C		X						X									MP		P		
PEE WEE HILL WATER SUPPLY (MD AML '10)	C											X						MP				
TERRA HAUTE AIRPORT (IN AML '10)	C			X	X				X		X						X	MP			P	P
KENNEL MINE CLOSURE (MD AML '10)	C	Profile	X	X	X						X							MP		P		
FROSTBURG NORTH CLOSURE (MD AML '10)	C	Profile	X	X	X						X							MP		P		
PEE WEE HILL WATER FEASIBILITY (MD AML '10)	C											X						MP			P	
WILLIAMS REFUSE PILE #2 (Private AML '09)	C		X			X	X			X	X	X	X	X			X					
PENINSULA HIGHWALLS (WV AML '09)	C	Profile	X	X		X			X		X						X	MP		P	P	P
ST. CLAIR PORTALS (WV AML '09)	C	Profile	X	X	X	X					X					X	X	MP		P	P	P
CHEAT NECK LANDSLIDE (WV AML '09)	C				X	X					X						X	MP		P	P	
FARMINGTON UMC (WV DEP EMER. '09)	C								X		X							MP			P	
MORNINGSIDE BAPTIST (WV DEP EMER. '09)	C								X		X							MP			P	
COLLINS MINING (ODNR FOR. '09)	C		X								X							MP		P		
FAIRVIEW WATER FEASIBILITY(WV AML '09)	C											X						MP				
AARON'S RUN (MD AML '09)	C		X			X					X	X		X		X		MP		P		
ECCLES SUBSIDENCE (WV AML '08)	C								X		X						X	MP			P	
McARTHUR SUBSIDENCE (WV AML '08)	C								X								X	MP			P	
TIOGA WATER FEASIBILITY (WV AML '08)	C											X						MP				
McCOURT LANDSLIDE(ODNR FOR. '08)	C		X			X					X						X	MP		P	P	
JONES TRUCKING (ODNR FOR. '08)	C		X								X							MP		P		
MILLER MINING (ODNR FOR. '08)	C					X					X	X						MP		P		
ZILMAN CLOSURE (MD AML '08)	C			X	X						X							MP		P		
CALDONIA HILL SLOPE STABILITY (MD AML '08)	C		X														X	MP				
WEST VIRGINIA BRIM (2005 - 2012) 42 Projects	C								X								X	MP			P	
OMSIUA (2005 - 2010) 47 Projects	C								X								X	MP			P	
(2005 - 2008) 20 Additional AML Projects for WV, MD, OH, PA	C		X	X	X				X		X	X	X				X	MP			P	

* List whether project experience is corporate or personnel based or both.
 ** Use this area to provide specific sections or pages if needed for reference.
 *** List Primary Design personnel and their functional capacity for the projects listed.

DESIGNATED CONTACT: Vendor appoints the individual identified in this Section as the Contract Administrator and the initial point of contact for matters relating to this Contract.

(Printed Name and Title) Ababu Gelaye REGIONAL SERVICE LINE MANAGER Civil Design & Surveying

(Address) 1091 Chaplin Road Morgantown, WV 26501

(Phone Number) / (Fax Number) 304-292-1135 / 304-296-9302

(email address) agelaye@ctleng.com

CERTIFICATION AND SIGNATURE: By signing below, or submitting documentation through *wvOASIS*, I certify that: I have reviewed this Solicitation/Contract in its entirety; that I understand the requirements, terms and conditions, and other information contained herein; that this bid, offer or proposal constitutes an offer to the State that cannot be unilaterally withdrawn; that the product or service proposed meets the mandatory requirements contained in the Solicitation/Contract for that product or service, unless otherwise stated herein; that the Vendor accepts the terms and conditions contained in the Solicitation, unless otherwise stated herein; that I am submitting this bid, offer or proposal for review and consideration; that this bid or offer was made without prior understanding, agreement, or connection with any entity submitting a bid or offer for the same material, supplies, equipment or services; that this bid or offer is in all respects fair and without collusion or fraud; that this Contract is accepted or entered into without any prior understanding, agreement, or connection to any other entity that could be considered a violation of law; that I am authorized by the Vendor to execute and submit this bid, offer, or proposal, or any documents related thereto on Vendor's behalf; that I am authorized to bind the vendor in a contractual relationship; and that to the best of my knowledge, the vendor has properly registered with any State agency that may require registration.

By signing below, I further certify that I understand this Contract is subject to the provisions of West Virginia Code § 5A-3-62, which automatically voids certain contract clauses that violate State law; and that pursuant to W. Va. Code 5A-3-63, the entity entering into this contract is prohibited from engaging in a boycott against Israel.

CTL Engineering, Inc

(Company)

(Signature of Authorized Representative)

Ababu Gelaye REGIONAL SERVICE LINE MANAGER Civil/Site Design & Surveying

(Printed Name and Title of Authorized Representative) (Date)

304-292-1135 / 304-296-9302

(Phone Number) (Fax Number)

agelaye@ctleng.com

(Email Address)

ADDENDUM ACKNOWLEDGEMENT FORM

SOLICITATION NO.: CEOI 0313 DEP2500000001

Instructions: Please acknowledge receipt of all addenda issued with this solicitation by completing this addendum acknowledgment form. Check the box next to each addendum received and sign below. Failure to acknowledge addenda may result in bid disqualification.

Acknowledgment: I hereby acknowledge receipt of the following addenda and have made the necessary revisions to my proposal, plans and/or specification, etc.

Addendum Numbers Received:

(Check the box next to each addendum received)

- ☐ Addendum No. 1
- ☐ Addendum No. 2
- ☐ Addendum No. 3
- ☐ Addendum No. 4
- ☐ Addendum No. 5

- ☐ Addendum No. 6
- ☐ Addendum No. 7
- ☐ Addendum No. 8
- ☐ Addendum No. 9
- ☐ Addendum No. 10

I understand that failure to confirm the receipt of addenda may be cause for rejection of this bid. I further understand that any verbal representation made or assumed to be made during any oral discussion held between Vendor's representatives and any state personnel is not binding. Only the information issued in writing and added to the specifications by an official addendum is binding.

CTL Engineering

Company

Authorized Signature

10/25/2024

Date

NOTE: This addendum acknowledgment should be submitted with the bid to expedite document processing.

ABANDONED MINE LANDS (AML) CONTRACTOR INFORMATION FORM

You must complete this form for your AML contracting officer to request an eligibility evaluation from the Office of Surface Mining Reclamation and Enforcement (OSMRE) to determine if you are eligible to receive an AML contract. This requirement can be found under OSMRE's regulations at 30 CFR 874.16. **NOTE:** This form must be signed and **dated within 30 days** of submission to be considered for a current bid.

Part A: General Information

Business Name: CTL Engineering
Tax ID #: _____
Address: 1091 Chaplin Road
City, State, & Zip: Morgantown, WV 26501
Phone Number: 304-292-1135
Email Address: agelaye@ctleng.com

Part B: Obtain an Organizational Family Tree (OFT) from the Applicant Violator System (AVS)

If you plan to certify the existing AVS information or submit updates under Part C, you must include an OFT. Instructions for downloading an OFT from the AVS can be found at: <https://www.osmre.gov/sites/default/files/2022-02/OMB%201029-0119%20instructions.pdf>. If you require assistance you may contact the AVS Office by phone at: 800-643-9748, or by email at: avshelp@osmre.gov.

Part C: Certifying and updating information in the AVS

Select one of the options, follow the instructions for the selected option, sign, and date below.

I, Joe Stanley, have express authority to certify that:
(Print Name)

- ☒ 1. Our business is listed in the AVS. The information is accurate, complete, and up to date. (If you select this option, you must attach an Entity OFT from the AVS to this form). Do not complete Part D.
- ☐ 2. Our business is in the AVS. The information needs to be updated. (If you select this option, you must attach an Entity OFT from the AVS to this form). Complete Part D to provide the missing or corrected information.
- ☐ 3. Our business is not listed in the AVS. The information needs to be added. Complete Part D to provide the information.

10/25/2024

Date



Signature

Business Development

Title



AVS OFT Report - 10/25/2024 2:00:40 PM

All OFT's where the selected entity is listed as an entity or related entity

Entity Selected (138901) CTL Engineering Inc

Parent Entity	Relationship	Description	Related Entity	% Ownership	Begin Date	End Date
(247114) CTL Engineering Inc ESOP	Shareholder		(138901) CTL Engineering Inc		1/15/1999	
(138901) CTL Engineering Inc	Owner		(247019) CTL Engineering of Indiana Inc	100%	12/1/2007	
(138901) CTL Engineering Inc	President		(138899) C K Satyapriya		5/10/1986	
(138901) CTL Engineering Inc	Shareholder		(138899) C K Satyapriya	17%	7/1/1980	
(138901) CTL Engineering Inc	Chief Executive Officer		(138899) C K Satyapriya		1/15/1999	
(138901) CTL Engineering Inc	Chairman of the Board		(138899) C K Satyapriya		1/15/1999	
(138901) CTL Engineering Inc	Shareholder		(247019) CTL Engineering of Indiana Inc	80%	3/20/1998	1/15/1999
(138901) CTL Engineering Inc	Chairman of the Board		(138898) Asbjorn Kvammen Jr		11/23/1980	1/15/1999
(138901) CTL Engineering Inc	Chief Executive Officer		(138898) Asbjorn Kvammen Jr		11/23/1980	1/15/1999
(138901) CTL Engineering Inc	Shareholder		(138898) Asbjorn Kvammen Jr	73%	6/27/1980	1/15/1999
(138901) CTL Engineering Inc	Shareholder		(247019) CTL Engineering of Indiana Inc	29%	1/15/1999	12/1/2007