



The following documentation is an electronically-submitted vendor response to an advertised solicitation from the *West Virginia Purchasing Bulletin* within the Vendor Self-Service portal at ***wvOASIS.gov***. As part of the State of West Virginia's procurement process, and to maintain the transparency of the bid-opening process, this documentation submitted online is publicly posted by the West Virginia Purchasing Division at ***WVPurchasing.gov*** with any other vendor responses to this solicitation submitted to the Purchasing Division in hard copy format.

Header @ 8

General Information

Contact

Default Values

Discount

Document Information

Clarification Request

Procurement Folder: 1495895

Procurement Type: Statewide MA (Open End)

Vendor ID: VS0000045806

Legal Name: Reliable Tire Company

Alias/DBA:

Total Bid: \$0.00

Response Date: 08/27/2024

Response Time: 15:03

Responded By User ID: reliabletire20

First Name: Victoria

Last Name: Chisler

Email: tireman@westco.net

Phone: 3042901817

SO Doc Code: CRFQ

SO Dept: 0212

SO Doc ID: SWC2500000001

Published Date: 8/20/24

Close Date: 8/29/24

Close Time: 13:30

Status: Closed

Solicitation Description: SBUSTIRE24: SWC for School Bus Tires & Services

Total of Header Attachments: 8

Total of All Attachments: 8



Department of Administration
Purchasing Division
2019 Washington Street East
Post Office Box 50130
Charleston, WV 25305-0130

State of West Virginia
Solicitation Response

Proc Folder: 1495895
Solicitation Description: SBUSTIRE24: SWC for School Bus Tires & Services
Proc Type: Statewide MA (Open End)

Solicitation Closes	Solicitation Response	Version
2024-08-29 13:30	SR 0212 ESR08272400000001509	1

VENDOR
VS0000045806
Reliable Tire Company

Solicitation Number: CRFQ 0212 SWC2500000001
Total Bid: 0
Response Date: 2024-08-27
Response Time: 15:03:08
Comments:

FOR INFORMATION CONTACT THE BUYER
Mark A Atkins
(304) 558-2307
mark.a.atkins@wv.gov

Vendor		
Signature X	FEIN#	DATE

All offers subject to all terms and conditions contained in this solicitation

Line	Comm Ln Desc	Qty	Unit Issue	Unit Price	Ln Total Or Contract Amount
1	School Bus Tires & Services - see attached pricing page	0.00000	EA	178980.000000	0.00

Comm Code	Manufacturer	Specification	Model #
25172500			

Commodity Line Comments: Please see attached forms for pricing. We can deliver 2 times per week.

Extended Description:

School Bus Tires & Services - see attached pricing pages:
 Note: Vendor shall use Exhibit_A Pricing Page(s) for bid pricing.
 If vendor is submitting a bid online, Vendor should enter \$0.00 in the Oasis commodity line.
 Vendor shall enter pricing into the Exhibit_A Pricing Pages and must attach with bid.
 See section 18 of Instructions to Bidders for additional information.

Warranty Exclusion & Limitations

The Limited Warranty for Defects and the Limited Casing Retread Warranty will not apply if any of the below listed exclusions or limitations are applicable and/or if any limitation or exclusions set forth in any other section of this document are applicable. Therefore, you should read all sections of the Sumitomo Medium Radial Truck Tire Limited Warranty document carefully.

List:

- Tires installed on a vehicle registered or normally used outside the United States or Canada;
- The tire was transferred to another vehicle after it was originally installed;
- The tire is branded as "Blemish" or "NA" or the molded DOT number has been removed or disfigured;
- The tire was repaired only with a self-vulcanizing plug, improper section repairs or in a manner that does not comply strictly with the Rubber Manufacturers Association's standards for tire repair, e.g., failure to dismount punctured tires for repair;
- Tire failures caused by road hazard, potholes, or collision damage;
- Vandalism, theft, long-term improper storage or other willful abuse;
- Improper mounting procedures, improper fitments or applications;
- Tires placed in off-highway service, such as mining or logging environments;
- Over and under inflation, overloading, or failure to maintain proper tire pressure;
- Addition of liquids, solids or gases (other than air, nitrogen, carbon dioxide) such as sealers or balancing materials;
- Ozone or weather cracks or checking occurring Six (6) years after the date of purchase or, if that proof is not available, six (6) years after the DOT serial date;
- Mechanical failures, improper alignment, or brake and shock failure;
- The wheel on which the tire is mounted is defective or fails; and
- Tires with "irregular tread wear" (which is defined as a tread groove depth differences of 2/32nds of an inch or more on the same tire).

NOTE: This warranty gives you specific rights, which vary from state to state. Some states do not allow the exclusion or limitation of incidental or consequential damages or a limit on how long an implied warranty may last, so certain limitations or exclusions herein may not apply to you. However, to the extent permitted by the laws of your state, TBC Brands disclaims all express or implied warranties other than the warranties stated in this limited warranty, including but not limited to the implied warranties of merchantability and fitness for a particular purpose. Any implied warranty of merchantability, fitness for a particular purpose or otherwise is limited in duration and expires when the tire's Usable Tread is exhausted as specified in this limited warranty. To the extent permitted by law, this warranty does not cover and expressly excludes any coverage or liability for punitive or Special damages, for loss of time, inconvenience, loss of use of your vehicle or tire, lost profits or opportunity, loss of Good Will, or any other indirect, incidental or consequential damages. This is the only warranty that applies to the Sumitomo medium truck tires purchased by you and supersedes and replaces the terms of any previous warranty. Nothing in this Limited Warranty is intended to be a representation that tire failures cannot occur. TBC Brands neither assumes nor extends, nor authorizes any other person or entity to assume or extend on its behalf, any additional or different warranty obligations or remedies. The limited warranties set forth above are the entire warranties given by TBC Brands. The Remedies set forth in this warranty do not include a cash refund in lieu of a warranty replacement or warranty allowance.



TBC Brands
4300 TBC Way
Palm Beach Gardens, FL 33410-4248
Tel: 800-238-6469

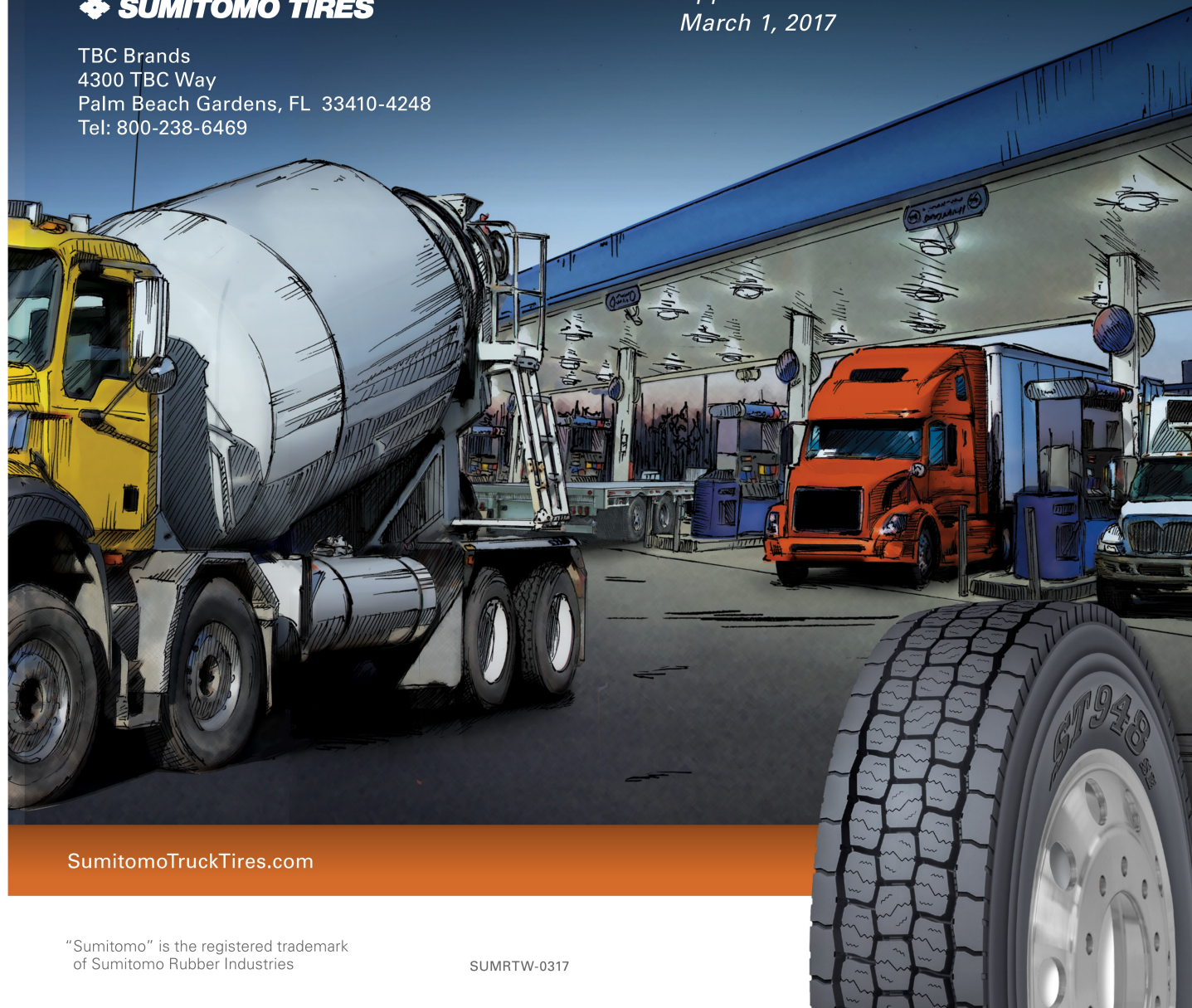
SumitomoTruckTires.com

"Sumitomo" is the registered trademark of Sumitomo Rubber Industries

SUMRTW-0317

MEDIUM RADIAL TRUCK TIRE LIMITED WARRANTY

Applies to Tires Purchased On or After March 1, 2017



General

TBC Brands extends to “you,” the original purchaser of a Sumitomo Medium Radial Truck Tire, the following two separate limited warranties and coverage benefits: (1) a limited warranty with respect to defects in material, workmanship or design (the “Limited Warranty for Defects”); and (2) a limited radial casing retread warranty (the “Casing Retread Limited Warranty”). You are eligible for the benefits of this limited warranty if: (a) you purchased the Sumitomo Medium Radial Truck Tire after March 1, 2017, (b) you are the original owner of the Sumitomo Medium Radial Truck Tire, (c) the Sumitomo Medium Radial Truck Tire bears the prescribed Department of Transportation (DOT) identification number, (d) the Sumitomo Medium Radial Truck Tire has been continuously installed on the vehicle on which it was originally installed, and (e) no warranty exclusion or exception identified in this Limited Warranty applies.

Limited Warranty for Defects

A Sumitomo Medium Radial Truck Tire covered by this Limited Warranty will be replaced with a comparable new Sumitomo Medium Radial truck Tire or comparable medium radial truck tire marketed by TBC Brands without charge for the tire if it becomes unserviceable due to a defect in design, workmanship, or material during the first 2/32nds of Usable Tread wear for up to six (6) years from the original purchase date (without proof of purchase, the tire’s date of manufacture will be used to determine age). You, however, are responsible for any charges for mounting and balancing the replacement tire as well as any applicable taxes or other related fees.

If a Sumitomo Medium Radial Truck Tire becomes unserviceable due to defect in design, workmanship, or material after the first 2/32nds of Usable Tread is worn, you will be entitled to a prorated percentage allowance applicable to the purchase price of a comparable new Sumitomo Medium Radial Truck tire, if such tire is not available, with a comparable medium radial truck tire marketed by TBC Brands. The amount of the allowance is determined based on the percentage of the original “Usable Tread” remaining when the tire is presented for adjustment. This percentage is applied to the new warranty replacement tire’s purchase price. You are responsible for paying for the remainder of the purchase price of the warranty replacement tire after the appropriate warranty allowance is deducted plus the charges for mounting and balancing the replacement tire as well as any applicable taxes or other related fees. Once the Usable Tread of a Sumitomo Medium Radial Truck tire has been exhausted the coverage and benefits of this Limited Warranty for Defects will terminate. However, a Casing Retread Limited Warranty allowance may apply.

Computing Remaining Useable Tread

The remaining “Usable Tread” of your Sumitomo Medium Radial Truck Tire is computed as a percentage of the original new Sumitomo Medium Radial Truck Tire’s Usable Tread depth. These depths vary by tire model and size. The original Usable Tread does not include the last 2/32nd inch (1.6 millimeters) of tread depth because tires with 2/32nd inch (1.6 millimeters) of tread depth are unsafe and should be replaced. Because tires do not always wear evenly, tread depth may vary depending where on the tire’s tread depth is measured. The lowest depth on the tire is used to determine the remaining Usable Tread for purposes of warranty replacement or allowance and whether the tire casing may be retreaded.

Casing Retread Limited Warranty

Sumitomo Medium Radial Truck Tire casings carry a Casing Retread Limited Warranty that is extended to the original purchaser for a six (6) year period following the tire’s original purchase date. However, the Casing Retread Limited Warranty terminates if the tire’s casing has been the subject of two retreadings. Sumitomo Medium Radial Truck Tires used in off-highway service (such as mining & Loggings) are excluded entirely from the casing Retread Limited Warranty.

If a Casing Retread Limited Warranty applies, the original purchaser shall receive the predetermined casing allowance set forth in the table below based on the Sumitomo Medium Radial Ruck Tire model and size purchased towards the purchase of a comparable new Sumitomo Medium Radial Truck Tire or, if such tire is not available, towards the purchase of a comparable medium radial truck tire marketed by TBC Brands.

Tire Size	Original Tread	1st & 2nd Retread
8.25R15, 10.00R15	\$60	\$40
All 17.5 Sizes	\$60	\$40
8R19.5	\$60	\$40
8.25R20	\$60	\$40
225, 245, 265/70R19.5	\$80	\$60
9.00R20	\$80	\$60
9R22.5 / 10R22.5	\$80	\$60
255/70R22.5	\$80	\$60
245/75R22.5	\$80	\$60
275/70R22.5	\$100	\$80
10.00R20 / 11.00R20	\$100	\$80
11R22.5 / 11R24.5	\$120	\$100
295/75R22.5 / 285/75R24.5	\$120	\$100
13/80R20 / 14/80R20	\$120	\$100
12.00R20	\$120	\$100
12R22.5	\$120	\$100
315/80R22.5	\$120	\$100
385, 425, 445/65R22.5	\$120	\$100



Definition Of A Comparable Tire

For the purposes of your Limited Warranty for Defects and Limited Casing Retread Warranty, a new “comparable” warranty replacement tire will be supplied or a warranty allowance will be applied to a “comparable” replacement tire if a matching new Sumitomo Medium Radial Truck Tire is out of production or is unavailable when the tire is presented for warranty replacement or allowance. In such cases, the replacement tire will be or the warranty allowance shall be applied to a “comparable” substitute medium radial truck tire of equal price, quality and construction available from TBC Brands. However, a “comparable” medium radial truck tire may have a different sidewall or tread configuration. If the purchaser requests that its warranty replacement or allowance be applied to or towards a higher-priced tire instead of a matching Sumitomo Medium Radial Truck Tire or a comparable medium radial truck tire available from TBC Brands, the purchaser must pay the price difference for the replacement tire after the appropriate replacement price or prorated allowance has been deducted. If the purchaser requests replacement with a lower priced medium radial truck tire available from TBC Brands, no refund or cash back shall be given because of the price difference.

Limited Warranty Claim Procedures

Please call TBC Brands’ warranty toll-free number at: 1-800-238-6469. Please be prepared to provide proof of purchase of the product and purchase date. Our Product Warranty Specialist will confirm the coverage of the Sumitomo Medium Radial Truck Tire Limited Warranty and discuss your tire issue with you. They will find a Sumitomo Medium Radial Truck Tire dealer nearest to you whom you may take your Sumitomo Medium Radial Truck Tire to for inspection and any applicable warranty adjustment. TBC Brands will work with the tire dealer to supply a replacement Sumitomo Medium Radial Truck Tire or comparable tire in an efficient manner. The authorized dealer has no authority or responsibility to make the determination as to eligibility for coverage under the warranty.

The original Purchaser must comply with each of the following procedures to qualify for any warranty replacement or allowance provided under the Limited Warranties set forth above.

1. Present the unserviceable medium radial truck tire together with any tube & flap used with that tire, to an authorized Sumitomo tire distributor;
2. Complete and sign a Sumitomo tire claim form provided by that distributor;
3. Present to that distributor any evidence that may be necessary to establish entitlement to a replacement or allowance under the limited Warranties set forth above (e.g., proof that claimant is the original purchaser of the tire.); and
4. Pay any applicable replacement tire price differentials, any distributor charges (e.g., those for mounting or balancing), and any applicable federal, state, or local taxes.



Department of Administration
Purchasing Division
2019 Washington Street East
Post Office Box 50130
Charleston, WV 25305-0130

State of West Virginia
Centralized Request for Quote
Vehicles

Proc Folder: 1495895

Doc Description: SBUSTIRE24: SWC for School Bus Tires & Services

Reason for Modification:

Proc Type: Statewide MA (Open End)

Date Issued	Solicitation Closes	Solicitation No	Version
2024-08-20	2024-08-29 13:30	CRFQ 0212 SWC2500000001	1

BID RECEIVING LOCATION

BID CLERK
DEPARTMENT OF ADMINISTRATION
PURCHASING DIVISION
2019 WASHINGTON ST E
CHARLESTON WV 25305
US

VENDOR

Vendor Customer Code: VS0000045806

Vendor Name: Reliable Tire Company

Address: 4535 mason Dixon HWY

Street :

City: Core

State: WV

Country: USA

Zip: 26521

Principal Contact: Andrew Savage

or

Victoria Hawkins
304-376-9335

Vendor Contact Phone: 304-290-1817

Extension:

FOR INFORMATION CONTACT THE BUYER

Mark A Atkins
(304) 558-2307
mark.a.atkins@wv.gov

Vendor

Signature X

Victoria Hawkins FEIN# 65-1174195

DATE 8/27/24

All offers subject to all terms and conditions contained in this solicitation

ADDITIONAL INFORMATION

The West Virginia Purchasing Division is soliciting bids on behalf of County Boards of Education to establish an Open-End, Statewide Contract for New and Retread School Bus Tires and Services, per the attached documents.

Items will be available to county Boards of Education in Districts: 1, 2, 3, 4, & 7 only.

The award of this contract will be to the lowest responsible bidder for all 5 districts.

INVOICE TO		SHIP TO	
VARIOUS AGENCY LOCATIONS AS INDICATED BY ORDER		STATE OF WEST VIRGINIA VARIOUS LOCATIONS AS INDICATED BY ORDER	
No City US	WV	No City US	WV

Line	Comm Ln Desc	Qty	Unit Issue	Unit Price	Total Price
1	School Bus Tires & Services - see attached pricing page	0.00000	EA		

Comm Code	Manufacturer	Specification	Model #
25172500			

Extended Description:

School Bus Tires & Services - see attached pricing pages:

Note: Vendor shall use Exhibit_A Pricing Page(s) for bid pricing.

If vendor is submitting a bid online, Vendor should enter \$0.00 in the Oasis commodity line.

Vendor shall enter pricing into the Exhibit_A Pricing Pages and must attach with bid.

See section 18 of Instructions to Bidders for additional information.

SCHEDULE OF EVENTS

<u>Line</u>	<u>Event</u>	<u>Event Date</u>
1	Technical Questions due by 10:00am EDT:	2024-08-22

District	Counties
1	Boone, Clay, Kanawha, Mason, Putnam
2	Cabell, Lincoln, Logan, Mingo, Wayne
3	Calhoun, Jackson, Pleasants, Ritchie, Roane, Wirt, Wood
4	Doddridge, Harrison, Marion, Monongalia, Preston, Taylor
7	Barbour, Braxton, Gilmer, Lewis, Upshur, Webster

ITEM NUMBER	ITEM DESCRIPTION	APPLICATION	ESTIMATED QUANTITY*	UNIT OF MEASURE	PRICE	EXTENDED PRICE	Tire & Tube Brand	MANUFACTURED ANNUALLY Y/N
3.1.1	11R22.5	Steer	150	Each	\$ 413.00	\$ 61,950.00	Toyo M170	Y
3.1.1	11R22.5	Drive	100	Each	\$ 483.00	\$ 48,300.00	Toyo M920	Y
3.1.1	11R22.5 RETREAD With Casing Exchange	Drive	300	Each	\$ 287.00	\$ 7,175.00	Oliver HMT	
3.1.1	11R22.5 RETREAD W/O Casing Exchange	Drive	25	Each	\$ 237.00	\$ 5,925.00	Oliver HMT	
3.1.1	10R22.5	Steer	20	Each	\$ 400.00	\$ 8,000.00	Toyo M170	Y
3.1.1	10R22.5	Drive	20	Each	\$ 370.00	\$ 7,400.00	Hercules H-Do	Y
3.1.1	10R22.5 RETREAD With Casing Exchange	Drive	10	Each	\$ 287.00	\$ 2,870.00	Oliver HMT	
3.1.1	10R22.5 RETREAD W/O Casing Exchange	Drive	5	Each	\$ 237.00	\$ 1,185.00	Oliver HMT	
3.1.1	255/70R-22.5	Steer	20	Each	\$ 342.00	\$ 6,840.00	Sumitomo	Y
3.1.1	255/70R-22.5	Drive	10	Each	\$ 390.00	\$ 3,900.00	Sumitomo	Y
3.1.1	255/70R-22.5 RETREAD With Casing Exchange	Drive	40	Each	\$ 230.00	\$ 9,200.00	Oliver ATD	
3.1.1	255/70R-22.5 RETREAD W/O Casing Exchange	Drive	5	Each	\$ 200.00	\$ 1,000.00	Oliver ATD	
3.2	INNER TUBE for 11R22.5		10	Each	\$ 42.00	\$ 420.00	Firestone	
3.2	INNER TUBE for 10R22.5		10	Each	\$ 42.00	\$ 420.00	Firestone	
3.2	INNER TUBE for 255/70R-22.5		10	Each	\$ 42.00	\$ 420.00	Firestone	
3.3.1	Tire Mounting - Installation w/purchase (includes dismount of used tires & tubes)		500	Each (Per Tire)	\$ 5.00	\$ 2,500.00		
3.3.2	Change Tire - included dismount and mount		20	Each (Per Tire)	\$ 5.00	\$ 100.00		
3.3.3	Flat Repair - On Bus		10	Each (Per Tire)	\$ -	\$ -		
3.3.5	Flat Repair - Off Bus		10	Each (Per Tire)	\$ 50.00	\$ 500.00		
3.3.6	Rotate Mounted Tires		20	Each (Per Tire)	\$ 50.00	\$ 1,000.00		
3.3.7	Computerized Tire Balancing		75	Each (Per Tire)	\$ 5.00	\$ 375.00		
3.3.8	Commercial Rim - Wheel Refinish		200	Each (Per Tire)	\$ 40.00	\$ 8,000.00		
3.3.9	Used Tire Recycle - Disposal Fee		100	Each (Per Tire)	\$ 15.00	\$ 1,500.00		
3.4.1	Delivery - Pickup Services (Minimum 2-times Per Week)	No Charge						
Grand Total Cost						\$ 178,980.00		

*Quantities listed in this RFQ are yearly estimates only. Vendor shall supply the quantities actually ordered for delivery during the term of the contract. Award will be based on the Grand Total Cost.

NOTE: Vendor must populate each of the highlighted cells in yellow. Failure to populate all the highlighted cells will be grounds for disqualification.

Vendor Company Name: Reliable Tire Company
Vendor Contact Name: Andrew Savage
Vendor Phone No.: 304-290-1817
Vendor Email: tireman@westco.net

District	Counties
1	Boone, Clay, Kanawha, Mason, Putnam
2	Cabell, Lincoln, Logan, Mingo, Wayne
3	Calhoun, Jackson, Pleasants, Ritchie, Roane, Wirt, Wood
4	Doddridge, Harrison, Marion, Monongalia, Preston, Taylor
7	Barbour, Braxton, Gilmer, Lewis, Upshur, Webster

ITEM NUMBER	ITEM DESCRIPTION	APPLICATION	ESTIMATED QUANTITY*	UNIT OF MEASURE	PRICE	EXTENDED PRICE	Tire & Tube Brand	TIRE MANUFACTURED ANNUALLY Y/N
3.1.1	11R22.5	Steer	150	Each	\$ 413.00	\$ 61,950.00	Toyo M170	Y
3.1.1	11R22.5	Drive	100	Each	\$ 483.00	\$ 48,300.00	Toyo M920	Y
3.1.1	11R22.5 RETREAD With Casing Exchange	Drive	300	Each	\$ 287.00	\$ 7,175.00	Oliver HMT	
3.1.1	11R22.5 RETREAD W/O Casing Exchange	Drive	25	Each	\$ 237.00	\$ 5,925.00	Oliver HMT	
3.1.1	10R22.5	Steer	20	Each	\$ 400.00	\$ 8,000.00	Toyo M170	Y
3.1.1	10R22.5	Drive	20	Each	\$ 370.00	\$ 7,400.00	Hercules H-Do	Y
3.1.1	10R22.5 RETREAD With Casing Exchange	Drive	10	Each	\$ 287.00	\$ 2,870.00	Oliver HMT	
3.1.1	10R22.5 RETREAD W/O Casing Exchange	Drive	5	Each	\$ 237.00	\$ 1,185.00	Oliver HMT	
3.1.1	255/70R-22.5	Steer	20	Each	\$ 342.00	\$ 6,840.00	Sumitomo	Y
3.1.1	255/70R-22.5	Drive	10	Each	\$ 390.00	\$ 3,900.00	Sumitomo	Y
3.1.1	255/70R-22.5 RETREAD With Casing Exchange	Drive	40	Each	\$ 230.00	\$ 9,200.00	Oliver ATD	
3.1.1	255/70R-22.5 RETREAD W/O Casing Exchange	Drive	5	Each	\$ 200.00	\$ 1,000.00	Oliver ATD	
3.2	INNER TUBE for 11R22.5		10	Each	\$ 42.00	\$ 420.00	Firestone	
3.2	INNER TUBE for 10R22.5		10	Each	\$ 42.00	\$ 420.00	Firestone	
3.2	INNER TUBE for 255/70R-22.5		10	Each	\$ 42.00	\$ 420.00	Firestone	
3.3.1	Tire Mounting - Installation w/purchase (includes dismount of used tires & tubes)		500	Each (Per Tire)	\$ 5.00	\$ 2,500.00		
3.3.2	Change Tire - included dismount and mount		20	Each (Per Tire)	\$ 5.00	\$ 100.00		
3.3.3	Flat Repair - On Bus		10	Each (Per Tire)	\$ -	\$ -		
3.3.5	Flat Repair - Off Bus		10	Each (Per Tire)	\$ 50.00	\$ 500.00		
3.3.6	Rotate Mounted Tires		20	Each (Per Tire)	\$ 50.00	\$ 1,000.00		
3.3.7	Computerized Tire Balancing		75	Each (Per Tire)	\$ 5.00	\$ 375.00		
3.3.8	Commercial Rim - Wheel Refinish		200	Each (Per Tire)	\$ 40.00	\$ 8,000.00		
3.3.9	Used Tire Recycle - Disposal Fee		100	Each (Per Tire)	\$ 15.00	\$ 1,500.00		
3.4.1	Delivery - Pickup Services (Minimum 2-times Per Week)		No Charge					
Grand Total Cost						\$ 178,980.00		

*Quantities listed in this RFQ are yearly estimates only. Vendor shall supply the quantities actually ordered for delivery during the term of the contract. Award will be based on the Grand Total Cost.

NOTE: Vendor must populate each of the highlighted cells in yellow. Failure to populate all the highlighted cells will be grounds for disqualification.

Vendor Company Name: Reliable Tire Company
Vendor Contact Name: Andrew Savage
Vendor Phone No.: 304-290-1817
Vendor Email: tireman@westco.net

INNER TUBE WARRANTY POLICY

POLICIES & FORMS / INNER TUBE WARRANTY POLICY

Tubes Covered

This policy covers all inner tubes that are sold by Bridgestone America's Tube Business (BATB) if they are used in the service for which they were intended.

Warranty Process

Customers desiring to return product to BATB for warranty consideration must first obtain an RGA number by calling our toll-free number (800.553.6008) or emailing tubewarranty@bfusa.com. Based on piece count and weight, BATB will advise to either return the product or provide pictures of the product. If product is to be returned, the customer is provided shipping instructions. If pictures are required, the customer is advised to email pictures of the tube brand and failure area. Pictures will need to include one of the brand and size and two of the failure area.

Warranty Coverage

If any inner tube covered by this warranty becomes unusable for any reason within the manufacturer's control, such inner tube will be replaced with an equivalent new inner tube or the equivalent of the wholesale (first purchaser) purchase price refunded on the basis set forth below. Some examples of causes or conditions normally beyond the manufacturer's control and therefore not adjustable are:

- Mounting cuts and pinches
- Rim/Bead cuts - rim slip
- Valve corrosion
- Apparent overload or improper inflation
- Improper insertion of filling materials
- Foreign material in tire cavity
- Intentional alteration
- Aging (or improper storage)
- Field/Road hazards
- Punctures
- Cuts
- Stubble damage
- Impact
- Valve pulled off or stem pulled out
- Improper Application

Abnormal tire (unless the tire is manufactured by Bridgestone or Bridgestone/Firestone).

Note: A history or pattern of tube failures in the same tire will be presumed to result from a tire abnormality.

BATB reserves the right to inspect the tire in such a case before honoring tube adjustment claims.

This warranty is in addition to and/or may be limited by any other applicable written warranty you may have received.

Warranty Period:

Natural Rubber and Severe Service inner tubes manufactured by BATB are warranted for a period of 5 years from date of sale*. All other inner tubes manufactured by or sold by BATB are warranted for a period of 3 years from date of sale* with the exception of racing and aircraft inner tubes. Racing inner tubes and aircraft inner tubes are warranted for new abnormal conditions only.

BATB will reimburse the first purchaser tube cost, along with reasonable and actual service charges within the limitations below if adequate documentation is provided.

Limitations:

- Loss of time, vehicle use, profits or inconvenience is not covered.
- Replacement cost for tire damage claimed is not covered.
- Overtime, weekend or holiday charges for service are not covered.
- For Agricultural, Forestry and Off-Road inner tubes:
 - Lost ballast is limited to \$1.00 per gallon.
 - Cost for service (in addition to distance charges) is limited to \$2.00 per diameter inch. For example, a 16.9R30 section tube is limited to reasonable and actual charges not to exceed \$60.00.

Transportation:

BATB will be responsible for freight costs associated with returning warranty tubes. All product will be returned freight collect using a carrier chosen by BATB. If designated carrier is not used, the customer will be responsible for all freight charges.

Conditions and Exclusions:



BATB's obligation under this policy may not be enlarged or altered by anyone.

* If no proof of purchase is submitted to identify date of sale, date of manufacture will be used for determining the warranty period.

Owner – User's Obligations:

It is the owner-user's obligation to operate inner tubes within the loads and speed limits as specified by BATB for the tire it is installed in, and to otherwise utilize proper care and use procedures for the tires and inner tubes. In the case of a warranty claim, the owner-user must present the inner tube to the first purchaser, complete and sign the customer section of the BATB Adjustment Claim Form. A BATB or Bridgestone Tire Claim form may be used (forms will be supplied on request).

Policies & Forms

[TUBE SAFETY](#)

[INNER TUBE TIPS](#)

[FREIGHT POLICY](#)

[INNER TUBE WARRANTY POLICY](#)

[DAMAGED FREIGHT / FREIGHT SHORTAGE POLICY](#)

[ENVIRONMENTAL POLICY STATEMENT](#)

[CONTACT US](#)



BRIDGESTONE

2700 East Main Street
Russellville, AR 72802

CALL AMERICA'S TUBE BUSINESS | **1.800.553.6008**

© 2024 Copyright Bridgestone America Tire Operations, LLC | Built by [VisionAmmo Marketing](#) | [Privacy Policy](#) | [Terms & Conditions](#)

STRONG GUARD® H-DO

PREMIUM | OPEN SHOULDER | DRIVE

The New Strong Guard® H-DO regional drive tire features an open shoulder design coupled with the latest compounds and technologies that deliver extended mileage and dependable traction.

- Featuring a 12% wider tread, the Strong Guard H-DO provides 11% more surface area than the previous generation tires improving vehicle stability and removal mileage
- The proprietary tread and sidewall design, coupled with a curb guard and specially angled grooves on the shoulder lugs work well for high scrub drive applications to resist cuts, abrasions and stone retention.



PERFORMANCE PROMISE¹



84-MONTH

These Hercules Strong Guard tires have a Limited Protection Policy against defects in workmanship or material for 84 months from the date of purchase.



WORKMANSHIP & MATERIALS

If this tire becomes unserviceable due to a flaw in workmanship or materials, we will replace it at no charge during the first 50% of tread life.



CASING ALLOWANCE & RETREADS

Tires carry a casing allowance for 3 retreads.

¹ See complete Limited Protection Policy on pages 66-67 for details and exclusions.

ITEM#	SIZE	LOAD/SPEED	PLY RATING	MIN. RIM WIDTH (IN)	MAX. RIM WIDTH (IN)	TREAD DEPTH (32NDS)	WEIGHT (LBS)	OVERALL DIAMETER (IN)	SECTION WIDTH (IN)	SINGLE MAX LOAD @ PRESSURE	DUAL MAX LOAD @ PRESSURE	RPM
98378	10R22.5/14	141/139L	G	6.75	7.50	23.0	112.40	40.55	10.00	5675@115	5355@115	538
98264	11R22.5/14	114/142L	G	7.50	8.25	26.0	137.78	41.93	10.98	6175@105	5840@105	522
98265	11R22.5/16	146/143L	H	7.50	8.25	26.0	137.78	41.93	10.98	6610@120	6610@120	522
98266	11R24.5/14	146/143L	G	7.50	8.25	26.0	147.71	43.46	10.98	6610@105	6005@105	496
98267	11R24.5/16	149/146L	H	7.50	8.25	26.0	147.71	43.46	10.98	7160@120	6610@120	496
98379	225/70R19.5/14	128/126N	G	6.00	6.75	21.0	72.12	31.93	8.86	3970@110	3750@110	653
98380	245/70R19.5/16	136/134N	H	6.75	7.50	23.0	81.87	32.03	9.65	4940@120	4675@120	655
98268.1	285/75R24.5/14	144/141L	G	8.25	8.25	26.0	137.57	41.34	11.14	6175@110	5675@110	519
98270	295/75R22.5/14	144/141L	G	8.25	9.00	26.0	129.85	39.92	11.73	6175@110	5675@110	540

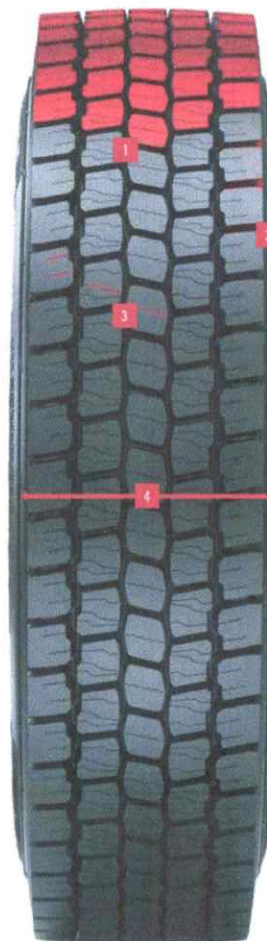
FEATURES & BENEFITS

1 GEN-H TREAD COMPOUND
delivers extended mileage in addition to promoting outstanding wet traction and stable handling via a calculated balance of compounds.

2 OPEN SHOULDER TREAD DESIGN
promotes self-cleaning while enhancing traction in all road conditions.

3 3D SIPES
increase control in dry and slippery conditions while guarding against irregular wear by interlocking the tread blocks to improve rigidity and reduce deformation.

4 OPTIMIZED FOOTPRINT AND WIDE TREAD DESIGN
extends tread life, improves product performance and increases vehicle stability due to a larger contact patch.



Failure to store tires in accordance with these instructions can cause damage resulting in sudden tire failure.

TIRE REGISTRATION

The tire registration system is an important means by which we can contact you in the event your tire is recalled. When you purchase your Toyo tires, please request a tire registration form from your dealer with the relevant tire information. Complete the card and mail it to the pre-addressed location on the form.

CORPORATE OFFICE

5665 Plaza Drive, Ste. 300
Cypress, CA 90630
(714) 236-2080
(800) 678-3250
FAX: (714) 229-6183
www.toyotires.com

NATIONWIDE CUSTOMER SERVICE CENTER

5665 Plaza Drive, Ste. 300
Cypress, CA 90630
(714) 236-2080
(800) 432-5036 (EAST)
(800) 382-9854 (EAST)
(800) 382-1471 (CENTRAL)
(800) 557-8696 (WEST)
FAX: (888) 329-8696

EASTERN TECHNICAL SERVICE CENTER

3660 Highway 411 N.E.
White, GA 30184
(888) 444-8696

CONTACT INFORMATION.

If you need assistance, please contact your authorized Toyo Tires truck/bus dealer. To locate an authorized Toyo Tires truck/bus dealer, use our dealer locator at www.toyotires.com, or contact Toyo Tires Consumer Relations at:

TOYO TIRE U.S.A. CORP.
P.O. Box 6052
Cypress, California 90630
(800) 442-8696
(6:30 am to 5:00 pm Pacific Time)

TOYO TIRES

#0180214

This brochure supersedes the commercial Truck
Tires brochure published in October 2010.

10/13 5k

TOYO TIRES



Limited Warranty for
Commercial Truck/Bus Radial Tires



COMMERCIAL TRUCK/BUS RADIAL TIRE and CASING LIMITED WARRANTY

Thank you for purchasing Toyo brand commercial truck/bus radial ("TBR") tires. This Limited Warranty covers your TBR tires against conditions that cause it to become unusable due to workmanship and materials, subject to the terms and conditions described below.

WHAT IS COVERED?

Your TBR tire is eligible for coverage if all of the following criteria are met ("**Eligible Tire(s)**"):

- You are the original purchaser of the tire.
- You purchased the tire on or after October 10, 2013*.
- You have properly maintained and used the tire.
- You fulfill the warranty claim procedure (See "HOW TO MAKE A CLAIM" below).
- You purchased and used the tire only in the United States.
- The tire was distributed within the United States by Toyo Tires.
- The tire bears the complete Toyo DOT tire identification number.
- The tire has not been branded "NA" (non-adjustable) or "USED."
- The tire is not subject to any exclusion (See "WHAT IS NOT COVERED?" below).

*Tires purchased before October 10, 2013 may be covered by an earlier warranty. See your authorized Toyo Tires truck/bus dealer or contact Toyo Tires for more information.

HOW LONG IS THE COVERAGE?

An Eligible Tire is covered for 66 months ("**Warranty Period**") from the original date of purchase, which is the date that appears in the original sales receipt. If a sales receipt is not available, the Warranty Period is 66 months from the date of manufacture, which is indicated by the Toyo DOT tire identification number on the tire sidewall.

WHAT IS NOT COVERED?

This Limited Warranty does not cover claims based on or arising from the following:

- Mileage or treadwear.
- Uniformity issues after the first 2/32" of treadwear.
- Road hazards, fire, theft, collision, or accident.
- Improper tire/vehicle maintenance or use, not limited to:
 - Incorrect inflation; overloading; vehicle misalignment; poor or defective mechanical condition of brakes, shocks, wheels, or other suspension components; or other factors attributable to the vehicle or wheel.
 - Running on a flat tire; i.e., 80% or less of the recommended inflation pressure.
 - Abuse, vandalism, tire alteration, tire spinning, or curbing.
 - Exposure to oil-based chemicals, water-based sealers, balancing substances, or flammable gases.
 - Improper use of tire chains.
 - Using an inner tube in a tubeless tire.
 - Using a highway tire for off-highway use.
- Improper mounting, dismounting, balancing, sizing, repair, or retreading, not limited to:
 - Water, chemicals or other foreign matter trapped within the tire.
 - Failure to keep tires balanced.
- Weather and/or ozone.
- Conditions from the retread process.

Nothing in this Limited Warranty is intended to be a representation that tire failures cannot occur.

WHAT TOYO TIRES WILL DO?

Original Tread Warranty.

For every Eligible Tire with original tread within the Warranty Period, Toyo Tires will do the following:

- **Less Than 2/32" Worn:** If your Eligible Tire with original tread has 2/32" or less wear, Toyo Tires will replace it, free of charge, with a comparable Toyo brand tire. **You are responsible for all mounting and balancing costs, disposal fees, and taxes.**
- **More Than 2/32" Worn:** If your Eligible Tire with original tread has more than 2/32" wear, Toyo Tires will replace with a comparable Toyo brand tire, on a pro rata basis. **You are responsible for the prorated cost of a replacement tire and all mounting and balancing costs, disposal fees and taxes.**

A **comparable Toyo brand tire** is the same model and size tire, or if it has been discontinued or otherwise not available, a tire of the same basic construction, quality, and size as the original tire, as determined in the sole discretion of Toyo Tires.

The **prorated cost of a replacement tire** is determined as follows:

$$\left(\frac{\text{Usable Remaining Tread}}{\text{Usable Total Tread}} \right) \times (\text{actual current authorized dealer selling price of comparable Toyo brand tire}).$$

- **Usable Total Tread** = Total tread depth of a new comparable Toyo brand tire minus 4/32" (note: the total tread depth will vary by tire model).
- **Usable Remaining Tread** = Usable Total Tread minus tread wear. Tread wear is determined by measuring the total tread depth of a new comparable Toyo brand tire and subtracting the remaining total tread depth on the Eligible Tire.

Casing Warranty.

For casings of an Eligible Tire within the Warranty Period, Toyo Tires will do the following:

If the casing of an Eligible Tire with at least 2/32" remaining tread depth becomes unserviceable during the Warranty Period due to a warrantable condition within the 1st or 2nd retread, you will receive the applicable casing allowance specified below. The number of retreads must be identified on the sidewall of the Eligible Tire.

Casing Allowances by Size	1st Retread	2nd Retread
215/75R17.5; 245/70R19.5	\$40.00	\$20.00
235/75R17.5; 245/70R17.5	\$40.00	\$20.00
265/70R19.5; 285/70R19.5	\$40.00	\$20.00
8.25R-20; 9R-22.5	\$40.00	\$20.00
265/75R22.5; 245/75R22.5	\$40.00	\$20.00
9.00R20; 10R22.5; 10.00R15	\$50.00	\$25.00

Casing Allowances by Size	1st Retread	2nd Retread
255/70R22.5; 275/70R22.5; 10.00R20	\$50.00	\$25.00
11.00R20; 12R22.5	\$50.00	\$25.00
12.00R20	\$50.00	\$25.00
11R22.5	\$110.00	\$80.00
295/75R22.5; 295/80R22.5	\$110.00	\$80.00
11R24.5	\$110.00	\$80.00
285/75R24.5	\$110.00	\$80.00
385/65R22.5	\$110.00	\$80.00
425/65R22.5	\$110.00	\$80.00
315/80R22.5; 305/70R22.5	\$110.00	\$80.00

If the casing of an Eligible Tire with at least 2/32" remaining tread depth becomes unserviceable due to a warrantable condition during the **first retread** within the Warranty Period, in addition to the casing allowance described above, you will also receive the applicable rubber allowance specified below.

Remaining Tread Depth	Rubber Allowance
15/32" or more	\$50.00
8/32" to 14/32"	\$30.00
7/32" or less	No Allowance

HOW TO MAKE A CLAIM.

To make a claim under this Limited Warranty, you must:

1. Present the Eligible Tire(s) to an authorized Toyo Tires truck/bus tire dealer. At the request of Toyo Tires, you must make available for inspection the vehicle on which the Eligible Tire was previously mounted.
2. Complete and sign the Toyo Tires Limited Warranty Claim form provided by the dealer.
3. Keep a copy of the Claim form for your records and leave the Eligible Tire(s) with the dealer.

Your claim will be administered in accordance with the limited warranty in effect at the time you purchased the Eligible Tires.

YOUR LEGAL RIGHTS.

This Limited Warranty gives you specific legal rights, and you may also have other rights which vary from state to state.

LIMITATIONS AND EXCLUSIONS.

THIS LIMITED WARRANTY IS GIVEN IN LIEU OF ALL OTHER WARRANTIES EXPRESS OR IMPLIED WHICH ARE SPECIFICALLY EXCLUDED, INCLUDING (WITHOUT LIMITATION) WARRANTIES OF MERCHANTABILITY AND FITNESS FOR A PARTICULAR PURPOSE. IN NO EVENT SHALL SELLER BE LIABLE FOR INCIDENTAL OR CONSEQUENTIAL DAMAGES TO THE FULL EXTENT SUCH MAY BE DISCLAIMED BY LAW (E.G., LOSS OF TIME, LOSS OF USE OF VEHICLE, TOWING CHARGES, ROAD SERVICES, COST OF RENTAL VEHICLE, INCONVENIENCES, ETC.).

Some states do not allow the exclusion or limitation of incidental or consequential damages, so the above exclusions may not apply to you.

The terms of this Limited Warranty may not be changed by anyone, including any Toyo Tires employee, representative, or dealer.

Toyo Tires does not warrant any work performed by a dealer, including, but not limited to, such dealer's selection, fitment, mounting and balancing, inspection or repair of any tire.

SAFETY WARNINGS AND ADVICE.

Toyo Tires are designed and built with great care. Any tire, no matter how well constructed, can fail as a result of punctures, impact damage, underinflation/overloading, or other conditions resulting from use. To obtain the highest possible performance, tires must be properly handled and maintained.

⚠ WARNING

WARNING: Failure to follow the safety information provided below can result in tire failure or explosion that may cause serious injury or death.

Tire Mounting and Repair

- A. Tire service personnel should be trained to follow the safety precautions for mounting, inflating, or dismounting tires as outlined by the Occupational Health and Safety Administration: <http://www.osha.gov/Publications/wheel/wheel-chart-booklet.pdf>. ("OSHA Publication") Only specially trained persons using the proper tools and procedures should service tires.
- B. Upon dismounting the tire from the vehicle, completely deflate the tires before handling.
- C. Inspect the interior and exterior of all tires prior to mounting.

⚠ WARNING

WARNING: Permanent tire damage due to underinflation and/or overloading cannot always be detected. Any tire known or suspected to have been run at 80% or less of the recommended inflation pressure, and/or operated in an overloaded condition could have suffered permanent structural damage (e.g., steel cord fatigue). Steel ply cords weakened by the extreme flexing caused by the underinflation and/or overloading could break apart until a rupture occurs in the upper sidewall with accompanying instantaneous and explosive air loss.

- D. When repairing tires, follow instructions as outlined in the RMA publication and wall chart "Puncture Repair Procedures for Truck/Bus Tires":

[http://www.rma.org/tire_care_info/wall_chart/Puncture%20Repair%20Procedures%20for%20Truck-Bus%20Tires%20\(2\).pdf](http://www.rma.org/tire_care_info/wall_chart/Puncture%20Repair%20Procedures%20for%20Truck-Bus%20Tires%20(2).pdf)

- External repairs or repairs that are done without dismounting the tire from the rim or wheel are considered improper.
- Never use a tube as a substitute for a proper repair.
- If you are unsure about the reparability of a tire, consult your tire dealer or retreading professional for further details on proper repair methods.

E. Rims/Wheels:

- Always make sure that the tire wheel diameter and the rim/ wheel diameter are identical. For example, do not mount a 17" tire on a 17.5" wheel, or similar incorrect combinations: 19" and 19.5", 22" and 22.5", 24" and 24.5". NEVER assemble a tire and rim unless you have positively identified and correctly matched the combination.
- Use rims and wheels that are approved for radial tires and which are rated for the pressure and loads required for the intended tire fitment. Consult the rim or wheel manufacturer for further information regarding proper application and use.
- Do not attempt to mount and inflate any tire on a bent, cracked, damaged or welded rim or wheel.
- Never exceed the maximum load or inflation limit of the rim or wheel. Consult the rim/ wheel manufacturer for further information regarding application or use.

F. Inflation:

- Always follow the safety guidelines in the OSHA Publication when inflating a newly mounted tire, including the use of a safety cage, an extension hose with gauge, and clip-on air chuck for inflating the tire. Stand back from the tire and never lean or reach over the assembly during inflation.
- Never attempt to inflate any tire that may have damaged cords, inner liner wrinkling, heat deterioration, casing distortion, or other signs of underinflation, run flat, separation, or air leakage.

⚠ WARNING

WARNING: If you attempt to inflate any tire which may have been damaged from underinflation/overload, or a run-flat condition, it may explode with violent force, which can result in serious injury or death.

- G. Never introduce flammable substances to the interior of any tire during either the mounting process or during inflation. Such practices can cause an explosion that may result in injury or death.

H. Mixing Tires: For trucks with four wheel positions, never mix radial and non-radial tires on the same axle.

- If two radial tires are used with a pair of non-radial tires, the radial tires should be placed on the rear axle.
- On a dual axle, never mix radial with bias tires.
- Use tires with a similar tread design and remaining tread depth to ensure consistent handling.

Refer to the vehicle owner's manual for specific instructions regarding the mixing and matching of replacement tires.

Tire Use and Maintenance

- I. Tire Pressure: Use an accurate tire gauge to routinely check inflation pressures, and always check the pressure when the tires are cold; i.e., before driving on them.
- Measuring inflation pressures when the tire is hot will generate inaccurate pressure readings. Never bleed pressure from hot tires as this can result in underinflated tires.
- Never run on tires that are underinflated.
- Use metal valve caps to keep cores clean, clear of debris and to help guard against air leakage.

Tire Load: Check tire inflation pressures to make sure they are rated for the load.

- Never overload your tires.
- In dual wheel applications, it is possible to overload a tire if one of the tires is underinflated or flat.
- If a tire has been driven in an overloaded condition, have it inspected and replaced.

⚠ WARNING

WARNING: Underinflation or overloading will result in tire fatigue and sudden tire failure. This could lead to loss of vehicle control, possibly resulting in personal injury or death.

Consult your Toyo commercial truck tire dealer or Toyo Tires for proper load and inflation information.

- J. Speed Ratings: Never run tires at speeds in excess of their speed ratings as the tires may overheat and suddenly fail. **This could lead to loss of vehicle control, possibly resulting in personal injury or death.** Consult your Toyo commercial truck tire dealer for further information concerning speed ratings for specific Toyo commercial truck tires.
- K. Routine Inspections: Check your tires for any damage or irregular wear prior to each trip. Irregular wear may indicate improper tire balance, vehicle misalignment or worn parts. Your authorized Toyo commercial truck tire dealer is also available to inspect and service your tires. A routine inspection of your tires will help to ensure your safety, and give you the maximum mileage and performance from your Toyo tires.

⚠ WARNING

WARNING Beware of Sudden Tire Vibration: Serious injury or death may result from a tire failure. Many tire failures are preceded by vibration, bumps, bulges or irregular wear. If you experience any unusual vibration, pull, ride disturbance or noise from your vehicle, pull over to a safe area as soon as possible and inspect the tires for signs of damage. Seek road-side assistance or replace the damaged tire with your spare.

- L. Worn Tires: All tires have wear indicator bars incorporated into the tread at 2/32" to signal when the tires must be replaced. Never drive on tires that are worn past the wear indicator bars. Commercial truck tires that are mounted on the front axles of buses, trucks or truck tractors need to be replaced at 4/32" (3.2mm).

⚠ WARNING

WARNING: Continued operation of your vehicle with excessively worn tires can lead to loss of vehicle control in wet or adverse weather conditions, possibly resulting in personal injury or death.

Tire Storage:

- M. Follow these recommended guidelines for storage of your tires:
 - Store tires in a cool dry area away from major heat sources.
 - Avoid contact of tire surfaces with petroleum or oil-based products.
 - It is best to store tires in an enclosed area with no exposure to electromagnetic sources such as electric welders, generators, or transformers.



OLIVER RUBBER COMPANY

Tuff-Cure® Retread

NATIONAL LIMITED WARRANTY



INDEX

	Page
Oliver® National Limited Warranty	1
What Is Covered and For How Long	1
What Is Not Covered	1
How Replacement Charges Are Calculated	1-2
What the End User Fleet / Customer Must Do	2
Conditions and Exclusions	2
 Safety and Maintenance Recommendations	3-8
Warning	3
Check Cold Inflation Pressures	3
Inspect Your Tires	4
Hazards	
Inspection	
Wear Bars	4
High Speed Driving	4-5
Wheel Alignment, Tracking and Balancing	5
Check Your Tires	5
Do Not Overload	5
Tire Mixing	6
Four Wheel Trucks	
Vehicles With More Than Four Wheel Positions	
Tire Alterations	6
Retreads and Repairs	6-7
Storage	7
Mounting Recommendations	7-8
For All MICHELIN® Tube-Type Tires	
For All MICHELIN® Tires	
Preparation of Wheels And Rims	8
 MICHELIN® X One® Casing Warranty	9
 MICHELIN® X One® Tire Specific Information	9
Pressure Maintenance	
Vehicle Handling	
Rapid Pressure Loss Techniques	
 MICHELIN® Consumer Care Information	Back Cover

OLIVER® NATIONAL LIMITED WARRANTY

WHAT IS COVERED AND FOR HOW LONG

Oliver Rubber Company (hereinafter referred to as Oliver Dealer), provides a national limited warranty for every retread, whether using a customer's casing or an Oliver Dealer's casing and for every repair produced by an Oliver Dealer.

The national limited warranty applies to all retreads and repairs bearing the Oliver Dealer's valid DOT⁽¹⁾ plant code and is warranted against defects in workmanship and materials for the "useable"⁽²⁾ life of the retread tread and within 3 years from the retread DOT or in the absence of a retread DOT, the date of purchase.⁽³⁾ Thereafter, all warranties, express or implied, expire.

WHAT IS NOT COVERED

- Road hazard injury (e.g., a cut, snag, bruise, impact damage, or puncture, whether repairable or not);
- Incorrect or improper mounting, tire/wheel imbalance, or improper repair made by others;
- Underinflation, overinflation, curbing, improper maintenance, neglect or other abuse;
- Mechanical irregularity in the vehicle such as vehicle damage or wheel misalignment resulting in uneven or rapid wear;
- Accident, fire, chemical corrosion, tire alteration or vandalism;
- Casings classified and marked by the MRT Dealer as "NA" (not adjustable) adjacent to the retread DOT code.
- Any tire casing designed in such a manner as to render MRT inspection techniques and/or equipment ineffective is not covered by this warranty. All other workmanship and material coverage remains in effect.

HOW REPLACEMENT CHARGES ARE CALCULATED

If a cap and casing, a retread, and/or a repair produced by an Oliver Dealer retread plant⁽⁴⁾ is within 3 years from the Oliver Dealer's DOT becomes unserviceable due to a condition covered by this warranty, it will be credited based on the percent of the retread that is worn. If the retread tread is not available, then the credit will be based on time of use.

If the retread, casing and / or repair becomes unserviceable due to a condition covered by this warranty in the first 10% of the useable tread life, and the retread tread is available, then the credit will be 100% of the invoice price for the casing, retread and / or repair. After 10% of the useable retread life is worn, and before 4/32nds, the credit will be on a pro rata basis using the calculation below.

$$\frac{\text{Remaining Retread Tread -4}}{\text{Original Retread Tread -4}} = \% \text{ Credit Due}$$

If the retread, casing and / or repair becomes unserviceable due to a condition covered by this warranty and if no measurable retread tread is available, credit will be given on a pro rata basis of the actual purchase

(1) DOT - Department of Transportation

(2) The usable life of a retread tread is defined as the tread depth down to 4/32nds of an inch of tread remaining.

(3) Date of purchase is documented by the retread or repair sales invoice.

(4) Retread must bear plant's DOT identification code.

price⁽⁵⁾ for the casing, retread and/or repair, based on the number of weeks of usage according to the following table. The customer pays the cost of mounting, balancing and any other service charges or applicable taxes.

<u>DOT Retread Date</u>	<u>Percent of Credit</u>	
0-16 weeks	100%	Casing, Retread and/or Repair
17-39 weeks	75%	Casing, Retread and/or Repair*
40-52 weeks	50%	Retread Only*
53-70 weeks	25%	Retread Only*
After 70 weeks	0%	

*X One casings will be credited at 100% of casing value

The customer pays the charges for mounting and balancing of the tire and any other service charges or applicable taxes in either the pro rate basis on available tread or the pro rate basis of time used.

Note: Please refer to Page 9 for MICHELIN® X One® casing specific warranty information.

If the purchase price cannot be obtained, the adjusting Oliver Dealer can calculate the Warranty Credit Amount. The price for the tire in the current Oliver Retread Suggested Fleet Price List is multiplied by the percentage adjustment to determine the credit for the retread, and the current value of the casing is multiplied by the same percentage to determine the credit for the casing (not applicable after the first 25% of tread is worn). Adding the 2 numbers together provides the total credit to be issued.

WHAT THE END USER FLEET / CUSTOMER MUST DO

When making a claim under the terms of this warranty, the end-user fleet/customer must present the retreaded/repared tire to an Oliver Dealer.

If the vehicle on which the tires are mounted is within 150 miles of the producing Oliver Dealer who manufactured the retread/repair or the producing dealer's commercial servicing location, the tire must be presented to that Oliver Dealer for warranty consideration.

CONDITIONS AND EXCLUSIONS

This warranty is in lieu of all other warranties, express or implied, including without limitation, warranties of merchantability and of fitness for a particular purpose.

The customer is not a participant in any retread program with Oliver Rubber Company, that includes warranty and adjustment provisions as an integral part of the program.

This warranty does not provide compensation for loss of time, loss of use of vehicle, inconvenience or consequential damage. Some states do not allow the exclusion or limitation of incidental or consequential damages, so the above limitation or exclusion may not apply to you. This warranty gives the customer specific legal rights, and you may have other rights that vary from state to state.

This warranty is for the exclusive benefit of the original customer and is not transferable.

This limited warranty applies **only** in the United States.

(5) Note: If the purchase invoice is not available, the adjusting Oliver Dealer will attempt to obtain the actual purchase pricing for the retread and casing and to inform the producing Oliver Dealer of the impending warranty claim.

SAFETY AND MAINTENANCE RECOMMENDATIONS

⚠ WARNING

DISREGARDING ANY OF THE SAFETY PRECAUTIONS AND INSTRUCTIONS CONTAINED IN THIS MANUAL MAY RESULT IN TIRE FAILURE OR EXPLOSION CAUSING SERIOUS PERSONAL INJURY OR DEATH.

DRIVING ON ANY TIRE THAT DOES NOT HAVE THE CORRECT INFLATION PRESSURE IS DANGEROUS AND MAY CAUSE IRREPARABLE TIRE DAMAGE.

Any underinflated tire builds up excessive heat that may result in sudden tire destruction. For replacement tires, the correct inflation pressure will be provided by your Michelin Truck Tire Retailer. If not, refer to the vehicle placard.

The placard indicates the inflation pressures required for the maximum axle loads (gross axle weight rating). However, do not exceed the maximum inflation pressure for the tire or the wheel on which it is mounted.

⚠ WARNING

DO NOT DRIVE UNNECESSARILY ON IMPROPERLY INFLATED TIRES.

CHECK THE COLD INFLATION PRESSURE IN ALL YOUR TIRES, INCLUDING THE SPARE, AT LEAST ONCE EACH WEEK

Failure to maintain correct inflation pressure may result in improper vehicle handling and may cause rapid and irregular tire wear, sudden tire destruction, loss of vehicle control and serious personal injury. Therefore, inflation pressures should be checked at least once each week and always prior to long distance trips.

Please refer to your authorized Michelin Truck Tire Retailer or www.michelintruck.com for detailed information on axle loads and appropriate cold inflation pressures.

Pressures should be checked when tires are cold; in other words, before they have been driven on. The ideal time to check tire pressures is early morning. Driving, even for a short distance, causes tires to heat up and pressure to increase.

Never bleed air from hot tires. Bleeding air from hot tires could result in under inflation.

Use an accurate tire gauge to check pressures. Never allow children to inflate or deflate tires.

If your pressure check indicates that one of your tires has lost pressure of four pounds or more, look for signs of penetration, valve leakage or wheel damage that may account for the pressure loss.

Any tire suspected of having been run flat or run at very low pressure (less than 80% of normal operating pressure) should not be re-inflated without careful inspection of the entire tire.

Visit a Michelin Truck Tire Retailer.

INSPECT YOUR TIRES DAILY — IF YOU SEE ANY DAMAGE TO THE TIRES OR WHEELS TAKE THEM TO AN AUTHORIZED MICHELIN RETAILER AT ONCE

HAZARDS

Driving over potholes, curb, glass, metal, rocks, wood debris and the like, can damage a tire and should be safely avoided. Unavoidable contact with such hazards should prompt a thorough tire inspection.

If you see damage to your tires or wheels, replace with a spare and immediately visit a Michelin Truck Tire Retailer for advice.



INSPECTION

Always examine your tires for bulges, cracks, cuts, penetrations and abnormal tire wear, particularly on the edges of the tire tread, which may be caused by misalignment or underinflation. If any such damage is found, the tire must be inspected by a Michelin Truck Tire Retailer at once. Use of a damaged tire could result in rapid pressure loss and sudden tire destruction. Failure to control a vehicle when one or more tires experience a sudden pressure loss can lead to an accident.

All tires will wear out faster when subjected to high speeds as well as hard cornering, rapid starts, sudden stops, frequent driving on surfaces which are in poor condition, and off-road use. Surfaces with holes and rocks or other objects can damage tires and cause vehicle misalignment. When driving on such surfaces, drive carefully and slowly, and before driving again at normal or highway speeds, examine your tires for any damage, such as cuts, bulges, penetrations, unusual wear patterns, etc.

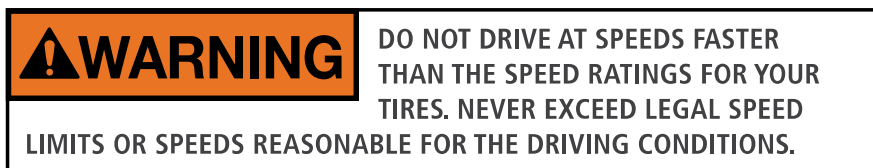
WEAR BARS

MICHELIN® Truck Tires contain “Wear Bars” in the grooves of the tire tread which show up when only 2/32nds of an inch (1.6 mm) of tread is remaining. At this stage, tires must be replaced. Tires worn beyond this stage are dangerous.

(Federal law requires the tires on front axles of a Bus, Truck or Truck Tractor to have at least 4/32nds of an inch of tread depth remaining.)

HIGH SPEED DRIVING CAN BE DANGEROUS AND MAY DAMAGE YOUR TIRES

Correct inflation pressure is especially important. However, at high speeds, even with the correct inflation pressure, a road hazard, for example, is more difficult to avoid and, if contact is made, has a greater chance of causing tire damage than at lower speeds. Moreover, driving at high speeds reduces the reaction time available to avoid accidents and bring your vehicle to a safe stop.



If you see any damage to a tire or wheel, replace it with the spare at once and visit a Michelin Truck Tire Retailer.

The maximum speed at which MICHELIN® Truck Tires can be operated is indicated in the MICHELIN® Truck Tire Data Book. This speed varies for each type of tire and depends on the type of application. Consult a Michelin Truck Tire Retailer for assistance in determining the maximum speed for your application.

Exceeding this maximum speed will cause the tire to build up excessive heat, which can cause tire damage that could result in sudden pressure loss and rapid tire destruction. Failure to control a vehicle when one or more tires experience sudden pressure loss can lead to an accident, property damage, and personal injury.

In any case, you should not exceed reasonable speeds as indicated by the legal limits and driving conditions.

WHEEL ALIGNMENT, TRACKING, AND BALANCING ARE IMPORTANT FOR SAFETY AND MAXIMUM MILEAGE FROM YOUR TIRES



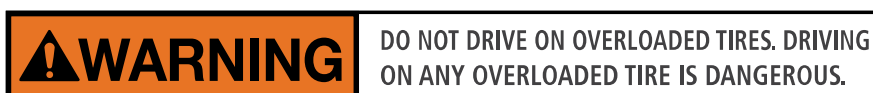
CHECK HOW YOUR TIRES ARE WEARING AT LEAST ONCE EACH MONTH

If your tires are wearing unevenly, such as the inside shoulder of the tire wearing faster than the rest of the tread, your vehicle may be out of alignment. This condition not only shortens the life of your tires but also adversely affects the handling characteristics of your vehicle, which could be dangerous. If you detect irregular wear, have the alignment of the wheels and the parallelism of the axles checked immediately. Also check to see that your tires are properly inflated.

For optimum tire life and performance, the front end alignment on vehicles equipped with MICHELIN® Truck Tires should be in accordance with the recommendations of the vehicle manufacturer.

Care should be taken to ensure tire/wheel concentricity to avoid potential issues with imbalance. It is recommended that you have your tires and wheels dynamically balanced. Tires and wheels which are not balanced may cause steering difficulties, a bumpy ride and irregular tire wear.

DO NOT OVERLOAD — DRIVING ON ANY OVERLOADED TIRE IS DANGEROUS



The maximum load rating marked on the tire sidewall of any truck tire is based on a specific maximum speed of operation. Consult a MICHELIN® Truck Tire Data Book for complete information on allowable loads for the tires in your application. Tires which are loaded beyond their maximum allowable loads for the particular application will build up excessive heat that may cause sudden tire destruction, property damage and personal injury.

In the case of dual mounted tires, if one of the tires is run underinflated or flat then the other tire will become severely overloaded which could lead to tire failure. "Limping in" is illegal and should never be attempted.

TIRE MIXING



DO NOT DRIVE IMPROPERLY MIXED TIRES.

FOUR WHEEL TRUCKS

For best performance it is recommended that the same size and type of tire be used on all four wheel positions. If only two MICHELIN® radial truck tires are mounted with two non-radial tires, the radial tires should be mounted on the rear axle.

Before mixing different types of tires in any configuration on any vehicle, be sure to check the vehicle manufacturer's owner's manual for its recommendations.

It is especially important to check the vehicle manufacturer's owner's manual when mixing, matching or replacing tires on 4-wheel drive vehicles, as this may require special precautions.

VEHICLES WITH MORE THAN FOUR WHEEL POSITIONS

For best performance, it is strongly recommended that radial and non-radial tires not be mixed in a dual fitment.

TIRE ALTERATIONS



DO NOT DRIVE ON ALTERED TIRES.

Do not make or allow to be made any alteration to your tires. Alterations may prevent proper performance, leading to tire damage which can result in an accident. Tires which become unserviceable due to alterations such as, but not limited to, truing, addition of balancing or sealant liquids, or the use of tire dressings containing petroleum distillates, are excluded from warranty coverage.

IMPROPERLY RETREADED AND/OR REPAIRED TIRES ARE DANGEROUS AND CAN CAUSE TIRE DESTRUCTION, PROPERTY DAMAGE AND PERSONAL INJURY



DO NOT DRIVE ON IMPROPERLY RETREADED OR REPAIRED TIRES.

Retreading and repairing of MICHELIN® Truck Tires should be performed only by qualified personnel with proper equipment using the procedures contained in MICHELIN® Retread and Repair manuals.

If any MICHELIN® Tire sustains a puncture, take it to an authorized Michelin Tire Retailer to check for possible damage that may have occurred.

Plug-only repairs done on-the-wheel are considered improper and are therefore not recommended. Such repairs are not reliable and may cause

further damage to the tire and may result in tire failure.

STORAGE

Tires contain waxes and emollients to protect their outer surfaces from ozone and weather checking. As the tire rolls and flexes, the waxes and emollients continually migrate to the surface, replenishing this protection throughout the normal use of the tire. Consequently, when tires sit outdoors, unused for long periods of time (a month or more), their surfaces become dry and more susceptible to ozone and weather checking, and the casing becomes susceptible to flat spotting. Also serious problems occur with tube-type tires when mounted with water trapped between the tire and the tube. Due to pressurization, the liquid can pass through the inner liner and into the casing plies. For these reasons, tires should always be stored in a cool, dry, clean indoor environment. Failure to store tires in accordance with these instructions could result in premature aging of the tires and sudden tire failure.

When tires are stored, be sure they are placed away from sources of heat and ozone, such as hot pipes and electric generators. Be sure the surfaces on which tires are stored are clean and free from grease, petroleum products or other substances which could deteriorate the rubber. (Tires exposed to these materials during storage or driving could be subject to sudden failure.)

FOLLOW THESE MOUNTING RECOMMENDATIONS TO PREVENT TIRE DESTRUCTION, PROPERTY DAMAGE AND PERSONAL INJURY

Regulations and recommendations published by the Occupational Safety and Health Administration of the U.S. Department of Labor (OSHA) deal in detail with mounting and demounting of tires for trucks/buses. You should ensure that you are always in compliance with these regulations and recommendations. In addition, Michelin urges you to bear in mind the following considerations:

Tire changing can be dangerous and must be done by professionally trained persons using proper tools and procedures as specified by the U.S. Tire Manufacturers Association (USTMA).

WARNING

TIRE AND WHEEL SERVICING CAN BE DANGEROUS AND MUST BE DONE ONLY BY TRAINED PERSONNEL USING PROPER TOOLS AND PROCEDURES. FAILURE TO READ AND COMPLY WITH ALL PROCEDURES MAY RESULT IN SERIOUS INJURY OR DEATH TO YOU OR OTHERS.

Tires should be mounted on wheels of the correct size and type which are in good, clean condition. Bent, chipped, or rusted wheels or rim components may cause tire damage and can also malfunction causing an accident.

All wheel components (i.e. flanges, lock rings, rim base, etc.) must match. Be sure to check wheel manufacturer's specifications.

When changing any tire, always deflate the tire before loosening any wheel or rim lugs. Always install new valve cores with new mountings.

FOR ALL MICHELIN® TUBE-TYPE TIRES

TUBES: Always fit a new MICHELIN® tube of the proper size in a new mounting. A tube through normal use will experience growth; therefore, if an old tube is re-used, there is a probability of creasing it with subsequent chafing and eventual failure of the tube causing tire damage. MICHELIN® Tubes are made of butyl rubber and marked with the trade name "AIRSTOP®." It is essential to use an "AIRSTOP®" tube with a MICHELIN® 'X®' Tire. These tubes are made with an overlap splice which is stronger than the butt splice used in many other tubes. The use of other tubes, not designed for MICHELIN® 'X®' Radial Tires, could result in tube failure causing tire damage.

FLAPS: Always install a new MICHELIN® Flap when you install a new tire. After a limited time the flap will develop a set to match the tire and wheel in which it is fitted; therefore, it will not exactly match a new tire/wheel combination.

FOR ALL MICHELIN® TIRES

LUBRICANT: Always use a proper lubricant when mounting tires. Use only an approved tire mounting lubricant. Never use anti-freeze, silicones or petroleum-based lubricants. Do not allow excess lubricant to run down and collect inside the tire.

SAFETY CAGE: Always use a safety cage or other OSHA approved restraining devices when inflating a truck tire. Ensure that the safety cage is large enough to accommodate wide base tires when inflating MICHELIN® X One® Tires. Never stand over the tire or in front of the valve when inflating. Use an inline gauge and stand to the side. Before final inflation, check the assembly carefully for signs of weakness or irregularities.

VALVE CAPS: It is essential that all valves be fitted with pressure-sealing metal valve caps, which are the PRIMARY seal of the valve, to avoid leaks. After mounting, check the assemblies for leaks. When wheel assemblies are mounted on a vehicle, be sure that the valves do not touch the brake drums or any mechanical part of the vehicle.

DUAL MOUNTING: Tires mounted in duals must be matched so that the maximum difference between the diameters of the tires does not exceed 1/4 inch. Failure to properly match dual tires will result in the tire with the larger diameter carrying a disproportionate share of the load which can cause sudden tire destruction, property damage and personal injury.

Proper dual spacing must be provided to prevent the tires from rubbing together and to allow for the flow of cooling air. Consult the MICHELIN® Truck Tire Data Book or visit a Michelin Truck Tire Retailer for information on the minimum dual spacing required for a particular tire/wheel fitment.

PREPARATION OF WHEELS AND RIMS

Prior to fitment, wheel assemblies should be thoroughly inspected for cracks, warpage, deformation of flanges, side rings, lock rings, etc. The condition of the stud holes on wheels should also be checked. If any of these conditions are discovered, the wheel should be discarded. All burrs, welds, hammer dents, etc., that are present on the tire side of the rim must be made smooth with a file and/or emery cloth. Remove rust with a wire brush and apply a rust inhibiting paint. Make sure the tires are being mounted on the correct wheel size and type. The wheels and rim components should be in good condition and clean.

MICHELIN® X ONE® CASING WARRANTY

Michelin Retread Technologies, Inc. (MRT) is pleased to offer an extended warranty coverage pertaining to MICHELIN® X One® tire casings retreaded via the MRT franchise network.

In assessing warranty credits payable for a MICHELIN® X One® tire retread and/or repair produced by an MRT franchisee via the MRT retread process when no measurable tread remains, warranty credits will be applied to both casings, retreads and repairs during the first 70 weeks of casing usage. The historical pro rata usage structure will continue to apply for retreads and repairs; however, an X One casing will be warranted at 100% for the full 70 weeks.

<u>DOT Retread Date</u>	<u>Percent of Credit</u>
0-16 weeks	100% Casing, Retread and/or Repair
17-39 weeks	75% Retread and/or Repair
40-52 weeks	Retread Only
53-70 weeks	Retread Only
After 70 weeks	0%

MICHELIN® X ONE® TIRE SPECIFIC INFORMATION

**ALL DRIVERS OF VEHICLES EQUIPPED WITH MICHELIN®
X ONE® TIRES SHOULD BE AWARE OF THE FOLLOWING:**

PRESSURE MAINTENANCE

Drivers have commented that an underinflated MICHELIN® X One® Tire is more likely to be detected with a simple visual inspection than duals. However, pressure is difficult to gauge visually even for the most experienced driver. Drivers should always use a properly calibrated gauge when verifying the pressure of a MICHELIN® X One® Tire and should not rely on the aspect of the tire. If the tire is 20% below the recommended pressure, it must be considered flat, removed and inspected for punctures or other damage. Failure to do so may cause tire failure.

VEHICLE HANDLING

Drivers have commented that the wide, stable footprint of the MICHELIN® X One® Tire can provide the feel of a much more stable truck compared to traditional dual tires. Most MICHELIN® X One® fitments allow the track of the tractor and trailer to be widened. However, drivers should not let the outstanding handling of the MICHELIN® X One® Tire give them a false sense of stability in curves. Drivers should always respect all posted speed limits regardless of tire fitment. Failure to do so may cause vehicle to tip.

RAPID PRESSURE LOSS TECHNIQUES

Extensive testing has shown that rapid pressure loss on a MICHELIN® X One® Tire will not compromise the stability and behavior of the vehicle. However, with one tire on each axle end, the loss of pressure will allow the wheel and axle end to drop and possibly contact the road surface. To avoid additional damage to the tire, wheel and axle due to tire/wheel lock-up and brake drag, drivers should be encouraged to decelerate gradually through down shifting, use of trailer brake (when appropriate) or by pumping the brakes during the initial phase of deceleration to allow some rotation of the assembly. Failure to do so may cause irreparable damage to the tire, wheel, axle components and vehicle.

Any time you see damage to your tires or wheels, contact your local Oliver Dealer listed in the dealer locator on www.oliverrubber.com at once. If further assistance is required, contact:

In the United States

PHONE: 1-866-464-2580

FAX: 800-982-6726

**REMEMBER . . . TO AVOID DAMAGE TO
YOUR TIRES AND A POSSIBLE ACCIDENT:**

- Check tire pressures at least once each week when tires are cold
- Maintain the proper pressure in the tires for the load being carried
- Do not underinflate
- Do not overload
- Do not overinflate
- Drive at moderate speeds, observe legal speed limits
- Avoid driving over potholes, obstacles, curbs or edges of pavement
- If you see any damage to a tire, replace with a spare and visit a MICHELIN® Truck Tire Retailer at once
- If you have any questions, contact a MICHELIN® Truck Tire Retailer



www.oliverrubber.com

One Parkway South, Greenville, SC 29615

OLV11000 (02/18)