



The following documentation is an electronically-submitted vendor response to an advertised solicitation from the *West Virginia Purchasing Bulletin* within the Vendor Self-Service portal at *wvOASIS.gov*. As part of the State of West Virginia's procurement process, and to maintain the transparency of the bid-opening process, this documentation submitted online is publicly posted by the West Virginia Purchasing Division at *WVPurchasing.gov* with any other vendor responses to this solicitation submitted to the Purchasing Division in hard copy format.

Header @ 1

List View

General Information | Contact | Default Values | Discount | Document Information | Clarification Request

Procurement Folder: 1258505

Procurement Type: Central Purchase Order

Vendor ID:

Legal Name: NEW RIVER ENGINEERS INC

Alias/DBA:

Total Bid: \$0.00

Response Date:

Response Time:

Responded By User ID:

First Name:

Last Name:

Email:

Phone:

SO Doc Code: CEOI

SO Dept: 0313

SO Doc ID: DEP2400000004

Published Date: 8/8/23

Close Date: 8/28/23

Close Time: 13:30

Status: Closed

Solicitation Description:

Total of Header Attachments: 1

Total of All Attachments: 1



Department of Administration
 Purchasing Division
 2019 Washington Street East
 Post Office Box 50130
 Charleston, WV 25305-0130

**State of West Virginia
 Solicitation Response**

Proc Folder: 1258505
Solicitation Description: EOI - 2023 AML Contract S4
Proc Type: Central Purchase Order

| Solicitation Closes | Solicitation Response | Version |
|---------------------|------------------------------|---------|
| 2023-08-28 13:30 | SR 0313 ESR08252300000000955 | 1 |

VENDOR
 000000209931
 NEW RIVER ENGINEERS INC

Solicitation Number: CEOI 0313 DEP2400000004
Total Bid: 0
Response Date: 2023-08-25
Response Time: 11:04:13
Comments:

FOR INFORMATION CONTACT THE BUYER
 Joseph E Hager III
 (304) 558-2306
 joseph.e.hageriii@wv.gov

Vendor Signature X **FEIN#** **DATE**

All offers subject to all terms and conditions contained in this solicitation

| Line | Comm Ln Desc | Qty | Unit Issue | Unit Price | Ln Total Or Contract Amount |
|------|---|-----|------------|------------|-----------------------------|
| 1 | Professional Svcs - Branchland (Blankenship) Portal Drainage | | | | 0.00 |

| Comm Code | Manufacturer | Specification | Model # |
|-----------|--------------|---------------|---------|
| 81100000 | | | |

Commodity Line Comments:

Extended Description:

Professional Svcs - Branchland (Blankenship) Portal Drainage

| Line | Comm Ln Desc | Qty | Unit Issue | Unit Price | Ln Total Or Contract Amount |
|------|---|-----|------------|------------|-----------------------------|
| 2 | Professional Svcs - Branchland (Crum) Drainage | | | | 0.00 |

| Comm Code | Manufacturer | Specification | Model # |
|-----------|--------------|---------------|---------|
| 81100000 | | | |

Commodity Line Comments:

Extended Description:

Professional Svcs - Branchland (Crum) Drainage

| Line | Comm Ln Desc | Qty | Unit Issue | Unit Price | Ln Total Or Contract Amount |
|------|---|-----|------------|------------|-----------------------------|
| 3 | Professional Svcs - Branchland Portals Rt. 10 | | | | 0.00 |

| Comm Code | Manufacturer | Specification | Model # |
|-----------|--------------|---------------|---------|
| 81100000 | | | |

Commodity Line Comments:

Extended Description:

Professional Svcs - Branchland Portals Rt. 10

| Line | Comm Ln Desc | Qty | Unit Issue | Unit Price | Ln Total Or Contract Amount |
|------|---------------------------------------|-----|------------|------------|-----------------------------|
| 4 | Professional Svcs - Branchland Portal | | | | 0.00 |

| Comm Code | Manufacturer | Specification | Model # |
|-----------|--------------|---------------|---------|
| 81100000 | | | |

Commodity Line Comments:

Extended Description:

Professional Svcs - Branchland Portal

| Line | Comm Ln Desc | Qty | Unit Issue | Unit Price | Ln Total Or Contract Amount |
|------|---|-----|------------|------------|-----------------------------|
| 5 | Professional Svcs - Middle Fork (Adkins) Portals | | | | 0.00 |

| Comm Code | Manufacturer | Specification | Model # |
|-----------|--------------|---------------|---------|
| 81100000 | | | |

Commodity Line Comments:

Extended Description:

Professional Svcs - Middle Fork (Adkins) Portals

| Line | Comm Ln Desc | Qty | Unit Issue | Unit Price | Ln Total Or Contract Amount |
|------|---|-----|------------|------------|-----------------------------|
| 6 | Professional Svcs - Cadbury Lane Drainage | | | | 0.00 |

| Comm Code | Manufacturer | Specification | Model # |
|-----------|--------------|---------------|---------|
| 81100000 | | | |

Commodity Line Comments:

Extended Description:

Professional Svcs - Cadbury Lane Drainage

| Line | Comm Ln Desc | Qty | Unit Issue | Unit Price | Ln Total Or Contract Amount |
|------|--|-----|------------|------------|-----------------------------|
| 7 | Professional Svcs - Belcher Hollow Auger Holes | | | | 0.00 |

| Comm Code | Manufacturer | Specification | Model # |
|-----------|--------------|---------------|---------|
| 81100000 | | | |

Commodity Line Comments:

Extended Description:

Professional Svcs - Belcher Hollow Auger Holes

| Line | Comm Ln Desc | Qty | Unit Issue | Unit Price | Ln Total Or Contract Amount |
|------|--|-----|------------|------------|-----------------------------|
| 8 | Professional Svcs - Guyan River Refuse | | | | 0.00 |

| Comm Code | Manufacturer | Specification | Model # |
|-----------|--------------|---------------|---------|
| 81100000 | | | |

Commodity Line Comments:

Extended Description:

Professional Svcs - Guyan River Refuse

| Line | Comm Ln Desc | Qty | Unit Issue | Unit Price | Ln Total Or Contract Amount |
|------|--|-----|------------|------------|-----------------------------|
| 9 | Professional Svcs - Branchland Hubball A | | | | 0.00 |

| Comm Code | Manufacturer | Specification | Model # |
|-----------|--------------|---------------|---------|
| 81100000 | | | |

Commodity Line Comments:

Extended Description:

Professional Svcs - Branchland Hubball A

| Line | Comm Ln Desc | Qty | Unit Issue | Unit Price | Ln Total Or Contract Amount |
|------|---|-----|------------|------------|-----------------------------|
| 10 | Professional Svcs - Harmonds Creek Portals Phase II | | | | 0.00 |

| Comm Code | Manufacturer | Specification | Model # |
|-----------|--------------|---------------|---------|
| 81100000 | | | |

Commodity Line Comments:

Extended Description:

Professional Svcs - Harmonds Creek Portals Phase II

| Line | Comm Ln Desc | Qty | Unit Issue | Unit Price | Ln Total Or Contract Amount |
|------|--|-----|------------|------------|-----------------------------|
| 11 | Professional Svcs - W. Columbia "B" Phase II | | | | 0.00 |

| Comm Code | Manufacturer | Specification | Model # |
|-----------|--------------|---------------|---------|
| 81100000 | | | |

Commodity Line Comments:

Extended Description:

Professional Svcs - W. Columbia "B" Phase II

| Line | Comm Ln Desc | Qty | Unit Issue | Unit Price | Ln Total Or Contract Amount |
|------|---|-----|------------|------------|-----------------------------|
| 12 | Professional Svcs - Lanham (Workman) Portals | | | | 0.00 |

| Comm Code | Manufacturer | Specification | Model # |
|-----------|--------------|---------------|---------|
| 81100000 | | | |

Commodity Line Comments:

Extended Description:

Professional Svcs - Lanham (Workman) Portals



Department of Administration
 Purchasing Division
 2019 Washington Street East
 Post Office Box 50130
 Charleston, WV 25305-0130

State of West Virginia
 Centralized Expression of Interest
 Architect/Engr

| | | | |
|--|----------------------------|-------------------------|---------------------------------|
| Proc Folder: 1258505 | | | Reason for Modification: |
| Doc Description: EOI - 2023 AML Contract S4 | | | |
| Proc Type: Central Purchase Order | | | |
| Date Issued | Solicitation Closes | Solicitation No | Version |
| 2023-08-08 | 2023-08-28 13:30 | CEOI 0313 DEP2400000004 | 1 |

BID RECEIVING LOCATION

BID CLERK
 DEPARTMENT OF ADMINISTRATION
 PURCHASING DIVISION
 2019 WASHINGTON ST E
 CHARLESTON WV 25305
 US

VENDOR

Vendor Customer Code:
Vendor Name : New River Engineers, Inc.
Address : 501 Eagle Mountain Road
Street :
City : Charleston
State : WV **Country :** **Zip :** 25311
Principal Contact : Jessie O. Parker, Jr. P.E./CEO
Vendor Contact Phone: 304-342-7168 **Extension:**

FOR INFORMATION CONTACT THE BUYER

Joseph E Hager III
 (304) 558-2306
 joseph.e.hageriii@wv.gov

Vendor
 Signature X

FEIN# 55-0764054

DATE 08/22/2023

All offers subject to all terms and conditions contained in this solicitation

ADDITIONAL INFORMATION

The Acquisitions and Contract Administration Section of the Purchasing Division ("Purchasing Division") is soliciting Expression(s) of Interest ("EOI" or "Bids") for the West Virginia Department of Environmental Protection, Division of Land Restoration, Office of Abandoned Mine Lands and Reclamation (WVDEP-DLR-AML) ("Agency"), for A/E design, planning, realty, and construction services. Aspects of the design, planning, realty, and construction oversight services are to include, but not be limited to; Civil, Geological and Hydrological per the attached specifications and terms and conditions.

| INVOICE TO | SHIP TO |
|--|--|
| ENVIRONMENTAL PROTECTION OFFICE OF AML&R 601 57TH ST SE CHARLESTON WV 25304 US | ENVIRONMENTAL PROTECTION OFFICE OF AML&R 601 57TH ST SE CHARLESTON WV 25304 US |

| Line | Comm Ln Desc | Qty | Unit Issue |
|------|--|-----|------------|
| 1 | Professional Svcs - Branchland (Blankenship) Portal Drainage | | |

| Comm Code | Manufacturer | Specification | Model # |
|-----------|--------------|---------------|---------|
| 81100000 | | | |

Extended Description:

Professional Svcs - Branchland (Blankenship) Portal Drainage

| INVOICE TO | SHIP TO |
|--|--|
| ENVIRONMENTAL PROTECTION OFFICE OF AML&R 601 57TH ST SE CHARLESTON WV 25304 US | ENVIRONMENTAL PROTECTION OFFICE OF AML&R 601 57TH ST SE CHARLESTON WV 25304 US |

| Line | Comm Ln Desc | Qty | Unit Issue |
|------|--|-----|------------|
| 2 | Professional Svcs - Branchland (Crum) Drainage | | |

| Comm Code | Manufacturer | Specification | Model # |
|-----------|--------------|---------------|---------|
| 81100000 | | | |

Extended Description:

Professional Svcs - Branchland (Crum) Drainage

| INVOICE TO | SHIP TO |
|--|--|
| ENVIRONMENTAL PROTECTION OFFICE OF AML&R 601 57TH ST SE CHARLESTON WV 25304 US | ENVIRONMENTAL PROTECTION OFFICE OF AML&R 601 57TH ST SE CHARLESTON WV 25304 US |

| Line | Comm Ln Desc | Qty | Unit Issue |
|------|---|-----|------------|
| 3 | Professional Svcs - Branchland Portals Rt. 10 | | |

| Comm Code | Manufacturer | Specification | Model # |
|-----------|--------------|---------------|---------|
| 81100000 | | | |

Extended Description:
Professional Svcs - Branchland Portals Rt. 10

| INVOICE TO | SHIP TO |
|--|--|
| ENVIRONMENTAL PROTECTION OFFICE OF AML&R 601 57TH ST SE CHARLESTON WV 25304 US | ENVIRONMENTAL PROTECTION OFFICE OF AML&R 601 57TH ST SE CHARLESTON WV 25304 US |

| Line | Comm Ln Desc | Qty | Unit Issue |
|------|---------------------------------------|-----|------------|
| 4 | Professional Svcs - Branchland Portal | | |

| Comm Code | Manufacturer | Specification | Model # |
|-----------|--------------|---------------|---------|
| 81100000 | | | |

Extended Description:
Professional Svcs - Branchland Portal

| INVOICE TO | SHIP TO |
|--|--|
| ENVIRONMENTAL PROTECTION OFFICE OF AML&R 601 57TH ST SE CHARLESTON WV 25304 US | ENVIRONMENTAL PROTECTION OFFICE OF AML&R 601 57TH ST SE CHARLESTON WV 25304 US |

| Line | Comm Ln Desc | Qty | Unit Issue |
|------|--|-----|------------|
| 5 | Professional Svcs - Middle Fork (Adkins) Portals | | |

| Comm Code | Manufacturer | Specification | Model # |
|-----------|--------------|---------------|---------|
| 81100000 | | | |

Extended Description:
Professional Svcs - Middle Fork (Adkins) Portals

| INVOICE TO | SHIP TO |
|--|--|
| ENVIRONMENTAL PROTECTION OFFICE OF AML&R 601 57TH ST SE CHARLESTON WV 25304 US | ENVIRONMENTAL PROTECTION OFFICE OF AML&R 601 57TH ST SE CHARLESTON WV 25304 US |

| Line | Comm Ln Desc | Qty | Unit Issue |
|------|---|-----|------------|
| 6 | Professional Svcs - Cadbury Lane Drainage | | |

| Comm Code | Manufacturer | Specification | Model # |
|-----------|--------------|---------------|---------|
| 81100000 | | | |

Extended Description:
Professional Svcs - Cadbury Lane Drainage

| INVOICE TO | SHIP TO |
|--|--|
| ENVIRONMENTAL PROTECTION OFFICE OF AML&R 601 57TH ST SE CHARLESTON WV 25304 US | ENVIRONMENTAL PROTECTION OFFICE OF AML&R 601 57TH ST SE CHARLESTON WV 25304 US |

| Line | Comm Ln Desc | Qty | Unit Issue |
|------|--|-----|------------|
| 7 | Professional Svcs - Belcher Hollow Auger Holes | | |

| Comm Code | Manufacturer | Specification | Model # |
|-----------|--------------|---------------|---------|
| 81100000 | | | |

Extended Description:
Professional Svcs - Belcher Hollow Auger Holes

| INVOICE TO | SHIP TO |
|--|--|
| ENVIRONMENTAL PROTECTION OFFICE OF AML&R 601 57TH ST SE CHARLESTON WV 25304 US | ENVIRONMENTAL PROTECTION OFFICE OF AML&R 601 57TH ST SE CHARLESTON WV 25304 US |

| Line | Comm Ln Desc | Qty | Unit Issue |
|------|--|-----|------------|
| 8 | Professional Svcs - Guyan River Refuse | | |

| Comm Code | Manufacturer | Specification | Model # |
|-----------|--------------|---------------|---------|
| 81100000 | | | |

Extended Description:
Professional Svcs - Guyan River Refuse

| INVOICE TO | SHIP TO |
|--|--|
| ENVIRONMENTAL PROTECTION OFFICE OF AML&R 601 57TH ST SE CHARLESTON WV 25304 US | ENVIRONMENTAL PROTECTION OFFICE OF AML&R 601 57TH ST SE CHARLESTON WV 25304 US |

| Line | Comm Ln Desc | Qty | Unit Issue |
|------|--|-----|------------|
| 9 | Professional Svcs - Branchland Hubball A | | |

| Comm Code | Manufacturer | Specification | Model # |
|-----------|--------------|---------------|---------|
| 81100000 | | | |

Extended Description:
Professional Svcs - Branchland Hubball A

| INVOICE TO | SHIP TO |
|--|--|
| ENVIRONMENTAL PROTECTION OFFICE OF AML&R 601 57TH ST SE CHARLESTON WV 25304 US | ENVIRONMENTAL PROTECTION OFFICE OF AML&R 601 57TH ST SE CHARLESTON WV 25304 US |

| Line | Comm Ln Desc | Qty | Unit Issue |
|------|---|-----|------------|
| 10 | Professional Svcs - Harmonds Creek Portals Phase II | | |

| Comm Code | Manufacturer | Specification | Model # |
|-----------|--------------|---------------|---------|
| 81100000 | | | |

Extended Description:
Professional Svcs - Harmonds Creek Portals Phase II

| INVOICE TO | SHIP TO |
|--|--|
| ENVIRONMENTAL PROTECTION OFFICE OF AML&R 601 57TH ST SE CHARLESTON WV 25304 US | ENVIRONMENTAL PROTECTION OFFICE OF AML&R 601 57TH ST SE CHARLESTON WV 25304 US |

| Line | Comm Ln Desc | Qty | Unit Issue |
|------|--|-----|------------|
| 11 | Professional Svcs - W. Columbia "B" Phase II | | |

| Comm Code | Manufacturer | Specification | Model # |
|-----------|--------------|---------------|---------|
| 81100000 | | | |

Extended Description:
Professional Svcs - W. Columbia "B" Phase II

| INVOICE TO | SHIP TO |
|--|--|
| ENVIRONMENTAL PROTECTION OFFICE OF AML&R 601 57TH ST SE CHARLESTON WV 25304 US | ENVIRONMENTAL PROTECTION OFFICE OF AML&R 601 57TH ST SE CHARLESTON WV 25304 US |

| Line | Comm Ln Desc | Qty | Unit Issue |
|------|--|-----|------------|
| 12 | Professional Svcs - Lanham (Workman) Portals | | |

| Comm Code | Manufacturer | Specification | Model # |
|-----------|--------------|---------------|---------|
| 81100000 | | | |

Extended Description:
Professional Svcs - Lanham (Workman) Portals

SCHEDULE OF EVENTS

| <u>Line</u> | <u>Event</u> | <u>Event Date</u> |
|-------------|--------------|-------------------|
|-------------|--------------|-------------------|

| | Document Phase | Document Description | Page |
|---------------|----------------|----------------------------|------|
| DEP2400000004 | Final | EOI - 2023 AML Contract S4 | 8 |

ADDITIONAL TERMS AND CONDITIONS

See attached document(s) for additional Terms and Conditions

New River Engineers, Inc.



August 28, 2023

Department of Administration
Purchasing Division
Attn: Joseph E. Hager III
2019 Washington Street East
Charleston, WV 25305

Re: Centralized Expression of Interest
CEOI 0313 DEP2400000004
2023 AML Contract S4

To Whom it May Concern:

We are pleased to submit a copy of our statement of qualifications for providing professional engineering services on the above referenced project.

New River Engineers, Inc. (NREI) is a highly qualified and experienced environmental / civil engineering firm providing services for municipal, federal, state, industrial and commercial clients throughout the states of Virginia, West Virginia, Kentucky, and Ohio.

For over 42 years NREI has a history of completing projects on time, under budget and without any successful litigation against us or our client, a record no other firm can match.

We would appreciate an opportunity to present our detailed qualifications at a mutually convenient date and time.

Please call if you have any questions or need further information.

Very Truly Yours,

NEW RIVER ENGINEERS, INC.

Jessie O. Parker, Jr., P.E.,
CEO
Email: jop@nreiwv.com

Enclosures

WV Department of Administration



**Expression of Interest
For
Architectural and Engineering Services
For
2023 AML Contract S4
CEOI 0313 DEP2400000004**

August 2023

Presented by:

NEW RIVER ENGINEERS, INC.



**501 Eagle Mountain Road
Charleston, WV 25311
(304) 342-7168**

**202 School Drive
Shrewsbury, WV 25015
(304) 595-3290**

**507 Richland Avenue, Suite 201
Athens, OH 45701**

**3041 University Avenue, Suite 6
Morgantown, WV 26505**

**156 Woodrow Avenue, Suite 2A
St. Clairsville, OH 43950
(740) 695-9977**

**DEPARTMENT OF ADMINISTRATION
2023 AML CONTRACT S4**

TABLE OF CONTENTS

| | |
|---|----|
| Expression of Interest | 1 |
| Company Profile – New River Engineers, Inc. | 2 |
| Company Profile -- NGE | 4 |
| Scope of Work | 5 |
| Plan of Approach | 6 |
| Project Experience | 8 |
| Project Management | 12 |
| Resumes of Key Personnel | 14 |
| Client References | 26 |
| Safety | 28 |
| Our Teaming Partners | 29 |
| Additional Services | 30 |



**DEPARTMENT OF ADMINISTRATION
2023 AML CONTRACT S4**

EXPRESSION OF INTEREST

New River Engineers Inc. (NREI), formerly S & S Engineers, Inc., is pleased to express our interest in providing environmental, engineering, architecture, and surveying services to the WV Department of Administration (Agency). Our team is a civil / environmental engineering firm and is noted for design excellence and client focus. Our team's integrated design approach, our commitment to design quality, as well as our architectural and construction experience will help to ensure the quality of services that we will provide to the Agency Below, please find additional qualifications that make our team uniquely qualified to assist you with your potential needs:

We have a history of providing high quality design and engineering management services throughout West Virginia, Ohio, Kentucky, and Virginia. This quality has been recognized by the quantity of our repeat clients. We will use our engineering abilities and extensive design experience to aid the Agency as any need would arise.

As CEO of our firm, Mr. Jessie O. Parker, Jr., P.E. will lead projects for the Agency. Mr. Parker has a Bachelor of Science in Civil Engineering from WVU Institute of Technology and a Master of Science in Engineering from Marshall University. Mr. Parker has a vast amount of experience working in the municipal market and has spent his entire career in the utility / infrastructure sector of engineering. Mr. Parker will be assisted by Mr. Matt Shelton, VP, PM, Mr. Christopher Burford, COO, PM, Mr. Elijah Laramee, P.E., Mr. Ashok Sanghavi, P.E., DEE, QEP, Mr. Randy Crace, P.S., Mr. Charles Kurzyna P.E., P.S., Eric Hartwell, P.E., Josh Cook, P.E., and the rest of our staff.

We have the training, experience, and multi-discipline support to meet the needs of our clients. Due to our small size, our Engineers and Architects become well rounded and deeply involved with each Project. Our Engineers and Architects are able to put their heads together to create an excellent working knowledge of projects, creating high quality, personalized, and professional services. We would like to thank you for this opportunity and if we can be of service to you in this matter, please don't hesitate to contact us at (304) 342-7168.



COMPANY PROFILE

NEW RIVER ENGINEERS, INC.

New River Engineers, Inc. (NREI) is an engineering, surveying, and consulting firm that has been providing quality service to our clients and the industries for over 42 years. Mutual respect and trust are the cornerstones in the relationships established and maintained with our clients. NREI strives to perform all work in a professional and cost-effective manner, while providing our clients with quality and excellence.

The firm is currently managed by Mr. Jessie O. Parker, Jr., P.E. - CEO and Mr. Christopher D. Burford - COO. NREI has successfully provided an integrated approach to utility projects for our clients. NREI provides professional services to facility owners and operators, architects, and contractors throughout Ohio, West Virginia, Kentucky, Virginia and North Carolina and many others. NREI services range through all facets of civil engineering design as well as construction administration and project management.

Our staff combines advanced technology with many decades of surveying, mining, and engineering experience and includes two professional engineers, one professional surveyor, four degreed engineers, AutoCAD/engineer technicians and ten full time survey crews.

As a full-service engineering and surveying firm, NREI can provide a whole host of services to our clients including, but not limited to the following:

- Construction Design
- Construction Management
- Construction Surveying
- Geotechnical Engineering & Drilling Management
- Environmental Permitting (WVDEP, NPDES, OAQ and USACOE)
- Underground / Surface Mine Engineering
- Underground / Surface Mining Surveying
- Civil Site Design / Engineering / Planning
- Drainage Design / Engineering / HECRAS
- Aerial Mapping
- Compaction Testing with Nuclear Density Gauge
- Subsurface Utility Locate Surveys with Ground Penetrating Radar & Pipe and Cable Locators
- Ohio DNR Environmental Permitting
- Oil & Gas Surveying
- Boundary & Property / Topographical Surveying
- GPS RTK & Static Surveying
- Reserve Studies



NREI remains committed to the idea of providing high quality, client focused, design solutions that meet budget and schedule requirements. This commitment to quality has been recognized through the long-term client relationships that we have developed. NREI has the qualified professionals available to provide services throughout the duration of a project from the initial planning phases through construction completion and beyond.

NREI utilizes the abilities of designers with many years of experience in their area of expertise, teamed with younger designers on a "best resource for the project approach". We also provide project management services at levels ranging from general oversight to complete project delivery through all phases of design and construction. Our personnel have worked in both the private and public sector and are familiar with many methods of project delivery.

NREI has developed the following philosophy to guide the performance of its services:

- Provide superlative design services to our clients in new construction, improvements, and daily operations.
- Perform work in a timely, accurate and professional manner.
- Present multiple alternatives and solutions whenever possible.
- Work with our clients to control project costs.
- Be a technical sounding board for our clients in all situations.
- Strive to maintain professional competency through continuing education and training.

NREI utilizes a practical application approach to all projects throughout the design process to provide a well-rounded result. This methodology emphasizes the best overall solution, meeting all the client's needs, instead of just the best technical solution. We believe our small size provides a distinct advantage to our clients and affords us the freedom to easily team with the clients to achieve the overall best possible result.



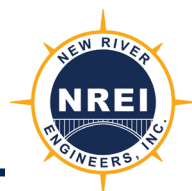
COMPANY PROFILE

NGE CONSULTING

NGE Consulting is an award-winning engineering firm founded by a sibling team with 25+ years of experience. NGE pairs the personal touch of a family-owned business with highly qualified employees who possess a deep knowledge of their discipline. As a Woman-Owned Small Business, NGE is positioned to help clients meet their governmental contracting goals.

NGE Consulting

- Geotechnical Engineering
- In-House Drilling Crews
- Laboratory Services
- Environmental Compliance
- Remediation
- Waste Management
- Construction Inspection
- Drill Cuttings Managements



SCOPE OF WORK

The West Virginia Department of Administration is looking for licensed architectural / engineering firms (A/E) in the state of West Virginia. AML Contract 4 Project South (a group of 12 projects and locations) to provide the planning, realty, design, and construction services for each. Locations/Projects will include: Branchland (Blankenship) Portal Drainage Project, Branchland (Crum) Drainage Project, Branchland Portals Rt. 10 Project, Branchland Portal Project, Middle Fork (Adkins) Portals Project, Cadbury Lane Drainage Project, Belcher Hollow Auger Holes Project, Guyan River Refuse Project, Branchland Hubball A Project, Harmonds Creek Portals Phase II Project, W. Columbia "B" Phase II Project, Lanham (Workman) Portals Project.

Some of the services that will be requested for these projects will include, but not limited to:

- National Environmental Policy Act (NEPA) consultations and documentation
- Public Participation
- Infrastructure Investment Jobs Act (IIJA) compliance
- Determine legal ownership of properties
- Obtain exploratory and construction rights of entry
- Provide legal documentation to substantiate legal ownership findings
- Provide current mapping, perform survey and other related services.
- Perform Site and Geotechnical Investigations
- Design temp and permanent access or accesses for construction and future maintenance
- Slope stabilization
- Design multiple portal seals and regrades
- Design reclamation of exposed coal refuse and mine spoil
- Design of drainage conveyances, including drainage channels, underdrains, and/or other controls to safely convey water of-site
- Construction quality assurance and quality control
- Provide resident project representative/inspector
- Prepare daily construction activity logs summarizing activities
- Provide engineering support and services throughout construction
- Provide engineers certification report

New River Engineers, Inc. (NREI) will provide any other services required by the Agency for the implementation of the projects.



PLAN OF APPROACH

New River Engineers, Inc. (NREI) has been serving various communities for over 42 years. NREI believes in offering personal services as well as professional services. The following is a draft approach from project conception through project completion of the services NREI can provide.

NREI believes in a team approach for the development of projects. Therefore, our first task will be to meet with Agency officials to review existing data, reports, etc., and to ascertain the need of the specific project. Following data gathering, we will then evaluate alternatives and develop a cost-effective proposal that meets existing and future needs of a specific project. Throughout the process, Agency officials will be kept informed and involved in all important matters.

NREI will assist the Agency in preparation and submission of any funding application needs. Once the funding has been secured, we will then begin to develop detailed engineering drawings and specifications for the project. As information is gathered, it will be reviewed with Agency officials to allow comment and coordination as the project progresses. The project engineer will be involved during all phases of developing a project, obtaining funding, design, and construction to assure coordination with Agency personnel, and regulatory and funding agencies.

PRELIMINARY ENGINEERING REPORT

Our next task will be the preparation of a Preliminary Engineering Report. Specifically, the report will be organized in accordance with regulatory and funding agency requirements as follows:

1. Introduction and Overview
2. Planning Area and Future Needs
3. Evaluation of the Existing System
4. Proposed Improvements/Upgrades
5. Alternate Solutions
6. Cost Estimates – Capital and O & M
7. Environmental Issues
8. Public Participation
9. Final Plan Selection
10. Implementation

Prior to publication of the final report, all information will be shared and reviewed with Agency officials to assure that concerns are addressed.



DESIGN PHASE

Initially NREI will request any additional documentation relative to the project that has not already been provided. This may include other viable sites already being considered, access route locations, topographic surveys, etc. Upon review of this information, NREI will begin meeting with your designated representatives to review and discuss preferred site features and orientations. Once the site and orientation are confirmed NREI will begin preparing the design drawings and specifications.

Upon completion of the preliminary design drawings NREI will schedule a second meeting to present the design and preliminary cost estimate to the designated officials for review and comments. NREI will then revise the design drawings and cost estimate to reflect any comments from Agency officials.

CONSTRUCTION DOCUMENTS PHASE

Once the final design is complete NREI will begin procuring the necessary permits and preparing the bidding and construction documents, details, and specifications for the project. NREI will provide a 90% submission to the owner for review and comment to allow minor modifications prior to final binding and printing.

BIDDING PHASE

During this phase NREI will assist by participating in the pre-bid meeting, answer addendum questions and reviewing contractor bids. NREI will also assist in the preparation of the construction agreement as required.

CONSTRUCTION PHASE SERVICES

During construction our services include review of shop drawings and submittals, conducting regular progress site meetings, reviewing, and preparing change orders and payment applications, conducting substantial and final inspections and reviewing close out documents.

NREI will also provide a Resident Construction Inspector for the duration of the project construction.

SCHEDULE

Upon selection NREI will begin working on the project immediately.



PROJECT EXPERIENCE

1. **AML Carbondale (Hill) Portals Phase II – Recently Awarded (2022)**
 - a. **Description:** Engineering, Environmental Permitting, Design & Construction Management, Inspection, and Technical Services for a developing project to raise salmon utilizing the water stored in the abandoned Maple Meadow Mine.

2. **Maple Eagle Complex, Fayette / Kanawha County, WV**
 - **Description:** Engineering, Environmental Permitting, Design & Construction Management for a Surface Mine and Deep Mine Facility. Activities include: Environmental Permitting, Pond Design & Construction, Primary Haulroad / IUAR Design & Construction, Preparation of Mine Plans, Prospecting / Drilling Operations, Valley Fill Designs & Certifications, Excess Spoil Disposal Areas, Surface Mine Surveying Activities, Sediment Control Structures, Support for Excavation of Overburden & Removal of Coal, Underground Deep Mine Surveying, Preparation of Underground Mine Mapping, WVOMHS&T & MSHA Plans (including Ventilation, Ground Control, & Roof Control Plans), Underground Mine Seal Plans, SWORA Evaluations, Phase Maps, and Site Supervisor / Project Manager.
 - **Funding Source:** Maple Coal Co., Western Coal, Walter Resources, ERP Fuels, and currently Blackhawk Mining
 - **Project Cost:** Approximately \$8,500,000 to Current
 - **Project Status:** Started December 2005 and continues currently

3. **American Mining Group, Fayette County, WV**
 - **Description:** Engineering, Environmental Permitting, Design & Construction Management for a Surface Mine Facility. Activities include Environmental Permitting, Pond Design & Construction, Primary Haulroad / IUAR Design & Construction, Preparation of Mine Plans, Prospecting / Drilling Operations, Excess Spoil Disposal Areas, Surface Mine Surveying Activities, Sediment Control Structures, Support for Excavation of Overburden & Removal of Coal, WVOMHS&T & MSHA Plans (including Ground Control, Plans), SWORA Evaluations, Phase Maps, and Site Supervisor / Project Manager.
 - **Funding Source:** American Mining Group
 - **Project Cost:** Approximately \$850,000 to Current
 - **Project Status:** Started Circa 2018 and continues currently

4. **Marshall County Coal Preparation Plant Geotechnical Investigation (2022)**
 - **Description:** Oversaw and performed a geotechnical investigation for an expansion to the Marshall County coal preparation plant. Provided structural designers geotechnical parameters for shallow and deep foundations, included drilled caissons and driven piles.



5. **Cyprus Kanawha Corp, Fayette County, WV**
 - **Description:** Completed USACOE permitting requirements to expand a coal barge loading facility located on the Kanawha River. The expansion consisted of the construction of additional steel pile mooring cells, additional barge storage and increased loading speed of barges.
 - **Funding Source:** Cyprus Kanawha Corp
 - **Project Cost:** \$1,000,000
 - **Project Status:** Completed 1990 on Schedule

6. **United Coal Company, LLC (including Pocahontas Coal Company, LLC & Carter Road Coal Company), Raleigh, Wyoming, Randolph, & Upshur County, WV**
 - **Description:** Coal Mining/Environmental Planning, Permitting, and Coordination including; engineer site review and reconnaissance; mine layout and design; drainage design; haulage layout and design; spoil balance and reclamation design; stream delineation and USACE permitting and approvals; WVDEP permit submittals and approvals including Article 3, Article 11, and Storm Water Construction; on-site construction stakeout; surveying, both surface and underground; field management and on-site project coordination; as-built certifications; coal slurry impoundment and coarse refuse disposal management, coordination, surveying, and design; and daily contact and coordination between the company, field personnel, and office personnel to ensure the proper running of daily mining and environmental activities and needs for various on-going mining and environmental projects.
 - **Funding Source:** Private Business Coal Extraction & Sales
 - **Project Cost:** \$13,400,000 average for completed and on-going services
 - **Project Status:** Began Circa August 2006 and continues currently

7. **TC Energy, Various Locations, WV, OH, VA, PA, KY, MI, NY, NJ & Etc.**
 - **Description:** Engineering, Surveying and Drafting for Multiple Projects Across the Eastern United States. Provide Surveying, Engineering and Drafting Support for the Long Wall Program, HCA Wire-Line Program, HCA-Dig Program, HCA-Hydro Test Programs, and Right-Of-Way Program. Provide Engineering & Geotechnical for Hazardous Steep Slope Winch Plans for Construction Operations.
 - **Funding Source:** Private Business / TC Energy
 - **Project Cost:** Approximately \$3,500,000 and on-going
 - **Project Status:** Started Circa 2017 and continues currently



8. **Nitro Regional Wastewater Utility, Kanawha County, WV**
 - **Description:** Planning including preliminary engineer site and system review and assessment, design, and construction management of a sewer line extension and construction of a new Belt Filter Press Building and Belt Filter Press.
 - **Funding Source:** WVDEP-CWSRF
 - **Project Cost:** \$8,226,840, completed project approximately \$100,000 under budget and used savings to upgrade the wastewater treatment plant headworks
 - **Project Status:** Completed 2017

9. **City of Sistersville, Tyler County, WV**
 - **Description:** Planning including preliminary engineer site and system review and assessment, design, and construction management of a new wastewater collection system in the Hanford City area with pump station and related work.
 - **Funding Source:** WVDEP-CWSRF
 - **Project Cost:** \$1,100,000, completed project approximately \$100,000 under budget and used savings to replace approximately 800 LF of existing sewer line
 - **Project Status:** Completed 2014

10. **Kanawha PSD, Kanawha County, WV**
 - **Description:** Planning including preliminary engineer site and system review and assessment, design, and construction management of 6 miles of gravity sewer & force mains, two (2) pump stations and three (3) grinder pump stations for Winifrede Hollow.
 - **Funding Source:** WVDEP-CWSRF
 - **Project Cost:** \$5,370,000, completed project approximately \$450,000 under budget and used savings to purchase equipment, replaced diffusers in aeration basins at the WWTP, constructed a new laboratory

11. **Patriot Coal Corporation, Logan County, WV**
 - **Description:** Planning and design of a water line extension project which also included a water booster station and a 27,000-gallon water storage tank.
 - **Funding Source:** Patriot Coal Corporation
 - **Project Cost:** \$1,200,00
 - **Project Status:** Completed 2010



12. Pocahontas Coal Company, Raleigh County, WV

- **Description:** Planning and design of a water and sewer line extension project which also included wastewater pump station.
- **Funding Source:** Pocahontas Coal Company
- **Project Cost:** \$400,000
- **Project Status:** Completed 2010

13. WVDOC Denmar Correctional Center, Pocahontas County, WV

- Description:** Planning, design, and construction management of the replacement of two (2) water storage tanks with one 300,000-gallon water storage tank.
- Funding Source:** WVDOC
- Project Cost:** \$600,000
- Project Status:** Completed March 2015

14. WVDNR Bluestone State Park, Summers County, WV

- Description:** Planning, design, and construction management of the replacement of water line which also included the two (2) pressure reducing stations.
- Funding Source:** WVDNR
- Project Cost:** \$450,000
- Project Status:** Completed 2011

15. Coonskin Park Flood Repairs, Kanawha County, WV

- **Description:** Planning, design, and construction management of 160 LF of H-Pile wall, a 40 LF H-Pile wall, Replacement of three 18" culverts, Paving of approx. 2,800 LF of Elk River Trail, and Replacement of 105 LF of 36" HDPE storm pipe. Project cost of approx. \$1.85 million.

16. Big Bend / Coonskin, Kanawha County, WV

- Description:** Planning and design for an embankment repair to address failed slope along the trail on the Elk River. Planning and design for an embankment repair to address failed slope that is adjacent to the Coal River in Tornado, WV

PROJECT MANAGEMENT

With over 100 years of combined professional experience, the project team will be made up of the following personnel, along with the rest of New River Engineers, Inc.

Jessie O. Parker, Jr., P.E. Chief Executive Officer / Principal Engineer
Email: jop@nreiww.com

Christopher D. Burford Chief Operating Officer
Email: cburford@nrei-wv.com

D. Matt Shelton Vice President/ Project Manager
Email: dms@nreiww.com

Elijah T. Laramée, P.E. Structural Engineer
Email: etl@nreiww.com

Ashok M. Sanghavi, P.E., DEE, QEP Senior Engineer
Email: a.sanghavi@s-s-eng.com

Charles "Chuck" B. Kurzyna, P.E., P.S. Senior Engineer/ Surveyor
Email: ckurzyna@nrei-wv.com

Eric T. Hartwell, P.E. Senior Engineer
Email: eth@nreiww.com

Joshua D. Cook, P.E., PMP Senior Engineer
Email: jdc@nreiww.com

Randy B. Crace, P.S. Senior Surveyor
Email: r.crace@s-s-eng.com

J. Michael "Mike" Green, P.S. Senior Surveyor
Email: mgreen@greenandassoc.net

Aaron Huston Junior Engineer / Project Manager
Email: abh@nreiww.com

Noah Julian Junior Engineer / Project Manager
Email: ngj@nreiww.com





RESUMES OF KEY PERSONNEL



Jessie O. Parker, Jr., P.E.
CEO / Senior Engineer

Mr. Parker began his career in 2003 working on a variety of environmental projects throughout West Virginia, Kentucky, Ohio, and Virginia. Mr. Parker has served in the capacity of Engineer, Project Manager, and Principal in Charge for a variety of projects at S & S. This experience includes environmental, water supply, wastewater, storm water and drainage projects. Mr. Parker's responsibilities include planning, design, and construction administration.

Mr. Parker also has experience in grading plans, construction management, payment request approvals, quantity & cost estimates, and has worked with City, Town & PSD personnel, regulatory and funding agencies, as well as contractors.

Mr. Parker has proven to move projects forward in a professional, cost-effective, and timely manner. Has extensive knowledge of the state and federal water supply, and wastewater laws and regulations and is very familiar with federal and state grant and loan programs.

EDUCATION

Bachelor of Science

Civil Engineering
West Virginia University Institute of Technology
December 2002

Master of Science

Engineering
Marshall University
May 2006

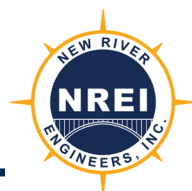
CERTIFICATIONS

Environmental Site Assessment
Commercial Real Estate
December 2016

Professional Engineer (WV)
Professional Engineer (OH)
Professional Engineer (KY)
Professional Engineer (VA)
Professional Engineer (MD)
Professional Engineer (NC)
Professional Engineer (SC)
Professional Engineer (PA)
Professional Engineer (TN)

PROFESSIONAL AFFILIATIONS

Water Environment Federation
American Water Works Association
American Society of Civil Engineers
Society of American Military Engineers
West Virginia Rural Water Association
Contractors Association of West Virginia





Christopher D. Burford
COO / Project Manager
Green and Associates, LLC
New River Safety, LLC
Ellison Ridge Mining, LLC

Mr. Burford has been with NREI for over fifteen years. As the Project Manager, he oversees Surface and Underground Mining Permit Applications, is the Manager of Surveying Crews, manages State and Federal Safety Plans and Permits, oversees Construction Oversight & Construction Management, and Mine Planning.

Green and Associates, LLC, St. Clairsville OH – manager and supervisor of survey crews and office personnel, business development, and coordination with clients on various projects.

New River Safety, LLC, – manager and Supervisor of safety instructors, electrical inspectors, and office personnel, business development, and coordination with clients and government entities.

Ellison Ridge Mining, LLC – management and oversight of various sub-contractors over mining, reclamation, and civil site construction projects, business development, and coordination with clients and government entities.

EDUCATION

Associate of Science

Civil Engineering Technology
 West Virginia University Institute of Technology
 May 2004

CERTIFICATIONS

Certified Underground Coal Miner
 Certified Surface Coal Miner
 MSHA Certified Limited Instructor
 MSHA Certified Gravimetric Dust Sampling
 MSHA Certified Gravimetric Dust Calibration & Maintenance
 Heartsaver First Aid, CPR & AED Certified
 Safe Land USA PEC Safety
 MSHA – Methane / Oxygen Deficiency Qualified
 APNGA Portable Nuclear Gauge Safety & USDOT Hazmat Certified
 (#299-160-926-311)
 APNGA Certificate of Achievement
 Radiation Safety Officer Class
 (#299-160-994-3161)

PROFESSIONAL AFFILIATIONS

Contractors Association of West Virginia
 West Virginia Rural Waters Association
 West Virginia Coal Association
 Friends of Coal Association





D. Matt Shelton
Vice President / Project Manager

Mr. Shelton began his career in 2004 working in civil engineering fields such as site development, water supply, wastewater, storm water and drainage. Also has experience in surveying, construction management, record keeping, quantity and payment reviews, inspection and site grading. Having worked with general contractors, subcontractors, community representatives and residents, he has developed solid techniques to move the projects in a professional, cost-effective and timely manner.

Experienced in site grading, surveying, quantity surveys, building layout, water & sewer system design and construction inspection on civil engineering projects.

Experience as Engineering Technician including design of water line extensions, water booster stations, water storage tanks, wastewater pump stations, sewer line extensions, manholes, drainage calculations, and preparation of quantity and cost estimates.

Experience as Survey Technician / Instrument man includes topographic surveys, construction stakeout for water & sewer systems and highways, building layout, cut sheets for sewer systems, GPS surveying for field control work, etc.

EDUCATION

Bachelor of Science

Civil Engineering Technology
West Virginia University Institute of Technology
May 2005

CERTIFICATIONS

Environmental Site Assessment
Commercial Real Estate
December 2016

PROFESSIONAL AFFILIATIONS

Water Environment Federation
Contractors Association of West Virginia



Elijah Laramee, P.E.
Senior Structural Engineer

Mr. Laramee has more than seventeen years of civil/structural design and management experience, including deep foundations, shallow foundations, concrete and steel structures, building enclosures, rigging, drainage, underground utilities, etc. Mr. Laramee is also proficient in several analysis & design, laser scan and 3D design software packages.

EXPERIENCE

PROFESSIONAL ENGINEER

Responsible for analysis and design of various types of structures and materials for compliance with building codes and design standards. Design work includes large steel structures, as well as retrofit of steel and concrete structures and foundations.

LEAD ENGINEER

Perform design and analysis responsibilities of professional engineer with additional duties of coordinating the civil structural design effort with clients and other design disciplines. Duties include work planning, scheduling, cost control, quality management, design reviews, and construction packaging.

DEPARTMENT MANAGER

Responsible for the overall execution and quality of the Civil Structural Department in U.S and India offices. Duties include resource planning, scheduling, technical oversight, development of people, procedural development, auditing, and determination of needs for tools and skills.

FIELD ENGINEER

Provide inspection and verification of design in construction and provide solutions to issues encountered in the field. Review of submissions and creation of punch list items

EDUCATION

Bachelor of Science

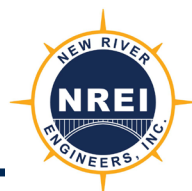
Civil Engineering
West Virginia University Institute of Technology
May 2003

CERTIFICATIONS

Professional Engineer (WV)
Professional Engineer (IA)
Professional Engineer (KY)
Professional Engineer (MO)
Professional Engineer (NC)
Professional Engineer (OH)
Professional Engineer (PA)
Professional Engineer (TX)
Professional Engineer (VA)
Professional Engineer (SC)
Professional Engineer (GA)
Professional Engineer (MI)

PROFESSIONAL AFFILIATIONS

American Society of Civil Engineers
American Institute of Steel Construction
AISC





Michael Noel, NCARB
Registered Architect
Michael Noel Architect, LLC

Mr. Noel has been Principal of Michael Noel Architect, LLC for the past four years. Before establishing his firm, he was Senior Principal with Panich, Noel and Associates for 32 years.

EXPERIENCE

REGISTERED ARCHITECT

Responsible for day-to-day design and management of various construction types for the firm.

CONSTRUCTION DOCUMENTS

As the Partner in charge Mr. Noel has been partnered to oversee more than \$300 million dollars of construction documents varying from hotels, industrial buildings, churches, prisons, and higher and lower education.

PROJECTS

- Hotels: Morgantown-Holiday Inn - \$20,000,000
Portsmouth- Holiday Inn Remodel - \$6,000,000
- Industrial: RXQ Compounding - \$5,000,000
Logan Goodyear Plant - \$3,000,000
- Prisons: Septa Correctional Facility - \$4,500,000
HVCRC Youth Prison and School - \$3,000,000
- Education: Athens City Schools Renovations, Roof Replacement, Additions, Bus Garage and Athlete Facilities Buildings - \$15,000,000.
Trimble Schools Building Additions and Remodeling - \$400,000. Alexander Schools Renovations and Maintenance Facility - \$500,000. HVCRC Gymnasium and Classroom Design - \$3,000,000.

EDUCATION

Bachelor of Arts in Architecture

Ohio University
May 1974

Register NCARB

1982

Certifications

Registered (WV) Professional
Registered (OH) Professional
Registered (IL) Professional
Registered (FL) Professional

Civic Affiliations

Athens Rotary Club
Boy Scouts of America
Athletes in Action





Ashok M. Sanghavi, P.E., DEE, QEP
Senior Engineer / Quality Control Officer

Over forty-six years of professional experience in civil engineering fields such as environmental, water supply, wastewater, solid wastes management, drainage, and mining. He has provided planning, design, construction management and technical expert testimony for environmental and general civil engineering projects. He has prepared Phase I environmental site assessments and carried out subsequent Phase II and Phase III remediation work. He has prepared environmental impact statements for state and federal highway projects. Having worked for the private industry as well as state government, he thoroughly understands both sides. He has extensive knowledge of the state and federal water supply, and wastewater laws and regulations and is also very familiar with federal and state grant and loan programs.

West Virginia State Health Department

- 1) Acting Chief, Wastewater Division
- 2) District Engineer
- 3) Water Supply Engineer

EDUCATION

Master of Science

Civil Engineering
West Virginia University
May 1970

Partial Course work for Ph.D.

CERTIFICATIONS

Professional Engineer (WV)

Diplomate - American Academy of
Environmental Engineers

Qualified Environmental Professional, IPEP

PROFESSIONAL AFFILIATIONS

Water Environment Federation
American Water Works Association
American Society of Civil Engineers
West Virginia Rural Water Association
Contractors Association of West Virginia

AWARDS

Arthur Sidney Bedell Award,
Water Environment Federation, 1993



Charles "Chuck" Kurzyna, P.E., P.S.
Senior Engineer / Senior Surveyor

Mr. Kurzyna has over 30 years of engineering and management experience in the mining industry and consulting business. He specializes in surface and underground mine design, planning, and surveying; environmental and safety permitting; project and construction management.

Project Manager for a consulting engineering firm, responsible for job estimates and bidding, supervise office staff in engineering related projects including surface mine surveying, reclamation and permitting, reserve studies, etc.

Chief Engineer for a small mining and construction company, responsible for mine planning, production tracking, construction job bidding, construction engineering, etc.

Chief Engineer, Senior Engineer for the Lady Dunn Surface Mine & Preparation Plant; coal reserve evaluations; project engineering for mine related facilities; environmental permits for large surface and deep mining operation; etc.

EDUCATION

Bachelor of Science

Mine Engineering Technology
West Virginia Institute of Technology
May 1979

Associate of Science

West Virginia Institute of Technology
May 1977

CERTIFICATIONS

Professional Engineer (WV)
Professional Engineer (OH)
Professional Engineer (PA)
Professional Engineer (VA)
Professional Engineer (KY)
Professional Engineer (GA)
Professional Surveyor (WV)
Underground Mine Foreman
Surface Mine Foreman

PROFESSIONAL AFFILIATIONS

Contractors Association of West Virginia
West Virginia Coal Association
Friends of Coal Association
Society of Mining Engineers



Eric T. Hartwell, P.E.
Senior Engineer

Mr. Hartwell joined New River Engineers, Inc. in January 2023, and has over 25 years of experience in planning, design, and construction of environmental projects. Mr. Hartwell has a background in the design and construction of wastewater treatment and collection systems, water treatment and distribution systems, and industrial oil water separators. Mr. Hartwell was an integral part of the design team for several wastewater treatment plant upgrade projects and over 70 pump stations ranging in size from 5 to 7000 gallons per minute. He has also been involved in the design of multiple water treatment plants and pumping stations. Mr. Hartwell has been involved with the design and construction of water storage tanks and pressure reducing valve stations. Mr. Hartwell has worked on environmental projects throughout West Virginia. Mr. Hartwell has served in the capacity of Engineer and Project Manager, throughout his career. This experience includes environmental, water supply and distribution, wastewater collection and treatment, water loss and infiltration and inflow reduction projects. Mr. Hartwell's responsibilities include planning, design, construction administration, preparation of operation and maintenance manuals and operator training.

Mr. Hartwell also has experience in construction management, payment request review and approval, quantity & cost estimates, and has worked with City & PSD personnel, and regulatory agencies, as well as contractors.

EDUCATION

Bachelor of Science

Civil Engineering
West Virginia Institute of Technology
December 1995

Master of Science

Civil Engineering
West Virginia University
December 1997

CERTIFICATIONS

Professional Engineer (WV)



Joshua D. Cook, P.E., PMP
Morgantown Engineering Manager / Senior Engineer
New River Engineers Inc.

Josh began his professional career in 2012 and has worked on a variety of civil engineering projects throughout West Virginia, Ohio, Virginia, Maryland, and Pennsylvania. During his career, Josh has served as Project Engineer, Project Manager, and Engineering Manager for Coal and Natural Gas Companies and Municipal Engineering Consulting Firms, including New River Engineers.

Josh has experience in Environmental Remediation, Groundwater Protection Plans (including Spill Prevention, Control, and Countermeasure Plans), Stormwater Permitting and Design, Construction Management, Water, Wastewater, Storm Water, and a variety of Natural Gas Experience.

Josh has been successful in managing a variety of projects to remain on-time, on-budget, and compliant.

EDUCATION

Bachelor of Science

Civil Engineering
West Virginia University Institute of Technology
December 2012

Master of Science

Engineering
Marshall University
May 2014

CERTIFICATIONS

Professional Engineer (WV)
Professional Engineer (OH)
Project Management Professional (PMP)

PROFESSIONAL AFFILIATIONS

American Society of Civil Engineers
West Virginia Rural Water Association
Business Networking International (BNI)
Project Management Institute (PMI)



Randy B. Crace, P.S.
Senior Surveyor

Mr. Crace began his career in 1983 working on a variety of surveying and engineering projects. Areas of concentration in boundary surveys, mapping, topography, subdivisions, annexations, right of ways, subdivision development, construction stakeout, aerial mapping controls, GPS-RTK survey control networks, oil and gas well locations, surface and underground mining permits, construction stakeout, hydrology, erosion and sediment control plans, storm water retention systems, site grading plans, parking lot layout, WVDOH driveway permits, Cad software programs, Geographic Information Systems, Phase I - ASTM environmental site assessment and expert witness testimony in the surveying field.

U.S. Army - SP4
Honorable Discharge - 1974

EDUCATION

Bachelor of Science

Industrial Technology
West Virginia State College, Institute
December 1989

Master of Science Environmental Studies
MUCGS, Institute of WV Partial Course Work

CERTIFICATIONS

Environmental Site Assessment
Commercial Real Estate Certification
ASTM E-1527 & E-1528
October 2001

ASTM E 1527-05 Phase I and USEPA AAI
October 2006

ACSM Surveying Instrumentation and
Coordinate Computation Certificate, 1978

Center College, Charleston, WV
Technical Degree, Drafting – 1970

Professional Surveyor (WV)
Professional Surveyor (KY)
Professional Surveyor (OH)

PROFESSIONAL AFFILIATIONS

West Virginia Association of Land Surveyors
American Congress on Surveying & Mapping
National Society of Professional Surveyors
American Institute of Architects, WV





Aaron B. Huston
Junior Engineer

Mr. Huston began his career at New River Engineers, Inc. in September 2019.

EXPERIENCE

JUNIOR ENGINEER

Responsibilities include site civil design, water, wastewater, & stormwater system design using Civil 3D. Projects include the development of multiple campgrounds with utilities and various water & sewer extension/ rehabilitation projects throughout West Virginia and Ohio.

Mr. Huston also has experience with permitting from various agencies including WVDEP, WVDHHR, WVDOH, OEPA, & local Railroads.

DENSITY TESTING INSPECTOR

Density Testing Inspector for Advance Testing Company, Inc. – Campbell Hall, NY, responsibilities included handling Nuclear density gauge and performing density testing on asphalt for a variety of projects in New Jersey.

EDUCATION

Bachelor of Science

Civil Engineering
West Virginia University May 2019

CERTIFICATIONS

APNGA Portable Nuclear Gauge
Safety & USDOT Hazmat
APNGA Certificate of Achievement
- Radiation Safety Officer Class
Qualified Preparer of Stormwater Pollution
Prevention Plans
Qualified Compliance Inspector of Stormwater
NYSHMA Density Testing Inspector
Certified QC/QA HMA Technician
OSHA

PROFESSIONAL AFFILIATIONS

Contractors Association of West Virginia



Noah Julian
Junior Engineer

Mr. Julian began his career at Alcon in 2021 working as a validation engineer on a variety of machines and processes for making intraocular lenses. Mr. Julian gained experience with PLC systems. This experience includes Allen Bradley systems, as well as PC Based systems. Mr. Julian also has experience with FDA guidelines and regulations for CSV systems, as well as the guidelines for installation, operational, and performance qualifications for equipment, whether it is new, retrofitted or revalidated. Mr. Julian's responsibilities include mechanical systems and design.

Mr. Julian also has experience with machine design, hydraulic system and component design for machines, 3D and 2D CAD drawings, and proficient with Microsoft Excel and VBA. Mr. Julian has also worked within MSHA guidelines for machines.

Mr. Julian has proven to move projects forward in a professional, cost-effective, and timely manner. He has extensive knowledge of machines and computers, as well as FDA and MSHA regulations.

EDUCATION

Bachelor of Science

Mechanical Engineering
West Virginia University Institute of Technology
May 2020

CLIENT REFERENCES

Mr. Matt Hildebrand,
Trans-Canada/TC Energy
700 MacCorkle Avenue, SE
Charleston, WV 25314-1515
(304) 357-2000
(304) 894-2657

Mr. John McNew
United Coal Company
109 Appalachian Dr.
Beckley, WV 25801
(304) 255-9030
(304) 550-2324

Mr. Will Harless
Montage Resources Company
125 Putnam Street
Marietta, OH
(740) 374-2940
(304) 993-5510

Mr. Christopher Matkins, Senior Engineer
West Virginia Dept. of
Environmental Protection
1159 Nick Rahall Greenway
Fayetteville, WV 25840
(304) 574-4465

Mr. Eric Bess
Mott MacDonald
201 Pennsylvania S #400
Charleston, WV 25302
(304) 356-3010

Mr. Andrew Jordon
Pritchard Mining
P.O. Box 3311
Charleston, WV 25333
(304) 389-5715

Mr. G.R. Carr
G.R. Carr Excavation Inc.
297 Nathan Rd.
Pool, WV 26684
(304) 619-8903

Mr. Edward Brown
Blackhawk Mining, LLC
3228 Summit Square Place,
Lexington, KY
(304) 590-2487

Mr. Jamie Hake
Allegheny Contracting, LLV
13374 Boot Jack Road
Ridgway, PA 15853
(814) 772-2525

Mr. Brian Worley
Contoura Energy, LLC
208 Business St.
Beckley, WV 25801
(304) 929-6626

Mr. Larry Cook
Black Warrior Minerals
Charleston, WV 25304
(304) 376-0513



CLIENT REFERENCES

Mr. Jeremy Lewis, General Manager
Nitro Regional Wastewater Utility (City of Nitro)
P.O. Box 607
Nitro, WV 25143
(304) 755-3669

Hon. Joetta Hatfield, Mayor
Town of Fort Gay
P.O. Box 336
Fort Gay, WV 25514
(304) 648-5246

Mr. John Rubin, Chairman
Kanawha Public Service District
P.O. Box 8
Cabin Creek, WV 25035
(304) 595-2203

Mr. John Elliot, President / Owner
American Medical Facilities Management
240 Capitol Street, Suite 500
Charleston, WV 25301
(304) 344-1623

Mr. Curtis Keller, General Manager
Berkeley County Public Service Sewer District
P.O. Box 944
Martinsburg, WV 25402
(304) 263-8344

Hon. Randy Barrett, Mayor
City of Winfield
P.O. Box 596
Winfield, WV 25213
(304) 586-2122

Hon. Bill Rice, Mayor
City of Sistersville
200 Diamond Street
Sistersville, WV 26175
(304) 652-6361



SAFETY

In today's ever-changing workplaces, we place safety as an utmost necessity for all employees. We are fully committed to provide our employees with knowledge and training to complete all tasks in a professional manner and to prepare them with a safe and hazard free work environment.



VERIFORCE[™]
INTEGRATED COMPLIANCE SOLUTIONS



OUR TEAMING PARTNERS



Tempo Construction, LLC



Larson Design Group®

Larson Design Group



American Geotech, Inc.



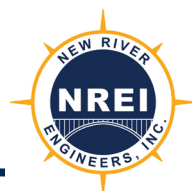
Carr Excavating



Allstar Ecology



Airport Design Consultants, Inc.





ADDITIONAL SERVICES



Water Supply, Treatment, Storage, and Distribution Systems

With over forty years of experience, we are your one stop shop for water supply, treatment, storage, and distribution systems. We implement our four-step process to each project to develop a better understanding of our client's needs and expectations: 1. Preliminary Engineering Report; 2. Design Phase; 3. Bidding Phase; 4. Construction Administration. We are "hands on" during all phases to ensure our clients obtain what they want in every project.

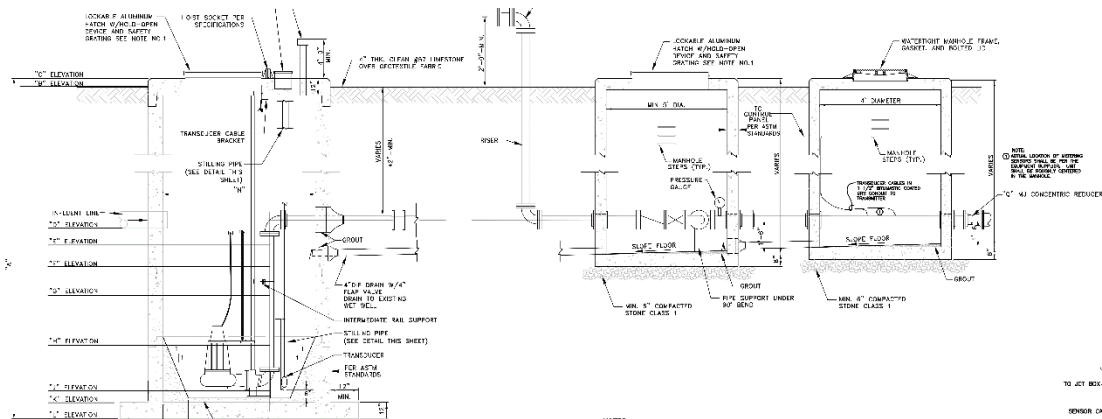
As a locally owned "small family" consulting firm, our clients get more for their money and receive more one-on-one time with our employees, which yields a more pleasurable experience. We excel in helping our clients ascertain funding from various governmental agencies to assist in the financing of the project.



Wastewater Collection & Treatment Systems / Industrial and Hazardous Waste Treatment Systems

We recognize the importance and understands the hurdles that our clients must maneuver to offer wastewater service to their customers. We have a proven track record with a vast knowledge of local conditions and an excellent reputation with all regulatory, funding, permitting, and enforcement agencies. Our crew, from CAD Techs to the President, is included in all phases of the project. We have the knowledge and capacity to carry out the workload in a timely manner.

We have a full understanding of wastewater systems from small treatment facilities to municipalities, all the way to industrial wastewater systems. We are thoroughly knowledgeable in obtaining federal, state, and local funding, and are available to you 24/7. We will see your projects from conception to completion.



Construction Management and Civil Site Design

We have been providing construction engineering solutions to our clients, including towns and municipalities for a combined total of over 60 years. We have established ourselves as one of the leading consulting firms in the area, and our experienced staff is committed and dedicated to your project from the initial site design and bid package development to inspections and certification.

We also offer Civil Site Design services including sub-division layouts, commercial development and design, HCA project areas, well pads, impoundments, street paving, drainage control, solid waste landfill, and impoundment design. We know and understand the value and importance of properly designed sites that offer the most cost effective and beneficial for our clients. Construction Management and Civil Site Design services include, but are not limited to the following:

- 3D Site Design
- Haulage & Access Road Design
- Excess Spoil Disposal Site Design
- Drainage Design and Runoff Calculations
- Solid Wastewater Management and Land Fill Design
- Subdivision Design and Permit Applications
- Site Development Plans
- Pre, During, & Post Construction Surveying
- HECRAS Modeling
- Stability analysis
- Site inspections / Project Management
- Certifications
- Cost Estimates
- Subdivision Design
- Street Paving Design and Drainage Control
- Construction Management
- Earth work quantity Estimates
- Construction Staking
- Concrete Testing and Inspection

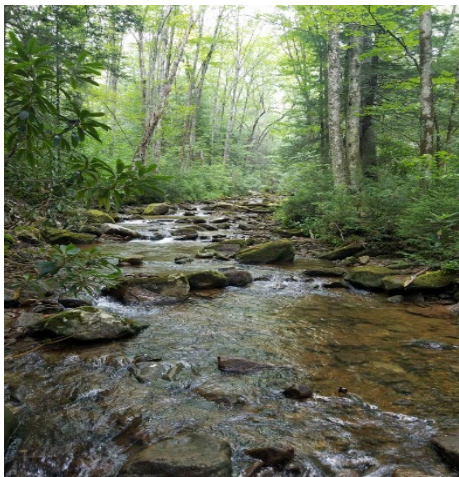


Environmental Permitting

Environmental permitting has become a complex and confusing landscape. We have an efficient and thorough team of environmental consultants making sure permitting, regulatory compliance, construction monitoring, and biological surveying are done with the utmost quality and cost effectiveness. This will save your project time and money from the start and avoid costly delays in the future. Compliance with Clean Air and Water Acts, NEPA, and other state and federal requirements is invaluable to every project. Our attention to detail and practical solutions to complex issues are second to none. Our environmental permitting team will make sure once your project is off the ground, it stays there! Environmental Permitting services include but are not limited to the following:

Environmental Permitting services

- Storm Water Permitting, Design, and Management
- Water Quality Monitoring
- Flood Plan Determination and Flood Elevation Certificates
- Groundwater Protection Plans
- Stream & Wetland Delineation
- Spill Prevention Control & Countermeasures Plan (SPCC)
- Article 3 Mining Permits
- Article 11 NPDES Permits
- West Virginia 401 Certification Permitting
- Wastewater Permitting, Design, & Management
- Clean water Act Section 402 Permitting (NPDES Permit)
- United States Army Corps of Engineers 404 Permitting
- Air Quality Permitting
- Best Management Practices (BMP) Planning



Environmental Permitting (Cont.)

Environmental Permitting Services

- Ohio State Historic Preservation Office (SHPO)
- National Environmental Policy Act (NEPA)
- US Environmental Protection Agency (EPA)
- National Conservation Planning Partnership (NRCS) & Forest Service
- United States Department of Agriculture (USDA) – Rural Development
- West Virginia Public Lands
- WV Department of Natural Resources (DNR)
- US Fish & Wildlife
- WV Culture & History
- Ohio Department of Natural Resources (DNR)
- Ohio environmental Protection Agency (DNR)
- Ohio Environmental Protection Agency (EPA)
- Ohio Public Works Commission (OPWC)
- Ohio Department of Commerce/Division of Industrial Compliance
- Virginia Department of Environmental Quality (DEQ)
- Federal Aviation Administration (FAA)
- EPA & WV DEP Compliance
- Environmental Site Assessment
- Local Agency Building / Construction

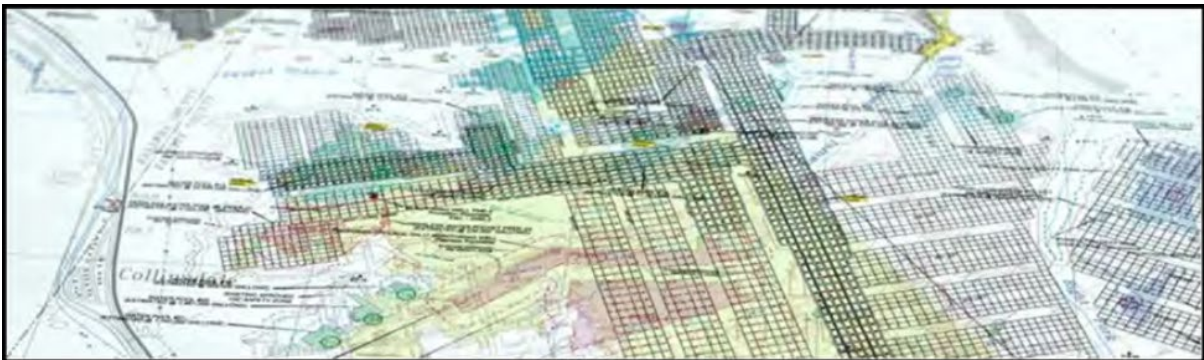


Mining Engineering

We are a full-service surveying, engineering, and consulting firm with deep roots in the mining industry of southern WV. Our qualified staff of professional engineers, engineering technicians, and professional surveyors have decades of combined experience in the field of mining engineering. We have established ourselves as one of the areas' leading mining engineering firms – specializing in both surface and underground mine design / planning; surveying; environmental and safety permitting; and project / construction management. We put the focus on identifying the needs of clients and providing cost-effective solutions with real results.

Mining Engineering Services

- Coal Reserve Analysis and Evaluation
- Surface Mine Design and Planning
- Mine Surveying and Mapping
- MSHA / WVOHS&T Permitting
- Ventilation Plans
- Roof Control Plans
- Mining Under Bodies of Water (1716 Permit)
- Horizontal Drilling
- Methane and Dust Control (MMU Plan)
- West Virginia Mineral Tax Appraisal
- Returns
- Pre-Blast Surveys
- Prospecting Permits & Releases
- Slope Stability Analysis
- Reclamation & Revegetation Planning
- Valley Fill Certifications
- Drainage Certifications
- Ventilation Plans
- MSHA Compliance
- MHS&T Compliance



Oil & Gas Engineering

The natural gas boom in the US has brought a wealth of opportunity for energy companies in the United States. We have answered the call of these companies by providing solutions to the unique design, permitting, and environmental needs of the ever-evolving Oil and Gas Industries

Oil and Gas engineering requires a unique approach to project development that differs from mining engineering. Our experienced staff is available to consult with clients on the most practical and cost-effective manner of addressing oil and gas engineering concerns. With a professional staff encompassing surveying, AutoCAD, professional engineers, and engineering technicians – we have the capacity to tackle the most complex oil and gas engineering projects

Oil and Gas Engineering Services

- Gas Well Plats and Permits
- Well Location and Stakeout
- Site Design
- Gas Line Surveys
- Unit Surveys
- HCA Project Areas
- Right-of-Way
- Impoundment Design, Construction, and Certification
- Access Road Design and Stakeout
- Construction Layout and Oversight
- Pumps & Water Line Design



Geotechnical Engineering

We have professional engineers and engineering technicians with extensive geotechnical engineering experience. We specialize in compaction testing, foundation design, slope failure remediation and embankment design. We put the focus on identifying the needs of clients, and providing cost-effective solutions with real results

Geotechnical Engineering Services

- Drilling Oversight, Management, and Inspection
- Slope failure Remediation
- Slope Stability Analysis
- Gabion Basket Wall Design
- Compaction Testing
- Foundation Design
- Embankment Design
- Drainage Analysis
- Soldier Pile Wall Design



Structural Engineering

We offer a full range of structural engineering services to help meet the needs of our clients. In addition to professional training, our structural capabilities are bolstered by a depth and breath of experience developed through solving unique and complex engineering challenges. We have experience with projects in the private, public, commercial, and industrial sectors. Whether designing new structures, retrofitting existing structures, addressing overstressed conditions, or assessing, structural integrity, our clients can rest assured that we are capable of meeting their specific needs.

Structural Engineering Services

- Structural Analysis
- Steel Structures and Building Enclosures
- Modular Design
- Pilings and Foundations
- Concrete Containment Structures
- Retrofit of Existing Overstressed Structures
- Building Permits and Code Analysis
- Bridge Cranes, Monorails, Jibs, etc.
- Truck/Rail Unloading Stations
- Lifting Beams and Rigging
- Industrial Architectural Design
- Structural Inspections and Assessments



Surveying

We have established ourselves as one of the area's leading surveying firms with our 40+ years of experience in property, boundary, and topographic mapping. Our staff is skilled in courthouse research, finding property evidence, providing quality property surveys, and construction stake-outs.

Additionally, we offer aerial mapping utilizing drone surveys. Our aerial mapping has been proved to be invaluable for construction progress mapping, well pad progression, subdivision layouts, and civil site designs. Surveying services include, but are not limited to the following:

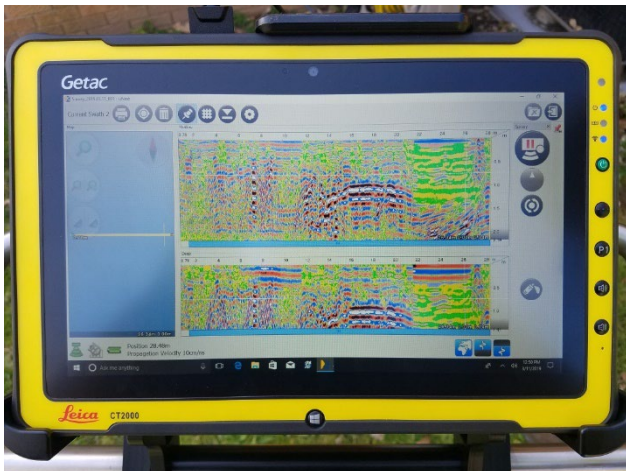
- Property Abstract & Research
- Boundary Surveys
- Survey Plats
- Subdivision Design & Layout
- Construction Surveying & Stakeout
- Underground Mining Surveying
- Right-of-Way & Land Acquisition
- GPS Services
- Aerial Mapping / Control
- Drone Flight & Surveying
- Topographical Surveys
- ALTA / ACSM Land Title Surveys
- Unit Surveys
- Surface Mining Surveying
- Computer Mapping
- GIS Services



Subsurface Utility Survey

We use some of the most advanced technology in Ground Penetrating Radar (GPR), pipe and cable locators, and smoke testing machines to accurately survey, map and inspect subsurface utilities. These services have been extensively used by our clients in the construction, oil, and gas industries, as well as public service districts. Subsurface Utility Survey services include, but are not limited to the following:

- Pipe and Cable Location
- Sewer Line Smoke Testing
- Ground Penetrating Radar (GPR)
- Internal Video Pipe Inspection



Fiberoptic Broadband Services

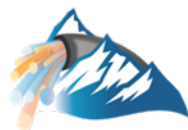
We team with Mountain State Fiber and Alpha Technologies company which is a registered WV CLEC and was founded in 2000 specializing in Wide Area and Local Area Networks. Mountain State Fiber and Alpha Technologies is headquartered in Hurricane, WV.

Working with a full service fiber optic firm, New River Engineers Inc. (NREI) and Mountain State Fiber can provide a whole host of services to our clients including, but not limited to the following:

- Build Specifications based on network
- PONs
- Metro Ethernet
- Support for Tier 1-3 Helpdesk— Technical questions, Network Outages, Internet engineering and routing
- Regulatory—Federal: FDOF, USAC, Erate, USDA; State: CLEC, PSC
- Complete understanding of Pole Attachment Process

| Resources | Security Audits | Support | Regulatory |
|---|---|--|---|
| <ul style="list-style-type: none"> •Professional Engineers •Professional Surveyors •Network Engineers •Build Specifications based on network <ul style="list-style-type: none"> •PONs •Metro Ethernet •Ground Penetrating Radar •GIS Analyst | <ul style="list-style-type: none"> •HIPPA - Healthcare •SOC I and II •PCI – Credit Cards •FISMA | <ul style="list-style-type: none"> •Tier 1 Helpdesk – Address basic customer technical questions •Tier 2 Helpdesk – Network Outages and support •Tier 3 Helpdesk – Internet engineering and routing | <ul style="list-style-type: none"> •Federal <ul style="list-style-type: none"> •RDOF •USAC •Erate •USDA •State <ul style="list-style-type: none"> •CLEC •Interaction with PSC •Complete understanding of Pole Attachment Processes |

mountain state
fiber



Funding Assistance

We provide assistance for our clients in the preparation of grant/loan funding applications. We will represent our clients and coordinate with the various funding agencies to obtain a favorable funding package. Once the funding has been secured, we will then begin to develop detailed engineering drawings and specifications for the project. Funding Sources can include, but are not limited to the following:

- West Virginia Infrastructure and Jobs Development Council (WV IJDC)
- West Virginia Water Development Authority (WV WDA)
- West Virginia Bureau of Public Health – Drinking Water Treatment Revolving Fund (WV BPH-DWTRF)
- West Virginia Department of Environmental Protection – Clean Water State Revolving Fund (WV DEP-CWSRF)
- Appalachian Regional Commission (ARC)
- United States Department of Agriculture Development Loans (USDA-RD)
- Housing and Urban Development – Community Development Block Grant (HUD-CDBG)
- West Virginia Environmental Protection Agency (Ohio EPA)
- West Virginia Rural Community Assistance Program (Ohio RCAP) – Funding Assistance
- United States Army Corps of Engineers (USACOE)



Technical Expert Testimony

With over forty years of professional engineering experience, we are more than capable of providing expert witness testimony to our clients should a need arise. We have multiple registered professional engineers in various disciplines, and these professionals are licensed throughout the United States. We are more than willing and ready in an utmost resolute manner to defend our clients and ensure that their interests are represented in the courtroom



