



The following documentation is an electronically-submitted vendor response to an advertised solicitation from the *West Virginia Purchasing Bulletin* within the Vendor Self-Service portal at wvOASIS.gov. As part of the State of West Virginia's procurement process, and to maintain the transparency of the bid-opening process, this documentation submitted online is publicly posted by the West Virginia Purchasing Division at WVPurchasing.gov with any other vendor responses to this solicitation submitted to the Purchasing Division in hard copy format.

Header @ 1

List View

- General Information**
- Contact
- Default Values
- Discount
- Document Information
- Clarification Request

Procurement Folder: 1257588

Procurement Type: Central Purchase Order

Vendor ID:

Legal Name: POTESTA & ASSOCIATES INC

Alias/DBA:

Total Bid: \$0.00

Response Date:

Response Time:

Responded By User ID:

First Name:

Last Name:

Email:

Phone:

SO Doc Code: CEOI

SO Dept: 0313

SO Doc ID: DEP2400000003

Published Date: 8/8/23

Close Date: 8/24/23

Close Time: 13:30

Status: Closed

Solicitation Description:

Total of Header Attachments: 1

Total of All Attachments: 1



Department of Administration
 Purchasing Division
 2019 Washington Street East
 Post Office Box 50130
 Charleston, WV 25305-0130

**State of West Virginia
 Solicitation Response**

Proc Folder: 1257588
Solicitation Description: EOI - 2023 AML Contract S3
Proc Type: Central Purchase Order

Solicitation Closes	Solicitation Response	Version
2023-08-24 13:30	SR 0313 ESR08242300000000925	1

VENDOR
 000000173443
 POTESA & ASSOCIATES INC

Solicitation Number: CEOI 0313 DEP2400000003
Total Bid: 0
Response Date: 2023-08-24
Response Time: 11:24:47
Comments:

FOR INFORMATION CONTACT THE BUYER
 Joseph E Hager III
 (304) 558-2306
 joseph.e.hageriii@wv.gov

Vendor Signature X **FEIN#** **DATE**

All offers subject to all terms and conditions contained in this solicitation

Line	Comm Ln Desc	Qty	Unit Issue	Unit Price	Ln Total Or Contract Amount
1	Professional Svcs - Clifftop Strip Complex				0.00

Comm Code	Manufacturer	Specification	Model #
81100000			

Commodity Line Comments:

Extended Description:

Professional Svcs - Clifftop Strip Complex

Line	Comm Ln Desc	Qty	Unit Issue	Unit Price	Ln Total Or Contract Amount
2	Professional Svcs - Clifftop Strip South				0.00

Comm Code	Manufacturer	Specification	Model #
81100000			

Commodity Line Comments:

Extended Description:

Professional Svcs - Clifftop Strip South

Line	Comm Ln Desc	Qty	Unit Issue	Unit Price	Ln Total Or Contract Amount
3	Professional Svcs - Clifftop (Road Fork) Drainage				0.00

Comm Code	Manufacturer	Specification	Model #
81100000			

Commodity Line Comments:

Extended Description:

Professional Svcs - Clifftop (Road Fork) Drainage

Line	Comm Ln Desc	Qty	Unit Issue	Unit Price	Ln Total Or Contract Amount
4	Professional Svcs - Crozier Rd (G.A. Pacific) Portals & HW				0.00

Comm Code	Manufacturer	Specification	Model #
81100000			

Commodity Line Comments:

Extended Description:

Professional Svcs - Crozier Rd (G.A. Pacific) Portals & HW

Line	Comm Ln Desc	Qty	Unit Issue	Unit Price	Ln Total Or Contract Amount
5	Professional Svcs - Lookout (Moore) Subsidence				0.00

Comm Code	Manufacturer	Specification	Model #
81100000			

Commodity Line Comments:

Extended Description:

Professional Svcs - Lookout (Moore) Subsidence

Line	Comm Ln Desc	Qty	Unit Issue	Unit Price	Ln Total Or Contract Amount
6	Professional Svcs - Fayette Station Slide				0.00

Comm Code	Manufacturer	Specification	Model #
81100000			

Commodity Line Comments:

Extended Description:

Professional Svcs - Fayette Station Slide

Line	Comm Ln Desc	Qty	Unit Issue	Unit Price	Ln Total Or Contract Amount
7	Professional Svcs - Keeney Creek Mines				0.00

Comm Code	Manufacturer	Specification	Model #
81100000			

Commodity Line Comments:

Extended Description:

Professional Svcs - Keeney Creek Mines

Line	Comm Ln Desc	Qty	Unit Issue	Unit Price	Ln Total Or Contract Amount
8	Professional Svcs - Royal Loadout				0.00

Comm Code	Manufacturer	Specification	Model #
81100000			

Commodity Line Comments:

Extended Description:

Professional Svcs - Royal Loadout

Line	Comm Ln Desc	Qty	Unit Issue	Unit Price	Ln Total Or Contract Amount
9	Professional Svcs - Nuttallburg South Bench				0.00

Comm Code	Manufacturer	Specification	Model #
81100000			

Commodity Line Comments:

Extended Description:

Professional Svcs - Nuttallburg South Bench

Line	Comm Ln Desc	Qty	Unit Issue	Unit Price	Ln Total Or Contract Amount
10	Professional Svcs - Floyd Creek HW and Drainage				0.00

Comm Code	Manufacturer	Specification	Model #
81100000			

Commodity Line Comments:

Extended Description:

Professional Svcs - Floyd Creek HW and Drainage

Line	Comm Ln Desc	Qty	Unit Issue	Unit Price	Ln Total Or Contract Amount
11	Professional Svcs - County Rt. 82 Portals				0.00

Comm Code	Manufacturer	Specification	Model #
81100000			

Commodity Line Comments:

Extended Description:

Professional Svcs - County Rt. 82 Portals

Line	Comm Ln Desc	Qty	Unit Issue	Unit Price	Ln Total Or Contract Amount
12	Professional Svcs - Winona Complex				0.00

Comm Code	Manufacturer	Specification	Model #
81100000			

Commodity Line Comments:

Extended Description:

Professional Svcs - Winona Complex

Line	Comm Ln Desc	Qty	Unit Issue	Unit Price	Ln Total Or Contract Amount
13	Professional Svcs - Winona East Highwall and Drainage				0.00

Comm Code	Manufacturer	Specification	Model #
81100000			

Commodity Line Comments:

Extended Description:

Professional Svcs - Winona East Highwall and Drainage

Line	Comm Ln Desc	Qty	Unit Issue	Unit Price	Ln Total Or Contract Amount
14	Professional Svcs - Buffalo Creek Complex				0.00

Comm Code	Manufacturer	Specification	Model #
81100000			

Commodity Line Comments:

Extended Description:

Professional Svcs - Buffalo Creek Complex



EXPRESSION OF INTEREST

Prepared for:

**West Virginia Department of
Environmental Protection
Division of Land Restoration
Office of Abandoned Mine Lands and Reclamation**



2023 AML Contract S3 CEOI 0313 DEP2400000003



CHARLESTON

7012 MacCorkle Avenue, SE
Charleston, WV 25304
(304) 342-1400

MORGANTOWN

125 Lakeview Drive
Morgantown, WV 26508
(304) 225-2245

WINCHESTER

15 South Braddock Street
Winchester, VA 22601
(540) 450-0180

TABLE OF CONTENTS

EXECUTIVE SUMMARY	1
CORPORATE PROFILE.....	3
TECHNICAL EXPERTISE	4
MANAGEMENT AND STAFFING.....	9
PRIOR EXPERIENCE	16
PROJECT MANAGEMENT	55
CLOSING	58

APPENDICES

AML Consultant Confidential Qualification Questionnaire	APPENDIX A
AML and Related Project Experience Matrix	APPENDIX B
Signed Expression of Interest Forms, Designated Contact with Certification and Signature Page, Addendum Acknowledgement Form, and AML Contractor Information Form	APPENDIX C

EXPRESSION OF INTEREST

EXECUTIVE SUMMARY

Potesta & Associates, Inc. (POTESTA) is pleased with the opportunity to provide this Expression of Interest to the West Virginia Department of Environmental Protection, Division of Land Restoration, Office of Abandoned Mine Lands and Reclamation (WVDEP-DLR-AML).

POTESTA is familiar with the reclamation of abandoned mine lands similar to the 2023 AML Contract S3 Project group of fourteen projects including: (1) Clifftop Strip, (2) Clifftop Strip South, (3) Clifftop (Road Fork) Drainage, (4) Crozier Road (G.A. Pacific) Portals and HW, (5) Lookout (Moore) Subsidence, (6) Fayette Station Slide, (7) Keeney Creek Mines, (8) Royal Loadout, (9) Nuttallburg South Bench, (10) Floyd Creek HW and Drainage, (11) County Rt. 82 Portals, (12) Winona Complex, (13) Winona East Highwall and Drainage, and (14) Buffalo Creek Complex projects. POTESTA has a successful track record for the design of AML projects. POTESTA's design professionals include civil engineers, geologists, and hydrology specialists with extensive AML reclamation design experience. We are prepared to utilize our firm's resources and experienced staff to provide planning, realty, design, permitting, and construction phase services. We understand that each project may require the following tasks/services.

- National Environmental Policy Act (NEPA) consultations and documentation
- Public participation
- Infrastructure Investment Jobs Act (IIJA) compliance
- Determine legal ownership of properties
- Obtain exploratory and construction rights of entry
- Provide legal documentation to substantiate legal ownership findings
- Provide current mapping, perform survey and other related services
- Perform site and geotechnical investigations
- Design temporary and permanent access or accesses for construction and future maintenance
- Slope stabilization
- Design multiple portal seals and regrades
- Design reclamation of exposed coal refuse and mine spoil
- Design of drainage conveyances, including drainage channels, underdrains, and/or other controls to safely convey water off-site
- Construction quality assurance and quality control (QA/QC)
- Provide resident project representative/inspector
- Prepare daily construction activity logs summarizing activities
- Provide engineering support and services throughout construction
- Provide engineer's certification report

POTESTA focuses on understanding the client's goals, needs, and requirements to achieve a successful project outcome. We believe POTESTA's track record with AML and civil engineering projects demonstrates our ability, experience, and commitment for the 2023 AML Contract S3 Project group of fourteen projects.

POTESTA has assembled a team that has historically served WVDEP, AML on numerous AML projects. In fact, our staff has worked on over 160 AML projects for WVDEP (and more in other states) on four different WVDEP, AML contracts dating back into the mid-1980s. We have an ongoing workload with WVDEP, AML. We most recently worked on the Paint Branch Complex AML design project and emergency AML projects in southern West Virginia.

POTESTA has completed projects involving geotechnical, civil, mining, structural, geological, hydrological and reclamation engineering; land use and natural resource planning; soil science/agronomy; hydrology/geology; stream and water restoration; and post reclamation land uses. We also have open ended statewide contracts with various state agencies. In addition, we have the preeminent staff in West Virginia for addressing issues regarding geotechnical design and remediation.

EXPRESSION OF INTEREST

EXECUTIVE SUMMARY



As a result, POTESTA will provide the required expertise to complete this AML project in a timely, economical, and efficient manner.

EXPRESSION OF INTEREST

CORPORATE PROFILE

HISTORY

POTESTA was founded in 1997 as a full-service engineering and environmental consulting firm headquartered in Charleston, West Virginia. We have now expanded to a diverse staff of 83 experienced engineers, scientists, and support personnel with branch offices in Morgantown, West Virginia, and Winchester, Virginia. Our clients include local, state and federal agencies; mining, manufacturing and chemical companies; utility companies; waste management companies; K-12 schools/colleges/universities; land developers; attorneys; financial institutions; insurance companies; construction companies; and architects.



SERVICES

- AML Reclamation Engineering and Design
- Air Permitting
- Biological and Toxicological
- CADD/GIS
- Civil Engineering and Design
- Construction Monitoring
- Environmental Site Assessment
- Geotechnical Engineering
- Groundwater
- Hydrology and Hydraulics
- Landfills and Solid Waste
- Litigation Support
- Mining
- Occupational Safety and Health
- Oil and Natural Gas Consulting
- Permitting
- Remediation
- Roadway Engineering
- Sampling
- Site Design
- Storage Tanks
- Surveying and Mapping
- Water and Wastewater
- Water Quality
- Wetlands

LEADERSHIP

Our firm is managed by two principals driving POTESTA forward with their experience and emphasis on exceeding expectations. Ronald R. Potesta, President, has served as the Director and Deputy Director of West Virginia's Department of Natural Resources (WVDNR) which, during his tenure housed all of the environmental regulatory programs, had an annual budget of \$23 million and 700 full-time employees. The agency at that time encompassed state environmental regulatory programs, wildlife management, and law enforcement.



Ronald R. Potesta

Dana L. Burns, P.E., Vice President, has more than 44 years' experience with civil, geotechnical, mining and environmental engineering projects. Mr. Burns, P.S., P.E., has managed numerous multi-discipline projects, including numerous AML projects and understands the importance of client communication and the internal coordination of various disciplines on a project. The public service and experience of our principals has provided POTESTA with personal relationships with many of the regulatory staff members and in-depth program knowledge of West Virginia and surrounding state's regulatory programs. POTESTA builds our contact base, stays informed on current issues, and strengthens relationships with the regulatory community by contributing and serving on various boards and commissions.



Dana L. Burns

EXPRESSION OF INTEREST

TECHNICAL EXPERTISE

ABANDONED MINE LANDS

The diversity of POTEESTA's staff and their personal coal industry experience enable POTEESTA to complete mining and mine reclamation projects in all phases, from design to permitting. POTEESTA's staff members belong to the Kanawha Valley Mining Institute, West Virginia Contractors' Association, West Virginia Coal Association, Kentucky Coal Association, and groups that meet periodically to discuss technical, regulatory, environmental and other mining-related issues. Knowledge of potential changes in policies, regulations, etc. is vital to keep our companies informed and projects on the forefront of a constantly moving regulatory system. POTEESTA understands that cost-effective designs and responsiveness are of the utmost importance in order to complete our clients' projects.

POTEESTA has completed numerous AML projects and projects similar to a WVDEP, AML type project. These include design and permitting of landslide stabilization measures, refuse piles and slurry impoundments, evaluating mine drainage from pre-SMCRA sites, evaluation of mine subsidence and developing subsidence stabilization plans, highwall reclamation and stabilization plans, reclamation designs for WVDEP, coal refuse/mine fires, sanitary and storm sewer design, water line design, landfill closure assistance program (LCAP) projects, stream monitoring, development of grading plans, mine reclamation liability assessments, watershed assessments including evaluation of impact from acid mine drainage (AMD) including AMD from pre-SMCRA sites, detention pond designs, wetland/stream studies, natural stream design, mine site design and permitting, and design of numerous storm water structures.

We have the preeminent staff in West Virginia for addressing issues regarding the abatement of problems associated with abandoned mine lands. POTEESTA has assembled a successful team of employees that have 125+ years' experience working on WVDEP, AML projects and AML projects in other states. POTEESTA has 20+ employees with experience on WVDEP, AML projects.

- Passive Acid Mine Drainage Treatment
- Assessment of Contamination (e.g., PCBs, asbestos), Hazardous Waste Remediation
- Demolition of Structures
- Diversion and Control of Stormwater
- Identifying and Controlling Acid Mine Drainage
- Mine Fires
- Landslide Stabilization
- Slope Stabilization
- Reclamation of Refuse Piles
- Sealing Mine Portals
- Stream Relocations
- Subsidence Assessment and Remediation
- USCOE Permitting
- Water Line Design
- Water Supply Feasibility Studies and Design
- Inventory of Residential Water Supplies
- Wetland Assessments
- Revegetation Plan
- Environmental Permitting

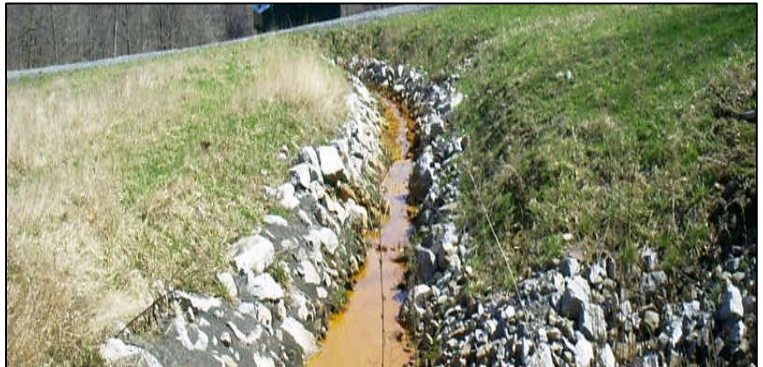
POTEESTA is familiar with completing realty and planning/environmental services as required for these AML projects. Our experienced realty and environmental staff is ready to begin work on this contract.

POTEESTA routinely provides construction phase services for projects including resident project representative, sampling and conformance testing, QA/QC certification, and preparation of daily field activity logs to document construction activities.

EXPRESSION OF INTEREST

TECHNICAL EXPERTISE

Appendix A includes our completed AML Consultant Confidential Qualification Questionnaire. **Appendix B** includes our AML and Related Project Experience Matrix. These documents provide information on the education, qualifications, and previous experience of our professionals and support staff. The AML and Related Project Experience Matrix especially shows the number of AML reclamation projects completed.



CIVIL ENGINEERING/SITE PLANNING

POTESTA's engineering staff has a broad background related to the vast field of civil engineering, including utility/infrastructure design, roadway design, development of grading plans, and storm water management. Our diverse staff of engineers, geologists, and scientists is routinely involved in these types of projects and works to support the project teams assigned to these projects on a daily basis to achieve a completed project that meets the client's expectations.

Once a project has been determined feasible through the preliminary planning stages, POTESTA's design professionals work to complete preliminary and final design plans. Frequent communication is made with the client and other design professionals to review the completed activities and obtain input for the design process.

- Site Selection/Siting Studies
- Access Roadway Design and Layout
- Utility Design/Relocation
- Earthwork Optimization
- Site Development Grading and Drainage Plans
- Hydraulic Structure Design
- Earth Retaining Structures
- Stormwater Management Plans
- Erosion and Sediment Control Plans
- Geometric Site Layout
- Vehicular and Pedestrian Circulation
- Grading and Drainage Plans, Including Excavation and Fill Optimization
- Water and Sewer Design
- Slope Stability Analysis
- Subsurface Drainage System Design
- Construction Drawings, Specifications, and Contract Document Preparation

POTESTA has a significant body of work in site design for residential, commercial and industrial clients. We have assisted numerous developers and development agencies with the creation of business industrial parks throughout West Virginia, and have been part of design teams for elementary, secondary and collegiate projects primarily associated with new building construction.



EXPRESSION OF INTEREST

TECHNICAL EXPERTISE

SURVEYING

POTESTA proposes to utilize our own survey crews for work on this project. POTESTA will perform the surveying required for this project using in-house personnel. Our surveyors are experienced in all aspects of surveying such as topographic mapping, boundary and property surveys, and construction surveys for layout of work, record drawings, and quantity measurements. Our surveyors have worked on numerous site development, roadway and bridge construction, utility construction, and landfill development projects.

POTESTA is equipped with modern surveying instruments allowing efficient data processing and accurate gathering of field information:

- Total Station Instruments
- Trimble R-8 Glonass
- RTK GPS Systems
- AutoCAD
- Autodesk Land Desktop
- Autodesk Civil 3D Design Software



The latest versions of software are then used to process survey data and create drawings or required end products.

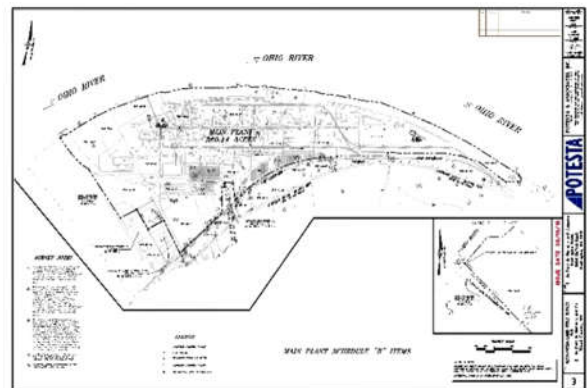
Small topographic mapping projects can be completed in-house using the aforementioned process. Larger projects are better suited for mapping using aerial photography. If necessary, POTESTA will provide the necessary surveying required for establishing ground control for aerial mapping in conjunction with our aerial mapping subcontractor. As a quality control measure, aerial mapping is field checked for accuracy by surveying cross sections or random points. POTESTA will also locate critical features needed for AML reclamation design including pipes, channels, found property monuments, etc.

Surveys and mapping are completed to the standards as outlined by the National Map Standards as well as other applicable quality standards.

CADD

The CADD department utilizes the latest drafting/design software and computer hardware to maintain productivity at the high levels that clients demand and expect. We utilize Autodesk Civil 3D design software to prepare, revise, and manipulate drawings and engineering data efficiently. POTESTA's experienced and trained professionals allow clients' projects and assignments to be completed rapidly and at a reasonable cost.

- Surveying data manipulation including development of topographic mapping, cross sections, profiles, isopach drawings, etc.



EXPRESSION OF INTEREST

TECHNICAL EXPERTISE

- Site design including grading plans, drainage plans, utilities plans, right-of-way plans, etc.
- Roadway design
- Water, sanitary, storm sewer, electric, natural gas, and telecommunications design
- Permit drawings, maps, and exhibits
- Earthwork and planimetric quantity development
- Two- and three-dimensional graphics

GEOTECHNICAL ENGINEERING

POTESTA's staff is very familiar with terrain ranging from plateaus to mountains. West Virginia encompasses rugged terrain, which presents unique challenges and hazards to mitigate threats. Our vast experience in our region has resulted in innovative approaches to the various challenges that the topography and geology present.

POTESTA can provide field engineers and geologists who are knowledgeable using the latest technologies subsurface explorations, monitoring well and piezometer installations, foundation design recommendations, slope stability analysis, retaining walls, and remedial designs as they relate to construction, mining, waste disposal, environmental remediation, and other projects. Our knowledge of the proper procedures and familiarity with local conditions allows office and field personnel to adjust the exploration plan if unanticipated field conditions are found.

SUBSURFACE EXPLORATIONS

- Attend an initial meeting with the client
- Conduct preliminary site reconnaissance
- Develop a recommended exploration program

SLOPE STABILITY ANALYSIS AND REMEDIAL DESIGN

- Utilize various methods to predict slope stability
- Analysis of existing or proposed soil embankments, rock fills, dam analysis and design, landfill design and operation, assessing the causation of slope failure, and designing remedial measures
- Analyses - circular or sliding block methods, interface friction angles, and estimate of the strength parameters of the soil or rock
- Develop preventive measures during initial project design or recommendations to repair slope failures
- Consider various remedial measures - regarding the site to obtain more suitable conditions, management of groundwater, and design of retaining structures
- Familiar with wide variety of retaining structures - gabion baskets, soldier beam and lagging walls, sheet piles, reinforced concrete and reinforced earth slopes



FOUNDATION DESIGN RECOMMENDATIONS

- Experience with various types of foundations and will recommend the appropriate type of foundation given the anticipated application and site conditions

EXPRESSION OF INTEREST

TECHNICAL EXPERTISE

- Foundations - spread and strip footings, steel piles, auger-cast concrete piles, drilled piers, and reinforced mats
- Preliminary foundation design recommendations and cost analyses
- Preliminary alternatives for final recommendation
- Construction documents
- Final recommendation - construction drawings, technical specifications, recommendations for allowable bearing capacity, engineer's construction cost estimate, and contractor's bid sheet

PERMITTING AND NEPA COMPLIANCE

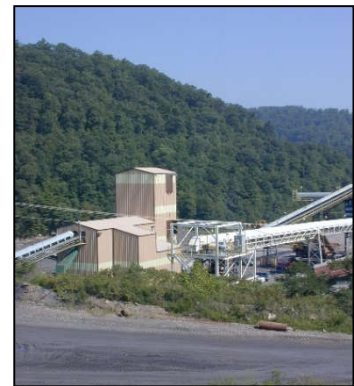
Acquiring environmental permits is a critical element for the success of every project. POTE STA offers its clients exceptional expertise and experience when it comes to the permitting process, including all phases of application preparation, negotiations, modifications, compliance, and renewal at all levels of government. POTE STA has prepared the required environmental documents for numerous roadways, cross country pipelines/high voltage power lines, and site developments. POTE STA has the experience and knowledge and the regulatory relationships to provide timely, cost-effective solutions to your permitting needs.

These projects will require planning and environmental assessments to obtain authorization to proceed. POTE STA's environmental consulting group can provide necessary surveys, consultation with resource agencies, preparation of environmental assessment reports and other documents that may be required.

POTE STA has completed numerous projects including environmental assessments, environmental impact statements, categorical exclusions, cultural resource studies, endangered species assessments, environmental compliance with various federal and state regulations (Clean Water Act [CWA], NEPA, and Endangered Species Act), permitting, wetlands delineation/mitigation, sampling and remediation.

Permits/approvals typically required for projects:

- Environmental Site Assessments
- Environmental Impact Statements
- Stormwater Management Permits
- Air Quality Permits
- Wetland Delineation and Mitigation Permits
- National Pollutant Discharge Elimination System (NPDES) Permits
- Groundwater Protection Plans
- Spill Prevention, Control and Countermeasure Plans
- Floodplain Management Studies and Permits
- Stream Activity Permits



EXPRESSION OF INTEREST

MANAGEMENT AND STAFFING

STAFF PROFILE

Total Staff: 83

18	Civil Engineers	2	Energy Land Management
15	Construction Technicians	2	Fish & Wildlife Specialists
4	Geotechnical Engineers	1	GIS Specialist
1	Geologist	1	Horticulturalist
8	CADD Operators/Draftsman	1	Environmental Scientist
6	Surveyors	1	Toxicologist
1	Mechanical Engineer	1	Economist
1	Mining Engineer	1	Aquaculturalist
2	Ecologists	1	Information Technologist
5	Biologists	10	Administrative Personnel
1	Environmental Engineer		



Included are 14 registered professional engineers (P.E.), 5 registered professional licensed land surveyors (P.S.), 5 Licensed Remediation Specialists (L.R.S.), 6 West Virginia Transportation Engineering Technicians, and one Ph.D. whose specialties include aquatic biology and water quality.

ABILITY OF STAFF

- POTESTA's current workload is such that we can immediately provide construction technicians, engineers, CADD designers, and survey crews to work on this project.
- Low turnover means interacting with the same POTESTA staff - 14 registered Professional Engineers on staff with combined experience over 400 years and are supported by a capable team of engineers, designers, and surveyors.
- We have the ability to take a project from planning through construction - we have successfully completed similar projects.
- We stand ready to commit the personnel and resources required to complete this project in a timely, technically sound, and cost-efficient manner.
- POTESTA's large staff size will allow us to work on this project on an accelerated schedule, if necessary.
- POTESTA carries a full line of insurance coverage, including general liability, errors and omissions, and workers' compensation.
- We also have and follow a stringent internal quality control system designed to provide our clients with quality products.
- POTESTA believes the quality of our work is best exemplified by approximately 85 percent of our workload coming from repeat clients.



Charleston Office



Morgantown Office



Winchester Office

EXPRESSION OF INTEREST

MANAGEMENT AND STAFFING

KEY SENIOR PROJECT TEAM

Good communication is the key for successful project completion. POTESTA listens to our clients and works to specify products that meet your needs. POTESTA has experience in developing this type of project and moving them through the process from start to finish.



Mr. Dana L. Burns, P.E., Vice President at POTESTA, will serve as principal-in-charge for this project. As such, he will direct POTESTA's staff, answer questions, address problems encountered and review the project budget. Mr. Burns has over 44 years of experience with civil and environmental engineering projects, including water line extensions, sealing portals, regrading refuse, site assessments, mine fires, preliminary feasibility evaluations, detailed design, and preparation of construction drawings, specifications, and bid documents. Mr. Burns has served as project manager or principal-in-charge on three open end contracts for WVDEP, AML from 1986 through 1997 totaling over 90 projects. In addition, Mr. Burns has served as the principal-in-charge for numerous other WVDEP, AML projects since 2003.

Mr. Mark Kiser, P.E., Chief Engineer, will serve as the project manager for this project. Mr. Kiser has over 39 years of engineering experience and has worked on over 75 different AML projects for WVDEP. His AML experience includes abandoned surface and deep mine reclamation; mine portal and shaft closures; hydraulic and hydrologic design/evaluation; landslide investigation and stabilization; remining explorations; mine refuse fire abatement and extinguishing plans; subsidence explorations and stabilization plans; water feasibility studies and water system design; construction observation and management plans; natural stream restoration projects; geotechnical explorations; slope stability analyses; preparation of construction drawings, specifications and engineers estimates; and directing both pre-bid and pre-construction meetings. Mr. Kiser is familiar with management of subcontractors, as well as managing staff and equipment needs for the design team.



Mr. Terence C. Moran, P.E., Senior Engineer, will serve as alternate project manager and/or project advisor if needed for this project. Mr. Moran has served as project manager/project engineer or assisted with over 60 AML projects in West Virginia and Virginia. Mr. Moran has 35 years of experience in civil and environmental engineering projects, including evaluation, design, preparation of plans and specifications, and construction administration. Mr. Moran has co-authored multiple papers, including one on the abatement of AMD at the Omega Mine site and another on evaluating AMD of AML sites during pre-acquisition site assessments. Messrs. Kiser and Moran have worked on AML projects that addressed such technical issues as AMD, sealing portals, regrading refuse, diverting stormwater, landslides, subsidence and water supply. Mr. Moran is familiar with requirements of AML projects and will ensure that WVDEP is satisfied with POTESTA's work by ensuring that proper QA/QC and timeliness are adhered to.

EXPRESSION OF INTEREST

MANAGEMENT AND STAFFING

Mr. Christopher Grose, L.R.S., Senior Engineering Associate, has over 32 years of experience and will serve as geotechnical engineer for this project. His areas of expertise include geological/geotechnical explorations, surface/subsurface hydrology, hydrogeology, and landslide causation analysis/stability modeling/failed slope restoration. Mr. Grose's experience includes the design and evaluation of geotechnical explorations related to bridges, culverts, earth retention structures, slope stability and engineered fill construction. Mr. Grose currently oversees aspects of geotechnical work at POTESta in their Charleston, West Virginia office and has worked on WVDEP, AML projects since 1990. Mr. Grose will evaluate slope stability issues with respect to regraded coal refuse, landslide abatement, or other steep slope applications.



Mr. Paul Maggard, P.E., Senior Engineer, will serve as a Project Engineer for this project. Mr. Maggard has served as project manager/project engineer on over 40 AML related projects in Virginia. Mr. Maggard has over 26 years of experience completing mining and environmental services related projects. AML projects included landslide stabilization, AMD assessment and treatment, subsidence remediation, portal closures, refuse regrading and revegetation and drainage control including flood mitigation. Mr. Maggard also helped several coal companies complete no-cost reclamation projects and drinking water replacement. Responsibilities included overseeing field explorations and surveying, preparation of construction plans and specifications, preparation of reclamation cost estimates, and helping during the bidding and construction phase. Mr. Maggard is also licensed through the FAA as a Drone pilot. He has flown well over 100 missions with all of them being at mine sites.



Mr. Peter S. Potesta, Staff Engineer, has over 10 years of experience in geotechnical engineering with an emphasis in landslide design, repair, and causation investigation. Other areas of expertise include civil and site development projects with an emphasis in geotechnical engineering and construction. Responsibilities have included geotechnical evaluations including management of subsurface explorations, settlement analysis, slope stability modeling, foundation analysis, well pad and horizontal directional drill construction, roadway improvements/repairs, and commercial/residential construction.

Ms. Jessica Yeager, MS, Senior Scientist, is an aquatic biologist and toxicologist with 29 years of experience in evaluating the effects of anthropogenic activities on aquatic communities. She reviews and prepares environmental assessments, biological assessments and other environmental impact studies, as well as environmental permits for energy and industrial clients. Ms. Yeager is proficient in incorporation of GIS in project development and has worked as a project manager for T&E and SHPO coordination/consultation. Other specialties include developing impact assessments for planned disturbances and accidental releases, establishing and implementing recovery plans for streams and rivers, supervising the field personnel conducting impact assessments, designing benthic macroinvertebrate and fish studies for permitting needs, biological assessments of federally threatened and endangered species, and advising clients on issues pertaining to the Endangered Species Act, CWA, and the National Environmental Policy Act. Ms. Yeager is a certified wetland soil scientist, botanist, and hydrologist with field experience in Kentucky, Virginia and West Virginia. Ms. Yeager is also a recognized forensic delineation professional. She has completed numerous environmental studies for large energy projects.



EXPRESSION OF INTEREST

MANAGEMENT AND STAFFING



Mr. Timothy Ferguson, Senior Scientist, has over 17 years' experience in environmental compliance and permitting and has served as project manager for numerous projects. He specializes in stream and wetland identification and delineation, mitigation development and planning, and permitting with the following agencies: USACE, WVDEP, WVDNR, West Virginia State Historical Preservation Office (SHPO), United States Fish and Wildlife Service and United States Environmental Protection Agency. He is formally trained in the use of the 1987 USACE Wetland Delineation Manual from Ohio State University in 2008 and has been utilizing the Eastern Mountains and Piedmont Regional Supplement since its issuance.

Mr. Tim Rice, E.I.T., Senior Engineer, has over 40 years of full-time experience and has worked on nearly 80 different AML projects for West Virginia, Maryland, Ohio, and Pennsylvania. Mr. Rice will serve as an in-house consultant on an as-needed basis for this project. His AML experience includes abandoned surface and deep mine reclamation; mine portal and shaft closures; hydraulic and hydrologic design/evaluation; remaining explorations; mine refuse and deep mine fire abatement and extinguishing plans; slope stability analyses; preparation of construction drawings, specifications and engineers estimates; and directing both pre-bid and pre-construction meetings.



Mr. David B. Sharp, P.E., is the Branch Manager of POTESTA's Morgantown office. Mr. Sharp is a registered professional engineer in Maryland, West Virginia, Pennsylvania, Ohio, and Kentucky. Mr. Sharp will also serve as an in-house consultant on an as-needed basis for this project. He has over 27 years of experience with engineering and environmental consulting projects throughout the region. Mr. Sharp obtained his bachelor's and master's degrees from West Virginia University and has spent a large part of his career involved with geotechnical engineering and construction observation/management projects. Mr. Sharp has worked on and managed numerous projects involving landslide investigation and repair projects, mine permitting, mine reclamation, acid mine drainage, hydrology,

and many other components that would typically be encountered on an abandoned mine reclamation project. Many of these projects have included preliminary planning and assessments, as well as geotechnical engineering, assessments of potential treatment technologies, and preparation of bidding and construction documents.

Abbreviated personal history statements of primary staff and more detailed descriptions of staff experience are presented in the AML Consultant Confidential Qualification Questionnaire in **Appendix A**, and the AML and Related Project Experience Matrix in **Appendix B**.

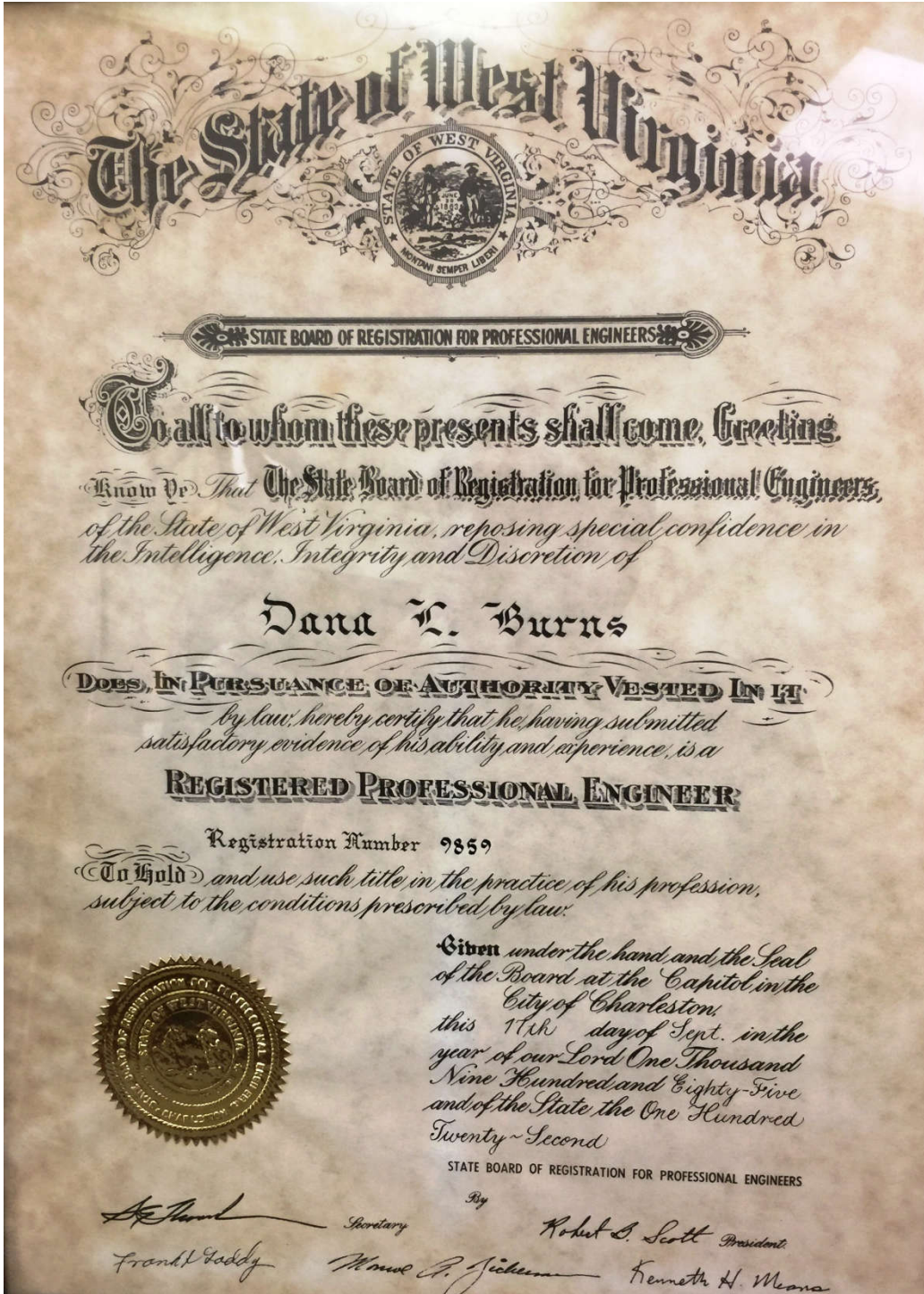
Mr. Burns' and Mr. Kiser's Registered Professional Engineer certificates are included on the following pages, along with an organizational chart. Our capabilities, qualifications, and expertise in design of AML projects are further exemplified in the Prior Experience section.

EXPRESSION OF INTEREST

MANAGEMENT AND STAFFING

PRIMARY STAFF PROFESSIONAL CERTIFICATIONS

Principal-in-Charge



EXPRESSION OF INTEREST

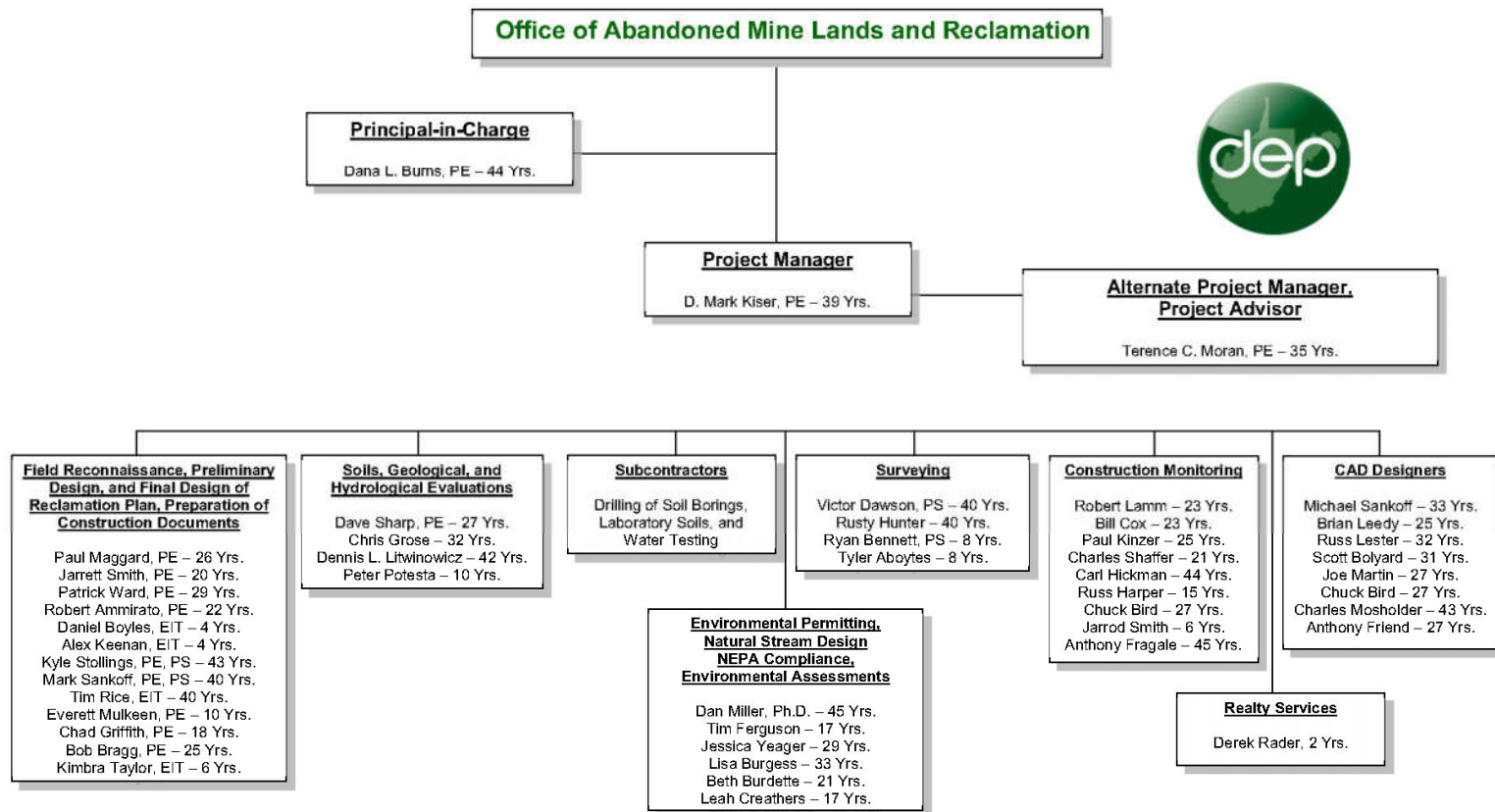
MANAGEMENT AND STAFFING

Project Manager



EXPRESSION OF INTEREST

MANAGEMENT AND STAFFING



STATEMENT OF QUALIFICATIONS

PRIOR EXPERIENCE

2022 AML CONTRACT 5 PROJECT, NORTH

*West Virginia Department of Environmental Protection
Office of Abandoned Mine Lands
Monongalia, Preston and Harrison Counties, West Virginia*

Potesta & Associates, Inc. (POTESTA) was retained by the West Virginia Department of Environmental Protection (WVDEP) to provide realty services; planning and NEPA compliance; prepare design plans, specifications, and related bidding documents; complete required permit applications and obtain necessary regulatory permits/approvals; and provide construction monitoring services and construction certification for four projects in Monongalia, Preston and Harrison Counties.



These projects included:

- Laurel Point (Travinski) Portals
- Left Fork of Little Sandy Subsidence
- McAlpin (Lambert) Landslide
- Smith Run Portal

Projects included courthouse and field work to obtain ownership documentation and right of entry for design and reclamation work, environmental planning to document NEPA compliance and obtain project authorization, surveying and development of topographic mapping, subsurface exploration, development of drawings, specifications and engineer's construction cost estimate, preparing applications for necessary permits, conducting pre-bid and pre-construction meetings, construction monitoring and documentation, and related services.



Projects included mine portal closures, stream subsidence stabilization, landslide abatement/stabilization, drainage control, demolition of dangerous mine structures, refuse regrading, and vegetation of disturbed areas.

STATEMENT OF QUALIFICATIONS

PRIOR EXPERIENCE

LEIVASY (DORSEY) SUBSIDENCE

*West Virginia Department of Environmental Protection
Office of Abandoned Mine Lands
Nicholas County, West Virginia*

Potesta & Associates, Inc. (POTESTA) was retained by the West Virginia Department of Environmental Protection, Office of Abandoned Mine Lands and Reclamation (WVDEP-AML), to investigate the potential that underground mine subsidence could have contributed to the formation of a sinkhole near a privately owned structure near the Community of Leivasy, Nicholas County, West Virginia. The landowner's property was undermined in the Sewell Coal seam by Quinwood Mining Company in the mid-1960s and an existing farm pond had allegedly been leaking for many years. In June 2023, a sinkhole formed along the ground surface near the owner's driveway, prompting the landowner to submit a claim with the WVDEP-AML. POTESTA's scope of services included the coordination and advancement of three subsurface borings on the property. Each of these borings were advanced to depths ranging from 120 to 160 feet below the ground surface through the underlying Sewell Coal seam and associated abandoned Quinwood Imperial Mine No. 2 workings. The boring locations were determined following an examination of available historic mine mapping.



A POTESTA technician was on site during the duration of the exploration field work. One of the three borings encountered the mine void; however, following careful examination and measurement of the recovered rock core, no evidence was found of fracturing within the overburden rock strata. A subsequent examination of the sinkhole determined the presence of a buried concrete structure which was believed to be the source of the sinkhole development. POTESTA worked with the drilling contractor and WVDEP-AML officials to fill the sinkhole with stone.

Following the field work, POTESTA prepared a summary letter presenting the results of the drilling program which indicated that there was no evidence of mine subsidence at the site.

STATEMENT OF QUALIFICATIONS

PRIOR EXPERIENCE

PAINT BRANCH COMPLEX

*West Virginia Department of Environmental Protection
Office of Abandoned Mine Lands
Kanawha County, West Virginia*

Potesta & Associates, Inc. (POTESTA) was retained by the West Virginia Department of Environmental Protection (WVDEP) to prepare design plans and specifications to reclaim 23 abandoned mine portals, remove abandoned structures and mining related debris, install access roads, install temporary stream crossings, install drainage channels and road crossings, install erosion and sediment controls, and revegetate disturbed areas.

POTESTA prepared a conceptual reclamation plan; met with WVDEP, AML representatives to review the conceptual plan; prepared and submitted 60 and 90 percent review documents (plans, specifications, bid form, and engineer's construction cost estimate); responded to WVDEP review comments; and prepared an application for coverage of reclamation activities under the WVDEP general construction stormwater permit.



STATEMENT OF QUALIFICATIONS

PRIOR EXPERIENCE

RAGLAND (MOUNTS) LANDSLIDE AML EMERGENCY PROJECT

*West Virginia Department of Environmental Protection
Office of Abandoned Mine Lands
Mingo County, West Virginia*

Potesta & Associates, Inc. (POTESTA) was retained by the West Virginia Department of Environmental Protection (WVDEP) to prepare design plans and specifications for an emergency landslide project along Rockhouse Fork Road in the community of Ragland, West Virginia. The problem included a landslide which damaged a pre-manufactured home and moved it off of its foundation.



POTESTA completed a subsurface exploration and designed a stabilization/reclamation plan for the property. Reclamation included excavation and removal of saturated, landslide soils, installation of a rock buttress, installation of surface and subsurface drainage control measures, restoration of the modular home, erosion and sediment control, and revegetation of disturbed areas.

This project required expedited plan development since it was handled as an emergency.



STATEMENT OF QUALIFICATIONS

PRIOR EXPERIENCE

CRANY MINE DUMP

*West Virginia Department of Environmental Protection
Office of Abandoned Mine Lands
Wyoming County, West Virginia*

Potesta & Associates, Inc. (POTESTA) was retained by the West Virginia Department of Environmental Protection's Office of Abandoned Mine Lands (WVDEP) to prepare a reclamation design for the Crany Mine Dump in Wyoming County, West Virginia. The main problem included a 20-acre coal refuse pile with steep slopes. The refuse had very little vegetative cover, severe erosion features including drainage gullies 20 to 30 feet deep, and angle of repose slopes over most of the refuse pile. Coal refuse disposal filled the original stream in the hollow. Continued erosion was occurring over the coal refuse pile, severely impacting the receiving streams. Other challenges included gas transmission lines on and around the refuse pile including a gas well and compressor unit.



POTESTA mapped gas facilities; developed a grading plan to result in stable slopes and terraces on the regraded refuse pile; designed drainage channels and conveyances to carry water off and around the regraded coal refuse pile; designed a sediment basin for temporary control during construction; specified adjacent soil borrow areas; prepared technical specifications, drawings, and related bid documents; and prepared applications for required environmental permits. The proposed reclamation plan included 348,000 cubic yards of unclassified excavation, 2,800 linear feet of drainage channels, 22 acres of soil cover, and 33 acres of revegetation.

STATEMENT OF QUALIFICATIONS

PRIOR EXPERIENCE

SUNDIAL (HATFIELD) REFUSE PILES

*West Virginia Department of Environmental Protection
Office of Abandoned Mine Lands
Raleigh County, West Virginia*

Potesta & Associates, Inc. (POTESTA) was retained by the West Virginia Department of Environmental Protection's Office of Abandoned Mine Lands (WVDEP) to prepare a reclamation design for the Sundial Refuse Piles in Raleigh County, West Virginia. The site was a former mining complex and included four distinct refuse piles that lacked vegetation and were eroding, open mine portals, and abandoned structures such as hoist houses.



As part of this project, the following were completed:

- Ground survey.
- Geotechnical exploration.
- Preparation of construction drawings, technical specifications, bid form, and engineer's estimate of probable construction costs.



The reclamation design anticipated approximately 372,000 cubic yards of earthwork, 15,000 feet of drainage channel, 3,000 feet of underdrains, 26 mine seals, and demolition and removal of numerous structures, including historic mine cars.

The project was bid at a construction price of approximately \$3,700,000.

STATEMENT OF QUALIFICATIONS

PRIOR EXPERIENCE

WILLIAMSON (HATFIELD) NURSING HOME LANDSLIDE MAINTENANCE

*West Virginia Department of Environmental
Protection - Office of Abandoned Mine Lands
Williamson, West Virginia*

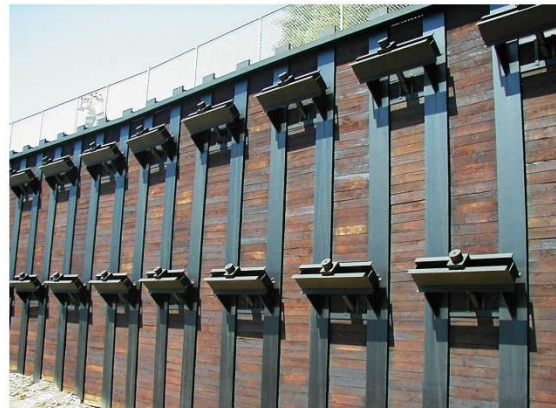


Potesta & Associates, Inc. (POTESTA) was retained by the West Virginia Department of Environmental Protection - Office of Abandoned Mine Lands (WVDEP) to evaluate and perform geotechnical engineering services for a landslide below the parking lot of the Mingo Manor Nursing Home and above the Hatfield residence. The project area was the site of a former WVDEP reclamation project 15 years earlier. The previous project included regrading of the mine spoil that had been formerly disposed of in this area, as well as drainage improvements.

A landslide occurred in the hillside threatening damage to the residence at the base of the hillside, as well as causing damage to the nursing home parking lot at the top of the hillside and potentially threatening damage to structures at the nursing home facility.

POTESTA performed a subsurface exploration to assist in evaluating the landslide condition. The remedial measures to correct the landslide area included the design of a 456-foot steel soldier beam and wood lagging retaining wall. The retaining wall included a rock anchor tie-back system to minimize the potential for additional settlement of the nursing home parking lot area and potential future damage to the structures within the nursing home facility.

As part of the project, POTESTA assisted the WVDEP with contract administration and performed construction observation services during the construction phase of the project.



STATEMENT OF QUALIFICATIONS

PRIOR EXPERIENCE

MACARTHUR SUBSIDENCE PHASE 1

*West Virginia Department of Environmental Protection- AML
Raleigh County, West Virginia*



Potesta & Associates, Inc. (POTESTA) was retained by the West Virginia Department of Environmental Protection, Office of Abandoned Mine Lands and Reclamation, to develop a subsidence control/prevention plan for a portion of the community of MacArthur in Raleigh County, West Virginia. MacArthur had been undermined and several claims of subsidence were being reported by home owners. The project consisted of developing a subsidence control plan for 41 homes and 5 garages within the community. In addition to the subsidence control/prevention plan,

POTESTA developed technical specifications for the project. A total of 18 holes were drilled throughout the community to estimate the location and thickness of the mine workings and to log the overburden strata. Down-hole camera surveillance was performed at selected borehole locations in an attempt to discover the condition of the overlying rock strata in the borehole, as well as collection of video at the mine level. The subsidence control/prevention plan included vertical and angled drilling of injection holes for placement of grout and concrete in the mine workings. The subsidence control/prevention plan was only developed to prevent subsidence under the 41 homes and 5 garages. The construction phase of the project has been completed and included over 200 vertical and angled injection holes.



STATEMENT OF QUALIFICATIONS

PRIOR EXPERIENCE

MACARTHUR SUBSIDENCE PHASE II

*West Virginia Department of Environmental Protection- AML
Raleigh County, West Virginia*

Potesta & Associates, Inc. (POTESTA) was retained by the West Virginia Department of Environmental Protection, Office of Abandoned Mine Lands and Reclamation, to develop a subsidence control/prevention plan for a portion of the community of MacArthur in Raleigh County, West Virginia. Additional home owners reported subsidence problems in an area adjacent to Phase I of the MacArthur Subsidence project. Due to the construction cost related to Phase I of the project, it was determined that an additional phase would be required.



Phase II of the project consisted of developing a subsidence control/prevention plan for 28 homes, 1 business and 3 garages within the community. Phase II of the project is located to the east and adjacent to Phase I. In addition to the subsidence control/prevention plan, POTESTA developed technical specifications for the project. A total of 9 holes were drilled throughout the community to estimate the location and thickness of the mine workings and to log the overburden strata. Down-hole camera surveillance was performed at selected borehole locations in an attempt to discover the condition of the overlying rock strata in the borehole, as well as collection of video at the mine level. The subsidence control/prevention plan included vertical and angled drilling of injection holes for placement of grout and concrete in the mine workings. The subsidence control/prevention plan was only developed to prevent subsidence under the 28 homes, 1 business and 3 garages. POTESTA has estimated that over 130 vertical and angled injection holes will be required to complete construction of the project.

STATEMENT OF QUALIFICATIONS

PRIOR EXPERIENCE

GEORGES CREEK PORTALS

*West Virginia Department of Environmental Protection
Office of Abandoned Mine Lands
Georges Creek, Kanawha County, West Virginia*

Potesta & Associates, Inc. (POTESTA) was retained by the West Virginia Department of Environmental Protection's Office of Abandoned Mine Lands to design mine seals for abandoned mine openings along Georges Creek and U.S. Route 60.



Design included a total of 28 mine seals. The following types of seals were utilized:

- Urethane Foam with Applied Mortar
- Typical West Virginia Wet Seals
- Wet Seals with Bat Gates
- Dry Seals

In addition to mine seals, the design included piping to convey mine drainage to receiving streams. The conveyance piping layout required two West Virginia Division of Highways road crossing permits. An underdrain was utilized to convey subsurface drainage.

STATEMENT OF QUALIFICATIONS

PRIOR EXPERIENCE

MILL CREEK REFUSE PILE

*West Virginia Department of Environmental Protection
Office of Abandoned Mine Lands
Gary, West Virginia*

Potesta & Associates, Inc. (POTESTA) was retained by the West Virginia Department of Environmental Protection (WVDEP) to prepare and design plans and specifications to reclaim an abandoned mine land site located near Gary, West Virginia. Work to reclaim the site included the removal of debris, refuse relocation and compaction, 1-foot soil placement, tree removal, and regrading.

Development of engineering reports, construction plans, and specifications for the stabilization of the Mill Creek mine refuse site.



Provision of plans and specifications which include, but are not limited to, plan views, cross sections, maps, photographs, and drawings.

Final design is to meet the WVDEP standards.

STATEMENT OF QUALIFICATIONS

PRIOR EXPERIENCE

KOPPERSTON – JOHN’S BRANCH REFUSE PILE EMERGENCY AML PROJECT

*West Virginia Department of Environmental Protection
Office of Abandoned Mine Lands and Reclamation
Wyoming County, West Virginia*

Potesta & Associates, Inc. (POTESTA) was selected by the West Virginia Department of Environmental Protection, Office of Abandoned Mine Lands and Reclamation (WVDEP, AMLR) to design an emergency plan, prepare bidding and contract documents, and provide support to abate problems from an eroding coal refuse dam. Coal refuse, soil, and rock were eroding from the steeply sloped, uncovered portion of the coal refuse pile. Eroded coal refuse washed over two Norfolk Southern Railroad tracks suspending service to a coal loadout facility. POTESTA was requested to expedite engineering work in order that WVDEP, AMLR could bid the project and stabilize the eroding coal refuse so that the railroad could be placed back into service.



POTESTA performed field reconnaissance, analyzed surface runoff flow patterns, and quantified surface runoff discharge rates from the approximately 40-acre refuse pile located at the bottom of a 160-acre watershed.



POTESTA provided a survey crew and engineer that selected and staked proposed drainage channels and culverts in the field. Utilizing the survey information, POTESTA prepared plan view drawings, channel and culvert profiles, and details depicting the proposed abatement measures to control surface water and minimize erosion.

The plan included 7,150 linear feet of riprap and grouted riprap channels to carry surface runoff over and around the steep coal refuse pile. The project included twin 72-inch reinforced concrete pipes installed beneath the railroad and a 5-foot by 10-foot concrete box culvert to carry runoff under WV Route 85 to the receiving stream. POTESTA obtained approvals from Norfolk Southern Railroad and the West Virginia Division of Highways so that construction could proceed.

STATEMENT OF QUALIFICATIONS

PRIOR EXPERIENCE

JOHN'S BRANCH COAL REFUSE DAM AML RECLAMATION PROJECT

*West Virginia Department of Environmental Protection
Office of Abandoned Mine Lands and Reclamation
Wyoming County, West Virginia*



Potesta & Associates, Inc. (POTESTA) was selected by the West Virginia Department of Environmental Protection, Office of Abandoned Mine Lands and Reclamation (WVDEP, AMLR) to design a reclamation plan and prepare bidding and contract documents for the John's Branch Coal Refuse Dam Project in Wyoming County. The site was an abandoned, unreclaimed coal refuse pile and impoundment, approximately 40 acres in size. A large portion of the coal refuse pile was poorly vegetated with steep slopes and severe erosion. Eroded coal refuse was eroding from the site and entering surface water receiving streams. The eroding coal refuse was also impacting the Norfolk Southern Railroad by filling railroad ditches, blocking cross culverts, and covering the railroad tracks. Rail service on the tracks was suspended due to the severe erosion.

POTESTA developed a reclamation design; prepared technical specifications, drawings, contractor's bid form, engineer's construction cost estimate and calculations brief; prepared a construction stormwater National Pollutant Discharge Elimination System (NPDES) application; and assisted WVDEP, AMLR with pre-bid and pre-construction meetings. POTESTA's reclamation design included regrading of the coal refuse pile to flatten steeply sloped portions of the refuse pile and to establish benches or terraces on the face of the coal refuse pile to control erosion and surface runoff. POTESTA designed a system of surface water drainage channels to control runoff. The reclamation plan included soil covering coal refuse and revegetation.



A portion of the top of the coal refuse pile was covered with wetland vegetation. Two natural gas wells also existing on the top of the refuse pile. POTESTA's reclamation plan preserved and protected these areas, avoiding negative impacts.

POTESTA identified soil and rock borrow areas for the contractor's use for obtaining soil cover material and rock riprap for surface water channel linings. POTESTA also coordinated with a natural gas producer to temporarily move natural gas production lines crossing the surface of the coal refuse pile so that reclamation could be completed.

STATEMENT OF QUALIFICATIONS

PRIOR EXPERIENCE

MEASLE FORK REFUSE

*West Virginia Department of Environmental Protection
Office of Abandoned Mine Lands
Wyoming County, West Virginia*

Potesta & Associates, Inc. (POTESTA) was retained by the West Virginia Department of Environmental Protection's Office of Abandoned Mine Lands (WVDEP) to regrade/cover all refuse material with at least 12 inches of topsoil, remove all debris from the site, and to stabilize Measle Fork and the stream bank due to refuse encroaching the water way.

The Measle Fork Refuse area was a 25-acre site with 7 acres of steep slopes with exposed refuse to be regraded and covered. Approximately 2,600 feet of Measle Fork were stabilized to protect the stream and prevent further erosion of the stream bank and potential for refuse to enter the stream. The regrading and stream bank protection included three terraced planting areas. The site was also provided with 4,500 feet of drainage channels.

POTESTA prepared drawings, technical specifications, contractor's bid forms, engineer's construction cost estimate, and calculations brief for the project. POTESTA also attended the pre-bid and pre-construction conferences to assist WVDEP with the project.

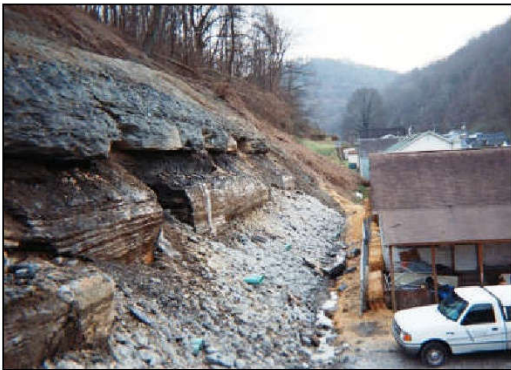


STATEMENT OF QUALIFICATIONS

PRIOR EXPERIENCE

GEORGE'S CREEK (LUCAS) LANDSLIDE MAINTENANCE

*West Virginia Department of Environmental
Protection - Office of Abandoned Mine Lands
Kanawha County, West Virginia*



Potesta & Associates, Inc. (POTESTA) was retained by the West Virginia Department of Environmental Protection - Office of Abandoned Mine Lands (WVDEP) to evaluate and perform geotechnical engineering services for a landslide related to historic mining activity which was threatening a nearby residential structure.

A portion of the existing hillside immediately adjacent to the rear of the residential structure was excavated prior to construction of the structure to a near vertical slope exposing weathered shale and a coal seam near the slope's base. The exposed coal seam was determined to be the No. 2 Gas seam which was reportedly mined in the 1950s. Some drainage was noted flowing from the coal seam and the resulting water was conveyed through a nearby culvert to Georges Creek. Attempts were made by WVDEP to excavate loose rock and soil from the hillside in an effort to improve stability of the slope. Following this initial work, the slope continued to slough with periodic small slides and slope movement believed to be caused by continued subsidence of the underground mine works.

POTESTA performed a subsurface exploration to assist in evaluating the landslide condition, including the type and condition of the rock located in the slope, as well as the attitude, thickness and condition of the underlying coal seam. POTESTA survey crews also completed a topographic survey of the affected area including the surrounding residential structure, drains and wooded hillside. The remedial measures to correct the landslide area included the design of a 25-foot high steel soldier beam and concrete lagging retaining wall with sloped, compacted backfill constructed from on-site materials. The retaining wall design required the application of a rock anchor tie-back system due to mine voids existing at the base of the hillside slope that were encountered during the subsurface exploration.



As part of the project, POTESTA assisted the WVDEP with contract administration and performed construction observation services during the construction phase.

STATEMENT OF QUALIFICATIONS

PRIOR EXPERIENCE

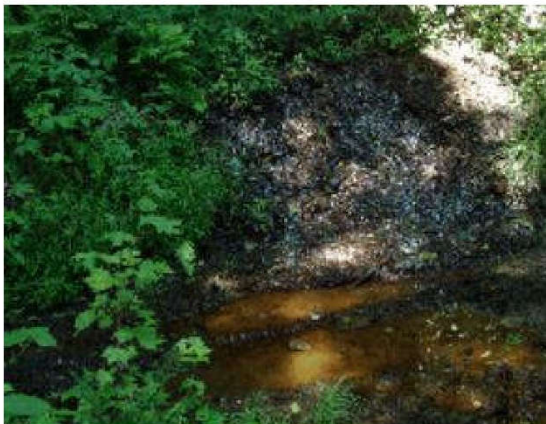
TAYLORVILLE (CANTRELL) DRAINAGE

*West Virginia Department of Environmental Protection
Office of Abandoned Mine Lands
Mingo County, West Virginia*

Potesta & Associates, Inc. (POTESTA) was retained by the West Virginia Department of Environmental Protection's Office of Abandoned Mine Lands (WVDEP) to evaluate and develop a reclamation design for mine drainage impacting a community in Taylorville, Mingo County, West Virginia. POTESTA completed field reconnaissance and surveying to develop topographic mapping, and prepared construction bid documents for the reclamation design.



The Taylorville project included three different sites. The first site included mine drainage along the hillside behind a mobile home. The second site included mine drainage impacting a driveway and parking area. The third site included mine drainage above a house.



POTESTA designed underdrains to collect and convey drainage from the first two sites to the West Virginia Division of Highways (DOH) right-of-way. Approximately 1,100 feet of new corrugated plastic pipe with DOH Type G drop inlets were designed to convey mine drainage to Pigeon Creek, while also handling storm water from the DOH roadway. A standard wet mine seal was designed with riprap channels to handle the mine drainage at the third site.

POTESTA prepared drawings, technical specifications, contractor's bid forms, engineer's construction cost estimate, and calculations brief for the project. POTESTA also attended the pre-bid and pre-construction conferences to assist WVDEP with the project.

STATEMENT OF QUALIFICATIONS

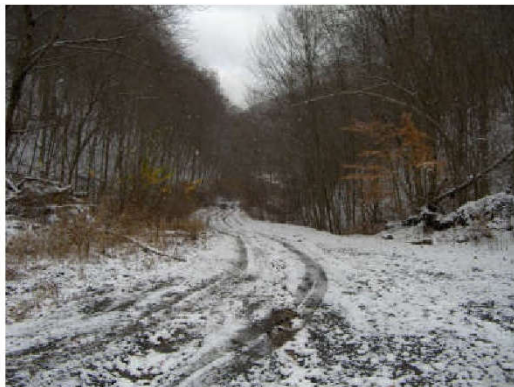
PRIOR EXPERIENCE

LANDO (EDWARDS) DRAINAGE

*West Virginia Department of Environmental Protection
Office of Abandoned Mine Lands
Lando, West Virginia*

Potesta & Associates, Inc. (POTESTA) was retained by the West Virginia Department of Environmental Protection's Office of Abandoned Mine Lands (WVDEP) for a project that included the regrading of mine spoil that had been formerly disposed of in this area, as well as installation of mine portal seals and drainage improvements. The project consisted of three sites:

- A refuse pile graded to flattened slopes and topped with a soil cover.
- Channeling and diverting into nearby streams some drainage affecting nearby residences.
- Rehabilitating two existing mine seals and installing one new mine seal.



POTESTA's work on the project included surveying and development of mapping, as well as development of the repair, drainage and reclamation plans.

POTESTA prepared drawings, technical specifications, contractor's bid form, engineer's construction cost estimate, and calculations brief for the project. POTESTA also attended the pre-bid and pre-construction conferences to assist WVDEP with the project.

STATEMENT OF QUALIFICATIONS

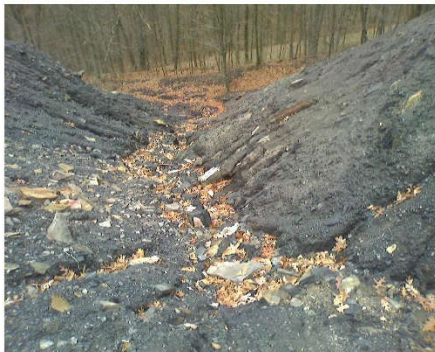
PRIOR EXPERIENCE

MOUNTAIN RUN REFUSE AND PORTALS

*West Virginia Department of Environmental Protection
Office of Abandoned Mine Lands
Masontown, West Virginia*

Potesta & Associates, Inc. (POTESTA) was retained by the West Virginia Department of Environmental Protection's Office of Abandoned Mine Lands (WVDEP) to evaluate the Mountain Run Refuse and Portals Project. This project consisted of 15 collapsed mine portals, five refuse piles covering 3 acres, and the demolition/removal of miscellaneous areas of mining debris, garbage, abandoned mine structures, and rail timbers. Our services included:

- Drilling of the refuse piles, mine portals and potential soil borrow areas.
- Field survey to develop site mapping.
- Regrading of the refuse piles to stabilize the slopes.
- Design of drainage control channels including a limestone channel to reduce acid mine drainage.
- Design of five wet mine seals and 11 dry mine seals, with the wet seals including a modified outlet pipe to maintain the current discharge from the portal which is used as a portion of a local resident's water supply.



POTESTA prepared drawings, technical specifications, contractor's bid forms, engineer's construction cost estimate, and calculations brief for the project. POTESTA also attended the pre-bid and pre-construction conferences to assist WVDEP with the project.

STATEMENT OF QUALIFICATIONS

PRIOR EXPERIENCE

RACHEL REFUSE AND STRUCTURES

*West Virginia Department of Environmental Protection
Office of Abandoned Mine Lands
Marion County, West Virginia*

Potesta & Associates, Inc. (POTESTA) was retained by the West Virginia Department of Environmental Protection's Office of Abandoned Mine Lands (WVDEP) to evaluate three sites to upgrade access roads, regrade/cover all refuse material with at least 12 inches of topsoil, and to dismantle and remove all buildings, equipment and debris from the site. The project also included construction of drainage control structures to carry water safely offsite and revegetation of all areas disturbed by the construction.

Site 1 was regraded and all refuse was covered with 1 foot of soil. An access road for a gas well was regraded across this site.

Site 2 was a refuse pile located behind a residence. This area was regraded to lower the pile by 10 feet and flatten the slopes on the sides. A drainage ditch was placed between the refuse pile and the house.

Site 3 was an existing impoundment. The site was regraded to remove the dam and place a grouted riprap drainage system at an existing drainage structure. All buildings and debris were removed from this site.



POTESTA prepared drawings, technical specifications, contractor's bid forms, engineer's construction cost estimate, and calculations brief for the project. POTESTA also attended the pre-bid and pre-construction conferences to assist WVDEP with the project.

STATEMENT OF QUALIFICATIONS

PRIOR EXPERIENCE

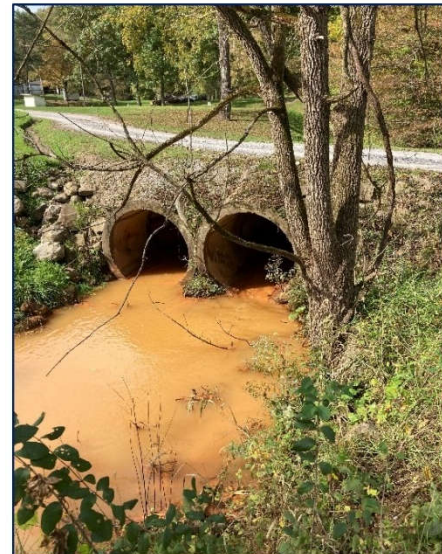
SARDIS (SAAS) LANDSLIDE

*West Virginia Department of Environmental Protection
Division of Land Restoration
Office of Abandoned Mine Lands and Reclamation
Harrison County, West Virginia*

Potesta & Associates, Inc. (POTESTA) was retained by the West Virginia Department of Environmental Protection, Division of Land Restoration, Office of Abandoned Mine Lands and Reclamation (WVDEP-DLR-AML) to provide engineering and design services for remediation of two landslides and acid mine drainage (AMD) that is being discharged from an abandoned deep mine in Harrison County, WV near the community of Sardis. The project consisted of two problem areas. One being a landslide that previously impacted CR 22 and was emitting AMD drainage to the existing roadside ditch and associated hillside. The landslide continued to show signs of instability and could impact the county road again in the future. The other problem area included a previous AML project located approximately 1500-2000 feet south of the slide area causing AMD drainage issues that were impacting local residential properties and their dwellings.

Based on observations and discussions with WVDEP-DLR-AML during the site visit, POTESTA implemented the following reclamation approach.

- Performed field surveying to supplement mapping to be provided by WVDEP-DLR-AML.
- Performed subsurface exploration at the landslide and mine portals to estimate current water levels, void thicknesses, and portal floor elevations.
- Provided design to stabilize the landslide.
- Wet mine seals, seep collectors, or horizontal borings were provided for the various mine entries and seeps identified within the project area.
- Drainage channels and/or subsurface drains were provided to convey mine drainage to nearby ditches, culverts and receiving streams.
- Areas disturbed during drilling were revegetated.



STATEMENT OF QUALIFICATIONS

PRIOR EXPERIENCE

MORGAN MINE ROAD (BURKEY) MINE FIRE

*West Virginia Department of Environmental Protection
Office of Abandoned Mine Lands
Arthurdale, West Virginia*

Potesta & Associates, Inc. (POTESTA) was retained by the West Virginia Department of Environmental Protection (WVDEP) to prepare and design plans and specifications to reclaim an abandoned mine land site located near Arthurdale, West Virginia. The project consisted of an approximate 6.4-acre area of mine reserve that was burning. The area had previously been strip mined around the extent of the mine seam being evaluated and the WVDEP AML Emergency Group had performed reclamation in this area in an attempt to suffocate the fire.

The area continued to exhibit signs of burning so the WVDEP retained POTESTA to perform an evaluation of the fire and recommend potential methods to extinguish the area. POTESTA's scope of services included advancing 20 borings throughout the area being evaluated and by obtaining downhole temperature readings. Along with temperatures and proximate coal analysis obtained from some of the borings, POTESTA determined the likely extents of the fire.

POTESTA then prepared preliminary plans to extinguish the fire by removal of the seam and regrading of the project area. The plans included an excavation plan, erosion control plans, drainage plans, and final regrading plans. After the plans and technical specifications were developed, the WVDEP was able to make an informed decision regarding the potential reclamation costs associated with the project as compared to the potential ramifications of a "No-Reclamation" option.



STATEMENT OF QUALIFICATIONS

PRIOR EXPERIENCE

JESSOP HIGHWALL #10

*West Virginia Department of Environmental Protection
Office of Abandoned Mine Lands
Tunnelton, West Virginia*



Potesta & Associates, Inc. (POTESTA) was retained by the West Virginia Department of Environmental Protection (WVDEP) to prepare design plans and specifications to reclaim three abandoned mine land (AML) sites located near Tunnelton, West Virginia. Work to reclaim the three sites included sealing of abandoned mine portals, regrading of highwalls and collection of drainage from some of the abandoned mine portals and seeps. POTESTA utilized aerial mapping and ground survey to create topographic mapping of the sites.

Site 1

- Regraded approximately 1,150 feet of highwall averaging approximately 25 feet in height.
- Monitored test borings at the proposed mine portal sites to determine the location and the depth of mine voids, and the amount of water in the voids.
- Designed the closure of seven abandoned mine portals using a wet seal or bat gate mine seal.
- Designed drainage channels to collect water from the mine portals to discharge into a nearby stream.
- Designed a mine portal collection system that included 18 HDPE manholes.
- Incorporated a previously designed acid mine drainage collection and treatment system into our design.

Site 2

- Regraded approximately 7,500 feet of highwall averaging approximately 20 feet in height.
- Monitored test borings at the proposed mine portal sites to determine the location and depth of mine voids, and the amount of water in the voids.
- Designed the closure of three abandoned mine portals using a wet seal or modified mine seal.
- Designed drainage channels to collect water from the mine portals to discharge into a nearby stream.



Site 3

- Designed an underdrain system behind a residence and garage to prevent damage to the structures from a seep discharging acid mine drainage.

POTESTA prepared drawings, technical specifications, contractor's bid forms, engineer's construction cost estimate, and calculations brief for the project. POTESTA also attended the pre-bid and pre-construction conferences to assist WVDEP with the project.

STATEMENT OF QUALIFICATIONS

PRIOR EXPERIENCE

FAIRMONT EAST MINE DRAINAGE

*West Virginia Department of Environmental Protection
Office of Abandoned Mine Lands
Fairmont, West Virginia*

Potesta & Associates, Inc. (POTESTA) was retained by the West Virginia Department of Environmental Protection's Office of Abandoned Mine Lands (WVDEP) to provide engineering services regarding the conveyance of mine seepage around residential areas and into the City of Fairmont's storm sewer system. The project area is located along Palatine Avenue and Mason Street. Abandoned underground mine works caused flooding problems along these streets.

POTESTA performed the following tasks to complete this project:

- Mine map review.
- Survey to develop mapping.
- Subsurface exploration.
- Design of mine drainage collection system and storm sewer system to convey runoff to the City of Fairmont's storm sewer system.
- Design of collection system consisting of 15-inch corrugated plastic pipe to City of Fairmont's standards, including pavement overlay to impacted streets.



STATEMENT OF QUALIFICATIONS

PRIOR EXPERIENCE

LAKE LYNN COMPLEX

*West Virginia Department of Environmental Protection
Office of Abandoned Mine Lands
Monongalia County, West Virginia*

Potesta & Associates, Inc. (POTESTA) was retained by the West Virginia Department of Environmental Protection's Office of Abandoned Mine Lands (WVDEP) to evaluate the Lake Lynn Complex Project. This project consisted of three separate sites including 15 mine portals, three highwalls (totaling approximately 1,400 lineal feet), and the demolition/removal of miscellaneous areas of mining debris, garbage, and abandoned mine structures. Our services included:

- Drilling of the refuse piles, mine portals and potential soil borrow areas.
- Field survey to develop site mapping.
- Regrading of the refuse piles to stabilize the three highwalls that included 50,000 cubic yards of earthwork.
- Design of drainage control structures including limestone lined channels to reduce acid mine drainage.
- Design of nine wet mine seals and six dry mine seals, with seven of the wet seals and two of the dry seals including bat gate outlets.

POTESTA performed a subsurface exploration, prepared construction level drawings, technical specifications, bid documents, engineer's opinion of probable cost, and a calculations brief for the project. POTESTA also prepared permit applications for WVDEP stormwater and West Virginia Division of Highways project entrances. POTESTA also attended pre-bid and pre-construction conferences with WVDEP.



Site 2: Proposed Bat Gate Wet Mine Seal Location/Highwall Area

STATEMENT OF QUALIFICATIONS

PRIOR EXPERIENCE

MONONGAHELA BOULEVARD ROCKFALL

*West Virginia University
Morgantown, West Virginia*

Potesta & Associates, Inc. (POTESTA) was contacted by West Virginia University (WVU) after a substantial rockfall occurred along Monongahela Boulevard in Morgantown, West Virginia. POTESTA obtained Lidar mapping, aerial drone footage, and an orthophoto from a drone. POTESTA assessed the hillside and worked with GeoStabilization International (GSI) to determine potential remedial actions. POTESTA performed several site visits and participated in numerous meetings with WVU to discuss the failure and potential remediation options.



POTESTA was the Owner's representative for WVU during construction. The following services were provided:

- Coordinating with the selected repair contractor in assessing the stability of the rockfall areas.
- Review of shop drawings submitted as part of the remedial design.
- Serving as liaison between the contractor and WVU during the design, as well as during construction including attending meetings as requested.



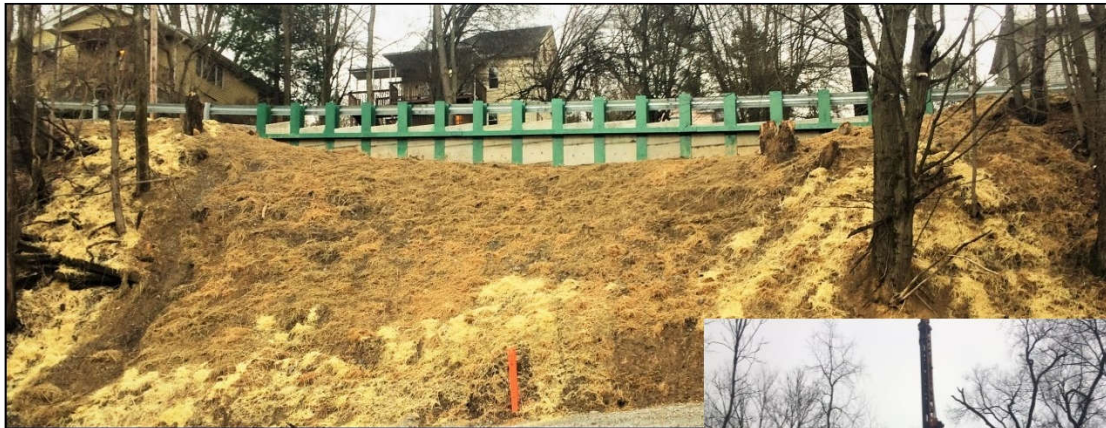
STATEMENT OF QUALIFICATIONS

PRIOR EXPERIENCE

JACOB STREET SLIP REPAIR TOPOGRAPHIC SURVEY

*City of Morgantown
Monongalia County, West Virginia*

Potesta & Associates, Inc. (POTESTA) was retained by the City of Morgantown, West Virginia to provide civil engineering design services for the Jacob Street Slip Repair. This project included a subsurface exploration study, engineering design, and a global stability evaluation of the failed slope in a residential area. The slope stabilization method involved the installation of a soldier beam and lagging retaining wall located in the area of the scarp just off the edge of the road. The remaining failed slope material below the wall was removed and replaced with compacted soil backfill.



- **Surveying** – Topographic mapping of the project area.
- **Coordination and Consulting with Various Groups/Agencies** – Working with the City of Morgantown’s Engineering Department, coordination with landowner(s) and utility providers in the area. Also, attendance of pre-bid and pre-construction meetings to assist the client in bid review and decision making.
- **Civil Site** – Retaining wall design and grading plan including cut/fill for the construction site. Site plan and profile, retaining wall section and profile, pavement plan and detail, and erosion and sediment control details.
- **Construction Observation/Administration** – Various services during the construction phase including schedule coordination between client and contractor(s), and on-site inspection and materials testing (compaction, concrete, etc.).



STATEMENT OF QUALIFICATIONS

PRIOR EXPERIENCE

GEOTECHNICAL SERVICES – WVSR 4 REPAIR AND STABILIZATION

*WVDOH/WVDOH
Various Locations, West Virginia*

Potesta & Associates, Inc. (POTESTA) has recent experience working for the WVDOH/DOH for repairs and stabilization of three separate sections of WVSR 4, which were undercut and washed out during the June 2016 floods. The project was completed for Orders Construction Company and CDM Smith under an Emergency Design/Build contract. POTESTA's services included the completion of a subsurface exploration, evaluation of subsurface soil and rock conditions, and the development of geotechnical design recommendations for the installation of two sections of soldier beam and lagging retaining walls, as well as the sizing and foundation design for a new structural box culvert to replace a failed and washed out section of culvert under WVSR 4 at a third location.



STATEMENT OF QUALIFICATIONS

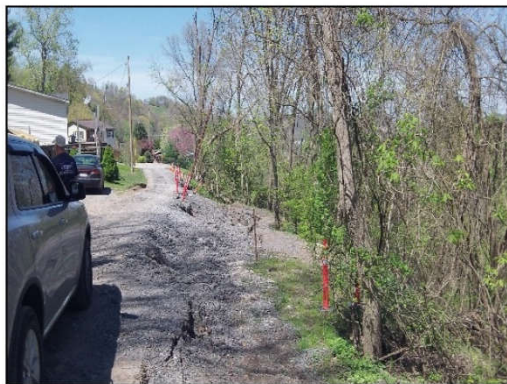
PRIOR EXPERIENCE

BOWSER STREET LANDSLIDE REPAIR

*Town of Granville
Granville, West Virginia*

Potesta & Associates, Inc. (POTESTA) was retained by the Town of Granville (Granville) to complete a subsurface exploration and to prepare a repair and stabilization design for a section of failed soil and weathered rock slope along Bowser Street in Granville, West Virginia. The slope failure was situated immediately down slope from a residential home limiting access to the site. POTESTA completed the following tasks in accomplishing the repair:

- Preliminary and continued surveying to establish limits of disturbance and property boundaries, as well as verify quantities during construction.
- Five subsurface borings were completed above, below, and within the slope in order to examine soil conditions and bedrock location.
- Cost-effective analysis on various possible solutions.
- Design of an engineered soil slope with a rock toe key at the base of the slip.
- Erosion and sediment control plans.
- Grading and drainage plans.
- Participated in condemnation hearings on select property.
- Coordinated with property owners.
- Construction administration (i.e., preparing a bid package and working with the town to receive bids and select contractor for the project).
- Construction monitoring, including bearing capacity and compaction testing.



Slide Before Repair



During Construction of Repair

STATEMENT OF QUALIFICATIONS

PRIOR EXPERIENCE

BONA VISTA DRIVE SLIP REPAIR SOLDIER BEAM & LAGGING RETAINING WALL

*Travelers Insurance/City of Charleston
Charleston, Kanawha County, West Virginia*



Potesta & Associates, Inc. (POTESTA) was retained by Travelers Insurance to provide civil engineering design services to repair a section of hillside below Bona Vista Drive in Charleston, West Virginia. This project included a subsurface exploration study, engineering design, and a global stability evaluation of the failed slope in a residential neighborhood. The slide was caused by a water main break beneath the paved Bona Vista Drive. The slope stabilization method involved the installation of a soldier beam and lagging retaining wall located in the area of the scarp just off the edge of

the road. The remaining failed slope material below the wall was removed and replaced with compacted soil backfill.

- **Surveying** – Topographic mapping of the project area.
- **Coordination and Consulting with Various Groups/Agencies** – Working with the City of Charleston’s Engineering Department, coordination with landowner(s) and utility providers in the area. Also, attendance of pre-bid and pre-construction meetings to assist the client in bid review and decision making.
- **Civil Site Design and Construction Documents** – Retaining wall design and grading plan including cut/fill for the construction site, and construction documents.
 - Construction Detail Drawings – Site plan and profile, retaining wall section and profile, pavement plan and detail, and erosion and sediment control details.
 - Bid Documents – Preparation of bid tables, contract documents, and review of contractors’ bids.
- **Construction Observation/Administration** – Various services during the construction phase including schedule coordination between client and contractor(s), and on-site inspection and materials testing (compaction, concrete, etc.).



STATEMENT OF QUALIFICATIONS

PRIOR EXPERIENCE

PRIBBLE STORAGE TANK LANDSLIDE STABILIZATION

*Stone Energy Corporation
New Martinsville, Wetzel County, West Virginia*

Potesta & Associates, Inc. (POTESTA) was retained by Stone Energy Corporation to develop a stabilization plan for a failed soil fill slope immediately adjacent to two primary 2.5-million gallon storage tank structures. The failed slope impacted and undermined the concrete foundation of the secondary containment tank which surrounded both primary storage tanks. The primary tanks served to store recirculated water utilized for hydraulic fracturing efforts in the associated Marcellus Shale reserve. POTESTA's services included exploration of failed slope which included several subsurface borings, field testing, and sample collection for laboratory testing. Following completion of the field exploration, POTESTA prepared several regrading alternatives which were analyzed for long-term stability. The final alternative was developed to provide a final slope configuration which included a toe buttress, several rock toe keys/underdrains, and a surface drainage channel to collect, control, and convey surface and groundwater seepage from the regraded fill slope.



Following completion of the stability evaluation, POTESTA prepared construction documents which included construction plans and details, as well as a bid sheet and specifications for the work. Since the unsupported section of tank wall was situated near the top of the slope, the work was completed in two distinct phases, the initial phase included preparation of a site access road, clearing and grubbing, removal of saturated failed soil material near the mid-slope and toe, and excavation and establishment of the toe key foundation at the toe of the regraded slope. Upon completion of the toe excavation and placement of the slope buttress fill, off-site borrow material was imported to the site for placement and compaction of the slope. This work continued with 15 of the unsupported tank foundations, at which time work was suspended until the affected portion of the tank was disassembled and removed using a crane. Following removal of the tank, fill placement and compaction operations continued until the reconstructed slope reached the target final elevation. Once the slope was completed, the replacement tank foundation was installed and the replacement tank walls were erected. POTESTA provided full-time construction observation and field testing services during the entire duration of the slope reconstruction.

STATEMENT OF QUALIFICATIONS

PRIOR EXPERIENCE

GRANDVIEW SLIP REPAIR

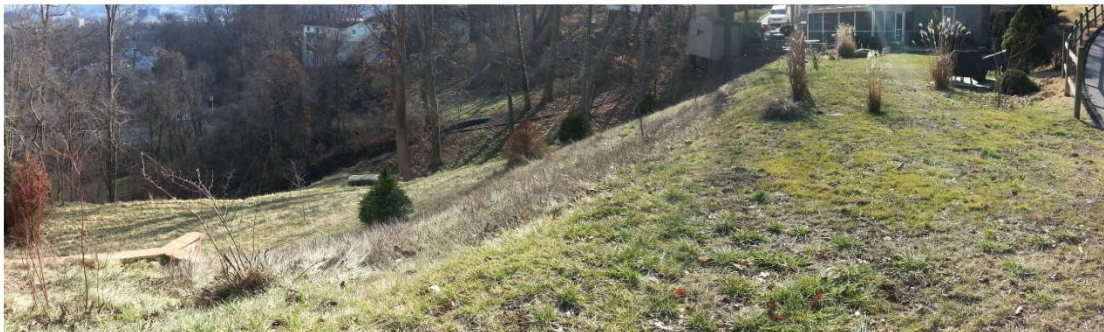
*City of Charleston
Kanawha County, West Virginia*

Potesta & Associates, Inc. (POTESTA) was retained by the City of Charleston to provide civil engineering design services for a slip that occurred on Charleston, West Virginia's Westside. This project involved a geotechnical assessment and development of regrading construction plans for the repair of a failed 50-foot-tall section of a soil slope below Grandview Drive in Charleston, West Virginia. The slope failure occurred between two adjacent residential structures and encompassed a sanitary sewer main, as well as storm drainage pipe. The stabilization plan involved the removal of the failed mass beginning at the toe of the slope and then working progressively upslope to result in a stabilized and regraded slope surface.



The work required the removal of all failed material to the underlying bedrock surface and included the installation of a shot rock toe buttress which was installed along a natural topographic bench near the toe. Following the completion of the slope repair, the affected utilities were installed either below or outside the limits of the regraded slide area.

- **Surveying** – Topographic mapping of the project area.
- **Geotechnical Exploration** was completed to determine the extent of the failed soil mass, as well as determine the depth of the underlying bedrock.
- **Civil Site Design and Construction Documents** – Regraded soil slope design with grading plan including cut/fill for the construction site.
 - Construction Detail Drawings – Site plan and profile, cross-section profiles, rock toe key detail, and erosion and sediment control details.
- **Construction Observation/Administration** – Various services during the construction phase including schedule coordination between client and contractor, and on-site inspection and soil density testing.



STATEMENT OF QUALIFICATIONS

PRIOR EXPERIENCE

WHEELING CREEK #7 DAM LANDSLIDE REPAIR

*West Virginia Conservation Agency,
Northern Panhandle Conservation District
Triadelphia, Ohio County, West Virginia*

Potesta & Associates, Inc. (POTESTA) was hired by the West Virginia Conservation Agency (WVCA) and the Northern Panhandle Conservation District (NPCD) to evaluate a landslide that has developed on within the Wheeling Creek Dam #7 Impoundment. The landslide is currently impacting a handicap access and public fishing area and is encroaching into the normal pool elevation of the impoundment. POTESTA completed a subsurface evaluation which included drilling six borings and completing a laboratory testing program. Field surveys were completed, and a topographic map developed that served as a baseline map for the design of repair options. A slope stability analysis was performed, and recommendations made for final repair options.



STATEMENT OF QUALIFICATIONS

PRIOR EXPERIENCE

UPPER GRAVE CREEK #1 DAM LANDSLIDE REPAIR

*West Virginia Conservation Agency,
Northern Panhandle Conservation District
Marshall County, West Virginia*

Potesta & Associates, Inc. (POTESTA) was hired by the West Virginia Conservation Agency (WVCA) and the Northern Panhandle Conservation District (NPCD) to evaluate a landslide that developed on the slope of the auxiliary spillway at the Upper Grave Creek Impoundment in Marshall County, West Virginia. The slide occurred near the toe of the slope and has dislodged a volume of soil that caused undue pressures on the uphill side of a water treatment clarifier operated by the Town of Cameron for public water supply. POTESTA completed a subsurface evaluation which included drilling four borings, equipping two of the borings with piezometers to measure groundwater levels, and completing a laboratory testing program. Field surveys were completed, and a topographic map developed that served as a baseline map for the design of repair options. A slope stability analysis was performed, and recommendations made for final repair options.



STATEMENT OF QUALIFICATIONS

PRIOR EXPERIENCE

KINETIC PARK SLIP REPAIR

*Huntington Municipal Development Authority
Huntington, West Virginia*

Potesta & Associates, Inc. (POTESTA) was hired by the Huntington Municipal Development Authority (HMDA) to remediate the Kinetic Park landslide in the City of Huntington, West Virginia. The park developed a large landslide on the western facing fill slope. The landslide was approximately 4 acres in size and over 150 feet tall. It was very important for POTESTA to design a permanent stabilized design as the landslide was located within the city limits and impacted both residential and commercial properties.



The landslide damage neighboring property below the hill, impacted a stream and resulted in the uncontrolled discharge of stormwater from Kinetic Park.



POTESTA completed a substantial subsurface exploration to aid in the development of the landslide remediation plans, as well as completing topographic mapping of the entire area.

Following the completion of the subsurface exploration, POTESTA prepared a full set of plans to remediate the landslide. The remediation included:

- The regrading of the hillside to promote global stability with the construction of two rock toe keys. One at the bottom of the slope as well as one at the mid-slope.
- The 680 feet of 48-inch corrugated plastic stormwater pipe that collects stormwater from the top of Kinetic Park.
- Numerous surface stormwater collection devices, as well as thousands of feet of underdrains, were installed to collect and convey the groundwater.



The final design of the stabilized hillside resulted in three benches and well over 100,000 cubic yards of material excavated and placed. Due to the nature of onsite soils, POTESTA also utilized cement reinforced soils to allow for construction to advance even during the winter months.

STATEMENT OF QUALIFICATIONS

PRIOR EXPERIENCE

NORTH EDGEMONT SLOPE STABILIZATION

Huntington Sanitary Board Huntington, West Virginia

Potesta & Associates, Inc. (POTESTA) was hired by the Huntington Sanitary Board (HSB) to maintain sanitary sewage pipeline and remediate damages caused by breaks for the City of Huntington, West Virginia. A damaged sanitary line contributed to a landslide just below North Edgemont Road.

The landslide was situated along a natural section of wooded hillside below North Edgemont Road. The landslide was approximately 90 feet in total height from top to bottom with an affected area of approximately 4 acres and extends downward behind two existing multi-story apartment condominium structures.

POTESTA monitored the landslide over the course of approximately a year in which an inclinometer was used to monitor the hillside movement. The monitoring program was done to understand the depth, rate and extent of the hillside movement.

Following the completion of the monitoring program, POTESTA prepared a full set of plans to remediate the landslide utilizing the information collected during the monitoring phase. The remediation included:

- The regrading of the hillside to promote global stability.
- The installation of two soldier beam and lagging walls.
- New stormwater surface controls as well as new stormwater inlets and pipe.
- Replacement of a section of damaged sanitary line and installation new manholes.

POTESTA also completed a subsurface exploration to aid in the preparation of the remediation plans. The subsurface exploration included the advancement of eight borings, and three of the borings had inclinometer casing installed for the monitoring phase.



STATEMENT OF QUALIFICATIONS

PRIOR EXPERIENCE

NIXON RIDGE SLIP REPAIR

*K&N Contracting, Inc.
Moundsville, West Virginia*

Potesta & Associates, Inc. (POTESTA) was hired by K&N Contracting, Inc. (KN) to monitor and provide field quality testing for the slip repair along Nixon Ridge outside of Moundsville, West Virginia. This landslide was located along a section of right-of-way owned and maintained by a natural gas distribution company.

The landslide damage caused a 36-inch high pressure gas line to break which resulted in a large explosion that scorched and damaged numerous acres. The landslide that caused this section of line to break was approximately 350 feet tall and 50 to 100 feet wide.

POTESTA was onsite during the installation of a pier wall at the toe of the slope, as well as the regrading and slip repair efforts along the right-of-way.

Due to the nature and location of the remediation work, a steep slope safety plan was prepared by POTESTA to aid in the winching of tracked equipment up and down the slope. POTESTA evaluated each piece of equipment that was utilized on the steep slope. POTESTA's calculation showed the gas company that each piece of equipment that was working on the slope could do so in a safe manner while connected to a winch capable piece of equipment.

POTESTA had a field technician onsite during the construction to complete daily logs and to perform soil density tests using a nuclear density gauge. POTESTA's field technician also provided onsite concrete testing for the pier wall and established a testing regiment for the sampled concrete.



STATEMENT OF QUALIFICATIONS

PRIOR EXPERIENCE

FORT MARTIN CCB LANDFILL PERMIT APPLICATION/CONSTRUCTION INSPECTION

*Allegheny Energy Supply Company, LLC
Monongalia County, West Virginia*

Potesta & Associates, Inc. (POTESTA) was retained by Allegheny Energy Supply Company, LLC to develop a permit renewal application associated with a coal combustion by-product (CCB) landfill expansion. The project is located near Madsville, West Virginia. POTESTA developed a West Virginia/NPDES permit renewal application related to the existing portion of the Class F Industrial Landfill, as well as encompassing the expansion area of just under 100 acres.

POTESTA prepared a solid waste/NPDES water pollution control permit including supplemental evaluation of candidate sites for the expansion area; field exploration involving collection of soil, geological, and hydrological data; wetland and stream impact delineation; detailed design; and preparation of construction/bid documents for the landfill expansion. In conjunction, the project included two large leachate storage ponds and a composite landfill liner system. The capacity of the expansion area is approximately 8.7 million cubic yards of CCB.



POTESTA also performed construction observation/construction administration for the landfill project. Services provided by POTESTA included soil density testing, concrete testing, nondestructive and destructive testing for the liner system. POTESTA provided between one and four construction technicians to observe the contractor's construction activities, document construction activities and construction quality assurance testing, preparation of daily field activity logs, preparation of records of quality assurance testing, take photographs of the construction, and attend weekly progress meetings. POTESTA also prepared a summary of construction report for final approval of the construction by the West Virginia Department of Environmental Protection and prepared certifications of construction for each layer of the landfill liner system.

STATEMENT OF QUALIFICATIONS

PRIOR EXPERIENCE

CONSTRUCTION MONITORING AND CERTIFICATION OF CELL F-3a

Brooke County Sanitary Landfill Colliers, West Virginia

Potesta & Associates, Inc. (POTESTA) was retained by Brooke County Sanitary Landfill to provide construction quality assurance for the installation of the geosynthetic components of the liner system for Cell F-3a at the Brooke County Sanitary Landfill.

The liner system consisted of five geosynthetic layers placed over a prepared soil subgrade. POTESTA provided a full-time construction monitor to observe placement and witness quality control testing for the construction of the new cell. Cell F-3a was approximately 2.5 acres. POTESTA reviewed quality assurance/quality control test results provided by the manufacturer, observed and documented the arrangement of panels for the geosynthetic materials, observed placement and tying of two HDPE drainage net layers for leak detection and leachate collection, observed and documented daily trial seaming and testing for 80-mil HDPE geomembrane (primary liner) and 60-mil HDPE geomembrane (secondary liner), and observed and documented destructive and nondestructive seam testing of HDPE geomembrane panels.



Construction of the 60-mil HDPE geomembrane over the prepared soil subgrade and excavation of perimeter anchor trenches.



HDPE drainage net was installed as the leak detection layer above the 60-mil HDPE geomembrane.

POTESTA provided construction certifications for each geosynthetic layer and prepared a final summary of construction report for submittal to the West Virginia Department of Environmental Protection.

STATEMENT OF QUALIFICATIONS

PRIOR EXPERIENCE

LANDFILL CAPPING PROJECT

Client Confidential
Kanawha County, West Virginia



Placement of the final soil cover layer over the geosynthetic layers of the cap.

Potesta & Associates, Inc. (POTESTA) was retained by a chemical manufacturing company to provide engineering services for the design of a synthetic capping system for a closed landfill disposal cell. POTESTA initially performed a site assessment to evaluate environmental conditions at the landfill. The site characterization included surveying, monitoring well abandonment, leachate and surface water sampling, leachate collection and discharge for treatment, review of historical records, site reconnaissance, leachate level monitoring, development of a conceptual closure plan, and interface with the West Virginia Department of Environmental Protection, Division of Water Resources (WVDEP-DWR).

POTESTA prepared a detailed design of the cap plan. Included were regrading of the site, construction of a leachate collection underdrain, final cap design, and drainage channel design. POTESTA prepared construction drawings, technical specifications, engineer's construction cost estimates and bid documents.

POTESTA provided construction quality assurance monitoring for the capping project. POTESTA provided a technician to monitor construction on a full-time basis. POTESTA also reviewed contractor submittals for materials, quality control tests, and payment applications.

The project included reconstruction of a leachate collection underdrain line; regrading of the site; excavation of an anchor trench; installation of a 2.2-acre gas collection layer; installation of a 2.2-acre, 40-mil HDPE cap layer; installation of a 2.2-acre drainage layer; installation of a 2.2-acre soil cover layer; construction of a drainage diversion ditch; and construction of an access road.

POTESTA prepared a final summary report and prepared submittals for the WVDEP-DWR.



Post construction photograph showing revegetated landfill cap.

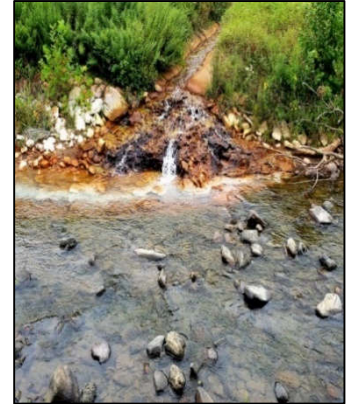
STATEMENT OF QUALIFICATIONS

PROJECT MANAGEMENT

Management Plan

POTESTA's proposed project organization chart including key staff and subcontractors was presented previously in this EOI. Work will be performed out of POTESTA's Charleston, West Virginia office or on site as may be required.

POTESTA's professional, technical, and support staff have extensive experience on WVDEP-AML reclamation projects including many coal refuse reclamation, mine portal reclamation, drainage control, landslide abatement, subsidence stabilization, and other AML problem areas. We are well qualified to serve WVDEP on this project. We stand ready to commit the personnel and resources required to complete this project in a timely, technically sound, and cost-efficient manner. POTESTA's large staff size will allow us to work on this project on an accelerated schedule if necessary.



POTESTA's team of existing, experienced professionals include employees experienced with (1) researching and compiling documentation to substantiate legal ownership of properties and obtaining right of entry agreements, (2) determining and documenting NEPA compliance and IJJA compliance, (3) developing engineering design, construction plans, specifications and documents required for bidding AML reclamation work, (4) obtaining, maintaining, and release of necessary permits, and (5) providing resident project representative, QA/QC certification, and required documentation during the construction phase of each project.



POTESTA's principal-in-charge will be responsible for contract management (administration) and shall coordinate and direct all aspects of the project. The principal-in-charge will review the proposed project, work with the project manager to assemble a project team and appoint key staff to develop a proposed scope of work. The principal-in-charge and project manager will visit the site with WVDEP, AML to review site conditions and the proposed services to be completed and guide the preparation of a detailed proposal and cost estimate. A written proposal including a detailed scope of work and an associated manhour and cost estimate will then be prepared and submitted to

WVDEP, AML for review. The project manager will review the proposal with the WVDEP, AML including a task-by-task discussion of work items and the related costs. Upon WVDEP, AML's approval of the proposal, the project manager will arrange for the start of project activities. The principal-in-charge will provide the project manager the required staff and resources necessary to complete the project activities, will review the project budget and schedule during performance of the project, and will provide a final QA/QC review of the documents prior to submittal to the WVDEP, AML. Mr. Dana Burns, P.E. will serve as the principal-in-charge on this project.



STATEMENT OF QUALIFICATIONS

PROJECT MANAGEMENT

Day-to-day project activities for this project will be performed under the direction of our project manager, Mr. Mark Kiser. The project manager will develop a detailed step by step project work plan so that the project activities are completed in a correct manner, on budget, and on time. They will also review work products at intermediate points and prior to project completion. They will conduct project status reports which may include weekly meetings, memos, or telephone calls with the WVDEP, AML project manager as required. The project manager will supervise the day-to-day work in progress, will coordinate with POTESTA's subcontractors to provide necessary services, and review work products at intermediate points and prior to submittal to the WVDEP, AML.

POTESTA will utilize the appropriate classification of staff to conduct activities required for the project. Our large, experienced staff allows us to respond quickly, provides flexibility, and will provide for the opportunity of high-level input from in house experts on complex multi-disciplinary projects. Our normal method of staffing projects is to assign a small project team with total responsibility for completion of the work to the client's satisfaction and budget. Where necessary, the team can draw on the expertise available within POTESTA's large staff. POTESTA offers a large staff with the efficiency and rates normally associated with a small firm.

Project Budget Control

The project manager will be responsible for monitoring the project budget and keeping the principal-in-charge and WVDEP informed of its status. POTESTA's staff enters time into POTESTA's InFocus computer system on a daily and/or weekly basis. POTESTA's project managers can access InFocus at any time, thus allowing "real time" control of project costs. In addition, field representatives routinely keep track of subcontractor costs on a daily basis. Thus, we can, in effect, keep track of the total project costs on a weekly basis. Our subcontractors commonly invoice at monthly intervals and there is seldom a discrepancy between our field representative's pay items and our subcontractor's invoice.

Schedule Control

Direct responsibility for schedule control lies with the project manager. Initially, the project manager will review schedule requirements to see how they can be achieved given the anticipated scope of work. As the project progresses, the project manager will monitor progress and compare it with the established schedule on a weekly basis keeping the principal-in-charge aware of the schedule's status. In this manner, the principal-in-charge can make staff adjustments to allow the project manager to maintain the project schedule. If circumstances develop that make it impossible to maintain the project schedule, the project manager will contact the WVDEP project manager to develop a mutually acceptable adjustment to the schedule and/or work plan.

Location of Facilities

POTESTA will complete the work under this contract in our Charleston, West Virginia office. Our subcontractors are located in the Charleston area or other strategic locations and are quite familiar with work anticipated for this project.

STATEMENT OF QUALIFICATIONS

PROJECT MANAGEMENT

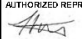
Quality Assurance/Quality Control

Submittals to the WVDEP will be reviewed and commented on by the project manager and the principal-in-charge prior to submittal to the WVDEP. Both the project manager and the principal-in-charge have worked on numerous WVDEP, AML projects, and thus understand the level of detail and expectations for WVDEP, AML projects. POTESTA utilizes standardized Quality Assurance/Quality Control (QA/QC) practices such as consistency checks, color coding of checked copies/calculations, and review of method of measurements versus quantity tallies to meet QA/QC expectations.

Certificate of Liability Insurance

POTESTA carries a full line of insurance coverage including general liability, errors and omissions, and workers' compensation.

		POTE&AS-01	EMORRIS				
CERTIFICATE OF LIABILITY INSURANCE		DATE (MM/DD/YYYY) 3/6/2023					
THIS CERTIFICATE IS ISSUED AS A MATTER OF INFORMATION ONLY AND CONFERS NO RIGHTS UPON THE CERTIFICATE HOLDER. THIS CERTIFICATE DOES NOT AFFIRMATIVELY OR NEGATIVELY AMEND, EXTEND OR ALTER THE COVERAGE AFFORDED BY THE POLICIES BELOW. THIS CERTIFICATE OF INSURANCE DOES NOT CONSTITUTE A CONTRACT BETWEEN THE ISSUING INSURER(S), AUTHORIZED REPRESENTATIVE OR PRODUCER, AND THE CERTIFICATE HOLDER.							
IMPORTANT: If the certificate holder is an ADDITIONAL INSURED, the policy(ies) must have ADDITIONAL INSURED provisions or be endorsed. If SUBROGATION IS WAIVED, subject to the terms and conditions of the policy, certain policies may require an endorsement. A statement on this certificate does not confer rights to the certificate holder in lieu of such endorsement(s).							
PRODUCER Ames & Gough 8300 Greensboro Drive Suite 980 McLean, VA 22102		CONTACT PHONE: (703) 827-2277 FAX: (703) 827-2279 EMAIL: admin@amesgough.com					
INSURED Potesta & Associates, Inc. 7012 McCorkle Avenue SE Charleston, WV 25304		INSURERS AFFORDING COVERAGE					
		INSURER A: Valley Forge Insurance Company A(XV)	NAIC # 20508				
		INSURER B: Continental Insurance Company A(XV)	35289				
		INSURER C: National Fire Insurance Company of Hartford A(XV)	20478				
		INSURER D: Evanston Insurance Company	35378				
		INSURER E:					
		INSURER F:					
COVERAGES		CERTIFICATE NUMBER:	REVISION NUMBER:				
THIS IS TO CERTIFY THAT THE POLICIES OF INSURANCE LISTED BELOW HAVE BEEN ISSUED TO THE INSURED NAMED ABOVE FOR THE POLICY PERIOD INDICATED. NOTWITHSTANDING ANY REQUIREMENT, TERM OR CONDITION OF ANY CONTRACT OR OTHER DOCUMENT WITH RESPECT TO WHICH THIS CERTIFICATE MAY BE ISSUED OR MAY PERTAIN, THE INSURANCE AFFORDED BY THE POLICIES DESCRIBED HEREIN IS SUBJECT TO ALL THE TERMS, EXCLUSIONS AND CONDITIONS OF SUCH POLICIES. LIMITS SHOWN MAY HAVE BEEN REDUCED BY PAID CLAIMS.							
INSR	TYPE OF INSURANCE	INSR	SUBR	POLICY NUMBER	POLICY EFF. DATE (MM/DD/YYYY)	POLICY EXP. DATE (MM/DD/YYYY)	LIMITS
A	<input checked="" type="checkbox"/> COMMERCIAL GENERAL LIABILITY <input type="checkbox"/> CLAIMS-MADE <input checked="" type="checkbox"/> OCCUR <input type="checkbox"/> GEN'L AGGREGATE LIMIT APPLIES PER: <input checked="" type="checkbox"/> POLICY <input checked="" type="checkbox"/> PROJE VECT <input checked="" type="checkbox"/> LOC <input type="checkbox"/> OTHER:			6057035330	3/7/2023	3/7/2024	EACH OCCURRENCE \$ 1,000,000 DAMAGE TO RENTED PREMISES (EA occurrence) \$ 100,000 MED EXP (Any one person) \$ 15,000 PERSONAL & ADV INJURY \$ 1,000,000 GENERAL AGGREGATE \$ 2,000,000 PRODUCTS - COMP/OP AGG \$ 2,000,000 EMPLOYEE BENEFIT \$ 1,000,000 SOUVENIR SINGLE LIMIT (EA accident) \$ 1,000,000
A	<input checked="" type="checkbox"/> AUTOMOBILE LIABILITY <input checked="" type="checkbox"/> ANY AUTO <input type="checkbox"/> OWNED AUTOS ONLY <input type="checkbox"/> HIRED AUTOS ONLY <input type="checkbox"/> SCHEDULED AUTOS <input type="checkbox"/> NON-OWNED AUTOS ONLY			6057035327	3/7/2023	3/7/2024	BODY INJURY (Per person) \$ PROPERTY DAMAGE (Per accident) \$ \$
B	<input checked="" type="checkbox"/> UMBRELLA LIAB <input checked="" type="checkbox"/> OCCUR EXCESS LIAB CLAIMS-MADE DED <input checked="" type="checkbox"/> RETENTION \$ 10,000			6057035358	3/7/2023	3/7/2024	EACH OCCURRENCE \$ 10,000,000 AGGREGATE \$ 10,000,000 \$
C	WORKERS COMPENSATION AND EMPLOYERS' LIABILITY ANY PROPRIETOR/PARTNER/EXECUTIVE OFFICER/MEMBER EXCLUDED? (Membership is N/A) If yes, describe under DESCRIPTION OF OPERATIONS below	Y/N	N/A	6057035344	3/7/2023	3/7/2024	<input checked="" type="checkbox"/> PER <input type="checkbox"/> SUIUTE <input type="checkbox"/> OTH-ER EL EACH ACCIDENT \$ 1,000,000 EL DISEASE - EA EMPLOYEE \$ 1,000,000 EL DISEASE - POLICY LIMIT \$ 1,000,000
D	Professional Liab.			MKLV7PL0005743	3/7/2023	3/7/2024	Per Claim/Aggregate \$ 5,000,000

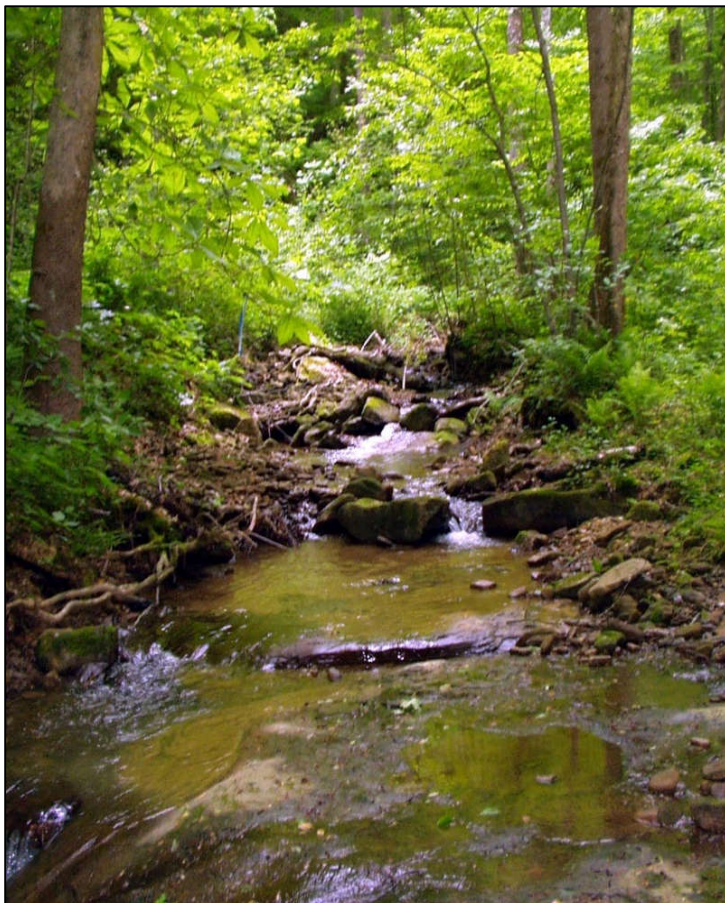
CERTIFICATE HOLDER	CANCELLATION
Evidence of Insurance	SHOULD ANY OF THE ABOVE DESCRIBED POLICIES BE CANCELLED BEFORE THE EXPIRATION DATE THEREOF, NOTICE WILL BE DELIVERED IN ACCORDANCE WITH THE POLICY PROVISIONS. AUTHORIZED REPRESENTATIVE 

ACORD 25 (2018/03) © 1988-2015 ACORD CORPORATION. All rights reserved. The ACORD name and logo are registered marks of ACORD

STATEMENT OF QUALIFICATIONS

CLOSING

We look forward to continuing to serve WVDEP, AML on the 2023 AML Contract S3 Project and bring it to completion. Our staff has an abundance of experience with AML reclamation projects throughout West Virginia and will make our experienced personnel immediately available for this project. Our commitment is to provide quality service, rapid response, project completion, and to exceed your expectations for services performed under this project. We believe the track record of our professionals demonstrates our abilities and we look forward to once again serving WVDEP AML and our great Mountain State.



APPENDIX A

**WEST VIRGINIA DEPARTMENT OF ENVIRONMENTAL PROTECTION
AML CONSULTANT QUALIFICATION QUESTIONNAIRE**

Attachment "A"

PROJECT NAME 2023 AML Contract S3		DATE (DAY, MONTH, YEAR) 24, August, 2023	FEIN 311509066
FIRM NAME Potesta & Associates, Inc.		2. HOME OFFICE BUSINESS ADDRESS 7012 MacCorkle Avenue, SE Charleston, West Virginia 25304	3. FORMER FIRM NAME N/A
4. HOME OFFICE TELEPHONE (304) 342-1400	5. ESTABLISHED (YEAR) 1997	6. TYPE OWNERSHIP <input type="checkbox"/> Individual <input checked="" type="checkbox"/> Corporation <input type="checkbox"/> Partnership <input type="checkbox"/> Joint-Venture	6a. WV REGISTERED DBE (Disadvantaged Business Enterprise) <input type="checkbox"/> YES <input checked="" type="checkbox"/> NO
7. PRIMARY AML DESIGN OFFICE: ADDRESS/ TELEPHONE/ PERSON IN CHARGE/ NO. AML DESIGN PERSONNEL EACH OFFICE 7012 MacCorkle Avenue, SE, Charleston, West Virginia 25304 / (304) 342-1400 / Dana L. Burns, Vice President Charleston - 27 / Morgantown - 8 / Winchester - 2			
8. NAMES OF PRINCIPAL OFFICERS OR MEMBERS OF FIRM Ronald Potesta, President Dana L. Burns, Vice President		8a. NAME, TITLE, & TELEPHONE NUMBER - OTHER PRINCIPALS N/A	
9. PERSONNEL BY DISCIPLINE			
<u>10</u> ADMINISTRATIVE	<u>1</u> ECONOMISTS	<u> </u> HISTORIANS	<u> </u> SPECIFICATION WRITERS
<u> </u> ARCHITECTS	<u> </u> ELECTRICAL ENGINEERS	<u>1</u> HORTICULTURALIST	<u> </u> STRUCTURAL ENGINEERS
<u>1</u> AQUA CULTURALIST	<u>2</u> ENERGY LAND MANAGEMENT	<u> </u> HYDROLOGISTS	<u>6</u> SURVEYORS
<u>5</u> BIOLOGISTS	<u>1</u> ENVIRONMENTAL ENGINEER	<u>1</u> INFORMATION TECHNOLOGIST	<u>1</u> TOXICOLOGIST
<u>8</u> CADD OPERATORS	<u>1</u> ENVIRONMENTALISTS	<u> </u> LANDSCAPE ARCHITECTS	<u> </u> TRAFFIC ENGINEERS
<u> </u> CHEMICAL ENGINEER	<u> </u> ESTIMATORS	<u>1</u> MECHANICAL ENGINEERS	<u> </u> OTHER
<u>18</u> CIVIL ENGINEERS	<u>2</u> FISH & WILDLIFE SPECIALISTS	<u>1</u> MINING ENGINEERS	
<u>15</u> CONSTRUCTION INSPECTORS	<u>1</u> GEOLOGISTS	<u> </u> PHOTOGRAMMETRISTS	
<u> </u> DESIGNERS	<u>4</u> GEOTECHNICAL ENGINEERS	<u> </u> PLANNERS: URBAN/REGIONAL	
<u> </u> DRAFTSMEN	<u>1</u> GIS SPECIALIST	<u> </u> SANITARY ENGINEERS	
<u>2</u> ECOLOGISTS		<u> </u> SOILS ENGINEERS	<u>83</u> TOTAL PERSONNEL
<p>TOTAL NUMBER OF WV REGISTERED PROFESSIONAL ENGINEERS IN PRIMARY OFFICE: <u>10</u></p> <p>*RPEs other than Civil and Mining must provide supporting documentation that qualifies them to supervise and perform this type of work.</p>			
10. HAS THIS JOINT-VENTURE WORKED TOGETHER BEFORE? <input type="checkbox"/> YES <input type="checkbox"/> NO <input checked="" type="checkbox"/> N/A			

11. OUTSIDE KEY CONSULTANTS/SUB-CONSULTANTS ANTICIPATED TO BE USED. Attach "AML Consultant Qualification Questionnaire".

NAME AND ADDRESS:	SPECIALTY:	WORKED WITH BEFORE
Keddal Aerial Mapping 1121 Boyce Road, Suite 3100 Pittsburgh, Pennsylvania 15241	Aerial Photography and Mapping	<input checked="" type="checkbox"/> YES <input type="checkbox"/> NO
GeoMechanics, Inc. 600 Munir Drive P.O. Box 386 Elizabeth, PA 15037	Environmental and Coal Related Laboratory	<input checked="" type="checkbox"/> YES <input type="checkbox"/> NO
Test Boring Services 140 Mong Road Scenery Hill, Pennsylvania 15360	Soils and Rock Boring	<input checked="" type="checkbox"/> YES <input type="checkbox"/> NO
GeoMechanics, Inc. 600 Munir Drive P.O. Box 386 Elizabeth, PA 15037	Soils and Concrete Testing	<input checked="" type="checkbox"/> YES <input type="checkbox"/> NO
Pace Analytical 5 Weatheridge Drive Hurricane, WV 25526	Water Analytical	<input checked="" type="checkbox"/> YES <input type="checkbox"/> NO
D. L. Martin Construction & Excavating Company PO Box 494 Scott Depot, WV 25560	Soils and Rock Boring	<input checked="" type="checkbox"/> YES <input type="checkbox"/> NO
Terracon 912 Morris Street Charleston, WV 25301	Soils and Concrete Testing	<input checked="" type="checkbox"/> YES <input type="checkbox"/> NO
NAME AND ADDRESS:	SPECIALTY:	WORKED WITH BEFORE <input type="checkbox"/> YES <input type="checkbox"/> NO

12. A. Is your firm's personnel experienced in Abandoned Mine Lands Remediation/Mine Reclamation Engineering?

YES NO

Description and Number of Projects: POTEESTA's principal-in-charge, Dana L. Burns, P.E. and project managers, Messrs. Mark Kiser, P.E., Terence Moran, P.E., and Tim Rice, EIT, have each worked on over 70 AML projects dating back to 1986, including landslide exploration and abatement, mine subsidence stabilization projects, acid mine drainage treatment, refuse piles, mine drainage, mine portal seals, and water supply projects. POTEESTA has 35 plus staff with experience on AML projects. Many of the previous AML projects won reclamation awards including: Bear Run Refuse; Kimball Refuse Piles; Owings Mine Complex; Pine Creek (Omar) Refuse; Turner-Douglas Complex; and Grass Run Refuse. These projects were completed by Dana Burns, Mark Kiser, and Terry Moran.

B. Is your firm experienced in Soil Analysis?

YES NO

Description and Number of Projects: POTEESTA's staff is experienced in all aspects of soil analysis, including geotechnical and environmental soil analysis. POTEESTA's staff has worked on 30+ AML projects involving soil science, including slope stability and revegetation. POTEESTA is experienced in soil analysis as it relates to this project. POTEESTA's principal engineers have developed and implemented plans for nutrient and lime requirements testing to determine revegetation requirements, acid-base accounting of rock samples to evaluate the potential of excavated materials to generate acidity, and analysis of coal refuse to determine the potential for reprocessing.

C. Is your firm experienced in hydrology and hydraulics?

YES NO

Description and Number of Projects: POTEESTA's staff is experienced in hydrology and hydraulics as it relates to AML projects in West Virginia. POTEESTA's staff has worked on over 70 AML projects that involved sizing channels, culverts, and waterlines. POTEESTA has developed well over 100 storm water management plans for mines, industrial facilities, and new site development projects throughout West Virginia.

D. Does your firm produce its own Aerial Photography and Develop Contour Mapping?

YES NO

Description and Number of Projects: POTEESTA's staff routinely develop contour mapping for use with design. We subcontract aerial mapping development but complete the ground control necessary for developing mapping. On smaller projects, we perform the topographic survey work and subsequently develop the contour mapping. POTEESTA has completed 200+ mapping development projects in the last five years.

E. Is your firm experienced in domestic waterline design? (Include any experience your firm has in evaluation of aquifer degradation as a result of mining.)

YES NO

Description and Number of Projects: POTEESTA's staff is exceptionally experienced at domestic waterline design. POTEESTA's staff has worked on waterline designs and water treatment plant designs for municipalities, WVDEP AML, and private utilities. POTEESTA's staff includes one project manager, Terence C. Moran, P.E., who has managed design of numerous AML waterlines, including 20+ mile Cow Creek-Sarah Ann Extension and 30+ mile/2,800 GPM Water Treatment Plant Mill Creek Regional Water Supply project. We are also exceptionally well qualified to evaluate aquifer degradation, including aquifer degradation by AML sites. Our staff has worked on 80+ evaluations of aquifer degradation. POTEESTA has performed over 40 water line design projects totaling several hundred miles of installed water line.

F. Is your firm experienced in Acid Mine Drainage Evaluation and Abatement Design?

YES NO

Description and Number of Projects: POTEESTA has completed numerous projects addressing acid mine drainage evaluation and abatement design. POTEESTA's staff has worked on 30+ projects involving AMD evaluation and 10+ projects involving AMD abatement design. In both cases, many of the projects involved AML sites. We have worked extensively with Anker Energy, Dominion Generation, and the WVDOH, among others with acid-base accounting evaluations and the subsequent development of plans to prevent/abate AMD generation. Additionally, we worked extensively with Elk Run Coal Company to devise a plan to limit AMD generation and to treat the remaining AMD.

13. PERSONAL HISTORY STATEMENT OF PRINCIPALS AND ASSOCIATES **RESPONSIBLE FOR AML PROJECT DESIGN** (Furnish complete data but keep to essentials)

NAME & TITLE (Last, First, Middle Int.)	YEARS OF EXPERIENCE		
	YEARS OF AML DESIGN EXPERIENCE:	YEARS OF AML RELATED DESIGN EXPERIENCE:	YEARS OF DOMESTIC WATERLINE DESIGN EXPERIENCE:
Burns, Dana L. Vice President	44	44	31

Brief Explanation of Responsibilities

Mr. Burns will serve as principal-in-charge for this project with his significant experience with AML type projects. Mr. Burns has served as the project manager or principal-in-charge on three open end contracts for WVDEP, AML from 1986 through 1997, totaling over 90 projects. He will ensure the personnel required to efficiently complete this project will be identified. He will coordinate contract issues with the State of West Virginia.

EDUCATION (Degree, Year, Specialization)

MS, 1979, Civil Engineering with Environmental Engineering Emphasis
BS, 1978, Civil Engineering

MEMBERSHIP IN PROFESSIONAL ORGANIZATIONS	REGISTRATION (Type, Year, State)
West Virginia Coal Association American Society of Civil Engineers West Virginia Association of Consulting Engineers American Consulting Engineering Council - Trans Committee	PE, 1985, WV PS, 1995, WV

13. PERSONAL HISTORY STATEMENT OF PRINCIPALS AND ASSOCIATES **RESPONSIBLE FOR AML PROJECT DESIGN** (Furnish complete data but keep to essentials)

NAME & TITLE (Last, First, Middle Int.)	YEARS OF EXPERIENCE		
	YEARS OF AML DESIGN EXPERIENCE:	YEARS OF AML RELATED DESIGN EXPERIENCE:	YEARS OF DOMESTIC WATERLINE DESIGN EXPERIENCE:
Kiser, D. Mark Chief Engineer	35	39	27

Brief Explanation of Responsibilities

Mr. Kiser will serve as Project Manager for this project. Mr. Kiser's 35 years of AML experience includes over 80 projects in West Virginia, Maryland, Ohio, and Pennsylvania. Mr. Kiser will provide the technical knowledge and experience necessary to complete this AML project.

EDUCATION (Degree, Year, Specialization)

BS, 1984, Civil Engineering

MEMBERSHIP IN PROFESSIONAL ORGANIZATIONS	REGISTRATION (Type, Year, State)
	PE, 1990, WV Licensed Remediation Specialist, 1998, WV

13. PERSONAL HISTORY STATEMENT OF PRINCIPALS AND ASSOCIATES **RESPONSIBLE FOR AML PROJECT DESIGN** (Furnish complete data but keep to essentials)

NAME & TITLE (Last, First, Middle Int.)	YEARS OF EXPERIENCE		
	YEARS OF AML DESIGN EXPERIENCE:	YEARS OF AML RELATED DESIGN EXPERIENCE:	YEARS OF DOMESTIC WATERLINE DESIGN EXPERIENCE:
Maggard, Paul Senior Engineer	31	31	26

Brief Explanation of Responsibilities

Mr. Maggard will serve as a project engineer on this project. He has served as project manager/project engineer on over 40 AML related projects in West Virginia and Virginia. Mr. Maggard has over 25 years of experience completing mining and environmental services related projects. AML projects included landslide stabilization, AMD assessment and treatment, subsidence remediation, portal closures, refuse regrading and revegetation and drainage control including flood mitigation.

EDUCATION (Degree, Year, Specialization)

BS, 1994, Civil Engineering

MEMBERSHIP IN PROFESSIONAL ORGANIZATIONS	REGISTRATION (Type, Year, State)
	PE, 2012, WV PE, 1998, KY PE, 1998, VA PE, 2009, TN

13. PERSONAL HISTORY STATEMENT OF PRINCIPALS AND ASSOCIATES **RESPONSIBLE FOR AML PROJECT DESIGN** (Furnish complete data but keep to essentials)

NAME & TITLE (Last, First, Middle Int.)	YEARS OF EXPERIENCE		
	YEARS OF AML DESIGN EXPERIENCE:	YEARS OF AML RELATED DESIGN EXPERIENCE:	YEARS OF DOMESTIC WATERLINE DESIGN EXPERIENCE:
Sharp, David B. Branch Manager	27	27	27

Brief Explanation of Responsibilities

Mr. Sharp will serve as technical review contact as needed for this project with his significant experience with AML type and geotechnical projects throughout the region. Mr. Sharp has served as the Branch Manager in Morgantown for 12 years. Mr. Sharp has worked on and managed AML projects and has spent most of his career involved in geotechnical engineering and construction management projects.

EDUCATION (Degree, Year, Specialization)

MS, 1995, Civil Engineering with Geo-environmental Engineering Emphasis
BS, 1993, Civil Engineering

MEMBERSHIP IN PROFESSIONAL ORGANIZATIONS	REGISTRATION (Type, Year, State)
West Virginia Coal Association American Society of Civil Engineers West Virginia Association of Consulting Engineers American Consulting Engineering Council - Trans Committee	PE, 1999, WV PE, 2001, KY PE, 1999, MD PE, 2001, OH PE, 2000, PA

13. PERSONAL HISTORY STATEMENT OF PRINCIPALS AND ASSOCIATES **RESPONSIBLE FOR AML PROJECT DESIGN** (Furnish complete data but keep to essentials)

NAME & TITLE (Last, First, Middle Int.)	YEARS OF EXPERIENCE		
	YEARS OF AML DESIGN EXPERIENCE:	YEARS OF AML RELATED DESIGN EXPERIENCE:	YEARS OF DOMESTIC WATERLINE DESIGN EXPERIENCE:
Rice, Timothy M. Senior Engineer	40	40	31

Brief Explanation of Responsibilities

Mr. Rice has significant experience including completion of over 80 AML projects for WVDEP in coal refuse stabilization design, mine portal closures, landslide stabilization, mine subsidence stabilization, and drainage channelization, and has served as a project manager on many similar projects. Mr. Rice will serve as the project engineer for this project as needed.

EDUCATION (Degree, Year, Specialization)

BS, 1982, Civil Engineering

MEMBERSHIP IN PROFESSIONAL ORGANIZATIONS	REGISTRATION (Type, Year, State)
	EI, 2005, WV

13. PERSONAL HISTORY STATEMENT OF PRINCIPALS AND ASSOCIATES **RESPONSIBLE FOR AML PROJECT DESIGN** (Furnish complete data but keep to essentials)

NAME & TITLE (Last, First, Middle Int.)	YEARS OF EXPERIENCE		
	YEARS OF AML DESIGN EXPERIENCE:	YEARS OF AML RELATED DESIGN EXPERIENCE:	YEARS OF DOMESTIC WATERLINE DESIGN EXPERIENCE:
Grose, Christopher A. Senior Engineering Associate	32	32	19

Brief Explanation of Responsibilities

Mr. Grose will coordinate the drilling and geotechnical analysis for slope stability design, identification of borrow sites for soil cover, and investigation and design of solutions for subsurface hydrogeology within the deep mines and recommendations for mine seals.

EDUCATION (Degree, Year, Specialization)

MS, 1990, Geological Engineering
BS, 1988, Civil Engineering

MEMBERSHIP IN PROFESSIONAL ORGANIZATIONS	REGISTRATION (Type, Year, State)
American Society of Civil Engineering Association of Engineering Geology Society of American Military Engineers	Licensed Remediation Specialist, 1998, WV

13. PERSONAL HISTORY STATEMENT OF PRINCIPALS AND ASSOCIATES RESPONSIBLE FOR AML PROJECT DESIGN (Furnish complete data but keep to essentials)

NAME & TITLE (Last, First, Middle Int.)	YEARS OF EXPERIENCE		
	YEARS OF AML DESIGN EXPERIENCE:	YEARS OF AML RELATED DESIGN EXPERIENCE:	YEARS OF DOMESTIC WATERLINE DESIGN EXPERIENCE:
Potesta, Ronald R. President			

Brief Explanation of Responsibilities

As President, Mr. Potesta directs the full resources of the firm to meet the complete requirements of this project for WVDEP.

EDUCATION (Degree, Year, Specialization)

MS, 1975, Economics with a Concentration in Mineral Economics, Econometrics, and Micro Economics
BS, 1971, Business Administration

MEMBERSHIP IN PROFESSIONAL ORGANIZATIONS	REGISTRATION (Type, Year, State)
Commissioner, Ohio River Valley Water Sanitation Commission; Board of Directors, WV Chapter of the Nature Conservancy; National Institute for Chemical Studies; WV Environmental Institute; WV Manufacturers Association	

13. PERSONAL HISTORY STATEMENT OF PRINCIPALS AND ASSOCIATES **RESPONSIBLE FOR AML PROJECT DESIGN** (Furnish complete data but keep to essentials)

NAME & TITLE (Last, First, Middle Int.)	YEARS OF EXPERIENCE		
	YEARS OF AML DESIGN EXPERIENCE:	YEARS OF AML RELATED DESIGN EXPERIENCE:	YEARS OF DOMESTIC WATERLINE DESIGN EXPERIENCE:
Peter S. Potesta Staff Engineer	10	10	6

Brief Explanation of Responsibilities

Mr. Peter Potesta, Staff Engineer, has over ten years of experience and will serve as a geotechnical engineer for this project. His areas of expertise include geotechnical engineering with an emphasis in landslide repair design, natural gas production well pads and access roads, retaining wall design and analysis, foundation recommendations, slope stability analysis, civil/site design, and landslide causation investigation.

EDUCATION (Degree, Year, Specialization)

BS, 2011, Civil Engineering
BA, 2007, Environmental Geosciences

MEMBERSHIP IN PROFESSIONAL ORGANIZATIONS	REGISTRATION (Type, Year, State)

13. PERSONAL HISTORY STATEMENT OF PRINCIPALS AND ASSOCIATES **RESPONSIBLE FOR AML PROJECT DESIGN** (Furnish complete data but keep to essentials)

NAME & TITLE (Last, First, Middle Int.)	YEARS OF EXPERIENCE		
	YEARS OF AML DESIGN EXPERIENCE:	YEARS OF AML RELATED DESIGN EXPERIENCE:	YEARS OF DOMESTIC WATERLINE DESIGN EXPERIENCE:
Bragg, Bob L., PE Senior Engineer	2	5	25

Brief Explanation of Responsibilities

Mr. Bragg designs municipal wastewater and potable water distribution systems including treatment plants, pipeline collection and distribution, water storage tanks, and pump stations.

EDUCATION (Degree, Year, Specialization)

AS, 1980, Electrical Engineering Technology
 BS, 1983, Electronic Engineering Technology
 BS, 1991, Civil Engineering

MEMBERSHIP IN PROFESSIONAL ORGANIZATIONS	REGISTRATION (Type, Year, State)
American Water Works Association Project Management Institute	Professional Engineer, 1997, WV Professional Engineer, 2020, KY Professional Engineer, 2007, VA

13. PERSONAL HISTORY STATEMENT OF PRINCIPALS AND ASSOCIATES **RESPONSIBLE FOR AML PROJECT DESIGN** (Furnish complete data but keep to essentials)

NAME & TITLE (Last, First, Middle Int.)	YEARS OF EXPERIENCE		
	YEARS OF AML DESIGN EXPERIENCE:	YEARS OF AML RELATED DESIGN EXPERIENCE:	YEARS OF DOMESTIC WATERLINE DESIGN EXPERIENCE:
Moran, Terence C. Senior Engineer	35	35	31

Brief Explanation of Responsibilities

Mr. Moran will serve as project engineer coordinating interaction between the WVDEP, design team members, and subconsultants. Mr. Moran has served as a project engineer/project manager for over 60 AML projects in West Virginia between 1989 and 1999. More recently, he has served as principal engineer and project manager for WVDEP-AML projects including water studies and reclamation plans. He will also serve as one of the principal designers of the reclamation design solution.

EDUCATION (Degree, Year, Specialization)

MS, 1989, Civil Engineering
 BS, 1987, Civil Engineering

MEMBERSHIP IN PROFESSIONAL ORGANIZATIONS	REGISTRATION (Type, Year, State)
American Society of Civil Engineers	PE, 1996, WV PE, 1998, VA

13. PERSONAL HISTORY STATEMENT OF PRINCIPALS AND ASSOCIATES **RESPONSIBLE FOR AML PROJECT DESIGN** (Furnish complete data but keep to essentials)

NAME & TITLE (Last, First, Middle Int.)	YEARS OF EXPERIENCE		
	YEARS OF AML DESIGN EXPERIENCE:	YEARS OF AML RELATED DESIGN EXPERIENCE:	YEARS OF DOMESTIC WATERLINE DESIGN EXPERIENCE:
Griffith, Chad Staff Engineer	18	18	13

Brief Explanation of Responsibilities

Mr. Griffith has extensive experience with surface mine application Article 3 (coal) and Article 4 (quarry) permitting, mining related NPDES permits, mining related bonding phase releases, prospecting permits, residential and commercial site layout, road design, geotechnical engineering, civil/site design, stormwater management, stormwater/NPDES permitting, construction monitoring, hydrology, and other areas of civil engineering.

EDUCATION (Degree, Year, Specialization)

BS, 2004, Civil Engineering

MEMBERSHIP IN PROFESSIONAL ORGANIZATIONS

REGISTRATION (Type, Year, State)
PE, 2008, WV

13. PERSONAL HISTORY STATEMENT OF PRINCIPALS AND ASSOCIATES **RESPONSIBLE FOR AML PROJECT DESIGN** (Furnish complete data but keep to essentials)

NAME & TITLE (Last, First, Middle Int.)	YEARS OF EXPERIENCE		
	YEARS OF AML DESIGN EXPERIENCE:	YEARS OF AML RELATED DESIGN EXPERIENCE:	YEARS OF DOMESTIC WATERLINE DESIGN EXPERIENCE:
Litwinowicz, Dennis L. Senior Scientist		42	

Brief Explanation of Responsibilities

Mr. Litwinowicz will serve as a project geologist, including observation of subsurface exploration activities and assistance on evaluation of other geologic activities.

EDUCATION (Degree, Year, Specialization)

BS, 1980, Geology and Mineralogy

MEMBERSHIP IN PROFESSIONAL ORGANIZATIONS

American Association of Petroleum Geologists

REGISTRATION (Type, Year, State)

Certified Petroleum Geologist, 1984

13. PERSONAL HISTORY STATEMENT OF PRINCIPALS AND ASSOCIATES **RESPONSIBLE FOR AML PROJECT DESIGN** (Furnish complete data but keep to essentials)

NAME & TITLE (Last, First, Middle Int.)	YEARS OF EXPERIENCE		
	YEARS OF AML DESIGN EXPERIENCE:	YEARS OF AML RELATED DESIGN EXPERIENCE:	YEARS OF DOMESTIC WATERLINE DESIGN EXPERIENCE:
Dawson, Victor M. Survey Supervisor	31	40	19

Brief Explanation of Responsibilities

Mr. Dawson will coordinate required surveying for aerial mapping control, if needed, establish construction benchmarks, topographic surveys, boundary surveys and/or property and deed research, survey of boring locations and profiling significant existing drainage courses not clearly defined in the aerial mapping. Mr. Dawson will reduce survey data and create topographic mapping for AML projects.

EDUCATION (Degree, Year, Specialization)

AS, 1983, Surveying

MEMBERSHIP IN PROFESSIONAL ORGANIZATIONS

American Congress Surveying and Mapping
West Virginia Association of Land Surveyors
North Carolina Society of Surveyors
South Carolina Society of Surveyors

REGISTRATION (Type, Year, State)

PS, 1988, NC
PS, 1989, SC
PS, 1993, WV

13. PERSONAL HISTORY STATEMENT OF PRINCIPALS AND ASSOCIATES **RESPONSIBLE FOR AML PROJECT DESIGN** (Furnish complete data but keep to essentials)

NAME & TITLE (Last, First, Middle Int.)	YEARS OF EXPERIENCE		
	YEARS OF AML DESIGN EXPERIENCE:	YEARS OF AML RELATED DESIGN EXPERIENCE:	YEARS OF DOMESTIC WATERLINE DESIGN EXPERIENCE:
Sankoff, Michael B. CADD Designer/Supervisor	25	33	19

Brief Explanation of Responsibilities

Mr. Sankoff will provide the CADD support in preparation of construction drawings for the project. He will reduce survey data to provide sufficient mapping to complete the design.

EDUCATION (Degree, Year, Specialization)

BS, 1987, Industrial Management
AS, 1986, Drafting and Design Engineering Technology
AS, 1986, Mechanical Engineering Technology

MEMBERSHIP IN PROFESSIONAL ORGANIZATIONS

REGISTRATION (Type, Year, State)

13. PERSONAL HISTORY STATEMENT OF PRINCIPALS AND ASSOCIATES RESPONSIBLE FOR AML PROJECT DESIGN (Furnish complete data but keep to essentials)

NAME & TITLE (Last, First, Middle Int.)	YEARS OF EXPERIENCE		
	YEARS OF AML DESIGN EXPERIENCE:	YEARS OF AML RELATED DESIGN EXPERIENCE:	YEARS OF DOMESTIC WATERLINE DESIGN EXPERIENCE:
Ammirato, Robert J. Engineer	17	22	17

Brief Explanation of Responsibilities

Mr. Ammirato will serve as a project engineer for the project. His responsibilities will include hydraulic calculations, layout, drawing preparation, design, technical specifications, bid forms, cost estimates, and field work. He has extensive experience in water supply and wastewater system design, permitting, and regulations. Mr. Ammirato was the project engineer on our Borderland (Matney) Portals project.

EDUCATION (Degree, Year, Specialization)

BS, 1999, Mechanical Engineering

MEMBERSHIP IN PROFESSIONAL ORGANIZATIONS

REGISTRATION (Type, Year, State)

PE, 2010, WV

13. PERSONAL HISTORY STATEMENT OF PRINCIPALS AND ASSOCIATES RESPONSIBLE FOR AML PROJECT DESIGN (Furnish complete data but keep to essentials)

NAME & TITLE (Last, First, Middle Int.)	YEARS OF EXPERIENCE		
	YEARS OF AML DESIGN EXPERIENCE:	YEARS OF AML RELATED DESIGN EXPERIENCE:	YEARS OF DOMESTIC WATERLINE DESIGN EXPERIENCE:
Smith, Jarrett M. Senior Engineer	16	20	16

Brief Explanation of Responsibilities

Mr. Smith has been involved extensively with development of hydrologic and hydraulic calculations including preparation of NPDES stormwater construction permits. He also has significant expertise in the development of site grading plans and quantity/cost estimates. Mr. Smith was the project engineer on our Taylorville (Cantrell) Drainage AML project.

EDUCATION (Degree, Year, Specialization)

BS, 2002, Civil Engineering

MEMBERSHIP IN PROFESSIONAL ORGANIZATIONS

REGISTRATION (Type, Year, State)

National Society of Professional Engineers

PE, 2008, WV

13. PERSONAL HISTORY STATEMENT OF PRINCIPALS AND ASSOCIATES **RESPONSIBLE FOR AML PROJECT DESIGN** (Furnish complete data but keep to essentials)

NAME & TITLE (Last, First, Middle Int.)	YEARS OF EXPERIENCE		
	YEARS OF AML DESIGN EXPERIENCE:	YEARS OF AML RELATED DESIGN EXPERIENCE:	YEARS OF DOMESTIC WATERLINE DESIGN EXPERIENCE:
Ward, Patrick E. Senior Engineer	26	29	11

Brief Explanation of Responsibilities

Mr. Ward will serve as a project engineer and has extensive experience on WVDEP, AML projects, having served as a project engineer on refuse piles, mine drainage, and subsidence projects in the early to mid-1990s.

EDUCATION (Degree, Year, Specialization)

MS, 1992, Civil Engineering (Geotechnical)
BS, 1990, Civil Engineering

MEMBERSHIP IN PROFESSIONAL ORGANIZATIONS

REGISTRATION (Type, Year, State)

PE, 1997, WV

13. PERSONAL HISTORY STATEMENT OF PRINCIPALS AND ASSOCIATES RESPONSIBLE FOR AML PROJECT DESIGN (Furnish complete data but keep to essentials)

NAME & TITLE (Last, First, Middle Int.)	YEARS OF EXPERIENCE		
	YEARS OF AML DESIGN EXPERIENCE:	YEARS OF AML RELATED DESIGN EXPERIENCE:	YEARS OF DOMESTIC WATERLINE DESIGN EXPERIENCE:
Rader, Derek C.		2 Yrs.	2 Yrs.

Brief Explanation of Responsibilities

Senior Technician - Assist engineers in field reconnaissance, title research, design, property acquisition, rights-of-way negotiations, and construction monitoring.

EDUCATION (Degree, Year, Specialization)

BS, 2020, Energy Land Management

MEMBERSHIP IN PROFESSIONAL ORGANIZATIONS

REGISTRATION (Type, Year, State)

15. CURRENT ACTIVITIES ON WHICH YOUR FIRM IS THE DESIGNATED ENGINEER OF RECORD

PROJECT NAME, TYPE AND LOCATION	NAME AND ADDRESS OF OWNER	NATURE OF YOUR FIRM'S RESPONSIBILITY	ESTIMATED CONSTRUCTION COST	PERCENT COMPLETE
Sardis (Saas) Landslide	WVDEP Abandoned Mine Lands 101 Cambridge Place Bridgeport, WV 26330	Surveying, subsurface exploration, design, and construction phase services for landslide remediation, wet mine seals and/or seep collectors, and drainage channels to convey mine water.	\$800,000 (Pre-Design Engineer's Estimate)	95%
Upper Grave Creek Dam Landslide Evaluation, Cameron, WV	Northern Panhandle Conservation District 1 Ball Park Drive McMechen, WV 26040	Surveying, Subsurface Exploration, and Design of Landslide Remediation.	\$350,000	50%
Wheeling Creek Dam #7 Landslide Evaluation, Ohio County, WV	Northern Panhandle Conservation District 1 Ball Park Drive McMechen, WV 26040	Surveying, Subsurface Exploration, and Design of Landslide Remediation.	\$800,000	20%
Herring Sub Area 1 & 3 Water Line Extension Preston County, WV <i>Project entirely funded by WVDEP, AML</i>	Preston County PSD #2 c/o Kingwood Water Works 313 Tunnelton Street Kingwood, WV 26537	Design and construction management of water line extension, including 9 miles of line.	\$2,190,000	10%
Paint Branch Complex AML Project, Kanawha County, WV	WVDEP-AML 601 57 th Street, SE Charleston, WV 25304	Design, Preparation of Bid Documents, and Permitting	\$630,000	95%
Leivasy (Dorsey) Subsidence AML Emergency Project, Nicholas County, WV	WVDEP-AML 601 57 th Street, SE Charleston, WV 25304	Subsurface Exploration, Stabilization Plan, Preparation of Bid Documents	Unknown	95%
2022 Contract 5 North AML Projects Various Locations	WVDEP-AML 101 Cambridge Place Bridgeport, WV 26330	Realty, Planning/Environmental, Design Bid Documents, and Construction Phase Services	\$1,900,000 Preliminary budget	10%
Laurel Avenue Poca, WV	WVDOH Building 5 1900 Kanawha Blvd. E Charleston, WV 25305	Preparation of Design and Bid Documents	\$200,000 Estimated	20%

15. CURRENT ACTIVITIES ON WHICH YOUR FIRM IS THE DESIGNATED ENGINEER OF RECORD

PROJECT NAME, TYPE AND LOCATION	NAME AND ADDRESS OF OWNER	NATURE OF YOUR FIRM'S RESPONSIBILITY	ESTIMATED CONSTRUCTION COST	PERCENT COMPLETE
Union Street CR6 Bruceeton Mills, WV	WVDOH Building 5 1900 Kanawha Blvd. E Charleston, WV 25305	Preparation of Design and Bid Documents	\$300,000	95%
Fairway Crossing Subdivision South Charleston, WV	South Charleston Development Authority PO Box 8597 So. Charleston, WV 25303	Surveying and Engineering Design of Roads and Utilities for New Subdivision	\$1,200,000	95%
Rand Drainage Rand, WV	WVDOH Building 5 1900 Kanawha Blvd. E Charleston, WV 25305	Design of Stormwater Collection System, Plan Development	\$17,000,000	40%
Howesville Area Water Line Extension Preston County, WV <i>Project mostly funded by WVDEP, AML</i>	Preston County PSD #2 c/o Kingwood Water Works 313 Tunnelton Street Kingwood, WV 26537	Design and construction management of water line extension, including 12 miles of line and one 60,000-gallon tank.	\$2,801,344	98%
Boone County PSD Wastewater Treatment Plant Upgrade Boone County, WV	Boone County PSD PO Box 287 Danville, WV 25053	Final design of wastewater treatment plant upgrade.	\$4,000,000	75%
Town of Mill Creek Water System Improvements Mill Creek, WV	Town of Mill Creek High Street Mill Creek, WV 26280	Design of water line replacement including construction documents.	\$2,650,000	95%
West Virginia American Water Master Services Agreement	West Virginia American Water PO Box 1906 Charleston, WV 25327	Design of Olcott water line extension, construction monitoring of various water line construction projects, and river water study.	\$5,000,000	80%
South Charleston Park Place Development (Retail Shopping Center)	South Charleston Development Authority PO Box 8597 South Charleston, WV 25303	Civil/site, geotechnical design, construction monitoring to close, fill, and develop 80-acre shopping center over a waste impoundment.	\$30,000,000	80%

TOTAL NUMBER OF PROJECTS:

16 (POTESTA has completed well over 1000 projects.)

TOTAL ESTIMATED CONSTRUCTION COSTS:

\$69,821,344

16. CURRENT ACTIVITIES ON WHICH YOUR FIRM IS SERVING AS A SUB-CONSULTANT TO OTHERS

PROJECT NAME, TYPE AND LOCATION	NATURE OF FIRMS RESPONSIBILITY	NAME AND ADDRESS OF OWNER	ESTIMATED COMPLETION DATE	ESTIMATED CONSTRUCTION COST	
				ENTIRE PROJECT	YOUR FIRMS RESPONSIBILITY
Phase I, Morgantown Municipal Airport Runway 18-36 Extension	Permitting, AMD treatment, and coal removal.	Michael Baker International, LLC Airside Business Park 100 Airside Drive Morgantown, WV 26505	2022	\$5,700,000	\$150,000
13 th Street Pump Station Renovation Huntington Sanitary Board	Permitting, Geotech, Mapping, Civil Site, and Temporary Pumping.	Strand Associates, Inc. 910 West Wingra Drive Madison, WI 53715	2026	\$19,500,000	\$4,000,000
4 th Street Pump Station Renovation Huntington Sanitary Board	Permitting, Geotech, Mapping, Civil Site, and Temporary Pumping.	Strand Associates, Inc. 910 West Wingra Drive Madison, WI 53715	2026	\$15,500,000	\$3,000,000
WWTP Upgrade Renovation Huntington Sanitary Board	Permitting, Geotech, Mapping, and Civil Site.	Strand Associates, Inc. 910 West Wingra Drive Madison, WI 53715	2028	\$143,500,000	\$15,000,000
Brad D. Smith College of Business & Innovation Building Huntington, WV	Geotechnical, Civil/Site Design	Perkins & Eastman 115 fifth Avenue, 3 rd Floor New York, NY 10003	2024	\$40,000,000	\$1,000,000

17. COMPLETED WORK WITHIN LAST 5 YEARS ON WHICH YOUR FIRM WAS THE DESIGNATED ENGINEER OF RECORD

PROJECT NAME, TYPE AND LOCATION	NAME AND ADDRESS OF OWNER	ESTIMATED CONSTRUCTION COST	YEAR	CONSTRUCTED (YES OR NO)
North Edgemont Landslide Remediation	Huntington Sanitary Board 555 Seventh Ave. Huntington, WV 25701	\$750,000	2019	Yes
Nixon Ridge Landslide Remediation	K&N Contracting 2976 Wills Creek Road Elkview, WV 25701	\$2,400,000	2020	Yes
Marshall Portal Landslide Repair	MEPCO, LLC 966 Crafts Run Road Maidsville, WV 26541	\$200,000	2018	Yes
Kinetic Park Landslide Remediation	Huntington Municipal Development Authority 800 5 th Avenue Huntington, WV 25701	\$3,900,000	2021	Yes
Verner (Grimmett) Hollow Emergency Landslide Remediation and Drainage Improvements	WVDEP Office of AML 1159 Nick Rahall Greenway Fayetteville, WV 25840	\$325,000	2021	Yes
West Virginia University Rockfall Mitigation Morgantown, WV	West Virginia University Division of Facilities, Design & Construction 979 Rawley Lane Morgantown, WV 26506	\$2,900,000	2022	Yes
Armory Lot Retaining Wall Replacement Morgantown, WV	City of Morgantown Parking Authority 300 Spruce Street Morgantown, WV 26505	\$200,000	2022	Yes
Friends of Cheat, Cheat River Rail Trail Landslide & Drainage Evaluation Kingwood, WV	Friends of the Cheat 1343 N. Preston Highway Kingwood, WV 26537	TBD	2022	Yes
Kingwood Landfill, Landfill Closure Design Kingwood, WV	WVDEP 601 57 th Street, SE Charleston, WV 25304	\$6,000,000	2022	Yes

19. Use this space to provide any additional information or description of resources supporting your firm's qualifications to perform work for the West Virginia Abandoned Mine Lands Program.

Potesta & Associates, Inc.'s (POTESTA) Expression of Interest for Professional Engineering Design Services supports this questionnaire in providing POTESTA's qualifications and resources for serving the West Virginia Department of Environmental Protection, Office of Abandoned Mine Lands and Reclamation on this project. In summary, POTESTA:

1. Has assembled a team of in-house personnel and subcontractors who have historically worked on AML projects. POTESTA's in-house staff includes 14 Professional Engineers including 10 in the primary office, 3 in Morgantown, and 1 in Winchester. Our staff has worked on over 160 AML projects for WVDEP on four different WVDEP AML contracts dating back to the mid-1980s.
2. Has a large local staff with a unique multidiscipline technical emphasis (including civil engineering, structural engineering, geological engineering, hydrological engineering, mine land reclamation, with a strong emphasis on water quality and aquatic life and toxicity).
3. Has 20+ employees with experience on WVDEP AML projects. POTESTA employees have worked on and have experience in the following type of WVDEP AML projects:
 - Passive Acid Mine Drainage Treatment
 - Assessment of Contamination (e.g., PCBs, asbestos)
 - Demolition of Structures
 - Diversion Structures
 - Identifying Acid Mine Drainage
 - Inventory of Residential Water Supplies
 - Water Supply Feasibility Studies and Design
 - Mine Fires
 - Landslides
 - Reclamation of Refuse Piles
 - Sealing Mine Portals
 - Stream Relocations
 - Subsidence Assessment and Remediation
 - USCOE Permitting
 - Wetland Assessments
4. Can handle a substantial AML workload (more than our competitors) since POTESTA has three Professional Engineer (P.E.) Project Managers each with experience on 75+ AML projects.
5. Offices located in Charleston, WV near WVDEP's Charleston office, office in Morgantown, WV close to WVDEP Bridgeport office, and support office in Winchester, Virginia.
6. Staff has had a positive relationship with WVDEP, AML in the past, which we would like to continue.

20. The foregoing is a statement of facts.

Signature: 

Title: Vice President

Date: August 24, 2023

Printed Name: Dana L. Burns, PE

APPENDIX B

AML AND RELATED PROJECT EXPERIENCE MATRIX																													
PROJECT	Exp. Basis C=Corp. P=Personnel *	Additional Info Provided in EOI (page) **	PROJECT EXPERIENCE REQUIREMENTS														PRIMARY STAFF PARTICIPATION/CAPACITY *** M=Management P=Professional												
			Abandoned Surface Mine Reclamation	Abandoned Deep Mine Reclamation	Portal/Shaft Closure	Hydrologic/Hydraulic Design/Eval.	Remining Evaluation	Mine/Refuse Fire Abatement	Subsidence Investigation Mitigation	Hazardous Waste Disposal	Project Specifications	Water Quality Evaluation/Mitigation/Replacement	Construction Inspection/Management	Water Treatment	Equipment/Structure Removal	Stream Restoration	Geotechnical/Stability	Dana L. Burns	Tim M. Rice	David B. Sharp	Chris A. Grose	D. Mark Kiser	Terence C. Moran	Michael Sankoff	Jarrett Smith	Robbert Ammirato	Paul Maggard	Scott A. Bolyard	Chad Griffith
City of Charleston - Grandview Slip Repair - Kanawha County WV	C					✓					✓	✓				✓			M	P									P
Chemical Plant - Parkersburg, WV	C				✓					✓	✓										M								
CEF 8 Ltd. Partnership -Artisan Heights Townhouse Dev. Stability Review	C															✓			P,M										
Burlew Landslide Repair	P															✓			P, M										
Bradshaw Schools	C				✓					✓		✓					M					M			P				
Boone County PSD - Trace Branch/Robinson Water Line Extension	C																M					M		P					
Boone County PSD - Stephens Auto/Betsy Lane Water Line Extension	C																M					M		P					
Boone County PSD - Six Mile Extension/Corridor G	C																M					M		P					
Boone County PSD - Lick Creek Water Line Extension	C																M					M		P					
Boone County PSD - Joes Creek Water Line Extension	C																M					M		P					
Birchfield Landslide - Engineering	P		✓							✓						✓										M,P			
Barrackville Mine Expansion	C				✓					✓	✓					✓	M										M,P		P
Baker AMD	P			✓						✓	✓		✓													M,P			
Avery Court	C				✓					✓									M									P	
Allen Sheridan Hazardous Facility (Asbestos)	P		✓						✓	✓							M												
6th Street Tower Landslide Repair	P															✓			P, M										

* List whether project experience is corporate or personnel based or both.

** Use this area to provide specific sections or pages if needed for reference.

*** List Primary Design personnel and their functional capacity for the projects listed.

APPENDIX C



Department of Administration
 Purchasing Division
 2019 Washington Street East
 Post Office Box 50130
 Charleston, WV 25305-0130

State of West Virginia
 Centralized Expression of Interest
 Architect/Engr

Proc Folder: 1257588
Doc Description: EOI - 2023 AML Contract S3
Proc Type: Central Purchase Order

Reason for Modification:

Date Issued	Solicitation Closes	Solicitation No	Version
2023-08-08	2023-08-24 13:30	CEOI 0313 DEP2400000003	1

BID RECEIVING LOCATION

BID CLERK
 DEPARTMENT OF ADMINISTRATION
 PURCHASING DIVISION
 2019 WASHINGTON ST E
 CHARLESTON WV 25305
 US

VENDOR

Vendor Customer Code: 000000173443
Vendor Name : Potesta & Associates, Inc.
Address : 7012
Street : MacCorkle Avenue, SE
City : Charleston
State : WV **Country :** USA **Zip :** 25304
Principal Contact : Dana L. Burns
Vendor Contact Phone: (304) 342-1400 **Extension:** 1127

FOR INFORMATION CONTACT THE BUYER

Joseph E Hager III
 (304) 558-2306
 joseph.e.hageriii@wv.gov

Vendor Signature X 

FEIN# 31-1509066

DATE August 24, 2023

All offers subject to all terms and conditions contained in this solicitation

DESIGNATED CONTACT: Vendor appoints the individual identified in this Section as the Contract Administrator and the initial point of contact for matters relating to this Contract.

(Printed Name and Title) _____

(Address) _____

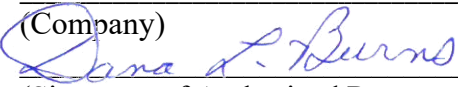
(Phone Number) / (Fax Number) _____

(Email address) _____

CERTIFICATION AND SIGNATURE: By signing below, or submitting documentation through wvOASIS, I certify that: I have reviewed this Solicitation/Contract in its entirety; that I understand the requirements, terms and conditions, and other information contained herein; that this bid, offer or proposal constitutes an offer to the State that cannot be unilaterally withdrawn; that the product or service proposed meets the mandatory requirements contained in the Solicitation/Contract for that product or service, unless otherwise stated herein; that the Vendor accepts the terms and conditions contained in the Solicitation, unless otherwise stated herein; that I am submitting this bid, offer or proposal for review and consideration; that this bid or offer was made without prior understanding, agreement, or connection with any entity submitting a bid or offer for the same material, supplies, equipment or services; that this bid or offer is in all respects fair and without collusion or fraud; that this Contract is accepted or entered into without any prior understanding, agreement, or connection to any other entity that could be considered a violation of law; that I am authorized by the Vendor to execute and submit this bid, offer, or proposal, or any documents related thereto on Vendor's behalf; that I am authorized to bind the vendor in a contractual relationship; and that to the best of my knowledge, the vendor has properly registered with any State agency that may require registration.

By signing below, I further certify that I understand this Contract is subject to the provisions of West Virginia Code § 5A-3-62, which automatically voids certain contract clauses that violate State law; and that pursuant to W. Va. Code 5A-3-63, the entity entering into this contract is prohibited from engaging in a boycott against Israel.

(Company)



(Signature of Authorized Representative)

(Printed Name and Title of Authorized Representative) (Date)

(Phone Number) (Fax Number)

(Email Address)

ADDENDUM ACKNOWLEDGEMENT FORM
SOLICITATION NO.:

Instructions: Please acknowledge receipt of all addenda issued with this solicitation by completing this addendum acknowledgment form. Check the box next to each addendum received and sign below. Failure to acknowledge addenda may result in bid disqualification.

Acknowledgment: I hereby acknowledge receipt of the following addenda and have made the necessary revisions to my proposal, plans and/or specification, etc.

Addendum Numbers Received:

No Addenda Received

(Check the box next to each addendum received)

- Addendum No. 1
- Addendum No. 2
- Addendum No. 3
- Addendum No. 4
- Addendum No. 5

- Addendum No. 6
- Addendum No. 7
- Addendum No. 8
- Addendum No. 9
- Addendum No. 10

I understand that failure to confirm the receipt of addenda may be cause for rejection of this bid. I further understand that any verbal representation made or assumed to be made during any oral discussion held between Vendor's representatives and any state personnel is not binding. Only the information issued in writing and added to the specifications by an official addendum is binding.

Company

Dana L. Burns

Authorized Signature

Date

NOTE: This addendum acknowledgment should be submitted with the bid to expedite document processing.

ABANDONED MINE LANDS (AML) CONTRACTOR INFORMATION FORM

You must complete this form for your AML contracting officer to request an eligibility evaluation from the Office of Surface Mining Reclamation and Enforcement (OSMRE) to determine if you are eligible to receive an AML contract. This requirement can be found under OSMRE's regulations at 30 CFR 874.16. **NOTE:** This form must be signed and **dated within 30 days** of submission to be considered for a current bid.

Part A: General Information

Business Name: _____
 Tax ID #: _____
 Address: _____
 City, State, & Zip: _____
 Phone Number: _____
 Email Address: _____

Part B: Obtain an Organizational Family Tree (OFT) from the Applicant Violator System (AVS)

If you plan to certify the existing AVS information or submit updates under Part C, you must include an OFT. Instructions for downloading an OFT from the AVS can be found at: <https://www.osmre.gov/sites/default/files/2022-02/OMB%201029-0119%20instructions.pdf>. If you require assistance you may contact the AVS Office by phone at: 800-643-9748, or by email at: avshelp@osmre.gov.


Part C: Certifying and updating information in the AVS

Select one of the options, follow the instructions for the selected option, sign, and date below.

I, _____, have express authority to certify that:
 (Print Name)

1. Our business is listed in the AVS. The information is accurate, complete, and up to date. (If you select this option, you must attach an Entity OFT from the AVS to this form). Do not complete Part D.
2. Our business is in the AVS. The information needs to be updated. (If you select this option, you must attach an Entity OFT from the AVS to this form). Complete Part D to provide the missing or corrected information.
3. Our business is not listed in the AVS. The information needs to be added. Complete Part D to provide the information.

Date



Signature

Title



U.S. Department of the Interior
Office of Surface Mining Reclamation and Enforcement
Applicant/Violator System

Help Guest
Logout

Search Criteria: Primary Show E Entity Name: 247598 Mail To: Send

(247598) Load Report

1 of 1 Find | Next

AVS OFT Report - 6/20/2022 3:32:59 PM

All OFT's where the selected entity is listed as an entity or related entity

Entity Selected (247598) Potesta & Associates Inc

Parent Entity	Relationship	Description	Related Entity	% Ownership	Begin Date	End Date
(247598) Potesta & Associates Inc	Vice President		(247600) Dana L Burns		3/7/1997	
(247598) Potesta & Associates Inc	Shareholder		(247600) Dana L Burns	20%	3/7/1997	
(247598) Potesta & Associates Inc	Shareholder		(264075) Peter Potesta	10%	1/1/2021	
(247598) Potesta & Associates Inc	President		(247599) Ronald R Potesta		3/7/1997	
(247598) Potesta & Associates Inc	Shareholder		(247599) Ronald R Potesta	65%	3/7/1997	
(247598) Potesta & Associates Inc	Vice President		(247601) Laidley Eli McCoy		6/7/1997	12/31/2014

1 of 1

Potesta & Associates, Inc. made several attempts to access the Applicant Violator System to print a current AVS OFT Report. On each attempt, access was not possible and we received a message indicating the AVS system was offline. This report is from June 20, 2022 and contains accurate information.