



The following documentation is an electronically-submitted vendor response to an advertised solicitation from the *West Virginia Purchasing Bulletin* within the Vendor Self-Service portal at [wvOASIS.gov](http://wvOASIS.gov). As part of the State of West Virginia's procurement process, and to maintain the transparency of the bid-opening process, this documentation submitted online is publicly posted by the West Virginia Purchasing Division at [WVPurchasing.gov](http://WVPurchasing.gov) with any other vendor responses to this solicitation submitted to the Purchasing Division in hard copy format.

Header @ 1

List View

- General Information**
- Contact
- Default Values
- Discount
- Document Information
- Clarification Request

|  |   |
|--|---|
| Procurement Folder: 1257313                                    | SO Doc Code: CEOI   |
| Procurement Type: Central Purchase Order                       | SO Dept: 0313   |
| Vendor ID: <input type="text" value="00000204787"/>            | SO Doc ID: DEP2400000001  |
| Legal Name: THE THRASHER GROUP INC                             | Published Date: 8/7/23  |
| Alias/DBA:   | Close Date: 8/23/23   |
| Total Bid: \$0.00  | Close Time: 13:30   |
| Response Date: <input type="text" value="08/23/2023"/>         | Status: Closed  |
| Response Time: <input type="text" value="12:27"/>              | Solicitation Description: <input type="text" value="EOI - 2023 AML Contract S2"/> |
| Responded By User ID: <input type="text" value="Thrasher"/>    | Total of Header Attachments: 1  |
| First Name: <input type="text" value="Anjelica"/>              | Total of All Attachments: 1   |
| Last Name: <input type="text" value="D'Annunzio"/>             |   |
| Email: <input type="text" value="adannunzio@thethrashergror"/> |   |
| Phone: <input type="text" value="304-624-4108"/>               |   |



Department of Administration  
 Purchasing Division  
 2019 Washington Street East  
 Post Office Box 50130  
 Charleston, WV 25305-0130

**State of West Virginia  
 Solicitation Response**

**Proc Folder:** 1257313  
**Solicitation Description:** EOI - 2023 AML Contract S2  
**Proc Type:** Central Purchase Order

| Solicitation Closes | Solicitation Response        | Version |
|---------------------|------------------------------|---------|
| 2023-08-23 13:30    | SR 0313 ESR08232300000000869 | 1       |

**VENDOR**  
 000000204787  
 THE THRASHER GROUP INC

**Solicitation Number:** CEOI 0313 DEP2400000001  
**Total Bid:** 0  
**Response Date:** 2023-08-23  
**Response Time:** 12:27:38  
**Comments:** n/a

**FOR INFORMATION CONTACT THE BUYER**

Joseph E Hager III  
 (304) 558-2306  
 joseph.e.hageriii@wv.gov

**Vendor Signature X** **FEIN#** **DATE**

All offers subject to all terms and conditions contained in this solicitation

| Line | Comm Ln Desc                     | Qty | Unit Issue | Unit Price | Ln Total Or Contract Amount |
|------|----------------------------------|-----|------------|------------|-----------------------------|
| 1    | Professional Svcs - Drawdy Creek |     |            |            | 0.00                        |

| Comm Code | Manufacturer | Specification | Model # |
|-----------|--------------|---------------|---------|
| 81100000  |              |               |         |

Commodity Line Comments: n/a

**Extended Description:**

Professional Svcs - Drawdy Creek

| Line | Comm Ln Desc  | Qty | Unit Issue | Unit Price | Ln Total Or Contract Amount |
|------|---|-----|------------|------------|-----------------------------|
| 2    | Professional Svcs - Peytona (Bowles) Portals & Drainage |     |            |            | 0.00                        |

| Comm Code | Manufacturer | Specification | Model # |
|-----------|--------------|---------------|---------|
| 81100000  |              |               |         |

Commodity Line Comments: n/a

**Extended Description:**

Professional Svcs - Peytona (Bowles) Portals & Drainage

| Line | Comm Ln Desc                           | Qty | Unit Issue | Unit Price | Ln Total Or Contract Amount |
|------|--|-----|------------|------------|-----------------------------|
| 3    | Professional Svcs - Toney Fork Portals |     |            |            | 0.00                        |

| Comm Code | Manufacturer | Specification | Model # |
|-----------|--------------|---------------|---------|
| 81100000  |              |               |         |

Commodity Line Comments: n/a

**Extended Description:**

Professional Svcs - Toney Fork Portals

| Line | Comm Ln Desc                                  | Qty | Unit Issue | Unit Price | Ln Total Or Contract Amount |
|------|---|-----|------------|------------|-----------------------------|
| 4    | Professional Svcs - Mitchell Cemetery Complex |     |            |            | 0.00                        |

| Comm Code | Manufacturer | Specification | Model # |
|-----------|--------------|---------------|---------|
| 81100000  |              |               |         |

Commodity Line Comments: n/a

**Extended Description:**

Professional Svcs - Mitchell Cemetery Complex

| Line | Comm Ln Desc                            | Qty | Unit Issue | Unit Price | Ln Total Or Contract Amount |
|------|---|-----|------------|------------|-----------------------------|
| 5    | Professional Svcs - New Butler Drainage |     |            |            | 0.00                        |

| Comm Code | Manufacturer | Specification | Model # |
|-----------|--------------|---------------|---------|
| 81100000  |              |               |         |

Commodity Line Comments: n/a

**Extended Description:**

Professional Svcs - New Butler Drainage

| Line | Comm Ln Desc                               | Qty | Unit Issue | Unit Price | Ln Total Or Contract Amount |
|------|--|-----|------------|------------|-----------------------------|
| 6    | Professional Svcs - Lens Creek Refuse Pile |     |            |            | 0.00                        |

| Comm Code | Manufacturer | Specification | Model # |
|-----------|--------------|---------------|---------|
| 81100000  |              |               |         |

Commodity Line Comments: n/a

**Extended Description:**

Professional Svcs - Lens Creek Refuse Pile

| Line | Comm Ln Desc                                     | Qty | Unit Issue | Unit Price | Ln Total Or Contract Amount |
|------|--|-----|------------|------------|-----------------------------|
| 7    | Professional Svcs - Lens Creek Left Fork Portals |     |            |            | 0.00                        |

| Comm Code | Manufacturer | Specification | Model # |
|-----------|--------------|---------------|---------|
| 81100000  |              |               |         |

Commodity Line Comments: n/a

**Extended Description:**

Professional Svcs - Lens Creek Left Fork Portals

| Line | Comm Ln Desc  | Qty | Unit Issue | Unit Price | Ln Total Or Contract Amount |
|------|---|-----|------------|------------|-----------------------------|
| 8    | Professional Svcs - Poe Hollow Portals and Drainage |     |            |            | 0.00                        |

| Comm Code | Manufacturer | Specification | Model # |
|-----------|--------------|---------------|---------|
| 81100000  |              |               |         |

Commodity Line Comments: n/a

**Extended Description:**

Professional Svcs - Poe Hollow Portals and Drainage

| Line | Comm Ln Desc                                   | Qty | Unit Issue | Unit Price | Ln Total Or Contract Amount |
|------|--|-----|------------|------------|-----------------------------|
| 9    | Professional Svcs - Route 60 Drainage Phase II |     |            |            | 0.00                        |

| Comm Code | Manufacturer | Specification | Model # |
|-----------|--------------|---------------|---------|
| 81100000  |              |               |         |

Commodity Line Comments: n/a

**Extended Description:**

Professional Svcs - Route 60 Drainage Phase II

| Line | Comm Ln Desc                                    | Qty | Unit Issue | Unit Price | Ln Total Or Contract Amount |
|------|---|-----|------------|------------|-----------------------------|
| 10   | Professional Svcs - Cannelton (Miller) Drainage |     |            |            | 0.00                        |

| Comm Code | Manufacturer | Specification | Model # |
|-----------|--------------|---------------|---------|
| 81100000  |              |               |         |

Commodity Line Comments: n/a

**Extended Description:**

Professional Svcs - Cannelton (Miller) Drainage

| Line | Comm Ln Desc                      | Qty | Unit Issue | Unit Price | Ln Total Or Contract Amount |
|------|-----------------------------------|-----|------------|------------|-----------------------------|
| 11   | Professional Svcs - Cabot Portals |     |            |            | 0.00                        |

| Comm Code | Manufacturer | Specification | Model # |
|-----------|--------------|---------------|---------|
| 81100000  |              |               |         |

Commodity Line Comments: n/a

**Extended Description:**

Professional Svcs - Cabot Portals

| Line | Comm Ln Desc                                      | Qty | Unit Issue | Unit Price | Ln Total Or Contract Amount |
|------|---|-----|------------|------------|-----------------------------|
| 12   | Professional Svcs - Big Ugly (O'Neal)<br>Drainage |     |            |            | 0.00                        |

| Comm Code | Manufacturer | Specification | Model # |
|-----------|--------------|---------------|---------|
| 81100000  |              |               |         |

Commodity Line Comments: n/a

**Extended Description:**

Professional Svcs - Big Ugly (O'Neal) Drainage

| Line | Comm Ln Desc                    | Qty | Unit Issue | Unit Price | Ln Total Or Contract Amount |
|------|---------------------------------|-----|------------|------------|-----------------------------|
| 13   | Professional Svcs - Prenter UMF |     |            |            | 0.00                        |

| Comm Code | Manufacturer | Specification | Model # |
|-----------|--------------|---------------|---------|
| 81100000  |              |               |         |

Commodity Line Comments: n/a

**Extended Description:**

Professional Svcs - Prenter UMF





**THRASHER**

# **WEST VIRGINIA DEPARTMENT OF ENVIRONMENTAL PROTECTION**

**CE01 0313 DEP2400000001 - AML Contract 2 Project South**

Submitted by:  
The Thrasher Group, Inc.  
August 23, 2023

August 23, 2023

Attn: Mr. Joseph E Hager III  
Department of Administration, Purchasing Division  
2019 Washington Street East | Charleston, WV 25305-0130

WE WOULD BE A MAJOR PARTNER TO THE WVDEP

WE GET RESULTS QUICKLY

WE PRIORITIZE YOU

RE: West Virginia Department of Environmental Protection - CEOI 0313 DEP2400000001  
AML Contract 2 Project South

Dear Mr. Hager and Selection Committee Members:

The Thrasher Group, Inc. is pleased to present our qualifications to the West Virginia Department of Environmental Protection for the AML Contract 2 Project South consisting of the following projects:

- » Drawdy Creek
- » Peytona (Bowles) Portals & Drainage
- » Toney Fork Portals
- » Mitchell Cemetery Complex
- » New Butler Drainage
- » Lens Creek Refuse Pile
- » Lens Creek Left Fork Portals
- » Poe Hollow Portals and Drainage
- » Route 60 Drainage Phase II
- » Cannelton (Miller) Drainage
- » Cabot Portals
- » Big Ugly (O'Neal) Drainage
- » Prenter UMF

With more than 40 years of experience working throughout the mountain state, Thrasher understands the geographical and geological conditions associated with abandoned mine sites in southern West Virginia. We have a longstanding reputation for successfully completing Abandoned Mine Land (AML) projects — from emergency repairs, Abandoned Mine Lands, Economic Revitalization projects, traditional grant projects, and everything in between.

Our assembled team has been involved in numerous AML projects, successfully completing design, NEPA documentation, survey and mapping, construction inspection, and other needed services. Our demonstrated experience showcases our ability to efficiently identify project goals, establish accurate budgets, and develop successful outcomes for each of the projects at hand.

Additionally, with our offices in Beckley, Charleston, and Scott Depot, we will have dedicated team members readily available and easily accessible when the need arises to be on-site in an instant. Our proximity to the project sites allows us to perform consistent monitoring of the projects going on in the area.

We appreciate the opportunity to partner with you on these projects and look forward to helping you achieve your project goals now and in the future.

Sincerely,  
The Thrasher Group, Inc.



Samuel Rich, PLA  
Principal



Brian Knight  
Project Manager



# SECTION .01

*Qualifications, Experience,  
and Past Performance*



THRASHER



300+

EMPLOYEES

- 36 Licensed Professional Engineers
- 10 Licensed Professional Surveyors
- 6 Licensed Professional Architects
- 2 Licensed Professional Landscape Architects

MAIN POINT OF CONTACT:

Brian Knight  
 Project Manager  
 bknight@thethrashergroup.com  
 Cell: 304-677-3572  
 Office: 304-431-7800



40

YEARS

of delivering successful projects



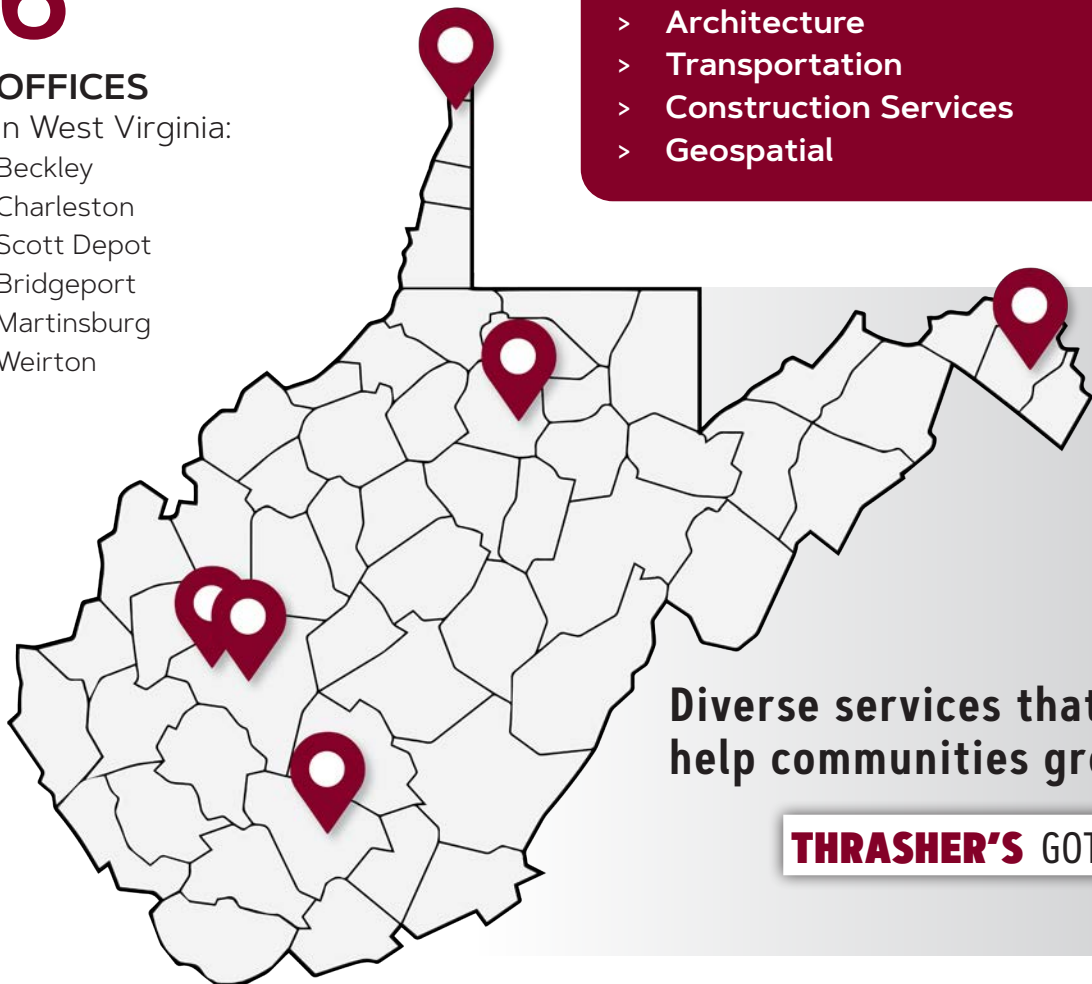
6

OFFICES

in West Virginia:  
 Beckley  
 Charleston  
 Scott Depot  
 Bridgeport  
 Martinsburg  
 Weirton

OUR SERVICES

- > Site Engineering
- > Environmental
- > Survey
- > Utility Engineering
- > Architecture
- > Transportation
- > Construction Services
- > Geospatial



Diverse services that help communities grow.

THRASHER'S GOT IT





# COMPANY HISTORY

With a commitment to building business through “successful projects and repeat clientele,” H. Wood Thrasher, PE and the late Henry A. Thrasher, PE, formed Thrasher Engineering, Incorporated in Clarksburg, West Virginia in 1983. Since that time, the company — now known as The Thrasher Group, Inc. — has transformed into one of the Mid-Atlantic region’s largest full-service privately owned architectural and engineering firms.

Thrasher has grown from its original three employees to a current staff of over 300 and continues to prosper. Instilled in each employee is a commitment to maintaining the highest standards of professional service. Our team has the experience, knowledge, versatility, and integrity to get the job done. With a 39-year history of driving infrastructure development for public and private clients, we have a reputation of keeping our word and completing projects on time and on budget.







## AML DESIGN

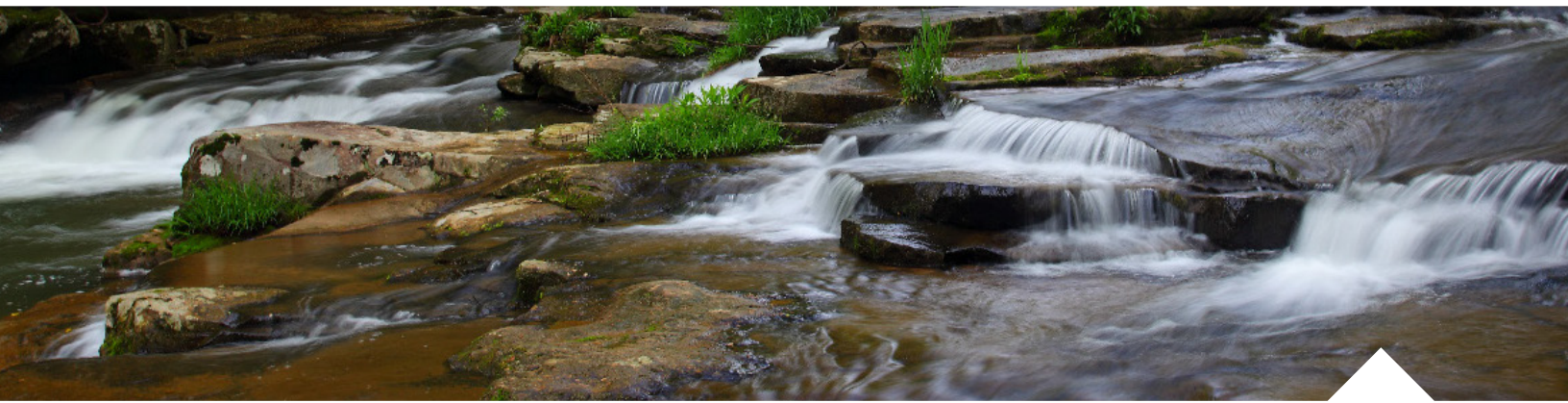
The Thrasher Group has provided design services to a number of Abandoned Mine Lands projects over the years. We are leaders in the industry, having completed projects for emergency repairs, using AML grants, and as part of the Abandoned Mine Lands Economic Revitalization project.

**Our team has been a part of all types of AML work, including, but not limited to:**

- » Highwalls
- » Portals
- » Slope Stabilization
- » Landslides
- » AMD Treatment
- » Refuse and Dump Improvements
- » Drainage Control
- » Burning Refuse Remediation

**Drainage Design:** All AML projects completed by Thrasher have required design of drainage structures. These have included vegetated, grouted, and riprap channels, as well as culverts and storm sewers. Drainage calculations are completed to properly size all conveyances.

**Permitting:** the permitting process can delay projects if they are not submitted correctly or in a timely manner. Thrasher takes pride in our ability to quickly obtain permits for our clients. We are able to utilize our excellent relationship with the WVDEP for NPDES permits as well as our relationship with the West Virginia Division of Highways for entrance and drainage permits. We are also experienced in obtaining Army Corp of Engineers permits from both the Pittsburgh and Huntington District Offices for stream bank restoration, wetland mitigation, and construction, linear transportation, and utility line projects, temporary construction access, and dewatering.



## ENVIRONMENTAL SERVICES

In today's ever-changing regulatory landscape, compliance with federal and state environmental laws is critical to the success of projects. Compliance can often seem at odds with the project vision and financial constraints. The Thrasher team partners as a technical and regulatory advocate to overcome obstacles and guide our clients through complicated policies to achieve their goals. From initial investigations to final design, our environmental experts are there to assist in all facets of our clients' projects. Our team has developed relationships with academic consultants from multiple universities that are here to aid in specialized assessments.

Thrasher offers a range of environmental services, from abandoned mine land reclamation to stream and wetland delineations and everything in between. We have extensive experience with site assessments, permitting, and every aspect of environmental work that your project will encompass.

In addition, our team has a host of experience with Abandoned Mine Land (AML) projects and are familiar with the intricacies involved

### Environmental Services:

- > All Appropriate Inquiry (AAI)
- > Environmental Site Assessments
- > NEPA Compliance for Publicly Funded Projects
- > Ecological Studies
- > Brownfield Redevelopment
- > Industrial Hygiene and Demolition Planning
- > Underground Storage Tank (UST) Consulting Services
- > Wetland Delineation, Design, and Mitigation
- > Remediation Investigation, Feasibility Studies, and Design
- > Hydrogeologic and Geologic Investigations
- > Groundwater Monitoring
- > Sampling and Laboratory Analysis
- > Solid and Hazardous Waste Management
- > SPCC, GPP, SWPPP, GWPP, SWPPP Environmental Compliance
- > Coal Combustion Residuals Rule Compliance (CCR)
- > Stream Assessments, Design, and Mitigation
- > Erosion and Sediment Control Plans
- > Voluntary Remediation Program
- > Uniform Environmental
- > Covenants Act
- > CERCLA Preliminary Assessment
- > CERCLA Site Investigation

Thrasher has completed more NEPA evaluations for AMLER projects than anyone in the state.





## ENVIRONMENTAL PERMITTING

The Environmental Division of the Thrasher Group provides permitting, consulting, and assessment services to a multitude of clients spanning the Mid-Atlantic region. With a combined 40 years of permitting experience, Thrasher’s Environmental Scientists, Permitting Leads, and Project Managers are able to take even the most complex and time restrictive projects and provide clients with cost effective and timely solutions.

### Federal Permitting

- > National Historic Preservation Act - Section 106 Consultation
  - > *State Historic Preservation Office or Division of Culture and History*
- > Endangered Species Act – Section 7 and Section 9 Consultations
  - > *United States Fish and Wildlife Service*
- > Clean Water Act – Section 404 Permits
  - > *United States Army Corps of Engineers*

- > National Environmental Policy Act – Categorical Exclusions, Environmental Assessments, and Short Environmental Assessment Forms
  - > *United States Army Corps of Engineers; Federal Aviation Administration; Division of Transportation; and Federal Communications Commission*

### State and Local Permitting

- > State Responsible Regulations of the Clean Water Act – Section 401 and 402 Permits
- > State Level Rare, Threatened, or Endangered Species Consultations
- > State Level Aquatic Resource Encroachment and Impact Permits
- > State Level Roadway Encroachment, Crossing, and Occupancy Permits
- > State Level Industrial Waste Discharge Permits
- > Local Level Floodplain or Building Permits





## CONSTRUCTION ADMINISTRATION

Effective management of our projects ensures that both clients and contractors work in an efficient and safe manner. From pre-construction activities - such as bid conferences and surveys - to inspections, job progress reviews, and on through final completion, our goal is work that proceeds in accordance with plans and specifications.

At Thrasher, we inspect and manage a wide variety of projects designed by our firm in addition to projects for contractors and other designers. We have certified project representatives responsible for overseeing every element of design integrity. Our methods have earned the respect of not only our clients, but contractors and project owners alike.

### Construction Inspection Services:

- > Construction Materials
- > Pipelines
- > Structural Steel & Concrete
- > Paving
- > Drainage
- > Embankments
- > Work Zone Safety & Traffic Control
- > Erosion and Soil Control

### Quality Control and Assurance Methods:

- > Regularly Scheduled Planning and Progress Meetings
- > Engineering During Construction
- > Daily Logs and Progress Sheets
- > Cut Sheets
- > Quantity Tracking



Thrasher has an internal Quality Control Policy to ensure our projects move forward efficiently and effectively. The objectives of this policy are to continually improve the quality of the design and technical deliverables Thrasher provides to its internal and external clients.

This policy illustrates the basic requirements for quality control in our projects. It describes the methods for checking and reviewing product elements and client deliverables, and includes rigorous comprehensive written check-lists for each stage of the design process, document production, and construction activities.

The purpose of these QC methodologies is to reduce or eliminate the potential for errors, omissions, ambiguities, and inconsistencies.

The policy outlines three main areas:

- > **General**  
Defines the purpose, intent and limitations, definitions, and implementation
- > **Project Management Procedures**  
Presents required procedures specific to this practice that allow for the efficient and accurate management of projects
- > **Check and Final Review Procedures**  
Presents required procedures specific to this practice that are used to insure technical accuracy of the work product



## Budgeting

Construction estimating and budgeting is one of the most important parts of what Thrasher can provide you. Without accurate budgets, there is no tool to guide the design process and issues will be inevitable. By including cost estimating as a part of the project scope from day one, we are able to avoid issues before they arise and keep your project within a reasonable cost.

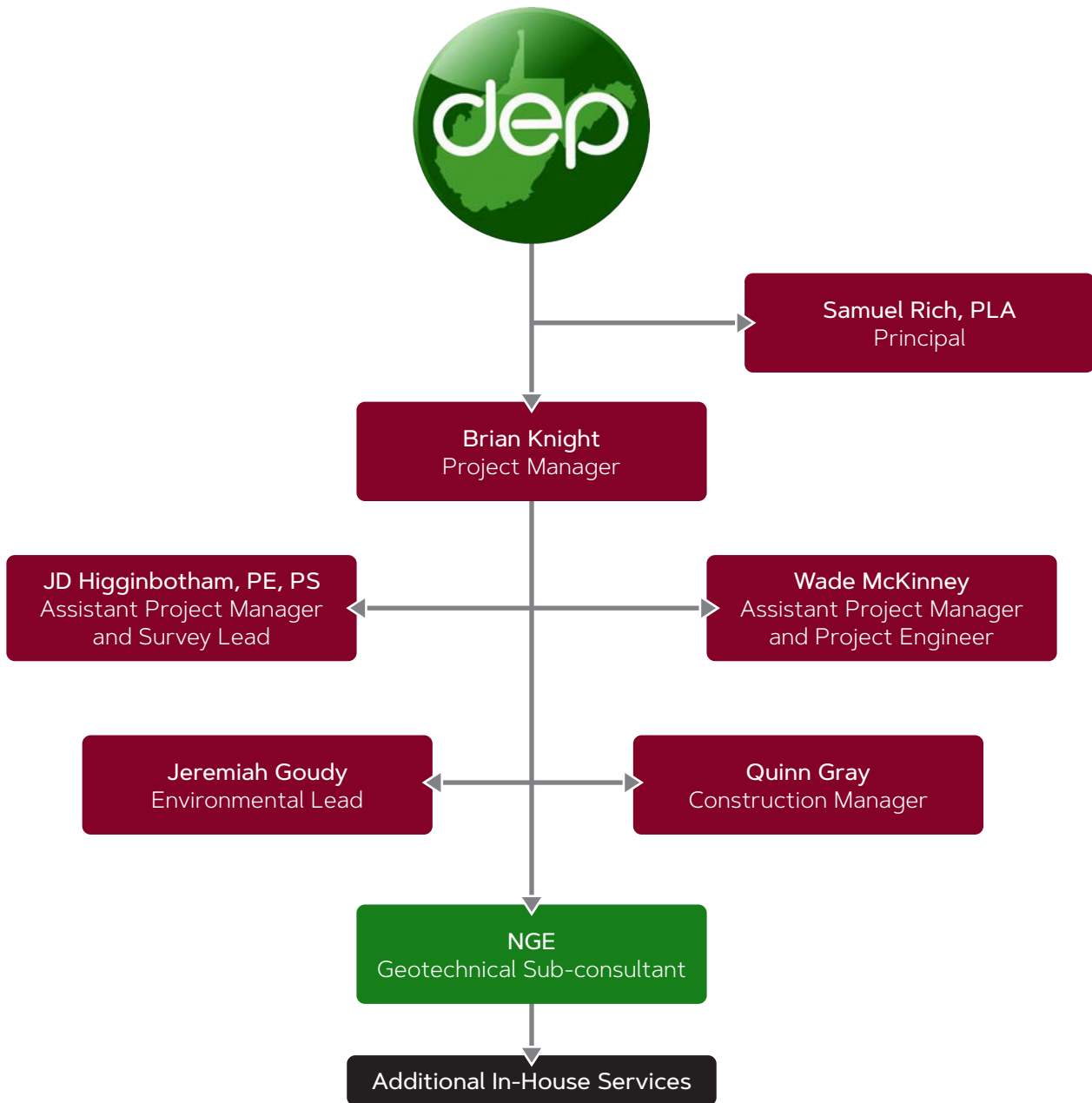
And our estimates go beyond the typical system - rather than simply providing cost per foot or lump sum price, Thrasher will provide contractor-grade estimates that look at every part of the project. We do detailed take-offs of materials and look at every man hour needed to complete a project and factor this in accordingly. Then, we use our thorough understanding of the local market and material costs to accurately design within your budget.



## Scheduling

Thrasher realizes the importance of establishing and maintaining project schedules. Time means money and making sure we help you spend your money wisely is our number one goal. Because of this, our team puts an emphasis on ensuring project timetables are met and communication is upheld throughout the process.

To accomplish these goals, Thrasher utilizes scheduling to track every stage of a project - from design and bidding through construction completion. Keeping our owners up to speed with progress is always our priority and ensures occupancy and owner supplied equipment are scheduled accordingly.





# SAMUEL RICH, PLA

PRINCIPAL

## Education

Bachelor of Science,  
Landscape Architecture  
West Virginia University

## Registrations

Professional Landscape Architect:  
> West Virginia  
> Virginia

## Affiliations

> American Society of Landscape  
Architects  
> 2022 Class of Generation Next  
40 Under 40

## PROFESSIONAL OVERVIEW

Samuel Rich, PLA is a Principal at The Thrasher Group working in the Land Development Market. Sam's role includes overseeing the design process for a variety of land development and planning projects in the commercial, residential, municipal, and industrial sectors. His team works with clients to take projects from the development stages all the way through construction, providing site evaluation, master planning, estimating, project marketing, and final design services.

Before his time at Thrasher, he spent three years in the landscape design/build industry working on a variety of projects involving the beautification of the outdoor environment for both residential and commercial spaces. Sam also held an internship position with the District of Columbia Office of Planning where he oversaw the historic restoration design of 10 Downtown D.C. pocket parks under National Park Service jurisdiction.

## EXPERIENCE

### Advantage Valley Site Planning Study

Project Manager | Cabell, Kanawha, Putnam, and Wayne Counties, WV

### Ashland Scenic Campground LLC Ashland Resort Master Plan

Project Manager | McDowell County, WV

### Oakhurst Subdivision Planning at the Greenbrier

Project Manager | Greenbrier County, WV

### City of Beckley Downtown Improvements

Project Manager | Raleigh County, WV

### City of Nitro Landscape Master Plan

Project Manager | Kanawha County, WV

### Webster County Economic Development Authority Bakers Island Master Plan

Project Manager | Webster County, WV

### West Virginia Department of Economic Development Site Assessments

Project Manager | Various Locations, WV

### Boy Scouts of America New River Trek

Project Manager | Fayette County, WV

### City of Smithers Riverfront Park Redevelopment

Project Manager | Fayette County, WV

# SAMUEL RICH, PLA

PRINCIPAL

## WEST VIRGINIA STATE BOARD OF LANDSCAPE ARCHITECTS

This is to certify that

**Samuel A. Rich**

having given satisfactory evidence of good moral character and being possessed of the necessary skill, training and experience is hereby granted the right and privilege to practice and use the title of

**LANDSCAPE ARCHITECT**  
in the State of West Virginia



Number 413

In witness whereof we set our hand and seal  
this 1st day of NOVEMBER 2013.

Michael R. Becker, PLA  
Chairman

Stephenson, PLA  
Secretary





# BRIAN KNIGHT

PROJECT MANAGER

## Certifications

- > Project Management Course Specialization
- > Leadership Development for Engineers - Rice University
- > Engineering Project Management - Rice University
- > OSHA 10 Hour Construction Worker Training
- > CPR and First-Aid

## PROFESSIONAL OVERVIEW

Brian Knight serves as a Project Manager with Thrasher. Brian has over 18 years of experience as a drafter, project engineer/manager, and project administrator with small engineering firms and large consulting firms. Since then, Mr. Knight has been diligent in providing high-quality and accurate project design and construction that meet deadlines and maintain budgets.

Prior to his time at Thrasher, Brian was responsible for bidding, billing, reporting various projects, coordinating with vendors for material shipments, and meeting with state officials. These are responsibilities that help make Brian a valued Project Manager.

## EXPERIENCE

### **WVDEP AML Bloomingrose (Tincher) Burning Refuse Project**

Project Manager | Boone County, WV

### **WVDEP AML Branchland (Ellis) Portals and Drainage**

Project Manager | Lincoln County, WV

### **WVDEP Glenn Alum Refuse Pile**

Project Manager | Mingo County, WV

### **WVDEP Len's Creek Portals**

Project Manager | Boone County, WV

### **WVDEP Monarch Portals**

Project Manager | Fayette County, WV

### **WVDEP Big Creek Portals**

Project Manager | Fayette County, WV

### **WVDEP Broad Run Portals**

Project Manager | Kanawha County, WV

### **WVDEP Conley Branch (Whitt) Landslide**

Project Manager | Logan County, WV

### **WVDEP Switzer (Ellis) Drainage**

Project Manager | Logan County, WV

### **WVDEP Verner Landslide Emergency Project**

Project Manager | Logan County, WV



# JOHN HIGGINBOTHAM, PE, PS

ASSISTANT PROJECT MANAGER AND SURVEY LEAD

## Education

Master of Science,  
Engineering Management  
Marshall University

Bachelor of Science,  
Civil Engineering  
West Virginia University-Institute  
of Technology

## Registrations

Professional Engineer:

- > West Virginia
- > Virginia

Professional Surveyor:

- > West Virginia

## Certifications

- > OSHA 10 Hour Construction
- > American Red Cross Adult First Aid/CPR/AED

## PROFESSIONAL OVERVIEW

John Higginbotham, PE, PS, serves as a project engineer in the Water Resources Division. Throughout his career as a dual licensee, he has had the opportunity to work on many engineering projects - primarily in the coal mining industry - and several survey projects for the various companies he has worked for.

John has 50 years of engineering experience in various disciplines, including 5 years in public utility design and 45 years in the coal industry. Many of John's coal industry projects involved survey projects for mine site construction, sediment control structure layouts, valley fill layouts, haulroad layouts, mine survey and mapping of the mine works, surveys for establishing survey monuments at the mine sites, extending the property coordinate system and controls to other areas of the property, surveys for drill holes into the mine workings, locating gas wells, surveys for as-built drawings for ponds, dams, roadways, drainage ditches, constructed and reclaimed mine sites, coal refuse disposal sites, coal slurry impoundments and various other types of surveys.

## EXPERIENCE

### Residential FEMA Flood Elevation Survey and Certificate

Project Manager | Raleigh County, WV

### Commercial FEMA Flood Elevation Survey and Certificate

Project Manager | Raleigh County, WV

### Mercer County Gas Extension Survey

Surveyor | Mercer County, WV

### Piney Land Company and McCreery Coal Land Company ALTA Survey

Project Manager | Raleigh, Mercer, and McDowell Counties WV

### Piney Land Company and McCreery Coal Land Company GPS Survey

Project Manager | Raleigh, Mercer, and McDowell Counties WV

### Appalachian Bible College Soccer Field Topographic Survey

Project Manager | Raleigh County, WV

### Bradley Elementary School Parking Lot Topographic Survey

Project Manager | Raleigh County, WV

### Beckley Little League New Baseball Field Topographic Survey

Project Manager | Raleigh County, WV

### Residential House at Pine Hills Topographic Survey

Project Manager | Raleigh County, WV

# JOHN HIGGINBOTHAM, PE, PS

ASSISTANT PROJECT MANAGER AND SURVEY LEAD

|                                    |   |
|------------------------------------|---|
| <b>Name:</b>                       | JOHN D. HIGGINBOTHAM, JR  |
| <b>WV Professional Engineer:</b>   | <b>PE License Number:</b> 008647                                  |
|                                    | <b>PE License Status:</b> Active                                  |
|                                    | <b>PE Issue Date:</b> 02/13/1981                                  |
|                                    | <b>PE Expiration Date:</b> 12/31/2024                             |
| <b>Continuing Education Claim:</b> | <b>Qualifying Hours from Last Renewal or Reinstatement:</b> 49.00 |
|                                    | <b>Carryover Hours for Next Renewal:</b> 15.00                    |
|                                    | <b>Last Renewal or Reinstatement Date*:</b> 12/31/2022            |
| <b>WV Engineer Intern:</b>         | <b>EI Certification Number:</b> 2653                              |
|                                    | <b>EI Issue Date:</b> 07/06/1973                                  |
| <b>Primary Address of Record:</b>  | PO BOX 1633<br>BECKLEY, WV 25802                                  |
| <b>Primary Employer of Record:</b> | THE THRASHER GROUP<br>155 BLUE ANGEL LANE<br>BEAVER, WV 25813     |

West Virginia Board of Professional Surveyors > Surveyor Search Results

## SURVEYOR SEARCH RESULTS

John David Higginbotham  
 License Number: 1251  
 Current Status: Active  
 Beckley, WV 25802



# WADE MCKINNEY

ASSISTANT PROJECT MANAGER AND PROJECT ENGINEER

## Education

Bachelors of Science,  
Civil Engineering Technology  
Fairmont State University

## Certifications

- > OSHA 10
- > SafeLand USA
- > First Aid

## Affiliations

- > American Society of Civil Engineers

## PROFESSIONAL OVERVIEW

Wade McKinney serves the Thrasher team as a highly motivated Staff Engineer working with both the firm's Utility and Site Divisions. Wade works closely with his colleagues to assist in project design, site planning, grading, field inspections, development of contract documents, and other support tasks. Prior to his current role, Wade worked directly with project Owners and contractors in the field. His time spent as the day-to-day presence on-site has given him a unique perspective that proves especially valuable during the design phase of projects. Wade is able to utilize his field experience to ensure that projects are designed with safety, budgets, and accurate timelines in mind.

## EXPERIENCE

**WVDEP AML Owl Creek Highwall Project Grading and Design**  
Project Engineer | Monongalia County, WV

**WVDEP AML Branchland (Ellis) Portals and Drainage**  
Project Engineer | Lincoln County, WV

**Sam Black Church Water Storage Tank Project**  
Project Engineer | Greenbrier County, WV

**Sam Black Church Water Line Extension**  
Project Engineer | Greenbrier County, WV

**Town of Farmington Sidewalk Project**  
Project Engineer | Marion County, WV

**Town of Fayetteville FEMA Storm Sewer Project**  
Project Engineer | Fayette County, WV

**Town of Rainelle FEMA Storm Sewer Repair Project**  
Project Engineer | Greenbrier County, WV

**Town of Rainelle FEMA Street and Sidewalk Repairs**  
Project Engineer | Greenbrier County, WV

**WestRidge Retail Development Project**  
Project Engineer | Monongalia County, WV

**City of Beckley Parking Lot Study**  
Project Engineer | Raleigh County, WV

**City of Richwood Emergency Sanitary Sewer Projects (FEMA)**  
Project Engineer | Nicholas County, WV

**Greenbrier County PSD #2 FEMA Flood Projects**  
Project Engineer | Greenbrier County, WV



# JEREMIAH GOUDY

ENVIRONMENTAL LEAD

## Education

Bachelor of Science,  
Environmental Science  
Minor in GIS  
Alderson Broaddus University

## Certifications

- > 40 Hour Hazardous Waste Operations and Emergency Response (HAZWOPER)
- > 10 Hour OSHA Construction Safety and Health
- > 8 Hour Safeland Safety Course

## PROFESSIONAL OVERVIEW

Jeremiah Goudy currently serves the Thrasher team as an Environmental Scientist. His work has included: stream and wetland delineations, report writing, environmental permitting, performing groundwater sampling, storm water runoff sampling, soil drilling and sampling, SWVM sampling (stream classification and benthic macroinvertebrate sampling/identification), and Phase I and Phase II Environmental Site Assessments.

Additionally, Jeremiah meets with state agencies and Owner representatives to determine potential aquatic and environmental impacts within project areas. Jeremiah uses a combination of his extensive field work and formal education to identify and mitigate potential environmental hazards.

Jeremiah obtained his minor in GIS. He assists the environmental division with mapping and data collection on many of the environmental projects.

## EXPERIENCE

**WVDNR Elk River Permitting, Field Work, and Environmental Assessment**  
Environmental Scientist | Kanawha County, WV

**Extraction A to Greathouse Water Line, Stream, and Wetland Delineations for Impacts**  
Environmental Scientist | Various Locations, WV

**E001 Wellpad, Stream, and Wetland Delineation for Impacts**  
Environmental Scientist | Various Locations, WV

**Beech Bottom Phase II ESA Sampling and Reporting**  
Environmental Scientist | Brooke County, WV

**White Oaks Business Park Phase III SWVM Stream Classification and Sampling**  
Environmental Scientist | Harrison County, WV

**City of Clarksburg MS4 Update**  
Environmental Scientist, GIS Data Collection | Harrison County, WV

**Hazel Ruby McQuain Kayak Launch Permitting**  
Environmental Scientist | Monongalia County, WV

**Hatfield-McCoy Trail Environmental Assessment**  
Environmental Scientist | Logan County, WV



# QUINN GRAY

CONSTRUCTION SERVICES PROJECT MANAGER

## Education

Bachelor of Science,  
Applied Physics  
(Minor in Mathematics)  
West Virginia Wesleyan College

## Certifications

- > NRMCA Concrete Technologist - Level II
- > ACI Aggregate Base
- > ACI Aggregate Technician - Level I
- > ACI Concrete Laboratory Technician - Level I
- > ACI Concrete Field Grade I
- > ACI Concrete Strength
- > WVDOH Soil and Aggregate Compaction Technician
- > WVDOH PCC Inspector
- > WVDOH PCC Technician
- > WVDOH Asphalt Field Compaction Technician
- > WVDOH Aggregate Technician
- > WVDOH Aggregate Sampling Inspector
- > WVDOH Concrete Mix Design
- > WVDOH TRET - Level IV
- > Caterpillar Asphalt Design Placement and Compaction Certified
- > Responsible Land Disturber
- > OSHA 10
- > SafeLand USA Training
- > Radiation Safety
- > First-Aid / CPR

## PROFESSIONAL OVERVIEW

Quinn Gray has been with Thrasher for seven years and currently serves as Project Manager and lab manager. Primarily, Quinn oversees projects in the southern region of WV. He has background knowledge in material control measures as well as laboratory production. Additionally, he oversees report documentation, personnel, and project financing.

Quinn's background in physics and mathematics has made him an excellent addition to the Thrasher laboratory team. His primary responsibilities are to run gradations, break cylinders, and report on laboratory findings. Quinn's knowledge of the laboratory procedures and the proper reporting skills makes him an excellent manager.

Quinn also possesses impeccable technical skills such as software and computer course training. While in college, Quinn spent time working in the chemistry and physics lab which has prepared him for his current position.

## EXPERIENCE

**Raleigh County Schools Crab Orchard Elementary School Materials Testing**  
Laboratory Supervisor | Raleigh County, WV

**Raleigh County Schools Shady Spring High School**  
Laboratory Supervisor | Raleigh County, WV

**WVU Tech Institute Engineering Building**  
Laboratory Supervisor | Raleigh County, WV

**City of Beckley Police Department**  
Construction Services Project Manager | Raleigh County, WV

**City of Beckley Fire Station #3**  
Construction Services Project Manager | Raleigh County, WV

**West Virginia University Evansdale Visitor's Center**  
Construction Services Project Manager | Monongalia County, WV

**West Virginia University Engineering Sciences Building**  
Construction Services Project Manager | Monongalia County, WV

**Young Life Camp Wild Ridge**  
Construction Services Project Manager | Nicholas County, WV

**Boy Scouts of America JW Marriott JR Leadership Center**  
Construction Services Project Manager | Fayette County, WV





## Locations

### West Virginia Office

650 MacCorkle Avenue West  
St. Albans, WV 25177  
P: (304) 201-5180  
F: (304) 201-5182

### Pennsylvania Office

171 Montour Run Road  
Moon Twp, PA 15108  
P: (412) 722-1970  
F: (412) 722-1929

## Company Overview

NGE was founded in the fall of 2002 by Amy Veltri and John Nottingham, a management team with a combined forty years of industry experience. The family-based entrepreneurial spirit that defined NGE's beginnings remains evident in the innovative solutions we deliver to our loyal clients each and every day. Advances in engineering, science and technology, coupled with regulatory, legal, and compliance pressures create increasingly complex challenges for businesses. NGE strives to keep pace with these changes, with an eye to supporting our clients' changing needs.

NGE has grown into a dependable and flexible environmental and geotechnical consulting firm providing a wide range of professional services, including Environmental Consulting, Geotechnical Engineering and Environmental Construction / Remediation. With clients across the nation, NGE added a second office location in West Virginia in 2003, and seeks to grow in the future by providing consistent, quality service in a family-oriented atmosphere.

Since its inception, NGE has hired and retained the best and brightest talent in the industry. Our staff have relevant experience and qualifications to complete complex environmental and geotechnical projects. NGE's future is bright as we pursue a course of planned, measured growth to meet the challenge of expansion without diluting leadership or weakening the company's ability to perform. After establishing a solid foundation and longstanding reputation in the region and across the nation as an innovative, sophisticated, forward-thinking environmental and geotechnical consulting firm, we are proud of our roots and the progressive environment we have created for our dedicated employees.

NGE is an organization that is small enough to focus time on each client but with a depth in talent and resources to successfully complete large and complex projects. NGE provides superior environmental and geotechnical services at a manageable price. A family oriented work atmosphere has fostered the growth of NGE's staff with the best and brightest talent in the industry.

NGE has garnered a variety of certifications and awards over the years in the environmental and geotechnical consulting industry. These accomplishments and accolades bear testament to the impeccable standards that we strive to achieve at NGE. They help differentiate our company from our competitors and serve to distinguish our employees as the "best of the best."

The Thrasher Group's current workload will allow for immediate response to your needs. You will have specifically appointed team members located in our Beckley office, whose schedules will allow flexibility to enable them to fulfill all deliverables. In addition to these dedicated staff members, Thrasher has the ability to provide additional assistance as needed. The company boasts a staff of more than 300 people in four states, allowing us – if necessary – to pull more personnel to provide a timely response to your needs. This amount of available staff enables us to adjust workloads to ensure the resources needed to meet all project requirements and deadlines are made available, as well as to provide the depth of expertise needed to address any planning, engineering or other challenges which arise. Using a combination of technology and business acumen, Thrasher is better able to support all aspects of a project to the extent requested by our clients. By integrating the mapping, engineering, architectural, planning, surveying, environmental, construction monitoring and materials testing staff, we are able to provide a wealth of experienced talent, bringing the best minds and proven methods to every job.



## Hatfield McCoy Regional Recreation Authority

Mr. Jeffrey Lusk, Executive Director  
State Route 16, Building 2  
John D. Rockefeller Industrial Park  
Pineville, WV 24874  
304-752-3255

## West Virginia Young Life Camp

Mr. Jake Harper, Project Manager  
162 Old Vinton Farm Road  
Summersville, WV 26651  
304-880-0321

## City of Oak Hill

Ms. Damita Johnson City Manager  
PO Box 1245  
Oak Hill, WV 25901  
304-469-9541



# SECTION .02

*Projects and Goals*



THRASHER



## HATFIELD MCCOY REGIONAL RECREATION AUTHORITY Ivy Branch Phase I Portal Closures

### Client Contact:

Mr. Jeffrey Lusk, Executive Director  
179 Rita Mall Road | Man, WV 25635  
304-752-3255

Thrasher was hired to locate and survey 9 open mine portals within the property being purchased by Hatfield McCoy Regional Recreation Authority (HMRRA) for the reopening of the Ivy Branch Trail System. Our team developed, submitted, and received approval for the required NEPA EA documents to perform the closures. We designed the closures, drainage collection, and E&S controls for each of the 9 portal locations, developed contract bidding documents, and assisted HMRRA with pre-bid and bid opening conferences.

Thrasher administered the contract documents through AML and OSM to sign a construction agreement with the Contractor and we provided construction administration and construction inspection throughout the construction of the project. We also prepared and administered the project closeout documents with the Owner, AML, and OSM.







**WVDEP AML**  
**Bloomingrose (Tincher)**  
**Burning Refuse**

**Client Contact:**

Mr. Patrick Murphy, Southern Emergency Engineer  
1159 Nick Rahall Greenway | Fayetteville, WV 25840  
304-574-4465

Bloomingrose was a surface refuse fire that was affecting air quality in the community. Thrasher produced the design plans and specifications to mitigate the burning refuse pile, temporary stream crossings, erosion control, surveying, and utility coordination. Thrasher also conducted the pre-bid meeting for this project.





 **ASHLAND SCENIC CAMPGROUND, LLC**  
Ashland Resort

**Client Contact:**

Ashland Scenic Campground, LLC  
246 Totem Pole Rd, | Northfork, WV 24868  
304-862-2322

The Thrasher Group worked with Ashland Scenic Campground on an AML Pilot Program project to perform reclamation of historically mined areas adjacent to the existing Ashland Resort Campground. In addition to the reclamation work that is taking place, funds were awarded for various infrastructure upgrades to support expansion of the existing campground facility. Thrasher worked with the client

to develop a master plan of all desired improvements so that infrastructure improvements would support continue expansion following completion of the grant program. The project calls for development of a new general store, restaurant, outdoor entertainment venue, playground, an ATV wash, walking trails and ample parking for visitors.

Thrasher has played a major role in making these plans come to life. Our team has provided infrastructure improvements, including water, sewer, and power extensions, a new wastewater treatment package plant, two bridges, and road improvements. Thrasher also conducted and obtained approval of the environmental assessment and all necessary permitting at a very efficient pace, allowing the client to move forward with construction. Thrasher is also handling construction documents, bidding, and construction administration for this project.





 **WEST VIRGINIA YOUNG LIFE CAMP**  
Wild Ridge Camp Master Plan

**Client Contact:**

Mr. Corey McGrail, Project Manager  
247 Mohican Lake Road | Glen Spey, NY 12737  
845-582-7755

The Thrasher Group is working with Young Life on a master plan of their new Wild Ridge Camp that will sit adjacent to the canyon rim of the Gauley River in West Virginia. The camp will support events all year long including eleven weeks of summer camp which will have 500+ campers and support staff every week. The

camp will serve similar sizes on the weekends during the school season and also cater to local school and church groups for special event use.

The camp will have multiple housing facilities and dorms, a dining hall, a covered sports court, a club room, a swimming pool and snack bar, laundry facilities, maintenance facilities as well as multiple recreational opportunities such as trails, zip lines, and a 17 acre lake for small craft boating and fishing. Thrasher is currently working on developing the initial schematics into detailed conceptual plans for purposes of estimating and securing final funding for the first phase of the camp. Thrasher’s current work with Young Life involves surveying, geotechnical investigation, civil engineering, and master planning.





### WVDEP AML Roaring Creek

#### Client Contact:

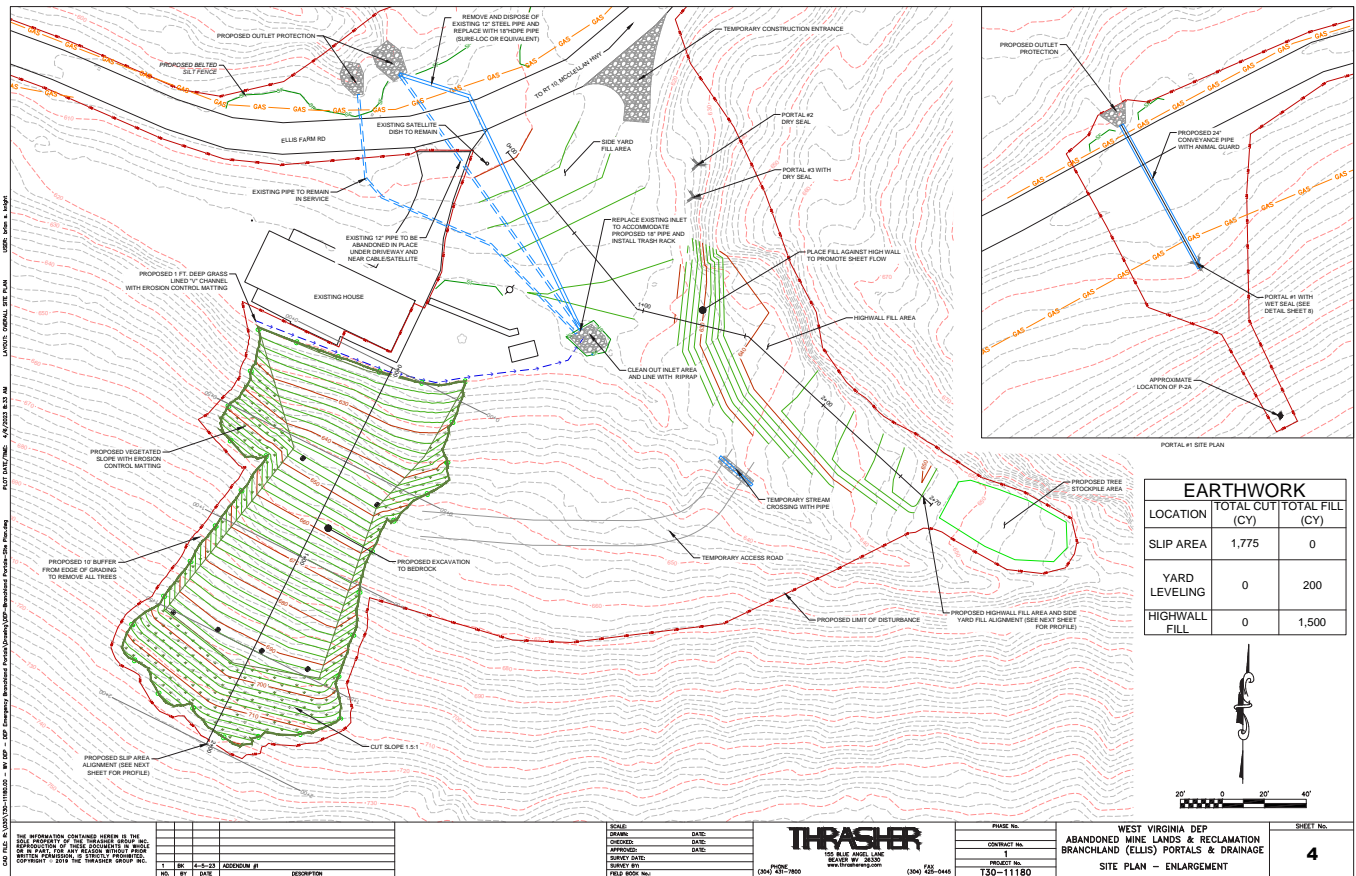
Greenbrier County PSD #2  
Mr. Kevin Williams, Manager  
PO Box 673 | Rainelle, WV 25962  
304-438-9283

This project involved the elimination of subsidence depressions, the closure of open portals and the treatment of AMD. The Roaring Creek Watershed was heavily deep mined and surfaced mined prior to 1977. The project area consisted of 3 open and 3 closed

portals discharging AMD. The AMD seeped along the unnamed tributary and an area of subsidence, which drained surface water into the mine workings. AMD flow from the deep mine portals ranged from 10 gpm to 100 gpm with PH ranging from 3.1 to 5.0. The seeps along the UNT showed an average PH of 3.3.

Thrasher's design plans called for the construction and rehabilitation of access roads to the site, and installation of wet seals at the portal locations. The plans also included re-grading the subsidence area to prevent surface water from entering the mine workings, and installing an emergency spillway on the existing pond which was designed to handle the additional flow.





## WVDEP AML EMERGENCY Branchland (Ellis) Portals and Landslide

### Client Contact:

Mr. Chris Matkins, PE  
1159 Nick Rahall Greenway | Fayetteville, WV 25840  
304-574-4465

**Project Description:** The project area included excavating a landslide to bedrock behind a residential home, backfilling a high wall, installing two dry mine seals, one wet mine seal, and drainage pipes. The project area was located in close proximity to the residence. Design aspects for this project included - geotechnical investigation, survey with survey crew and drone for topography, bat habitat investigation, remediation design, and specifications. Thrasher conducted the pre-bid meeting and responded to questions prior to bid.



A critical step in meeting your goals is first ensuring we understand them. Thrasher's team has thoroughly reviewed the Expression of Interest request and is confident in our ability to deliver the highest-quality solutions to your problems. We are capable of meeting each goal/objective you have outlined and feel strongly that you will be satisfied with the outcomes you receive.

**Our team is prepared to complete all of the following services:**

- > National Environmental Policy Act (NEPA) consultations and documentation
- > Public Participation
- > Infrastructure Investment Jobs Act (IIJA) compliance
- > Determine legal ownership of properties
- > Obtain exploratory and construction rights of entry
- > Provide legal documentation to substantiate legal ownership findings
- > Provide current mapping, perform survey and other related services
- > Perform Site and Geotechnical Investigations
- > Design temporary and permanent access or accesses for construction and future maintenance
- > Slope stabilization
- > Design multiple portal seals and regrades
- > Design reclamation of exposed coal refuse and mine spoil
- > Design of drainage conveyances, including drainage channels, underdrains, and/or other controls to safely convey water off-site
- > Design reclamation of underground mine fire
- > Construction quality assurance and quality control (QA/QC)
- > Provide resident project representative/inspector
- > Prepare daily construction activity logs summarizing activities
- > Provide engineering support and services throughout construction
- > Provide Engineers certification report

We understand your goals for the 13 projects in this contract and will handle them in the following manner:

**► GOAL/OBJECTIVE 2.1**

The Thrasher Group will meet with the WVDEP on site to conduct a site walk through and identify areas in need of remediation and the type of remediation. Once completed, Thrasher will prepare a proposal and estimate for each project.

**► GOAL/OBJECTIVE 2.2**

The Thrasher Group will conduct an environmental assessment (EA) meeting the requirement of WVDEP-AML and OSMRE. This EA, will at a minimum, include correspondence and consideration to the US Fish and Wildlife Agency, the Army Corps of Engineers, Division of Natural Resources, State Historic Preservation Office, and other agencies necessary to meet the NEPA and IIJA environmental requirements.

Thrasher will also develop plans and specifications in a manner that will comply with the IIJA requirements. This may include, but is not limited to, American Iron and Steel requirements, Davis Bacon Act wage requirements, disadvantaged business requirements and other necessary considerations.

The Thrasher Group will conduct a thorough record search to determine the legal ownership of any properties associated with the project. This may include tax record searches, deed research, property corner locations, legal title searches, owner interviews, and other necessary research. Thrasher will assist with any necessary right-of-way or easement preparation, deed verification, or other document preparation necessary to substantiate or acquire legal rights needed to complete the projects.

## ► **GOAL/OBJECTIVE 2.3**

The Thrasher Group will work with WVDEP-AML to develop a cost-effective approach to solve the issues related to these sites. Thrasher will develop plans and specifications for each project that will allow a contractor to efficiently complete the work. We will provide detailed plans to reclaim mine portals, drainage controls and systems, slope stabilization, coal refuse reclamation, stream restoration, subsidence repair, storm water and erosion and sediment control, regrade and revegetation, and all other conditions encountered on the project sites. Finally, we will provide specifications that will require contractors to meet the standard of WVDEP-AML. Standard WVDEP-AML specifications and other materials will be incorporated into the documents.

## ► **GOAL/OBJECTIVE 2.4**

The Thrasher Group will prepare and assist with the acquisition of all permits required to complete these projects. This may include, but is not limited to, NPDES stormwater construction permits, Army Corps of Engineers Nationwide or Individual Permits, and/or other necessary permits.

We will develop plans and specifications outlining the contractor requirements during construction

and maintenance periods. These specifications will ensure that the permits are well maintained and meet the requirements for release. Thrasher will assist with the preparation of any documents needed to maintain or release the permits.

## ► **GOAL/OBJECTIVE 2.5**

The Thrasher Group will provide an experience resident project representative (RPR). The RPR will develop daily field activity reports that can be provided in real time or at preferred intervals. Project Managers and/or Professional Engineers will conduct site visits on a regular basis and at critical construction points to ensure quality construction and adherence to the plans and specifications.

Thrasher's in-house Materials Testing Division will provide necessary field representatives to ensure quality assurance and control specifications are being adhered to. Our lab and field personnel can conduct most all necessary material testing practices including but not limited to soil and stone compaction testing and analysis of materials, moisture content testing, concrete and/or grout testing, and many others.



Brian Knight will be the Project Manager for these projects with Samuel Rich providing oversight. They will be supported by a team of qualified staff to perform the necessary tasks such as survey, geotechnical engineering, design, permitting, and bid documents as required for a complete design set and project.

Both Samuel and Brian will communicate with the AML team to determine the preferred timing for each project and will work with you to establish the most realistic and efficient schedule for all projects.

**The general project approach we will follow for your project is outlined below:**

## **Step 1 | Site Visit**

Our assembled team of engineers and technicians will conduct a site visit. This group will evaluate the project conditions and identify and document potential problem areas. Thrasher will call the necessary utilities prior to being on-site to help identify any known utility locations. We will coordinate with your team and any identified stakeholders to take all the facts into consideration during this process.

## **Step 2 | Land Rights Acquisition**

Thrasher will identify property owners within the project area. This will be completed through deed search. We will also reach out to property owners to obtain the needed permissions to be on property to design and construct the projects.

## **Step 3 | Survey**

Thrasher will survey the sites for existing structures, utilities, topography, mine portals, and/or other identified items on site. Survey will include, but not limited to, drone, flight, and survey team.

## **Step 4 | Conceptual Design and Report**

Thrasher will prepare a conceptual design for the project at hand. Where applicable, we will also provide design alternatives for consideration. We will then prepare a written report of the conceptual designs and outline any issues.

## **Step 5 | Construction Documents**

Our team will provide design solutions and construction documents to the WVDEP-AML for the project. These plans will be carried forward to final design based upon the conceptual design report. In addition, with Thrasher's experience working on various similar projects, a construction safety and phasing plan, as required, will be developed and reviewed with the WVDEP-AML to ensure an efficient and safe project during construction.

We will complete the final design documents based upon comments received and conclusions throughout the design review process. Our field evaluations and design approach will specifically address these issues in the construction documents.

## **Step 6 | Cost Estimates**

Our project team will provide itemized cost estimates at the following stages: conceptual design, preliminary design, and final design.

## **Step 7 | Bid Process**

We will assist the WVDEP-AML in preparation of the bid documents, attend pre-bid meetings, and assist in issuance of addenda.

## **Step 8 | Construction Administration**

The project team will review project submittals, attend project meetings, and provide a Resident Project Representative to inspect the construction being completed. The project team will also provide final punch list inspection at project completion.

Thrasher will also develop a program to keep your team abreast of potential construction issues.

## **Step 9 | Project Close Out**

Upon completion of the project, the Thrasher team will review and comment or approve contractor's as-builts and final quantities. All permits will be closed/terminated at the completion of the warranty period.

# SECTION .03

*Required Forms*



THRASHER

**DESIGNATED CONTACT:** Vendor appoints the individual identified in this Section as the Contract Administrator and the initial point of contact for matters relating to this Contract.

(Printed Name and Title) Samuel Rich, PLA | Principal

(Address) 155 Blue Angel Lane | Beaver, WV 25813

(Phone Number) / (Fax Number) 304-431-7800 / 304-425-0445

(Email address) srich@thetrashergroup.com

**CERTIFICATION AND SIGNATURE:** By signing below, or submitting documentation through *wvOASIS*, I certify that: I have reviewed this Solicitation/Contract in its entirety; that I understand the requirements, terms and conditions, and other information contained herein; that this bid, offer or proposal constitutes an offer to the State that cannot be unilaterally withdrawn; that the product or service proposed meets the mandatory requirements contained in the Solicitation/Contract for that product or service, unless otherwise stated herein; that the Vendor accepts the terms and conditions contained in the Solicitation, unless otherwise stated herein; that I am submitting this bid, offer or proposal for review and consideration; that this bid or offer was made without prior understanding, agreement, or connection with any entity submitting a bid or offer for the same material, supplies, equipment or services; that this bid or offer is in all respects fair and without collusion or fraud; that this Contract is accepted or entered into without any prior understanding, agreement, or connection to any other entity that could be considered a violation of law; that I am authorized by the Vendor to execute and submit this bid, offer, or proposal, or any documents related thereto on Vendor's behalf; that I am authorized to bind the vendor in a contractual relationship; and that to the best of my knowledge, the vendor has properly registered with any State agency that may require registration.

*By signing below, I further certify that I understand this Contract is subject to the provisions of West Virginia Code § 5A-3-62, which automatically voids certain contract clauses that violate State law; and that pursuant to W. Va. Code 5A-3-63, the entity entering into this contract is prohibited from engaging in a boycott against Israel.*

The Thrasher Group, Inc.

(Company) 

(Signature of Authorized Representative)  
Samuel Rich

(Printed Name and Title of Authorized Representative) (Date)  
304-431-7800 / 304-425-0445

(Phone Number) (Fax Number)  
srich@thetrashergroup.com

(Email Address)

ADDENDUM ACKNOWLEDGEMENT FORM  
SOLICITATION NO.: CEOI 0313 DEP2400000001

Instructions: Please acknowledge receipt of all addenda issued with this solicitation by completing this addendum acknowledgment form. Check the box next to each addendum received and sign below. Failure to acknowledge addenda may result in bid disqualification.

Acknowledgment: I hereby acknowledge receipt of the following addenda and have made the necessary revisions to my proposal, plans and/or specification, etc.

Addendum Numbers Received:  
*(Check the box next to each addendum received)*

- |   |  |
|---|--|
| <input type="checkbox"/> Addendum No. 1 | <input type="checkbox"/> Addendum No. 6  |
| <input type="checkbox"/> Addendum No. 2 | <input type="checkbox"/> Addendum No. 7  |
| <input type="checkbox"/> Addendum No. 3 | <input type="checkbox"/> Addendum No. 8  |
| <input type="checkbox"/> Addendum No. 4 | <input type="checkbox"/> Addendum No. 9  |
| <input type="checkbox"/> Addendum No. 5 | <input type="checkbox"/> Addendum No. 10 |

I understand that failure to confirm the receipt of addenda may be cause for rejection of this bid. I further understand that any verbal representation made or assumed to be made during any oral discussion held between Vendor's representatives and any state personnel is not binding. Only the information issued in writing and added to the specifications by an official addendum is binding.

**The Thrasher Group, Inc.**

Company



Authorized Signature

**August 22, 2023**

Date

NOTE: This addendum acknowledgment should be submitted with the bid to expedite document processing.



**WEST VIRGINIA DEPARTMENT OF ENVIRONMENTAL PROTECTION  
AML CONSULTANT QUALIFICATION QUESTIONNAIRE**

Attachment "A"

|  |                               |   |   |
|--|-------------------------------|---|---|
| PROJECT NAME<br>CEOI 0313 DEP240000001<br>AML Contract 2 Project South |                               | DATE (DAY, MONTH, YEAR)<br>August 22, 2023  | FEIN<br>55-0633596-6  |
| 1. FIRM NAME<br>The Thrasher Group, Inc.                               |                               | 2. HOME OFFICE BUSINESS ADDRESS<br>600 White Oaks Blvd.<br>Bridgeport, WV 26330   | 3. FORMER FIRM NAME<br>Thrasher Engineering                                     |
| 4. HOME OFFICE TELEPHONE<br>304-624-4108                               | 5. ESTABLISHED (YEAR)<br>1983 | 6. TYPE OWNERSHIP<br>Individual Corporation <b>X</b><br>Partnership Joint-Venture | 6a. WV REGISTERED DBE<br>(Disadvantaged Business Enterprise)<br>YES NO <b>X</b> |

7. PRIMARY AML DESIGN OFFICE: ADDRESS/ TELEPHONE/ PERSON IN CHARGE/ NO. AML DESIGN PERSONNEL EACH OFFICE  
600 White Okas Boulevard. Bridgeport, WV 26330 / 304-624-4108 / Samuel Rich / 11

|   |  |
|---|--|
| 8. NAMES OF PRINCIPAL OFFICERS OR MEMBERS OF FIRM<br>Woody Thrasher - President and CEO<br>Lauren Lint - CFO<br>Clayton White - COO | 8a. NAME, TITLE, & TELEPHONE NUMBER - OTHER PRINCIPALS<br>CHAD RILEY, PE - SHAREHOLDER (304)-326-6120<br>WM. RANDY WATSON - SHAREHOLDER (304) 326-6129<br>CHADWICK BILLER, PE - SHAREHOLDER (304) 326-6127<br>DAN FERRELL, PE - SHAREHOLDER (304) 288-7755<br>CRAIG BAKER, ALEP - SHAREHOLDER (304) 669-3022<br>JONATHAN CARPENTER, PE- SHAREHOLDER (304)343-7601<br>KYLEA RADCLIFF, PE - SHAREHOLDER (304) 476-8033<br>STEVEN HAMIT, PE - SHAREHOLDER (304) 620-4790<br>JESSE ALDEN, PE - SHAREHOLDER (304) 476-8488<br>JASON BOYD, PE - SHAREHOLDER (304) 677-5142<br>JOE LOWTHER, PS - SHAREHOLDER (304) 677-5314<br>HEIDI HANDLEY - SHAREHOLDER (304)612-6002<br>DOUG SMITH, PE, MBA - SHAREHOLDER (304) 326-6372<br>AMANDA CHEUVRONT, AIA - SHAREHOLDER (304) 444-0360<br>MATTHEW BREAKEY, AIA - SHAREHOLDER (304) 641-3741<br>MICHAEL TYLER, PE - SHAREHOLDER (304) 343-7601<br>CLAY RILEY, PE - SHAREHOLDER (304) 288-5011<br>ERIC SHERRARD, EI - SHAREHOLDER (304) 918-4317<br>NICOLE JONES, PE - SHAREHOLDER (304) 476-3655 |
|---|--|

9. PERSONNEL BY DISCIPLINE

|                           |                        |                            |                        |
|---------------------------|------------------------|----------------------------|------------------------|
| 14 ADMINISTRATIVE         | — ECOLOGISTS           | 3 LANDSCAPE ARCHITECTS     | 2 STRUCTURAL ENGINEERS |
| 8 ARCHITECTS              | — ECONOMISTS           | 1 MECHANICAL ENGINEERS     | 100 SURVEYORS          |
| — BIOLOGIST               | 2 ELECTRICAL ENGINEERS | — MINING ENGINEERS         | 3 TRAFFIC ENGINEERS    |
| 20 CADD OPERATORS         | 10 ENVIRONMENTALISTS   | 3 PHOTOGRAMMETRISTS        | 48 OTHER               |
| — CHEMICAL ENGINEERS      | 1 ESTIMATORS           | 2 PLANNERS: URBAN/REGIONAL |                        |
| 44 CIVIL ENGINEERS        | 3 GEOLOGISTS           | 44 SANITARY ENGINEERS      |                        |
| 8 CONSTRUCTION INSPECTORS | — HISTORIANS           | — SOILS ENGINEERS          |                        |
| 3 DESIGNERS               | 1 HYDROLOGISTS         | — SPECIFICATION            |                        |
| — DRAFTSMEN               |                        | 3 Writers                  | 316 TOTAL PERSONNEL    |

TOTAL NUMBER OF WV REGISTERED PROFESSIONAL ENGINEERS IN PRIMARY OFFICE: 39

\*RPEs other than Civil and Mining must provide supporting documentation that qualifies them to supervise and perform this type of work.

10. HAS THIS JOINT-VENTURE WORKED TOGETHER BEFORE?  YES  NO - Not Applicable

11. OUTSIDE KEY CONSULTANTS/SUB-CONSULTANTS ANTICIPATED TO BE USED. Attach "AML Consultant Qualification Questionnaire".

|  |  |   |
|--|--|---|
| <p>NAME AND ADDRESS:<br/> <b>NGE Consulting</b><br/> <b>650 MacCorkle Ave.   St. Albans, WV 25177</b><br/> <b>304-201-5180</b></p> | <p>SPECIALTY:<br/> <b>Geotechnical Engineering</b></p> | <p>WORKED WITH BEFORE<br/> <input checked="" type="checkbox"/> Yes<br/> <input type="checkbox"/> No</p> |
| <p>NAME AND ADDRESS:</p>   | <p>SPECIALTY:</p>                                      | <p>WORKED WITH BEFORE<br/> <input type="checkbox"/> Yes<br/> <input type="checkbox"/> No</p>            |
| <p>NAME AND ADDRESS:</p>   | <p>SPECIALTY:</p>                                      | <p>WORKED WITH BEFORE<br/> <input type="checkbox"/> Yes<br/> <input type="checkbox"/> No</p>            |
| <p>NAME AND ADDRESS:</p>   | <p>SPECIALTY:</p>                                      | <p>WORKED WITH BEFORE<br/> <input type="checkbox"/> Yes<br/> <input type="checkbox"/> No</p>            |
| <p>NAME AND ADDRESS:</p>   | <p>SPECIALTY:</p>                                      | <p>WORKED WITH BEFORE<br/> <input type="checkbox"/> Yes<br/> <input type="checkbox"/> No</p>            |
| <p>NAME AND ADDRESS:</p>   | <p>SPECIALTY:</p>                                      | <p>WORKED WITH BEFORE<br/> <input type="checkbox"/> Yes<br/> <input type="checkbox"/> No</p>            |
| <p>NAME AND ADDRESS:</p>   | <p>SPECIALTY:</p>                                      | <p>WORKED WITH BEFORE<br/> <input type="checkbox"/> Yes<br/> <input type="checkbox"/> No</p>            |
| <p>NAME AND ADDRESS:</p>   | <p>SPECIALTY:</p>                                      | <p>WORKED WITH BEFORE<br/> <input type="checkbox"/> Yes<br/> <input type="checkbox"/> No</p>            |
| <p>NAME AND ADDRESS:</p>   | <p>SPECIALTY:</p>                                      | <p>WORKED WITH BEFORE<br/> <input type="checkbox"/> Yes<br/> <input type="checkbox"/> No</p>            |



|        |   |
|--------|---|
| 12. A. | <p>Is your firm's personnel experienced in Abandoned Mine Lands Remediation/Mine Reclamation Engineering?</p> <p><input checked="" type="checkbox"/> YES Description and Number of Projects: Thrasher performs engineering design services to the WV DEP for drainage, portal seals, highwall and other remediation projects, as well as water line and water treatment plant projects related to AML. Numerous projects involving land remediation, storm water drainage, slip repair, mass grading in relations to site development and highway projects are engineered by the firm on a regular basis.</p>   |
| NO     |   |
| B.     | <p>Is your firm experienced in Soil Analysis?</p> <p><input checked="" type="checkbox"/> YES Description and Number of Projects: Thrasher maintains an AASHTO Certified materials testing lab at both the Bridgeport and Beckley offices. Soil analysis experience is specifically in gradation and classification.</p>   |
| NO     |   |
| C.     | <p>Is your firm experienced in hydrology and hydraulics?</p> <p><input checked="" type="checkbox"/> YES Description and Number of Projects: Throughout the state, Thrasher has done planning and design of bridges for the West Virginia department of highways and the design of multiple private and municipal development projects located within floodplains. Thus, Thrasher has extensive experience in hydrology. We also have a vast amount of experience in hydraulic modeling for water and wastewater projects throughout West Virginia</p>   |
| NO     |   |
| D.     | <p>Does your firm produce its own Aerial Photography and Develop Contour Mapping?</p> <p><input checked="" type="checkbox"/> Description and Number of Projects: Thrasher acquires aerial imagery using in-house resources on smaller area projects. We own and operate three UAS (unmanned aerial systems) for a variety of imagery missions for projects up to approximately 500 acres. For large mapping projects, we use commercial flying service. Thrasher has three FAA Certified pilots. Thrasher has expertise and software in-house and routinely performs aero triangulation, planimetric compilation, surface modeling, contour mapping and digitally rectified imagery. Thrasher has mapped and flown hundreds of projects within the last year.</p> |
| NO     |   |
| E.     | <p>Is your firm experienced in domestic waterline design? (Include any experience your firm has in evaluation of aquifer degradation as a result of mining.)</p> <p><input checked="" type="checkbox"/> YES Description and Number of Projects: Thrasher has designed more water line systems than any other West Virginia firm. Projects include new systems, extensions, and replacements of water line distribution systems, many of which have been affected by AML. Design of the projects includes lines, booster stations, water treatment plants, and storage facilities. Thrasher's analysis and design also includes improvements and alternatives for water sources deemed ground water under the direct effect of surface water.</p>                  |
| NO     |   |
| F.     | <p>Is your firm experienced in Acid Mine Drainage Evaluation and Abatement Design?</p> <p><input checked="" type="checkbox"/> YES Description and Number of Projects: Thrasher has been awarded and has successfully completed numerous reclamation projects for the WV DEP related specifically to acid mine drainage and abatement, as well as multiple passive treatment systems designed to watershed protection groups. The Charleston, WV branch of our company designed and award-winning water treatment plant for Martinka mines in Marion County, West Virginia to treat mine drainage.</p>   |
| NO     |   |

13. PERSONAL HISTORY STATEMENT OF PRINCIPALS AND ASSOCIATES **RESPONSIBLE FOR AML PROJECT DESIGN** (Furnish complete data but keep to essentials)

| NAME & TITLE (Last, First, Middle Int.) | YEARS OF EXPERIENCE             |   |  |
|---|---------------------------------|---|--|
|   | YEARS OF AML DESIGN EXPERIENCE: | YEARS OF AML RELATED DESIGN EXPERIENCE: | YEARS OF DOMESTIC WATERLINE DESIGN EXPERIENCE: |
| Rich, Samuel<br>Principal               | 2                               | 10                                      | 10   |

**Brief Explanation of Responsibilities**  
 Sam serves as Market Leader for the Land Development Market at Thrasher. Sam’s team works on a variety of project types for both public and private clients including industrial development, commercial development, residential development, public spaces, reclamation, remediation, and master planning.

**EDUCATION (Degree, Year, Specialization)**  
 Bachelor of Science, 2012, Landscape Architecture

|   |  |
|---|--|
| <b>MEMBERSHIP IN PROFESSIONAL ORGANIZATIONS</b><br>American Society of Landscape Architects | <b>REGISTRATION (Type, Year, State)</b><br>Professional Landscape Architect: West Virginia, Virginia |
|---|--|

13. PERSONAL HISTORY STATEMENT OF PRINCIPALS AND ASSOCIATES **RESPONSIBLE FOR AML PROJECT DESIGN** (Furnish complete data but keep to essentials)

| NAME & TITLE (Last, First, Middle Int.) | YEARS OF EXPERIENCE             |   |  |
|---|---------------------------------|---|--|
|   | YEARS OF AML DESIGN EXPERIENCE: | YEARS OF AML RELATED DESIGN EXPERIENCE: | YEARS OF DOMESTIC WATERLINE DESIGN EXPERIENCE: |
| Knight, Brian<br>Project Manager        | 8                               | 15                                      | 13   |

**Brief Explanation of Responsibilities**  
 Brian Knight serves as a Project Manager with Thrasher. Brian has over 18 years of experience as a drafter, project engineer/manager, and project administrator with small engineering firms and large consulting firms. Since then, Mr. Knight has been diligent in providing high-quality and accurate project design and construction that meet deadlines and maintain budgets.

**EDUCATION (Degree, Year, Specialization)**  
 N/A

|  |  |
|--|--|
| <b>MEMBERSHIP IN PROFESSIONAL ORGANIZATIONS</b><br>N/A | <b>REGISTRATION (Type, Year, State)</b><br>N/A |
|--|--|

13. PERSONAL HISTORY STATEMENT OF PRINCIPALS AND ASSOCIATES **RESPONSIBLE FOR AML PROJECT DESIGN** (Furnish complete data but keep to essentials)

| NAME & TITLE (Last, First, Middle Int.)                             | YEARS OF EXPERIENCE             |   |  |
|---|---------------------------------|---|--|
|   | YEARS OF AML DESIGN EXPERIENCE: | YEARS OF AML RELATED DESIGN EXPERIENCE: | YEARS OF DOMESTIC WATERLINE DESIGN EXPERIENCE: |
| McKinney, Wade<br>Assistant Project Manager<br>and Project Engineer | 4                               | 5                                       | 6  |

Brief Explanation of Responsibilities  
As project engineer, Wade's responsibilities will include design layout, AutoCAD drafting, project management, and Plan Set Construction.

EDUCATION (Degree, Year, Specialization)  
Bachelor of Science, 2013, Civil Engineering Technology

| MEMBERSHIP IN PROFESSIONAL ORGANIZATIONS | REGISTRATION (Type, Year, State) |
|--|----------------------------------|
| N/A                                      | N/A                              |

13. PERSONAL HISTORY STATEMENT OF PRINCIPALS AND ASSOCIATES **RESPONSIBLE FOR AML PROJECT DESIGN** (Furnish complete data but keep to essentials)

| NAME & TITLE (Last, First, Middle Int.)                            | YEARS OF EXPERIENCE             |   |  |
|--|---------------------------------|---|--|
|  | YEARS OF AML DESIGN EXPERIENCE: | YEARS OF AML RELATED DESIGN EXPERIENCE: | YEARS OF DOMESTIC WATERLINE DESIGN EXPERIENCE: |
| Higginbotham, John<br>Assistant Project Manager<br>and Survey Lead | 0                               | 0                                       | 0  |

Brief Explanation of Responsibilities  
As survey lead, John's responsibilities include property surveys, right-of-ways and easements, plats and descriptions, engineering support, QA/QC, and design review.

EDUCATION (Degree, Year, Specialization)  
Bachelor of Science, 1973, Civil Engineering  
Master of Science, 2004, Engineering Management

| MEMBERSHIP IN PROFESSIONAL ORGANIZATIONS | REGISTRATION (Type, Year, State)   |
|--|--|
| N/A                                      | Professional Engineer: West Virginia, Virginia<br>Professional Surveyor: West Virginia |

13. PERSONAL HISTORY STATEMENT OF PRINCIPALS AND ASSOCIATES **RESPONSIBLE FOR AML PROJECT DESIGN** (Furnish complete data but keep to essentials)

| NAME & TITLE (Last, First, Middle Int.) | YEARS OF EXPERIENCE             |   |  |
|---|---------------------------------|---|--|
|   | YEARS OF AML DESIGN EXPERIENCE: | YEARS OF AML RELATED DESIGN EXPERIENCE: | YEARS OF DOMESTIC WATERLINE DESIGN EXPERIENCE: |
| Goudy, Jeremiah<br>Environmental Lead   | 0                               | 6.5                                     | 6.5  |

Brief Explanation of Responsibilities  
 As the Environmental Lead, Jeremiah is responsible for NEPA documentation including agency coordination and permitting including Cultural resources/Section 106, endangered species/Section 7, Clean Water Act/USACE permitting, NRCS Farmland coordination, DEP NPDES permitting, Floodplain permitting, and consultations

EDUCATION (Degree, Year, Specialization)  
 Bachelor of Science, 2015, Environmental Science

| MEMBERSHIP IN PROFESSIONAL ORGANIZATIONS | REGISTRATION (Type, Year, State) |
|--|----------------------------------|
| N/A                                      | N/A                              |

13. PERSONAL HISTORY STATEMENT OF PRINCIPALS AND ASSOCIATES **RESPONSIBLE FOR AML PROJECT DESIGN** (Furnish complete data but keep to essentials)

| NAME & TITLE (Last, First, Middle Int.) | YEARS OF EXPERIENCE             |   |  |
|---|---------------------------------|---|--|
|   | YEARS OF AML DESIGN EXPERIENCE: | YEARS OF AML RELATED DESIGN EXPERIENCE: | YEARS OF DOMESTIC WATERLINE DESIGN EXPERIENCE: |
| Gray, Quinn<br>Construction Manager     | 0                               | 1                                       | 4  |

Brief Explanation of Responsibilities  
 Quinn oversees the construction service operations in southern WV, which consists of management of quality measures for the clientele, scheduling, invoicing and proposals, and making sure the Beckley lab is running to the standards as set forth from AASHTO. He also makes sure that Thrasher's RPRs are informed and competent in the testing being performed, as well as tracking down information that is required for said testing.

EDUCATION (Degree, Year, Specialization)  
 Bachelor of Science, 2014, Applied Physics

| MEMBERSHIP IN PROFESSIONAL ORGANIZATIONS | REGISTRATION (Type, Year, State) |
|--|----------------------------------|
| N/A                                      | N/A                              |



14. PROVIDE A LIST OF SOFTWARE AND EQUIPMENT AVAILABLE IN THE PRIMARY OFFICE WHICH WILL BE USED TO COMPLETE AML DESIGN SERVICES

The Thrasher Group, Inc. will design work for AML utilizing one of the largest networks of computer aided design (CAD) equipment, software and trained personnel in the state of West Virginia.

Connected through a virtual private network, our cad staff has the ability to share necessary plans among our locations. This will allow work designed for AML to be prepared and updated at the office location that best meets the needs of the scope of services.

Civil 3D, Carlson and Microstation V8 Software is utilized at 35 CAD stations throughout our locations. Additionally, equipment includes 10 large format (Size E) plotters and 5 large format plotter / scanners. CAD plans are prepared by both dedicated cad employees and by staff engineers and engineering technicians in each of the firm's offices.

Thrasher also utilizes top-of-the line survey equipment. Our survey work is accomplished with global positioning systems (GPS) and electronic distance measuring (EDM) survey stations with data gathering capabilities. The survey crews and office support staff generate mapping deliverables in virtually any digital format referenced to specified projection systems.

Additional survey services include: high accuracy monumentation, astronomic observations / orientation, NGS blue booking, hydrographic, terrestrial scanning, 3D asbuilts, 3d monitoring, sub-surface utility location / designation. The field crews are all equipped with late model four-wheel drive vehicles stocked with the most modern equipment available to perform professional land surveying services.

- 111 TRIMBLE GNSS UNITS
- 68 TRIMBLE ROBOTS
- 2 PRECISE DIGITAL FIRST ORDER LEVELS WITH INVAR RODS
- 39 LEICA, NIKON OR TOPCON TOTAL STATIONS ALL MANAGED BY
- TRIMBLE TSC3 FIELD COMPUTERS
- 2 REMOTE CONTROLLED/UNMANNED MAPPING AERIAL PLATFORM
- HYDROGRAPHIC SURVEY VESSEL
- CIVIL 3D
- CARLSON AND MICROSTATION V8 SOFTWARE
- 35 CAD STATIONS
- 10 LARGE FORMAT (SIZE E) PLOTTERS AND
- 5 LARGE FORMAT PLOTTER / SCANNERS
- 7 3D SUB-SURFACE UTILITY LOCATORS

15. CURRENT ACTIVITIES ON WHICH YOUR FIRM IS THE DESIGNATED ENGINEER OF RECORD

| PROJECT NAME, TYPE AND LOCATION   | NAME AND ADDRESS OF OWNER   | NATURE OF YOUR FIRM'S RESPONSIBILITY   | ESTIMATED CONSTRUCTION COST         | PERCENT COMPLETE |
|---|---|--|-------------------------------------|------------------|
| DESIGN GROUP B<br>AML-REFUSE, PROTALS,<br>RECLAMATION,<br>LANDSLIDE<br>OHIO, MARION, AND<br>TAYLOR COUNTIES, WV | ENVIRONMENTAL PROTECTION<br>OFFICE OF AML&R<br>601 57TH ST SE CHARLESTON<br>WV<br>25304         | PROVIDE ENGINEERING<br>SERVICES TO MITIGATE<br>MINING RELATED<br>PROBLEMS ASSOCIATED WITH<br>ABANDONED MINE LANDS<br>(PERMITTING, DESIGN,<br>CONSTRUCTIONMONITORING) | TBD                                 | 80%%             |
| KEMPTON REFUSE<br>REHABILITATION<br>TUCKER COUNTY, WV NEAR<br>THOMAS  | ENVIRONMENTAL PROTECTION<br>OFFICE OF AML&R<br>601 57TH ST SE<br>CHARLESTON WV<br>25304         |  | TBD                                 | 0%               |
| HATFIELD-MCCOY REGIONAL<br>RECREATION AUTHORITY<br>TWIN<br>HOLLOW CAMPGROUND AML<br>PILOT<br>LOGAN COUNTY, WV   | MR. JEFFREY LUSK,<br>EXECUTIVE<br>DIRECTOR 179 RITA MALL<br>ROAD  <br>MAN, WV 2563 304-692-6782 |  | TBD                                 | 30%              |
|   |   |  |                                     |                  |
|   |   |  |                                     |                  |
|   |   |  |                                     |                  |
|   |   |  |                                     |                  |
|   |   |  |                                     |                  |
|   |   |  |                                     |                  |
|   |   |  |                                     |                  |
|   |   |  |                                     |                  |
|   |   |  |                                     |                  |
|   |   |  |                                     |                  |
| TOTAL NUMBER OF PROJECTS:   | 3 of our current<br>projects listed   |  | TOTAL ESTIMATED CONSTRUCTION COSTS: | \$ N/A           |

16. CURRENT ACTIVITIES ON WHICH YOUR FIRM IS SERVING AS A SUB-CONSULTANT TO OTHERS

| PROJECT NAME, TYPE AND LOCATION | NATURE OF FIRMS RESPONSIBILITY | NAME AND ADDRESS OF OWNER | ESTIMATED COMPLETION DATE | ESTIMATED CONSTRUCTION COST |                           |
|---------------------------------|--------------------------------|---------------------------|---------------------------|-----------------------------|---------------------------|
|                                 |                                |                           |                           | ENTIRE PROJECT              | YOUR FIRMS RESPONSIBILITY |
|                                 |                                |                           |                           |                             |                           |
|                                 |                                |                           |                           |                             |                           |
|                                 |                                |                           |                           |                             |                           |
|                                 |                                |                           |                           |                             |                           |
|                                 |                                |                           |                           |                             |                           |
|                                 |                                |                           |                           |                             |                           |
|                                 |                                |                           |                           |                             |                           |
|                                 |                                |                           |                           |                             |                           |
|                                 |                                |                           |                           |                             |                           |

**N/A**



17. COMPLETED WORK WITHIN LAST 5 YEARS ON WHICH YOU WERE THE DESIGNATED ENGINEER OF RECORD:

**AML RELATED PROJECTS FOR THE WVDEP AND WATERSHED PROTECTION GROUPS**

| PROJECT NAME, TYPE AND LOCATION  | NAME AND ADDRESS OF OWNER  | ESTIMATED CONSTRUCTION COST   | YEAR        | CONSTRUCTED (YES OR NO) |
|--|--|---|-------------|-------------------------|
| NUTTER RUN LANDSLIDE EMERGENCY AML HARRISON COUNTY, WV                                     | WV DEP, NORTHERN EMERGENCY<br>101 CAMBRIDGE PLACE   BRIDGEPORT, WV 26330<br>304-842-1900     | \$10,000,000  | 2017        | YES                     |
| RIDGEWAY DRIVE LANDSLIDE EMERGENCY AML HARRISON COUNTY, WV                                 | WV DEP, NORTHERN EMERGENCY<br>101 CAMBRIDGE PLACE   BRIDGEPORT, WV 26330<br>304-842-1900     | \$20,000,000  | 2018        | YES                     |
| ED GOWER HIGHWALL AML GRANT UPSHUR COUNTY, WV  | WV DEP, OFFICE OF AMLER<br>601 57 <sup>TH</sup> STREET, SE CHARLESTON, WV 25304              | \$11,080,655  | 2019        | YES                     |
| ASHLAND RESORT AML PILOT MCDOWELL COUNTY, WV   | MR. JEFFREY LUSK, EXECUTIVE DIRECTOR 179 RITA MALL ROAD   MAN, WV 2563<br>304-692-6782       | MASTER PLANNING, RECLAMATION WORK, UTILITY EXTENSIONS, BRIDGE DESIGN, ROAD IMPROVEMENTS, ENVIRONMENTAL ASSESSMENTS, PERMITTING  | \$1,700,000 | YES                     |
| ISAAC CREEK LANDSLIDE ABANDONED MINE LANDS AND RECLAMATION NEAR DOLA WV - HARRISON COUNTY  | ENVIRONMENTAL PROTECTION OFFICE OF AML&R<br>601 57TH ST SE CHARLESTON WV 25304               | DEVELOP CONSTRUCTION AND EROSION AND SEDIMENT PLANS ALONG WITH TECHNICAL SPECIFICATIONS TO STABILIZE THE LANDSLIDE AND RE-ESTABLISH THE ALIGNMENT OF ISAAC CREEK ROAD (CR 16-1) | \$890,000   | YES                     |
| HATFIELD-MCCOY REGIONAL RECREATION AUTHORITY IVY BRANCH AML PILOT PROJECT BOONE COUNTY, WV | MR. JEFFREY LUSK, EXECUTIVE DIRECTOR 179 RITA MALL ROAD   MAN, WV 2563<br>304-692-6782       | ENVIRONMENTAL PERMITTING AND ASSESSMENTS, NEPA DOCUMENTATION, ENGINEERING DESIGN, BIDDING, CONSTRUCTION ADMINISTRATION  | \$350,000   | YES                     |
| ISAAC CREEK NEAR DOLA WV HARRISON COUNTY   | WV DEP, NORTHERN EMERGENCY<br>101 CAMBRIDGE PLACE   BRIDGEPORT, WV 26330<br>304-842-1900     | \$883,096   | 2022        | YES                     |
| OWL CREEK HIGHWALL #2 MORGANTOWN WV MONONGALIA COUNTY                                      | WV DEP, NORTHERN EMERGENCY<br>101 CAMBRIDGE PLACE   BRIDGEPORT, WV 26330<br>304-842-1900     | \$2,159,917.25  | 2023        | NO                      |
| Branchland (Ellis) Portals and Landslide LINCOLN COUNTY                                    | Mr. Chris Matkins, PE<br>1159 Nick Rahall Greenway<br>Fayetteville, WV 25840<br>304-574-4465 | \$123,950.00  | 2023        | YES                     |
| Bloomingrose Burning Refuse BOONE COUNTY   | WV DEP, NORTHERN EMERGENCY<br>101 CAMBRIDGE PLACE   BRIDGEPORT, WV 26330<br>304-842-1900     | \$88,000.00   | 2022        | YES                     |

18. COMPLETED WORK WITHIN LAST 5 YEARS ON WHICH YOUR FIRM HAS BEEN A SUB-CONSULTANT TO OTHER FIRMS (INDICATE PHASE OF WORK FOR WHICH YOUR FIRM WAS RESPONSIBLE)

| PROJECT NAME, TYPE AND LOCATION | NAME AND ADDRESS OF OWNER | ESTIMATED CONSTRUCTION COST OF YOUR FIRM'S PORTION | YEAR | CONSTRUCTED (YES OR NO) | FIRM ASSOCIATED WITH |
|---------------------------------|---------------------------|--|------|-------------------------|----------------------|
|                                 |                           |  |      |                         |                      |
|                                 |                           |  |      |                         |                      |
|                                 |                           | N/A  |      |                         |                      |
|                                 |                           |  |      |                         |                      |
|                                 |                           |  |      |                         |                      |
|                                 |                           |  |      |                         |                      |

19. Use this space to provide any additional information or description of resources supporting your firm's qualifications to perform work for the West Virginia Abandoned Mine Lands Program.

20. The foregoing is a statement of facts.

Signature: Samuel A Rich Title: Principal Date: August 22, 2023

Printed Name: Samuel Rich

# AML and RELATED PROJECT EXPERIENCE MATRIX

ATTACHMENT "B"

| PROJECT                    | Exp. Basis<br>C-Corp<br>P-Personal<br>* | Additional info<br>provided in Section<br>(s)<br>** | PROJECT EXPERIENCE REQUIREMENTS       |                                    |                      |                                      |                      |                               |  |                       |                        |   |                                       |                 |                                |                    | Primary staff<br>participation/capacity ***<br>M-Management P-Professional |             |              |
|----------------------------|---|---|---------------------------------------|------------------------------------|----------------------|--------------------------------------|----------------------|-------------------------------|--|-----------------------|------------------------|---|---------------------------------------|-----------------|--------------------------------|--------------------|--|-------------|--------------|
|                            |   |   | Abandoned Surface<br>Mine Reclamation | Abandoned Deep<br>Mine Reclamation | Portal/shaft closure | Hydrologic/Hydraulic<br>design/Eval. | Remaining Evaluation | Mine/refuse fire<br>abatement | Subsidence<br>investigation/mitigation | Hazard waste disposal | Project specifications | Water quality evaluation/<br>mitigation replacement | Construction<br>inspection/management | Water treatment | Equipment/structure<br>removal | Stream restoration | Geotechnical/stability   | Samuel Rich | Brian Knight |
| Bloomington Burning Refuse | C                                       | Project Experience                                  | X                                     |                                    |                      |                                      |                      | X                             |  |                       | X                      |   |                                       |                 |                                |                    |  | M           | P            |
| Branchland Landslide       | C                                       | Project Experience                                  | X                                     | X                                  |                      |                                      |                      |                               |  |                       | X                      |   |                                       |                 |                                | X                  |  | M           | P            |
| Sullivan                   | C                                       |   | X                                     | X                                  | X                    |                                      |                      |                               |  |                       | X                      | X   |                                       |                 | X                              | X                  |  | M           | P            |
| Glen Alum                  | P                                       |   | X                                     |                                    |                      |                                      |                      |                               |  |                       |                        | X   |                                       | X               | X                              |                    |  |             | M            |
| Len's Creek                | P                                       |   | X                                     | X                                  | X                    |                                      |                      |                               |  |                       |                        |   | X                                     |                 |                                |                    |  |             | M            |
| Cooley Branch              | P                                       |   | X                                     |                                    |                      |                                      |                      |                               |  |                       |                        | X   |                                       |                 |                                |                    |  |             | M            |
| Switzer Drainage           | P                                       |   | X                                     | X                                  |                      |                                      |                      |                               |  |                       |                        | X   |                                       |                 |                                |                    |  |             | M            |
| Verner Landslide           | P                                       |   | X                                     |                                    |                      |                                      |                      |                               |  |                       |                        | X   |                                       |                 |                                |                    |  |             | M            |
| Ashland Resort             | C                                       | Project Experience                                  | X                                     |                                    |                      |                                      |                      |                               |  |                       |                        | X   |                                       |                 |                                |                    |  | M           |              |
| Ivy Branch                 | C                                       | Project Experience                                  | X                                     | X                                  |                      |                                      |                      |                               |  |                       | X                      | X   |                                       |                 |                                |                    |  | M           |              |
| Wild Ridge                 | C                                       | Project Experience                                  |                                       |                                    |                      |                                      |                      |                               |  |                       | X                      |   |                                       |                 |                                |                    |  | M           |              |
|                            |   |   |                                       |                                    |                      |                                      |                      |                               |  |                       |                        |   |                                       |                 |                                |                    |  |             |              |
|                            |   |   |                                       |                                    |                      |                                      |                      |                               |  |                       |                        |   |                                       |                 |                                |                    |  |             |              |
|                            |   |   |                                       |                                    |                      |                                      |                      |                               |  |                       |                        |   |                                       |                 |                                |                    |  |             |              |
|                            |   |   |                                       |                                    |                      |                                      |                      |                               |  |                       |                        |   |                                       |                 |                                |                    |  |             |              |
|                            |   |   |                                       |                                    |                      |                                      |                      |                               |  |                       |                        |   |                                       |                 |                                |                    |  |             |              |
|                            |   |   |                                       |                                    |                      |                                      |                      |                               |  |                       |                        |   |                                       |                 |                                |                    |  |             |              |
|                            |   |   |                                       |                                    |                      |                                      |                      |                               |  |                       |                        |   |                                       |                 |                                |                    |  |             |              |
|                            |   |   |                                       |                                    |                      |                                      |                      |                               |  |                       |                        |   |                                       |                 |                                |                    |  |             |              |

\*List whether project experience is corporate or personnel based or both  
 \*\* Use this area to provide specific sections or pages if needed for reference  
 \*\*\* List primary design personnel and their functional capacity for the projects listed.



ABANDONED MINE LANDS (AML) CONTRACTOR INFORMATION FORM

You must complete this form for your AML contracting officer to request an eligibility evaluation from the Office of Surface Mining Reclamation and Enforcement (OSMRE) to determine if you are eligible to receive an AML contract. This requirement can be found under OSMRE's regulations at 30 CFR 874.16. **NOTE:** This form must be signed and **dated within 30 days** of submission to be considered for a current bid.

**Part A: General Information**Business Name: The Thrasher Group, Inc.Tax ID #: 55-0633596Address: 600 White Oaks BlvdCity, State, & Zip: Bridgeport, WV 26330Phone Number: 304-624-4108Email Address: llint@thetrashergroup.com**Part B: Obtain an Organizational Family Tree (OFT) from the Applicant Violator System (AVS)**

If you plan to certify the existing AVS information or submit updates under Part C, you must include an OFT. Instructions for downloading an OFT from the AVS can be found at:

<https://www.osmre.gov/resources/forms/OMB1029-0119instructions.pdf>

If you require assistance you may contact the AVS Office by phone at: 800-643-9748, or by email at: [avshelp@osmre.gov](mailto:avshelp@osmre.gov).

**Part C: Certifying and updating information in the AVS**

Select one of the options, follow the instructions for the selected option, sign, and date below.

I, Lauren Lint, have express authority to certify that:  
(Print Name)

1. Our business is listed in the AVS. The information is accurate, complete, and up to date. (If you select this option, you must attach an Entity OFT from the AVS to this form). Do not complete Part D.
2. Our business is in the AVS. The information needs to be updated. (If you select this option, you must attach an Entity OFT from the AVS to this form). Complete Part D to provide the missing or corrected information.
3. Our business is not listed in the AVS. The information needs to be added. Complete Part D to provide the information.

8-22-23

Date

Lauren Lint  
Signature

CFO

Title

**Part D: OFT Information**

Contractor's Business Name: The Thrasher Group, Inc.

If the current Entity OFT information for your business is incomplete in the AVS, or if there is no information in the AVS for your business, you must provide all of the following information as it applies to your business. Please include additional copies of this page if the space below is not sufficient to capture all information.

- Every officer (President, Vice President, Secretary, Treasurer, etc.);
- All Directors, Partners, and Members;
- All persons performing a function similar to a Director;
- Every person or business that owns 10% or more of the voting stock in your business;
- Any other person(s) who has the ability to determine the manner in which the AML reclamation project is being conducted.
- **Please list an end date for any person who is no longer with your business.**

Name: Henry Wood Thrasher  
 Address: 600 White Oaks Blvd  
 City, State, Zip: Bridgeport, WV 26330  
 Begin Date: 04/01/2022  
 End Date: N/A  
 % Ownership: 19.45%  
 Position/Title: President  
 Phone Number: 304-624-4108

Name: Chad Riley  
 Address: 600 White Oaks Blvd  
 City, State, Zip: Bridgeport, WV 26330  
 Begin Date: 04/01/2022  
 End Date: N/A  
 % Ownership: 2.65%  
 Position/Title: Vice President  
 Phone Number: 304-624-4108

Name: Lauren Lint  
 Address: 600 White Oaks Blvd  
 City, State, Zip: Bridgeport, WV 26330  
 Begin Date: 04/01/2022  
 End Date: N/A  
 % Ownership: 0.83%  
 Position/Title: Treasurer  
 Phone Number: 304-624-4108

Name: Clayton White  
 Address: 600 White Oaks Blvd  
 City, State, Zip: Bridgeport, WV 26330  
 Begin Date: 04/01/2022  
 End Date: N/A  
 % Ownership: 0.83%  
 Position/Title: Secretary  
 Phone Number: 304-624-4108

**PAPERWORK REDUCTION STATEMENT**

The Paperwork Reduction Act of 1995 (44 U.S.C 3501) requires us to inform you that: Federal Agencies may not conduct or sponsor, and a person is not required to respond to, a collection of information unless it displays a current valid OMB control number. This information is necessary for all successful bidders prior to the distribution of AML funds, and is required to obtain a benefit.

Public reporting burden for this form is estimated to range from 15 minutes to one hour, with an average of 30 minutes per response, including time for reviewing instructions, gather and maintaining data, and completing and reviewing the form. You may direct comments regarding the burden estimate or any other aspect of this form to the Information Collection Clearance Officer, Office of Surface Mining Reclamation and Enforcement, 1849 C Street, NW, Room 4559, Washington, DC 20240.

**Part D: OFT Information**

Contractor's Business Name: The Thrasher Group, Inc.

If the current Entity OFT information for your business is incomplete in the AVS, or if there is no information in the AVS for your business, you must provide all of the following information as it applies to your business. Please include additional copies of this page if the space below is not sufficient to capture all information.

- Every officer (President, Vice President, Secretary, Treasurer, etc.);
- All Directors, Partners, and Members;
- All persons performing a function similar to a Director;
- Every person or business that owns 10% or more of the voting stock in your business;
- Any other person(s) who has the ability to determine the manner in which the AML reclamation project is being conducted.
- **Please list an end date for any person who is no longer with your business.**

Name: Kenneth Moran  
Address: 600 White Oaks Blvd  
City, State, Zip: Bridgeport, WV 26330  
Begin Date: 05/27/1991  
End Date: 04/01/2022  
% Ownership: 0  
Position/Title: Shareholder  
Phone Number: 304-624-4108

Name: Ronald Stanley  
Address: 600 White Oaks Blvd  
City, State, Zip: Bridgeport, WV 26330  
Begin Date: 01/01/2020  
End Date: 04/01/2022  
% Ownership: 0  
Position/Title: Vice President  
Phone Number: 304-624-4108

Name: Chad Riley  
Address: 600 White Oaks Blvd  
City, State, Zip: Bridgeport, WV 26330  
Begin Date: 01/01/2020  
End Date: 04/01/2022  
% Ownership: 0  
Position/Title: President  
Phone Number: 304-624-4108

Name: Ronald Stanley  
Address: 600 White Oaks Blvd  
City, State, Zip: Bridgeport, WV 26330  
Begin Date: 02/04/2009  
End Date: 04/01/2022  
% Ownership: 0  
Position/Title: Treasurer  
Phone Number: 304-624-4108

**PAPERWORK REDUCTION STATEMENT**

The Paperwork Reduction Act of 1995 (44 U.S.C 3501) requires us to inform you that: Federal Agencies may not conduct or sponsor, and a person is not required to respond to, a collection of information unless it displays a current valid OMB control number. This information is necessary for all successful bidders prior to the distribution of AML funds, and is required to obtain a benefit.

Public reporting burden for this form is estimated to range from 15 minutes to one hour, with an average of 30 minutes per response, including time for reviewing instructions, gather and maintaining data, and completing and reviewing the form. You may direct comments regarding the burden estimate or any other aspect of this form to the Information Collection Clearance Officer, Office of Surface Mining Reclamation and Enforcement, 1849 C Street, NW, Room 4559, Washington, DC 20240.



**Part D: OFT Information**

Contractor's Business Name: The Thrasher Group, Inc.

If the current Entity OFT information for your business is incomplete in the AVS, or if there is no information in the AVS for your business, you must provide all of the following information as it applies to your business. Please include additional copies of this page if the space below is not sufficient to capture all information.

- Every officer (President, Vice President, Secretary, Treasurer, etc.);
- All Directors, Partners, and Members;
- All persons performing a function similar to a Director;
- Every person or business that owns 10% or more of the voting stock in your business;
- Any other person(s) who has the ability to determine the manner in which the AML reclamation project is being conducted.
- **Please list an end date for any person who is no longer with your business.**

Name: Richard Hovatter  
Address: 600 White Oaks Blvd  
City, State, Zip: Bridgeport, WV 26330  
Begin Date: 08/29/2011  
End Date: N/A  
% Ownership: 0.1146%  
Position/Title: Manager  
Phone Number: 304-624-4108

Name: Samuel Rich  
Address: 600 White Oaks Blvd  
City, State, Zip: Bridgeport, WV 26330  
Begin Date: 04/01/2022  
End Date: N/A  
% Ownership: 0.4584%  
Position/Title: Manager  
Phone Number: 304-624-4108

Name: Clay Riley  
Address: 600 White Oaks Blvd  
City, State, Zip: Bridgeport, WV 26330  
Begin Date: 01/01/2020  
End Date: 04/01/2022  
% Ownership: 2.4710%  
Position/Title: Secretary  
Phone Number: 304-624-4108

Name: Ronald Stanley  
Address: 600 White Oaks Blvd  
City, State, Zip: Bridgeport, WV 26330  
Begin Date: 02/04/2009  
End Date: 01/01/2020  
% Ownership: \_\_\_\_\_  
Position/Title: Secretary  
Phone Number: 304-624-4108

**PAPERWORK REDUCTION STATEMENT**

The Paperwork Reduction Act of 1995 (44 U.S.C 3501) requires us to inform you that: Federal Agencies may not conduct or sponsor, and a person is not required to respond to, a collection of information unless it displays a current valid OMB control number. This information is necessary for all successful bidders prior to the distribution of AML funds, and is required to obtain a benefit.

Public reporting burden for this form is estimated to range from 15 minutes to one hour, with an average of 30 minutes per response, including time for reviewing instructions, gather and maintaining data, and completing and reviewing the form. You may direct comments regarding the burden estimate or any other aspect of this form to the Information Collection Clearance Officer, Office of Surface Mining Reclamation and Enforcement, 1849 C Street, NW, Room 4559, Washington, DC 20240.



## AVS OFT Report - 6/16/2022 3:21:35 PM

All OFT's where the selected entity is listed as an entity or related entity

### Entity Selected (260544) The Thrasher Group Inc

| Parent Entity                   | Relationship   | Description            | Related Entity              | % Ownership | Begin Date | End Date |
|---------------------------------|----------------|------------------------|-----------------------------|-------------|------------|----------|
| (260544) The Thrasher Group Inc | Manager        | Senior Project Manager | (260548) Richard G Hovatter |             | 8/29/2011  |          |
| (260544) The Thrasher Group Inc | Shareholder    |                        | (260545) Kenneth P Moran    | 10%         | 5/27/1991  |          |
| (260544) The Thrasher Group Inc | President      |                        | (260547) Chad Riley         |             | 1/1/2020   |          |
| (260544) The Thrasher Group Inc | Secretary      |                        | (264948) Clay Riley         |             | 1/1/2020   |          |
| (260544) The Thrasher Group Inc | Shareholder    |                        | (264948) Clay Riley         | 3%          | 1/31/2008  |          |
| (260544) The Thrasher Group Inc | Shareholder    |                        | (260547) Chad Riley         | 3%          | 6/22/1997  |          |
| (260544) The Thrasher Group Inc | Vice President |                        | (260546) Ronald Stanley     |             | 1/1/2020   |          |
| (260544) The Thrasher Group Inc | Treasurer      |                        | (260546) Ronald Stanley     |             | 2/4/2009   |          |



THRASHER