



The following documentation is an electronically-submitted vendor response to an advertised solicitation from the *West Virginia Purchasing Bulletin* within the Vendor Self-Service portal at ***wvOASIS.gov***. As part of the State of West Virginia's procurement process, and to maintain the transparency of the bid-opening process, this documentation submitted online is publicly posted by the West Virginia Purchasing Division at ***WVPurchasing.gov*** with any other vendor responses to this solicitation submitted to the Purchasing Division in hard copy format.

Header 1

[List View](#)

General Information Contact Default Values Discount Document Information Clarification Request

Procurement Folder: 1403403

SO Doc Code: CEOI

Procurement Type: Central Purchase Order

SO Dept: 0310

Vendor ID: 000000160928

SO Doc ID: DNR2400000007

Legal Name: CIVIL & ENVIRONMENTAL CONSULTANTS INC

Published Date: 4/1/24

Alias/DBA:

Close Date: 4/17/24

Total Bid: \$0.00

Close Time: 13:30

Response Date: 04/17/2024

Status: Closed

Response Time: 11:33

Solicitation Description: A&E - Little Beaver & Twin Falls SP Campground Improvements

Responded By User ID: kevinhanks

Total of Header Attachments: 1

Total of All Attachments: 1

First Name: Kevin

Last Name: Hanks

Email: khanks@cecinc.com

Phone: 2676885593



Department of Administration
Purchasing Division
2019 Washington Street East
Post Office Box 50130
Charleston, WV 25305-0130

State of West Virginia
Solicitation Response

Proc Folder: 1403403
Solicitation Description: A&E - Little Beaver & Twin Falls SP Campground Improvements
Proc Type: Central Purchase Order

Solicitation Closes	Solicitation Response	Version
2024-04-17 13:30	SR 0310 ESR04172400000006108	1

VENDOR
000000160928
CIVIL & ENVIRONMENTAL CONSULTANTS INC

Solicitation Number: CEOI 0310 DNR2400000007
Total Bid: 0
Response Date: 2024-04-17
Response Time: 11:33:53
Comments:

FOR INFORMATION CONTACT THE BUYER
Joseph E Hager III
(304) 558-2306
joseph.e.hageriii@wv.gov

Vendor Signature X	FEIN#	DATE
---------------------------	--------------	-------------

All offers subject to all terms and conditions contained in this solicitation

Line	Comm Ln Desc	Qty	Unit Issue	Unit Price	Ln Total Or Contract Amount
1	Professional engineering services				0.00

Comm Code	Manufacturer	Specification	Model #
81100000			

Commodity Line Comments:

Extended Description:

Design and contract administration services of campground improvements at Little Beaver State Park.



Department of Administration
Purchasing Division
2019 Washington Street East
Post Office Box 50130
Charleston, WV 25305-0130

State of West Virginia
Centralized Expression of Interest
Architect/Engr

Proc Folder: 1403403			Reason for Modification:
Doc Description: A&E - Little Beaver & Twin Falls SP Campground Improvements			
Proc Type: Central Purchase Order			
Date Issued	Solicitation Closes	Solicitation No	Version
2024-04-01	2024-04-17 13:30	CEOI 0310 DNR2400000007	1

BID RECEIVING LOCATION

BID CLERK
DEPARTMENT OF ADMINISTRATION
PURCHASING DIVISION
2019 WASHINGTON ST E
CHARLESTON WV 25305
US

VENDOR

Vendor Customer Code: 000000160928
Vendor Name : Civil & Environmental Consultants, Inc.
Address : 3574 Teays Valley Road
Street :
City : Hurricane
State : WV **Country :** USA **Zip :** 25526
Principal Contact : Jim Christie, PLA
Vendor Contact Phone: 304-933-3119 **Extension:**

FOR INFORMATION CONTACT THE BUYER

Joseph E Hager III
(304) 558-2306
joseph.e.hageriii@wv.gov

Vendor
Signature X

FEIN# 25-1599565

DATE April 17, 2024

All offers subject to all terms and conditions contained in this solicitation



Civil & Environmental Consultants, Inc.



WEST VIRGINIA DNR PARKS AND RECREATION SECTION

**LITTLE BEAVER STATE PARK AND TWIN FALLS STATE
PARK CAMPGROUND
IMPROVEMENTS**

CEC | CHARLESTON

Project 342-453

April 17, 2024



April 17, 2024

Division of Natural Resources
Parks & Recreation-Pem Section
324 4th Ave
South Charleston WV 25305
Attn: Josh Hager

Dear Mr. Hager,

Subject: Consulting Services for West Virginia DNR Parks and Recreation Section Little
Beaver State Park and Twin Falls State Park Campground Improvements
CEC Project # 342-453

Civil & Environmental Consultants, Inc. (CEC) is pleased to present our team's proposal of qualifications for the above-advertised EOI issued by the West Virginia Department of Natural Resources (WVDNR) for professional services to provide necessary engineering and other related professional services to design, specify and provide construction contract administration services for the construction of repairs and improvements to the Black Oak campground at Little Beaver State Park in Raleigh County and the campground at Twin Falls State Park in Wyoming County.

This is an extremely exciting project and one that CEC is very much qualified to perform. We want to join your team in helping in the effort to increase recreation in Wyoming and Raleigh County. Jim Christie, PLA will serve as the project principal. He has spent his entire 25-year career planning and implementing regional 'recreation as a destination' projects such as this one in mountain regions around the world. CEC is very familiar with WVDNR State Park Projects and process. CEC strives to be the consultant that helps West Virginia resorts and communities become heritage and recreation destinations. CEC is excited to join the WVDNR and become the TEAM that leads this important undertaking.

CEC is pleased to present our team's qualifications for these important projects. Our team brings together a group of master planners, engineers, landscape architects, ecological scientists, and campground specialists. The WVDNR will get senior leadership on our team, along with RV Park Campgrounds, Recreational Trails, and overall regional master planning experts. Our design team is dedicated to this industry and has completed over 12 RV Park Campground designs in 2023 alone and most recently completed the Coopers Rock RV Park expansion.. By providing the WVDNR with senior planners and designers, our team will guide the WVDNR, Little Beaver, and Twin Falls State Parks in making quality direction on planning, project elements, budgets, and construction implementation. These are more than recreational projects. They are the catalyst for the growth of recreation and tourism throughout Wyoming and Raleigh County. Our team understands how the State Park system functions as a destination and how it affects other aspects such as parking, pedestrian/vehicular conflict, and possibilities of future trail or amenity expansion. Our team will utilize the experience of our senior professionals to design and implement the campground as a destination for locals and tourists alike.

Jim Christie, a Principal in CEC's Bridgeport office, will serve as the primary contact for the consultant in his role as Project Manager. Jim's contact information is: Phone: 304-709-2332 Email: jchristie@cecinc.com
Thank you for this opportunity to submit our qualifications, and we look forward to working with you.

Sincerely,

CIVIL & ENVIRONMENTAL CONSULTANTS, INC.


Jim Christie, PLA
Principal


Colin McCardle
Assistant Project Manager



CONTENTS

1.0	Firm Overview	1
2.0	CEC Capacity and Capabilities	10
3.0	Project Approach - Goals and Objectives.....	11
4.0	Project Team.....	12
5.0	Project Experience	20
6.0	References	28
7.0	Additional Forms.....	29

1.0 Firm Overview

In 1989, four engineers and scientists came together with a singular vision: to be a people-first company, one that promotes a culture where clients and employees enjoy working together, and that is responsive to client needs with integrated services and high-quality work for projects both complex and routine. More than 30 years later, Civil & Environmental Consultants, Inc. (CEC) has 1,500+ team members in offices nationwide. Headquartered in Pittsburgh, Pennsylvania, we are consistently ranked on Engineering News-Record's annual lists of the Top Design Firms and Top Environmental Firms in the nation.

A culture of accountability. We own it. At CEC, every member of our team has a personal stake in ensuring the success of our clients. Because their success is our success. As employee-owners of the firm, we are all personally accountable for building lasting relationships and delivering outstanding results. Because we don't just work at CEC. We own it.

Being easy to work with. We own it. At other firms, you may find one person you work well with. Here, our clients tell us they work well with all of us. It's because all of us are invested in your success. We're accessible, responsive, and operate with integrity.

Putting people first. We own it. At CEC, people come first. Always. Whether that's our clients, our employees, or our community. It's why we listen more and work harder to understand the unique needs of our clients. And it's why we prioritize the career development of every individual on our team. People are why we do this, and why we love what we do.

Teamwork. We own it. We are at our best when we work together. That means bringing together a diverse team of talented, passionate, multidisciplinary experts to work closely alongside clients to craft comprehensive solutions to complex problems. We believe that by working together, no problem is insurmountable.

Safety excellence. We own it. We believe all accidents are preventable and are committed to creating an accident- and incident-free workplace for employees and subcontractors through training, safe workplace practices, and processes for assessing project hazards. CEC strives for safety excellence throughout our entire organization and holds all individuals accountable for the safe performance of their work.

CEC is an expanding, multi-disciplined company that is home to:

- Civil Engineers
- Geotechnical Engineers
- Transportation Engineers
- Structural Engineers
- Environmental Scientists
- Environmental Engineers
- Chemical Engineers
- Geologists
- Hydrogeologists
- Hydrologists
- Ecologists
- Biologists
- Wetland Scientists
- Threatened & Endangered Species Experts
- Agronomists/Soil Scientists
- Emissions Testing Professionals
- Meteorologists
- Chemists
- Archaeologists
- Construction Managers and Inspectors
- Environmental Technicians
- Treatment Plant Operators
- Land Surveyors
- Landscape Architects
- GIS Analysts and Programmers



CEC West Virginia

CEC's Bridgeport and Charleston offices are comprised of senior leaders, engineers, project managers and support staff all with significant private and public infrastructure planning, design and engineering experience. The offices are adequately staffed with a variety of professionals to ensure appropriate staff is assigned to any task.

The Bridgeport and Charleston offices enjoy a positive relationship with local, regional and state regulatory officials. These relationships are critical to navigating the permitting process through the increasingly difficult regulatory environment. CEC understands the length of time required for permitting tasks and can assist the client in developing accurate project schedules. CEC also has significant experience working with local contractors on similar development, roadway, and utility projects throughout West Virginia. This knowledge of

local construction techniques and a thorough understanding of the design and operation/maintenance of public infrastructure provide a technical advantage to CEC.

CEC's team provides a balance of public and private sector experience that allows us to offer an exceptional perspective to our consulting services. Our team has proven experience in both private and public sector projects throughout West Virginia, meeting intensive schedules for projects and locally funded projects while maintaining quality work. We understand the balance and collaboration required between private site development projects and the public development process which will be critical in the success of this development.



Landscape Architecture & Planning

CEC provides a diverse range of landscape architecture design services for site and land development, master development planning, feasibility studies, stormwater management, landscape design, green infrastructure and irrigation.

CEC provides landscape architecture services to architects; developers; institutional, commercial and businesses owners; and public agencies, and is recognized for leadership in applying sustainable design practices to projects seeking LEED® certification.

SITE AND LAND DEVELOPMENT

CEC landscape architects prepare feasibility studies, site concept plans and master development plans for commercial office and retail sites, industrial and residential developments and institutional/academic campuses. Preliminary site planning services address utility and roadway infrastructure, vehicular accessibility and circulation, in some cases rail access, municipal zoning and land development requirements, and state and federal regulations, as well as site planning flexibility.

CEC takes into consideration floodplain issues, topographic constraints, existing and proposed infrastructure, stormwater management, preservation of natural site features such as existing vegetation and water courses, and review of wetlands and other environmental considerations. CEC can include the design of ponds and other water features such as bioswales, rain gardens, and creative stormwater treatment measures to limit water resource impacts.

LANDSCAPE AND IRRIGATION DESIGN

CEC can prepare landscape design and planting plans that address local municipal ordinance requirements and the client's program objectives, LEED, and construction budget constraints. CEC also can prepare irrigation plans and construction documents to include commercial systems, groundwater and surface water supply irrigation systems, increased water efficiency, fountains and other water amenity features.

GRAPHIC RENDERINGS AND PHOTO MANIPULATION SERVICES

CEC prepares large-scale color renderings, photo manipulation services and 3-D modeling for presentation quality drawings and 3-D visualizations. CEC combines computer accuracy with an artistic by-hand touch to create realistic renderings and 3-D models. With technology to overlay proposed design solutions on photos of existing site conditions, CEC can communicate a photo-realistic effect of what the final design solution may look like, which is very effective for public meetings. Hand-drawn and computer-imaged renderings include: black and white and color perspectives, realistic detailed sections and elevations, 3-D models, and color presentation boards presenting both conceptual and final master plans.



Civil Engineering & Site Development

CEC provides civil engineering and site development consulting services to assist with the development of cost-effective designs to meet regulatory and client requirements.

CEC has extensive experience preparing regulatory permits and managing the design, approval, and on-site construction processes associated with the site development of multi-building campuses, commercial, industrial and retail developments, institutional and educational facilities, and residential developments. CEC has developed a reputation for developing high-quality, sustainable and “buildable” design solutions within construction budgets.

PREDEVELOPMENT SITE INVESTIGATIONS

CEC provides predevelopment investigation services to evaluate sites for specific uses, addressing site layout, zoning adherence for parking and setbacks, site access, wetlands and other environmental considerations, geotechnical concerns, grading/earthwork, and utility availability and capacity.

CIVIL DESIGN AND PERMITTING

CEC has extensive design experience and a proven track record of successfully obtaining local, state, and federal erosion and sedimentation control (E&S) permits and/or regulatory approvals and has a working knowledge of the various state and federal E&S and National Pollutant Discharge Elimination System (NPDES) regulations and requirements. Civil design and permitting services include:

- Site Grading/Earthwork Analysis
- Erosion and Sedimentation Control/NPDES Permitting
- Stormwater Management/Water Quality Design
- Utility Design/Coordination
- Roadway Design and DOT Permitting
- Sustainability Planning and Design

LANDSCAPE ARCHITECTURE AND PLANNING

CEC provides a diverse range of landscape architecture design services for site and land development, master development planning, feasibility studies, landscape design, green infrastructure and irrigation. CEC is recognized for leadership in applying sustainable design, green infrastructure and low-impact design solutions. CEC’s services include the preparation of graphic renderings, photo manipulation services and 3-D modeling visualizations.

GEOTECHNICAL ENGINEERING

CEC provides geotechnical engineering services to determine foundation and retaining wall design parameters, develop site grading requirements, design pavements, and investigate slope stability, mine subsidence, landslides, and foundation failures.

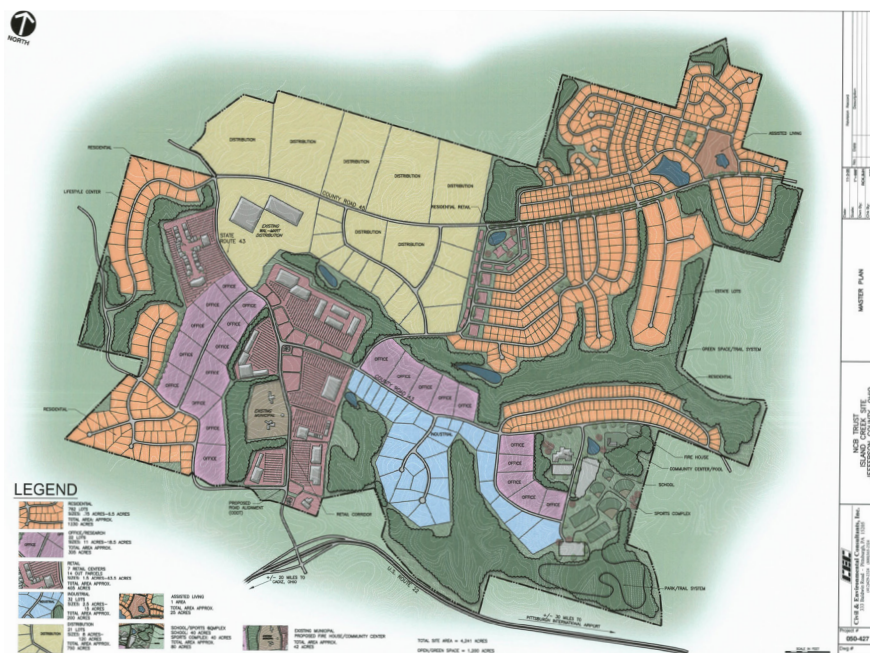
CONSTRUCTION SERVICES

CEC routinely monitors the construction of earthmoving operations, the installation of erosion control measures and building construction. CEC provides certified technicians for testing of soils, concrete, masonry, steel and fireproofing. Technicians are certified to meet International Building Code (IBC) Special Inspection requirements and provide construction quality assurance and construction management services for a wide range of civil, geotechnical, environmental and waste management projects.



CEC engineers, construction managers and field superintendents perform infrastructure assessments, develop recommendations to correct concerns, and deliver cost-effective repair, rehabilitation and maintenance services for site infrastructure, including stormwater facilities, site utilities, landscaping, parking lots and pavement.

CEC inspects, monitors, maintains, restores, repairs and improves property infrastructure. The need for such services can arise from damage, age, poor maintenance of systems, and/or changing regulatory requirements.



Survey/Geospatial Services

With a seasoned team of registered professionals and survey staff, combined with cutting-edge technology and equipment, CEC offers a full range of surveying and geospatial services both on land and in water that meet the changing needs of clients.



LAND SURVEYING

CEC surveyors have a depth of professional experience combined with advanced technical skills to locate, analyze, and map property boundaries and existing conditions for a variety of land use and development purposes. From reviewing aged deeds to utilizing the latest survey technology, reconciling boundary and title exceptions, and preparing high-quality documents and deliverables, CEC surveyors are proven expert measurers. Licensed professionals are experienced with various agency and governmental requirements, as well as state and national survey standards. Robust professional capabilities, specialized experience, and technical competence and capacity allow CEC to provide the following surveys:

- Boundary and ALTA/NSPS Land Title
- Topographic, Utility, and As-Built
- Horizontal and Vertical Control
- Construction Surveys and Staking
- Volumetric
- Settlement and Deformation Monitoring
- Route and Right-Of-Way
- Roadway and Railway

BATHYMETRIC/HYDROGRAPHIC SURVEYS

CEC performs bathymetric/hydrographic surveys using its in-house fleet of survey vessels and depth-sounding equipment to satisfy diverse industry needs for mapping underwater environments. Our vessels are outfitted with required United States Coast Guard (USCG) safety equipment and are operated by CEC personnel with a USCG Captain's License and/or safe boat operation training, and who have been trained to work in aquatic environments.



CEC collects comprehensive bathymetric data to assist manufacturing, mining, natural gas, power, and transportation companies with projects requiring accurate water depth/ bottom surface elevation data. Capabilities and services include:

- Dual-Frequency and Side-Scan Capabilities
- Manned and Autonomous Survey Vessels
- Pre- and Post-Dredging and Demolition Surveys
- River, Harbor, and Impoundment Surveys
- Maintenance Dredging Scans
- Draft and Trench Verification
- Storage Volumes and Resident Time Calculations
- Utility Crossing Alignment Surveys
- Horizontal Directional Drilling (HDD) Scans

UNMANNED AERIAL SYSTEMS (UAS)

CEC utilizes UAS to conduct site inspections, topographic surveys, construction site monitoring, stockpile and landfill volumetric calculations, vegetation analyses, optical gas imaging, and other similar projects. UAS provide a cost-effective, low-environmental-impact solution that optimizes the quality and value of collected data.

Survey/Geospatial Services

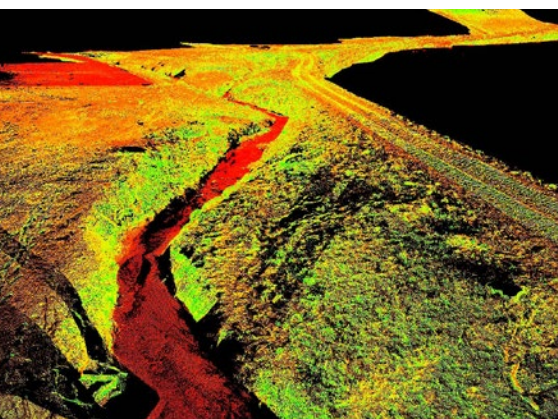


CEC obtained a Federal Aviation Administration (FAA) Section 333 Exemption and FAA Part 107 Pilot Certifications to operate robotic UAS within the national airspace system for the purpose of conducting aerial data acquisitions. The use of UAS enables CEC to conduct data acquisition for project sites in a safe manner. The use of UAS also creates significant economic efficiencies, such as reductions in the number of field personnel required and the time required for both data acquisition and review. Applications of the technology include:

- Aerial Photography and Videography
- Photogrammetric and 3D Light Detection And Ranging (LiDAR) Topography
- Optical Gas Imaging (OGI) and Pipeline Leak Detection
- Vegetative Analysis and Thermal Imagery
- Visual Façade Inspections
- Volume Determinations
- Right-Of-Way Monitoring

3D LIDAR SCANNING AND IMAGERY

CEC provides a wide range of land surveying services with a full complement of cutting-edge technology, including 3D LiDAR scanning to create spatial imaging.



With ease of portability and setup, and decreased data processing time, LiDAR scanning provides significant time savings versus traditional location methods. The use of LiDAR technology also enables increased safety by minimizing the need to send crews into dangerous spaces.

Using LiDAR, CEC can create an extremely detailed and dimensionally accurate 3D image using millions of acquired intelligent data points on a project site. Services include:

- Topographic Scanning
- Architectural LiDAR Surveys
- Mobile LiDAR Surveys
- Bridge Surveys
- Mine Surveys and Mapping
- Asset Management Surveys
- Industrial and Manufacturing Scanning
- Landslide and Deformation Surveys
- 360-Degree Imagery
- Orthorectified Imagery

Construction Management

CEC engineers, construction managers, and field superintendents provide tailored Construction Management (CM) services to deliver seamless completion of projects. CEC's proactive approach saves time and cost while providing quality results that achieve client objectives.

CONSTRUCTION MANAGEMENT APPROACH

CEC provides CM services as an agency or as an Owner's Representative, as well as CEC-led Design/Build arrangements to provide a turnkey solution. CEC's collaborative team approach enables early, impactful decisions about a project's design intent, schedule, budget, materials, and more. As the Construction Manager, CEC acts as the Owner's Representative and advocate, managing the construction trades, budgeting, and scheduling. Trade contracts are "held" either by the owner or by CEC as the Construction Manager. In a Design/Build approach, where CEC is responsible for both design and construction of a project, CEC contracts directly with the Owner and is fully responsible for the delivery of the project. CEC's typical Design/Build approach is to offer an integrated team with CEC providing design and engineering on a turnkey basis.

The benefits of a CEC-led CM approach are:

- Builder/contractor selection flexibility
- Early input on constructability
- Early budget and schedule input/control
- Faster schedule delivery
- Owner advocacy

CEC provides a single point of responsibility for both design and construction.

CONSTRUCTION MANAGEMENT SERVICES

CEC's suite of construction-related services provides for client advocacy and confidence while we deliver projects in many forms, including:

- | | |
|--|--------------------------------------|
| • Pre-Construction | • Cost Estimating |
| • Project Administration | • Cost Control and Value-Engineering |
| • Construction Inspection | • Change Order Management |
| • Constructability Reviews | • Claims Management and Resolution |
| • Project Controls and Document Management | • Quality Assurance |
| • Scheduling | • Startup and Testing |
| | • Project Close-out |

CONSTRUCTION MANAGEMENT EXPERIENCE

CEC has delivered on-schedule and on-budget quality construction management for a variety of projects, including:

- | | |
|---|---|
| • Site Development | • Wetland and Stream Restoration |
| • Earthwork and Grading | • Access Road Rehabilitation and Construction |
| • Site Utility Construction | • Mine Grouting |
| • Soil and Groundwater Remediation | • Soil Retention Systems |
| • Landslide Repair and Remediation | • Paving |
| • Erosion & Sedimentation Controls Installation | • Post-Construction Restoration |



Construction Phase and Quality Assurance Services

The trained professionals, technicians, and inspectors at CEC combine extensive experience with state-of-the-art field equipment to complete construction phase services for a wide range of civil, geotechnical, environmental, and waste management projects.



CEC routinely monitors the construction of large earthmoving projects, mine grouting programs, the installation of erosion control measures, landslide corrective actions, environmental remediation projects, geosynthetic installation, landfill closures, and building construction.

CONSTRUCTION PHASE SERVICES

- Construction Quality Assurance (CQA) and Special Inspections
 - Density Testing of Soils and Aggregates
 - Concrete Testing
 - Structural Steel Inspections and Testing
 - Masonry Inspections and Testing
 - Fire Proofing Inspections and Testing
 - Asphalt Pavement Testing
 - Fill Placement Monitoring
 - Geosynthetic Testing
- Landfill Liner/Cap Installation Monitoring
- Confirmation Sampling
- Certification Report Preparation
- As-Built Drawing Preparation

IBC SPECIAL INSPECTIONS

CEC provides Special Inspections during building construction as required by Chapter 17 of the International Building Code (IBC). The code requires the firm performing Special Inspections to be retained by the owner or design professional. CEC typically provides inspection and testing of soils, concrete, masonry, steel, and fire proofing. CEC's technicians are certified by numerous testing organizations including ACI, NICET, ASNT, and ICC.

ENVIRONMENTAL-RELATED MONITORING

CEC provides services during the remedial action phase of UST and waste/contaminated material removal projects and has directed and monitored the installation of groundwater extraction and treatment systems and soil venting systems. Professionals include AHERA-certified asbestos inspectors who can monitor removal of asbestos-containing materials. CEC technicians also perform air monitoring during construction to allow contractors to assess on-site personnel protection requirements.

WASTE MANAGEMENT CQA

CEC provides CQA services during the construction and closure of waste management facilities. CEC reviews material testing reports, monitors placement of earth materials and geosynthetics, and evaluates field test results from geosynthetic installations while compiling the information for the construction certification report, sealed by a CEC registered professional engineer and prepared for submittal to environmental agencies.

CONSTRUCTION MANAGEMENT

CEC provides complete construction management services beginning with the bidding process and through to project closeout. CEC develops bid documents, solicits and evaluates bids, and negotiates contracts for site development, environmental remediation and other projects. During construction, CEC oversees contractor activities with site supervision and helps meet the specifications and schedule requirements.

2.0 CEC Capacity and Capabilities

Project Team and Technical Experience

The project team identified to work with the WVDNR have extensive experience performing advisory and design services throughout West Virginia. Over 130 staff in the Bridgeport and Charleston offices will support the project team identified in Section 4. CEC's management staff are familiar with West Virginia conditions and have extensive experience performing projects.

Value Engineering and Constructability

In today's economic climate, it is imperative to evaluate and minimize construction costs while maintaining quality and meeting the objectives of the project. Project costs are directly affected by constructability. Many senior professionals at CEC "cut their teeth" in the field, functioning as construction inspectors or project observers, which allows them to draw from this experience to apply construction approaches to design. CEC will work with the WVDNR to identify cost-effective alternative methods in an effort to limit the budget and schedule impacts associated with the proposed projects.

Schedule & Availability

CEC is available to begin work immediately upon authorization to proceed from the WVDNR and will work with the staff to complete the requested services. CEC anticipates having a project start up meeting within a week of project award with the necessary staff.

Attention to Quality

CEC performs our professional services under our corporate Quality Assurance Plan (QAP). This QAP was developed to verify the engineering, design, plans and other deliverables prepared by the project team and the various disciplines are supported by comprehensive studies and sound engineering judgment, in compliance with established policies, guidelines and standards, and contain appropriate design flexibility and cost saving measures. This QAP entails a comprehensive listing of CEC quality policies and standard operating procedures that are available on CEC's internal network. It is consistently reviewed and updated by a multi-office team of experienced professionals to ensure "Best Quality Control Practices" are uniformly applied. In support of this QAP, CEC is committed to the application of established design policies, guidelines, and processes developed and published by review and resource agencies. From a quality standpoint, technical personnel review the technical quality, accuracy and completeness of all designs, analyses, drawings, estimates, and report text. Peer-level personnel are responsible for the performance of an independent check of all calculations and project deliverables prior to each project milestone submission.

As part of the QAP, reviews will be performed for the appropriate element throughout the design/construction process. These reviews will be completed prior to submitting reports, plans, construction documentation, or other deliverables. These reviews will verify the adequacy of the information presented and compliance with established guidance documents. The QAP also documents procedures for work procedure and equipment use, employee and project safety, project management and records and communications. The goal and objective of the QA/QC Policy is to provide a safe and consistent delivery of quality services.

Specific quality policies and standard operation procedures can be provided if requested.

Commitment to Safety

CEC is committed to conducting its business in a manner that sustains and protects the safety and health of its employees. CEC strives for continuous improvement in the effectiveness of its safety and health programs. We affirm that:

- Working safely is a key corporate value and a condition of employment.
- All workplace hazards can be safeguarded against by using proactive measures and actions.
- Occupational safety and health is part of every employee's total job performance.
- Each CEC employee is responsible, and is held accountable for establishing safe workplace conditions to prevent injuries and occupational illnesses.
- Training employees to work safely is essential and is the responsibility of CEC Managers and Supervisors.
- Creating and maintaining a safe workplace, combined with the prevention of personal injuries and accidents, is good business.
- An effective Safety Program is part of CEC's vision and mission.

CEC's Workplace Safety Program and Manual provides general physical hazard assessments for tasks commonly performed by CEC employees. The program requires a hazard assessment and preparation of a project safety plan for all field operations. The plans are continuously updated through the use of Job Safety Assessments and on-site safety meetings for CEC personnel.

CEC is a consulting services firm employing engineers, scientists, biologists, ecologists, technicians, surveyors and office staff. The firm is part of the NAICS 5413 firms providing architectural, engineering and related services.

3.0 Project Approach - Goals and Objectives

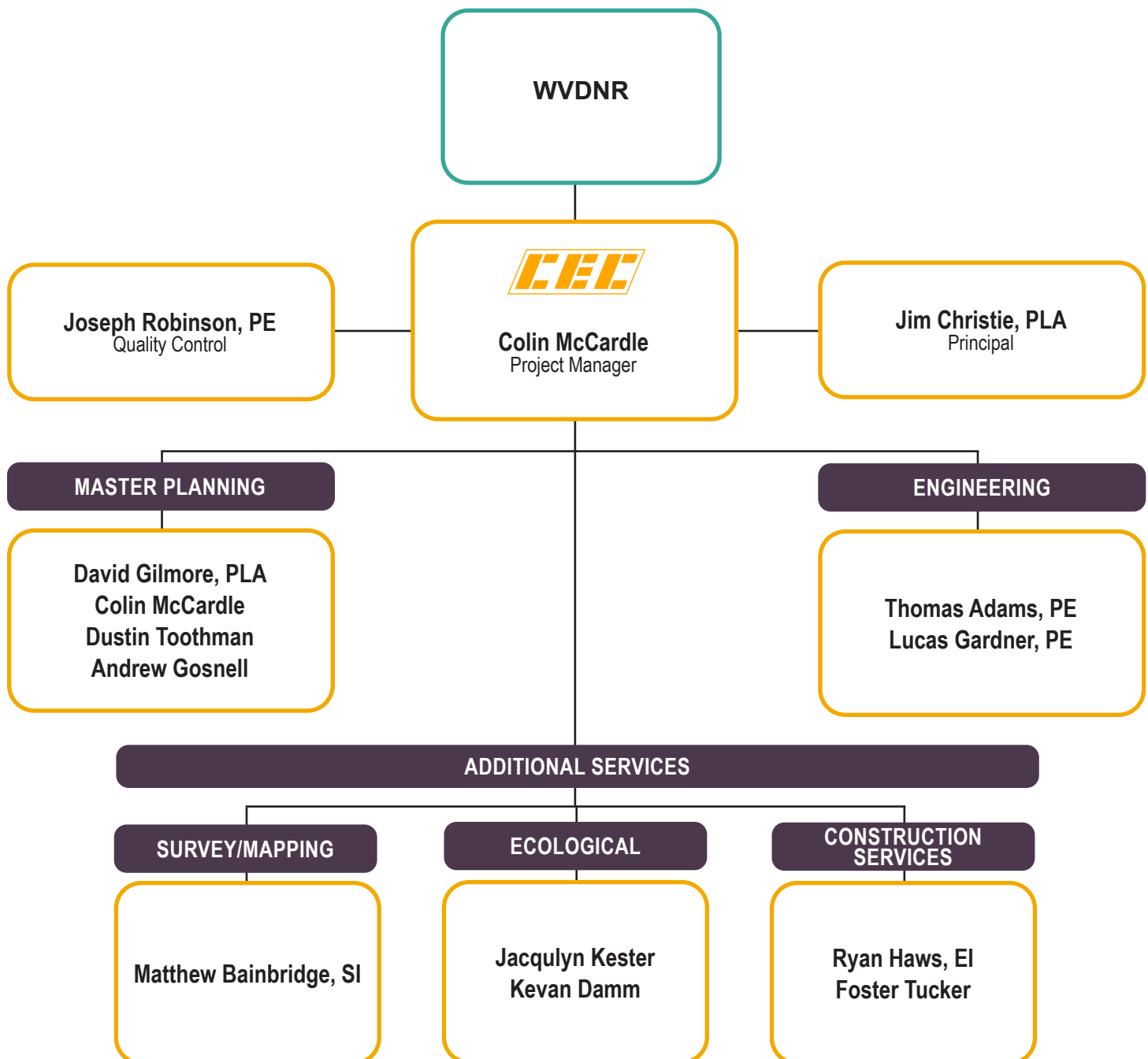


CEC understands the challenges faced when expanding or reorganizing an existing campground facility. CEC's approach when restructuring an existing campground begins with a thorough site visit and meetings with project stakeholders, site maintenance teams, and site guests to assess the site's strengths and weakness. This information forms the basis of an inventory and analysis provided to the client for review and final decision-making. We aim to create a cohesive development plan that enhances the site's best qualities while introducing additional amenities and RV/camping sites.

Our design team specializes in RV-based campground design and related facilities. We integrate ecological, environmental, civil/site, wastewater, and landscape architecture practices into our designs. We collaborate with subconsultants for specialized amenities and liaise with state and federal agencies, such as The United States Army Corps of Engineers, West Virginia Department of Natural Resources, West Virginia Department of Environmental Protection, and the State Historic Preservation Office, to address potential site constraints. CEC manages all design and permitting needs for site projects, ensuring compliance and approval.

Our experienced construction contract administrative team ensures the selection of qualified contractors to build the RV campgrounds. Detailed contract agreements are crafted to align with the client's needs and provide a comprehensive design package, minimizing unknown construction costs. Our team members are trained in the intricacies of RV campground construction, emphasizing the importance of efficiency and thoughtful design in utility routing, RV site layout, and overall project execution. Regular inspections and reviews of the contractor's work ensure adherence to quality standards and project requirements.

4.0 Project Team



James Christie, P.L.A.

Principal



25 YEARS OF EXPERIENCE

EDUCATION

B.S., Landscape Architecture, West Virginia University, 1998

REGISTRATIONS

Registered Landscape Architect

- CO [REDACTED]
- WV [REDACTED]
- MD [REDACTED]

Bridgeport Development Authority - Board Member

- 2019 - Present

West Virginia Council of Trout Unlimited - Immediate Past Chair

- 2017-2021

Jim is a Principal and licensed Landscape Architect in the Civil department. In his capacity, he is responsible for complete project management within CEC. He is responsible for site design, landscape architecture, site development entitlement services, construction documents, client management, personnel supervision, and construction administration on numerous municipal, commercial, and institutional projects. Jim is a detail-oriented, highly-creative Landscape Architect with 25 years of dedicated experience in designing and implementing projects to support client needs and meet business objectives. His wide range of project experience ranges from landscape design to destination resort design in multiple regions both within the United States and internationally. Jim's passion for recreation as an economic engine shows with over two decades of projects directly related to recreation as a destination and the recreation of economies around tourism as the driver. Jim and his team are working to create ADA inclusive parks and playgrounds throughout West Virginia.

PROJECT EXPERIENCE

Coopers Rock RV Park and Cabins, WVDNR

Grand Vue Park Masterplan, Omni Associates, Moundsville, WV

Grand Vue Park RV Park, Omni Associates, Moundsville, WV

Stonewall Resort RV Park and Camping Master Plan, Stonewall Resort Roanoke, WV

Stonewall Resort Passive Park, Stonewall Resort, Roanoke, WV

Concord University ADA Upgrade Master Plan, Mercer County, Athens, WV*

Norwood ADA All-Inclusive Park, Fairmont Park and Recreation, Fairmont, WV

The Bridge Recreation Complex Masterplan, Omni Associates, Bridgeport, WV

The Bridge Recreation ADA All-Inclusive Park, City of Bridgeport, Bridgeport, WV

Tomlinson Run State Park ADA Fishing Platforms and Fisherman's Trail, WVDNR, New Cumberland, WV

Brooke Hills Park Masterplan, Brooke Hills Park, Wellsburg, WV*

Grand Vue Park Pool, Omni Associates, Moundsville, WV

Inwood Park Master Plan and ADA All-Inclusive Park, Berkeley County Parks, Inwood, WV

Vienna Park and Recreation Master Plan, City of Vienna, Vienna, WV

Vienna Pool, Omni Associates, Vienna, WV

Wave Pool Masterplan, MCPARC, Pleasant Valley, WV*

Palatine Park and Boat Ramp Masterplan, Marion County Commission, Fairmont, WV*

Upper Kanawha Valley Recreational Tourism Study, Kanawha County Commission, Charleston, WV

The Tracks Resort and ATV Trail System Masterplan, The Shott Foundation, Bluefield, WV

Fairmont Connectivity Plan, Mainstreet Fairmont, Fairmont, WV,*

Fairmont Cross Town Connector Trail, City of Fairmont, Fairmont, WV

Bee Run Adventure Park Master Plan, Braxton County Development Authority, Flatwoods, WV*

Loch Lynn Heights Wetland Boardwalk Trail, Loch Lynn Heights, Loch Lynn Heights, MD*

The Eastern Continental Divide Loop Trail Master Plan, Garrett Trails, Garrett County, MD*

Allegany County Bicycle and Pedestrian Master Plan, Cumberland Area MPO, Allegany County, MD*

Friendsville Bicycle and Pedestrian Masterplan, Town of Friendsville, Friendsville, WV*

Friendsville Trailhead and Boater Parking, Town of Friendsville, Friendsville, WV*

Great Allegheny Passage Mile Markers, Allegheny Trail Alliance, Homestead Allegheny County, PA*

The River Park at Canal Place Feasibility Study, Cumberland, Maryland, Allegany County, MD

** Work performed prior to joining CEC*

Colin McCardle

Assistant Project Manager



10 YEARS OF EXPERIENCE

EDUCATION

B.S., Landscape Architecture, West Virginia University, 2014

Colin is an Assistant Project Manager in the Civil department. In his capacity, he is responsible for assisting the Project Manager within CEC. With nine years of experience spanning a diverse background in land development master planning, he brings a wealth of knowledge to CEC. His collaborative nature shines through his ability to engage effectively with clients, municipalities, and authoritative bodies. This talent ensures seamless alignment between project goals and regulatory standards. Adept at enhancing project efficiency through strategic problem-solving, Colin guides projects from inception to completion. Colin has provided his expertise on detailed local projects focused within the states of West Virginia, Virginia, Maryland, Pennsylvania, and Ohio. Colin has dedicated his career to providing excellent client relations, maintaining project goals, and enriching local communities within the region.

PROJECT EXPERIENCE

The River Park at Canal Place, Whitewater Park, MD
Coopers Rock State Park RV Park, WV
Wolf Creek RV Resort, WV
Stonewall Resort Cottages and RV Park, WV
Little Kanawha River RV Park, WV
Glennville River Park and Trail Network, WV
Paint Creek Campground, WV
Kanawha River Campground, WV
Cavitt's Creek Master Plan Lodging and RV Campground, VA
Luray RV Resort and Campground on the Shenandoah, VA
Fairchance Community Park, PA*
Lemon Street Park, Uniontown, PA*
Grant Street Park, Uniontown, PA*
Fort Dupont RV Resort, DE
Cape Charles/Chesapeake KOA RV Resort, DE
Shore Pines RV Resort, DE
Endless Caverns, VA
Eagle Lake RV Campground, MD
Foxwoods RV Campground, CT
Camp Margaritaville, TX
Private Developer RV Park Campground Prototypes & Design Guidelines, US



Civil & Environmental Consultants, Inc.

David Gilmore, P.L.A., MBA

Principal



36 YEARS OF EXPERIENCE

EDUCATION

BSLA, West Virginia University, 1988

MBA with an Emphasis on Management, Point Park University, 2015

36 years of experience on a diverse range of projects with an emphasis on recreational planning. Experience encompasses all aspects of land development, landscape architecture, planning and urban design in both the public and private sector including but not limited to: project, department and office management; business and client development; mentoring / staff development; contract, construction document and technical specification preparation; site analysis; schematic design; construction administration; master and land-use planning (institutional, resort, parks, recreational, residential; industrial, commercial); streetscape; strategic planning, transit oriented development and urban design; landscape and hardscape design; graphic presentation drawing.

PROJECT EXPERIENCE

Park & Recreation Experience

Hurricane Bridge Park Masterplan, Hurricane, WV*

Herbert and Gloria Jones Recreational Trail, Charleston WV*

Prindle Park, Huntington WV*

Rotary and Memorial Park Upgrades, Huntington WV*

Haddad Riverfront Park, Charleston, WV*

Celebration Station All-Inclusive Playground, Charleston WV*

Village of Barboursville Sports Complex, Cabell County, WV*

CAMC General Division Employee Park, Charleston, WV*

Taylor Memorial Park, Brockway PA*

Milton Middle School, Football / Track Complex, Cabell County, WV*

Elk River Riverfront Park & Bike Trail, Charleston, WV*

Wheeling Island Gateway Riverfront Park, Wheeling, WV*

Kanawha Boulevard Bikeway and Greenway Masterplan, Charleston WV*

Kanawha River Boardwalk, Kanawha County, WV*

Valley Park Masterplan, Putnam County WV*

Washington County Parks, Recreation and Open Space Plan, Washington County, PA*

Putnam County Parks, Recreation and Open Space Plan, Putnam County, WV*

Wardensville Parks Masterplan, Wardensville WV*

City of Bluefield Parks, Recreation and Open Space Plan, Mercer County, WV*

Upper Kanawha Valley Trail System, Kanawha County, WV*

Bible Center Church Park, South Charleston, WV*

Mingo Creek Park Masterplan, Washington County, PA*

Cross Creek Park Masterplan, Washington County, PA*

Stonewall Jackson State Park & Resort Master Plan, Roanoke, WV*

East End Community Park, Charleston, WV*

REGISTRATIONS

Registered Landscape Architect

- WV

ADDITIONAL TRAINING / PROFESSIONAL DEVELOPMENT

- GAI Leaders to Watch
- Harvard Leadership Training
- Advanced Project Management Training
- Client First Training
- Risk Management Training
- Past WVASLA State Licensing Board Member
- Past President, WVASLA



Civil & Environmental Consultants, Inc.

Joseph D. Robinson, P.E.

Vice President



19 YEARS OF EXPERIENCE

EDUCATION

B.S., Civil Engineering, West Virginia University,
2004

Mr. Robinson is a Vice President with nineteen years of diverse experience in civil, geotechnical, water resources, structural engineering, Oil & Gas site & pipeline design and residential/commercial site design. He has designed various projects including site layouts, grading plans, sanitary sewer, storm water management, impoundments, roads, sediment control measures, segmental retaining walls, flood plain analyses and concrete design projects. Mr. Robinson has currently been responsible for the Bridgeport civil practice, construction management of WVDNR and Oil & Gas Sites, design lead on AMLER funded developments, actively managing the AML Contract 8 and Special Inspector of Record for the Texas border wall projects.

PROJECT EXPERIENCE

Civil Site Design Experience

Coopers Rock RV Park and Cabins, WVDNR, Bruceton Mills, WV

Responsible for Project Management, Civil/Site Design, Utility Design, Construction Oversight

Site Development Projects, Timberbrook Condos*

Responsible for grading, quantities and design plan production.

Site Development Projects, Bridgeport BUMC Parking Lot, Bridgeport, WV* Responsible for grading, quantities, design plans and construction.

Site Development Projects, Energy Plaza Partners, WV*

Site Grading Project along Rt 50 Responsible for grading, quantities, design plan production and survey stakeout.

EPP Experience, Energy Plaza Partners, WV

Project management and design of one site for future development. Project included civil site design for rough grading, E&S controls, surveying, as-built and concept site layouts.

Site Development Projects, 200 Orchard Street*

Segmental Retaining Wall Project Responsible for site layout, segmental retaining wall design, design plan production, survey stakeout and construction.

Site Development Projects, Mon General*

Segmental Retaining Wall Redesign Project Responsible for segmental retaining wall design, design plan production and construction.

Health Care Facility Design*

UHC Project - Jerry Dove Drive, Bridgeport, WV Responsible for final site grading, drafting and segmental retaining wall design & construction. Physicians Office Building - Jerry Dove Drive, Bridgeport, WV Responsible for final site grading, drafting and construction oversight.

EXPERTISE

Project planning, coordination and permitting of Site Development projects in WV

Diverse experience in civil, geotechnical, water resources, structural engineering, and site design

REGISTRATIONS

Professional Engineer

- WV
- OH
- MD
- VA
- PA
- TX



Civil & Environmental Consultants, Inc.

Thomas W. Adams, P.E.

Principal



19 YEARS OF EXPERIENCE

EDUCATION

B.S., Civil Engineering, West Virginia University, 2003

M.S., Civil Engineering, West Virginia University, 2005

EXPERTISE

Commercial Site Design
Erosion and Sedimentation Control Design
Stormwater Management Design
Regulatory Permitting

REGISTRATIONS

Professional Engineer

- WV
- MD
- OH

Mr. Adams has experience as a project engineer and project manager in completing site development projects including commercial, residential, industrial, oil & gas, and municipal. Design experience includes site layout, grading, storm water management, erosion and sediment control, water and wastewater design, utility coordination, and NPDES permitting. Mr. Adams has an excellent understanding of construction cost estimating, permitting requirements, and bid documents preparation.

PROJECT EXPERIENCE

Mylan Park RV Park, Mylan Park Foundation, Morgantown, WV

Responsible for Project Management, Civil/Site Design, Utility Design, Construction Oversight.

Dorsey Knob Slide Repair, BOPARC / City of Morgantown, Morgantown Monongalia, WV*

Project engineer for the grading of a slide repair and parking lot restoration at Dorsey Knob park. Project included stormwater design, public bidding, and construction administration.

Camp Bosco Improvements, Catholic Diocese of Wheeling-Charleston, Huttonsville Randolph, WV*

Project manager for design of trails, parking area, stormwater conveyance, and E & S for new dorm facility and campus improvements at Camp Bosco.

Cubby's Daycare Facility, VanNostrand Architects, PLLC, Bridgeport, WV

Role: Project Manager

Project manager for site design and permitting for a child daycare facility building within an existing development. Project required site design and grading, storm water design, utility coordination, and local/state permitting.

Elkins High School Athletic Field, ELA Group, Inc., Elkins, West Virginia

Role: Project Manager

Project manager for storm water design and permitting for installation of a turf surface on the existing football field. This project was a design-build project and required coordination with the landscape architect, turf installer, site contractor, and the Randolph County Board of Education.

Bridgeport Indoor Sports and Recreation Center, Omni Associates, Bridgeport, WV

Role: Project Engineer

Civil engineering services for the proposed City of Bridgeport 40 million dollar recreational complex on 55+ acres. CEC provided services to create the 55+ acre site in mountainous terrain and meet ADA regulations, the project moved over 350,000 cubic yards of earth. Project required phasing of construction to allow for permit issuances and funding to be finalized.

Charles Pointe Crossing, Genesis Partners, Bridgeport, WV

Role: Project Engineer

Civil engineering services for 104 acres of development creating 67 developable acres of pad sites within Charles Pointe. This was a phased project consisting of 4,000,000 cubic yards of earthwork, 4,000 linear feet of boulevard, and utility extensions.

* Work performed prior to joining CEC



Civil & Environmental Consultants, Inc.



Lucas Gardner, PE

Mr. Gardner is a registered professional engineer in West Virginia and has contributed to the growth and success of CEC's civil / site practice in the Bridgeport office by providing high quality civil engineering design services. His experience includes performing design of site layout and grading, stormwater management systems, and erosion and sedimentation controls for various markets and clients including architects, real estate developers, municipalities, oil and gas companies, and non-profit organizations. Lucas manages and contributes to multiple phases of projects from conceptual designs and cost estimates to creation of final construction plans and permitting documents.

Education B.S., Civil Engineering Technology, Fairmont State University

Registration Professional Engineer (WV)



Dustin Toothman

Mr. Toothman is a graduate from the dual master of architecture, master of landscape architecture program at the University of Tennessee. His experiences throughout design school have made him extremely passionate about architecture and landscape architecture and their connection and influence on the world around us. His main interest has been the relationship between architecture and landscape architecture and the importance of the two profession working together in order to approach design in a more holistic way. He also has been given the opportunity throughout his education to serve as a teaching assistant. He has always been passionate about teaching others what he learned and the power of design education.

Education B.S., Architecture, Fairmont State University
M.A., Architecture, University of Tennessee
M.A., Landscape Architecture, University of Tennessee



Andrew Gosnell

A graduate of West Virginia University's Landscape Architecture program, Mr. Gosnell has 3 years of landscape designer experience. He has been involved with master planning projects at a variety of scales, ranging from regional tourism masterplans to site specific mixed use masterplans. In addition, Mr. Gosnell has played a role in the design and development of streetscapes, park and recreation facilities, housing developments, trail planning, site signage development, RV park development, playground design, and landscape planting design. As a part of the design process, Mr. Gosnell develops artistic and photorealistic renderings of masterplans, section elevations, perspectives, and other related graphics to assist clients in showcasing their projects to receive grant funding and attract potential developers.

Education B.S., Landscape Architecture, West Virginia University



Matthew Bainbridge, SI

Mr. Bainbridge possesses a diverse background in both Civil Engineering and Geomatics. With experience ranging from site design to geospatial processing, Mr. Bainbridge's capabilities enable him to provide a wide variety of services throughout the industry. His industry experience ranges from manufacturing, architectural, commercial, oil & gas, and power transmission. Starting the remote sensing group in CEC's Bridgeport office in 2015, he currently leads the survey/geospatial group for the office.

Education B.S., Mathematics, Fairmont State University
B.S., Civil Engineering Technology, Fairmont State University
Registration: Surveyor in Training (WV)



Jacquelyn Kester

Ms. Kester is the Ecological Services Lead for CEC's Bridgeport, West Virginia Office. She has extensive experience in attaining baseline data for reporting and permitting projects. She is knowledgeable of permitting at the local, state, and federal levels for aquatic resource impacts associated with transportation, energy infrastructure, and site development projects. She regularly provides technical advice and assistance in the interpretation and application of federal and state laws, regulations, and Executive Orders. Ms. Kester manages Clean Water Act (CWA), National Environmental Policy Act (NEPA), and Endangered Species Act (ESA) aspects of projects, including developing scope and budget; building a team of technical resources; coordinating with the owner to develop strategies to meet the project's goals; managing budget/schedule; and delivering high-quality services.

Education B.S., Environmental Sciences, West Virginia University



Kevan Damm

Mr. Damm is a Project Scientist with the Ecological Services Practice Area in CEC's Bridgeport Office, where he focuses on oil & gas projects. He is responsible for conducting stream and wetland delineations, preparing reports, agency correspondence, and permit applications for both production and midstream clients. Mr. Damm has years of experience in stream and wetland assessments and in West Virginia and Ohio, as well as knowledge of state and federal regulations regarding permanent and temporary impacts associated with well pad and pipeline projects.

Education B.S., Wildlife Ecology & Management, West Virginia University



Ryan Haws, EI

Mr. Haws is an engineer with more than 15 years of experience in civil engineering, project management, and government relations. Mr. Haws is experienced in the various aspects of land development, including large-scale residential subdivision design, grading and earthwork analysis, drainage design, water, sewer, and storm water system design, and commercial/multi-family site design, including the construction management of large public/private site development projects. Mr. Haws has also worked with NPDES permitting, Asset Management Plan preparation, Abandoned Mine Land projects, Above Ground Storage Tank permitting and removal, and preliminary site evaluations.

Education B.S., Civil Engineering, West Virginia University
MBA, Business Administration, University of Phoenix
Registration Engineer in Training (WV)



Foster Tucker

Mr. Tucker has been involved with geotechnical and construction inspection work for five years. His first full time position was here with CEC starting in the summer of 2018. His interest in these types of work began with his internships with CEC in the summers of 2015 and 2016. He is excited to continue learning new things and expanding his knowledge about geology, geotechnical engineering, and anything else that comes his way.

Education B.S., Geology, West Virginia University



5.0

Project Experience

RV CAMPGROUND DESIGN OVERVIEW & PROJECTS

Civil & Environmental Consultants, Inc. (CEC) is recognized for providing innovative design solutions and integrated expertise in civil engineering, landscape architecture, ecological sciences, environmental sciences, survey/geospatial services, geotechnical engineering, and traffic engineering to our RV Campground clients.

CEC has a proven record of performance in solving the difficult site engineering problems and design challenges often associated with RV Campground site development, from master planning through construction. Key drivers include the importance of designing site elements with acknowledgment of the resident experience. We do this by designing thoughtful, multi-functional spaces within the site for site-seeing and relaxing, providing convenient and safe pedestrian mobility, and creating a sense of place consistent with the overall environment that makes residents feel welcome, whether overnight or permanent. Our projects incorporate innovative stormwater management and water quality measures to meet sustainability goals and we pride ourselves on providing thoughtful and efficient staging and sequencing of construction operations to allow for minimal disruption to the residents during construction.

CEC provided services for the representative projects below including design and layout of amenities for luxury campsites including outdoor kitchens, outdoor living spaces, shelters, decks, unit paver, and landscaping; site analysis of travelway width, turn radii, and lot dimensions; creation and implementation of lot layout guidelines for maximum density, efficiency, and privacy; and reconstruction/retrofitting of campgrounds to allow additional capacity, accommodating larger Class A Motorhomes, and new site amenities including event centers, pool, waterslide, RC racetrack, pickleball, and pocket parks.

REPRESENTATIVE PROJECTS

Cacapon State Park RV Campground, WV
Coopers Rock State Park RV Park, WV
Wolf Creek RV Resort, WV
Grand Vue Park, RV Park, WV
Stonewall Resort Cottages and RV Park, WV
Little Kanawha River RV Park, WV
Paint Creek Campground, WV
Kanawha River Campground, WV
Mammoth Campgrounds, WV
The Tracks Resort RV Park and Campground, WV
Cavitt's Creek Master Plan Lodging and RV Campground, VA
Charleston Jellystone RV Resort, WV
Luray RV Resort and Campground on the Shenandoah, VA
Fort Dupont RV Resort, DE
Cape Charles/Chesapeake KOA RV Resort, DE
Shore Pines RV Resort, DE
Endless Caverns, VA
Camp Margaritaville, TX
Eagle Lake RV Campground, MD
Foxwoods RV Campground, CT



1. Grand Vue Park RV Park
2. Stonewall Resort Cottages & RV Park
3. Luray RV Resort and Campground on the Shenandoah

MYLAN PARK RV PARK

OWNER/CLIENT

Mylan Park Foundation

LOCATION

Morgantown, WV

CEC SERVICES

Erosion & Sedimentation Control/NPDES Permitting

Geotechnical Engineering

Roadway Design

Site Grading/Earthwork Analysis

Stormwater Management/BMP Design

OWNER OBJECTIVE

Mylan Park Foundation supports the development of Mylan Park in Morgantown, West Virginia. Mylan Park is a full-service sports, recreation, wellness, and events complex spanning across 400 acres. The park is home to 14 indoor and outdoor facilities comprising more than 60 acres of athletic field space and more than 180,000 square feet of indoor sport, recreation, and event venues. The park includes trails for walking, biking, and carts, with plans to expand the trail system.

Mylan Park Foundation sought to add an RV Park and additional accommodations to add capacity to the park and allow event attendees to stay on site for the duration of their event. Mylan currently has a small RV area, but increased demand is creating a need for additional RV spaces and other lodging options.

CEC APPROACH

The RV Park is located on property that has been surface and deep mined. The mining reclamation has left gently sloping field on a majority of the site, but multiple feet of mine spoil is expected to be encountered during construction. Utility extension is required to serve the RV Park including water, sanitary sewer, and electric.

CEC has teamed with the Mylan Park Foundation to assist the organization in applying for funding opportunities, including the Abandoned Mine Lands and Reclamation (AML) Pilot Program, sponsored by the West Virginia Department of Environmental Protection (WVDEP). CEC researched past mining activities, preparing a report and mapping, and met onsite with WVDEP AML representatives to review the project and assisted in getting a portion of Mylan Park established as an abandoned mine land. Getting that designation allowed the project to be eligible for the AML Pilot Program.

CEC has begun designing the layout, grading, and utilities for the park, which includes approximately 142 RV spaces, 10 cabins, and a multipurpose trail to connect the RV Park to Mylan Park Lane. The park is planned to be a Kampgrounds of America (KOA) site, so CEC has coordinated the design with KOA to ensure the park meets their requirements. Because utilities, including water and sanitary sewer extensions, are required as part of the project, CEC also has coordinated with the Morgantown Utility Board (MUB) for connections and for the design of utility extensions beyond MUB's system.

Working closely with Mylan Park, KOA, and MUB to ensure the RV Park meets Mylan Park's needs while also heeding to KOA and MUB requirements, CEC anticipates construction to being in spring 2023.

A 36 BACK-IN LOTS
B 131 PULL THROUGH LOTS
C 26 CABIN SITES
D 4 TENT SPOTS
E 1



GRAND VUE PARK RV PARK SITE DEVELOPMENT

OWNER/CLIENT

Marshall County Parks and Recreation

LOCATION

Marshall County, West Virginia

CEC SERVICES

- Erosion & Sedimentation Control/NPDES Permitting
- Geotechnical Engineering
- Landscape Architecture/Land Planning
- Roadway Design
- Site Grading/Earthwork Analysis
- Stormwater Management/BMP Design
- Utility Design
- Erosion & Sediment Control Design and Inspection
- NPDES Permit Negotiation
- Stormwater BMP Design and Inspections
- Stormwater Piping and Culvert Inspections
- Aerial Photography/Videography
- Construction Surveys/Staking
- Topographic Surveys
- Construction Management

OWNER OBJECTIVE

Grand Vue Park (GVP) is a 650-acre park in Marshall County, West Virginia, just outside of the Moundsville City limits. GVP offers numerous lodging options, zip lining, an aerial adventure park, paintball, geocaching, an outdoor amphitheater, a banquet hall, picnic shelters, an aquatic center, frisbee golf, a playground, and walking and biking trails.

GVP proposed to construct a 40-site RV park with water, sewer, and electric utility hook-ups for all sites in order to offer lodging options for park guests

CEC APPROACH

The proposed RV Park is approximately 2,000 feet long and will be constructed with 20 RV sites on each side of the road, with three bathhouses to be built to serve guests. The RV Park will be constructed on top of a rolling hill, which requires earthmoving. CEC was tasked with designing the layout of the roadway and developing grading plans for excavation and embankment.

GVP, which is provided potable water service from Marshall County Public Services District #3, collects and treats its own wastewater at two existing packaged wastewater treatment plants. The existing packaged wastewater treatment plants are currently at capacity; therefore, a sanity sewer collection system will be constructed, with all collected wastewater getting pumped into the City of Moundsville sewer system for treatment. A 6-inch water line will be extended along the roadway to provide potable water service and fire protection.

Construction of the RV park began in June 2021 and is expected to be completed in November 2021. CEC provided detailed plans and specifications, project permitting, bidding, and construction support.

The total construction cost is approximately \$2,500,000 and it is funded by Marshall County.



COOPERS ROCK STATE PARK

OWNER/CLIENT

West Virginia Division Of Natural Resources

LOCATION

Monongalia County, WV

CEC SERVICES

Erosion & Sedimentation Control/NPDES Permitting

Geotechnical Engineering

Site Grading/Earthwork Analysis

Stormwater Management/BMP Design

Utility Design

Wetlands & Waters Delineations

Detailed Design

Construction Quality

Aerial Photography/Videography

Topographic Surveys

Construction Management

OWNER OBJECTIVE

WVDNR and WV Tourism planned upgrades to Coopers Rock State Forest to provide additional 25 RV site locations, 20 A-frame cabins and dark sky initiatives. The goal of the project is to make the location a minimum of net zero on revenues to provide sustainable state forests and parks throughout the state.

CEC APPROACH

CEC engaged with WVDNR through 5G process to be selected based on quality qualifications and was selected to design and provide construction management services during bidding and construction of the project. CEC utilized expertise in state park master planning and civil site design to design and coordinate approvals and permitting to complete 25 RV sites and a planned 20 A-frame cabin loop for the planned \$7.25 million project. CEC started the project by collecting survey topo, utilities and site features to prepare a base map to develop concept plans.

CEC coordinated with WVDNR representatives including the WVDNR director and secretary of tourism to utilize the planned locations. CEC then provided a geotechnical investigation to provide a balanced and stable site design. CEC proceeded to complete site development design for the RV locations, cabin locations and site utilities with the oversight of sub ZMM which designed the electrical systems and the A-frame cabins. CEC has provided bidding support and construction management including site QC testing of fill, concrete and asphalt placement.

In addition to the utility design CEC provided a pump station design to provide sanitary sewer service to the cabins and pump to a planned sanitary sewer treatment system located near the RV site location. During the bid process and planned construction execution CEC teamed with WVDNR and WV State Forest to mark and provide marketable timber during the clearing and grubbing phase. One of the key features during the design and development of the project was to maintain existing trees to provide the feel of an established state park location.

CEC has successfully overseen 90% of the completion of the project to date and is planning additional projects and bids with WVDNR.



THE TRACKS RESORT AND ATV TRAIL SYSTEM MASTERPLAN

OWNER/CLIENT

The Hugh I Shott, Jr., Foundation Inc.

LOCATION

Bluefield, WV

CEC SERVICES

Landscape Architecture/Land Planning

OWNER OBJECTIVE

The Hugh I Shott, Jr., Foundation Inc. (The Shott Foundation) was established in 1984 to assist in the improvement of the social and economic quality of life for those who live within the Bluefield, West Virginia region. They support projects that invest in the community and strive to make Bluefield and surrounding region a better place for future generations.

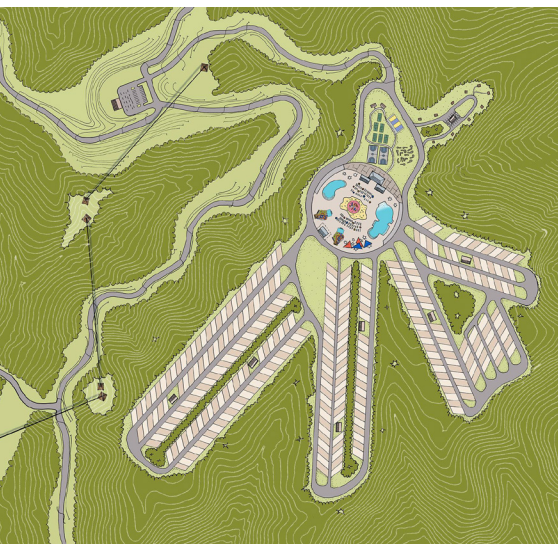
Located in the southernmost point of West Virginia, Bluefield was once the transportation and financial center of the coal mining industry but has since seen a prolonged economic and physical decline. In response to this decline, Bluefield has taken action to diversify its economy. The client needed a masterplan of a 60+ mile all-terrain vehicle (ATV) trail system that will link Bluefield to the 1,000+ mile Hatfield and McCoy ATV Trail System. The plan would also include other recreational tourism amenities to transform Bluefield and the surrounding region into a recreational destination with hiking, biking, boating and more.

CEC APPROACH

CEC began the project by analyzing existing conditions within the city through several site visits and meetings with the client, government entities, and stakeholders. Following this initial phase, our design team analyzed the information gathered, along with other publicly available Geographic Information System (GIS) data, to create an initial project concept. The CEC team then presented the initial concept to the client and finished designing the masterplan. Our final plan proposed the creation of 70+ miles of ATV trails, 800+ units of various lodging types, and a variety of outdoor amenities and attractions (including a gondola system, ziplining, a Snowflex tubing hill, kayaking, hiking and biking trails, etc.). The plan also provides opportunities for event venues and further development to revitalize downtown Bluefield. Bluefield is situated within the Appalachian Mountains, surrounded by steep terrain and high elevations. CEC viewed these challenges as an asset and utilized these natural resources in the proposed masterplan to create great outdoor adventures for visitors and residents.

All design proposals were assembled into a final book that has been used by the client and others to apply for grants and gain support from federal agencies. Various entities involved in the project are currently using the plan in their search for construction developers.

The project is working with private developers and federal agencies to begin Phase I of the Tracks Resort.



KANAWHA VALLEY RIVER TRAIL GATEWAY STUDY

OWNER/CLIENT

The Kanawha County Commission

LOCATION

Various Counties, West Virginia

CEC SERVICES

Public Engagement

Social Economics

Planning

Branding Study

Landscape Architecture

OWNER OBJECTIVE

"The Valley" is an inspired ecotourism destination surrounded by the natural beauty of the Kanawha Valley. The project location serves as a gateway, connecting Charleston, WV to the New River Gorge National Park and Preserve. Dramatic hillsides, tree canopies, and framed river views offer a natural playground for recreation, leisure, and discovery. An extensive network of river access, walkways and elevated trails weave through the Valley, tying together a hierarchy of outdoor spaces to the thirteen communities nestled within the Valley. The existing landscape lends itself to engaging outdoor amenities such as trailblazing, horseback riding, off-road jeep adventures, ATV networks and diverse lodging opportunities like glamping (glamor camping). Proposed ideas in the masterplan aim to address the tourism gap along the Upper Kanawha Valley River corridor, providing amenities currently unknown to the area.

The Kanawha County Commission was seeking to coordinate the planning of trail systems proposed by various organizations in the Upper Kanawha Valley (UKV), as well as address planning to develop Kanawha River access points at strategic locations that will attract not only trails but river related recreation to the towns.

CEC APPROACH

CEC performed an inventory and analysis of potential use and development of the site. Incorporating the public engagement process, the design team developed a comprehensive master plan for the region. The team's vision serves as a catalyst for tourism growth in the Upper Kanawha Valley for interventions along the Kanawha River as well as the surrounding valley landscape. The vision of starting and ending the adventures in the communities of the Valley will bring locals and visitors alike to a unique network of communities and outdoor recreation.



VIENNA PARKS AND RECREATION MASTER PLAN

OWNER/CLIENT

Vienna Parks & Recreation

LOCATION

Vienna, WV

CEC SERVICES

Existing Conditions Analysis

Community Engagement

Landscape Architecture/Land Planning

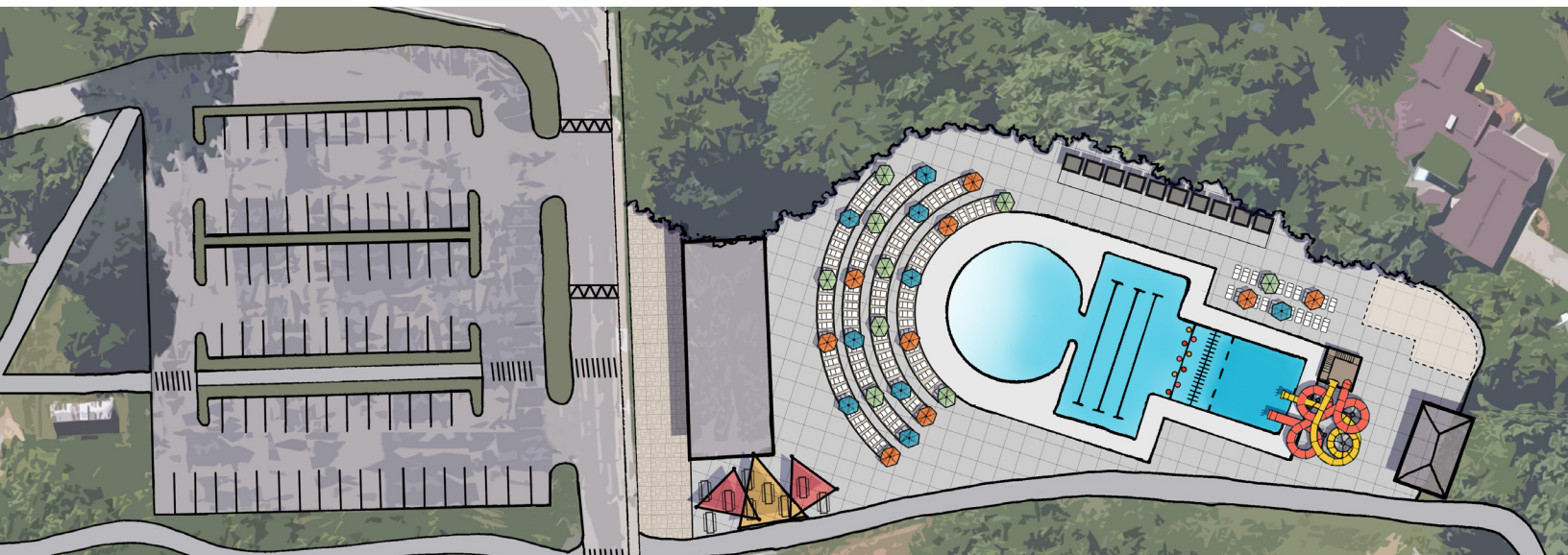
Master Plan

OWNER OBJECTIVE

The City of Vienna, WV offers many great parks and outdoor amenities to their community. Recently the city wished to make needed improvements to existing park facilities, but were not sure on the correct approach. With no existing Parks and Recreation masterplan, Vienna was lacking an overall guiding vision to direct the city in their decisions. They sought out the expertise of an outside design team to analyze the existing parks system and to propose new concepts and priorities to the city. This would assist in their decision making process.

CEC APPROACH

The CEC design team began the project by performing an existing conditions analysis. This included a site visit to all parks and an initial public meeting to meet community members and listen to what improvements they wanted in their parks system. To further support the community, an online input survey was created and shared with residents. The goal of this step was to hear opinions from a greater audience to further direct the design. After analyzing all information gathered, CEC began to create a series of recommendations to enhance the parks system. These proposed concepts addressed areas of concern voiced by the community, as well as areas of concern that were identified by the design team. The final product presented to city council was a masterplan book that documented the evolution of the design process, explained the proposed recommendations, and proposed priority projects for the city. This product can be used by the City of Vienna to direct Parks projects and funding in a way that improves the existing parks system to better serve the community.



6.0 References

Ms. Terrell Ellis

Owner
Terrell Ellis & Associates
1045 Bridge Street
Charleston, WV 25314
304-342-6972
tellis@te-associates.com

Mr. Jay Shott

COO
Diamondback Development
131 Plantation Ridge Drive
Mooresville, NC 28117
(704) 309-9880
jshott@diamondbackllc.com

Ms. Dee Dee Ritchie

Executive Director
Canal Place Preservation and Development Authority
13 Canal Street Suite 301
Cumberland, MD 21502
301-742-3655



April 20, 2022

[REDACTED]
[REDACTED]
[REDACTED]
[REDACTED]
[REDACTED]

Dear [REDACTED],

I am writing today to express my sincere support for and confidence in Nature Trails LLC, one of the contractors submitting an RFQ for the [REDACTED] Trail System project. Trails Utah has previously contracted with Nature Trails on two different trail construction projects in Salt Lake County in 2021, a portion of the Upper Pipeline Trail and the new Rattlesnake Trail, both in Millcreek Canyon. We will be contracting them again on the Grandeur Peak section of the Bonneville Shoreline Trail to be built this summer.

We have consistently found Matt Malone and his crew to be responsive, more than capable, and highly professional, allowing us to meet budgets, timelines, and reporting requirements. Nature Trails repeatedly demonstrated the ability to meet difficult terrain and trail building challenges and the quality of the work performed exceeded expectations. Trails Utah is thrilled to endorse Nature Trails and work with them to bring needed trail resources to Salt Lake County. Please give them every consideration in your quest to hire a trail builder and contractor who can tackle the many facets of the [REDACTED] Trail System project.

Sincerely,

A handwritten signature in blue ink, appearing to read "S. Bennett".

Sarah L. Bennett
Executive Director, Trails Utah



7.0 Additional Forms

DESIGNATED CONTACT: Vendor appoints the individual identified in this Section as the Contract Administrator and the initial point of contact for matters relating to this Contract.

(Printed Name and Title) Jim Christie, PLA - Principal

(Address) 120 Genesis Boulevard, Bridgeport, WV 26330

(Phone Number) / (Fax Number) 304-933-3119 / 904-933-3327

(email address) jchristie@cecinc.com

CERTIFICATION AND SIGNATURE: By signing below, or submitting documentation through wvOASIS, I certify that: I have reviewed this Solicitation/Contract in its entirety; that I understand the requirements, terms and conditions, and other information contained herein; that this bid, offer or proposal constitutes an offer to the State that cannot be unilaterally withdrawn; that the product or service proposed meets the mandatory requirements contained in the Solicitation/Contract for that product or service, unless otherwise stated herein; that the Vendor accepts the terms and conditions contained in the Solicitation, unless otherwise stated herein; that I am submitting this bid, offer or proposal for review and consideration; that this bid or offer was made without prior understanding, agreement, or connection with any entity submitting a bid or offer for the same material, supplies, equipment or services; that this bid or offer is in all respects fair and without collusion or fraud; that this Contract is accepted or entered into without any prior understanding, agreement, or connection to any other entity that could be considered a violation of law; that I am authorized by the Vendor to execute and submit this bid, offer, or proposal, or any documents related thereto on Vendor's behalf; that I am authorized to bind the vendor in a contractual relationship; and that to the best of my knowledge, the vendor has properly registered with any State agency that may require registration.

By signing below, I further certify that I understand this Contract is subject to the provisions of West Virginia Code § 5A-3-62, which automatically voids certain contract clauses that violate State law; and that pursuant to W. Va. Code 5A-3-63, the entity entering into this contract is prohibited from engaging in a boycott against Israel.

Civil & Environmental Consultants, Inc.

(Company)

(Signature of Authorized Representative)

Jim Christie, PLA - Principal (4/17/2024)

(Printed Name and Title of Authorized Representative) (Date)

304-933-3119 / 304-933-33-27

(Phone Number) (Fax Number)

jchristie@cecinc.com

(Email Address)

ADDENDUM ACKNOWLEDGEMENT FORM
SOLICITATION NO.: DNR240000007

Instructions: Please acknowledge receipt of all addenda issued with this solicitation by completing this addendum acknowledgment form. Check the box next to each addendum received and sign below. Failure to acknowledge addenda may result in bid disqualification.

Acknowledgment: I hereby acknowledge receipt of the following addenda and have made the necessary revisions to my proposal, plans and/or specification, etc.

Addendum Numbers Received:

(Check the box next to each addendum received)

- ☐ Addendum No. 1
- ☐ Addendum No. 2
- ☐ Addendum No. 3
- ☐ Addendum No. 4
- ☐ Addendum No. 5

- ☐ Addendum No. 6
- ☐ Addendum No. 7
- ☐ Addendum No. 8
- ☐ Addendum No. 9
- ☐ Addendum No. 10

I understand that failure to confirm the receipt of addenda may be cause for rejection of this bid. I further understand that any verbal representation made or assumed to be made during any oral discussion held between Vendor's representatives and any state personnel is not binding. Only the information issued in writing and added to the specifications by an official addendum is binding.

Civil & Environmental Consultants, Inc.

Company



Authorized Signature

April 17, 2024

Date

NOTE: This addendum acknowledgment should be submitted with the bid to expedite document processing.



CERTIFICATE OF LIABILITY INSURANCE

4/1/2025

DATE (MM/DD/YYYY)

3/29/2024

THIS CERTIFICATE IS ISSUED AS A MATTER OF INFORMATION ONLY AND CONFERS NO RIGHTS UPON THE CERTIFICATE HOLDER. THIS CERTIFICATE DOES NOT AFFIRMATIVELY OR NEGATIVELY AMEND, EXTEND OR ALTER THE COVERAGE AFFORDED BY THE POLICIES BELOW. THIS CERTIFICATE OF INSURANCE DOES NOT CONSTITUTE A CONTRACT BETWEEN THE ISSUING INSURER(S), AUTHORIZED REPRESENTATIVE OR PRODUCER, AND THE CERTIFICATE HOLDER.

IMPORTANT: If the certificate holder is an ADDITIONAL INSURED, the policy(ies) must have ADDITIONAL INSURED provisions or be endorsed. If SUBROGATION IS WAIVED, subject to the terms and conditions of the policy, certain policies may require an endorsement. A statement on this certificate does not confer rights to the certificate holder in lieu of such endorsement(s).

PRODUCER Lockton Companies 444 W. 47th Street, Suite 900 Kansas City MO 64112-1906 (816) 960-9000 kcasu@lockton.com	CONTACT NAME:	FAX (A/C, No):	
	PHONE (A/C, No, Ext):	E-MAIL ADDRESS:	
INSURED 1519239 CIVIL & ENVIRONMENTAL CONSULTANTS, INC. 700 CHERRINGTON PARKWAY MOON TOWNSHIP PA 15108	INSURER(S) AFFORDING COVERAGE		NAIC #
	INSURER A : National Union Fire Ins Co Pitts. PA		19445
	INSURER B : New Hampshire Insurance Company		23841
	INSURER C : Allied World Surplus Lines Insurance Company		24319
	INSURER D :		
INSURER E :			
INSURER F :			

COVERAGES**CERTIFICATE NUMBER:** 20103565**REVISION NUMBER:** XXXXXXXX

THIS IS TO CERTIFY THAT THE POLICIES OF INSURANCE LISTED BELOW HAVE BEEN ISSUED TO THE INSURED NAMED ABOVE FOR THE POLICY PERIOD INDICATED. NOTWITHSTANDING ANY REQUIREMENT, TERM OR CONDITION OF ANY CONTRACT OR OTHER DOCUMENT WITH RESPECT TO WHICH THIS CERTIFICATE MAY BE ISSUED OR MAY PERTAIN, THE INSURANCE AFFORDED BY THE POLICIES DESCRIBED HEREIN IS SUBJECT TO ALL THE TERMS, EXCLUSIONS AND CONDITIONS OF SUCH POLICIES. LIMITS SHOWN MAY HAVE BEEN REDUCED BY PAID CLAIMS.

INSR LTR	TYPE OF INSURANCE	ADDL INSD	SUBR WVD	POLICY NUMBER	POLICY EFF (MM/DD/YYYY)	POLICY EXP (MM/DD/YYYY)	LIMITS
A	<input checked="" type="checkbox"/> COMMERCIAL GENERAL LIABILITY <input type="checkbox"/> CLAIMS-MADE <input checked="" type="checkbox"/> OCCUR GEN'L AGGREGATE LIMIT APPLIES PER: <input type="checkbox"/> POLICY <input type="checkbox"/> PRO-JECT <input type="checkbox"/> LOC OTHER:	N	N	526-81-68	4/1/2024	4/1/2025	EACH OCCURRENCE \$ 1,000,000 DAMAGE TO RENTED PREMISES (Ea occurrence) \$ 500,000 MED EXP (Any one person) \$ 25,000 PERSONAL & ADV INJURY \$ 1,000,000 GENERAL AGGREGATE \$ 2,000,000 PRODUCTS - COMP/OP AGG \$ 2,000,000 \$
A	<input checked="" type="checkbox"/> AUTOMOBILE LIABILITY <input type="checkbox"/> ANY AUTO <input type="checkbox"/> OWNED AUTOS ONLY <input type="checkbox"/> SCHEDULED AUTOS <input type="checkbox"/> HIRED AUTOS ONLY <input type="checkbox"/> NON-OWNED AUTOS ONLY	N	N	448-96-61 (AOS) 448-96-62 (MA)	4/1/2024 4/1/2024	4/1/2025 4/1/2025	COMBINED SINGLE LIMIT (Ea accident) \$ 1,000,000 BODILY INJURY (Per person) \$ XXXXXXXX BODILY INJURY (Per accident) \$ XXXXXXXX PROPERTY DAMAGE (Per accident) \$ XXXXXXXX \$ XXXXXXXX
	<input type="checkbox"/> UMBRELLA LIAB <input type="checkbox"/> OCCUR <input type="checkbox"/> EXCESS LIAB <input type="checkbox"/> CLAIMS-MADE DED RETENTION \$			NOT APPLICABLE			EACH OCCURRENCE \$ XXXXXXXX AGGREGATE \$ XXXXXXXX \$ XXXXXXXX
B A	WORKERS COMPENSATION AND EMPLOYERS' LIABILITY ANY PROPRIETOR/PARTNER/EXECUTIVE OFFICER/MEMBER EXCLUDED? (Mandatory in NH) If yes, describe under DESCRIPTION OF OPERATIONS below	Y/N <input checked="" type="checkbox"/> N	N	WC 015-89-3683 (AOS) WC 015-89-3684 (CA)	4/1/2024 4/1/2024	4/1/2025 4/1/2025	<input checked="" type="checkbox"/> PER STATUTE <input type="checkbox"/> OTH-ER E.L. EACH ACCIDENT \$ 1,000,000 E.L. DISEASE - EA EMPLOYEE \$ 1,000,000 E.L. DISEASE - POLICY LIMIT \$ 1,000,000
C	PROFESSIONAL LIABILITY	N	N	0313-6673	4/1/2024	4/1/2025	\$1,000,000 EACH CLAIM; \$1,000,000 AGGREGATE

DESCRIPTION OF OPERATIONS / LOCATIONS / VEHICLES (ACORD 101, Additional Remarks Schedule, may be attached if more space is required)

CERTIFICATE HOLDER20103565
EVIDENCE OF COVERAGE**CANCELLATION**

SHOULD ANY OF THE ABOVE DESCRIBED POLICIES BE CANCELLED BEFORE THE EXPIRATION DATE THEREOF, NOTICE WILL BE DELIVERED IN ACCORDANCE WITH THE POLICY PROVISIONS.

AUTHORIZED REPRESENTATIVE



Civil & Environmental
Consultants, Inc.

3574 Teays Valley Road | Hurricane, WV 25526 | www.cecinc.com