

LETTER OF QUALIFICATION

West Virginia Division of Forestry

A/E Services Metal Building Construction



**Chapman
Technical
Group**

a division of
GRW

Chapman Technical Group | 200 Sixth Avenue St. Albans, WV 25177 | 304.727.5501



**Chapman
Technical
Group**
a division of
GRW

February 21, 2024

Department of Administration, Purchasing Division
2019 Washington Street East
Charleston, WV 25305-0130

**Re: A/E Services
Metal Building Construction**

Dear Selection Committee:

Chapman Technical Group is interested in providing architectural and engineering services for the Metal Building Construction Project. In recent years we have designed several similar buildings for the West Virginia Division of Natural Resources for their wildlife management areas. These buildings house vehicles and boats, and also have office space, bunk rooms, and a kitchen. We have also designed many other metal building projects, as you will see from the enclosed material. We are currently working on bathhouse renovation for WV DNR, including bathhouses at Coopers Rock.

Our project team includes architects, civil and structural engineers, and mechanical and electrical engineers, all in-house, ensuring seamless design of your project. Our workload is such that we could begin work on your project immediately.

We would appreciate the opportunity to present our project team and further discuss your project. Please feel free to contact me at (304) 727-5501 or by email at jbird@chaptech.com if you have any questions or need more information.

Sincerely,

CHAPMAN TECHNICAL GROUP

Joseph E. Bird, ASLA
Senior Vice President

200 Sixth Avenue
Saint Albans, WV 25177

304.727.5501

Buckhannon, WV
Lexington, KY

www.chaptech.com

RECEIVED
2024 FEB 16 AM 10:26
WV PURCHASING
DIVISION

TABLE OF CONTENTS



Section 1.0 - Company Overview & Awards

Section 2.0 - Project Experience

Section 3.0 - Resumes

Section 4.0 - References

Section 5.0 - Purchasing Documents

COMPANY OVERVIEW & AWARDS



Established in 1984, Chapman Technical Group has steadily grown into a diverse firm of professionals, many of whom were educated in West Virginia colleges and universities. We have achieved an outstanding reputation for developing high-quality projects, while meeting schedules and budgets.

In 2013, Chapman Technical Group was acquired by the Lexington, Kentucky based A/E firm of GRW, allowing us to provide a wider range of services while expanding our resources. Now, in addition to our offices in St. Albans, Buckhannon, and Martinsburg, West Virginia, as part of the GRW family, we also work in Kentucky, Ohio, Tennessee, and Indiana.

Our architectural group not only designs new buildings from the ground up, but also specializes in renovations and historic restoration projects. Our award-winning landscape architects provide master planning, as well as detailed site design for parks and public spaces projects.

In addition to our building studio, our engineering support staff gives us the ability to meet almost any challenge a project may present. All of our mechanical, electrical, plumbing engineering is provided in-house, and our civil engineers work with our landscape architects to provide site designs that are functional while achieving a high level of aesthetics.

Water and sewer system design is accomplished by our environmental engineers, and when on-site wastewater treatment is required, we can do it.

Working with our airport group, we can provide full airport design services, from runway and lighting design, to hangars and terminal buildings.

COMPANY OVERVIEW & AWARDS



SRC Building Renovation
WV AIA Merit Award, 2016
Historic Preservation



I-79 Rest Area
AIA Merit Award, 2010

COMPANY OVERVIEW & AWARDS



Upshur County Courthouse Renovations
WV AIA Honor Award, 2008
Historic Preservation



COMPANY OVERVIEW & AWARDS



Upper Big Branch Miners Memorial
WV ASLA Honor Award, 2012



Nuttallburg Historic Mining Complex
WV ASLA Merit Award, 2012



West Virginia Division of Natural Resources Elk River Wildlife Management Area Storage Building Flatwoods, West Virginia

The project included the design of a pre-engineered steel building to house equipment, including boats and trailers, that are used in the management of the Elk River Wildlife Management Area. The building also includes an office for DNR staff, a bunk room and kitchen, and an office and storage space for WVDNR Law Enforcement. The project included extensive sitework, including the construction of an access road.



Barbour County Economic Development Authority
Belington Multi-Tenant Business Incubator
Belington Industrial Park
Belington, West Virginia

Chapman Technical Group assisted the Barbour County Economic Development Authority by providing design services and construction administration for the Belington Multi-Tenant Building located in the Belington Industrial Park. The Multi-Tenant Building is a 25,100 s.f. metal building which consists of three 8,300 s.f. tenant spaces, each with their own office core and bay spaces.





Buckhannon-Upshur County Airport Snow Removal Equipment Building

38 West Main Street
Buckhannon, West Virginia

As part of the continuing expansion of the Upshur County Airport, Chapman Technical Group provided design and construction administration services for the three-bay Removal Equipment building. The building and the site were designed to easily accommodate future expansions. The 3,200 square-foot facility was completed in 2002 at an approximate cost of \$300,000.





Yeager Airport **Crash/Fire/Rescue Building** Charleston, West Virginia

Design and construction inspection services for a 6,440 square-foot facility to adjoin the architecturally compatible Maintenance and Storage Building that houses the large airfield fire protection equipment. Additionally, there are designated office, training, and kitchen areas, a 1,400 square-foot storage space provided by a second floor loft, and a 1,200 square-foot vehicle maintenance bay. Also included in this project was the design of a new maintenance vehicle fuel farm. The dilapidated Fire Garage and Maintenance Building was removed after the erection of this facility which completed the maintenance modernization at Yeager Airport.

ARCHITECTURE



Buckhannon Upshur Airport Authority
New Airport Hangars
40 West Main Street
Buckhannon, West Virginia 26201

The Buckhannon Upshur Airport Authority called upon Chapman Technical Group to design two 10,000 sq. ft. hangars - one with an 18-ft. door height for a growing local fixed based operator and one with a 28-ft. door height for an avionics and interior refurbishing business. A specially designed reinforced floor slab accommodates the various aircraft anticipated. Innovative construction details were developed to meet the specific fire safety and building codes and stay within budget.





City of Lewisburg Public Works Maintenance Building Lewisburg, West Virginia

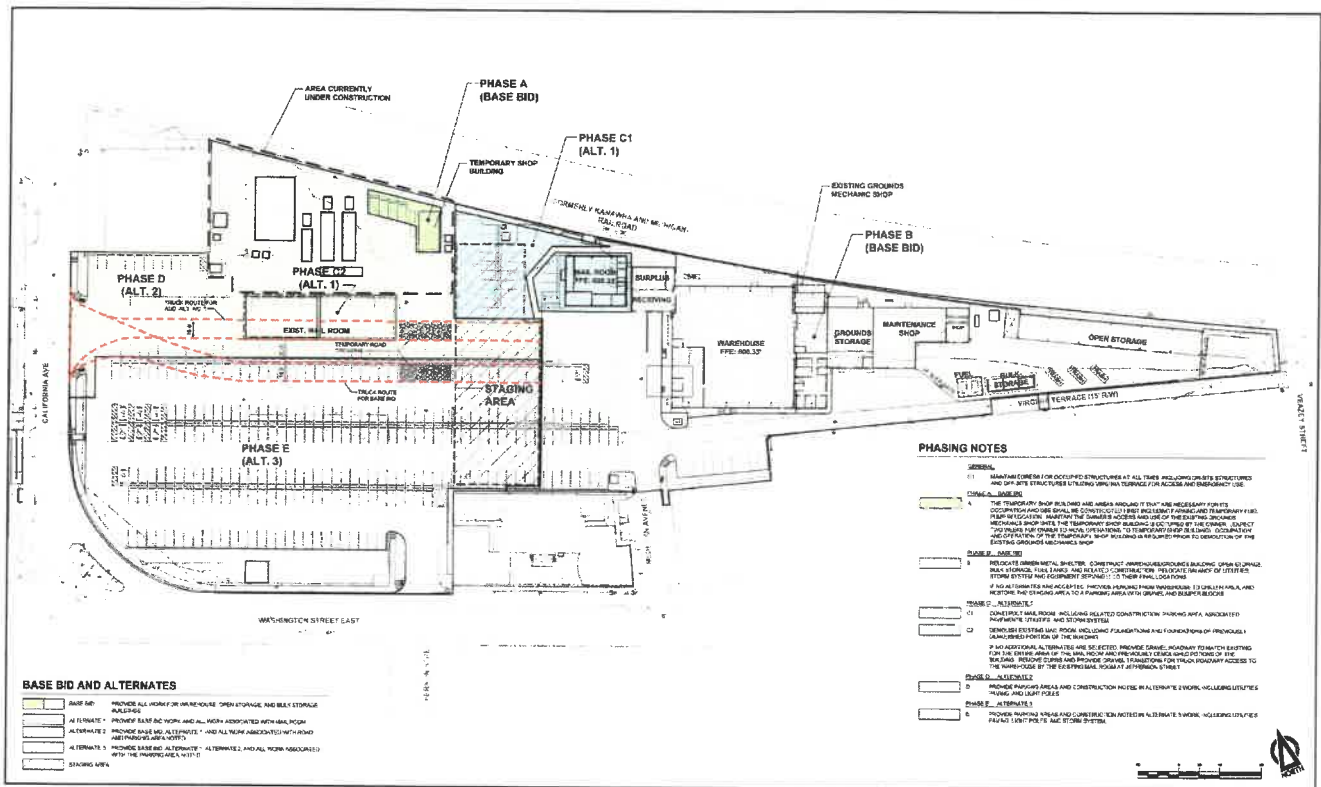
Currently under construction, this 12,000 square-foot pre-engineered metal building will house maintenance operations and administrative staff serving the City of Lewisburg. The building has four vehicle maintenance bays, three vehicle storage bays, a large covered open storage area, and an administrative suite with offices, a conference room, restrooms, and a kitchen area secured behind firewalls. Site development, including utility extensions, stormwater management, salt storage, and pavements, are integral to the facility.





Philippi Barbour Airport Multi-Tenant Building Philippi, West Virginia

This project involved the design of a 7,000 square-foot, one-story, multi-purpose/multi-tenant office and industrial facility. The building was designed as a small Aircraft Maintenance Facility and as such required a sprinkler system that included a 200,000 gallon water tank and a fire pump building. Also included was the development of a 2-acre site, 1.25 miles of DOH roads, parking areas, electrical and power requirements, and storm, sewer and water systems, as well as all landscaping.

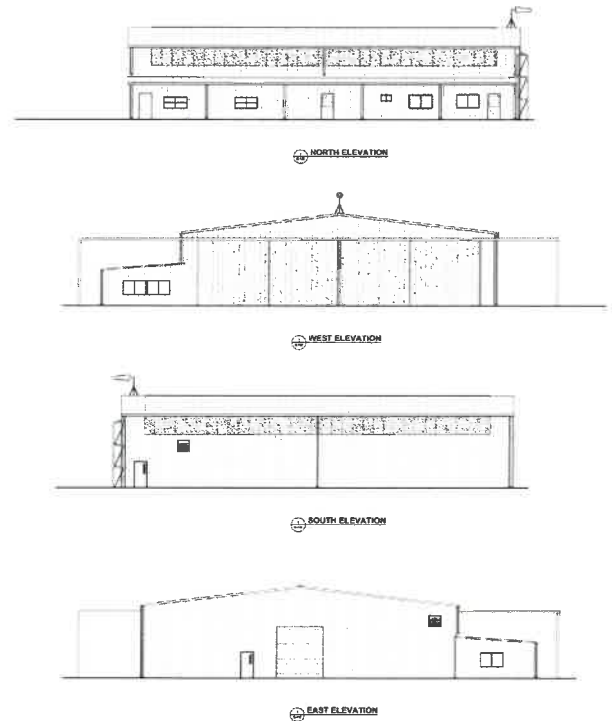
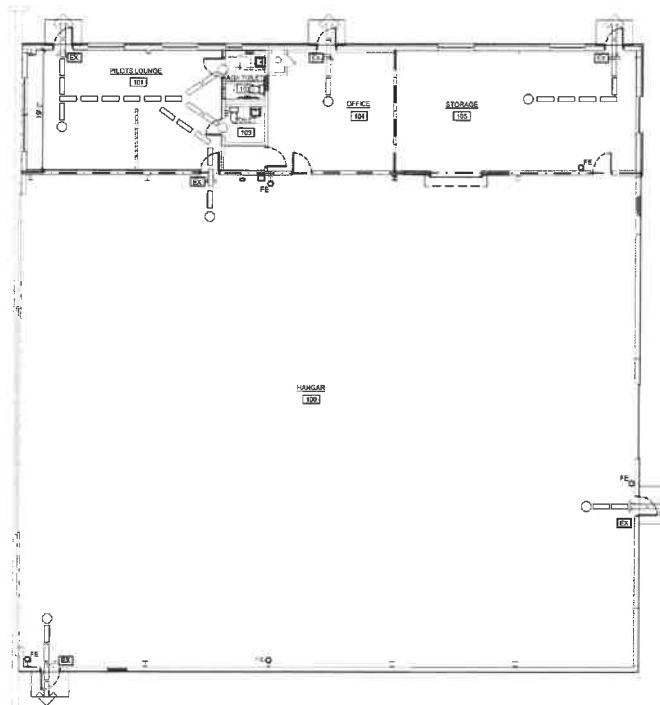


WV Department of Administration Warehouse and Grounds Buildings Charleston, WV

The State of West Virginia needed to upgrade and consolidate its warehouse facilities, as well as its building and grounds maintenance facilities. A new 28,000 square-foot warehouse building, a 5,000 square-foot buildings and grounds facility, and a 3,000 square-foot mail room building were included in the project. Parking and vehicle access were major components and low-impact stormwater facilities were designed to minimize impact on the City of Charleston's combined sewer system. Chapman Technical Group provided architectural design; civil and structural engineering; mechanical, electrical and plumbing engineering; and landscape architecture services. Project completion is scheduled for 2024.



ARCHITECTURE



Martin Campbell Field Terminal and Main Hangar Rehabilitation Copper Hill, TN

Chapman Technical Group is currently designing the rehabilitation and renovation of the terminal and hangar facilities at Martin Campbell Field which was originally built around 1965. The work includes removing and replacing the metal roof, exterior metal wall panels, and the metal building's structural system.

Installation of code-mandated fire walls, ADA access to the building, lighting, and HVAC improvements, and restroom renovations are included in the work.

Translucent wall panels will be provided in the hangar area to utilize daylighting and reduce energy consumption.

Additionally, water service improvements and finish upgrades are being considered as alternates to provide as much improvement as the budget will allow.



Existing Terminal/Hangar Building



Ohio Army National Guard Readiness Center and Maintenance Shops

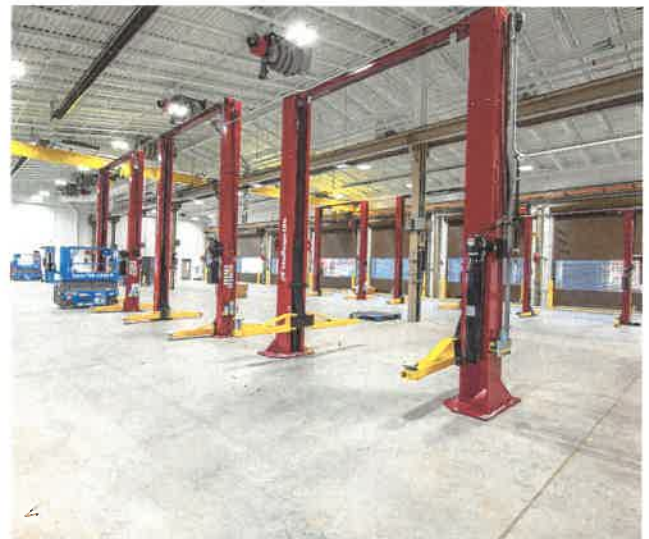
Springfield, Ohio

GRW provided planning, design and construction of a new 85,865 SF Joint Armed Forces Readiness Center (AFRC) and Field Maintenance Shop (FMS) for the Ohio Army National Guard (ARNG) and the US Army Reserves (USAR).

Additional site work involved parking, wash platform, loading dock, access roads, force protection measures, security lighting, utilities and landscaping.

The 24,963 SF Field Maintenance Shops included 10 drive-through bays; tools and parts storage; battery room; bulk POL storage and lubrication system storage; flammable material storage and controlled waste facilities; private shop offices; and classrooms and a library.

ARCHITECTURE



WV Division of Highways District One Shop Building Charleston, West Virginia

As part of the West Virginia Division of Highways District One Campus Renovation, a new vehicle maintenance building will be constructed. Seven drive-through bays will provide space for maintenance of large vehicles and trailers, and will be fully equipped with lifts and equipment. Separate bays will be provided for welding, vehicle washing, and parts washing.

Offices and training rooms, as well as parts and tire storage, will also be included in the facility. The building was designed to complement the architecture of the other buildings of the downtown campus.



Joseph E. Bird, ASLA

Senior Vice President Project Manager

Years of Experience: 44
Years with Chapman: 37

Education

B.S., Landscape
Architecture, 1978
West Virginia University

Registration

Architect: WV, KY, IN

Affiliations

Council
of Landscape
Architectural
Registration Boards

WV Chapter,
American Society of
Landscape Architects

Experience

Joe has been involved in a wide range of projects in his 40+ years of experience. In addition to his landscape architectural design experience, he has served as Project Manager for many major multi-discipline projects ranging from site development to major architectural projects. His experience includes coordinating the efforts of various local, state, and federal agencies.

Site Development

Site planning and project management for numerous projects throughout West Virginia ranging from small campus sites to large sites for commercial, government, industrial, and institutional development. Projects include military complexes, campuses, public housing developments and other public facilities.

Parks and Recreation

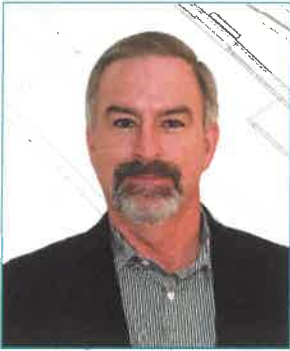
Projects include, master planning for municipal parks, swimming pools, bathhouses, cabins and support facilities for the West Virginia Division of Natural Resources and similar facilities for county and municipal park systems. Also involved in the design of facilities such as softball fields, fishing access facilities, recreation facilities for prisons, as well as passive recreation areas for public and private clients.

Miscellaneous

Other project experience includes the urban planning and development, streetscape design, roadway and storm drainage projects, as well as the project management of numerous major architectural projects throughout West Virginia.

Recent Relevant Experience

Old Central City Gazebo Space Redesign; Huntington, WV
Smith Street Streetscape; Charleston, WV
St. Albans C Street Plaza; St. Albans, WV
Scottsville Streetscape; Scottsville, KY
Meadow River Trail; Greenbrier County, WV
Clear Fork Trail; Raleigh County, WV



Robert G. Belcher, P.E.

Senior Vice President
Project Officer

Years of Experience: 39
Years with Chapman: 36

Education

B.S., Civil Engineering, 1983,
West Virginia Institute of
Technology

Registration

Civil Engineer: WV, OH, VA

Affiliations

WV Water Environment
Association

Contractor's Association of
WV

WV American Water Works
Association

WV Society of Professional
Engineers

WV American Council of
Engineering Companies

WVUIT Civil Engineering Ad-
visory Board

WV Qualifications Based
Selection Council

Awards

George Warren Fuller
Award, 2001

Experience

Water Systems

Design and project management for numerous water systems for both public and private water companies. Projects include new water treatment plants as large as 6.0 MGD, improvements to existing plants, water mains and distribution systems. Water storage projects include glass-lined steel tanks, welded high-strength steel tanks, elevated pedestal tanks, and pre-stressed concrete tanks.

Wastewater Systems

Design and project management for numerous wastewater systems throughout West Virginia. Projects include new, secondary and tertiary wastewater treatment plants as large as 4.5 MGD, improvements to existing plants, small-flow treatment plants, new and rehabilitation of wastewater collection systems, and facility plan updates.

Miscellaneous

Design and project management for large highway and bridge projects, airport improvements projects, large stormwater management projects including assistance with MS4 compliance, as well as potable water and wastewater system design for site development projects throughout West Virginia.



Phillip A. Warnock, NCARB, AIA Project Architect

Years of Experience: 31
Years with Chapman: 19

Education

B.S., Architecture, 1995
University of Tennessee

Registration

Architect: WV, KY, IN, TN

Affiliations

National Council
of Architectural
Registration Boards

WV Chapter,
American Institute
of Architects

Awards

Honor Award, WV AIA
Upshur County Courthouse

Merit Award, WV AIA
I-79 Burnsville Rest Area

Merit Award, WV AIA
State Road Commission
Building

Publications

Structure Magazine,
February 2010
"A Gem in the Mountains"
Upshur County Courthouse
Restoration

Experience

Phill is an award-winning architect with extensive experience, having worked with clients on programming / planning, budget analysis, design, construction documents, meeting coordination, bidding / negotiation services, construction phase services, and code compliance. He is especially skilled in renovation and historic restoration projects for government and municipal facilities.

WV Division of Natural Resources, Building 74 Renovation; Charleston, WV

Project Architect for evaluation and recommendations for possible improvements and upgrades to building systems in three-story, 37,000 SF, masonry-construction facility that houses approximately 100 employees. Among improvements selected for design are replacement of heating and cooling systems, windows, T5 lighting with LED fixtures, and replacement of ceilings and floor finishes, as well as new DDC controls throughout building.

WV DOT Rest Areas and Welcome Centers

Project Architect for the design and construction of the prototype rest areas and welcome centers for various locations throughout West Virginia.

State Road Commission Building; Charleston, WV

Project Architect for the renovation of the historic State Road Commission Building for the West Virginia Division of Highways. The 40,000 square-foot building houses offices and support facilities for the local highway district. In addition to a complete interior makeover that included a historic information center and radio studio, the building also received new exterior doors, windows, roofing and a new elevator. A skywalk connects the building to a new Headquarters Building that was constructed beside the State Road Commission.

District One Equipment Shop Building; Charleston, WV

Project Architect for the design of the new \$10 million vehicle equipment shop building for District One which includes multiple service bays, parts storage, welding shop, and offices.

Coal Heritage Discover Center; Mt. Hope, WV

Project Architect for the Coal Heritage Discovery Center, which is a rehabilitation of the historic Patterson Building in downtown Mt. Hope. The Coal Heritage Discovery Center is designed to house WVDNR WMA Storage Buildings offices, meeting rooms, an historic information center, a small theater space, a public lobby area, a gift shop, and a small café area. There will also be an outdoor patio which can be used as exterior cafe seating.



Sharon L. Chapman

Interior Design

Years of Experience: 25
Years with Chapman: 24

Education

B.A., Art and Interior Design, 1993
University of Charleston

Registration

Allied Member, American Society of Interior Designers

Affiliations

Allied Member, ASID

St. Albans Rotary

Thomas Memorial Hospital Foundation

Gabriel Project of WV

Experience

Sharon has extensive experience in space planning and interior design and has worked on a variety of projects ranging from industrial facilities to schools and high-end professional offices. She offers a unique perspective, understanding the need to provide durable, low maintenance finishes, while enhancing the basic architectural design with just the right aesthetic touch.

Jane Lew Elementary School Addition; Jane Lew, WV
Interior Designer for the addition and renovation project that included five new classrooms, and an updated office suite.

Smithville Elementary School Addition; Smithville, WV
Interior Designer for the addition and renovation of the Smithville Elementary School project which included the design of a new classroom wing and a new kitchen addition adjacent to the remaining buildings.

State Road Commission Building; Charleston, WV
Interior Designer for the renovation of the historic State Road Commission Building for the West Virginia Division of Highways. The 40,000 square-foot building houses offices and support facilities for the local highway district. In addition to a complete interior makeover that included a historic information center and radio studio, the building also received new exterior doors, windows, roofing and a new elevator. A skywalk connects the building to a new Headquarters Building that was constructed beside the State Road Commission.

WV Division of Natural Resources, Building 74 Renovation; Charleston, WV
Interior Designer for evaluation and recommendations for possible improvements and upgrades to building systems in three-story, 37,000 SF, masonry-construction facility that houses approximately 100 employees. Improvements included new ceilings, floor finishes, and wall finishes.

Various State Park Cabins

Interior Designer for three new 2,200 sf deluxe 4-bedroom cabins at Chief Logan State Park; thirteen new 1,500 sf modern 4-bedroom cabins at Blackwater Falls State Park; and the renovation of nine cabins at Watoga State Park.



W. Thomas Cloer, III

NCARB, AIA
Project Architect

Years of Experience: 20
Years with Chapman: 15

Education

B.S., Architecture, 2001
University of Tennessee

Registration

Architect: WV, VA, KY

Affiliations

National Council
of Architectural
Registration Boards

WV Chapter
American Institute
of Architects

Experience

Tommy has extensive architectural experience, having worked with clients on programming, planning, budget analysis, design, construction documents, bidding, construction phase services, and code compliance. He regularly provides leadership in architectural design and project management for new building design and renovation projects such as K-12, parks and recreation, and government and municipal facilities.

Comprehensive Educational Facilities Plan

Tommy has worked as part of a team to develop the 2020 Comprehensive Educational Facilities Plan (CEFP) for both Ritchie County Schools and Clay County Schools. Work on the CEFP's include facilities assessments and reports, participation in educational planning committee meetings, presenting findings to the county board of education and assisting the county in translating educational needs

Jane Lew Elementary School Addition; Jane Lew, WV
Project Architect for the design of an addition and renovation project that included five new classrooms, an updated office suite, and a new building entrance and bus loop. Toilet rooms were also renovated and new floor finishes were installed throughout the building. A new HVAC system serves the addition, and a new sprinkler system and fire alarm were installed for the entire school. New ceilings and lighting were also provided throughout.

Clay County High School Flood Repair; Clay, WV
Project Architect for FEMA-funded project to repair flooding damage including considerable damage to Clay County High School football and softball fields, restrooms and pressbox, lower level gymnasium locker room, gymnasium floor, and bus garage. Work included floodplain analysis of Elk River to evaluate impacts of proposed improvements to athletic fields.

WV Division of Natural Resources, Sled Run Building Renovations;

Thomas, WV
Project Architect for the renovation of the Sled Run ticket and concessions building. The project included an addition and reconfiguration of the existing space.



Monty Maynard, PE

LEED AP BD+C

Vice President

Years of Experience: 46
Years with GRW: 27

Education

B.S., Electrical Engineering,
1978,
University of Kentucky

Registration

Professional Engineer
(Electrical): KY, WV, IN, GA,
TN, TX, NV, NC, MS, MI, AL,
CA, DC, FL

NCEES Member allows
reciprocity with other
states

LEED Accredited
Professional, Building
Design + Construction

Affiliations

National Fire Protection
Association

International Society of
Automation

American Council of
Engineering Companies

National Council of
Examiners for Engineering
and Surveying

Experience

Monty's experience with electrical design, process instrumentation and control design, and project management is extensive. He has been involved with the design of building systems for more than 300 projects, ranging from water resources projects to the design-build of federal prisons with total construction values as high as \$984 million. His areas of technical expertise include electrical power distribution, substation design, alarm systems, communications, lighting, lightning protection, instrumentation/controls/telemetry, power quality, energy efficiency and code compliance.

Cumberland Valley Technical College Building One Renovation; Harlan, KY

Electrical Engineer. Renovation design for 31,000 SF building including updated exterior appearance, and modernized teaching spaces. Work included total replacement of building mechanical and electrical systems.

Fort Knox Macdonald Elementary School Renovation; Ft. Knox, KY

Principal-in-Charge. Renovation of a 63,000 SF Army school with year-round schedule. Involved a new standing seam roof installed over 48,000 SF to create an attic for 100% replacement of existing HVAC system equipment with geothermal-based heat pump system, new electrical service system, and fire alarm system upgrade.

Lexington Catholic High School Phase II Addition, Lexington, KY

Engineering Manager. 48,000 SF addition included 1800-seat two level gymnasium and running track, performing arts stage, art wing, and new administration area.

Marshall University Weisberg Family Engineering Laboratory, Huntington, WV

Electrical Engineer. New, 16,000 SF engineering laboratory building. Building security systems included access control and CCTV. HVAC systems feature rooftop VAV systems with variable electric reheat.



Cory Sharrard, PE

LEED AP

Mechanical Engineer

Years of Experience: 24
Years with GRW: 4

Education

B.S., Industrial Technology,
1996, Murray State University

B.S., Mechanical Engineering,
1998, University of Kentucky

Registration

Professional Engineer: KY, IN,
OH, WV, NY, FL, TN

NCEES Member allows
reciprocity with other states

LEED AP

Affiliations

American Society of Heating,
Refrigerating and Air-
Conditioning Engineers

Kentucky Society of
Professional Engineers

Kentucky Local Correctional
Facilities Construction
Authority Board

Society of American Military
Engineers

Society of Marketing
Professional Services (SMPS) -
Past President

Experience

Cory possesses more than 20 years' experience with mechanical engineering including design of traditional water source heat pump (WSHP), geothermal WSHP, hybrid geothermal WSHP, variable refrigerant flow (VRV), split system, rooftop units, unit ventilators, variable air volume (VAV), and ice storage systems. Her experience includes numerous K-12, higher education, vocation school, detention center, church, and library projects.

WV Division of Natural Resources Building 74 - South Charleston, WV
Mechanical Engineer for evaluation and recommendations for possible improvements and upgrades to building systems in three-story, 37,000 SF, masonry-construction facility that houses approximately 100 employees. Among improvements selected for design are replaced of heating and cooling systems, windows, TS fighting with LED lighting LED fixtures, and replacement of ceilings and floor finishes, as well as new DDC controls throughout building.

WV Capitol East Campus - Charleston, WV
Mechanical Engineer for planning, design, and bidding services for a 26,771 SF warehouse facility with surplus and receiving, a warehouse store, office area, maintenance shop with welding, grounds mechanic shop for vehicle maintenance, and equipment storage facility serving the General Services Division on the Capitol East Campus. Included are an open storage and bulk storage building, as well as a separate building for Capitol mail room.

Clay County Schools Bus Garage; Clay, WV
Mechanical Engineer; FEMA funded project for new bus garage constructed above 100 year flood elevation. Project included 5,000 SF masonry garage (constructed on deep foundations) with two service bays, wash bay, parts storage, and drivers lounge. Separate building houses spare tires.

Clay County High School Renovation and Addition; Clay, WV
Mechanical Engineer; Design and construction administration phase services for gymnasium and locker rooms, commons area, and HVAC system renovations; door/window replacement; and security/communications system improvements. Portion of construction will occur during summer months, but most was completed while school is occupied.

Buffalo Trace Distillery Design-Build Process Building at Wastewater Treatment Plant; Frankfort, KY
Architectural, mechanical, process, and structural design services for design-build of process building at Buffalo Trace Distillery's wastewater treatment plant in Frankfort, KY. Approximate 13,000 SF pre-engineered metal building, with height of up to 33 feet, houses equipment and processes for new wastewater treatment plant.



Jon Marcum, PE, SE

Structural Engineer

Years of Experience: 24
Years with GRW: 5

Education:

M.S., Civil Engineering, 1996,
University of Kentucky
B.S., Civil Engineering, 1995,
University of Kentucky

Registrations:

Professional Engineer/
Structural Engineer: KY
Professional Engineer: KY, WV,
IN, TN, GA, NY, NC, WA, OH,
AZ, TX, NM, KS

NCEES Member allows
reciprocity with other states

Experience

Jon has two decades of experience with all phases of structural consulting services including contracting, code searching, schematic design, design development, structural design, value engineering, structural evaluations, structural inspections, structural forensics, BIM/drafting production of contract documents, bid reviews, contract administration, as-built drawings, etc. He is experienced with a wide variety of structural design software, as well as drafting and BIM software, such as Autocad, Microstation, Draftsight, Sketchup 2016, Bentley Structural Modeler, Revit, and Tekla BIMsight.

Ashland Federal Correctional Institute Standby Power Improvements; Ashland, KY

Structural Engineer. Design-build of 750 kW standby power generator at minimum-security satellite camp and addition of four, paralleled 500 kW standby power generators at medium-security main campus.

Carter Caves State Resort Park Handrail and Bridge Improvements; Olive Hill, KY

Project Manager. Design for improvements to 1,426 feet of handrail located throughout cave system. Project included repair, replacement, and/or addition of guiderails/handrails in Cascade Cave and several others. Methodologies used not only are suited to environmental conditions of cave, but also prevent cross contamination of cave dwelling creatures and bat population. Repair of concrete bridge in Lake Room of Cascade Cave was also included.

Carter Caves State Resort Park Handrail and Bridge Improvements; Olive Hill, KY

Project Manager. Design for improvements to 1,426 feet of handrail located throughout cave system. Project included repair, replacement, and/or addition of guiderails/handrails in Cascade Cave and several others. Methodologies used not only are suited to environmental conditions of cave, but also prevent cross contamination of cave dwelling creatures and bat population. Repair of concrete bridge in Lake Room of Cascade Cave was also included.

Clermont County PUB Well Field Control Tower; Pierce Township, OH

Structural Engineer. Recondition/replacement of existing control tower for PUB water treatment plant wells 17-20. Work includes replacement of platform tower, control panels, electric wiring, handrail, and access ladder.

REFERENCES



1. Ms. Damita Johnson
City Manager
City of Oak Hill
100 Kelly Avenue
Oak Hill, WV 25901
(304) 469-9541
2. Honorable Scott James, Mayor
City of St. Albans
1488 MacCorkle Avenue
St. Albans, WV 25177
(304) 722-3391
3. Mr. Matt Yeager
Deputy Chief, Planning, Engineering, and Maintenance
West Virginia Division of Natural Resources
South Charleston, WV 25303
(304) 558-2764



Department of Administration
 Purchasing Division
 2019 Washington Street East
 Post Office Box 50130
 Charleston, WV 25305-0130

State of West Virginia
 Centralized Expression of Interest
 Architect/Engr

Proc Folder: 1359402 **Reason for Modification:**

Doc Description: WVDOP - A/E SERVICES METAL BUILDING CONSTRUCTION

Proc Type: Central Purchase Order

Date Issued	Solicitation Closes	Solicitation No	Version
2024-02-06	2024-02-21 13:30	CEOI 0305 FOR2400000001	1

BID RECEIVING LOCATION

BID CLERK
 DEPARTMENT OF ADMINISTRATION
 PURCHASING DIVISION
 2019 WASHINGTON ST E
 CHARLESTON WV 25305
 US

VENDOR

Vendor Customer Code: 000000207246

Vendor Name : Chapman Technical Group

Address : 200

Street : Sixth Avenue

City : Saint Albans

State : West Virginia

Country : USA

Zip : 25177

Principal Contact : Joseph Bird

Vendor Contact Phone: 304-727-5501

Extension: 3154

FOR INFORMATION CONTACT THE BUYER

Toby L Welch
 (304) 558-8802
 toby.l.welch@wv.gov

Vendor Signature X

FEIN# 550704766

DATE 2-15-24

All offers subject to all terms and conditions contained in this solicitation

DESIGNATED CONTACT: Vendor appoints the individual identified in this Section as the Contract Administrator and the initial point of contact for matters relating to this Contract.

(Printed Name and Title) Joseph E. Bird, Senior Vice President

(Address) 200 Sixth Avenue, Saint Albans, WV 25177

(Phone Number) / (Fax Number) 304-727-5501/NA

(email address) jbird@chaptech.com

CERTIFICATION AND SIGNATURE: By signing below, or submitting documentation through wvOASIS, I certify that: I have reviewed this Solicitation/Contract in its entirety; that I understand the requirements, terms and conditions, and other information contained herein; that this bid, offer or proposal constitutes an offer to the State that cannot be unilaterally withdrawn; that the product or service proposed meets the mandatory requirements contained in the Solicitation/Contract for that product or service, unless otherwise stated herein; that the Vendor accepts the terms and conditions contained in the Solicitation, unless otherwise stated herein; that I am submitting this bid, offer or proposal for review and consideration; that this bid or offer was made without prior understanding, agreement, or connection with any entity submitting a bid or offer for the same material, supplies, equipment or services; that this bid or offer is in all respects fair and without collusion or fraud; that this Contract is accepted or entered into without any prior understanding, agreement, or connection to any other entity that could be considered a violation of law; that I am authorized by the Vendor to execute and submit this bid, offer, or proposal, or any documents related thereto on Vendor's behalf; that I am authorized to bind the vendor in a contractual relationship; and that to the best of my knowledge, the vendor has properly registered with any State agency that may require registration.

By signing below, I further certify that I understand this Contract is subject to the provisions of West Virginia Code § 5A-3-62, which automatically voids certain contract clauses that violate State law; and that pursuant to W. Va. Code 5A-3-63, the entity entering into this contract is prohibited from engaging in a boycott against Israel.

Chapman Technical Group

(Company)

(Signature of Authorized Representative)

Joseph E. Bird, Senior Vice President

(Printed Name and Title of Authorized Representative) (Date)

304-727-5501/NA

(Phone Number) (Fax Number)

jbird@chaptech.com

(Email Address)

ADDENDUM ACKNOWLEDGEMENT FORM
SOLICITATION NO.: CEOI FOR24-001

Instructions: Please acknowledge receipt of all addenda issued with this solicitation by completing this addendum acknowledgment form. Check the box next to each addendum received and sign below. Failure to acknowledge addenda may result in bid disqualification.

Acknowledgment: I hereby acknowledge receipt of the following addenda and have made the necessary revisions to my proposal, plans and/or specification, etc.

Addendum Numbers Received:

(Check the box next to each addendum received)

- | | |
|---|--|
| <input type="checkbox"/> Addendum No. 1 | <input type="checkbox"/> Addendum No. 6 |
| <input type="checkbox"/> Addendum No. 2 | <input type="checkbox"/> Addendum No. 7 |
| <input type="checkbox"/> Addendum No. 3 | <input type="checkbox"/> Addendum No. 8 |
| <input type="checkbox"/> Addendum No. 4 | <input type="checkbox"/> Addendum No. 9 |
| <input type="checkbox"/> Addendum No. 5 | <input type="checkbox"/> Addendum No. 10 |

I understand that failure to confirm the receipt of addenda may be cause for rejection of this bid. I further understand that any verbal representation made or assumed to be made during any oral discussion held between Vendor's representatives and any state personnel is not binding. Only the information issued in writing and added to the specifications by an official addendum is binding.

Chapman Technical Group

Company

Authorized Signature

Date

NOTE: This addendum acknowledgment should be submitted with the bid to expedite document processing.