



The following documentation is an electronically-submitted vendor response to an advertised solicitation from the *West Virginia Purchasing Bulletin* within the Vendor Self-Service portal at *wvOASIS.gov*. As part of the State of West Virginia's procurement process, and to maintain the transparency of the bid-opening process, this documentation submitted online is publicly posted by the West Virginia Purchasing Division at *WVPurchasing.gov* with any other vendor responses to this solicitation submitted to the Purchasing Division in hard copy format.

Header @ 14

List View

General Information | Contact | Default Values | Discount | Document Information | Clarification Request

Procurement Folder: 1233121

Procurement Type: Central Master Agreement

Vendor ID: 000000127325

Legal Name: AUS ATLANTIC GROUP LOCKBOX

Alias/DBA:

Total Bid: \$0.00

Response Date: 06/15/2023

Response Time: 9:21

Responded By User ID: wright-james3

First Name: James

Last Name: Wright

Email: wright-james3@aramark.com

Phone: (864) 616-5469

SO Doc Code: CRFQ

SO Dept: 0803

SO Doc ID: DOT2300000143

Published Date: 6/8/23

Close Date: 6/15/23

Close Time: 13:30

Status: Closed

Solicitation Description: ADDENDUM NO_1 Uniform Rental Services

Total of Header Attachments: 14

Total of All Attachments: 14



Department of Administration
 Purchasing Division
 2019 Washington Street East
 Post Office Box 50130
 Charleston, WV 25305-0130

**State of West Virginia
 Solicitation Response**

Proc Folder: 1233121
Solicitation Description: ADDENDUM NO_1 Uniform Rental Services
Proc Type: Central Master Agreement

Solicitation Closes	Solicitation Response	Version
2023-06-15 13:30	SR 0803 ESR06142300000006331	1

VENDOR
 000000127325
 AUS ATLANTIC GROUP LOCKBOX

Solicitation Number: CRFQ 0803 DOT2300000143
Total Bid: 0
Response Date: 2023-06-15
Response Time: 09:21:33
Comments:

FOR INFORMATION CONTACT THE BUYER
 John W Estep
 304-558-2566
 john.w.estep@wv.gov

Vendor Signature X **FEIN#** **DATE**

All offers subject to all terms and conditions contained in this solicitation

Line	Comm Ln Desc	Qty	Unit Issue	Unit Price	Ln Total Or Contract Amount
1	ANSI Class 2 High Vis Short Sleeve T-Shirt	0.00000	EA	2.530000	0.00

Comm Code	Manufacturer	Specification	Model #
91111501			

Commodity Line Comments: GS1204YELO
 Lime Yellow, 100% Polyester, Left Chest Pocket
 \$5.00 Replacement
 11 in inventory per wearer @ \$0.23

Extended Description:
 SEE ATTACHED PRICING PAGE - ATTACHMENT A, FOR ACTUAL COST

Line	Comm Ln Desc	Qty	Unit Issue	Unit Price	Ln Total Or Contract Amount
2	ANSI Class 2 High Vis Short Sleeve Button Down Work Shirt	0.00000	EA	2.530000	0.00

Comm Code	Manufacturer	Specification	Model #
91111501			

Commodity Line Comments: GS2672YELO
 Lime Yellow, blended Material 65% Polyester and 35% Cotton, Left and Right Chest Pocket
 \$5.00 Replacement
 11 in inventory per wearer @ \$0.23

Extended Description:
 SEE ATTACHED PRICING PAGE ATTACHMENT A, FOR ACTUAL COST

Line	Comm Ln Desc	Qty	Unit Issue	Unit Price	Ln Total Or Contract Amount
3	ANSI Class 2 High Vis Long Sleeve Button Down Work Shirt	0.00000	EA	2.530000	0.00

Comm Code	Manufacturer	Specification	Model #
91111501			

Commodity Line Comments: GS2673YELO
 Lime Yellow, blended Material 65% Polyester and 35% Cotton, Left and Right Chest Pocket
 \$5.00 Replacement
 11 in inventory per wearer @ \$0.23

Extended Description:
 SEE ATTACHED PRICING PAGE ATTACHMENT A, FOR ACTUAL COST

Line	Comm Ln Desc	Qty	Unit Issue	Unit Price	Ln Total Or Contract Amount
4	Enhanced Vis Work Pant - Men's Cut	0.00000	EA	2.530000	0.00

Comm Code	Manufacturer	Specification	Model #
91111501			

Commodity Line Comments: GP0294BDYT - Men's
 Dark Blue Denim/Jean material
 \$7.00 Replacement
 11 in inventory per wearer @ \$0.23

Extended Description:
 SEE ATTACHED PRICING PAGE ATTACHMENT A, FOR ACTUAL COST

Line	Comm Ln Desc	Qty	Unit Issue	Unit Price	Ln Total Or Contract Amount
5	Enhanced Vis Work Pant - Women's Cut	0.00000	EA	2.530000	0.00

Comm Code	Manufacturer	Specification	Model #
91111501			

Commodity Line Comments: GP0294BDYT - Women's
 Dark Blue Denim/Jean material
 \$7.00 Replacement
 11 in inventory per wearer @ \$0.23

Extended Description:
 SEE ATTACHED PRICING PAGE ATTACHMENT A, FOR ACTUAL COST

Line	Comm Ln Desc	Qty	Unit Issue	Unit Price	Ln Total Or Contract Amount
6	Enhanced Vis Unlined Flame-Resistant Coveralls	0.00000	EA	1.000000	0.00

Comm Code	Manufacturer	Specification	Model #
91111501			

Commodity Line Comments: GO1083NVYT
 Navy Blue, 100% Cotton
 2-way Zipper, Left and Right Chest Pocket
 \$27.44 Replacement
 2 in inventory per wearer @ \$.050

Extended Description:
 SEE ATTACHED PRICING PAGE ATTACHMENT A, FOR ACTUAL COST

Line	Comm Ln Desc	Qty	Unit Issue	Unit Price	Ln Total Or Contract Amount
7	ANSI Class 2 High Vis 3-Season Hip Jacket	0.00000	EA	0.880000	0.00

Comm Code	Manufacturer	Specification	Model #
91111501			

Commodity Line Comments: GO2600NVYT
 Lime Yellow, 100% Polyester
 \$47.00 Replacement
 2 in inventory per wearer @ \$0.44

Extended Description:
 SEE ATTACHED PRICING PAGE ATTACHMENT A, FOR ACTUAL COST

Line	Comm Ln Desc	Qty	Unit Issue	Unit Price	Ln Total Or Contract Amount
8	Enhanced Vis Unlined Bib-Overalls	0.00000	EA	2.750000	0.00

Comm Code	Manufacturer	Specification	Model #
91111501			

Commodity Line Comments: GO0809INYT
 Dark Blue Denim/Jean Material
 Adjustable buckled suspenders, Left and/or Right Chest Pocket
 \$14.60 Replacement
 11 in inventory per wearer @ \$0.25

Extended Description:
 SEE ATTACHED PRICING PAGE ATTACHMENT A, FOR ACTUAL COST

Line	Comm Ln Desc	Qty	Unit Issue	Unit Price	Ln Total Or Contract Amount
9	Enhanced Vis Short Sleeve Button Down Work Shirt	0.00000	EA	3.575000	0.00

Comm Code	Manufacturer	Specification	Model #
91111501			

Commodity Line Comments: GS0449NVYT
 Navy Blue, 100% Cotton, Left and Right Chest Pocket
 \$5.00 Replacement
 11 in inventory per wearer @ \$0.325

Extended Description:
 SEE ATTACHED PRICING PAGE ATTACHMENT A, FOR ACTUAL COST

Line	Comm Ln Desc	Qty	Unit Issue	Unit Price	Ln Total Or Contract Amount
10	Enhanced Vis Long Sleeve Button Down Work Shirt	0.00000	EA	3.080000	0.00

Comm Code	Manufacturer	Specification	Model #
91111501			

Commodity Line Comments: GS0448NVYT
 Navy Blue, 100% Cotton, Left and Right Chest Pocket
 \$5.00 Replacement
 11 in inventory per wearer @ \$0.28

Extended Description:
 SEE ATTACHED PRICING PAGE ATTACHMENT A, FOR ACTUAL COST

Line	Comm Ln Desc	Qty	Unit Issue	Unit Price	Ln Total Or Contract Amount
11	Enhanced Vis Work Pant - Men's Cut	0.00000	EA	2.640000	0.00

Comm Code	Manufacturer	Specification	Model #
91111501			

Commodity Line Comments: GP0171NVYT - Men's
 Navy Blue, 100% Cotton
 \$7.00 Replacement
 11 in inventory per wearer @ \$0.24

Extended Description:
 SEE ATTACHED PRICING PAGE ATTACHMENT A, FOR ACTUAL COST

Line	Comm Ln Desc	Qty	Unit Issue	Unit Price	Ln Total Or Contract Amount
12	Enhanced Vis Work Pant - Women's Cut	0.00000	EA	2.640000	0.00

Comm Code	Manufacturer	Specification	Model #
91111501			

Commodity Line Comments: GP0171NVYT - Women's
 Navy Blue, 100% Cotton
 \$7.00 Replacement
 11 in inventory per wearer @ \$0.24

Extended Description:
 SEE ATTACHED PRICING PAGE ATTACHMENT A, FOR ACTUAL COST

Line	Comm Ln Desc	Qty	Unit Issue	Unit Price	Ln Total Or Contract Amount
13	Enhanced Vis Cargo Pant - Men's Cut	0.00000	EA	2.530000	0.00

Comm Code	Manufacturer	Specification	Model #
91111501			

Commodity Line Comments: GP1253NVYT - Men's
 Navy Blue, blended Material 65% Polyester and 35% Cotton
 \$7.00 Replacement
 11 in inventory per wearer @ \$0.23

Extended Description:
 SEE ATTACHED PRICING PAGE ATTACHMENT A, FOR ACTUAL COST

Line	Comm Ln Desc	Qty	Unit Issue	Unit Price	Ln Total Or Contract Amount
14	Enhanced Vis Cargo Pant - Women's Cut	0.00000	EA	2.530000	0.00

Comm Code	Manufacturer	Specification	Model #
91111501			

Commodity Line Comments: GP1037NVYT - Women's
 Navy Blue, blended Material 65% Polyester and 35% Cotton
 \$7.00 Replacement
 11 in inventory per wearer @ \$0.23

Extended Description:
 SEE ATTACHED PRICING PAGE ATTACHMENT A, FOR ACTUAL COST

Line	Comm Ln Desc	Qty	Unit Issue	Unit Price	Ln Total Or Contract Amount
15	WVDOH Logo Patch	0.00000	EA	0.000000	0.00

Comm Code	Manufacturer	Specification	Model #
11162135			

Commodity Line Comments: WVDOH Logo Patch (2.5" x 4.5") shall be placed above the left pocket on all shirts, coveralls, bib-overalls and jackets

Extended Description:
 SEE ATTACHED PRICING PAGE ATTACHMENT A, FOR ACTUAL COST

Line	Comm Ln Desc	Qty	Unit Issue	Unit Price	Ln Total Or Contract Amount
16	Replacement: ANSI Class 2 High Vis Short Sleeve T-Shirt	0.00000	EA	2.530000	0.00

Comm Code	Manufacturer	Specification	Model #
53102700			

Commodity Line Comments: GS1204YELO
 Lime Yellow, 100% Polyester, Left Chest Pocket
 \$5.00 Replacement
 11 in inventory per wearer @ \$0.23

Extended Description:
 SEE ATTACHED PRICING PAGE ATTACHMENT A, FOR ACTUAL COST

Line	Comm Ln Desc	Qty	Unit Issue	Unit Price	Ln Total Or Contract Amount
17	Replacement: ANSI Class 2 High Vis Short Sleeve wk shirt	0.00000	EA	2.530000	0.00

Comm Code	Manufacturer	Specification	Model #
53102700			

Commodity Line Comments: GS2383YELO
 Lime Yellow, blended Material 65% Polyester and 35% Cotton, Left and Right Chest Pocket
 \$5.00 Replacement
 11 in inventory per wearer @ \$0.23

Extended Description:
 SEE ATTACHED PRICING PAGE ATTACHMENT A, FOR ACTUAL COST

Line	Comm Ln Desc	Qty	Unit Issue	Unit Price	Ln Total Or Contract Amount
18	Replacement:ANSI Class 2 High Vis Long Sleeve Wk Shirt	0.00000	EA	2.530000	0.00

Comm Code	Manufacturer	Specification	Model #
53102700			

Commodity Line Comments: GS2382YELO
 Lime Yellow, blended Material 65% Polyester and 35% Cotton, Left and Right Chest Pocket
 \$5.00 Replacement
 11 in inventory per wearer @ \$0.23

Extended Description:
 SEE ATTACHED PRICING PAGE ATTACHMENT A, FOR ACTUAL COST

Line	Comm Ln Desc	Qty	Unit Issue	Unit Price	Ln Total Or Contract Amount
19	Replacement: Enhanced Vis Work Pant - Men's Cut	0.00000	EA	2.530000	0.00

Comm Code	Manufacturer	Specification	Model #
53102700			

Commodity Line Comments: GP0294BDOT - Men's
 Dark Blue Denim/Jean material
 \$7.00 Replacement
 11 in inventory per wearer @ \$0.23

Extended Description:
 SEE ATTACHED PRICING PAGE ATTACHMENT A, FOR ACTUAL COST

Line	Comm Ln Desc	Qty	Unit Issue	Unit Price	Ln Total Or Contract Amount
20	Replacement: Enhanced Vis Work Pant - Women's Cut	0.00000	EA	2.530000	0.00

Comm Code	Manufacturer	Specification	Model #
53102700			

Commodity Line Comments: GP0294BDOT - Women's
 Dark Blue Denim/Jean material
 \$7.00 Replacement
 11 in inventory per wearer @ \$0.23

Extended Description:
 SEE ATTACHED PRICING PAGE ATTACHMENT A, FOR ACTUAL COST

Line	Comm Ln Desc	Qty	Unit Issue	Unit Price	Ln Total Or Contract Amount
21	Replacement:Enhanced Vis Unlined Flame-Resistant Coveralls	0.00000	EA	1.000000	0.00

Comm Code	Manufacturer	Specification	Model #
53102700			

Commodity Line Comments: GO1083NVOT
 Navy Blue, 100% Cotton
 2-way Zipper, Left and Right Chest Pocket
 \$7.00 Replacement
 2 in inventory per wearer @ \$0.50

Extended Description:
 SEE ATTACHED PRICING PAGE ATTACHMENT A, FOR ACTUAL COST

Line	Comm Ln Desc	Qty	Unit Issue	Unit Price	Ln Total Or Contract Amount
22	Replacement:ANSI Class 2 High Vis 3-Season Hip Jacket	0.00000	EA	0.880000	0.00

Comm Code	Manufacturer	Specification	Model #
53102700			

Commodity Line Comments: GO2600NVOT
 Lime Yellow, 100% Polyester
 \$7.00 Replacement
 2 in inventory per wearer @ \$0.44

Extended Description:
 SEE ATTACHED PRICING PAGE ATTACHMENT A, FOR ACTUAL COST

Line	Comm Ln Desc	Qty	Unit Issue	Unit Price	Ln Total Or Contract Amount
23	Replacement: Enhanced Vis Unlined Bib-Overalls	0.00000	EA	2.750000	0.00

Comm Code	Manufacturer	Specification	Model #
53102700			

Commodity Line Comments: GO0809INOT
 Dark Blue Denim/Jean Material
 Adjustable buckled suspenders, Left and/or Right Chest Pocket
 \$7.00 Replacement
 11 in inventory per wearer @ \$0.25

Extended Description:
 SEE ATTACHED PRICING PAGE ATTACHMENT A, FOR ACTUAL COST

Line	Comm Ln Desc	Qty	Unit Issue	Unit Price	Ln Total Or Contract Amount
24	Replacement:Enhanced Vis Short Sleeve wk shirt	0.00000	EA	3.580000	0.00

Comm Code	Manufacturer	Specification	Model #
53102700			

Commodity Line Comments: GS0449NVOT
 Navy Blue, 100% Cotton, Left and Right Chest Pocket
 \$5.00 Replacement
 11 in inventory per wearer @ \$0.325

Extended Description:
 SEE ATTACHED PRICING PAGE ATTACHMENT A, FOR ACTUAL COST

Line	Comm Ln Desc	Qty	Unit Issue	Unit Price	Ln Total Or Contract Amount
25	Replacement: Enhanced Vis Long Sleeve wk shirt	0.00000	EA	3.080000	0.00

Comm Code	Manufacturer	Specification	Model #
53102700			

Commodity Line Comments: GS0448NVYT
 Navy Blue, 100% Cotton, Left and Right Chest Pocket
 \$5.00 Replacement
 11 in inventory per wearer @ \$0.28

Extended Description:
 SEE ATTACHED PRICING PAGE ATTACHMENT A, FOR ACTUAL COST

Line	Comm Ln Desc	Qty	Unit Issue	Unit Price	Ln Total Or Contract Amount
26	Replacement: Enhanced Vis Work Pant - Men's Cut	0.00000	EA	2.640000	0.00

Comm Code	Manufacturer	Specification	Model #
53102700			

Commodity Line Comments: GP0171NVYT - Men's
 Navy Blue, 100% Cotton
 \$7.00 Replacement
 11 in inventory per wearer @ \$0.24

Extended Description:
 SEE ATTACHED PRICING PAGE ATTACHMENT A, FOR ACTUAL COST

Line	Comm Ln Desc	Qty	Unit Issue	Unit Price	Ln Total Or Contract Amount
27	Replacement: Enhanced Vis Work Pant - Women's Cut	0.00000	EA	2.640000	0.00

Comm Code	Manufacturer	Specification	Model #
53102700			

Commodity Line Comments: GP0171NVYT - Women's
 Navy Blue, 100% Cotton
 \$7.00 Replacement
 11 in inventory per wearer @ \$0.24

Extended Description:
 SEE ATTACHED PRICING PAGE ATTACHMENT A, FOR ACTUAL COST

Line	Comm Ln Desc	Qty	Unit Issue	Unit Price	Ln Total Or Contract Amount
28	Replacement: Enhanced Vis Cargo Pant - Men's Cut	0.00000	EA	2.530000	0.00

Comm Code	Manufacturer	Specification	Model #
53102700			

Commodity Line Comments: GP1253NVYT - Men's
 Navy Blue, blended Material 65% Polyester and 35% Cotton
 \$7.00 Replacement
 11 in inventory per wearer @ \$0.23

Extended Description:
 SEE ATTACHED PRICING PAGE ATTACHMENT A, FOR ACTUAL COST

Line	Comm Ln Desc	Qty	Unit Issue	Unit Price	Ln Total Or Contract Amount
29	Replacement:Enhanced Vis Cargo Pant - Women's Cut	0.00000	EA	2.530000	0.00

Comm Code	Manufacturer	Specification	Model #
53102700			

Commodity Line Comments: GP1037NVYT - Women's
Navy Blue, blended Material 65% Polyester and 35% Cotton
\$7.00 Replacement
11 in inventory per wearer @ \$0.23

Extended Description:
SEE ATTACHED PRICING PAGE ATTACHMENT A, FOR ACTUAL COST

**WVDOH Uniform Rental Service Contract 6623C044
Pricing Page, Attachment A (ATT A)**

Part I. Weekly Rental Cost Instructions: Vendor shall provide One Weekly Unit Rate for each Contract Item listed below. Failure to provide a bid price for every Contract Item below will result in the Vendor's bid being disqualified.

NOTE: Please refer to Section 5.2.1 of the Contract Specifications for description of a "Unit".

Contract Item #	Estimated ** Weekly Unit Quantity	Item Description	One Weekly Unit Rate	Extended Weekly Cost
Standard	1	ANSI Class 2 High Visibility Short Sleeve T-Shirt (Section 3.3.1.1) Lime Yellow, 100% Polyester, Left Chest Pocket	\$2.53	\$809.60
	2	ANSI Class 2 High Visibility Short Sleeve Button Down Work Shirt (Section 3.3.1.1) Lime Yellow, blended Material 65% Polyester and 35% Cotton, Left and Right Chest Pocket	\$2.53	\$5,060.00
	3	ANSI Class 2 High Visibility Long Sleeve Button Down Work Shirt (Section 3.3.1.1) Lime Yellow, blended Material 65% Polyester and 35% Cotton, Left and Right Chest Pocket	\$2.53	\$1,012.00
	4	Enhanced Visibility Work Pants - Men's Cut (Section 3.3.1.2) Dark Blue Denim/Jean material	\$2.53	\$6,072.00
	5	Enhanced Visibility Work Pants - Women's Cut (Section 3.3.1.2) Dark Blue Denim/Jean material	\$2.53	\$885.50
	6	Enhanced Visibility Unlined Flame-Resistant Coveralls (Section 3.3.1.3) Navy Blue, 2-way Zipper, Left and Right Chest Pocket	\$1.00	\$1,000.00
	7	ANSI Class 2 High Visibility 3-Season Hip Jacket (Section 3.3.1.4) Lime Yellow, 100% Polyester	\$0.88	\$2,464.00
Alternate	8	Enhanced Visibility Unlined Bib-Overalls (Section 3.3.1.5) Dark Blue Denim/Jean Material, Adjustable buckled suspenders, Left and/or Right Chest Pocket	\$2.75	\$13.75
	9	Enhanced Visibility Short Sleeve Button Down Work Shirt (Section 3.3.1.1) Navy Blue, 100% Cotton, Left and Right Chest Pocket	\$3.58	\$143.20
	10	Enhanced Visibility Long Sleeve Button Down Work Shirt (Section 3.3.1.1) Navy Blue, 100% Cotton, Left and Right Chest Pocket	\$3.08	\$123.20
	11	Enhanced Visibility Work Pants - Men's Cut (Section 3.3.1.2) Navy Blue, 100% Cotton	\$2.64	\$184.80
	12	Enhanced Visibility Work Pants - Women's Cut (Section 3.3.1.2) Navy Blue, 100% Cotton	\$2.64	\$26.40
	13	Enhanced Visibility Cargo Pants - Men's Cut (Section 3.3.1.6) Navy Blue, blended Material 65% Polyester and 35% Cotton	\$2.53	\$126.50
	14	Enhanced Visibility Cargo Pants - Women's Cut (Section 3.3.1.6) Navy Blue, blended Material 65% Polyester and 35% Cotton	\$2.53	\$25.30
TOTAL EXTENDED WEEKLY RENTAL COST				

Contract Item #	Estimated ** Quantity	Item Description	Cost Each	Extended Logo Patch
15	42,000/each	WVDOH Logo Patch (2.5" x 4.5") shall be placed above the left pocket on all shirts, coveralls, bib overalls and jackets (Section 3.3.1.7)	\$0.00	\$0.00

*	TOTAL PART I. COST equals the total of <u>Extended Weekly Rental Cost</u> plus <u>Extended Logo Patch Cost</u>			\$17,946.25
---	---	--	--	--------------------

**Provide this Rate in Part III as well*

(Continue to Page 2)

**WVDOH Uniform Rental Service Contract 6623C044
Pricing Page, Attachment A (ATT A)**

Part II. Replacement Cost - Instructions: Vendor shall provide a Replacement Cost Rate for each Contract Item listed below. Vendor must complete this section in its entirety. If bidding an Insurance Program in lieu of individual replacement costs, please see Section 5.2.4. for instructions.

NOTE: Replacement Cost, for new garments, shall be paid per the rates listed below based on the sliding scale described in Section 3.3.10 of the Contract Specifications.

Contract Item #	Estimated ** Replacement Quantity	Item Description	Replacement EACH Rate	Extended Replacement Cost
Standard	16	ANSI Class 2 High Visibility Short Sleeve T-Shirt (Section 3.3.1.1) Lime Yellow, 100% Polyester, Left Chest Pocket	\$5.00	\$250.00
	17	ANSI Class 2 High Visibility Short Sleeve Button Down Work Shirt (Section 3.3.1.1) Lime Yellow, blended Material 65% Polyester and 35% Cotton, Left and Right Chest Pocket	\$5.00	\$185.00
	18	ANSI Class 2 High Visibility Long Sleeve Button Down Work Shirt (Section 3.3.1.1) Lime Yellow, blended Material 65% Polyester and 35% Cotton, Left and Right Chest Pocket	\$5.00	\$185.00
	19	Enhanced Visibility Work Pants - Men's Cut (Section 3.3.1.2) Dark Blue Denim/Jean material	\$7.00	\$700.00
	20	Enhanced Visibility Work Pants - Women's Cut (Section 3.3.1.2) Dark Blue Denim/Jean material	\$7.00	\$175.00
	21	Enhanced Visibility Unlined Flame-Resistant Coveralls (Section 3.3.1.3) Navy Blue, 2-way Zipper, Left and Right Chest Pocket	\$7.00	\$175.00
	22	ANSI Class 2 High Visibility 3-Season Hip Jacket (Section 3.3.1.4) Lime Yellow, 100% Polyester	\$7.00	\$875.00
Alternate	23	Enhanced Visibility Unlined Bib-Overalls (Section 3.3.1.5) Dark Blue Denim/Jean Material, Adjustable buckled suspenders, Left and/or Right Chest Pocket	\$7.00	\$35.00
	24	Enhanced Visibility Short Sleeve Button Down Work Shirt (Section 3.3.1.1) Navy Blue, 100% Cotton, Left and Right Chest Pocket	\$5.00	\$25.00
	25	Enhanced Visibility Long Sleeve Button Down Work Shirt (Section 3.3.1.1) Navy Blue, 100% Cotton, Left and Right Chest Pocket	\$5.00	\$25.00
	26	Enhanced Visibility Work Pants - Men's Cut (Section 3.3.1.2) Navy Blue, 100% Cotton	\$7.00	\$35.00
	27	Enhanced Visibility Work Pants - Women's Cut (Section 3.3.1.2) Navy Blue, 100% Cotton	\$7.00	\$7.00
	28	Enhanced Visibility Cargo Pants - Men's Cut (Section 3.3.1.6) Navy Blue, blended Material 65% Polyester and 35% Cotton	\$7.00	\$35.00
	29	Enhanced Visibility Cargo Pants - Women's Cut (Section 3.3.1.6) Navy Blue, blended Material 65% Polyester and 35% Cotton	\$7.00	\$7.00
	*	TOTAL PART II. COST equals the sum of all Extended Replacement Cost Contract Items.		\$2,714.00

**Provide this Rate in Part III as well*

Part III. Grand Total Instructions: Vendor should list the Total Pricing sum of Contract Items 1 thru 15, and then the Total Pricing sum of Contract Items 16 thru 27, in the designated spaces below for the calculation of the Grand Total Dollar Amount Bid.

* TOTAL PRICE from Part I Weekly Rental Cost above, equals the total of Extended Weekly Rental Cost plus the Extended Logo Patch Cost:	\$	17,946.25
* TOTAL PRICE from Part II Replacement Cost above, equals the total of Extended Replacement Cost:	\$	2,714.00
GRAND TOTAL DOLLAR AMOUNT BID	\$	20,660.25

**These estimates represent the approximate volume of anticipated rentals and replacements ONLY. No future use of the Contract or any individual item is guaranteed or implied.

ADDENDUM ACKNOWLEDGEMENT FORM
SOLICITATION NO.: CRFQ DOT2300000143

Instructions: Please acknowledge receipt of all addenda issued with this solicitation by completing this addendum acknowledgment form. Check the box next to each addendum received and sign below. Failure to acknowledge addenda may result in bid disqualification.

Acknowledgment: I hereby acknowledge receipt of the following addenda and have made the necessary revisions to my proposal, plans and/or specification, etc.

Addendum Numbers Received:

(Check the box next to each addendum received)

- | | |
|--|--|
| <input checked="" type="checkbox"/> Addendum No. 1 | <input type="checkbox"/> Addendum No. 6 |
| <input type="checkbox"/> Addendum No. 2 | <input type="checkbox"/> Addendum No. 7 |
| <input type="checkbox"/> Addendum No. 3 | <input type="checkbox"/> Addendum No. 8 |
| <input type="checkbox"/> Addendum No. 4 | <input type="checkbox"/> Addendum No. 9 |
| <input type="checkbox"/> Addendum No. 5 | <input type="checkbox"/> Addendum No. 10 |

I understand that failure to confirm the receipt of addenda may be cause for rejection of this bid. I further understand that that any verbal representation made or assumed to be made during any oral discussion held between Vendor's representatives and any state personnel is not binding. Only the information issued in writing and added to the specifications by an official addendum is binding.

Atamark
Company
William McLaughlin
Authorized Signature
6/14/2023
Date

NOTE: This addendum acknowledgment should be submitted with the bid to expedite document processing.

DESIGNATED CONTACT: Vendor appoints the individual identified in this Section as the Contract Administrator and the initial point of contact for matters relating to this Contract.

(Printed Name and Title) JAMES WRIGHT Key Acct. Manager
(Address) 222 Kerns Drive Greenville SC. 29607
(Phone Number) / (Fax Number) 1-864-616-5469 • N/A
(Email address) Wright-JAMES3@Aramark.COM

CERTIFICATION AND SIGNATURE: By signing below, or submitting documentation through wvOASIS, I certify that: I have reviewed this Solicitation/Contract in its entirety; that I understand the requirements, terms and conditions, and other information contained herein; that this bid, offer or proposal constitutes an offer to the State that cannot be unilaterally withdrawn; that the product or service proposed meets the mandatory requirements contained in the Solicitation/Contract for that product or service, unless otherwise stated herein; that the Vendor accepts the terms and conditions contained in the Solicitation, unless otherwise stated herein; that I am submitting this bid, offer or proposal for review and consideration; that this bid or offer was made without prior understanding, agreement, or connection with any entity submitting a bid or offer for the same material, supplies, equipment or services; that this bid or offer is in all respects fair and without collusion or fraud; that this Contract is accepted or entered into without any prior understanding, agreement, or connection to any other entity that could be considered a violation of law; that I am authorized by the Vendor to execute and submit this bid, offer, or proposal, or any documents related thereto on Vendor's behalf; that I am authorized to bind the vendor in a contractual relationship; and that to the best of my knowledge, the vendor has properly registered with any State agency that may require registration.

By signing below, I further certify that I understand this Contract is subject to the provisions of West Virginia Code § 5A-3-62, which automatically voids certain contract clauses that violate State law; and that pursuant to W. Va. Code 5A-3-63, the entity entering into this contract is prohibited from engaging in a boycott against Israel.

Aramark
(Company)
William McClanahan
(Signature of Authorized Representative)
WILLIAM McCLANAHAN General Manager 6/14/2023
(Printed Name and Title of Authorized Representative) (Date)
276-494-6553 276-322-4040
(Phone Number) (Fax Number)
McClanahan-Bill@Aramark.COM
(Email Address)

REQUEST FOR QUOTATION
Uniform Rental Services

10.5 Contract Manager: During its performance of this Contract, the Vendor must designate and maintain a primary Contract Manager responsible for overseeing the Vendor's responsibilities under this Contract. The Contract Manager must be available during normal business hours to address any customer service issues or other issues related to this Contract. The Vendor should list its Contract Manager and his/her contact information below. The Contract Manager shall be available to attend mandatory semi-annual meetings with the WVDOH or at any other designated time that the WVDOH feels that a meeting is needed. If at any time during the life of this Contract there is a change in Contract Managers, the Vendor shall notify the WVDOH Central Office as soon as possible.

Contract Manager: James Wright





Telephone Number: (864) 616-5469

Fax Number: N/A

Email Address: wright-james3@carroll.com

Vendor shall inform the Agency in writing of any changes to the information provided above within ten (10) calendar days of such changes. Failure to comply may be grounds for the cancellation of this contract.

Date: 8/30/2018	Requestor: Liz Lester	Account: 309545	Design: 00FXQ1	PO Number:
---------------------------	---------------------------------	---------------------------	--------------------------	-------------------

Description Wvoh	Products Requested Embroidery Embroidered Emblems	Style and Location Shape: Other Shape J3 - 4 1/2" x 2 1/2" Rectangle round corners Dimensions	Fabric / Background <input type="checkbox"/> Fabric/Media Color White - 18 (935-00) <input type="checkbox"/> Border Type  Backing Industrial Heat Seal
Physical/Simulation Sample Indicator Simulated Samples	Your Design  Image Uploaded 00fxq1w.jpg	Border Color  Navy - 06	Colors  Navy 06 Text



NAME (PRINTED)

APPROVAL SIGNATURE

DATE



ANSI Class 2 High Visibility Short Sleeve T-Shirt – GS1204YELO

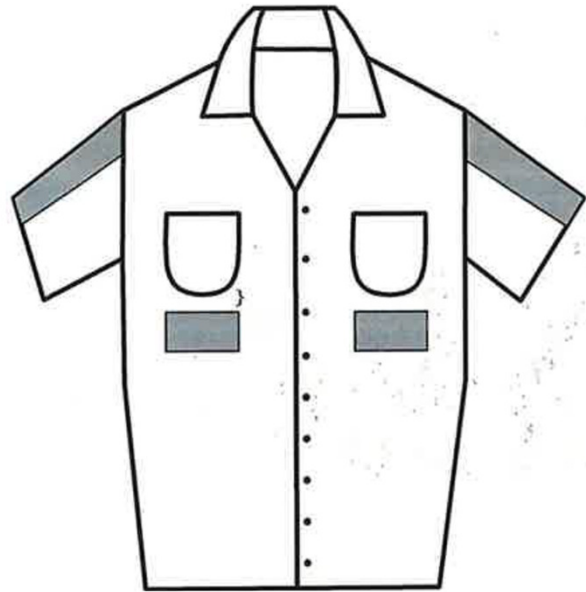
**Fabric:**

- Fade-resistant 6.2-oz. 100% polyester
- ANSI certified 3M™ Scotchlite™ Reflective Material
- Comfort Trim is breathable and flexible
- Silver Taping

Features:

- Short sleeve
- Meets requirements for ANSI/ISEA 107-2010 Class 2 Level 2
- Convenient front chest pocket

ANSI Class 2 High Visibility Short Sleeve Work Shirt – GS2672YELO



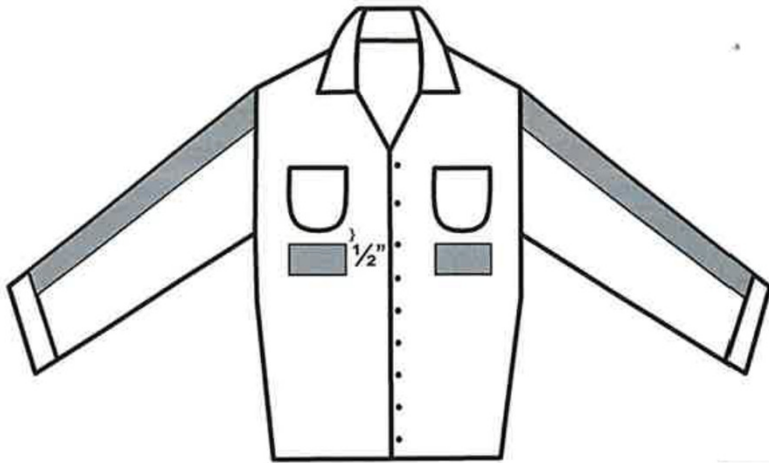
Fabric:

- 7-oz. 65% polyester/35% cotton
- ANSI Yellow
- Silver Taping

Features:

- Short Sleeve
- One snap button at neck opening
- Vertical buttons to close shirt
- Two-inch wide silver reflective tape horizontally at chest, center back and vertically from shoulder down to chest (front and back)
- Two front chest pockets with center button closures

ANSI Class 2 High Visibility Long Sleeve Work Shirt – GS2673YELO

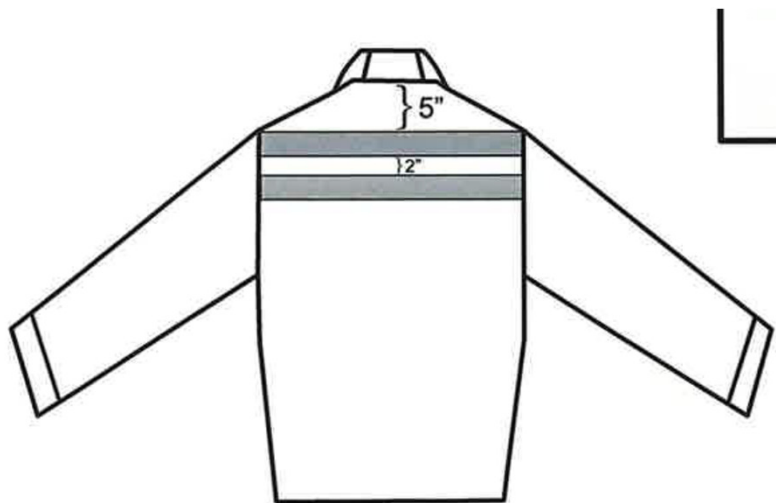


Fabric:

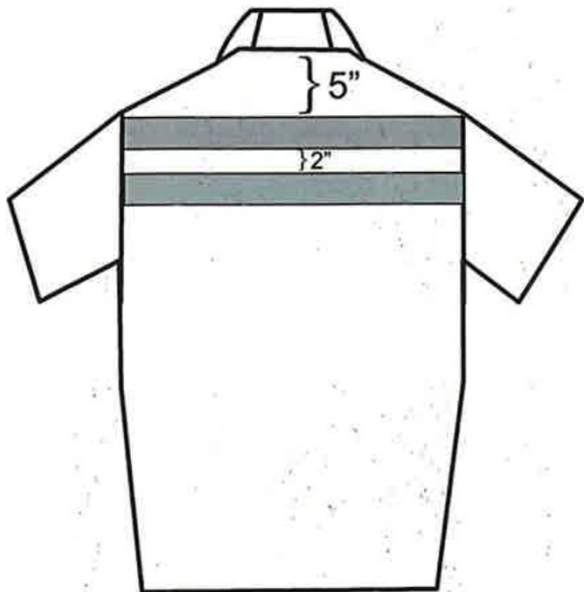
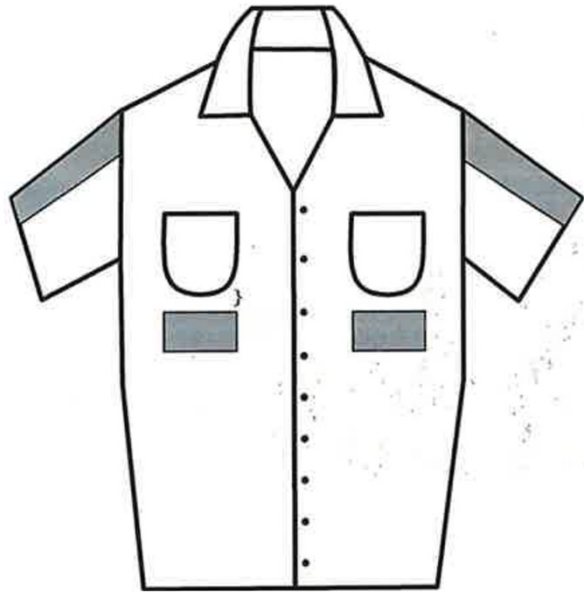
- 7-oz. 65% polyester/35% cotton
- ANSI Yellow
- Silver Taping

Features:

- Long Sleeve
- One snap button at neck opening
- Vertical buttons to close shirt
- Two-inch wide silver reflective tape horizontally at chest, center back and vertically from shoulder down to chest (front and back)
- Two front chest pockets with center button closures



Enhanced Visibility Navy Short Sleeve 100% Cotton Work Shirt – GS0449NVYT



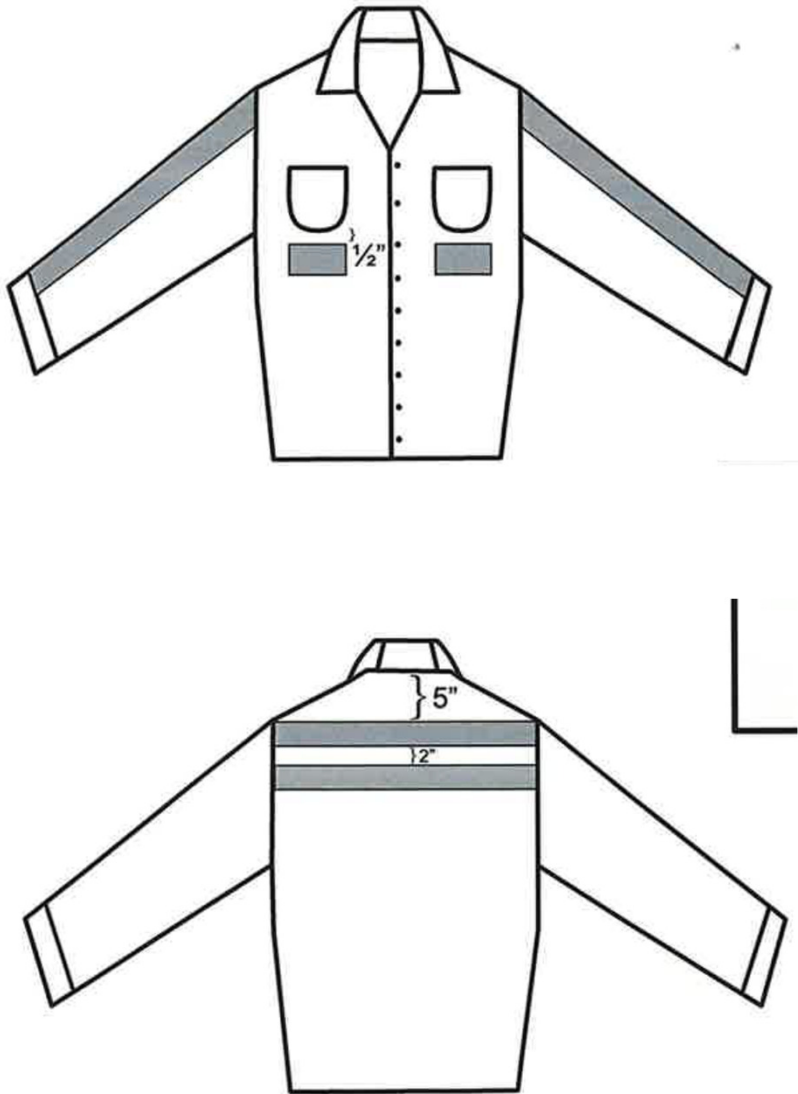
Fabric:

- 5-oz. 100% pre-shrunk cotton twill
- Navy
- Yellow Taping

Features:

- Short Sleeve
- 7-button closure with vertical buttonholes
- Stitched down front
- 2 ½" enhanced visibility trim applied across pockets, down sleeves from shoulders to cuff and two horizontal stripes across back
- Separate two-piece yoke
- 2 button-through hex pockets

Enhanced Visibility Navy Long Sleeve 100% Cotton Work Shirt – GS0448NVYT



Fabric:

- 5-oz. 100% pre-shrunk cotton twill
- Navy
- Yellow Taping

Features:

- Long Sleeve
- 7-button closure with vertical buttonholes
- Stitched down front
- 2 1/2" enhanced visibility trim applied across pockets, down sleeves from shoulders to cuff and two horizontal stripes across back
- Separate two-piece yoke
- 2 button-through hex pockets

Enhanced Visibility Cargo Pant – Men's – GP1253NVYT

NEW



Fabric:

- 7.75-oz. 65% polyester/35% cotton twill
- Navy
- Yellow Taping

Features:

- Soil release
- 2.5" yellow silver yellow reflective tape provides 360 degrees enhanced visibility protection
- Two side pockets
- Two back welt pockets
- Two side cargo pockets with flaps and concealed snap closures

Enhanced Visibility Navy Cargo Pant – Women’s – GP1037NVYT

NEW



Fabric:

- 7.75-oz. 65% polyester/35% cotton twill
- Navy
- Yellow Taping

Features:

- Soil release
- 2.5” yellow silver yellow reflective tape provides 360 degrees enhanced visibility protection
- Two side pockets
- Two back welt pockets
- Two side cargo pockets with flaps and concealed snap closures

Enhanced Visibility Navy Cotton Work Pant – Men's – GP0171NVYT

NEW



Fabric:

- 8.25-oz. 100% preshrunk cotton twill
- Navy
- Yellow Taping

Features:

- 2 ½" enhanced visibility trim: three stripes around each leg, one stripe above each back pocket, one strip down front on either side of zipper
- Two slack style front pockets, two set-in hip pockets, two back welt pockets with button on left pocket
- Heavy duty brass ratcheting zipper

Enhanced Visibility Navy Cotton Work Pant – Women's – GP0171NVYT

NEW



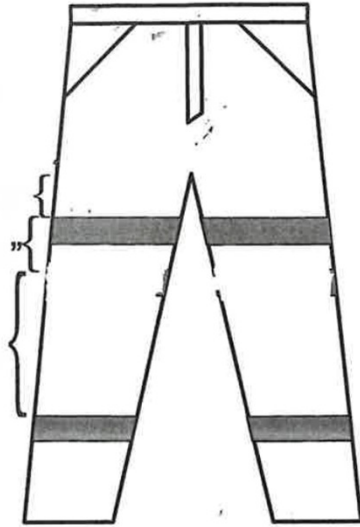
Fabric:

- 8.25-oz. 100% preshrunk cotton twill
- Navy
- Yellow Taping

Features:

- 2 ½" enhanced visibility trim: three stripes around each leg, one stripe above each back pocket, one strip down front on either side of zipper
- Two slack style front pockets, two set-in hip pockets, two back welt pockets with button on left pocket
- Heavy duty brass ratcheting zipper

Enhanced Visibility Men's Denim Work Pant – GP0294BDOT

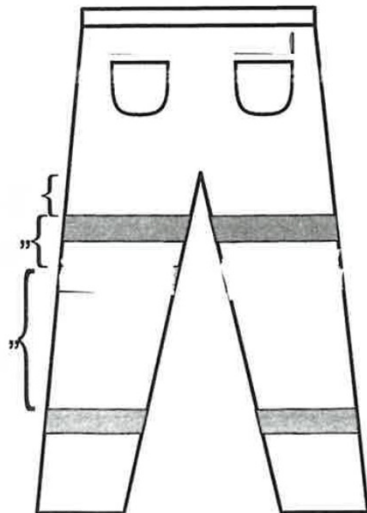


Fabric:

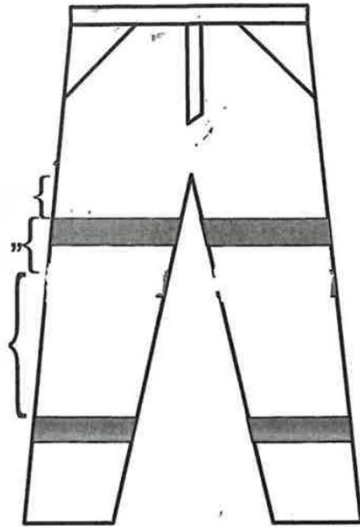
- Navy denim
- Yellow Taping

Features:

- Heavy-duty construction, made-for-work features
- 5-pocket styling: 2 front, 2 back, 1 coin pocket
- Extra-safe double-needle stitching
- 13.75-oz. 100% cotton denim
- Tapered leg styling
- Resists shrinking and fading
- Two front pockets
- Two back pockets
- Front coin pocket



Enhanced Visibility Women's Denim Work – GP0294BDOT

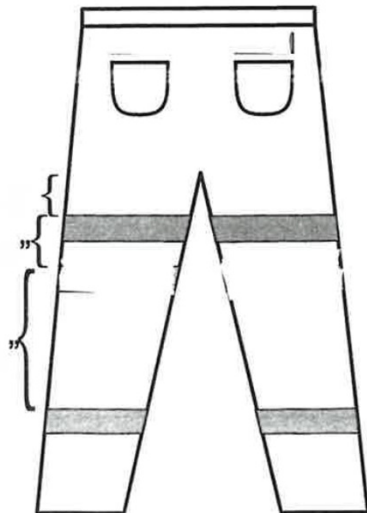


Fabric:

- Navy denim
- Yellow Taping

Features:

- Heavy-duty construction, made-for-work features
- 5-pocket styling: 2 front, 2 back, 1 coin pocket
- Extra-safe double-needle stitching
- 13.75-oz. 100% cotton denim
- Tapered leg styling
- Resists shrinking and fading
- Two front pockets
- Two back pockets
- Front coin pocket



Enhanced Visibility Unlined Denim Bib-Overalls – GO0809INYT

Fabric:

- 12-oz. 100% cotton denim
- Closure: brass plated steel loop and slider, brass nylon collet buttons, brass plated snaps

Features:

- Top needle construction, triple needle seat, inseam, and outseam for durability
- Stitched down fly edge
- Clean finish hem at bottom leg 1/2"
- Loop closure on shoulder strap, slider for adjustments on shoulder strap
- 2 set-in front pockets, 2 patch hip pockets, rule pocket, bib pocket with 2 openings and pencil slot. Hammer loop
- 2 ½" enhanced visibility trim: three stripes around each leg, one stripe above each back pocket, one strip down front on either side of zipper, one strip above bib pocket

Enhanced Visibility Navy FR Coverall 100% Cotton – GO1083NVOT

**Fabric:**

- 8.25-oz. 100% preshrunk cotton twill
- Navy
- Yellow Taping

Features:

- 2.5" yellow silver yellow reflective tape provides 360 degrees enhanced visibility protection
- Zipper front coverall with two concealed snaps at collar
- Two chest pockets
- Left chest pocket has a pencil slot
- Two side pockets
- Two back patch pockets with right tool pocket

ANSI Class 2 High Visibility 3-Season Hip Jacket – GO2600NVOT

**Fabric:**

- 4.8-oz. 95% polyester/5% spandex water resistant plain weave; 4.8-oz. 95% polyester/5% spandex water resistant rip stop on body and sleeves side panels

Features:

- Meets requirements for ANSI/ISEA 107-2015 Type R, Class 2
- Midweight warmth for three-season protection
- 3M™ 2" heat-transferred, reflective trim
- Water resistant, plain weave with stretch
- Rip stop pattern with stretch on high abrasive areas
- Zipped underarm venting
- Elastic waist and cuffs with adjustable hook-and-loop closure
- Two bottom pockets with zipper closures
- Right inside cell phone pocket holds larger cell phones

A white Aramark delivery truck is parked on a city street during sunset. The truck features the Aramark logo and name on its side. The words "THANK YOU" are overlaid in large, white, sans-serif capital letters across the center of the image. The background shows a cityscape with brick buildings and a wet street reflecting the warm, golden light of the setting sun.

THANK
YOU

Confidential Information

THESE MATERIALS ARE THE PROPRIETARY AND CONFIDENTIAL INFORMATION OF ARAMARK UNIFORM SERVICES AND ARE FOR USE SOLELY IN CONNECTION WITH ARAMARK UNIFORM'S PROVISION OF SERVICES TO THE RECIPIENT. ANY OTHER USE MAY CONSTITUTE A VIOLATION OF ARAMARK UNIFORM'S RIGHTS. THE RECIPIENT OF THESE MATERIALS MUST HOLD THEM IN CONFIDENCE AND SHALL NOT DISTRIBUTE THEM, IN WHOLE OR IN PART, TO ANY OTHER INDIVIDUAL OR ENTITY IN ANY FORM WITHOUT THE PRIOR WRITTEN CONSENT OF ARAMARK UNIFORM. WITHOUT LIMITING THE FOREGOING, THE DESIGNS SHOWN HEREIN ARE PROPRIETARY TO, AND THE SOLE PROPERTY OF, ARAMARK UNIFORM SERVICES AND CANNOT BE REPLICATED OR DISCLOSED TO ANY OTHER PARTY WITHOUT SPECIFIC WRITTEN CONSENT FROM ARAMARK UNIFORM SERVICES. THE DESIGNS AND/OR FABRICATION OF ITEMS SHOWN HEREIN ARE PROTECTED AS COPYRIGHTED WORKS OF ARAMARK UNIFORM SERVICES AND MAY BE PROTECTED UNDER OTHER INTELLECTUAL PROPERTY LAWS. PRICING SHOWN AND TERMS AND CONDITIONS ARE SUBJECT TO CONTRACTUAL AGREEMENT.

© 2018 ARAMARK UNIFORM SERVICES. ALL RIGHTS RESERVED.

Aramark On-Site Garment Scanning Overview

Aramark has the capability to scan garments at the customer site.

With our recent change to a new billing and reporting system (ABS) Aramark can turn on any handheld device used by our route person to scan garments on-site.

Aramark started the scanning on-site at a few locations for WVD0H when the RFP came out to show examples.

Aramark has the ability to send the garment scanning report via email to all sites weekly.

If awarded the bid, all sites will be scanned on-site and the new garments will all be set up in the system.

Scan Date Range: 06/08/2023 - 06/13/2023

MC	MC Name	CID	Customer Name	NAID	Wearer #	Wearer Name	Item Type	Item	Size	REC QTY	DEL QTY	Auth Inv
545	Bluefield (MC545)	6013083	WVDOH DIST 10 LOC 2	S11052-NEW	7	BENJAMIN WALKER	PANT	GP0171NAVY	32X36	4	0	11
545	Bluefield (MC545)	6013083	WVDOH DIST 10 LOC 2	S11052-NEW	18	DAVID DAVIDSON	PANT	GP0171NAVY	38X34	5	0	11
545	Bluefield (MC545)	6013083	WVDOH DIST 10 LOC 2	S11052-NEW	18	DAVID DAVIDSON	SHIRT	GS0448NAVY	2XLL	4	0	11

The yellow quantities are the handheld unit on-site scans of garments.



2680 Palumbo Drive
Lexington, KY40509

Visit us at www.aramarkuniform.com

Attn:
WVDOH DIST 10 LOC 2
270 HARDWOOD LANE
ATTN TINA HESTER
PRINCETON, WV 24740

This account was on shut-down at time of service, so the soiled garment pick-up count was very low.

INVOICE

BILLING INQUIRIES	(800) 504-0328
CUSTOMER SERVICE	(800) ARAMARK
ACCOUNT NUMBER	734354000
CUSTOMER NUMBER	6013083
INVOICE NUMBER	5450187951
INVOICE DATE	06/13/2023
TERMS	NET 10 EOM
PO #	
NAID	S11052-NEW
MARKET CENTER	545
ROUTE NUMBER	511
Page 1 of 1	

Ship
To: WVDOH DIST 10 LOC 2
454 NEW HOPE ROAD
PRINCETON, WV 24740

A/R BALANCES AS OF 06/13/2023						
TOTAL DUE	CURRENT	30 DAYS	60 DAYS	90 DAYS	120 DAYS	OVER 120 DAYS
666.63	666.63	0.00	0.00	0.00	0.00	0.00

Wr #	Wearer Name	Item	Description	Size	Type	Bill Qty	Rate	Total
1	WYATT REED	GO2533YSR	JACKET HI-VIS ANSI WVD	1XLR	Rent	2	0.455	0.91
1	WYATT REED	GP0294BLDM	PANT DENIM JEAN	38X30	Rent	11	0.230	2.53
1	WYATT REED	GS2382YELC	SHRT ULS HIVIS	1XLR	Rent	5	0.230	1.15
1	WYATT REED	GS2383YELC	SHRT USS HIVIS	1XLR	Rent	6	0.230	1.38
2	ROGER MILL	GO2533YSR	JACKET HI-VIS ANSI WVD	1XLR	Rent	2	0.455	0.91
2	ROGER MILL	GP0294BLDM	PANT DENIM JEAN	36X32	Rent	11	0.230	2.53
2	ROGER MILL	GS2383YELC	SHRT USS HIVIS	1XLR	Rent	11	0.230	2.53
5	CHARLES WILLIAMS	GO2533YSR	JACKET HI-VIS ANSI WVD	2XLL	Rent	2	0.455	0.91
5	CHARLES WILLIAMS	GP0294BLDM	PANT DENIM JEAN	42X32	Rent	11	0.230	2.53
5	CHARLES WILLIAMS	GS1204YELC	SHRT SS ANSI 2	2XLR	Rent	11	0.230	2.53
6	DAVID BLAIR	GO2533YSR	JACKET HI-VIS ANSI WVD	3XLR	Rent	2	0.455	0.91
6	DAVID BLAIR	GP0294BLDM	PANT DENIM JEAN	42X30	Rent	11	0.230	2.53
6	DAVID BLAIR	GS1204YELC	SHRT SS ANSI 2	2XLR	Rent	5	0.230	1.15
6	DAVID BLAIR	GS2383YELC	SHRT USS HIVIS	2XLR	Rent	6	0.230	1.38
7	BENJAMIN WALKER	GO2533YSR	JACKET HI-VIS ANSI WVD	LGGER	Rent	2	0.455	0.91
7	BENJAMIN WALKER	GP0171NAV	PANT WORK DURAPRES C	32X36	Rent	11	0.260	2.86
7	BENJAMIN WALKER	GS0448NAV	SHIRT WORK LS BTN COT	MEDL	Rent	11	0.325	3.58
9	ALLEN THOMPSON	GO2533YSR	JACKET HI-VIS ANSI WVD	1XLR	Rent	2	0.455	0.91
9	ALLEN THOMPSON	GP0294BLDM	PANT DENIM JEAN	40X32	Rent	11	0.230	2.53
9	ALLEN THOMPSON	GS1204YELC	SHRT SS ANSI 2	1XLR	Rent	11	0.230	2.53
11	JODY DEHART	GO2533YSR	JACKET HI-VIS ANSI WVD	5XLR	Rent	2	0.455	0.91
11	JODY DEHART	GP0294BLDM	PANT DENIM JEAN	50X32	Rent	11	0.230	2.53
11	JODY DEHART	GS2383YELC	SHRT USS HIVIS	5XLR	Rent	11	0.230	2.53
12	EARL HALSTEAD	GO2533YSR	JACKET HI-VIS ANSI WVD	1XLR	Rent	2	0.455	0.91
12	EARL HALSTEAD	GP0294BLDM	PANT DENIM JEAN	38X32	Rent	11	0.230	2.53
12	EARL HALSTEAD	GS1204YELC	SHRT SS ANSI 2	LGGER	Rent	5	0.230	1.15
12	EARL HALSTEAD	GS2383YELC	SHRT USS HIVIS	LGGER	Rent	6	0.230	1.38
12	EARL HALSTEAD	GS2383YELC	SHRT USS HIVIS	LGEL	Rent	11	0.230	2.53
13	JAMES FARLEY	GO2533YSR	JACKET HI-VIS ANSI WVD	1XLR	Rent	2	0.455	0.91
13	JAMES FARLEY	GP0294BLDM	PANT DENIM JEAN	36X32	Rent	11	0.230	2.53
13	JAMES FARLEY	GS2383YELC	SHRT USS HIVIS	1XLR	Rent	11	0.230	2.53
14	TED HILL	GO2533YSR	JACKET HI-VIS ANSI WVD	1XLR	Rent	2	0.455	0.91
14	TED HILL	GP0294BLDM	PANT DENIM JEAN	38X32	Rent	11	0.230	2.53
14	TED HILL	GS2382YELC	SHRT ULS HIVIS	LGGER	Rent	11	0.230	2.53
15	KEITH MURPHY	GO2533YSR	JACKET HI-VIS ANSI WVD	3XLL	Rent	2	0.455	0.91
15	KEITH MURPHY	GP0171NAV	PANT WORK DURAPRES C	42X34	Rent	11	0.260	2.86
15	KEITH MURPHY	GS0448NAV	SHIRT WORK LS BTN COT	2XLL	Rent	11	0.325	3.58
16	JASON RHODES	GO2533YSR	JACKET HI-VIS ANSI WVD	3XLR	Rent	2	0.455	0.91
16	JASON RHODES	GP0294BLDM	PANT DENIM JEAN	42X32	Rent	11	0.230	2.53
16	JASON RHODES	GS2383YELC	SHRT USS HIVIS	2XLR	Rent	11	0.230	2.53
17	EUGENE FRANSISCO	GO2533YSR	JACKET HI-VIS ANSI WVD	2XLR	Rent	2	0.455	0.91
17	EUGENE FRANSISCO	GP0294BLDM	PANT DENIM JEAN	40X32	Rent	11	0.230	2.53
17	EUGENE FRANSISCO	GS1204YELC	SHRT SS ANSI 2	2XLR	Rent	6	0.230	1.38
17	EUGENE FRANSISCO	GS2383YELC	SHRT USS HIVIS	2XLR	Rent	5	0.230	1.15

18	DAVID DAVIDSON	GO2533YSR	JACKET HI-VIS ANSI WVD	2XLL	Rent	2	0.455	0.91
18	DAVID DAVIDSON	GP0171NAV	PANT WORK DURAPRES C	38X34	Rent	11	0.260	2.86
18	DAVID DAVIDSON	GS0448NAV	SHIRT WORK LS BTN COT	2XLL	Rent	11	0.325	3.58
19	FRED ALBERT	GO2533YSR	JACKET HI-VIS ANSI WVD	LGFR	Rent	2	0.455	0.91
19	FRED ALBERT	GP0294BLDM	PANT DENIM JEAN	34X32	Rent	11	0.230	2.53
19	FRED ALBERT	GS2383YELC	SHRT USS HIVIS	MEDR	Rent	11	0.230	2.53
20	REX PARKER	GO2533YSR	JACKET HI-VIS ANSI WVD	1XLR	Rent	2	0.455	0.91
20	REX PARKER	GP0294BLDM	PANT DENIM JEAN	34X32	Rent	6	0.230	1.38
20	REX PARKER	GP0294BLDM	PANT DENIM JEAN	36X32	Rent	11	0.230	2.53
20	REX PARKER	GS2382YELC	SHRT ULS HIVIS	1XLR	Rent	5	0.230	1.15
21	DARREN HICKS	GO2533YSR	JACKET HI-VIS ANSI WVD	4XLR	Rent	2	0.455	0.91
21	DARREN HICKS	GP0294BLDM	PANT DENIM JEAN	44X32	Rent	11	0.230	2.53
21	DARREN HICKS	GS1204YELC	SHRT SS ANSI 2	3XLR	Rent	11	0.230	2.53
22	LARRY DUTY	GO2533YSR	JACKET HI-VIS ANSI WVD	2XLR	Rent	2	0.455	0.91
22	LARRY DUTY	GP0294BLDM	PANT DENIM JEAN	40X32	Rent	11	0.230	2.53
22	LARRY DUTY	GS1204YELC	SHRT SS ANSI 2	2XLR	Rent	11	0.230	2.53
23	JAMES NELSON	GO2533YSR	JACKET HI-VIS ANSI WVD	4XLR	Rent	2	0.455	0.91
23	JAMES NELSON	GP0294BLDM	PANT DENIM JEAN	50X30	Rent	11	0.230	2.53
23	JAMES NELSON	GS1204YELC	SHRT SS ANSI 2	3XLR	Rent	11	0.230	2.53
24	JASON BELCHER	GO2533YSR	JACKET HI-VIS ANSI WVD	3XLR	Rent	2	0.455	0.91
24	JASON BELCHER	GP0294BLDM	PANT DENIM JEAN	40X32	Rent	11	0.230	2.53
24	JASON BELCHER	GS2383YELC	SHRT USS HIVIS	3XLR	Rent	11	0.230	2.53
25	CHRIS THOMPSON	GO2533YSR	JACKET HI-VIS ANSI WVD	2XLR	Rent	2	0.455	0.91
25	CHRIS THOMPSON	GP0294BLDM	PANT DENIM JEAN	42X32	Rent	11	0.230	2.53
25	CHRIS THOMPSON	GS2383YELC	SHRT USS HIVIS	2XLR	Rent	11	0.230	2.53
26	JAMES THORNTON	GO2533YSR	JACKET HI-VIS ANSI WVD	2XLR	Rent	2	0.455	0.91
26	JAMES THORNTON	GP0294BLDM	PANT DENIM JEAN	42X30	Rent	11	0.230	2.53
26	JAMES THORNTON	GS2383YELC	SHRT USS HIVIS	2XLR	Rent	11	0.230	2.53
27	TIM COPLEY	GO2533YSR	JACKET HI-VIS ANSI WVD	3XLL	Rent	2	0.455	0.91
27	TIM COPLEY	GP0294BLDM	PANT DENIM JEAN	42X36	Rent	11	0.230	2.53
27	TIM COPLEY	GS2382YELC	SHRT ULS HIVIS	2XLL	Rent	11	0.230	2.53
28	STEVEN COBURN	GO2533YSR	JACKET HI-VIS ANSI WVD	2XLR	Rent	2	0.455	0.91
28	STEVEN COBURN	GP0294BLDM	PANT DENIM JEAN	40X30	Rent	11	0.230	2.53
28	STEVEN COBURN	GP0294BLDM	PANT DENIM JEAN	42X30	Rent	11	0.230	2.53
28	STEVEN COBURN	GS1204YELC	SHRT SS ANSI 2	2XLR	Rent	6	0.230	1.38
28	STEVEN COBURN	GS2383YELC	SHRT USS HIVIS	2XLR	Rent	5	0.230	1.15
29	CHRISTIAN STARKY	GO2533YSR	JACKET HI-VIS ANSI WVD	1XLR	Rent	2	0.455	0.91
29	CHRISTIAN STARKY	GP0294BLDM	PANT DENIM JEAN	34X34	Rent	11	0.230	2.53
29	CHRISTIAN STARKY	GS1204YELC	SHRT SS ANSI 2	MEDR	Rent	3	0.230	0.69
29	CHRISTIAN STARKY	GS2383YELC	SHRT USS HIVIS	MEDR	Rent	8	0.230	1.84
30	MATTHEW REED	GO2533YSR	JACKET HI-VIS ANSI WVD	3XLR	Rent	2	0.455	0.91
30	MATTHEW REED	GP0294BLDM	PANT DENIM JEAN	42X32	Rent	11	0.230	2.53
30	MATTHEW REED	GS2383YELC	SHRT USS HIVIS	3XLR	Rent	11	0.230	2.53
31	JOSH GIBSON	GO2533YSR	JACKET HI-VIS ANSI WVD	3XLR	Rent	2	0.455	0.91
31	JOSH GIBSON	GP0294BLDM	PANT DENIM JEAN	40X30	Rent	11	0.230	2.53
31	JOSH GIBSON	GS1204YELC	SHRT SS ANSI 2	2XLR	Rent	11	0.230	2.53
32	TAMMY WILLIAMS	GO2533YSR	JACKET HI-VIS ANSI WVD	7XLR	Rent	2	0.455	0.91
32	TAMMY WILLIAMS	GP0294BLDM	PANT DENIM JEAN	54X30	Rent	11	0.230	2.53
32	TAMMY WILLIAMS	GS2383YELC	SHRT USS HIVIS	6XLL	Rent	11	0.230	2.53
33	TRACY MCCLAUGHERTY	GO2533YSR	JACKET HI-VIS ANSI WVD	1XLR	Rent	2	0.455	0.91
33	TRACY MCCLAUGHERTY	GP0294BLDM	PANT DENIM JEAN	34X30	Rent	11	0.230	2.53
33	TRACY MCCLAUGHERTY	GS2383YELC	SHRT USS HIVIS	LGFR	Rent	11	0.230	2.53
34	STEVEN MILLER	GO2533YSR	JACKET HI-VIS ANSI WVD	4XLL	Rent	2	0.455	0.91
34	STEVEN MILLER	GP0294BLDM	PANT DENIM JEAN	48X32	Rent	11	0.230	2.53
34	STEVEN MILLER	GS2383YELC	SHRT USS HIVIS	4XLR	Rent	11	0.230	2.53
35	CALVIN POFF	GO2533YSR	JACKET HI-VIS ANSI WVD	1XLR	Rent	2	0.455	0.91
35	CALVIN POFF	GP0294BLDM	PANT DENIM JEAN	36X30	Rent	11	0.230	2.53
35	CALVIN POFF	GS2382YELC	SHRT ULS HIVIS	LGFR	Rent	5	0.230	1.15
35	CALVIN POFF	GS2383YELC	SHRT USS HIVIS	LGFR	Rent	6	0.230	1.38
36	MICHAEL MINNIX	GO2533YSR	JACKET HI-VIS ANSI WVD	2XLR	Rent	2	0.455	0.91
36	MICHAEL MINNIX	GP0294BLDM	PANT DENIM JEAN	38X34	Rent	11	0.230	2.53
36	MICHAEL MINNIX	GS1204YELC	SHRT SS ANSI 2	1XLR	Rent	11	0.230	2.53
37	JOHN ELMORE	GO2533YSR	JACKET HI-VIS ANSI WVD	1XLR	Rent	2	0.455	0.91
37	JOHN ELMORE	GP0294BLDM	PANT DENIM JEAN	32X30	Rent	11	0.230	2.53
37	JOHN ELMORE	GS2382YELC	SHRT ULS HIVIS	1XLR	Rent	5	0.230	1.15
37	JOHN ELMORE	GS2383YELC	SHRT USS HIVIS	1XLR	Rent	6	0.230	1.38
38	DANNY WOLFORD	GO2533YSR	JACKET HI-VIS ANSI WVD	3XLR	Rent	2	0.455	0.91
38	DANNY WOLFORD	GP0294BLDM	PANT DENIM JEAN	42X30	Rent	11	0.230	2.53

38	DANNY WOLFORD	GS2382YELC	SHRT ULS HIVIS	3XLR	Rent	5	0.230	1.15
38	DANNY WOLFORD	GS2383YELC	SHRT USS HIVIS	3XLR	Rent	6	0.230	1.38
39	CHARMAINE HANES	GO2533YSR	JACKET HI-VIS ANSI WVD	2XLR	Rent	2	0.455	0.91
39	CHARMAINE HANES	GP1039BLDM	PANT JEAN F 80/20	20X31	Rent	11	0.230	2.53
39	CHARMAINE HANES	GS2383YELC	SHRT USS HIVIS	2XLR	Rent	11	0.230	2.53
40	DENNIS BAILEY	GO2533YSR	JACKET HI-VIS ANSI WVD	1XLR	Rent	2	0.455	0.91
40	DENNIS BAILEY	GP0294BLDM	PANT DENIM JEAN	40X30	Rent	11	0.230	2.53
40	DENNIS BAILEY	GS1204YELC	SHRT SS ANSI 2	1XLR	Rent	11	0.230	2.53
41	BRIAN GILLEY	GO2533YSR	JACKET HI-VIS ANSI WVD	5XLR	Rent	2	0.455	0.91
41	BRIAN GILLEY	GP0294BLDM	PANT DENIM JEAN	48X30	Rent	11	0.230	2.53
41	BRIAN GILLEY	GS2383YELC	SHRT USS HIVIS	5XLR	Rent	11	0.230	2.53
42	TRAVIS JONES	GO2533YSR	JACKET HI-VIS ANSI WVD	2XLR	Rent	2	0.455	0.91
42	TRAVIS JONES	GP0294BLDM	PANT DENIM JEAN	38X34	Rent	10	0.230	2.30
42	TRAVIS JONES	GS2382YELC	SHRT ULS HIVIS	1XLR	Rent	5	0.230	1.15
42	TRAVIS JONES	GS2383YELC	SHRT USS HIVIS	1XLR	Rent	6	0.230	1.38
43	BROCK COEBURN	GO2533YSR	JACKET HI-VIS ANSI WVD	2XLR	Rent	2	0.455	0.91
43	BROCK COEBURN	GP0294BLDM	PANT DENIM JEAN	34X30	Rent	11	0.230	2.53
43	BROCK COEBURN	GS2383YELC	SHRT USS HIVIS	LGFR	Rent	11	0.230	2.53
44	STERLING GREEN	GO2533YSR	JACKET HI-VIS ANSI WVD	3XLR	Rent	2	0.455	0.91
44	STERLING GREEN	GP0294BLDM	PANT DENIM JEAN	42X30	Rent	11	0.230	2.53
44	STERLING GREEN	GS1204YELC	SHRT SS ANSI 2	2XLR	Rent	11	0.230	2.53
45	JEREMY HYLTON	GO2533YSR	JACKET HI-VIS ANSI WVD	3XLR	Rent	2	0.455	0.91
45	JEREMY HYLTON	GP0294BLDM	PANT DENIM JEAN	40X30	Rent	11	0.230	2.53
45	JEREMY HYLTON	GS2383YELC	SHRT USS HIVIS	3XLR	Rent	11	0.230	2.53
46	JOHNATHAN CORY	GO2533YSR	JACKET HI-VIS ANSI WVD	2XLR	Rent	2	0.455	0.91
46	JOHNATHAN CORY	GP0294BLDM	PANT DENIM JEAN	38X30	Rent	11	0.230	2.53
46	JOHNATHAN CORY	GS1204YELC	SHRT SS ANSI 2	1XLR	Rent	8	0.230	1.84
46	JOHNATHAN CORY	GS2383YELC	SHRT USS HIVIS	1XLR	Rent	3	0.230	0.69
47	RANDY EASTER	GO2533YSR	JACKET HI-VIS ANSI WVD	1XLR	Rent	2	0.455	0.91
47	RANDY EASTER	GP0294BLDM	PANT DENIM JEAN	34X32	Rent	11	0.230	2.53
47	RANDY EASTER	GS1204YELC	SHRT SS ANSI 2	LGFR	Rent	11	0.230	2.53
49	KEVIN MCCLEESE	GO2533YSR	JACKET HI-VIS ANSI WVD	LGFR	Rent	2	0.455	0.91
49	KEVIN MCCLEESE	GP0294BLDM	PANT DENIM JEAN	32X32	Rent	11	0.230	2.53
49	KEVIN MCCLEESE	GS2383YELC	SHRT USS HIVIS	LGFR	Rent	11	0.230	2.53
50	DANIEL SHRADER	GO2533YSR	JACKET HI-VIS ANSI WVD	2XLR	Rent	2	0.455	0.91
50	DANIEL SHRADER	GP0294BLDM	PANT DENIM JEAN	34X32	Rent	11	0.230	2.53
50	DANIEL SHRADER	GS1204YELC	SHRT SS ANSI 2	2XLR	Rent	11	0.230	2.53
51	MARTY TAYLOR	GP0294BLDM	PANT DENIM JEAN	36X32	Rent	11	0.230	2.53
51	MARTY TAYLOR	GS1204YELC	SHRT SS ANSI 2	LGFR	Rent	6	0.230	1.38
51	MARTY TAYLOR	GS2383YELC	SHRT USS HIVIS	LGFR	Rent	5	0.230	1.15
52	ROBERT WALTERS	GO2533YSR	JACKET HI-VIS ANSI WVD	LGFR	Rent	2	0.455	0.91
52	ROBERT WALTERS	GP0294BLDM	PANT DENIM JEAN	36X30	Rent	11	0.230	2.53
52	ROBERT WALTERS	GS1204YELC	SHRT SS ANSI 2	LGFR	Rent	11	0.230	2.53
53	HAROLD STONE	GO2533YSR	JACKET HI-VIS ANSI WVD	3XLR	Rent	2	0.455	0.91
53	HAROLD STONE	GP0294BLDM	PANT DENIM JEAN	38X34	Rent	11	0.230	2.53
53	HAROLD STONE	GS1204YELC	SHRT SS ANSI 2	2XLR	Rent	5	0.230	1.15
53	HAROLD STONE	GS2383YELC	SHRT USS HIVIS	2XLR	Rent	6	0.230	1.38
54	ADRIAN ROLLYSON	GO2533YSR	JACKET HI-VIS ANSI WVD	2XLR	Rent	2	0.455	0.91
54	ADRIAN ROLLYSON	GP0294BLDM	PANT DENIM JEAN	36X30	Rent	11	0.230	2.53
54	ADRIAN ROLLYSON	GS1204YELC	SHRT SS ANSI 2	1XLR	Rent	11	0.230	2.53
57	CLYDE KINSER	GO2533YSR	JACKET HI-VIS ANSI WVD	LGFR	Rent	2	0.455	0.91
57	CLYDE KINSER	GP0294BLDM	PANT DENIM JEAN	32X32	Rent	11	0.230	2.53
57	CLYDE KINSER	GS2383YELC	SHRT USS HIVIS	LGFR	Rent	11	0.230	2.53
59	DARREN BEAVERS	GO2533YSR	JACKET HI-VIS ANSI WVD	2XLR	Rent	2	0.455	0.91
59	DARREN BEAVERS	GP0294BLDM	PANT DENIM JEAN	36X30	Rent	11	0.230	2.53
59	DARREN BEAVERS	GP0294BLDM	PANT DENIM JEAN	38X30	Rent	10	0.230	2.30
59	DARREN BEAVERS	GS2383YELC	SHRT USS HIVIS	1XLR	Rent	8	0.230	1.84
60	CHARLES JONES	GO2533YSR	JACKET HI-VIS ANSI WVD	3XLL	Rent	2	0.455	0.91
60	CHARLES JONES	GP0294BLDM	PANT DENIM JEAN	42X34	Rent	11	0.230	2.53
60	CHARLES JONES	GS1204YELC	SHRT SS ANSI 2	2XLR	Rent	10	0.230	2.30
60	CHARLES JONES	GS2383YELC	SHRT USS HIVIS	2XLL	Rent	6	0.230	1.38
61	BRANDON STEIDLEY	GO2533YSR	JACKET HI-VIS ANSI WVD	LGFR	Rent	2	0.455	0.91
61	BRANDON STEIDLEY	GP0294BLDM	PANT DENIM JEAN	34X30	Rent	11	0.230	2.53
61	BRANDON STEIDLEY	GS1204YELC	SHRT SS ANSI 2	MEDR	Rent	6	0.230	1.38
61	BRANDON STEIDLEY	GS2383YELC	SHRT USS HIVIS	MEDR	Rent	5	0.230	1.15
62	ERIC LOWE	GO2533YSR	JACKET HI-VIS ANSI WVD	3XLR	Rent	2	0.455	0.91
62	ERIC LOWE	GP0294BLDM	PANT DENIM JEAN	38X32	Rent	11	0.230	2.53
62	ERIC LOWE	GS1204YELC	SHRT SS ANSI 2	2XLR	Rent	11	0.230	2.53

Based on your usage, some inventory levels were decreased. See Bill Qty col

		SUBTOTAL (ALL PAGES)	333.20
THANK YOU FOR YOUR BUSINESS	<i>NS</i>	FREIGHT	0.00
		TAX	0.00
Delivery received by _____ nS	Signature from handheld acknowledging delive	TOTAL	\$ 333.20

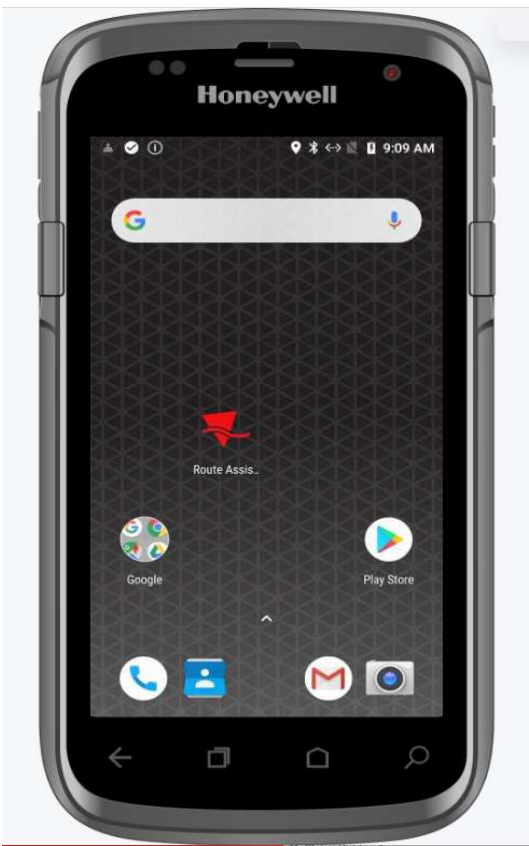


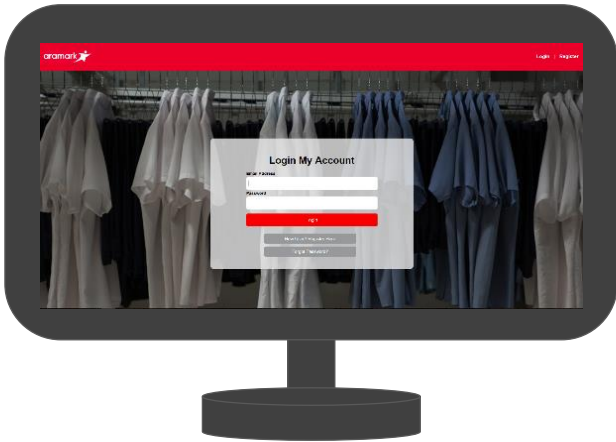
To ensure proper payment application, please write your invoice number on your check, and include the attached coupon with your payment

INVOICE DATE 06/13/2023
ACCOUNT NUMBER 734354000

Bill To:
WVDOH DIST 10 LOC 2270 HARDWOOD LANEATT

PAYMENT DUE 07/10/2023
TOTAL DUE \$ 333.20
INVOICE NUMBER **5450187951**
Payable
To: ARAMARKPO Box 28050New York, NY 10087-8050





Online Account Manager

myaccount.aramark.com

What is the Online Account Manager?

24/7 online access to view and download 12 months of invoices and statements

How to Register

Go to <http://myaccount.aramark.com> and have the following ready:

1

Your **Aramark Account ID**
labeled as Account Number
on your statement
93146000

2

Your **Billing Zip Code** can be
found in the Bill To address.

78259

3

A valid **email address**

Users E-Mail Address

Quick Tips!

- We recommend using the browsers Chrome, Firefox or Internet Explorer
- Pop-ups must be enabled to view and download billing documents. Review the settings/options in the Internet browser you are using if you are not seeing your documents.
- 12 months worth of billing documents are available at this time. If you need older documents, contact customer service.
- If you have a question about your billing documents, customer service will be happy to assist with your questions

Customer Service

800-ARAMARK
aramark-cares@aramark.com



Aramark Customer Portal “My Account”

2.24.2022

Customer Communication - Rental

Key Information for the Customer: Oracle Account Bill to Zip Code

- Each User will have to register with their email and create a password
- Multiple Users can register the same account.
- Each registration can contain multiple accounts

Aramark's Uniform Services New Online Account Manager

On our quest to improve our client experiences, we've created an online account manager to access account information.

What's changing?

As a part of our service model, your Route Sales Representative will review your invoice and obtain your signature on his/her handheld device. A copy of your invoice will then be available to view or download online.

How will this improve my service?

The online account manager, My Account, will provide you with 24/7 access to 90 days of invoices and statements, alleviating the need to contact customer service for recent copies or storing weekly paper invoices from each delivery. You will also have direct access to email our customer service team with any questions, concerns or feedback directly from the portal.



Here's what you will need to register: <http://myaccount.aramark.com>

1

Your **Aramark Account ID** labeled as Account Number on your statement

2

Your **Billing Zip Code** can be found in the Bill To address.

3

A valid email address

How to access My Account after registration?

You have several options:

- Bookmark the portal URL
- Directly input the portal URL into your browser
- Go to www.aramarkuniform.com. The link to access the portal can be found on the homepage.

Need Assistance?

Please contact our customer service team at 800-ARAMARK or aramark-cares@aramark.com

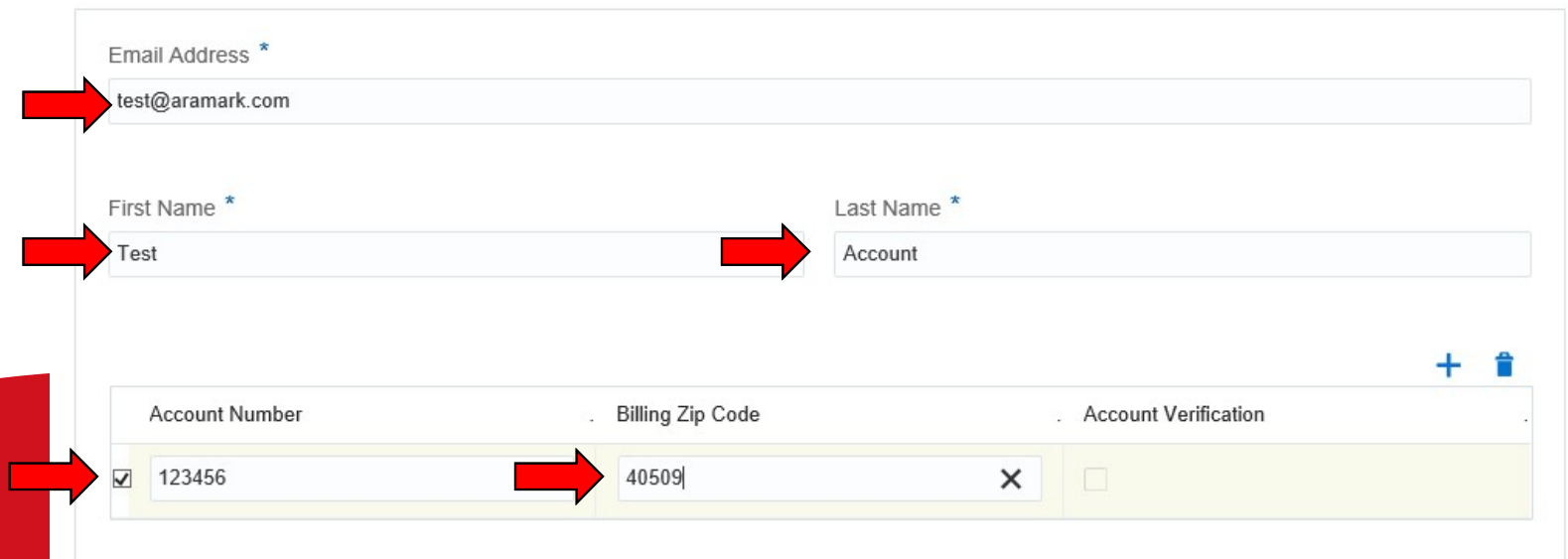
New Account Registration

- New Account Registration
 - Select “New User? Register Here”



- Input information into Required Fields (*) and select “Submit”
My Account Registration

Submit



Email Address *
test@aramark.com

First Name *
Test

Last Name *
Account

Account Number Billing Zip Code Account Verification


123456 40509

New Account Registration

New Account Registration Continued

- Email Verification
 - Select “Complete Registration”


Welcome to your Aramark My Account Kay Tee



reply.email <reply.email@aramark.com>
to ket Show details

Feb 22 (3 days ago)

Inbox ← Reply More ▾



Hi Kay Tee,

To complete registration to view your Invoices and Statements, you will need to activate your account and setup a password

[Complete Registration](#)

Details

If the activate your account link doesn't work, please copy and paste the following URL into the address bar of your browser:

<https://idcs-0cb883576bbd46209c84a6a594573ac3.identity.oraclecloud.com/ui/v1/resetpwd?token=AARh8aUhw4J5K5cI57JADGNu%2BuGzBFY9hdGS%2FFszY9s%3D>

Important: This link will expire on Saturday, February 23, 2019 3:26:16 PM CST.

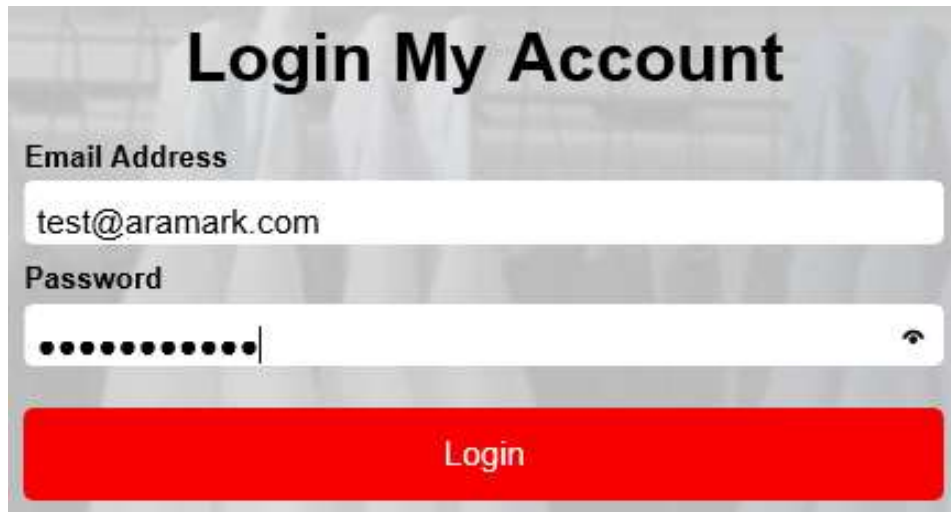
If you don't recognize this message, contact your system administrator at aramark-cares@aramark.com.

[Privacy Statement](#)

This is a system generated message. Do not reply to this message. General marketing opt-out preferences have been over-riden to ensure that you receive this e-mail.

Customer Portal Navigation: Login

➤ Login



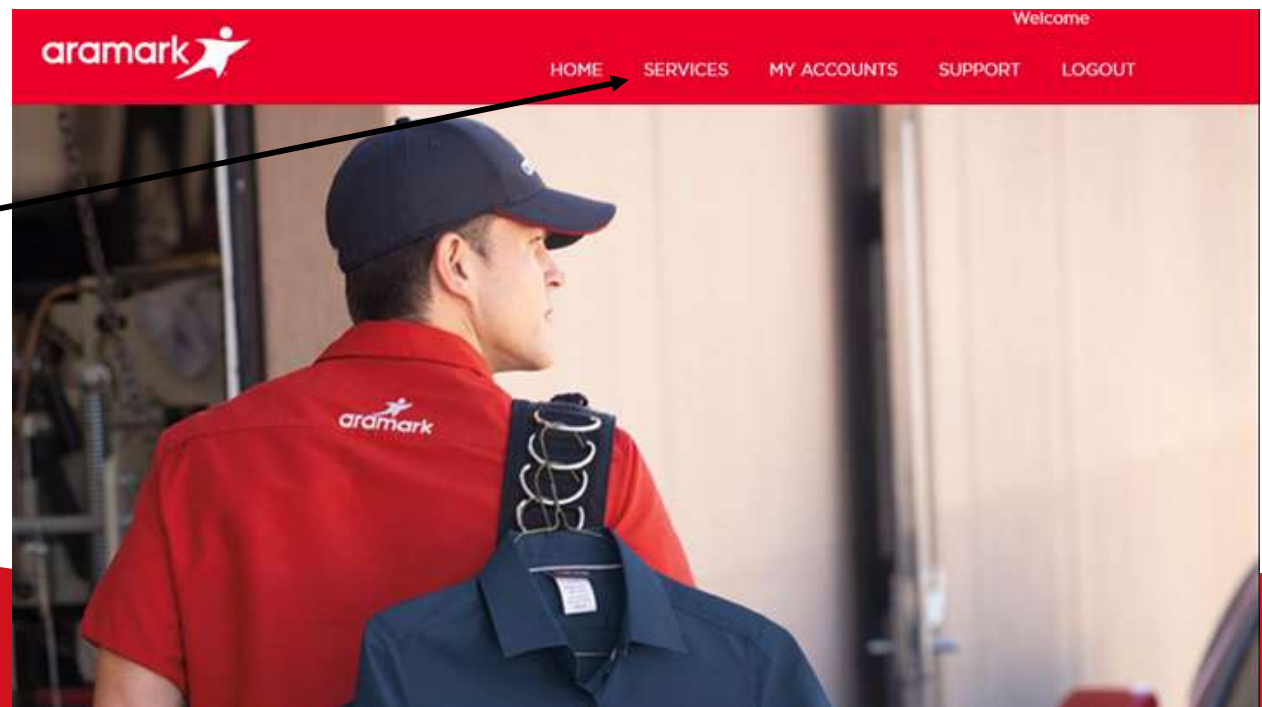
Login My Account

Email Address
test@aramark.com

Password
●●●●●●●●

Login

- Access Invoices and Statements by selecting “Services”
- Select Pay Open Invoices to make Credit Card or ACH payments
- Selection Payment History for a record of payment made on the My Account portal.



Customer Portal Navigation: Search

- Select whether you want to see Invoices, Statements or Consolidated Invoices
- Set the date range you want to view or download
- Additional Options to narrow the information:
 - Input the specific deliver to location
 - Input the specific invoice number
- Click Search

View & Download Billing Documents

Invoices
 Statements
 Consolidated Invoices

From To

Additional Search Parameters (Optional)

Account Number Filter:

Customer ID Filter:

Invoice Number Filter:

* Invoices/Statements for past 3 months will be displayed by default

Customer Portal Navigation: Preview and Download

- Review Results Continued:
 - 1 – Preview document
 - 2 – Download individual document

	Account Number	Customer ID	Invoice Date	Invoice Number		
<input type="checkbox"/>	10652000	792154744	12/27/2018	001591681415		
<input type="checkbox"/>	10652000	792154743	12/27/2018	001591681414		
<input type="checkbox"/>	A1001138	115709	12/23/2018	21342571		
<input type="checkbox"/>	10652000	792154744	12/20/2018	001591673293		
<input type="checkbox"/>	10652000	792154743	12/20/2018	001591673292		
<input type="checkbox"/>	A1001138	115709	12/16/2018	21326730		
<input type="checkbox"/>	A1001138	115709	12/14/2018	21321466		

Download Selected Files

1

2

- 3 – Download multiple documents

Select All

Select Multiple Documents

	Account Number	Customer ID	Invoice Date	Invoice Number		
<input type="checkbox"/>	10652000	792154744	12/27/2018	001591681415		
<input type="checkbox"/>	10652000	792154743	12/27/2018	001591681414		
<input type="checkbox"/>	A1001138	115709	12/23/2018	21342571		
<input type="checkbox"/>	10652000	792154744	12/20/2018	001591673293		
<input type="checkbox"/>	10652000	792154743	12/20/2018	001591673292		
<input type="checkbox"/>	A1001138	115709	12/16/2018	21326730		
<input type="checkbox"/>	A1001138	115709	12/14/2018	21321466		

3a

3b

Download Selected Files

Customer Portal Navigation: Adding Accounts

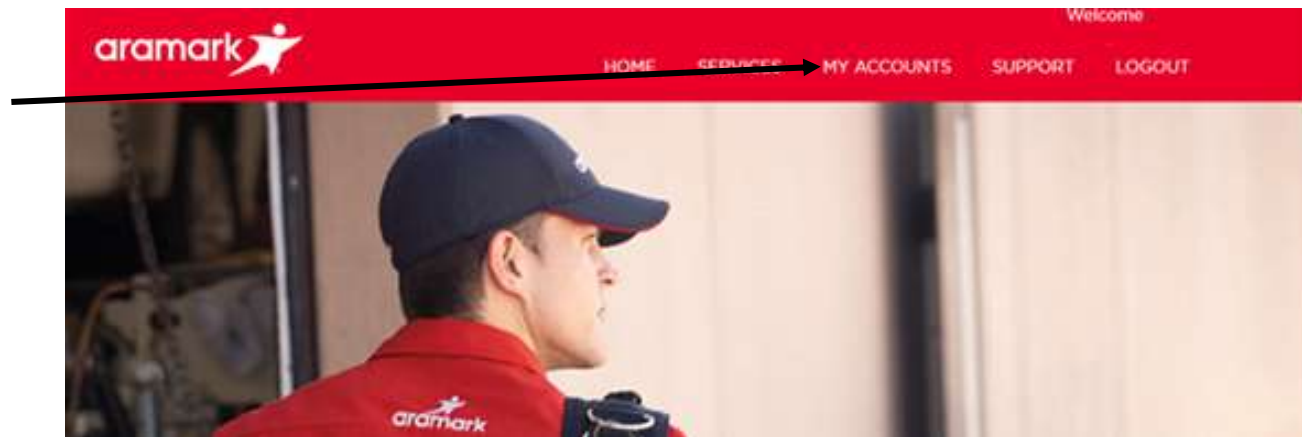
➤ Navigate to “My Accounts” to Add/Remove Accounts

➤ My Accounts

➤ 1 – Add

➤ 2 - Remove

** Always Click Submit after inputting data or making selections



***Add Account**

Account Number	Billing Zip Code	Account Verification
<input type="checkbox"/> 10652000	61615	<input checked="" type="checkbox"/>
<input type="checkbox"/> A1001138	76102	<input checked="" type="checkbox"/>
<input type="checkbox"/> 10015000	92841	<input checked="" type="checkbox"/>

Select Account(s)

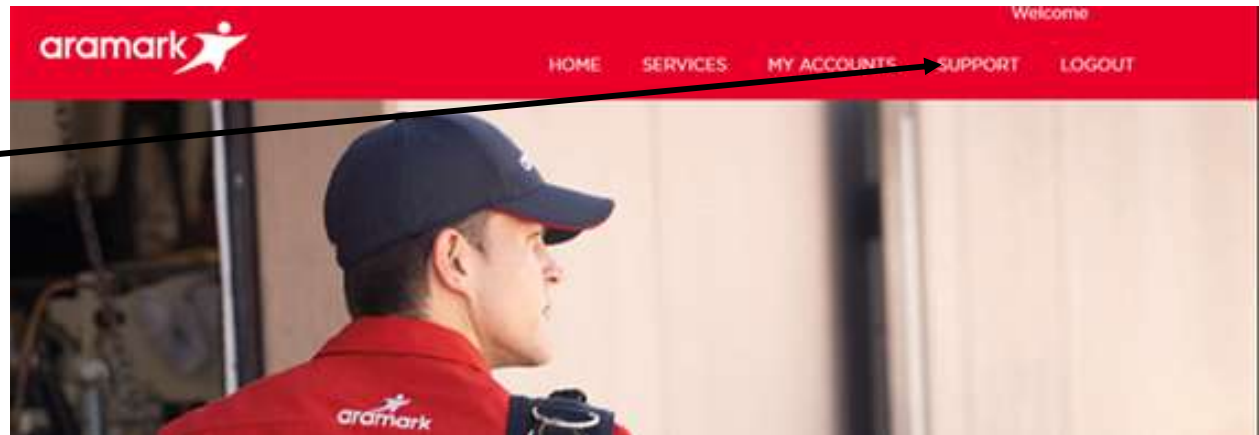
2a

1

2b

Customer Support

- Customer Portal Issues – navigate to “Support”



Questions or Concerns?

Our Customer Support Team is ready to help you with any request:

Rental Assistance

800-ARAMARK (272-6275)

aramark-cares@aramark.com

[Submit Request](#)

Purchase Assistance

800-888-2900

Feedback2-AUS@aramark.com

[Submit Request](#)

Measuring Customer Satisfaction



MEASURING CUSTOMER SATISFACTION

We seek customer feedback regularly to monitor our service levels to help us improve the customer experience

- Every customer is eligible to participate and may be included during the random selection process
- Survey conducted by a third-party research agency
- Survey is distributed via email, mail and phone
- Results allow us to proactively identify and resolve issues
- Responses are reviewed by customer service and Market Centers for follow up



CUSTOMER VISITATION PROGRAM

Our customer visitation program helps confirm the highest levels of customer satisfaction

- Our service team schedules in-person meetings to check in on our services
- We will address any concerns on the spot when possible or help develop an action plan
- We conduct surveys to proactively monitor
 - Product quality & inventory
 - Service levels
 - Value of service



CUSTOMER SERVICE REQUESTS

1. Acknowledge & Set A Plan

- Same Day Response
- Resolve or Agree on a plan

2. Recover & Resolve

- Expectation of resolution by next delivery date or sooner

3. Satisfaction with Resolution

- Confirm satisfaction within 24 – 48 hours of resolution

4. Visitation Program

- Proactively survey each location during an in person visit

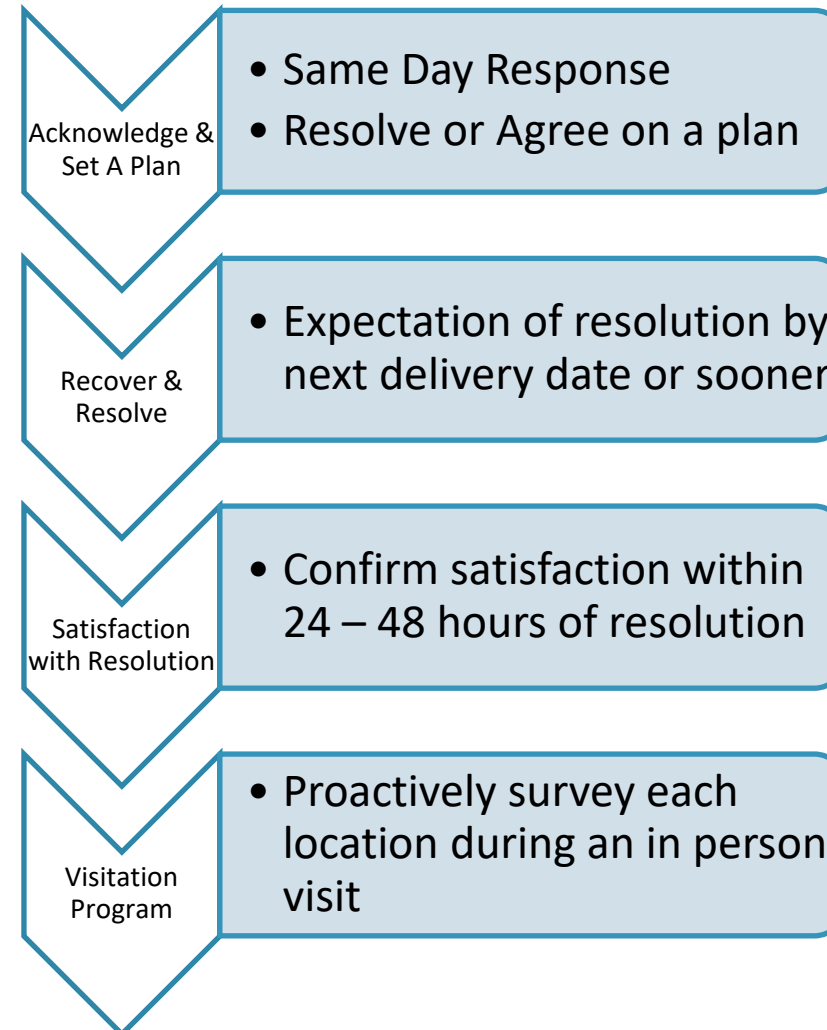
Customer Satisfaction

Product Inquiries Deliveries
MOPS Lockers ORDER INCREASES
REPAIRS TOWELS NEW EMPLOYEE UNIFORMS
SEASONAL CHANGES EQUIPMENT INVOICE QUESTIONS SERVICE QUESTIONS
WORK APPAREL REPAIRS Refer a Friend SAMPLES
Floor Mats RESTROOM SUPPLIES
Uniform Rentals
ANYTHING YOU NEED

reasons to call
1-800 ARAMARK

Please have the following information available when you call:
Company Name | City | Zip Code | Location\Department Name or Number

Customer Service Center: **1-800 ARAMARK (272-6275)**
Customer Service Email: **aramark-cares@aramark.com**
1 Number • 1 Email • All Solutions





Aramark ABS Reporting

Garment Tracking System - Reporting

Our Garment Tracking System (GTS) provides reporting on garment activity and garment history. Standard Reports Available from the GTS System:

- Customer Activity Report – provides details for a given period of time on the number of garments washed, mended, returned, assigned, ordered, inventory assigned to the wearer, and inventory wearer is authorized to have
- In Service Garment Report by Wearer – provides an overview of the inventory each wearer is supposed to have by garment type vs the number of garments that are currently assigned to the wearer.
- Variance Report – provides details about the inventory a wearer is supposed to have vs the actual wearer inventory.
- Garment verification report – provides details about activity at the wearer level for a given time period.
- Activity detail includes
 - number of garments that were picked up at the customer site
 - number of garments in mend status for the given wearer
 - number of garments taken out of service (RTS) from the wearer
 - number of garments that were assigned to the wearer during a given period
 - number of garments delivered to the given wearer

New Billing System Overview



2680 Palumbo Drive
Lexington, KY 40509

Visit us at www.aramarkuniform.com

INVOICE

Attn: Accounts Payable
SAMPLE CUSTOMER
123 MAIN ST
ANYWHERE CA 90212

BILLING INQUIRIES	(800) 504-0328
CUSTOMER SERVICE	(800) ARA-MARK
ACCOUNT NUMBER	123456789
CUSTOMER NUMBER	792515198
INVOICE NUMBER	473001234568
INVOICE DATE	06/16/2019
TERMS	NET 10 EOM
PO #	
NAID	
MARKET CENTER	473
ROUTE NUMBER	45
Page 1 of 2	

Ship
To: TEST LOCATION #123
123 MAIN ST
ANYWHERE CA 90212

A/R BALANCES AS OF 06/16/2019						
TOTAL DUE	CURRENT	1-30 DAYS	31-60 DAYS	61-90 DAYS	91-120 DAYS	OVER 120 DAYS
219.36	219.36	0.00	0.00	0.00	0.00	0.00

WEARER#	WEARER NAME	ITEM	ITEM DESCRIPTION	SIZE	TYPE	BILL QTY	RATE	TOTAL
1	ALFREDO ARELLANO	GP0002BLAK	PANT WORK TWILL	34X32	Rent	11	0.220	2.42
1	ALFREDO ARELLANO	GS0019CHAR	SHRT WORK SS	LGER	Rent	11	0.220	2.42
9	GER LEE	GP0002BLAK	PANT WORK TWILL	32X30	Rent	11	0.220	2.42
9	GER LEE	GS0019CHAR	SHRT WORK SS	MEDR	Rent	11	0.220	2.42
		CE0184BLAK	CRT CABINT DARMAN	EACH	Rent	2	0.500	1.00
		DLL263HORZ	Mat MAT COOKS AUTO REPAI	4X6	Rent	1	6.000	6.00
		DLL263HORZ	Mat MAT COOKS AUTO REPAI	4X6	Rent	1	-6.000	-6.00
		DM0001BLAK	Mat MAT NYLON/RUBBER	3X4	Rent	2	5.000	10.00
		DM0001BLAK	Mat MAT NYLON/RUBBER	3X4	Rent	2	-5.000	-10.00
		DP0018GREN	MOP SYNTHETIC BLN	36	Rent	1	2.000	2.00
		TC0001BLUE	CONT ROLL TOWEL	X	Rent	4	2.500	10.00
		TS0002REDD	SHOP TOWEL PLAIN	18X18	Rent	400	0.050	20.00
		TS0002REDD	SHOP TOWEL PLAIN	18X18	Inventory Maintenance	24	0.850	20.40
			EASYCARE					4.84

See remaining pages of this invoice for a list of all included charges

THANK YOU FOR YOUR BUSINESS

Delivery made on 06/13/19

SUBTOTAL (ALL PAGES)	73.12
FREIGHT	0.00
TAX	0.00
TOTAL	\$73.12

To ensure proper payment application, please write your invoice number on your check, and include the attached coupon with your payment

NEW ROUTING SYSTEM

- Invoices emailed within 24 hours after service has been provided
- Refreshed rental invoice layouts include electronic signature captured at time of service, billing adjustments that occurred during service and payment coupon

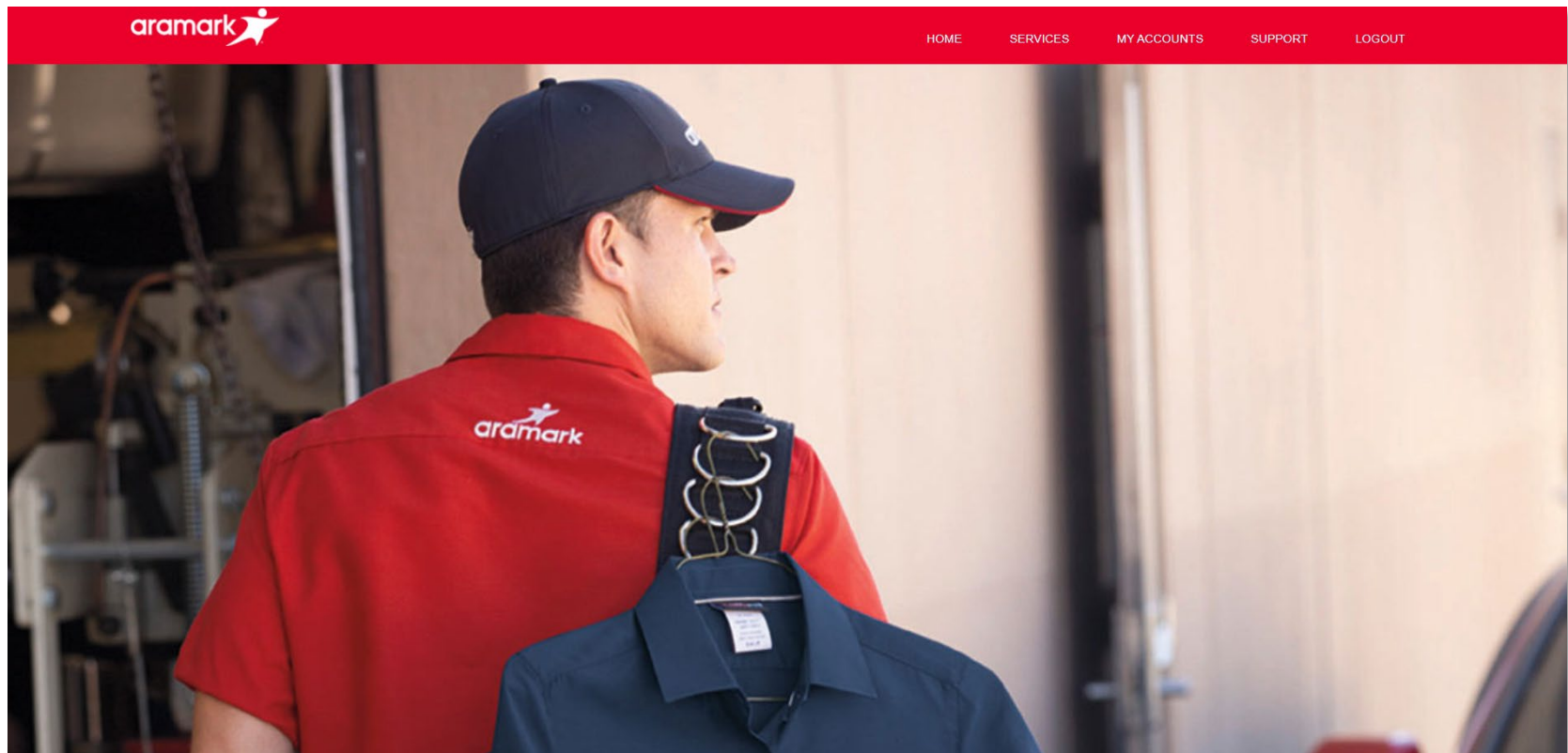
PREVIOUS ROUTING SYSTEM

- Paper invoice delivered at time of service
 - Required customers to contact customer service if invoice was misplaced or for additional copies

New Customer Portal – My Account

BENEFITS

- 24/7 access via myaccount.aramark.com
- View statements and invoices
- Pay invoices electronically
- Contact customer service



On-Site Services

HANDHELD DEVICE

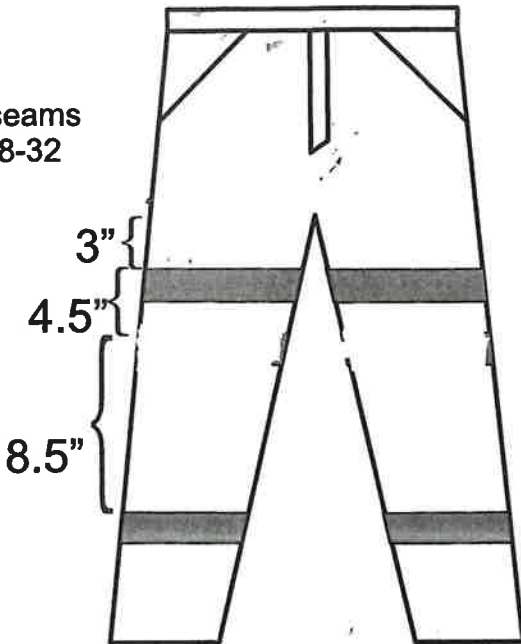
- Our devices and software allow our Route Sales Representatives (RSRs) to:
 - Add product
 - Add new wearers
 - Enter soil count (PUC)
 - Enter allied loss/ruin
 - View customer information such as transactions, products, pricing, wearers and more
 - Scan garments for replacement
 - Assign replacement for lost garments





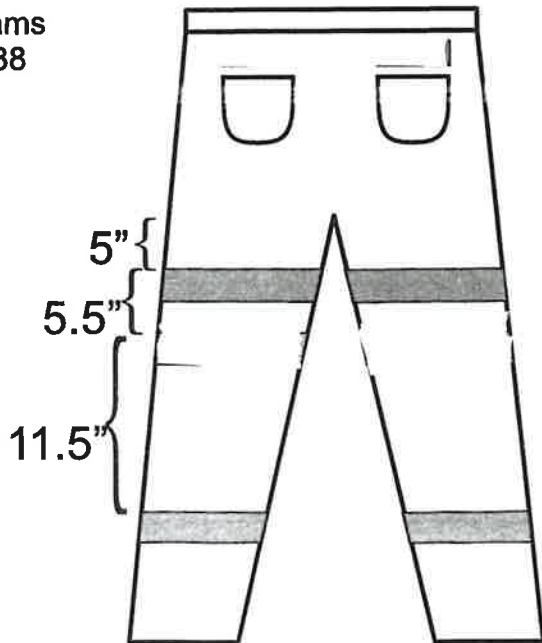
ARAMARK - PANTS

Inseams
28-32



FRONT

Inseams
34-38



BACK

WVDOH

Standard Safety w/ 1/2" ORAFOL reflective - \$14.92
2 1/2" Safety Orange or Safety Green
Item #AR03AOWF PA ORAFOL= Safety Orange*
Item#AR03AGWF PA ORAFOL= Safety Green*

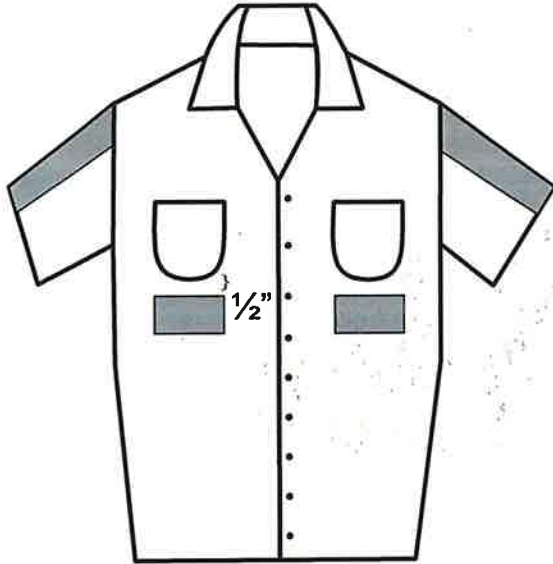
*flats above back
pockets are 1 1/2" Trim

SNP Firebrake w/ 1/2" FR ORAFOL reflective \$17.92
2" Orange or Green
Item #AR03FBO PA ORAFOL= Flame Retardant Orange
Item#AR03FBG PA ORAFOL= Flame Retardant Green



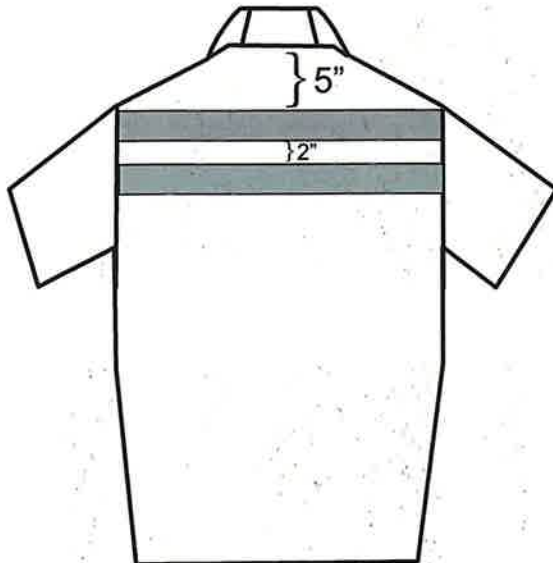


ARAMARK - SHORTSLEEVE SHIRT



FRONT

Standard Safety w/ 1/2" ORAFOL reflective - \$8.84
2 1/2" Safety Orange or Safety Green
Item #AR02AO SS ORAFOL= Safety Orange
Item#AR02AG SS ORAFOL= Safety Green



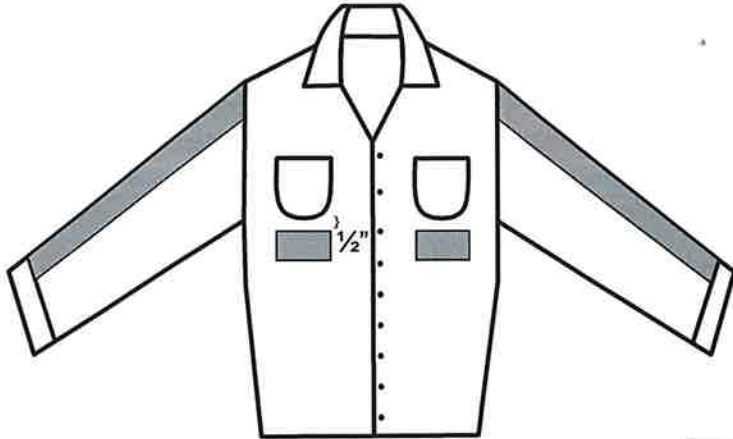
BACK

SNP Firebrake w/ 1/2" FR ORAFOL reflective \$10.60
2" Orange or Green
Item #AR02FBO SS ORAFOL= Flame Retardant Orange
Item#AR02FBG SS ORAFOL= Flame Retardant Green



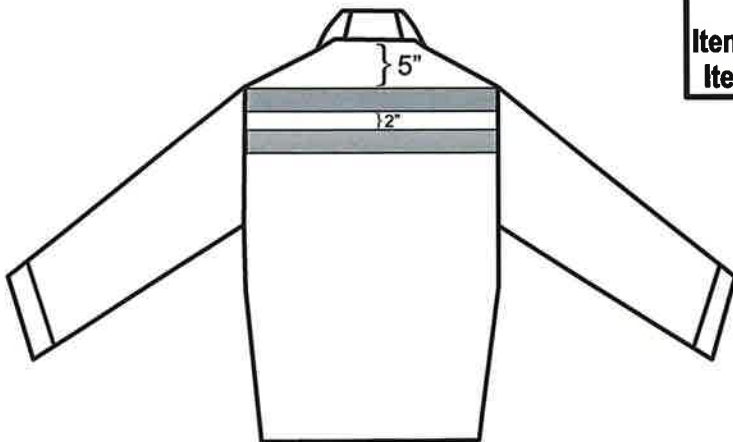


ARAMARK - LONGSLEEVE SHIRT



FRONT

Standard Safety w/ 1/2" ORAFOL reflective - \$9.57
2 1/2" Safety Orange or Safety Green
Item #AR01AO LS ORAFOL= Safety Orange
Item#AR01AG LS ORAFOL= Safety Green



BACK

SNP Firebrake w/ 1/2" FR ORAFOL reflective \$11.63
2" Orange or Green
Item #AR01FBO LS ORAFOL= Flame Retardant Orange
Item#AR01FBG LS ORAFOL= Flame Retardant Green



