



The following documentation is an electronically-submitted vendor response to an advertised solicitation from the *West Virginia Purchasing Bulletin* within the Vendor Self-Service portal at ***wvOASIS.gov***. As part of the State of West Virginia's procurement process, and to maintain the transparency of the bid-opening process, this documentation submitted online is publicly posted by the West Virginia Purchasing Division at ***WVPurchasing.gov*** with any other vendor responses to this solicitation submitted to the Purchasing Division in hard copy format.

Header 1

List View

General Information [Contact](#) [Default Values](#) [Discount](#) [Document Information](#) [Clarification Request](#)

Procurement Folder: 1053663

Procurement Type: Central Purchase Order

Vendor ID: 000000104005

Legal Name: PERKINS EASTMAN ARCHITECTS PC

Alias/DBA:

Total Bid: \$0.00

Response Date: 06/21/2022

Response Time: 12:10

Responded By User ID: e.pope

First Name: Emily

Last Name: Pope

Email: e.pope@perkinseastman.com

Phone: 412-894-8375

SO Doc Code: CEOI

SO Dept: 0613

SO Doc ID: VET2200000001

Published Date: 6/8/22

Close Date: 6/21/22

Close Time: 13:30

Status: Closed

Solicitation Description: Beckley Veterans Nursing Facility
Architectural/Engineering

Total of Header Attachments: 1

Total of All Attachments: 1



Department of Administration
Purchasing Division
2019 Washington Street East
Post Office Box 50130
Charleston, WV 25305-0130

State of West Virginia
Solicitation Response

Proc Folder: 1053663
Solicitation Description: Beckley Veterans Nursing Facility Architectural/Engineering
Proc Type: Central Purchase Order

Solicitation Closes	Solicitation Response	Version
2022-06-21 13:30	SR 0613 ESR06212200000007922	1

VENDOR
000000104005
PERKINS EASTMAN ARCHITECTS PC

Solicitation Number: CEOI 0613 VET2200000001
Total Bid: 0
Response Date: 2022-06-21
Response Time: 12:10:52
Comments:

FOR INFORMATION CONTACT THE BUYER
Tara Lyle
(304) 558-2544
tara.l.lyle@wv.gov

Vendor		
Signature X	FEIN#	DATE

All offers subject to all terms and conditions contained in this solicitation

Line	Comm Ln Desc	Qty	Unit Issue	Unit Price	Ln Total Or Contract Amount
1	Develop A&E EOI & Other Documents For Beckley Facility	1.00000	EA	0.000000	0.00

Comm Code	Manufacturer	Specification	Model #
81101508			

Commodity Line Comments:

Extended Description:

.

Beckley Veterans Nursing Facility

EXPRESSION OF INTEREST FOR ARCHITECTURAL/ENGINEERING SERVICES

JUNE 21, 2022



**PERKINS —
EASTMAN**

Human by Design



**PERKINS —
EASTMAN**

Jerry R. Walleck AIA

Principal-in-Charge

209 South LaSalle Street

Suite 400

Chicago, IL 60604

312 873 6260

j.walleck@perkinseastman.com

Beckley Veterans Nursing Facility

EXPRESSION OF INTEREST FOR ARCHITECTURAL/
ENGINEERING SERVICES

JUNE 21, 2022



June 21, 2022

Tara Lyle
2019 Washington Street East
Charleston, WV 25305

Re: Expression of Interest for Architectural/Engineering Services, Beckley Veterans Nursing Facility

Dear Tara Lyle:

We are pleased to submit our Expression of Interest for architectural and engineering services for the Beckley Veterans Nursing Facility. Our team offers expertise in long-term care design along with extensive experience with the U.S. Department of Veteran Affairs and the West Virginia Department of Administration.

A national expert and thought leader in senior living and healthcare design, Perkins Eastman brings over 35 years of experience and an extensive portfolio of long-term care and residential living for diverse populations. Our proposed team has designed multiple long-term care communities and community living centers for veterans. We are intimately familiar with the Veterans Affairs Small Home Model Design Guide and contributed to the development process for the guide.

Perkins Eastman has a range of experience designing for Department of Veterans Affairs in long-term care, community living centers, small houses, housing for homeless veterans, and healthcare planning. Select experience includes:

- Illinois Veterans Home at Quincy | Quincy, IL
- Minnesota Veterans Homes | Bemidji, Montevideo, and Preston, MN
- Arkansas Department of Veterans Affairs: New Sate Veterans Home | North Little Rock, AR
- VA Illiana Health Care System | Danville, IL
- North Chicago VAMC | North Chicago, IL
- Mercy Housing: VA Illiana Health Care System Housing for Homeless Veterans | Danville, IL

Through our experience, we have developed a strong working relationship with the USDVA and have successfully navigated their State Home grant program each time we've been a partner—delivering projects on time and within budget. Our proposed consultant team is bolstered by regional expertise working directly with the West Virginia Department of Administration and the West Virginia Department of Health and Resources, providing a local presence and the familiarity of local State Agencies that this project requires. We share a commitment to designing spaces that improve the lives of aging adults, their families, and the people that care for them. We are excited by this opportunity and the potential we see for the community.

Thank you for the opportunity to submit our Expression of Interest, we look forward to hearing from you.

Sincerely,

A handwritten signature in black ink, appearing to read "J. Walleck".

Jerry R. Walleck AIA
Principal-in-Charge





TABLE OF CONTENTS

1.0 | QUALIFICATIONS, EXPERIENCE,
AND PAST PERFORMANCE

2.0 | PROJECT GOALS

3.0 | FORMS



An aerial photograph of a university campus. On the left, modern academic buildings with large windows and flat roofs are visible. A winding path leads through green lawns and trees. In the lower-left corner, there is a pond with a small dock and a boat. The right half of the image is overlaid with a semi-transparent orange filter, creating a warm, monochromatic look for the text area.

1.0

QUALIFICATIONS,
EXPERIENCE, AND
PAST PERFORMANCE



Firm Profile

Founded in 1981, Perkins Eastman is a leading architecture, urban design, and interior design firm offering programming, planning, design, and strategic planning services, with a global network of more than 1,000 professionals across 24 interdisciplinary offices.

Veterans Affairs Experience

A national expert and thought leader in senior living and healthcare design, Perkins Eastman brings over 35 years of experience and an extensive portfolio of Small House and Green House® work, including the design of The Green House Prototype®. With work in more than 20 countries and the United States, Perkins Eastman has designed multiple Green Houses and Community Living Centers for Veterans. Perkins Eastman's staff is intimately familiar with the Veterans Affairs Small Home Model Design Guide; Jerry Walleck contributed to the development process and material included in the original guidelines. Additionally, Perkins Eastman has a long history of innovative design for short- and long-term care, with unique experience in culture change and household models of care, rehabilitation programs, and single and multi-story residential household models.

Senior Living Practice

- Principal-level architects lead our Human by Design culture, where we place the user at the heart of all our projects and enable a better future by working as one across our global platform to deliver on our designs.
- We offer experienced, passionate, and knowledgeable planners, architects, and interior designers who focus on the built

environment and its ability to help people—from quality of lifestyle to quality of care.

- More than 90% of our projects include an integrated approach to architecture and interior design services, and our interior designers are involved from the beginning of the process to see that a cohesive design evolves.
- We achieve success on projects both large and small by offering an interactive, transparent process that maintains client involvement.
- We participate in senior living trade conferences, have given more than 400 lectures and web conferences, and wrote *Building Type Basics for Senior Living Design* (John Wiley & Sons, First and Second Editions).

Continuum Experience

- Active adult developments
- Life plan communities
- Independent living apartments, villas, cottages
- Assisted living apartments
- Long term care environments
- Memory support residences
- Geriatric healthcare facilities
- Short-term rehabilitation centers

By the Numbers

- 20 principals committed to senior living
- 20 interior designers focused on senior living
- 30 AIA Design for Aging awards, including the 10-Year Award for Woodside Place and Half Century More's Japan developments for aging adults
- 100+ industry citations for excellence
- 500+ clients over the last 30 years
- 500+ master plans for senior living communities
- 35,000+ skilled nursing rooms
- 30,000+ assisted living apartments
- 60,000+ independent living apartments
- 600+ completed projects, 90% of which integrated architecture and interior design services

Our Unique Approach

What our clients need most need is a strategic partner—one with specialized expertise that can respond to their specific needs and goals. Here is how we deliver on that need.

IDEAS Process

Perkins Eastman IDEAS is a proprietary process—Integrating Design, Economics and Assessment into Strategy—that uses workshops to combine design, marketing, and financial feasibility to quickly create consensus around an organization's strategy before significant investment.

Strategies

The Perkins Eastman IDEAS process—Integrating Design, Economics and Assessment into Strategy—is a highly collaborative approach dedicated to strategies that create forward-looking programs, partnerships, and great senior environments. The process is structured to help providers determine ways to develop new opportunities and to create, reposition, and

reinvent existing services and strategies for seniors in their community. Our workshops can be broadly applied to new life plan communities or as targeted as a branded culinary master plan or Covid-19 environmental assessment.

Research

Our researchers investigate the ways the built environment is experienced by people. Our NextGen staff create passion projects, using the firm's scholarship program to take deeper dives into their ideas and explore the impact on design or create new designs. Our findings support the development of pioneering ideas by challenging assumptions and by testing ideas.

Convergence

Our senior living design teams collaborate with the other practice areas in our firm, including hospitality, healthcare, residential, mixed-use, and education. This convergence of practice areas allows us to challenge the limits of what is traditionally considered senior living, while testing innovation against our depth of experience designing for older adults.

Collaboration

Our process is structured around collaborating with our clients and collaborating with other professionals on the project, including contractors, engineers, project managers, financial advisors, fundraisers, and development managers. We have served in many roles on project teams, from consultant to design architect to executive architect.

The planning phase of our engagements focuses on philosophical goals, explores alternatives, and builds consensus around a shared direction. We emphasize active participation, conscientious listening, and comprehensive documentation with our clients.

Sustainable Design

The building industry uses more energy than any other single sector, and we realize our tremendous obligation and opportunity to address this challenge. We are signatories of the American Institute of Architects 2030 Commitment, to which we report our entire annual portfolio, and we are developing new initiatives to improve the performance of all our work.

Some of our notable sustainable design projects are:

- Peconic Landing: LEED Platinum
- The Summit at Rockwood: LEED Silver
- Felician Sisters: LEED Gold (the first such senior living renovation in the country)
- Franciscan Sisters of St. Joseph: LEED Platinum for Homes (the first to achieve this)
- NewBridge on the Charles: has the Northeast region's largest geothermal system



Consultant Team

H.F. LENZ COMPANY

MEP/FP, Site Observations

H.F. Lenz Company was established 1946 in its present form, under the name H.F. Lenz Company, R.E., and in 1953 the company was incorporated, as a Private Corporation, in Pennsylvania as H.F. Lenz Company. Our projects span the nation, with the heaviest concentration in the Northeast, and exceed \$600 million in MEP, Civil and Structural construction annually. Each market sector—corporate, government, health care, education, and industry—is served by a team of specialists who understand the unique needs of the clients they serve. Our staff consists of 160+ individuals, including 44 Licensed Professional Engineers and 19 LEED Accredited Professionals. Our headquarters is in Johnstown, Pennsylvania with branch offices in Pittsburgh and Lancaster, Pennsylvania, Conneaut, Ohio, and Middletown, Connecticut.

Our firm has been working with the Department of Veterans Affairs since the 1970s and has provided the engineering design for over two million sq.ft. of new and renovated space with a total construction value in excess of \$300 million. Our team is up-to-date with the current VA criteria as we continue to use it for on-going projects. VA criteria is typically more stringent than FGI guidelines and other resources and often is discussed with the facility engineers before proceeding with design. We have consulted with the central office engineer when discrepancies are found or differences exist between VA criteria and desires of the local engineers.

POTESTA & ASSOCIATES, INC.

Civil Engineer

POTESTA was founded in 1997 in Charleston, West Virginia by Mr. Ronald Potesta. Maintaining a diverse staff of 74 experienced engineers, scientists, and support personnel with branch offices in Winchester, Virginia and Morgantown, West Virginia.

POTESTA's engineering staff has a broad background related to the vast field of civil engineering, including utility/infrastructure design, roadway design, development of grading plans, and storm water management. Our diverse staff of engineers, geologists, and scientists is routinely involved in these types of projects and work to support the project teams assigned to these projects on a daily basis to achieve a completed project that meets the client's expectations. POTESTA's design professionals work to complete preliminary and final design plans. Frequent communication is made with the client and other design professionals to review the completed activities and obtain input for the design process.

BRITT, PETERS AND ASSOCIATES

Structural Engineer

Britt, Peters and Associates has been a leader in civil and structural engineering for over 54 years. We've helped plan, design and project-manage thousands of challenging projects for clients with stringent budget, schedule and quality requirements. Our multidisciplinary staff works collaboratively with clients on a local, regional, and national basis across a variety of industries.

Britt, Peters' registered professional engineers and support team are responsible for the structural design of parking decks, hotels, restaurants, offices, banks, churches, apartments, condos, fire stations, factories, and more.

MIDDLETON COST CONSULTING

Cost Estimating

Middleton Construction Consulting (MCC) is a Service Disabled Veteran Owned Small Business (SDVOSB) composed of highly skilled professionals who focus on Construction Cost Estimating and Owner Representation. Our objective is to help our clients complete their projects on time and on budget.

We have recently entered our twelfth year in business, with offices operating in Illinois and Wisconsin. Our experienced staff of cost consultants possess all of the skills necessary to manage our clients' construction costs by providing timely and accurate cost estimates for any commercial construction project, large or small. Our project portfolio has provided us with all of the resources needed to provide a consistent, professional, and reliable service, and our project industries range from healthcare, education, retail, corrections, municipalities, site development, and more. MCC uses all of the latest software and technology to ensure accurate and timely delivery of our cost estimates.

FOOD FACILITIES CONCEPTS, INC.

Food Service Design Consulting

Food Facilities Concepts, Inc. was established in 1989. The founders of the company were two former food service equipment sales people. The company was established when the founders realized that the industry was in need of design professionals focused on the specific needs of their clients and not focused on equipment sales numbers while designing facilities.

Food Facilities Concepts, Inc. specializes in meeting the design requirements of the institutional food service industry. Our design team has experience in planning projects for health care, long-term care, educational, hospitality and industry food service facilities, as well as teaching facilities for culinary schools. We have expertise in all phases of design - from determining project feasibility through installation management. Food Facilities Concepts, Inc.'s design projects encompass small and large scale endeavors; from the renovation of small, outdated serving areas, to the total development of expansive food service departments for new multi-unit facilities.

NOVA

Geotechnical Engineering

Established in 1996, NOVA provides Geotechnical Engineering, Environmental Consulting, Construction Materials Testing and Inspection Services. Today, we have more than 535 team members in 18 offices serving clients throughout the southeastern U.S. comprised of professional engineers, geologists, environmental scientists, LEED accredited professionals, soil/foundation engineers, materials technicians, lab specialists, and support staff. Our local office located at 5504 Commercial Avenue in Raleigh has 28 team members and our local laboratory is accredited with AASHTO for soils, concrete, aggregate and hot mix asphalt testing/inspection; CCRL for concrete sampling, curing, and testing. NOVA's North Carolina license number is: C-2807.



VA COMMUNITY LIVING CENTERS

References | Perkins Eastman



Mike Jandro
State Program Administrative Manager
Minnesota Department of Veterans Affairs
E. mike.jandro@state.mn.us
T. 651.274.4945
Project: Minnesota State Veterans Homes



Gwen Diehl
Veterans Home Coordinator
Illinois Department of Veterans Affairs
E. gwen.diehl@illinois.gov
T. 217.785.4575
Project: Illinois Veterans Home at Quincy



Bill Gilchrist
CEO
Southminster
E. bgilchrist@southminster.org
T. 704.551.6800
Project: Southminster: Embrace Health

References | H.F. Lenz



Michael Redlawsk
Westminster Group Companies
T. 814.833.8900
E. mike@wpperie.com
Project: Lake Erie College of
Osteopathic Medicine



Brian C. Murdock
Project Engineer
North Atlantic Division – NCA
T. 215.381.3787 ext. 4046
E. Brian.Murdock@va.gov
Project: Va Philadelphia Healthcare System,
Corporal Michael J. Crescenz Department Of
Veterans Affairs Medical Center



Thaddeus Kocuba
Facility Manager
Lebanon VA Medical Center
T. 717.272.6621 ext. 4740
E. Thaddeus.kocuba2@va.gov
Project: VA Lebanon Healthcare System

Jerry R. Walleck

AIA | PRINCIPAL-IN-CHARGE



CONTACT

+1 312 873 6260

J.Walleck@perkinseastman.com

EDUCATION

Bachelor of Architecture,
Illinois Institute of Technology,
College of Architecture
Chicago, IL

ASSOCIATIONS

Jerry is a registered architect in the state of Illinois and a member of the American Institute of Architects (AIA), and LeadingAge, and served as the co-chair for the Chicago AIA Housing Committee. His award-winning work has been published in AIA Focus, AIA/LeadingAge Design for Aging Review, Architecture Magazine, Chicago Magazine, DESIGN for Senior Environments, Environmental Design + Construction, and Faith + Form.

Jerry has been responsible for leading the planning and design of projects for the Department of Veterans Affairs at the federal and state level on eight VA campuses, as well as a number of senior housing projects on a variety of scales and levels of care. A leader in Perkins Eastman's senior living practice, he serves as a resource on the design and construction requirements for these types of environments. Jerry also contributed to the development process and material included in the original Veterans Affairs Small Home Model Design Guide. His award-winning work has been recognized by AIA Design for Aging Review, National Association of Home Builders, and Environments for Aging, including an AIA Design for Aging Review Special Recognition Award for the Arkansas Department of Veterans Affairs: New State Veterans Home.

Select Experience

Arkansas Department of Veterans Affairs: New State Veterans Home

North Little Rock, Arkansas

Consulting, planning, and design for 12, 9,500 SF Community Living Centers, each with 12 single occupancy rooms. The project also includes a Community Building at the heart of the campus.

Illinois Veterans' Home at Quincy

Quincy, Illinois

Bridging design services to create a transformative vision for veteran care at the historic campus. The plan includes a 251,000 sf, 210-unit long term care building and a 75,000 sf, 80-unit domiciliary.

Minnesota Veteran Homes: Bemidji, Montevideo, and Preston

Various Locations, Minnesota

Programming, planning, and design for three new veterans homes offering quality care and amenities. The facilities follow the USDVA's Small House Model Design Guide.

US Department of Veterans Affairs (VA): Community Living Centers

North Chicago, Illinois

Consulting, planning, and design for two Small Houses, designed under the Community Living Center guidelines. Each home will be approximately 7,000 sf with 10 to 12 private bedrooms.

US Department of Veterans Affairs (VA): Green Houses®

Danville, Illinois

Consulting, planning, and design for two certified Green Houses®, designed under the Community Living Center guidelines. Each home will be approximately 7,000 sf with 10 to 12 private bedrooms.

Mercy Housing: VA Illiana Health Care System Housing for Homeless veterans

Danville, Illinois

Planning, programming, and architecture for a new 109,400 sf intergenerational supportive housing development for Veterans and their families.

**PERKINS —
EASTMAN**

Ramu Ramachandran

AIA, LEED AP | PROJECT MANAGER



CONTACT

+1 312 873 6262

R.Ramachandran@perkinseastman.com

EDUCATION

Bachelor of Architecture,
Indian Institute of Technology
Kharagpur, India

Master of Architecture, University
of Illinois at Urbana-Champaign
Champaign-Urbana, Illinois

Master of Science in Civil Engineering,
University of Illinois at Urbana-Champaign
Champaign-Urbana, Illinois

ASSOCIATIONS

Ramu is a registered architect in the state of Illinois. He is a member of the American Institute of Architects (AIA) and a LEED Accredited Professional.

Ramu is experienced in the design, management and delivery of long-term care, educational and large-scale, complex mixed-use projects. A team leader in master planning and architectural design, he brings a deep knowledge of USDVA guidelines and requirements that helps balance design excellence with campus resilience and redundancy. Ramu leads the coordination of grant submission preparations for state VA home projects, keeping campus-wide needs in balance with crafting shared visions of transformation at our State Veterans Homes.

Select Experience

Arkansas Department of Veterans Affairs: New State Veterans Home

North Little Rock, Arkansas

Consulting, planning, and design for 12, 9,500 SF Community Living Centers, each with 12 single occupancy rooms. The project also includes a Community Building at the heart of the campus.

Illinois Veterans' Home at Quincy

Quincy, Illinois

Bridging design services to create a transformative vision for veteran care at the historic campus. The plan includes a 251,000 sf, 210-unit long term care building and a 75,000 sf, 80-unit domiciliary.

Minnesota Veteran Homes: Bemidji, Montevideo, and Preston

Various Locations, Minnesota

Programming, planning, and design for three new veterans home offering quality care and amenities. The facilities follow the USDVA's Small House Model Design Guide.

Blue Skies of Texas

San Antonio, Texas

Planning, architecture, and interior design for a major repositioning of Blue Skies of Texas' two existing CCRC campuses. The project includes a new skilled care and rehabilitation center, 3 new four-story independent living villas, and repositioned dining venues

Maravilla at The Domain

Austin, Texas

Architectural and interior design of a new 342,000 sf community, including 145 independent living, 55 assisted living, and 35 memory care units; and Center for Healthy Living. Organized into three mid-rise towers with a ground level Town Center, the community design reflects a resort-styled hospitality model.

Grand Rapids Dominican Sisters Marywood Center

Grand Rapids, Michigan

Design and implementation of a new, 80,000 sf, award-winning facility that blends assisted living, skilled care, and memory support care.

Greg Gauthreaux

AIA | PROJECT DESIGNER



CONTACT

+1 704 927 6516

g.gauthreaux@perkinseastman.com

EDUCATION

Bachelor of Architecture
Louisiana State University
Baton Rouge, Louisiana

ASSOCIATIONS

Greg is a licensed architect registered in the state of Illinois.

Greg Gauthreaux has experience with housing for veterans, senior living, affordable housing, residential, community support, and hospitality design. His expertise in software technologies and passion for sustainable design practices supports project teams through all phases of design and construction. Greg's project design experiences includes a number of award-winning senior living communities.

Select Experience

Arkansas Department of Veterans Affairs: New state Veterans Home

Little Rock, Arkansas

Planning and design for a new Veterans Home for twelve residents and a community building.

Minnesota Veteran Homes: Bemidji, Montevideo, and Preston

Various Locations, Minnesota

Programming, planning, and design for three new veterans homes offering quality care and amenities. The facilities follow the USDVA's Small House Model Design Guide.

US Department of Veterans Affairs (VA):

Community Living Centers

North Chicago, Illinois

Consulting, planning, and design for two Small Houses, designed under the Community Living Center guidelines. Each home is approximately 7,000 sf with 10 to 12 private rooms.

US Department of Veterans Affairs (VA): Green Houses®

Danville, Illinois

Consulting, planning, and design for two certified Green Houses®,

designed under the Community Living Center guidelines. Each home is approximately 7,000 sf with 10 to 12 private rooms.

Southminster

Charlotte, North Carolina

Life Plan Community reinvention to include:

- New small villa building (relocate displaced cottage residents);
- New health center, amenities, and back of house operations;
- Renovate existing health center into apartments; and
- Develop four new villa buildings near the new health center or, alternatively, on adjacent land (acquisition).

Blue Skies of Texas

San Antonio, Texas

Planning and design for a major repositioning of Blue Skies of Texas' two existing Life plan Communities. The project resulted in new and renovated facilities encompassing all parts of the senior living continuum.

**PERKINS —
EASTMAN**

Doug Metcalf

AIA, NCARB | PROJECT ARCHITECT



CONTACT

+1 704 927 6524

d.metcalf@perkinseastman.com

EDUCATION

Bachelor of Architecture
University of Illinois
Chicago, Illinois

ASSOCIATIONS

Doug Metcalf is a registered architect in the State of North Carolina and California.

Doug Metcalf is a member of the American Institute of Architect's and is NCARB certified.

Doug has a strong Project Manager/Architect background for large scale custom projects: being involved at schematic design and programming, championing construction documents production, managing consultants and vendors for coordination and quality control, with full construction administration to project completion. He has experience with managing joint venture design teams with owner and user interface, as well as managing construction administration for fast track and multi-prime projects.

Select Experience

VA Health Care Center

Kernersville, North Carolina

New 400,000 sf facility providing a wide array of services for veterans, including primary care, complete diagnostic imaging services, ambulatory surgery, mental health, urology, invasive and non-invasive cardiology services, ophthalmology, audiology, and a complete range of rehabilitative medical services, including physical and occupational therapy and prosthetic support.

Durham VA Health Care System

Durham, North Carolina

Renovation of the Post-Anesthesia Care Unit (PACU).

Ernest Childers Community Based Outpatient Clinic

Tulsa, Oklahoma

A 140,000 sf developer-led design/build outpatient clinic that promotes efficient form, circulation, and systems. Thoughtful interior design solutions create a non-institutional, patient-centered care environment. Designed to established Green

Globes objectives, the design's sustainable solutions include efficient infrastructure, thoughtful siting, and green material selection.

Atria at Foster Square

Foster City, California

New 194,000 sf, seven-story senior living facility offering 131 independent and assisted living residences, and 24 homes for persons with Alzheimer's disease.

Legacy at Mills River Life Care Community

Mills River, North Carolina

Two new independent living, assisted living and memory care facilities totaling 500,000 sf.

Augusta University Medical Center: Pharmacy Master Planning with Clean Room for IV Production

Augusta, Georgia

Development of a space program and master plan to right-size the Pharmacy Department and meet current pharmacy clean room regulation (USP 800) to manage manufacturing of Hazardous drugs totaling 9,600 sf.

Corey Cappello

LEED GA | INTERIOR DESIGNER



CONTACT

+1 312 873 6248

c.cappello@perkinseastman.com

EDUCATION

Bachelor of Science, Business Management, Calumet College of St. Joseph's, Whiting, IN

Masters of Arts, Interior Design, Harrington College of Design, Chicago, IL

ASSOCIATIONS

Corey is a LEED Green Associate.

As a former resource librarian, Corey uses her vast knowledge of materiality to design spaces that are both highly functional and aesthetically pleasing, allowing for connectivity and productivity. With a keen interest in research-based design, Corey utilizes her knowledge of materiality in conjunction with the end-user, creating successful interior spaces throughout projects ranging from master plans to a single story refresh. As an interior designer in Perkins Eastman's Chicago office, her expertise includes the selection of interiors finishes, furnishings, and equipment, as well as specifications.

Select Experience

Minnesota Veteran Homes: Bemidji, Montevideo, and Preston

Various Locations, Minnesota

Programming, planning, and design for three new veterans homes offering quality care and amenities. The facilities follow the USDVA's Small House Model Design Guide.

Maravilla at the Domain

Austin, Texas

Architectural and interior design of a new 370,000 sf community, including 142 independent living, 54 assisted living, and 34 memory care units; and Center for Healthy Living. Organized into three mid-rise towers with a ground level Town Center, the community design reflects a resort-styled hospitality model.

Anthology of King of Prussia

King of Prussia, Pennsylvania

Architecture and interior design for 100 independent living, 60 assisted living, and 32 memory care units. Amenities located on the top floor include a theater, multipurpose room, family room, salon, and dining.

Central Baptist Village Refresh

Norridge, Illinois

Paint and fabric specifications for a bathing room refresh, and furniture and fabric selections for an activity room in the skilled care building.

Eben Ezer Lutheran Care Assisted Living

Brush, Colorado

Interior design for a new building on an existing campus; includes a single-story wing of 20 memory care apartments and a two-story wing of 54 assisted living apartments.

Franciscan Ministries:

Addolorata Villa Repositioning

Wheeling, Illinois

Master planning and design for a holistic repositioning of current campus. The conceptual plan will serve as a framework for the repositioning and includes a new main entry procession and front door, new independent living, new small house memory care, repositioning of the exiting skilled nursing, two dining venues, enhancement of the wellness and rehab facilities, and a new chapel.

J. David Hoglund

FAIA, LEED AP | RESOURCE PRINCIPAL



CONTACT

+1 412 894 8301

d.hoglund@perkinseastman.com

EDUCATION

Master of Architecture, University of Illinois, Urbana-Champaign
Champaign County, Illinois

Bachelor of Science, Architecture,
Rensselaer Polytechnic Institute
Troy, New York

ASSOCIATIONS

David is a licensed architect in several states, including West Virginia, and is certified by the National Council of Architectural Registration Boards (NCARB). He is also licensed by the Ontario Association of Architects. David is a LEED Accredited Professional.

David is a member of the Pittsburgh Chapter of the American Institute of Architects (Past President), the College of Fellows of the AIA, LeadingAge, The Global Ageing Network, and the American Seniors Housing Association

He has served as a board member, building committee chairperson, or advisor to many organizations, including United Methodist Services for the Aging.

**PERKINS —
EASTMAN**

David is a principal and executive director at Perkins Eastman and is a leader in the firm's senior living practice. An international leader in senior care design, David brings extensive knowledge and skills in programming, planning, and design for older adults. He is a frequent contributor to industry publications and presents on issues of changing demographics, facility repositionings, culture change and trends impacting design, life plan communities, assisted living, long-term care and memory support environments.

Select Experience

Illinois Veterans' Home at Quincy *Quincy, Illinois*

Bridging design services to create a transformative vision for veteran care at the historic campus. The plan includes a 251,000 sf, 210-unit long term care building and a 75,000 sf, 80-unit domiciliary.

Goodwin House Alexandria *Alexandria, Virginia*

Renovation and expansion, including new five-story urban Small House model for long-term care, improved dining options, updated amenities and additional assisted and independent living apartments. The project attained LEED Silver.

Hebrew SeniorLife: NewBridge on the Charles

Dedham, Massachusetts
Intergenerational community with housing for 750 aging adults in a variety of living accommodations including 50 cottages, 24 villa apartments, 146 apartments, 51 traditional assisted living apartments, 40 memory support rooms, and a 268-resident health care center with

220 long-term care residents and 48 sub-acute patient, as well as a setting for 450 students in the Rashi School.

Presbyterian SeniorCare: **Woodside Place of Washington** *Washington, Pennsylvania*

Planning and design of a new, 34,000 sf assisted living memory support residence with 36 resident rooms and a separate adult day care. The design approach includes a strong focus on resident health and wellness and incorporates sustainable design strategies.

MorseLife: The Tradition *West Palm Beach, Florida*

Design of a new community offering 102 apartments and 42 assisted living apartments.

MorseLife: The Tower *West Palm Beach, Florida*

Design of a new independent living building offering 184 luxury apartments with refined interior design elements and exceptional outdoor features.

David F. Bacci

P.E. | MEP PRINCIPAL-IN-CHARGE



EDUCATION

Bachelor of Science, Mechanical Engineering Technology, 1986, University of Pittsburgh at Johnstown

ASSOCIATIONS

Licensed Professional Engineer in Pennsylvania, California, Connecticut, Georgia, Indiana, Maine, Maryland, New York, New Mexico, North Carolina, Nevada, Oregon, South Dakota, Texas, Vermont, New Hampshire, Virginia, and West Virginia

American Society of Heating, Refrigerating and Air-Conditioning Engineers

Past President, Johnstown Chapter - Pennsylvania Society of Professional Engineers

Mr. Bacci has extensive experience in the design of assisted living, independent living, skilled living centers, as well as master planning and design of healthcare facilities including medical office buildings, acute care hospitals, and research facilities. Mr. Bacci is also a responsible Project Manager, performing project scheduling duties, coordination and supervision of project design teams, preparation of reports and cost estimates, and other project management functions.

Select Experience

Veterans Affairs Medical Center

Lebanon, Pennsylvania

New 17,000 sq.ft. Behavioral Health Outpatient Facility, LEED Silver

Veterans Affairs Medical Center

Huntingdon, West Virginia

Design for a new 17,000 sq.ft. Psychological Residential Rehabilitative Treatment Program Facility

Veterans Affairs Medical Center

Clarksburg, West Virginia

Expansion and renovation of approximately 15,000 sq.ft. of existing space converted to new Inpatient Behavioral Health Program

LECOM

Erie, Pennsylvania

New 210,000 sq.ft., 245-bed Skilled Nursing Facility

Ohio Department of Veterans Affairs

Sandusky and Georgetown, Ohio

Ten year Master Plan for both assisted living complexes. Investigation of utilities and infrastructure on both sites

Veterans Affairs Medical Center

Coatesville, Pennsylvania

New single story, 16,000 sq.ft. hospice building connected to the existing nursing home

Veterans Affairs Medical Center

Philadelphia, Pennsylvania

Strategic master plan to address facility and site infrastructure improvements needed to support changes to services forecast during the next decade

Evermore Senior Living

Woodbridge, Virginia

Two new assisted living homes

H.F. LENZ
COMPANY
Engineering

Robert G. Mickle

P.E. | ELECTRICAL ENGINEER



EDUCATION

Bachelor of Science, Architectural Engineering, 1979, Pennsylvania State University

ASSOCIATIONS

Licensed Professional Engineer in Pennsylvania, Arizona, Connecticut, Delaware, Maryland, New Jersey, New York, North Carolina, Texas, Virginia, and West Virginia

Institute of Electrical and Electronics Engineers (IEEE)

Mr. Mickle is responsible for the design of complete electrical systems for facilities. His key responsibilities include: coordination of building electrical, telephone and cable television services with respective utility companies; lighting design; power system design; fire alarm system design; sound system design; clock system design; stage lighting design; nurse call system design; emergency power system and lighting system design; electrical connection of HVAC, plumbing, and other miscellaneous equipment; writing of specifications; design of 5 KV and 12 KV underground electrical distribution systems; design of electrical systems for health care facilities; design of roadway lighting systems; design of electrical systems for military facilities; checking of plans and specifications for quality control; project management, building study and evaluation, and commissioning.

Select Experience

Veterans Affairs Medical Center

Lebanon, Pennsylvania

New 17,000 sq.ft. Behavioral Health Outpatient Facility, LEED Silver

Veterans Affairs Medical Center

Huntingdon, West Virginia

Design for a new 17,000 sq.ft. Psychological Residential Rehabilitative Treatment Program Facility

Veterans Affairs Medical Center

Clarksburg, West Virginia

Expansion and renovation of approximately 15,000 sq.ft. of existing space converted to new Inpatient Behavioral Health Program

LECOM

Erie, Pennsylvania

New 210,000 sq.ft., 245-bed Skilled Nursing Facility

Ohio Department of Veterans Affairs

Sandusky and Georgetown, Ohio

Ten year Master Plan for both assisted living complexes. Investigation of utilities and infrastructure on both sites

Veterans Affairs Medical Center

Coatesville, Pennsylvania

New single story, 16,000 sq.ft. hospice building connected to the existing nursing home

Veterans Affairs Medical Center

Philadelphia, Pennsylvania

Strategic master plan to address facility and site infrastructure improvements needed to support changes to services forecast during the next decade

Evermore Senior Living

Woodbridge, Virginia

Two new assisted living homes

**H.F. LENZ
COMPANY**
Engineering

Ryan W. Buff

P.E., CEM | MECHANICAL ENGINEER



EDUCATION

Bachelor of Architectural Engineering,
2005, The Pennsylvania State University

ASSOCIATIONS

Licensed Professional Engineer
Pennsylvania and Ohio

Certified Energy Manager, sponsored by
the Association of Energy Engineers

American Society of Heating,
Refrigerating and Air-Conditioning
Engineers

Pittsburgh Chapter - Pennsylvania Society
of Professional Engineers

Mr. Buff is experienced in the master planning and design of research facilities, health care facilities including acute care hospitals, and medical office buildings. He is also experienced in the design of heating, ventilating, and air conditioning systems including steam, hot water, chilled water, refrigeration, and air distribution systems. Mr. Buff's involvement has encompassed field survey of existing conditions, engineering analyses, systems design, and the preparation of cost estimates. He has been involved in several energy conservation studies.

Select Experience

Veterans Affairs Medical Center

Lebanon, Pennsylvania

New 17,000 sq.ft. Behavioral Health
Outpatient Facility, LEED Silver

Veterans Affairs Medical Center

Huntingdon, West Virginia

Design for a new 17,000 sq.ft.
Psychological Residential
Rehabilitative Treatment
Program Facility

Veterans Affairs Medical Center

Clarksburg, West Virginia

Expansion and renovation of
approximately 15,000 sq.ft. of
existing space converted to new
Inpatient Behavioral Health Program

Veterans Affairs Medical Center

Philadelphia, Pennsylvania

Renovation of the clinical lab in 10
phases and maintain operations
during construction. Same Day
Surgery renovation of existing

25,000 sq.ft. designed in multiple
phases to maintain operations.
Includes new PACU, patient family
spaces, pre-surgery exam rooms, and
support spaces. OR Department
renovation of 25,000 sq.ft., in 5
distinct construction phases changes
to services forecast during the
next decade.

LECOM

Erie, Pennsylvania

New 210,000 sq.ft., 245-bed Skilled
Nursing Facility

Ruby Memorial Hospital

Morgantown, West Virginia

Renovation projects totaling more
than 47,000 sq.ft. and additions
totaling more than 176,000 sq.ft.
including a long-term acute care unit

H.F. LENZ
COMPANY
Engineering

Jeffrey L. Jarvis

PLUMBING/FIRE PROTECTION DESIGNER



EDUCATION

Associate Degree, Specialized
Technology, Mechanical Drafting, 1988,
Hiram G. Andrews Center, Johnstown, PA

ASSOCIATIONS

ASSE 6005 Certified Medical Gas
Specialist

American Society of Plumbing Engineers,
Medical Gas Professional Healthcare
Organization

Mr. Jarvis is highly experienced in all aspects of the design and commissioning of plumbing systems including medical gas systems, acid waste and vent, plumbing fixture requirements, decontamination chambers and complete plumbing system requirements for health care, correctional, institutional, industrial, educational, and commercial facilities. He also has several years of hands-on experience with a variety of field plumbing healthcare systems including laboratory, medical gas, and balancing return systems. Mr. Jarvis coordinates with other trades, municipal fire protection authorities, utility companies, and with the Project Engineer and project Architect.

Select Experience

Veterans Affairs Medical Center

Lebanon, Pennsylvania

New 17,000 sq.ft. Behavioral Health
Outpatient Facility, LEED Silver

Veterans Affairs Medical Center

Huntingdon, West Virginia

Design for a new 17,000 sq.ft.
Psychological Residential
Rehabilitative Treatment
Program Facility

Veterans Affairs Medical Center

Clarksburg, West Virginia

Expansion and renovation of
approximately 15,000 sq.ft. of
existing space converted to new
Inpatient Behavioral Health Program

LECOM

Erie, Pennsylvania

New 210,000 sq.ft., 245-bed Skilled
Nursing Facility

Ohio Department of Veterans Affairs

Sandusky and Georgetown, Ohio

Ten year Master Plan for both assisted
living complexes. Investigation
of utilities and infrastructure on
both sites

Veterans Affairs Medical Center

Coatesville, Pennsylvania

New single story, 16,000 sq.ft.
hospice building connected to the
existing nursing home

Veterans Affairs Medical Center

Philadelphia, Pennsylvania

Strategic master plan to address
facility and site infrastructure
improvements needed to support
changes to services forecast during
the next decade

Brook Grove Foundation

Sandy Spring, Maryland

Renovation of a 7,500 sq.ft. Senior
Living Facility

H.F. LENZ
COMPANY
Engineering

Dana L. Burns

P.E., P.S. | CIVIL PRINCIPAL-IN-CHARGE



EDUCATION

M.S. Civil Engineering,
West Virginia University

B.S. Civil Engineering,
West Virginia University

ASSOCIATIONS

Professional Engineer – West Virginia,
Illinois

Professional Surveyor – West Virginia

Dana's areas of specialization include management of design and permitting of civil, environmental, geotechnical, and mining engineering projects. Siting, design, and permitting of industrial and municipal waste disposal sites; reclamation of abandoned mine lands; and development of stormwater management plans and groundwater sampling programs. Environmental/reclamation liability assessments. Development of site plans for commercial and industrial facilities including hydrologic and hydraulic analyses. Expert witness testimony. Directs engineering division including day-to-day operation of headquarters and three branch offices concerning staffing, coordination, training, business development, and overall management of technical and support staff.

Select Experience

University of Charleston – Principal-in-Charge for the following projects:

- Development of topographic mapping of campus
- Evaluation of storm sewer system
- Civil site services – UC Pharmacy School, New Hall, Middle Hall, and Brotherton Hall
- Design of new campus entrance roadway

Marshall University – Principal-in-Charge for the following projects:

- 400 bed housing project
- Biotechnology Center
- Fifth Avenue parking and 6th Avenue parking facility
- Jomie Jazz Center
- Childcare Center
- Mid-Ohio Valley Center
- Campus landscape master use plan
- Campus improvements project
- MU Graduate College South Charleston campus

- Student Center and Henderson Center
- Bookstore addition
- University Heights

Glenville State University – Principal-in-Charge for the following projects:

- Student Residence Hall
- Athletic Convocation Center and Forestry/Survey Class Center

Tucker County Industrial Park – Principal-in-Charge for the design which included water and sewer lines, stormwater management design, roadway design, pavement design, site grading plan, master plan, and geotechnical exploration/foundation recommendations.

Principal-in-Charge for site grading plans, stormwater management system, site surveying, roadway/parking lot design, wetland delineation/mitigation, and construction monitoring for the 400,000-square foot Coldwater Creek distribution center in Parkersburg, West Virginia.



Christopher A. Grose

L.R.S. | CIVIL PROJECT MANAGER



EDUCATION

M.S. Geological Engineering,
University of Missouri-Rolla

B.S. Civil Engineering,
West Virginia Institute of Technology

ASSOCIATIONS

Licensed Remediation Specialist – West
Virginia

Christopher's areas of specialization include geological/geotechnical engineering related to subsurface exploration studies, soil and rock slope design, landslide causation studies, foundation system design, surface/subsurface hydrogeology, ground subsidence, contaminant transport and groundwater flow modeling. Planning, design, and permitting of natural gas production well pads and access roads. Geological study of hazardous waste remediation sites, CERCLA/SARA, RI, and FS report compilation, geological and geotechnical aspects of siting and design of municipal and industrial waste landfills.

Select Experience

Preparation of foundation investigations for several large structures including a parking garage and student housing complex at Marshall University in Huntington, West Virginia. Tasks included development of subsurface exploration program, soils/rock sampling, testing program, and preparation of a final geotechnical report.

Responsible for development of geotechnical and geological recommendations as well as development of stabilization designs for many failed soil/rock slopes in West Virginia. This work included initial site reconnaissance visits, development of a subsurface exploration study and materials testing program, evaluation of stabilization alternatives, and construction plan preparation.

Completion of numerous subsurface exploration studies for active soil slope landslide failures associated with the development of natural gas production well pads and access

roads. Work included the layout, surveying, and logging of subsurface borings to determine the depth and extent of the slope failures. Following testing efforts, the failed slopes were modeled using computer-based slope stability design models to determine a stable configuration including the addition of rock buttresses, toe keys, underdrains, mid-slope keys, etc. Final stabilization plans were then prepared for the client allowing bidding and selection of a repair and stabilization contractor to perform the work.

Travelers Insurance/City of Charleston – Project included a subsurface exploration study, engineering design, and global stability evaluation of a failed soil slope in a residential neighborhood on Bona Vista Drive for the City of Charleston, West Virginia. The recommended slope stabilization method was to install a soldier beam and lagging retaining wall along an existing paved roadway (supporting the buried utilities) with the remainder of the failed slope below being removed and replaced with compacted soil backfill.



Mark Rickher

P.E. | STRUCTURAL ENGINEER



CONTACT

980.235.2624

mrickher@brittpeters.com

EDUCATION

B.S. Architecture
University of Illinois

Master of Architecture
(Structures)
University of Illinois

ASSOCIATIONS

American Institute Steel Construction,
American Consulting Engineers Council,
Consulting Engineers Council of
North Carolina

Registered in: NC, MS, VA, WV, AL, GA,
MA, PA, NY

Mark is responsible for managing and designing large scale multi-phase, fast-track, and design-build ventures. This role brings him into direct contact not only with our clients but with many of the largest owners and contractors in the country.

Mark's background in both architecture and structure engineering enables him to bridge the communication gap that frequently arises between architects, engineers, and contractors. This background has proven extraordinarily beneficial in proceeding with the design of fast-track and short schedule projects with only limited architectural design concept information available. He has provided an important element of our firm's successful reputation for over 30 years amongst the owners and clients that we have worked with. This success is the reason for the many continued repeat clients that our firm enjoys.

Select Experience

VAMC Mental Health Building

Fayetteville, NC

Structural Engineer for a new 16,000 s.f. Mental Health Building. This is a steel framed structure that was constructed as a two story building with provisions for two additional future levels. Const. Cost: \$9M

ICU Addition - Salem VAMC

Salem, VA

Structural Engineer for the 9500 s.f. ICU Addition. This project consisted of erecting a new steel framed roof over an existing concrete framed structure. Analyzed the existing structural conditions to be able to frame a new level on top of the existing structure. Const. Cost: \$8.0M

New Center for Rehabilitative Services - VAMC

Columbia, SC

Structural Engineer for the new two story 15,000 s. f. Rehab Center. Designed the composite steel floor framing, the steel bar joist roof and the concrete masonry shear wall lateral force resisting system and the concrete foundations. Const. Cost: \$8.8M

New Parking Deck - Louis A. Johnson VAMC

Clarksburg, WV

Structural Engineer for the new three story 430 car precast parking garage. The project will consist of precast structural members supported on drilled caissons. The lateral force resisting system will be precast shear walls. Const. Cost: \$8.0M



Tom Middleton

CPC | LEAD COST CONSULTANT



CONTACT

608.960.9444

Tom@middleton-cc.com

EDUCATION

Bachelor of Arts International Business
Frostburg State University

ASSOCIATIONS

American Institute of Constructors 2015

Tom leads cost estimating services for all projects. He has 26 years in the commercial construction industry leading many major projects to successful completion. His experience ranges from healthcare to commercial buildings to schools and corporate headquarters. Tom has worked in both direct, hands-on, field roles as well as project leadership roles. Based on his intimate knowledge of the construction process he understands the nuances of taking an idea from concept to completion.

Tom served in the United States Army for over 22 years and retired in 2011 from the Wisconsin Army National Guard. During his time in the armed forces, Tom oversaw the personnel and training needs for large combat units. He served in the Middle East, Korea and Haiti.

Select Experience

Sierra Vahcs Community Living Center

Reno, NV

Lead cost estimator for the construction of a new, 13,900 SF long term care facility housing 12-20 single patient bedrooms.

John R. Moses Skilled Nursing Facility King, WI

Lead cost estimator for the new 257,537 SF 24-hour skilled nursing facility which includes 192 beds within 16 households in a home-like setting which contain shared kitchen, dining, and living spaces. Worked throughout the design phases to establish and maintain the project's budgets.

Lovell Vamc Renovate Three Wards Of CLC Building 134

North Chicago, IL

Lead cost estimator for the renovation of the 30,360 GSF community living center.

Quincy Veterans' Home Nursing Home And Domiciliary

Quincy, IL

Lead cost estimator for the new 300,000 SF nursing home and domiciliary which included 340 single-occupancy beds with integral restrooms with showers, selective rooms to accommodate bariatric care, memory loss care accommodations, site improvements, and demolition to accommodate the new construction.

Black Hills Vahcs Domiciliary Renovation

Hot Springs, SD

Lead cost estimator for the renovation of Building 8, a 24,560 GSF, three-story building, to provide patient privacy by constructing private rooms, offices and administrative function spaces, an elevator to comply with ADA requirements, and total HVAC system replacement.



Michael Ventresca

FCSI | FOOD SERVICE DESIGN PRINCIPAL



CONTACT

724.777.1681

mventresca@ffcinc.biz

EDUCATION

Associates in Specialized Technology of
Computer Aided Drafting and Design, ITT
Pittsburgh, PA

ASSOCIATIONS

Foodservice Consultants Society
International

Michael has over 23 years experience in the food service industry. His experience ranges from small scale renovations, managing installations, and the planning of large scale multi-venue facilities. Michael is the owner and principal in charge of all projects at FFC, Inc. He will be involved in the entire process from schematic design through construction administration.

Michael initiates the design process by focusing on the clients needs, vision, and menu prototype. He develops layouts focusing on process flow through the facility with flexibility in equipment selections and how equipment is built-into a facility from an MEP perspective. His experience with detailing drawings, managing large scale installations of equipment, and years of construction administration work allow him to lead his team in developing a set of highly detailed construction and bid documents. Special attention to minimizing the impact of commercial equipment in order to enhance the resident experience is a particular area of focus that Michael employs. This includes how equipment is integrated and utilizing equipment with certain characteristics that lessens its impact to the facility. Michael was also the lead food service designer in the first Reset Certified restaurant in the world.

Select Experience

Jewish Geriatric Services

Longmeadow, Massachusetts

Braxton County Senior Center

Sutton, West Virginia

Fox Hill Village

Westwood, Massachusetts

New Bridge on the Charles

Dedham, Massachusetts

Goodwin House Small Houses

Alexandria, Virginia

Goodwin House Amenities

Alexandria, Virginia

Woodside Place of Washington

Washington, Pennsylvania

Glacier Hills IL

Ann Arbor, Michigan

The VA Home of Quincy

Quincy, Illinois

Inova Loudoun Medical Center

Leesburg, Virginia

Friendship Village

Pittsburgh, Pennsylvania

UMC The Shores

Ocean City, New Jersey

The Woodlands at Furman

Greenville, South Carolina

VA Home Erie

Erie, Pennsylvania



James W. Niehoff

P.E. | GEOTECHNICAL PRINCIPAL



EDUCATION

Georgia Institute of Technology, BS Civil Engineering

Georgia Institute of Technology, MS, Civil Engineering

ASSOCIATIONS

American Society of Civil Engineers
Geo-Institute, Deep Foundations Committee
Geo-Institute, Shallow Foundations Committee
Deep Foundations Institute

REGISTRATIONS

South Carolina
North Carolina
Arizona
Colorado
Florida
Georgia
Hawaii
New Mexico
Oregon
Tennessee
Utah
Washington

Jim Niehoff is a Senior Geotechnical Engineer with NOVA Engineering & Environmental. He holds B.S. and M.S. degrees in civil engineering from Georgia Tech and is a registered professional engineer in 12 states. He has served as a geotechnical consultant on over 4,000 projects covering all 50 states as well as in 10 foreign countries during his 42-year career. Some of his notable projects include the Olympic Stadium in Atlanta, the Wynn Hotel and Casino in Las Vegas, the Ritz Carlton Residences in Honolulu, and the Omni Convention Center Hotel in Louisville. While he primarily works on projects involving new construction, he has served as an expert witness on over 40 projects involving geotechnical failures. He is the author of over a dozen technical papers and articles relating to geotechnical engineering. He served on the Board of Editors of the Journal of Geotechnical and GeoEnvironmental Engineering of the ASCE for 10 years and is a Life Member of the ASCE.

Select Experience

Rural Health Womens Center Cmt
Aiken, SC

Bayonet Point Medical Plaza - Geo
Hudson, FL

Benton House Florence
Florence, SC

Gaffney Senior Living
Gaffney, SC

Anmed Health Central Family Medicine
Central, SC

Training Facility For Family Health Cent
Orangeburg, SC

Rural Health Womens Center
Aiken, SC

Au Columbia County Medical Center Site
Grovetown, GA

Lmc Saluda Springs Parcel Geo
Lexington, SC

App. Reg. Wmc - Central Energy Plant
Boone, NC

Caromont Regional Med. Ctr. Tower Additi
Gastonia, NC

Appalachian Regional Hcs Expansion
Boone, NC

Novant South Charlotte
Charlotte, NC

Appalachian Reg. Wmc Expansion Supp.
Boone, NC

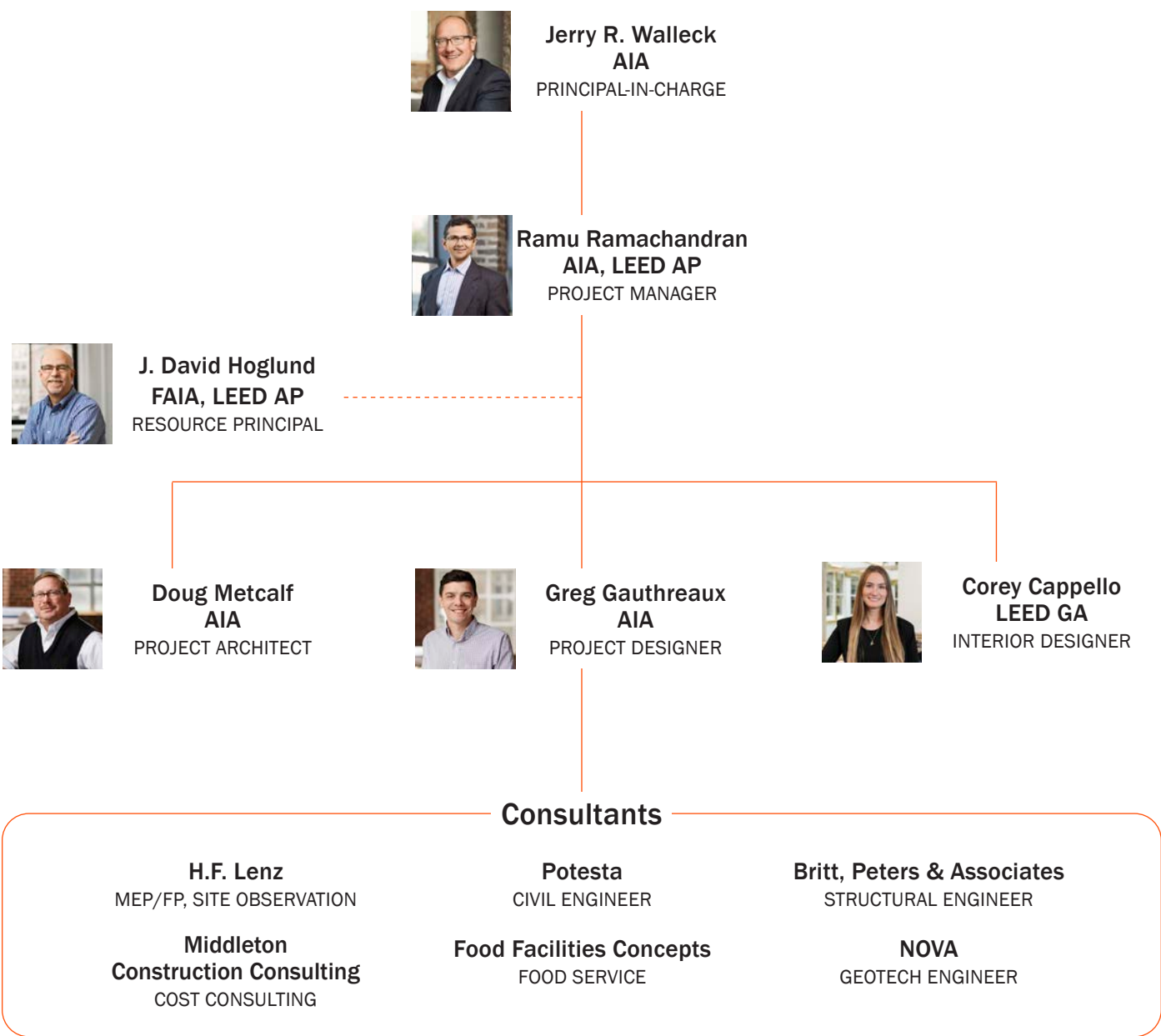
Novant S. Charlotte Campus
Charlotte, NC



Staffing Plan

Our proposed team organization is tailored to address the challenges and opportunities presented by the Beckley VA project. Its composition is basic to our management plan. Our technical strength and expertise has been structured into every level of the team organization, providing leadership to each stage of the process. The core leadership of Perkins Eastman offers specialized expertise in the highest level of building design and state of the art planning and design. Our team brings significant experience on senior living and VA projects.

If selected, our team is committed to be fully available for this project.





MINNESOTA VETERANS HOME: MONTEVIDEO



MINNESOTA VETERANS HOME: MONTEVIDEO

Arkansas State Veterans Home

ARKANSAS DEPARTMENT OF VETERANS AFFAIRS | NORTH LITTLE ROCK, AR

SIZE
87,100 sf
(8,092 sm)

DESIGN SERVICES
Planning,
Architecture,
Interior Design

PIC / PROJECT
MANAGER
Jerry Walleck
T 312.873.6260
E j.walleck@
perkinseastman.com

PROJECT DESIGNER
Greg Gauthreaux
T 312.873.6252
E g.gauthreaux@
perkinseastman.com

The ADVA implemented significant change from an institutional model of care to a resident-centered, small house model.

When the Arkansas Department of Veterans Affairs (ADVA) was faced with a need to create more housing for veterans, they looked to the U. S. Department of Veterans Affairs' national movement as a model for their new style of care. Each resident home is 9,600 sf and designed under the VA's Community Living Center Design Guide. All 12 resident rooms in each home are single occupancy with a private bathroom. Two designated couples rooms are sized to accommodate two residents each. Common areas are centrally located and feature natural light and ventilation through large windows and clerestory glazing. Front and back porches provide connection to the outdoors.

The community building acts as the heart of the campus—a centrally located destination for residents and staff. The building can accommodate large events while also expressing an intimacy that is inviting to smaller groups. A central lobby and gallery space offer pre-function space for events with residents and the surrounding community.





Illinois Veterans Home at Quincy

ILLINOIS CAPITAL DEVELOPMENT BOARD; ILLINOIS DEPARTMENT OF VETERANS' AFFAIRS | QUINCY, ILLINOIS

SIZE

Long Term Care:
251,000 sf
Domiciliary:
75,000 sf

DESIGN SERVICES

Planning,
Architecture,
Bridging Documents

PROJECT MANAGER

Ramu Ramachandran
T 312.873.6262
E r.ramachandran@
perkinseastman.com

A phased campus redevelopment sets a new standard of excellence for veteran care.

The Illinois Veterans Home at Quincy plans to transform veteran care and set a new standard of excellence through a phased redevelopment of its historic campus. Working collaboratively with campus leadership and the Illinois Department of Veterans Affairs, Perkins Eastman provided bridging design services to help create a 50 year master plan that emphasizes superior support and wellness for veterans.

The oldest and largest veterans home in the state, the campus has more than 25 buildings across a 210 acre site. To honor its rich history, the design reorients new buildings around its original core, creating ample access to the heart of the campus and a strong sense of place. Throughout the site, indoor/outdoor spaces are oriented in different directions for residents to engage with nature in a variety of ways. Perkins Eastman also designated pathways and connectors within the landscape to enhance wayfinding and encourage walkability.





Minnesota Veterans Home

STATE OF MINNESOTA: STATE DESIGNER SELECTION BOARD |
BEMIDJI, MONTEVIDEO, AND PRESTON, MINNESOTA

SIZE

Bemidji -
92,000 sf
(8,547 sm)

Montevideo -
106,000 sf
(9,848 sm)

Preston -
67,000 sf
(6,225 sm)

DESIGN SERVICES

Planning,
Programming,
Architecture

PIC/PROJECT MANAGER

Jerry Walleck
T 312.873.6260
E j.walleck@
perkinseastman.com

PROJECT DESIGNER

Greg Gauthreaux
T 312.873.6252
E g.gauthreaux@
perkinseastman.com

The new Veterans Homes provide long-term care for eligible residents in their communities, meeting them where they are.

The goal for these new Veterans Homes is to provide long-term care for eligible residents and “meet them where they are.” Taking a community based approach, the Minnesota Department of Veterans Affairs is creating housing for veterans within, or close to, the communities they already know and call home. The new Veterans Homes are located in Bemidji, Montevideo, and Preston, Minnesota.

At Bemidji and Montevideo, 72 residents are divided into four households, while at Preston, 54 residents are split between three households. Every household at each site has been organized to follow the USDVA's Small House Model Design Guide; comprised of 18 private rooms, each with their own bathroom, and are paired together as neighborhoods sharing a resident courtyard. The flexible, universal household design accommodates various needs including long-term care, dementia, respite, and rehabilitation. A town center at each site provides greater amenity spaces for veteran residents to gather.





Embrace Health at Southminster

SOUTHMINSTER | CHARLOTTE, NORTH CAROLINA

SIZE
200,000 sf
(45,290 sm)

DESIGN SERVICES
Planning,
Programming,
Architecture

PROJECT MANAGER
Brian Shirley
T 704.927.6529
E b.shirley@
perkinseastman.com

PROJECT DESIGNER
Greg Gauthreaux
T 312.873.6252
E g.gauthreaux@
perkinseastman.com

Southminster embraces, connects, and integrates all people within their entire care community. Embrace Health is a substantial contribution to this mission.

The IDEAS process, led by Perkins Eastman and fueled by this spirit of connectivity, led the team to position the new healthcare building between two formerly disjointed parts of the campus. Embrace Health now serves as a literal connection that integrates independent living with skilled care, assisted living, memory support, and dining and gathering spaces. The program is organized by a communicating spine that connects two levels of below-grade parking, four 15-bed skilled care households wrapping a central outdoor plaza, and 25 assisted living apartments, along with dining, entertaining, and socialization spaces for residents and staff.





Illiana Health Care System: Community Living Center

U.S. DEPARTMENT OF VETERANS AFFAIRS | DANVILLE, ILLINOIS

SIZE
45,000 sf
(4,182 sm);
7,500 sf
(697 sm) per CLC

DESIGN SERVICES
Planning,
Architecture,
Interior Design

AWARDS
AIA Westchester/
Mid-Hudson, Design
Awards: Citation

National Association
of Home Builders
(NAHB), Best of
Seniors Housing
Award: Platinum
Winner, Assisted
Living Facility-Large

Contemporary Long
Term Care, Design
Excellence Assisted
Living

PROJECT MANAGER
Sarah Blatnick
T 312.873.6275
E s.blatnick@
perkinseastman.com

An innovative CLC for a healthy male population, designed using the Small Housing model of residential living and care.

The U.S. Department of Veterans Affairs (VA) is creating new and renovated Community Living Centers (CLCs) on many of its medical campuses throughout the country. Perkins Eastman designed six of the first new CLCs: two at the VA Illiana Health Care System in Danville, IL, and four at the North Chicago VAMC, IL.

Each CLC is approximately 7,500 sf with 10 to 12 private rooms. Perkins Eastman worked with the VA to create home-like environments that are appealing to their heavily male population, offering environments that differ from the primarily female dominated “small house” projects that have been developed in recent years. The CLCs feature open living areas and kitchens, short hallways, and direct views to common areas from sleeping rooms.

The projects are designed under the VA's Community Living Center guidelines, and the residences at Danville are among the VA's first CLCs that are also certified Green Houses®.





Cannon Place

MERCY HOUSING LAKEFRONT | DANVILLE, ILLINOIS

SIZE
109,400 sf
(10,164 sm)

DESIGN SERVICES
Planning,
Programming,
Architecture

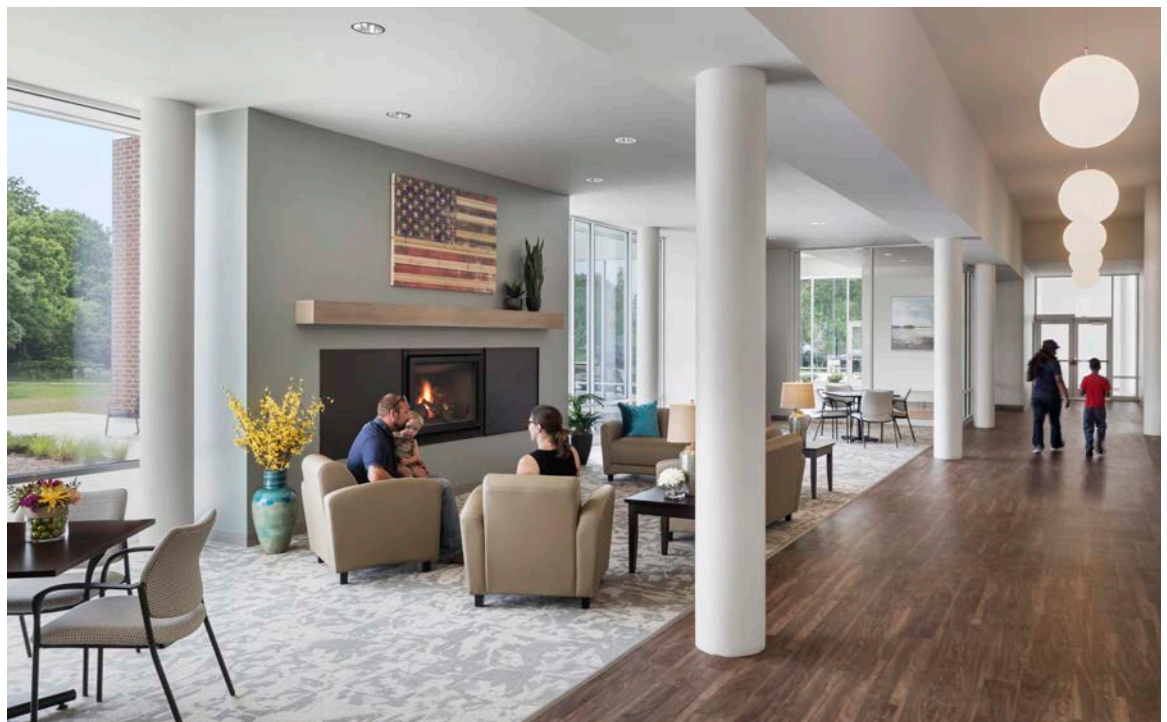
SUSTAINABILITY
FEATURES
LEED BD+C: New
Construction v2009,
Silver (Certified)

PROJECT MANAGER
Gina Paradowicz
T 312.873.6252
E j.paradowicz@
perkinseastman.com

An inter-generational supportive housing development for Veterans and their families on the VA Illiana Health Care System campus.

Perkins Eastman has partnered with Mercy Housing to create an inter-generational supportive housing development for Veterans and their families on the VA Illiana Health Care System campus. The multi-phased development is part of the Veteran Administration's national Enhanced-Use Lease program that seeks to reuse underutilized VA property to create safe, affordable, permanent housing for homeless veterans and their families.

The first phase of the development includes a community center and 65 apartments. Ranging in size from studios to three-bedrooms, the apartments are designed to accommodate a diverse mix of single and family residents. Supporting the VA's mission of providing a housing model geared towards enabling Veterans to achieve self-sufficiency and live independently, a new connected community center includes supportive services, counseling offices, and a job-training center.





H.F. Lenz



Veterans Affairs Medical Centers

VETERANS AFFAIRS MEDICAL CENTER *Huntington, West Virginia*

- › New 17,000 sq.ft. Psychological Residential Rehabilitative Treatment Program (PRRTP) Facility
- › HVAC renovations to Buildings 12 and 15
- › 600-ton chiller and cooling tower addition
- › Complete HVAC renovation and upgrade to Building 12
- › Chilled water system upgrade, Building 15

VETERANS AFFAIRS MEDICAL CENTER *Clarksburg, West Virginia*

- › Renovate Behavioral Health, Units 4A and C
- › Renovate Behavioral Health Unit 4B
- › Medical gas systems were upgraded and expanded to create 100% redundancy, correct code and system deficiencies, and provide engineering and maintenance personnel with accurate as-built drawing
- › Electrical design

VETERANS AFFAIRS MEDICAL CENTER *Lebanon, Pennsylvania*

- › New 17,000 sq.ft. Behavioral Health Outpatient Facility – designed to attain LEED Silver
- › Campus-wide IT Infrastructure Upgrade
- › Pharmacy Gap Analysis
- › Oncology Renovation

VETERANS AFFAIRS MEDICAL CENTER *Coatesville,, Pennsylvania*

- › New 16,000 sq.ft. Hospice addition

VETERANS AFFAIRS MEDICAL CENTER *Butler, Pennsylvania*

- › Telephone site preparation for 33 buildings
- › Chapel
- › Library
- › Patient bath rooms
- › Street lights

VETERANS AFFAIRS MEDICAL CENTER *Martinsburg, West Virginia*

- › Cafeteria/dining hall renovation

VETERANS AFFAIRS MEDICAL CENTER *Erie, Pennsylvania*

- › Long-term Care Renovation
- › Electrical Master Plan

RELEVANT PROJECTS



CLIENT	PROJECT	SCOPE OF SERVICES
Stonerise Healthcare	Eastbrook Addition	Geotechnical evaluation and site development services for an approximate 38,000-square-foot addition in Charleston, West Virginia.
RC General Contractors	Family Health Associates Office Building	Civil and geotechnical engineering for the development and construction of a one-story physicians' office building in South Charleston, West Virginia. Also designed stormwater management plan for the office building and parking.
Elkins Rehabilitation and Care Center	Building Addition	Topographic surveying/mapping, permitting, and civil engineering design services for construction of additional rehabilitation and patient care facilities (10,000 square feet), exterior walkways and entrances, and a parking lot.
Edgewood Summit	Wing "D" Assisted Living Addition	Civil and geotechnical engineering services and surveying consisting of hydrology recommendations, design recommendations and construction layout services for the addition, including building foundations, site grades, access roads, and utility services.
Associated Architects, Inc.	WV Water Development Authority Office Building	Site topographic survey and utility mapping, geotechnical exploration and foundation recommendations report, civil/site design, and permitting for a proposed 14,500 square foot, two-story office building and parking lot on 2.75-acre site in Charleston, West Virginia.
Cabela's/Ridgeline	Retail Store	Civil engineering and design services for a 80,000 square foot building, over 400 parking spaces, 3 entrances from public and private roadways, a plaza area, RV park area, dog kennel area, and landscaping on 10-acre parcel in Charleston, West Virginia.
Cross Development	Dollar General Retail Store	Site plan for development, geotechnical evaluation and reporting, and development of grading plan to excavate approximately of 50,000 cubic yards, design of turn-lanes, pavement widening along Route 522, and commercial entrance, and development of E&S control plans for a new store in Morgan County, West Virginia.
Copper Beech Townhome Communities, LLC	Student Housing	Design plans and specifications for a 40-acre student housing development containing 31 residential buildings, clubhouse, and parking. Scope of services also included permitting, geotechnical evaluations, storm water design, utility coordination, and construction stakeout in Morgantown, West Virginia.
Carl M. Freeman Communities	The Villages at Coolfont Resort	Engineering and environmental consulting services for a second-home community with high-end amenities on the Coolfont Recreation property in Morgan County, West Virginia. Scope of services included an ALTA survey, design and permitting for potable water and wastewater treatment facilities and water storage and distribution system, permitting for development a new lake along with upgrades/expansion of the existing lake, and roadway and stormwater management plans.

Britt, Peters & Associates

BRITT, PETERS & ASSOCIATES RELEVANT PROJECTS

- Southminster Terraces 3 & 4, Charlotte, NC: \$30.0 MM
- Southminster Terraces 1 & 2, Charlotte, NC: \$20.0 MM
- Southminster Healthcare Expansion, Charlotte, NC: \$60.0 MM
- Branchlands Memory Care and Assisted Living, Charlottesville, VA: \$30.0 MM
- Christ's Sanctified Holy Church Skilled Nursing Facility, Fort Valley, GA: \$7.0 MM
- Harrington Park, Augusta, GA: \$10.0 MM
- Meadows Park, Vidalia, GA: \$17.0 MM
- Chelsey Park, Dahlonega, GA: \$17.0 MM
- Ansley Park, Newnan, GA: \$10.0 MM
- Zebulon Park, Macon, GA: \$10.0 MM
- Stevens Park, Augusta, GA: \$10.0 MM
- Village at Germantown, Memphis, TN: \$50.0 MM
- Twin Lakes, Cincinnati, OH: \$35.0 MM
- Capstone Village, Tuscaloosa, AL: \$44.0 MM
- NC Veterans Home, Fayetteville, NC: \$7.5 MM
- VAMC Nursing Home Care Unit, Asheville, NC: \$10.0 MM
- Glenaire Presbyterian Home and Retirement Community, Cary, NC: \$26.0 MM
- Tryon Estates Retirement Community, Columbus, NC: \$31.0 MM
- The Forest at Duke Retirement Community, Durham, NC: \$22.0 MM
- Building 1 D-Wing Emergency Dept. Expansion, Fayetteville, NC: \$10.0MM
- New CLC Fayetteville VAMC, Fayetteville, NC: \$14.0MM
- Kernersville VA Healthcare Center, Kernersville, NC: \$60.0MM
- Behavioral Health Center, James E. Van Zandt VAMC, Altoona, PA: \$4.5MM
- Renovation of Building 2, VA Butler Healthcare, Butler, PA: \$2.5MM
- Boiler Plant Replacement, Wm. Jennings Bryan Dorn VAMC, Columbia, SC: \$10.0MM
- Utility Plant Upgrade, Salem VAMC, Salem, VA: \$10.0MM
- New Boiler Plant, Erie VAMC, Erie, PA: \$10.0MM
- Central Utility Plant, Lebanon VAMC, Lebanon, PA: \$10.0MM
- Pharmacy Renovation, Birmingham VAMC, Birmingham, AL: \$3.0MM
- HVAC Upgrade, Wilkes Barre VAMC, Wilkes Barre, PA: \$8.0MM
- Surgery Suite 11B, Carl Vinson VAMC, Dublin, GA: \$4.0MM
- Canteen Renovation, Fayetteville VAMC, Fayetteville, NC: \$5.0MM
- New ICU, Ralph H. Johnson VAMC, Charleston, SC: \$10.0MM
- Medical Surgical RTU, W.G. Hefner VAMC, Salisbury, NC: \$4.0MM
- Bldg. 1D ED Expansion, Fayetteville VAMC, Fayetteville, NC: \$9.0MM
- New Mental Health Bldg., Fayetteville VAMC, Fayetteville, NC: \$8.0MM
- PCU Addition, Salem VAMC, Salem, VA: \$8.0MM
- ICU Addition, Salem VAMC, Salem, VA: \$8.0MM
- ED Addition, Salem VAMC, Salem, VA: \$8.0MM

Middleton Construction Consulting

MIDDLETON CONSTRUCTION CONSULTING RELEVANT PROJECTS

- Sierra VAHCS Community Living Center, Reno, NV, 2021, \$9 M, 13,900 SF
- John R. Moses Skilled Nursing Facility, King, WI 2021, \$200 M, 257,537 SF
- Quincy Veterans' Home Nursing Home & Domiciliary, Quincy, IL, 2023, \$230 M, 300,000 SF
- Black Hills VAHCS Domiciliary Renovation, Hot Springs, SD, TBD, \$10 M, 24,560 GSF
- Lovell VAMC Renovate Three Wards of CLC Building 134, North Chicago, IL, 2016, \$8 M, 30,360 GSF
- Amarillo VAHCS CLC Building 29 Addition, Amarillo, TX, 2017, \$6 M, 12,000 GSF
- Iron Mountain VAMC CLC Building Addition, Iron Mountain, MI, 2018, \$8 M, 16,800 GSF
- Indianapolis VAMC Building 5 Specialty Care Expansion, Indianapolis, IN, 2017, \$6 M, 17,294 GSF
- St. Cloud VAHCS CLC Cottage, St. Cloud, MN, 2015, \$9 M, 23,732 GSF
- Harry S. Truman Memorial VA Relocate Medical Ward, Columbia, MO, 2021, \$10 M, 23,250 GSF
- Black Hills VAHCS Upgrade Mental Health Lock Ward, Fort Meade, SD, \$3 M, 14,061 GSF
- Ann Arbor VAMC Building 128 CLC Expansion, Ann Arbor, MI, 2015, \$3 M, 9,550 GSF
- Carl T. Hayden VAHCS Bed Tower Safety & Security, Phoenix, AZ, 2019, \$600,000

Food Facilities Concepts

Jewish Geriatric Services
Longmeadow, Massachusetts

Braxton County Senior Center
Sutton, West Virginia

Fox Hill Village
Westwood, Massachusetts

New Bridge on the Charles
Dedham, Massachusetts

Goodwin House Small Houses
Alexandria, Virginia

Goodwin House Amenities
Alexandria, Virginia

Woodside Place of Washington
Washington, Pennsylvania

Glacier Hills IL
Ann Arbor, Michigan

The VA Home of Quincy
Quincy, Illinois

VA Home Erie
Erie, Pennsylvania

Va Hospital of Pittsburgh
Pittsburgh, Pennsylvania

Friendship Village
Pittsburgh, Pennsylvania

UMC The Shores
Ocean City, New Jersey

The Woodlands at Furman
Greenville, South Carolina

Jewish Home of Rockleigh
Rockleigh, New Jersey

Gurwin Senior Living
Commack, New York

Montecedro Senior Living
Altadena, California

Jewish Home of Palm Beach
Palm Beach, Florida

Shell Point IL Dining
Fort Meyers, Florida

SRG Austin Senior Living
Austin, Texas

**Heritage Community IL
Expansion - Ann Arbor,**
Michigan

Kendal at Ithaca CCRC
Ithaca, New York

Cordwainer Senior AL
Norwell, Massachusetts

Anthology King of Prussia
King of Prussia, Pennsylvania

John Knox Village IL Expansion
Pompano Beach, Florida

John Knox Village Market Place
Pompano Beach, Florida

Sisters of Christian Charity
Mendham, New Jersey

Kendal at Longwood
Longwood, Pennsylvania

Fairwinds Manor AL
Sarver, Pennsylvania

**Clark Lindsey Village Small
House** *Champaign, Illinois*

Sara Neuman Small House
Mamarneck, New York

VA FACILITIES

VA Hospital - Building 7 Renovations, Charlotte, NC
 VA Outpatient Clinic Garner, Garner, NC
 VAMC Durham - Building 23 Renovation, Durham, NC
 VAMC Durham Operating Suite, Durham, NC
 Charles George VA Center Building 9, Asheville, NC
 VA Hospital, Decatur, GA
 VA Marietta, GA Outpatient Clinic, Marietta, GA
 VA Urgent Care Facility - Decatur, Decatur, GA
 New Veteran Affairs Clinic - Anderson, Anderson, SC
 Cobb County VA Hospital, Marietta, GA

SENIOR LIVING

Apex Retirement Residence, Apex, NC
 Austin Village Snr. Lvg. Supplemental, Stallings, NC
 Chapel Hill Retirement Residence, Chapel Hill, NC
 Charlotte Retirement Residence, Charlotte, NC
 Davidson Retirement Residence CMT, Davidson, NC
 Stoneridge Retirement Center, Cary, NC
 Treeo Senior Living Community, Raleigh, NC
 Gaffney Senior Living, Gaffney, SC
 Lakewood Independent Living, Boilings Springs, SC
 Woodbridge Assisted Living, Spartanburg, SC
 Gaffney Senior Living, Gaffney, SC
 Avondale Senior Housing Site, Indian Land, SC
 Hendon Square Senior Housing, Atlanta, GA
 Lou Walker Senior Center ADA Repairs, Lithonia, GA
 Lumpkin County Senior Center, Dahlonega, GA
 Phoenix Senior Living, Hoschton, GA
 Acworth Senior Living, Acworth, GA

HEALTHCARE

Fresenius Medical Care, Tarboro, NC
 1410 S. 15th Street, Wilmington, NC
 167 Moore Rd, King Site, King, NC
 170 Medical Park Road Ph. I ESA, Mooresville, NC
 3149 & 3152 Freedom Drive GEO, Charlotte, NC
 705 Griffith Street GEO, Davidson, NC
 Advent Health Hendersonville, Hendersonville, NC
 Appalachian Regional HCS Expansion, Boone, NC

Boone Medical Office Building, Boone, NC
 Brightwalk Development, Charlotte, NC
 Camp Lejeune-P4638 Ambulatory Care Cntr, Jacksonville, NC
 CaroMont Reg. Medical Tower Addition, Gastonia, NC
 CHS Blue Ridge, Valdese, NC
 Discovery 4 Spec Lab, Morrisville, NC
 Erickson McKee Road Site, Matthews, NC
 Fresenius Medical Care, Tarboro, NC
 Glenmark Formulation Facility, Monroe, NC
 Hearst Road MOB, Wilmington, NC
 New WMC Generator Pad, Boone, NC
 Novant Cardiac Rehab, Winston-Salem, NC
 Novant Clinic - Brightwalk, Charlotte, NC
 Novant Freedom CMT, Charlotte, NC
 NOVANT Hampton Huntersville, Huntersville, NC
 Novant Harrisburg, Harrisburg, NC
 Novant South Charlotte, Charlotte, NC
 NOVANT Urgent Care - Harrisburg, huntersville, NC
 OrthoCarolina, Gaston, NC
 Project Blue Jay (ARCO), Durham, NC
 Proposed Urgent Care Facility Liberty, Liberty, NC
 Queens Northwest Residence Hall, Charlotte, NC
 Project Green Slope, Durham, NC
 Repair Critical Façade Deficiencies, Durham, NC
 Signature Healthcare-Chapel Hill, Chapel Hill, NC
 Southminster Health Care Facility, Charlotte, NC
 Thermo Fisher Scientific, Mebane, NC
 Roper St. Francis - Hospital, Charleston, SC
 Florence Medical Office, Florence, SC
 GHS Orthopedic Clinic PCA, Greenville, SC
 GME 2 Site Preparation, West Columbia, SC
 Graduate Medical Education Facility, W. Columbia, SC
 Grand Strand Hospital MCU, Myrtle Beach, SC
 Lake Murray Blvd Family Practice, Irmo, SC
 Mcleod Health, Florence, SC
 Children's Healthcare of Atl-Druid Hills, Atlanta, GA
 Children's Healthcare Sports Therapy, Alpharetta, GA
 Children's Hospital of Atlanta, Atlanta, GA
 Children's OMP Orthopedics, Alpharetta, GA
 Crawford Long Medical Tower, Atlanta, GA
 Crestview A-Wing Solar, Atlanta, GA
 Emory Healthcare - Emory Decatur, Decatur, GA





2.0

PROJECT GOALS



Project Goals

We are entering a period of transformation in long-term care environments supporting the health and wellness of our Veterans across the country. This is a much needed response to the changing needs facing our aging Veteran population and the finite resources of our Veterans' services organizations.

Beginning in 2005 the Veterans Health Administration made a bold culture-changing move by adopting the Community Living Center (CLC) guidelines. As a result, great strides have been made in the evolution of resident-centered care. This guide, which established basic criteria for the design and operation of care environments, challenged the conventional institutional model and aligned itself with the resident-focused, "Small-House" model of care and trends being set in the private sector. This commitment was further deepened in 2016 by the release of the Small House Model guidelines.

In the last decade, Perkins Eastman has been entrusted with leading the design transformations at State and Federal Veterans Homes, and Veterans resident care campuses across the country. Our breadth of knowledge and expertise in designing for aging adults has contributed to more than 45,000+ long-term care beds. We've categorized trends of the new and evolving senior living consumer into "Themes of Innovation" where they serve as key influences to discover design opportunities, and help inspire leaders within Veterans Services community to transform the long-term and domiciliary care provided to Veterans.

Perkins Eastman's staff is intimately familiar with the Veterans Affairs Small Home Model Design Guide, our team members contributed to the development process for the guide.

We have a long history of innovative design for short- and long-term care, with unique experience in culture change and household models of care, rehabilitation programs, and execution of these models in large scale projects.

ADAPTABILITY AND FLEXIBILITY

A Veterans Home is a living collection of factors and priorities that influence every aspect of its design. Some, like climate, geography, and the local culture are fairly stable. These might inform whether a home is designed around a connected model versus a group or neighborhood of separate detached homes.

The State Veterans Home in Montevideo, MN, with its harsh winters and expansive site, for example, was designed as a community of connected buildings that are linked together to form a network of spaces. The design emphasizes each household's identity and connects residents and staff together under one roof.

The rolling hills at the Arkansas State Veterans Home in North Little Rock inspired a different approach. Each of the eight homes are detached and arranged across the site to take advantage of the topography and maximize views. In Quincy, IL, the constraints of a tight site within a historic campus led the team to consider a vertical model where the households are stacked vertically. This reduced the building's overall footprint while maintaining the spirit of household identity and independence. In each of these examples, the underlying foundation of Small House design principles was adapted to create something distinctive and authentic: a building typology informed by the cultural, site, and infrastructure priorities of that residence.

In addition to project, site, and building typology, changing demographics, and the resulting Veteran needs are a major driver of the need for adaptability and flexibility. These factors tend to be more fluid and difficult to predict. As residents age in place, their individual care needs evolve. A home of 10–16 residents is more nimble and able to adapt to an individual's changing care and culinary choices without disrupting the care of others. Benefits of this person-centered approach to design and care is demonstrated as neighboring households, able to express their own personalities and cultures instead of a “one size fits all” mentality. Residents and staff are empowered by the level of autonomy, freedom, and choice inherent in the Small House model of care. This flexibility permeates all aspects of care delivery including the culinary experience — menu planning on a smaller scale affords greater flexibility in meeting individual dietary needs and personal preferences.

As designers we challenge the monotony that comes from the idea of replicating prototypical design footprints across the country. Regional culture, context, and landscape offer the ideas that spark positive memories and place making. The planning solutions seek inspiration in connections to nature as an architecture is developed. Sensitivity to the local context and cultures of the community helps to establish a connection to place, and unite, engage, and inspire project stakeholders in the process.

RESILIENCE AND AUTHENTIC EXPERIENCE

The need for resilient campuses cannot be overstated. The COVID-19 pandemic has reinforced the need for thoughtful planning of robust infrastructure systems with redundancy, attention to indoor air, water and environmental quality, smart technology integration, and healthy material selection. The pandemic taught us that the tools and strategies used to mitigate

the spread of infectious diseases can be easier to deploy on a smaller footprint, and with a smaller group of residents.

As is true for most state and federally-led projects, longevity, efficiency, durability, and resilience are just some of the closely monitored variables that are measured and prioritized throughout the design process. The analysis of these variables continues well past a project's substantial completion. Once occupied and operational, metrics including operational costs, staffing ratios, and resident wellness outcomes find their way to the desks of administrators and leadership where the results begin to shape decisions that have direct impacts on the care provided to the Veterans. Budgets and staffing models are getting tighter, while expectations for quality of care are increasing. This tension is where we find opportunities for innovation. We draw inspiration from the connections and shared experiences that manifest between residents and staff. Staff empowerment, engagement, and accountability increase morale and performance while decreasing turnover. Deeper, more meaningful relationships build a sense of fulfillment and trust within the home and serve to improve wellness and health.

We continue to tap into the healing power of ‘returning home’ — creating an authentic environment within a resilient framework. A careful and considered approach to architectural design has the power to integrate seemingly irreconcilable differences: the sense of home within a larger campus, resident care delivered with efficiency, and resilience that supports resident wellness.

VA STATE HOME CONSTRUCTION GRANT APPLICATION PROCESS

For the accelerated project at Quincy, Illinois, Perkins Eastman helped meet the project's USDVA grant application deadlines by carefully orchestrating and staging the discussions



ILLINOIS VETERANS' HOME AT QUINCY

and presentations between the USDVA's state homes grant program and the state agencies and partners involved. Targeting a complete Section A package for the April deadline, Perkins Eastman helped fill gaps in earlier submissions and completed a fast-tracked campus needs assessment. The package included an overall project cost framework, supported by conceptual planning drawings and engineering narratives.

To build USDVA confidence in the state team, we organized an in-person progress review and feedback meeting at the US Department of Veterans Affairs Washington D.C. headquarters. Subsequent to our presentation, and following a discussion on design excellence and national trends in veteran care and care delivery, the Illinois team was informed that our package was ahead of schedule and had all the information needed to enable the state to submit a complete Section B 35% Design Development package earlier than planned. We exceeded the Using Agency (Illinois DVA) and the Illinois CDB's expectations in project and schedule management. The Illinois DVA just received full matching funds for their \$260M project. Minnesota DVA received full funding for all three new campuses all at once. Construction of these communities is currently underway.

IDEAS PROCESS—PROGRAMMING, PLANNING, AND CONSENSUS BUILDING

The Perkins Eastman IDEAS process is a highly collaborative approach dedicated to strategies that promote better living for older adults. The process is structured to help providers determine ways to develop new opportunities and to create, reposition, and reinvent existing services and strategies for seniors in their community.

We use our IDEAS process—Integrating Design, Economics and Assessment into Strategy—to develop solutions that create forward-looking programs, partnerships, and great senior environments. Bringing leadership and creativity, we engage executive teams and board members in the process to integrate forward-thinking design, thoughtful economic analysis, and thorough market assessment into sustainable strategies for tomorrow's aging adult.

Our team-based approach solves complex problems by combining insightful expertise from industry leaders with complementary backgrounds. Our main goal is to help our clients develop a strategic plan for their organizations that position communities for a sustainable future.



3.0

FORMS





Department of Administration
Purchasing Division
2019 Washington Street East
Post Office Box 50130
Charleston, WV 25305-0130

State of West Virginia
Centralized Expression of Interest
Architect/Engr

Proc Folder: 1053663			Reason for Modification:
Doc Description: Beckley Veterans Nursing Facility Architectural/Engineering			
Proc Type: Central Purchase Order			
Date Issued	Solicitation Closes	Solicitation No	Version
2022-06-07	2022-06-21 13:30	CEOI 0613 VET2200000001	1

BID RECEIVING LOCATION

BID CLERK
DEPARTMENT OF ADMINISTRATION
PURCHASING DIVISION
2019 WASHINGTON ST E
CHARLESTON WV 25305
US

VENDOR

Vendor Customer Code: 000000104005
Vendor Name : Perkins Eastman Architects, DPC
Address : 520 West Sixth Street
Street :
City : Charlotte
State : NC **Country :** United States **Zip :** 28202
Principal Contact : Jerry R. Walleck
Vendor Contact Phone: 312.873.6260 **Extension:**

FOR INFORMATION CONTACT THE BUYER

Tara Lyle
(304) 558-2544
tara.l.lyle@wv.gov

Vendor
Signature X

FEIN# 13-3044005

DATE June 21, 2022

All offers subject to all terms and conditions contained in this solicitation

Date Printed: Jun 7, 2022

Page: 1

FORM ID: WV-PRC-CEOI-002 2020/05

ADDITIONAL INFORMATION

The West Virginia Purchasing Division, for the agency, the West Virginia Department of Veterans Assistance, is soliciting Expressions of Interest from qualified firms to provide professional design services to develop construction documents for a 120 bed Veterans Nursing Facility located in Beckley, WV, per the attached documentation.

INVOICE TO

DIVISION OF VETERANS ASSISTANCE
1900 KANAWHA BLVD
BUILDING 5, ROOM 205
CHARLESTON WV 25301
US

SHIP TO

DIVISION OF VETERANS ASSISTANCE
1900 KANAWHA BLVD
BUILDING 5, ROOM 205
CHARLESTON WV 25301
US

Line	Comm Ln Desc	Qty	Unit Issue
1	Develop A&E EOI & Other Documents For Beckley Facility	1.00000	EA

Comm Code	Manufacturer	Specification	Model #
81101508			

Extended Description:

.

SCHEDULE OF EVENTS

<u>Line</u>	<u>Event</u>	<u>Event Date</u>
-------------	--------------	-------------------

	Document Phase	Document Description	Page 3
VET2200000001	Final	Beckley Veterans Nursing Facility Architectural/Engineering	

ADDITIONAL TERMS AND CONDITIONS

See attached document(s) for additional Terms and Conditions

DESIGNATED CONTACT: Vendor appoints the individual identified in this Section as the Contract Administrator and the initial point of contact for matters relating to this Contract.

(Name, Title) J. Walleck Principal

(Printed Name and Title) Jerry R. Walleck, Principal

(Address) 209 South LaSalle Street, Suite 400, Chicago, IL 60604

(Phone Number) / (Fax Number) 312.873.6260

(email address) j.walleck@perkinseastman.com

CERTIFICATION AND SIGNATURE: By signing below, or submitting documentation through wvOASIS, I certify that: I have reviewed this Solicitation/Contract in its entirety; that I understand the requirements, terms and conditions, and other information contained herein; that this bid, offer or proposal constitutes an offer to the State that cannot be unilaterally withdrawn; that the product or service proposed meets the mandatory requirements contained in the Solicitation/Contract for that product or service, unless otherwise stated herein; that the Vendor accepts the terms and conditions contained in the Solicitation, unless otherwise stated herein; that I am submitting this bid, offer or proposal for review and consideration; that I am authorized by the vendor to execute and submit this bid, offer, or proposal, or any documents related thereto on vendor's behalf; that I am authorized to bind the vendor in a contractual relationship; and that to the best of my knowledge, the vendor has properly registered with any State agency that may require registration.

By signing below, I further certify that I understand this Contract is subject to the provisions of West Virginia Code § 5A-3-62, which automatically voids certain contract clauses that violate State law; and that pursuant to W. Va. Code 5A-3-63, the entity entering into this contract is prohibited from engaging in a boycott against Israel.

Perkins Eastman Architects, DPC

(Company) J. Walleck Principal

(Authorized Signature) (Representative Name, Title) Jerry R. Walleck, Principal

June 21, 2022

(Printed Name and Title of Authorized Representative) (Date)

312.873.6260

(Phone Number) (Fax Number)

j.walleck@perkinseastman.com

(Email Address)

**PERKINS —
EASTMAN**
Human by Design

www.perkinseastman.com