

# THRASHER

RECEIVED  
08/12/21 08:48:13  
WV Purchasing Division



## WEST VIRGINIA ARMY NATIONAL GUARD

### Camp Dawson South Gate Road Slope Stabilization Design

Submitted by:  
The Thrasher Group, Inc.  
August 12, 2021



COMPLEX PROJECTS  
REQUIRE RESOLVE  
**THRASHER'S GOT IT**

August 12, 2021

Attn: David Pauline, Senior Buyer  
2019 Washington Street, East  
Charleston, WV 25305

*RE: West Virginia Army National Guard Camp Dawson South Gate Road Slope Stabilization Design*

Dear members of the selection committee:

The Thrasher Group is pleased to present our qualifications for for the design and development of construction documents for the stabilization and repair of approximately 200 linear feet of road embankment on the South Gate access road. Our team of engineers, surveyors, and construction administrators will work together to ensure a smooth, seamless process for your project. Our goal for the repair of the slip goes beyond just engineering; our team will work as the West Virginia Army Guard's (WVANG) partner to understand and coordinate the evaluation of the slip and to offer the most effective solutions that best suits the present and future needs.

We have assembled a team of experts that understands the complexities that go into the design and construction documents for this type of slip. Our team will work hard to to modify and repair each site to comply with all regulations. As a full-service A/E firm, we can carry these projects from concept through construction closeout. Thrasher can provide anything from aerial mapping to materials testing services to better enhance your projects.

Thank you for considering the Thrasher Team and providing us the opportunity to present the WVANG with our qualifications. We look forward to your positive reception of our proposal and to meet with you to further demonstrate the commitment, dedicate and support he Thrasher team will bring to your project.

Sincerely,  
The Thrasher Group, Inc.

Richard Hovatter, PE  
Project Manager



- > Utility Engineering
- > Architecture
- > Site Engineering
- > Environmental
- > Survey
- > Transportation
- > Construction Services
- > Geospatial

### Main Point of Contact:

Richard "RJ" Hovatter, PE  
Project Manager  
rhovatter@thethrashergroup.com  
Cell: 304-669-6848  
Office: 304-205-8809



# 9

### OFFICES

in five states:  
West Virginia  
Virginia  
Pennsylvania  
Ohio  
Maryland



# 300+

### EMPLOYEES

- 34** Licensed Professional Engineers
- 10** Licensed Professional Surveyors
- 7** Licensed Professional Architects
- 2** Licensed Professional Landscape Architects



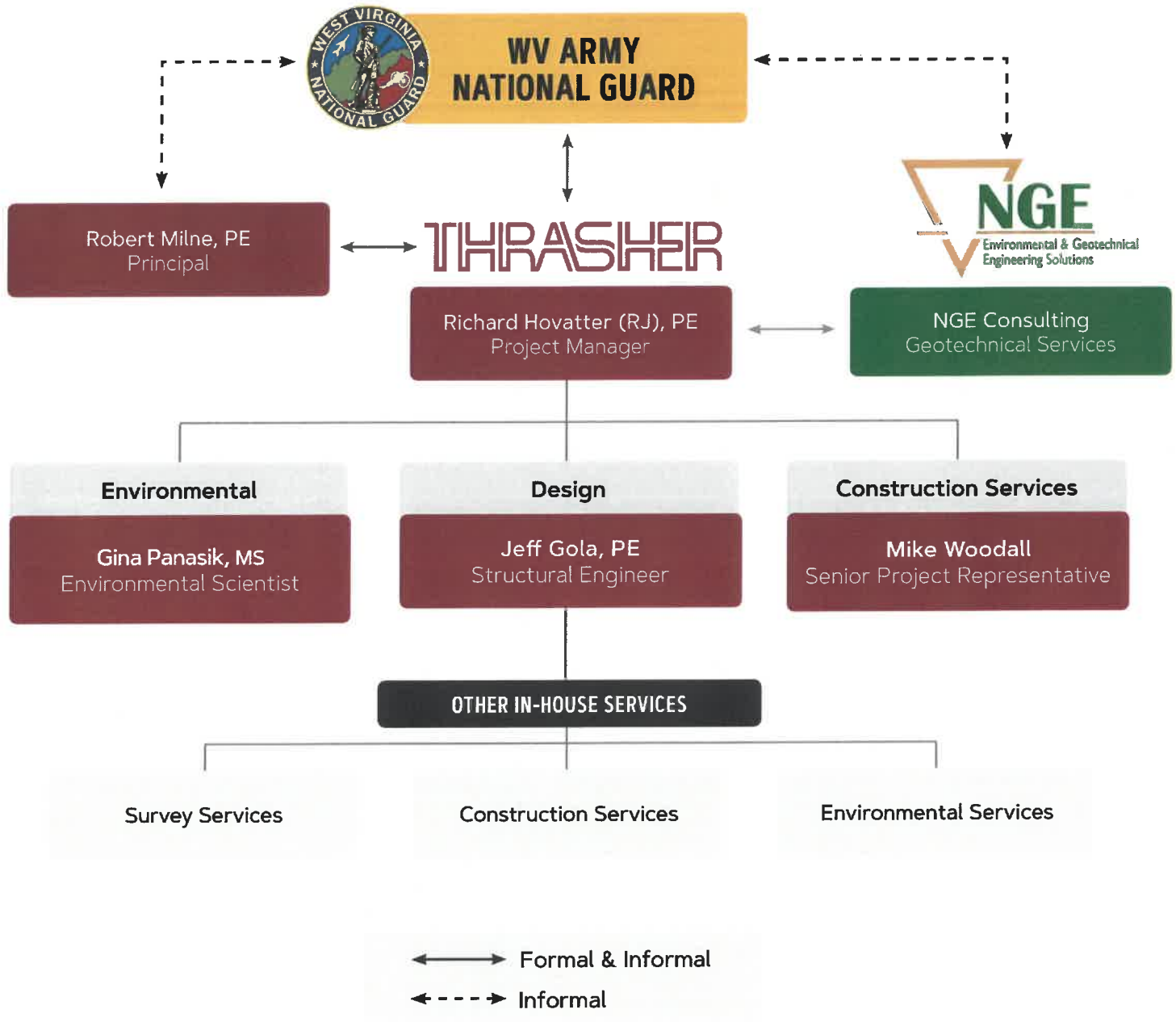
# 38

### YEARS

of delivering successful projects

Diverse services that grow communities.

**THRASHER'S GOT IT.**



Principal



## Education

Master of Science,  
Civil Engineering  
West Virginia University

Bachelor of Science,  
Civil Engineering  
West Virginia University

## Registrations

Professional Engineer:

- > West Virginia
- > Pennsylvania
- > Virginia
- > Maryland

## Affiliations

- > Leadership Monongalia County, WV
- > Foundations of Leadership/ National Leadership Institute

Robert Milne, PE has over 30 years of experience working with both public and private clientele throughout the Mid-Atlantic region to develop millions of dollars' worth of commercial, industrial, residential, and mixed-use sites. Rob's in-depth understanding of site layout, design, permitting, and funding have enabled him to complete several complex projects that have boosted economic development and delivered safe, sustainable building sites.

In addition to his engineering expertise, Rob serves as an experienced Senior Project Manager for Thrasher. His years of hands-on experience and in-depth knowledge is an asset for his clients. Rob uses this knowledge to oversee every aspect of his projects, including design standards, staff assignments, project schedules, and client communication. He takes the time to understand the needs of each client and finds specific solutions to their problems and provide a high-quality experience.

## Experience

### City of Clarksburg Stormwater Management

Role: Principal

- > Harrison County, WV

### WV Division of Natural Resources Boat Ramp Design at Palatine Park

Role: Project Manager

- > Marion County, WV

### WV Division of Natural Resources Elk River Boating Access

Role: Project Manager

- > Kanawha County, WV

### WVDEP Beckley Design-Build

Role: Principal

- > Raleigh County, WV

### WVDEP AML Dansbranch Landslide Emergency Project

Role: QA/QC

- > Mingo County, WV

### West Virginia Division of Natural Resources Clendenin North

Role: Project Manager

- > Kanawha County, WV

### DEA Academy Flexible Operations Facility Fieldhouse Improvements

Role: Civil Engineering Lead

- > Quantico, VA

### Camp Upshur Marine Corps Base

Role: Project Manager

- > Prince William County, VA

### DEA Flex Ops Facility Site Design

Role: Project Manager

- > Prince William County, VA

## Project Manager



### Education

Bachelor of Science,  
Civil Engineering  
Fairmont State University

### Registrations

Professional Engineer:  
> West Virginia  
> Pennsylvania

### Training

- > Level I Rosgen Natural Stream Construction
- > Level II Rosgen Natural Stream Construction
- > HEC—RAS Operator Training Short Course
- > Annual Oil & Gas Training Pennsylvania—Expedited Review of ESCGP-1
- > MSHA Training

Richard "RJ" Hovatter currently leads a team of highly skilled engineers in developing innovative slip remediation projects all across the Appalachian basin. RJ has spent a large portion of his career evaluating critical land slips and assessing feasible, sustainable solutions that serve both public and private entities. In addition to his work on slips, RJ has vast experience with site design endeavors, stormwater solutions, well pad design, pipeline routing, and other various utility extensions. His diverse portfolio of work has given RJ a refined eye for potential land issues and slip-prone terrain, which ensures his clients projects are designed on safe, stable sites.

### Experience

#### Antero Canton Loop Slip Repair

Role: Project Manager  
> Doddridge County, WV

#### Antero McDonald Slip Repair

Role: Project Manager  
> Doddridge County, WV

#### Antero West Fork Slip Repair

Role: Project Manager  
> Doddridge County, WV

#### Eureka Hunter Multiple Slip Repairs

Role: Project Manager  
> Various Locations

#### Crestwood Perkins Compressor Pad Slip Repair

Role: Project Manager  
> Harrison County, WV

#### City of Clarksburg Quarry Drive Slip Repair

Role: Project Manager  
> Harrison County, WV

#### City of Ripley

##### City Park Slip Repair

Role: Project Manager  
> Jackson County, WV

#### Brooke County Rail Trails Slip Repair

Role: Project Manager  
> Brooke County, WV

#### WestRidge Phase 1 Slip Repair

Role: Project Manager  
> Monongalia County, WV

#### SBA Communications Slip Repairs

Role: Project Manager  
> Various Locations

#### AML Town of Nutterfort Rip Rap Retaining Wall

Role: Project Manager  
> Harrison County, WV

#### AML Emergency Landslide City of Bridgeport Ridgeway

Role: Project Manager  
> Harrison County, WV

President of NGE Environmental and Geotechnical Engineering



## Education

Bachelor of Science,  
Civil Engineering  
West Virginia University

Master of Science,  
Civil Engineering  
West Virginia University

## Registrations

Professional Engineer:

- > Ohio
- > West Virginia
- > Pennsylvania
- > Maryland
- > Virginia

Mr. Nottingham has served as Office Manager & Principal Engineer for the West Virginia office of NGE since 2002 after having managed Geotechnical Services at Triad Engineering. In this capacity, he has served as lead Geotechnical Engineer on a variety of government and commercial design and construction projects. His responsibilities on these projects include direction and coordination of all geotechnical engineering activities. Duties on these projects have included foundation investigation report production, foundation and retaining wall design, fill embankment and cut slope design, dam design and analysis, slope stability analysis, pavement design, design of drainage systems, supervision of subsurface drilling programs, field activity coordination, laboratory data computation and processing, performance of field work, client relations, and supervision of staff and project level geotechnical engineers.

## Fields of Competence

- > Highway & Airport Geotechnical Design
- > Bridge & Building Foundation Analysis
- > Subsurface Investigations
- > Site Development Earthwork Design
- > Slope Stability Analysis
- > Landslide Analysis & Remedial Design
- > Retaining Wall Design
- > Reinforced Soil Slope Design
- > Mine Subsidence Investigations
- > Forensic & Insurance Investigations
- > Construction Monitoring
- > Personnel Management
- > Project Management (schedule and budget)
- > Project Estimating

Structural Engineer



Jeff Gola, PE has accrued over 20 years of professional experience designing and overseeing the construction of public works projects such as slip repairs, sidewalks, dams, bridges, roadways, stormwater systems, and retaining walls. Jeff has dedicated much of his career to understanding the structural design elements that govern these infrastructure projects. His methodical design process ensures that his work will withstand environmental stresses and pressures, and that his projects remain safe, stable, and secure throughout their use.

## Education

Bachelor of Science,  
Civil Engineering  
West Virginia University

## Registrations

Professional Engineer:  
> West Virginia  
> Maryland

## Affiliations

> American Society of Highway  
Engineers  
> American Society of Civil  
Engineers

## Experience

### City of Clarksburg Slip Repairs

Role: Structural Engineer  
> Harrison County, WV

### City of Salem Slip Repairs

Role: Project Manager  
> Harrison County, WV

### City of Clarksburg Florence Street

Intersection Upgrades  
Role: Structural Engineer  
> Harrison County, WV

### Harrison County Commission Court Street

Role: Project Manager  
> Harrison County, WV

### Fairmont State University Multiple Retaining Walls

Role: Project Manager  
> Marion County, WV

### West Virginia University Clark Hall Retaining Wall Design

Role: Project Manager  
> Monongalia County, WV

### Harrison County Commission Courthouse Plaza, Sidewalks, and ADA Accessible Ramp

Role: Project Manager  
> Harrison County, WV

### WVDOH Lodgeville Road and Bridge

Role: Project Manager  
> Harrison County, WV

### WVDOH Bridgeport Hill Drainage Project

Role: Project Manager  
> Harrison County, WV

### Grafton Housing Authority Roof Replacement and Retaining Walls

Role: Project Manager  
> Taylor County, WV

### Town of Nutter Fort Sidewalk Design

Role: Project Manager  
> Harrison County, WV



Environmental Scientist



## Education

Master of Science,  
Marine Biology  
UNC Wilmington

Bachelor of Arts,  
Biology  
Boston University

## Affiliations

- > Society of Wetland Scientists
- > Women's Energy Network

Gina Panasik has over 20 years of experience working in both the academic and private sector performing environmental research, field studies, and environmental permitting. She has experience in 10 states along the eastern seaboard, from Massachusetts to North Carolina and into Michigan. Gina's environmental work has included soil sampling; groundwater sampling; wetlands delineation and mitigation; environmental assessments; Phase I ESAs; and rare, threatened, and endangered species surveys for bats and plants.

Gina has also worked with a number of established companies in the energy sector, including Shell, Chevron, Spectra, Williams, and Tesla. During this time, she developed permitting for pads and linear projects as well as solar fields.

## Experience

### WestRidge Development

Role: Permitting Specialist  
> Monongalia County, WV

### Hatfield-McCoy Ivy Branch Trail AML/WVDEP Permitting

Role: Permitting Specialist and  
NEPA Document  
> Mercer County, WV

### Town of Strasburg Utility Line Replacement Agency Clearances

Role: Permitting Specialist  
> Shenandoah County, VA

### Wellsburg Sanitary Sewer Line Replacement

Role: Permitting Specialist  
> Brooke County, WV

### Riverfront 47 Development

Role: Wetlands Delineations  
Specialist and Permitting  
Specialist  
> Allegheny County, PA

### PennDOT Ridge Pike Corridor Bridge Replacement

Role: Field Delineations and  
Permitting Specialist  
> Montgomery County, PA

### Town of Shenandoah USDA Grant Application and Environmental Report

Role: Permitting Specialist  
> Page County, VA

### City of Louisville Wetland Delineations

Role: Project Manager  
> Stark County, OH

## Senior Project Representative



### Education

Salem International University  
Salem, West Virginia

Fishburne Military School  
Waynesboro City, Virginia

### Training

- > ACI Field Testing Technician
- > ACI Aggregate Base
- > WVDOH S.A.C. Technician
- > WVDOH PCC Inspector
- > WVDOH Aggregate Sampler
- > WVDOH TRET - Level II
- > VDOT Asphalt - Level I
- > VDOT Asphalt - Level II
- > VDOT Soils and Aggregate
- > VDOT Concrete Field
- > VDOT Work Area Protection
- > PE Plastic Fusion Joining Certification
- > KTA Paint Coating Certified
- > VDOT Intermediate Work Zone (Temporary Traffic Control)
- > American Concrete Institute Certification
- > OSHA 10
- > SafeLand USA Training
- > Energy Innovation
- > Soil Compaction - Nuclear Radiation Gauge
- > Heavy Equipment Operation

Mike Woodall is one of the most seasoned construction services professionals at Thrasher, and currently serves as a Senior Project Representative. Mike is extensively trained in all aspects of construction management, project inspection, and materials testing. Additionally, Mike has strong communication and administrative skills in relation to project management. Aside from his work in the field, Mike has spent a large portion of his career working in Thrasher's laboratories on soil, concrete and aggregate testing. Through this experience, Mike has become certified in numerous facets of materials testing by the states of Maryland, Virginia and West Virginia. He is also certified by the WVDOH in many disciplines.

### Experience

#### Salem Slip Repair

##### Construction Management

Role: Construction Oversight

- > Harrison County, WV

#### Stout Slip Repair

##### Construction Management

Role: Construction Oversight

- > Doddridge County, WV

#### Hardy County Rural

##### Development Authority

##### Various Projects

Role: Construction Oversight

- > Hardy County, WV

#### Sun Valley Industrial

##### Access Road

Role: Construction Oversight

- > Harrison County, WV

#### Wolfe Creek Community

##### Park Project

Role: Construction Oversight

- > Fayette County, WV

#### WVDOH Meadowbrook Road

Role: Construction Oversight

- > Harrison County, WV

#### WVDOH Chestnut

##### Ridge Road

Role: Construction Oversight

- > Harrison County, WV

## Fairmont State University Slip Repair Retaining Wall

### Slip Repair Retaining Wall

Thrasher was hired by Fairmont State University to provide slip repair and retaining wall civil engineering services for the Fairmont State University campus. These tasks were part of the 10-year \$10 million master plan for infrastructure improvements contract.

Within the site development project scope of services there was a need for design and construction expertise for various retaining walls throughout the campus.



## City of Clarksburg Quarry Drive Slip Repair

The Rail Trail along the West Fork River in the Glen Falls - Arlington area of Clarksburg in Harrison County experienced a slip under a pedestrian bridge along the trail due to erosion caused by drainage. The Thrasher Group was responsible for the evaluation of the slip, and subsequent design for correction and bid documentation outlining repairs and removal of debris caused by the slip.

- » 230 Linear Feet
- » 120 Linear Feet H-Pile
- » 120 Linear Feet Quarry Drive Repairs
- » Traffic Control
- » Utilities Coordination



## Nutter Run

### AML Emergency Landslide

Nutter Run was the site of an emergency AML landslide. The Thrasher Group mobilized the necessary equipment and personnel to complete the project within state timeframes with a construction cost of \$954,750.

Some of the major steps of the project included the following: site preparation (clearing and grubbing, removing existing structures and debris), construction and installation of support areas, maintenance of access roads, construction and installation of drainage control items to convey stormwater off-site, backfilling highwalls, and re-vegetation of disturbed areas.





## Ridgeway Drive

### AML Emergency Landslide

Ridgeway, in Bridgeport, was the site of an AML emergency landslide that The Thrasher Group repaired. Our team engineered the design of the slip remediation and was responsible for all necessary materials to accomplish that design, from shop drawings to a detailed construction schedule. Thrasher provided all necessary materials and labor for this project. The final result of the project was 1 Soil Nail Wall ~36' and 6,300 cubic yards of Earthwork.



## City of Ripley City Park Slip Repair

- Drainage Solutions
- Planning
- Utility Engineering
- Meetings
- Field Services
- Construction Monitoring



## Oil & Gas Various Slip Remediations

- Gas Right-of-Way Repairs
- Water Right-of-Way Repairs
- Well & Compressor Station Pad Repairs
- Access Roads Repairs



## Confidential Client Slip Repairs

- Design
- Bid Services
- Construction Management
- Clearing & Grubbing
- Erosion & Sediment Control
- Pile Wall Construction



## WVDEP AML LYONS Landslide Repairs

- Two-Acre Slide
- Soldier Pile
- Concrete Lagging Retaining Wall
- Re-Grading
- New Underdrains & Channels



- > New Milton Slip Repair
- > Toms Fork Slip Repair
- > McDonald Slip Repair
- > West Fork Slip Repair
- > Confidential Client - Canton Slip Repair 1
- > Confidential Client - Canton Slip Repair 2
- > Confidential Client - Canton Slip Repair 3
- > Confidential Client - Canton Slip Repair 4
- > Confidential Client - Alice Edge Slip Repair
- > Confidential Client - Van Asher Slip Repair
- > Carbide Slip Repair
- > Post Rock Slip Repair
- > Shroyer Slip Repair
- > 4 Brothers Slip Repair
- > Fisher Hill Slip Repair
- > Mosier Slip Repair
- > Dietrick Slip Repair
- > Hazlett Compressor Station Slip Repair
- > Bardall Compressor Station Slip Repair
- > Neehouse Compressor Station Slip Repair
- > Crow Compressor Station Slip Repair
- > Perkins Compressor Station Slip Repair
- > Boggs Airfield Slip Repair
- > Ripley Stream Bank Repair
- > Central Mingo Slip Repair
- > Eureka Hunter Multiple Slip Repairs





A critical step in meeting your goals is first ensuring we understand them. Thrasher's team has thoroughly reviewed the Expression of Interest request and is confident in our ability to deliver the highest-quality solutions to your problems. We are capable of meeting each goal/objective you have outlined and feel strongly that you will be satisfied with the outcomes you receive.

We understand your goals for the slip repair and will handle them in the following manner:

## ► GOAL/OBJECTIVE 1

Thrasher's Design Team is prepared to provide all engineering design and prepare all construction bid documents for the WV State Purchasing Division. Our designers will review and evaluate all existing plans and conditions with special efforts devoted to stabilizing the road embankment, rebuilding the road, and protecting the stream below the site. Our Project Manager, Richard Hovatter (RJ) will remain in constant communication with the owner and will work with the entire team to develop plans that include minimal disruption of daily activities.

## ► GOAL/OBJECTIVE 2

Our designers will provide the South Gate Access road with the necessary design services to accommodate regular heavy military vehicle traffic on this road. Our team will remain consistent with The WVANG needs, objectives, current law and code. One of our main goals will be to execute the repair within project budget.

## ► GOAL/OBJECTIVE 3

If needed, Thrasher will work to coordinate any geotechnical work with a familiar subconsultant. Our team will research and investigate the location of existing underground and above ground utilities and will provide the drawings and specifications of all the findings as needed and directed by the owner, state agency, or other utility companies in Kingwood, WV.

## ► GOAL/OBJECTIVE 4

Thrasher will provide drawings, specifications, and cost estimates at 35%, 65%, 95%, and 100% design milestones. Once the design is complete our team will provide three hard copies and a digital copy.



Communication throughout any project is a primary key to project management. To that end, Thrasher will begin communication with the WVANG immediately upon notification of award and will maintain consistent lines of communication for the duration of the project. This will ensure all parties involved - owner, contractor, and engineer - will always be apprised of the project happenings.

The two main components of the project approach will be design and construction. Each will have its own plan for communication.

## Communication During Design

Prior to the initiation of design services, Thrasher's Project Manager, RJ Hovatter will discuss preferred methods of communication with the WVANG's point of contact. Updates during the design phase can occur in numerous ways:

- > Weekly status updates via email
- > Weekly conference calls
- > Monthly progress meetings

No matter the methods preferred, our project teams are well versed in keeping our clients abreast of project status. We can customize your project's communication plans to best fit your teams' wants and needs.

## Communication During Construction

Before construction begins, RJ will again meet with the team to determine preferred communication tools for this phase of the project. Open, consistent communication will be paramount to keep the project on-time and within budget.

Additionally, Thrasher will conduct monthly progress meetings with the contractor, the WVANG, and key project stakeholders throughout the duration of the project. Meeting minutes will be distributed to all attendees and any other agents identified by the WVANG. Action items will be documented within the meeting minutes.

Throughout construction, Thrasher will have people on-site for project representation as well as material testing. Anytime a Thrasher employee is on site during construction, a field report will be prepared. Field reports will be reviewed by the engineering team and distributed to the WVANG construction representative on a weekly basis.



Thrasher has an internal Quality Control Policy Plan to ensure our projects move forward efficiently and effectively. The objectives of this manual are to continually improve the quality of the design and technical deliverables Thrasher provides to its internal and external clients.

This manual illustrates the basic requirements for quality control in our projects. It describes the methods for checking and reviewing product elements and client deliverables and includes rigorous comprehensive written check-lists for each stage of the design process, document production, and construction activities.

The purpose of these QC methodologies is to reduce or eliminate the potential for errors, omissions, ambiguities, and inconsistencies.

### The policy outlines three main areas:

- > **General** - Defines the purpose, intent and limitations, definitions, and implementation
- > **Project Management Procedures** - Presents required procedures specific to this practice that allow for the efficient and accurate management of projects
- > **Check and Final Review Procedures** - Presents required procedures specific to this practice that are used to insure technical accuracy of the work product



Cost is a concern in every project and one that we take seriously – it is important to us that we provide a transparent, thorough look at what it will take to get your project completed. To make sure that happens, we follow four important principles:

**Thorough construction documents** - Starting off with detailed construction documents helps the entire project run more smoothly. By laying an accurate, realistic picture at the beginning of the process, we are able to complete your project more efficiently and with fewer change orders.

**In-depth review process** - The Thrasher team participates in an in-depth review process to ensure there is a thorough understanding of your project. Our construction administration team visits your site in person so we know exactly what is needed for the space.

**Understanding of what things cost** - Thrasher has a knowledgeable construction administration team that understands what it truly costs to make things happen. Rather than relying on general industry standards, our Construction Estimator can tell you what something will cost in actuality. Our estimator knows how to navigate both sides of a bid process and can deliver an accurate look at your project costs up front.

**Respect for your wallet** - We respect your business needs and work to ensure the lowest-cost options we can find. We also keep you updated of budget throughout the process: An initial construction cost will be calculated to reflect your budget, and construction cost estimates will be delivered with the drawings at the end of Schematic Design, Design Development, and Construction Documentation. Adjustments to size and/or quality will be made, as necessary, during each design phase to maintain your budget.

A photograph of two construction workers from behind, wearing white hard hats and high-visibility yellow safety vests. They are looking at a tablet held by the worker on the right. The background is a blurred construction site. A white geometric wireframe pattern is overlaid on the image. The word 'THRASHER' is written in a white, stylized, blocky font across the center.

# THRASHER