



# West Virginia Purchasing Division

2019 Washington Street, East  
Charleston, WV 25305  
Telephone: 304-558-2306  
General Fax: 304-558-6026  
Bid Fax: 304-558-3970

The following documentation is an electronically-submitted vendor response to an advertised solicitation from the *West Virginia Purchasing Bulletin* within the Vendor Self-Service portal at [wvOASIS.gov](http://wvOASIS.gov). As part of the State of West Virginia's procurement process, and to maintain the transparency of the bid-opening process, this documentation submitted online is publicly posted by the West Virginia Purchasing Division at [WVPurchasing.gov](http://WVPurchasing.gov) with any other vendor responses to this solicitation submitted to the Purchasing Division in hard copy format.

## Header @ 2

List View

**General Information** | [Contact](#) | [Default Values](#) | [Discount](#) | [Document Information](#) | [Clarification Request](#)

Procurement Folder: 909738

Procurement Type: Central Purchase Order

Vendor ID: VS0000021856

Legal Name: Big Pine Consultants LLC

Alias/DBA:

Total Bid: \$250,000.00

Response Date: 07/29/2021

Response Time: 10:28

Responded By User ID: BigPineConsult

First Name: Justin

Last Name: Johnston

Email: justin.johnston@bigpinec

Phone: 231-282-2192

SO Doc Code: CEOI

SO Dept: 0603

SO Doc ID: ADJ2200000001

Published Date: 7/14/21

Close Date: 7/29/21

Close Time: 13:30

Status: Closed

Solicitation Description: EOI- Historical Building Surveys

Total of Header Attachments: 2

Total of All Attachments: 2



Line	Comm Ln Desc	Qty	Unit Issue	Unit Price	Ln Total Or Contract Amount
1	EOI- Historical Building Surveys				250000.00

Comm Code	Manufacturer	Specification	Model #
81101508			

**Commodity Line Comments:** As this is an Expression of Interest, we understand that no costs should be submitted. We are entering the \$250,000 minimum described as requiring the EOI process. This amount is only to satisfy the WVOasis system

**Extended Description:**

EOI- Historical Building Surveys per the attached documentation.



1066 Towerview Drive  
Pittsburgh, PA 15227  
231-282-2192

[justin.johnston@bigpineconsultants.com](mailto:justin.johnston@bigpineconsultants.com)  
[www.bigpineconsultants.com](http://www.bigpineconsultants.com)

July 29, 2021

Mr. David H Pauline  
Department of Administration, Purchasing Division  
2019 Washington Street East  
Charleston, WV 25305-0130

**Expression of Interest**  
**West Virginia Army National Guard Historical Building Surveys**  
**Solicitation No. CEOI 0603 ADJ2200000001**

Dear Mr. Pauline,

Big Pine Consultants LLC (Big Pine) and SEARCH, Inc. (SEARCH) are teaming to offer this expression of interest to the West Virginia (WV) Department of Administration Purchasing Division (Purchasing Division) for historical resources surveys on seven WV Army National Guard (WVARNG) facilities (Table 1) and to provide recommendations of eligibility for the National Register of Historic Places (NRHP) for each facility shown in Figure 1.

Table 1. WVARNG Facilities Description.

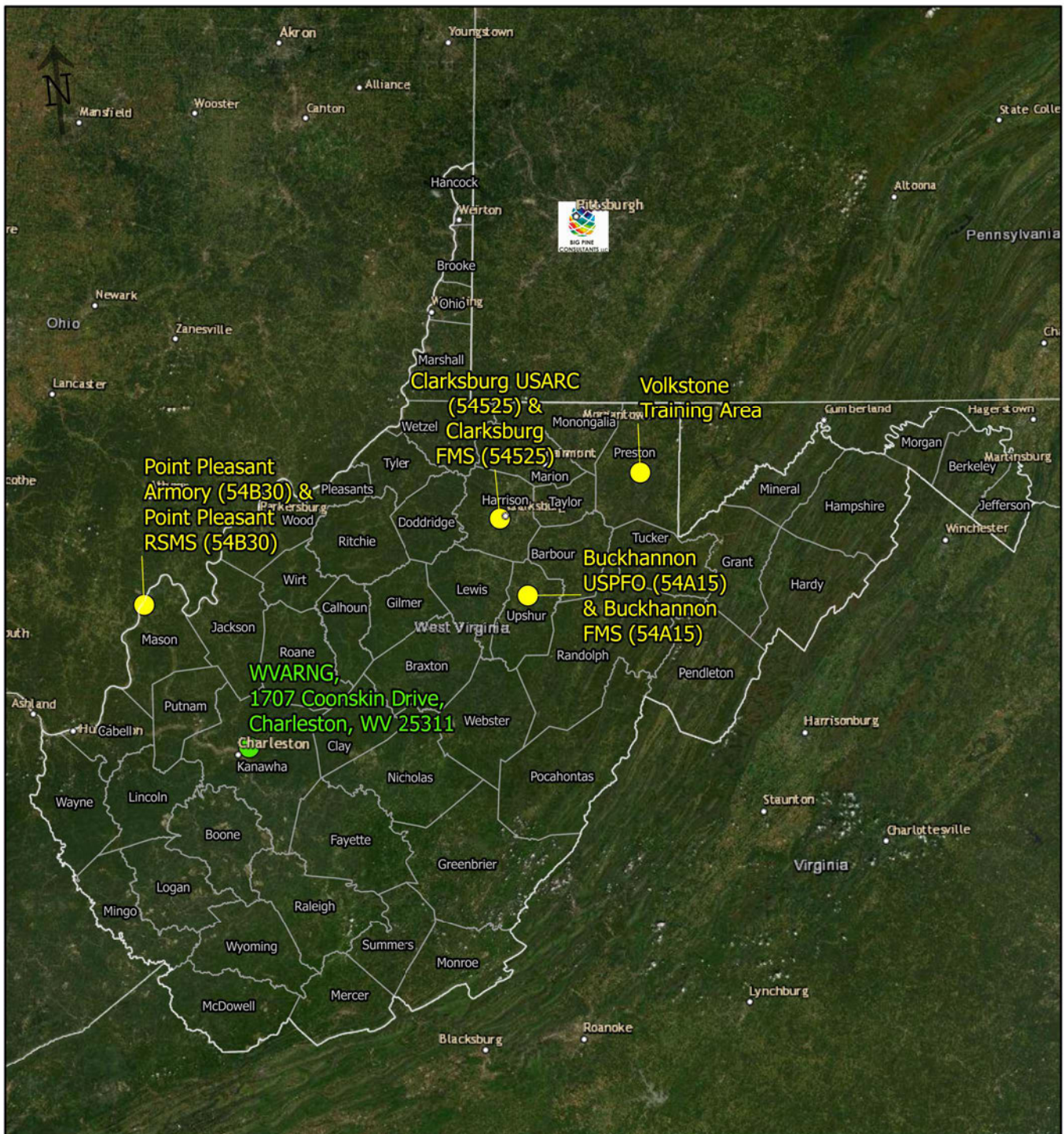
Facility	Construction Date	Square Footage	Address
Clarksburg USARC (54525)	1963	11,579	5 Armory Road, Clarksburg, WV 26301
Clarksburg FMS (54525)	1963	2,530	5 Armory Road, Clarksburg, WV 26301
Point Pleasant RSMS (54B30)	1965	31,186	4194 Ohio River Road, Point Pleasant, WV 25550
Point Pleasant Armory (54B30)	1960	31,183	4194 Ohio River Road, Point Pleasant, WV 25550
Buckhannon USPFO (54A15)	1962	29,138	50 Armory Road, Buckhannon, WV 26201
Buckhannon FMS (54A15)	1962	5,822	50 Armory Road, Buckhannon, WV 26201
Volkstone Training Area	1967	20,000	12450 River Road, Kingwood, WV 26537

This historic resources surveys will be conducted in accordance with the National Historic Preservation Act (NHPA) of 1966 (16 USC § 470), as amended, and follow the WV State Historic Preservation Office (WVSHPO) guidelines found in *National Register and Architecture/History Survey Manual* (WVSHPO 2016).

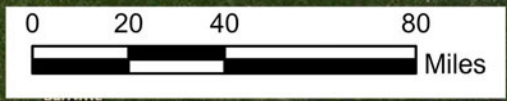
## Team Background

### Big Pine Consultants LLC and SEARCH, Inc.

Big Pine and SEARCH are committed to completing the work for this project (Attachment 1). Big Pine will serve as Prime for this project. Big Pine formed in 2018 as an environmental consulting company providing professional services for environmental studies and permitting, archaeological investigations, architectural history surveys, drone mapping and GIS services (Attachment 2). Big Pine is registered with the Small Business Administration to do work for the federal government under the Cage Code 83UV7 (however we are not HUBZone, 8A, SDVOB or WOSB), WV Small Business Vendor #VS0000021856, and PennDOT Small Business Enterprise - Business Partner ID 015115, SBE Certification #16320 (Attachment 3).



Esri, HERE, Garmin, Earthstar Geographics




**Legend**

- Facility
- Agency



Big Pine Consultants LLC

**Project Location Map**  
 WVARNG  
 Joint Forces Headquarters  
 Construction and Facilities Management Office  
 Environmental Programs Directorate  
 EO1 - Historical Building Surveys



BIG PINE CONSULTANTS LLC

Preston, Harrison, Upshur and Mason Counties, WV

DWN: JCJ	Date: 7/28/2021	1"=40mi
Rev: 0	<b>Figure 1</b>	

Spatial Reference: NAD 1983 2011 StatePlane West Virginia North FIPS 4701 FTUS; Projection: Lambert Conformal Conic; Units: Foot US



1066 Towervue Drive  
Pittsburgh, PA 15227  
231-282-2192

[justin.johnston@bigpineconsultants.com](mailto:justin.johnston@bigpineconsultants.com)  
[www.bigpineconsultants.com](http://www.bigpineconsultants.com)

Big Pine's office is based in Pittsburgh, PA. We are well-located within a two- to four-hour drive from each facility named in the solicitation, as well as the WVARNG and WVSHPO.

SEARCH will serve as subconsultant for this work. Established in 1993, SEARCH is an esteemed CRM firm providing a suite of services in archaeology, maritime archaeology, architectural history, history & archives, museum services, and media production (Attachment 4). SEARCH is a certified woman-owned small business (WOSB171868) and woman's business enterprise (WBENC #2005127518) and has a DUNS number of #94-205-4461 (Attachment 5).

SEARCH has multiple regional offices in the eastern United States including a location in northern Virginia with close access to the National Archives in Washington D.C.

Big Pine Consultants LLC currently maintains sufficient insurances required in the terms and conditions section of the solicitation and will add WV Statutory requirement – WV Code §23-4-2 (Mandolidis) upon contract award (Attachment 6).

## Qualifications and Experience

### Key Personnel

Key personnel resumes are included in Attachment 7.

**Ms. Lisa M. Dugas, MA, RPA, will be the Project Manager for the project.** Ms. Dugas has an MA in Applied Archaeology from Indiana University of Pennsylvania. Ms. Dugas has over 25 years of experience completing archaeological investigations and supporting architectural history studies for a variety of projects. Ms. Dugas has performed cultural resource studies for compliance under Sections 106 of the NHPA in WV and has worked closely with the staff at WVSHPO.

**As the owner of Big Pine, Mr. Justin C. Johnston, MS, MBA will manage the contract, and provide drone services,** if requested. Mr. Johnston works primarily with clients in PA, MD, and WV to support them in permitting, compliance, and mitigation activities. As the Project Manager for the Prince George's County and District of Columbia Reliability and Reinforcement Project (PGDCRRP) for Washington Gas Light Company, Mr. Johnston was responsible for all environmental and cultural resources studies for the project. Mr. Johnston is a Federal Aviation Administration (FAA) licensed Private Pilot and Part 107 licensed remote pilot and is capable collecting aerial imagery and videography with Big Pine's DJI Phantom 4 Pro V2.0 drone with 4K camera, if needed.

**Mr. Travis N. Fulk, MA will serve and the Technical Lead for the project.** Mr. Fulk received his master's degree in Historic Preservation from the Savannah College of Art and Design in 2006. Mr. Fulk leads the SEARCH Architectural History Division and has extensive experience with Sections 106 and 110 of the NHPA, National Register nominations and Determination of Eligibility documentation, and HABS/HAER/HAL documentation. Mr. Fulk has extensive experience with military facilities, from working on his first ICRMP in 2006 to his fieldwork at Grand Forks Air Force Base in April 2021. Mr. Fulk has completed architectural history surveys at a wide range of CONUS and OCONUS military bases.

Big Pine has two full time staff and five part time staff available to support this project. Big Pine will provide a technician to assist in the collection of background research and field work. SEARCH has 11 full time Architectural Historians and three full time Historians who are available to work on this project.



1066 Towervue Drive  
Pittsburgh, PA 15227  
231-282-2192

[justin.johnston@bigpineconsultants.com](mailto:justin.johnston@bigpineconsultants.com)  
[www.bigpineconsultants.com](http://www.bigpineconsultants.com)

## Experience

Since 2018, Big Pine has supported two architectural history projects in WV. Big Pine performed architectural history fieldwork for initial consultation for the DTE Appalachia Gathering LLC (DTE) Raider Pipeline Project in Monongalia County. Big Pine served as a subconsultant to Ridge and Vale, LLC for the Van Voorhis Project providing GIS support for an architectural history survey in Monongalia County (see Attachment 2).

SEARCH has supported every military service branch, their Reserve and Guard units, and the Defense Logistics Agency on 267 military facilities, including combat theater (see Attachment 3). The Department of Defense (DoD) has awarded SEARCH 24 contracts as Prime and 61 team contracts. SEARCH's Army (including National Guard and Reserve) project experience includes:

- 20 Years of experience—2001 was the first project at the Florida Army National Guard Camp Blanding Joint Training Center;
- 77 cultural resource projects both as prime and as a sub for the Army;
- 72 projects CONUS (AL, AR, CO, FL, GA, KY, MS, NC, OK, PA, SC, TN, TX, UT, VA); and
- 5 projects OCONUS (American Samoa, HI, PR).

SEARCH's DoD built environment services include historic contexts, HABS/HAER/HALS documentations, NRHP nominations, Historic Preservation plans, landscape studies, high-density laser scanning, program management and agreements documents, ICRMPs, oral histories, education and outreach programs and products, and training manuals and modules. SEARCH architectural historians have been embedded at military installations to assist in the management of their cultural resource program, and SEARCH staff have Anti-Terrorism Force Protection (ATFP) Level 1 and Survival, Evasion, Resistance and Escape (SERE) 100 training.

SEARCH historic building documentation experience includes evaluating 2,124 military resources that range in date from 1842 to 2010 and are located from Japan to Guam to Hawai'i to Maine to Florida to Puerto Rico. Documentation type includes (some facilities were documented more than one way):

- NHPA Section 110 surveys: 1787 facilities;
- NHPA Section 106 surveys: 230 facilities;
- HABS/HAER documentation: 81 facilities;
- Economic analyses: 28 facilities;
- Interior assessments: 6 facilities; and
- NRHP nominations: 1 facility individually and 137 as a district.

Examples of past projects completed by SEARCH that include type of project, project goals and strategy to complete goals are included in Attachment 8.

## Project Goals, Task and Methods

### Project Goals

According to the solicitation, the project involves the development and submittal of historical resources surveys for the seven WVARNG facilities listed in Table 1 and to provide recommendations of eligibility for the NRHP for each facility to support WVARNG plans to maintain and upgrade these facilities and to keep the Planning Resources Infrastructure Development and Evaluation (PRIDE) database up to date. We understand the goals for the project will be: 1) to completed WV Historic Property Inventory (HPI) forms for





1066 Towerview Drive  
Pittsburgh, PA 15227  
231-282-2192

[justin.johnston@bigpineconsultants.com](mailto:justin.johnston@bigpineconsultants.com)  
[www.bigpineconsultants.com](http://www.bigpineconsultants.com)

each facility, and 2) prepare NRHP recommendations for the properties in a report format for final submittal to the WVSHPO.

### Project Tasks and Methods

To complete project goals, we will perform the following tasks and methods in accordance with the solicitation and WVSHPO guidance (2016). (A formal work plan will be provided once contract is awarded.)

#### *Project Management*

Our project management approach focuses on solid communication among our team members. We use Microsoft SharePoint sites as a method to keep the team informed and organized. Team members use the SharePoint sites to upload, store, and share large data files. We use Microsoft Project to provide Gantt Chart scheduling of various tasks and keep track of milestones (Attachment 9). Microsoft Teams is used for conference calls and desktop sharing to present maps and graphics. We use ESRI ArcGIS Pro to prepare professional maps, figures, and spatial analysis (e.g., viewshed analysis for historic properties).

#### *Meetings and Consultation*

Upon project award, we will schedule a meeting with the WVARNG Environmental Office to coordinate the project and access to the facilities, arrange facility escorts, schedule background research, plan informant interviews, and review the task objectives. Additionally, we will initiate consultation with the WVSHPO. Additional meeting with WVARNG Environmental Office and WVSHPO will be scheduled as needed.

#### *Background Research*

In advance of field work, we will conduct background research to prepare the historic context for the WVARNG, as well as address each facility listed in Table 1. Background research will include review of online databases, historical maps, aerial images, floorplans, informant interviews, documents at WVARNG and WVSHPO, and historical societies. Additional archival repositories may be visited.

A variety of research themes exist for historic survey of military structures. Examples of topics we will consider include: 1) What is the history of the National Guard in WV; 2) how does each facility fit into the national context for armories; 3) post-World War II style trends; 4) did any facilities play a role in the Civil Rights Movement; 5) did any facilities provide disaster relief support locally or nationally; and 6) what role has the facilities played in the local and regional communities?

#### *Fieldwork*

Our team will conduct fieldwork at each facility documenting significant attributes. We will photograph the exterior of the facilities, including building attributes, surrounding yards, fence lines, out buildings, flag poles and other exterior feature that may contribute to the eligibility of the facility. Exterior location data will be recorded using a handheld Trimble GPS unit with sub-meter accuracy. Spatial data will be incorporated into GIS shapefiles to produce photograph keys. The interior will be accessed to photograph internal attributes and create sketch maps. Photographs will be logged on standardized forms. Field notes will record facility data following a rubric we established based on the WVSHPO guidance (2016).

#### *Reporting*

Our team will complete documentation for each facility following WV guidance (2016). We will compile all data into a narrative report. The report format will include Abstract, Table of Contents, Introduction, Research Design and Methods, Background Research, Investigation Results, Conclusions and Recommendations, and Works Cited. The report will be illustrated with GIS produced maps and figures, photos from the fieldwork. Appendices will include HPI forms, Photograph Logs, and Resumes. This work



1066 Towervue Drive  
Pittsburgh, PA 15227  
231-282-2192

[justin.johnston@bigpineconsultants.com](mailto:justin.johnston@bigpineconsultants.com)  
[www.bigpineconsultants.com](http://www.bigpineconsultants.com)

will be completed by our team to support the WVSHPO in determining eligibility the seven facilities for listing in the NRHP.

## References

**Mr. Hardeep Rana, P.E., Chief Engineer and Vice President of Corporate Engineering (retired) at Washington Gas Light Company.** E-mail: [hardeeprana1955@gmail.com](mailto:hardeeprana1955@gmail.com), phone: (571) 205-0042.

**Ms. Serena Bellew, Deputy Associate Director, Preservation Assistance Programs, National Park Service.** E-mail: [serena@bellew.com](mailto:serena@bellew.com), phone: (202)-568-1160.

**Len Winter, Historic Preservation Officer and Cultural Resources Section Head, NAVFAC SE.** E-mail [len.winter@navy.mil](mailto:len.winter@navy.mil), phone: (904)-542-6861.

I hope that this information gives you a better understanding of what the Big Pine and SEARCH team is capable of accomplishing. We appreciate opportunity to be of assistance to you.

If you would like to meet to discuss our capabilities further or if you have any questions, please feel free to reach out to me at [justin.johnston@bigpineconsultants.com](mailto:justin.johnston@bigpineconsultants.com) (cell: 231-282-2192) or Lisa M. Dugas at [ldugas@bigpineconsultants.com](mailto:ldugas@bigpineconsultants.com) (cell: 412-525-3491).

Sincerely,

Justin C. Johnston, MS, MBA  
President  
Big Pine Consultants LLC

## References Cited

West Virginia State Historic Preservation Office (WV SHPO)

2016 *National Register and Architecture/History Survey Manual*. Electronic Document, [http://www.wvculture.org/shpo/Survey/manual\\_2016\\_revisions.pdf](http://www.wvculture.org/shpo/Survey/manual_2016_revisions.pdf), accessed July 27, 2021.

Attachments: Attachment 1 – Letter of Commitment  
Attachment 2 – Big Pine Capabilities Statements  
Attachment 3 – Small Business Certificate  
Attachment 4 – SEARCH Service Brief  
Attachment 5 – Woman-Owned Small Business Certificates  
Attachment 6 – Example Insurance Certificate  
Attachment 7 – Resumes of Key Staff  
Attachment 8 – Past Project Experience  
Attachment 9 – Example Gantt Chart Scheduling



1066 Towervue Drive  
Pittsburgh, PA 15227  
231-282-2192

[justin.johnston@bigpineconsultants.com](mailto:justin.johnston@bigpineconsultants.com)  
[www.bigpineconsultants.com](http://www.bigpineconsultants.com)

## Attachment 1 – Letter of Commitment



3117 Edgewater Drive  
Orlando Florida 32804  
(407) 236-7711  
[www.searchinc.com](http://www.searchinc.com)

Letter of Commitment

7/27/2021

Bid Clerk  
Department of Administration  
Purchasing Division  
2019 Washington ST E  
Charleston, WV 25305

SUBJECT: Letter of Commitment for Proposed Contract for Solicitation No. CEOI 0603  
ADJ2200000001 for project entitled "Historic Resources Survey of Seven West Virginia Army  
National Guard Facilities"

Dear Sir or Madam:

I hereby indicate my commitment that, in the event of an award of a contract to Big Pine  
Consultants, LLC, SEARCH –SEARCH<sub>2</sub>O will fulfill the duties of cultural resource management  
services.

*SEARCH, Inc.* is a Woman Owned Small Business, holding the Women's Business Enterprise  
National Council certification #WOSB171868 and has a DUNS number of #94-205-4461.

Sincerely,

A handwritten signature in blue ink, appearing to read "Anne V. Stokes".

Anne V. Stokes, Ph.D.  
SEARCH CEO & Principal



1066 Towervue Drive  
Pittsburgh, PA 15227  
231-282-2192

[justin.johnston@bigpineconsultants.com](mailto:justin.johnston@bigpineconsultants.com)  
[www.bigpineconsultants.com](http://www.bigpineconsultants.com)

## Attachment 2 – Big Pine Capabilities Statements



NAICS Codes:  
541620 Environmental Consulting  
541618 Other Management Consulting Services  
541330 Engineering Services (secondary)

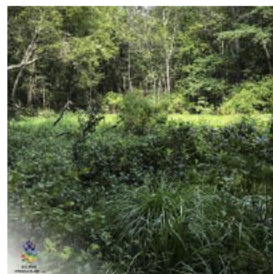
CAGE Code: 83UV7  
EIN: 82-5441344  
DUNS: 081222161  
SBE: PennDOT #16320

## CAPABILITIES STATEMENT

**Big Pine Consultants LLC (Big Pine)** is a small environmental consulting firm focused on solid team communication to meet our client's environmental and archaeology consulting needs. Our team of biologists, archaeologists and technical professionals help our clients plan their projects from inception to completion using the latest technology and dedicated professional staff. Big Pine is certified by the Pennsylvania Department of Transportation (PennDOT) as a Small Business Enterprise (SBE #16320) and listed as a SBE by West Virginia Department of Administration, Purchasing Division (WV Vendor #VS0000021856).

### ENVIRONMENTAL

- Rare, Threatened and Endangered Species
- Aquatic Ecology Studies
- Water Quality Sampling
- Macroinvertebrate Surveys
- Fish Surveys
- Zooplankton and Algal Surveys
- Clean Water Act Permitting
- Environmental Site Assessments
- NEPA Documentation
- FERC Prior Notices



### GEOSPATIAL

- Drone Services, FAA Part 107 Licensed and Insured
- ArcGIS Pro Mapping
- ArcGIS Online Web Map Applications
- Aerial Orthoimagery
- Plant Health Maps
- Contour Maps
- 3D Models
- Real Estate Photography
- Videography
- GPS Data Collection

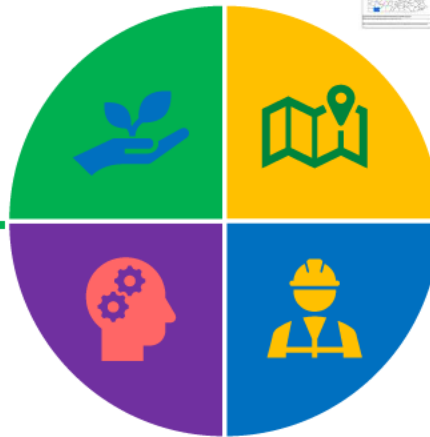
### PAST PERFORMANCE

- Washington Gas, Prince George's County and District of Columbia Reliability and Reinforcement Project
- DTE Appalachia Gathering, LLC, Raider Pipeline Project, Monongalia County, WV
- Washington Gas, Strip 1 West Project
- Ridge & Vale LLC, Van Voorhis Project
- Washington Gas, Reg Station 0217 Project



### CULTURAL RESOURCES

- Archival Research
- Archaeological Survey
- National Register Evaluation
- Data Recovery, Mitigation
- Artifact Analysis
- Technical Reports
- Agreement Documents
- Historic Narratives
- Preservation Planning
- Heritage Tourism



Justin C. Johnston, MS, MBA  
President  
O: 412-206-1703  
C: 231-282-2192

[justin.johnston@bigpineconsultants.com](mailto:justin.johnston@bigpineconsultants.com)

Lisa M. Dugas, MA, RPA  
Cultural Resources Manager  
O: 412-241-0834  
C: 412-525-3491

[l.dugas@bigpineconsultants.com](mailto:l.dugas@bigpineconsultants.com)

Big Pine Consultants LLC  
1066 Towervue Drive  
Pittsburgh, Pa, 15227  
United States

[www.bigpineconsultants.com](http://www.bigpineconsultants.com)



1066 Towervue Drive  
Pittsburgh, PA 15227  
231-282-2192

[justin.johnston@bigpineconsultants.com](mailto:justin.johnston@bigpineconsultants.com)  
[www.bigpineconsultants.com](http://www.bigpineconsultants.com)

## Attachment 3 – Small Business Certificate



ALLAN L. MCVEY  
CABINET SECRETARY

STATE OF WEST VIRGINIA  
DEPARTMENT OF ADMINISTRATION  
PURCHASING DIVISION  
2019 WASHINGTON STREET, EAST  
CHARLESTON, WEST VIRGINIA 25305-0130

W. MICHAEL SHEETS  
DIRECTOR

April 15, 2020

Big Pine Consultants, LLC  
1066 Towervue DR  
Pittsburgh, PA 15227-3928

Mr. Johnson:

This is to notify you that your Small, Women-, and Minority-Owned Businesses (SWAM) Certification Application has been approved on the basis of your representations that the vendor named above meets the definition of a Small, Women-, and Minority-Owned Businesses as set forth in the **West Virginia Code of State Rules** 148-22-1 et seq. This certification becomes effective:

4/15/2020

And shall automatically expire without notice two years after the effective date unless revoked by the Purchasing Director or upon expiration pursuant to the **West Virginia Code of State Rules** 148-22-8. The type(s) of Small, Women-, and Minority-Owned Businesses (SWAM) Certification approved for your entity:

Small Business

To maintain certification without lapse, a certified business shall apply to renew its certification at least 60 days prior to the end of the two-year certification period. Complete renewal instructions, recertification forms, and a list of all SWAM Certified entities are available online at [www.state.wv.us/admin/purchase/VendorReg.html](http://www.state.wv.us/admin/purchase/VendorReg.html).

If you have questions, please contact the West Virginia Purchasing Division at 304-558-2306.

Sincerely,

A handwritten signature in blue ink that reads "Lu Anne Cottrill".

Lu Anne Cottrill  
Assisting Registration Coordinator





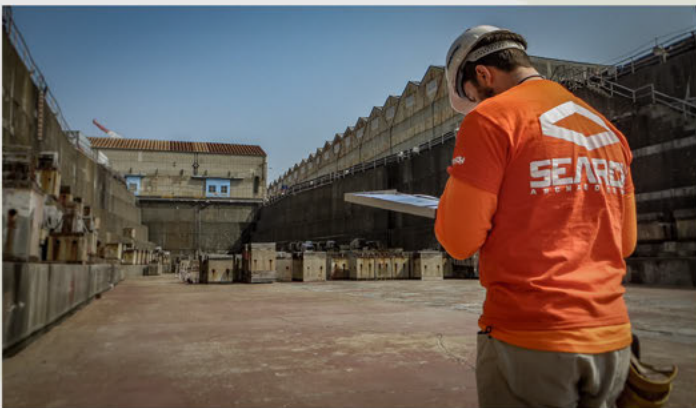
1066 Towerview Drive  
Pittsburgh, PA 15227  
231-282-2192  
[justin.johnston@bigpineconsultants.com](mailto:justin.johnston@bigpineconsultants.com)  
[www.bigpineconsultants.com](http://www.bigpineconsultants.com)

## Attachment 4 – SEARCH Service Brief



## ABOUT SEARCH

Over land and under water, SEARCH deploys the full spectrum of cultural heritage services worldwide. SEARCH20, its maritime program, is at the forefront of historic shipwreck and submerged pre-contact archaeology, paleolandscape reconstruction, and deep-water archaeology. SEARCH's staff are cultural resource industry leaders, pioneers, and subject matter experts across 44 markets, regions, and research sectors. Since 1993, SEARCH has completed more than 4,000 projects in 47 states, 6 US territories, and 32 countries spanning 6 continents and 4 oceans. By integrating science, technology, and creativity, SEARCH harnesses the power of the past to advance the projects, places, and people it serves.



## DEFENSE EXPERIENCE

SEARCH has supported every military service branch as well as their Reserve and Guard units CONUS and OCONUS at 267 military facilities, including combat theater. DoD has awarded SEARCH more than 84 IDIQs including 24 as Prime (\$310M) and 60 as a Team member (\$1.98B). The technical staff at SEARCH includes veterans as well as former DoD cultural resources personnel.

SEARCH Defense clients include: 26 USACE Districts, 11 NAVFACs, NHHHC, NAVSUP, AFRICOM, AFCEC, DLA, and DPAA.

## WORKING WITH SEARCH

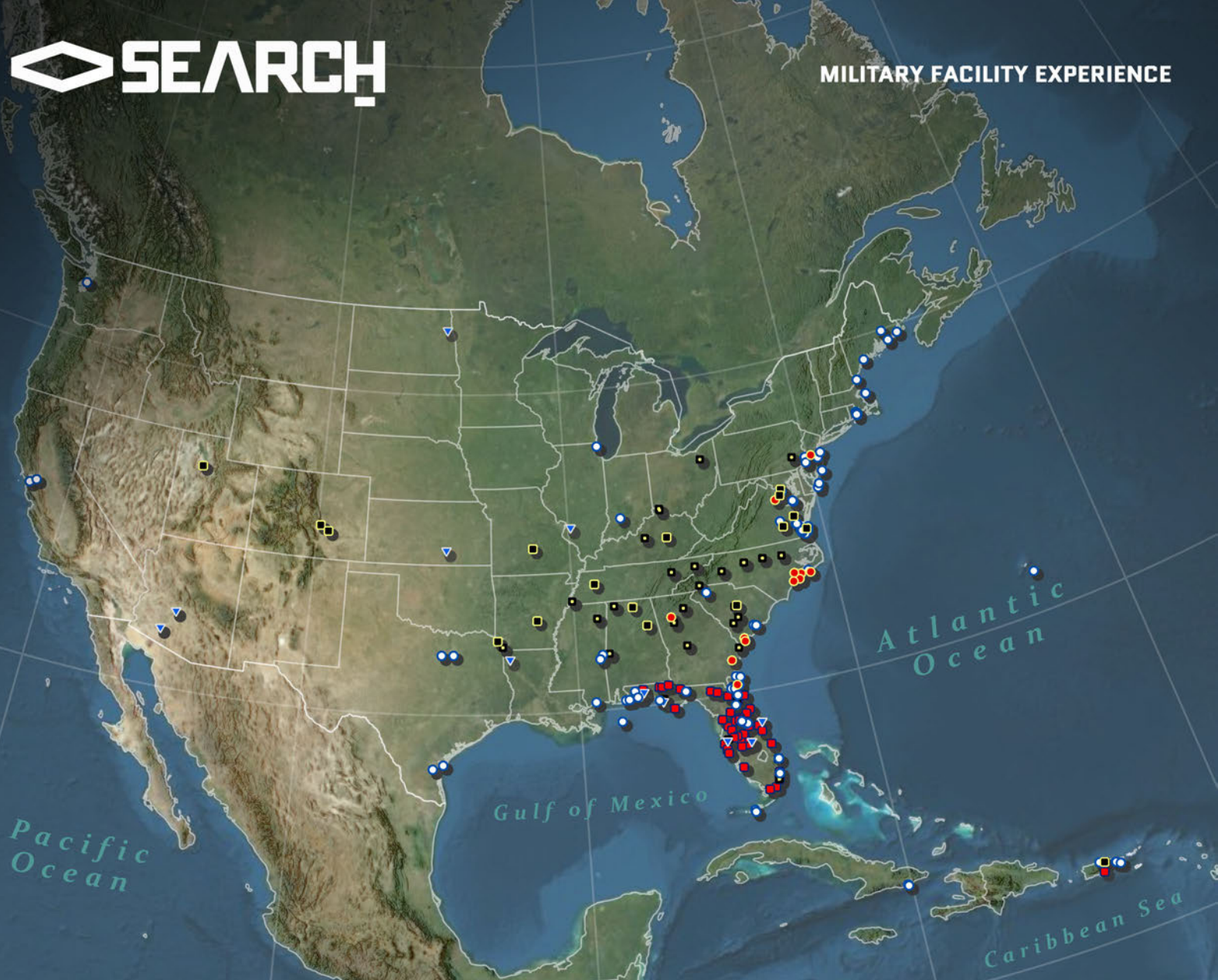
- Woman-Owned Small Business (WOSB)
- Primary NAICS Code 541720—Research & Development in the Social Sciences & Humanities
- ACASS “Exceptional” past performance ratings
- EMR of 0.63 (2020), 0.62 (2019), and 0.63 (2018)

## CONTACT

Geoffrey Mohlman, MA  
*Defense Market Leader*

904-379-8838

[geoff@searchinc.com](mailto:geoff@searchinc.com)



 U.S. ARMY	 NAVY	 MARINE CORPS	 AIR FORCE	 NATIONAL GUARD	 RESERVE	 DPAA	TOTAL
19	110	18	14	69	37	6	273



## Military Facility Experience

SEARCH has supported the DoD on 267 military facilities CONUS (217) and OCONUS (50) as well as 6 DPAA OCONUS missions.

### ARMY

Armed Forces Experimental Training Activity, Camp Peary, VA  
Army Training Center, Fort Jackson, SC  
Blue Grass Army Depot, KY  
Fort Belvoir, VA  
Fort Belvoir Community Hospital, VA  
Fort Carson, CO  
Fort Leonard Wood, MO  
Fort McClellan, AL  
Joint Expeditionary Base Little Creek-Fort Story, VA  
*Fort Buchanan, Puerto Rico*

### NAVY

Atlantic City Complex, NJ  
Atlantic Test Range Complex, MD  
Boston Range Complex, Offshore MA, NH, and ME  
Cherry Point Range Complex, NC  
Corry Station, FL  
Craney Island Fuel Terminal, VA  
Defense Supply Center Richmond, VA  
Dutch Harbor Naval Operating Base, AK  
Fleet and Industrial Supply Center, Craney Island, VA  
Fort Adams, RI  
Great Pond Outdoor Adventure Center, ME  
Gulf of Mexico Range Complex, Offshore TX, LA, MS, AL, and FL  
Hampton Roads Naval Museum Storage Facility, VA  
Jacksonville Range Complex, Offshore FL, GA, SC, and NC  
Joint Base Charleston, SC  
Joint Expeditionary Base Fort Story, VA  
Key West Range Complex, FL  
LaFayette River Annex, VA  
Military Ocean Terminal Concord (MOTCO), CA  
Narragansett Bay Range Complex, RI and NY  
Naval Air Engineering Station Lakehurst, NJ  
Naval Air Station Brunswick, ME  
Naval Air Station Brunswick, Topsham Annex, ME  
Naval Air Station Cecil Field, FL  
Naval Air Station Corpus Christi, TX  
Naval Air Station Green Cove Springs, FL  
Naval Air Station Jacksonville, FL  
Naval Air Station Jacksonville, Rodman Bombing Range, FL  
Naval Air Station Joint Reserve Base Fort Worth, TX  
Naval Air Station Joint Reserve Base Willow Grove, PA  
Naval Air Station Key West, FL  
Naval Air Station Kingsville, TX  
Naval Air Station Meridian, MS  
Naval Air Station Oceana, VA  
Naval Air Station Oceana Dam, Neck Annex, VA  
Naval Air Station Patuxent River, MD  
Naval Air Station Patuxent River, Solomons Annex, MD  
Naval Air Station Pensacola, FL  
Naval Air Station Portsmouth, VA  
Naval Air Station Whiting Field, FL  
Naval Auxiliary Landing Field Fentress, VA  
Naval Computer and Telecommunications Station Cutler, ME  
Naval Construction Battalion Center Gulfport, MS  
Naval Hospital Beaufort, SC  
*AUTEC Range Complex, Bahamas*  
*Bermuda Range Complex, Bermuda*  
*Camp Lemonier, Djibouti*  
*Commander Fleet Activities Okinawa, Japan*  
*Commander Fleet Activities Sasebo, Japan*  
*Commander Fleet Activities Yokosuka, Japan*  
*Commander in Chief Pacific Fleet Headquarters, Hawai'i*  
*Guantanamo Range Complex, Cuba*  
*Joint Base Pearl Harbor-Hickam, Hawai'i*  
*Naval Air Station Sigonella, Italy*  
*Naval Security Group Activity Sabana Seca, Puerto Rico*

### 17 CONUS-2 OCONUS

Milan Army Ammunition Plant, TN  
Pine Bluff Arsenal, AR  
Pueblo Depot Activity, CO  
Redstone Arsenal, AL  
Red River Army Depot, TX  
Regional Archaeological Curation Facility, Fort Lee, VA  
Tooele Army Depot, UT  
Walter Reed National Military Medical Center, MD  
*US Army Military History Office, Campbell Barracks, Germany*

### 88 CONUS-22 OCONUS

Naval Operations Support Center Tallahassee, FL  
Naval Outer Landing Field Wolf, FL  
Naval Outlying Landing Field Holley, FL  
Naval Outlying Landing Field Joe Williams, MS  
Naval Research Laboratory Underwater Sound Reference Detachment, Leesburg, FL  
Naval Research Laboratory Underwater Sound Reference Detachment, Orlando, FL  
Naval Station Great Lakes, IL  
Naval Station Mayport, FL  
Naval Station Newport, RI  
Naval Station Norfolk, VA  
Naval Station Norfolk, Lafayette River Annex, VA  
Naval Submarine Base Kings Bay, GA  
Naval Support Activity Crane, IN  
Naval Support Activity Hampton Roads, VA  
Naval Support Activity Hampton Roads, Northwest Annex, VA  
Naval Support Activity Orlando's Bugg Spring Property, FL  
Naval Support Activity Panama City, FL  
Naval Support Activity Prospect Harbor, ME  
Naval Surface Warfare Center Panama City Division Testing Area, FL  
Naval Undersea Warfare Center Newport North Test Range and Outer Range, RI  
Naval War College, RI  
Naval Weapons Industrial Reserve Plant Dallas, TX  
Naval Weapons Station Charleston, SC  
Naval Weapons Station Earle, NJ  
Naval Weapons Station Yorktown, VA  
Naval Weapons Station Yorktown, Cheatham Annex, VA  
Naval Weapons Station Yorktown, Fuel Site, VA  
Navy Medical Center Portsmouth, VA  
Navy Training Center, McCoy Annex, FL  
Norfolk Naval Shipyard, VA  
Old Naval Observatory, Washington, DC  
Pennsylvania Navy Yard Annex, PA  
Portsmouth Naval Shipyard, NH  
Proposed NC and VA Outlying Landing Field Locations  
Puget Sound Naval Shipyard, WA  
South FL Ocean Measurement Facility, FL  
St. Juliens Creek Annex, VA  
Switzerland Bomb Target, FL  
Switzerland Naval Outer Landing Field, FL  
Tactical Towed Array Calibration Facility Leesburg, FL  
Treasure Island Museum, Former Naval Station Treasure Island, CA  
US Atlantic Fleet Training and Testing Area, Atlantic Ocean  
Virginia Capes Range Complex, VA  
Washington Navy Yard, Washington, DC  
*Naval Station Guantanamo Bay, Cuba*  
*Naval Station Roosevelt Roads, Puerto Rico*  
*Naval Station Rota, Spain*  
*Naval Support Activity Port Operations, Italy*  
*Naval Support Activity Souda Bay, Greece*  
*Naval Support Facility Diego Garcia*  
*Navy Atlantic Fleet Weapons Training Facility, Puerto Rico*  
*Naval Base Guam*  
*Opana Radar Site, Hawai'i*  
*Pacific Missile Range Facility, Hawai'i*  
*Vieques Naval Training Range, Puerto Rico*

## MARINE CORPS

Marine Corps Air Station Beaufort, SC  
Marine Corps Air Station Cherry Point, NC  
Marine Corps Auxiliary Landing Field Bogue, NC  
Marine Corps Base Camp Lejeune, NC  
Marine Corps Base Quantico, VA  
Marine Corps Outlying Landing Field Atlantic, NC  
*Camp Foster Marine Corps Base, Okinawa, Japan*  
*Marine Corps Air Station Ewa, Hawai'i*  
*Marine Corps Air Station Futenma, Okinawa, Japan*

## AIR FORCE

Avon Park Air Force Range, FL  
Barry M. Goldwater Air Force Range East, AZ  
Cape Canaveral Air Station, FL  
Eglin Air Force Base, FL  
Hurlburt Field Air Force Base, FL  
Scott Air Force Base, IL  
*Andersen Air Force Base, Guam*

## NATIONAL GUARD

Alexander O. Shelfer National Guard Armory, FL  
Armed Forces Reserve Center, Daytona Beach, FL  
Armed Forces Reserve Center, West Palm Beach, FL  
Avon Park National Guard Armory, FL  
Babcock Center National Guard Armory, FL  
Bonifay National Guard Armory, FL  
Brooksville Armory Aviation Support Facility #2, FL  
Camp Blanding Joint Training Center, FL  
Cecil Field Hangar Facility, FL  
Charlie Jack Anderson National Guard Armory, FL  
ChIPLEY National Guard Armory, FL  
Cocoa National Guard Armory, FL  
Crestview National Guard Armory, FL  
Crystal River National Guard Armory, FL  
CSM Thomas Jeff Mayo Armory, FL  
Dade City National Guard Armory, FL  
DeLand National Guard Armory, FL  
Eugene M. Bass National Guard Armory, FL  
Eustis National Guard Armory, FL  
FL State Arsenal, St. Francis Barracks, FL  
Fort Coombs National Guard Armory, FL  
Fort Myers National Guard Armory, FL  
Fort Pierce National Guard Armory, FL  
H. W. McMillan National Guard Armory, FL  
Haines City National Guard Armory, FL  
Hiram W. Sperry National Guard Armory, FL  
*Fort Ruger, Hawai'i*  
*Hanapepe Reserve Center, Hawai'i*  
*Hilo Army Aviation Support Facility #2, Hawai'i*  
*Kalaeloa Reserve Center, Hawai'i*  
*Kapaa Reserve Center, Hawai'i*  
*Kaunakakai Reserve Center, Hawai'i*  
*Keaau Reserve Center, Hawai'i*  
*Kealakekua Reserve Center, Hawai'i*  
*Camp Santiago, Puerto Rico*

## RESERVES

81<sup>st</sup> Readiness Division, USAR, Fort Jackson, SC  
Andrew Leslie Jackson Army Reserve Center, AL  
Area Maintenance Support Activity #47, FL  
Area Maintenance Support Activity #52, FL  
Area Maintenance Support Activity #53, FL  
Area Maintenance Support Activity #71, KY  
Area Maintenance Support Activity #150, TN  
Bloomberg Army Reserve Center, NC  
Brooks-Lawler Army Reserve Center, KY  
C. Lovejoy Army Reserve Center, FL  
Carlyle C. Council, Jr.-Washington Duke Lyon ARC, NC  
Colonel FM Williams Army Reserve Center, FL  
Durham Army Reserve Center, NC  
DW Hudson Army Reserve Center, NC  
East Point Army Reserve Center, GA  
Fort Valley Army Reserve Center, GA  
Gainesville Army Reserve Center, GA  
General Joseph Wheeler Army Reserve Center, AL  
*Area Maintenance Support Activity #161, Puerto Rico*

## DPAA

*Assam, India*  
*Bay, Germany and the Netherlands*  
*Hurtgen Forest, Germany*

## 12 CONUS-6 OCONUS

Marine Corps Outlying Landing Field Oak Grove, NC  
Marine Corps Recruiting Depot Parris Island, SC  
Marine Corps Reserve Center West Trenton, NJ  
Marine Corps Reserve Center Windy Hill, GA  
Marine Corps Support Facility Blount Island, FL  
Townsend Bombing Range, MCAS Beaufort, GA  
*Marine Corps Base Hawaii, Hawai'i*  
*Marine Corps Base Hawaii, Puuloa Training Facility, Hawai'i*  
*Marine Corps Base Camp Blaz, Guam*

## 13 CONUS-1 OCONUS

Langley Air Force Base, VA  
Luke Air Force Base, AZ  
MacDill Air Force Base, FL  
Tyndall Air Force Base, FL  
Grand Forks Air Force Base, ND  
McConnell Air Force Base, KS  
Barksdale Air Force Base, LA

## 52 CONUS-17 OCONUS

Hollywood National Guard Armory, FL  
Homestead National Guard Armory, FL  
Lakeland National Guard Armory, FL  
Larry C. Bolyard National Guard Armory, FL  
Leesburg National Guard Armory, FL  
Louie C. Wadsworth National Guard Armory, FL  
Marianna National Guard Armory, FL  
Mark W. Lance National Guard Armory, FL  
Maxwell C. Snyder National Guard Armory, FL  
Melbourne National Guard Armory, FL  
Miramar Nike Hercules Missile Site, FL  
Nonie Worth Gable National Guard Armory, FL  
North Miami National Guard Armory, FL  
Ocala National Guard Armory, FL  
Palmetto National Guard Armory, FL  
R.F. Chitty National Guard Armory, FL  
Ragin-Deutsch National Guard Armory, FL  
Robert A. Ballard National Guard Armory, FL  
Robert B. Harkness National Guard Armory, FL  
Robert F. Ensslin National Guard Armory, FL  
Robert L. Lewis National Guard Armory, FL  
Sarasota National Guard Armory, FL  
Sumter L. Lowry National Guard Armory, FL  
Tavares Organization Maintenance Shop #5, FL  
United States Property and Fiscal Office, FL  
Wauchula National Guard Armory, FL  
*Kekaha Weekend Training Site, Hawai'i*  
*Puuene Reserve Center, Hawai'i*  
*Regional Training Institute, Hawai'i*  
*Ukumehame Weekend Training Site, Hawai'i*  
*Waiawa Gulch Units Training Equipment Site & Regional Training Site Pearl City, Hawai'i*  
*Wahiawa Reserve Center, Hawai'i*  
*Wheeler Army Air Field, Hawai'i*  
*Keaukaha Military Reservation, Hawai'i*

## 35 CONUS-2 OCONUS

Greeneville Army Reserve Center, TN  
Harry Kandel Army Reserve Center, GA  
High Point Army Reserve Center, NC  
Joe Harris Tower Army Reserve Center, MS  
Joseph Stillwell Army Reserve Center, FL  
Marine Corps Reserve Center West Trenton, NJ  
Miller-Duckett Army Reserve Center, NC  
Navy Marine Corps Reserve Center, Akron, OH  
Navy Marine Corps Reserve Center, Reading, PA  
Nelson County Memorial Army Reserve Center, KY  
Newkirk Sutherland Jr. Army Reserve Center, FL  
Oak Ridge Army Reserve Center, TN  
Orangeburg Memorial Army Reserve Center, SC  
Rocky Mount Army Reserve Center, NC  
T. Whiddon Army Reserve Center, FL  
Thomas Clyde Lamar Army Reserve Center, NC  
Thomas Dry Howie Army Reserve Center, SC  
*Captain Euripides Rubio Jr. US Army Reserve Center, Puerto Rico*

## 6 OCONUS

*New Caledonia*  
*New Guinea*  
*Palau*



1066 Towervue Drive  
Pittsburgh, PA 15227  
231-282-2192

[justin.johnston@bigpineconsultants.com](mailto:justin.johnston@bigpineconsultants.com)  
[www.bigpineconsultants.com](http://www.bigpineconsultants.com)

## Attachment 5 – Woman-Owned Small Business Certificates



WOMEN'S BUSINESS ENTERPRISE NATIONAL COUNCIL

JOIN FORCES. SUCCEED TOGETHER.

HEREBY GRANTS
WOMAN OWNED SMALL BUSINESS (WOSB) CERTIFICATION TO
SOUTHEASTERN ARCHAEOLOGICAL RESEARCH INC DBA SEARCH ;
SEARCH, Inc.

The identified small business is an eligible WOSB for the WOSB Program, as set forth in 13 C.F.R. part 127 and has been certified as such by an SBA approved Third Party Certifier pursuant to the Third Party Agreement, dated June 30, 2011, and available at www.sba.gov/wosb.

The WOSB Certification expires on the date herein unless there is a change in the SBA's regulation that makes the WOSB ineligible or there is a change in the WOSB that makes the WOSB ineligible. If either occurs, this WOSB Certification is immediately invalid. The WOSB must not misrepresent its certification status to any other party, including any local or State government or contracting official or the Federal government or any of its contracting officials.

Table with 2 columns: NAICS codes, UNSPSC codes, Certification Number (WOSB171868), and Expiration Date (September 28, 2021).



Handwritten signature of Nancy Allen

Nancy Allen, Women's Business Enterprise Council Florida President & CEO

Handwritten signature of Pamela Prince-Eason

Pamela Prince-Eason, WBENC President & CEO

Handwritten signature of Laura Taylor

Laura Taylor, WBENC Vice President

# WBENC

WOMEN'S BUSINESS ENTERPRISE  
NATIONAL COUNCIL

JOIN FORCES. SUCCEED TOGETHER.

hereby grants

# National Women's Business Enterprise Certification

to

SOUTHEASTERN ARCHAEOLOGICAL RESEARCH INC DBA SEARCH ; SEARCH, Inc.

who has successfully met WBENC's standards as a Women's Business Enterprise (WBE).

This certification affirms the business is woman-owned, operated and controlled and is valid through the date herein.

Certification Granted: September 28, 2015

Expiration Date: September 28, 2021

WBENC National Certification Number: 2005127518

WBENC National WBE Certification was processed and validated by Women's Business Enterprise Council Florida, a WBENC Regional Partner Organization.



**WBENC FLORIDA**  
WOMEN'S BUSINESS ENTERPRISE COUNCIL

Authorized by Nancy Allen, President & CEO  
Women's Business Enterprise Council Florida

NAICS: 541370, 115310, 493190, 512110, 519120, 541310, 541330, 541360, 541430, 541513, 541611, 541620, 541690, 541712, 541715, 541720, 541990, 561611, 561990, 562910, 611430, 611710, 712110, 712120

UNSPSC: 41113809, 60103601, 80171904, 81151705, 82140000, 82151511, 82151512, 90141503, 90151501, 90151502, 92111701, 93141707, 93141708, 93141713, 93141715

Center for Women & Enterprise

Great Lakes  
Women's  
Business  
COUNCIL

GREATER  
WOMEN'S  
BUSINESS  
COUNCIL

WOMEN'S  
BUSINESS  
COUNCIL  
SOUTHWEST

WOMEN'S  
BUSINESS  
DEVELOPMENT  
CENTER

WBEA

WBENC EAST  
WOMEN'S BUSINESS ENTERPRISE COUNCIL  
OHIO RIVER VALLEY

WBENC ORV  
WOMEN'S BUSINESS ENTERPRISE COUNCIL  
OHIO RIVER VALLEY

WBENC PACIFIC  
WOMEN'S BUSINESS ENTERPRISE COUNCIL

WBENC SOUTH  
WOMEN'S BUSINESS ENTERPRISE COUNCIL

WBENC WEST  
WOMEN'S BUSINESS ENTERPRISE COUNCIL

WOMEN PRESIDENTS'  
Educational Organization





1066 Towervue Drive  
Pittsburgh, PA 15227  
231-282-2192  
[justin.johnston@bigpineconsultants.com](mailto:justin.johnston@bigpineconsultants.com)  
[www.bigpineconsultants.com](http://www.bigpineconsultants.com)

## Attachment 6 – Example Insurance Certificate





1066 Towerview Drive  
Pittsburgh, PA 15227  
231-282-2192  
[justin.johnston@bigpineconsultants.com](mailto:justin.johnston@bigpineconsultants.com)  
[www.bigpineconsultants.com](http://www.bigpineconsultants.com)

## Attachment 7 – Resumes of Key Staff



Lisa M. Dugas, MA, RPA

## Lead Senior Cultural Resources Specialist

### Education

M.A. Applied Archaeology 2011,  
Indian University of Pennsylvania

B.A. Anthropology 1995, University  
of Pittsburgh

### Registrations

Registered Professional  
Archaeologist # [REDACTED]

Pennsylvania Archaeological Council

Council for West Virginia  
Archaeology

Society for American Archaeology

### Professional Employment

Big Pine Consultants LLC

Senior Cultural Resources Lead  
January 2019-present

SWCA Environmental Consultants

Cultural Resources Director  
November 2014 – July 2015

AECOM (formerly URS Corporation)

Principal Investigator May 2012 –  
November 2014

GAI Consultants, Inc.

Senior Archaeologist, August 1997-  
May 2012

### Summary

Ms. Dugas has filled multiple roles in her 25-year career as a cultural resource management (CRM) professional. She began her career as an archaeological field technician on the grounds of Fort Campbell, KY, and became an accomplished principal investigator. Ms. Dugas has designed and implemented all phases of precontact and historic archaeological investigations and has supported historic structure and landscape surveys. She has considerable experience with the O&G industry and transportation projects. Ms. Dugas is well-versed with State and Federal regulations and regulatory agencies. In 2015, Ms. Dugas was personally invited by the Deputy Director of the PA SHPO to participate in the PA DEP Pipeline Infrastructure Task Force: Historical, Cultural, Tribal Working Group, reporting to Governor Tom Wolf. In 2018, Ms. Dugas was invited by the U.S. Fish and Wildlife Service to speak at the Ohio River Islands National Wildlife Refuge about her research on prehistoric Native American lifeways that focused on freshwater mussel use.

### Selected Project Experience

#### ***2018 – DTE Appalachia Gathering LLC – Architectural History Scoping and Consultation for Raider Pipeline Project***

Ms. Dugas was the Principal Investigator for the DTE Appalachia Gathering LLC Raider Pipeline Project in Monongalia County, WV. She conducted architectural history fieldwork for initial consultation as requested by the WV State historic Preservation Office.

#### ***2012-2015 – Shell Chemicals – Cultural Resources Investigation of a Proposed Petrochemical Plant***

Ms. Dugas was the Principal Investigator for Shell Chemicals (Shell) proposed petrochemical plant in Monaca, PA. She designed and executed Phase I and II archaeological studies, supported architectural survey, and prepared a Programmatic Agreement detailing mitigation commitments for a 675-acre project area for PA DEP and USACE Permits. Responsibilities included predictive model development, preparation of technical documents and agency consultation. Ms. Dugas negotiated an expedited review process with the PA SHPO and engaged in a mitigation strategy working group with USACE, PA DEP, and PA SHPO to facilitate the development of a Programmatic Agreement within six (6) months; thus, avoiding schedule delays and revenue loss. The mitigation provided resources to redesign and upgrade the cultural resources data management system maintained by the PA SHPO, providing statewide benefits to Pennsylvania's citizens.



### ***2014-2015– Kinder Morgan – Cultural Resources Investigation of the Utopia Pipeline Project***

As the principal investigator for Kinder Morgan’s Utopia Pipeline Project, Ms. Dugas developed and presented work plans and agency documents for a proposed 240-mile, 12-inch diameter petrochemical pipeline in Ohio in support USACE Permits. Fatal flaw analysis and “smart siting” practices were implemented by Ms. Dugas to assist with route selection. In advance of field work, Ms. Dugas negotiated testing and reporting strategies with the OH SHPO to maximize field time and expedite review schedules. She also developed efficiency enhancing protocols that improved data flow from the field to laboratory and office. These improvements were particularly useful for processing data on large-scale projects that required expedited reporting and were implemented for other projects. These refined processes resulted in greater efficiency for reporting and were later reflected as reduced cost for clients.

### ***2012-2014 – Williams Field Services – Appalachian Basin Area Gathering Pipelines***

Ms. Dugas managed cultural resources studies to facilitate permitting tasks of multiple natural gas gathering lines projects for Williams Field Services in WV, OH and PA. Responsibilities included SHPO consultation, development of costs and scope, coordinating historic architecture survey, logistical coordination, supervision of fieldwork, report preparation. Projects accomplished under fast-paced timelines for fieldwork and reporting.

### ***2012-2014 – PennDOT – Transportation Upgrades and Bridge Replacement Projects***

Ms. Dugas conducted cultural resource investigations for a variety of PennDOT transportation projects including: New Stanton Interchange (I-70) upgrade project, Port Kennedy Ground Penetrating Radar (GPR) Study, and the Sewickley Creek Bridge Replacement. Ms. Dugas coordinated consultation with PennDOT and PA SHPO. She arranged land access and acquired railroad permits, as needed. Feasibility studies were performed using GSSI SIR-3000 GPR data collection system, as well as geomorphology investigation. Workplans, fieldwork and reporting were completed in close consultation with the PennDOT District Historic Preservation Specialists.

### ***2003-2012 Dominion Transmission, Inc. and Dominion Energy Services– Gathering Expansion Projects***

For nearly a decade, Ms. Dugas conducted cultural resources investigations for Dominion Transmission, Inc. and Dominion Energy Services for gathering and expansion Projects through multiple counties in MD, NY, PA, OH, VA and WV. The Projects were an assemblage of many pipeline projects ranging in length from approximately 2.5 to 50 miles and included compressor stations and treatment facilities. Projects include: Natrium to Market Project (Phase II National Register Evaluation of 36GR275); Burch Ridge Compressor Station; Rural Valley Pipeline Project; Appalachian Gateway TL-492 Extension 5 Pipeline Project; USA Storage Project, PL-1 Pipeline Retest Sections; Cove Point Expansion Project, TL-532 Pipeline (approximately 50 miles, including 22 Phase II National Register Evaluations and two (2) Phase III data recoveries); Dominion East OH Jefferson Compressor Station; Hub II—TL 587 Pipeline; Northeast Storage Project (22 miles of Pipeline including Phase II National Register Evaluation of sites 36PO34 and 36MC70); Messer Reef Pipeline Project; Wolf Run Compressor Station and Pipeline; Cove Point East Project; Mid-Atlantic Project; Loudoun-Leesburg Pipeline Project; Fink Capacity Maintenance Project; and Quantico Compressor Station. Projects often included viewshed analyses for architectural resources and historic landscapes. For many of these Projects, Ms. Dugas coordinated SHPO consultation, artifact and document curation, as well as developed various public outreach documents.



Justin C. Johnston, MS, MBA

President

### Education

M.B.A. Business Management 2015, Point Park University  
M.S. Biology 2004, Central Michigan University  
B.S. Biology 2000, Central Michigan University  
Wetland Training Institute, Grasses Sedges and Rushes, Instructed by Wesley Knapp, July, 2019  
Ohio EPA, Wetland Biocriteria Training  
Larval Fish Identification Course, Stone Laboratory, The Ohio State University  
Richard Chinn Environmental Training, U.S. Army Corps of Engineers, Wetland Delineation and Management Training

### Registrations

MD Qualified Professional (Forest Conservation)  
MD Erosion & Sediment Control Certification, Responsible Personnel (Green Card) No. RPC022739  
MD State Highway Administration Erosion and Sediment Control Certification (Yellow Card) No. [REDACTED]  
USFWS PA Field Office, Northeastern Bulrush (*Scirpus ancistrochaetus*) surveyor  
Private Pilot, [REDACTED] USA Department of Transportation, FAA  
Remote Pilot Certificate, USA Department of Transportation, FAA  
SCUBA, 2 [REDACTED] SCUBA Schools Int'l.  
HAZMAT 1205, 4 [REDACTED] ABAG Training Ctr.  
First Aid/Adult CPR/AED, [REDACTED]

### Professional Employment

Big Pine Consultants LLC  
President May 2018-present  
GAI Consultants, Inc.  
Environmental Manager, November 2007-May 2018  
AMEC Earth & Environmental  
Biologist, March 2005-November 2007  
Michigan Water Research Center, Central Michigan University  
Graduate Research Assistant and Teaching Assistant, August 2001-December 2004

### Summary

Mr. Johnston is an aquatic ecologist with a Masters in Biology and a second Masters in Business Management, who is experienced in project management, routing, planning, permitting, associated studies, and compliance for major infrastructure projects. Mr. Johnston is also proficient in water quality analyses, aquatic algae surveys, aquatic macroinvertebrate surveys, zooplankton surveys, larval fish surveys, Clean Water Act Section 316(b) impingement and entrainment studies, economic analyses of fish losses, and wetland and stream delineations.

### Selected Project Experience

#### ***2014-Present – Washington Gas Light Company - Prince George's County and District of Columbia Reliability and Reinforcement Project (PGDCRRP)***

Mr. Johnston was the Project Manager for the 16-mile long 24-inch diameter steel natural gas transmission pipeline for Washington Gas Light Company. Mr. Johnston was responsible for desktop and field routing studies, landowner contacts and easement acquisition, environmental studies including wetland and stream delineations and forest stand delineations, environmental and roadway permitting, public outreach efforts, coordination and meetings with various government agencies and officials, civil survey activities, and other duties. Mr. Johnston managed the scope, schedule, and budget while keeping the client informed of progress during bi-weekly conference calls and email updates.

#### ***2011-2013 - M3 Midstream (Momentum) – Appalachia Gathering System***

Mr. Johnston managed the environmental studies and permitting for the Appalachia Gathering System for M3 Appalachia Gathering (Momentum). The system included over 130 miles of natural gas gathering trunk lines and laterals spanning multiple counties in Northern WV and Southwestern PA. Permitting included several pre-construction notifications to the U.S. Army Corps of Engineers (USACE) for trunk lines and laterals in WV; numerous general permits and PASPGP-4 coordination for various trunk lines and laterals in PA; air permitting for one of two compressor stations, erosion and sedimentation control plan development in WV and permitting in PA (ESCGP-1); agency consultations and coordination of numerous studies for rare, threatened and endangered (RTE) species including the Indiana bat (*Myotis sodalis*), freshwater mussels, and many plant species;

cultural resources surveys to satisfy USACE requirements; highway occupancy and equipment access permitting; pipeline civil surveys, stakeout, and as-built; hydrostatic testwater discharge permitting; Stream Activity License and Right-of-Entry approvals in WV; Submerged Land License Agreement in PA; coordination with municipalities regarding site design for aboveground facilities; and various other coordination and approvals as required to obtain the necessary permits and approvals for construction of the numerous projects associated with the system.

### ***2011-2013 CNX Morris to Majorsville Project***

Managed the permitting for the CNX Gas – Morris to Majorsville Pipeline Project in Greene County, PA. The project included 11 miles of pipeline traversing the Bailey Mine complex (a known Indiana bat hibernaculum and maternity site) and extending into West Virginia to the Majorsville Compressor Station. The permitting included a PCN to the USACE for the WV portion of the project, a general permit and PASPGP-4 category III review for stream and wetland crossings in PA, ESCGP-1 preparation for the portion in PA, on-site ESCP for the portion in WV; Stream Activity License and Right-of-Entry; coordination with USFWS and PADCNR regarding rare, threatened and endangered species; coordination and studies regarding cultural resources including consultations with PHMC and WVDCH.

### ***2011-2013 CNX – Various Small Projects***

Managed permitting for numerous small gas and waterline Projects for CNX Gas in PA and WV including Ninevah water line; CRDA3 water line; Web 4 pipeline; Majorsville Station Pipeline; MC22 to MC21 Pipeline; and SHL8 Well Connect.

### ***2011-2012 Dominion TL-571 Replacement Project***

Managed environmental, survey, and environmental monitoring tasks for the replacement of approximately 6 miles of natural gas transmission pipeline for the Dominion Transmission Inc., TL-571 Replacement Project in Lewis County, WV. Coordinated rare, threatened, and endangered species consultation. Coordinated Phase I Archaeological investigations and consultation with the West Virginia Division of Culture and History (WVDCH). Coordinated wetland and waterbody delineations and confirmed coverage under Nationwide Permit-12 (non-reporting).

### ***2010-2011 Dominion Transmission, Inc. – Gathering Expansion Projects***

Managed environmental, survey, and environmental monitoring tasks for Dominion Transmission Inc.'s, Gathering Expansion Projects in WV and OH. The Projects were a collection of many smaller pipeline projects totaling approximately 32 miles, as well as compression and treatment facilities projects. Projects included: the Carlisle Extraction Project; Lightburn Facility Project; Hastings Fractionation Modifications Project; Davis Station Project; TL-404 Replacement Project (approximately 14 miles of replacement); Oscar Nelson POD Project (three pipelines totaling approximately six miles of new pipeline); Weston West POD Project (replacement of approximately 3.5 miles of pipeline); Bridgeport POD Project (replacement of approximately 2.5 miles of pipeline); the Deep Valley POD Project (approximately six miles of pipeline replacement); and the Spruce Run Station Project (new compressor station). The Projects were distributed in multiple counties in WV and OH, including: Lewis, Ritchie, Harrison, Barbour, Wyoming, Marshall, Wetzel, and McDowell Counties, in WV, and Noble and Monroe Counties, in OH. For these Projects, Mr. Johnston coordinated RTE species consultation, Phase I Environmental Site Assessments, Phase I Archaeological investigations and consultation with the WVDCH, wetland and waterbody delineations, Site Registration (NPDES) applications, RTE mussel survey, and confirmed coverage under Nationwide Permit-12 under non-reporting in most cases and for some Projects by preparing a pre-construction notification (PCN).

### ***2011 Dominion – Oakford Drip Replacement***

Managed environmental permitting for the Dominion Transmission, Inc., Oakford Drip Replacement Project at the Oakford Compressor Station.

### ***2010-2011 Duke Energy – Gallagher Pipeline Project***

Served as the FERC environmental advisor for the Duke Energy, Gallagher Pipeline Project. The Project consisted of approximately 19 miles of 20-inch diameter natural gas transmission pipeline in Floyd and Harrison Counties, Indiana and Jefferson County, Kentucky to provide natural gas to fuel a power plant. As the advisor, Mr. Johnston consulted with the Environmental Project Manager to provide guidance on the FERC processes and procedures and reviewed documents for consistency to meet FERC requirements.

### ***2009-2011 Superior Appalachian Pipeline, LLC – Snowshoe Pipeline Project and extensions***

Managed environmental and routing tasks for approximately 29 miles of new natural gas gathering pipeline for the Superior Appalachian Pipeline, LLC, Snow Shoe Pipeline Project in Centre and Clearfield Counties, PA. Coordinated RTE species consultation and investigations for the Allegheny woodrat (*Neotoma magister*), Northeastern bulrush (*Scirpus ancistrochaetus*), timber rattlesnake (*Crotalus horridus*), and the Indiana bat (*Myotis sodalis*). Prepared Act 14, 67, 68, and 127 notification letters. Coordinated Phase I Archaeological investigations and consultation with the PHMC. Coordinated wetland and waterbody delineations and subsequent Chapter 105 and ESCGP-1 permitting. Coordinated with the PA Game Commission (PGC) regarding right-of-way on state game lands property. Negotiated right-of-way alignment with the district forester and coordinated studies including an invasive plant surveys and avoidance of a known blue heron rookery. Prepared the State Forest Environmental Review (SFER) documentation in order to obtain right-of-way in Sproul State Forest.

### ***2009-2010 Dominion – Appalachian Gateway Project***

Coordinated preparation of draft Resource Reports 1 and 10 to support the FERC pre-filing process for the Dominion Transmission, Inc. Appalachian Gateway Project. Coordinated preparation of Resource Report 9 for the certificate proceedings (CP) filing for the Project. Served as a reviewer for the overall CP filing for the Project.

### ***2010 – Equitrans– Rogersville Compressor Station Project***

Mr. Johnston drafted the FERC Environmental Report (Exhibit F-1) for the Equitrans, L.P. Rogersville Compressor Station Abandonment Project in Greene County, PA. The project involved the abandonment of multiple facilities at the station to cease compression from the facility while maintaining dehydration and other services. Completed consultation with federal and state agencies regarding RTE species and cultural resources concerns. Conducted a wetland delineation and coordinated a Phase I cultural resources review for the site.

### ***2009-2010 Dominion Transmission Inc. - Hub II Project***

Completed the FERC Environmental Report (Exhibit F-1) for the Dominion Transmission, Inc., Hub II Project, at the Borger Compressor Station in Tompkins County, New York. The project involved addition of a new turbine to increase horsepower and decrease emissions from the station. Completed consultation with federal, state, and tribal entities regarding rare, threatened and endangered species and cultural resources concerns. Coordinated wetland delineation and Phase I cultural resources review for the site. Coordinated Title V Air Permit Modification for the compressor station. Coordinated contour data collection and mapping. Coordinated New York State Department of Environmental Conservation NOI for Stormwater Discharges Associated with Construction Activity including Stormwater Pollution Prevention Plan preparation.

### ***2009 Equitable Resources, Inc. - Logansport Well Plug and Abandonments***

Wetland delineations and environmental reviews of various wells and proposed well sites. Prepared Federal Energy Regulatory Commission (FERC) Prior Notice abbreviated environmental reports for the Logansport Well Plug and Abandonment Project and the Logansport Well Installation Project in West Virginia for Equitable Resources, Inc.

### ***2008-2009 T.W. Phillips (now Peoples TWP) – Bionol Clearfield Pipeline Project***

Mr. Johnston drafted the FERC Environmental Report (Exhibit F-1) for the 8-mile long transmission pipeline to fuel a new ethanol production facility in Clearfield, PA. Mr. Johnston also prepared materials and coordinated



open house meetings for the Project, completed environmental studies and permitting including consultations regarding rare, threatened, and endangered species, and historic properties. This was the first and only interstate transmission project that T.W. Phillips had undertaken.

***2005-2007 – Lead Biologist for Clean Water Act Section 316(b) Studies***

Mr. Johnston completed impingement and entrainment studies of fish at four FirstEnergy power plants along the Ohio River and Lake Erie. Collected and identified adult fish from the cooling water intake screens and completed estimates of economic value for use in determining appropriate technologies to reduce impingement of adult fish. Utilized a pump-net-in-water technique to sample for larval fish and eggs that were preserved in ethanol and later identified to the lowest practicable taxonomic unit (LPTU). Incorporated the entrainment of larval fish and eggs into the economic loss models for impingement.

***2006-2007 – Biologist for Gamesa Shaffer Mountain Wind Farm Project in Somerset and Bedford Counties, PA***

Mr. Johnston participated in wetland delineations, reviews for rare, threatened and endangered plants, and migrating Raptor Surveys for the proposed Shaffer Mountain Windfarm Project.

***2001-2004 – Graduate Research Assistant / Teaching Assistant at Central Michigan University***

Mr. Johnston taught Biology 101 laboratory courses and Genetics laboratory courses for undergraduates at Central Michigan University during the fall and spring semesters. Mr. Johnston conducted thesis research on larval yellow perch (*Perca flavescens*) during the summer and participated in a larger great lakes yellow perch research project being led by his graduate advisor, Dr. A. Scott McNaught. Mr. Johnston completed laboratory identification, enumeration and biovolume calculations for aquatic phytoplankton samples collected from Platt Lake in Michigan's northwestern lower peninsula. Mr. Johnston participated in aquatic sampling in Crystal Lake in Benzie County, Michigan including fish sampling, aquatic vascular plant bed mapping, water chemistry sampling, and *Cladophora sp.* 'walks' to identify locations where the algae was growing and collect water chemistry samples to identify areas where nutrients may be entering the lake.

***1998-1999 – Undergraduate Research Assistant***

Mr. Johnston worked as an undergraduate assistant on a project with Mr. Brian Gunderman, who was completing his MS thesis project on Lake Sturgeon (*Acipenser fulvescens*) in the Manistee River, Manistee County, Michigan. Work included using gill nets to capture lake sturgeon. Captured lake sturgeon were tagged with PIT tags, floy tags, and in some cases fitted with sonic transmitters which were used to locate sturgeon on a daily basis to document movements within Manistee Lake and Manistee River. Genetic samples were collected and sent to Michigan State University to determine population genetic diversity.



**Travis N. Fulk, MA**  
**Architectural History Division Leader**  
**Washington, DC Area Office**

**Travis N. Fulk, MA**, joined SEARCH in 2006 and is responsible for directing all phases of architectural history projects. Mr. Fulk's skills include large-format photography, archival research, and emergency response. Mr. Fulk has extensive experience with Sections 106 and 110 of the National Historic Preservation Act, National Register nominations and Determination of Eligibility documentation, HABS/HAER/HAL documentation, and the development of management documents including ICRMPs and Users' Guides and agreement documents including PAs and MOAs. He has 17 years of professional experience across the Mid-Atlantic, Northeast, Southeast, and Southwest, and internationally across the West Indies, Oceania, and Asia. Mr. Fulk has advanced training with Sections 106 and 110 of the NHPA, Section 4(f) of the DOT Act, and NEPA. His safety training includes Fall Protection Competent Person training; Survival, Evasion, Resistance, and Escape (SERE Level 1); and Anti-Terrorism Level 1 Awareness training. Mr. Fulk received his master's degree in Historic Preservation from the Savannah College of Art and Design in 2006 and his undergraduate degree from James Madison University in 2000. In 2005 and 2006, he was a member of an award-winning Colonial Williamsburg Foundation team that conducted assessments of buildings damaged by Hurricane Katrina along the Gulf Coast of Mississippi. In 2008, he was a member of the Historic District Council in Fernandina Beach, Florida. Awards for his work include Outstanding Cultural Study (2011) and the Historic Preservation Project Award (2012). Mr. Fulk has extensive experience with military facilities, from working on his first ICRMP in 2006 to his fieldwork at Naval Air Station (NAS) JRB Fort Worth in May 2019. Mr. Fulk has completed architectural history surveys at a wide range of CONUS and OCONUS military bases, including Eglin Air Force Base (AFB) in 2019 and 2017, Naval Air Station (NAS) Joint Reserve Base Fort Worth in 2019, Marine Corps Air Station Cherry Point in 2018, Naval Station Great Lakes in 2017 and 2016, NAS Panama City in 2016, Andersen AFB in 2016, Naval Support Activity Hampton Roads in 2016, Milan Army Ammunition Plant in 2016, Naval Construction Battalion Center Gulfport in 2016, Naval Station Mayport in 2015, Marine Corps Recruit Depot Parris Island in 2015, and Navy Outlying Field Joe Williams in 2015.

**EDUCATION**

MA 2006 Historic Preservation. Savannah College of Art and Design.  
BBA 2000 Accounting/Human Resources Management. James Madison University.

**RESEARCH SPECIALIZATIONS**

Archival research  
HABS/HAER documentation  
National Register nominations/Determinations of Eligibility (DOE)  
Integrated Cultural Resource Management Plan (ICRMP) development  
Disaster response and evaluation

**PROFESSIONAL EXPERIENCE**

2006–present Architectural Historian, SEARCH  
2005–2006 Architectural Conservation and Collections Staff, Colonial Williamsburg Foundation, Williamsburg, Virginia.  
2003–2005 Historic Preservation Specialist/Team Leader, Roundhouse Railroad Museum, Coastal Heritage Society, Savannah, Georgia.



## **SELECT PROJECT EXPERIENCE: Architectural Historian/Principal Investigator**

### **2021**

**Architectural Historian.** Class III Intensive Cultural Resource Architectural Inventory of Twenty-seven (27) Facilities located on Grand Forks Air Force Base, North Dakota. Project involved the survey and NRHP evaluation of 27 facilities and the development of a Cold War context for Grand Forks AFB. Conducted for USACE Omaha.

### **2020**

**Architectural Historian.** Mitigation for the replacement of the Ramey Unit School, US Coast Guard Air Station Borinquen, Aguadilla, Puerto Rico. Project involved the HABS Level II documentation of the school, the creation of a popular history book, leading an open house school tour prior to demolition, and the creation of a website detailing the history of the school. Conducted for Schenkle & Shultz Inc. under contract to the USACE Norfolk District.

### **2019**

**Principal Investigator.** Mitigation of Adverse Effects to Building 408 as a Result of Proposed Demolition, Eglin Air Force Base, Florida. Project involved the HEAR Level II documentation of Building 408, including the laser scanning of the World War II-era high altitude test chamber. Conducted for USACE Mobile.

**Principal Investigator.** Architectural Assessment Building Inventory for Two Historic Structures for the 81<sup>st</sup> Readiness Division, San Juan, Puerto Rico. Conducted for USACE Mobile District. Project involved the documentation of two Cold War-era Army Reserve Centers, historical research, and the production of a report detailing the findings.

**Principal Investigator.** Built Environment Survey, Naval Air Station Joint Reserve Base Fort Worth, Texas. Project involved the documentation of 40 Cold War-era resources, historic research, and the production of a report detailing the findings. Conducted for NAVFAC Southeast.

### **2018**

**Principal Investigator.** Capitol Hill Historic Architectural Survey, Capitol Hill Area, Saipan, CNMI. Project involved the documentation of 137 Cold War-era resources built by the Navy for the CIA, historic research, and the production of a report detailing the findings. As part of the project, SEARCH prepared a National Register nomination. Conducted for the Commonwealth of the Northern Mariana Islands.

**Architectural Historian.** Architectural Survey Update, Marine Corps Air Station Cherry Point, North Carolina. Project involved the documentation of 44 Cold War-era resources, historic research, and the production of a report detailing the findings. Conducted for Leidos/NAVFAC Mid-Atlantic.

### **2017**

**Principal Investigator/HABS Photographer.** Mitigation of Adverse Effects to Eglin Field World War II Historic District. Project involved the HABS Level II and III documentation of 32 buildings, the creation of a Memorandum of Agreement for the demolition of the World War II Historic District, and development of a popular history of Eglin Field during World War II. Conducted for USACE Mobile.



**Architectural Historian.** Interiors assessments for six historic buildings at Naval Station Great Lakes. The interiors assessment used a preservation zoned approach to identify primary, secondary, and tertiary spaces in each of the six buildings. Conducted for NAVAC Mid-Atlantic.

**Architectural Historian.** Integrated Cultural Resources Management Plan for Naval Station Great Lakes, Lake County, Illinois. Prepared for NAVFAC Atlantic.

## 2016

**Principal Investigator.** Popular History of Building 11, Naval Station Great Lakes, Illinois. Produced a popular history of the Naval Station Great Lakes Power Plant (Building 11) as part of mitigation measures. Conducted for NAVFAC Mid-Atlantic.

**Architectural Historian.** Built Environment Investigation, Naval Support Activity Panama City, Florida. Project involved the documentation of 54 Cold War-era resources, historic research, and the production of a report detailing the findings. Conducted for NAVFAC Southeast.

**Architectural Historian.** Historic Inventory Survey, Andersen Air Force Base, Territory of Guam. Conducted for NAVFAC Marianas. Project involved the documentation of 71 Cold War-era resources, historical research, and the production of a report detailing the findings.

**Principal Investigator/HABS Photographer.** HABS Level II-equivalent Documentation of Buildings NH-5 and NH-41, NSA Hampton Roads, Norfolk, Virginia. Conducted for NAVFAC Mid-Atlantic.

**Principal Investigator/HABS Photographer.** HABS Level II-equivalent Documentation of Building C, Lafayette River Annex, Norfolk, Virginia. Conducted for NAVFAC Mid-Atlantic. Project involved large-format photography, historical research, reproduction of as-built plans, and HABS Level II-equivalent report submitted to the SHPO. Conducted for NAVFAC Mid-Atlantic.

**Principal Investigator/HABS Photographer.** Historic American Buildings Survey (HABS) Level II-equivalent documentation of the Browning House at Milan Army Ammunition Plant, Milan, Tennessee. Conducted for USACE Mobile District. Project involved large-format photography, historical research, and HABS Level II-equivalent report submitted to the SHPO.

**Principal Investigator.** Built Environment Survey Naval Construction Battalion Center Gulfport, Mississippi. Project involved development of a Cold War (1946-1991) historic context and documenting 66 Cold War-era facilities. Conducted for NAVFAC Southeast.

**Principal Investigator.** National Register nomination of Building 42 at Naval Station Great Lakes, Illinois. Skidmore, Owings & Merrill (SOM) designed Building 42, and the work is specifically attributed to the important American Modernist architect, Gordon Bunshaft. Building 42 was the second building designed by Bunshaft after he joined SOM in 1937. He served as chief designer at SOM and went on, after military service during World War II, to design New York City's Lever House (built 1952), considered one of the major landmarks in American skyscraper design and modernism. Conducted for NAVFAC Mid-Atlantic.

## 2015

**Principal Investigator.** Built Environment Survey Naval Station Mayport, Florida. Conducted for NAVFAC SE. Project involved development of a Cold War (1946-1991) historic context and



documenting 75 Cold War-era facilities.

**Architectural Historian.** Built Environment Survey Marine Corps Recruit Depot (MCRD) Parris Island, South Carolina. Project involved development of a Cold War (1946-1991) historic context of and documenting 150 Cold War-era facilities. Conducted for NAVFAC Southeast.

**Architectural Historian.** Built Environment Survey of Navy Outlying Field Joe Williams, Mississippi. Conducted for E&E and NAVFAC Atlantic. Project involved the survey of Navy Cold War-era facilities and civilian buildings built from the 1940s to the 1970s. Conducted for E&E and NAVFAC Atlantic.

**Principal Investigator.** Photographical Research of Naval Installations in Hampton Roads, Virginia. Archival research was conducted to consolidate a large number of historic photos of naval installations in Hampton Roads, including Norfolk Naval Station, Norfolk Naval Shipyard, Naval Air Station Oceana, Naval Weapons Station Yorktown, Cheatham Annex, St. Juliens Creek, and Craney Island. Conducted for NAVFAC Mid-Atlantic.

**Principal Investigator.** Literature Search for the Norfolk Naval Shipyard, Portsmouth, Virginia. Archival research was conducted to provide information on the southern half of the shipyard to include pre-Navy conditions, areas of disturbance, and the chronology of development of the area. Conducted for NAVFAC Mid-Atlantic.

## 2014

**Architectural Historian.** Archaeological and Architectural Investigations, Naval Base Guam (NBG), South Finegayan Latte Site 66-08-0141 and US Nava Royal Palm Housing Area, Territory of Guam. Project involved large-format photography of Cold War-era Navy housing, historical research, and the production of a HABS Level II-equivalent report. Conducted for NAVFAC Marianas.

**Principal Investigator.** Geo-referencing Study, Naval Installations in Hampton Roads, Virginia. Archival research was conducted to consolidate historic maps of Naval Station Norfolk, Naval Air Station Oceana, Naval Auxiliary Landing Field Fentress, Naval Support Activity Hampton Roads, Naval Weapons Station Yorktown, and Cheatham Annex. The maps were geo-referenced to be used as a planning tool by the Navy. Conducted for NAVFAC Mid-Atlantic.

**Architectural Historian.** Historic Context and Inventory for Commander Fleet Activities Yokosuka. Project involved developing a historic context of the Imperial Japanese Navy and documenting 118 Imperial Japanese Navy resources built between 1868 and 1945. Conducted for NAVFAC Pacific.

**Principal Investigator/HAER Photographer.** Water Storage Tank (WST) 188 Mitigation Measures. Project involved HAER Level II-equivalent documentation and the creation of a poster, with side-by-side historic and contemporary photos of the installation as viewed from the top of the water tower, for use as public education by Fort Belvoir. Conducted for Fort Belvoir, Virginia.

## 2013

**Principal Investigator.** Integrated Cultural Resources Management Plan, Naval Air Station Corpus Christi, Nueces County, Texas. Historic Building documentation, evaluations, research, and ICRMP development. Conducted for NAVFAC Southeast.



**Principal Investigator.** Historic Resources Survey, Naval Air Station Corpus Christi, Corpus Christi, Texas. Conducted for NAVFAC Southeast.

**Principal Investigator.** Literature Search of the Former Seavey's Island at the Portsmouth Naval Shipyard, Kittery, Maine. Conducted for NAVFAC Mid-Atlantic.

**Architectural Historian.** Cultural Survey at Five Sites, Joint Region Marianas, Guam. Project involved the documentation of 36 facilities at three power plants and two substations. Conducted for NAVFAC Pacific.

**Architectural Historian.** Historic Inventory Survey Andersen Air Force Base, Guam. Project involved the documentation of 144 Cold War-era resources, historical research, and the production of a report detailing the findings. Conducted for NAVFAC Marianas.

## 2012

**Architectural Historian/HAER Photographer.** HAER Level I Documentation of the Cape San Blas Quarters, and Oil Storage Building, Gulf County, Florida. Project involved large-format photography, laser scanning, historical research, and the production of a HAER Level I and three HAER Level III reports for submittal to the SHPO and NPS. Conducted for Eglin AFB.

**Principal Investigator.** Historic Resources Survey, Naval Air Station Key West, Key West, Florida. Conducted for NAVFAC Southeast.

## 2011

**Architectural Historian.** Mapping/Inventory Survey and Historic Context Report of the Historic Railroad Tracks and Train Rails System throughout Pearl Harbor Naval Shipyard and Intermediate Maintenance Facility, Pearl Harbor, Hawai'i. Conducted for NAVFAC Hawaii.

**Architectural Historian/HAER Photographer.** Historic American Engineering Record Level II for North Field, Andersen Air Force Base, Guam. Project involved large-format photography, historical research, and the production of a HABS Level II report for submittal to the SHPO and NPS. Conducted for NAVFAC Pacific.

**Architectural Historian.** Archaeological Survey and National Register Nomination for Japanese Defensive Complex, Rota Island, Commonwealth of the Northern Mariana Islands. The survey focused on historic research, photographic documentation, measured drawings, and GPS recordation of 133 features, including 27 tunnels, five anti-aircraft guns, five ramps, two ammunition clusters, and two berms. Research in Washington, DC, Hawaii, Guam, and Rota was conducted to develop the historic context. As part of the project, SEARCH prepared a National Register nomination. The defensive complex was officially listed in the National Register of Historic Places on 1 May 2012. According to a National Register reviewer, the provided documentation was excellent and the site clearly eligible for listing in the National Register. Conducted for the Commonwealth of the Northern Mariana Islands.

**Principal Investigator.** Archival Research in Support of Archaeological Investigations at Fort Leavenworth. Conducted for USACE/ERDC/CERL.

## 2010



**Architectural Historian.** Integrated Cultural Resources Management Plan Update, Naval Support Activity Panama City, Florida. Conducted for NAVFAC Southeast.

**Architectural Historian.** Integrated Cultural Resources Management Plan Update, Naval Air Station Key West, Florida. Conducted for NAVFAC Southeast.

**Architectural Historian.** Comprehensive Survey Update and National Register of Historic Places—Evaluation of Above-Ground, Navy-Owned Resources at Naval Air Station Joint Reserve Base Willow Grove, Pennsylvania. Conducted for NAVFAC Atlantic.

**Architectural Historian.** Historic Resources Survey, NAS Meridian, Meridian, Mississippi. Conducted for NAVFAC Southeast.

## 2009

**Principal Investigator.** Literature Search for the Quay Wall Systems at the Portsmouth Naval Shipyard, Kittery, Maine. Conducted for NAVFAC Mid-Atlantic.

**Architectural Historian.** Integrated Cultural Resources Management Plan for the Naval Computer and Telecommunications Station Cutler, Cutler, Maine. Conducted for NAVAC Mid-Atlantic.

**Architectural Historian.** Integrated Cultural Resources Management Plan for the Great Pond Outdoor Adventure Center, Great Pond, Maine. Conducted for NAVAC Mid-Atlantic.

**Architectural Historian.** Integrated Cultural Resources Management Plan for the Jacksonville Naval Air Station, Jacksonville, Florida. Conducted for NAVFAC Southeast.

## 2008

**Architectural Historian.** Phase I Historic Architectural and Archaeological Investigation of Proposed Outlying Landing Field (OLF) Locations in Virginia and North Carolina. Conducted for NAVFAC Atlantic.

**Architectural Historian.** Integrated Cultural Resources Management Plan of Naval Weapons Industrial Reserve Plant, Dallas, Texas. Conducted for NAVFAC Southeast.

## 2007

**HABS/HAER Photographer.** HABS/HAER Level II of Building 443, Abandoned Catapults (108, 108a, 119, and 159) and the Centrifugal Gun Tester (205), NAS Patuxent River, Maryland. Conducted for NAVFAC Atlantic.

**Architectural Historian.** Architectural Assessment of Twenty-Four US Army Reserve Centers Located in Eight Southeastern States, 81st Regional Readiness Command. Conducted for the USACE.

**Architectural Historian.** Significance Evaluations of Five Architectural Resources and One Archaeological Site at the Naval Air Station Patuxent River. Conducted for NAVFAC Atlantic.

## 2006

**Architectural Historian.** ICRMP and National Register Forms, MCAS Cherry Point, Havelock, North Carolina. Conducted for NAVFAC Atlantic.



1066 Towerview Drive  
Pittsburgh, PA 15227  
231-282-2192  
[justin.johnston@bigpineconsultants.com](mailto:justin.johnston@bigpineconsultants.com)  
[www.bigpineconsultants.com](http://www.bigpineconsultants.com)

## Attachment 8 – Past Project Experience



**PROJECT SUMMARY**

PROJECT KEY NUMBER

TITLE AND LOCATION *(City and State)*

Architectural Assessment—Building Inventory for Two Historic Structures for 81st Readiness Division (San Juan, Puerto Rico)

YEAR COMPLETED

PROFESSIONAL SERVICES  
2019-2020

PROJECT OWNER'S INFORMATION

PROJECT OWNER  
USACE Mobile

POINT OF CONTACT NAME  
Michael Malsom

POINT OF CONTACT TELEPHONE NUMBER  
251-690-2023

BRIEF DESCRIPTION OF PROJECT

SEARCH PROJECT #: F19025

**Contract Number:** W91278-15-D-0046

**Cost:** \$--

**Scope:** In December 2019, SEARCH conducted a Section 110 Architectural Survey at (1) Captain (CPT) Euripides Rubio Jr. U.S. Army Reserve Center (ARC) (PR012) at 498 Baleares Street, Puerto Nuevo, PR 00920; and (2) Area Maintenance Support Activity (AMSA) 161 (PR027), Building 653, Road 28, Guaynabo, PR 00965, as per Task Order #W9127819F0401 P00001 of Contract #W91278-15-D-0046 between U.S. Army Corps of Engineers (USACE) Mobile District and SEARCH, Inc. (SEARCH) executed on 22 November 2019. This survey was conducted pursuant to Department of Defense (DoD) Instruction 4715.16 and in conjunction with Title 54 of the United States Code (U.S.C.) 306101 et seq. and U.S. Army Regulation 200-1. Title 54 U.S.C. § 306101 et seq.: Program Responsibilities and Authorities (formerly known as the National Historic Preservation Act [NHPA] Section 110) describes the broad historic preservation responsibilities of federal agencies to ensure that historic preservation is integrated into planning. Part of this responsibility is for the federal agency to establish a preservation program for the identification, evaluation, and nomination to the National Register of Historic Places (NRHP) and protection of historic properties.

**Size:** 2 buildings

**Summary:** The architectural assessment included inventory and documentation of two facilities: (1) Building 1 constructed in 1969 and located at CPT Euripides Rubio Jr. USARC (PR012); and (2) Building 653, which was built in 1948 and underwent a Full Facility Restoration (FFR) in 2004 and is located at AMSA 161 (PR027). The assessment and supporting documentation include NRHP eligibility determinations for the two facilities in order to meet requirements of the NHPA, as amended, and concurrently satisfy the State Historic Preservation Officer (SHPO). Of the two facilities surveyed, neither are eligible for listing in the NRHP due to lack of historic significance and/or lack of integrity.



FIRMS INVOLVED WITH THIS PROJECT

a.	(1) FIRM NAME SEARCH, Inc.	(2) FIRM LOCATION <i>(City and State)</i> Jacksonville, FL	(3) ROLE Prime
b.	(1) FIRM NAME	(2) FIRM LOCATION <i>(City and State)</i>	(3) ROLE

**PROJECT SUMMARY**

PROJECT KEY NUMBER

TITLE AND LOCATION *(City and State)*

Cultural Resource Survey of 40 Buildings at Naval Air Station Joint Reserve Base Fort Worth (Tarrant County, Texas)

YEAR COMPLETED

PROFESSIONAL SERVICES  
2018–2020

PROJECT OWNER'S INFORMATION

PROJECT OWNER

NAVFAC Southeast

POINT OF CONTACT NAME

Donna Covington

POINT OF CONTACT TELEPHONE NUMBER

904-542-6844

BRIEF DESCRIPTION OF PROJECT

SEARCH PROJECT #: F18262

**Contract Number:** N69450-18-D-0114, Task Order N6945018F0423

**Scope:** Section 110 survey, inventory, and evaluation of aboveground facilities at Naval Air Station (NAS) Joint Reserve Base (JRB) Fort Worth.

**Size:** Forty buildings on the 1,804 acres of NAS JRB Fort Worth.

**Summary:** SEARCH conducted an inventory and evaluation of 40 facilities at Naval Air Station (NAS) Joint Reserve Base (JRB) Fort Worth to determine their National Register of Historic Places (NRHP) eligibility. SEARCH conducted a Section 110 survey of 40 facilities at NAS JRB Fort Worth and recommended one facility as eligible for listing in the NRHP as a representative example of a Strategic Air Command (SAC) hangar. Two facilities were determined to be covered by the Advisory Council on Historic Preservation (ACHP) Program Comment for Cold War Era Unaccompanied Personnel Housing (1946–1974) and require no further evaluation as the responsibilities for compliance under Section 106 have been mitigated programmatically. The remaining facilities were recommended as not eligible due to the lack of historical or architectural significance, or lack of integrity. Three facilities were determined to be covered by a Programmatic Agreement regarding the demolition of World War II temporary buildings and the DoD’s Section 106 obligations have been met regarding the adverse effects of the demolition of World War II temporary buildings, but consultation with the Texas Historical Commission is still required for other undertakings.



FIRMS INVOLVED WITH THIS PROJECT

	(1) FIRM NAME	(2) FIRM LOCATION <i>(City and State)</i>	(3) ROLE
a.	SEARCH, Inc.	Austin, TX	Subcontractor
b.	Environmental Research Group (ERG)	Baltimore, MD	Prime
c.	(1) FIRM NAME	(2) FIRM LOCATION <i>(City and State)</i>	(3) ROLE
d.	(1) FIRM NAME	(2) FIRM LOCATION <i>(City and State)</i>	(3) ROLE

**PROJECT SUMMARY**

PROJECT KEY NUMBER

TITLE AND LOCATION (*City and State*)

Built Environment Survey Marine Corps Recruit Depot Parris Island (Port Royal, South Carolina)

YEAR COMPLETED

PROFESSIONAL SERVICES  
2015–2017

**PROJECT OWNER'S INFORMATION**

PROJECT OWNER

NAVFAC Southeast

POINT OF CONTACT NAME

Len Winter, Historic Preservation Officer/Cultural Resources Section Head

POINT OF CONTACT TELEPHONE NUMBER

(904) 542-6861

BRIEF DESCRIPTION OF PROJECT

SEARCH PROJECT #: 3400-15062F

**Contract Number:** IDIQ N69450-08-D-0078, Task Order 22

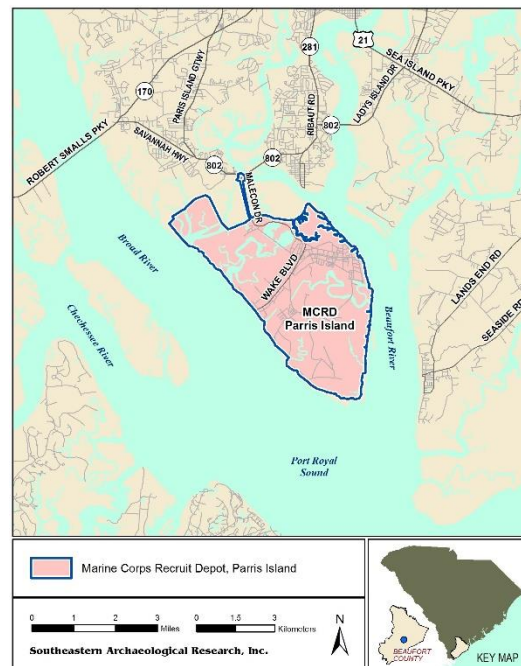
**Scope:** This project is undertaking an extensive survey of buildings and structures—142 in total—at MCRD Parris Island.

**Size:** 142 buildings.

**Summary:** SEARCH completed a Section 110 architectural survey in August 2017 of 142 facilities built between 1884 and 2000 at MCRD Parris Island. The purpose of this project was two fold: 1. to assess buildings constructed in the Cold War era, between 1945 and 1991, examining how the physical layout of the depot changed in the decades following World War II, and 2. Resurvey of pre-1945 buildings that were previously determined to be eligible for the NRHP. Worked involved both archival and secondary research as well as fieldwork to document each facility. Of the 54 previously determined eligible facilities, two were recommend as having their period of significance extended and one was recommend as not eligible. Of the 88 other facilities, two were recommend eligible, one individually, one as a contributing resource to a historic district, 10 were covered by a program comment, and 76 as not eligible either individually or as contributing to a historic district.

SEARCH's relevant qualifications include:

- Section 110 of the NHPA
- Cold War era expertise
- Military architecture expertise
- Marine Corps expertise
- Archival and historical research
- Analytic and historic interpretation
- Historic context development
- Southern history experience
- Carolinian history experience



**FIRMS INVOLVED WITH THIS PROJECT**

	(1) FIRM NAME	(2) FIRM LOCATION ( <i>City and State</i> )	(3) ROLE
a.	SEARCH, Inc.	Jacksonville, Florida	Prime
b.	(1) FIRM NAME	(2) FIRM LOCATION ( <i>City and State</i> )	(3) ROLE
c.	(1) FIRM NAME	(2) FIRM LOCATION ( <i>City and State</i> )	(3) ROLE



1066 Towervue Drive  
Pittsburgh, PA 15227  
231-282-2192

[justin.johnston@bigpineconsultants.com](mailto:justin.johnston@bigpineconsultants.com)  
[www.bigpineconsultants.com](http://www.bigpineconsultants.com)

## Attachment 9 – Example Gantt Chart Scheduling



## WVARNG Historical Building Surveys

Lisa M. Dugas, MA, RPA  
Project Manager  
Big Pine Consultants LLC  
412-525-3491

\*Dates provided are approximate and subject to change. Big Pine assumes that facilities will be available to conduct field work during the planned dates.

ID	Task Name	Duration	Start	Finish	Qtr 3, 2021				Qtr 4, 2021			Qtr 1, 2022			Qtr 2, 2022		
					Jun	Jul	Aug	Sep	Oct	Nov	Dec	Jan	Feb	Mar	Apr	May	Jun
1	Expression of Interest	1 day	Thu 7/29/21	Thu 7/29/21													
2	Phone Interviews	10 days	Fri 7/30/21	Thu 8/12/21													
3	Statement of Work	10 days	Fri 8/13/21	Thu 8/26/21													
4	Award	10 days	Fri 8/27/21	Thu 9/9/21													
5	Notice to Proceed	10 days	Fri 9/10/21	Thu 9/23/21													
6	Kick-off Meeting	1 day	Fri 9/24/21	Fri 9/24/21													
7	Initiate SHPO Consultation	1 day	Mon 9/27/21	Mon 9/27/21													
8	Background Research	25 days	Tue 9/28/21	Mon 11/1/21													
9	<b>Field Work</b>	<b>24 days</b>	<b>Tue 11/2/21</b>	<b>Fri 12/3/21</b>													
10	Point Pleasant	5 days	Tue 11/2/21	Mon 11/8/21													
11	Clarksburg	5 days	Tue 11/9/21	Mon 11/15/21													
12	Buckhannon	5 days	Tue 11/16/21	Mon 11/22/21													
13	Thanksgiving & Black Friday	2 days	Thu 11/25/21	Fri 11/26/21													
14	Volkstone	5 days	Mon 11/29/21	Fri 12/3/21													
15	<b>Reporting</b>	<b>105 days</b>	<b>Mon 12/6/21</b>	<b>Mon 5/9/22</b>													
16	Draft Report	30 days	Mon 12/6/21	Thu 1/20/22													
17	WVARNG Review	30 days	Fri 1/21/22	Fri 3/4/22													
18	Final Report	10 days	Mon 3/7/22	Fri 3/18/22													
19	SHPO Review	35 days	Mon 3/21/22	Mon 5/9/22													

WVARNG Historical Building Surveys  
Date: Wed 7/28/21

Task		Inactive Summary		External Tasks	
Split		Manual Task		External Milestone	
Milestone		Duration-only		Deadline	
Summary		Manual Summary Rollup		Progress	
Project Summary		Manual Summary		Manual Progress	
Inactive Task		Start-only			
Inactive Milestone		Finish-only			