

# STATEMENT OF QUALIFICATIONS

## 2022 AML Contract 9 Project North

CEOI 0313 DEP2200000018

West Virginia Department  
of Environmental Protection  
Abandoned Mine Lands

06/28/22 11:38:17  
WV Purchasing Division

**Project contact:**

**Eric J. Coberly, P.E.**

5088 Washington Street, West  
Charleston, WV 25313

304.776.7473



**E.L. ROBINSON**  
ENGINEERING

[www.elrobinsonengineering.com](http://www.elrobinsonengineering.com)





# E.L. ROBINSON ENGINEERING

5088 Washington Street, West • Charleston, WV 25313 • T: 800.856.6485

elrobinsonengineering.com

June 27, 2022

West Virginia Department of Environmental Protection  
Office of AML  
c/o Joseph E. Hager III  
Department of Administration, Purchasing Division  
2019 Washington Street, East  
Charleston, WV 25305

Dear Mr. Hager,

E.L. Robinson Engineering (ELR) is pleased to have the opportunity to submit our Statement of Qualifications to provide the West Virginia Department of Environmental Protection AML with design services for the **2022 Contract 9 Projects North**.

ELR has completed plans and specifications for numerous reclamation projects for WVDEP-AML for over 20 years in addition to several projects with ODNR and Maryland AML. We have included descriptions of our project experience later in this proposal.

The ELR staff has combined experience in the design of more than 280 AML projects.

The Charleston office has:

- A. Fourteen (14) registered professional engineers (civil or mining), one (1) geologist, three (3) landscape architects, six (6) engineers in training as well as several CADD technicians that may be used on these projects.
- B. ELR Corporate experience in designing one hundred thirty-six (136) abandoned mine land remediation projects. Personal experience on approximately two hundred eighty (280) AML projects. This number does not include surveying/mapping/drilling projects.

E.L. Robinson Engineering has grown from 13 employees in 1996 to nearly 200 employees today. Throughout this growth period, we have continued to meet project deadlines while providing a high quality engineering product. Our office location in Charleston is centrally and conveniently located in respect to the WVDEP offices and the referenced project areas.

We at E.L. Robinson Engineering look forward to serving your agency under this contract. If you have any questions or need clarification, please feel free to contact me at (304) 776-7473.

Sincerely,

Eric J. Coberly, P.E.  
Project Manager  
E.L. Robinson Engineering

Proposal for  
**2022 Contract 9 Projects North**  
West Virginia Department of Environmental Protection



Executive Summary	4
Project Approach	5
Project Team	6
Project Team Resumes	7-19
Capabilities	20
Experience	21-31
CCQQ	Attachment A
Project Experience Matrix	Attachment B
Required Forms	Attachment C

# WHO WE ARE.

E.L. Robinson provides a full range of quality engineering services, from planning and analysis to design and implementation. Over the past four decades, E.L. Robinson has grown to be a highly respected firm offering a diverse scope of services.

Founded in 1978 by our president, Edward L. Robinson, who is a registered Professional Engineer (PE) and a Professional Surveyor (PS). We come from humble beginnings. The company began as a small surveying firm with four employees and has grown to a highly-diversified engineering, planning and design and surveying firm with more than 200 employees.

# WE'VE GOT YOU COVERED.

ELR professionals fill 10 offices within an easy drive to project locations. Staff are readily available for phone and email correspondence, video calls, and in-person meetings per current health guidelines.

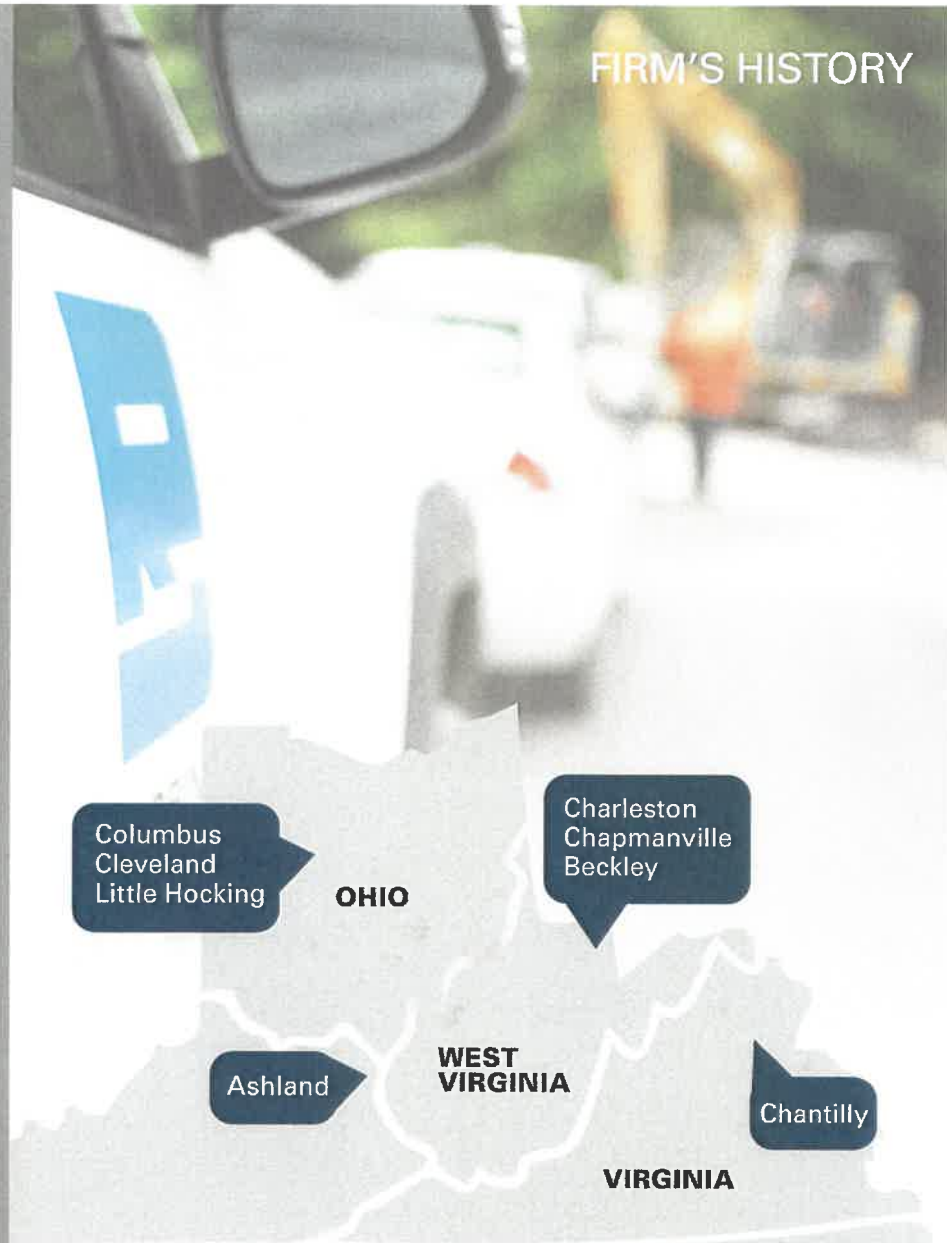
# WHAT WE ARE.

**200+**  
employees



**100%**  
employee  
owned

**50+**  
licensed PEs



**TOP 500  
DESIGN  
FIRMS  
2012**  
EL Robinson  
Engineering Co.

**TOP 500  
DESIGN  
FIRMS  
2019**  
EL Robinson  
Engineering Co.

**TOP 500  
DESIGN  
FIRMS  
2020**  
EL Robinson  
Engineering Co.

**TOP 500  
DESIGN  
FIRMS  
2021**  
EL Robinson  
Engineering Co.

For more than 20 years, E.L. Robinson Engineering (ELR) has been a prime and preferred engineering and surveying consultant to the WV Division of Environmental Protection, Office of Abandoned Mine Lands and Reclamation (WVDEP-AML) program. We have provided this Executive Summary to directly respond to the Expression of Interest and provide ease for the evaluators to score this proposal.

### Understanding of Project Requirements

E.L. Robinson Engineering fully understands the requirements for the **Contract 9 Projects North** and is committed to giving the WVDEP Office of Abandoned Mine Lands and Reclamation the time and attention that is necessary for this project. Professional services may include: civil; structural; geological; surveying and mapping; preparation of all necessary permit applications; construction monitoring and other services that may be required.

### Firm's Capacity

E.L. Robinson Engineering approaches all engineering projects with the same attention to detail and fiscal responsibility to ensure the client receives the most cost effective plan, design and operationally functional project possible. Our approach truly makes the WVDEP-AML engineering staff an integral part in the design of the project. We want to make sure that the review staff is comfortable with the design concept before the project is submitted for review. During this process, we evaluate all technical alternatives to determine the most cost effective plan and technically acceptable project for the WVDEP-AML staff.

ELR has nearly 200 professionals on staff including many individuals experienced in mine reclamation. This capacity allows for the development of innovative and alternative methods to address complex issues involved in reclamation projects of this nature. Our QA/QC process also allows for a different perspective to be brought to the project before submission to the client and for review. ELR has the capacity to take this project from conception to completion with a wide variety of experienced professionals with in-house staff for planning, design, permitting, bidding and construction monitoring.

Our company will work diligently to deliver the highest quality, cost effective solution that the WVDEP-AML deserves. We have extensive knowledge in mine reclamation and are currently working with the WVDEP-AML on similar projects. We have an excellent understanding of the requirements for this type of project and a good working relationship with NEPA permitting and regulatory agencies.

## WHAT WE'LL DO.

E.L. Robinson is familiar with the various project areas associated with the **2022 Contract 9 Projects North** and the desired design services for which you are seeking. We understand that the individual projects that encompass this broader project include:

- 1 Three Fork Creek Watershed Restoration project**
- 2 Abram Creek AMD Treatment Phase II project**
- 3 Richard (Shaver) Drainage project**

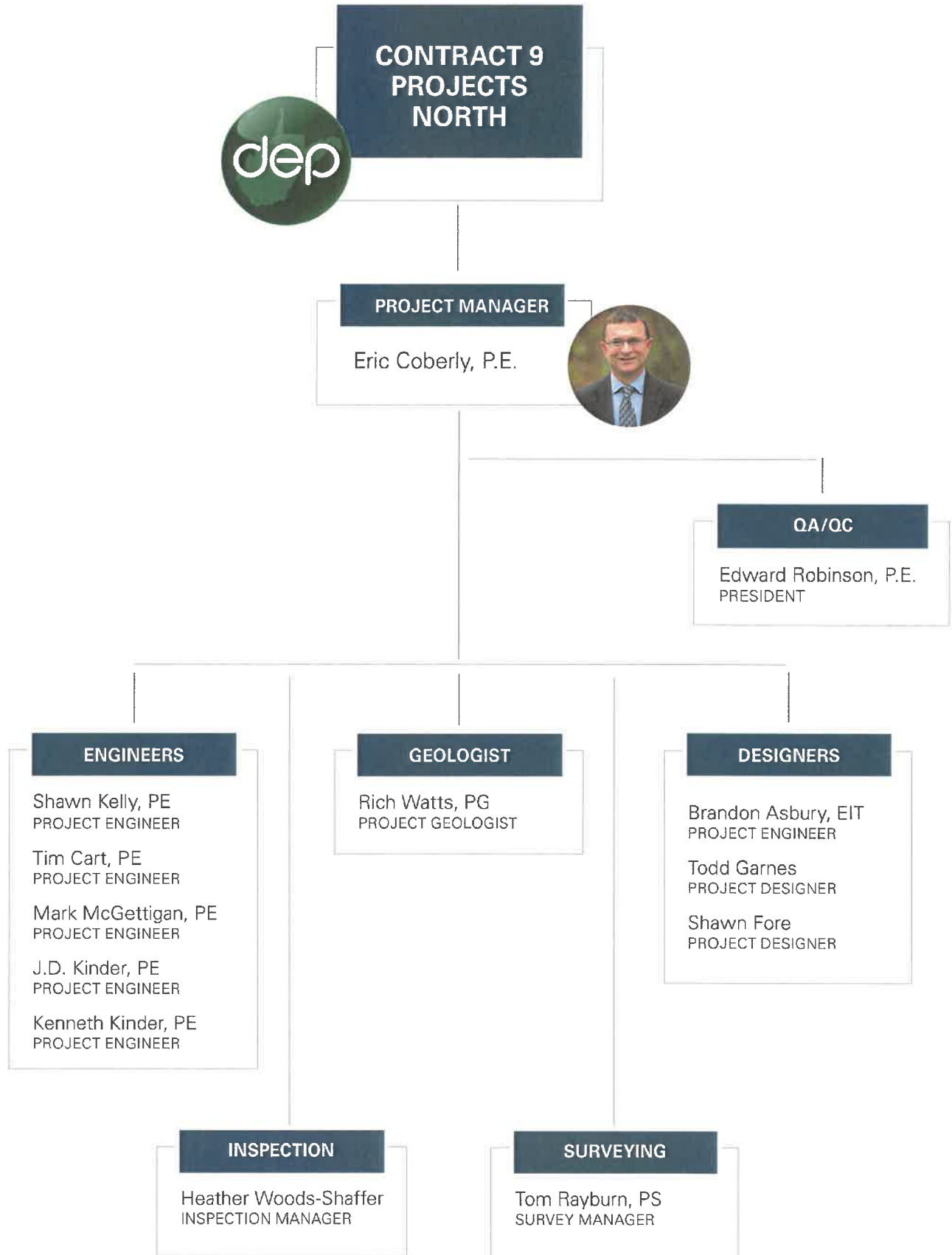
Further, ELR understands the scope of services includes the following tasks:

- Perform site and geotechnical investigations
- Design temporary and permanent access or accesses for construction and future maintenance
- Design to stabilize landslides
- Design multiple portal seals and regrades
- Design of highwall reclamation
- Design to repair or replace existing drainage structures/systems
- Design to mitigate AMD drainage, including possible horizontal borings
- Design reclamation of exposed mine spoil and refuse
- Design of drainage conveyances, including drainage channels, underdrains, and/or other controls to safely convey water off-site
- Condition and revegetate all disturbed areas

We are anxious to become an extension of your staff by providing prompt planning, design and construction monitoring services as needed. We interact with the various review and permitting agencies. As you will see from our resumes, we are uniquely diversified to provide the quality engineering services for which you seek.

E.L. Robinson will work closely with the WVDEP-AML and all regulatory and permitting agencies to complete this project. We feel that our extensive knowledge and experience in the planning and design of similar projects are significant assets in developing a cost-effective solution to your reclamation project.

# ORGANIZATIONAL CHART



# ERIC COBERLY, PE

## Project Engineer

### Professional overview

Mr. Coberly has decades of experience as an infrastructure and civil engineer. His extensive experience as a Project Manager in various engineering disciplines includes site development, infrastructure planning, water, sewer, geotechnical analysis, abandoned mine reclamation, building construction, active surface mining, insurance investigations, and various post mining land use projects.

Additionally, Mr. Coberly served as the Chief for the West Virginia Department of Environmental Protection Abandoned Mine Lands Division for more than 4 years. In this position he was responsible for managing and directing all operations. Mr. Coberly has spent his career working to better the State of West Virginia in both the private and public sectors.

### Relevant experience

- Squires Creek (Moats) Portal and Refuse
- Red Warrior Gob & Slide
- Glen Alum Complex
- West Columbia B
- Milam Ridge Refuse Pile
- Carson One Special Reclamation Project
- Preston Energy/Rockville/Viking Coal Rec
- North Matewan (Akers) Landslide
- Branchland (Blankenship) Landslide
- Coburns Creek Landslide
- McGraws Vertical Opening
- New Cumberland Mine Blowout
- Fairview Mine Shaft
- Whitehall Mine Fire
- Sauls Run Landslide
- Missouri Fork Landslide
- Worthington (Hess) Landslide
- Copen Road Landslide
- Lynch Run Mine Blowout
- Dans Branch (Dillon) Landslide
- Marsh Run Portals
- Donnie Thorn Highwall
- Vickers Branch (Butcher) Drainage



### Education

M.S. Engineering of Mines,  
West Virginia University,  
1990

B.S. Engineering of Mines,  
West Virginia University,  
1983

### Registrations

Registered Professional  
Engineer in West Virginia,  
Ohio, and Maryland

### Years experience

38

E.L. ROBINSON

ENGINEERING

# ED ROBINSON, PE, PS

## President

### Professional overview

In 1978, Mr. Robinson founded E.L. Robinson Engineering with only four employees. Under his leadership, ELR has grown exponentially to what it is today – a highly diversified engineering and surveying firm with 170 full time, experienced professionals and support personnel. ELR, which was a small surveying firm at its inception, now offers a complete range of services, including construction management, transportation engineering, utilities engineering, geotechnical engineering, surveying and technology, land planning and landscape architecture, bridge and structural engineering, and site development. Mr. Robinson is committed to quality engineering services and complete customer service. He recognizes the importance of every client he has interacted with and every staff member he has invested in. From holding sole ownership, Mr. Robinson converted ELR to an employee owned company through the Employee Stock Ownership Plan (ESOP).

### Relevant experience

#### Professional Memberships

National Society of Professional Engineers  
American Society of Civil Engineers

#### Offices Held

Current Chairman of WVUIT Advisory Board  
President of West Virginia Council of Consulting Engineers  
Chairman Transportation Committee - WV Association of Consulting Engineers  
State Director of West Virginia Society of Professional Engineers  
President of West Virginia Society of Professional Engineers  
Assistant Treasurer of the American Society of Civil Engineers  
National Director of the ASCE representing WV, NC, SC and VA  
President of West Virginia Section of ASCE

#### Honors Awarded

Alumnus of the Year – West Virginia University Institute of Technology, 1992  
Engineer of the Year – West Virginia Society of Professional Engineers, 1997  
Engineer of the Year – American Society of Civil Engineers, 1998  
National Entrepreneur of the Year Finalist – Ernst & Young, 2001  
Engineering Entrepreneur of the Year – Ernst & Young, 2001  
Honorary PhD, Doctor of Science – West Virginia Institute of Technology 2002  
West Virginia Section - ASHE - Man of the Year - 2010



### Education

M.S. Civil Engineering,  
University of West Virginia  
Graduate Studies, 1981

B.S. Civil Engineering,  
West Virginia Institute of  
Technology, 1969

### Registrations

Registered Professional  
Engineer in West Virginia,  
Ohio, Kentucky, Virginia and  
North Carolina

Registered Professional  
Surveyor in West Virginia

### Years experience

52



# SHAWN KELLY, PE

## Project Engineer

### Professional overview

Shawn Kelly, PE, brings over 20 years of experience to E.L. Robinson. His knowledge of site development has taken him all across West Virginia, working for both public and private clients. Mr. Kelly's understanding of drainage calculating, stormwater management plans, and site development planning have helped improve countless places in the state. Mr. Kelly has experience in the development of erosion and sediment control design. He has provided his expertise for the design of roadway drainage and erosion and sediment control for the roads around the complex. Shawn has vast experience working with the WV Department of Transportation, Division of Highways and WV Department of Environmental Protection to successfully permit many projects throughout the state.

### Professional experience

- Boy Scouts of America Brenda L. Murray Drive - Roadway Drainage - Fayette County, WV
- Boy Scouts of America JW Marriott JR Leadership Center Roadway Drainage
- Boy Scouts of America Bunkhouse and Dining Hall Site Design - Fayette County, WV
- WVU Medicine Building Site Design - Greene County, PA
- Pad 1A4 in Westridge Commercial and Retail Development - Monongalia County, WV
- Corridor H Davis to Bismark E&S Control - Grant County, WV
- Upshur County Industrial Park Drainage Calculations- Upshur County, WV
- US Route 35 - Couch to Little Fivemile - Putnam County, WV
- Putnam Public Service District Sewer Extension Project - Putnam County, WV
- Putnam Public Service District Water Line Replacement - Putnam County, WV
- Corridor H Kerens to US 219 Connector Design-Build
- Cow Creek Water Line Project - Putnam County, WV
- Coalfields Expressway – Welch to WV 16 Interchange
- City of Beckley New Fire Station - Raleigh County, WV
- West Village Senior Housing - Cabell County, WV
- Signet Real Estate Group WVU Beckley Housing Project - Raleigh County, WV
- Clear Mountain Bank New Branch - Harrison County, WV
- McDowell County Schools Riverview High School Renovations - McDowell County, WV
- Baker Heights New Fire Station - Berkeley County, WV
- St. Marys High School Stormwater Drainage- Pleasants County, WV
- WVDOH Coalfields Expressway – Welch to WV 16 Interchange (SWPPP) - McDowell County, WV
- P3 Housing WVU Beckley Stormwater Management - Raleigh County, WV
- City of Wellsburg Stormwater Management - Brooke County, WV
- The Bend at Meadow Valley Storm Sewer Design - Putnam County, WV
- City of Huntington West Village Stormwater - Cabell County, WV



### Education

Bachelor of Science,  
Civil Engineering  
West Virginia University  
2001

### Registrations

Professional Engineer  
West Virginia  
Virginia  
Kentucky  
Maryland  
North Carolina  
South Carolina

### Years experience

20+

# TIM CART, PE, PS

## Project Manager

### Professional overview

Mr. Cart has more than 40 years of experience in providing consulting engineering services. Clients served have included industrial, public and private institutions along with state and federal agencies. He has served as Project Engineer on numerous geotechnical investigations including highways, bridges, industrial sites, buildings and site development projects.

Mr. Cart has served as project manager, project engineer and lead geotechnical investigator on numerous geotechnical projects including highways, bridges, industrial sites, buildings and various developments.

Mr. Cart has designed numerous retaining structures and grading plans to reduce the likelihood of future landslide movement. He has also designed retaining walls including reinforced concrete cantilever walls, mechanically stabilized earth (MSE) walls, sheet pile walls, H-pile and lagging walls. Several of these designs included the use of rock anchors and tiebacks.

Geotechnical reports for highway projects included recommendations for rock cut slopes and fill slopes, as well as types of foundation systems for structures and recommended bearing capacities for deep and shallow foundations. Mr. Cart has made design recommendation for fill construction which focused on fill settlement and recommended methods to accelerate consolidation settlements so that the settlement would occur during the construction activities.

Mr. Cart has served as project engineer on several hundred AML projects for the WVDEP and USOSMRE. These projects include regrading major refuse piles into stable configurations, draining mine portals, stabilization of areas affected by mine subsidence, evaluation of areas for possible effects on structures due to mine subsidence, and the developing of plans and specifications to address landslides which have resulted from mining related activities.

Mr. Cart has also designed numerous bank stabilization projects for river banks throughout the state. These projects incorporated re-grading, rip-rap materials, cantilever and tieback wall designs. He has also performed numerous damage investigations for landslide and blast damage claims for insurance and law firms and has provided testimony in depositions and law suits.

### Relevant experience

- WVDOH District 2 FEMA Emergency Landslides (35 Projects)
- WVDOH District 1 FEMA Emergency Landslides (9 Projects)
- Lavalette Widening Project
- I-77 Bridges- Surface Drive Overpass Bridges
- Corridor H - Kerens to Parsons Design Build
- Tappers Creek-Pocatalico Bridges
- Corridor H - Old Fields to Moorefield
- US 35 - Lower Five Mile Creek to Three Mile Creek
- US 35 - WV 34 to Buffalo Bridge Design Build



### Education

B.S. Civil Engineering, West Virginia University, 1981

### Registrations

Registered Professional Engineer in West Virginia

Registered Professional Surveyor in West Virginia

### Years experience

40

# MARK MCGETTIGAN, PE

## Project Engineer

### Professional overview

Mr. McGettigan has decades of experience in providing consulting engineering services. He has worked on numerous land development and commercial building construction projects where his duties included procuring all necessary permits to designing potable water, sanitary sewer and storm sewer connections to development lots and commercial properties.

Mr. McGettigan has also served as project manager for numerous water and wastewater projects throughout West Virginia. He has secured funding, designed, obtained permitting and managed the construction for numerous water and sanitary sewer projects totaling well over \$60,000,000. Further, he has successfully worked on or managed numerous Phase I and Phase II ground water quality investigations and feasibility studies and reclamation projects for the West Virginia Department of Environmental Protection Abandoned Mine Lands program.

### Relevant experience

- Twisted Gun Recreational Area Development Water Extension Project
- Mingo County PSD Emergency Intake Construction Project
- Mingo County PSD Beech Creek Water Main Extension Project
- Mingo County PSD Ben Creek Phase I
- Mingo County PSD Ben Creek Phase II
- Mingo County PSD Marrowbone Waterline Extension Project
- Mingo County PSD Jennies Creek Waterline Extension Project
- Dingess Water Distribution System Extension Phase I
- Dingess Water Distribution System Extension Phase II
- Crocket Miller Fork Waterline Extension Project
- Nestlow Water Project Phase I
- Nestlow Water Project Phase II
- Route 37 Water Extension Project
- Crum PSD Route 152 Phase I Water Project
- Crum PSD Route 152 Phase II Water Project
- Lavalette Water Storage Tank
- WVDNR Pipestem and Beech Fork Campgrounds
- North Landbay Phase I Infrastructure Project
- South Landbay Phase I Infrastructure Project



### Education

M.S. Engineering Management/  
Environmental Engineering,  
Marshall University, 2007

B.S. Civil Engineering  
Technology, Fairmont State  
University, 1999

### Years experience

22

# JD KINDER, PE

## Project Engineer

### Professional overview

Mr. Kinder has experience in many areas of civil engineering including roadway design projects, site development projects, structural design, geotechnical investigations, natural gas projects, retain structure design and performing 2D and 3D slope stability analysis for various roadway fills and bridges. Additionally, Mr. Kinder has experience developing geotechnical reports for highway projects which include the design and recommendations for rock cut slopes and fill slopes, as well as types of foundation systems for structures and recommended bearing capacities for deep and shallow foundations.

Mr. Kinder has designed numerous retaining structures to stabilize or to reduce the likelihood of future landslide movement. He has also designed retaining walls including reinforced concrete cantilever walls, mechanically stabilized earth (MSE) walls, sheet pile walls, H-pile and lagging walls.

Prior to joining E.L. Robinson Engineering, Mr. Kinder gained experience in the manufacturing industry supervising various products. His duties included QA/QC testing, product development, estimating, on site installation assistance, inventory, production scheduling, oversight and site layout and design for more than 140 retaining wall projects throughout West Virginia, Ohio and Kentucky.

### Relevant experience

- WVDOT Corridor H Design Build- Kerens to US 219
- WVDOT Corridor H Design Build US 219 WV 72
- WV 10 Operational Improvements
- WVDOT I-70 Mining Project
- Jefferson Road Design Build (Geotechnical) - Kanawha County, WV
- WVDOT Laurel Creek Girder Bridge (Geotechnical) - Mingo County, WV
- WVDOT Arnettsville Arch Bridge (Geotechnical) - Monongalia County, WV
- WVDOT Harmon Creek Bridge (Geotechnical) - Brooke County, WV
- WVDOT Junior W-Beam Bridge (Geotechnical) - Barbour County, WV



### Education

B.S. Civil Engineering,  
West Virginia Institute of  
Technology, 2008

### Registrations

Registered Professional  
Engineer in West Virginia

### Years experience

14

# KENNETH KINDER, PE

## Project Engineer

### Professional overview

Mr. Kinder has experience in many facets of civil engineering. Mr. Kinder began his career as a staff engineer where he became proficient in the designing of projects and project management assistance. He has worked on an array of projects including civil site design, erosion and sediment control, stormwater management, hydraulic modeling, floodplain permitting, wastewater treatment, water treatment and distribution, geotechnical solutions, surface and underground coal permitting, limestone quarry permitting and solid waste landfill design. Mr. Kinder then moved into the role of Project Manager and served as an Office Leader while employed with a previous firm. Since joining ELR, Mr. Kinder has taken on the role of Project Manager on several notable projects.

### Relevant experience

- City of Princeton Rogers Street Drainage Improvements Project – Project Manager
- Birch River PSD Wilson Ridge Waterline Extension Phase 2 – Project Manager
- Birch River PSD Mill Creek Waterline Extension Project – Project Manager
- Bluefield Sanitary Board Midway Sewer Replacement – Project Manager
- Town of Rainelle Water Improvements Project – Project Manager
- Town of Rupert Stormwater Mitigation Project – Project Manager
- Armstrong PSD Deepwater and Powellton Water Improvements Project – Project Manager
- Oakvale Road PSD Christian Fork Sewerline Repair Project – Project Manager
- Harbor Freight Retail Store Site Development – Civil Design Task Manager
- 13 individual WVDOH ADA Design-build Curb Ramp Projects – Project Manager
- Kanawha County, Clendenin, Logan County, and Richwood FEMA HMGP Flood Mitigation Projects – Project Manager
- WV Conservation Agency Elk Twomile Dam Seep Repair – Project Manager
- Kanawha County FEMA Flood Map Update Review – Project Manager
- Buffalo Creek and Gauley Recreational Trail – Flood Damage Assessments – Project Manager
- Nitro City Park Riverbank Restoration and Recreational Trail – Project Manager
- WVDEP LCAP Wheeling Landfill Closure Cap Design – Lead Design Engineer, Civil Task Manager, Assistant Project Manager
- 90 MW Solar Generation Facility in Raleigh County, WV – Stormwater and E&S Design Task Manager and Assistant Project Manager
- 100 MW Solar Generation Facility in Lancaster County, VA – Civil Design Task Manager
- 70 MW Solar Generation Facility in Richmond County, VA – Civil Design Task Manager
- CCR Impoundment Closure Project for 5 impoundments, Prince William County, VA - Civil Design Task Manager and Assistant Project Manager
- CCR Bottom Ash Pond Retrofit Design for 3 impoundments, Armstrong County, PA – Civil Task Manager and Assistant Project Manager
- CCR Bottom Ash Pond Retrofit Design for 4 impoundments, Lycoming County, PA – Civil Task Manager



### Education

B.S. Civil Engineering,  
West Virginia Institute of  
Technology, 2003

### Registrations

Registered Professional  
Engineer - WV and VA

### Certifications

Certified Floodplain Manager  
(CFM)

### Years experience

18

# RICH WATTS, PG

## Project Geologist

### Professional overview

Mr. Watts has four decades of experience in providing consulting services as a senior geologist. He has also served as project manager on numerous projects.

Mr. Watts is primarily an engineering geologist whose range of project experience has encompassed numerous projects concerning geologic investigation, rock and soils engineering, landslides, abandoned mine land reclamation, forensic damage investigations, hydrogeology and the coal industry.

Mr. Watts' AML experience includes over 100 projects spanning more than 33 years. He has served as both Project Manager and Designer for these projects. Further, he is proficient in field reconnaissance and drilling.

He has performed hundreds of slope stability analyses for landslides and other projects involving the design of stable slopes. In addition, he has performed numerous studies involving landslide prediction to aid clients in land use and safety planning. Projects involving rock slope stability have included high rock cuts for surface mining operations and highways.

His geotechnical experience has included numerous projects involving soils, foundations, landfills and damage studies. These projects have encompassed such areas as pile driving, caisson installation, earth fill placement, subsurface exploration, site reconnaissance, grout and concrete placement and quality control.

### Relevant experience

- WVDEP - Carswell
- WVDEP - Prenter Road Waterline Feasibility
- WVDEP - Jolo/Paynesville/Wolfpen
- WVDEP - Swiss Drennan Areas, Gauley River
- WVDEP - Coal Mountain Waterline Feasibility
- WVDEP - Hanover Waterline Feasibility
- Huntington Mall, Barboursville, WV
- Best Buy, Barboursville, WV
- Fiesta Bravo Restaurant, Barboursville, WV
- McDonalds, Gilbert, WV
- Numerous Cell Phone Towers sites
- Marshall University - Corbly Hall
- WVDOH - Five Landslides, Charleston, WV

### Geotech:

- WVDOH Corridor H Design Build- Kerens to US 219
- WVDOH Corridor H Design Build US 219 WV 72
- WVDOH - I-79 Landslide
- WVDOH I-70 Mining Project
- WVDOH District 2 Spring Valley Drive
- WV 10 Operational Improvements
- Jefferson Road Design Build
- WVDOT Landslide Repairs- Lincoln County (20 sites)
- WVDOT Landslide Repairs- Logan County (6 sites)
- WVDOT Landslide Repairs- Mingo County (8 sites)
- WVDOT WV 4 Clendenin Slip and Slide Repair (11 sites)
- WVDEP - New River Gorge Landslide
- WVDEP - Brownnton Landslide



### Education

M.S. Geography, Marshall University, 1994

B.S. Geology, Marshall University, 1977

### Registrations

Registered Professional Geologist in Virginia and Kentucky

### Years experience

44

# BRANDON ASBURY, EI

## Project Engineer

### Professional overview

Brandon is an engineer-in-training with experience in design and permitting for several site development projects in West Virginia. Mr. Asbury has manufactured information pertaining to design and calculated information used for hydrology, site grading and permitting (including NPDES). He has experience in sizing drainage structures such as drainage ditches, ponds, sediment basins, sediment traps, standpipes and outlet pipes. Mr. Asbury has implemented these calculations and information into the permitting phase of the project. He has also assisted in calculating quantities, and construction cost estimates in several projects ranging between 2-200 acre sites.

### Relevant experience

- Harbor Freight Retail Store (Kenova, West Virginia) Site Development
- Durbin Stormwater Design (Durbin, West Virginia)
- Rogers Street Drainage Design (Princeton, West Virginia)
- Christian Fork Lake Drainage Design (Princeton, West Virginia)
- RHL Boulevard - NPDES Permitting
- Cheat River Bridge
- BC&G Railroad Rail-Trail Repairs Project
- Raleigh County Memorial Airport Industrial Park Site Preparation Project
- Hatfield McCoy Triadelphia ATV Resort Project
- WVDOH Corridor H Design Build- Kerens to US 219
- WVDOH Corridor H Design Build US 219 WV 72
- WVDOH Spring Valley Landslide
- WVDOH Laurel Creek Slides
- Candy Mountain Road
- Mid-State Properties – Hole Site
- Mid-State Properties – Post Office Site
- Mid-State Properties – Crupperneck Site
- WV Great Barrel Company Project
- Hawks Nest Access Road Landslide
- WVDOH I-70 Mining Project
- WVDOH Jefferson Road Design Build Project
- WV 10 Operational Improvements
- Madison Branch Road
- South Cuba Bridge
- East Fork Bridge
- Mountaintop Beverage Sewer Line Extension Project



### Education

B.S. Civil Engineering,  
West Virginia Institute of  
Technology, 2017

### Years experience

4

# TODD GARNES

## Project Designer

### Professional overview

Mr. Garnes has decades of experience as a civil draftsman and designer. He is proficient in numerous drafting and mapping software platforms including Civil 3D, AutoCAD, and ArcMap. Mr. Garnes has experience in GIS, construction inspection, waterline planning and design, wastewater planning and design, site development, cathodic protection planning, county-wide planning, permitting, and construction document preparation.

### Professional experience

- Village of Bowerston Water System and Tank Improvements
- Village of Jewett Water System Improvements
- Putnam PSD Water Treatment Plant Upgrade
- Putnam PSD Olympia Fields Booster Station Replacement
- Pocahontas County PSD Wastewater Treatment Plant Upgrade Projects
- Pocahontas County PSD: Frank-Bartow Sanitary Sewer Extension
- Town of Durbin Sanitary and Storm Improvements
- Mercer County PSD: Town of Matoaka Wastewater System Improvements
- West Virginia Division of Natural Resources:
  - Watoga State Park – Riverside Campground Wastewater Treatment Plant
  - Watoga State Park – Water System Improvements Project
  - Watoga State Park – Wastewater System Improvements
  - North Bend State Park Water System Improvements
  - Babcock State Park Water System Improvements
  - Chief Logan State Park Water System Improvements
  - Chief Logan State Park Campground Sanitary Sewer Extension
- First Tracts Realty – Forever Wild Site Development Project at Snowshoe Resort
- Western Pocahontas Properties, LLC – Thomas River View Development
- Village of Rio Grande Wastewater System Improvements and Wastewater Treatment Plant
- Camp Caesar Infrastructure Improvements Project
- Doddridge County PSD 2015 County Wide Water Study
- Pocahontas County PSD: Cheat Mountain Water Acquisition; Dominion Waterline Extension
- Village of Cadiz Water System Improvements Project
- Bluefield Commercialization Station
- WVDNR North Bend State Park Waterline Extension
- Rahall Transportation Institute Land Use Master Plans – Boone, Clay, Fayette, Lincoln, Logan, McDowell, Mercer, Wayne, Wyoming, Raleigh, Upshur, Webster, and Marshall Counties
- Webster County PSD Bergoo Wastewater System and Wastewater Treatment Plant Improvement
- Town of Gilbert: Slabtown, Tamcliff and Paynter Bottom Waterline Extension Project; Horsepen, Gilbert Creek and Browning Fork Waterline Extension; River Bend Road Waterline Extension; Upper Gilbert Creek Waterline Extension
- Logan County PSD: Upper Little Harts Creek Waterline Extension; Big Harts Creek Waterline Extension; Marsh Fork Waterline Extension; Hidden Valley/Airport Road Waterline Extension; Ridgeview Sewer – Railroad Permits
- Lincoln EDA Lower Mud River Waterline Extension
- Town of Chapmanville Water Upgrade Project
- City of Charleston Lee Street Sidewalk Enhancements
- King Coal Highway Water and Sewer Project
- Putnam County Business Park Utilities Extension Project
- Norton Harding Jimtown PSD Scott Run/Findley Road Waterline Extension Project



### Education

A.A.S. Architectural Drafting Technology. West Virginia State College, 1999

A.A.S. Computer Aided Drafting and Design West Virginia State College, 1999

### Years experience

23



# SHAWN FORE

## Project Designer

### Professional overview

Mr. Fore has two decades of experience as a CAD Designer in numerous areas of civil engineering. His representative experience includes civil site development, water and wastewater line treatment plants, abandoned mine lands reclamation, highway design, bridge inspection, utility location and mapping, hydrographic surveying, land surveying, environmental, wind energy, water sampling, GPS and RTK.

He is adept in AutoCad Civil 3D (Version 2006 thru 2019). Further proficiency includes Autocad Land Desktop, Microstation, Inroads, Autodesk Vault Explorer, Eagle Point, TGO, Pathfinder Office, Hydro-Pro, Microsoft Access, Excel and Word. He provides training/support and workstation configuration, as well as data management of CAD and GIS related material.

### Professional experience

- White Sulphur Springs Rt 60 East Wastewater System Replacement
- Burnsville Wastewater Collection System Rehabilitation
- Ashland-Crumpler Wastewater Collection and Treatment System
- Town of Bradshaw Collection System Upgrade
- Town of Bradshaw Pump Stations & WWTP Upgrade
- Village of Woodsfield WWTP Improvements and Dedicated Storm Sewers
- Village of Bowerston Wastewater Collection System Improvements
- Village of Bowerston Wastewater Treatment Plant Improvements
- Green Valley Glenwood PSD Raw Water System Upgrade
- Village of Cadiz South and Center Collection System Improvements
- City of Catlettsburg Wastewater Treatment Plant Upgrade
- Kanawha Falls PSD Wastewater Treatment Plant Improvements
- Kanawha Falls PSD Wastewater Collection System Improvements
- Kanawha Falls PSD Gauley River Waterline Crossing Replacement
- Village of Woodsfield Long Term Control Plan Phase 3
- City of Salem Stormwater Elimination Project
- Logan County PSD Holden Wastewater System Extension and Upgrade
- Logan County PSD Mud Fork Wastewater System Extension and Upgrade
- Excelsa Westmoreland Hospital Secondary Disinfection System
- Buffalo Creek PSD Wastewater System Improvements
- Lincoln County PSD Alum Creek Sewer
- McDowell County PSD Elkhorn Creek Clean Stream and Trout Habitat Initiative



### Education

Drafting CADD Certificate (Microstation), Ben Franklin Career and Technical Center, 2000

CADD Certificate (Autocad), Carver Career and Technical Center, 1999

CADD Certificate (Civil 3D)

### Years experience

22

# TOM RAYBURN, PS

## Surveying Manager

### Professional overview

Mr. Rayburn currently serves as Manager of Surveying for E.L. Robinson Engineering and has more than four decades of design surveying and construction surveying experience. His responsibilities include management of surveying and control for various design projects, including highways, buildings, and bridges. In addition, Mr. Rayburn manages and performs work consisting of courthouse research for property ownership resolution for the above mentioned project types. This includes preparation of property resolution maps, deed descriptions for property acquisitions required for project plan preparation. Mr. Rayburn has experience in Geodetic Control Surveys, 3D Laser Scanning, Photogrammetric Control, Topographic Surveys, Cemetery Surveys, Boundary Surveys, Construction Stakeout, Subdivision Surveys, along with Hydrographic surveys of river and lake bottoms. A few of the more notable surveying projects performed by ELR under the supervision of Mr. Rayburn, have been the Blennerhassett Bridge Project, 11 continuous miles of Corridor H design surveys, GPS Control for the West Virginia Statewide Mapping and Addressing PSD Project, 3D Laser Scan and mapping of the CAMC Parking Garage partial collapse, and 3D Laser Scanning of I64/I77 Retaining Wall for Monitoring.

### Professional experience

- WV Rt. 10 (City of Man, Logan County) & Rt. 19 (Mercer Co)
- JF Allen Company, Flatwoods Garvee (Braxton Co)
- WVDOH St. Project S331-79-155 50.00 Blue Horizon Dr. (PA State Line)
- WVDOH Wellsburg Bridge Project
- WVDOH I-81 Widening Project
- WVDOH I-79 Flatwoods
- WVDOH I-70 Mining Project
- Corridor H Kerens to US 219 Connector
- WVDOH I-70 Mining Project
- WVDOH WV Route 10 Operational Improvements
- Mingo County Redevelopment Wood Park WVDOH Access Road ROW Plans
- Logan County Commission Building Elevator and Stairway Project- Logan, WV
- WVDOH WV Route 10 Operational Improvements
- Chief Logan Recreational Center- Logan, WV
- Forks of Coal Site Development
- Logan County Commission /WVANG C130 Camp Branch Landing Zone
- WVDOH Median Improvement Surveys I-64 and I-77
- Surveys for Huntington Tri-State Airport Improvements
- Huntington Federal Building/USACOE Seven Floor Reconstruction Surveys
- WVDOH / Modjesky and Masters New River Parkway Highway Design Surveys
- Moses Auto Group 5.5 Acre ALTA Survey South Charleston, WV
- Gallipolis Ohio Waterfront Survey



### Education

A.S. Mechanical  
Engineering, West Virginia  
Institute of Technology, 1971

### Registrations

Registered Professional  
Surveyor in West Virginia,  
Kentucky, North Carolina

Current Secretary for the  
West Virginia Board of  
Professional Surveyors

Member of National Society  
of Professional Surveyors

### Years experience

45

# HEATHER WOODS-SHAFFER

## Construction Inspection Manager

### Professional overview

Mrs. Woods-Shaffer has experience in all phases of construction projects. Mrs. Woods-Shaffer has managed numerous WV highway and bridge projects throughout the state and has extensive knowledge in all aspects of the construction process. For nearly 15 years, she has worked as E.L. Robinson's Construction Inspection Manager/Safety Officer. As the Construction Inspection Manager her duties include the management of all construction inspection operations; estimation, preparation and securing of construction inspection and material testing projects throughout the State of West Virginia; assignment of personnel, preparation of invoices for reimbursement, coordination and communication between field inspectors, designers, contractors and clients; approval of sub contractor and vendor invoices, material and cost tracking; and ensuring that ELR has a core group of inspectors capable of handling all future assignments.

Further, Mrs. Woods-Shaffer serves as ELR's Safety Officer. Her duties include the evaluation and monitoring of safety protocols and guidelines associated with ELR's day to day construction/oil and gas operations; orientation and education of new construction hires regarding ELR's safety policies along with planning and facilitating required annual occupational health and safety training programs for all employees; selecting, ordering and training employees on the appropriate PPE use and care; and conducting accident and incident investigations, along with reporting accident statistics, running OSHA audits and providing corrective action recommendations.

### Relevant experience

- WV 2 Proctor to Kent
- Corridor H US 219 to WV 72
- I-70 Mining, Wheeling, WV
- Corridor H Kerens to US 219 Connector
- Junior Bridge, Junior, WV
- Harmon Creek Bridge, Weirton, WV
- Various WVDOH Statewide contracts
- Cottageville T-Beam Bridge, Cottageville, WV
- South Fork Lee Exxon Bridge, Lubeck, WV
- I-77 Bridges: Surface Drive Overpass Bridges, Sissonville, WV
- McQuain Brothers Bridge, Clendenin, WV
- US Route 35 Design Build (CR 34 – Hurricane Creek), Winfield, WV
- US Route 35 Couch to Little Five Mile, Mason, WV
- Big Tyler Widening Project, Cross Lanes, WV
- Corridor D Ballfield relocation, Parkersburg, WV
- Corridor D Soccer field complex, Parkersburg, WV
- Garden Ground Highwall Phase II, Beckley, WV
- Hamlin Public Service District, Hamlin, WV



### Certifications

Radiation Safety Officer (RSO)

West Virginia Department of Transportation HazMat

West Virginia Division of Highways Aggregate Sampling Inspector

WV Transportation Engineering Technician Certification Level III

OSHA 10-hour Occupational Safety & Health Training Course

OSHA 30-hour Occupational Safety & Health Training Course in Construction

First Aid/CPR - Adult/AED/ Blood Borne Pathogens Training

Safe Gulf/Safe Land USA

### Years experience

27

Over the past 40 years, E.L. Robinson Engineering has focused its efforts on delivering quality projects to our clients and building strong relationships based on trust and partnership. We believe building lasting relationships with our clients is key to delivering exceptional service for many years to come.

E.L. Robinson provides WVDEP-AML with the capabilities, expertise and resources of one of the top-notch civil engineering firms in the region. Our offices are staffed with professionals experienced in AML reclamation mapping, permitting, design and construction monitoring. Further, we are very familiar with the requirements of the permitting and regulatory agencies which expedites the completion of projects.

As part of our commitment to quality, E.L. Robinson realizes that every project, client and location is very different. As a result, we look at each project independently to determine the most feasible and functional solution. Specifically, we look at ways we can maximize the project benefit and minimize the construction cost while at the same time completing projects on time and within budget. We have demonstrated abilities in developing practical and cost-effective reclamation and improvement projects and are dedicated to meeting project schedules and budgets.

### Maryland Shallmar Landslide Emergency

Project Location: Garrett County, Maryland  
Completion Date: September 2018  
Client: Maryland Department of the Environment

Project Description: Landslide Abatement Design

### Maryland Scenic Railroad Landslide

Project Location: Frostburg, Maryland  
Completion Date: August 2016  
Client: Maryland Department of the Environment

Project Description: Landslide Abatement Design

### Red Warrior Gob & Slide

Project Location: Kanawha County, West Virginia  
Completion Date: June 2015  
Client: WVDEP-AML, Charleston, WV

Project Description: Performed surveying, drilling and design for a potential blowout area. Designed horizontal bore for dewatering.

### North Matewan (Akers) Landslide

Project Location: Mingo County, WV  
Completion Date: June 2013  
Client: WVDEP-AML, Charleston, WV

Project Description: Performed surveying, drilling and emergency design for stabilizing landslide.

### Branchland (Blankenship) Landslide

Project Location: Lincoln County, West Virginia  
Completion Date: May 2014  
Client: WVDEP-AML, Charleston, WV

Project Description: Performed surveying, drilling and emergency design for stabilizing landslide.

### Coburns Creek Landslide

Project Location: Preston County, West Virginia  
Completion Date: May 2014  
Client: WVDEP-AML, Bridgeport, WV

Project Description: Performed surveying, drilling and emergency design for stabilizing landslide.

### Sauls Run Landslide

Project Location: Lewis County, West Virginia  
Completion Date: May 2015  
Client: WVDEP-AML, Charleston, WV

Project Description: Performed surveying and emergency design for stabilizing landslide.

### Missouri Fork Landslide

Project Location: Boone County, West Virginia  
Completion Date: May 2015  
Client: WVDEP-AML, Charleston, WV

Project Description: Performed surveying and emergency design for stabilizing landslide.

### Worthington (Hess) Landslide

Project Location: Marion County, West Virginia  
Completion Date: May 2015  
Client: WVDEP-AML, Bridgeport, WV

Project Description: Performed surveying, drilling and emergency design for mine blowout and landslide abatement.

### Copen Road Landslide

Project Location: Braxton County, West Virginia  
Completion Date: July 2015  
Client: WVDEP-AML, Bridgeport, WV

Project Description: Performed surveying, drilling and emergency design for stabilizing landslide.

### Dans Branch (Dillon) Landslide

Project Location: Kanawha County, West Virginia  
Completion Date: June 2015  
Client: WVDEP-AML, Charleston, WV

Project Description: Performed surveying, drilling and design for a potential blowout area. Designed horizontal bore for dewatering.

### Pendleton Creek Highwall

Project Location: Tucker County, West Virginia  
Completion Date: September, 2018  
Client: WVDEP-AML

Project Description: Highwall Backfill

**Maryland Barton Mine Pool**

Project Location: Allegany County, Maryland  
 Completion Date: June 2018  
 Client: Maryland Department of the Environment

Project Description: Mine Pool Evaluation and Design

**Glen Alum Complex**

Project Location: Mingo County, West Virginia  
 Completion Date: September 2014  
 Client: WVDEP-AML, Charleston, WV

Project Description: Performed surveying and design for large refuse area and upgrading of surface drainage.

**Carson One Special Reclamation Project**

Project Location: Upshur County, West Virginia  
 Completion Date: June 2015  
 Client: WVDEP-Special Reclamation, Philippi, WV

Project Description: Performed surveying, drilling and design for regrading refuse, sealing mine shafts and slopes and upgrading drainage structures.

**Vickers Branch (Butcher) Drainage**

Project Location: Logan County, West Virginia  
 Completion Date: 2013  
 Client: WVDEP-AML, Charleston, WV

Project Description: Performed survey, drilling, design for mine seals and mine drainage control.

**Sugarcamp Run Burning Refuse Phase II**

Project Location: Nicholas County, West Virginia  
 Completion Date: 2013  
 Client: WVDEP-AML, Oak Hill, WV

Project Description: Performed site survey, drilling and prepared burning refuse abatement design.

**Craigmoor (Strader) Landslide Emergency**

Project Location: Harrison County, West Virginia  
 Completion Date: 2017  
 Client: WVDEP-AML

Project Description: Landslide abatement design

**Maryland G&S Landslide Study**

Project Location: Kitzmiller, Maryland  
 Completion Date: 2019  
 Client: Maryland AML

Project Description: Landslide causation study

**Sauls Run (Bennett) Landslide**

Project Location: Lewis County, West Virginia  
 Completion Date: 2017  
 Client: WVDEP-AML

Project Description: Landslide abatement design

**West Milford (Chapman) Landslide**

Project Location: Harrison County, West Virginia  
 Completion Date: 2019  
 Client: WVDEP-AML

Project Description: Landslide abatement design

**Roderfield (Simpson) Landslide**

Project Location: McDowell County, West Virginia  
 Completion Date: 2017  
 Client: WVDEP-AML

Project Description: Landslide abatement design

**Scotch Hill Mine Fire**

Project Location: Preston County, West Virginia  
 Completion Date: 2019  
 Client: WVDEP-AML

Project Description: Mine fire abatement design

**Mammoth (Shamblin) Landslide**

Project Location: Kanawha County, West Virginia  
 Completion Date: 2017  
 Client: WVDEP-AML

Project Description: Landslide abatement design

**Delbarton (Curry) Landslide**

Project Location: Mingo County, West Virginia  
 Completion Date: 2019  
 Client: WVDEP-AML

Project Description: Landslide abatement design

**Big Creek (Surgoine) Landslide**

Project Location: Logan County, West Virginia  
 Completion Date: 2019  
 Client: WVDEP-AML

Project Description: Landslide abatement design

**Crooked Run (Davis) Landslide**

Project Location: Harrison County, West Virginia  
 Completion Date: 2017  
 Client: WVDEP-AML

Project Description: Landslide abatement design

**Prociuous (Doughty) Landslide**

Project Location: Clay County, West Virginia  
 Completion Date: 2017  
 Client: WVDEP-AML

Project Description: Landslide abatement design

**Rivesville (Parker) Landslide**

Project Location: Marion County, West Virginia  
 Completion Date: 2018  
 Client: WVDEP-AML

Project Description: Landslide abatement design

**Bridgeport (Ridgeway) Landslide**

Project Location: Harrison County, West Virginia  
 Completion Date: 2019  
 Client: WVDEP-AML

Project Description: Landslide abatement design

**North Matewan (Ross) Landslide**

Project Location: Mingo County, West Virginia  
 Completion Date: 2019  
 Client: WVDEP-AML

Project Description: Landslide abatement design

**Summerlee Refuse Phase II**

Project Location: Fayette County, West Virginia  
 Completion Date: 2019  
 Client: WVDEP-AML

Project Description: Refuse and drainage design

**Weston (Williams) Landslide**

Project Location: Fayette County, West Virginia  
 Completion Date: 2019  
 Client: WVDEP-AML

Project Description: Landslide abatement design

**Smithers Landslide**

Project Location: Fayette County, West Virginia  
 Completion Date: Current  
 Client: WVDEP-AML

Project Description: Landslide abatement design

**Abney Refuse Pile**

Project Location: Raleigh County, West Virginia  
 Completion Date: 2011-2013  
 Client: WVDEP-AML, Oak Hill, WV

Project Description: Field surveying and mapping, subsurface investigation, design work for refuse regrading, mine seals, and drainage.

**Cartright Branch Refuse Pile**

Project Location: Logan County, West Virginia  
 Completion Date: 2011-2012  
 Client: WVDEP-AML, Charleston, WV

Project Description: Performed survey, drilling, design for refuse regrading and mine drainage control.

**Milam Ridge**

Project Location: Wyoming County, West Virginia  
 Completion Date: December 2012  
 Client: WVDEP-AML, Charleston, WV

Project Description: Performed surveying, drilling and design for numerous mine portals.

**Squires Creek (Moats) Portal and Refuse**

Project Location: Preston County, West Virginia  
 Completion Date: December 2014  
 Client: WVDEP-AML, Bridgeport, WV

Project Description: Performed surveying, drilling and design of refuse area and portals.

**Preston Energy/Rockville/Viking Coal Special Reclamation**

Project Location: Preston County, West Virginia  
 Completion Date: October 2015  
 Client: WVDEP-Special Reclamation, Philippi, WV

Project Description: Performed surveying and design for design of reclamation of portals and piping system to convey mine water to treatment plant.

**McGraws Vertical Opening**

Project Location: Wyoming County, West Virginia  
 Completion Date: July 2013  
 Client: WVDEP-AML, Charleston, WV

Project Description: Performed emergency design for mine shaft cap.

**New Cumberland Mine Blowout**

Project Location: Hancock County, West Virginia  
 Completion Date: June 2013  
 Client: WVDEP-AML, Bridgeport, WV

Project Description: Performed surveying, drilling and design for mine blowout abatement.

**Fairview Mine Shaft**

Project Location: Marion County, West Virginia  
 Completion Date: October 2013  
 Client: WVDEP-AML, Bridgeport, WV

Project Description: Performed emergency design for mine shaft cap.

**Whitehall Mine Fire**

Project Location: Marion County, West Virginia  
 Completion Date: October 2013  
 Client: WVDEP-AML, Bridgeport, WV

Project Description: Performed surveying, drilling and design for extinguishment of mine fire.

**Lynch Run Mine Blowout**

Project Location: Gilmer County, West Virginia  
 Completion Date: May 2015  
 Client: WVDEP-AML, Bridgeport, WV

Project Description: Performed surveying, drilling and emergency design for mine blowout and landslide abatement.

**Marsh Run Portals**

Project Location: Braxton County, West Virginia  
 Completion Date: 2013  
 Client: WVDEP-AML, Charleston, WV

Project Description: Performed survey, drilling and design for mine seals and regrading.



**Donnie Thorn Highwall**

Project Location: Preston County, West Virginia  
 Completion Date: 2013  
 Client: WVDEP-AML, Bridgeport, WV

Project Description: Field surveying and mapping, subsurface investigation, design work for refuse regrading, mine seals, and drainage.

**Glen Rogers Emergency**

Project Location: Wyoming County, West Virginia  
 Completion Date: 2012  
 Client: WVDEP-AML, Charleston, WV

Project Description: Performed survey, drilling, and design for shaft seals.

**Morgan #46 Highwall**

Project Location: Preston County, West Virginia  
 Completion Date: 2013  
 Client: WVDEP-AML, Bridgeport, WV

Project Description: Performed survey and design for refuse and spoil regrading and drainage control.

**Thorpe Refuse Pile**

Project Location: McDowell County, West Virginia  
 Completion Date: 2011-2012  
 Client: WVDEP-AML, Oak Hill, WV

Project Description: Performed survey, drilling, design for refuse and spoil regrading and mine drainage control.

**Shinnston Lumberport Subsidence**

Project Location: Harrison County, West Virginia  
 Completion Date: 2010-2012  
 Client: WVDEP-AML, Philippi, WV

Project Description: Performed site survey, drilling and prepared subsidence abatement design.

**Newtown (Kinder) Portals Design**

Project Location: Mingo County, West Virginia  
 Completion Date: 2010-2012  
 Client: WVDEP-AML, Charleston, WV

Project Description: Performed site survey, and prepared design for portals reclamation and drainage abatement design.

**Gordon "C" Refuse Pile**

Project Location: Boone County, West Virginia  
 Completion Date: 2010-2012  
 Client: WVDEP-AML, Oak Hill, WV

Project Description: Field surveying and mapping, subsurface investigation, design work for mine seals, drainage, and refuse reclamation.

**Keaton Branch Complex**

Project Location: Raleigh County, West Virginia  
 Completion Date: 2010-2011  
 Client: WVDEP-AML, Oak Hill, WV

Project Description: Performed survey, drilling, design for refuse, regrading and mine drainage control.

**Dunloup Creek Complex**

Project Location: Raleigh County, West Virginia  
 Completion Date: 2009-2011  
 Client: WVDEP-AML, Oak Hill, WV

Project Description: Performed survey, drilling, design for refuse and spoil regrading and mine drainage control.

**Brownnton (McCord) Landslide**

Project Location: Barbour County, West Virginia  
 Completion Date: 2009-2011  
 Client: WVDEP-AML, Philippi, WV

Project Description: Performed site survey, drilling and prepared landslide abatement design.

**Keystone (Avery) Landslide Portal**

Project Location: McDowell County, West Virginia  
 Completion Date: 2009-2011  
 Client: WVDEP-AML, Charleston, WV

Project Description: Performed site survey and prepared landslide abatement design, portals reclamation, and drainage control.

**Dan's Branch (Pennington) Landslide Emergency**

Project Location: Mingo County, West Virginia  
 Completion Date: 2011  
 Client: WVDEP-AML, Charleston, WV

Project Description: Field surveying and mapping, subsurface investigation, design work for landslide reclamation.

**East Bank (Willis) Mine Blowout**

Project Location: Kanawha County, West Virginia  
 Completion Date: 2009  
 Client: WVDEP-AML, Charleston, WV

Project Description: Field surveying and mapping, design work for mine seal and drainage control.

**Island Creek #18 Mine Complex**

Project Location: Logan County, West Virginia  
 Completion Date: 2009-2011  
 Client: WVDEP-AML, Oak Hill, WV

Project Description: Field surveying and mapping, subsurface investigation, design work for mine seals, drainage, and refuse reclamation.

**Jacob's Fork Complex**

Project Location: Boone County, West Virginia  
 Completion Date: 2008-2009  
 Client: WVDEP-AML, Charleston, WV

Project Description: Field surveying and mapping, subsurface investigation, design work for mine seals, drainage, and reclamation.

**Gilmer B Site 3.8**

Project Location: Gilmer County, West Virginia  
 Completion Date: 2008  
 Client: WVDEP-AML, Charleston, WV

Project Description: Performed survey, drilling, design for refuse and spoil regarding and mine drainage control.

**Rhodell Refuse & Portals**

Project Location: Wyoming County, West Virginia  
 Completion Date: 2008  
 Client: WVDEP-AML, Charleston, WV

Project Description: Performed survey, drilling, design for refuse and spoil regarding and mine drainage control.

**Gouge Landslide Emergency**

Project Location: Scotttown, Ohio  
 Completion Date: 2007  
 Client: ODNR-AML, Columbus, OH

Project Description: Performed site survey, drilling and prepared landslide abatement design.

**Rodgers Subsidence Emergency**

Project Location: Logan County, West Virginia  
 Completion Date: 2011-2012  
 Client: WVDEP-AML, Charleston, WV

Project Description: Performed survey, drilling, design for refuse regrading and mine drainage control.

**McAdams Subsidence Emergency**

Project Location: Stark County, Ohio  
 Completion Date: 2006  
 Client: ODNR-AML, Columbus, OH

Project Description: Performed investigation and prepared report of findings.

**Athens Rt. 13 Refuse Fire Emergency**

Project Location: Athens County, Ohio  
 Completion Date: 2006  
 Client: ODNR-AML, Columbus, OH

Project Description: Performed site survey, prepared abatement design and monitored on site construction for fire extinguishment.

**Brown Landslide Emergency**

Project Location: Rayland, OH  
 Completion Date: 2007  
 Client: ODNR-AML, Columbus, OH

Project Description: Performed site survey and prepared landslide abatement design.

**Toney Fork Landslide Emergency**

Project Location: Boone County, West Virginia  
 Completion Date: 2006  
 Client: WVDEP-AML, Charleston, WV

Project Description: Performed site survey, drilling and prepared plans and specifications to stabilize an emergency landslide area.

**Lavender Refuse Fire Emergency**

Project Location: Meigs County, Ohio  
 Completion Date: 2005  
 Client: ODNR-AML, Columbus, OH

Project Description: Performed abatement plan and monitored construction.

**Goetz Subsidence Emergency**

Project Location: Columbiana County, Ohio  
 Completion Date: 2005  
 Client: ODNR-AML, Columbus, OH

Project Description: Performed investigation and prepared report of findings.

**Cox Refuse Fire Emergency**

Project Location: Gallia County, Ohio  
 Completion Date: 2005  
 Client: ODNR-AML, Columbus, OH

Project Description: Performed abatement design for fire extinguishment.

**North Matewan (Sipple Drainage)**

Project Location: Mingo County, West Virginia  
 Completion Date: 2005  
 Client: WVDEP-AML

Project Description: Performed surveying, drilling and design for drainage project abatement.

**Phalen Landslide Emergency**

Project Location: Martins Ferry, Ohio  
 Completion Date: 2005  
 Client: ODNR-AML, Columbus, OH

Project Description: Performed site surveying and landslide abatement design.

**Adkins Landslide Emergency**

Project Location: Gallia County, Ohio  
 Completion Date: 2005  
 Client: ODNR-AML, Columbus, OH

Project Description: Performed surveying, drilling, landslide abatement and construction monitoring.

**Baisden Subsidence Emergency**

Project Location: Jackson County, Ohio  
 Completion Date: 2005  
 Client: ODNR-AML, Columbus, OH

Project Description: Performed drilling to develop subsidence abatement solutions.

**Treadway Landslide Emergency**

Project Location: Rayland, Ohio  
 Completion Date: 2004  
 Client: ODNR-AML, Columbus, OH

Project Description: Performed site surveying, drilling and landslide abatement design.

**Big Creek "C" Refuse**

Project Location: Logan County, West Virginia  
 Completion Date: 2004  
 Client: WVDEP-AML

Project Description: Performed surveying and drilling for design.

**Imboden Landslide Emergency**

Project Location: Rutland, Ohio  
 Completion Date: 2004  
 Client: ODNR-AML, Columbus, OH

Project Description: Performed drilling and surveying to develop landslide abatement solutions and cost estimates.

**Parsons Landslide Emergency**

Project Location: New Philadelphia, Ohio  
 Completion Date: 2004  
 Client: ODNR-AML, Columbus, OH

Project Description: Performed site review and report concerning landslides relation to mining and potential solutions.

**Jefferson County Road 26 Landslide Emergency**

Project Location: Weinterville, Ohio  
 Completion Date: 2004  
 Client: ODNR-AML, Columbus, OH

Project Description: Performed surveying, drilling and prepared plans and specifications to stabilize and emergency landslide area.

**Charleston Romeo Landslide**

Project Location: Kanawha County, West Virginia  
 Completion Date: 2004  
 Client: WVDEP-AML

Project Description: Performed surveying, drilling and design of landslide abatement.

**Titus Road Landslide Emergency**

Project Location: Rutland, Ohio  
 Completion Date: 2004  
 Client: ODNR-AML, Columbus, OH

Project Description: Performed surveying, drilling and prepared plans and specifications to stabilize and emergency landslide area.

**Lewis Landslide Emergency**

Project Location: Pomeroy, Ohio  
 Completion Date: 2004  
 Client: ODNR-AML, Columbus, OH

Project Description: Performed surveying, drilling, prepared plans and specifications to stabilize an emergency landslide area, and provided construction monitoring.

**Roush Landslide Emergency**

Project Location: Pomeroy, Ohio  
 Completion Date: 2004  
 Client: ODNR-AML, Columbus, OH

Project Description: Prepared plans and specifications to stabilize an emergency landslide area.

**Moran Subsidence**

Project Location: Clinton, Ohio  
 Completion Date: 2004  
 Client: ODNR-AML, Columbus, OH

Project Description: Prepared plans and specifications to stabilize an emergency subsidence area.

**Ron Bobar Subsidence**

Project Location: Flushing, Ohio  
 Completion Date: 2004  
 Client: ODNR-AML, Columbus, OH

Project Description: Investigation and report of an emergency subsidence area.

**Gooney Otter Refuse**

Project Location: Wyoming County, West Virginia  
 Completion Date: 2004  
 Client: WVDEP-AML

Project Description: Performed surveying, drilling and site design for refuse regarding project.

**Chapmanville (Gorby) Mine Blowout**

Project Location: Logan County, West Virginia  
 Completion Date: 2003  
 Client: WVDEP-AML

Project Description: Performed surveying, drilling and design of landslide regrading and retaining wall design.

**Tuppers Creek (Layne) Landslide**

Project Location: Kanawha County, West Virginia  
 Completion Date: 2003  
 Client: WVDEP-AML

Project Description: Performed surveying, drilling and design of landslide abatement.

**Maidsville (Tennant) Landslide**

Project Location: Monongalia County, West Virginia  
 Completion Date: 2003  
 Client: WVDEP-AML

Project Description: Performed surveying, drilling and design of landslide abatement.

**Whittington Hill (Walker Landslide)**

Project Location: Kanawha County, West Virginia  
 Completion Date: 2002  
 Client: WVDEP-AML

Project Description: Performed surveying, drilling and design for an emergency landslide.

**Minden Refuse Pile Reclamation Project**

Project Location: Fayette County, West Virginia  
 Completion Date: 2001  
 Client: WVDEP-AML

Project Description: Performed surveying and design for emergency project to upgrade drainage control.

**Jeffrey Mine Complex Reclamation Project**

Project Location: Boone County, West Virginia  
 Completion Date: 2001  
 Client: WVDEP-AML

Project Description: Performed surveying and design regrading refuse.

**Hot Coal Reclamation Project**

Project Location: Raleigh County, West Virginia  
 Completion Date: 2000  
 Client: WVDEP-AML

Project Description: Performed surveying and design for regrading refuse.

**Bull Run #27**

Project Location: Preston County, West Virginia  
 Completion Date: 2000  
 Client: WVDEP-AML

Project Description: Performed surveying and design for regrading refuse.

**Rich Fork (Thaxton) Landslide**

Project Location: Kanawha County, West Virginia  
 Completion Date: 2003  
 Client: WVDEP-AML

Project Description: Performed surveying, drilling and design of landslide abatement.

**Riffe Branch Impoundment**

Project Location: Fayette County, West Virginia  
 Completion Date: 2000  
 Client: WVDEP-AML

Project Description: Performed surveying and design for regrading refuse and drainage control.

**Ven's Run Landslide**

Project Location: Harrison County, West Virginia  
 Completion Date: 1999  
 Client: WVDEP-AML

Project Description: Performed surveying and design for regraded landslide area.

**Bull Run #35**

Project Location: Preston County, West Virginia  
 Completion Date: 1999  
 Client: WVDEP-AML

Project Description: Performed surveying and design for refuse and spoil regrading.

**Securo Mine Drainage Site 1 & 2**

Project Location: Fairmont, West Virginia  
 Completion Date: 1998  
 Client: WVDEP-AML

Project Description: Performed surveying and design for mine drainage system.

## **Geotechnical/Soil Analysis**

Performed geotechnical analysis on 135 projects over the past 20 years. These project involved slope stability, mine pool locations and mine subsidence.

**US 35 Design Build:** Utilized provided core boring data, coordinated drilling of over 100 additional core borings to design 7.5 miles of 4 lane highway in Putnam County, West Virginia. This included the foundation designs of bridge piers and abutments for 2 bridges carrying the 4 lane roadway over a major stream and an existing roadway.

**WVDOT-District 2 Mingo County:** Solicited core borings, provided field personnel to log core samples, designed 4 pile retaining walls for landslides effecting existing roadways. Including analyzing piling, lagging and other aspects of each wall. Developed plans with profile, traffic control, estimated quantities, drainage controls, etc. in a bid package suitable for WVDOT to solicit bids.

**WVDOT-District 2 Logan County:** Solicited core borings, provided field personnel to log core samples, designed 5 pile retaining walls for landslides effecting existing roadways. Including analyzing piling, lagging and other aspects of each wall. Developed plans with profile, traffic control, estimated quantities, drainage controls, etc. in a bid package suitable for WVDOT to solicit bids.

**WVDOT-District 2 Lincoln County:** Solicited core borings, provided field personnel to log core samples, designed 14 pile retaining walls for landslides effecting existing roadways. Including analyzing piling, lagging and other aspects of each wall. Developed plans with profile, traffic control, estimated quantities, drainage controls, etc. in a bid package suitable for WVDOT to solicit bids.

**WVDOT Cottageville Bridge:** Solicited bids from drilling contractors, coordinated drilling for a bridge replacement in Jackson and Mason County, West Virginia. The geotechnical testing performed consisted of five hydrometer analysis and rock core compression testing. The design included pile foundations for the piers and abutments, sonar analysis of the creek channel as it relates to the soil materials and slope stability analysis for each abutment.

**WVDEP-AML Dans Branch:** Performed geotechnical investigation of an AML emergency landslide. Performed core borings and geotechnical testing of soil samples obtained from the borings. Designed pile retaining wall to support embankment and existing home below pre-law mining.

**Dempsey Bottom Beam Span:** The subsurface investigation consisted of 6 test borings, all of which encountered bedrock. Four of the core borings were located at the site of the two proposed abutments, while the other two were drilled at the site of the proposed retaining wall. Hollow stem augers were utilized to drill the holes through the overburden. The Standard Penetration Test method utilizing split-spoon sampler was also used to sample the overburden soils.

**Guyandotte River Bridge:** ELR performed geotechnical design including future mine subsidence remediation for this bridge. During the design process a check of the mining records determined the presence of a coal seam in the vicinity of the bridge. After review of the mine maps and additional drilling, presence of mine voids was confirmed. Using the depths from the ground surface to the mine level a limit of grout protection was developed. The grouting program developed included some down hole camera work and confirmation borings to confirm the grout effectiveness. Grouting of the mine void eliminated the possibility of future mine subsidence in the vicinity of the substructure and allowed the bridge to be supported on conventional caissons.

**Hydraulics/Hydrology**

E.L. Robinson has worked with various clients, both private firms and public entities, in developing hydrology and hydraulics studies to determine effects that developments would have on floodplains and how they might adversely affect the surrounding communities.

- East Fork Bridge
- South Cuba Bridge
- WV 10 Operational Improvements
  - Jesse Bridge
  - Herndon Slab Bridge
  - Car Wash Bridge
  - Matoaka Bridge No. 1
  - Matoaka Bridge No 2
  - SSG Gene Arden Vance Jr Memorial Bridge
  - Toney Fork Slab Bridge
  - Road Branch Bridge
  - Beech Branch Bridge
  - Giatto Overpass Bridge
  - Hiawatha Overpass Bridge
  - U.S. Army Sp4 Jackie (Hearn) Mcmillion Memorial Bridge
- Blue Creek Bridge
- Marsh Fork Bridge
- Junior Bridge
- Corridor H – Kerens to Parsons
  - Baldlick Fork Bridge (Bridge #1)
  - Panther Run Bridge (Bridge #2)
  - South Branch of Haddix Run Bridge (Bridge #3)
  - Unnamed Trib of Haddix Run Bridge (Bridge #4)
  - Bridge over Haddix Run and US 219 (Bridge #5)
- Cherry Tree Bridge
- Laurel Creek Girder Bridge

**Aerial Photography/Mapping**

E.L. Robinson Engineering has worked with various clients to develop contour mapping of sites and areas that otherwise could not be determined. With the use of aerial photography and state of the art technology, ELR has developed maps from photographs for numerous projects including but not limited to:

- City of Beckley
- City of Charleston
- Corridor D
- Corridor H
- Cross Lanes Connector
- Eldora
- Frazier's Bottom
- Glenwood
- Hatfield Cemetery
- I-70 Washington Avenue (Wheeling, WV)
- I-64 Glade Creek
- Jackson Mill
- King Coal
- KY 40 Connector
- Logan Run
- New River Parkway
- Ohio River Crossing
- Pinegrove
- Parkersburg
- Powell Creek
- Prince
- PSI-Baker/Ft. Henry Bridges
- Racetrack
- White Sulphur Springs

**Aerial Photography/Mapping**

E.L. Robinson Engineering has completed the preliminary mapping for the WVDEP for all of the AML projects located in Northern West Virginia since 2012. In addition, ELR has completed either preliminary or final mapping for the following:

**2003-Present**

All ELR AML Projects WV and OH

**2002**

Community of Preston  
Rhodell Refuse Portals  
Vivian Refuse Maintenance  
Glen Rogers Waterline  
Sundial (Hatfield) Refuse Pile  
Jacob Fork Complex  
Thomas (NE) Subsidence

**2001**

Bartley Mine Dump  
Beckley Soccer Complex  
Holden Portals/Structures  
Jeffrey Complex  
Minden Refuse Drainage  
Roach Branch Refuse

Sauls Run Strip  
Stonecoal Creek Complex  
Waterline Photography  
Weaver Portals/Mine Drain

**2000**

Micajah Refuse Pile  
McAlphin Eroding Dump  
Flemington Portals/Drainage  
Minden "C" Refuse Pile  
National Mine Complex  
Linger Clogged Stream  
Hotcoal Mine Dump  
Layton Mine Drainage  
Quintain Development

**1999**

Bull Run #27  
8th Street-Warwood Avenue

Mable Highwall  
Coal Branch  
Matoaka Subsidence  
Elkins Coal  
Springton Refuse  
Veins Run

**1998**

Bull Run #35  
Fickey Run

**1997**

Browns Creek  
Marrowbone  
Matewan  
Pigeon Creek

**CCQQ**

**Attachment A**



**WEST VIRGINIA DEPARTMENT OF ENVIRONMENTAL PROTECTION  
AML CONSULTANT CONFIDENTIAL QUALIFICATION QUESTIONNAIRE**

**Attachment "B"**

PROJECT NAME 2022 AML Contract 9 Project North CEOI 0313 DEP220000018		DATE (DAY, MONTH, YEAR) June 27, 2022	FEIN 55-0594633
1. FIRM NAME E.L. Robinson Engineering Co.		2. HOME OFFICE BUSINESS ADDRESS 5088 Washington Street, West Charleston, WV 25313	3. FORMER FIRM NAME
4. HOME OFFICE TELEPHONE 304-776-7473	5. ESTABLISHED (YEAR) 1978	6. TYPE OWNERSHIP Individual    x Corporation Partnership    Joint-Venture	6a. WV REGISTERED DBE (Disadvantaged Business Enterprise) YES                    x NO
7. PRIMARY AML DESIGN OFFICE: ADDRESS/ TELEPHONE/ PERSON IN CHARGE/ NO. AML DESIGN PERSONNEL EACH OFFICE 5088 Washington Street, West    304-776-7473/Eric Coberly, P.E./54 Staff in Charleston Area Charleston, WV 25313			
8. NAMES OF PRINCIPAL OFFICERS OR MEMBERS OF FIRM Ed Robinson, P.E. 304 776-7473 Ext 211		8a. NAME, TITLE, & TELEPHONE NUMBER - OTHER PRINCIPALS	
9. PERSONNEL BY DISCIPLINE			
4 ADMINISTRATIVE ARCHITECTS	— ECOLOGISTS	3 LANDSCAPE ARCHITECTS	7 STRUCTURAL ENGINEERS
— BIOLOGIST	— ECONOMISTS	— MECHANICAL ENGINEERS	7 SURVEYORS
6 CADD OPERATORS	— ELECTRICAL ENGINEERS	1 MINING ENGINEERS	— TRAFFIC ENGINEERS
— CHEMICAL ENGINEERS	— ENVIRONMENTALISTS	— PHOTOGRAMMETRISTS	— OTHER
22 CIVIL ENGINEERS	— ESTIMATORS	PLANNERS: URBAN/REGIONAL	
22 CONSTRUCTION INSPECTORS	1 GEOLOGISTS	— SANITARY ENGINEERS	
— DESIGNERS	— HISTORIANS	1 SOILS ENGINEERS	
DRAFTSMEN	— HYDROLOGISTS	— SPECIFICATION WRITERS	74 TOTAL PERSONNEL
<p><b>TOTAL NUMBER OF WV REGISTERED PROFESSIONAL ENGINEERS IN PRIMARY OFFICE: <u>14</u></b></p> <p><b>*RPEs other than Civil and Mining must provide supporting documentation that qualifies them to supervise and perform this type of work.</b></p>			
10. HAS THIS JOINT-VENTURE WORKED TOGETHER BEFORE? <input type="checkbox"/> YES                    NO <input checked="" type="checkbox"/> This is not applicable			

11. OUTSIDE KEY CONSULTANTS/SUB-CONSULTANTS ANTICIPATED TO BE USED. Attach "AML Consultant Confidential Qualification Questionnaire" for each if copy is not on file with AML.

<p>NAME AND ADDRESS:</p> <p>Novel Geo – Environmental (NGE) 806 B Street, St. Albans, WV</p>	<p>SPECIALTY:</p> <p>Drilling</p>	<p>WORKED WITH BEFORE</p> <p><input checked="" type="checkbox"/> YES</p> <p><input type="checkbox"/> NO</p>
<p>NAME AND ADDRESS:</p>	<p>SPECIALTY:</p>	<p>WORKED WITH BEFORE</p> <p><input type="checkbox"/> YES</p> <p><input type="checkbox"/> NO</p>
<p>NAME AND ADDRESS:</p>	<p>SPECIALTY:</p>	<p>WORKED WITH BEFORE</p> <p><input type="checkbox"/> YES</p> <p><input type="checkbox"/> NO</p>
<p>NAME AND ADDRESS:</p>	<p>SPECIALTY:</p>	<p>WORKED WITH BEFORE</p> <p><input type="checkbox"/> YES</p> <p><input type="checkbox"/> NO</p>
<p>NAME AND ADDRESS:</p>	<p>SPECIALTY:</p>	<p>WORKED WITH BEFORE</p> <p><input type="checkbox"/> YES</p> <p><input type="checkbox"/> NO</p>
<p>NAME AND ADDRESS:</p>	<p>SPECIALTY:</p>	<p>WORKED WITH BEFORE</p> <p><input type="checkbox"/> YES</p> <p><input type="checkbox"/> NO</p>
<p>NAME AND ADDRESS:</p>	<p>SPECIALTY:</p>	<p>WORKED WITH BEFORE</p> <p><input type="checkbox"/> YES</p> <p><input type="checkbox"/> NO</p>
<p>NAME AND ADDRESS:</p>	<p>SPECIALTY:</p>	<p>WORKED WITH BEFORE</p> <p><input type="checkbox"/> YES</p> <p><input type="checkbox"/> NO</p>
<p>NAME AND ADDRESS:</p>	<p>SPECIALTY:</p>	<p>WORKED WITH BEFORE</p> <p><input type="checkbox"/> YES</p> <p><input type="checkbox"/> NO</p>

12. A. Is your firm experienced in Abandoned Mine Lands Remediation/Mine Reclamation Engineering?

YES Description and Number of Projects: One hundred twenty one (132) Projects - See Attached Sheet

NO

B. Is your firm experienced in Soil Analysis?

YES Description and Number of Projects: Ten (10) Projects Listed - See attached Sheet

NO

C. Is your firm experienced in hydrology and hydraulics?

YES Description and Number of Projects: Ten (10) Projects Listed - See attached sheet

NO

D. Does your firm produce its own Aerial Photography and Develop Contour Mapping?

YES Description and Number of Projects: > 200 - in Firm History - 65 Recent Projects Listed  
All ELR WV & OH AML Projects since 2003 have been surveyed with ELR Surveying Staff

NO

E. Is your firm experienced in domestic waterline design? (Include any experience your firm has in evaluation of aquifer degradation as a result of mining.)

YES Description and Number of Projects: Ninety-seven (97) Total  
Twelve (12) Domestic Waterline Experience (AML Related)  
Thirty-five (35) Evaluation of Aquifer Degradation  
Seventy (70) Non-AML Domestic Water Lines

NO

F. Is your firm experienced in Acid Mine Drainage Evaluation and Abatement Design?

YES Description and Number of Projects: Seven (7) Projects

NO

13. PERSONAL HISTORY STATEMENT OF PRINCIPALS AND ASSOCIATES **RESPONSIBLE FOR AML PROJECT DESIGN** (Furnish complete data but keep to essentials)

NAME & TITLE (Last, First, Middle Int.)	YEARS OF EXPERIENCE		
	YEARS OF AML DESIGN EXPERIENCE:	YEARS OF AML RELATED DESIGN EXPERIENCE:	YEARS OF DOMESTIC WATERLINE DESIGN EXPERIENCE:
Robinson, Edward L., President	20	31	37

**Brief Explanation of Responsibilities**

Mr. Robinson worked in the Right of Way Division of the WV Department of Highways for ten years where he reviewed major utility plans. He has extensive experience in property surveys, property title searches, aerial mapping and land acquisition. He has provided quality control on all projects designed by this firm for the past 25 years. Provide and coordinate Quality Control on all design projects.

**EDUCATION (Degree, Year, Specialization)**

B.S. Civil Engineering, 1969  
 M.S. Civil Engineering, 1981

MEMBERSHIP IN PROFESSIONAL ORGANIZATIONS	REGISTRATION (Type, Year, State)
American Society of Civil Engineers - Past President WV American Council of Engineering Companies National Society of Professional Engineers	Professional Engineer: WV, OH, KY, VA, NC

13. PERSONAL HISTORY STATEMENT OF PRINCIPALS AND ASSOCIATES **RESPONSIBLE FOR AML PROJECT DESIGN** (Furnish complete data but keep to essentials)

NAME & TITLE (Last, First, Middle Int.)	YEARS OF EXPERIENCE		
	YEARS OF AML DESIGN EXPERIENCE:	YEARS OF AML RELATED DESIGN EXPERIENCE:	YEARS OF DOMESTIC WATERLINE DESIGN EXPERIENCE:
Watts, Richard, Geologist	36	41	1

**Brief Explanation of Responsibilities**

Mr. Watts has served as project geologist on more than ninety (90) abandoned mine land projects. Responsibilities include project management, field reconnaissance, drilling coordination, laboratory testing and analysis, stability analysis, specification writing, quantity determinations, cost estimates, pre-bid and pre-construction meetings. Projects included surface and deep mine reclamation, subsidence, AMD treatment and waterline feasibility studies.

**EDUCATION (Degree, Year, Specialization)**

B.S. Geology, 1977  
 M.S. Geography, 1994

MEMBERSHIP IN PROFESSIONAL ORGANIZATIONS	REGISTRATION (Type, Year, State)
Geological Society of America Association of Engineering Geologists	Professional Geologist: KY, VA

13. PERSONAL HISTORY STATEMENT OF PRINCIPALS AND ASSOCIATES **RESPONSIBLE FOR AML PROJECT DESIGN** (Furnish complete data but keep to essentials)

NAME & TITLE (Last, First, Middle Int.)	YEARS OF EXPERIENCE		
	YEARS OF AML DESIGN EXPERIENCE:	YEARS OF AML RELATED DESIGN EXPERIENCE:	YEARS OF DOMESTIC WATERLINE DESIGN EXPERIENCE:
Coberly, Eric J., Project Manager	36	36	16

**Brief Explanation of Responsibilities**  
 Mr. Coberly has performed AML Grant and Emergency project designs since 1984. Projects have included highwall backfill, refuse regarding, portals, mine drainage, subsidence, refuse and mine fire abatement. Mr. Coberly has participated in the design of over 100 such project while working for WVDEP or at ELR. Included in that total is over 30 emergency project designs completed in Ohio and West Virginia. Mr. Coberly has served in various capacities with the WV AML Program including construction and design administrator as well as the Chief of the Office. This involved the review of hundreds of additional projects in the 22 years spent with AML program.

**EDUCATION (Degree, Year, Specialization)**  
 B.S. Engineering of Mines, 1983  
 M.S. Engineering of Mines, 1990

MEMBERSHIP IN PROFESSIONAL ORGANIZATIONS	REGISTRATION (Type, Year, State)
	Professional Engineer: WV, OH, MD

13. PERSONAL HISTORY STATEMENT OF PRINCIPALS AND ASSOCIATES **RESPONSIBLE FOR AML PROJECT DESIGN** (Furnish complete data but keep to essentials)

NAME & TITLE (Last, First, Middle Int.)	YEARS OF EXPERIENCE		
	YEARS OF AML DESIGN EXPERIENCE:	YEARS OF AML RELATED DESIGN EXPERIENCE:	YEARS OF DOMESTIC WATERLINE DESIGN EXPERIENCE:
Cart, Timothy, Project Engineer	36	37	24

**Brief Explanation of Responsibilities**  
 Mr. Cart has completed numerous mine reclamation projects under the AML program, including regrading of coal refuse materials, re-establishment of vegetation cover, disposal of acid producing materials, and developing methods for extinguishing burning materials and disposal of old mining structures. Designed passive AMD treatment systems. Conducted Phase I and Phase II Studies to determine if groundwater had been affected by pre-law mining.  
 Mr. Cart has extensive experience in the design and construction management of waterline extension projects. Mr. Cart has recently completed water projects in Mingo; Kanawha; Putnam; and Cabell counties.  
 Mr. Cart has performed geotechnical engineering calculations and designs for settlement analysis of dams and other embankments.

**EDUCATION (Degree, Year, Specialization)**  
 B.S. Civil Engineering, 1981

MEMBERSHIP IN PROFESSIONAL ORGANIZATIONS	REGISTRATION (Type, Year, State)
	Professional Engineer WV, OH

13. PERSONAL HISTORY STATEMENT OF PRINCIPALS AND ASSOCIATES **RESPONSIBLE FOR AML PROJECT DESIGN** (Furnish complete data but keep to essentials)

NAME & TITLE (Last, First, Middle Int.)	YEARS OF EXPERIENCE		
	YEARS OF AML DESIGN EXPERIENCE:	YEARS OF AML RELATED DESIGN EXPERIENCE:	YEARS OF DOMESTIC WATERLINE DESIGN EXPERIENCE:
McGettigan, Mark, Project Engineer	11	11	11

**Brief Explanation of Responsibilities**

Mr. McGettigan has worked on several AML projects since joining our firm. He has developed grading plans, cross sections, estimated and checked quantity calculations. He has also served as a field inspector for several waterline Projects designed by E. L. Robinson Engineering Co. He has been the lead designer on waterlines over the past five years.

Mr. McGettigan also has experience with surveying and equipment including; theodolites, levels, and total stations. He has also performed various concrete and soil tests and is certified on Troxler nuclear density gage.

**EDUCATION (Degree, Year, Specialization)**

B.S. Civil Engineering Technology, 1999  
 M.S. Engineering Management, 2007

MEMBERSHIP IN PROFESSIONAL ORGANIZATIONS	REGISTRATION (Type, Year, State)
	Professional Engineer WV

13. PERSONAL HISTORY STATEMENT OF PRINCIPALS AND ASSOCIATES **RESPONSIBLE FOR AML PROJECT DESIGN** (Furnish complete data but keep to essentials)

NAME & TITLE (Last, First, Middle Int.)	YEARS OF EXPERIENCE		
	YEARS OF AML DESIGN EXPERIENCE:	YEARS OF AML RELATED DESIGN EXPERIENCE:	YEARS OF DOMESTIC WATERLINE DESIGN EXPERIENCE:
Kenneth Kinder, Project Engineer	5	18	5

**Brief Explanation of Responsibilities**

Mr. Kinder has experience in many facets of civil engineering. Mr. Kinder began his career as a staff engineer where he became proficient in the designing of projects and project management assistance. He has worked on an array of projects including civil site design, erosion and sediment control, stormwater management, hydraulic modeling, floodplain permitting, wastewater treatment, water treatment and distribution, geotechnical solutions, surface and underground coal permitting, limestone quarry permitting and solid waste landfill design.

**EDUCATION (Degree, Year, Specialization)**

B.S. Civil Engineering, 2003

MEMBERSHIP IN PROFESSIONAL ORGANIZATIONS	REGISTRATION (Type, Year, State)
	Professional Engineer: WV, PA

13. PERSONAL HISTORY STATEMENT OF PRINCIPALS AND ASSOCIATES **RESPONSIBLE FOR AML PROJECT DESIGN** (Furnish complete data but keep to essentials)

NAME & TITLE (Last, First, Middle Int.)	YEARS OF EXPERIENCE		
	YEARS OF AML DESIGN EXPERIENCE:	YEARS OF AML RELATED DESIGN EXPERIENCE:	YEARS OF DOMESTIC WATERLINE DESIGN EXPERIENCE:
Shawn Kelly, PE - Project Engineer	1	1	10

**Brief Explanation of Responsibilities**  
 Shawn Kelly, PE, brings over 20 years of experience to E.L. Robinson. His knowledge of site development has taken him all across West Virginia, working for both public and private clients. Mr. Kelly's understanding of drainage calculating, stormwater management plans, and site development planning have helped improve countless places in the state. Mr. Kelly has experience in the development of erosion and sediment control design. He has provided his expertise for the design of roadway drainage and erosion and sediment control for the roads around the complex. Shawn has vast experience working with the WV Department of Transportation, Division of Highways and WV Department of Environmental Protection to successfully permit many projects throughout the state.

**EDUCATION (Degree, Year, Specialization)**  
 B.S. Civil Engineering, 2001

<b>MEMBERSHIP IN PROFESSIONAL ORGANIZATIONS</b>	<b>REGISTRATION (Type, Year, State)</b> Professional Engineer: WV
---	--

13. PERSONAL HISTORY STATEMENT OF PRINCIPALS AND ASSOCIATES **RESPONSIBLE FOR AML PROJECT DESIGN** (Furnish complete data but keep to essentials)

NAME & TITLE (Last, First, Middle Int.)	YEARS OF EXPERIENCE		
	YEARS OF AML DESIGN EXPERIENCE:	YEARS OF AML RELATED DESIGN EXPERIENCE:	YEARS OF DOMESTIC WATERLINE DESIGN EXPERIENCE:
Garnes, J. Todd, Project Designer	8	8	8

Brief Explanation of Responsibilities

Mr. Garnes experience surveying and providing CADD Design for mine reclamation projects and waterline and sewer extrusions. He has provided construction inspection services for landsides and subsidence projects in Ohio. Mr. Garnes has performed numerous water feasibility studies, which involved interviews, water sampling and analysis, mapping, mine research, and development of final reports.

EDUCATION (Degree, Year, Specialization)

A.S. Architectural Design, 1999  
A.S. Computer Aided Drafting and Design, 1999

MEMBERSHIP IN PROFESSIONAL ORGANIZATIONS	REGISTRATION (Type, Year, State)

13. PERSONAL HISTORY STATEMENT OF PRINCIPALS AND ASSOCIATES **RESPONSIBLE FOR AML PROJECT DESIGN** (Furnish complete data but keep to essentials)

NAME & TITLE (Last, First, Middle Int.)	YEARS OF EXPERIENCE		
	YEARS OF AML DESIGN EXPERIENCE:	YEARS OF AML RELATED DESIGN EXPERIENCE:	YEARS OF DOMESTIC WATERLINE DESIGN EXPERIENCE:
Rayburn, James T., Surveying Manager		41	

Brief Explanation of Responsibilities

Mr. Rayburn has experience in mine mapping and surveying, formulated short term and long range mining plans for all types of coal mining, designed mine drainage and water supply systems for underground and surface mines, designed mine ventilation plans and systems which include precision pressure quality surveys and computer simulation of ventilation systems. He has performed slope stability analysis and hydrology calculations, provides computer analysis for mining applications, work with leases and land management as well as reclamation and environmental permits. By utilizing "state of the art" electronic total stations and/or GPS (Satellite) equipment, he performs control surveys for aerial mapping and collects data and develops GIS for utility mapping. Mr. Rayburn has also performed surveying and mapping for large scale highway projects.

EDUCATION (Degree, Year, Specialization)

A.S. Mechanical Engineering, 1970

MEMBERSHIP IN PROFESSIONAL ORGANIZATIONS	REGISTRATION (Type, Year, State)
	Professional Surveyor: WV



13. PERSONAL HISTORY STATEMENT OF PRINCIPALS AND ASSOCIATES **RESPONSIBLE FOR AML PROJECT DESIGN** (Furnish complete data but keep to essentials)

NAME & TITLE (Last, First, Middle Int.)	YEARS OF EXPERIENCE		
	YEARS OF AML DESIGN EXPERIENCE:	YEARS OF AML RELATED DESIGN EXPERIENCE:	YEARS OF DOMESTIC WATERLINE DESIGN EXPERIENCE:
Gwinn, James Eric, Project Designer	10	11	11

Brief Explanation of Responsibilities

Mr. Gwinn has experience in construction layout for waterline projects. He performs calculation and permit requirements. He has worked on the Cabell County Water Project and the raw water intake structure for the Fayette Plateau Regional Water Project. He has performed calculations on various AML project. Mr. Gwinn has designed approach slabs, decks and extensive detailing on several bridge projects.

EDUCATION (Degree, Year, Specialization)

B.S. Civil Engineering, 1998

MEMBERSHIP IN PROFESSIONAL ORGANIZATIONS	REGISTRATION (Type, Year, State)
--	----------------------------------

13. PERSONAL HISTORY STATEMENT OF PRINCIPALS AND ASSOCIATES **RESPONSIBLE FOR AML PROJECT DESIGN** (Furnish complete data but keep to essentials)

NAME & TITLE (Last, First, Middle Int.)	YEARS OF EXPERIENCE		
	YEARS OF AML DESIGN EXPERIENCE:	YEARS OF AML RELATED DESIGN EXPERIENCE:	YEARS OF DOMESTIC WATERLINE DESIGN EXPERIENCE:
Workman, Gary A., Project Designer	25	25	5

Brief Explanation of Responsibilities

Mr. Workman is responsible for CADD design on AML projects, as well as geotechnical soil analysis. He Worked on 44 WVDEP/AML projects while employed at Ackenheil and has worked on 23 AML projects while at E. L. Robinson.

EDUCATION (Degree, Year, Specialization)

CADD Certificate, 1986

MEMBERSHIP IN PROFESSIONAL ORGANIZATIONS	REGISTRATION (Type, Year, State)
--	----------------------------------

13. PERSONAL HISTORY STATEMENT OF PRINCIPALS AND ASSOCIATES **RESPONSIBLE FOR AML PROJECT DESIGN** (Furnish complete data but keep to essentials)

NAME & TITLE (Last, First, Middle Int.)	YEARS OF EXPERIENCE		
	YEARS OF AML DESIGN EXPERIENCE:	YEARS OF AML RELATED DESIGN EXPERIENCE:	YEARS OF DOMESTIC WATERLINE DESIGN EXPERIENCE:
Asbury, Brandon, EI	1	3	0

Brief Explanation of Responsibilities  
 Mr. Asbury is a Project Engineer with 3 years of experience in design and permitting for several site development projects in West Virginia. He has manufactured information pertaining to design and calculated information used for hydrology, site grading and permitting (including NPDES).

EDUCATION (Degree, Year, Specialization)

B.S. Civil Engineering, 2017

MEMBERSHIP IN PROFESSIONAL ORGANIZATIONS

REGISTRATION (Type, Year, State)

13. PERSONAL HISTORY STATEMENT OF PRINCIPALS AND ASSOCIATES **RESPONSIBLE FOR AML PROJECT DESIGN** (Furnish complete data but keep to essentials)

NAME & TITLE (Last, First, Middle Int.)	YEARS OF EXPERIENCE		
	YEARS OF AML DESIGN EXPERIENCE:	YEARS OF AML RELATED DESIGN EXPERIENCE:	YEARS OF DOMESTIC WATERLINE DESIGN EXPERIENCE:
Williams, Wendell, Project Designer	0	16	5

Brief Explanation of Responsibilities  
 Mr. Williams has been employed with ELR since 1978, having over thirty-seven years of engineering and design experience. Mr. Williams has worked on over one hundred fifty WVDEP-AML projects. He has been involved with every aspect of the process including initial site visits, ground control surveys, coordination of aerial photography, map editing and the submittal of final drawings.

EDUCATION (Degree, Year, Specialization)

A.A.S. CAD Technology, 1997

B.A. Board of Regents, 1999

MEMBERSHIP IN PROFESSIONAL ORGANIZATIONS

REGISTRATION (Type, Year, State)

14. PROVIDE A LIST OF SOFTWARE AND EQUIPMENT AVAILABLE IN THE PRIMARY OFFICE WHICH WILL BE USED TO COMPLETE AML DESIGN SERVICES

Various computer hardware and software including: Microstation, InRoads, AutoCAD, ELRSoil, Microsoft Office applications, Haested, Water CADD, Culvert Master, Flow Master/Civil 3D

Various surveying equipment:

Instruments - Topcon Total Station (6), Trimble Robotic DR200+ (2)

GPS Equipment - Trimble 5700 Receiver (6), Trimble TSCe Controller/Handheld (5)  
\*all equipment lists have various misc. survey equipment to go along (poles, tape measures, data collectors, etc.)

Riegl LMS - 360 3D Laser Scanner - surface imaging system based upon accurate distance measurement by means of electro-optical range measurement and a two axis scanning mechanism.

15. CURRENT ACTIVITIES ON WHICH YOUR FIRM IS THE DESIGNATED ENGINEER OF RECORD

PROJECT NAME, TYPE AND LOCATION	NAME AND ADDRESS OF OWNER	NATURE OF YOUR FIRM'S RESPONSIBILITY	ESTIMATED CONSTRUCTION COST	PERCENT COMPLETE
Weston (Williams) Landslide AML Lewis County	WVDEP/AML	Landslide Abatement Design	\$1,220,000	80
Smithers Landslide AML Fayette County	WVDEP/AML	Landslide Abatement Design	\$1,000,000	75
Willis Branch Sewer Extension Wastewater Pax, WV	Town of Pax	Design and Construction Inspection	\$2,291,000	95
West Virginia Great Barrel Company Project Site Development Greenbrier County, WV	West Virginia Great Barrel Company, LLC	Surveying, Design and Construction Inspection	\$1,500,000	95
Route 60 East Sewer Wastewater White Sulphur Springs, WV	City of White Sulphur Springs	Design and Construction Inspection	\$1,500,000	40
City of Hinton CSO Abatement Project Phase I Wastewater Hinton, WV	City of Hinton	Testing, Design, Construction Inspection	\$3,500,000	50
City of Ronceverte Water Distribution System Rehab Water Ronceverte, WV	City of Ronceverte	Design and Construction Inspection	\$2,000,000	50
TOTAL NUMBER OF PROJECTS:		TOTAL ESTIMATED CONSTRUCTION COSTS: \$		

15. CURRENT ACTIVITIES ON WHICH YOUR FIRM IS THE DESIGNATED ENGINEER OF RECORD

PROJECT NAME, TYPE AND LOCATION	NAME AND ADDRESS OF OWNER	NATURE OF YOUR FIRM'S RESPONSIBILITY	ESTIMATED CONSTRUCTION COST	PERCENT COMPLETE
Iaeger Regional Sewer Project Wastewater McDowell County PSD	McDowell County PSD	Design and Construction Inspection	\$7,900,000	40
Heaters-Weyerhaeuser Waterline Upgrade Water Braxton County, WV	Flatwoods-Canoe Run PSD	Design and Construction Inspection	\$8,000,000	90
Frank-Bartow Sanitary Sewer Extension Wastewater Pocahontas County, WV	Pocahontas County PSD	Design and Construction Inspection	\$2,766,000	80
Deep Water & Powellton Water Distribution Water Fayette County, WV	Fayette County, WV	Design and Construction Management	\$2,515,000	40
Harts Run Waterline Extension Project Water White Sulphur Springs, WV	City of White Sulphur Springs	Design and Construction Management	\$2,000,000	95
Berwind Water Treatment Plant Improvements Water McDowell County, WV	McDowell County PSD	Design and Construction Management	\$243,000	70
Coalwood Sewer Project Phase I Wastewater McDowell County	McDowell County PSD	Design and Construction Management	\$3,250,000	80
TOTAL NUMBER OF PROJECTS:		TOTAL ESTIMATED CONSTRUCTION COSTS: \$		

15. CURRENT ACTIVITIES ON WHICH YOUR FIRM IS THE DESIGNATED ENGINEER OF RECORD

PROJECT NAME, TYPE AND LOCATION	NAME AND ADDRESS OF OWNER	NATURE OF YOUR FIRM'S RESPONSIBILITY	ESTIMATED CONSTRUCTION COST	PERCENT COMPLETE
Snowshoe Regional Wastewater Project Wastewater Pocahontas County, WV	Pocahontas County PSD	Design and Construction Management	\$5,000,000	40
Corridor H Design Build Kerens-Parsons Roadway/Structures Randolph/Tucker County, WV	WVDOT-DOH	Surveying, Design and Construction Management	\$200,000,000	40
Corridor H Design Build US 219-WV 72 Roadway/Structures Randolph/Tucker County, WV	WVDOT-DOH	Surveying, Design and Construction Management	\$176,000,000	0
WV Route 10 Operational Improvements (Con 2) Roadway/Structures Mercer/Wyoming County, WV	WVDOT-DOH	Surveying, Design and Construction Management	\$17,000,000	30
WV Route 10 Operational Improvements (Con 5) Roadway/Structures Mercer/Wyoming County, WV	WVDOT-DOH	Surveying, Design and Construction Management	\$33,000,000	50
WV Route 10 Operational Improvements (Con 3) Roadway/Structures Mercer/Wyoming County, WV	WVDOT-DOH	Surveying, Design and Construction Management	\$31,000,000	50

TOTAL NUMBER OF PROJECTS:

TOTAL ESTIMATED CONSTRUCTION COSTS:



17. COMPLETED WORK WITHIN LAST 5 YEARS ON WHICH YOUR FIRM WAS THE DESIGNATED ENGINEER OF RECORD

PROJECT NAME, TYPE AND LOCATION	NAME AND ADDRESS OF OWNER	ESTIMATED CONSTRUCTION COST	YEAR	CONSTRUCTED (YES OR NO)
Route 18 South-Snowbird Road Waterline Extension Water Doddridge County, WV	Doddridge County PSD	969,500	2019	Yes
Cheat Mountain Water System Acquisition Water Pocahontas County, WV	Pocahontas County PSD	\$2,109,000	2018	Yes
Airport-Ameagle Water Project Water Raleigh County, WV	Raleigh County PSD	\$5,100,000	2016	Yes
Blue Knob Waterline Extension Project Water Clay County, WV	Clay Municipal Water Works	\$2,321,000	2019	Yes
City of Salem Sanitary Sewer Evaluation Survey Wastewater Salem, WV	City of Salem	\$96,000	2016	Yes
Emergency Intake Construction Project Water Mingo County, WV	Mingo County PSD	\$500,000	2018	Yes
Besoco-Pickshin Water Extension Project Water Raleigh County, WV	Raleigh County PSD	\$369,939	2019	Yes
Kenova Downtown School Waterline Improvements Project Water Kenova, WV	City of Kenova	\$1,961,000	2018	Yes

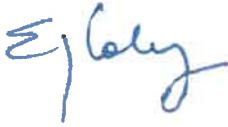


17. COMPLETED WORK WITHIN LAST 5 YEARS ON WHICH YOUR FIRM WAS THE DESIGNATED ENGINEER OF RECORD

PROJECT NAME, TYPE AND LOCATION	NAME AND ADDRESS OF OWNER	ESTIMATED CONSTRUCTION COST	YEAR	CONSTRUCTED (YES OR NO)
Cheat Mountain Water Post Acquisition Project Water Pocahontas County, WV	Pocahontas County PSD	\$2,300,000	2019	Yes
Scott Road-Findley Road Waterline Extension Water Randolph County, WV	Norton Harding Jimtown PSD	\$1,300,000	2016	Yes
Otsego/Pierpoint/Maben Waterline Extension Water Wyoming County, WV	Eastern Wyoming PSD	\$9,800,000	2018	Yes
Covel Waterline Extension Project Water Wyoming County, WV	Eastern Wyoming PSD	\$5,600,000	2016	Yes
Barkers Ridge Basin Waterline Extension Ph 1 Water Wyoming County, WV	Eastern Wyoming PSD	\$5,600,000	2017	Yes
Mozart Sanitary Sewer Project Wastewater Marshall County, WV	Marshall County Sewerage District	\$9,500,000	2019	Yes
Green Valley Glenwood PSD Water System Improvements Water Mercer County, WV	Green Valley Glenwood PSD	\$15,711,000	2019	Yes
Cow Creek Waterline Replacement Project Water Putnam County, WV	Putnam PSD	\$500,000	2018	Yes

17. COMPLETED WORK WITHIN LAST 5 YEARS ON WHICH YOUR FIRM WAS THE DESIGNATED ENGINEER OF RECORD				
PROJECT NAME, TYPE AND LOCATION	NAME AND ADDRESS OF OWNER	ESTIMATED CONSTRUCTION COST	YEAR	CONSTRUCTED (YES OR NO)
Maryland Consol Shaft AML Frostburg, MD	Maryland AML	\$200,000	2017	Yes
Craigmoor (Strader) Landslide Emergency AML Randolph County, WV	WVDEP-AML	\$400,000	2017	Yes
Sauls Run (Bennett) Landslide AML Lewis County, WV	WVDEP-AML	\$500,000	2017	Yes
Shaffer Investigation AML Harrison County, WV	WVDEP-AML	\$50,000	2017	Yes
West Milford (Chapman) Landslide AML Harrison County, WV	WVDEP-AML	\$1,000,000	2019	Yes
Roderfield (Simpson) Landslide AML McDowell County, WV	WVDEP-AML	\$250,000	2017	Yes
Scotch Hill Mine Fire AML Preston County, WV	WVDEP-AML	\$1,000,000	2019	Yes
Mammoth (Shamblin) Landslide AML Kanawha County, WV	WVDEP-AML	\$500,000	2017	Yes

17. COMPLETED WORK WITHIN LAST 5 YEARS ON WHICH YOUR FIRM WAS THE DESIGNATED ENGINEER OF RECORD				
PROJECT NAME, TYPE AND LOCATION	NAME AND ADDRESS OF OWNER	ESTIMATED CONSTRUCTION COST	YEAR	CONSTRUCTED (YES OR NO)
Delbarton (Curry) Landslide AML Mingo County, WV	WVDEP-AML	\$500,000	2019	Yes
Big Creek (Surgoine) Landslide AML Logan County, WV	WVDEP-AML	\$400,000	2019	Yes
Crooked Run (Davis) Landslide AML Harrison County, WV	WVDEP-AML	\$300,000	2017	Yes
Prociuous (Doughty)Landslide AML Clay County, WV	WVDEP-AML	\$350,000	2017	Yes
Rivesville (Parker) Landslide AML Marion County, WV	WVDEP-AML	\$400,000	2018	Yes
Bridgeport (Ridgeway) Landslide AML Harrison County, WV	WVDEP-AML	\$900,000	2019	Yes
North Matewan (Ross) Landslide AML Mingo County, WV	WVDEP-AML	\$500,000	2019	Yes
Summerlee Refuse Phase II AML Fayette County, WV	WVDEP-AML	\$900,000	2019	Yes

18. COMPLETED WORK WITHIN LAST 5 YEARS ON WHICH YOUR FIRM HAS BEEN A SUB-CONSULTANT TO OTHER FIRMS (INDICATE PHASE OF WORK FOR WHICH YOUR FIRM WAS RESPONSIBLE)					
PROJECT NAME, TYPE AND LOCATION	NAME AND ADDRESS OF OWNER	ESTIMATED CONSTRUCTION COST OF YOUR FIRM'S PORTION	YEAR	CONSTRUCTED (YES OR NO)	FIRM ASSOCIATED WITH
Linmont Bridge Replacement Cabell County	WV Dept of Transportation Engineering Division Charleston, WV 25301	Bridge Design (VE)	2011	Yes	Paul's Concrete
Clothier Bridge Logan County	WV Dept of Transportation Engineering Division Charleston, WV 25301	Bridge Design (VE)	2011	Yes	Paul's Concrete
Market Street Bridge Brooks County, WV	WV Dept of Transportation Engineering Division Charleston, WV	Post Design Services	2011	Yes	Ahern & Assoc.
Leon Thru Girder Bridge Mason County, WV	WV Dept of Transportation Engineering Division Charleston, WV	Plans for Bridge (VE) Hydraulics Post Design	2010	Yes	Triton Construction
Holley Grove Bridge Kanawha County	WV Dept of Transportation Engineering Division Charleston, WV	\$500,000	2010	Yes	Triton Construction
19. Use this space to provide any additional information or description of resources supporting your firm's qualifications to perform work for the West Virginia Abandoned Mine Lands Program. <b>E. L. Robinson Engineering Co. is committed to the WVDEP/AML program to provide professional design, surveying and mapping and construction monitoring services in a timely and cost-efficient manner. Our business plan relies heavily on the work offered by the WVDEP/AML program.</b>					
20. The foregoing is a statement of facts.				Date: June 27, 2022	
 Signature: _____ Title: PROJECT MANAGER Printed Name: Eric J. Coberly, P.E.					

NOTE: THIS DOCUMENT WILL BECOME VOID AFTER DECEMBER 31 IN CALENDAR YEAR OF DATE HEREON.

# **Project Matrix**

## **Attachment B**

AML and RELATED PROJECT EXPERIENCE MATRIX																							
PROJECT	Experience Basis Corporate-C Personal-P	Additional Information in Section	PROJECT EXPERIENCE													Primary Staff Participation							
			Abandoned Surface Mine Reclamation	Abandoned Deep Mine Reclamation	Portal/Shaft Closure	Hydrological/Hydraulic Design/Eval.	Remining Evaluation	Mine/Refuse Fire Abatement	Subsidence Investigation Mitigation	Hazardous Waste Disposal	Project Specifications	Water Quality Evaluation/Mitigation/Replacement	Construction Inspection/Management	Water Treatment	Equipment/Structure Removal	Stream Restoration	Geotechnical/Stability	M-Mngmt					
																		Ed Robinson, P.E.	Eric Coberly	Tim Cart, P.E.	Richard W. Watts, P.G.	Mark McGettigan, P.E.	John Kelly, E.I.
Jacob's Fork Complex	C	YES		X	X	X				X					X	X	M		P		P	P	
Rhodell Refuse & Portals	C	YES		X	X	X				X					X	X	M		P		P	P	
Gilmer B Sites 3-8	C	YES		X	X	X				X					X	X	M		P		P	P	
Morrisvale/Cameo/Big Horse Creek Waterline Feasibility Study	C	YES									X						M		P		P	P	
Camp Creek Waterline Feasibility Study	C	YES									X						M		P		P	P	
Lick Creek Waterline Feasibility Study	C	YES									X						M		P		P	P	
Ragland Waterline Feasibility Study	C	YES									X						M	P	P		P	P	
Beech Creek and Ben II Waterline Feasibility Study	C	YES									X						M		P		P	P	
Dingess Waterline Feasibility Study	C	YES									X						M	P	P		P	P	
Sharon Heights Waterline Feasibility Study	C	YES									X						M	P	P		P		
Amhesdale Water Feasibility Study	C	YES									X						M	P	P		P	P	
Mercer County Commission	C	YES									X						M	P	P		P	P	
Danese PSD Waterline Feasibility Study	C	YES									X						M	P	P		P	P	
New Haven Waterline Feasibility Study	C	YES									X						M	P	P		P	P	
Nubbin Ridge/Camp Creek Waterline Feasibility Study	C	YES									X						M		P		P		
Bramwell Hill Waterline Feasibility Study	C	YES									X						M		P		P	P	
Coaldale and Coaldale Mountain Waterline Feasibility Study	C	YES									X						M		P		P	P	
Jennie Creek Waterline Feasibility Study	C	YES									X						M		P		P		
Beech Creek and Ben Areas Waterline Feasibility Study	C	YES									X						M		P		P	P	
Blair/Sharples Area Waterline Feasibility Study	C	YES									X						M		P		P	P	
Brown's Creek #10	C	YES	X	X	X	X	X				X				X	X	M		P				
Bull Run #35	C	YES	X	X	X	X	X				X	X		X	X	X	M		P			P	
Securo Mine Drainage	C	YES		X	X	X					X						M		P			P	
Fickey Run	C	YES	X	X	X	X	X				X	X		X			M		P		P	P	
Ven's Run	C	YES	X			X					X						M		P			P	
Bull Run #27	C	YES	X	X	X	X	X				X	X		X	X		M		P		P	P	
Riffe Branch	C	YES	X	X	X	X	X				X				X	X	M		P			P	
Hot Coal	C	YES		X	X	X	X				X				X	X	M		P		P	P	
Minden Refuse Pile	C	YES		X		X					X				X		M		P		P	P	
Jeffrey Mine Complex	C	YES		X	X	X	X				X				X		M		P		P	P	
Pigeon Creek Waterline	C	YES				X					X	X	X				M		P			P	

AML and RELATED PROJECT EXPERIENCE MATRIX																							
PROJECT	Experience Basis Corporate-C Personal-P	Additional Information in Section	PROJECT EXPERIENCE													Primary Staff Participation							
			Abandoned Surface Mine Reclamation	Abandoned Deep Mine Reclamation	Portal/Shaft Closure	Hydrological/Hydraulic Design/Eval.	Remining Evaluation	Mine/Refuse Fire Abatement	Subsidence Investigation Mitigation	Hazardous Waste Disposal	Project Specifications	Water Quality Evaluation/Mitigation/Replacement	Construction Inspection/Management	Water Treatment	Equipment/Structure Removal	Stream Restoration	Geotechnical/Stability	M-Mngmt					
																		Ed Robinson, P.E.	Eric Goberly	Tim Cart, P.E.	Richard W. Watts, P.G.	Mark McGettigan, P.E.	John Kelly, E.I.
Red Jacket, Matewan, Newtown Waterline	C	YES				X				X	X						M		P		P		
Marrowbone Waterline	C	YES				X				X	X	X					M		P		P	P	
Mount Zion Waterline	C	YES				X				X	X						M		P		P	P	
Coopers Rock, Pisgah, and Laurel Run Waterline	C	YES				X				X	X						M		P		P	P	
Davis Water Tank	C	YES				X				X	X						M		P		P	P	
Whittington Hill (Walker)Slide	C	YES		X	X	X				X					X		M	P/M	P		P	P	
Maidsville Landslide	C	YES	X							X					X		M	P	P		P	P	
Rich Fork Landslide	C	YES	X	X						X					X		M	P	P		P	P	
Tuppers Creek Landslide	C	YES	X	X						X					X		M	P	P		P	P	
Glen Rogers Waterline	C	YES				X				X	X						M	P	P		P	P	
Gooney Otter Refuse	C	YES	X	X	X	X	X			X					X		M	P	P		P	P	
Charmanville Mine Blowout	C	YES															M	P	P		P	P	
Charleston Romeo Landslide	C	YES		X	X	X				X					X		M	P	P		P	P	
Big Creek C Refuse	C	YES		X						X					X		M	P	P		P	P	
North Matewan Slipp	C	YES		X	X	X				X					X		M	P	P		P	P	
Moran Subsidence	C	YES		X					X	X					X		M	P	P		P	P	
Lewis Landslide	C	YES		X		X				X					X		M	P	P		P	P	
Roush Landslide	C	YES		X		X				X					X		M	P	P		P	P	
Jefferson 26 Landslide	C	YES		X		X				X					X		M	P	P		P	P	
Titus Road Landslide	C	YES	X	X		X				X					X		M	P	P		P	P	
Imboden Landslide	C	YES	X	X											X		M	P	P		P	P	
Baisden Subsidence	C	YES		X													M	P	P		P	P	
Parsons Landslide	C	YES		X					X						X		M	P	P		P	P	
Treadway Landslide	C	YES	X	X		X				X					X		M	P	P		P	P	
Phalen Landslide	C	YES		X		X				X					X		M	P	P		P	P	
Adkins Landslide	C	YES	X	X		X				X					X		M	P	P		P	P	
Goeltz Subsidence	C	YES		X					X								M	P	P		P	P	
Lavender Refuse Fire	C	YES		X					X	X					X		M	P	P		P	P	
Cox Refus Fire	C	YES		X					X	X					X		M	P	P		P	P	
Toney Fork Landslide	C	YES		X		X				X							M	P	P		P	P	
Athens Rt. 13 Refuse Fire	C	YES		X					X	X					X		M	P	P		P	P	
McAdams Subsidence Ermer	C	YES		X					X	X							M	P	P		P	P	
Rodgers Subsidence	C	YES		X					X	X					X		M	P	P		P	P	
Brown Landslide	C	YES		X		X				X							M	P	P		P	P	
Town Run	P	NO																					
Witcher Creek	P	NO																					
Pond Gap, Hitop & Spanjler	P	NO																					
Elk City	P	NO																					
Little Fork Refuse Pile	P			X		X		X							X	X				P			
OSM-Tackett Fork	P		X	X	X		X													P			
OSM-Ironton	P			X		X														P			
OSM-Williamson LS	P			X		X														P			
OSM-Ray Landslide	P			X																P			
OSM-Spence Landslide	P			X		X														P			
OSM-Ratiff Landslide	P			X		X														P			
OSM-Pigeon Roost LS	P			X		X														P			
OSM-Oak Hill Subsidence	P			X	X	X			X	X										P			









AML and RELATED PROJECT EXPERIENCE MATRIX

PROJECT	Experience Basis Corporate-C Personal-P	Additional Information in Section	PROJECT EXPERIENCE													Primary Staff Participation													
			Abandoned Surface Mine Reclamation	Abandoned Deep Mine Reclamation	Portal/Shaft Closure	Hydrological/Hydraulic Design/Eval.	Remining Evaluation	Mine/Refuse Fire Abatement	Subsidence Investigation Mitigation	Hazardous Waste Disposal	Project Specifications	Water Quality Evaluation/Mitigation/Replacement	Construction Inspection/Management	Water Treatment	Equipment/Structure Removal	Stream Restoration	Geotechnical/Stability	M-Mngmt											
																		Ed Robinson, P.E.	Eric Coberly	Tim Cart, P.E.	Richard W. Watts, P.G.	Mark McGettigan, P.E.	John Kelly, E.I.	J. D. Kinder, P. E.	Gary A. Workman, CADD				
Lutz Vertical Opening	P			X	X					X									P/M										
Swiger Mine Blowout	P			X	X	X				X						X				P/M									
Blair Wolfe Subsidence	P			X						X										P/M									
Lake (Winkler) Phase II	P			X			X			X										P/M									
Preston County PSD #4	C										X											P	P						P
Marsh Run Portals	C		X	X	X	X				X							X			P							P	P	
Donnie Thorn HW	C		X	X	X	X				X										P							P	P	
Vickers Branch Drainage	C		X	X	X	X				X						X			M	P							P	P	
Morgan HW	C		X			X				X									M	P							P	P	
Sugarcamp Run Burning Ref	C		X			X		X		X						X			M	P			P				P	P	
Glen White-Trap Hill PSD	C										X								M		P	P						P	
North Matewan Akers LS	C			X			X			X						X			M	P	P						P	P	
Fairview Laurel Run Shaft	C			X	X	X				X						X			M	P	P						P	P	
McGravs Shaft	C			X	X					X						X			M	P	P						P	P	
Meadow Creek PSD	C										X								M		P	P							
Squires Creek (Moats) Portal and Refuse	C		X	X	X	X				X							X		M	P	P	P					P	P	
Red Warrior Gob & Slide	C			X	X	X				X							X		M	P	P	P					P	P	
Glen Alum Complex	C			X	X	X				X									M	P	P	P					P	P	
West Columbia "B"	C		X	X	X	X				X							X		M		P	P					P	P	
Milam Ridge	C		X	X	X	X													M		P	P					P	P	
Carson One Special Rec	C			X	X	X			X				X		X				M	P	P	P					P	P	
Preston Energy/Rockville/ Viking Coal Spec Rec	C		X	X	X	X													M	P	P	P					P	P	
Branchland (Blankenship) Landslide	C			X	X	X											X		M	P	P	P					P	P	
Coburns Creek Landslide	C		X		X	X											X		M	P	P	P					P	P	
New Cumberland Mine Blowout	C			X	X	X													X	M	P	P					P	P	
WhRehall Mine Fire	C			X		X		X									X		M	P	P	P					P	P	
Sauls Run Landslide	C		X	X	X	X													M	P	P	P					P	P	
Missouri Fork Landslide	C			X	X	X												X	M	P	P	P							
Worthington (Hess) Landslide	C			X	X	X											X		M	P	P	P					P	P	
Copen Road Landslide	C			X	X	X												X	M	P	P	P					P	P	
Lynch Run Mine Blowout	C		X	X	X	X													M										
Dans Branch (Dillon) Landslide	C			X	X	X												X	M	P	P	P					P	P	
Pendleton Creek Highwall	C		X	X	X	X				X									M	P	P	P					P	P	
Maryland Matthew Run	C		X			X						X							M	P	P	P					P	P	
Maryland Scenic RR Landslide	C		X	X	X	X					X		X					X	M	P	P	P					P	P	
Maryland Barton Mine Pool	C			X	X	X					X							X	M	P	P	P					P	P	
Maryland G&S Landslide Study	C		X															X	M	P	P	P					P	P	
Maryland Consoi Shaft	C			X							X			X					M	P	P	P					P	P	
Maryland Shallmar Landslide	C			X		X					X		X						X	M	P	P					P	P	
Crainmoor Landslide Emer	C		X			X					X								X	M	P	P					P	P	

AML and RELATED PROJECT EXPERIENCE MATRIX																									
PROJECT	Experience Basis Corporate-C Personal-P	Additional Information in Section	PROJECT EXPERIENCE													Primary Staff Participation									
			Abandoned Surface Mine Reclamation	Abandoned Deep Mine Reclamation	Portal/Shaft Closure	Hydrological/Hydraulic Design/Eval.	Remining Evaluation	Mine/Refuse Fire Abatement	Subsidence Investigation Mitigation	Hazardous Waste Disposal	Project Specifications	Water Quality Evaluation/Mitigation/Replacement	Construction Inspection/Management	Water Treatment	Equipment/Structure Removal	Stream Restoration	Geotechnical/Stability	M-Mngmt							
																		Ed Robinson, P.E.	Eric Coberly	Tim Cart, P.E.	Richard W. Watts, P.G.	Mark McGettigan, P.E.	John Kelly, E.I.	J. D. Kinder, P. E.	Gary A. Workman, CADD
Coburn Creek Landslide Emer	C		X			X					X					X	M	P	P	P			P		
Gilmer Blowout Emer	C		X	X	X	X					X						M	P	P	P	P			P	
Mary Ruth Spec Reclamation	C		X	X		X					X	X		X			M	P	P	P	P			P	
Sauls Run Bennett Landslide	C		X			X					X					X	M	P	P	P	P			P	
Shaffer Investigation	C			X					X								M	P	P	P	P			P	
West Milford Landslide Emer	C		X			X					X					X	M	P	P	P	P			P	
Roderfield Landslide Emer	C			X	X	X					X						M	P	P	P	P			P	
Scotch Hill Mine Fire	C		X	X				X			X					X	M	P	P	P	P			P	
Mammoth(Shamlin) Landslide	C			X	X	X					X					X	M	P	P	P	P			P	
Delbarton (Curry) Landslide	C			X		X					X					X	M	P	P	P	P			P	P
Big Creek (Surgoine) Landslide	C			X	X	X					X					X	M	P	P	P	P			P	P
Crooked Run (Davis) Landslide	C			X		X					X					X	M	P	P	P	P			P	
Procious (Doughty) Landslide	C			X		X					X					X	M	P	P	P	P			P	P
Rivesville (Parker) Landslide	C			X		X					X					X	M	P	P	P	P			P	P
Bridgeport (Ridgeway) Landslide	C			X		X					X					X	M	P	P	P	P			P	P
North Matewan (Ross) Landslide	C			X		X					X					X	M	P	P	P	P			P	P
Verdonville (Spry) Drainage	C			X		X					X					M	P	P	P	P	P			P	P
Summerlee Refuse Phase II	C			X		X					X					X	M	P	P	P	P			P	P
Weston (Williams) Landslide	C		X	X		X					X					X	M	P	P	P	P			P	P
Smithers Landslide	C		X			X					X					X	M	P	P	P	P			P	P
Camden (Wilson) Landslide	C		X			X					X					X	M	P	P	P	P			P	P
Rockhouse Fork Burning Refuse	C					X				X							M	P	P	P	P			P	P
Witcher Creek (Meeker) Landslide	C		X			X					X						M	P	P	P	P			P	P
Long Run (Raines) Air Shaft	C			X	X									X		X	M	P	P	P	P			P	P

# **Required Forms**

**Attachment C**



Department of Administration  
 Purchasing Division  
 2019 Washington Street East  
 Post Office Box 50130  
 Charleston, WV 25305-0130

State of West Virginia  
 Centralized Expression of Interest  
 Architect/Engr

<b>Proc Folder:</b> 1047664			<b>Reason for Modification:</b>
<b>Doc Description:</b> EOI - 2022 AML Contract 9 Project North			
<b>Proc Type:</b> Central Purchase Order			
<b>Date Issued</b>	<b>Solicitation Closes</b>	<b>Solicitation No</b>	<b>Version</b>
2022-05-31	2022-06-28 13:30	CEOI 0313 DEP2200000018	1

**BID RECEIVING LOCATION**

BID CLERK  
 DEPARTMENT OF ADMINISTRATION  
 PURCHASING DIVISION  
 2019 WASHINGTON ST E  
 CHARLESTON WV 25305  
 US

**VENDOR**

**Vendor Customer Code:**

**Vendor Name :** EL Robinson Engineering

**Address :**

**Street :** 5088 Washington Street, West  
**City :** Charleston  
**State :** West Virginia **Country :** United States **Zip :** 25313

**Principal Contact :** Eric Coberly, PE, Project Manager

**Vendor Contact Phone:** 304.833.9021 **Extension:**

**FOR INFORMATION CONTACT THE BUYER**  
 Joseph E Hager III  
 (304) 558-2306  
 joseph.e.hageriii@wv.gov

**Vendor Signature X**  **FEIN#** 55-0594633 **DATE** 6/25/22

All offers subject to all terms and conditions contained in this solicitation

**DESIGNATED CONTACT:** Vendor appoints the individual identified in this Section as the Contract Administrator and the initial point of contact for matters relating to this Contract.

(Name, Title) Eric Coberly Project Manager  
(Printed Name and Title) Eric Coberly, PE, Project Manager  
(Address) 5088 Washington Street, West | Charleston, WV 25313  
(Phone Number) / (Fax Number) 304.833.9021 / 304.776.6426  
(email address) ecoberly@elrobinson.com

**CERTIFICATION AND SIGNATURE:** By signing below, or submitting documentation through wvOASIS, I certify that: I have reviewed this Solicitation/Contract in its entirety; that I understand the requirements, terms and conditions, and other information contained herein; that this bid, offer or proposal constitutes an offer to the State that cannot be unilaterally withdrawn; that the product or service proposed meets the mandatory requirements contained in the Solicitation/Contract for that product or service, unless otherwise stated herein; that the Vendor accepts the terms and conditions contained in the Solicitation, unless otherwise stated herein; that I am submitting this bid, offer or proposal for review and consideration; that I am authorized by the vendor to execute and submit this bid, offer, or proposal, or any documents related thereto on vendor's behalf; that I am authorized to bind the vendor in a contractual relationship; and that to the best of my knowledge, the vendor has properly registered with any State agency that may require registration.

By signing below, I further certify that I understand this Contract is subject to the provisions of West Virginia Code § 5A-3-62, which automatically voids certain contract clauses that violate State law; and that pursuant to W. Va. Code 5A-3-63, the entity entering into this contract is prohibited from engaging in a boycott against Israel.

EL Robinson Engineering

(Company) Eric Coberly Project Manager  
(Authorized Signature) (Representative Name, Title)  
Eric Coberly, PE, Project Manager  
(Printed Name and Title of Authorized Representative) (Date)  
304.833.9021 / 304.776.6426  
(Phone Number) (Fax Number)  
ecoberly@elrobinson.com  
(Email Address)

ABANDONED MINELANDS (AML) CONTRACTOR INFORMATION FORM

You must complete this form for your AML contracting officer to request an eligibility evaluation from the Office of Surface Mining Reclamation and Enforcement (OSMRE) to determine if you are eligible to receive an AML contract. This requirement can be found under OSMRE's regulations at 30 CFR 874.16. **NOTE:** This form must be signed and dated within 30 days of submission to be considered for a current bid.

**Part A: General Information**

Business Name: EL Robinson Engineering  
 Tax ID #: 55-0594633  
 Address: 5088 Washington Street, West  
 City, State, & Zip: Charleston, WV 25305  
 Phone Number: 304.776.7473  
 Email Address: ecoberly@elrobinson.com

**Part B: Obtain an Organizational Family Tree (OFT) from the Applicant Violator System (AVS)**

If you plan to certify the existing AVS information or submit updates under Part C, you must include an OFT. Instructions for downloading an OFT from the AVS can be found at:

<https://www.osmre.gov/resources/forms/OMB1029-0119instructions.pdf>

If you require assistance you may contact the AVS Office by phone at: 800-643-9748, or by email at:

[avshelp@osmre.gov](mailto:avshelp@osmre.gov).

**Part C: Certifying and updating information in the AVS**

Select one of the options, follow the instructions for the selected option, sign, and date below.

I, Eric L. Coberly, have express authority to certify that:  
 (Print Name)

1. Our business is listed in the AVS. The information is accurate, complete, and up to date. (If you select this option, you must attach an Entity OFT from the AVS to this form). Do not complete Part D.
2. Our business is in the AVS. The information needs to be updated. (If you select this option, you must attach an Entity OFT from the AVS to this form). Complete Part D to provide the missing or corrected information.
3. Our business is not listed in the AVS. The information needs to be added. Complete Part D to provide the information.

6/27/2022

Date

E. Coberly  
 Signature

Project Manager

Title



STATE OF WEST VIRGINIA  
Purchasing Division

# PURCHASING AFFIDAVIT

**CONSTRUCTION CONTRACTS:** Under W. Va. Code § 5-22-1(i), the contracting public entity shall not award a construction contract to any bidder that is known to be in default on any monetary obligation owed to the state or a political subdivision of the state, including, but not limited to, obligations related to payroll taxes, property taxes, sales and use taxes, fire service fees, or other fines or fees.

**ALL CONTRACTS:** Under W. Va. Code §5A-3-10a, no contract or renewal of any contract may be awarded by the state or any of its political subdivisions to any vendor or prospective vendor when the vendor or prospective vendor or a related party to the vendor or prospective vendor is a debtor and: (1) the debt owed is an amount greater than one thousand dollars in the aggregate; or (2) the debtor is in employer default.

**EXCEPTION:** The prohibition listed above does not apply where a vendor has contested any tax administered pursuant to chapter eleven of the W. Va. Code, workers' compensation premium, permit fee or environmental fee or assessment and the matter has not become final or where the vendor has entered into a payment plan or agreement and the vendor is not in default of any of the provisions of such plan or agreement.

**DEFINITIONS:**

**"Debt"** means any assessment, premium, penalty, fine, tax or other amount of money owed to the state or any of its political subdivisions because of a judgment, fine, permit violation, license assessment, defaulted workers' compensation premium, penalty or other assessment presently delinquent or due and required to be paid to the state or any of its political subdivisions, including any interest or additional penalties accrued thereon.

**"Employer default"** means having an outstanding balance or liability to the old fund or to the uninsured employers' fund or being in policy default, as defined in W. Va. Code § 23-2c-2, failure to maintain mandatory workers' compensation coverage, or failure to fully meet its obligations as a workers' compensation self-insured employer. An employer is not in employer default if it has entered into a repayment agreement with the Insurance Commissioner and remains in compliance with the obligations under the repayment agreement.

**"Related party"** means a party, whether an individual, corporation, partnership, association, limited liability company or any other form or business association or other entity whatsoever, related to any vendor by blood, marriage, ownership or contract through which the party has a relationship of ownership or other interest with the vendor so that the party will actually or by effect receive or control a portion of the benefit, profit or other consideration from performance of a vendor contract with the party receiving an amount that meets or exceeds five percent of the total contract amount.

**AFFIRMATION:** By signing this form, the vendor's authorized signer affirms and acknowledges under penalty of law for false swearing (W. Va. Code §61-5-3) that: (1) for construction contracts, the vendor is not in default on any monetary obligation owed to the state or a political subdivision of the state, and (2) for all other contracts, that neither vendor nor any related party owe a debt as defined above and that neither vendor nor any related party are in employer default as defined above, unless the debt or employer default is permitted under the exception above.

**WITNESS THE FOLLOWING SIGNATURE:**

Vendor's Name: EL Robinson Engineering

Authorized Signature: *E. G. Goly* Date: 6/27/2022

State of West Virginia

County of Kanawha, to-wit:

Taken, subscribed, and sworn to before me this 28 day of June, 2022

My Commission expires July 13, 2020

**AFFIX SEAL HERE**

**NOTARY PUBLIC**

*Jayne Gwinn*  
Purchasing Affidavit (Revised 01/19/2018)



ADDENDUM ACKNOWLEDGEMENT FORM SOLICITATION  
NO.: CEOI 0313 DEP220000018

Instructions: Please acknowledge receipt of all addenda issued with this solicitation by completing this addendum acknowledgment form. Check the box next to each addendum received and sign below. Failure to acknowledge addenda may result in bid disqualification.

Acknowledgment: I hereby acknowledge receipt of the following addenda and have made the necessary revisions to my proposal, plans and/or specification, etc.

Addendum Numbers Received:


*(Check the box next to each addendum received)*

- |   |  |
|---|--|
| <input type="checkbox"/> Addendum No. 1 | <input type="checkbox"/> Addendum No. 6  |
| <input type="checkbox"/> Addendum No. 2 | <input type="checkbox"/> Addendum No. 7  |
| <input type="checkbox"/> Addendum No. 3 | <input type="checkbox"/> Addendum No. 8  |
| <input type="checkbox"/> Addendum No. 4 | <input type="checkbox"/> Addendum No. 9  |
| <input type="checkbox"/> Addendum No. 5 | <input type="checkbox"/> Addendum No. 10 |

I understand that failure to confirm the receipt of addenda may be cause for rejection of this bid. I further understand that any verbal representation made or assumed to be made during any oral discussion held between Vendor's representatives and any state personnel is not binding. Only the information issued in writing and added to the specifications by an official addendum is binding.

**EL Robinson Engineering**

Company



Authorized Signature

6/30/2022

Date

NOTE: This addendum acknowledgment should be submitted with the bid to expedite document processing.