



The following documentation is an electronically-submitted vendor response to an advertised solicitation from the *West Virginia Purchasing Bulletin* within the Vendor Self-Service portal at ***wvOASIS.gov***. As part of the State of West Virginia's procurement process, and to maintain the transparency of the bid-opening process, this documentation submitted online is publicly posted by the West Virginia Purchasing Division at ***WVPurchasing.gov*** with any other vendor responses to this solicitation submitted to the Purchasing Division in hard copy format.



Jump to: Go

Home Personalize Accessibility App Help About

Welcome, Lu Anne Cottrill

[Procurement](#) | [Budgeting](#) | [Accounts Receivable](#) | [Accounts Payable](#)

Solicitation Response(SR) Dept: 0403 ID: ESR04222100000007244 Ver.: 1 Function: New Phase: Final Modified by batch , 04/22/2021

Header 2

List View

General Information | [Contact](#) | [Default Values](#) | [Discount](#) | [Document Information](#) | [Clarification Request](#)

Procurement Folder: 858601

Procurement Type: Central Contract - Fixed Amt

Vendor ID: 000000161599

Legal Name: STRADA ARCHITECTURE LLC

Alias/DBA:

Total Bid: \$0.00

Response Date: 04/22/2021

Response Time: 13:19

Responded By User ID: stradallic

First Name: Alan

Last Name: Cuteri

Email: acuteri@stradallic.com

Phone: 4122633800

SO Doc Code: CEOI

SO Dept: 0403

SO Doc ID: DBS2100000001

Published Date: 4/14/21

Close Date: 4/22/21

Close Time: 13:30

Status: Closed

Solicitation Description: A&E EOI for Renovation and Assessment Projects at the

Total of Header Attachments: 2

Total of All Attachments: 2



Department of Administration
Purchasing Division
2019 Washington Street East
Post Office Box 50130
Charleston, WV 25305-0130

State of West Virginia
Solicitation Response

Proc Folder: 858601
Solicitation Description: A&E EOI for Renovation and Assessment Projects at the WVSDB
Proc Type: Central Contract - Fixed Amt

| Solicitation Closes | Solicitation Response | Version |
|---------------------|------------------------------|---------|
| 2021-04-22 13:30 | SR 0403 ESR04222100000007244 | 1 |

VENDOR
000000161599
STRADA ARCHITECTURE LLC

Solicitation Number: CEOI 0403 DBS2100000001
Total Bid: 0
Response Date: 2021-04-22
Response Time: 13:19:36
Comments:

FOR INFORMATION CONTACT THE BUYER
Joseph E Hager III
(304) 558-2306
joseph.e.hageriii@wv.gov

| | | |
|-------------------------------|--------------|-------------|
| Vendor Signature X | FEIN# | DATE |
|-------------------------------|--------------|-------------|

All offers subject to all terms and conditions contained in this solicitation

| Line | Comm Ln Desc | Qty | Unit Issue | Unit Price | Ln Total Or Contract Amount |
|------|---------------------------|-----|------------|------------|-----------------------------|
| 1 | Architectural Engineering | | | | 0.00 |

| Comm Code | Manufacturer | Specification | Model # |
|-----------|--------------|---------------|---------|
| 81101508 | | | |

Commodity Line Comments: Per the Solicitation Document (page 16; #2) - 2. BIDS MUST NOT CONTAIN PRICE INFORMATION: The State shall select the best value solution according to W. Va. Code §50-1-3. In accordance with Code requirements, no "price" or "cost" information is permitted in the Vendor's FOI response.

Extended Description:

Services of an architectural engineering firm



Strada

WEST VIRGINIA SCHOOLS FOR THE DEAF AND BLIND

EXPRESSION OF INTEREST FOR RENOVATION AND ASSESSMENT SERVICES

611 William Penn Pl.
Suite 700
Pittsburgh, PA 15219
412.263.3800

325 Chestnut St.
Suite 909
Philadelphia, PA 19106
215.440.0190

www.stradallc.com

April 22, 2021

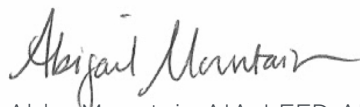
West Virginia Schools for the
Deaf and Blind
301 E. Main Street
Romney, West Virginia 26757

Dear Mr. Hager,

Thank you for considering Strada for the proposed work at the West Virginia Schools for the Deaf and Blind. This is a rare opportunity for the WVSDB to make dramatic changes in many of their existing buildings, and we would be honored to be chosen to be a part of making this happen. We could not be more excited about the thought-provoking possibilities that this series of projects creates. Transformation of existing spaces into incredible PLACES that are more than the sum of their parts is at the heart of what Strada strives to do. Refined over the last 20 years, PlaceMapping®, our proprietary approach, is designed to engage, immerse, understand, listen, and assist in comprehensive, creative solutions.

We have carefully curated a team of experts that excel in every aspect of your project. From replacing HVAC systems to be more sustainable, functional, and cost effective to operate/maintain to helping you create a new activity center that could be the heart of your campus culture, our team has the experience, passion, and talent to make these projects exceptional. Let us show you how we can help make this campus the best environment possible.

Sincerely,



Abby Mountain AIA, LEED AP, AICP

Contact:
412.246.2826
amountain@stradallc.com

611 William Penn Pl.
Suite 700
Pittsburgh, PA 15219

CONTENTS

4

Firm Qualifications

Why Strada?

Proposed Staffing Plan

14

Project Plan

Work Plan Overview

22

Firm Experience

WVU College of Law Addition and Renovation

St. Edmund's Academy

Mifflin School

Commonwealth Charter Academy Waterfront

Roman Catholic High School Howard Center for the Arts

34

Appendix

References

Resumes

Certifications and Licenses

Firm Qualifications

STRADA OFFICE, PHILADELPHIA

A man in a light blue shirt and red trousers is walking from left to right in a modern building hallway. The hallway has large windows with red frames that look out onto a brick building. Above the windows is a long chalkboard filled with handwritten names. The text "DESIGN WITH PEOPLE IN MIND®" is overlaid in large white letters.

DESIGN WITH PEOPLE IN MIND®

ROMAN CATHOLIC HIGH SCHOOL
HOWARD CENTER FOR THE ARTS
PHILADELPHIA

Firm Overview

Strada means street in Italian. Streets are the connections between buildings, people, and public spaces. They are the fundamental infrastructure of our communities and the core of our civic lives. Just as people mingle on city streets, our office is a place where we freely exchange ideas, challenging and inspiring one another to create exceptional work.

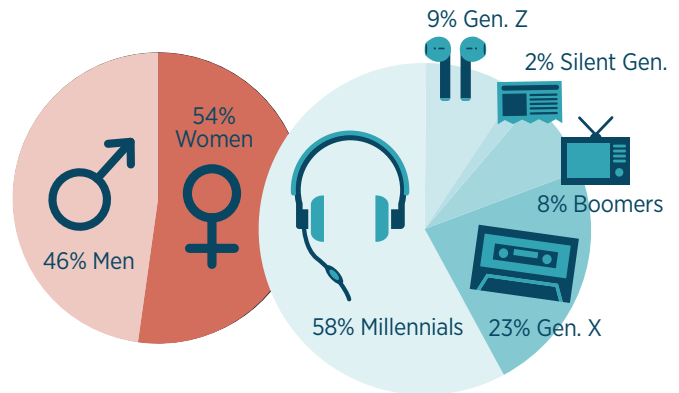
FOUNDED IN 2000 and led by a team of seasoned professionals, Strada is a cross-disciplinary design firm where architects, interior designers, urban designers, landscape architects, and graphic designers regularly collaborate to create places that people enjoy.

More than a group of designers, Strada's professionals are trusted advisors. Our individual experiences are deep and wide-ranging.

Our clients tell us that they value our hands-on involvement from start to finish. We employ a holistic, human-centered approach to design, delivering projects that satisfy program and function. We set high standards for creative design, and we seek out clients who share our commitment to quality. We collaborate closely with our clients to achieve success in every project.

Strada ranked as the 4th largest architecture firm in Pittsburgh per the 2019 Book of Lists published by the Pittsburgh Business Times.

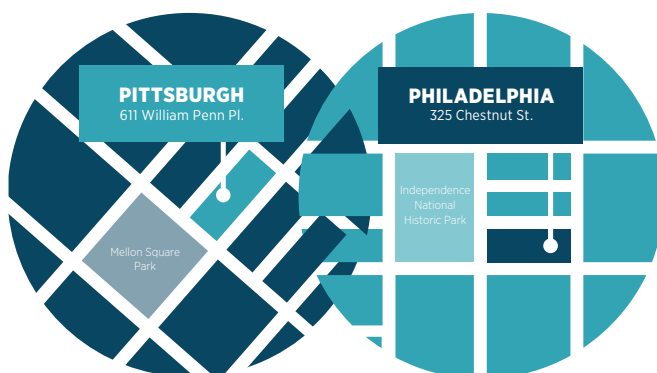
We are...



We represent...



Our offices





Sectors of Practice

Architecture

- Programming
- Feasibility studies
- Master planning
- Building condition assessments
- Due diligence reports
- Zoning & building code analysis
- Budget analysis & estimates
- Lab planning
- Construction documentation & observation

Interior Design

- Programming
- Space planning
- Color, material & finishes selection
- FF&E
- Lighting & technology coordination
- Sourcing & presentation of artwork
- Custom furniture design

Landscape Architecture

- Site analysis
- Site & landscape design
- Permit & regulatory preparation
- Construction documentation/observation
- Stormwater management
- Open space & trail systems



Exhibit/Graphic Design

- Interpretive planning
- Research, scriptwriting, & editing
- Marketing & fundraising support
- Branding/identity
- Signage
- Wayfinding

Sustainable Design

- Brownfield redevelopment
- LEED strategies & certification
- Energy modeling

Urban Design

- Land use planning
- District-scale urban design
- Campus planning
- Planning & architectural design
- Guidelines
- Community workshops and outreach

Historic Preservation and Adaptive Reuse

- Building conditions survey, documentation and reports
- Research building history
- Code research specific to Historic Structures
- Understanding and applying Secretary of the Interior Standards
- Appropriate contextual design
- Application submissions for review by Historic Review Commissions
- Understanding Historic Tax Credit procedures

Strada

ORGANIZATIONAL CHART



* Denotes senior associate
 Project team member

Why Strada?



We design projects that are greater than the sums of their parts



PlaceMapping® fosters a collaborative approach to design



Our curated team of experts has a proven track record of successful projects together

Experience:

Strada has extensive experience in adaptive re-use design services for academic, residential, and institutional buildings. More than 60 percent of all work completed by Strada in the past 20 years has been renovation and building upgrade design projects, just like the projects at WVSD. We pride ourselves on working collaboratively with our clients and engineering consultants to find the best solutions in each of these projects. Our team is well versed in ascertaining and finding solutions for the myriad of challenges that come with updating existing buildings.

Strada has extensive experience designing **K-12 schools, specialty education facilities**, and higher education buildings. We have also designed over a dozen projects for West Virginia University, including building renovations, additions, landscape design, feasibility studies, and master planning for several of West Virginia University's campuses. We worked with the Diocese of Wheeling Charleston for ten years, renovating and providing master planning services for their Wheeling Cathedral Campus. **Strada understands the WV state systems** and has worked successfully with the WV State Fire Marshal on all these projects, which range in size from \$100,000 to WVU's \$84 million Business School.



Strada Team

The Strada team is highly experienced with renovations of existing buildings for educational uses. We have the expertise to create long term-value with upgrades and improvements.



Abby Mountain AIA, LEED AP, AICP, Principal-in-Charge, will lead this complex renovation and improvement effort. Abby is a highly organized and talented Architect and Campus Planner, who will ensure the project moves forward on schedule. She excels at engaging with clients and user groups to help them come to the goals that guide the project's design. Abby will manage the entire design and consultant team, as well as facilitate the client interaction. She has been the Architect in charge for many of our educational and WV projects and is highly qualified to manage this project.



Alan J. Cuteri AIA, LEED AP BD+C, supporting Principal, is Strada's **education principal**. He has over 30 years designing and renovating K-12 and higher education buildings, abating hazardous materials, and planning transformational projects for buildings of all ages. Alan worked with Pittsburgh Public Schools for more than five years managing major capital projects and the internal design studio for the district. Alan brings a wealth of construction, technical and cost estimating skills to the process and will ensure that you are more than satisfied with our process and efforts.



Kevan Rutledge RA, Associate, will be the **project manager**, bringing his meticulous attention to schedule, budget, and details to wrangle this series of projects. A code guru and spreadsheet aficionado, Kevan is currently wrapping up one of the most complicated projects in Strada's history and is looking forward to his next challenge.



Megan McGee RA, Associate, will serve as the **project architect**. Beyond her design talent, diverse experience, and detailing know-how, Megan brings personal experience with the Deaf and hard of hearing community. This project is near and dear to her heart since her two children receive services through the Pennsylvania School for the Deaf. Megan will ensure that the needs of the students are always kept at the forefront of the design team's focus.



Chelsey Atkins WELL AP, LEED AP ID+C, ASSOC. IIDA, FITWEL AMBASSADOR, is the project's **interior designer**, imparting her boundless enthusiasm, passion for sustainability, and keen eye for detail to the team. Chelsey espouses a holistic perspective to projects, incorporating human health and wellness with sustainability to shape the built environment. She is a skilled communicator and helps bring people together towards a common goal.



Elena Alves, is a skilled **landscape designer** whose approach to design provides therapeutic, restorative, and thoughtful solutions. While the RFP does not specifically mention landscape improvements, often there are opportunities that arise as part of HVAC upgrades or building improvements. With little to no cost increase, these can provide a valuable asset to the school.

A curated team of experts:

We have gathered a team of design professionals to bring the necessary mixture of skills, passion and expertise to this project.

Strada

Strada Architecture LLC

Architecture, Interior Design, Programming, Project Coordination, Accessibility, Landscape Architecture

*Small Business



Rosellen Peek

Teacher of the Visually Impaired



Allen and Shariff Engineering

MEP Engineering

*MBE Business

Lam Partners

Lam Partners

Lighting Design

BABICH *acoustics*

Babich Acoustics LLC

Acoustic Engineering



Triad

Site Civil Engineering



Atlantic Engineering Services

Structural Engineering

cadnetics®

measure | draft | model | visualize

Cadnetics

Field survey and floor plan updates for the campus.

*MBE Business



Trophy Point

Cost estimation

*Service-Disabled Veteran-Owned Small Business

Lighting

Lighting is an important consideration when designing for those with visual and hearing disabilities. These individuals are often particularly sensitive to certain lighting conditions, including glare, contrast ratios, shadow patterns, and backlighting. Lighting should be integrated into the overall design, where it can reduce eyestrain by being diffused and balanced, or strategically used to aid navigation. Lam Partners brings experience in designing spaces attuned to visual disabilities and will use their expertise to create proper lighting and daylighting to optimize the space for students. Strada and Lam have collaborated for many years creating beautiful and functional lighting in a variety of challenging projects.

Acoustics:

Acoustics are a particularly important facet of design for spaces for those with varying hearing levels. Babich Acoustics LLC is a trusted partner in collaborative design of spaces to meet diverse acoustic requirements. Babich will also work with the design team and engineers to ensure that acoustics are evaluated and tuned to allow supportive educational environment for all students and faculty.

Accessibility Specialist:

Although we are knowledgeable about accessibility issues involving physical, visual, and hearing disabilities, we believe it important to engage an expert on our team with the specific knowledge and experience required for the West Virginia School for the Deaf and Blind. Rosellen Peek has thirty years of experience with the Deaf and Blind community. She holds certifications to teach the Deaf, hearing handicapped, blind, and partially sighted, as well as a certification from the Academy for Certification of Vision Rehabilitation and Education Professionals. Peek has assisted design teams through several renovation projects. We are excited to have her experience and expertise to bolster our understanding of WVSD's concerns, issues, and challenges.

Structural engineering

Atlantic Engineering Services has worked with our team for 20 years on many projects including structural assessments, renovations, additions, new construction and complex historical rehabilitation projects.

Mechanical, Electrical, Plumbing, and Fire Protection Engineering:

Allen and Shariff engineering has been a critical engineering partner with Strada for 20 years. Together, we have completed millions of sq. ft. of new and renovated design projects. Their engineering talent and experience is wide ranging. They excel at helping institutions make decisions that balance cost, maintenance and performance.

Site Civil Engineering

Triad Engineering has worked with Strada in WV on several projects. They bring the local knowledge of land, geomechanics, stormwater and site civil issues.

With the exception of our Accessibility Specialist, this team of professionals has been working together for many years. We bring expertise, value and client service to all of our projects. We will work with you to ensure your needs, goals and requirements are met or exceeded. We have a proven track record of seamless collaboration, which yields beautiful projects that exceed client expectations, come in on time, and stay within budget.

Proposed Staffing Plan

| Staffing time allocation per phase | | Immersion | Programming | Design | Construction Documents | Construction |
|------------------------------------|----------------------------|-----------|-------------|--------|------------------------|--------------|
| STRADA TEAM | Principal Architect(s) | 20% | 15% | 5% | 5% | 5% |
| | Project Manager | 20% | 15% | 10% | 15% | 25% |
| | Interior Designer | 20% | 30% | 20% | 15% | 10% |
| | Production Team | 20% | 0% | 5% | 25% | 10% |
| | Accessibility Consultant | 6% | 10% | 5% | 2% | 5% |
| CONSULTING TEAM | Lighting Consultant | 2% | 5% | 5% | 5% | 5% |
| | Acoustic Engineer | 2% | 3% | 3% | 3% | 3% |
| | Senior Structural Engineer | 2% | 7% | 5% | 2% | 3% |
| | Senior Mechanical Engineer | 2% | 15% | 5% | 2% | 3% |
| | Structural Designer | 0% | 0% | 7% | 5% | 7% |
| | Mechanical Engineer | 2% | 0% | 10% | 8% | 10% |
| | Electrical Engineer | 2% | 0% | 10% | 8% | 10% |
| | Plumbing Fire Protection | 2% | 0% | 10% | 5% | 4% |

Consulting Team

Strada Team

TRIAD

Civil Engineering

William M. Ernstes, PLA
David L. Graham, PS



Al, AIA, LEED AP BD+C
Supporting Principal



Megan, RA
Project Architect



EXTENDED TEAM

Abby, AIA, LEED AP, AICP
Principal-in-Charge



Elena
Landscape Designer



Chelseym WELL AP, LEED AP ID+C,
Assoc. IIDA, Fitwel Ambassador
Interior Designer



Kevan, RA
Project Manager



West Virginia Schools For
The Deaf and the Blind

CORE TEAM



Trophy Point
Cost Estimating



Rosellen Peek
Accessibility
Specialist

Lam
Partners

LAM Partners
Lighting
Steve Iski, IALD, MIES,
LC, LEED AP
Sarah Fisher, IALD,
LEED BD+C, LC



AES
Structural Engineering
Gilbert J. Taylor, PE
Robert S. Bertocchi, PE

Allen + Shariff
MEP Engineering | Project Management

Allen & Shariff
MEP/FP Engineering

Robert Livorio, PE
Alexander G. Radkoff, PE
James T. Marsili, CPD

cadnetics®
measure | draft | model | visualize

Cadnetics
Surveys/Plans

BABICHacoustics

Babich Acoustics
Acoustical Engineering

Jeffrey E. Babich,
INCE BD, Cert.

We have handpicked a team of Stradistas and consultants. The Core Team will interact with and be available to you on a regular basis.

Project Plan

POSVAR HALL
UNIVERSITY OF PITTSBURGH

Work Plan Overview

Our approach to the design and delivery of transformative people and place-based solutions begins with a thoughtful start. It continues through an exciting journey focused on BIG discovery, iterative refinement, appropriate moments of pause, and confident decision making based on data. This process helps us clearly define and create solutions in a timely well-informed way. Most importantly, it helps us achieve the vision for the project.

PHASE I. Research & Discovery Through PlaceMapping®

Duration: 6 weeks

Deliverable: WVSDB PlaceBook

In a complicated, multi-project process such as WVSDB's, this step is vital to define schedule, priorities and process. It is also the time period where we gather, listen, look, learn, think together to discover the core concepts related to people, place, and experience. We call this PlaceMapping®. Key activities include:

SMARTstart

Once contracts are in place, **the first thing we do is gather.** We gather information such as site surveys, drawings and operational information related to the buildings, zoning and planning information, etc. We also develop a list of internal and external stakeholders to engage with throughout the duration of the project. Analyzing this content helps us prepare for the first ALL-HANDS (full team) SMARTstart kick-off meeting and assemble a draft of the proposed project ROADMAP.

The SMARTstart Meeting of the Minds:

1. Makes time for all of the key players to get to know each other and discuss what excites them most about this project and outline their role, responsibility, and unique perspective related to the work.
2. Helps identify both challenges and opportunities related to the project's vision and mission.

3. Allows us to have some FUN playing the "What IF?" game where everyone gets to ask one question that opens up and stretches our minds to think beyond the obvious or expected solution or idea.
4. It explains the who, what, when, where, why and to what extent items related to planning, design, documentation, and construction.
5. Establishes a clear, confident, and powerful **ROADMAP to help us get from A to B to C.**

Seaton Hall Office Conversion, Blue & Gold Building Renovation

Deep-Dive Programming and Needs Assessment

Projects

Our programmatic deep dives with the end users, allows us to use data collected from *you* to create a program that serves the investigators as well as the fundraisers. At this stage, we employ our most empathetic listeners to glean as much information as possible. In these conversations, we often uncover needs and desires that may have otherwise been left out of the project.

Primary Activities

1. Collect and review data on sizes of existing spaces, list of departments/occupants, and projected program. If you don't have these, no worries; we can help you generate them.
2. Synthesize what we've discovered, including your programming, functional and critical needs, statistics, and cultural vibes formatted into a quick reference Findings & Feedback Guide.
3. Based on the feedback, we work together to transform your top priorities into achievable goals.

4. Develop a Programming Matrix spreadsheet illustrating current, proposed, and growth needs for proposed user groups. This spreadsheet works in tandem with color-coded existing floor plan that clearly shows the configuration and relationship of people, departments, spaces, and places.
5. An appendix of all technical data, facilities evaluations, programming data, photographs, and other information in support of the final plan document.

Building Assessment and Documentation

Strada, along with our team of MEP and Structural engineers, will tour the buildings affected by the upgrades and renovations to understand the existing conditions and project challenges. Depending on the complexity, we may elect to have the buildings scanned and photo documented to have a convenient and non-invasive way to check on exact conditions without having to repeatedly interrupt building occupants. The buildings will be measured and existing layout plans will be drafted.

Examples of Deliverables



| Group | Space | Exist. Space | | | User Requirements - 1st Floor | | | User Requirements - 2nd Floor | | | Optimization | | | Remarks |
|---------------------|------------------------------------|--------------|-------|-------|-------------------------------|-------|-------|-------------------------------|-------|-------|--------------|-------|-------|------------|
| | | sq ft | sq ft | sq ft | sq ft | sq ft | sq ft | sq ft | sq ft | sq ft | sq ft | sq ft | sq ft | |
| R & D Space | Group - Shared Offices | | | | | | | | | | | | | 5th shared |
| | Group - Shared Offices | | | | | | | | | | | | | |
| | Group - Shared Offices | | | | | | | | | | | | | |
| | Group - Shared Offices | | | | | | | | | | | | | |
| Collaboration Space | Large Meeting Room (12-20 persons) | | | | | | | | | | | | | |
| | Large Meeting Room (12-20 persons) | | | | | | | | | | | | | |
| | Large Meeting Room (12-20 persons) | | | | | | | | | | | | | |
| | Large Meeting Room (12-20 persons) | | | | | | | | | | | | | |
| Office Space | Office Space | | | | | | | | | | | | | |
| | Office Space | | | | | | | | | | | | | |
| | Office Space | | | | | | | | | | | | | |
| | Office Space | | | | | | | | | | | | | |
| Support Space | Support Space | | | | | | | | | | | | | |
| | Support Space | | | | | | | | | | | | | |
| | Support Space | | | | | | | | | | | | | |
| | Support Space | | | | | | | | | | | | | |
| Annexes | Annexes | | | | | | | | | | | | | |
| | Annexes | | | | | | | | | | | | | |
| | Annexes | | | | | | | | | | | | | |
| | Annexes | | | | | | | | | | | | | |

Samples of Survey Metrics

DEEP DIVE

We'd like to get to know you! Understanding what makes you tick will drive a design that's tailored to your values.



Q&A

There are lots of ways to get to know you and most of them involve asking questions.



FINDINGS

Let's discuss what we've discovered!



VISION PRIORITIES

We'll work together to transform your top priorities into achievable goals.



Q&A

Smart questions result in smart answers. We believe the best insights come from a blend of closed- and open-ended questions.

Multiple Choice and Likert Questions

Great for data-driven design, hearing quiet voices, and uncovering hidden opportunities or obstacles early. We'd like to share this survey with as many participants as possible!

Open-ended Questions and Interviews

Gain dynamic intel about unique practices and processes. Reveal cultural values and wish-list items. Great for getting the inside scoop from a strategic planning team and key decision makers.

Process Tip: Typically, survey questions would be developed by Strada then reviewed by Biome decision-makers for approval.

Future Workplace

How would you prioritize these support spaces:

| | Not a Priority | Low Priority | High Priority | Essential |
|------------------------------|--------------------------|--------------------------|--------------------------|--------------------------|
| Quiet Zone / Library | <input type="checkbox"/> | <input type="checkbox"/> | <input type="checkbox"/> | <input type="checkbox"/> |
| Focus Room | <input type="checkbox"/> | <input type="checkbox"/> | <input type="checkbox"/> | <input type="checkbox"/> |
| Enclosed Collaboration Space | <input type="checkbox"/> | <input type="checkbox"/> | <input type="checkbox"/> | <input type="checkbox"/> |
| Open Collaboration Space | <input type="checkbox"/> | <input type="checkbox"/> | <input type="checkbox"/> | <input type="checkbox"/> |
| Social / Break Room | <input type="checkbox"/> | <input type="checkbox"/> | <input type="checkbox"/> | <input type="checkbox"/> |
| Town Hall / All-Hands Space | <input type="checkbox"/> | <input type="checkbox"/> | <input type="checkbox"/> | <input type="checkbox"/> |
| Wellness Room | <input type="checkbox"/> | <input type="checkbox"/> | <input type="checkbox"/> | <input type="checkbox"/> |

Learning About Your Department

What specialty spaces does your department require access to? (ex. IT workbench, secure file room, or similar)

Your answer: _____

Is your department louder than typical due to a call-center nature or other cause?

Your answer: _____



FINDINGS

Your critical statistics and cultural vibes, synthesized into a quick-reference guide.

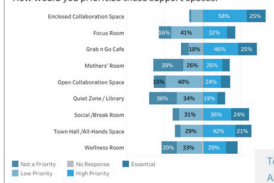
Multiple Choice and Likert Questions

Ideal for slicing and dicing info, making correlations and preferences easier to spot.

Open-ended Questions and Interviews

No statistics here! Interview findings can be represented by quotes or diagrams. Brand, culture and design language values are expressed through emotive mood boards.

How would you prioritize these support spaces:



Top 3 Thing Employees Miss About Working in the Office:

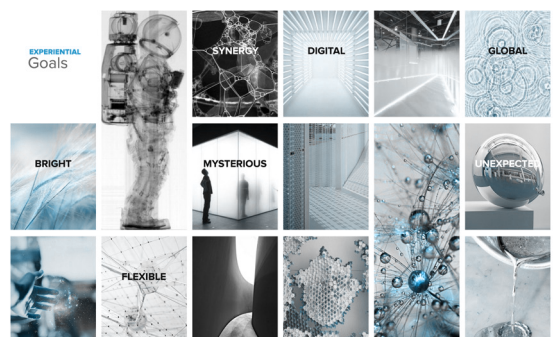
- 01 The clarity of in-person communication
"Personal interaction is still how things are getting done."
- 02 The social aspect
"People miss people."
- 03 Equipment
"Full monitors and printing capabilities were the most common equipment needs cited."

Productivity is off the charts compared to what we expected!



FINDINGS

Example mood board expressing design language and cultural values.



VISION PRIORITIES

Actionable summary statements that drive your design forward.

Best Practices & Biome Practices

Wondering how many workstations you can fit in your space? Worried you're not leaving enough room for collaboration and amenities? We can help with that!

Using a chart similar to this one, we'll show you a Standard Scenario that outlines industry best practices.

Together, we'll make adjustments based on your Priorities to create an Optimized Scenario that is tailored to your needs and goals.

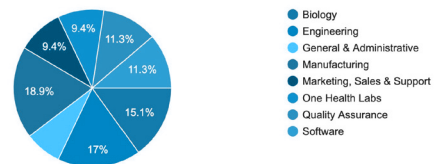
| | STANDARDIZE | OPTIMIZE |
|----------------------|-------------------|-------------------|
| RSF | 72,000 RSF | 58,700 RSF |
| Employees | 240 Employees | 240 Employees |
| Individual Seats | 247 (3% vacancy) | 247 (3% vacancy) |
| RSF / Seat | 291 RSF/Seat | 238 RSF/Seat |
| Collaboration Ratio | 0.6 : 1.0 | 0.8 : 1.0 |
| Office Percentage | 60% | 20% |
| Space Standards | 36 sf (standard) | 36 sf (standard) |
| Workstations | 150 sf (standard) | 150 sf (standard) |
| Focus Rooms | 5% | 15% |
| Support & Amenity SF | 15,300 SF | 19,000 SF |
| Impact | Stay in place | Move to new space |

⬆ Indicates High Priority values

EARLY FINDINGS

Please select your department.

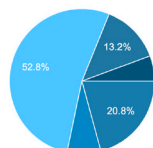
53 responses



EARLY FINDINGS

When collaboration is unscheduled, where would it be most convenient and fruitful?

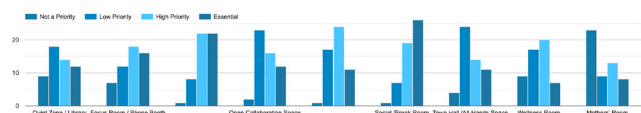
53 responses



- A workstation or lab bench
- An available meeting room
- A collaborative break out area
- A social space/break area
- N/A - I do not collaborate.

EARLY FINDINGS

How would you prioritize these support spaces:



45% say a Social/Break room is **ESSENTIAL**
+ 19% say it's a **HIGH PRIORITY**

22% say enclosed collaboration space is **ESSENTIAL**
+ 22% say it's a **HIGH PRIORITY**



This or That—Look & Feel Input Session

Before we put pen to paper and dive into design, we hold a fun and interactive input session where a series of look & feel images are presented and categorized by primary exterior and interior spaces and places of varying scale, use, mood, and personality. **We ask participants to individually react to and decide what they like or don't like** (this or that) by putting a green or red dot on the images. Once selections are made, we review together, highlight common LIKES and DISLIKES and the why behind them, and synthesize the information into a preferred LOOK-BOOK that influences the direction of our landscape, interior and exterior architectural design efforts. We can do this session virtually, or in person, depending on the status of things in the world.

Example of LOOK-BOOK cover for Echo Realty



All Projects

PHASE II. Integrated Design Engineering [IDEAtion]

We begin the IDEAtion phase of work with another all-hands (full team) meeting. Here, we collectively pause to review and reaffirm the goals and outcomes of our Phase I work and comfortably move into design. At this point, everyone will understand who and what the building needs to support—along with a sliding scale of its size, capacity, and cost. The quantitative and qualitative data captured in the PlaceBook will be translated into a virtual place and experience. We call this PlaceMaking. Key activities can include:

Design Safari—Project: Blue & Gold Building Renovation (Student Activities Center)

Understanding what we expect a place or space to look like is minor compared to how it feels as an experience. To gain insight on this, we enjoy taking our clients on a Design Safari. This entails a small group, 2-day, dynamic itinerary focused on visiting a diverse group of destinations that reflect WVSDb's goals in different ways. These may include Gallaudet University, Perkins School for the Blind, or any multitude of places that you might suggest. The end of this activity is usually marked by both exhilaration and exhaustion. Most importantly, it allows us to bond together through shared experiences. This always comes in handy when we have to make hard design decisions or choose priorities based on cost.

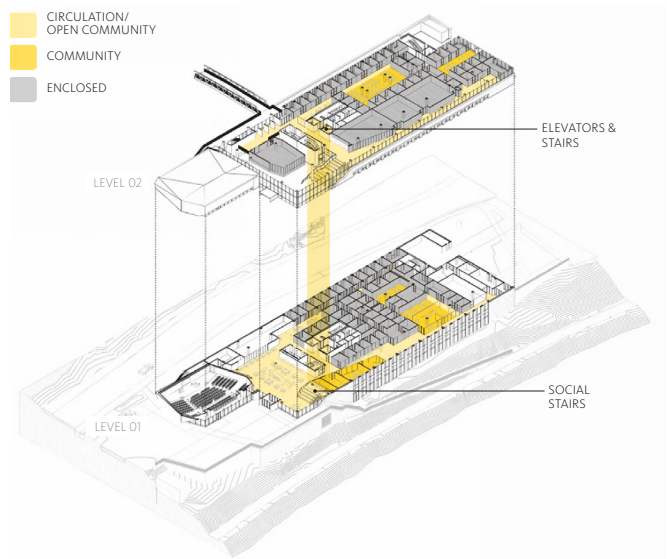
Cross-Disciplinary IDEAtion

Armed with the groups preferred look-&-feel and experiential objectives, Strada's cross-disciplinary AE team embarks on a highly focused and immersive IDEAtion process. This dynamic effort simultaneously weaves design and engineering together with performance and cost analysis to translate key goals and concepts into beautiful, buildable, and affordable transformational places.

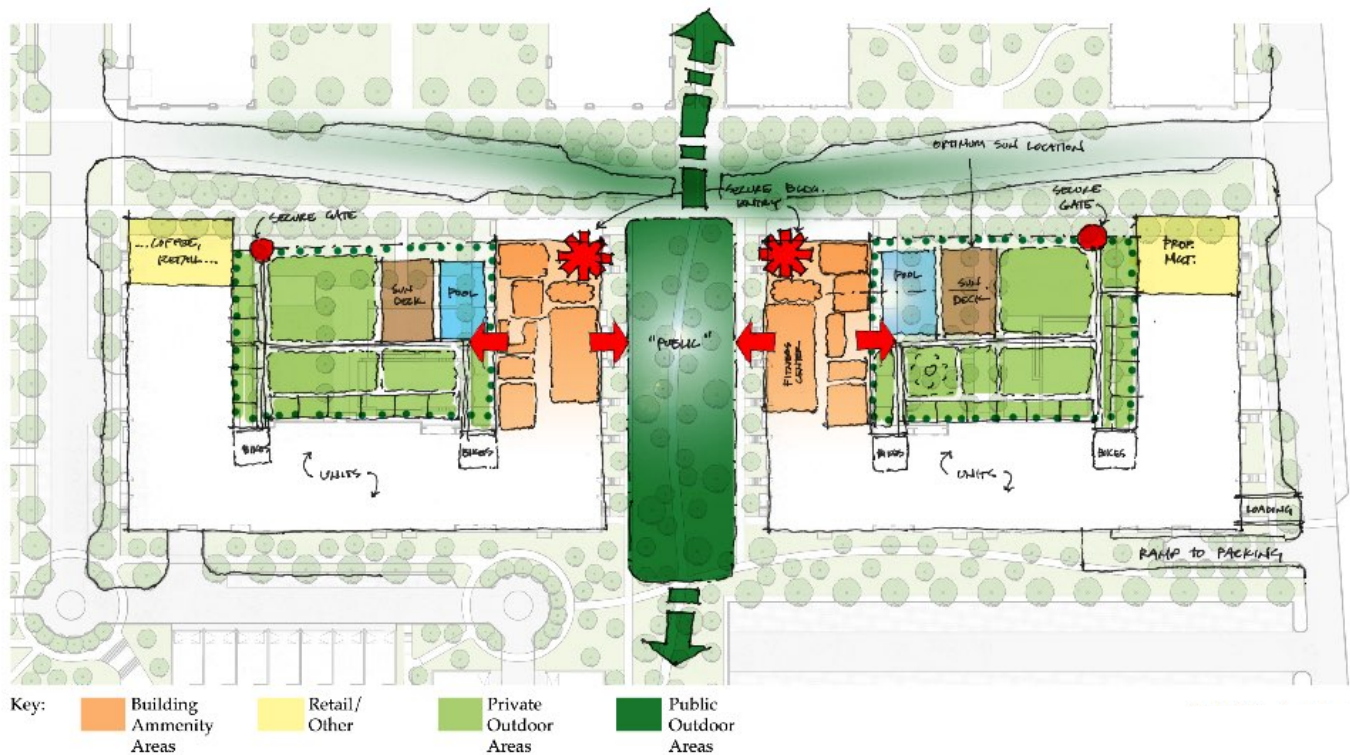
We will develop a series of design iterations and options associated with the preferred development strategy and review them with the WVSDb team for reaction, input, and direction. Based on feedback we create a hybridized design and present how it performs against the key performance indicators (KPIs) established in Phase I.

Primary IDEAtion Activities:

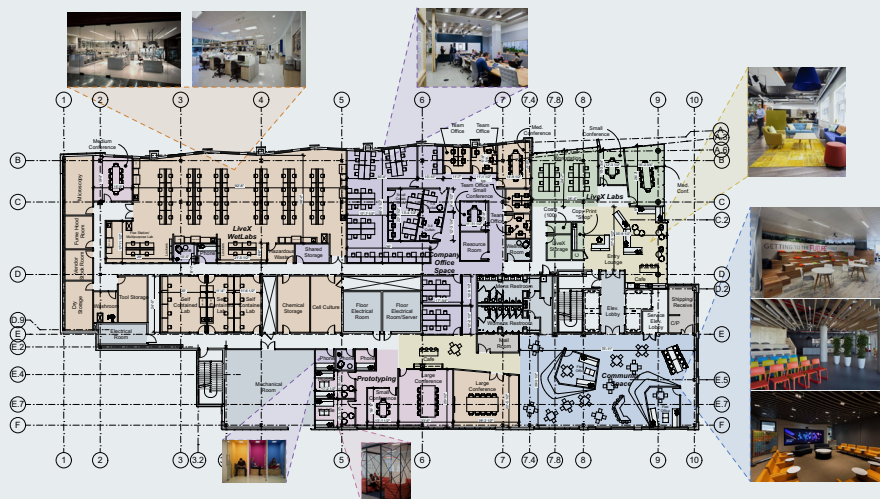
1. Campus context: how can these projects aid the campus overall?
2. Outside < > Inside Space Planning & Brand Experience design. Unified effort shaped by Strada's architect, landscape architect, interior designer team.
3. Space Adjacency Diagrams & Test-fit Plans. Finding the right mix and balance is critical for flexible innovative collaboration programs.
4. Study options for optimizing the building MEP system integration.
5. Explore design of exterior architecture envelope with both aesthetics and performance in mind.
6. Incorporate and identify key sustainability measures and components baked into the design.
7. Present design progress and options to WVSD on a bi-weekly schedule for input and feedback.
8. Create and publish Schematic Design and Design Development drawings, along with cost



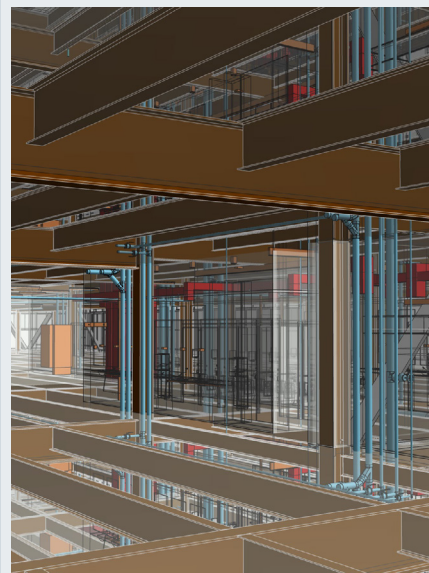
Example of stack plan illustrating two-story welcome experience



Outside-inside PlaceMap



Example of space adjacency test-fit plan with mood imagery



System visualization example

PHASE III. Documentation & Construction

Design Documentation Duration: 6-9 months

Construction Duration: variable

Deliverable: Building Permit & Guaranteed Maximum Price (GMP) Drawings & Specifications

Once the project is given the green light to move forward, Strada and our engineering team will complete the drawings and specifications necessary to permit, bid, and build the project(s). We are well-versed in WV requirements and have navigated the State Fire Marshal approvals.

We will do whatever it takes to make your vision a reality.

Building Information Modeling (BIM)—Predictive Analytics & Visualization

Building Information Modeling (BIM) is the technological medium and tool that we use to refine and articulate design ideas. It creates a 3D digital environment that provides our AE team with the opportunity to explore and test the relationship between both major and minor design elements and their influence on the performance of building systems. It also provides us with the opportunity to clearly communicate intent through traditional (2D) and non-traditional (3D) documentation.

We also use Virtual Reality (VR) plug-ins to solicit and incorporate client feedback in real time and prove that the resulting experience will be both effective and awesome. We like to tell our clients that, **“BIM allows us to predict the future.”** More importantly, it provides you with poetic 2D & 3D drawings and models that create the excitement and understanding necessary to move the project forward.

Firm Experience



WEST VIRGINIA UNIVERSITY
COLLEGE OF LAW

College of Law Addition and Renovation

Enhancing brand recognition, recruiting, and retention through transformational planning & design

West Virginia University

Morgantown, Virginia

*Project Type: Institutional abatement, renovation
and addition*

*Project Manager: Abby Mountain, 412.246.2826,
amountain@stradallc.com*

STRADA WAS RETAINED to engage in a strategic planning study with the College of Law. The planning effort involved faculty, students, alumni, administrators, donors and University planners and Engineers in an interactive exchange of ideas, concepts, and goals. The resultant Master Plan provided a roadmap for the implementation of the vision, growth and goals of the College of Law. The existing 118,000 sq. ft. building was completely renovated and another 30,000 sq. ft. of additions created the successful fulfillment of the vision, goals and needs of the College of Law. Total final project cost was \$29,500,000.

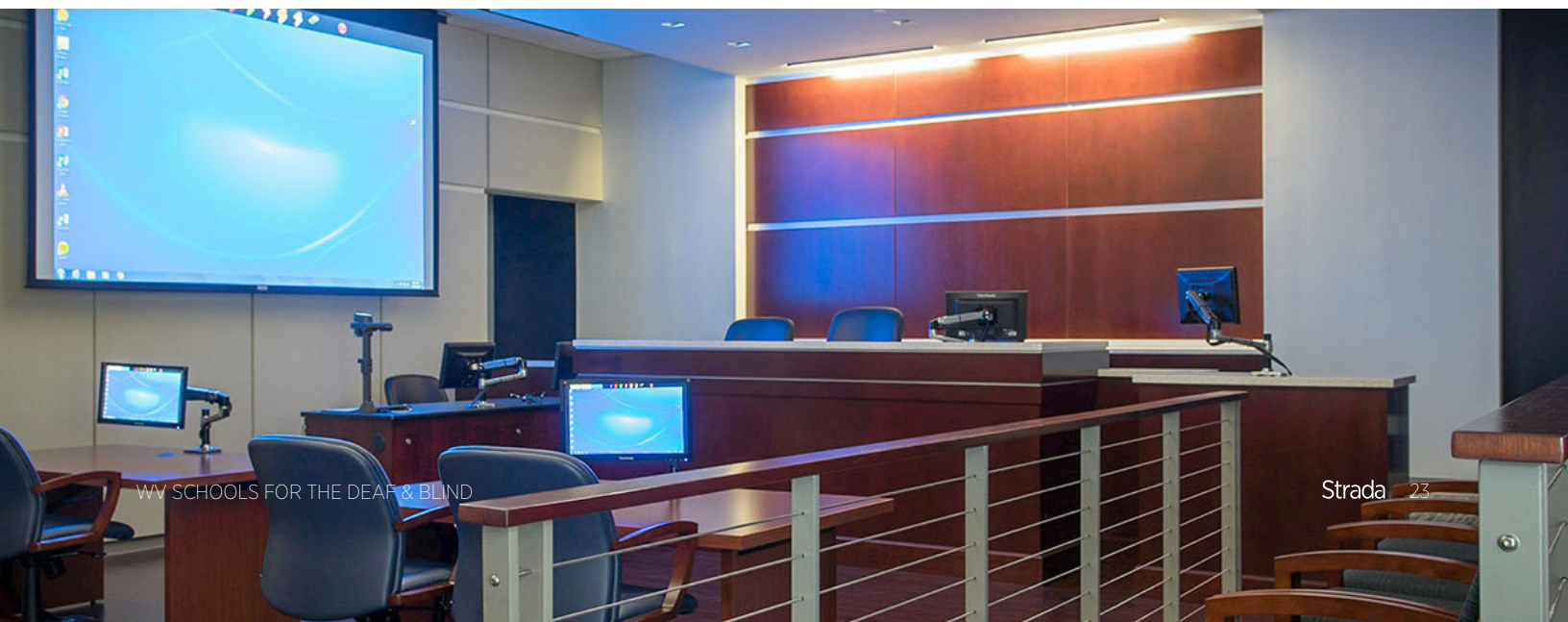
Using the Master Plan and Guiding Principles, Strada and WVU were able to implement the entire program over 5 phases of work while the school remained in full operation. The master plan provided the roadmap for renovation, and the Guiding Principles were relied upon by the College of Law and Strada in a continuous design effort to plan each phase of the project. This resulted in meeting all programs and reducing the anticipated cost of the project by 20% over a 6-year implementation.

Key Accomplishments:

- Consolidation of all College of Law functions
- Upgrade and expansion of all classrooms, offices, moot court room
- Complete AV/IT upgrade
- Remote learning teleconferencing room
- New multipurpose space to accommodate the entire college
- Reconfiguration and modernization of library
- New law clinics addition with green roof plaza
- Façade transformation, landscape improvements
- Abatement of all hazardous materials
- Full upgrade of all MEP & Life Safety Systems

Relevance to WVSDb:

- Hazardous material abatement
- MEP and life safety systems replacement
- Multi-phased construction
- Building in use year round during construction
- Project completed within budget





St. Edmund's Academy Center for Integrated Discovery

Transformation that balanced academic and community needs

Pittsburgh, Pennsylvania

Project type: K-12, renovation/addition

Project Manager: Kevan Rutledge, 412.246.4806, krutledge@stradallc.com

ST EDMUND'S ACADEMY is a secular private K-8 school nestled in the heart of the Squirrel Hill Neighborhood of Pittsburgh. It is comprised of one building with no less than five additions from differing periods of time over the school's history. The building was in need of renovations to meet accessibility and code compliance requirements, while also creating spaces that supported the strong music, athletics, entrepreneurial and collaborative learning process of the Academy.

Strada evaluated & modeled the existing facility to understand the complex interrelationships of varying floor levels, building additions and functional relationships. After a thorough and detailed

curriculum discussion with faculty and school leadership, the team began a series of planning and design charrettes engaging faculty, students, community leaders, parents, and board members. Additionally we received local political input due to significant zoning approvals needed.

After the series of immersive meetings & charrettes, Strada developed a solution that prioritized the academic needs and balanced the community and parent needs to achieve a truly transformative project. Traditional classroom spaces were redesigned to support the innovative educational process and hands-on learning curriculum for the students. Finding the space for their annual build projects, team projects and interactive educational sessions with local business leaders required some difficult decision making and re-thinking of available and convertible space.

Relevance to WVSDDB:

- Hazardous material abatement
- MEP and life safety systems replacement
- Multi-phased construction
- Building in use year round during construction
- Project completed within budget
- Designing within specific programmatic challenges





WV SCHOOLS FOR THE DEAF & BLIND



Strada 26

Mifflin School

A contemporary addition is woven into a historic structure with two different architectural styles: Modernist and Art deco

Pittsburgh, Pennsylvania

Project type: K-8, renovation/addition

Project Manager: Al Cuteri, 412.401.3708, acuteri@stradallc.com

THIS RENOVATION AND addition project presented multiple challenges. The original Art Deco school was built on top of a hill overlooking the neighborhood with an additional classroom wing added in the 1950s. The building program needed to reorganize the existing facilities and incorporate a new wing containing a modern cafeteria and gymnasium. Creating new student entries at either end of the addition and a

central courtyard from a service drive were key elements of the plan, solving accessibility problems and unifying disparate pieces of the existing architecture.

Relevance to WVSD:

- Addition to historic school with historic addition
- Hazardous material abatement
- MEP and life safety systems replacement
- Multi-phased construction
- K-8 renovation
- Add elevators to existing building
- Create ADA accessibility for the 3-building plan
- Building in use year round during construction
- Project completed within budget

Awards & Recognition
AIA Pennsylvania
Honor Award, Design

AIA Pittsburgh
Honor Award, Design

AIA CAE
Design Citation Award

Preservation Pennsylvania
Historic Preservation Award

City of Pittsburgh
Historic Review Commission
Preservation Award

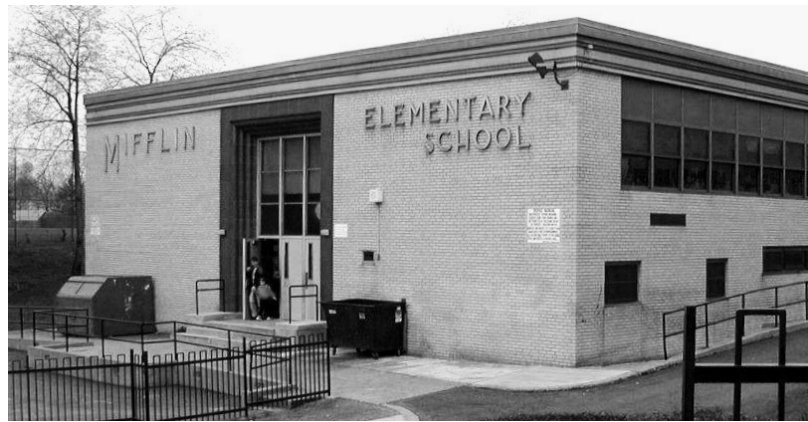
International Masonry Institute
Golden Trowel Award



Original 1950's facade memorializes Mifflin School as part of the new two-story atrium



*Right:
the Mifflin
School building
before
renovations.
Some walls of
the exterior
became
signatures of
the interior.*



Commonwealth Charter Academy Waterfront

From big box retail store to a state-of-the-art technology building

Homestead, Pennsylvania

Project type: K-12, adaptive reuse

PM: Dawn Peterson, 412.246.4793,

dpeterson@stradallc.com

THIS 62,000 SQ. FT. tenant fit-out for a public K-12 charter school was a collaboration between M&J Wilkow, Strada and Shannon Construction. Commonwealth Charter Academy (CCA) is a top accredited public cyber charter school that provides personalized educational programs and services to K-12 students at no cost to families.

The design assumed the overarching goal of embodying the feeling of home. With end users representing a wide age range, feeling at home was deemed the unifying factor that would make the space welcoming to all. This was studied and achieved with an open floor plan navigable to individuals of any age and design features that

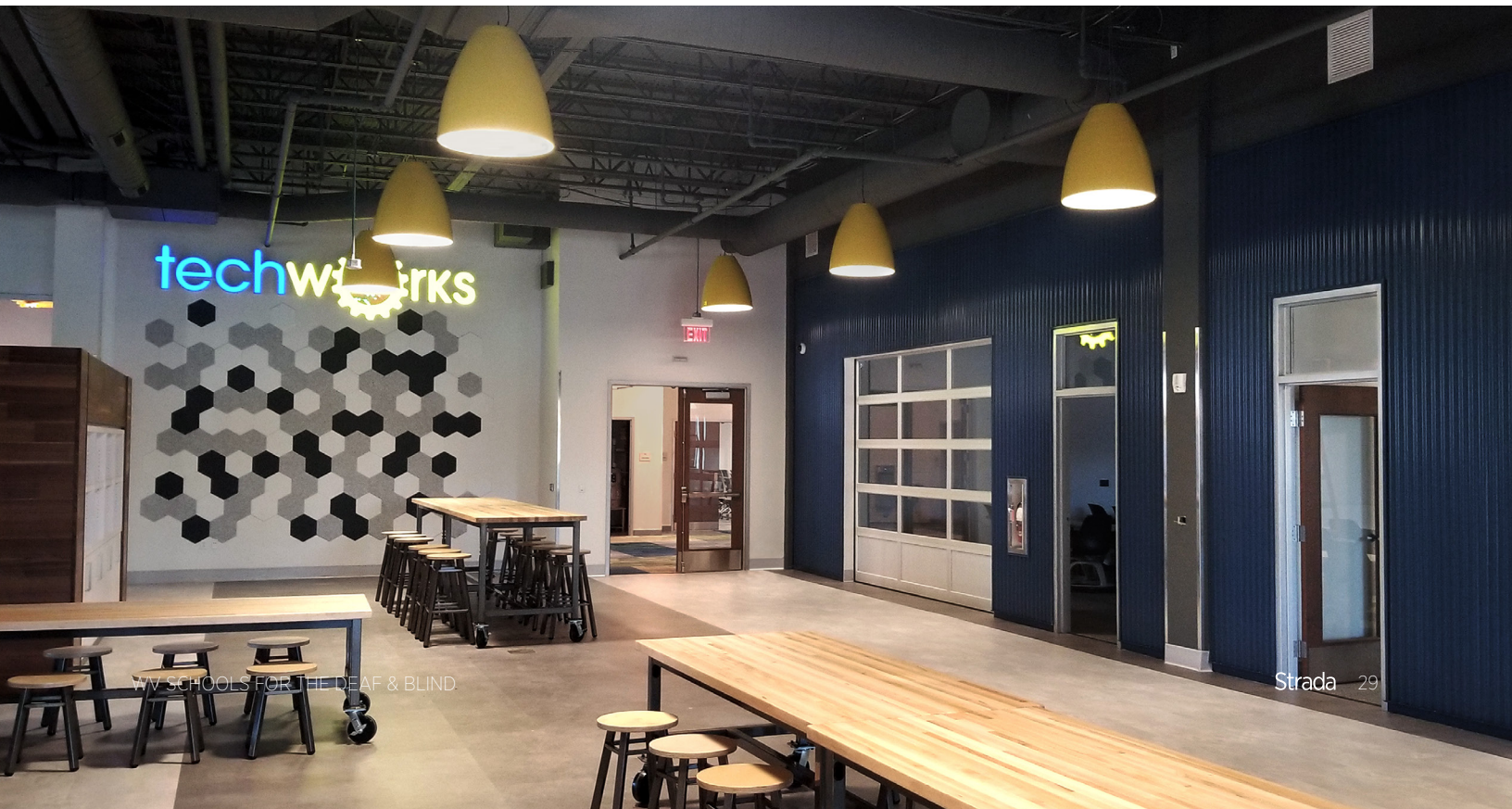
embodied home. Wood, different sizes of lounge furniture, and a large central fireplace give a subtle nod to this idea. Another goal was to inspire innovation in Techworks. We achieved this by creating a high-energy space with workbenches, various data and power connections, unique and exciting lighting, and high, open ceilings to allow for drone flying.

The design incorporates the industrial nature of the historic Waterfront, integrating an open office and learning environment with exposed structure. Custom wall graphics, acoustical panels and wood plank ceilings enhance the interior. The exterior boasts state-of-the-art lighting and signage, high quality A/V and security equipment and 52 new perimeter windows to enhance natural lighting.

Repurposing this big box retail store into a state-of-the-art technology building is a testament to the shift in the retail market, a challenge that many will continue to face as we embrace a new normal on the heels of a global pandemic.

Relevance to WVSDB:

- MEP and life safety systems replacement
- Project completed within budget
- Renovation of existing facility





Roman Catholic High School Howard Center for the Arts

From a nondescript warehouse to a light-filled, modern arts facility

Philadelphia, Pennsylvania

Project type: high school renovation, adaptive reuse

PM: Chris Kenney, 215.644.7650,

ckenney@stradallc.com

THE HOWARD CENTER for the Arts provides a state-of-the-art facility for the visual and performing arts at Roman Catholic High School (RCHS). The Howard Center for the Arts is Phase I of a four-phased, \$25 million, transformational initiative which will provide an innovative, 21st-century education for Roman's students.

The first phase included the renovation of a nondescript 1940's warehouse building to transform it into a light-filled and modern facility for fine and performing arts and digital photography and videography. The Center contains gathering spaces, mixed media classrooms, a piano lab, a digital arts studio, a band room, practice rooms, and

offices for instructors on the second floor. Parking is accommodated on the first floor.

A major component of the design of the new space is the creation of a Black Box Theater. All performing arts, music, choral, and drama programs now practice, perform, and exhibit their artistic works in this intimate setting. The space is also available to local arts groups.

The existing two-story warehouse building presented challenges such as low ceiling heights and roof structure, limited access to natural light, inefficient HVAC systems and the need to accommodate large scale functions. The Design Team flipped the initial program from the first to the second floor to help solve the design challenges. With the program on the second floor, the ceiling structure was left exposed to provide greater volumes. The roof was lifted in several areas to accommodate the black box theater and band room. Windows were enlarged and skylights added to flood natural light into the rooms and corridors.

Relevance to WVSDB:

- MEP and life safety systems replacement
- Multi-phased construction
- High school renovation
- Add elevators to existing building
- Complete ADA accessibility
- Project completed within budget





Appendix: References, Resumes



References



John Thompson **Associate Director of Design & Construction**

304.293.3625

john.thompson@mail.wvu.edu

West Virginia University, Facilities Planning & Scheduling

979 Rawley Lane, P.O. Box 6572

Morgantown, WV 26506



Chad Barnett **Head of School**

412.521.1907 ext. 115

chadbarnett@stedmunds.net

St. Edmund's Academy

5705 Darlington Road

Pittsburgh, PA 15217



Rev. Joseph Bongard **President/Rector**

215.627.1270

jbongard@romancatholichs.com

Roman Catholic High School

301 North Broad Street

Philadelphia, PA 19107



Abby Mountain AIA, LEED AP, AICP

Principal-in-Charge



Macro-Micro
Maestro



Wasted Space
Assassin



Collaboration
Champion

“Good design, at any scale, is all about the layers. Overlaying textures, colors, light, sounds, intensities, and uses weaves a place (whether a neighborhood or a room) into a rich tapestry that can stand up to the test of time.”

With more than 15 years of experience in design and planning, Abby is passionate about finding ways to create PLACES out of left over or underutilized space. She consistently strives to transform the ordinary into something memorable and unique.

Abby has worked with a broad range of clients including higher education, corporate, non-profit, hospitality, and towns. She has facilitated countless charettes, taken many projects from concept design through construction, and developed an award-winning urban master plan for the City of Hermitage, in addition to designing several award-winning higher education projects. Abby's diverse project portfolio ranges in scale and type, inspiring creativity when problem solving and allowing her to look at things from multiple perspectives.



EDUCATION

Kent State University
Master of Architecture in Urban Design

Kent State University
Bachelor of Architecture

Centro Linguistico Italiano Dante Alighieri



INVOLVEMENT

American Planning Association

Urban Land Institute

American Institute of Architects



PROJECT EXPERIENCE

West Virginia University
College of Law Master Plan &
Multi-Phased Construction
Morgantown, West Virginia

West Virginia University
Evansdale Quad Master Plan
Morgantown, West Virginia

West Virginia University
Health Sciences Master Plan
Morgantown, West Virginia

University of Pittsburgh
Pitt Global Hub
Pittsburgh, Pennsylvania

University of Pittsburgh
Posvar Hall Multi-Phased Renovations
Pittsburgh, Pennsylvania

Shady Side Academy
Middle School
Pittsburgh, Pennsylvania

Slippery Rock University
Student Success Center
Slippery Rock, Pennsylvania

Slippery Rock University
Student Success Center
Slippery Rock, Pennsylvania

412.246.2826

amountain@stradallc.com

Attached is your wallet card, evidence of your current registration to practice architecture in West Virginia. You will receive a renewal notice prior to the expiration date indicated.

Certificate No: [REDACTED]

STATE OF WEST VIRGINIA
BOARD OF ARCHITECTS

This Certifies that:

ABIGAIL MOUNTAIN

is duly Registered and entitled to
practice as a
REGISTERED ARCHITECT
until and including 06/30/2021



Attest

A handwritten signature in black ink, appearing to read "A. R. K.", followed by a horizontal line.

President

S
E
C
R
E
T
A
R
Y

A handwritten signature in black ink, appearing to read "David W. Fisher", written vertically.



Alan Cuteri AIA, LEED AP BD+C

Supporting Principal

+35

Years of Experience



One of SCUP-
Planning Institute's
First Graduates



Detail-Focused,
Creative Problem
Solver

“During his term as AIA Pittsburgh Chapter President, Alan said ‘Good Design is Good Business,’ exemplifying the way in which a well-designed project can elevate a client’s purpose, goals and vision.”

Alan is a founding principal of Strada and has been in practice for over 35 years. His steadfast leadership and collaborative approach has resulted in countless thoughtful, successful projects for higher education, corporate, and private clients.

One of the first graduates of the Society for College and University Planners-Planning Institute, Alan has embraced the methodologies and planning tools acquired at SCUP Institute and coupled them with Strada’s PlaceMapping® process. This unique approach results in high-quality projects that are not only successful financially, but also generate places where people enjoy working, learning, and playing.



PROJECT EXPERIENCE

West Virginia University
Business School
Morgantown, West Virginia

West Virginia University
College of Law Addition & Renovation
Morgantown, West Virginia

West Virginia University
Beckley Campus, Shroyer Hall
Laboratory Building
Montgomery, West Virginia

Roman Catholic High School
Howard Center for the Arts
Philadelphia, Pennsylvania

St. Edmund’s Academy
Center for Integrated Discovery
Pittsburgh, Pennsylvania

Pittsburgh Public Schools
Multiple School Renovations
Pittsburgh, Pennsylvania

Pittsburgh Public Schools
George Cupples Stadium
Pittsburgh, Pennsylvania

Mifflin School
Pittsburgh, Pennsylvania

Diocese of Wheeling-Charleston
Cathedral Campus Addition & Renovation
Wheeling, West Virginia

Diocese of Wheeling-Charleston
Cathedral Campus Chancery
Wheeling, West Virginia

City Charter High School
Pittsburgh, Pennsylvania



EDUCATION

Carnegie Mellon University
College of Fine Arts, BFA Architecture

Society of College and University Planners,
Planning Institute Graduate

Leadership Pittsburgh, Class XVI

Harvard Graduate School of Design
Continuing Education



INVOLVEMENT

Society for College and University Planning
(SCUP), 2004–Present

Penn-Liberty Local Historic Review
Committee Chairman 2003–2012

AIA Pittsburgh Chapter, President,
Treasurer, Chair, Legislative Committee,
1990–2001

AIA Contract Documents Instructor,
1988–2013

AIA Pennsylvania, Board Member,
Legislative Committee Chair, 1992–1997

American Arbitration Association, Active
Arbitrator, 1990–1997

Borough of Ben Avon Heights, Council
President, Planning Committee Chair, 1995–
Present

412.401.3708

acuteri@stradallc.com

**West Virginia Board of Architects
Receipt for Renewal**

Date: 6/11/2020 8:59:47 AM
Sequence Number: 20200611242014
Fee: \$75.00

| | |
|---|--|
| Registrant: ALAN CUTERI, License: [REDACTED] | |
| Address 611 William Penn Place Suite 700 Pittsburgh, PA 15219 | Payment information Card: 5*****0300 Expiration: 07/2022 Alan Cuteri Alan Cuteri Alan Cuteri 611 William Penn Place Pittsburgh, PA 15219 |
| Email: acuteri@stradallc.com | Your license Expires: 2020-21 |

The West Virginia Board of Architects

certifies that

ALAN CUTERI

is registered and authorized to practice
Architecture in the State of West Virginia.

In testimon whereof this certificate has been issued
b the authorit of this board.

Certificate Number [REDACTED]

The registration is in good standing until June 30, 2020.



Board Administrator



Kevan Rutledge

Architect, Project Manager



Building Code
Whisperer



Diplomatic
Communicator



Embracer of
Complex Challenges

“Good design is more than just creative problem solving. Good design is the result of a thoughtful, iterative process that fosters communication, challenges assumptions, uncovers opportunities, and keeps the needs of people at the center of the discussion.”

Since joining Strada in 2012, Kevan has excelled at managing demanding projects with compressed schedules. His abilities with clever details and document coordination have been of value on residential conversions and other renovation projects. He was a key team member for Hotel Monaco, for which Strada was the architect of record, and has worked on design and construction administration for a number of other urban adaptive reuse projects. Prior to joining Strada, Kevan was a key designer on higher education projects, such as an award-winning 140,000 sq. ft. science building at Smith College, completed while he worked at Bohlin Cywinski Jackson.

In addition to setting an example as a proactive and efficient project manager, Kevan also spearheads the cycling movement at Strada. He helped our office to earn the “Bike Friendly Employer” certification from Bike Pittsburgh, and he is a four-season bike commuter.



EDUCATION

University of Cincinnati, College of Design,
Architecture, Art, and Planning Master of
Architecture

University of Cincinnati, College of Design,
Architecture, Art, and Planning Bachelor of
Science in Architecture

Licensed Architect, Commonwealth of
Pennsylvania



INVOLVEMENT

Allegheny Cycling Association, former
board member



PROJECT EXPERIENCE

Roman Catholic High School
Howard Center for the Arts
Philadelphia, Pennsylvania

St. Edmund's Academy
Addition & Renovations
Pittsburgh, Pennsylvania

Shady Side Academy
McIlroy Center for Science and Innovation
Pittsburgh, Pennsylvania

Temple University
Alpha Center
Philadelphia, Pennsylvania

Bakery Square Office Building 3.0
Pittsburgh, Pennsylvania

AAA Century III Office
Renovation & Addition
Pleasant Hills, Pennsylvania

Uber Advanced Technologies Center
Pittsburgh, Pennsylvania

Kimpton Hotel Monaco
Pittsburgh, Pennsylvania

City's Edge Tower
Pittsburgh, Pennsylvania

412.246.4806

krutledge@stradallc.com



Megan McGee

Associate | Project Architect



Construction Detail
Enthusiast



Supportive
Communicator



Code Navigator

“Design is about sensitivity. Responding to the client’s needs is step one, but evaluating social, environmental, and emotional impacts is also a key part of the work. It’s extremely empowering to understand that by creating a space, I am affecting a person’s experience in some way, and with each project, I have the potential to carve a place in their memory.”

Megan is a natural leader who brings a rare combination of talents to projects—an easygoing manner, meticulous attention to detail and a high bar of precision. These qualities enable her to harvest the talents of our cross-disciplinary team members and inspire the best from them. Through the depth and diversity of Megan’s experience, she guides the creation of transformative places while anticipating potential pitfalls and keeping projects running smoothly. Her facility with custom detailing through construction administration makes Megan an invaluable team leader for clients navigating a project.



EDUCATION

Drexel University
Bachelor of Architecture
Graduated Cum Laude



INVOLVEMENT

Preservation Alliance for Greater
Philadelphia



PROJECT EXPERIENCE

University of Pennsylvania
Penn Global
Philadelphia, Pennsylvania

Thomas Jefferson University
Hayward Hall Renovations
Philadelphia, Pennsylvania

Temple University
Alpha Center, Interdisciplinary
Educational & Community
Engagement Center
Philadelphia, Pennsylvania

Convene CityView
Philadelphia, Pennsylvania

Convene Commerce Square
Philadelphia, Pennsylvania

Adaptimmune
Philadelphia, Pennsylvania

BioLabs@CIC
Philadelphia, Pennsylvania

The Beauty Shoppe
Pittsburgh, Pennsylvania

Science Center Offices
Philadelphia, Pennsylvania

Weaver’s Way Co-op
Ambler, Pennsylvania

215.644.7659

mmcgee@stradallc.com



Chelsey Atkins

WELL AP, LEED AP ID+C,
ASSOC. IIDA, FITWEL AMBASSADOR

Interior Designer



Bridge Builder



Trailblazer



Resident Research
Nerd

“I believe that the creation of Place is so much more than simply the design and construction of space and am most in my element when practicing design in that sweet spot where people, environment, and design converge.”

Chelsey came to Strada armed with fresh ideas, boundless enthusiasm, and a tremendous eye for detail. She has devoted herself to building her professional credentials and knowledge of environmental sustainability and human health and wellness in relation to the built environment, allowing her to bring a holistic perspective to her project teams and reinforcing her excellent work on design projects.

Through her active leadership within the studio and on project teams, paired with her wider community engagement efforts, Chelsey has proven herself adept at opening communication and bridging divides to bring people together in the pursuit of creating transformative experiences of place. Chelsey's focused sense of purpose and persistent drive to push herself, her teams, and the industry forward are only matched by her sincere intention of improving environments for everyone, making her a thoughtful and valuable contributor to any project team.



EDUCATION

The Art Institute of Pittsburgh, Bachelor of
Science in Interior Design

Indiana University of Pennsylvania,
Bachelor of Arts in Religious Studies,
Minors in Art History | Women's Studies



INVOLVEMENT

Women+ in Design PGH
Member
2019 - Present

International Interior Design Association,
Pittsburgh City Center Events Chair
July 2015 - June 2018

International Interior Design Association,
Pittsburgh City Center Director
July 2015 - June 2018



PROJECT EXPERIENCE

University of Pittsburgh
Statistics Department Renovation
Pittsburgh, Pennsylvania

Caterpillar Inc.
Pittsburgh Office Expansion
Pittsburgh, Pennsylvania

The Urban Redevelopment Authority
of Pittsburgh
412 Blvd of the Allies
Pittsburgh, Pennsylvania

West Virginia University
Beckley Library
Beckley, West Virginia

Echo Realty Headquarters
Pittsburgh, Pennsylvania

University of Pittsburgh
Sutherland Hall
Pittsburgh, Pennsylvania

Walnut Capital
Pittsburgh Athletic Association Renovation
Pittsburgh, Pennsylvania

412.246.2832

catkins@stradallc.com



Elena Alves

Landscape Designer



Analytical Mastermind



Outdoors Advocate



Master of Markers

“When we try to pick out anything by itself, we find it hitched to everything else in the universe. It’s important for designers to realize their impact on things beyond the ‘project scope,’ because everything we put into this universe will ultimately impact a long system of things.”

A self-motivated, passionate, and hard-working designer, Elena understands the transformative relationship between people and landscape. Her approach to design provides therapeutic, restorative, and thoughtful solutions to current-day cultural, ecological and urban issues. Elena’s time spent in nature has allowed her to reflect on the reparative essence of landscapes on the human spirit, as well as the importance of natural places for respite, community, and transformation.



EDUCATION

Virginia Tech
Bachelor of Landscape Architecture

University of Melbourne
Semester Abroad



PROJECT EXPERIENCE

CCA Johnstown
Johnstown, Pennsylvania

Bakery Square 3.0 Refresh
Pittsburgh, Pennsylvania

North Shore Lot 10 Development
Pittsburgh, Pennsylvania

*Weequahic Park Playground
Newark, New Jersey

*1255 Main Street Courtyards
Rahway, New Jersey

412.246.4792

ealves@stradallic.com

**indicates experience prior to joining Strada.*

NOTICE OF SMALL BUSINESS SELF-CERTIFICATION



The Department is pleased to announce that

STRADA ARCHITECTURE LLC

has successfully completed the Pennsylvania Department of General Services' process for self-certification as a small business under the Commonwealth's Small Business Contracting Program, with the following designation:

BUSINESS TYPE(s):

Building Design Services

CERTIFICATION NUMBER: **341372-2020-11-SB**

CERTIFICATION TYPE: **SMALL BUSINESS**

ISSUE DATE: **11/30/2020**

EXPIRATION DATE: **11/30/2022**

RECERTIFIED DATE:

A handwritten signature in black ink that reads "Kerry L. Kirkland". The signature is written in a cursive style with a large, looped "K" and a long, sweeping "L".

Kerry L. Kirkland, Deputy Secretary
Bureau of Diversity, Inclusion & Small Business Opportunities

ROSELLEN A. PEEK

716.984.2586 RPeek2@rochester.rr.com

EXPERIENCE

2008–present
Western NY

Independent Contract Services

Positions held: Consultant Orientation and Mobility Services/Teacher of the Visually Impaired. Providing evaluations, recommendations and direct services to various school districts in the Western New York area.

1991–present
Buffalo

St. Mary's School for the Deaf

Positions held: Substitute teacher, birth-21; Speech-Language Therapist, birth-21; Auditory Training/Listening Skills teacher, birth-21; Classroom teacher, Elementary Special Needs, ages K-6; Current position: Teacher of the Blind/Visually Impaired, birth-21; Orientation and Mobility Specialist, birth-21; Deafblind Specialist, birth-21

Summer 2001
Buffalo

Buffalo City Schools, School 84

Student teaching experience. Blind & Visually Impaired summer program. Grades 3-5.

Spring 1991
Dalton

Keshequa Central School District

Student teaching experience. Hearing-Impaired mainstream program, Grades K-6. Followed by long-term substitute Speech-Language therapist. Hearing-Impaired classroom, K-6. Responsibilities: interpreting, academic instruction and consultation with classroom teachers.

AGENCY EXPERIENCE

2006–2018
Buffalo

Elizabeth Pierce Olmsted, M.D. Center for the Visually Impaired.

Orientation and Mobility Specialist, consultant services
Internship Experience: Orientation and Mobility Specialist.

COMMITTEE EXPERIENCE

2020–present
Buffalo

St. Mary's School for the Deaf – COVID Re-Opening Committee

Collaborated with members of Administration, the Maintenance Department, colleagues and local health consultants to develop a safe, functional, Deaf friendly school re-opening plan.

2017–2019
Buffalo

St. Mary's School for the Deaf Classroom Redesign

Collaborated with colleagues and architectural firm to design a classroom space to meet the needs of students of the Secondary Special Needs Achievement Program.

2016–2018
Buffalo

St. Mary's School for the Deaf Library Redesign Committee

Collaborated with colleagues and architectural firm to develop a space implementing Deaf friendly design principles to the St. Mary's Library remodel project.

2015–present
Buffalo

St. Mary's School for the Deaf - Standing Committees

Conference of Educational Administrators of Schools and Programs for the Deaf (CEASD), Accreditation Committees: Health and Safety; Facilities. Responsibilities: Monitoring/evaluating progress toward long term plans, addressing current safety and facility concerns, implementing CEASD recommendations to ensure re-accreditation.

EDUCATION

2007
New York

City University of New York, Hunter College

Post Graduate Study: Orientation and Mobility Specialist, ACVREP certified.

2003
Geneseo

State University of New York, College at Geneseo

Post Graduate Study: Certification Completion. New York State Permanent Certification in Special Education, concentration in Emotional and Behavioral Disorders.

2001
New York

City University of New York, Hunter College

Post Graduate Study: New York State Permanent Certification, Blind & Partially Sighted

1991
Geneseo

State University of New York, College at Geneseo

Master of Science – Education (Deaf and Hearing Impaired)

Permanent Certification: Teacher of the Deaf and Hearing Handicapped

Bachelor of Science – Speech Pathology and Audiology

Permanent Certification: Teacher of the Speech and Hearing Handicapped

Robert Livorio, PE
Electrical Engineer
Assignment: *Electrical Engineer*

Education:

Master and Bachelor of Architectural Engineering/2014/Pennsylvania State University - University Park, PA

Professional Registrations

Register Professional Engineer - PA

Years with Firm: 6

Years with Other Firms: 0

Professional Experience

Rob is well rounded in the engineering of lighting, power, and fire alarm systems. He exemplifies an enthusiasm for creating great partnerships. Rob realizes that the key to a smart project is a smart team that can collaborate and communicate without hesitation. His detailed oriented nature, allows him to head off engineering issues in the early design phases, thus saving the owner money and keeping the project on schedule. With this heads-up mentality, Rob has garnered repeated client satisfaction and on-going building relationships.

He has worked on a diverse range of projects including non-profit, cultural, education, municipal, and local/state government agency facilities, among others.

Center for Community – Etna, PA

Providing MEP/FP engineering design services for a 10,000 SF renovation of an existing facility into a library/communal space and several apartments.

The Frick Orientation Center – Pittsburgh, PA

Provided MEP engineering design services for the new construction of a 3,000 SF modern style glass box building to better serve the visitors and community. The Orientation Center includes a Learning Room, a Museum Shop, luncheon area, and information/ticketing area.

Pittsburgh Athletic Association Renovation – Pittsburgh, PA

Provided MEP/FP engineering design services for a 135,000 SF renovation of an existing building. The renovated space contains 95,000 SF of office space on four floors and the lower level contains a fitness center.

Carnegie Mellon University Margaret Morrison Carnegie Hall – Pittsburgh, PA

Provided MEP/FP engineering design services for a 3,000 SF renovation of lecture halls A14 and Breed Hall (103), as well as several classrooms/computer labs including CFA 102, CFA 317, CFA 318, and CFA 323.

Federal Galley – Pittsburgh, PA

Provided MEP/FP engineering design services for an 8,500 SF conversion of an existing bank into several restaurants at Nova Place.

Alexander G. Radkoff, PE

Mechanical Engineer

Assignment: *Mechanical Engineer*

Education

Bachelor of Architectural Engineering-Mechanical Option/2014/The Pennsylvania State University – University Park, PA

Professional Registrations

Registered Professional Engineer – PA

Years with Firm: 1

Years with Other Firms: 5

Professional Experience

Alex has experience serving as a project manager and lead mechanical engineer of piping, HVAC, and controls systems. He has developed ASHRAE 90.1-2007 and LEED Version 3& 4 compliant energy models and reports using Virtual Environment 2017 (IESVE) to provide evidence of improved building energy performance compared to national standards. He has selected a diverse range of mechanical system applications, including geothermal (methanol, water, and carbon dioxide), variable refrigerant flow (VRF), steam to hot water heating central plants, chilled water central plants, educational science laboratory exhaust and makeup, radiant floor cooling and heating, vertical stack heat pumps, and dedicated outdoor air variable air volume systems. His timely communication with project architects, manufacturers, and engineers helps to ensure the project schedule and coordination are achieved.

He has worked on a diverse range of projects including non-profit, education, cultural, office, and state/local government agency facilities, among others.

11 Stanwix – Pittsburgh, PA

Provided mechanical engineering analysis services for an existing 23-story building. The purpose of the building analysis was to review ventilation, temperature, and COVID avoidance options.

Children’s Museum of Pittsburgh Museum Lab – Pittsburgh, PA

Provided mechanical engineering design services for a 117,000 SF renovation that was WELL Building Standard and LEED certified. Used a district energy steam and chilled water plant to serve four pipe fan coils and dedicated outside air.

Center for Community – Etna, PA

Providing MEP/FP engineering design services for a 10,000 SF renovation of an existing facility into a library/communal space and several apartments.

Point Park University West Penn Hall – Pittsburgh, PA

Provided ME engineering design services for a 1,350 SF renovation of the first floor of West Penn Hall. This space will serve as a Sales Lab for the School of Business.

Point Park Thayer Hall Concept Study – Pittsburgh, PA

Provided MEP/FP engineering services for a 2,700 SF space in Thayer Hall. The goal is to convert the existing space into offices.

James T. Marsili, CPD**Senior Plumbing & Fire Protection Designer**

Assignment: *Senior Plumbing & Fire Protection Designer*

Education

Associates Degree/1977/Milwaukee School of Engineering - Milwaukee, WI

Professional Registrations

Certified Plumbing Designer (CPD)

Years with Firm: 7

Years with Other Firms: 36

Relevant Work Experience

Jim has experience in the investigation and coordination of applicable code requirements, a must in the plumbing/fire protection industry. Having worked for decades with local code authorities, he has developed invaluable relationships that help a project to stay on-track before and during construction. His ability to understand projects from design through construction results in achieving schedule milestones and budget goals.

Jim coordinates with architects, structural designers, owners, and maintenance directors to provide systems and equipment sized economically for the building's needs. His direct expertise includes storm systems, sanitary systems, and domestic water systems (cold and hot); medical gas systems (oxygen, medical air, medical vacuum, nitrogen, nitrous oxide and W.A.G.D.); and fire protection systems (wet, dry, pre-action, antifreeze, fire pump, and standpipe).

He has experience with a diverse range of projects including education, cultural, office, and state/local government agency facilities, among others.

BPMI Office Renovation and Addition – Monroeville, PA

Provided MEP/FP engineering design services for 66,000 SF renovations and 90,000 SF addition. The project consists of renovations of the 1st and 2nd floor in the main building and the addition of a 4-story building.

Wendell August Forge - Springfield Township, PA

Provided MEP/FP engineering design services for a 57,424 SF design/build project for the new Wendell August Forge manufacturing, warehouse, retail and corporate office facility.

California University of Pennsylvania Coover Hall – California, PA

Provided MEP/FP/Technology/Security engineering design services for this Pennsylvania Department of General Services project which was a life cycle renovation of a 39,000 SF space that brought the building up to current building codes and allowed the University students and personnel to work in an environment conducive to learning.

Edinboro University Baron-Forness Library - Edinboro, PA

Provided MEP/FP engineering design services for the Learning Commons portion (approximately 13,800 SF) of the Master Plan and taking it directly to fit-out located on the second floor of the Baron-Forness Library. The second floor includes an open atrium to the main entrance, additional study rooms, a computer lab and additional book stack space.

Kennywood Park Thomas Land - West Mifflin, PA

Provided MEP/FP engineering design services for a private party pavilion and indoor play area for children. The project also involved providing power for site lighting and four new rides.

THIS CERTIFIES THAT

Allen + Shariff Corporation

* Nationally certified by the: **CAPITAL REGION MINORITY SUPPLIER DEVELOPMENT COUNCIL (MD/DC MSDC)**

*NAICS Code(s): 236220; 541330

* Description of their product/services as defined by the North American Industry Classification System (NAICS)

08/11/2020

Issued Date

07/31/2021

Expiration Date

Adrienne Trimble

Certificate Number

Sharon Pinder, President

By using your password (NMSDC issued only), authorized users may log into NMSDC Central to view the entire profile: <http://nmsdc.org>

Certify, Develop, Connect, Advocate.

* This MBE is certified by an Affiliate of the National Minority Supplier Development Council, Inc.®

NOTICE OF SMALL DIVERSE BUSINESS VERIFICATION

 **pennsylvania**
DEPARTMENT OF GENERAL SERVICES

The Department is pleased to announce that

Allen & Shariff Corporation

has successfully completed the Pennsylvania Department of General Services' process for self-certification as a small business under the Commonwealth's Small Business Contracting Program, and is verified as a Small Diverse Business with the following designation(s):

BUSINESS TYPE(s):
Building Design Services

CERTIFICATION NUMBER: **536512202011-SDB-M**

CERTIFICATION TYPE: **SMALL DIVERSE BUSINESS**

ISSUE DATE: **12/04/2020** EXPIRATION DATE: **11/05/2022**

RE-CERTIFIED DATE:


Kerry L. Kirkland, Deputy Secretary
Bureau of Diversity, Inclusion & Small Business Opportunities

Steve Iski IALD, MIES, LC, LEED AP Principal

Almost 20 years ago, Steve Iski started a lighting design firm in Pittsburgh, based on the beliefs that lighting enhances a person's experience with architecture, and that design is a collaborative process. Since that time, he's been involved in over 350 projects across the globe, including lighting/daylighting of the 'Greenest Skyrise in America'. His interests extend to product development, with which he has been involved in the design of numerous custom and standard fixtures. The merger of studioi with Lam Partners expands upon this success, and extends the reach and skills of the combined firm. As a Principal and Pittsburgh Director of Lam Partners, Steve's role is to continue to share his beliefs about lighting and design.



Education

The Pennsylvania State University
Master of Architectural Engineering

The Pennsylvania State University
Bachelor of Architectural Engineering

Professional Affiliations & Certifications

Professional Member of the IALD

Member of the IES

Lighting Certified by NCQLP

LEED Accredited Professional, USGBC

IES OBA Whiteness Rendering
Technical Committee

Selected Teaching and Lectures

Pittsburgh ASID Guest Lecture, 2005

Pittsburgh CSI Guest Lecture, 2008

Penn State University School of
Architecture Guest Lecturer - 2008,
2009, 2011, 2015, 2018

Penn State University Raymond A
Bowers Lecturer - 2014

IES Annual Conference Lecturer, 2014

Penn State University School of
Architecture Guest Critic - 2019

Carnegie Mellon University SoA Guest
Critic - 2020, 2021

Penn State Architectural Engineering -
Senior Thesis Guest Critic, 2020

Penn State University Project Candle
Partner - 2014 - Present

Selected Awards

2004 IIDA Pittsburgh Award - Willow

2011 AIA Pennsylvania Merit Award,
AIA Tri-State Design Award - Chatham
University, Mellon Hall

2015 IES Award of Merit, Robert J
Coury Global Center

2016 AIA Pennsylvania Award of Honor
- The TOWER at PNC Plaza

2020 AIA Pennsylvania Award of Honor
- ANSYS Hall

Sarah Fisher IALD, LEED BD+C, LC Principal

Sarah is a Principal at Lam Partners, with over 18 years of experience in architectural lighting design. Her career began in theatrical lighting, where she served in all capacities, from lighting designer to union stagehand. Prior to pursuing her Master's degree in Architectural Lighting Design from Parsons School of Design, Sarah explored the opportunity of working as a lighting director in broadcast television. As a senior member of the Lam team, Sarah offers her special expertise in sustainable lighting and energy code compliance, and a strong collaborative approach. Additionally, she serves on multiple RP committees for the IES, and embraces all facets of a good lighting design challenge.



Education

Parsons – The New School for Design
MA Architectural Lighting Design, 2002
SUNY Purchase School for the Arts
BFA Theatrical Lighting Design &
Technology, 1994

Professional Affiliations & Certifications

International Association of Lighting Designers, Professional Member
Illuminating Engineering Society of North America, Member
IES RP-28 Lighting for the Aged and Partially Sighted Committee Member
IES RP-38 Lighting for Videoconferencing and Presentation Committee Member
NCQLP Lighting Certified
USGBC LEED Accredited Professional

Selected Teaching and Lectures

Guest Lecturer, McGill University, 2020
Guest Lecturer, Parsons The New School for Design, 2013
Guest Lecturer, Columbia University, 2013-2014
AIA+2030: "Illuminating Savings – Daylighting and Integrated Lighting Strategies"
Lecturer, Illuminating Engineering Society, 2011-2012

Selected Awards

IES Award of Merit
2014 – The Jackson Laboratory, LEED Gold
2012 – University of Portland – Chapel of Christ the Teacher
2010 – University of Portland – Shiley School of Engineering, LEED Platinum
2012 – Guth Award – University of Portland Bell Tower & Marian Garden

Professional Experience

Lam Partners, Cambridge, MA, 2016-Present
Principal
AKF, Boston, MA, 2015-2016
Senior Lighting Designer
Atelier Ten, New Haven, CT, 2012-2014
Associate
Interface Engineering Lighting Studio, Portland, OR
Senior Lighting Designer, 2007-2012
Lighting Designer, 2004-2006
Glumac, Portland, OR, 2006-2007
Senior Lighting Designer
Focus Lighting, New York, NY, 2003-2004
Lighting Designer
Cosler Theater Design, New York, NY, 2002-2003
Lighting Designer
CNN New York and Financial Studio, New York, NY, 1999-2001
Lighting Director

Jeffrey E. Babich, INCE Bd. Cert.
Principal

Education

- Johns Hopkins University
 - Master of Arts in Acoustics and Audio Design
- Purdue University
 - Bachelor of Science in Mechanical Engineering

Professional

- Institute of Noise Control Engineering, Board Certified Member & Member of Building Acoustics Technical Committee
- National Council of Acoustical Consultants – Firm Member
- Acoustical Society of America, Associate Member
- InfoComm International, Certified Technology Specialist
- Chatham University, Interior Design Studio – Guest Lecturer



Qualifications

Jeffrey E. Babich is an acoustical consultant with 19 years of experience. Skills include lead acoustical design, testing, project management for audiovisual and technology systems, and business development. He has consulted on hundreds of acoustics and audiovisual designs for universities, schools, hospitals, offices, worship spaces, theaters, and multi-family dwellings throughout North America.

Recommendations for education facilities are consistent with ANSI S12.60, LEED v4.1, LEED for Schools, and the ASHRAE Handbook's chapter on Sound and Vibration Control.

Babich has experience on the following K-12 school projects:

- **North Catholic High School Chapel:** Acoustical design and consulting for the fit out of a new chapel for the school in Cranberry Township, PA.
- **Deer Lakes High School Auditorium:** Room acoustics analysis and recommendations for a high school auditorium in Russellton, PA.
- **Harry W. Lockley Early Learning Center:** Acoustical consulting services for a LEED for Schools renovation and addition to a primary school in New Castle, PA.
- **Manchester Charter School:** Acoustical design and consulting for a renovation for a charter school located in a historic building shared with the MuseumLab of the Children's Museum of Pittsburgh.
- **Oakland Catholic High School:** Sound isolation design review for a music practice room in a renovated facility in Pittsburgh, PA.
- **Pittsburgh Montessori School:** Acoustical testing, analysis and sound system design review for an auditorium/gymnasium in Pittsburgh, PA.
- **Seneca Valley New K-6 School:** Acoustical design and consulting for a \$60M, 196,000 SF elementary school in Butler County, PA just north of Pittsburgh.
- **Shady Side Academy, New Middle School:** Acoustical design and consulting for a \$16M new middle school for a private school in Fox Chapel, PA.
- **Sewickley Academy, Means Alumni Hall Event Center:** Acoustical design and consulting for a renovation to a gymnasium and event center for the school.

Babich also has experience on the following higher education projects:

- **Carnegie Mellon University – ANSYS Hall and TCS Hall:** Acoustical consulting for two new buildings on CMU's campus in Pittsburgh, PA.
- **Duquesne University:** Acoustical design for renovations in the School of Law Classrooms, Rockwell Hall 4th Floor, and Music Rehearsal and Performance Space in Pittsburgh, PA.
- **Kent State University, Franklin Hall & Design Innovation Hub:** Acoustic design for the School of Journalism and Mass Communication. And acoustic and noise control for a renovation to the 1970s Art Building transforming it into a Design Innovation Hub for the university.
- **Lock Haven University – Price Auditorium:** Acoustical design for multipurpose auditorium for lectures and music performances in Lock Haven, PA.
- **West Virginia University – Downtown Library Atrium Improvements:** Acoustical consulting for renovations to an atrium at the library at the Downtown Morgantown, WV campus.



EDUCATION

West Virginia University 1994
BS, Landscape Architecture

PROFESSIONAL EXPERIENCE

26 Years

REGISTRATIONS & LICENSES

Registered Landscape
Architect:

- Pennsylvania
- Virginia
- West Virginia
- Maryland

SKILLS

- Walkability Studies
- Feasibility Studies
- Site Inventory and Analysis Improvements
- Conceptual Design and Development Plans
- Utilities Design
- Roadway Infrastructure

HIGHLIGHTS OF EXPERIENCE

Mr. Ernstes manages Triad's Northwestern Regional Civil Engineering & Land Development department. He provides professional services in the areas of site inventory and analysis, planning, landscape architecture, and permitting. His responsibilities include project management, client project coordination, design production, quality control and quality assurance. Mr. Ernstes' experience includes land and infrastructure development, permitting, utilities, stormwater management and storm drain design / best management practices, and erosion and sediment controls.

RELEVANT PROJECT EXPERIENCE

Autism Clinic, Morgantown, WV

As Project Designer, Mr. Ernstes was responsible for the site design for this .28-acre clinic. Mr. Ernstes prepared a scaled geometric layout depicting the building location, parking limits, travelways, entrance/egress driveway and sidewalks, building entrances, building corners, and site elevations. Included in the plan were stormwater management, erosion and sediment control, and landscaping. A Site Plan package was provided which included construction details.

The Crossings, Morgantown, WV

As Project Designer, Mr. Ernstes was responsible for the site civil design transition of a 15.1-acre hillside farm into a 180,000 square foot, four-story senior living facility. Included in the project was site selection to best locate the structure away from abandoned strip mines and wetlands, and to create stormwater management best-practice features which included moving 100,000 cubic yards of earth.

Liberty Street Streetscape, Public Parking & Restroom Facility, Middleburg, VA

As Project Designer, Mr. Ernstes was responsible for planning and site civil design of a 33 space public parking lot, public restroom facility and streetscape improvements. The Town of Middleburg is a historic district and local materials were utilized to blend the improvements with the Town's existing historic character. Brick pavers were utilized within designated parking space areas and along Liberty Street sidewalks. Proposed landscaping and street trees were selected based on native species within the district. Full construction documents were prepared including layout, grading, storm drainage, landscaping, erosion and sediment control and project specifications.

Stepping Stones Accessible Playground, Morgantown, WV

As Project Manager, Mr. Ernstes was responsible for preparing a preliminary playground layout and grading concept plans for this 100% handicapped accessible playground which serves both children and adults with disabilities. Requisite site information necessary to complete project funding applications were provided, along with attaining buy-in from consultants and constituents.





EDUCATION

Woodson School of Surveying

PROFESSIONAL EXPERIENCE

43 Years

CERTIFICATIONS

OSHA Certificate

CADD Certificate

REGISTRATIONS & LICENSES

Professional Surveyor

West Virginia

SKILLS

FEMA Flood Surveys

ALTA / NSPS Land Title

Surveys

Boundary

Subdivision

Construction Stake Out

As-Build

Bridge & Highways

Industrial

PROFESSIONAL AFFILIATIONS

WV Association of Professional
Surveyors

HIGHLIGHTS OF EXPERIENCE

Mr. Graham brings over 43 years of diverse surveying and construction management experience to the Triad team. He is responsible for all survey services provided in our northwest region. Mr. Graham has provided survey services to municipalities, residential, commercial and industrial developments and construction groups. His background includes experience as a Professional Surveyor, Field Engineer, Consultant, Construction Supervision, and Project Management.

RELEVANT PROJECT EXPERIENCE

Sheetz-Mileground, Morgantown, WV

Mr. Graham provided oversight for survey services for this 4,893 square foot one-story structure, fuel canopy, underground tank farm, parking areas, and three access point facility. An ALTA/NSPS survey was completed along with an existing condition, topographic survey, and soil boring stakeout for a subsurface geotechnical exploration.

Allegheny County Teachers (ACT) 1st Federal Credit Union, Romney, WV

Mr. Graham oversaw the deed research and field run survey of parcels identified to be used for this project. Property limits were identified and a topographic survey to create base mapping was designed. The finished product depicted the property outline, surface mapping, existing features, utility locations and markings.

WVU Caperton Indoor Practice Facility, Morgantown, WV

Mr. Graham oversaw the detailed topographic survey for this facility. Spot elevations were determined on a ten foot grid for the purpose of determining the degree of variances in grade. Vertical datum was obtained to establish benchmarking with GPS.

Mountain State University, Beckley, WV

Mr. Graham oversaw this ALTA/NSPS Land Title Survey. Activities performed included field run surveys to locate boundary, buildings, and all existing features including utilities and storm water systems.

Construction Stake Out/As-Built Surveys

As Manager of Field Operations, Mr. Graham directed field and office efforts for many construction projects. The work included computations for stakeout by field crews, performing quality control evaluations for post stakeout data, providing clients with cutsheets and layout schematics. Mr. Graham was responsible for all final as-built plans and submissions from direction of field efforts through final plan preparation. As-Built plans depicted final constructed locations for all features on a given project including invert elevations for all sanitary and storm systems. Final Storm water management ponds, volumetrics, and outfall structure details. Final plans were submitted to appropriate government agency for acceptance.

- Safeway, Broadlands, VA
- Ashburn Business Park, Ashburn, VA
- Washington Redskins Practice Facility and fields, Ashburn, VA
- Greenwood Commons, Round Hill, VA
- Navy Federal Credit Union, Sterling, VA
- Loudoun County High School, Leesburg, VA

2021 WEST VIRGINIA PROFESSIONAL SURVEYOR 2021

The West Virginia Board of Professional Surveyors certifies that the individual listed below is a PROFESSIONAL SURVEYOR who has qualified for a license under Chapter 30, Article 13A, Code of West Virginia, and has met the requirements for license renewal for the period ending June 30, 2021



DAVID L. [REDACTED] HAM
P.S. [REDACTED]



Board Members

Sefton Stewart, PS, Chairman

Tom Rayburn, PS, Secretary

Gary Facemyer, PE, PS

Lantz Rankin, PS

Douglas McElwee, Esq.

Issued
07/01/2020



Expires
06/30/2021

Executive Director
Kristi Justice

2021

State of West Virginia
Board of Professional Surveyors



Expires:
06/30/2021

DAVID L. GRAHAM
P.S.LIC. [REDACTED]

Is a PROFESSIONAL SURVEYOR who has qualified for a license under Chapter 30, Article 13A, Code of West Virginia, and has met the requirements for license renewal for the period ending June 30, 2021

State of West Virginia
Board of Professional Surveyors
1124 Smith Street, Suite B127C
Charleston, WV 25301

Phone (304) 558-0350
Fax (304) 558-0352

Website: www.wvbps.wv.gov
Email: wvbps@wv.gov



PERSONAL SUMMARY

Mr. Taylor has a wide range of projects with a major emphasis in medical facilities of all types and sizes, historical buildings, transportation and parking facilities, residence halls and educational buildings at major institutions of higher learning, and commercial facilities. His work includes cast-in-place concrete, post-tensioned concrete, and conventional steel framing systems. Not only does he engage the rest of the design team and the owner to provide creative, economic, and sustainable structural solutions, but he guides his team through a hands-on approach. He is involved in daily project supervision, project scheduling, team and client communications, and design oversight. He routinely conducts progress and coordination meetings on projects in progress, keeping in mind the needs and goals of his clientele.

EDUCATION

Bachelor of Architectural Engineering
Pennsylvania State University, 2000
Master of Architectural Engineering
Pennsylvania State University, 2000

PROFESSIONAL REGISTRATIONS

Licensed Professional Engineer in Colorado, Florida, Georgia, Kentucky, Mississippi, Nebraska, New York, North Carolina, Ohio, Pennsylvania, and West Virginia

EXPERIENCE

Mr. Taylor has served as the Principal for our West Virginia office since its opening, and has provided his structural expertise for a wide variety of projects including facility studies, new construction and renovations, building additions, and structural condition assessments throughout the United States.

Mr. Taylor's experience includes work for many different project types, including designing entire new structures; rehabilitating historic structures; facility expansions, additions, and department upgrades; and providing structural solutions for equipment including installations and retrofitting.

Recent projects designed by Mr. Taylor have reached construction costs as large as \$280 million. His daily responsibilities include attending design and development meetings, supervising the production of construction documents, reviewing shop drawings, issuing revision sketches, attending site visits and construction meetings, and completing site visit and structural assessment reports.

FEATURED PROJECTS

West Virginia University Oglebay Hall | Morgantown, WV

Home of the Department of Forensic and Investigative Science at West Virginia University, this project added state-of-the-art classrooms, labs, and support spaces as well as the restoration of brick, limestone, and terracotta for the exterior façade. The structure also included the addition of Ming Hsieh Hall, containing two lecture halls and a rooftop parking deck. Additionally, exterior facade restoration was completed for this building that is listed on the National Register of Historic Places.

66,000 sq ft | \$23.5M Addition & Renovation

21c Museum Hotel Cincinnati | Cincinnati, OH

The renovation of this historic building originally constructed in 1912 was designed to add new life to the existing structure for the new 21c Museum Hotel. This 11-story, 156-room boutique hotel has a rooftop terrace, the Metropole restaurant, and 8,000 square feet of exhibition space.

156 rooms, 8,000 sq ft exhibition space | \$75M Construction

Dinosaurs in Their Time | Pittsburgh, PA

This renovation project entailed design work for the newest exhibit space at the Carnegie Museum of Natural History. Renovation work included the conversion of an open-air courtyard into a 3-story, tiered exhibit space illustrating life during the Mesozoic Era, resulting in multiple awards and a LEED Silver certification.

18,000 sq ft | \$35M Renovation & Addition

ROBERT S. BERTOCCHI ^{PE}

SENIOR PROJECT ENGINEER



PERSONAL SUMMARY

Mr. Bertocchi's expertise ranges across many industry sectors. His clients are diverse, including the United States Army, K-12 school districts, the United States Corps of Engineers, private residential developers, museums, and major universities. His projects involve new construction, surveys and assessments, adaptive reuse, and historical restoration work among other services. His experience positions him to be able to identify efficient system solutions for a wide range of building issues, and to address the design team's questions and concerns quickly and concisely. Mr. Bertocchi maintains his team's focus on the project's key structural issues, supporting their dedication to the client's project goals from schematic design to Construction Documents and all the way to close-out.

EDUCATION

Bachelor of Science, Civil & Environmental Engineering
University of Pittsburgh, 1997
Master of Science, Engineering
University of Illinois, 1998

PROFESSIONAL REGISTRATIONS

Licensed Professional Engineer in Maryland, Michigan, Ohio, Pennsylvania, Tennessee, Virginia, and West Virginia

EXPERIENCE

Mr. Bertocchi began consulting on structures in 1998. He has since served on a wide variety of projects including facility studies, new designs, renovations and rehabilitations, additions, and historic preservations.

Mr. Bertocchi has provided structural design services for multiple large-scale projects, including multi-story buildings, school additions, and hotels. His most notable works include the design of a 5-level, post-tensioned concrete infill structure used to renovate H. H. Richardson's Allegheny County Jail into court facilities; the design and construction review of the 14-story, concrete-framed Heritage IV Center in Annandale, Virginia; the design and construction review of the steel-framed Southpointe Town Center mixed-use development buildings in Cecil Township, Pennsylvania; and the design and construction review of the steel-framed Children's Hospital of Pittsburgh Medical Office Building in South Fayette Township, Pennsylvania.

Mr. Bertocchi has consulted for numerous K-12 projects, including high school renovations and additions for the Hollidaysburg area, Mifflinburg area, and Everett area school districts. These high school renovation projects all involved classroom additions and interior renovation work. Often, the interior renovation work included the addition of mechanical rooftop units to existing roof framing, which required additional analysis and reinforcement.

Mr. Bertocchi supervises projects, schedules design meetings and tasks, coordinates with other A/E/C consultants, communicates with clientele, and leads progress meetings on a daily basis.

FEATURED PROJECTS

Loudoun County High School | Leesburg, VA

This project included both renovations and additions to the existing high school. The renovations transformed an auxiliary gymnasium into an updated library. The additions included a new auxiliary gymnasium, a two-story classroom wing, and a dramatic bridge that spans over a courtyard and a one-story classroom area.

Approx. 74,000 sq ft | \$20M Renovation & Addition

Hollidaysburg Area Senior High School | Hollidaysburg, PA

Alterations and additions were completed for this project across various portions of the campus. Work included new elevated floors, classroom and storage spaces, a stair tower, gymnasium space, music and art space, and numerous rooftop mechanical units and canopies.

Approx. 22,245 sq ft | \$27.8M Alteration & Addition

Supporting Consultants



Rich Chudzik, President

Office: 716.823.0006 (Ext. 217)

Mobile: 248.613.7065

rchudzik@trohypoint.com

www.trophypoint.com

Pittsburgh, PA | Blasdell, NY | New York, NY



James Mauler, CM-BIM, President/CEO

Office: 412.642.2701 x1004

Fax: 412.642.2703

Cell: 412.292.4007

jmauler@cadnetics.com

www.cadnetics.com

Pittsburgh, PA | Charlotte, NC | Columbus, OH

ACORD™

CERTIFICATE OF LIABILITY INSURANCE

DATE (MM/DD/YYYY)

4/14/2021

THIS CERTIFICATE IS ISSUED AS A MATTER OF INFORMATION ONLY AND CONFERS NO RIGHTS UPON THE CERTIFICATE HOLDER. THIS CERTIFICATE DOES NOT AFFIRMATIVELY OR NEGATIVELY AMEND, EXTEND OR ALTER THE COVERAGE AFFORDED BY THE POLICIES BELOW. THIS CERTIFICATE OF INSURANCE DOES NOT CONSTITUTE A CONTRACT BETWEEN THE ISSUING INSURER(S), AUTHORIZED REPRESENTATIVE OR PRODUCER, AND THE CERTIFICATE HOLDER.

IMPORTANT: If the certificate holder is an ADDITIONAL INSURED, the policy(ies) must have ADDITIONAL INSURED provisions or be endorsed. If SUBROGATION IS WAIVED, subject to the terms and conditions of the policy, certain policies may require an endorsement. A statement on this certificate does not confer any rights to the certificate holder in lieu of such endorsement(s).

| | | |
|--|---|-----------------------|
| PRODUCER USI Insurance Services, LLC Six PPG Place, Suite 200 Pittsburgh, PA 15222 412 765-3510 | CONTACT NAME: Collin Jackson | |
| | PHONE (A/C, No, Ext): 412 765-3510 | FAX (A/C, No): |
| | E-MAIL ADDRESS: Collin.Jackson@usi.com | |
| | INSURER(S) AFFORDING COVERAGE | |
| | INSURER A : RLI Insurance Company | NAIC # 13056 |
| | INSURER B : Continental Casualty Company | 20443 |
| INSURED Strada Architecture LLC 611 William Penn Place Suite 700 Pittsburgh, PA 15219 | INSURER C : | |
| | INSURER D : | |
| | INSURER E : | |
| | INSURER F : | |

COVERAGES

CERTIFICATE NUMBER:

REVISION NUMBER:

THIS IS TO CERTIFY THAT THE POLICIES OF INSURANCE LISTED BELOW HAVE BEEN ISSUED TO THE INSURED NAMED ABOVE FOR THE POLICY PERIOD INDICATED. NOTWITHSTANDING ANY REQUIREMENT, TERM OR CONDITION OF ANY CONTRACT OR OTHER DOCUMENT WITH RESPECT TO WHICH THIS CERTIFICATE MAY BE ISSUED OR MAY PERTAIN, THE INSURANCE AFFORDED BY THE POLICIES DESCRIBED HEREIN IS SUBJECT TO ALL THE TERMS, EXCLUSIONS AND CONDITIONS OF SUCH POLICIES. LIMITS SHOWN MAY HAVE BEEN REDUCED BY PAID CLAIMS.

| INSR LTR | TYPE OF INSURANCE | ADDL INSR | SUBR WVD | POLICY NUMBER | POLICY EFF (MM/DD/YYYY) | POLICY EXP (MM/DD/YYYY) | LIMITS |
|----------|--|-----------|----------|---------------|-------------------------|-------------------------|---|
| A | <input checked="" type="checkbox"/> COMMERCIAL GENERAL LIABILITY <input type="checkbox"/> CLAIMS-MADE <input checked="" type="checkbox"/> OCCUR GEN'L AGGREGATE LIMIT APPLIES PER: <input type="checkbox"/> POLICY <input type="checkbox"/> PRO-JECT <input checked="" type="checkbox"/> LOC <input type="checkbox"/> OTHER: | | | PSB0002922 | 05/01/2020 | 05/01/2021 | EACH OCCURRENCE \$1,000,000 DAMAGE TO RENTED PREMISES (Ea occurrence) \$1,000,000 MED EXP (Any one person) \$10,000 PERSONAL & ADV INJURY \$1,000,000 GENERAL AGGREGATE \$2,000,000 PRODUCTS - COMP/OP AGG \$2,000,000 \$ |
| A | AUTOMOBILE LIABILITY <input type="checkbox"/> ANY AUTO OWNED AUTOS ONLY <input checked="" type="checkbox"/> HIRED AUTOS ONLY <input type="checkbox"/> SCHEDULED AUTOS NON-OWNED AUTOS ONLY | | | PSB0002922 | 05/01/2020 | 05/01/2021 | COMBINED SINGLE LIMIT (Ea accident) \$1,000,000 BODILY INJURY (Per person) \$ BODILY INJURY (Per accident) \$ PROPERTY DAMAGE (Per accident) \$ \$ |
| A | <input checked="" type="checkbox"/> UMBRELLA LIAB <input checked="" type="checkbox"/> OCCUR <input type="checkbox"/> EXCESS LIAB <input type="checkbox"/> CLAIMS-MADE <input type="checkbox"/> DED <input type="checkbox"/> RETENTION \$ | | | PSE0001930 | 05/01/2020 | 05/01/2021 | EACH OCCURRENCE \$5,000,000 AGGREGATE \$5,000,000 \$ |
| A | WORKERS COMPENSATION AND EMPLOYERS' LIABILITY ANY PROPRIETOR/PARTNER/EXECUTIVE OFFICER/MEMBER EXCLUDED? <input checked="" type="checkbox"/> Y <input checked="" type="checkbox"/> N (Mandatory in NH) If yes, describe under DESCRIPTION OF OPERATIONS below | | N/A | PSW0002531 | 05/01/2020 | 05/01/2021 | <input checked="" type="checkbox"/> PER STATUTE <input type="checkbox"/> OTH-ER E.L. EACH ACCIDENT \$1,000,000 E.L. DISEASE - EA EMPLOYEE \$1,000,000 E.L. DISEASE - POLICY LIMIT \$1,000,000 |
| B | Professional Liab | | | AEH591929630 | 04/30/2020 | 04/30/2021 | \$1,000,000 Each Occ \$2,000,000 Aggregate |

DESCRIPTION OF OPERATIONS / LOCATIONS / VEHICLES (ACORD 101, Additional Remarks Schedule, may be attached if more space is required)

Evidence of Coverage

CERTIFICATE HOLDER

CANCELLATION

Strada Architecture, LLC
 611 William Penn Place, Suite 700
 Pittsburgh, PA 15219-0000

SHOULD ANY OF THE ABOVE DESCRIBED POLICIES BE CANCELLED BEFORE THE EXPIRATION DATE THEREOF, NOTICE WILL BE DELIVERED IN ACCORDANCE WITH THE POLICY PROVISIONS.

AUTHORIZED REPRESENTATIVE



© 1988-2015 ACORD CORPORATION. All rights reserved.

ADDENDUM ACKNOWLEDGEMENT FORM
SOLICITATION NO.:

Instructions: Please acknowledge receipt of all addenda issued with this solicitation by completing this addendum acknowledgment form. Check the box next to each addendum received and sign below. Failure to acknowledge addenda may result in bid disqualification.

Acknowledgment: I hereby acknowledge receipt of the following addenda and have made the necessary revisions to my proposal, plans and/or specification, etc.

Addendum Numbers Received:

(Check the box next to each addendum received)

☒ Addendum No. 1

☒ Addendum No. 2

☐ Addendum No. 3

☐ Addendum No. 4

☐ Addendum No. 5

☐ Addendum No. 6

☐ Addendum No. 7

☐ Addendum No. 8

☐ Addendum No. 9

☐ Addendum No. 10

I understand that failure to confirm the receipt of addenda may be cause for rejection of this bid. I further understand that any verbal representation made or assumed to be made during any oral discussion held between Vendor's representatives and any state personnel is not binding. Only the information issued in writing and added to the specifications by an official addendum is binding.

Strada Architecture LLC

Company



Authorized Signature

April 22, 2021

Date

NOTE: This addendum acknowledgement should be submitted with the bid to expedite document processing.

DESIGNATED CONTACT: Vendor appoints the individual identified in this Section as the Contract Administrator and the initial point of contact for matters relating to this Contract.

Abigail Mountain, Principal

(Name, Title)

Abigail Mountain Principal

(Printed Name and Title)

611 William Penn Pl. Suite 700, Pittsburgh, PA 15219

(Address)

412.263.3800 / 412.471.5704

(Phone Number) / (Fax Number)

amountain@stradallc.com

(email address)

CERTIFICATION AND SIGNATURE: By signing below, or submitting documentation through wvOASIS, I certify that I have reviewed this Solicitation in its entirety; that I understand the requirements, terms and conditions, and other information contained herein; that this bid, offer or proposal constitutes an offer to the State that cannot be unilaterally withdrawn; that the product or service proposed meets the mandatory requirements contained in the Solicitation for that product or service, unless otherwise stated herein; that the Vendor accepts the terms and conditions contained in the Solicitation, unless otherwise stated herein; that I am submitting this bid, offer or proposal for review and consideration; that I am authorized by the vendor to execute and submit this bid, offer, or proposal, or any documents related thereto on vendor's behalf; that I am authorized to bind the vendor in a contractual relationship; and that to the best of my knowledge, the vendor has properly registered with any State agency that may require registration.

Strada Architecture LLC

(Company)

Abigail Mountain Principal

(Authorized Signature) (Representative Name, Title)

Abigail Mountain, Principal

(Printed Name and Title of Authorized Representative)

April 22, 2021

(Date)

412.263.3800 / 412.471.5704

(Phone Number) (Fax Number)

Revised 03/15/2021

611 William Penn Pl.
Suite 700
Pittsburgh, PA 15219
412.263.3800

325 Chestnut St.
Suite 909
Philadelphia, PA 19106
215.440.0190

CONTACT:
Abby Mountain
412.246.2826,
amountain@stradallc.com



Department of Administration
Purchasing Division
2019 Washington Street East
Post Office Box 50130
Charleston, WV 25305-0130

State of West Virginia
Centralized Expression of Interest
Architect/Engr

Proc Folder: 858601

Doc Description: A&E EOI for Renovation and Assessment Projects at the WVSDDB

Reason for Modification:

Addendum #2 issued to revise
Section 3: Project Specifications
of EOI to include Item #9 and
extend bid due date.

Proc Type: Central Contract - Fixed Amt

| Date Issued | Solicitation Closes | Solicitation No | Version |
|-------------|---------------------|-------------------------|---------|
| 2021-04-14 | 2021-04-22 13:30 | CEOI 0403 DBS2100000001 | 3 |

BID RECEIVING LOCATION

BID CLERK
DEPARTMENT OF ADMINISTRATION
PURCHASING DIVISION
2019 WASHINGTON ST E
CHARLESTON WV 25305
US

VENDOR

Vendor Customer Code:

Vendor Name : Strada Architecture LLC

Address :

Street : 611 William Penn Pl. Suite 700

City : Pittsburgh

State : PA

Country : USA

Zip : 15219

Principal Contact : Abby Mountain

Vendor Contact Phone: 412.246.2826

Extension:

FOR INFORMATION CONTACT THE BUYER

Joseph E Hager III
(304) 558-2306
joseph.e.hageriii@wv.gov

**Vendor
Signature X** 

FEIN# 25-1870627

DATE Apr 22 2021

All offers subject to all terms and conditions contained in this solicitation

ADDITIONAL INFORMATION

Addendum

Addendum #2 issued to distribute the attached documentation to the vendor community

The Acquisition and Contract Administration Section of the Purchasing Division ("Purchasing Division") is soliciting Expression(s) of Interest ("EOI" or "Bids") for West Virginia Schools for the Deaf and the Blind ("Agency"), from qualified firms to provide architectural/engineering services ("Vendors") as defined herein per the attached specifications and terms and conditions.

PROJECT: The mission or purpose of the project for which bids are being solicited is to provide necessary engineering, and other related professional services to design as well as provide construction contract administration services for a School for the Blind HVAC, electrical, and windows upgrades, Central Supply building structural assessment, Seaton Hall Boys Dorm renovation into administrative offices, School for the Deaf building elevator upgrade, Keller Hall building roof replacement, IRC building parking lot completion, Blue & Gold building renovation, and update all campus building floor plans and related work at the West Virginia Schools for the Deaf and the Blind. The project will include the design, specification, and construction administration of all necessary improvements to the buildings ("Project").

| INVOICE TO | SHIP TO |
|---|---|
| SCHOOL FOR THE DEAF & BLIND 301 EAST MAIN ST ROMNEY WV 26757-1894 US | SCHOOL FOR THE DEAF & BLIND 301 EAST MAIN ST ROMNEY WV 26757-1894 US |

| Line | Comm Ln Desc | Qty | Unit Issue |
|------|---------------------------|-----|------------|
| 1 | Architectural Engineering | | |

| Comm Code | Manufacturer | Specification | Model # |
|-----------|--------------|---------------|---------|
| 81101508 | | | |

Extended Description:

Services of an architectural engineering firm

SCHEDULE OF EVENTS

| <u>Line</u> | <u>Event</u> | <u>Event Date</u> |
|-------------|--------------|-------------------|
|-------------|--------------|-------------------|

| | | | |
|---------------|----------------|---|-----------|
| | Document Phase | Document Description | Page 3 |
| DBS2100000001 | Final | A&E EOI for Renovation and Assessment Projects at the WVSDb | |

ADDITIONAL TERMS AND CONDITIONS

See attached document(s) for additional Terms and Conditions