

# THRASHER

RECEIVED

2020 SEP 10 AM 9:26

WV PURCHASING  
DIVISION



## WV DEP - KEMPTON REFUSE REHABILITATION

CEOI 0313 DEP2100000002

Submitted by:  
The Thrasher Group, Inc.  
September 10, 2020



COMPLEX PROJECTS  
REQUIRE RESOLVE  
**THRASHER'S GOT IT**

September 10, 2020

Attn: Guy Nisbet  
Department of Administration, Purchasing Division  
2019 Washington Street East  
Charleston, WV 25305-0130

*RE: WV DEP Kempton Refuse Rehabilitation Project*

Dear members of the selection committee:

The Thrasher Group, Inc. is pleased to present our qualifications to the West Virginia Department of Environmental Protection for the Kempton Refuse Rehabilitation project. As a West Virginia-based company that has been serving the state for 37 years, we take pride in projects that so clearly improve our state's landscape and restore the safety of our infrastructure.

We have a longstanding reputation for successfully completing projects such as this one. Our experience in stream bank stabilization and Acid Mine Drainage (AMD) remediation will allow us to work with you to efficiently identify project goals, establish accurate budgets, and develop successful outcomes.

We have a longstanding history with this region of West Virginia, having worked on projects in this general area of the same scope. We consider ourselves a partner with WVDEP AML – our support spans beyond general infrastructure to include true community projects.

We appreciate the opportunity to partner with you and look forward to further speaking with you about the needs of this project.

Sincerely,  
The Thrasher Group, Inc.

Richard Hovatter Jr., PE  
Project Manager



**Cover Letter..... 2**

**Table of Contents..... 3**

↳ **Qualifications, Experience, and Past Performance..... 4-33**

    Company Overview.....5-14

    Staffing Plan.....15

    Key Staff Resumes.....16-22

    Workload and Capacity.....23

    Project Experience.....24-30

↳ **Project Approach.....31-33**

    Goals and Objectives.....32

    Project Management Plan.....33

↳ **Required Forms.....34-45**

↳ **Addendum Acknowledgment..... 46**





*Qualifications, Experience,  
and Past Performance*

THRASHER





- > Utility Engineering
- > Architecture
- > Site Engineering
- > Environmental
- > Survey
- > Transportation
- > Construction Services
- > Geospatial

### Main Point of Contact:

Richard Hovatter Jr., PE  
Project Manager  
rhovatter@thethrashergroup.com  
Cell: 304-669-6848  
Office: 304-205-8809



# 400

## EMPLOYEES

- 39** Licensed Professional Engineers
- 11** Licensed Professional Surveyors
- 6** Licensed Professional Architects
- 3** Licensed Professional Landscape Architects



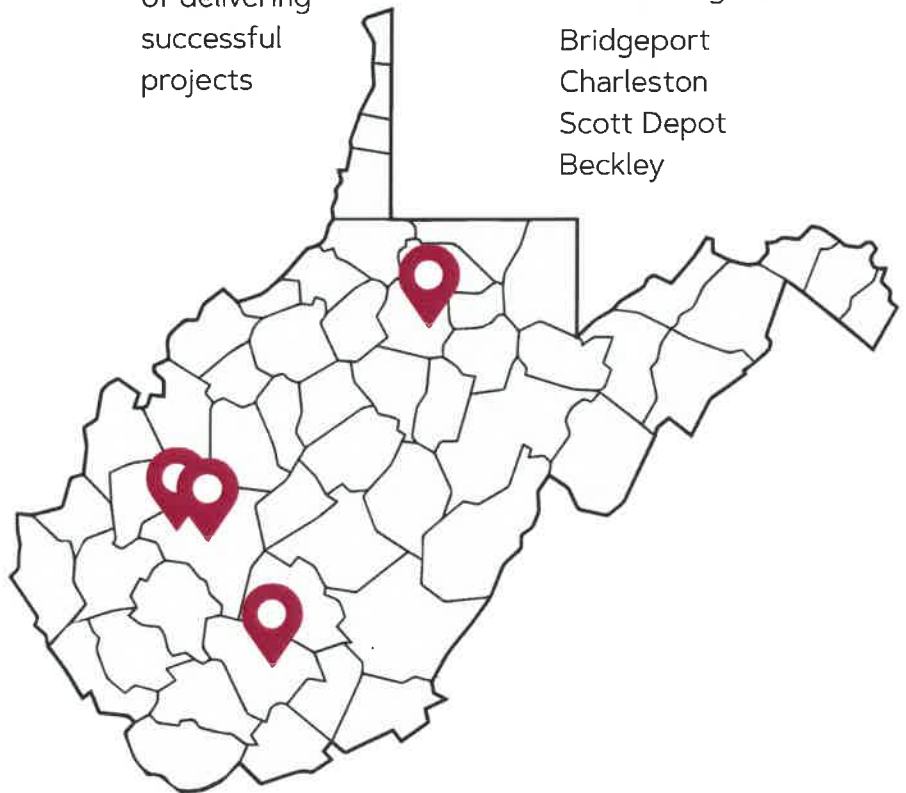
# 37

**YEARS**  
of delivering  
successful  
projects



# 4

**OFFICES**  
in West Virginia  
Bridgeport  
Charleston  
Scott Depot  
Beckley



Diverse services that grow communities.

**THRASHER'S GOT IT.**

With a commitment to building business through “successful projects and repeat clientele”, H. Wood Thrasher, PE and the late Henry A. Thrasher, PE - formed Thrasher Engineering, Incorporated in Clarksburg, West Virginia in 1983. Since that time, the company, now known as The Thrasher Group, Inc. has grown into one of the Mid-Atlantic Region’s largest full-service privately owned architectural and engineering firm.

Publicly funded projects have been the backbone of the company, and continue to be a large part of our engineering division. Thrasher has grown from its original three employees to a current staff of over 400 and continues to prosper. Instilled in each employee is a commitment to maintaining the highest standards of professional service.

The Thrasher Group is a full-service firm providing architecture, engineering, and field services such as environmental, survey, materials testing, and construction management. Our team has the experience, knowledge, versatility, and integrity to get the job done. With a 37-year history of driving infrastructure development for public and private clients, we have a reputation of keeping our word and completing projects on time and on budget. Thrasher is one of the fastest-growing A/E firms in the Mid-Atlantic region with eight offices located in the Appalachian Basin.



Diverse services that grow communities.

**THRASHER'S GOT IT.**



## CIVIL ENGINEERING

### AML Design

**Drainage Design:** All AML projects completed by Thrasher have required design of drainage structures. These have included vegetated, grouted, riprap channels, as well as culverts and storm sewers. Drainage calculations are completed to properly size all conveyances.

**Permitting:** the permitting process can delay projects if they are not submitted correctly or in a timely manner. Thrasher takes pride in our ability to quickly obtain permits for our clients. We are able to utilize our excellent relationship with the WVDEP for NPDES permits as well as our relationship with the West Virginia Division of Highways for entrance and drainage permits. We are also experienced in obtaining Army Corp of Engineers permits from both the Pittsburgh and Huntington District Offices for stream bank restoration, wetland mitigation, and construction, linear transportation and utility line projects, and temporary construction access and dewatering.

### Stormwater Systems

Thrasher is prepared to take on challenges to make your stormwater management project a success. In the not so distant past, storm water management was not a significant issue. It was “out of sight, out of mind.” That is no longer the case. Ever-increasing regulations, the creation of public storm water utilities, and the focus on downstream effects of development are pushing stormwater management issues to the forefront.

### Site Development

Engineering for site development is far from a “one size fits all” approach. Every project is unique and requires a blend of technical expertise combined with quality planning principles, efficient design, market realities, and flexibility to seize opportunities. With our diverse staff, Thrasher has the right blend of talent to make your project a success.

### Roadways & Bridges

From industries to local families, the nation depends on the strength of highways, bridges, and even pedestrian walkways. No matter what the mode of land transportation, Thrasher gets our clients where they want to be.





## SITE DEVELOPMENT

Engineering for site development is far from a "one size fits all" approach. Every project is unique and requires a blend of technical expertise, planning principals, efficient design, market realities, and the flexibility to seize opportunities. With our diverse staff, Thrasher has a winning combination of talent to take projects from design to reality.

At Thrasher, we understand that the design of a successful site development project must factor in economic landscape, political implications, and strategic planning that takes projects beyond engineering. The Thrasher team possesses expertise in every facet of development, including site selection and planning, grading, storm water management, erosion and sediment control, permitting, and infrastructure design.

We pride ourselves on being a partner in projects that improve the quality of life for residents and provide economic sustainability to communities.

### Site Development Expertise:

- > AML Project Sites
- > Slip Repairs
- > Industrial and Business Parks
- > Mixed-Use Developments
- > Athletic Facilities
- > Federal Correctional Facilities
- > Streetscapes and Sidewalk Planning
- > Commercial Developments
- > Single and Multi-Family Residential Development
- > Primary, Secondary, and Higher Education Facilities
- > Recreational Resorts and Guest Lodging
- > Shopping Plazas





## ENVIRONMENTAL SERVICES

In today's ever-changing regulatory landscape, compliance with federal and state environmental laws is critical to the success of projects. Compliance can often seem at odds with the project vision and financial constraints. The Thrasher team partners as a technical and regulatory advocate to overcome obstacles and guide our clients through complicated policies to achieve their goals. From initial investigations to final design, our environmental experts are there to assist in all facets of our clients' projects. Our team has developed relationships with academic consultants from multiple universities that are here to aid in specialized assessments.

Thrasher's offers a range of environmental services, from abandoned mine land reclamation to stream and wetland delineations and everything in between. We have extensive experience with site assessments, permitting, and every aspect of environmental work that your project will encompass.

In addition, our team has a host of experience with Abandoned Mine Land (AML) projects and are familiar with the intricacies involved

### Environmental Services:

- > All Appropriate Inquiry (AAI)
- > Environmental Site Assessments
- > NEPA Compliance for Publicly Funded Projects
- > Ecological Studies
- > Brownfield Redevelopment
- > Industrial Hygiene and Demolition Planning
- > Underground Storage Tank (UST) Consulting Services
- > Wetland Delineation, Design, and Mitigation
- > Remediation Investigation, Feasibility Studies, and Design
- > Hydrogeologic and Geologic Investigations
- > Groundwater Monitoring
- > Sampling and Laboratory Analysis
- > Solid and Hazardous Waste Management
- > SPCC, GPP, SWPPP, GWPP, SWPPP Environmental Compliance
- > Coal Combustion Residuals Rule Compliance (CCR)
- > Stream Assessments, Design, and Mitigation
- > Erosion and Sediment Control Plans
- > Voluntary Remediation Program
- > Uniform Environmental
- > Covenants Act
- > CERCLA Preliminary Assessment
- > CERCLA Site Investigation



## ENVIRONMENTAL PERMITTING

The Environmental Division of the Thrasher Group provides permitting, consulting, and assessment services to a multitude of clients spanning the Mid-Atlantic region. With a combined 40 years of permitting experience, Thrasher's Environmental Scientists, Permitting Leads, and Project Managers are able to take even the most complex and time restrictive projects and provide clients with cost effective and timely solutions.

### Federal Permitting

- > National Historic Preservation Act - Section 106 Consultation
  - > *State Historic Preservation Office or Division of Culture and History*
- > Endangered Species Act - Section 7 and Section 9 Consultations
  - > *United States Fish and Wildlife Service*
- > Clean Water Act - Section 404 Permits
  - > *United States Army Corps of Engineers*

- > National Environmental Policy Act - Categorical Exclusions, Environmental Assessments, and Short Environmental Assessment Forms
  - > *United States Army Corps of Engineers; Federal Aviation Administration; Division of Transportation; and Federal Communications Commission*

### State and Local Permitting

- > State Responsible Regulations of the Clean Water Act - Section 401 and 402 Permits
- > State Level Rare, Threatened, or Endangered Species Consultations
- > State Level Aquatic Resource Encroachment and Impact Permits
- > State Level Roadway Encroachment, Crossing, and Occupancy Permits
- > State Level Industrial Waste Discharge Permits
- > Local Level Floodplain or Building Permits



## SURVEY AND MAPPING SERVICES

Thrasher employs one of the largest survey departments in the Mid-Atlantic region and offers a wide range of land surveying and related services for federal, state, and private clients. We are committed to evolving our techniques and equipment to best serve our clients and their growing needs.

At Thrasher, we are able to provide both surveying and engineering services which provide a distinct advantage over survey-only companies. The combination of these two services provide our surveyors with a better understanding of what engineers and architects require to develop an appropriate design for different types of projects. Our field and survey personnel offer extensive experience, certified training, and flexibility to meet our clients' unique project schedules.

### Route Location Surveys:

- > Transmission Lines
- > Natural Gas Pipelines
- > Wind Turbine
- > Roadway, Railway, and Rec Trails

### GPS Surveys:

- > Geodetic Control Networks
- > Ground Control for Aerial Mapping
- > Telecommunications
- > FAA 1A and 2C Letters

### General Survey Services:

- > Large-Scale Boundary Work
- > Topographic Survey and Mapping
- > ALTA/ACSM Survey and Mapping
- > Lake and River Soundings
- > Accident Reconstruction Survey & Mapping
- > Drug-free Zone Mapping
- > Expert Witness Testimony
- > Construction Layout
- > Permanent Project GPS Base Stations
- > Building Control and Layout
- > Road/Bridge Alignment and Staking
- > Sewer/Water/Pipeline
- > Site Layout
- > Quality Assurance Surveying
- > Volume/Quantity Surveys
- > As-Built Surveys

### Coal and Energy Surveys:

- > Pre and Post Mining Blast Surveys
- > Water Quality Monitoring Plan
- > Construction Layout
- > Emergency Control Survey/Plans





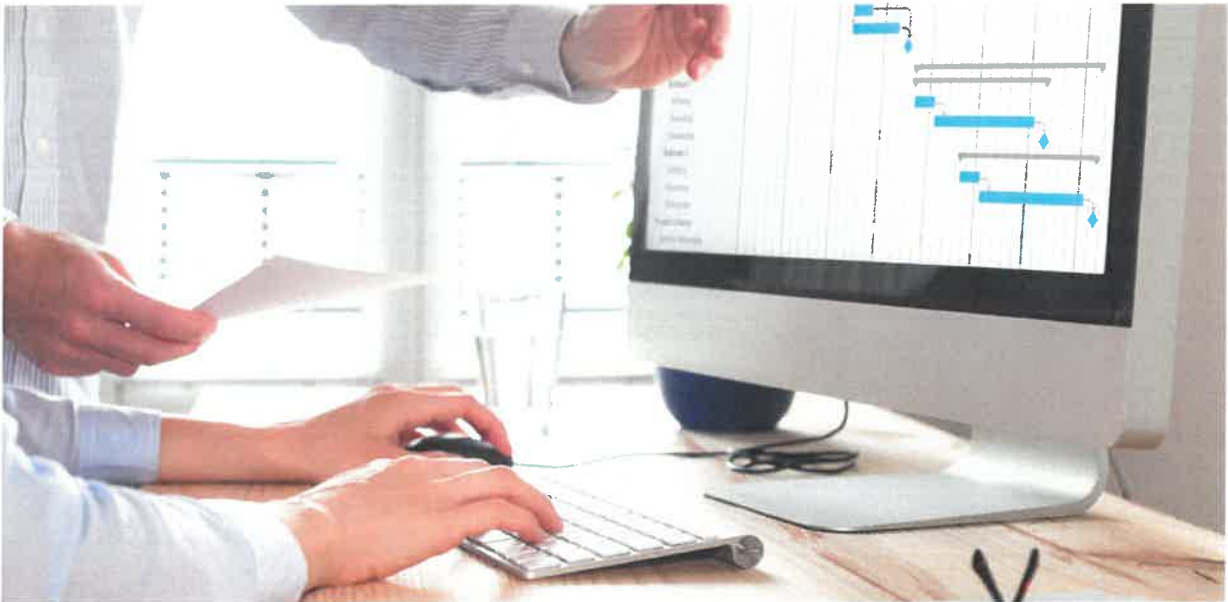
Thrasher has an internal Quality Control Policy to ensure our projects move forward efficiently and effectively. The objectives of this manual are to continually improve the quality of the design and technical deliverables Thrasher provides to its internal and external clients.

This manual illustrates the basic requirements for quality control in our projects. It describes the methods for checking and reviewing product elements and client deliverables, and includes rigorous comprehensive written check-lists for each stage of the design process, document production, and construction activities.

The purpose of these QC methodologies is to reduce or eliminate the potential for errors, omissions, ambiguities, and inconsistencies.

The policy outlines three main areas:

- > **General**  
Defines the purpose, intent and limitations, definitions, and implementation
- > **Project Management Procedures**  
Presents required procedures specific to this practice that allow for the efficient and accurate management of projects
- > **Check and Final Review Procedures**  
Presents required procedures specific to this practice that are used to insure technical accuracy of the work product



Cost is a concern in every project and one that we take seriously – it is important to us that we provide a transparent, thorough look at what it will take to get your project completed. To make sure that happens, we follow four important principles:

- > **Thorough construction documents** - Starting off with detailed construction documents helps the entire project run more smoothly. By laying an accurate, realistic picture at the beginning of the process, we are able to complete your project more efficiently and with fewer change orders.
- > **In-depth review process** - The Thrasher team participates in an in-depth review process to ensure there is a thorough understanding of your project. Our construction administration team visits your site in person so we know exactly what is needed for the space.
- > **Understanding of what things cost** - Thrasher has a knowledgeable construction administration team that understands what it truly costs to make things happen. Rather than relying on general industry standards, our Construction Estimator, Jim Decker, can tell you what something will cost in actuality. Jim, who has a contracting license, knows how to navigate both sides of a bid process and can deliver an accurate look at your project costs up front.
- > **Respect for your wallet** - We respect your business needs and work to ensure the lowest-cost options we can find. We also keep you updated of budget throughout the process: An initial construction cost will be calculated to reflect your budget, and construction cost estimates will be delivered with the drawings at the end of Schematic Design, Design Development, and Construction Documentation. Adjustments to size and/or quality will be made, as necessary, during each design phase to maintain your budget.



### Budgeting:

Construction estimating and budgeting is one of the most important parts of what Thrasher can provide you. Without accurate budgets, there is no tool to guide the design process and issues will be inevitable. By including cost estimating as a part of the project scope from day one, we are able to avoid issues before they arise and keep your project within a reasonable cost.

And our estimates go beyond the typical system - rather than simply providing cost per foot or lump sum price, Thrasher will provide contractor-grade estimates that look at every part of the project. We do detailed take-offs of materials and look at every man hour needed to complete a project and factor this in accordingly. Then, we use our thorough understanding of the local market and material costs to accurately design within your budget.

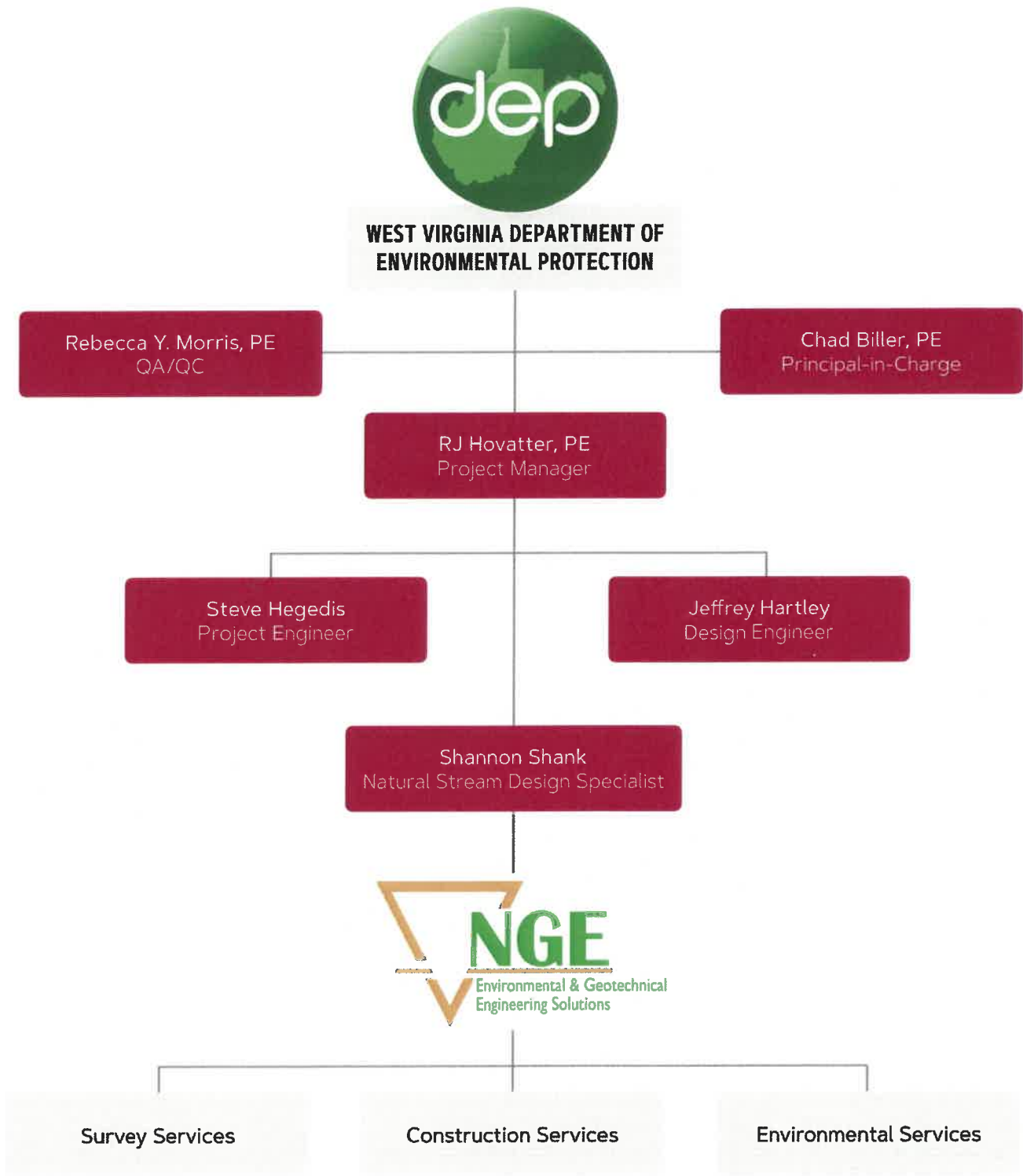


### Scheduling:

Thrasher realizes the importance of establishing and maintaining project schedules. Time means money and making sure we help you spend your money wisely is our number one goal. Because of this, our team puts an emphasis on ensuring project timetables are met and communication is upheld throughout the process.

To accomplish these goals, Thrasher utilizes scheduling to track every stage of a project - from design and bidding through construction completion. We also require contractors working on our projects to regularly update their project schedules and give a detailed progress report at each job meeting, again focusing on the communication component of scheduling. This helps to ensure all parties are informed and aware of potential delays. Keeping our owners up to speed with progress is always our priority and ensures occupancy and owner supplied equipment are scheduled accordingly. Then, we use our thorough understanding of the local market and material costs to accurately design within your budget.





Principal-in-Charge



Chad Biller, PE has extensive experience in all aspects of civil engineering, but his primary emphasis lies in site development, transportation, and airport projects. Chad's expertise has made him a go-to source for the design and site layout of numerous residential and commercial sites all throughout the Mid-Atlantic region. His knowledge of site design in the mountainous terrain of West Virginia and the surrounding Appalachian basin is second to none.

As part of his role as in the Site Division, Chad is responsible for the development of project design, production of project specifications and plans, bidding, quality assurance/quality control, and project monitoring. He brings a deep breadth of knowledge to the table, including creative problem solving skills, and decades of hands-on experience implementing unique project delivery methods individually tailored for his clients.

### Education

Bachelor of Science,  
Civil Engineering  
West Virginia University

### Registrations

Professional Engineer:  
> West Virginia  
> Ohio

### Affiliations

- > American Society of Highway Engineers
- > American Society of Civil Engineers
- > National Society of Professional Engineers

### Experience

#### WVDEP AML Landgraph Refuse Pile

Role: Principal-in-Charge  
> McDowell County, WV

#### WVDEP AML Stowe Landslide

Role: Principal-in-Charge  
> Logan County, WV

#### WVDEP AML Anglins Run

Role: Principal-in-Charge  
> Nicholas County, WV

#### WVDEP AML Squires Creek

Role: Principal-in-Charge  
> Preston County, WV

#### WVDEP Isaac Creek Landslide

Role: Principal-in-Charge  
> Harrison County, WV

#### WVDEP AML Owl Creek Highwall #2 Refuse

Role: Principal-in-Charge  
> Monongalia County, WV

#### City of Salem Slip Repairs

Role: Project Manager  
> Harrison County, WV

#### Fairmont State University Storm Water Management Plan

Role: Principal-in-Charge  
> Marion County, WV

#### Old Bridgeport Hill Storm Drainage

Role: Principal-in-Charge  
> Harrison County, WV



Quality Assurance / Quality Control



Rebecca Y. Morris, PE is a Senior Project Manager in Thrasher's Site Division. She has a main focus on oil and gas and primarily leads work on well pads, M&R pads, and compressor stations. She started with oil and gas as the Marcellus and Utica shale boom came to the region and has stayed in the field because of her passion for the industry – Rebecca thrives on the high-energy, high-intensity atmosphere that comes with oil and gas sites.

### Education

Bachelor of Science,  
Civil Engineering  
West Virginia University

### Registrations

Professional Engineer:  
> West Virginia

In the role of QA/QC, Rebecca oversees and assures the quality of all deliverables and management practices of all disciplines. This includes overseeing critical events, attending client or stockholder meetings, participating in kick-off and milestone meetings, preparing quality control plans, assuring project performance, and meeting client expectations.

### Experience

#### Morgan Run AMD

Role: Project Engineer  
> Preston County, WV

#### Lambert Run Site 5 AMD

Role: Project Engineer  
> Harrison County, WV

#### Middle Fork of Greens Run Phase 1 AMD

Role: Project Engineer  
> Preston County, WV

#### Sovern Run 62 and Bishoff AMD

Role: Project Engineer  
> Preston County, WV

#### Allen Conner/Messenger Site on Glad Run AMD

Role: Project Engineer  
> Preston County, WV





Project Manager



Richard "RJ" Hovatter, PE has spent most of his career working with private and public clients on various site development projects. His team of engineers are able to develop strategies to fit the needs of each client. RJ is well versed in site design, grading, storm water and erosion and sediment control plans. He has also managed over 35 Abandoned Mine Land Emergency and Abandoned Mine Land projects across West Virginia, Maryland, and Ohio. His experience provides clients with the reassurance that projects are inspected thoroughly.

### Education

Bachelor of Science,  
Civil Engineering  
Fairmont State University

### Registrations

Professional Engineer:  
> West Virginia  
> Pennsylvania

### Certifications and Trainings

- > Level I Rosgen Natural Stream Construction
- > Level II Rosgen Natural Stream Construction
- > HEC—RAS Operator Training Short Course
- > Annual Oil & Gas Training Pennsylvania—Expedited Review of ESCGP-1
- > MSHA Training

He also leads a team of highly skilled engineers in developing innovative slip remediation projects all across the Appalachian basin. RJ has spent a large portion of his career evaluating critical land slips and assessing feasible, sustainable solutions that serve both public and private entities. His diverse portfolio of work has given RJ a refined eye for potential land issues and slip-prone terrain, which ensures his clients projects are designed on safe, stable sites.

### Experience

#### WVDEP AML Canyon Refuse and Dump

Role: Project Manager  
> Monongalia County, WV

#### WVDEP AML Landgraff Refuse Pile Design

Role: Project Manager  
> McDowell County, WV

#### WVDEP Isaac Creek Landslide

Role: Principal-in-Charge  
> Harrison County, WV

#### WVDEP AML Stowe Landslide Emergency Project

Role: Project Manager  
> Logan County, WV

#### WVDEP AML Dansbranch Landslide Emergency Project

Role: Project Manager  
> Mingo County, WV

#### WVDEP AML Lyons Landslide Project

Role: Project Manager  
> Harrison County, WV

#### WV DEP Shinns Run Portals

Role: Project Engineer  
> Harrison County, WV

#### WestRidge Phase 1 Slip Repair

Role: Project Manager  
> Monongalia County, WV



Project Engineer



### Education

Bachelor of Science,  
Environmental Resource  
Management  
Penn State University

Steve Hegedis is an experienced civil site design engineer with an education in environmental resource management. He has a strong background in site design, stormwater design, and engineered natural systems (ENS) design. Prior to joining Thrasher, he worked on a host of energy projects, as well as commercial and residential site developments, and water and stormwater design.

Steve has a thorough knowledge of NPDES permitting, bringing a deep respect for the environmental impact of his work and an important expertise to his clients. Additionally, Steve is a licensed general contractor in West Virginia, giving him a unique dual perspective as he approaches design projects.

### Experience

#### **Chaplin Hill Business Park NPDES Permitting**

Role: Project Engineer  
> Monongalia County, WV

#### **Hatfield McCoy Regional Recreation Authority Stormwater Site Design and Welcome Center Project**

Role: Project Engineer  
> Logan County, WV

#### **Industrial Park Site Design NPDES Form**

Role: Project Engineer  
> Doddridge County, WV

#### **Rt. 50 Site Design Stormwater Design E&S**

Role: Project Engineer  
> Harrison County, WV

#### **WestRidge Development Stormwater System Project**

Role: Project Engineer  
> Monongalia County, WV

#### **Ronald Lane Ritchie County Industrial Park Site Design and NPDES Permitting**

Role: Project Engineer  
> Ritchie County, WV

#### **Ronald Lane, The Quarry Business Park Site Design and NPDES Permitting**

Role: Project Engineer  
> Harrison County, WV

#### **Harrison County Power, Harrison Energy Center Site Design and NPDES Permitting**

Role: Project Engineer  
> Harrison County, WV

#### **Energy Solutions, Brooke County Power Plant Site Design & NPDES Permitting**

Role: Project Engineer  
> Brooke County, WV

Design Engineer



### Education

Bachelor of Science,  
Civil Engineering Technology  
Fairmont State University

Jeffrey Hartley currently serves as a Staff Engineer for the firm. Jeffrey has a notable background in the site design of corporate and retail centers, road upgrades, access roads, and well pads. He has detailed understanding of site layout, design, and permitting while being actively involved in the development of various site plans, grading plans, erosion and sediment control measures, and project specifications.

Jeffrey's experience working on developments from their initial stages through to completion has allowed him to apply project knowledge to his work in site design. Jeffrey is a successful Staff Engineer by utilizing his leadership skills and proficiency in site design on every project.

### Experience

#### **Preston County School Paving Program**

Role: Project Engineer  
> Preston County, WV

#### **Hatfield-McCoy Trails Ivy Branch Cabins Procurement**

Role: Project Engineer  
> McDowell County, WV

#### **WestRidge Corporate Park**

Role: Construction Administration/Staff Engineer  
> Monongalia County, WV

#### **WestRidge Commerce Center**

Role: Construction Administration/Staff Engineer  
> Monongalia County, WV

#### **WestRidge Commons**

Role: Construction Administration/Staff Engineer  
> Monongalia County, WV

#### **WestRidge Exit 155 Development**

Role: Construction Administration/Staff Engineer  
> Monongalia County, WV

#### **Central Station Road Improvements**

Role: Staff Engineer  
> Doddridge County, WV

#### **Morgan Ashland Road Upgrades**

Role: Staff Engineer  
> Wetzel County, WV

#### **Arsenal Scotch Hill Road Improvements**

Role: Staff Engineer  
> Preston County, WV

#### **Antero Margery Run Road Improvements**

Role: Staff Engineer  
> Tyler County, WV



Natural Stream Design Specialist



### Education

Bachelor of Science,  
Landscape Architecture  
West Virginia University

Associate of Applied Science,  
Architectural Drafting  
West Virginia State College

Shannon Shank is an Environmental Scientist for The Thrasher Group. He brings nearly 15 years of experience to his role. Shannon has a background in GIS and landscape architecture. He is an expert in GIS analysis involving slope, water, and environmental impacts. He also works with a variety of environmental wetland and stream features, collecting GPS data and creating maps for clients.

Prior to joining Thrasher, Shannon spent a decade with GAI Consultants, Inc. He handled a variety of responsibilities in this role, from land development to stream delineation. He also spent several years with Columbia Gas Transmission, where he grew his GIS and mapping skills, working directly with clients to provide the specific information their companies needed.

### Experience

#### Edgewood Elementary

#### School Stream Mitigation

Role: Environmental Scientist

- > Kanawha County, WV

#### Confidential Client – Multiple

#### Stream and Wetland

#### Restorations

Role: Environmental Scientist

- > Location Undisclosed

#### GAI Consultants, Inc.

Role: Senior Environmental  
Specialist/Land Development/  
GIS Analyst

- > Kanawha County, WV

#### Columbia Gas Transmission

Role: GIS Analyst/  
Cartographer

- > Kanawha County, WV

Sub-consultant



## Locations

### West Virginia Office

650 MacCorkle Avenue West  
 St. Albans, WV 25177  
 P: (304) 201-5180  
 F: (304) 201-5182

### Pennsylvania Office

171 Montour Run Road  
 Moon Twp, PA 15108  
 P: (412) 722-1970  
 F: (412) 722-1929

## Company Overview

NGE was founded in the fall of 2002 by Amy Veltri and John Nottingham, a management team with a combined forty years of industry experience. The family-based entrepreneurial spirit that defined NGE’s beginnings remains evident in the innovative solutions we deliver to our loyal clients each and every day. Advances in engineering, science and technology, coupled with regulatory, legal, and compliance pressures create increasingly complex challenges for businesses. NGE strives to keep pace with these changes, with an eye to supporting our clients’ changing needs.

NGE has grown into a dependable and flexible environmental and geotechnical consulting firm providing a wide range of professional services, including Environmental Consulting, Geotechnical Engineering and Environmental Construction / Remediation. With clients across the nation, NGE added a second office location in West Virginia in 2003, and seeks to grow in the future by providing consistent, quality service in a family-oriented atmosphere.

Since its inception, NGE has hired and retained the best and brightest talent in the industry. Our staff have relevant experience and qualifications to complete complex environmental and geotechnical projects. NGE’s future is bright as we pursue a course of planned, measured growth to meet the challenge of expansion without diluting leadership or weakening the company’s ability to perform. After establishing a solid foundation and longstanding reputation in the region and across the nation as an innovative, sophisticated, forward-thinking environmental and geotechnical consulting firm, we are proud of our roots and the progressive environment we have created for our dedicated employees.

NGE is an organization that is small enough to focus time on each client but with a depth in talent and resources to successfully complete large and complex projects. NGE provides superior environmental and geotechnical services at a manageable price. A family oriented work atmosphere has fostered the growth of NGE’s staff with the best and brightest talent in the industry.

NGE has garnered a variety of certifications and awards over the years in the environmental and geotechnical consulting industry. These accomplishments and accolades bear testament to the impeccable standards that we strive to achieve at NGE. They help differentiate our company from our competitors and serve to distinguish our employees as the “best of the best.”

Our team's current workload will allow for immediate response to your needs. Thrasher is available to attend any meetings regarding your project(s).

Thrasher has a history of successfully delivering projects that were developed out of solid/sound professional surveying, engineering, and architectural services. We understand our role to be an extension of your staff, working closely to provide quality work in a timely manner. We also understand that turnaround time on a task may be short, and that timely service is critical. Thrasher routinely meets aggressive deadlines. We have assembled a team of responsive professionals who possess the qualifications and experience necessary to handle all aspects of this project.

Thrasher is fully staffed with survey, engineering, architectural, environmental, construction management, and materials testing personnel to meet your needs. The employees identified as key personnel on your projects bring specific areas of expertise to the Team.

**Why Thrasher?** The Thrasher Team has technical qualifications, skills, experience, and resources that are integrated with a proven management infrastructure. We want to perform projects for the WVDEP, and will provide high quality engineering services in a timely and cost effective manner.







This project, located in Alton, WV, involved a large ferric iron "mushroom" that takes up approximately 0.87 acres. This was caused by acid mine drainage (AMD) emanating from an entombed refuse fill above an unnamed tributary of Swamp Run. The Swamp Run #1 passive AMD treatment system utilized open limestone channels channeling the toxic water to a forebay, which controls larger storm event flow and separates that flow between primary and secondary limestone leech beds. These beds are self-flushing with an automated inline water level control structure. The treated water from the leech beds will then discharge into flushing ponds for solids removal before being conveyed into a wetland finishing pool prior to being released back into the unnamed tributary.

### **WVDEP AML Swamp Run Refuse #1**

**Location:** Preston County, WV

**Type of Project:** Passive Acid Mine  
Drainage Treatment System

**Thrasher Project Manager:** Chad Biller, PE

#### **Client Contact:**

Buckhannon River Watershed Association  
112 Fayette Street | Buckhannon, WV 26201  
304-472-3317



Mill Creek, in the City of Ripley, experienced damage due to high flood waters. The toe of the stream bank washed out and the slope above it failed, damaging the walking trail above the Creek.

The Thrasher Group was hired to repair the bank and restore the integrity of the trail. Doing so, however, was a complicated task. The repair could not change or impact the ordinary high-water mark of the channel. To ensure this was done properly, Thrasher excavated a bench in the bank at the high-water elevation and compressed shot rock into the remaining bank below. This became the foundation for the slope repair above the Creek. The bank was then backfilled with riprap up to within two feet of the walking trail elevation. Soil was then used to finish the backfill and the walking trail was constructed back on the soil.

Thrasher's approach to this project saved the City of Ripley time and money. The inventive way the project was engineered allowed Ripley to avoid lengthy permitting applications and get work completed on Mill Creek right away.

### City of Ripley City Park Slip Repair

**Location:** Jackson County, WV

**Type of Project:**

Streambank Stabilization

**Thrasher Project Manager:** RJ Hovatter

**Client Contact:**

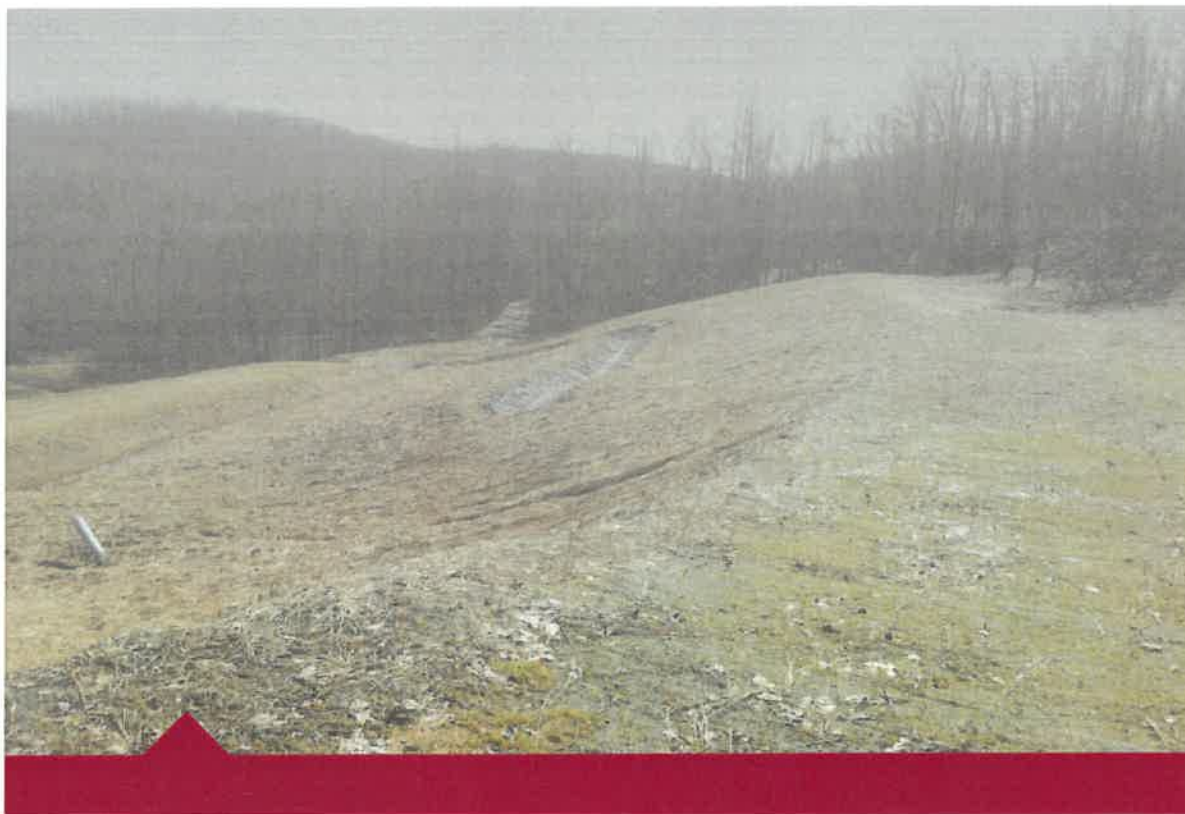
Ms. Carolyn Rader, Mayor

203 South Church Street | Ripley, WV 25271

304-532-3657

The Thrasher Group provided stream bank stabilization services for the City of Ripley. Our work included a variety of topics, including:

- > Drainage solutions
- > Planning
- > FEMA consultation
- > Mussel surveys
- > Meeting representation
- > Permitting
- > Field services
- > Construction monitoring



Squires Creek, located in Newburg, had two refuse piles covering two to three acres of land. The site had remains of a mine building, unvegetated coal refuse, deep mine portals, and acid mine drainage. Nearly all of the land was unvegetated with signs of severe erosion. Additionally, there were several public safety hazards: steep outcrops with well-used ATV trails up and down the face and deep mine portals, one of which was open enough to easily allow entrance.

Some of the major steps of the project included the following: site preparation (clearing and grubbing, removing debris), construction and installation of support areas, maintenance of access roads, construction and installation of drainage control items, re-vegetation of disturbed areas, and regrading of portal sites and refuse sites.

### **WVDEP AML Squires Creek Refuse**

**Location:** Preston County, WV

**Type of Project:** Refuse and Portals

**Thrasher Project Manager:** Chad Biller, PE

#### **Client Contact:**

Gregory Smith, PE

101 Cambridge Place | Bridgeport, WV 26330

304-842-1900





### Canyon Refuse

**Location:** Monongalia County, WV  
**Type of Project:** Refuse and Dump  
**Thrasher Project Manager:** Chad Biller, PE

**Client Contact:**  
Darren Bennett  
101 Cambridge Place | Bridgeport, WV 26330  
304-842-1900

The Canyon Refuse and Dump project was a site Thrasher worked on in Morgantown, WV. This project included a large scope, from mobilizing equipment to re-vegetating disturbed areas. To accomplish everything within the scope of this project, Thrasher prepared the site (including clearing and grubbing), constructed and installed support areas, and maintained access roads. Additionally, the team constructed and installed drainage control items to convey stormwater safely off-site through channels, culverts, and outlet protection. Thrasher also constructed and installed wet or modified mine seals, re-graded the refuse sites, backfilled highwalls, and ensured sediment control compliance with the approved NPDES permit.

*This project included ~76,500 cubic yards of earthwork, ~3,300 linear feet, and 8 mine seals.*

### Nutter Run Landslide

**Location:** Harrison County, WV

**Type of Project:** AML Emergency Landslide

**Thrasher Project Manager:** RJ Hovatter, PE  
Rob Milne, PE

**Client Contact:**

Eric Simpson, Northern Emergency Engineer  
101 Cambridge Place | Bridgeport, WV 26330  
304-842-1900

Nutter Run was the site of an emergency AML landslide. The Thrasher Group mobilized the necessary equipment and personnel to complete the project within state timeframes with a construction cost of \$954,750.

Some of the major steps of the project included the following: site preparation (clearing and grubbing, removing existing structures and debris), construction and installation of support areas, maintenance of access roads, construction and installation of drainage control items to convey stormwater off-site, backfilling highwalls, and re-vegetation of disturbed areas.



*The Nutter Run project included a 1 H-Pile Wall ~140' Long and a 1- H-Pile Wall ~200' Long.*



### Ridgeway Landslide

**Location:** Harrison County, WV

**Type of Project:** AML Emergency Landslide

**Thrasher Project Manager:** RJ Hovatter, PE

**Client Contact:**

Eric Simpson, Northern Emergency Engineer  
101 Cambridge Place | Bridgeport, WV 26330  
304-842-1900



Ridgeway, in Bridgeport, was the site of an AML emergency landslide that The Thrasher Group repaired. Our team engineered the design of the slip remediation and was responsible for all necessary materials to accomplish that design, from shop drawings to a detailed construction schedule. Thrasher provided all necessary materials and labor for this project. The final result of the project was 1 Soil Nail Wall ~36' and 6,300 cubic yards of Earthwork.



### Dans Branch Landslide

**Location:** Mingo County, WV  
**Type of Project:** AML Emergency Landslide  
**Thrasher Project Manager:** Chad Biller, PE

**Client Contact:**  
Jason Foster, Emergency Program Administrator  
601 57th Street, SE, Box 20 | Charleston, WV 25304  
304-926-0499

Dansbranch was the site of an AML emergency landslide that Thrasher worked to remediate. Some of the major steps of the project included the following: site preparation (clearing and grubbing, removing existing structures and debris), construction and installation of support areas, maintenance of access roads, construction and installation of drainage control items to convey stormwater off-site, ensure sediment control compliance with the NPDES permit, and re-vegetation of disturbed areas. Thrasher also had to protect existing structures during grading operations and the installation of permanent rock fall protection above structures. Construction on this project cost approximately \$352,370.



*This project included 6,500 cubic yards of earthwork and stabilizing the slope behind the residence.*

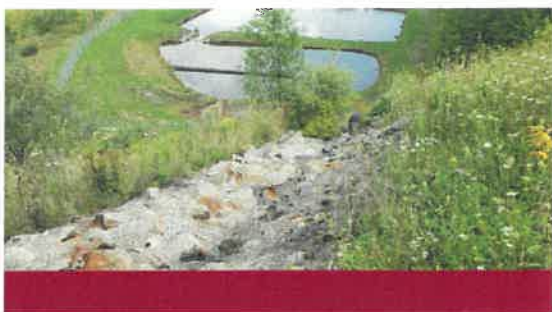




*Project Approach*



A critical step in meeting your goals is first ensuring we understand them. Thrasher’s team has thoroughly reviewed the Expression of Interest request and is confident in our ability to deliver the highest-quality solutions to your problems. We are capable of meeting each goal/objective you have outlined and feel strongly that you will be satisfied with the outcomes you receive.



Our team is prepared to complete all of the following services:

- > Access or accesses as required
- > Geotechnical analysis
- > Stabilize landslide
- > Hydrologic and hydraulic analyses
- > AMD Passive Treatment System
- > Natural Stream Design
- > Clear and grub affected areas
- > Regrade as necessary
- > Install drainage channels, underdrains, stabilize existing channels, and/or other controls to safely convey water off-site
- > Condition/Revegetate all disturbed areas
- > Obtain required permits as determined at the Pre-Design Meeting

We understand your goals for the Kempton Refuse Rehabilitation project and will handle them in the following manner:

### ▶ GOAL/OBJECTIVE 2.1

The Thrasher Group will evaluate the project site and communicate effectively with the DEP to develop construction plans and technical specifications to rehabilitate and retrofit the passive treatment facility at the AML area, Kempton Refuse Rehabilitation. We will then determine a plan that can be implemented realistically and will meet all objectives in a manner that will meet all objectives.

### ▶ GOAL/OBJECTIVE 2.2

We are confident that Thrasher can provide all of the necessary services to provide site engineering services for this AML Project. We will develop the design plans and specifications to control any associated water on-site as well as design natural stream repairs.

### ▶ GOAL/OBJECTIVE 2.3 - 2.4

Thrasher will provide design plans and develop specifications to control any associated ground water, limits of disturbance, stormwater control, erosion and sediment prevention, and any other conditions encountered at the Kempton Refuse Rehabilitation site. Thrasher will also ensure all disturbed areas will be regraded and revegetated.



Thrasher is a statewide, full-service group with the experience and ability to work on complex-natured projects and the necessary environmental capabilities to handle the Kempton Refuse Rehabilitation project. To make sure your project is completed successfully, Thrasher follows the approach outlined below:

### Project Inception

Thrasher not only takes the time to understand the scope of work, but takes the time to understand other issues that may arise while executing your project. We attend various meetings to provide progress updates, listen to the constituents and their concerns, and focus on ways to address them to ensure everyone is working together.

### Availability

Thrasher has a unique advantage because of our strategically placed office locations throughout the state of West Virginia. Our team has the capability to respond quickly and effectively to meet client needs as they arise, including emergency situations that allow very little notice.

### Addressing Each Project

Every project has unique issues and needs. We take an individualized approach to ensure those needs are being met to the fullest of our capability. As each project arises, it will be assessed and broken down into manageable phases laid out as a roadmap to success.

### Coordination/Communication

Your project manager, RJ Hovatter, will serve as your main point of contact for this project. Initial support will begin with consistent communications and internal Thrasher Quality Control processes (site surveys, stakeholder reviews, comment resolution, etc.). RJ will also be in constant contact with members of the WVDEP in order to maintain transparency during the process.

### Rehab/Retrofit Passive Treatment Facility

Thrasher will provide plans and specifications for rehabilitation of the existing passive treatment facility based on the projects needs.

### Natural Stream Design/Replacement

Natural Stream Design using Rosgen methods will be used to restore or enhance a stream to maintain connectivity and flow to adjacent aquatic features while maintaining ecological function, natural setting and aesthetic of the stream. Successful natural stream designs are achieved starting with hydraulic modeling, site analysis and stream assessment. Stream structures using native rock such as step pools, cross vanes and riffles will be utilized along with a riparian buffer featuring native plant species.

### Drainage Design

All of the AML projects completed by Thrasher have required design of drainage structures, like the Kempton Refuse Rehabilitation project. In the past, these have included vegetated, grouted, rip-rap channels, as well as culverts and storm sewers. Drainage calculations were completed to properly size all conveyances.

### Permitting

The permitting process can delay projects if they are not submitted correctly or in a timely manner. Thrasher takes pride in on our ability to quickly obtain permits for our clients. We are able to utilize our excellent relationship with the WVDEP for NPDES permits as well as our relationship with the West Virginia Division of Highways for entrance and drainage permits. We are also experienced in obtaining Army Corps of Engineers permits from both the Pittsburgh and Huntington District Offices for stream bank restoration, wetland mitigation and construction, linear transportation and utility line projects, and temporary construction access and dewatering. You can be confident in knowing that any permitting necessary for your project will be handled swiftly by the Thrasher team.





*Required Forms*



**WEST VIRGINIA DEPARTMENT OF ENVIRONMENTAL PROTECTION**  
**AML CONSULTANT QUALIFICATION QUESTIONNAIRE** Attachment "A"

PROJECT NAME <b>KEMPTON REFUSE REHABILITATION PROJECT</b>		DATE (DAY, MONTH, YEAR) <b>SEPTEMBER 10, 2020</b>	FEIN <b>55-0633596-6</b>
1. FIRM NAME <b>THE THRASHER GROUP, INC.</b>		2. HOME OFFICE BUSINESS ADDRESS <b>600 WHITE OAKS BOULEVARD, BRIDGEPORT, WV 26330</b>	3. FORMER FIRM NAME <b>THRASHER ENGINEERING</b>
4. HOME OFFICE TELEPHONE <b>304-624-4108</b>	5. ESTABLISHED (YEAR) <b>1983</b>	6. TYPE OWNERSHIP Individual Partnership Corporation X Joint-Venture	6a. WV REGISTERED DBE (Disadvantaged Business Enterprise) YES NO X

7. PRIMARY AML DESIGN OFFICE: ADDRESS/ TELEPHONE/ PERSON IN CHARGE/ NO. AML DESIGN PERSONNEL EACH OFFICE  
**600 WHITE OAKS BOULEVARD, BRIDGEPORT, WV 26330 / 304-624-4108 / CHAD RILEY / 6**

8. NAMES OF PRINCIPAL OFFICERS OR MEMBERS OF FIRM <b>CHAD RILEY - PRESIDENT &amp; CEO RON STANLEY - VP, CFO, AND TREASURER CLAY RILEY, PE - SECRETARY</b>	8a. NAME, TITLE, & TELEPHONE NUMBER - OTHER PRINCIPALS <b>WM. RANDY WATSON - SHAREHOLDER (304) 624-4108 CHADWICK BILLER, P.E. - SHAREHOLDER (304) 624-4108 DAN FERRELL, P.E. - SHAREHOLDER (304) 624-4108 CRAIG BAKER, CEFP - SHAREHOLDER (304) 624-4108 ROBERT MILNE, P.E. - SHAREHOLDER (304) 624-4108 JONATHAN CARPENTER, P.E. - SHAREHOLDER (304) 343-7601 JENELLE ARMSTRONG, P.E., PMP - SHAREHOLDER (304)326-7601 CLAYTON WHITE, EI, PMP - SHAREHOLDER (304)624-4108 KYLEA RADCLIFF, P.E. - SHAREHOLDER (304)476-8033 STEVEN HAMIT, P.E. - SHAREHOLDER (304)620-4790 JESSE ALDEN, P.E. - SHAREHOLDER (304)476-8488 REBECCA MORRIS, P.E. - SHAREHOLDER (304)685-9259 JASON BOYD, P.E. - SHAREHOLDER (304)677-5142 JOE LOWTHER, P.S. - SHAREHOLDER (304)677-5314</b>
--	---

9. PERSONNEL BY DISCIPLINE

<b>14 ADMINISTRATIVE</b>	— ECOLOGISTS	<b>3 LANDSCAPE ARCHITECTS</b>	<b>2 STRUCTURAL ENGINEERS</b>
<b>6 ARCHITECTS</b>	— ECONOMISTS	<b>1 MECHANICAL ENGINEERS</b>	<b>38 SURVEYORS</b>
— BIOLOGIST	<b>2 ELECTRICAL ENGINEERS</b>	— MINING ENGINEERS	<b>3 TRAFFIC ENGINEERS</b>
<b>35 CADD OPERATORS</b>	<b>10 ENVIRONMENTALISTS</b>	<b>3 PHOTOGRAMMETRISTS</b>	<b>3 GIS SPECIALIST</b>
— CHEMICAL ENGINEERS	— ESTIMATORS	<b>2 PLANNERS: URBAN/REGIONAL</b>	— PIPELINE INSPECTOR
<b>67 CIVIL ENGINEERS</b>	<b>3 GEOLOGISTS</b>	— SANITARY ENGINEERS	<b>33 MATERIALS TESTING TECH.</b>
<b>8 CONSTRUCTION INSPECTORS</b>	— HISTORIANS	— SOILS ENGINEERS	<b>166 OTHER</b>
— DESIGNERS	<b>1 HYDROLOGISTS</b>	— SPECIFICATION	<b>400 TOTAL PERSONNEL</b>
— DRAFTSMEN		— WRITERS	

TOTAL NUMBER OF WV REGISTERED PROFESSIONAL ENGINEERS IN PRIMARY OFFICE: **39**

\*RPEs other than Civil and Mining must provide supporting documentation that qualifies them to supervise and perform this type of work.

10. HAS THIS JOINT-VENTURE WORKED TOGETHER BEFORE?  YES  NO NOT APPLICABLE

11. OUTSIDE KEY CONSULTANTS/SUB-CONSULTANTS ANTICIPATED TO BE USED. Attach "AML Consultant Confidential Qualification Questionnaire".

NAME AND ADDRESS: <b>NGE CONSULTING</b> <b>650 MACCORKLE AVE. WEST, ST. ALBANS, WV 25177</b> <b>304-201-5180</b>	SPECIALTY: <b>GEOTECHNICAL SERVICES</b>	WORKED WITH BEFORE <input checked="" type="checkbox"/> Yes <input type="checkbox"/> No
NAME AND ADDRESS:	SPECIALTY:	WORKED WITH BEFORE <input type="checkbox"/> Yes <input type="checkbox"/> No
NAME AND ADDRESS:	SPECIALTY:	WORKED WITH BEFORE <input type="checkbox"/> Yes <input type="checkbox"/> No
NAME AND ADDRESS:	SPECIALTY:	WORKED WITH BEFORE <input type="checkbox"/> Yes <input type="checkbox"/> No
NAME AND ADDRESS:	SPECIALTY:	WORKED WITH BEFORE <input type="checkbox"/> Yes <input type="checkbox"/> No
NAME AND ADDRESS:	SPECIALTY:	WORKED WITH BEFORE <input type="checkbox"/> Yes <input type="checkbox"/> No
NAME AND ADDRESS:	SPECIALTY:	WORKED WITH BEFORE <input type="checkbox"/> Yes <input type="checkbox"/> No
NAME AND ADDRESS:	SPECIALTY:	WORKED WITH BEFORE <input type="checkbox"/> Yes <input type="checkbox"/> No
NAME AND ADDRESS:	SPECIALTY:	WORKED WITH BEFORE <input type="checkbox"/> Yes <input type="checkbox"/> No



12. A. Is your firm experienced in Abandoned Mine Lands Remediation/Mine Reclamation Engineering?  
**X YES** Description and Number of Project: **Thrasher performs engineering design services to the WV DEP for drainage, portal seals, highwall and other remediation projects, as well as for water line and water treatment plant projects related to AML. Numerous projects involving land remediation, storm water drainage, slip repair, mass grading in relation to site development and highway projects are engineered by the firm on a regular basis.**
- 
- B. Is your firm experienced in Soil Analysis?  
**X YES** Description and Number of Projects: **Thrasher maintains an AASHTO Certified materials testing and analysis lab at both the Bridgeport and Beckley offices. Soil analysis experience is specifically in gradations and classification.**
- 
- C. Is your firm experienced in hydrology and hydraulics?  
**X YES** Description and Number of Projects: **Throughout the state thrasher has done planning and design of bridges for the West Virginia department of highways and the design of multiple private and municipal development projects located within floodplains. Thus, thrasher has extensive experience in hydrology. We also have a vast amount of experience in hydraulic modeling for water and wastewater projects throughout West Virginia.**
- 
- D. Does your firm produce its own Aerial Photography and Develop Contour Mapping?  
**X YES** Description and Number of Projects: **Thrasher acquires aerial imagery using in house resources on smaller area projects. We own and operate three UAS (unmanned aerial systems) for a variety of imagery missions for projects up to approximately 500 acres. For large mapping projects, we use a commercial flying service. Thrasher has three FAA Certified pilots.**
- Thrasher has expertise and software in house and routinely performs aero triangulation, planimetric compilation, surface modeling, contour mapping and digitally rectified imagery.**
- Thrasher has mapped and flown hundreds of projects during the last year.**
- 
- E. Is your firm experienced in domestic waterline design? (Include any experience your firm has in evaluation of aquifer degradation as a result of mining.)  
**X YES** Description and Number of Projects: **Thrasher has designed more water line systems than any other West Virginia firm. Projects include new systems, extensions and replacements of water line distribution systems, many of which have been affected by Abandoned Mine Lands. Design of the projects includes lines, booster stations, water treatment plants, and storage facilities.**
- Thrasher's analysis and design also includes improvements and alternatives for water sources deemed ground water under the direct effect of surface water.**
- 
- F. Is your firm experienced in Acid Mine Drainage Evaluation and Abatement Design?  
**X YES** Description and Number of Projects: **Thrasher has been awarded and has successfully completed numerous reclamation projects for WV DEP related specifically to acid mine drainage and abatement, as well as, multiple passive treatment systems designed for watershed protection groups. The Charleston, WV branch of our company designed an award-winning water treatment plant for Martinka mines in Marion County, West Virginia to treat mine drainage.**

13. PERSONAL HISTORY STATEMENT OF PRINCIPALS AND ASSOCIATES **RESPONSIBLE FOR AML PROJECT DESIGN** (Furnish complete data but keep to essentials)

NAME & TITLE (Last, First, Middle Int.)	YEARS OF EXPERIENCE		
	YEARS OF AML DESIGN EXPERIENCE:	YEARS OF AML RELATED DESIGN EXPERIENCE:	YEARS OF DOMESTIC WATERLINE DESIGN EXPERIENCE:
<b>BILLER, CHADWICK D. – PRINCIPAL-IN-CHARGE</b>	<b>16</b>	<b>21</b>	<b>21</b>

Brief Explanation of Responsibilities:  
**Chadwick. Biller has experience in all aspects of engineering with specific emphasis on site development, highways, roads, bridges, and airports. Chad joined The Thrasher Group, Inc. in 1999 and is a partner of The Thrasher Group. Chad is responsible for WV DEP AML project and public and private site development projects, specializing in airports, highways, roads, and bridges. As Project Manager for all of the firm's WV DOT/DOH projects, he has extensive knowledge of state and federal building standards.**

EDUCATION (Degree, Year, Specialization):  
**Bachelor of Science, Civil Engineering, 1992 – West Virginia University**

MEMBERSHIP IN PROFESSIONAL ORGANIZATIONS	REGISTRATION (Type, Year, State)
<ul style="list-style-type: none"> <li>American Society of Civil Engineers</li> <li>Society of American Military Engineers</li> <li>National Society of Professional Engineers</li> </ul>	Professional Engineer, 1998, West Virginia # [REDACTED] Professional Engineer, 1999, Pennsylvania # [REDACTED] Professional Engineer, 2000, Ohio [REDACTED]

13. PERSONAL HISTORY STATEMENT OF PRINCIPALS AND ASSOCIATES **RESPONSIBLE FOR AML PROJECT DESIGN** (Furnish complete data but keep to essentials)

NAME & TITLE (Last, First, Middle Int.)	YEARS OF EXPERIENCE		
	YEARS OF AML DESIGN EXPERIENCE:	YEARS OF AML RELATED DESIGN EXPERIENCE:	YEARS OF DOMESTIC WATERLINE DESIGN EXPERIENCE:
<b>HOVATTER, RICHARD (RJ) – PROJECT MANAGER</b>	<b>13</b>	<b>13</b>	<b>13</b>

Brief Explanation of Responsibilities  
**As Project Manager, RJ has completed the site design, grading, storm water and erosion and sediment control plans for over twenty private and commercial development. He has also managed over 35 Abandoned Mine Land Emergency and Abandoned Mine Land projects in West Virginia, Maryland and Ohio. RJ has also been the lead on numerous slip remediation projects.**

EDUCATION (Degree, Year, Specialization)  
**Bachelor of Science, 2002, Civil Engineering Technology – Fairmont State University**

MEMBERSHIP IN PROFESSIONAL ORGANIZATIONS	REGISTRATION (Type, Year, State)
N/A	Professional Engineer, 2009, West Virginia [REDACTED] Professional Engineer, 2010, Pennsylvania [REDACTED]

13. PERSONAL HISTORY STATEMENT OF PRINCIPALS AND ASSOCIATES **RESPONSIBLE FOR AML PROJECT DESIGN** (Furnish complete data but keep to essentials)

NAME & TITLE (Last, First, Middle Int.)	YEARS OF EXPERIENCE		
	YEARS OF AML DESIGN EXPERIENCE:	YEARS OF AML RELATED DESIGN EXPERIENCE:	YEARS OF DOMESTIC WATERLINE DESIGN EXPERIENCE:
<b>MORRIS, REBECCA, Y. – QA/QC</b>	N/A	2	10

**Brief Explanation of Responsibilities**  
**Rebecca Morris, PE is the Sector Leader of Thrasher’s Land Development Market. With nearly two decades experience in the land development industry, Rebecca brings the knowledge and expertise to bring these projects from concept to completion. Rebecca has refined her management skills and technical expertise by working on complex and diversified land development projects. Rebecca’s in-depth understanding of site layout, design, permitting, and funding have enabled her to successfully deliver quality engineering solutions for both public and private clientele through-out the region.**

**In the role of QA/QC, Rebecca oversees and assures the quality of all deliverables and management practices of all disciplines. This includes overseeing critical events, attending client or stockholder meetings, as well as, participating in kick-off and milestone meetings, preparing quality control plans and assuring project performance and meeting client expectations.**

**EDUCATION (Degree, Year, Specialization)**  
**Bachelor of Science, 2003, Civil Engineering – West Virginia University**

<b>MEMBERSHIP IN PROFESSIONAL ORGANIZATIONS</b>	<b>REGISTRATION (Type, Year, State)</b>
<ul style="list-style-type: none"> <li>• Leadership Monongalia</li> <li>• West Virginia Oil and Natural Gas Association</li> <li>• Marcellus Shale Coalition</li> <li>• Women’s Energy Network</li> </ul>	<b>Professional Engineer, 2008, State of West Virginia</b> [REDACTED]

13. PERSONAL HISTORY STATEMENT OF PRINCIPALS AND ASSOCIATES **RESPONSIBLE FOR AML PROJECT DESIGN** (Furnish complete data but keep to essentials)

NAME & TITLE (Last, First, Middle Int.)	YEARS OF EXPERIENCE		
	YEARS OF AML DESIGN EXPERIENCE:	YEARS OF AML RELATED DESIGN EXPERIENCE:	YEARS OF DOMESTIC WATERLINE DESIGN EXPERIENCE:
<b>HEGEDIS, STEVE – PROJECT ENGINEER</b>	20	20	20

**Brief Explanation of Responsibilities**  
**Steve Hegedis is an experienced civil site design engineer with an education in environmental resource management. He has a strong background in site design, stormwater design, and engineered natural systems (ENS) design. Prior to joining Thrasher, he worked on a host of energy projects, as well as commercial and residential site developments, and water and stormwater design.**

**Steve has a thorough knowledge of NPDES permitting, bringing a deep respect for the environmental impact of his work and an important expertise to his clients. Additionally, Steve is a licensed general contractor in West Virginia, giving him a unique dual perspective as he approaches design projects.**

**EDUCATION (Degree, Year, Specialization)**  
**Bachelor of Science, 1993, Environmental Resource Management – Penn State University**

<b>MEMBERSHIP IN PROFESSIONAL ORGANIZATIONS</b>	<b>REGISTRATION (Type, Year, State)</b>
N/A	N/A



14. PROVIDE A LIST OF SOFTWARE AND EQUIPMENT AVAILABLE IN THE PRIMARY OFFICE WHICH WILL BE USED TO COMPLETE AML DESIGN SERVICES

**The Thrasher Group, Inc. will design work for AML utilizing one of the largest networks of computer aided design (CAD) equipment, software and trained personnel in the state of West Virginia.**

**Connected through a virtual private network, our cad staff has the ability to share necessary plans among our locations. This will allow work designed for AML to be prepared and updated at the office location that best meets the needs of the scope of services.**

**Civil 3D, Carlson and Microstation V8 Software is utilized at 35 CAD stations throughout our locations. Additionally, equipment includes 10 large format (Size E) plotters and 5 large format plotter / scanners. CAD plans are prepared by both dedicated cad employees and by staff engineers and engineering technicians in each of the firm's offices.**

**Thrasher also utilizes top-of-the line survey equipment. Our survey work is accomplished with global positioning systems (GPS) and electronic distance measuring (EDM) survey stations with data gathering capabilities. The survey crews and office support staff generate mapping deliverables in virtually any digital format referenced to specified projection systems.**

**Additional survey services include: high accuracy monumentation, astronomic observations / orientation, NGS blue booking, hydrographic, terrestrial scanning, 3D as-builts, 3d monitoring, sub-surface utility location / designation. The field crews are all equipped with late model four-wheel drive vehicles stocked with the most modern equipment available to perform professional land surveying services.**

- 111 TRIMBLE GNSS UNITS
- 68 TRIMBLE ROBOTS
- 2 PRECISE DIGITAL FIRST ORDER LEVELS WITH INVAR RODS
- 39 LEICA, NIKON OR TOPCON TOTAL STATIONS ALL MANAGED BY
- TRIMBLE TSC3 FIELD COMPUTERS
- 2 REMOTE CONTROLLED/UNMANNED MAPPING AERIAL PLATFORM
- HYDROGRAPHIC SURVEY VESSEL
- CIVIL 3D
- CARLSON AND MICROSTATION V8 SOFTWARE
- 70 CAD STATIONS
- 10 LARGE FORMAT (SIZE E) PLOTTERS AND
- 5 LARGE FORMAT PLOTTER / SCANNERS
- 7 3D SUB-SURFACE UTILITY LOCATORS

15. CURRENT ACTIVITIES ON WHICH YOUR FIRM IS THE DESIGNATED ENGINEER OF RECORD  
 THE THRASHER GROUP IS CURRENTLY THE DESIGNATED "ENGINEER OF RECORD" ON MORE THAN 200 ON-GOING PROJECTS. THESE PROJECTS RANGE FROM SIMPLE BOUNDARY SURVEYS WHICH ARE COMPLETED WITHIN A FEW DAYS' TIME TO COMPLETE MUNICIPAL PROJECTS WHICH ARE COMPLETED OVER AN EXTENDED AMOUNT OF TIME. A PARTIAL LISTING OF CURRENT PROJECTS FOLLOWS WHICH DEMONSTRATES THE RANGE OF SERVICES PROVIDED BY THE THRASHER GROUP.

PROJECT NAME, TYPE AND LOCATION	NAME AND ADDRESS OF OWNER	NATURE OF YOUR FIRM'S RESPONSIBILITY	ESTIMATED CONSTRUCTION COST	PERCENT COMPLETE
OWL CREEK HIGHWALL #2 ABANDONED MINE LANDS AND RECLAMATION NEAR MORGANTOWN WV MONONGALIA COUNTY	ENVIRONMENTAL PROTECTION OFFICE OF AML&R 601 57TH ST SE CHARLESTON WV 25304	PROVIDE ENGINEERING SERVICES TO MITIGATE MINING RELATED PROBLEMS ASSOCIATED WITH ABANDONED MINE LANDS (PERMITTING, DESIGN, CONSTRUCTION MONITORING)	TBD	20%
ISAAC CREEK LANDSLIDE ABANDONED MINE LANDS AND RECLAMATION NEAR DOLA WV HARRISON COUNTY	ENVIRONMENTAL PROTECTION OFFICE OF AML&R 601 57TH ST SE CHARLESTON WV 25304	DEVELOP CONSTRUCTION AND EROSION AND SEDIMENT PLANS ALONG WITH TECHNICAL SPECIFICATIONS TO STABILIZE THE LANDSLIDE AND RE-ESTABLISH THE ALIGNMENT OF ISAAC CREEK ROAD (CR 16-1)	TBD	20%
BERKELEY COUNTY PUBLIC SERVICE SEWER DISTRICT RIVERSIDE PUMP STATION INSTALLATION BERKELEY COUNTY, WV	BERKELEY COUNTY PSSD PO BOX 944 MARTINSBURG, WV 25402	FEASIBILITY STUDY, DESIGN, FUNDING AND PERMIT APPLICATIONS, CONTRACT DOCUMENTS, FIELD SERVICES OF SURVEY AND INSPECTION	\$7,000,000.00	90%

TOTAL NUMBER OF PROJECTS: 3 of our current projects listed

TOTAL ESTIMATED CONSTRUCTION COSTS: n/a





17. COMPLETED WORK WITHIN LAST 5 YEARS ON WHICH YOU WERE THE DESIGNATED ENGINEER OF RECORD:  
**AML RELATED PROJECTS FOR THE WVDEP AND WATERSHED PROTECTION GROUPS**

PROJECT NAME, TYPE AND LOCATION	NAME AND ADDRESS OF OWNER	ESTIMATED CONSTRUCTION COST	YEAR	CONSTRUCTED (YES OR NO)
STOWE (PRINCE) LANDSLIDE EMERGENCY AML LOGAN COUNTY, WV	WV DEP, OFFICE OF AML&R 601 57TH STREET, SE CHARLESTON, WV 25304	\$220,000.00	2015	YES
LAMBERTON RUN SITE 7 PASSIVE AMD TREATMENT SYSTEM HARRISON COUNTY, WV	GUARDIANS OF THE WEST FORK 830 BENONI AVE. FAIRMONT, WV 2554	\$340,000.00	2015	YES
SWAMP RUN #1 PASSIVE AMD TREATMENT SYSTEM UPSHUR COUNTY, WV	BUCKHANNON RIVER WATERSHED ASSOCIATION 112 FAYETTE STREET, BUCKHANNON, WV 26201	\$440,000.00	2015	NO
NUTTER RUN LANDSLIDE EMERGENCY AML HARRISON COUNTY, WV	WV DEP, NORTHERN EMERGENCY 101 CAMBRIDGE PLACE   BRIDGEPORT, WV 26330 304-842-1900	\$10,000,000	2017	YES
RIDGEWAY DRIVE LANDSLIDE EMERGENCY AML HARRISON COUNTY, WV	WV DEP, NORTHERN EMERGENCY 101 CAMBRIDGE PLACE   BRIDGEPORT, WV 26330 304-842-1900	\$20,000,000	2018	YES

18. COMPLETED WORK WITHIN LAST 5 YEARS ON WHICH YOU WERE ASSOCIATED WITH OTHER FIRMS  
(INDICATE PHASE OF WORK FOR WHICH YOUR FIRM WAS RESPONSIBLE)

PROJECT NAME, TYPE AND LOCATION	NAME AND ADDRESS OF OWNER	ESTIMATED CONSTRUCTION COST OF YOUR FIRM'S PORTION	YEAR	CONSTRUCTED (YES OR NO)	FIRM ASSOCIATED WITH
BOONE COUNTY MINE ACCESS BOONE COUNTY, WV	WVDOH 1900 KANAWHA BLVD E CHARLESTON, WV 25311	\$1,207,900	2018	NO	BIZZACK CONSTRUCTION
OAK MOUND WALDO RUN ELECTRIC TRANSMISSION LINE SUMMIT COUNTY, OH	FIRST ENERGY 76 SOUTH MAIN STREET AKRON, OH 44308	\$1,294,493	2016	YES	BURNS AND MCDONNELL
DOMINION ENERGY HEADQUARTERS BUILDING DESIGN HARRISON COUNTY, WV	DOMINION ENERGY 900 WHITE OAKS BOULEVARD BRIDGEPORT WV 26330	\$860,000	2015	YES	MARCH WESTIN COMPANY

19. USE THIS SPACE TO PROVIDE ANY ADDITIONAL INFORMATION OR DESCRIPTION OF RESOURCES SUPPORTING YOUR FIRM'S QUALIFICATIONS TO PERFORM WORK FOR THE WV ABANDONED MINE LANDS PROGRAM

SEE ATTACHMENT – STATEMENT OF QUALIFICATIONS

20. THE FOREGOING IS A STATEMENT OF FACTS.

SIGNATURE:  TITLE: PROJECT MANAGER  
PRINTED NAME: RICHARD HOVATTER

DATE: SEPTEMBER 8, 2020

## Attachment "B"

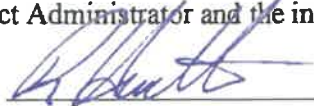
PROJECT	Exp. Basis C-Corp P-Personal *	Additional info provided in Section (s) **	PROJECT EXPERIENCE REQUIREMENTS														Primary staff participation/capacity *** M-Management P-Professional		
			Forfeited Surface Mine Reclamation	Forfeited Deep Mine Reclamation	Portal/shaft closure	Hydrologic/Hydraulic design/ Eval.	Remining Evaluation	Mine / refuse fire abatement	Subsidence investigation/ mitigation	Hazardous waste disposal	Project specifications	Water quality evaluation /mitigation replacement	Construction inspection / management	Water treatment	Equipment /structure removal	Stream restoration	Geotechnical/stability	Chadwick D. Biller	Rebecca Y. Morris
Anglins Run Portals	C	Project Experience			X	X				X							M		
Roaring Creek	C		X	X		X			X								M		
Shinns Run Portals	P			X		X			X									M/P	
Squire's Creek Portals	C		X		X	X			X				X				M		
Overfield (Laferty) CS&P	C		X		X	X			X						X		M		
Laurel Run	C		X		X	X			X								M	P	
Clarksburg Lyons Landslide	C		X			X			X						X		M		
Pleasant Valley	C		X		X	X			X								M	P	
Roger Camp Hill	C		X			X			X								M	P	
Owl Creek Highwall	C		X		X	X			X					X			M	P	
Landgraff Refuse	C		X			X			X								M	P	
Canyon Refuse & Dump	C		X		X	X			X				X				M	P	
Stowe (Prince) Landslide	C					X			X						X		M	P	
Lamberts Run Site 7	C	Project Experience	X			X			X	X	X	X		X			M	P	P
Swamp Run #1	C	Project Experience	X			X			X	X	X	X		X			M		P
Dans Branch	C					X			X						X		M		P
Ed Gower Highwall #2	C		X		X	X			X								M		P
Martinka Mine	C	Project Experience	X			X			X	X	X	X					M		P

\*List whether project experience is corporate or personnel based or both

\*\* Use this area to provide specific sections or pages if needed for reference

\*\*\* List primary design personnel and their functional capacity for the projects listed.

**DESIGNATED CONTACT:** Vendor appoints the individual identified in this Section as the Contract Administrator and the initial point of contact for matters relating to this Contract.



\_\_\_\_\_  
(Name, Title)  
Richard Hovatter - Project Manager

\_\_\_\_\_  
(Printed Name and Title)  
600 White Oaks Blvd, Bridgeport, WV 26330

\_\_\_\_\_  
(Address)  
304-624-4108 / 304-624-7831

\_\_\_\_\_  
(Phone Number) / (Fax Number)  
rhovatter@thetrashergroup.com

\_\_\_\_\_  
(email address)

**CERTIFICATION AND SIGNATURE:** By signing below, or submitting documentation through wvOASIS, I certify that I have reviewed this Solicitation in its entirety; that I understand the requirements, terms and conditions, and other information contained herein; that this bid, offer or proposal constitutes an offer to the State that cannot be unilaterally withdrawn; that the product or service proposed meets the mandatory requirements contained in the Solicitation for that product or service, unless otherwise stated herein; that the Vendor accepts the terms and conditions contained in the Solicitation, unless otherwise stated herein; that I am submitting this bid, offer or proposal for review and consideration; that I am authorized by the vendor to execute and submit this bid, offer, or proposal, or any documents related thereto on vendor's behalf; that I am authorized to bind the vendor in a contractual relationship; and that to the best of my knowledge, the vendor has properly registered with any State agency that may require registration.

\_\_\_\_\_  
The Thrasher Group, Inc.

\_\_\_\_\_  
(Company)



\_\_\_\_\_  
Richard Hovatter - Project Manager

\_\_\_\_\_  
(Authorized Signature) (Representative Name, Title)

\_\_\_\_\_  
Richard Hovatter - Project Manager

\_\_\_\_\_  
(Printed Name and Title of Authorized Representative)

\_\_\_\_\_  
9/8/2020

\_\_\_\_\_  
(Date)

\_\_\_\_\_  
304-624-4108 / 304-624-7831

\_\_\_\_\_  
(Phone Number) (Fax Number)



**ADDENDUM ACKNOWLEDGEMENT FORM**  
**SOLICITATION NO.: CEOI 0313 DEP2100000002**

**Instructions:** Please acknowledge receipt of all addenda issued with this solicitation by completing this addendum acknowledgment form. Check the box next to each addendum received and sign below. Failure to acknowledge addenda may result in bid disqualification.

**Acknowledgment:** I hereby acknowledge receipt of the following addenda and have made the necessary revisions to my proposal, plans and/or specification, etc.

**Addendum Numbers Received:**  
(Check the box next to each addendum received)

- |  |  |
|--|--|
| <input checked="" type="checkbox"/> Addendum No. 1 | <input type="checkbox"/> Addendum No. 6  |
| <input type="checkbox"/> Addendum No. 2            | <input type="checkbox"/> Addendum No. 7  |
| <input type="checkbox"/> Addendum No. 3            | <input type="checkbox"/> Addendum No. 8  |
| <input type="checkbox"/> Addendum No. 4            | <input type="checkbox"/> Addendum No. 9  |
| <input type="checkbox"/> Addendum No. 5            | <input type="checkbox"/> Addendum No. 10 |

I understand that failure to confirm the receipt of addenda may be cause for rejection of this bid. I further understand that any verbal representation made or assumed to be made during any oral discussion held between Vendor's representatives and any state personnel is not binding. Only the information issued in writing and added to the specifications by an official addendum is binding.

The Thrasher Group, Inc.

\_\_\_\_\_  
Company

  
\_\_\_\_\_  
Authorized Signature

9/8/2020

\_\_\_\_\_  
Date

**NOTE:** This addendum acknowledgment should be submitted with the bid to expedite document processing.  
Revised 6/8/2012