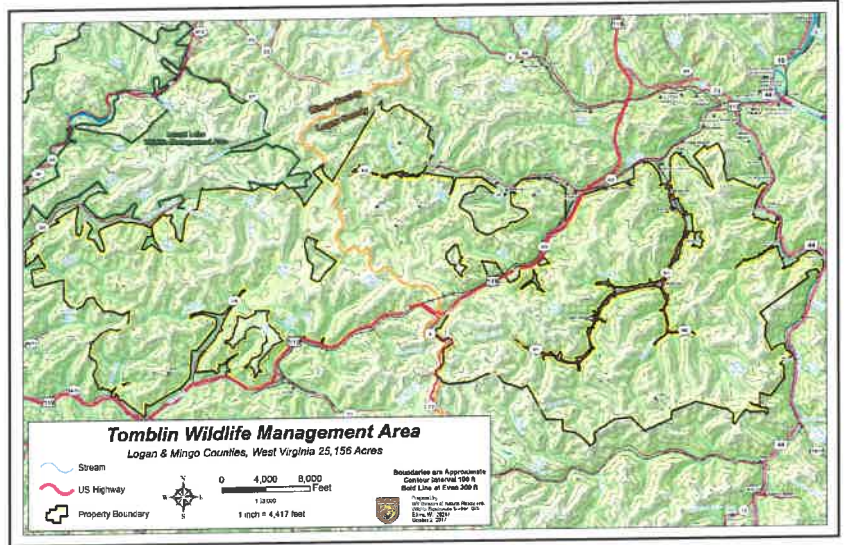




## West Virginia Division of Natural Resources



RECEIVED  
04/02/21 10:37:23  
WV PURCHASING DIVISION

**CEOI 0310 DNR2100000001**

**Tomblin Wildlife Management Area  
Elk Restoration Visitor Center**

**McKINLEY**  
ARCHITECTURE + ENGINEERING

*in association with:*



April 1, 2021

Joseph E Hager III  
Bid Clerk  
Department of Administration, Purchasing Division  
2019 Washington Street East  
Charleston, WV 25305-0130

Dear Mr. Hager,

**What a great opportunity for the Tomblin Wildlife Management Area!** McKinley Architecture and Engineering, Brandstetter Carroll, Katz Design, and R.K. Levitz (McKinley Team) have teamed up, and are pleased to provide the Acquisitions and Contract Administration Section of the Purchasing Division, on behalf of the West Virginia Division of Natural Resources, with our proposal for providing architectural/engineering design services for the Elk Education / Visitor Center located on Tomblin WMA near Holden in Logan County, WV. As you review this submission, we emphasize the following strengths of the McKinley Team with respect to your project:

**McKinley Architecture and Engineering (McKinley & Associates)** is a **full-service architectural and engineering firm** that has been designing renovation projects since 1981. With offices in Wheeling and Charleston, WV, and Pittsburgh, PA, we support a professional staff of **Architects, Engineers, Construction Administrators, an Interior Designer, a Qualified Commissioning Process Provider**, and more. Our staff also includes a **LEED Accredited Professional** and **3 LEED Accredited Professionals specializing in Building Design and Construction** who can add energy efficient aspects into your project. **McKinley has made the 2020 Inc. 5000 list, the most prestigious ranking of the nation's fastest-growing private companies!** McKinley ranks on the 2020 Inc. 5000 List with 3-Year Revenue Growth of 62.86%.

**Brandstetter Carroll Inc.** is a firm of **Architects, Engineers, Landscape Architects, Interior Designers, LEED Accredited Professionals and Green Associates, and Planners**. They were founded in 1979 with the express purpose of providing professional design services to public sector clients. Since the firm's inception, BCI has grown to include a staff of 60 employees headquartered in Lexington, Kentucky, with additional offices in Cincinnati and Cleveland Ohio, and Dallas, Texas.

For over 35 years, BCI has completed public projects totaling over \$2 billion in construction cost. Their Senior Design Architect for this project is **Richard T. Parker, AIA, LEED AP**, who is a **widely respected leader in camp, nature center, and environmental education communities**. He has led numerous projects which include **environmental educational centers, visitor centers, wilderness interpretive buildings, nature centers**, and much more.

**McKinley Architecture and Engineering and Brandstetter Carroll are currently working together** on multiple projects throughout West Virginia, and a project in Ohio. We have a great working relationship, which we will bring to your project.

---

**Karen Katz** is an **exhibit designer** who specializes in creating interactive learning environments for children and families. She obtained her Master's Degree in Museum Exhibition Planning and Design. For 20 years, Katz has worked in the field of exhibit design, having most recently served as the Director of Exhibits at The Children's Museum of Cleveland. In this role, she participated as part of the leadership team to help secure \$11 million to move the museum to a new location and designed 20,000 square feet of exhibit space for the new facility. Some of her relevant clients have included Cuyahoga Valley Scenic Railroad, Holden Forests and Gardens, and more.

**R.K. Levitz LLC** is a 100% Hispanic-Owned business certified as a **Minority Business Enterprise (MBE)**, with special expertise in **signage, wayfinding and graphics, and exterior architectural design branding**. Richard K. Levitz, AIA, president, managed the design, permitting and implementation of storefronts, signs, and wayfinding valued at over 3 million dollars for parks, retail, office, health care and educational clients. This has included over 100 clients. Mr. Levitz just completed his 20th year as Owner's Representative / Project Manager of Crocker Park in Westlake, Ohio, where he has participated in its development since inception, which has included urban, architectural design, graphics/signs and wayfinding guidelines.

**In closing,** one of the more exciting aspects of our job is **listening to you**, our client, in how you envision this project, and transforming your ideas into realities. This can only be accomplished by effectively working together with you. Most of our clients are repeat, which is a good indication of the services we provide. The main reason we have been able to maintain this relationship is because **we listen to their needs, and then deliver**. We encourage you to speak with our references because we feel this is the best way that our abilities can be conveyed to you.

The building vision, the atmosphere, and the impression it leaves are some of the defining aspects of a facility and some of the hardest to achieve. It takes great consideration of space and place to achieve successful integration of all these aspects. **Together**, the design team we have assembled will **work with you** to develop the Elk Restoration Visitor Center that will successfully meet your goals and objectives.

We love what we do, so we care about the results you get. We are ready to begin **immediately** and can work to your schedule to get this project designed and constructed. Thank you for reviewing our submission and considering our Team for your project. We are very excited about the possibility of working with you.

Sincerely,



Ernest Dellatorre  
Director of Business Development  
McKinley Architecture and Engineering  
(304) 340-4267 x115  
edellatorre@mckinleydelivers.com



# Staffing Plan

The work to be performed by your design team is very clear; to evaluate, prioritize and design within budget and schedule to meet the needs of the Tomblin Wildlife Management Area and the West Virginia Division of Natural Resources. We use and welcome your input throughout the project. Our project team has been chosen for this project and they are available to dedicate the necessary time to this effort. Several members of McKinley and Brandstetter Carroll have collaborated on projects. We are available to **start immediately** upon our being selected. We can and will perform for you on time.

We have assembled a core team of professional firms and individuals for this project that have the experience, qualifications, and successful project histories that are well-aligned with this project type and scope. The team has extensive experience in state and government agency projects, and notably, many projects located in **natural environments** as evidenced in the project examples. Completed projects include **youth camps, regional, state, and national parks and nature centers and environmental education centers**. The team will be supported by Karen Katz Exhibit Design for display and exhibit design and programming, and Richard Levitz for programming and signage expertise. Note, although not specifically identified as a service requirement, the McKinley Team has included exhibit and signage as specific service enhancements that would benefit this project.

The McKinley Team's ability to meet the Owner's expectations are confirmed in the **long-term relationships each firm has maintained** with public and private clients—some have lasted nearly 40 years. As Architects, BCI often is at the front line with clients from initial vision through occupancy, and as such relationships grow and client thoughts and opinions (good and bad) are shared freely. Consistently, the initial visioning, planning, and design explorations are exciting and passionate. Construction phase always presents challenges and tests the project team's ability to maintain the vision until completion. **Project success is summarized by final costs, timeliness, and ability to implement the expected project scope.** Most of the projects our core team have completed result in very satisfied clients and users with comments as – *"exceeds expectations.... more than planned...., and this place feels good."*

This proposed team has **extensive experience in designing projects in natural environments** (which may be wood frame and timber construction, masonry construction, etc). The BCI architects have completed new and renovation projects located in meadowlands, deserts, woodlands, lowlands, mountainsides, and waterfronts. Our project Design Team Lead has spent most of his career working on similar scale and building type projects located at outdoor activity-based sites. Each ecosystem type has unique conditions that affect construction and building systems functions and operations. This team approaches each project by first understanding the existing situation to ensure we bring forth the appropriate past knowledge and design successes to each project.

**Our experiences and approach to design** requires a dialog with the Owner and the end users of the facility. Throughout the design process, we hold design workshops with YOU to get the critical information needed to achieve a design that meets your needs and budget. We do not only depend on our experience, but on the day to day experiences of



# Staffing Plan

those who will use the building. We have found that this **hands on approach** allows us to focus on your needs and desires and to achieve a better outcome for our client.

The McKinley Team's approach will be to keep the process simple. **Scheduling and communication** are strengths of our Team's leadership. For most projects, milestone work sessions (in person or virtual) are established and facilitated by project leadership and will be the gauge and guide of project process. In addition, Owner review and presentation sessions are **key milestones** to guide and maintain schedule. Execution of all services and preparation of deliverables will coordinate with the schedule and utilization of technology-based platforms for information sharing, including BIM, will be integral to this initiative.

As with many organizations, the use of virtual platforms for meetings and communications have become a daily occurrence for our team members. We are able to host these meetings through Microsoft Teams and Zoom and also have participated in sessions hosted by Owner-preferred meeting services. Site visits and safely managed in-person meetings onsite will be facilitated as appropriate to ensure progress and full understanding of the project.

**Initial building assessments and preparation of the Program of Requirements is critical and when well done, provide solid bases for developing alternative considerations and design recommendations for the Elk Restoration Visitor Center.** The McKinley Team will learn about the immediately surrounding site and services and endeavor to identify any specific or potential impacts of the projects. The design team's experience with similar projects provides depth of resource knowledge and history to support decision making for alternatives, design and documentation and implementation.

The design team is also very experienced with **green** certification projects such as LEED. Successful execution of green projects inherently requires the entire project team – Owner and building occupants, the design team and the construction team share and embrace the project vision and objectives. This type of collaboration usually is initiated in a kick-off project charette and validated throughout the project by re-convening the project team at intervals throughout the project. Mr. Parker (proposed Project Design Lead) has facilitated this engagement process for several green design projects, and they all benefitted from minimal changes and additional costs and more timely decision-making. This approach would be of benefit.

Moreover, and in addition to the planning and design phases; after the building is constructed, our 11-Month Walk-Through is a process where our professionals return to your facility eleven months after the project is completed. At that time they review all the work that was completed and check all warranties. We are making sure all of the covered work is in order and that the warranties do not expire with equipment or product not working properly. We have been doing this for over 20 years, long before it being adopted as an AIA 101 Standard. We also conduct Post Occupancy Evaluations with the Owner to find out how well we matched the Owners' needs.

# Corporate Information

## Firm History

**Founded in 1981**, McKinley Architecture and Engineering is a multi-discipline **full service A/E firm**, offering comprehensive **professional services in Architecture, Engineering, Interior Design, Energy Efficient and Sustainable (LEED) Design, Commissioning, Construction Administration, and more.** We have a broad range of skill and experience for projects involving **governmental, commercial/office**, emergency response facilities, public safety, municipal, industrial, and schools to name a few. Over the years, our firm won multiple **State and National awards and recognitions** for our designs. **McKinley has made the 2020 Inc. 5000 list, the most prestigious ranking of the nation's fastest-growing private companies!**



## Firm Information

**Ernest Dellatorre**  
Director of Business Development

**Tim Mizer, PE, RA, QCxP**  
Director of Engineering Services

**Patrick J. Rymer, AIA, ALEP**  
Director of Architectural Services

## Date of Incorporation

**July 1, 1981**  
Wheeling, West Virginia

## Professionals on Staff

Architects  
Engineers  
Arch./Eng. Designers  
LEED AP BD+C's  
Historic Preservationist  
Construction Admins.  
HVAC Commissioning Provider  
Interior Designer  
ALEP (CEFP)  
REFP

## Locations

32 Twentieth Street  
Suite 100  
Wheeling, WV 26003  
P: 304-233-0140  
F: 304-233-4613

129 Summers Street  
Suite 201  
Charleston, WV 25301  
P: 304-340-4267

5000 Stonewood Drive  
Suite 200  
Wexford, PA 15090  
P: 724-719-6975

## Credentials

**McKinley Architecture and Engineering** is a member of the following **organizations**:

A4LE (formerly CEFPI), ACI International, AIA, ASCE, ASHRAE, ASPE, AWI, BOCA, NCARB, NFPA, WVEDC, and more

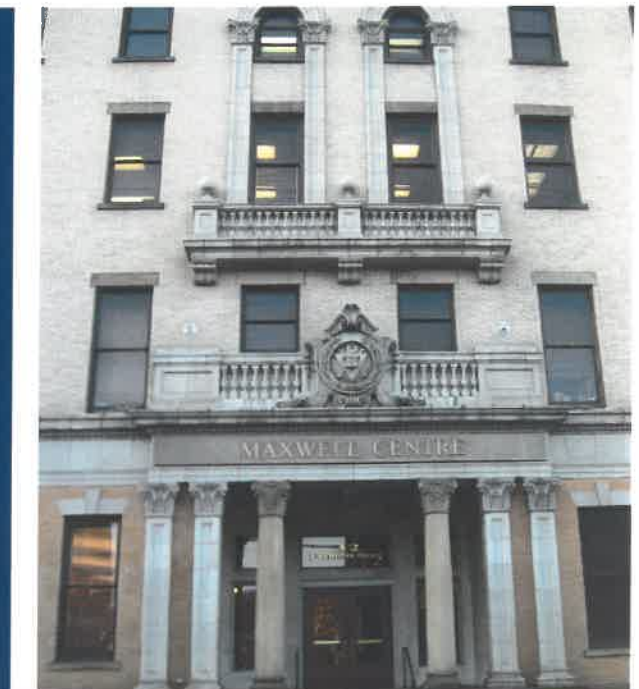
## Follow Us

[www.McKinleyDelivers.com](http://www.McKinleyDelivers.com)

[www.Facebook.com/McKinleyDelivers](https://www.facebook.com/McKinleyDelivers)

[www.Linkedin.com/company/McKinleyDelivers](https://www.linkedin.com/company/McKinleyDelivers)

Instagram: @McKinleyDelivers



**McKINLEY**  
ARCHITECTURE + ENGINEERING



# Sustainable “Green” Design

**B**uildings designed today will need to meet the demands of the future; McKinley Architecture and Engineering identifies the changes necessary in the design of today and to meet these demands. This approach helps to retain the buildings’ long-term profitability and value, which achieves the buildings’ **sustainability**.

McKinley approaches ecological design from a business perspective, offering **proactive** solutions to complex problems such as **indoor air quality, energy efficiency, resource depletion, and water quality**. With **commercial and governmental office project experience**, the McKinley Team can work alongside local designers to provide sustainable design and construction guidance. We also offer full architectural design services and guided design workshops on sustainable design issues.

**Our Philosophy** is to provide our clients with experienced leadership as well as state-of-the-art and **innovative** design expertise to accomplish the goals of your projects. Function, economics and versatility, in addition to the development of **strong aesthetic appeal**, are crucial elements in our design process. We also believe that enhancement of the physical environment in which each individual lives and works should add significantly to the enjoyment of life. Our firm has dedicated our professional skills to attain these goals.

**For a few recent sustainable awards**, McKinley Architecture and Engineering was



presented with the **2019 Governor's Award for Leadership in Buildings Energy Efficiency** at the Innovation & Entrepreneurship Day at the Capitol! We were recognized for our commitment to sustainability and energy efficiency in the design of office buildings, schools, multi-use facilities, and a wide variety of commercial, industrial, **government**, and historical structures.

Our designs have also won **West Virginia Department of Environmental Protection's Clean Energy Environmental Award, 2 Black Bear Awards for the Highest Achievement** for the WV

Sustainable Schools program, **2 U.S. Department of Education Green Ribbon Schools**, and a **Gold Medal Green Building Award** by Building of America, among others!

We also have a project that is **Collaborative for High Performance School (CHPS) Registered**; the United States' first green building rating program designed for schools.

Furthermore, we have designed 4 projects listed on the **U.S. Environmental Protection Agency's ENERGY STAR** program: Building 55: West Virginia State Office Building in Logan, Hilltop Elementary School, Cameron Middle/High School, and Johnson Elementary School. To receive an ENERGY STAR, you need to perform in the top 25% of the most energy efficient projects in the program. **Building 55: West Virginia State Office Building** is one of the most energy efficient buildings in the State, and is in the **Top 5%** of all Energy Star rated buildings in the Country!





# Leadership in Energy and Environmental Design



**LEED® (Leadership in Energy and Environmental Design) Green Building Rating System™** developed by the U.S. Green Building Council (USGBC) is the nationally accepted standard for the design, construction, and operation of high performance green buildings ([www.usgbc.org](http://www.usgbc.org)). In January 2001, our firm was the **first organization in West Virginia to join the USGBC**. No other WV firm joined until nearly 2 years later! We have **LEED Accredited Professionals** on staff, along with our skilled architectural/engineering team, who will efficiently and cost effectively achieve certification under this standard or we can guide you through the process in order to develop sustainability goals specific to your project.

We have **LEED® Accredited Professionals**, including 3 who are **specialized in Building Design & Construction**:

- Kurt A. Scheer, PE, LEED AP
- Christina Schessler, AIA, LEED AP BD+C
- Jeffrey W. Wessel, AIA, LEED AP, BD+C
- Thomas R. Worlledge, AIA, LEED AP BD+C, REFP



Our **LEED Certified Projects** are (LEED Rating System in parentheses):

 **Hilltop Elementary School** in Sherrard, WV (LEED for Schools 2.0)  
- The First LEED Certified School in the State of West Virginia!

 **Building 55: West Virginia State Office Complex** in Logan, WV (LEED NC 2.2)

All of our current **LEED Registered Projects** are (LEED Rating System in parentheses):

- Bellann in Oakhill, WV (LEED EB O&M)
- Cameron Middle/High School in Cameron, WV (LEED for Schools 2.0)
- SMART Office in Williamson, WV (LEED CI)

The LEED AP Specialty Logos signify advanced knowledge in green building practices and specialization in a particular field.



The LEED AP BD+C designation that Thom, Christina, and Jeff have achieved represents specialization in commercial design and construction.



Thomas R. Worlledge, AIA, LEED AP BD+C, REFP has been a member of the USGBC since 2001; he was the first LEED Accredited Professional in the state of West Virginia! As a professional trainer for the Sustainable Building Industries Council, he teaches other design professionals in the art of High Performance School

design. He is also a Founder & Chairman of the Board for the US Green Building Council's West Virginia Chapter.



Christina Schessler, AIA, LEED AP BD+C has been a member of the USGBC since 2009. In 2012 she received her Masters in Historic Preservation, so not only can she incorporate LEED "Green" aspects into new buildings; she can even incorporate energy efficient design into renovation/preservation projects. Twenty percent of a building's energy consumption is embodied in the existing physical structure itself!

The 'USGBC Member Logo' is a trademark owned by the U.S. Green Building Council and is used by permission.

**McKINLEY**  
ARCHITECTURE + ENGINEERING

# Interior Design



Basic interior services begin with a strategy session designed to determine the owner's project requirements, timetable and budget. The interviews will include analyzing space requirements, operating procedures, communication relationships and future needs. Inventory of existing conditions are used to develop accurate drawings and plans.

Application of current ADA and building codes will be applied to the developed plans for way finding (signage, directories, fire escape plan), furnishings and finishes. Attention to budget and maintenance is given in relationship to owner needs.

Construction documents required to detail the project include schedules, elevations, plans, presentation boards and specifications. To maintain coordination, the follow up contract administration consists of submittal review, post construction evaluation and coordination of FF&E contracts when applicable.

We can also design for energy efficiency and sustainability. For interior design & FF&E; specific color and texture selections on the floors, walls, ceilings, and furnishings can enhance the lighting in the space, can create a comfortable atmosphere, and can incorporate a color palette with fresh accents to offer interest and contrast. We have utilized wall paint that has very low volatile organic compounds (VOC's) which keeps the air we breathe cleaner, and contains an anti-microbial which inhibits the growth of mold and mildew. We have specified carpet tile which minimizes waste, has 35% recycled content, and is Green Label Certified, meaning it meets stringent indoor air quality requirements.





# Commissioning

On staff, we have a **Qualified Commissioning Process Provider** who can provide independent commissioning services, not only on new facilities but also existing facilities.

This professional is **Tim E. Mizer, PE, RA, QCxP**. His **QCxP accreditation** was earned at the University of Wisconsin-Madison. He has been formally trained to fully understand how integrated HVAC systems function and how systems interface with others to run your building efficiently, and has a comprehensive knowledge of the full American Society of Heating, Refrigerating, and Air-Conditioning Engineers (ASHRAE) Commissioning Process. From this, we commission the project to ensure everything is working properly, and to teach the maintenance personnel how to use the machinery and gives them all the correct manuals.



For existing buildings, the commissioning provider can troubleshoot the existing systems to determine the fault of non-performing equipment or the reasons for uncomfortable spaces.

For new buildings and their systems, commissioning entails the review of the design plans, verifying the installations, and the oversight of the testing of the mechanical and electrical systems to ensure the owner is getting the type and quality of product expected.





# Construction Administration & On-Site Representation

**Construction Administrator Involved from the Beginning of the Design Phase**

**Observe the Construction Progress**

**Liaison between the Owner, Contractor, and Architects/Engineers**

**Responsible for All Construction Progress Meetings and Minutes**

**Monitor the Construction Schedule**

**Ensure that the Contractor is Following the Construction Documents**

**Verify Pay Application and Change Orders**

**Typically On-Site Once Every Two Weeks  
(Provide Additional On-Site Representation if Requested)**



Our **Construction Administrators** have an extra responsibility than what most firms' Construction Administrators have; our CAs are a part of the design process from **Day 1** (they are not thrown into the project only when construction starts; they are here from the beginning), so they know the ins-and-outs of the project. Our CAs have an important role as being the **liaison between the Owner, Contractor, and Architect**. The primary objective of the Construction Administration services is to ensure completion of work the way the client wants it - **as scheduled and as budgeted**. Our CAs evaluate the quality of the work to verify that it meets the level required by clients; in addition, they monitor the contractor's progress to ensure that they are following the Construction Documents. They observe the construction progress, are responsible for all construction meetings and minutes, and they verify pay application and change orders. The Construction Administrator is typically on-site once every two weeks, but we can provide additional on-site representation if requested.

# References

We feel that the best way to demonstrate our strengths and leadership is by referring to our clients. We have an ever-growing list of repeat clients. We are able to respond to their needs, and we are certain that we are able to respond to all of your needs as well. So that you don't only have to take our word for it; we encourage you to call our references:

Mr. Randall Reid-Smith  
Commissioner  
WV Division of Culture & History  
1900 Kanawha Boulevard, East  
Charleston, WV 25305  
304 / 558-0220

Mr. Gregory L. Melton  
Director  
State of West Virginia  
WV Department of Administration  
General Services Division  
1900 Kanawha Boulevard East  
Charleston, WV 25305  
304 / 558-1808

Mr. Joshua Smith, PE  
Buildings & Grounds Program Manager  
Maintenance Division  
WVDOT Division of Highways  
1900 Kanawha Boulevard, East  
Building 5, Room 350  
Charleston, WV 25305  
304 / 887-2325

Mr. Robert Herron  
City Manager  
City of Wheeling  
1508 Chapline Street  
Wheeling, WV 26003  
304 / 234-3617

## FIRM OVERVIEW

### FIRM LOCATIONS

308 East 8th Street <b>Cincinnati</b> , OH 45202 513.651.4224 (Phone) 513.651.0147 (Fax)	2360 Chauvin Drive <b>Lexington</b> , KY 40517 859.268.1933 (Phone) 859.268.3341 (Fax)	220 West 6th Street, Suite 300 <b>Cleveland</b> , OH 44113 216.241.4480 (Phone)	17300 Preston Road, Suite 310 <b>Dallas</b> , TX 75252 214.762.2535 (Phone)
---	---	---	---

Brandstetter Carroll Inc. (BCI) is a firm of Architects, Engineers, Landscape Architects, and Planners founded in 1979 with the express purpose of providing professional design services to public sector clients. Since the firm's inception, BCI has grown to include a staff of nearly 60 and maintains offices in Lexington, Kentucky; Cincinnati and Cleveland, Ohio; and Dallas, Texas. The firm's in-house services include architecture, civil engineering, transportation engineering, landscape architecture, park and recreation system planning, interior design, construction administration, and resident inspection.

#### Architecture

- Public Safety Buildings
- Courthouses
- Public Administration
- Recreation Centers
- Libraries
- Higher Education
- Interior Design

#### Recreation & Landscape Architecture

- Park Design
- System Planning
- Master Plans
- Aquatic Facility Design
- Nature Centers and Camps
- Sports Complexes
- Feasibility Studies
- Trail Planning & Design

#### Engineering

- Roadway Design
- Traffic Planning
- Sewer and Water Systems
- Aviation Engineering
- Streetscape Design
- Site Development

The following individuals are Principals and Owners of BCI:

Benjamin E. Brandstetter, P.E., LEED GA	President/Owner
Lawrence W. Brandstetter, AIA	Chairman
Michael E. Carroll, AIA	Senior Vice President
Bruce G. Brandstetter, P.E.	Senior Vice President
Monica G. Sumner, AIA, CID	Executive Vice President/Owner
Patrick D. Hoagland, ASLA	Principal/Owner
Nancy K. Nozik, AIA	Principal/Owner
Eric M. Chambers, AIA , LEED GA	Principal/Owner
Charles L. Schneider, P.E.	Principal/Owner
Philip N. Schilffarth, AIA, CID, LEED AP	Owner
Ian C. Beattie, CSI, CCCA	Owner
Richard T. Parker, AIA, LEED AP	Principal
Elizabeth S. Holser, AIA	Principal





Karen has been designing exhibits for over 20 years. For each project, she draws on her experiences traveling to countries across the globe to source ideas and find innovative techniques that make each design one-of-a-kind. She also applies her knowledge obtained from her master's degree in Museum Exhibition Planning and Design, for inspiration.

# KAREN KATZ

Exhibit Designer

## Experience

20 years overall

## Education

M.F.A., Museum Exhibition Planning  
and Design

The University of the Arts  
Philadelphia, PA

B.A., Anthropology

The University of Wisconsin,  
Madison, WI.

## Professional Affiliations

Association of Children's Museums

American Alliance of Museums

National Association for Museum  
Exhibitions

Association of Midwest Museums



karen katz,  
exhibit design

## Holden Forests and Gardens - Cleveland, Ohio

Designed new exhibit components and experiences for annual holiday exhibit.

## The Children's Museum of Cleveland - Cleveland, Ohio

Developed, designed, and managed the fabrication and installation of 20,000 s.f. of new exhibit space.

## Cleveland Museum of Art - Cleveland, Ohio

Created Family Engagement Plan with the Education Department.

## Cuyahoga Valley Scenic Railroad - Peninsula, Ohio

Designed interactive children's exhibit on train car.

## The Maltz Museum of Jewish Heritage - Beachwood, Ohio

Assisted in the creation of photography exhibition.

## Van Aken Market Hall - Shaker Heights, Ohio

Designed interactive area for children.



karen katz,  
exhibit design

# Design Purpose Meaning

## R.K. LEVITZ LLC

**Architecture & Planning  
Graphics, Signs & Wayfinding  
Owner's Representation/PM**

R.K. Levitz LLC is an architecture, planning, and owner's representation firm with special expertise in signage, wayfinding and graphics, and exterior architectural design branding. R.K. Levitz has extensive experience in master planning and urban design, public/private development projects for the federal, state, and municipal governments, institutional clients, health care, and the hospitality industry.

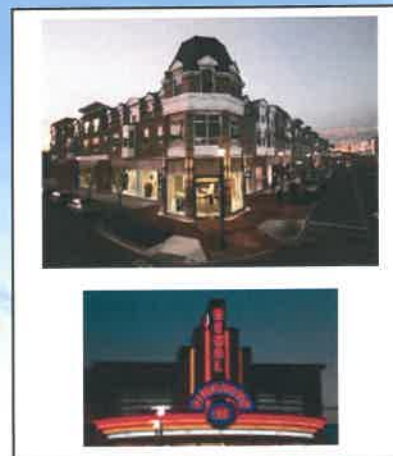
Richard K. Levitz, AIA, President of R.K. Levitz LLC, just completed his 20<sup>th</sup> year as Owner's Representative/Project Manager of Crocker Park in Westlake, Ohio (Robert L. Stark Enterprises/The Carney Group), where he has participated in its development since inception. As Planner and Design Consultant, Mr. Levitz co-authored Crocker Park's urban, architectural design, graphics/signs and wayfinding guidelines codified by the City of Westlake. Mr. Levitz managed the design, permitting and implementation of storefronts as well as signs and wayfinding valued at over 3 million dollars for retail, office, health care and educational clients. Mr. Levitz continues to be design architect for many tenants and design "gatekeeper" and expeditor of multiple City approvals.

R.K. Levitz provided architectural programming services and signage/wayfinding services for the new University Hospitals (UH) Rainbow Center for Women & Children. R.K. Levitz also provided signage/wayfinding services for UH St. John Medical Center, UH Parma Medical Center, and the rebranding of the main campus and all statewide facilities from UH Case Medical Center to UH Cleveland Medical Center.

Mr. Levitz has provided consulting services in architecture, urban design, branding and signage to over 100 local, national and international retail, restaurant and office tenants, as well as to real estate developers and institutional clients.

### SKILLS AND SERVICES

- Architecture & Planning / Interior Design
- Environmental Design, Graphics, Signs & Wayfinding
- Owner's Representation / Project Management QC-QA
- Strategic Branding Analysis and Rollout Planning
- Use/Function Analysis and Programming
- Design Direction and Concept Development
- Full Design, production and Approvals
- Construction Management/Tenant Coordination



**Coordinating well designed environments of  
buildings, streetscapes and signs**



**Designing well integrated building signs  
(with Richards Communications & Mobius Grey)**



**Designing beautiful buildings and signs that  
clearly represent the Owner's image and mission  
(with Bialosky & Partners Architects)**

### R.K. LEVITZ LLC

**Richard K. Levitz, AIA**

2859 Eaton Road, Shaker Heights, OH 44122  
P: 216-752-3080 F: 216-752-3081 M: 216-218-4035  
rklevitz@rklevitzllc.com

**A MINORITY BUSINESS ENTERPRISE**  
**Se habla Español**

**RKLEVITZ**  
ARCHITECTURE PLANNING GRAPHICS

### **RK LEVITZ on Commitment to Diversity and Inclusion**

“The multiplicity of perspectives, ideas and opinions that result from diversity and inclusion give rise to a greater level of creativity and innovation. RK Levitz is deeply committed to this philosophy that enhances engagement with the community where we live and work. Consequently, RK Levitz has focused its mission in bridging the realms of architecture, branding and “place-making” whereby environments must be inviting and full of humanity, bringing ALL communities together, because of character, beauty and most importantly, a sense of belonging and ownership.”



**RICHARD K. LEVITZ, AIA**

**REFERENCES:**

Jim Bedell, AICP  
Planning & Economic Development Director  
City of Westlake  
Westlake, OH 44145  
440-617-4307

Mr. Christopher Smythe  
Smythe Property Advisors  
1801 East Ninth Street, Suite 1600  
Cleveland, OH 44114  
216-241-0200

Raymond Weiss  
Chief Financial Officer  
Stark Enterprises  
1350 West Third Street  
Cleveland, OH 44113  
216-292-0244

Cassandra L. Johnson, Principal  
Johnson Randolph Advisors, LLC  
600 Superior Avenue East, Suite 1300  
Fifth Third Building  
Cleveland, Ohio 44114  
216-479-6885 (Office)  
216-386-7191 (Mobile)

Linda Hulsman  
Senior Project Manager  
University Hospitals of Cleveland  
2047 Cornell Road  
Cleveland, OH 44106  
216-844-2992

Ryan Brady  
Brady Signs  
1721 Hancock Street  
Sandusky, OH 44870  
419-626-5112

# Design Team Flow Chart

## Project Manager / Point of Contact


■■■ Thomas R. Worlledge, AIA, LEED AP BD+C, REFP

## Architectural Team

■■■ Thomas R. Worlledge, AIA, LEED AP BD+C, REFP  
*Senior Architect / Specialized LEED Accredited Professional /  
Recognized Educational Facility Planner*

 Eric M. Chambers, AIA, CDT, CPO, LEED GA  
*BCI's Principal-in-Charge / Architect / LEED Green Associate*

 Richard T. Parker, AIA, LEED AP  
*Senior Design Architect / LEED Accredited Professional*

 Nancy K. Nozik, AIA  
*Division Principal / Architect*

■■■ Chelsea Constantino  
*Interior Designer / Architectural Designer*

 Karen Katz  
*Exhibit Designer*

RKLEVITZ Richard K. Levitz, AIA  
*Graphics, Signs & Wayfinding*

## Engineering Team

■■■ Tim E. Mizer, PE, RA, QCxP  
*Director of Engineering Services / Architectural Engineer / Architect  
/ Qualified Commissioning Process Provider*

■■■ Kurt A. Scheer, PE, LEED AP  
*Senior Mechanical Engineer / LEED Accredited Professional*

■■■ Richard G. Berger  
*Senior Mechanical Engineering Designer*

■■■ David A. Ullom  
*Mechanical Engineering Designer*

■■■ Scott D. Kain  
*Plumbing Engineering Designer*

■■■ Michael J. Clark Sr.  
*Electrical Engineering Designer*

## Construction Administration

■■■ Robert E. Smith

\* The McKinley Team is willing to dedicate more professionals if they are needed; including more Architects, Engineers, Designers, LEED Accredited Professionals, CAs, and more.

# Thomas R. Worlledge, AIA, LEED AP BD+C, REFP

## Architect / Specialized LEED AP / Educational Facility Planner

### Charleston Office Manager



#### EDUCATION:

Virginia Polytechnic Institute & State University  
Master of Architecture - 1992

Fairmont State College, School of Technology  
B.S. Architectural Eng. Tech. - 1983

#### PROFESSIONAL AFFILIATIONS AND REGISTRATIONS:

##### Registered Architect in:

West Virginia  
Ohio  
Pennsylvania  
Tennessee  
Virginia

##### National Board Certification:

NCARB #48600

##### President:

West Virginia Society of Architects

##### Member:

The American Institute of Architects  
US Green Building Council  
Sustainable Building Industries Council  
Recognized Educational Facility Professional  
(REFP)

##### Former voting member:

ASHRAE 90.1 International Energy Code  
Committee

#### PROFESSIONAL EMPLOYMENT:

McKinley Architecture and Engineering  
Manager, Charleston Office  
Charleston, WV (2005 to present)

Proactive Architecture Inc.  
President  
Charleston, WV (1999-2005)

Silling Associates Inc.  
Vice President  
Charleston, WV (1992-1999)

TAG Architects  
Charleston, WV (1985-1990)

Alpha Associates Inc.  
Morgantown, WV (1983-1985)

#### SUMMARY OF EXPERIENCE:

Mr. Worlledge is a skilled **Architect** with over 30 years of experience, who has been the former President of the WV chapter of AIA, has received State and National design awards, and placed in National and Global design competitions. Unlike many architects who are new to green building and alternate energy, Thom started his career designing and building alternate energy systems, and was the first LEED Accredited Professional in West Virginia! He believe energy efficient design is simply good design practice. As a **LEED Accredited Professional specializing in Building Design & Construction (LEED AP BD+C)** and a **recognized sustainable design expert**, he has **2 LEED Certified** projects, **multiple LEED Registered** projects, several other energy-efficient projects, has articles published in State and National trade publications, was a featured speaker at multiple State and National conferences, served on the committee that set the ASHRAE 90.1 Standards for the International Energy Code, professionally teaches and trains other professionals in the art of High Performance Design, is a Founder & Chairman of the Board for the US Green Building Council's West Virginia Chapter, and much more. Thom is also a **Recognized Educational Facility Planner** as designated by the A4LE; a credential for industry professionals who plan and design quality school facilities. He has utilized this knowledge in the planning and design of multiple educational projects since being designated in 2007, ranging from a new LEED Certified elementary school to a \$23 million high school addition/renovation project.

#### NOTABLE PROFESSIONAL ACHIEVEMENTS:

Building 55: WV State Office Complex in Logan (**LEED Certified**)

West Virginia Department of Health & Human Resources' Ohio County Office Building fit-out / renovations

WVSU's Gus R. Douglass Economic Development Center / DigiSo

Veterans Affairs Medical Centers - multiple VAMCs around WV and PA

United States Postal Service - multiple projects throughout WV

West Virginia State Police - new Logan Detachment

West Virginia State Police Academy - Renovations to Buildings A, B, and C; New Buildings D and Multi-Purpose Building

Fairmont State University - new 3 building "University Terrace"  
College Apartments Housing Complex

Charleston Enterprise Center renovation (**WV AIA Design Award**)

Williamson SMART Office (**LEED Registered / Placemaker Award**)

Natural Energy Design (N&D) Building (**Placemaker Award**)

Bellann in Oakhill, WV (**LEED Registered**)

Marshall County Schools - Hilltop Elementary School (**LEED Certified** - **won multiple WV and National Awards & Recognitions**)

Wood County Schools - Parkersburg High renovation (\$23 million) & Williamstown High renovation (\$13.5 million)

# ERIC M. CHAMBERS, AIA, CDT, CPO, LEED GA

Principal-in-Charge



Mr. Chambers is a Registered Architect who joined BCI in 2003 and has served as Principal-in-Charge/Architect for numerous projects. His diverse portfolio includes projects such as municipal buildings, courthouses, maintenance facilities, and safety buildings such as fire stations and police stations.

## EDUCATION

University of Kentucky, Bachelor of Architecture, Business Minor

PSMS Project Management (BARCH) Bootcamp 2006

Recreation Facility Design School 2006

High Performance School Buildings 2012

F.I.E.R.O. Fire Station Design Symposium 2016

Cancer Awareness and Prevention Program for the Fire Industry 2018

## REGISTRATIONS

Registered Architect:

Kentucky [REDACTED]

Ohio ARC [REDACTED]

LEED Green Associate

Construction Document Technologist (CDT)

## AFFILIATIONS

American Institute of Architects (AIA)

NCARB

Leadership Central Kentucky

Baptist Church at Andover Property and Facility Task Force

## RELEVANT PROJECTS

HOOK FIELD EDUCATION BUILDING  
Middletown, Ohio

SAFRAN WELCOME CENTER  
Walton, Kentucky

ST. JOHN WELLNESS CENTER RENOVATION/ADDITION TRINITY HEALTH SYSTEMS AND EAST LIVERPOOL YMCA  
Steubenville, Ohio

NORTHSIDE YMCA RENOVATION/ADDITION  
Lexington, Kentucky

NORTH ROYALTON FAMILY YMCA RENOVATION AND ADDITION  
North Royalton, Ohio

SALVATION ARMY RAY AND JOAN KROC COMMUNITY CENTER  
Ashland, Ohio

KENNETH L. JOHNSON RECREATION CENTER RENOVATIONS AND ADDITIONS  
Cleveland, Ohio

DAYTON REC PLEX  
Dayton, Ohio

WHITAKER FAMILY YMCA  
Lexington, Kentucky

MT. WASHINGTON RECREATION CENTER  
Cincinnati, Ohio

NORTHWEST RECREATION CENTER RENOVATION AND ADDITION  
Dayton, Ohio

LOHREY RECREATION CENTER ADDITION AND RENOVATION  
Dayton, Ohio

BEAUMONT YMCA  
Lexington, Kentucky

MADISONVILLE RECREATION CENTER  
Cincinnati, Ohio

SEVEN HILLS RECREATION CENTER  
Seven Hills, Ohio



BRANDSTETTER  
CARROLL INC  
ARCHITECTS • ENGINEERS • PLANNERS



## RICHARD T. PARKER, AIA, LEED AP

Senior Design Architect



Mr. Parker is a widely respected leader in camp, nature center, and environmental education communities. His knowledge, experience and insight into the intricacies and nuances of mission-driven organizations and their stewardship of out-of-doors-based facilities offers clients a valuable perspective. His responsibilities are crafted specifically for each project. He often serves as Lead Design Architect, will lead vision strategy sessions and planning development, and also is the senior design architect for most development initiatives.

### EDUCATION

Kent State University, College of Architecture and Environmental Design, Bachelor of Architecture

### REGISTRATIONS

Registered Architect:

California [REDACTED]

Colorado [REDACTED]

District of Columbia [REDACTED]

Florida [REDACTED]

Georgia [REDACTED]

Illinois [REDACTED]

Indiana [REDACTED]

Louisiana [REDACTED]

Michigan [REDACTED]

Minnesota [REDACTED]

New York [REDACTED]

North Carolina [REDACTED]

Ohio [REDACTED]

Pennsylvania [REDACTED]

South Carolina [REDACTED]

Texas [REDACTED]

Virginia [REDACTED]

Wisconsin [REDACTED]

### AFFILIATIONS

American Institute of Architects

Association of Nature Center Administrators

USGBC Ohio

Cleveland Restoration Society  
Historic Warehouse District Design Review Committee

US Green Building Council LEED-Accredited Professional

### RELEVANT PROJECTS

NATIONAL YOUTH SCIENCE FOUNDATION, NATIONAL SCIENCE EDUCATION CENTER

Tucker County, West Virginia

TEVA ENVIRONMENTAL EDUCATION CENTER, TAMARACK CAMPS  
Groveland Township, Ohio

LEONARD KRIEGER VISITOR CENTER, OHIO AND ERIE CANAL RESERVATION  
Cleveland, Ohio

SQUIRE VALLEEVIEW FARM GREENHOUSE, CASE WESTERN RESERVE UNIVERSITY  
Moreland Hills, Ohio\*

ASBURY WOODS NATURE CENTER  
Mill Creek Township, Pennsylvania\*

NOVEMBER LODGE ENVIRONMENTAL EDUCATION CENTER  
Peninsula, Ohio\*

THE WILDERNESS CENTER INTERPRETIVE BUILDING  
Wilnot, Ohio\*

THE NATURE CENTER AT SHAKER LAKES  
Shaker Heights, Ohio\*

HONDA WETLAND EDUCATION CENTER AT GLACIER RIDGE, COLUMBUS PARKS  
Columbus, Ohio\*

ENVIRONMENTAL EDUCATION NATURE PODS, YMCA STORER CAMPS  
Jackson, Michigan\*

GLACIER RIDGE ENVIRONMENTAL EDUCATION CENTER  
Dublin, Ohio\*

CROWN POINT ECOLOGY CENTER  
Bath, Ohio\*

CHILDREN'S NATURE CENTER, RED BRICK SCHOOLHOUSE, LAKE METROPARKS  
Kirtland, Ohio\*

\* Project completed with former firm

## NANCY K. NOZIK, AIA

Division Principal



Ms. Nozik is the Division Principal for the Cleveland Office of Brandstetter Carroll. Ms. Nozik is a Registered Architect with 31 years of experience in the design and management of architectural projects. She has worked on recreational, cultural, educational, municipal, and corporate facilities for both profit and non-profit organizations in Ohio and across the country. Her experience in design, construction documents, client relations, project management, construction administration, presentations, and meeting facilitation are an asset to every project.

### EDUCATION

Georgia Institute of Technology,  
Master of Architecture, 1990

Miami University, Oxford, Bachelor  
of Environmental Design, 1987

### REGISTRATIONS

Registered Architect  
Ohio A [REDACTED]

### AFFILIATIONS

American Institute of Architects

### RELEVANT PROJECTS

CAMP SUGARBUSH DEVELOPMENT, GIRL SCOUTS OF NORTH EAST  
OHIO

Macedonia, Ohio

CAMP LEDGEWOOD DEVELOPMENT, GIRL SCOUTS OF NORTH EAST  
OHIO

Macedonia, Ohio

TAMARACK CAMPS, SHERUTH VILLAGE RENOVATIONS

Ortonville, Michigan

TAMARACK CAMPS, NEW ARTS AND CRAFTS CENTER

Ortonville, Michigan

TAMARACK CAMPS, BERMAN VILLAGE RENOVATIONS

Ortonville, Michigan

TAMARACK CAMPS, SPECIALTY VILLAGE RENOVATIONS

Ortonville, Michigan

TAMARACK CAMPS, ADULT STAFF HOUSING

Ortonville, Michigan

CAMP SONI SPRINGS MULTI-PURPOSE CENTER, GIRL SCOUTS OF  
NORTHERN INDIANA-MICHIANA

Fort Wayne, Indiana

CAMP SUMMIT PHASE 1 DEVELOPMENT

Paradise, Texas

BLUM CENTER AND ADMINISTRATION CENTER, FROST VALLEY YMCA

Claryville, New York

KOVACIC RECREATION CENTER ADDITION AND RENOVATION

Cleveland, Ohio

KEN JOHNSON RECREATION CENTER ADDITION AND RENOVATION

Cleveland, Ohio

ELYRIA ICE ARENA RENOVATIONS

Elyria, Ohio

NORTH ROYALTON YMCA

North Royalton, Ohio



BRANDSTETTER  
CARROLL INC.  
ARCHITECTS • ENGINEERS • PLANNERS

# Chelsea Constantino

## Interior Designer

### EDUCATION:

La Roche University  
Bachelor of Science, Interior Design - 2015  
Minors: Visual Communications & Marketing

### PROFESSIONAL AFFILIATIONS AND REGISTRATIONS:

American Society of Interior Designers (ASID)

### PROFESSIONAL EMPLOYMENT:

McKinley Architecture and Engineering  
Interior Designer  
Wexford, PA (2020 to present)

Desmone and Architects  
Designer II  
Pittsburgh, PA (2014-2020)

NaRa Productions  
Design Assistant  
Pittsburgh, PA (2012)

North Shore Productions  
Set Dresser  
Pittsburgh, PA (2012)

### SUMMARY OF EXPERIENCE:

Ms. Constantino is an **Interior Designer**, as well as an **Architectural Designer**. She is a problem solver who takes pride in finding thoughtful and innovative solutions to challenges. She approaches projects of all sizes with diligence and professionalism while implementing client goals through successful designs. Her primary responsibilities include fulfillment of client goals through design, primarily in commercial and educational facilities, ranging from new construction to renovations

### NOTABLE PROFESSIONAL EXPERIENCES:

Tyler County Judicial Building

Ft. Henry Building - office build-out

Ohio County Schools - Wheeling Park High School addition and renovations

Ohio County Schools - Woodsdale Elementary School cafeteria addition & renovations

Chemimage - renovated an old coffin warehouse to be their new office. Includes open & private offices, huddle rooms, conference rooms, lab areas, game area and a break area\*

Motional - New construction to a 3 story office building at Mill 19 in Pittsburgh. The scope of work consists of open & private offices, huddle rooms, conference rooms, lab areas, game area and a break area\*

Alloy 26 - Pittsburgh's first incubator space. Renovation to a portion of an old mall. This space consists of open and private offices, conference rooms, coffee bar, and an event room\*

Center for Victims - 3 story new construction building in Pittsburgh. Includes a women's shelter on the first floor, exhibit and training rooms on the second floor, and offices & therapy rooms on the third floor\*

Flynn Construction - Renovation and test-fit located in Pittsburgh. The scope of work consists of open & private offices, huddle rooms, conference rooms, lab areas, game area and a break area\*

CCL - New construction and test-fit in New Albany\*

California University of PA's Coover Hall - renovation and addition to an existing building\*

Edinboro University's Dining Hall - located in PA. Renovated their existing dining room to an updated design that has more types of seating for the students to use\*

University of Pittsburgh's Salk Hall - renovated their existing classroom to a more updated lecture hall\*

St Matthews Condos - restored and renovated the St. Matthews Church, located in Pittsburgh, to be a 6 unit Condo\*

*\*previous work experience with a firm other than McKinley Architecture and Engineering*





Karen has been designing exhibits for over 20 years. For each project, she draws on her experiences traveling to countries across the globe to source ideas and find innovative techniques that make each design one-of-a-kind. She also applies her knowledge obtained from her master's degree in Museum Exhibition Planning and Design, for inspiration.

# KAREN KATZ

Exhibit Designer

## Experience

20 years overall

## Education

M.F.A., Museum Exhibition Planning  
and Design

The University of the Arts  
Philadelphia, PA

B.A., Anthropology

The University of Wisconsin,  
Madison, WI.

## Professional Affiliations

Association of Children's Museums

American Alliance of Museums

National Association for Museum  
Exhibitions

Association of Midwest Museums

## Holden Forests and Gardens - Cleveland, Ohio

Designed new exhibit components and experiences for annual holiday exhibit.

## The Children's Museum of Cleveland - Cleveland, Ohio

Developed, designed, and managed the fabrication and installation of 20,000 s.f. of new exhibit space.

## Cleveland Museum of Art - Cleveland, Ohio

Created Family Engagement Plan with the Education Department.

## Cuyahoga Valley Scenic Railroad - Peninsula, Ohio

Designed interactive children's exhibit on train car.

## The Maltz Museum of Jewish Heritage - Beachwood, Ohio

Assisted in the creation of photography exhibition.

## Van Aken Market Hall - Shaker Heights, Ohio

Designed interactive area for children.



karen katz,  
exhibit design



karen katz,  
exhibit design

## Richard K. Levitz, AIA – Biography/Resume



Richard K. Levitz, a native of Colombia, South America, is President of RK Levitz, an architecture, planning graphics, and project management consulting firm with particular expertise in buildings and storefront design, interiors and space planning, signage and graphics, architectural corporate branding, and retail branding. Mr. Levitz's extensive experience includes public/private development projects for the federal, state and municipal governments, as well as institutional clients, health care and the hospitality industry.

Mr. Levitz just completed 20 years as Owner's Representative, Project Manager, Planner and Design Consultant of **Crocker Park** in Westlake, Ohio (Robert L. Stark Enterprises/The Carney Group), where he has participated in its development since inception. Mr. Levitz co-authored Crocker Park's urban, architectural design, graphics/signs and wayfinding guidelines codified by the City of Westlake. Mr. Levitz managed the design, permitting and implementation of all ground-level storefronts as well as all signs valued at over 3 million dollars for retail, office, and wayfinding signs. Between 2010 and 2017, Mr. Levitz wrote and secured City entitlements of new sign ordinance allowing for 40 assets of large format advertisement, 3-D billboards and electronic media within Crocker Park; Mr. Levitz is presently managing its design approval, permitting and technical coordination.

In Healthcare Mr. Levitz was Architect team member with Moody Nolan for Programing/Schematic Design of the new **UH Rainbow Center for Women and Children** currently under construction and for which Mr. Levitz is also lead for its exterior signage and wayfinding. Mr. Levitz was project manager and QC/QA manager for the rebranding and exterior and interior signage and wayfinding for various **University Hospitals** mergers, including UH St. John Medical Center in Westlake and UH Parma Medical Center comprising of the main campus and all the satellite facilities. Mr. Levitz designed and secured zoning approvals for exterior signage at the **MetroHealth Urgentcare Clinics** at Crocker Park, Westlake and Beachwood, Ohio.

For **Zaremba Group**, Cleveland, OH, as **Development Director**, Mr. Levitz worked on pre-development through construction of multifamily communities (condominiums and apartments) in northeast Ohio, southern Michigan, and western Pennsylvania (March-Dec 2000). Richard was Owner's Representative and Project Director for **Mustard Seed Market & Cafe** at **Developers Diversified's Uptown Solon Mall**; and with The Sanchez Group, worked on the renovation/addition of Fairmount Temple in Beachwood and Cuyahoga Community College east campus classroom and theater extension. Other clients include **AvalonBay Properties** and **Columbia University**.

Mr. Levitz's experience in real estate began in planning, architecture and construction, working for both the public sector (U.S. General Services Administration) and the private sector (the New York award-winning architectural firms of Beyer Blinder Belle and Polshek and

Partners). Mr. Levitz worked on the original **Barneys New York Women's Store** and **The Limited's** first urban prototype in New York City's Madison Avenue (BBB). At Polshek, Mr. Levitz was Project Manager/Construction Administration of **NYU Medical Center** mixed-use research laboratory and medical offices and remodeling of emergency and outpatient services

For LCOR, Inc., he worked on **42nd Street Now!**, preparing the real estate development and design guidelines for the now thriving entertainment district (with Disney's New Amsterdam Theater, Madame Tussaud's Wax Museum, and E Walk); and predevelopment work in the repositioning of the mall and street retail and redevelopment of all interior and exterior public spaces of the **New York World Trade Center** (1994-95). In 1996, Mr. Levitz provided consulting services for **Tishman Urban Development Corporation** in the pre-development phase of the **Miami World Trade Center** (including a hotel, an arena for the Miami Heat, and retail); also for Tishman and in collaboration with MRA International, he developed a concept of a sports/retail/entertainment destination for the **National Football League**.

In 1991, Mr. Levitz joined **LCOR Incorporated/The Linpro Company**, a national full-service real estate developer, to manage the public/private development of the 34-story **Foley Square Federal Office Building** in New York City, (one million square-feet; \$276 million), owned by the **U.S. General Services Administration** and fully tenanted by the IRS, EPA and U.S. Attorney's Office. **Mr. Levitz was Latino Liaison for outreach to Latino design professionals and contractors; over 20% of all contracts — \$59 million, were awarded to minority businesses.** Among many complexities facing this project included the discovery of a pre-revolutionary African Burial Ground, which was commemorated with art commissioned as an integral part of the building's architecture.

In late 1996, Mr. Levitz joined the URS Greiner Cleveland office as Director of Development and Design/Build Services, working for developer, institutional, and corporate clients in the U.S. and Latin America. During his two-year tenure, Richard was also Program Manager of Architecture, restructuring its management and design focus. Projects included, the Chapel for St. Ignatius High School, Shaker Heights/RTA Towers in The Landscape (AIA design award 1998), Shaker Heights High School Gym, NEORSD Headquarters, Tren Urbano, San Juan, PR, and feasibility study for Cleveland Convention Center.

Mr. Levitz holds a B.S. in Architecture from **The Ohio State University** and M. Arch. from **Columbia University**. He completed humanities and architecture courses in **New College, Oxford University**. Through Columbia University, completed advanced research in Spanish Colonial Urban Planning and Civic Code in Colombia, South America. He also completed executive courses in real estate development at **New York University**. Mr. Levitz is a graduate of Leadership Cleveland — class of 2000. He is Trustee of Northeast Ohio Hispanic Chamber of Commerce and member of the Community Engagement Committee of The Cleveland Orchestra.

# Tim E. Mizer, PE, RA, QCP

Architectural Engineer / Architect / Commissioning Provider

## Director of Engineering Services

### EDUCATION:

Kansas State University  
B.S. Architectural Engineering - 1983

University of Cincinnati  
Architecture

### PROFESSIONAL AFFILIATIONS AND REGISTRATIONS:

Registered Engineering in:  
West Virginia  
Ohio

Registered Architect in:  
Ohio

Qualified Commissioning Process  
Provider

### PROFESSIONAL EMPLOYMENT:

McKinley Architecture and Engineering  
Director of Engineering Services  
Architect / Engineer / Commissioning  
Wheeling, WV (1995 to present)

M.C.C. Engineering  
Director of Design  
Columbus, Ohio (1988-1995)

Schooley Caldwell and Associates  
Electrical & Mechanical Design  
Columbus, Ohio (1986-1988)

Mizer Design  
Free Lance Architectural Engineering Design  
Columbus, Ohio (1985-1986)

Envirotek, Inc.  
Drafting and Electrical & Mechanical Design  
Raleigh, NC (1984-1985)

### SUMMARY OF EXPERIENCE:

A very talented and unique professional who is registered **both** in **engineering** and **architecture** which has provided him with a total understanding of the engineering components and the process necessary for integrating architectural design and building systems. Furthermore, as a **Qualified Commissioning Process Provider**, he has been formally trained to fully understand how integrated HVAC systems function and how systems interface with others to run your building efficiently. He understands that the HVAC system's performance can reduce operating and maintenance costs, improve the comfort of a building's occupants, and extend the life of equipment. He joined McKinley Architecture and Engineering in 1995, and has over 30 years of experience. As the **Director of Engineering Services**, Mr. Mizer's presence is a key to the design procedures required to coordinate the functionality of the engineering systems into the aesthetics of a building space.

### NOTABLE PROFESSIONAL EXPERIENCES:

Building 55: WV State Office Complex in Logan (LEED Certified)

Building 34: WV State Office Complex in Weirton

Wheeling Park Commission - multiple projects at Wheeling Park & Oglebay Park

West Virginia Independence Hall

Grave Creek Mound Museum and Archeology Complex renovations  
Artisan Center

Catholic Heritage Center

Braxton County Senior Center

West Virginia School Building Authority - Dozens of projects State-Wide, including new construction and renovations

WV Army National Guard - multiple projects

West Virginia Department of Health & Human Resources' Ohio County Office Building fit-out / renovations

USPS - worked on a multitude of Post Offices in WV & PA

West Virginia State Police - dozens of renovations, additions, and new detachments

West Virginia Department of Transportation, Division of Highways - Buckhannon & Moundsville Headquarters

West Virginia University - multiple renovations, additions, and new buildings

Orrick's Global Operations Center

Wagner Building

Belmont County Divisional Courts & Offices renovations

The Towers Building renovations



# Kurt A. Scheer, PE, LEED AP

## Senior Mechanical Engineer / LEED Accredited Professional

### EDUCATION:

Penn State University  
B.S. Architectural Engineering - 2001

### PROFESSIONAL AFFILIATIONS AND REGISTRATIONS:

**Registered Engineering in:**  
Pennsylvania  
West Virginia

**Member:**  
US Green Building Council

**ASHRAE**

**ASPE**

### PROFESSIONAL EMPLOYMENT:

McKinley Architecture and Engineering  
Senior Mechanical Engineer  
Wexford, PA (2020 to present)

Allen & Shariff Corporation  
Senior Mechanical Engineer  
Pittsburgh, PA (2018-2020)

BDA Engineering, Inc.  
Senior Mechanical Engineer  
Homestead, PA (2006-2018)

Allen & Shariff Corporation  
Mechanical Engineer  
Pittsburgh, PA (2004-2006)

LLI Technologies, Inc.  
Mechanical Engineer  
Pittsburgh, PA (2001-2004)

### SUMMARY OF EXPERIENCE:

Mr. Scheer is a **Mechanical Engineer** with 20 years of experience in the Architectural Engineering industry with a focus on mechanical systems design. In addition, Kurt has overseen electrical, plumbing, and fire protection engineering for all his projects for 15 years. Market sectors such as hospitality, higher education, and commercial office are areas where he has significant experience. Additionally, Mr. Scheer has experience with **LEED Certified** projects and energy modeling.

### NOTABLE PROFESSIONAL EXPERIENCES:

Brooke County Judicial Courthouse renovations

City of Moundsville - Municipal/Public Safety Building

Tyler County Commission - Judicial Annex Building

Nicholas County Division of Homeland Security & Emergency Management - E911 and Emergency Operations Center

Light of Life Rescue Mission

Fayette County Schools - NEW Meadow Bridge School PK-12 School & School Based Health Clinic

Harrison County Schools - Gore Elementary School build-out renovation / addition

Harrison County Schools - NEW Lost Creek Elementary School

Ohio County Schools - Warwood School renovations

Ohio County Schools - Wheeling Park High School Athletic Complex

Ohio County Schools - Woodsdale Elementary School cafeteria addition & renovations

Fort Henry Building - Fourth Floor office build-out

City of Weirton - Park Drive / Three Springs Drive Development

YWCA Renovations

### Allen & Shariff Corporation\*

Some notable projects are the historic Pittsburgh Athletic Association high rise renovation, the new Bakers Crossing apartments and retail spaces (Nashville, TN), City of Pittsburgh Building @ 412 Blvd of the Allies (LEED Commercial Interiors), several urban multifamily projects, and several retail projects and commercial projects ranging in size from 5,000 – 50,000 square feet.

*\*previous work experience with a firm other than McKinley Architecture and Engineering*

# Richard G. Berger

## Senior Mechanical Engineering Designer

### EDUCATION:

CCAC of Allegheny County  
Concentration: HVAC

### PROFESSIONAL AFFILIATIONS AND REGISTRATIONS:

Pennsylvania Sheet Metal Journeyman License

Volunteer Fireman (retired)

### PROFESSIONAL EMPLOYMENT:

McKinley Architecture and Engineering  
Senior Engineering Designer  
Wexford, PA (2020 to present)

CJL Engineering  
Lead HVAC Senior Mechanical Designer  
Moon Township, PA (2019-2020)

Lovorn Engineering  
Lead HVAC Senior Mechanical Designer  
Blawnox, PA (2013-2019)

Stantec Corporation (formerly Burt Hill)  
Lead HVAC Mechanical Designer  
Butler, PA (1997-2013)

Peter F. Loftus division of Eichleay Engineers  
Lead HVAC Mechanical Designer  
Pittsburgh, PA (1989-1997)

SSM Industries, Inc.  
Sheet Metal Professional Licensed Journeyman  
Pittsburgh, PA (1979-1989)

### SUMMARY OF EXPERIENCE:

Mr. Berger is a mechanical engineering professional with over 35 years of experience in HVAC design. His skills include Revit, AutoCadd, Microstation CADD, HVAC duct work and piping design, HVAC calculations, project management, and HVAC and piping field experience. Rich is a Professional Sheet Metal Journeyman license Sheet Metal Workers Local 12. Have designed for healthcare, K-12 schools, universities, high rise commercial, lab renovations and hotels.

### NOTABLE PROFESSIONAL EXPERIENCES:

#### McKinley Architecture and Engineering

Tyler County Commission - Judicial Annex Building

Fayette County Schools - NEW Meadow Bridge School PK-12  
School & School Based Health Clinic

Harrison County Schools - Gore Elementary School build-out  
renovation / addition

#### CJL Engineering\*

Mr. Berger was the Lead HVAC Senior Mechanical Designer for Healthcare/Commercial/Restaurants. Projects have included Hospital related area design, PNC Bank Scranton multi-story office, Parkway West Tech Center, Erie Water Works, and more.

#### Lovorn Engineering\*

Mr. Berger was the Lead HVAC Senior Mechanical Designer for Healthcare/Commercial/Restaurants. Projects have included OR design, MRI design, Radiology department, Central Sterile, Higher education institutions, Restaurants, Hotels/Motels, and more.

#### Stantec Corporation (formerly Burt Hill)\*

Lead HVAC Mechanical Designer for the Healthcare Division. His projects have included but are not limited to OR design, MRI design, Radiology departmental, Central Sterile, lab design, Higher education institutions, Cornell University Sciences Building, Beachwood Ohio High School renovation, UPMC Biomedical science tower and Scaife Hall lab renovations.

#### Peter F. Loftus division of Eichleay Engineers\*

Lead HVAC designer for Healthcare and University projects. Projects included West Penn Hospital North Tower, Carnegie Mellon University Center, General Motors chiller replacement and UPMC facility upgrades and additions.

#### SSM Industries, Inc.\*

Projects worked on included Allegheny County Prison, PPG Place, West Penn Hospital, One Mellon Bank Center, Bristol Medical Center and UPMC Hospital facilities.

*\* previous work experience with a firm other than McKinley Architecture and Engineering*

# David A. Ullom

## Mechanical Engineering Designer

### EDUCATION:

Fairmont State University  
B.S. Mechanical Engineering Technology - 2011

Pierpont Community and Technical College  
Associates Degree in Applied Sciences:  
Drafting and Design - 2011

### PROFESSIONAL EMPLOYMENT:

McKinley Architecture and Engineering  
Engineering Designer  
Wheeling, WV (2019 to present)

Kennametal Inc.  
Sales Engineer (2016-2019)  
Applications Engineer (2012-2016)  
Latrobe, PA

Marion County Assessors Office  
Map Developer  
Fairmont, WV (2010-2012)

### SUMMARY OF EXPERIENCE:

Mr. Ullom is a results-driven individual who prioritizes safety, cost-effective solutions, and exceeding customer expectations. He is proficient in Autocad, Inventor, and Revit software. David also has experience as a Sales Engineer, Applications Engineer, and Map Developer, which provides a unique understanding for problem solving.

### NOTABLE PROFESSIONAL EXPERIENCES:

Belmont County Divisional Courts renovations

Jefferson County Justice Center renovations

Trinity Health System - Crisis Rehabilitation Unit

Ft. Henry Building renovation

General Services Administration - Social Security Administration's  
Wheeling, WV Office

Jefferson County (Ohio) - Steubenville High commons and kitchen  
renovation

Fayette County Schools - New Meadow Bridge K-12 project

Harrison County Schools - Lost Creek Elementary addition and  
renovations

Harrison County Schools - Gore Elementary addition and  
renovations

Ohio County Schools - Bethlehem Elementary renovations

Ohio County Schools - Bridge Street Middle renovations

Ohio County Schools - Elm Grove Elementary renovations

Ohio County Schools - Madison Elementary renovations

Ohio County Schools - Middle Creek Elementary renovations

Ohio County Schools - Triadelphia Middle renovations and additions

Ohio County Schools - Warwood Elementary and Middle School  
renovations

Ohio County Schools - West Liberty Elementary renovations

Ohio County Schools - Wheeling Middle renovations

Ohio County Schools - Wheeling Park High renovations and  
additions

Ohio County Schools - Woodsdale Elementary renovations

Tyler County Schools - New Bus Maintenance Facility

Mid-Ohio Valley Technical Institute (MOVTI) renovations



# Scott D. Kain

## Plumbing & Electrical Engineering Designer

### EDUCATION:

Technology Education College /  
Ohio State University  
Associates in Mechanical Design - 1996

### PROFESSIONAL EMPLOYMENT:

McKinley Architecture and Engineering  
Engineering Designer  
Wheeling, WV (2001 to present)

HAWA Inc.  
Mechanical Designer  
Columbus, OH (1998-2001)

Autotool Inc.  
Engineer  
Columbus, OH (1995-1998)

### SUMMARY OF EXPERIENCE:

Mr. Kain is an accomplished engineering designer who has performed in all the engineering trades we provide; specializing in electrical, plumbing, and fire protection. He has been utilized for various McKinley Architecture and Engineering' projects that needed additional mechanical, structural, and architectural manpower. In addition, Mr. Kain has also provided 3D renderings, to aid in business development, during his long tenure at McKinley Architecture and Engineering.

### NOTABLE PROFESSIONAL EXPERIENCES:

Wheeling Park Commission - Zoo Discovery Lab renovations  
Wheeling Park Commission - Wilson Lodge's Glassworks HVAC  
Wheeling Park Commission - Wilson Lodge steam boiler replacement  
West Virginia Independence Hall historic preservation / renovations  
Grave Creek Mound Museum and Archeology Complex renovations  
Braxton County Senior Center  
Building 55: WV State Office Complex in Logan (LEED Certified)  
Building 34: WV State Office Complex in Weirton  
Cabela's Eastern Distribution Center  
West Virginia Army National Guard - multiple projects  
WVDHHR's new Ohio County office fit-out / renovations  
WVDRS Wheeling District's new office space fit-out / renovations  
United States Postal Service - statewide post offices  
Orrick's Global Operations Center  
Wagner Building - multiple phases of tenant fit-outs  
Ft. Henry Building - multiple phases of tenant fit-outs  
Panhandle Cleaning & Restoration warehouse and office building  
Wheeling Island Hotel•Casino•Racetrack multiple projects  
Wheeling Island Fire Station  
West Virginia University - State Fire Training Academy  
WV Northern Community College - B. & O. Building  
Marshall County Schools - Hilltop Elementary School (LEED Certified)  
Marshall County Schools - Cameron High School (LEED Registered)  
Boone County Schools - multiple projects  
Brooke County Schools - multiple projects  
Hancock County Schools - multiple projects  
Ohio County Schools - multiple projects  
Wood County Schools - multiple projects

# Michael J. Clark Sr.

## Electrical Engineering Designer

### EDUCATION:

Eastern Gateway Community College  
A-ATS Electro-Mechanical Engineering - 2012

Jefferson Community College  
A-ATS Electrical Trade Technology - 2003

### PROFESSIONAL AFFILIATIONS AND REGISTRATIONS:

Certified in SMAW Weld Process & Basic  
Welding and Applications 2002

West Virginia Journeyman License

Ohio Fire Alarm License

OSHA 30 Certified

### PROFESSIONAL EMPLOYMENT:

McKinley Architecture and Engineering  
Electrical Engineering Designer  
Wheeling, WV (2012 to 2018, 2020 to present)

Arcelor Mittal  
Maintenance Technician Electrician  
Weirton, WV (2012)

M.J. Electric  
Journeyman Electrician  
Iron Mountain, MI (2010-2012)

Erb Electric Company  
Journeyman Electrician  
Bridgeport, OH (2009-2010)

Bechtel Group Inc.  
Journeyman Electrician  
Glendale, AZ (2009)

Cattrell Companies, Inc  
Journeyman Electrician  
Toronto, OH (1998-2009)

### SUMMARY OF EXPERIENCE:

Mr. Clark is an Electrical Engineering Designer and a Certified Journeyman Electrician with over 20 years of industrial, commercial and residential experience. He is knowledgeable in all areas of the national electrical code and excels in analyzing and solving problems with various electrical controls and systems. Mr. Clark brings a cross-trained background to our projects, being skilled in both the design and the construction ends which gives him a unique ability to understand all aspects of a project. He is also adept in performing electrical and mechanical installations, maintenance and repairs in plant facilities. Furthermore, he is seasoned as an Electrical Foreman and Superintendent on both commercial and industrial job sites. His key skills include Electrical Systems & Controls, Installations & Maintenance, Electromechanical Repairs, Blueprints & Schematics, Generators & Transformers, Switches & Circuit Breakers, Electrical Code, Safety & QA, Wiring Diagrams, Troubleshooting, Testing Instruments, Motors & Conduit, CAD-2D/3D, Welding, & Residential construction.

### NOTABLE PROFESSIONAL EXPERIENCES:

Building 55: WV State Office Complex in Logan (LEED Certified)

City of Steubenville - 5 Parks Lighting and Security project

City of Moundsville - New Municipal Public Safety Bldg

Belmont County Divisional Courts & Offices renovations

Jefferson County (OH) Courthouse upgrades and Annex demo

Brooke Co. Commission - Judicial Center & Historic Courthouse

Tyler Co. Commission - Courthouse & Police renovations

Brooke County Schools - NEW Brooke Middle School

Hancock County Schools - several projects, including Oak Glen High School renovations, Senator John D. Rockefeller IV Career Center HVAC renovations, Weir High renovations, Weir Middle renovations, NEW Weirton Elementary, and more

Harrison County Schools - NEW Johnson Elementary

The Linsly School - Banes Hall addition/renovations

Holiday Inn Express Hotels - on-call contract / multiple projects

City of Steubenville - 5 Parks Lighting and Security project

Franciscan University OP#1 Multi-tenant Retail Building

Franciscan University OP#2 Office / Retail Building

Wheeling Island Hotel•Casino•Racetrack - multiple projects

WVDRS Wheeling District's new office space fit-out

Carenbauer Wholesale Corporation warehouse addition/renovations

Bennett Square office build-out

Ft. Henry Building - multiple tenants fit-outs

# Robert E. "Bob" Smith

## Construction Administrator

### EDUCATION:

University of Pittsburgh  
M.S. Industrial Engineering - 1989

United States Air Force Academy  
B.S. Behavioral Science /  
Human Factors Engineering - 1983

### PROFESSIONAL AFFILIATIONS AND REGISTRATIONS:

**Board Member:**  
Indian Creek School District (elected in 2009)

**Instructor:**  
Mechanical Engineering, Eastern Gateway  
Community College

**President:**  
Mingo Business Association (2007 to present)

**Commander:**  
American Legion Post 351 (2008 to present)

### PROFESSIONAL EMPLOYMENT:

McKinley Architecture and Engineering  
*Construction Administrator*  
Wheeling, WV (2009 to present)

Jefferson County Regional Planning Commission  
*Regional Planner*  
Steubenville, OH (2008-2009)

Edison Local School District  
*Director of Operations* (1999-2008)  
*Transportation Supervisor* (1998-1999)  
Hammondsville, OH

### MILITARY SERVICE:

Wright Patterson Air Force Base - Dayton, OH  
*Chief B-2, Block 20 Field Retrofit, \$300 million*  
B-2 Systems Program Office (1994-1996)  
*Team Leader, Process Improvement Technology*  
Armstrong Laboratory (1989-1994)

Randolph Air Force Base - San Antonio, TX  
*Chief, Test Construction Section*  
Occupational Measurement Center (1987-1988)  
*Quality Control Psychologist*  
Occupational Measurement Center (1985-1987)  
*Supervisor of Test Construction Team*  
Occupational Measurement Center (1983-1985)

### SUMMARY OF EXPERIENCE:

Mr. Smith has been a **Construction Administrator** at McKinley Architecture and Engineering for 10 years. Bob is a self confident, articulate and highly motivated individual with superior interpersonal and teamwork skills. He has a plethora of experience in mid to upper level personnel management, advanced information systems integration, training, acquisition, contract management, transportation and maintenance, and quality control. He has 23 years of direct supervisory experience, as well as 13 years of documented success as an Air Force Officer. He is currently a member of the Board of Education for the Indian Creek School District in Jefferson County, Ohio. He is also an Adjunct Professor at Eastern Gateway Community College in Steubenville, Ohio, where he is teaching Mechanical Engineering.

### NOTABLE PROFESSIONAL EXPERIENCES:

United States Postal Service - multiple projects thru multiple open-ended IDIQ contracts

Fairmont State University's new 3 building "University Terrace"  
Student Housing Apartment Complex

Cabela's Eastern Distribution Center

Brooke County Schools - Brooke High HVAC, new Brooke Middle,  
Follansbee Middle & Carlin Dodrill Fieldhouse renovations

Grant County Schools - Maysville Elementary & gymnasium  
renovations/HVAC & Union Educational Complex renovations

Hancock County Schools - A.T. Allison Elementary renovations,  
New Manchester Elementary renovations, Oak Glen High  
renovations/HVAC, Oak Glen High Multi-Sports Complex, Oak  
Glen Middle addition/renovations, Senator John D. Rockefeller IV  
Career Center HVAC, Weir High Multi-Sports Complex, Weir MS/  
HS HVAC, & new Weirton Elementary

Marshall County Schools - new Cameron High (LEED Registered)  
& new Hilltop Elementary (LEED Certified)

Ohio County Schools - multiple projects

The Linsly School - Banes Hall addition/renovations & Behrens  
Memorial Gymnasium renovations

The Towers Building renovations

Lincoln National Bank Building renovations

Cameron American Legion renovations

Jefferson County Courthouse renovations & Annex demo

West Virginia Army National Guard - AASF#1 HVAC renovations

Harrison County Courthouse renovations

City of Steubenville - multiple projects

Jefferson County Jobs & Family Services renovations



# West Virginia Independence Hall

## Wheeling, West Virginia

### Owner

WV Division of Culture & History

### Size

22,000 SF

### Project Architects-Engineers

McKinley Architecture and Engineering

### Project Architect

Christina Schessler, AIA, LEED AP BD+C

We completed a renovation/restoration/historic preservation to what many consider the **most historical building in the State of West Virginia - Independence Hall in Wheeling**; known as the “Birthplace of West Virginia.” This was built in 1859 as the **Wheeling Custom House**, added to the **National Register of Historic Places** in 1970, and was designated as a **National Historic Landmark** in 1988. **The building is now appropriately renamed West Virginia Independence Hall.** This stone building was restored inside and out using careful research and coordination with the State Historic Preservation Office. McKinley Architecture and Engineering was presented with the 2011 **Heritage Tourism Award from the Preservation Alliance of West Virginia**, for our achievements in preserving Independence Hall.

**The building is now a museum and education/visitors center.** They have merchandise, brochures for nearby attractions, cultural information, and more. Tours are shown by a Civil War re-enactor, and include authentically restored rooms, Civil War exhibits, statehood leaders and documents exhibit, and an interpretive film. The permanent exhibition located on the first floor of the museum, “**West Virginia: Born of the Civil War**,” features dramatic displays with period artifacts, and explores the statehood process against the background of the Civil War. The newest display “**Waving For Liberty and the Union**” is a special exhibit of thirteen original Civil War battle flags located on the second floor. A federal courtroom, located on the third floor and restored to its original design, offers visitors the opportunity to move into the space where the first constitutional convention for West Virginia was held and where citizens of western Virginia decided to choose loyalty to the Union over secession.

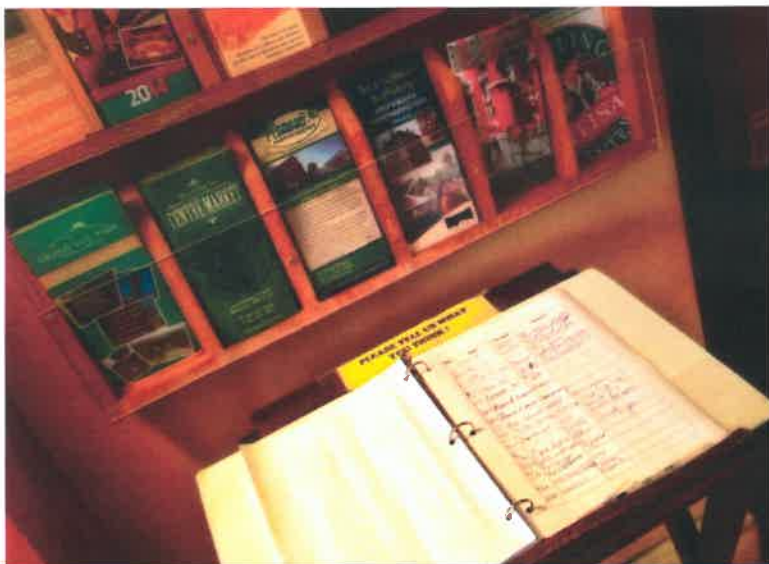
A portion of the interior plastering in the **third floor Courtroom** and the **entire first floor exhibit area** (formerly a US Post Office) were restored, eliminating or concealing previously botched attempts. The interior plastering restoration in the third floor Courtroom included the ceiling crown mouldings, flat work and plaster returns at the window jambs. In addition, **two rooms on the second floor**, including the **First Governors Office of West Virginia**, were completely restored since the existing spaces were nearly destroyed by deterioration. Historic paint colors were applied on all newly plastered surfaces in the building. All 44 of the double-hung wood windows have been fully restored and reglazed. The failed metal roofing system was removed and replaced with 5,000 SF of new standing seam metal and a new custom metal guttering and downspout system emblematic of 1859. In addition to the aesthetic improvements, a new HVAC system and a fully automatic sprinkler system and fire alarm detection system has been installed: the ductwork, piping and conduit for these systems is designed to be completely concealed within the existing walls and ceilings.



**McKINLEY**  
ARCHITECTURE + ENGINEERING



# West Virginia Independence Hall *(continued)*



# West Virginia Independence Hall *(continued)*





# West Virginia Independence Hall *(continued)*





# Artisan Center

## Wheeling, West Virginia

### Owner

City of Wheeling

### Size

40,000 SF approx.

### Construction Cost

\$1.8 million

### Project Architects

Murphy & Dittenhoffer

### Project Engineers

McKinley Architecture and Engineering

### Contractor

Pat R. Ionadi Corp. & Davison Electric

The **Artisan Center (former List Building)** at Heritage Square was a historic preservation/adaptive reuse project that involved a total renovation of a former warehouse built in 1867 into a 3-story, 40,000 SF **tourist attraction**. This is a contributing structure found in the Wheeling Historic District of the National Register of Historic Places (NRHP#: 79002597).

The original \$1.8 million project included **exhibit space, retail shopping, artisan areas, offices, a large meeting/reception area, as well as a full service restaurant with commercial kitchen**. This unique historic renovation project features a magnificent three-story Atrium, with an 80 foot high skylight ceiling, and a 60 foot high bridge.

The second floor is split into **artisan areas, exhibit space, and offices**. There are **gifts, merchandise, cultural information, maps, brochures, snacks, etc.** The **"Made in Wheeling" Exhibits** are interactive, walk-thru exhibits, **highlighting Wheeling's rich industrial heritage**.

River City Ale Works is a full service restaurant and banquet facility located in the Artisan Center. They offer a 250 seat restaurant and bar on the first floor, and on the third floor is their beautiful 10,000 SF loft area which holds up to 400 people for wedding receptions, banquets, proms, reunions, conferences, community events, ethnic festivals, and other special events. All events of 70 people or less are held in the Atrium.



**BEFORE  
and AFTER**



# Wheeling Park Commission

## Wheeling, West Virginia

McKinley Architecture and Engineering has worked with the Wheeling Park Commission multiple times in the past at **Oglebay Park** and **Wheeling Park**. Some of these buildings might have similarities to your proposed project; multiple projects include **rustic and wooden structures**; projects also include **welcome centers, multiple merchandise and gift shops**, various reception areas, recreational projects, concession areas, **lodges**, clubhouses, restaurants, and more. Our projects have included (this list includes McKinley Architecture and Engineering's project name/brief description):



Wilson Lodge Lobby HVAC Design  
Pine Room HVAC Study  
Wilson Lodge Office & Hickman Lounge Room HVAC Design  
Oglebay Animal Hospital  
Pine Room Design  
Speidel Golf Course Clubhouse Cooling Loads Calculations  
Wheeling Park Amphitheater Inspection  
Banquet Room at Wilson Lodge  
White Palace Ball Room HVAC Replacement Recommendations  
Roof over Pool at Wilson Lodge  
Oglebay Good Zoo HVAC Evaluation  
Wilson Lodge Security  
Glessner Addition  
Aviary  
Good Lake Site Design  
Wilson Lodge Corridor  
Oglebay GlassWorks Restaurant HVAC Study  
Wheeling Park Comm Human Resources Building HVAC Design  
Oglebay Amphitheater Structural Design  
Oglebay Mansion  
Wilson Lodge Steam Boiler Replacement  
Oglebay GlassWorks HVAC Design  
Pool Concessions at Wilson Lodge  
Oglebay Institute  
Oglebay Park Stifel Center  
Oglebay Carriage House  
Pizza Shop at Wilson Lodge Pool  
Oglebay Park Stables Riding Arena  
Wheeling Park Commission White Palace Office HVAC  
**Good Zoo Discovery Lab Renovation**  
Stone Room HVAC  
White Palace HVAC RTUs  
Schenk Lake Lighting  
Oglebay Mansion  
Electrical to Chalets at Wilson Lodge  
Zoo Office Controls  
White Palace HVAC Control



# Building 55 West Virginia State Office Complex



## Logan, West Virginia

**Owner**  
State of West Virginia

**Size**  
53,200 SF approx.

**Project Architects-Engineers**  
McKinley Architecture and Engineering

**Project Architect**  
Thomas Worlledge,  
AIA, LEED AP BD+C, REFP

**Contractor**  
Massaro Corporation

**Commissioning Agent**  
Iams Consulting, LLC



City leaders were searching for a catalyst to stimulate community efforts to revitalize downtown Logan, West Virginia. This recently completed office building has become that inspiration. The building is designed to reflect the history and culture of the area while incorporating current technology and safety elements, thus empowering the community leaders to create a vibrant connected urban core. This new 5-story office building underscores its major role in the development and revitalization of downtown Logan by **uniting office space for 127 employees for 6 State agencies** under one roof, whom were once scattered throughout the city. The building provides **current technology, flexibility for future growth, and security features for existing and future tenants.**

The building was designed to be **energy efficient "green"** and meet **sustainable design** goals, and in March 2014, this project became **LEED Certified**. To help achieve this, the **HVAC system** included the installation of 2 high efficiency condensing boilers, pumps with variable speed drive control, custom air handling units with chilled and hot water coils, variable air volume boxes with hot water heating coils, water cooled chiller with cooling tower, packaged rooftop energy recovery ventilator, and direct digital controls. In addition, a tight building envelope was created with **closed cell foam insulation** and **thermal efficient windows**. One of the unique features of the building is the **daylight system** which takes clues from older buildings that were designed to let daylight penetrate deep into the buildings by necessity. To enhance this effect we added "light louvers" which are devices that redirect daylight to the ceiling and diffuse natural light throughout the space. The open offices were placed around the exterior of the building and the enclosed offices along the interior wall so more of the tenants receive quality light. In addition, interior windows allow the daylight to pass to the center offices.

For another feature, the plaza uses **recycled brick pavers** from the demolished street; the patterns intersect at a quilt star, a symbol of West Virginia heritage that is carried into the building's main entry. It is interesting to point out a **stained glass window** feature in this entry, which won a 2013 AIA Craftsmanship Award. It is custom designed to reflect the culture and history of the area (images of a coal tippie, arrowheads, West Virginia Quilt Star, old Logan courthouse, etc.) and use as much glass from West Virginia Manufacturers as possible.



**McKINLEY**  
ARCHITECTURE + ENGINEERING

# Building 55 West Virginia State Office Complex



September 5, 2014

**Sent Via CMRRR: 7013 2630 0000 2069 4021**

Mr. David J. Hildreth  
West Virginia Department of Administration  
900 Pennsylvania Ave., Ste. 500  
Charleston, WV 25302

Re: Logan State Office Bldg. – Energy Efficient Commercial Building Deduction

Mr. Hildreth:

alliantgroup has completed an Energy Efficient Commercial Building Tax Deduction study for Logan State Office Bldg. for Massaro Corporation. As required by U.S. Tax Code § 179D, notification must be given to the building owner regarding the energy efficient features of the building and the building's projected annual energy costs.

Below is a list of the energy efficient features of the building which were installed on or in the building as part of a plan designed to reduce the total annual energy and power costs in comparison to a reference building which meets the minimum requirements of ASHRAE (American Society of Heating and Refrigeration, and Air-Conditioning Engineers) Standard 90.1-2001.

#### Heating, Ventilation, and Air Conditioning Systems:

- Boilers
- Unit Heaters
- Chillers
- Energy Recovery Ventilation

#### Interior Lighting Systems:

- Fluorescent Bulbs
- LEDs
- Occupancy Sensors

#### Building Envelope System:

- Pre-Cast Panels
- Rigid Polyisocyanurate
- Gypsum Board

3009 POST OAK BOULEVARD, SUITE 2000 | HOUSTON, TEXAS 77056

[www.alliantgroup.com](http://www.alliantgroup.com) | 800.564.4540

# Building 55 West Virginia State Office Complex



The projected annual energy cost for Logan State Office Bldg. was calculated to be \$34,231. Please note that the projected annual energy costs may vary from the building's actual energy costs due to the exclusion of process loads, exterior lighting, variations in occupancy, and variations in usage schedules among other variables.

Please be advised that the amount of the deduction that has been allocated to Massaro Corporation is \$98,658 for the building envelope, HVAC and hot water, and lighting systems in the building. For more information on the allocation of the section 179D deduction, please refer to the U.S. Tax Code § 179D and IRS Notice 2008-40. A copy of the notice can be found at [www.irs.gov](http://www.irs.gov)

If you have any questions, please do not hesitate to contact me.

Very truly yours,

Rizwan Virani  
Managing Director



[www.alliantgroup.com](http://www.alliantgroup.com) | 800.564.4540



Wheeling Jesuit University

# Erma Ora Byrd Center for Educational Technologies

Wheeling, West Virginia

**Owner**

Wheeling Jesuit University

**Size**

48,000 SF approx.

**Construction Cost**

\$9 million

**Project Architects**

Bohlin, Cywinski, Jackson

**Project Engineers**

McKinley Architecture and Engineering

**Contractor**

Colaiani Contracting

The Erma Ora Byrd Center for Educational Technologies includes a NASA space control room for visitors to interact, a Challenger shuttle and space museum, a complete studio and video editing suite, the latest in educational software, satellite transmission access, research and lab facilities, large meeting rooms wired for distance learning, classrooms, offices, and more. The building contains upscale technology, serves as a learning center for students and teachers of all ages, and engages students in the fields of science and math. The Classroom of the Future (COTF) serves as NASA's principal research and development center for education technologies. The COTF is also designated as one of only 47 Challenger Learning Centers in the world for Space Science Education. They use space-themed simulated learning and role-playing strategies to help students bring their classroom studies to life and cultivate skills needed for future success, such as problem solving, critical thinking, communication and teamwork. For this project, McKinley teamed up with BCJ. We completed full MEPS Engineering, Architectural support, as well as Construction Administration services.



**McKINLEY**  
ARCHITECTURE + ENGINEERING



### **Camp Maas Nature Center, Tamarack Camps Inc.** Groveland Township, Michigan

The new Teva Nature Center is another in a series of program facilities highlighted in the Tamarack Camps Site Master Plan developed by BCI. This facility provides a modern, efficient, and green venue to support the summer resident camp nature program as well as the growing school-year outdoor environmental education curriculum. The center captures a beautiful, previously underutilized, lakefront area near the Ravitz Arts and Crafts Center. The location is in the camp's program core area and quickly has become a destination programming area. The facility consists of four new structures including the main nature program building, a restroom, and teaching kitchen center, a divisible program shelter, and a covered fire pit gathering area. The site plan composition defines several outdoor spaces between the individual buildings, and both the interior and exterior spaces are organized along a main pedestrian circulation spine. Green features include extensive windows with shade devices to capture daylight and provide winter passive solar heating, photovoltaic solar panels, many of the building construction products are manufactured with rapidly renewable and recycled content materials, LED lighting, natural ventilation, and a vegetated roof system to reduce water runoff, provide a visually appealing appearance, and provide a plant habitat for birds and insects. The entire complex can accommodate up to 200 people at one time.



### The Nature Center at Shaker Lakes Shaker Heights, Ohio



Originally built to prevent the construction of a freeway through a series of lakes, creeks, and wetlands in a significant inner-ring suburb of Cleveland, the Nature Center at Shaker Lakes was completely renovated and expanded. The 11,000 s.f. design enables the center to meet the demands of environmental programming and provides a two-story exhibit venue to enhance the visitor experience. An important design premise for the project is to demonstrate Green Design features surrounding community homeowners can consider. This project was awarded a Gund Foundation grant to analyze the application of green design strategies for renovation projects. Green design features include recycled building materials from the original construction, geothermal heating and cooling, low VOC finishes, minimized impact to the Center's surroundings, resource efficient equipment, lighting and appliances, low flow plumbing fixtures, and native planting materials in new landscaping.

Project credit: BCI Principal Richard T. Parker with schmidtcopelandparkerstevens.



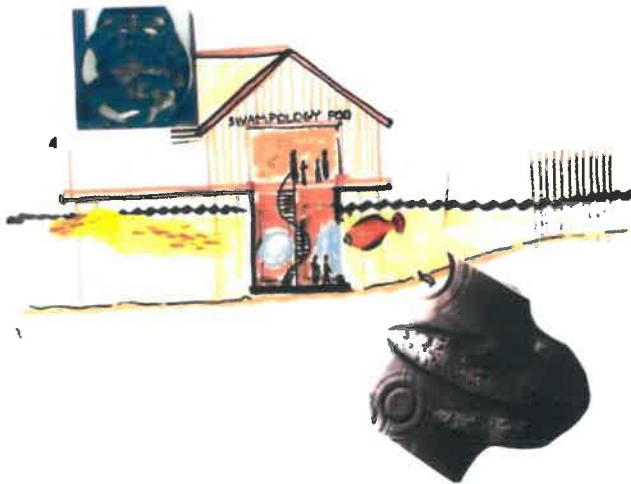
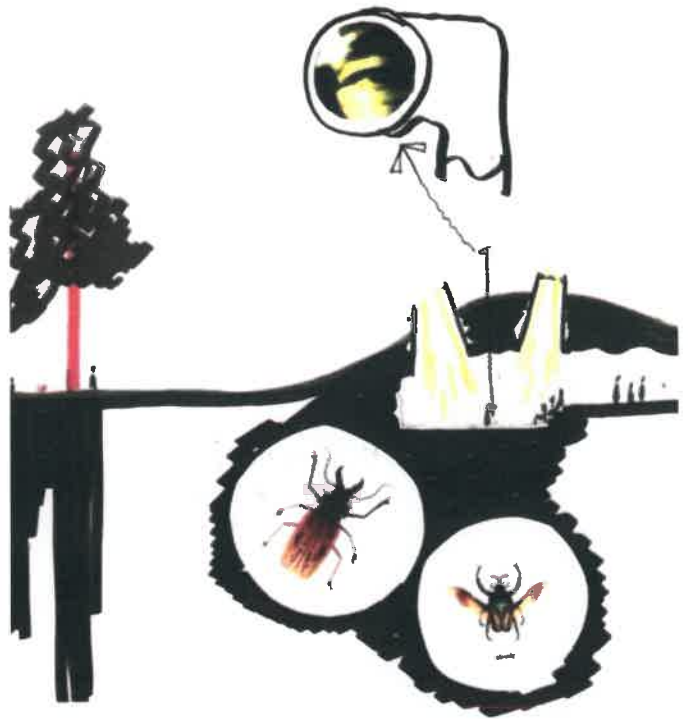
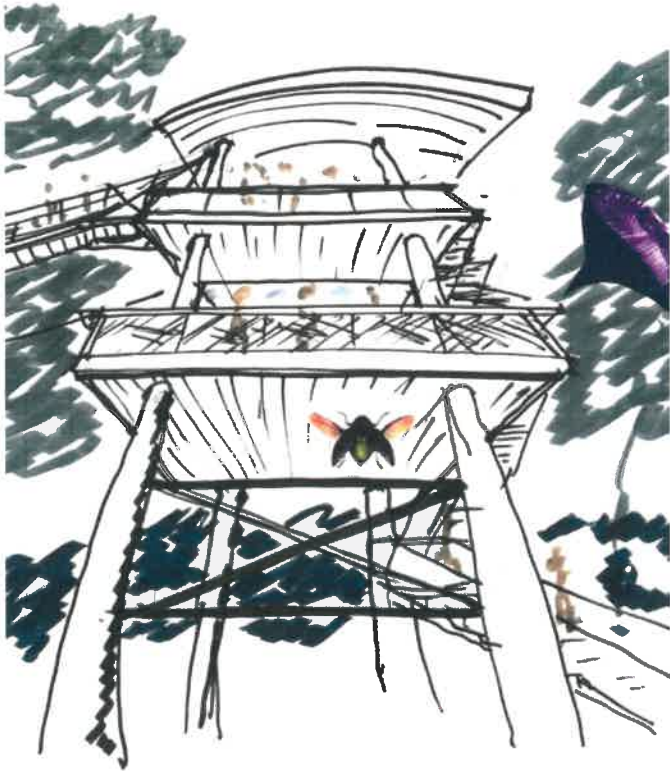
## Boone County Extension Education and Nature Center Burlington, Kentucky

The Boone County Education and Nature Center is a 115-acre property owned by the Boone County Cooperative Extension Service and was set aside to serve entirely as an environmental and educational center.

The Master Plan design includes the various program elements established by the Boone County Cooperative Extension Service. Some of the prominent features include grassland restoration areas, a 4-H outdoor classroom, wildlife viewing area with large shelters and toilet facilities, 2 miles of interior hiking trails, vernal ponds, foot bridges, multi-purpose building, roads and parking lots, and a large barn style building to be utilized for classrooms and storage.



### YMCA Storer Camps – Nature Pods YMCA of Greater Toledo Jackson, Michigan



YMCA Storer Camps, located in southern Michigan encompasses nearly 1,100 acres of various types of ecosystems – remnants of historic glacial movements. The site hosts elementary and middle school student groups throughout the year for environmental education programs. Environmental education staff and teacher representatives set forth a challenge to define opportunities throughout the site for natural and environmental exploration and discovery. The team developed the nature study pods concept – for program delivery and facilities. Employing an existing, underutilized lodge as a home base, the program delivery model is to begin and end at the home base and move in small groups out to the "pods" located throughout the site. At each program site, a specific feature of the site or history of the area is presented for study. A tree house will be used for bird and insect observation, a floating glass bottom pontoon boat will explore the bottom of the 200-acre lake, a cut away cave will expose glacial remains, and a "big dig" might unearth old farmsteads. Other than the sites or facilities, the students will pack in all needed materials and will leave no evidence of disturbance to the site areas. The project is ongoing.

Project credit: BCI Principal Richard T. Parker with schmidtcopelandparkerstevens.



### Honda Wetland Education Center at Glacier Ridge

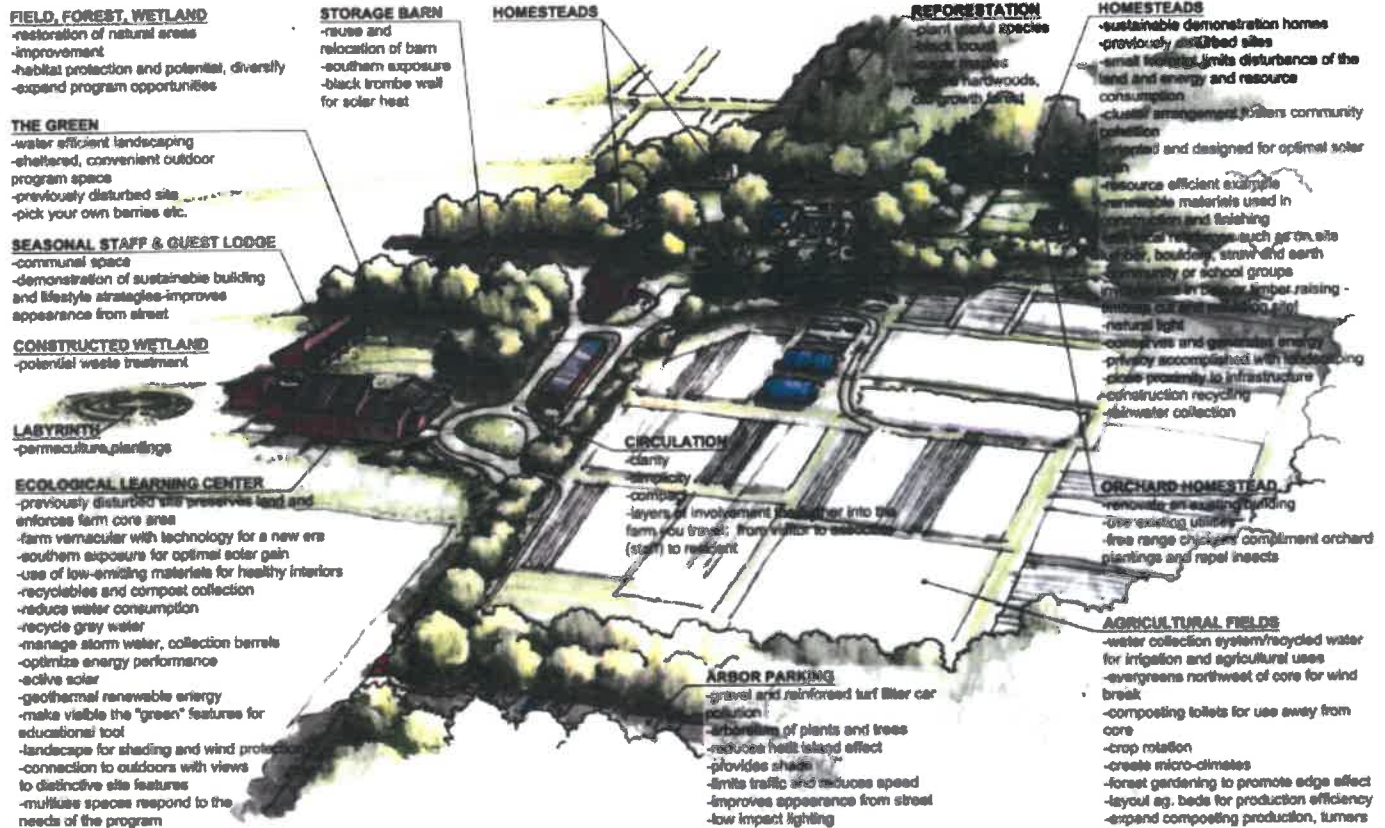
Columbus, Ohio

A collaboration with Floyd Browne Group, Inc., this project brought to life a conceptual plan and program established by Metro Parks and funded in part by the Honda Motor Company. There were 180 acres of wetland constructed or restored at this 970-acre park to provide the public a unique opportunity to view active wetlands. The project includes two new structures for educational opportunities for visitors of Glacier Ridge Metro Park. The new Orientation Shelter and restrooms were composed in part by a dismantled and relocated historic barn, providing a focal point for the Park. A two-story observation tower offers dramatic views of the wetlands. This project was awarded an ASLA Ohio Merit Award for Environmental/Sustainable Design, and an Ohio Parks and Recreation Association Meritorious Facility Development Award.





## Crown Point Ecology Center Ministry of the Sisters of St. Dominic of Akron Bath, Ohio



The objective of this planning effort is to define a long-term vision for expansion and enhancement of the Crown Point Ecology Center lands and buildings. Over the course of an eight-month period, the Consultant Team worked with staff and an advisory committee through an interactive process to craft a Master Site Plan and architectural concepts for a new Ecological Center and homesteads. The Ecological Learning Center is envisioned as a multipurpose program building designed to support the existing Crown Point program and to expand with new year-round and indoor activity space.

The new facilities are integrated with existing facilities to blend with the agricultural style and farmstead architecture and clustering of buildings. Sustainability objectives guided the overall design and are intended to be integrated with all improvement projects as an expression of the Crown Point Mission. These technologies are to be used as educational tools and are envisioned to be visible to the public and transferable for home applications.

Project credit: BCI Principal Richard T. Parker with schmidt copeland parker stevens.

### **Interpretive Building** **The Wilderness Center, Inc.** Wilmot, Ohio

Continued growth of program demands and community awareness of the Center has provided the opportunity to expand and enhance the main Interpretive Building and surrounding site. Primary enhancements are a large 100-seat multi-purpose classroom and expanded display, exhibit, and bookstore areas. Site development includes new picnic areas, parking, and access paths to connect the main building with a new Observatory Building. This project was awarded the 2001 Award of Excellence by the Ohio Parks and Recreation Association, Facility Award for Project Additions and Renovations.

Project credit: BCI Principal Richard T. Parker with schmidtcopelandparkerstevens.





### CanalWay Center, Ohio and Erie Canal Reservation Cleveland, Ohio

BCI was commissioned to design a multi-purpose program space addition to the Leonard Krieger Visitor Center at Cleveland Metroparks Ohio and Erie Canal Reservation. The project originally was designed by Richard T. Parker while with his previous firm. To maintain the project's design integrity, he was invited to assist in the development of this important addition. The Ohio and Erie Canal Reservation is an urban park in the heart of Cleveland's industrial valley along the Cuyahoga River. The park preserves more than 400 acres of pristine valley lands and celebrates the history of the canal, as well as the city's industrial heritage. The design and interpretive exhibits of the expanded 9,500 s.f. Visitor's Center illustrate the park's theme of relationships between people at work, nature at work, and systems at work.





### National Center for Youth Science Education

Davis, West Virginia

The National Center for Youth Science Education will be developed on 110 acres in the midst of the Canaan Valley Institute's 3,000 acres in the Canaan Valley in eastern West Virginia. BCI is leading the Programming and Master Planning efforts in collaboration with Perfidio Weiskopf Wagstaff + Goettel, located in Pittsburgh, Pennsylvania. For 50 years at rented facilities, the National Youth Science Foundation has delivered a unique core program to expose high school graduates to a variety of science and math subjects uncommon to typical high school curricula. The foundation now has the opportunity to develop a site specifically for their use and will expand their reach to many more students and educators in a year-round facility. The project will be developed in phases and will include camper, staff, and educator housing, dining hall, lecture hall, program and education spaces, classrooms, labs, creative arts, indoor and outdoor recreation space, challenge course, field sports area, environmental studies area, activity commons, and health center. Green design strategies and sustainable practices will be employed as well as integrated into the science programming, utilizing the buildings and site as live working models and laboratories to explore emerging technologies for building efficiency and renewable energy sources. The organization receives support from the State of West Virginia, NASA, and the National Radio Astronomy Observatory.



### November Lodge Environmental Education/Multi-Purpose Facility Cuyahoga Valley National Park Association

Peninsula, Ohio



Incorporating Green Design and utilizing a sustainable approach were key guiding principles in developing this year-round facility. In addition to providing much needed specialty classrooms, flexible space for large and small group activities, and a large multi-purpose gathering space, the building and surrounding site development serve as an educational demonstration of environmental responsibility. Carefully placed between areas of significant stress, the lodge takes advantage of wind protection, southern solar exposure, and proximity to an existing service drive and wetlands sanitary treatment system. The 6,630 s.f. building incorporates a large multi-purpose room with salvaged 200-year-old timber roof trusses, a wonderful art room with an abundance of natural light from sun-pipes, breakout "sun" rooms, a computer lab, and resource center. A geothermal system provides heating and cooling for the building.

Project credit: BCI Principal Richard T. Parker with schmidtcopelandparkerstevens.



### Master Plan and Phase I Development, Camp Summit

Paradise, Texas

The mission of Camp Summit is to provide barrier-free outdoor experiences that promote personal growth and foster independence for children and adults with disabilities. Brandstetter Carroll Inc., in collaboration with MESA Design Group in Dallas, Texas, developed the Site Master Plan and facilities designs for the relocation of the Camp to their property in Sunset, Texas. A beautiful and unique site in north Texas, the planning design capitalizes on the diverse ecosystems and varying topography. Although challenging, the design concepts will utilize the hillsides to create safe and accessible interesting and exciting camper experiences.

The Camp Summit programs serve clients ages eight through adult and aging populations. The plan includes full-site infrastructure, dining hall, administration building, health center, camper and staff housing, program activity building, pool, sports fields, fire circles, equestrian center, arts center, amphitheater, and challenge course. The facility is anticipated to accommodate 150 campers plus staff and will be utilized year-round.



Future Welcome Center





### Lake Alma State Park Campground Improvements Ohio Department of Natural Resources

Hamden, Ohio

Brandstetter Carroll Inc. provided master planning and engineering services for improvements to the Lake Alma State Park Campground. The Ohio Department of Natural Resources (ODNR) developed a new shower-house facility. The firm provided master planning services to determine the most functional and cost-effective location for the shower house, and the utility systems it will require. The process included meetings with officials from the Village of Hamden and the City of Wellston to assess wastewater treatment options. A Preliminary Engineering report was presented to ODNR officials, prior to completing the final design and construction. Construction took place in 2011.





### Stillwater Place, Cleveland Metroparks Zoo Cleveland, Ohio

Stillwater Place is a new Event Center located at the Cleveland Metroparks Zoo. The 10,900 s.f. facility will host parties, private and corporate functions, meetings, trade shows, weddings, and educational events. Seating for 300 persons, a fireplace, plus a prep kitchen, and support spaces is planned. BCI is part of the Design/Build team led by Regency Construction.





## PAST PROJECTS

### Lake Erie Bluffs Pavillion

Perry Township, Ohio

Lake Metroparks has worked with local, state, and national conservation partners to acquire, conserve, and protect more than 600 acres in Perry Township, Ohio, on the bluffs overlooking Lake Erie. The first phase of development included the three-season picnic and event pavilion with restrooms. The double-sided fireplace and overhead doors provide flexible indoor and outdoor space. The materials were selected for their park aesthetic as well as durability and low-maintenance characteristics.







## ADVENTURE CITY / Children's Museum of Cleveland

Cleveland, Ohio

Adventure City is the largest exhibit at the Children's Museum of Cleveland. It is in an incredible exhibit space that was once the Grand Ballroom for a men's club. Two enormous wooden structures rise from the floor, as if they emerged from a child's imagination, filling the large volume of space. These rustic components nicely juxtapose the fancy ballroom, creating a dramatic visual effect for visitors. Using wood and other natural materials in the construction, the designers capture the essence of playing outside to encourage familiar and important outdoor play patterns such as physical activity, building dens, collecting items, and exploring with friends. The exhibit is made up of an 18 foot climber, roof top garden, farmers market, mechanic shop, hospital, houses, and a two-story high net.

Completed: 2017 / Cost: \$800,000 / Reference: Maria Campanelli, Executive Director, 216.791.7114 X 16, [mcampanelli@clevelandchildrensmuseum.org](mailto:mcampanelli@clevelandchildrensmuseum.org)



karen katz,  
exhibit design



## ARTS & PARTS / Children's Museum of Cleveland

Cleveland, Ohio

Art and science come together in the art studio at the Children's Museum of Cleveland. The space feels like a Tudor castle and retains the mansion's historic flavor, while adding whimsy and playfulness with color and materials like a color-block patterned floor and an abundance of child-made artwork. In the sun-filled exhibit, children design, construct, and experiment to create unique objects to take home or add to a communal project. Themes and programs rotate throughout the year providing unlimited opportunities for self-expression, creativity, and innovation.

Completed: 2017 / Cost: \$250,000 / Reference: Maria Campanelli, Executive Director, 216.791.7114 X 16, [mcampanelli@clevelandchildrensmuseum.org](mailto:mcampanelli@clevelandchildrensmuseum.org)



karen katz,  
exhibit design





## THE MEADOW / Children's Museum of Cleveland

Cleveland, Ohio

This exhibit space was designed specifically for the Children's Museum of Cleveland's youngest visitors. Infants, crawlers and early walkers have a bright, clean and sensory rich space to make sense of the world. From crawlers to climbers, a variety of components challenge children's emerging physical abilities as they learn how to use their bodies. The Meadow is designed to encourage and support the parent/child relationship, building a firm foundation for life-long learning and healthy child development. Family-friendly amenities, such as a breastfeeding room, are located within the Meadow to make the experience as comfortable as possible.

Completed: 2018 / Cost: \$250,000 / Reference: Maria Campanelli, Executive Director, 216.791.7114 X 16, [mcampanelli@clevelandchildrensmuseum.org](mailto:mcampanelli@clevelandchildrensmuseum.org)





## THEATER & PLAYLIST / Children's Museum of Cleveland

Cleveland, Ohio

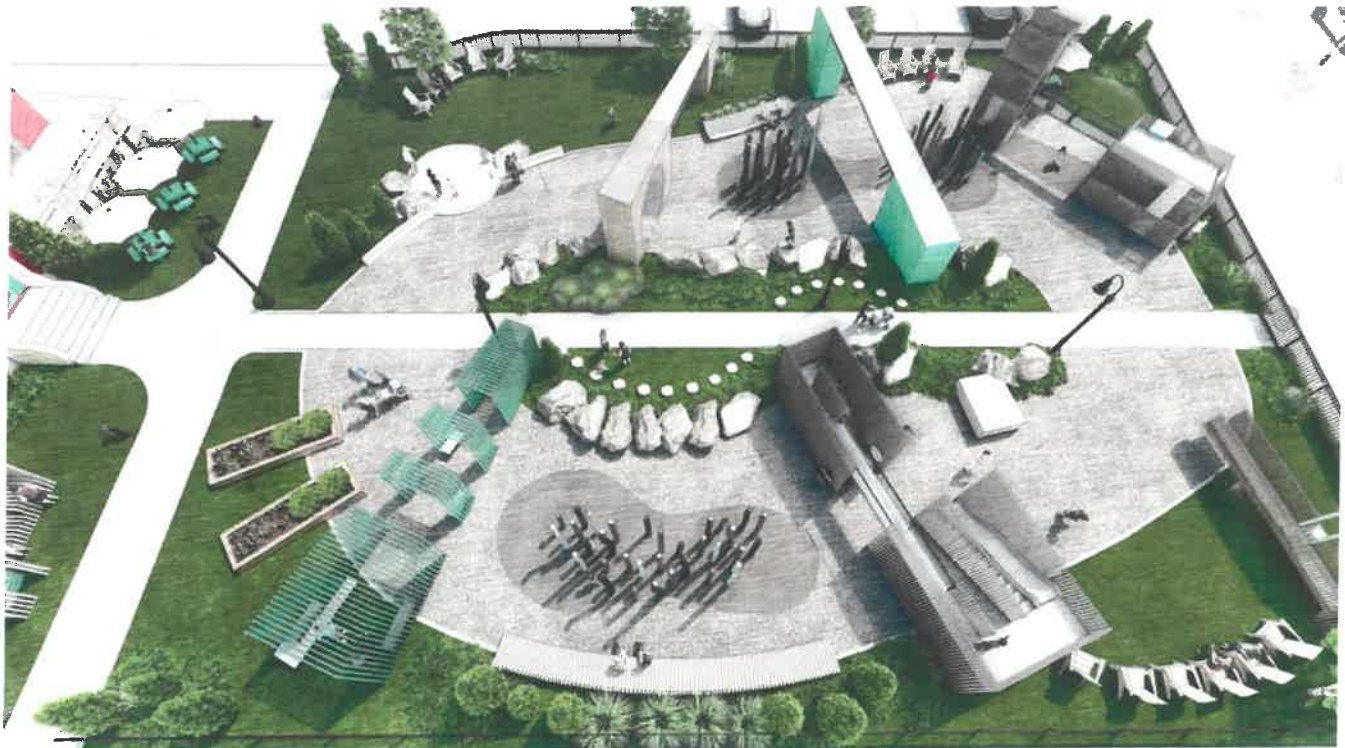
These two exhibits make up the performing arts section at the Children's Museum of Cleveland. In Playlist, visitors are immersed in a rich, one-of-a-kind, musical experience. Rotating animations project onto the center glass structure as the musical genres switch from classical to rock to world music. Visitors are encouraged to dance with their bodies, props, and pretend instruments while making shadows on the dramatically lit glass walls. As you move from Playlist into Theater, you pass through a red portal representative of traditional red stage curtains. In Theater, imaginations and collaboration come together while young performers, set designers, and directors create their very own productions. There are three different backdrops for the stage, painted by a local Cleveland artist, that periodically change.

Completed: 2018 / Cost: \$300,000 / Reference: Maria Campanelli, Executive Director, 216.791.7114 X 16, [mcampanelli@clevelandchildrensmuseum.org](mailto:mcampanelli@clevelandchildrensmuseum.org)



karen katz,  
exhibit design



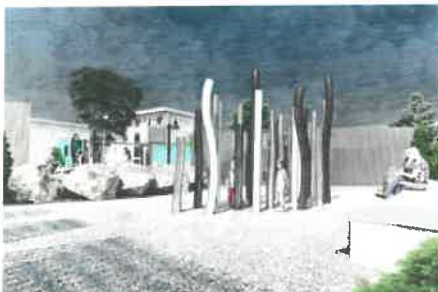


## PLAYSCAPE / Children's Museum of Cleveland

Cleveland, Ohio

A new playscape on the front lawn of the Children's Museum will have several purposes: to beautify the front lawn, to offer an outdoor playful learning experience, and to provide children with intense physical activity. The new play area will mimic the design style of the exhibits inside the museum, and, by adding nature-inspired design elements, it will become a unique experience for visitors. The playscape also acts as a park, combining the elements that make playing in a outdoor space beneficial for children, while providing a variety of rich and stimulating play opportunities.

Anticipated Completion: Fall 2023





## CUYAHOGA VALLEY SCENIC RAILROAD

Peninsula, Ohio

In 2018, as part of CVSR's Capital Campaign, the former coach car underwent renovations to transform it into the Edu-trainment car, a place for families to retreat to during excursions. Designed to keep children entertained during the three-hour run, the Edu-trainment car has a miniature train table and two bigger train cars in which children can pretend play. There's an abacus, a library, a reading nook, a nursing room, a bathroom, a big magnetic wall map of the route and many signs with information about the surrounding Cuyahoga Valley National Park. Renovations took more than a year to complete and it made its debut on the rails in late October 2019.

Completed: 2019 / Cost: \$175,000 / Reference: Bobby Dinkins, Vice President of Development, 234-759-0092, [bdinkins@cvsr.com](mailto:bdinkins@cvsr.com)



karen katz,  
exhibit design





## **GLOW / Botanical Gardens**

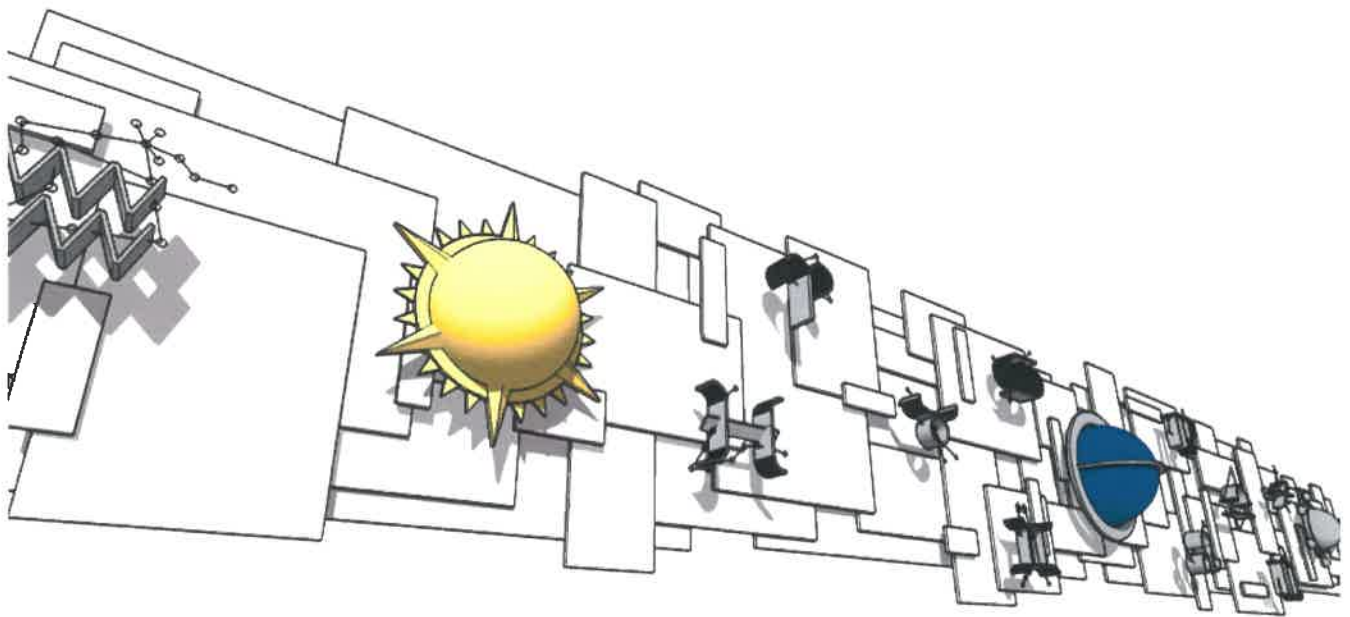
Cleveland, Ohio

In 2019, the Cleveland Botanical Garden's updated their annual holiday exhibit with activities and components based on the theme, Holiday Hollows. The project began by creating a master plan which included a look and feel plan, activity plan, and display plan. Several new components were added to the exhibit including a village of three small houses surrounded by holiday plants in the Ellipse. Another house was placed in Clark Hall next to a snow hill as part of a winter wonderland play area. Wooden animal sculptures along the garden paths and a children's story on the train enhanced the Garden Express experience. Additional help was provided by installing a miniature winter town display of glowing gnome homes in the Orientation Theater.

Completed: 2019 / Cost: \$28,000 / Reference: Jillian Slane, Director of Exhibits & Experience, Holden Forests and Gardens, 216.707.2824, [jslane@holdenfg.org](mailto:jslane@holdenfg.org)



karen katz,  
exhibit design



## TIME & SPACE / Cleveland Hopkins International Airport

Cleveland, Ohio

---

Mounted over the new 1956 Cleveland Hopkins International Airport entrance was the "Signs of the Zodiac" sculpture, created by Viktor Schreckengost. The City of Cleveland and Cleveland Hopkins Airport wanted to honor Schreckengost by bringing this historic sculpture out of storage after 40 years, restoring it, and exhibiting it back at the airport. The design intent is to mount each zodiac and planet piece as originally intended by Schreckengost, by re-attaching aluminum posts, with new bracket mounts behind the substrate, and allowing each piece to "float" in front of the backing panel. Underneath the sculpture and wrapping the central column is an interpretive exhibit display.

Project Currently on Hold / Reference: Jim Wamelink, Construction Program Services, The Ritenour Group, 330.425.3232, [jim@wrrestoration.net](mailto:jim@wrrestoration.net)







## VAN AKEN MARKET HALL

Shaker Heights, Ohio

The Van Aken Market Hall, the first of its kind in Northeast Ohio, offers visitors the best local restaurants and retailers along with a variety of different gathering spaces for customers. The addition of a new kids corner gives adults time to eat and catch up with friends and family while children have a safe space to play. Since the space is used for events throughout the year, components were designed so that they could easily move in and out of the space. The two wooden tinkering walls and large black dominoes blend seamlessly with the look and feel of the Market Hall.

Completed: 2019 / Cost: \$5,000 / Reference: Megan O'Donnell, Marketing and Events Manager,  
modonnell@rmscorporations.com, 216.491.8800 x3



karen katz,  
exhibit design

# CROCKER PARK, Westlake, Ohio

Phase I & II (Starting Phase III)



**Crocker Park** (Phase I & II), Westlake's new "downtown" is a 12-block mixed-use development of retail, entertainment, residential and office buildings in a setting of streets, sidewalks and urban parks (75-acre development/\$480 million/one million sq.ft.).

**Richard K. Levitz** served as Project Manager/Project Coordinator, Architectural Design/Aesthetic Direction and Construction Coordination; bidding/selection of design professionals and contractors, design compliance, construction quality control, close-out and occupancy. **Mr. Levitz co-authored Crocker Park's urban, architectural design, graphics/signs and way-finding guidelines (codified by City ordinance), which he continues to monitor, ensuring design excellence in compliance with the "Design Guidelines" and City codes;** he was also responsible for overall site-work and buildings zoning/planning approvals, public transit coordination, procurement of miscellaneous design and construction tenant-work, tenant design coordination (review/approvals—storefronts, signs and public art) and construction coordination of over 80 tenants. Managed the project start-up, established the project management systems and the records/communication systems. Lead project meetings, published minutes, and prepared project schedule. Coordinated underground utilities and site/civil work and prepared and negotiated related legal easements. **Mr. Levitz managed the soft-cost budget of over \$14 million during the course of six years, comprising of twenty professional contracts, including architects and engineers.** He was responsible for pre-qualification of professionals, issuing RFP's, managing their presentations to ownership/client, preparing comparative spreadsheet of proposals, lead negotiations, made final selection recommendations to ownership, prepared and finalized contracts, managed invoices and payments, on-going monitoring of soft-cost budget during the course of the project, and prepared reports for financing of project.

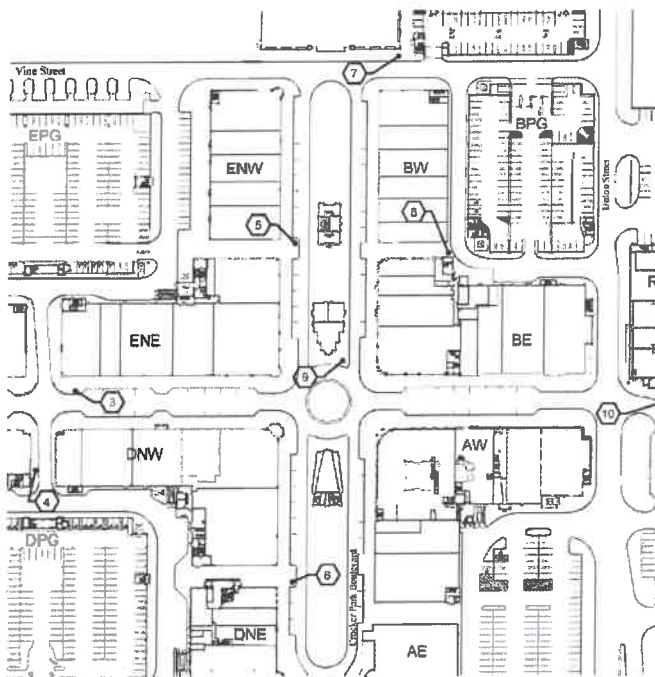
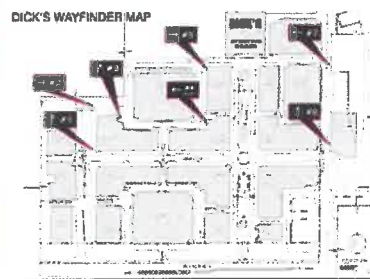
## Credits:

- **Owner/Developer:** Crocker Park, LLC  
Stark Enterprises/The Carney Group
- **Project Manager/Coordinator & Storefronts/Signs Design Consultant:**  
Richard K. Levitz
- **Construction Manager:**  
Arbor Construction/Whiting Turner
- **Architect:** Bialosky & Partners
- **Landscape Architect:** MSI
- **Master Plan:** Streetworks



# Crocker Park

Westlake, Ohio



Location Site Plan -- Crocker Park Map/Advertisement Kiosks

## Way-finding and Directional Signs

In traditional downtowns and dense urban centers, different from single-use shopping centers, directional and way-finding signs for commercial/ retail entities may be either absent or, when existing, focus on specific districts and are eclectic in design. Also, urban areas allow for both generalized ad hoc advertisement and location-based advertisement that lead customers to a specific destination. Following this character concept, Crocker Park, conceived as Westlake's downtown, has a series of way-finding strategies planned according to the immediate directional needs of visitors for overall mapping and orientation, and the choice of individual commercial entities who may decide for further identification and advertisement. These signage programs include advertisement/map kiosks and directional signs for specific tenants and visitor amenities.

Mr. Levitz designed and located the tenant directional signs, as well as coordinated the placement of the *Maestri*-designed map/advertisement kiosks, which were strategically located in the pedestrian alleyways leading from parking decks to the principal streets. All City approvals were secured by Mr. Levitz.

Inspired by historical European street sign prototypes, the design of Crocker Park directional signs are simple in geometric form and graphics, with colors specifically related to Crocker Park's standard color palette.

**Owner/Developer:** Crocker Park, LLC/*Stark Enterprises, Cleveland, Ohio*

**Signs Design Consultant & Project Manager/Coordinator:**  
*Richard K. Levitz, Shaker Heights, Ohio*

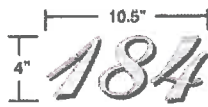
**Directional Sign Fabricator/Installer:**  
*JF Signs LLC*  
*Beachwood, Ohio*

# Crocker Park

Westlake, Ohio



FRONT ENTRANCE

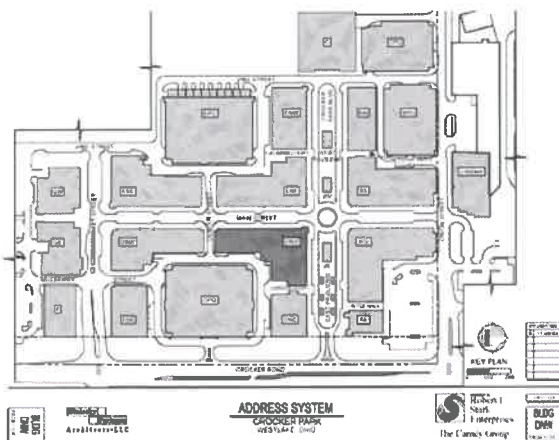
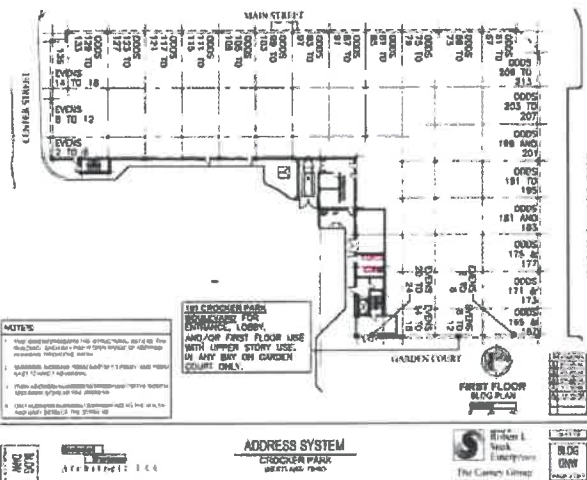
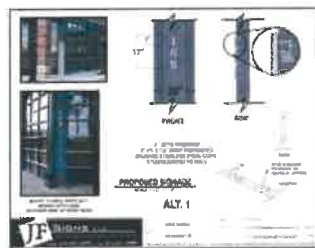


CENTER ON THIS ROWS ABOVE DOORS

4" HT. CLEAR ALUM.  
DISC-MOUNT TO  
5" MULLION ABOVE DOORS



FRONT ELEVATION



## Urban Address System

"the oldest 'new' way-finding system"

The oldest urban way-finding system is the identification of specific premises, blocks and/or lots through street names and address numbers. Mr. Levitz was responsible for creating and coordinating the approvals and implementation of Crocker Park's address system, which is based on European and early American urban models.

The Crocker Park system was approved by both the USPS and the City of Westlake for this new mixed-use urban prototype. Additionally, this system was incorporated into the Tele-Atlas universal mapping and internet search engines, listing every address number associated with every occupant at Crocker Park, street-level and upper floors, thus facilitating the use of maps and satellite-run GPS for directions and final destinations within Crocker Park. Thus, unlike typical suburban single-use shopping centers, where internet searches generally take you to the old existing roads outside of the development, the Crocker Park address system brings you into the heart of the development.

This type of address system added an important level of authenticity and "place-making" to Westlake's new downtown. First, there is character definition with street names that relate historically to Midwestern towns and cities; and second, through clear organization of numbering series that allow for immediate identification of individual stakeholders and lessees. Additionally, following the eclectic nature of urban environments, tenants have the design freedom to choose number "fonts" associated with their own design character and personality.

Critical to this address program was the substitution of the traditional lot/block numbering system used in older cities, with that of new building structural bays. This allows for a range of designated series of numbers for individual premise designations, but with the flexibility of future splitting and/or reassembly of premises and number reassignments.

**Owner/Developer:** Crocker Park, LLC/Stark Enterprises, Cleveland, Ohio

**Signs Design Consultant, Address System & Project Manager/Coordinator:**  
Richard K. Levitz, Shaker Heights, Ohio

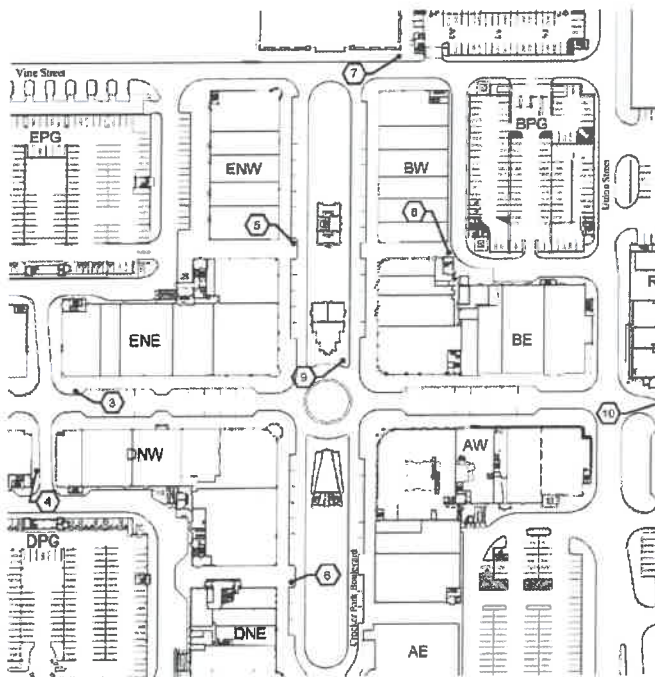
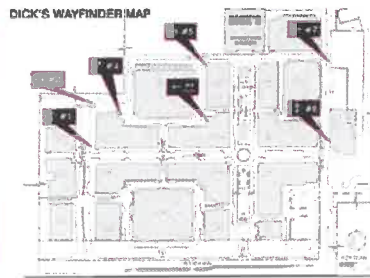
**Address System Drafting:**  
Bialosky & Partners, Cleveland, Ohio

**Sign Fabricator/Installer:**  
JF Signs LLC, Beachwood, Ohio



# Crocker Park

Westlake, Ohio



Location Site Plan -- Crocker Park Map/Advertisement Kiosks

## Way-finding and Directional Signs

In traditional downtowns and dense urban centers, different from single-use shopping centers, directional and way-finding signs for commercial/ retail entities may be either absent or, when existing, focus on specific districts and are eclectic in design. Also, urban areas allow for both generalized ad hoc advertisement and location-based advertisement that lead customers to a specific destination. Following this character concept, Crocker Park, conceived as Westlake's downtown, has a series of way-finding strategies planned according to the immediate directional needs of visitors for overall mapping and orientation, and the choice of individual commercial entities who may decide for further identification and advertisement. These signage programs include advertisement/map kiosks and directional signs for specific tenants and visitor amenities.

Mr. Levitz designed and located the tenant directional signs, as well as coordinated the placement of the *Maestri*-designed map/advertisement kiosks, which were strategically located in the pedestrian alleyways leading from parking decks to the principal streets. All City approvals were secured by Mr. Levitz.

Inspired by historical European street sign prototypes, the design of Crocker Park directional signs are simple in geometric form and graphics, with colors specifically related to Crocker Park's standard color palette.

**Owner/Developer:** Crocker Park, LLC/Stark Enterprises, Cleveland, Ohio

**Signs Design Consultant & Project Manager/Coordinator:**  
Richard K. Levitz, Shaker Heights, Ohio

**Directional Sign Fabricator/Installer:**  
JF Signs LLC  
Beachwood, Ohio

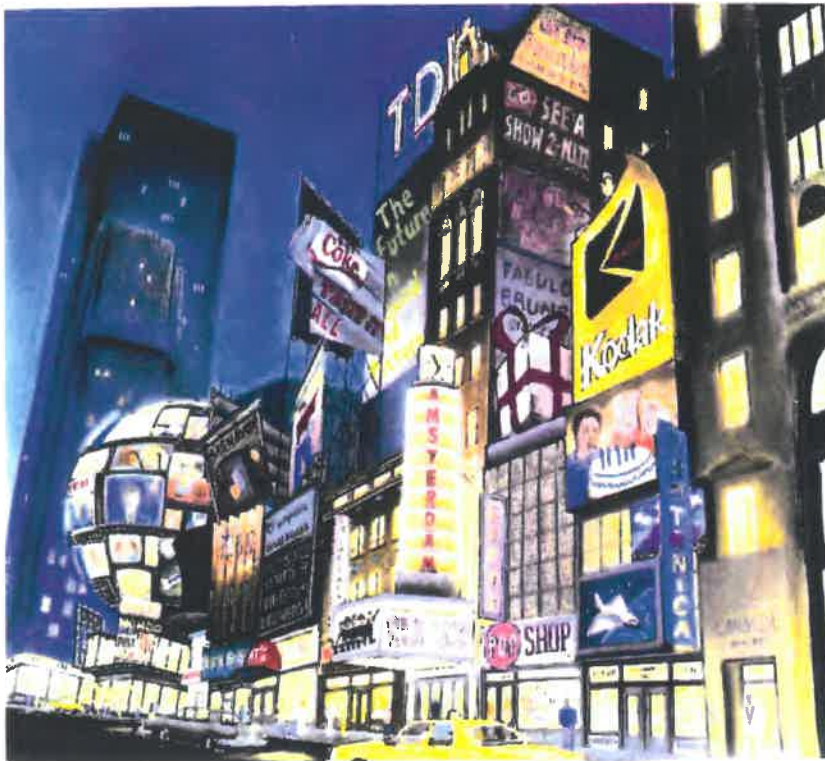
## 42ND STREET NOW!

### New York, NY

In Times Square, the center of America's popular culture and New York's most famous entertainment district, LCOR served as Development Advisor in the formulation of a master plan for interim retail development. Concentrating on 42nd Street between 7th and 8th Avenues, this

plan for the 42nd Street Development Project will consist of approximately 300,000 square feet of retail space. The 42nd Street Development Project is a subsidiary of the New York State Urban Development Corporation, whose long-term plan for the area includes approximately four million square feet of office space, a

merchandise mart, a hotel and nine historic theatres. The developer of the office sites, Times Square Center Associates, entered into a Memorandum that provided for ten years of interim development while the long term plan was being executed.



#### Richard K. Levitz

Project Manager for LCOR, Inc.  
Development Advisor

Mr. Levitz worked as Project Manager and Coordinator on behalf of LCOR preparing real estate development and design guidelines (urban/environmental design, signs and billboards). This plan became the boilerplate for the now thriving entertainment district with Disney's New Amsterdam Theater, Madame Tussaud's Wax Museum, and E Walk. Due to the codified ordinance provided by the plan allowing "mega signs", 42nd Street has become a prototype for large format advertisement in urban entertainment districts and one of the most celebrated palettes of urban signage and billboards world-wide.

**Owner/Client**  
42nd Street Development Project  
New York, NY

NYC Economic Development Corporation  
New York, NY

**Development Advisor**  
LCOR Incorporated  
New York, NY

**Architect**  
Robert A. M. Stern Associates  
New York, NY

**Graphics**  
M & Co.  
New York, NY

**Retail Design**  
Haverson/Rockwell Architects, P.C.  
New York, NY

**Estimating**  
Tishman Construction Company  
New York, NY

**Structural Engineer**  
DeSimone, Chaplin and Dobryn Consulting  
Engineers, P.C.  
New York, NY

**Retail Feasibility**  
Garrick/Aug Assoc. Store Leasing, Inc.  
New York, NY





Department of Administration  
Purchasing Division  
2019 Washington Street East  
Post Office Box 50130  
Charleston, WV 25305-0130

State of West Virginia  
Centralized Expression of Interest  
Architect/Engr

<b>Proc Folder:</b> 851767			<b>Reason for Modification:</b>
<b>Doc Description:</b> A/E Services-Tomblin WMA Elk Visitor Center (NEW)			
<b>Proc Type:</b> Central Contract - Fixed Amt			
<b>Date Issued</b>	<b>Solicitation Closes</b>	<b>Solicitation No</b>	<b>Version</b>
2021-03-08	2021-04-06 13:30	CEOI 0310 DNR2100000001	1

**BID RECEIVING LOCATION**

BID CLERK  
DEPARTMENT OF ADMINISTRATION  
PURCHASING DIVISION  
2019 WASHINGTON ST E  
CHARLESTON WV 25305  
US

**VENDOR**

**Vendor Customer Code:** \*000000206862  
**Vendor Name :** McKinley Architecture and Engineering  
**Address :**  
**Street :** 129 Summers Street - Suite 201  
**City :** Charleston  
**State :** West Virginia **Country :** USA **Zip :** 25301  
**Principal Contact :** Ernest Dellatorre  
**Vendor Contact Phone:** (304) 340-4267 **Extension:** 115

**FOR INFORMATION CONTACT THE BUYER**

Joseph E Hager III  
(304) 558-2306  
joseph.e.hageriii@wv.gov

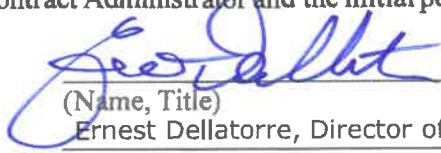
Vendor  
Signature X

FEIN# 55-0696478

DATE April 1, 2021

All offers subject to all terms and conditions contained in this solicitation

**DESIGNATED CONTACT:** Vendor appoints the individual identified in this Section as the Contract Administrator and the initial point of contact for matters relating to this Contract.



(Name, Title)  
Ernest Dellatorre, Director of Business Development

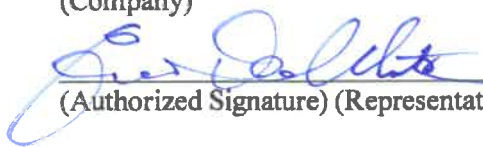
(Printed Name and Title)  
129 Summers Street - Suite 201, Charleston, West Virginia 25301

(Address)  
(304) 340-4267 x115 | (304) 233-4613

(Phone Number) / (Fax Number)  
edellatorre@mckinleydelivers.com  
(email address)

**CERTIFICATION AND SIGNATURE:** By signing below, or submitting documentation through wvOASIS, I certify that I have reviewed this Solicitation in its entirety; that I understand the requirements, terms and conditions, and other information contained herein; that this bid, offer or proposal constitutes an offer to the State that cannot be unilaterally withdrawn; that the product or service proposed meets the mandatory requirements contained in the Solicitation for that product or service, unless otherwise stated herein; that the Vendor accepts the terms and conditions contained in the Solicitation, unless otherwise stated herein; that I am submitting this bid, offer or proposal for review and consideration; that I am authorized by the vendor to execute and submit this bid, offer, or proposal, or any documents related thereto on vendor's behalf; that I am authorized to bind the vendor in a contractual relationship; and that to the best of my knowledge, the vendor has properly registered with any State agency that may require registration.

McKinley Architecture and Engineering  
(Company)



(Authorized Signature) (Representative Name, Title)

Ernest Dellatorre, Director of Business Development  
(Printed Name and Title of Authorized Representative)

April 1, 2021  
(Date)

(304) 340-4267 x115 | (304) 233-4613  
(Phone Number) (Fax Number)



STATE OF WEST VIRGINIA  
Purchasing Division

## PURCHASING AFFIDAVIT

**CONSTRUCTION CONTRACTS:** Under W. Va. Code § 5-22-1(i), the contracting public entity shall not award a construction contract to any bidder that is known to be in default on any monetary obligation owed to the state or a political subdivision of the state, including, but not limited to, obligations related to payroll taxes, property taxes, sales and use taxes, fire service fees, or other fines or fees.

**ALL CONTRACTS:** Under W. Va. Code §5A-3-10a, no contract or renewal of any contract may be awarded by the state or any of its political subdivisions to any vendor or prospective vendor when the vendor or prospective vendor or a related party to the vendor or prospective vendor is a debtor and: (1) the debt owed is an amount greater than one thousand dollars in the aggregate; or (2) the debtor is in employer default.

**EXCEPTION:** The prohibition listed above does not apply where a vendor has contested any tax administered pursuant to chapter eleven of the W. Va. Code, workers' compensation premium, permit fee or environmental fee or assessment and the matter has not become final or where the vendor has entered into a payment plan or agreement and the vendor is not in default of any of the provisions of such plan or agreement.

**DEFINITIONS:**

"Debt" means any assessment, premium, penalty, fine, tax or other amount of money owed to the state or any of its political subdivisions because of a judgment, fine, permit violation, license assessment, defaulted workers' compensation premium, penalty or other assessment presently delinquent or due and required to be paid to the state or any of its political subdivisions, including any interest or additional penalties accrued thereon.

"Employer default" means having an outstanding balance or liability to the old fund or to the uninsured employers' fund or being in policy default, as defined in W. Va. Code § 23-2c-2, failure to maintain mandatory workers' compensation coverage, or failure to fully meet its obligations as a workers' compensation self-insured employer. An employer is not in employer default if it has entered into a repayment agreement with the Insurance Commissioner and remains in compliance with the obligations under the repayment agreement.

"Related party" means a party, whether an individual, corporation, partnership, association, limited liability company or any other form or business association or other entity whatsoever, related to any vendor by blood, marriage, ownership or contract through which the party has a relationship of ownership or other interest with the vendor so that the party will actually or by effect receive or control a portion of the benefit, profit or other consideration from performance of a vendor contract with the party receiving an amount that meets or exceeds five percent of the total contract amount.

**AFFIRMATION:** By signing this form, the vendor's authorized signer affirms and acknowledges under penalty of law for false swearing (W. Va. Code §61-5-3) that: (1) for construction contracts, the vendor is not in default on any monetary obligation owed to the state or a political subdivision of the state, and (2) for all other contracts, that neither vendor nor any related party owe a debt as defined above and that neither vendor nor any related party are in employer default as defined above, unless the debt or employer default is permitted under the exception above.

**WITNESS THE FOLLOWING SIGNATURE:**

Vendor's Name: McKinley Architecture and Engineering

Authorized Signature: *[Signature]* Date: April 1, 2021

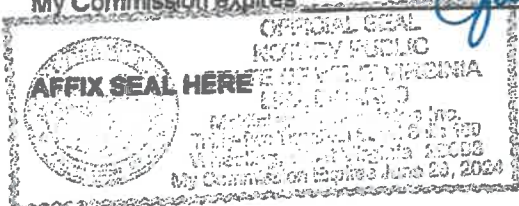
State of West Virginia

County of Ohio, to-wit:

Taken, subscribed, and sworn to before me this 1 day of April, 2021.

My Commission expires

June 26, 2024



NOTARY PUBLIC

*[Signature]*

Purchasing Affidavit (Revised 01/18/2018)

Per your request in the Solicitation, in GENERAL TERMS AND CONDITIONS, Part 8. INSURANCE, here are sample copies of our various Insurances and their Coverages:

**ACORD** **CERTIFICATE OF LIABILITY INSURANCE** DATE (MM/DD/YYYY) 02/03/2021

THIS CERTIFICATE IS ISSUED AS A MATTER OF INFORMATION ONLY AND CONFERS NO RIGHTS UPON THE CERTIFICATE HOLDER. THIS CERTIFICATE DOES NOT AFFIRMATIVELY OR NEGATIVELY AMEND, EXTEND OR ALTER THE COVERAGE AFFORDED BY THE POLICIES BELOW. THIS CERTIFICATE OF INSURANCE DOES NOT CONSTITUTE A CONTRACT BETWEEN THE ISSUING INSURER(S), AUTHORIZED REPRESENTATIVE OR PRODUCER, AND THE CERTIFICATE HOLDER.

IMPORTANT: If the certificate holder is an ADDITIONAL INSURED, the policy(ies) must have ADDITIONAL INSURED provisions or be endorsed. IF SUBROGATION IS WAIVED, subject to the terms and conditions of the policy, certain policies may require an endorsement. A statement on this certificate does not confer rights to the certificate holder in lieu of such endorsement(s).

PRODUCER: Paul Associates, Inc.  
1311 Chapline Street  
PO Box 980  
Wheeling WV 26003-0123

CONTACT: Amy Slover  
PHONE: (304)233-3303 FAX: (304)233-3333  
E-MAIL: aslover@paulassociates.com

INSURER A: CINCINNATI INDEMNITY RMC # 3280

INSURED: McKinley & Associates Inc  
McKinley Architecture and Engineering  
32 20th Street Ste 100  
Wheeling WV 26003-

COVERAGES: CERTIFICATE NUMBER: REVISION NUMBER:

THIS IS TO CERTIFY THAT THE POLICIES OF INSURANCE LISTED BELOW HAVE BEEN ISSUED TO THE INSURED NAMED ABOVE FOR THE POLICY PERIOD INDICATED. NOTWITHSTANDING ANY REQUIREMENT, TERM OR CONDITION OF ANY CONTRACT OR OTHER DOCUMENT WITH RESPECT TO WHICH THIS CERTIFICATE MAY BE ISSUED OR MAY PERTAIN, THE INSURANCE AFFORDED BY THE POLICIES DESCRIBED HEREIN IS SUBJECT TO ALL THE TERMS, EXCLUSIONS AND CONDITIONS OF SUCH POLICIES. LIMITS SHOWN MAY HAVE BEEN REDUCED BY PAID CLAIMS.

LINE	TYPE OF INSURANCE	ACORD 101	POLICY NUMBER	POLICY DATE	POLICY PERIOD	LIMITS
A	COMMERCIAL GENERAL LIABILITY CLAIMS-MADE <input checked="" type="checkbox"/> OCCUR <input checked="" type="checkbox"/>	X	EPP 0146335	09/15/2020	06/15/2021	EACH OCCURRENCE DAMAGE TO RENTED EQUIPMENT (See schedule) \$ 500,000 BODILY INJURY (Per person) \$ 10,000 PERSONAL & ADY. INJURY \$ 1,000,000 GENERAL AGGREGATE \$ 2,000,000 PRODUCTS - COMP/OP AGG. \$ 2,000,000
A	AUTOMOBILE LIABILITY ANY AUTO OWNED AUTOS ONLY HIRE AUTOS ONLY	X	EPP 0146335	09/15/2020	06/15/2021	COMBINED SINGLE LIMIT (See schedule) \$ 1,000,000 BODILY INJURY (Per person) \$ BODILY INJURY (Per accident) \$ PROPERTY DAMAGE (See schedule) \$ EACH OCCURRENCE AGGREGATE \$ 1,000,000
A	UMBRELLA LIA EXCESS LIA OCCUR <input checked="" type="checkbox"/> CLAIMS-MADE <input checked="" type="checkbox"/>	X	EPP 0146335	09/15/2020	06/15/2021	EACH OCCURRENCE AGGREGATE \$ 1,000,000 \$ 1,000,000
WORKERS COMPENSATION AND EMPLOYER'S LIABILITY ANY EMPLOYEE COMPENSATION EXCLUDED (See schedule B-10) IF EMPLOYEE UNDER THE PROVISIONS OF THE EMPLOYER'S POLICY						

DESCRIPTION OF OPERATIONS / LOCATIONS / VEHICLES (ACORD 101, Additional Remarks Schedule, may be attached if more space is required)  
Specimen Copy to be held for McKinley and Associates

CERTIFICATE HOLDER: Specimen

CANCELLATION: SHOULD ANY OF THE ABOVE DESCRIBED POLICIES BE CANCELLED BEFORE THE EXPIRATION DATE THEREOF, NOTICE WILL BE DELIVERED IN ACCORDANCE WITH THE POLICY PROVISIONS.

AUTHORIZED REPRESENTATIVE: *[Signature]*

ACORD 25 (2016/03) © 1985-2015 ACORD CORPORATION. All rights reserved. The ACORD name and logo are registered marks of ACORD.

**ACORD** **CERTIFICATE OF LIABILITY INSURANCE** DATE (MM/DD/YYYY) 10/12/2020

THIS CERTIFICATE IS ISSUED AS A MATTER OF INFORMATION ONLY AND CONFERS NO RIGHTS UPON THE CERTIFICATE HOLDER. THIS CERTIFICATE DOES NOT AFFIRMATIVELY OR NEGATIVELY AMEND, EXTEND OR ALTER THE COVERAGE AFFORDED BY THE POLICIES BELOW. THIS CERTIFICATE OF INSURANCE DOES NOT CONSTITUTE A CONTRACT BETWEEN THE ISSUING INSURER(S), AUTHORIZED REPRESENTATIVE OR PRODUCER, AND THE CERTIFICATE HOLDER.

IMPORTANT: If the certificate holder is an ADDITIONAL INSURED, the policy(ies) must have ADDITIONAL INSURED provisions or be endorsed. IF SUBROGATION IS WAIVED, subject to the terms and conditions of the policy, certain policies may require an endorsement. A statement on this certificate does not confer rights to the certificate holder in lieu of such endorsement(s).

PRODUCER: The James B. O'Connell Company  
1100 Superior Avenue, Suite 1500  
Cleveland OH 44114

CONTACT: Steven Galica  
PHONE: (440) 216-308-0047 FAX: (440) 216-330-2815  
E-MAIL: sgatica@oconnellcompany.com

INSURER A: Continental Insurance Company RMC # 35289

INSURED: McKinley Architecture and Engineering  
32 20th Street Ste 100  
Wheeling WV 26003

COVERAGES: CERTIFICATE NUMBER: 1067424632 REVISION NUMBER:

THIS IS TO CERTIFY THAT THE POLICIES OF INSURANCE LISTED BELOW HAVE BEEN ISSUED TO THE INSURED NAMED ABOVE FOR THE POLICY PERIOD INDICATED. NOTWITHSTANDING ANY REQUIREMENT, TERM OR CONDITION OF ANY CONTRACT OR OTHER DOCUMENT WITH RESPECT TO WHICH THIS CERTIFICATE MAY BE ISSUED OR MAY PERTAIN, THE INSURANCE AFFORDED BY THE POLICIES DESCRIBED HEREIN IS SUBJECT TO ALL THE TERMS, EXCLUSIONS AND CONDITIONS OF SUCH POLICIES. LIMITS SHOWN MAY HAVE BEEN REDUCED BY PAID CLAIMS.

LINE	TYPE OF INSURANCE	ACORD 101	POLICY NUMBER	POLICY DATE	POLICY PERIOD	LIMITS
A	COMMERCIAL GENERAL LIABILITY CLAIMS-MADE <input type="checkbox"/> OCCUP <input type="checkbox"/>					EACH OCCURRENCE DAMAGE TO RENTED EQUIPMENT (See schedule) \$ BODILY INJURY (Per person) \$ PERSONAL & ADY. INJURY \$ GENERAL AGGREGATE \$ PRODUCTS - COMP/OP AGG. \$
A	AUTOMOBILE LIABILITY ANY AUTO OWNED AUTOS ONLY HIRE AUTOS ONLY	X				COMBINED SINGLE LIMIT (See schedule) \$ BODILY INJURY (Per person) \$ BODILY INJURY (Per accident) \$ PROPERTY DAMAGE (See schedule) \$ EACH OCCURRENCE AGGREGATE \$
A	UMBRELLA LIA EXCESS LIA OCCUR <input checked="" type="checkbox"/> CLAIMS-MADE <input checked="" type="checkbox"/>	X				EACH OCCURRENCE AGGREGATE \$ \$
WORKERS COMPENSATION AND EMPLOYER'S LIABILITY ANY EMPLOYEE COMPENSATION EXCLUDED (See schedule B-10) IF EMPLOYEE UNDER THE PROVISIONS OF THE EMPLOYER'S POLICY						

DESCRIPTION OF OPERATIONS / LOCATIONS / VEHICLES (ACORD 101, Additional Remarks Schedule, may be attached if more space is required)  
Waiver of Subrogation as designated above as provided when required of the Named Insured by written contract or agreement.

CERTIFICATE HOLDER: Specimen For Purposes of Evidencing Coverage Only

CANCELLATION: SHOULD ANY OF THE ABOVE DESCRIBED POLICIES BE CANCELLED BEFORE THE EXPIRATION DATE THEREOF, NOTICE WILL BE DELIVERED IN ACCORDANCE WITH THE POLICY PROVISIONS.

AUTHORIZED REPRESENTATIVE: *[Signature]*

ACORD 25 (2016/03) © 1985-2015 ACORD CORPORATION. All rights reserved. The ACORD name and logo are registered marks of ACORD.