

**STAHLSHEAFFER
ENGINEERING**

Expression of Interest

A&E Services for Public Shooting Range Improvements and Lead Management Plan

Qualifications Presented to:



RECEIVED
2020 FEB 19 PM 1:20
WV PURCHASING
DIVISION

Mr. Guy Nisbet
Department of Administration, Purchasing Division
2019 Washington Street, Charleston, West Virginia 25305-0130

Qualifications Presented by:

**STAHLSHEAFFER
ENGINEERING**

250 Lakewood Center
Morgantown, WV 26508

a multi-discipline civil / structural engineering company



Contents

Cover Letter

- 1. Firm Overview..... 11**
- 2. Project and Goals..... 12**
 - 2.1 Site Evaluation..... 12
 - 2.2 Engineering and Environmental Services..... 12
 - 2.3 Construction Contract Administration Services..... 13
- 3. Qualifications, Experience, and Past Performance..... 15**
 - 3.1 Communication..... 15
 - 3.2 History Completing Projects On Time & On Budget..... 15
 - 3.3 Similar Projects..... 16
 - 3.4 References..... 19
 - 3.5 Project Delivery Plan..... 19
 - 3.6 Staff Qualifications & Proposed Staffing Plan..... 20

This document contains proprietary and confidential information of Stahl Sheaffer Engineering, LLC, and shall not be used, disclosed, or reproduced, in whole or in part, for any purpose other than to evaluate this document, without the prior written consent of Stahl Sheaffer Engineering.

STAHL SHEAFFER ENGINEERING

Stahl Sheaffer Engineering, LLC
250 Lakewood Center
Morgantown, WV 26508
Phone: 304-381-4281
Fax: 304-381-4299
sse-llc.com

February 19, 2020

Mr. Guy Nisbet
WV Purchasing Division - Supervisor
WV Division of Natural Resources Parks & Recreation-PEM Section
2019 Washington Street, East
Charleston, WV 25305

Re: A/E Services for Public Shooting Range Improvements & Lead Management Plan

Dear Mr. Nisbet:

Stahl Sheaffer Engineering, LLC (Stahl Sheaffer) is pleased to submit this Expression of Interest for architectural/engineering services and the development of a lead management plan for 29 WV DNR owned shooting ranges throughout the state. We understand the agency desires to evaluate each of these facilities, design improvements, and develop a lead management plan for each site.

In this EOI you will find our firm overview; understanding of the project and goals; and qualifications, experience, and past performance.

Our West Virginia office is located in Morgantown and places Stahl Sheaffer in position to be responsive and readily available. Please contact me at (304) 381-4281 or via email at tkinder@sse-llc.com should you have any questions or require additional information.

Sincerely,



Timothy Klinder, PLS, CFM
Project Manager / Person-In-Charge
Stahl Sheaffer Engineering, LLC

Copy File P20-106

**STAHL SHEAFFER
ENGINEERING**

Morgantown, WV
259 Lallawood Cir
Morgantown, WV
26308
(304) 381-1281

Charleston, WV
400 Allen Dr.
Suite 100
Charleston, WV
25302
(681) 265-3842

Corporate HQ
301 Science Park
Road, Suite 323
State College, PA
16803
(814) 689-1562

Southpointe, PA
6000 Town Center
Blvd, Suite 215
Canonsburg, PA
15317
(724) 960-1111

Monroeville, PA
4055 Monroeville
Blvd, Suite 400
Monroeville, PA
15146
(412) 229-8583

Scottdale, PA
106 N High Street
Scottdale, PA
17270
(570) 374-4813

Clearfield, PA
800 Leonard Street
Suite 2
Clearfield, PA 16830
(814) 205-4012

Harrisburg, PA
4431 N. Front Street
Suite 102
Harrisburg, PA
17110
(717) 510-7222

**Soils &
Materials Lab**
360 Euclid Avenue
Canonsburg,
PA 15317
(724) 206-9862

Canton, OH
1401 S. Main Street
Suite 203
North Canton, OH
44729
(330) 491-5490

A&E Services for Public Shooting Range Improvements & Lead Management Plan

1. Firm Overview

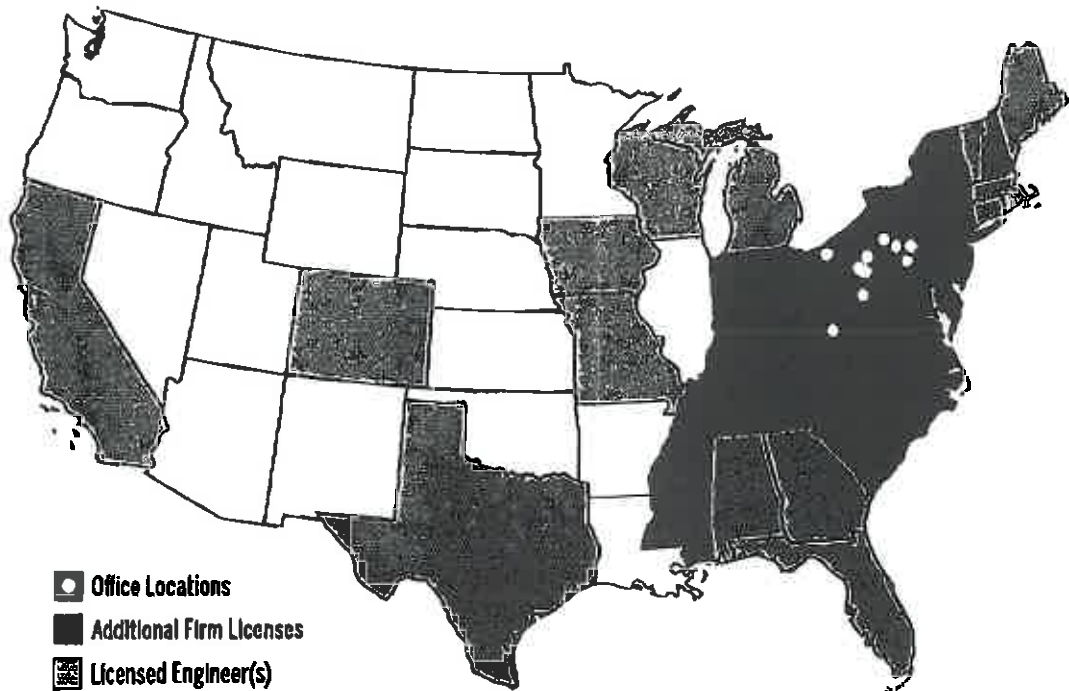
Stahl Sheaffer Engineering, LLC (Stahl Sheaffer) is a multi-discipline civil engineering firm that has been providing services since 2006. Stahl Sheaffer specializes in highway, pavement, traffic and bridge engineering, municipal engineering, land surveying, site and building design, and construction services. Our licensed engineers, surveyors, construction managers, and inspectors have worked extensively with both public and private sector clients. Additionally, our firm operates an AASHTO accredited soil and materials laboratory that specializes in testing subgrade soils and pavement materials.

Our size and reputation have grown quickly based on the work of dedicated teams with exemplary skill and the use of advanced technology to meet our clients' needs. We do this with a high degree of quality and professionalism, and we strive to continually build on our reputation for being adaptable, innovative, and cost effective.

Stahl Sheaffer has more than 150 employees, operating from ten locations from which we can assign resources to meet timelines and design requirements. Our professionals are licensed or certified as civil engineers, LEED designers, professional traffic operation engineers, bridge safety inspectors, tunnel inspectors, facade inspectors, construction inspectors, surveyors, geotechnical analysts, environmental scientists, designers, GIS technicians, and construction inspectors.

Services for the Public Shooting Range Improvement and Lead Management Plan project will be provided from our local West Virginia office, as well as supplemental offices that are close to the project site.

Stahl Sheaffer has 10 Locations, Licensed in 15 States



2. Project and Goals

2.1 Site Evaluation

2.1.1 Evaluation Approach

To provide the most responsible design, a site visit would be conducted at each site as a first step in an overall site evaluation of existing conditions. Each site potentially contains its own specific physical, operational, and environmental constraints and concerns. Stahl Sheaffer will perform a site visit and evaluation to identify existing site constraints, environmental concerns, and site needs prior to making design recommendations. The evaluation will include the review of existing plans and known conditions to arrive at recommendations for site improvements and regulatory compliance.

The site evaluation will include, but is not limited to, the identification of:

- Topographic limitations
- Stormwater management and runoff conditions
- Ingress and egress
- Surrounding sensitive environmental features
- Type of operations and needs of that specific operation
- Existing lead containment and shot collection methods

2.1.2 Timing

Most site evaluations can be conducted in the early morning or on weekends when ranges are not in operation or during planned closures. Planned closures will be discussed with the owner in advance to determine an acceptable schedule to provide minimal disruption to range operations. We propose visiting multiple sites in one day to limit the downtime.

2.1.3 Methods

GPS and GIS equipment and software can be used to readily collect site features and their locations. The field data can be downloaded at the time of collection if that level of response is needed. We will provide a summary table of site conditions to the DNR for review. As data is collected, it will be added to the table and be ready for review prior to collection of additional site data. This approach will help to keep WV DNR updated on the project schedule. This method will allow us to closely monitor the budget and communicate concerns. On a weekly basis, or other agreed upon schedule, we will communicate with DNR to verify that data is received accurately and as expected.

2.2 Engineering and Environmental Services

2.2.1 Site Design

Upon notice to proceed, Stahl Sheaffer will request a meeting to discuss each site and the proposed goals that WV DNR desires for each site. This meeting will provide us the information needed to move forward with evaluation, design and permitting in a manner consistent with WV DNR's goals and objectives for each site. Stahl Sheaffer is aware of EPA regulations governing shooting ranges and as such will conduct all work accordance with existing laws and codes. Stahl Sheaffer will provide the following, but not limited to,

A&E Services for Public Shooting Range Improvements & Lead Management Plan

engineering and environmental services to complete design for improvements at the 29 separate shooting range sites:

- Grading and stabilization plans
- Stormwater management
- Topographic survey
- Vegetative management plan and specifications
- Access roadway Improvements
- Backstop design
- Lead management plan development
- Environmental permitting

If lead management is required at the indoor facility in Moundsville, we will team with a HVAC mechanical engineering firm to review existing conditions and provide Improvement recommendations. The selected firm will have experience in push/pull ventilation and be able to provide design of those systems.

2.2.2 Lead Management Plan

The lead management plan will be developed in a manner to provide the owner with operational and maintenance procedures that if performed will assist the owner in achieving regulatory compliance. Stahl Sheaffer will review appropriate Best Management Practices (BMPs) on a site-specific basis. In developing the plan, we will review and include appropriate BMPs in accordance with the guidance provided in "Best Management Practices for Lead at Outdoor Shooting Ranges" (EPA-902-B-01-001 Revised June 2005 Region 2). The lead management plan will include at a minimum the following procedures:

- Bullet and shot containment
- Prevention of lead migration
- Lead remediation, recycling, and removal
- Recordkeeping and documentation

2.3 Construction Contract Administration Services

Our experienced personnel, including our construction management staff and construction cost estimators, understand the appropriate options to investigate to determine the best solution for specific projects. These construction personnel will be involved throughout the design life of all assignments. Our firm will utilize our most experienced staff to perform reviews. This ensures that simple mistakes are not made on the plan or calculations that could potentially lead to costly change orders during construction.

Construction Supervision

The Stahl Sheaffer team will provide customary engineering advice and assistance necessary to enable WV DNR to readily understand the project. A representative of our team can visit the construction site to observe progress and quality of work, to confirm work is proceeding in accordance with contract documents and keep WV DNR informed of progress, to guard against defects and deficiencies, and disapprove work not in conformance with contract documents. The Engineer can serve as WV DNR's representative at the project site, issuing all instructions to the contractors and preparing any change orders.

Stahl Sheaffer can check and approve samples, schedules, shop drawings, catalogue data, laboratory, shop and mill tests of materials and equipment, and other data which contractors are required to submit to ensure conformity with project design, concept, and

A&E Services for Public Shooting Range Improvements & Lead Management Plan

requirements. Stahl Sheaffer, in accordance with accepted professional standards and practice, can review contractors' payment requests and approve, in writing, payment to the contractors in such amounts. Stahl Sheaffer can also conduct, in the company of the owner and contractor, a final inspection of the project for conformity with design, concept, and contract documents.

Alternatively, Stahl Sheaffer can provide full time construction inspection upon request from WV DNR. We have staff certified construction inspectors readily available for work within the project site locations covered with this request.

Construction Administration

Stahl Sheaffer will assist the WV DNR during the bid and construction phases by:

- Reviewing basic material submittals and shop drawings
- Responding to contractor questions of RFIs (anticipated to be based on questions which are required based on coordination issues discovered during construction or unforeseen conditions discovered during construction).
- Attending visits during construction as agreed upon.

3. Qualifications, Experience, and Past Performance

3.1 Communication

We propose one single point of contact for clear communication between the client and Stahl Sheaffer. Stahl Sheaffer is currently using many of the available technological tools in conducting our day-to-day business such as GIS software and online video conferencing. Using these tools results in time savings and cost savings to our clients. We propose using our GIS portal to communicate the progress of tasks from design through construction. As a web-based system, the GIS portal does not require any additional software installation on the users end. This system allows effective organization of project documents, mapping and schedules. We can readily document progress and concerns that arise during field evaluations, design or during construction and convey that in real-time. We will coordinate with our team to ensure appropriate resources are assigned to meet key milestones. Any unexpected issues will be communicated immediately to the WVDNR. We will supplement our GIS system with a minimum of weekly status meetings accomplished in person or through online video conferencing and email usage.

3.2 History Completing Projects On Time & On Budget

Stahl Sheaffer has a history of completing projects on time and on budget. Project Managers across the firm meet as a group monthly to evaluate overall workload and distribution of resources. Stahl Sheaffer also maintains a steady workload balanced across regions, disciplines, and market sectors, and we have a strategic approach to adding additional staff to support workload requirements. We believe our success is best communicated through our clients:

- *"Stahl Sheaffer Engineering excelled on the completion of Part 2 of this agreement, accelerating the controversial project resulting in letting the project nearly one year ahead of the originally scheduled let date. Stahl Sheaffer performed very well at facilitating the public workshops meeting the needs of the Department as well as other project stakeholder. Stahl Sheaffer was very responsive to the project's needs, often times meeting with residents or design team members on very short notice. Jeff Sheaffer and Aaron Fayish performed very well at both the technical end of the design and facilitating the public's needs into the project. It was a pleasure working with SSE on this project." ~PennDOT District 2-0 Project Manager*
- *"I have had the privilege to team with Stahl Sheaffer Engineering to, assess risks, implement designs and administer construction on several projects. Aside from the excellent engineering services and extremely competitive fee Stahl Sheaffer is widely known for and has consistently delivered for me, I'm most impressed by the design development methods Stahl Sheaffer implements to reach a successful final design, especially when it comes to working with numerous stakeholders." ~Ron Kobelenske, Project Coordinator, Penn State OPP Commonwealth Services*
- *"Stahl Sheaffer Engineering's professionalism and approach to completing this project was impeccable. Their attention to detail was key in surveying existing building conditions and incorporating feasibility, practicality, and architectural aspects into their design in an effort to meet the safety, budgetary, and architectural constraints of the project." ~Jason Sheffield, Project Executive, Poole Anderson Construction*

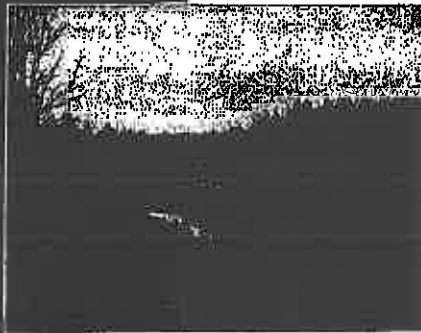
A&E Services for Public Shooting Range Improvements & Lead Management Plan

3.3 Similar Projects

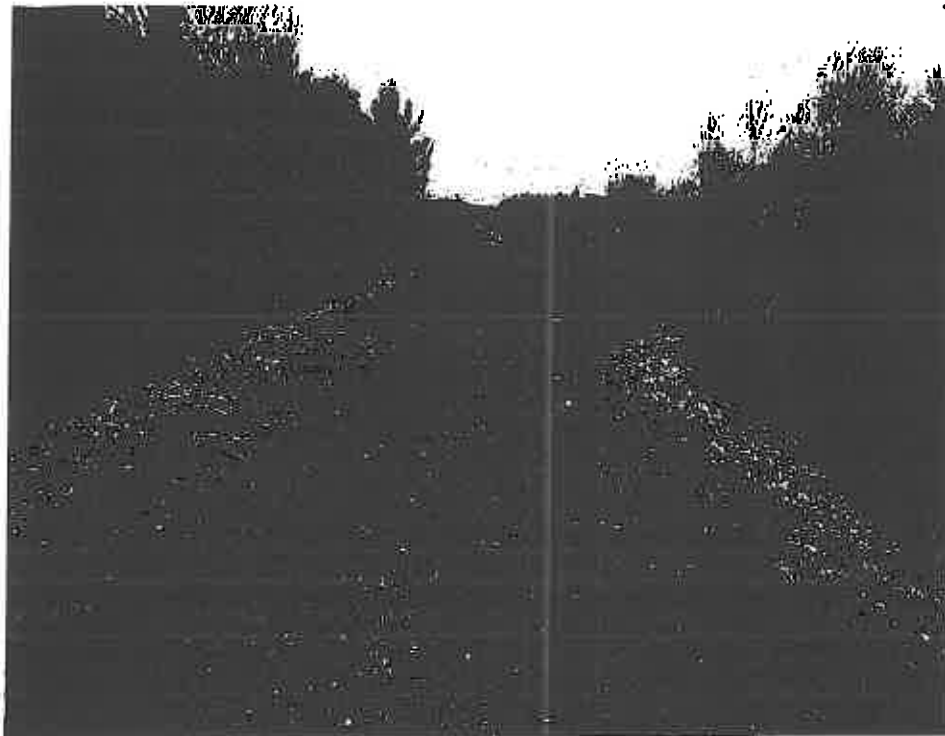
Shooters Gauntlet Shooting Range, Bradford County, PA

Stahl Sheaffer provided the following services for the design and construction of two shooting stations and one target location for a long-range shooting range in Bradford County, Pennsylvania. The objective of the project was to create a safe long-range shooting range with a clear line of sight in mountainous terrain in northcentral Pennsylvania.

- Grading plans
- Stormwater management
- Erosion and sediment pollution control
- Natural resource constraints identification
- Earth disturbance environmental permitting
- Stormwater BMP construction critical stage inspection



The range allows for an approximate 1,500-foot maximum shooting distance and supports shorter intermediate distances as well. An Individual NPDES permit was secured from the Pennsylvania Department of Environmental Protection for earth disturbances greater than one acre in half the allotted review time with minimal comments. A soil amendment stormwater best management practice was designed and constructed to compensate for a minor increase in stormwater runoff. The BMP was selected based on its ease of construction and ability to be implemented by the owner. The project construction also involved the blasting of a section of existing bedrock to clear the line-of-sight. *Project Manager: Paul McClellan, P.E. | (814) 205-4012 | pmcclellan@sse-llc.com*



A&E Services for Public Shooting Range Improvements & Lead Management Plan

- Clearly Ahead Development, Rivers Landing New Mixed-Use Building, Clearfield Borough, PA** – Stahl Sheaffer provided civil engineering services on the development of a mixed-use building (renderings below). The site includes a driveway connection to Market Street, pedestrian access to the River Walk, on-site parking facilities, and associated stormwater management and utility connections. Stahl Sheaffer provided the necessary engineering design to complete site improvement plans and obtain associated permits and approvals. Since the Rivers Landing site used to have a service garage located on it, Stahl Sheaffer also completed the necessary soil testing to determine if the existing soils still contained any contaminants that could affect the overall site plan. Stahl Sheaffer Engineering also provided the following services: land development approval under the jurisdiction of Clearfield Borough, modification to the existing NPDES stormwater permit, and site plans and technical specifications suitable for bidding and construction. *Project Manager: Jason Reed, / (814)205-4012 / jreed@sse-llc.com*

**RIVERS LANDING**

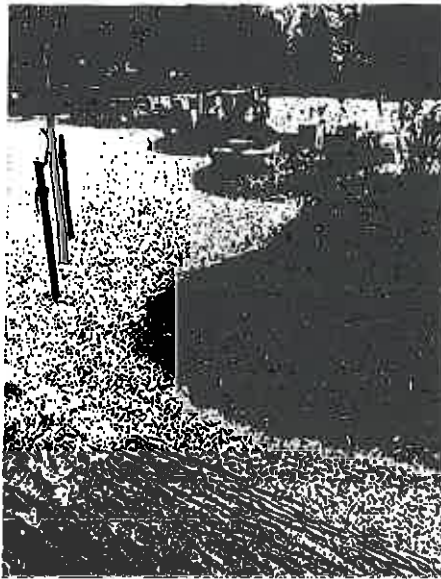
- West Virginia Roadway Improvement Initiative, Energy Client, Various Counties, WV** – Stahl Sheaffer was the lead design engineering firm on a project that included various public roadway improvement projects totaling 183 miles located in several WVDOH Districts (District 1, 2, 3, 4 & 6). The work involved approximately 100 roadway upgrade projects, eight bridge replacement or rehabilitation projects, two aluminum box culverts, numerous slide repairs, and assisting in the construction management of these roadway improvement and bridge projects as part of the scope. Stahl Sheaffer completed the geotechnical inspection and design, survey, design, DOT permitting, environmental permitting, and project bidding. Stahl Sheaffer assisted in the construction of the roadway improvements in less than 12 months from NTP. *Project Manager: Brian Hoffheins, P.E., | (814) 689-1562 | bhoffheins@sse-llc.com*
- Treasure Lake Property Owners Association Stormwater Management Strategic Plan, DuBois, PA** – Stahl Sheaffer Engineering provided civil and environmental engineering services to support the Treasure Lake Stormwater Management Strategic Plan. The purpose of the plan was to serve as a guidance document for the Treasure Lake Property Owners Association (TLPOA), improve stormwater management infrastructure and decision making, and protect property. Stahl Sheaffer verified types of existing infrastructure including ditches, swales, channels, culverts including stream crossing structures, and catch basins and storm drains. Stahl Sheaffer also identified potential causes of sedimentation from stormwater into lakes and streams, overall condition of the existing stormwater management infrastructure, main sources of floodflow capture and retention, and passive areas and the benefits they provide. Concerns, including the need for ditch cleaning, structural maintenance, proper culvert installation, and floodwater control were also identified as well as strategies for property managers. Stahl Sheaffer Environmental Manager Jason Reed delivered a presentation to the Treasure Lake Property Owners in September 2017.



A&E Services for Public Shooting Range Improvements & Lead Management Plan

Treasure Lake Property Owner John Worsby described the presentation as *“very informative and well received...our survey data reflects their appreciation regarding the information you shared. Many of those in attendance want more information on things they can do regarding stormwater management... Your commitment to what you do and to Treasure Lake is very much in evidence.”* Project Manager: Jason Reed | (814) 205-4012 | jreed@sse-llc.com

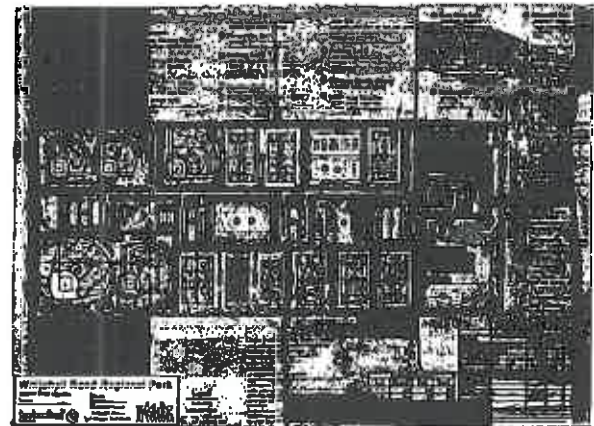
- **Brandon Park Rehabilitation, The City of Williamsport, Lycoming County, PA – Stahl**



Sheaffer provided project management, subconsultant coordination, and design services as lead consultant for the Brandon Park Rehabilitation, located in the City of Williamsport, Lycoming County. The project included improvements and additions throughout the park, to include a nature playground, walking trails, parking lot overlay and expansion, park site lighting, stormwater bioretention areas, and tennis court resurfacing. This project was also one of PA DCNR's pilot Nature Play projects in the state, exploring the potential of this type of recreational experience to connect children with their natural environment. The nature play area incorporated natural play materials such as log structures and stone and gravel play areas, a homestead playhouse, edible garden and native plantings, and interpretive signage. Stahl Sheaffer led the overall design effort

and managed the project team, including a landscape architecture consultant to design the Nature Play area. The project began in the conceptual stages and included coordination with City staff and officials before moving to final design. Following conceptual design, the project moved to final design and coordination with PA DCNR to facilitate the grant funding process. Stahl Sheaffer also managed the permitting requirements for the project, which included a Stormwater NPDES permit and PA Labor & Industry permit. Project Manager: Robyn Froehlich, P.E., LEED AP | (814) 6891562 | rfroehlich@sse-llc.com

- **Whitehall Road Regional Park, Ferguson Township, Centre County, PA – Stahl Sheaffer provided the feasibility planning, site engineering, land development, and environmental services for this regional park located within the Centre Region Parks and Recreation parks system. Stahl Sheaffer led a multi-disciplined team to complete the park design and obtain Township and environmental approvals. The project scope involved the Phase 1**



design of the 100-acre park, which included four playing fields, driveway and parking facilities, water, sewer, and gas services, field and parking lot lighting, all-season pavilion, park storage shed, and landscaping throughout the park. Project Manager: Robyn Froehlich, P.E., LEED AP | (814) 6891562 | rfroehlich@sse-llc.com

A&E Services for Public Shooting Range Improvements & Lead Management Plan**3.4 References****WVDOH Upper Leadership:**

- Jacob Bumgarner - Director of Maintenance Division. Phone: (304) 588-8282 Email: Jacob.M.Bumgarner@wv.gov
- Marvin Murphy – Assistant Deputy Secretary. (304) 473-5327 Marvin.G.Murphy@wv.gov

WVDEP Inspectors:

- Northern Region: Ryan Dague – 304.476.4080
- Central Region: Tim Casto – 304.288.6219
- Southern Region: Dexter Starcher – 304.993.9659

3.5 Project Delivery Plan

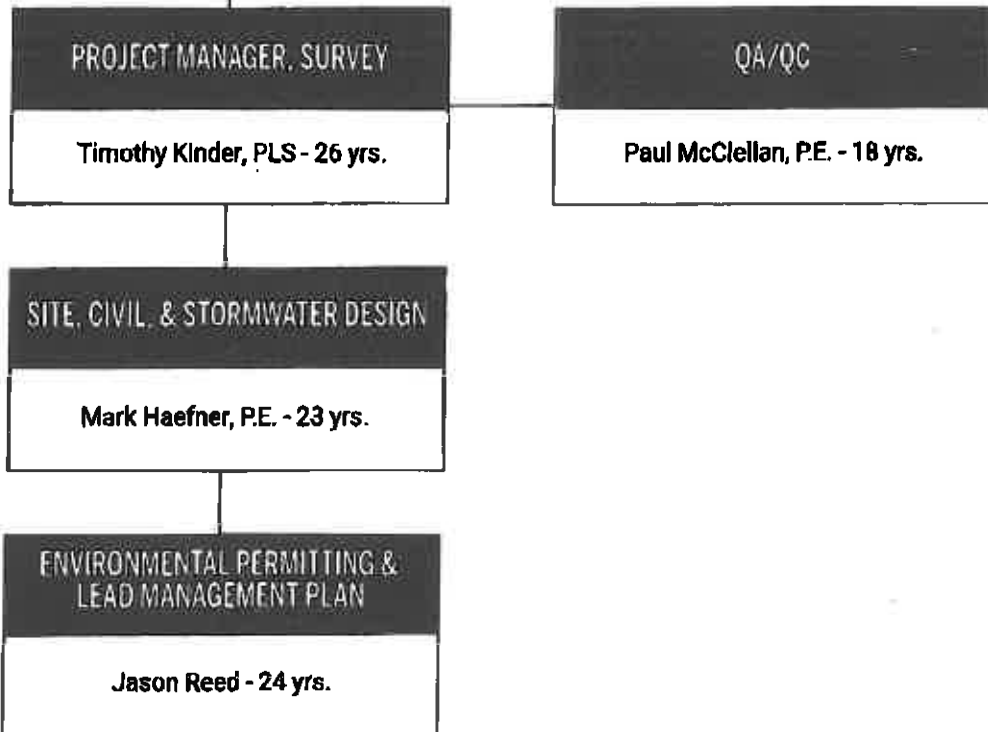
The construction schedule will be developed jointly with WVDNR to assure that the agencies goals and objective will be met and in required timeframe. Construction sequencing, utility relocations, material lead times, erection/demolition, and environmental commitments will be considered when developing the schedule.

Our project management approach and commitment to quality allow us to successfully deliver projects that will meet DNR's needs. **Mr. Paul McClellan, P.E., Site Development Director, will serve as QA/QC Manager** and personally oversee the quality of all deliverables. He will work directly with team members to develop a Plan that satisfies the needs of this agreement. The Plan will provide clear guidance to direct our team from the initial stages of project development to project closeout. Our plan will be based on Stahl Sheaffer's Company Quality Control Plan, which contains our company-wide quality policy and objectives and will be developed specifically for the intricacies of this agreement. This plan will define standard operating procedures, design and checking procedures, documentation, and requirements that need to be independently addressed by the designer. We will clearly define scope and budget at project outset and communicate this to all team members, establish deliverables with defined milestone dates, identify project personnel roles, and develop a clear communication plan.

Stahl Sheaffer requires that all deliverables are checked by an independent reviewer prior to submission. We require our subconsultants check their work per their quality management system prior to submission to us, and we check their work internally to meet our standards for quality prior to submission to the DNR. Stahl Sheaffer's discipline managers will review all deliverables in accordance to their technical expertise. **Mr. Mark Haefner, P.E.** will review all land development and stormwater management items. **Jason Reed** will review all environmental and permitting submissions. **Mr. Tim Kinder, PLS** will review all survey. Tim Kinder and Paul McClellan will monitor the Plan throughout the agreement.

A&E Services for Public Shooting Range Improvements & Lead Management Plan

3.6 Staff Qualifications & Proposed Staffing Plan



STAHL SHEAFFER
ENGINEERING

A&E Services for Public Shooting Range Improvements & Lead Management Plan

Aaron Fayish, P.E., PTOE – Principal

State of WV: PE# 20045 | O: (724) 960-1111 | C: (724) 747-2908 | afayish@sse-llc.com

EDUCATION

Master of Science in Civil Engineering, The Pennsylvania State University (2003)
Bachelor of Science In Civil Engineering, The Pennsylvania State University (2002)

PROFESSIONAL EXPERIENCE

As a Principal and Project Manager for Stahl Sheaffer Engineering, Mr. Fayish is responsible for projects involving transportation studies, traffic analysis, highway design, traffic signal design, and transportation research. He has public and private sector experience performing engineering and traffic studies, traffic impact analyses, traffic signal timing and optimization, traffic simulation studies, transportation data collection, origin-destination studies, traffic calming studies, and safety studies. He has assisted municipalities in the development of transportation policies and pedestrian safety education.

As a Designer, Mr. Fayish has completed conceptual, preliminary, and final highway designs involving geometric roadway design, utility relocations, traffic control, pavement markings, traffic signals, cross sections, and construction item tabulations. He has prepared plans, specifications, and estimates per PennDOT procedures and plans presentation. Mr. Fayish is experienced in traffic analysis software: SYNCHRO, HCS, TransCAD, VISSIM, Corsim, Transyt-7f, Passer-II; and highway design software: Microstation, InRoads, AutoTAB, traffic signal strain pole analysis, and lighting analysis.

As a researcher, Mr. Fayish has presented findings at national conferences and co-authored peer-reviewed papers and reports on intelligent transportation systems for the Transportation Research Board (TRB). He is a member of the Institute of Transportation Engineers (ITE), the International Municipal Signal Association (IMSA), and a technical paper reviewer for the Transportation Research Board's Traffic Signal Systems Committee.

Mr. Fayish will serve as QA/QC Manager. He leads Stahl Sheaffer's transportation division with a focus on serving PennDOT, municipalities, and the oil and gas industry in PA, OH, WV, and NY. These efforts in transportation engineering include projects related to traffic studies, traffic signal timing and optimization, traffic calming, and pedestrian safety studies. Relevant projects include:

- **SR 3012 Greene Valley Road Improvement Project, Aleppo Township, Greene County, PA** – Principal-In-Charge for the design and permit plans for cement-stabilized full depth roadway reclamation, asphalt overlays, drainage improvements, and slide repairs with an estimated construction cost of \$2,170,000. The project design and permitting was reviewed by PennDOT District 12-0 Permits Office, Design Group, and Geotechnical Group. Construction is anticipated in Spring 2018.
- **Confidential Natural Gas Transmission Client, Various Counties, WV** – Principal-In-Charge for 3D survey and base mapping of approx. 150 miles of rural roads, spread across 10 counties and in West Virginia. Mr. Kliner is responsible for the oversight and scheduling of the survey crew and technicians for providing topographic mapping, certified plat creation for new right of way, and easement acquisitions.

CREDENTIALS

Professional Engineer

Professional Traffic
Operations Engineer
(No. 2123, ITE)

American Society of
Civil Engineers (ASCE)
Member

Institute of
Transportation
Engineers (ITE)
Member

International
Municipal Signal
Association (IMSA)
Member

Transportation
Research Board (TRB)

Traffic Signal
Systems Committee

A&E Services for Public Shooting Range Improvements & Lead Management Plan

Timothy H. Kinder, PLS, CFM – Project Manager

State of WV: PLS# 1969 | O: (304) 841-4299 | C: (304) 841-5981 | tkinder@sse-llc.com

EDUCATION

Associate of Science, Land Surveying, Glenville State College
Regents Bachelor of Art, Marshall University

PROFESSIONAL EXPERIENCE

Mr. Kinder oversees all survey projects and leads all operations out of Stahl Sheaffer’s two West Virginia locations. Mr. Kinder is responsible for driving project schedules, managing project budgets, leading client/sub-consultant coordination, and overseeing the technical design and survey of project teams. He is responsible for performing reviews of all survey projects, directing staff surveyors and technicians, and managing client communication and project progress. Mr. Kinder has over 25 years of experience in boundary and topographical surveying, subdivision and land development planning, oil and gas upstream and midstream development planning, and construction survey layout, nearly exclusively working within the oil and gas industry for the past six years. Mr. Kinder is a certified Floodplain Manager and Professional Land Surveyor in West Virginia, Rhode Island, and Connecticut.

- **Confidential Natural Gas Transmission Client, Various Counties, WV – Survey Manager** for 3D survey and base mapping of approx. 150 miles of rural roads, spread across 10 counties and in West Virginia. Mr. Kinder is responsible for the oversight and scheduling of the survey crew and technicians for providing topographic mapping, certified plat creation for new right of way, and easement acquisitions.
- **The Pennsylvania State University, Centre County, PA – Survey Project Manager** for a comprehensive roadway classification, assessment, and asset management solution project. This project included 3-D LIDAR survey of 100 miles of roads and development of a Roadway Network Maintenance and Repair Prioritization Tool to provide Penn State personnel a process to systematically identify and prioritize necessary repairs, maintenance, and rehabilitation as well as to forecast anticipated necessary yearly expenditures. The Penn State Roadway Network consists of 30 miles of paved roadways and 69 miles of unpaved roadways.
- **SR 150 Lock Haven Signals, Mobile LIDAR Base Mapping, Lock Haven, PA – Stahl Sheaffer** acquired survey grade high-resolution Mobile LIDAR point cloud data tied to survey control for the design of new traffic signals in the town of Lock Haven, PA. This project encompassed 11 intersections and mapped portions of 12 roads. Following data acquisition, Stahl Sheaffer used specialized mapping software to extract and map all visible features of note within 40 feet of the road right of way centerline up to and including the face of buildings. Following feature extraction, the high-resolution point cloud was used to generate a 3D digital terrain model of the ground surface for use during design.

STAHLSHEAFFER
ENGINEERING



CREDENTIALS

Certified Floodplain
Manager (CFM)
March 2018 MS-33
06879

Association of
Floodplain Managers
(AFLM) Member

West Virginia Society
of Professional
Surveyors (WVPSA)
Member

Pennsylvania Society
of Land Surveyors
(PSLS) Member

National Society of
Professional Surveyors
(NSPS) Member

American Association
of Traffic Engineers
(AATE) Member

STAHLSHEAFFER
ENGINEERING

CREDENTIALS

Professional Engineer
(P.E.)American Society of
Civil Engineers (ASCE)
Member**A&E Services for Public Shooting Range Improvements & Lead Management Plan****Mark Haefner, P.E. – Lead Site Design**

State of WV: P.E. #23007 | O: (814) 689-1562 | C: (814) 574-5780 | mhaefner@sse-llc.com

EDUCATION

Bachelor of Science, Civil Engineering, West Virginia University (1995)

PROFESSIONAL EXPERIENCE

Mr. Haefner supervises, manages, and implements Stahl Sheaffer's land development projects. He has 24 years of experience, with extensive expertise in site evaluation and layout, utility design, erosion and sedimentation control plans, permitting, feasibility studies, stormwater management design, and drainage design. Mr. Haefner is also responsible for the coordination of projects through government and planning commission review processes, conducting Quality Assurance/Quality Control (QA/QC) reviews, project administration, review and approval of shop drawings, and peer review. Additionally, he has 15 years of experience serving as a municipal engineer, performing duties such as the review of subdivision and land development plans, providing consultation, and preparing reports for municipal projects. Project experience includes commercial, residential, retail, education, healthcare, corporate, industrial, institutional, recreation, government, and civic facilities. A few project examples (with previous employer) follow:

- **Municipal Engineer, Warriors Mark Township Engineer, Huntingdon County, PA & Hector Township, Potter County, PA** – Responsible for the review of all plan submissions for conformance with subdivision and land development, stormwater management, and floodplain ordinances, including coordination with other Township staff (Solicitor, Secretary, Zoning Officer, Sewage Enforcement Officer, etc.) and county, state, and local regulatory agencies. Also responsible for inspection and acceptance of public improvements including stormwater management facilities and public streets.
- **Lerch RV Expansion, Mifflin County, PA** – Managed site engineering for new 17,200 SF maintenance garage addition, including additional RV storage and display area, access drives, employee parking and associated stormwater management improvements. Engineering services included, site layout, grading, stormwater management design, roadway design, utility coordination, regulatory permitting, and municipal coordination.
- **Lebanon VA Medical Center, Lebanon County, PA** – Civil Engineer for the site and civil engineering for the design and permitting of the new 16,000 SF behavioral health and primary care building. Site survey has been completed, and this project is currently in progress.
- **University Park Airport Parking Expansion, State College, PA** – Project Engineer for the design and permitting of a new surface parking facility in the former Airport Park and expansion of the existing surface parking facility adjacent to the University Park Airport terminal building. Site related services included site layout, re-alignment of the existing access drive, grading, erosion and sediment control, stormwater management and regulatory approvals. The stormwater management conveyance and attenuation facilities were designed to accommodate future improvements to the terminal building identified on the airport masterplan.
- **Sheetz Distribution Center Expansion, Blair County, PA** – Managed site engineering and permitting for a 37,000-SF dry storage and a 47,500-SF freezer addition to the existing distribution facility. Site related services including grading, truck access, utility

Site | Survey | Geotechnical | Traffic | Structures | Inspection

A&E Services for Public Shooting Range Improvements & Lead Management Plan

coordination, erosion and sediment control, stormwater management, and regulatory approval coordination. In addition to the current expansion the site and stormwater management facilities were designed to accommodate an additional 70,000 SF of future building expansion.

- **Fraser Centre, State College, PA** – Managed site engineering for the Fraser Centre, a mixed-use facility, featuring 60,000-SF of retail space for Target, H&M, a 158-room Hyatt Place hotel, the Federal Taphouse restaurant, and 26 residential condos.
- **Blue Course Medical Center, State College, PA** – Managed site engineering associated with a 50,000sf medical office building, including grading, utilities, access driveway and parking lot, site lighting, and landscaping. Project site included 6.67 acres and a total of 249 parking stalls.
- **Plne Hall Development, Centre County, PA** – Responsibilities included master planning for a 160-acre traditional town development, including residential, commercial, and office components. Master planning efforts have included survey, stormwater management assessment, roadway design, sanitary sewer design, utility coordination, and municipal coordination.
- **Restek Corporate Campus Distribution Center, Manufacturing Building, and Fitness Center, Centre County, PA** – Project included site design services for manufacturing building, distribution center, and fitness center on the 22-acre Restek Corporate Campus in the Penn Eagle Industrial Park. Infrastructure Included site design, additional parking, utility extensions, etc. Site related service include grading, stormwater management, landscape, lighting, utility coordination, erosion and sediment control, permit applications, and approval coordination.
- **The Oaks at Pleasant Gap, Pleasant Gap, PA** – Project Manager. Managed site engineering for a new 5,600 SF community center and 28 age restricted cottages, including the extension of the internal road network to access the cottage on the campus of Allegheny Lutheran Social Ministries – The Oaks at Pleasant Gap. Site-related engineering services included, stormwater management design, roadway design, sanitary sewer design, utility coordination, regulatory permitting, and municipal coordination.
- **Fulton County Medical Center, McConnellsburg, PA** – Project Manager. Managed master planning for the expansion of the medical center campus and site engineering for Phase 1 – the Center for Advanced Medicine. Phase 1 included a 69,500 SF, two-story medical office building, relocation of the main access to the hospital, a new patient drop-off, a pharmacy drive-thru, additional site parking, and relocation of the helipad. Site design services included site layout and grading, stormwater management, landscape, lighting, utility coordination, erosion and sediment control, permit applications, and approval coordination. Est. Construction Cost: \$20 million.
- **Imbt Industrial Park, Centre County, PA** – Project included roadway, parking, utility coordination, and stormwater management. Drainage improvements required inlets and piped conveyance to a “regional” stormwater management facility in the park. Also, responsible for site design associated with the park’s first two tenants.

STAHLSHAFFER
ENGINEERING

CONFIDENTIAL

- Travel & AS/AM
- Environmental Site
- Accession Training

- Wetland Delineation
- Certification
- Proprietary Training
- Courses

- Mine Safety & Health
- Administration
- (MSHA) Experienced
- Mine

A&E Services for Public Shooting Range Improvements & Lead Management Plan**Jason Reed – Lead Environmental**

O: (814) 205-4012 | C: (717) 870-8826 | jreed@sse-llc.com

EDUCATION

Bachelor of Science, Environmental Resource Management, The Pennsylvania State University

PROFESSIONAL EXPERIENCE

As Manager of Environmental Services, Mr. Reed has over 23 years of natural resource planning and environmental consulting experience and 21 years in consulting engineering. His experience spans a wide array of project types including aviation, roadway, bridge, utilities, stream enhancement, oil and gas development, commercial land development, pollution treatment systems, and recreational facilities. His relevant experience includes:

- **Shooters Gauntlet Shooting Range, Bradford County, PA – Environmental Manager** responsible for the completion of a wetland identification and delineation and NPDES permit application preparation. The project was the permitting of earth disturbance required to develop a long-range shooting range in mountainous terrain in northcentral Pennsylvania. Site constraints consisted of wetlands and streams within the line of site and bedrock outcrops. Responsibilities included completion of erosion and sediment control plans and the design and siting of a soil amendment post construction stormwater BMP for control of increased stormwater runoff. The permit was approved with minimal comments in approximately half the agency review time frame.
- **Rivers Landing Mixed-Use Building, Clearfield, Clearfield County, PA – Clearly Ahead Development.** Project Manager responsible for managing the site civil engineering, and environmental permitting including quality assurance of all submittals. This project included the design and development of a new two-story office and retail building with parking and stormwater management. The site is located immediately adjacent to the West Branch of the Susquehanna River. A stormwater outfall to the River within a FEMA delineated floodway was needed. An outfall permit was successfully secured through PADEP. The site was a previously contaminated site and required soil sampling throughout the proposed depth of planned excavation. A site soils characterization was completed and coordinated with the Waste Management section of PADEP. The only concern identified was elevated lead levels. Additional sampling was conducted to refine the areas of concern and to develop acceptable handling procedure for the excavated waste soil. Additional responsibilities included
- **Clearfield Facility Industrial Stormwater Permitting, Clearfield County, PA, Oil States Energy Services – Environmental Scientist/Project Manager** for this project that included securing National Pollutant Discharge Elimination System (NPDES) Industrial Stormwater Permitting. As an Environmental Scientist, responsibilities for the NPDES permit included the preparation of preparedness, prevention, and contingency (PPC) plan and the filing of a No Exposure Certification. The PPC plan included a chemical inventory of the entire facility and creation of a chemical storage index plan. The PPC plan and No Exposure Certification were approved through the Pennsylvania Department of Environmental Protection North Central Regional Office. Project Manager duties included invoicing, budget review, and coordination of all permit components with support staff.
- **Corrective Action E&S Control Plan, Cameron County, PA, Chestnut Ridge Whitetail Hunting Preserve, Inc. – Environmental Scientist/Project Manager** responsible for

A&E Services for Public Shooting Range Improvements & Lead Management Plan

preparing a corrective action E&S pollution control plan as required by a consent order and agreement Issued by the Commonwealth of Pennsylvania for erosion and water quality violations. This project involved the preparation of an E&S plan for controlling existing erosion issues at an active wildlife hunting preserve. The project involved field reconnaissance of on-site issues and In turn the specification of restoration techniques and best management practices to bring the client into regulatory compliance. Responsible for required management documentation including budget concerns, as well as client correspondence and scheduling and facilitation of on-site regulatory meetings.

- **Penn Commons Redevelopment, Lewisburg, Union County, PA – Pennsylvania House Commons, LP.** Environmental Scientist responsible for performing a Phase I Environmental Site Assessment due diligence review for existing or past hazardous material concerns on the property. The site was proposed as a redevelopment of existing abandoned lots that which included a vacant house and past uses that supported manufacturing of furniture at the Pennsylvania House, Inc. furniture manufacturing facility located immediately north of the study site. Responsibilities include site reconnaissance, records review, interviews and preparation of the Phase I report.
- **Finley and Portable Run Acid Drainage Treatment, Cameron County, PA – Cameron County Conservation District.** This project was the design and permitting of two separate passive acid mine drainage treatment sites within the Sterling Run Watershed. As an Environmental Scientist responsibility included wetland delineations, erosion and sedimentation control plans design and preparation, environmental assessment, functional wetland assessment, alternative analysis, collection of wetland locations with a GPS unit, and preparation of a Waiver 16 and GP-4 Permit. Also, created bidding documents and guided the preparation of construction plans. Acted as the main contact for all coordination with the PADEP and the Army Corp of Engineers Baltimore District. The Waiver 16 and GP-4 were approved through the Northcentral PADEP with no comments.
- **Luthersburg Yard, Clearfield County, PA, Horizontal Well Drillers – Environmental Scientist/Project Manager** for this project that included the preparation of a National Pollutant Discharge Elimination System (NPDES) permit for stormwater associated with construction activities, NPDES Industrial Stormwater permitting, and Tier II hazardous chemical reporting. As an Environmental Scientist, responsibilities for the NPDES construction permit included on-site wetland delineation, infiltration testing, assistance in the ground survey task, preparation of an E&S pollution control plan, and completion of all remaining items associated with the NPDES permit application. The NPDES permit was approved through the Clearfield County Conservation District with no comments. Responsibilities for the preparation of the NPDES permit for industrial stormwater discharges included the preparation of preparedness, prevention, and contingency (PPC) plan and the filing of a No Exposure Certification. The PPC plan included a chemical inventory of the entire facility and creation of a chemical storage index plan. The PPC plan and No Exposure Certification were approved through the Pennsylvania Department of Environmental Protection North Central Regional Office. Project Manager duties included Invoicing, budget review, and coordination of all permit components with support staff.

STAHLSHAFFER
ENGINEERING

CREDENTIALS

Professional Engineer

American Society of
Highway Engineers
(ASCE)**A&E Services for Public Shooting Range Improvements & Lead Management Plan****Paul McClellan, P.E. – Quality Assurance & Oversight**

O: (814) 205-4012 | C: (814) 762-5104 | pmcclellan@sse-llc.com

EDUCATION

Bachelor of Science, Civil Engineering Technology, University of Pittsburgh

PROFESSIONAL EXPERIENCE

- **Pleasant Valley Road, SR 2022, Lycoming County, PA – Project Manager** for public/private partnership project. Represented a private oil and gas operator, partnered with PennDOT to complete improvements on approximately two miles of Segment 0210 to Segment 0260. Performed a safety review of the project resulting of minor sight distance improvements, curve widening and super elevation corrections. The project also included a 4' wide flexible base replacement for the outside wheel path of each travel lane, 4" depth structural overlay over entire width of roadway, drainage improvements, roadway striping, resetting guide rail and shoulder backup.
- **Centre Hall Streetscape, Phase 2, Centre County, PA – Project Manager** for replacement of over two miles of existing sidewalk in Centre Hall Borough. Involved coordination with Centre Hall Borough and Centre Region Planning.
- **Harris Township Streetscape, SR 45, Centre County, PA – Project Manager** for replacement of two blocks of existing sidewalk, including updating ADA access and signal work. Project involved coordination with Township and Centre Region Planning.
- **State College Streetscape, SR 26, Centre County, PA – Project Manager** for installation of street lighting and replacement of sidewalks in downtown State College along SR 26. Project involved coordination with State College Borough and Centre Region Planning.
- **Atherton Street Corridor Drainage Upgrades, Centre County, PA – Project Manager.** The first section was completed per the "Minor Project" guidelines in Appendix AB of DM-1X. Scope focused on upgrading deteriorated drainage facilities and pavement rehabilitation. Phased traffic control schemes centered on maintaining access to existing businesses. Fourteen separate utility companies were present along this corridor, resulting in complex utility coordination. Most utilities were able to be avoided and minimal relocations resulted, eliminating potential schedule delays. The project limits were increased three months before advertisement, and the team was able to incorporate the added improvements (approximate 0.5-mile additional roadway improvements, six additional temporary and permanent traffic signal designs, and additional utility impacts) and exceed the original let date of the project by two weeks.
- **PennDOT District 2-0, SR 3018 Section N10, Centre County, PA – Project Manager** for preliminary engineering and final design for the widening and reconstruction of three miles of roadway to provide a center turn lane, widened shoulders/bike lanes and continuous sidewalk along the north side of roadway. Project scope included the addition of a continuous turning lane, bicycle lanes, and sidewalks; traffic signal upgrades and turning lanes; geophysical surveys and evaluation of Karst geological formations that are prone to sinkholes; traffic impact studies; archeology studies; historic studies; and 4(f) evaluations. The project involved significant coordination with local municipalities, Penn State, Centre Region Planning, and environmental agencies.

STAHl SHEAFFER
ENGINEERING

A&E Services for Public Shooting Range Improvements & Lead Management Plan

Michael Vaow – Environmental Project Coordinator

O: (814) 205-4012 | C: (814) 553-8763 | mvaow@sse-lk.com

EDUCATION

Bachelor of Arts, Environmental Studies, University of Pittsburgh (2005)

PROFESSIONAL EXPERIENCE

Mr. Vaow has 15 years of experience in environmental and engineering consulting. As Project Coordinator for Stahl Sheaffer Engineering, he assists with drafting and stormwater report reviews. He is responsible for environmental reviews and site assessments, drainage design, stormwater management design, erosion and sediment pollution control design, and Chapters 78, 102, and 105 permitting. Mr. Vaow has experience with new well sites, pipeline projects, well-plugging projects, notice of termination, and landowner resolutions. He is familiar with AutoCAD, HydroCAD, MicroStation, and data collecting via GPS and total station methods. Relevant projects include:

- **Oil & Gas Site Plugging Permitting, CNX, Various Locations, PA** – Completed plugging pad and access roadway design and permitting services for multiple locations throughout PA.
- **Chapter 78 permit renewals, EQT, Noble Energy, Campbell Oil and Gas, & Carrizo Marcellus, PA** – Projects Included well pad design revisions, stormwater management design, E&S design, and site restoration design for various Oil & Gas clients across PA.
- **Consumptive Use Withdrawals, KMI, LLC & Campbell Oil & Gas, PA** – Designed several large withdrawals from the Susquehanna and Ohio River Basins. He also conducted HOP, NPDES, SLLA, JPA, SRBC registration, and metering plans.
- **Oil & Gas Site Development and Permitting, EQT, Noble Energy, Campbell Oil and Gas, Carrizo Marcellus & Appalachia Midstream Services, LLC, PA, Various Locations, PA** – Provided wetlands/streams delineation, well pad design, stormwater design, E&S design, site restoration design and permitting services, SPCC plans, Chapters 78, 102, and 105 permitting, as-built survey and well plat exhibits, temporary waterline routing and permitting, and access road/entrance upgrades and HOPs for well site traffic.
- **Commercial and Industrial Land Development and Permitting, Multiple Clients, Various Locations, PA** – Provided wetlands/streams delineation, site layout, stormwater design, E&S design, stormwater design, quantity-takeoffs and permitting services for multiple developers. Regulatory agencies include townships, county conservation districts, PADEP, PennDOT, and ACOE.
- **Wetland & Waters Reviews Confidential Clients, Various Locations, PA** – Environmental Scientist responsible for wetland and water identification and delineation and report preparation for various projects ranging from energy exploration, land development, roadway system modifications, and pipeline routing.
- **Scotts Pools, Clearfield County, PA** – Environmental Specialist responsible for the coordination and completion of a Phase I Environmental Site Assessment (ESA). The project consisted of a commercial property purchase of a tire store and automotive garage for the intent of renovating into a showroom and shop. He also provided supporting written and photographic documentation of the characteristics of the existing and historical conditions of the subject property. This documentation was required to determine environmental liability risk for the prospective buyer.