



The following documentation is an electronically-submitted vendor response to an advertised solicitation from the *West Virginia Purchasing Bulletin* within the Vendor Self-Service portal at ***wvOASIS.gov***. As part of the State of West Virginia's procurement process, and to maintain the transparency of the bid-opening process, this documentation submitted online is publicly posted by the West Virginia Purchasing Division at ***WVPurchasing.gov*** with any other vendor responses to this solicitation submitted to the Purchasing Division in hard copy format.

Header 1

List View

General Information | [Contact](#) | [Default Values](#) | [Discount](#) | [Document Information](#)
Procurement Folder: 530203

SO Doc Code: CRFQ

Procurement Type: Statewide MA (Open End)

SO Dept: 0212

Vendor ID:
SO Doc ID: SWC1900000009

Legal Name: D HOSPITALITY

Published Date: 1/9/19

Alias/DBA: DAE W OH

Close Date: 1/15/19

Total Bid: \$0.00

Close Time: 13:30

Response Date:
Status: Closed

Response Time:
Solicitation Description:
Total of Header Attachments: 1

[Apply Default Values to Commodity Lines](#)
[View Procurement Folder](#)



Purchasing Division
2019 Washington Street East
Post Office Box 50130
Charleston, WV 25305-0130

State of West Virginia
Solicitation Response

Proc Folder : 530203

Solicitation Description : ADDENDUM_1: SYSFURN19 - SWC for Systems Furniture & Acc.

Proc Type : Statewide MA (Open End)

Date issued	Solicitation Closes	Solicitation Response	Version
	2019-01-15 13:30:00	SR 0212 ESR01141900000003183	1

VENDOR

VC0000070785
D HOSPITALITY
DAE W OH

Solicitation Number: CRFQ 0212 SWC1900000009

Total Bid : \$0.00 Response Date: 2019-01-14 Response Time: 13:00:27

Comments:

FOR INFORMATION CONTACT THE BUYER

Mark A Atkins
(304) 558-2307
mark.a.atkins@wv.gov

Signature on File

FEIN #

DATE

All offers subject to all terms and conditions contained in this solicitation

Line	Comm Ln Desc	Qty	Unit Issue	Unit Price	Ln Total Or Contract Amount
1	Furniture & Accessories - Use Exhibit_A for bid pricing	0.00000	EA	\$6,753,460.000000	\$0.00

Comm Code	Manufacturer	Specification	Model #
56111500			

Extended Description :	Furniture & Accessories: Note: Vendor shall use Exhibit_A Pricing Page(s) for bid pricing. If vendor is submitting a bid online, Vendor should enter \$0.00 in the Oasis commodity line.
------------------------	--



dhospitality

HOSPITALITY DESIGN



PRESENTATION
FOR:



2019

LEADERS IN CUSTOM
MANUFACTURING



02 about us

about us 02



About dhospitality

D Hospitality is a manufacturing design company specializing in case goods and upholstered goods for the hospitality industry, healthcare, and resorts.

With over 15 years experience in the industry, we have developed a comprehensive capacity to fulfill our clients' needs. We strive to meet the specific needs of our clients based on design, project qualifications and product delivery.

Our experience in the field has given us the ability to develop custom designed furniture that will fulfill the requirements outlined by our clients and bring the best of contemporary design to each project

15 years in business
Manufacturing case goods, seating & mill work
Specializing in hotels and healthcare
92 employees
922,000 square foot factory including warehouse
8-10 40' containers a month
30-40 days production time & lead shipping time
Exporting from United States, Dubai, & Asia

WHY CHOOSE DHOSPITALITY?

- 01 Professional Sales Team
- 02 Professional Design Team
- 03 Manufacturing Capacity
- 04 Post-Sales Service
- 05 Quality and Value
- 06 Bonded

about us

02

1. Professional Sales Team – First and foremost, our goal on any project is understanding our clients' needs. Our sales team is focused on gathering information on project guidelines and developing a strong foundation for project requirements.

2. Professional Design Team – Our design team is passionate about our company's product and fulfilling our clients' needs. With years of experience and a keen eye for contemporary design, our team provides products that meet the specifications of each project and deliver a high level of quality and aesthetics to the end product.

3. Manufacturing Capacity – We own and manage our own manufacturing facilities out of mainland China, giving us the ability to ensure a high level of quality control and precise delivery execution for each product. We also hold the advantages of being able to provide a variety quantities for each product line, and giving our clients access to the best possible pricing in the US and Overseas by buying direct.

4. Post-Sales Services – Our service does not stop with the final sale of our products. We follow through with our orders; verifying appropriate delivery and that our products meet the quality and fitment that our clients desire.

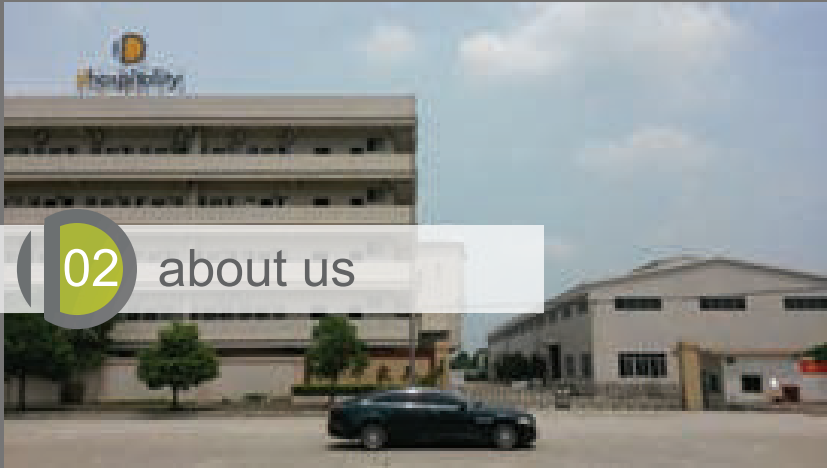
5. Quality and Value – We always strive to provide great quality products at the best value. With DHospitality, giving the best price doesn't mean sacrificing quality in our products.

6. Bonded – Unique to our industry is DHospitality's ability to bond each and every client to ensure them that the products in both the US and overseas will be insured at a high rate of guaranteed value and against any damages.



Factory

Machinery And Equipment Process



STANDARD 10 YEARS MANUFACTURER WARRANTY:

The D hospitality the manufacturer warrants this product to be free from defects in workmanship and materials, under normal hospitality use and conditions, for a period of (10) years for the original invoice date. Shipping and handling fees are to be paid for by the customer. The manufacturer agrees, at its option during the warranty period, to repair and defect in material or workmanship or to furnish a repaired or refurbished product of equal value in exchange without charge (except for a fee for shipping, handling, packing, return postage, and insurance which will be incurred by the customer). Such repair or replacement is subject to verification of the defect or malfunction and proof of purchase as confirmed by showing the model number on original dated sales receipt.

CASE GOODS/UPHOLSTERY PRODUCT WARRANTIES: • The manufacturer warrants the mechanism, wooden frame parts and spring systems against manufacturing and material defects for 10 year. • Cushioning/Filling Material – The manufacturer warrants against defective parts on seat cushion foams and filling materials for 10 year. • All foam and filling composites naturally soften with use. This softening does not constitute a defect under the warranty.

All Casegoods under warranty for 10 years with the exception of normal wear and tear.

FABRIC AND LEATHER Fabric – The manufacturer warrants the upholstery fabric used on your furniture against; seam failure, fabric separation and nap loss for one year. The manufacturer cannot cover pilling, which is a result of normal wear, nor fading, which can be caused by overexposure to sunlight. **Leather** – The manufacturer warrants leather upholstery against seam failure and material defects for one year. • The natural beauty of leather means that no two pieces of leather are exactly alike. As such, natural markings and grain variations are not considered defects.

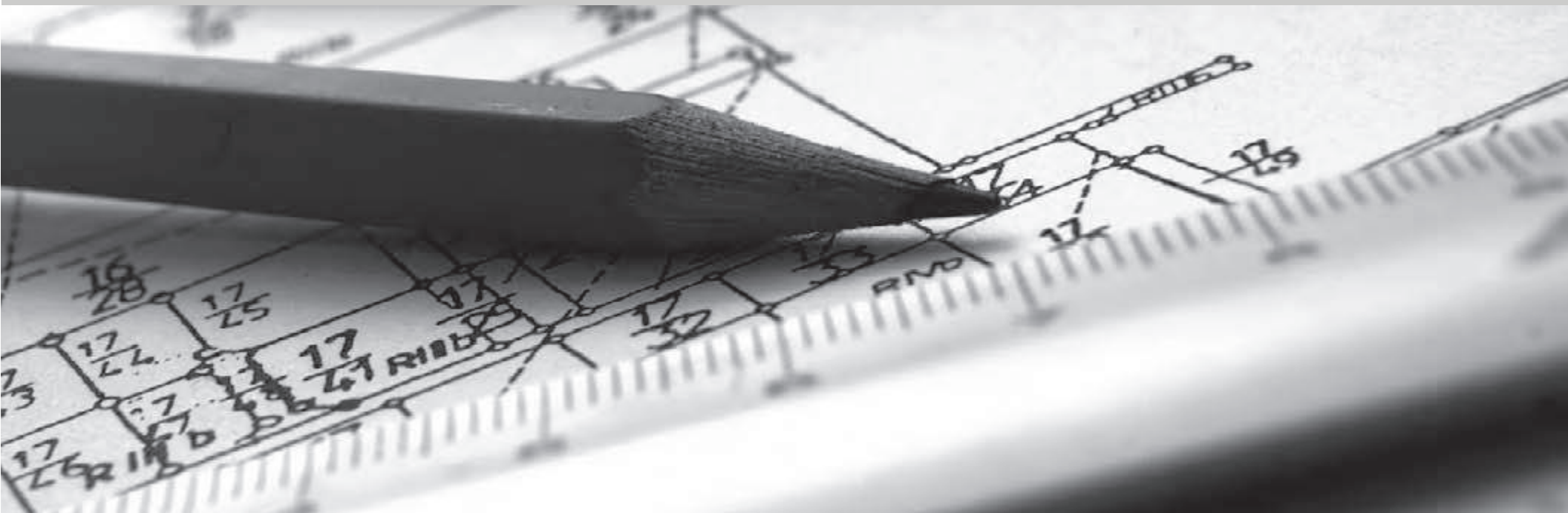
WARRANTY LIMITATIONS This warranty does not include: • Any condition resulting from other than ordinary hospitality wear or any use for which the product was not intended, such as use in rental or contract trade or commercial use • Any condition resulting from incorrect or inadequate maintenance or care • Damage resulting from misuse, abuse, negligence, accidents or shipping damage • Dissatisfaction due to buyer's remorse • Normal wear and tear • Damages incurred during transportation • Damages incurred during assembly or maintenance • Any used, previously displayed items The Company makes no express warranty or condition whether written or oral and the company expressly disclaims all warranties and conditions not stated in this limited warranty. To the extent allowed by the local law of jurisdictions outside the United States, the Company disclaims all implied warranties or conditions, including any implied warranties of merchantability and fitness for a particular purpose. For all transactions occurring in the United States, any implied warranty of condition of merchantability, satisfactory quality, or fitness for a particular purpose is limited to the duration of the express warranty set forth above. Some states or countries do not allow a limitation on how long an implied warranty lasts or the exclusion of limitation of incidental or consequential damages for consumer products. In such sates or countries, some exclusions or limitations of this limited warranty may not apply to the Purchaser. For consumer transaction, the limited warranty terms contained in this statement, except to the extent lawfully permitted, do not exclude, restrict, or modify but are in addition to the mandatory statutory rights applicable to the sale of this Product to the Purchaser.

Dhospitality is truly a unique company. We offer high quality products that meet or exceed brand all major brand standards with significant SAVINGS. The best part is it is all backed up by superior customer service and a company in this industry since 1999. We have implemented a strategy in design and manufacturing facilities.

Innovation is a core foundation of Dhospitality. This has enabled them to establish an extraordinary team of individuals. They include designers, sales, marketing, engineering, consulting, procurement, shipping and logistics just to highlight the solid foundation the company is built upon. This has made it feasible to offer turnkey operations seamlessly. It provides the capacity to execute innovative Interior Design, Private Label or corporate Branded and Procurement services. This is all achieved while still maintaining the highest quality products and value with superior customer service.

This organizational strategy has produced a high level of expertise. It enables Dhospitality grow and focus their business while driving innovative, and authentic solutions for every hospitality/residential/hospital or assisted living project.

Our mission is to evolve while continuously maintaining our high standards and excellence in these areas. The basis of all their efforts creates the lasting value for our partners. We strive tirelessly to advance these masteries as we seek new and innovative ways to enrich the lives of people who will experience the atmospheres our designs and products help create.





WEST VIRGINIA

Spec Book

**SOLICITATION BID
SWC 1900000009
(SYSFURN19)**

POWERED PANEL

PA-001

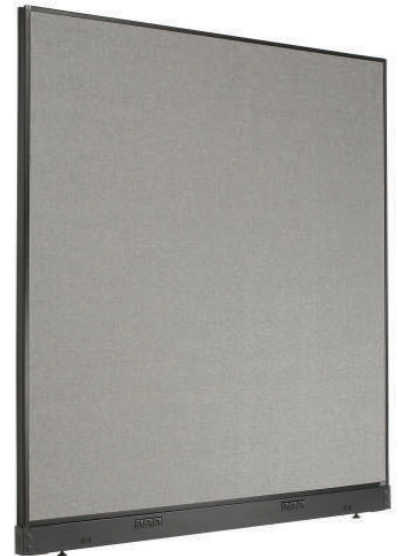
MANUFACTURER:
D HOSPITALITY

CONTACT:
DAE OH
DHOSPITALITY
4653 TRUEMAN BLVD. SUITE 350
HILLIARD, OH 43026
866-878-7288
INFO@DHOSPITALITY.COM

APPROVED ALTERNATE MANUFACTURER:
*see Approved Alternate list for contact information

SPECIFICATION:

ITEM NUMBER: PA-001
DESCRIPTION: FREE STANDING NON POWERED PANEL
DIMENSIONS: 42"W x 1-3/4"D 60-1/4"H
FINISH: BLACK STEEL
TOP FINISH: GRAY FABRIC
DETAILS: ACOUSTICAL FABRIC ON BOTH SIDES;
16 GAUGE STEEL FRAME
ALL INSTALL ACCESSORIES AVAILABLE SEPERATELY
10 YEAR WARRANTY ON STEEL
5 YEAR WARRANTY ON ACOUSTICAL FABRIC



NOTES:

- Eligible items to be installed in accordance with the manufacturer's guidelines by trained installers
- Must be contract quality and suitable for commercial use
- All materials and methods of construction must comply with all local fire and life safety codes for use in hotels and other public spaces
- Manufacturer to side mark outside of shipping box with property item and area specified
- Quantities shown are for estimating purpose only, purchasing agent and contractor shall coordinate to determine final quantities required

WEST VIRGINIA

NON-POWERED PANEL

PA-002

MANUFACTURER:
D HOSPITALITY

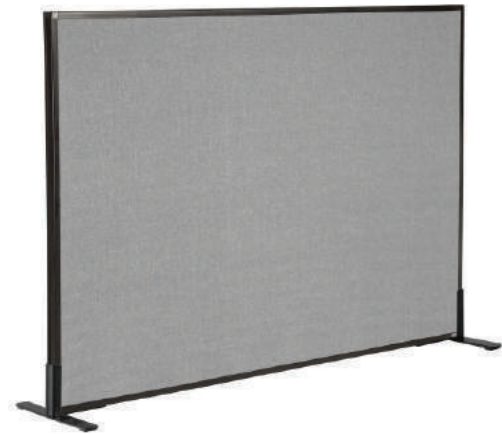
CONTACT:
DAE OH
DHOSPITALITY
4653 TRUEMAN BLVD. SUITE 350
HILLIARD, OH 43026
866-878-7288
INFO@DHOSPITALITY.COM

APPROVED ALTERNATE MANUFACTURER:

*see Approved Alternate list for contact information

SPECIFICATION:

ITEM NUMBER: PA-002
DESCRIPTION: FREE STANDING NON POWERED PANEL
DIMENSIONS: 42"W x 1-3/4"D 60-1/4"H
FINISH: 16 GAUGE BLACK STEEL
TOP FINISH: GRAY FABRIC
DETAILS: ACOUSTICAL FABRIC ON BOTH SIDES;
16 GAUGE STEEL FRAME
INSTALL ACCESSORIES AVAILABLE SEPERATELY
STEEL T- FRAME LEGS - TO BE ATTACHED DURING INSTALL
PLASTIC GLIDES ON BOTTOM OF LEGS
10 YEAR WARRANTY ON FRAME
5 YEAR WARRANTY ON ACOUNSTICAL FABRIC



NOTES:

- Eligible items to be installed in accordance with the manufacturer's guidelines by trained installers
- Must be contract quality and suitable for commercial use
- All materials and methods of construction must comply with all local fire and life safety codes for use in hotels and other public spaces
- Manufacturer to side mark outside of shipping box with property item and area specified
- Quantities shown are for estimating purpose only, purchasing agent and contractor shall coordinate to determine final quantities required

WEST VIRGINIA

POWERED PANEL- NO FABRIC

PA-003

MANUFACTURER:
D HOSPITALITY

CONTACT:
DAE OH
DHOSPITALITY
4653 TRUUMAN BLVD. SUITE 350
HILLIARD, OH 43026
866-878-7288
INFO@DHOSPITALITY.COM

APPROVED ALTERNATE MANUFACTURER:
*see Approved Alternate list for contact information

SPECIFICATION:

ITEM NUMBER: PA-003
DESCRIPTION: FREE STANDING POWERED PANEL
DIMENSIONS: 42"W x 1-3/4"D 60-1/4"H
FINISH: 16 GAUGE BLACK STEEL
TOP FINISH: CUSTOM COLOR
DETAILS: FIBERGLASS PANEL;
FROSTED GLASS (MULTIPLE COLORS)
16 GAUGE BLACK STEEL FRAME
STEEL T- SHAPE LEGS TO STAND FREELY
PLASTIC GLIDES ON BOTTOM OF LEGS
10 YEAR WARRANTY



NOTES:

- Eligible items to be installed in accordance with the manufacturer's guidelines by trained installers
- Must be contract quality and suitable for commercial use
- All materials and methods of construction must comply with all local fire and life safety codes for use in hotels and other public spaces
- Manufacturer to side mark outside of shipping box with property item and area specified
- Quantities shown are for estimating purpose only, purchasing agent and contractor shall coordinate to determine final quantities required

WEST VIRGINIA

NON-POWERED PANEL- NO FABRIC**PA-004**

MANUFACTURER:
D HOSPITALITY

CONTACT:
DAE OH
DHOSPITALITY
4653 TRUEMAN BLVD. SUITE 350
HILLIARD, OH 43026
866-878-7288
INFO@DHOSPITALITY.COM

APPROVED ALTERNATE MANUFACTURER:
*see Approved Alternate list for contact information

SPECIFICATION:

ITEM NUMBER: PA-004
DESCRIPTION: FREE STANDING NON POWERED PANEL
DIMENSIONS: 42"W x 1-3/4"D 60-1/4"H
FINISH: BLACK STEEL
TOP FINISH: CUSTOM COLOR
DETAILS: FIBERGLASS PANEL;
FROSTED GLASS (MULTIPLE COLORS)
16 GAUGE BLACK STEEL FRAME
STEEL T- SHAPE LEGS TO STAND FREELY
PLASTIC GLIDES ON BOTTOM OF LEGS
10 YEAR WARRANTY



NOTES:

- Eligible items to be installed in accordance with the manufacturer's guidelines by trained installers
- Must be contract quality and suitable for commercial use
- All materials and methods of construction must comply with all local fire and life safety codes for use in hotels and other public spaces
- Manufacturer to side mark outside of shipping box with property item and area specified
- Quantities shown are for estimating purpose only, purchasing agent and contractor shall coordinate to determine final quantities required

WEST VIRGINIA

DUPLEX RECEPTACLES @ PANELS

AC-01

MANUFACTURER:
D HOSPITALITY

CONTACT:
DAE OH
DHOSPITALITY
4653 TRUEMAN BLVD. SUITE 350
HILLIARD, OH 43026
866-878-7288
DCIDAE@AIM.COM

APPROVED ALTERNATE MANUFACTURER:

SPECIFICATION:

ITEM NUMBER: AC-01
DESCRIPTION: FREE STANDING NON POWERED PANEL
DIMENSIONS: 2 X 15 A
FINISH: NYLON
AMPS: 15 AMPS
DETAILS: MEETS OR EXCEEDS ANSI/BIFMA PERFORMANCE
STANDARDS
15 AMP
125 VOLT
SELF GROUNDING
INDOOR USE ONLY
TO BE INSTALLED BY TRAINED INSTALLER
UL CERTIFIED
10 YEAR WARRANTY



NOTES:

- Eligible items to be installed in accordance with the manufacturer's guidelines by trained installers
- Must be contract quality and suitable for commercial use
- All materials and methods of construction must comply with all local fire and life safety codes for use in hotels and other public spaces
- Manufacturer to side mark outside of shipping box with property item and area specified
- Quantities shown are for estimating purpose only, purchasing agent and contractor shall coordinate to determine final quantities required
 - Auto monitoring exceeds UL listing
 - Patented lockout action prevents reset if GFCI is damaged and cannot respond to a ground fault
 - Withstands high torque and resists wire pullout

WEST VIRGINIA

PANEL CONNECTORS: 2 WAYS STRAIGHT**AC-02**

MANUFACTURER:
D HOSPITALITY**CONTACT:**
DAE OH
DHOSPITALITY
4653 TRUEMAN BLVD. SUITE 350
HILLIARD, OH 43026
866-878-7288
DCIDAE@AIM.COM**APPROVED ALTERNATE MANUFACTURER:**

SPECIFICATION:

ITEM NUMBER: AC-02
DESCRIPTION: PANEL CONNECTORS- 2 WAY STRAIGHT
FINISH: 16 GAUGE BLACK STEEL
MODEL: 238644
TYPE: ACCESSORY - CONNECTOR
DETAILS: EASILY JOINS 2 PRIVACY PARTITIONS IN A
STRAIGHT 180 DEGREE RUN
16 GAUGE STEEL
HARDWARE NOT INCLUDED
10 YEAR WARRANTY



NOTES:

- Eligible items to be installed in accordance with the manufacturer's guidelines by trained installers
- Must be contract quality and suitable for commercial use
- All materials and methods of construction must comply with all local fire and life safety codes for use in hotels and other public spaces
- Manufacturer to side mark outside of shipping box with property item and area specified
- Quantities shown are for estimating purpose only, purchasing agent and contractor shall coordinate to determine final quantities required
- All accessories available for purchase separately on an as need basis

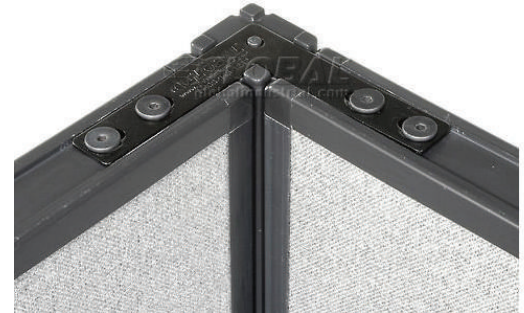
WEST VIRGINIA

PANEL CONNECTORS: 2 WAYS 90 DEGREE**AC-03**

MANUFACTURER:
D HOSPITALITY**CONTACT:**
DAE OH
DHOSPITALITY
4653 TRUEMAN BLVD. SUITE 350
HILLIARD, OH 43026
866-878-7288
DCIDAE@AIM.COM**APPROVED ALTERNATE MANUFACTURER:**

SPECIFICATION:

ITEM NUMBER: AC-03
DESCRIPTION: PANEL CONNECTORS- 2 WAY 90 DEGREE
FINISH: BLACK STEEL
MODEL: 238645
TYPE: CONNECTOR
DETAILS: EASILY JOINS 2 PRIVACY PARTITIONS IN A
CORNER 90 DEGREE RUN
16 GAUGE STEEL
HARDWARE NOT INCLUDED
10 YEAR WARRANTY



NOTES:

- Eligible items to be installed in accordance with the manufacturer's guidelines by trained installers
- Must be contract quality and suitable for commercial use
- All materials and methods of construction must comply with all local fire and life safety codes for use in hotels and other public spaces
- Manufacturer to side mark outside of shipping box with property item and area specified
- Quantities shown are for estimating purpose only, purchasing agent and contractor shall coordinate to determine final quantities required
- All accessories available for purchase separately on an as need basis

WEST VIRGINIA

PANEL CONNECTORS: 3 WAY TEE

AC-04

MANUFACTURER:
D HOSPITALITY

CONTACT:
DAE OH
DHOSPITALITY
4653 TRUEMAN BLVD. SUITE 350
HILLIARD, OH 43026
866-878-7288
DCIDAE@AIM.COM

APPROVED ALTERNATE MANUFACTURER:

SPECIFICATION:

ITEM NUMBER: AC-04
DESCRIPTION: PANEL CONNECTORS- 3 WAY TEE
FINISH: 16 GAUGE BLACK STEEL
MODEL: 238648
TYPE: 3 WAY CONNECTOR FOR STATIONARY
PANEL @ 90 DEGREE ANGLES
DETAILS: EASILY JOINS 3 PRIVACY PARTITIONS IN A
90 DEGREE RUNS
16 GAUGE STEEL CONSTRUCTION
HARDWARE NOT INCLUDED
10 YEAR WARRANTY



NOTES:

- Eligible items to be installed in accordance with the manufacturer's guidelines by trained installers
- Must be contract quality and suitable for commercial use
- All materials and methods of construction must comply with all local fire and life safety codes for use in hotels and other public spaces
- Manufacturer to side mark outside of shipping box with property item and area specified
- Quantities shown are for estimating purpose only, purchasing agent and contractor shall coordinate to determine final quantities required
- All accessories available for purchase separately on an as need basis

WEST VIRGINIA

PANEL CONNECTORS: 4 WAY

AC-05

MANUFACTURER:
D HOSPITALITY

CONTACT:
DAE OH
DHOSPITALITY
4653 TRUEMAN BLVD. SUITE 350
HILLIARD, OH 43026
866-878-7288
DCIDAE@AIM.COM

APPROVED ALTERNATE MANUFACTURER:

SPECIFICATION:

ITEM NUMBER: AC-05
DESCRIPTION: PANEL CONNECTORS- 4 WAY
FINISH: 16 GAUGE BLACK STEEL
MODEL: 238648
TYPE: 4 WAY CONNECTOR FOR STATIONARY
PANELS @ 90 DEGREE ANGLES
DETAILS: EASILY JOINS 4 PRIVACY PARTITIONS IN
90 DEGREE RUNS
16 GAUGE STEEL CONSTRUCTION
HARDWARE NOT INCLUDED
10 YEAR WARRANTY



NOTES:

- Eligible items to be installed in accordance with the manufacturer's guidelines by trained installers
- Must be contract quality and suitable for commercial use
- All materials and methods of construction must comply with all local fire and life safety codes for use in hotels and other public spaces
- Manufacturer to side mark outside of shipping box with property item and area specified
- Quantities shown are for estimating purpose only, purchasing agent and contractor shall coordinate to determine final quantities required
- All accessories available for purchase separately on an as need basis

WEST VIRGINIA

PANEL CONNECTOR-END CAPS

AC-06

MANUFACTURER:
D HOSPITALITY

CONTACT:
DAE OH
DHOSPITALITY
4653 TRUEMAN BLVD. SUITE 350
HILLIARD, OH 43026
866-878-7288
DCIDAE@AIM.COM

APPROVED ALTERNATE MANUFACTURER:

SPECIFICATION:

ITEM NUMBER: AC-06
DESCRIPTION: PANEL CONNECT END CAPS
FINISH: BLACK STEEL
MODEL: 249065
DETAILS: ACCESSORY FOR STATIONARY PANELS
PROVIDES A NEAT, FINISHED APPEARANCE
HIDES WIRES & CABLING WITHOUT BULK
EASILY ATTACHED TO RACEWAY PARTITIONS
10 YEAR WARRANTY



NOTES:

- Eligible items to be installed in accordance with the manufacturer's guidelines by trained installers
- Must be contract quality and suitable for commercial use
- All materials and methods of construction must comply with all local fire and life safety codes for use in hotels and other public spaces
- Manufacturer to side mark outside of shipping box with property item and area specified
- Quantities shown are for estimating purpose only, purchasing agent and contractor shall coordinate to determine final quantities required
- All accessories available for purchase seperately on an as need basis

WEST VIRGINIA

PANEL MOUNT RAIL TOOLBAR

AC-07

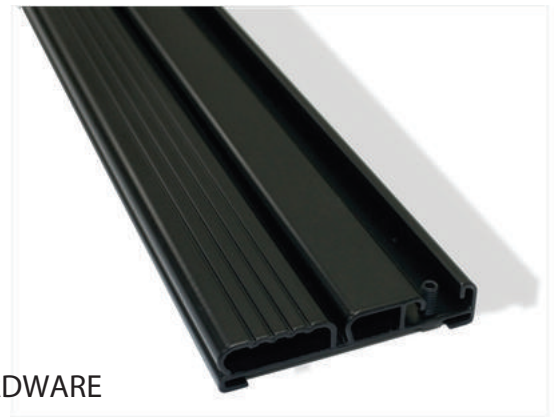
MANUFACTURER:
D HOSPITALITY

CONTACT:
DAE OH
DHOSPITALITY
4653 TRUEMAN BLVD. SUITE 350
HILLIARD, OH 43026
866-878-7288
DCIDAE@AIM.COM

APPROVED ALTERNATE MANUFACTURER:

SPECIFICATION:

ITEM NUMBER: AC-07
DESCRIPTION: PANEL MOUNT RAIL TOOLBAR
DIMENSIONS: 48" METAL
FINISH: LAMINATED ALUMINUM
MODEL: TRAINING TABLE
DETAILS: CAN ATTACH LETTER TRAY, VERTICAL
STORAGE TRAY OR VERTICAL TRIPLE
ORGANIZER;
PLASTIC TO BE LAMINATED ANY COLOR
TO BE TO USED WITH HANGER FRAME HARDWARE
& PANEL MOUNTED STRIPS
10 YEAR WARRANTY



NOTES:

- Eligible items to be installed in accordance with the manufacturer's guidelines by trained installers
- Must be contract quality and suitable for commercial use
- All materials and methods of construction must comply with all local fire and life safety codes for use in hotels and other public spaces
- Manufacturer to side mark outside of shipping box with property item and area specified
- Quantities shown are for estimating purpose only, purchasing agent and contractor shall coordinate to determine final quantities required
- All accessories available for purchase separately on an as need basis

WEST VIRGINIA

WORK SURFACE 1

WS-01

MANUFACTURER:
D HOSPITALITY

CONTACT:
DAE OH
DHOSPITALITY
4653 TRUEMAN BLVD. SUITE 350
HILLIARD, OH 43026
866-878-7288
DCIDAE@AIM.COM

APPROVED ALTERNATE MANUFACTURER:

SPECIFICATION:

ITEM NUMBER: WS-01
DESCRIPTION: PANEL CONNECT END CAPS
DIMENSIONS: 36"W x 24"D
FINISH: METAL BASE W/ HPL TOP
MODEL: TRAINING TABLE
DETAILS: WORKSURFACE FEATURES RADIUS EDGE
HIGH PRESSURE LAMINATE TOP
ROUNDED, VINYL EDGE FOR COMFORT
GROMMETS FOR CABLE MANAGEMENT
CONSTRUCTION TO HOLD WIRE BASKET
ON UNDERSIDE OF WORKTOP
TO BE SUPPORTED AT EACH END OR MOUNTED
10 YEAR WARRANTY



NOTES:

- Eligible items to be installed in accordance with the manufacturer's guidelines by trained installers
- Must be contract quality and suitable for commercial use
- All materials and methods of construction must comply with all local fire and life safety codes for use in hotels and other public spaces
- Manufacturer to side mark outside of shipping box with property item and area specified
- Quantities shown are for estimating purpose only, purchasing agent and contractor shall coordinate to determine final quantities required
- All accessories available for purchase separately on an as need basis

WEST VIRGINIA

WORK SURFACE - CORNER DESK

WS-02

MANUFACTURER:
D HOSPITALITY

CONTACT:
DAE OH
DHOSPITALITY
4653 TRUEMAN BLVD. SUITE 350
HILLIARD, OH 43026
866-878-7288
DCIDAE@AIM.COM

APPROVED ALTERNATE MANUFACTURER:

SPECIFICATION:

ITEM NUMBER: WS-02
DESCRIPTION: WORK SURFACE- CORNER DESK
DIMENSIONS: 36"W x 24"D
FINISH: WOOD FRAME W/ HPL TOP
MODEL: TRAINING TABLE
DETAILS: L SHAPE WORK SURFACE TOP
HIGH PRESSURE LAMINATE TOP
ROUNDED, VINYL EDGE FOR COMFORT
GROMMETS FOR CABLE MANAGEMENT
CONSTRUCTION TO HOLD WIRE BASKET
ON UNDERSIDE OF WORKTOP
TO BE SUPPORTED AT EACH END OR MOUNTED
10 YEAR WARRANTY



NOTES:

- Eligible items to be installed in accordance with the manufacturer's guidelines by trained installers
- Must be contract quality and suitable for commercial use
- All materials and methods of construction must comply with all local fire and life safety codes for use in hotels and other public spaces
- Manufacturer to side mark outside of shipping box with property item and area specified
- Quantities shown are for estimating purpose only, purchasing agent and contractor shall coordinate to determine final quantities required
- All accessories available for purchase separately on an as need basis

WEST VIRGINIA

WORK SURFACE - 2

WS-03

MANUFACTURER:
D HOSPITALITY

CONTACT:
DAE OH
DHOSPITALITY
4653 TRUEMAN BLVD. SUITE 350
HILLIARD, OH 43026
866-878-7288
DCIDAE@AIM.COM

APPROVED ALTERNATE MANUFACTURER:

SPECIFICATION:

ITEM NUMBER: WS-03
DESCRIPTION: WORK SURFACE- 2
DIMENSIONS: 48x 24"D
FINISH: WOOD W/ HPL LAMINATE TOP
MODEL: TRAINING TABLE
DETAILS: WORKTOP SURFACE
HIGH PRESSURE LAMINATE TOP
ROUNDED, VINYL EDGE FOR COMFORT
GROMMETS FOR CABLE MANAGEMENT
CONSTRUCTION TO HOLD WIRE BASKET
ON UNDERSIDE OF WORKTOP
TO BE SUPPORTED AT EACH END OR MOUNTED ONTO PANEL
10 YEAR WARRANTY



NOTES:

- Eligible items to be installed in accordance with the manufacturer's guidelines by trained installers
- Must be contract quality and suitable for commercial use
- All materials and methods of construction must comply with all local fire and life safety codes for use in hotels and other public spaces
- Manufacturer to side mark outside of shipping box with property item and area specified
- Quantities shown are for estimating purpose only, purchasing agent and contractor shall coordinate to determine final quantities required
- All accessories available for purchase separately on an as need basis

WEST VIRGINIA

36" FLIPPER DOOR UNIT

FD-001

MANUFACTURER:
DHOSPITALITY

CONTACT:
DAE OH
DHOSPITALITY
4653 TRUEMAN BLVD. SUITE 350
HILLIARD, OH 43026
866-878-7288
INFO@DHOSPITALITY.COM

APPROVED ALTERNATE MANUFACTURER:
*see Approved Alternate list for contact information

SPECIFICATION:

ITEM NUMBER:
DESCRIPTION: STEEL FLIPPER DOOR UNIT
DIMENSIONS: 36" W x 14"D x 15"H
FINISH: Steel frame w/ locking steel doors
CATAGORY: Accessory

DETAILS: 16 gauge steel frame
2 locking flipper door cabinets
To be mounted on wall panels
above desks
10 year warranty



NOTES:

- Eligible items to be installed in accordance with the manufacturer's guidelines by trained installers
- Must be contract quality and suitable for commercial use
- All materials and methods of construction must comply with all local fire and life safety codes for use in hotels and other public spaces
- Manufacturer to side mark outside of shipping box with property item and area specified
- Quantities shown are for estimating purpose only, purchasing agent and contractor shall coordinate to determine final quantities required
- All accessories available for purchase seperately on an as need basis

WEST VIRGINIA

48" FLIPPER DOOR UNIT

FD-002

MANUFACTURER:
DHOSPITALITY

CONTACT:
DAE OH
DHOSPITALITY
4653 TRUEMAN BLVD. SUITE 350
HILLIARD, OH 43026
866-878-7288
INFO@DHOSPITALITY.COM

APPROVED ALTERNATE MANUFACTURER:
*see Approved Alternate list for contact information

SPECIFICATION:

ITEM NUMBER:
DESCRIPTION: STEEL FLIPPER DOOR UNIT
DIMENSIONS: 48" W x 14"D x 15"H
FINISH: Steel frame w/ locking doors
CATAGORY: Accessory

DETAILS: Steel frame
2 Locking flipper doors
Storage cabinets
10 year warranty



NOTES:

- Eligible items to be installed in accordance with the manufacturer's guidelines by trained installers
- Must be contract quality and suitable for commercial use
- All materials and methods of construction must comply with all local fire and life safety codes for use in hotels and other public spaces
- Manufacturer to side mark outside of shipping box with property item and area specified
- Quantities shown are for estimating purpose only, purchasing agent and contractor shall coordinate to determine final quantities required
- All accessories available for purchase seperately on an as need basis

WEST VIRGINIA

24" PEDESTAL 2 DRAWER FILE CABINET

FC-001

MANUFACTURER:
DHOSPITALITY

CONTACT:
DAE OH
DHOSPITALITY
4653 TRUEMAN BLVD. SUITE 350
HILLIARD, OH 43026
866-878-7288
INFO@DHOSPITALITY.COM

APPROVED ALTERNATE MANUFACTURER:

*see Approved Alternate list for contact information

SPECIFICATION:

ITEM NUMBER:

DESCRIPTION: PEDESTAL FREESTANDING FILE CABINET

DIMENSIONS: 15" W x 24"D x 20"H

FINISH: 16 GAUGE STEEL FRAME W/ METAL HARDWARE

DETAILS: 16 GAUGE STEEL

2 Locking file cabinet drawers

To be used to secure work top surface

Drawer suspension cycle test of 100,000 cycles

Steel ball bearings in suspension

Positive acting spring latch to hold drawers closed

10 year warranty



NOTES:

- Eligible items to be installed in accordance with the manufacturer's guidelines by trained installers
- Must be contract quality and suitable for commercial use
- All materials and methods of construction must comply with all local fire and life safety codes for use in hotels and other public spaces
- Manufacturer to side mark outside of shipping box with property item and area specified
- Quantities shown are for estimating purpose only, purchasing agent and contractor shall coordinate to determine final quantities required
- All accessories available for purchase separately on an as need basis

WEST VIRGINIA

24" PEDESTAL FILE CABINET

FC-002

MANUFACTURER:
DHOSPITALITY

CONTACT:
DAE OH
DHOSPITALITY
4653 TRUEMAN BLVD. SUITE 350
HILLIARD, OH 43026
866-878-7288
INFO@DHOSPITALITY.COM

APPROVED ALTERNATE MANUFACTURER:
*see Approved Alternate list for contact information

SPECIFICATION:

ITEM NUMBER:
DESCRIPTION: PEDESTAL FREESTANDING FILE CABINET
DIMENSIONS: 15" W x 24"D x 22"H
FINISH: 16 GAUGE STEEL FRAME W/ METAL HARDWARE
DETAILS: 16 GAUGE STEEL
1 locking file drawer
2 locking box drawers
To be used to secure work top surface
Drawer suspension cycle test of 100,000 cycles
Steel ball bearings in suspension
Positive acting spring latch to hold drawers closed
10 year warranty



NOTES:

- Eligible items to be installed in accordance with the manufacturer's guidelines by trained installers
- Must be contract quality and suitable for commercial use
- All materials and methods of construction must comply with all local fire and life safety codes for use in hotels and other public spaces
- Manufacturer to side mark outside of shipping box with property item and area specified
- Quantities shown are for estimating purpose only, purchasing agent and contractor shall coordinate to determine final quantities required
- All accessories available for purchase separately on an as need basis

WEST VIRGINIA

TACK BOARD**TB-001**

MANUFACTURER:
DHOSPITALITY

CONTACT:
DAE OH
DHOSPITALITY
4653 TRUEMAN BLVD. SUITE 350
HILLIARD, OH 43026
866-878-7288
INFO@DHOSPITALITY.COM

APPROVED ALTERNATE MANUFACTURER:

*see Approved Alternate list for contact information

SPECIFICATION:

ITEM NUMBER:
DESCRIPTION: TACK BOARD
DIMENSIONS: 36" W x 11"H
FINISH: Aluminum frame w/ corkboard surface
DETAILS: Aluminum frame
Corkboard finish for tacking
To be wall/ panel mounted
Hardware not included
Self healing surface to help minimize
holes created by tacking
10 year warranty



NOTES:

- Eligible items to be installed in accordance with the manufacturer's guidelines by trained installers
- Must be contract quality and suitable for commercial use
- All materials and methods of construction must comply with all local fire and life safety codes for use in hotels and other public spaces
- Manufacturer to side mark outside of shipping box with property item and area specified
- Quantities shown are for estimating purpose only, purchasing agent and contractor shall coordinate to determine final quantities required
- All accessories available for purchase separately on an as need basis

WEST VIRGINIA

30" TASK LIGHT

TL-001

MANUFACTURER:
DHOSPITALITY

CONTACT:
DAE OH
DHOSPITALITY
4653 TRUEMAN BLVD. SUITE 350
HILLIARD, OH 43026
866-878-7288
INFO@DHOSPITALITY.COM

APPROVED ALTERNATE MANUFACTURER:
*see Approved Alternate list for contact information

SPECIFICATION:

ITEM NUMBER: tl-001
DESCRIPTION: 30" TASK LIGHT
DIMENSIONS: 30" W x 5"D x 4"H
FINISH: Powdercoated metal frame w/ LED lightbulb
SWITCH: Right hand switch
CORD: 8' black cord
DETAILS: Powder coat finish: high quality black coating with
mar resistant finish
Lamp: T-5 rapid start fluorescence that provide energy
efficient illumination
Switch: miniature rocker switch, positive position
rocker
Lens: prismatic acrylic guaranteed to maintain life and not discolor
Electronic ballast: rapid start ups
9' cord length
10 year warranty



NOTES:

- Eligible items to be installed in accordance with the manufacturer's guidelines by trained installers
- Must be contract quality and suitable for commercial use
- All materials and methods of construction must comply with all local fire and life safety codes for use in hotels and other public spaces
- Manufacturer to side mark outside of shipping box with property item and area specified
- Quantities shown are for estimating purpose only, purchasing agent and contractor shall coordinate to determine final quantities required
- All accessories available for purchase seperately on an as need basis

WEST VIRGINIA

42" TASK LIGHT

TL-002

MANUFACTURER:
DHOSPITALITY

CONTACT:
DAE OH
DHOSPITALITY
4653 TRUEMAN BLVD. SUITE 350
HILLIARD, OH 43026
866-878-7288
INFO@DHOSPITALITY.COM

APPROVED ALTERNATE MANUFACTURER:
*see Approved Alternate list for contact information

SPECIFICATION:

ITEM NUMBER: TL-002
DESCRIPTION: 42" TASK LIGHT
DIMENSIONS: 42" W x 5"D x 4"H
FINISH: Powdercoated metal frame w/ LED lightbulb
SWITCH: Right hand
DETAILS: Powder coat finish: high quality black coating with
mar resistant finish
Lamp: T-5 rapid start fluorescence that provide energy
efficient illumination
Switch: miniature rocker switch, positive position
rocker
Lens: prismatic acrylic guaranteed to maintain life and not discolor
Electronic ballast: rapid start ups
9' cord length
10 year warranty



NOTES:

- Eligible items to be installed in accordance with the manufacturer's guidelines by trained installers
- Must be contract quality and suitable for commercial use
- All materials and methods of construction must comply with all local fire and life safety codes for use in hotels and other public spaces
- Manufacturer to side mark outside of shipping box with property item and area specified
- Quantities shown are for estimating purpose only, purchasing agent and contractor shall coordinate to determine final quantities required
- All accessories available for purchase separately on an as need basis

WEST VIRGINIA

KEYBOARD TRAY**KT-001**

MANUFACTURER:
DHOSPITALITY**CONTACT:**
DAE OH
DHOSPITALITY
4653 TRUEMAN BLVD. SUITE 350
HILLIARD, OH 43026
866-878-7288
INFO@DHOSPITALITY.COM**APPROVED ALTERNATE MANUFACTURER:**
*see Approved Alternate list for contact information

SPECIFICATION:

ITEM NUMBER: KT-001
DESCRIPTION: KEYBOARD TRAY
DIMENSIONS: 20" W X 10" D x 1-6"H (adjustable)
FINISH: Plastic w/ metal hardware & wrapped foam cushions
DETAILS: Right or left mouse pad capability
6" of height adjustment
Tilting mechanism w/ positive or negative tilt
360 degree swivel for comfort
10 year warranty



NOTES:

- Eligible items to be installed in accordance with the manufacturer's guidelines by trained installers
- Must be contract quality and suitable for commercial use
- All materials and methods of construction must comply with all local fire and life safety codes for use in hotels and other public spaces
- Manufacturer to side mark outside of shipping box with property item and area specified
- Quantities shown are for estimating purpose only, purchasing agent and contractor shall coordinate to determine final quantities required
- All accessories available for purchase separately on an as need basis

WEST VIRGINIA

LETTER TRAY**LT-001**

MANUFACTURER:
DHOSPITALITY**CONTACT:**
DAE OH
DHOSPITALITY
4653 TRUEMAN BLVD. SUITE 350
HILLIARD, OH 43026
866-878-7288
INFO@DHOSPITALITY.COM**APPROVED ALTERNATE MANUFACTURER:**
*see Approved Alternate list for contact information

SPECIFICATION:

ITEM NUMBER:
DESCRIPTION: LETTER TRAY
DIMENSIONS: 12 1/2" W X 10" D x 12 1/2"H
FINISH: Plastic base w/ plastic dividers

DETAILS: Plastic file organizer with plastic dividers;
3 separate plastic panels for storage; To be
mounted horizontally on slat pad. 5 compartment
document sorter. Black powder coat finish;
10 Year Warranty.



NOTES:

- Manufacturer to submit cutting from production run for designer approval
- It is the responsibility of the owner to interpret these specifications for each property
- Must be contract quality and suitable for commercial use
- All materials and methods of construction must comply with all local fire and life safety codes for use in public spaces
- Manufacturer to side mark outside of shipping box with property item and area specified
- Quantities shown are for estimating purpose only, purchasing agent and contractor shall coordinate to determine final quantities required

WEST VIRGINIA

DIAGONAL TRAY**DT-001**

MANUFACTURER:
DHOSPITALITY

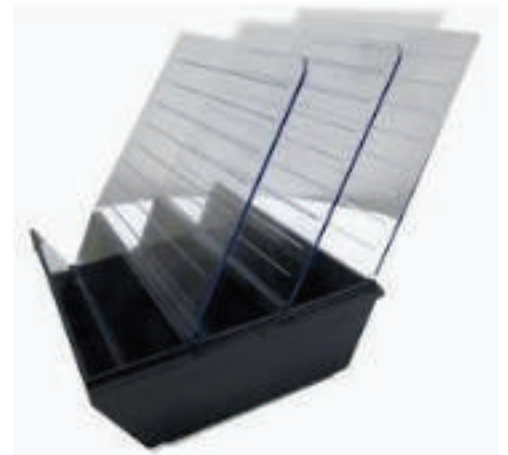
CONTACT:
DAE OH
DHOSPITALITY
4653 TRUEMAN BLVD. SUITE 350
HILLIARD, OH 43026
866-878-7288
INFO@DHOSPITALITY.COM

APPROVED ALTERNATE MANUFACTURER:
*see Approved Alternate list for contact information

SPECIFICATION:

ITEM NUMBER:
DESCRIPTION: DIAGONAL TRAY
DIMENSIONS: 12 1/2" W X 10" D x 12 1/2"H
FINISH: Plastic base w/ plastic dividers

DETAILS: Plastic file organizer with plastic dividers. 3 separate file dividers; Ethos and A02 panels and paper management. Has a lip on edge to clip on tool bar. Tray uses all sizes of tool bars.
10 Year Warranty



NOTES:

- Manufacturer to submit cutting from production run for designer approval
- It is the responsibility of the owner to interpret these specifications for each property
- Must be contract quality and suitable for commercial use
- All materials and methods of construction must comply with all local fire and life safety codes for use in public spaces
- Manufacturer to side mark outside of shipping box with property item and area specified
- Quantities shown are for estimating purpose only, purchasing agent and contractor shall coordinate to determine final quantities required

WEST VIRGINIA

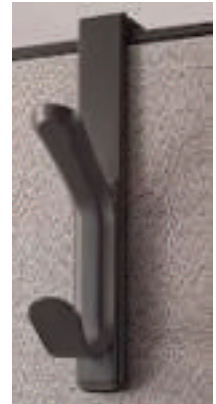
COAT HOOK**CH-001**

MANUFACTURER:
DHOSPITALITY**CONTACT:**
DAE OH
DHOSPITALITY
4653 TRUEMAN BLVD. SUITE 350
HILLIARD, OH 43026
866-878-7288
INFO@DHOSPITALITY.COM**APPROVED ALTERNATE MANUFACTURER:**
*see Approved Alternate list for contact information

SPECIFICATION:

ITEM NUMBER:
DESCRIPTION: COAT HOOK
DIMENSIONS: 1" W X 2" D x 7"H
FINISH: Metal

DETAILS: Metal "U" shaped hook to go over stationary panels;
2 vertical hooks; No tools required to install
10 year warranty



NOTES:

- Manufacturer to submit cutting from production run for designer approval
- It is the responsibility of the owner to interpret these specifications for each property
- Must be contract quality and suitable for commercial use
- All materials and methods of construction must comply with all local fire and life safety codes for use in public spaces
- Manufacturer to side mark outside of shipping box with property item and area specified
- Quantities shown are for estimating purpose only, purchasing agent and contractor shall coordinate to determine final quantities required

WEST VIRGINIA

TASK CHAIR**TC-001**

MANUFACTURER:
D HHOSPITALITY

CONTACT:
DAE OH
DHOSPITALITY
4653 TRUEMAN BLVD. SUITE 350
HILLIARD, OH 43026
866-878-7288
INFO@DHOSPITALITY.COM

APPROVED ALTERNATE MANUFACTURER:

*see Approved Alternate list for contact information

SPECIFICATION:

ITEM NUMBER:
DESCRIPTION: TASK CHAIR
DIMENSIONS: 25" x 24"x 40" (adjustable)
FINISH: Metal caster base w/ upholstered seat & mesh back
SEAT HEIGHT: 18" - 22"

DETAILS: Adjustable height arms
Pneumatic height adjustment w/ tilt & swivel
Five star base w/ casters; Mesh back;
Tight Upholstered seat; Rubber top on arms;
10 Year Warranty



NOTES:

- Manufacturer to submit cutting from production run for designer approval
- It is the responsibility of the owner to interpret these specifications for each property
- Must be contract quality and suitable for commercial use
- All materials and methods of construction must comply with all local fire and life safety codes for use in public spaces
- Manufacturer to side mark outside of shipping box with property item and area specified
- Quantities shown are for estimating purpose only, purchasing agent and contractor shall coordinate to determine final quantities required

WEST VIRGINIA

GUEST CHAIR**GC-001**

MANUFACTURER:
D HHOSPITALITY**CONTACT:**
DAE OH
DHOSPITALITY
4653 TRUEMAN BLVD. SUITE 350
HILLIARD, OH 43026
866-878-7288
INFO@DHOSPITALITY.COM**APPROVED ALTERNATE MANUFACTURER:**

*see Approved Alternate list for contact information

SPECIFICATION:**ITEM NUMBER:****DESCRIPTION:** GUEST CHAIR**DIMENSIONS:** 19" x 19" x 31"**FINISH:** Metal base w/ plastic molded shell**SEAT HEIGHT :** 18"**DETAILS:**

Molded poly shell seat/ back
Metal legs; Plastic glides on bottom of legs
Anti-static shell; Ability to stack 10 high
Underseat cross braces for stability & durability
10 year warranty



NOTES:

- Manufacturer to submit cutting from production run for designer approval
- It is the responsibility of the owner to interpret these specifications for each property
- Must be contract quality and suitable for commercial use
- All materials and methods of construction must comply with all local fire and life safety codes for use in public spaces
- Manufacturer to side mark outside of shipping box with property item and area specified
- Quantities shown are for estimating purpose only, purchasing agent and contractor shall coordinate to determine final quantities required

WEST VIRGINIA

SIDE CHAIR**SC-001**

MANUFACTURER:
D HHOSPITALITY**CONTACT:**
DAE OH
DHOSPITALITY
4653 TRUEMAN BLVD. SUITE 350
HILLIARD, OH 43026
866-878-7288
INFO@DHOSPITALITY.COM**APPROVED ALTERNATE MANUFACTURER:**

*see Approved Alternate list for contact information

SPECIFICATION:

ITEM NUMBER:
DESCRIPTION: SIDE CHAIR
DIMENSIONS: 24" x 26" x 34"
SEAT HEIGHT: 18"
FINISH: Metal base w/ upholstered seat/ back
DETAILS: Metal legs
Attached metal arms w/ rubber covering
Casters on bottom of legs; Supports up to 300 lbs
Curved back w/ lumbar support; 10 year warranty



NOTES:

- Manufacturer to submit cutting from production run for designer approval
- It is the responsibility of the owner to interpret these specifications for each property
- Must be contract quality and suitable for commercial use
- All materials and methods of construction must comply with all local fire and life safety codes for use in public spaces
- Manufacturer to side mark outside of shipping box with property item and area specified
- Quantities shown are for estimating purpose only, purchasing agent and contractor shall coordinate to determine final quantities required

WEST VIRGINIA

ADJUSTABLE HEIGHT ARMS

AA-001

MANUFACTURER:
DHOSPITALITY

CONTACT:
DAE OH
DHOSPITALITY
4653 TRUEMAN BLVD. SUITE 350
HILLIARD, OH 43026
866-878-7288
INFO@DHOSPITALITY.COM

APPROVED ALTERNATE MANUFACTURER:
*see Approved Alternate list for contact information

SPECIFICATION:

ITEM NUMBER:
DESCRIPTION: ADJUSTABLE HEIGHT ARMS
DIMENSIONS: 5" W x 6"D x 14"H (EACH ARM)
FINISH: Metal frame w/ padded arm rests

DETAILS: Metal base T Bar Arms w/ padded arms; Adjustable height and width; Add support to existing chair; helps to reduce strain on neck and shoulders; 10 Year Warranty.



NOTES:

- Manufacturer to submit cutting from production run for designer approval
- It is the responsibility of the owner to interpret these specifications for each property
- Must be contract quality and suitable for commercial use
- All materials and methods of construction must comply with all local fire and life safety codes for use in public spaces
- Manufacturer to side mark outside of shipping box with property item and area specified
- Quantities shown are for estimating purpose only, purchasing agent and contractor shall coordinate to determine final quantities required

WEST VIRGINIA

SOFA**SE-001**

MANUFACTURER:
D HHOSPITALITY

CONTACT:
DAE OH
DHOSPITALITY
4653 TRUEMAN BLVD. SUITE 350
HILLIARD, OH 43026
866-878-7288
INFO@DHOSPITALITY.COM

APPROVED ALTERNATE MANUFACTURER:

*see Approved Alternate list for contact information

SPECIFICATION:

ITEM NUMBER:
DESCRIPTION: SOFA
DIMENSIONS: 75"W x 34"D x 33"H
SEAT HEIGHT: 18"
FINISH: Wood frame w/ vinyl upholstered seat/ back
DETAILS: Wood, tapered legs
Tight upholstered seat/ back/ arms

Plastic glides on bottom of legs
100% vinyl fabric for cleanability
10 year warranty



NOTES:

- Manufacturer to submit cutting from production run for designer approval
- It is the responsibility of the owner to interpret these specifications for each property
- Must be contract quality and suitable for commercial use
- All materials and methods of construction must comply with all local fire and life safety codes for use in public spaces
- Manufacturer to side mark outside of shipping box with property item and area specified
- Quantities shown are for estimating purpose only, purchasing agent and contractor shall coordinate to determine final quantities required

WEST VIRGINIA

LOUNGE CHAIR

SE-002

MANUFACTURER:
D HOSPITALITY

CONTACT:
DAE OH
DHOSPITALITY
4653 TRUEMAN BLVD. SUITE 350
HILLIARD, OH 43026
866-878-7288
INFO@DHOSPITALITY.COM

APPROVED ALTERNATE MANUFACTURER:

*see Approved Alternate list for contact information

SPECIFICATION:

ITEM NUMBER:
DESCRIPTION: LOUNGE CHAIR
DIMENSIONS: 32"W x 33"D x 34"H
SEAT HEIGHT: 18"
FINISH: Wood frame w/ vinyl upholstered seat/ back
DETAILS: Wood, tapered legs
Tight upholstered seat/ back/ arms;
Plastic glides on bottom of legs; 100% vinyl
fabric for easy cleaning; 10 Year Warrnaty.



NOTES:

- Manufacturer to submit cutting from production run for designer approval
- It is the responsibility of the owner to interpret these specifications for each property
- Must be contract quality and suitable for commercial use
- All materials and methods of construction must comply with all local fire and life safety codes for use in public spaces
- Manufacturer to side mark outside of shipping box with property item and area specified
- Quantities shown are for estimating purpose only, purchasing agent and contractor shall coordinate to determine final quantities required

WEST VIRGINIA

CREDENZA**CR-001**

MANUFACTURER:
D HOSPITALITY**CONTACT:**
DAE OH
DHOSPITALITY
4653 TRUEMAN BLVD. SUITE 350
HILLIARD, OH 43026
866-878-7288
INFO@DHOSPITALITY.COM**APPROVED ALTERNATE MANUFACTURER:**

*see Approved Alternate list for contact information

SPECIFICATION:

ITEM NUMBER:
DESCRIPTION: CREDENZA
DIMENSIONS: 72"W x 20"D x 29"H
FINISH: Wood frame w/ high pressure laminate top/ front sides & metal hardware
DETAILS: 2 large storage cabinets; Use of high pressure laminate finish for long durability; Non-toxic laminate use; 10 year warranty.



NOTES:

- Manufacturer to submit cutting from production run for designer approval
- It is the responsibility of the owner to interpret these specifications for each property
- Must be contract quality and suitable for commercial use
- All materials and methods of construction must comply with all local fire and life safety codes for use in public spaces
- Manufacturer to side mark outside of shipping box with property item and area specified
- Quantities shown are for estimating purpose only, purchasing agent and contractor shall coordinate to determine final quantities required

WEST VIRGINIA

CROSS BASE ROUND TABLE**TB-001**

MANUFACTURER:
D HOSPITALITY**CONTACT:**
DAE OH
DHOSPITALITY
4653 TRUEMAN BLVD. SUITE 350
HILLIARD, OH 43026
866-878-7288
INFO@DHOSPITALITY.COM**APPROVED ALTERNATE MANUFACTURER:**
*see Approved Alternate list for contact information

SPECIFICATION:

ITEM NUMBER:
DESCRIPTION: CROSS BASE TABLE
DIMENSIONS: 48" diameter x 29"H
FINISH: Metal frame w/ high pressure laminate top

DETAILS: Metal cross base frame
High pressure laminate top
Rubber edge detail for durability
Plastic glides on bottom of base
10 year warranty



NOTES:

- Manufacturer to submit cutting from production run for designer approval
- It is the responsibility of the owner to interpret these specifications for each property
- Must be contract quality and suitable for commercial use
- All materials and methods of construction must comply with all local fire and life safety codes for use in public spaces
- Manufacturer to side mark outside of shipping box with property item and area specified
- Quantities shown are for estimating purpose only, purchasing agent and contractor shall coordinate to determine final quantities required

WEST VIRGINIA

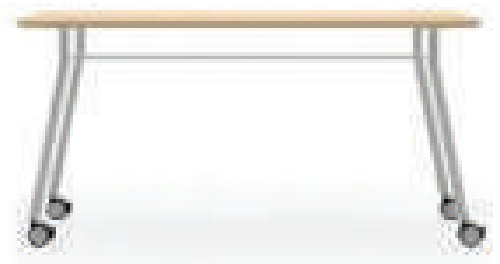
RECTANGLE TABLE**TB-002**

MANUFACTURER:
D HOSPITALITY**CONTACT:**
DAE OH
DHOSPITALITY
4653 TRUEMAN BLVD. SUITE 350
HILLIARD, OH 43026
866-878-7288
INFO@DHOSPITALITY.COM**APPROVED ALTERNATE MANUFACTURER:**
*see Approved Alternate list for contact information

SPECIFICATION:

ITEM NUMBER:
DESCRIPTION: RECTANGLE TABLE
DIMENSIONS: 72"W x 30"D x 29"H
FINISH: Steel frame w/ high pressure laminate top

DETAILS: Steel frame
High pressure laminate top
Rubber edge detail for durability
Steel stability rail under top
Casters on bottom w/ stoppers
10 year warranty



NOTES:

- Manufacturer to submit cutting from production run for designer approval
- It is the responsibility of the owner to interpret these specifications for each property
- Must be contract quality and suitable for commercial use
- All materials and methods of construction must comply with all local fire and life safety codes for use in public spaces
- Manufacturer to side mark outside of shipping box with property item and area specified
- Quantities shown are for estimating purpose only, purchasing agent and contractor shall coordinate to determine final quantities required

WEST VIRGINIA

CONFERENCE TABLE**TB-003**

MANUFACTURER:
D HOSPITALITY**CONTACT:**
DAE OH
DHOSPITALITY
4653 TRUEMAN BLVD. SUITE 350
HILLIARD, OH 43026
866-878-7288
INFO@DHOSPITALITY.COM**APPROVED ALTERNATE MANUFACTURER:**
*see Approved Alternate list for contact information

SPECIFICATION:

ITEM NUMBER:
DESCRIPTION: CONFERENCE TABLE
DIMENSIONS: 48"W x 96"L x 29"H
FINISH: Wood frame w/ high pressure laminate



DETAILS: Wood frame
High pressure laminate top/ legs
Half moon high pressure laminate pedestal legs
Plastic glides on bottom of legs
Wooden support rail between legs
10 year warranty

NOTES:

- Manufacturer to submit cutting from production run for designer approval
- It is the responsibility of the owner to interpret these specifications for each property
- Must be contract quality and suitable for commercial use
- All materials and methods of construction must comply with all local fire and life safety codes for use in public spaces
- Manufacturer to side mark outside of shipping box with property item and area specified
- Quantities shown are for estimating purpose only, purchasing agent and contractor shall coordinate to determine final quantities required

WEST VIRGINIA

DESK**TB-004**

MANUFACTURER:
D HOSPITALITY

CONTACT:
DAE OH
DHOSPITALITY
4653 TRUEMAN BLVD. SUITE 350
HILLIARD, OH 43026
866-878-7288
INFO@DHOSPITALITY.COM

APPROVED ALTERNATE MANUFACTURER:

*see Approved Alternate list for contact information

SPECIFICATION:

ITEM NUMBER:
DESCRIPTION: DESK
DIMENSIONS: 60"L x 30"W x 29"H
FINISH: Wood frame w/ high pressure laminate
& metal hardware

DETAILS: Wood frame
High pressure laminate all around
Single pedestal, locking file system
Plastic glides on bottom of legs
Floor length end panels
Floor length modesty panel on front of desk
10 year warranty



NOTES:

- Manufacturer to submit cutting from production run for designer approval
- It is the responsibility of the owner to interpret these specifications for each property
- Must be contract quality and suitable for commercial use
- All materials and methods of construction must comply with all local fire and life safety codes for use in public spaces
- Manufacturer to side mark outside of shipping box with property item and area specified
- Quantities shown are for estimating purpose only, purchasing agent and contractor shall coordinate to determine final quantities required.

WEST VIRGINIA

BOOKCASE**BC-001**

MANUFACTURER:
D HOSPITALITY**CONTACT:**
DAE OH
DHOSPITALITY
4653 TRUEMAN BLVD. SUITE 350
HILLIARD, OH 43026
866-878-7288
INFO@DHOSPITALITY.COM**APPROVED ALTERNATE MANUFACTURER:**

*see Approved Alternate list for contact information

SPECIFICATION:

ITEM NUMBER:
DESCRIPTION: BOOKCASE
DIMENSIONS: 36"W x 12"D x 48"H
FINISH: Wood frame w/ high pressure laminate

DETAILS: Wood framed high pressured laminate; 1
stationary shelf with 2 adjustable shelves;
Made with non-toxic laminated particle
bookcase; can be used for display purposes;
10 Year Warranty



NOTES:

- Manufacturer to submit cutting from production run for designer approval
- It is the responsibility of the owner to interpret these specifications for each property
- Must be contract quality and suitable for commercial use
- All materials and methods of construction must comply with all local fire and life safety codes for use in public spaces
- Manufacturer to side mark outside of shipping box with property item and area specified
- Quantities shown are for estimating purpose only, purchasing agent and contractor shall coordinate to determine final quantities required.

WEST VIRGINIA

STORAGE CABINET

BC-002

MANUFACTURER:
D HOSPITALITY

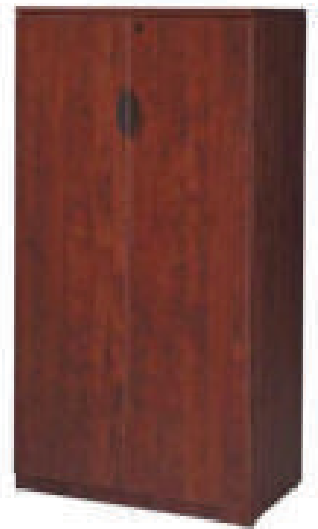
CONTACT:
DAE OH
DHOSPITALITY
4653 TRUEMAN BLVD. SUITE 350
HILLIARD, OH 43026
866-878-7288
INFO@DHOSPITALITY.COM

APPROVED ALTERNATE MANUFACTURER:
*see Approved Alternate list for contact information

SPECIFICATION:

ITEM NUMBER:
DESCRIPTION: STORAGE CABINET
DIMENSIONS: 36"W x 18"D x 72"H
FINISH: Wood frame w/ high pressure laminate & metal hardware

DETAILS: Wood framed high pressure laminate all around; 1 stationary shelf with 4 adjustable shelves; Metal locking system; high density PVC on curbed edges to increase durability; 10 Year Warranty



NOTES:

- Manufacturer to submit cutting from production run for designer approval
- It is the responsibility of the owner to interpret these specifications for each property
- Must be contract quality and suitable for commercial use
- All materials and methods of construction must comply with all local fire and life safety codes for use in hotels and other public spaces
- Manufacturer to side mark outside of shipping box with property item and area specified
- Quantities shown are for estimating purpose only, purchasing agent and contractor shall coordinate to determine final quantities required.

WEST VIRGINIA

WARDROBE/ STORAGE CABINET**BC-003**

MANUFACTURER:
D HOSPITALITY**CONTACT:**
DAE OH
DHOSPITALITY
4653 TRUEMAN BLVD. SUITE 350
HILLIARD, OH 43026
866-878-7288
INFO@DHOSPITALITY.COM**APPROVED ALTERNATE MANUFACTURER:**
*see Approved Alternate list for contact information

SPECIFICATION:

ITEM NUMBER:
DESCRIPTION: WARDROBE/ STORAGE CABINET
DIMENSIONS: 18"W x 24"D x 77"H
FINISH: Wood frame w/ high pressure laminate & metal hardware

DETAILS: Wood framed high pressure laminate; 1 Hinged wardrobe door with 4 adjustable shelves on opposite side of wardrobe; Metal locking system for each component. High density laminate with additional 3 mil PVC on all exposed curbs for longer life; 10 year warranty.



NOTES:

- Manufacturer to submit cutting from production run for designer approval
- It is the responsibility of the owner to interpret these specifications for each property
- Must be contract quality and suitable for commercial use
- All materials and methods of construction must comply with all local fire and life safety codes for use in hotels and other public spaces
- Quantities shown are for estimating purpose only, purchasing agent and contractor shall coordinate to determine the final quantities required.

WEST VIRGINIA

LATERAL 2 DRAWER FILE CABINET**FC-003**

MANUFACTURER:
DHOSPITALITY**CONTACT:**
DAE OH
DHOSPITALITY
4653 TRUEMAN BLVD. SUITE 350
HILLIARD, OH 43026
866-878-7288
INFO@DHOSPITALITY.COM**APPROVED ALTERNATE MANUFACTURER:**
*see Approved Alternate list for contact information

SPECIFICATION:

ITEM NUMBER:
DESCRIPTION: LATERAL 2 DRAWER FILE CABINET
DIMENSIONS: 35" W X 22" D X 29" H
FINISH: Wood frame w/ high pressure laminate finish

DETAILS: Durable abnrasion and stain resistant laminate; Straight edge provides streamline look; 2 Drawers extend fully on steal ball bearing suspensions; Hang rails for letter and legal sized hang files; 10 Year Warranty; Freestanding



NOTES:

- Manufacturer to submit cutting from production run for designer approval
- It is the responsibility of the owner to interpret these specifications for each property
- Must be contract quality and suitable for commercial use
- All materials and methods of construction must comply with all local fire and life safety codes for use in public spaces
- Manufacturer to side mark outside of shipping box with property item and area specified
- Quantities shown are for estimating purpose only, purchasing agent and contractor shall coordinate to determine final quantities required

WEST VIRGINIA

LATERAL 4 DRAWER FILE CABINET**FC-004**

MANUFACTURER:
DHOSPITALITY

CONTACT:
DAE OH
DHOSPITALITY
4653 TRUEMAN BLVD. SUITE 350
HILLIARD, OH 43026
866-878-7288
INFO@DHOSPITALITY.COM

APPROVED ALTERNATE MANUFACTURER:
*see Approved Alternate list for contact information

SPECIFICATION:

ITEM NUMBER:
DESCRIPTION: LATERAL 4 DRAWER FILE CABINET
DIMENSIONS: 36" W X 19" D X 53" H
FINISH: Wood frame w/ high pressure laminate finish

DETAILS: Multi-ply laminate stand up to scratches, spills, stains, wood stains, and boiling liquids. Holds up under heavy use. Durable inner-frame construction; Freestanding metal-to-metal fasteners and wood dowels for solid feel; 10 year warranty;



NOTES:

- Manufacturer to submit cutting from production run for designer approval
- It is the responsibility of the owner to interpret these specifications for each property
- Must be contract quality and suitable for commercial use
- All materials and methods of construction must comply with all local fire and life safety codes for use in public spaces
- Quantities shown are for estimating purpose only, purchasing agent and contractor shall coordinate to determine final quantities required

WEST VIRGINIA

LAMINATE OPTIONS: (WILSONART HPL)



CAFELLE
7933k-07



PHANTOM CHARCOAL
8214k-28



AMBER CHERRY
7919K-78

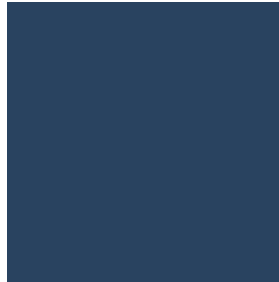


LANDMARK WOOD
7981k-12

PAINT OPTIONS: (SHERWIN WILLIAMS)



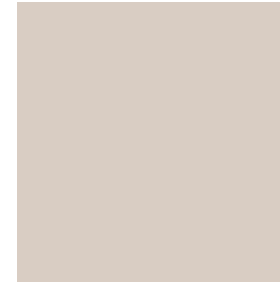
BLACK OF NIGHT
SW 6993



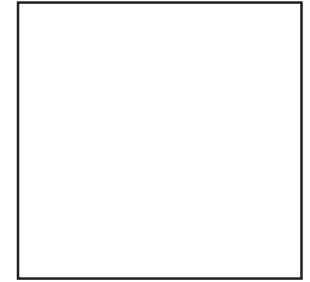
DRESS BLUES
SW 9176



GRAY CLOUDS
SW 7658



RETICENCE
SW 6064



HIGHLY REFLECTIVE WHITE
SW 7757

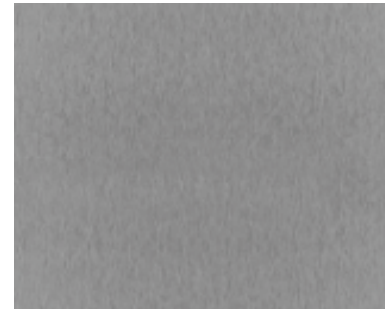
METAL OPTIONS: (CHEMETAL)



BLACK BRUSHED ALUMINUM
917



POLISHED ALUMINUM
701



BRUSHED SMOKE ALUMINUM
701



OILED BRONZE
721



D Hospitality
www.dhospitality.com
4653 Trueman Blvd
Suite 350
Hilliard, Ohio 43026
T/ 866.878.7288

RE: Warranty WV (FF&E) swc1900000009

Date: 1.15.19

STANDARD 10 YEARS MANUFACTURER WARRANTY:

The D hospitality the manufacturer warrants this product to be free from defects in workmanship and materials, under normal hospitality use and conditions, for a period of (10) years for the original invoice date. Shipping and handling fees are to be paid for by the customer. The manufacturer agrees, at its option during the warranty period, to repair and defect in material or workmanship or to furnish a repaired or refurbished product of equal value in exchange without charge (except for a fee for shipping, handling, packing, return postage, and insurance which will be incurred by the customer). Such repair or replacement is subject to verification of the defect or malfunction and proof of purchase as confirmed by showing the model number on original dated sales receipt.

CASE GOODS/UPHOLSTERY PRODUCT WARRANTIES: • The manufacturer warrants the mechanism, wooden frame parts and spring systems against manufacturing and material defects for 10 year. • Cushioning/Filling Material – The manufacturer warrants against defective parts on seat cushion foams and filling materials for 10 year. • All foam and filling composites naturally soften with use. This softening does not constitute a defect under the warranty.

All Office furniture, cabinets, and accessories under warranty for 10 years with the exception of normal wear and tear.

FABRIC AND LEATHER Fabric – The manufacturer warrants the upholstery fabric used on your furniture against; seam failure, fabric separation and nap loss for one year. The manufacturer cannot cover pilling, which is a result of normal wear, nor fading, which can be caused by overexposure to sunlight. Leather – The manufacturer warrants leather upholstery against seam failure and material defects for one year. • The natural beauty of leather means that no two pieces of leather are exactly alike. As such, natural markings and grain variations are not considered defects.

WARRANTY LIMITATIONS This warranty does not include: • Any condition resulting from other than ordinary hospitality wear or any use for which the product was not intended, such as use in rental or contract trade or commercial use • Any condition resulting from incorrect or inadequate maintenance or care • Damage resulting from misuse, abuse, negligence, accidents or shipping damage • Dissatisfaction due to buyer's remorse • Normal wear and tear • Damages incurred during transportation • Damages incurred during assembly or maintenance • Any used, previously displayed items The Company makes no express warranty or condition whether written or oral and the company expressly disclaims all warranties and conditions not stated in this limited warranty. To the extent allowed by the local law of jurisdictions outside the United States, the Company disclaims all implied warranties or conditions, including any implied warranties of merchantability and fitness for a particular purpose. For all transactions occurring in the United States, any implied warranty of condition of merchantability, satisfactory quality, or fitness for a particular purpose is limited to the duration of the express warranty set forth above. Some states or countries do not allow a limitation on how long an implied warranty lasts or the exclusion of limitation of incidental or consequential damages for consumer products. In such states or countries, some exclusions or limitations of this limited warranty may not apply to the Purchaser. For consumer transaction, the limited warranty terms contained in this statement, except to the extent lawfully permitted, do not exclude, restrict, or modify but are in addition to the mandatory statutory rights applicable to the sale of this Product to the Purchaser.

All warranty claims must be filed by the consumer to the retailer of this product, who in turn is to contact the manufacturer regarding any warranty return or replacement. We will not handle claims from the consumer directly. Please retain invoices for a minimum of one year for warranty purposes.

CLAIM PROCEDURES: • Claims for defective merchandise must be made within ONE year from invoice date. Claims for missing parts must be made within 60 calendar days after the merchandise is received • Any claim for

defective merchandise returns does not have be in original packaging • We reserve the right to specify that items be returned to the original warehouse for inspection or be inspected by our representative in the field • Pictures are required to claim defective merchandise, along with a copy of the original invoice • If the claim is justified, the item(s) or part(s) will be repaired or replaced or a credit will be issued. It is our policy to replace parts whenever possible This warranty gives you specific legal rights. You may have other rights, which vary from state to state.

Thank you,

Dae Oh

CEO

Client



CERTIFICATE OF LIABILITY INSURANCE

DATE (MM/DD/YYYY)
1/11/2019

THIS CERTIFICATE IS ISSUED AS A MATTER OF INFORMATION ONLY AND CONFERS NO RIGHTS UPON THE CERTIFICATE HOLDER. THIS CERTIFICATE DOES NOT AFFIRMATIVELY OR NEGATIVELY AMEND, EXTEND OR ALTER THE COVERAGE AFFORDED BY THE POLICIES BELOW. THIS CERTIFICATE OF INSURANCE DOES NOT CONSTITUTE A CONTRACT BETWEEN THE ISSUING INSURER(S), AUTHORIZED REPRESENTATIVE OR PRODUCER, AND THE CERTIFICATE HOLDER.

IMPORTANT: If the certificate holder is an ADDITIONAL INSURED, the policy(ies) must be endorsed. If SUBROGATION IS WAIVED, subject to the terms and conditions of the policy, certain policies may require an endorsement. A statement on this certificate does not confer rights to the certificate holder in lieu of such endorsement(s).

PRODUCER E&M RISK MANAGEMENT LLC PO BOX 1171 WORTHINGTON, OHIO 43085	CONTACT NAME:		
	PHONE (A/C, No, Ext): 6143966853	FAX (A/C, No): 6143966855	
	E-MAIL ADDRESS: DAWN@EANDMRISK.COM		
	INSURER(S) AFFORDING COVERAGE	NAIC #	
	INSURER A: ERIE INSURANCE	26271	
INSURED D HOSPITALITY 4653 TRUMAN BLVD HILLIARD OH 43026	INSURER B:		
	INSURER C:		
	INSURER D:		
	INSURER E:		
	INSURER F:		

COVERAGES CERTIFICATE NUMBER: REVISION NUMBER:

THIS IS TO CERTIFY THAT THE POLICIES OF INSURANCE LISTED BELOW HAVE BEEN ISSUED TO THE INSURED NAMED ABOVE FOR THE POLICY PERIOD INDICATED. NOTWITHSTANDING ANY REQUIREMENT, TERM OR CONDITION OF ANY CONTRACT OR OTHER DOCUMENT WITH RESPECT TO WHICH THIS CERTIFICATE MAY BE ISSUED OR MAY PERTAIN, THE INSURANCE AFFORDED BY THE POLICIES DESCRIBED HEREIN IS SUBJECT TO ALL THE TERMS, EXCLUSIONS AND CONDITIONS OF SUCH POLICIES. LIMITS SHOWN MAY HAVE BEEN REDUCED BY PAID CLAIMS.

INSR LTR	TYPE OF INSURANCE	ADDL INSD	SUBR WVD	POLICY NUMBER	POLICY EFF (MM/DD/YYYY)	POLICY EXP (MM/DD/YYYY)	LIMITS
A	<input checked="" type="checkbox"/> COMMERCIAL GENERAL LIABILITY <input type="checkbox"/> CLAIMS-MADE <input checked="" type="checkbox"/> OCCUR	x	Y	Q392650796	3/26/15	3/26/19	EACH OCCURRENCE \$ 1,000,000
	DAMAGE TO RENTED PREMISES (Ea occurrence) \$ 1,000,000						
	MED EXP. (Any one person) \$ 10,000						
	PERSONAL & ADV INJURY \$ 1,000,000						
	<input checked="" type="checkbox"/> Contractual liab						GENERAL AGGREGATE \$ 2,000,000
	GEN'L AGGREGATE LIMIT APPLIES PER: <input checked="" type="checkbox"/> POLICY <input type="checkbox"/> PRO-JECT <input type="checkbox"/> LOC						PRODUCTS - COMP/OP AGG \$ 2,000,000
	OTHER:						\$
A	AUTOMOBILE LIABILITY <input checked="" type="checkbox"/> ANY AUTO ALL OWNED AUTOS <input checked="" type="checkbox"/> HIRED AUTOS <input type="checkbox"/> SCHEDULED AUTOS NON-OWNED AUTOS	x	Y	Q065330276	6/3/2015	6/3/19	COMBINED SINGLE LIMIT (Ea accident) \$
	BODILY INJURY (Per person) \$ 1,000,000						
	BODILY INJURY (Per accident) \$ 1,000,000						
	PROPERTY DAMAGE (Per accident) \$ 1,000,000						
							\$
A	<input checked="" type="checkbox"/> UMBRELLA LIAB <input checked="" type="checkbox"/> OCCUR <input type="checkbox"/> EXCESS LIAB <input type="checkbox"/> CLAIMS-MADE	x	Y	Q272670249	3/26/15	3/26/19	EACH OCCURRENCE \$ 6,000,000
	AGGREGATE \$						
	\$						
	DED <input type="checkbox"/> RETENTION \$						\$
	WORKERS COMPENSATION AND EMPLOYERS' LIABILITY ANY PROPRIETOR/PARTNER/EXECUTIVE OFFICER/MEMBER EXCLUDED? (Mandatory in NH) If yes, describe under DESCRIPTION OF OPERATIONS below	Y/N <input type="checkbox"/> N/A					PER STATUTE <input type="checkbox"/> OTH-ER <input type="checkbox"/>
							E.L. EACH ACCIDENT \$
							E.L. DISEASE - EA EMPLOYEE \$
							E.L. DISEASE - POLICY LIMIT \$
A	CARGO COVERAGE			Q392650796	3/26/15	3/26/19	\$ 1,300,000

DESCRIPTION OF OPERATIONS / LOCATIONS / VEHICLES (ACORD 101, Additional Remarks Schedule, may be attached if more space is required)

CERTIFICATE HOLDER

STATE OF WEST VIRGINIA

CANCELLATION

SHOULD ANY OF THE ABOVE DESCRIBED POLICIES BE CANCELLED BEFORE THE EXPIRATION DATE THEREOF, NOTICE WILL BE DELIVERED IN ACCORDANCE WITH THE POLICY PROVISIONS.

AUTHORIZED REPRESENTATIVE

© 1988-2014 ACORD CORPORATION. All rights reserved.

	A	B	C	D	E	F	G	H	I	J	K	L
1	Exhibit A: CRFQ 0212 SWC1900000009 Systems Furniture Pricing Pages											
2	Please complete the below pricing sheet to include with your bid, as follows:											
3	Catalog Name:	Provide the number for the manufacturers catalog from which Catalog Price is taken; must match catalog included with bid.										
4	Catalog Page Number:	Provide the Page Number for the specific catalog item bid for this line; must match page number of catalog included with bid.										
5	Manufacturer:	Provide the name of the manufacturer for item bid for this line.										
6	Manufacturer Part No.:	Provide the manufacturer's part number (or catalog part number) for the item being bid for this line.										
7	Catalog Price:	Provide the price listed in the catalog; must exactly match price found in previously listed catalog number.										
8	Discount %:	Provide the discount percentage being bid for this line's manufacturer; note: vendors may bid only one (1) unique discount percentage for each Type.										
9	Type:	Describes the Type of Item, as specified in the Specifications document of the Request for Quotation										
10	Contract Unit Price:	Provide the price for which this item will be sold under the awarded contract; THIS PRICE MUST MATCH CATALOG PRICE WITH LISTED DISCOUNT %.										
11		Contract Unit Prices for Items whose Description is exactly identical on this Pricing Page must be equal.										
12	Contract Hourly Rate	Contract Hourly Rate of Design or Installation Labor for Reconfigurations Only										
13	Total Bid:	Multiply listed Estimated Quantity by Contract Unit Price or Contract Hourly Rate, as applicable, to calculate Total Bid for this line.										
14	TOTAL FURNITURE BID COST:	Add all Total Bids										
15	TOTAL BID COST:	Add TOTAL FURNITURE BID COST										
16	A hard copy of this form must be included if bidding on paper; an electronic copy (Microsoft Excel preferred) should also be included with any paper bid, but MUST be included as an attachment on any bid submitted through WVOasis.											
17	*Estimated Quantities listed on this Pricing Page are only estimates, included for bid evaluation purposes only. Actual quantities of items listed on this Pricing Page, and items not listed herein but included in the successful vendors catalog(s) may vary.											
18	** Quantity Required section must be completed if the manufacturer does not offer a part number for the complete unit and the items used to make the complete panel unit bid will be ordered and invoiced with separate and individual part numbers on the vendors invoice.											

	A	B	C	D	E	F	G	H	I	J	K	L
19	Description	Estimated Quantity*	Catalog Name (If applicable)	Catalog Page No.	Manufacturer	Manufacturer Part No.	Catalog List Price	Discount %	Type	Contract Unit Price (Each)		Total Bid (Estimated Quantity * Contract Unit Price)
20	Panels: 62"H (+/- 5"): 60" Powered Panels - Acoustical Fabric on both sides (price listed must include everything to make one complete unit including but not limited to: top caps, raceways, straight connectors both sides, with 2 Duplex receptacles, and any other hardware to accomplish a complete install)	1000	DHOSPITALITY (HOSPITALITY DESIGN)	8	DHOSPITALITY	PA-001	\$ 389.00	10.00%	System	\$350.10		\$350,100.00
21	Fabric Panels: 62"H (+/- 5"): 60" Powered Panels Complete Unit shall consist of the following:	**Quantity Required (Complete Unit Bid)									PANEL UNIT PRICE (Each) NOTE: Items listed must add up to the complete unit submitted in bid.	
22	Acoustical Fabric Panel		DHOSPITALITY (HOSPITALITY DESIGN)	8	DHOSPITALITY	PA-001	\$ -	10.00%	System	\$0.00	\$0.00	
23	Top Caps		DHOSPITALITY (HOSPITALITY DESIGN)	8	DHOSPITALITY	PA-001	\$ -	10.00%	System	\$0.00	\$0.00	
24	Raceways		DHOSPITALITY (HOSPITALITY DESIGN)	8	DHOSPITALITY	PA-001	\$ -	10.00%	System	\$0.00	\$0.00	
25	Straight Connectors		DHOSPITALITY (HOSPITALITY DESIGN)	8	DHOSPITALITY	PA-001	\$ -	10.00%	System	\$0.00	\$0.00	
26	Identify Additional hardware here if needed		DHOSPITALITY (HOSPITALITY DESIGN)		DHOSPITALITY		\$ -	10.00%	System	\$0.00	\$0.00	
27	Identify Additional hardware here if needed		DHOSPITALITY (HOSPITALITY DESIGN)		DHOSPITALITY		\$ -	10.00%	System	\$0.00	\$0.00	
28	Identify Additional hardware here if needed		DHOSPITALITY (HOSPITALITY DESIGN)		DHOSPITALITY		\$ -	10.00%	System	\$0.00	\$0.00	
29	Identify Additional hardware here if needed		DHOSPITALITY (HOSPITALITY DESIGN)		DHOSPITALITY		\$ -	10.00%	System	\$0.00	\$0.00	
30							TOTAL OF PANEL BID				\$0.00	
31	Panels: 62"H (+/- 5"): 60" Non-powered Panels - Acoustical Fabric on both sides (price listed must include everything to make one complete unit including but not limited to: top caps, raceways, straight connectors both sides, and any other hardware to accomplish a complete install)	1000	DHOSPITALITY (HOSPITALITY DESIGN)	9	DHOSPITALITY	PA-002	\$ 379.00	10.00%	System	\$341.10		\$341,100.00
32	Panels: 62"H (+/- 5"): 60" Non-Powered Panels Complete Unit shall consist of the following:	**Quantity Required (Complete Unit Bid)									PANEL UNIT PRICE (Each) NOTE: Items listed must add up to the complete unit submitted in bid.	
33	Acoustical Fabric Panel		DHOSPITALITY (HOSPITALITY DESIGN)	9	DHOSPITALITY	PA-002	\$ -	10.00%	System	\$0.00	\$0.00	
34	Top Caps		DHOSPITALITY (HOSPITALITY DESIGN)	9	DHOSPITALITY	PA-002	\$ -	10.00%	System	\$0.00	\$0.00	
35	Raceways		DHOSPITALITY (HOSPITALITY DESIGN)	9	DHOSPITALITY	PA-002	\$ -	10.00%	System	\$0.00	\$0.00	
36	Straight Connectors		DHOSPITALITY (HOSPITALITY DESIGN)	9	DHOSPITALITY	PA-002	\$ -	10.00%	System	\$0.00	\$0.00	
37	Identify Additional hardware here if needed		DHOSPITALITY (HOSPITALITY DESIGN)		DHOSPITALITY		\$ -	10.00%	System	\$0.00	\$0.00	
38	Identify Additional hardware here if needed		DHOSPITALITY (HOSPITALITY DESIGN)		DHOSPITALITY		\$ -	10.00%	System	\$0.00	\$0.00	
39	Identify Additional hardware here if needed		DHOSPITALITY (HOSPITALITY DESIGN)		DHOSPITALITY		\$ -	10.00%	System	\$0.00	\$0.00	
40	Identify Additional hardware here if needed		DHOSPITALITY (HOSPITALITY DESIGN)		DHOSPITALITY		\$ -	10.00%	System	\$0.00	\$0.00	
41							TOTAL OF PANEL BID				\$0.00	

	A	B	C	D	E	F	G	H	I	J	K	L
42	Panels: 62"H (+/- 5"): 60" Powered Panels - Non-Fabric on both sides (price listed must include everything to make one complete unit including but not limited to: top caps, raceways, straight connectors both sides, with 2 Duplex receptacles, and any other hardware to accomplish a complete install)	500	DHOSPITALITY (HOSPITALITY DESIGN)	10	DHOSPITALITY	PA-003	\$ 379.00	10.00%	System	\$341.10		\$170,550.00
43	Non-Fabric Panels: 62"H (+/- 5"): 60" Powered Panels Complete Unit shall consist of the following:	**Quantity Required (Complete Unit Bid)									PANEL UNIT PRICE (Each) NOTE: Items listed must add up to the complete unit submitted in bid.	
44	Non-Fabric Panel		DHOSPITALITY (HOSPITALITY DESIGN)	10	DHOSPITALITY	PA-003	\$ -	10.00%	System	\$0.00	\$0.00	
45	Top Caps		DHOSPITALITY (HOSPITALITY DESIGN)	10	DHOSPITALITY	PA-003	\$ -	10.00%	System	\$0.00	\$0.00	
46	Raceways		DHOSPITALITY (HOSPITALITY DESIGN)	10	DHOSPITALITY	PA-003	\$ -	10.00%	System	\$0.00	\$0.00	
47	Straight Connectors		DHOSPITALITY (HOSPITALITY DESIGN)	10	DHOSPITALITY	PA-003	\$ -	10.00%	System	\$0.00	\$0.00	
48	Identify Additional hardware here if needed		DHOSPITALITY (HOSPITALITY DESIGN)		DHOSPITALITY		\$ -	10.00%	System	\$0.00	\$0.00	
49	Identify Additional hardware here if needed		DHOSPITALITY (HOSPITALITY DESIGN)		DHOSPITALITY		\$ -	10.00%	System	\$0.00	\$0.00	
50	Identify Additional hardware here if needed		DHOSPITALITY (HOSPITALITY DESIGN)		DHOSPITALITY		\$ -	10.00%	System	\$0.00	\$0.00	
51	Identify Additional hardware here if needed		DHOSPITALITY (HOSPITALITY DESIGN)		DHOSPITALITY		\$ -	10.00%	System	\$0.00	\$0.00	
52							TOTAL OF PANEL BID				\$0.00	
53	Panels: 62"H (+/- 5"): 60" Non-powered Panels - Non-Fabric on both sides (price listed must include everything to make one complete unit including but not limited to: top caps, raceways, straight connectors both sides, and any other hardware to accomplish a complete install)	500	DHOSPITALITY (HOSPITALITY DESIGN)	11	DHOSPITALITY	PA-004	\$ 379.00	10.00%	System	\$341.10		\$170,550.00
54	Non-Fabric Panels: 62"H (+/- 5"): 60" Non-Powered Panels Complete Unit shall consist of the following:	**Quantity Required (Complete Unit Bid)									PANEL UNIT PRICE (Each) NOTE: Items listed must add up to the complete unit submitted in bid.	
55	Non-Fabric Panel		DHOSPITALITY (HOSPITALITY DESIGN)	11	DHOSPITALITY	PA-004	\$ -	10.00%	System	\$0.00	\$0.00	
56	Top Caps		DHOSPITALITY (HOSPITALITY DESIGN)	11	DHOSPITALITY	PA-004	\$ -	10.00%	System	\$0.00	\$0.00	
57	Raceways		DHOSPITALITY (HOSPITALITY DESIGN)	11	DHOSPITALITY	PA-004	\$ -	10.00%	System	\$0.00	\$0.00	
58	Straight Connectors		DHOSPITALITY (HOSPITALITY DESIGN)	11	DHOSPITALITY	PA-004	\$ -	10.00%	System	\$0.00	\$0.00	
59	Identify Additional hardware here if needed		DHOSPITALITY (HOSPITALITY DESIGN)		DHOSPITALITY		\$ -	10.00%	System	\$0.00	\$0.00	
60	Identify Additional hardware here if needed		DHOSPITALITY (HOSPITALITY DESIGN)		DHOSPITALITY		\$ -	10.00%	System	\$0.00	\$0.00	
61	Identify Additional hardware here if needed		DHOSPITALITY (HOSPITALITY DESIGN)		DHOSPITALITY		\$ -	10.00%	System	\$0.00	\$0.00	
62	Identify Additional hardware here if needed		DHOSPITALITY (HOSPITALITY DESIGN)		DHOSPITALITY		\$ -	10.00%	System	\$0.00	\$0.00	
63							TOTAL OF PANEL BID				\$0.00	

	A	B	C	D	E	F	G	H	I	J	K	L
64	Duplex Receptacles for Panels	5000	DHOSPITALITY (HOSPITALITY	12	DHOSPITALITY	AC-01	\$ 10.00	10.00%	System	\$9.00		\$45,000.00
65	Panel Connectors: 2-way, straight	2000	DHOSPITALITY (HOSPITALITY	13	DHOSPITALITY	AC-02	\$ 39.00	10.00%	System	\$35.10		\$70,200.00
66	Panel Connectors: 2-way, 90-degree elbow	1000	DHOSPITALITY (HOSPITALITY	14	DHOSPITALITY	AC-03	\$ 39.00	10.00%	System	\$35.10		\$35,100.00
67	Panel Connectors: 3-way, tee	500	DHOSPITALITY (HOSPITALITY	15	DHOSPITALITY	AC-04	\$ 10.00	10.00%	System	\$9.00		\$4,500.00
68	Panel Connectors: 4-way, tee	500	DHOSPITALITY (HOSPITALITY	16	DHOSPITALITY	AC-05	\$ 39.00	10.00%	System	\$35.10		\$17,550.00
69	Panel Connectors: Panel End Caps (62"h +/- 5" panel)	2000	DHOSPITALITY (HOSPITALITY	17	DHOSPITALITY	AC-06	\$ 49.00	10.00%	System	\$44.10		\$88,200.00
70	24"d x 36"w laminate work surface	500	DHOSPITALITY (HOSPITALITY	19	DHOSPITALITY	WS-01	\$ 899.00	10.00%	System	\$809.10		\$404,550.00
71	24"d x 36" w laminate corner work surface	500	DHOSPITALITY (HOSPITALITY	20	DHOSPITALITY	WS-02	\$ 999.00	10.00%	System	\$899.10		\$449,550.00
72	24"d x 48" w laminate work surface	500	DHOSPITALITY (HOSPITALITY	21	DHOSPITALITY	WS-03	\$ 1,199.00	10.00%	System	\$1,079.10		\$539,550.00
73	36" w steel flipper door unit with lock	500	DHOSPITALITY (HOSPITALITY	22	DHOSPITALITY	FD-001	\$ 499.00	10.00%	System	\$449.10		\$224,550.00
74	48" w steel flipper door unit with lock	500	DHOSPITALITY (HOSPITALITY	23	DHOSPITALITY	FD-002	\$ 599.00	10.00%	System	\$539.10		\$269,550.00
75	24"d pedestal full height file cabinet with lock with two (2) file drawers to attach to work surface	1000	DHOSPITALITY (HOSPITALITY DESIGN)	24	DHOSPITALITY	FC-001	\$ 399.00	0.00%	PDU	\$399.00		\$399,000.00
76	24"d pedestal full height file cabinet with lock with two (2) small box drawers position above one (1) file drawer to attach to work surface	1000	DHOSPITALITY (HOSPITALITY DESIGN)	25	DHOSPITALITY	FC-002	\$ 459.00	0.00%	PDU	\$459.00		\$459,000.00
77	11"h x 36"w tackboard	200	DHOSPITALITY (HOSPITALITY	26	DHOSPITALITY	TB-001	\$ 24.00	10.00%	System	\$21.60		\$4,320.00
78	30"w task light (must be within 6" of the width of flipper door unit)	100	DHOSPITALITY (HOSPITALITY DESIGN)	27	DHOSPITALITY	TL-001	\$ 199.00	10.00%	System	\$179.10		\$17,910.00
79	42"w task light (must be within 6" of the width of flipper door unit)	100	DHOSPITALITY (HOSPITALITY DESIGN)	28	DHOSPITALITY	TL-002	\$ 229.00	10.00%	System	\$206.10		\$20,610.00
80	Keyboard Tray	1000	DHOSPITALITY (HOSPITALITY	29	DHOSPITALITY	KT-001	\$ 59.00	10.00%	SysAcc	\$53.10		\$53,100.00
81	Panel Mount Rail Toolbar - 48" metal, includes two (2) supports, one rail with two (2) end caps	100	DHOSPITALITY (HOSPITALITY DESIGN)	18	DHOSPITALITY	AC-07	\$ 1,499.00	10.00%	SysAcc	\$1,349.10		\$134,910.00
82	Letter Tray: Mounts on slat pad horizontally, supports minimum of five (5) pounds	500	DHOSPITALITY (HOSPITALITY DESIGN)	30	DHOSPITALITY	LT-001	\$ 29.00	10.00%	SysAcc	\$26.10		\$13,050.00
83	Diagonal Tray	500	DHOSPITALITY (HOSPITALITY	31	DHOSPITALITY	DT-001	\$ 59.00	10.00%	SysAcc	\$53.10		\$26,550.00
84	Coat hook – one (1) per workstation	100	DHOSPITALITY (HOSPITALITY	32	DHOSPITALITY	CH-001	\$ 19.00	10.00%	SysAcc	\$17.10		\$1,710.00
85	Task Chair	1000	DHOSPITALITY (HOSPITALITY	33	DHOSPITALITY	TC-001	\$ 199.00	5.00%	STC	\$189.05		\$189,050.00
86	Guest Chair	2000	DHOSPITALITY (HOSPITALITY	34	DHOSPITALITY	GC-001	\$ 140.00	5.00%	SCG	\$133.00		\$266,000.00
87	Side Chair	1000	DHOSPITALITY (HOSPITALITY	35	DHOSPITALITY	SC-001	\$ 199.00	5.00%	SSC	\$189.05		\$189,050.00
88	Adjustable height arms	1000	DHOSPITALITY (HOSPITALITY	36	DHOSPITALITY	AA-001	\$ 79.00	5.00%	STC	\$75.05		\$75,050.00

[illegible]

West Virginia Ethics Commission



Disclosure of Interested Parties to Contracts

Pursuant to *W. Va. Code* § 6D-1-2, a state agency may not enter into a contract, or a series of related contracts, that has/have an actual or estimated value of \$1 million or more until the business entity submits to the contracting state agency a Disclosure of Interested Parties to the applicable contract. In addition, the business entity awarded a contract is obligated to submit a supplemental Disclosure of Interested Parties reflecting any new or differing interested parties to the contract within 30 days following the completion or termination of the applicable contract.

For purposes of complying with these requirements, the following definitions apply:

"Business entity" means any entity recognized by law through which business is conducted, including a sole proprietorship, partnership or corporation, but does not include publicly traded companies listed on a national or international stock exchange.

"Interested party" or *"Interested parties"* means:

- (1) A business entity performing work or service pursuant to, or in furtherance of, the applicable contract, including specifically sub-contractors;
- (2) the person(s) who have an ownership interest equal to or greater than 25% in the business entity performing work or service pursuant to, or in furtherance of, the applicable contract. (This subdivision does not apply to a publicly traded company); and
- (3) the person or business entity, if any, that served as a compensated broker or intermediary to actively facilitate the applicable contract or negotiated the terms of the applicable contract with the state agency. (This subdivision does not apply to persons or business entities performing legal services related to the negotiation or drafting of the applicable contract.)

"State agency" means a board, commission, office, department or other agency in the executive, judicial or legislative branch of state government, including publicly funded institutions of higher education: Provided, that for purposes of *W. Va. Code* § 6D-1-2, the West Virginia Investment Management Board shall not be deemed a state agency nor subject to the requirements of that provision.

The contracting business entity must complete this form and submit it to the contracting state agency prior to contract award and to complete another form within 30 days of contract completion or termination.

This form was created by the State of West Virginia Ethics Commission, 210 Brooks Street, Suite 300, Charleston, WV 25301-1804. Telephone: (304)558-0664; fax: (304)558-2169; e-mail: ethics@wv.gov; website: www.ethics.wv.gov.

STATE OF WEST VIRGINIA
Purchasing Division

PURCHASING AFFIDAVIT

CONSTRUCTION CONTRACTS: Under W. Va. Code § 5-22-1(i), the contracting public entity shall not award a construction contract to any bidder that is known to be in default on any monetary obligation owed to the state or a political subdivision of the state, including, but not limited to, obligations related to payroll taxes, property taxes, sales and use taxes, fire service fees, or other fines or fees.

ALL CONTRACTS: Under W. Va. Code §5A-3-10a, no contract or renewal of any contract may be awarded by the state or any of its political subdivisions to any vendor or prospective vendor when the vendor or prospective vendor or a related party to the vendor or prospective vendor is a debtor and: (1) the debt owed is an amount greater than one thousand dollars in the aggregate; or (2) the debtor is in employer default.

EXCEPTION: The prohibition listed above does not apply where a vendor has contested any tax administered pursuant to chapter eleven of the W. Va. Code, workers' compensation premium, permit fee or environmental fee or assessment and the matter has not become final or where the vendor has entered into a payment plan or agreement and the vendor is not in default of any of the provisions of such plan or agreement.

DEFINITIONS:

"Debt" means any assessment, premium, penalty, fine, tax or other amount of money owed to the state or any of its political subdivisions because of a judgment, fine, permit violation, license assessment, defaulted workers' compensation premium, penalty or other assessment presently delinquent or due and required to be paid to the state or any of its political subdivisions, including any interest or additional penalties accrued thereon.

"Employer default" means having an outstanding balance or liability to the old fund or to the uninsured employers' fund or being in policy default, as defined in W. Va. Code § 23-2c-2, failure to maintain mandatory workers' compensation coverage, or failure to fully meet its obligations as a workers' compensation self-insured employer. An employer is not in employer default if it has entered into a repayment agreement with the Insurance Commissioner and remains in compliance with the obligations under the repayment agreement.

"Related party" means a party, whether an individual, corporation, partnership, association, limited liability company or any other form or business association or other entity whatsoever, related to any vendor by blood, marriage, ownership or contract through which the party has a relationship of ownership or other interest with the vendor so that the party will actually or by effect receive or control a portion of the benefit, profit or other consideration from performance of a vendor contract with the party receiving an amount that meets or exceeds five percent of the total contract amount.

AFFIRMATION: By signing this form, the vendor's authorized signer affirms and acknowledges under penalty of law for false swearing (W. Va. Code §61-5-3) that: (1) for construction contracts, the vendor is not in default on any monetary obligation owed to the state or a political subdivision of the state, and (2) for all other contracts, that neither vendor nor any related party owe a debt as defined above and that neither vendor nor any related party are in employer default as defined above, unless the debt or employer default is permitted under the exception above.

WITNESS THE FOLLOWING SIGNATURE:

Vendor's Name: D HOSPITALITY

Authorized Signature: [Signature]

Date: 1-14-2019

State of OHIO

County of Franklin, to-wit:

Taken, subscribed, and sworn to before me this 14th day of January, 2019.

My Commission expires 4-23-2023, 20 .

AFFIX SEAL HERE



JENNY L. FOSTER
NOTARY PUBLIC
STATE OF OHIO
Comm. Expires
04-23-2023
Recorded in
Franklin County

NOTARY PUBLIC

[Signature]

Purchasing Affidavit (Revised 01/19/2018)

West Virginia Ethics Commission
Disclosure of Interested Parties to Contracts

(Required by W. Va. Code § 6D-1-2)

Name of Contracting Business Entity: D HOSPITALITY Address: 4653 TREWMAN BLVD Ste 350B
Hilliard OH 43026

Name of Authorized Agent: DAE OH Address: _____

Contract Number: SWC 1900000009 Contract Description: SWC for Systems furniture

Governmental agency awarding contract: STATEWIDE MASTEK AGREEMENT

☐ Check here if this is a Supplemental Disclosure

List the Names of Interested Parties to the contract which are known or reasonably anticipated by the contracting business entity for each category below (attach additional pages if necessary):

1. **Subcontractors or other entities performing work or service under the Contract**

☐ Check here if none, otherwise list entity/individual names below.

2. **Any person or entity who owns 25% or more of contracting entity (not applicable to publicly traded entities)**

☐ Check here if none, otherwise list entity/individual names below.

3. **Any person or entity that facilitated, or negotiated the terms of, the applicable contract (excluding legal services related to the negotiation or drafting of the applicable contract)**

☐ Check here if none, otherwise list entity/individual names below.

Signature: _____

Date Signed: 1-14-2019

Notary Verification

State of Ohio, County of Franklin:

I, DAE OH, the authorized agent of the contracting business entity listed above, being duly sworn, acknowledge that the Disclosure herein is being made under oath and under the penalty of perjury.

Taken, sworn to and subscribed before me this 14th day of January, 2019.

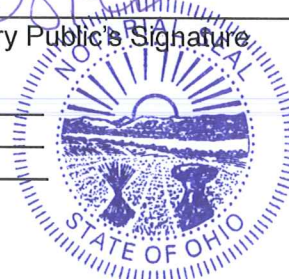
Notary Public's Signature

To be completed by State Agency:

Date Received by State Agency: _____

Date submitted to Ethics Commission: _____

Governmental agency submitting Disclosure: _____



JENNY L. FOSTER
NOTARY PUBLIC
STATE OF OHIO
Comm. Expires
04-23-2023
Revised June 8, 2018
Recorded in
Franklin County