

West Virginia Schools for the Deaf and the Blind

CEOI 0403 DBS1800000001

**A&E EOI for Demolition,
Reconstruction, and
ADA Restrooms**

01/25/18 09:50:22
WV Purchasing Division



McKINLEY & ASSOCIATES
ARCHITECTS • ENGINEERS • INTERIOR DESIGN

in association with:



FOOD FACILITIES CONCEPTS, INC.



West Virginia Schools for the Deaf and the Blind

CEOI 0403 DBS1800000001

**A&E EOI for Demolition,
Reconstruction, and
ADA Restrooms**



McKINLEY & ASSOCIATES
ARCHITECTS • ENGINEERS • INTERIOR DESIGN

in association with:



FOOD FACILITIES CONCEPTS, INC.



January 24, 2018

Michelle L. Childers
Senior Buyer
Department of Administration, Purchasing Division
2019 Washington Street, East
Charleston, WV 25305-0130

Dear Ms. Childers and Members of the Selection Team;

McKinley & Associates has teamed up again with Food Facilities Concepts (McKinley Team), and are pleased to provide the Acquisition and Contract Administration Section of the Purchasing Division, as well as the West Virginia Schools for the Deaf and the Blind, with our Expression of Interest to provide professional engineering and associated services to design 4 ADA accessible restrooms and shower rooms at the Keller Hall Dormitory, demolition and reconstruction of the Seaton Hall Dormitory bakery wing, Blue and Gold Cafeteria exterior and interior renovation, and related work at the West Virginia Schools for the Deaf and the Blind. As you review this submission, we emphasize the following strengths of the McKinley Team with respect to your proposed project:

McKinley & Associates has been providing design services since 1981. We recently became a 100% ESOP Company (Employee Stock Ownership Plan), so our employees now own 100% of our corporation! With offices in Wheeling and Charleston, WV and Pittsburgh, PA, we support a professional staff of **Engineers, Architects, a Historic Preservation Architect**, Construction Administrators, a Qualified Commissioning Process Provider, a certified Interior Design Department, and more. We have an **Accredited Learning Environment Planner (ALEP)** [formerly known as Certified Educational Facility Professional (CEFP) – one of only 6 in West Virginia; and 195 in the entire World!] and also a **Recognized Educational Facility Planner (REFP)** on staff whom were designated by the Association for Learning Environments (A4LE - formerly CEFPI)! Our staff also includes **LEED Accredited Professionals specializing in Building Design & Construction (LEED AP BD+C)**s that have the experience and knowledge to add energy efficient aspects into your projects.

McKinley & Associates takes great pride in our designs, and **“Educational Facilities”** are the primary focus market for our Firm. We currently support clients on a number of significant school building renovations / additions / new construction projects that illustrate this ability. We have designed over \$600 million worth of projects to over a hundred school facilities in over half of West Virginia’s 55 counties. This has included multiple ADA restroom and shower renovations; demolition projects; buildings that included walls, loading docks, roofing, HVAC, sprinkler systems, and more; cafeteria renovations; as well as other similar scope.

We have experience with all aspects of **restroom and shower renovations**, which has included ADA compliance, remodeling outdated restrooms, plumbing infrastructure upgrades, aesthetic improvements, as well as upgrading with energy efficient cost-saving fixtures all of which will provide lower maintenance costs, lower water costs, and better hygiene among others.

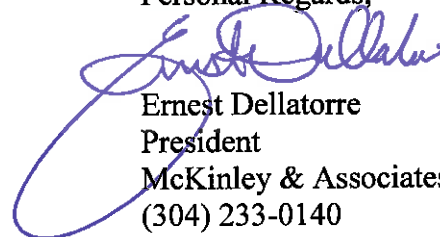
We understand how important nutrition is for the students and teachers of the West Virginia Schools for the Deaf and the Blind; therefore, we have brought in a forerunner in Food Services to be our consultant for the **Seaton Hall Dormitory bakery wing and Blue and Gold Cafeteria renovations**. **Food Facilities Concepts (FFC)** was founded in 1989, and they specialize in meeting the design requirements of the institutional food service industry. As with all of their projects, this project will have principal involvement throughout every phase. All key employees continuously work with nutrition and food service operations management and staff, which enables them to provide functional designs that are operator friendly, as they understand issues relevant to their particular operations. Their design team has experience in planning projects for educational (from PK-12 thru higher Ed) and also teaching facilities for culinary schools, all across the United States.

Furthermore, McKinley & Associates has utilized FFC as our Food Service consultant on **over a dozen educational projects** ranging from renovations to additions to new. In addition to educational projects, we have also utilized their services in other sectors of business, for over 15 years. Combined, we have teamed on over \$150 million in construction projects.

In closing, one of the more exciting aspects of our job is **listening to you**, our client, in how you envision this project, and transforming your ideas into realities. This can only be accomplished by effectively working together with you. Most of our clients are repeat, which is a good indication of the services we provide. The main reason we have been able to maintain this relationship is because **we listen to their needs, and deliver**. We encourage you to speak with our references because we feel this is the best way that our abilities can be conveyed to you.

We love what we do, so we care about the results you get. We are ready to begin **immediately** and can work to your **schedule** to get these projects designed by April 15, 2018. Thank you for reviewing our submission and considering the McKinley Team for your various projects. We are very excited about the possibility of working with the West Virginia Schools for the Deaf and the Blind!

Personal Regards,



Ernest Dellatorre
President

McKinley & Associates
(304) 233-0140

edellatorre@mckinleyassoc.com



West Virginia Schools for the Deaf and the Blind



CEOI 0403 DBS1800000001

A&E EOI for Demolition, Reconstruction, and ADA Restrooms



McKINLEY & ASSOCIATES
ARCHITECTS • ENGINEERS • INTERIOR DESIGN

in association with:



FOOD FACILITIES CONCEPTS, INC.

Corporate Information

Firm History

Founded in **1981**, McKinley & Associates is a multi-discipline, full service A/E firm, offering comprehensive professional services in Architecture, Engineering, Learning Environment & Educational Facility Planning, Interior Design, LEED "Green" Design, Construction Administration, and more. We have a broad range of skill and experience for projects involving PK-12 schools, higher educational, warehouse and storage facilities, governmental, and commercial, among others. Our school design experience is one of the foundations upon which we were established. With **over \$100 million** in educational building renovation / new construction in the past 3 years, we consider this sector of our business, our best.



Weirton Elementary School



J.B. Chambers Performing Arts Center at Wheeling Park High School

Firm Information

Ernest Dellatorre
President

Tim Mizer, PE, RA, QCxP
Director of Operations

Date of Incorporation

July 1, 1981
Wheeling, West Virginia

Number of Professionals

Total Size	30
Architects	6
Engineers	3
Arch./Eng. Designers	9
ALEP (CEFP) / REFP	2
LEED AP BD+C	2
Construction Admins.	3
Interior Designer	1
Commissioning Provider	1
Historic Preservationist	1
MIS	1

Cameron Middle/High School

Locations

32 Twentieth Street - Suite 100
Wheeling, West Virginia 26003

P: 304-233-0140
F: 304-233-4613

1116 Smith Street - Suite 406
Charleston, West Virginia 25301

P: 304-340-4267
F: 304-340-4269



McKinley & Associates is now a 100% ESOP Company (Employee Stock Ownership Plan). From this, our employees now own 100% of our corporation.

416 Longridge Drive
Pittsburgh, Pennsylvania 15243

P: 724-223-8250
F: 724-223-8252

www.McKinleyAssoc.com

[www.Facebook.com/McKinleyAssoc](https://www.facebook.com/McKinleyAssoc)

Instagram: @mckinley_and_associates

Credentials

McKinley & Associates is a member of the following organizations:

AIA, NCARB, A4LE, NFPA, ASCE, ASPE, BOGA, ASHRAE, AWI, WVEDC, AGI International



Qualifications

Founded in 1981, McKinley & Associates is a multi-discipline full service Architecture & Engineering firm, offering comprehensive professional services in architecture, engineering, learning environment and educational facility planning, LEED design (sustainable and energy efficient "green"), historic preservation, interior design, construction administration, HVAC commissioning, and more. We have provided professional services in all 55 counties of West Virginia. We recently became a 100% ESOP Company (Employee Stock Ownership Plan), so our employees now own 100% of our corporation! We provided design services for projects

New Manchester Elementary School Addition/Renovations - Hancock County



representing more than \$100,000,000 annually in construction value. We have a broad range of skills and experience for projects involving educational (PK-12 thru higher ed), governmental, manufacturers, commercial, medical, industrial, and more.

We are active members in Association for Learning Environments (A4LE - formerly CEFPI), and we have members who have achieved ALEP (CEFP) and REFP status. We have provided design services for numerous schools and colleges/universities in the States of West Virginia, Ohio, and Pennsylvania. Our educational involvement has included preliminary planning and cost estimating, preparation of final design and construction documents, contract administration, energy audits and facilities evaluation. McKinley &

NEW Chapmanville Regional High School - Logan County



Associates has provided design and construction administration services for West Virginia school buildings and related facilities since the inception of our firm. Within that time we have designed over \$600 million worth of building renovations, additions, new building construction, HVAC projects, safety and security upgrades, building infrastructure improvements, etc., to school facilities in over half of West Virginia's 55 counties.

Within the past 5 years McKinley & Associates has won multiple local, State, and even National awards and recognitions for our educational projects, which we feel is worth noting. Some of our honors for PK-12 projects include: 2012 West Virginia Department of Environmental Protection's Clean Energy Environmental Award, 2012 Black Bear Award for the Highest Achievement for the West Virginia Department of Education's Green Ribbon Schools program, 2012 (inaugural) U.S. Department of Education Green Ribbon Schools, 2013 Placemaker Award

Ashford Rumble Computer Lab Addition/Renovations - Boone County



for Leadership of/for Place from the West Virginia GreenWorks, 2013 Placemaker Award for Innovation from West Virginia GreenWorks, 2013 Outstanding Design by the American School & University Magazine's Architectural Portfolio, 2014 Black Bear Award for the Highest Achievement for the West Virginia Sustainable Schools program, 2014 U.S. Department of Education Green Ribbon School, and more! We also had the first LEED Certified school in the State of West Virginia (awarded May 2011).

Project Approach

First and foremost, we will meet ALL of your Project Goals and Objectives which you list in Section Three, Part 4. The work to be performed by your design team is very clear; **to evaluate, prioritize and design within budget and schedule to meet the needs of the West Virginia Schools for the Deaf and the Blind.** In the past 36 years we have extensive experience with similar projects. **Our project team has been chosen for this project and they are available to dedicate the necessary time to this effort. We are available to start immediately upon our being selected. We can and will perform for you on time.** We know this Team possesses the required expertise to address all facets of your project - from engineering and architectural services, designing to your needs, meeting codes, designing to budget, meeting fast schedules, providing construction contract administration services for the implementation of this plan, etc.

We know we have the ability to provide you with the services to make this project a success. Over the years, McKinley & Associates has designed hundreds of projects that included **restroom/shower/locker room renovations.** This experience includes **updating existing conditions to meet present day codes and ADA requirements, total plumbing infrastructure replacements, and/or just for added aesthetic value.** Restrooms occur in the vast majority of our construction design comprising over 30 years of experience within the construction trades. We have designed **cafeterias and kitchens** at multiple schools; some serve well over 1,000 meals a day. Furthermore, our Food Service consultant, *Food Facilities Concepts*, will help design these areas, and we have worked with them on over a dozen schools. We also have experience with renovations that include **walls, loading dock, roofing, HVAC, sprinkler systems, and much more similar scope. We have completed hundreds of renovation projects which allow us to use that experience in your project.** Examples are seen throughout this submittal.

In addition to engineering and architectural design, we can utilize a LEED Accredited Professional can help choose **energy efficient** ideas, such as sinks and toilet options which use less water, lighting fixtures which use less electricity, and quiet fans can be used for HVAC/mechanical ventilation. In addition, our Interior Designer can help chose color schemes, floors, walls, cabinetry, counters, tables, chairs, and more fixtures and furnishings to make the renovations **aesthetically pleasing.** Furthermore, we have a Qualified Commissioning Process Provider; Tim E. Mizer, PE, RA, QCxP, your project manager. From this, we commission multiple HVAC projects to ensure everything is working properly, and to teach the maintenance personnel how to use the machinery and gives them all the correct manuals.

The most important element of the entire process becomes **communication from you** to our designers. We use and welcome your input throughout the project. We continually achieve success in projects by maintaining **time and cost management, quality control and excellent communication** amongst the client and contractors. To start your project, a kickoff meeting will be held with all available owners representatives along with facilities walkthroughs for the design professionals. From this meeting the Owners Project Requirements will be defined and documented, to be used as a guideline through the design phase. Our philosophy regarding these types of work requires an intimate knowledge of the buildings so we can determine how to most effectively use the existing resources. Early activity includes carefully mapping out any damaged areas and formulating a plan of action for repairs. This process targets the areas of greatest need and helps to control cost. We will verify existing conditions against any available building drawings and/or documentation. We will use all this information to aid in the design of the various renovation projects. We can also provide multiple options pertaining to the quality and style of replacement or repair as related to the potential cost of construction. It is with this experience that we are able to bring insight to the design of spaces that will retain long term value. Afterward the design, we will help with the advertisement, the bidding, and will complete construction administration services. We can and will perform for you on time and to your budget.

Quality Control

Quality control at McKinley & Associates, Inc. is a constant process which **begins with the initial project activity and continues through document submissions, bidding, construction and owner occupancy.** The longevity and size of the firm and our history of success completing complex and innovative projects is founded upon our commitment to this process.

During the design phases, all personnel become fully versed in the client's program, project requirements and design standards. The design team is responsible for identifying for the West Virginia Schools for the Deaf and the Blind any potential conflicts between program criteria and design standards and resolving those conflicts to your satisfaction.

As the schematic/concept plans are developed, Tim E. Mizer, PE, RA, QCxP, your Project Manager, will present plans for review and comments to a plan group depending on the nature of the work; e.g. engineers commenting on the engineering and architects critiquing the architecture (*a peer review with Architects, along with a Construction Administrator, is seen below*). Once a consensus is reached, the plans advance in the process.

Prior to the completion of each phase, a set of project documents is issued to each discipline for coordination, cross-checking and review. The following items are checked at that time:

- Drawings and specifications for program compliance.
- Drawings and specifications for internal coordination.
- Cost effectiveness of the design.
- Drawing accuracy.
- Compliance with appropriate codes and client standards.

After coordination check corrections are completed, Tim will review the documents and compare the completed documents with check prints to verify that corrections have been made in accordance with the project design criteria. A review set will be sent to the West Virginia Schools for the Deaf and the Blind, the Fire Marshal and other governing authorities for preliminary review.

During the subsequent phases of design, all items are checked by persons other than those performing the daily design work in order to provide fresh insight. Prior to the final release of the documents, revisions are once again checked by the Project Manager and appropriately referenced on the drawings. Copies of the final documents will be distributed to the West Virginia Schools for the Deaf and the Blind for final review and approval. A set is sent to the Fire Marshal and other governing authorities for final review comments. Comments are incorporated into the documents prior to issuance for advertising, bidding and construction.

Bid documents are issued after a final check to verify that all bid packages have current revisions included and are appropriately identified. Bid sets are numbered and registered to bidders so that

each bidder may be kept informed of clarifications and addenda. We will provide assistance in analyzing and evaluating bids for construction, and assist with awarding the construction contracts.

During the construction, the processing of shop drawings and submittals will be controlled and monitored by Mr. Mizer, and includes the receipt, logging, review and return of submittals. Urgent items can often be expedited to satisfy the construction schedule. In addition, Bob Smith, your Construction Administrator, will monitor the contractor's progress to ensure that they are following the Construction Documents, and verify that closeout documents are submitted in a timely manner upon Substantial Completion.



Award-Winning School Designs

McKinley & Associates has **multiple local, State, and even National awards and recognitions** for our works, which includes **multiple educational projects**. Some of our recent educational honors are (some of these honors we have been awarded multiple times, like the U.S. Department of Education Green Ribbon Schools, the Black Bear Award for the Highest Achievement for the West Virginia Sustainable Schools program, etc. Furthermore, we have also won additional educational awards and recognitions which aren't shown):



OUTSTANDING DESIGN SPECIALIZED FACILITY

WHEELING PARK HIGH SCHOOL, J.B. CHAMBERS PERFORMING ARTS CENTER
WHEELING, WEST VIRGINIA

McKinley & Associates, Inc.

Client: Wheeling Park High School, 5100 1st St., Wheeling, WV 26061
Area: 34,000 sq. ft.
Value: \$17,000,000
Project Type: Specialized Facility

Project Description: The Wheeling Park High School, J.B. Chambers Performing Arts Center is a 34,000 sq. ft. facility that includes a performing arts center, theater, and classrooms. The facility is a prime example of sustainable design and construction.

Project Highlights: The facility is a prime example of sustainable design and construction. It features a green roof, energy-efficient lighting, and a LEED Gold certification. The facility is a prime example of sustainable design and construction.



Construction Administration & On-Site Representation

Construction Administrator Involved from the Beginning of the Design Phase

Observe the Construction Progress

Liaison between the Owner, Contractor, and Architects/Engineers

Responsible for All Construction Progress Meetings and Minutes

Monitor the Construction Schedule

Ensure that the Contractor is Following the Construction Documents

Verify Pay Application and Change Orders

Typically On-Site Once Every Two Weeks

(Provide Additional On-Site Representation if Requested)



Our **Construction Administrators** have an extra responsibility than what most firms' Construction Administrators have; our CAs are a part of the design process from **Day 1** (they are not thrown into the project only when construction starts; they are here from the beginning), so they know the ins-and-outs of the project. Our CAs have an important role as being the **liaison between the Owner, Contractor, and Architect**. The primary objective of the Construction Administration services is to ensure completion of work the way the client wants it - **as scheduled and as budgeted**. Our CAs evaluate the quality of the work to verify that it meets the level required by clients; in addition, they monitor the contractor's progress to ensure that they are following the Construction Documents. They observe the construction progress, are responsible for all construction meetings and minutes, and they verify pay application and change orders. The Construction Administrator is typically on-site once every two weeks, but we can provide additional on-site representation if requested.

Interior Design



Basic interior services begin with a strategy session designed to determine the owner's project requirements, timetable and budget. The interviews will include analyzing space requirements, operating procedures, communication relationships and future needs. Inventory of existing conditions are used to develop accurate drawings and plans. Application of current ADA and building codes will be applied to the developed plans for way finding (signage, directories, fire escape plan), furnishings and finishes. Attention to budget and maintenance is given in relationship to owner needs. Construction documents required to detail the project include schedules, elevations, plans, presentation boards and specifications. To maintain coordination, the follow up contract administration consists of submittal review, post construction evaluation and coordination of FF&E contracts when applicable.



Deb Blakeman, NCIDQ #015070, is knowledgeable and has experience with application of ADA regulations, ergonomic standards, state building code and industrial standards as they apply to interior furnishings, space planning and finishes. Improving comfort through lighting and ergonomically sound furnishings will increase employee performance. Efficient spaces aid in organization, and work flow, by decreasing communication barriers.



Sustainable "Green" Design

Buildings designed today will need to meet the demands of the future; McKinley & Associates identifies the changes necessary in the design of today and to meet these demands. This approach helps to retain the buildings' long-term profitability and value, which achieves the buildings' **sustainability**. In January 2001, our firm was the first organization in West Virginia to join the U.S. Green Building Council (USGBC); no other WV firm joined until nearly 2 years later! We have 2 **LEED® Accredited Professionals specializing in Building Design & Construction (LEED AP BD+C)** on staff. They, along with our skilled architectural /engineering team, will efficiently and cost effectively guide you through the process in order to develop sustainability goals specific to your project.



McKinley approaches ecological design from a business perspective, offering **proactive** solutions to complex problems such as indoor air quality, energy efficiency, resource depletion, and water quality. With commercial and institutional project experience, the McKinley Team can work alongside local designers to provide sustainable design and construction guidance. We also offer full architectural design services and guided design workshops on sustainable design issues.

Our Philosophy is to provide our clients with experienced leadership as well as state-of-the-art and **innovative** design expertise to accomplish the goals of your projects. Function, economics and versatility, in addition to the development of **strong aesthetic appeal**, are crucial elements in our design process. We also believe that enhancement of the physical environment in which each individual lives and works should add significantly to the enjoyment of life. Our firm has dedicated our professional skills to attain these goals. **For a few recent sustainable awards**, we were honored to have won 5 Placemakers Awards from West Virginia GreenWorks at the 2013 Building Conference. In addition, Cameron Middle/High School, won the 2014 Black Bear Award for the **Highest Achievement** for the **West Virginia Sustainable Schools** program, and was selected as a 2014 **U.S. Department of Education Green Ribbon School**, among its awards!

Moreover, your Hilltop Elementary School is one of our many projects that we designed using **energy efficient** and **sustainable design** approaches. It was not until **after** construction had commenced that you decided to submit for LEED Certification. This required a great deal of coordination with

the architects, engineers, subcontractors and suppliers. Since we incorporated **good sustainable design practices** from the beginning, this allowed for an easy transition, and for the project to be successfully completed in July 2009. **This is the first LEED Certified school in the state of West Virginia.** Hilltop won a 2010 Gold Medal Green Building Award by Building of America. Hilltop also won the 2012 West Virginia Department of Environmental Protection's Clean Energy Environmental Award. Hilltop received the 2012 Black Bear Award for the **Highest Achievement** for the **West Virginia Department of Education's**

Green Ribbon Schools program. In addition, Hilltop was one of 78 schools (which span 29 states and D.C.) to be awarded the **first-ever U.S. Department of Education Green Ribbon Schools!** Moreover, Hilltop won a 2013 Placemaker Award for Leadership of/for Place from the West Virginia GreenWorks.



HILLTOP ELEMENTARY SCHOOL
Shavers Fork, West Virginia

CERTIFIED

LEED

May 2011

U.S. DEPARTMENT OF EDUCATION

GreenRibbonSchools



McKINLEY & ASSOCIATES
ARCHITECTS • ENGINEERS • INTERIOR DESIGN

References



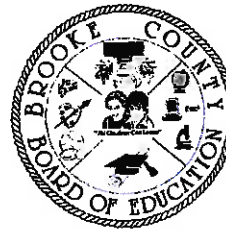
Dr. Mark Manchin
Superintendent
Harrison County Schools
P.O. Box 1370
Clarksburg, WV 26302
304 / 326-7345



Dr. Kim Miller
Superintendent
Ohio County Schools
2203 National Road
Wheeling, WV 26003
304 / 243-0300



Mr. Brent Nelson
Director of Facilities and Maintenance
Grant County Schools
204 Jefferson Avenue
Petersburg, WV 26847
304 / 257-1011



Ms. Toni Shute
Superintendent
Brooke County Schools
1201 Pleasant Avenue
Wellsburg, WV 26070
304 / 737-3481



Mr. Mark Dziatkowicz
Facilities/Maintenance Director
Hancock County Schools
2900 Orchard Street
Weirton, WV 26062
304 / 797-1643



Mr. Terry Depew
Assistant Headmaster
The Linsly School
60 Knox Lane
Wheeling, WV 26003
304 / 234-4616 x217



Mr. Jeff Lancaster
Treasurer/CFO
Wetzel County Schools
333 Foundry Street
New Martinsville, WV 26155
304 / 455-2441 x129

Client Testimonials



HANCOCK COUNTY SCHOOLS

Suzan L. Smith, *Superintendent*
P.O. Box 1300, New Cumberland, WV 26047
Fax – 304-564-3990 • Voice – 304-564-3411 • www.hancockschools.org

February 2, 2015

SUBJECT: REFERENCE FOR MCKINLEY & ASSOCIATES

To Whom It May Concern:

The Hancock County Schools administration and I would like to express our great appreciation for McKinley & Associates and the care they place in their business.

Together, we have just recently finished construction of over 56 million dollars of countywide school construction. This included new construction, as well as existing building renovations, and finishing off with our new Weirton Elementary School which is closing out at just under 1% in total change orders.

McKinley & Associates recognized the challenges of these projects for us from the beginning and, through their efforts, helped to achieve our goal. From utilizing their marketing skills and relationships with the School Building Authority on funding approval and local Bond Passage, technical knowledge required for educational facility planning and construction, and their involvement during the construction phase, McKinley & Associates continually exceeded our expectations.

Hancock County Schools highly recommends the services of McKinley & Associates to anyone in need of professional architectural and engineering services. I would like to take this opportunity to thank the staff of McKinley & Associates for this continued effort and friendship.

Sincerely,

Suzan L. Smith
Superintendent

SLS:blr

Hancock County Schools' mission is to afford all students the academic and social skills necessary to become productive members of society.

IT'S
ALL
ABOUT
LEARNING



MCKINLEY & ASSOCIATES
ARCHITECTS • ENGINEERS • INTERIOR DESIGN

Client Testimonials

Brooke County Schools



1201 Pleasant Avenue, Wellsburg, WV 26070

Phone (304) 737-3481 / Fax (304) 737-3480

BOARD OF EDUCATION:
James R. Piccirillo, President
Brian L. Ferguson, Vice-President
James F. Lazaar, Member
Chad D. Haight, Member
Pamela Dudley, Member

www.edline.net/pages/BrookeCountySchools

"Build a Better Brooke"

Dr. Kathy Kidder-Wilkerson
Superintendent

Martin J. Bartz, Jr.
Assistant Superintendent

February 2, 2015

Mr. Ernie Dellatorre
President
McKinley & Associates
32 Twentieth Street Suite 100
Wheeling, WV 26003

Dear Mr. Dellatorre,

I would like to take this opportunity to thank you and your firm for all of your efforts and support with the passage of our recent bond for the new Brooke Middle School. I truly believe that the bond passage would not have been successful without your assistance.

The Brooke County Staff and I look forward to our ongoing partnership with McKinley & Associates on the design and construction of our new Middle School and HVAC renovations to our High School.

Sincerely,

Dr. Kathy Kidder-Wilkerson
Superintendent
Brooke County Schools

Client Testimonials



JOHN G. HUDSON
SUPERINTENDENT

DR. LISA D. BECK
ASSISTANT SUPERINTENDENT

JEFF W. HUFFMAN
ASSISTANT SUPERINTENDENT

Boone County Schools

69 AVENUE B - MADISON, WEST VIRGINIA 25130
304-369-3131
FAX 304-369-6789

September 12, 2011

BOARD of EDUCATION

MARK E. SUMPTER
PRESIDENT

CHARLES J. GIBSON
VICE PRESIDENT

DANNY L. CANTLEY
MEMBER

BOBBY R. HALE
MEMBER

JOE S. TAGLIENTE, JR.
MEMBER

McKinley & Associates
1116 Smith Street ♦ Suite 406
Charleston, WV 25301

I wish to convey the great appreciation that I have for McKinley and Associates and the work that was performed for Boone County Schools over the last several years. It is not often that a county school system receives the care and attention that your organization has provided to Boone County Schools. The attention to detail that McKinley and Associates has provided on all aspects of the various building projects, specifically the Boone County School Honors Academy, have been remarkable. Thanks for being a great educational partner.

Sincerely,

John G. Hudson
Superintendent

JGH:pag

"High Expectations...Every Student, Every Chance, Every Day"

Client Testimonials

Hampshire County Board of Education

*SUPERINTENDENT
OF SCHOOLS
Marianna Leone*

**111 School Street
Romney, WV 26757**

**Phone: (304) 822-3528
Fax: (304) 822-5382**

BOARD OF EDUCATION
*Jean Shoemaker, President
Bernard Hott, Vice President
Gerald Mathias
John Ward, Jr.
Bonita Wilcox*

January 22, 2015

Subject: Reference for McKinley & Associates

To Whom It May Concern:

The Hampshire County School Administration and I would like to express our great appreciation for McKinley and Associates and the care they place in their business. Together, we have just recently finished up the construction of our new 4,800 Sq. Ft. Animal Veterinary Science Building (the First SBA Funded) on Schedule and on Budget.

McKinley & Associates recognized the challenges of this project for us from the beginning and through their efforts helped to achieve our goal. From utilizing their relationships with the SBA to help achieve funding approval, their technical knowledge required by a non-standard educational facility, and their continued presence during the construction period holding biweekly construction meetings; McKinley & Associates continually exceeded our initial expectations.

Hampshire County Schools highly recommends the services of McKinley & Associates to anyone in need of a professional and friendly Architectural and Engineering firm, and we would like to take this opportunity to thank the staff of McKinley & Associates for this continued effort and friendship.

Sincerely,



Denise R. Hott
Treasurer/CSBO
304/822-3528 x133



Marianna Leone
Superintendent



West Virginia Schools for the Deaf and the Blind



CEOI 0403 DBS1800000001

A&E EOI for Demolition, Reconstruction, and ADA Restrooms



McKINLEY & ASSOCIATES
ARCHITECTS • ENGINEERS • INTERIOR DESIGN

in association with:



FOOD FACILITIES CONCEPTS, INC.

FOOD FACILITIES CONCEPTS, INC.
COMPANY PROFILE



Food Facilities Concepts, Inc. specializes in meeting the design requirements of the institutional food service industry. Our design team has experience in planning projects for health care, long-term care, educational, hospitality and industry food service facilities, as well as teaching facilities for culinary schools.

We have expertise in all phases of design - from determining project feasibility through installation management. Food Facilities Concepts, Inc.'s design projects encompass small and large scale endeavors; from the renovation of small, outdated serving areas, to the total development of expansive food service departments for new multi-unit facilities.

We have made a commitment to provide the best services possible.
Following are some of the advantages of working with
Food Facilities Concepts, Inc.

PRINCIPAL INVOLVEMENT - Your project will be designed by the principal of our firm. This total personal involvement enables prompt, comprehensive development of your design.

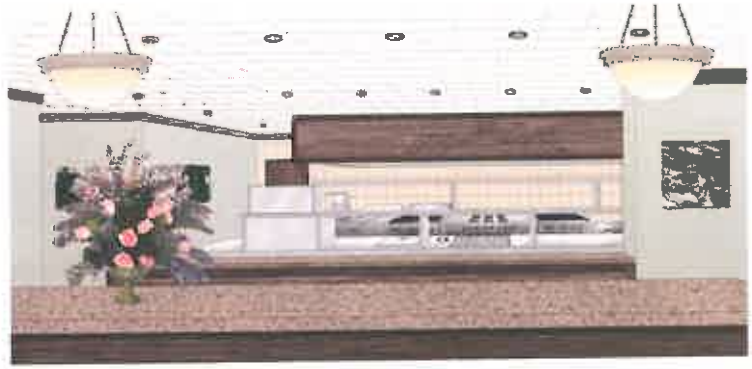
QUALITY OF DOCUMENTATION - We utilize the most advanced food service CAD design programs to produce precise detailed drawings and documentation.

EXPERIENCE - The principal of our firm has more than thirty years of food service design experience. As the food service consultant for numerous architects, our staff is also knowledgeable in construction design and coordination requirements.

INTERIOR DESIGN - Our interior design department is available to assist your design team in selection and specification of furnishings and interior finishes that will endure their environment.

FEES - Our fees are typically fixed, as opposed to a percentage of equipment costs. Many feel that this fee structure helps keep food service equipment costs in line, as our fee is unrelated to the cost of the specified equipment.





Our Food Service Design Process consists of many integrated steps that produce solutions, which are functional, efficient and enduring.

PRELIMINARY PLANNING - The preliminary planning involves the development of the service concepts and the determination of the project scope and feasibility.

SPACE ANALYSIS - An analysis of each area takes into account the amount of space required, along with the relationship to other functions and special design features.

PROJECT DESIGN PHASES - A typical food service and/or interior design project is comprised of Programming, Schematic Design, Design Development, Construction Documents, Submittal Review, and Installation & Project Inspection.

DESIGN CRITERIA - Design criteria are developed to meet the specific management goals and objectives for the facility.

BASIC DESIGN PRINCIPALS - Each design component is evaluated for flexibility, simplicity, ease of sanitation, space efficiency and value.

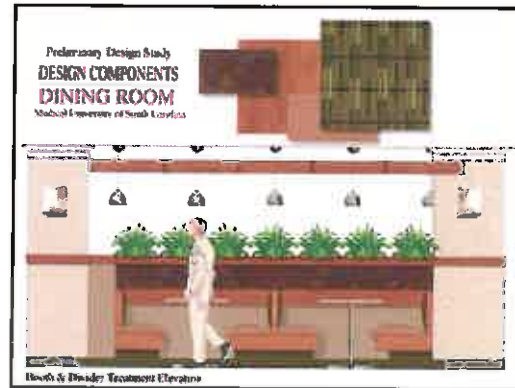
HUMAN ENGINEERING - Consideration is given to efficient workspace, adequate aisle space, work surfaces, appropriate equipment selection and environmental criteria.

EFFECTIVE LAYOUT - An effective layout creates a systematic flow within functional areas and provides easy access to raw materials, utensils and equipment components. It organizes efficient relationships with other departments and work areas to assure a productive facility.

EQUIPMENT PLACEMENT - The location of the food service equipment takes into consideration the precise configuration and spacing of each element for the optimum operation and the ease of cleaning and sanitation.



FOOD FACILITIES CONCEPTS, INC.
COMPANY PROFILE



Following is an outline of our services; segmented into the phases that are most often required to generate a comprehensive design program. We are available to perform any or all of these services, as required by the scope of the project.

PHASE I - SCHEMATIC DESIGN

The Schematic Design Phase develops the food service programs, space allocation, preliminary equipment determination, as well as utility requirements and budgetary information.

PHASE II - DESIGN DEVELOPMENT

The Design Development Phase creates food service equipment plans and details utility connection requirements. This phase also includes interior design of the spaces.

PHASE III - PREPARATION OF BID DOCUMENTS

The Bid Document Preparation Phase generates specifications and drawings that will allow competitive bidding of food service equipment and furnishings.

PHASE IV - COORDINATION & APPROVAL OF SUBMITTALS

The Coordination and Approval of Submittals Phase provides a review and approval of the food service equipment and furnishings contractor's submittals. These submittals include custom fabrication shop drawings, utility rough-in drawings and equipment product sheets booklet.

PHASE V - FINAL INSPECTION AND TRAINING

The Final Inspection and Training Phase consists of an inspection of the food service and furnishing contractors' work after completion of their installation, to assure that items furnished are those specified and that the work meets the quality requirements stated in the specifications. Demonstration of all the food service equipment, by qualified factory authorized personnel, is then scheduled with food service management.



FOOD FACILITIES CONCEPTS, INC.
PARTIAL PROJECT LIST

Culinary School Design Clients

· Cuyahoga County Community College	Cleveland, OH
· Central Oregon Community College	Bend, OR
· Lorain County Community College	Elyria, OH
· Mountainland Applied Technology College	Orem, UT
· Pittsburgh Technical Institute	Oakdale, PA
· The Art Institute of Atlanta	Atlanta, GA
· The Art Institute of California – Hollywood	Hollywood, CA
· The Art Institute of California – Inland Empire	San Bernardino, CA
· The Art Institute of California - Los Angeles	Santa Monica, CA
· The Art Institute of California – Orange County	Santa Ana, CA
· The Art Institute of California – Sacramento	Sacramento, CA
· The Art Institute of California – San Diego	San Diego, CA
· The Art Institute of California – San Francisco	San Francisco, CA
· The Art Institute of Charleston	Charleston, SC
· The Art Institute of Charlotte	Charlotte, NC
· The Art Institute of Cincinnati	Cincinnati, OH
· The Art Institute of Colorado	Denver, CO
· The Art Institute of Dallas	Dallas, TX
· The Art Institute of Fort Lauderdale	Ft. Lauderdale, FL
· The Art Institute of Houston	Houston, TX
· The Art Institute of Indianapolis	Indianapolis, IN
· The Art Institutes International Minnesota	Minneapolis, MN
· The Art Institute of Jacksonville	Jacksonville, FL
· The Art Institute of Kansas City	Kansas City, MS
· The Art Institute of Las Vegas	Henderson, NV
· The Art Institute of Michigan	Novi, MI
· The Art Institute of Pittsburgh	Pittsburgh, PA
· The Art Institute of Philadelphia	Philadelphia, PA
· The Art Institute of Phoenix	Phoenix, AZ
· The Art Institute of Portland	Portland, OR
· The Art Institute of Raleigh Durham	Durham, NC
· The Art Institute of Seattle	Seattle, WA
· The Art Institute of Tampa	Tampa, FL
· The Art Institute of Tennessee - Nashville	Nashville, TN
· The Art Institute of Tucson	Tucson, AZ
· The Art Institute of Vancouver	Vancouver, BC
· The Art Institute of Washington	Arlington, VA
· The Illinois Institute of Art	Chicago, IL
· West Virginia Northern Community College	Wheeling, WV

Educational Design Clients

· Akron City Public Schools – Multiple Sites	Akron, OH
· Allegheny College	Meadville, PA
· American University	Washington, DC
· Brooke County Middle School	Wellsburg, WV
· Central Connecticut State University	New Britain, CT
· Chapmanville Regional High School	Chapmanville, WV
· East Stroudsburg University	E. Stroudsburg, PA
· Falk Laboratory School	Pittsburgh, PA
· Frostburg State University	Frostburg, MD
· George Mason University	Fairfax, VA
· George Washington University	Washington, DC
· Georgetown University	Washington, DC
· Grafton High School	Grafton, WV
· Jefferson County High School	Charles Town, WV
· Juniata College	Huntingdon, PA
· Kalamazoo College	Kalamazoo, MI
· Liberty University	Lynchburg, VA
· Marshall County Schools –	
· Cameron High School w/Meat Lab	Cameron, WV
· Central Elementary	Moundsville, WV
· Hilltop Elementary	Sherrard, WV
· McNinch Elementary	Moundsville, WV
· Sherrard Middle School	Sherrard, WV
· Marymount University	Arlington, VA
· Morgan State University	Baltimore, MD
· Morgantown High School	Morgantown, WV
· Montour High School	Pittsburgh, PA
· New Cameron High School	Cameron, WV
· New Weirton Elementary School	New Cumberland, WV
· Penn State Greensburg Campus	Greensburg, PA
· Penn State Schuylkill Campus	Schuylkill Haven, PA
· Shenandoah University	Winchester, VA
· Slanesville Elementary School	Romney, WV
· South Jefferson County High School	Charles Town, WV
· St. Francis College	Loretto, PA
· The University of Texas at Austin Student Center	Austin, TX
· West Virginia University – Boreman Bistro	Morgantown, WV
· Westminster College	New Wilmington, PA
· Westside High School	Oceana, WV
· Wheeling Jesuit College	Wheeling, WV
· Wood County Schools –	
· Parkersburg High School	Parkersburg, WV
· Parkersburg South High School	Parkersburg, WV
· Williamstown High School	Williamstown, WV
· Wyoming County High School	Wyoming County, WV





West Virginia Schools for the Deaf and the Blind

CEOI 0403 DBS1800000001

**A&E EOI for Demolition,
Reconstruction, and
ADA Restrooms**



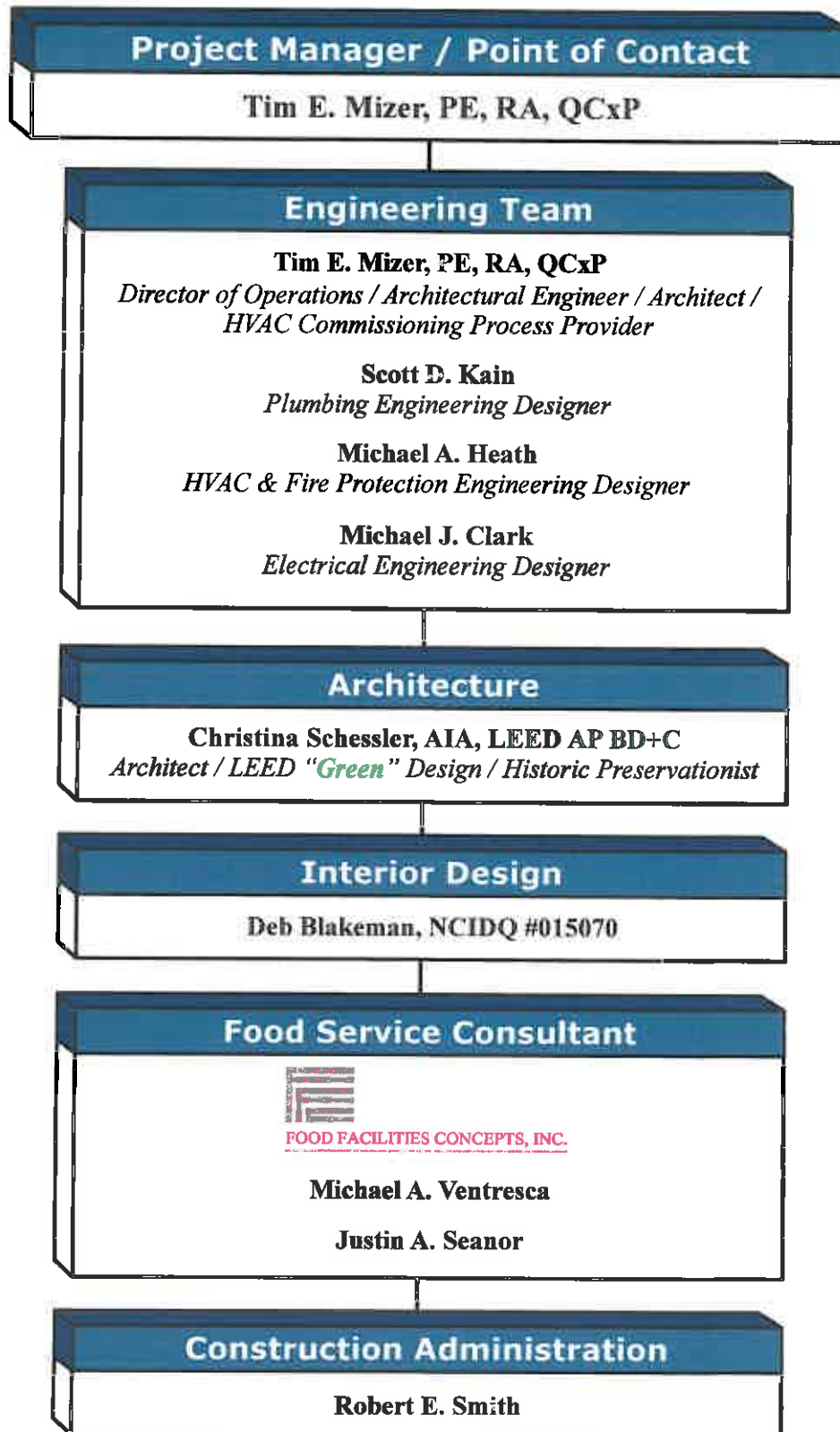
McKINLEY & ASSOCIATES
ARCHITECTS • ENGINEERS • INTERIOR DESIGN

in association with:



FOOD FACILITIES CONCEPTS, INC.

Design Team Flow Chart



* McKinley & Associates is willing to dedicate more professionals if they are needed; including Architects, LEED Accredited Professionals (Energy Efficient "Green" Design), and more.

Tim E. Mizer, PE, RA, QCxP

Architectural Engineer / Architect / Commissioning Provider

Director of Operations

EDUCATION:

Kansas State University
B.S. Architectural Engineering - 1983

University of Cincinnati
Architecture

PROFESSIONAL AFFILIATIONS AND REGISTRATIONS:

Registered Engineering in:
West Virginia
Ohio

Registered Architect in:
Ohio

**Qualified Commissioning
Process Provider**

PROFESSIONAL EMPLOYMENT:

McKinley & Associates
Director of Operations
Architect / Engineer / Commissioning
Wheeling, WV (1995 to present)

M.C.C. Engineering
Director of Design
Columbus, Ohio (1988-1995)

Schooley Caldwell and Associates
Electrical & Mechanical Design
Columbus, Ohio (1986-1988)

Mizer Design
Free Lance Architectural Engineering Design
Columbus, Ohio (1985-1986)

Envirotek, Inc.
Drafting and Electrical & Mechanical Design
Raleigh, NC (1984-1985)

SUMMARY OF EXPERIENCE:

Mr. Mizer is a very talented and unique professional being both a **Professional Engineer** and **Registered Architect**. His background as an Architect and Engineer has provided him with a total understanding of the engineering components and the process necessary for integrating architectural design and building systems. In addition, he is also a **Qualified Commissioning Process Provider**, where he has been formally trained to fully understand how integrated HVAC systems function and how systems interface with others to run your building efficiently. He understands that the HVAC system's performance can reduce operating and maintenance costs, improve the comfort of a building's occupants, and extend the life of equipment. Mr. Mizer joined McKinley & Associates in 1995, and has over 30 total years of experience. As the Director of Operations, his presence is a key to the design procedures required to coordinate the functionality of the engineering systems into the aesthetics of a building space.

NOTABLE PROFESSIONAL EXPERIENCES:

Boone County Schools - Ashford Rumble Elementary, Boone County Honors Academy, Brookview Elementary, & much more

Braxton County Schools - Braxton County High

Brooke County Schools - Brooke County High, NEW Brooke Middle, Follansbee Middle, & Carlin Dodrill Field House

Grant County Schools - Maysville Elementary, Petersburg Elementary, Petersburg High, & Union Educational Complex

Hampshire County Schools - NEW Animal Vet Science Center

Hancock County Schools - NEW Oak Glen Middle, Oak Glen High, Senator John D. Rockefeller IV Career Center, NEW Weirton Elementary, Weir High, & much more

Harrison County Schools - NEW Johnson Elementary

Logan County Schools - NEW Chapmanville Regional High

Marshall County Schools - Cameron Elementary, NEW Cameron Middle/High (LEED Registered), Center McMechen Elementary, Central Elementary, NEW Hilltop Elementary (LEED Certified), John Marshall Fieldhouse, McNinch Elementary, Sherrard Elementary, Washington Lands Elementary, & more

Ohio County Schools - Bridge Street Middle, Madison Elementary, Wheeling Park High, & much more

Tyler County Schools - A.I. Boreman Elementary, Sistersville Elementary, & more

Wetzel County Schools - Long Drain Elementary, New Martinsville Elementary, Short Line Elementary, & more

Wood County Schools - Parkersburg High, Parkersburg South High, Williamstown High, & much more

The Linsly School - Baner Hall & Behrens Gym



Scott D. Kain

Plumbing & Electrical Engineering Designer

EDUCATION:

Technology Education College /
Ohio State University
Associates in Mechanical Design - 1996

PROFESSIONAL EMPLOYMENT:

McKinley & Associates
Engineering Designer
Wheeling, WV (2001 to present)

HAWA Inc.
Mechanical Designer
Columbus, OH (1998-2001)

Autotool Inc.
Engineer
Columbus, OH (1995-1998)

SUMMARY OF EXPERIENCE:

Mr. Kain is an accomplished engineering designer who has performed in all the engineering trades we provide; specializing in electrical, plumbing, and fire protection. He has been utilized for various McKinley & Associates' projects that needed additional mechanical, structural, and architectural manpower. In addition, Mr. Kain has also provided 3D renderings, to aid in business development, during his long tenure at McKinley & Associates.

NOTABLE PROFESSIONAL EXPERIENCES:

Boone County Schools:

Boone County Honors Academy addition/renovations
Madison Elementary School addition/renovations
Madison Middle School renovations

Brooke County Schools - NEW Brooke Middle School

Grant County Schools:

Maysville Elementary School renovations
Petersburg Elementary School renovations
Petersburg High School renovations
Union Educational Complex addition/renovations

Hampshire County Schools - NEW Animal Vet Science Center

Hancock County Schools:

Oak Glen High School renovations
Oak Glen Middle School renovations
Senator John D. Rockefeller IV Career Center renovations
Weir Middle / High School renovations
NEW Weirton Elementary School

Harrison County Schools - NEW Johnson Elementary

Logan County Schools - NEW Chapmanville Regional High School

Marshall County Schools:

NEW Cameron Middle/High School (LEED Registered)
Central Elementary School renovations
NEW Hilltop Elementary School (LEED Certified)
McNinch Elementary School renovations

Ohio County Schools:

Bridge Street Middle School renovations
J. B. Chambers Performing Arts Center addition/renovations to WPHS
Madison Elementary School renovations
Wheeling Park High School addition/renovations

Wood County Schools:

Parkersburg High School addition/renovations
Parkersburg South High School addition/renovations
Williamstown High School addition/renovations

West Virginia University - multiple projects

Building 55: WV State Office Complex in Logan, WV (LEED Certified)

Michael A. Heath

HVAC / Mechanical & Fire Protection Engineering Designer

EDUCATION:

ITT Technical Institute
Associate Degree in Specialized Technology:
Computer-Aided Drafting Technology - 2000

PROFESSIONAL EMPLOYMENT:

McKinley & Associates
Mechanical & Fire Protection Designer
Wheeling, WV (2007 to present)

Janus, Inc.
AutoCAD Designer / Project Manager
Pittsburgh, PA (2002-2007)

Comunale Automatic Sprinkler
Fire Protection Designer
Pittsburgh, PA (July 05 - Oct 05)

S.A. Comunale Inc.
Fire Protection Designer
Pittsburgh, PA (2000-2002)

SUMMARY OF EXPERIENCE:

Mr. Heath brings a cross-trained design background to your project, and has vast knowledge in a diverse range of disciplines. He was trained by the National Fire Protection Association (NFPA) in Dallas, Texas, and has used these skills to work on projects from multiple business sectors and with various sizes. Mike is skilled in the complete design of mechanical systems. He also has vast expertise in designing and calculating fire protection systems, standpipes, dry and wet systems, hydraulics, water cannons, stock listing materials for systems, as well as surveying job sites. Mr. Heath will help in the mechanical assessments for the initial site visit to fully determine the scope of work, as well as designing, specifications, equipment selection using various manufacturer's selection software, heating/cooling loads, shop drawing submittals, and more.

NOTABLE PROFESSIONAL EXPERIENCES:

Boone County Schools - Ashford Rumble Elementary additions/renovations, Boone County Honors Academy, Brookview Elementary, & Madison Elementary additions/renovations

Brooke County Schools - new Brooke County Middle & Brooke High HVAC renovations

Grant County Schools - Maysville Elementary renovations & Union Educational Complex renovations

Hancock County Schools - A.T. Allison Elementary renovations, New Manchester Elementary renovations, Oak Glen High HVAC and renovations, Senator John D. Rockefeller IV Career Center HVAC, Weir MS/HS HVAC, & new Weirton Elementary

Marshall County Schools - Cameron Elementary addition, new Cameron Middle/High (LEED Registered), John Marshall Fieldhouse Gymnasium renovation & HVAC, McNinch Elementary renovation & HVAC, & Sherrard Middle renovations

Ohio County Schools - Bridge Street Middle HVAC renovations, J. B. Chambers Performing Arts Center at Wheeling Park High, & Madison Elementary HVAC renovations

Ritchie County Schools - Ritchie County Middle/High HVAC

Summers County Schools - Summers Middle HVAC

Tyler County Schools - A.I. Boreman Elementary HVAC repairs and upgrades, Sistersville Elementary HVAC repairs and upgrades, & Tyler County Pre-K HVAC repairs and upgrades

Wetzel County Schools - Long Drain Elementary HVAC upgrades & New Martinsville AHU Replacement

The Linsly School - Banes Hall addition/renovations

For 14 West Virginia counties; provided HVAC / Mechanical and Fire Protection assessments at every school (160+ schools), for their 10-year Comprehensive Educational Facilities Plan (CEFP)

Michael J. Clark Sr.

Electrical Engineering Designer

EDUCATION:

Eastern Gateway Community College
A-ATS Electro-Mechanical Engineering - 2012

Jefferson Community College
A-ATS Electrical Trade Technology - 2003

PROFESSIONAL AFFILIATIONS AND REGISTRATIONS:

Certified in SMAW Weld Process & Basic
Welding and Applications 2002

West Virginia Journeyman License

Ohio Fire Alarm License

OSHA 30 Certified

PROFESSIONAL EMPLOYMENT:

McKinley & Associates
Electrical Engineering Designer
Wheeling, WV (2012 to present)

Arcelor Mittal
Maintenance Technician Electrician
Weirton, WV (2012)

M.J. Electric
Journeyman Electrician
Iron Mountain, MI (2010-2012)

Erb Electric Company
Journeyman Electrician
Bridgeport, OH (2009-2010)

Bechtel Group Inc.
Journeyman Electrician
Glendale, AZ (2009)

Cattrell Companies, Inc
Journeyman Electrician
Toronto, OH (1998-2009)

SUMMARY OF EXPERIENCE:

Mr. Clark is an Electrical Engineering Designer and a Certified Journeyman Electrician with over 20 years of educational, industrial, commercial and residential experience. Mr. Clark brings a cross-trained background to our projects, being skilled in both the design and the construction ends which gives him a unique ability to understand all aspects of a project. Mike is knowledgeable in all areas of the national electrical code and excels in analyzing and solving problems with various electrical controls and systems. He is also adept in performing electrical and mechanical installations, maintenance and repairs. Furthermore, he is seasoned as an Electrical Foreman and Superintendent on both commercial and industrial job sites. His key skills include Electrical Systems & Controls, Blueprints & Schematics, Generators & Transformers, Switches & Circuit Breakers, Wiring, Electrical Code, Troubleshooting, & CAD-2D/3D.

NOTABLE PROFESSIONAL EXPERIENCES:

Brooke County Schools - Adult Learning Center (ALC) &
NEW Brooke County Middle School

Grant County Schools - Maysville Elementary renovations & Union
Educational complex addition/renovations

Hampshire County Schools - Animal Veterinary Science Center

Hancock County Schools - A.T. Allison Elementary addition/
renovations, New Manchester Elementary addition/renovations,
Oak Glen High renovations, Senator John D. Rockefeller IV Career
Center HVAC & renovations, Weir High renovations, Weir Middle
renovations, & NEW Weirton Elementary

Marshall County Schools - Cameron High

The Linsly School - Banes Hall addition/renovations

West Liberty University - Football Field Lighting

Building 55: West Virginia State Office Complex (LEED Certified)

Big Sandy Arena & Convention Center HVAC

Wheeling Island Hotel•Casino•Racetrack - multiple projects

Follansbee City Building renovations

Wellsburg City Building renovations

Bennett Square office build-out

Carenbauer Wholesale Corporation office renovations & warehouse
addition

Holiday Inn Express Hotel & Suites - multiple projects

Grave Creek Mound Museum renovations

Christina Schessler, AIA, LEED AP BD+C

Architect / LEED Accredited Professional / Historic Preservationist



EDUCATION:

The Pennsylvania State University
Bachelor of Architecture - 1988

Savannah College of Art & Design (SCAD)
Masters Degree in Historic Preservation - 2012

PROFESSIONAL AFFILIATIONS AND REGISTRATIONS:

Registered Architect in:

West Virginia
Ohio
Pennsylvania
Virginia

NCARB Certificate - 2005

LEED® Accredited Professional

Member:

American Institute of Architects
City of Wheeling - Building Codes Board
of Appeals
Preservation Alliance of West Virginia
The Association for Preservation Technology
International

Former Member, Board of Director, & Treasurer:

The Midwife Center for Birth & Women's
Health / Pittsburgh, PA

PROFESSIONAL EMPLOYMENT:

McKinley & Associates
Wheeling, WV (2004 to present)

MacLachlan, Cornelius & Filoni Architects
Pittsburgh, PA (1999-2004)

Perfido Weiskopf Architects
Pittsburgh, PA (1996-1999)

T.L. Cox & Associates
Beaver, PA (1990-1996)

Valentour English Bodnar Architects
Mt. Lebanon, PA (1989-1990)

Kenny Williams & Williams Building Diagnostics
Maple Glen, PA (1988)

SUMMARY OF EXPERIENCE:

For over 25 years, Ms. Schessler has obtained a wide range of educational, emergency service, forensic, medical, residential and commercial **architectural** project experience. As a **LEED Accredited Professional specializing in Building Design & Construction (LEED AP BD+C)**, Christina will be able to help provide direction to your project to develop a design that includes energy efficient aspects. She has had the opportunity to participate in the design of a few uncommon educational building types, such as an animal research facility in a high school, and a fire fighting training center for WVU to name a few. She recently completed her Masters in Historic Preservation, and has a passion for restoration and modernization projects. For Independence Hall, she won a Heritage Tourism Award from the Preservation Alliance of West Virginia. She also won a Pittsburgh History and Landmarks Restoration Award for the City Theater restoration project. Ms. Schessler is adept at developing space and utilization programs with Clients who are unfamiliar with the architectural design process. As a volunteer and as a professional, Ms. Schessler has also developed several projects for non-profit agencies on limited budgets.

NOTABLE PROFESSIONAL EXPERIENCES:

Braxton County High School addition/renovations (in association with Fairmont State University)

Grant County Schools - Maysville Elementary renovations, Petersburg Elementary renovations, Petersburg High renovations, & Union PK-12 Educational Complex addition/renovations

Hampshire County Schools - new Animal Veterinary Science Center

Hancock County Schools - A.T. Allison Elementary renovations & New Manchester Elementary renovations

Ohio County Schools - Madison Elementary renovations/historic preservation, Middle Creek Elementary renovations, & West Liberty Elementary renovations

Tyler County Schools - School Access Safety Plan updates

Wetzel County Schools - Magnolia High renovations/addition

The Linsly School's 200th Anniversary Campaign - Stifel Field House and Behrens Memorial Gymnasium renovations & Banes Hall addition/renovations

South Branch Career & Technical Center new Annex

West Virginia University's new State Fire Training Academy

Washington & Jefferson College - Old Main Building renovations

United States Postal Service - multiple projects across WV & PA from Open-End IDIQ contracts

Wheeling Island Hotel•Casino•Racetrack multiple projects

WV Independence Hall historic preservation

Panhandle Cleaning & Restoration warehouse and office building

Bennett Square Office Building - 3 Phases

Deb Blakeman, NCIDQ #015070

Interior Designer



EDUCATION:

University of Charleston
Bachelor of Arts, Interior Design - 1992

PROFESSIONAL AFFILIATIONS AND REGISTRATIONS:

**National Council for Interior
Design Qualification:**
NCIDQ [REDACTED]

Associate Member:
The American Institute of Architects

PROFESSIONAL EMPLOYMENT:

McKinley & Associates
Charleston, WV (2004 to present)

HDMR Group Inc
Charleston, WV (2000-2004)

Custom Office Furniture
Charleston, WV (1994-2000)

University of Charleston
Teacher
Charleston, WV (1997-2000)

Interior Design
Charleston, WV (1992-1994)

Freeland Furniture Company
Charleston, WV (1981-1987)

Interior Reflections
Logan, WV (1980-1981)

SUMMARY OF EXPERIENCE:

Ms. Blakeman has over 30 combined years of experience in the interior design field including education, corporate facilities, banks, residential, health care projects, and much more. She is also an Adjunct Professor at the University of Charleston. She has knowledge and experience with application of ADA regulations, ergonomic standards, state building code and industrial standards as they apply to interior furnishings, space planning and finishes. As a professional designer, Deb believes it is important to find the right balance between organizational and individual needs to increase productivity. Improving comforts through lighting and ergonomically sound furnishings will increase employer performance, and efficient spaces will organize work flow, decreasing communication barriers. She also has spent a lot of time researching LEED-approved furnishings, finishes, etc. to make interior energy conservation aspects of a project a success.

NOTABLE PROFESSIONAL EXPERIENCES:

Boone County Schools - Ashford Rumble Elementary, Boone County Honors Academy addition/renovation, Brookview Elementary addition/renovation, & Madison Elementary addition/renovation

Braxton County Schools - Braxton County High School addition/renovation with Fairmont State University

Brooke County Schools - NEW Brooke County Middle School

Clay County Schools - Lizemore Elementary School

Grant County Schools - Petersburg High addition/renovation, & Union Educational Complex addition/renovation

Hancock County Schools - NEW Weirton Elementary School, & multiple addition/renovation projects county-wide

Logan County Schools - NEW Chapmanville Regional High School

Marshall County Schools - NEW Cameron High School (LEED Registered), Central Elementary School, NEW Hilltop Elementary School (LEED Certified), McNinch Elementary School, & Sherrard Middle School

Ohio County Schools - J.B. Chambers Performing Arts Center addition to WPHS, Madison Elementary School, & Wheeling Park High School

Wood County Schools - Parkersburg High addition/renovation, & Williamson High Schools addition/renovation

The Linsly School's Baner Hall addition/renovation

West Virginia Northern Community College - B. & O. Building

West Virginia University - Colson Hall & NEW Fire Training Academy

WVU Institute of Technology - Maclin Hall

West Virginia State University's Gus R. Douglass Economic Development Center / DigiSo

Building 55: WV State Office Complex in Logan (LEED Certified)

Charleston Enterprise Center fit-out (WV AIA Design Award winner)

Robert E. Smith

Construction Administrator

EDUCATION:

University of Pittsburgh
M.S. Industrial Engineering - 1989

United States Air Force Academy
B.S. Behavioral Science /
Human Factors Engineering - 1983

PROFESSIONAL AFFILIATIONS AND REGISTRATIONS:

Board Member / President:
Indian Creek School District

Instructor:
Mechanical Engineering, Eastern Gateway
Community College

Village Administrator:
City of Mingo Junction

Commander:
American Legion Post 351

PROFESSIONAL EMPLOYMENT:

McKinley & Associates
Construction Administrator
Wheeling, WV (2009 to present)

Jefferson County Regional Planning Commission
Regional Planner
Steubenville, OH (2008-2009)

Edison Local School District
Director of Operation (1999-2008)
Transportation Supervisor (1998-1999)
Hammondsville, OH

MILITARY SERVICE:

Wright Patterson Air Force Base - Dayton, OH
Chief B-2, Block 20 Field Retrofit, \$300 million
B-2 Systems Program Office (1994-1996)
Team Leader, Process Improvement Technology
Armstrong Laboratory (1989-1994)

Randolph Air Force Base - San Antonio, TX
Chief, Test Construction Section
Occupational Measurement Center (1987-1988)
Quality Control Psychologist
Occupational Measurement Center (1985-1987)
Supervisor of Test Construction Team
Occupational Measurement Center (1983-1985)

SUMMARY OF EXPERIENCE:

Mr. Smith is a self confident, articulate and highly motivated individual with superior interpersonal and teamwork skills. He has a plethora of experience in mid to upper level personnel management, advanced information systems integration, training, acquisition, contract management, transportation and maintenance, and quality control. He has 23 years of direct supervisory experience, as well as 13 years of documented success as an Air Force Officer. He is currently **President of the Board of Education** for the Indian Creek School District in Jefferson County, Ohio. He is also an **Adjunct Professor at Eastern Gateway Community College** in Steubenville, Ohio, where he is teaching Mechanical Engineering.

NOTABLE PROFESSIONAL EXPERIENCES:

Construction Administrator:
Brooke County Schools - Brooke High HVAC, new Brooke Middle, Follansbee Middle renovations, & more

Grant County Schools - Maysville Elementary renovations & Union PK-12 Educational Complex renovations

Hancock County Schools - A.T. Allison Elementary renovations/addition, New Manchester Elementary renovations/addition, Oak Glen High HVAC and renovations, OGHS Field of Dreams, OGHS Multi-Sports Stadium Complex, Oak Glen Middle addition/renovations, Senator John D. Rockefeller IV Career Center HVAC, Weir High Multi-Sports Stadium Complex, Weir MS/HS HVAC, & NEW Weirton Elementary

Marshall County Schools - new Cameron Middle/High (LEED Registered) & new Hilltop Elementary (LEED Certified)

The Linsly School - 200th Anniversary Campaign: Baner Hall renovations/addition, & Behrens Memorial Gymnasium renovations/restorations

Fairmont State University - new 3 building "University Terrace" Student Housing Apartment Complex

Director of Operations:

Was responsible for the daily transportation of all district students (over 2500) which included 29 bus routes traveling over 3500 miles per day. Also responsible for all maintenance in 7 buildings. Managed a budget of over \$1.5 million.

Transportation Supervisor:

Was responsible for all transportation in the district, while also supervising 29 regular bus drivers, 10 substitutes, and 3 full-time mechanics.

FOOD FACILITIES CONCEPTS, INC.
COMPANY RÉSUMÉ



MICHAEL A. VENTRESCA



SUMMARY STATEMENT

Michael Ventresca, the President of Food Facilities Concepts, Inc., has been working 16 years in the food service consulting field. He is a member of the Food Service Consultants Society International, the Art Institute of Pittsburgh Culinary Program Advisory Committee and is ServSafe Certified. Michael's initial role at FFC, Inc. formed the foundation and knowledge base that allows Michael to understand all aspects of the industry. Over the years, Michael continued to advance and began coordinating large scale food service installations, managing the documentation process for all projects, dealing with design issues, and the day to day functions of the company. His evolution through the years and advancement through the ranks of the company has allowed him to understand the industry from the ground up which also allows him to manage all aspects of each project from design through construction administration and is the principal in charge of all projects.

WORK EXPERIENCE

- 1999 through 2004 - Draftsman at Food Facilities Concepts, Inc.
- 2004 through 2011 - Project Manager for all Food Facilities Concepts, Inc projects.
- 2011 through 2014 - Vice President/Project Manager of Food Facilities Concepts, Inc.
- 2014 to Present - President of Food Facilities Concepts, Inc.

EDUCATION

- Higher Education - ITT Technical Institute, Pittsburgh, Pennsylvania
- Continuing Education Courses as related to Food Service Design
 - Hobart Dealer and Consultant School - 2000
 - Commercial Kitchen Ventilation Seminar - 2003, 2010
 - Convection and Combination Oven Training Seminar - 2012
 - Steam Equipment Training Webinar - 2012
 - Refrigeration Equipment Training Webinar - 2012
 - AVTEC EcoArch Hood Training Webinar - 2012
 - ServSafe Certified - 2013
 - Dinex Healthcare Equipment Symposium - 2014
- Industry Trade Show Attendance to include pertinent industry related seminars
 - National Association of Food Equipment Manufacturers Exhibition & Seminar - 2001, 2003, 2007, 2013
 - National Restaurant Association Restaurant & Hotel/Motel Exhibition & Seminars - 2000





JUSTIN A. SEANOR

SUMMARY STATEMENT

Justin Seanor, Interiors at Food Facilities Concepts, Inc., has been working for at FFC, Inc. for the past 10 years. Justin was brought on board as Assistant Interior Designer and then took the position of Lead Interior Designer in 2010. He has worked hands on within the food service industry from 1998 through 2013 as acting manager or trainer in various restaurants. Justin's experience in the food service industry is an invaluable asset that gives him the ability to evaluate layouts for efficiency as well as highlight potential changes that would reflect how the operator would most likely operate their establishment. He is responsible for coordination of all back of house and front of house finishes and the review of layouts for efficiency, flow, and accessibility.

WORK EXPERIENCE

- 1998 to 2013 – Held training and management positions at several restaurants.
- 2007 to 2010 – Assistant of Interiors at Food Facilities Concepts, Inc.
- 2010 to Present – Interiors for all Food Facilities Concepts, Inc. projects.

EDUCATION

- Bachelors of Science, Interior Design – The Art Institute, Pittsburgh, Pennsylvania 2006
- Continuing Education Courses as related to Food Service/Interior Design

Dinex Healthcare Equipment Symposium - 2014

Rational Self-Cooking Combi Oven Training – 2014

LED Lighting 103: Residential Design and Applications Webinar - 2014

LED Lighting 104: Commercial and Institutional Design and Applications Webinar – 2014

Unified Brands Consultant Seminar – 2015

Revit BIM modeling Training – 2015, 2017

Zink Food Service Combi Oven Technology Training - 2016



West Virginia Schools for the Deaf and the Blind

CEOI 0403 DBS1800000001

**A&E EOI for Demolition,
Reconstruction, and
ADA Restrooms**



McKINLEY & ASSOCIATES
ARCHITECTS • ENGINEERS • INTERIOR DESIGN

in association with:



FOOD FACILITIES CONCEPTS, INC.

Union Educational Complex

Mt. Storm, West Virginia

Owner

Grant County Schools

Size

65,673 SF

Construction Cost

\$1.6 million

Project Architects-Engineers

McKinley & Associates

Project Architect

Christina Schessler, AIA, LEED AP BD+C

Contractors

Harbel Construction
G & G Builders, Inc.

The 65,673 SF Union PK-12 Educational Complex accommodates approximately 270 students from three schools: Union Elementary (Pre-K-4), Union Middle (5-8), and Union High (9-12). This \$1.6 million renovation and addition project involved 2 Phases of work. This project involved a new 1,200 SF floor to ceiling aluminum storefront safety glazed ADA entry, new secure doors and windows, site improvements, ADA accessibility, new building façade, walls and ceilings painting, floors and ceiling tiles, lighting, furnishings and finishes, plumbing, HVAC, electrical, new school-wide fire alarm protection system, site drainage, water barrier application, gymnasium floor replacement and painting, and new interior ADA ramps, to name a few.

The project also included 4 renovated restrooms (2 boys / 2 girls) in the main school facility, which includes ADA accessibility, toilets, urinals, partitions and accessories (tissue dispensers, mirrors, shelves, grab bars, liquid soap dispensers, towel dispensers, electric hand dryers, sanitary napkin disposal units, etc.), new ceilings, floor tile, paint, and more.

There was also a 3,500 SF of locker rooms/restrooms renovations. These areas included ADA compliance, boys toilet (2 urinals & 1 ADA stall), girls toilet (3 stalls, 1 is ADA accessible), boys office toilet, girls office toilet, toilet partitions and accessories, boys/girls showers (6 each, including 1 roll-in handicap shower with folding corner shower seats), vanities, walls and ceilings painting, floors and ceiling tiles, wood repairs, 200 lockers, benches, shelving, HVAC, plumbing, and electrical and to name a few.



Hancock County Schools

A.T. Allison Elementary School

Chester, West Virginia

Owner

Hancock County Schools

Size

56,000 SF

Construction Cost

\$5.3 million

Project Architects-Engineers

McKinley & Associates

Project Architect

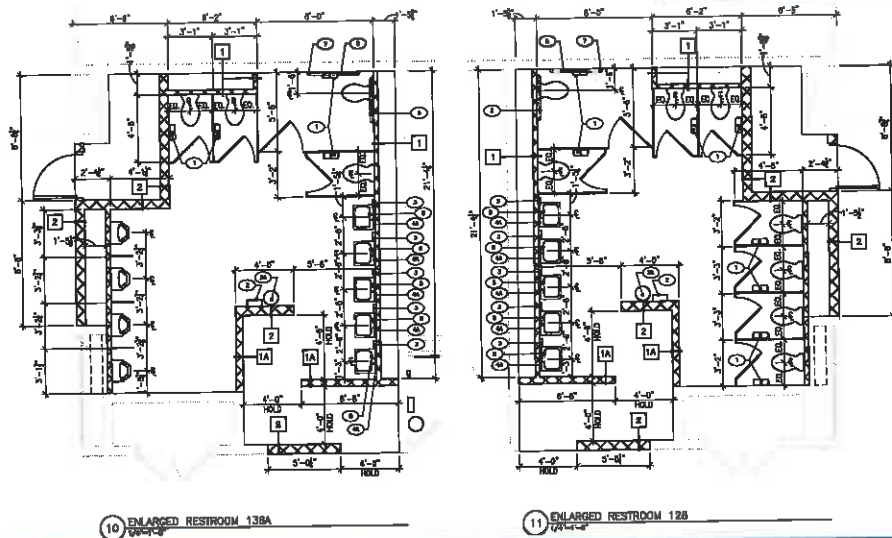
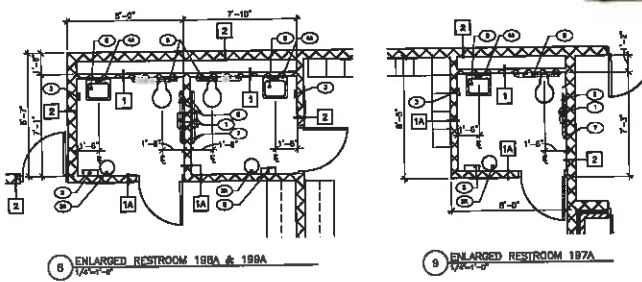
Christina Schessler,
AIA, LEED AP BD+C

Contractor

Jarvis, Downing & Emch, Inc.

A Dedication Ceremony was held on August 25th, 2013 for the **addition/renovation project** to the Allen T. (A.T.) Allison Elementary School. The original building was built in 1963, and now consists of 440 students and 31 faculty members. Improvements include **restroom upgrades, ADA compliance, plumbing, HVAC, data, electrical, life safety, security, roof, and a brand new cafeteria among others.** This project also includes a 3-classroom Pre-K addition with a separate entrance, which includes **pint-sized toilet fixtures, carpet squares, Smart Boards and much more.** The renovations/additions now gleam with the brightness of new lights, ceilings, flooring and paint.

There is 1,012 SF of renovated restroom space including a total gut and rework of piping and new fixtures to fit the new design; 730 SF of refit restroom space which get replacement of flush valves, toilet seats and faucets, stop valves and p-traps; as well as 113 SF of new restroom space where we extended piping to serve supply and waste from existing restrooms. These are all now ADA Accessible. In addition, there are different child-height toilet fixtures, new exhaust fans, 6 new floor drains added to serve new mechanical equipment throughout the building, and more. Furthermore, all of the new faucets and flush valves are automatic operation.



Weirton Elementary School

Weirton, West Virginia

Owner

Hancock County Schools

Size

105,000+ SF

Construction Cost

\$26.5 million

Project Architects-Engineers

McKinley & Associates

Project Architect

Gregg P. Dorfner, AIA, REFP

Contractor

Cattrell Companies, Inc.

Construction Manager

PICIS

The new \$26.5 million Weirton Elementary School for 950 students in grades PK-4 replaces Weirton Heights, Liberty, and Broadview Elementary Schools. There was a Dedication and Ribbon-Cutting Ceremony on August 10, 2014. This school is the largest elementary school designed in the State. The facility features three separate areas for learning, divided into preschool and kindergarten; first and second grades; and third and fourth grades. The 2-story school includes more than 60 classrooms, not including resource rooms and administrative offices. It is also wireless and equipped with two computer labs, 10 laptop labs and five iPad labs, a multi-purpose room, gymnasium, a cafeteria and a separate entrance specifically for food deliveries. Furthermore, we incorporated multiple "green" components into this 105,000+ SF building. These include high efficiency boilers, energy recovery wheel, desiccant wheel, chilled beam system, Variable Frequency Controllers to reduce fan energy, low flow plumbing fixtures, energy monitor on the main electrical gear, dimmable lighting with occupancy sensor control, and T-5 & T-5 HO fluorescent bulbs used as primary light sources throughout school to name a few. All of this has been accomplished with only one-third of 1% in total change orders!

The Food Service will serve over 1000 meals a day for breakfast and lunch. It is sized to accommodate over 600 students for lunch with hot meals, over 350 students who pack lunches, as well as meals for staff. In addition, 380 students are served breakfast each day. The kitchen area is roughly 3000 SF and the cafeteria

is around 2500 SF. There are 5 cooks – 1 cook to sell milk and restock meals, 2 cashiers, and a Custodian for clean up. The 800 SF server area includes two cashier stands and two serving lines. It is near physical education for use in nutrition units, near custodial and maintenance for ease in using loading dock, near Pre-K and K for teaching, and also near Special Needs for ease in delivering meals to students. The equipment is a dishwasher, 3 bowl sink, garbage disposal, stainless steel shelving, 2 mobile cashier stands for lap tops and scanners, 2 stationary hot tables with 4 wells, 2 Serving tables, 2 large milk coolers (20 cases per cooler), table for condiments and silverware, enough lunch tables to accommodate 350 students, plastic trays, 6 steamer ovens, 4 warmers – 2 for each work station, 2 table top refrigerators, walk-in freezer, walk-in cooler, and stainless steel hand washing sinks.



Marshall County Schools

Cameron High School

Cameron, West Virginia

Owner
Marshall County Schools

Size
130,000 SF approx.

Construction Cost
\$32 million

Project Architects-Engineers
McKinley & Associates

Project Architects
Patrick J. Rymer, AIA
Gregg P. Dorfner, AIA, REFP

General Trades Contractor
Nello Construction

Construction Manager
PICIS

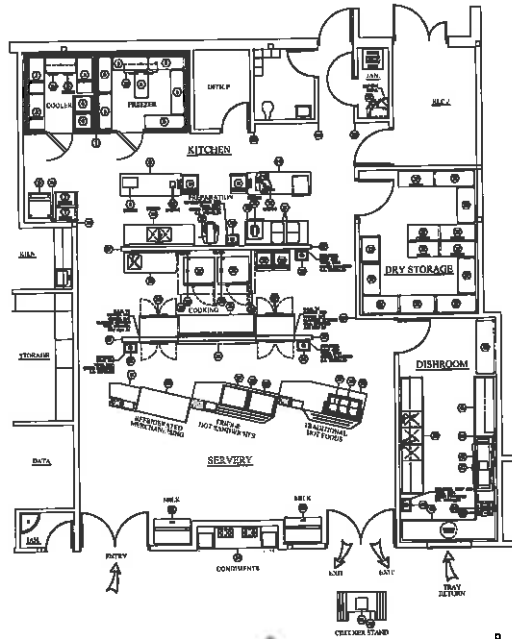
Commissioning Agent
L. L. DUNN & Company

Another project we were honored to work with you on was the new \$32 million Cameron High School. This building incorporates a 270-student High School, to which a 155-student Middle School program and a HS-level Agricultural Sciences program are added; total school capacity is 425 students attending grades 6 thru 12. Sustainable design goals within the 130,000 SF building included reduced life cycle costs, the use of air terminal units, "chilled beams," desiccant wheel dehumidification, and more. The Owner's program required Middle School and High School areas with both separate and integrated facilities. The facility features Departmentalized classroom groupings. A School wide WI-FI and Interactive "smart" boards in all classrooms are incorporated to support the Owner's future "paper-less" goals. To date the school has won multiple awards acknowledging

achievements in taking a comprehensive approach to green schools, including: a 2013 Placemaker Award for Innovation from West Virginia GreenWorks; the 2014 Black Bear Award for the Highest Achievement in the West Virginia Sustainable Schools program; and selection as a 2014 U.S. Department of Education Green Ribbon School!

The building consisted of two gymnasiums, an elevated jogging track, multiple weight training rooms, concessions room with commercial grade equipment, and more. Adjacent to the gyms is a 1500 SF integrated electronic game/exercise and community outreach Exergaming facility. The school partnering with local healthcare providers through the NEW (Nutrition, Exercise, and Weight Management)

You program to utilize the Exergaming facility and facilitate community wellness particularly for students identified at risk for Overweight, Heart Disease or Diabetes. The gyms are also adjacent to the schools new commons / cafeteria overlooking the school's football stadium and utilizing a healthy choice cafeteria style plan for student menu selection. For Food Service, they serve breakfast and 2 lunch periods. The kitchen area is 2,865 SF, which includes preparation/cooking area, serving area, dry food storage, walk-in freezer, walk-in freezer cooler, and much more. A 2,400 SF "scatter" style cafeteria/Commons space to assists in the education of healthy food choice selection. The cafeteria consisted of multi-concept stations without requiring a lot of space. There are enough tables and chairs to accommodate 300 people. There are skylights and lots of windows to allow for natural daylighting.



Main Gym showing Daylighting



Servery



Community Exergaming Facility



Cafeteria

Marshall County Schools

Hilltop Elementary School



Sherrard, West Virginia

Owner

Marshall County Schools

Size

49,700 SF

Construction Cost

\$8.4 million

Project Architects-Engineers

McKinley & Associates

Project Architect

Thomas R. Worledge,
AIA, LEED AP BD+C, REFP

Contractor

Grae-Con Construction

Commissioning Agent

Iams Consulting, LLC

McKinley & Associates is proud of our projects we have completed for you over the years, including this new Hilltop Elementary School, among our many projects together. The 49,700 SF school didn't start out as a green school but the design intent was to incorporate good sustainable design practice. This \$8.4 million school was designed to blend into the backdrop of a small rural community. Typical of West Virginia, hilly terrain prohibits huge, sprawling facilities. The school board wanted to use the property it already owned; a little used football field at the local middle school fit the need for both parameters. During design coordination with the engineering team members the energy model that was developed compelled the designers to reduce the chiller capacity and system design; thus reducing energy use while saving money. After reviewing the design, MCBOE chose to submit for LEED Certification. A lot of time was spent researching LEED-approved furnishings, finishes, etc. to make the indoor environmental quality conducive to learning, and to minimize maintenance. Sun shades mounted over classroom windows eliminate noontday sun from equinox to equinox. A combination of masonry and metal siding was chosen for durability and all were manufactured locally. The metal siding and roofing is Cradle to Cradle Certified which is a program that focuses on manufactures whose products are perpetually recycled in a closed loop. The interior materials were chosen using the same criteria; low maintenance and locally sourced. All the gypsum board used in the project came from a gypsum board plant a few miles from the project. The rubber and vinyl flooring does not require the typical yearly stripping and waxing, eliminating the use of harsh chemicals; the floors can be maintained simply by buffing with mild soap and water. The 2,871 SF cafetorium has dining seating for over 250 students, and the kitchen/prep/serving area is over 1,600 SF. For some sustainable features in these areas: there is water use reduction with low flow faucets on the kitchen sinks that use 1.6 GPM as opposed to the base case 2.5 GPM, the lighting has toggle-style switches with automatic shutdown of 68% of light in room between 11:00pm and 5:00am, etc. The School Building Authority's 2009 Limit on New Elementary School Design was \$217/SF, but Hilltop Elementary's final price was less than \$170/SF. This amount was well below the National average for elementary school construction; sustainable or not.



Hilltop Elementary is the first LEED Certified school in the state of West Virginia! HES won a 2010 Gold Medal Green Building Award by Building of America. HES also won the 2012 West Virginia Department of Environmental Protection's Clean Energy Environmental Award. HES received the 2012 Black Bear Award for the Highest Achievement for the West Virginia Department of Education's Green Ribbon Schools program. In addition, in April 2012, Hilltop was one of 78 schools nation-wide to be awarded the first-ever U.S. Department of Education Green Ribbon Schools! Moreover, Hilltop won a 2013 Placemaker Award for Leadership of/for Place from the West Virginia GreenWorks.



McKINLEY & ASSOCIATES
ARCHITECTS • ENGINEERS • INTERIOR DESIGN

County-Wide Projects

Ohio County, WV - county-wide

Throughout the years, we have completed multiple projects for Ohio County Schools totaling over \$40 million; including renovations, additions, upgrades, various local construction projects, MIP and Needs projects, their 10 year Comprehensive Educational Facilities Plans (CEFP 2010-2020), and much more. The facilities we have worked on include Bethlehem Elementary, Bridge Street Middle, Elm Grove Elementary, J.B. Chambers Performing Arts Center, Madison Elementary, Middle Creek Elementary, Ritchie Elementary, Triadelphia Middle, Warwood Elementary, Wheeling Middle, Wheeling Island Stadium, Wheeling Park High, Woodsdale Elementary, the Board Office and more.

One recent project, the new \$11 million J.B. Chambers Performing Arts Center was built on to the front of Wheeling Park High School. This project was selected as an Outstanding Design by the American School & University Magazine's 2013 Architectural Portfolio; the premier showcase celebrating the best in education design! The 34,000 SF facility was created to support the long-standing robust Performing Arts Program. It provides a professional grade theater to showcase both musical and theater performances, and is used as a workshop for classes in production and performance. For these students, standing onstage in this unique venue is the first step of a dream-come-true. The PAC is not only a state of the art facility available to elementary, middle and high school students; it is also available to local community groups, colleges, universities as well as performances by the Wheeling Symphony. In addition to the theater, we also completed 6,000 SF of renovations to the existing WPHS. The Theater is linked to the existing school with a compact but dynamic 2-Story Lobby space. The Lobby features a central monumental stair, connecting the open balcony of the upper Lobby to the curtainwall-glazed angular geometry of the ground floor. The oversized mid-point landing on this stair looks out onto the entry plaza on one side, and into the dramatic cascading hillside of the park on the other. The 1,200 seat theater was designed as a Gallery configuration with 2 Gallery levels. The Galleries are shallow, and wrap around in a crescent form, thus providing the audience with optimal proximity to the stage. In response to the High School's unusual concentration on performing arts and theater technology, the project showcases various components not typically found in public school facilities, such as a professional equipment, a lighting catwalk, multi-layer engineered stage floor system, structural steel grid-iron with professional-grade motorized rigging equipment and smoke control vents, an open-view lighting and audio booth at the back, a mid-house mix workstation, a 4,000



SF back stage with touch-screen computers that operate 350 lighting and rigging circuits and audio controls, demountable orchestra shell, a suspended walk-able tension grid, 1,500 SF Scene Shop high-bay studio provides open volume workshop space for set construction and equipment transfer, a 20 FT high door which allows access and mobility for the tallest stage equipment and set assemblies, and more. All of these systems are utilized as hands-on training for the Theater Arts students.



Our most recently completed project was \$88,000 ADA Restroom renovation project performed at both Middle Creek Elementary and West Liberty Elementary Schools, with a total design and construction period of three months. As this was a small project (two single occupant restroom renovations in each of the two elementary buildings) the design portion of the project was very straight forward. Both schools included the removal and replacement of existing toilet room fixtures and accessories, removal of existing toilet room partitions, the relocation and resizing of the door and frame to the toilet rooms, the demolition and reconstruction of plumbing chase, new plumbing chase access, new finishes, as well as new diffusers, devices and upgrades. The challenges of this project were more centered around scheduling to meet the aggressive completion date. The entry doors to the restrooms in both buildings were not ADA compliant and also not standard height (custom). To help keep the project on schedule, we coordinated material for the county to direct purchase the new doors and frames to facilitate a quicker arrival to the jobsite. This way the doors were onsite by the time contractor completed the demolition. Through the combined efforts with the owner/architect/contractor, this project was delivered as required within this very short time frame.



Before and After

Ohio County Schools

Wheeling Park High School kitchen

Wheeling, West Virginia

Owner

Ohio County Schools

Size

16,500 SF approx.

Construction Cost

\$1.2 million

Project Architects-Engineers

McKinley & Associates

Project Architect

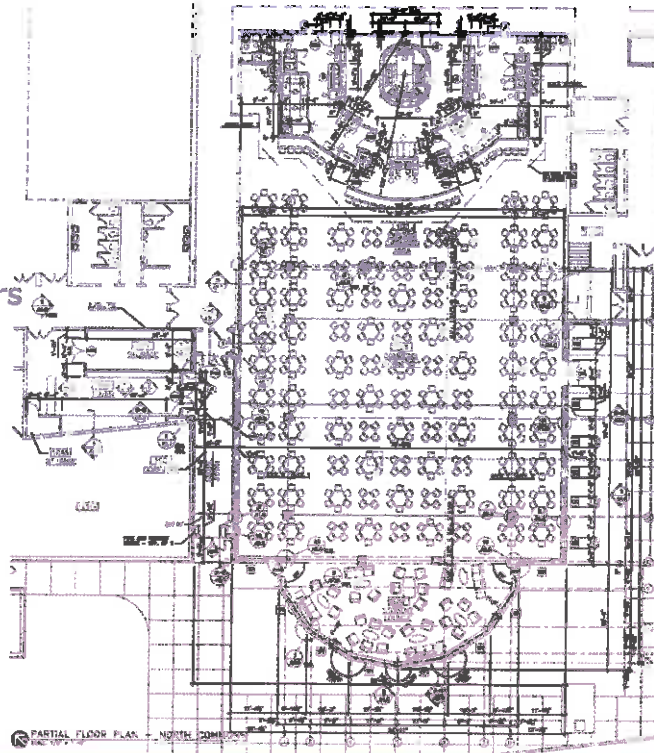
Gregg P. Dorfner, AIA, REFP

Contractor

Walters Construction

Over the years, we have completed multiple projects at Wheeling Park High School. One project was to create an approx. 16,500 SF addition, as well as renovations to existing space. This \$1.2 million project consisted of a food court that serves 600 students every 21 minutes, as well as a new kitchen. In the kitchen area, there were renovations which included the existing 6,140 SF dry storage area, as well as renovations

of a classroom for 3,720 SF of additional dry storage space. Moreover, we added new kitchen equipment including a new cooler and freezer. There were new ceilings, lighting, door openings, and HVAC adjustments. The server area for the Cafeteria is made up of 3 separate lines entered from the corridor, which are 1) full meal, 2) a la carte and 3) soup and salad. There are 3 cashiers at the end of the serving lines, and each line has a back-up area for storage and a hand sink. The full meal line has a back-up area large enough 3 tube pot sinks. In addition to renovations, there was also 7,159 SF of new additions which included new food court equipment and new furnishings.



Wood County Schools

Parkersburg High School

Parkersburg, West Virginia

Owner

Wood County Schools

Size

254,000 SF approx.

Construction Cost

\$20 million

Project Architects-Engineers

McKinley & Associates

Project Architect

Thomas R. Worledge, AIA, LEED AP BD+C, REFP

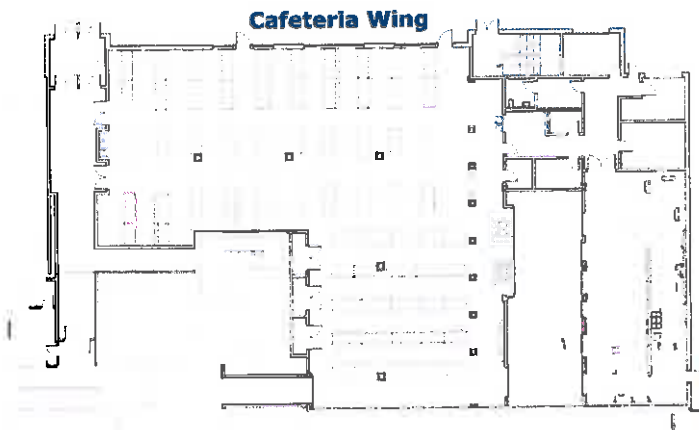
Contractor

Grae-Con Construction

Parkersburg High School was founded in 1867 and was one of the first high schools in the state of West Virginia. The original building of the current structure was built in 1917, making it one of the oldest school buildings in West Virginia, and it is now grown to 254,000 SF to be one of the largest high school buildings / campuses in the state. Parkersburg High School was added to the National Register of Historic Places in 1992 (NRHP Reference #: 92000895). This \$20 million project includes a **restoration/renovation** that encompassed all of the original building, as well as additions of a 3-story science and **cafeteria wing** and an auxiliary gymnasium.

Being a historic school with a strong alumni association, it was paramount that the original historic caricature of the building remained intact. The original building features extensive stone work and exquisite interior plaster work detailing. Our design protected the grand front façade in favor of small additions to the rear of the building. We carefully matched the profiles of the stone and matched the brick to give a seamless transition from the old and new structure on the exterior. Many meetings were held with the state historic association and the alumni to insure the building would not be disfigured by the renovations and additions. For example, the building only had window AC units; therefore, to protect the historic structure, the HVAC system required that we put louvers through the wall. We designed a custom grill colored to match the brick to conceal the intakes. **The interior of the building needed major upgrades including a new HVAC system, fire alarm, electrical, fire protection upgrades and interior space planning to meet the needs of a modern high school. There were also multiple restroom renovations throughout the building.**

The cafeteria included 8,700 SF of commons space which has 79 tables that seats 672 students. Parkersburg High serves well over 1,000 meals a day, and there are many meal plans to choose from. In addition, the 5,400 SF food services area includes a serving area, cooking/prep area, wash area, paper/dry storage, and walk-in coolers and freezers.



Wood County Schools

Parkersburg South High School

Parkersburg, West Virginia

Owner

Wood County Schools

Size

295,000 SF approx.

Construction Cost

\$23.8 million

Project Architects-Engineers

McKinley & Associates

Project Architect

Ray Winovich, RA

Contractor

Grae-Con Construction

Completed in July 2008, Parkersburg South High School was a multi-phased project, completed in various "fast-tracked" construction packages over a 2-year period to accommodate the complex on-going campus operations, and encompassed over \$23.8 million worth of construction. This was one of the many projects that was included in the Master Bond Program; one of three high schools in Wood County in which we completed major construction. The project included 295,000 SF of demolition, additions, major renovations and construction administration for an educational campus. There were multiple restroom renovations and additions throughout the building, encompassing every restroom facility. The 92,000 SF of additions and new construction were general classrooms, industrial arts, science laboratories, day care facilities, offices, and athletic gymnasiums. The culinary arts program area has a classroom, kitchen, and cafe. The renovations encompassed all of the original 203,000 SF building; the interior of the building needed major upgrades including fire protection upgrades, a new electrical system, a new HVAC system, classrooms, and major interior space planning to meet the needs of a modern high school. There was a major renovation to the 14,230 SF cafeteria area, which included a 7,082 SF dining area, a separate staff dining room, a 3,394 SF kitchen/preparation room with walk-in freezers, a serving kitchen with connected serving area, dish washing room, food storage, and more. They serve well over 1,000 meals a day, and have various meal plans for the students to choose from. Scope also included system wide coordination access control.



BEFORE
and AFTER



Maclin Hall Dormitory

Montgomery, West Virginia

Owner

WVU Institute of Technology

Size

53,900 SF approx.

Construction Cost

\$6 million

Project Architects-Engineers

McKinley & Associates

Project Architect

Thomas Worlledge,
AIA, LEED AP BD+C

Contractor

Wiseman Construction

A comprehensive renovation to the historic Maclin Hall dormitory on the campus of WV Tech in Montgomery, WV. This \$6 million project had two fast-tracked aspects to it; there was a design time of only 1 month, along with a construction time of only 5 months. This project was fast-tracked throughout the summer of 2007, so the building could be occupied by students for the start of the 2007-2008 school year. Even with this extremely short timeline, we were still able to bring the project in under budget.

There were 35 total restroom renovations. We completely regutted every restroom and also provided new shower facilities. On the ground floor, there were 5 restroom/shower renovations; on the upper floors there was 2 communal restrooms/showers per floor, and the 8 suites per floor each had their own separate restroom. These involved the removal of all toilet partitions & associated hardware, toilet accessories, plumbing fixtures, cap supply and waste lines, etc. We then replaced the ceramic tile base at toilet rooms, the walls, new toilets and showers including ADA compliance, partitions, mirrors, soap dispensers, paper towel dispensers, toilet paper holders, sanitary napkin dispenser, grab bars, shower rods and curtains, soap holders at showers, towel bars, robe hooks, solid surface shelving above sinks, and more.

In this 53,900 SF building, we added a theater room, exercise area, laundry room, studies, computer rooms, tv rooms for video games, student commons areas, and lounges. We also replaced the entire HVAC, lighting, fire protection, data systems, redesigned the shared areas, new finishes, new roof, and the project included a restoration of the exterior.

The project has had subsequent phases, and we recently completed a \$240,000 boiler replacement which is used by both Maclin and Conley Halls. This involved replacing a steam boiler with a hot water boiler.



BEFORE



and AFTER



Braxton County Senior Center

Gassaway, West Virginia

Owner

Braxton County Senior Citizen Center, Inc.

Size

13,965 SF approx.

Construction Cost

\$2.8 million

Project Architects-Engineers

McKinley & Associates

Project Architect

Christina Schessler, AIA, LEED AP BD+C

Contractor

Flint Construction Co.



Architectural/Engineering design for an adaptive reuse/renovation of a former steak house restaurant into a multi-use senior citizen center in Gassaway, WV. The project involved the total renovation of existing building, a single story addition, site grading and drainage, landscaping improvements, renovation and expansion of parking areas (approximately 65 spaces), and gravel overflow lot. Project included new systems, such as HVAC, electrical, automatic sprinkler system, etc. The facility was designed to support events within the center, such as weddings, receptions, bingo, meetings, and much more. The center also supports a Meals On Wheels Program. The 3,685 SF Community Room has the ability to hold 526 persons, or have dining for 246 persons for assembly with less concentrated use. There are over 30 round tables with seating for 8. Also included in the structure are a kitchen, walk-in freezer/refrig, dry storage, dishwashing, kitchen storage, table/chair storage, mechanical space, exercise room, arts & crafts room, audio video room, conference room, offices, laundry facilities/maintenance, computer room, and more. We renovated restrooms and had fit-outs. These included employee lavatories, public toilets, and assisted shower/toilet. These were built to be ADA Compliant/ handicap-accessible. There were new plumbing fixtures and toilet partitions, primary door and frame, all wall-mounted urinals, toilet accessories, floor tile, drain system, wall tile, and much more.

Capitol Theatre

Wheeling, West Virginia

Owner

Wheeling Convention & Visitors Bureau

Size

82,000 SF approx.

Construction Cost

\$2.3 million

Project Architects-Engineers

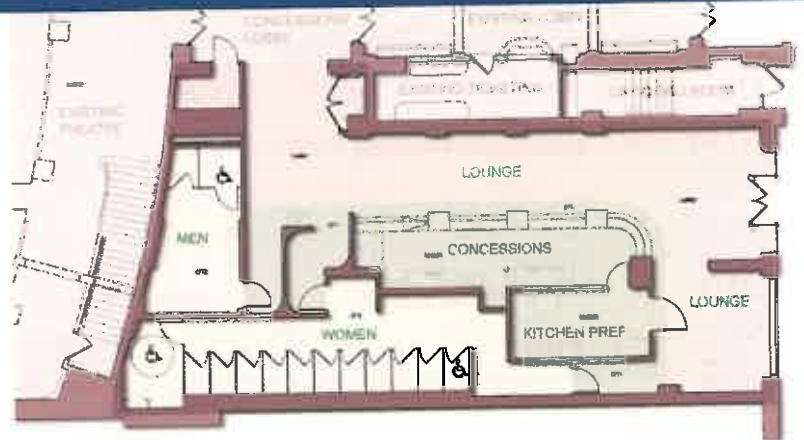
McKinley & Associates

Project Architect

Christina Schessler,
AIA, LEED AP BD+C

Contractors

Brewer and Company
United Electric
Walters Construction Co.
Grae-Con Construction



NEW ADA REST ROOM AND CONCESSIONS PLAN

The Capitol Theatre (also known as the Capitol Music Hall) was originally built in 1928. In 2007, it was closed due to code violations. Two years later, the theater was bought by the Wheeling Convention & Visitors Bureau, and McKinley & Associates was honored to become the Architects and Engineers on this restoration project. We completed an overall **Master Plan**, and it resulted in multiple construction phases to reopen the historic theater. **Phase 1** of Capitol Theatre restoration included **life safety and code improvements** to the historic building directly related to the facilities re-opening. This included **full building sprinklering, full building fire alarm, and temporary ADA restrooms**. McKinley & Associates worked with several groups having authority over the building to work out a plan that met both the life safety requirements and the **time constraints** of the owner. A final plan was put into place that included 5 separate prime contracts **fast-tracked** to achieve reopening of the theatre. With a **tight schedule of 6 months** from master planning to occupancy, a hands on approach was used to ensure the historic fabric of this building was maintained while these improvements were implemented. After Phase I was completed, **the theater reopened on September 23, 2009**. **Phase 2** included 2 six-foot wide, 5 story, free standing emergency exit stairs with a scissor configuration. Finally, **Phase 3** included a new elevator and shaft, **ADA compliance**, and a **2,400 SF concession and restroom build out**. The restrooms involved architecture, engineering, construction administration, and even interior design. Interior Design included products such as counter tops and casework, ceiling, tile, resilient flooring, toilets and partitions, urinals, base & transition strips, grout, color selections, and more. Additional accessories are toiler tissue dispensers, semi recessed trash/towel dispensers, clothes hooks, liquid soap dispensers, changing stations, mirrors, sanitary napkin disposal unit, purse shelves, and grab bars. An existing restroom was converted into the Women's ADA stall, and 11 adjacent stalls were added (including another ADA stall). The new Men's room included 6 urinals and 2 stalls.



Before



and After



Additional Restroom Projects

Grave Creek Mound Museum / Archeology Complex Before & After



Additional Restroom Projects

Central Elementary Before & After



Additional Restroom Projects

**Willow Glen
Before & After
(Historic Preservation - Plumbing Restoration)**



**McNinch Elementary
Before & After**



Additional Restroom Projects

Bishop's Residence renovation



Additional Restroom Projects



Huntington CC renovation



**Panhandle Cleaning & Restoration
Office Building & Warehouse**



WVSP Detachment renovation



Additional Restroom Projects

Brookview Elementary renovation



Madison Elementary renovation



Additional Restroom Projects

Williamstown High Before...



...and After



Additional Restroom Projects

Building 55: West Virginia State Office Complex (LEED Certified)



Hilltop Elementary (LEED Certified)



CAMERON HIGH SCHOOL

Cameron, West Virginia

Type: Education Design
Size: 5,200 Square Feet
Services: Foodservice Design Consulting
Completed: Dec 2012



The Cameron High School project was a completely new construction of the old school. Food Facilities Concepts, Inc. was hired on to design the cafeteria and kitchen area as well as the school's Meat Lab for one of their programs. The cafeteria consisted of multi-concept stations without requiring a lot of space. The meat lab required student work tables, holding coolers, curry/drying coolers, smoker room and a meat rail system. The meat rail system was designed to transport the meat from receiving, through a holding cooler and finally to the student work tables. This room also incorporates specific equipment geared towards this curriculum.



FOOD FACILITIES CONCEPTS, INC.

MONTOUR HIGH SCHOOL

McKees Rocks, Pennsylvania

Type: Education Design
Size: 6,300 Square Feet
Services: Foodservice Design Consulting
Completed: Sept 2011



The Montour High School project was a complete renovation of their receiving/storage, kitchen, warewashing, and servery areas. The cooking program was updated with modern combination over/steamer cooking technology and the servery area updated to a food court style serving area. Food Facilities Concepts, Inc. was the design consultant for the spaces mentioned above and assisted with the design of the counter fronts, light selections, and finishes for the servery.



FOOD FACILITIES CONCEPTS, INC.

**OUR LADY OF LOURDES
REGIONAL MEDICAL CENTER**
Lafayette, Louisiana

Type: Health Care
Size: 10,000 Square Feet
Services: Foodservice Design Consulting
Completed: July 2011



Our Lady of Lourdes project consisted of the design of room service tray make-up program as well as a servery. Food Facilities Concepts worked with the hospital's food service operator and the design team to develop these areas as well as a complete kitchen to support both spaces. The room service program was developed to support 250 patient beds. The servery is a multi station food court that incorporates the branded concepts of the hospital's food service operator. The servery counters incorporates natural design elements and finishes that helps maintain a common theme throughout the space and hospital.



**NEWBRIDGE ON THE CHARLES
HEBREW SENIOR LIFE**

Dedham, Massachusetts

Type: Retirement Community

Size: 1,000,000 Square Feet

Services: Foodservice Design Consulting

Completed: June 2009



New Bridge on the Charles is a continuing care retirement community located in the suburbs of Boston, Massachusetts. The campus has twenty-five plus food and beverage service points. The main kitchen receives, stores and prepares food and beverage products for each of these service points.

The kitchen provides varying levels of support for the entire operation. This includes Independent Living Residents, Assisted Living Residents, Health Care Residents, Staff and Visitors. The facility has many retail food service outlets also supported by the main kitchen including; restaurant with formal and informal dining, club room/bar, deli, and coffee/ice cream shop.



CASCADE CULINARY INSTITUTE

Central Oregon Community College
Bend, Oregon

Type: Culinary School
Size: 18,240 Square Feet
Services: Foodservice Design Consulting
Completed: October 2011



The Central Oregon Community College's Cascade Culinary Institute project allowed for the major expansion of the school's culinary program. A new building was built from the ground up to support the school's vision of creating the region's premier culinary program.

Food Facilities Concepts worked with the project team to develop the program, curriculum, and design for the new facility. Kitchens include; Le Patisserie, Multi-Purpose/Bake Skills and Skills/ A La Carte. The Skills/A La Carte kitchen will support the school's restaurant program. This project also includes a demonstration kitchen with a 50 seat theater classroom setting.

The facility was designed to allow for future expansion of the culinary program.



**NEMACOLIN WOOLANDS:
SKI LODGE RESTUARANT & BAR
OAK TREE BAR
AUTUM'S RESTAURANT
CADDY SHACK RENOVATIONS
ENTERTAINMENT CENTER
SPA & FITNESS CENTER**
Farmington, Pennsylvania

Type: Resort
Size: Varies per Project
Services: Foodservice Design Consulting
Equipment Procurement
Equipment Installation
Completed: Varies per Job



Nemacolin Woodlands Resort offers a variety of different activities and venues. Food Facilities Concepts, Inc. has worked on multiple jobs to create the desired look at feel of most of the spaces around the resort located in Farmington, PA.

The most recent of these jobs was the Nemacolin Ski Lodge that reopened this winter 2013. We were brought on to develop the restaurant space as well as the Apex Bar.



FOOD FACILITIES CONCEPTS, INC.