



West Virginia Purchasing Division

2019 Washington Street, East
Charleston, WV 25305
Telephone: 304-558-2306
General Fax: 304-558-6026
Bid Fax: 304-558-3970

The following documentation is an electronically-submitted vendor response to an advertised solicitation from the *West Virginia Purchasing Bulletin* within the Vendor Self-Service portal at ***wvOASIS.gov***. As part of the State of West Virginia's procurement process, and to maintain the transparency of the bid-opening process, this documentation submitted online is publicly posted by the West Virginia Purchasing Division at ***WVPurchasing.gov*** with any other vendor responses to this solicitation submitted to the Purchasing Division in hard copy format.

Header @ 7

List View

General Information | Contact | Default Values | Discount | Document Information

Procurement Folder: 305912

SO Doc Code: CRFQ

Procurement Type: Central Purchase Order

SO Dept: 0608

Vendor ID:

SO Doc ID: COR1700000009

Legal Name: ADVANTAGE EQUIPMENT INC

Published Date: 3/27/17

Alias/DBA:

Close Date: 4/5/17

Total Bid: \$164,915.00

Close Time: 13:30

Response Date:

Status: Closed

Response Time:

Solicitation Description:

Total of Header Attachments: 7

Total of All Attachments: 7

Line	Comm Ln Desc	Qty	Unit Issue	Unit Price	Ln Total Or Contract Amount
1	COMMERICAL WASHERS	29.00000	EA	\$2,795.000000	\$81,055.00

Comm Code	Manufacturer	Specification	Model #
52141600			

Extended Description : COMMERCIAL WASHERS

Comments: Continental EH020, High performance, front load soft mount, programmable 300 G-force extract, gravity drain washer, no bases required, stainless steel inner and outer drum,120/60/1 with full manufactures warranty.

Line	Comm Ln Desc	Qty	Unit Issue	Unit Price	Ln Total Or Contract Amount
2	COMMERICAL DRYERS	28.00000	EA	\$2,995.000000	\$83,860.00

Comm Code	Manufacturer	Specification	Model #
52141602			

Extended Description : COMMERCIAL DRYERS

Comments: Continental CG2030 Commercial gas dryer, with 64,000 BTU/h 20-30 lb. capacity with White painted front and full manufactures warranty.



IMPORTANT: To Prevent Overloading, DO NOT
Use More Than 14 cup Detergent

▲ DANGER
Do not allow children to operate machine.

DOOR IS EQUIPPED WITH INTERLOCK SAFETY SWITCH
Never try to open the door if:
- cycle has not finished.
- Drum has not completely stopped.
- Water has not been completely drained.

LOGI CONTROL

Control panel with digital display and buttons for cycle selection and settings.

Control panel for the drying tumbler, featuring a digital display and buttons for cycle selection.

Continental's E-Series Washer-Extractor and matching drying tumbler deliver an energy-efficient, industrial solution to on-premise laundries with small load requirements. Designed to cut utilities while increasing productivity, the machines return dollars to your bottom line!

E-SERIES

CONTINENTAL
GIBBULLI, INC.



E-SERIES HIGH-PERFORMANCE WASHER-EXTRACTORS MAXIMIZING ENERGY EFFICIENCY

Designed to drive down gas, water and electrical costs while improving productivity, Continental E-Series High Performance Washer-Extractors deliver high-speed extract, an easy-to-install freestanding design, unmatched durability and the ultimate in programmability!

High Speed Extract & Freestanding Design

E-Series Washer-Extractors feature a freestanding design that enables extraction speeds of up to 300 G-force, about 200 G-force more than most topload washers. The super-speed extract removes more water from each load—slashing dry time and resulting gas consumption in half! And, unlike other industrial machines that must be bolted to concrete foundations, the freestanding design of E-Series Washer-Extractors allows them to be easily installed and moved at any time—using the same footprint as most topload washers. To further facilitate easy installation, E-Series Washers use single-phase power which is easily available at most on-premise locations.

Stingy on Water

E-Series technology allows for superior wash quality using considerably less water than most toploads on the market. A sump-less design, exclusive AquaFall system and a highly programmable control combine to slash water usage and ensure excellent wash quality. Compared with most topload washers, which consume 31-40 gallons of water per load, E-Series can use as little as 13.4* gallons per load! Less water used equates to less water heated and additional savings in gas and electricity. No wonder it's ENERGY STAR® qualified as a top tier commercial washer for efficiency!

Continental's Most Flexible Control Ever!

The highly flexible Logi Control offers eight individually modifiable programs—each with up to nine baths including multiple pre-wash, wash and rinse cycles. Variables within each bath—including wash temperature, water levels, cycle times, rotation and G-force extract speeds—can be individually programmed for maximum efficiency given the load type. E-Series Washers can also be programmed for automatic chemical injection—ensuring a consistent clean with every wash and eliminating the possibility of chemical overuse and resulting damage to fabric.

Proven Construction, Durability & Longevity

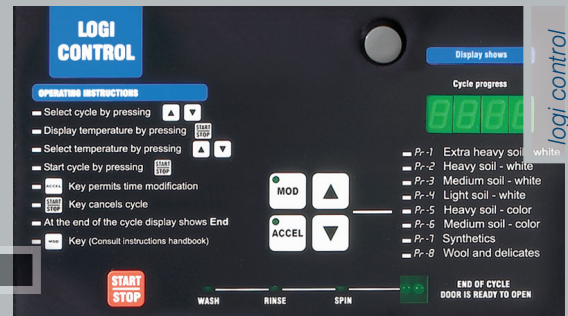
E-Series Washers feature inner and outer drums of durable AISI-304 stainless steel, oversized bearings and bearing housings and a quality sealing system. They are engineered using as few welds as possible to attain unmatched strength. The oversized door on E-Series, which allows for easy loading and unloading, is equipped with heavy duty bolt style door hinges that will withstand the rigors of constant use. No wonder E-Series is backed by a 5/3-year manufacturer's warranty!

Ease of Maintenance

Nearly all components are accessible via the front or top cover of the washer, which is easily removed without interfering with detergent dispensers. Bearings are lubricated for a lifetime, the poly-v belt needn't be tightened, and bearings and seals are easily replaced without removing the washer drum. Everything about E-Series mandates ease of maintenance and component accessibility.



AquaFall™ system



logi control



minimal welding

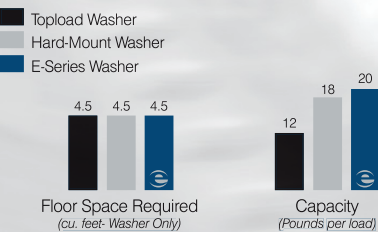


freestanding design



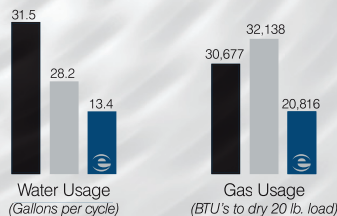
*According to DOE test results report by Intertek, an independent testing laboratory, dated December 19, 2006. Modified Energy Factor (MEF) 2.21 (cubic feet per kilowatt-hour per cycle). Water Consumption Factor (WCF) 5.03 (gallons per cycle per cubic feet).

E-SERIES GIVES YOU MORE — MORE CAPACITY, MORE EFFICIENCY, & MORE PRODUCTIVITY!



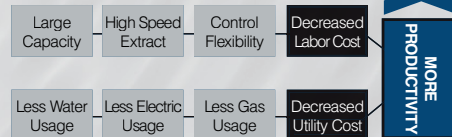
More Capacity — Same Space

E-Series Washers fit into the same space as most topload washers, yet offer 40% greater capacity. Larger loads equate to increased productivity. Plus, E-Series Washers use the same power requirements as topload washers, and as a result are an easy replacement for these less efficient models.



More Efficiency — Decreased Utility Costs

E-Series Washers use up to 57-percent less water per load! This translates into significant savings of water usage costs and an equal savings in water heating costs. The high-speed extract of E-Series* further reduces utility costs by decreasing gas or electricity consumed to dry a load.



More Productivity — Less Cost

The large capacity, high-speed extract and control flexibility of E-Series Washers significantly cuts the time required to process laundry. The time savings decreases associated labor costs, while the machines high-level of energy-efficiency decreases utilities—resulting in greater productivity.

* Models used in comparison: Continental JW7820 topload washer, Continental L1018 3-phase hard-mount washer, Continental EH020 1-phase E-Series Washer

E-SERIES COMPACT DRYING TUMBLERS THE NEXT LEVEL OF DRYING EFFICIENCY

Equipped with an oversized door, dryer window and cylinder light, E-Series Drying Tumblers are not only easy to use, they are incredibly efficient! A 20-pound capacity dryer, E-Series is available in gas or electric heat—making it the right choice for any on-premise laundry application. Loaded with industrial grade features that ensure durability and simplify maintenance, E-Series Dryers are built to last.

Industrial Grade Efficiency and Durability

Featuring AISI-304 stainless steel top, front and side panels, the E-Series Drying Tumbler was designed to echo the efficiency and durability of the E-Series Washer-Extractor. The robust 7.0 cu. ft. cylinder and 1/3 HP motor are a perfect match in capacity and power to the E-Series Washer. In addition, E-Series Dryers boast efficient axial airflow that maximizes water removal. Laundry dries faster—resulting in a significant savings in labor and utility costs.

Flexible Control

The drying tumbler control, which mirrors the look of the E-Series Washer control, offers four temperature settings including high, med, low and delicate. It couldn't be simpler to operate thanks to easy-to-understand icons showing operating instructions and a digital display that illuminates machine cycle status.

Ergonomic Design

Utilizing a sensible ergonomic design with an oversized door, cylinder light, unique dryer window, and optional elevation base, the E-Series Dryer makes loading and unloading a snap. The large door—with a left to right swing—features heavy-duty hinges that will withstand the rigors of constant use.

Easy to Install, Service & Maintain

E-Series Dryers share the same dimensions and utility connections as most home-style dryers, and as a result, are an easy replacement for these less efficient models. Designed for minimal maintenance and simplified serviceability, the drying tumbler features a lint filter that's easy to reach and clean, but doesn't get in the way of users. When service is necessary, most components are accessible from the front—eliminating the need to move the machine. The motor, blower, heating element, gas valve and thermostats are serviceable through a lower front panel without having to disconnect the door switch.

Gas or Electric

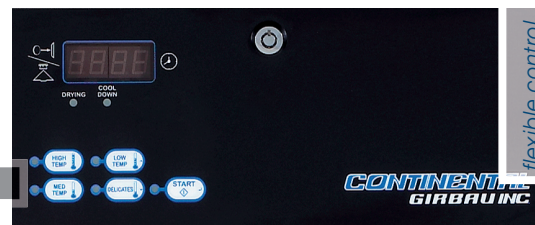
Underwriters Laboratories (UL) and CSA International (CSA) listed, E-Series Dryers are available in gas or electric heat.



door window



large cylinder



flexible control



**E-SERIES WASHER
(MODEL #EH020)**

**E-SERIES DRYER
(MODEL #KFE/KFG)**

DIMENSIONS & WEIGHTS

Capacity <i>lbs (kg)</i>	20 (8)
Cylinder Diameter <i>inch (mm)</i>	21.1 (536)
Cylinder Depth <i>inch (mm)</i>	13.8 (351)
Cylinder Volume <i>cu. ft (dm³)</i>	2.8 (79.2)
Net Weight <i>lbs. (kg)</i>	279 (127)
Crated Weight <i>lbs.(kg)</i>	301 (137)
Machine Width <i>inch (mm)</i>	27 (685)
Machine Depth <i>inch (mm)</i>	27.6 (700)
Machine Height <i>inch (mm)</i>	42.5 (1080)
Door Opening <i>inch (mm)</i>	12.7 (322)
Floor to Door <i>inch (mm)</i>	15.4 (390)
Shipping Dimensions <i>inch (mm)</i> (WxDxH)	28.3 x 29.1 x 47.7 (720 x 740 x 1212)

GENERAL

Washing Speed <i>rpm</i>	50
Spin Speed <i>rpm</i>	580/690/780/970
G-force	300

CONNECTIONS

Drain Diameter	
Pump Drain <i>inch (mm)</i>	1 (25.4)
Gravity Drain <i>inch (mm)</i>	2 (51)
Water Inlets <i>inch (mm)</i>	3/4 (19)
Water Pressure <i>PSI (bar)</i>	7-87 (0.5-6)
Water Flow <i>gal/min (l/min)</i>	8 (30)
Motor Power <i>kW</i>	0.87

DIMENSIONS & WEIGHTS

Basket Volume <i>cu. ft (dm³)</i>	7.0 (199)
Net Weight	
Electric <i>lbs. (kg)</i>	150 (68)
Gas <i>lbs. (kg)</i>	155 (70)
Crated Weight	
Electric <i>lbs. (kg)</i>	160 (73)
Gas <i>lbs. (kg)</i>	165 (75)
Machine Width <i>inch (mm)</i>	26.875 (683)
Machine Depth <i>inch (mm)</i>	28 (711)
Machine Height <i>inch (mm)</i>	40.75 (1035)
Door Opening <i>inch (mm)</i>	24.7 (628)
Shipping Dimensions <i>inch (mm)</i> (WxDxH)	29.5 x 30.5 x 45 (749 x 775 x 1143)

GENERAL

Exhaust Diameter <i>inch (mm)</i>	4 (102)
Exhaust Air Flow <i>cfm (m³/min)</i>	220 (374)
Basket Motor Power <i>Hp</i>	1/3
Gas Heating <i>BTU/h (Kcal/h)</i>	25,000 (6300)
Gas Inlet Diameter <i>inch</i>	3/8 N.P.T.

CONNECTIONS

Heating Element Wattage <i>kW</i>	
60Hz- 208 Volt*	4750
240 Volt	5350
240 Volt (Canada)	5000
50Hz- 230 Volt	4800
Amp Protection <i>Amp</i>	
Electric 120/240/60/1	30
230/50/1	30
Gas 120/60/1	15
230/50/1	10

* Conversion kit required for 208 Volt models. Contact Continental Girbau, Inc. or your local authorized Continental distributor for details.



Product design and specifications are subject to change without notice. For the most current and complete technical specifications, architectural line drawings and warranty information, please visit our Web site at www.continentalgirbau.com

DISTRIBUTED BY:



www.continentalgirbau.com • 800-256-1073
2500 State Road 44 • Oshkosh, WI 54904 • 920-231-8222 • Fax 920-231-4666

ADDENDUM ACKNOWLEDGEMENT FORM
SOLICITATION NO.: COR1700000009

Instructions: Please acknowledge receipt of all addenda issued with this solicitation by completing this addendum acknowledgment form. Check the box next to each addendum received and sign below. Failure to acknowledge addenda may result in bid disqualification.

Acknowledgment: I hereby acknowledge receipt of the following addenda and have made the necessary revisions to my proposal, plans and/or specification, etc.

Addendum Numbers Received:

(Check the box next to each addendum received)

- | | |
|----------------------------------------------------|------------------------------------------|
| <input checked="" type="checkbox"/> Addendum No. 1 | <input type="checkbox"/> Addendum No. 6 |
| <input checked="" type="checkbox"/> Addendum No. 2 | <input type="checkbox"/> Addendum No. 7 |
| <input type="checkbox"/> Addendum No. 3 | <input type="checkbox"/> Addendum No. 8 |
| <input type="checkbox"/> Addendum No. 4 | <input type="checkbox"/> Addendum No. 9 |
| <input type="checkbox"/> Addendum No. 5 | <input type="checkbox"/> Addendum No. 10 |

I understand that failure to confirm the receipt of addenda may be cause for rejection of this bid. I further understand that any verbal representation made or assumed to be made during any oral discussion held between Vendor's representatives and any state personnel is not binding. Only the information issued in writing and added to the specifications by an official addendum is binding.

ADVANTAGE EQUIPMENT INC.
Company

[Signature]
Authorized Signature

4/4/17
Date

NOTE: This addendum acknowledgment should be submitted with the bid to expedite document processing.
Revised 6/8/2012

SOLICITATION NUMBER: CRFQ COR1700000009
Addendum Number: 2

The purpose of this addendum is to modify the solicitation identified as (“Solicitation”) to reflect the change(s) identified and described below.

Applicable Addendum Category:

- Modify bid opening date and time
- Modify specifications of product or service being sought
- Attachment of vendor questions and responses
- Attachment of pre-bid sign-in sheet
- Correction of error
- Other

Description of Modification to Solicitation:

1. To provide answers to vendor questions
2. To attach the correct Addendum 1 for the solicitation

Additional Documentation: Documentation related to this Addendum (if any) has been included herewith as Attachment A and is specifically incorporated herein by reference.

Terms and Conditions:

1. All provisions of the Solicitation and other addenda not modified herein shall remain in full force and effect.
2. Vendor should acknowledge receipt of all addenda issued for this Solicitation by completing an Addendum Acknowledgment, a copy of which is included herewith. Failure to acknowledge addenda may result in bid disqualification. The addendum acknowledgement should be submitted with the bid to expedite document processing.

SOLICITATION NUMBER: CRFQ COR1700000009

Addendum Number: 1

The purpose of this addendum is to modify the solicitation identified as ("Solicitation") to reflect the change(s) identified and described below.

Applicable Addendum Category:

- Modify bid opening date and time
- Modify specifications of product or service being sought
- Attachment of vendor questions and responses
- Attachment of pre-bid sign-in sheet
- Correction of error
- Other

Description of Modification to Solicitation:

1. To extend bid opening date to April 5, 2017 at 1:30 PM EST

Answers to vendor questions will be addressed in a subsequent addendum

Additional Documentation: Documentation related to this Addendum (if any) has been included herewith as Attachment A and is specifically incorporated herein by reference.

Terms and Conditions:

1. All provisions of the Solicitation and other addenda not modified herein shall remain in full force and effect.
2. Vendor should acknowledge receipt of all addenda issued for this Solicitation by completing an Addendum Acknowledgment, a copy of which is included herewith. Failure to acknowledge addenda may result in bid disqualification. The addendum acknowledgement should be submitted with the bid to expedite document processing.

ATTACHMENT A

CRFQ 0608 COR1700000009

ADDENDUM 2

Q1: 3.1.1.4 Must include base if necessary.

Please elaborate on "if necessary." Our machines do not require a base. Bases are used to improve the user experience and/or to improve the height of the drain for installation. If the washers are draining into a floor trough, or the drain pipe that we would be attaching into is below the drain exit of the washer, no base would be needed. Are the washers to drain in below grade troughs or are the drain connections at less than a 3" height?

Can we do a site visits to assess the installation needs, or can you tell me how many drains would require a base?

A1: These will be going to multiple sites and may be moved to different locations after purchase. If it is necessary, that a base is needed to operate the machine (i.e. if the machine cannot operate without the base for ANY reason) then include the base in the bid total. The machines need to come with all parts needed for operation.

There are too many locations to do site visits.

Q2: 3.1.1.9 Manufactures warranty that is described is a parts only warranty. Is this correct?

A2: Yes.

Q3: 3.1.2.3 Must feature AISI-304 stainless steel top, front, sides panes.

Assuming that "panes" means panels, only front panels are available in stainless steel. Front panel is also available in white painted, to match the sides. The rear cylinder back plate is available in Annealed Stainless Steel as requested.

A3: White painted is acceptable.

Q4: 3.1.2.8 Manufactures warranty that is described is a parts only warranty. Is this correct?

A4: Yes

STATE OF WEST VIRGINIA
Purchasing Division

PURCHASING AFFIDAVIT

MANDATE: Under W. Va. Code §5A-3-10a, no contract or renewal of any contract may be awarded by the state or any of its political subdivisions to any vendor or prospective vendor when the vendor or prospective vendor or a related party to the vendor or prospective vendor is a debtor and: (1) the debt owed is an amount greater than one thousand dollars in the aggregate; or (2) the debtor is in employer default.

EXCEPTION: The prohibition listed above does not apply where a vendor has contested any tax administered pursuant to chapter eleven of the W. Va. Code, workers' compensation premium, permit fee or environmental fee or assessment and the matter has not become final or where the vendor has entered into a payment plan or agreement and the vendor is not in default of any of the provisions of such plan or agreement.

DEFINITIONS:

"Debt" means any assessment, premium, penalty, fine, tax or other amount of money owed to the state or any of its political subdivisions because of a judgment, fine, permit violation, license assessment, defaulted workers' compensation premium, penalty or other assessment presently delinquent or due and required to be paid to the state or any of its political subdivisions, including any interest or additional penalties accrued thereon.

"Employer default" means having an outstanding balance or liability to the old fund or to the uninsured employers' fund or being in policy default, as defined in W. Va. Code § 23-2c-2, failure to maintain mandatory workers' compensation coverage, or failure to fully meet its obligations as a workers' compensation self-insured employer. An employer is not in employer default if it has entered into a repayment agreement with the Insurance Commissioner and remains in compliance with the obligations under the repayment agreement.

"Related party" means a party, whether an individual, corporation, partnership, association, limited liability company or any other form or business association or other entity whatsoever, related to any vendor by blood, marriage, ownership or contract through which the party has a relationship of ownership or other interest with the vendor so that the party will actually or by effect receive or control a portion of the benefit, profit or other consideration from performance of a vendor contract with the party receiving an amount that meets or exceeds five percent of the total contract amount.

AFFIRMATION: By signing this form, the vendor's authorized signer affirms and acknowledges under penalty of law for false swearing (W. Va. Code §61-5-3) that neither vendor nor any related party owe a debt as defined above and that neither vendor nor any related party are in employer default as defined above, unless the debt or employer default is permitted under the exception above.

WITNESS THE FOLLOWING SIGNATURE:

Vendor's Name: Advantage Equipment, Inc

Authorized Signature: [Signature] Date: 4.3.2017

State of Ohio

County of Summit, to-wit:

Taken, subscribed, and sworn to before me this 3 day of April, 2017.

My Commission expires _____, 20__.



Debera L. Wickiser
Resident Summit County
Notary Public, State of Ohio
My Commission Expires: 3/7/2022

NOTARY PUBLIC [Signature]

AFFIX SEAL HERE

State of West Virginia

VENDOR PREFERENCE CERTIFICATE

Certification and application* is hereby made for Preference in accordance with West Virginia Code, §5A-3-37. (Does not apply to construction contracts). West Virginia Code, §5A-3-37, provides an opportunity for qualifying vendors to request (at the time of bid) preference for their residency status. Such preference is an evaluation method only and will be applied only to the cost bid in accordance with the West Virginia Code. This certificate for application is to be used to request such preference. The Purchasing Division will make the determination of the Vendor Preference, if applicable.

1. Application is made for 2.5% vendor preference for the reason checked:

- ___ Bidder is an individual resident vendor and has resided continuously in West Virginia for four (4) years immediately preceding the date of this certification; or,
___ Bidder is a partnership, association or corporation resident vendor and has maintained its headquarters or principal place of business continuously in West Virginia for four (4) years immediately preceding the date of this certification; or 80% of the ownership interest of Bidder is held by another individual, partnership, association or corporation resident vendor who has maintained its headquarters or principal place of business continuously in West Virginia for four (4) years immediately preceding the date of this certification; or,
___ Bidder is a nonresident vendor which has an affiliate or subsidiary which employs a minimum of one hundred state residents and which has maintained its headquarters or principal place of business within West Virginia continuously for the four (4) years immediately preceding the date of this certification; or,

2. Application is made for 2.5% vendor preference for the reason checked:

- ___ Bidder is a resident vendor who certifies that, during the life of the contract, on average at least 75% of the employees working on the project being bid are residents of West Virginia who have resided in the state continuously for the two years immediately preceding submission of this bid; or,

3. Application is made for 2.5% vendor preference for the reason checked:

- ___ Bidder is a nonresident vendor employing a minimum of one hundred state residents or is a nonresident vendor with an affiliate or subsidiary which maintains its headquarters or principal place of business within West Virginia employing a minimum of one hundred state residents who certifies that, during the life of the contract, on average at least 75% of the employees or Bidder's affiliate's or subsidiary's employees are residents of West Virginia who have resided in the state continuously for the two years immediately preceding submission of this bid; or,

4. Application is made for 5% vendor preference for the reason checked:

- ___ Bidder meets either the requirement of both subdivisions (1) and (2) or subdivision (1) and (3) as stated above; or,

5. Application is made for 3.5% vendor preference who is a veteran for the reason checked:

- ___ Bidder is an individual resident vendor who is a veteran of the United States armed forces, the reserves or the National Guard and has resided in West Virginia continuously for the four years immediately preceding the date on which the bid is submitted; or,

6. Application is made for 3.5% vendor preference who is a veteran for the reason checked:

- ___ Bidder is a resident vendor who is a veteran of the United States armed forces, the reserves or the National Guard, if, for purposes of producing or distributing the commodities or completing the project which is the subject of the vendor's bid and continuously over the entire term of the project, on average at least seventy-five percent of the vendor's employees are residents of West Virginia who have resided in the state continuously for the two immediately preceding years.

7. Application is made for preference as a non-resident small, women- and minority-owned business, in accordance with West Virginia Code §5A-3-59 and West Virginia Code of State Rules.

- ___ Bidder has been or expects to be approved prior to contract award by the Purchasing Division as a certified small, women- and minority-owned business.

Bidder understands if the Secretary of Revenue determines that a Bidder receiving preference has failed to continue to meet the requirements for such preference, the Secretary may order the Director of Purchasing to: (a) reject the bid; or (b) assess a penalty against such Bidder in an amount not to exceed 5% of the bid amount and that such penalty will be paid to the contracting agency or deducted from any unpaid balance on the contract or purchase order.

By submission of this certificate, Bidder agrees to disclose any reasonably requested information to the Purchasing Division and authorizes the Department of Revenue to disclose to the Director of Purchasing appropriate information verifying that Bidder has paid the required business taxes, provided that such information does not contain the amounts of taxes paid nor any other information deemed by the Tax Commissioner to be confidential.

Under penalty of law for false swearing (West Virginia Code, §61-5-3), Bidder hereby certifies that this certificate is true and accurate in all respects; and that if a contract is issued to Bidder and if anything contained within this certificate changes during the term of the contract, Bidder will notify the Purchasing Division in writing immediately.

Bidder: Advantage Equipment Inc.

Signed: [Signature]

Date: 4/4/17

Title: President

DESIGNATED CONTACT: Vendor appoints the individual identified in this Section as the Contract Administrator and the initial point of contact for matters relating to this Contract.

SCOTT VIAHOS PRESIDENT
(Name, Title)

Scott Viahos President
(Printed Name and Title)

1660 SONIC WAY AKRON, OH 44310
(Address)

330-475-8220 X101 330-475-8218 FAX
(Phone Number) / (Fax Number)

SVIAHOS@ADVANTAGEEQUIPMENT.NET
(email address)

CERTIFICATION AND SIGNATURE: By signing below, or submitting documentation through wvOASIS, I certify that I have reviewed this Solicitation in its entirety; that I understand the requirements, terms and conditions, and other information contained herein; that this bid, offer or proposal constitutes an offer to the State that cannot be unilaterally withdrawn; that the product or service proposed meets the mandatory requirements contained in the Solicitation for that product or service, unless otherwise stated herein; that the Vendor accepts the terms and conditions contained in the Solicitation, unless otherwise stated herein; that I am submitting this bid, offer or proposal for review and consideration; that I am authorized by the vendor to execute and submit this bid, offer, or proposal, or any documents related thereto on vendor's behalf; that I am authorized to bind the vendor in a contractual relationship; and that to the best of my knowledge, the vendor has properly registered with any State agency that may require registration.

ADVANTAGE EQUIPMENT INC.
(Company)

SMH President
(Authorized Signature) (Representative Name, Title)

SCOTT VIAHOS PRESIDENT
(Printed Name and Title of Authorized Representative)

4/4/17
(Date)

330-475-8220 330 475 8218 FAX
(Phone Number) (Fax Number) X101

ADDENDUM ACKNOWLEDGEMENT FORM
SOLICITATION NO.: CRFQ COR1700000009

Instructions: Please acknowledge receipt of all addenda issued with this solicitation by completing this addendum acknowledgment form. Check the box next to each addendum received and sign below. Failure to acknowledge addenda may result in bid disqualification.

Acknowledgment: I hereby acknowledge receipt of the following addenda and have made the necessary revisions to my proposal, plans and/or specification, etc.

Addendum Numbers Received:

(Check the box next to each addendum received)

- | | |
|----------------------------------------------------|------------------------------------------|
| <input checked="" type="checkbox"/> Addendum No. 1 | <input type="checkbox"/> Addendum No. 6 |
| <input type="checkbox"/> Addendum No. 2 | <input type="checkbox"/> Addendum No. 7 |
| <input type="checkbox"/> Addendum No. 3 | <input type="checkbox"/> Addendum No. 8 |
| <input type="checkbox"/> Addendum No. 4 | <input type="checkbox"/> Addendum No. 9 |
| <input type="checkbox"/> Addendum No. 5 | <input type="checkbox"/> Addendum No. 10 |

I understand that failure to confirm the receipt of addenda may be cause for rejection of this bid. I further understand that any verbal representation made or assumed to be made during any oral discussion held between Vendor's representatives and any state personnel is not binding. Only the information issued in writing and added to the specifications by an official addendum is binding.

Company

Advantage Equipment Inc.

Authorized Signature

[Signature]

Date

4/14/17

NOTE: This addendum acknowledgement should be submitted with the bid to expedite document processing.

**Commercial Clothes Washers & Dryers
PRICING PAGE**

CONTRACT ITEM NO.	DESCRIPTION	QTY	UNIT PRICE	TOTAL
Item No. 3.1.1 (Line Item #1)	Commercial Clothes Washer-Extractor Manufacturer Bid: Model No. Bid:	29	\$ 2795 -	\$ 81,055.00
Item No. 3.1.2 (Line Item #2)	Commercial Clothes Dryer Manufacturer Bid: Model No. Bid:	28	\$ 2995 -	\$ 83,860.00
Unit prices to be inclusive of all freight/delivery costs				
Failure to use this form may result in disqualification		GRAND TOTAL		\$ 164,915. ⁰⁰

Bidder / Vendor Information:

Name: ADVANTAGE EQUIPMENT, INC
 Address: 1660 SCENIC WAY
AKRON OHIO 44310

Phone: 330-475-8220 x101
 Fax: 330 475 8218

E-mail Address: SVIATOS @ ADVANTAGE EQUIPMENT. NET

Authorized Signature:



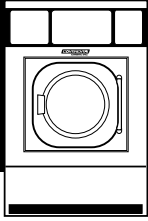
Date:

4/4/17

ATTACHMENT A



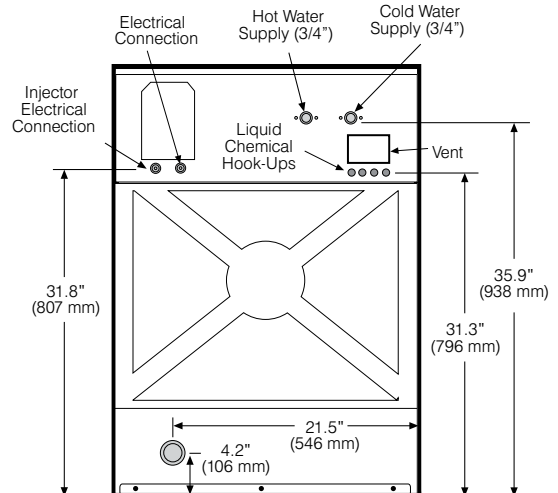
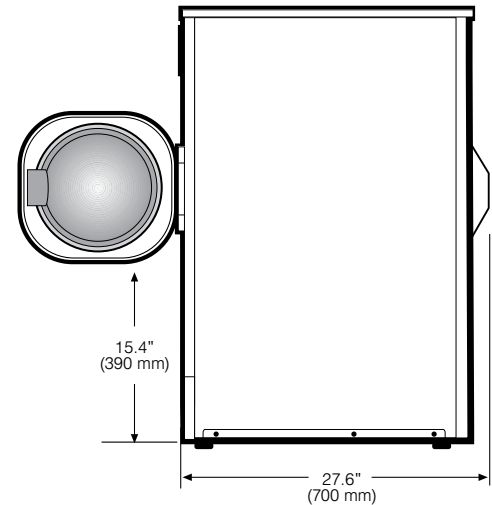
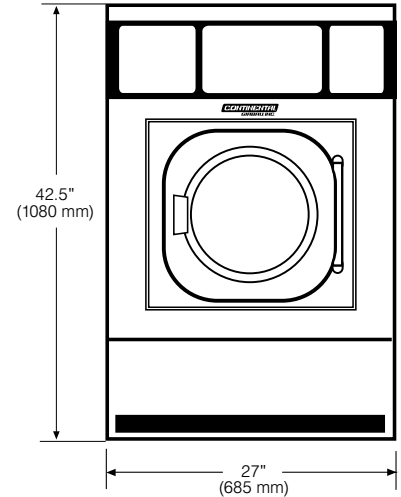
2500 State Road 44 • Oshkosh, WI 54904
 920.231.8222 • FAX 920.231.4666
www.continentalgirbau.com



EH020

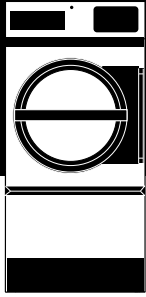
ON-PREMISE LAUNDRY E-SERIES 20-POUND CAPACITY
 HIGH-PERFORMANCE WASHER-EXTRACTOR

Capacity <i>lbs (kg)</i>	20 (8)
Cylinder Diameter <i>inch (mm)</i>	21.1 (536)
Cylinder Depth <i>inch (mm)</i>	13.8 (351)
Cylinder Volume <i>cu ft (dm³)</i>	2.8 (79.2)
Net Weight <i>lbs (kg)</i>	279 (127)
Crated Weight <i>lbs (kg)</i>	301 (137)
Machine Width <i>inch (mm)</i>	27 (685)
Machine Depth <i>inch (mm)</i>	27.6 (700)
Machine Height <i>inch (mm)</i>	42.5 (1080)
Door Opening <i>inch (mm)</i>	12.7 (322)
Floor to Door <i>inch (mm)</i>	15.4 (390)
Shipping Dimensions <i>inch (mm)</i> (WxDxH)	28.3 x 29.1 x 47.7 (720 x 740 x 1212)
Washing Speed <i>rpm</i>	50
Spin Speeds <i>rpm</i>	50/100/580/690/780/970
G-force	0.75/3/101/143/183/300
Static Force Transmitted <i>lbs (kg)</i>	340 (154)
Dynamic Force Transmitted <i>lbs (kg)</i>	115 (52)
Frequency of Dynamic Force <i>Hz</i>	16.2
Available Voltages/Wire Conductor/Amp	
Hot Water (standard)	120/60/1, 3-prong cord, 15 Amp
Hot Water (standard)	208-240/60/1, 2W + G, 5 Amp
Electric Auxiliary Heat (optional)	208-240/60/1, 2W + G, 20 Amp
Electric Auxiliary Heat (optional)	208-240/60/3, 3W + G, 20 Amp
Modified Energy Factor (MEF)*	2.21
Water Consumption Factor (WCF)*	5.03
Drain Diameter <i>inch (mm)</i>	
Pump Drain	1 (25.4)
Gravity Drain	2 (51)
Water Inlets <i>inch (mm)</i>	3/4 (19)
Recommended Water Pressure <i>PSI (bar)</i>	30-60 (2-4)
Water Flow <i>gal/min (l/min)</i>	8 (30)
Motor Power <i>kW</i>	0.8
Electric Heating Power (optional) <i>kW</i>	4.3



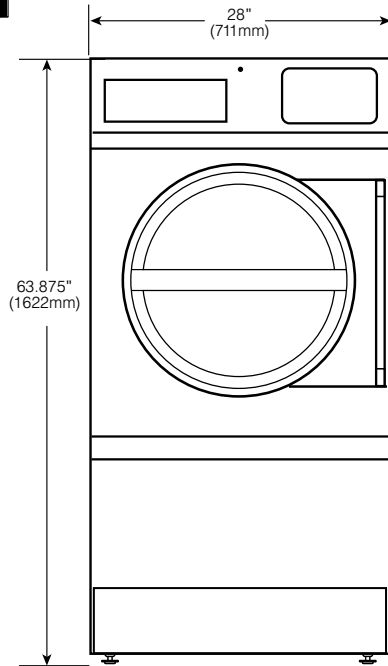
* Modified Energy Factor (MEF) measured in cubic feet per kilowatt-hour per cycle. Water Consumption Factor (WCF) measured in gallons per cycle per cubic feet. MEF and WCF statistics are according to DOE test results report by Intertek, an independent testing laboratory, dated February 27, 2007.

** Specifications subject to change without notice or obligation. Call Continental Girbau, Inc for dimensions not shown or for clarification.

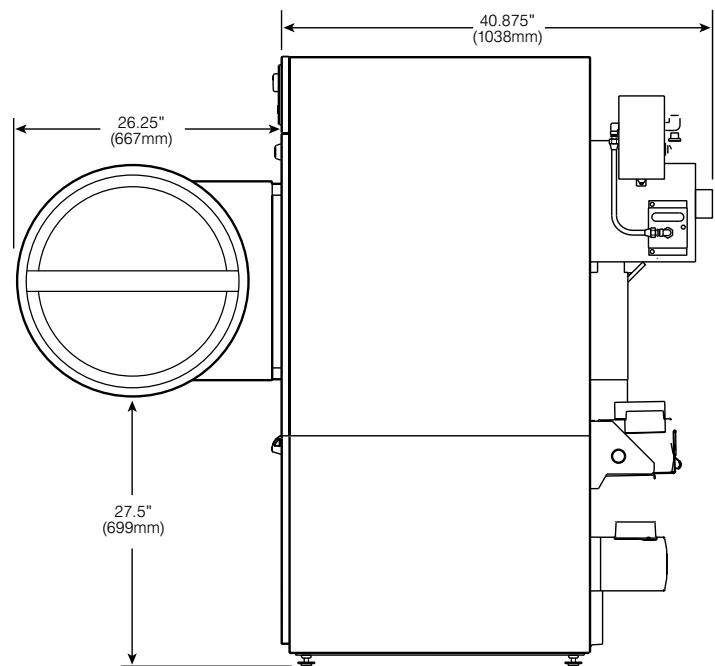


CG20-30

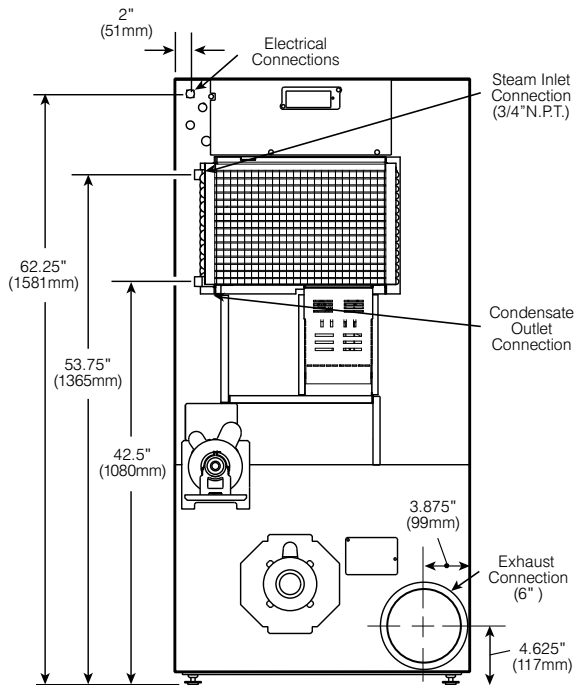
PRO-SERIES II DRYING TUMBLER



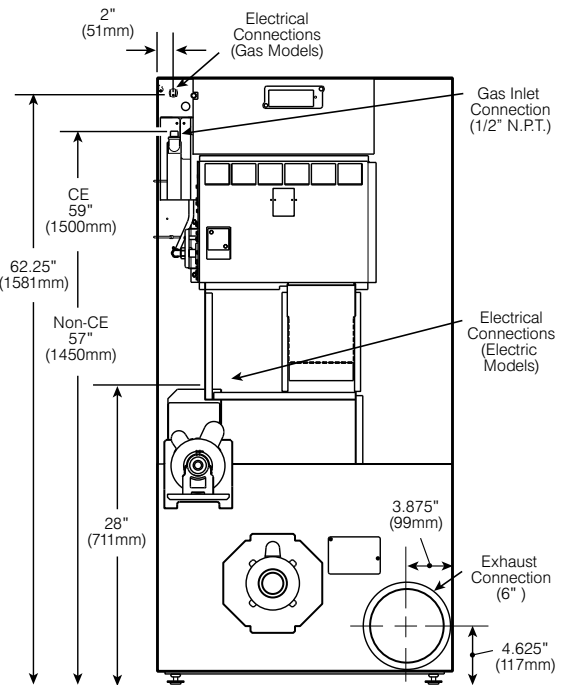
FRONT VIEW



SIDE VIEW



REAR VIEW (Steam Models)



REAR VIEW (Gas and Electric Models)

CG20-30 PRO-SERIES II DRYING TUMBLER PRODUCT SPECIFICATIONS

Capacity <i>lbs</i>	up to 30
Cylinder Diameter <i>inch (mm)</i>	26.5 (673)
Cylinder Depth <i>inch (mm)</i>	24 (610)
Cylinder Volume <i>cu ft (dm³)</i>	7.7 (0.22)
Net Weight <i>lbs (kg)</i>	300 (137)
Crated Weight* <i>lbs (kg)</i>	332 (151)
Machine Width <i>inch (mm)</i>	28 (711)
Machine Depth <i>inch (mm)</i>	40.87 (1038)
Machine Height** <i>inch (mm)</i>	63.87 (1622)
Door Opening <i>inch (mm)</i>	22.69 (576)
Floor to Door <i>inch (mm)</i>	27.5 (699)
Shipping Dimensions <i>inch (mm)</i> (WxDxH)	30 x 43 x 69 (762 x 1092 x 1753)
Motor Power <i>Hp (kW)</i>	2 @ 1/4 (2 @ 0.19)
Reversing Motor Power <i>Hp (kW)</i>	2 @ 1/4 (2 @ 0.19)
Exhaust Diameter <i>inch (mm)</i>	6 (152)
Exhaust Air Flow <i>cfm (l/s)</i>	500 (236)
Electric Heating <i>kW</i>	12
Gas Connection <i>inch</i>	1/2 N.P.T.
Gas Heating <i>BTU/h (Kcal/h)</i>	64,000 (16,128)
Steam Connection <i>inch</i>	3/4 N.P.T.
Steam Heating <i>BTU/h (kW)</i> at 100 PSI (6.9 bar)	134,700 (39.5)
BHP Consumption <i>BHP</i> at 100 PSI (6.9 bar)	3.9
Available Voltages/Wire Conductor/Amp (Rev Amp) Gas/Steam	120/60/1, 1W + N + G, 12 208-240/60/1, 2W + N + G, 6.7 200-208/240/60/3, 3W + G, 3.2 460-480/60/3, 3W + G, 1.6
Electric	200/60/1, 2W + G, 64 208/60/1, 2W + N + G, 64 240/60/1, 2W + N + G, 57 200-208/60/3, 3W + G, 37 240/60/3, 3W + G, 33 460-480/60/3, 3W + G, 16

* Crated weights for international shipping not listed. Contact Continental Girbau for details.

** Also available in optional heights of 72 1/4" (1835mm) and 76 1/4" (1937mm).

*** Specifications subject to change without notice or obligation. Call Continental Girbau, Inc for dimensions not shown or for clarification.

CONTINENTAL
GIRBAU INC.
CG75-85



Pro-Series II Dryers are engineered for the ultimate in efficiency, programmability and ease of use. Complete with properly balanced airflow, heat input and cylinder volume, the Pro-Series II line delivers high-quality results and features that can dramatically increase laundry production.

- CG20-30
- CG30-40
- CG55-65
- CG50-60
- CG75-85
- CG115-25
- CG165-75

PRO-SERIES II DRYING TUMBLERS

PRODUCTIVITY AND EFFICIENCY REDEFINED.

Pro-Series II Drying Tumblers are designed with quality components, easy-to-use programmable controls and a multitude of features that dramatically increase laundry production and energy-efficiency. Properly balanced airflow, heat input and basket volume allows maximum production when matched with Continental Washer-Extractors.

ENERGY-EFFICIENCY

Several key features contribute to heightened energy-efficiency on Pro-Series II Dryers, including instant electronic spark ignition; a modular electrical system for added reliability and easy servicing; and a multiple burner heat system to efficiently and quickly reach desired temperatures. Pro-Series II delivers quick drying thanks to carefully balanced heat energy input and airflow. Perfectly balanced airflow prevents extra wear on fabrics and cuts drying time. The heat system is enclosed thereby capturing intake air and preheating it before entering the tumbler—reducing energy costs without increasing dry time.

ERGONOMIC & EASY TO MAINTAIN

Ergonomic and easy to maintain, Pro-Series II Dryers feature self-cleaning lint screens that support maximum airflow. Further contributing to ease of maintenance are conveniently accessible components and an automatic backdraft damper to prevent outside air from entering the laundry room. Because ergonomics matter, the tumblers feature oversized steel doors with reinforced metal door bars and hinges—simplifying loading and unloading!

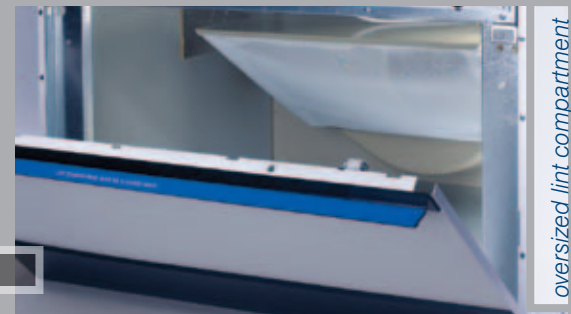
CONTROL FLEXIBILITY

Pro-Series II Dryers offer two programmable controls—the Dual Digital Control or the Microprocessor Control. The Dual Digital Control is simple to use, efficient and reliable. It allows the operator to choose one of four temperature selections, heat and cool down cycle time and a single push-to-start operation.

Continental's new Microprocessor Control is designed for greater flexibility and efficiency. Equipped with a multitude of features, the control offers up to 20 programmable cycles; a reminder to clean the lint screen; an anti-wrinkle and extended tumble feature that initiates unheated tumble action after the end-of-cycle signal to reduce the occurrence of wrinkles in unattended loads; an external end-of-cycle output to aid attendants in noticing when a load is complete; and auditing information on the display. With multiple programmable cycle types—time-dry, auto-dry or Continental's moisture sensing drying (optional on CG20-30 through CG75-85, standard on CG115-25 and CG165-75)—Pro-Series Dryers offer the ultimate in drying technology and load management control.

MOISTURE SENSING TECHNOLOGY

Continental's Linen Life Extension (LLE) moisture sensing system is very reliable and extremely accurate. Featuring 20 programmable cycles with up to 12 programmable dryness levels and additional programmable heat time, LLE can target any dryness level from zero to 40-percent. To ensure accurate moisture readings, the LLE system provides an extremely large load-to-surface contact area. Unlike some moisture sensing systems available, Continental's LLE system uses the entire surface area of the lifters within the dryer cylinder as sensors. This increase in load contact surface area provides extremely accurate moisture readings. When the load has reached its preset target level of dryness, the control shuts the dryer off—saving energy, time and labor. The result? Dry goods experience less damage with up to 31 percent less fiber loss. LLE effectively reduces over-drying, resulting fabric damage, and cuts energy and labor costs.





COMPACT DESIGN OF CG55-65

The Pro-Series II compact CG55-65 tumbler fits through a standard 36-inch door, takes up less space and offers more drying capacity than most 50-pound capacity drying tumblers! At 34.5 inches in width, the CG55-65 tumbler is super-slim so it fits into smaller spaces. Yet, thanks to innovative engineering, it also offers big capacity and productivity!

AXIAL AIRFLOW FOR SMALL-LOAD EFFICIENCY

CG20-30, CG30-40, CG55-65 Models

Pro-Series II small-capacity dryers feature axial airflow, a system that directs heated air through the load from back to front. Perforated cylinders and drum lifters maximize airflow and tumbling action while also preventing tangling. The result is fast and efficient drying—exactly what on-premise laundries want!

RADIAL AIRFLOW FOR LARGER LOADS

CG50-60, CG75-85, CG115-25, CG165-75 Models

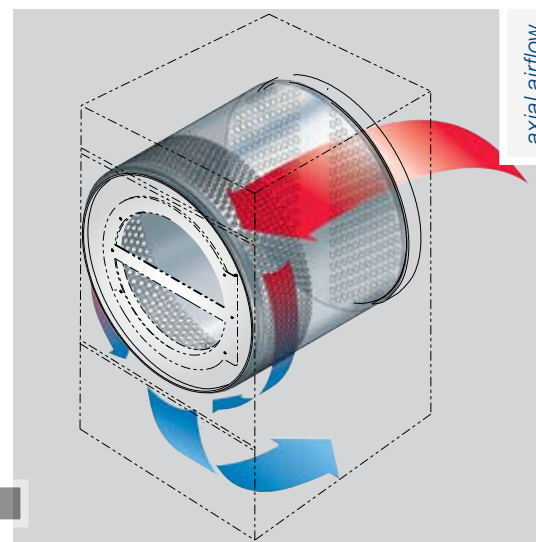
Pro-Series II large-capacity drying tumblers are designed with radial airflow—a system that captures heated intake air and distributes it evenly throughout the cylinder. Radial airflow ensures maximum load separation for big loads and bulky items and utilizes the tumbler's complete capacity for quick, even drying. As heated air is released from the top of the basket, linens, which are rotated from the bottom to the top, fall and separate throughout the entire cylinder. Simultaneously, heated air is pushed through and around the load—eliminating hot spots.

DURABILITY UNMATCHED

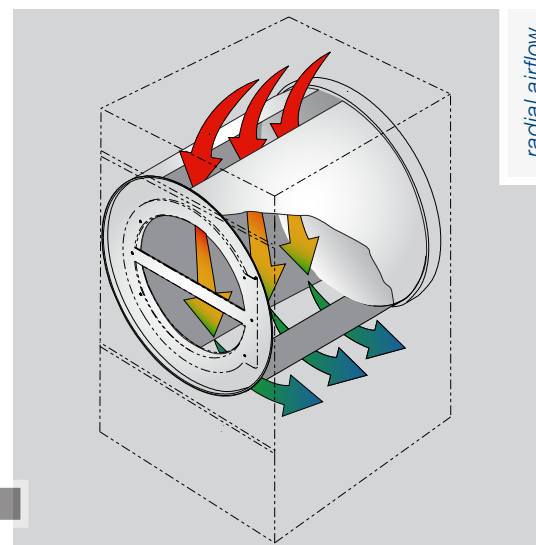
Durability characterizes Pro-Series II. The tumblers feature rugged cylinders; dual motors with overload protection; steel front, side and top panels coated inside and out with electrostatically applied, baked-on paint for superior bonding and corrosion resistance; an all-belt drive system with cast iron pulleys and permanently sealed bearings for quiet, low-maintenance operation; and durable kick-plates and cart bumpers to protect tumblers from nicks and scrapes. An exclusive annealed stainless steel backplate (standard on all models except CG115-25 and CG165-75) contributes to longer machine life and also reduces friction against tumbling laundry—extending linen life. No wonder Pro-Series II Tumblers are backed by an industry-leading factory warranty!

ISS FIRE SENSING & EXTINGUISHING

Continental understands the importance of safety. That's why we've equipped Pro-Series II dryers with an optional Integrated Sprinkler System (ISS), a sensing and extinguishing device that squelches dryer fires before they get out of control. ISS, which is available on gas and steam units, is always active—even after a load is complete—offering laundries added protection when a laundry is unattended. If ISS sensors detect a fire inside the dryer drum, the drum rotates and distributes water vapor—saturating laundry and extinguishing the fire. ISS continues to monitor the condition of the dryer and restarts if fire is again detected.



axial airflow



radial airflow



fire extinguishing system

	CG20-30	CG30-40	CG55-65	CG50-60	CG75-85	CG115-25	CG165-75	
DIMENSIONS & WEIGHTS	Capacity lbs	up to 30	up to 40	up to 65	up to 60	up to 85	up to 175	
	Airflow Type	Axial	Axial	Axial	Radial	Radial	Radial	
	Cylinder Diameter inch (mm)	26.5 (673)	30 (762)	33 (838)	37 (940)	37 (940)	44 (1118)	50.75 (1289)
	Cylinder Depth inch (mm)	24 (610)	30 (762)	35 (889)	30 (762)	36 (914)	41 (1041)	42.5 (1080)
	Cylinder Volume cu ft (m ³)	7.7 (0.22)	12.3 (0.35)	17.3 (0.49)	18.6 (0.53)	22.4 (0.63)	36.1 (1.02)	49.7 (1.41)
	Net Weight lbs (kg)							
	Gas/Electric	300 (137)	360 (163)	435 (197)	545 (247)	615 (279)	1275 (580)	1575 (716)
	Steam	300 (137)	360 (163)	—	545 (247)	615 (279)	1375 (625)	1675 (761)
	Crated Weight lbs (kg)							
	Gas/Electric	332 (151)	394 (179)	476 (216)	602 (273)	677 (307)	1338 (607)	1667 (756)
	Steam	332 (151)	394 (179)	—	602 (273)	677 (307)	1447 (656)	1776 (806)
	Machine Width inch (mm)	28 (711)	31.5 (800)	34.5 (876)	38.62 (981)	38.62 (981)	46.38 (1178)	53.12 (1349)
	Machine Depth inch (mm)	40.87 (1038)	46.87 (1191)	53.62 (1362)	48.25 (1226)	54.25 (1378)	67.92 (1725)	68.85 (1749)
	Machine Height inch (mm)							
	Gas/Electric	63.87 (1622)	63.87 (1622)	66.72 (1695)	76.62 (1946)	76.62 (1946)	85.7 (2177)	94 (2388)
	Steam	63.87 (1622)	63.87 (1622)	—	80 (2032)	80 (2032)	83.5 (2121)	94 (2388)
	Door Opening inch (mm)	22.69 (576)	22.69 (576)	26.89 (683)	26.89 (683)	26.89 (683)	26.89 (683)	26.89 (683)
	Floor to Door inch (mm)	27.5 (699)	27.5 (699)	26.87 (682)	30.75 (781)	30.75 (781)	31.38 (797)	33.86 (860)
	Shipping Dimensions inch (mm) (WxDxH)	30 x 43 x 69 (762 x 1092 x 1753)	33 x 49 x 69 (838 x 1245 x 1753)	35.5 x 59 x 72 (902 x 1499 x 1829)	41.5 x 52.1 x 81 (1054 x 1323 x 2057)	41.5 x 56.4 x 81 (1054 x 1433 x 2057)	48.5 x 72 x 90 (1232 x 1829 x 2286)	58 x 74.5 x 99 (1473 x 1892 x 2515)
	Motor Power HP (kW)	2 @ 1/4 (0.19)	2 @ 1/4 (0.19)	2 @ 1/2 (0.37)	1/2 (0.37)	3/4 (0.56)	—	—
	Reversing Motor Power HP (kW)							
	Cylinder	1/4 (0.19)	1/4 (0.19)	1/4 (0.19)	1/3 (0.25)	1/3 (0.25)	3/4 (0.56)	3/4 (0.56)
Fan	1/4 (0.19)	1/4 (0.19)	1/4 (0.19)	1/3 (0.25)	1/3 (0.25)	1 (0.75)	3 (2.24)	
Exhaust Diameter inch (mm)	6 (152)	8 (203)	8 (203)	8 (203)	8 (203)	10 (254)	12 (300)	
Exhaust Air Flow cfm (l/s)								
Gas/Steam	500 (236)	650 (307)	700 (330)	750 (354)	920 (434)	1600 (755)	2450 (1156)	
Electric	500 (236)	650 (307)	700 (330)	750 (354)	750 (354)	1600 (755)	2450 (1156)	
Electric Heating kW	12	24	27	30	30	60	—	
Gas Connection inch	1/2 N.P.T.	1/2 N.P.T.	1/2 N.P.T.	1/2 N.P.T.	1/2 N.P.T.	3/4 N.P.T.	1 N.P.T.	
Gas Heating BTU/h (Kcal/h)	64,000 (16,128)	90,000 (22,680)	112,000 (28,224)	130,000 (32,760)	165,000 (41,580)	270,000 (68,040)	395,000 (99,538)	
Steam Connection inch	3/4 N.P.T.	3/4 N.P.T.	—	3/4 N.P.T.	3/4 N.P.T.	3/4 N.P.T./3/4 N.P.T.	3/4 N.P.T./1 N.P.T.	
Steam Heating BTU/h (kW) at 100 PSI (6.9 bar)	134,700 (39.5)	166,000 (48.6)	—	177,500 (52)	210,300 (61.6)	405,000 (118.7)	648,000 (189.9)	
BHP Consumption BHP at 100 PSI (6.9 bar)	3.9	4.8	—	5.1	6.1	11.7	18.8	
Gas/Steam Amp (Rev. Amp)								
120/60/1	12	12	9.2	9.3	13.8	—	—	
208-240/60/1	6.7	6.7	6.5	—	—	—	—	
200-208/240/60/1	—	—	—	5.1	7.6/7.6	—	—	
200-208/240/60/3	3.2	3.2	4.0/3.9	2.8 (4.0)	3.8/3.8 (4.3/4.3)	(7.7/7.3)	(13.5/13.5)	
440/60/3	—	—	—	1.9 (2.1) steam only	1.9 (2.1) steam only	(3.8) steam only	(6.4) steam only	
460-480/60/3	1.6	1.6	—	1.4 (1.9)	1.9 (2.1)	(3.9) gas only	(6.7)	
Electric Amp (Rev. Amp)								
200/60/1	64	122	122	—	—	—	—	
208/60/1	64	122	129	—	—	—	—	
240/60/1	57	107	115	—	—	—	—	
200-208/60/3	37	71	79	89 (88)	89 (88)	—	—	
240/60/3	33	62	65	79 (78)	79 (78)	(152)	—	
440/60/3	—	—	—	41 (41)	41 (41)	—	—	
460-480/60/3	16	31	—	—	—	—	—	
480/60/3	—	—	—	38 (38)	38 (38)	(76.1)	—	

CONNECTIONS

AVAILABLE VOLTAGES

* Product specifications are subject to change without notice. For the most current product specifications including CAD details, technical specifications and warranty, please visit www.continentalgirbau.com.



CONTINENTALCARE™
BUY WITH COMPLETE CONFIDENCE



DISTRIBUTED BY:



www.continentalgirbau.com • 800-256-1073
2500 State Road 44 • Oshkosh, WI 54904 • 920-231-8222 • Fax 920-231-4666

CONTINENTAL GIRBAU

DRYING TUMBLERS
WARRANTY CERTIFICATE
COMMERCIAL & VENDED



CONTINENTALCARE™
BUY WITH COMPLETE CONFIDENCE

3-YR LIMITED PARTS WARRANTY



CONTINENTAL CARE™ PRODUCT WARRANTY FOR DRYING TUMBLERS

PRO-SERIES II, EXPRESSDRY AND E-SERIES MODELS

Revised May 2012 (Starting Serial Number by Model Available Upon Request)

I. What this Limited Warranty Covers and For How Long

Continental Girbau, Inc. (Continental), Oshkosh, WI 54904 extends this limited warranty to the original owner (Purchaser), or by factory authorized warranty transfer to a new owner, of a Continental Girbau brand drying tumbler (Equipment).

Continental will repair or replace, free of charge, any part on serial numbered products which fails as a result of a defect in material or workmanship for a period of three years (36 months) after the date of original installation. If the date of installation of the Equipment cannot be definitely determined, the date of installation shall be deemed to be 90 days after the date of sale by Continental to the Purchaser.

- For all new replacement parts, the remaining term of the limited warranty of the Equipment to which the parts are incorporated or one year (12 months) from the date of sale of the parts, whichever time period is greater.

II. What this Limited Warranty Does Not Cover

- Continental will not provide a replacement of any part which fails for reasons other than defective material or workmanship. This includes, but is not limited to, failure as a result of abuse, misuse, improper installation and transportation damage.
- Continental will not honor this warranty for parts which have been altered without the written consent of Continental's President or if parts have been altered in any way, so as in the judgement of Continental, to adversely affect the stability or reliability of the Equipment or parts.
- Continental will not honor this warranty if parts from a manufacturer other than Continental have been incorporated on the equipment or if parts have been incorporated which have not been purchased from Continental.
- Continental will not pay labor and transportation charges incurred in the replacement of any part.
- Continental is not responsible for clothing or machine damage caused by foreign objects placed in unit.
- Continental is not responsible for any consequential damage resulting from any malfunction.
- Continental shall not be responsible for, and rejects liability for, any part failure if such failure is due to an act of God, natural disaster, vandalism, intentional infliction of damage or dereliction.
- Continental shall not be responsible for freight or transportation costs of any part covered under the terms of the product warranty.

III. How to Obtain Replacement Parts Under this Limited Warranty

For warranty service, Purchaser shall contact the distributor from which the equipment or part was originally purchased or the nearest Continental distributor. In the event that the Purchaser is unable to make contact with a Continental distributor, the Purchaser shall contact Continental directly. Proof of purchase, model number, serial number and the defective part (part return-USA only) are required in order to obtain credit.

Important: Outside the USA this limited warranty may not be applicable. Consult your authorized Continental Girbau distributor or route operator regarding the applicability, if any, of warranty coverage to you.

THIS WARRANTY IS EXPRESSLY IN LIEU OF ALL OTHER WARRANTIES EXPRESS OR IMPLIED, INCLUDING THE WARRANTIES OF MERCHANTABILITY AND FITNESS FOR USE AND ALL OTHER OBLIGATIONS OR LIABILITIES ON CONTINENTAL'S PART. CONTINENTAL NEITHER ASSUMES NOR AUTHORIZES ANY OTHER PERSON TO ASSUME FOR CONTINENTAL ANY OTHER LIABILITY IN CONNECTION WITH THE SALE OF THE EQUIPMENT AND PARTS. THIS LIMITED WARRANTY IS EXCLUSIVE AND IN LIEU OF ALL OTHER WARRANTIES AND PURCHASER HEREBY WAIVES ALL OTHER REMEDIES, WARRANTIES, GUARANTEES OR LIABILITIES, EXPRESS OR IMPLIED, ARISING BY LAW OR OTHERWISE (INCLUDING WITHOUT LIMITATION ANY OBLIGATIONS OF CONTINENTAL WITH RESPECT TO FITNESS, MERCHANTABILITY, INCIDENTAL DAMAGES AND CONSEQUENTIAL DAMAGES) OR WHETHER OR NOT OCCASIONED BY CONTINENTAL'S NEGLIGENCE. THIS WARRANTY SHALL NOT BE EXTENDED, ALTERED OR VARIED EXCEPT UPON THE PRIOR WRITTEN INSTRUMENT SIGNED BY CONTINENTAL GIRBAU INC.'S PRESIDENT.

CONTINENTAL GIRBAU

WASHER-EXTRACTOR
WARRANTY CERTIFICATE
COMMERCIAL WASHER-EXTRACTORS

CONTINENTAL
COMMERCIAL



CONTINENTALCARE™
BUY WITH COMPLETE CONFIDENCE

3-YR LIMITED PARTS WARRANTY
5-YR KEY COMPONENT WARRANTY



CONTINENTAL CARE™ PRODUCT WARRANTY FOR COMMERCIAL WASHERS

E-SERIES, RMG-SERIES, REM-SERIES AND L-SERIES MODELS

Revised May 2012 (Starting Serial Number by Model Available Upon Request)

I. What this Limited Warranty Covers and For How Long

Continental Girbau Inc. (Continental), Oshkosh, WI 54904 extends this limited warranty to the original owner (Purchaser), or by factory authorized warranty transfer to a new owner, of a Continental Girbau brand washer-extractor (Equipment).

Continental will repair or replace, free of charge, any part which fails as a result of a defect in material or workmanship for a period of three years (36 months) after the date of original installation, but no later than three-and-one-half years (42 months) from the date of Equipment manufacture. If installation is not completed by an authorized Continental Girbau Distributor (Distributor), then two years from the date of original installation, but no later than two-and-one-half years (30 months) from the date of Equipment manufacture. Additionally, Continental will repair or replace, free of charge, the following if failure as a result of a defect in material or workmanship occurs:

- The inner cylinder (including coupler and shaft assembly), bearing and bearing seals, frame assembly on hard-mount models and inner and outer frame assembly on soft-mount models for a period of five years (60 months) after the date of original installation, but no later than five-and-one-half years (66 months) from the date of Equipment manufacture.
- For all new replacement parts, the remaining term of the limited warranty of the Equipment to which the parts are incorporated or one year (12 months) from the date of sale of the parts, whichever time period is greater.

If the date of installation of the Equipment cannot be definitely determined, the date of installation shall be deemed to be 90 days after the date of sale by Continental to the Purchaser.

II. What this Limited Warranty Does Not Cover

- Continental will not provide the replacement of fuses under this limited warranty.
- Continental will not provide replacement of any part which fails for reasons other than defective material or workmanship. This includes, but is not limited to, failure as a result of abuse, misuse, improper installation or maintenance and transportation damage.
- Continental will not honor this warranty for parts which have been altered without the written consent of Continental's President or if parts have been altered in any way, so as in the judgement of Continental, to adversely affect the stability or reliability of the Equipment or parts.
- Continental will not honor this warranty if machines are mounted on bases not supplied by Continental or approved in writing by Continental's President.
- Continental will not honor this warranty if parts from a manufacturer other than Continental have been incorporated on the Equipment or if parts have been incorporated which have not been purchased from Continental.
- Continental is not responsible for labor, freight or transportation costs incurred in the replacement of any part.
- Continental is not responsible for clothing or machine damage caused by foreign objects placed in unit.
- Continental is not responsible for any consequential damage resulting from any malfunction.
- Continental is not be responsible for, and rejects liability for, any part failure if such failure is due to an act of God, natural disaster, vandalism, intentional infliction of damage or dereliction.

III. How to Obtain Replacement Parts Under this Limited Warranty

For warranty service, Purchaser shall contact the Distributor from which the equipment or part was originally purchased or the nearest Distributor. In the event that the Purchaser is unable to make contact with a Distributor, the Purchaser shall contact Continental directly. Proof of purchase, model number, serial number and the defective part are required in order to obtain credit. Continental shall have the discretion to require the return of defective parts, however, no parts shall be returned to Continental without Continental's prior written authorization. The determination by Continental not to require the return of defective parts shall not be deemed to constitute a waiver of this warranty or of its right to enforce all of the terms of this warranty thereafter.

THIS WARRANTY IS EXPRESSLY IN LIEU OF ALL OTHER WARRANTIES EXPRESS OR IMPLIED, INCLUDING THE WARRANTIES OF MERCHANTABILITY AND FITNESS FOR USE AND ALL OTHER OBLIGATIONS OR LIABILITIES ON CONTINENTAL'S PART. CONTINENTAL NEITHER ASSUMES NOR AUTHORIZES ANY OTHER PERSON TO ASSUME FOR CONTINENTAL ANY OTHER LIABILITY IN CONNECTION WITH THE SALE OF THE EQUIPMENT AND PARTS. THIS LIMITED WARRANTY IS EXCLUSIVE AND IN LIEU OF ALL OTHER WARRANTIES AND PURCHASER HEREBY WAIVES ALL OTHER REMEDIES, WARRANTIES, GUARANTEES OR LIABILITIES, EXPRESS OR IMPLIED, ARISING BY LAW OR OTHERWISE (INCLUDING WITHOUT LIMITATION ANY OBLIGATIONS OF CONTINENTAL WITH RESPECT TO FITNESS, MERCHANTABILITY, INCIDENTAL DAMAGES AND CONSEQUENTIAL DAMAGES) OR WHETHER OR NOT OCCASIONED BY CONTINENTAL'S NEGLIGENCE. THIS WARRANTY SHALL NOT BE EXTENDED, ALTERED OR VARIED EXCEPT UPON THE PRIOR WRITTEN INSTRUMENT SIGNED BY CONTINENTAL GIRBAU INC.'S PRESIDENT.

www.continentalgirbau.com • 800-256-1073

2500 State Road 44 • Oshkosh, WI 54904 • 920-231-8222 • Fax 920-231-4666

CONTINENTAL
GIRBAU®