



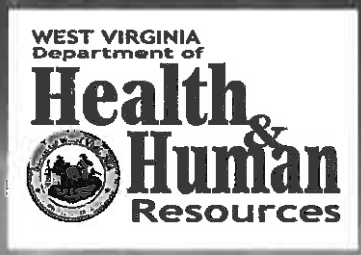
Expression of Interest to provide Engineering Services

Hopemont Hospital Boilers and the Mildred Mitchell-Bateman Hospital Generator

WV Department of Administration
Purchasing Division
2019 Washington Street, East Charleston, WV 25305

Solicitation No.
CEOI_0506 HHR1700000001

August 30, 2016



08/30/16 11:03:20
WV Purchasing Division

**Hopemont Hospital Boilers and the
Mildred Mitchell-Bateman Hospital Generator Projects**
Solicitation No. CEOI 0506 HHR170000001

TABLE OF CONTENTS

Approach to Project Executive Summary Letter	Section I
Organization Company Overview	Section II
Expertise and Project Experience Project Experience Brochures and Flyers	Section III
Team Resumes Todd A. Zachwieja Ted A. Zachwieja, III Daniel H. Kim Jennings L. Davis James E. Watters Carol A. Stevens	Section IV
Testimonial Letters and Recognition Client Testimonial Letters	Section V
Attachments WV Purchasing Required Information Designated Contact/Certification Purchasing Affidavit	Section VI





Design/Consulting Services
281 Smiley Drive
St. Albans, WV 25177
Phone: (304) 755-0075
Fax: (304) 755-0076
www.ZSDSDesign.com



MECHANICAL ● ELECTRICAL ● INDOOR AIR QUALITY ● ENERGY ● COMMISSIONING ● FORENSIC

August 30, 2016

WV Department of Administration
Purchasing Division
2019 Washington Street, East
Charleston, WV 25305-0130

Re: Expression of Interest to provide Professional Engineering Services
Solicitation No. CE01 0506 HHR1700000001

Please accept our Statement of Qualifications to provide Professional MEP Engineering Services and related work for the *Hopemont Hospital Boilers and the Mildred Mitchell-Bateman Hospital Generator projects.*

ZDS Design/Consulting Services was founded in 1994 and is located at 281 Smiley Drive, St. Albans, WV 25177. The contact person for **ZDS** is Todd Zachwieja, Telephone: 304-755-0075; Fax: 304-755-0076; Mobile: 304-545-4550; Email: Todd.Zachwieja@ZSDSDesign.com; Website: www.ZSDSDesign.com.

ZDS founding members have over five decades of engineering experience in West Virginia providing a local understanding of your needs. We have extensive design experience in boiler systems and emergency generators including phased construction that will assist in reducing potential disruptions. Our approach is different than the traditional role as **we have actual operational and design experience.** **ZDS** can design and commission the Project systems and fine-tune them to actual conditions and assist the Owner's personnel after occupancy to provide training that will reduce operating costs and improve comfort.

Our proposed Project Team consists of **ZDS** Design/Consulting Services in the lead role and **CAS** Structural Engineering, Inc. providing support services for any necessary structural portions of the Project. This team has the experience to bring quality professional engineering services to the Project. **CAS** Structural Engineering, Inc. is a full service structural engineering firm with projects ranging from new design, additions, renovations, adaptive reuse, repairs and historic preservation.

We offer the most experienced engineering services in West Virginia and have provided design, commissioning, Agency review, and DEP permitting assistance services for many West Virginia Department of Health and Human Resources (WVDHHR) hospital facilities including William R. Sharpe, Jr. Hospital, Hopemont Hospital, Mildred Mitchell-Bateman Hospital, Lakin Hospital, Jackie Withrow Hospital, John Manchin Sr. Health Care Center, and Welch Community Hospital.

ZDS' provided engineering design services for three (3) facilities in West Virginia that received Energy Star® Certification from the EPA. Each of these buildings performs in the top 25 percent of similar facilities nationwide for energy efficiency while meeting IES lighting levels, ASHRAE standards such as ASHRAE 62.1, Ventilation for Acceptable Indoor Air Quality, IES lighting levels and ASHRAE 55, Thermal Environmental Conditions for Human Occupancy. We met the facility's requirements while providing very energy efficient mechanical, electrical and plumbing systems.

ZDS' experience involves hundreds of projects which include working with many state and federal agencies. We are recognized for our specialties in mechanical and electrical design, indoor air quality, energy conservation, commissioning, Agency reviews and DEP permitting services. Our professionals are dedicated to performing quality services taking into account our clients' needs, scheduling and budgets.

ZDS founder Todd Zachwieja specialized in energy conservation design prior to establishing ZDS over 21 years ago and was involved in hundreds of millions of dollars in renovations, new construction, and Performance Contracting.

Our **approach to the projects** will be based on our understanding of the goals and the extensive information on the project facilities that we possess due to our previous design services at each of the hospitals. We have knowledge and documentation of the existing systems and believe we are best suited to provide design for the upgrades necessary to achieve the goals of these two (2) critical projects. ZDS can obtain detailed existing conditions at the subject facilities through utilization of our 3D scanning services that will assist with the development of the construction drawings. We will assist the WVDHHR with submissions for Agency reviews including the State Fire Marshal, OHFLAC, the State Boiler Inspector and the State Historical Preservation Office as well as securing the necessary DEP permitting as we recently did on the William R. Sharpe, Jr. Hospital HVAC Renovations Project.

A relationship between the WVDHHR, the individual facility's personnel, and ZDS is crucial to the successful completion of the projects. These projects offer challenges, but we believe our team of design professionals can address these challenges competently. With the previously available data, it is our goal to take ownership of the information and provide the best design solution that accommodates the project objectives. Members of the ZDS team have extensive experience in working with the WVDHHR and the policies and procedures involved in the performance of the overall project. Working together with the WVDHHR and the facility personnel we will make every effort to provide a successful project that meets the criteria and is completed within the budget restraints.

ZDS utilizes digital technology for receiving, tracking, managing, and submitting documents during the construction administration process. All construction administration documents are received and logged by our personnel and distributed to the Project Manager and applicable team members. The Project Manager, being most familiar with the project, will oversee and participate in all construction administration duties, both office and field.

ZDS creates and delivers quality projects by implementing these Quality Control Program strategies including peer review by multiple design professionals and the Principal-in-charge:

- Establish and maintain a working project schedule and budget;
- Periodic print and review of project progression;
- Peer reviewed document checking at the end of each project milestone using our in-house checklist;
- Create a working list of products meeting and/or exceeding the WVDHHR and facility's requirements;
- Early design meeting(s) with the Authority Having Jurisdiction.

ZDS Design/Consulting Services has registered professionals in all of the required disciplines to effectively execute the requirements of these projects. We believe that our experience in boiler systems, emergency generator installations, commissioning of mechanical and electrical systems, Energy Management, Planning and Codes compliance make us most qualified to work on your facilities. We continue to have an excellent working relationship with the West Virginia State Fire Marshal and other agencies within the State of West Virginia. Below is a partial listing of the Project Team.

Ted (Todd) A. Zachwieja, ZDS Principal-in-Charge BSME, MSEM, P.E., CEM, LEED AP with over 38 years of experience in Electrical, HVAC, Plumbing, Energy Management, IAQ and Commissioning services. *Nationally recognized for expertise in IAQ, LEED and Certified Energy Manager. Founding partner of ZDS.*

Daniel H. Kim, ZDS Principal/Management Services BSEE, PhD, with strong design and management skills with nearly 40 years of experience in consulting ranging from traditional Electrical and HVAC/Plumbing systems design to being one of the Nation's leading experts. *Founding partner of ZDS.*

Jim Watters, ZDS Production Manager/Associate with over 40 years of experience in Electrical, HVAC, and Plumbing design, Commissioning and Construction Administration.

Jennings L. Davis II, ZDS Project Manager/Associate, BSME, P.E. with over 25 years of experience specializing in Electrical, HVAC, Plumbing design, Construction Administration and Commissioning.

Ted A. Zachwieja III, ZDS BIM Manager/Chief Technical Officer, BSME, P.E., CEM and 2012 Legend-in-Energy recipient, specializes in 3D modelling, Electrical, HVAC, Plumbing design/scanning and technology systems administration with **ZDS** for over 12 years.

Carol A. Stevens, CAS President, P.E., has over 25 years of experience and will be the individual responsible for any structural design work needed.

ZDS personnel have worked on hundreds of projects throughout West Virginia including many with Governmental agencies. We encourage you to call the references listed below to verify how well we worked with their staff, our technical strengths and our ability to work with contractors to provide a quality project.

1. Mr. Mike Pickens, Executive Director, West Virginia Department of Education, 1900 Kanawha Blvd. East, Bldg. 6, Room 215, Charleston, WV 25305 (304) 558-2711, mepicken@k12.wv.us. Involved with dozens of MEP projects in West Virginia since the 1990's.
2. Mr. David Sneed, Executive Director of SBA, (304) 558-2541, david.a.sneed@wv.gov. Involved with dozens of MEP projects in West Virginia since 1990's.

3. Mr. Gary Boyd, Director of Facility Services, University of Charleston, 2300 MacCorkle Avenue S.E., Charleston, WV 25304 (304) 357-4871, garyboyd@ucwv.edu. Worked on projects at both WVU and UC involving MEP systems since 1990's.
4. Mr. Tony Crislip, Manager, Mechanical and Electrical Trades, Marshall University, (304) 696-6241, Crislip@marshall.edu.
5. Mr. Rudy Raynes, Assistant State Fire Marshal, (304) 558-2191, ext. 53214, Rudy.L.Raynes@wv.gov.

ZDS has an excellent track record of completing projects on time and in budget and are ready and willing to start on your project. We feel confident that our specialties will provide you with the best expertise to provide economical solutions for your facilities and look forward to discussing our qualifications. If there are any questions, please do not hesitate to call.

Sincerely,



Todd A. Zachwieja, P.E., CEM, LEED AP
Principal, Chief Executive Officer



COMPANY OVERVIEW

Design/Consulting Services



ABOUT ZDS DESIGN/CONSULTING SERVICES

In 1983, Todd A. Zachwieja founded ZECO Consultants. In 1994 ZDS Limited Liability Company was incorporated in West Virginia using dba ZDS Design/Consulting Services, and was founded to provide design and consulting services.

Each new project is assigned to a principal in charge who will follow the project from inception through commissioning. ZDS assigns the production staff according to the nature of the project and the work force necessary to meet the schedule. The principal in charge of that project determines if consultants are needed and coordinates all areas. After bidding, a principal of ZDS coordinates visits to the job site regularly, all the way through the post-warranty inspection. ZDS believes in the team approach when providing engineering design and consulting services. We start with our client as the number one member on our team. We listen to the needs and concerns of our client and that becomes the basis for our design.

COMPANY LEGAL NAME

**ZDS Limited Liability
Company dba ZDS Design/Consulting Services**

LOCATION OF INCORPORATION

West Virginia

FOUNDERS

**Todd A. Zachwieja, P.E., C.E.O.
Lori L. Zachwieja, C.P.A., C.F.O.
Ted T. Zachwieja, Executive
Daniel H. Kim, Ph.D.**

OFFICE

281 Smiley Drive, St. Albans, WV 25177

EMPLOYEES

ZDS currently employs design professionals covering all aspects of our services.

COMPANY OVERVIEW

Design/Consulting Services

CLIENTS

- Bluefield Regional Medical Center
- Charleston Area Medical Center (CAMC)
 - General Division
 - Memorial Division
 - Women & Children's Hospital
- Concord University
 - Nick J. Rahall Technology Center
- McDowell County Schools
- Montgomery General Hospital
- Raleigh County Schools
- Summersville Memorial Hospital
- United Hospital Center
- Veterans Affairs (VA) Hospital Administration
- Webster County Memorial Hospital

- WV Capitol Complex
 - Master Planning for Emergency Power
- WV Department of Health & Human Resources
 - Hopemont State Hospital
 - Jackie Withrow Hospital
 - John Manchin, Sr. Health Care Center
 - Lakin Health Care Center Retrofit
 - Mildred Mitchell-Bateman Hospital
 - Welch Community Hospital Retrofit
 - William R. Sharpe, Jr. Hospital Addition
 - William R. Sharpe, Jr. Hospital Retrofit
- WV Division of Culture and History
- WVU NASA Emergency Generator Upgrades

SERVICES INCLUDE:

MECHANICAL	ENERGY
INDOOR AIR QUALITY	ELECTRICAL
3D LASER SCANNING	BIM
COMMISSIONING	PLUMBING
EXPERT WITNESS	

ZDS provides comprehensive design services. We have experience and specialties in indoor air quality, energy management and commissioning, along with traditional mechanical and electrical design experience dating back as far as 1958. We offer a complete package.

ZDS works with all levels of the client's staff: the building owner, budget supervisor, operating and maintenance staff and others impacted by the project. We recognize that the maintenance and operating staff live with the design long after the project's completion. We listen to and work with those who will continue to operate and maintain the equipment. We find that proper communication benefits the client throughout the design process and beyond.

The ZDS design team provides a total system evaluation for cost-effective selection, installation, and ease of maintenance for both new systems and retrofit of in-place systems. Design begins with our client. Our staff meets with our client to review their concerns, budgets and schedules. The ZDS design team reviews the entire picture, and ends with "A Total Design." The ZDS staff has the expertise with codes and standards. We have extensive experience in conducting engineering code surveys of existing facilities. Our staff has excellent working relationships with the West Virginia Fire Marshal's Office, West Virginia Department of Education and the West Virginia School Building Authority. In addition to comprehensive Engineering services from an experienced design team, another major consideration in the selection of your engineer and design staff should be their track record.

ZDS' organization has an unbeatable, long running, and well-known track record for meeting our clients' needs, on time and within budget, with outstanding quality.

ZDS views these characteristics as the foundation of Quality. We look forward to the opportunity to discuss our ideas with you and assist you by providing solutions for your needs with a full range of services from Planning to Commissioning.

COMPANY OVERVIEW

Design/Consulting Services

INDOOR AIR QUALITY SERVICES

ZDS provides consulting engineering services for the indoor air quality (IAQ) environment. These services include: strategic planning for renovation and new construction projects; technical research and writing; specialized applications software development; corporate and professional training programs; publications support and fulfillment; and site-specific engineering and scientific consultation. Todd Zachwieja, ZDS Principal, is contributing editor for the following IAQ publications:

- Technical Review Panel for the publication of the *INvironment™ Handbook of Building Management and Indoor Air Quality*, by Chelsea Group and published for Powers Educational Services
- Technical Review Panel for the quarterly publication of the *INvironment™ Newsletter*, by Chelsea Group for Powers Educational Services
- *Ventilation for a Quality Dining Experience: A Technical Bulletin for Restaurant Owners and Managers*, released in January 1993
- *The New Horizon: Indoor Environmental Quality*, published as a supplement to an issue of *Consulting-Specifying Engineer* magazine, a trade magazine distributed to roughly 50,000 engineers
- Editorial Advisory Board member reviewing the articles of the monthly publication *INvironment™ Professional*
- Editorial Advisory Board member of *POWER PRESCRIPTIONS™ Indoor Air Quality Publication* by Electric Power Research Institute

ZDS provides Indoor Air Quality (IAQ) services for major corporations, government organizations and property owners to resolve their specific facility problems:

- Resolve "sick building syndrome"
- Identify solutions to building-related illnesses due to extensive biological contamination
- Develop solutions for HVAC systems, temperature controls, equipment, operating and maintenance practices for indoor air quality
- Commission new and renovated facilities to minimize or eliminate IAQ issues before problems arise
- Develop and establish master plans as well as conduct training seminars for IAQ of schools and commercial buildings

As one of the nation's leaders in Indoor Air Quality (IAQ), ZDS provides sophisticated technical expertise that enables our client to be proactive in solving and preventing indoor environmental problems.



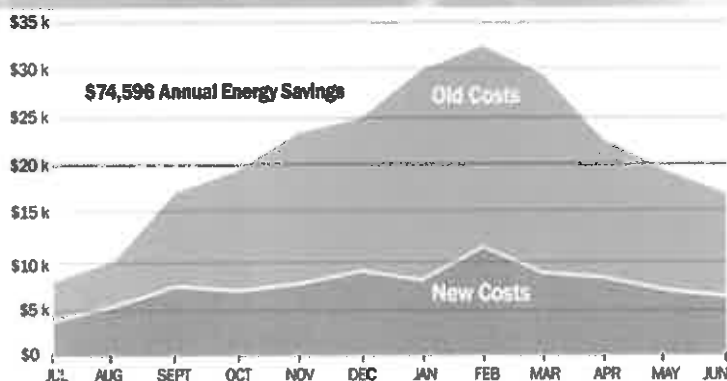
COMPANY OVERVIEW

Design/Consulting Services

At ZDS, our engineering staff integrates energy efficiency into each project design to provide you, our client, with the added value that you expect and deserve. The ZDS team approach represents a tremendous amount of experience in designing energy efficient facilities. ZDS offers a comprehensive range of energy management services including:

- Providing detailed analysis of facilities
- Recommending sound and proven energy saving solutions
- Implementing energy management improvements
- Determining, quantifying and assisting in securing available Utility and Government grants

The ZDS team members take pride in the quality of their projects and have been responsible for designing and implementing numerous energy management programs. These programs are providing significant energy improvements and include optimizing, central utility plant equipment, control systems, air handling systems, lighting systems, and other energy consuming equipment.



Recent projects include:

- Interconnecting boilers and chiller plant systems
- Designing Geothermal HVAC systems
- Optimizing HVAC equipment and operating sequences, including upgrades to variable speed operation
- Installing Direct Digital Control (DDC) Energy Management Systems
- Replacing inefficient lighting equipment with energy efficient systems
- Modifying air handling equipment from 100% outside air to return air operation
- Implementing heat recovery units into HVAC equipment
- Improving laundry, kitchen and other process application efficiencies



1st Place 2014
ASHRAE
Technology
Award



In addition to the energy management projects outlined above, the ZDS team members have extensive experience in identifying and implementing energy efficient operating and maintenance measures. These are typically low cost or no cost measures that include:

- Inspecting, calibrating temperature controls and adjusting outdoor air dampers
- Commissioning economizer cycle operation
- Testing steam traps and pressure relief equipment operation
- Enabling heating and cooling equipment only when required

ABOVE: ZDS designed and implemented the region's first and largest commercial geothermal system saving Webster County High School over \$74,596 in energy savings.

COMPANY OVERVIEW

Design/Consulting Services

The ZDS team is trained and experienced in advising you of program options to incorporate energy efficiency and operational savings features into the design of your new construction and renovation projects. At ZDS, we view our role as helping you to define your own energy efficiency needs and goals through identifying energy savings options and providing supporting financial information. We then help you fit your energy efficiency needs and goals into a workable budget and schedule, and then design a program to fill those needs.

Sustainable "Green Building" design, including LEED certification, recognizes the importance of commissioning. The design and construction industry have had start-up problems when a facility is occupied and construction deficiencies were not discovered until the contractor's traditional one-year warranty period expired. The mechanical and electrical systems have continued to become more complex with sophisticated control systems and equipment, and a mountainous amount of changing technology. If not properly addressed, building owners could face numerous operational problems from "Sick Building Syndrome," excessive energy costs, and uncomfortable indoor environments.

Commissioning is the missing link between design and implementation. Prior to joining ZDS, Todd Zachwieja established commissioning services for one of the nation's largest energy service companies. He is also a LEED Accredited Professional. Many utility companies and building owners now require commissioning for new or renovated facilities in order to maximize the use of their investments in their facilities and to obtain LEED certification.

ZDS offers commissioning services for their clients, including meeting LEED enhanced commissioning requirements. These services include strategic planning and operations assistance for renovation and new construction projects. Commissioning services consist of construction document review, equipment performance testing, documentation of design criteria, value engineering, operational fine tuning, coordination of professional operations training programs and site-specific engineer-ing consultation. Our project team has the unique experience of in-depth design knowledge and hands-on operations knowledge that fills in the gap between traditional design services and the building owner's operational needs.

The commissioning process offers the following benefits:

- Improved comfort, serviceability and owner understanding of systems and design intent
- Added technical support for the owner and being proactive in preventing new problems
- Reduced maintenance and decreased expenses related to operating deficiencies
- Early identification and resolution of system discrepancies while designers and contractors are still under contract and on the job
- Verification of system performance while meeting financial restraints

The National Conference on Building Commissioning invited Todd Zachwieja to speak and he jointly presented a paper with the Director of Maintenance of Charleston Area Medical Center's Memorial Division. The Tampa, Florida Conference involved experts nationwide.

Since 1958, the ZDS design staff has provided millions of dollars of engineering design services on a variety of project types. The ZDS design team will provide comprehensive services utilizing experienced staff through planning, cost estimating, engineering, coordination of bidding, regular site visitation during construction and specifications for equipment.

You, our client, will greatly benefit from a single point of responsibility for every need your project may have.





Firm Profile

CAS Structural Engineering, Inc. – CAS Structural Engineering, Inc. is a West Virginia Certified Disadvantaged Business Enterprise (DBE) structural engineering firm located in the Charleston, West Virginia area.

Providing structural engineering design and/or analysis on a variety of projects throughout the state of West Virginia, CAS Structural Engineering has experience in excess of 25 years on the following types of building and parking structures:

- **Governmental Facilities (including Institutional and Educational Facilities)**
- **Industrial Facilities**
- **Commercial Facilities**

Projects range from new design and construction, additions, renovation, adaptive reuse, repairs and historic preservation (including use of The Secretary of the Interior's Standards for Rehabilitation) to evaluation studies/reports and analysis.

CAS Structural Engineering utilizes AutoCAD/REVIT for drawing production and Tedds, Enercalc and RISA 2D and 3D engineering software programs for design and analysis. Structural systems designed and analyzed have included reinforced concrete, masonry, precast concrete, structural steel, light gauge steel and timber.

Carol A. Stevens, PE is the firm President and will be the individual responsible for, as well as reviewing, the structural engineering design work on every project. Carol has over 25 years of experience in the building structures field, working both here in West Virginia and in the York, Pennsylvania vicinity. Carol is also certified by the Structural Engineering Certification Board for experience in the field of structural engineering.

CAS Structural Engineering, Inc. maintains a professional liability insurance policy.

PO Box 469 • Alum Creek, WV 25003-0469 ☎ 304-756-2584 🌐 304-756-2585 🌐 www.casstruceng.com

PROVIDING STRUCTURAL ENGINEERING SOLUTIONS FOR RESIDENTIAL, COMMERCIAL AND INDUSTRIAL
COMMERCIAL, GOVERNMENTAL AND INDUSTRIAL STRUCTURAL DESIGN, ANALYSIS AND RESTORATION
A WEST VIRGINIA CERTIFIED DISADVANTAGED BUSINESS ENTERPRISE • AFFILIATED IN THE WEST VIRGINIA STATE OF STRUCTURAL ENGINEERING

WV VA OH MD PA

Engineering for Health Care Facilities

Our project experience includes engineering for over 75 health care facilities — those publicly and privately owned.

William R. Sharpe Jr. Hospital



CAMC Women's & Children's Hospital



VA Medical Center



Lakin Hospital



Welch Community Hospital



Design/Consulting Services

Engineering for Health Care Facilities

Our project experience includes engineering for three divisions of CAMC, one of the largest health care providers in West Virginia.



CAMC Memorial Division Hospital Renovations

Emergency Room, Patient Rooms, Chiller Replacement and Interconnect, Radiology/Nuclear Medicine, **Emergency Generator**, Fuel Oil Storage, Surgery Addition Commissioning, Cath Lab, SICU, MICU Renovations and CT Scan Rooms

CAMC Women & Children's Hospital Renovations:

LDRP Additions, NICU and PICU, Emergency Room and Patient Rooms,.



Since 1982, the ZDS founders and staff have provided engineering services while meeting stringent health care requirements and safety of the patients for CAMC.

Engineering for Health Care Facilities

Our project experience includes engineering for over 75 health care facilities — those publicly and privately owned.



Veterans Affairs (VA)
Hospital Administration

Summersville
Memorial
Hospital



Montgomery
General
Hospital



Webster
County
Memorial
Hospital



Bluefield Regional Medical Center



Design/Consulting Services

Health Care Project Experience

Project Name:
Location:

CAMC General Division
Charleston Area Medical Center (CAMC), Charleston, WV

Description:

CAMC is one of the largest health care providers in West Virginia and consists of several separate hospital campuses and facilities encompassing nearly 10 million square feet. Prior to forming ZDS, their principals and personnel's work at the General Division included the following: Special Care Facility, Physical Therapy, Emergency Room Retrofit, 3-4-5-6 South Patient Retrofit, District Chiller Plant Replacement and Interconnect, **boiler plant and emergency generator systems**



Contact:

Ray George, Corporate Director of Construction, (304) 388-9740
Bill Williams (Retired), Consultant for Plant Operations, (304) 595-3844 (H)

Project Name:
Location:

CAMC Memorial Division
Charleston Area Medical Center (CAMC), Charleston, WV

Description:

Prior to forming ZDS, Todd Zachwieja, Ted Zachwieja, and Jim Watters were involved at CAMC with review of the design and commissioning of a \$40 million surgery addition to the Memorial Division campus. This work paid for itself in less than two years from the savings generated and addressed maintenance reliability and future expandability issues. Their involvement at this location included Emergency Room Renovations, Patient Room Renovations, Chiller Replacement/Interconnect, **boiler systems**, Radiology/Nuclear Medicine Renovations, Cath Lab, SICU, MICU Renovations and CT Scan, **emergency generator**, Fuel Oil Storage, Surgery Addition Commissioning, and Laundry Facility Renovations



Contact:

Ray George, Corporate Director of Construction, (304) 388-9740
Bill Williams (Retired), Consultant for Plant Operations, (304) 595-3844 (H)

Health Care Project Experience

Project Name: CAMC Women & Children's Hospital
Location: Charleston Area Medical Center (CAMC), Charleston, WV

Description:

ZDS' principals and personnel have worked with CAMC since 1982 while at [redacted] and through previous employers on many design, energy conservation and commissioning projects involving sophisticated mechanical and electrical systems while meeting stringent health care requirements and safety of the patients for. Some of their involvement at CAMC's Women & Children's Hospital included LDRP Additions/Renovations, NICU & PICU Renovations, Emergency Room Renovations and Patient Room Renovations.



Contact: Ray George, Corporate Director of Construction, (304) 388-9740
Bill Williams (Retired), Consultant for Plant Operations, (304) 595-3844 (H)

Project Name: Hopemont Hospital, Terra Alta, WV – Boiler Plant Renovations
Location: West Virginia Department of Health and Human Resources (WVDHHR), Charleston, WV

Description:

ZDS' initial work addressed their fire alarm needs in 2003. ZDS was contacted again in 2010 to provide master planning, boiler system upgrades and ARRA funded lighting upgrades. The boiler plant optimization initial phase involved replacing underground piping between the central plant and hospital, along with comprehensive steam trap upgrades. This required engineering planning, design, supervision, preparation of construction documents, specifications, and construction administration of the boiler systems including lighting upgrades with replacement of T-12 lighting fixtures and incandescent lights with energy efficient T-8/T-5 and LED lighting, reducing lighting energy usage by over 30%.



Project Cost: ARRA Renovation \$760,000 Completed in 2011
Fire Alarm \$175,000 Completed in 2003

Hospital Size: 124,800 ft²

Health Care Project Experience

Project Name: Jackie Withrow Hospital, Beckley, WV – Boiler Plant Renovations
Location: West Virginia Department of Health and Human Resources (WVDHHR), Charleston, WV

Description: ZDS was the Prime for this project. Renovations included creating a central plant at one end of the large facility which included three 3,000 MBH, 125 psi steam boilers with upgrades to the condensate return system and comprehensive steam trap upgrades, providing a new gas service to the new boiler plant. The existing boiler plant in the opposite end of the large facility was upgraded to lengthen the life of it including a 2,500 MBH steam boiler. Several old or poor condition boilers were removed or isolated from providing heat to the system. The natural gas service upgrades were coordinated through the State Fire Marshal for approval to meet emergency backup fuel needs required by current code for both heating and emergency power.



Heating Project Cost: \$1,907,000 408,820 ft² Completed in 2011

Project Name: WV Department of Health and Human Resources
Location: William R. Sharpe, Jr. Hospital – Renovations & Addition, Weston, WV

Description: Prime consultant for renovation work including Engineering Master Planning, energy analysis, Mechanical, Electrical, and Fire Protection design, bidding and construction administration services for retrofitting the 212,000 ft² Hospital and consultant for all MEP engineering for the 32,000 ft² addition. This Project encompassed upgrades to the Central Utility Plant that included new boilers, pumps, new 1800 kw emergency generator installation, automatic transfer switches and other associated equipment.



Construction Costs:	Phase I HVAC Cost	\$ 1,403,000	Completed in 2011
	ARRA Funded Lighting Upgrade Costs	\$ 618,700	Completed in 2011
	Comprehensive Renovation Cost	\$30,000,000	Completed in 2016
	Addition Project Cost	\$13,500,000	Completed in 2014

Emergency Generator Projects

ZDS electrical engineering projects include governmental facilities and complexes that often require multiple levels of security.



Buildings 5, 6 & 7



Engineering master planning and design for specific life safety issues involving homeland security, emergency power fire alarm, sprinklers,, CCTV, intercom, and mass notification system.



Building #3



Building #4



East Wing and West Wing



West Virginia Division of Culture and History
A 228,500 ft² Facility



Emergency Power Generator

Engineering master planning, energy analysis, Mechanical/Electrical/Fire Protection design, bidding and construction.



Design/Consulting Services

Emergency Generator Projects

Our experience includes health care facilities and complexes that require multiple levels of security and power requirements.

CAMC General Division



Charleston Area Medical Center (CAMC)

One of the largest health care providers in West Virginia.

- Commissioning
- Energy Conservation
- Electrical Systems
- Emergency Generator
- Fuel Oil Storage
- HVAC Systems
- Power Controls
- Emergency Retrofits
- Campus Interconnects
- Boiler Systems



CAMC Memorial Division



Women & Children's Hospital

The WVDHHR hired ZDS as the prime consultant for renovation work including engineering master planning, energy analysis, **emergency power generators**, M/E/P, bidding and construction administration for retrofitting the 212,000 ft² hospital.



William R. Sharpe, Jr. Hospital



William R. Sharpe, Jr. Hospital



Crane lowering the emergency power generator into the electrical room.



United Hospital Center



Design/Consulting Services

Emergency Generator Projects

Our experience includes educational and governmental facilities that require multiple levels of security and power requirements.



West Virginia Army National Guard

Army Headquarters Building and Annex

Charleston, WV



Emergency Power Generators

This project was completed ahead of schedule and within budget to provide emergency power needs for the Coonskin Army National Guard campus as part of their overall homeland security strategy.



Three emergency power generators were used on this project: one at 1250 kW, the second at 1250 kW and the third at 1000 kW.

West Virginia University NASA Facility Fairmont, WV

The National Aeronautics and Space Administration (NASA) manages the nation's civilian space program and leads aeronautics and aerospace research.

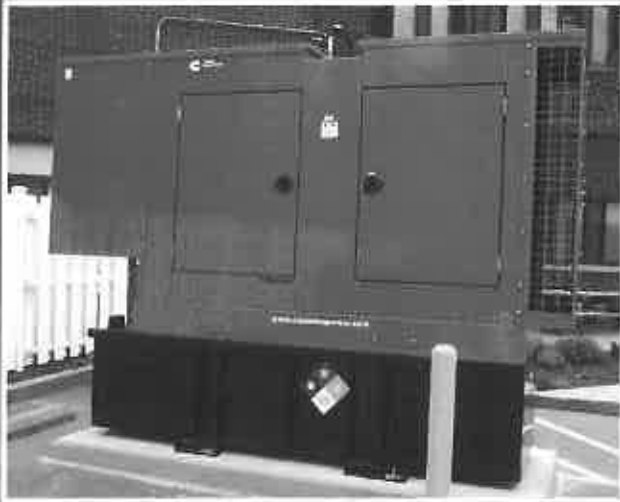
The emergency power system supports many facets of the entire WVU NASA campus facility operations including computer mainframes, electrical, HVAC, fire safety and security systems.



Design/Consulting Services

Emergency Generator Projects

Raleigh County Schools, Beckley WV



Central Office 100 KW Emergency Generator



Transportation Office 15 KW Emergency Generator

Raleigh County Schools contracted with ZDS to provide design and Construction Administration services for new emergency standby generators at six (6) locations in and around Beckley, West Virginia. The generators varied in size based on each of the individual facility's needs. The Project was completed on schedule and within the budget.



Auxiliary Services 425 KW
Emergency Generator



Maintenance Office
60 KW Emergency Generator



Bus Garage
100 KW Emergency Generator



iRaleigh
50 KW Emergency Generator

ZDS Commissioning Experience



ZDS helps a client determine whether equipment meets a facility's operational goals or whether adjustments are needed to improve efficiency and overall performance.

Our expertise helps clients in projects with the following:

- Fundamentals of Commissioning
- Enhanced Commissioning
- Retro Commissioning projects

ZDS offers these and other commissioning services:

- Compliance with LEED
- Construction Document Review
- Performance Documentation
- Equipment Performance Testing
- Value Engineering
- Post-Occupancy Fine Tuning



An integration of nine buildings involving over 1.9 million square-feet including the Capitol, Governor's Mansion, Center for Culture and History, plus six other administration facilities.

The initial years **savings of \$1,079,296** paid for the \$10,108,102 investment costs over time

LEED Certified Candidate

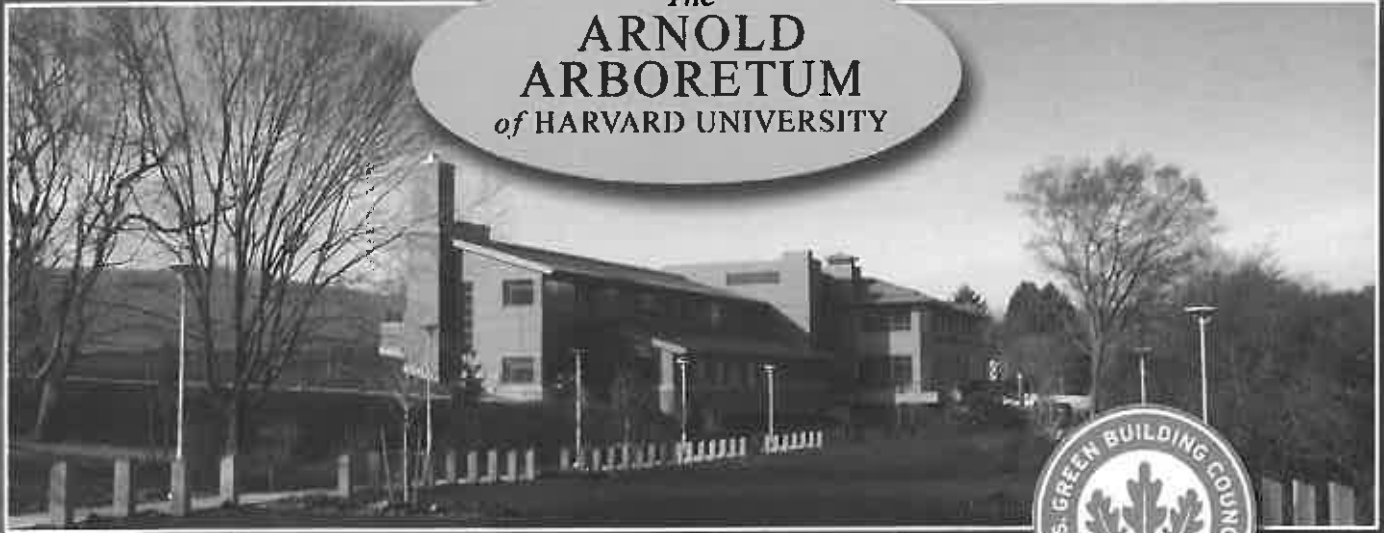


Design/Consulting Services



ZDS Commissioning Experience

The
**ARNOLD
ARBORETUM**
of HARVARD UNIVERSITY

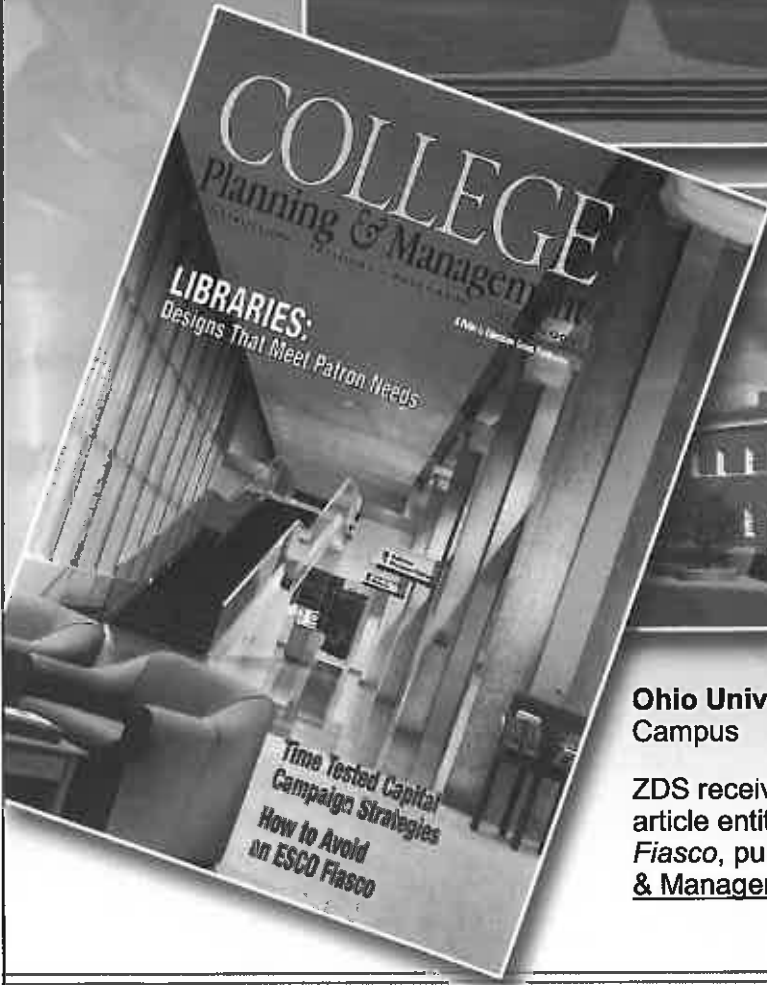


Washington
and Lee
University
Lexington, VA



Harvard University
Arnold Arboretum Weld Hill
Research and Administration
Building

LEED Gold Certified



**Ohio University - Chillicothe
Campus**

ZDS received national publicity for the
article entitled, *How to Avoid an ESCO
Fiasco*, published in College Planning
& Management, a highly-respected



Design/Consulting Services

ZDS Commissioning Experience



Air National Guard

130th Airlift Wing at
Yeager Airport, Phase I
and Phase II: Aircraft
Maintenance Fuel
Systems Hangars and
Shops

Awarded a **LEED
Silver Certification** for
each of the two phases



The Prince
Jonah Kūhiō
Kalaniana'ole
(PJKK) Federal
Building and
United States
Courthouse

Honolulu,
Hawaii



General Motors (GM)
of North America



Design/Consulting Services

ZDS Commissioning Experience



The Cuisset Residence, Charleston, WV



Webster Springs Elementary School



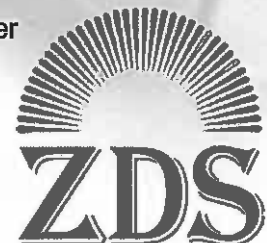
Webster County High School

ZDS Commissioning Project Experience

- Air National Guard (Phase I)
Replacement Aircraft Maintenance Facility
- Air National Guard (Phase II)
Replacement Fuel Cell Hangar Facility
- Beckley Stratton Middle School
- Cuisset Residence, Charleston, WV
- General Motors (GM) of North America
- Harvard University - Arnold Arboretum Weld Hill
Research and Administration Building
- Maryland – Calvert County Indoor Aquatic Center
- Montgomery County Departments of
Correction and Police
- Ohio University – Chillicothe Campus,
Stevenson Library and Bennett Hall
- PJKK Federal Building, Hawaii
- Santa Ana Federal Building Renovations
- University of California, Davis School of
Veterinary Medicine Instructional Facility
- Washington & Lee University
- Webster County High School
- Webster Springs Elementary School
- William R. Sharpe, Jr. Hospital
- WV Museum of Culture and Natural History
- WV State Capitol Complex
- WVU—Downtown Campus

Commissioning Projects Experience by Personnel before ZDS established:

- CAMC General Division
- CAMC Memorial Division
- CAMC Women & Children's Hospital
- General Motors North America
- Kanawha County Schools –
Capitol High School
- Milledgeville Georgia
Correctional Facility
- United Hospital Center
- WVU—Downtown
Campus



Design/Consulting Services

3D Digital Imaging for Health Care Facilities

Our 3D Laser Scanning Services helped William R. Sharpe, Jr. Hospital document existing conditions and integrate their 50-bed renovation.



3D Laser Scanning

Data points of building exterior



Web Share:

3D laser Scanning allows facility owners to view and measure areas with others on their planning and construction team.



Why 3D Laser Scanning is better:

3D laser scans reveal significant differences between existing conditions and the original drawings.

3D laser scans also provide superior details by capturing data that is more comprehensive and precise than conventional methods.



3D Digital Imaging for Health Care Facilities



3D Laser Scanning



Data points of building interior

3D Engineering Drawing:
Sample of 3D mechanical drawing converted from 3D laser scan data points.



Web Share: Helps construction team members integrate existing conditions into BIM models.

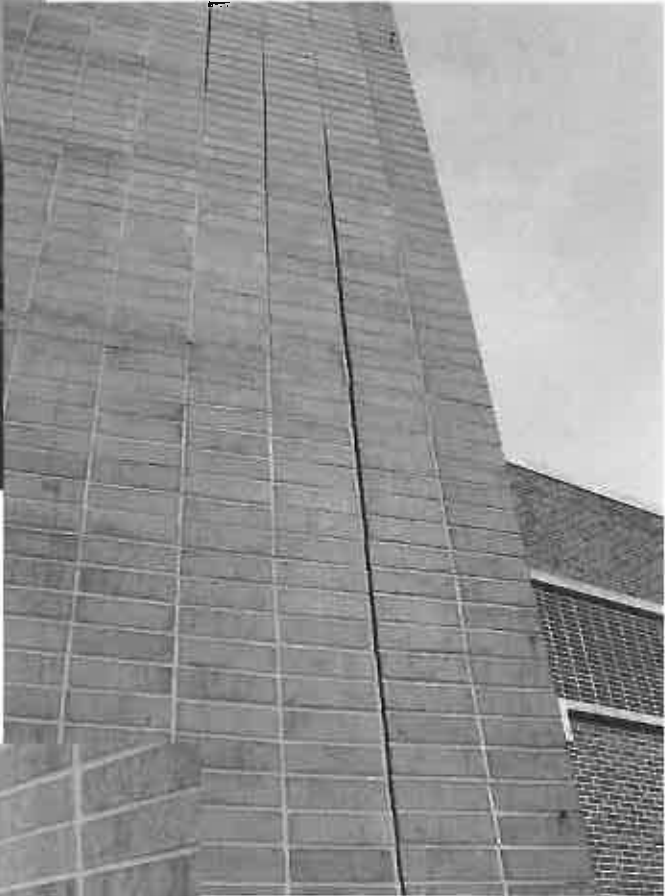


MILDRED MITCHELL BATEMAN HOSPITAL INVESTIGATION

Huntington, West Virginia

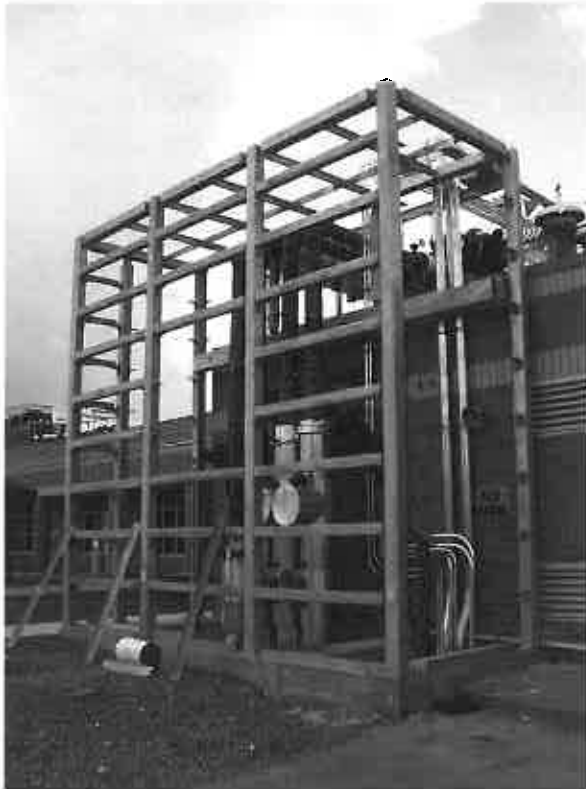


The project included limited investigation of the cracks in the brick façade of the structure. Provided a letter report with recommendations for repairs.



SHARPE HOSPITAL HVAC RENOVATIONS

Weston, West Virginia

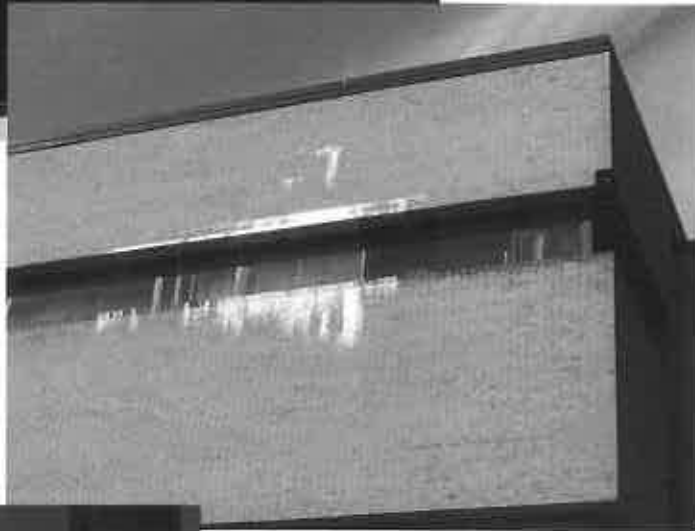


The project included design of framing for piping enclosures, fuel tank foundations, generator foundations, cooling tower foundations and steel structure support, and other miscellaneous support designs and analyses for complete redesign of HVAC systems in existing facility.



EAST RIDGE HEALTH SYSTEMS INVESTIGATION

Martinsburg, West Virginia



The project included limited investigation of the masonry façade and review of the existing drawings to determine cause for masonry failures and efflorescence. Recommendations for additional investigation were made to determine if structural steel supporting the masonry was compromised.



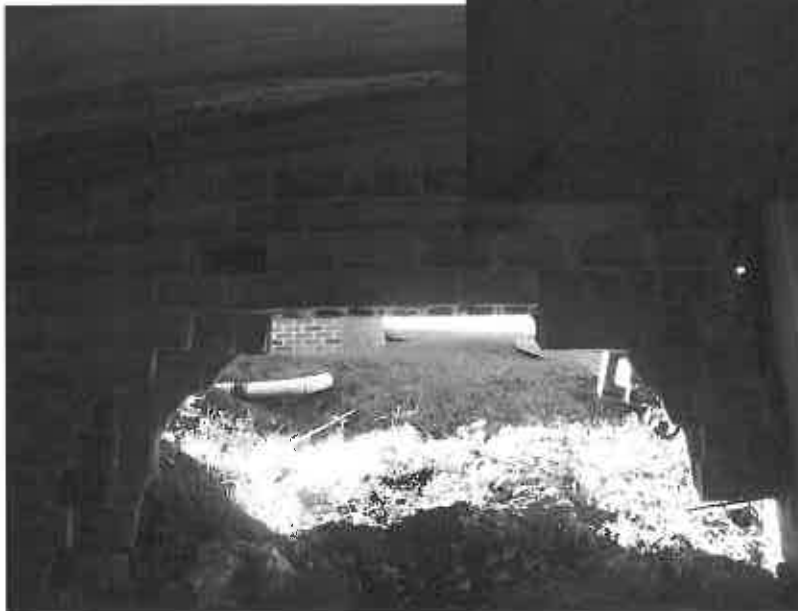
MANCHIN HOSPITAL STRUCTURAL RAMP INVESTIGATION

Fairmont, West Virginia



The project included limited investigation of the precast concrete ramp structure with recommendations for repairs to restore to pedestrian only usage.

Vehicular usage was not permitted under any circumstances without significant structural repairs.



GOVERNMENT AND COMMERCIAL PROJECTS

- Bank One – WV
- Bayer Material Science, South Charleston, WV
- Calvert County Aquatic Center, MD
- Culture Center HVAC, Fire Alarm, and Fire Protection renovations,
- General Motors Corporation of North America Re-commissioning Program
- Kanawha County Commission – 120,000 sf additions/renovations for the Judicial Annex/Kanawha County Courthouse – Charleston
- Kohl's
- Laidley Towers – Charleston
- Mercer County Courthouse Annex – Princeton
- Olin Corporation
- Phillip Morris USA
- Rhone-Poulenc
- Santa Anna Federal Building, CA
- WV Capitol Complex Central Heating Plant Renovations
- Sears
- Toyota Motor Manufacturer, WV Inc.
- Union Carbide/DOW
- United Center – Charleston
- Walker Machinery
- WV Air National Guard including Cx \$45M Fuel Cell/Maintenance Hangars at Yeager Airport for LEED Silver
- WV Army National Guard
- WV Department of Transportation/DOH
- WV Division of Protective Services
- WV Higher Education Authority
- WV General Services Division
- WV Public Service Commission Headquarters
- WV State Capitol Complex renovations
- Yeager Airport

Todd also designed one of the largest geothermal heat pump applications in the mid-Atlantic region, and retro-commissioned HVAC systems and mechanical engineering at many General Motors' facilities in North America.

HEALTH CARE PROJECTS

- Bluefield Regional Medical Center
- Cabell Huntington Hospital
- Charleston Area Medical Center (Memorial Division, General Division and Women & Children's Hospital)
- Charleston Surgical Center
- Family Practice Center
- Jackie Withrow Hospital
- John Manchin, Sr. Health Care Center
- Hometown Healthcare Center
- Hopemont Hospital
- Lakin Hospital
- Lewistown Outpatient Surgical Facility, PA
- Mercy Medical Center
- Mildred Mitchell-Bateman Hospital
- Monongalia General Hospital
- Montgomery General Hospital
- St. Joseph's Hospital
- St. Mary's Hospital
- Summersville Regional Medical Center
- Surgicare Center
- Thomas Memorial Hospital
- United Hospital Center
- VA Hospitals – Clarksburg & Huntington
- Wayne Memorial Hospital
- Webster Memorial Hospital
- Welch Community Hospital
- William R. Sharpe, Jr. Hospital Additions and Renovations

EDUCATIONAL PROJECTS

Colleges and Universities

Projects include Alderson Broadus College, Bluefield State College, Concord University, Fairmont State College, Harvard University – LEED Gold Certified, Marshall University, Ohio University's Athens and Chillicothe Campuses, Southern WV Community & Technical College, University of California-Davis, University of Charleston, Washington & Lee University, WVU Institute of Technology, West Virginia State University, West Virginia University and West Virginia Wesleyan College.

Todd was recognized nationally for his work with Ohio University in development of multiple performance contracting programs that are anticipated to save \$2.5 million annually in energy and operating costs. He has been involved in hundreds of higher education facilities.

Schools

M/E/P design for schools in West Virginia Counties of Calhoun, Clay, Fayette, Grant, Greenbrier, Hardy, Harrison, Jackson, Kanawha, Lewis, Logan, Marion, McDowell, Mercer, Mingo, Monroe, Ohio, Pocahontas, Putnam, Raleigh, Randolph, Ritchie, Summers, Taylor, Tucker, Upshur, Webster and Wyoming. Allegheny County Maryland School District as well as schools in Pennsylvania.

Some of Todd's project experience includes development and design of a pilot geothermal heat pump HVAC with variable speed pumping system at Webster County High School, which reduced electric bills by more than 40% while meeting IAQ requirements. *In 2013 Elkins Middle School, Webster Springs Elementary and Glade Elementary/Middle School were given Energy Star Certification, placing them in the nation's top 25% of energy efficiency schools.*

Ted has over twelve years of experience in building construction design industry. His strategic thinking and development deployment of technical resources at ZDS has helped streamline design processes and improve quality of work office wide. Ted is an innovative problem solver in engineering design, communication methods and management of BIM models between stakeholders during a design project. As a pioneer and a believer in technological processes Ted has championed Integrated Design Practices that has become the fabric of ZDS's day to day operations.

Ted developed ZDS's 3D Scanning services which have assisted in collecting key existing conditions for renovation projects, forensic engineering, historical preservation, and high definition reality capture. Ted has in depth experience on collection, registration, and scan to BIM processes. He has provided training and developed materials for best practices when using 3D scan data. Ted's 3D scanning experience includes educational, health care, industrial, and commercial facilities. He also has experience in speaking on how 3D laser scanning impacts our industry today.

Ted develops and manages the IT systems. The experience encompasses development and deployment of central server systems to networked client computer systems, strategic development for ZDS' Integrated Design Processes, and research and development into new technologies to continue staying on the cutting edge at ZDS.

Ted's project experience includes the commissioning and design for heating, ventilating, air conditioning, plumbing, electrical and lighting systems for educational, health care, industrial and commercial facilities. His experience encompasses working both on new construction as well as renovation projects.

Ted maintains an active membership to the ASHRAE professional society and also has a lifetime membership to the Association of Energy Engineers. He maintains an active continuing education towards today's standards and codes as well as participates in ASHRAE at both a local and society level. He was recently appointed to the Electronic Communications Standing Committee with ASHRAE.

PROFESSIONAL REGISTRATIONS

Professional Engineer:
West Virginia 21677
Certified Energy Manager (C.E.M.) - National Certification No. 22411

EDUCATION

Bachelor of Science in Mechanical Engineering from
Rochester Institute of Technology, Rochester, NY



PROFESSIONAL AFFILIATIONS

Member of Investigative Engineers
Association (I-ENG-A)



Secretary, Past Membership
Promotion Chair - American Society of
Heating, Refrigeration and Air
Conditioning Engineers (ASHRAE)
West Virginia Chapter



Lifetime Member of the Association of
Energy Engineers (AEE)



Associate Member West Virginia
Society for Healthcare Engineering



AWARDS AND RECOGNITIONS

Awarded 2012 Legend in Energy
by the Association of Energy Engineers



Awarded acceptance into ASHRAE's
2015 Leadership University.

ASHRAE Blue Ribbon Award of
Excellence



Co-Author at Autodesk University

COMMERCIAL AND INDUSTRIAL PROJECTS

- WV Air National Guard Maintenance Hangar and Fuel Cell Hangar, Charleston, WV – *LEED Silver Certified*
- Bayer Material Science
- Catholic Church of Ascension Parish Hall Renovations
- Coal Heritage Trails Center Renovations
- Kanawha County Judicial Annex HVAC Renovation
- Meadowbrook Rest Areas
- I-70 Welcome Center
- Casci Building, Charleston WV
- Morgantown Welcome Center
- Pocahontas County Community Center
- Robinson Grand Theatre
- Servia Rest Areas
- Stonewall Jackson Marina
- WV Parkways Authority – Toll Booth Plazas
- WV State Capital Complex Central Heating Plant
- White Sulfur Springs Rest Area

EDUCATIONAL PROJECTS

M/E/P design for schools in the following West Virginia counties includes:

- Bluefield High School and Vocational School
- Davis-Thomas Elementary/Middle School Renovations
- South Charleston Middle School Evaluations/Renovations
- Elkins Middle School Renovations – *Energy Star Certified*
- Greenbrier West High School Additions/ Renovations
- Jaeger/Panther Elementary School
- Jane Lew Elementary School Addition/Renovations
- Lashmeet/Matoaka Elementary School Renovations
- Smith Hall & Harris Hall at Marshall University, Huntington WV
- Mercer County Technical Education Center Renovations,
- Montcalm High School Renovations
- Park Middle School Renovations
- Princeton High School Renovations
- Raleigh County Schools – County-Wide Domestic Water Service Upgrades Smithville Elementary Schools additions and renovations.
- Sacred Heart Pavilion
- Spanishburg Elementary School Renovations
- University of Charleston Innovation Center
- Webster County - Glade Elementary/Middle School Renovations – *Energy Star Certified*
- Woodrow Wilson High School HVAC/electrical renovations
- WV Higher Education Policy Commission (WVHEPC) South Charleston Tech Center – Campus Comprehensive Infrastructure Evaluation

HEALTH CARE PROJECTS

- Eastbrook Nursing Home
- West Virginia Department of Health and Human Resources Hospitals:
 - Elkins Children's Hospital
 - Jackie Withrow Hospital, Beckley: Master Planning Study, new central steam plant and renovations to heating system and lighting renovations.
 - Hopemont State Hospital, Terra Alta: Master Planning Study, renovations to heating system and lighting systems.
 - John Manchin, Sr. Health Care Center, Fairmont: Master Planning Study, renovations to lighting systems.
 - Lakin State Hospital, West Columbia: Master Planning Study and exterior envelope and lighting renovations.
 - Mildred Mitchell-Bateman Hospital, Huntington: Master Planning Study and lighting renovations.
 - Welch Community Hospital, Welch: Master Planning Study and lighting renovations.
 - William R. Sharpe, Jr. Hospital, Weston: fifty bed forensic addition and renovations to entire existing hospital including new central heating/cooling plant, 1,800 KW emergency power station and comprehensive HVAC and electrical renovations throughout the facility

Daniel brings with him strong design and management skills with over 36 years of experience in consulting ranging from traditional electrical and mechanical systems design to being one of the nation's leading experts in organizational issues including Total Quality Management, Organizational Learning, Leadership Development and Systems Thinking. His specialties include the management and design of HVAC systems for new building construction in the \$50 - 150 million range including the One Hundred and Fifty, Federal Streets, Boston, MA; the Becton Dickinson World Headquarters, NJ; Marketplace Center, Boston, MA.

Dr. Kim is an organizational consultant and public speaker who is committed to helping problem-solving organizations transform into learning organizations. He has worked with numerous companies including Standard & Poors, National Education Association, DuPont, Ford Motor Company, Harley-Davidson, Hanover Insurance, Healthcare Forum, Hewlett-Packard, CIGNA, Ameritech Services, Brigham & Women's Hospital, General Electric, and numerous government ministries and agencies in Singapore, among others.



EDUCATION

Ph.D. in Management
from Massachusetts
Institute of Technology
Sloan School of
Management in 1993

**Bachelor of Science in
Electrical Engineering**
from Massachusetts
Institute of Technology in
1987

CO-FOUNDER AND MEMBER:



Publications (selected list)

- "Foresight as a Central Ethic of Leadership," 2002, Essay series published by R.K. Greenleaf Center for Servant Leadership, Indianapolis, IN.
- Organizing for Learning, 2001, Pegasus Communications, Waltham, MA. "Learning Laboratories: Designing Reflective Learning Environments,"
- "Decisionmaking: The Empowerment Challenge," *The Systems Thinker*, Vol. 6, No. 7.
- "The Link Between Individual and Organizational Learning," *Sloan Management Review*, Fall 1993.
- "Systems Archetypes: Diagnosing Systemic Issues and Designing High-Leverage Interventions" 1992, Cambridge, MA: Pegasus Communications
- "Toward Learning Organizations: Integrating TQC and Systems Thinking," *Special Report Series*, Cambridge, MA: Pegasus Communications
- "The Leader with the Beginner's Mind," *Healthcare Forum Journal*, July/August 1993
- "Experimentation in Learning Organizations: A Management Flight Simulator Approach," *European Journal of Operations Research*, May 1992

Speeches/Lectures (selected list)

- 2013 Keynote speaker at the 1st International Seminar and Conference on the Learning Organization, Bandung, Indonesia
- 2012 Keynote speaker at the 2nd STADA/ASTD Asia Pacific Conference—
Developing Human Capital in the Asia-Pacific Economy, Singapore
- 2011 Keynote speaker at the 42nd Colorado Association of School Executives,
Breckenridge, CO
- 2011 Keynote Speaker at the 21st Servant Leadership Conference, Dallas, TX
- Keynote speaker and/or concurrent session leader at dozens of various conferences, including those hosted by Pegasus Communications, The Planning Forum, The Healthcare Forum, Institute for Healthcare Improvement, The Conference Board.

Jennings has over 25 years of experience as an engineer involving the design, project management and construction management of heating, ventilating and air conditioning (HVAC), plumbing, electrical, lighting and specialized systems for health care, institutional and commercial facilities. His experience also includes indoor environmental quality analysis, building system commissioning and forensic engineering.

Prior to joining ZDS, Jennings' professional experience included working as an Owner's Representative at West Virginia University (WVU) in the positions of Staff Engineer and Construction Project Manager, and as a Mechanical Engineer for the West Virginia Department of Education (WVDE).

During his employment at WVU, Jennings was responsible for management of major repair and capital construction projects and in-house design of smaller projects. While working for the WVDE, he was responsible for quality control of design documents for various school system construction projects throughout the state of West Virginia; troubleshooting issues related to HVAC systems and Indoor Air Quality (IAQ); re-commissioning of HVAC systems to original design parameters; recommendations for HVAC operational and energy savings procedures; and training of county school systems' maintenance personnel. He performed annual investigations of facilities concentrating primarily on HVAC operation and occupant safety. Tasks included IAQ measurements such as temperature, humidity and carbon dioxide; HVAC equipment visual inspection; life safety assessment; and building component checks.

As a Project Engineer, Jennings specializes in developing scope, budget and design parameters; establishing program requirements through interaction with Owners and other Team members; design reviews; budget analysis and control; schedule control; complete design oversight and task assignment; construction administration and project closeout.

PROFESSIONAL REGISTRATIONS

Professional Engineer:

- West Virginia 15060
- Pennsylvania 062186
- Virginia 040028
- Maryland 47193

Jennings has completed multiple forensic education courses, some of which were under the direction of Peter Vallas, Sr. Such training included structural failures, fire investigations, product failures, mold and water damage, accident reconstruction and bodily injury, among others. He is a member of the Investigative Engineers Association (I-ENG-A) of the Tri-State Region.



EDUCATION

Bachelor of Science in
Mechanical Engineering from
West Virginia University

PROFESSIONAL AFFILIATIONS

Member of Investigative
Engineers Association
(I-ENG-A) of the Tri-State
Region. Fire Investigation
Certification under the direction
of Peter Vallas, Sr.



President - American Society
of Heating, Refrigeration and
Air Conditioning Engineers
(ASHRAE) West Virginia
Chapter



Associate Member West
Virginia Society for Healthcare
Engineering



AWARDS AND RECOGNITIONS

Selected to assist in training of
Code officials and the design
community on the new
ASHRAE 90.1-2007 State
Energy Code adopted by West
Virginia in 2013

LEED Silver Certified WVANG
Fuel Cell/Maintenance Hangar,
Charleston, WV

GOVERNMENT AND COMMERCIAL PROJECTS

- WV Air National Guard including commissioning for recent \$45M Fuel Cell/Maintenance Hangars at Yeager Airport for **LEED Silver Certified**
- WV Public Broadcasting Station HVAC design for transmitter station
- Federal Government Facility Cafeteria and Food Court Renovations, Electrical Vault Renovations

HEALTH CARE PROJECTS

- Children's National Medical Center (CNMC) – Washington, D.C.: 7-story East Wing Addition and Fit Out, multiple office suite renovations, Pediatric Intensive Care Unit (PICU) renovations, Hearing & Speech Outpatient Suite renovations, Quarantine Infection Control System Modifications, Pulmonary Outpatient Renovations, and Pharmacy Renovations
- Friendship Ridge – Beaver, PA: Bulk Oxygen System and Facility Distribution Upgrade
- Heritage Valley Health Systems (HVHS)/Sewickley Valley Hospital (SVH) - PA: Radiology Reading and Processing Suite Renovations, Outpatient Clinic and Emergency Department Renovations, 5th Floor Central/West Inpatient Wing Renovations
- HVHS/Moon – PA: Imaging X-Ray Relocation
- HVHS/The Medical Center (TMC) of Beaver - PA: Helipad Study, Bulk Oxygen Supply and Storage Replacement, Radiology Reading and Processing Suite Renovations, RIS-PACS Data Storage Facility
- Indiana Regional Medical Center (IRMC) - PA: New Blairsville Medical Office Building, IT Data Storage Room HVAC Upgrade, Dialysis Treatment Suite HVAC Upgrade
- Mount Nittany Medical Center (MNMC) - PA: Commissioning for East Wing addition, ED renovations, Central Utility Plant upgrades, Special Services/Computer Services Building
- Somerset Hospital - PA: ADL Suite Fit-out, New Medical Office Building, Renovations to Cath Lab, CT Replacement, X-Ray Replacement, and Pharmacy Relocation
- VAMC Clarksburg - WV: 4th Floor Renovations (Psychiatric Suite)
- VAMC Coatesville - PA: New Hospice Facility
- VAMC Huntington - WV: Mental Health-Psychiatric Residential Rehabilitation Treatment Program (MH PR RTP) Addition and Renovations
- VAMC Philadelphia - PA: Renovations to Canteen, Dental Lab, Emergency Department and Patient Processing, Home Health Suite, Medical Records, MRI, CT Scan, Angio Suite, and Specialty Clinic; OR Suite HVAC System Upgrades; Chiller and Cooling Tower Replacements; New Patient Transport Elevator; Clean Steam System for Facility Wide Humidification
- WV Department of Health and Human Resources:
 - Jackie Withrow Hospital, Beckley: Master Planning Study, new central steam plant and renovations to heating and lighting systems
 - Hopemont State Hospital, Terra Alta: Master Planning Study, renovations to heating and lighting systems
 - John Manchin, Sr. Health Care Center, Fairmont: Master Planning Study, renovations to heating and lighting systems
 - Lakin State Hospital, West Columbia: Master Planning Study and exterior envelope renovations and lighting systems
 - Mildred Mitchell-Bateman Hospital, Huntington: Master Planning Study and lighting renovations
 - Welch Community Hospital, Welch: Master Planning Study and lighting renovations
 - William R. Sharpe, Jr. Hospital, Weston: 50 bed forensic addition and renovations to entire existing hospital including new central heating/cooling plant, 1,800 KW emergency power station and comprehensive HVAC and electrical renovations throughout the facility.

EDUCATIONAL PROJECTS

- West Virginia University (WVU)
 - Wise Library addition and renovation
 - Engineering Sciences Building chiller replacement
 - Coliseum's new primary 23kV power feed to existing sub-station
 - Engineering Research Building hydrogenation reactor lab
 - Armstrong Hall HVAC and sprinkler renovation
 - Numerous research laboratory renovations and hood installations
 - Elevator system upgrades in several buildings
 - Roof replacements for several buildings
 - White Hall Computer and Study Lab renovation
 - White Hall Chiller Plant
 - Lighting upgrade projects at various Morgantown campuses.
 - New Life Sciences Building on the downtown campus
 - Downtown Campus 4 KV electrical loop system upgrades.
 - Numerous minor renovation projects in various campus buildings
- Shepherd University Ikenberry Hall HVAC Renovation
- State of Maryland, Allegheny County School
- State of Pennsylvania Schools

Jim has nearly 40 years' experience in design and implementation of HVAC, plumbing and electrical systems including nine years in the construction industry. He has a comprehensive knowledge of construction documents, contracts, and development of cost estimates, budgets and schedules. Jim's strengths reside in his ability to manage projects and people in an organized and cost-effective manner. Jim has been involved with the design and production of mechanical and electrical drawings including HVAC, plumbing, fire protection, lighting, electrical power and specialized systems. He has worked with and managed engineers in projects for health care, educational and commercial buildings in the states of West Virginia, Ohio, Kentucky, Virginia, Georgia, New York, Arizona, Illinois and Massachusetts.

Jim has extensive experience in energy savings' programs for HVAC, plumbing and electrical systems in hospitals, state and government office buildings, school systems, and manufacturing facilities, as well as managing performance contracts for a large facility's campus totaling \$10,000,000 in construction costs on various projects, including the conception, design and construction administration for the installation of a 1.5 Megawatt emergency generator. The propane-fired generator and associated switchgear in conjunction with 60,000 gallons of propane fuel storage served to provide peak shaving/load shedding to save on the campus utility costs as well as emergency power functions. Through the years, Jim has researched and implemented into practice International Building Codes, NFPA Codes, National Electrical Codes, Life Safety Codes, IES standards, AIA Guidelines for Design and Construction, and ADA guidelines. His involvement in construction through the years has been mainly from the design side of the industry with a 9 year stint working for a contracting firm at the turn of this century. His experience includes coordinating with Architects, Owners and Agencies including a very good relationship with the office of the West Virginia State Fire Marshal.



PROFESSIONAL AND COMMUNITY AFFILIATIONS

Member of Investigative Engineers Association (I-ENG-A) of the Tri-State Region



Member of the National Fire Protection Association (NFPA)



Past Member of the Health Care Section of the NFPA

Member of the Illuminating Engineering Society (IES)



Past member of the American Society of Plumbing Engineers (ASPE)



Past member of the Institute of Electrical Engineers (IEE)

OTHER RECOGNITIONS

Energy Star Certified for facilities in the nation's top 25% of energy efficiency



GOVERNMENT AND COMMERCIAL PROJECTS

- Bluefield Area Transit Authority Administration and Maintenance Facility design.
- Boyd County, Kentucky Judicial Center
- Chase Towers (formally Charleston National Bank)
- Department of Transportation Rest Area prototype
- Department of Transportation Welcome Center prototype
- Fenway Park in Boston - Lightning Protection/Grounding Study
- Glenville State College
- I-70 Welcome Center
- Jackson County Libraries Renovations
- Kanawha County Commission Judicial Annex Renovations
- Meadowbrook Rest Areas North and South Bound
- Morgantown Welcome Center
- Redmond House Renovations design
- Rhone-Poulenc new administrative offices
- Sacred Heart Pavilion and Daycare Center
- Saint Patrick Church Renovations
- Shawnee Park Clubhouse
- Stonewall Jackson Marina Renovations
- Tucker County Board Office Boiler Retrofit
- Tucker County Courthouse Renovations
- WV Air National Guard – Commissioning for \$43 million maintenance and fuel cell hangars – **LEED Silver Certified**
- WV Department of Military Affairs and Public Safety Maintenance Facility in Eleanor
- WV Department of Transportation Burnsville Rest Area (**AIA Merit Award Recipient**) and Domestic Water Pumping Station
- WV Division of Culture and History Fire Alarm/Sprinkler upgrades
- White Sulphur Springs Welcome Center

HEALTH CARE PROJECTS

- Cabell Huntington Hospital
- Charleston Area Medical Center (CAMC) (prior to joining ZDS)
 - Projects included: Cath Lab III Renovations; 750 kW Emergency Generator/Underground Fuel System; Two-Four West Nursing Wing; Main Electrical Service Upgrade; Emergency Room Renovations; Surgical Intensive Care Retrofit; Two/Three East Patient Room Renovations; Four-North HVAC Renovations; Nuclear Medicine Renovations; Special Care Facility Contract Administration; Allied Health, Physical Therapy & Hydrotherapy; Three-Six Floor Patient Room South; Emergency Generator Retrofit Design; Heliport and pilots quarters; Wound Center; Pediatric Intensive Care & Newborn Intensive Care Unit; Central Electric Metering Design; CT Scan Addition; LDRP/Gynecology; Surgery Addition; Operating and Recovery Room HVAC System; Medical Office Building – General Division
- Kings Daughters Medical Center, Ashland (prior to joining ZDS) - Projects included: Cardiac Care Center; Medical Office Building
- Thomas Memorial Hospital
- St. Mary's Medical Center, Huntington
- United Hospital Center
- VA Hospital, Huntington – steam distribution system to serve six additional facilities on campus, main hospital domestic water line replacement and CT Scan renovations
- WV Department of Health and Human Resources Master Planning and renovations:
 - o Jackie Withrow Hospital, Beckley: new central steam plant; renovations to heating system and lighting systems.
 - o Hopemont State Hospital, Terra Alta: renovations to heating system and lighting systems.
 - o John Manchin, Sr. Health Care Center, Fairmont: renovations to lighting systems.
 - o Lakin State Hospital, West Columbia: lighting renovations.
 - o Mildred Mitchell-Bateman Hospital, Huntington: lighting renovations.
 - o Welch Community Hospital, Welch: lighting renovations.
 - o William R. Sharpe, Jr. Hospital, Weston: fifty bed forensic addition and renovations to entire existing hospital, 1,800 KW emergency power station.

EDUCATIONAL PROJECTS

- Davis Thomas Elementary/Middle School Renovations
- Elkins Middle School HVAC and Electrical Renovations- **2013 Energy Star Certified**
- Eastern Greenbrier Middle School Addition
- Kanawha County Schools
- Greenbrier West High School Additions/Renovations
- Marshall University Smith Hall Renovations
- Marshall University Student Housing in Huntington
- Mercer County Schools, Princeton High Schools Renovations, Vo-Tech Renovations, Lashmeet/Matoaka School Renovations, Montcalm High School, and Spanishburg Elementary Renovations.
- New Jaeger/Panther Elementary School
- Paul Blazer High School in Ashland
- Pleasant Hill Elementary School Renovations in Calhoun County
- Pocahontas County Community Center
- Raleigh County School County-Wide Domestic Water Service Upgrades
- Ritchie County Middle/High School Renovations
- Smithville Elementary School Additions/Renovations
- Woodrow Wilson High School HVAC/Electrical Renovations
- WVU Wise Library Fire Protection Renovations

Carol A. Stevens, P.E.

Structural Engineer



EDUCATION

West Virginia University, BSCE, 1984
Chi Epsilon National Civil Engineering Honorary
The Pennsylvania State University, ME Eng Sci, 1989

PROFESSIONAL REGISTRATION

P.E. 1990 Pennsylvania
P.E. 1991 West Virginia
P.E. 1994 Maryland
P.E. 2008 Ohio
P.E. 2010 Kentucky
P.E. 2013 Virginia

BACKGROUND SUMMARY

2001 – Present President, Structural Engineer
CAS Structural Engineering, Inc.

1999 – 2001 Structural Engineer
Clingenpeel/McBrayer & Assoc, Inc.

1996 – 1999 Transportation Department Manager
Structural Engineer
Chapman Technical Group, Inc.

1995 – 1996 Structural Engineer
Alpha Associates, Inc.

1988 – 1995 Structural Department Manager
Structural Engineer
NuTec Design Associates, Inc.

1982 – 1988 Engineer
AAI Corporation, Inc.

PROFESSIONAL ASSOCIATIONS

American Society of Civil Engineers, WV Section
National Society of Professional Engineers
American Concrete Institute
American Institute of Steel Construction
West Virginia University Department of Civil and
Environmental Engineering Visiting Committee
West Virginia Tech Department of Civil Engineering
Advisory Committee

CIVIC INVOLVEMENT

ASCE Christmas in April Project/Engineer's Wk Speaker

EXPERIENCE

West Virginia, CAMC Boiler Room: Structural design of roof framing, walls and foundations for new boiler enclosure.

West Virginia, CAMC Cancer Center: Structural design of connections for architecture/structure interfaces.

West Virginia, Sharpe Hospital: Structural design of framing and foundations for HVAC renovations at existing facility.

West Virginia, Manchin Hospital: Structural evaluation of existing concrete ramp structure.

West Virginia, Bateman Hospital: Structural evaluation of existing masonry façade with recommendations for repairs.

West Virginia, East Ridge Health Systems: Structural investigation of existing masonry façade to determine cause of failures in exterior envelope.

West Virginia, Teays Medical Office Building: Design of foundations and framing for new 2-story medical building.

West Virginia, Thomas Hospital Parking Garage: Design of structural repairs to 1980's precast concrete garage.

West Virginia, St. Francis Hospital Parking Garage: Design of structural repairs to 1980's precast concrete garage.

West Virginia, Braxton Health Associates: Designed foundations and roof framing for new one-story medical office building.

West Virginia, St. Mary's Hospital Parking Garage: Structural evaluation of precast concrete parking garage.

West Virginia, Thomas Memorial Hospital: Various projects related to analysis of floor structure for installation of new equipment and relocation of functions within existing facility.

West Virginia, Cabell Huntington Hospital: Designed floor framing for new blood collection reception area within new Marshall University Medical Center.

PREVIOUS EXPERIENCE

West Virginia, Johnson Ave Professional Building: Structural design of new 9,400 SF steel framed multi-tenant medical office building.

West Virginia, Cabell Huntington Hospital Boiler Mezzanine: Structural analysis and testing of existing reinforced concrete mezzanine with significant degradation from brine tank leakage. Developed new structural system to replace existing concrete mezzanine utilizing steel framing and steel grating.

West Virginia, Morgantown High School Additions: Designed steel framing and foundations for science classroom, cafeteria and gymnasium additions to existing education complex.

West Virginia, Grafton High School Addition: Designed steel framing and foundations for new science classroom addition to existing high school.

West Virginia, North Fork Hughes River Water Treatment Plant: Designed reinforced concrete structure for new water treatment facility.

Pennsylvania, Apple Hill Medical Center: Designed structural steel framing and foundations for new surgical center addition to existing medical facility.

Pennsylvania, Metropolitan Edison Company, Headquarters: New 80,000 SF two-story office addition to existing complex.

Pennsylvania, Defense Distribution Region East: Structural engineering and design for a 33,000 SF Hazardous Materials Storage Warehouse.

Maryland, U.S. Army Corps of Engineers, Baltimore District, Administration Building: Seismic design of new 10,000 SF masonry building.

Maryland, U.S. Army, Ft. Dietrich Hospital: Structural design for new second floor addition to existing functioning hospital facility.

Pennsylvania, Carlisle Syntec: Design of foundation supports for 800,000 lb rubber vulcanizing machine; enlargement of foreman's office including new framing to support mechanical equipment on roof; new monorail installation; extension of existing gantry rail.

Pennsylvania, Engel Worldwide: Steel framing and foundations for new 12,000 SF two-story office building;

design of crane beams and columns for adjacent 60,000 SF crane building.

Pennsylvania, AMP IMF: Structural design for the renovation and conversion of a stamping facility into an integrated manufacturing facility (IMF) housing operations for stamping as well as blow molding processes.

Texas, York International: Structural survey of existing building structure for modifications to incorporate large testing and manufacturing areas for mechanical equipment.

Maryland, Columbia 100: Design of structural steel framing for new two-story 43,000 SF office building.

Pennsylvania, York Federal Savings and Loan Association/New Service Corporation: Design of steel framing, reinforced concrete retaining wall and foundations for new 14,400 SF two-story office building.

Pennsylvania, Yorktowne Parking Garage: Study of reinforced concrete/steel framed parking garage.

Pennsylvania, Blakey Yost Bupp & Schaumann: Reconstruction of a 3-story 10,200 SF, fire damaged urban building and conversion into law offices.

Pennsylvania, Queensgate Theaters: Structural analysis of existing mall area for conversion to movie theaters.

Pennsylvania, College Misericordia: Structural design of new 50,000 SF student resident hall utilizing precast concrete planks and masonry bearing walls.

Pennsylvania, Homewood Suites: Structural and foundation design for new two-story hotel.

Pennsylvania, Comfort Inn: Structural and foundation design of new 5-story hotel.

Pennsylvania, Glatfelter Insurance: Design of steel framing and foundations for new 30,200 SF building.

Pennsylvania, M&M Mars: Multi-level steel structure to support dust collectors positioned over existing building, steel framing for motor control center within existing silo building, design of 4-story Alkalizing and Roasting Addition with accommodations for existing functioning railroad siding which remained operations beneath new building.

Pennsylvania, York City Ice Arena: Design of heavy timber exposed roof trusses and foundations for new 6,500 SF masonry wall bearing building.

Boyd, Gary MA, CFP

2300 MacCorkle Ave. SE | 304 357-4871 | garyboyd@ucwv.edu

August 11, 2016

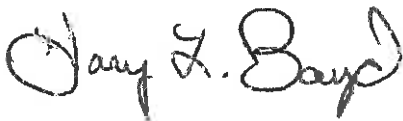
To Whom It May Concern

With well earned respect I would like to recommend ZDS as a high quality MEP design firm.

I have had multiple opportunities to work on highly technical projects with Todd Zachwieja and his team of skilled engineers. The first project that I had the opportunity to work with ZDS was a WVU project that connected several older chillers to develop a chilled water loop on the downtown campus. The project included piping through congested areas, load calculations, differential pressure and pump control, and load balancing. This project was designed to become a phased approach to a central chiller plant which is now in operation. The project was efficiently managed and the performance exceeded expectations. As the system changed and older chillers were removed from the loop, Todd always responded to questions and concerns to insure a positive outcome for the overall objective.

At present I am working with ZDS on a University of Charleston project constructing a new Innovation Center and Athletic Complex. ZDS has accommodated many twist and changes to this project. We are on track to open the new facility in December of this year. I have found Todd and his team to be highly responsive and professional.

Sincerely,



Boyd, Gary MA, CFP
Director of Facilities
University of Charleston

TIM HOLBROOK

305 East Foster Street, Lewisburg, WV 24901

Phone: 304-645-1073 Cell: 304-546-1893



February 3, 2016

Re: ZDS Design/Consulting Services.

To Whom It May Concern:

I have had the recent privilege to work with ZDS Design/Consulting Services on several construction projects for the Greenbrier County Board of Education. In my role as the Clerk of the Works (owner's representative) for these projects, I was fortunate to be able to work with a company possessing their level of knowledge and expertise as an important part of our design team.

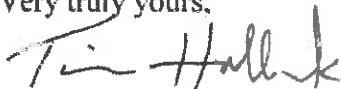
ZDS was on board from the conceptual design/development phase through the completion of construction and close out of the project. They constantly pushed to see that work progressed as it should and was done right.

Their personnel was extremely qualified and easy to work with. They were immediately responsive to any questions, problems, or issues that came up, and often called offering ideas and suggestions that could benefit the owner.

They were also instrumental in helping the board secure some rebates and credits that helped with the project costs.

I would be very happy to do another project with ZDS as they were a first class company, willing to do what it took give the owner a quality job. I highly recommend them for any mechanical and electrical construction project you may have.

Very truly yours,



Tim Holbrook



ELSWICK & ASSOCIATES, LLC

April 15, 2015

To Whom It May Concern:

I am distinctly honored to provide this letter of recommendation for ZDS Design/Consulting Services to your organization. I have known ZDS's principals and many of their staff since working with Ted and Todd Zachwieja at West Virginia Institute of Technology located in Montgomery, WV, from the 1970's, while I was the Physical Plant Director there. That relationship continues through today. Their knowledge of energy efficient systems related to Heating, Ventilating, and Air-Conditioning (HVAC), Building Automation Systems (BAS), lighting, power distribution, and plumbing systems has always been at the cutting edge of the industry. They have routinely provided innovative solutions to complex design challenges while minimizing energy and operating costs and enhancing maintenance efficiency. I have always considered their approach to engineering design and commissioning systems first for higher education, hospitals and schools to be superior and I would recommend them to anyone.

Throughout my career I have continued my working relationship with Ted and Todd Zachwieja and Jim Watters while I was Director of Facilities Management at Charleston Area Medical Center (CAMC), General Division, located in Charleston, WV. During that time, they provided mechanical, electrical, and plumbing (MEP), engineering, and construction administration services for all areas of CAMC's facilities. Their knowledge of health care code and practical design approach always provided the uniqueness required for the scope of the work. They understood the importance of operating and maintaining equipment and used their hands-on knowledge to ensure all our projects were on schedule and within budget. As a matter of fact, Todd led the first energy services performance contract in West Virginia. Through Todd's leadership, CAMC saved in excess of \$800,000.00 annually in energy costs and those savings were used for mechanical, electrical, and infrastructure upgrades at all three CAMC divisions. Ted, Todd, and Jim also assisted in many other projects at all CAMC divisions, including commissioning the work implemented as part of the energy savings program. Their combined engineering design and commissioning skills proved to be invaluable.

I also worked with ZDS Design/Consulting Services while I was Director of Facilities, Planning and Management at Washington & Lee University in the 1990's. They designed, acted as the construction project manager and commissioned the campus chilled water plant and distribution system to address the needs of the growing campus while fast tracking the project from start to finish in just nine months. I would always think of ZDS first whenever I was faced with a challenge, knowing that I would get the best technical expertise available.

513 Havana Dr.
Charleston, WV 25311
304.542.8877

Likewise, ZDS helped establish one of the first performance contracting programs in the State of Ohio's higher education system for Ohio University, saving the Athens campus millions annually while the savings were used for the mechanical, electrical and building automation improvements to generate the savings.

I have the utmost confidence in the technical expertise, the collaborative approach and ethical standards of ZDS Design/Consulting Services. Furthermore, these individuals are truly honorable professionals. In this regard, if you have questions or need additional information, please don't hesitate to contact me.

Sincerely,

A handwritten signature in black ink, appearing to read "Bill Elswick", written over a light gray horizontal line.

Bill Elswick, MBA, CEO



February 1, 2016

RE: ZDS Design/Consulting Services

I have had the privilege to work with ZDS Design/Consulting Services' principals and many of their staff since working at the School Building Authority in the 1990's in my roles at the School Building Authority to my current role as Executive Director of the Office of School Facilities at the West Virginia Department of Education.

When an emergency issue arose, they would immediately make themselves available to help. ZDS's principal, Todd Zachwieja, did not hesitate to board a helicopter during a weekend to help assess the damage to the State's school facilities when damaging floods occurred. Helicopters were the only way to reach many of the facilities because the roads had been washed away or were impassible. Anytime a challenging issue has arisen that no one knew how to resolve, ZDS has stepped up to solve the challenges. Their extensive engineering knowledge of energy efficient systems, HVAC, controls, lighting, power and plumbing systems has always been at the leading edge in the industry, providing innovative solutions that also minimize energy and operating costs. I have always considered their approach in engineering design and commissioning for buildings to be the best and would highly recommend them to anyone.

Their ability to work with the State Fire Marshal and other agencies – while guiding everyone to a practical design approach – always provided each project with the best value. They are much more than excellent design engineers; they also understand the importance of operating and maintaining equipment and have hands-on knowledge to troubleshoot and also commission to ensure our projects were a great success. Their combined engineering design and commission skills prove to be invaluable.

ZDS Design/Consulting Services was also selected to help the WV Department of Education and the School Building Authority in writing new codes and standards to raise the bar for the entire State. They were chosen because their projects were a success while we were having challenges with others. Todd Zachwieja was also asked to teach school facility staff members, and his reference books continue to be used today. I would always think of ZDS first whenever a challenge would occur, knowing I would get the best results possible.

I trust ZDS's staff in their technical expertise and their approach in solving challenging engineering issues and believe that anyone who uses them will be as satisfied as I have been. They are worth it!

Sincerely,

Michael E. Pickens

Michael Pickens

172 Oak Street

Dunbar, WV 25064

(304) 400-9993



Purchasing Division
 2019 Washington Street East
 Post Office Box 50130
 Charleston, WV 25305-0130

State of West Virginia
 Centralized Expression of Interest
 02 – Architect/Engr

Proc Folder: 211903

Doc Description: EOI for professional engineering services

Proc Type: Central Purchase Order

Date Issued	Solicitation Closes	Solicitation No	Version
2016-07-26	2016-08-30 13:30:00	CEOI 0506 HHR1700000001	1

PROVIDER RECEIVING LOCATION

PROVIDER CLERK
 DEPARTMENT OF ADMINISTRATION
 PURCHASING DIVISION
 2019 WASHINGTON ST E
 CHARLESTON WV 25305
 MS

PROVIDER VENDOR

Vendor Name, Address and Telephone Number:

ZDS Design/Consulting Services
 281 Smiley Drive
 St. Albans, West Virginia 25177
 (304) 755-0075

FOR ADDITIONAL INFORMATION CONTACT THE BUYER

Jessica S Chambers
 (304) 558-0246
 jessica.s.chambers@wv.gov

Signature X *Jodd Q. Zebineja*

FEIN # 550735995

DATE August 30, 2016

All offers subject to all terms and conditions contained in this solicitation

INFORMATION:

Expression of Interest

The West Virginia Purchasing Division is soliciting Expression(s) of Interest for the Agency, The Department of Health and Human Resources (HHR), from qualified firms to provide professional engineering services and other related professional services for the design of a replacement boiler system at Hopemont Hospital referred to as Project A, and to provide professional engineering services for the design of transfer switches and components to utilize a emergency generator at Mildred Mitchell Bateman Hospital referred to as Project B. as defined herein.

BUYER		SHIP TO	
BUYER - 304-957-0209		BUYER - 304-957-0209	
HEALTH AND HUMAN RESOURCES		HEALTH AND HUMAN RESOURCES	
OFFICE OF PROPERTY MANAGEMENT ONE DAVIS SQUARE		OFFICE OF PROPERTY MANAGEMENT	
STE 100, RM 106		ONE DAVIS SQUARE, STE 106	
CHARLESTON	WV25301-1613	CHARLESTON	WV 25301
US		US	

Line	Comm Ln Desc	Qty	Unit Issue
1	Professional engineering services		

Comm Code	Manufacturer	Specification	Model #
81100000			

Extended Description :
 4.1 Project A: Hopemont Hospital
 Utilizing State Funds only!

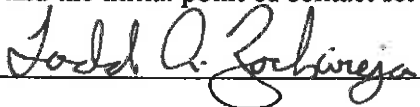
BUYER		SHIP TO	
BUYER - 304-957-0209		BUYER - 304-957-0209	
HEALTH AND HUMAN RESOURCES		HEALTH AND HUMAN RESOURCES	
OFFICE OF PROPERTY MANAGEMENT ONE DAVIS SQUARE		OFFICE OF PROPERTY MANAGEMENT	
STE 100, RM 106		ONE DAVIS SQUARE, STE 106	
CHARLESTON	WV25301-1613	CHARLESTON	WV 25301
US		US	

Line	Comm Ln Desc	Qty	Unit Issue
2	Professional engineering services		

Comm Code	Manufacturer	Specification	Model #
81100000			

Extended Description :
 4.2 Project B: Mildred Mitchell-Bateman Hospital
 Utilizing State Funds only!

DESIGNATED CONTACT: Vendor appoints the individual identified in this Section as the Contract Administrator and the initial point of contact for matters relating to this Contract.



(Name, Title)
Todd A. Zachwieja, PE, CEM, LEED AP CEO, Principal in Charge

(Printed Name and Title)
281 Smiley Drive, St. Albans, WV 25177

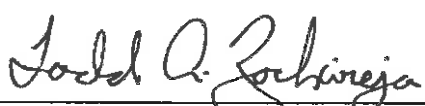
(Address)
304-755-0075, 304-755-0076

(Phone Number) / (Fax Number)
todd.zachwieja@zdsdesign.com

(email address)

CERTIFICATION AND SIGNATURE: By signing below, or submitting documentation through wvOASIS, I certify that I have reviewed this Solicitation in its entirety; that I understand the requirements, terms and conditions, and other information contained herein; that this bid, offer or proposal constitutes an offer to the State that cannot be unilaterally withdrawn; that the product or service proposed meets the mandatory requirements contained in the Solicitation for that product or service, unless otherwise stated herein; that the Vendor accepts the terms and conditions contained in the Solicitation, unless otherwise stated herein; that I am submitting this bid, offer or proposal for review and consideration; that I am authorized by the vendor to execute and submit this bid, offer, or proposal, or any documents related thereto on vendor's behalf; that I am authorized to bind the vendor in a contractual relationship; and that to the best of my knowledge, the vendor has properly registered with any State agency that may require registration.

ZDS Design/Consulting Services

(Company)


(Authorized Signature) (Representative Name, Title)
Todd A. Zachwieja, PE, CEM, LEED AP CEO, Principal in Charge

(Printed Name and Title of Authorized Representative)
August 30, 2016

(Date)
304-755-0075, 304-755-0076

(Phone Number) (Fax Number)

RFQ No. _____

STATE OF WEST VIRGINIA
Purchasing Division

PURCHASING AFFIDAVIT

MANDATE: Under W. Va. Code §5A-3-10a, no contract or renewal of any contract may be awarded by the state or any of its political subdivisions to any vendor or prospective vendor when the vendor or prospective vendor or a related party to the vendor or prospective vendor is a debtor and: (1) the debt owed is an amount greater than one thousand dollars in the aggregate; or (2) the debtor is in employer default.

EXCEPTION: The prohibition listed above does not apply where a vendor has contested any tax administered pursuant to chapter eleven of the W. Va. Code, workers' compensation premium, permit fee or environmental fee or assessment and the matter has not become final or where the vendor has entered into a payment plan or agreement and the vendor is not in default of any of the provisions of such plan or agreement.

DEFINITIONS:

"Debt" means any assessment, premium, penalty, fine, tax or other amount of money owed to the state or any of its political subdivisions because of a judgment, fine, permit violation, license assessment, defaulted workers' compensation premium, penalty or other assessment presently delinquent or due and required to be paid to the state or any of its political subdivisions, including any interest or additional penalties accrued thereon.

"Employer default" means having an outstanding balance or liability to the old fund or to the uninsured employers' fund or being in policy default, as defined in W. Va. Code § 23-2c-2, failure to maintain mandatory workers' compensation coverage, or failure to fully meet its obligations as a workers' compensation self-insured employer. An employer is not in employer default if it has entered into a repayment agreement with the Insurance Commissioner and remains in compliance with the obligations under the repayment agreement.

"Related party" means a party, whether an individual, corporation, partnership, association, limited liability company or any other form or business association or other entity whatsoever, related to any vendor by blood, marriage, ownership or contract through which the party has a relationship of ownership or other interest with the vendor so that the party will actually or by effect receive or control a portion of the benefit, profit or other consideration from performance of a vendor contract with the party receiving an amount that meets or exceed five percent of the total contract amount.

AFFIRMATION: By signing this form, the vendor's authorized signer affirms and acknowledges under penalty of law for false swearing (W. Va. Code §61-5-3) that neither vendor nor any related party owe a debt as defined above and that neither vendor nor any related party are in employer default as defined above, unless the debt or employer default is permitted under the exception above.

WITNESS THE FOLLOWING SIGNATURE:

Vendor's Name: ZDS Design/Consulting Services

Authorized Signature: *Joshua A. Zebinska* Date: August 30, 2016

State of West Virginia

County of Kanawha, to-wit:

Taken, subscribed, and sworn to before me this 30 day of August, 2016

My Commission expires May 21, 2020

AFFIX SEAL HERE

NOTARY PUBLIC

Lauren M. Meek

Purchasing Affidavit (Revised 07/01/2012)

