



West Virginia Purchasing Division

2019 Washington Street, East
Charleston, WV 25305
Telephone: 304-558-2306
General Fax: 304-558-6026
Bid Fax: 304-558-3970

The following documentation is an electronically-submitted vendor response to an advertised solicitation from the *West Virginia Purchasing Bulletin* within the Vendor Self-Service portal at ***wvOASIS.gov***. As part of the State of West Virginia's procurement process, and to maintain the transparency of the bid-opening process, this documentation submitted online is publicly posted by the West Virginia Purchasing Division at ***WVPurchasing.gov*** with any other vendor responses to this solicitation submitted to the Purchasing Division in hard copy format.

Header

List View

General Information | Contact | Default Values | Discount | Document Information

Procurement Folder: 229606

Procurement Type: Central Purchase Order

Vendor ID: 000000105821

Legal Name: MH EQUIPMENT COMPANY

Alias/DBA:

Total Bid: \$71,300.00

Response Date: 07/14/2016

Response Time: 12:21

SO Doc Code: CRFQ

SO Dept: 0310

SO Doc ID: DNR1600000050

Published Date: 7/7/16

Close Date: 7/14/16

Close Time: 13:30

Status: Closed

Solicitation Description: Addendum No.01Beech Fork SP Loader w/Ba:khoe & Attachment

Total of Header Attachments: 0

Total of All Attachments: 0



Purchasing Division
 2019 Washington Street East
 Post Office Box 50130
 Charleston, WV 25305-0130

**State of West Virginia
 Solicitation Response**

Proc Folder : 229606

Solicitation Description : Addendum No.01Beech Fork SP Loader w/Backhoe & Attachment

Proc Type : Central Purchase Order

Date issued	Solicitation Closes	Solicitation No	Version
	2016-07-14 13:30:00	SR 0310 ESR07141600000000180	1

VENDOR

000000105821
 MH EQUIPMENT COMPANY

FOR INFORMATION CONTACT THE BUYER

Guy Nisbet
 (304) 558-2596
 guy.l.nisbet@wv.gov

Signature X FEIN # DATE

All offers subject to all terms and conditions contained in this solicitation

Line	Comm Ln Desc	Qty	Unit Issue	Unit Price	Ln Total Or Contract Amount
1	Front end loaders	1.00000	EA	\$71,300.000000	\$71,300.00

Comm Code	Manufacturer	Specification	Model #
22101501			

Extended Description : Case 580N or Equal 4 x 4 with enclosed cab and compatible front loader . Specifications 3.1.1



Product Quotation

**Prepared For:
Guy Nisbet**

**WV DNR - Beech Fork State Park
Barboursville WV 25504**



**Prepared By:
Rick Woodrum
M H JCB
CHARLESTON WV 25313
mobile:**

Image is for indicative purpose only and may not represent exact equipment being quoted



Standard Equipment

Standard Equipment and Features & Benefits related to this product are subject to change without notice

SAFETY and SECURITY

Two post Roll Over Protective Structure (ROPS), Falling Objects Protective Structure (FOPS) and retractable seat belt. Equipped with independent park brake and loader service strut. Rear boom lock activated from operator's compartment; boom swing lock. Vandalism protection with key lock-able cab, hydraulic fill, fuel cap. All locks with the exception of the Diesel Exhaust Fluid (DEF) tank operate with ignition key. Front and rear horn buttons. Automatic backup alarm.

ENGINE

91 HP Gross (109 HP Gross option), turbocharged, water-cooled, 4 cylinder, direct injection diesel. Tier 4 Final compliant engine with Selective Catalytic Reduction (SCR) and 5 gallon DEF tank. Hand and foot throttle. Selective full flow pressure engine oil lubrication with spin-on filter cartridge. Air to fluid coolers. Separately serviceable radiator, hydraulic and transmission oil coolers. Two stage fuel filtering system utilizing a water/sediment separator and spin-on type filter element. Dual element air filter, dry type with cleanable outer element, replaceable inner element and under hood pre-cleaner.

TRANSMISSION

Separate unit mounted to engine containing torque converter and all transmission components. Pressure lubrication with spin on filter. Electrically operated Fwd / Rev lever on steering column. Electrically operated transmission. disconnect on gear shift and loader levers. Powershift gear selection with 4 Fwd / 4 Rev speeds.

FRONT AXLE

4WD - Industrial duty JCB Max-Trac torque proportioning, outboard Planetary reduction axle, 4WD shift-on-the-go; steering cylinder located behind front axle.

REAR AXLE

Separate, rigidly mounted to mainframe and connected to transmission via drive shaft. Heavy duty double reduction, outboard Planetary gear final reduction. Limited slip differential to provide automatic equalization of wheel spin under conditions of unequal footing.

BRAKES

Sealed wet multiple disc. Brake pedals can be independently operated or locked together. Power assisted, hydraulic brakes. Independent over center actuation, park brake. Transmission shifts to neutral when park brake is activated. 4 wheel braking in 2 wheel drive activated by switch.

STEERING

Hydrostatic power, with priority valve. Three steering wheel turns (lock to lock). Unbraked turning circle - 26 ft 5 in.

BACKHOE AND MAINFRAME

Unitized, one piece heavy duty mainframe with integral backhoe. Sealed swing post pins and swing cylinder pins, 2 in top and bottom rear frame plates (centermount). Fabricated boom and dipper. SAE maximum dig depth: Extradig dipper - 14 ft 7 in - 18 ft 6 in. EasyControl backhoe controls Fabricated stabilizer legs with anti-drift valves. 11000 lbs lifting hook as standard.

LOADER

Equipped with integrally mounted front end loader using two lift cylinderinders and two bucket dump cylinderinders. Parallel lift standard during loader raise and lower functions. Dump height: 9 ft 0 in. Bucket return-to-dig and third spool loader valve standard. Dump reach at full height - 32 in. Auto Smooth Ride System (AutoSRS). Front bumper protection fitted as standard.





Standard Equipment

ELECTRICAL SYSTEM

12 volt system with 150 amp alternator Standard Wiring harness and outside cab connectors meet IP69 standard for protection against ingress of dust, and pressure spray of 4.23 gpm at 1450 psi. Inside cab connectors meet IP67 standard for protection against ingress of dust, and water when submerged. Single, maintenance free battery rated at 900 cold cranking amps. Four halogen work lights in front and four separate halogen work lights in the rear. Stop lights, turn signals, and four way hazards standard. Backlit gauges and readouts consisting of a tachometer, fuel gauge, engine coolant temperature gauge, digital hour meter and digital clock. Light and alarm for battery charge condition, coolant temp., engine oil pressure, transmission oil pressure, transmission oil temp., air cleaner restriction, water in fuel indicator, and park brake engaged. Light indicators for hazard flashers on, turn signals, steering mode, and lights on. 12 volt outlet for powered accessories. Common fuses and relays located in an easy access panel. Main circuit breakers at battery positive terminal for added circuit protection. Battery ISOLator fitted as standard.

OPERATORS ENVIRONMENT

Suspension seat with adjustments for weight, seat angle, and back angle. Armrests and retractable seat belt standard. Two door entry with deluxe trim. Composite sure grip molded floor, tilt steering column, front windshield with 2 speed plus intermittent wiper and washer, interior rear view mirror, pre-wired for beacon, cup holders, storage compartment. Cab includes door ajar stays, 14 adj. vents, operable side windows, one piece rear window with wiper and washer that acts as a shield during inclement weather, heater with defogger vents, and radio pre-wire with speakers in-cabs. AutoTHROTTLE returns engine speed to pre-set hand throttle position when work is resumed. AutoDRIVE provides cruise control-type characteristics during roading. Advanced Easy Controls and Easy Controls only: AutoSTABILIZERS and AutoBOOMLOCK.

HYDRAULIC SYSTEM

Open center system, variable displacement piston pump, engine driven, 44 gpm at 3650 psi. Separate oil reservoir not shared with other systems, externally mounted to mainframe for ground level servicing. Abrasion protection of valve to boom hoses. Hoses have burst pressure of 4 times working pressure. Structural steel pipes to withstand minor impacts. Auto Idle reduces engine speed when no hydraulic functions are requested.

SERVICEABILITY AND MAINTENANCE

Ground level check for engine and transmission oil, brake fluid, engine coolant, and windshield washer levels. Ground level top off of engine oil, transmission oil, hydraulic fluid, brake fluid, fuel, and engine coolant. Tilt engine hood and lockable front grill. 15 second engine manifold preheat (activated through ignition switch). 40 gallon fuel tank. 20 gallon hydraulic tank with 5 micron filter. 500 hour engine oil and filter service interval. 1000 hour DEF filter interval. 1000 hour transmission oil and 500 hour transmission filter service interval. 2000 hour hydraulic oil and 500 hour hydraulic filter service interval. External Toolbox. AutoCHECK automatically performs daily under hood maintenance checks on 'key on'

TELEMATICS

JCB Livelink telematics. Monitored and managed remotely via a PC or Smartphone. Two year subscription. Real time reporting of machine hours, routine maintenance alerts, location, critical health alerts, fuel level/consumption and work cycle information. Ability to set machine geo-fences and curfews for improved security.





Standard Equipment

ELECTRICAL SYSTEM

12 volt system with 150 amp alternator Standard Wiring harness and outside cab connectors meet IP69 standard for protection against ingress of dust, and pressure spray of 4.23 gpm at 1450 psi. Inside cab connectors meet IP67 standard for protection against ingress of dust, and water when submerged. Single, maintenance free battery rated at 900 cold cranking amps. Four halogen work lights in front and four separate halogen work lights in the rear. Stop lights, turn signals, and four way hazards standard. Backlit gauges and readouts consisting of a tachometer, fuel gauge, engine coolant temperature gauge, digital hour meter and digital clock. Light and alarm for battery charge condition, coolant temp., engine oil pressure, transmission oil pressure, transmission oil temp., air cleaner restriction, water in fuel indicator, and park brake engaged. Light indicators for hazard flashers on, turn signals, steering mode, and lights on. 12 volt outlet for powered accessories. Common fuses and relays located in an easy access panel. Main circuit breakers at battery positive terminal for added circuit protection. Battery ISOLator fitted as standard.

OPERATORS ENVIRONMENT

Suspension seat with adjustments for weight, seat angle, and back angle. Armrests and retractable seat belt standard. Two door entry with deluxe trim. Composite sure grip molded floor, tilt steering column, front windshield with 2 speed plus intermittent wiper and washer, interior rear view mirror, pre-wired for beacon, cup holders, storage compartment. Cab includes door ajar stays, 14 adj. vents, operable side windows, one piece rear window with wiper and washer that acts as a shield during inclement weather, heater with defogger vents, and radio pre-wire with speakers in-cabs. AutoTHROTTLE returns engine speed to pre-set hand throttle position when work is resumed. AutoDRIVE provides cruise control-type characteristics during roading. Advanced Easy Controls and Easy Controls only: AutoSTABILIZERS and AutoBOOMLOCK.

HYDRAULIC SYSTEM

Open center system, variable displacement piston pump, engine driven, 44 gpm at 3650 psi. Separate oil reservoir not shared with other systems, externally mounted to mainframe for ground level servicing. Abrasion protection of valve to boom hoses. Hoses have burst pressure of 4 times working pressure. Structural steel pipes to withstand minor impacts. Auto Idle reduces engine speed when no hydraulic functions are requested.

SERVICEABILITY AND MAINTENANCE

Ground level check for engine and transmission oil, brake fluid, engine coolant, and windshield washer levels. Ground level top off of engine oil, transmission oil, hydraulic fluid, brake fluid, fuel, and engine coolant. Tilt engine hood and lockable front grill. 15 second engine manifold preheat (activated through ignition switch). 40 gallon fuel tank. 20 gallon hydraulic tank with 5 micron filter. 500 hour engine oil and filter service interval. 1000 hour DEF filter interval. 1000 hour transmission oil and 500 hour transmission filter service interval. 2000 hour hydraulic oil and 500 hour hydraulic filter service interval. External Toolbox. AutoCHECK automatically performs daily under hood maintenance checks on 'key on'

TELEMATICS

JCB Livelink telematics. Monitored and managed remotely via a PC or Smartphone. Two year subscription. Real time reporting of machine hours, routine maintenance alerts, location, critical health alerts, fuel level/consumption and work cycle information. Ability to set machine geo-fences and curfews for improved security.

SAFETY and SECURITY

Two post Roll Over Protective Structure (ROPS), Falling Objects Protective Structure (FOPS) and retractable seat belt. Equipped with independent park brake and loader service strut. Rear boom lock activated from operator's compartment; boom swing lock. Vandalism protection with key lock-able cab, hydraulic fill, fuel cap. All locks with the exception of the Diesel Exhaust Fluid (DEF) tank operate with ignition key. Front and rear horn buttons. Automatic backup alarm.





Standard Equipment

ENGINE	91 HP Gross (109 HP Gross option), turbocharged, water-cooled, 4 cylinder, direct injection diesel. Tier 4 Final compliant engine with Selective Catalytic Reduction (SCR) and 5 gallon DEF tank. Hand and foot throttle. Selective full flow pressure engine oil lubrication with spin-on filter cartridge. Air to fluid coolers. Separately serviceable radiator, hydraulic and transmission oil coolers. Two stage fuel filtering system utilizing a water/sediment separator and spin-on type filter element. Dual element air filter, dry type with cleanable outer element, replaceable inner element and under hood pre-cleaner.
TRANSMISSION	Separate unit mounted to engine containing torque converter and all transmission components. Pressure lubrication with spin on filter. Electrically operated Fwd / Rev lever on steering column. Electrically operated transmission. disconnect on gear shift and loader levers. Powershift gear selection with 4 Fwd / 4 Rev speeds.
FRONT AXLE	4WD - Industrial duty JCB Max-Trac torque proportioning, outboard Planetary reduction axle, 4WD shift-on-the-go; steering cylinder located behind front axle.
REAR AXLE	Separate, rigidly mounted to mainframe and connected to transmission via drive shaft. Heavy duty double reduction, outboard Planetary gear final reduction. Limited slip differential to provide automatic equalization of wheel spin under conditions of unequal footing.
BRAKES	Sealed wet multiple disc. Brake pedals can be independently operated or locked together. Power assisted, hydraulic brakes. Independent over center actuation, park brake. Transmission shifts to neutral when park brake is activated. 4 wheel braking in 2 wheel drive activated by switch.
STEERING	Hydrostatic power, with priority valve. Three steering wheel turns (lock to lock). Unbraked turning circle - 26 ft 5 in.
BACKHOE AND MAINFRAME	Unitized, one piece heavy duty mainframe with integral backhoe. Sealed swing post pins and swing cylinder pins, 2 in top and bottom rear frame plates (centermount). Fabricated boom and dipper. SAE maximum dig depth: Extradig dipper - 14 ft 7 in - 18 ft 6 in. EasyControl backhoe controls Fabricated stabilizer legs with anti-drift valves. 11000 lbs lifting hook as standard.
LOADER	Equipped with integrally mounted front end loader using two lift cylinder and two bucket dump cylinder. Parallel lift standard during loader raise and lower functions. Dump height: 9 ft 0 in. Bucket return-to-dig and third spool loader valve standard. Dump reach at full height - 32 in. Auto Smooth Ride System (AutoSRS). Front bumper protection fitted as standard.





Features and Benefits

Standard Equipment and Features & Benefits related to this product are subject to change without notice

JCB EcoMAX 4.4L Turbocharged

No DPF or after treatment keeping servicing cost low and downtime minimal but still providing high levels of torque

Low cost increased efficiency

Fuel efficient JCB engine provides high torque at low revs enabling high a breakout force at the same rate

High performance hydraulics

44 gpm hydraulic pump accomodating variety of attachments and increase cycle times

JCB Efficient Design program

JCB high back-ff brakes and viscous fan increase efficiency and savings

JCB Max-Trac torque proportioning differential axle

Increases tractive effort in all ground conditions

Advanced Easy Controls

JCB's controls provide finger tip control and supreme comfort with various configurations to accomodate all users

Comfort and ease of use

Fully adjustable seat, dash mounted display for machine performance and ISO, SAE and JCB X control patterns change over accomodates all users

Automated features

Auto Idle, Auto Check, Auto Throttle, Auto Boomlock, Auto SmoothRide System, Auto Pre-Heat, Auto Stabilizer-up only make operation easier

Kingpost design

Hoses are strategically routed to prevent pinching and maximize backhoe movement

Front and rear quickhitch

Easy and effortless switching between attachments

Fixed or extending dipper

14 ft dipper decreases time spent repositioning translating into efficiency

Twin hose burst technology

Hose burst check valve keep legs from moving during operation

Safe and secure

Anti-slip steps, laminated front screen, rear boom lock, self leveling loader and stabilizer from dropping in the event of hose failure





Features and Benefits

Optional hand tool circuit

Provides ability to prepare sites

Optional Extradig package

Allows for an additional 4 ft 1 in in dig depth increasing efficiency while decreasing time spent repositioning

Added value through JCB Assetcare

Provides comprehensive peace at mind warranty and service agreements worldwide

Technical support service

Provides instant access to factory expertise, day or night

Parts distribution

Global network of part centers, delivering 95 percent of all parts any where in the world within 24 hrs

SAFETY AND SECURITY

Two post Roll Over Protective Structure (ROPS), Falling Objects Protective Structure (FOPS) and retractable seat belt. Equipped with independent park brake and loader service strut. Rear boom lock activated from operator's compartment; boom swing lock. Vandalism protection with key lock- able cab, hydraulic fill, fuel cap. All locks with the exception of the Diesel Exhaust Fluid (DEF) tank operate with ignition key. Front and rear horn buttons. Automatic backup alarm.

ENGINE

91HP gross (109HP gross option), turbocharged, water-cooled, 4 cyl, direct injection diesel. T4F compliant engine with Selective Catalytic Reduction (SCR) and 5 gallon DEF tank. Hand and foot throttle. Selective full flow pressure engine oil lubrication with spin-on filter cartridge. Air to fluid coolers. Separately serviceable radiator, hydraulic and transmission oil coolers. Two stage fuel filtering system utilizing a water/sediment separator and spin-on type filter element. Dual element air filter, dry type with cleanable outer element, replaceable inner element and under hood pre-cleaner.

TRANSMISSION

Separate unit mounted to engine containing torque converter and all transmission components. Pressure lubrication with spin on filter. Electrically operated Fwd / Rev lever on steering column. Electrically operated transmission disconnect on gear shift and loader levers. Powershift gear selection with 4 Fwd / 4 Rev speeds.

FRONT AXLE

4WD - Industrial duty JCB Max-Trac torque proportioning, outboard planetary reduction axle, 4WD shift-on-the-go; steering cylinder located behind front axle.

REAR AXLE

Separate, rigidly mounted to mainframe and connected to transmission via drive shaft. Heavy duty double reduction, outboard planetary gear final reduction. Limited slip differential to provide auto- matic equalization of wheel spin under conditions of unequal footing.





Features and Benefits

BRAKES

Sealed wet multiple disc. Brake pedals can be independently operated or locked together. Power assisted, hydraulic brakes. Independent over center actuation, park brake. Transmission shifts to neutral when park brake is activated. 4 wheel braking in 2 wheel drive activated by switch.

STEERING

Hydrostatic power, with priority valve. Three steering wheel turns (lock to lock). Unbraked turning circle - 26' 5".

BACKHOE AND MAINFRAME

Unitized, one piece heavy duty mainframe with integral backhoe. Sealed swing post pins and swing cylinder pins, 2" top and bottom rear frame plates (centermount). Fabricated boom and dipper. SAE maximum dig depth: Extradig dipper - 14' 7" - 18' 6". EasyControl backhoe controls. Fabricated stabilizer legs with anti-drift valves. 11,000 lb. lifting hook as standard.

LOADER

Equipped with integrally mounted front end loader using two lift cylinders and two bucket dump cylinders. Parallel lift standard during loader raise and lower functions. Dump height: 9' 0". Bucket return-to-dig and third spool loader valve standard. Dump reach at full height - 32". Auto Smooth Ride System (AutoSRS). Front bumper protection fitted as standard.

ELECTRICAL SYSTEM

12 volt system with 150 amp alternator std. Wiring harness and outside cab connectors meet IP69 standard for protection against ingress of dust, and pressure spray of 4.23 gpm at 1450 psi. Inside cab connectors meet IP67 standard for protection against ingress of dust, and water when submerged. Single, maintenance free battery rated at 900 cold cranking amps. Four halogen work lights in front and four separate halogen work lights in the rear. Stop lights, turn signals, and four way hazards standard. Backlit gauges and readouts consisting of a tachometer, fuel gauge, engine coolant temperature gauge, digital hour meter and digital clock. Light and alarm for battery charge condition, coolant temp., engine oil pressure, transmission oil pressure, transmission oil temp., air cleaner restriction, water in fuel indicator, and park brake engaged. Light indicators for hazard flashers on, turn signals, steering mode, and lights on. 12 volt outlet for powered accessories. Common fuses and relays located in an easy access panel. Main circuit breakers at battery positive terminal for added circuit protection. Battery Isolator fitted as standard.





Features and Benefits

OPERATORS ENVIRONMENT

Suspension seat with adjustments for weight, seat angle, and back angle. Armrests and retractable seat belt standard. Two door entry with deluxe trim. Composite sure grip molded floor, tilt steering column, front windshield with 2 speed plus intermittent wiper and washer, interior rear view mirror, pre-wired for beacon, cup holders, storage compartment. Cab includes door ajar stays, 14 adj. vents, operable side windows, one piece rear window with wiper and washer that acts as a shield during inclement weather, heater with defogger vents, and radio pre-wire with speakers in-cabs. AutoTHROTTLE returns engine speed to pre-set hand throttle position when work is resumed. AutoDRIVE provides cruise control-type characteristics during roading. Advanced Easy Controls and Easy Controls only: AutoSTABILIZERS and AutoBOOMLOCK.

HYDRAULIC SYSTEM

Open center system, variable displacement piston pump, engine driven, 44 gpm @ 3650 psi. Separate oil reservoir not shared with other systems, externally mounted to mainframe for ground level servicing. Abrasion protection of valve to boom hoses. Hoses have burst pressure of 4 times working pressure. Structural steel pipes to withstand minor impacts. Auto Idle reduces engine speed when no hydraulic functions are requested.

SERVICEABILITY AND MAINTENANCE

Ground level check for engine and transmission oil, brake fluid, engine coolant, and windshield washer levels. Ground level top off of engine oil, transmission oil, hydraulic fluid, brake fluid, fuel, and engine coolant. Tilt engine hood and lockable front grill. 15 second engine manifold preheat (activated through ignition switch). 40 gallon fuel tank. 20 gallon hydraulic tank with 5 micron filter. 500 hour engine oil and filter service interval. 1000 hour DEF filter interval. 1000 hour transmission oil and 500 hour transmission filter service interval. 2000 hour hydraulic oil and 500 hour hydraulic filter service interval. External Toolbox. AutoCHECK automatically performs daily under hood maintenance checks on 'key on'

TELEMATICS

JCB Livelink telematics. Monitored and managed remotely via a PC or Smartphone. Two year subscription. Real time reporting of machine hours, routine maintenance alerts, location, critical health alerts, fuel level/consumption and work cycle information. Ability to set machine geofences and curfews for improved security.





Prepared For:
 Guy Nisbet
 WV DNR - Beech Fork State Park
 5601 Long Branch Road
 Barboursville WV 25504

 phone:304-558-2596
 guy.l.nisbet@wv.gov

Dealer Information
 M H JCB
 126 LAKEVIEW DR
 CHARLESTON WV 25313
 phone:(304) 776-6900
 fax:(304) 776-6966

Prepared By:
 Rick Woodrum
 rwoodrum@MHJCB.com
 mobile:
 Quote Date: 07/14/16
 Valid Until: 10/14/16
 Quotation Reference: 131080

Model: 3CX 14MFCM

Qty: 1

Equipment Description

3CX-14 SUPER, 4WD, 2WS, 91 HP TIER 4 FINAL, 14FT CENTERMOUNT BACKHOE WITH FIXED DIPPER. MANUAL CONTROLS. 150A ALTERNATOR, 100LBS COUNTERWEIGHT. INCLUDES 2 SPOOL LOADER VALVE, DIRT FEET, INTERIOR MIRROR, FRONT AND REAR WORKLIGHTS, BATTERY ISOLATOR, TOOLBOX AND AUTOMATE (AUTOCHECK, AUTOIDLE, AUTODRIVE AND AUTOTHROTTLE).
 3CX-14 SUPER 91 HP CM 4WD MODEL PACK
 GALAXY INDUSTRIAL 12.5X18X10 and 21LX24X10 AND 21L-24-10
 POWERSHIFT + LSD, 4WD/2WS
 CAB WITH A/C CLOTH SUSPENSION SEAT
 CAB, LIVELINK,
 HAMMER PIPEWORK
 5/8 LOADER PIPEWORK RTD AND AUTO SRS
 ENGLISH TERRITORY PACK
 Q-FIT GENERAL PURPOSE LOADER BUCKET: INCLUDES Q-FIT TOOLCARRIER, 92 IN (2350MM), 1.4YD3 (1.1M3) STANDARD DUTY WITH BOLT ON CUTTING EDGE
 BACKHOE BUCKET - 24 IN (600MM) HEAVY DUTY 4 TEETH
 110 V BLOCK HEATER
 220 LB (100KG) COUNTERWEIGHT
 HEATED CLOTH AIR SUSPENSION SEAT
 White Light rotating beacon Cab Mounted

Equipment Total	71,300.00
Total Customer Sale Price	71,300.00

The above quote supersedes all preceding price quotes. Prices quoted are valid for 30 days from quote date.

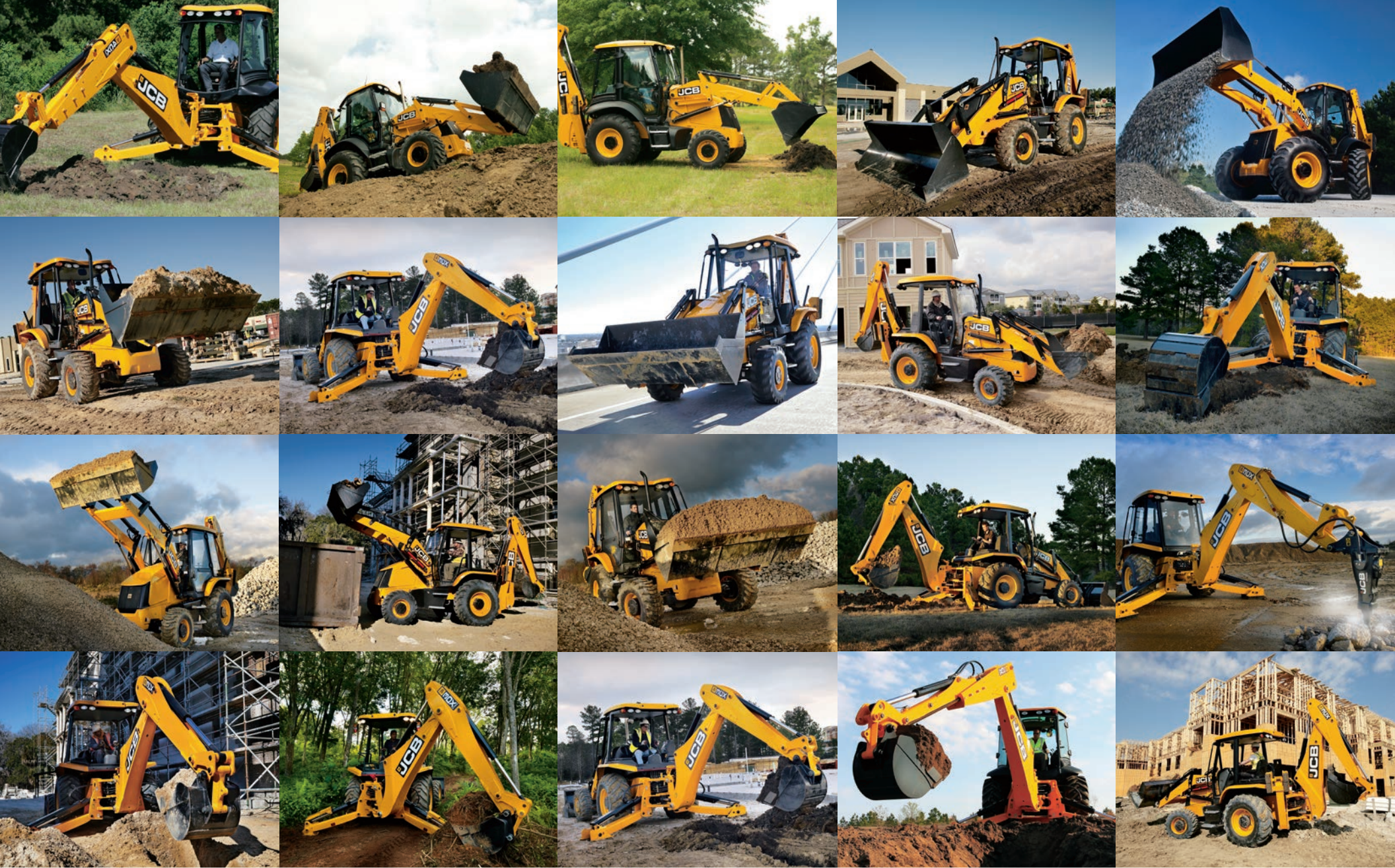
Customer Acceptance: _____

Date _____

Dealer _____

Date _____





BACKHOE LOADER | RANGE



BUILDING THE ULTIMATE RANGE.

Ever since JCB was founded by Joseph Cyril Bamford in a small garage in Staffordshire in 1945, innovation has driven our machines and our thinking. Of course we've grown since then – to employ over 10,000 people across 4 continents – but innovation remains at the heart of everything we do.

A history of innovation

We've been innovating since day one, and we've always cultivated a uniquely fearless approach to design. Indeed, we've invented whole new genres of machinery – the backhoe loader and – the telehandler for example – and revolutionised others like the tractor or skid steer loader.

The best backup in the business

A key component of any JCB machine is peerless backup and support: our 2,000-strong global dealership and service network keeps the customer at the centre of everything we do, in over 150 countries worldwide. A state of the art facility in Chicago, IL opened in September, 2014 to support North American dealers and customers. This new Parts Distribution Center (PDC) more than doubles JCB's warehouse capacity in North America. This significant investment aims to meet the needs of our customers. Our World Parts Center, meanwhile, aims to deliver anywhere on earth within 24 hours.

Success by the million

Every JCB is designed and built to offer ultimate productivity, durability, efficiency, safety, comfort and reliability, so it's perhaps not surprising that we've just built our millionth machine. As you'd expect from such an innovative company though, we won't be resting on our laurels.





OVER SIXTY YEARS AND COUNTING.

AT MORE THAN SIXTY YEARS OF AGE, JCB'S ICONIC BACKHOE LOADER IS JUST AS FRESH AND INNOVATIVE TODAY AS IT WAS WHEN IT WAS FIRST CONCEIVED. BACK THEN, COMPANY FOUNDER JOSEPH CYRIL BAMFORD INVENTED THE ENTIRE BACKHOE LOADER CONCEPT WHEN HE COMBINED A LIGHTWEIGHT BACKHOE WITH A TRACTOR LOADER. FOR THE FIRST TIME, A SINGLE MACHINE COMBINED A FRONT SHOVEL AND REAR EXCAVATOR ARM.

Today's JCB continues to innovate and is the world's best selling backhoe.



THE 50'S. The JCB MKI Major Loader.



THE 60'S. The JCB I.



THE 70'S. The JCB 3CIII.

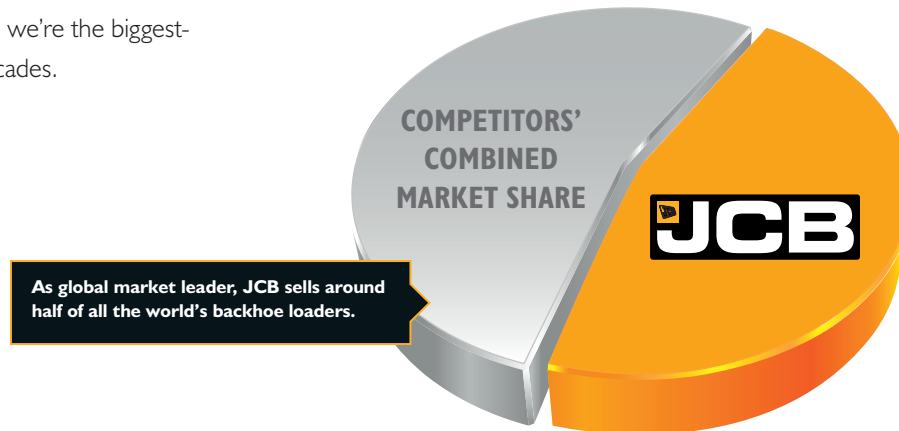
The world's first... and still the best.

Throughout the intervening years, JCB has continued to improve on this basic concept by using innovative thinking and advanced engineering principles. In the process, many of our innovations have become industry-standard features. Like four-wheel drive, for example, as well as extending dippers, torque converter drive, powershift transmissions, all-wheel steer, sideshift chassis and powerslide.

As a direct result of our innovative thinking and pioneering spirit, our backhoe loader range has led the world in terms of both features and sales. Today, we're the biggest-selling backhoe manufacturer on the planet, and have been for decades.

An innovative future.

We recognize that a large part of our success is down to the fact that we listen to what our customers want. And we'll be continuing this trend, always striving to build the most productive, dependable and efficient machines that technology will allow. In an increasingly tough market, we're already attaching particular importance to versatility, residuals and fuel efficiency, all of which you'll find in abundance on this latest range of backhoe loaders.



THE 80'S. The JCB 3CX.



THE 90'S. The JCB 3CX Sitemaster.



THE 00'S. The JCB 3CX Eco.



THE FUTURE?

3CX BACKHOE LOADER.

The world's number one.

Market leader in 74 countries, around half of all the backhoe loaders sold in the world today are JCBs.

Low maintenance engine.

JCB EcoMAX is a highly efficient 74hp Tier 4 final engine, that doesn't require costly DPF technology; this keeps servicing and refueling costs low.

Excellence in any field.

The 3CX is the number one go-to solution for large fleets, rental yards and owner operators alike.

Standard parallel lift.

This feature expands the versatility of the machine and helps with load retention in loading applications.

Strength in depth.

There's durability aplenty throughout to cope with the rigours of the rental industry.

Value for money.

Our entry-level 3CX is a great value machine, boasting low cost of ownership and superior strength as standard.

Innovation built in.

This machine packs the sort of innovative features that make JCB backhoes synonymous with class-leading productivity, performance and efficiency.



Precision machining provides high tolerances and accurate location of pins and bushings.



Excellent forward reach enables the machine to easily load high sided trucks.



There's a powerful swing torque to ensure fast and controllable backfilling.



Operating the 3CX is straight forward; the traditional manual control system is easy and comfortable to operate.



A large 38 gallons fuel tank extends refueling intervals and maximizes productivity.

		3CX
Operating weight	lb	17,196
Gross engine power	hp (kW)	74 (55)
Dig depth	ft-in	14-7 / 18-6
Steer mode		2WS
Loader bucket breakout force	lbf	14,400
Maximum loader bucket capacity	yd ³	1.3
Maximum dipper breakout force	lbf	7,092
Maximum bucket breakout force	lbf	13,940

3CX-14 AND 3CX SUPER BACKHOE LOADER.

1. Going with the flow

Benefit from low and high-flow hydraulic power with our Hammer circuit, capable of powering many attachments.

2. Best cab in class

With low noise levels, ample storage and even a coolbox on air conditioned models, our cab is the biggest and best around.

3. EcoMax efficiency

JCB's EcoMAX engine doesn't require exhaust after treatment, heat-resistant oils or DPF, all of which saves money on servicing.

4. Tons of capacity

Placing loads of up to 4,400lbs (2,000kg) is no problem with the 3CX's front hydraulic quickhitch and pallet forks.

5. Made for each other

The EcoMAX engine is mated to an all-JCB driveline for ultimate performance and reliability.



Mounted behind the front axle, the steering ram is protected from impact damage.



Our innovative scoop design one-piece rear windscreen offers excellent visibility.



Unhindered front bucket visibility, especially when loading at height.

A backhoe loader is, by its very nature, a highly versatile machine, but our optional extras make it all the more so, allowing you to tailor your 3CX to a huge array of different applications.



		3CX - 14	3CX - 14 SUPER	3CX - 15 SUPER	3CX - 17 SUPER
Operating weight 4WD	lbs.	16,997	16,997	19,010	19,480
Gross engine power	hp (kW)	74 (55)	91 (68)	109 (81)	109 (81)
Dig depth	ft.in.	14-7 / 18-6	14-7 / 18-6	16-3 / 20.1	17-7 / 21-6
Steer mode		2WS	2WS	2WS	2WS
Loader bucket breakout force	lbf	13,603	13,605	14,498	14,498
Maximum loader bucket capacity	yds. ³	1.4	1.6	1.6	1.6
Maximum dipper breakout force	ret / ext lbf	8,605	8,605	10,245 / 7,366	10,690 / 7,632
Maximum bucket breakout force	lbf	13,730	13,730	16,387	16,387

4CX SUPER BACKHOE LOADER.

I. Deeply impressive

With a standard-fit 14ft and optional 15ft excavator and 17ft (5.36m) dig depth, the JCB 4CX Super is a high-performance machine.



2. Comfortably in control

Ergonomic seat-mounted servo controls – provide great maneuverability, fingertip control and supreme comfort.

3. Durability to the Max

Our EcoMAX engine has been tried and tested to last the distance in even the harshest applications and environments.

4. Speed is everything

Fast and responsive cycles are guaranteed on the 4CX SUPER with an increased 44gpm (165l/min) peak hydraulic flow.

6. Attention to detail

Robot-welded single piece chassis maximizes strength and minimizes weight.

5. Access all areas

Choose from three steer modes to suit every situation: two-wheel, four-wheel or crab steer.



Optional 1.6 yard shovel capacity along with 3 steering modes provide exceptional on-site productivity.



JCB's new multi-functional instrument control panel can provide current and average fuel consumption.



Our innovative scoop design one-piece rear windscreen offers excellent visibility.

		4CX - 14 SUPER	4CX - 15 SUPER	4CX - 17 SUPER
Operating weight 4WD	lbs	17,990	18,765	18,970
Gross engine power	hp (kW)	109 (81)	109 (81)	109 (81)
Dig depth	ft in	14'7" / 18'6"	16-3 / 20-1	17-7 / 21-6
Steer mode		4WS	4WS	4WS
Loader bucket breakout force	lbf	13,728*	13,728*	13,728*
Maximum loader bucket capacity	yds ³	1.6	1.6	1.6
Maximum dipper breakout force	ret/ext lbf	8,605 / 6,025	10,245 / 7,366	10,690 / 7,632
Maximum bucket breakout force	lbf	13,730	16,387	16,387

* GP Shovel

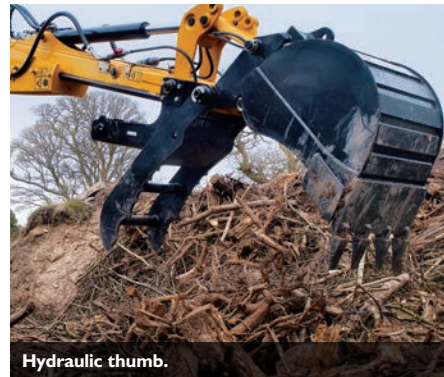
ATTACHMENTS.

JCB ATTACHMENTS ARE DESIGNED TO MEET THE EXACT REQUIREMENTS OF OUR MACHINERY FOR OPTIMUM PRODUCTIVITY. FROM BUCKETS TO SHOVELS, HANDHELD HYDRAULIC TOOLS, COMPACTION EQUIPMENT AND PATCH PLANERS, WE'VE GOT THE RIGHT ATTACHMENTS FOR ANY JCB BACKHOE LOADER YOU CHOOSE.

For added versatility, you can use your backhoe loader as a power source for a whole range of handheld tools.



Sweeper collectors.



Hydraulic thumb.



Earth drill.



Hammers.

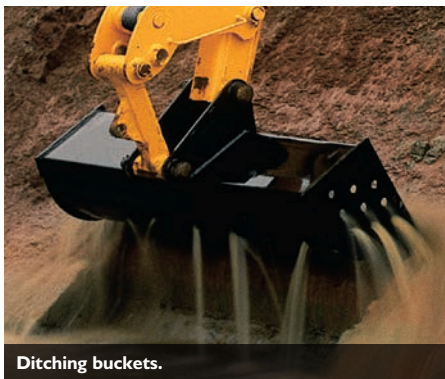
		HAMMERMASTER HMI15	HAMMERMASTER HMI166Q	HAMMERMASTER HM266Q	HAMMERMASTER HM386Q	HAMMERMASTER HM496Q	EARTH DRILL
Weight	lbs (kg)	243 (110)	357 (162)	494 (224)	725 (329)	1,058 (480)	231 (105) + Flight
Carrier weight	t	45	2.0 - 4.5	2.8 - 6.0	4.5 - 9.0	6.0 - 12	2.0 - 8.0
Impact energy (published)	ft lbs (J)	0.74 - 2.58 (1.0 - 3.5)	186 (252)	277 (376)	443 (600)	627 (850)	3500 - 6000 Nm Torque
Blow rate min - max	bpm	200	1020 - 1750	840 - 1400	600 - 1380	540 - 1250	N/A

		SWEEPER COLLECTOR	PATCH PLANER	COMPACTOR	FORKS/FRAMES
Width	in (mm)	60-95 (1500 - 2400)	16 (400)	12 (305)	3-4 (75-125)
Capacity	yd ³ (m ³)	0.48 - 0.52 (0.37 - 0.4)	N/A	N/A	1 - 4 t per fork
Weight	lbs (kg)	1,543 - 1,874 (700 - 850)	1,102 (500)	392 (178)	254 (115)

		GENERAL PURPOSE BUCKET	DITCH MAINTENANCE BUCKET	GENERAL PURPOSE SHOVEL	6-IN-1 SHOVEL	SIDE TIP SHOVEL
Width	in (mm)	9 - 36 (230 - 900)	60 (1525)	73 - 96 (1850 - 2440)	73 - 96 (1850 - 2440)	73 (1850)
Capacity	yd ³ (m ³)	0.0037 - 0.26 (0.028 - 0.2)	0.16 - 0.24 (0.12 - 0.18)	0.59 - 1.44 (0.45 - 1.1)	0.21 - 1.7 (0.16 - 1.3)	0.81 (0.62)
Weight	lbs (kg)	115 - 365 (52 - 179)	256 - 380 (116 - 172)	337 - 1162 (153 - 527)	419 - 1008 (190 - 457)	1102 (500)

		RIBBED BUCKET	TAPER DITCH BUCKET	JAW BUCKET	TILTING GRADING BUCKET	SNOWBLADE
Width	in (mm)	9 - 36 (250 - 900)	12 - 66 (305 - 1676)		60 (1525)	90 (2290)
Capacity	yd ³ (m ³)	0.5 - 0.16 (0.04 - 0.12)	0.8 - 0.13 (0.06 - 0.1)	0.26 (0.2)	0.21 (0.16)	N/A
Weight	lbs (kg)	231 - 463 (105 - 210)	245 - 408 (111 - 185)	459 (280)	750 (340)	1080 (490)

*Attachments suitability varies by machine model and specification.



Ditching buckets.



Side-tip shovels.



Trapezoidal buckets.



Hydraulic quickhitch.

VALUE ADDED.

JCB'S WORLDWIDE CUSTOMER SUPPORT IS FIRST CLASS. WHATEVER YOU NEED AND WHEREVER YOU ARE, WE'LL BE AVAILABLE QUICKLY AND EFFICIENTLY TO HELP MAKE SURE YOUR MACHINERY IS PERFORMING TO ITS FULL POTENTIAL.



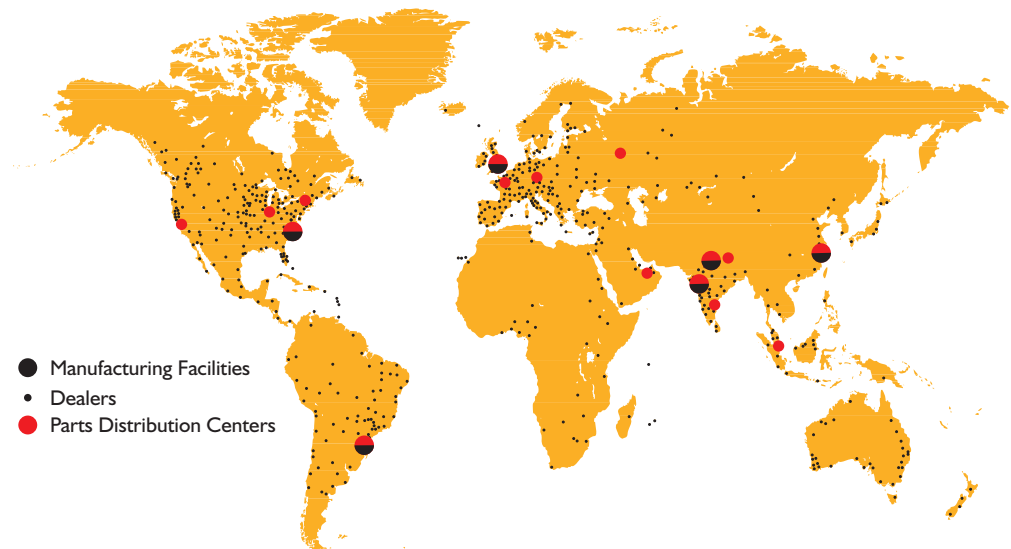
1 Our Technical Support Service provides instant access to factory expertise, day or night.

2 The global network of JCB Parts Centers is another model of efficiency; with 16 regional bases, we can deliver around 95% of all parts anywhere in the world within 24 hours. Our genuine JCB parts are designed to work in perfect harmony with your machine for optimum performance and productivity.



JCB Assetcare offers comprehensive extended warranties and service agreements, as well as service-only or repair and maintenance contracts. Irrespective of what you opt for, our maintenance teams around the world charge competitive labour rates, and offer non-obligation quotations as well as fast, efficient insurance repair work.

3 Built in 2000, the JCB North American Headquarters in Savannah, Georgia supports all United States, Canadian and Mexican dealers and manufactures the world's safest skid steer and compact tracked loader.



Note: JCB ASSETCARE may not be available in your region, so please check with your local dealer.



2 YEAR WARRANTY

Protection comes standard

- Industry best standard 2-year warranty
- Includes 3-year structural warranty
- Full JCB machine range covered
- First year warranty covers unlimited hours, second year covers up to 2000 hours



JCB is committed to the best aftersales support in the industry. The 2 year standard warranty can be serviced by any authorized JCB dealership and is transferable during the standard 2 year period.



ONE COMPANY, OVER 300 MACHINES.

Your nearest JCB Dealer

Backhoe Loader Range

JCB North American – Headquarters

Savannah, 2000 Bamford Blvd., Savannah, Georgia, 31322 Tel: (912) 447-2000

Download the very latest information on this product range at www.jcb.com

JCB inc. All rights reserved. No part of this publication may be reproduced, stored in a retrieval system, or transmitted in any form or by any other means, electronic, mechanical, photocopying or otherwise, without prior permission from JCB inc. All references in this publication to operating weights, sizes, capacities and other performance measurements are provided for guidance only and may vary dependant upon the exact specification of machine. They should not therefore be relied upon in relation to suitability for a particular application. Guidance and advice should always be sought from your JCB Dealer. JCB reserves the right to change specifications without notice. Illustrations and specifications shown may include optional equipment and accessories. The JCB logo is a registered trademark of J.C. Bamford Excavators Ltd.

9999/5761 10/14 en-US Issue I

[f /JCBNA](https://www.facebook.com/JCBNA)
[t /JCBNA](https://twitter.com/JCBNA)
[y /JCBNORTHAMERICA](https://www.youtube.com/channel/UCJCBNA)

