



The following documentation is an electronically-submitted vendor response to an advertised solicitation from the *West Virginia Purchasing Bulletin* within the Vendor Self-Service portal at ***wvOASIS.gov***. As part of the State of West Virginia's procurement process, and to maintain the transparency of the bid-opening process, this documentation submitted online is publicly posted by the West Virginia Purchasing Division at ***WVPurchasing.gov*** with any other vendor responses to this solicitation submitted to the Purchasing Division in hard copy format.

## Header

List View

**General Information** | Contact | Default Values | Discount | Document Information

Procurement Folder: 113847

SO Doc Code: CEOI

Procurement Type: Central Contract - Fixed Amt

SO Dept: 0313

Vendor ID: 000000161046 

SO Doc ID: DEP1600000005

Legal Name: SKELLY & LOY INC

Published Date: 8/12/15

Alias/DBA:

Close Date: 9/22/15

Total Bid: \$0.00

Close Time: 13:30

Response Date: 09/21/2015 

Status: Closed

Response Time: 15:14

Solicitation Description: Expression of Interest Mtn. View Portals DEP16431 

Total of Header Attachments: 0

Total of All Attachments: 0



Purchasing Division  
 2019 Washington Street East  
 Post Office Box 50130  
 Charleston, WV 25305-0130

**State of West Virginia  
 Solicitation Response**

**Proc Folder :** 113847

**Solicitation Description :** Expression of Interest Mtn. View Portals DEP16431

**Proc Type :** Central Contract - Fixed Amt

Date issued	Solicitation Closes	Solicitation No	Version
	2015-09-22 13:30:00	SR 0313 ESR09211500000001217	1

**VENDOR**

000000161046  
 SKELLY & LOY INC

**FOR INFORMATION CONTACT THE BUYER**

Beth Collins  
 (304) 558-2157  
 beth.a.collins@wv.gov

Signature X	FEIN #	DATE
-------------	--------	------

All offers subject to all terms and conditions contained in this solicitation

Line	Comm Ln Desc	Qty	Unit Issue	Unit Price	Ln Total Or Contract Amount
1	EOI Engineering Design Services				

Comm Code	Manufacturer	Specification	Model #
81100000			

<b>Extended Description :</b>	*Dates of Service are estimated for bidding purposes only.
-------------------------------	------------------------------------------------------------



**WEST VIRGINIA DEPARTMENT OF ENVIRONMENTAL PROTECTION  
AML CONSULTANT QUALIFICATION QUESTIONNAIRE**

**Attachment "B"**

PROJECT NAME Expression of Interest Mountain View Portals DEP# 16431	DATE (DAY, MONTH, YEAR) 22, 9, 15	FEIN 25-1645583
----------------------------------------------------------------------------	--------------------------------------	--------------------

1. FIRM NAME Skelly and Loy, Inc.	2. HOME OFFICE BUSINESS ADDRESS 449 Eisenhower Boulevard, Suite 300, Harrisburg, PA 17111	3. FORMER FIRM NAME
--------------------------------------	-------------------------------------------------------------------------------------------------	---------------------

4. HOME OFFICE TELEPHONE 717-232-0593	5. ESTABLISHED (YEAR) 1969	6. TYPE OWNERSHIP Individual      X Corporation Partnership    Joint-Venture	6a. WV REGISTERED DBE (Disadvantaged Business Enterprise) YES                      X NO
------------------------------------------	-------------------------------	------------------------------------------------------------------------------------	--------------------------------------------------------------------------------------------------

7. PRIMARY AML DESIGN OFFICE: ADDRESS/ TELEPHONE/ PERSON IN CHARGE/ NO. AML DESIGN PERSONNEL EACH OFFICE

ADDRESS	TELEPHONE	PERSON IN CHARGE	NO. PERSONNEL
240 Scott Avenue Morgantown, WV 26508	304-296-6500 FAX 304-381-4197	Gerald W. Longenecker, P.E.	5

8. NAMES OF PRINCIPAL OFFICERS OR MEMBERS OF FIRM

8a. NAME, TITLE, & TELEPHONE NUMBER - OTHER PRINCIPALS

Sandra Loy Bell, Chief Executive Officer  
John W. Gunnett, PG, President & Chief Operating Officer  
Mark A. Williams, Executive Vice President, Engineering Services  
449 Eisenhower Boulevard, Suite 300  
Harrisburg, PA 17111  
717-232-0593

9. PERSONNEL BY DISCIPLINE => Numbers reflect participating Skelly and Loy, Inc. offices. Numbers in parentheses () reflect personnel in entire company.

0 ADMINISTRATIVE (20)	0 ECOLOGISTS (0)	0 LANDSCAPE ARCHITECTS (2)	0 STRUCTURAL ENGINEERS (2)
0 ARCHITECTS (0)	— ECONOMISTS (0)	0 MECHANICAL ENGINEERS (0)	0 SURVEYORS (1)
0 BIOLOGIST (11)	0 ELECTRICAL ENGINEERS (0)	1 MINING ENGINEERS (1)	0 TRAFFIC ENGINEERS (0)
1 CADD OPERATORS (9)	0 ENVIRONMENTALISTS (41)	— PHOTOGRAMMETRISTS (0)	0 OTHER (20)
0 CHEMICAL ENGINEERS (0)	0 ESTIMATORS (0)	0 PLANNERS:URBAN/REGIONAL (1)	
1 CIVIL ENGINEERS (9)	1 GEOLOGISTS (5)	— SANITARY ENGINEERS (0)	
1 CONSTRUCTION INSPECTORS (3)	0 HISTORIANS (10)	0 SOILS ENGINEERS (1)	5 TOTAL PERSONNEL (147)
0 DESIGNERS (5)	0 HYDROLOGISTS (5)	0 SPECIFICATION WRITERS (1)	
— DRAFTSMEN (0)			

**TOTAL NUMBER OF WV REGISTERED PROFESSIONAL ENGINEERS IN PRIMARY OFFICE: 1**  
**\*RPEs other than Civil and Mining must provide supporting documentation that qualifies them to supervise and perform this type of work.**

---



---



---



---

10. HAS THIS JOINT-VENTURE WORKED TOGETHER BEFORE?     YES     NO



12. A. Is your firm experienced in Abandoned Mine Lands Remediation/Mine Reclamation Engineering?

X YES Description and Number of Projects: Skelly and Loy has broad and diverse experience in all aspects of mine closure projects. This experience has included dozens of recent projects as well as approximately 70 other projects dating back to the early 1970's associated with abandoned surface and underground mines, wet mine seal design, reclamation planning, grading plans, and development of bid documents. Our experience includes soup to nuts ability from evaluation, to design and bid specifications, and through construction inspection. Skelly and Loy is a recognized leader in mine planning and abandoned mine reclamation providing mining and civil engineering, environmental, and water resources including passive and active treatment of acid mine drainage to the mining industry, state agencies, and federal government.

Please refer to our list of projects including herein. Specifically our work for Virginia AML on the Pole Bridge Road project was focused on reclamation, subsidence, and AMD treatment for an abandoned mine site. Our permitting for Circle L Land Company on their Red Ash strip mine and Gob Pile Reclamation project involved two targeted areas re-mining of an old strip pit and reclamation of several old gob piles on the same property. Permitting was obtained for both projects

NO

B. Is your firm experienced in Soil Analysis?

X YES Description and Number of Projects: Soil analysis is an integral part of many abandoned mine reclamation projects conducted by Skelly and Loy. These soil analyses typically include evaluation of soils for wetland determination to soil chemistry evaluation related to revegetation requirements. From this standpoint, soil analysis is a component of nearly every abandoned mine land project Skelly and Loy completes and every newly permitted surface mining site. Additionally, our engineers and technicians have experience at soil testing and evaluations for foundation and fill designs and for many typical construction projects

NO

C. Is your firm experienced in hydrology and hydraulics?

X YES Description and Number of Projects: Skelly and Loy has completed many hydraulic and hydrologic engineering service for the mining industry and governmental agencies. Skelly and Loy is well versed in computer applications and routinely uses computer software applicable to hydrologic and hydraulic engineering, including HEC-1, HEC-2, HEC RAS, HEC HMS, ARCINFO, as well as GIS, CADD, SedCAD, and Skelly and Loy's proprietary software.

NO

D. Does your firm produce its own Aerial Photography and Develop Contour Mapping?

x YES Description and Number of Projects: Historically Skelly and Loy subcontracted, these services however, in August we have received Section 333 exemption from the FAA that allows Skelly and Loy to operate a small unmanned aircraft system (UAS) for purposes of performing site topographic surveys using a Trimble UX5 system.

NO

E. Is your firm experienced in domestic waterline design? (Include any experience your firm has in evaluation of aquifer degradation as a result of mining.)

X YES Description and Number of Projects: Skelly and Loy has completed many projects for Pennsylvania Department of Environmental protection that included evaluation of mining impacts to private wells, determined that the mining impacts were caused by pre-SMCRA mining activities based on evaluation of aerial photos, and completed the design of a water line extension to serve the impacted homes. Skelly and Loy uses AMDTreat and the Geochemical modeling program, Geochemist Workbench.

NO

F. Is your firm experienced in Acid Mine Drainage Evaluation and Abatement Design?

X YES Description and Number of Projects: Skelly and Loy is a national leader in the design of passive treatment systems for Acid Mine Drainage (AMD). Skelly and Loy staff have completed approximately 100 passive treatment system designs for mining companies, state agencies, and the federal government. Approximately 50 of these designs have gone through to construction in West Virginia, Pennsylvania, Maryland, and Tennessee. A typical project includes evaluation of the mining activity that created the AMD, AMD discharge chemistry and flows, available space to construct a system, projected life of system, projected water quality, and operation and maintenance plans such as the Virginia AML Pole Bridge Road project where drainage was expected and shown to be acid and Skelly and Loy provided an appropriate design feature to manage the discharge.

NO

13. PERSONAL HISTORY STATEMENT OF PRINCIPALS AND ASSOCIATES **RESPONSIBLE FOR AML PROJECT DESIGN** (Furnish complete data but keep to essentials)

NAME & TITLE (Last, First, Middle Int.)	YEARS OF EXPERIENCE		
	YEARS OF AML DESIGN EXPERIENCE:	YEARS OF AML RELATED DESIGN EXPERIENCE:	YEARS OF DOMESTIC WATERLINE DESIGN EXPERIENCE:
<b>John W. Gunnett, P.E., President and Chief Operating Officer</b>	20	20	0

Brief Explanation of Responsibilities  
Principal of Skelly and Loy, QA/QC. Involved with Operation Scarlift, oversight and involvement over history or the firm.

EDUCATION (Degree, Year, Specialization)  
B.S., 1971, Geology  
M.S., 1974, Mining Engineering

MEMBERSHIP IN PROFESSIONAL ORGANIZATIONS Pennsylvania Coal Alliance Society of Mining Engineers	REGISTRATION (Type, Year, State) Professional Geologist, 1993, Kentucky Professional Geologist, 1994, Pennsylvania
-------------------------------------------------------------------------------------------------------	--------------------------------------------------------------------------------------------------------------------------

13. PERSONAL HISTORY STATEMENT OF PRINCIPALS AND ASSOCIATES **RESPONSIBLE FOR AML PROJECT DESIGN** (Furnish complete data but keep to essentials)

NAME & TITLE (Last, First, Middle Int.)	YEARS OF EXPERIENCE		
	YEARS OF AML DESIGN EXPERIENCE:	YEARS OF AML RELATED DESIGN EXPERIENCE:	YEARS OF DOMESTIC WATERLINE DESIGN EXPERIENCE:
<b>Donald W. Polly, EIT, Associate, Vice President, Technical Services</b>	35	35	0

Brief Explanation of Responsibilities  
Associate of Skelly and Loy, Assistance with mine reclamation plans. Involved with Operation Scarlift, oversight and involvement over history of the firm and continuing through current day involvement in designing mine reclamation plans.

EDUCATION (Degree, Year, Specialization)  
Certificate, 1966, Accounting  
Certificate, 1968, Civil Engineering

MEMBERSHIP IN PROFESSIONAL ORGANIZATIONS	REGISTRATION (Type, Year, State) EIT, 1972, Pennsylvania
------------------------------------------	-------------------------------------------------------------

13. PERSONAL HISTORY STATEMENT OF PRINCIPALS AND ASSOCIATES **RESPONSIBLE FOR AML PROJECT DESIGN** (Furnish complete data but keep to essentials)

NAME & TITLE (Last, First, Middle Int.)	YEARS OF EXPERIENCE		
<b>Gerald W. Longenecker, P.E., Associate, Vice President, Engineering Services</b>	YEARS OF AML DESIGN EXPERIENCE: 5	YEARS OF AML RELATED DESIGN EXPERIENCE: 20	YEARS OF DOMESTIC WATERLINE DESIGN EXPERIENCE: 5
<p>Brief Explanation of Responsibilities Senior Manager and Associate of Skelly and Loy. Provide project management and direction of mine reclamation projects throughout 22 year tenure with the firm. Currently manages technical staff involved in AML-related worke</p>			
<p>EDUCATION (Degree, Year, Specialization) B.S., 1979, Agricultural Engineering M.S., 1980, Agricultural Engineering</p>			
MEMBERSHIP IN PROFESSIONAL ORGANIZATIONS	<p>REGISTRATION (Type, Year, State) Professional Engineer, 2010, West Virginia Professional Engineer, 1997, Maryland Professional Engineer, 1985, Pennsylvania Professional Engineer, 1988, Delaware Professional Engineer, 1986, NJ Professional Engineer, 1988, NC</p>		

14. PROVIDE A LIST OF SOFTWARE AND EQUIPMENT AVAILABLE IN THE PRIMARY OFFICE WHICH WILL BE USED TO COMPLETE AML DESIGN SERVICES

Software: AMDTreat, Geochemist Workbench, CADD, SedCAD, Carlson, ArcGIS, PHREEQC. 'R' STATISTICAL, Hydroflow

Survey Equipment:

TOPCOM S-6 Robotic Total Station, 1 ea.  
TOPCON Total Station Model GPT-3200NW with non-prism technology, 1 ea.  
GR5 GPS receivers with Real Time Kinematics (RTK) technology, 4 ea.  
Prism poles, 2 ea.  
Allegro CX Survey Data Collector  
Battery Chargers, Trickle Charger  
Sokkia Level with Philly and CST level rods  
Level/Transit/Tripod/Rod  
Measuring Tape, Field, 300'  
Metal Detector  
Motorola Radios  
Philly Stadia Rod  
Schoenstedt or LST models Metal Detector (Stick)  
Sokkia Level  
Survey Rods - 2 each  
GPS Data Logger, Static with Tripod, Antenna, and Cables  
Trimble R-6 RTK System  
GPS, Hand-Held  
GST Stadia Rod  
Level, Dumpy, and Rod (for surveying elevations)  
Level, Laser, Invisible Beam with Tripod, Detector, and Rod  
Lietz Transit (CSI) Model 110  
Lietz Transit BT-20  
Measuring Rod  
Sokkia Auto Level C32  
Sokkisha Electronic Distance Meter - Red Mini 2 D7017  
Sokkisha Theodolite DT-6  
Trimble GeoExplorer 6000 XH  
Trimble Pro XR Receiver with a Trimble TSCe Datalogger  
Tools, Hand (shovels, picks, sledge hammer, post hole digger, rakes, etc.)  
Topcon GTS-211D Total Station (EDM)  
Tripods - 10 each  
Backpack for surveying equipment, 1 ea.  
Level/stadia rod, adjustable to 25 ft., 1 ea.  
Hand held rechargeable radios, 3 ea.  
Tape measure, 300 ft., 1 ea.  
Tape measure, 100 ft., 1 ea.  
Digital Camera, 1 ea.



Other Equipment:

Hanna 9828 Geochemical Field Meter

Marsh McBirney/USGS Wading Rod Flow Meter

Solens Level SenSors - 5 data logger

Solens Baro loggers - 1

Well Tape

pH Meter

Water Quality Multi-meter

Well Pump

15. CURRENT ACTIVITIES ON WHICH YOUR FIRM IS THE DESIGNATED ENGINEER OF RECORD

PROJECT NAME, TYPE AND LOCATION	NAME AND ADDRESS OF OWNER	NATURE OF YOUR FIRM'S RESPONSIBILITY	ESTIMATED CONSTRUCTION COST	PERCENT COMPLETE
Alpha Natural Resources Environmental Audits	Alpha Natural Resources, One Alpha Place, P.O. Box 16429, Bristol, VA 24209	Environmental compliance audits. Verify conformation to EPA, DEP, SMCRA regulations.	\$265,808 (fees)	73%
Kolb Polishing Wetland Passive AMD Treatment System	Blackleggs Creek Watershed Association, P.O. Box 59, Clarksburg, PA 15725	Comprehensive engineering design, bid packages, permitting services, construction oversight.	\$29,500 (fees)	80%
Brinkerton Phase II Passive AMD Treatment System	Western Pennsylvania Conservancy, 1067 Philadelphia Street, Suite 101, Indiana, PA 15701	Comprehensive engineering design, bid packages, permitting services, construction oversight.	\$35,000 (fees)	80%
Broadtop Township Passive AMD Treatment Systems	Broad Top Township, 187 Municipal Road, Defiance, PA 16633	Comprehensive engineering design, bid packages, permitting services, construction oversight.	\$189,500 (fees)	77%
Brubaker Run Active Calcium Oxide AMD Treatment Sytem	Clearfield Creek Watershed Association, 216 Beldin Road, Ashville, PA 16613	Comprehensive engineering design, bid packages, permitting services, construction oversight.	\$30,000 (fees)	10%
Buck Mountain 2 Passive AMD Treatment System Evaluation and Recommendations Report	Trout Unlimited, 18 East Main Street, Suite 3, Lock Haven, PA 17745	Evaluation and recommendations for passive AMD treatment sytem.	\$5,000 (fees)	50%
Future Power, Susquehanna River Basin Commission Permitting Studies	Future Power PA LLC, 72 Glenmaura Drive, Suite 105, Mosaic, PA 18507	High capacity pump testing with associated surface water, groundwater, and mine pool monitoring. Comprehensive	\$8,838 (currently billed)	80%

		permitting.		
FODC Sandy Run Passive AMD Remediation Project	Friends of Deckers Creek, P.O. Box 877, Dellslow, WV 26531	Comprehensive engineering design, bid packages, permitting services, construction oversight.	\$26,075 (fees)	90%
Lausanne Tunnel AMD Passive Treatment System	Pennsylvania Wildlands Conservancy, 3701 Orchid Place, Emmaus, PA 18049	Evaluation and recommendations for passive AMD treatment sytem.	\$3,745 (fees)	95%
Sequatchie Valley Coal Active AMD Treatment Systems and AMD Generation Research Study	Cloudpeak Energy Resources LLC, P.O. Box 3009, Gillette, WY 82717	Comprehensive engineering design, bid packages, permitting services, construction oversight. Research methods to abate production of AMD.	\$1,449,434 (fees)	35%
Site 42 Passvie AMD Treatment System	Northumberland County Conservation District, 441 Plum Creek Road, Sunbury, PA 17801	Comprehensive engineering design, bid packages, permitting services, construction oversight.	\$10,000 (fees)	80%
Spruell Passive AMD Treatment System	Western Pennsylvania Conservancy, 1067 Philadelphia Street, Suite 101, Indiana, PA 15701	Comprehensive engineering design, bid packages, permitting services, construction oversight.	\$33,500 (fees)	80%
Rausch Creek Land Engineering Support for Mine Reclamation, AMD treatment facilities	Rausch Creek Land 978 Gap Street Valley View, Pa 17983	Comprehensive Engineering, Environmental, and Permitting Services	\$1,000,000 (Fees)	60%

Hagerman's Run 2 Permit Application, Williamsport, Lycoming County, Pennsylvania	Glenn O. Hawbaker 1952 Waddle Road, Suite 203 State College, PA 16803-1649	Comprehensive Engineering and Environmental Design, Mining, and Reclamation Planning associated with the submission to secure large non-coal mining permits	\$177,000 (Fees)	93%
Gentzel Permit Application (Graymont, Bellefonte, PA)	Glenn O. Hawbaker 1952 Waddle Road, Suite 203 State College, PA 16803-1649	Comprehensive Engineering and Environmental Design, Mining, and Reclamation Planning associated with the submission to secure large non-coal mining permits	\$73,000 (Fees)	90%
Fairborn/Xenia 3250 Linebaugh Road, Xenia, OH	CEMEX 3250 Linebaugh Road, Xenia, OH	Comprehensive Engineering and Environmental Design, Mining, and Reclamation Planning associated with the submission to secure large non-coal mining permits	\$44,000 (Fees)	90%
GOH/BCC Mammoth Project	GOH/BCC 1952 Waddle Road, Suite 203 State College, PA 16803-1649	Comprehensive Engineering and Environmental Design, Mining, and Reclamation Planning associated with the submission to secure large non-coal mining permits	\$90,000 (Fees)	95%
Tressler Permit Application, Bellefonte, PA	Glenn O. Hawbaker 1952 Waddle Road, Suite 203 State College, PA 16803-1649	Comprehensive Engineering and Environmental Design, Mining, and Reclamation Planning associated with the submission to secure large non-coal mining permits	\$93,000 (Fees)	95%

Egypt Quarry - Reclamation Plan	Lafarge Corporation 300 East Jopp 21286a Road, Suite 200 Towson, MD	Detailed reclamation plans including quantity calculations and construction specificatios for final reclamation at large non-coal mine sites	\$10,000 (Fees)	90%
Strongstown Site	Rosebud Mining Company RD #9 Box 379A Kittanning, PA 16201	Comprehensive Engineering and Environmental Design, Mining, and Reclamation Planning associated with the submission to secure large non-coal mining permits	\$80,000 (Fees)	95%
Rehabilitation/Reclamation Plans for Northampton/Dragon Quarry Sites, Northampton, PA	Lafarge Corporation 300 East Jopp 21286a Road, Suite 200 Towson, MD	Detailed reclamation plans including quantity calculations and construction specificatios for final reclamation at large non-coal mine sites	\$10,000 (Fees)	90%
Harleysville Permitting and Mine Planning	Harleysville Materials LLC	Comprehensive Engineering and Environmental Design, Mining, and Reclamation Planning associated with the submission to secure large non-coal mining permits	\$20,000 (Fees)	95%
Ontelaunee New Permit Berks County, Pennsylvania	Berks Products 167 Berks Products Drive Leesport, PA 19533	Comprehensive Engineering and Environmental Design, Mining, and Reclamation Planning associated with the submission to secure large non-coal mining permits	\$50,000 (Fees)	90%

G.S. Smith Consent Order of Compliance Activities. Pennsylvanis	Rausch Creek Land 978 Gap Street Valley View, PA 17983	Detailed engineering mine and reclamation plans including material quantities for large non-coal mine sites	\$20,000 (Fees)	73%
Rohrer's Quarry Assistance Lititz, Pennsylvanis	Rohrer's Quarry, Inc. 70 Lititz Road Lititz, PA 17543-0365	Comprehensive Engineering and Environmental Design, Mining, and Reclamation Planning associated with the submission to secure large non-coal mining permits	\$25,000 (Fees)	90%
Sequatchie Valley Coal Corporation, Comprehensive Engineering, Environmental and Permitting Services, Sequatchie County, TN	Sequatchie Valley Coal Corporation HCR 65, Box 364 Dunlap, TN 37327	Comprehensive Engineering, Environmental, and Permitting Services	\$2,000,000 (fee)	80%
Rausch Creek Land, L.P., Schuylkill County, PA	Rausch Creek Land, L.P. 978 Gap Street Valley View, PA 17983	Surface Mine Reclamation and Ash Management Services	\$1,000,000 (fee)	90%
Mine Ventilation Mapping and Control Stakeout, Old Castle Industrial Minerals, Thomasville, PA	Oldcastle Industrial Minerals 550 S. Biesecker Road Thomasville, PA 17364 Mr. Doyle Hurst (717) 792-2631	Mine Ventilation Mapping and Control Stakeout	\$25,000 (annually)	NA

Statewide Open-End Contract for Natural Resources, WV (2009)	WV Division of Highways State Capitol Complex 1900 Kanawha Blvd., East Building 5, Room A-416 Charleston, WV 25305-0430	Natural Resources	\$1,500,000 (fee)	36%
Statewide Open-End Contract for Natural Resources, WV (2011)	WV Division of Highways State Capitol Complex 1900 Kanawha Blvd., East Building 5, Room A-416 Charleston, WV 25305-0430	Natural Resources	\$1,500,000 (fee)	6%
Philadelphia Water Department Stream Channel Restoration and Wetland Design Services	Philadelphia Water Department Aramark Tower 1101 Market Street 2 <sup>nd</sup> Floor Philadelphia, PA 19107	Natural Stream Channel Restoration and Wetland Design	\$2,000,000 33%	
Central Susquehanna Valley Thruway Environmental Impact Statement, Snyder, Union & Northumberland Counties, PA	PENNDOT Engineering District 3-0 P.O. Box 218 Montoursville, PA 17754	Environmental Impact Study	\$19,700,000 (fee)	96%
Statewide Open-End Contract Cultural Resources Studies/Services, WV (2011)	WV Division of Highways State Capitol Complex 1900 Kanawha Blvd., East Building 5, Room A-416 Charleston, WV 25305-0430	Cultural Resources Studies/Services	\$750,000	90%

Statewide Open-End Contract for Compliance with Highway Traffic Noise Requirements, WV (2011)	WV Division of Highways State Capitol Complex 1900 Kanawha Blvd., East Building 5, Room A-416 Charleston, WV 25305-0430	Noise Analysis	\$1,500,000 (fee)	5%
NHS Corridor Between I-68 and Corridor H Tier One Draft EIS, WV	WV Division of Highways State Capitol Complex 1900 Kanawha Blvd., East Building 5, Room A-416 Charleston, WV 25305-0430	Environmental Impact Statement	\$1,355,000 (fee)	96%
Statewide Open-End Contract for Management of Environmental and Engineering Activities, PA (Agreement E02192)	PENNDOT Bureau of Design P.O. Box 3161 Harrisburg, PA 17105-3161	Environmental and Engineering Activities	\$3,000,000 (fee)	8%
PA Turnpike Commission Open-End Contract Storage Tank Program Services Systemwide, PA (Agreement 3208)	PA Turnpike Commission P.O. Box 67676 Harrisburg, PA 17106-7676	Storage Tank Management Program	\$2,000,000 (fee)	75%
PENNDOT District 4-0 Cultural Resources Open End, PA	PENNDOT District 4-0 55 Keystone Industrial Park Dunmore, PA 18512	Cultural Resources	\$1,000,000 (fee)	85%



SPC On-Call Consultancy Services Agreement	Southwestern Pennsylvania Corporation Regional Enterprise Tower 425 Sixth Avenue, Suite 2500 Pittsburgh, PA 15219-1852	Environmental Consulting	\$100,000 (fee)	75%
PENNDOT Environmental Remediation Services (Statewide), PA (Agreement 4400008267)	PENNDOT Bureau of Office Services P.O. Box 3060 Harrisburg, PA 17105	Remediation Services	\$4,950,000	81%
Statewide Open-End Contract for Environmental Training - Natural Resources, PA (Agreement 4400003172)	PENNDOT Bureau of Design P.O. Box 3161 Harrisburg, PA 17105-3161	Environmental Training	\$110,000 (fee)	23%
MD SHA 2011 Cultural Resource Open-End, MD (Agreement BCS2010-02B)	MD State Highway Administration 707 N. Culvert Street Baltimore, MD 21202	Cultural Resources	\$2,000,000 (fee)	40%
Bureau of Public Transportation Environmental Support Open-End Contract (Agreement E02468)	PENNDOT Bureau of Public Transportation P.O. Box 3161 Harrisburg, PA 17105-3161	Environmental Consulting	\$2,000,000 (fee)	0%
TOTAL NUMBER OF PROJECTS: 43		TOTAL ESTIMATED CONSTRUCTION COSTS: \$43,253,500 (Estimated fees)		

16. CURRENT ACTIVITIES ON WHICH YOUR FIRM IS SERVING AS A SUB-CONSULTANT TO OTHERS

PROJECT NAME, TYPE AND LOCATION	NATURE OF FIRMS RESPONSIBILITY	NAME AND ADDRESS OF OWNER	ESTIMATED COMPLETION DATE	ESTIMATED CONSTRUCTION COST	
				ENTIRE PROJECT	YOUR FIRMS RESPONSIBILITY
S.R. 0031-179 at Donegal Exit, Westmoreland County, PA	Environmental Studies/Documentation	PENNDOT District 12-0 P.O. Box 459 825 North Gallatin Avenue Ext., Uniontown, PA	2015 NA		\$190,000 (fee)
Reconstruction of PA Turnpike Mainline - MP T57 to T67, Allegheny and Westmoreland	Environmental Studies	PA Turnpike Commission P.O. Box 67676 Harrisburg, PA 17106-7676	2016 NA		\$370,000 (fee)
Reconstruction of PA Turnpike Mainline - MP T49 to T53, Westmoreland	Environmental Studies	PA Turnpike Commission P.O. Box 67676 Harrisburg, PA 17106-7676	2016 NA		\$433,000 (fee)
SR 0322 PMG, Centre County, PA	Cultural Resource Studies	PENNDOT District 2-0 70 PennDOT Drive Clearfield, PA 16830	2015 NA		\$148,000 (fee)
S.R. 0127, Sec. B01, Hunters Station Bridge Rehabilitation, Forest County, PA	Environmental Studies/Documentation	PENNDOT District 1-0 255 Elm Street P.O. Box 398 Oil City, PA 16301	2015 NA		\$307,000 (fee)
Freedom Road Improvement Project, Allegheny and Beaver Counties, PA	NEPA Document, Cultural Resources, Wetland and Stream Mitigation	PENNDOT District 11-0 45 Thoms Run Road Bridgeville, PA 15017-2853	2015 NA		\$550,000 (fee)
Greene County Bridge No. 15, Greene County, PA	Environmental Studies/Documentation	Greene County Board of Commissioners 93 E. High Street Waynesburg, PA	2015 NA		\$59,000 (fee)

16. CURRENT ACTIVITIES ON WHICH YOUR FIRM IS SERVING AS A SUB-CONSULTANT TO OTHERS

PROJECT NAME, TYPE AND LOCATION	NATURE OF FIRMS RESPONSIBILITY	NAME AND ADDRESS OF OWNER	ESTIMATED COMPLETION DATE	ESTIMATED CONSTRUCTION COST	
				ENTIRE PROJECT	YOUR FIRMS RESPONSIBILITY
Coalfields Expressway, Raleigh and Wyoming Counties, WV	Section 404/401 Permit	WV Division of Highways State Capitol Complex 1900 Kanawha Blvd.,	2015	NA \$372,000	(fee)
S.R. 0119, Section 499, Wake Robin Curve, Indiana County, PA	Environmental Studies/Documentation	PENNDOT District 10-0 2550 Oakland Avenue P.O. Box 429 Indiana, PA 15701	2017 NA		\$60,000 (fee)
I-70 South Junction to PA 519, Washington County, PA	Environmental Studies/Documentation/ Final Design	PENNDOT District 12-0 P.O. Box 459 825 North Gallatin Avenue Ext.,	2016 NA		\$344,000 (fee)

17. COMPLETED WORK WITHIN LAST 5 YEARS ON WHICH YOUR FIRM WAS THE DESIGNATED ENGINEER OF RECORD				
PROJECT NAME, TYPE AND LOCATION	NAME AND ADDRESS OF OWNER	ESTIMATED CONSTRUCTION COST	YEAR	CONSTRUCTED (YES OR NO)
Sovern-Titchenell AMD, Treatment System Design, Plans, Permitting, Bid Documents, and Construction Inspection, Preston County, WV	Friends of the Cheat, 119 South Price Street, Kingwood, WV 26537	\$200,000 (Construction) \$30,000 (fees)	2014	Yes
PASE AMD Remediation Project, Plans, Permitting, Bid Documents, and Construction Inspection, Preston County, WV	Friends of the Cheat, 119 South Price Street, Kingwood, WV 26537	\$27,700 (fees)	2013	Yes
Sandy Run AMD Treatment System Design, Plans, Permitting, Bid Documents, and Construction Inspection, Preston County, WV	Friends of Deckers Creek, PO Box 877, Dellslow, WV 26531	\$535,000 (Construction) \$26,000 (fees)	2012	Yes
KCSS #3 AMD Treatment System Design, Plans, Permitting, Bid Documents, and Construction Inspection, Preston County, WV	Friends of Deckers Creek, PO Box 877, Dellslow, WV 26531	\$135,000 (Construction) \$36,500 (fees)	2014	Yes
Multiple AMD Treatment System Designs, Plans, Permitting, Construction Inspection, Final Reports, and OM&R Reports, Bedford County, PA	Broad Top Township, 187 Municipal Road, Defiance, PA 16633	\$128,900 (fees)	2010-2015	Yes
Keysers Ridge, Acid Rock Mitigation Project for MDSHA, I-68 Garrett County, Maryland	Maryland Department of State Highways 707 North Calvert Street Baltimore, Maryland 21202	\$1,000,000 2011		Yes
Boyce Park AMD Treatment System Design, Plans, Permitting, Bid Documents, Construction Inspection, O&M Reports, and Water Sampling, Allegheny County, PA	Allegheny County Department of Public Works, 501 County Office Building, 542 Forbes Avenue, Pittsburgh, PA 15219	\$100,000 (fees)	2010-2012	Yes

Sequatchie Valley Coal Active and Passive AMD Treatment Facilities Dunlap Tennessee	Cloud Peak PO Box 3001 Gillette, Wyoming 82717	\$2,000,000 (fees)	2010-2014	Yes
Blacklegs Creek AMD Treatment Facilities Indiana County, Pa	Black Leggs Watershed Association P.O. Box 59 Clarksburg, Pa 15725	\$150,000 (fees)	2010-2014	Yes
Red Ash Strip; Application for permit representing lessee to Re-mine Jewell Coal Seam; Buchanan County, VA	Circle L Land Company, Inc. P.O. Box 1244 Raven, VA 24639	\$160,000 (fees)	2013	N
Sugar Cove Gob; Permitting and engineering support for Coal Gob reclamation; Buchanan County, VA	Circle L Land Company, Inc. P.O. Box 1244 Raven, VA 24639	\$65,000 (fees)	2015	N
Middle Creek Gob; Application for permit representing Lessee for Coal Gob reclamation; Buchanan County, VA	Circle L Land Company, Inc. P.O. Box 1244 Raven, VA 24639	\$120,000 (fee)	2013	N
Pole Bridge Road; Wise County, VA Project to eliminate certain hazards associated with abandoned mine site including dangerous highwall, dangerous impoundment, subsidence issues, acid mine drainage, and site drainage	Commonwealth of Virginia AML, P.O. Box 900 Big Stone Gap, VA 24219	\$50,000 (fees)	2013	N

Seng Camp Fork #1; Application for permit representing Lessee to strip mine four coal seams on property; Buchanan County, VA	Revelation Energy, 160 Lark Branch, Suite 2, Pikeville, KY 41501	\$160,000 (fees)	2013	N
Progress Energy Government Imposition Claim, IN	Progress Energy 410 S. Wilimington Street Raleigh, NC 27601	\$47,000 2014		N
Leslie Branch Haulroad Renewal of Permit, McDowell County, WV	Mid Vol Coal Sales, Inc. 640 Clover Dew Dairy Road Princeton, WV 24740.	\$5000 (fees)	2012 Y	
Environmental Site Assessment; Complete assessment of site environmental history and liabilities to satisfy transfer of ownership per contractual obligation of operating company; Hawkins County near Rogersville, TN.	Tennessee Valley Authority 1101 Market Street Chattanooga, TN 37402	\$10,000 (fees)	2012	Y
Dry Fork Surface Mine; Strip mining permit revision representing client in Wise County, VA	Paramont Coal Company LLC 5703 Crutchfield Drive Norton VA 24273	\$40,000 (fees)	2012	Y
Osaka Wilson Mitigation Project; Temporal stream loss mitigation project management and coordination with various agencies to secure approval associated with Osaka Wilson mine; in Wise County, VA.	Maggard Branch Coal LLC P.O. Box 2560 Wise, VA 24293	\$65,000 (fees)	2012	Y
I81 Exit 10 Development; Provided civil engineering and surveying services including erosion and sediment control for site permitting; Washington County, VA	Barnette Contractors LLC P.O. Box 1190 Wise, VA 24293	\$2,100 (fees)	2012	Y

Rock Switch Road; Provided civil engineering and permitting services for site permitting; Wise County, VA.	Barnette Contractors LLC P.O. Box 1190 Wise, VA 24293	\$6,000 (fees)	2012	N
Cumberland Resource Corporation - Roda Dust Monitoring and Abatement, Roda, VA	Cumberland Resource Corporation P.O. Box 2560 Wise, VA 24293	\$125,000	2010	NA
PPL ROW Mineral Valuation, PA	Progress Energy 410 S. Wilimington Street Raleigh, NC 27601	\$8,000	2012	NA
Investigations of Solar Mine Costs, IN	Hoosier Energy REC, Inc. 7398 North State Road 37 Bloomington, IN 47304	\$9,000 2011		NA
Statewide Open-End Contract for Cultural Resources Studies/Services, WV (2009)	WV Division of Highways State Capitol Complex 1900 Kanawha Blvd., East Building 5, Room A-416 Charleston, WV 25305-0430	NA 2011		NA
Statewide Open-End Archaeological, DE (2007) (Agreement 1418)	Delaware Department of Transportation 800 Bay Road Dover, DE 19903	NA 2010		NA
PENNDOT Agencywide - Western Waste Management, PA (Agreement 354A02-2)	PENNDOT Bureau of Office Services P.O. Box 3060 Harrisburg, PA 17105	NA 2011		NA
PENNDOT Agencywide - Eastern Waste Management, PA (Agreement 354A02-1)	PENNDOT Bureau of Office Services P.O. Box 3060 Harrisburg, PA 17105	NA 2011		NA
PA Turnpike Commission Open-End Contract Environmental Services, Systemwide, PA	PA Turnpike Commission P.O. Box 67676 Harrisburg, PA 17106-7676	NA 2011		NA
PA Turnpike Commission, Open-End Contract for Waste Management System-Wide, PA (Agreement 2914)	PA Turnpike Commission P.O. Box 67676 Harrisburg, PA 17106-7676	NA 2011		NA
Statewide Open-End Contract for Management Services, PA (Agreement E00668)	PENNDOT Bureau of Design P.O. Box 3161 Harrisburg, PA 17105-3161	NA 2011		NA

17. COMPLETED WORK WITHIN LAST 5 YEARS ON WHICH YOUR FIRM WAS THE DESIGNATED ENGINEER OF RECORD				
PROJECT NAME, TYPE AND LOCATION	NAME AND ADDRESS OF OWNER	ESTIMATED CONSTRUCTION COST	YEAR	CONSTRUCTED (YES OR NO)
Statewide Open-End Archaeological, DE (2007) (Agreement 1418)	Delaware Department of Transportation 800 Bay Road Dover, DE 19903	NA 2010		NA
PENNDOT Agencywide - Western Waste Management, PA (Agreement 354A02-2)	PENNDOT Bureau of Office Services P.O. Box 3060 Harrisburg, PA 17105	NA 2011		NA
PENNDOT Agencywide - Eastern Waste Management, PA (Agreement 354A02-1)	PENNDOT Bureau of Office Services P.O. Box 3060 Harrisburg, PA 17105	NA 2011		NA
PA Turnpike Commission Open-End Contract Environmental Services, Systemwide, PA	PA Turnpike Commission P.O. Box 67676 Harrisburg, PA 17106-7676	NA 2011		NA
PA Turnpike Commission, Open-End Contract for Waste Management System-Wide, PA (Agreement 2914)	PA Turnpike Commission P.O. Box 67676 Harrisburg, PA 17106-7676	NA 2011		NA
Statewide Open-End Contract for Management Services, PA (Agreement E00668)	PENNDOT Bureau of Design P.O. Box 3161 Harrisburg, PA 17105-3161	NA 2011		NA
Statewide Open-End Archaeological, DE (2007) (Agreement 1418)	Delaware Department of Transportation 800 Bay Road Dover, DE 19903	NA 2010		NA
PA Turnpike Commission, Open-End Contract for Waste Management System-Wide, PA (Agreement 2914)	PA Turnpike Commission P.O. Box 67676 Harrisburg, PA 17106-7676	NA 2011		NA
PA Turnpike Commission Open-End Contract Environmental Services, Systemwide, PA (Agreement 1125)	PA Turnpike Commission P.O. Box 67676 Harrisburg, PA 17106-7676	NA 2011		NA



Statewide Open-End Contract for Cultural Resources Studies/Services, WV (2009)	WV Division of Highways State Capitol Complex 1900 Kanawha Blvd., East Building 5, Room A-416 Charleston, WV 25305-0430	NA 2011		NA
PENNDOT Agencywide - Western Waste Management, PA (Agreement 354A02-2)	PENNDOT Bureau of Office Services P.O. Box 3060 Harrisburg, PA 17105	NA 2011		NA


18. COMPLETED WORK WITHIN LAST 5 YEARS ON WHICH YOUR FIRM HAS BEEN A SUB-CONSULTANT TO OTHER FIRMS (INDICATE PHASE OF WORK FOR WHICH YOUR FIRM WAS RESPONSIBLE)

PROJECT NAME, TYPE AND LOCATION	NAME AND ADDRESS OF OWNER	ESTIMATED CONSTRUCTION COST OF YOUR FIRM'S PORTION	YEAR	CONSTRUCTED (YES OR NO)	FIRM ASSOCIATED WITH
Painters Run Road Roadway Widening and Reconstruction, Allegheny County, PA	Allegheny County Dept. of Public Works 501 County Office Bldg. 542 Forbes Avenue Pittsburgh, PA 15219	\$213,000 (fee)	2010	NO	HDR, Inc.
Route 531 Extension Study, Route 36 to Redman Road, Monroe County, NY	NYS DOT Region 4 1530 Jefferson Road Rochester, NY 14623	\$94,000 (fee)	2010	NO	Stantec
PA Project of the Magnetic Levitation (MAGLEV) Transportation Project, Allegheny and Westmoreland Counties, PA	Port Authority of Allegheny County 345 -Sixth Avenue, 3 <sup>rd</sup> floor Pittsburgh, PA 15222-2527	\$1,500,000 (fee)	2010	NO	MSM Group Joint Venture
Barretts Chapel Road (SR 1 to McGinnis Pond Road), Kent County, DE	DelDOT 800 Bay Road PO Box 778 Dover, DE 19903	\$66,600 (fee)	2010	NO	Century Engineering
Mon/Fayette Expressway, PA Route 51 to I-376, Allegheny County, PA	PA Turnpike Commission P.O. Box 67676 Harrisburg, PA 17106-7676	\$500,000 (fee)	2011	NO	Mackin Engineering Company
S.R. 0286, Golden Mile Highway Improvements, Allegheny and Westmoreland Counties, PA	PENNDOT District 11-0 45 Thoms Run Road Bridgeville, PA 15017-2853	\$225,000 (fee)	2011	NO	AECOM
ID/IQ Contract for Geotechnical and Environmental Services, USACE, Pittsburgh District	USACE, Pittsburgh District 1000 Liberty Avenue W.S. Moorehead Federal Bldg. Pittsburgh, PA 15222	\$320,000 (fee)	2012	NA	D'Appolonia
ID/IQ Contract for Geotechnical and Environmental Services, USACE, Pittsburgh District	USACE, Pittsburgh District 1000 Liberty Avenue W.S. Moorehead Federal Bldg. Pittsburgh, PA 15222	\$293,000 (fee)	2012	NA	Rhea Engineers and Consultants, Inc.

Altoona Transportation Improvement Project, Blair County, PA	PENNDOT District 9-0 1620 North Juniata Street Hollidaysburg, PA 16648	\$146,000 (fee)	2012	NA	Sucevic, Piccolomini & Kuchar Engineering, Inc.
U.S. Route 35 Improvements, Mason and Kanawha Counties, WV	WV Division of Highways State Capitol Complex 1900 Kanawha Blvd., East Building 5, Room A-416	\$3,400,000 (fee)	2013	YES	Kimley-Horn and Associates, Inc.
Greene County Bridge No. 99, Greene County, PA	Greene County Board of Commissioners 93 E. High Street Waynesburg, PA 15370	\$57,000 (fee)	2013	YES	Widmer Engineering Inc.
S.R. 0422 Improvement Project, Armstrong and Indiana Counties, PA	PENNDOT District 10-0 2550 Oakland Avenue P.O. Box 429 Indiana, PA 15701	\$126,000 (fee)	2013	NA	PB Americas, Inc.
S.R. 1001, Section C01, Farrandsville Road Reconstruction / Realignment, Clinton County, PA	PENNDOT District 2-0 70 PennDOT Drive Clearfield, PA 16830	\$51,000 (fee)	2014	NO	Sucevic, Piccolomini & Kuchar Engineering, Inc.
S.R. 0019, Section P02, Morrisville Widening and Relocation Project, Greene County, PA	PENNDOT District 12-0 P.O. Box 459 825 North Gallatin Avenue Ext., Uniontown, PA 15401	\$275,000 (fee)	2014	NO	TransAssociates, Inc.
S.R. 0021, Section H10, Roadway Improvement, Fayette County, PA	PENNDOT District 12-0 P.O. Box 459 825 North Gallatin Avenue Ext., Uniontown, PA 15401	\$277,000 (fee)	2014	YES	Sucevic, Piccolomini & Kuchar Engineering, Inc.

19. Use this space to provide any additional information or description of resources supporting your firm's qualifications to perform work for the West Virginia Abandoned Mine Lands Program.

20. The foregoing is a statement of facts.

Signature:  Title: Associate, Vice President, Engineering

Printed Name: Gerald W. Longenecker, P.E.

Date: September 21, 2015

AML and RELATED PROJECT EXPERIENCE MATRIX																								
PROJECT	Exp. Basis C=Corp. P=Personal *	Additional Info Provided in Section (s) **	PROJECT EXPERIENCE REQUIREMENTS														PRIMARY STAFF PARTICIPATION/CAPACITY ***M=Management P=Professional							
			Abandoned Surface Mine Reclamation	Abandoned Deep Mine Reclamation	Portal/Shaft Closure	Hydrologic/Hydraulic Design/Eval.	Remining Evaluation	Mine/Refuse Fire Abatement	Subsidence Investigation Mitigation	Hazardous Waste Disposal	Project Specifications	Water Quality Evaluation/Mitigation/ Replacement	Construction Inspection/ Management	Water Treatment	Equipment/Structure Removal	Stream Restoration	Geotechnical/Stability	John W. Gunnett, P.G.	Gerald W. Longenecker, P.E.	Mark A. Williams	Joseph E. Mills	Timothy A. Denicola	Brent A. Sapeen	Albert J. Budinsky
Alpha Natural Resources Environmental Audits	C								X		X	X	X					M	P	P		P		
Kolb Polishing Wetland Passive AMD Treatment System	C			X	X	X	X			X		X	X							P		P	M/P	
Brinkerton Phase II Passive AMD Treatment System	C					X				X	X	X	X							P	P	P	M/P	
Broadtop Township Pssive AMD Treatment Systems	C		X	X	X	X					X	X	X		X			M		M	P	P		
Brubaker Run Active Calcium Oxide AMD Treatment Sytem	C					X				X	X	X	X							P	M	P	P	
Future Power, Susquehanna River Basin Commission Permitting Studies	C					X				X	X	X	X							P	P		P	
FODC Sandy Run Passive AMD Remediation Project	C				X	X				X	X	X	X							P	M	P		
Lausanne Tunnel AMD Passive Treatment System	C					X				X	X	X	X								M		P	
Site 42 Passvie AMD Treatment System	C					X				X	X	X	X							P	P	P	M	
Spruell Passive AMD Treatment System	C		X			X				X	X		X		X					P	P	P	M	

AML and RELATED PROJECT EXPERIENCE MATRIX																													
PROJECT	Exp. Basis C=Corp. P=Personal *	Additional Info Provided in Section (s) **	PROJECT EXPERIENCE REQUIREMENTS														PRIMARY STAFF PARTICIPATION/CAPACITY ***M=Management P=Professional												
			Abandoned Surface Mine Reclamation	Abandoned Deep Mine Reclamation	Portal/Shaft Closure	Hydrologic/Hydraulic Design/Eval.	Remining Evaluation	Mine/Refuse Fire Abatement	Subsidence Investigation Mitigation	Hazardous Waste Disposal	Project Specifications	Water Quality Evaluation/Mitigation/ Replacement	Construction Inspection/ Management	Water Treatment	Equipment/Structure Removal	Stream Restoration	Geotechnical/Stability	John W. Gunnett, P.G.	Gerald W. Longenecker, P.E.	Mark A. Williams	Joseph E. Mills	Timothy A. Denicola	Brent A. Sopen	Albert J. Budinsky	Donald W. Polly, E.I.T.	Thomas R. Johnston, Jr.			
Kelly's Creek Watershed AMD Survey and Restoration Plan, Kanawha County, West Virginia	C											X			X											P			
Valley Point #12 AMD Remediation Project, Preston County, West Virginia	C	X	X		X	X						X	X	X	X											P			
North Fork Greens Run AMD Remediation Project, Preston County, West Virginia	C	X	X			X						X	X	X	X											M			
Midde Creek Gob Pile Reclamation Project, Cedar Bluff, Virginia	C	X	X			X	X	X				X	X													M			P
Pole Bridge Road AML Remediation Project, Wise County, Virginia	C	X	X	X	X	X					X				X											M			
Red Ash Strip Mine & Gob Reclamation Project, Buchanan County, Virginia	C	X	X			X	X	X				X	X	X	X											M			P
Government Finaced Construction Contract AML Reclamation Projects, Clearfield County, Pennsylvania	C	X	X				X							X												M			
Armstrong Energy Comment Letter to PA DEP, Armstrong County, Pennsylvanai	C	X	X			X					X															M/P			
Sequatchie Valley Coal Corporation, Sequatchie County, Tennessee	C	X	X			X	X					X	X	X	X											P	P		
Rausch Creek Land, L.P., Schuylkill County, Pennsylvania	C	X	X	X	X	X						X	X	X	X	X										M		P	P
Six Mile Run, Sandy Run and Longs Run AMD Assessment and Remediation Plan, Bedford County, Pennsylvania	C	X	X	X	X	X									X											M		P	



AML and RELATED PROJECT EXPERIENCE MATRIX																									
PROJECT	Exp. Basis C=Corp. P=Personal *	Additional Info Provided in Section (s) **	PROJECT EXPERIENCE REQUIREMENTS													PRIMARY STAFF PARTICIPATION/CAPACITY ***M=Management P=Professional									
			Abandoned Surface Mine Reclamation	Abandoned Deep Mine Reclamation	Portal/Shaft Closure	Hydrologic/Hydraulic Design/Eval.	Remining Evaluation	Mine/Refuse Fire Abatement	Subsidence Investigation Mitigation	Hazardous Waste Disposal	Project Specifications	Water Quality Evaluation/Mitigation/ Replacement	Construction Inspection/ Management	Water Treatment	Equipment/Structure Removal	Stream Restoration	Geotechnical/Stability	John W. Gunnett, P.G.	Gerald W. Longenecker, P.E.	Mark A. Williams	Joseph E. Mills	Timothy A. Denicola	Brent A. Sapeen	Albert J. Budinsky	Donald W. Polly, E.I.T.
Elk Creek Watershed AML/AMD																									
West Virginia DCONR/EPA																									
VA Office of Mine Land Reclamation/AMD Project	C		X		X						X	X				X	X	M							
Hagerman's Run 2 Permit Application, Lycoming County, PA	C					X					X	X		X				M						P	
Gentzel Permit Application, Bellefonte, PA	C					X					X	X		X				M						P	
Fairborn/Xenia Engineering & Environmental Design, Mining & Reclamation Planning	C					X					X	X		X				M						P	
GOH/BCC Mammoth Engineering/Environmental Design, Mining & Reclamation Planning	C										X	X		X				M						P	
Tressler Permit Application, Bellefonte, PA	C					X					X	X		X				M						P	
LaFarge Egypt Quarry Reclamation Plan	C					X					X	X		X				M						P	
Harleysville Materials Permitting and Mine Planning	C					X					X	X		X				M						P	
Berks Products Ontelaunee New Permit Reclamation Planning	C					X					X	X		X				M						P	

AML and RELATED PROJECT EXPERIENCE MATRIX																											
PROJECT	Exp. Basis C=Corp. P=Personal *	Additional Info Provided in Section (s) **	PROJECT EXPERIENCE REQUIREMENTS													PRIMARY STAFF PARTICIPATION/CAPACITY ***M=Management P=Professional											
			Abandoned Surface Mine Reclamation	Abandoned Deep Mine Reclamation	Portal/Shaft Closure	Hydrologic/Hydraulic Design/Eval.	Remining Evaluation	Mine/Refuse Fire Abatement	Subsidence Investigation Mitigation	Hazardous Waste Disposal	Project Specifications	Water Quality Evaluation/Mitigation/ Replacement	Construction Inspection/ Management	Water Treatment	Equipment/Structure Removal	Stream Restoration	Geotechnical/Stability	John W. Gunnett, P.G.	Gerald W. Longenecker, P.E.	Mark A. Williams	Joseph E. Mills	Timothy A. Denicola	Brent A. Sapeen	Albert J. Budinsky	Donald W. Polly, E.I.T.	Thomas R. Johnston, Jr.	
Rausch Creek Land G.S. Smith Consent Order of Compliance Activities	C					X				X	X			X		X										P	
Rohrer's Quarry Engineering & Environmental Design for Reclamation	C					X				X	X			X		X										P	

\* List whether project experience is corporate or personnel based or both.

\*\* Use this area to provide specific sections or pages if needed for reference.

\*\*\* List Primary Design personnel and their functional capacity for the projects listed.





Skelly and Loy has assembled a key personnel team with extensive experience, proven technical expertise, and educational background ideally suited to meet the needs of WV DEP under this contract. The following highlights specific areas of the team's relevant experience and expertise.

**PRIMARY OFFICE DESIGN TEAM KEY STAFF**

**Mr. Gerald W. Longenecker, P.E., will serve as our Engineer in Responsible Charge/West Virginia Registered Professional Engineer.** Mr. Longenecker (WV PE 018491) is designated as the Engineer in Responsible Charge with the West Virginia State Board of Registration for the Certificate of Authorization (C00687-00) issued to Skelly and Loy, Inc. As a Vice President and an Associate of the firm, Mr. Longenecker provides oversight, management, and technical direction on services performed by the company's Engineering Services Group in its multiple-state office locations. A licensed Professional Engineer, Mr. Longenecker has 35 years of experience in the engineering consulting field including 22 as an employee of Skelly and Loy. This experience has been gained through the management and technical participation in a broad range of projects including mine reclamation and mine drainage treatment, stream restoration, erosion and sediment control, watershed assessments, stormwater management, solid waste handling, industrial and sanitary wastewater treatment, dam safety, water resources engineering, and wetland-related evaluations.

Mr. Longenecker served as principle engineer and project manager on numerous active and reclaimed coal and non-coal mine sites throughout the Middle Atlantic and Southern states regions. Project management responsibilities have included projects involving the development and oversight of geotechnical testing plans for embankment and slope stability and evaluating remedial measures. Technical project assignments involved developing water management and site reclamation plans to stabilize sites and control/treat mine drainage. Assignments included the management and design of a mine drainage treatment system at a 1,500-acre coal mine. The project focused on the restoration of the impacted receiving streams and improving water quality sufficiently to support native aquatic life. Efforts included coordinating efforts to secure OSM phased bond release, performing water balances and hydrogeologic assessments, NPDES permit revision negotiations, evaluation and design of passive mine drainage treatment systems, and general permit coordination with the federal and state regulatory agencies. Following phased bond release for site stabilization, additional refinements for implementing passive mine drainage treatment are ongoing. He evaluated the economics and performance of chemical treatment and passive treatment systems used for treating degraded water quality at a reclaimed surface coal mine preparation plant. Primary drainage sources included a gob pile, slurry lakes, and upgradient abandoned mine lands. Other assignments have included mine pool pumping to control acid mine drainage seepage, passive and active (chemical addition) mine drainage treatment system design, and NPDES permit negotiations for treatment system discharges. Mr. Longenecker has also made technical symposium presentations on the passive treatment of acid mine drainage.

**Our designated Project Manager is Mr. Joseph E. Mills.** Mr. Mills recently joined Skelly and Loy's Morgantown, West Virginia, office location following a long tenure with MDE's Mining Program. He earned a B.S. degree in biology from Frostburg State College. He gained extensive knowledge of mining, abandoned mine land reclamation, and acid rock drainage control and abatement during his 35 years of professional experience. Mr. Mills has designed and monitored construction of 15 active dosing systems and more than 50 passive mine drainage treatment systems. Additionally, he has been involved in the design, construction inspection, and post-construction evaluation of 22 AML projects. During his time as a Mine Inspector, Mr. Mills was responsible for 34 surface mines, assuring that the daily mining activities met all state and federal laws and regulations and that they were reclaimed to approximate original contour and met the approved post-mining land use. He is familiar with of the Federal Surface Mining Control and Reclamation Act of 1977 (SMCRA), Maryland Mining Law Code of Maryland Regulations (COMAR), NPDES, and Federal Clean Water Act (CWA) as they pertain to current mining practices.

Mr. Mills' extensive experience in planning, performance, and supervision of project assignments makes him an ideal choice to serve as Project Manager under this contract. Additionally, he routinely prepares project estimates and task schedules, reviews progress and evaluates results, and makes prudent changes in methods, design, or equipment where necessary to keep projects on track. He operates with some latitude with minimal oversight regarding actions or decisions.



**Mr. Timothy A. Denicola is our assigned Geologist/Scientist.** Mr. Denicola has seven years of professional experience, a B.S. degree in chemistry from Clarion University of Pennsylvania, and an M.S. degree in geology from West Virginia University. He has a thorough background in geochemistry, geology, and hydrology gained through work on mine drainage research studies, management of mine drainage remediation projects, facilitation of a mine pool geotechnical study, and funding acquisition and management efforts for multiple projects. He managed administrative, educational, and outreach components for a non-profit organization focusing on watershed restoration. Mr. Denicola is ideally suited to assess mine water contamination issues, develop remediation plans, communicate with agencies regarding funding and permitting, and manage remediation project budgets.

Mr. Denicola's work experience and educational background provide him with technical expertise in planning, performing, and evaluating projects involving geologic and hydrogeologic issues related to coal mining. His areas of expertise include coal overburden acid-base accounting, groundwater chemistry, surface water chemistry, coal stratigraphy, and hydrogeology.

**Mr. Daniel L. Miller, P.E., is our assigned water line design engineer.** Mr. Miller has 36 years of experience in providing potable water system engineering and consulting for numerous existing municipal and privately owned public water systems. He is experienced with West Virginia's Infrastructure and Jobs Development Council (IJDC) and its funding/approval process and has design experience including new source development, distribution system extensions, permit applications, and other design and engineering aspects of potable water supply.

**ADDITIONAL DESIGN TEAM SUPPORT PERSONNEL – PITTSBURGH AND OTHER OFFICES**

**Mr. Steven J. Pernick, a Senior Environmental Scientist/Biologist** with 23 years of experience, **is a USFWS-Qualified Indiana Bat Surveyor** in addition to possessing several Scientific Collectors Permits for a wide range of Threatened and Endangered Species investigations. **Mr. Robert E. Golkosky, P.E. is a West Virginia-registered professional mining engineer** with 46 years of experience. **Mr. Stephen G. Toki, Jr., is an FAA-Qualified Wildlife Hazard Biologist** with 18 years of experience, and **Mr. Bradley S. Reese is a CAD/GIS Analyst** with 10 years of experience.

**ADDITIONAL DESIGN TEAM SUPPORT PERSONNEL – CORPORATE HEADQUARTERS OFFICE**

**Two principals of the firm, Mr. John W. Gunnett, P.G. (President and Chief Operating Officer), and Mr. Mark A. Williams (Executive Vice President, Engineering)** in our Harrisburg, Pennsylvania, corporate headquarters office both have extensive mining experience which dates back to nearly the founding of the firm in 1969. Both principals have remained actively involved in mining projects throughout their careers and continue to provide senior leadership and direction on mine-related projects. Mr. Williams also presently serves as the principal in charge of the Pittsburgh office and can assist with assigning staffing needs for project personnel who may be needed from that office.

While additional specialized project-related staff members are available from our Pittsburgh office, additional experienced personnel from our corporate office include **Mr. Donald W. Polly, Associate and Mining Engineer**, with 48 years of experience in mine planning and developing mine reclamation plans; **Mr. Brent A. Saper**, a Civil Design Specialist with 29 years of experience with mine drainage treatment and site civil engineering; **Mr. Albert J. Budinsky**, a Civil Designer with 28 years of experience including surface and underground mine planning, geologic investigations, and mine drainage and permitting; **Mr. Edward Lesny, P.E., a Geotechnical Engineer** with 53 years of experience in various geotechnical assignments related to slope stability, geotechnical drilling plans and dam embankment stability analysis; **Mr. Daniel J. Johnston, a Senior CAD Designer** with 22 years of experience in preparing mine permit and reclamation drawing and permitting packages; **Mr. Dennis R. Bell, P.G., a Senior Geologist** with 38 years of experience with coal and non-coal reserve assessments and drilling programs; **Mr. Thomas R. Johnston, Jr., an Assistant Vice President and Senior Biologist** with 31 years of experience in wetland and stream permitting for the mining industry; and **Mr. Luke E. Smeltz, CPSS, a Soil Scientist** with over 28 years of experience with a wide range of soil investigations.



**EDUCATION:**

M.S., Agricultural Engineering, 1980, The Pennsylvania State University

B.S., Agricultural Engineering, 1979, The Pennsylvania State University

**PROFESSIONAL REGISTRATIONS AND CERTIFICATIONS:**

Professional Engineer, WV, MD, PA, NJ, DE, TN, NC, NM

**RELEVANT TRAINING:**

Rosgen Level I, "River and Stream Classification/Fluvial Geomorphology Stream Restoration" Short Course, Dave Rosgen, Professional Hydrologist, 1996

Rosgen Level II, "River Morphology and Applications" Short Course, Dave Rosgen, Professional Hydrologist, Pagosa Springs, Colorado, 1997

Rosgen Level III, "River Assessment and Monitoring" Short Course, Dave Rosgen, Professional Hydrologist, Pagosa Springs, Colorado, 1997

Rosgen Level IV, "River Restoration and Natural Channel Design" Short Course, Dave Rosgen, Professional Hydrologist, Pagosa Springs, Colorado, 1997

**YEARS OF EXPERIENCE:**  
35 Years

A licensed Professional Engineer, Mr. Longenecker has 35 years experience in the engineering consulting field. This experience has been gained through the management and technical participation in a broad range of projects including mine reclamation and mine drainage treatment, stream restoration, watershed assessments, stormwater management, solid waste handling, industrial and sanitary wastewater treatment, dam safety, water resources engineering, and wetland-related evaluations. As Vice President and an Associate of the firm, Mr. Longenecker provides various levels of oversight, management and technical direction on the company's civil and environmental engineering projects performed in its various multi-state office locations.

**PROFESSIONAL EXPERIENCE**

**Mine Reclamation and Acid Mine Drainage Treatment** – Mr. Longenecker served as principle engineer and project manager on numerous active and reclaimed coal and non-coal mine sites throughout the Mid-Atlantic and Southern states regions. Project management responsibilities have included projects involving the development and oversight of geotechnical testing plans for embankment and slope stability and evaluating remedial measures. Technical project assignments have involved developing water management and site reclamation plans to stabilize sites and control mine drainage. Assignments have involved the management and design of a mine drainage treatment system at a 1,500-acre coal mine. The project focused on the restoration of the impacted receiving streams and improving water quality sufficiently to support native aquatic life. Efforts included coordinating efforts to secure OSM phased bond release, performing water balances, hydrogeologic assessments, NPDES permit revision negotiations, evaluation and design of passive mine drainage treatment systems, and general permit coordination with the federal and state regulatory agencies. Following phased bond release for site stabilization, additional refinements for implementing passive mine drainage treatment are ongoing at the present time. Evaluated the economics and performance of chemical treatment and passive treatment systems used for treating degraded water quality at a reclaimed surface coal mine preparation plant. Primary drainage sources included a gob pile, slurry lakes, and upgradient abandoned mine lands. Other assignments have included mine pool pumping to control acid mine drainage seepage, passive and active (chemical addition) mine drainage treatment system design and NPDES permit negotiations for treatment system discharges. Mr. Longenecker has also made technical symposium presentations on the passive treatment of acid mine drainage.

**Erosion and Sedimentation Control/NPDES Stormwater Permits** - Prepared Erosion and Sedimentation Control Plans for a variety of project that have involved earth disturbances and land use changes. These have included temporary and permanent control features and have involved the use of several stabilization techniques. Performed watershed and drainage area assessments to evaluate and stabilize sedimentation sources and reduce loadings designed to improve water quality and the development of mitigation measures to address sedimentation pollution achieve TMDL waste load reductions.

**Natural Stream Restoration** - Completed approximately 100 projects using fluvial geomorphology (FGM) methodologies and natural stable channel techniques for stream restoration and relocation. Stream designs have incorporated pools, runs, and riffles into the stream bottom to enhance aquatic life and dissipate energy. Stabilization designs have included cross rock weirs, rock vanes and restoration techniques consisting of streambank grading,



fencing, and establishment of riparian buffer zones. Directed the classification of miles of stream using FGM to identify locations for stabilization and restoration. Provided training sessions to introduce Department of Transportation (DOT) personnel to FGM principles in both Pennsylvania and New York. Served as Project Manager for mitigation projects throughout the Northeast and MidAtlantic states.

**Stormwater Management** - Managed the design of numerous stormwater runoff control facilities in accordance with current Best Management Practices to reduce runoff volume, control peak runoff rates, and improve water quality. Projects have been designed in accordance with various Stormwater Best Management Practices manuals and regulatory guidance documents. Benefits included the control of runoff volume, flooding events, and peak runoff rates as well as to limit the pollutant and sediment loads experienced by downstream areas. Directed the analysis of stormwater control facilities where the analysis was focused on evaluating innovative and alternative techniques which would enhance groundwater recharge while controlling pollutant loads. Supervised numerous watershed modeling projects using HEC-RAS and HEC-HMS models for stormwater retrofit projects and floodplain analysis and developed design bases for culverts and bridge crossings.

**Wetland Delineation, Mitigation, and Restoration** - Directed numerous wetland restoration projects under enforcement actions by the U.S. Army Corps of Engineers for compliance with the Clean Water Act. These project sites have involved unpermitted fill placement at a townhouse development and construction site. Supervised numerous wetland mitigation projects in conjunction with obtaining permits from regulatory agencies. Activities have included modification and modeling of the site to support hydrology, planting/seeding specifications, construction supervision, and long-term monitoring to evaluate success. Managed more than 150 wetland delineations in coastal tidal marsh and inland undisturbed areas in accordance with state and federal methodologies and requirements.

## PROJECT EXPERIENCE

**Sequatchie Valley Coal, Dunlap, TN** - Assignments involved the management and design of a mine drainage treatment system at this 1,500-acre reclaimed coal mine. The project focused on the restoration of the impacted receiving streams and improving water quality sufficiently to support native aquatic life. Efforts included coordinating efforts to secure OSM phased bond release, performing water balances, hydrogeologic assessments, NPDES permit revision negotiations, evaluation and design of passive mine drainage treatment systems, and general permit coordination with the federal and state regulatory agencies. Following phased bond release for site stabilization, additional refinements for implementing passive mine drainage treatment are ongoing at the present time.

**First Hollow Run, Carbon County, PA** - At this coal refuse reclaimed site, the project involved the restoration and stabilization of very high gradient Exceptional Value stream channel confined within a 25-foot deep ravine formed mine spoil. Mr. Longenecker and the design team used an innovative step-pool approach that incorporates keystone step structures. The project was constructed in two phases and the entire project site was heavily planted with native trees and shrubs following completion of the channel restoration work. Ongoing monitoring at the site confirms that the stream channel has maintained its stability and has redevelop aquatic function and value.

**Confidential Client** - Evaluated the economics and performance of chemical treatment and passive treatment systems used for treating degraded water quality at a reclaimed surface coal mine preparation plant. Primary drainage sources included a gob pile, slurry lakes, and upgradient abandoned mine lands.

**Hicks Creek Stream Restoration, Eastern Pennsylvania Coalition of Abandoned Mine Reclamation** - Skelly and Loy, Inc. was contracted Eastern Pennsylvania Coalition for Abandoned Mine Reclamation to complete a natural stream channel design using fluvial geomorphic (FGM) principles for Hicks Creek in Luzerne County, PA. This project was one of the first watershed restoration projects which was prioritized in a comprehensive watershed restoration plan, also previously completed by Skelly and Loy. The Hicks Creek watershed encompasses approximately 4 square miles and contains approximately 4.5 miles of perennial stream channel, portions of which flow over areas previously subjected to intensive underground mining activity. In these abandoned mine areas, significant quantities of stream flow were being lost to infiltration into these underground mine areas. Additionally, extremely unstable stream channel conditions were generating hundreds of tons of sediment to downstream portions of the watershed. Skelly and Loy's design included aspects to minimize infiltration losses while restoring natural stability and aquatic habitat to the stream channel. The project is currently in the final stages of permitting agency review.





**Nolichucky Sand Company, Inc., Mine Site Stream Stabilization Project, TN** - Mr. Longenecker managed this active sand and gravel mine site project which included field data collection activities and engineering design to implement stream relocation/rehabilitation utilizing fluvial geomorphology methods. Design preparation included plans, profiles, sections, and details for the proposed stream route, width, depth, and slope, habitat structures, and energy dissipating structures. Mr. Longenecker directed the preparation of federal and state permits. Supervised the performance of on-site surveying using conventional and global positioning system to generate engineering drawings. Construction of this project needed to be completed without interruption of active haul roads and mine site operational activities.

**Vulcan Materials, Knoxville, TN** – Mining activity at this active limestone aggregates quarry were being impacted by groundwater infiltration. The source of this water originated from the perennial stream that flowed immediately adjacent to the active highwall at the site through underlying fractured bedrock. Mr. Longenecker served as lead project engineer for the design of a relocation of this stream channel, including the incorporation of a liner material to eliminate loss of stream flow to the quarry. Natural stream channel (fluvial geomorphic) principles were used for the design of the relocated stream channel. The project entailed securing all regulatory approvals and environmental clearances for the stream relocation.

**WV Route 9, Charlestown to Virginia State Line, Post-ROD Studies, Jefferson County, WV. Client: West Virginia Division of Highways** - As part of this overall highway design effort, Mr. Longenecker managed the engineering and design efforts required to incorporate natural stream channel design concepts into the stream relocation effort associated with the proposed West Virginia Route 9 segment from Charles Town to Virginia state line, Jefferson County, West Virginia. This project will relocate approximately 1,880 linear feet of Grog Spring Run. Natural stream channel techniques are being integrated to satisfy special conditions of an Army Corps of Engineers Permit. In developing a successful stream relocation plan, it was important to first know the type of stream that exist at the project site. Classifying the stream type present within the study area was completed in the initial steps of this work phase by using field measurement of stream dimension, pattern, and profile. These measurements were collected from the three project areas to define existing stream conditions and stream types based on the Rosgen stream classification system. An analysis was then completed for the proposed relocation routes to determine site controls and conditions which would represent limitations on the relocation design.

Skelly and Loy identified the location of suitable reference reach streams in the study area using aerial photography and U.S.G.S. quadrangle analysis and field reconnaissance which were then used as design models for the project as necessary to meet the design requirements. U.S.G.S. gage sites for the Shenandoah River and other stable channel reaches within the drainage basin were evaluated in order to develop FGM channel dimensions, patterns, and profiles characteristic of stable channel reaches of the same stream type as determined by the concept design. This information was used to determine design data applicable to the study area. All plan sheets were developed in compliance with applicable WVDOH Design Directives and Specifications. Skelly and Loy also developed Special Provisions required for the bidding and construction of the project.

**Meadowbrook Road Natural Stream Channel Design, Harrison County, WV. Client: West Virginia Division of Highways** - Skelly and Loy, Inc. applied natural stream channel concepts to design the relocation of a stream in association with the reconstruction of Meadowbrook Road in Harrison County, West Virginia. This project will relocate approximately 1,300 linear feet of Simpson Creek within the project area. The originally proposed channel relocation was redesigned by Skelly and Loy to incorporate natural stream channel principles to satisfy special conditions of an Army Corps of Engineers' permit. Incorporating design parameters that typify a natural channel proved to be quite a challenge due to horizontal and vertical constraints resulting from terrain and the proposed roadway design. This challenge was compounded by the fact that Simpson Creek has been impacted by numerous anthropogenic activities throughout the last several decades.

**Lodgeville Road Natural Stream Channel Design and Wetland Mitigation, Harrison County, WV. Client: West Virginia Division of Highways.** - Skelly and Loy, Inc. applied natural stream channel concepts to design a proposed stream relocation associated with the construction of Lodgeville Road in Harrison County, West Virginia. This project relocated approximately 600 linear feet of an unnamed tributary to Simpson Creek within the project area. The originally proposed channel relocation was redesigned by Skelly and Loy to incorporate a combination of natural stream channel principles and bioengineering to satisfy special conditions of an Army Corps of Engineers' permit.

**GERALD W. LONGENECKER, P.E.**  
**Associate, Vice President, Engineering Services**



Incorporating design parameters that typify a natural channel proved to be quite a challenge due to horizontal and vertical constraints resulting from terrain and the proposed roadway design. In this case, physical constraints including the embankment of Interstate 79 limited the available area to a point where a pure natural channel design was not possible. Skelly and Loy incorporated a number of techniques, some typical of natural channel design and some bioengineering concepts, that provided a stable stream reach. The existing stream within the project area had been impacted by numerous anthropogenic activities, including mining, development, highway construction, railroads, etc. Skelly and Loy was also responsible for design of a wetland mitigation site that would replace those wetlands lost from construction of the new roadway. A mitigation site was identified in the headwaters of the tributary within 1/4 mile of the stream relocation and adjacent to the roadway project. A 0.65-acre mitigation site was designed entirely within West Virginia Division of Highways right-of-way, thus requiring no property acquisition. This wetland, in addition to providing functions and values to the impacted wetlands, helps to provide flood storage and treat mine drainage that currently enters the stream.



**EDUCATION:**

B.S., Mining Engineering,  
1966, The Pennsylvania State  
University

SOHIO Program for Middle  
Managers, 1984, University of  
New Hampshire

**PROFESSIONAL  
REGISTRATIONS AND  
CERTIFICATIONS:**

Professional Engineer, West  
Virginia, Virginia, Kentucky,  
Pennsylvania and Indiana

**CONTACT INFORMATION:**

(276) 698-6474 - Mobile  
rgolkosky@gmail.com

**YEARS OF EXPERIENCE:**

46 Years

Mr. Golkosky is a registered professional engineer with extensive experience in all facets of the coal mining industry. He has worked in senior management, operations, engineering, project management, acquisitions and consulting for several major mining and consulting companies. He has provided technical support and expert testimony in several litigation cases.

Areas of specialization include mining project planning and management, reclamation project planning and management, due diligence, mining and reclamation engineering, coal processing, coal handling and refuse disposal, international projects, and litigation support services.

**PROFESSIONAL EXPERIENCE**

- **Associate Consultant** - Skelly and Loy, Inc. (2011-Present)
- **President** - GRE Mineral Services, LLC, Bristol, VA (2010-Present)
- **Senior Consultant** - ATS, Inc., Abingdon, VA (2001-2010)
- **Financial Advisor** - Prudential Securities, Inc. (1999-2001)
- **Senior Engineer** - Peabody Energy (1998-1999)
- **Director** - Underground Services - Marston & Marston, Inc. (1996-1998)
- **Vice President** - Anderson & Schwab, Inc. - Management Consultants (1995-1996)
- **Vice President** - Weir International Mining Consultants (1992-1995)
- **Associate Consultant** - Anderson & Schwab, Inc. (1990-1992)
- **Vice President of Exploration** - Royal Land Co. (1980-1990)

**Mr. Golkosky has also held the following positions.**

- Manager of Mine Planning
- Chief Engineer
- Vice President of Engineering
- Assistant Mine Superintendent
- Production Engineer

**PROFESSIONAL ASSOCIATIONS**

Society of Mining Engineers of AIME  
National Mining Association  
West Virginia Coal Association  
West Virginia Coal Mining Institute  
Kanawha Valley Mining Institute

**DONALD W. POLLY, E.I.T., Mining Engineer**  
**Associate, Vice-President, Technical Services**



DONALD W. POLLY, E.I.T., Mining Engineer, Associate, Vice-President, Technical Services

**EDUCATION:**

Certificate, Accounting, King's College and Harrisburg Area Community College

Certificate, Civil Engineering Program, The Pennsylvania State University

**PROFESSIONAL REGISTRATIONS:**

Engineer-in-Training, PA

**RELEVANT TRAINING:**

Short Courses: Technical Elements of Surface Coal Mining and Land Reclamation; Elements of Underground Coal Mining, The Pennsylvania State University

Blasting Seminar, American Society of Civil Engineers

**YEARS OF EXPERIENCE:**

48 Years

Mr. Polly has a combined total of 48 years of mining and civil engineering project experience. His mining responsibilities include mine planning; reclamation plans; equipment selection and comparisons; preparation of illustrative and technical mining manuals; property evaluations; regulatory compliance cost evaluations; detailed mine design; unit operations scheduling; owning and operating costs determination; cash flow analysis; assessment of geology and reserves quantity and quality; and preparation of coal mining and quarry permits. His civil engineering activities have included the design and preparation of construction and right-of-way plans for several interstate, state, and local highway projects.

**PROJECT EXPERIENCE**

During his 43 years with Skelly and Loy, Mr. Polly has been involved in a variety of mine related projects for both private and government clients. The areas of concentration have been mine planning and reclamation for private clients, and research and development projects for government clients.

His work on surface related mine planning and reclamation activities has included the following projects.

- Texas Quarry Mine Planning, Cockeysville, Maryland
- Acquisition Due Diligence for ECC International, Inc., Baltimore County, Maryland
- Reserve Confirmation Study, Southwestern Ohio Greenfield Site
- Preliminary Underground Limestone Mine Design, Northern Kentucky
- Investigations into Proposed Mining Operations, Reclamation Activities, Power Plant Waste Disposal Requirements, and Contract Negotiations, Albuquerque, New Mexico
- Abandoned Mine Lands Reclamation projects for several sites in Pennsylvania, West Virginia, and Wyoming

**PROFESSIONAL EXPERIENCE**

**Mine Planning** - During his tenure at Skelly and Loy, Mr. Polly has been involved in numerous coal and quarry mining projects throughout the country. He has prepared detailed mining plans for coal operations in all of the mining regions throughout the United States. Planning activities have included unit operation scheduling of equipment and manpower, equipment owning and operating costs, reclamation planning, and mine closure activities. He has participated in several feasibility analyses, resource development evaluations, reserve estimates, coal transportation plans, and permits. Mr. Polly has also prepared numerous Yearly and Life-of-Mine Plan Reserve Estimates and Permits for quarry companies.

**Reclamation Planning** - Mr. Polly's experience in reclamation projects has been extensive. He has involvement with the development of numerous reclamation plans, construction specifications, erosion and sedimentation control plans, and cost estimates for several Abandoned Mine Land (AML) reclamation projects in Pennsylvania, West Virginia, and Wyoming. He has also been engaged in monitoring and inspection of the same. Mr. Polly has prepared and reviewed reclamation plans and cost estimates including ongoing and final reclamation requirements for several coal mine and quarry operations throughout the country. Activities associated with these operations include ongoing and final pit grading; topsoil and subsoil handling; disposal of unsuitable materials; removal of existing haulroads; highwall reduction; facilities



**DONALD W. POLLY, E.I.T., Mining Engineer**  
**Associate, Vice-President, Technical Services**



removal and disposal; erosion and sedimentation control plans; and revegetation.

Mr. Polly has also prepared and evaluated numerous regulatory related "reclamation cost claims" that have resulted from changing regulations. Clients included both mining and utility companies.

During his five years as a technician/designer for Rummel, Klepper and Kahl, Mr. Polly was engaged in the preparation of construction and right-of-way plans for numerous highway construction projects. His work consisted of drainage design, horizontal and vertical geometry, quantity computation, cost estimates, and assistance in the drafting of final plans and cross sections. Mr. Polly also participated in the design and preparation of plans for several roadside rest facilities for the interstate system in Pennsylvania. This assignment included the determination of sites for all buildings and parking areas.

## JOSEPH E. MILLS, Mine Reclamation Specialist



### EDUCATION:

Bachelor of Science in  
Biology, 1979,  
Frostburg State College,  
Frostburg, MD

### YEARS OF EXPERIENCE:

35 Years

Mr. Mills joined Skelly and Loy with a thorough background and knowledge of mining, abandoned mine land reclamation and Acid Rock Drainage control and abatement. During his career, Mr. Mills has designed and supervised the construction of 15 active dosing systems and over 50 passive mine drainage treatment systems. Mr. Mills has performed sample collection and data analysis of treatment system effluent. He has evaluated the effectiveness of these AMD Treatment Systems and has recommended remedial actions to improve system performance when necessary. He has performed field collection of water, soil and benthic organisms. Mr. Mills has conducted numerous tours, for all age groups, of active mine sites, AMD Treatment facilities and abandoned mine reclamation projects.

### PROFESSIONAL EXPERIENCE

**Maryland Department of the Environment, Mining Program** – Mr. Mills served as a Surface Mine Compliance Inspector. He conducted State and Federally mandated compliance inspections of active mine sites on a monthly basis and was the lead inspector in charge of Blasting. These inspections ensured company compliance with State of Maryland mining laws and regulations as well as pertinent Federal laws.

**Maryland Department of the Environment, Mining Program** – Mr. Mills served a lead role in the Acid Mine Drainage Section, and was responsible for the design, bidding, and contracting for construction of AMD Remediation Projects. He developed plans for over 50 passive AMD treatment systems and also for 15 lime dosing units. Mr. Mills oversaw the construction activities of these projects during implementation and was responsible for compliance with environmental permits during construction.

### PROFESSIONAL EXPERIENCE

#### Skelly and Loy, 2015 - Present

**Brinkerton AMD System Modification Project** – Mr. Mills oversaw major modifications to the Maelstrom Aeration devise and to the final discharge structures. Two Weirs were installed to better monitor the total discharge ( $\geq$  5,000 gpm).

**Kolb Polishing Wetland Project** – Mr. Mills is overseeing the design, permitting and construction of the final polishing wetland at this existing AMD treatment facility. This project is being conducted by the Blackleggs Creek Watershed Association.

**Glade Run/Spruell AMD Remediation** – Mr. Mills is actively involved in the grant application, design, permitting and construction of a major modification to the existing AMD treatment project. This project is being conducted by the Western Pennsylvania Conservancy.

**Alpha Natural Resources Environmental Audit** – Mr. Mills is involved in this EPA mandated, third party audit of Alpha Natural Resources mining permits in West Virginia and Kentucky. All aspects of State and Federal environmental permits are reviewed for compliance as are the field conditions at the mine sites. All observations are documented and loaded into a database. Formal write-ups are completed at the conclusion of each audit for submittal to Alpha and to EPA.



**SXO-D9 AMD Treatment Project, Broadtop Township, PA** - Mr. Mills is overseeing the design, permitting and construction of a large, passive, AMD Treatment System. This system is one of many in the watershed, each addressing a different AMD source. This project is being conducted by Broadtop Township (Pa.)

**Sovern-Tichnell AMD Project** – Mr. Mills assisted in the construction inspection duties at this project. This project is being constructed by the Friends of the Cheat, an active watershed group in the Cheat River drainage.

**MDE, Mining Program** – Mr. Mills served as Project Manager for the North Branch Potomac River Lime Doser Project. Installed 7 “lime” dosing units in strategically located sites along the Potomac River to insure complete treatment of the AMD in the River. To supplement the dosers, Mr. Mills also designed and constructed 5 passive AMD Treatment Systems in the watershed. These projects collectively restored over 30 miles of the NB of the Potomac River to a fishable and swimmable River. As a result of this project, both Maryland and West Virginia now stock trout into the river on an annual basis and many small recreation based businesses have developed in and near the watershed.

**MDE, Mining Program** – Mr. Mills served as Project manager for the Aaron Run AMD Remediation Project. He designed and oversaw the construction of 3 passive treatment systems and 1 active, “lime” doser. These projects resulted in Aaron Run being removed from EPA's 303(d) list.

**MDE, Mining Program** – Mr. Mills served as Project Manager for the Casselman River Alkaline Addition Project. He designed and oversaw the construction of 13 leach beds and sand application stations. These projects have resulted in an overall increase in pH of the mainstem of the Casselman River and have resulted in an increase the brook trout populations in various streams.

**MDE, Mining Program** – Mr. Mills served as Project Manager for the Cherry Creek Restoration Projects. He designed and oversaw the construction of 3 passive AMD treatment projects and 1 active, “lime” doser. These projects collectively have been responsible for the development of over 1 mile of restored spawning waters for numerous species of fish. Cherry Creek is now the single most productive spawning waters feeding Deep Creek Lake.

**Maryland Department of the Environment, 1981 - 2015**

**Reclamation Inspector, 1981 – 1995** - Responsible for the review and approval of Mining Plans under SMCRA and Maryland Mining Law and Regulation. Directed the mining and reclamation of 34 surface mines permitted under SCMRA.

**Michael's Run Reclamation Project** - Completed in 1991, located near Barton, MD, that removed and regraded over 9,000 cubic yards of abandoned coal refuse over a 3 acre area. Projects goals were AMD treatment, utilizing Open Limestone Ditches, slope stability utilizing refuse removal and toe of slope stabilization with gabion baskets and rock buttresses.

**Ocean Refuse Removal Project** - Completed in 1991, located near Midland, MD, that removed over 76,000 cubic yards of abandoned coal refuse, reconstructed over 2,000 lineal feet of stream, removed abandoned mine buildings and revegetated the 11 acre project area.

**Eckhart Gob Pile Reclamation Project** - Completed in 1991, removed a dangerous, collapsed drainage tunnel, removed and regraded over 140,000 cubic yards of abandoned coal refuse, re-established the stream channel and revegetated the 8 acre site.

**Lostland Run Coal Waste Stabilization Project** - Completed in 1990, is located near Loch Lynn, MD, included the installation of a mine portal wet seal, the removal of over 7,200 cubic yards of mine refuse from the stream bank, placement of stream bank protection and vegetation of the disturbed area.

**Aaron's Run Road Refuse Reclamation Project** - Completed in 1989, located near Westernport, MD, involved the regrading and revegetation of 8 acres of abandoned coal mine refuse.



**Potomac Hill Reclamation Project** - Completed in 1989, located near Barton, MD, included the installation of 2 wet seals, the removal of a tiple structure, and the reclamation of 2 acres of abandoned coal mine refuse.

**Amish Road/Tarkiln Run Reclamation Project** - Completed in 1986, located near Grantsville, MD, involved the installation of core drains, removal of refuse from the stream bank, removal of a large quantity of illegally dumped used tires, the elimination of over 700 feet of dangerous highwall and the reclamation of over 30 acres of abandoned mine area.

**Casselman Deep Mine Project** - Completed in 1986, located near Grantsville, MD, involved the installation of 3 wet seals and the regrading of 1 acre of abandoned mine area.  
Fund Source: Federal RAMP Appropriation 1986

**Meadow Lake Reclamation Project** - Completed in 1986, located near Grantsville, MD, removed coal refuse from Meadow Run, and regraded and revegetated over 32 acres of abandoned coal mine refuse.

**Ocean Gob Piles Reclamation Project** - Completed in 1992, near Midland, MD, involved the regrading and revegetation of over 13 acres of abandoned coal mine refuse and the removal of dangerous mine structures.

**Wolfden Run Reclamation Project** - Completed in 1992, located near Kitzmiller, MD, removed coal refuse from the channel of Wolfden Run. The project included stream channel reconstruction and regrading of over 5 acres of disturbed area.

**Durst Road Abandoned Mine Reclamation Project** - Completed in 1993, located near Grantsville, MD, involved the elimination of open pits, impounded water, and unstable refuse within the stream banks of the Casselman River and the regrading and revegetation of 38 acres of abandoned coal refuse.

**Bessemer Coal Company, Permit 296, Area "A" Mine Forfeiture Reclamation Project** - Completed in 1992, located near Mt. Savage, MD, involved the reclamation of a 48 acre Bond Forfeited mine permit.

**Jones Coal Company, Permit 376 Mine Forfeiture Reclamation Project** - Completed in 1993, located near Friendsville, MD, involved the reclamation of a 34 acre, Bond Forfeited mine permit.

**Bessemer Coal Company, Permit 296, Area "F" Mine Forfeiture Project** - Completed in 1993, located near Mt. Savage, MD, involved the reclamation of a 20.5 acre, Bond Forfeited mine permit.

**Delta Coal Company, Permit 378 Mine Forfeiture Reclamation Project** - Completed in 1997, located near Frostburg, MD, involved the reclamation of a 40 acre, Bond Forfeited mine permit.

**Oliver Mining Company Permit 233 Mine Forfeiture Reclamation Project** - Completed in 2001, located near Barton, MD, involved the reclamation of 20 acres in conjunction with an active surface3 mine.

**Shallmar Coal Refuse Stabilization Project** - Completed in 2003, located near Shallmar, MD, included the installation of 3 wet seals, the routing of discharging AMD, the installation of a Lime Doser to treat the AMD, and the regrading of over 26 acres of abandoned mine refuse.

**Kitzmiller Coal Waste Stabilization Project** - Completed in 2003, located near Kitzmiller, MD, involved the removal of burning mine refuse, extinguishing the fire, removal of refuse in the Potomac River, establishment of discharge channels and the regrading and revegetation of 16 acres of abandoned mine refuse.

**Oak Hill Landslide Stabilization Project** - Completed in 2003, located near Lonaconing, MD, stabilized a coal refuse landslide to eliminate blockage in the stream channel of Georges Creek, construction of a drainage channel the convey AMD away from the refuse material and the regrading and revegetation of 6 acres of coal refuse.

**Mill Run II Abandoned Mine Reclamation Project** - Completed in 2006, located near Barton, MD, involved the removal of abandoned deep mine support structures, regrading of 2.5 acres of coal refuse, and the restoration of 200 feet of stream channel.

## JOSEPH E. MILLS, Mine Reclamation Specialist



**Zilman Deep Mine Closure Project** - Completed in 2009, located near Zilman, MD, involved the installation of a steel, Bat Gate to prevent human access into the underground mine workings while preserving bat habitat.

### PUBLICATIONS

“North Branch of the Potomac River Doser Project: An Update”, Presented at 19th Annual National Association of Abandoned Mine Land Programs Conference in Pittsburgh, PA, November 1998

“The Recovery of the North Branch: 1940 to 2000 and Beyond”, Presented at the 21st West Virginia Surface Mine Drainage Task Force Symposium, April 2000

“Windmills of Your Mine: Treating Acid In Drainage in Maryland”, Presented at the 22nd Annual National Association of Abandoned Mine Land Programs Conference in Steamboat Springs, Colorado, October 2000

“Acid Mine Drainage: An Overview”, Presented at the Chesapeake Bay Foundation's Winter Education Conference, Tilghman Island, Maryland, February 2001

“Mill Run: Recovery of a Small Stream in Western Maryland”, news article in MDEnvironment, August 2001

“The Recovery of the North Branch: 1940 to 2000 and Beyond”, Presented at the 22nd Annual National Association of Abandoned Mine Land Programs Conference in Athens, Ohio, August 2001

“Mill Run: Recover of a Small Stream in Western Maryland using Limestone Sand Application and Pulse Limestone Bed Technology”, Presented at the 23rd Annual National Association of Abandoned Mine Land Programs Conference in Lexington, Kentucky, July 2002

“The North Branch of the Potomac River: Results of Two Years of Lime Dosing”, Presented at the 23rd West Virginia Surface Mine Drainage Task Force Symposium, April 2004

“Mining in Maryland”, Presented to “Leadership Allegany”, November 2004

“Acid Mine Drainage Abatement in Maryland”, Presented at the West Branch Susquehanna River Restoration Symposium, March 2005

“Acid Mine Drainage in Maryland: Past, Present, and Future”, Presented at the Maryland Biological Stream Survey Annual Conference, July 2005

“The North Branch of the Potomac River: Achieving Watershed Scale Restoration Success”, Presented at the West Branch Susquehanna River Restoration Symposium, March 2007

“Elementary School Visits Limestone Doser”, news article in MDEnvironment, June 2007

Numerous Power Point Presentations to local Civic Organizations and local Watershed Associations

### AWARDS, ACTIVITIES and MEMBERSHIPS

2000 “Good Neighbor” Award, Nemaquin Chapter of Trout Unlimited

2005 “Good Neighbor” Award, Youghiogheny Chapter of Trout Unlimited

Member, Acid Mine Drainage Subcommittee of the Maryland State Water Quality Advisory Committee

Vice President of the Western Maryland Chapter of the National Wild Turkey Federation

Member of Trout Unlimited

Member of the Rocky Mountain Elk Foundation



## EDUCATION:

B.S., Chemistry, 2006,  
Clarion University of  
Pennsylvania

M.S, Geology, 2013, West  
Virginia University

## YEARS OF EXPERIENCE:

7 Years

Mr. Denicola joined Skelly and Loy with a thorough background in geochemistry, geology, and hydrology, having studied and worked in watershed remediation, university and laboratory settings, and quality control over seven years duration. During that time, Mr. Denicola performed mine drainage research studies at two universities, managed several mine drainage remediation projects, facilitated a mine pool geotechnical study, composed a watershed based plan, and acquired funding for several additional projects. He also managed administrative, educational, and outreach components for a non-profit with an emphasis in watershed restoration. As a result, Mr. Denicola is adept at assessing mine water contamination issues and developing remediation efforts, communicating with the necessary agencies for funding and permitting, and developing and managing remediation and institutional budgets. During this time he performed field data collection and laboratory analysis, evaluated flow rates, audited passive and active AMD treatment systems, maintained databases, worked with landowners, and local, state, and federal agencies, and conducted software based geochemical and statistical evaluations related to mine water discharge and the associated contamination issues.

## PROFESSIONAL EXPERIENCE

### **Friends of Deckers Creek, Water Remediation Project Manager and Interim Executive Director** - Mr. Denicola responsibilities included:

- Managed all stages of project completion, i.e., assessment of contaminate sources, funding, permitting, engineering, construction, analysis, reporting, and maintenance of water quality improvement projects.
- Developed annual water remediation budgets, successfully acquired funding toward additional water quality improvement projects and administrative requirements.
- Communicated with, and obtained legal, notarized right-of-entry agreements with landowners.
- Conducted extensive field chemical and hydrologic sampling and maintained database.
- Organized and managed community outreach, volunteer, and fundraising activities. Managed administrative duties, institutional budgets, employees, and finances.
- Supported water remediation program, concurrently progressed multiple projects, obtained various permits, communicated with various local, state, and federal agencies, composed extensive progress and financial reports, improved several miles of stream.

### **West Virginia University, Department of Geology - Research Student and Graduate Teaching Assistant** - Studied the fundamentals of structural geology, sedimentology, and stratigraphy. Composed thesis entitled:

"Geochemistry of Mine Pool Discharges in the Pittsburgh Coal Basin."  
Conducted field chemical and hydrologic sampling, performed laboratory analysis and QA/QC. Interpreted geochemical and hydrologic data utilizing "ArcMap, PHREEQc, and R" software. Taught entry level geology curriculum, assisted various in-state and national geology courses.

**Home Shopping Network, QA Product Evaluator** - Worked within QA Chemically Regulated Division, evaluated within FTC and FDA standards. Examined physical samples, organized inspections, and interpreted inspection reports. Analyzed risk and ensured product retail claims are scientifically substantiated. Communicated company wide, nationwide and overseas to





organize logistics processes. Monitored manufacturing from raw materials to completion. ng from raw materials to completion.

**National Forensic Science Technology Center, Laboratory Technician** - Validated drug kits for sensitivity/specificity to various cutting agents at varying concentration. Developed presentation of findings in regard to validation study to be presented in Washington D.C. Participated in validation of portable field unit GC/MS/MS.

### PROJECT EXPERIENCE

**Evaluation of Titanium Dioxide Semi-Conductors for Iron Oxidation** - As an undergraduate Mr. Denicola participated in a study that utilized ultraviolet radiation stimulated titanium oxide semi-conductor to expedite iron oxidation in abandoned mine discharges characterized by net-alkaline pH and high ferrous iron concentrations. Large scale application has yet to be utilized, but the fundamentals warrant further research.

**Diurnal Cycling of Selenium in Fly-Ash Pond Discharges** - As a graduate student, Mr. Denicola participated in a study that investigated diurnal cycling of selenium in coal fired fly ash pond discharges. The purpose was to evaluate co-precipitation with other metals on a diurnal cycle and to incorporate this into future remediation techniques. Ultimately, diurnal cycling was not observed during this study, but the research provided insight into geochemical processes relevant to the mining industry today.

**Geochemistry of Flooded Underground Mine Pools in the Pittsburgh Coal Basin** - As a graduate student, Mr. Denicola participated in a study to characterize waters of flooded underground mine pools. Though abandoned mine drainage is typically associated with high acidity, iron, aluminum, and manganese, geochemical and statistical techniques revealed a range of mine water classifications, both natural and anthropogenic induced.

**Kanes Creek South Site #3, Preston County, West Virginia** - Several acid mine discharges impairing Dills Run in Preston County, WV, required development of a passive remediation system. Mr. Denicola oversaw final stages of system design, construction storm water permitting, and WV Non-Point Source (NPS) 319 and Office of Surface Mining (OSM) Watershed Cooperative Agreement (WCAP) grants management, as well as conducted construction oversight and completion of pre and post-construction monitoring. The final system ultimately consists of a flushing limestone bed followed by two settling ponds in series. The system is successfully neutralizing all acidity, introducing residual alkalinity, and is removing all metals to analytical minimum detection limits.

**Satcher Pre-Treatment Pond (SPTP)** - The SPTP was constructed to handle severe AMD characterized by high acidity, iron, and aluminum. In 2013, the system required refurbishment. Chemical and hydrologic assessment, funding acquisition, design, and construction were completed by Mr. Denicola and the landowner. The resulting system is an improved flushing limestone bed with improved hydrologic capacity, acid neutralization, and metals removal.

**Slabcamp Tributary AMD Remediation, Preston County, West Virginia** - Four severe AMDs are impairing a tributary to Slabcamp Run and a 5.4 acre wetland in Preston County, WV. Mr. Denicola completed pre-construction monitoring, execution of landowner right-of-entry agreements, acquisition of an environmental consulting firm, communication with the U.S. Army Corps of Engineers (USACE) regarding Nationwide 27 permitting, communication with State Historic Preservation Office (SHPO) to complete a Section 106 review, communication with WV Department of Natural Resources (WVDNR) to complete a National Environmental Policy Act (NEPA) review and composed an Environmental Assessment (EA), communicated with Region VI Planning and Development Council for the necessary consultation letter, and assisted development of a conceptual design. Final stages of design and permitting are underway and the system will ultimately proceed to construction in 2015.

**Ingrand Mine AMD Remediation, Preston County, West Virginia** - Two severe AMDs impairing Dills Run, Preston County, WV, required development of a passive remediation system. Mr. Denicola oversaw pre-construction monitoring, completion of land purchase through execution of a sub-divided land deed, acquisition of an environmental consulting firm, communication with the U.S. Army Corps of Engineers, SHPO, NEPA, and Region VI, and assisted development of a final design with associated specifications, bid, and contract documents. Scheduled for construction in 2015, the passive treatment system will utilize a flushing limestone leach bed, two settling ponds, an anaerobic vertical flow wetland (AVFW), and a polishing wetland.



**Valley Point #12 Refurbishment, Kanes Creek South Site #1 and Valley Highwall #3 Upgrades** - After years of successful acid neutralization and metals load reductions at numerous systems within the Deckers Creek Watershed, system efficacy had reduced at several and refurbishments were necessary. Mr. Denicola oversaw extensive system assessments and coordinated with landowners and the Deckers Creek Restoration team to facilitate improvements. The result was award of funding for two projects, a completed design for one, and a funding request in process for the final system.

**Successive Alkalinity Producing System and Active Lime Doser Assessments** - As a responsibility of project management, Mr. Denicola thoroughly audited all existing systems within the Deckers Creek watershed. The most extensive audits were conducted at a successive alkalinity producing system (SAPS) that utilizes flushing limestone leach beds, settling ponds, and an anaerobic vertical flow wetland (AVFW). Chemical, hydrologic, and redox potential data was collected and geochemical software was utilized to evaluate the iron reducing capability of the AVFW, which ultimately proved to be highly successful. The SAPS was receiving AMD with pH=2.6, and high ferric iron and aluminum concentrations, and was discharging water of circum-neutral pH with metals below minimum detection limits. The AVFW alone displayed a redox potential of -0.093 V and conversion of all ferric iron into the ferrous form. In addition, The Deckers Creek watershed utilizes two active, tipping bucket lime dosers for neutralization of severely degrading AMD. Mr. Denicola thoroughly audited both active systems through a series of geochemical sampling and evaluation techniques. The results of the audits substantiated the necessity of future funding for refurbishment.

**Richard Mine Geotechnical Study** - The Richard mine discharges 400 gallon per minute of water characterized by pH=4.0 and high iron and aluminum concentrations. The discharge emanates from a partially flooded mine pool within a 2300 acre mining complex. Treatment will require a full-scale active facility and to assess the design requirements Mr. Denicola oversaw acquisition of an environmental consulting firm for successful installation of a 342' deep monitoring well. To facilitate the project Mr. Denicola executed a notarized landowner entry agreement, obtained and evaluated mine maps, and utilized field pumps and transducers to monitor water level and chemistry of the Richard mine pool.

**Clean Creek Program** - Since 2002, the Friends of Deckers Creek has participated in the Clean Creek Program (CCP) which consists of quarterly chemical, biological, and flow sampling at thirteen key locations along the twenty-four mile length of Deckers Creek. In addition, collected data is compiled into an annual State of the Creek report for distribution to community members and funding agencies. Mr. Denicola took an active role in performing CCP duties, funding acquisition, and report writing.

**Watershed Based Plan and Quality Assurance Protection Plan** - As a responsibility of project management, Mr. Denicola composed a Watershed Based Plan (WBP) and Quality Assurance Protection Plan (QAPP) for approval by the U.S. Environmental Protection Agency (EPA). The WBP identifies priority remediation sites to meet compliance with West Virginia Department of Environmental Protection (WVDEP) Total Maximum Daily Loads (TMDL) requirements for the WV 303(d) list of impaired streams. In addition, Mr. Denicola composed a QAPP to ensure EPA accepted sampling and data handling protocols were being utilized universally across all staff members and sampling events within the watershed.

## RELEVANT TRAINING

During 2013, Mr. Denicola participated in 15 hours of advanced AMDtreat Mine Drainage Cost Calculation software training provided by the U.S. Office of Surface Mining.

During 2013, Mr. Denicola participated in an 8 hour Construction Oversight workshop hosted by the West Virginia Department of Environmental Protection to aide watershed remediation project managers in addressing the critical details of AMD treatment system construction.

During 2013, Mr. Denicola participated in an 8 hour Action Planning workshop hosted by West Virginia Department of Environmental Protection to aide non-profits in project development.





**PUBLICATIONS**

Denicola, T. 2013. Geochemistry of Mine Pool Discharges in the Pittsburgh Coal Basin. West Virginia University Electronic Thesis and Dissertation. August, 2013.

*In Proceedings*, Geological Society of America, Denver, Colorado; October 2013:  
Geochemistry of Mine Pool Discharges in the Pittsburgh Coal Basin. Paper No. 245-9.

Updates to Deckers Creek Watershed Based Plan. Friends of Deckers Creek, Monongalia County, WV. November 2014.

**PROFESSIONAL AFFILIATIONS**

Previous member of the following organizations:  
Sigma Gamma Epsilon, Student Chapter, 2010 – 2013  
American Chemical Society, Student Chapter, 2003 – 2006

## BRENT A. SAPEN, Civil Design Specialist



### EDUCATION:

B.S., Structural Design and Construction Engineering Technology, 1987, The Pennsylvania State University

### YEARS OF EXPERIENCE:

29 Years

With over 29 years of experience, Mr. Sapen serves as a Project Manager within the Engineering Services Group of Skelly and Loy, Inc. He has direct project-related experience in the fields of civil engineering and design, mining, and environmental engineering. Mr. Sapen has been involved in the preparation of site development plans for many commercial, residential and industrial construction projects. His experience in land development has included the preparation of site development plans, contract documents, highway occupancy permits, and local and State permit applications. The work associated with these projects includes site grading, bituminous and cement concrete pavements, sidewalks, curbing, retaining walls, erosion and sedimentation control planning, and stormwater management. Mr. Sapen also performs map development and prepares the required design and permit drawings.

He has prepared numerous acid mine drainage passive treatment system designs for sites throughout Pennsylvania and West Virginia. The systems included anoxic limestone drains, limestone ponds, sulfate bacteria reducing beds, and vertical flow wetlands. He also prepared zoning applications for Marcellus Shale projects and conducted core drilling and sampling, erosion and sedimentation control planning, foundation and retaining wall designs, bituminous and cement concrete pavement designs, and the design of wetland habitat replacement and stream relocations. Mr. Sapen has also provided inspection services for the concrete pavements, and structural steel building systems.

### PROFESSIONAL EXPERIENCE

**Mine Drainage** – The work associated with mine drainage included the design of passive treatment systems for various clientele including watershed associations, municipalities, army corps of engineers, mining companies, and private individuals. The passive treatment system designs included layout and grading of vertical flow wetlands, limestone ponds, anoxic limestone drains, and sulfate bacteria reducing beds. The total treatment system also included the design of treatment ponds, wetland areas, and channels. Upon design completion, quantity takeoffs were performed and construction cost estimates prepared for the treatment systems.

**Land Development Planning** - Preparation of numerous subdivision and land development plans for commercial, residential, and industrial construction projects. His land development experience includes preparation of site development plans, contract documents, and local and State permit applications in addition to Schematic Design Phase Reports, Parking Studies, and PennDOT Highway Occupancy Permit plans. He has managed various projects that included design of drainage corrections, site layout and grading, stormwater management design, and erosion and sedimentation control as well as construction inspection and monitoring. In addition, Mr. Sapen also was involved with numerous ALTA/ACSM Surveys for various clients.

**Site Development** - Preparation of site development plans for various projects for TYCO Electronics (formerly AMP, Inc.). Work performed included a site grading plan, design of a railway siding, erosion and sedimentation control planning, pavement design, stormwater management, and the preparation of all local permit applications. Performed site investigation to determine sources of groundwater and/or surface waters discharging through wall/floor joints at the AMP, Inc., Headquarters Building in Harrisburg, PA.



**Land Surveying** - Prepared ALTA/ACSM survey plans for the acquisition of existing quarry and asphalt plant operations located on three separate sites for U.S. Silica Company as well as for a large warehousing facility, two quarry sites in eastern Pennsylvania, and an industrial facility in Harrisonburg, Virginia.

## **PROJECT EXPERIENCE**

**Valley Point #12 Abandoned Mine Drainage Remediation Project, Preston County, WV** - Skelly and Loy was hired to provide engineering and environmental services to remediate the AMD from two discharges located at this site. The engineering design called for the collection of the discharges in a limestone leach bed for pre-treatment. Mr. Sapen provided engineering design services in preparation of the design drawings which included layout, grading, details, and cut/fill and storage volumetric calculations.

**Porter Tunnel Mine Seal, Schuylkill County, PA** - Skelly and Loy was hired to resolve structural issues associated with the tunnel as well as water treatment concerns with the tunnel discharge. As part of this effort, a wet mine seal was designed for the Porter Tunnel as well as two conventional mine seals at associated air shaft and access points to the mine. Mr. Sapen provided engineering design services in preparation of the design drawings which included layout, grading, and details.

**Glade Run Drift Mine Discharge, Fayette County, PA** - Skelly and Loy in coordination with The Chestnut Ridge Chapter of Trout Unlimited, is continuing the effort to restore the Youghiogheny River by addressing Acid Mine Drainage discharges to Glade Run. Skelly and Loy's role in this project included treatment system design, construction oversight, and final water quality monitoring. The project utilized a two-phased approach with each using Anoxic Limestone Drain Technology. For this effort, Mr. Sapen assisted the Project Manager in preparation of the engineering design drawings for the proposed treatment system.

**Big Run #2 Acid Mine Drainage Discharge Treatment, Indiana County, PA** - Skelly and Loy was contracted to complete the engineering design and permitting of the passive treatment system of the Big Run #2 discharge into Blackleggs Creek. The goal of the project was to construct and operate a passive AMD Treatment system to reduce the aluminum and acidity loads while adding some excess alkalinity to Big Run and Blackleggs Creek. For this effort, Mr. Sapen provided engineering design services in preparation of the design drawings which included layout, grading, and details.

**Kelly's Creek Water Quality Assessment/AMD Remediation, Kanawha County, WV** - Skelly and Loy completed engineering and environmental services to remediate the AMD throughout the Sugarcamp Branch and Horsemill Branch sub-basins. Services included site investigations and measurements, aquatic resource investigations, water quality sampling and testing, engineering design, state and local federal agency coordination, and assistance in permitting. Mr. Sapen assisted in the preparation of the engineering design drawings and bid documents for the project.

**Kettle Creek Watershed Acid Mine Drainage Remediation, Tioga and Potter Counties, PA** - Mr. Sapen prepared the conceptual designs and cost estimates of passive treatment systems for approximately 50 separate mine drainage sites throughout the Kettle Creek watershed located in Tioga and Potter Counties in north-central Pennsylvania. The passive treatment systems included anoxic limestone drains, limestone ponds, sulfate bacteria reducing beds, and vertical flow wetlands, as well as ponds and wetlands. This project was performed for the U.S. Army Corps of Engineers.

**Broad Top Township, PA** - Mr. Sapen has served as the Civil Design Specialist for the design, permitting, and construction of more than a dozen passive AMD treatment systems in Broad Top Township. Mr. Sapen assisted in the design and permitting associated with the passive treatment systems. Some of the projects required the use of mine seals, mine pool manipulation, and treatment technologies capable of treating high flow and/or high level acidity discharges.

**PennDOT I-99 Sections A-12 and C-12, State College, PA** - Mr. Sapen served as Civil Design Specialist and assisted in the preparation of design drawings and permitting of the active chemical treatment systems at the site. Mr. Sapen assisted in the design of the grading, contouring, and covering of two of the pyritic fill areas to prevent runoff infiltration and helped design the associated stormwater runoff handling system for the impervious areas.



**Orbisonia-Rock Hill Joint Municipal Authority, Hungtingdon County, PA** – Mr. Sapen served as Civil Design Specialist for the design and permitting for two municipal water projects. One project included preparation of design drawings and a Highway Occupancy Permit package for the replacement of an existing water main. The second project involved preparation of subdivision and land development plans for the design of a new water tank and associated water mains.

**Nixon Park, York County, PA** - Mr. Sapen was the project designer for an approximately 155 feet long, low-profile, pedestrian boardwalk over and across a wetland area and stream channel. The primary boardwalk section was four feet in width built on concrete piers, pressure treated lumber for posts, beams, and joists, and composite decking boards for the finished surface. There are two “bump-outs” offset off the main boardwalk path as an observation deck. The boardwalk was designed as a low profile walkway. The boardwalk crosses a stream channel which required a guard/railing on the two sides of the boardwalk.

**Friends of the Wissahickon, Valley Green Road, Philadelphia, Philadelphia County, PA** - Mr. Sapen was the Project Manager and designer for the preparation of plans, specifications, and contract documents for the reconstruction of a bituminous paved parking lot. The project included reconstruction of previously failed areas, resurfacing other areas, timber fencing and landscaping along the edge of the parking area adjacent to a stream channel. In addition, we also provided bid and construction phase services which included receiving and evaluating bids, selection of the contractor, and inspection services during construction. The project, including construction, was completed in November 2013.

**Woodmont Properties – Capitol Logistics Center, Lower Swatara Township, Dauphin County, PA** – Mr. Sapen served as the Project Designer for the reconstruction of over 640,000 square feet of warehouse space. The project involved preparation of construction plans for the demolition and reconstruction of warehouse facility, raising the floor elevation of the buildings by two feet, regarding truck court areas, providing trailer parking, evaluating tractor trailer turning movements, and stormwater and erosion and sedimentation control design along with NPDES permitting. The plans for the facility were completed in January 2014.

**AMP, Inc., Lower Swatara Township, Dauphin County, Pennsylvania** - Mr. Sapen was Project Manager for the preparation of Site Development Plans, Subdivision Plans, and Highway Occupancy Permit Plans for a new two-story 180,000 square foot building and 600+ parking spaces on a 68-acre tract of land. Associated activities included obtaining a Highway Occupancy Permit for the widening of approximately 2000 feet of a state road to accommodate a center turn lane, curbing, stormwater management, and the addition of a traffic signal at a nearby intersection. The comprehensive range of services provided for the project included surveying, stormwater management design, erosion and sedimentation control planning, wetland investigation, groundwater monitoring, geotechnical investigation, and preparation of construction specifications. Construction inspection and monitoring were also provided for this project.

**MGB Enterprises, Harrisburg, Pennsylvania** – Mr Sapen provided surveying and engineering services for development of a building expansion on a 14.5± acres tract of land on the western side of East Hanover Township. The primary objective of the project for Skelly and Loy was to obtain land development approval and erosion and sedimentation control approval for the addition of 119,800 square feet of warehouse to the already existing 60,000 square feet of warehouse and 3,200 square feet of office space. The project involved a topographic and boundary survey of the site and surrounding area. The Land Development Plans included site layout of the building, employee parking, trailer maneuvering, and a separate trailer storage area for twenty trailers, stormwater design, on-site septic system design with septic and dose tanks, and erosion and sedimentation control design. Due to the size of the expansion of building and pavement on-site, stormwater was a major concern for the approving agencies since the site is primarily in a residential area. Therefore, the project included the design of three separate stormwater basins for the control of stormwater from the site. A landscape plan was also prepared by Skelly and Loy which primarily involved screen planting from the neighboring residential areas and the State Road. The erosion and sedimentation control plan required approval from the Dauphin County Conservation District. Skelly and Loy presented the plans to the East Hanover Township Planning Commission and the Board of Supervisors.



**EDUCATION:**

B.S. Engineering of Mines,  
1986, West Virginia University

**YEARS OF EXPERIENCE:**

28 Years

Mr. Budinsky has a variety of mining assignments, including due-diligence investigations, surface and underground mine planning, geologic investigations, and permitting. He also provides engineering support for drainage and stormwater management, potable water and sanitary designs, construction cost estimates, and bid-proposal preparation. He has an extensive computer background and has developed many plans using AutoCAD, Land Development Desktop, and SurvCADD as well as various hydrology packages.

**PROFESSIONAL EXPERIENCE**

**Senior Designer - MEPCO Mine Dewatering Project, Greene County, Pennsylvania** - Prepared and coordinated NPDES permit documents for 12,000 feet of pipe. Provided CADD support, developed the erosion control plan and worked with wetland specialists to minimize the impact of crossing several sensitive areas within the project area. Organized and adjusted survey information collected for the project.

**Senior Designer - Keystruct Office Building and Addition, Harrisburg, Pennsylvania** - Prepared project overall stormwater management and erosion control plans. Assisted in plan preparation that included grading, storm sewer design, and site layout. Assisted in obtaining approvals from the Dauphin County Conservation District and Susquehanna and Lower Paxton Townships.

**Senior Designer - Keyser's Ridge Leachate Removal System, Garrett County, Maryland** - Assisted in conceptual design phases and final plan preparation, developed CADD drawings, and performed quantity takeoffs for project cost estimate. Onsite during construction of the facility, provided field modifications which enhance performance of the chemical feed distribution of existing system. Coordinated system startup and commissioning of facility.

**Senior Designer - Good Spring South Mine Transfer Permit, Schuylkill County, Pennsylvania** - Developed reclamation and mining plan which included project phasing analysis, stream restoration, erosion and sediment control plan, and permit application preparation. Performed volumetric computations for bonding calculations and utilized county GIS data to prepare property owners' mapping used for various aspects of the project.

**Senior Designer - SVC Acid Mine Drainage Remediation, Sequatchie County, Tennessee** - Provided construction management for plans prepared in the office by Skelly and Loy engineers for renovations to acid mine treatment facilities. Assisted in well monitoring activities and coordination of sludge removal utilizing Geotubes and polymer additives. Made field recommendations for drainage and road construction ongoing at the site.

**Senior Designer - Good Spring East Coal Ash Placement and Monitoring Plan, Schuylkill County, Pennsylvania** – Developed mine



reclamation and erosion control plans for Pa DEP module 25 permit submission. Collected field information pertaining to flow and monitoring data at the site's monitoring wells to be incorporated into the overall site monitoring plan.

**Senior Designer - Rausch Creek Land Planning Mapping, Schuylkill County, Pennsylvania –** Analyzed GIS and site information to prepare a series of maps for client which highlighted coal, water and wind resources. Ten large size maps were developed and accompanied with a general narrative which discussed potential uses for the 12,000 acre tract.

**Senior Designer – Markson Silt Culm Pile Removal, Schuylkill County, Pennsylvania –** Prepared large mine permit for the removal of mine refuse associated with abandoned culm pile. Design elements included diversion channel design for 200 acre drainage area, Erosion and Sediment Control for removal operation and final reclamation plan.





## EDUCATION:

Continuing Graphic Design Degree

## YEARS OF EXPERIENCE:

22 Years

Mr. Johnston has worked for Skelly and Loy for 21 years as a CAD Designer. His exceptional computer aptitude allows Skelly and Loy to diversify his knowledge among all types of computer applications. He is experienced in all CADD platforms as well as in most graphic software applications. He is proficient with Civil 3D, Carlson Civil and Mining, InRoad Design, AutoCAD, and MicroStation. Mr. Johnston is accustomed to applying his knowledge to overcome challenges presented by client demands. He is experienced in compiling and updating Planimetric and Topographic databases from orthophotography, and LIDAR. In addition to his CAD technical skills, Mr. Johnston is extremely knowledgeable in many of the ESRI GIS products.

## PROFESSIONAL EXPERIENCE

**Viewshed Analysis and Computer Rendering** - Mr. Johnston is responsible for collecting and organizing project data and building the computer model for viewshed analysis for major infrastructure and development projects. He uses the latest software and technology in the industry.

- **Photographic Computer Renderings** - Project photographs of very important viewsheds can be modified to incorporate the proposed design. These illustrations are valuable for communicating the true impact of a proposed design to a viewshed. Mr. Johnston can also develop illustrations that require complete background reconstruction of the viewshed, which usually requires several photographs from different angle and positions. The photographs are then pulled apart and repositioned to proper angle and perspective for the final illustrations.
- **3D Computer Model Renderings** - For some projects a 3D computer model is required for the viewshed analysis. This type of model allows a complete 360° view of the project area plus the proposed project design. Mr. Johnston incorporates the CAD data from the design team and supplements the surrounding areas by incorporating GIS data (including DEM data). Once the model is built still images can be generated for any view for paper production and a computer animation file can be generated for replay on computer, web, or DVD. The animation may be a flyover of the site or follow a certain corridor path like a road, transmission line, or trail.

**Project Mapping Coordinator** - Mr. Johnston is responsible for organizing and cataloging various layers of project information. His coordination of projects allows seamless development of work between GIS Specialists and CADD Operators. This ensures quality control of data that is being developed in an organized and speedy process.

- **Central Susquehanna Valley Transportation Project - PennDOT** - The proposed highway was developed to cross Snyder, Union and Northumberland Counties. Mr. Johnston was in charge of all CADD file development and GIS integration. The project required development of approximately 60 different environmental constraint features, which were incorporated into GIS layers for impact analysis. Due to the large size of the study area, there were several different base mapping structures developed to present information at public events and in the project NEPA documents as clearly and accurately as possible.
- **Mining Permits - Mining Client in Central United States** - The client has several mining operations which require permitting for either new development or expansion of current operations. Mr. Johnston was directed to acquire, develop, and organize mapping from various available public or private sources. He uses the raw information and develops a uniform mapping appearance that met governmental permit requirements.



- **Complete Design Packages - Various Clients** - Mr. Johnston's experience with CADD and various engineering software allows Skelly and Loy to develop complete sets of engineering packages, ranging from 15 to 60 different plan sheets per package.

**Data Analyst** - Mr. Johnston is a key person in developing different methods of data analysis for our engineering and environmental staff. His ability to integrate multiple computer applications allows him to develop new methods for old problems.

- **Valley Subsidence - Mining Client in Virginia** - Our client requested that we prepare subsidence mapping for an old gypsum mine. This mine consisted of 14 main levels with several offshoot sub-levels. Mr. Johnston, in coordination with other in-house GIS specialists, developed a model that accounts for existing terrain, sloping angle of existing subsidence, and elevations of individual levels. This model is capable of predicting future subsidence with a reasonably accurate location. Our GIS model was used to calculate and catalog all the affected items in the study area, which allowed our engineers to determine a cost of potential liability for our clients.
- **Coal Refuse Analyst - Coal Processor in Australia** - Our client requested Skelly and Loy to evaluate and determine if a coal refuse pile was suitable for power generation. Mr. Johnston was responsible for collating drill holes and surface sampling information. The uniqueness of the problem was that the hole depths varied depending on the locations of the hole on the pile. He developed a 3D model that illustrated the location of quality coal deposits and was able to generate volumes of these deposits.
- **Corridor O Project Potential Subsidence - PennDOT** - The proposed highway would connect State College to Interstate 80. Our engineering staff collected large amounts of mining data from various sources. Mr. Johnston, along with our GIS Specialist, and our engineering staff developed a method that accounted for all of the information collected. Mr. Johnston's role in the process was to develop a methodology to identify potential subsidence zones that were acceptable to our engineers and GIS Specialist.
- **Volumetric Analyst - Various Clients** - Mr. Johnston is capable of calculating volumes of materials of all types. His ability to apply software applications beyond their original designated use allows Skelly and Loy to determine numerous types of material volumes.

**Graphics Coordinator** - Mr. Johnston is responsible for coordinating all graphics for agency and public involvement activities. Graphics range from designing meeting displays to managing a dual-screen computer projection for meeting presentations.

- **Central Susquehanna Valley Transportation Project - PennDOT** - Mr. Johnston was responsible for developing a digital version of both the draft and final Environmental Impact Statements. The digital version was constructed using a web-based format that allowed distribution of the document on a compact diskette. This version also enabled the Environmental Impact Statements to function as searchable documents. As part of the project, Mr. Johnston also developed a 3D Animation of a proposed bridge overpass near a group of concerned citizens, and developed several before and after photographs of impacted view sheds in the study area.
- **Long Term AMD Treatment - Mining Client in Tennessee** - Mr. Johnston developed a valley dam to hold water for a low maintenance AMD treatment system. As part of the design process, earthwork volumes and incremental water volumes were calculated at different elevations. The client then directed us to produce a five-minute 3D animation showing what the potential lake would look like after completion. This animation was used to explain the idea to the client and other environmental state and federal agencies for approval.
- **Mining Permit - Mining Client in Central United States** - As part of the permit process, our client was required to have a public meeting. Mr. Johnston developed a 3D rendering of the proposed reclamation for this site. This rendering demonstrated alternative use of the property after the mining operation was completed.
- **Interstate 81, PA Exit 17 - PennDOT** - This proposed exit reconfiguration required impacting several historic farms in the area. Skelly and Loy was directed to develop a public display illustrating the history of farming in the area as mitigation for the impacted farms. Mr. Johnston created and produced the display, which incorporated historic maps, photos and text. The board is on display at the welcome center along Interstate 81 near Chambersburg.





**EDUCATION:**

B.A., Urban Planning, 2004,  
University of Pittsburgh

**YEARS OF EXPERIENCE:**

11 Years

Mr. Reese has more than eleven years of experience in the engineering and environmental consulting profession in both the public and private sectors throughout multiple Mid - Atlantic States, including West Virginia, Pennsylvania, Maryland, and Delaware. He performs a variety of roles for the Pittsburgh, PA and Morgantown, WV offices of Skelly and Loy including Geographic Information Systems (GIS) management, analysis, and development using ESRI software; computer aided design (CAD) using Bentley MicroStation, CorelDraw Graphics Suite, and Adobe Systems software; and management and maintenance of the IT systems in the Pittsburgh, PA and Morgantown, WV offices.

**PROFESSIONAL EXPERIENCE**

**GIS Management and Analysis**

Mr. Reese serves as the GIS Database Manager for all projects in the Pittsburgh and Morgantown offices. Project related services include topographic surveying, ecological restoration studies including invasive species investigations, and bat habitat assessment studies. Other items include GIS management of Historic Resource and Archaeological Surveys. Mr. Reese serves as the GIS Manager for Asbestos Demolition and Disposal Plans, Stormwater Management Plans, and data related to NEPA Documents. He is proficient in ESRI software and has developed, analyzed, and formulated data into GIS to develop figures for planning projects that include portraying project locations, neighborhood settings, land usage, zoning, park facilities, trail networks and hazards, invasive species control, and recommendations for improvements. He has produced hundreds of GIS mapping and graphic-related items. He is familiar with socioeconomic research and information gathering relating to public records as a contribution to NEPA documents. Brad compiles and analyzes a wide range of regional GIS data and occasionally serves as a public involvement assistant.

**WV Route 2, Indiana Bat Mist Net Survey, Kent to Woodlands, Marshall County, WV. Client: West Virginia Division of Highways** - Mr. Reese is the GIS Manager for this project. He uses the data collected in the field to compile a database of bat mist net sites along the project area.

**I-70 W31 Reconstruction, Washington County, PA. Client: Pennsylvania Department of Transportation** - Mr. Reese is the primary CAD technician for this project. Activities on this project included design of stream mitigation and development of associated landscape planting plans.

**U.S. Route 220 Tier One EIS, Grant, Hampshire, Hardy, and Mineral Counties, WV and Allegany County, MD. Client: West Virginia Division of Highways** - Mr. Reese served multiple roles in this project including GIS Manager and Analyst, CAD Operator, historic resource specialist, public involvement assistant, and was an author for the Environmental Impact Statement. He is familiar with socioeconomic research and information gathering relating to public records as a contribution to the EIS. He has developed, analyzed, and formulated data into GIS to develop figures that include portraying project locations, neighborhood settings, land usage, zoning, park facilities, trail networks and hazards, invasive species control, and recommendations for improvements. The project is a joint effort between the Division of Highways and the Maryland State Highway Administration.

**King Coal Highway EA, Mingo County, WV. Client: West Virginia Division of Highways** - Mr. Reese serves as the GIS Manager and CAD Operator for



this project. He collected and analyzed data for inclusion in GIS systems and portrayed project related data for report mapping. Some of the information includes: census data, trails, land cover, streams, floodplains, and wetlands, hazardous sites, historic resources, and potential displacements. If taken to construction, the project will result in a new state highway being built as a major component of a post-mining land use plan. The impacts of a full range of alternatives are being evaluated.

### Computer Aided Design

Mr. Reese makes daily use of Bentley MicroStation software, CorelDraw Graphics Suite, and Adobe Systems software. His deliverables include mapping and figures of field surveyed wetland and stream sample point locations according to GPS coordinates, archaeological surveying and testing sites according to grid coordinates, profiles and plan views of archaeological sites, soil profiling, historic site plans and building floor plans, plan views delineating hazardous waste sites, among others.

**Corridor H Kerens to VA State Line, Randolph and Tucker Counties, WV. Client: West Virginia Division of Highways** - Mr. Reese is the primary CAD operator for this multi-million dollar project. Project tasks include management of and development of all data pertaining to surveys of streams, wetlands, bat habitats and mining portlas, sensitive plant species, historic resources, and archaeological resources.

**WV Route 35 Henderson to High Speed and the Additional 14 Mile Survey, Mason and Putnam Counties, WV. Client: West Virginia Division of Highways** - Mr. Reese serves as the CAD Operator for this project. His primary role is management and portrayal of Archaeological data for Phase I, II, and III reports. At the completion of this project, a highway will be constructed in a new location near existing U.S. Route 35.

### Accreditation / Continuing Education

Bentley Institute – Certificates of Accomplishment

- Microstation Essentials V8i  
(32 Learning Units)  
(28 Contact Hours)

- Siteops Fundamentals  
(IACET Units 2)  
(20 Learning Units)

The American Institute of Architects - Continuing Education  
(32 Learning Units)

ESRI ArcGIS Desktop – Continuing Education  
(3 Training Hours)



**EDUCATION:**

B.S., Geology, 1984,  
University of Kentucky

**PROFESSIONAL REGISTRATIONS AND CERTIFICATIONS:**

Professional Geologist, PA,  
KY, AL, NC, IN

**RELEVANT TRAINING:**

OSHA Certified for Hazardous  
Waste Site Activities

American Red Cross First Aid  
and CPR

OSHA 40-Hour Hazardous  
Waste Operations and  
Emergency Response

Civil and Engineering Course  
Work, Tri-State University,  
Angola, IN

**YEARS OF EXPERIENCE:**

38 Years

During the past 38 years, Mr. Bell has acquired expertise in coal and non-coal property reserve estimates and valuations; conducting geologic site investigations, highwall/slope stability analysis, interpretations, and aquifer identifications; developing core drilling and sampling programs; geophysical log interpretations; regional groundwater assessments; anthracite culm/silt bank evaluations; report preparation; geologic field mapping; computer-generated isopach/isopleth map development; comprehensive environmental mining permit preparation; surface and groundwater sampling schedules and sample collection techniques; geologic sampling procedures; assessment of material acid-based accounts; evaluation of environmental hazards associated with mining activities; assessment of the potential for acid mine drainage development from spoil materials deposited on mine sites; project management; and providing expert testimony for clients on a variety of several litigation cases.

**PROFESSIONAL EXPERIENCE**

As a Senior Geologist, Mr. Bell has been Principal Investigator on numerous coal and Non-coal mineral reserve assessments throughout the United States. He has also completed studies in all of the major coal producing basins within the United States as well as in Northern Turkey, New South Wales, Australia and in the Latrobe Valley, Victoria, Australia. He has worked extensively in the Pennsylvania Anthracite and Bituminous coal fields. His geologic duties have included: the design and supervision of drilling programs to gather confirmatory coal thickness data, coal quality information, and roof and floor stratigraphy; review and confirmation of existing drill data and electronic geophysical logs; confirmation of in-place reserve quantities; coal and non-coal quality assessments; development of site geologic structure and stratigraphic mapping; mineral valuations, and development and implementation of additional exploration activities. He has recently completed reserve confirmation project assignments utilizing the Geological Survey of Canada "Paper 88-21" standards and is knowledgeable of "National Instrument" NI 43-101 document requirements and preparation.

In addition to his geologic duties, Mr. Bell also coordinates the preparation and review of many Coal and Non-Coal Surface Mining Permit Applications prepared by Skelly and Loy's engineers. Through years of experience, Mr. Bell has gained understanding of the regulatory requirements of the mining industry.

Mr. Bell also completed numerous groundwater assessment investigations associated with both active and abandoned mining operations. His duties have included: installation of monitoring wells; aquifer identification; determining the direction of groundwater movement; and conducting aquifer pump tests. He has written several reports determining the probable hydrologic consequences due to

## DENNIS R. BELL, JR., P.G., Senior Geologist



surface disturbances on water quality within a specific watershed. He has used aerial photo interpretation, literature reviews, field reconnaissance, and computer modeling.

In 1980, Mr. Bell became a member of the team created to identify and locate all hazardous abandoned mine lands within the state of Kentucky. His duties as such included the collection of existing data, aerial photo interpretation, and mapping and describing areas while in the field. These efforts involved more than thirty projects.

Prior to Mr. Bell's full-time employment with Skelly and Loy, he was a co-op intern at the Harrisburg, Pennsylvania office. He was exposed to both environmental and engineering aspects of the surface mining industry. One engineering project which he became involved in was to determine the stability of hollow fills. His primary responsibility was to identify the sampling locations and to monitor the sampling procedure conducted at each hollow fill selected for the study. Upon completion of sampling, he performed the following laboratory analyses on each sample: Natural Water Content; Unit Weight Determination; Sieve Analysis; and Direct Shear Tests.

Mr. Bell was also part of the project team which completed a demonstration project for the Bureau of Mines which included the identification and mapping of all abandoned mine lands in three Appalachian counties. His duties included: background data collection; preparation of area wide land use maps; ground reconnaissance; surface water sampling to identify streams polluted from AMD within the three- county study area; and final report preparation.

### PUBLICATIONS

"Assessment of Anthracite Culm/Silt Material for Fluidized Bed Cogeneration" presented at the Pittsburgh Coal Conference, September 1986 (co-author)

### PROFESSIONAL AFFILIATIONS

Pennsylvania Aggregate and Concrete Association  
Pennsylvania Council of Professional Geologists (PCPG)



**EDUCATION:**

B.S., Civil Engineering, 1962,  
The Pennsylvania State  
University

**PROFESSIONAL  
REGISTRATIONS AND  
CERTIFICATIONS:**

Professional Engineer,  
Commonwealth of  
Pennsylvania, 1967

Professional Engineer, State  
of Maryland, 2004

**SHORT COURSES:**

Impoundment Inspection:  
Mining Enforcement and  
Safety Administration

Underground Coal Mining, An  
Overview: The Pennsylvania  
State University

Fundamentals of Rock  
Mechanics: The Pennsylvania  
State University

Design and Analysis of  
Railroad Tracks Program:  
Princeton University

Training Course for the Use  
of Nuclear Testing Equipment:  
Troxler Electronic Laboratory,  
Inc.

**YEARS OF EXPERIENCE:**

53 Years

Mr. Lesny has a total of 53 years experience in the geotechnical aspects of numerous projects. He also has pre-graduation experience gained through employment with a geotechnical engineering consultant.

Mr. Lesny has been involved with the following types of projects:

- High and low-rise buildings
- Warehouses
- Bridges
- Highways
- Dams
- Retaining Walls
- Soil and Rock Cut Slopes
- Pavement Design
- Waste Treatment Plants
- Sinkhole Repairs
- Embankment Stability
- Waste Disposal Permits
- Quarry Permits
- Reclamation Plans

These projects included the design and/or construction employing the following:

- Spread footings
- End bearing piles
- Caissons
- Shoring
- Underpinning
- De-watering
- Structural fills
- Blasting
- Rock anchors
- Friction piles

**PROFESSIONAL EXPERIENCE**

Over the last six years, Mr. Lesny has been employed by several consultants, on a part time basis, to inspect the work performed by drilling contractors. The subsurface investigation work was associated with commercial projects and county or township bridges.

**Slope Stability Analysis** - Mr. Lesny's experience with respect to slope stability dates to 1964, when computer programs were not available. He performed the analyses using a combination of graphics and a handheld or desktop calculator. The process was tedious and several hours were spent doing the calculations for one failure arc. He performed such analyses for highway embankments situated over deep glacial deposits located in western and northern Pennsylvania.

With the passing of time, Mr. Lesny learned to use the computer programs which became available. The early programs were not user-friendly and preparing the input for complex dam embankments was challenging.

The following enumerate Mr. Lesny's slope stability analysis experience by category.

**PROJECT EXPERIENCE**

**Earth Dam Design Projects**

**Old Ben Coal Company** - As a project engineer with Skelly & Loy of Harrisburg, Pennsylvania, Mr. Lesny was in charge of analyzing the subsurface conditions at two large coal slurry ponds to determine if the embankments could be heightened to increase storage capacity.

**Sunbury Fly Ash Basin** - This project involved the testing of soil and fly ash samples for Pennsylvania, Power and Light Company to provide data to their engineers to analyze if was possible to raise the height of a major fly ash





storage dam. Mr. Lesny assisted in the slope stability analysis

**Brunner Island SES** - Mr. Lesny provided geotechnical engineering services and developed a soil testing program for the design of Ash Basin Nos. 6 and 7 at the PP&L, Brunner Island, Steam Electric Station. Upon completion of the testing, he analyzed the stability of the proposed containment structure.

**Camp Small Valley** - Camp Small Valley is a girl-scout camp located in northern Dauphin County, Pennsylvania. Mr. Lesny prepared the investigation and soil testing programs for this dam. His work on the design included analyzing the slope stability and providing data for the prime consultant to incorporate in the design.

**Silver Creek Reservoir** - This project was completed with Mr. Lesny's partner, Philip C. Kitlinks, P.E., and included the re-design of an earth water supply dam declared unsafe by PADEP Division of Dam Safety. The work required performing numerous slope stability calculations because of the configurations studies.

**East Stroudsburg Water Supply Reservoir** - The East Stroudsburg dam was declared unsafe by the PADEP Division of Dam Safety. Mr. Lesny was engaged by the prime consultant to assist in analyzing the test boring results and prepare the slope stability analysis.

#### Highway Design Projects

**U.S. Route 322, Port Matilda to Philipsburg, Pennsylvania** - Mr. Lesny analyzed the cut slopes for this project by plotting the bedrock geometry on stereonet. To perform the analysis, he researched the geology of the area and reviewed the results of the core borings drilled to investigate the roadway alignment. The goal of the study was to determine if pre-split blasting could be used to steepen the slopes and reduce the potential waste.

**Section A-12, S.R. 0015, Williamsport, Pennsylvania** - The analysis of the test borings data accumulated by the PADOT District 3-0 office over a period of several years, and the preparation of the geotechnical engineering report for Section A-12 of S.R. 0015, north of Williamsport, Pennsylvania. The work included the analysis of several deep cuts using stereonet analyses and the analysis of several sliver fills using a computer program for a sliding block failure. This work was performed under an open end contract with District 3-0 and the highway design was completed by District personnel.

**U.S. Route 322, Lewistown Narrows** - In June of 1992, Mr. Lesny participated in the study of the widening of the Lewistown Narrows. This section of roadway located in Mifflin and Juniata counties forms one of the last bottlenecks along U.S. Route 322 between Harrisburg and State College. The recommendation made in the Soils and Geologic Reconnaissance Report was to have the roadways separated by mechanically stabilized walls such as the patented Reinforced Earth Wall. The Lewistown Narrows area has been investigated several times and the conclusion is that the existing talus slopes must not be disturbed otherwise catastrophic slope failures could occur. The design proposed by Larson Design Group would accomplish widening of the roadway with no impact on the existing slopes covered with rock rubble.

**PA Route 45, Spring Mills, Pennsylvania** - As a part of an open end contract with the PADOT District 2-0 office located in Clearfield, Pennsylvania, Larson Design Group was assigned the task to design the widening of Pennsylvania Route 45 immediately east of the town of Spring Mills, in Centre County. At this location the roadway and its narrow shoulders followed a sharp curve through a deep rock cut that impaired the sight distance. Vehicles traveling at high speeds had difficulty negotiating the curve and numerous accidents occurred. Mr. Lesny developed a test-boring program to investigate the rock cut and applied stereonet analysis to the geometry of the rock to determine the most suitable slope for the rock cut. His recommendation was to put the natural bedding planes of the rock to control the direction of benching of the slope and eliminate the potential for massive slides. The construction of the widening has been completed and the benching technique recommended has resulted in an attractive, stable slope.

**S.R. 0015, Tioga County, Pennsylvania** - Mr. Lesny analyzed the geotechnical data for the design of the Mansfield By-Pass, Section E-61 of S.R. 0015 and section F-12 of S.R. 6015, located to the north of Mansfield. The work included analyzing the widening of fills and cuts, the evaluation of storm water detention ponds, studying the use of conventional spread footings to support bridge abutments. The significant challenge associated with the project is



proving that the slide that occurred in 1976 as a result of the construction of the nearby Tioga-Hammond Dam is safe. Mr. Lesny utilized the PCSTABL computer program to perform the slope stability of the embankment slopes associated with the project.

### **Landfill and Flyash Disposal**

Throughout his career Mr. Lesny has provided geotechnical services to consultants requiring slope stability analyses of landfills and fly ash disposal facilities.

**Steelton-Highspire Class III Demolition Waste Landfill** - This project included preparation of the permit application and plans for the expansion of an existing landfill. The landfill is located near the Steelton-Highspire High School and includes an area of 3.5 acres. In addition to the design of the landfill, certification of the construction at various stages was also performed.

**Harrisburg Incinerator Waste Area B-2** - The work performed at the site of the B-2 waste area included the excavation of test pits to identify the soil and collect samples for laboratory testing. Soil classification, soil compaction and permeability tests were performed as a part of the permit application. Engineering services provided included the stability analysis of the slopes of the containment embankment and the evaluation of the bearing capacity of the soil/rock that would support the landfill.

**Harrisburg Incinerator Waste Area B-3** - In 1994, Mr. Lesny performed the stability analysis and bearing capacity analysis for the B-3 waste disposal area as a sub-consultant to Brinjac-Kambic of Harrisburg.

**Clinton County Landfill, Clinton County, Pennsylvania** - As a sub-consultant to the firm of Cummings and Smith of Lewisburg, Pennsylvania, Mr. Lesny provided soil-testing services to evaluate soil which was to be used as attenuating soil base in a construction/demolition waste landfill. The testing included grain size, standard compaction and consolidation tests. The purpose of the testing was to determine the change in the permeability of the soil with an increase in load simulating the load due to the landfill.

**Rock Run Fly Ash Disposal Pit, Tioga County, Pennsylvania** - Mr. Lesny performed slope stability analyses for the permit application at this site for the firm of Walter W. Kaufman Associates of Camp Hill, Pennsylvania. The primary containment for the fly ash is a former coal strip mine in north central Pennsylvania. The final height of the fill above the surrounding ground surface was approximately 60 feet.

**Mine 24 Fly Ash Disposal Site, Cambria County, Pennsylvania** - The Mine 24 Fly Ash Disposal Site is associated with several coal fired co-generation plants. The final design height of the pile for which we performed slope stability analyses is 250 feet. This work was performed for RNS Services through Walter W. Kaufman Associates.

**Greentree Landfill, Jefferson County, Pennsylvania** - Mr. Lesny was retained by Blazosky Associates, Inc., in 1992, to perform a slope stability analysis for the Greentree Landfill in Jefferson county to satisfy the requirements of the Department of Environmental Protection.

**Federal Mine No.1 Fly Ash Disposal Site, Granttown, West Virginia** - At the request of Ross Consulting Engineers, Mr. Lesny performed a slope stability analysis for the Federal Mine No. Fly Ash Pile which is to be constructed of fly ash generated by a nearby co-generation facility. The analysis was part of the permit application submitted to the West Virginia Department of Natural Resources.

**Antrim Construction/Demolition Landfill, Tioga County, Pennsylvania** - The slope stability analysis for the Antrim Construction/Demolition Landfill is Mr. Lesny's most recent project in the area of demolition waste disposal. He completed a detailed slope stability analysis in February of 1996.

**Robindale Energy, Johnstown, Pennsylvania** - Mr. Lesny is currently performing soil tests to certify the suitability of the on-site soil for liner construction for a fly-ash disposal site that will cover 180 acres. He has also performed a slope stability analysis of the proposed ash pile.



**Quarries**

Mr. Lesny has completed stereonet analyses of the following quarries. The stereonet analysis is a graphical procedure for analyzing the safety of the high-walls based on the orientation of the bedding planes and joint system. The result does not yield a specific factor of safety. Its purpose is to reveal whether there are bedding and joint planes that are potentially un-stable.

Such analyses have been performed for the following quarries:

- HANSON, Penns Park Quarry, Bucks County, Pennsylvania
- HANSON, Downingtown Quarry, Chester County, Pennsylvania
- HANSON, Glen Mills Quarry, Chester County, Pennsylvania
- Eureka Stone Quarry, Chalfont, Pennsylvania
- Warrington Quarry, Warrington, Pennsylvania
- Rushland Valley Quarry, Rushland, Pennsylvania





**EDUCATION:**

B.S., Agronomy, 1987, The Pennsylvania State University

**PROFESSIONAL REGISTRATIONS AND CERTIFICATIONS:**

ARCPACS Certified Professional Soil Scientist (CPSS), [REDACTED]

PA DEP Certified Sewage Enforcement Officer (SEO), [REDACTED]

OSHA 1910.120 HAZWOPER Trained (40-Hour) with Annual 8-Hour Refreshers

Troxler Certified Nuclear Testing Gauge Operator

**YEARS OF EXPERIENCE:**  
28 Years

Mr. Smeltz has over 28 years of experience investigating soils and making interpretations for on-site wastewater and solid waste disposal, wetlands delineations, Phase I cultural resources investigations, stormwater management, beneficial land application of wastes and biosolids, and environmental site characterization and remediation.

**PROFESSIONAL EXPERIENCE**

Mr. Smeltz has performed field investigations, often as principal investigator, on numerous soils and site evaluation projects, identifying and mapping the soils and making interpretations for various on-site uses and natural resource delineations. He has extensive experience in performing site evaluations for on-site wastewater disposal systems including test pit soil profile descriptions, soil morphology interpretations, and percolation and permeability testing for both large community systems and individual residential systems. Site evaluations have been completed to identify and quantify soil resources for both municipal and residual waste disposal facilities including soils mapping using National Cooperative Soil Survey (NCSS) procedures, detailed soil profile descriptions using United States Department of Agriculture-Natural Resources Conservation Service (USDA-NRCS) procedures, and soil sampling for laboratory physical and chemical analyses. Wetlands delineations have been performed for solid waste disposal facilities, utility companies, proposed U.S. Postal Service sites, municipal wellhead protection areas, and other commercial and residential land development projects using United States Army Corps of Engineers (USACE) procedures. He has completed soils and geomorphology interpretations for Phase 1 cultural resources investigations on several project sites related to floodplain stormwater management and highway construction. Mr. Smeltz has also completed site evaluations to identify prime farmland areas and has evaluated sites for the application of beneficial use materials such as food processing wastes, wastewater, and biosolids.

Mr. Smeltz also has substantial project experience in performing site characterizations; soil, water, and air monitoring and sampling; and remediation of sites impacted by petroleum hydrocarbons, volatile organic compounds, and heavy metals. These projects were at industrial sites including manufacturing and refinery facilities and at military installations and major airports. He has logged and sampled soil borings and monitoring well installations using various drilling methods. He has performed oversight of soil remediation/excavation projects and completed detailed confirmation sampling to document attainment of remediation standards while also supervising remediation subcontractors. He has performed groundwater monitoring and sampling and also soil vapor extraction system monitoring and sampling and is qualified in the use of various field analytical equipment including organic vapor analyzers, petroleum hydrocarbon analyzers, and water quality monitoring equipment. He has also performed data analysis and assisted with site closure reporting for numerous sites in Pennsylvania under the Act 2 Land Recycling Program.

**PROFESSIONAL AFFILIATIONS**

Pennsylvania Association of Professional Soil Scientists  
American Society of Agronomy/Soil Science Society of America



RELEVANT TRAINING

**Hazardous Waste Operations and Emergency Response Refresher, Mine Safety Refresher, First Aid and CPR:** Eichelberger's Safety Consulting Services, March 18, 2011

**Troubleshooting On-Lot Systems: PA DEP SEO Training Course #214, PSATS Training Center, Enola, Pennsylvania -** Gordon Sheetz, Instructor; January 21, 2009

**Hazardous Waste Operations and Emergency Response Refresher and Mine Safety Refresher:** Eichelberger's Safety Consulting Services, February 25, 2008

**Site Testing and Evaluation: PA DEP SEO Training Course #211, Harrisburg, Pennsylvania -** Mark Mills and Gordon Sheetz, Instructors; May 31 and June 1, 2007

**First Aid, CPR, Bloodborne Pathogens:** Eichelberger's Safety Consulting Services, April 19, 2007

**OSHA HAZWOPER 8-Hour Refresher Course: SAIC,** Christopher Fontana, March 20, 2007

**Alternate Peat-Based Systems: PA DEP SEO Web-Based Training Course #332,** March 16, 2006

**Hazardous Waste Operations 8-Hour Supervisor Training (OSHA 1910.120): SAIC Online Self-Study Course,** evaluated by Michael Crenshaw, March 4, 2005

**Construction Inspection Techniques: PA DEP SEO Training Course #206, PSATS Training Center, Enola, Pennsylvania -** Gordon Sheetz, Instructor; February 16, 2005

**Soil Testing and Characterization for Stormwater Infiltration: Pennsylvania Association of Professional Soil Scientists Technical Session, Harrisburg, Pennsylvania -** Randy Greer, Delaware DNR; Thomas Cahill, Cahill Assoc.; Daniel Fritton, Ph.D., Penn State University; Edward White, CPSSc, PA State Soil Scientist; July 21, 2004

**Alternate Steep Slope Elevated Sand Mound On-Lot Sewage Disposal Systems: PA DEP SEO Web-Based Training Course #328,** November 20, 2003

**Alternate At-Grade On-Lot Sewage Disposal Systems: PA DEP SEO Web-Based Training Course #329,** July 25, 2002

**Alternate Drip Dispersion On-Lot Sewage Disposal Systems: PA DEP SEO Web-Based Training Course #321,** July 25, 2002

**Siting New On-Lot Sewage Treatment Systems by Assessing Infiltration Loading and Hydraulic Linear Loading Utilizing Soil Morphology: Pennsylvania Association of Professional Soil Scientists Technical Session, Harrisburg, Pennsylvania -** Darrell Fritz, CPSSc, and William Davis, PA DEP; Joseph Valentine, CPSSc; Jerry Tyler, Ph.D., University of Wisconsin; January 9, 2002

**Advanced Soils Training for SEOs: PA DEP SEO Training Course #109, Beltzville State Park, Jim Thorpe, Pennsylvania -** Mark Mills and Jason Fellon, Instructors; September 21, 2001

**Drip Irrigation: PA DEP SEO Training Course #312, Harrisburg, PA -** Mark Mills and Gordon Sheetz, Instructors; March 14, 2000

**Site Selection and Requirements for Drip Irrigation in PA: Pennsylvania Association of Professional Soil Scientists Technical Session, SAIC Learning Center of Applied Environmental Technology, Middletown, Pennsylvania -** Thomas Ashton, CPSSc, American Manufacturing; Joseph Valentine, CPSSc; Edward White, CPSSc, PA State Soil Scientist; May 18, 1999



***Permitting of Alternate and Experimental Systems: PA DEP SEO Training Course #108, Harrisburg, Pennsylvania*** - Mark Mills, CPSSc, and Gordon Sheetz, SEO, Instructors; March 3, 1999

***Winter Wetlands Identification: SAIC Learning Center of Applied Environmental Technology, Middletown, Pennsylvania*** - Robert Hill, PADEP Wetlands Botanist, Instructor; January 27-28, 1997

***Permitting of Individual Residential Spray Irrigation Systems: PA DEP SEO Training Course #303, Harrisburg, Pennsylvania*** - Mark Mills, CPSSc, and Gordon Sheetz, SEO, Instructors; June 11, 1996

***Soil and Water Relationships: Pennsylvania Association of Professional Soil Scientists Technical Session, Hershey, Pennsylvania*** - Jay Lehr, Environmental Education Ent., Inc.; Mallory N. Gilbert, CPSSc; Mike J. Vepraskas, North Carolina State University; Maurice J. Mausbach, USDA-NRCS; H. Chris Smith, USDA-NRCS NTCHS; June 9-10, 1995

***Competent Person Training in Excavation Safety (OSHA 1926, Subpart P): R. E. Wright Environmental, Inc., Learning Center of Applied Environmental Technology, February 18, 1995***

***Federal Regulations for Biosolids: The Water Pollution Control Association of PA., March 30, 1993***

***PA Sewage Enforcement Officer Certification No. 01958: Pennsylvania Department of Environmental Resources (PA DER), Board for Certification of Sewage Enforcement Officers, September 24, 1987***

***Hazardous Waste Operations 40-Hour Health and Safety Training (OSHA 1910.120): Phoenix Safety Associates, Ltd., R. E. Wright Environmental, Inc., Learning Center of Applied Environmental Technology, September 18, 1987***



**EDUCATION:**

B.S., Biology, 1983,  
Shippensburg University

A.A., Biology & Chemistry,  
1981, Harrisburg Area  
Community College

**PROFESSIONAL  
REGISTRATIONS AND  
CERTIFICATIONS:**

U.S. Army Corps of  
Engineers, Baltimore District  
Wetlands Delineator  
Certification

U.S. Fish and Wildlife Service  
HEP Certification, 1987

U.S. Fish and Wildlife  
Certification in Principles and  
Techniques of Electrofishing,  
1994

**PROFESSIONAL  
AFFILIATIONS:**

American Fisheries Society

Pennsylvania Association of  
Environmental Professionals

Society of Wetlands Scientists

**YEARS OF EXPERIENCE:**

31 Years

As Assistant Vice President for Natural Resources at Skelly and Loy, Mr. Johnston is responsible for the coordination of ecological and regulatory services conducted out of the main office in Harrisburg. Over the past several years, he has been involved in a wide variety of projects ranging from wetlands investigation to aquatic sampling to terrestrial habitat modeling. Mr. Johnston is involved in all facets of biological projects including field data collection, data analysis, report generation, and project management. In the past six years, he has managed more than 75 projects that have included both specific wetland studies and general Environmental Assessments for a variety of government, utility, and private clients.

**PROFESSIONAL EXPERIENCE**

**Permit Management & Feasibility Studies for Mining Projects - Mr.**

Johnston has recently been involved in a series of management planning and feasibility evaluation studies for a broad spectrum of complex mining and quarrying projects. The projects have included coal mines in the Appalachian, Illinois, and Powder River Basins; and quarries in the Mid West, East Coast, and Gulf Coast. Mr. Johnston's specialty is the integration of federal, state and local regulatory approvals into the mine development and permitting process, and proactively managing the approval process to reduce development cost and schedule. He regularly assists all types land development clients (including miners and quarrymen) by helping them "see how the big picture fits together" and avoid unforeseen delays and cost.

**Wetland & Stream Permitting - Mr.** Johnston has been involved in over 200 wetland projects throughout the East Coast, Mid West and High Plains states. In these projects, he has participated in the delineation of more than 3,000 individual wetland habitats using both the 1987 and 1989 methodologies. Much of this work has included delineation of problem area wetlands, disturbed wetlands, and farmed wetlands. Mr. Johnston has also been involved in the functional assessment of wetlands using the narrative descriptive method, the Adamus method, HEP and PAM HEP, and the U.S. ACOE WET 2.0 method. He regularly provides clients with regulatory interpretation of Section 404 Regulations of the Clean Water Act and the state 401 WQC Permit. Mr. Johnston also actively manages the preparation of Permit Applications prepared by Skelly and Loy with direct technical participation in the preparation of the 404(b)1 analysis.

**Wetland Replacement Design - A large portion of Mr.** Johnston's technical activities centers around the planning and design of replacement wetlands which are provided as compensatory mitigation for unavoidable wetland impacts. Mr. Johnston has conducted 22 wetland replacement design projects which included over 50 individual basin designs, totaling more than 120 acres of replacement wetlands. Throughout the course of these design projects, Mr. Johnston has developed several technologic methodologies which have become industry standards such as: methods of estimating hydrologic demand based on primary productivity, the use of concrete key spillways, and the establishment of backfill compaction specifications to promote natural revegetation.

**Habitat Assessments and HEP Studies-** Mr. Johnston has conducted or supervised numerous habitat assessments for a wide range of private and public development projects. The habitat assessments have been included in NEPA documents, 404/401 Permit Applications, ESA Biological Assessments, Master Planning Studies, and Habitat Management Plans. These studies have



included the U.S. Fish & Wildlife Service's Habitat Evaluation Procedures (HEP), Pennsylvania Modified HEP (PAM HEP), Anderson Land Use/Land Cover mapping assessments, Hydrogeomorphology (HGM), and community-specific assemblage-based assessments. Many of these 'classic' assessment tools have been updated operate on GIS interfacing digital platforms.

**Public Outreach & Involvement** - Mr. Johnston is routinely involved in public outreach programs associated with complex land development projects and regulatory review processes. He has been involved in public information meetings, steering committee meetings, stakeholder group meetings, special focus group meetings, and public hearings for public, private, and non-profit sector clients. Mr. Johnston specializes in the presentation of complex technical and planning data in plain language that allows public stakeholders to easily understand what a project will mean to them, their family, and their community. Mr. Johnston also routine and effectively practices a "De-NIMBYizing" technique called issue distillation. Over the past 20 years Mr. Johnston has made more that 50 public presentations for high profile and controversial projects in the Mid-Atlantic States.

**Linear Projects** - Much of Mr. Johnston's practice is associated with large scale linear projects such as roadways, railroads, pipelines and transmissions lines. He has coordinated the natural resources studies for: six major new interstate type highways in the northeast; five railroad reconstructions in the east and Midwest; two major interstate pipelines in the mid-Atlantic; and five major transmission lines (ranging from 5 to 75 miles and 38 to 50 kV). Mr. Johnston's most famous transmission line project involved the PA PUC and USACE authorization to reconstruct and 138 kV line through the Tannersville Cranberry Bog, an internationally recognized unique peat land habitat owned by The Nature Conservancy.

**NEPA Experience** - Over the past 20 years, Mr. Johnston has managed and participated in a wide range of NEPA environmental studies associated with a wide variety of federal actions. The studies have been associated with U.S. DOT transportation projects, U.S. Army Corps of Engineers 404 Permits, FERC authorizations, OSM permits, and U.S. DOI mineral reserve leases. Mr. Johnston served as the Natural Resource Coordinator on the Joint NEPA-404 project conducted by the Federal Highways Administration in the northeast. Most recently he served as the environmental project manager of a Joint NEPA-404 Environmental Impact Statement for a 12 mile section of new Interstate Highways spanning two states. Mr. Johnston has been involved in over 100 individual projects which have involved NEPA studies and clearances.

**Wetland Enforcement Action** - Mr. Johnston has provided assistance in resolving numerous wetland enforcement actions brought by both the State and Federal governments. Many of these cases involved complex delineation and jurisdiction issues which were able to be resolved with voluntary compliance. He has provided expert testimony on a variety of wetland and ecological issues before the Pennsylvania Environmental Hearing Board, Commonwealth Court, Federal District Court, and a Federal Grand Jury.

**Environmental Education Study Areas** - Mr. Johnston has worked on several replacement projects that incorporated educational components into the design. These projects included the I-279 highway project in Allegheny County, Pennsylvania; the Fairfield School District in Adams County, Pennsylvania; the Susquenita School District in Perry County, Pennsylvania; and, a terrestrial site at the Whitetail Ski Resort in Franklin County, Pennsylvania. Mr. Johnston is currently working on the design of wetland replacement sites for the Warren Street Reconstruction Project in Berks and Lancaster Counties, Pennsylvania. This project involves two sites; one that will be developed for the Wyomissing Dark and the second for the Wyomissing School District. Both sites will be developed for use as environmental study areas.

**Wetland & Environmental Instruction** - Mr. Johnston has provided training services related to wetlands identification and permitting to numerous public and private clients including: PennDOT, the U.S. Army Corps of Engineers, and multi-national aggregate producers. He has also provided training related to environmental compliance related to regulated natural resource to PennDOT Construction and Maintenance Units. Mr. Johnston has developed two Environmental Handbooks for PennDOT related to Wetlands and Non-Regulated Natural Resources. Mr. Johnston has provided wetlands and permit compliance training for PennDOT in 1990, 1992, 1997, 2001, 2002, 2004, 2007, and 2008. In 2007 he facilitated a three (3) day training course related to 404-105 permitting for design, construction, and maintenance.





## RELEVANT TRAINING

Aquatic and Fisheries Biology; Biostatistics and Computer Modeling, Shippensburg University  
Wetland Identification and Delineation Training, Frank Plewa and Dr. Thomas Pluto, 1990  
Identification of Hydric Soil, Shippensburg University, 1990  
Wetland Identification and Delineation Training, Wetland Training Institute, 1989

## PUBLICATIONS

- Section 404 Permitting of Coal Mines: Impacts on Supply. Training for Midwestern and Southeastern Public Utility Fuel Procurement Groups, 2010.
- Permitting of Coal Mines: Challenges & Impacts on Supply-Management Overview. Presentation to the American Coal Council, 2009.
- Section 404 Permitting of Valley Fills: What Now & What's Next? Presentation to the North Carolina Coal Institute, 2009.
- Environmental Mitigation Commitment Track (ECMT) Workshop. Training course conducted for the Pennsylvania Department of Transportation, 2009.
- Environmental Compliance During Construction (Chapter 105 & NPDES Compliance). Training course conducted for the Pennsylvania Department of Transportation, Engineering District 2-0, 2009.
- Chapter 105 GP Permit Condition Compliance. Training course conducted for the Pennsylvania Department of Transportation, Engineering District 8-0, 2008.
- 404-105 Permitting and Compliance Workshop (Design, Construction & Maintenance). Training course conducted for the Pennsylvania Department of Transportation, 2007.
- 404-105 Permitting Workshop "The Big Picture for Design". Training course conducted for the Pennsylvania Department of Transportation, 2006.
- FHWA & PENNDOT 404-105 Permitting Workshop. Training course conducted for the Pennsylvania Department of Transportation, 2002.
- Chapter 105 & Section 404 Permitting. Training course conducted for the Pennsylvania Department of Transportation, 1997.
- An Overview of the Dam Safety and Encroachments Regulation (Chapter 105). Training course conducted for the Pennsylvania Department of Transportation, 1992.
- Problems of Wetlands Mitigation. Advanced Technical Workshop, Chapter 105 Regulations and Permitting. Sponsored by Pennsylvania Environmental Consultants Technical Advisory Committee, 1992.
- Design Criteria for Wetlands. Pennsylvania Wetlands 1991: Focusing on the Issues. Sponsored by Pennsylvania Department of Environmental Resources and Shippensburg State University, 1991.
- Wetland Regulations and Development Issues. Pennsylvania Environmental Regulations Course. Sponsored by Executive Enterprises, Inc., 1991.
- Wetlands Mitigation Problems and Promise. Stormwater, Wetlands, and Floodplain Management Conference. Sponsored by Pennsylvania State University, 1991
- Engineering and Technical Problems of Wetlands Compensation. Presentation to Pennsylvania Engineers in Private Practice, 1990.
- An Overview of Wetlands Delineation and Regulation. Training Course conducted for the Pennsylvania Department of Transportation, 1990.
- Creating Artificial Wetlands Freshwater. Pennsylvania Wetlands: Preparing for the Decade of the Environment Conference Sponsor Pennsylvania Department of Environmental Resources, 1990.
- Small Mammal Exploitation of a Forest/Clearcut Interface. *Acta Theriologica.*, 30, 11: 211218, 1985.
- The effects of Rough fish removal on the growth and survival of Hatchery Brown trout (*Salmo trutta*) in Burd Run. American Fisheries Society International Symposium: "The Role of Fish Culture in Fisheries Management", 1985.
- Small mammal exploitation of forest/clearcut interface during years of high and low abundance. The annual meeting of the Pennsylvania Wildlife Society, 1984.
- The effects of Rough fish removal on the growth and survival of Hatchery Brown trout (*Salmo trutta*) in Burd Run. The annual meeting of the Pennsylvania Association of State College and University Biologists, 1984.
- The ecology of small mammals exploiting the forest clearcut interface. The annual meeting of the Pennsylvania Academy of Science, 1983.



**EDUCATION:**

B.S., Environmental Resource Management, 1992, The Pennsylvania State University

**PROFESSIONAL REGISTRATIONS AND CERTIFICATIONS:**

USFWS Qualified Indiana Bat Surveyor

USACE Baltimore District Certified Wetland Delineator

PADI Open Water Diver SCUBA Certification

**PROFESSIONAL AFFILIATIONS:**

The Wildlife Society PA Chapter

**YEARS OF EXPERIENCE:**

23 Years

As a Senior Environmental Scientist/Biologist, Mr. Pernick has served as the project manager and coordinator for projects involving threatened and endangered species and wetland and stream investigations, as well as 105/404 permitting, for a full range of public and private clients. He is experienced in evaluating and documenting potential habitats for species of concern and also in preparing Biological Assessments to evaluate potential project impacts. He has coordinated and participated in multiple surveys for a variety of terrestrial and aquatic threatened and endangered species for PennDOT, WVDOH, and private clients. Mr. Pernick routinely works with the USFWS, WVDNR, WVDEP, PADCNR, PADEP, PFBC, and the PGC regarding a variety of projects with the potential to affect species of special concern. He is also a USFWS-listed Qualified Indiana Bat Surveyor (QIBS) and further qualified for other federally and state listed bat species.

In addition to threatened and endangered species investigations, Mr. Pernick is the lead investigator for aquatic resources and has been extensively involved in wetlands delineation, wetlands functional analysis, wetland mitigation site selection, water quality and aquatic biota sampling, and report preparation for both public and private clients.

**PROFESSIONAL EXPERIENCE**

**Threatened and Endangered Species Investigations** - Mr. Pernick has coordinated and participated in investigations for mammals, birds, reptiles and amphibians, mussels, and plants. The majority of these investigations have been to determine the presence or absence of threatened or endangered species. Important aspects of these investigations include impact avoidance and minimization. Through these investigations, he has worked closely with agency representatives from the USFWS, PGC, PFBC, WVDNR, and has held numerous Scientific Collectors Permits to conduct specialized work.

**Wetland Delineation and Mitigation** - As a Provisionally Certified Wetland Delineator, Mr. Pernick is responsible for wetland identification and delineation using the 1987 Corps of Engineers Manual. He has co-established and instructed a credited college level course entitled Advanced Wetland Delineation Level II. This course was developed in conjunction with the USACE requirements for professional provisional certification under the Federal Wetland Delineator Certification Program. He is also responsible for wetland functional analysis using several different methods including Wetland Evaluation Technique II (WET 2.0), Hydrogeomorphic Classification, and the New England USACE Descriptive Method. He is also proficient at performing wetland mitigation site feasibility studies and compliance monitoring for permit requirements.

**Stream Assessment** - Mr. Pernick has extensive experience in aquatic habitat evaluation and characterization. He also is proficient in the characterization of surface water resources and has been trained in a variety of stream assessment and sampling methods including the use of the EPA Rapid BioAssessment Protocol. Using this experience, he is responsible for the physical, chemical, and biological evaluation of stream habitats, including benthic macroinvertebrate identification and sampling, and use of biotic indicators. Through the characterization of numerous streams throughout Pennsylvania and West Virginia, he is familiar with a wide variety of lotic systems.



**Natural Stream Channel Design** - Mr. Pernick has been involved in stream restoration and mitigation, incorporating both natural stream channel design utilizing bio-engineering and fluvial geomorphology (FGM), and has served as the construction monitor for stream restoration projects.

**Permitting** - Having many years of experience on a wide range of projects involving stream and wetland encroachments in both Pennsylvania and West Virginia, Mr. Pernick is very familiar with the federal Section 404 permitting and PA Chapter 105 permitting processes and has prepared the necessary permits for numerous clients.

## PROJECT EXPERIENCE

**Coalfields Expressway and Mullens Connector Project, Wyoming County, West Virginia** – Mr. Pernick served as the primary investigator for the potential presence/absence of federally listed bat species. This task included the investigation of over 12 square miles of land formerly deep mined and surface mined, the assessment of 26 mine portals, and hibernacula survey of 9 portals for the federally listed Indiana bat and northern long-eared bat.

**West Virginia Corridor H (Kerens to Parsons section), Randolph and Tucker Co., West Virginia** – Mr. Pernick was responsible for habitat investigations for the Allegheny woodrat and 25 other animals identified as forest sensitive species along 13 miles of proposed highway corridor through the Monongahela National Forest. His responsibilities included passive listening and active call surveys for the long-eared owl (13 call stations) and Northern goshawk (410 call stations) along 13 miles of proposed highway corridor through the Monongahela National Forest. The goshawk survey involved 96 miles of transect with 410 call stations. Additionally, habitat suitability investigations for the peregrine falcon were also conducted at several habitats within the MNF.

**Valley View Business Park, Lackawanna County, Pennsylvania** – Conducted emergence surveys for the small-footed bat at 8 proposed development sites on reclaimed mine land, and monitoring/emergence survey of 10 man-made small-footed bat habitats constructed for mitigation. The survey also incorporated supplemental acoustic recorders and infra-red video cameras. Additionally, emergence/swarm surveys were conducted at 6 known hibernacula occurring on the site.

**Redstone Watershed Water Quality Assessment, Fayette County, Pennsylvania** – Mr. Pernick oversaw and led efforts for the planning and assessment of over 50 square miles of watershed affected by abandoned mine drainage. He was also responsible for identification of abandon mine drainage and leading the training of volunteer monitors.

**Altmans Run Watershed Water Quality Assessment, Indiana County, Pennsylvania** – Mr. Pernick oversaw and led efforts for the planning and assessment of over 20 square miles of watershed affected by abandoned mine drainage. He was also responsible for identification of abandon mine drainage and leading the training of volunteer monitors.

**Mountain Watershed Association, Fayette County, Pennsylvania** – Mr. Pernick led efforts at a site for the identification and delineation of mine seep caused wetlands and associated state and federal permitting for implementation of active and passive remediation measures of abandoned mine drainage.

**Freedom-Crider Road Stream Relocation Project, Beaver County, Pennsylvania** - Mr. Pernick served as the construction inspector for the FGM stream channel relocation and wetland mitigation on the Freedom-Crider Road project. He also was responsible for wetland and stream resource studies for the Crows Run Road project.

**Indiana University of Pennsylvania Stream Reconstruction, Indiana County, Pennsylvania** – Mr. Pernick was responsible for monitoring the success of over 1000 feet of stream channel reconstructed using natural stream design techniques, and advisement of improvement measures.

**Environmental Impact Statement for Pennsylvania High-Speed Maglev Project, Allegheny and Westmoreland Counties, Pennsylvania** - Mr. Pernick conducted a survey for the state endangered short-eared owl for the Pennsylvania High-Speed Maglev Project. Additionally, he conducted an investigation for the presence of natural and mine openings for the Indiana bat. Mr. Pernick also served as a Regulatory Liaison for this project.

**Mon/Fayette Transportation Project, PA Route 51 to I-376, Allegheny County, Pennsylvania** - Mr. Pernick





served as task manager for studies pertaining to threatened and endangered species, including abandoned mine portal identification and assessment for bats and survey for federally listed bat species, wetlands, surface water resources, and other natural resources and assisted with the preparation of the EIS. He also assisted with the wetland and stream mitigation and site selection/design and the construction monitoring.

**S.R. 0286, Section A09, Golden Mile Highway Project, Allegheny County, Pennsylvania** - This project involves the upgrade of the existing highway facility to alleviate existing traffic congestion and provide a safer roadway. Mr. Pernick was responsible for wetland and stream investigations, and associated preparation of the NEPA documents for these investigations. He also served as the 105/404 regulatory liaison for permitting and directed preparation of the Joint Permit. He was further involved in the wetland/stream mitigation siting.

**Allegheny County Geotechnical Engineering Services Open End, Allegheny County, Pennsylvania** - Skelly and Loy, Inc., as a subconsultant, is performing environmental services for Allegheny County under a Geotechnical Engineering Services open-end contract. Environmental services include studies associated with natural, cultural, and socioeconomic resources, as well as the preparation of environmental documents and permits. Mr. Pernick's responsibilities include natural resource investigations (including wetland investigations) and permit coordination.

**Painters Run Road Widening and Reconstruction Project, Scott and Upper St. Clair Townships, Allegheny County, Pennsylvania** - Skelly and Loy, Inc. provided environmental services and had the lead role in the preparation of an Environmental Assessment document for the Project. Mr. Pernick's responsibilities include natural resource investigations (including wetland investigations) and permit coordination.

**Other Project Experience** - Mr. Pernick has coordinated and assisted with surveys for the Indiana bat including a section of the Mon/Fayette Transportation Project (Brownsville to Uniontown), the Elkins WV Bypass, WV Route 9, Orgas to Chelyan Connector (Boone and Kanawha Counties, WV), US Route 22 Improvement Project (Section 495), and US Route 15 Improvement Project (Tioga County, PA). These surveys included mist-net surveys of summer habitat and/or winter hibernaculum surveys. Mr. Pernick has served as a Senior Natural Resources Specialist and Qualified Indiana Bat Surveyor, responsible for securing, conducting, and managing wildlife surveys for Marcellus Shale pipeline corridors in Pennsylvania and Ohio. These surveys include primarily those for the Indiana and small-footed bat, woodrat, timber rattlesnake, goshawk, and wetland identification and delineation.

He has also coordinated and assisted with several surveys and reporting for the federally endangered clubshell and riffleshell mussels in both Pennsylvania and West Virginia. These projects included bridges over the Allegheny River (East Brady and West Hickory), French Creek, and Shenango and Little Shenango rivers in PA, and the Elk, Little Kanawha, New, and Greenbrier rivers in West Virginia. Mr. Pernick has also coordinated and assisted with surveys for the massasauga and timber rattlesnake and short-eared owl in Pennsylvania. He further assisted with a variety of plant surveys for species of special concern for several transportation projects.

#### RELEVANT TRAINING

Virginia Big-Eared Bat Trapping, Trout Cave, Pendleton County, WV, Craig Stihler (WVDNR) and Barbara Douglas (USFWS), July 28, 2015. Assisted with trapping of 30+ Virginia big-eared bats for *WNS Skin Immune Protein Study 2014 (Moore/Davalos/Russell)*. The sampling involved tissue biopsy collection for genotyping and proteomes, and qPCR swab for presence of PD DNA.

Indiana Bat Trapping, Canoe Creek State Park/Hartman Mine: Blair County, PA, Cynthia Hauser and Lee deWolski (PGC), April 16, 2014. Assisted with trapping and species ID.

Indiana Bat Trapping, Long Run Mine, Butler County, PA: PGC, Greg Turner, Cal Butchkoski, February 24, 2014. Assisted PGC with hibernaculum survey of mine interior for the Indiana bat, and species identification.

Indiana Bat Trapping, Long Run Mine, Butler County, PA: PGC, Greg Turner, April 2012. Spring emergence survey and UV light diagnostic testing of bat wings for tissue damage resulting from white-nosed syndrome.

Indiana Bat Trapping, Canoe Creek State Park/Hartman Mine: Blair County, PA, Cal Butchkoski/Greg Turner (PGC),



October 2011. Assisted with species ID.

Indiana Bat Trapping and Radio Transmitter Tagging at Canoe Creek State Park/Hartman Mine, Blair County, PA: Cal Butchkoski/Greg Turner (PGC), April 2008. Assisted with species ID, including the Indiana bat, arm band attachment, transmitter attachment, and radio-telemetry tracking of transmitted bats.

Indiana Bat Trapping and Radio Telemetry Tracking, Long Run Mine: Butler County, PA, Cal Butchkoski/Greg Turner (PGC), April 2007. Assisted with identification of Indiana bats and radio-telemetry tracking of transmitted bats (aerial and ground).

Winter Hibernaculum Survey at US Steel Mine, Armstrong County, PA: Lead investigators Cal Butchkoski/Greg Turner (PGC), February 8<sup>th</sup>, 2007. ~9,000 bats (majority little browns, few N. long ears and pips, several Indiana's), assisted with counts, wading, canoe.

Indiana Bat Fall Trapping and Radio Telemetry Tracking for the Indiana Bat at Long Run Mine, Butler County, PA: Lead investigators Cal Butchkoski/Greg Turner (PGC), September 11<sup>th</sup> and 18<sup>th</sup> 2006. Assisted with identification of >2000 trapped bats (majority little browns, dozen or so N. long-ears, 1 pipestrelle, 1 big brown).

Indiana Bat Trapping at Long Run Mine: Butler County, PA, Cal Butchkoski/Greg Turner (PGC), October 3<sup>rd</sup> and 4<sup>th</sup>, 2005. Assisted with identification of Indiana bats.

Indiana Bat Trapping at CS&M Mine: Lawrence County, PA, Cal Butchkoski/Greg Turner (PGC), September 26, 2005. Assisted with identification of Indiana bats.

Bat Acoustic Monitoring Workshop - Bat Conservation International, Barree, PA, August 2005. Included operation/use and call classification using ANABAT, SONOBAT, SPECTRA.

Indiana Bat Trapping and Radio Transmitter Tagging at Canoe Creek State Park/Hartman Mine: Blair County, PA, Cal Butchkoski/Greg Turner (PGC), April 26, 2005. Assisted with telemetry tracking of Indiana bat in York Co.

Indiana Bat Trapping and PIT Tagging of Little Brown Bats— Mark and Recapture Study at Canoe Creek State Park/Hartman Mine: Blair County, Michael Clark/Alan Hicks (NYS DEC), April 20<sup>th</sup> and 21<sup>st</sup> 2005. Assisted with identification of Indiana bats and PIT tag insertion.

Indiana Bat Trapping and Radio Transmitter Tagging at Canoe Creek State Park/Hartman Mine: Blair County, Cal Butchkoski/Greg Turner (PGC), April 10<sup>th</sup> thru 17<sup>th</sup> 2005. Assisted with identification of Indiana bats, arm banding and radio transmitter attachment.

Indiana Bat Trapping and Radio Transmitter Tagging at Canoe Creek State Park/Hartman Mine: Blair County, Cal Butchkoski (PGC), April 2004. Assisted with identification of Indiana bats, arm banding and radio transmitter attachment.

Indiana Bat Trapping and Radio Transmitter Tagging at Canoe Creek State Park/Hartman Mine: Blair County, Cal Butchkoski (PGC) and Dave Wayland (PGC), April 2003. Assisted with identification of Indiana bats.

Survey of the Canoe Creek State Park/Hartman Mine with Emphasis on the Indiana Bat: Blair County, Cal Butchkoski (PGC), February 2003. Assisted with the population count and identification of bats.

Bi-annual Bat Survey of the Salisbury Mine with Emphasis on the Indiana Bat: Somerset County, John Chenger and Chris Sanders (PGC), February 2003.

Indiana Bat Banding and Maternity Investigation: Blair County, Canoe Creek State Park, Cal Butchkoski (PGC), July



2002. Assisted with telemetry tracking in the adjacent "feeding area".

Hartman Mine Investigation for the Indiana Bat/Bat Workshop: Blair County, Canoe Creek State Park, Dr. Mike Gannon (PSU), August 1996.

*Running Buffalo Clover and Virginia Spiraea Workshop – Federally Threatened and Endangered Plants of West Virginia.* WVDNR/USFWS. Elkins, WV. May 28, 2015.

*Wetland Delineation and Updates/Interim Regional Supplements to the USACE Wetland Delineation Manual.* February 2012. The Swamp School. Williamsport, PA.

*Woodrat Management Workshop – Adaptive Management Practices and Habitat Improvement Measures (1000 Steps site, Huntingdon Co.),* PA Chapter Wildlife Society Annual Meeting, State College PA, March 2013. Presented by the PGC.

*Vernal Pool Best Management Practices Workshop–* PA Chapter Wildlife Society Annual Meeting, State College PA, March 2013. Presented by the PGC.

*Threatened and Endangered Species Desk Reference (PennDOT Publication 546) Training - Includes module on INDIANA BATS -* PennDOT District 9-0, Holidaysburg, PA, March 3-5, 2009

*Wildlife Hazard Management Training -* Embry Riddle Aeronautical University and Denver International Airport, Colorado, July 8-10, 2008

*Section 404, Chapter 105 Advanced Design –* PennDOT Bureau of Design (held at District 11-0), May 1-2, 2007.

*Bat Acoustic Monitoring Workshop -* Bat Conservation International, Barree, PA, August 2005. Included ANABAT, SONOBAT, SPECTRA.

*Federal Endangered Species Act and Section 7 Consultation -* Federal Highway Administration, Marshall University/Rahall Appalachian Transportation Institute, WV, July 2004

*Distance Sampling Technique: Sampling Designs, Field Techniques, and Data Analysis -* Clarion University, March 2004. Sponsored by the PA Wildlife Society. Instruction by Duane Diefenbach (USGS, PA Cooperative Fish and Wildlife Research Institute, PSU), and Daniel Brauning (PGC).

*Fluvial Geomorphology (FGM) and Natural Stream Channel Assessment -* North Carolina University Stream Restoration Institute, April 2002.

*Top Ten Mistakes on Applications for Water Obstructions Permits* (including instruction on complete application preparation) - PADEP/USACOE/PAEP, March 2001.

*On-Site Inspection of Erosion Controls -* Beaver County Conservation District/PADEP, April 2000.

*Stream Ecology and Monitoring Techniques* (including EPA's Rapid Bioassessment protocol)- Philadelphia Academy of Natural Sciences, June 1996.

*Pond Management -* Penn State College of Agricultural Sciences, Cooperative Extension/Westmoreland County Conservation District/USDA-NRCS, 1994.

*Wetland Functions and Values (WET 2.2) -* Wetland Training Institute, August 1993.

*Wetland Identification and Delineation Practicum -* Wetland Training Institute, June 1993.

*Wetland Identification and Delineation (1987 Manual) -* Wetland Training Institute, June 1993.



**EDUCATION:**

B.S., Environmental Health / Biology Minor, 1995, Indiana University of Pennsylvania

**PROFESSIONAL REGISTRATIONS AND CERTIFICATIONS:**

FAA Qualified Wildlife Hazard Biologist

**YEARS OF EXPERIENCE:**

18 Years

Mr. Toki has over 18 years of natural resource related experience, including 3 years as a Fisheries Biologist with the Pennsylvania Fish and Boat Commission. His responsibilities primarily include natural resource/ecological evaluations, NEPA documentation and state/federal water obstruction and encroachment permitting. In his role, Mr. Toki serves as a lead investigator, field coordinator and overall project coordinator.

Mr. Toki directs and leads a variety of primary research studies and facilitates agency coordination for our clients. He has a broad experience base in conducting routine wildlife and habitat surveys for a variety of birds, mammals, fishes, reptiles, amphibians, and plants including those designated as species of special concern. He has extensive experience in aquatic resource assessments/characterizations as well as wetland and stream mitigation site selection, site design, construction inspection, and post-construction monitoring. Additionally, Mr. Toki has extensive practical experience as a senior field delineator and is skilled in the use and application of the federal delineation manuals, various individual state wetland finding procedures and regional delineation supplements as well as multiple functional habitat assessment methodologies. His stream experience includes: stream ecology and habitat assessment (including EPA Rapid Bio-Assessment), macro invertebrate and fish sampling (including electro-shocking), impact assessment, mitigation site suitability and design (natural stream channel design and fluvial geomorphic techniques), construction inspection of mitigated resources. Mr. Toki also has extensive experience in evaluation of terrestrial ecosystems including application of various wildlife habitat assessment models, development of habitat conservation/protection and enhancement plans and implementation of breeding bird and raptor survey protocols. Ultimately he is responsible for securing state and federal environmental permitting for our clients. Mr. Toki has applied his expertise and helped to facilitate and successfully manage natural resources on hundreds of federal/state and private projects throughout Pennsylvania, West Virginia, Virginia, New York, New Jersey and Maryland.

**PROFESSIONAL EXPERIENCE**

**Homer City Power Generation Facility Indiana County, Pennsylvania and Shawville Power Generation Facility, Clearfield County, Pennsylvania –** Mr. Toki was responsible for wetland mitigation site design and monitoring including preparation of site specific re-vegetation/reclamation plans and state/federal permitting associated with fly-ash disposal areas.

**Pennsylvania Department of General Services, IUP Convocation Center, Indiana, Pennsylvania –** Mr. Toki assisted with the reclamation of a scrap yard facility including development of a stream relocation/restoration design along 506 feet of Marsh Run. The restoration plan incorporated bioengineering techniques rather than standardized engineering practices. Additionally, Mr. Toki was directly responsible for the completion and submission of a state/federal Water Obstruction and Encroachment Joint Permit Application for this project.

**John Sisson Motors/Bull International Property Expansion, Washington County, Pennsylvania –** Mr. Toki developed a stream restoration plan for a 180 linear foot reach of stream as compensatory mitigation for project related surface water impacts. The restoration design incorporated bio-engineering bank stabilization techniques, stream flow and structure diversification, riparian corridor establishment and invasive species control measures.





**WV Department of Transportation Division of Highways, Corridor H Transportation Improvement Project, Kerens to Parsons, Randolph and Tucker County, WV - Sections 1A and 1B** – Mr. Toki developed and prepared brook trout habitat improvement plans as compensatory mitigation for stream resource impacts incurred on the project. Mr. Toki developed trout habitat improvements along a 1,800 foot reach of the South Branch Haddix Creek and assisted with biological evaluation and restoration design of aquatic organism passage improvements on three known brook trout waters.

**Chief Gathering, LLC, Fayette South TETCO Compressor Station & Pipeline Project, PA** – Mr. Toki performed field investigations and wetland / surface water delineations for the purpose of minimization or avoidance of aquatic habitats. Mr. Toki prepared and submitted a Species Presence/Absence and Habitat Findings Report for state-listed threatened plant species. Mr. Toki was also prepared, submitted and secured PA DEP Chapter 105 General Permit applications for this project.

**Wildlife Specialists, LLC, Mist Net Surveys for Federally Endangered Indiana Bat at Various Marcellus Shale Natural Gas Pipeline Projects located in North Central and Northeastern Pennsylvania** – Mr. Toki assisted with mist net surveys for the federally endangered Indiana bat on multiple natural gas pipeline projects located in Tioga, Potter, Sullivan and Montgomery Counties, Pennsylvania. Surveys were conducted for a 3 month period during the summer of 2010. Surveys were conducted in accordance with Pennsylvania game Commission and United States Fish and Wildlife Service established protocols. Survey efforts included site and net set selection (GPS survey), species identification and specimen data collection, transmitter and radio-telemetry, documentation of summer range/site habitat features, data compilation and adherence to specific disinfectant protocols.

**SR 6219, Section 020, Somerset County, Pennsylvania for PennDOT District 9-0** - Construction of a new 11-mile, four-lane, limited access roadway extending from the northern end of the Meyersdale Bypass to the southern end of the existing four-lane limited access US 219, south of Somerset, PA. As the Environmental Monitor on record Mr. Toki was responsible for the re-evaluation of the Final Environmental Impact Statement during final design of this highway improvement project. Associated studies completed included: wetland and surface water identification and delineation; wetland functional assessments; stream assessments; threatened and endangered species surveys (timber rattlesnake, Fraser's sedge, upland sandpiper, dickcissel and the Indiana bat); agricultural lands reevaluation (Farmland Assessment Report) and ALCAB Adjudication. Mr. Toki was also responsible for the preparation and submission of a state/federal Water obstruction and Encroachment Joint Permit Application for the project as well as the design of on-site palustrine wetland replacement areas and stream restoration plans.

**Chestnut Flats Wind Project, Blair and Cambria Counties, Pennsylvania for Chestnut Flats Wind, LLC** – Mr. Toki prepared a Critical Issues Analysis Report containing a preliminary inventory of potential resource constraints as they relate to project planning, land development and permitting for a 14,000 acre study area. This information allowed the developer to make proactive, informed decisions relative to preliminary sighting with the intent to avoid and/or minimize resource impacts to a practicable extent. This document also provided the foundation for future proposed due-diligence studies. Mr. Toki conducted detailed wetland and surface water identification and delineation studies, and threatened and endangered species habitat/presence/absence surveys for pre-determined wind turbine locations. Mr. Toki conducted surveys for the timber rattlesnake, Allegheny woodrat, Northeastern bulrush, Torrey's rush, Margurite's clubmoss, Appalachian blue violet and bushy beardgrass, with occurrences of the timber rattlesnake and suitable habitat for the woodrat (no active populations) identified and documented. A GIS database containing historically known and recently identified resource features was made available to the client throughout the duration of the project. Through proactive identification and avoidance of resource features, this project utilized permitting under the Pennsylvania Department of Environmental Protection General Permit criteria. As a part of this project, Mr. Toki also prepared a formal Wetland Restoration Plan for the client to facilitate the sale of land for a proposed substation and rectify a violation incurred by the previous owner. Steve's efforts, specifically his ability to present accurate and comprehensive findings have allowed for the successful avoidance of important resources, limited the scope of state permit applicability and eliminated the necessity for federal action on said permit.

**SR 6219, Section 019, Somerset County Pennsylvania, Meyersdale to I-68 Transportation Improvement Project for PennDOT District 9-0** – Mr. Toki was responsible for the inventory and identification/classification of natural resource features (wetlands, surface waters, threatened and endangered species, terrestrial habitats, etc.) located within an 11,000 acre project study area. Mr. Toki assisted the prime consultant in the development of preliminary alternatives (Environmental Overview) and selection of alternatives retained for detailed study, and was



responsible for completing individual sections of the Draft Environmental Impact Statement. Mr. Toki conducted detailed field reconnaissance investigations related to vegetation and wildlife, threatened and endangered species, wetlands and surface waters and provided an analysis/coordination of findings and presentation to resource agencies. Mr. Toki was also responsible for direct coordination with federal and state regulatory agencies including coordination and presentation at Special Agency Coordination Meetings (SACM); and ecosystem based mitigation sighting activities. Mr. Toki conducted wetland mitigation sighting, selection of preferred site and secured agency concurrence. Additionally, Mr. Toki coordinated with state and federal regulatory agencies regarding habitat suitability and/or presence/absence for over 25 threatened, endangered or rare species within PA and MD.

#### **RELEVANT TRAINING**

Technical and Regulatory Guidance for Characterization, Design, Construction and Monitoring of Mitigation Wetlands – Interstate Technology Regulatory Council May 2005

Bog Turtles and the Environmental Review Process Parts I & II– United States Fish and Wildlife Service and the Pennsylvania Fish and Boat Commissions, October 2003 and June 2004

Endangered Species Act – Pennsylvania Department of Transportation October 2002

Species of Special Concern – Pennsylvania Department of Transportation September 2003

NEPA and Transportation Decision Making – Commonwealth of Pennsylvania Department of Transportation May 2005

Road Crossing Structure Improvements to Accommodate Wildlife Passage - American Society of Civil Engineers July 2006

Threatened and Endangered Species Training (PennDOT Publication 546) - Including module on INDIANA BATS – PennDOT Engineering District 9-0, Hollidaysburg, PA, March, 2009

Wildlife Hazard Management Training – United States Department of Agriculture, Dulles Airport, Washington DC. October 2009

Wildlife Hazard Management Training – Embry-Riddle Aeronautical University, On-line coursework refresher. March 2012

#### **PROFESSIONAL AFFILIATIONS**

Society of Wetland Scientists

The Wildlife Society (National and PA Chapter)

Volunteer surveyor for the Pennsylvania Game Commission and Pennsylvania Fish and Boat Commission



# CERTIFICATE OF *Authorization*

STATE BOARD OF REGISTRATION FOR PROFESSIONAL ENGINEERS

*The West Virginia State Board of Registration for Professional Engineers  
having verified the person in responsible charge is registered in  
West Virginia as a professional engineer for the noted firm, hereby certifies*

**SKELLY & LOY, INC.**

**C00687-00**

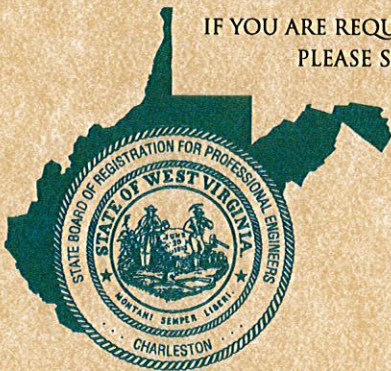
**Engineer in Responsible Charge: GERALD LONGENECKER - WV PE 018491**

*has complied with section §30-13-17 of the West Virginia Code governing  
the issuance of a Certificate of Authorization. The Board hereby notifies you of its  
certification with issuance of this Certification of Authorization for the period of:*

**July 1, 2015 - December 31, 2015**

*providing for the practice of engineering services in the State of West Virginia.*

IF YOU ARE REQUIRED TO REGISTER WITH THE SECRETARY OF STATE'S OFFICE,  
PLEASE SUBMIT THIS CERTIFICATE WITH YOUR APPLICATION.



IN TESTIMONY WHEREOF, THE WEST VIRGINIA STATE BOARD OF  
REGISTRATION FOR PROFESSIONAL ENGINEERS HAS ISSUED THIS COA  
UNDER ITS SEAL, AND SIGNED BY THE PRESIDENT OF SAID BOARD.

BOARD PRESIDENT





STATE BOARD OF REGISTRATION FOR PROFESSIONAL ENGINEERS

To all to whom these presents shall come Greeting  
"Know Ye" That The State Board of Registration for Professional Engineers  
of the State of West Virginia, reposing special confidence in  
the Intelligence, Integrity and Discretion of

Gerald W. Longenecker

DOES IN PURSUANCE OF AUTHORITY VESTED IN IT  
by law hereby certify that he having submitted  
satisfactory evidence of his ability and experience is a

REGISTERED PROFESSIONAL ENGINEER

Registration Number [REDACTED]

(To Hold) and use such title in the practice of his profession,  
subject to the conditions prescribed by law.



Given under the hand of the  
Seal of the Board at the Capitol in the  
City of Charleston,  
This 11th day of January  
in the year of our Lord 2010  
and of the State  
the One Hundred Forty-Sixth

Members of the Board

Lester D. Timms, Jr. Richard E. Dlyns  
Bhajan S. Saha William E. Nieman





**West Virginia State Board of Registration  
for Professional Engineers**

**GERALD W. LONGENECKER**  
**WV PE** [REDACTED]

This is to certify that the above named PROFESSIONAL ENGINEER has met the requirements of the law, is duly registered and is entitled to practice engineering in the State of West Virginia.

**EXPIRES December 31, 2016**

**GERALD W. LONGENECKER**  
**SKELLY & LOY, INC.**  
**449 EISENHOWER BOULEVARD SUITE 300**  
**HARRISBURG, PA 17111**



STATE BOARD OF REGISTRATION FOR PROFESSIONAL ENGINEERS

To all to whom these presents shall come, Greeting  
Know Ye That The State Board of Registration for Professional Engineers  
of the State of West Virginia, reposing special confidence in  
the Intelligence, Integrity and Discretion of  
**Robert E. Golkosky**

Does, in Pursuance of Authority Vested in it  
by law, hereby certify that he, having submitted  
satisfactory evidence of his ability and experience, is a  
**REGISTERED PROFESSIONAL ENGINEER**

Registration Number [REDACTED]

To hold and use such title in the practice of his profession,  
subject to the conditions prescribed by law.



Given under the hand and the Seal  
of the Board, at the Capitol, in the  
City of Charleston  
this 21st day of Feb in the  
year of our Lord One Thousand  
Nine Hundred and Ninety-five  
and of the State the One Hundred  
Thirty-first.

STATE BOARD OF REGISTRATION FOR PROFESSIONAL ENGINEERS

Secretary: Kenneth H. Moore  
President: Robert E. Golkosky



**Search: Details**

<b>Name:</b>	ROBERT E GOLKOSKY
<b>WV Professional Engineer:</b>	<b>PE License Number:</b> [REDACTED]
	<b>PE License Status:</b> Active
	<b>PE Issue Date:</b> 02/21/1995
	<b>PE Expiration Date:</b> 12/31/2016
<b>WV Engineer Intern:</b>	<b>EI Certification Number:</b> 6305
	<b>EI Issue Date:</b> 01/17/1994
<b>Primary Address of Record:</b>	23200 FLEDGLING CIRCLE BRISTOL, VA 24202
<b>Primary Employer of Record:</b>	GRE MINERAL SERVICES, LLC 23200 FLEDGLING CIRCLE BRISTOL, VA 24202

This data was retrieved on 9/15/2015.

[Print](#)

[Search Again](#)

## Middle Creek Gob Pile Reclamation Project Cedar Bluff, Virginia

### Client/Owner

Circle L Land Company, LLC

### Estimated Project Value

Total: \$150,000

### Completion Date

March 2013

### Key Components

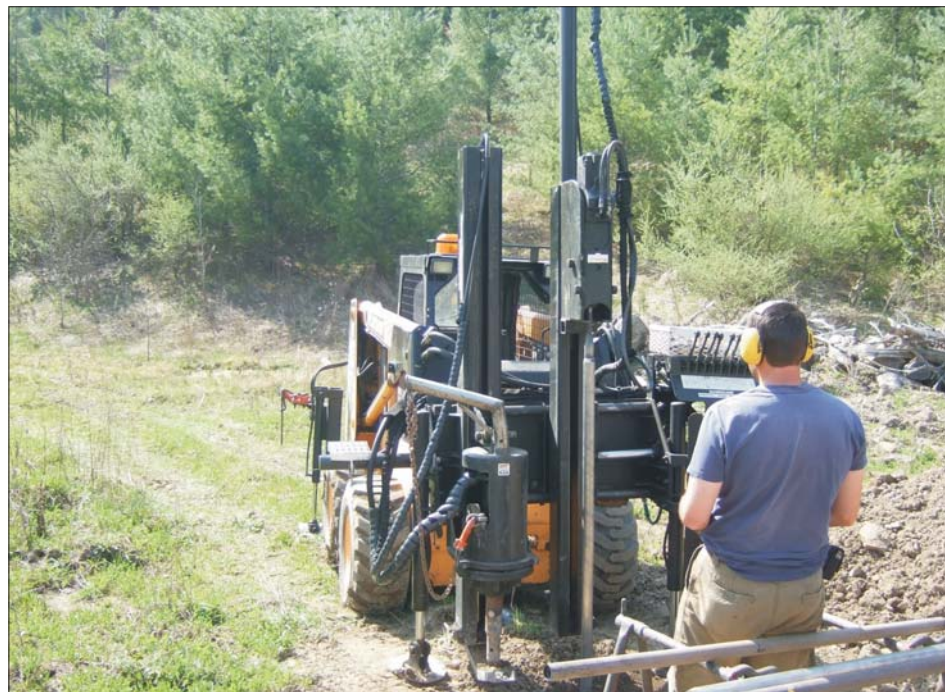
Stream Crossing; Drainage  
Control; Thermal Energy  
Evaluations

### Reference Contact

Mr. Tim Anders  
Circle L Land Company, LLC  
241 Circle T Drive  
Raven, VA 24639  
P: 276-345-1401

### Senior Project Manager

Mark Williams



Circle L Land Company owns coal rights to coal refuse in an area known as Middle Creek located near Cedar Bluff, Virginia. The site supported a coal processing plant many years ago and the rejected material from that operation was stockpiled on-site. This refuse/gob stockpile is planned as a reclamation and reprocessing project by Circle L Land. The operator will selectively reclaim the higher quality portion of the existing coal gob as fossil fuel. Skelly and Loy, Inc. has provided engineering services to Circle L Land Company to permit this reclamation project.

The Middle Creek site is made up of sloping terrain containing two significant coal refuse piles. Sampling and analysis of these gob piles indicate that significant BTU value and potential recovery

of the energy available as a viable fuel will be cost-effective. In fact, the mining company has been able to secure buyers with the assistance of Skelly and Loy through our research and evaluation of material testing for the site.

A permit for reclamation of existing refuse piles is anticipated to be issued by the end of March 2013. Once that permit is approved, Circle L will immediately begin reclamation and reprocessing of this coal which is destined for the utility market. The value of the coal on this relatively small site of about 50 acres is in the multi-millions of dollars, and there are several customers interested in purchasing the desirable product.

Skelly and Loy has provided assistance to our client along the way by



- evaluating coal quality and recoverable quantity,
- establishing water sampling stations and parameters based on available data to reduce permit costs,
- developing drainage control for the site which could be readily approved by the regulators,
- coordinating the entire approval process with the U.S. Army Corps of Engineers, the U.S. Environmental Protection Agency, and other governing groups such that plans were readily accepted,
- offering expertise to develop a significant stream crossing based on extensive flow calculations, and
- delivering permittable plans and support information to regulatory agencies including DMLR, MSHA, and DEQ.

Skelly and Loy personnel further provided assistance to Circle L Land by offering sales and transportation contacts for development of the business side of the operation. Our expertise has included providing necessary air quality permitting for an on-site screening plant. Skelly and Loy team members delivered technical assistance through our own personnel and through our established relationships with other important members of the permit team, such as the water quality testing laboratory.

Circle L Land Company is extremely pleased with the permit package, and Skelly and Loy is proud to say that we delivered.

## Virginia AML Refuse Reclamation and AMD Corrections at Pole Bridge Road Wise County, Virginia

### Client/Owner

Virginia Department of Mines,  
Minerals, and Energy -  
Abandoned Mine Land Group

### Estimated Project Value

Total: \$50,000

### Completion Date

February 2013

### Key Components

Acid Mine Drainage; Impounded  
Mine Water; Site Drainage  
Control

### Reference Contact

Mr. Richard Davis  
Virginia DMME - AML Project  
Coordinator  
3405 Mountain Empire Road  
P.O. Drawer 900  
Big Stone Gap, VA 24219  
P: 276-523-8216

### Senior Project Manager

Mark Williams



The Virginia Department of Abandoned Mine Lands selected Skelly and Loy, Inc. for this complicated project to eliminate a dangerous highwall; eliminate a dangerous impoundment of water within an abandoned mine; eliminate subsidence issues; reclaim an old mine spoils pile on-site; and establish drainage control which would include managing an acid mine drainage.

Skelly and Loy established an exploratory drilling program and offered a conceptual plan for completing all of the goals associated with the project.

The Pole Bridge Road site is situated immediately adjacent to a heavily traveled thoroughfare. Several residents in the area were complaining of subsidence problems, and traffic traveling the state-maintained road was subjected to a potentially dangerous highwall. This site had experienced a major blowout of mine discharge in the 1980s, and the present drainage was obviously acidic with very difficult drainage control issues.

Skelly and Loy personnel surveyed the site, selected an experienced drill team and worked closely with them during exploratory efforts, and evaluated all conditions related to the project objectives. We were able to

recognize some potentially serious problems associated with the impounded mine water and to firmly establish pH control and drainage control in the area. Our team developed a conceptual plan and worked closely with the Virginia AML group to decide the best possible solution for managing water issues, highwall elimination, AMD, and surface drainage control.

After a thorough evaluation, Skelly and Loy and VAML personnel completed the design phase of this project February 28, 2013. Our staff provided a construction cost estimate to the Agency and assisted with selection of a qualified candidate to perform the work. We continued the project by making several site visits during the construction phase and advising Agency staff of suggestions when field conditions did not fully reflect predictions upon excavation of problem areas. The Skelly and Loy responsibilities concluded with our submission of a complete and thorough Engineering Report which captured all data and records requested in the original RFP.

Virginia AML management and supervisory personnel expressed complete satisfaction with the services that Skelly and Loy provided on this project.



## Red Ash Strip Mine and Gob Pile Reclamation Project Whitewood, Virginia

### Client/Owner

Circle L Land Company, LLC

### Estimated Project Value

Total: \$225,000

### Completion Date

January 2013

### Key Components

Stream Crossing; Drainage Control; Management of Mine Discharge

### Reference Contact

Mr. Tim Anders  
Circle L Land Company, LLC  
241 Circle T Drive  
Raven, VA 24639  
P: 276-345-1401

### Senior Project Manager

Mark Williams



Circle L Land Company owns coal rights over an area known as Sugar Cove near Whitewood, Virginia. The site under permit was mined many years ago within the Jewell coal seam, and this project offers the mining company the opportunity to remine this high-quality coal seam. Skelly and Loy, Inc. has provided engineering services to Circle L Land Company to permit this site for remining and reclamation.

The Sugar Cove site is made up of steep terrain with an existing narrow bench. Several old gob piles were deposited on-site by more than one mining company prior to the 1977 SMCRA Act, and the first phase of this project permitted the reclamation of those piles. In fact, the mining company has been able, through our research and assistance, to reprocess a portion of the gob for sale as fossil fuel. Other inert materials have been managed appropriately in an approved spoils area.

A permit for remining of the Jewell coal seam is anticipated to be issued by the end of January 2013. Once that permit is approved, Circle L will immediately begin stripping this high-quality coal for the metallurgical market. The value of the coal on this relatively small site of about 80 acres is in the multi-millions of dollars, and there are several customers waiting in line to purchase the desirable product.

Skelly and Loy has provided assistance to our client along the way by

- evaluating coal reserves and coal quality;
- obtaining reference geologic information to reduce permit costs;
- establishing water sampling stations and parameters based on available data also reducing permit costs;



- developing technically innovative drainage control for the site, thereby offering plans which could be approved by the regulators;
- coordinating the entire approval process with the U.S. Army Corps of Engineers, the U.S. Environmental Protection Agency, and other governing groups such that plans were readily accepted;
- offering expertise to develop a significant stream crossing based on extensive flow calculations; and
- delivering permittable plans and support information to regulatory agencies including DMLR, MSHA, and DEQ.

Skelly and Loy personnel further provided assistance to Circle L Land by offering sales and transportation contacts for development of the business side of the operation. We were able to provide necessary air quality permitting for a screening plant established on-site. Skelly and Loy team members delivered technical assistance through our own personnel and through our established relationships with other important members of the permit team, such as the water quality testing laboratory.

Circle L Land Company is extremely pleased with the permit package, and Skelly and Loy is proud to say that we delivered.



## Government Financed Construction Contract (GFCC) AML Reclamation Projects Clearfield County, Pennsylvania

### Client/Owner

R. H. Dotts Contracting, LLC

### Estimated Project Value

Firm Responsibility: \$15,340

### Completion Date

Ongoing

### Key Components

AML Reclamation; Permitting services; Engineering design

### Reference Contact

Mr. Joe Cusick  
5527 Glen Hope Boulevard  
Glen Hope, PA 16645  
P: 814-378-7802  
F: 814-672-4262

### Senior Project Manager

Mark Williams



Skelly and Loy has performed engineering design and permitting services for R.H. Dotts Contracting, LLC for two GFCC projects located in Clearfield County, Pennsylvania. The two GFCC projects, located in Woodward Township, immediately outside of the Borough of Brisbin along State Route 153, involved reclamation and coal removal associated with abandoned underground mine complexes for the Upper Freeport coal seam. The shallow underground mine workings at the two adjacent sites, resulted in significant subsidence features on the two properties. Skelly and Loy was retained by R.H. Dotts Contracting in 2008 for the three acre Dunlap site to provide all of the necessary permitting and design information for submission as a GFCC project to the Pennsylvania Department of Environmental Protection Bureau of Mining and Reclamation (PA DEP BMR) Moshannon Office. Following PA DEP BMR approval of the GFCC application, R.H. Dotts Contracting, LLC performed the coal removal and reclamation work that was completed in 2010.



In 2011, R.H. Dotts Contracting, LLC retained Skelly and Loy to conduct the engineering design and permitting services for the five acre Machipongo site adjacent to the Dunlap project site. Upon development of the necessary engineering drawings using publicly available LIDAR mapping for the site, the GFCC application including all the necessary forms, drawings, and supporting information were submitted to PA DEP BMR Moshannon Office for review and comment. Skelly and Loy worked closely with the client to develop the responses to comments and upon final approval from PA DEP BMR, R.H. Dotts Contracting began the coal removal and reclamation activities at the site in July 2011. Reclamation work at the project site is expected to continue until early 2012. The results of the Machipongo and Dunlap GFCC projects will have reclaimed roughly eight acres of abandoned underground coal mines that had created significant subsidence features on the properties, which will allow for the safe future use of each site.

## Armstrong Energy Comment Letter to PA DEP Armstrong County, Pennsylvania

### Client

Tenaska, Inc.

### Estimated Project Value

Total: \$12,000

Firm Responsibility: \$12,000

### Completion Date

May 2008

### Key Components

Permit Review; Hydrogeologic  
Analysis; Subsidence Analysis

### Reference Contact

Mr. James D. Stallmeyer

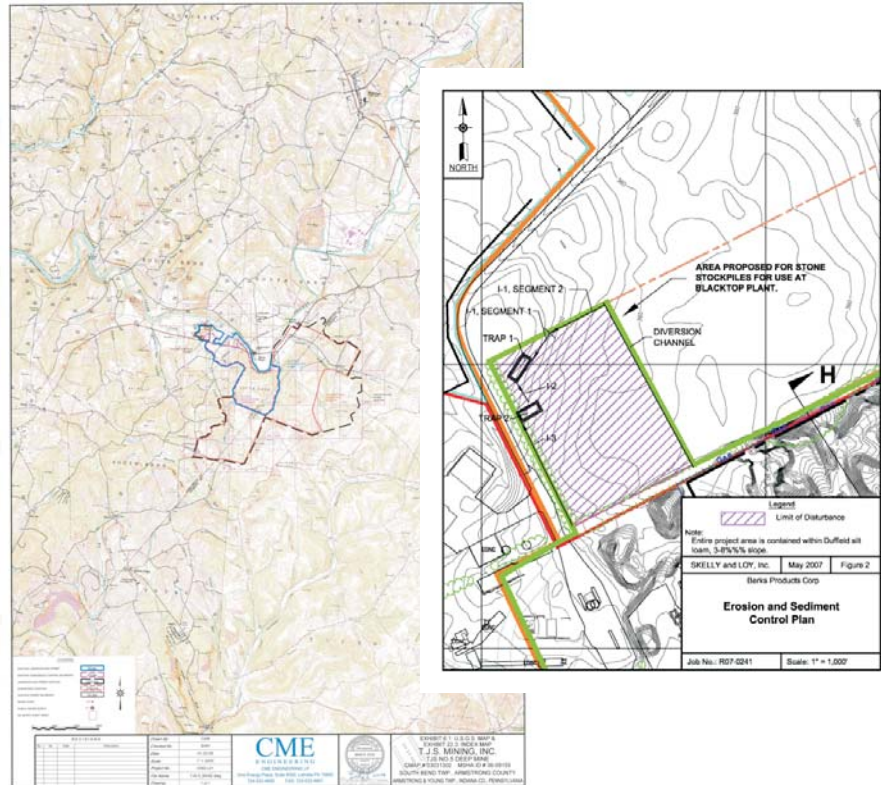
P.O. Box 12259

Pittsburgh, PA 15231-0259

P: 860-693-1740

### Senior Project Manager

Mark Williams



Skelly and Loy was engaged by Tenaska, Inc. to prepare a letter to convey to the Pennsylvania Department of Environmental Protection (PA DEP) comments and objectives that Armstrong Energy Limited Partnership, an affiliate company of Tenaska, had pertaining to a coal mine permit application. The nature of the concern is that Armstrong Energy operates a power plant overlying a portion of the proposed TJS Mining's No 5 Mine underground mine permit expansion area located near South Bend, Pennsylvania. Skelly and Loy concentrated its review on the adequacy of the evaluation completed by TJS Mining's consultant with regard to the impact of mining on the hydrology of the area and the potential for subsidence at the Armstrong facility.

The comment letter was prepared by Skelly and Loy based on our review of available published hydrogeologic data, the original mine permit, and revised permit information regarding the development of the proposed TJS Mining No. 5 Deep Mine. Skelly and Loy concluded that future deep mining operations may impact Armstrong's groundwater supplies. Skelly and Loy also recommended that a more detailed analysis of subsidence potential for the No. 5 Mine in the area of the Armstrong Power plant should be completed by TJS Mining. As a preferred alternative, Skelly and Loy suggested that the coal company maintain a mutually agreed upon mining setback from the plant area (such that the Armstrong Power Plant property is outside of the 35 degree angle of draw from the limit of mining) so that there could be no potential impact to the plant from subsidence.



## Abandoned Mine Drainage Remediation Project Valley Point #12 Preston County, West Virginia

### Client/Owner

Friends of Deckers Creek

### Estimated Project Value

Total: \$37,000

Firm Responsibility: \$34,000

### Completion Date

2008

### Key Components

Site Topographic Survey;  
Aquatic Resource Investigations;  
Water Quality Sampling and  
Testing; Engineering Design;  
State and Federal Agency  
Coordination

### Reference Contact

Mr. Martin Christ

P.O. Box 877

Dellslow, WV 26531-0877

P: 304-292-3970

### Senior Project Manager

Mark Williams



The Valley Point #12 Abandoned Mine Drainage (AMD) Remediation Project is located outside of Kingwood, West Virginia on a headwater tributary to Kaners Creek, which is a named tributary to Deckers Creek. Skelly and Loy, Inc. was hired by Friends of Deckers Creek to provide engineering and environmental services to remediate the AMD from two discharges located at this site. These services included site topographic survey, aquatic resource investigations (wetland and stream), water quality sampling and testing, engineering design (including plans, cost estimation, and bid package preparation), state and federal agency coordination, and assistance in preparing the state and federal permits.

At this site, the two mine portals are discharging low flows that have a low pH, and high concentrations of acidity, iron, and aluminum. These discharges have eliminated aquatic life from portions of Kaners Creek.

The engineering design for this project calls for the collection of the discharges in a limestone leach bed for pre-treatment. This effluent is then moved down slope via a channel to a retention pond, prior to treatment in one or two sulfate-reducing bioreactors depending on the flow. From there, the effluent receives tertiary or polishing treatment in a second retention pond and aerobic wetland. Construction of this project was completed in spring 2008.

## North Fork Greens Run AMD Treatment Design Preston County, West Virginia

### Client

Friends of the Cheat

### Estimated Project Value

Total: \$12,500

Firm Responsibility: \$12,500

### Completion Date

December 2003

### Key Components

AMD Treatment Design;  
Construction Inspection

### Reference Contact

Mr. Keith Pitzer  
119 South Price Street  
Suite 206  
Kingwood, WV 26537  
P: 304-329-3621  
F: 304-329-3622

### Senior Project Manager

Mark Williams



The North Fork Greens Run Abandoned Mine Drainage (AMD) Treatment Project is located outside of Kingwood, West Virginia, on a headwater tributary of North Fork of Greens Run near Dinkenberger Road. In 2003, Skelly and Loy assisted Friends of the Cheat by turning a conceptual design of the AMD treatment option prepared by the West Virginia University (WVU) - National Mine Land Reclamation Center into an engineering design and bid specifications package for construction. Skelly and Loy also provided construction inspection services for this project.

At this site, a mine portal is discharging a low flow AMD seep that has a low pH and is high in acidity, iron, and aluminum, that eventually flow into the tributary stream. As indicated in the

provided conceptual design by WVU National Mine Land Reclamation Center for the project, the discharge was collected in a small limestone leach bed on a hillside bench before being discharged into an 860-foot open limestone channel that parallels Dinkenberger Road until it eventually flows into North Fork of Greens Run.

Since construction of this remediation project, WVU and Friends of the Cheat have reported the following water quality improvements:

Parameter	Pre-Construction	Post-Const.
pH	2.7	3.2
Acidity	1,598 mg/l	549 mg/l
Fe	309 mg/l	65 mg/l
Al	104 mg/l	53 mg/l



## Comprehensive Engineering, Environmental, and Permitting Services Sequatchie Valley Coal Corporation, Sequatchie County, Tennessee

### Client

Sequatchie Valley Coal Corporation

### Project Value

Total: \$1,000,000  
Firm Responsibility: \$1,000,000

### Completion Date

Ongoing

### Key Components

Watershed Assessment; Land Management Plan; Acid Rock Drainage Remediation

### Reference Contact

Mr. Ken Milmine  
Cloud Peak Energy Resources  
P.O. Box 3009  
555 South Gillette Avenue  
Gillette, WY 82717  
P: 307-687-6028

### Senior Project Manager

Mark Williams



The Sequatchie Valley Coal Corporation (SVC) is a +1,000-acre surface coal mine operation located in Sequatchie and Van Buren Counties, Tennessee, in a physiographic area known as the Cumberland Plateau. Mining operations were initiated in 1982 under the ownership of the Nerco Coal Corp. In 1993, Nerco decided to close the mine as part of an effort to divest itself of eastern United States coal mining operations. SVC, along with other Nerco land holdings, was purchased in 1995 by Kennecott Energy, presently represented as Cloud Peak Energy Resources LLC (CPE). Reclamation activities were initiated in 1993 and are ongoing at the site. All backfilling, final grading, and seeding have been completed. Current reclamation activities deal primarily with mine drainage and water quality problems. Throughout this reclamation process since 1993, Skelly and Loy has continuously provided engineering and environmental support.

As part of the National Pollutant Discharge Elimination System (NPDES) permit discharge requirement for the property, Skelly and Loy (in conjunction with CPE) developed a watershed assessment and land management plan to address the acid rock drainage and water quality issues across the SVC property. Skelly and Loy designed and oversaw the construction of numerous acid rock drainage passive and semi-active remediation measures across the SVC property within both the Dry Creek and Rocky River watersheds. The planning efforts have included a comprehensive evaluation of the water chemistry across the groundwater and surface waters regimes for the property in an effort to develop a strategic planned approach to remediating the water quality concerns for the SVC property. Remedial measures have included the installation of passive wetland treatment, limestone ponds, anoxic limestone drains,



and water-powered lime dispensing systems with storage silos. Skelly and Loy designed and provided construction oversight for dozens of these systems. Skelly and Loy's efforts have also included permit negotiations with Tennessee Department of Environment and Conservation (TDEC),

To assess the recovery of the receiving streams within the respective watersheds, Skelly and Loy completed an annual aquatic survey and water quality analysis of the Dry Creek and Rocky River watersheds as part of the SVC NPDES permit requirements. An extensive aquatic investigation was designed to determine baseline conditions of the Dry Creek watershed. The water quality of these streams had already been degraded by acid mine drainage from prior mining operations within the watershed. Typical annual sampling of Dry Creek watershed streams included 14 sites for populations

of benthic macroinvertebrates, organisms which are sensitive to changes in habitat, water quality, and sediment load and composition. Water samples were collected at 33 sites within the watershed and analyzed both in the field and in the laboratory for 14 different chemical parameters. Several of the streams were traversed to collect data at 27 sampling sites regarding the volume and velocity of stream flow and identification of point source discharge locations. The low flow and normal flow conditions were evaluated for all receiving streams within the scope of proposed SVC mining operations. The stream flow and water quality data were used in the determination of a loading analysis for receiving streams. The data obtained through the aquatic survey and the water quality evaluation, in comparison with historic data, are used in assess degradation of these streams and compare biological recovery associated with the ARD remediation efforts.



## Surface Mine Reclamation and Ash Management Service Rausch Creek Land, L.P., Schuylkill County, Pennsylvania

### Client/Owner

Rausch Creek Land, L.P.

### Estimated Project Value

Total: \$500,000

Firm Responsibility: \$500,000

### Completion Date

Ongoing

### Key Components

Reclamation of Surface Mines;  
Waste Characterization of Coal  
Ash; Permitting for Coal Ash  
Disposal; Regulatory Permitting  
and Negotiations

### Reference Contact

Mr. Matt Postupack  
978 Gap Street  
Valley View, PA 17983  
P: 570-682-4600

### Senior Project Manager

Mark Williams



Rausch Creek Land, L.P. owns surface, coal, and mineral rights over a large area in the western portion of Schuylkill County, Pennsylvania. The mining of anthracite coal has historically been performed throughout this region over the last 150 years. Areas that were mined prior to the Reclamation Act of 1977 were not reclaimed. For developing portions of its property, Skelly and Loy has provided services to Rausch Creek Land, L.P. to reclaim and restore a portion of these historical surface mined areas.

These reclamation services have included performing assessments to determine the total potential volume of ash storage/disposal areas within its property holdings. Skelly and Loy estimated that over ten million cubic yards of space is available for the storage/disposal of ash materials. This estimate accounted for the disposal of ash while maintaining the ability to meet the original topographical contour requirements and other regulatory reclamation obligations. In addition, Skelly and Loy also developed a list of potential ash storage areas, prioritizing prospective sites based on access, permitting, and water-handling challenges.

Skelly and Loy has also assisted Rausch Creek Land, L.P. with the preparation of permit modifications for the addition of new ash sources and a “request for determination” for innovative ash handling equipment associated with the beneficial use of ash. The permitting process included collecting samples of the ash and determining the physical and chemical characteristics of the materials. This information was used to determine the ash quality disposal requirements. Skelly and Loy also evaluated existing and potential ash generators and compared the quality of ash generated to new draft guidelines with particular emphasis on meeting the lower concentration limits for arsenic.

During an incident when ash was placed on a permitted area which did not meet beneficial use criteria, Skelly and Loy led the negotiations between the Pennsylvania Department of Environmental Protection, the permit holder, and the ash generator to resolve the outstanding compliance issues. As part of the negotiation process, Skelly and Loy prepared compliance plans to ensure that the ash fill materials would meet the ash quality placement requirements.



## Six Mile Run, Sandy Run, and Longs Run AMD Assessment and Remediation Plan Broad Top Township, Bedford County, Pennsylvania

### Client

Broad Top Township

### Estimated Project Value

Total: \$2,500,000

Firm Responsibility: \$500,000

### Completion Date

2004-Present

### Key Components

Growing Greener Grant;  
Abandoned Mine Design;  
Engineering Design; Permitting;  
Mine Seal Design

### Reference Contact

Mr. David Thomas  
P.O. Box 57  
Defiance, PA 16633  
P: 814-928-5253

### Senior Project Manager

Mark Williams



For more than 20 years, Broad Top Township has worked to improve the quality of life for its citizens by addressing the negative environmental impacts related to abandoned mine land (AMLs) and abandoned mine drainages (AMD). In 2001, serving as the Township's environmental consulting firm, Skelly and Loy, Inc. completed an AMD assessment of the combined Six Mile Run and Sandy/Longs Run watersheds. The purpose of this evaluation was to update existing water quality information and establish a priority list for AMD remediation projects. The focus of this project was a year-long field survey and water quality sampling of the three watersheds to record flow and water quality parameters typical for AMD, ranging from net acidic with high iron and aluminum concentrations to net alkaline discharges containing elevated ferrous iron concentrations.

This investigation resulted in the identification of 80 discharges: 41 discharges located along Six Mile Run, 24 discharges along Sandy Run, and 15 discharges along Longs Run. The majority of these discharges are associated with abandoned underground coal mines, but some areas of abandoned or partially reclaimed surface mines have also resulted in AMD discharges within the watersheds. In addition, water

quality data indicated that cumulatively the monitored AMDs contribute a total of 63 tons per year of iron, 42 tons per year of aluminum, and 542 tons per year of acidity to the watersheds. Skelly and Loy estimated the cost for construction of passive treatment systems to remediate all the monitored AMDs at \$6,680,000 and that an additional \$4,000,000 would be needed for operation, maintenance, and replacement of the systems. Skelly and Loy developed a comprehensive remediation plan that identified passive treatment of 26 discharges and relocation of one discharge as top priorities in this 28-square-mile study area.

Skelly and Loy completed the design and supervised the construction of the high-priority remediation projects, entitled "Longs Run Regional AMD Remediation Project Phase 1 and 2." The engineering design details the specifications for the construction of 12 passive treatment systems to effectively abate 13 discharges. This elaborate set of passive treatment systems restored nearly the entire main stem or approximately 5.25 miles of Longs Run.

Within the Six Mile Run watershed, Skelly and Loy completed the engineering design and performed





construction oversight of 15 passive AMD treatment systems to remediate 19 AMD discharges. These constructed passive treatment systems have helped to restore approximately three miles of Six Mile Run and nearly two entire tributaries known as Shreves Run and Brewster Holland.

The components of these 27 passive treatment systems included channel modifications to reroute discharges and/or offsite stormwater, mine seals within exposed mine entries, limestone and settling ponds to impart alkalinity and capture the precipitated heavy metals, dosing siphons, inline and inlet control structures to completely drain the ponds for removal of the metal precipitates and sludge, and aerobic wetlands for tertiary treatment. Due to the presence of aluminum in most of the discharges, innovative flushing technologies were incorporated into the design for many of the passive treatment systems to manage the accumulation of metal precipitates in the limestone void spaces.

In completing the designs, Skelly and Loy's engineering team completed surveying and mapping, conceptual engineering design, erosion and sediment control planning, and permits. These professionals determined limestone pond, vertical flow wetland, aerobic wetland, and settling pond configurations; specified pond and wetland berm heights, types, and outlet structures; calculated storage volumes; estimated retention times and surface areas; and detailed grading of topographic features. Skelly and Loy computed expected treatment conditions, sludge accumulation volumes, and clean-out methods.

All construction work was completed by Broad Top Township personnel with Skelly and Loy providing construction oversight and final design as-builts. Throughout the design and construction process, Skelly and Loy as the engineering design firm and Broad Top Township as the construction entity worked closely together to achieve the individual objective at each AMD discharge site and to complete each project within the funding budget.

These individual projects were part of the larger Broad Top Township/Coaldale Borough Wastewater Management and Environmental Restoration Program, which is working to solve problems associated with non-point pollution throughout the two municipalities, especially abandoned mine drainage and failing on-lot sewer systems. Partnership cooperation and stakeholder communication have been essential elements of the continued success of this large-scale ecosystem restoration program. Skelly and Loy worked closely on these projects with the Broad Top Township Supervisors, Penn State University Environmental Resources Research Institute, Pennsylvania Department of Environmental Protection Bureau of District Mining Operations, Bedford County Conservation District, Western Pennsylvania Coalition for Abandoned Mine Reclamation, and Bedford County Planning Commission.



## Blackleggs Creek Watershed Acid Mine Drainage Remediation Projects Indiana County, Pennsylvania

### Client

Blackleggs Creek Watershed  
Association

### Estimated Project Value

Total: \$2,000,000  
Firm Responsibility: \$300,000

### Completion Date

2005-Present

### Key Components

AMD Treatment System;  
Engineering Design; Permitting;  
Mine Seal Design; Abandoned  
Mine Reclamation

### Reference Contact

Mr. Art Grguric  
P.O. Box 59  
Clarksburg, PA 15725-0059  
P: 724-639-9572

### Senior Project Manager

Mark Williams



In 2001, the Blackleggs Creek Watershed Association (BCWA) received funding from Pennsylvania's Growing Greener Grant and Section 319 programs to design and construct three passive and one semi-active abandoned mine drainage (AMD) treatment systems to address the iron, aluminum, and acidity loading of the Big Run #2, #3, #7, and #8 discharges into Big Run, a tributary to Blackleggs Creek. Upon receiving the funding for each individual project, Skelly and Loy, Inc. was contracted by BCWA to complete the engineering design and permitting of the treatment systems. The ultimate goal of the watershed restoration efforts is to restore Blackleggs Creek watershed to a put-and-take trout fishery through the remediation of these high flow AMD discharges.

The goal of the Big Run #2 project was to construct and operate a passive AMD treatment system to reduce the aluminum and acidity loads while adding some excess alkalinity into Big Run and ultimately Blackleggs Creek. The Big Run #2 discharge originates from a deep mine drainage heading along Big Run in Conemaugh Township, Indiana County. While the water chemistry, specifically the aluminum and acidity concentrations, are not severe, the average flow rate of the discharge is 1,250 gallons per minute (gpm), which translates to 252 tons of acidity and 42 tons of aluminum

discharge entering Blackleggs Creek annually.

The Big Run #2 passive treatment system includes a piping network to direct the discharge from a deep mine drainage heading underneath Big Run and to the treatment location, which includes an oxalic limestone pond containing 3,400 tons of limestone and a settling pond/wetland which includes inline water control structures to adjust the surface water elevations in the limestone bed and wetland. The limestone pond inline structure is also used to manually flush metal precipitates from the void spaces of the limestone. In addition, BCWA with the help of Skelly and Loy submitted a Growing Greener Grant in 2005 for additional limestone due to the increase in average flow rates for the discharge. The grant was awarded and BCWA added the additional limestone to the pond in 2006.

The Big Run #7 passive treatment system targeted an AMD discharge from an exposed underground mine entry, with average flows of 800 gpm and moderate concentrations of aluminum and acidity. A passive treatment system design was completed that utilized a 4,000-ton oxalic limestone pond and settling pond to fit in the site constraints. A wet mine seal was designed and



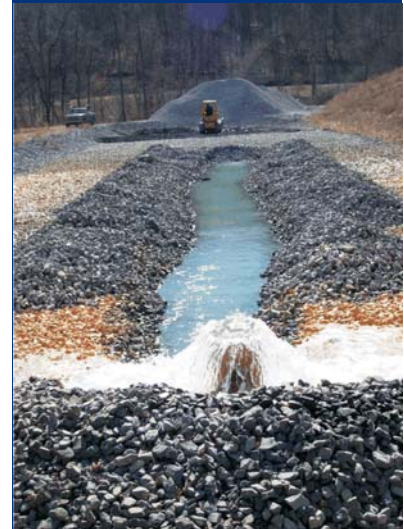
installed at the exposed mine entry to either direct the AMD into the limestone pond or into a diversion channel that bypasses the system. The limestone pond incorporates inline structures for the purpose of manually flushing the aluminum precipitates from the void spaces of the limestone. Prior to completion of the Big Run #7 AMD passive treatment system in 2006, the discharge contributed approximately 275 tons of acidity and 26 tons of aluminum annually to Big Run/Blacklegs Creek.

The Big Run #8 AMD discharge was the most complex and difficult to remediate due to the drainage heading that was installed by blasting approximately 1,000 feet horizontally through bedrock from Big Run into a low point in the underground mine complex for dewatering. A mine seal and control valve were designed and installed at a reduction point in the drainage heading from the mine in order to hydraulically control outflow from the underground mine complex. This mine seal allowed raising the mine pool elevation over 20 feet to discharge the AMD into a passive AMD treatment system that included two 2,400-ton limestone ponds and one settling pond. Due to the significant increase in the mine pool elevation, AMD discharged from an adjacent mine entry location. This mine entry was stabilized and sealed with a hydraulic outlet pipe that conveyed the AMD and bypassed the Big Run #8 treatment system. In addition to the design and construction of the limestone-based passive treatment system, the existing highwall feature at the site that resulted from the incidental coal removal as part of the project was filled with the excavated material from the Big Run #8 treatment system and stabilized. The system and site improvements were completed in 2009-2010. The Big Run #8 AMD was characterized as net acidic with high aluminum and moderate to high iron and acidity concentrations and an average flow of approximately

1,000 gpm. Annually, the Big Run #8 raw AMD discharge contributes approximately 57 tons of aluminum, 33 tons of iron, and 584 tons of acidity.

Because of the high aluminum loading rates for each AMD discharge into the constructed limestone-based passive treatment systems, inline structures and perforated piping networks with the limestone beds were designed and installed to manually flush the metal precipitates from the void spaces periodically by BCWA personnel. Inlet structures were installed for most of the settling ponds to allow control of the retention time for maximum treatment efficiency and dewatering of the basin for maintenance purposes such as sludge removal.

The Big Run #3 AMD discharge was not capable of treatment due to location, which required the addition of excess alkalinity to an existing treatment system outfall for in-stream remediation of the untreated discharge. A semi-active alkaline chemical feed system was designed and constructed in 2010 using the outfalls from the Big Run #7 and #8 passive treatment systems. Hydrated lime will be added to the two system outfalls using a hydraulically driven tipping bucket dispensing mechanism with a 30-ton silo storage unit. This alkaline chemical addition is expected to provide final polishing to the two passive system outfalls, which can average approximately 1,800 gpm combined, and impart excess alkalinity into Big Run and ultimately Blacklegs Creek. A rock-lined mixing channel, settling pond, aerobic wetland, and sludge dewatering pond were the additional major components of the treatment system, which will be maintained by BCWA. The treatment system construction will be completed and operation initiated in 2011.





## Boyce Park Acid Mine Drainage Remediation Project Allegheny County, Pennsylvania

### Client/Owner

Jeff Zell Consultants, Inc.

Allegheny County Department of  
Public Works

### Estimated Project Value

Total: \$100,000

### Completion Date

2003-Present

### Key Components

AMD Passive Treatment System  
Design; Operations and  
Maintenance Services; OM&R  
Plan Development; Construction  
Inspection

### Reference Contact

Mr. Louis Obradovich  
Jeff Zell Consultants, Inc.  
1031 4th Avenue  
Coraopolis, PA 15108  
P: 412-262-2022

Andrew G. Baechle, Director  
Allegheny County Parks  
Department  
County Office Building  
542 Forbes Avenue, Room 211  
Pittsburgh, PA 15219  
P: 412-350-7275

### Senior Project Manager

Mark Williams



Severe Acid Mine Drainage (AMD) enters Piersons Run located within the Allegheny County portion of the Turtle Creek watershed and Abers Creek, both of which are classified as trout-stocked fisheries. Skelly and Loy, Inc. assisted in the preparation of a Growing Greener Grant subsequently awarded to the Allegheny County Conservation District (ACCD) for the design and construction of passive treatment systems at these high-priority AMD discharges using one central site within the county/regional park known as Boyce Park. The AMD discharges lower the naturally low pH and produce elevated dissolved metals concentrations in the receiving streams.

ACCD selected Skelly and Loy to design the passive treatment system(s) for an estimated 20- to 25-year life and to supervise their construction in 2007. Based on water quality and flow data and site surveys prepared by Skelly and Loy, AMD design experts evaluated alternatives for treating and routing

the three AMD discharges. One elaborate passive treatment system was proposed and constructed for treating all three of the discharges due to the close proximity of the discharges and the county park-imposed site constraints.

### TREATMENT SYSTEMS

All three discharges were treated separately using independent limestone-based treatment ponds but were combined in the final polishing wetland to create one final treated discharge from the site. The treatment systems included limestone ponds, vertical flow wetlands, settling ponds, and wetlands. The design for the passive treatment system(s) included the determination of the configurations of limestone/VFW and settling ponds for routing and treating the discharges based on site topography and the characteristics of each discharge.

In the limestone pond used for treating the BP2 discharge, the



AMD passes through the high calcium carbonate limestone (typically greater than 80% CaCO<sub>3</sub>) and dissolves the limestone to impart alkalinity and neutralize acidity. Similarly, in the VFWs for BP3 and BP4, a layer of compost material is placed on top of a limestone bed to help to control the precipitation and coating of iron within the limestone bed and to enhance the limestone dissolution by trapping carbon dioxide. The net alkaline water is then routed out of the limestone bed via piping networks at the bottom of the ponds and through settling or retention ponds for precipitation of the metals, primarily iron and aluminum. Skelly and Loy designed both manual flushing systems and automatic dosing siphons to aid in the removal of aluminum and iron precipitates from the void spaces in the limestone ponds and VFWs. Finally, the water from all three discharges is combined in a final polishing wetland before discharge to an existing wetland area in the headwaters of Piersons Run. Before their treatment, the individual AMD discharges were characterized as follows in Figure 1.

After construction of the passive treatment systems, the water quality was dramatically improved. Flows remained fairly consistent and the typical combined final

effluent quality is provided below in Figure 2.

Skelly and Loy was subsequently retained by the Allegheny County Department of Public Works starting in 2003 to the present to perform operation and maintenance (O&M) checks and to ensure that all systems continue to function as designed. Skelly and Loy continues to perform O&M services including system flushing, water quality and flow monitoring and maintaining hydraulic structures.

**FIGURE 1: BOYCE PARK RAW AMD DISCHARGES CHARACTERIZATION**

SITE	FLOW (GPM)	PH (SU)	ALKALINITY (MG/L)	ACIDITY (MG/L)	TOTAL IRON (MG/L)	TOTAL ALUMINUM (MG/L)	TOTAL MANGANESE (MG/L)
BP2	19	4.6	12.4	55.8	0.48	13.4	0.29
BP3	29	3.3	0.0	257.0	5.0	25.3	0.7
BP4	7	3.5	1.7	467.5	15.0	71.9	1.7

**FIGURE 2: BOYCE PARK SYSTEM FINAL OUTFALL**

SITE	PH (SU)	ALKALINITY (MG/L)	ACIDITY (MG/L)	TOTAL IRON (MG/L)	TOTAL ALUMINUM (MG/L)	TOTAL MANGANESE (MG/L)
ALL	8	82	-70	0.06	<0.05	0.16

## REFERENCES



### **Mr. Joe Cusick**

R.H. Dotts Contracting, LLC  
5527 Glen Hope Boulevard  
Glen Hope, PA 16645  
P: 814-378-7802

### **Mr. James D. Stallmeyer**

Tenaska, Inc.  
P.O. Box 12259  
Pittsburgh, PA 15231-0259  
P: 860-693-1740

### **Mr. Martin Christ**

Save the Tygart Watershed Association  
P.O. Box 877  
Dellslow, WV 26531-0877  
P: 304-292-3970

### **Mr. Keith Pitzer**

Friends of the Cheat  
119 South Price Street, Suite 206  
Kingwood, WV 26537  
P: 304-329-3621

### **Mr. Ken Milmine**

Cloud Peak Energy Resources  
P.O. Box 3009  
555 South Gillette Avenue  
Gillette, WY 82717  
P: 307-687-6028

### **Mr. Matt Postupack**

Rausch Creek Land, LP  
978 Gap Street  
Valley View, PA 17983  
P: 570-682-4600

### **Mr. Ernest Fuller**

Broad Top Township P.O. Box 57  
Defiance, PA 16633  
P: 814-928-5253

### **Mr. Randy R. Casey, P.E. – Director**

Division of Mined Land Reclamation  
3405 Mountain Empire Rd. Big Stone Gap, VA  
24219  
P: 276-523-8286  
Randy.casey@dmme.virginia.gov

### **Mr. Richard V. Davis, Jr. – Project Coordinator, AML**

Virginia DMME Div. of Mined Land Reclamation  
P.O. Drawer 900  
Big Stone Gap, VA 24219  
P: 276-523-8216  
Richard.davis@dmme.virginia.gov

### **Mr. Tim Anders - Owner**

Circle L Land Company, Inc.  
P.O. Box 1244  
Raven, VA 24639  
P: 276-345-1401  
tim@cllandco.com

### **Mr. Todd Tackett – Sr. VP of Engineering**

Revelation Energy  
160 Lank Branch, Suite 2  
Pikeville, KY 41501  
P: 606-433-1630 ttackett@revelenergy.com

### **Mr. David Barnette – Owner**

Barnette Contractors, LLC  
5500 Wise-Norton Rd. Wise, VA 24293  
P: 276-679-2628  
barnettecontractors@yahoo.com

### **Ms. Margie Horton – Project Manager**

Environmental Monitoring, Inc.  
5730 Industrial Park Rd. Norton, VA 24273  
P: 276-679-6544 mhorton@emilab.com

### **Mr. Art Grguric**

Blackleggs Creek Watershed Association  
P.O. Box 59  
Clarksburg, PA 15725-0059  
P: 724-639-9572

### **Andrew G. Baechle, Director Allegheny Parks**

Department County Office Building  
542 Forbes Avenue, Room 211  
Pittsburgh, PA 15219  
P: 412-350-7275

### **Mr. Phillip C. Mullins – Director / Environmental Compliance & Reclamation**

Alpha Natural Resources P.O. Box 16429  
Bristol, VA 24209  
P: 276-739-5308  
pcmullins@alphanr.com