

June 2, 2016

STATEMENT OF QUALIFICATIONS
for Architectural / Engineering Services

Claudia L. Workman
Fish & Wildlife Education Center
for the WVDNR



06/02/16 09:34:06
WV Purchasing Division

E.T. BOGGESS ARCHITECT, INC.



Guy Nisbet
Division of Administration, Purchasing Division
2019 Washington Street East
Charleston, WV 25305-0130

June 2, 2016

Dear Mr. Nisbet:

In response to your Request for Proposals, E.T. Boggess Architect, Inc. (ETB) is pleased to present our Expression of Interest to provide professional architectural services for the design and construction of the Claudia L. Workman Fish and Wildlife Education Center at Forks of Coal State Natural Area in Alum Creek, WV. Our team will work with the State of West Virginia, Division of Natural Resources to ensure that everyone's vision for the project is achieved.

We have assembled a team of experts specifically for this project. Our team has a great deal of experience with a wide range of government projects in general, as well as project specific experience with similar-type visitor centers, museums and educational displays. Most of our consultants are located in Kanawha County and include **Harper Engineering** (MEP), **Moment Engineers** (Structural) and **Terradon Corporation** (Site/Civil/Landscape) who are all within minutes of the project site. Complementing our local team participants will be **Riggs Ward Design** (RWD), an award-winning studio located in Richmond, Virginia, who will provide broad knowledge and experience for the planning and design of the wildlife exhibits. RWD's specialty practice includes experts in the fields of experiential exhibit design, interactive media, and graphic design.

ETB emphasizes a client-centered design approach, incorporating mutually defined project objectives. Through this focus, we can assure the State of West Virginia and the WV Division of Natural Resources that project goals and issues will be clearly identified and addressed through an engaged, interactive programming, design, and construction process. Our design process will be conducted with an attention to detail, creative problem solving and with a passion towards project success.

We value this opportunity to serve you and look forward to personally presenting our credentials.

Sincerely,

A handwritten signature in black ink, appearing to read 'Todd Boggess', written over a faint, larger version of the signature.

Todd Boggess, AIA, NCARB, Architect
President

Cover Letter

Qualifications & Technical Expertise – 1

Scope of Services – 2

Firm Profiles – 3

Projects / Prior Experience – 4

Management & Staffing Capabilities – 5

West Virginia Forms – 6

Qualifications & Technical Expertise – 1

Qualifications & Technical Expertise – 2

Qualifications & Technical Expertise – 3

Qualifications & Technical Expertise – 4

Qualifications & Technical Expertise – 5

Qualifications & Technical Expertise – 6

INTRODUCTION

The E.T. Boggess Architect, Inc., team understands the challenges facing our state agencies as they strive to serve the needs of our citizens and continue to attract visitors to our state. The financial situation our state is enduring has affected all of us and requires us mountaineers to “get creative” in our approach. We must find ways to maximize our financial resources and preserve our environment. The Claudia L. Workman Fish and Wildlife Education Center can educate and inspire future generations to protect our fish, wildlife and other natural resources. The center and natural area can also become a tourist destination for those wishing to experience our state’s “pristine” atmosphere.

ETB has a great deal of experience with government and recreational facilities of all sizes and scopes, including visitor centers, museums, and educational facilities. We have provided and continue to provide various state agencies, including the WVDOH, with a variety of services. Over the years, we have accomplished several projects for the WVDNR, including the following at Pipestem State Park:

- ✓ Conference Center Addition
- ✓ Kitchen Renovations
- ✓ Connecting Walkway/Bridgeway
- ✓ Picnic Shelters
- ✓ Clubhouse Deck
- ✓ Golf Course Toilets

We have also worked on tourism and recreational public and private projects and were fortunate to design facilities for The Summit Bechtel Family National Scout Reserve. ETB has also worked with the Hatfield/McCoy Regional Trail Authority and private developers along the ATV trail on various projects that will help continue to attract users from across the country. We understand the impact tourism has on our state and the need to ensure visitors are able to experience and enjoy their favorite recreational activity, as well as provide new options for them to appreciate in The Mountain State.

Our team can provide you with all the A/E services you will need to accomplish your project. ETB has worked with all the consultants on our team and believe we have the experience, knowledge and commitment to ensure the new education/visitors center will represent the wishes of the Workman family. Our team has a reputation for producing quality designs that can save energy, money, and valuable resources over time, as well as comply with the ICC International Energy Conservation Code.

Our team consists of the following:

Architect:

E. T. Boggess Architect, Inc.
101 Rockledge Avenue
Princeton, WV 24740
304-425-4491

Specialty Exhibit Design Consultant:

Riggs Ward Design, Inc
2315 W. Main Street
Richmond, VA 23220
804-254-1740

Mechanical & Electrical Engineer:

Harper Engineering, pllc
52 B Street
St. Albans, WV 25177
304-722-3602

Structural Engineer:

Moment Engineers, Inc.
603 Peoples Building, 179 Summers Street
Charleston, WV 25301
304-414-4000

Site / Civil Engineer & Landscape Architecture:

Terradon Corporation
PO Box 519
Nitro, WV 25143
304-755-8291

PHILOSOPHY

Communication, collaboration, and consensus are the three elements we feel are essential to the planning, design and building process. The architect is responsible for the finished product, but the design process must include guidance and review by you and representatives from the various agencies. Our goal is to develop a "*partnership*" with our clients – a relationship that includes a long-term commitment, trust, and shared vision.

ETB believes architectural design should be an *interactive process*. We work closely with you to identify and define all your project goals, objectives, functions, responsibilities, and relationships. This interactive approach enables us to develop facilities that meet your requirements, as well as being aesthetically distinctive. Design cannot be mass produced or provided in a "cookie cutter" fashion, it must be developed from scratch with the unique attributes of each individual project in mind. Our approach is not only about our ideas . . . it is about *you and your ideas*. We **look** at your site, **listen** to what you need, and then provide **designs** to satisfy those needs.

METHOD for MEETING GOALS

The Integrated Design Process is our process of design in which the owners, users and the ETB team (architects and engineers) are all integral team members. This integrated process and the implementation of high performance design requires both efficiency and innovation. In our role with this team as the design leader and project organizer, ETB will be responsible for coordinating and orchestrating the work of our in-house architects with the site/civil engineers and users involved throughout the design, documentation, and administrative functions of the project.

Utilizing the interactive design approach will best serve the needs of the WV State Police by allowing us to better identify your objectives and produce long-term solutions. Your project will be completed by emphasizing the following activities:

- **Understanding goals.** We develop a plan for identifying and prioritizing individual goals as a means for addressing the overall project.

- **Brainstorming ideas.** We investigate opportunities for greater service through value engineering, strategic partnering, or an alternative delivery method.
- **Assuring timelines.** We generate a management plan to fulfill deliverables and meet milestones on schedule. All team members participate in and monitor this plan.
- **Maintaining client contact.** We are accessible, convenient, and committed to success from the beginning through the design process, and after completion.
- **Inviting performance feedback.** We involve all team members and clients in project evaluation at closeout and determine how well time, cost, and design goals were met.

Project Management - Our project managers provide extraordinary leadership managing the team dynamics, budget, schedule, and the flow of information. The project manager's role also includes assisting the client with the management of services and consultants that may not be a part of this contract, but still may have an impact on workflow and infrastructure coordination. The effective implementation of your goals and objectives will be realized thru early and consistent collaboration among all the design disciplines. This will result in opportunities and challenges being discussed and addressed as we proceed thru the design process.

Cost Management - We believe that the management of cost and/or risk begins with the development of fully vetted alternatives which enable you to make informed choices about the project. We search for simple and effective solutions which support the different services that will be offered at the education and visitors center. We also believe that the evaluation of cost must extend beyond the cost of construction, and consider the costs of operations, human resources, energy and sustainability.

Project Schedule Management - Completing projects on time requires effective schedule management and a commitment of the entire project team. The process begins with the development of the project schedule with input from each stakeholder engaged in the process. Accelerated schedules require even more dedication to benchmarks and deadlines, identifying production problems early and making the necessary adjustments before issues become too great to be effectively managed.

Project coordination is ETB's responsibility. As a service to the client and for the sake of efficiency, we create an online (secured and password protected) website for each project which functions as a project and information management tool. The site gives the project team direct access to project information, including design plans, imagery, construction documents, submittals, logs, field reports, and meeting minutes. This method has proven very successful by keeping the client and the team members well informed and insuring that the latest information is always readily available. This has been a valuable tool to further ensure quality control/assurance standards are being maintained.

Quality Assurance - We feel quality assurance is the ability of an architect to provide the client with a set of documents that satisfies the client's needs and are as accurate as possible. ETB believes quality assurance is an ongoing process, not just a one-time occurrence. No project is perfect, however, we strive to achieve maximum client satisfaction.

To that end, we have set the following goals for ourselves:

- Promote teamwork
 - within the office
 - with outside consultants
 - with representatives from the State of WV and the DNR
 - with representatives from the Forks of Coal State Natural Area
- Quality management throughout entire project – *Website*
- Prompt response to client’s requests – *Availability*
- Creation of quality construction documents – *Purpose Driven*
- Error *prevention*, not error catching – *Standard Practices*
- Personal pride in our work - *Motivation*
- Education and Training in-house (staff mentoring) – *Continuing Education*
- Go the extra mile whenever necessary – *Service Oriented*

Quality Control - Quality control starts with matching expectations about quality standards and life cycle costs with budget and scope during planning and design reviews. This continues through construction delivery with a program of inspections, tests, and certifications that are typically handled through a third-party agency. Quality control should flow seamlessly from one phase to another. The “partnership” we develop during the project assists us in maintaining a high level quality control standard with everyone working together in the project’s best interest. We strive to coordinate performance among the entire project team in order for a completed building program to fully satisfy your needs and expectations. The quality control plan we follow should help eliminate errors, reduce cost and improve overall building quality. ETB normally follows the plan as outlined below:

- Keep the lines of communication open and consistent between all team members
 - Regular/scheduled project meetings
- Share lessons learned from recent similar projects, include value engineering
 - Up-to-date detailing
- In-house reviews to address issues with constructability and budget restraints
- Utilize past experiences related to construction administration
 - Address before issue or occurrence
- Provide post construction administration services to be utilized on future projects
 - Every project or opportunity can be a learning experience for continued growth to better serve clients

Over 1200

Qualifications & Technical Capabilities - 1

Scope of Services - 2

Firm Profile - 3

Financial / Price Information - 4

Management & Staffing Capabilities - 5

West Virginia Profile - 6

OBJECTIVES

We understand that the over 100-acre donation made by the Workman family is intended to ensure that the natural area that currently exists alongside the Coal River will be preserved for future generations to discover and explore. The goal of the Claudia L. Workman Fish and Wildlife Education Center is to educate children and will include a variety of nature exhibits that will help them learn and appreciate our natural resources. The center will also offer education programs, along with a walking trail.

We believe that architectural solutions can be inspired by the contextual character of the surrounding natural environment. As a place for education and recreation, the building's design should incorporate ideas that promote seamless connections to the surrounding natural environment and complement the educational experience of the visitor. An environmentally responsive design aided by immersive and interactive exhibits, science-based play, and other built-in architectural and technology features, will increase the visitor's awareness of the Coal State Natural Area resource as a viable State educational and recreational asset.

ETB utilized West Virginia products throughout the Tourist Information Center, located at the intersection of I-77 and Route 460 (shown below). Hardwood flooring, "Terne" roofing, native field stone and split-rail fencing are just a few of the details found throughout the West Virginia landscape that are also on display at the visitor's center.



Vehicular and pedestrian traffic will need to be taken into consideration during site planning. Landscaping and site amenities will also be important, as well as signage and wayfinding techniques. Ease of access, safety concerns, coordination of lighting in parking areas and large parking areas for buses are important considerations.

Any correlation between the two existing buildings and the new education center will need to be incorporated into the site design.

PHASES

The ETB team is uniquely qualified to provide all of the services the DNR will need for the project. The services listed below will be accomplished for each project in steps or phases beginning with Pre-Design/Planning, then Schematic Design Phase, followed by Design Development Phase. Once you approve the final design, we start the Construction Documents Phase, then proceed to the Bidding Phase, and, finally, the Construction Administration Phase. Throughout the entire process, we will continue to utilize an interactive design process and maintain effective communication.

The information that follows describes our customary services:

Pre-Design/Planning

A thorough examination of the needs associated with the Claudia L. Workman Fish and Wildlife Education Center will begin the pre-design/planning process. Our team will lay the groundwork to clarify the project's goals and design issues. We have no preconceptions and will work to answer your project needs as we define them together.

Services/tasks include . . .

- Determine project's goals and design objectives.
- Identify project constraints and opportunities.
- Review and analyze data on each space program
- Examine the proposed site

Schematic Design Phase

The schematic design documents will establish the general scope and conceptual design for your project, and the scale and relationships of the building components. The main goal of this phase is to arrive at a clearly defined, feasible concept and to present it in a form that will result in your understanding and acceptance.

You will have the following items to review at the end of this phase:

- Preliminary Building Plan with elevations or space adjacency studies
- Perspective Sketches
- Preliminary Cost Estimates

Design Development Phase

Services in the design development phase are structured to achieve the refinement and coordination necessary for a polished work of architecture. During this phase, decisions made in schematic design are worked out at a more detailed level to minimize the possibility of major modifications being needed during the development of construction documents.

Your design team arrives at a clear, coordinated description of all aspects of the design, including

- Site/Civil
- Architectural
- Structural

- Mechanical
- Electrical
- Plumbing
- Fire Protection Systems
- Exhibition Design

Final Design Phase / Construction Document Phase

Construction documentation is the bridge between building design and physical building form. A key element of documentation services, construction drawings provide the instructions for transforming the design solution into brick, mortar, landscapes, access, etc. The purpose of providing construction document drawings is to provide graphic documentation for bidding and execution of construction services.

Services/tasks include . . .

- Prepare construction drawings based on approved design development drawings.
- Coordinate and incorporate drawings from all team members.
- Prepare specifications to accompany drawings to establish a desired level of performance.
- Submit documents to building code officials.
- Prepare bid packages/documents (blueprints and manuals)

Bidding Phase

Construction procurement activities assist the client in obtaining competent construction services. Our team will prepare bid packages or request for proposals/qualifications, and we will support the selection, negotiation, and contract award processes.

Services/tasks include . . .

- Assist client in selection of project delivery method.
- Organize or participate in pre-bid conference.
- Distribute bidding documents (blueprints and manuals)
- Address questions submitted by bidders.
- Review and evaluate competitive bids.
- Award contract for construction.

Construction Phase / Contract Administration Services

Contract administration services are important in order to ensure construction conforms to construction documents; to support the design intent; to lessen project risks; to identify and resolve construction problems early; and assist you in understanding the construction process. The architect, serving as a construction administrator, observes construction for conformity to construction drawings and specifications.

Services/tasks included . . .

- Establish lines of communication.
- Coordinate the pre-construction meeting.
- Maintain and distribute paperwork/records, including final project manuals and prints.
- Respond to contractor's requests for information.

- Track changes in construction documents.
- Review contractor's requests for payment.
- Review shop drawings and product information.
- Prepare field reports and records.
- Supervise completion and closeout, including preparation of punch list.
- Assist with any post-occupancy issues.

During the construction phase, our proximity to the project site will prove invaluable. We will be at the site on a regular basis and will be available by phone to answer any of your contractor's questions. We review shop drawings/submittals, and pay requests from the contractor. We want to ensure the construction is in compliance with the design intent.

Once the doors open and you occupy the buildings, we will remain available to assist you with start-up questions, "fine tuning and balancing" of systems required to make sure the building works specifically for the WV DNR.

One Year Walk-Thru

Every project is unique and there are learning opportunities through all phases of our work. The one year walk-thru that we provide allows us to interact with the building's users while reviewing warranty items that the contractor will be responsible for correcting. This is a great opportunity for everyone involved - the design team, the construction team, the owner, and the occupants – to all comment on what works, what could be improved, and what needs to be addressed immediately.

Cover Letter

Qualifications & Technical Experience - 1

Summary of Services - 2

Firm Profiles - 3

Supervisory / Other Experience - 4

Management & Staffing Organization - 5

West Virginia Firms - 6

HISTORY

E. T. Boggess Architect, Inc. is an 11 person architectural firm located in Princeton, West Virginia. Our firm was established in 1966 by Ted Boggess and has been successful because of a team approach and partnership-type attitude with all involved in the design and construction process. Having grown up in the practice and with a life-long love of architecture, Todd became a full time presence with the firm in 1988 after receiving a Masters in Architecture from Clemson University. Their unique relationship as father/son/mentor/apprentice and, now, partners is both exciting and rewarding as the practice continues to flourish and evolve.

REPUTATION

Our firm lives or dies by its reputation. We have cultivated a team that strives to deliver the highest level of project managements, service, and design. Our approach is client and site specific, and questions conventional assumptions. The greatest testament to the success of ETB's work goes beyond the organizational, operation and business stewardship we provide; it is in our enduring client relationships.

The architects at ETB are well-respected for their high ethical standards, as well as professional and civic activities. They have been asked to serve as expert witnesses and arbitrators in legal disputes. They have also been selected to serve on various local, state and national committees. These committees cover areas from determining local zoning ordinances to reviewing and developing educational requirements for future architects, to preserving West Virginia's historic architecture. Todd has recently been appointed to the WV Board of Architects by Governor Tomblin. The Board of Architects protects the life, health, and property of the people of the State of West Virginia by ensuring that proper architecture practices are used in the state.

SIZE

Bigger is not always better. ETB has purposely controlled size in order to maintain personal involvement and quality control. We feel that it is important to maintain close client contact and be available to respond to your needs and address any situations that may arise. Your project will not get lost in the shuffle. We are, however, of sufficient size and capabilities to accommodate the needs of your project, as well as ensuring the successful completion of our current workload. The depth of our personnel is such that we can assign individuals to the appropriate task during each phase to ensure all your project's needs are satisfied.

TEAMWORK

Our projects and design services are dependent on both our abilities as architects and our commitment to perform and implement a set of standards in order to create a design that responds to the needs of our client. In house, ETB actually functions as a team of consultants with individual strengths and abilities emphasized by each employee's role within the team. In addition to being a strong design oriented firm, we offer expertise in communication and information management, construction documentation, construction administration, and quality control.

Throughout West Virginia, we have developed relationships with government agencies, contractors and material suppliers which will be valuable as we address the challenges associated with this project.

SCHEDULES & BUDGETS

ETB understands the importance of ensuring that all schedules and budgets are met. Our past experience designing within the confines of strict budgets and tight construction schedules makes us even more diligent in these areas. Once the general contractor has been selected, we will provide him with the information he needs to stay on schedule. As mentioned earlier, the key to addressing issues during construction will be **communication, collaboration, and consensus**.



Mercer County Health Center Computer Rendering

FIRM PROFILE

Riggs Ward Design (RWD) is an award-winning studio located in Richmond, Virginia.

Our team provides exhibition and graphic design, strategic master planning, research, content analysis, and storyline development for established, new, and emerging museums, visitor centers, and other similar cultural institutions.

RWD's services also include exhibit casework, retail environments, indoor and outdoor interpretive experiences, interactive and multimedia presentations, as well as brochures, catalogs, and fundraising materials.

Our unique range of services combined with our staff of established and well-respected professionals will provide your institution with a single source for all of its design needs. RWD is committed to giving our clients the highest quality creative product and service available, while honoring a commitment to the art of design.

SELECT CLIENT LIST

American Library Association	North Carolina Division of
Black History Museum & Cultural Center	Parks & Recreation
Blenheim House and Visitor Center	North Carolina State University
Cathedral of the Sacred Heart	Outer Banks Center for Wildlife Education
City of Durham, North Carolina	Pamplin Historic Park
City of Fairfax Museum and Visitor Center	Pemberton Historic Park
City of Greenwood, South Carolina	Richmond Historic Riverfront Foundation
City of Greensboro Parks &	Science Museum of Virginia
Recreation Department	Shenandoah Valley Battlefields Foundation
City of Hampton, Virginia	Smithfield Schoolhouse
City of North Myrtle Beach	Smithsonian Institution
Contemporary Art Center of Virginia	South Carolina Department of
Council for America's First Freedom	Parks, Recreation & Tourism
County of Henrico, Virginia	Steamboat Era Museum
Currituck Heritage Park	University of Texas
Danville Science Center	University of Virginia
Historic Christ Church	U.S. Army Center of Military History
Historic Jarvisburg Colored School	Valentine Richmond History Center
Library of Congress	Virginia Association of Museums
Library of Virginia	Virginia Center for Architecture
National Bean Market Museum	Virginia Historical Society
National Library of Medicine	Virginia Tech
National Park Service	West Virginia University
North Carolina Aquariums	Woodrow Wilson Birthplace



riggs ward

Harper Engineering, pllc

52 B Street
St. Albans, WV 25177
Office: 304.722.3602 Fax: 304.722.3603

Harper Engineering, pllc was founded in 2008 to provide innovative engineering design services to architects, owners and contractors throughout the state. We are a unique combination of eager young talent and proven experience fused together to serve all of your building systems design needs including HVAC, Plumbing, Lighting, Electrical, Fire Alarm and Sprinkler Suppression systems.

Our goal is to design optimized systems that meet all of our client's performance, energy use, and budgetary needs. The staff at Harper Engineering has a combined 85 years of experience working with clients in a variety of fields including but not limited to K-12 Schools, hospitals, offices, airports, manufacturing, and water treatment plants.

Services:

HVAC Design

- Heating and Cooling load calculations
- Ductwork sizing
- Hydronic pipe sizing
- Equipment selection

Electrical Design

- Electrical load calculations
- Panel and switch gear selection
- Lighting
- Fire alarm
- Site Utilities
- Emergency Generators
- Security and communications

Plumbing Design

- Pipe Sizing
- Fixture Selection
- Sprinkler design
- Site Utilities

Drafting

- Specifications
- Project Management
- Construction Documents

Background



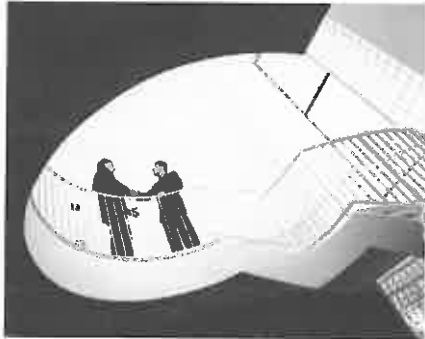
Moment Engineers, Inc. is a professional consulting firm specializing in structural engineering. We serve the architectural and building construction communities throughout West Virginia. Based in Charleston, West Virginia at 179 Summers Street, Moment Engineers was founded by Douglas Richardson in early 2005.

During his more than 25 years of experience, Mr. Richardson has had sole responsibility for the structural engineering design of more than 6 million square feet of built space. The construction costs of these projects exceeded a half billion dollars. His experience, which ranges from small to very large multi-phase projects, is invaluable in providing the technical expertise and creative flexibility to deliver results in a prompt and reliable manner.

Our staff's experience encompasses a wide variety of building types and sectors, and our expertise includes design analysis for steel, concrete, masonry, and wooden structures.



Approach



At Moment Engineers, we recognize that the architect is the primary contact for the building owner. Our role is to strengthen that relationship by producing high quality designs in a prompt and cost effective manner. To that end, we emphasize incorporating traditional and technical means of communication and data transfer to ensure a seamless integration of structural integrity and architectural creativity.

We believe that the practice of engineering is the point at which science and society meet. We also believe that the architects and builders we serve are essential in the development of the fundamental dignity of the community. Moment Engineers is strongly committed to developing structural solutions which bring permanence and strength to the expression of architectural thought.

QUALIFICATIONS

CORPORATE OVERVIEW

TERRADON Corporation offers a multi-faceted approach to design engineering and consulting services. For more than 25 years TERRADON staff has provided a wealth of engineering solutions blanketing the Ohio Valley and the Appalachian Region with successful projects. The company built its reputation on expert personnel and quality, time-sensitive service. Those same founding principles hold true today.

Staff includes engineers, landscape architects, surveyors, planners, environmental scientists, designers, technicians and LEED Accredited Professionals.

The company maintains approximately 50 leading-edge staff in four locations: Poca, WV; Lewisburg, WV; Charlton Heights, WV; and Ripley, WV. TERRADON'S departments work cohesively to provide turn-key solutions that strive to exceed client expectations.

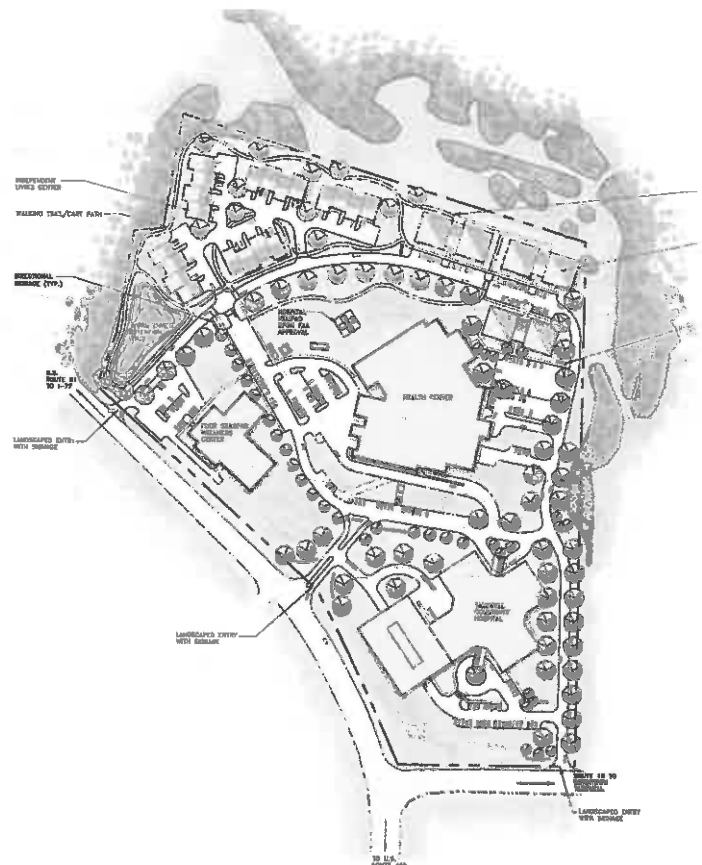
ABOUT TERRADON

The family-owned business has built a strong reputation by providing flexible, cost effective design solutions and maintaining the highest level of customer service. TERRADON is particularly suited to design engineering within the mountainous areas of the Ohio Valley and Appalachian Regions. The firm has been recognized through numerous awards from professional organizations and agencies including the several State Divisions of Highways, Departments of Environmental Protection and the American Institute of Architects state chapters.

TERRADON's corporate culture promotes innovation and progressive thinking. Project leaders strive to sustain customers through a wide-range of engineering offerings. TERRADON employees understand the purpose behind their services and work to cultivate lasting relationships with clients through honest, hard work.

SERVICE OFFERINGS

- Land Planning and Site Design
- Civil Engineering
- Environmental
- Geotechnical Engineering
- Surveying and Mapping
- Water/Wastewater
- Transportation Engineering
- Structural Engineering
- Construction Oversight and Monitoring
- Materials Testing





TERRADON Land Development Services Overview

Land Development covers a broad swath of TERRADON's service offerings and sees a large percentage of its annual revenue from repeat clients or referrals. The group is composed mainly of Landscape Architects and CAD designers who frequently team with every other department within the company.

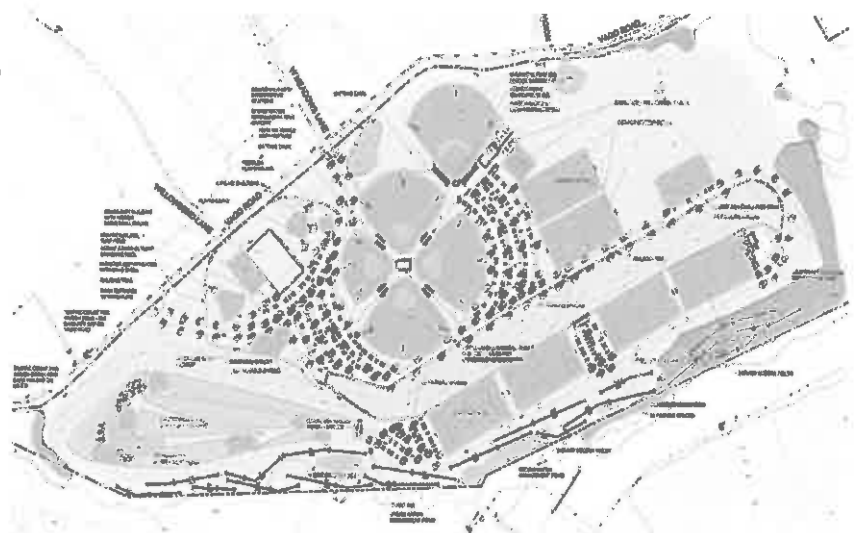
TERRADON's Land Development department collaborates with public and private entities and has a strong presence in the recreation, public/civil, educational and commercial development sectors. TERRADON is recognized as a leader in providing site design and land planning services. The firm's professional engineers work closely with the client from the project's initial phase through a schematic design, construction documents and project delivery. TERRADON's Landscape Development Group remains on the forefront of sustainable design, providing LEED Accredited Professionals to clients. Projects utilizing sustainable design best practices aid clients in significantly reducing energy costs on projects.

TERRADON's Land Development Group works in a variety of markets including: Parks/Recreation, Commercial/Industrial, Civic/Public, K-12 Education, Higher Education and Medical.

Projects include: Master planning, recreational planning, funding agencies assistance, economic development planning, surveying, engineering, architecture, historical preservation construction administration and inspection.

LAND DEVELOPMENT SERVICES

- Master Planning
- Presentation Drawings/Renderings
- Site Feasibility Studies
- Schematic Design
- Layout Plans
- Grading Plans
- Stormwater Management Plans
- Erosion Control Plans
- Planting Plans
- Construction Observation



Overall Score

Qualifications & Technical Expertise - 1

Quality of Work - 2

Client Feedback - 3

Projects / Prior Experience - 4

Management & Staffing Capabilities - 5

Overall Rating - 6

WV TOURIST INFORMATION CENTER

Princeton, WV



PROJECT DETAILS

owner/district:
WV Parkways Authority

year:
1992

size:
7,200 sf

The West Virginia Tourist Information Center is "composed" of three pyramid-shaped skylites (41' x 41', 33' x 33' and 29' x 29') that enclose a large main exhibit hall with the information desk, multi-use small exhibit hall with a mezzanine level, and restroom facilities. The seemingly "high-tech" design is complimented by incorporating a dry, stacked stone wall and split-rail fence into the landscape and by utilizing an exposed wood framing system.

West Virginia products were used throughout the project, including hardwood flooring, "Terne" roofing and native field stone. Local artisans also have their creations on display. Over 100,000 people per year visit the facility which is located ten miles from the border at the intersection of I-77/460.

1994 WVAIA Merit Award Winner



GREENBRIER COUNTY CONVENTION & VISITORS CENTER

Lewisburg, WV



PROJECT DETAILS

owner/district:
Greenbrier CCVC

year:
2010

size:
16,800 sf

The design and renovations to the former Yrid's Building allowed the adaptive re-use of a former department store in order to serve as a convention and visitors center. The lower level contains a conference room for public meetings and a large, open floor plan showcases an information desk, displays, kiosks, and computers for use by visitors. The upper level design provided new office space for the Chamber of Commerce, the Development Authority, and two additional rentable units.

The exterior "facelift" included the installation of new windows, awnings, roof and exterior lighting.



COAL HERITAGE TRAIL INTERPRETATION CENTER

Bramwell, WV

PROJECT DETAILS

owner/district:
Bramwell Development Authority

year:
2003

The Coal Trail Interpretation Center was patterned after the original N&W train station that was located on the same site during the early 1900s (black & white image shown below).

An open courtyard provides the entrance to the center. The layout includes a lobby, interpretive display area for coal artifacts with audio/visual presentations, information center, gift shop and restrooms. An elevated, covered walk-way, reminiscent of a train passenger loading dock, leads along the courtyard to an authentic N&W railroad car.



RAILROAD MUSEUM

Princeton, WV

PROJECT DETAILS

owner/district:
City of Princeton

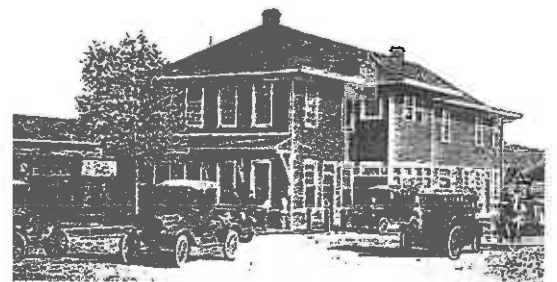
year:
2006

size:
12,000 sf (Two Story)



Princeton, as we know it today, began with the coming of the Virginia Railroad early in the twentieth century. The first commercial district literally rose from the railroad tracks up to East Mercer Street where a half dozen buildings still stand.

This recreation of the original railroad station (shown below) commemorates the history of the railroad in our area and provides visitors with an understanding of the impact the railroad had on our town.



PIPESTEM STATE PARK CONFERENCE CENTER

Pipestem, WV



PROJECT DETAILS

owner/district:
WV DNR

year:
1999

size:
20,000 sf

The Pipestem Conference Center Project involved a two-story addition to the Mc-Keever Lodge. The project centered around the addition of a multi-purpose conference area that can accommodate a single, large group or be divided with panels for multiple, smaller groups.

In order to allow for ADA compliant access, an enclosed, connecting bridge-way was designed to connect the new conference center to the existing lodge.

The existing kitchen area was also renovated during this project.



PIPESTEM STATE PARK CONFERENCE CENTER

Pipestem, WV



PROJECT DETAILS

owner/district:
WV DNR

year:
1999

size:
20,000 sf

The Pipestem Conference Center Project involved a two-story addition to the McKeever Lodge. An enclosed bridgeway (interior & exterior shown here) was designed to provide ADA compliant access



PIPESTEM STATE PARK PICNIC SHELTERS

Pipestem, WV

PROJECT DETAILS

owner/district:
WV DNR

year:
phased

ETB provided a picnic shelter design that appears to have been duplicated throughout Pipestem State Park.



CHICORY SQUARE INTERPRETIVE AREA

Bluefield, WV

PROJECT DETAILS

owner/district:
City of Bluefield

year:
2006

size:
Downtown Block



The Chicory Square Interpretive Area was renovated to symbolize the "round house" design, once a prominent feature in Bluefield. Walkways radiate out from the center of the stage in the same manner as the old railways radiated out from the round house, making the stage area the main focus of the site. Grates house lights to illuminate and highlight the stage, as well as provide site drainage. An interactive kiosk allows visitors to explore the history of Bluefield and the impact coal and the railroad had on the area.



with
Hill Studio

TRIADELPHIA ATV LODGE AND RESORT

Logan County, West Virginia



LODGE ENTRANCE

PROJECT DETAILS

owner/district:
Private Developer

year:
2016

size:
40 acres w/ 36,000 sf Lodge

ETB provided master planning and architectural design for the resort that will cater to the ATV enthusiast. The Architectural design for the resort facilities features a timber and stone exterior with woodcraft details representative of the National Parks rustic style with an Appalachian Mountain craftsman theme.



STANDARD COTTAGE



DELUXE COTTAGE



LODGE - SOUTH FACADE

HATFIELD / MCCOY REGIONAL RECREATIONAL AUTHORITY

Lyburn, WV



PROJECT DETAILS

owner/district:
Hatfield/McCoy Regional Authority

year:
2011

type:
renovation

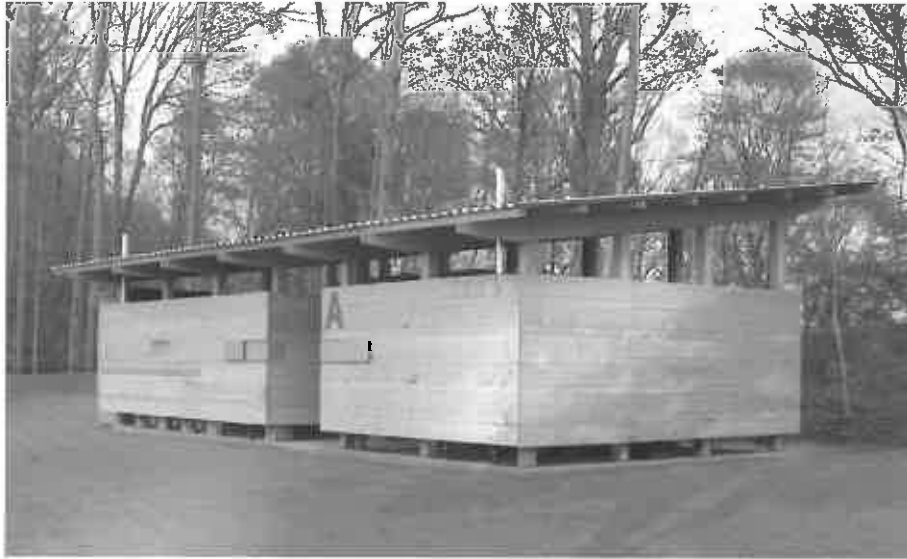
ETB designed the renovations to the former Western Sizzling Building to accommodate the main authority offices.

The renovations included a total interior re-design, new floor plan layouts, and material selections. The building spaces include offices, conference room, sales/display, restrooms and storage areas.



BATHHOUSE DESIGN & CONSTRUCTION SUMMIT BECHTEL FAMILY NATIONAL SCOUT RESERVE

Mt. Hope, WV



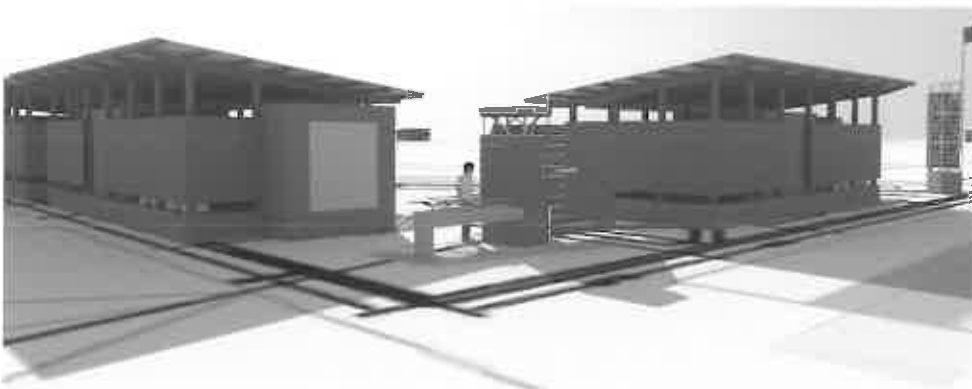
PROJECT DETAILS

owner/district:
Boy Scouts of America

year:
2013

size:
330 units

ETB provided design, graphic imagery construction documentation and administration for 330 bathhouses which were located throughout the national scout reserve. The bathhouses were spread throughout the six villages.



OBSERVATION DECK SUMMIT BECHTEL FAMILY NATIONAL SCOUT RESERVE Mt. Hope, WV

PROJECT DETAILS

owner/district:
Boy Scouts of America

year:
2013

ETB designed a new ADA compliant observation deck overlooking the entire Boy Scout Reserve. The deck can accommodate over 100 sight-seers. In addition to providing a scenic view, the deck was used during construction to observe progress throughout the site.



VIEW FROM OBSERVATION DECK



PRINCETON PUBLIC LIBRARY

Princeton, WV



PROJECT DETAILS

owner/district:
City of Princeton

year:
2010

size:
13,331 sf, (Two Story)

This renovation/adaptive re-use project involved a total interior renovation that transformed the abandoned former USPO building into a new focal point for Mercer Street. In addition to providing much needed space for books, this design enabled the library to have designated spaces for audio/visual, as well as an exclusive West Virginia Room. Activities associated with the operation of the library are easily maintained from the custom designed control desk. The basement offers rooms dedicated to three specific age groups, and an open computer area. Public meeting rooms with state-of-the-art technology equipment are also located in the basement.



ADVANTAGE VALLEY ADVANCED TECHNOLOGY CENTER

South Charleston

PROJECT DETAILS

owner/district:
WV Council for Community and
Technical College Education

year:
2014

size:
55,000 sf (2-Story)



Planned in coordination with local industry, the laboratories are designed for maximum flexibility to deliver education and training for the emerging technologies, including Mechatronics, Nanotechnology and Information Technology. Student common and breakout areas are integrated with the building's circulation to encourage collaboration and transparency.



NORTH CENTRAL ADVANCED TECHNOLOGY CENTER

Fairmont, WV

PROJECT DETAILS

owner/district:
WV Council for Community and
Technical College Education

year:
2016

size:
65,400 sf (3-Story)

Situated within the I-79 Technology Park in Fairmont, the new laboratory and classroom facilities were planned in collaboration with local industry to deliver the technical training necessary to expand the ranks of skilled workers in West Virginia. The facility will also include Pierpont's new Headquarters, "One Stop" Student Services Center and Allied Health Center.



RELEVANT WORK

The following list includes just a few of our relevant projects. Please see the attached information and project sheets for more details.

WEST VIRGINIA UNIVERSITY

Riggs Ward created a highly immersive visitor experience at West Virginia University in Morgantown, West Virginia. The center was designed to be a focal point for all visitors to the central campus. Riggs Ward's exhibits and interior designs are complemented by interactive experiences to make the visitor experience truly memorable.

LOCATION OF PROJECT Morgantown, West Virginia
PROJECT MANAGER Bob Riggs
briggs@riggsward.com
TYPE OF PROJECT Visitor Center
PROJECT GOALS & OBJECTIVES Please see project sheet.
REFERENCE Ms. Danica Wilburn, Director
One Waterfront Place
PO Box 6693
Morgantown, WV, 26506
304.293.3489

SHENANDOAH RIVER STATE PARK RAYMOND "ANDY" GUEST VISITOR CENTER

Riggs Ward's design includes an area for housing both temporary and permanent exhibits, interactive displays that allow visitors to follow the area's historic timeline, as well as three-dimensional artifacts.

LOCATION OF PROJECT Bentonville, VA
PROJECT MANAGER Bob Riggs
briggs@riggsward.com
TYPE OF PROJECT Nature Center/Visitor Center
PROJECT GOALS & OBJECTIVES Please see project sheet.
REFERENCE Mr. Tony Widmer
350 Daughter of Stars Drive
Bentonville, VA 22610
(540) 622-6840
Tony.Widmer@dcr.virginia.gov

VIRGINIA TECH

Riggs Ward, in collaboration with Glave and Holmes Associates, designed a new Virginia Tech Visitor and Undergraduate Admissions Center. Throughout the Virginia Tech Center, RWD highlights key elements of being a Hokie: cheering fans in Lane Stadium, the Hokie Bird, and the iconic Burruss Hall.

LOCATION OF PROJECT Blacksburg, Virginia
PROJECT MANAGER Bob Riggs
briggs@riggsward.com
TYPE OF PROJECT Visitor Center
PROJECT GOALS & OBJECTIVES Please see project sheet.
REFERENCE Mr. Christopher Clough
Virginia Tech
1 Medial Building (0109)
Blacksburg, VA 24061
540.231.4168

THREE LAKES PARK NATURE CENTER & AQUARIUM
Riggs Ward designed exhibits for the center that educate visitors about the many species of animals and plants found throughout the park.

LOCATION OF PROJECT Richmond, Virginia
PROJECT MANAGER Bob Riggs
briggs@riggsward.com
TYPE OF PROJECT Nature Center/Visitor Center
PROJECT GOALS & OBJECTIVES Please see project sheet.
REFERENCE Neil Luther (Retired)
County of Henrico Division of
Recreation and Parks
Office: 804-501-5119
lut08@co.henrico.va.us

BETHLEHEM VISITOR CENTER

Designed to promote the many messages and destinations of local organizations and events, the center features a combination of interactive kiosks, as well as more traditional static displays.

LOCATION OF PROJECT Bethlehem, Pennsylvania
PROJECT MANAGER Mike Radtke
mrادتke@riggsward.com
TYPE OF PROJECT Visitor Center
PROJECT GOALS & OBJECTIVES Please see project sheet.
REFERENCE Mr. Ron Unger, Director of
Special Projects
610.332.1328
runger@artsquest.org

MERCHANTS MILLPOND STATE PARK VISITORS CENTER
Riggs Ward Design collaborated with Frank Harmon Architect to design Merchants Millpond State Park Visitors Center, where 1,500 square feet of exhibits highlight the wetland ecology, biodiversity, and cultural history of the region.

LOCATION OF PROJECT Gatesville, North Carolina
PROJECT MANAGER Bob Riggs
briggs@riggsward.com
TYPE OF PROJECT Nature Center/Visitor Center
PROJECT GOALS & OBJECTIVES Please see project sheet.
REFERENCE Mr. Jay Greenwood
Park Superintendent,
Merchants Millpond State Park
252.357.1191

RELEVANT WORK

OUTER BANKS CENTER FOR WILDLIFE EDUCATION
Riggs Ward designed the 5,000 square foot permanent exhibition, "Life by Water's Rhythms," which features various interpretive displays that inform visitors of the region's centuries-old hunting and fishing heritage.

LOCATION OF PROJECT Corolla, North Carolina
PROJECT MANAGER Bob Riggs
briggs@riggsward.com
TYPE OF PROJECT Nature Center/Visitor Center
PROJECT GOALS & OBJECTIVES Please see project sheet.
REFERENCE Ms. Ginger S. Mangum
1704 Mail Service Center
Raleigh, NC 27699
919.707.0171
ginger.mangum@ncwildlife.org

RAVEN ROCK STATE PARK

Riggs Ward was commissioned to provide both indoor and outdoor interpretive displays for the visitors center, exhibit hall, and trail at Raven Rock State Park in Harnett County, North Carolina.

LOCATION OF PROJECT Lillington, NC
PROJECT MANAGER Mike Radtke
mradtke@riggsward.com
TYPE OF PROJECT Nature Center/Visitor Center
PROJECT GOALS & OBJECTIVES Please see project sheet.
REFERENCE Architect
Mr. Chris Roberts LS3P
919.829.2700
434 Fayetteville Street
Suite 1700
Raleigh, NC 27601

OLD WOMAN CREEK NATURAL ESTUARINE RESEARCH RESERVE VISITOR CENTER (AND MOBILE APPLICATION)
Riggs Ward recently designed and installed new exhibits that are hands-on and natural science-based. Riggs Ward also developed a mobile phone application that displays the various trails on the Reserve.

LOCATION OF PROJECT East Huron, OH
PROJECT MANAGER Mike Radtke
mradtke@riggsward.com
TYPE OF PROJECT Nature Center/Visitor Center
PROJECT GOALS & OBJECTIVES Please see project sheet.
REFERENCE Mr. Frank Lopez
Old Woman Creek NERR
2514 Cleveland Road East
Huron, Ohio 44839
419.433.4601
frank.lopez@dnr.state.oh.us

GRAVEYARD OF THE ATLANTIC MUSEUM (IN PROGRESS)
Riggs Ward Design is creating exhibit designs for the new permanent display within the 7,000 square foot Graveyard of the Atlantic Museum in Hatteras, NC.

LOCATION OF PROJECT Hatteras, North Carolina
PROJECT MANAGER Bob Riggs
briggs@riggsward.com
TYPE OF PROJECT Museum/Visitor Center
PROJECT GOALS & OBJECTIVES Please see project sheet.
REFERENCE N/A

ROANOKE ISLAND FESTIVAL PARK

Riggs Ward worked with Roanoke Island Festival Park to enhance the existing 8,000 sf Roanoke Adventure Museum and to update and expand topical content.

LOCATION OF PROJECT Manteo, North Carolina
PROJECT MANAGER Bob Riggs
briggs@riggsward.com
TYPE OF PROJECT Museum/Visitor Center
PROJECT GOALS & OBJECTIVES Please see project sheet.
REFERENCE Kimberly A. Sawyer
Executive Director
One Festival Park
Manteo, NC 27954
252-475-1500, ext. 226

S.C. NATIONAL HERITAGE CORRIDOR REGION IV DISCOVERY CENTER

The SCNHC commissioned Riggs Ward to produce a mobile phone application that would deliver real-time content to visitors.

LOCATION OF PROJECT Blackville, SC
PROJECT MANAGER Bob Riggs
briggs@riggsward.com
TYPE OF PROJECT Museum/Visitor Center
PROJECT GOALS & OBJECTIVES Please see project sheet.
REFERENCE Ms. Michelle McCollum
PO Box 477
Belton, SC 29627
864.338.4841
michelle@scnhc.com

RELEVANT WORK

West Virginia University Visitor Resource Center



The new West Virginia University (WVU) Visitor Resource Center is a high-tech immersive experience with an HD panoramic video display, multi-user touch tables, and a virtual tram ride. A new reception desk provides better interaction between visitors and staff. The exhibits explore student, alumni, academic and student life stories.

Of particular focus is WVU's significant contribution to forensic sciences and clean energy technologies. These two very prominent and highly respected areas of research by WVU are shown via experiential exhibits that evoke strong connections among the academia, corporate, and government leaders and the scientists who visit the center.

RELEVANT WORK



Above: Visitors use an interactive touchscreen to search for notable alumni by year, major, or region.
Below, left to right: A structured ceiling system adds focus to the reception desk; Visitors use an interactive study desk to create and arrange a class schedule. The visitor can view student schedules, course descriptions, and requirements.



RELEVANT WORK

Virginia Tech New Visitor and Admissions Center



Lobby space with front help desk.

Riggs Ward Design, in collaboration with Glavé and Holmes Architecture, designed a new Virginia Tech Visitor and Undergraduate Admissions Center. Upon entering the Virginia Tech Center, visitors view pictures and names of current students, which helps prospective students envision their place within the university. Throughout the Virginia Tech Center, RWD highlights key elements of being a Hokie: cheering fans in Lane Stadium, the Hokie Bird, and the iconic Burruss Hall.

Additionally, RWD incorporated interactive touchscreens and videos in the design to motivate prospective students to learn about Virginia Tech's student life, academics, and research opportunities. Visitors can learn about Virginia Tech's history by viewing a timeline, which includes both video and images. Overall, RWD's Virginia Tech Center design encourages prospective students to imagine themselves as a part of the close-knit Hokie community.

RELEVANT WORK



Above: The title panel is complemented by large graphics and adjacent touch-screen interactives. Below: Visitors can explore alumni stories through an interactive map.



RELEVANT WORK

Bethlehem Visitor Center Bethlehem, Pennsylvania Steel Stacks



The main exhibit gallery allows visitors to use multiple touch screen interactives to explore sites related to steelworker heritage within the city.

RWD worked on a multi-phase project for a new Bethlehem Visitor Center. The Bethlehem Visitor Center, housed in the 1863 stock house, is the oldest building at the Steel Stacks campus. Located adjacent to the iconic blast furnaces, the exhibit space is designed to give tourists and visitors a portal to not only the city of Bethlehem, but also the larger Lehigh Valley.

Designed to promote the many messages and destinations of local organizations and events, the center features a combination of interactive kiosks, as well as more traditional static displays. All of the exhibits celebrate the wide range of historical venues alongside the many festivals, such as Musikfest and Christkindlmarkt that are held annually in the region.

Additionally, visitors are transported to a day in the life of a steelworker through a highly immersive steelworkers' catwalk experience. When standing beneath the catwalk, visitors can view the steel extrusion process, hear a factory supervisor direct workers, and see the large-scale machinery and steel production techniques come to life.

RELEVANT WORK



Above: Overhead, an immersive steelworkers' catwalk uses multiple touchscreens, booming audio, and a looping animation to give visitors an idea of the steel production scale and to bring the factory atmosphere to life.
Below, left to right: A view of the catwalk display system. Visitors use an interactive touchscreen to explore "Arts and Entertainment" sites throughout the city.



RELEVANT WORK

State of Virginia Department of Conservation Shenandoah River State Park Raymond “Andy” Guest Visitor Center



Riggs Ward recently collaborated with the Virginia Department of Conservation and Recreation to plan, design, and install exhibits for Shenandoah River State Park's newly constructed Raymond "Andy" Guest Visitor Center. The space features exhibit areas, class/conference rooms, a photo gallery, and lobby displays. The exhibits celebrate the park's history, natural beauty, and recreational value, focusing on the centrality of the Shenandoah River to those themes.



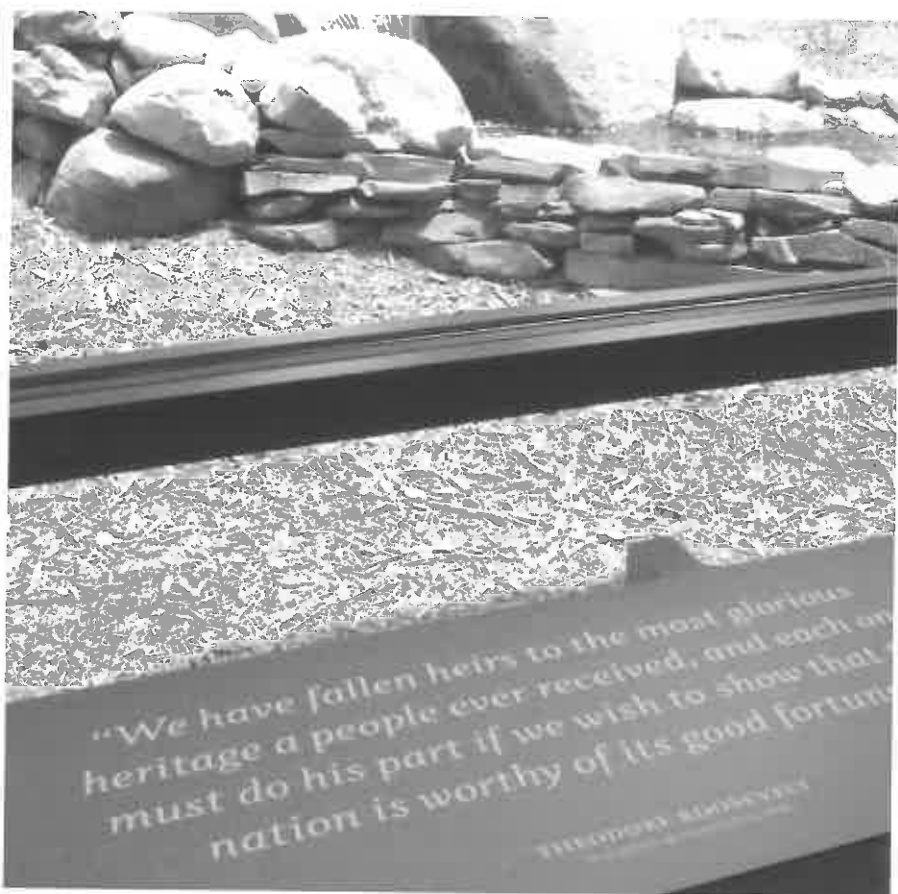
Riggs Ward's design includes indoor and outdoor water features that highlight the Shenandoah River's ecosystems, an area for housing both temporary and permanent exhibits, interactive displays that allow visitors to follow the area's historic timeline, as well as three-dimensional artifacts, including a number of mounted animals.

RELEVANT WORK



Above: An indoor water feature provides a sense of place next to the interactive timeline and fossil display. Below, left to right: Visitors are invited to use bird-watching viewfinders in an outdoor interpretive space. Inside, they are able to explore the diversity of the park through an interactive bird display.





RELEVANT WORK

Henrico County Division of Recreation & Parks Three Lakes Park Nature Center & Aquarium



In 2007, Henrico County's Three Lakes Park opened a new natural history and nature center. Riggs Ward designed exhibits for the center that educate visitors about the many species of animals and plants around the park.

A mixture of live animals and interactive exhibits help visitors to connect with the environment they are exploring. Exhibits represent the different systems in air, land, and water, while examining changes from the prehistoric era to today. Features of the space include a rock wall and lake-wall aquarium.

“One of the finest, and most comprehensive nature centers we’ve visited . . . There was so much to see: An underwater view of a man-made pond, a stuffed black bear, a full-size cutaway replica of a beaver lodge, a variety of live animals . . . even an impressive display of Native American tools.”

—Trip Advisor Review

Top 10 Best
Attractions
in Richmond,
Virginia

**USA
TODAY
TRAVEL**

SIMILAR WORK



A mixture of live animals and interactive exhibits help visitors connect to the environment.

RELEVANT WORK

North Carolina Division of Parks & Recreation Merchants Millpond State Park Visitors Center



Riggs Ward Design collaborated with Frank Harmon Architect to design Merchants Millpond State Park Visitors Center, where 1,500 square feet of exhibits highlight the wetland ecology, biodiversity, and cultural history of the region. In particular, the exhibits focus on the comparison between unique features of coastal pond, southern swamp forest, pine woodland, and mixed hardwood forest ecosystems within the park's 3,300 acres.

Dioramas of each of the four distinct natural communities are arranged in rows, enabling visitors to view them separately, making connections between the different plant and animal life associated with each, or to view them collectively in a single vista as they explore the grounds. Many of the dioramas represent scenes not visible in the wild, such as the inside of a beaver lodge in the coastal pond diorama. Interactives include a hollowed out cypress tree where visitors go inside to discover the creatures that live in the tree trunk.



FEATURED IN
ARCHITECT

RELEVANT WORK

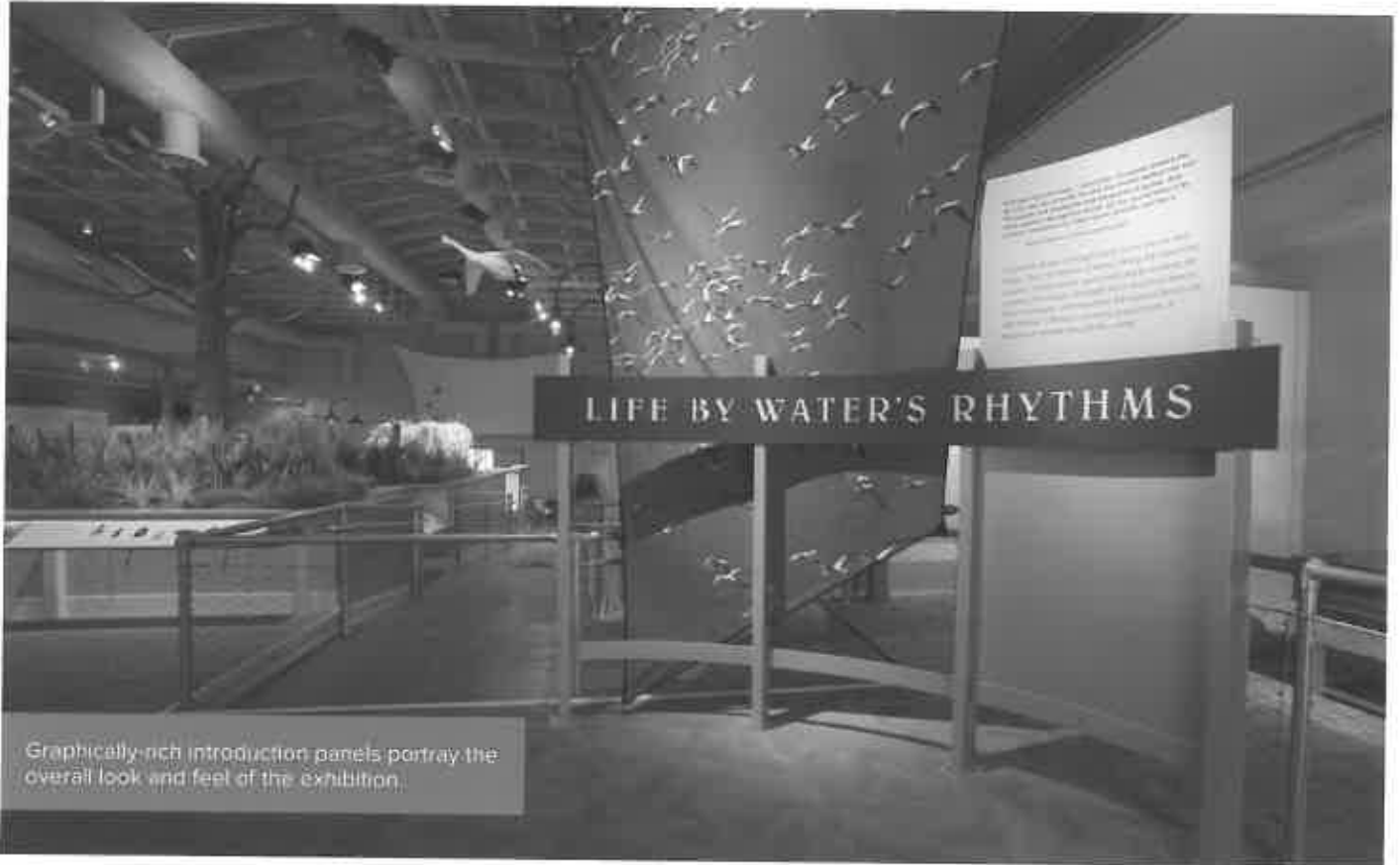


Above: Visitors can view the inner-workings of a beaver dam in the freshwater wetland exhibit.
Below: Close-up view of a Bobcat diorama



RELEVANT WORK

North Carolina Wildlife Resources Commission Outer Banks Center for Wildlife Education



Graphically-rich introduction panels portray the overall look and feel of the exhibition.

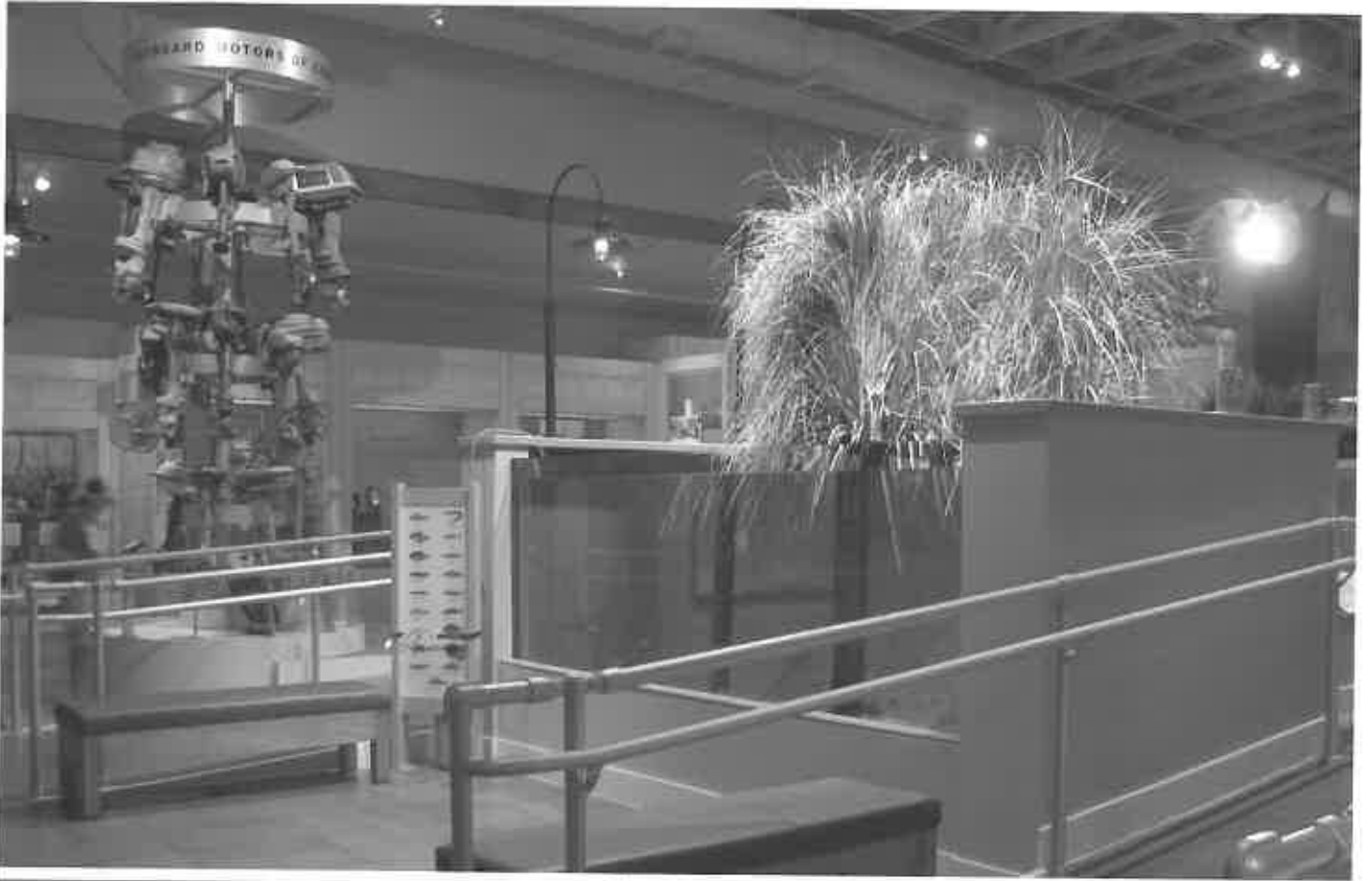
Riggs Ward designed the 5,000 square foot permanent exhibition, "Life by Water's Rhythms," in the Outer Banks Center for Wildlife Education. The gallery features a 8,000 gallon freshwater aquarium with regional species of fish from the Currituck Sound, dramatic wildlife habitat dioramas, one of the nation's largest collections of artisan-made working decoys, hands-on and computer interactives, as well as interpretive displays informing visitors of the region's centuries-old hunting and fishing heritage.

Upon opening in the summer of 2006, this new facility joined the Whalehead Club historic mansion (also featuring exhibits designed by Riggs Ward) and the Currituck Beach Lighthouse in the beautiful 39 acre sound front Currituck Heritage Park.



Riggs Ward worked with Truelove Fabrication to incorporate a 8,000 gallon freshwater aquarium within the main gallery.

SIMILAR WORK



Above: A visitor views the vertical motorboard display, which is adjacent to the freshwater aquarium exhibit.
Below, left to right: Wildlife dioramas guide visitors to the aquarium space; Touchscreen interactives and hands-on exhibits provide additional information on the local fishing heritage.



RELEVANT WORK

North Carolina Division of Parks & Recreation Raven Rock State Park



Visitors are greeted by a replica of the "Raven Rock" geological formation.

Riggs Ward was commissioned to provide both indoor and outdoor interpretive displays for the visitors center, exhibit hall, and trail at Raven Rock State Park in Harnett County, North Carolina. As part of the North Carolina Division of Parks and Recreation (NCDPR), RWD complied with various state guidelines related to accessibility, egress, design, and budget. Because education was a primary focus for the client, RWD created displays that told the compelling history of the area, while being careful to maintain the character of the park in the exhibits' design. Raven Rock's new visitor center was a Leadership in Energy and Environmental Design (LEED) certified project; therefore, RWD incorporated energy efficient and sustainable material in the displays.

RWD collaborated closely with NCDPR and the architect, LS3P/Boney Architecture, to make this a successful project.



RELEVANT WORK



Above: An interactive exhibit in the entry gallery allows users to explore the various rock formations. Below, left to right: A hands-on water pressure interactive, an indigenous plant display.



RELEVANT WORK

Ohio Department of Natural Resources Old Woman Creek National Estuarine Reserve Visitor Center



Entry space with a touchscreen interactive map of the reserve.

Riggs Ward recently designed and installed new exhibits in the Ohio Division of Wildlife's Old Woman Creek State Nature Preserve & National Estuarine Research Reserve in Huron, Ohio. The exhibit features numerous hands-on natural science-based exhibits including a 52" touchable map with live video feeds and a 60" touch screen interactive focusing on the stewardship of estuaries. RWD also created a mobile phone application, educational curriculum, and an interpretive/wayfinding signage system for the 572-acre campus.

Estuaries like Old Woman Creek protect Lake Erie by removing pollutants from streams and rivers, ultimately benefitting coastal communities by acting as a buffer against flooding and erosion. The estuary serves as a field laboratory where scientists can study this naturally functioning system and as a place where visitors can learn about estuarine ecology in a natural setting.

"There is a really nice nature center that gives a lot of history of Old Woman Creek (Indians, birds, and water life) [and] exhibits that children can enjoy and learn from. The trails are very well laid out and easy to walk on and follow."

—Trip Advisor Review

RELEVANT WORK



Above: View of the classroom space
Below, left to right: Taxidermied birds, aquariums, and magnifying glasses allow visitors to get an up-close and personal feel for the wildlife in the area.



RWD created a mobile phone application, educational curriculum, and an interpretive/wayfinding signage system for the 572-acre campus.

RELEVANT WORK

Ohio Department of Natural Resources (Interactives) Old Woman Creek Natural Estuarine Reserve Visitor Center



To complement the new exhibits at the Ohio Division of Wildlife's Old Woman Creek State Nature Preserve & National Estuarine Research Reserve, RWD created a mobile phone application. The application provides a trail map, guides visitors through a color-coded trail system, supplies additional interpretive information for key sites, and uses GPS navigation.

Top to Bottom: A view of the interactive table at the visitor center entry, Two screen-shots of the mobile application: one allows the user to explore the various nature trails by viewing them on a color-coded map and the other highlights the Pole Barn Site.

RELEVANT WORK

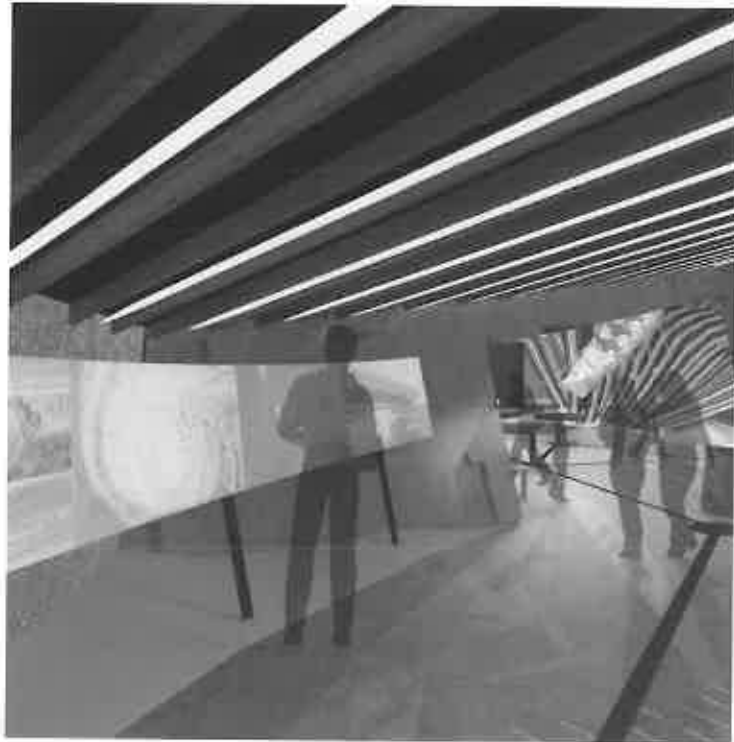
Graveyard of the Atlantic Museum (In Progress) Permanent Exhibit Design



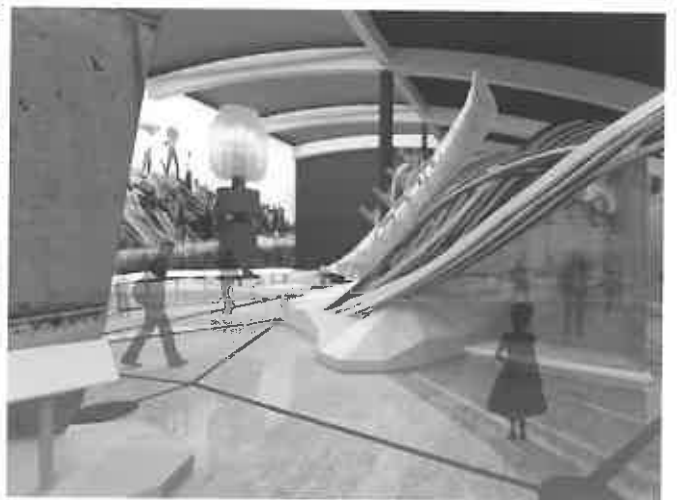
Riggs Ward Design is excited to be working with the North Carolina Department of Cultural History and North Carolina Maritime Museums to create exhibit designs for the 7,000 square foot Graveyard of the Atlantic Museum in Hatteras, NC. The project is currently in the design development phase.

The exhibits will highlight the thousands of vessels and mariners who lost a desperate struggle against the forces of war, piracy and nature off the North Carolina Coast. The exhibits will immerse visitors through scale, environmental graphics, and sound. North Carolina's unique maritime history will be further emphasized through interactive experiences that reveal artifacts, preservation techniques, weather prediction technologies, and modern lifesaving tools.

RELEVANT WORK



Above: Visitors move from the sunken ship structure into the main exhibit gallery, which is flanked by artifact displays in shipping containers.
Bottom, left to right: Interactive coastal maps in the ship's hull. Abstract wave forms and a lifeboat, suggesting the turbulent waves of a storm. Casework below the waves allow vistas into the displays beneath.



RELEVANT WORK

Roanoke Island Festival Park North Carolina Department of Cultural Resources



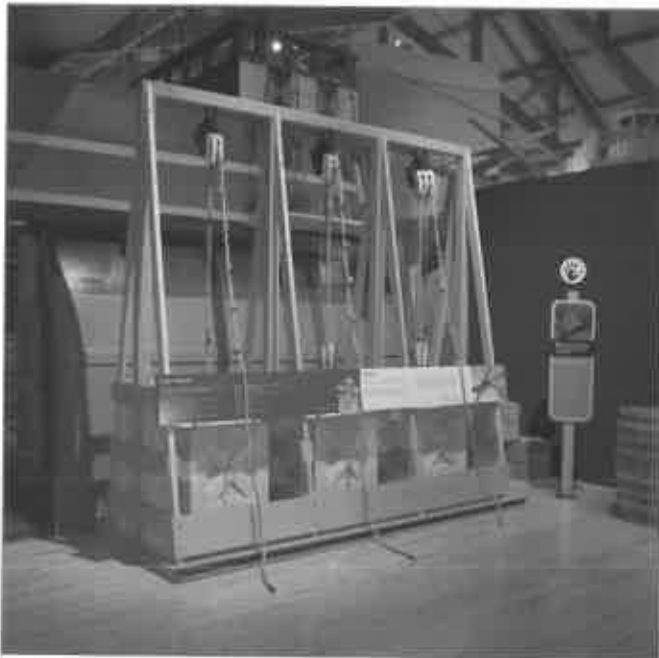
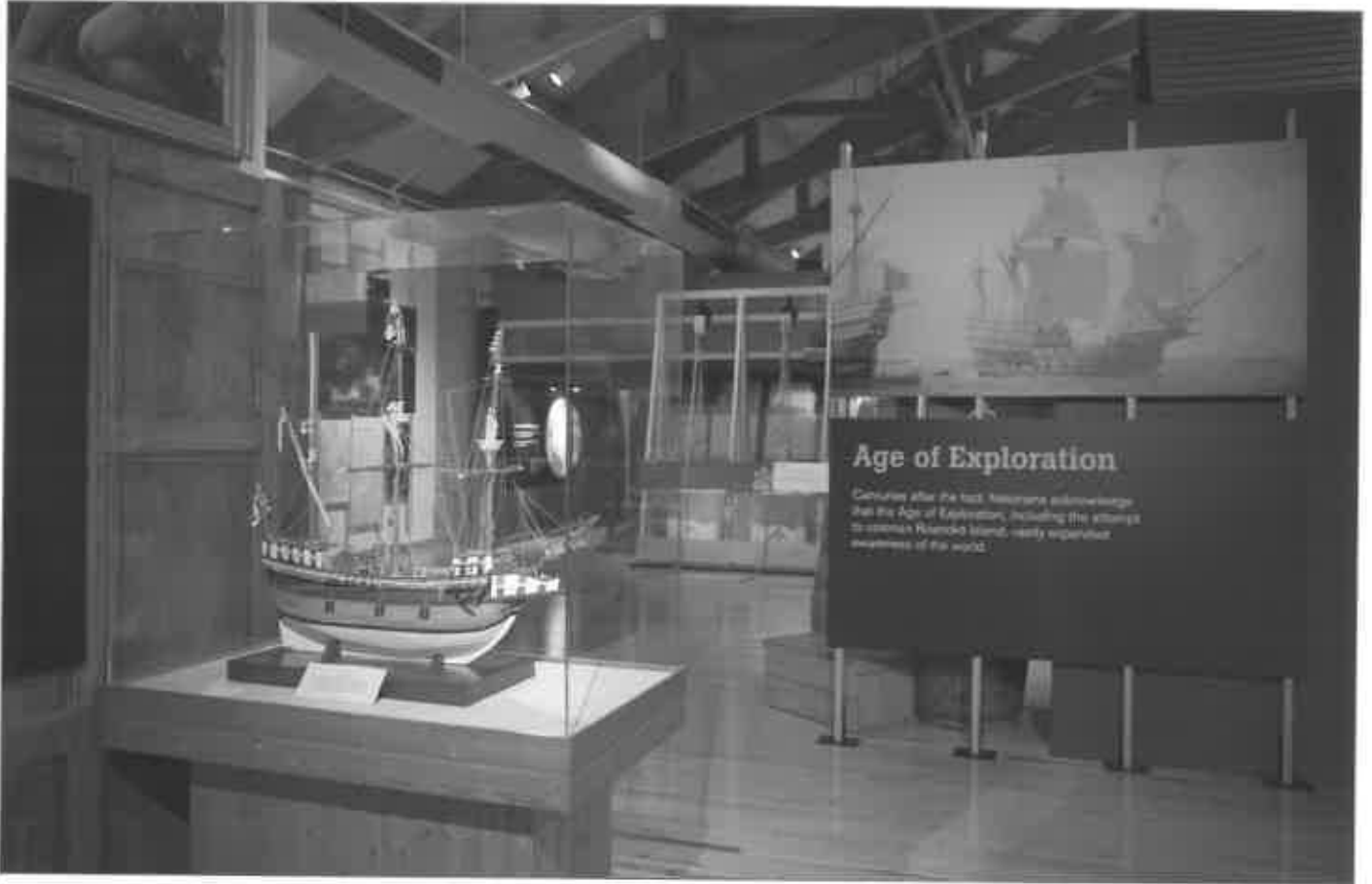
Riggs Ward worked with Roanoke Island Festival Park to enhance the existing 8,000 sf Roanoke Adventure Museum. RWD updated and expanded topical content, incorporated existing core exhibits, implemented “Family Learning” concepts into the overall museum experience, and increased the diversity, frequency and quality of hands-on and interactive exhibits.

Riggs Ward worked closely with the Roanoke Island Festival Park staff on programming and planning activity stations, improving guest traffic flow, and more fully integrating the museum experience into the overall educational program at Roanoke Island Festival Park.



The 8,000 sf exhibit space consists of multiple hands-on experiences, such as a pulley interactive, a pirate clothing dress-up station, and nets for children to cast out of a boat.

RELEVANT WORK

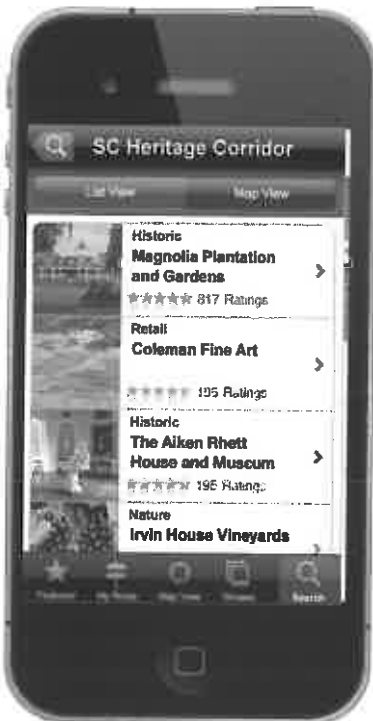


Above: Artifact displays are complemented by large-scale graphics that guide visitors throughout the themed exhibit spaces. Bottom, left to right: A pulley interactive allows visitors to experience the strength needed to lift cargo; View of a hands-on interactive zone.



RELEVANT WORK

SC Department of Parks, Recreation & Tourism S.C. National Heritage Corridor Region IV Discovery Center



The South Carolina National Heritage Corridor (SCNHC) is an economic development program that promotes heritage tourism. Many of the sites and stops along the Corridor are locally owned heritage, arts, and culture venues that operate on small budgets. The SCNHC commissioned Riggs Ward to produce a mobile phone application that would deliver real-time content to visitors. The application was a major leap for the marketing and educational needs of the heritage sites, historic homes, arts centers, and museums along the Corridor.

Riggs Ward created a simple, economic, and incredibly powerful application. Visitors simply download the SCNHC App from Apple's store online, in visitor centers along the Corridor, sites with Wi-fi access, or through the iPhone's cellular connection anywhere there is a cellular signal. The app provides GPS-enabled, turn-by-turn directions from site-to-site. The visitor merely selects a site or builds an itinerary of several sites, saves it to "My Routes," and presses start; the application does the rest. Once at a site, the application can be used to purchase tickets, video tours, audio tours, interactive site/gallery guides, and even gift shop purchases.

Top to Bottom: A screen-shot of the mobile website and a screen-shot of the mobile application, which lists sites both in a list form and in a map form.

Harper Engineering, PLLC

52 B Street
St. Albans, WV 25177
Office: 304.722.3602 Fax: 304.722.3603

St. Albans Armory Storage Building: HVAC, Plumbing, Electrical and Fire Alarm design for a 3,000 sq. ft. storage building.

WV Veterans Home Barboursville: Electrical design for a new 1,000 sq. ft. storage building.

WV DOH Weigh Station: HVAC, Plumbing and, Electrical design for new 885 sq. ft. weigh stations to replace existing weigh stations in Putnam County.

New Bus Garage: HVAC, Plumbing, Sprinkler, Electrical and Fire Alarm design for the new 5,900 sq. ft. bus garage in West Union, WV.

Public Works Building: HVAC, Plumbing, Sprinkler, Electrical and Fire Alarm design for new 4,500 sq. ft. bus garage in Romney, WV.

Energy Corporation of America: HVAC, Plumbing, Electrical, Fire Alarm, and Sprinkler design for a 60,000 sq. ft. office located in Charleston, WV.

Chief Logan Lodge and Conference Center Pool: MEP design for new ventilation system for pool filtration.

Cabwaylingo State Park Dining Hall: HVAC, Plumbing and Electrical Design for a new 3800 Sq. Ft. facility.

Alum Creek Farmers Market: Mechanical, Electrical, and Plumbing design including HVAC, power, lighting and sanitary and domestic water.

Palentine Park Improvements: Site lighting and power for Splash Park pump, rest rooms, Amphitheatre and power for vendor receptacles.

W. Kent Carper Justice and Public Safety Complex: HVAC, Plumbing, Electrical, Fire Alarm, and Sprinkler design for renovations to the 62,400 sq. ft. Justice and Public Safety Complex.



Sample Project Experience

Moment Engineers staff experience includes a wide variety of new building design and existing structure evaluation and renovation. The list below is a small sample of the projects for which our staff has had responsible charge of the structural engineering, design and contract document production. All projects listed were or are being constructed in West Virginia. A more extensive list is available upon request.

<u>Project</u>	<u>Sq. Ft.</u>
Logan State Office Building	53,200
Lewis County Judicial Annex	28,000
Cacapon State Park Addition	9,840
Summit Bechtel Reserve Bathhouses (358 units)	646 ea.
Mountaineer Challenge Academy	47,790
Kappa Alpha Fraternity House, WVU	14,000
Greenbrier East H.S. Renovations & Additions	205,060
Lincoln Co. High School	216,500
Wayne Co. Spring Valley High School	175,000
Cabell West Elementary School	55,790
Judge Donald F. Black Courthouse Annex	37,000
WV Hospital Association Office Building	29,710
Glen Jean - AFRC	107,090
Elkins - AFRC	60,570
Robert C. Byrd Regional Training Institute	143,000
Alderson Federal Prison Dormitory	60,620
Western Juvenile Detention Center	29,020
Lewisburg United Methodist Church	12,800
West Liberty University Health Sciences Bldg	70,500
Goodwill Industries Renovation and Addition	15,460
NGK-NTK Production Facility	78,000
Advantage Valley Advance Technology Center	55,040

RELEVANT EXPERIENCE

Summit Bechtel National Scout Reserve Master Plan

From 2008 to July 2013, TERRADON provided a variety of services for the development of the Summit Bechtel National Scout Reserve near Mt. Hope, Fayette County, WV. In fact, TERRADON worked with local entities on the initial site selection and presentations to the Boy Scouts of America, which landed this massive project in Mt. Hope.

The Summit is a 10,600+ acre outdoor adventure center near Mt. Hope, WV next to the New River Gorge National Park. The world-class facility serves as a venue for the Boy Scouts of America's fourth High Adventure Base, the permanent home to the National Jamboree, a summer camp and National Center for Scouting Excellence leadership center - all on the same contiguous property.

Services for the 10,600+ Acre site included:

- Initial Site Selection/Conceptual Designs
- Site Planning/Grading
- Erosion and Sediment Control
- AML
- Survey/Mapping
- All Environmental Permitting
- Geotechnical Engineering
- Materials Testing and Construction Monitoring
- Utility Design
- 60+ miles of underground utilities
- 550,000 tons of aggregate produced by on-site rock crushing 600 acres of clearing, grubbing and rough grade operations
- 3 million cubic yards of excavation
- 600 acres of fine grading and revegetation
- 28 miles of drainage swales, including erosion and sediment control
- 14 miles of new roads (grade and drain)
- 4 earthen dams
- 80,000 seat lawn amphitheater
- On site sanitary sewer system

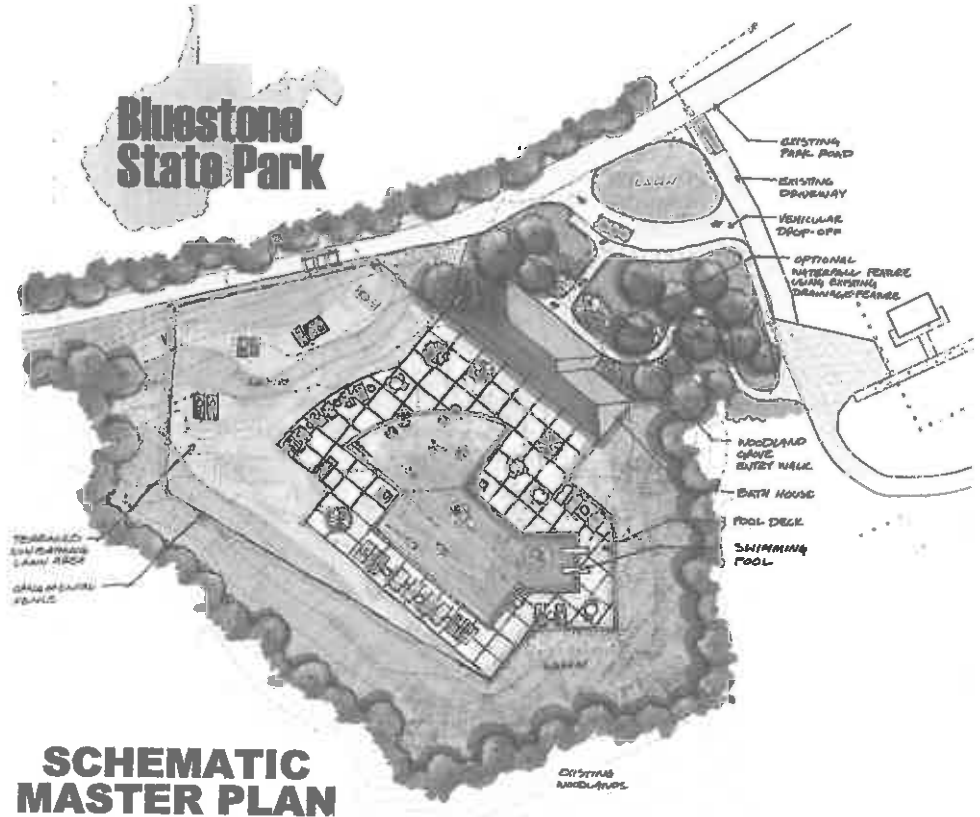


PRIOR EXPERIENCE - Parks and Recreation

Bluestone State Park Master Planning

TERRADON was responsible for the development of a swimming pool replacement for existing pools at Bluestone State Park. The existing pool was located within the 100-year flood plain and subject to flooding.

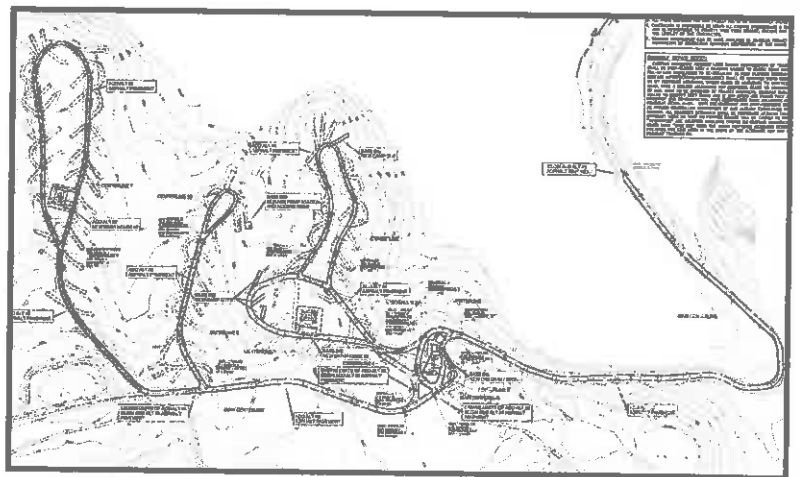
TERRADON proposed a new pool located above the 100-year flood plain while incorporating many unique and creative design features for Bluestone State Park guests and the surrounding community.



SCHEMATIC MASTER PLAN

Little Beaver State Park Design

TERRADON was responsible for the design of a campground expansion that doubled the number of existing full-service RV spaces, a new bathhouse and a trail system to the bathhouse. TERRADON was also responsible for preparation of plans and specifications for a septic tank effluent gravity (STEG) system at the park. DNR Parks and Recreation had started the project using force account method of construction, but was unable to complete the project. Terradon designed the project to utilize materials already purchased and delivered to the site. The project consisted of septic tanks, one (1) grinder sewage pumping station, and small diameter gravity sewer (SDGS) with connection to the local PSD for treatment.

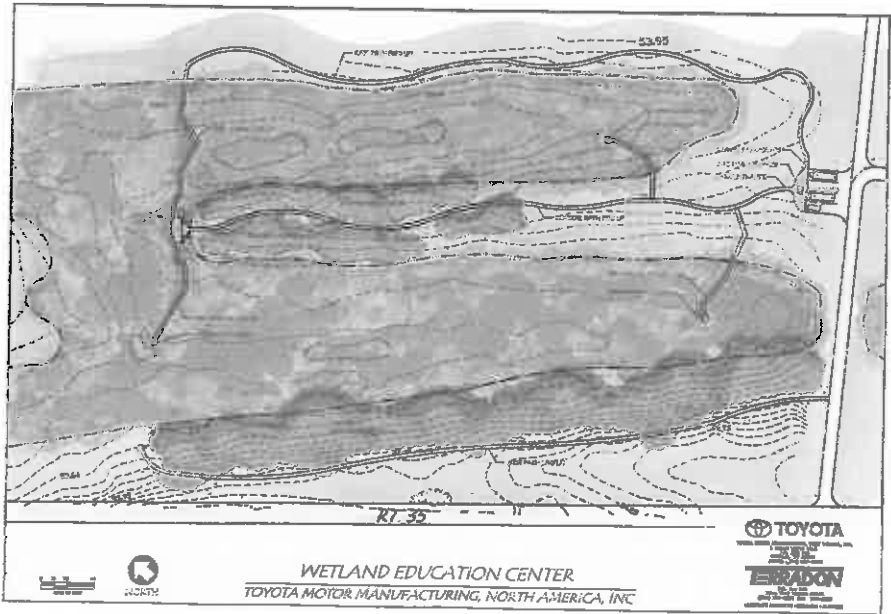


RELEVANT EXPERIENCE

Toyota Wetland Education Center

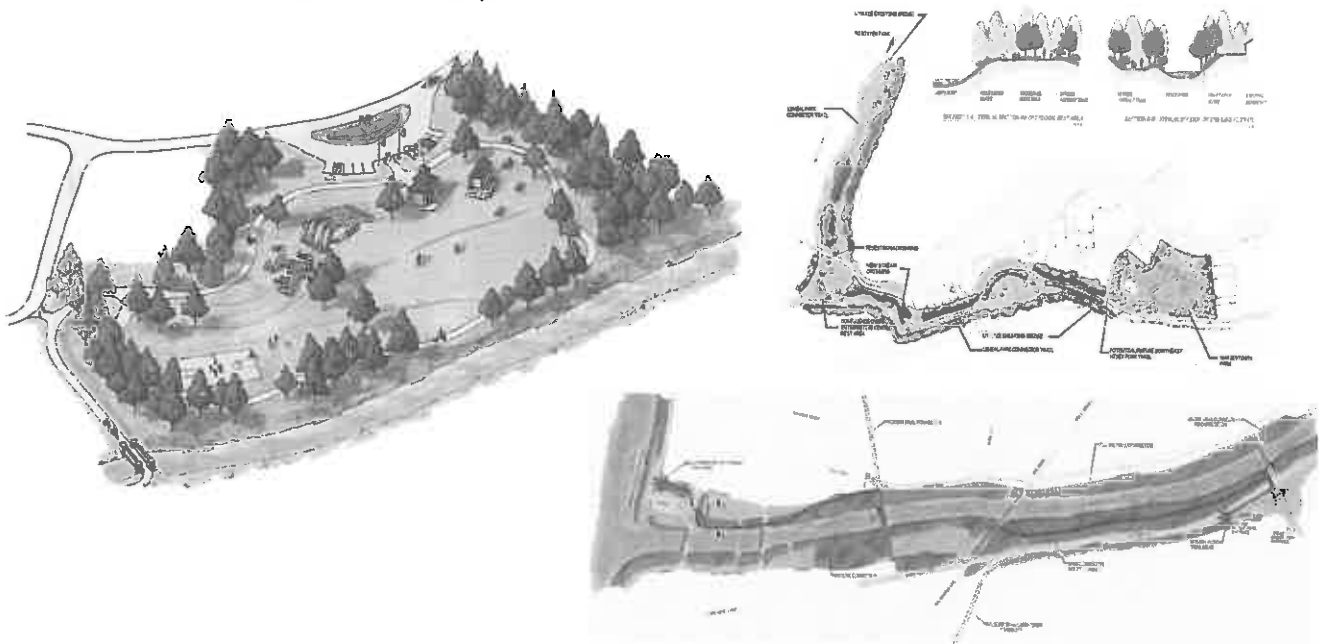
TERRADON Corporation provided Master Planning and site civil design services, followed by construction drawings, for the Toyota Wetland Education Center near Buffalo, WV.

Notable elements incorporated parking spaces, information kiosks, crushed gravel trails, elevated boardwalks and observation decks into this unique environmental habitat and wildlife refuge.



Harveytown Park & Connector Master Planning

TERRADON Corporation was responsible for trail design of a connector from Harveytown Park to Ritter Park in Huntington, WV. TERRADON provided a 3-Phase Master Planning approach for a section of trail that is predicted to be heavily used by the Huntington Community.

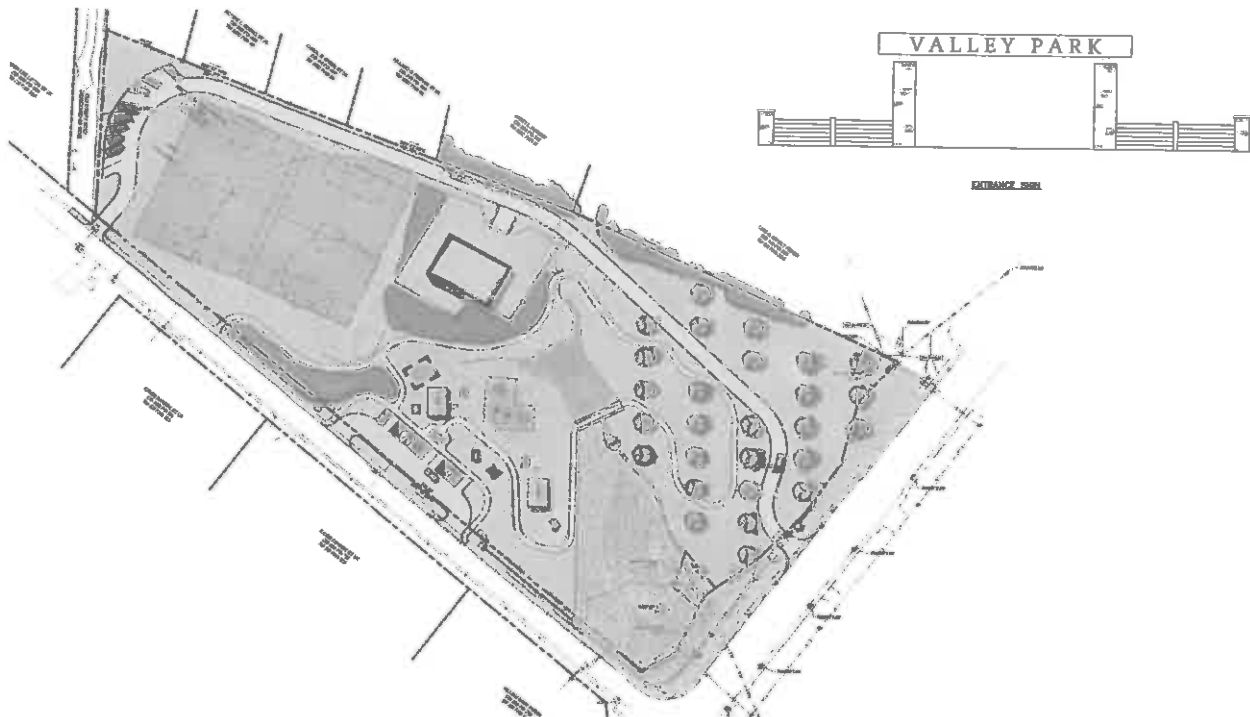


RELATED PRIOR EXPERIENCE - Master Planning, Trails Putnam County Commission - Master Planning & Valley Park Expansion



TERRADON Corporation provided Master Planning and site civil design services for the expanding Valley Park in Hurricane, Putnam County, WV. This work is part of a nearly \$2 million expansion, which was completed in 2013 and adds an additional 6 acres to the park.

The project included planning for athletic fields, multiple parking lots, access roads and greenspace, but also incorporated a walking trail that ties into existing park trails. The plan was produced in coordination with the WVDOT to determine roadway/walkway ingress/egress and designed in accordance with local, state and federal regulations.



CONCEPTUAL MASTER PLAN
VALLEY PARK Hurricane, West Virginia

CURRICULUM

Qualifications & Technical Experience - 1

Scope of Services - 2

Proprietary - 3

Projects / Prior Experience - 4

Management & Staffing Capabilities - 5

West Virginia Form 100

OUR TEAM

Todd Boggess is President of E.T. Boggess, Architect, Inc., and will serve as the design team leader. He will be assisted by Stephen Mackey, who is responsible for planning and design.

A component of our management approach is the development of an individual strategy for each project, focused on the specific problems to be solved. This strategy considers the staff members assigned to the project, the scheduling and duration of work phases, the use of special consultants or specialized studies. Our Project Management Plan (PMP) will document key management and oversight tasks and is updated throughout the project as changes occur. The plan will include a definition of your program goals, technical requirements, schedules, resources, budgets, and management programs. Once we gain a better understanding of your scheduling targets, we will be able to determine exactly what resources we will need to dedicate to the project.

We have analyzed our team's requirements carefully and are confident that our manpower and skill level will remain more than adequate, even in the early, labor intensive phases. We are prepared to staff the project with a cadre of our key design personnel. Our projected workloads and the depth of personnel available are such that staffing projects of this size and complexity will have no adverse impact on any current or future projects in our office.

Resumes for our design team can be found on the following pages. Section 4 contains project information showcasing our capabilities.

Architect – E. T. Boggess Architect, Inc.

**Principal & Lead Architect
Design & Production**

Todd Boggess, AIA, NCARB
Steve Mackey
Nathan Turner

**Technology & Information
Construction Documents
Construction Administration**

Roy Morum
Dale East
Chris Canterbury

Specialty Exhibit Design Consultant – Riggs Ward Design

**Principal & Creative Director
Principal & Project Manager**

Bob Riggs
Brent Ward

Mechanical/Electrical/Plumbing Engineering – Harper Engineering

Jason Harper
Scott Phillips

Kevin Mark King
Richard Standish

Structural Engineering – Moment Engineers, Inc.

Doug Richardson

Site/Civil Engineering & Landscape Architecture – Terradon Corporation

Greg Fox
Bill Hunt
John James

Peter Williams
Jim Nagy
Robert Thaw

Todd Boggess, AIA, NCARB, Architect
President



EDUCATION

- Master of Architecture, Clemson University School of Architecture
- International Studies, Clemson University Daniel Center for Urban Design & Building Studies, Genoa, Italy
- Bachelor of Arts Degree in Design, Clemson University School of Architecture

RESPONSIBILITIES

Todd joined ETB as a project architect and office manager in 1988 after graduating from Clemson University. In January, 2001, he assumed the office of President.

Todd is responsible for . . .

- architectural design and development
- project management and coordination
- computer aided design and visualization
- interior design
- site planning

Your project will receive his complete attention, from the interview and project meetings, through the construction process. As the president of the firm, you are putting your trust in him and he takes that commitment very seriously. He wants to make sure you are satisfied with our service, performance, and design.

PROFESSIONAL

West Virginia Board of Architects (2014) – Governor Tomblin appointed Todd to this board which is responsible for protecting the life, health and property of the people of the State of WV by ensuring that proper architecture practices are used in the state.

Princeton Zoning Board of Appeals (since 2000) – Todd has been asked to serve on this local committee for the past 15 years. He currently serves as vice-chair. The board is responsible for reviewing and ruling on appeals to the existing Princeton Zoning Laws.

National Council of Architectural Registration Boards (NCARB) - Member

American Institute of Architects (AIA) - Member

PROJECTS

Todd understands the demands being placed on all state agencies as they strive to offer the necessary services to our citizens and their efforts to do so within limited budgets. While he has always incorporated energy efficiency into his designs, the focus on green technologies over the past decade has definitely changed the architectural and construction industries. Todd's designs for every governmental building, both new construction and renovations, must address these requirements and ensure the safety of citizens who will be using the facility, as well as the employees who will be working from their new environment on a daily basis.

Recreational – Governmental & Private

- Princeton Railroad Museum (*Historical Re-creation*), Princeton, WV
- Bramwell Coal Interpretive Museum (*Historical Re-creation*), Bramwell, WV
- Greenbrier County Convention and Visitor's Center (*Renovations*), Lewisburg, WV
- Pipestem Conference Center (*Addition*), Pipestem State Park, WV
- The Summit Bechtel Family National Scout Reserve - Bathhouse Design & Construction, Observation Deck, & Pavilion Design Options, Mt. Hope, WV
- Richwood Visitor's Center (*Renovations*), Richwood, WV
- Chicory Square Interpretive Area, Bluefield, WV
- Hatfield/McCoy Office (*Renovations*), Lyburn, WV
- Hatfield/McCoy Trailhead Facility, Ashland, WV
- Ashland KOA Cabins, Ashland, WV
- Ashland Resort Bathhouse, Ashland, WV
- Cotiga ATV Development, Mingo County
- Triadelphia ATV Development, Logan County
- Spearhead Trail Development, Tazewell County, VA

AWARDS

- WVAIA "Honor Award" for Renovation Design of the Princeton Public Library – April 2012
- Princeton/Mercer County Chamber of Commerce "Excel Award" – January, 2011
- *West Virginia Executive Magazine's* "Young Guns" - Fall, 2003
- Princeton/Mercer County Chamber of Commerce "Citizen of the Year - 2000"
- Princeton Elks Club "Citizen of the Year - 2000"

Stephen Mackey
Planning & Design



EDUCATION

- Bachelor of Arts Degree in Design, Clemson University School of Architecture
- Master of Architecture, Clemson University School of Architecture

RESPONSIBILITIES

With over 29 years of experience in all phases of design and construction, Mr. Mackey brought strong design, management and leadership skills to the firm. His significant experience has enabled him to successfully oversee the design and construction of a number of large educational projects. Specific project responsibilities include:

- code review and analysis
- program development
- conceptual design
- design visualization
- project coordination
- construction specifications

PROJECTS

Mr. Mackey rejoined ETB Architects in 2009 after serving as Executive Vice President for two architectural firms in Florida. During his absence, Mr. Mackey also served as project manager on several large school projects in the state of Florida and has been focused on education projects since his return to ETB.

- The Summit Bechtel Family National Scout Reserve - Bathhouse Design & Construction, Observation Deck, & Pavilion Design Options, Mt. Hope, WV
- Cotiga ATV Development, Mingo County
- Triadelphia ATV Development, Logan County
- Advantage Valley Advanced Technology Center for the WVC&TCS, So. Charleston
- North Central Advanced Technology Center for the WVC&TCS and Allied Health, Fairmont
- New River Community and Technical College Headquarters and Allied Health Building, Beckley

Roy Morum, LEED G.A.
Project Manager



EDUCATION

- Bachelor of Architecture, University of the Orange Free State, South Africa
- Master of Design Management, UNITEC, Auckland, New Zealand

RESPONSIBILITIES

Roy joined ETB in 2004 as a project architect. His area of expertise is in design, documentation, and information management. He will be responsible for the ftp site that we will create to share project information. Before joining ETB, Roy completed major works in South Africa and New Zealand. His work in the USA includes government facilities for the West Virginia Army National Guard and other public buildings.

Roy's Master's Dissertation, "*A Model for Knowledge Management in an Architectural Enterprise*" deals with effective communication and creative project / information / data management. He has developed processes and skills in this field that contribute much to the successful outcome of a project – and the continued facilities maintenance of a building.

Roy is responsible for . . .

- planning/programming
- construction documentation
- coordination of other disciplines
- ftp site design and implementation
- information management
- responding to contractor's requests for information
- reviewing submittals and shop drawings

PROJECTS

Roy's expertise in project management and communication is reflected in his use of technology to enhance the delivery process via the internet and FTP. His mastery of information management systems will ensure that team members, contractors, and your representatives will be able to share ideas efficiently and cost effectively.

- The Summit Bechtel Family National Scout Reserve - Bathhouse Design & Construction, Observation Deck, & Pavilion Design Options, Mt. Hope, WV

Nathan Turner, LEED G.A.
Project Manager



EDUCATION

- Bachelor of Science, Engineering – Architecture, Fairmont State University
- Master of Architecture (May, 2009), Boston Architectural College

RESPONSIBILITIES

Mr. Turner joined ETB in 2009 and brought with him a wealth of experience in architectural design, as well as construction methods and practices. His prior experience with educational facilities has already proven extremely valuable as we have several elementary, middle, and high school projects at various stages of completion. Nathan has obtained LEED certification and will assist in our efforts to provide a “green” approach to as many projects as possible.

Specific project responsibilities include:

- architectural programming
- construction documentation
- project management
- project coordination
- construction specifications
- construction administration

PROJECTS – Public Buildings

- The Summit Bechtel Family National Scout Reserve - Bathhouse Design & Construction, Observation Deck, & Pavilion Design Options, Mt. Hope, WV
- North Central Advanced Technology Center for the WVC&TCS and Allied Health, Fairmont
- Advantage Valley Advanced Technology Center for the WVC&TCS, So. Charleston
- New River Community and Technical College Headquarters & Allied Health Building, Beckley

Dale East
Architectural Intern



EDUCATION

- Bachelor of Science - Architectural Engineering
Bluefield State College

RESPONSIBILITIES

Mr. East is an architectural intern with 10 years of experience who joined ETB in November of 2013. Prior to returning to Princeton, his work at architectural firms in Tennessee allowed him to manage projects from New Jersey to Atlanta, ranging from educational facilities to zoological exhibits. Dale is involved in all phases of design documentation and production and is eager to handle any task needed to ensure a smooth project flow from start to finish.

Specific project responsibilities include:

- 3D modeling
- graphics/imagery
- construction documentation
- project coordination

PROJECTS

- Richwood Visitor's Center (*Renovations*), Richwood, WV
- Ashland KOA Campground Bathhouse, Ashland, WV
- Hatfield/McCoy Trailhead Facility, Ashland, WV
- Cabins for the Ashland KOA, Ashland, WV
- Cotiga ATV Development, Mingo County
- Triadelphia ATV Development, Logan County
- Spearhead Trail Lodging/Parking, Tazewell County, VA
- WVARNG Coonskin (*Renovations*), Charleston, WV

Chris Canterbury, Associate AIA
Construction Admin Manager



EDUCATION

- Bachelor of Science Engineering Technology/Architecture, Fairmont State University

RESPONSIBILITIES

Chris joined ETB in 2000 as a CADD Technician. His focus in recent years has been project administration and his current position of Construction Administration Manager reflects that area of expertise. Your project will benefit from his superb organizational skills. He attends meetings and keeps track of your needs and wishes through notes and minutes. His timely response to submittals will ensure that your project stays on its construction schedule.

Chris is responsible for . . .

- construction administration
- organizing and attending meetings
- distribution of minutes and progress reports
- contacting material suppliers
- responding to contractor's requests for information
- reviewing submittals and shop drawings
- site visits/observations

PROJECTS – Public

During the construction process, Chris attends the regular progress meetings, as well as special meetings with material suppliers and sub-contractors. He works closely with the contractor in maintaining the budget, adhering to the schedule, and ensuring quality control.

- Princeton Railroad Museum (*Historical Re-creation*), Princeton, WV
- Bramwell Coal Interpretive Museum (*Historical Re-creation*), Bramwell, WV
- Greenbrier County Convention and Visitor's Center (*Renovations*), Lewisburg, WV
- Pipestem Conference Center (*Addition*), Pipestem State Park
- Hatfield/McCoy Office (*Renovations*), Lyburn, WV
- Hatfield/McCoy Trailhead Facility, Ashland, WV
- Cabins for the Ashland KOA, Ashland, WV



BOB RIGGS

PRINCIPAL & CREATIVE DIRECTOR

As Principal and Creative Director of Riggs Ward Design (RWD), Mr. Riggs provides input on all aspects of the design process. He has a strong background in conceptual work, drafting, writing, and supervising large and small scale exhibit and graphic design projects. Mr. Riggs has designed exhibits for some of the nation's most respected organizations, including the Smithsonian Institution, the Library of Congress, the U.S. Department of the Interior, and the Colonial Williamsburg Foundation. He has also won national awards and provided in-class lectures to students of Virginia Commonwealth University's artistic design program, which is ranked #1 Public Graphic Design Program in the country.

Relevant Work

Employment History

Franklin Street Communications

Exhibit Manager, April 1996 – September 1997

Mr. Riggs was included in all phases of the exhibit design process, from programming to construction administration

1717 Design Group

Senior Exhibit Designer, February 1989 – April 1996

While at 1717, Riggs worked on as an exhibit designer on a number of projects, including:

- Colonial Williamsburg: Rockefeller Library
- Historic Charleston Foundation
- Library of Congress: Rome Reborn
- Library of Virginia: The Common Wealth
- Virginia Museum of Fine Arts: Fabergé in America

Select RWD Experience

Exhibition

Atlanta History Center

Hampton History Museum

LBJ Presidential Library and the Briscoe Center at the University of Texas at Austin: *Cronkite: Eyewitness to A Century*

Library of Congress:

- Churchill and the Great Republic*
- New Visitor Experience*
- The Last Full Measure: Civil War Photographs from the Liljenquist Collection*

Museum of the Confederacy - Appomattox: Permanent Exhibit

National Park Service: Richmond National Battlefields

St. Charles County Parks and Recreation Department:

St. Charles County Heritage Museum

Valentine Richmond History Center:

- This is Richmond*
- War is Hell*

Virginia Historical Society: *Virginians at Work*

Virginia Museum of Fine Arts: *Fabergé Revealed*

Woodrow Wilson Presidential Museum and Library:

- Hinge to the 20th Century*
- World War I: The Doughboy War*

Interpretive Signage

Civil War Interpretive Center at Historic Blenheim

Currituck Heritage Park: Whalehead Club

Pamplin Historical Park

Wicomico County, MD Recreation, Parks and Tourism:
Pemberton Historical Park

Master Planning

Atlanta History Center

Library of Congress: New Visitor Experience

Smithsonian Institution: Ocean Hall Conceptual Design

Mobile Exhibition

Library of Congress: *Gateway to Knowledge*

Virginia Sesquicentennial Commission: Virginia Civil War 150
HistoryMobile

Traveling Exhibition

Contemporary Art Center of Virginia:

Magna Carta and Four Foundations of Freedom

Virginia Historical Society: *An American Turning Point: The Civil War in Virginia*

Library of Congress: *With Malice to None: The Abraham Lincoln Bicentennial Exhibit*

Visitor Center

County of Henrico:

Three Lakes Park Nature Center and Aquarium

North Carolina Dept. of Environment and Natural Resources:

Outer Banks Center for Wildlife Education

North Carolina Division of Parks and Recreation:

Merchants Millpond State Park

Raven Rock State Park

South Carolina National Heritage Corridor:

Region II: Discovery Center

Region III: Discovery Center and Retail Area

U.S. Department of Agriculture, National Forest Service:

James R. Wilkins CCC Visitor Center

West Virginia University Visitor Resource Center

Education and Honors

Mr. Riggs earned his Bachelor of Fine Arts, with a Concentration in Communication and Design, from Virginia Commonwealth University in 1989. He has received numerous awards, including the Washington Book Publishers Design Award, Print Casebooks: Best in Exhibition Design, the Potlach Award of Merit, and the American Association of Museums – Publication Design.



BRENT WARD

PRINCIPAL & PROJECT MANAGER

As RWD's Managing Principal, Mr. Ward works closely with the Design team to plan, develop, and supervise each project. With a background in museum interpretation and construction, he leads the design staff, conceptualize themes and exhibits on staff, public programming, product development, conservation techniques, and materials. He also oversees content flowcharts, signing and end of project as integrating new technologies into additional design techniques.

Relevant Work

EMPLOYMENT HISTORY

Franklin Street Design

Director of Museum Services, 1996 - 1997

Mr. Ward was a project manager for a variety of exhibitions and museum-related developments.

Valentine Museum

Museum Educator, July 1994 – Aug 1996

Assisted with the development and interpretation of the Wickham House and providing site interpretation of the following subjects: African-Americans in 19th Century Richmond; The Powhatan Tribes; Richmond's Hollywood Cemetery; Richmond: Capitol of the Confederacy

Virginia Historical Society

December 1993 – December 1994

Brent worked with the collections staff to catalog and conserve the Society's rare collection of photographs and glass plate negatives.

Select RWD Experience

Exhibition

Hampton History Museum

LBJ Presidential Library and the Briscoe Center at the

University of Texas at Austin: *Cronkite: Eyewitness to A Century*

Library of Congress:

Churchill and the Great Republic

From the Home Front and the Front Lines

Exploring the Early Americas

Life of the People

The Last Full Measure: Civil War Photographs from the Liljenquist Collection

National Park Service: Richmond National Battlefields

North Myrtle Beach Historical Museum (in development)

University of Virginia Special Collections Library:

Flowerdew Hundred: Unearthing Virginia's History

Best Sellers: Popular Fiction in America

Valentine Richmond History Center: *War is Hell*

Virginia Historical Society: *Virginians at Work*

Woodrow Wilson Presidential Museum and Library:

Hinge to the 20th Century

World War I: The Doughboy War

Interpretive Signage

National Park Service Natchez Trace Parkway

Civil War Interpretive Center at Historic Blenheim

Currituck Heritage Park: Whalehead Club

Pamplin Historical Park

Shreveport Bossier Convention and Visitors Bureau: Northwest Byway Interpretive Signage

University of Arkansas - Fort Smith: Drennen - Scott House

Wicomico County, MD Recreation, Parks and Tourism:

Pemberton Historical Park

Master Planning

Atlanta History Center

Appomattox Court House National Park

Kennecott Mines National Historic Landmark

Library of Congress: New Visitor Experience

National Building Museum: *Designing for Disaster*

National Museum Rt. 6 Museum

Shenandoah Battlefields National Historic District

Smithsonian Institution: Ocean Hall Conceptual Design

Valentine Richmond History Center: *This is Richmond*

Traveling Exhibition

Virginia Historical Society: *An American Turning Point: The Civil War in Virginia*

Library of Congress: *With Malice to None: The Abraham Lincoln Bicentennial Exhibit*

Visitor Center

North Carolina Division of Parks and Recreation: Merchants Millpond State Park

Raven Rock State Park

Ohio Division of Natural Resources:

Old Woman Creek State Nature Preserve

South Carolina National Heritage Corridor:

Region II: Discovery Center

Region III: Discovery Center and Retail Area

Region IV: Mobile Application

Education and Honors

Mr. Ward earned a Bachelor of Arts from Ohio State University (1992) and a Master of Arts from the University of Richmond (1996). He graduated Phi Alpha Theta and holds memberships in the American Association of Museums, the Southeastern Museums Conference, and the Virginia Association of Museums. Mr. Ward also provides pro bono consulting and design services to the Association for the Preservation of Virginia Antiquities (APVA) and the Virginia Association of Museums (VAM).



MICHAEL RADTKE

SENIOR EXHIBIT DESIGNER

Mr. Radtke brings many years of exhibit design experience to every project. His design, detailing and architectural education complement the Creative Director's skill set to give each client an array of graphic and three-dimensional knowledge and experiences. Mr. Radtke is a skilled user of Vectorworks and AutoCAD programs. He is responsible for the production of conceptual and working drawings for exhibit fabrication, project management, and the coordination of production scheduling with other departments.

Relevant Work

Employment History

1717 Design

Designer and Project Manager, August 1996 – September 2001

Projects Included:

- The National Cowboy Hall of Fame
- NCAA Hall of Champions and NCAA trophy
- The Washington Monument
- Stratford Hall Plantation
- Colonial Williamsburg

Hadley Exhibits, Inc.

Designer and Project Manager, August 1993 – July 1996

Designer for design build museum and trade show exhibit firm.

Projects included:

- John F. Kennedy Presidential Library and Museum
- The Center at High Falls, Rochester, NY
- El Portal Visitor Center in the El Yunque National Rain Forest, Puerto Rico.

Select RWD Experience

Exhibition

Contemporary Art Center of Virginia:

Magna Carta and Four Foundations of Freedom

Hampton History Museum

LBJ Presidential Library and the Briscoe Center at the

University of Texas at Austin:

Cronkite: Eyewitness to A Century

Library of Congress:

Churchill and the Great Republic

Exploring the Early Americas

From the Home Front and the Front Lines

New Visitor Experience

The Last Full Measure: Civil War Photographs from the Liljenquist Collection

National Park Service: Richmond National Battlefields

University of Virginia Special Collections Library:

From Out That Shadow: The Life & Legacy of

Edgar Allen Poe

Flowerdew Hundred: Unearthing Virginia's History

Best Sellers: Popular Fiction in America

Valentine Richmond History Center:

War is Hell

Virginia Historical Society: *Virginians at Work*

Virginia Museum of Fine Arts: *Fabergé Revealed*

Woodrow Wilson Presidential Museum and Library:

Hinge to the 20th Century

World War I: The Doughboy War

Interpretive Signage

Civil War Interpretive Center at Historic Blenheim

Currutuck Heritage Park: Whalehead Club

Maymont Foundation Nature Center

Pamplin Historical Park

Shreveport Bossler Convention and Visitors Bureau: Northwest Byway

Interpretive Signage

Master Planning

Atlanta History Center

Appomattox Court House National Park

Library of Congress: New Visitor Experience

Smithsonian Institution: Ocean Hall Conceptual Design

Valentine Richmond History Center: *This is Richmond*

Visitor Center

County of Henrico: Three Lakes Park Nature Center and Aquarium

North Carolina Dept. of Environment and Natural Resources:

Outer Banks Center for Wildlife Education

North Carolina Division of Parks and Recreation:

Merchants Millpond State Park

Raven Rock State Park

South Carolina National Heritage Corridor:

Region II: Discovery Center

Region III: Discovery Center and Retail Area

U.S. Department of Agriculture, National Forest Service:

James R. Wilkins CCC Visitors Center

West Virginia University Visitor Resource Center

Education and Honors

Mr. Radtke earned a Master of Arts in Architecture from the State University of New York at Buffalo in 1993 and a Bachelor of Science in Professional Photography from the Rochester Institute of Technology in 1983.



SARA MARTIN

RESEARCHER AND PROJECT COORDINATOR

Ms. Martin has a broad background in urban and environmental planning which includes community development, community development, and economic development. These interests are complemented by her passion for design. In addition to her involvement in the planning side of projects, she currently works as a rollsmith and project coordinator at Riggs Ward Design.

Relevant Work

Employment History

Dominion Harvest

Account Manager & Marketing Assistant, Jan – Dec 2012

Managed accounts payable, created promotional newsletters and flyers, attended regional events to educate customers about the benefits of supporting local farmers and local produce/products.

Habitat for Humanity of Charlottesville

Researcher and Team Member, Jan – May 2011 (4 months)

Part of a team that created a new marketing approach for the Habitat Re-Store.

UVA Student Council Environmental Sustainability Committee

Research and Development Task Force Leader,

Aug 2010 – Aug 2011 (1 year)

Organized and coordinated efforts within the 15-person team to improve the University sustainability programs and initiatives.

City of Charlottesville Economic Development Department

Economic Specialist Intern, May – Aug 2010 (3 months)

Completed vacancy surveys, created articles related to new businesses in the region for a monthly newsletter, interviewed business owners, and assisted the Lead Economic Specialist in a variety of tasks.

Select RWD Experience

Exhibition

Atlanta History Center

Bethlehem Steelworks Visitor Center

Black History Museum of Virginia

City of Raleigh Museum

R3 and CityLab Exhibits

Ft. Lewis Army Museum

Historic Columbia Foundation

Woodrow Wilson Family Home

Historic Jarvisburg Colored School

University of Virginia: Rotunda Project, Lower East Oval Room

Virginia Capitol Visitor Center

Interpretive Signage

National Park Service

Natchez Trace Parkway Interpretive Signage

Education and Honors

Ms. Martin earned her Bachelor of Urban and Environmental Planning Degree with a Minor in Economics from the School of Architecture at the University of Virginia. Her team marketing project for Habitat for Humanity of Charlottesville won an award from the Virginia Chapter of the American Planning Association.



CHRISTOPHER KING

INTERACTIVE MEDIA DEVELOPER

Mr. King is a highly motivated problem solver and media developer with several years of professional experience in web application development, Flash, web design, and programming. He is a focused, patient, and responsible individual that completes projects within deadlines by utilizing strong written and verbal communication, excellent technical design, additional job-based research, and learning skills.

Relevant Work

EMPLOYMENT HISTORY

Metis Creative

Lead Web Designer/Developer, July 2014 – October 2014

Managed team. Developed and designed fully responsive and mobile cross browser websites

eFedSystems Corporation

Web Developer, Researcher (Internship), Sept. 2013 – August 2014

Sharepoint Systems, C#, Web Development

Entity Management Systems, LLC

Web Software Developer, June 2013 – May 2014

Developed company website, assisted with biometric software advancements in C#

Programming/Scripting/Styling

HTML, CSS, JavaScript, JQuery, PHP, C, C++, C#, Java, JSP, Python, ActionScript 3.0, XML

Frameworks/Libraries/Specifications

jQuery, Google App Engine

Relational Databases

MySQL, MSSQL, Oracle

Development Environments/Version Control

Flash CS6, Flash Develop, Eclipse, Android Developer Studio, Visual Studio, Subversion, Git

Volunteer Experience

University of Mary Washington, Created a web based scheduling system through Agile RSASA.org, Wordpress repair

Select RWD Experience

Exhibition

- Atlanta History Center
- Jethlehem Steelworks Visitor Center
- Black History Museum of Virginia
- City of Aiken, South Carolina

City of Orangeburg, South Carolina

Historic Jarvisburg Colored School

Old Woman Creek National Estuarine Research Reserve

Patriots Point Naval and Maritime Museum

South Carolina National Heritage Corridor:

Region IV: Discovery Center Application

Valentine Richmond History Center

Virginia Tech

Woodrow Wilson Family Home

Education and Honors

Mr. King earned a Bachelor of Computer Science from the University of Mary Washington where he graduated in 2014.



MICHELLE BABYOK, ASID

EXHIBIT DESIGNER

Ms. Babyok has 12 years of design experience in interior, graphic, and exhibits. The combination of her liberal arts background and design degree have given her a solid foundation for the display of content in three-dimensional space. She has strong project management skills, is a strategic thinker and a problem solver.

Relevant Work

Employment History

MFM Design, Bethesda, MD

Senior Graphic Designer, 2013 – 2014

Designer of interpretive graphics for the Museum of the American Revolution project. Responsible for conceptual layouts of 3-D graphics, Sketch-Up renderings, color palettes, and typography. Also in charge of artifact layouts and displays, including outdoor elements.

Design 3, Orange, VA

Exhibit Designer, 2010 – 2013

Designer of interpretive exhibits for history museums. Recently acted as lead designer and project manager on a \$1.5 million, turn-key project for a history museum in Roanoke, VA. As part of a small team, I was also responsible for content gathering, curation, research, client presentations, SketchUp renderings, full CAD-drawn DD sets, graphic design, art direction, RFP responses, and management of fabricators, designers, interactive designers, A/V teams and other contractors.

Michelle Babyok, ASID, DC Metro Area, Charlottesville

Interior Designer, 2009 – 2010

After passing the NCIDQ (professional certification exam for interior designers) and becoming certified in Maryland, Babyok has worked on several residential and commercial projects.

Juicy Couture, New York, NY

Retail Designer, 2008

Drew plans and elevations for 20+ boutiques and outlets across the country. Planned store layouts with site conditions, local and national codes, and merchandising goals in mind. Designed exterior storefronts with moulding details. Analyzed capacities of store fixtures and calculated potential earnings.

Related Projects

Exhibition

Lancome, New York, NY

Retail Designer for 3D, CAD and fabrication

Macy's, New York, NY

Retail Designer for shop layout, fixture design and materials, winner 2007 NASFM Award

McCartan, New York, NY

Interior Designer for hospitality lighting and furniture

Alexandra Champalimaud, New York, NY

Interior Design Intern

Icon Medialab, New York, NY

Associate Project Manager of website development in medicine, e-commerce and fashion

MTV Networks, New York, NY

Website Designer for MTV News Online

Select RWD Experience

Exhibition

Atlanta History Center

Cape Fear Museum

Ft. Lewis Army Museum

Historic Brentsville Jail Permanent Exhibits

Historic Jefferson School

Education and Honors

Ms. Babyok holds a Bachelor of Arts from Smith College with a concentration in Studio Art and Art History. She earned a Master of Science in Interior Design from Pratt Institute where she participated in the Exhibit Design Intensive (EDI) Program.



MARTIN SPEER

GRAPHIC DESIGNER

Mr. Speer is a designer with expertise in the creation and development of brand identities, communications and user experiences across most media. He has a broad background in problem solving and creative thinking with his experience in leadership, working independently and with others successfully.

Relevant Work

EMPLOYMENT HISTORY

Carousel Designs, Rockville, VA
Senior Designer, 2013

Acclaimed, regional sign and design company, focused on the residential and commercial housing market. Responsible for overall sign design, production documents and client design relations. Ensured detail-orientated needs were met in a timely informative manner. Worked to bolster sales team capabilities through good design and a cooperative, positive attitude.

Outdoor Living Brands, Inc., Richmond, VA
Senior Designer, 2008 – 2013

Senior Graphic Designer for Outdoor Living Brands, responsible for guiding the growth of its family of outdoor concept franchise brands: Archadeck Outdoor Living, Mosquito Squad and Outdoor Lighting Perspectives. Responsible for brand identities to user experiences in all media, primary focus was to create impactful and memorable communications to generate inquiry leads from homeowners for Outdoor Living Brands products and services.

CMSS Architects, PC, Virginia Beach, VA
Senior Designer, 2004 – 2007

International Architectural Firm specializing in the holistic design of public/private projects. Supported the growth of firm through various collateral projects. Enabled the formation of the Communications Department through client branding and environmental graphic design. Responsible for support of company brand and project related materials. Responsible for client branding and environmental graphics.

Design 3, Orange, VA
Senior Designer, 1999, 2000, 2002 – 2004

Multidisciplinary design studio specializing in graphic, exhibit, environmental and web design. Servicing state-wide cultural, historic, military, commercial, financial and industrial clients. Consistently and effectively enabled this client spectrum to visually communicate ideas by informing, enlightening and explaining their specific offerings to targeted markets. Responsible for creating and co-managing numerous design projects focusing the clients' specific needs by creating engaging, formative, and cost effective design solutions.

Related Experience

The Creative Group — Virginia Beach, VA
Breviloquent — Charlottesville, VA

Select RWD Experience

Exhibition

Atlanta History Center
Hampton History Museum
National Park Service

Natchez Trace Parkway Interpretive Signage

Education and Honors

Mr. Speer received his Bachelor of Fine Arts from Ferrum College and a Master of Fine Arts from Virginia Commonwealth University where he majored in Communication Arts and Design. In 2007, Mr. Speer received the AIGA GRADE Award of Merit and the ADDY Silver Award.



NISSA LIPOWICZ

RESEARCH AND DEVELOPMENT

Nissa Lipowicz received a masters degree in museum studies from the Johns Hopkins University where she researched exhibit evaluation and visitor studies. With an interdisciplinary background in the fine arts, digital preservation and exhibit planning, Ms. Lipowicz brings a unique perspective to exhibit development and evaluation for museums and public institutions.

Relevant Work

Employment History

Virginia Museum of Fine Arts, Richmond, VA
Graduate Intern, August 2014 – December 2014

RSA, Washington, DC
Image Specialist, May 2013 – February 2014 (Federal Contract)

Gallery 5800/Flux, Richmond, VA
Gallery Director, October 2010 – August 2013

Art Magazine, New York, NY
Contributor, 2010

Certification

Protecting Human Research Participants for Extramural Research
National Institutes of Health, Johns Hopkins University, 2015

Projects

- Biocubes Exhibit Prototyping and Formative Evaluation, 2015
National Museum of Natural History, Smithsonian Institution
- “Skin & Bones” Mobile App Development and Evaluation, 2015
Dissertation research with Andy Petarek and Diana Marques
National Museum of Natural History, Smithsonian Institution
- Rotunda Renovation, Front end evaluation, Ivory, 2015
National Museum of Natural History, Smithsonian Institution
- “Headlines: Then & Now” Exhibit Development Evaluation, 2015
Newseum
- Oral Histories of American Artists, auditor/research, 2014
Archives of American Art, Smithsonian Institution
- Placemaking: Project for Public Spaces, Campaign Planning, 2014
Virginia Museum of Fine Arts

Select RWD Experience

Exhibition

- Atlanta History Center
- Black History Museum and Cultural Center of Virginia
- Salt River Pima-Maricopa Indian Community
- Virginia State Capitol

Education and Honors

Ms. Lipowicz holds a Master of Arts in Museum Studies from the Johns Hopkins University and a Bachelor of Fine Art in Photography and Film from Virginia Commonwealth University. In 2014, Ms. Lipowicz was recognized for her contributions to the museum studies field with the Johns Hopkins’ *Future of Museums: Visionary Ideas for Visitor Engagement Seminar Scholarship*.



RON THOMSON

INTERPRETIVE PLANNER & WRITER

Has over 30 years of professional experience between interpretive planning and production of interpretive media including writing and editing exhibit content, interpretive tour scripts, interpretive brochures and interpretive multimedia programs. He has worked on interpretive projects for more than 20 units of the National Park Service. Completed jobs include more than 50 Long-Range Interpretive Plans.

Relevant Work

Employment History

Compass

Owner and Principal, 1994-Present

Produce interpretive plans and write content for interpretive media including museum exhibits

Mid-Atlantic Regional Office, National Park Service

Interpretive Specialist, 1988-1994

Provided technical assistance to parks in the region and reviewed interpretive media developed by NPS staff and contractors.

Independence National Historical Park

Interpretive Specialist, 1988-1980

Developed a variety of interpretive media for the park and supervised interpretive training.

Tuskegee Institute National Historic Site

Chief of Interpretation, 1977-1980

Supervised the interpretive program and development of interpretive media for this new national park.

Independence National Historical Park

District Ranger, 1972-1977

Supervised both permanent and seasonal interpretive rangers.

Projects

Donner Memorial State Park Visitor Center, Exhibit text. In progress with installation expected in the summer of 2014.

Railtown 1897 State Historic Site, Interpretive master plan. In progress.

Anza Borrego Desert State Park, Interpretive master plan. In progress.

Underground Railroad Interpretive Center, Niagara Falls, NY, Exhibit planning and text. In progress.

Sam Rayburn Library and Museum, Exhibit planning and text. Completed in 2012.

George Rogers Clark National Historical Park, Interpretive planning. Completed in 2012.

Agate Fossil Beds National Monument, Interpretive planning. Completed in 2011.

Little Bighorn Battlefield National Monument, Interpretive planning. Completed in 2011.

Shenandoah River State Park, VA, Exhibit text; 2011

Pemberton's Headquarters, Vicksburg National Military Park, Exhibit text, Completed 2010.

Eyewitness to a Century, University of Texas/Austin, Exhibit text;

Completed in 2010;

South Lawn, University of Virginia, Interpretive text; Completed 2010;

St. Charles County Heritage Museum, MO, Exhibit text; 2010.

Select RWD Experience

Exhibition

Eyewitness to a Century, University of Texas/Austin, Exhibit text.

Graveyard of the Atlantic Museum, Hatteras, NC, Exhibit text.

Natchez Trace Parkway Interpretive Master Plan and exhibit text.

Sam Rayburn Library and Museum, Exhibit planning and text.

Shenandoah River State Park, VA, Exhibit text.

South Lawn, University of Virginia, Interpretive text.

St. Charles County Heritage Museum, MO, Exhibit text.

Underground Railroad Interpretive Center, Niagara Falls, NY, Exhibit planning and text.

Education and Honors

University of Virginia, 1969-1970

Thomas Jefferson Fellow in the Graduate School of Arts and Sciences

Moravian College, 1965-1969

Summa cum laude with honors in American history



MERCY QUINTOS PROCACCINI

WEST COAST PROJECT MANAGER

Ms. Procaccini is engaged in project management, interpretive planning, and collections-based projects for the firm. She is currently working on collection planning and production for the redesign of exhibits at the Fort Lewis Museum at Fort Lewis (WA). Based in Seattle, she provides project management and on-site support to western U.S. clients.

Relevant Work

Employment History

Prior to joining the University of Virginia Library, Ms. Procaccini managed a traveling science exhibition for the American Psychological Association. She also worked at a variety of history museums and organizations, including Fort Ward Museum and Historic Site, The Lyceum History Museum, National Museum of American History, Stephen Decatur House, and the National Trust for Historic Preservation.

Projects

Having been involved with numerous exhibit projects over the past twenty years, Ms. Procaccini has a broad range of experience working with a team to manage project planning, schedules, resources, and multiple stakeholders effectively. Prior to her work with RWD, Ms. Procaccini directed the University of Virginia Library's exhibition program, working closely with donors, administrators, curators, conservators, preparators, designers, facilities staff, and the communications department. She was involved with the interpretive planning of the exhibits, and managed accompanying print, web, and film projects. Exhibition topics included archaeology, Native American history and culture, faculty research, popular fiction, cartography, history, book collecting, and architecture. Prior to her work at the Library, she managed a traveling science exhibition, and worked on exhibit and collections projects at a variety of museums.

American Journeys: From Columbus to Kerouac

Breaking and Making Tradition: Women at the University of Virginia

Censored: Wielding the Red Pen

Creating America's Theatre

Declaring Independence

From Out that Shadow: The Life and Legacy of Edgar Allan Poe (in collaboration with the Ransom Center at the University of Texas at Austin)

From Village to Grounds: Architecture at the University of Virginia

Layers of the Past: Discoveries at Flowerdew Hundred

Lewis and Clark: The Maps of Exploration 1507 - 1814

Lift Every Voice: Music in American Life

On the Map

Paul Mellon's Personal Library at the University of Virginia Library

The Firebird and the Factory: Modern Russian Children's Books

The Style of Power

Virginia Visions

Select RWD Experience

Exhibition

Ft. Lewis Army Museum

University of Virginia

Dell and Meadow Creek Wayside Panels

Rotunda Visitor Center

South Lawn Project Interpretive Exhibits

Virginia Tech Visitor Center

Education and Honors

Ms. Procaccini graduated with Distinction from the University of Virginia with a Bachelor of Arts in History. She has a Master of Arts in Museum Studies from George Washington University.



Harper Engineering,pllc

52 B Street
St. Albans, WV 25177
Office: 304.722.3602 Fax: 304.722.3603



Jason E. Harper, PE
(304)-541-1390
jason@harperengwv.com

Education

West Virginia University Institute of Technology
Montgomery, WV
Bachelor of Science-Mechanical Engineering

Registrations/Professional Affiliations

Licensed Professional Engineer – WV
ASHRAE
NFPA

Experience

Jason E. Harper, PE brings 11 years design experience to our firm. He has experience with HVAC, Electrical, plumbing, and fire alarm system design. His projects include educational facilities (including colleges and universities), health care facilities, office buildings, banks, emergency services facilities, postal facilities, and government buildings.

Projects

Addition and Renovation to Geary School
Baileysville Elem. HVAC Renovations
W. Kent Carper Justice and Public Safety Complex
Dominion Gas Office Building
Renovations to Glenville ES
Addition to Shady Spring Middle School
Addition and Renovations to Flinn Elementary
Renovations to Park Middle School

Harper Engineering,pllc

52 B Street
St. Albans, WV 25177
Office: 304.722.3602 Fax: 304.722.3603



Kevin Mark King, PE
mark@harperengwv.com

Education

West Virginia University Institute of
Technology Montgomery, WV
Bachelor of Science-Electrical Engineering

Bluefield State College
Bluefield, WV
Bachelor of Science-Computer Science

Registrations/Professional Affiliations

Licensed Professional Engineer – WV, KY, PA, OH, VA
WV licensed Master Electrician
NFPA

Experience

Kevin Mark King, PE brings 10 years of electrical design experience and over 11 years of electrical construction/maintenance experience to our firm. His projects include educational facilities (including colleges and universities), health care facilities, office buildings, emergency services facilities, government buildings and industrial projects.

Projects

Fayette Co. 911 Center
Wayne County 911 Center
Pulmonary Associates

Huff PK-8 School
Oakvale Elementary School
Pineville Elementary School

HE Harper Engineering

P O B o x 8 7 4
S t. A l b a n s , W V 2 5 1 7 7
O f f i c e : 3 0 4 . 7 2 2 . 3 6 0 2 F a x : 3 0 4 . 7 2 2 . 3 6 0 3



Richard M. Standish
(304)-722-3206
Rick@harperengwv.com

Registrations/Professional Affiliations

ASHRAE

Experience

Richard M. Standish brings 36 years design experience to our firm. He has experience with HVAC, plumbing, and electrical design. His specialty is the electrical design of water treatment and wastewater treatment plants. Rick's projects include treatment plants, educational facilities (including colleges and universities), health care facilities, office buildings, banks, emergency services facilities, postal facilities, and government buildings.

Projects

Brooke County High School
University of Charleston Dorm
Tri-State Gaming Center
Mylan Pharmaceuticals Expansion
Mason Co. 911 Center
Oak Hill Police Station
Kenova WTP
Boone County WWTP
Salt Rock PSD
Eleanor Maintenance Facility

Wyoming West High School
WVU- Boreman Hall
Greenbank Observatory
Robert Byrd Health Science Center
WV DEP Consolidated Offices
Flatwoods-Canoe Run PSD
Union PSD
City of St Mary's WWTP
St. Albans WTP
Dominion Gas Office Building



Harper Engineering,pllc

52 B Street
St. Albans, WV 25177
Office: 304.722.3602 Fax: 304.722.3603



Scott D. Phillips
(304)-722-3602
Scott@harperengwv.com

Registrations/Professional Affiliations

American Society of Plumbing Engineers

Experience

Scott D. Phillips brings 30 years design experience to our firm. He has experience with mechanical, electrical, plumbing and fire suppression system design. His projects include educational facilities (including colleges and universities), health care facilities, office buildings, banks, emergency services facilities, postal facilities, and government buildings.

Projects

W. Kent Carper Justice and Public Safety Complex
Renovations to Burnsville Elementary School
Pioneer Community Bank
Bible Center Recreation and Ministry Building
Pulmonary Associates Office Building
Additions and Renovations to Little Birch Elementary School
Moses Factory Outlet- Teays Valley
Dominion Gas Office Building
Fairmount State University WV Folk Life Center
South Preston Pre K-8 School
Rahall Technology and Business Center Community Based Outpatient Clinic
Renovations to Davis Elementary School

Resume



Douglas R. Richardson, PE, LEED AP
Principal Engineer

Education

North Carolina State University, (8/87-5/89).

Masters of Science in Civil Engineering, major in structures and minor in construction.

GPA 4.0/4.0.

West Virginia University, (8/83-8/87)

Bachelors of Science in Civil Engineering.

Ranking: 1st out of approximately 450 College of Engineering graduates. GPA 3.98/4.0.

Professional Registration

Professional Engineer - WV, VA and KY

Maintains active record with NCEES to facilitate prompt registration in additional states as required.

LEED Accredited Professional

Professional Affiliations

American Society of Civil Engineers

American Concrete Institute

American Institute of Architects, Professional Affiliate

Structural Engineering Institute

Timber Framers Guild

US Green Building Council

Engineers Without Borders-USA



TECHNICAL EXPERTISE - KEY PERSONNEL

Greg Fox, ASLA, LEED AP **Planner and Primary Point of Contact**

Greg Fox has overseen the Land Development Department at TERRADON since its inception in 2000. He offers more than 26 years of industry experience, providing design services to a variety of markets. During his tenure, the Land Development Group has completed more than one hundred K-12 Educational projects and dozens of Higher Education projects.

Under his guidance, the group has been the recipient of Engineering Excellence awards from the West Virginia Association of Consulting Engineers, and the Gold Award for Engineering Excellence from the American Council of Engineering Companies. Additionally, the Land Development Group has been recognized numerous times for Merit Awards by the West Virginia Chapter of American Society of Landscape Architects. Fox is a registered Landscape Architect in West Virginia, Ohio, North Carolina, South Carolina, Pennsylvania and Virginia. He is an active member of the American Society of Landscape Architects. Fox received degrees in Landscape Architecture and Planning from West Virginia University.

Jim Nagy, PE **Infrastructure**

Nagy performs Civil Engineering related to water and waste water projects at TERRADON. He specializes in the design of water treatment and distribution systems. He has more than 25 years of on-hand experience providing engineering for the largest private water company in West Virginia. He earned a B.S. in Civil Engineering from West Virginia University. His primary focus is on management of water and wastewater projects. He also performs design work related to water distribution systems and sewage collection systems.

Shawn Gray, ASLA **Landscape Architect**

Shawn Gray is an experienced Site Designer and Land Planner who serves as an integral part of the TERRADON design team. He offers experience on many of TERRADON's highest profile projects, focusing on large scale site development and parks and recreation projects. Gray also provides site design and landscape architecture services for K-12 and Higher Education projects. He is responsible for developing site, grading, landscape and utility plans, site detailing and erosion sediment control plans and permitting.

Peter J. Williams, ASLA **Landscape Architect**

"Pete" Williams is a graduate of West Virginia University with a Bachelor of Science in Landscape Architecture. His responsibilities include landscape architectural design, grading and storm water drainage design, the design of pedestrian circulation systems and related amenities, roadway design, site planning, and quality control. Mr. Williams is registered as a professional Landscape Architect in West Virginia with more than 13 years of experience at TERRADON and more than 22 years of overall experience.

Robert Thaw, PS **Survey and Mapping**

Robert Thaw, Vice President of Survey and Mapping, oversees all TERRADON Survey services. TERRADON's survey group serves a diverse range of projects in support of seven TERRADON service groups in addition to managing survey-specific clients. Thaw manages a staff of Professional Surveyors and Computer Aided Drafting (CAD) designers who provide mapping, construction layout, ALTA survey, topographic survey and boundary survey services. Thaw's leadership has been instrumental in TERRADON's prioritization of the use of modern technology, ensuring clients the most efficient and accurate results. Additionally, he is responsible for in-house design of commercial property sites, parking and utility easements, and review of project plans and base mapping creation. Thaw's group also provides as-built surveys, utility identification surveys and deformation monitoring of design features such as retaining walls and dams.

PRINCIPALS/KEY PERSONNEL

Greg Fox, ASLA, LEED AP
 Vice President of Land Development

Greg Fox oversees TERRADON's Land Development Sector. Fox has been responsible for hundreds of notable commercial, educational and recreational site development projects during his 25+-year career. During his time as Land Development Department Head, TERRADON has earned Engineering Excellence Awards from the West Virginia Association of Consulting Engineers, numerous Merit Awards from the American Society of Landscape Architects, and the Gold Award from the American Council of Engineering Companies.



Relevant Project Experience

- **The Bechtel Summit National Scouting Reserve**
 Provide Site Design for the 10,600+ acre site in Fayette County, WV. Responsible for site grading, construction drawings, NPDES design and coordination for all project subconsultants for NPDES permitting with WVDEP.
- **Greater Greenbrier Sports Complex**
 Provided Master Planning and Grading Design Services for the Greater Greenbrier Sports Complex located north of Lewisburg, WV. Five phases include: Master Planning, Grading Study, Full Construction Documents, Utility Layout, Road Design, Erosion and Sediment Control.
- **Advanced Technology Centers**
 Provided site grading, erosion and sediment control and utility design for two West Virginia Higher Education Policy commission Advanced Technology Centers located in Fairmont, WV and South Charleston, WV.
- **K-12 Educational Facilities**
 Responsible for Master Planning, Site Layout and Design, Schematic Renderings, Parcel Identification, Feasibility and Cost Analysis, and construction drawings for hundreds of k-12 educational facilities throughout West Virginia. Projects include new construction as well as renovations and additions.
- **Fairmont State University**
 Responsible for Master Planning and Design of inner campus, including design of seating fountain, drainage features and landscaping.
- **Marshall University**
 Responsible for Site Design, Utility Design, Grading and Drainage for Applied Sciences Building, Student Housing, Wellness Center and Parking Garage. Provided ADA compliancy on campus buildings and site design for existing soccer field.
- **Greenbrier Valley Medical Center**
 Responsible for master planning through site/civil construction documents for the Greenbrier Valley Medical Center in Lewisburg, WV.
- **Tazewell Community Hospital**
 Responsible for master planning through site/civil construction documents for the East Addition of the Tazewell Community Hospital in Tazewell, Virginia.
- **Thomas Memorial Hospital**
 Responsible for site/civil construction documents for Thomas Memorial Hospital in South Charleston, WV.

Education

B.S. Landscape Architecture
 West Virginia University

B.A. Geography & Planning
 West Virginia University

Work Experience

2000-Present
 TERRADON Corporation

1996-2000
 Martin Boal Anthony &
 Johnson Architects

1993-1996
 Site Design

1989-1993
 EG&G Inc

1988-1989
 PSC Engineers

Jim Nagy, PE
Senior Engineer

As a Senior Engineer at TERRADON, Jim Nagy's primary focus is on designing civil engineering projects for public and private development projects throughout West Virginia. Nagy specializes in the design of water distribution systems as well as sewage collection systems. Nagy offers decades of hands-on experience and has previously provided design engineering services for schools, commercial developments, residential developments, public utilities and more. He earned a B.S. in Civil Engineering from West Virginia University and is a Professional Engineer in the State of West Virginia.



Relevant Project Experience

- **SPCC Planning** - updated SPCCs for All Crane & Equipment Rental and Spirit Services, Inc.
- **School Projects** - Responsible for layout, design, and permitting of water and sewer lines for numerous school projects in WV. Projects entailed coordination with PSDs, municipal water and sewer departments, State and Federal regulatory agencies for design of facilities. Schools include: Blue Ridge Community and Technical College, Blue Ridge K-12, Burnsville Elementary, Flatwoods Elementary, Davis Elementary, Sutton Elementary, Little Birch Elementary, Frametown Elementary, Buffalo High School, Clay-Battelle High School, Confidence Elementary, Jefferson Elementary, East Hardy High School, Eastwood Elementary, Flinn Elementary, Geary Elementary, Gilbert High School, Greenbrier West high School, Hampshire High School, Harpers Ferry High School and 19 additional schools.
- **Commercial Developments** - Responsible for layout, design, and permitting of water and sewer lines for numerous commercial developments in WV. Projects entailed coordination with PSDs, municipal water and sewer departments, State and Federal regulatory agencies for design of facilities. Developments include: Fairmont Federal Credit Union, Allegheny Energy Union (Fairmont), First Ward (Clendenin) Apartments, Milton Crossing, Tri-State Hotel and multiple convenience store sites throughout WV.
- **Charleston Replacement Housing** - Utility design, primarily water, sewer and stormwater, and coordination of overall site activities with the project developer for multi-unit housing development. Each phase entailed the design and layout of several hundred feet of water, sewer and stormwater line, including multiple connections with the utility providers, i.e., the Charleston Sanitary Board and West Virginia American Water, and applicable permit applications. Also responsible for construction monitoring and provision of as-built drawings as required by the respective utility providers.
- **Cathcart – Devonshire Development, Scott Depot, WV** - Designed sanitary sewer and water distribution system to serve more than 900 housing units in this private development.
- **Washington Woods Subdivision, Ravenswood, WV** - Designed more than 9,000 feet of water and sewer line and a 500 gpm fire pump water booster station to serve a 150 lot subdivision.
- **Sawmill Village, Snowshoe, WV** - Designed approximately 2,800 feet of 8" water line and sanitary facilities to serve the Sawmill Village development project in Snowshoe, WV.

Education
B.S. Civil Engineering
West Virginia University

Work Experience
TERRADON Corporation
2007-Present

WV American Water
1991-2007

AWW SC
1984-1991

WV DNR
1982-1984

VTN, Inc. Consulting
Engineers
1978-1982

J.H. Milam Consulting
Engineers
1977-1978

WV DNR
1976-1977

WV Department of
Highways
1975-1976

Registration
Professional Engineer: WV

- **Cabell County Water Main Extension Project** - Worked on design and layout of approximately 46,000 feet of water main for the Salt Rock PSD/WVAW. Responsible for bidding, contract award, and project management.
- **Putnam County Water Main Extensions** - Worked on design and layout of approximately 63,000 feet of water main and a booster pumping station for the Putnam County Commission/WVAW. Responsible for bidding, contract award, and project management.
- **Manila Ridge Water Main Extension Project** - Worked on design and layout of approximately 38,000 feet of water main for the Putnam County Commission/WVAW. Project has not received funding yet. However, will be responsible for bidding, contract award, and project management.

Shawn Gray, ASLA
Site Designer and Land Planner

Shawn Gray is an experienced Site Designer and Land Planner who serves as an integral part of the TERRADON design team. He offers experience on many of TERRADON's highest profile projects, focusing on large scale site development and parks and recreation projects. Gray also provides site design and landscape architecture services for K-12 and Higher Education projects. He is responsible for developing site, grading, landscape and utility plans, site detailing and erosion sediment control plans and permitting.



Relevant Project Experience

- **Greater Greenbrier Sports Complex Master Plan**
 Currently providing 5-Phased, Master Planning and Grading Design Services for the Greater Greenbrier Sports Complex located north of Lewisburg, WV.
- **Valley Park Master Planning & Expansion**
 Served as a Site Designer for the expanding Valley Park in Hurricane, WV. The project included planning for athletic fields, multiple parking lots, access roads and greenspace, but also incorporated a walking trail that ties into existing park trails. The plan was produced in coordination with the WVDOT to determine roadway/walkway ingress/egress and designed in accordance with local, state and federal regulations.
- **Volcano Island Master Planning**
 Provided land planning and design engineering, utility location and mapping services for the properties. The master planning provided vision for Volcano Island Water Park, allowing the City of Fairmont efficient and value-based use of the former environmentally concerned site.
- **Scott-Teays, Sheetz**
 Provided site design services for Sheetz Service Centers at Scott Depot and Green Acres, WV. The projects consisted of site layout and design, utility design, hardscapes and landscape architecture.
- **Pioneer Federal Credit Union**
 Provided site design services for Pioneer Federal Credit Union in Hurricane, WV.
- **The Bechtel Summit National Scouting Reserve**
 Provided Initial Site Selection/Conceptual modeling designs, site planning/grading and Erosion and Sediment Control services for the 12,000+ acre site in Fayette County, WV.
- **Palatine Park Master Planning**
 Provided master Planning Services for the City of Fairmont for the redevelopment of Palatine Park on the east side of the Monongahela River adjacent to downtown Fairmont, WV. The Master Plan featured new parking areas, walking trails, a vista overlook, a picnic gazebo and retail space.
- **Westmoreland Trail System Master Planning**
 Provided site design services for a trail connector designed on the top of an earthen flood levy to move through urban areas.
- **Harveytown Park & Connector Master Planning**
 Provided 3-Phase Master Planning for a heavily used section of trail.
- **Southridge Center Master Site Planning**
 Provided master planning and site civil engineering for several areas of Southridge Center in South Charleston, WV.

Education

B.S. Landscape Architecture
 West Virginia University

Work Experience

TERRADON Corporation
 2005-Present

Organizations

American Society of
 Landscape Architects

Peter J. Williams, ASLA
Landscape Architect

“Pete” Williams is a graduate of West Virginia University with a Bachelor of Science in Landscape Architecture. His responsibilities include landscape architectural design, grading and storm water drainage design, the design of pedestrian circulation systems and related amenities, roadway design, site planning, and quality control. Mr. Williams is registered as a professional Landscape Architect in West Virginia with more than 15 years of experience at TERRADON and more than 24 years of overall experience.



Relevant Project Experience

- **Fire Stations, Medical, First Responder, Public Facilities**
Yeager Airport Fire/Crash/Rescue Station
Fairmont Public Safety Building & Fire Safety Station
South Charleston Fire Station
Greenbrier Valley Medical Center
A New Marshall County Public Safety Annex
- **Higher Education**
Marshall University Student Recreation Center
Marshall University Student Housing
Fairmont State Inner Campus Design
- **K-12 Schools, Athletic Fields and Other Facilities**
A New Marsh Fork Elementary School
A New Shady Spring Middle School
Hurricane High School Sports Fields, Additions & Renovations
Lakeside Elementary School Additions & Renovations
Eastwood Elementary School Additions & Renovations
Flinn Elementary School Additions & Renovations
Musselman High School Additions & Renovations
Martinsburg North Middle School Additions & Renovations
A New Gerrardstown Middle School
Jefferson Elementary School Additions & Renovations
A New Blue Ridge Primary School
Winfield Elementary School Additions & Renovations
A New Buffalo High School
A New Confidence Elementary School
Greenbrier West High School Additions & Renovations
A New Lewisburg Elementary School
A New Rainelle Elementary School
Eastern Greenbrier Junior High School Additions & Renovations
Mason Dixon Elementary School Additions & Renovations
Poca High School Additions & Renovations
A New Winfield Middle School
A New Poca Elementary / Middle School

Education

B.S. Landscape
Architecture
West Virginia University

Work Experience

2000 – Present
TERRADON Corporation

1992-2000

Chapman Technical Group
Registration

Affiliations

American Society of Landscape
Architects

West Virginia Chapter of
American Society of Landscape
Architects

- A New Mingo Central High School & Athletic Complex
- A New University High School & Athletic Complex
- A New Mountain View Elementary School
- A New Mountain Ridge Intermediate School
- Morgantown High School Additions & Renovations
- A New Pikeview Middle School
- Moorefield High School Additions & Renovations
- Burch PreK-8 School Additions & Renovations
- A New Leading Creek Elementary School
- John Marshall High School Additions & Renovations
- A New Gilmer County Elementary School
- A New Suncrest Elementary School
- East Hardy High School Additions & Renovations
- A New Arnoldsburg Elementary School
- Berkeley Springs High School Additions & Renovations
- A New South Preston Pk-8 School
- Fort Gay K-8 School
- Dingess Elementary School
- A New Leading Creek Elementary School
- Jefferson County Bus Maintenance Facilities
- Chapmanville High School Field Turf Football Field
- Logan High School Field Turf Football Field
- Man High School Field Turf Football Field

- **Numerous Industrial, Commercial, Parks and Recreation Facilities**
 - Analabs Office Building
 - A New Towne Place Suites Hotel
 - A New Hampton Inn Hotel
 - A New Fairfield Inn & Suites Hotel
 - Greater Huntington Park and Recreation District
 - Grand Vue Park High Adventure Park & Treehouse Cabins
 - Beckley YMCA Field Turf Soccer Field

Robert Thaw, PS
VP - Survey and Mapping

With more than 30 years of experience in a wide range of surveying projects, Robert Thaw serves as head of TERRADON's Survey and Mapping department. He organizes and supervises survey crews, reviews project plans, and creates base mapping for various projects including noise barriers, interchanges, connectors, bypasses, sidewalks, bike paths, and bridges. Thaw oversees all TERRADON survey activities, including: preparation of Right-Of-Way plans; the development of GPS static networks for aerial mapping in the design of roadways; identification of existing utilities and property lines; base image development and control placement for construction projects; and drafting of legal descriptions for ROW parcels.

Thaw has been directly responsible for survey and mapping services, including Right-Of-Way, on a number of notable transportation projects including:

- **Laurel Fork Campground Bridge**
 TERRADON provided surveying and design engineering on a USDA Forest Service project in Randolph County, West Virginia. Surveyors led by Thaw provided Right-Of-Way services, including courthouse research, construction easements, and location of alignments. Additionally, provided topographic mapping, project control for construction, hydraulic cross sections, and stream profiles.
- **Sedalia Arch Bridge**
 Thaw oversaw survey services for the replacement of an existing concrete arch bridge with a 72' single span bridge. The bridge consisted of adjacent concrete prestressed box beams with a cast-in-place concrete deck. Survey services consisted of a topographic survey, ROW plans, construction control, and legal description creation. Roadway design consisted of new bridge approaches and a designed detour. Drainage, maintenance of traffic, and right-of-way plans were included in the scope of work.
- **Sleeth's Run Bridge**
 Thaw provided Right-Of-Way services during the design for the replacement of an existing truss bridge in Lewis County, WV. The project included the design of a new 200' structure and approaches. Survey services consisted of a topographic survey, ROW plans, construction control, and legal description creation.
- **Grade Road**
 Thaw oversaw Right-Of-Way services for the new construction of two lanes adjacent to an existing two-lane roadway. Right-Of-Way services included Right-Of-Way Plans, legal descriptions, and questionnaires for take parcels.
- **St. Mary's Bypass**
 Working for the WVDOT, Thaw led transportation survey services for the relocation of WV 16 in Pleasants County, from Pleasants County Route 18 to WV 2 in Saint Mary's, West Virginia for approximately two miles of highway. The project included topographic mapping, survey control mapping, right-of-way and utility cost estimates, and inventories.



Education
 A.S., Survey Technology, 1981,
 West Virginia University Institute
 of Technology

B.S., Surveying, 1985,
 West Virginia University Institute
 of Technology

Work Experience
 TERRADON Corporation
 1994-Present

Bowman Land Surveying
 1992-1994

Dunn Engineers
 1990-1992

Kelley Gidley Blair and Wolf
 1988-1990

Pierson & Whitman
 Architects and Engineers
 1984-1986

Registrations
 Professional Surveyor,
 West Virginia

Trustee List

Qualifications & Technical Experience - 7

Statement of Services - 8

Financial Statements - 9

Financial Statements - 10

Management & Training - 11

West Virginia Forms – 6

ADDENDUM ACKNOWLEDGEMENT FORM
SOLICITATION NO.: DIUR 1600000018

Instructions: Please acknowledge receipt of all addenda issued with this solicitation by completing this addendum acknowledgment form. Check the box next to each addendum received and sign below. Failure to acknowledge addenda may result in bid disqualification.

Acknowledgment: I hereby acknowledge receipt of the following addenda and have made the necessary revisions to my proposal, plans and/or specification, etc.

Addendum Numbers Received:

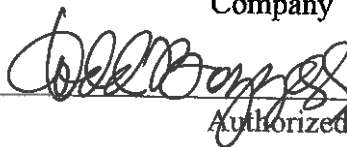
(Check the box next to each addendum received)

- | | |
|--|--|
| <input checked="" type="checkbox"/> Addendum No. 1 | <input type="checkbox"/> Addendum No. 6 |
| <input type="checkbox"/> Addendum No. 2 | <input type="checkbox"/> Addendum No. 7 |
| <input type="checkbox"/> Addendum No. 3 | <input type="checkbox"/> Addendum No. 8 |
| <input type="checkbox"/> Addendum No. 4 | <input type="checkbox"/> Addendum No. 9 |
| <input type="checkbox"/> Addendum No. 5 | <input type="checkbox"/> Addendum No. 10 |

I understand that failure to confirm the receipt of addenda may be cause for rejection of this bid. I further understand that any verbal representation made or assumed to be made during any oral discussion held between Vendor's representatives and any state personnel is not binding. Only the information issued in writing and added to the specifications by an official addendum is binding.

E.T. Boggess Architect, Inc.

Company



Authorized Signature

June 1, 2016

Date

NOTE: This addendum acknowledgment should be submitted with the bid to expedite document processing.

CERTIFICATION AND SIGNATURE PAGE

By signing below, or submitting documentation through wvOASIS, I certify that I have reviewed this Solicitation in its entirety; that I understand the requirements, terms and conditions, and other information contained herein; that this bid, offer or proposal constitutes an offer to the State that cannot be unilaterally withdrawn; that the product or service proposed meets the mandatory requirements contained in the Solicitation for that product or service, unless otherwise stated herein; that the Vendor accepts the terms and conditions contained in the Solicitation, unless otherwise stated herein; that I am submitting this bid, offer or proposal for review and consideration; that I am authorized by the vendor to execute and submit this bid, offer, or proposal, or any documents related thereto on vendor's behalf; that I am authorized to bind the vendor in a contractual relationship; and that to the best of my knowledge, the vendor has properly registered with any State agency that may require registration.

E.T. Boggess Architect, Inc.

(Company) Todd Boggess Todd Boggess, President
 (Authorized Signature) (Representative Name, Title)
 (P) 304-425-4491 / (F) 304-425-2028 / June 1, 2016
 (Phone Number) (Fax Number) (Date)

STATE OF WEST VIRGINIA
Purchasing Division

PURCHASING AFFIDAVIT

MANDATE: Under W. Va. Code §5A-3-10a, no contract or renewal of any contract may be awarded by the state or any of its political subdivisions to any vendor or prospective vendor when the vendor or prospective vendor or a related party to the vendor or prospective vendor is a debtor and: (1) the debt owed is an amount greater than one thousand dollars in the aggregate; or (2) the debtor is in employer default.

EXCEPTION: The prohibition listed above does not apply where a vendor has contested any tax administered pursuant to chapter eleven of the W. Va. Code, workers' compensation premium, permit fee or environmental fee or assessment and the matter has not become final or where the vendor has entered into a payment plan or agreement and the vendor is not in default of any of the provisions of such plan or agreement.

DEFINITIONS:

"Debt" means any assessment, premium, penalty, fine, tax or other amount of money owed to the state or any of its political subdivisions because of a judgment, fine, permit violation, license assessment, defaulted workers' compensation premium, penalty or other assessment presently delinquent or due and required to be paid to the state or any of its political subdivisions, including any interest or additional penalties accrued thereon.

"Employer default" means having an outstanding balance or liability to the old fund or to the uninsured employers' fund or being in policy default, as defined in W. Va. Code § 23-2c-2, failure to maintain mandatory workers' compensation coverage, or failure to fully meet its obligations as a workers' compensation self-insured employer. An employer is not in employer default if it has entered into a repayment agreement with the Insurance Commissioner and remains in compliance with the obligations under the repayment agreement.

"Related party" means a party, whether an individual, corporation, partnership, association, limited liability company or any other form or business association or other entity whatsoever, related to any vendor by blood, marriage, ownership or contract through which the party has a relationship of ownership or other interest with the vendor so that the party will actually or by effect receive or control a portion of the benefit, profit or other consideration from performance of a vendor contract with the party receiving an amount that meets or exceeds five percent of the total contract amount.

AFFIRMATION: By signing this form, the vendor's authorized signer affirms and acknowledges under penalty of law for false swearing (W. Va. Code §61-5-3) that neither vendor nor any related party owe a debt as defined above and that neither vendor nor any related party are in employer default as defined above, unless the debt or employer default is permitted under the exception above.

WITNESS THE FOLLOWING SIGNATURE:

Vendor's Name: E.T. Boggess Architect, Inc.

Authorized Signature: *[Signature]* Date: June 1, 2016

State of West Virginia

County of Mercer, to-wit:

Taken, subscribed, and sworn to before me this 1 day of June, 2016.

My Commission expires March 11, 2018

AFFIX SEAL HERE

NOTARY PUBLIC *[Signature]*

Purchasing Affidavit (Revised 08/01/2015)

