

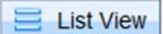


West Virginia Purchasing Division

2019 Washington Street, East
Charleston, WV 25305
Telephone: 304-558-2306
General Fax: 304-558-6026
Bid Fax: 304-558-3970

The following documentation is an electronically-submitted vendor response to an advertised solicitation from the *West Virginia Purchasing Bulletin* within the Vendor Self-Service portal at ***wvOASIS.gov***. As part of the State of West Virginia's procurement process, and to maintain the transparency of the bid-opening process, this documentation submitted online is publicly posted by the West Virginia Purchasing Division at ***WVPurchasing.gov*** with any other vendor responses to this solicitation submitted to the Purchasing Division in hard copy format.

Header



General Information

Contact

Default Values

Discount


Document Information

Procurement Folder: 20734

SO Doc Code: CRFQ

Procurement Type: Central Purchase Order

SO Dept: 0211

Vendor ID: 000000200158 

SO Doc ID: GSD1500000007

Legal Name: WV ELECTRIC SUPPLY CO

Published Date: 9/25/14

Alias/DBA:

Close Date: 10/15/14

Total Bid: \$49,500.00

Close Time: 13:30

Response Date: 10/15/2014 

Status: Closed

Response Time: 8:32

Solicitation Description: Parking Garage Lights, fixtures
for General Services Divisio

Total of Header Attachments: 0

Total of All Attachments: 0



Purchasing Division
 2019 Washinton Street East
 Post Office Box 50130
 Charleston, WV 25305-0130

**State Of West Virginia
 Solicitation Response**

Proc Folder : 20734

Solicitation Description : Parking Garage Lights, fixtures for General Services Divisio

Proc Type : Central Purchase Order

Date issued	Solicitation Closes	Solicitation No	Version
	2014-10-15 13:30:00	SR 0211 ESR10151400000000557	1

VENDOR
000000200158 WV ELECTRIC SUPPLY CO

FOR INFORMATION CONTACT THE BUYER
 Guy Nisbet
 (304) 558-2596
 guy.l.nisbet@wv.gov

Signature X **FEIN #** **DATE**

All offers subject to all terms and conditions contained in this solicitation

Line	Comm Ln Desc	Qty	Unit Issue	Unit Price	Ln Total Or Contract Amount
1	Parking Garage Replacement Lights	180.00000	EA	\$275.00	

Comm Code	Manufacturer	Specification	Model #
39111538			

Extended Description : Parking Garage Replacement Lighting - See Attached Specifications

W. Va. Electric SUPPLY COMPANY

W. VA. ELECTRIC SUPPLY CO.
PLEASE: NO PAYMENTS TO THIS ADDRESS
250 12TH ST WEST
HUNTINGTON, WV 25704
Phone: (304) 525-0361
Fax (304) 525-2726



Quotation

EXPIRATION DATE	QUOTE NUMBER
11/29/2014	S1514589
W. VA. ELECTRIC SUPPLY CO. PLEASE: NO PAYMENTS TO THIS ADDRESS 250 12TH ST WEST HUNTINGTON, WV 25704 Phone: (304) 525-0361 Fax (304) 525-2726	
PAGE NO.	
1 of 1	

QUOTE TO:

SHIP TO:

WV DEPT OF ADMIN GSD
BUILDING 1 ROOM MB60
1900 KANAWHA BLVD EAST
CHARLESTON, WV 25305

WV DEPT OF ADMIN GSD
BUILDING 1 ROOM MB60
1900 KANAWHA BLVD EAST
CHARLESTON, WV 25305

CUSTOMER NUMBER	CUSTOMER PO NUMBER	JOB NAME / RELEASE NUMBER	SALESPERSON	
5021	CRFQ GSD1500000007		JOHN NORRIS	
WRITER	SHIP VIA	TERMS	SHIP DATE	FREIGHT ALLOWED
JUDY LANG	BID	NET 30 DAYS	12/22/2014	No
ORDER QTY	DESCRIPTION		UNIT PRICE	EXT PRICE
180ea	<div style="border: 1px solid black; padding: 5px; text-align: center;"> SHIPPING INSTRUCTIONS LEAD TIME 30 WORKING DAYS </div> NON TLED-C-48-VS-G-WW LED BARRON LIGHTING		275.000/ea	49500.00

- * TAX & FREIGHT NOTICE
- * This quotation does NOT include applicable taxes.
- * In addition, freight charges or other fees are subject to change unless otherwise noted on this quotation.

Subtotal	49500.00
S&H Charges	0.00
Amount Due	49500.00

This quotation is submitted by us subject to Strikes, Fires, Accidents and conditions over which we have no control. Prices and deliveries are subject to change without notice and all orders will be accepted by us subject to our ability to obtain such prices and deliveries from our suppliers. Any Federal or State taxes, when and if effective, will be added to the prices quoted. Unless otherwise specified, terms will be 30 days net. Prices quoted are F.O.B. Huntington or factory, unless transportation charges are allowed and so indicated on the quotation. Prices on this quotation are based on quantities specified. If quantities ordered are less than shown, prices quoted are subject to revision by us.
On materials for future delivery our manufacturers are accepting orders only on the basis of prices in effect on date of shipment. Therefore, the prices named in this quotation are those currently in effect, and any orders accepted by us will be billed at prices in effect on date of shipment, unless otherwise specified.

Model Number:

Approvals:

Accessories:

Job:

Type:

DESCRIPTION

The second generation of the TLED series canopy family features upgraded SSL light engines with more performance levels to choose from, a newly added housing design that is exclusive to TRACE[®]LITE, as well as a choice of two different color finishes. The upgraded TLED-C maintains a low profile design, the TLED-RC is for recessed applications and the TLED-TC is our new trapezoidal housing design. All three housings are combined with our next generation high performance LED light engines featuring our superior thermal management that makes the entire family an attractive, energy saving choice. Constructed of die formed and welded aluminum, the TLED series canopy family design has been engineered to provide a LED canopy luminaire that delivers optimum optical performance and lamp longevity in attractive and durable housings with UV resistant powder coated finishes to protect against the elements and are ETL listed for Wet Locations. Our TLED series canopies incorporate contractor friendly features that allow for ease of installation in a variety of applications and allow them to be installed by a single person. Available with 4 different LED light engine configurations with 21, 28, 41, 55 or 72 total system watts and approximate delivered lumen outputs of 1964, 2870, 4115, 5593 or 7200; the TRACE[®]LITE TLED series canopies provide an energy saving solution to a wide spectrum of applications including, but not limited to security lighting in schools, office complexes, light commercial development, apartments, parking garages, entryways, and stairwells. The TLED series canopies are DesignLights[™] Consortium qualified and meets or exceeds the efficacy requirements for various rebate programs across the country.



SPECIFICATIONS

Construction:

Precision die formed aluminum housings feature clean architectural lines with ample, integral mounting space for future accessories, the TLED series canopy family's most important construction feature is their integral thermal management. The housing is fabricated using 1/8" Aluminum plate, which not only provides strength and durability but also acts as a substantial heat sink and allows for optimum performance and durability of the LED light engine without sacrificing design aesthetics or increasing the outside dimensions of the housing. LEDLITElogic heat sinking technology moves heat away from the LEDs by taking advantage of thermal convection dynamic properties and maximizing system performance that delivers up to a 100,000 hour life with 70% lumen maintenance. The TLED series canopy family is ETL listed for wet locations, and incorporates a UV resistant, long lasting, polyester based powder coated finish.

Optics:

TRACE[®]LITE's TLED series canopy family of luminaires deliver exceptional light quality and efficiency with a garage optic design that provides excellent Type VS distribution. Our Garage optic provides more lumens in the 60° to 80° zone, which satisfies the DLC requirements for parking garage luminaires. The stabilized polycarbonate optical lenses are specifically designed to distribute light where it is needed in the most efficient way possible making it the ideal luminaire for high efficiency applications.

Electrical:

A choice of four (4) performance levels are available in the TLED series canopy family offering LED light engines with either 18, 24, 36, 48 or 64 LEDs, drawing 21, 28, 41, 55 or 72 total watts and providing approximately 1907, 2816, 4119, 5712 or 7200 initial delivered lumens, respectively, see chart on Page 2 for complete performance figures. The available LED light engine wattages are powered by 0-10V dimmable, constant current control drivers and provide up to a 100,000 hour rated life with 70% lumen maintenance, a 4700K CCT, and a CRI of ≥70. All drivers are Class 2 power supplies with input voltage range of 120VAC to 277VAC, providing a Class A EMI rating and a high power factor of ≥0.90. The TLED series canopies are suitable for operation in -40°C (-40°F) to 40°C (104°F) ambient conditions.

Thermal Management:

LEDLITElogic heat sinking technology moves heat away from the LEDs by taking advantage of thermal convection dynamic properties and maximizing system performance that delivers up to a 100,000 hour life with 70% lumen maintenance.

Environmentally Friendly Design:

TLED series canopy luminaires consume very little energy and provide long life in comparison to traditional lamp technologies. Our manufacturing process utilizes no hazardous substances such as mercury or lead. The TLED-C is RoHS (Restriction of Hazardous Substances) compliant, 100% recyclable, and provides a significant reduction in Kw load and carbon emissions.



Installation:

The TLED series canopies can be installed and wired by a single person, the base plate easily attaches to a 3" or 4" J-box, and the fixture housing is attached to the base plate by four captive fasteners. The TLED-C can be surface mounted to a recessed J-box, surface mounted with conduit, or pendant mounted using a standard 1/2" downrod & hardware (supplied by others), the TLED-RC can be recessed mounted, and the TLED-TC can be surface mounted to a recessed J-box or pendant mounted using a standard 1/2" downrod & hardware (supplied by others).

Transient Protection System (Option: TP):

The LEDLITElogic optional transient protection device is designed to be used in conjunction with our LED drivers. The "TP" option utilizes a 3-leaded device that protects Line-Ground, Line-Neutral, and Neutral-Ground in accordance with IEEE/ANSI C62.41.2 guidelines. The surge current rating of the "TP" option is 10,000 amps.

Photocontrol (Option: PC):

Optional photocontrol provides dusk-till-dawn security. Input voltage must be specified to match fixture input voltage.

Testing & Compliance:

The reliability and performance of the TLED series canopy luminaires are evaluated in accordance with the parameters outlined and reported by LM-79 and LM-80 documents. Photometric data is tested to IESNA LM-79-08 standard by an independent testing laboratory. Lumen maintenance, L70 a measure of long term reliability, is determined for the light source, which consists of the LED and PSB sub-assembly as installed in the luminaire, is determined using LM-80 in situ thermal and reliability data as provided by the LED manufacturer in accordance with DOE/EPA standards. The TLED series canopies have been tested to and meet DLC compliancy and are included on their Qualified Products List.

Listing:

The TLED-C, TLED-RC, and TLED-TC are ETL certified under UL1598 specifications and listed for wet locations.

Warranty:

Any component that fails due to manufacturer's defect is guaranteed for 5 years. The warranty does not cover physical damage, abuse or acts of God. Manufacturer reserves the right to charge for such repairs if deemed necessary.

SPECIFICATIONS ARE SUBJECT TO CHANGE WITHOUT NOTICE

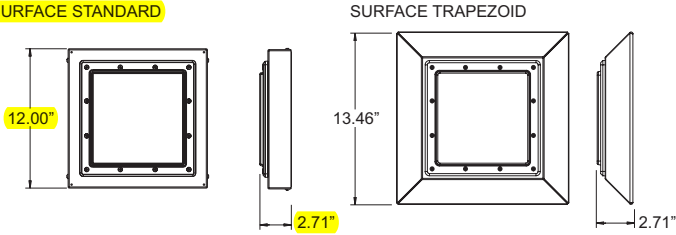
Fixture Performance

Part Number	Total System Watts	Initial Delivered Lumens	Lumens per Watt (LPW)	BUG Ratings	120VAC		277VAC	
					Amps	Watts	Amps	Watts
TLED-X-18-VS-G	21	1907	100	B2-U0-G1	0.185	22.2	0.083	23.0
TLED-X-24-VS-G	28	2816	101	B2-U0-G1	0.245	29.4	0.115	31.9
TLED-X-36-VS-G	41	4119	101	B3-U0-G1	0.37	44.4	0.167	46.3
TLED-X-48-VS-G	55	5712	104	B3-U0-G1	0.5	60	0.24	66.5
TLED-X-64-VS-G	72	7200	100	B3-U0-G1	0.65	78	0.3	83.1

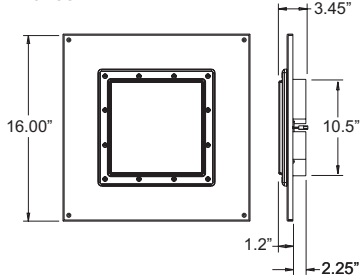
NOTE: Lumen maintenance and life (part of LM-80 data) are per published information from primary LED suppliers and is based on design operation at their specified thermal management and electrical design parameters.

Dimensions

SURFACE STANDARD



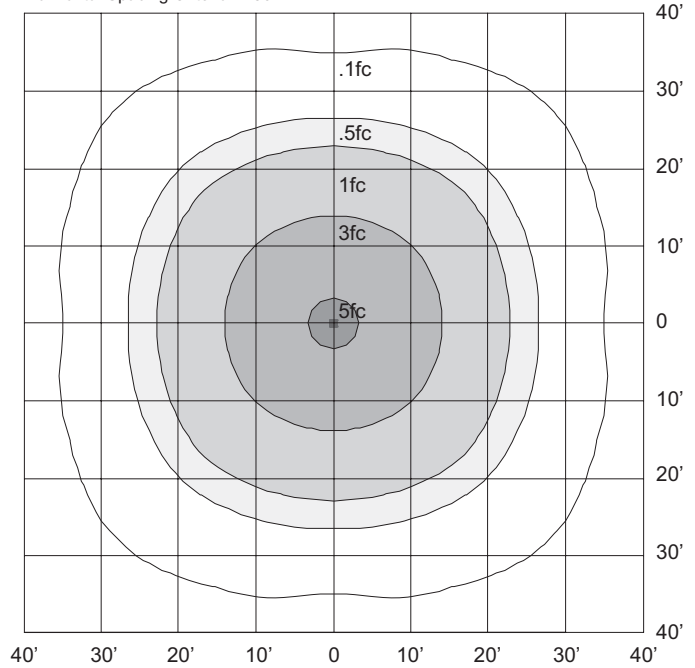
RECESSED



Approximate Weight: 14 bs.

Sample Photometrics

TLED-C-48-VS-G Mounted at 10' (Type V Short)
Horizontal Spacing Criteria: 2.86



Ordering Information

Example: TLED-TC-24-VS-G-WW

Series	# of LEDs	Input Voltage	Optics	Finish (Housing/Trim)	Options (Factory Installed)
TLED-C = Standard Canopy	18 = 18 LEDs	VS = 120-277VAC (Voltage Sensing)	G = Garage Optics	WW = White/White	TP = Transient Protection System
TLED-TC = Trapezoid Canopy	24 = 24 LEDs			SW = Silver/White	CC ¹ = Custom Color
TLED-RC = Recessed Canopy	36 = 36 LEDs				
	48 = 48 LEDs				
Notes	64 = 64 LEDs				Accessories² (Field Installed)
¹ Consult factory for specific part number and details					PC1 = 120VAC Photocontrol
² Order as separate line item					PC2 = 208-277VAC Photocontrol



800.533.3948 • www.barronlgt.com