

Original

THRASHER

**West Virginia Division of Natural Resources
Canaan Valley Resort State Park Demolition of Existing Sleeping Units**

Submitted by:

THE THRASHER GROUP

OCTOBER 14, 2014

10/14/14 09:30:35AM
West Virginia Purchasing Division

October 14, 2014

Department of Administration, Purchasing Division
2019 Washington Street, East
Charleston, WV 25305-0130

RE: Canaan Valley Resort State Park Demolition of Existing Sleeping Units

Thrasher is pleased to submit the following response to your request for engineering firms to for the Canaan Valley Resort State Park Sleeping Units Demolition. Thrasher is committed to working alongside the WV DNR to not only get these structures demolished, but to relocate the utilities, re-grade the building sites, and adjust parking and sidewalks as necessary. This project is tailor made for the team at Thrasher. As West Virginia's largest full-service engineering and architecture firm, we have the staff and the experience to accomplish any side tasks and challenges that arise during demolition.

Thrasher has, and will continue to build a business reputation that stands on integrity, experience, efficiency, and judgment. In taking this approach to all our projects, we deliver superior service that we can stand behind. Our team has carefully and concisely assembled our response to this specific EOI, and we look forward to yet another successful collaboration with the West Virginia Division of Natural Resources.

Sincerely,

THE THRASHER GROUP, INC.

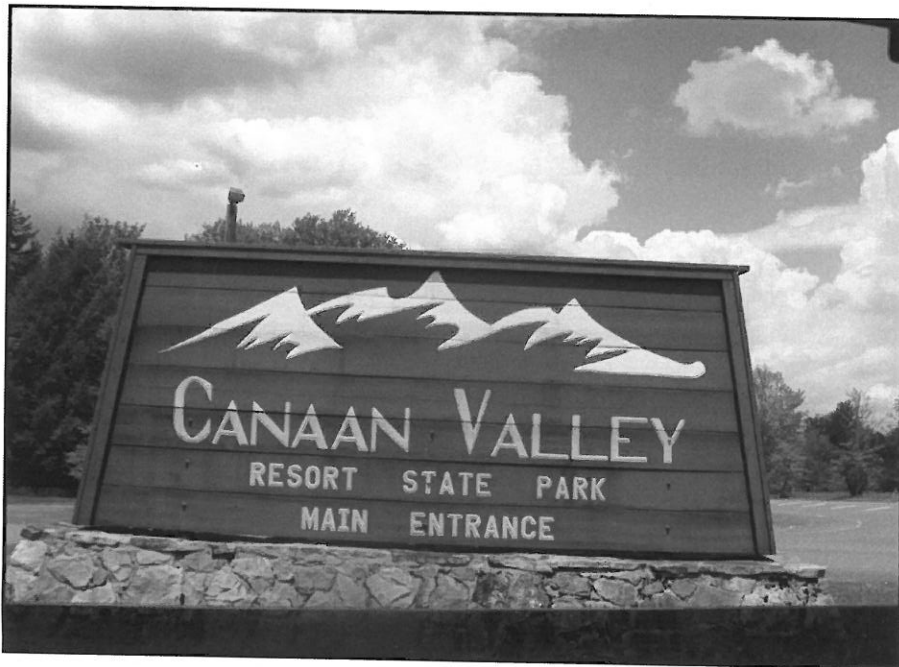


CHAD M. RILEY, PE
Principal-in-Charge

Project Approach

The Thrasher Team is ready to kick off the demolition of these sleeping units at Canaan Valley State Park. We know that demolition projects are more than just tearing down a building...it is about the relocation of utilities, the re-grading of the project area, and the adjustment of effected parking lots and sidewalks. The combined teams first-hand knowledge of demolition projects and the unforeseen hurdles that often arise will make this project seamless and less burdensome on the WV DNR. The following steps will be used by our team throughout the project:

- Step 1.** The *first* step will be to familiarize the WV DNR and Canaan Valley Resort officials with our team. Our highly qualified group of professionals will be available at all times to the DNR and the Canaan Valley Resort stakeholders.
- Step 2.** The *second* step will be to refine the project scope. Our team will spend the required time to nail down your exact needs and work through all our options to make sure we comply with both timeline and budget constraints.
- Step 3.** The *third* step will be to establish a detailed project time-line. This step will consist of determining a schedule that is least disruptive to the day to day activities at Canaan Valley Resort. We understand that the resort is one of the busiest in the state, so being conscious of project schedule and work hours will be crucial.



Step 4. The *fourth* step will be to complete bidding documents and obtain competitive bids within our project budget.

Step 5. The *fifth* step in our project approach consists of staying involved until the post project review is complete.

Our goal is to make this project as seamless as possible for you and your staff.

**We know how to get projects done in a
*timely and cost effective manner!***

City of Mannington Downtown Demolition

Thrasher completed a demolition project for the City of Mannington that included four buildings within the same block in downtown. The Thrasher team was responsible for the construction documents and plans, asbestos analysis, environmental assessment, permitting and construction management. Stream restoration was also involved with this project due to the close proximity of the structures to Buffalo Creek.

CONTACT:

City of Mannington
206 Main Street
Mannington, WV 26582
304-986-2700

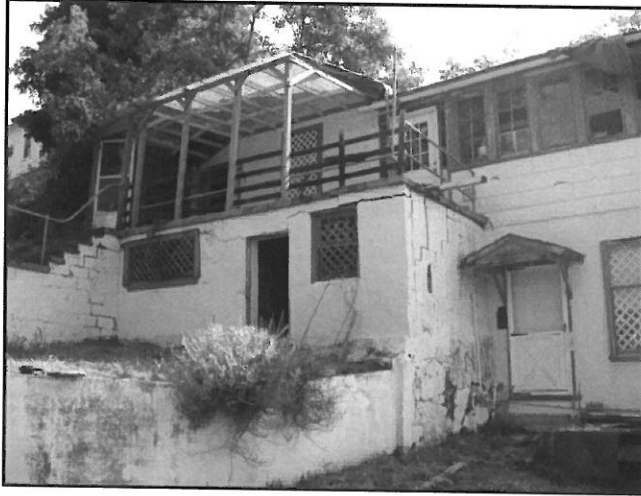


City of Mount Hope Residential Home and School Demolition

The City of Mount Hope hired Thrasher to complete a two phase demolition project. The first phase of the project included the demolition of 28 residential homes and the second phase of the demolition project consisted of 10 residential homes and an old school building. Along with these demolitions, Thrasher was required to relocate all utility lines that ran to the old structures.

CONTACT:

City of Mount Hope
518 Main Street
Mount Hope, WV 25880
304-877-2211



City of Moundsville

Brownfield Industrial Site Demolition

Thrasher provided the City of Moundsville site engineering, demolition services and cleanup of the Brownfield industrial site. The demolition process was of six industrial structures of more than 50,000 square feet. Thrasher prepared site plans and specifications for the demolition and site cleanup.



CONTACT:

City of Moundsville
114 Cypress Avenue
Moundsville, WV 26041
304-845-6300

Other Various Demolition Experience

- Fairmont-Morgantown Housing Authority
- Shepherd College
- West Virginia Wesleyan College
- Salem-Teikyo College
- Kennedy Center
- Mylan Pharmaceuticals
- UCAR Carbon Company
- Corhart Refractories
- Warehouse Groceries (*asbestos abatement*)
- Jack's Friendly Furniture Building (*asbestos abatement*)
- City of Salem (*asbestos abatement*)
- Century Limestone Facility (*asbestos abatement*)
- Harrison County Schools
- Marion County Schools
- Taylor County Schools
- Mineral County Schools
- Lewis County Schools
- Randolph County Schools



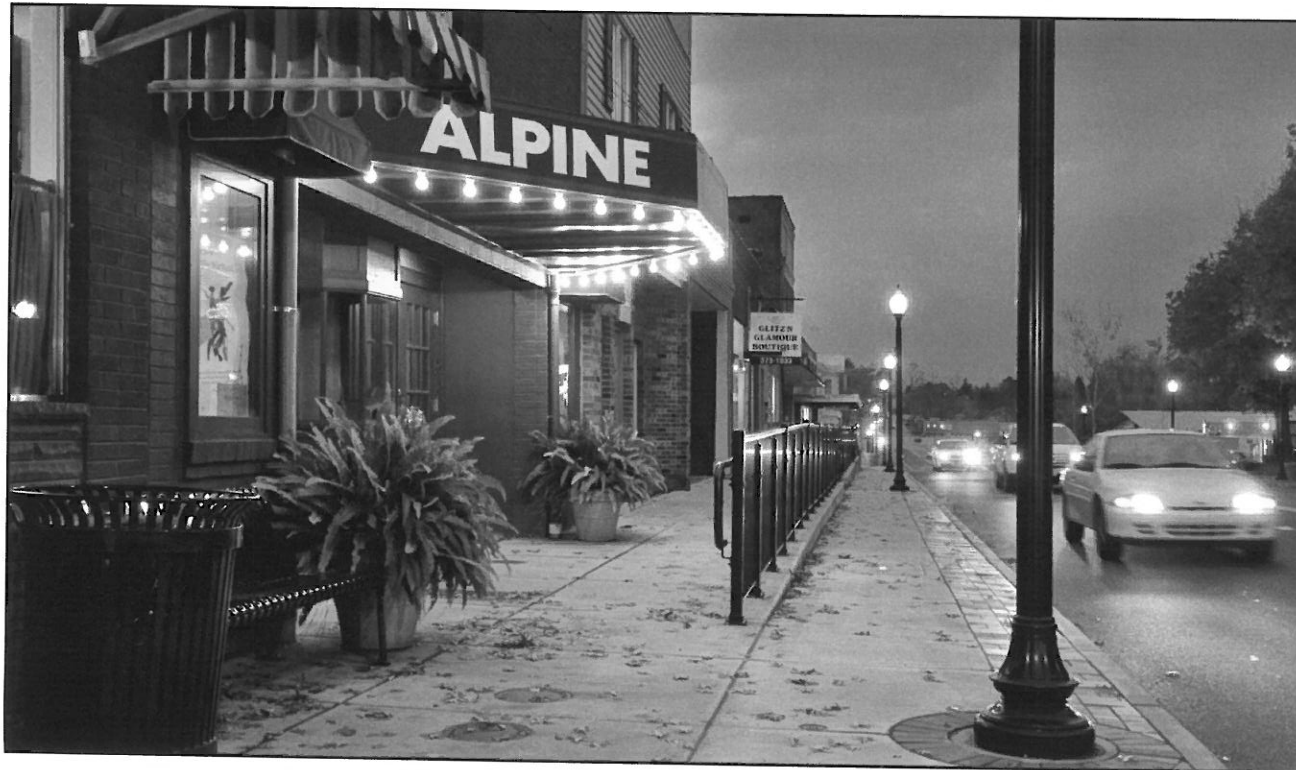
City of Ripley Main Street Revitalization Project

Thrasher provided preliminary engineering and design and field services, including survey, construction management and testing for this downtown beautification project. The project consists of three phases of Main Street: Church to Court, Court to Maple, and Maple to Mill Creek Bridge.

Key elements of the project included:

- Relocation of utilities
- Sidewalk replacement
- Streetscape amenities including ornamental lighting, plantings, trees and grates, benches, trash receptacles and bike racks.

Another component involved was the installation of ornamental lighting and plantings, street trees, benches and trash receptacles. This created a design standard for sidewalk and streetscape replacement within the City of Ripley.



CONTACT:

City of Ripley
203 South Church Street
Ripley, WV 25271
304-372-3485

West Virginia Division of Natural Resources

Various State Park Projects

Chief Logan State Park Conference Center

The Chief Logan State Park was in need of a conference center. Thrasher, as the site development consultant, teamed with an architectural firm was hired by the West Virginia Division of Natural Resources to provide the State Park with utility, site development and roadway design for the new conference center.

Lost River Wastewater Collection System

The West Virginia Division of Natural Resources hired Thrasher to provide services for a new wastewater collection system for the Lost River State Park. Along with the construction of the wastewater collection system, Thrasher provided erosion and sediment analysis, roadway repairs and the construction of an underground electrical system, eliminating over 49 poles and 12,400 LF of electrical lines.

Watoga Water and Sanitary Sewer Improvement

Thrasher was able to provide the West Virginia Division of Natural Resources at Watoga State Park with water and sewer system improvements. The Thrasher team provided design and construction services at the park of various degrees. It was important to the Division of Natural Resources to keep the areas of construction with the least amount of disturbance as possible.

Chief Logan State Park: Thrasher provided all site development engineering aspects for the development of the lodge and conference center at Chief Logan State Park.



West Virginia University Creative Arts Center Parking Lots

Thrasher was contracted by WVU to provide engineering services and construction documents for revisions to the parking lot layout at the Creative Arts Center. This project was done in accordance with changes to the Evansdale Drive and Monongahela Boulevard intersection modifications.

The scope of services for this project included the following:

- Survey and mapping
- Increased parking capacity and entrance realignment
- Final site and grading plan
- Erosion and sediment control plan
- Utility plan
- Stormwater facility design
- Landscape design

CONTACT:

West Virginia University
48 Donley Street, 4th Floor
Morgantown, WV 26506
304-293-7202





ARCHITECTURE

Thrasher offers a broad range of architecture and building design services to suit the needs of each individual client. The team at Thrasher is sought after in a variety of markets: commercial and retail spaces, healthcare facilities, educational facilities, government buildings, banking and financial institutions, and industrial warehouses to name a few.

We have experience in numerous delivery systems including design-build, design-bid-build, and have worked with owners in developing preliminary packages for alternative selection.

At Thrasher we pride ourselves on aesthetic design while keeping our roots firmly planted in accurate cost estimating, budget control and sustainability. Fulfilling our clients' needs in a responsible and innovative way has earned our firm prestigious recognition throughout the Mid-Atlantic region.

ARCHITECTURAL EXPERTISE:

- Public and Private Office Buildings
- Healthcare Facilities
- Educational Facilities
- Financial Institutions
- Building Additions and Renovations
- Recreational Facilities
- Public Safety Buildings
- Single Family Residential Units
- Multiple Family Residential Units
- Historical Preservation
- LEED Certification

CONSTRUCTION MANAGEMENT

Effective management of our projects ensures that both clients and contractors work in an efficient and safe manner. From pre-construction activities such as bid conferences and surveys, to inspections, job progress reviews, through final completion, our goal is work that proceeds in accordance with plans and specifications.

At Thrasher, we inspect and manage a wide variety of projects designed by our firm in addition to projects for contractors and other designers. We have certified project representatives responsible for overseeing every element of design integrity. Our methods have earned the respect of not only our clients, but contractors and project owners alike.

CONSTRUCTION INSPECTION SERVICES:

- Construction Materials
- Structural Steel and Concrete
- Paving
- Drainage
- Embankments
- Work Zone Safety and Traffic Control
- Erosion and Soil Control

QUALITY CONTROL AND ASSURANCE METHODS:

- Regularly Scheduled Planning and Progress Meetings
- Engineering During Construction
- Daily Logs and Progress Sheets
- Cut Sheets
- Quantity Tracking



ENVIRONMENTAL

In today's ever-changing regulatory landscape, compliance with federal and state environmental laws is critical to the success of projects. Compliance can often seem at odds with the project vision and financial constraints. The Thrasher team partners as a technical and regulatory advocate to overcome obstacles and guide our clients through complicated policies to achieve their goals.

From initial investigations to final design, our environmental experts are there to assist in all facets of our clients' projects. Our team has developed relationships with academic consultants from multiple universities that are here to aid in specialized assessments.

ENVIRONMENTAL SERVICES:

- All Appropriate Inquiry (AAI)
- Environmental Site Assessments
- NEPA Compliance for Publicly Funded Projects (CATEX, EA, EIS)
- Ecological Studies
- Brownfield Redevelopment
- Industrial Hygiene and Demolition Planning
- Underground Storage Tank (UST) Consulting Services
- Wetland Delineation, Design, and Mitigation
- Remediation Investigation and Feasibility Studies, Alternatives, and Design
- Hydro-geologic and Geologic Investigations
- Ground-water Monitoring
- Sampling and Laboratory Analysis
- Solid and Hazardous Waste Management
- SPCC, GWPP, SWPP Environmental Compliance Plans
- Stream Assessments, Design, and Mitigation
- Erosion and Sediment Control Plans



THRASHER

LANDS

ITECTURE

LANDSCAPE ARCHITECTURE

Landscape architecture at Thrasher involves the design of landscapes on a variety of scales—from large, multi-functional sites to small, confined spaces. Innovative research into materials, lifestyles, and landscape technologies coupled with a deep understanding of how people use outdoor spaces informs our unique design process.

With a diverse background throughout the Mid-Atlantic region and international mountain regions, we excel at providing client-specific and site-specific planning and design solutions. Thrasher's Landscape Architects have the expertise and experience to guide you smoothly from concept through construction closeout.

LANDSCAPE ARCHITECTURE SERVICES:

- Destination Resorts
- Business Parks
- Industrial Parks
- Community Planning
- Design Guidelines
- Botanical Gardens
- Children's Gardens
- Residential Landscape Design
- Trail Design
- Recreational Facilities
- Water Features
- Schools
- Natural Playgrounds
- Irrigation Systems
- Native Restoration
- Monuments

SITE DEVELOPMENT

Engineering for site development is far from a “one size fits all” approach. Every project is unique and requires a blend of technical expertise, planning principals, efficient design, market realities, and the flexibility to seize opportunities. With our diverse staff, Thrasher has a winning combination of talent to take projects from design to reality.

At Thrasher, we understand that the design of a successful site development project must factor in economic landscape, political implications, and strategic planning that takes projects beyond engineering. The Thrasher team possesses expertise in every facet of development including site selection and planning, grading, storm water management, erosion and sediment control, permitting, and infrastructure design.

We pride ourselves on being a partner in projects that improve the quality of life for residents and provide economic sustainability to communities.

SITE DEVELOPMENT EXPERTISE:

- Industrial and Business Parks
- Mixed-Use Developments
- Athletic Facilities
- Federal Correctional Facilities
- Streetscapes and Sidewalk Planning
- Commercial Developments
- Single and Multi-Family Residential Development
- Primary, Secondary, and Higher Education Facilities
- Recreational Resorts and Guest Lodging
- Shopping Plazas

SURVEY

Thrasher employs one of the largest survey departments in the Mid-Atlantic region and offers a wide range of land surveying and related services for federal, state, and private clients. We are committed to evolving our techniques and equipment to best serve our clients and their growing needs.

At Thrasher, we are able to provide both surveying and engineering services which provide a distinct advantage over survey-only companies. The combination of these two services provide our surveyors with a better understanding of what engineers and architects require to develop an appropriate design for different types of projects. Our field and survey personnel offer extensive experience, certified training, and flexibility to meet our clients' unique project schedules.

GENERAL SURVEY SERVICES

- Large-scale Boundary Work
- Topographic Survey and Mapping
- ALTA/ACSM Survey and Mapping
- Lake and River Soundings
- Accident Reconstruction Survey and Mapping
- Drug-free Zone Mapping
- Expert Witness Testimony
- Construction Layout
- Permanent Project GPS Base Stations
- Building Control and Layout
- Road/Bridge Alignment and Staking
- Sewer/Water/Pipeline
- Site Layout
- Quality Assurance Surveying
- Volume/Quantity Surveys
- As-Built Surveys

GPS SURVEYS

- Geodetic Control Networks
- Ground Control for Aerial Mapping
- Telecommunications
- FAA 1A and 2C Letters

ROUTE LOCATION SURVEYS

- Transmission Lines
- Natural Gas Pipelines
- Wind Turbine
- Roadway, Railway and Rec Trails

COAL AND ENERGY SURVEYS

- Pre and Post Mining Blast Surveys
- Water Quality Monitoring Plan
- Construction Layout
- Emergency Control Survey/Plans



WASTEWATER COLLECTION AND TREATMENT

Thrasher has planned, designed, and supervised the construction of municipal, industrial, and individual wastewater collection and treatment projects throughout West Virginia and its surrounding states. When designing a wastewater system, many factors including the environment, technology and cost-effectiveness come into play. Wastewater system projects require both experience and a strong understanding of regulations and requirements.

Having successfully designed and completed wastewater system projects ranging from \$100,000 to \$50 million dollars, the Thrasher team employs some of the most skilled and sought after professionals in the industry. Our approach allows us to develop unique solutions for our clients while providing a helping hand through difficult funding and regulatory hurdles.

WASTEWATER SERVICES:

- New Collection Systems and Extensions
- Rehabilitation and Replacement of Existing Systems
- Combined Sewer Overflow (CSO) Reduction
- Long-Term Control Plans
- Construction Monitoring
- Wastewater Treatment Plant Design
- Feasibility Studies
- Facility Planning
- Geographical Information Systems (GIS)
- Inflow and Infiltration (I&I) Testing and Evaluation

WATER TREATMENT AND DISTRIBUTION

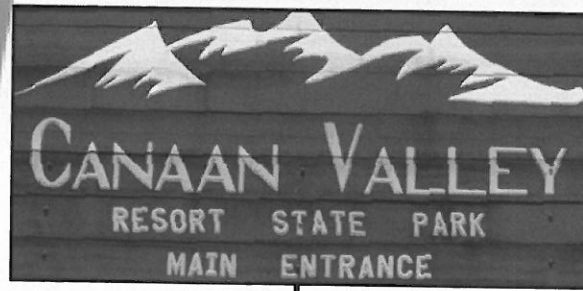
Meeting increasingly stringent water quality standards demands experienced and dedicated water system specialists. Since our very first water project over 30 years ago, there has always been a potable water project underway at Thrasher. These projects provide safe drinking water to towns, cities, and entire counties. The team at Thrasher are highly skilled and practiced in both conventional ground and surface treatment systems involving rapid mix, flocculation, sedimentation filtration, membrane, and reverse osmosis processes.

Whether it is designing more efficient processes, integrating alternative energy sources, reducing infiltration, or restoring function to aged piping systems; our clients can count on Thrasher to find practical, low cost, environmentally friendly solutions to their supply needs.

WATER SERVICES:

- Distribution System Design
- Booster Stations and Hydraulic Modeling
- Water Loss Evaluation and Analysis Studies
- Feasibility Studies/Facility Planning
- Water Treatment Plant Design
- SCADA and Telemetry Systems
- Existing System Evaluation
- Storage Facility Design
- Pump Station Design
- Construction Monitoring
- Geographical Information Systems (GIS)

Project Team



CHAD RILEY, PE
Principal-in-Charge

JEFF GOLA, PE
Project Manager

MICHAEL NESTOR, PE
Project Engineer

LEE GUSTAFSON, AIA
Project Architect

JIM CHRISTIE, RLA
Landscape Architect

JEFFREY TODD
Environmental Scientist

JAMES DECKER
Construction Manager/Estimator

Chad Riley, PE

Principal-in-Charge



Chad Riley, P.E. joined Thrasher in 1996 and was named partner in the firm in 2004. As Site Development and Construction Services manager, Mr. Riley is responsible for the development of industrial and business parks, multi-use developments and long-term, multi-phase infrastructure improvement and building projects.

Mr. Riley is Project Manager for numerous economic development projects throughout the State of West Virginia. Most recently, Mr. Riley has become highly involved in consulting and engineering for private developers. He served as Project Manager for the development of White Oaks, a premier business park along the 1-79 Corridor in Bridgeport, West Virginia.

Education:

- Bachelor of Science, Civil Engineering Technology - Fairmont State University

Registrations:

- Registered Professional Engineer
 - States of West Virginia and Maryland

Affiliations/Certifications:

- WVDOH Certified Concrete Technician / Compaction Technician

Related Experience Includes:

- **Fairmont State University Various Housing Structure Demolitions** - Marion County, West Virginia
- **City of Mannington Downtown Buildings Demolition** - Marion County, West Virginia
- **City of Mount Hope Residential Building Demolitions** - Fayette County, West Virginia



Jeff Gola, PE

Project Manager



Jeff Gola, PE has built a successful portfolio of highway, community improvements, airports and commercial site development projects. He is experienced in all aspects of project control, from design and drafting to construction and project oversight. Jeff has an excellent understanding of bid processes and construction inspection.

Jeff's expertise in designing and planning roadways, bridges, sidewalks, retaining walls, utility plant structures, storm water management and demolition plans is exceptional. He has first hand knowledge in obtaining permits and their requirements. His understanding of erosion and sediment control make him an excellent project manager.

Education:

- Bachelor of Science, Civil Engineering - West Virginia University

Registrations:

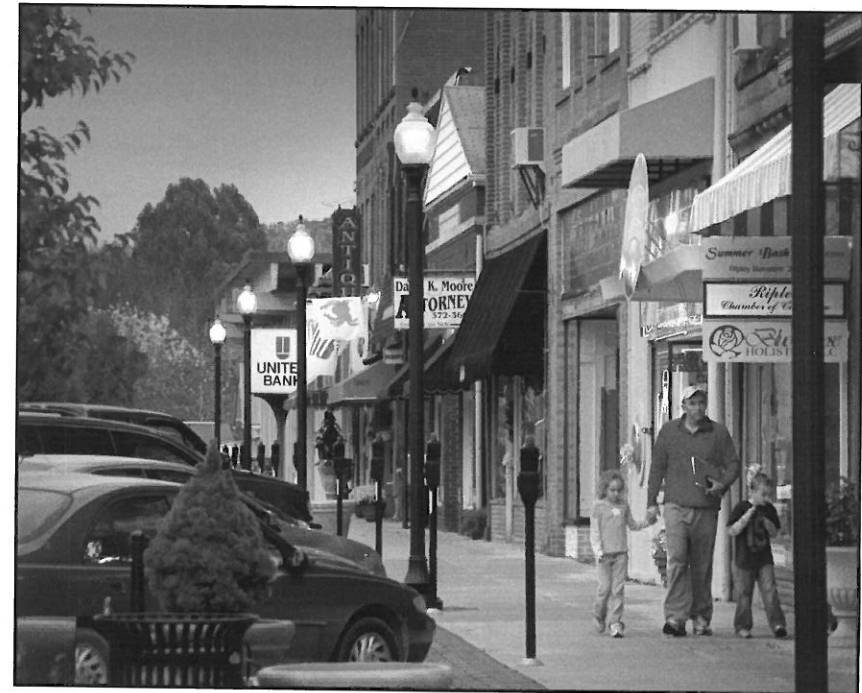
- Registered Professional Engineer
 - States of West Virginia and Maryland

Affiliations/Certifications:

- American Society of Civil Engineers
- American Society of Highway Engineers

Related Experience Includes:

- **City of Ripley Main Street Revitalization Project** - Jackson County, West Virginia
- **Tri-State Airport South Side Airpark Access Road** - Wayne County, West Virginia
- **Harrison County Commission ADA Compliant Courthouse Plaza Projects** - Harrison County, West Virginia



Michael Nestor, PE

Project Engineer



Michael R. Nestor, PE is a graduate of Fairmont State University who joined the team at Thrasher in 2005. Mr. Nestor has a wide range of experience covering residential and commercial developments, industrial and business parks, multi-use developments, stormwater management and drainage projects, as well as various community improvement projects.

Mike is highly knowledgeable in the storm water management and MS4 area, having written multiple "MS4" Storm Water Management Programs and completing designs of dozens of projects with storm water management components. He obtained his Certified Flood Plain Manager Certificate in 2012.

Education:

- Bachelor of Science, Civil Engineering Technology - Fairmont State University

Registrations:

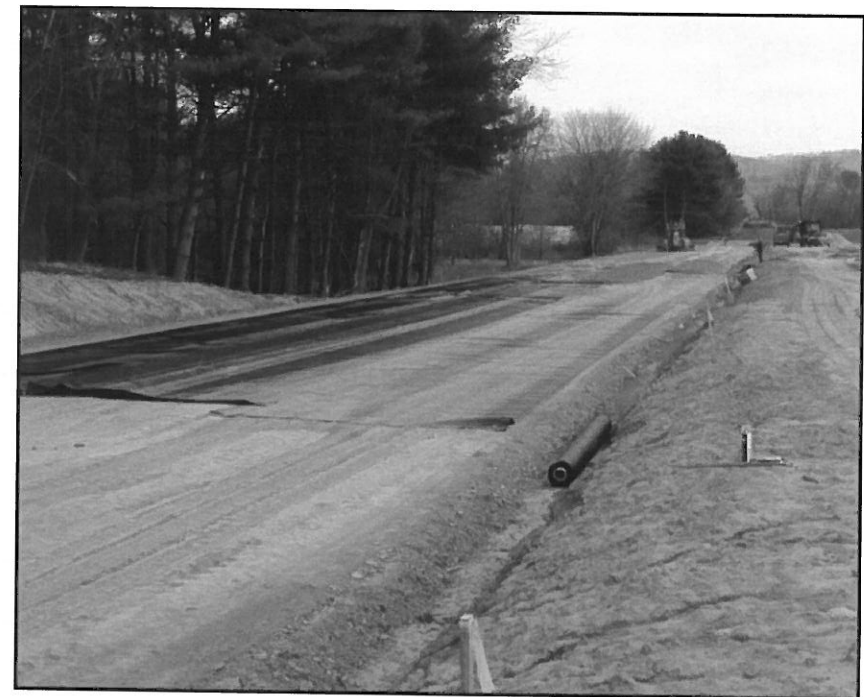
- Registered Professional Engineer
 - State of West Virginia

Affiliations/Certifications:

- Certified Floodplain Management

Related Experience Includes:

- **West Virginia University Silver Lot Improvements** - Monongalia County, West Virginia
- **Town of Williamsport Park Road Extension** - Washington County, Maryland
- **City of Clarksburg Storm Water Management Plan** - Harrison County, West Virginia



Lee Gustafson, AIA

Project Architect



Mr. Gustafson brings over 35 years of experience to the table in both design and architectural management. Lee has a diverse portfolio of work that spans all facets of architecture:

- Academic facilities
- Athletic complexes
- Healthcare facilities
- Government and community buildings
- Office buildings
- Senior centers
- Apartment complexes
- Religious buildings
- Industrial facilities
- Site development

Lee has a profound ability to take a client's vision and shape it into a project that is not only realistic, but is eco-friendly and aesthetically pleasing. With his understanding of funding agencies and grant programs, Lee is able to provide funding alternatives that get projects under construction quick.

Education:

- Bachelors of Science, Architecture - University of Cincinnati

Registrations:

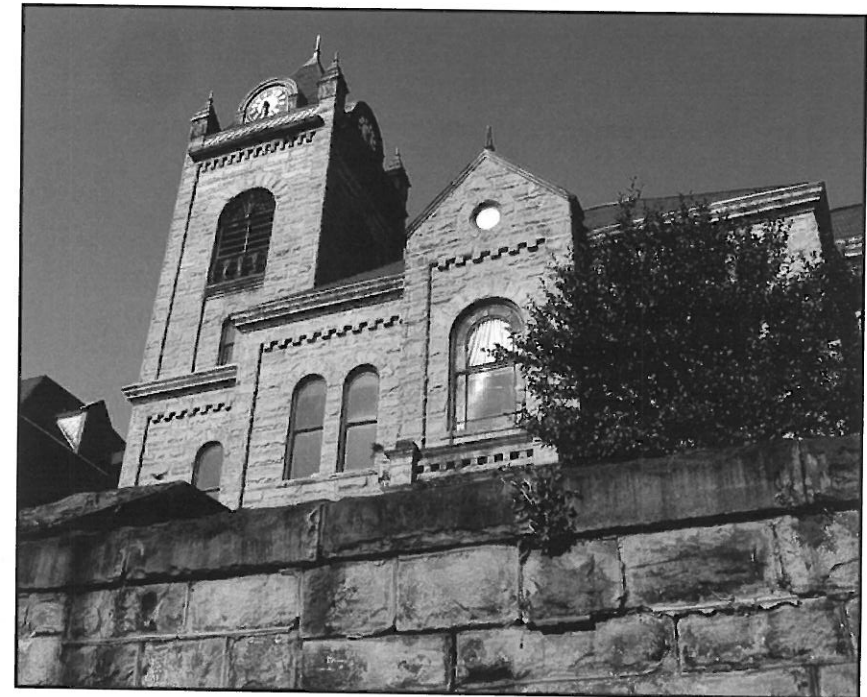
- American Institute of Architects (AIA) Registered Architect
 - States of West Virginia, Maryland, and Pennsylvania

Affiliations/Certifications:

- West Virginia Society of Architects
- AIA Committee on Architecture for Education, Health Care, & Justice
- SHPO Listed and Approved for Historic Preservation Work
- National Council of Architectural Registration Boards

Related Experience Includes:

- **McDowell County BOE Anawalt Elementary School Demolition** - McDowell County, West Virginia
- **City of Grafton Mother's Day Shrine Historic Preservation Project** - Taylor County, West Virginia



Jim Christie, RLA

Landscape Architect



Jim Christie, RLA joined Thrasher in 2010, bringing twelve years of master planning and landscape architecture experience. Jim's expertise and experience in the field is international, including recreational areas in Argentina, Costa Rica and India, as well as award winning projects in the United States. His focus within the recreation planning arena is in pedestrian and vehicular circulation. Jim is a current board member for the Garrett County Heritage Board and is the Venue Committee Chair for the National Interscholastic Cycling Association for West Virginia.

In addition to his proven experience in landscape architecture, land planning and economic development, Jim is highly skilled in all aspects of graphic arts and the development of conceptual renderings and materials used for the client marketing of their properties.

Education:

- Bachelor of Science, Landscape Architecture - West Virginia University

Registrations:

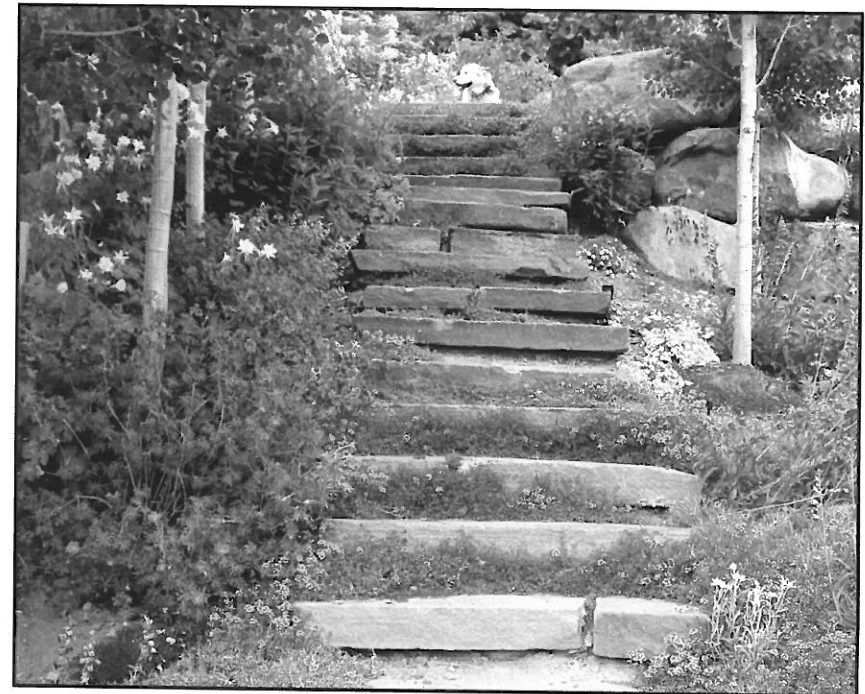
- Registered Landscape Architect
 - State of Colorado

Affiliations/Certifications:

- Garrett County, MD, Volunteer of the Year, 2013
- Xeriscape, Grand Award - Betty Ford Alpine Garden - Vail, CO
- Xeriscape, Grand Award - Private Estates - Eagle County, CO
- Water Feature Merit Award - Betty Ford Alpine Garden - Vail, CO

Related Experience Includes:

- **Savage River Lodge Yurt Village Landscape Project** - Allegany County, Maryland
- **Snowshoe Mountain Resort Architectural Guidelines** - Pocahontas County, West Virginia



Jeffrey Todd

Environmental Scientist



As the Lead Environmental Scientist for Thrasher, Jeffrey C. Todd is well versed and highly experienced in requirements for environmental compliance on both state and national levels.

Jeff has applied his talents to projects within each of the areas of service Thrasher offers, including oil and natural gas sites and pipelines, site selection and development along with water, wastewater and storm water engineering. His areas of expertise include groundwater sampling, the abandonment and installation of monitoring wells, soil drilling and sampling, aquatic resource assessments and permitting, asbestos inspections, and ESA Phase I.

He is responsible for site delineation, collection of data and mapping to help formulate permitting strategies on local, state and deferral level for projects along with coordinating with agencies and the client on permitting requirements for construction.

Education:

- Bachelor of Science, Wildlife and Fisheries Resources - West Virginia University
- Master of Science, Environmental Science - Marshall University

Registrations:

- Asbestos Inspector
 - State of West Virginia

Affiliations/Certifications:

- 40 hours Hazardous Waste Operations and Emergency Response

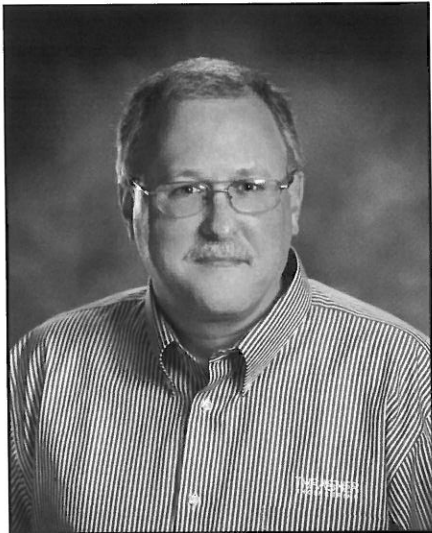
Related Experience Includes:

- **Baker Sanitary Sewer System Stream and Wetland Delineations** - Hardy County, West Virginia
- **Elk Village Apartments Phase I Environmental Site Assessment** - Kanawha County, West Virginia



James Decker

Construction Manager/Estimator



Mr. Decker has over 20 years of experience in construction estimating and management in the private arena as well as 10 years as the Facilities Director at Fairmont State University. In addition to his impressive professional career, Mr. Decker has a B.S. in Civil Engineering and a Masters degree in Project Management which has made him highly sought after in his field.

Mr. Decker provides daily counsel to the Thrasher architectural team, specific to inspections, site monitoring, cost control, schedules, contract administration, payment processing, shop and coordination drawings, change orders and project reports.

Jim has been involved in a vast array of projects that include commercial offices, educational facilities, religious centers, banking and financial institutions, manufacturing, prisons and military structures.

Education:

- Master of Business Administration, Project Management Emphasis - Fairmont State University
- Bachelor of Science, Civil Engineering - Fairmont State University
- Associates Degree, Mechanical Engineering - Fairmont State University

Affiliations/Certifications:

- General Contractor - State of West Virginia
- Eagle Scout, B.S.A, 1981
- Cub Scouts & Boy Scouts of America
- City of Fairmont, BOCA Board of Appeals Water Commissioner
- St. Paul United Methodist Church—Pastor Parish Relations, Building Committee, Trustees

Related Experience Includes:

- **Clarksburg Aquatic Center Existing Pool Demolition and Addition of New Water Park-** Harrison County, West Virginia
- **White Oaks Business Park Development-** Harrison County, West Virginia



The Thrasher Group, Inc.

Formed in 1983, Henry A. Thrasher and H. Wood Thrasher created Thrasher with a commitment to excellence and professionalism in engineering. As the leading consulting engineering firm in the state of West Virginia, Thrasher specializes in all facets of engineering from site development to public works projects.

In 2005, the company added architecture services to our ever-expanding list of capabilities. In early April of this year, it was confirmed that Thrasher acquired the Marion County-based Blackwood Associates architectural firm. Blackwood Associates brings over 40 years of experience throughout the state of West Virginia to the ever-growing Thrasher architecture division.

Throughout the past 5 years, Thrasher has grown from roughly 200 employees to the over 300 people we presently employ. Thrasher is growing at a rapid pace and that has allowed us to bring aboard some of the most sought after talent around.

We believe that the partnership we establish with our clients is what makes them and their projects successful. This philosophy is the foundation of our growing company.



We have learned, regardless of our size, our commitment to this philosophy leads to successful projects.

The Thrasher philosophy is
PARTNERSHIP.

Thrasher was recently named #37 on the Zweig White Hot Firms - Fastest Growing Firms in the Country.

Main Point of Contact:
Mr. Chad M. Riley, PE
600 White Oaks Boulevard
P. O. Box 940
Bridgeport, WV 26330
Phone: 304-624-4108
Fax: 304-624-7831

Office Locations:

Bridgeport, WV
Charleston, WV
Princeton, WV
Beckley, WV
Oakland, MD
Fredericksburg, VA
Canton, OH
Canonsburg, PA

Thrasher Information:

Incorporated in 1983
State of West Virginia
www.thrashereng.com
thrasher@thrashereng.com

THRASHER

The Thrasher Group, Inc.

With multi-discipline capabilities, Thrasher cover all of the professional services needed to deliver successful projects to both public and private clientele. The firms' roots were planted in civil engineering and consulting services for public utility projects. Over the years, our success has allowed us to branch out, expanding our services to meet both the needs of our clients and the growing need for more responsive and effective solutions.

By providing a full range of quality professional engineering, surveying, architectural, environmental and related field services, this partnership has positioned itself as one of the leading consulting teams in the Mid-Atlantic region.

Disciplinary Practices :

- Architecture
- Civil Engineering
- Water Treatment and Distribution
- Wastewater Collection and Treatment
- Land & Site Development
- Roadways / Bridges /Streetscapes
- Storm Water Systems
- Dams and Levees
- Land Planning and Landscape
- Parks and Recreation
- Survey
- Construction Monitoring
- Materials Testing
- Environmental Services
- Pipeline Inspection
- GIS Mapping Software Development

Areas of Service:

- Planning
- Preliminary engineering
- Funding direction & application assistance
- Regulatory permitting
- Design and construction document preparation
- Bid documentation & process oversight
- Construction administration & monitoring
- Post construction service & on-going commitment
- Cost estimating

Successful projects require more from an engineering firm than just technical design expertise. At Thrasher, our project managers and engineers focus on all aspects of "getting the job done."

References

**MCDOWELL COUNTY
BOARD OF EDUCATION**
MR. WILL CHAPMAN
SUPERINTENDENT
30 CENTRAL AVENUE
WELCH, WV
304-436-88441

CITY OF MOUNT HOPE
MR. MICHAEL MARTIN
MAYOR
518 MAIN STREET
MOUNT HOPE, WV 25880
304-877-2211

**FAIRMONT STATE
UNIVERSITY**
MR. TOM TUCKER
ASSISTANT VP FOR FACILITIES
1201 LOCUST AVENUE
FAIRMONT, WV 26554
304-367-4139



CERTIFICATION AND SIGNATURE PAGE

By signing below, or submitting documentation through wvOASIS, I certify that I have reviewed this Solicitation in its entirety; understand the requirements, terms and conditions, and other information contained herein; that I am submitting this bid, offer or proposal for review and consideration; that I am authorized by the vendor to execute and submit this bid, offer, or proposal, or any documents related thereto on vendor's behalf; that I am authorized to bind the vendor in a contractual relationship; and that to the best of my knowledge, the vendor has properly registered with any State agency that may require registration.

The Thrasher Group, Inc.
(Company)

Chad Riley - Chad Riley, Principal-in-Charge
(Authorized Signature) (Representative Name, Title)

ph (304) 624-4108 fax (304) 624-7831
(Phone Number) (Fax Number) (Date)

10/13/14