



State of West Virginia
 Department of Administration
 Purchasing Division
 2019 Washington Street East
 Post Office Box 50130
 Charleston, WV 25305-0130

Solicitation

NUMBER
GSD146827

PAGE
1

ADDRESS CORRESPONDENCE TO ATTENTION OF
GUY NISBET 304-558-2596

*124151406 01 304-529-7111

WESCO DISTRIBUTION INC
 7 STONECREST DR

HUNTINGTON WV 25701

V
E
N
D
O
R

S
H
I
P
T
O

DEPARTMENT OF ADMINISTRATION
 VARIOUS LOCALES AS INDICATED
 BY ORDER

DATE PRINTED
06/03/2014

BID OPENING DATE: 06/12/2014 BID OPENING TIME 1:30PM

LINE	QUANTITY	UOP	CAT. NO.	ITEM NUMBER	UNIT PRICE	AMOUNT
				ADDENDUM NO.01		
				ADDENDUM ISSUED TO PUBLISH AND DISTRIBUTE THE FOLLOWING INFORMATION TO THE VENDOR COMMUNITY.		
0001	1	LS		285-56	382. ⁰⁰	
				REPLACEMENT OUTDOOR LIGHTING FOR PARKING GARAGE		
	180EACH				382. ⁰⁰	68,760
	***** THIS IS THE END OF RFQ GSD146827 ***** TOTAL:					

06/12/14 12:43:31PM
 West Virginia Purchasing Division

SIGNATURE	<i>Russell A. Walker</i>	TELEPHONE	304-529-7111	DATE	6-12-14
TITLE	O,SR	FEIN	25-172 3345	ADDRESS CHANGES TO BE NOTED ABOVE	

WHEN RESPONDING TO SOLICITATION, INSERT NAME AND ADDRESS IN SPACE ABOVE LABELED 'VENDOR'

SOLICITATION NUMBER: GSD146827
Addendum Number: No.01

The purpose of this addendum is to modify the solicitation identified as (“Solicitation”) to reflect the change(s) identified and described below.

Applicable Addendum Category:

- Modify bid opening date and time
- Modify specifications of product or service being sought
- Attachment of vendor questions and responses
- Attachment of pre-bid sign-in sheet
- Correction of error
- Other

Description of Modification to Solicitation:

1. Addendum issued to publish and distribute the attached vendor submitted questions and agency responses.
2. No other changes.

Additional Documentation: Documentation related to this Addendum (if any) has been included herewith as Attachment A and is specifically incorporated herein by reference.

Terms and Conditions:

1. All provisions of the Solicitation and other addenda not modified herein shall remain in full force and effect.
2. Vendor should acknowledge receipt of all addenda issued for this Solicitation by completing an Addendum Acknowledgment, a copy of which is included herewith. Failure to acknowledge addenda may result in bid disqualification. The addendum acknowledgement should be submitted with the bid to expedite document processing.

ATTACHMENT A

GSD146827
Vendor submitted Questions

1. Please clarify the exact product specified for the parking garage project.
There are two wattage options, two color temperature options and several housing color options.
 - A.1. 55 watt, 4000K, White Color Housing

ADDENDUM ACKNOWLEDGEMENT FORM
SOLICITATION NO.: GSD146827

Instructions: Please acknowledge receipt of all addenda issued with this solicitation by completing this addendum acknowledgment form. Check the box next to each addendum received and sign below. Failure to acknowledge addenda may result in bid disqualification.

Acknowledgment: I hereby acknowledge receipt of the following addenda and have made the necessary revisions to my proposal, plans and/or specification, etc.

Addendum Numbers Received:

(Check the box next to each addendum received)

- | | |
|--|--|
| <input checked="" type="checkbox"/> Addendum No. 1 | <input type="checkbox"/> Addendum No. 6 |
| <input type="checkbox"/> Addendum No. 2 | <input type="checkbox"/> Addendum No. 7 |
| <input type="checkbox"/> Addendum No. 3 | <input type="checkbox"/> Addendum No. 8 |
| <input type="checkbox"/> Addendum No. 4 | <input type="checkbox"/> Addendum No. 9 |
| <input type="checkbox"/> Addendum No. 5 | <input type="checkbox"/> Addendum No. 10 |

I understand that failure to confirm the receipt of addenda may be cause for rejection of this bid. I further understand that any verbal representation made or assumed to be made during any oral discussion held between Vendor's representatives and any state personnel is not binding. Only the information issued in writing and added to the specifications by an official addendum is binding.

WESCO DISTRIBUTION

Company

Arnold A. Wafar

Authorized Signature

6-12-14

Date

NOTE: This addendum acknowledgement should be submitted with the bid to expedite document processing.
Revised 6/8/2012

REPLACEMENT OUTDOOR LIGHTING FOR PARKING GARAGE

Category: Electrical Services and Supplies
NAICS Code: 3351 - Electric Lighting Equipment Manufacturing
State: West Virginia
Entity: State of West Virginia - Department of Administration
End Date: June 12, 2014
Agency Contact Name:

Description:

RFQ NO. : GSD146827 ONE-TIME PURCHASE OF REPLACEMENT OUTDOOR LIGHTING FOR PARKING GARAGE

SPENDING UNIT : DEPARTMENT OF ADMINISTRATION

BID OPENING : 06/12/2014

GUY NISBET
304-558-2596

DEPARTMENT OF ADMINISTRATION
VARIOUS LOCALES

Question Submission Deadline: June 3rd, 2014 at 1:00 PM. EST.
Submit Questions to: Guy Nisbet, Senior Buyer, File 21
2019 Washington Street, East
Charleston, WV 25305
Fax:(304)558-4115
(Vendors should not use this fax number for bid submission)
Email: Guy.L.Nisbet@WV.Gov

SPECIFICATIONS

1. **PURPOSE AND SCOPE:** The West Virginia Purchasing Division is soliciting bids on behalf of General Services Division to establish a contract for the one time purchase of 180 (one-hundred eighty) OSRAM PERMALED or Equal Outdoor Replacement Light fixtures.



D-Series LED Surface Canopy



Catalog
Number

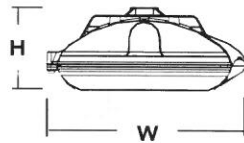
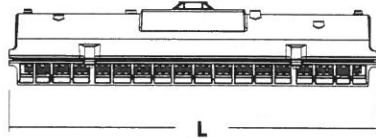
Notes

Type

d^{series}

Specifications

Length:	17-3/4" (45.1 cm)
Width:	8-1/2" (21.6 cm)
Height:	3-7/16" (8.7 cm)
Weight (max):	16 lbs (7.3 kg)



Introduction

The D-Series LED Surface Canopy luminaire is ideal for covered walkways or drive-thrus, semi-covered outdoor aisles, and walk-in coolers and freezers. Its five optical choices provide the design flexibility to potentially reduce luminaire counts while still meeting IES criteria, lowering overall energy consumption.

Its expected service life of over 100,000 hours (20 years of nighttime operation) combined with the available motion/ambient sensor offers an extremely low maintenance solution that yields quick payback.

EXAMPLE: DSXSC LED 20C 700 40K T5M MVOLT SRM DWHXD

DSXSC LED

Series	LEDs	Drive current	Color temperature	Distribution	Voltage	Mounting	Options	Finish (required)
DSXSC LED	10C 10 LEDs (one engine) ^{1,2}	350 350 mA	30K 3000K	TSE Type V, entryway ³ TSM Type V, medium TSW Type V, wide TSR Type V, rectangular ASY Asymmetric	MVOLT ⁴ 120 ⁴ 208 ⁴ 240 ⁴ 277 ⁴ 347 ⁵ 480 ⁵	Shipped included SRM Surface mount	Shipped installed DMG 0-10V dimming driver (no controls) ⁷ HS House-side shield (housing visor) ⁶ SF Single fuse (120, 277, 347V) ^{7,8} DF Double fuse (208, 240, 480V) ^{7,8} PIR360SS Motion/ambient sensor, 8-15' mounting height ^{8,9} PIRH360SS Motion/ambient sensor, 15-30' mounting height ^{8,9} SPD Separate surge protection ¹⁰ XAD Wireless dimming controller ¹¹	DWHXD White DNAXD Natural aluminum DDBXD Dark bronze
		530 530 mA	40K 4000K					
		700 700 mA	50K 5000K					
	20C 20 LEDs (two engines)	1000 1000 mA (1 A)						
		30C 30 LEDs (three engines)						
							Shipped separately BDS Bird shroud ⁹	

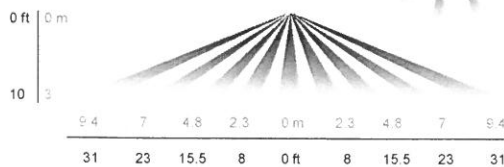
Motion Sensing

The motion/ambient sensor options (PIR360SS or PIRH360SS) have 360° of passive infrared sensing and adjustable bi-level dimming to save energy when there are no occupants.

TOP VIEW

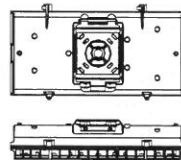


SIDE VIEW



Mounting Options

Surface Mounting



Accessories

Ordered and shipped separately.

DSXSCHS U

House-side shield (1 per light engine)

DSXSCBDSJ DWHXD U

Bird shroud for SRM on surface J-box only, white (specify finish)

NOTES

- Available with 700mA or 1000mA option only.
- Not available with 347 or 480V.
- DesignLights Consortium qualified.
- MVOLT driver operates on any line voltage from 120-277V (50/60 Hz). Specify 120, 208, 240 or 277 options only when ordering with fusing (SF, DF options).
- N/A with one light engine (10C). Only available with 700mA. N/A DMG.
- Also available as a separate accessory; see Accessories information at left.
- Single fuse (SF) requires 120, 277 or 347 voltage option. Double fuse (DF) requires 208, 240 or 480 voltage option.
- Not available with XAD.
- PIR360SS specifies the SensorSwitch SBR 10-ODP control; PIRH360SS specifies the SensorSwitch SBR-6-ODP control; see Motion Sensor Guide for details. Dimming driver standard.
- See the electrical section on page 3 for more details.
- Dimming driver standard. Available 120V or 277V only. Not available with fusing, PIR360SS or PIRH360SS. Not available with 1000mA.



Performance Data

Lumen Output

Lumen values are from photometric tests performed in accordance with IESNA LM-79-08. Data is considered to be representative of the configurations shown, within the tolerances allowed by Lighting Facts. Actual performance may differ as a result of end-user environment and application. Actual wattage may differ by +/- 8% when operating between 120-480V +/- 10%.

Light Engines	Drive Current (mA)	Performance Package	System Watts	Dist. Type	30K (3000K, 80 CRI)					40K (4000K, 70 CRI)					50K (5000K, 65 CRI)				
					Lumens	B	U	G	LPW	Lumens	B	U	G	LPW	Lumens	B	U	G	LPW
10C (10 LEDs)	700 mA	10C700--K	26W	ASY	1,792	0	0	1	69	2,253	1	0	1	87	2,428	1	0	1	93
				TSE	1,882	1	0	0	72	2,366	1	0	0	91	2,550	1	0	0	98
				TSM	1,889	1	0	0	73	2,375	2	0	0	91	2,560	2	0	0	98
				TSR	1,860	2	0	2	72	2,339	2	0	2	90	2,521	2	0	2	97
				TSW	1,771	2	0	1	68	2,226	2	0	1	86	2,399	2	0	1	92
	1000 mA	10C1000--K	37W	ASY	2,444	1	0	1	66	3,074	1	0	1	83	3,314	1	0	1	90
				TSE	2,566	1	0	0	69	3,227	2	0	0	87	3,479	2	0	0	94
				TSM	2,576	2	0	0	70	3,241	2	0	1	88	3,493	2	0	1	94
				TSR	2,537	2	0	2	69	3,191	2	0	2	86	3,440	3	0	3	93
				TSW	2,414	2	0	1	65	3,037	2	0	1	82	3,274	3	0	1	88
20C (20 LEDs)	350 mA	20C350--K	25W	ASY	1,995	1	0	1	80	2,511	1	0	1	100	2,705	1	0	1	108
				TSE	2,095	1	0	0	84	2,637	1	0	0	105	2,840	2	0	0	114
				TSM	2,103	2	0	0	84	2,647	2	0	0	106	2,851	2	0	1	114
				TSR	2,071	2	0	2	83	2,607	2	0	2	104	2,808	2	0	2	112
				TSW	1,971	2	0	1	79	2,481	2	0	1	99	2,672	2	0	1	107
	530 mA	20C530--K	37W	ASY	2,803	1	0	1	76	3,526	1	0	1	95	3,799	1	0	1	103
				TSE	2,943	2	0	0	80	3,702	2	0	0	100	3,989	2	0	0	108
				TSM	2,955	2	0	1	80	3,717	2	0	1	100	4,005	2	0	1	108
				TSR	2,910	2	0	2	79	3,660	3	0	3	99	3,944	3	0	3	107
				TSW	2,770	2	0	1	75	3,483	3	0	1	94	3,754	3	0	1	101
700 mA	20C700--K	46W	ASY	3,449	1	0	1	75	4,337	1	0	1	94	4,675	1	0	1	102	
			TSE	3,621	2	0	0	79	4,554	2	0	0	99	4,909	2	0	0	107	
			TSM	3,636	2	0	1	79	4,572	3	0	1	99	4,928	3	0	1	107	
			TSR	3,580	3	0	3	78	4,502	3	0	3	98	4,853	3	0	3	106	
			TSW	3,407	3	0	1	74	4,285	3	0	1	93	4,619	3	0	1	100	
	1000 mA	20C1000--K	74W	ASY	4,632	1	0	1	63	5,828	1	0	1	79	6,283	1	0	2	85
				TSE	4,864	2	0	0	66	6,119	2	0	0	83	6,597	2	0	1	89
				TSM	4,883	3	0	1	66	6,143	3	1	1	83	6,623	3	0	1	90
				TSR	4,808	3	0	3	65	6,050	3	0	3	82	6,522	3	0	3	88
				TSW	4,577	3	0	1	62	5,758	3	0	2	78	6,207	3	0	2	84
30C (30 LEDs)	350 mA	30C350--K	35W	ASY	3,022	1	0	1	86	3,799	1	0	1	109	4,097	1	0	1	117
				TSE	3,172	2	0	0	91	3,989	2	0	0	114	4,302	2	0	0	123
				TSM	3,185	2	0	1	91	4,005	2	0	1	114	4,319	3	0	1	123
				TSR	3,137	2	0	2	90	3,944	3	0	3	113	4,253	3	0	3	122
				TSW	2,985	2	0	1	85	3,754	3	0	1	107	4,048	3	0	1	116
	530 mA	30C530--K	53W	ASY	4,239	1	0	1	80	5,333	1	0	1	101	5,748	1	0	1	108
				TSE	4,451	2	0	0	84	5,599	2	0	0	106	6,035	2	0	0	114
				TSM	4,468	3	0	1	84	5,622	3	0	1	106	6,059	3	0	1	114
				TSR	4,400	3	0	3	83	5,536	3	0	3	104	5,967	3	0	3	113
				TSW	4,188	3	0	1	79	5,269	3	0	1	99	5,679	3	0	1	107
700 mA	30C700--K	67W	ASY	5,170	1	0	1	77	6,504	1	0	2	97	7,011	1	0	2	105	
			TSE	5,428	2	0	0	81	6,829	3	0	1	102	7,362	3	0	1	110	
			TSM	5,450	3	0	1	81	6,856	3	0	1	102	7,391	3	0	2	110	
			TSR	5,367	3	0	3	80	6,752	3	0	3	101	7,278	3	0	3	109	
			TSW	5,108	3	0	1	76	6,426	3	0	2	96	6,927	3	0	2	103	
1000 mA	30C1000--K	107W	ASY	6,775	1	0	2	63	8,520	2	0	2	80	9,187	2	0	2	86	
			TSE	7,113	3	0	1	66	8,946	3	0	1	84	9,646	3	0	1	90	
			TSM	7,141	3	0	1	67	8,982	3	0	2	84	9,685	3	0	2	91	
			TSR	7,032	3	0	3	66	8,845	4	0	4	83	9,537	4	0	4	89	
			TSW	6,693	3	0	2	63	8,418	4	0	2	79	9,077	4	0	2	85	

Lumen Ambient Temperature (LAT) Multipliers

Use these factors to determine relative lumen output for average ambient temperatures from 0-40°C (32-104°F).

Ambient	Lumen Multiplier
0°C	1.02
10°C	1.01
20°C	1.00
25°C	1.00
30°C	1.00
40°C	0.98

Electrical Load

LEDs	Drive Current (mA)	System Watts	Current (A)					
			120	208	240	277	347	480
10C	700	26W	0.25	0.15	0.13	0.11	-	-
	1000	37W	0.37	0.21	0.18	0.16	-	-
20C	350	25W	0.23	0.13	0.12	0.10	-	-
	530	37W	0.33	0.19	0.17	0.14	-	-
	700	46W	0.43	0.25	0.22	0.19	0.15	0.11
	1000	74W	0.68	0.39	0.34	0.29	-	-
30C	350	35W	0.33	0.19	0.16	0.14	-	-
	530	53W	0.50	0.29	0.25	0.22	-	-
	700	67W	0.66	0.38	0.33	0.29	0.23	0.17
	1000	107W	1.01	0.58	0.50	0.44	-	-

Projected LED Lumen Maintenance

Data references the extrapolated performance projections for the platforms noted in a 25°C ambient, based on 10,000 hours of LED testing (tested per IESNA LM-80-08 and projected per IESNA TM-21-11).

To calculate LLF, use the lumen maintenance factor that corresponds to the desired number of operating hours below. For other lumen maintenance values, contact factory.

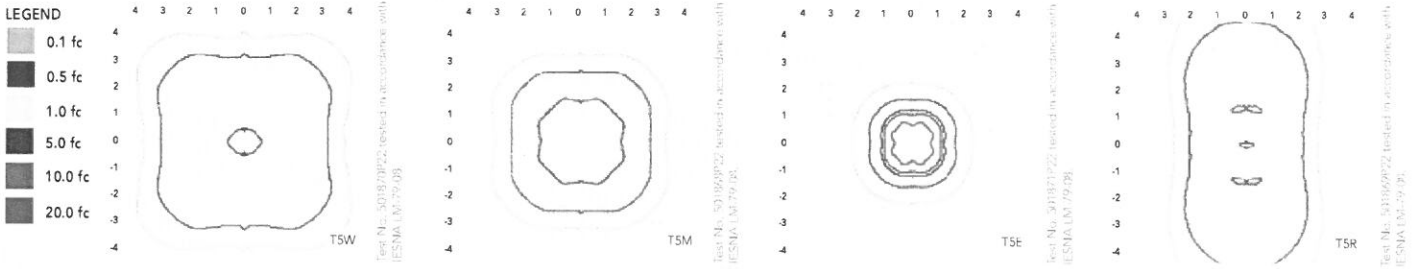
Operating Hours	0	25,000	50,000	100,000
Lumen Maintenance Factor	1.0	0.97	0.94	0.90
	1.0	0.93	0.89	0.80
	1.0	0.98	0.97	0.95
	1.0	0.98	0.97	0.95



Photometric Diagrams

To see complete photometric reports or download .ies files for this product, visit Lithonia Lighting's [D-Series Parking Garage homepage](#).

Isofootcandle plots for the DSXSC LED 30C700 40K. Distances are in units of mounting height (8').



FEATURES & SPECIFICATIONS

INTENDED USE

The energy savings, long life, and easy-to-install design of the D-Series LED Surface Canopy luminaire make it the smart choice for canopy lighting in commercial, industrial and institutional applications with mounting heights of 8-15'.

CONSTRUCTION

Two-piece die-cast aluminum housing has integral heat sink fins to optimize thermal management through conductive and convective cooling. Modular design allows for ease of maintenance and future light engine upgrades. The LED drivers are mounted in direct contact with the casting to promote low operating temperature and long life. Housing is completely sealed against moisture and environmental contaminants (IP66) and is suitable for hose-down.

FINISH

Exterior parts are protected by a zinc-infused Super Durable TGIC thermoset powder coat finish that provides superior resistance to corrosion and weathering. A tightly controlled multi-stage process ensures a minimum 3 mils thickness for a finish that can withstand extreme climate changes without cracking or peeling.

OPTICS

Precision-molded proprietary acrylic lenses provide five different photometric distributions suited to a variety of canopy and walkway applications. Light engines are available in 3000K (80 min. CRI), 4000K (70 min. CRI) or 5000K (65 min. CRI) configurations.

ELECTRICAL

Light engines consist of 10 high-efficacy LEDs mounted to a metal-core circuit board to maximize heat dissipation and promote long life. The electronic driver has a power factor of >90%, THD <20%, and a minimum 2.5 KV surge rating. When ordering the SPD option, a separate surge protection device is installed within the luminaire which meets a minimum Category C low operation (per ANSI/IEEE C62.41.2).

INSTALLATION

Mounts to a 4x4" recessed or surface mount outlet box using a quick-mount kit (included); kit contains galvanized steel luminaire and outlet box plates and a full pad gasket. Kit has an integral mounting support that allows the luminaire to hinge down for easy electrical connections. Luminaire and plates are secured with captive screws. Supply leads are 12" in length as standard. For longer supply leads, please consult factory.

LISTINGS

CSA certified to U.S. and Canadian standards. Light engines and luminaire are IP66 rated. Rated for -40°C minimum ambient.

DesignLights Consortium® (DLC) qualified product — Fuel Pump Canopy Luminaires category. Not all versions of this product may be DLC qualified. Please check the DLC Qualified Products List at www.designlights.org to confirm which versions are qualified.

WARRANTY

Five year limited warranty. Full warranty terms located at

Note: Specifications subject to change without notice.