

12/09/13 10:31:30AM
West Virginia Purchasing Division



E.L. ROBINSON
ENGINEERING

Expression of Interest

DECEMBER 10, 2013

A grayscale background image showing a hand holding a pen, poised to write on a blueprint or technical drawing. The drawing includes various lines, circles, and text, including the words 'NO TAKE' and some numbers like '1324' and '379.15'.

Monongahela River Boat Ramp Development

Fairmont, West Virginia
RFQ# DNR 214040

Original

ESTABLISHED EXPERIENCE. PROVEN PERFORMANCE.

T: 304.776.7473
F: 304.776.6426

5088 Washington Street, West
Charleston, West Virginia 25313

elrobinsonengineering.com



December 10, 2013

Mr. Guy Nisbet, Senior Buyer
Department of Administration Purchasing Division
2019 Washington Street, East
Charleston, West Virginia 25305

Re: Monongahela River Boat Ramp Development Expression of Interest
RFQ# DNR 214040

Dear Mr. Nisbet:

E.L. Robinson (ELR) professionals have helped West Virginia plan and develop our built environment for 35 years. ELR's team has completed many similar projects all across West Virginia for the Division of Natural Resources, Highways, Environmental Protection as well as many cities and counties.

Here are a few points of note that make ELR ideally suited to assist you on this project.

1. Past design experience in boat ramp projects completed for WVDNR, ODNR, and NRCS.
2. Current and previous experience working with WVDNR on other projects throughout West Virginia will be an asset completing this project on time and within budget.
3. With design professionals from the field of surveying, engineering, landscape architecture, and construction management, our team has the ability to offer the required services for this project. Our offices in Bridgeport and Charleston will collaborate for these required services.

We welcome the opportunity to assist WVDNR with this project through planning, design and construction administration. We look forward to your favorable review. Should you have any questions, please call me.

Sincerely,

Jeff L. Nelsen, PLA

Project Manager

jnelson@elrobinson.com

Table of Contents



Firm Overview	4
Qualification Statement	5
Firm's Staffing / Capacity to Perform Project's Scope	6
Schedule & Deadlines / Budget & Cost Accounting	7
Project Approach	8-11
Our Project Team	12
Experience / Capabilities of the Project Team	13-24
Edward L. Robinson, P.E., P.S., President	13-14
Jeff Nelsen, PLA, Project Manager	15-16
Tim Cart, P.E., P.S., Project Engineer	17-18
Patrick Leighty, P.E., Project Engineer	19-20
James T. Rayburn, P.S., Chief Surveyor	21-23
Jeff Casto, Construction Inspector	24
Projects	25-36
Ice Creek Boating and Fishing Access - Coal Grove, Ohio	25
Kanawha Falls Public Access - Gauley Bridge, West Virginia	26
South Mill Creek Recreation Area - Grant County, West Virginia	27
Mud River Recreation Area - Lincoln County, West Virginia	28
Beech Fork State Park Lodge Development - Lavalette, West Virginia	29
Stonewall Jackson Lake Resort - Roanoke, West Virginia	30
Stonewall Jackson Lake Resort Pedestrian Bridge - Roanoke, West Virginia	31
West Virginia State Park Cabins - Multiple West Virginia State Parks	32
Blackwater Falls State Park Sewage Treatment Plant - Davis, West Virginia	33
Tygart Lake State Park Wastewater Treatment Plant - Grafton, West Virginia	34
US 35 Design / Build - Putnam County, West Virginia	35
Charles Pointe Construction Management - Bridgeport, West Virginia	36
Business References & Certifications	37
RFQ Required Attachments	38

Firm Overview



E.L. Robinson is a multi-disciplined engineering /planning firm with a staff of over 125 full-time professionals and support personnel located in seven offices throughout West Virginia (Charleston corporate office, Beckley and Chapmanville), Kentucky, and Ohio. Over the last 35 years, E.L. Robinson has grown to one of the largest firms in the region, offering a diverse scope of services. Since 1978, E.L. Robinson has provided a full range of quality engineering services, from planning and analysis to design and implementation.

Named for its founder and president, Edward L. Robinson, P.E., P.S., the firm has based its success on a commitment to quality projects with superior client service. Finding new and creative ways to say yes to challenges has brought the firm's vision of excellence into reality. Along with this "yes, we can do it" attitude, the firm has grown to understand the ingredients of a professional service firm include not only brick and mortar, but also leading edge technology and a talented, motivated staff that is continually growing and advancing their skills. This dedication rewarded ELR with being named one of the **Engineering News Record's** top 500 engineering firms in the country.

The use of technology has allowed the firm to expand engineering capabilities and make use of new resources such as satellite imagery and digital mapping. In addition to the use of technology, E.L. Robinson also continues to strive to invent new and more effective ways to serve our clients. One of these ways is to provide a thorough pre-analysis of every project, saving the client time, money, and legal exposure. When the client is educated on every phase of the job and every challenge, the reputation of the firm grows stronger and attracts business from a larger marketplace.

E.L. Robinson has been providing its clients with quality products and superior service since 1978. Our staff combines state-of-the-art technology, experienced professionals, and innovative methods to help our clients meet their challenges.

- Transportation
- Infrastructure
- Bridge Design
- Structural Engineering
- Geotechnical Engineering
- Environmental Engineering
- Site Development
- Right-of-Way Services
- Construction Administration/Observation
- Surveying/Global Positioning
- Landscape Architecture
- Oil and Natural Gas Systems Development



Qualification Statements



E.L. Robinson has a strong background in planning and design of recreation related projects. Our team has over 35 years experience working with communities in West Virginia, Ohio, and other states.

Additionally, E.L. Robinson has over 125 staff members including professional engineers, registered landscape architects, surveyors, and construction technicians. Our offices in Bridgeport and Charleston, West Virginia will provide the identified scope of services.

ELR's team has been fortunate to assist on other related projects. The following is a partial listing of similar projects relevant to the Monongahela River Boat Ramp Development.

- Ice Creek Boating and Fishing Access - Coal Grove, Ohio
- Kanawha Falls Public Access - Gauley Bridge, West Virginia
- South Mill Creek Recreation Area - Grant County, West Virginia
- Mud River Recreation Area - Lincoln County, West Virginia
- Beech Fork State Park Lodge Development - Lavalette, West Virginia
- Stonewall Jackson Lake Resort - Roanoke, West Virginia
- Stonewall Jackson Lake Resort Pedestrian Bridge - Roanoke, West Virginia
- West Virginia State Park Cabins - Multiple West Virginia State Parks
- Blackwater Falls State Park Sewage Treatment Plant - Davis, West Virginia
- Tygart Lke State Park Wastewater Treatment Plant - Grafton, West Virginia
- US 35 Design / Build - Putnam County, West Virginia
- Charles Pointe Construction Management - Bridgeport, West Virginia

Profiles and descriptions of the most recent projects with the client references can be found toward the end of this statement of qualifications.

This team of engineers, landscape architects and surveyors has been specifically assembled for this project because of their experience relating to your project and for preparing context sensitive solutions that are realistic. Resumes for each team member are included on pages 13-24.



Firm's Staffing / Capacity to Perform Project's Scope



Our firm has put together a project team that is experienced in the planning and design of boat ramp facilities and has the capacity to perform the project's scope in a timely and efficient manner:

Our team will be led by **Mr. Jeff Nelsen, PLA**, a seasoned landscape architect with a strong background in park and recreation planning and their facilities design. He has developed downtown/neighborhood master plans focused on improved pedestrian/vehicular circulation and creation/preservation of public spaces improving economic opportunities for the communities. Mr. Nelsen has completed boat ramp projects for WVDNR and USNRCS in the past and numerous other park and recreation projects for WVDNR, US Forest Service and numerous communities in West Virginia, Ohio, Kentucky, and Indiana. He is currently working on the Beech Fork State Park Lodge Development. Mr. Nelsen will serve as project manager for the project, providing the point of contact with you and coordination of ELR's the planning and design efforts.

Other key staff members that will be assigned to this project are as follows:

Mr. Patrick Leighty, P.E., provides construction documents and administrative support for this project. He was the principle engineer for ELR's last boat ramp design and engineering project for a boat ramp on the Ohio River.

Mr. Tim Cart, P.E., P.S., is a Civil, Structural and Geotechnical Engineer who has provided all the reports, plans and specifications for the referenced demolition projects previously identified. Tim has over 30 years of experience with landslide and abandoned mine land design solutions, infrastructure design for sewer and water line extensions and structural design for many buildings across the state.

Mr. Ed Robinson, P.E., P.S., will serve as Quality Control and Quality Assurance representative for the project team. Mr. Robinson has over 30 years experience in the engineering and construction field, where he has been a member of many associations and boards within the design field.

Mr. Tom Rayburn, P.S., will be assigned to oversee all Surveying activities. Our team of surveyors, managed by Mr. Rayburn, provides the latest in technology and experience in surveying and mapping. By using GIS based mapping and high-tech instrumentation, E.L. Robinson's survey team can evaluate any type of surface including lakes and river bottoms. Other services pertaining to surveying that our company specializes in are aerial photogrammetry consulting, hydrographic surveying, land surveying and GPS surveying.

Mr. Jeff Casto, Construction Inspector, has provided construction observation for these type of project and other projects in West Virginia. Jeff was involved in a significant amount of the construction inspection for the Charles Pointe Development in Bridgeport, West Virginia.

Our staff is well qualified and experienced in related pedestrian improvement projects. Each has the knowledge and capabilities to perform all of the tasks required for making the Monongahela Boat Ramp a reality.

In addition to your primary project team, other members of our organization may be called upon from time-to-time to provide their expertise and assistance to ensure this important project is completed on-time and on-budget.



Schedules and Deadlines Budget and Cost Accounting

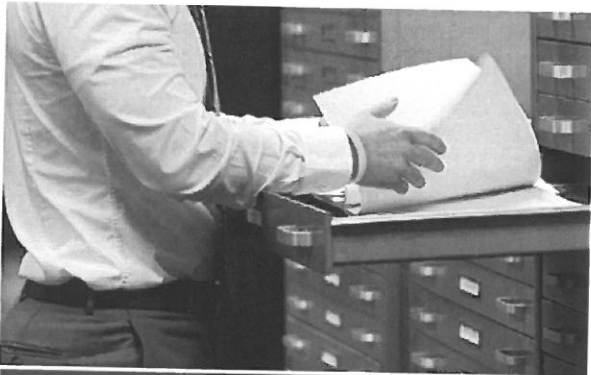


Schedules and Deadlines – are established with the client at the start of the project. These deadlines are set up in a software package to assist project managers in tracking actual tasks and completion. All project managers are familiar with this scheduling procedure and required to use it. Internal weekly resource meetings are held to check progress and reallocate staff resources if necessary.

Budget Management & Cost Accounting – Keeping a project in budget requires having the right information and current information. ELR uses a daily web-based time sheet program. Project managers know where projects are relative to budget on a daily basis. At no time is the project manager unaware of what has been charged to the project.

We use this same system to provide accurate cost estimates. By comparing the scope of services to similar previous experience, we are able to carefully estimate project costs by properly adjusting for labor, equipment, and other expenditures.

In addition to your primary project team, other members of our organization may be called upon from time-to-time to provide their expertise and assistance to ensure this important project is completed on-time and on-budget.



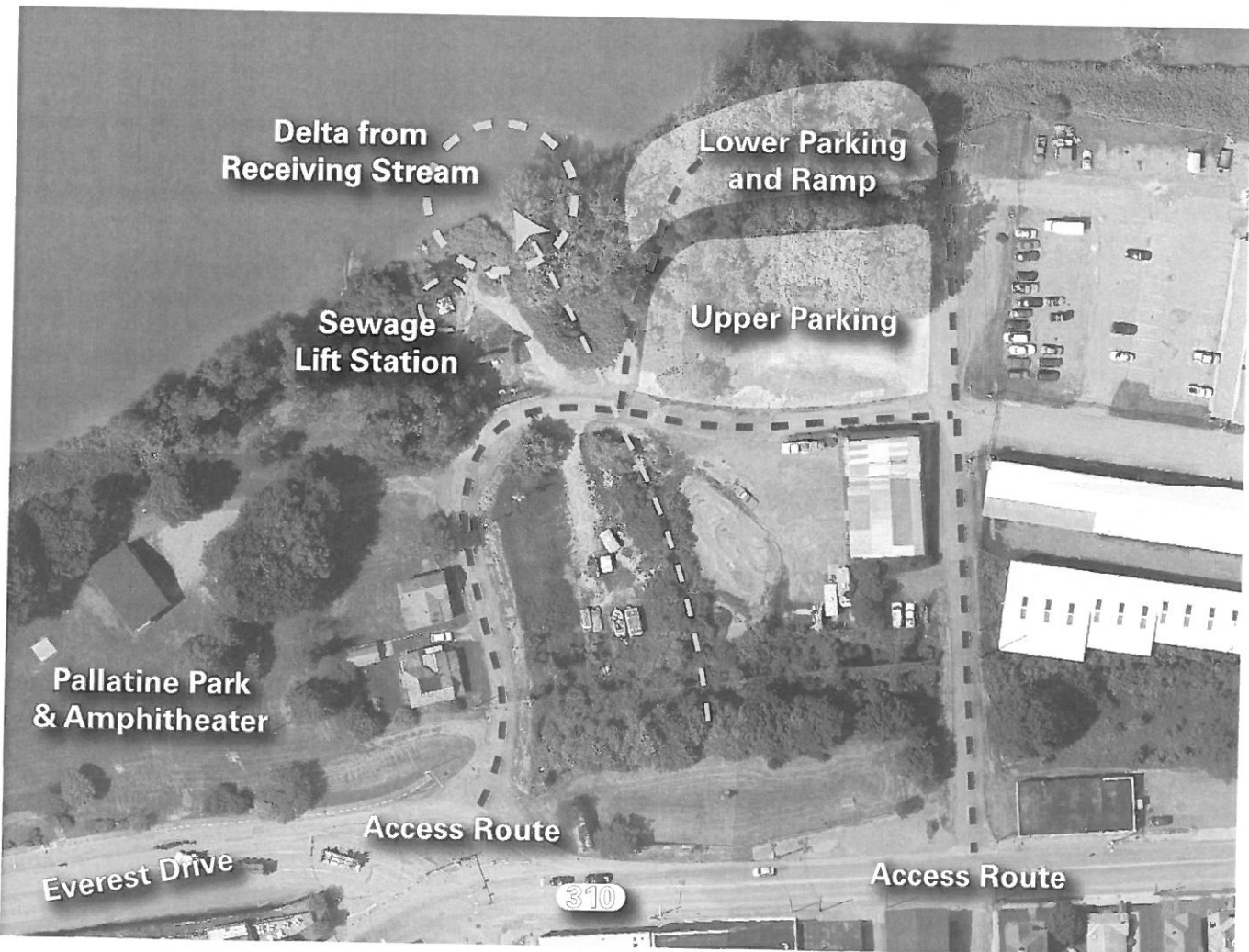
On Time. On Budget.



Project Approach



- Our project approach will be to develop the schematic design for the boat ramp facility based on the criteria identified as Exhibit A of the RFQ.
- We shall utilize the survey already completed for the boat ramp development and provide additional survey as necessary for the construction document preparation. We will coordinate access issues with WVDOH off WV 310 (Park Avenue), and Everest Drive. Review operational concerns with WVDNR, Marion County Parks and Recreation, City of Fairmont's sewer department, and WVDEP for stormwater and construction permits.
- A geotechnical investigation of the ramp and parking site will be performed after completion of schematic design and prior to proceeding to construction documents to verify structural requirements for the ramp, docks, the pavements and earthwork operations.
- Finalize the construction documents with review by WVDNR prior to preparing the required permits from WVDEP, WVDNR, and the US Army Corps of Engineers.
- Prepare the bidding documents and assist the state with bidding and bid evaluation for contractor selection.
- Provide construction administration and monitoring as per the state's direction.
- A conceptual development option is provided with photographs of the key site issues to be considered in the design.



Project Approach



• Everest Drive and New Street access



• Auburn Street access



• Lower parking and launch area



Project Approach



- Lower parking and launch area

- Pallatine Park and sewage lift station

- Impacted stream between lift station and boat ramp



Project Approach



- Impacted stream above boat ramp parking



- Upper parking area



- Upper parking area



Our Project Team



West Virginia Division of Natural Resources

Wildlife Resources Section

QA/QC

Ed Robinson, P.E., P.S.

Project Manager

Jeff Nelsen, RLA

Marion County Commission

Parks and Recreation

Engineering & Design

Patrick Leighty, P.E.

Tim Cart, P.E.

Construction Inspection

Jeff Casto

Surveying & Mapping

James Rayburn, P.S.



Education

M.S. Civil Engineering, University of West Virginia (COGS), 1981

B.S. Civil Engineering, West Virginia Institute of Technology, 1969

Registrations

Registered Professional Engineer in West Virginia, Kentucky, Ohio, Pennsylvania, North Carolina, South Carolina, Virginia, Georgia, Maryland and Colorado

Registered Professional Surveyor in West Virginia

Professional Experience

Mr. Robinson founded E. L. Robinson Engineering Co. in 1978 with four employees. Initially the firm provided land surveying and land development services. Over the course of the next 20 years, the firm added water and wastewater engineering as well as structural inspection services simultaneously growing to 14 employees.

Under his leadership, E. L. Robinson enters the new millennium as a multi-disciplined professional services firm that utilizes the latest technology in the design of highways, bridges, structures, environmental, civil, and geotechnical projects as well as global position satellite surveying, right-of-way, construction inspection and architectural services.

The firm now employs more than 85 engineers, landscape architects, surveyors and support personnel and has been converted to an employee owned company through an Employee Stock Ownership Plan (ESOP).

Professional Memberships

National Society of Professional Engineers

American Society of Civil Engineers

Water Environmental Federation

Offices Held

Chairman of WVUIT Advisory Board

President of West Virginia Council of Engineering Companies

Chairman Transportation Committee – WV Association of Consulting Engineers



Edward L. Robinson, P.E., P.S.

[continued]

State Director of West Virginia Society of Professional Engineers

President of West Virginia Society of Professional Engineers

Assistant Treasurer of the American Society of Civil Engineers

National Director of the ASCE representing WV, NC, SC and VA

President of West Virginia Section of ASCE

Honors Awarded

Alumnus of the Year – West Virginia University Institute of Technology, 1992

Engineer of the Year – West Virginia Society of Professional Engineers, 1997

Engineer of the Year – American Society of Civil Engineers, 1998

National Entrepreneur of the Year Finalist – Ernst & Young, 2001

Engineering Entrepreneur of the Year – Ernst & Young, 2001

Honorary PhD, Doctor of Science – West Virginia Institute of Technology 2002

Jeff Nelsen, PLA Project Manager



Education

Bachelor of Science in Landscape Architecture
West Virginia University, 1976

Registrations

Professional Landscape Architect in West Virginia, Indiana, Ohio, Maryland, Virginia, and Kentucky

Professional Experience

Mr. Nelsen has practiced landscape architecture for over 30 years principally in West Virginia but also has completed projects in Ohio, Indiana and Pennsylvania. His professional experience has afforded him opportunities to assist clients with park and recreation planning and design, community and urban planning, streetscape design, campus planning for elementary, secondary and higher education facilities and site planning and design for residential, commercial and public places. He has been involved in environmental planning and restoration especially lands degraded from past mining practices. He has managed site development on significant projects such as the Stonewall Jackson Resort and the Tamarack Art Center yet enjoys working with clients and communities assisting them visualize the improvements for their parcels and neighborhoods.

Representative Projects

Clay Center for the Arts and Sciences, Charleston, WV: Prepared construction and bidding documents and provided construction administration for a new public plaza space at the corner of Leon Sullivan Way and Washington Street for Charleston's premier performing arts and science center. The site's design called creating a cool green zone for people to gather informally and as an entertainment venue for special events. The relative flat site consisted of a circular plaza and fountain surrounded by a concentric ring of granite seat walls at the edge of the pavement radiating outward into the lawn area. Large 4" and 6" caliper Linden and Honeylocust trees were planted to create a shaded canopy for the space in front of the center.

Washington Street Streetscape, Charleston's East End, WV: Prepared master plan, construction and bidding documents and provided construction administration services for the remaining segment of the Washington Street streetscape from the state Capitol grounds to Charleston Area Medical Center which entailed a ½ mile of sidewalk replacement, new street lighting, brick accent pavements, street trees, landscaping, utility line relocation and burial and new underground electrical service for 30 structures. Total budget for the project was approximately two million dollars.

Rich Mountain, Laurel Hill and Corrick's Ford Civil War Battlefields, Randolph, Barbour and Tucker Counties, WV: These are three distinct battlefields but are all related to each other because they are a progression of the first major



Jeff Nelsen, PLA

[continued]

conflict in northwestern Virginia in July, 1861 between approximately 9000 Union soldiers led by General George McClellan and 5000 Confederate troops led by General Robert Garnett. The armies engaged each other at these three locations over a week's time resulting in the defeat of the Confederate forces. This early Union victory allowed Union sympathizers in the western counties of Virginia to organize a secessionist movement to form the new state of West Virginia. Services included providing master planning, interpretation recommendations, signage and trail development for each of these sites with archeological and historical consultants on the team. The planning and design efforts of these new public lands were focused on preservation and interpretation of each site's story about West Virginia's role in the Civil War.

Tamarack Art Center, Beckley, WV: Working with the architect for the project prepared the site master plan and managed design for all exterior improvements including access road, bus and car parking, earthwork, stormwater management, utility design, pedestrian walkways and plaza spaces, fountain design, landscaping, and irrigation design. This \$20 million facility is widely recognized in West Virginia and surrounding states as one of the finest venues for West Virginia artisans.

Stonewall Jackson Resort, Roanoke, WV: In the most recent major expansion of a West Virginia State Park, assisted the developer in an unique public private partnership to build new facilities at the park which included master planning for a lodge, golf course, expanded campgrounds, cabins, expanded day use facilities, trails and other site features. Prepared documents for regulatory review by the USACOE, WVDEP, and WVDNR. Managed the development of site preparation construction documents for the lodge, golf clubhouse, cabin area, and future campground areas. Assisted the golf course design team with storm water management and permitting issues. After the completion of new facilities have continued to assist the developer on future proposed amenities for the resort.

BOPARC Master Plan Update, Morgantown, WV: Due to the significant growth in Morgantown, assisted the Morgantown Board of Park and Recreation Commission with an update of the existing and proposed park facilities maintained by the City of Morgantown. This involved site review of approximately 20 facilities, development of a needs analysis survey and interpretation of its findings, preparation of new master plans for each park, preparation of cost opinions and phased recommendations for the planned \$12 million of improvements.

Aspen Village, Timberline Resort, Canaan Valley, WV: Provided master planning and managed site design, permitting and engineering for a new 50 lot subdivision near Timberline. The development involved grading layout for lots, roads, drives, utilities, pond enlargement, and site amenities. Project entailed 30 duplex and triples units and 20 single family lots. Coordinated utility extensions with each respective company and assisted several of the property owners with site planning of their home sites.

West Side Community Renewal Plan, Charleston, WV: Working with the Charleston Urban Renewal Authority, Charleston Planning Department and community leaders on the West Side developed the largest urban renewal plan within the city encompassing 228 acres and almost 900 buildings. With assistance of a public facilitation consultant held a series of meetings with residents and business owners to gain input into their vision for the plan. The adopted recommendations identified significant public and private recommendations with the strongest focus on a new home ownership zone around the new elementary school planned on Florida Street.

Timothy B. Cart, P.E., P.S.
Project Engineer



Education

B.S. Civil Engineering, West Virginia University, 1981

Registrations

Registered Professional Engineer in West Virginia and Ohio

Registered Professional Surveyor in West Virginia

Professional Memberships

American Society of Civil Engineers

Professional Experience

Mr. Cart has over 25 years of experience in providing consulting engineering services. Clients served have included Industrial, Public and Private Institutions and State and Federal Agencies.

Mr. Cart has served as Project Engineer on numerous geotechnical investigations over the years. These projects have included highways, bridges, industrial sites and private development.

Mr. Cart has been involved in numerous projects where demolition of an existing structure was deemed the best way to alleviate dangers to the public. These projects have ranged from providing structural inspections of existing structures for government agencies, for single family dwellings in rural areas and multi-story hotels in urban areas.

Mr. Cart has also served as the Sewer Project Engineer for numerous projects revolving new structures where the existing property was occupied by an existing building. Demolition of the existing structure was necessary to prepare the site for the new facility.

He has designed numerous waterline extensions and sewer collection systems. These extensions have included providing service to many residential as well as industrial customers. The sewer collection systems have included design of systems to collect sewage from residential and industrial sites. Mr. Cart served as project engineer on several major waste water treatment plant upgrades for industrial clients in the Kanawha Valley. He has designed several plants to serve industrial as well.

Mr. Cart has performed over 100 Abandoned Mine Land Reclamations projects throughout Appalachia. These projects have been mainly in Ohio, West Virginia and Eastern Kentucky. These projects have involved draining flooded mine workings, support of ground experiencing or subject to Mine subsidence and the stabilization of landslides.

Mr. Cart has designed numerous retention and retaining ponds for sites. These designs have involved the determination of storm runoff and design of structures to safely retain and pass the required storm peak flows.



Timothy B. Cart, P.E., P.S.

[continued]

His experience includes permitting activities for projects which have included:

- Railroad Occupancy Permits for Utilities
- NPDES Permits for Industrial and Public Wastewater Facilities
- Highway Permits for Utility Occupancy and Access Road Tie Ins
- Health Department Permits for Water and Sewer Projects
- US Corps of Engineers Permits - Nationwide and Individual
- West Virginia Public Lands Permits

Representative Projects

WVDOH - Nicholas County - Maintenance Headquarters Facility: Mr. Cart performed a structural analysis on wall panels, garage door headers and pre-fabricated truss system for a wood framed building. Panels and trusses were originally designed by 84 Components Company. St. Albans West Virginia and E.L. Robinson Engineering Staff determined loads based on BOCA and ASCE-7 and performed check calculations of all wall panels, trusses and other building components. Where stresses were found to be too high, additional members or alternative members were added. After correction a summary report of the analysis was provided to the WVDOH for review.

Pump Station Buildings - South Putnam PSD: Mr. Cart designed several pump station buildings to house the potable water pumps for the South Putnam PSD – Water System. These designs included overhead rail systems To assist maintenance personnel in the removal of pumps from the facilities.

Preston County - Buckwheat Express - Bus Storage Facility: Mr. Cart designed the concrete foundation system for the 132' x 80' metal building to be erected in a high snow load and high wind load environment. Building loading was based on the International Building Code and applicable portions of the ASCE-7 for wind loading.

Blackwater Falls State Park: He has designed 75 x 60 timber framed building to provide shelter and screening of a WWTP in a state park. The design included a foundation system capable of resisting both vertical, lateral and uplift loading. The design incorporates rough timber to blend the building into the natural surroundings.

Mr. Cart has performed numerous structural inspections of homes and buildings throughout the Kanawha Valley and State of West Virginia. He has also prepared reports which detail the structural deficiencies and recommendations on necessary repairs.

Patrick Leighty, P.E.
Project Engineer



Education

B.S. Civil Engineering
University of Kentucky, 2001

Registrations

Registered Professional Engineer in Ohio, West Virginia, Kentucky, Virginia, Indiana, and Illinois
Registered Professional Surveyor in Ohio and Kentucky

Professional Memberships

Water Environment Federation
Ohio Water Environment Federation
Society of American Military Engineers

Professional Experience

Mr. Leighty has professional experience primarily in coordination of engineering services and the management of all field personnel. He provides construction administrative support to many of the firm's clientele during the design development of their projects. To ensure continuity, Mr. Leighty is involved beyond the planning stage, into preliminary and final design of the project. Prior to joining E.L. Robinson Engineering, Mr. Leighty had experience with other consulting engineering firms in the area, and three years experience with a local construction firm. Mr. Leighty has also handled various complex issues related to construction disputes in both the public and private construction sectors. He has significant experience in the use of computer and computer programs for many other engineering applications.

Representative Projects

Mr. Leighty has experience in the planning, design and construction of a wide variety of Industrial, water, wastewater, transportation and structural projects. He also has expertise in the development of detailed technical specifications and construction management of large industrial project.

Ironton Street Paving 2009 - Project Engineer responsible for project planning, design, construction management and project close-out for resurfacing 0.75 miles of City Street.

Ironton Third Street Paving and Drainage - Project Engineer responsible for project planning, grant procurement, design, construction management and project close-out for resurfacing and drainage improvements to 1.3 miles of City Street.

Ironton Signalization Study - Project Engineer responsible for data collection, agency coordination and local coordination of traffic safety study for 19 signalized intersections in Ironton, Ohio.

Coal Grove Boating & Fishing Access - Project Engineer responsible for planning and design development for a single lane boat launch facility and access road in Coal Grove, Ohio. Also was responsible for the bidding



Patrick Leighty, P.E.

[continued]

assistance and construction administration for the project.

Lawrence County Airport Capital Improvements – Project Engineer assisting in the Geotechnical Investigations, design, bidding, and construction management. He was responsible for Construction Services for Airport Drainage and Apron Expansion and Airport Layout Plan Update which also includes the design development for drainage improvements to the airport.

Chesapeake Symmes Creek Road Slip Repair – Project Engineer assisting in designing an emergency permanent retaining wall, plans, specifications, bidding assistance and construction administration for a 400-foot section of roadway.

Chesapeake North Huntington Heights Slip Repair – Project Engineer responsible for designing an emergency permanent retaining wall, plans, specifications, bidding assistance and construction administration for a 375-foot section of roadway.

Gallia County Slip Repairs – Project Engineer responsible for designing emergency permanent retaining wall, plans, specifications, and construction administration for seven different slips that occurred in the spring of 2011.

The Point Intermodal Roadway Project – Project Engineer responsible for the construction administration for design/build roadway project that provides access to the Ohio River for the Point Industrial Park.

The Point Intermodal Railway Project – Project Engineer responsible for the construction administration for design/build project that added a loading pad and railroad spurs for the Point Industrial Park.

Ironton Riverfront Eroded Bank Restoration - Project engineer responsible for design, plans, specifications and construction management for the placement of large size rip rap for prevent the river bank from slipping further.

Burlington Storm Sewer Improvements - Project engineer responsible for design, plans, specifications and construction management for the reconstruction of storm drainage and curbs in the Wal-Mart Way area of Burlington, Ohio.

Education

A.S. Mechanical Engineering, West Virginia Institute of Technology, 1970

Registrations

Registered Professional Surveyor in West Virginia

Professional Memberships

American Congress on Surveying and Mapping

The American Association for Geodetic Surveying (AAGS)

Member Organization of ACSM.

Cartography and Geographic Information Society (CaGIS)

Geographic and Land Information Society (GLIS)

National Society of Professional Surveyors (NSPS)

West Virginia Association of Land Surveyors, Inc.

Professional Experience

Mr. Rayburn currently serves as Manager of Surveying for E.L. Robinson Engineering (ELR) and has more than 30 years of Design Surveying and Construction Surveying experience. The responsibilities include management of surveying and control for various design projects, including highways, buildings, and bridges. In addition, Mr. Rayburn manages and performs work consisting of courthouse research for property ownership resolution for the above mentioned project types. This includes preparation of property resolution maps, deed descriptions for property acquisitions required for project plan preparation. Mr. Rayburn has experience in Geodetic Control Surveys, 3D Laser Scanning, Photogrammetric Control, Topographic Surveys, Cemetery Surveys, Boundary Surveys, Construction Stakeout, Subdivision Surveys, along with Hydrographic surveys of river and lake bottoms. A few of the more notable surveying projects performed by ELR under the supervision of Mr. Rayburn, has been the Blennerhassett Bridge Project, 11 continuous miles of Corridor H design surveys, GPS Control for the West Virginia Statewide Mapping and Addressing Board Project, 3D Laser Scan and mapping of the CAMC Parking Garage partial collapse, and 3D Laser Scanning of I64/I77 Retaining Wall for Monitoring.

James T. Rayburn, P.S.

[continued]

Representative Projects

Design Surveys

- **Corridor H (WVDOT) Hardy County, WV:** Lead Surveyor for Design Surveys, Right of Way Staking, etc. for approximately 11 miles of Corridor H in Hardy County, WV. This was for Sections 6 & 7 of Corridor H, both Sections of which are now under construction. Estimated construction cost of \$150 million dollars.
- **WV Route 10 (WVDOT) Logan to Man WV, Logan County, WV:** Lead Surveyor for Design Surveys for a section approximately five miles in length from Man, WV, to Rita, WV, including the Man Bridge. Also provided control surveying for the entire project length of approximately 12 miles. The approximate five miles section of roadway is now under construction at an estimated cost of \$51 million dollars.
- **Blennerhassett Bridge, Corridor D (WVDOT), Wood County, WV:** Lead Surveyor for Design Surveys for this landmark Bridge Project which is now under construction at an estimated cost of \$120 million dollars.
- **James Ramsey Bridge (WVDOT) Potomac River, Shepardstown, WV:** Lead Surveyor for Design Surveys for this Bridge Project which is now completed at an estimated cost \$15.5 million dollars. This project involved working in an environmentally historic area, which adjoined a National Park.
- **US Route 35 (WVDOT) Mason County, WV:** Lead Surveyor for Design Surveys for two Design Sections each approximately 2.5 miles in length from Lower Five Mile Road to Upper Nine Mile Road. Also provided control surveying for the entire US 35 design project length of approximately 22 miles.
- **I64/US 35 (WVDOT) I64 to US 34 Crooked Creek, Putnam County, WV:** Lead Surveyor for Design Surveys, Right of Way Staking, etc. for approximately four miles of US 35 including Interstate 64 Ramps and Fly-overs in Putnam County, WV. This included the I64 Bridges and Flyovers, which is now under construction.
- **ATB-Parrish Road (ODOT) Ashtabula County, Ohio:** Project Design Surveyor for rail grade separation project. Project involved roadway realignment, 900' new bridge, new waterline, storm and sanitary sewers. Project is currently under construction. Estimated construction cost: \$8.6 million.
- **PIC-23-3.21 and Various (ODOT) Pickaway County, Ohio:** Project Design Surveyor for ODOT Project PIC-23-3.21 and Various. Project involves deck replacements along 11 miles of US 23 in Pickaway County. Project includes large diameter culvert liner, interchange upgrade that includes mainline profile correction, ramp reconstruction, and addition of barrier wall and storm drainage. Project is currently under design (90%). Project scheduled for construction in 2007. Estimated construction cost: \$12 million.
- **ATB-90-22.06 (ODOT) Ashtabula County, Ohio:** Project Design Surveyor for Interstate Reconstruction Project. Project includes total pavement replacement, bridge widening, and contra – crossover maintenance of traffic, culvert replacements and storm sewer rehabilitation and sign replacements. Project is currently under design (50%) and scheduled for construction in 2011. Estimated construction cost: \$36 million.

Construction Surveys

- **Corridor D (WVDOT) Wood County, WV:** Lead Surveyor for Highway/Bridge Construction Monitoring surveys for the following segments of Corridor D and related relocation projects:

James T. Rayburn, P.S.

[continued]

- Godbey Athletic Field Relocation Construction
- Godbey Colt Field and Soccer Field Construction
- West WV 47-East WV 47 Highway/Bridge Construction
- East Buckeye-West Little Kanawha River Highway/Bridge Construction
- **Interstate I-79 Widening and Median Barrier (WVDOT) Harrison County, WV:** Lead Surveyor for construction layout surveys for the widening of I-79 from the Meadowbrook Exit, north to the Jerry Dove Exit approximately three miles in length, as a subcontractor to the prime contractor.
- **CAMC 33rd Street Relocation and Building Expansion, Charleston, WV:** Lead Surveyor for construction layout surveys for 33rd Street relocation along with ancillary items including sidewalks, drainage and utilities. Also layout surveys for building expansion project.
- **Saturn Dealership, Hurricane, WV:** Lead Surveyor for Saturn Dealership site development and access roads at Hurricane Interchange of Interstate 64.
- **Arch Coal WV Mining Operations:** Lead Surveyor as a subcontractor to Arch Coal operations for Valley Fill Construction (Up to 27 million cubic yard fills), mine haul road layout, drill line staking, and dragline pit layout.

Jeff Casto

Inspector / Technician



Education

High School Diploma, Herbert Hoover High School, 1975

Carver Career Center, 1975

Certifications

Fairmont State University Level IV (TET-SC)

NICET Level IV Construction Certification

Class A CDL License

WVDOH PCC Inspector

WVDOH Aggregate Sample

OSHA 40 Hour Training Class

Lead Worker in Safety Course

Turn of the Nut & Rotational Capacity

Professional Experience

Mr. Casto has 14 years experience with WVDOH District I. He has experience in all phases of construction projects. He has worked as an inspector on WV Highways and Bridge Projects throughout the state. Some of the projects Mr. Casto has been involved with include: lead removal, pipe replacements, slip repair, bridge replacement, and ramp and road widening.

Representative Projects

Corridor D, Route 50, Parkersburg, WV – Supervisor – 5 separate projects which included 9 bridges with construction of all phases.

Ohio DNR, Pomeroy, Ohio – Lead Inspector – Remove and repair slip.

Earl Ray Tomblin Industrial Park, Logan County, WV – Installation of storm and sanitary sewer, water line and construction of roadway, curbs, gutters and lighting.

Charleston Area Medical Center General Division, Charleston, WV – Lead Inspector – Repair of collapsed parking building.

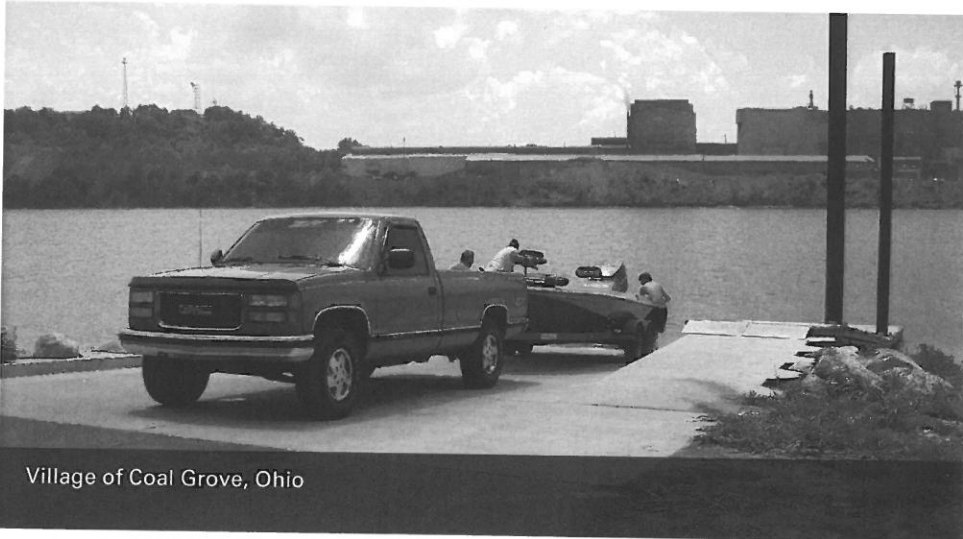
Charleston Area Medical Center Memorial Division, Charleston, WV – Lead Inspector – Two construction projects that required roadway construction, storm sewer, sanitary sewer and water line relocation work of 33rd Street replacement.

Chief Logan State Park, Logan, WV – Lead Inspector – Inspected excavation and compaction of materials in preparation of building pad for recreational center.

Charles Pointe – North Land Bay, Bridgeport, WV – Lead Inspector - Inspected construction work on Charles Pointe Development. The work consisted of installation of storm and sanitary sewer, water line construction, curbs, lighting and roadway construction.



Ice Creek Boating and Fishing Access Phase I and II



CLIENT:

Village of Coal Grove, Ohio

Larry McDaniel, Mayor
Village of Coal Grove, Ohio
513 Carlton Davidson Lane
Coal Grove, Ohio 45638
Phone: 740.532.8875

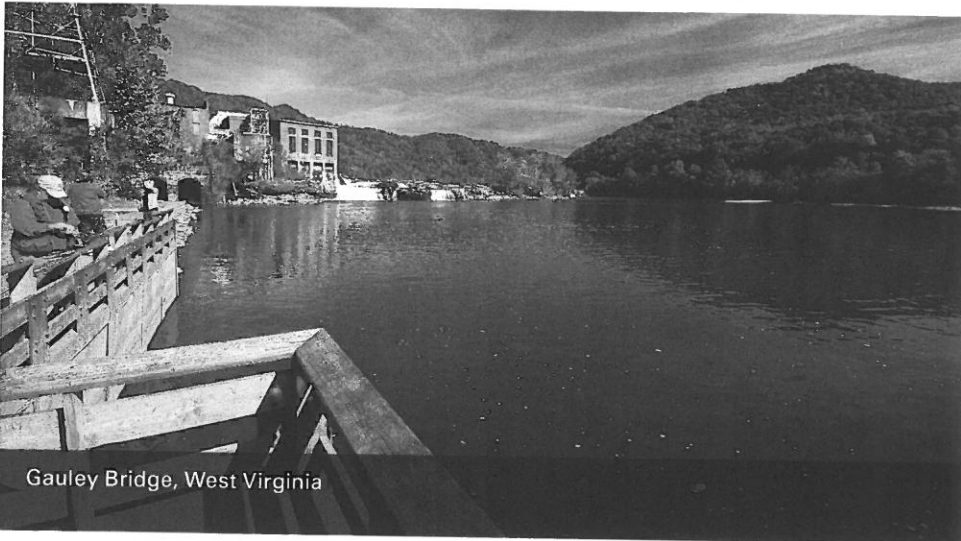
Village of Coal Grove, Ohio

The Village of Coal Grove received the Cooperative Boating Facility Grant from the ODNR to construct a Boat Ramp complete with floating docks and Access to the site. The project consisted of 75 feet of floating docks complete with guide piles, drainage, and site work to install an asphalt parking area.

E.L. Robinson Engineering was responsible for obtaining funding, final design, and construction administration for the two phases of the project.



Kanawha Falls Public Access



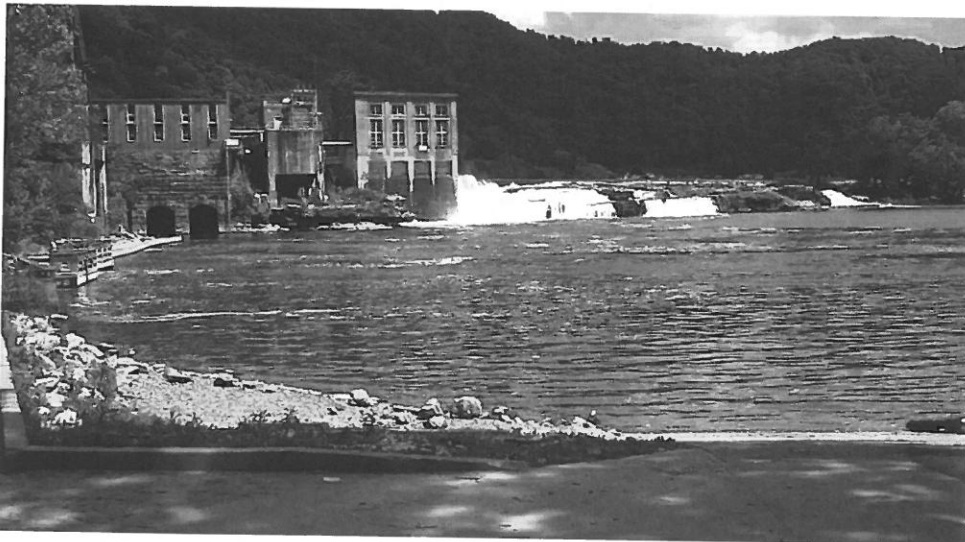
CLIENT:

West Virginia Division of
Natural Resources

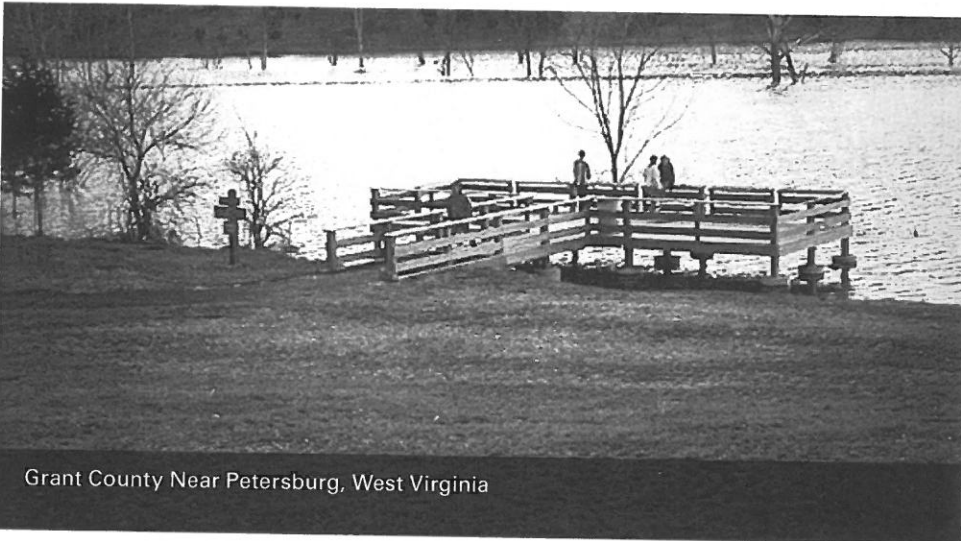
Zack Brown, Division of
Natural Resources - Wildlife
Resources 324 4th Avenue
South Charleston, WV 25303
Phone: 304.558.2771

E.L. Robinson's landscape architects prepared construction documents for this unique natural landmark on the Kanawha River just down stream from its formation at Gauley Bridge. This project included a boat ramp, access road, parking facilities, fishing pier, trails, and picnic sites for this excellent fishing area as well as a very scenic tourist spot along US Route 60 in Fayette County.

This project was completed by E.L. Robinson's landscape architects prior to their affiliation with the firm.



South Mill Creek Lake Area



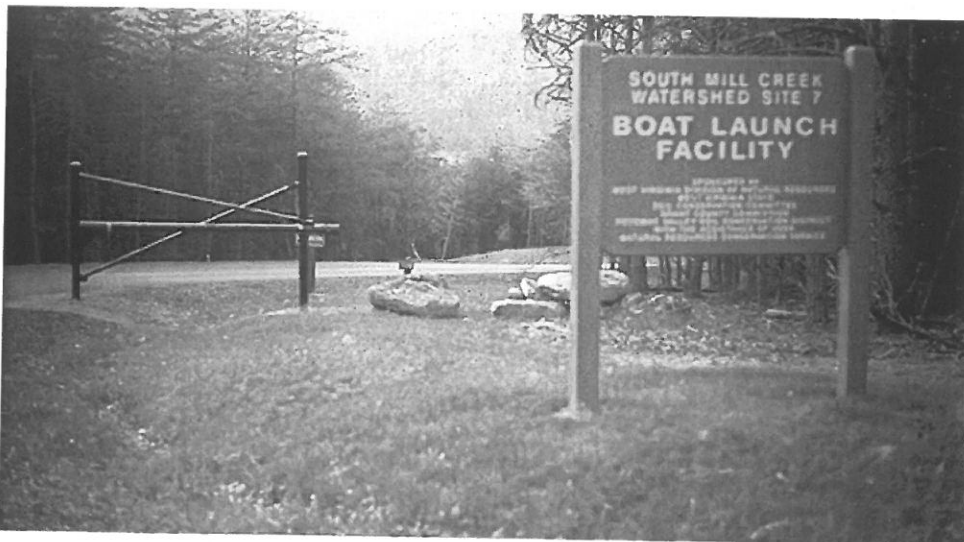
CLIENT:
U.S. Natural Resources
Conservation Service

Andy Deichert
1550 Earl Cove Road Suite 200,
Morgantown, WV 26505
Phone:304.284.7540

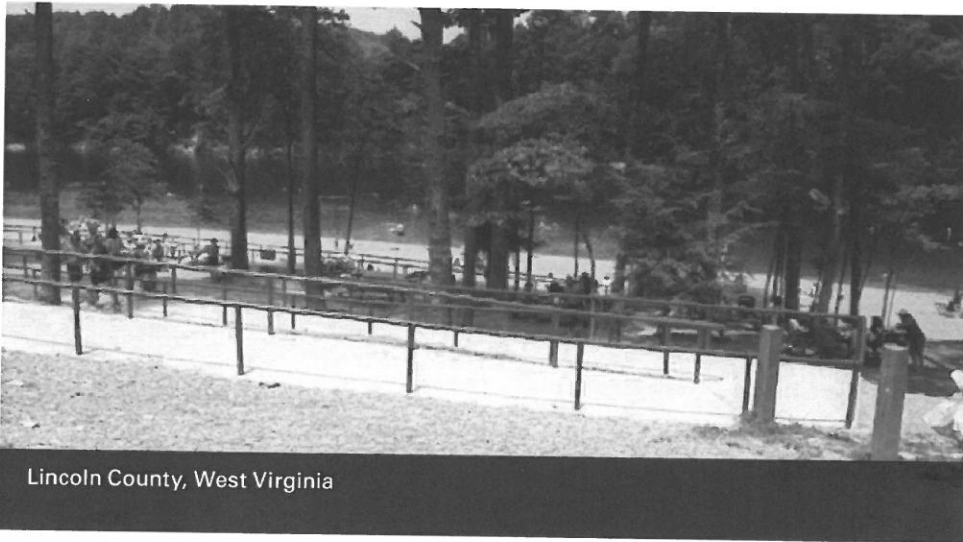
Grant County Near Petersburg, West Virginia

E.L. Robinson's landscape architects provided Master planning and construction documents for the 100 car/trailer parking lot, access road, boat ramp, accessible fishing dock, pit toilet, and picnic facilities for South Mill Creek Lake recreation development.

This project was completed by E.L. Robinson's landscape architect prior to their affiliation with the firm.



Mud River Recreation Area



CLIENT:

U.S. Natural Resources
Conservation Service

Andy Deichert
1550 Earl Cove Road Suite 200,
Morgantown, WV 26505
Phone:304.284.7540

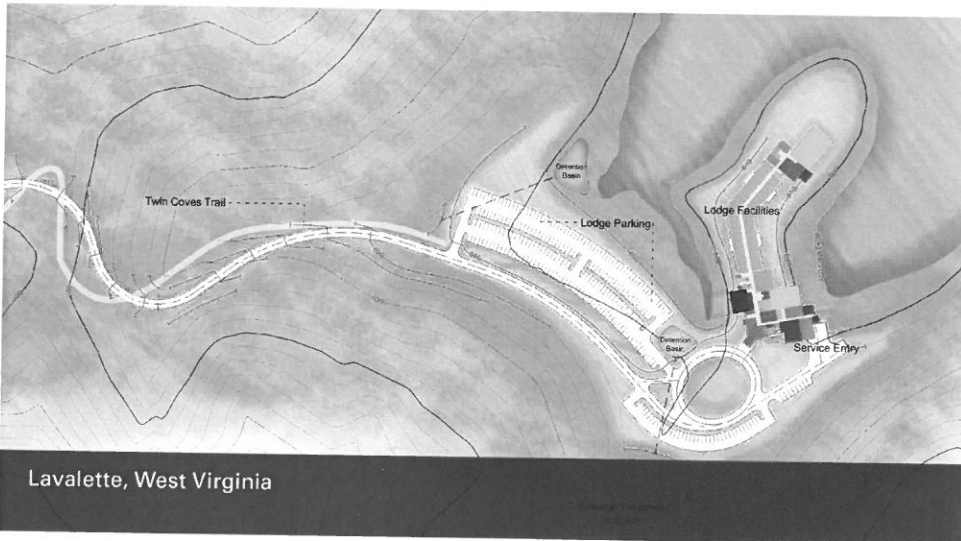
E.L. Robinson's landscape architects provided a master plan and construction documents for the development of a 200-acre recreation facility associated with a new flood control lake on the Upper Mud River in rural Lincoln County, WV. The recreational use area features a diverse natural habitat with steeply sloping mature beech, oak and hemlock forests, rock outcrops and upland meadows dotted with young maples and pine thickets. Historic Native American habitat is documented at a rock ledge shelter located on-site.

Development included 2 boat ramps and related parking, beach, bath house, picnic areas, shelters, trails, tot play playfields along new-formed park roads and parking areas. Utility service to the facility is provided through on-site water and wastewater systems for collection, distribution and treatment.

This project was completed by E.L. Robinson's landscape architects prior to their affiliation with the firm.



Beech Fork State Park Lodge Development



CLIENT:

West Virginia Division of
Natural Resources

Brad S. Leslie, P.E.
Assistant Chief West Virginia
Division of Natural Resources
State Parks Section
324 4th Avenue
South Charleston, WV 25303
Phone: 304.558.2764 Ext. 51823
E-Mail: bradley.s.leslie@wv.gov

West Virginia Division of Natural Resources has considered a lodge for Beech Fork State Park since before it was opened in 1979. Several studies were completed in the past examining six possible sites for lodges ranging in size from 75 to 150 rooms. The last studies completed in 1995 recommended a 150 room lodge at Stowers Branch.

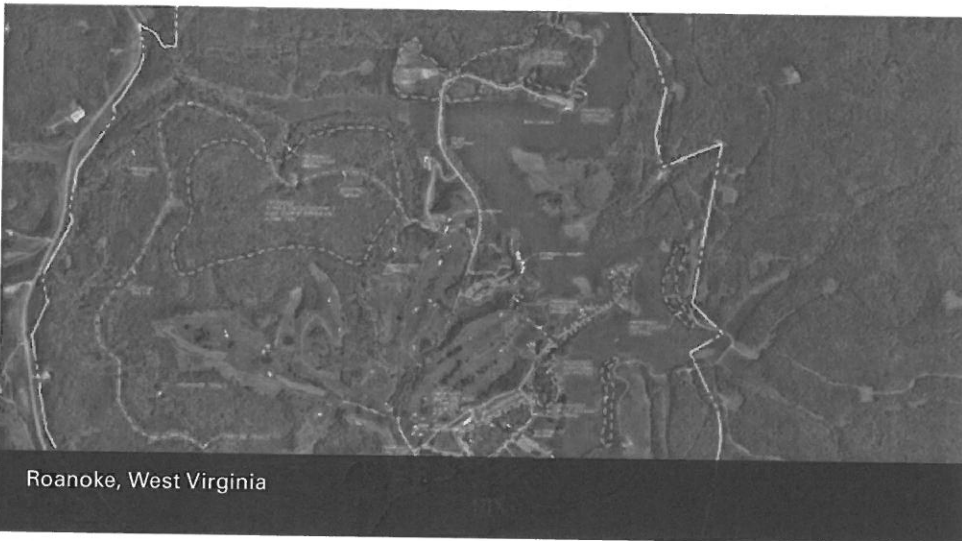
WVDNR retained E.L. Robinson's landscape architects in 2008 to study a new site near the Beech Fork Lake dam and marina for the feasibility of building a 35, 50, or 75 room lodge. This study found from earth work calculation, cost estimates, and slope analysis maps that the Stowers Branch site was still the most desirable based on costs, proximity to the lake, and visual impact on the park.

In 2011, WVDNR retained the team of E.L. Robinson Engineering and ZMM Architects to prepare a feasibility study for a 75 room lodge at the Stowers Branch location. This site is located near the swimming beach owned and operated by US Army Corps of Engineers and two miles by road from the Beech Fork Lake Dam.

This site was selected after two previous studies completed in 1994 and 2008. It was concluded that after studying six other possible locations, the Stowers Branch Site proved to be the most desirable location. This study is the basis of WVDNR efforts to lease additional USACOE property for the state park's facilities expansion.



Stonewall Jackson Lake Resort



CLIENT:

McCabe - Henley Properties for
West Virginia State Parks

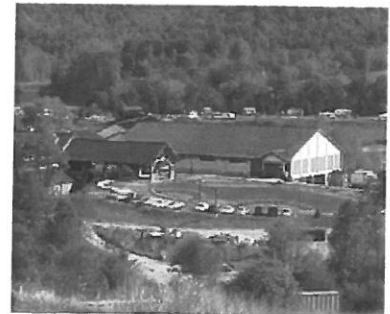
Mr. Rudy Henley
West Virginia Commercial
LLC 305 Washington St. West
Charleston, WV 25302
Phone: 304.347.7500

Stonewall Jackson Lake State Park represents a new beginning for state supported recreation development in West Virginia. The 35 million dollar

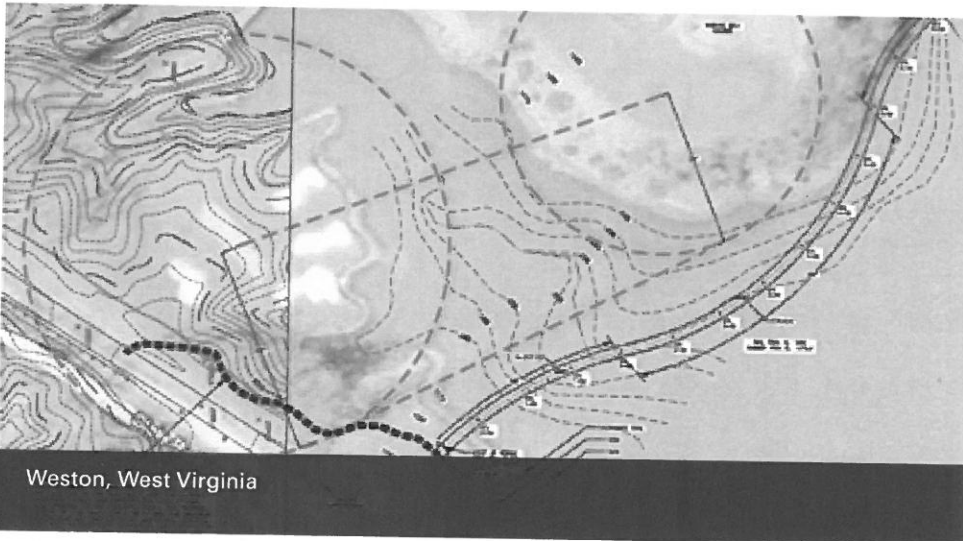
Resort planned by E.L. Robinson's landscape architects as part of the developer's team, was the first public/private partnership formed in the state for the development of facilities at a state park. The developer was responsible for coordinating all design and construction activity, while the state assisted in the financing package.

ELR landscape architects were responsible for master planning and site construction design for the 2,000 acre resort, including a 180-room lodge, an 18-hole signature golf course by Palmer Course Design Co., a 100-unit campground, cabins, day use improvements, a swimming pool, trails, access and parking. The firm was also responsible for permit coordination with the various state and federal agencies for wetlands, riparian corridors, utilities, stormwater and erosion controls. An extensive tree preservation and relocation program was planned and was coordinated by the firm.

This project was completed by E.L. Robinson's landscape architects prior to their affiliation with the firm.



Stonewall Jackson Resort Park Pedestrian Bridge



CLIENT:
West Virginia Division of
Natural Resources

James G. Schotsch, P.E.
WVDNR-Parks and Recreation
1200 Harrison Ave, Ste. 222
Elkins, WV 26241
Phone: 304.637.0301
E-Mail: james.g.schotsch@
wv.gov

West Virginia DNR received grant to build a pedestrian bridge approximately 900 feet across the lake from the lodge to the campground. An initial concept plan was developed for the bridge in 2008 which serves as the basis of the final design which EL Robinson was retained to develop.

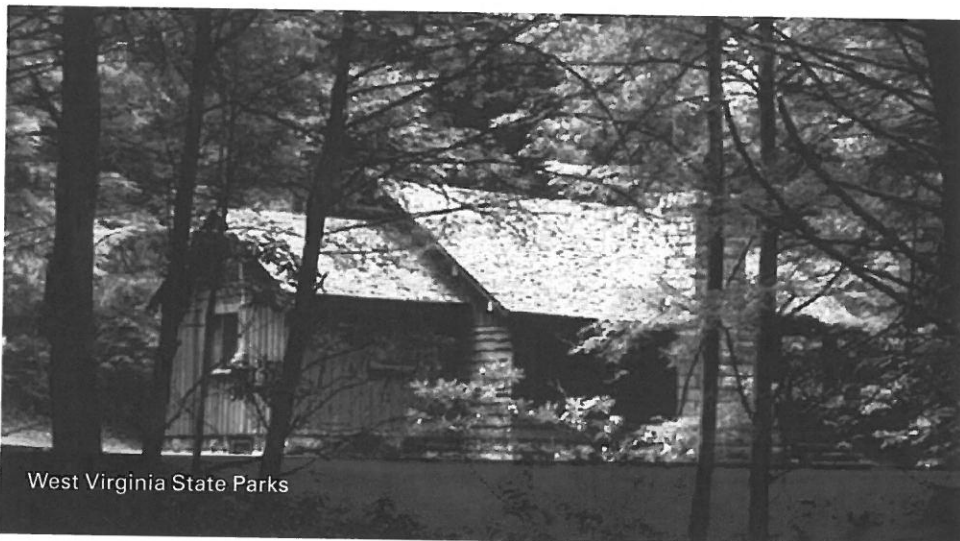
It will be a 10' wide timber pile bridge with appropriate wooden decking and handrail. The accessible approach on the lodge side is complete and the contractor will be required to connect the bridge to that existing approach. At the campground end of the bridge an alignment will be shown on the plans that will allow for the Resort to build that accessible approach separate from the bridge construction.



Projects



West Virginia State Parks Accessible Cabins



CLIENT:

West Virginia Division of Natural Resources Parks and Recreation

Brad S. Leslie, P.E.
 Assistant Chief West Virginia Division of Natural Resources State Parks Section
 324 4th Avenue
 South Charleston, WV 25303
 Phone: 304.558.2764 Ext. 51823
 E-Mail: bradley.s.leslie@wv.gov

LOCATIONS:

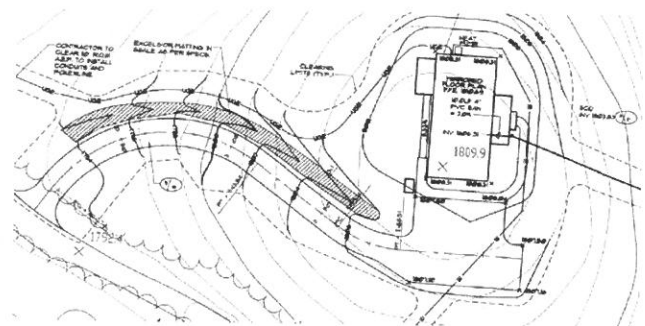
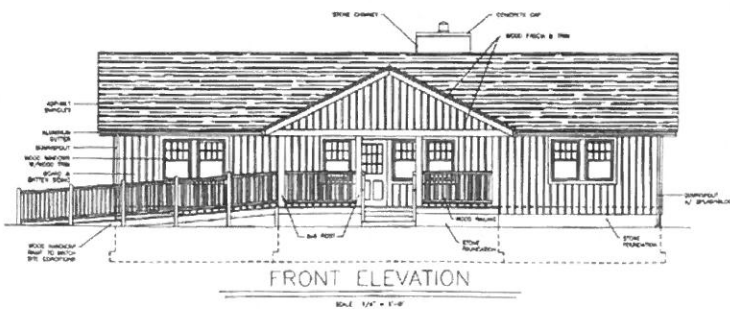
Greenbrier State Forest, Pipestem State Park, Twin Falls State Park, Bluestone State Park, Babcock State Park, Holly River State Park, Watoga State Park, Seneca State Forest, Kumbrabow State Forest, Blackwater Falls State Park, Tygart Lake State Park, Lost River State Park, Cacapon State Park.

West Virginia State Parks

As part of a \$100 million bond issued for the state wide public improvements, WVDNR retained E.L. Robinson’s landscape architects to prepare construction documents for 16 new handicapped accessible cabins throughout the state park system. Many of the sites were located adjacent to the existing cabins where slope, vegetation and drainage site considerations significantly impacted the cabins’ site design requirements for meeting the ADA guidelines.

The end result created an overall inviting and visually stimulating atmosphere where people of any physical ability will have equal opportunities to partake in all site experiences offered at the state parks and forests.

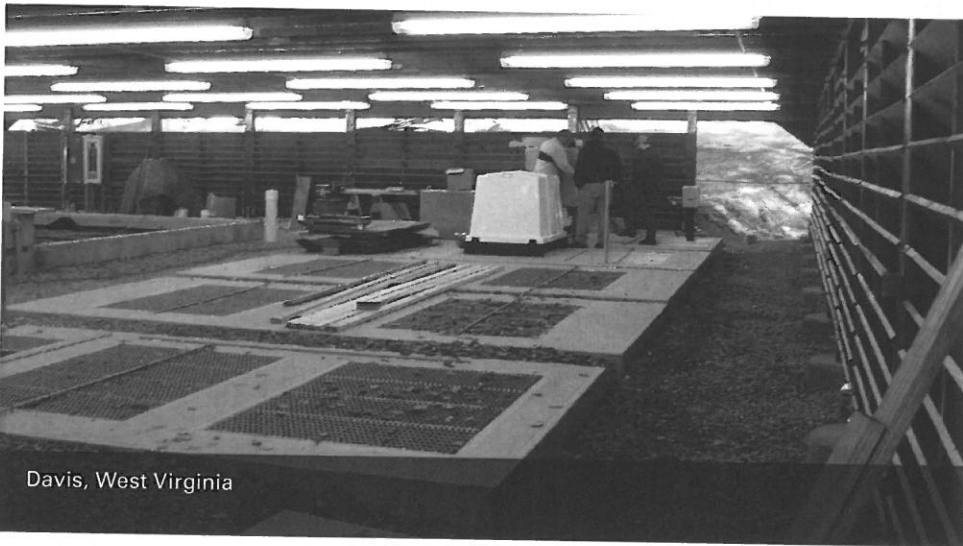
This project was completed by E.L. Robinson’s landscape architects prior to their affiliation with the firm.



Projects



Blackwater Falls State Park Sewage Treatment Plant Replacement



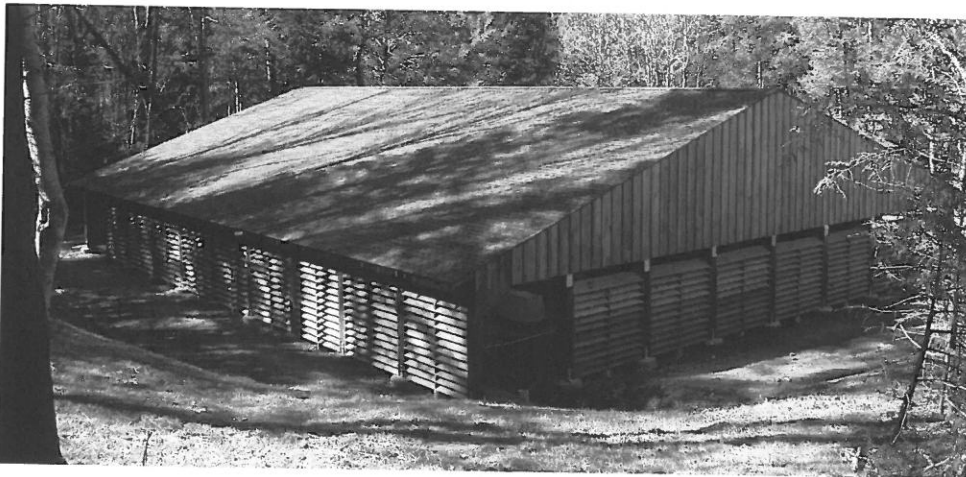
CLIENT:
West Virginia Division of
Natural Resources, Parks and
Recreation

Brad S. Leslie, P.E.
Assistant Chief West Virginia
Division of Natural Resources
State Parks Section
324 4th Avenue
South Charleston, WV 25303
Phone: 304.558.2764 Ext. 51823
E-Mail: bradley.s.leslie@wv.gov

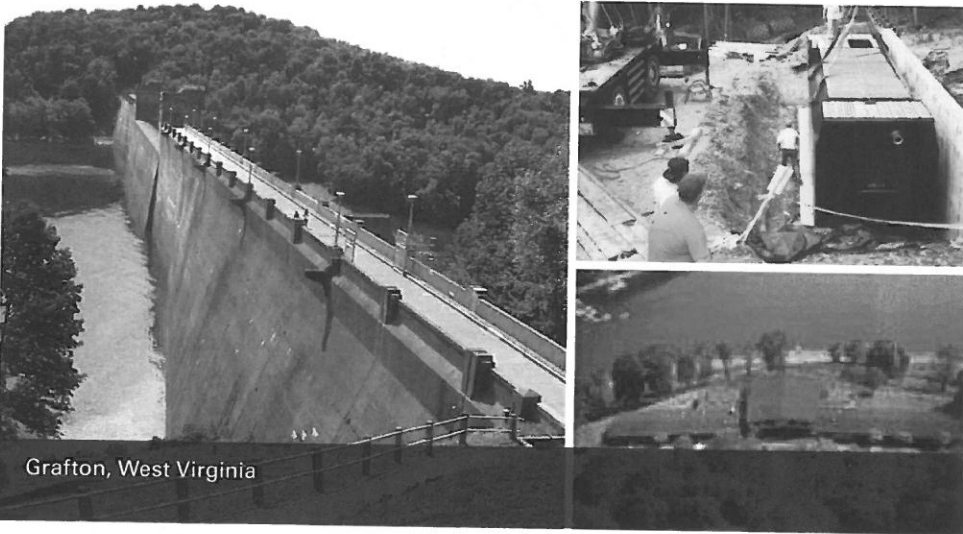
Davis, West Virginia

E.L. Robinson Engineering Co. was contracted by the West Virginia Division of Natural Resources, Parks & Recreation to design a new concrete sewage treatment plant which eliminates the potential for rust. The new plant also uses ultraviolet disinfection and provides a sand filter prior to discharge into the Blackwater Canyon.

The new plant was constructed adjacent to the existing plant. E.L. Robinson's design kept the existing plant in service during construction. A new building was also designed to match the building housing the existing plant.



Tygart Lake State Park Wastewater Treatment Plant



Grafton, West Virginia

CLIENT:

West Virginia Division of
Natural Resources, Parks and
Recreation

Brad S. Leslie, P.E.
Assistant Chief West Virginia
Division of Natural Resources
State Parks Section
324 4th Avenue
South Charleston, WV 25303
Phone: 304.558.2764 Ext. 51823
E-Mail: bradley.s.leslie@wv.gov

E.L. Robinson Engineering Co. was retained by the West Virginia Division of Natural Resources, Parks and Recreation, to provide planning, design and construction administration services for a new waste water treatment plant for Tygart Lake State Park near Grafton, West Virginia.

The existing treatment plant was replaced by an 8,000 gallon per day package plant, with new controls and electrical equipment. The new plant serves the lodge. A concrete retaining wall was also constructed due to poor soil conditions at the plant site.

US Route 35 Design-Build



CLIENT:

West Virginia Department of
Highways (WVDOH)

Daryl Allen, PE
West Virginia Department of
Transportation 1900 Kanawha
Blvd., East Charleston, WV
25305

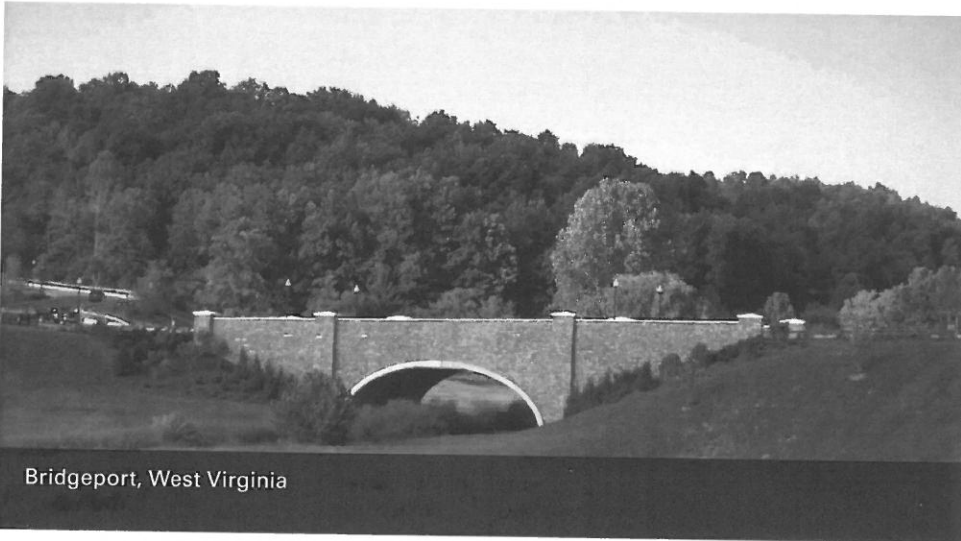
E.L. Robinson teamed with Kokosing Construction Company as joint advocates for the first ever design-build highway project for the West Virginia Department of Highways (WVDOT). The design enhances traffic safety and opens new economic development opportunities for the state and its people.

This project consists of approximately 6.29 miles of new four-lane divided highway, an interchange with WV 34, and approximately 3.34 miles of side road access and two sets of mainline structures. The project involved 6.8 miles of pavement, two bridges, 28 culverts, 39 storm sewer runs, one interchange, six at-grade intersections, realignment of four local roads and one state route, over 8,000,000 cubic yards of earthwork, 6 modified NPDES documents, two reviewing agencies (WVDOH, DEP), and 21-day review times.

The bid price was \$73,819,000 and was approximately \$30 million under the next bidder. One of the reasons that the bid price was substantially lower was due to ELR's innovative design. The original quantity of excavation was expected to be 11 million cubic yards, but was able to be reduced by 3 million cubic yards, thanks to the expertise of our qualified staff. Additional benefits from this reduced excavation included less impact on the topography and environment.

In order to meet the construction timetable, the design phase needed to be completed in four months. The design schedule followed the contractor's CPM schedule, which permitted construction crews to begin the massive excavation task the day after notice to proceed was issued by the West Virginia Department of Highways. The project involved moving approximately 8,000,000 cubic yards of earth and placement of 290,000 square yards of non-reinforced Portland Cement Pavement, along with several large size drainage structures. To complete construction in the time frame needed, both day and night crews were utilized.

Charles Pointe Construction Monitoring



Bridgeport, West Virginia

CLIENT:

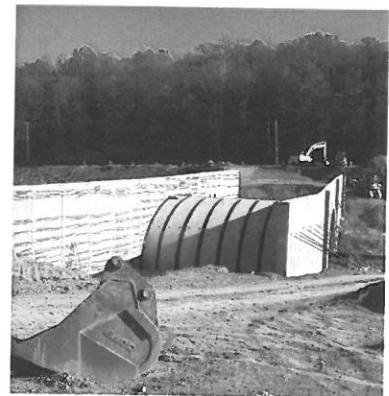
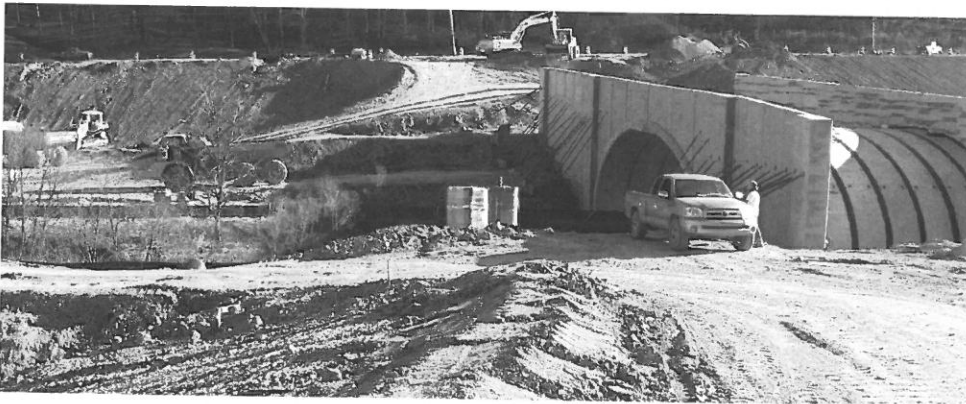
Genesis Partners

James A. Corton,
Managing Partner
2400 Aviation Way
P.O. Box 1000
Bridgeport, WV 26330
Phone: 304.842.0880

E-mail:

cortonja@genesis-partners.com

The South Landbay & North Landbay Phase I project included the construction of the Road A-4 and Road A-1 entrances, including a pre-cast arch bridge w/stone facing, roadway, storm water management, water and sewer mains, two sewage lift stations, as well as lighting and landscaping at the award winning Charles Pointe mixed land use community in Bridgeport, WV. ELR provided construction management services for the project. These management services included full time construction inspection, approval of contractor pay applications, development of change orders and all other construction management requirements through to the final close out of this successful project. The total final construction cost for this project was approximately \$8.8 million including all additional work performed by addendum/change orders.



Business References & Certifications



Brad Leslie, P.E. Assistant Chief

West Virginia Division of Natural Resources
324 Fourth Ave.
South Charleston, WV 25303

Larry McDaniel, Mayor

Village of Coal Grove, Ohio
513 Carlton Davidson Lane
Coal Grove, Ohio 45638
740.532.8875

Jim Blevins, Mayor

Town of Man
P.O. Box 70
Man, WV 25635
304.583.9631

Michael Martin, Mayor

City of Mt. Hope
P.O. Box 151
Mt. Hope, WV 25880
304.877.2211

Vivian Livingood, Mayor

Town of Gilbert
P.O. Box 188
Gilbert, WV 25621



CERTIFICATE OF *Authorization*

STATE BOARD OF REGISTRATION FOR PROFESSIONAL ENGINEERS

*The West Virginia State Board of Registration for Professional Engineers
having verified the person in responsible charge is registered in
West Virginia as a professional engineer for the noted firm, hereby certifies*

**E. L. ROBINSON ENGINEERING COMPANY
C00165-00**

Engineer in Responsible Charge: EDWARD ROBINSON - WV PE 006918

*has complied with section §30-13-17 of the West Virginia Code governing
the issuance of a Certificate of Authorization. The Board hereby notifies you of its
certification with issuance of this Certification of Authorization for the period of:*

July 1, 2013 – June 30, 2014

providing for the practice of engineering services in the State of West Virginia.

IF YOU ARE REQUIRED TO REGISTER WITH THE SECRETARY OF STATE'S OFFICE,
PLEASE SUBMIT THIS CERTIFICATE WITH YOUR APPLICATION.



IN TESTIMONY WHEREOF, THE WEST VIRGINIA STATE BOARD OF
REGISTRATION FOR PROFESSIONAL ENGINEERS HAS ISSUED THIS COA
UNDER ITS SEAL, AND SIGNED BY THE PRESIDENT OF SAID BOARD.

BOARD PRESIDENT

RFQ Required Attachments





State of West Virginia
 Department of Administration
 Purchasing Division
 2019 Washington Street East
 Post Office Box 50130
 Charleston, WV 25305-0130

Solicitation

NUMBER
DNR214040

PAGE
1

ADDRESS CORRESPONDENCE TO ATTENTION OF:
GUY NISBET
304-558-8802

RFQ COPY
 TYPE NAME/ADDRESS HERE

VENDOR

SHIP TO

DIVISION OF NATURAL RESOURCES
 PROCUREMENT OFFICE
 324 4TH AVENUE
 SOUTH CHARLESTON, WV
 25303-1228 304-558-3397

DATE PRINTED
11/05/2013

BID OPENING DATE: 12/10/2013

BID OPENING TIME 1:30PM

LINE	QUANTITY	UOP	CAT. NO.	ITEM NUMBER	UNIT PRICE	AMOUNT
0001	1	LS		906-00-00-001		
PROFESSIONAL ENGINEERING SERVICES						
EXPRESSION OF INTEREST (EOI)						
<p>THE WEST VIRGINIA STATE PURCHASING DIVISION FOR THE AGENCY, THE WEST VIRGINIA DIVISION OF NATURAL RESOURCES, WILDLIFE RESOURCES SECTION, IS SOLICITING EXPRESSIONS OF INTEREST FROM QUALIFIED FIRMS TO PROVIDE ARCHITECTURAL AND ENGINEERING SERVICES FOR THE DESIGN OF A BOAT RAMP, COURTESY DOCKS, ACCESS ROAD AND PARKING AREA ON THE MONONGAHELA RIVER AT FAIRMONT, WV. PER THE ATTACHED SPECIFICATIONS.</p>						
***** THIS IS THE END OF RFQ DNR214040 ***** TOTAL:						

SIGNATURE <i>J. L. Nelsen</i>	TELEPHONE 304-776-7473	DATE 12-6-13
TITLE Project Manager	FEIN 55-0594633	ADDRESS CHANGES TO BE NOTED ABOVE

WHEN RESPONDING TO SOLICITATION, INSERT NAME AND ADDRESS IN SPACE ABOVE LABELED 'VENDOR'

CERTIFICATION AND SIGNATURE PAGE

By signing below, I certify that I have reviewed this Solicitation in its entirety; understand the requirements, terms and conditions, and other information contained herein; that I am submitting this bid or proposal for review and consideration; that I am authorized by the bidder to execute this bid or any documents related thereto on bidder's behalf; that I am authorized to bind the bidder in a contractual relationship; and that to the best of my knowledge, the bidder has properly registered with any State agency that may require registration.

E. L. Robinson Engineering
(Company)

Jeff L. Nelsen
(Authorized Signature)

Jeff L. Nelsen, Project Manager.
(Representative Name, Title)

304.776.7473 304.776.6426
(Phone Number) (Fax Number)

12.6.13
(Date)

ADDENDUM ACKNOWLEDGEMENT FORM

SOLICITATION NO.: DNR214040

Instructions: Please acknowledge receipt of all addenda issued with this solicitation by completing this addendum acknowledgment form. Check the box next to each addendum received and sign below. Failure to acknowledge addenda may result in bid disqualification.

Acknowledgment: I hereby acknowledge receipt of the following addenda and have made the necessary revisions to my proposal, plans and/or specification, etc.

Addendum Numbers Received:

(Check the box next to each addendum received)

- | | |
|--|--|
| <input checked="" type="checkbox"/> Addendum No. 1 | <input type="checkbox"/> Addendum No. 6 |
| <input type="checkbox"/> Addendum No. 2 | <input type="checkbox"/> Addendum No. 7 |
| <input type="checkbox"/> Addendum No. 3 | <input type="checkbox"/> Addendum No. 8 |
| <input type="checkbox"/> Addendum No. 4 | <input type="checkbox"/> Addendum No. 9 |
| <input type="checkbox"/> Addendum No. 5 | <input type="checkbox"/> Addendum No. 10 |

I understand that failure to confirm the receipt of addenda may be cause for rejection of this bid. I further understand that any verbal representation made or assumed to be made during any oral discussion held between Vendor's representatives and any state personnel is not binding. Only the information issued in writing and added to the specifications by an official addendum is binding.

E.L. Robinson Engineering
Company

Joy L. Nelson
Authorized Signature

12.6.13
Date

NOTE: This addendum acknowledgement should be submitted with the bid to expedite document processing.

RFQ No. DNR 214040

STATE OF WEST VIRGINIA
Purchasing Division

PURCHASING AFFIDAVIT

MANDATE: Under W. Va. Code §5A-3-10a, no contract or renewal of any contract may be awarded by the state or any of its political subdivisions to any vendor or prospective vendor when the vendor or prospective vendor or a related party to the vendor or prospective vendor is a debtor and: (1) the debt owed is an amount greater than one thousand dollars in the aggregate; or (2) the debtor is in employer default.

EXCEPTION: The prohibition listed above does not apply where a vendor has contested any tax administered pursuant to chapter eleven of the W. Va. Code, workers' compensation premium, permit fee or environmental fee or assessment and the matter has not become final or where the vendor has entered into a payment plan or agreement and the vendor is not in default of any of the provisions of such plan or agreement.

DEFINITIONS:

"Debt" means any assessment, premium, penalty, fine, tax or other amount of money owed to the state or any of its political subdivisions because of a judgment, fine, permit violation, license assessment, defaulted workers' compensation premium, penalty or other assessment presently delinquent or due and required to be paid to the state or any of its political subdivisions, including any interest or additional penalties accrued thereon.

"Employer default" means having an outstanding balance or liability to the old fund or to the uninsured employers' fund or being in policy default, as defined in W. Va. Code § 23-2c-2, failure to maintain mandatory workers' compensation coverage, or failure to fully meet its obligations as a workers' compensation self-insured employer. An employer is not in employer default if it has entered into a repayment agreement with the Insurance Commissioner and remains in compliance with the obligations under the repayment agreement.

"Related party" means a party, whether an individual, corporation, partnership, association, limited liability company or any other form or business association or other entity whatsoever, related to any vendor by blood, marriage, ownership or contract through which the party has a relationship of ownership or other interest with the vendor so that the party will actually or by effect receive or control a portion of the benefit, profit or other consideration from performance of a vendor contract with the party receiving an amount that meets or exceeds five percent of the total contract amount.

AFFIRMATION: By signing this form, the vendor's authorized signer affirms and acknowledges under penalty of law for false swearing (W. Va. Code §61-5-3) that neither vendor nor any related party owe a debt as defined above and that neither vendor nor any related party are in employer default as defined above, unless the debt or employer default is permitted under the exception above.

WITNESS THE FOLLOWING SIGNATURE:

Vendor's Name: EL Robinson Engineering
Authorized Signature: [Signature] Date: 12.6.13

State of West Virginia

County of Kanawha, to-wit:

Taken, subscribed, and sworn to before me this 6 day of December, 2013

My Commission expires November 21, 2021.

AFFIX SEAL HERE

NOTARY PUBLIC

[Signature]
Purchasing Affidavit (Revised 07/01/2012)

