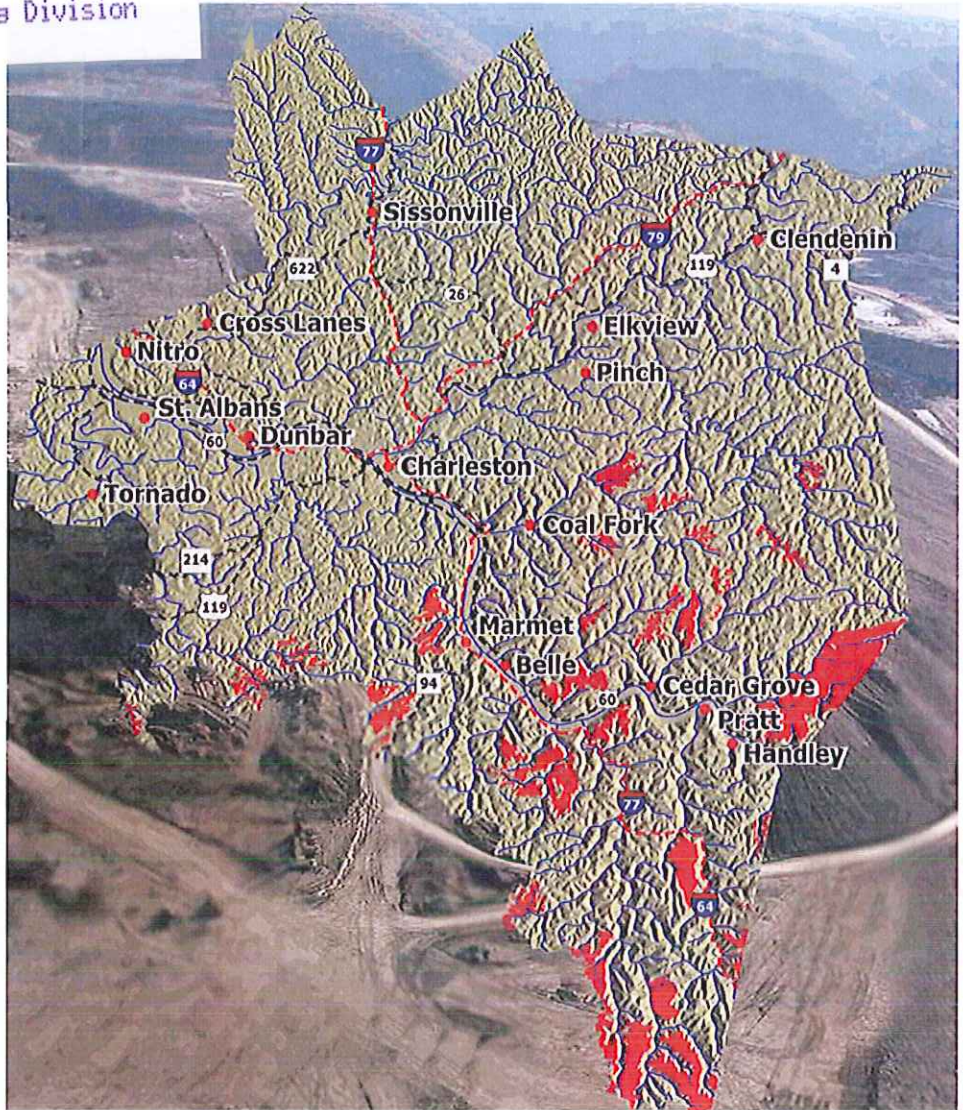


July 23, 2013

#DEP16288

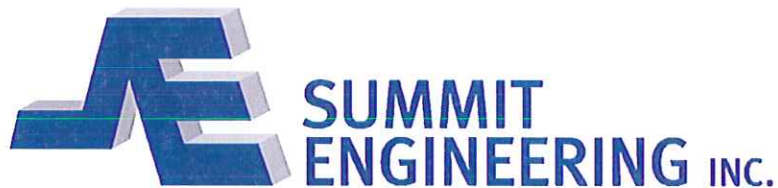
WOLFPEN
(CARPENTER)
PORTAL

KANAWHA COUNTY, WV



Statement of Qualifications

Prepared for the
West Virginia Department of
Environmental Protection Office
of Abandoned Mine Lands
& Reclamation



www.summit-engr.com

*WEST VIRGINIA *KENTUCKY *VIRGINIA



State of West Virginia
 Department of Administration
 Purchasing Division
 2019 Washington Street East
 Post Office Box 50130
 Charleston, WV 25305-0130

Solicitation

NUMBER
DEP16288

PAGE
1

ADDRESS CORRESPONDENCE TO ATTENTION OF:
FRANK WHITTAKER 304-558-2316

RFQ COPY
 TYPE NAME/ADDRESS HERE

VENDOR

ENVIRONMENTAL PROTECTION
 DEPARTMENT OF
 OFFICE OF AML&R
 601 57TH STREET SE
 CHARLESTON, WV
 25304 304-926-0499

SHIP TO

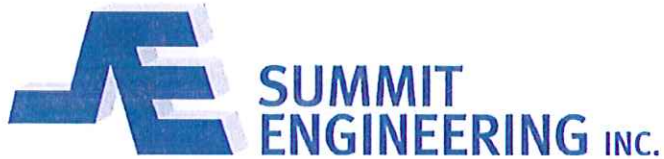
DATE PRINTED
06/19/2013

BID OPENING DATE: 07/23/2013 BID OPENING TIME 1:30PM

LINE	QUANTITY	UOP	CAT NO	ITEM NUMBER	UNIT PRICE	AMOUNT
001	1	JB		906-29		
WOLFPEN (CARPENTER) PORTALS DESIGN EXPRESSION OF INTEREST THE WEST VIRGINIA PURCHASING DIVISION, FOR THE AGENCY, THE WEST VIRGINIA DEPARTMENT OF ENVIRONMENTAL PROTECTION, IS SOLICITING EXPRESSIONS OF INTEREST FOR PROFESSIONAL ENGINEERING DESIGN SERVICES AND CONSTRUCTION MONITORING SERVICES AT THE WOLFPEN (CARPENTER) PORTALS PROJECT IN KANAWHA COUNTY, WEST VIRGINIA PER THE FOLLOWING BID REQUIREMENTS AND ATTACHED SPECIFICATIONS.						
***** THIS IS THE END OF RFQ DEP16288 ***** TOTAL:						

SIGNATURE <i>James Cantelmo</i>	TELEPHONE (304) 744-6410	DATE 7/23/13
TITLE Vice President	FEIN 61-0991104	ADDRESS CHANGES TO BE NOTED ABOVE

WHEN RESPONDING TO SOLICITATION, INSERT NAME AND ADDRESS IN SPACE ABOVE LABELED 'VENDOR'



July 23, 2013

West Virginia Department of Environmental Protection
Office of Abandoned Mine Lands and Reclamation
c/o State of West Virginia Department of Administration
Purchasing Department
2019 Washington Street, East
PO Box 50130
Charleston, WV 25305-0130

RE: DEP 16288: WOLFPEN (CARPENTER) PORTALS

Members of the Selection Committee:

Summit Engineering, Inc. (Summit) has successfully completed two (2) projects for the Office of Abandoned Mine Lands. Our team of engineers – who are assigned specifically to AML project – are ready to move forward on the Wolfpen (Carpenter) Portals project. As proven by our previous projects, the DEP can be confident that Summit will provide the highest level of service and technical proficiency, in a cost efficient manner, and meet or beat all deadlines.

Our client base in the state includes coal companies, municipalities, public service districts, and economic development authorities. Our knowledge of the area, in addition to our proximity to the site will prove to be advantages to the successful completion of this project.

We look forward to the opportunity to discuss your needs and demonstrate how Summit can continue to provide successful projects with the service you deserve.

Sincerely,

Summit Engineering, Inc.

A handwritten signature in blue ink that reads 'James S. Canterbury'. The signature is fluid and cursive, written over the printed name and title.

James S. Canterbury, PE
Vice President

Cover Letter

Solicitation Page

SECTION I

Selection Criteria

General Statement of Qualifications

Additional Company Information – Office Locations

Experience with AML Projects

Project Team Chart

Resumes

SECTION II

Project Approach

Project Discussion

Site Photographs

SECTION III

Consultant Confidential Qualification Questionnaire

Related Project Experience Matrix

Organization Chart



**CORPORATE EXPERIENCE WITH ABANDONED MINE LAND PROJECTS
West Virginia Professional Engineers (Civil or Mining)**

Summit Engineering has been involved in AML reclamation projects since 1983. We have provided services to the West Virginia Department of Environmental Protection – Division of Abandoned Mine Lands, the Virginia Division of Mined Land Reclamation, the Kentucky Division of Abandoned Mine Lands and directly to the Office of Surface Mining. Projects in all three states have included some or all of the following: study, planning, permitting, design and construction oversight on varied types of projects including landslide and other soil and rock stability problems, mine and refuse fire abatement, sealing of hazardous shafts and other portals, mine subsidence problems, channel restoration, acid mine drainage mitigation and facility demolition, water studies and infrastructure projects. Our projects completed for West Virginia’s Division of Abandoned Mine Lands include the Godby Branch Project and the Twin Branch Portal Closings Project.

The following exhibit of Abandoned Mine Lands and Reclamation Experience, which briefly describes prior and on-going AML&R projects by Summit, is a quick reference guide to our experience and expertise with AML projects. You will note that most of these projects have been successfully built and have dealt with a variety of issues that might be encountered when dealing with a reclamation project.

Our most recent experience has been obtained in the area of ground water contamination studies. Consequently, many of our studies have resulted in the funding of multiple water supply projects. As an illustration of this success, Summit is proud to have several water supply projects in the region fully funded and in various stages of final design and construction

Summit maintains the experienced staff and other in-house and/or sub-contracted capabilities for all phases of Abandoned Mine Land projects which require services in surveying and mapping, geotechnical investigation, design engineering, contract drawings and specifications, contract document preparation and administration. Thus we are expertly qualified to provide these services for the abatement of problems resulting from abandoned mine lands.



since 1977

Summit Engineering, Inc.
304.744.6410
www.summit-engr.com

RECLAMATION ENGINEERING DESIGN EXPERIENCE OF THE WV RPE AS IT RELATES TO THE SPECIFIC PROJECT PROBLEM AREAS.

The **Principal-in-Charge** will ultimately be responsible for the entire scope of the project and serve as **Project Manager. James S. Canterbury, PE**, who will serve as the Principal-in-Charge and is a legally authorized official of our firm, is authorized to sign all contractual documents related to AML work. A portion of his responsibilities as project manager will be as the official project liaison with the DEP. Mr. Canterbury serves as the Office Manager of our Charleston office where he will have direct, hands-on control of any awarded project. Mr. Canterbury has worked for years as an advocate of the coal mining industry and continues to serve on many panels and in industry organizations.

The **Project Support Team** will be responsible for the overall management of each project assigned. **Chad Stowers, EIT** and **Amy Dayton, CAD Technician** will serve as project manager on all WV DEP AML projects. Mr. Stowers and Ms. Dayton will serve as project liaison for the Project Manager. Stowers and Dayton will play as key members of the staff will review the work directive, visit the site(s) and develop and execute a work plan. Additional project engineers may be assigned by the project manager. The majority of the Project Manager's work will involve the technical aspects of the project (i.e., design of engineering plans, detailed review of calculations and drawings, preparation of technical reports and construction documents), however he will also assume some managerial duties. Particularly, he will coordinate the technical efforts and field work of the team members and will be responsible for any subcontractors regarding their specific assignments as well as regular monitoring of the design process.

Summit Engineering's survey team is led by **Steve Haywood, LS (WV)**. Topographic and control surveying are integral parts of the services we provide. Our survey staff offers specialized expertise in various types of field surveys including boundary surveys, topographic surveys, control surveys for aerial mapping, construction surveys and spad setting in underground mine works. We have performed surveying and mapping on projects ranging from mine reclamation projects to water and wastewater lines and from underground mine layouts to construction layout for major projects including roadways, golf courses and industrial sites. Our survey staff is equipped with the latest technology including the use of GPS Systems and other precision instruments for making extremely accurate measurements in the rugged terrain of the Appalachian coalfields. CAD Technicians dedicated to this project include staff from the Charleston office as well as the Bridgeport and Chapmanville offices, based on the office most readily available to the project site and DEP personnel. Utilizing state of the art equipment and software, we are able to offer a spectacular product of mapping, exhibits and illustrations in a clear and concise format.



Since 1977

Summit Engineering, Inc.
304.744.6410
www.summit-engr.com

Available WV-AML DESIGN Teams within the corporation. (A Design Team consists of but not limited to, One (1) Project Engineering (Civil or Mining), One (1) CAD person, and available support personnel as required by the project.

Today, Summit Engineering employs approximately 125 highly-trained staff members representing a diverse range of professional backgrounds and technical expertise. Our employees include engineers, geologists, environmental scientists, hydrologists, surveyors and resident inspectors who are complemented by a dedicated support staff.

These individuals have worked on many projects that have addressed both mining and civil engineering concerns. Many of those projects have dealt with post-mining land use or abandoned mine lands. Several of these projects have uniquely integrated all of our engineering disciplines. One similar project is the Stone Crest Golf Course, where previously mined lands were developed into an 18-hole championship golf course in Prestonsburg, Kentucky. Another of these projects is the Grant’s Branch Park, where a community facility along with a fishing lake was developed on post-mining lands.

Summit Engineering utilizes an interdisciplinary team approach to develop realistic, cost-effective solutions to the environmental issues associated with abandoned mine lands. This approach allows for the collective input of ideas and expertise and gives the client and the project the “best of both worlds” utilizing our mining and civil engineering departments.

Owners			
CEO	JACK SYKES, PE & PLS	PRESIDENT	PHILIP ELSWICK, PE
COO/OWNER	DAVID RASNICK, PE & PLS	VICE PRESIDENT/OWNER	JAMES CANTERBURY, PE
VICE PRESIDENT/OWNER	PHILLIP LUCAS, PE & PLS	VICE PRESIDENT/OWNER	J D ELKINS
VICE PRESIDENT/OWNER	KEVIN HOWARD, PE & PLS	VICE PRESIDENT/OWNER	MARK SANDERS, PE
VICE PRESIDENT/OWNER	TRACY GOFF, PE	VICE PRESIDENT/OWNER	MIKE HILL, PE
VICE PRESIDENT/OWNER	BYRD COPLEY	VICE PRESIDENT/OWNER	JODY HUNT, PE
VICE PRESIDENT/OWNER	STEVE TACKET, PE		
S. Charleston Mining Engineering			
Michael Akers Jr.	Ryan Jackson	Chad Stowers	Joshua Sharps
Todd Cooper	Drake Levo	Jerry W. Baisden II	Jeff Davis



since 1977

Summit Engineering, Inc.
 304.744.6410
www.summit-engr.com

S. Charleston Mining Engineering (cont.)			
Amy Dayton	Ralph Nagle	Matthew Bonham	Jonathan Griffith
David Rucker	Michael Ray, Jr.		
Surveying			
Steven Haywood	Michael Countiss	Robert Damron	Gratho Williams
Justin Smallwood	Matt Elliott	Richard Wright	
Bridgeport Mining			
Brandi Smith	Travis Evans	Adam Pelak	Stephanie Sayre



since 1977

Summit Engineering, Inc.
304.744.6410
www.summit-engr.com

Summit Engineering, Inc.

100 Technology Drive
South Charleston, WV 25301
(304) 744-6410

4013 Buckhannon Pike
Mt. Clare, WV 26408
(304) 622-0286

131 Summit Drive
Pikeville, Kentucky 41501
(606) 432-1447

Firm Highlights

- Founded in 1977
- Over 35 years experience in engineering and architectural services
- Combined experience of more than 110 highly trained employees
- Professionals registered in multiple states:
Kentucky
Virginia
West Virginia
Indiana
Tennessee
Ohio
Pennsylvania
Arkansas

Firm History

Since its founding in 1977, Summit Engineering, Inc. has rapidly expanded to meet the growing civil, architectural, mining engineering and environmental engineering needs of Kentucky, western Virginia and West Virginia. Summit's first office, located in Pikeville, Kentucky, has now expanded into six branch offices, which are Charleston, WV, and Bridgeport, WV, Lexington, KY, Hazard, KY, Big Rock, VA.

■ TWO (2) WEST VIRGINIA OFFICE LOCATIONS - BRIDGEPORT AND SOUTH CHARLESTON

BRIDGEPORT ENGINEERING SERVICES – located in Bridgeport, WV

S. CHARLESTON ENGINEERING SERVICES – located in S. Charleston, WV

Key personnel are listed below:

James Canterbury, P.E., Principal-in-Charge

JD Elkins, Principal-in-Charge

Jeff Davis, Environmental Scientist

■ FOUR (4) KENTUCKY OFFICE LOCATIONS - PIKEVILLE, HAZARD AND LEXINGTON PIKEVILLE ENGINEERING SERVICES – located in Pikeville, KY

The Pikeville office serves at Summit Engineering's corporate office location. Key personnel are listed below:

Philip Elswick, PE, President

David Rasnick, PE, LS, Corporate Personnel

Phil Lucas, PE, LS, Corporate Personnel

Connie Copley, Office Manager

Charles Dale, PE, Project Engineer

Tracy Goff, PE, Principal-in-Charge

Stan Crabtree, Office Manager

TRI-STATE LABORATORY SERVICES – located in Pikeville, KY

Key personnel are listed below:

Jeff Robinson, Office Manager

Annie Stanley, Tech Director

HAZARD ENGINEERING SERVICES – located in Hazard, KY

Key personnel related to this project are listed below:

Steve Tackett, P.E. Principal-in-Charge

Dennis Watts, Office Manager

LEXINGTON ENGINEERING SERVICES – located in Lexington, KY

Key personnel related to this project are listed below:

Mike Hill, P.E., Principal Engineer

Kevin Howard, P.E., Principal Engineer

Mark David Sanders, PE, Principal-in-Charge

■ ONE (1) VIRGINIA OFFICE LOCATIONS – BIG ROCK, VA BIG ROCK ENGINEERING SERVICES

Key personnel related to this project are listed below:

Byrd Copley, Principal-in-Charge.



Summit Engineering, Inc.
304.744.6410
www.summit-engr.com

Visit us at www.summit-engr.com to find out how we can meet your engineering, architecture and surveying needs

Civil Engineering Services

For over 35 years, Summit's staff of experienced civil engineers has provided wastewater collection and treatment design services for several municipalities and utility districts. It is Summit's mission to provide cost-effective solutions to meet the infrastructure needs of our clients. Summit's services range from project design and management, to bidding and construction administration services. As municipal engineers for various communities and projects, Summit has worked extensively with local, state and federal regulations that may be encountered during project development. Services provided by our Civil Engineering division include:

- Water supply systems
- Sanitary and storm sewer systems
- Utilities/Infrastructure Needs Studies
- Regional Facilities Planning
- Urban planning
- Residential communities

It is our goal to be a full-service provider for your project. Summit also provides additional services to our civil engineering clients, including project administration, construction inspection and funding assistance.



GIS Services

Summit Engineering offers a broad array of GIS Services to suit your needs. Using the most up-to-date ArcGIS software and the latest in GPS technologies, Summit is able to provide GIS and mapping services customized to fit your needs. Services we provide include:

- GPS Services
- Utility Location Mapping
- Site Selection Analysis
- Basic 3-D Modeling
- City Zoning, Mapping and Planning



Summit Engineering, Inc.
304.744.6410
www.summit-engr.com



Environmental Services

Summit has developed an in-depth understanding of environmental situations, investigations, and mitigation plans. Our staff of highly trained and experienced personnel enables Summit to provide quality, efficient results on projects ranging in size and sensitivity. Project owners have utilized Summit's services for both mining and civil engineering projects requiring:

- Environmental site assessments
- Reclamation liability studies
- Aquatic biologic surveys
- Stream and wetland mitigation
- Wetland delineation
- Corps of Engineers permits
- Toxic release inventory reporting
- Water quality studies
- Land reclamation cost analysis
- Stream benthic surveys
- KPDES permit applications
- Air quality permits and reporting
- Spill prevention control and countermeasures plans
- EPA underground injection permits



The Summit Engineering Environmental office has a staff size of 15 including 1 professionally registered engineer, and 1 engineer in training. Key personnel related to this project are listed below:

Philip Elswick, P.E., Director of Environmental Services
Ashlie Childers, E.I.T., Manager of Environmental Services

Surveying

Summit Engineering's field staff offers more than 100 years of combined experience in both conventional and global positioning (GPS) survey methods. Our survey staff is comprised of six qualified field personnel who have accumulated an impressive depth of experience on jobs, both large and small, the majority of which are in challenging terrain. Summit's organization combines fieldwork experience with superior project management.

Our projects are held to the highest standards of accuracy by utilizing state of the art equipment, software and support vehicles. Summit's experience has been gained on a wide array of survey projects including:

- | | | |
|--------------------|--|------------------|
| ➤ Baseline Surveys | ➤ Terrain | |
| ➤ Reconnaissance | ➤ Boundary | ➤ Mine Surveys |
| ➤ Aerial Mapping | ➤ Property and subdivision | ➤ Underground |
| ➤ TOPO | ➤ Roadway surveys | ➤ Quarries |
| ➤ Planimetric | ➤ Cross-Sections Surveys | ➤ Stockpiles |
| ➤ Terrain | ➤ Control surveys for aerial photography | ➤ GPS Capability |



since 1977

Summit Engineering, Inc.
304.744.6410
www.summit-engr.com



Mining

Serving the
Appalachian
Coal Fields and
The Eastern U.S.

*With more than 35 years of
regional project experience
behind us, we have the
resources to help you.*

Summit Engineering's has decades of combined experience in the mining and reclamation projects. Summit is proud to have accumulated an enormous amount of experience, which ensures our clients of high quality services at very competitive fees. Projects include:



- ↘ Plan Design
- ↘ Permitting
- ↘ Surveying and Mapping
- ↘ Hydrology Investigation
- ↘ Geologic Investigation
- ↘ Environmental Monitoring and Testing
- ↘ Technical Report Preparation

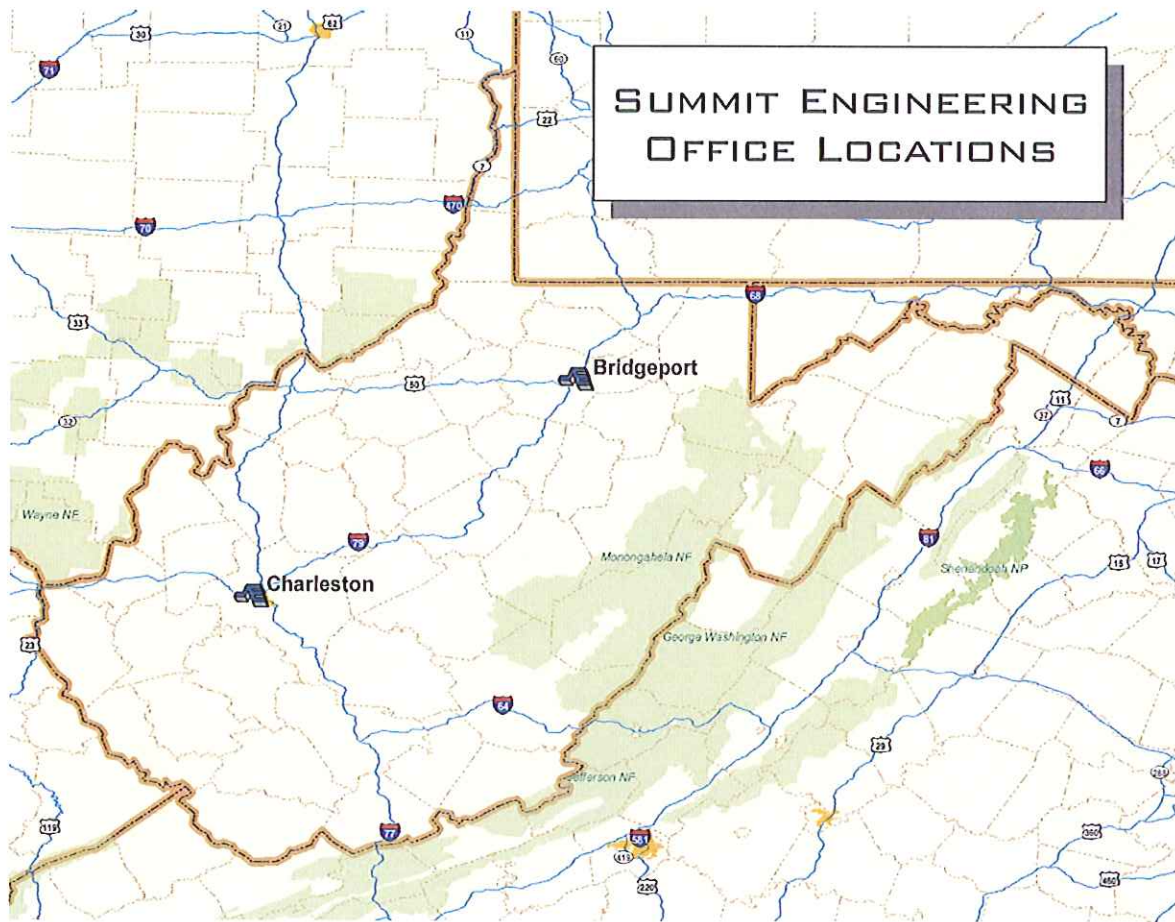


Summit's most valuable asset is the experience of our staff. Our staff has over of 100 years of cumulative experience in the mining industry. The experience, knowledge, and skills of our staff enable us to assist with the planning and permitting needs of the coal industry in order to overcome the obstacles faced in today's market. Summit has also been instrumental in the development of unique post mining and uses. We have been involved in developing golf courses, residential subdivisions, commercial developments and recreational facilities on previously mined sites, thus illustrating our capacity to combine different disciplines of engineering for the benefit of industry, community, and the environment.



since 1977

Summit Engineering, Inc.
304.744.6410
www.summit-engr.com



South Charleston Office Address

100 Technology Drive
South Charleston, WV 25303
304-744-6410

Bridgeport Office Address

4013 Buckhannon Pike
Mt. Clare, WV 26408
304-622-0286



since 1977

Summit Engineering, Inc.
304.744.6410
www.summit-engr.com



Successful Projects

#DEP16288

Summit Engineering, Inc. proposes to provide design and specification services, surveying and mapping, and any required laboratory or subsurface investigation, in support of the Department of Environmental Protection's (DEP) effort to reclaim lands and water affected by coal mining which occurred prior to the promulgation of the Surface Mining Control and Reclamation Act of 1977. We also propose to offer the service of construction contract document preparation and contract administration to these projects.

Summit Engineering, Inc. is a large, diverse mining and civil engineering firm with seven regional offices strategically located in the Appalachian Coalfields and in close proximity to the anticipated projects requested by the Department for the required scope of work. Our three West Virginia offices are located in Charleston and Bridgeport, West Virginia. We have combined our individual talents and expertise to benefit many post mining projects in the region. Being a mining *and* civil engineering firm, we have many corporate attributes that uniquely qualify our firm to provide services for abandoned mine lands reclamation projects in the state of West Virginia.

These attributes include:

- Strategically located offices in West Virginia coalfields (Charleston and Bridgeport)
- Successful working relationship with West Virginia DEP
- Award-winning post mining land use projects
- Extensive background in coal mine design
- Experienced and available professional staff
- Vast amount of existing data in areas of potential projects

Summit has taken the opportunity to conduct field investigations of this project and has an understanding of the project scope.



Since 1977

Summit Engineering, Inc.
304.744.6410
www.summit-engr.com



since 1977

Summit Engineering, Inc.
304.744.6410
www.summit-engr.com



SUMMIT ENGINEERING, INC.

Since 1977

**PARTNER
CHEIF ENGINEER**

EDUCATION

Graduate
South Charleston High School
South Charleston, WV
1970

B.S. – Civil Engineering
West Virginia Institute of
Technology
Montgomery, WV
1975

Master's Degree in
Business Administration
Marshall University
Huntington, WV
1978

REGISTRATION

Professional Engineer
Kentucky - #16000
West Virginia - #8377
Pennsylvania - #055450E
Wyoming - #13772

JAMES S. CANTERBURY, P.E.

PROFESSIONAL EXPERIENCE

Summit Engineering, Inc. South Charleston, WV (June 2003 – Present)
Vice President

Mr. Canterbury's responsibilities include overseeing the technical aspects of the designs by the office and staff, working to prepare and obtain approval of coal-mining permits, Working to prepare and obtain approval of US Army Corps of Engineers permits, overseeing environmental related projects, design of Abandon Mine Lands projects, oversee the design of water and sewer projects, invoicing, performing accounts receivable, assisting clients and working with regulatory agencies.

- WVAML – Twin Branch Portals Design Project
- WVAML – Godby Branch Design Project
- Catenary Coal Company – Moccasin Hollow Deep Mine Article 3 and NPDES Permit Application
- Wildcat Coal Company US Army Corps of Engineers 404 Individual Permit and final Compensatory Mitigation Plan
- Evergreen Mining Company- O'Brien Fork No. 2 Surface Mine Article 3, 401 and NPDES permit applications
- Arch of West Virginia- Guyan Ridge 3A Surface Mine Article 3 and NPDES permit applications
- Brooks Run Mining Company- Cove Mountain Deep Mine Article 3 and NPDES permit applications
- Catenary Coal Company- Laurel Fork Deep Mine IBR No. 5 and 401 permit applications – Added Deep Mine Reserves
- Bandmill Coal Corporation- US Army Corps of Engineers 404 Individual Permit and Final Compensatory Mitigation Plan
- Evergreen Mining Company- O'Brien Fork No. 2A Surface Mine Article 3 and NPDES permit applications
- Brooks Run Mining Company- Brandy Station Mine Article 3 and NPDES applications
- Catenary Coal Company – Tenmile Fork Hernshaw Deep Mine Article 3 and NPDES permit applications
- Catenary Coal Company – Hernshaw Deep Mine #1 Revision to add coal reserves to be mined updip for a potentially toxic coal seam.
- Eastern Associated Coal – Permit revision to add deep mine reserves to existing mine.
- Metikki Coal – E Mine Deep Mine – Permitted deep mine in Upper Freeport coal seam.

PRIOR EXPERIENCE

Mountain State Co. Cedar Grove, WV (October 1999- April 2003)
Permit Engineer

- Responsibilities included the design, preparation, and corrections to all types of permits required by state and federal agencies for the coal mining industry.

Killam Associates South Charleston, WV (May 1998-October 1999)
Manager

- Responsibilities included managing the day-to-day activities, obtaining and helping prepare coal-mining permits, the design of water and sewer projects, invoicing, performing accounts receivable, assisting clients, and working with regulatory agencies.



JAMES S. CANTERBURY, P.E.

Page 2

Battle Ridge Companies Belle, WV (February 1988-May 1998)

Chief Engineer/Estimator

- Responsibilities included ensuring that coal-mining operations stayed in compliance with state and federal laws and regulations, the preparation of all permits, overseeing reclamation work, preparing budgets, evaluating coal properties, negotiating coal leases, preparing bid quotations for coal related construction/reclamation projects, Abandoned Mine Lands projects, excavation of state and federal projects, preparing invoices, overseeing survey crews and quality control requirements of the projects.

U.S. Steel Mining Co. Inc. Chesapeake, WV (June 1982-February 1988)

Environmental Engineer

- Responsibilities included insuring that all coal-mining operations stay in compliance with state and federal laws and regulations, preparing all necessary permits, maintaining water quality, and overseeing reclamation work.

Carbon Fuel Co. Chesapeake, WV (April 1979-June 1982)

Environmental Engineer

- Responsibilities included insuring that all coal-mining operations stay in compliance with state and federal laws and regulations, preparing all necessary permits, maintaining water quality, and overseeing reclamation work.

Dept. of Natural Resources, Charleston, WV (September 1978-April 1979)

Engineer-in-Training

- Responsibilities included the implementation of construction grants and reviewing consultants' plans and proposals.

WV Dept. of Highways Charleston, WV (December 1975-September 1978)

Engineer-in-Training

- Responsibilities included the geometric design and layout of highway projects, preparing construction drawings, specifications, and cost estimates.

Swindell-Dressler Consulting Engineers Charleston, WV (May 1975-December 1975)

Engineer-in-Training

- Responsibilities included the geometric design and layout of highway projects with quantity calculations.



SUMMIT ENGINEERING, INC.

Since 1977

**PROJECT MANAGER/
PROJECT ENGINEER**

EDUCATION

West Virginia Institute of
Technology
B.S. Civil Engineering, 2012

AFFILIATIONS

American Society of Civil
Engineers, Student Section

American Society of
Testing and Materials,
Student Section

American Society of Steel
Construction, Student
Section

CHADWICK STOWERS, E.I.T. (PROJECT MANAGER)

Mr. Stowers joined Summit in May 2011 as Project Engineer / Project Manager. He is responsible for the many of the civil and mining projects handled in Summit Engineering's South Charleston office. He has accumulated experience in projects including mine layouts, slope stability analysis, drainage design, and structural inspections.

PROFESSIONAL EXPERIENCE

- Construction Inspector (Bridges)
West Virginia Department of Transportation
Division of Highways
Charleston, WV
- Construction Crew Leader
Stowers Construction Company
Belle, WV
- Engineer
Summit Engineering, INC
South Charleston, WV

PROJECT EXPERIENCE

- Grey Eagle Surface Mine Application – McDowell County, WV
- Antietam Surface Mine Application – Webster County, WV
- McDonald Fork Surface Mine Application – Wyoming County, WV
- Rockspring Development Coal Preparation Plant Structural Inspection – Wayne County, WV
- Pond and Sediment Ditch As-Built Certifications – Multiple Counties, WV
- Laurel Fork Surface Mine Application – McDowell County, WV
- Hoover's Landing Surface Mine Application – Webster County, WV
- Jackson Bridge Extension Surface Mine Application – Braxton County, WV



SUMMIT ENGINEERING, INC.

Since 1977

**PROJECT MANAGER/
PROJECT AutoCAD**

EDUCATION

Florida Community College,
Jacksonville, FL
Introduction to ArcGIS I; February
2002

Ben Franklin Technical Center,
Dunbar, WV
Certificate: Drafting; May 1993-1995

West Virginia University,
Morgantown, WV
Coursework towards Interior
Design; 63 cr/hrs: 1991-1993

AMY DAYTON (PROJECT MANAGER – AUTO/CAD)

SUMMARY

- Over 18 years of cad technical experience, using AutoCAD and Microstation.
- Experience in various engineering industries to include: coal mining (currently), transportation, land development and landscape design, civil (utility).
- Basic knowledge and understanding of GIS process (import shapefiles, convert coordinates)
- Apply practical knowledge of administrative duties: using MS Office suite and maintaining document management.
- Work independently and self-sufficiently.

PROFESSIONAL EXPERIENCE

11/2009-Present Summit Engineering, Inc., Charleston, WV

Set up proposed maps/plans for coal mining permit applications. Create exhibit drawings using Google Earth to show mining details on images and how it will relate to real world. Use various online websites to research data for gas wells, soil information and active/inactive mines. Electronic permit submittals to WVDEP. Import GIS data (soil, deep mines, gas wells, and tax map information).

06/2007-02/2009 EMC Engineering Services, Inc., Savannah, GA

Prepared construction design plans and reports: specifications and cost estimates for transportation roadway, erosion control and drainage projects. Adhered to and implemented Georgia Department of Transportation (GDOT) policies and procedures of layer management for construction plans. Updated landscape design plans for urban renewal projects.

04/2004-05/2007 England-Thims & Miller, Inc., Jacksonville, FL

Planning group:

Applied county development code and PUD requirements to create graphic presentation exhibits and pre-construction plans of future master development plans, created maps of geographical areas in order to show natural and constructed features and boundaries, also used legal records in order to establish boundaries of properties, and calculated land usage per project.

Landscape group:

Updated designs per comments and prepared quantity take-offs for various landscape projects.

04/2001-04/2004 RAM Professional Group, Inc. / JEA, Jacksonville, FL

Assisted in manual field utility locates, prepared working construction design plans for public works (water, sewer, and drainage) infrastructure projects. Assisted in preparation of construction plans and reports, specifications and cost estimates for water and sewer infrastructure, erosion control and drainage projects based on input from project managers.



STEVEN E. HAYWOOD, LS

SUMMIT ENGINEERING, INC.

Since 1977

SURVEYING MANAGER

EDUCATION

Prestonsburg High School

REGISTRATION

Land Surveyor
Kentucky / #2661

PROFESSIONAL EXPERIENCE

Summit Engineering, Inc.
Pikeville, Kentucky
Oct. 1977 – Present

Elkhorn Coal Corporation
(1976-1977)

Kentucky Department of
Transportation (1973-1976)

CERTIFICATIONS

Density Testing

PROFESSIONAL EXPERIENCE

Mr. Haywood is responsible for all work assignments of the field crew personnel, note reductions of the surface surveys and mapping of all survey projects as well as the work assignments of the computer drafting personnel. With over 29 years experience with Summit, projects have included roadways, subdivisions, sanitary sewers, construction, and various deep mine and surface mine related projects.

Mr. Haywood has been with Summit Since its formation and has managed all survey projects performed to date.

PROJECTS

- South Williamson Sewer Project
- Little Shepherd's Trail Water Project
- Feds Creek / Mouthcard Water Supply Project
- Gateway Industrial Park
- Pikeville Downtown Revitalization Project
- StoneCrest Golf Course/Residential Development/Industrial Park
- Honey Branch Industrial Park
- Fishtrap Park Boundary
- Habitat for Humanity Subdivisions and Property related projects
- Pikeville Methodist Hospital, Expansion Project
- Pine Mountain Properties
- Pike County Regional Technology Center
- Floyd County Development - surveying and mapping the R & S Truck Body site at Ivel, Kentucky
- East Kentucky Exposition Center
- Breaks Interstate Park Mineral Boundary
- Appalachian Cellular Telephone. Survey and mapping for various cellular telephone tower sites.
- Pikeville Parking Garage
- Kentucky Division of A.M.L. – Various Projects
- Edgewater Subdivision
- Davidson Industrial Park
- Sidney Coal Corporation. Survey for the construction of the Coal Refuse Belts and for the Raw Coal Storage areas.
- Clintwood Elkhorn Mining. - Preparation plant and coal storage areas.
- Numerous Underground Surveys



Our team that will be assigned to your project has worked together on previous occasions, many of which are similar in scope to the upcoming project. Summit is committed to the allocation of additional personnel and any other required resources that may be necessary to successfully complete your project in an efficient, timely, professional and cost effective manner. In order to develop an understanding of the West Virginia Department of Environmental needs, our team will study the information provided in the RFQ. Based upon our understanding and experience, we have developed an approach to exhibit our abilities and methods of design and construction.

Preliminary Planning

The preliminary planning phase will identify all project goals, limitations, and special needs.

Obtain adequate mapping

Design

Typically, Summit Engineering organizes the design work into three phases:

Evaluation of preliminary alternates

- Expand upon the preliminary planning studies and assist in selecting the alternate best suited to WV's DEP needs.

Preliminary design

- Draft plans and specifications are prepared for the selected alternate. These preliminary plans are reviewed internally and are then presented for WV DEP's comment.

Final Design

- The review recommendations are incorporated into the preliminary work products to create the final construction drawings.
- Submit final plans to both local and state agencies and secure all necessary permits and approvals.

Pre- Construction Phase Services

The following outlines the responsibilities that the construction inspection team (if requested) anticipates providing:

- Schedule and attend a pre-construction conference with the selected contractor.
- Provide a resident inspector at the project site to monitor the work and check conformance of the work with the contract documents.
- Prepare reports discussing the general progress of the construction and reason for any delays.
- Prepare and submit contract change orders for the approval of WV DEP (when needed).
- Review and approve the contractor's estimated payment schedules.
- Review shop drawings.
- Review and approve contractor's construction schedule.
- Prepare, in consultation with the contractor, all periodic pay estimates and submit these documents to WV DEP for approval.

Pre- Construction Phase Services

- The Project Manager will be available during the construction to answer any questions the contractor/inspector may have.
- Summit inspectors that are certified by the State of West Virginia will be used if the WV DEP requests services.



Wolfpen (Carpenter) Portals

The Wolfpen (Carpenter) Portals project is located in Kanawha County near the community of Edens Fork. The project is approximately twenty (20) minutes from Summit Engineering's South Charleston office. The project consists of providing topographic mapping of the project area, designing approximately 31 mines seals, design of numerous drainage conveyance channels and providing a re-vegetation plan of the disturbed areas.

Representatives from Summit Engineering visited the site on Friday, July 5, 2013. During the site visit the project area was walked to determine accessibility to the site, location of surrounding residents/structures, site topography, inspection of the existing mine benches and mine openings and talk with landowners and nearby residents.

Representative pictures of the project site are included in this Expression Of Interest.

Summit Engineering has completed the design of two (2) previous projects for the West Virginia Department of Environmental Protection that were very similar to the Wolfpen (Carpenter) Portals project.



Summit Engineering, Inc.
304.744.6410
www.summit-engr.com

**WEST VIRGINIA DEPARTMENT OF ENVIRONMENTAL PROTECTION
AML CONSULTANT CONFIDENTIAL QUALIFICATION QUESTIONNAIRE**

PROJECT NAME #DEP16288 WOLFPEN (CARPENTER) Portal	DATE (DAY, MONTH, YEAR) 20 July 2013	FEIN 61-0991104
--	---	--------------------

1. FIRM NAME Summit Engineering, Inc.	2. HOME OFFICE BUSINESS ADDRESS 100 Technology Drive, Charleston, WV 25053	3. FORMER FIRM NAME N/A
--	---	----------------------------

4. HOME OFFICE TELEPHONE (304) 744-6410	5. ESTABLISHED(YEAR) 1977	6. TYPE OWNERSHIP Individual <input type="checkbox"/> Corporation <input checked="" type="checkbox"/> Partnership Joint-Venture	6a. WV REGISTERED DBE (Disadvantaged Business Enterprise) YES <input type="checkbox"/> NO <input checked="" type="checkbox"/>
---	----------------------------------	---	---

7. PRIMARY AML DESIGN OFFICE: ADDRESS/ TELEPHONE/ PERSON IN CHARGE/ NO. AML DESIGN PERSONNEL EACH OFFICE
100 Technology Drive, Charleston, WV 25053 (304) 744-6410/ James Canterbury, PE/10 Personnel

8. NAMES OF PRINCIPAL OFFICERS OR MEMBERS OF FIRM Jack C. Sykes, P.E., L.S. Phillip Lucas, P.E., L.S. Steve Tackett, P.E. David Rasnick, P.E., L.S. Kevin M. Howard, P.E., L.S. Tracy Goff, P.E. Mark David Sanders, P.E. Philip Elswick, P.E. Jody Hunt, P.E. Mike Hill, P.E., L.S.I.T. James S. Canterbury, PE	8a. NAME, TITLE, & TELEPHONE NUMBER - OTHER PRINCIPALS J.D. Elkins, Office Manager (304) 855-5691 Byrd Copley, Office Manager (276) 530-7220
--	--

9. PERSONNEL BY DISCIPLINE

<u>5</u> ADMINISTRATIVE	<input type="checkbox"/> ECOLOGISTS	<input type="checkbox"/> LANDSCAPE ARCHITECTS	<input type="checkbox"/> STRUCTURAL ENGINEERS
<u>2</u> ARCHITECTS	<input type="checkbox"/> ECONOMISTS	<input type="checkbox"/> MECHANICAL ENGINEERS	<u>9</u> SURVEYORS
<u>3</u> BIOLOGIST	<input type="checkbox"/> ELECTRICAL ENGINEERS	<u>20</u> MINING ENGINEERS	<input type="checkbox"/> TRAFFIC ENGINEERS
<u>14</u> CADD OPERATORS	<input type="checkbox"/> ENVIRONMENTALISTS	<input type="checkbox"/> PHOTOGRAMMETRISTS	<u>47</u> OTHER
<u>1</u> CHEMICAL ENGINEERS	<input type="checkbox"/> ESTIMATORS	<input type="checkbox"/> PLANNERS: URBAN/REGIONAL	
<u>11</u> CIVIL ENGINEERS	<u>5</u> GEOLOGISTS	<input type="checkbox"/> SANITARY ENGINEERS	
<u>1</u> CONSTRUCTION INSPECTORS	<input type="checkbox"/> HISTORIANS	<input type="checkbox"/> SOILS ENGINEERS	
<u>7</u> DESIGNERS	<input type="checkbox"/> HYDROLOGISTS	<input type="checkbox"/> SPECIFICATION WRITERS	
<input type="checkbox"/> DRAFTSMEN			<u>111</u> TOTAL PERSONNEL

TOTAL NUMBER OF WV REGISTERED PROFESSIONAL ENGINEERS IN PRIMARY OFFICE: 3
*RPEs other than Civil and Mining must provide supporting documentation that qualifies them to supervise and perform this type of work.

Not Applicable

10. HAS THIS JOINT-VENTURE WORKED TOGETHER BEFORE? YES NO

12.

A. Is your firm experienced in Abandoned Mine Lands Remediation/Mine Reclamation Engineering?

YES Description and Number of Projects:

Our services include mining permits, reclamation projects and AML water line projects through our civil, mining, surveying and environmental divisions. The number of projects is well over 100 due to our 29 years of service to the various industries, public and private clients we serve.

NO

B. Is your firm experienced in Soil Analysis?

YES Description and Number of Projects:

We perform routine services such as slope stability analyses and small retaining wall design. We utilize sub-consultants for exploration and detailed analysis such as consolidation, liquefaction, etc. Number of Projects is well over 100 as we do soil analysis for many of our mining clients as well as for stream bank stabilization and environmental projects.

NO

C. Is your firm experienced in hydrology and hydraulics?

YES Description and Number of Projects:

Summit designs have primarily addressed the control, treatment, and diversion of surface and ground water. Summit has designed well over 100 projects involving hydrology and hydraulics.

NO

D. Does your firm produce its own Aerial Photography and Develop Contour Mapping?

YES Description and Number of Projects:

We develop contour maps by field survey for sites up to 50 acres. We utilize sub-consultants for mapping by aerial photogrammetry for sites larger than 50 acres. Number of projects is well over 100 as we do mapping for all mining and civil engineering and surveying clients.

NO

E. Is your firm experienced in domestic waterline design? (Include any experience your firm has in evaluation of aquifer degradation as a result of mining.)

YES Description and Number of Projects:

Summit's civil engineering division has over 30 years of experience with domestic waterline design.

NO

F. Is your firm experienced in Acid Mine Drainage Evaluation and Abatement Design?

YES Description and Number of Projects:

Summit Engineering has been doing mining permits for 30 years and has addressed acid mine drainage in each of those. As a firm we have only completed one project that directly mitigated acid mine drainage.

NO

13. PERSONAL HISTORY STATEMENT OF PRINCIPALS AND ASSOCIATES RESPONSIBLE FOR AML PROJECT DESIGN (Furnish complete data but keep to essentials)

NAME & TITLE (Last, First, Middle Int.)	YEARS OF EXPERIENCE		
	YEARS OF AML DESIGN EXPERIENCE:	YEARS OF AML RELATED DESIGN EXPERIENCE:	YEARS OF DOMESTIC WATERLINE DESIGN EXPERIENCE:
James S. Canterbury, Partner/Vice President	24	24	0

Brief Explanation of Responsibilities

Partner, Branch Office Manager

Mr. Canterbury's responsibilities include managing day-to-day activities of the office and staff. Responsibilities also include obtaining and assisting in the preparation of coal-mining permits, invoicing, performing accounts receivable, assisting clients, and working with regulatory agencies.

EDUCATION (Degree, Year, Specialization)

B.S. – (1975) Civil Engineering – West Virginia Institute of Technology

M.S. – (1979) Business Administration – Marshall University

MEMBERSHIP IN PROFESSIONAL ORGANIZATIONS

REGISTRATION (Type, Year, State)

P.E.: WV (1977), KY (1979), PA (1998)

13. PERSONAL HISTORY STATEMENT OF PRINCIPALS AND ASSOCIATES RESPONSIBLE FOR AML PROJECT DESIGN (Furnish complete data but keep to essentials)

NAME & TITLE (Last, First, Middle Int.)	YEARS OF EXPERIENCE		
	YEARS OF AML DESIGN EXPERIENCE:	YEARS OF AML RELATED DESIGN EXPERIENCE:	YEARS OF DOMESTIC WATERLINE DESIGN EXPERIENCE:
Phillip Lucas, Partner/Vice President	21	21	0

Brief Explanation of Responsibilities

Mr. Lucas joined Summit Engineering in 1992 and presently serves as Vice-President and Partner in the firm. Mr. Lucas has oversight responsibility in the Pikeville, KY, Hazard, KY, and Charleston, WV Offices. He is presently responsible for design and design supervision of deep mines, surface mines, refuse impoundments, and construction related projects.

EDUCATION (Degree, Year, Specialization)

B.S. – (1976)- Civil Engineering, Mining Option - University of Kentucky

M.S. – (1997) - Mining Engineering - University of Kentucky

MEMBERSHIP IN PROFESSIONAL ORGANIZATIONS

Kentucky Society of Professional Engineers

National Society of Professional Engineers

American Institute of Mining Engineers

REGISTRATION (Type, Year, State)

P.E. (1991) KY, (1991) VA, (1991) WV

L.S. (1993) KY, (1996) VA, (1996) WV

13. PERSONAL HISTORY STATEMENT OF PRINCIPALS AND ASSOCIATES RESPONSIBLE FOR AML PROJECT DESIGN (Furnish complete data but keep to essentials)

NAME & TITLE (Last, First, Middle Int.)	YEARS OF EXPERIENCE		
	YEARS OF AML DESIGN EXPERIENCE:	YEARS OF AML RELATED DESIGN EXPERIENCE:	YEARS OF DOMESTIC WATERLINE DESIGN EXPERIENCE:
J.D. Elkins, Partner/Vice President	7	7	4

Brief Explanation of Responsibilities

Mr. Elkins has over twelve years experience in the layout, design, and implementation of surface and underground mining and reclamation projects. Experience includes mine planning; reserve/depletion studies; design of dams, roadways, and fill areas; reclamation plans; re-vegetation/reforestation schedules; feasibility/forecast studies; construction and reclamation supervision; and property management. Mr. Elkins' duties include supervision of a complete office staff of project engineers, technicians, draftsmen, and clerical personnel.

EDUCATION (Degree, Year, Specialization)

B.S. (1990) Industrial Engineering Technology
Undergraduate Courses (198601987) Mining Engineering

MEMBERSHIP IN PROFESSIONAL ORGANIZATIONS

REGISTRATION (Type, Year, State)

13. PERSONAL HISTORY STATEMENT OF PRINCIPALS AND ASSOCIATES RESPONSIBLE FOR AML PROJECT DESIGN (Furnish complete data but keep to essentials)

NAME & TITLE (Last, First, Middle Int.)	YEARS OF EXPERIENCE		
	YEARS OF AML DESIGN EXPERIENCE:	YEARS OF AML RELATED DESIGN EXPERIENCE:	YEARS OF DOMESTIC WATERLINE DESIGN EXPERIENCE:
David F. Rasnick, Vice President/Partner	24	24	0

Brief Explanation of Responsibilities

Mr. Rasnick joined Summit Engineering after graduation from the University of Kentucky in 1978. He is currently Vice-President of the firm and oversees many projects in West Virginia, Kentucky and Virginia. He has been responsible for the design of surface mine operations, deep mine layouts, mineral reserve studies, mine reclamation projects, railroad design and layout, refuse fill design, property surveys, the layout of water monitoring programs, topographic mapping projects, construction supervision and Geotechnical exploration projects.

EDUCATION (Degree, Year, Specialization)

B.S.- (1977)- Civil Engineering - University of Kentucky

MEMBERSHIP IN PROFESSIONAL ORGANIZATIONS

National Society of Professional Engineers
American Institute of Mining Engineers
Kentucky Society of Professional Engineers

REGISTRATION (Type, Year, State)

P.E.: (1981) KY, (1982) VA, (1985) WV,
(1986) OH, (1985) IN
L.S. (1983) KY, (1995) WV

13. PERSONAL HISTORY STATEMENT OF PRINCIPALS AND ASSOCIATES RESPONSIBLE FOR AML PROJECT DESIGN (Furnish complete data but keep to essentials)

NAME & TITLE (Last, First, Middle Int.)	YEARS OF EXPERIENCE		
	YEARS OF AML DESIGN EXPERIENCE:	YEARS OF AML RELATED DESIGN EXPERIENCE:	YEARS OF DOMESTIC WATERLINE DESIGN EXPERIENCE:
Michael J. Akers, Jr., PE	6	6	0
<p>Brief Explanation of Responsibilities</p> <p>Mr. Akers' responsibilities include interacting with mining clients, the WVDEP and Summit staff to prepare and obtain approval of all types of Article 3 and NPDES permits.</p>			
<p>EDUCATION (Degree, Year, Specialization)</p> <p>B.S. Mathematics, West Virginia Institute of Technology (1975)</p> <p>M.S. Petroleum Engineering, West Virginia University (1978)</p> <p>M.B.A., West Virginia College of Graduate Studies (1980)</p>			
<p>MEMBERSHIP IN PROFESSIONAL ORGANIZATIONS</p> <p>Society of Petroleum Engineers</p> <p>Virginia Oil and Gas Association</p> <p>Kentucky Oil and Gas Association</p>		<p>REGISTRATION (Type, Year, State)</p> <p>P.E.: KY (1982), WV (1982)</p>	

13. PERSONAL HISTORY STATEMENT OF PRINCIPALS AND ASSOCIATES RESPONSIBLE FOR AML PROJECT DESIGN (Furnish complete data but keep to essentials)

NAME & TITLE (Last, First, Middle Int.)	YEARS OF EXPERIENCE		
	YEARS OF AML DESIGN EXPERIENCE:	YEARS OF AML RELATED DESIGN EXPERIENCE:	YEARS OF DOMESTIC WATERLINE DESIGN EXPERIENCE:
Kevin M. Howard, Vice President/Partner	14	14	27
<p>Brief Explanation of Responsibilities</p> <p>Mr. Howard is responsible for most of Summit's civil engineering related design projects. Mr. Howard's projects have included roadways, shopping centers, hydrologic impact statements, sanitary and storm sewers, lift stations, municipal water system and channel change designs.</p>			
<p>EDUCATION (Degree, Year, Specialization)</p> <p>B.S. – (1979)- Civil Engineering - University of Kentucky</p> <p>M.S. – (1982)- Civil Engineering - University of Kentucky</p>			
<p>MEMBERSHIP IN PROFESSIONAL ORGANIZATIONS</p> <p>National Society of Professional Engineers</p> <p>American Society of Professional Engineers</p> <p>Kentucky Society of Professional Engineers</p>		<p>REGISTRATION (Type, Year, State)</p> <p>P.E. (1992) WV, (1983) KY</p> <p>L.S. (1985) KY</p>	

13. PERSONAL HISTORY STATEMENT OF PRINCIPALS AND ASSOCIATES RESPONSIBLE FOR AML PROJECT DESIGN (Furnish complete data but keep to essentials)

NAME & TITLE (Last, First, Middle Int.)	YEARS OF EXPERIENCE		
	YEARS OF AML DESIGN EXPERIENCE:	YEARS OF AML RELATED DESIGN EXPERIENCE:	YEARS OF DOMESTIC WATERLINE DESIGN EXPERIENCE: 32
Jack C. Sykes, P.E., L.S., Partner	16	16	
<p>Brief Explanation of Responsibilities Mr. Sykes has been a principal and President of Summit Engineering, Inc. since its establishment in October 1977. He has performed technical review and been in the position of responsible person in charge for many projects handled by the firm. Some of the projects Mr. Sykes has been associated with have included forecasts and feasibility studies, residential and commercial development, construction supervision, roadway design, design of water and wastewater handling and treatment facilities, control surveying and mapping, earth fill designs, mineral reserve evaluation, preparation of mine plans, design of coal handling facilities, mine permitting, mine land reclamation, land surveying, and golf course design.</p>			
<p>EDUCATION (Degree, Year, Specialization) B.S. (1973) Civil Engineering, University of Kentucky M.S. (1975) Civil Engineering, University of Kentucky</p>			
<p>MEMBERSHIP IN PROFESSIONAL ORGANIZATIONS Kentucky Society of Professional Engineers National Society Professional Engineers Institute of Transportation Engineers Coal Operators and Associates</p>		<p>REGISTRATION (Type, Year, State) P.E.: WV (1978), KY (1977), VA (1977), TN(1979), IN (1985), OH (1986) L.S. : WV (1995), KY (1980)</p>	

14. PROVIDE A LIST OF SOFTWARE AND EQUIPMENT AVAILABLE IN THE PRIMARY OFFICE WHICH WILL BE USED TO COMPLETE AML DESIGN SERVICES

<p><u>Computers:</u> 115 Dell Precision Workstations (Quad Core Intel Processors, 4 gb – 32 gb of RAM, 1gb – 2gb video cards)</p> <p>25 Dell Precision Mobile Workstation (Quad Core Intel Processors, 4 gb – 16 gb of RAM, 1gb – 2gb video cards)</p> <p>10 Dell Optiplex Business machines (Dual Core Intel Processors, 4 gb – 8 gb of RAM, 512mb – 1 gb video cards)</p>	<p><u>Scanners:</u> Ricoh Aficio c4501 (Color Copier / Scanner / Fax) x 3</p> <p>Ricoh Aficio 4501 (Copier / Color Scanner / Fax) x 2</p> <p>Ricoh Aficio c6501(Color Copier / Scanner / Fax) x 2</p> <p>HP Large Format Color Scanner (42”)</p> <p>Graphtec Large Format Color Scanner (36”)</p>	<p><u>Software:</u> Microstation V8i</p> <p>Windows 7 Professional</p> <p>Power InRoads V8i</p> <p>Windows Server 2003</p> <p>Autocad 2011 / 2013</p> <p>Windows Server 2008</p> <p>Autodesk Map3D 2011 / 2013</p> <p>KYPipe 2010</p> <p>Autodesk Civil3D 2011 / 2013</p>
<p><u>Plotters:</u> HP Design Jet 4000 (4 units)</p> <p>Canon iPF 700</p> <p>Canon iPF 710 x 2</p> <p>Canon iPF 810</p> <p><u>Servers:</u> Dell Poweredge Fileservers x 7</p> <p>Buffalo NAS Storage Servers x 4</p>	<p><u>Printers/Peripherals:</u> Canon Network/Workgroup Printer/Copier/Fax</p> <p>HP LaserJet 4050N Network Printer</p> <p>HP DeskJet 855 Cse Printer</p> <p>HP DesignJet 1050C Network Plotter</p> <p>CalComp Digitizer</p> <p>HP Scanjet 4470 Scanner</p> <p>HP LaserJet 2200 S Printer</p> <p>HP LaserJet 1200 Printer</p> <p>Xerox Phaser 3160 Color Network Printer</p>	<p>ESRI ARCGIS / ARCVIEW</p> <p>Autodesk Building Design Suite Premium 2013</p> <p>ESRI 3D Analyst</p> <p>Autodesk Revit Architecture Suite 2011 / 2013</p> <p>ESRI Spatial Analyst</p> <p>Carlson Suite 2011 / 2013</p> <p>Sedcad 4</p> <p>Reame 2008</p> <p>Trimble Business Center</p> <p>Reame 2012</p> <p>ForesightD</p> <p>MS Office 2007</p> <p>MS Office 2010</p>

15. CURRENT ACTIVITIES ON WHICH YOUR FIRM IS THE DESIGNATED ENGINEER OF RECORD (BE SURE TO LIST ALL WVDEP PROJECTS)

PROJECT NAME, TYPE AND LOCATION	NAME AND ADDRESS OF OWNER	NATURE OF YOUR FIRM'S RESPONSIBILITY	ESTIMATED CONSTRUCTION COST	PERCENT COMPLETE
Antietam Mine Article 3, 401 & NPDES Permits Webster County, WV	Brooks Run Mining Company, LLC 25 Little Birch Road Sutton, WV 26601	Design, submit, make corrections to and obtain approval of all the permit applications.	Design and Permitting Only	
Coal Mountain No. 1 Surface Mine Amendment Article 3 & NPDES Permits Wyoming county, WV	Dynamic Energy Corporation P.O. Box 1085 Beckley, WV 25801	Design, submit, make corrections to and obtain approval of all the permit applications.	Design and Permitting Only	
Ramp Run Haul Road Article 3 & NPDES Permits Nicholas County, WV	Terry Eagle Coal Company P. O. Box 180 Bickmore, WV 25019	Design, submit, make corrections to and obtain approval of all the permit applications.	Design and Permitting Only	
Beartown Surface Mine Article 3, 401 & NPDES Permits Wyoming County, WV	Kentucky Fuel Corporation P. O. Box 2178 Beaver, WV 25813	Design, submit, make corrections to and obtain approval of all the permit applications.	Design and Permitting Only	
Jackson Bridge Deep Mine Article 3 & NPDES Permits Webster County, WV	Brooks Run Mining Company, LLC 25 Little Birch Road Sutton, WV 26601	Design, submit, make corrections to and obtain approval of all the permit applications.	Design and Permitting Only	
Barkers Ridge Surface Mine Article 3, 401 & NPDES Permits Wyoming County, WV	Kentucky Fuel Corporation P. O. Box 2178 Beaver, WV 25813	Design, submit, make corrections to and obtain approval of all the permit applications.	Design and Permitting Only	
Clear Fork No. 1 Surface Mine Article 3 & NPDES Permits Nicholas County, WV	Atlantic Leaseco, LLC 702 Professional Park Drive, Suite D Summersville, WV 26651	Design, submit, make corrections to and obtain approval of all the permit applications.	Design and Permitting Only	
TOTAL NUMBER OF PROJECTS: 7 (this page)	TOTAL ESTIMATED CONSTRUCTION COSTS: N/A			

15. CURRENT ACTIVITIES ON WHICH YOUR FIRM IS THE DESIGNATED ENGINEER OF RECORD (BE SURE TO LIST ALL WVDEP PROJECTS)

PROJECT NAME, TYPE AND LOCATION	NAME AND ADDRESS OF OWNER	NATURE OF YOUR FIRM'S RESPONSIBILITY	ESTIMATED CONSTRUCTION COST	PERCENT COMPLETE
Sumter Deep Mine Article 3, 401 & NPDES Permits Braxton, County, WV	Brooks Run Mining Company, LLC 25 Little Birch Road Sutton, WV 26601	Design, submit, make corrections to and obtain approval of all the permit applications.	Design and Permitting Only	
Birch River Operation Facilities Article 3 & NPDES Permits Webster County, WV	ICG Eastern, LLC P.O. Box 1019 Cowen, WV 26206	Design, submit, make corrections to and obtain approval of all the permit applications.	Design and Permitting Only	
McDonald Fork Surface Mine Article 3 & NPDES Permits Wyoming county, WV	Dynamic Energy Corporation P.O. Box 1085 Beckley, WV 25801	Design, submit, make corrections to and obtain approval of all the permit applications.	Design and Permitting Only	
Ramp Run No. 2 Amendment Article 3 & NPDES Permits Nicholas County, WV	Terry Eagle Coal Company P. O. Box 180 Bickmore, WV 25019	Design, submit, make corrections to and obtain approval of all the permit applications.	Design and Permitting Only	
Jackson Bridge Extension Deep Mine Article 3 & NPDES Permits Webster County, WV	Brooks Run Mining Company, LLC 25 Little Birch Road Sutton, WV 26601	Design, submit, make corrections to and obtain approval of all the permit applications.	Design and Permitting Only	
Antietam Mine US Army Corps of Engineers 404 Individual Permit Webster County, WV	Brooks Run Mining Company, LLC 25 Little Birch Road Sutton, WV 26601	Design, submit, make corrections to and obtain approval of USACE 404 IP Permit and Stream Mitigation Plan	Design and Permitting Only	
Sumter Deep Mine US Army Corps of Engineers 404 Individual Permit Braxton, County, WV	Brooks Run Mining Company, LLC 25 Little Birch Road Sutton, WV 26601	Design, submit, make corrections to and obtain approval of USACE 404 IP Permit and Stream Mitigation Plan	Design and Permitting Only	
TOTAL NUMBER OF PROJECTS: 7 (this page)		TOTAL ESTIMATED CONSTRUCTION COSTS: N/A		

15. CURRENT ACTIVITIES ON WHICH YOUR FIRM IS THE DESIGNATED ENGINEER OF RECORD

PROJECT NAME, TYPE AND LOCATION	NAME AND ADDRESS OF OWNER	NATURE OF YOUR FIRM'S RESPONSIBILITY	ESTIMATED CONSTRUCTION COST	PERCENT COMPLETE
Barkers Ridge Surface Mine US Army Corps of Engineers 404 Individual Permit Wyoming County, WV	Kentucky Fuel Corporation P. O. Box 2178 Beaver, WV 25813	Design, submit, make corrections to and obtain approval of USACE 404 IP Permit and Stream Mitigation Plan	Design and Permitting Only	
Beartown Surface Mine US Army Corps of Engineers 404 Individual Permit Wyoming County, WV	Kentucky Fuel Corporation P. O. Box 2178 Beaver, WV 25813	Design, submit, make corrections to and obtain approval of USACE 404 IP Permit and Stream Mitigation Plan	Design and Permitting Only	
TOTAL NUMBER OF PROJECTS: 2 (this page)/16 Total Projects		TOTAL ESTIMATED CONSTRUCTION COSTS: \$ N/A		

17. COMPLETED WORK WITHIN LAST 5 YEARS ON WHICH YOUR FIRM WAS THE DESIGNATED ENGINEER OF RECORD

PROJECT NAME, TYPE AND LOCATION	NAME AND ADDRESS OF OWNER	ESTIMATED CONSTRUCTION COST	YEAR	CONSTRUCTED (YES OR NO)
Twin Branch Portal – AML Project Mingo County, WV	WV DEP 601 57 th Street, S.E. Charleston, WV 25304	\$512,000	2005	Yes
Godby Branch Portal AML Project Drainage Phase II Logan, WV	WV DEP 601 57 th Street, S.E. Charleston, WV 25304	\$75,000	2005	Yes
Dent's Run Bridge Monongalia County, WV	William Henrich, ROW Division WV Dept. of Trans., Bldg. 5 Charleston, WV 25305	\$56,000	2004	Yes
Moccasin Hollow Deep Mine Article 3 and NPDES Permits Boone County, WV	Catenary Coal Company, LLC 5914 Cabin Creek Rd Eskdale, WV 25075	Design and Permitting Only	2007	No
Tenmile Fork Deep Mine Article 3 and NPDES Permits Kanawha County, WV	Catenary Coal Company, LLC 5914 Cabin Creek Rd Eskdale, WV 25075	Design and Permitting Only	2007	No
O'Brien No. 1 Surface Mine Article 3 and NPDES Permits Webster County, WV	ICG Eastern, LLC P. O. Box 1019, Rt. 82 West Cowen, WV 26206	Design and Permitting Only	2003	Yes
O'Brien No. 2 Surface Mine Article 3 and NPDES Permits Webster County, WV	ICG Eastern, LLC P. O. Box 1019, Rt. 82 West Cowen, WV 26206	Design and Permitting Only	2005	Yes
Casey Creek No. 1 Surface Mine Article 3 and NPDES Permits USACOE 404 IP Boone County, WV	Hillside Mining Company P. O. Box 1189 Charleston, WV 25324	Design and Permitting Only	2006	No

17. COMPLETED WORK WITHIN LAST 5 YEARS ON WHICH YOUR FIRM WAS THE DESIGNATED ENGINEER OF RECORD

PROJECT NAME, TYPE AND LOCATION	NAME AND ADDRESS OF OWNER	ESTIMATED CONSTRUCTION COST	YEAR	CONSTRUCTED (YES OR NO)
Brandy Station Mine Article 3 and NPDES Permits USACOE 404 IP Webster County, WV	Brooks Run Mining Company, LLC 25 Little Birch Road Sutton, WV 26601	Design and Permitting Only	2005	No
Cove Mountain Deep Mine Article 3 and NPDES Permits USACOE 404 IP Webster County, WV	Brooks Run Mining Company, LLC 25 Little Birch Road Sutton, WV 26601	Design and Permitting Only	2005	No
Big Creek No. 2 Amendment Article 3 and NPDES Permits Fayette County, WV	Appalachian Fuels, LLC 1500 N. Big Run Rd. Ashland, KY 41102	Design and Permitting Only	2005	Yes
Slabcamp Stockton Deep Mine Article 3 and NPDES Permits Kanawha County, WV	Kanawha Energy Company P. O. Box 11174 Charleston, WV 25339	Design and Permitting Only	2003	Yes
Saylor's A & B Deep Mines Article 3 and NPDES Permits Webster County, WV	Brooks Run Mining Company, LLC 25 Little Birch Road Sutton, WV 26601	Design and Permitting Only	2006	Yes
Boone North No. 3 Surface Mine Article 3 and NPDES Permits Boone County, WV	Raven Crest Contracting, LLC P. O. Box 1200 Robinson Creek, KY 41560	Design and Permitting Only	2006	Yes
Bridge Fork West Amendment Article 3 and NPDES Permits Fayette County, WV	Powellton Coal Company P. O. Box 158 Bickmore, WV 25019	Design and Permitting Only	2007	No
"E" Deep Mine Article 3 and NPDES Permits Tucker County, WV	Mettiki Coal (WV), LLC 771 Corporate Drive, Suite 1000 Lexington, KY 40503	Design and Permitting Only	2004	Yes

17. COMPLETED WORK WITHIN LAST 5 YEARS ON WHICH YOUR FIRM WAS THE DESIGNATED ENGINEER OF RECORD

PROJECT NAME, TYPE AND LOCATION	NAME AND ADDRESS OF OWNER	ESTIMATED CONSTRUCTION COST	YEAR	CONSTRUCTED (YES OR NO)
Bridge Fork West Surface Mine Article 3 and NPDES Permits Fayette County, WV	Powellton Coal Company P. O. Box 158 Bickmore, WV 25019	Design and Permitting Only	2004	Yes
McDonald's Parking Lot Condemnation Wood County, WV	WV Dept. of Transportation Bldg. 5, Room 603 1900 Kanawha Blvd., E Charleston, WV 25305-0430	N/A	2003-2004	N/A
Dominion App./Cabot Gas Wells Appraisal Wyoming Co., WV	WV Dept. of Transportation Bldg. 5, Room 603 1900 Kanawha Blvd., E Charleston, WV 25305-0430	N/A	2003	N/A
Coalfield Expressway Coal Reserve Study Slab Fork, WV	WV Dept. of Transportation Bldg. 5, Room 603 1900 Kanawha Blvd., E Charleston, WV 25305-0430	Design Only	2003	N/A
Beaver Coal/Gas Wells Appraisal Raleigh Co., WV	WV Dept. of Transportation Bldg. 5, Room 603 1900 Kanawha Blvd., E Charleston, WV 25305-0430	N/A	2003	N/A
Mineral Wells Access Road Road Design Wood Co., WV	WV Dept. of Transportation Bldg. 5, Room 603 1900 Kanawha Blvd., E Charleston, WV 25305-0430	Design Only	2003	Yes
KFC Parking Lot Condemnation Logan, WV	WV Dept. of Transportation Bldg. 5, Room 603 1900 Kanawha Blvd., E Charleston, WV 25305-0430	N/A	2003	N/A
Dominion App./Cabot Gas Wells Appraisal Wyoming Co., WV	WV Dept. of Transportation Bldg. 5, Room 603 1900 Kanawha Blvd., E Charleston, WV 25305-0430	N/A	2004	N/A

17. COMPLETED WORK WITHIN LAST 5 YEARS ON WHICH YOUR FIRM WAS THE DESIGNATED ENGINEER OF RECORD

PROJECT NAME, TYPE AND LOCATION	NAME AND ADDRESS OF OWNER	ESTIMATED CONSTRUCTION COST	YEAR	CONSTRUCTED (YES OR NO)
Beaver Coal Parcel 10-3/Gas Wells Appraisal Logan Co., WV	WV Dept. of Transportation Bldg. 5, Room 603 1900 Kanawha Blvd., E Charleston, WV 25305-0430	N/A	2004	N/A
Beaver Coal Parcels 1-8 Coal Reserve Study Logan Co., WV	WV Dept. of Transportation Bldg. 5, Room 603 1900 Kanawha Blvd., E Charleston, WV 25305-0430	N/A	2004	N/A
Beaver Coal Parcels/Western Pocahontas Coal Reserve Study Raleigh Co., WV	WV Dept. of Transportation Bldg. 5, Room 603 1900 Kanawha Blvd., E Charleston, WV 25305-0430	N/A	2004	N/A
Fed Ex Entrance and Parking Alternatives Road Design Wood County, WV	WV Dept. of Transportation Bldg. 5, Room 603 1900 Kanawha Blvd., E Charleston, WV 25305-0430	Design Only	2003	Yes
Dollar General Parking and Entrance Alternatives Road Design Tucker County, WV	WV Dept. of Transportation Bldg. 5, Room 603 1900 Kanawha Blvd., E Charleston, WV 25305-0430	Design Only	2004	Yes
Berkeley County Industrial Park Access Road Road Design Berkeley County, WV	WV Dept. of Transportation Bldg. 5, Room 603 1900 Kanawha Blvd., E Charleston, WV 25305-0430	Design Only	2005	Yes
Retaining Walls Alternates Design Wood County, WV	WV Dept. of Transportation Bldg. 5, Room 603 1900 Kanawha Blvd., E Charleston, WV 25305-0430	Design Only	2004	Yes
Seven Pines Mine US Army Corps of Engineers 404 Individual Permit Webster County, WV	Brooks Run Mining Company, LLC 25 Little Birch Road Sutton, WV 26601	Design and Permitting Only	2002	Yes

17. COMPLETED WORK WITHIN LAST 5 YEARS ON WHICH YOUR FIRM WAS THE DESIGNATED ENGINEER OF RECORD

PROJECT NAME, TYPE AND LOCATION	NAME AND ADDRESS OF OWNER	ESTIMATED CONSTRUCTION COST	YEAR	CONSTRUCTED (YES OR NO)
Wildcat Surface Mine US Army Corps of Engineers 404 Individual Permit Webster County, WV	Wildcat, LLC 106 Lockheed Drive Beaver, WV 25813	Design and Permitting Only	2004	Yes
Georges Creeks Surface Mine US Army Corps of Engineers 404 Individual Permit Logan County, WV	Highland Mining Company P. O. Box 1097 Holden, WV 25625	Design and Permitting Only	2005	Yes
Camp Branch Surface Mine US Army Corps of Engineers 404 Individual Permit Logan County, WV	Aracoma Coal Company P. O. Box 1120 Holden, WV 25625	Design and Permitting Only	2005	Yes
Mountain Laurel Complex US Army Corps of Engineers 404 Individual Permit Logan County, WV	Mingo Logan Coal Company 1000 Mingo Logan Avenue Wharnccliffe, WV 25657	Design and Permitting Only	2006	Yes
Whitman No. 2 Surface Mine US Army Corps of Engineers 404 Individual Permit Logan County, WV	Alex Energy, Inc. P. O. Box 877 Stollings, WV 25646	Design and Permitting Only	2004	Yes
Victory Deep Mine – SCP Article 3 and NPDES Permits	Spartan Mining Company	Design and Permitting Only	2001	Yes
Georges Creek Surface Mine Article 3 and NPDES Permits Logan County, WV	Highland Mining Company P. O. Box 1097 Holden, WV 25678	Design and Permitting Only	2002	Yes
Ruby Energy Complex Article 3 and NPDES Permits	Delbarton Mining Company P. O. Box 1097 Holden, WV 25678	Design and Permitting Only	2002	Yes

17. COMPLETED WORK WITHIN LAST 5 YEARS ON WHICH YOUR FIRM WAS THE DESIGNATED ENGINEER OF RECORD

PROJECT NAME, TYPE AND LOCATION	NAME AND ADDRESS OF OWNER	ESTIMATED CONSTRUCTION COST	YEAR	CONSTRUCTED (YES OR NO)
South Copperas Surface Mine Article 3 and NPDES Permits Logan County, WV	Alex Energy, Inc. P. O. Box 1097 Holden, WV 25625	Design and Permitting Only	2003	Yes
North Haulroad SMA Article 3 and NPDES Permits Logan County, WV	Alex Energy, Inc. P. O. Box 1097 Holden, WV 25625	Design and Permitting Only	2004	Yes
Horsepen Alma "C" Deep Mine Article 3 and NPDES Permits Logan County, WV	Mingo Logan Coal Company P. O. Box 40 L Wharnccliffe, WV 25651	Design and Permitting Only	2005	Yes
Guyandotte Slope Mine Article 3 and NPDES Permits Wyoming County, WV	Road Fork Development Company, Inc. P. O. Box 565 Matewan, WV 25678	Design and Permitting Only	2005	Yes
Guyandotte Slope Mine - SCP Article 3 and NPDES Permits Wyoming County, WV	Road Fork Development Company, Inc. P. O. Box 565 Matewan, WV 25678	Design and Permitting Only	2006	Yes
Mountain Laurel Upper Coalburg Deep Mine Article 3 and NPDES Permits Boone & Logan Counties, WV	Mingo Logan Coal Company P. O. Box E Sharples, WV 25651	Design and Permitting Only	2006	Yes
Highland Middle Coalburg Deep Mine Article 3 and NPDES Permits Logan County, WV	Highland Mining Company P. O. Box 1097 Holden, WV 25625	Design and Permitting Only	2006	Yes
Calvin Branch Surface Mine Article 3 and NPDES Permits Logan County, WV	Apogee Coal Company, LLC HC61 Box 156 Yolyn, WV 25654	Design and Permitting Only	2006	Yes

17. COMPLETED WORK WITHIN LAST 5 YEARS ON WHICH YOUR FIRM WAS THE DESIGNATED ENGINEER OF RECORD

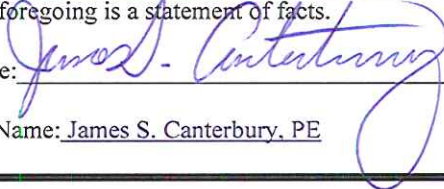
PROJECT NAME, TYPE AND LOCATION	NAME AND ADDRESS OF OWNER	ESTIMATED CONSTRUCTION COST	YEAR	CONSTRUCTED (YES OR NO)
Mountaineer II Deep Mine SCP Article 3 and NPDES Permits Logan County, WV	Mingo Logan Coal Company P. O. Box E Sharples, WV 25651	Design and Permitting Only	2007	Yes
Rich Fork Surface Mine Article 3 & NPDES Permits Boone County, WV	Raven Crest Contracting, LLC P.O. Box 1200 Robinson Creek, KY 41560	Design and Permitting Only	2007	No
Boone North No. 5 Surface Mine Article 3 & NPDES Permits Boone County, WV	Raven Crest Contracting, LLC P.O. Box 1200 Robinson Creek, KY 41560	Design and Permitting Only	2009	No
Falling Rock Deep Mine Article 3 & NPDES Permits Boone County, WV	Raven Crest Contracting, LLC P.O. Box 1200 Robinson Creek, KY 41560	Design and Permitting Only	2007	No
Seven Pines Amendment Article 3 & NPDES Permit Webster County, WV	Brooks Run Mining Company, LLC 25 Little Birch Road Sutton, WV 26601	Design and Permitting Only	2007	No
Rich Fork Surface Mine US Army Corps of Engineers 404 Individual Permit Boone County, WV	Raven Crest Contracting, LLC P.O. Box 1200 Robinson Creek, KY 41560	Design and Permitting Only	2008	No

18. COMPLETED WORK WITHIN LAST 5 YEARS ON WHICH YOUR FIRM HAS BEEN A SUB-CONSULTANT TO OTHER FIRMS (INDICATE PHASE OF WORK FOR WHICH YOUR FIRM WAS RESPONSIBLE)

PROJECT NAME, TYPE AND LOCATION	NAME AND ADDRESS OF OWNER	ESTIMATED CONSTRUCTION COST OF YOUR FIRM'S PORTION	YEAR	CONSTRUCTED (YES OR NO)	FIRM ASSOCIATED WITH
N/A					

19. Use this space to provide any additional information or description of resources supporting your firm's qualifications to perform work for the West Virginia Abandoned Mine Lands Program.

20. The foregoing is a statement of facts.

Signature: 

Title: Partner/Vice President

Date: 7/23/13

Printed Name: James S. Canterbury, PE

AML and RELATED PROJECT EXPERIENCE MATRIX																	PARTICIPATION/CAPACITY ***					
PROJECT	Exp. Basis C=Corp. P=Personal	Additional Info Provided in Section (s) **	PROJECT EXPERIENCE REQUIREMENTS														M=Management P=Professional					
			Abandoned Surface Mine Reclamation	Abandoned Deep Mine Reclamation	Portal/Shaft Closure	Hydrologic/Hydraulic Design/Eval.	Remining Evaluation	Mine/Refuse Fire Abatement	Subsidence Investigation Mitigation	Hazardous Waste Disposal	Project Specifications	Water Quality Evaluation/Mitigation/ Replacement Construction	Inspection/Management	Water Treatment	Equipment/Structure Removal	Stream Restoration	Geotechnical/Stability	Jim Canterbury	Mike Akers	Todd Cooper	Eva Melancon	J D Elkins
Page 1																	Current Projects					
Antietam Mine Article 3 & NPDES	Both					X						X			X	X	M, P	P	P	P		
Boone North No. 5 Surface Mine	Both				X							X			X	X	M, P	P	P	P		
Ramp Run Haul Road	Both				X							X					M, P	P	P	P		
Beartown Surface Mine	Both				X							X			X	X	M, P	P	P	P		
Jackson Bridge Deep Mine	Both			X	X							X				X	M, P	P	P	P		
Rich Fork Surface Mine	Both				X							X			X	X	M, P	P	P	P		
Clear Fork No. 1 Surface Mine	Both				X							X				X	M, P	P	P	P		
Falling Rock Deep Mine	Both			X	X							X			X	X	M, P	P	P	P		
Seven Pines Amendment	Both				X							X			X	X	M, P	P	P	P		
Ramp Run No. 2 Amendment	Both				X							X				X	M, P	P	P	P		

** Use this area to provide specific sections or pages if needed for reference.

*** List Primary Design personnel and their functional capacity for the projects listed.

AML and RELATED PROJECT EXPERIENCE MATRIX

PROJECT	Exp. Basis C=Corp. P=Personal	Additional Info Provided in Section (s) **	PROJECT EXPERIENCE REQUIREMENTS														PARTICIPATION/CAPACITY *** M=Management P=Professional						
			Abandoned Surface Mine Reclamation	Abandoned Deep Mine Reclamation	Portal/Shaft Closure	Hydrologic/Hydraulic Design/Evaluation	Remining Evaluation	Mine/Refuse Fire Abatement	Subsidence Investigation Mitigation	Hazardous Waste Disposal	Project Specifications	Water Quality Evaluation/ Nitigation/Replacement	Construction Inspection/Management	Water Treatment	Equipment/Structure Removal	Stream Restoration	Geotechnical/Stability	Jim Canterbury	Mike Akers	Todd Cooper	Eva Melancon	J D Elkins	Bryan Gray

Page 1 of 2 Previous 5 Years Projects

Twin Branch Portal	Both		X	X	X	X	X			X	X		X		X	M, P							
Godby Branch Portal	Both		X	X	X	X				X				X	X	M, P							
Dent's Run Bridge	Both					X							X			M, P							
Moccasin Hollow Deep Mine	Both				X	X		X		X					X	M, P	P						
Tenmile Fork Deep Mine	Both				X	X		X		X					X	M, P	P						
O'Brien No. 1 Surface Mine	Both					X				X					X	M, P							
O'Brien No. 2 Surface Mine	Both					X				X					X	M, P	P						
Casey Creek No. 1 Surface Mine	Both					X				X				X	X	M, P		P					
Brandy Station Mine	Both					X				X				X	X	M, P							
Cove Mtn Deep Mine	Both				X	X		X		X				X	X	M, P							
Big Creek No. 2 Amendment	Both					X				X					X	M, P							
Slabcamp Stockton Deep Mine	Both				X	X		X		X					X	M, P							
Saylor's A & B Deep Mine	Both				X	X		X		X					X	M, P		P					

AML and RELATED PROJECT EXPERIENCE MATRIX

PROJECT	Exp. Basis C=Corp. P=Personal	Additional Info Provided in Section (s) **	PROJECT EXPERIENCE REQUIREMENTS														PARTICIPATION/CAPACITY *** M=Management P=Professional					
			Abandoned Surface Mine Reclamation	Abandoned Deep Mine Reclamation	Portal/Shaft Closure	Hydrologic/Hydraulic Design/Eval.	Remining Evaluation	Mine/Refuse Fire Abatement	Subsidence Investigation Mitigation	Hazardous Waste Disposal	Project Specifications	Water Quality Evaluation/Nitigation/Replacement	Construction Inspection/Management	Water Treatment	Equipment/Structure Removal	Stream Restoration	Geotechnical/Stability	Jim Canterbury	Mike Akers	Todd Cooper	Eva Melancon	J D Elkins

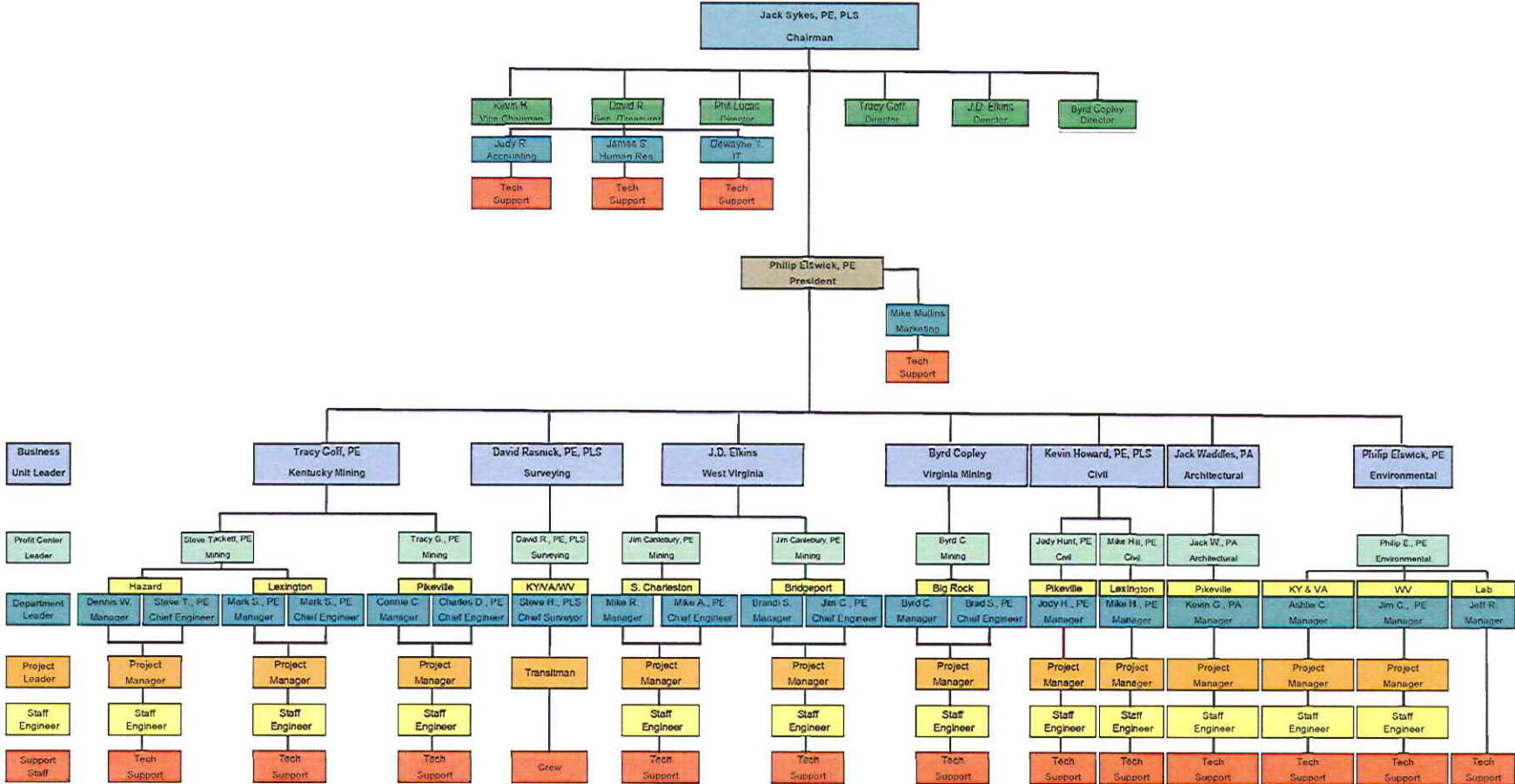
Page 2 of 3 Previous 5 Years Projects

Boone North No. 3 Surface Mine	Both					X					X			X			M, P	P	P	P		
Bridge Fork West Amendment	Both			X		X					X					X	M, P		P			
"E" Deep Mine	Both				X	X			X	X	X					X	M, P					
Bridge Fork West Surface Mine	Both					X					X					X	M, P					
Seven Pines Mine	Both														X		M, P					
Wildcat Surface Mine	Both		X	X											X		M, P					
Camp Branch Surface Mine	Both					X									X	X					M, P	P
Mountain Laurel Complex	Both				X	X			X						X	X					M, P	P
Whitman No. 2 Surface Mine	Both		X			X									X	X					M, P	P
Victory Deep mine - SCP	Both				X				X							X					M, P	P
Ruby Energy Complex	Both				X	X			X												M, P	P
** Use this area to provide specific:																						

*** List Primary Design personnel and their functional capacity for the projects listed.

Attachment "C"

SUMMIT ENGINEERING, INC. ORGANIZATIONAL CHART



CERTIFICATION AND SIGNATURE PAGE

By signing below, I certify that I have reviewed this Solicitation in its entirety; understand the requirements, terms and conditions, and other information contained herein; that I am submitting this bid or proposal for review and consideration; that I am authorized by the bidder to execute this bid or any documents related thereto on bidder's behalf; that I am authorized to bind the bidder in a contractual relationship; and that to the best of my knowledge, the bidder has properly registered with any State agency that may require registration.

Summit Engineering, Inc.

(Company)

(Authorized Signature)

James S. Canterbury, PE, Partner

(Representative Name, Title)

304-744-6410

(Phone Number)

304-744-6416

(Fax Number)

7/22/2013

(Date)

ADDENDUM ACKNOWLEDGEMENT FORM

SOLICITATION NO.: DEP16288

Instructions: Please acknowledge receipt of all addenda issued with this solicitation by completing this addendum acknowledgment form. Check the box next to each addendum received and sign below. Failure to acknowledge addenda may result in bid disqualification.

Acknowledgment: I hereby acknowledge receipt of the following addenda and have made the necessary revisions to my proposal, plans and/or specification, etc.

Addendum Numbers Received:

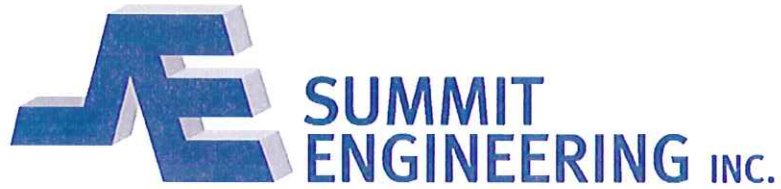
(Check the box next to each addendum received)

- | | |
|--|--|
| <input checked="" type="checkbox"/> Addendum No. 1 | <input type="checkbox"/> Addendum No. 6 |
| <input type="checkbox"/> Addendum No. 2 | <input type="checkbox"/> Addendum No. 7 |
| <input type="checkbox"/> Addendum No. 3 | <input type="checkbox"/> Addendum No. 8 |
| <input type="checkbox"/> Addendum No. 4 | <input type="checkbox"/> Addendum No. 9 |
| <input type="checkbox"/> Addendum No. 5 | <input type="checkbox"/> Addendum No. 10 |

I understand that failure to confirm the receipt of addenda may be cause for rejection of this bid. I further understand that any verbal representation made or assumed to be made during any oral discussion held between Vendor's representatives and any state personnel is not binding. Only the information issued in writing and added to the specifications by an official addendum is binding.

Summit Engineering, Inc.
Company
James S. Antakany
Authorized Signature
7/23/13
Date

NOTE: This addendum acknowledgement should be submitted with the bid to expedite document processing.



www.summit-engr.com

*WEST VIRGINIA *KENTUCKY *VIRGINIA

WEST VIRGINIA OFFICES

100 TECHNOLOGY DRIVE
S. CHARLESTON, WV 25303
(304) 744-6410 Phone
(304) 744-6416 FAX

4013 BUCKHANNON PIKE
MT. CLARE, WV 26408
(304) 622-0286 Phone
(304) 622-0288 FAX

KENTUCKY OFFICES

131 SUMMIT DRIVE
PIKEVILLE, KY 41501
(606)432-1447 Phone
(606) 432-1440 FAX

3205 SUMMIT SQUARE PLACE
LEXINGTON, KY 40509
(859) 264-9860 Phone
(859) 264-9106 FAX

3090 North KY HWY 15
HAZARD, KY 41702
(606) 439-1497 Phone
(606) 439-3518 FAX

TRI-STATE LABORATORY SERVICES
160 LANK BRANCH
PIKEVILLE, KY 41501
(606) 509-0866

VIRGINIA OFFICES

33102 RIVERSIDE DRIVE
BIG ROCK, VA 24603
(276) 530-7220 Phone
(276) 530-7280 FAX

STATE OF WEST VIRGINIA
Purchasing Division**PURCHASING AFFIDAVIT**

MANDATE: Under W. Va. Code §5A-3-10a, no contract or renewal of any contract may be awarded by the state or any of its political subdivisions to any vendor or prospective vendor when the vendor or prospective vendor or a related party to the vendor or prospective vendor is a debtor and: (1) the debt owed is an amount greater than one thousand dollars in the aggregate; or (2) the debtor is in employer default.

EXCEPTION: The prohibition listed above does not apply where a vendor has contested any tax administered pursuant to chapter eleven of the W. Va. Code, workers' compensation premium, permit fee or environmental fee or assessment and the matter has not become final or where the vendor has entered into a payment plan or agreement and the vendor is not in default of any of the provisions of such plan or agreement.

DEFINITIONS:

"Debt" means any assessment, premium, penalty, fine, tax or other amount of money owed to the state or any of its political subdivisions because of a judgment, fine, permit violation, license assessment, defaulted workers' compensation premium, penalty or other assessment presently delinquent or due and required to be paid to the state or any of its political subdivisions, including any interest or additional penalties accrued thereon.

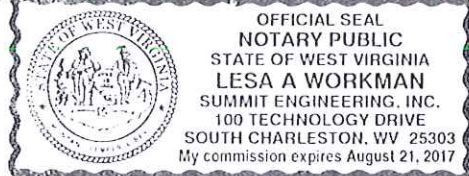
"Employer default" means having an outstanding balance or liability to the old fund or to the uninsured employers' fund or being in policy default, as defined in W. Va. Code § 23-2c-2, failure to maintain mandatory workers' compensation coverage, or failure to fully meet its obligations as a workers' compensation self-insured employer. An employer is not in employer default if it has entered into a repayment agreement with the Insurance Commissioner and remains in compliance with the obligations under the repayment agreement.

"Related party" means a party, whether an individual, corporation, partnership, association, limited liability company or any other form or business association or other entity whatsoever, related to any vendor by blood, marriage, ownership or contract through which the party has a relationship of ownership or other interest with the vendor so that the party will actually or by effect receive or control a portion of the benefit, profit or other consideration from performance of a vendor contract with the party receiving an amount that meets or exceeds five percent of the total contract amount.

AFFIRMATION: By signing this form, the vendor's authorized signer affirms and acknowledges under penalty of law for false swearing (W. Va. Code §61-5-3) that neither vendor nor any related party owe a debt as defined above and that neither vendor nor any related party are in employer default as defined above, unless the debt or employer default is permitted under the exception above.

WITNESS THE FOLLOWING SIGNATURE:Vendor's Name: Summit Engineering, Inc.Authorized Signature: *James S. Antstetter* Date: July 22, 2013State of WVCounty of Kanawha, to-wit:Taken, subscribed, and sworn to before me this 22nd day of July, 2013.My Commission expires Aug. 21, 2017.

AFFIX SEAL HERE

NOTARY PUBLIC *Les A Workman*