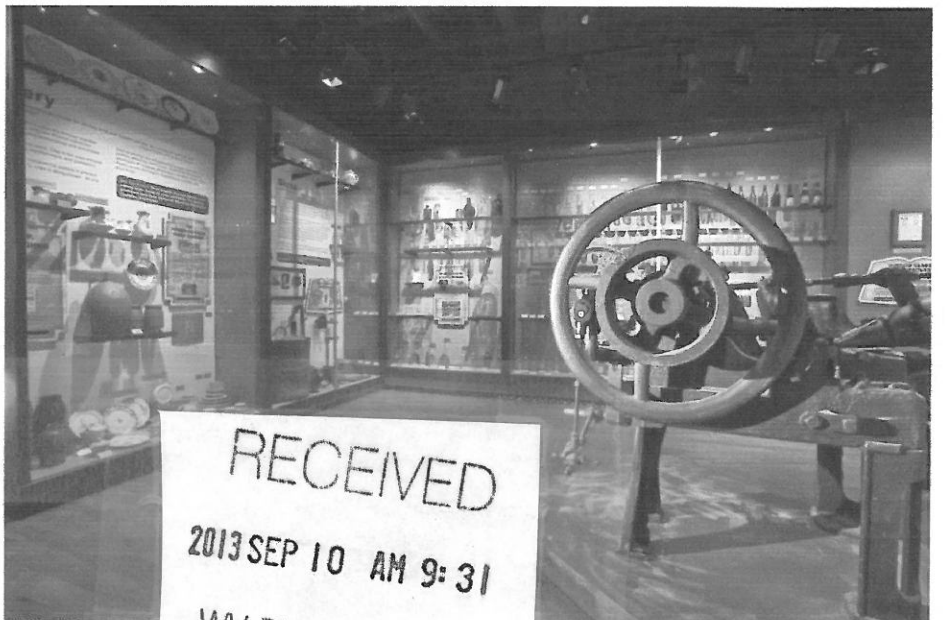
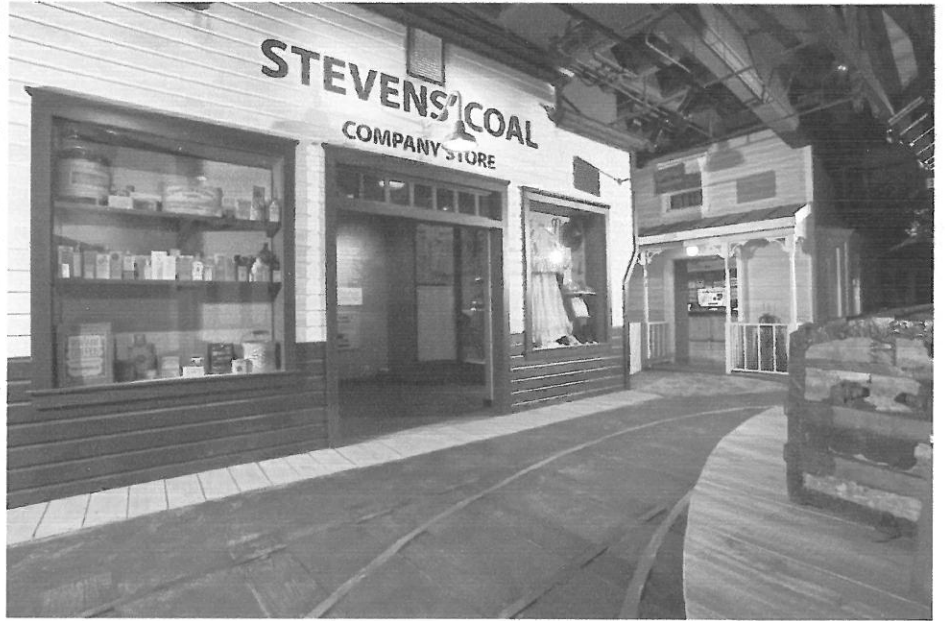


COMMERCIAL
ARCHITECTURE

**Expression of Interest Response
West Virginia State Museum Update
DCH1302
September 9, 2013**



RECEIVED

2013 SEP 10 AM 9:31

WV PURCHASING
DIVISION

TABLE OF CONTENTS

TITLE

3.1	Understanding of the Project Objectives and Time line
	Understanding of Overall Project and Project Objectives
	Project Timeline
	Current Workload
	Wheeling Docks Scene Enhancement
3.2	Vendor Experience/Qualifications
	Examples of Successful Projects
	Additional References
	Additional Projects of Note
	Experience with Specific Elements
	Experience with Projects Within Existing Facilities
	Specialty Lighting-Artifacts
	Finish and Material Selection
	Design of Back of House Areas
	Artifact Conservation, Cases, Mounts and Lighting
3.3	Quality of Staff Assigned to the Project
	Key Personnel and Anticipated Amount of Work Time
	Design Team Organization Chart
	RSL Staff Resumes
	Design Consultant Staff Resumes
	MEP and Structural Consultant Staff Resumes
4.0	Project and Goals
	Work Plan
	Design Phase
	Construction/Bid Document Phase
	Bid Preparation Phase
	Construction Phase
	Certification
	Purchasing Affidavit
	Addendum Acknowledgement Form

END OF TABLE OF CONTENTS

3.1 Understanding of the Project Objectives and Time Line

□ Understanding of Overall Project and Project Objectives

The proposed project consists of enhancements/updates to the existing West Virginia State Museum, located within 14,500 square feet of space in the West Virginia Cultural Center. Project design services must be completed in 180 days from a notice to proceed.

The scope consists of updates to approximately 6 or 7 existing scenes/dioramas to transform them from static displays to more dynamic and possibly interactive exhibits. Enhancements to the areas identified for improvement are intended to raise the level of those areas to be more consistent with the other portions of the museum.

RSL Commercial Architecture has already completed design and construction drawings for these enhancements under a previous contract. The objective under this contract is to modify the designs already completed to obtain the greatest positive impact for the actual budget available and to satisfy the Department of Education and the Arts and the Division of Culture and History's desire to inject additional fun to the museum experience. This will involve listening to the client's thoughts and comments regarding where the designs are currently as well as evaluating the proposed enhancements and the preliminary budgets for each element and reallocating or redesigning the exhibits accordingly. As some time has passed between the last round of designs and now, the technology used in the previous designs will be evaluated to see if newer products or systems can be used to reduce cost or better the end results and performance of the proposed exhibits. Or to just plain make them more fun and enjoyable.

The scope of services required will also include assistance in the preparation of the bid documents in cooperation with the WVDCH and the Purchasing Division to bid and award the contract for the construction of the exhibits. Construction phase services to review submittals, scripts and historical references as well as art direction for final installation will also be required/provided.

□ Project Timeline

Time is of the essence in completing the design process and construction documents. This work is to be completed in 180 days. RSL is in a unique position to complete this work quickly. Having provided the A/E services for the original museum construction and one round of design and construction documents for the museum enhancements/updates, we are very familiar with the museum's physical construction, infrastructure, content etc. We also have all of the existing CAD drawings and information on file and ready to be used for this project. Our design team is intact from our previous work on the museum and prepared to extend and improve on the excellent exhibits already in place while introducing some technology and show elements that go above and beyond the original. The design

services work can be completed easily within the 180 day window. Please refer to the Work Plan under section 4 of this document for a detailed schedule outline.

□ **Current Workload**

Current work load at RSL will not hamper our ability to provide the desired services on schedule. There is approximately \$315,000 of work under contract to RSL at this time. Of that total, more than one third is dedicated to a single project that is inactive due to delays on the part of the client. None of the remaining work is scheduled to run longer than 90 days. The RSL staff of 9 can produce 320 hours and approximately \$32,000 of work per week. At that rate, the current active work load is about 40 days total. Projects under contract include: The National Museum of the United States Army (detailing of architectural elements), Kerry Hyundai (expansion), 911 Memorial Museum (exhibit detailing), Axxess Commercial (office renovation), Museum of Alabama (exhibit detailing), Newgisitics (alteration), Meritrust CU (new branch), First Midwest Bank (new branch), Worlds of Fun-Windseeker attraction (control booth and electrical building).

In addition, we will be using a number of consultants for this project. Their availability to provide their services necessary for the completion of the project in 180 days has been confirmed.

□ **Wheeling Docks Scene Enhancement**

The Wheeling docks portion of the museum show path tells the story of the movement of the state capitol from Wheeling to Charleston. As it is, this is told through the voice over narration with a static mural on all sides of the room and artifact baggage etc. To bring this area to life we propose constructing a portion of the riverboat involved in that move and taking visitors right on board! Crewmen silhouetted behind a closed door and window will tell the story of the early morning departure for the new capitol and how it came to pass. The existing murals can remain in place to represent the Wheeling suspension bridge and city water front. Sounds of the river and riverboat (steam engine, paddlewheel) will add to the feel of being a part of history. Existing speakers and lighting can be repurposed to help maintain budget. Some of the artifacts may stay on the ground near the city waterfront and some will be placed on the upper deck of the riverboat as cargo.

As a final touch, an interactive projection will create fish swimming at the water's edge which dart away when visitors step near and then return. The water's surface will ripple and move in response to visitor movements.

3.2 Vendor Experience/Qualifications

RSL Commercial Architecture has a long history of experience providing A/E and creative design services for entertainment and museum venues with interactive elements.

We have provided architectural and engineering services for themed entertainment attractions for over sixteen years. We have been involved in various Museum projects for the past six years. These projects require RSL to coordinate a diverse project team including theme/set design, special effects, audio/visual, lighting , ride/conveyance design, artifacts and historical content. Our task has been to provide a coordinated set of facilities construction documents which integrates and accommodates all of the various systems and components. RSL has often had responsibility for overall project coordination including reviewing and critiquing work produced by other consultants hired directly by the client.

□ Examples of Successful Projects

West Virginia State Museum - Charleston, WV

This museum takes visitors on a walk through West Virginia history along its “show path”. An authentic log cabin and scenic recreations of historical elements from various eras create the feeling of being present as history is made. Artifacts related to different time periods are integrated into the primary themed path and are also collected into adjacent “discovery rooms” that add depth and additional content to the experience. Theatrical lighting, background sound and narration as well as traditional audio visual presentations are used.

The project was constructed utilizing two prime contractors.

Project Contact:

Mr. Randall Reid Smith
Commissioner of Culture and History
West Virginia Cultural Center
1900 Kanawha Boulevard East
Charleston, WV 25305
304-558-0226

Project Facts:

Museum Square Footage:	14,500 SF
Maximum Occupant Load:	1,280
Opening Date:	West Virginia Day 2009
Construction Start:	2008
Project Budget:	Delivered within budget

Services Provided by RSL Commercial Architecture:

Architecture including design, exhibit design, artifact case design, code compliance, accessibility compliance, construction documents, submittal review, art direction and overall coordination of all consultants, the project, and the interface of facilities with all exhibits and systems.

Structural Engineering was provided by Steven Schaefer Associates as part of our project team. They designed the elevated floor structure and critical exhibit supports, prepared construction documents, and reviewed submittals.

Mechanical, Electrical and Plumbing engineering was provided by KLH Engineers as part of our project team. Their services included design and construction documents for all MEP systems, and submittal review. The scope of these building systems included facilities to connect and operate audio, visual and lighting effects designed by RAW Media as part of the RSL team.

Audio visual design and scope definition was provided by RAW Media as part of the RSL team.

Graphic design was provided by three different graphic design consultants and coordinated by Jayne McGuire

Scenic design and mural concept design was provided by In Art Designs and coordinated by George Sells.

National Museum of American Jewish History - Philadelphia, PA

This museum exhibits the depth and breadth of the experience of Jews in the United States. Design and Production, Inc. was the exhibit contractor for the project which encompassed four floors of a new building across from the Liberty Bell. Working closely with D&P as a consultant, RSL provided exhibit detailing and structural engineering for nearly all the exhibits including themed building elements, integrated audio visual and lighting effects, cantilevered glass partitions and other pieces.

Project Contact:

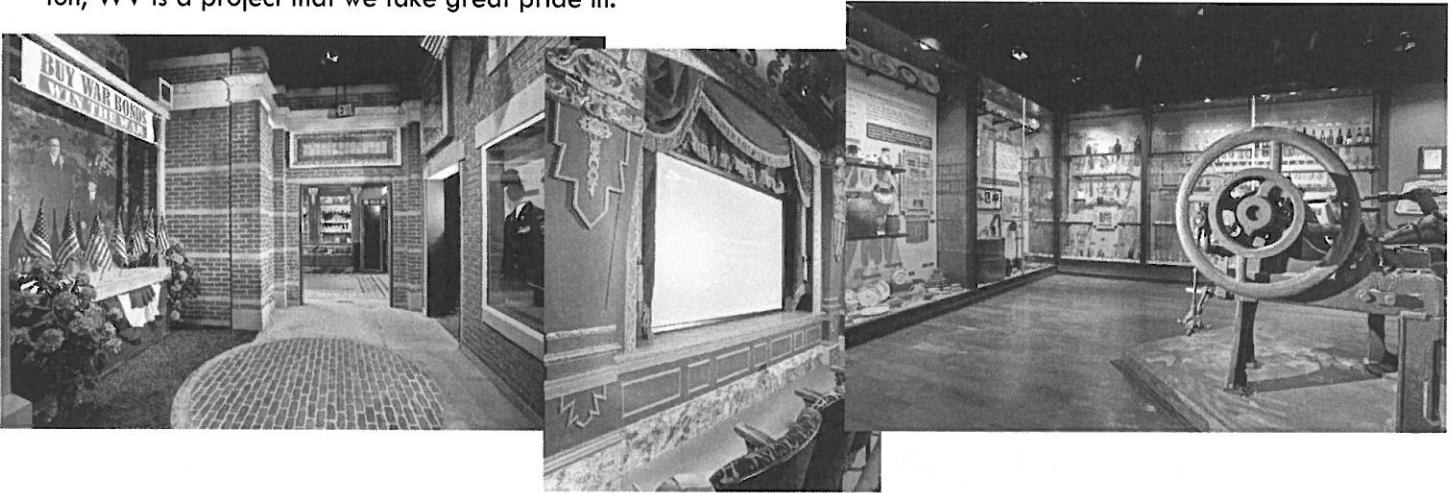
Ms. Debbie Cone
Senior Project Manager
Design and Production, Inc.
7110 Rainwater Place
Lorton, VA 22079
703.550.8640 office

Project Facts:

Museum Square Footage:	25,000 SF
Opening Date:	November 2010
Construction Start:	2009
Project Budget:	Delivered within budget

RSL COMMERCIAL ARCHITECTURE PROFILE:

RSL Commercial Architecture was established in 1990 by the firm's principal, Richard Stanley Ladrick. Since its inception, the company has grown steadily and now features a staff of five registered architects, two intern architects, one interior designer and two administrative support personnel. In 1998, we purchased and renovated a building in Cincinnati to house our offices. We have performed a wide variety of projects over our 23 plus year history, and pride ourselves in providing high quality design and construction documents. Our projects are all commercial or institutional and range from offices to museums, retail to industrial, interior to entertainment architecture. Our website shows our wide array of projects at www.rslarch.com. The West Virginia Museum of Culture and History in Charleston, WV is a project that we take great pride in.

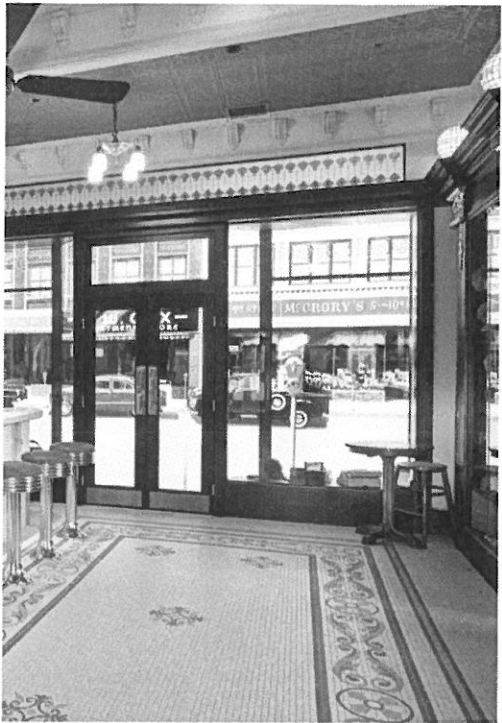


Our experience includes providing services to Design and Production, Inc on a number of museum projects. These services include architectural design and construction drawings for architectural exhibit elements, gypsum board partitions, structural and MEP engineering and exhibit detailing.

Projects on which we have collaborated with D&P include, the National Museum of American Jewish History, the Little League Museum, Colorado Justice Learning Center, Arabian Horse Galleries at the Kentucky Horse Park, Cattle Raiser's Gallery - FT. Worth Museum of Science and History. We are currently working with Design and Production on the National Museum of the United States Army in Ft. Belvoir, VA, the Museum of Alabama, the National Center for Civil and Human Rights and the 911 Memorial Museum at ground zero in New York City.

All of our employees are long term RSL members. Retaining and developing our people has been important to our success and our ability to retain clients like Design and Production, Kings Island, Cedar Fair Entertainment, Cincinnati Bell and Nisbet Brower for many years.





R S L COMMERCIAL ARCHITECTURE

PROJECTS:

Over the past 20 years, RSL has in partnership with our team engineering consultants completed more than 2,500 total projects. Our resume includes many building and construction types including historic brick and wood framed structures. We have extensive experience with museum projects and other entertainment related architecture. With today's emphasis on green design and the conservation of resources, we take great pride in working on a project where a previously developed site and existing buildings are being re-used. We know that museums as well as other high traffic facilities require a certain approach that requires the use of durable and easily maintained materials and design.

RSL services included design, verification and assessment of existing conditions, including elevator accessibility and building systems, code compliance, accessibility review, construction documents and overall project coordination. Our consultant team also provided structural engineering, lighting design, audio/visual, interior design, graphics, exhibits and theming scenery, mechanical, electrical, and plumbing engineering.



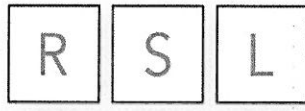
West Virginia Museum of Culture and History Cultural Center, Charleston, WV

Affecting more than 14,500 square feet of the West Virginia Cultural Center's lower level, the museum project is the complete renovation of the State's museum and related educational facilities. The museum itself incorporates thousands of historic artifacts, video, and audio materials into a themed tour of West Virginia history, including gallery spaces, educational facilities and a theater for museum orientation, lectures, and special events.

General construction began in 2007 and the museum opened in the summer of 2009. The project was built on schedule and within it's budget.

Project Facts:
 Size: 14,500 SF
 Max occupant load: 1,280
 Const. Start Date: June 2007
 Opening Date: June 2009
 Budget: \$17 million

Owner's Representative:
 Mr. Jim Hunt (704) 400-5895
 Hunt Construction Services
 1526 Andover Road
 Charlotte, NC 28211
 Phone: (704) 400-5895



COMMERCIAL
ARCHITECTURE

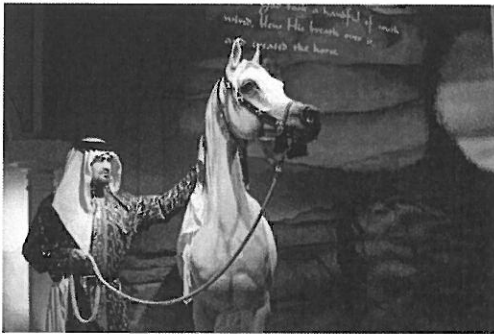
Arabian Horse Galleries, Kentucky Horse Park, Lexington, KY

The 9,400 sf of exhibits on two floors of this exhibit tell the story of the Arabian horse throughout history. These galleries complete the interior of a new addition to the museum of the horse.

RSL was a design/production consultant to D and P, which was the exhibit contractor.

Project Facts:
Size: 9,400 SF
Const. Start Date: Fall 2009
Opening Date: Summer 2010
Exhibit Designer: Hilferty

Reference:
Mr. Dan Sorg
Design and Production, Inc.
7110 Rainwater Place
Lorton, VA 22079
Phone: (703) 550-8640



RSL provided design and construction documents for metal stud and gypsum board partitions, electrical power and exhibit lighting.



Cattle Raisers Gallery, Ft. Worth Museum of Science and History, Fort Worth, TX

This is a single gallery within the Larger museum. The conceptual design had been completed and RSL worked with D&P to develop and execute that design concept. The exhibit includes life size long horn figures and cowboys on horse back.

RSL was a design/production consultant to D and P, Inc. which the exhibit contractor.

Project Facts:
Size: 6,650 SF
Max occupant load: 998
Const. Start Date: Fall 2008
Opening Date: Fall 2009

Owner's Representative:
Mr.
Design and Production, Inc.
7110 Rainwater Place
Lorton, VA 22079
Phone: (703) 550-8640



RSL provided design development services, including the review of code and accessibility requirements, exhibit design services, selection of interior finishes including flooring, bases, wall covering, paint, laminates, and stains. Prepared general casework design and case list of all proposed cases.

□ **Additional References**

Mr. Jeff Gramke
Manager of Engineering and Construction
King's Island
513-754-5761

Projects:

The Italian Job Stunt Track, Kings Island - Opened May 2005

A roller coaster based on the popular movie. Riders climb into their own Mini Cooper and join the movie's chase scene. The project included a tunnel, scenics, real fire effects and special arms fire and water explosion effects. RSL was responsible for architecture, structural engineering, MEP engineering and overall project coordination

Scooby's Haunted Castle, Kings Island - Opened April 2003

An existing "dark ride" was renovated with new scenics and a new layout. A new castle entrance and exit were added to complete the themed attraction. RFID "ghost blasters" allow riders to blast ghostly characters for a score registered on the car panel. RSL was responsible for architecture, structural engineering, MEP engineering and overall project coordination.

Tomb Raider - The Ride, Kings Island – Opened April 2002

A dark cave type passage leads the visitor through a maze like archaeological site and a hidden chamber with carved ancient figures and a mysterious hieroglyph. The hieroglyph slides open to reveal a larger room with a giant Buddha. Secrets of this hidden temple are revealed by an ominous voice and a video film clip as the guests are whisked through near darkness onto a ride to escape and safety. The ride takes guests on a series of adventures including an ice cave, molten lava and an idol with laser like eyes while turning them upside down and spinning round and round. The attraction successfully integrated theme and scenics, audio/visuals, special effects, i.e.; smoke, mist, and simulated fire, and a 75 seat amusement ride in an enclosed building. RSL was responsible for architecture, structural engineering, MEP engineering and overall project coordination

The attraction received the 2004 award for 'Outstanding Achievement' from the Themed Entertainment Association.

Outer Limits, Flight of Fear - Opened Spring 1996

Flight of Fear is a science fiction themed roller coaster, completely enclosed in a building. The attraction included audio/visuals and scenics. Visitors enter an alien space craft, are loaded onto transport vehicles and launched into the darkness. RSL was responsible for architecture, structural engineering, and MEP engineering as well as overall project coordination.

Mr. Cliff Dean
King's Dominion
16000 Theme Park Way
Doswell, VA 23047
804-875-5858

Projects:

The Italian Job Stunt Track, Kings Dominion - Opened May 2006.

This is a twin attraction to the Kings Island project. RSL responsibilities were similar. The attraction had to be adapted to different site conditions and to reduce construction costs.

Scooby's Haunted Mansion, Kings Dominion - Opened April 2004.

This "dark ride" takes guest inside the world of a Scooby Doo cartoon. The exterior is themed to be a rickety old mansion surrounded by swamp and mist. Inside is a glow in the dark world inhabited by Scooby and the gang and lots of ghosts. Guests interact with the attraction by using their special "fright light" ghost blasters to hit targets sprinkled throughout various scenes while riding in special four person Mystery Machine vehicles. The attractions are lit with black light for a ghostly glow. Special care was taken to locate exit signs and other devices to minimize their impact on scenics and the guest experience. Portions of the scenics are animated by compressed air or electrical devices to energize the show.

The "Outer Limits - Flight of Fear", Kings Dominion - Opened Spring 1996.

This is a twin attraction to the King's Island project. Both projects were executed simultaneously. The King's Dominion site is quite different, requiring adaptations of the attraction to this location. RSL responsibilities were similar.

Nickelodeon Amphitheater, Kings Dominion - Opened April 1995.

An existing outdoor seal show facility was transformed into a Nickelodeon amphitheater. The scope included a new stage, A/V systems, back of house dressing rooms and support facilities with a new tensile fabric roof. RSL provided design, structural and MEP engineering.

Mr. Jim Hunt
Hunt Construction Services
1526 Andover Road
Charlotte, NC 28211
704-400-5895

Projects:

West Virginia State Museum – Opened June 20, 2009

Jim was the owner's project manager for this project. Refer to additional information under earlier sections.

The Italian Job Stunt Track, Kings Island - Opened May 2005

A roller coaster based on the popular movie. Riders climb into their own Mini Cooper and join the movie's chase scene. The project included a tunnel, scenics, real fire effects and special arms fire and water explosion effects. RSL was responsible for architecture, structural engineering, MEP engineering and overall project coordination

The Italian Job Stunt Track, Kings Dominion - Opened May 2006.

This is a twin attraction to the Kings Island project. RSL responsibilities were similar. The attraction had to be adapted to different site conditions and to reduce construction costs.

Scooby's Haunted Mansion, Carowinds - Opened April 2002.

This "dark ride" takes guest inside the world of a Scooby Doo cartoon. The exterior is themed to be a rickety old mansion on the town square. Inside is a glow in the dark world inhabited by Scooby and the gang and lots of ghosts. Guests interact with the attraction by using their special "fright light" ghost blasters to hit targets sprinkled throughout various scenes while riding in special four person Mystery Machine vehicles. The attractions are lit with black light for a ghostly glow. Special care was taken to locate exit signs and other devices to minimize their impact on scenics and the guest experience. Portions of the scenics are animated by compressed air or electrical devices to energize the show. The project was a renovation and conversion of an existing theater building requiring extensive modifications. RSL was responsible for architecture, structural engineering, MEP engineering and overall project coordination.

□ **Additional Projects of Note**

RSL Commercial Architecture has been working as a consultant to Design and Production, Inc. since the completion of the WV State Museum in 2009. This collaboration has given us new knowledge, experience and insight into the design and fabrication of museum environments. The RSL team has provided architectural design, exhibit detailing including the integration of AV and lighting, field verification, field layout, structural engineering and MEP engineering in various combinations for a wide variety of projects including:

- Arabian Horse Galleries-Kentucky Horse Park, Lexington, KY
- Cattle Raiser's Gallery-Ft. Worth Museum of Science and History- Ft. Worth, TX
- 911 Memorial Museum, New York, New York
- Little League Museum, Williamsport, PA
- Museum of Alabama, Montgomery, AL
- National Center for Civil and Human Rights, Atlanta, GA
- National Museum of the United States Army, Ft. Belvoir, VA

□ Experience with Specific Elements

RSL Architecture has completed projects incorporating many types of theatrical lighting, animatronics, 4D elements, AV, graphics, show control/programming, lighting control/programming, mechanized movement of props/scenics and RFID technology. We have been responsible for designing, coordinating and documenting such elements and the supporting infrastructure related to them.

Theatrical Lighting – The West Virginia State Museum, National Museum of the United States Army, Tomb Raider, The Ride and many others.

Animatronics – The Phantom Theater themed dark ride incorporated multiple animatronic figures for a haunted opera house experience. Tomb Raider – The Ride also used moving and speaking figures. Design team members George Sells and Jayne McGuire have much more experience with animatronic figures and their use in interactive entertainment venues.

4D Elements – 4D means adding another dimension or sensory experience to an exhibit or attraction in addition to the visual and audible. In some cases, that has meant motion seats. It has also meant the introduction of fog or scents to reinforce a scene or story. It can be as simple as cold air in a chilling winter vignette or warm air near a fireplace. RSL has used these types of elements successfully to create experiences with a greater sense of depth and richness.

Audio/Visual – RSL projects have included a wide range of audio visual techniques including video monitors, rear screen projection, front projection, GOBO effects, and a wide range of speakers and audio devices. Our team member Rich Wagner or RAW Media has designed and produced AV installations all over the world. The enhancements to the museum will use the best technology available to execute the designs and obtain the desired results. That includes the budget results.

Graphics – The RSL team is skilled in the conception, design and use of graphics in exhibits and attractions. Graphics require attention to sight lines, mounting and lighting as well as the execution of the graphic itself. The West Virginia State Museum, three Scooby Doo dark rides and many other projects have honed our experience in this area.

Show Control and Programming - RSL Architecture and our project team have 20 years of experience in integrating show action and control into attractions. Our project team has been responsible for safety and integration of the effects into the structure and facilities systems. Examples include:

- The Italian Job Stunt Track - KI and KD
- This project included real fire effects, simulated bullet hits, water explosions, smoke effect, a moving helicopter, audio and in car audio on the ride vehicles.
- The “Outer Limits” Flight of Fear - KI and KD. The Flight of Fear incorporated fog effects, audio/visuals and lighting effects.

- Tomb Raider, The Ride - KI
Tomb Raider utilized a wide range of show action elements including simulated fire, fog, laser lighting, a moving stone door, simulated lava effect (using water and lighting), various lighting and audio/visual effects.
- Scooby Doo - Dark Rides - KI, KI and C
These dark rides used simple compressed air systems to make various scenics move, spin and create basic animation.

Lighting Control and Programming – Our experience with lighting control and programming is similar to that in show control. The two things most often go together. For this project, the scope includes modifications to the existing museum lighting to coordinate with the proposed improvements. Our experience with past projects and our knowledge of the existing museum lighting systems will allow us to create the best lighting for the enhancements.

Mechanized Movement of Props/Artifacts - RSL has used various techniques to create movement in props, flats and other elements in attractions. Methods used have been mechanically/electrically driven, air driven and water driven. Given a museum environment, it is mechanical/ electrically or air in this case. It would be rare to apply movement to an artifact due to the potential for negative wear and tear of the object. It seems unlikely that a one of a kind piece would be used in such a way, but there might be something out there that would be right for such an application.

RFID Technology – RSL has only done one type of project that incorporated RFID technology. The three Scooby Doo dark rides use this technology to allow guests to blast ghosts as they pass through the ride. There are a myriad of other uses for RFID. In museums they can be trigger the download of information onto mobile devices or any number of things. We are familiar with potential uses and our AV consultant RAW Media can assist you in pursuing RFID technology if desired

□ **Experience With Projects Within Existing Facilities:**

RSL Architecture and our project team have successfully executed multiple projects in existing buildings. This includes the WV State Museum itself. The original museum project required RSL and the project team to perform a survey of the existing Cultural Center space, all mechanical, electrical, plumbing, sprinkler, fire alarm and other systems and conditions prior to design work on the project.

Through the WV State Museum project and subsequent museum projects, we are very familiar with accessibility requirements and solutions including the use of assistive devices.

□ **Specialty Lighting - Artifacts**

Over the course of the last 5 years, RSL has worked in some capacity on the execution of 9 different museum projects. This has exposed us to many ways to address the lighting of artifacts while maintaining a no UV and limited light level

environment to safe guard the condition of one-of-a-kind items, that can not be replaced.

□ **Finish and Material Selection**

Our wide range of experience including themed entertainment projects with high occupant density, museums and retail facilities has taught us many things about finish materials and durability, appearance and maintenance. Materials must be appropriate to the level of visitor contact and the type of contact anticipated. It is our experience that anything that can be stepped on, sat upon, or climbed on, will be. We design for these realities and select materials to endure them. Other strategies can be used to prevent guest contact with items or materials which it would be undesirable to construct to withstand rough treatment. This involved manipulating the environment to allow visual contact while restraining visitors from physical access to them. Ideally this is accomplished without the guests being aware of it. Amusement parks are among the highest traffic and abuse type of occupancy. Having worked with them for 20 years, we are very aware of wear and tear and maintenance concerns.

□ **Design of Back of House Areas**

The design of what goes on behind the scenes at any museum or exhibit venue is just as important as the experience the visitors see. RSL takes care to make sure adequate space and access is provided for maintenance needs and for support areas. Any new elements designed to enhance the museum will be created with an eye to ease of maintenance and to not making the existing show systems more complicated than necessary. Our intent is to keep the controllers for the new AV and animatronic elements largely local to avoid costly reprogramming or expansion of the show system and to make sure they are accessible for maintenance. This will also minimize cabling that has to cross existing exhibits to reach the show control room and electrical room, reducing the disturbance to the existing museum outside the area of work.

□ **Artifact Conservation, Cases, Mounts and Lighting**

Artifacts are often one of a kind, items. No one is exactly like another and to have them faded, or damaged in some other way is to lose something forever. Therefore, artifact case, mounts and lighting must be assembled to protect these materials from excessive humidity, lack of humidity, UV light, over lighting and swings in temperature.

In the case of this project the intention is not to add artifacts, but the artifacts that are in place must be protected from damage during the construction and installation of any new work. The bid documents will spell out the requirements for the protection of any affected artifacts through cooperation with DCH to remove them or take other measures to ensure their safety.

3.3 QUALITY OF STAFF ASSIGNED TO PROJECT

RSL Architecture will lead the design team and have the overall responsibility of coordinating the team's efforts. Our proposed team is essentially the one that produced the original museum and the first round of enhancement designs. The availability of George Sells is somewhat limited due to his leaving the consultant world taking up full time employment. He will be able to consult with us on an as needed basis throughout the project. Jayne McGuire will remain in her role as designer and interior designer for the duration. All team members are highly experienced in general and have specific experience in projects of this type.

□ Key Personnel and Anticipated Amount of Work Time

RSL Architecture Staff

- Project Manager/Principal Architect: R. Stanley Ladrick, AIA
Duties: Project administration, code review, accessibility review, document coordination, design and scheduling.
Project Manager/Primary Contact for DCH.
Hours Required: The amount of time required will vary greatly from 30 hours a week at some points down to just a few hours per week at times.
- Project Staff: Aaron Bodart, R.A.
Duties: Design, design and construction document production, 3D modeling, verification of existing conditions.
Hours Required: The amount of time required will vary greatly from 30 hours a week at some points down to just a few hours per week at times.
- Project Staff: Jessica Scholl
Duties: Design, design and construction document production, submittal review.
Hours Required: The amount of time required will vary greatly from 30 hours a week at some points down to just a few hours per week at times.

Design Consultant Staff

- Designer/Interior Designer: Jayne McGuire
Duties: Interior design, finish and color selection, preparation of digital and real color and finish boards, coordination of interiors with scenic and exhibit design and assistance with art direction during installation.
Hours Required: The amount of time required will vary greatly from 30 hours a week at some points down to just a few hours per week at times.
- Designer: George Sells, AIA
Duties: As needed consultant on design concepts and execution
Hours Required: To be determined.

MEP Consultant Staff

- Electrical Engineer: Donna Miller, P.E.
Duties: Primary contact for mechanical engineering. Manage electrical design and document production. Evaluate existing conditions, and coordinate electrical work.
Hours Required: to be determined

Structural Consultant Staff

- Project Structural Engineer: Mike Ciprian, P.E.
Duties: Primary contact for structural engineering. Manage structural design and document production, evaluate existing conditions, and coordinate structural work.
Hours Required: to be determined

Audio Visual/Media Consultant

- Project AV/Media Consultant: Rich Wagner
Duties: Make recommendations for AV and media hardware and software for the proposed effects/designs. Prepare hardware list and specifications for AV/Media scope of work and bid documents.
Hours Required: to be determined

Historical Consultant

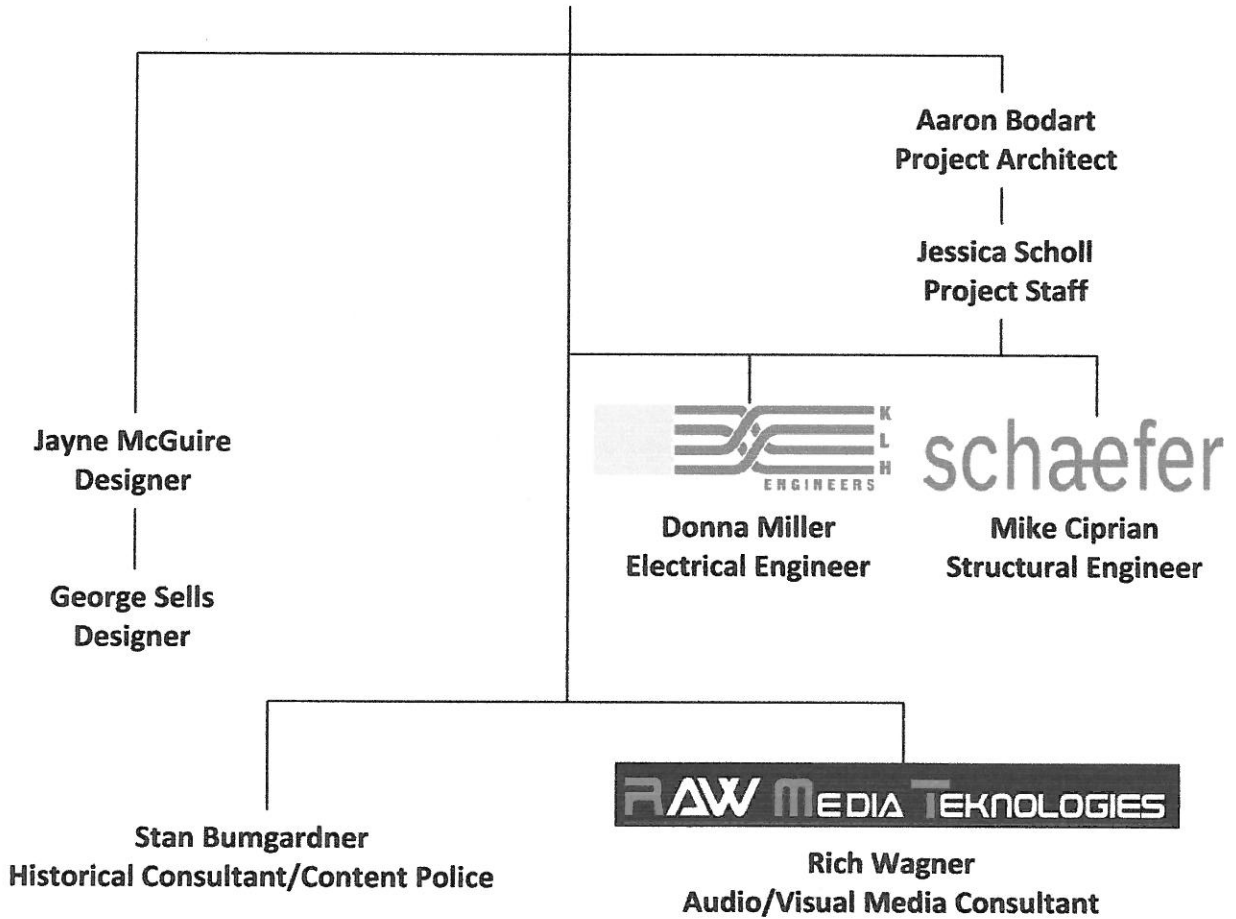
- Historical Consultant/Content Police: Stan Bumgardner
Duties: Review proposed content and designs for historical accuracy. Review contractor scripts, scenic submittals and AV for content.
Hours Required: to be determined

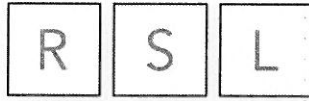
DESIGN TEAM ORGANIZATION CHART



COMMERCIAL
ARCHITECTURE

Stan Ladrick
Project Manager/Principal Architect





COMMERCIAL
ARCHITECTURE

STAN LADRICK, AIA, NCARB

STAN HAS BEEN THE PRINCIPAL ARCHITECT FOR ALL PROJECTS AT RSL FOR 20 YEARS. THESE HAVE INCLUDED NUMEROUS MEDICAL AND DENTAL OFFICES, FEDERALLY, STATE AND LOCALLY FUNDED PROJECTS AND PROJECTS UP TO 13 MILLION DOLLARS IN SIZE. STAN'S KNOWS HOW TO ASSESS THE CLIENTS REAL NEEDS AND DEVELOP A COMPLETE PROGRAM BEFORE PROCEEDING WITH PRELIMINARY DESIGN. HE ALSO HAS THE SKILL AND SENSITIVITY TO ATTEND TO ALL OF THE DETAILS A 1987 GRADUATE OF THE UNIVERSITY OF CINCINNATI, HE WAS ONE OF ONLY FOUR STUDENTS IN HIS CLASS TO EARN THE DISTINCTION OF GRADUATING "CUM LAUDE". HE CARRIES THAT COMMITMENT TO EXCELLENCE INTO HIS PRACTICE OF ARCHITECTURE TODAY. HE OVERSEES ALL PROJECTS IN THE OFFICE, AND HIS AREAS OF RESPONSIBILITY INCLUDE: SCHEDULING, PROJECT MANAGEMENT, CONTRACTS, DESIGN REVIEW, COORDINATION, COST ESTIMATING, AND SPECIFICATIONS. HE PARTICIPATES IN A VARIETY OF CONTINUING EDUCATION ACTIVITIES IN ORDER TO EXPAND HIS KNOWLEDGE OF SPECIFIC ASPECTS OF ARCHITECTURE SUCH AS MOLD AND MOISTURE PREVENTION, DAYLIGHTING AND SUSTAINABLE DESIGN.

EDUCATION:

Bachelors of Architecture, University of Cincinnati, 1987, Cum Laude.

PROFESSIONAL REGISTRATION:

Ohio Registered Architect # 8847, 1988.

NCARB Certificate # 47843, 1989.

Stan is a registered architect in an additional 34 states

EXPERIENCE:

West Virginia Museum of Culture and History-Charleston, WV

The Italian Job Stunt Track-Kings Island, Ohio

National Museum of Jewish American History-Philadelphia, Pennsylvania

Arabian Horse Galleries, Kentucky Horse Park-Lexington, Kentucky

Tomb Raider-The Ride-Kings Island, Ohio

Cattle Raiser's Gallery-Ft. Worth Museum of Science and History-Ft. Worth, Texas

Museum of Alabama-Montgomery, Alabama

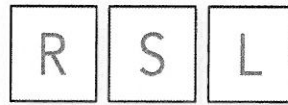
National Museum of the United States Army-Ft. Belvoir, Virginia

Flight of Fear Attraction-Kings Dominion-Doswell, Virginia

911 Memorial Museum-New York City

Heritage Bank-Clarksville, TN

Colorado Justice Learning Center-Denver, Colorado



COMMERCIAL
ARCHITECTURE

AARON BODART. RA

AARON IS A GRADUATE OF UNIVERSITY OF CINCINNATI, COLLEGE OF DESIGN, ARCHITECTURE, ART AND PLANNING WITH A MASTER'S DEGREE IN ARCHITECTURE. HE JOINED RSL IN SEPTEMBER 2003 WITH TWO YEARS OF PRIOR ARCHITECTURAL EXPERIENCE. HIS BACKGROUND INCLUDES CONSTRUCTION DOCUMENTS, DESIGN DEVELOPMENT, MODEL BUILDING AND RENDERING. AARON'S RESPONSIBILITIES AT RSL INCLUDE INTERIOR SPACE PLANNING, PRODUCTION OF DESIGN DRAWINGS AND CONSTRUCTION DOCUMENTS, AND PROJECT COORDINATION WITH CONSULTANTS.



EDUCATION:

University of Cincinnati

Bachelor's of Science of Architecture 2001

Master's of Architecture 2003

PROFESSIONAL REGISTRATION:

Ohio Registered Architect # 0914874

PROJECT EXPERIENCE:

Colorado Justice Learning Center-Denver, Colorado

Museum of Alabama-Montgomery, Alabama

National Museum of the United States Army-Ft. Belvoir, Virginia

Waterpark Entrance Building-Kings Island, OH

Romweber Flats Sr. Housing/Community Ctr. LEED Silver-Batesville, IN

National Center for Civil and Human Rights-Atlanta, Georgia

Cincinnati Bell-Multiple Retail Stores-Cincinnati, OH

West Virginia State Museum Enhancements-Charleston, WV

Alta One FCU-Lancaster, CA

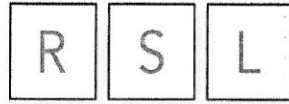
Spectra Financial-Cincinnati, OH

Patriot Federal Credit Union-Chambersburg, PA

Kings Island Diamondback Attraction-Cincinnati, OH

HK Systems-Cincinnati, OH





COMMERCIAL
ARCHITECTURE

JESSICA SCHOLL

JESSICA HAS BEEN A PART OF RSL SINCE 2006. HER EXPERIENCE AND RESPONSIBILITIES INCLUDE ALL PHASES OF DESIGN AND CONSTRUCTION DRAWINGS FROM SCHEMATICS TO SHOP DRAWING REVIEW. JESSICA IS SKILLED IN ADOBE PHOTOSHOP IN ADDITION TO AUTOCAD. SHE PROVIDED ON SITE ART DIRECTION DURING THE EXHIBIT INSTALLATION FOR THE WV STATE MUSEUM AND HAS BECOME WELL ACQUAINTED WITH MANY TYPES OF MUSEUM EXHIBIT DETAILING, WORKING ON MUSEUM RELATED PROJECTS FOR MUCH OF THE LAST SEVEN YEARS.

EDUCATION:

Master of Architecture, University of Cincinnati, 2006.
College of DAAP

Bachelor of Science, University of Cincinnati, 2004
College of DAAP

EXPERIENCE:

West Virginia State Museum-Charleston, West Virginia

National Museum of American Jewish History-Philadelphia, Pennsylvania

Arabian Horse Galleries-Kentucky Horse Park-Lexington, Kentucky

Ashland Credit Union-Addition and Renovation-Ashland, Kentucky

911 Memorial Museum-New York, New York

Little League Museum-Williamsport, Pennsylvania

National Center for Civil and Human Rights-Atlanta, Georgia

West Virginia Education Center-Charleston, West Virginia

Provident Bank-Monroe, New York

Provident Bank-Warwick, New York

Meritrust Credit Union-Manhattan, Kansas

Lafayette Marketplace-Exterior Renovation-Lafayette, Indiana

Community Research-Medical Offices-Cincinnati, Ohio



□ **Design Consultant Staff Resumes**

- Jayne McGuire, Designer/Interior Designer

Jayne McGuire holds a Bachelor of Arts in Environmental Design from the University of Kentucky. Jayne has over twenty three years of experience designing themed, branded, and office interior/exterior spaces. Before becoming a design consultant, Jayne was Senior Art Director with Paramount Parks for twelve years. She utilized strong organization skills and design abilities to consult with five regional park locations in the United States and Canada to determine project scopes relative to the guest experience and aesthetic issues. Jayne had an integral role as a member of the Universal Studios Planning and Development project team as interior designer for the \$600 million, 444 acre Orlando based theme park, Universal Studios Florida. She facilitated interior design and specifications for retail spaces, food facilities, show venues, and VIP areas while ensuring the artistic integrity coordinated with architects, contractors, and vendors through construction to opening.

- George Sells, AIA, Designer

George Sells received a Bachelor of Architecture from the University of Cincinnati. He is a registered Architect in North Carolina, maintains a certificate with the National Council of Architectural Registration Boards (NCARB) and is a member of the American Institute of Architects (AIA). George is also a member of the International Association of Amusement Parks and Attractions (IAAPA). George has spent over 23 years in the Themed Entertainment industry. For more than 24 years, George has consistently excelled as a results-oriented, versatile, hands-on registered Architect, accomplished at concurrently leading a wide range of tasks. During his tenure at Paramount Parks (PPI), George led a team that developed an award winning interactive Scooby-Doo! themed dark ride for Paramount Canada's Wonderland (PCW). Working with Warner Brothers Consumer Products, PCW management and Sally Corporation, this influential project was completed on time and well under the \$3.5 million budget. Recently, while retained by PPI as a consultant in the roll of Creative Producer, George led the design and development team that transformed an existing Hanna-Barbera children's theme area at Paramount King's Island (PKI) in Cincinnati into Nickelodeon Universe. In partnership with the Nickelodeon Recreation design team, PKI management, and dozens of designers & subcontractors, this complex eleven acre project consisting of intricate site development, over 35 attractions and facilities - all with licensed thematic overlays - integrated signage and highly detailed environmental graphics, was completed in 9 months, from concept design to opening, and under its multi-million dollar budget. In August of 2006, the international judging panel of Amusement Today magazine presented Nickelodeon Universe with the prestigious 2006 Golden Ticket Award as the Best Kid's Area in the World.

- Rich Wagner, Audio Visual/Media Consultant

Richard Wagner has an extensive background in Multimedia Systems Design and A/V systems integration. His audio, video and control systems experience has primarily been within the Themed Entertainment industry, including the Walt Disney Company, Universal Studios, Sea World, Six Flags Parks, Paramount Parks, various Themed Restaurants, Museums, and the former Opryland USA. His acoustics background stems primarily from the recording industry, being a recording engineer, and designing and building acoustic treatments for various recording facilities in Nashville, TN and studio designs for Paramount Productions in Charlotte, NC. Additionally, he has designed systems for a variety of acoustically difficult churches and live venue theatres. He also has numerous live, recorded and theatrical production credits, including shows for NBC, CBS, Disney Productions, Nickelodeon, ESPN, TNN, Harley-Davidson, Coca-Cola, and many Fortune 500 Companies.

- Stan Bumgardner, Historical Consultant/Content Police

Stan offers more than 20 years of experience as a professional, writer/editor, and exhibit developer. He has worked at Harpers Ferry National Historical Park, for the West Virginia History Film Project, as a regular contributor to *American History* magazine, at the West Virginia State Archives, and as acting director of the West Virginia Division of Culture and History's Museums section. In this latter capacity, he served as the creative director for a number of exhibits, including *Black Diamonds*, a traveling exhibit about the hand-loading coal era; the building of a new museum at a satellite site; and a series of displays Center related to the Holocaust. As a free-lance consultant, he served as creative director for the West Virginia State Museum renovation, overseeing the selection of all artifacts and the development of all graphics content and audiovisual production. He also ensured the historical accuracy of all themed historic settings in the museum. Most recently, he developed a traveling exhibit as a companion piece for the Peabody Award-winning documentary *The Great Textbook War* about a pivotal textbook controversy in 1974 Stan Bumgardner

□ **MEP and Structural Consultant Staff Resumes**

RSL Commercial Architecture and our consultants have worked together as a team for over 23 years. We have successfully completed a large number of projects. Our highly qualified consultants will provide engineering services as a part of our project team. Schaefer and KLH company profiles and resumes are attached for your convenience.



FIRM PROFILE

The Mission and Vision of **Kohrs Lonnemann Heil Engineers** is to be the obvious choice for engineering services because of the value and technical excellence we provide. This is accomplished by instilling within the firm a sense of security and a quest for excellence, fostered in an environment of proactivity, responsibility, integrity and innovation. **The firm's core values** are twofold; uncompromising value for our clients and dignity and respect for our employees.

Kohrs Lonnemann Heil Engineers is a Professional Service Corporation with Professional Engineers as stockholders. There are seven principals within the firm: Joseph R. Kohrs, P.E., President; Robert A. Heil, P.E., Sr. Vice President, Electrical; Robert A. Lonnemann, P.E., Sr. Vice President, Mechanical; Jeffrey A. Millard, P.E., Principal; Jeffrey A. Leuderalbert, P.E., Principal; Donna Miller, P.E., Principal; and James S. Tavernelli, P.E., Principal.

Our firm has been in business for more than 50 years. We are a mechanical and electrical engineering firm offering HVAC, electrical (power and lighting systems), fire protection and plumbing engineering services. Additionally, KLH has three unique departments - one specializing in **Lighting Design**, another other specializing in **Commissioning**, and the last is communication and information technology, **Technology Dynamics**. Having all of these offerings in-house allows us to coordinate between disciplines, providing excellence in engineering, design and field services.

We have offices in two locations:

Ohio Office:

104 Brown Street
Dayton, Ohio 45402
Phone: (937) 220-9700
(800) 354-9783
Fax: (937) 220-9702

Web site: www.klhengrs.com



Kentucky Office:

1538 Alexandria Pike, Suite 11
Ft. Thomas, Kentucky 41075
Phone: (859) 442-8050
(800) 354-9783
Fax: (859) 442-8058

Email: klh@klhengrs.com

Kohrs Lonnemann Heil Engineers is licensed to practice in 50 states and the District of Columbia. The firm is currently insured in the amount of \$2,000,000.00 for Professional Liability and \$2,000,000.00 for General Liability.

Advances in technology are revolutionizing the ways in which we communicate and exchange information. **Kohrs Lonnemann Heil Engineers** utilizes the latest in technology, from state of the art CADD systems to electronic communication and information management, in order to deliver our services in a timely and cost effective manner. Firm-created master specs, project calculations and cost histories are available to the entire staff. Effectively using the latest technologies assists us in meeting and exceeding client expectations. Ultimately this is the key to more successful projects.

Kohrs Lonnemann Heil Engineers has a workforce of over 80 engineers and support staff. This staff includes electrical engineers and designers, mechanical engineers and designers, plumbing/fire protection designers, communication technology specialists and construction inspectors. With our first geothermal project in 1975, we have made a **major commitment to sustainable design** and currently have 14 LEED Accredited Professionals on staff.



FIRM PROFILE

Individuals on our staff hold the following memberships and certifications:

- Mechanical Engineer (PE)
- Electrical Engineer (PE)
- Certified Technology Specialist (CTS)
- LEED Accredited Professional
- Independent Consultants in Audiovisual Technologies (ICAT)
- International Communications Industry Association (ICIA)
- Building Industry Consulting Services International (BICSI)
- National Systems Contractor Association (NSCA)
- Certified Plumbing Designer (CPD)
- Certified Engineering Technician
- Certified State of Ohio G-112 Automatic Sprinkler and Fire Protection Designer
- American Society of Heating Refrigeration and Air Conditioning Engineers (ASHRAE)
- Thomas More Trustee & Executive Committee
- American Society of Mechanical Engineers
- National Society of Professional Engineers
- Kentucky Society of Professional Engineers
- National Fire Protection Association (NFPA)
- American Consulting Engineers Council
- City of Covington Board of Housing Building and Construction Board Member
- Tender Mercies Building and Grounds Committee Member
- Northern Kentucky Chamber of Commerce
- Dayton Chamber of Commerce
- Best Committee Member; Ispace Lego League Judge State of Kentucky
- Math Counts Judge Kentucky Society of Professional Engineers.
- Ft. Thomas Planning Commission
- American Society of Plumbing Engineers
- American Society of Certified Engineering Technicians
- Institute for the Certification of Engineering Technicians
- Bellevue Kentucky Urban Renewal Agency Board Member
- Campbell Leadership Action Group Member
- Technology Triangle Partners
- St. Luke Foundation Board Member
- Leadership Cincinnati Class XXIX

KLH Awards:

- 2004 U.S. Small Business Administration Small Business Persons of the Year Award
- 2003 Northern Kentucky Chamber of Commerce Small Business 'SUCCESS' Award
- 1997 American Subcontractors Association of Cincinnati Engineer of the Year Award

Our 50 years of experience provides us with significant field and practical expertise in the areas of heating, ventilating, air conditioning, plumbing, electrical, fire protection and communication technology systems. We have experience with civic, education, health care, retail and commercial and mixed use facilities.

*We pride ourselves on the long-term relationships we establish.
We can be counted on to provide high quality professional service at all times.*



DONNA J. MILLER, P.E.

ELECTRICAL ENGINEER

CAREER PROFILE A member of the firm since 2003 and a principal partner since 2006, Donna Miller is a registered electrical engineer and a LEED Accredited Professional. Ms. Miller designs electrical systems for all types of projects, including educational, retail/furniture showrooms, manufacturing, health facilities, commercial office buildings, banks and recreational facilities. Ms. Miller has worked with the federal government, state governments and local municipalities and the private sector. Ms. Miller will serve as the Principal in Charge and Project Manager for this project.

EDUCATION B.S., Electrical Engineering, North Carolina State University, 1993

REGISTRATIONS & AFFILIATIONS Registered Electrical Engineer in KY, SC, VA, NC and OH
LEED Accredited Professional
National Society of Professional Engineers
Past President, North Piedmont Chapter

REPRESENTATIVE EXPERIENCE **Wright Brothers Memorial ♦ Kitty Hawk, North Carolina ***
Designed the power distribution, general and exhibit lighting, and life safety system for this museum housed in a \$1.8 million, 24,000 square foot Sprung Structure.

State Museum of West Virginia ♦ Charleston, West Virginia
Project Manager for the renovation of this 23,000 square foot museum housing cultural artifacts. Special HVAC systems are designed to control temperature and humidity for the artifacts, and exhaust systems will be in place to control smoke or fog for exhibits. KLH is currently providing fire protection design for a dry or pre-action sprinkler system device for the majority of the space, and a wet sprinkler system for the lower level of the building. Electrical, lighting, and life safety systems are also included and are designed to meet the Smithsonian ADA guidelines.

Fifth Third Bank – Madisonville Operations Building ♦ Cincinnati, Ohio
Designed the power distribution, general and decorative lighting, interior lighting control system, and parking lot and site lighting for this \$43 million, 500,000 square foot call center/office building. Security systems were taken into account because of the banking operations that took place at the facility.

Anderson Government Center ♦ Anderson Township, Ohio
KLH provided MEP, fire protection and Communication Technology design for this new center. Technology design included CCTV, a local access cable TV studio, 225-seat performing arts center, state of the art boardrooms, an emergency operations center, public address, data and voice cabling, and telecommunications.

* - Project designed with previous employer

schaefer

We are open-minded in our approach + thinking —
engineering experts with diverse expertise.

Schaefer provides all aspects of structural engineering: planning, design, inspection, and investigation, across a broad range of projects and industries.

- > Licensed in EVERY state
- > 33 structural engineers
- > 6 years into full implementation of BIM
- > 6 LEED accredited designers
- > Founded in 1976, offices in Cincinnati & Columbus

We believe in collaborative teams —
partnership with owners, architects, developers,
and construction team members.

Schaefer fosters integrated design culture from the beginning of every project. It allows clients to make key design decisions and establish reliable preliminary budgets early on a project. We have an intuitive sense for structural solutions during early design phases. We live to make projects successful and tight deadlines happen.

Our firm has extensive building information modeling (BIM) experience. BIM results in fewer RFI's and less change orders, improves the overall construction process, and reduces project costs and schedules.

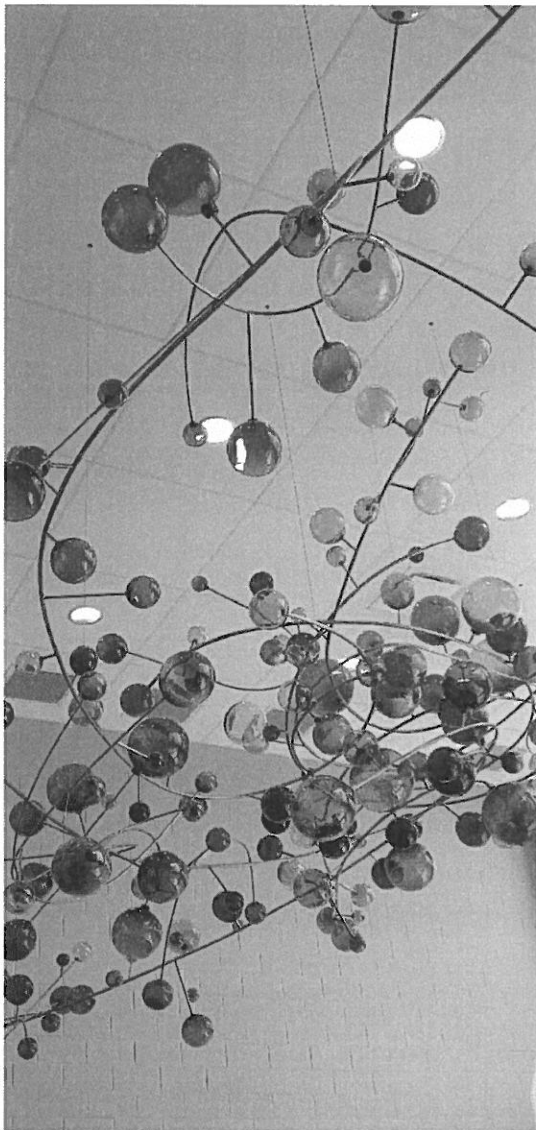


schaefer

Recent projects with D&P include:

- > The 911 Memorial Museum – Pedestals, Tribute Art foundations, and Freestanding Rails
- > The National Law Enforcement Museum – Display foundations
- > The National Museum of American Jewish History – Dreams of Freedom Wall, Glass Panels, and Suspended Mural

Other recent experience includes:



Prehistoric Shark Display (Fort Lauderdale): This prehistoric shark will be installed inside an existing structure and we designed the superstructure for a series of museum displays. The shark is 45' long x 25' tail to tip of dorsal fin. Construction is to be a steel skeleton frame supporting fiberglass panels.

Esme Kenney Memorial Sculpture (Cincinnati): Esme Kenney was a student at The School for Creative & Performing Arts before her tragic death in 2009. The sculpture was a collaboration of students past and present, with artist Jessie Henson, and includes 200 glass spheres in a variety of sizes ranging from 2" to 12" in diameter that hang over the third floor atrium area in the new school.

David Black Lift-Off Sculpture (Washington DC): A structural analysis of the 19-ft high,

schaefer

39- by 29-ft sculpture. Lift Off is a transparent, canopy-like structure that spreads out while not interrupting pedestrian movement.

Dinosaur Exhibits for Dinosaur' s Alive (National): We provided the structural design of foundations for thirty-four life-size, steel-framed, fiberglass clad dinosaurs.

schaefer



Mike Ciprian, PE
Project Principal

Mike has a wide-range of experience that includes projects from structural analysis to coaster foundations to new building construction. He has worked with many entertainment clients including Paramount, Cedar Fair and national museums, providing structural engineering for new ride foundations and support structures, sign foundations, and seasonal/specialty displays.

Experience:

- > The 911 Memorial Museum – Pedestals, Tribute Art foundations, and Freestanding Rails
- > The National Law Enforcement Museum – Display foundations
- > The National Museum of American Jewish History – Dreams of Freedom Wall, Glass Panels, and Suspended Mural

schaefer

- > Dinosaur Exhibit Foundations for Cedar Fair, Valley Fair, King' s Island, Worlds of Fun and Dorney Park
- > Science & Cultural Museum (Charleston)

Education: MS, Civil Engineering, University of Cincinnati, 1995

BS Civil Engineering, University of Cincinnati, 1985

Registrations: Delaware 15964, Florida PE67056, Kentucky 17526, Maine 11741, Maryland 34336, New York 86324, North Carolina 033918, Ohio PE53500, South Carolina 26708, Vermont 018-0009268, Virginia, 0402-043646, Washington DC, PE904967

Associations: American Institute of Steel Construction, American Society of Civil Engineers, Structural Engineers Association of Ohio

4.0 PROJECT AND GOALS

□ Work Plan (180 Days)

RSL Architecture having provided all of the A/E services for the current West Virginia State Museum and produced the first round of design and construction drawings for the proposed enhancements, can easily complete revisions to the enhancements design and bid documents within the required 180 day schedule. The following is an outline of the process as we see it now with rough time durations for each step/phase in the process.

Design Phase – 60-90 Days Duration

The RSL design team will evaluate the budget and existing enhancement designs relative to the value / impact of each proposed element and its cost.

We then will meet with the WV team to discuss your thoughts, requirements and budget. Our estimation of the value of the proposed enhancements relative to their cost will be presented. The goal of this meeting is to come out with a clear direction as to which elements are in, which require additional study and design and which are out.

Based on this feedback, RSL will present revised designs and budget adjustments to the DCH clients. New and revised designs will meet the project budget and provide as much WOW as possible with the dollars available.

DCH will have some time to review and return comments on the proposed designs and budget allocations. Then, we anticipate there will be discussion and a few rounds of tweaking and revising the designs. Give the reduced scope of the enhancements, the back and forth process should take a few weeks for each round. It will be important to keep the process moving.

Design Phase – Schedule Summary

Project kick-Off / initial discussion	1 Day
RSL-design and presentation preparation	30 Days
Presentation to WVDCH	1 Day
WVDCH initial review and comment period	14 Days
Present revised design for WVDCH second review	14 Days
Second WVDCH review and comment period	7 Days
<u>Repeat if necessary</u>	<u>14 Days</u>
Total Scheduled Time	90 Days

WVDCH is to approve of design documents and budget prior to the project moving on to Construction/Bid Documents phase.

During the design period it is our intent to review the technology originally proposed for each exhibit element to see if new and better products or techniques are available that can provide better performance, budget savings, or both.

Construction/Bid Document Phase – 60 Days

The scope of this phase will primarily consist of integrating the approved designs and budget changes into the previously prepared construction documents and bid package. This included construction drawings and specifications for infrastructure and facility construction to support the new exhibits and design documents that convey the appearance, function, stories, facts and other criteria and requirements of the proposed exhibits.

This package was completed by RSL for the original, larger enhancement scope. We will now revise those documents to reflect the final scope, design and budget. Other elements, left on the editing room floor could be brought back and implemented at a later date. Any new or updated technologies or products identified will be reflected in the revised documents.

WVDCH may be required to answer some facilities questions or provide operational input during this phase.

Bid Preparation Phase – 30 Days

RSL will provide assistance to the WVDCH and the Purchasing Department in preparing all required bid documents for the required bidding/purchasing process. Collaboration with Purchasing will be key to keeping this part of the process moving so that the project can be put out to bid at the end of the 30 days scheduled for this Phase. To ensure that the project is out to bid within the 180 day time limit, work of this phase can be started during the Construction documents Phase. That can potentially shorten the overall time to complete the process or give us additional time if the purchasing portion runs into any snags that need to work past.

Construction Phase – Duration TBD

The RSL design team will review contractor submittals including AV equipment, scripts, artwork, scenic elements etc. We will also assist the WVDCH in managing the project and provide on site art direction during the installation on the work and its testing and completion.

STATE OF WEST VIRGINIA
Purchasing Division

PURCHASING AFFIDAVIT

MANDATE: Under W. Va. Code §5A-3-10a, no contract or renewal of any contract may be awarded by the state or any of its political subdivisions to any vendor or prospective vendor when the vendor or prospective vendor or a related party to the vendor or prospective vendor is a debtor and: (1) the debt owed is an amount greater than one thousand dollars in the aggregate; or (2) the debtor is in employer default.

EXCEPTION: The prohibition listed above does not apply where a vendor has contested any tax administered pursuant to chapter eleven of the W. Va. Code, workers' compensation premium, permit fee or environmental fee or assessment and the matter has not become final or where the vendor has entered into a payment plan or agreement and the vendor is not in default of any of the provisions of such plan or agreement.

DEFINITIONS:

"Debt" means any assessment, premium, penalty, fine, tax or other amount of money owed to the state or any of its political subdivisions because of a judgment, fine, permit violation, license assessment, defaulted workers' compensation premium, penalty or other assessment presently delinquent or due and required to be paid to the state or any of its political subdivisions, including any interest or additional penalties accrued thereon.

"Employer default" means having an outstanding balance or liability to the old fund or to the uninsured employers' fund or being in policy default, as defined in W. Va. Code § 23-2c-2, failure to maintain mandatory workers' compensation coverage, or failure to fully meet its obligations as a workers' compensation self-insured employer. An employer is not in employer default if it has entered into a repayment agreement with the Insurance Commissioner and remains in compliance with the obligations under the repayment agreement.

"Related party" means a party, whether an individual, corporation, partnership, association, limited liability company or any other form or business association or other entity whatsoever, related to any vendor by blood, marriage, ownership or contract through which the party has a relationship of ownership or other interest with the vendor so that the party will actually or by effect receive or control a portion of the benefit, profit or other consideration from performance of a vendor contract with the party receiving an amount that meets or exceeds five percent of the total contract amount.

AFFIRMATION: By signing this form, the vendor's authorized signer affirms and acknowledges under penalty of law for false swearing (W. Va. Code §61-5-3) that neither vendor nor any related party owe a debt as defined above and that neither vendor nor any related party are in employer default as defined above, unless the debt or employer default is permitted under the exception above.

WITNESS THE FOLLOWING SIGNATURE:

Vendor's Name: RSL COMMERCIAL ARCHITECTURE
Authorized Signature: [Signature] Date: 9-6-2013

State of Ohio

County of Hamilton, to-wit:

Taken, subscribed, and sworn to before me this 6th day of September, 2013.

My Commission expires April 22, 2017.

AFFIX SEAL HERE
JANET DUMFORD
Notary Public, State of Ohio
My Commission Expires 04-22-2017

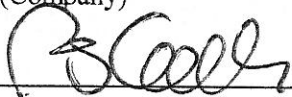
NOTARY PUBLIC [Signature]
Purchasing Affidavit (Revised 07/01/2012)

CERTIFICATION AND SIGNATURE PAGE

By signing below, I certify that I have reviewed this Solicitation in its entirety; understand the requirements, terms and conditions, and other information contained herein; that I am submitting this bid or proposal for review and consideration; that I am authorized by the bidder to execute this bid or any documents related thereto on bidder's behalf; that I am authorized to bind the bidder in a contractual relationship; and that to the best of my knowledge, the bidder has properly registered with any State agency that may require registration.

RSL COMMERCIAL ARCHITECTURE

(Company)



(Authorized Signature)

RICHARD S. LADRIAK, PRESIDENT

(Representative Name, Title)

513-891-9950

(Phone Number)

513-891-9951

(Fax Number)

9-6-2013

(Date)

ADDENDUM ACKNOWLEDGEMENT FORM
SOLICITATION NO.: DCH1302

Instructions: Please acknowledge receipt of all addenda issued with this solicitation by completing this addendum acknowledgment form. Check the box next to each addendum received and sign below. Failure to acknowledge addenda may result in bid disqualification.

Acknowledgment: I hereby acknowledge receipt of the following addenda and have made the necessary revisions to my proposal, plans and/or specification, etc.

Addendum Numbers Received:

(Check the box next to each addendum received)

- | | |
|---|--|
| <input type="checkbox"/> Addendum No. 1 | <input type="checkbox"/> Addendum No. 6 |
| <input type="checkbox"/> Addendum No. 2 | <input type="checkbox"/> Addendum No. 7 |
| <input type="checkbox"/> Addendum No. 3 | <input type="checkbox"/> Addendum No. 8 |
| <input type="checkbox"/> Addendum No. 4 | <input type="checkbox"/> Addendum No. 9 |
| <input type="checkbox"/> Addendum No. 5 | <input type="checkbox"/> Addendum No. 10 |

I understand that failure to confirm the receipt of addenda may be cause for rejection of this bid. I further understand that any verbal representation made or assumed to be made during any oral discussion held between Vendor's representatives and any state personnel is not binding. Only the information issued in writing and added to the specifications by an official addendum is binding.

RSL COMMERCIAL ARCHITECTURE
Company

R. Coe
Authorized Signature

9-6-2013
Date

NOTE: This addendum acknowledgment should be submitted with the bid to expedite document processing.