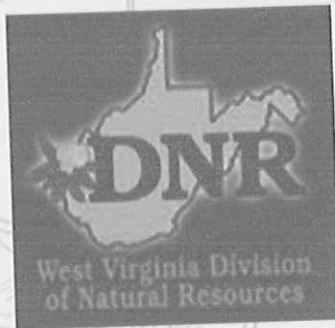
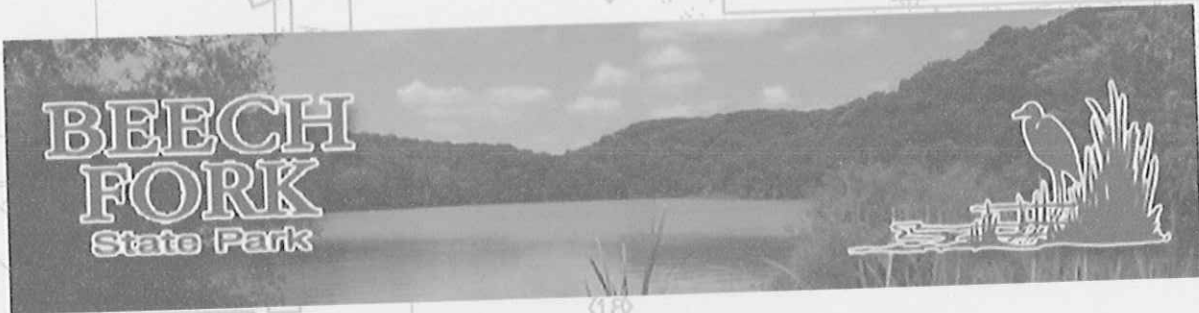


Expression of Interest
Beech Fork State Park Lodge
Wayne County, West Virginia



RECEIVED
2012 SEP -6 AM 11:08
WV PURCHASING
DIVISION



**Edward Tucker
ARCHITECTS, INC.**

916 Fifth Avenue, Suite 208
Huntington, West Virginia 25701
304.697.4990 telephone
304.697.4991 facsimile
eta@etarch.com

etarch.com



gai consultants
transforming ideas into reality.



MOMENT
engineers, inc.

MSES Consultants, Inc.



September 5, 2012

Mr. Frank Whittaker, Senior Buyer
Purchasing Division
2019 Washington Street East
PO Box 50130
Charleston, WV 25305-0130

re: Expression of Interest #DNR213005
Architectural/Engineering Beech Fork Lodge
Beech Fork State Park

Dear Mr. Whittaker,

Enclosed for consideration to the WV Division of Natural Resources is our Expression of Interest to provide Architectural & Engineering Services for the new Beech Fork Lodge.

Construction of a new Lodge facility is a once in a lifetime opportunity for Beech Fork State Park and Wayne County. Having carefully chosen each team member, I truly believe we can produce the best possible outcome for this exciting project.

Included on our team are Glave & Holmes Architects, hospitality design experts, GAI Associates as site development consultants, Moment Engineers as structural engineers, and MSES Consultants for mechanical, plumbing and electrical design. Both our firm and GAI Associates have recent experience working with and gaining approvals from the Corps of Engineers. Our firm also brings the project and budget management skills needed to handle a complex project of this scale. These combined qualifications and expertise, along with our location 20 minutes from the project site, make us the Division of Natural Resources' best choice to bring this significant project to fruition.

In the pages immediately following this letter are detailed descriptions of our:

- Communication procedures with the owner, contractor and design team
- Project budget management procedures and related historical data
- Experience with the Corps of Engineers Outgrant License Process

Remaining sections of the Expression of Interest describe our team structure and roles, staff qualifications and relevant experience for all expected disciplines necessary for the project.

Thank you for your thoughtful consideration of this Expression of Interest. I hope we may have the opportunity to discuss our team's approach to the Beech Fork Lodge with your selection committee.

Sincerely,

EDWARD TUCKER ARCHITECTS, INC.

A handwritten signature in cursive script that reads "Edward W. Tucker".

Edward W. Tucker, AIA

firm qualifications



Edward Tucker Architects, Inc. provides full architectural services, including master planning, site analysis, programming, architectural design, interior design, addition/alteration/renovation/adaptive reuse, space planning, and existing condition surveys. The firm has experience in a wide range of project types that include healthcare, academic, industrial, commercial, religious, preservation and public projects.

Our reputation has evolved by delivering quality design through talented, highly capable and professional staff. Most of our work is derived from relationships with repeat clients who count on our consistent level of service and added value. Our design is not a signature architectural style, but varies due to a philosophy that respects each project's unique conditions and setting. Listening carefully to each client, we strive to create an innovative, functional and beautiful solution.

Having compiled decades of actual and relevant local construction cost data, our experience with and knowledge of our market area's construction climate is unmatched. Our process of producing carefully coordinated and complete Contract Documents typically yields tightly grouped bids that are within budget with minimal change orders. Highly experienced staff never compromise the time and effort needed to produce a well coordinated set of documents.

PRINCIPAL:	Edward W. Tucker, AIA
PROJECT MANAGERS:	Walter L. Wilkes, AIA Nathan Jon Randolph, AIA Phoebe Patton Randolph, AIA, LEED AP Josh M. Dygert, AIA J.D. Maynard, Associate AIA, LEED AP
INTERIOR DESIGNER:	Emilie G. Maynard
OFFICE MANAGER:	Lisa Black
CONTACT INFORMATION:	Edward W. Tucker, AIA Edward Tucker Architects, Inc. 916 Fifth Avenue, Suite 208 Huntington, West Virginia 25701 (304) 697.4990 voice (304) 697.4991 fax eta@etarch.com



firm qualifications :: COMMUNICATION

CONSISTENT LEADERSHIP: SAME PROJECT TEAM FROM BEGINNING TO END. When team members change, project quality suffers.

At ETA, once a leadership team is established, it stays in place throughout the project - from concept generation to construction to occupancy. Staff can be added should project needs evolve, but the core team of Principal and Project Architect will not change. This continuity ensures good communication, maintains the project vision and builds intellectual investment throughout the project.

OPEN COMMUNICATION. "For the company directory, please dial ..."

We strive to ensure that a real person will always take your call. Clients should expect responsive, accessible and attentive people - not message services. We generally are able to offer timely and relevant responses to our clients' needs in less than 24 hours. ETA's principal, Edward Tucker, is always available to answer questions, listen to concerns and to discuss projects. Because he is involved in every project that comes into the office, he is in a position to respond to concerns in a meaningful way.

ETA leads client and key user group meetings to explore and identify project design needs. Following design reviews, we issue a written record of decisions made to team members to ensure that all parties are informed through consistent information. This process becomes a record of goals and decisions to guide and evaluate project outcomes.

DOING THE RIGHT THING, ASKING THE RIGHT QUESTIONS. If the Architect does all the talking, how can they learn about you and your project?

ETA listens actively, investigates and obtains objective data, then comes back with informed and insightful comments, options or solutions. This is accomplished through intensive pre-design sessions with clients and their stakeholders. We resist saying why we can't do something until all options are explored, and we always look for ways to do the right thing for the long term. Solving functional parameters is fundamental, but our value is best realized by creating a sustainable project with a lasting sense of identity.

AIM WELL. Too many projects follow the all too familiar pattern of "Ready - Fire - Aim."

Alignment of goals, planning, budgeting, uncovering problems to be solved, prioritizing and scheduling are all parts of what must take place in the "aiming" process of the pre-design phase. If the target is well defined before a design is launched, a "well aimed" design is much more likely to hit the target. ETA works diligently with our clients to question, explore, research and ultimately reach consensus of each project's goals and objectives prior to beginning design work.



firm qualifications : : BUDGET MANAGEMENT

BUDGET, QUALITY LEVEL AND SCHEDULE. Will the project come in on budget?

ETA works with clients to define realistic funding and budget realities regarding three key components: Budget, Quality Level and Schedule. Using past project histories, state and national data bases, we develop a construction estimate at project inception and update it until bids are received. We make sure to clarify construction vs. total project budgets. For traditional design-bid-build projects, our data-based records of actual construction costs help us refine Construction Documents to meet budget goals. We also work closely with construction contractor and subcontractor resources to stay in tune with bidding and cost climate forecasts in the project's geographical area.

CONSTRUCTION: STAYING ON TARGET TO THE END. How does the Architect carry out the design during construction?

ETA believes that the Project Architect should always administer construction phase duties. The architect who completed the drawings is intimately familiar with the project's overall goals, the client's particular interests and the design documents' intent. On-site project meetings are typically held every two weeks to monitor progress, address questions and solve problems. We make sure that these meetings are documented with detailed meeting minutes that include action items identifying parties responsible for timely issue resolution.

There are specific ETA protocols for Construction Administration that have earned the respect of both our clients and the construction community. We routinely hold our errors and omissions to less than one percent (< 1%) of construction costs, working with contractors to hold down costs on the projects we manage. Through the years we have realized that cost changes and schedule creep are minimized through the following ten practices - many of which take place before the construction begins:

- **Project Scope, Schedule and Budget** are realistically established at the outset of the project.
- We follow the **Drawing Notation** mantra of: "Say it once, say it correctly, say it in the proper place" through coordinated general, reference and sheet specific key notes. **Specifications** are edited to the needs of each project vs. listing every conceivable system, which only confuses estimators and trades.
- **Project Architects** complete the drawings without drafting technicians. This results in a high level of technical competence, accountability and an efficient path to well coordinated drawings.
- **Drawing Coordination and Quality Control** take place throughout the design process, but are finalized at the end of the construction documents phase by a highly experienced architect who is also not the project's architect. This "fresh set of eyes" is invaluable prior to issuing drawings for bids.
- **Bid Periods** are timed - when possible - to achieve the most favorable bidding experience.
- **Communicating** often with the client, contractor's superintendent and project manager. This means responding to telephone calls, e-mails and RFI's with a schedule of action within 24 hours or less.
- We require the contractor's updated **Construction Schedule** and **Work Plan** at each meeting. We treat these as working documents to be used by the contractor's personnel, not just pieces of paper.
- **Conducting Pre-Construction Meetings** with all major subcontractors present. Customary procedures are discussed and established, but a detailed review of the Work Plan and critical dates are also laid out to achieve **buy-in and commitment** to the Owner's and Contractor's overall goals.
- **Requiring preparation of Contractor's Submittal Schedule** at the beginning of construction. Staff time for critical path submittals can therefore be planned for processing within 2 weeks or less.
- **Certifying Payment Applications** through timely, first hand visits to the site and ongoing discussions of the project's progress with the superintendent, project manager and client representative.

firm qualifications :: PROJECT BUDGET ESTIMATING HISTORY

<u>Project</u>	<u>ETA, Inc. Estimate</u>	<u>Contract Type</u>	<u>Contract Value</u>	<u>Over/Under Estimate</u>	<u>Contract Execution Date</u>	<u>Contractor</u>
Glenville State College – Pioneer Center (w/ Associated Architects)	\$24,795,000	Public Bid	\$24,186,000	-2.5%	2012	Green River (Site) BBL Carlton
Carter County – Carter Elementary School (w/ APD)	\$8,688,000	Public Bid/	\$8,500,000	-2.2%	2011	Packs, Inc. (CM)
Integrated Health Center – Valley Health Systems	\$6,650,000	Public Bid	\$6,298,500	-5.3%	2011	Jarrett Const. Services, Inc.
Marshall University School of Pharmacy	\$7,320,000	Public Bid	\$6,969,000	-4.8%	2011	MIRC Construction Services
Raceland-Worthington – Campbell Elementary Additions & Renovations (2 Phases)	\$3,284,000	Public Bid	\$3,359,000	+2.3%	2010	Trace Creek Construction
WV Army National Guard – Kenova Readiness Center	\$2,385,000	Public Bid	\$2,078,000	-12.9%	2009	Neighborgall Construction
MU Forensic Science Phase 6 (3 story lab/ classroom bldg.)	\$4,400,000	Public Bid	\$4,197,000	-4.6%	2008	Neighborgall Construction
St. Joseph Elementary & Middle School	\$5,850,000	Invited Bid	\$5,999,000	+2.5%	2007	Jarrett Const. Services, Inc. Hunt Construction Group, Inc.
Pharmaceutical Mfg. Phase 3 Expansion	CM	CM	\$7,132,000	NA	2005	J&H Erectors
Marshall University Clinical Education & Outreach Center (w/ Freeman White)	\$18,864,000	Public Bid	\$18,396,000	-2.5%	2005	Hunt Construction Group, Inc.
Pharmaceutical Mfg. Phase 2 Expansion	CM	CM	\$13,145,000	NA	2004	Hunt Construction Group, Inc.
Cultural Arts & Athletic Addition – Raceland Worth. HS Phases 1 & 2	\$4,685,000	Public Bid	\$4,601,678	-1.8%	2003 phase 1 2005 phase 2	Crace Construction Company / J&H Erectors
Douglass Centre Renovation	\$3,397,000	Public Bid	\$3,268,000	-4.8%	2001	J D & E Inc., Contractors & Engineers



firm qualifications : : COE OUTGRANT LICENSE PROCESS

Edward Tucker Architects, Inc. has teamed with GAI Consultants, Inc. to design the site, civil and landscape architecture features of the Beech Fork State Park Lodge.

GAI Consultants, Inc. has extensive experience in archaeological and architectural studies for National Environmental Policy Act (NEPA) compliance projects. As part of that effort, their experienced staff is familiar with obtaining appropriate permits to conduct these studies. For instance, if a project impacts a water body under the jurisdiction of the U.S. Army Corps of Engineers (USACE), then archaeological and architectural Phase I surveys are required within a specific distance around that water body. If the project involves ground disturbing activities on federal property, then an Archaeological Resources Protection Act (ARPA) permit is required from that federal agency. Each federal agency has some flexibility in the ARPA approval process and approval can take up to 30 days depending upon the permitting agency's schedule requirements. GAI is currently working on two projects that require an ARPA permit: one project in south-central Virginia requiring a permit from the USACE, Wilmington District and one project in western North Carolina requiring a permit from the U.S.D.A., National Forest Service, Pisgah National Forest. GAI has all of the required talent and experience in house to provide the stipulated ARPA permitting services and to execute any cultural resource or archeological services necessary for completion of the project.

GAI is comprehensively skilled to provide necessary activities for geotechnical licensing for the proposed project. Their highly qualified staff of scientists, geotechnical engineers, cultural resources personnel and permitting specialists possedd the required talent to promote efficient and timely preparation of any required licensing documents. Their staff has unparalleled experience in the delineation of wetlands and streams in concert with cultural resources research and agency notifications in the development of engineering and geotechnical plans. These services are routinely provided for private and public clients. All of their construction work in West Virginia exceeding 1 acre of disturbance entails preparation of NPDES construction permitting documents and when streams or wetlands cannot be avoided, utilization of USACE Nationwide Permits and Pre-Construction Notices. GAI is also experienced in all aspects of individual permitting with the USACE and brings true value to the table with their expertise in alternatives analysis and innovative mitigation design when required. GAI can provide all of the listed services for this work including all of the eight items listed in Attachment 2 of the Beech Fork State Park Lodge Request for Qualifications.

Edward Tucker Architects, Inc. has experience serving as facilitator between agencies to achieve approval from the Corps of Engineers through our work on the Paul Ambrose Trail for Health in Huntington, WV. Our firm served as the key liason between the Corps and the City of Huntington and recieved Corps approval for Phase One of construction of the project which includes 3.5 miles of trail constructed on top of the flood control levee in West Huntington.



firm qualifications :: CORE VALUES

MOTIVATING PEOPLE FOR THE LONG TERM. Many specialty design firms fight staff turnover due to dissatisfaction with repetitive work.

ETA's employee turnover rate is extremely low. This is due in part to the fulfillment that comes with new design challenges. Rather than seek one dimensional staff with extensive experience in limited areas, we hire and develop people to be proactive and critical thinkers who are energized by new knowledge, concepts, and techniques. While we have extensive experience in some project types, we thrive on new challenges. We seek clients who want - and deserve - a unique project identity.

TEAMING FLEXIBILITY. Aligning expertise and the best people.

The same group of architects, engineers and consultants may not be the best team for every project. We choose to focus on architecture and carefully select the appropriate engineering and consultant team members based on each project's size, type, complexity and other project specific factors. Understanding that some projects need consultants with specific design type experience, we may team with other design firms for optimal results.

SPECIALIZED APPROACH: NO TWO PROJECTS - OR CLIENTS - ARE ALIKE. When you hear that a firm has designed dozens of banks, schools, clinics, etc. it often means that the same design has been used over and over.

Each project deserves a unique, tailored design response. Assumptions should not be made without a thorough examination of a project's site, context, budget, parameters, and other client needs. These factors define the work to be done. Owner/Design Team study of design exemplars, research or travel to recently completed facilities are encouraged to employ best practices of a project type. This pre-design work may also help to establish a common language for desirable outcomes. In the end, a unique project develops that is informed by - but not copied from - appropriate examples.

RESPONSIBLE COORDINATION. Get it right the first time: Each team member is accountable to everyone else.

ETA's work culture is much more "flat" than typical design firm hierarchies. While each design team member is responsible for specific parts of the work, all team members are responsible to one another for positive project outcomes. Through close communication and proven work processes, drawings and specifications are developed carefully with our consultant team to create a cohesive design of site, structure and systems. ETA's office configuration encourages collaboration at all levels, from exploring design solutions to detailing construction documents.



firm profile :: COMMUNITY INVOLVEMENT

Our offices are located in the heart of downtown Huntington, West Virginia. Our staff consists of professionals who choose to be a part of a thriving architectural practice that makes a positive impact in the community. As stakeholders in a region often characterized by the economic challenges of an Appalachian city, each of us has chosen to seize the opportunities to lead as design professionals, striving for personal and corporate success for the firm, our neighborhoods and city. Our involvement at local, state and regional levels builds economic, social and leadership capital in the community.

Edward Tucker, Principal

CURRENT AND PAST POSITIONS:

- › Regional Director - Virginias Region, American Institute of Architects (AIA) Board of Directors
- › President, Director - American Institute of Architects (AIA) West Virginia
- › Board of Trustees - Huntington Museum of Art
- › Board of Directors - Huntington Federal Savings Bank
- › City of Huntington Planning Commission, Historical Commission, Board of Code Appeals (Chair)
- › Cabell County Historic Landmarks Commission
- › Board of Directors - Huntington Symphony Orchestra
- › Board of Directors - Huntington Rotary Club
- › Executive Board - Tri-State Council - Boy Scouts of America
- › Chair, Church Council - Beverly Hills United Methodist Church
- › Board of Directors - Huntington Habitat for Humanity

Wally Wilkes, Architect

CURRENT AND PAST POSITIONS:

- › Board Member - West Virginia EXPO
- › Treasurer and Director - AIA West Virginia

Nate Randolph, Architect

CURRENT AND PAST POSITIONS:

- › Huntington City Council - District 4 Councilman
- › Chair - Young Professionals Committee
- › Commissioner - Huntington Urban Renewal Authority
- › Board Member - St. Joseph Central High School Advisory Board
- › Board Member - Cabell Huntington Coalition for the Homeless

Phoebe Patton Randolph, Architect

CURRENT AND PAST POSITIONS:

- › Director - American Institute of Architects (AIA) West Virginia
- › Board Member - KYOVA Interstate Planning Commission
- › Board Member - Marshall Artist Series
- › Board of Trustees - Huntington Museum of Art
- › Connector (President of Board) - Create Huntington Foundation, Inc.
- › Chair - AIA West Virginia Livable Communities Committee
- › Board of Trustees - Huntington Museum of Art
- › Member - Accessibility Committee for the Huntington Museum of Art

Lisa Black, Office Manager

CURRENT AND PAST POSITIONS:

- › Board of Directors - Musical Arts Guild



firm profile :: TECHNOLOGY



SOFTWARE

ETA utilizes AutoCAD Architecture Suite 2013 for our drafting and modeling software, Building Systems Design Spec Link for specifications, BSD Cost Link for construction estimating, Adobe Design Premium CS 5.5, and Ajera Core office management software, which allows a streamlined approach to project management and accounting.

NETWORK

We maintain a network server, Microsoft Exchange server, multiple CAD workstations, and a large format plotter/copier/scanner. Our server has dual Acronis backup including an off site backup in the case that disaster recovery is needed. Our network is protected by a Cisco PIX Firewall and Symantec Endpoint Protection. We maintain an 'FTP' site which allows us to transfer large files to our clients and consultants.



firm profile :: HERITAGE

EDWARD TUCKER ARCHITECTS, INC. IS FORTUNATE TO CONTINUE A RICH HERITAGE OF PROMINENT ARCHITECTS FROM HUNTINGTON, WEST VIRGINIA.



Albert F. Tucker

Edward's grandfather, Albert F. Tucker, became an architect "the hard way". His rural east Tennessee education ended in the eighth grade, but he gained experience beginning as a carpenter and later as a foreman and building supervisor in the early development of the Eastern Kentucky coalfields. He joined the firm of Meador & Handloser shortly after moving to Huntington in 1917. His association with the firm lasted until 1938 when he obtained licensure and opened his own office. He became known throughout West Virginia and neighboring states where more than 150 congregations of many denominations called upon him to design and supervise construction of their churches and church schools. His contributions were recognized in 1966 when he received an Honorary Doctor of Laws Degree from West Virginia Wesleyan College. His son and Edward's uncle James R. Tucker continued the firm until his retirement from active practice.



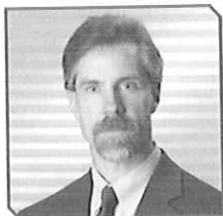
Levi Johnson Dean

Born in 1878 in Frametown, West Virginia, Levi Johnson Dean studied architecture by completing a Scranton Pennsylvania International Correspondence School course. He began practicing architecture in Huntington in 1910. In 1921, the state architectural registration law was enacted and he became the nineteenth architect to be licensed in the state of West Virginia. His legacy includes some of the area's most beautiful architectural works from the area's "boom" years of the 1920's - churches, county courthouses, residences and many commercial buildings such as those on Huntington's Fourth Avenue known for their terra cotta and metalwork trimmed facades. Two private residences designed by Levi Dean are listed on the National Register of Historic Places.



S. Brooks Dean &
E. Keith Dean

Two of Levi Dean's sons, S. Brooks Dean and E. Keith Dean formed Dean and Dean, Inc. Architects in 1956, in an effort to carry on their father's legacy after his death. Over the next 30 years the firm grew to become the premier architectural firm of Huntington, designing buildings for the area's prominent educational and public institutions. Dean and Dean, Inc. Architects designed many of Huntington's most significant buildings, including seven major commissions at Marshall University and scores of public schools, libraries, banks, medical facilities and commercial buildings. In 1996 the firm was sold to Edward Tucker, with the hopes of continuing the architectural legacy started by Levi Dean nearly a century before.



Edward W. Tucker

Growing up in Huntington, West Virginia, Edward Wells Tucker began working with James R. Tucker, AIA and Robert L. Brown, AIA at the age of 16. Graduating with high honors from the University of Tennessee in 1982, he moved to Nashville, Tennessee to continue his architectural internship, gaining licensure in 1986. Between 1982 and 1990, his work experience included many building types: Project Architect of a high rise office and parking structure, university renovation projects, child care centers, church additions, office buildings, industrial buildings, parking structures and state park facilities. In 1990, he joined Vanderbilt University as Staff Architect - Campus Planning, Medical Center. In the following five years, he managed and/or designed projects with a construction value of \$40 million. This period of representing the institution's interests gives him unique insight into his client's concerns that few architects share.

After nearly twelve years in Nashville, Edward returned to Huntington in 1995 to begin his own firm through the acquisition and renewal of Dean and Dean, Inc. Architects. Edward Tucker Architects continues a lineage of architects in Huntington, WV, that is now over 100 years old.



firm profile :: FIRM EXPERIENCE



Healthcare

CABELL HUNTINGTON HOSPITAL Huntington, West Virginia

- J. Robert Pritchard Dialysis Center
- Emergency Room Expansion & Renovation
- In Vitro Fertilization Suite
- Radiology - Magnetic Resonance Imaging (MRI) Suite
- Radiology - Interventional Suite

GENESIS HEALTHCARE CORPORATION Huntington, West Virginia

- Renovations to Heritage Center (Senior Care Facility)

ASSOCIATED CARDIOLOGY, INC. Charleston, West Virginia

- Physicians Office Building

HEALTHSOUTH CORPORATION

- Hospital Addition, Huntington, West Virginia
- Rehabilitation Center Bluefield, West Virginia

Higher Education

MARSHALL UNIVERSITY Huntington, West Virginia

- Joan C. Edwards School of Medicine Translational Genomics Research Institute
- Joan C. Edwards School of Medicine Rural Health Center, Chapmanville, WV
- Forensic Science Center - Phases 1-6
- Joan C. Edwards School of Medicine Erma Ora Byrd Clinical Center
- Basketball Locker Room Renovations

MARSHALL COMMUNITY & TECHNICAL COLLEGE Huntington, West Virginia

- Culinary Institute

K-12 Academic Experience

RACELAND-WORTHINGTON SCHOOL DISTRICT Raceland, Kentucky

- High School Cultural Arts & Athletic Complex
 - Gymnasium Addition
 - Auditorium Addition
- Campbell Elementary Renovations & Addition

ST. JOSEPH ELEMENTARY & MIDDLE SCHOOL Huntington, West Virginia

Industrial

ALCON MANUFACTURING, LTD. Huntington, West Virginia

- Facility Expansion and Renovations Phases 1-3

ROBERT C. BYRD INSTITUTE Huntington, West Virginia

- Center for Flexible Manufacturing

FED-EX, INC. Huntington, West Virginia

- Airport Distribution Center

Commercial

RIVER CITY PROPERTIES Huntington, West Virginia

- Tenant Renovations for Smith Barney
- Office Building for Merrill Lynch
- Interior Renovations for the Veterans Administration Regional Office



firm profile : : FIRM EXPERIENCE



Commercial (cont.)

DARCO INTERNATIONAL

Huntington, West Virginia

- New Office Building

FIRST BANK OF CHARLESTON

Charleston, West Virginia

- New Bank Building

UNLIMITED FUTURE, INC.

Huntington, West Virginia

- Phase Two of Mountain Bounty Kitchen, a Shared Use Commercial Kitchen Facility

I.B.E.W. LOCAL #317

Huntington, West Virginia

- New Union Hall and Credit Union
- New Apprentice Training Facility

NORTHWESTERN MUTUAL FINANCIAL GROUP

Charleston, West Virginia

- Tenant Renovations to the Embleton Building

CHILI WILLI'S MEXICAN CANTINA

Huntington, West Virginia

FRANKIE D'S RESTAURANT

Huntington, West Virginia

HUNTINGTON FEDERAL SAVINGS BANK

Huntington, West Virginia

- Branch Banking Facility, Huntington Mall
- Branch Banking Facility, East Hills

Religious

WESTMINSTER HOUSE

Morgantown, West Virginia

- Faith Based Student Housing
- Student Ministry Center
- First Presbyterian Child Development Center

ROMAN CATHOLIC DIOCESE OF WHEELING-CHARLESTON

- Nativity of Our Lord Catholic Parish
Wayne, West Virginia
- Renovations to the Hunt Building
Charleston, West Virginia

HOLY SPIRIT ORTHODOX CHURCH

Huntington, West Virginia

- New Church and Social Hall
- Classroom Addition

Public

HUNTINGTON MUSEUM OF ART

Huntington, West Virginia

- Isabelle & Robert Daine Gallery Addition

ARMED FORCES RESERVE CENTER

Kenova, West Virginia

GREATER HUNTINGTON PARKS AND RECREATION DISTRICT

Huntington, West Virginia

- Ritter Park Amphitheater Renovations
- Ritter Park Tennis Center Renovations
- Harveytown Park Shelter & Restrooms

CABELL COUNTY COMMISSION

Huntington, West Virginia

- EMS Station No. 2, 6 & 7

CABELL COUNTY PUBLIC LIBRARY

- Salt Rock Public Library
- Buffalo Creek Memorial Library - Addition

TRI-STATE REGIONAL AIRPORT

Huntington, West Virginia

- Terminal Renovations Phases 1&2
- Private Aircraft Terminal Renovations





FIRM HISTORY AND ORGANIZATION

Established in 1965, Glavé & Holmes Architecture (G&HA) is a nationally recognized architecture, interior design, and planning firm located in Richmond, Virginia. We are a leading practitioner of contextual design that is inspired by the specific culture, history and surroundings of a given community or place. Our regionally-focused design practice has cultivated expertise in five studios: Higher Education, Cultural, Hospitality/Residential, Interior Design, and Urban Architecture, allowing us to provide the resources necessary for a diverse portfolio that involves new buildings, additions and renovations, adaptive reuse of historic buildings, and projects in historic settings.

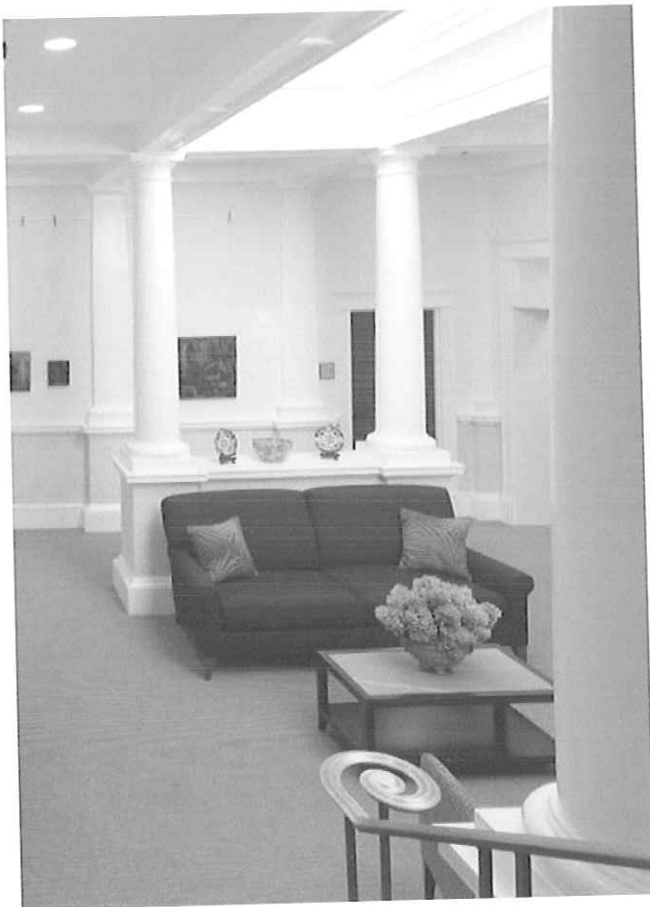
G&HA strives to create context specific design that fits seamlessly into the cultural milieu of a given community or place, while addressing the functional needs of the people that will interact with our buildings and spaces. We value a collaborative process that involves the client, the community, and the various disciplines in a dynamic exchange of ideas and concepts. Throughout the history of the firm, we have pursued an architectural aesthetic that is based on clarity, invention and resonance. We seek to design buildings that link themselves to the long tradition of other buildings and places, reaching out to the past, the present and even touching the future.

G&HA employs 44 design professionals and administrative staff. The firm is large enough to handle complex design projects and small enough to provide a high degree of personal attention. Each project is given the professional attention which has garnered G&HA a strong reputation for dependable service for nearly 50 years.

DESIGN PROCESS

We are passionate about the creation of beautiful places and to that end, we have developed a design methodology that begins with a POETIC Process. Drawing from the root word poe̓sis, meaning “create” or “make”, POETIC is an acronym that reminds us of certain critical steps we undertake in the early stages of the project. The “POE” represents the contextual research of answering three fundamental questions: What defines this Place? Who Occupies this place? And how is this place Experienced by its occupants? Through collaboration with the entire project team, this research is distilled into a Transcendent Idea that represents the irreducible essence of the project, transcending the contributions of each individual. Finally, we express the Transcendent Idea with visual form and develop the Concepts that serve as the palette for the developed design.

In our projects, we have found that the POETIC Process tends to clarify goals, build consensus among stakeholders and yield coherent, beautiful designs.



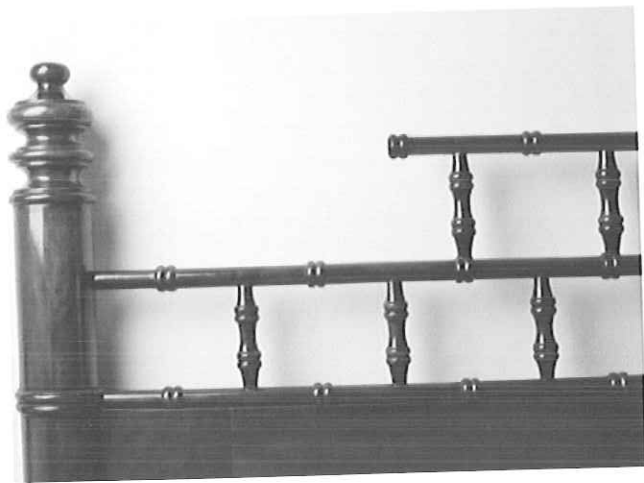


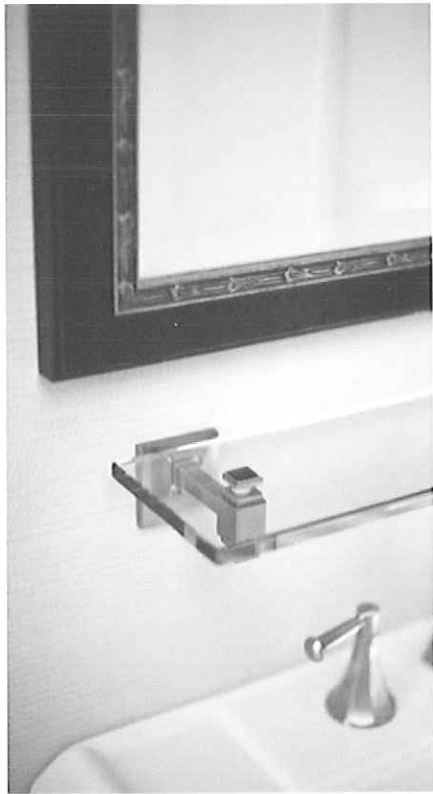
THE HOSPITALITY STUDIO

Glavé & Holmes has two solid decades of hospitality work at the highest levels of the industry. From historic resorts and hotels to restaurants, cafés, shops, and spas, the firm brings its contextual sensitivity to each project. Be it a National Trust site or an upscale bistro in a historic district, each is treated with a level of respect and care rarely found in the design field.

Elevating the Human Spirit is the heart-felt aspiration of the Hospitality Studio. Nowhere is this endeavor more immediate than in our work for the hospitality industry which seeks to entertain and nurture guests by providing them with an unparalleled experience. As designers, we support our clients by creating the stage for elegant events and fine dining. We aspire to create sumptuous guest rooms and tranquil spas to assuage the stresses of life.

We are guided by our unique contextual design approach which requires us to first gain a significant understanding of the history and culture of a site before developing designs. The design actually grows from the knowledge gained during this examination and assures that each design is as unique as the individual hotel, resort, spa, or restaurant. You'll find no rubber-stamp designs at Glavé & Holmes; rather, you will encounter expert storytellers who use design, art, signage, and branding to convey exciting stories for our clients. We invite you to experience our unique approach as we discover and share your distinct story.







Engage a different kind of company...

...one that truly cares about your success and approaches your projects differently. We start by asking you about your organization, your ideas, and your challenges.

What does this mean to you? It means you get the personalized attention of experienced and trusted professionals who immediately engage to tackle your challenges. It means that at GAI, you'll work with a customized team of experts best suited for your project. Because we are an employee-owned company, we attract the finest professionals, which means you'll deal with the best and they'll give you their all.

With GAI, you will have access to our broad spectrum of engineering and environmental services. That translates into a higher level of customer service from seasoned teams who can expertly handle every aspect of your project, from concept to completion. You will benefit in every way from our solid reputation of time-honored technical excellence.

Look inside, work with a trusted partner, experience the GAI difference.

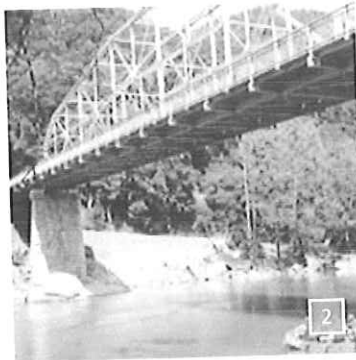
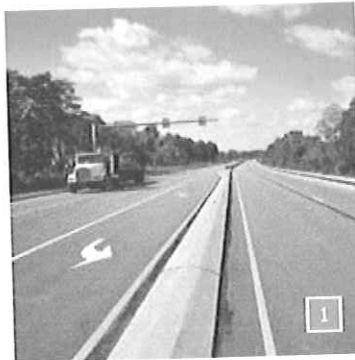
Work with a trusted partner.

GAI knows that transportation agencies face daunting challenges. Enhancing our nation's infrastructure, managing traffic congestion, keeping the public safe, and fostering environmental stewardship are high priorities.

For over 50 years, GAI has provided essential leadership and depth of experience delivering quality, award-winning design solutions. From managing public-private collaborations for expressways and airport expansions, through designing major highways, large-span bridges, and transit projects, to delivering streamlined environmental solutions, GAI's multidiscipline teams efficiently deliver transportation planning, final design, and construction inspection.

At GAI, we uphold a steadfast commitment to our partnerships with transportation agencies and their communities by facing every challenge with flexibility, insight, and keen attention to details.

With hundreds of successful transportation projects completed throughout the country, we've created a legacy of award-winning projects for our clients, earning them solid reputations as top transportation agencies.



Transportation Service Areas

- + Highway Studies and Design
- + Bridge Design, Inspection, and Rehabilitation
- + Traffic Studies and Design
- + Eminent Domain Services
- + Transportation Planning
- + Utility Coordination
- + Design-Build Project Delivery

★ Denotes Award-Winning Project



“ From start to finish, the team dealt with each aspect in a professional and competent manner while keeping the Department's best interest in mind. ”

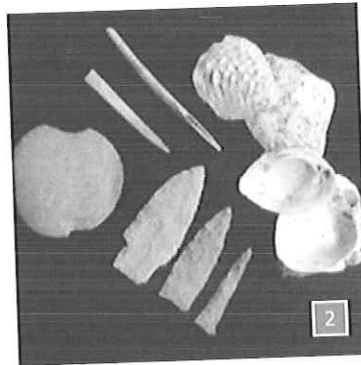
Florida Department of Transportation

Streamline your project's life cycle.

Efficient... timely... professional. When you work with GAI, award-winning experience is on your side. It is experience that takes the mystery out of the Section 106 Cultural Resources process.

GAI offers a 35-year track record for expertly navigating our private and public clients through the FERC / NEPA / NHPA (Section 106) process. With qualifications that exceed federal requirements (36CFR60), GAI Project Managers / Principal Investigators hold advanced degrees and are Registered Professional Archaeologists. Our staff is fully versed in National Park Service standards and protocol. As one of the largest Cultural Resources groups in the United States, GAI is noted for our quick response to simultaneous and fast-track projects on a moment's notice and in all weather conditions.

With GAI, you can expect a common sense approach to your project. Our streamlined cultural resource management techniques are surpassed only by our solid technical reputation, earning the trust of State Historic Preservation Offices across the United States. The results? Faster permit approvals, reduced costs, and your projects move forward with efficiency and precision.



Cultural Resources Service Areas

- + Site Files Check and Literature Reviews
- + Historic Context / Regional Syntheses
- + Prehistoric and Historical Archaeology
- + GIS Archaeological Predictive Modeling
- + Geoarchaeology, Geomorphology, and Pedology
- + Artifact Analysis
- + Architectural Surveys / NRHP Evaluations
- + National Register Nominations
- + HABS / HAER and State-level Recordations
- + Architectural Design Guidelines
- + Determination of Effects Reports
- + Cultural Landscape Documentation Reports
- + Cultural Resources Management Plans
- + Memoranda of Agreements
- + Programmatic Agreements
- + SHPO / Native American Consultation
- + Public Education and Outreach

★ Denotes Award-Winning Project

“I wish to take this opportunity to thank you and your staff for the efficient and effective way in which fieldwork was conducted. In the face of time constraints and logistical complications your staff performed with aplomb.”



- 1 Architectural Survey and Evaluation, Delray Beach, FL - *City of Delray Beach*
- 2 Follansbee-Weirton Road Upgrade, Brooke County, WV - *West Virginia Division of Highways* ★
- 3 Architectural Survey and Evaluation, Wythe County, VA - *American Electric Power*
- 4 Phase I / II Archaeological Investigations, Mason County, WV - *Madison Coal Company*

Provide stewardship over your resources.

Confidence... consistency... compatibility. These timeless qualities underscore the success of each GAI project. The demands we place on ourselves are your keys to a successfully completed project.

Successful projects result from applying innovative approaches to the environmental remediation, permitting, and mitigation processes. Our environmental engineers, biologists, hydrogeologists, and industrial hygienists bring multidisciplinary technical capabilities and unparalleled project management services to every project. As our projects are challenging and demand our best, they also create exciting research opportunities for our clients and staff alike. Just one more reason GAI attracts professionals who are top in their class and exceed the expectations of our clients and the communities they serve.

As your trusted consulting partner, GAI actively interacts on your behalf with governmental permitting agencies to keep the permit approval process moving ahead, allowing you to clearly focus on your critical project milestones. We design databases programmed to notify you before your permit is ready to expire so your project always remains in compliance. Our reputation as a dynamic, value-oriented consulting firm is built on the trust we bring to your projects and to your stakeholders.



Environmental Service Areas

- + Environmental Engineering
- + Environmental Health and Safety
- + Environmental Site Assessments and Remediation
- + Coal Combustion Product Management (Landfills and Reuse)
- + Water and Wastewater Management
- + Acid Mine Drainage and Abandoned Mine Lands Reclamation
- + Underground and Aboveground Storage Tank Management
- + Environmental Studies and Permitting
- + FERC Certification
- + NPDES Permitting
- + Threatened and Endangered Species Studies and Agency Clearance Coordination
- + Geographic Information Systems (GIS)
- + Greenhouse Gas Studies
- + Air Quality Management and Permitting
- + Groundwater Monitoring
- + Land Use Applications
- + Noise Studies and Predictive Modeling
- + Ecosystem and Stream Restoration
- + Wetland Delineation and Mitigation

★ Denotes Award-Winning Project

“Your staff’s willingness to do what is necessary, to learn by trying, and to generate good quality work throughout are the keys to this success. You helped us make the filing not only on time, but ahead of the initial schedule. Thank you.”



4

- 1 Marcellus Shale Pipeline, Fayette County, PA - Chief Oil & Gas LLC
- 2 I-99 Corridor Environmental Research, Blair and Centre Counties, PA - Pennsylvania Department of Transportation
- 3 EQT Production Well, Greene County, PA - EQT Corporation
- 4 New Haven Trail, New Haven, IN - City of New Haven

Build strong community relationships.

Sustainable community growth and development require passion, commitment, and innovation. Submitting plans and securing permits in a timely manner transform that passion into reality.

We value your time, money, and resources as if they were our own. From large-scale retail and commercial complexes to residential housing units, our attention to your goals distinguishes GAI's Land Development services. When appropriate, we use LEED® design principles to help reduce energy costs, cut carbon footprint, and enhance asset value.

Whether developing former brownfield, urban in-fill, or greenfield sites, our experienced professionals strategically navigate the compliance process and secure permits quickly. We strive to avoid costly delays and frustrating glitches by guiding you through the development process to achieve project buy-in from financial partners, local governments, and involved communities.

Our Civil Engineering, Planning, Landscape Architecture, and Survey professionals are integral to our Land Development services and provide seamless master planning, streetscape designs, landscape plans, and complete survey services.



Land Development Service Areas

- + Civil Engineering and Infrastructure
- + Landscape Architecture
- + Planning
- + Surveying
- + Brownfield Development
- + Due Diligence
- + Permitting
- + Sustainable and LEED Design

★ Denotes Award-Winning Project



“GAI has consistently shown themselves to be highly reliable, able to address sophisticated issues in a timely manner, and able to consistently achieve superior results.”

Orange County Public Schools, Orlando, Florida

Face challenging issues.

The construction engineering, management, and inspection industry has many challenges that must be faced with straight on, can-do approaches. At GAI, we help meet those demands with integrity, unparalleled service, and timely project completion.

For several decades, GAI has served as our clients' eyes and ears, providing quality control and cost protection throughout the construction process. Our certified construction engineers monitor construction at every stage to provide confidence that your project is executed in accordance with contract documents, and that the completed work meets or exceeds quality standards. With an in-house materials testing laboratory, we also help assure the soundness of our clients' building materials. Your projects are professionally delivered with cost, timeliness, and safety as our highest priorities.

GAI's Construction Services Group also provides innovative design-build solutions. This efficient project delivery system brings value to projects in both the public and private sectors. Our clients reap numerous benefits from design-build partnerships, including shortened project times, streamlined communication, and improved risk management.

With GAI, you can confidently tackle the most complex and challenging construction projects.



Construction Service Areas

- + Construction Inspection and Monitoring
- + Construction Management
- + Constructability Reviews
- + Construction Scheduling
- + Construction Claims Analysis
- + Materials Testing

★ Denotes Award-Winning Project

“Their ability to provide responsive and efficient engineering services has resulted in a timely and cost-effective completion of projects.”

Team up to enhance infrastructure.

From foundations to retaining walls, from dams to transmission towers, geotechnical and structural projects require specialized expertise. GAI's proficiency and proven solutions instill our client with confidence.

Widely published and recognized as industry leaders, our geotechnical and structural engineers have been providing sound solutions in the areas of engineering geology and geotechnical engineering for large transportation, industrial, and energy clients since 1958. GAI has specialized expertise in clearing the way for facilities where difficult ground conditions exist. Our geologists are also world experts in mine fire exploration and abatement.

GAI's extensive experience with transmission line siting, permitting and design encompasses several thousands of miles of electric lines throughout the U.S., Central and South America, and Southeast Asia. Our fully integrated, interdisciplinary team consists of leaders in the industry, so there is no learning curve for you.

By teaming with our experienced engineers, you gain the know-how to formulate smart ideas and to reduce risk every step of the way.



ASFE
The Best People on Earth

Geotechnical Service Areas

- + Geotechnical Explorations
- + Foundation Engineering and Research
- + Geology and Soil Mechanics
- + Mine Studies
- + Subsidence Remediation
- + Dam/Levee Engineering
- + Seismic Evaluations of Dams
- + Expansive Material Remediation
- + Slope Stability and Landslide Repairs

Structural Service Areas

- + Structural Analysis and Design
- + Seismic Investigations and Compliance Design
- + Structural Rehabilitation
- + Retaining Wall Design
- + Vibration Analysis and Remediation
- + Gas Pipeline Design
- + Transmission Line Design
 - Line Routing Studies
 - Line Design
 - Line Upgrades
 - Upgrading Studies and Design
 - Tower Modeling / Analysis / Retrofitting

★ Denotes Award-Winning Project

“With the help of your people, we have accomplished many goals that most people in the industry would not have thought possible.”

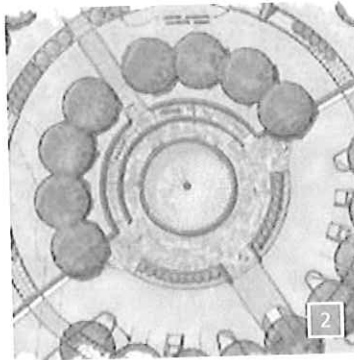
Think sustainably.

At GAI, we understand that sustainability goes beyond protecting the earth — it's a broad, evolving issue with economic, social, environmental, and financial considerations.

Buildings account for approximately 40 percent of U.S. energy consumption. Roughly half of all facilities will require renovation by 2040. As a recognized standard for measuring building sustainability, LEED certification helps owners improve their communities, save energy costs, and demonstrate their commitment to the environment.

GAI's LEED Accredited Professionals identify design and construction solutions that enhance both the environment and our clients' success for the long term.

Our multidiscipline staff guides your project through the LEED design and certification process. We present resource-efficient design solutions for new construction and older buildings. From green roofs to greywater systems, GAI partners with our clients to tailor solutions that meet both their sustainability goals and those of their communities.



LEED Design Service Areas

- + Building Design and Construction
- + Operations and Maintenance
- + Neighborhood Development
- + Commissioning for New and Existing Buildings
- + Multimodal Transportation
- + Material Identification and Recycling
- + Construction Waste Management and Pollution Prevention
- + Energy Efficient Systems
- + Landscaping and Green Roofs
- + Innovative Greywater and Stormwater Reuse Technologies

★ Denotes Award-Winning Project



“ We take our commitment to sustainability seriously. Moving into a LEED certified office building is a natural outgrowth of our company-wide core value of sustainability. ”

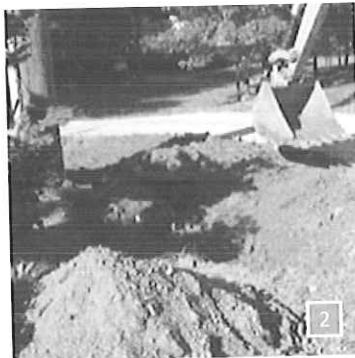
Plan for tomorrow.

Efficiency... reliability... profitability. GAI understands the complex operational and financial issues facing utilities, municipalities, and the customers they serve.

With experience managing over \$1 billion of utility acquisitions, our combined engineering and financial expertise stands out among engineering firms. In addition to analyzing rates and charges, GAI brings unique resources to the financial and operational challenges of water, wastewater, and electric utilities.

We embrace a hands-on, customized approach. Our combined engineering and financial expertise offers private and public utilities the tools they need to plan effectively for today and tomorrow.

GAI's nationally renowned team includes an appraiser certified by the American Society of Appraisers along with CPAs, MBAs, professional engineers, and former utility executives. Working as an extension of your staff, GAI leverages this unique expertise in a wide range of challenges, always with the goal of optimizing financial stability and operational efficiency.



Utility Management Consulting Service Areas

- + Valuation, Acquisition, and Divestiture Services
- + Rate and Financial Services
- + Government Grant, Loan, and Funding Services
- + Revenue Bond Feasibility and Capital Funding Services
- + Expert Witness Testimony and Litigation Support Services
- + Negotiation Assistance, Agreements, Franchises, Contracts
- + Utility Regulatory Services
- + Utility Optimization Services

★ Denotes Award-Winning Project



“GAI has consistently assisted the City in meeting stringent filing deadlines, securing project financing, and ensuring that our designs make it off the shelf into the construction phase.”

City of North Miami Beach, Florida



- 1 Original Utility Certifications, FL - *Evans Properties, Inc.*
- 2 Polybutylene Pipe Damages Expert Witness Testimony, Coweta County, GA - *Frost Brown Todd LLC*
- 3 State Revolving Fund and Stimulus Funding for VOC Removal, North Miami Beach, FL - *City of North Miami Beach*
- 4 Valuation, Financial Management, and Financing Support, Ocala, FL - *Bay Laurel Center CDD*

Transform your ideas into reality... with GAI.

Our goals for your projects are clear: Gain your confidence with trust, provide exceptional customer service, and deliver the best possible solutions that exceed your expectations.

With GAI, your project starts with a team of professionals rooted in a foundation of excellence, one that works with only the highest of ethical values. We base our business on the core values of respect and commitment established from the day GAI formed in 1958 to today, with hundreds of exceptional employees in locations throughout the Northeast, Midwest, and Southeastern United States.

We invite you to talk to our many professionals, request copies of their technical papers, or ask them to present their project solutions to you. Our clients welcome our partnerships with them, and we look forward to transforming their ideas into reality! How do you transform ideas into reality?

Engage a different kind of company — GAI Consultants.



Town Center, Altamonte Springs, FL City of Altamonte Springs ★

Our Vision

The Company of Choice... Transforming Ideas into Reality

Our Mission

To Continue Growing as an Integrated Consulting Firm
Creating Value for Our Clients and Employees

Guiding Principles

Providing Outstanding Performance
Accountability for Our Actions
Rewarding Superior Achievements
Being a Results Oriented Business
Sharing a Common Purpose and Direction
Creating an Entrepreneurial Work Environment
Promoting Teamwork within a Seamless Company
Encouraging Continuous Communication throughout the Company
Promoting Safety as a Top Priority
Sustainable Business Practices
Quality Project Delivery

Core Values

Honest, Fair, and Ethical Behavior
Quality Work and Project Delivery Culture
Company Loyalty and Support
Equal Employee Opportunities
Mutual Employee Respect

Critical Success Factors

Client Relationships
Employee Development
Financial Growth
Technical Innovation
Meeting or Exceeding Client Expectations

We invite you to learn more about GAI by
visiting our Website: www.gaiconsultants.com



Contains 30% Recycled Content



mSES consultants, inc.

August 31, 2012

Attn: Edward W. Tucker, AIA
Edward Tucker Architects, Inc.

RE: New Lodge
Beech Fork State Park

Dear Mr. Tucker:

The firm of **MSES Consultants, Inc. (MSES)** is pleased to submit this statement of qualifications for providing professional engineering services.

MSES is a one shop, multi-disciplinary planning, engineering, environmental, architectural and project management firm, established over 30 years ago and headquartered in Clarksburg, West Virginia. **MSES** has been providing engineering services on more than a million and a half square feet of West Virginia building construction.

MSES offers a professional staff of over 70 people, with registered structural, mechanical, civil and electrical engineers, architects, professional land surveyors, information and environmental technologists and a diverse roster of professionals, scientists, technicians and support staff. Our performance can best be measured by our long-standing client relationships, some of which have lasted for 30 years. Our qualifications are based on successfully understanding and working with State and Fire Marshal requirements on similar projects.

MSES provides a total array of engineering, design, and project management services. In addition, we can offer environmental and hygienist services where needed. We can assure a work force of sufficient size to provide immediate and comprehensive involvement on this project.

I am sending herewith a list of relevant experience and the resumes of key personnel that would be involved with this project. I would be the lead design professional for the project.

The project would be served out of our Western West Virginia Office located here in Huntington.

Sincerely,

MSES CONSULTANTS, INC.

David L. Skeen,
Senior Project Engineer
304-522-9055
dlskeen@msesinc.com

MSES Consultants, Inc.
Engineers and Environmental
609 West Main Street
Clarksburg, WV 26302
304-624-9700 304-622-0981 fax
wise@msesinc.com
<http://www.msesinc.com>



key personnel

ENGINEERING:

Administrative



- Lawrence M. Rine – Principal and Quality Assurance
- Jeffrey T. Wise – Managing Director

Mechanical Engineering • HVAC and Plumbing

- David L. Skeen, PE

Electrical Engineering • Fire Alarm Security

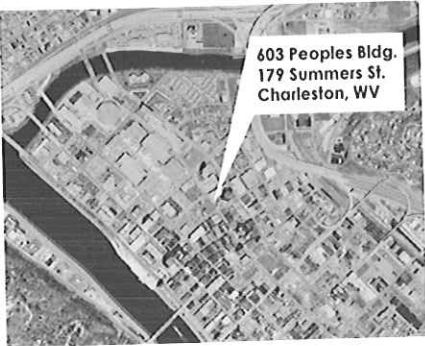
- Jeffrey K. Pauley, PE

MSES CONSULTANTS, INC. – ENGINEERS/ENVIRONMENTAL

609 West Main Street, Bldg. 2
Clarksburg, WV 26302
304-624-9700
<http://www.msesconsultants.com>

Principals: Lawrence M. Rine, QA/QC
John J. Keeling, P.E., C.I.H.,
C.S.P., Q.E.P., L.R.S.

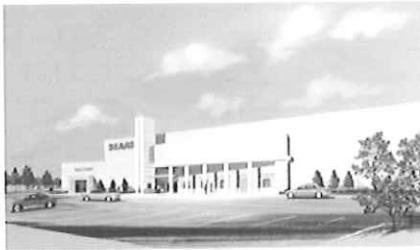
Background



Moment Engineers, Inc. is a professional consulting firm specializing in structural engineering. We serve the architectural and building construction communities throughout West Virginia. Based in Charleston, West Virginia at 179 Summers Street, Moment Engineers was founded by Douglas Richardson in early 2005.

During his more than 20 years of experience, Mr. Richardson has had sole responsibility for the structural engineering design of more than 5 million square feet of built space. The construction costs of these projects exceeded a half billion dollars. His experience, which ranges from small to very large multi-phase projects, is invaluable in providing the technical expertise and creative flexibility to deliver results in a prompt and reliable manner.

Our staff's experience encompasses a wide variety of building types and sectors, and our expertise includes design analysis for steel, concrete, masonry, and wooden structures.




Sample Project List

Moment Engineers staff experience includes a wide variety of new building design and existing building renovation. The list below is a small sample of the projects for which our staff has had responsible charge of the structural engineering, design and contract document production. A more extensive list is available upon request.

<u>Project</u>	<u>Sq. Ft.</u>
Barboursville Elementary School	63,947
Greenbrier East H.S. Renovations & Additions	205,057
Lincoln Co. High School	216,500
Wayne Co. Spring Valley High School	175,000
Cabell West Elementary School	55,788
Dunbar Primary Center School	14,100
Judge Donald F. Black Courthouse Annex	37,000
WV Hospital Association Office Building	29,710
Capital State Bank	4,088
Glen Jean - AFRC	107,090
Camp Dawson - AFRC	56,200
Sears, Chesterfield Mall, Richmond VA	146,980
Sears, Loudon VA	132,600
Alderson Federal Prison Dormitory	60,625
Western Juvenile Detention Center	29,015
Cacapon State Park Addition	9,842
Lewisburg United Methodist Church	12,800
Kroger Store Renovation, Kanawha City	15,427
Goodwill Industries Renovation and Addition	15,460
NGK-NTK Production Facility	78,000
Kappa Alpha Fraternity House, WVU	14,000

project team

THE EDWARD TUCKER ARCHITECTS TEAM CONSISTS OF:

EDWARD TUCKER ARCHITECTS	Architect, Project Management	
GLAVE & HOLMES ARCHITECTURE	Consulting Architect	
GAI CONSULTANTS	Site/Civil, Geotechnical Engineering, Permitting and Landscape Architecture	
MSES CONSULTANTS	Mechanical, Electrical, Plumbing & Telecommunication Engineering	
MOMENT ENGINEERS	Structural Engineering	

Edward Tucker Architects will have overall responsibility for the new Beech Fork Lodge, with specific responsibility for client liaison, design oversight, budget control, construction drawings/specifications, bidding and construction administration. Our location is only a 20 minute drive from Beech Fork Lake, enabling optimal service and response time during construction. We stress the importance of frequent construction progress meetings held at the project site in order to resolve issues, review payment applications, and keep the budget and schedule on track.

Glave & Holmes Architecture will bring their extensive hospitality design expertise to the programming, schematic and design development phases of the project. Along with the Division of Natural Resource's *Market and Financial Performance Study*, current trends in market driven hospitality design will be used to create attractive and economically feasible solutions. Working with ETA's Interiors staff, this same expertise will continue to inform the interior design for an integrated and cohesive experience for Lodge guests.

GAI Consultants will be responsible for site, roadway, infrastructure and landscape design of the Beech Fork Lodge development, as well as on-site construction coordination during its implementation. GAI will perform pre-construction studies specific to the U.S. Army Corps of Engineers Outgrant License process (archeological, geotechnical, environmental, etc.) Using their extensive experience working with the Corps of Engineers, DEP, DOH and other state and federal agencies, they will coordinate all permitting to ensure a smooth and efficient process.

MSES Consultants and **Moment Engineers** will design and engineer all of the building systems including structural, mechanical, plumbing, fire protection, lighting, electrical and telecommunications. With personnel living within an hour's drive of the site, they will be present during construction along with Edward Tucker Architects at site meetings from kick-off to final completion.

Our team has ongoing relationships with state authorities, as well as the U.S. Army Corps of Engineers (the Huntington District office is literally across the street from ETA), having successfully navigated their review and approval processes for other projects. We believe this combination of expertise and location makes our team the most qualified choice for the new Beech Fork State Park Lodge.



project team :: EDWARD W. TUCKER, AIA



Edward W. Tucker, AIA

Edward Tucker
Architects, Inc.
Principal

Edward W. Tucker, AIA, is President of Edward Tucker Architects, Inc. Edward manages the firm's overall operations with a focus on professional leadership, design and quality assurance. His expertise includes healthcare, education, research labs/clean rooms, industrial, religious, commercial, historic, and public architecture.

Originally from Huntington, West Virginia, Edward graduated with high honors from the University of Tennessee earning a Bachelor of Architecture degree in 1982. From 1983 to 1995, he worked in Nashville, TN, gaining licensure in 1986. Working with two firms during this time, his responsibilities grew with an emphasis on project management, eventually joining Campus Planning at Vanderbilt University Medical Center. While at Vanderbilt, he was responsible for constructed projects in the Medical Center totaling over 40 million dollars. He completed Vanderbilt University's Leadership Development Forum in 1994.

In 1995, he returned to Huntington to begin Edward Tucker Architects, Inc. through the acquisition of Dean and Dean Architects. The renewed firm continued its legacy of earning the trust of public, private and community related clients in the Tri-State region. Edward has established the firm as a preferred provider of architectural services in the area illustrated by repeat clientele including Marshall University, Cabell Huntington Hospital, Marshall University's Joan C. Edwards School of Medicine, Alcon Laboratories, the Greater Huntington Parks and Recreation District, River City Properties, the Diocese of Wheeling-Charleston, and the Cabell County Public Library.

In 2007, Edward was elected to a three-year term on the American Institute of Architects (AIA) National Board as the Region of the Virginias Director, where he served on the Finance and Audit Committee and several task forces. Prior to this he was President and Director of the West Virginia Chapter of the AIA. He currently serves on the Board of Directors of Huntington Federal Savings Bank, the City of Huntington Planning Commission and the Cabell County Historic Landmarks Commission. He has been an active Rotarian since 1995. Edward resides in Huntington with his wife Lynn.

EDUCATION

- **University of Tennessee** – Knoxville, Tennessee
Bachelor of Architecture, 1982 Summa Cum Laude
- **Denmark's International Studies** – Copenhagen, Denmark
Architecture and Urban Design, Semester Study 1981

PROFESSIONAL EXPERIENCE

- **Vanderbilt University Campus Planning**
Nashville, TN Staff Architect 1990 - 1995
- **Adkisson Harrison & Rick Architects, Inc.**
Nashville, TN Architect 1986 - 1990
- **Barge Waggoner Sumner & Cannon**
Nashville, TN Architectural Intern 1983 - 1986

PROFESSIONAL AFFILIATIONS

- **American Institute of Architects (AIA)** - Director, Region of the Virginias, 2008 - 2010
- **AIA West Virginia Chapter**
▸ President, Director-Past President, VP-President Elect, Director, 1998 - 2005

REGISTRATIONS

- **National Council of Architectural Registration Boards**
▸ West Virginia ▸ Kentucky ▸ Georgia ▸ Ohio ▸ Tennessee (inactive)

CIVIC AFFILIATIONS

- **Huntington Federal Savings Bank**, Director 2009 -
- **Cabell County Historic Landmarks Commission** 2008 - 2013
- **Huntington Symphony Orchestra**, Board of Directors 2003 - 2009
- **Rotary Club of Huntington**, Director 2003 - 2005
- **Tri-State Council Boy Scouts of America, Executive Board** 1999 - 2007
- **City of Huntington Planning Commission** 2011 -
Building Code Board of Appeals, Chair 1997-1999

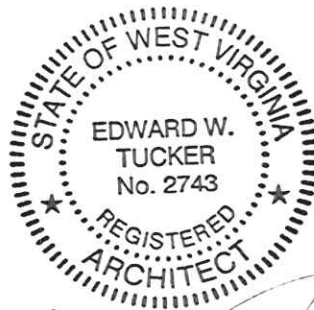


PRINT THIS RECEIPT FOR YOUR RECORDS.

**West Virginia Board of Architects
Receipt for Renewal**

Date: 6/1/2012 1:54:42 PM
Sequence Number: 20120601273184
Fee: \$75.00

Registrant: EDWARD W TUCKER, License: 2743	
Address 916 5TH AVENUE SUITE 208 HUNTINGTON, WV 25701	Payment information Card: 5*****3441 Expiration: 08/2012 EDWARD W TUCKER 916 5TH AVENUE HUNTINGTON, WV 25701
Email: EWT@ETARCH.COM	Your license Expires: 2012-13



Edward W. Tucker
8.31.12

project team :: NATHAN JON RANDOLPH, AIA



Nathan Jon Randolph, AIA

Edward Tucker
Architects, Inc.
Project Architect

Originally from Scott Depot, West Virginia, Nathan was raised in a construction and engineering oriented family. In keeping with this tradition, he chose architecture as a career path, graduating with high honors from the University of Tennessee with a Bachelor of Architecture degree in 1998. By the time that Nathan had completed his education at Tennessee, he had collected every honor and won all school sponsored architecture design competitions offered by UT's College of Architecture and Design.

With Edward Tucker Architects since 2000, he has designed and managed many successful projects with continuing client relationships in both the public and private sector. In 2009, Nathan was elected to the City of Huntington City Council where he represents the Fourth District. He has been instrumental in the City's efforts to clean up and repurpose abandoned properties to revitalize and rebuild neighborhoods.

Nathan has diverse design experience in the commercial, industrial, pharmaceutical, health care, collegiate, and residential markets. Nathan resides in Huntington and is a parishioner at Saint Joseph Catholic Church.

PROJECT EXPERIENCE

- **Marshall University Forensic Science Center Phases 1-7**
Huntington WV
2010 Honor Award for Excellence in Design - AIA West Virginia
- **Integrated Clinical Center - Valley Health Systems, Inc.**
Huntington WV
- **Dining Facility - Marshall University Twin Towers Dormitory**
Huntington WV
- **Saint Joseph Catholic Elementary & Middle School**
Huntington WV
- **Holy Spirit Orthodox Church, Huntington, WV**
 - Phase 1 – Sanctuary
 - Phase 2 – Social Hall
- **Dining Facility, Starbucks Coffee House - Marshall University Student Center**
Huntington WV
- **Alcon Manufacturing, Huntington WV**
 - Phase 1 – Clean Room Expansion
 - Phase 2 – Production Expansion
 - Phase 3 – Plant Rehabilitation
- **Cabell Huntington Hospital Pritchard Dialysis Center**
Huntington WV
- **Douglass Center – Historic Restoration/Rehabilitation of Douglass High School**
Huntington WV

EDUCATION

- **University of Tennessee – Knoxville TN**
Bachelor of Architecture, 1998 Cum Laude
 - Pella Design Award – 1996
 - East Tennessee AIA Integration Award – 1997
 - Tau Sigma Delta Bronze Medal Senior Thesis – 1998
 - Faculty Design Award Senior Thesis – 1998
 - Dean's Letter of Excellence Senior Thesis – 1998
- **Poland International Study – Krakow, Poland**
Architecture and Urban Design, Spring Semester 1997

PROFESSIONAL AFFILIATIONS

- **American Institute of Architects, West Virginia Chapter**
- **Chair of the Young Professionals Committee, Huntington Regional Chamber of Commerce**
- **City of Huntington - City Council, Fourth District**

REGISTRATIONS

- **National Council of Architectural Registration Boards**
 - West Virginia



project team :: PHOEBE PATTON RANDOLPH, AIA, LEED AP



Phoebe Patton Randolph
Edward Tucker
Architects, Inc.
Project Architect

Phoebe Patton Randolph received her architectural training at Pratt Institute and the University of Tennessee, Knoxville, obtaining a Bachelor of Architecture in 2000. She received a Faculty Design Award for her fifth year Comprehensive Design Project, and at the age of twenty-one became the youngest graduate of the College of Architecture + Design. During her fourth year at the University she studied for a semester abroad at the Krakow Polytechnic University in Poland. During this time she traveled extensively, gaining first-hand exposure to classical and modern European architecture.

Following graduation, Phoebe's employment included two years with a firm based in Pawley's Island, South Carolina. Her work there included experience with project management, developing construction documents, and construction administration.

Returning to Huntington in 2003, Phoebe accepted the position of Intern Architect at Edward Tucker Architects, Inc., where she has been responsible for a diverse group of projects including health care, multi-family housing, commercial, religious, industrial food production, library, museum, and historic preservation. In 2008, she achieved licensure in the state of West Virginia and assumed the role of Project Architect. In 2009, she became certified as a LEED Accredited Professional. Phoebe resides in Barboursville, West Virginia with her husband Justin and their sons.

PROJECT EXPERIENCE

- **School of Pharmacy, Marshall University**
 - Medical Education Building Renovation - VA Campus, Wayne County WV
- **City of Huntington** - Paul Ambrose Trail for Health - Phase 1
Huntington, WV
- **Huntington Museum of Art, Huntington WV**
Isabelle Gwynn and Robert Daine Gallery Addition
2011 Merit Award for Excellence in Design - AIA West Virginia
- **Cabell County Public Library**
Salt Rock Public Library, Salt Rock WV
2010 Merit Award for Excellence in Sustainable Design - AIA West Virginia
- **Joan C. Edwards School of Medicine, Marshall University**
 - Medical Education Building Renovation - VA Campus, Wayne County WV
 - Rural Health Center, Logan County WV
 - Erma Ora Byrd Clinical Center - 80,000 sf Clinical & Education Facility, Huntington WV
 - Orthopedics & Neuroscience Department Renovations, Huntington, WV
- **International Brotherhood of Electrical Workers, Local #317, Huntington WV**
New Union Hall and Credit Union
- **Mountain Bounty Kitchen, Huntington, WV**
Shared Use Commercial Kitchen Facility

EDUCATION

- **Pratt Institute** – Brooklyn NY
Pre-College summer program in Architecture - 1994
- **University of Tennessee** – Knoxville TN
Bachelor of Architecture, 2000
Faculty Design Award – 2000
School of Architecture Letter of Excellence – 2000
- **Krakow Polytechnic University** – Krakow Poland
Architecture and Urban Design, Spring Semester 1999

PROFESSIONAL AFFILIATIONS

- **American Institute of Architects**, West Virginia Chapter
Livable Communities Committee Chair, 2004-2008
- **KYOVA Interstate Planning Commission**
- **Create Huntington**, President, Board of Connectors

REGISTRATIONS

- **National Council of Architectural Registration Boards**
 - West Virginia
- **Green Building Certification Institute**, LEED AP



project team :: EMILIE G. MAYNARD



Emilie Maynard

Edward Tucker
Architects, Inc.
Interior Design

Emilie Maynard graduated with high honors from the University of Kentucky's College of Design in 2005 with a Bachelor Degree in Interior Design. In 2003, she became the first Interior Design student selected by the College of Design to participate in Atelier Veneziano in Venice, Italy. Her education also included an emphasis in lighting design.

Upon graduation, Emilie returned to her hometown of Huntington, WV, and started EGM Designs while raising her family. From 2006 -2010, her design work with EGM Designs varied from residential to commercial as well as healthcare.

In 2010, she was recruited to a full-time position at West Virginia Electric Supply Company to reinvigorate its showroom and counter sales. As Lighting Showroom Manager, she employed her design background to go beyond assisting customers with fixture sales through full custom lighting design and layout services. Her responsibilities also included managing the showroom's personnel, budget, purchasing and developing advertising media.

In 2012, Emilie accepted the position of Interior Designer at Edward Tucker Architects. Her interior design services include space planning, finish selections, furniture and equipment selection, specification development and procurement. Combined with Emilie's lighting design abilities, her work is fully integrated with the firm's architectural design process, adding more value to Edward Tucker Architects services through the design of completely coordinated interior environments.

Emilie lives in Huntington, WV, with her husband and three children, Tre', Naomi and Sophia.

EDUCATION

- **University of Kentucky** – Lexington, KY
Bachelor Degree in Interior Design, 2005

EMPLOYMENT

- **EGM Designs** - Huntington, WV
2006-2010
- **West Virginia Electric Supply Company** - Huntington, WV
Lighting Showroom Manager 2010 - 2012

PROFESSIONAL EXPERIENCE

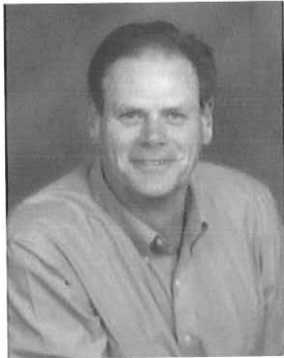
- **Integrated Health Center, Valley Health Systems, Inc.** - Huntington, WV
Selection & Procurement of Furniture, Medical and other Equipment for a new 24,000 sq ft outpatient center with Primary, Psychiatric and Dental Care along with Administrative Offices for a regional medical provider.
- **Marshall University College of Fine Arts** - Huntington, WV
Interior design including selection and coordination of finishes, furniture and equipment for the new Visual Arts Center, an adaptive reuse of a historic six story former department store.
- **Huntington Tri-State Airport** - Wayne County, WV
Interior design including selection and coordination of finishes and furniture in the main Terminal Building's public areas.
- **Cabell Surgery Center** - Huntington, WV
Interior Design services of this Ambulatory Surgery Facility included space planning, selection and coordination of finishes, and budget development for the procurement of furniture in public waiting areas, business office and employee offices.
- **Mainstream Services** - Huntington, WV
Interior Design centered around the introduction of a "snoezelen" space, or a controlled multisensory environment (MSE) for people with autism and/or other developmental disabilities. Lighting, atmosphere, sounds, and textures may be adapted to the specific needs of clients to provide soothing and stimulating therapy. Interiors were commissioned in remembrance of a past client to reflect her character throughout the space.





H. RANDOLPH HOLMES, JR., AIA

SENIOR PRINCIPAL, PRESIDENT



Randy Holmes is the President and Senior Principal at Glavé & Holmes Architecture. For more than 25 years, he has specialized in the design, renovation and adaptive reuse of historic buildings or projects in unique settings. His expertise allows him to work on a number of project types including cultural facilities, academic buildings, private residences and hospitality venues throughout Virginia and the southeast. Several prominent structures, such as the Pinchurst Resort, the Colonial Williamsburg Lodge and Spa, and the Boar's Head Inn, have been influenced by his enduring design that aspires from a contextual understanding and celebrates the human spirit. An award-winning architect, Mr. Holmes has received recognition for many of his designs including *Architectural Digest*, the Virginia Society of the American Institute of Architects, and *American School & University*.

- EXPERIENCE:** 29 Years Total Experience
21 Years With Glavé & Holmes
- EDUCATION:**
- Master of Architecture, University of Virginia, 1982
 - Bachelor of Science, Architecture, University of Virginia, 1979
- REGISTRATION/
CERTIFICATIONS:** Virginia; North Carolina; South Carolina; NCARB
- SELECT PROJECTS:**
- Stonewall Resort
Stonewall State Park, Roanoke, West Virginia

 - Pinchurst Resort - Multiple Projects
Village of Pinchurst, North Carolina

 - Boar's Head Inn Meeting Pavilion
Charlottesville, Virginia

 - Colonial Williamsburg Lodge Renovation
Williamsburg, Virginia

 - The Spa at Colonial Williamsburg
Williamsburg, Virginia

 - Jamestown Settlement Visitor Center
Williamsburg, Virginia



STEVEN BLASHFIELD, AIA, LEED AP

SENIOR ASSOCIATE, DIRECTOR, CULTURAL STUDIO



Steven Blashfield directs the Cultural Studio at Glavé & Holmes Architecture (G&HA). With nearly 20 years of experience, Mr. Blashfield has a career focus on preservation of heritage properties and environmental stewardship. After twelve years living and working on Nantucket Island, Massachusetts, Steven joined G&HA bringing his extensive background in historic preservation and contextual design. While on Nantucket, Mr. Blashfield worked on some of the island's most iconic properties including the South Church, the Siasconset Casino, and several properties of the Nantucket Historic Association. Steven is currently working with Stonewall State Park on a lodging component in Roanoke, West Virginia.

- EXPERIENCE:** 19 Years Total Experience
3 Years With Glavé & Holmes
- EDUCATION:**
- Master of Architecture, University of Oregon, 1997
 - Master of Historic Preservation, University of Oregon, 1997
 - Bachelor of Science, Architecture, Clemson University, 1992
- REGISTRATION/
CERTIFICATIONS:** Virginia; Massachusetts; NCARB Certificate; LEED Accredited Professional
- SELECT PROJECTS:**
- Stonewall Resort Cottages
 - Stonewall State Park, Roanoke, West Virginia

 - Mary Brock Forbes Science Complex and Chiller Plant
 - Christopher Newport University, Newport News, Virginia

 - Paul & Phyllis Galanti Education Center
 - Virginia War Memorial, Richmond, Virginia

 - Fabergé Gallery
 - Virginia Museum of Fine Arts, Richmond, Virginia

 - Gallery Renovation
 - Virginia Historical Society, Richmond, Virginia

 - Valentine Richmond History Center
 - Richmond, Virginia

 - Cumberland County Jail & Museum Restoration
 - Cumberland, Virginia



GARY M. INMAN, ASID ALLIED MEMBER

PRINCIPAL, DIRECTOR, HOSPITALITY & RESIDENTIAL STUDIO



Gary Inman directs the Hospitality Studio at Glavé & Holmes Architecture. A dynamic interpreter of classic design, Mr. Inman is skilled at combining elements from the past with the best of contemporary design. He merges his lifelong appreciation of beauty with his scholarly understanding of architecture and antiquities. He is an award-winning designer, author, and frequent lecturer whose work has been published in *The Washington Post*, *Southern Accents*, *Traditional Homes*, *Home & Design* and many others.

EXPERIENCE:

21 Years Total Experience
6 Years With Glavé & Holmes

EDUCATION:

- PhD, Architectural History, University of Virginia, ABD, 1998
- Master of Arts, Art History, Virginia Commonwealth University, 1993
- Bachelor of Science, Textile Design, University of North Carolina, Greensboro, 1983

SELECT PROJECTS:

Washington Duke Inn
Durham, North Carolina

Hotel Roanoke
Roanoke, Virginia

Pinehurst Presidential Suite, Carolina Hotel
Pinehurst Resort, North Carolina

Pinehurst Resort, 1895 Restaurant Camellia Dining Room
Pinehurst, North Carolina

Pinehurst Resort, East Wing, Carolina Hotel
Pinehurst, North Carolina

Pinehurst Country Club
Pinehurst, North Carolina

Montalto Restoration - Center for Jefferson Studies
Charlottesville, Virginia

Kluge Estate Winery and Vineyard
Charlottesville, Virginia

David Gilmore, RLA, ASLA

Corporate Practice Area Leader – Landscape Architecture

Education

B.S. Landscape Architecture 1988, West Virginia University

Registrations/Certifications

Council of Landscape Architectural Registration Board Certified

Professional Landscape Architect

West Virginia No. 247
Indiana No. LA 20700137
Pennsylvania No. LA 002737
Ohio No. LA 0801200
Kentucky No. LA 768
Maryland No. 3574
North Carolina No. 1632

Relevant Training/Courses

Harvard Leadership Training
GAI Leaders to Watch
GAI University Advanced Project Management Training

Affiliations

American Society of Landscape Architects, ASLA, West Virginia Chapter
Council of Landscape Architectural Review Board
WVASLA State Licensing Board Member
Past President, WVASLA
Executive Committee Member, WVASLA
Chairman, WVASLA Licensing and Sunset Review Committee
Judge, Senior Design Awards, West Virginia University

Professional Summary

Mr. Gilmore currently serves as the Corporate Practice Area Leader for Landscape Architecture services for GAI Consultants. In this role, he coordinates projects and marketing activities for all of GAI's offices throughout the region. In this capacity, Mr. Gilmore brings 22 years of experience on a diverse range of projects covering all aspects of landscape architectural design in both the public and private sector.

Professional Experience

Parks & Recreation:

- + Stonewall Jackson State Park Master plan, Roanoke, WV.
- + Horicon Preserve, Horicon, WI.
- + Charleston Gateway Park, Charleston, WV.
- + East End Community Park, Charleston, WV.
- + West Liberty Soccer Complex, West Liberty, WV.
- + Frontier Park, Charleston, WV.
- + Huntington Dog Park, Huntington, WV.
- + Meadowlark Park, Fostoria OH.
- + Charleston Riverfront Park, Charleston, WV.
- + Court Street Overlook, Charleston, WV.
- + Shoenbaum Performance Stage, Charleston, WV.
- + Berry Hills Country Club Master Plan, Charleston, WV.
- + Twin Falls State Park, Twin Falls, WV.
- + Dow Heritage Park, Charleston, WV.
- + CAMC General Division Employee Park, Charleston, WV.
- + Dupont 'Hyper' Plaza, Belle, WV.
- + Ohio to Erie Trail, Multiple Counties, OH.
- + Coonskin Park, Charleston, WV.

Streetscape & Urban Revitalization:

- + Charleston Comprehensive Plan, Charleston, WV
- + Charleston Downtown Urban Revitalization Study, Charleston, WV
- + City of Charleston Gateway Design, Charleston, West Virginia
- + Kanawha City Corridor Study, Charleston, WV
- + Charleston Riverfront Park, Charleston, WV
- + City of Charleston MS4 Stormwater Manual
- + Kanawha Boulevard Streetscape, Charleston, WV
- + Court Street Overlook, Charleston, WV
- + Citilink Transit Center, Fort Wayne, Indiana
- + Lewisburg Streetscape, City of Lewisburg
- + Pennsylvania Street, Carmel, IN
- + Dupont Road Corridor Improvements, Fort Wayne, IN
- + St. Albans Master Plan, St. Albans, WV.



- + St Albans Phase I, St. Albans, WV.
- + St. Albans Phase II, St. Albans, WV.
- + Pennsylvania Avenue Gateway, Charleston, WV
- + Florida Street Revitalization Master Plan, Charleston, WV.
- + Williamson Master Plan, Williamson, WV.
- + MacCorkle Avenue Greenspace Improvements, Kanawha City, WV.
- + Kanawha Valley Rapid Transit Shelter/Plaza Design, Charleston, WV
- + City of Charleston Storm Water Manual, Charleston, West Virginia
- + John Adams Middle School Rain Garden Design

Hospitals / Institutional / Campus Planning:

- + West Virginia University Evansdale Campus Infrastructure Master Plan, Morgantown, WV
- + West Virginia University Parkersburg, Child Development Center, Parkersburg, WV
- + West Virginia University Parkersburg, Applied Technology Center, Parkersburg, WV
- + WV State Convocation Center, Institute, WV.
- + WV State Capital Grounds Masterplan, Charleston, WV.
- + West Liberty University Health Sciences Center, West Liberty, WV.
- + West Liberty Soccer Complex, West Liberty, WV.
- + National Youth Science Camp, Davis, WV.
- + Dow South Charleston Plant, South Charleston, WV.
- + Edgewood Elementary School of the Future, Charleston, WV.
- + John Adams Middle School Rain Garden Design, Charleston, WV.
- + Huntington Middle School, Huntington, WV.
- + Cabell County EMS, Cabell County, WV
- + Beckley Federal Courthouse Security Upgrades, Beckley, WV.
- + Charleston Area Medical Center Memorial Park, WV.
- + King's Daughters Medical Center, Ashland, KY.
- + WVU Gateway Study, Morgantown, WV.
- + Morgan County Courthouse, Berkeley Springs, WV.
- + Raleigh County Courthouse, Beckley, WV.
- + Town of Fayetteville Cemetery Master Plan, Fayetteville, WV.
- + Trinity Lutheran Church Columbarium Master Plan, WV.
- + First Presbyterian Church Columbarium Master Plan, WV.
- + Elkview Baptist Church Land Use Study, Elkview, WV.
- + St. Timothy Lutheran Church, Charleston, WV.
- + St. John's Baptist Church, Spencer, WV.
- + Yeager Airport Master Plan, WV.
- + The Church of Jesus Christ of Latter-Day Saints, Multiple Projects / Multiple States
- + Marshall University Dormitory / Alumni Center
- + West Virginia University Dormitory, Evansdale Campus, WV.
- + West Virginia University Dormitory, Downtown Campus, WV.
- + Potomac State Dormitory Potomac, WV.
- + West Virginia State Student Housing, Institute, WV.
- + Moses Residence, Huntington, WV. (LEED Project)
- + Chesapeake Energy Regional Headquarters, Charleston, West Virginia (LEED Project)
- + Chesapeake Energy Field Office, Mount Morris, Pennsylvania
- + Cheat Landing Office Park, Morgantown, WV.
- + The Villages at Cheat Landing, Morgantown, WV.

- + Morgan County Courthouse, Berkeley Springs, WV.
- + Raleigh County Courthouse, Beckley, WV.
- + The Pines Country Club, Morgantown, WV.
- + Stonegate at Cranberry, Cranberry Township, PA
- + Bloomingdale Land-use Study, Hurricane, WV.
- + Chesapeake Energy Regional Headquarters, Charleston, WV.(**LEED Project**)
- + Chesapeake Energy Field Office, Jane Lew, WV.
- + Chesapeake Energy Field Office, Mount Morris, PA.
- + Chesapeake Energy Field Office, Honey Branch, KY.
- + Ridge Run @ North Camp, Wisp Ski Resort, Deep Creek, MD.
- + Cambridge Place Office Park, Bridgeport, WV.
- + Stonewall Jackson State Park Masterplan, Roanoke, WV.
- + Land-use Study / Development Alternatives, Aspen Corporation, Lewisburg, WV.
- + Commerce Park Mixed-use Development Masterplan, Huntington, WV.
- + Fort Boreman Mixed-use Development Masterplan, Parkersburg, WV.
- + Wilkerson Dental Office, Charleston, WV.
- + Ocean Isle Beach Resort Masterplan, Ocean Isle, SC.
- + 5/3 Bank, Cross Lanes, WV.
- + Banc One, Teays Valley, WV.

Residential Planning & Landscape Design:

- + Over 500 Projects

Project Awards

Merit Award (WVASLA): 'Hyper' Employee Plaza, Main Entrance Improvements

Merit Award (WVASLA): Florida Street Revitalization Master Plan

Honor Award (WVAIA): Haddad Riverfront Park

Honor Award (PAAIA): National Youth Science Camp

Education

M.B.A. Point Park University, Currently Enrolled

B.S. Civil Engineering 1989, West Virginia University Institute of Technology
Marshall University Graduate College, Environmental Engineering Coursework

Registrations/Certifications

Professional Engineer: WV, No. 12195; KY, No. 25437; OH, No. 72851; IN, No. 10809277; PA, No. 75494; NY, No. 85794
Licensed Remediation Specialist, WV, No. 003

Relevant Training/Courses

Harvard Leadership Development Training, GAI Consultants, Inc., 2010
Advanced Project Management Training, GAI Consultants, Inc., 2009
Leaders to Watch Program, GAI Consultants, Inc., 2008
OSHA 40 hour HAZWOPER Training
NICET 1 Geosynthetics Installation Inspection (expired)
Nuclear Density Gage Training, DOT and NRC (expired)
MSHA Safety Training (expired)

Professional Employment History

Environmental Design Group, 2000-2006
Potesta and Associates, 1997-2000
Terradon Corporation, 1995-1997
Joyce Engineering, 1990-1995
Dewberry and Davis, 1989-1990



Professional Summary

Mr. Hemme specializes in site engineering, including planning, permitting and stormwater management, with emphasis on parks and recreation areas and streetscapes. He brings a multi-disciplinary background to projects and this enables him to see the "big picture" of what will be needed to take a project from start to finish. Mr. Hemme is also competent in geotechnical engineering, environmental disciplines including NEPA compliance, and transportation services. He has worked extensively with private developers, architects, municipalities and government agencies.

Mr. Hemme has worked on landfills, quarries, mines, industrial and commercial sites and facilities. He has performed numerous Phase 1 Environmental Site Assessments (ESAs) providing solid waste, industrial waste, and Erosion and Sediment (E&S) control permitting. Mr. Hemme designs storm water management systems, site developments ranging from 1 acre to over 60 acres in size, and wetland mitigation areas. He prepares geotechnical reports, flood plain modeling, highway and roadway designs, right-of-way plans, detailed construction plans, and cost estimates for projects ranging from \$10,000 to over \$2 million in construction cost.

Mr. Hemme volunteered his time and knowledge to assist with preparation of the Greater Charleston Greenway Initiative by the West Virginia Land Trust Company in Charleston, West Virginia. He authored the analysis section of the report and peer-reviewed the entire document. Mr. Hemme is a current volunteer with the Riverside South Committee, which is working with the Charleston Land Trust to beautify and possibly promote pedestrian access on the south side of the Kanawha River. He has developed schematic plans and reviewed narratives for inclusion into several progress updates to the Land Trust.

Professional Experience

Civil Engineering and Permitting

- + Site Design for over 100 different projects throughout West Virginia, Ohio, Kentucky and Pennsylvania. NEPA compliance for wetlands, streams, cultural resources, and endangered species. Phase 1 Environmental Site Assessments for a wide range of facilities.
- + Designed over 50 stormwater management systems including run-on and run-off control utilizing ditches, berms, sumps, sediment ditches, storm sewers, culverts, drop structures, ponds, energy dissipaters, etc. Work included technical specifications, cross sections, profiles, site grading detail development and hydrologic and hydraulic modeling.
- + Developed detailed designs for over 100 different ponds at multiple sites throughout West Virginia and other states, including sediment ponds, treatment ponds, leachate storage ponds, and stormwater detention

ponds. Work included hydrologic and hydraulic routing calculations, volume estimates, embankment design, treatment efficiency, dewatering calculations, etc.

- + Prepared over 50 detailed Erosion and Sediment (E&S) Control Plans for various sites throughout West Virginia, including coal mines, quarries, highways, landfills and site developments. Work included technical specifications, re-vegetation plans, temporary control details and sequencing plans.
- + Prepared numerous National Pollutant Discharge Elimination System (NPDES) Construction Stormwater Permit Applications for sites throughout West Virginia and Ohio.
- + Prepared a complete set of construction plans and specifications consisting of a detailed grading plan, a storm sewer system consisting of 34 drop inlets and over 3,800 feet of piping, and parking lot layout.
- + West Virginia State College. Design of a revised stormwater system around the student union to help alleviate basement flooding issues.
- + Town of Buffalo. Phase I storm sewer design and construction administration for over 2,000 ft. of storm sewer with discharge to the Kanawha River, that included permitting work with the Corps of Engineers.
- + Analyzed various culvert scenarios consisting of modeling existing culverts and potential new corrugated metal pipe, steel pipe, concrete pipe and concrete box culverts to prevent upstream flooding from fill placement for Marietta Industrial Enterprises, Parkersburg, West Virginia.
- + Designed an extensive stormwater management system consisting of several thousand feet of ditch and storm sewers, and two sediment ponds designed to limit inflow to pre-existing conditions for the 2-, 10-, 50-, and 100-year storm events for Hanover County Sanitary Landfill, Virginia.
- + Melinda Street Stormwater Improvements. Underground stormwater detention system and storm sewer improvements design for the City of Parkersburg, West Virginia.

Site Development and Planning

- + Coldwater Creek Distribution Center in Parkersburg, West Virginia. Wetland mitigation for a 7.5-acre area that required a detailed planting plan, pavement design and an engineers' cost estimate.
- + Ft. Boreman Development in Parkersburg, West Virginia. Utility master planning, site preparation, roadway design, permitting, and stormwater management for the proposed 170-acre Fort Boreman mixed-use development near Martown Road interchange off U.S. Route 50 in Parkersburg.
- + Chesapeake Energy Regional Headquarters in Charleston, West Virginia (LEED Project). Chesapeake Energy Field Offices in Jane Lew, West Virginia; Mount Morris, Pennsylvania; and Honey Branch, Kentucky.
- + The Pines Country Club in Morgantown, West Virginia.
- + Dow Chemical South Charleston Plant Entrance, Parking and Pedestrian Improvements in West Virginia.
- + Tamarack Phase 2 Expansion in Beckley, West Virginia.
- + Morgan County Courthouse Replacement in Berkeley Springs, West Virginia. Greenbrier County Courthouse Annex and Expansion in Lewisburg, West Virginia.
- + Marshall University Clinical Outreach and Education Center, Huntington, West Virginia.
- + Cheat Landing Office Park in Morgantown, West Virginia. The Villages at Cheat Landing in Morgantown, West Virginia
- + Almost Heaven Habitat for Humanity, South Fork Crossing Subdivision, Pendleton County, West Virginia.
- + Stonegate at Cranberry Development in Cranberry Township, Pennsylvania.

Parks and Recreation Areas

- + April Dawn Sprayground and Park in Huntington, West Virginia. Lead Engineer for the continued development of the park consisting of an in-ground computer controlled fountain covered by suspended concrete pavers, a unique "Teays Valley Monster" concrete dragon over 8'-tall integrated into the design with slide and cool steam nostrils and a special soft surface design. The project won awards from the West Virginia Sections of the American Society of Landscape Architects and the American Consulting Engineers Council.
- + Rotary Park Improvements Project in Huntington, West Virginia. Lead Engineer responsible for new parking areas, unique picnic shelter, utilities, and a new entrance that blended with existing facilities.

- + Reviewed multiple playground components for compliance with the "Handbook for Public Playground Safety" published by the U.S. Consumer Product Safety Commission.
- + Assisted with designing ballfields, park facilities, and a large parking lot incorporating Bio-Retention/Treatment swales for treatment of stormwater in Stark County, Ohio.
- + Golf Club House and Lodge Site Development at Stonewall Jackson State Park in West Virginia. Project Manager for infrastructure including site design of the 100+-room lodge, parking, sewage lift station, extensive landscaping, and all aspects of construction administration.
- + Cedar Creek State Park Camp Ground Expansion, Glenville, West Virginia. Dow Heritage Park in Charleston, West Virginia. Fort Boreman Historic Park in Parkersburg, West Virginia.
- + Dupont 'Hyper' Plaza in Belle, West Virginia.

Streetscape and Trails

- + Kanawha Trestle and Rail Trail Master Plan. Project Manager and Lead Engineer responsible for development. The plan covered the existing CSX trestle crossing the Kanawha River in Charleston and approximately 2 miles of Norfolk and Southern rail corridor through the West Side of Charleston.
- + Project Manager or Design Engineer on multiple streetscape projects throughout West Virginia including Phase 1 Florida Street Streetscape, and Washington Street East Phase 2 and Pennsylvania Avenue streetscapes in Charleston, West Virginia.
- + North Bend Rail Trail. Prepared construction documents to repair flood damage to almost 50 miles of trail.
- + Florida Street Master Plan for the City of Charleston, West Side Neighborhood Association.
- + City of Richwood, West Virginia Streetscape Master Plan and Phase 1 Construction.
- + City of Charleston East End Design Cheret and "Think Tank" Design Cheret.

Solid Waste Management and Engineering

- + Design and permitting for 50 different solid waste facilities in West Virginia, Virginia, and Ohio.
- + Berkeley County Solid Waste Authority. Siting Study regarding suitability of property.
- + North Fork Landfill. 50-acre landfill over previously deep mined area.
- + Nicholas County Landfill. Small rural landfill expansion with special steep slope design.
- + Disposal Service Landfill. Unique multi-stage expansion of a landfill including steep slope design.
- + Boone County Commission. Permitting of various solid waste transfer stations.
- + Page County, Virginia comprehensive countywide search for a regional landfill.
- + Anker Energy Conceptual Study to determine feasibility of fly ash disposal facility.
- + Elkem Metals fly ash landfill utilizing a geosynthetic clay liner and special slope design.

Waste Water and Potable Water Design

- + National Radio Astronomy Observatory. Designed unique, non-mechanical, award-winning treatment system that uses no electricity and treats the entire campus wastewater load.
- + Manufactured Housing Development Waterline Replacement. Designed over 5 miles of water line within an existing 1000+-unit manufactured housing development.
- + Huttonsville Correctional Facility. Provided retrofit design for temperature, grease and trash issues.
- + Anthony Correctional Center. Designed package water treatment plant for correctional facility.
- + St. Mary's Correctional Facility. Retrofit design to address trash and grease issues.
- + Pocahontas County Landfill. Modular trickling sand filters with aeration pond and polishing wetland.
- + Multiple Landfills. Pre-treatment system design to remove high BOD levels prior to WWTP.
- + Storage Tank Design. Multiple bolted or welded steel tanks primarily for leachate storage.

Abandoned Mine Land (AML) Reclamation and Acid Mine Drainage (AMD) Treatment

- + Richard Mine Acid Mine Drainage. Treatment Alternatives Report, Monongalia County, West Virginia.
- + Richard Mine Flow Monitoring Study. Design, installation, full time flow monitoring and reporting for a 1 year period on drainage from a substantial AMD discharge.

- + East Branch Raccoon Creek Acid Mine Drainage (AMD) Treatment Design for the Ohio Department of Natural Resources.
- + Vens Run Landslide Reclamation No. 2 Design and Permitting in Harrison County, West Virginia.
- + Whites Run Reclamation Permitting in Randolph County, West Virginia.

Project Awards

National Radio Astronomy Observatory (NRAO) Wastewater Treatment Plant Design, West Virginia ACEC Gold Award, Project Manager

Florida Street Streetscape Masterplan, West Virginia ASLA Honor Award, Senior Engineer

Dupont Hyper Plaza Design, West Virginia ASLA Honor Award, Senior Engineer

Kanawha Trestle Rail Trail Masterplan, West Virginia ASLA Merit Award and West Virginia ACEC Silver Award, Project Manager

April Dawn Park Sprayground "Teays Valley Monster," West Virginia ASLA Honor Award and West Virginia ACEC Gold Award, Senior Engineer

Coldwater Creek Distribution Center Site Preparation, West Virginia ACEC Gold Award, Project Manager

Ann E. Schoolcraft

Assistant Environmental Technical Leader

Education

M.S. Biological Science 1999, Marshall University

B.S. Biological Science 1997, Marshall University

Relevant Training/Courses

Submar - Streambank Protection Training; Tunica, MS

2008 (participant)

2009 (presenter)

Southern Gas Association-Environmental Permitting Workshop, San Antonio, TX (2008, 2009)

Ecology and Environment – Linear Natural Gas Seminar, Eagle's Nest, NY (2008)

Professional Employment History

Schoolcraft Environmental, LLC, 2010-2012

US Army Corps of Engineers, 2009-2010

NiSource, Inc., 2007-2009

GAI Consultants, Inc., 2007

Potesta & Associates, Inc., 1999-2007

Professional Summary

Ms. Schoolcraft specializes in providing task management and consultation related to compliance with NEPA and various Federal, state, and local agencies for the energy sector.

As a former Regulatory Specialist with the U.S. Army Corps of Engineers (USACE), Ms Schoolcraft administered, executed, and enforced the USACE regulatory program pursuant to Section 404 of the Clean Water Act (CWA), and Section 10 of the Rivers and Harbors Act of 1899 for projects in Ohio, including conduction numerous jurisdictional determinations.

As a former self-employed independent consultant to, and employee of NiSource Gas Transmission & Storage, Ms. Schoolcraft was responsible for natural resource permitting for the business unit that operated and maintained over 15,000 miles of pipeline facilities ranging from the Gulf states to the northeast. She has a strong working knowledge of environmental and natural resource permitting laws and regulations, and the ability to successfully negotiate with Federal, State or Local regulatory agencies.

Professional Experience Highlights

Environmental Permitting and Compliance (2012)

- + Susquehanna Gathering Company. Multiple Marcellus Shale Natural Gas Well and Pipeline Projects, Pennsylvania (PA). Managed environmental permitting for gathering and production-related projects. Prepared application materials for PA State Programmatic General Permits (PASPGP) and permits for water obstruction and encroachment activities, reported on wetland delineations and stream investigations, consulted with PA Natural Diversity Index (PNDI)-related agencies regarding federal and state rare, threatened, and endangered (RTE) species, and provided support for Erosion and Sediment Control General Permit (ESCGP) applications.
- + Penn Virginia Resource Partners, L.P. Multiple Marcellus Shale Natural Gas Well, Pipeline, and Compressor Station Projects, PA. Prepared proposals and cost estimates. Managed environmental permitting for gathering and production-related projects. Prepared application materials for PA State Programmatic General Permits (PASPGP) and permits for water obstruction and encroachment activities, reported on wetland delineations and stream investigations, consulted with PA Natural Diversity Index (PNDI)-related agencies regarding federal and state RTE species, and provided support for Erosion and Sediment Control General Permit (ESCGP) applications.



- + EQT Corporation. Multiple Marcellus Shale Natural Gas Well and Pipeline Projects, West Virginia (WV). Managed environmental permitting for gathering and production-related projects. Prepared application materials for USACE Nationwide Permit pre-construction notifications, as well as for WV Office of Land and Streams stream crossing activities applications. Reported on wetland delineations and stream investigations, consulted agencies regarding federal and state T&E species, and provided support for Erosion and Sediment Control General Permit (ESCGP) applications.
- + Client Confidential, Natural Gas Trunk Line Critical Issues Analysis, PA and Maryland (MD). Provided technical writing for a critical issues analysis for a proposed large-diameter, 300-mile natural gas pipeline in PA and MD. Reported on potential issues associated with the proposed route with regards to FERC scheduling and consolidated record process, cultural resources, Coastal Zone impacts, waterbody encroachments including major and protected waterbody crossings, RTE species issues, protective easements identification and negotiations, compensatory mitigation for waters and federal/state/local protected lands, and air quality.
- + NiSource Midstream Services, LLC., Environmental Assessment (EA), PA. Assisted in preparation of an Environmental Assessment for a portion of a 60-mile project that proposes to cross USACE lands.
- + Columbia Gas Transmission, Benton Well Efficiency Project, Ohio (OH). Prepared FERC Blanket Prior Approval documentation for the abandonment of 21 storage wells, including environmental report documentation and agency consultations.
- + Equitrans, L.P., Line H-129 Low Pressure East Upgrade Project. Assisted in preparation of FERC Blanket Prior Notice report documentation for the replacement and retesting of a 16-inch natural gas pipeline.

Environmental Permitting and Compliance (Prior to 2012)

- + NiSource Gas Transmission & Storage. Line P Replacement Project, KY. Project Manager for environmental permitting and compliance activities for a 12-mile FERC-regulated replacement activity of a 16-inch natural gas pipeline.
- + NiSource Gas Transmission & Storage. Project Manager for environmental permitting and compliance activities on hundreds of capital projects in Ohio, West Virginia, Kentucky, Tennessee, Louisiana, and Mississippi. Included numerous FERC-regulated activities.
- + NiSource Gas Transmission & Storage. Project Manager for environmental permitting and compliance activities on hundreds operations and maintenance projects in Ohio, West Virginia, Kentucky, Tennessee, Louisiana, and Mississippi. Included numerous FERC-regulated activities.

Publications / Presentations

2007. Food Habits of the Candy Darter, *Etheostoma osburni* (Hubbs and Trautman) in the Cherry River, West Virginia. Proceedings of the West Virginia Academy of Science. Volume 79:2.
2002. Reproductive Biology of the Candy Darter, *Etheostoma osburni* (Hubbs and Trautman) in the Cherry River, West Virginia. Proceedings of the West Virginia Academy of Science. Volume 74:2.
1999. Presentation on food habits and reproductive biology of the dandy darter (*Etheostoma osburni*) in the Cherry River, West Virginia. Meeting of the West Virginia Academy of Science.

Ann E. Schoolcraft

Assistant Environmental Technical Leader

Education

M.S. Biological Science 1999, Marshall University

B.S. Biological Science 1997, Marshall University

Relevant Training/Courses

Submar - Streambank Protection Training; Tunica, MS

2008 (participant)

2009 (presenter)

Southern Gas Association-Environmental Permitting Workshop, San Antonio, TX (2008, 2009)

Ecology and Environment – Linear Natural Gas Seminar, Eagle's Nest, NY (2008)

Professional Employment History

Schoolcraft Environmental, LLC, 2010-2012

US Army Corps of Engineers, 2009-2010

NiSource, Inc., 2007-2009

GAI Consultants, Inc., 2007

Potesta & Associates, Inc., 1999-2007

Professional Summary

Ms. Schoolcraft specializes in providing task management and consultation related to compliance with NEPA and various Federal, state, and local agencies for the energy sector.

As a former Regulatory Specialist with the U.S. Army Corps of Engineers (USACE), Ms Schoolcraft administered, executed, and enforced the USACE regulatory program pursuant to Section 404 of the Clean Water Act (CWA), and Section 10 of the Rivers and Harbors Act of 1899 for projects in Ohio, including conduction numerous jurisdictional determinations.

As a former self-employed independent consultant to, and employee of NiSource Gas Transmission & Storage, Ms. Schoolcraft was responsible for natural resource permitting for the business unit that operated and maintained over 15,000 miles of pipeline facilities ranging from the Gulf states to the northeast. She has a strong working knowledge of environmental and natural resource permitting laws and regulations, and the ability to successfully negotiate with Federal, State or Local regulatory agencies.

Professional Experience Highlights

Environmental Permitting and Compliance (2012)

- + Susquehanna Gathering Company. Multiple Marcellus Shale Natural Gas Well and Pipeline Projects, Pennsylvania (PA). Managed environmental permitting for gathering and production-related projects. Prepared application materials for PA State Programmatic General Permits (PASPGP) and permits for water obstruction and encroachment activities, reported on wetland delineations and stream investigations, consulted with PA Natural Diversity Index (PNDI)-related agencies regarding federal and state rare, threatened, and endangered (RTE) species, and provided support for Erosion and Sediment Control General Permit (ESCGP) applications.
- + Penn Virginia Resource Partners, L.P. Multiple Marcellus Shale Natural Gas Well, Pipeline, and Compressor Station Projects, PA. Prepared proposals and cost estimates. Managed environmental permitting for gathering and production-related projects. Prepared application materials for PA State Programmatic General Permits (PASPGP) and permits for water obstruction and encroachment activities, reported on wetland delineations and stream investigations, consulted with PA Natural Diversity Index (PNDI)-related agencies regarding federal and state RTE species, and provided support for Erosion and Sediment Control General Permit (ESCGP) applications.



- + EQT Corporation. Multiple Marcellus Shale Natural Gas Well and Pipeline Projects, West Virginia (WV). Managed environmental permitting for gathering and production-related projects. Prepared application materials for USACE Nationwide Permit pre-construction notifications, as well as for WV Office of Land and Streams stream crossing activities applications. Reported on wetland delineations and stream investigations, consulted agencies regarding federal and state T&E species, and provided support for Erosion and Sediment Control General Permit (ESCGP) applications.
- + Client Confidential, Natural Gas Trunk Line Critical Issues Analysis, PA and Maryland (MD). Provided technical writing for a critical issues analysis for a proposed large-diameter, 300-mile natural gas pipeline in PA and MD. Reported on potential issues associated with the proposed route with regards to FERC scheduling and consolidated record process, cultural resources, Coastal Zone impacts, waterbody encroachments including major and protected waterbody crossings, RTE species issues, protective easements identification and negotiations, compensatory mitigation for waters and federal/state/local protected lands, and air quality.
- + NiSource Midstream Services, LLC., Environmental Assessment (EA), PA. Assisted in preparation of an Environmental Assessment for a portion of a 60-mile project that proposes to cross USACE lands.
- + Columbia Gas Transmission, Benton Well Efficiency Project, Ohio (OH). Prepared FERC Blanket Prior Approval documentation for the abandonment of 21 storage wells, including environmental report documentation and agency consultations.
- + Equitrans, L.P., Line H-129 Low Pressure East Upgrade Project. Assisted in preparation of FERC Blanket Prior Notice report documentation for the replacement and retesting of a 16-inch natural gas pipeline.

Environmental Permitting and Compliance (Prior to 2012)

- + NiSource Gas Transmission & Storage. Line P Replacement Project, KY. Project Manager for environmental permitting and compliance activities for a 12-mile FERC-regulated replacement activity of a 16-inch natural gas pipeline.
- + NiSource Gas Transmission & Storage. Project Manager for environmental permitting and compliance activities on hundreds of capital projects in Ohio, West Virginia, Kentucky, Tennessee, Louisiana, and Mississippi. Included numerous FERC-regulated activities.
- + NiSource Gas Transmission & Storage. Project Manager for environmental permitting and compliance activities on hundreds operations and maintenance projects in Ohio, West Virginia, Kentucky, Tennessee, Louisiana, and Mississippi. Included numerous FERC-regulated activities.

Publications / Presentations

2007. Food Habits of the Candy Darter, *Etheostoma osburni* (Hubbs and Trautman) in the Cherry River, West Virginia. Proceedings of the West Virginia Academy of Science. Volume 79:2.
2002. Reproductive Biology of the Candy Darter, *Etheostoma osburni* (Hubbs and Trautman) in the Cherry River, West Virginia. Proceedings of the West Virginia Academy of Science. Volume 74:2.
1999. Presentation on food habits and reproductive biology of the dandy darter (*Etheostoma osburni*) in the Cherry River, West Virginia. Meeting of the West Virginia Academy of Science.



MSES Consultants, Inc.



Lawrence M. Rine

Principal and Quality Assurance/Quality Control Manager

Years of Experience with MSES: 30

Years of Experience with Other Firms: 14

Education

B. S. Mechanical Engineering, West Virginia Institute of Technology 1969

B. S. Mining Engineering, West Virginia Institute of Technology 1970

Masters Study, Environmental Engineering, Cornell University 1973

Professional Registrations/Certifications

Certified Monitoring Well Designer and Installer - WVDEP

Licensed West Virginia Underground Storage Tank Closure/Installation Specialist

Class I Certified Public Water Supply Operator, West Virginia

Class II Certified Wastewater Treatment Plant Operator, West Virginia

Certified Commercial Applicator, West Virginia and Pennsylvania

Radiation Safety Officer - NRC

Certified Asbestos Inspector/Manager/Planner/Clearance Air Monitor - WVBOH

Licensed Remediation Specialist - WVDEP

Certified Mineral Appraiser - U. S. Army Corps of Engineers

Member State School Building Authority - Indoor Air Quality Committee

Professional Organizations

West Virginia Independent Oil and Gas Association (Environmental Committee Member)

Virginia Independent Oil and Gas Association (Association's Outstanding Member, 1990)

Pennsylvania Independent Oil and Gas Association

National Society of Professional Engineers

West Virginia Society of Professional Engineers, T. Moore Jackson Chapter

West Virginia Surface Mine and Reclamation Association

Past Work History

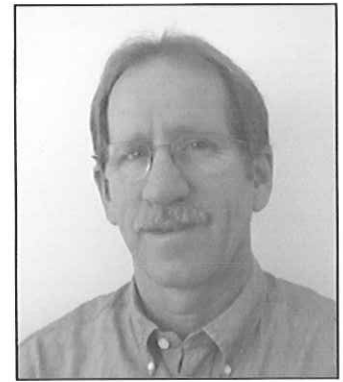
CNG Transmission Corporation

Experience Summary

- ⑥ Job Costing
- ⑥ Management
- ⑥ Groundwater Modeling/Monitoring
- ⑥ Earth Sciences
- ⑥ Risk Assessment/Analysis
- ⑥ Regulatory Interaction
- ⑥ Economic Feasibility
- ⑥ Phase I/II Investigation
- ⑥ Remediation (Design and Permitting)
- ⑥ RCRA Waste Units
- ⑥ Drilling Programs
- ⑥ Bioremediation
- ⑥ Sampling/Laboratory Programs
- ⑥ Property Evaluations
- ⑥ NPDES Permitting
- ⑥ Municipal Engineering
- ⑥ Code Compliance
- ⑥ E-911 Systems
- ⑥ Waste Management/Minimization
- ⑥ Hazardous Waste Management
- ⑥ Asbestos Assessment
- ⑥ Lead Base Paint Assessment
- ⑥ NORM Assessment
- ⑥ Brownfields Specialist
- ⑥ Mapping
- ⑥ Noise Assessment
- ⑥ SARA Title III
- ⑥ Specification Development
- ⑥ Environmental Impact Statements
- ⑥ Data Processing
- ⑥ Public Mtg. & Proj. Explanation
- ⑥ QA/QC Inspection & Compliance
- ⑥ Architectural Support
- ⑥ Radon
- ⑥ Water/Wastewater Systems
- ⑥ GIS Systems/Data Management



MSES Consultants, Inc.



David L. Skeen, P. E.

Senior Project Engineer

Years of Experience with MSES: 21

Years of Experience with Other Firms: 16

Education

Chemical Engineering, Virginia Polytechnic Institute and State University
B. S. Mathematics, West Virginia State University, 1975

Professional Registrations/Certifications

LEED Accredited Professional
Professional Engineer - West Virginia, Ohio, and Kentucky

Professional Organizations

American Society of Heating, Refrigeration, Air Conditioning Engineers
National Society of Professional Engineers
West Virginia AIA – Professional Affiliate

Past Work History

James E. Moore and Associates, Document Production Supervisor
John D. Meyers and Associates, Engineering Department Manager
David L. Skeen, P.E., Sole Proprietor

Experience Summary

- Project Management
- Indoor Air Quality
- Noise Assessment
- Specification Development
- Job Costing
- Emergency Generator
- CAD/Intergraph/CAM
- HVAC
- Boiler System (Hot Water/Steam)
- Code Compliance
- Regulatory Interaction
- Life Safety Codes
- Health & Safety Programs
- Economic Feasibility
- National Electric Code Compliance
- Firewater Systems
- Energy Management systems/Audits
- Specialty Ventilation Systems
- Architectural Support/Mechanical



MSES Consultants, Inc.

Jeffrey K. Pauley, P.E., P.S.

Electrical Engineer

Years of Experience with MSES: 12

Years of Experience with Other Firms: 7

Education

B. S., Electrical Engineering, Tennessee Tech University, 1988

Professional Registrations/Certifications

Registered Professional Engineer - West Virginia, Ohio, N.Y., Penn.

Maryland, Virginia, North Carolina, and District of Columbia

Professional Surveyor - West Virginia

Licensed State of West Virginia Master Electrician

Professional Organizations

National Society of Professional Engineers

Member Harrison County BOCA Appeals Board

Past Work History

Allegheny Power Company

Experience Summary

- Project Management
- Data Base Systems
- Life Safety Codes
- Job Costing
- Economic Feasibility
- Power Systems
- Telecommunications/Computer Systems
- Power Distribution
- Code Compliance
- Site Surveys
- Site Development
- Regulatory Interaction
- Computer Modeling
- Specification Development
- QA/QC Inspection & Compliance
- Lighting
- Fire Alarm Systems
- Emergency Generator
- National Electric Code Compliance
- Architectural Support/Electrical
- Mapping
- Site Utilities



Resume



Douglas R. Richardson, PE, LEED AP
Principal Engineer

Education

North Carolina State University, (8/87-5/89).

Masters of Science in Civil Engineering, major in structures and minor in construction.

GPA 4.0/4.0.

West Virginia University, (8/83-8/87)

Bachelors of Science in Civil Engineering.

Ranking: 1st out of approximately 450 College of Engineering graduates. GPA 3.98/4.0.

Professional Registration

Professional Engineer - WV, KY, and MS

Maintains active record with NCEES to facilitate prompt registration in additional states as required.

LEED Accredited Professional

Professional Affiliations

American Society of Civil Engineers

American Concrete Institute

American Institute of Architects, Professional Affiliate

Structural Engineering Institute

Timber Framers Guild

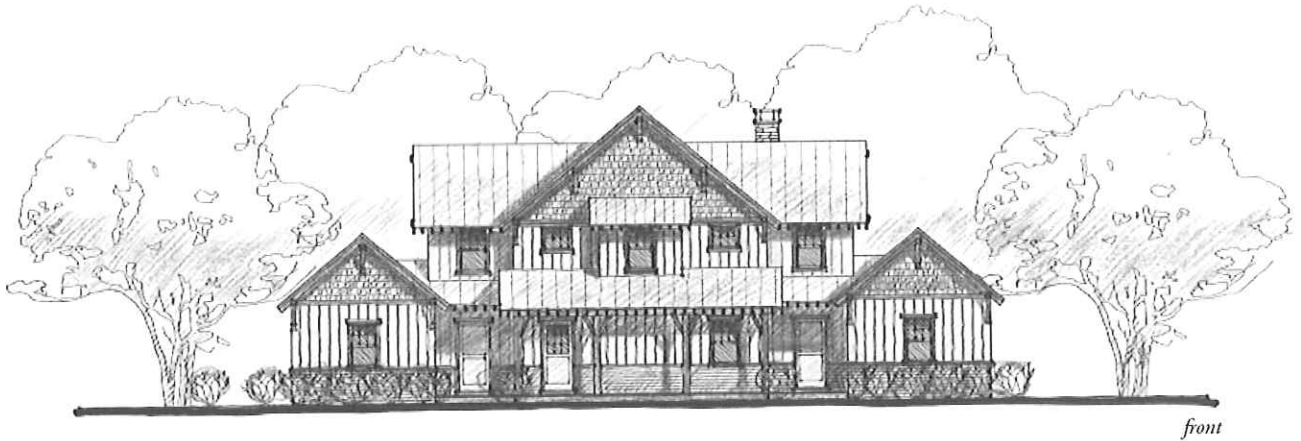
US Green Building Council

Engineers Without Borders-USA



STONEWALL RESORT COTTAGES

Stonewall Resort State Park, Roanoke, West Virginia

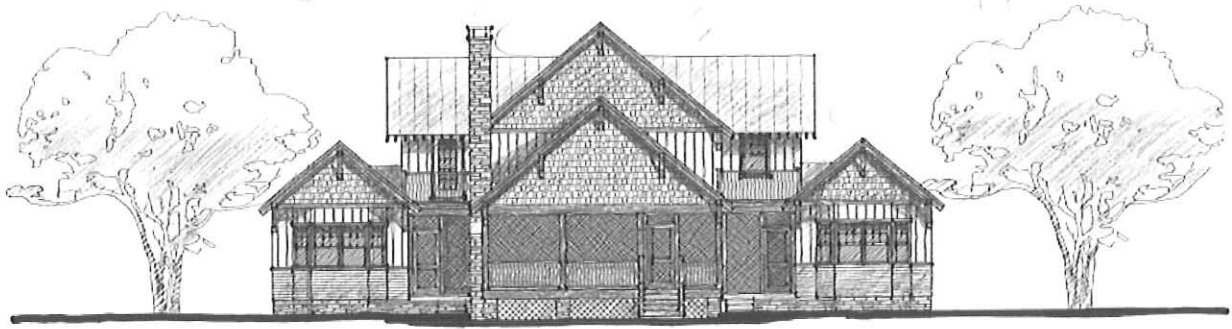


Glavé & Holmes to provided a concept design for a development of cottages to expand to the lodging component of the Stonewall State Park. The concept design was based on recognizing land forms and clustering cottages around existing “fingers” evident from the topography of the site. The cottages utilize a palette of materials that reflect natural materials and rustic detail that allow them to grow from the landscape that surrounds them.

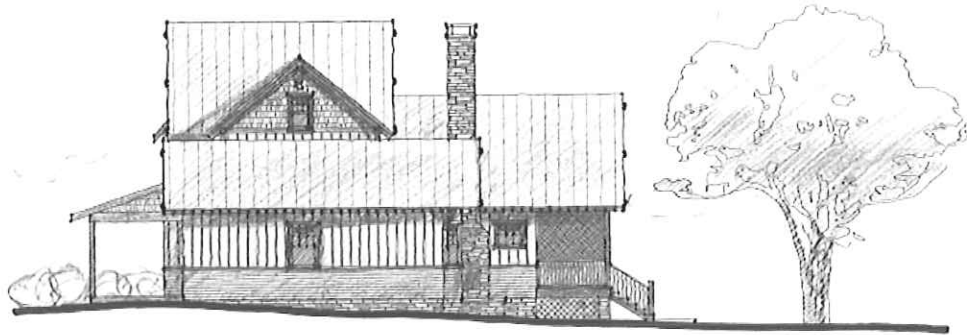
The primary unit type is a four bedroom, four and one-half bath cottage totaling approximately 2,500-2,700 square feet. The units are conceived to provide for flexible occupancy conditions, where cottages may be rented as a single or multi-family home.

COST: n/a
SIZE: 2,500-2,700 sf
COMPLETION: tbd

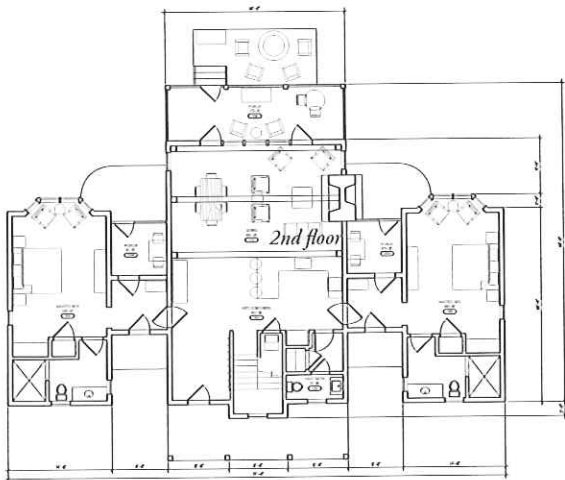
KEY PERSONNEL:
Steven Blashfield
(804) 649-9303



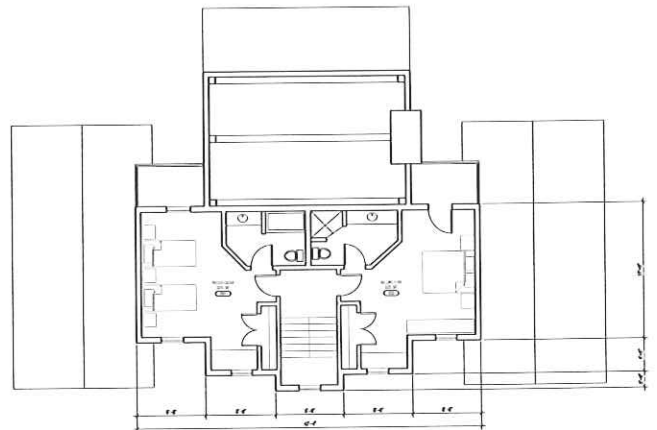
rear



side



1st floor



2nd floor

BOAR'S HEAD INN MEETING PAVILION

University of Virginia Foundation, Charlottesville, Virginia



Nestled in the foothills of the Blue Ridge Mountains, Charlottesville's Boar's Head Inn offers guests a luxurious experience in a timeless, pastoral setting. The University of Virginia Foundation acquired the Boar's Head in 1988, and recently commissioned Glavé & Holmes to design a new conference facility

The state-of-the-art Meeting Pavilion expanded the Inn's current conferencing capabilities with a 5,400 square foot ballroom, a business center, a break-out meeting room, pre-function space, and full commercial kitchen. The massing and proportion of the building relate to the residential scale of the inn's context. The design, drawing influence from English Arts and Crafts architect Charles Voysey, complements the Boar's Head tradition of Old English country inn hospitality.

COST: \$10 million
SIZE: 17,630 sf
COMPLETION: 2009

KEY PERSONNEL:
Randy Holmes
(804) 649-9303







COLONIAL WILLIAMSBURG LODGE

Williamsburg, Virginia

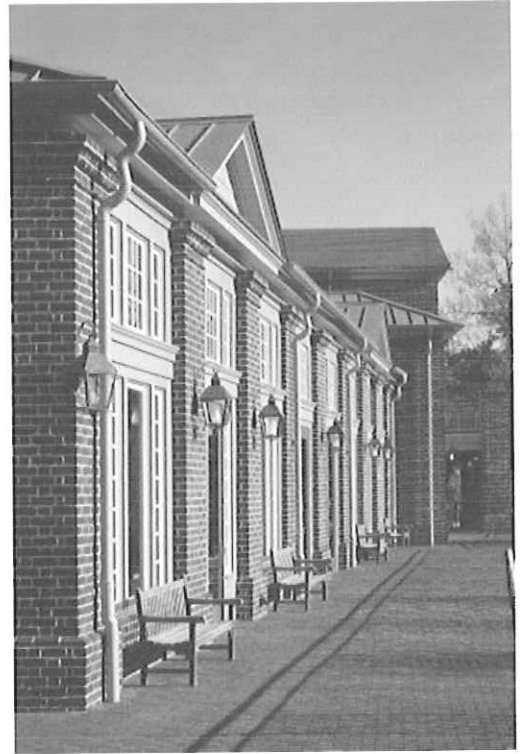


Glavé & Holmes Architecture (G&HA) collaborated with CMMI to renovate the Colonial Williamsburg Lodge, a structure originally built in 1938. The entire project was completed in four phases and includes 323 guest rooms with a lobby, reception and business offices and a gift shop. The conference center includes a 12,000 square foot ballroom, a 7,000 square foot ballroom, conference rooms, banquet facilities and a full service restaurant supported by a kitchen and back-of-house functions. The restored 1938 Lodge entry faces onto a landscaped arrival court which welcomes guests and visitors in a gracious, pedestrian friendly, colonial manner. The new additions complement the original building, creating a complex of hospitality appropriately scaled to the character and craftsmanship of Williamsburg. G&HA worked with Mimi Sadler of Sadler & Whitehead Architects and the Department of Historic Resources on the submittal for State Rehabilitation Tax Credits. This process led to Part 2 approval of tax credits. As a result, all historic fabric was retained in the two original buildings while the new elements were contextually designed to respect the existing in scale and material.

COST: \$60 million
SIZE: 330,000 sf
COMPLETION: 2007

KEY PERSONNEL:
Randy Holmes
(804) 649-9303

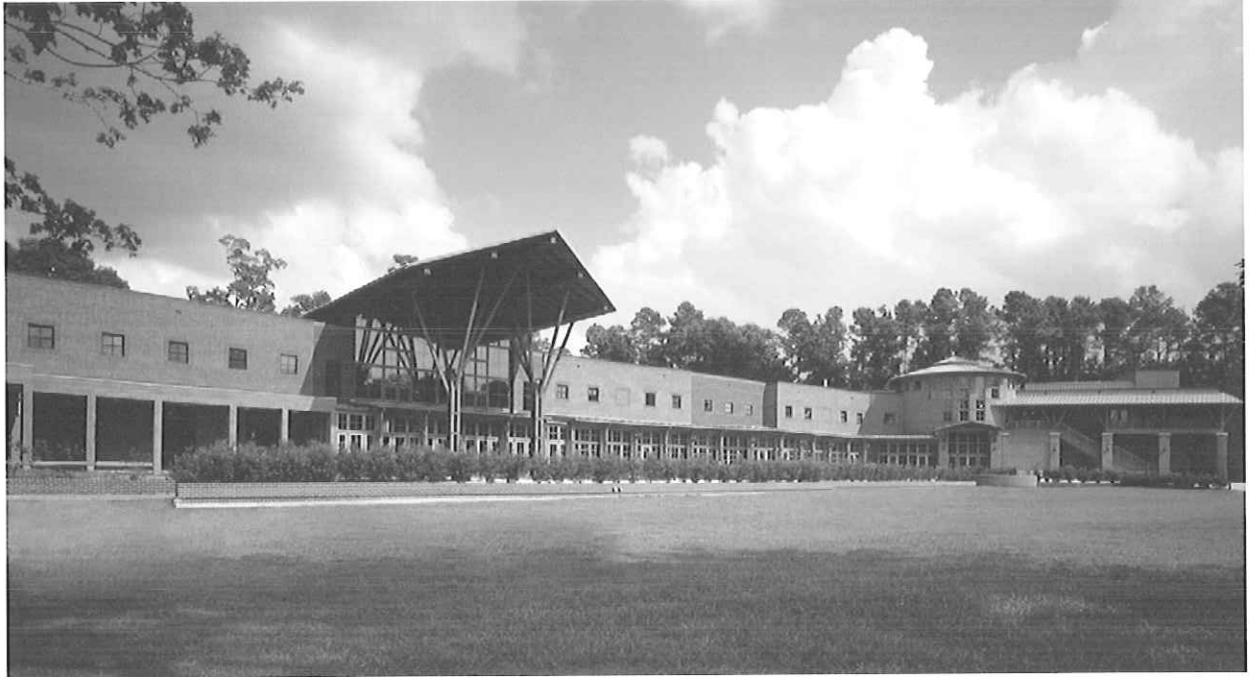






VISITOR RECEPTION & CAFE BUILDING

Jamestown Settlement, Williamsburg, Virginia

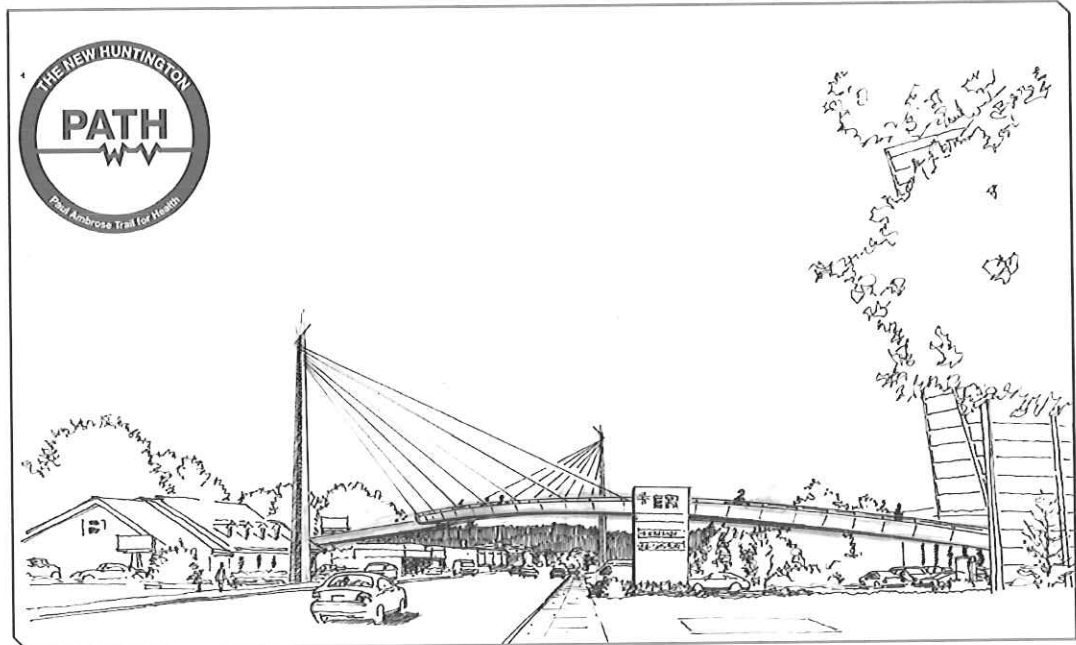


The Jamestown Visitor Reception and Café Building served as a signature structure for the Commonwealth's quadricentennial celebration of the founding of Jamestown Colony, as well as a gateway and orientation center for the park. The design sets up a logical circulation system, creating a strong link with future buildings. The 32,000 square foot facility includes administrative space, ticket and orientation areas, a café and a gift shop organized around a central lobby with a dramatic, two-story wood and glass entry pavilion.

COST: \$5.4 million
SIZE: 32,000 sf
completion: 2001

KEY PERSONNEL:
Randy Holmes
(804) 649-9303





City of Huntington, West Virginia Cabell-Wayne Paul Ambrose Trail for Health

Huntington, West Virginia

The City of Huntington selected Edward Tucker Architects, Inc. in 2010 as the lead design firm for the Paul Ambrose Trail for Health (P.A.T.H.) project. The Architects teamed with Alta Planning + Design, a pedestrian and bicycle trail design firm, along with Eastham & Associates, a local civil engineering and surveying firm. The project requires coordination and approvals from multiple stakeholders including the Corps of Engineers, the City's Floodwall Division, and the WV Department of Highways. The P.A.T.H. will ultimately create a network of on and off road trails to connect all areas of the city and provide access to this healthy, safe and enjoyable mode of transportation and recreation. Some sections of trail will be located on top of the City's existing flood levees to take advantage of the river views and provide another use for these flood control structures. Construction on Phase 1 is expected to begin in 2012 and will include 3 segments ("Guyandotte", "Levee" and "Harveytown") totaling approximately 8.5 miles of trail. Design is just beginning on Phase 2 of the project, which will include a pedestrian and bicycle bridge over Hal Greer Boulevard that will create a signature gateway into the City.

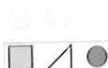




Greater Huntington Parks and Recreation District Harveytown Park Shelter and Restroom Facility

Huntington, West Virginia

The Greater Huntington Parks and Recreation District began developing a 2-acre park in the Harveytown neighborhood in Huntington and asked Edward Tucker Architects, Inc. to design the structures. Special emphasis was given to representing the historical legacy of this former farming community through architecture, while creating a gathering space for the neighborhood. The 4,000 sf outdoor pavilion and 1,000 sf covered picnic shelter are fully handicapped accessible, as is the 900 sf restroom building. The Paul Ambrose Trail for Health (PATH), a bicycle/running/walking trail system being developed in the Huntington area, will soon connect Harveytown Park to Ritter Park. Mark Blumenstein, a West Virginia sculptor, designed and fabricated a “wild bird” weather vane for the restroom building cupola, adding whimsy and memory of the community’s rural heritage.





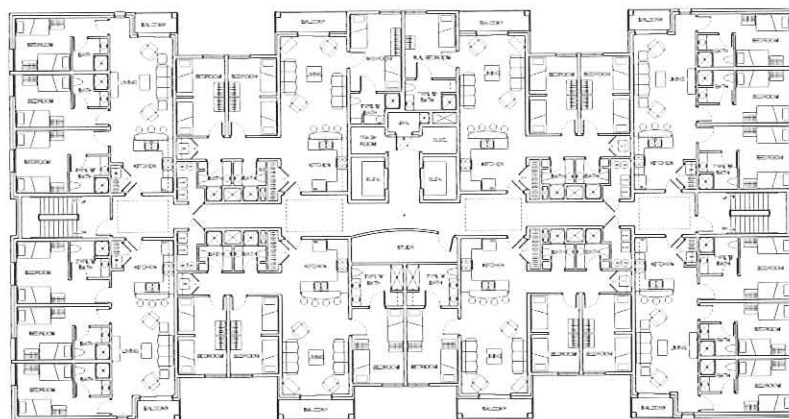
Westminster House - Student Housing Community First Presbyterian Church of Morgantown

Morgantown, West Virginia

Westminster House is a unique development that will provide faith-based student housing adjacent to the West Virginia University campus. The project also accommodates growth of the Presbyterian Child Development Center, a 25 year old program that provides daycare in the community through the First Presbyterian Church of Morgantown.

Two six story buildings are connected at the ground floor by a large multi-purpose space and commercial kitchen that can be shared between the new daycare facility and the Presbyterian Campus Ministry Center. The upper stories of each building consist of eight student apartment suites on each floor. Each suite has an open living, dining and kitchen area as well as laundry facilities. All bedrooms can accommodate double occupancy and have a private bath, for a maximum of 470 beds.

Edward Tucker Architects is designing the project for LEED Silver certification. Having worked closely with the City of Morgantown's Planning Department, ETA successfully navigated the Planned Unit Development process with the P.U.D. application being granted by the City Council in December 2008.



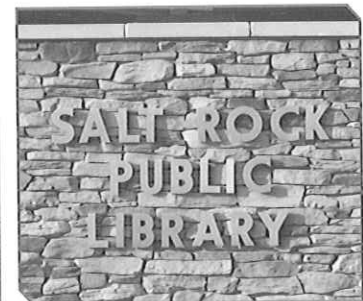
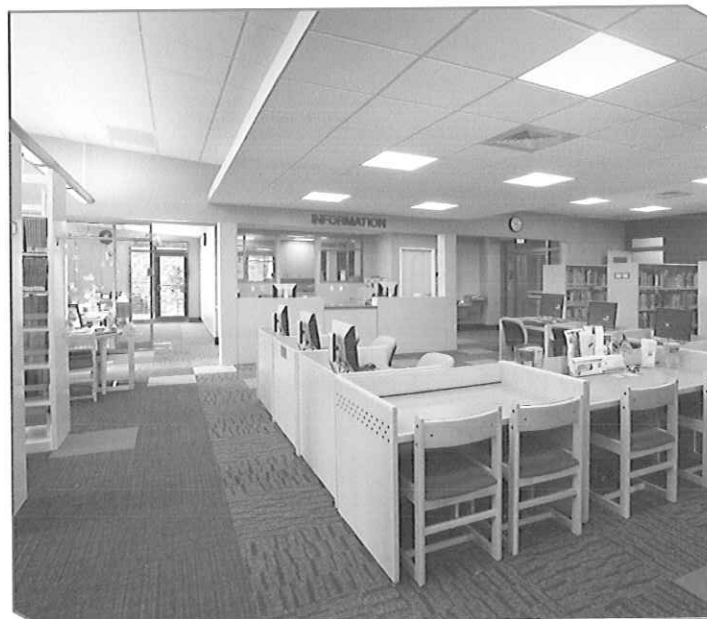


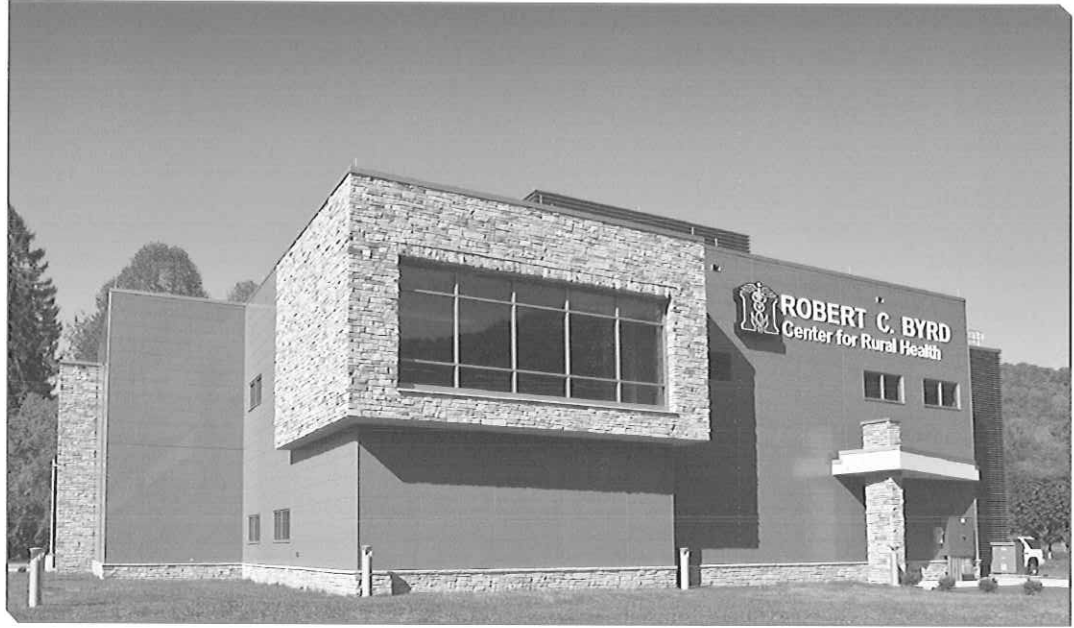
Cabell County Public Libraries Salt Rock Public Library

Salt Rock, West Virginia

2010 AIA WV Merit Award for Achievement in Architecture

Even with a limited budget, the Architects encouraged the Client to allow the design to extend beyond meeting the library's basic functional goals and to use the building as an educational tool to demonstrate environmentally sensitive design principles. The primary design move is an inwardly folded roof plane that collects 100% of the rainwater and channels it to two large above-ground cisterns. The building is constructed of durable, recyclable metal siding, roofing and windows. Strict VOC standards were specified for all construction materials. Recycled-content materials were also specified where feasible. Low-flow plumbing fixtures, high-efficiency mechanical equipment, daylighting and efficient lighting fixtures are all incorporated to minimize the building's energy and water consumption. A peat-filtration septic system eliminates the need for a septic leach field, decreasing the developed property area. Operable windows with insect screens are placed for cross-ventilation to offer users an option to mechanical ventilation and cooling during temperate months. High performance glazing reduces heat gain, ultraviolet and other damaging sun rays, thereby protecting books and reducing glare for patron and staff comfort.





Marshall University School of Medicine Robert C. Byrd Center for Rural Health

Chapmanville, West Virginia

This project was designed as a satellite clinic to the medical college at Marshall University. The facility will serve as a rural health clinic and resident education center, providing much needed access to quality health care in Southern West Virginia.

The program included clinical space, offices, support space and an x-ray room and blood draw lab. The design solution incorporates a radial plan with a central nurse station providing convenient physical and visual access to all exam rooms. A covered parking bay provides a home for the college's mobile medical unit, which is used to deliver health services in remote areas.

The building's exterior is designed with low maintenance, durable materials such as fiber-cement panels and cultured stone. The architects worked carefully with the client to fine tune the design to meet strict budget requirements. The project also dictated careful coordination with the local hospital, which will lease the x-ray and lab space. Through a series of stakeholder meetings their equipment and space planning needs were fine tuned and incorporated into the final design.



National Center for Youth Science Education Master Plan *Pocahontas County, West Virginia*



© Copyright Perfido Weiskopf Wagstaff + Goettel 2010

Brief Project Description

The National Center for Youth Science Education (NCYSE), also known as the "Youth Science Camp", is being relocated from its historic leased property in rural Pocahontas County to a prestigious, environmentally sensitive facility located on its own property adjacent to the Blackwater River in Tucker County, West Virginia. The new facility has plans to eventually operate year round providing a wealth of educational outreach programs, while still maintaining the core focus of the "Camp" during the summer months.

GAI Consultants, Inc. (GAI) provided master planning and schematic design services for the proposed National Center for Youth Sciences Camp property located at Davis, West Virginia. GAI was involved with initial programming and scope development for the project, as well as site analysis for the entire property, which included hydrology, soils, slopes, geology, wetlands, vegetation and wildlife. Additionally, GAI was responsible for combining the site analysis information and creating a preliminary land use plan and concept plan in order to generate a cost opinion.

Work Tasks/Services

- Data collection
- Land use planning
- Utility design
- Site analysis/geological review
- Landscape architecture
- Master planning
- Engineering
- Permitting review
- Access road design
- Trail design

Lasting Benefits

GAI's services helped the National Youth Science Center make better-informed decisions in site development and land use, as well as during construction.

Major Accomplishments

- Pennsylvania AIA Honor Award Winner

GAI Project Manager:

David A. Gilmore, RLA, ASLA

Project Team:

GAI Consultants, Inc. (Prime)

Client:

Perfido Weiskopf Wagstaff + Goettel

Client Contact:

Kevin Wagstaff

412.391.2884

Completion Date:

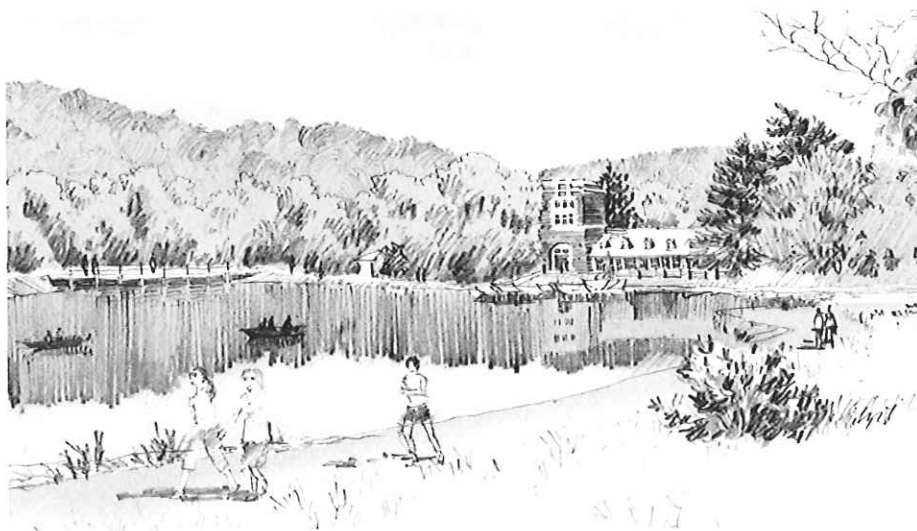
Ongoing

Project Cost:

\$35 million

#E090616.00

North Park Lake Area Master Plan and Multi-Use Trail Allegheny County, Pennsylvania



GAI Project Manager:
Todd D. Brant, RLA, ASLA, CLARB,
LEED AP ND

Project Team:
GAI Consultants, Inc. (Prime)
STRADA, LLC (Subconsultant)
Sci-Tek Consultants (Subconsultant)

Client:
Allegheny County Parks Foundation

Client Contact:
Christine Fulton
412.281.5595

Completion Date:
2011

#C100988.00

Brief Project Description

GAI Consultants is currently working with the Allegheny County Parks Foundation to conduct an overall master plan and trail development plan for the area around North Park Lake north of Pittsburgh, PA. At over 3,000 acres, North Park is the largest of Allegheny County's nine regional parks, with the lake being the prime focus and identifying element. The original park master plan, developed in the late 1920s, was the brainchild of Paul B. Riis, a landscape architect from the Midwest who also worked on Yellowstone Park. The lake was constructed in the mid 1930s as a project of the WPA and CCC and is anchored by the Boathouse.

GAI is conducting a multi-stage public/park stakeholder input process and design workshop, plus historic and site analysis and research into an overall collaborative design process to develop a Lake Area master plan, including the multi-use and ADA accessible Lake Trail, that defines a vision for improving this significant community asset by building on its current strengths and historic legacy.

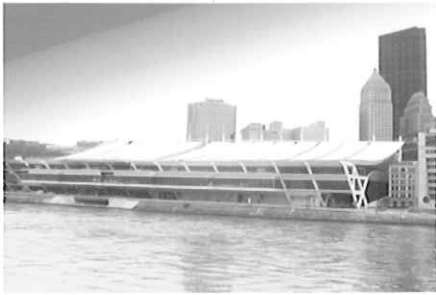
Work Tasks/Services

- Data collection and analysis
 - Base mapping
 - Historic research
 - Site reconnaissance and analysis
 - Research on sustainable best practices
 - Public and stakeholder facilitation
- Design workshop facilitation
- Conceptual alternatives
- Master plan development

Lasting Benefits

The Master Plan incorporates sustainable design best management practices and separates pedestrians, cyclists, and vehicular traffic for safer travel. Sound trail development practices were followed to connect the surrounding community and make the park accessible to all types of users.

David L. Lawrence Convention Center *City of Pittsburgh, Pennsylvania*



Brief Project Description

GAI Consultants, Inc. (GAI) created the site plan utility design for a water supply to the new David L. Lawrence Convention Center (Expansion), to include permit and design of new separate storm and sanitary sewers for the new building and streetscape.

The Fort Duquesne Boulevard roadway infrastructure project at the David L. Lawrence Convention Center required special designs and details with respect to vaults and utility conflicts with proposed water lines, sewer lines, and appurtenances for a new convention center.

Work Tasks/Services

- Civil Engineering and Permitting
- Project management
- Field survey
- Erosion control plans
- Permitting
- Permits processing
- Hydraulic river modeling
- Storm and Sanitary Sewers
 - Utility and water supply design
 - Storm and sanitary sewer separation
 - Erosion and sediment control
 - River wall penetration design
 - Environmental permitting
 - Hydrologic and hydraulic investigations
- Roadway Improvements
 - Preliminary Erosion and Sediment Control Plans and permits
 - Separate water distribution system replacement plan and profile
 - Structural and hydraulic analysis of existing sewer system

Value Added Innovations

Design and permits for separate sewers reduced combined sewer overflows to the Allegheny River.

GAI Project Manager:
Anthony F. Morrocco, P.E.

Project Team:
GAI Consultants, Inc. (Prime)

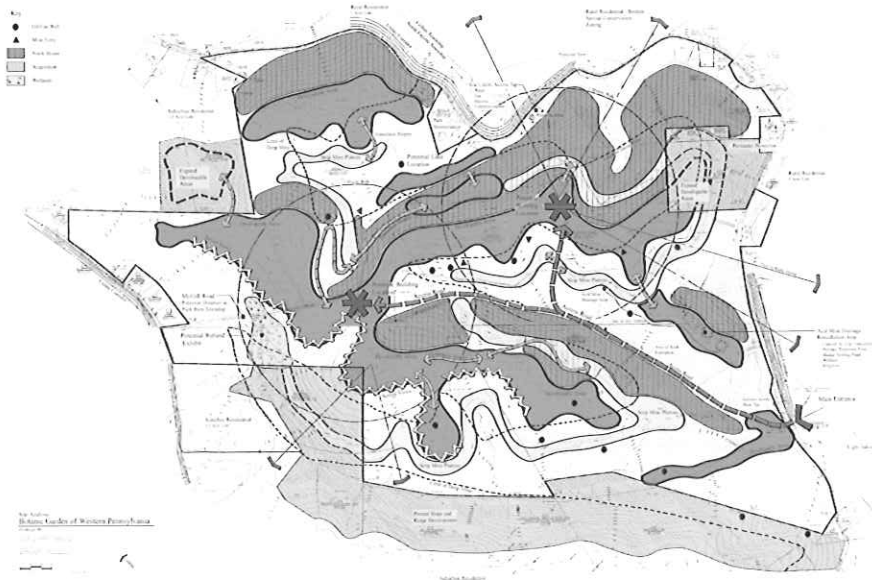
Client:
DMJM Harris

Client Contact:
John S. Prizner
412.395.8888

Completion Date:
2002

#C990327

Botanic Garden at Settlers Cabin Park Allegheny County, Pennsylvania



GAI Project Manager:
Stanley R. Michalski, P.G.

Project Team:
GAI Consultants, Inc. (Prime)
Hedin Environmental, Inc.
(Subconsultant)

Client:
The Horticultural Society
of Western Pennsylvania

Client Contact:
Lindsay Totten
412.444.4464

Completion Date:
2003

#C000183.10

Brief Project Description

The site of the proposed Botanic Garden of Western Pennsylvania is located on 432 acres in Allegheny County at the southern end of Settler's Cabin County Park. Surface drainage on the site originated from an abandoned strip mine and a deep mine entrance, and laboratory analysis indicated the surface waters had been significantly degraded by these seepages.

GAI Consultants, Inc. (GAI) proposed a passive treatment system to accomplish remediation of highly acidic surface water discharges from the Botanic Garden site. The surface water contained the high concentrations of heavy metals typically associated with mine discharge.

GAI worked closely with the Horticultural Society of Western Pennsylvania (HSWP) and Hedin Environmental, Inc. (Hedin) to develop a mitigation plan within the proposed Botanic Garden project area. The fieldwork was performed by Chartiers Nature Conservancy volunteers, supervised by GAI, HSWP, and Hedin.

Work Tasks/Services

- Collected water samples and analyzed water test data
- Developed a passive treatment system
- Generated design and construction drawings
- Produced technical specifications and a bid package
- Prepared quarterly progress reports

Value Added Innovations

GAI designed and implemented a passive treatment system to save water mitigation costs.

Lasting Benefits

Water runoff passing from the site into Settler's Cabin Creek will no longer contribute AMD to the stream.



relevant experience

MSES CONSULTANTS, INC.

MECHANICAL, ELECTRICAL, PLUMBING DESIGN

The projects listed are intended to demonstrate MSES experience and capabilities for providing engineering services on large projects, and of projects of a similar nature.

New Lodge, Stonewall Jackson State Park

Construction cost: \$20 million
Area: 175,000 square feet

Mechanical and Electrical Systems including heating/cooling plant, water source heat pump system for guest rooms, restaurant, lobby and conference spaces, services for kitchen with cutting edge food preparation equipment, indoor pool with specialized lighting and HVAC systems with dehumidification and heat recovery. Completed 2004.

East Fairmont Middle School, Fairmont, WV

Construction cost: \$15.5 Million
Area: 93,000 square feet

Mechanical and Electrical Systems, including variable refrigerant flow systems for occupied spaces and design of services to kitchen for service of 1200 meals per day, direct digital control system. Presently under construction.

West Virginia Behavioral Health Complex, Weston, WV

Construction cost: \$30 million
Area: 217,000 square feet

Mechanical and Electrical Systems including central heating and cooling plant, and systems for residential spaces, congregation spaces and administrative offices, indoor pool with dehumidification systems. Completed 1995.

references

EDWARD TUCKER ARCHITECTS, INC.

Project Name: Harveytown Park
Client: Greater Huntington Parks & Recreation District, Huntington, WV
Consultants: David L. Skeen, P.E. (now with MSES Consultants), Terradon Corporation
Contact: James L. McClelland, CPRP, Director/Secretary (retired) (304) 697-7374

Project Name: Paul Ambrose Trail for Health (PATH)
Client: City of Huntington, WV
Consultants: Alta Planning + Design, Eastham & Associates, Randolph Engineering
Contact: Charles Holley, Executive Director - Dept. of Development & Planning (304) 696-4486

Project Name: Westminster House - Student Housing Community, Morgantown, WV
Client: Westminster House Board - Chet Parsons, Chair
Construction Cost: \$22,000,000 (projected)
Contact: Chet Parsons, Senior Planner, URS Corporation (304) 212-5752

Project Name: Salt Rock Public Library
Client: Cabell County Library
Consultants: MSES Consultants, Terradon Corporation
Contact: Judy Rule, Director, Cabell County Public Library (304) 696-7351

Project Name: Rural Health Center, Chapmanville, WV
Client: Joan C. Edwards School of Medicine at Marshall University
Consultants: Scheeser Buckley Mayfield, Steven Schaefer Associates
Contact: Ron May, Director of Facility Planning & Management (304) 696-6415

GLAVE & HOLMES

References on following pages

Other consultants list reference information with Project Experience



COMMUNITY

SOLID

QUALITY DESIGN

LISTEN

SERVICE

PROFESSIONAL RESPONSIBILITY

REFLECTION

ARCHITECTS

CAPABILITY

CONSIDER

QUALITY PROJECTS

BUILT ON A TRADITION

BEAUTY

ARCHITECTURE

CREATIVITY

BALANCE

MUTUAL TRUST

SHARED IDEAS

DEDICATION

LASTING VALUE

SYNTHESIS

COMMUNITY

SOLID

QUALITY DESIGN

LISTEN

SERVICE

PROFESSIONAL RESPONSIBILITY

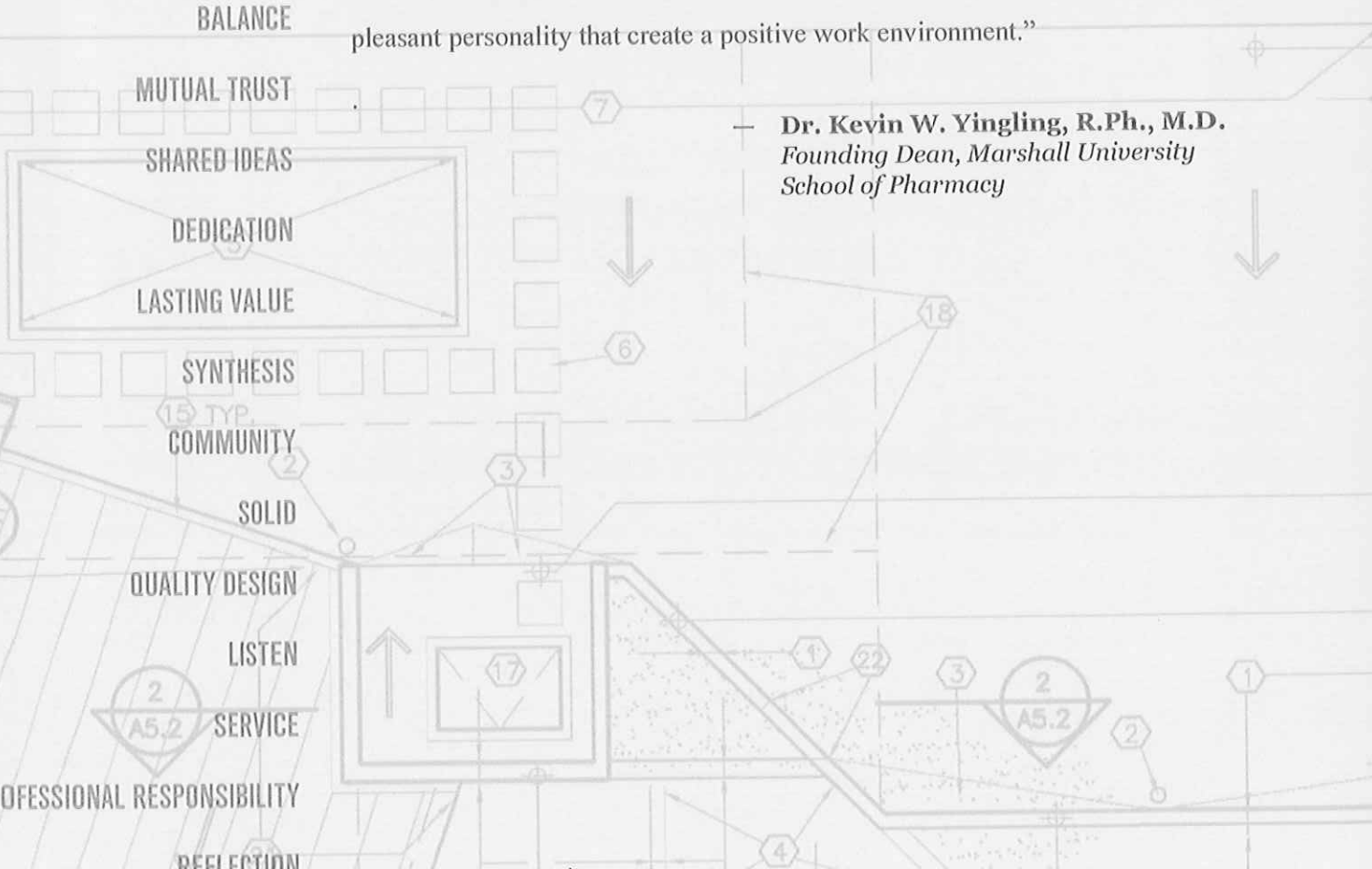
REFLECTION



"...exactly what we reviewed and defines our consensus."

"It is a real pleasure to work with you and the team at Edward Tucker Architects. Thank you for your knowledge, professionalism, timely actions and pleasant personality that create a positive work environment."

Dr. Kevin W. Yingling, R.Ph., M.D.
*Founding Dean, Marshall University
School of Pharmacy*



COMMUNITY

SOLID

QUALITY DESIGN

LISTEN

SERVICE

PROFESSIONAL RESPONSIBILITY

REFLECTION

ARCHITECTS

CAPABILITY

CONSIDER

QUALITY PROJECTS

BUILT ON A TRADITION

BEAUTY

ARCHITECTURE

CREATIVITY

BALANCE

MUTUAL TRUST

SHARED IDEAS

DEDICATION

LASTING VALUE

SYNTHESIS

15 TYP
COMMUNITY

SOLID

QUALITY DESIGN

LISTEN

2
A5.2
SERVICE

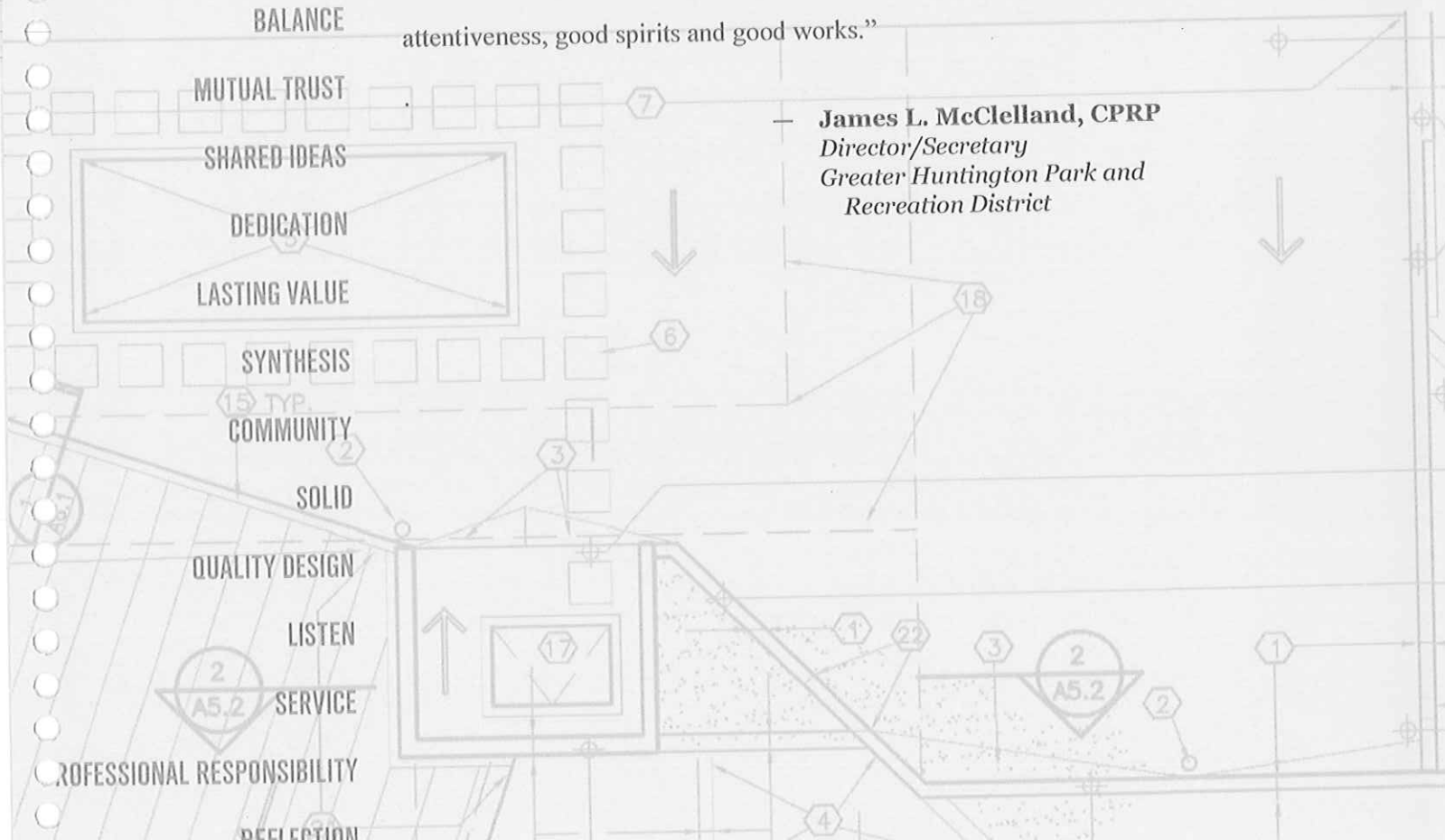
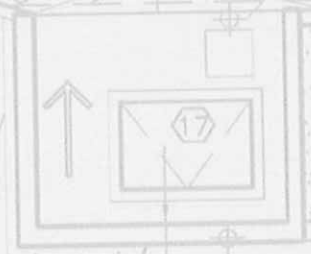
PROFESSIONAL RESPONSIBILITY

REFLECTION



“...for you have brought much more than fine planning and architecture. Thank you for being you, being professional, being creative and always being helpful. Please extend my appreciation to Josh, Wally, J.D. and all your team for their attentiveness, good spirits and good works.”

James L. McClelland, CPRP
*Director/Secretary
Greater Huntington Park and
Recreation District*



REFERENCES:

Mr. Rudy Henley
Project Developer & Asset Manager
Stonewall Resort
940 Resort Drive
Roanoke, West Virginia 26447
jrhenley@wv-commercial.com
(888) 278-8150

Mr. John T. Hallowell
President
Colonial Williamsburg (Hospitality)
P.O. Box 1776
Williamsburg, Virginia 23187
jhallowell@cwf.org
(757) 220-7607

Mr. Fred Missel
Director of Design and Development
University of Virginia Foundation
1 Boars Head Pointe
Charlottesville, Virginia 22903
fam5c@virginia.edu
(443) 982-4848


UNIVERSITY of VIRGINIA
Foundation

Randy Holmes
President
Glave' & Holmes Associates
801 E. Main Street
Richmond, VA 23219

Re: Letter of Recommendation
Boar's Head Meeting Pavillion
Boar's Head Inn, Charlottesville Virginia

Dear Randy:

The UVA Foundation greatly appreciates the professional services provided by Glave' & Holmes Associate as architect of record for the Boar's Head Meeting Pavillion from concept to construction.

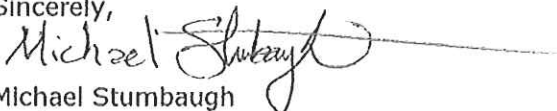
In the final analysis, the facility is striking. Two aspects of the exterior are notable: (1) the Pavillion fits so well into the Inn complex landscape that it appears to have always been here, and (2) architectural features are tastefully added to both provide visual interest and conceal the building mass. The interior reflects the Owner's vision of country elegance. Visitors are treated to spaces that are as memorable as they are functional. Millwork design is exceptional.

Reaching completion was no simple task. From unexpected site conditions to contractor issues, Glave' & Holmes provided guidance, recommendations, creativity and design effort beyond the requirements of a conventional project.

The vision and expertise of Glave' & Holmes Associates was vital to the beautiful and functional Boar's Head Meeting Pavillion.

We look forward to working with you on future projects.

Sincerely,



Michael Stumbaugh
Real Estate Project Manager
UVA Foundation


Fred Missel
Director of Design and Development
UVA Foundation



Colonial Williamsburg Company

WILLIAMSBURG, VIRGINIA

JOHN T. HALLOWELL
President-Hospitality

October 10, 2008

Dear Ms. Moses:

It is with great pleasure that I write to you in recommendation of Jim McAuliffe (formerly with CMMI) and Randy Holmes of Glavé & Holmes.

We had the opportunity to work very closely with both Jim and Randy during our multi-phased Williamsburg Lodge project. This was a complex undertaking, which involved demolition, new construction, as well as the restoration and renovation of historic facilities. Throughout the project their responsiveness, communication, professionalism, and attention to architectural detail and design were commendable.

We are very pleased with their work and the final product. By all accounts the project was well received with outstanding results and great feedback. It was truly a pleasure for our Design Team to work with such consummate professionals and we would not hesitate to call upon them for future undertakings.

If I can provide any further information, please do not hesitate to contact me.

Sincerely,



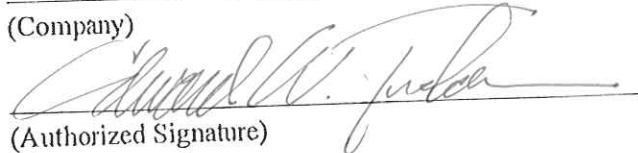
John T. Hallowell
President - Hospitality

Ms. Deborah J. Moses
Executive Director of the Commission
110 Shenandoah Avenue, N.W.
Roanoke, VA 24016

CERTIFICATION AND SIGNATURE PAGE

By signing below, I certify that I have reviewed this Solicitation in its entirety; understand the requirements, terms and conditions, and other information contained herein; that I am submitting this bid or proposal for review and consideration; that I am authorized by the bidder to execute this bid or any documents related thereto on bidder's behalf; that I am authorized to bind the bidder in a contractual relationship; and that to the best of my knowledge, the bidder has properly registered with any State agency that may require registration.

Edward Tucker Architects, Inc.
(Company)


(Authorized Signature)

Edward W. Tucker, President
(Representative Name, Title)

304.697.4990 304.697.4991
(Phone Number) (Fax Number)

September 5, 2012
(Date)

ADDENDUM ACKNOWLEDGEMENT FORM
SOLICITATION NO.: DNR213005

Instructions: Please acknowledge receipt of all addenda issued with this solicitation by completing this addendum acknowledgment form. Check the box next to each addendum received and sign below. Failure to acknowledge addenda may result in bid disqualification.

Acknowledgment: I hereby acknowledge receipt of the following addenda and have made the necessary revisions to my proposal, plans and/or specification, etc.

Addendum Numbers Received:
(Check the box next to each addendum received)

- | | |
|--|--|
| <input checked="" type="checkbox"/> Addendum No. 1 | <input type="checkbox"/> Addendum No. 6 |
| <input type="checkbox"/> Addendum No. 2 | <input type="checkbox"/> Addendum No. 7 |
| <input type="checkbox"/> Addendum No. 3 | <input type="checkbox"/> Addendum No. 8 |
| <input type="checkbox"/> Addendum No. 4 | <input type="checkbox"/> Addendum No. 9 |
| <input type="checkbox"/> Addendum No. 5 | <input type="checkbox"/> Addendum No. 10 |

I understand that failure to confirm the receipt of addenda may be cause for rejection of this bid. I further understand that any verbal representation made or assumed to be made during any oral discussion held between Vendor's representatives and any state personnel is not binding. Only the information issued in writing and added to the specifications by an official addendum is binding.

Edward Tucker Architects
Company

Edward W. Tucker
Authorized Signature

Sept. 5, 2012
Date

NOTE: This addendum acknowledgment should be submitted with the bid to expedite document processing.

RFQ No. DNR 213005

STATE OF WEST VIRGINIA
Purchasing Division

PURCHASING AFFIDAVIT

MANDATE: Under W. Va. Code §5A-3-10a, no contract or renewal of any contract may be awarded by the state or any of its political subdivisions to any vendor or prospective vendor when the vendor or prospective vendor or a related party to the vendor or prospective vendor is a debtor and: (1) the debt owed is an amount greater than one thousand dollars in the aggregate; or (2) the debtor is in employer default.

EXCEPTION: The prohibition listed above does not apply where a vendor has contested any tax administered pursuant to chapter eleven of the W. Va. Code, workers' compensation premium, permit fee or environmental fee or assessment and the matter has not become final or where the vendor has entered into a payment plan or agreement and the vendor is not in default of any of the provisions of such plan or agreement.

DEFINITIONS:

"Debt" means any assessment, premium, penalty, fine, tax or other amount of money owed to the state or any of its political subdivisions because of a judgment, fine, permit violation, license assessment, defaulted workers' compensation premium, penalty or other assessment presently delinquent or due and required to be paid to the state or any of its political subdivisions, including any interest or additional penalties accrued thereon.

"Employer default" means having an outstanding balance or liability to the old fund or to the uninsured employers' fund or being in policy default, as defined in W. Va. Code § 23-2c-2, failure to maintain mandatory workers' compensation coverage, or failure to fully meet its obligations as a workers' compensation self-insured employer. An employer is not in employer default if it has entered into a repayment agreement with the Insurance Commissioner and remains in compliance with the obligations under the repayment agreement.

"Related party" means a party, whether an individual, corporation, partnership, association, limited liability company or any other form or business association or other entity whatsoever, related to any vendor by blood, marriage, ownership or contract through which the party has a relationship of ownership or other interest with the vendor so that the party will actually or by effect receive or control a portion of the benefit, profit or other consideration from performance of a vendor contract with the party receiving an amount that meets or exceeds five percent of the total contract amount.

AFFIRMATION: By signing this form, the vendor's authorized signer affirms and acknowledges under penalty of law for false swearing (W. Va. Code §61-5-3) that neither vendor nor any related party owe a debt as defined above and that neither vendor nor any related party are in employer default as defined above, unless the debt or employer default is permitted under the exception above.

WITNESS THE FOLLOWING SIGNATURE:

Vendor's Name: Edward Tucker Architects, Inc.

Authorized Signature: [Signature] Date: Sep. 6, 2012

State of West Virginia

County of Cabell, to-wit:

Taken, subscribed, and sworn to before me this 6 day of September, 2012.

My Commission expires June 21, 2021.

AFFIX SEAL HERE

NOTARY PUBLIC [Signature]

Purchasing Affidavit (Revised 07/01/2012)

