

**Expression of Interest  
to Provide  
Professional Architectural/Engineering  
Services  
for  
Capitol Campus Security Project  
RFQ # GSD126428**



**February 9, 2012**

RECEIVED

2012 FEB -9 PM 12:15

WEST VIRGINIA  
PURCHASING  
DIVISION

**CMA**  
ENGINEERING

Clingenpeel/McBrayer & Associates, Inc.

824 Cross Lanes Drive  
Charleston, West Virginia 25313  
26505  
(304) 343-0316 tel  
(304) 343-5146 fax

5 Riddle Court  
Morgantown, West Virginia  
(304) 598-2558 tel  
(304) 598-2472 fax



February 9, 2012

Ms. Krista Ferrell  
Purchasing Division  
2019 Washington Street, East  
Charleston, WV 25305

Subject: RFQ #GSD126428  
Capitol Campus Security Project

Dear Ms. Ferrell:

CMA Engineering is pleased to submit our qualifications and interest in the proposed Capitol Campus Security Project. Our firm has a long and successful history of performing this type of challenging work with detailed requirements, time limitations and budget constraints. We are the Prime Consultant on the HVAC upgrade at the Main Capitol Building, WV State Senate/House Floors. Mr. Robert Krause is our State contact and can give you an accurate opinion of our capabilities and the type of service that we provide.

As security has become a major issue for governmental and educational facilities, CMA has extensive experience in the design of security systems. We recently provided engineering design services for the new WV Army National Guard Readiness Centers in Elkins and Moorefield, the new Monongalia County Sheriff's Office facility in Morgantown, the new Sissonville Middle School, the new Lewisburg Elementary School and the new Rainelle Elementary School. Projects that have included security upgrades include Yeager Airport and several United States Post Offices.

CMA is submitting this proposal as the Prime Consultant and will be utilizing Chapman Technical Group as it's architectural and civil engineering sub-consultant. Other specialty consultants will be used as needed. CMA and Chapman have successfully completed numerous jobs and are currently working with the State in upgrading the MEP systems and facilities at the Ski Resort at Canaan Valley State Park. Similar to the proposed Security project, utilities and MEP systems had to be verified and the effects of the upgrades documented and integrated into the renovation design.

CMA Engineering hopes to continue its relationship with the State of West Virginia. Thank you for your consideration of our firm. We look forward to presenting a more comprehensive statement of our qualifications in a personal interview.

Sincerely,  
CMA Engineering

Daniel L. Ellars, P.E.  
Principal

Clingenpeel/McBrayer & Associates, Inc.

Charleston  
824 Cross Lanes Drive  
Charleston, West Virginia 25313  
(304) 343-0316 tel  
(304) 343-5146 fax

Morgantown  
5 Riddle Court  
Morgantown, West Virginia 26505  
(304) 598-2558 tel  
(304) 598-2472 fax

www.cma.wv.com



State of West Virginia  
 Department of Administration  
 Purchasing Division  
 2019 Washington Street East  
 Post Office Box 50130  
 Charleston, WV 25305-0130

# Request for Quotation

RFQ NUMBER:  
 GSD126428

PAGE:  
 3

ADDRESS CORRESPONDENCE TO ATTENTION OF:  
 KRISTA FERRELL  
 304-558-2596

RFQ COPY  
 TYPE NAME/ADDRESS HERE

VENDOR

CMA Engineering  
 824 Cross Lanes Drive  
 Charleston, WV 25313

SHIP TO

DEPARTMENT OF ADMINISTRATION  
 GENERAL SERVICES  
 BUILDING 1 ROOM MB60  
 1900 KANAWHA BOULEVARD, EAST  
 CHARLESTON, WV  
 25305-0123 304-558-2317

DATE PRINTED	TERMS OF SALE	SHIP VIA	F.O.B.	FREIGHT TERMS
01/09/2012				

BID OPENING DATE: 02/09/2012 BID OPENING TIME 01:30PM

LINE	QUANTITY	UOP	CAT NO.	ITEM NUMBER	UNIT PRICE	AMOUNT
<p>INFORMATION ISSUED IN WRITING AND ADDED TO THE SPECIFICATIONS BY AN OFFICIAL ADDENDUM IS BINDING.</p> <p style="text-align: center;"><i>Daniel L. Ellars</i>            .....            SIGNATURE</p> <p style="text-align: center;">CMA Engineering            .....            COMPANY</p> <p style="text-align: center;">2/09/2012            .....            DATE</p> <p>NOTE: THIS ADDENDUM ACKNOWLEDGEMENT SHOULD BE SUBMITTED WITH THE EOI.</p> <p>REV. 09/21/2009</p> <p>BANKRUPTCY: IN THE EVENT THE VENDOR/CONTRACTOR FILES FOR BANKRUPTCY PROTECTION, THE STATE MAY DEEM THE CONTRACT NULL AND VOID, AND TERMINATE SUCH CONTRACT WITHOUT FURTHER ORDER.</p> <p>ANY INDIVIDUAL SIGNING THIS BID IS CERTIFYING THAT:            (1) HE OR SHE IS AUTHORIZED BY THE BIDDER TO EXECUTE THE BID OR ANY DOCUMENTS RELATED THERETO ON BEHALF OF THE BIDDER, (2) THAT HE OR SHE IS AUTHORIZED TO BIND THE BIDDER IN A CONTRACTUAL RELATIONSHIP, AND (3) THAT THE BIDDER HAS PROPERLY REGISTERED WITH ANY STATE AGENCIES THAT MAY REQUIRE REGISTRATION.</p> <p style="text-align: center;">NOTICE</p> <p>A SIGNED EOI MUST BE SUBMITTED TO:</p>						

SEE REVERSE SIDE FOR TERMS AND CONDITIONS

SIGNATURE	TELEPHONE	DATE
TITLE	FEIN	ADDRESS CHANGES TO BE NOTED ABOVE

WHEN RESPONDING TO RFQ, INSERT NAME AND ADDRESS IN SPACE ABOVE LABELED 'VENDOR'



State of West Virginia  
 Department of Administration  
 Purchasing Division  
 2019 Washington Street East  
 Post Office Box 50130  
 Charleston, WV 25305-0130

# Request for Quotation

RFQ NUMBER  
**GSD126428**

PAGE  
**2**

ADDRESS CORRESPONDENCE TO ATTENTION OF:  
**KRISTA FERRELL  
 304-558-2596**

RFQ COPY  
 TYPE NAME/ADDRESS HERE

VENDOR

CMA Engineering  
 824 Cross Lanes Drive  
 Charleston, WV

SHIP TO

DEPARTMENT OF ADMINISTRATION  
 GENERAL SERVICES  
 BUILDING 1 ROOM MB60  
 1900 KANAWHA BOULEVARD, EAST  
 CHARLESTON, WV  
 25305-0123 304-558-2317

DATE PRINTED <b>01/09/2012</b>	TERMS OF SALE	SHIP VIA	FOB	FREIGHT TERMS
-----------------------------------	---------------	----------	-----	---------------

BID OPENING DATE: **02/09/2012** BID OPENING TIME **01:30PM**

LINE	QUANTITY	UOP	CAT NO.	ITEM NUMBER	UNIT PRICE	AMOUNT
<p>NO CONTACT BETWEEN THE VENDOR AND THE AGENCY IS PERMITTED WITHOUT THE EXPRESS WRITTEN CONSENT OF THE STATE BUYER. VIOLATION MAY RESULT IN THE REJECTION OF THE BID. THE STATE BUYER NAMED ABOVE IS THE SOLE CONTACT FOR ANY AND ALL INQUIRIES AFTER THIS EOI HAS BEEN RELEASED.</p> <p>EXHIBIT 10</p> <p>REQUISITION NO.: .....</p> <p>ADDENDUM ACKNOWLEDGEMENT</p> <p>I HEREBY ACKNOWLEDGE RECEIPT OF THE FOLLOWING CHECKED ADDENDUM(S) AND HAVE MADE THE NECESSARY REVISIONS TO MY PROPOSAL, PLANS AND/OR SPECIFICATION, ETC.</p> <p>ADDENDUM NO.'S:</p> <p>NO. 1 <i>DLE</i> .....</p> <p>NO. 2 .....</p> <p>NO. 3 .....</p> <p>NO. 4 .....</p> <p>NO. 5 .....</p> <p>I UNDERSTAND THAT FAILURE TO CONFIRM THE RECEIPT OF THE ADDENDUM(S) MAY BE CAUSE FOR REJECTION OF BIDS.</p> <p>VENDOR MUST CLEARLY UNDERSTAND THAT ANY VERBAL REPRESENTATION MADE OR ASSUMED TO BE MADE DURING ANY ORAL DISCUSSION HELD BETWEEN VENDOR'S REPRESENTATIVES AND ANY STATE PERSONNEL IS NOT BINDING. ONLY THE</p>						

SEE REVERSE SIDE FOR TERMS AND CONDITIONS

SIGNATURE	TELEPHONE	DATE
TITLE	FEIN	ADDRESS CHANGES TO BE NOTED ABOVE

WHEN RESPONDING TO RFQ, INSERT NAME AND ADDRESS IN SPACE ABOVE LABELED 'VENDOR'

<b>1</b>	<b>CMA Firm Profile</b>
<b>2</b>	<b>CMA Resumes</b>
<b>3</b>	<b>CMA Project Experience</b>
<b>4</b>	<b>CMA References</b>
<b>5</b>	<b>Chapman Technical Firm Profile</b>
<b>6</b>	<b>Chapman Technical Resumes</b>
<b>7</b>	<b>Chapman Technical Project Experience</b>
<b>8</b>	<b>Affidavit</b>

## C O R P O R A T E P R O F I L E



Clingenpeel/McBrayer & Associates, Inc.

### Services

Clingenpeel/McBrayer & Associates is a West Virginia based small business firm, providing services in the areas of HVAC, plumbing, fire protection and electrical engineering. CMA's founders have long believed in the philosophy that a successful project requires a comprehensive approach. This includes all traditional facets of project planning, starting with master planning, working closely with the client, developing the completed construction documents, bidding the project and contract administration. However, our depth of expertise goes far beyond the traditional services. From developing design criteria for owners to designing the mechanical and electrical systems for the West Virginia DEP Consolidated Office Building, the first LEED certified building in the state, CMA is a proven leader in providing engineering services in the design-build delivery method. As we have been involved in LEED Certification and other "LEED-oriented" ventures for several years, we attempt to incorporate the most efficient and sustainable "green" designs in all of our projects.

### History

Since 1986, Clingenpeel/McBrayer & Associates has provided services on numerous projects of varying size and complexity. Clients include architects, industrial companies, governmental agencies, contractors, engineers, developers and private organizations. With offices strategically located in Charleston and Morgantown, our professional staff can provide clients with exceptional hands-on engineering services for planning, meetings, site visits and construction administration without effecting the project's budget.

### Commitment

Clingenpeel/McBrayer & Associates' submittal is based on your needs and our experience. Our firm has the experience, service and quality work to create a successful project. We are committing senior design professionals in order to assure you receive top priority. We have extensive experience with projects of this nature. Examples of projects for which we were the Engineer are listed in this proposal.

In 1987, computer aided drafting stations were added to provide the best quality and engineering services for our clients. We are currently operating AutoCad 2011. Our firm is constantly monitoring the latest technology, the cost effects and the end results to the final project.

Present staffing allows CMA to complete work in a timely manner without limiting our ability to perform our ongoing work. The staff of CMA is large enough to handle any size project, yet small enough for direct input and supervision by key personnel.



Clingenpeel/McBrayer & Associates, Inc.

824 Cross Lanes Drive  
Charleston, WV 25313  
(304) 343-0316 tel  
(304) 343-5146 fax

5 Riddle Court  
Morgantown, WV 26505  
(304) 598-2558 tel  
(304) 598-2472 fax

w w w . c m a w v . c o m

# M E C H A N I C A L

CMA Engineering experience includes:

Constant Volume Air Handling Systems  
Variable Volume Air Handling Systems  
Demand Control Ventilation Systems  
Natorium Dehumidification Systems  
Building Energy and Management Control Systems  
Industrial Ventilation and Exhaust Systems  
Steam and Condensate Systems  
Cooling Plants and Distribution  
Heating Plants and Distribution  
Energy Recovery Systems  
Water Source Heat Pump Systems  
Low, Medium and High Pressure Air Distribution Systems  
Direct Digital, Pneumatic and Hybrid Control Systems  
Kitchen Ventilation and Exhaust Systems



*(top)* Ruby Memorial Hospital—Morgantown, WV  
HVAC Exhaust System

*(middle)* Memorial Ice Rink—South Charleston, WV  
Refrigerant Pressure Gages

*(bottom)* Alderson Federal Correctional Facility—Alderson, WV  
Steam Plant



Clingenpeel/McBrayer & Associates, Inc.

824 Cross Lanes Drive  
Charleston, West Virginia 25313  
(304) 343-0316 tel  
(304) 343-5146 fax

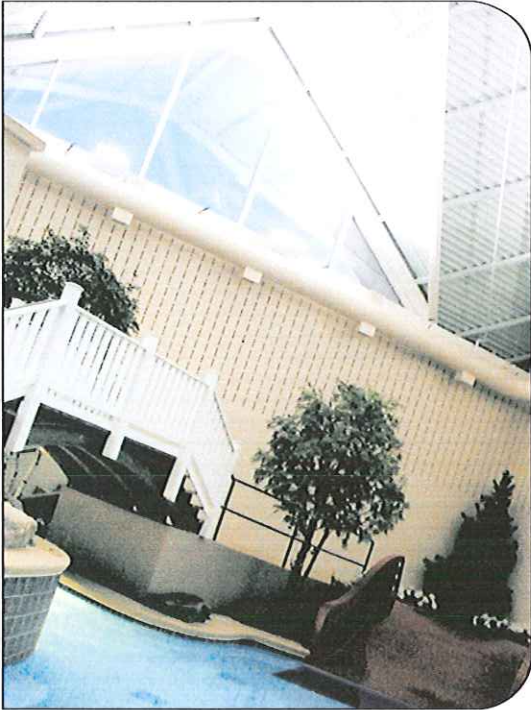
5 Riddle Court  
Morgantown, West Virginia 26505  
(304) 598-2558 tel  
(304) 598-2472 fax

[www.cma.wv.com](http://www.cma.wv.com)

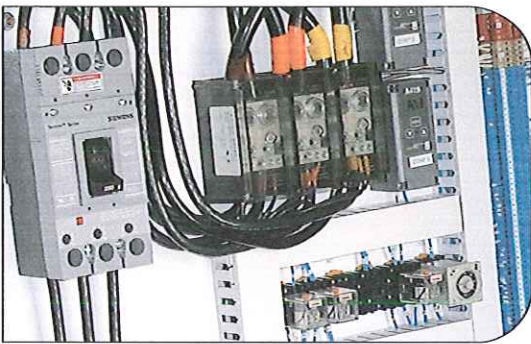
# E L E C T R I C A L

CMA Engineering experience includes:

- Underground Ducts and Utility Structures
- Intrusion Detection
- Closed Circuit Television
- Cable and Master Antenna Television
- Medium Voltage Distribution and Substations
- Secondary Voltage Distribution
- Engine Generators and Battery Inverters
- Transient Voltage Suppression
- Interior Lighting
- Exterior Lighting
- Sports Lighting
- Theatrical Lighting
- Lighting Control
- Uninterruptible Power Supply Systems
- Lightning Protection
- Intercommunications Systems
- Nurse Call
- Voice and Data Systems
- Fire Detection Systems



*(above)* Split Rock Pools—Snowshoe, WV  
Indirect Lighting System



*(below)* Memorial Ice Rink—South Charleston, WV  
Chiller Power and Control Panel



Clingenpeel/McBrayer & Associates, Inc.

824 Cross Lanes Drive  
Charleston, West Virginia 25313  
(304) 343-0316 tel  
(304) 343-5146 fax

5 Riddle Court  
Morgantown, West Virginia 26505  
(304) 598-2558 tel  
(304) 598-2472 fax

[www.cma.wv.com](http://www.cma.wv.com)



## P L U M B I N G & P I P I N G

CMA Engineering experience includes:

Sanitary Sewer Systems

Storm Sewer Systems

Natural Gas Distribution

LP Gas Distribution

Fuel-Oil Distribution

Compressed Air Systems

Vacuum Systems

Chemical Waste Systems

Process Water Systems

Deionized Water Systems

Domestic Water Systems

Helium Distribution Systems

Domestic Water Pumping Systems

Sewage Pumping Systems

Water Heating

Automatic Fire Sprinkler Systems

Standpipe Systems

Fire Pumps, Storage Tanks, Service Mains

Medical Gas Systems



*(top)* Split Rock Pools—Snowshoe, WV  
Piping & Pump Room

*(middle)* Memorial Ice Rink—South Charleston, WV  
Piping & Chilling

*(bottom)* Alderson Federal Correctional Facility—Alderson, WV  
Steam Piping

CMA  
ENGINEERING

Clingenpeel/McBrayer & Associates, Inc.

824 Cross Lanes Drive  
Charleston, West Virginia 25313  
(304) 343-0316 tel  
(304) 343-5146 fax

5 Riddle Court  
Morgantown, West Virginia 26505  
(304) 598-2558 tel  
(304) 598-2472 fax

www.cma.wv.com

## Professional Affiliations



Leadership in Energy &  
Environmental Design  
(LEED)



U.S. Green Building  
Council  
(USGBC)



American Society of  
Heating, Refrigerating and  
Air Conditioning Engineers,  
Inc.,  
(ASHRAE)



American Institute of  
Architects— WV Chapter  
Affiliate Member  
(WVAIA)



National Fire  
Protection Association  
(NFPA)

ASPE

American Society Of  
Plumbing Engineers  
(ASPE)



MasterSpec  
Specifications  
(ARCOM)



THE  
LIGHTING  
AUTHORITY (IES)

Illuminating  
Engineering Society  
(IES)



WV Society of  
Healthcare Engineers  
(WVSHE)



Business Partner



International Code Council (ICC)

CMA  
ENGINEERING

# P R O F I L E

## Timothy Cox, P.E., NCEES President Mechanical Engineer

(304) 598-2558  
tcox@cmaav.com

### EDUCATION

University of Colorado  
Boulder, Colorado  
Degree: Mechanical Engineering B.S.

### REGISTRATIONS/PROFESSIONAL AFFILIATIONS

Association of Energy Engineers-CBCP  
  
Registered Professional Engineer in WV, VA, KY  
  
CPD (Certified in Plumbing Engineering)  
  
Member of ASHRAE  
  
American Society of Plumbing Engineers  
  
National Association of Fire Protection Engineers  
  
WV Society of Healthcare Engineers

### EXPERIENCE

Mr. Timothy Cox, President and Senior Mechanical Engineer of CMA Engineering brings 28 years of mechanical design experience to our clients. Mr. Cox has been project manager and project engineer for a variety of projects.

### PROJECTS

#### West Virginia University

Open End Contract since 1999  
Mountain Lair Plaza Renovations  
Boreman HVAC/Plumbing/Fire Sprinkler Upgrades  
Soccer Stadium  
Coliseum Life/Safety Renovations  
Renovations  
Arnold Hall Fire Alarm/ Fire Sprinkler Upgrades

#### WVU Health Sciences Center

Electrical and Mechanical Utility  
Extensions for new BioMedical Research Facility

#### West Virginia University Hospitals

WV Eye Institute-MEP systems design for new facility  
Cheat Clinic-MEP design for new clinical addition  
WVUH Emergency Department-HVAC, electrical, fire and communication systems design for new addition  
Healthworks Rehab and Fitness –MEP systems design for new facility

#### Mylan Pharmaceuticals, Morgantown, WV

Various projects including HVAC, plumbing, fire sprinkler and controls for new office building, fluid bed addition, north plant expansion, parking garage and weighing and packaging.



Clingenpeel/McBrayer & Associates, Inc.

824 Cross Lanes Drive  
Charleston, WV 25313  
(304) 343-0316 tel  
(304) 343-5146 fax

5 Riddle Court  
Morgantown, WV 26505  
(304) 598-2558 tel  
(304) 598-2472

www.cmaav.com

# P R O F I L E

Daniel Lee Ellars, P.E.  
LEED AP  
NCEES

Principal  
(304) 343-0316  
dellars@cmawv.com

## EDUCATION

West Virginia University Institute of Technology  
Montgomery, West Virginia.  
Bachelors of Science in Electrical Engineering

West Virginia State University  
Institute, West Virginia  
Bachelors of Science in Business Administration

## REGISTRATIONS/PROFESSIONAL AFFILIATIONS

Registered Professional Engineer in West Virginia  
National Fire Protection Association (NFPA)  
Institute of Electrical and Electronics Engineers (IEEE)  
American Society of Heating, Refrigerating and Air-  
Conditioning Engineers (ASHRAE)

## EXPERIENCE

Mr. Daniel L. Ellars, Electrical Engineer for Clingenpeel/  
McBrayer & Associates, Inc. brings 23 years of  
electrical design experience to our clients. Mr. Ellars  
has been a project manager and project engineer for a  
variety of projects including commercial and industrial  
facilities as well as for both power and  
tele-communications utilities.

## PROJECTS

**State of West Virginia**  
HVAC upgrades to the House and Senate floors at  
the Main Capitol Complex  
Electrical upgrades at Canaan Valley State Park

**Educational Experience**  
New Talcott Elementary School-Electrical Design  
New Fairdale Elementary School-Electrical Design  
New Rainelle Elementary School-Electrical Design

**Hospital Experience**  
Thomas Memorial Hospital—Electrical systems  
survey, upgrades and documentation.  
Standby emergency power engine  
generator replacement.

**Military Experience**  
West Virginia Army National Guard  
Eleanor (WV) Maintenance Center—Electrical  
systems design for new facility.  
Elkins Readiness Center-Electrical systems design  
or new facility  
Moorefield Readiness Center-Electrical systems  
design for new facility

**Industrial Experience**  
Mylan Pharmaceuticals  
Mylan Office & Lab Buildings—various electrical  
systems designs for new, existing and expanded  
facilities including new 23kV/12kV switchyard  
and grounding plain layout.



Clingenpeel/McBrayer & Associates, Inc.

824 Cross Lanes Drive  
Charleston, WV 25313  
(304) 343-0316 tel  
(304) 343-5146 fax

5 Riddle Court  
Morgantown, WV 26505  
(304) 598-2558 tel  
(304) 598-2472

w w w . c m a w v . c o m

# P R O F I L E

## James A. Kerns Mechanical/Electrical Designer

(304) 343-0316  
jakerns@cmawv.com

### EDUCATION

West Virginia State College  
Institute, West Virginia  
Degree: Bachelor of Science in Industrial  
Technology/Building Construction

### REGISTRATIONS/PROFESSIONAL AFFILIATIONS

Member of ASHRAE

### EXPERIENCE

Mr. James A. Kerns has over 40 years experience in Mechanical and Electrical engineering design. He has been responsible for design projects in the educational, commercial, and health care fields.

Mr. Kerns has been a great asset to Clingenpeel/McBrayer & Associates. His knowledge and experience enables him to complete project designs in a clear and concise manner and in a timely fashion.

### PROJECTS

#### **Kanawha County Schools**

George Washington High School-HVAC  
Renovations

George Washington High School-Classroom  
Additions

Horace Mann Middle School-HVAC Renovations

Elkview Middle School-Classroom Additions

Elkview Middle School-Fire Alarm System

Ruffner Elementary School-Classroom Additions

#### **Concord College**

Athens, West Virginia — various renovation projects throughout the campus, which include Twin Towers Fire Alarm, Twin Towers Elevator Renovation, Alexander Arts Center Chiller Replacement and new Chapel

#### **U.S. Postal Service**

Open End Contract Since 1993, which encompasses numerous Post Office Renovations, new Post Offices, and new Postal Maintenance Facilities. Mr. Kerns has been Project Manager for over 65 projects for the U.S. Postal Service.

#### **Yeager Airport**

New Parking Garages

New Emergency Generator

Electrical Upgrades

Fire Alarm System Upgrade

Security Upgrade

**CMA**  
ENGINEERING

Clingenpeel/McBrayer & Associates, Inc.

824 Cross Lanes Drive  
Charleston, WV 25313  
(304) 343-0316 tel  
(304) 343-5146 fax

5 Riddle Court  
Morgantown, WV 26505  
(304) 598-2558 tel  
(304) 598-2472

www.cmawv.com

# P R O F I L E

## Matt Corathers, E.I. Mechanical Designer

(304) 598-2558  
mcorathers@cmawv.com

### EDUCATION

West Virginia University  
Bachelor of Science -Mechanical Engineering

### PROJECTS

#### West Virginia University

Mechanical design for new two-story  
child care facility

#### University High School, Morgantown, WV

Mechanical design for renovations/  
upgrades to the HVAC systems

#### Randolph County Building

Mechanical design for completion of two  
story addition and modifications of the  
existing second floor to be used by the  
Family Court

#### Monongalia County Family Court

Mechanical design for renovations to  
4,850sf in existing court facility

#### Veterans Hospital, Clarksburg, WV

Mechanical design for renovations to  
Dental Lab

#### Monongalia General Hospital

Evaluation of kitchen gas systems  
Mechanical design for renovations to  
IT workroom cooling

### PROFESSIONAL DEVELOPMENT

Successfully passed Fundamentals of Engineering  
Exam

### EXPERIENCE

Matt joined the staff of CMA Engineering in 2008  
having previously worked for Whitman, Requardt  
and Associates in Baltimore, MD.

# CMA

ENGINEERING

Clingenpeel/McBrayer & Associates, Inc.

824 Cross Lanes Drive  
Charleston, WV 25313  
(304) 343-0316 tel  
(304) 343-5146 fax

5 Riddle Court  
Morgantown, WV 26505  
(304) 598-2558 tel  
(304) 598-2472

www.cmawv.com

# P R O F I L E

## Larry Weese Mechanical/Plumbing Designer

(304) 343-0316  
lweese@cmawv.com

### EDUCATION

West Virginia University  
Morgantown, West Virginia  
Degree: Division of Forestry BS,MS

### PROJECTS

#### Medical Facilities Experience

Hess Medical Office Building-New Facility  
Pinewood Medical Office Building-Renovations  
Southern West Virginia Hospice-New Facility  
NorthGate Doctor's Office Building-New Facility

#### WV Department of Health and Human Resources

Office of Chief Medical Examiner, Charleston  
New Facility Mingo County

#### WV Army National Guard

Moorefield Readiness Center-New Facility  
Elkins Readiness Center-New Facility  
St. Albans Armory-Renovations and Addition

#### Emergency Response Facilities

Randolph County 911-New Facility  
Mason County 911-New Facility  
Raleigh County 911-New Facility  
Orchard Manor Fire Station-New Facility

#### Industrial Experience

Standard Laboratories-Laboratory Addition  
Dow Process Control-New Facility  
Diamond Electric-Expansion

#### Commercial Experience

Bobcat of Advantage Valley-New Facility  
Allegheny Springs Restaurant

### PROFESSIONAL DEVELOPMENT

Various seminars and technical sessions

### EXPERIENCE

Mr. Larry Weese, Mechanical Designer for Clingenpeel/McBrayer & Associates, Inc. brings 20 years of mechanical design and project management experience to our clients.



Clingenpeel/McBrayer & Associates, Inc.

824 Cross Lanes Drive  
Charleston, WV 25313  
(304) 343-0316 tel  
(304) 343-5146 fax

5 Riddle Court  
Morgantown, WV 26505  
(304) 598-2558 tel  
(304) 598-2472

www.cmawv.com

## Project Profiles



### **Yeager Airport**

CMA Engineering coordinated with security personnel and Architect to provide design of the access control systems at the new main entrance for passenger screening. The entrance combines typical revolving door-type security including fire alarm interconnection with a sophisticated camera system that detects restricted movement of passengers (moving in an unacceptable direction) to control the revolving door. Standard card readers with magnetic locks were also designed for other typical doors for access by airport security personnel.



### **West Virginia University Hospitals- Utility Extensions**

CMA reviewed existing site conditions and provided design of construction documents for the interfacing of existing site utilities with the new BMRF facility and new chilled water plant expansion. The site utilities included through connections to the existing site utilities were chilled water supply and return, steam, condensate, 23KV and 480V distribution with associated duct banks, and telephone/communications duct banks. All site utilities had to be coordinated with HSC and the designers of the BMRF facility and designers of the chilled water plant expansion. The project also included the addition of a new 1000 ton chiller and cooling tower (on roof of the new chiller plant) with associated piping and appurtenances.



## Project Profiles



### **Canaan Valley State Park Ski Resort Upgrades**

CMA Engineering is currently providing mechanical, electrical and plumbing design services for the renovations/upgrades to four existing buildings ( the Ski Patrol Building, Old Lodge, Quenchers Pub and Bear Paw Lodge) and two new buildings (New Tube Run Building and New Tube Run Storage Building) at the ski area of the park. CMA is providing raceway designs for the communications/data/security systems for the project in order to connect systems between the Main Lodge and Ski Areas.



### **West Virginia University Coliseum**

CMA Engineering provided the mechanical, electrical and plumbing design services for upgrades to the electrical, fire sprinkler, fire alarm and smoke evacuation systems. Project was designed and upgrades implemented to allow continued use of the facility based on current code requirements for assembly through the State Fire Marshal. Project included 125,000sf of renovated areas and 2,000sf of new exterior building to house communications and emergency power.

## Project Profiles

## New Construction



**Sissonville Middle School, Kanawha County**  
CMA Engineering provided mechanical, electrical, plumbing, sprinkler, and data/communication/alarm/control engineering design services for the new, approximately 80,000sf facility, consisting of administrative areas, commons, auditorium, media/technology, sixth, seventh and eighth grade educational areas, laboratories, special education, food services and physical education areas. CMA also provided design for the addition of the fifth grade wing.

CMA coordinated closely with Kanawha County Schools to provide indoor and outdoor camera surveillance and access controls, including the card-reader/camera/call-button combination-type at the main entrance in communication with an internal office station. Interior motion sensors were designed to perform double duty as intruder detection devices during unoccupied hours while operating as occupancy sensors during occupied hours to control lighting power relays to turn off lights and save energy.



### **WVANG Elkins Readiness Center**

CMA Engineering provided design of HVAC, plumbing, fire sprinkler and fire alarm systems, and electrical systems for new 54,500sf readiness center. All systems were designed utilizing LEED criteria. CMA complied with the latest requirements of the West Virginia Army National Guard to provide door access security at selected entrances including card readers with magnetic locks or electric hinge locks and door contacts for access monitoring. The fire alarm system was interconnected with a mass notification system for customized procedures in response to various emergency and threat conditions. Power and raceway designs were provided to support the Guard's elaborate security systems to safeguard their weapons vaults.

## Project Profiles

## New Construction



### **Monongalia County Walnut Street Building**

CMA Engineering provided mechanical, electrical and plumbing design services for new three-story, 30,000sf facility and 4,000sf, insulated metal shell, Mechanical Penthouse.

CMA worked closely with the Monongalia County Sheriff's Office and other County agencies to incorporate various security features into the building's design for different uses. CMA provided power and raceway design to support the Owner's various camera surveillance strategies, including motion and sound detectors, for security lighting controls and magnetic locks, door contacts and card readers for various applications. The holding cell doors utilized all of these items plus tamper switches, panic/duress alarms, intrusion detection and were connected to the fire alarm systems in the event of a fire condition. Special card access controls were provided for use of the building's elevator to restrict access to floors by unauthorized personnel. As with many projects, these critically important systems were backed up by on-site emergency power generation.



### **Lewisburg Elementary School**

CMA Engineering provided HVAC, plumbing, fire sprinkler, fire alarm, communication, lighting and electrical power design for new 75,000sf, two-story facility with gymnasium.

CMA cooperated with Greenbrier County Schools in designing both a base bid and alternate approach to provide flexibility in controls packaging in the bidding process. The various controls systems could be bid as the more conventional set of "stand-alone" systems or combined into an "integrated" system. Integration of systems or close coordination of separate systems allows motion sensors to provide intruder detection during unoccupied hours and also serve as occupancy sensors during occupied hours to save lighting energy, as well as, heating and cooling energy.

## Project Profiles



### **Charleston Gateway Greenspace**

CMA Engineering provided site lighting plan, details and specifications for new Greenspace park, property was previously a parking lot, located in downtown Charleston.

### **CAMC 33rd Street Streetscape, Kanawha City.**

As part of the expansion of the CAMC Memorial Division, 33rd Street was required to be re-aligned. CMA provided engineering services for design of the lighting along 33rd Street, providing a lighting design that welcomes visitors into the neighborhood.



### **Kanawha Boulevard Lighting**

CMA provided engineering services for the re-lighting of Kanawha Boulevard from the Patrick Street Bridge to the 35th Street Bridge in Kanawha City. This project included specifying of new light poles, arms and light fixtures.

### **Kanawha County Schools**

CMA provided electrical engineering services for the exterior lighting design for the football fields at Nitro High School, South Charleston High School, Sissonville High School, George Washington High School and St. Albans High School.



### **Kanawha County Courthouse**

CMA provided design for the exterior lighting renovation of the Virginia side of the historic Courthouse. This project while adding lighting for security, highlights the architectural features of the entrances and light towers.

## Project Profiles



**State of West Virginia House and Senate Offices**  
CMA is currently providing mechanical, and electrical design services for renovations to the first and second floors' HVAC systems at Building #1 at the State Capitol Complex.



**Kanawha County Courthouse**  
CMA has provided mechanical, electrical and plumbing engineering design services for Kanawha County since 1983. Projects include MEP renovations to main courthouse, toilet renovations, parking garage, MEP renovations to the judicial annex, renovations to the Law Master offices, and design of exterior lighting.



**Kimball War Memorial, Kimball, WV**  
CMA Engineering provided mechanical, electrical and plumbing design services for the restoration of the historic memorial which was destroyed by fire in 1991. Registered with the National Historical Society.



**Putnam County Courthouse**  
CMA has provided mechanical, electrical and plumbing design services for the new courthouse facility including design of the 911 center. CMA also provided mechanical, electrical and plumbing design services for renovations to the old courthouse including ADA modifications.



**Doddridge County Courthouse**  
CMA provided design services for the upgrades of the mechanical, electrical, plumbing, fire sprinkler /fire alarm and communication systems for the second and third floors of the facility.

## Project Profiles



### **Gassaway Armory**

CMA Engineering provided mechanical, electrical and plumbing, design services for the renovation of 24,170sf of a single story structure including a 10,900sf drill hall and the addition of a new 4,810sf single story facility to house lockers, storage space, a lobby, corridors and office space.



### **Boreman Hall-West Virginia University**

CMA provided mechanical, electrical and plumbing engineering services for the upgrade of the fire sprinkler, fire alarm and HVAC systems. CMA had previously provided design services for the upgrade to the plumbing system.



### **Engineering Science Building , WVU**

CMA Engineering provided design of new HVAC, plumbing, electrical, fire protection systems within existing space to provide three distinct clean room space (4,500sf)for WVU Engineering Department for conducting experiments on new technology. Project also include design of 2,000sf new mechanical roof top penthouse.



### **Davis Memorial Hospital**

CMA Engineering has provided mechanical, electrical, plumbing, and fire protection engineering services for various projects at DMH including the new operating room suite, relocating endoscopy unit, updating the fire suppression system in the computer room and design of the clean room in the Pharmacy.

## Project Profiles

## New Construction



### **WVANG Lewisburg Readiness Center**

CMA Engineering provided mechanical, electrical and plumbing design services for a 37,000sf readiness center that includes a vehicle maintenance bay.



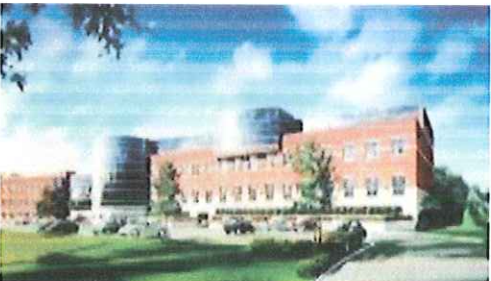
### **WVANG Eleanor Maintenance Center**

CMA Engineering provided mechanical, electrical and plumbing, design services for a 132,000sf maintenance facility to house combined support maintenance shop and Class IX USPFO warehouse. CMA has continued to provide engineering services for the addition of the paint booth, entrance guard house, MCOFT pad, and covered storage.



### **NRAO Greenbank Observatory Visitor's Center**

CMA Engineering provided mechanical, electrical, plumbing, fire protection and communication systems design for new visitor's science center.



### **Mylan Pharmaceuticals, Morgantown, WV**

CMA Engineering provided mechanical, electrical, plumbing and fire protection systems design for new corporate office in Morgantown, WV. CMA Engineering also provided engineering services for the 500,000sf addition to the plant facility.

## Project Profiles

## New Construction



### **Pikeview Middle School, Mercer County**

CMA Engineering provided design of HVAC, plumbing, fire alarm, fire sprinkler, electrical, lighting, communications, audio/visual and CCTV systems for new 75,000sf middle school comprised of a main wing with offices and gymnasium and a three-story classroom wing.



### **WVANG Summersville Readiness Center**

CMA Engineering provided engineering services for the design of mechanical, electrical and plumbing systems for the 42,000sf readiness center. This facility also features areas for use by the City of Summersville for events throughout the year.



### **Ayash Community Center, St. Albans**

CMA Engineering provided design for HVAC, plumbing, fire sprinkler, fire alarm systems, communication systems, lighting and electrical power for new 26,900sf community center which included gymnasium, wrestling room, fitness room, locker rooms and an open area for aerobics, dance and gymnastics.



### **Jefferson Place, Charleston, WV**

CMA Engineering provided mechanical, electrical, plumbing and fire protection design services for new medical apartment complex consisting of 24 units of one, two and three bedroom apartments.



## References

### Mechanical/Electrical/Plumbing



West Virginia University  
P.O. Box 0877  
Morgantown, WV 26505  
Contact: Mr. John Thompson  
(304) 293-3625



Kanawha County Schools  
3300 Pennsylvania Avenue  
Charleston, WV 25302  
Contact: Mr. Charles Wilson  
(304) 348-6148



State of West Virginia  
1900 Kanawha Blvd, East  
Bldg. 1, Room MB-60  
Charleston, WV 25305  
Contact: Mr. Robert Kilpatrick  
(304) 558-0250



Mylan Pharmaceuticals, Inc.  
P.O. Box 4310  
Morgantown, WV 26504  
Contact: Mr. J. J. Dotson  
(304) 599-2595

## Company Overview



### *Chapman Technical Group's St. Albans Office*

**C**hapman Technical Group is a full-service consulting firm with offices in St. Albans, Buckhannon, and Martinsburg, West Virginia offering an extensive range of professional architectural, engineering, interior design and landscape architectural services. Established in 1984, Chapman Technical Group has steadily grown to a diverse firm of professionals, many of whom were educated in West Virginia colleges and universities. We have achieved an outstanding reputation for providing high-quality design projects, while meeting client schedules and budgets and have received numerous awards for our work.

Our facilities are both state-of-the-art and architecturally significant. Our St. Albans office is a former post office and is now on the National Register of Historic Places.

### *Chapman Technical Group offers a broad range of professional services.*

- Airport Design
- Architecture
- Civil Engineering
- Fire Pumping & Protection
- Interior Design
- Landscape Architecture
- Recreational Facilities
- Roads, Highways, & Bridges
- Site Development
- Space Planning
- Surveying
- Water & Wastewater Systems

## Awards



**WINNER - "COMMISSIONER'S ENGINEERING ACHIEVEMENT AWARD", WV DOT - DIVISION OF HIGHWAYS - 2011:** Large Roadway Category for WV10 North Davy Branch to Rum Creek; 2000: Large Bridge Category for WV10 Buffalo Creek Bridge, Logan County, West Virginia.

**AMERICAN INSTITUTE OF ARCHITECTS - MERIT AWARD FOR EXCELLENCE IN ARCHITECTURE, 2009 - Interstate 79 Rest Areas.**

**AMERICAN SOCIETY OF CIVIL ENGINEERS - NATIONAL - SUPERIOR EMPLOYER AWARD, 2009, Support of Young Professionals in the Private Sector.**

**AMERICAN COUNCIL OF ENGINEERING COMPANIES-WV - ENGINEERING EXCELLENCE AWARD, 2009, Gold Award - Special Projects Category for the Mercer County Airport Runway Safety Area Project.**

**AMERICAN INSTITUTE OF ARCHITECTS - HONOR AWARD FOR EXCELLENCE IN ARCHITECTURE, 2008 - Upshur County Courthouse Restoration and Renovations.**

**AMERICAN COUNCIL OF ENGINEERING COMPANIES-WV - ENGINEERING EXCELLENCE AWARD, 2008, Bronze Award - Wastewater Category for the Spring Run State Fish Hatchery Improvements.**

**AMERICAN COUNCIL OF ENGINEERING COMPANIES-WV - ENGINEERING EXCELLENCE AWARD, 2007, Silver Award - Structures Category for the Mercer County Airport Runway Safety Area Project.**

**GARY KING COMMUNITY SERVICE AWARD, 2006. GOOD SCOUT RECIPIENT, 2005.**

**AMERICAN COUNCIL OF ENGINEERING COMPANIES-WV - ENGINEERING EXCELLENCE AWARD, 2003, Gold Award - Water Treatment Category for the City of Fairmont Water Treatment Plant Project.**

**AMERICAN COUNCIL OF ENGINEERING COMPANIES-WV - ENGINEERING EXCELLENCE AWARD, 2002, Gold Award - Transportation Category for the Raleigh County Memorial Airport Runway Rehabilitation Project.**

**FINALIST - "COMMISSIONER'S ENGINEERING ACHIEVEMENT AWARD", WV DOT - DIVISION OF HIGHWAYS - 1999:** Large Roadway Category for WV10 Buffalo Creek - Taplin Project; 2000: WV10 Buffalo Creek - Huff Junction Project, both in Logan County, West

**AMERICAN COUNCIL OF ENGINEERING COMPANIES-WV - ENGINEERING EXCELLENCE AWARD, 1999, Silver Award - Water and Wastewater Category, for the City of Beckley Piney Creek Wastewater Treatment Plant Project.**

**ENTREPRENEUR OF THE YEAR AWARD - FINALIST, 1999 and 2000, Sharon L. Chapman, President, was named one of twenty finalists in the West Virginia Area Entrepreneur of the Year Award. Sharon was recognized for leading Chapman Technical Group to become one of the most highly regarded engineering firms in the state after the death of her husband and company founder, Harvey R. Chapman.**

**"EXPECT THE BEST FROM WEST VIRGINIA AWARD", 1998, Charleston Regional Chamber of Commerce. The Expect the Best program was created to recognize West Virginia businesses and organizations that promote quality of life at home, work, and in the community so that individuals and organizations will implement quality principles and practices leading to unprecedented pride and economic growth in West Virginia.**

**HONOR AWARD, West Virginia Chapter of the American Society of Landscape Architects, 1994, Shrewsbury Street Area Redevelopment Plan, for excellence in planning and design projects. Joseph E. Bird, ASLA, Project Manager.**

**"GOVERNOR'S AWARD FOR ENGINEERING EXCELLENCE", 1990, The West Virginia Chapter of the American Public Works Association, in recognition of outstanding Public Works Engineering and Design of Projects within West Virginia.**

**DUNDEE CEMENT COMPANY ANNUAL DESIGN AWARD, 1988, Yeager Airport Taxiway Overlay Project. Harvey R. Chapman, P.E., Project Manager.**

**AUSTIN C. PALMER "OUTSTANDING FACILITY DESIGN AWARD", 1988, City of Bridgeport Swimming Pool Complex. Harvey R. Chapman, P.E., Project Manager.**

**"GEORGE WARREN FULLER AWARD", Harvey R. Chapman, P.E., 1984, Robert G. Belcher, P.E., 2001, and Sharon L. Chapman, 2005, Jeffery D. Ekstrom, P.E., 2010, American Water Works Association, for distinguished service in the water supply field in the State of West Virginia.**



**JOSEPH E. BIRD, ASLA**  
**Senior Vice President**  
**Project Manager**

**EDUCATION**

West Virginia University, BSLA, 1978

**REGISTRATION**

Landscape Architect, West Virginia, 1981

**PROFESSIONAL  
HISTORY**

**August 1985 to Present: Chapman Technical Group**  
Senior Vice President and Project Manager.

**May 1978 to August 1985: Kelley, Gidley, Blair & Wolfe, Inc.**  
Landscape Architect and Project Manager.

Mr. Bird is a project manager and registered landscape architect. His experience ranges from large site development projects to the management of multi-discipline and architectural projects.

33 years professional experience.

**PROJECT  
EXPERIENCE**

**Site Development:** Site planning and project management for numerous projects throughout West Virginia ranging from small campus sites to large sites for commercial, government, industrial, and institutional development. Projects include military complexes, campuses, public housing developments and other public facilities.

**Parks and Recreation:** Projects include swimming pools, bathhouses, cabins and support facilities for the West Virginia Division of Natural Resources and similar facilities for county and municipal park systems. Also involved in the design of facilities such as softball fields, fishing access facilities, recreation facilities for prisons, as well as passive recreation areas for public and private clients.

**Miscellaneous:** Other project experience includes the urban planning and development, streetscape design, roadway and storm drainage projects, as well as the project management of numerous major architectural projects throughout West Virginia.

**AFFILIATIONS**

West Virginia Chapter of the American Society of Landscape Architects

**AWARDS**

Honor Award for Shrewsbury St. Redevelopment Plan  
West Virginia Chapter of American Society of Landscape Architects



**ROBERT G. BELCHER, P.E.**  
**Senior Vice President, Engineering  
and Project Officer**

**EDUCATION**

West Virginia Institute of Technology, BSCE, 1983

**REGISTRATION**

Civil Engineering, West Virginia, 1996  
Civil Engineering, Ohio, 2006

**PROFESSIONAL  
HISTORY**

**January 1987 to Present: Chapman Technical Group**  
Senior Vice President and Project Officer.

**June 1984 to January 1987: Regional Intergovernmental Council**  
Planning and Development Council for West Virginia Region III - Metropolitan  
Planning Organization for Charleston, WV, MSA.

27 years professional experience.

**PROJECT  
EXPERIENCE**

**Water Systems:** Design and project management for numerous water systems for both public and private water companies. Projects include new water treatment plants as large as 10 MGD, improvements to existing plants, water mains and distribution systems. Water storage projects include glass-lined steel tanks, welded high-strength steel tanks, and elevated pedestal tanks.

**Wastewater Systems:** Design and project management for numerous wastewater systems throughout West Virginia. Projects include new, secondary and tertiary wastewater treatment plants as large as 4.5 MGD, improvements to existing plants, small-flow treatment plants, new and rehabilitation of wastewater collection systems, and facility plan updates.

**Miscellaneous:** Design and project management for large highway and bridge projects, airport improvements projects, large stormwater management projects, as well as potable water and wastewater system design for site development projects throughout West Virginia.

**AFFILIATIONS**

Water Environment Association - WV Section  
Contractor's Association of West Virginia - Associate Member  
American Water Works Association - WV Section  
WV Society of Professional Engineers  
American Council of Engineering Companies - ACEC/WV  
WVUIT Civil Engineering Advisory Board  
WV Qualifications Based Selection (QBS) Council

**AWARDS**

George Warren Fuller Award, 2001



**JASON E. BROWN, PS**  
**Professional Surveyor**

**EDUCATION**

West Virginia State College, General Studies, 1991 to 2002  
West Virginia Institute of Technology, Paramedic Science, May 1994  
Glennville State College, A.S. Land Surveying, 1997 to 2002

**REGISTRATION**

Professional Surveyor, West Virginia, 2009.

**PROFESSIONAL HISTORY**

**January 2010 to Present: Chapman Technical Group**  
Professional Surveyor/Survey Project Manager.

**January 2008 to January 2010: S&S Engineers**  
Surveyor Assistant/CADD Technician.

**July 2005 to January 2008: Brown Drafting**  
Owner/Operator.

**September 2003 to July 2005: Garcelon Surveying**  
Surveyor Assistant/CADD Technician.

**May 2002 to September 2003: Triad Engineering**  
Survey Party Chief.

**January 1995 to December 2001: Chapman Technical Group**  
Survey Technician/Junior Construction Representative.

16 years professional experience.

**PROJECT EXPERIENCE**

**Highways:** Established control, site surveying, topographic surveying, courthouse research, drawing production, Right-of-Way Questionnaires, bore hole stake out, and all surveying associated with the initial design of West Virginia highways for numerous highway projects throughout the state.

**Site Development:** All types of surveying associated with site development, to include control, topographic boundaries, research, and drawing production. Projects include military complexes, public housing, commercial development, industrial and institutional complexes, churches, resorts and public facilities throughout the state.

**Parks and Recreation:** Associated surveying for projects including swimming pools, bathhouses, cabins and support facilities for the West Virginia Division of Natural Resources and similar facilities for county and municipal park systems.

**Water and Wastewater Systems:** Associated surveying for the design of water systems, sewer systems and water and wastewater facilities for private and public water companies. Projects include water treatment plants, water mains and distribution systems, and collection systems throughout the state.

**Airports:** Associated surveying for the design of runways, airport facilities, lighting, and asphalt design for holding pads for small and large airport facilities throughout the state.

**Boundary Surveys:** Provided full boundary surveys and ALTA surveys for military complexes, private residences, prison facilities, commercial sites, and all boundaries associated with various engineering projects throughout the state.

**Construction Observation:** Provided construction observation, field engineering and testing for numerous water, wastewater and airport projects throughout the state.

**AFFILIATIONS**

West Virginia Society of Professional Surveyors.



**PHILLIP A. WARNOCK, NCARB, AIA**  
**Project Architect**

**EDUCATION**

The University of Tennessee, BArch, 1995

**REGISTRATION**

Architect, West Virginia, 2003

Architect, Tennessee, 2002

**PROFESSIONAL HISTORY**

**September 2003 to Present: Chapman Technical Group**  
Project Architect.

**June 2002 to July 2003: ZMM**  
Architect.

**June 1995 to May 2002: Lockwood Greene**  
Intern Architect.

**August 1991 to July 1993: Omni Associates**  
Architectural Draftsman.

20 years professional experience with additional experience in construction, interior design and developing.

**PROJECT EXPERIENCE**

**Project Participation and Design:** Experience ranges from design, detailing and drafting through project management and construction administration of building projects in various states, including West Virginia, Tennessee, Kentucky and South Carolina. Project experience includes:

- Public School Facilities
- Community Centers
- Recreational Facilities
- Aviation Facilities
- Health Care/Hospice Facilities
- Medical and Psychiatric Clinics
- Pharmaceutical Facilities
- Research and Development Labs
- Office Buildings
- Rest Areas and Welcome Centers
- Historic Preservation
- Historic Renovation/Additions
- Adaptive Reuse
- Governmental Facilities
- Military Support Facilities/Armories
- Multi-Family Housing
- ADA Assessments
- HUD 811, 202 and ECHO Facilities
- Small Cities Block Grants
- Public Safety Facilities

**AFFILIATIONS**

National Council of Architectural Registration Boards (NCARB)  
American Institute of Architects (AIA)

**AWARDS**

**2008 AIA West Virginia Honor Award for Excellence in Architecture**  
For the historic preservation of the Upshur County Courthouse.

**2010 AIA-West Virginia Merit Award for Achievement in Architecture**  
For the I-79 Rest Areas in Burnsville



**W. THOMAS CLOER, III, AIA, NCARB**  
**Project Architect**

**EDUCATION**

University of Tennessee, BArch, 2001

**REGISTRATION**

NCARB Registered Architect, 2009  
IDP Program completed.

**PROFESSIONAL HISTORY**

**October 2006 to Present: Chapman Technical Group**  
Project Architect and Architectural Designer

**2001-2006: NVisions Architect**  
Architect Intern and Architectural Designer

10 years professional experience.

**PROJECT EXPERIENCE**

Experience ranges from drafting, detailing and design through project management and construction administration of building projects throughout West Virginia including the following project types:

Public School Facilities  
Government Facilities  
Office Buildings  
Medical Office Facilities  
Single Family Housing  
Multi-family Housing  
Recreational Facilities  
ADA Assessments  
Site Planning

**AFFILIATIONS**

American Institute of Architects  
City of St. Albans Property and Maintenance Board, Member  
City of St. Albans Historic District Committee, Member  
Boy Scouts of America Troop 250 Committee Member





**ROBERT D. DINSMORE**  
**Project Designer**

**EDUCATION**

West Virginia University, BSLA, 2010

**PROFESSIONAL HISTORY**

**June 2010 to Present: Chapman Technical Group**  
Project Designer.

**Fall 2008 to Fall 2009: West Virginia University**  
Teaching Assistant, Intro to Landscape Architecture Graphics

**Fall 2009 to Spring 2010: West Virginia University**  
Teaching Assistant, History of Landscape Architecture

**Summer 2008: Austin Outdoor Landscape Professionals**  
Landscape Architecture Intern,

**2006 to 2007: Austin Outdoor Landscape Professionals**  
Project Manager

1 year of professional experience. Mr. Dinsmore is responsible for the design and development of urban design projects, parks and recreation projects, and landscape design.

**PROJECT EXPERIENCE**

**Urban Design:** Designed and developed a master plan as part of his senior thesis for the Boston waterfront development.

**Recreation Design:** Developed master plans and designs for various facilities as part of scholastic studies.

**Landscape Design:** Designed and installed numerous landscape plans for high end residential and resort projects constructed in Florida.

**AFFILIATIONS**

American Society of Landscape Architects WV Chapter (Chapter Director)  
Sigma Lambda Alpha Landscape Architecture Honorary (WVU President)  
G.E.R.M.A.N. Club of Virginia Tech  
Sunnyside Up Campus Neighborhoods Revitalization Corporation (Volunteer)

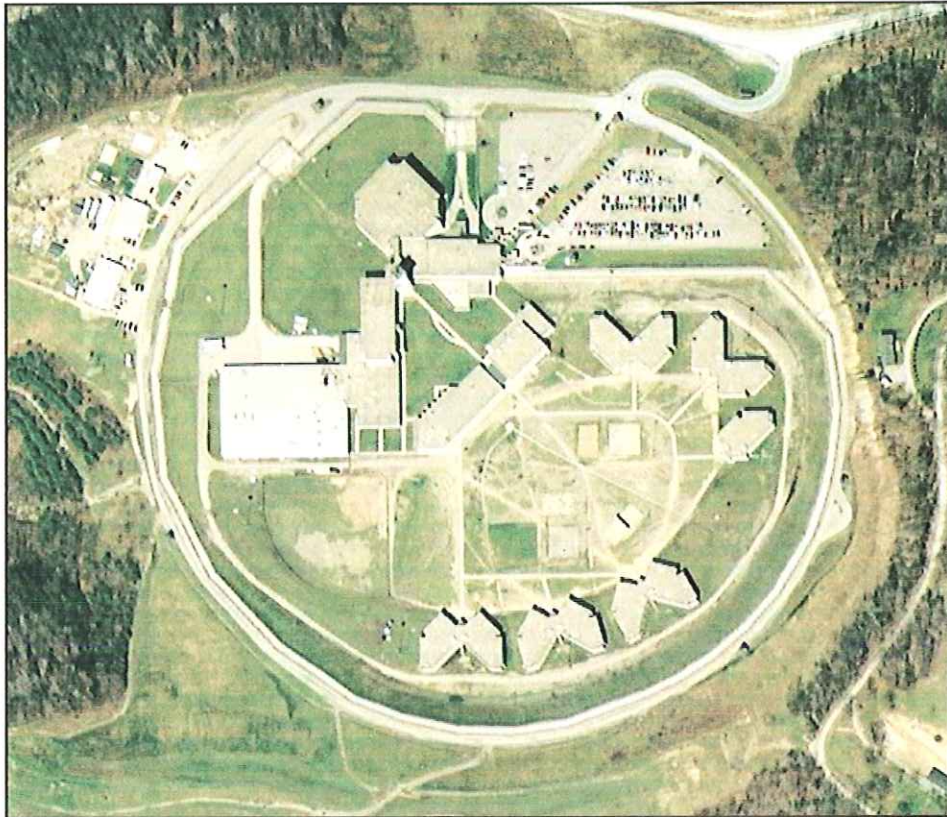
**AWARDS**

ASLA Student Honor Award Winner 2010  
ASLA Student Merit Award Nominee 2010



## Mount Olive Correctional Facility

90027



### **West Virginia Regional Jail and Correctional Authority**

1325 Virginia Street, East  
Charleston, West Virginia 25301

Design and construction inspection services for all site development project elements for a new 792 bed maximum and medium security state-of-the-art correctional center. Firm's responsibility encompasses all on-site (within the property boundaries of 110-acre site) project civil engineering and landscape architectural design including site grading and drainage, storm sewers, sanitary sewerage, potable and fire water supplies, roads and parking facilities, outdoor recreational facilities, and the interfacing and coordination with engineering consultants providing design of utilities to the property boundaries and with various regulatory agencies.



### **US Department of Labor**

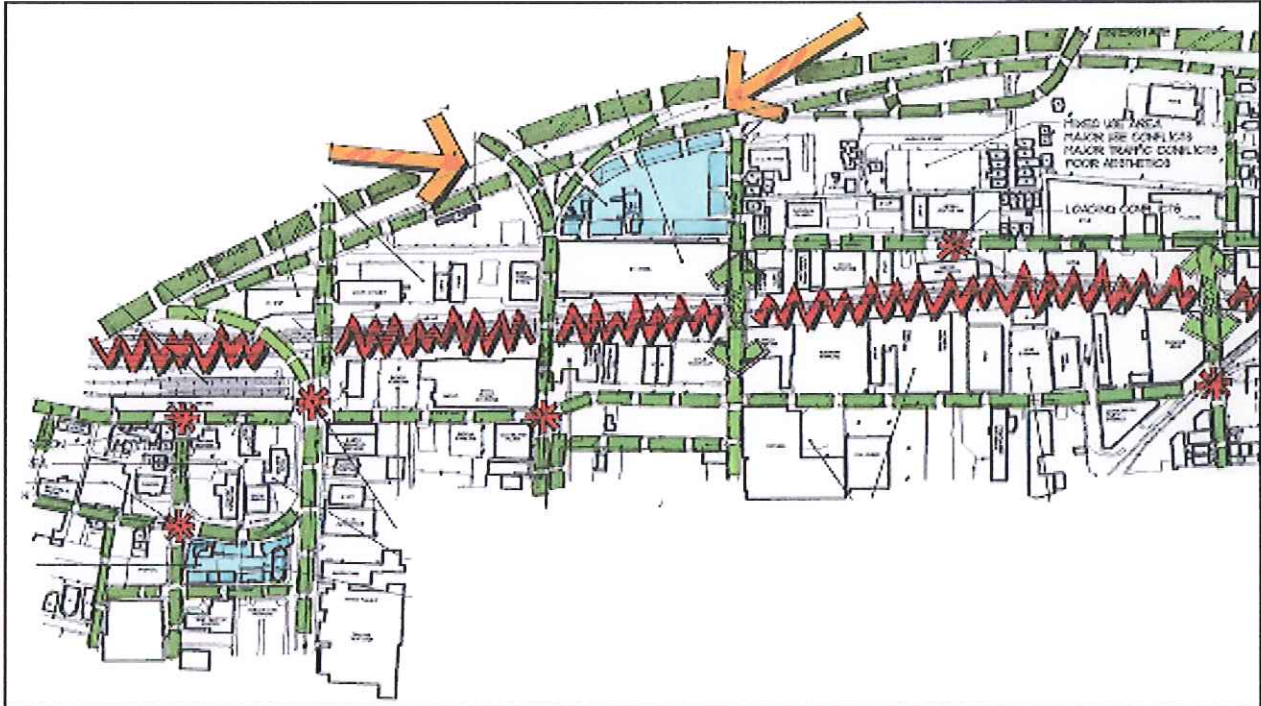
State Capitol Complex, Building 6  
1900 Kanawha Boulevard, East  
Charleston, West Virginia 25305

Site design and structural engineering for an 11-building complex located on a 24 acre site. Site design included earthwork and grading, all utilities including storm and sanitary sewers, domestic and fire protection water systems, site lighting and electrical distribution, and pavement and roadway design. Structural engineering included design and drafting for the structural systems of all buildings.



## Shrewsbury Street Redevelopment Plan

89008



**Charleston Urban Renewal Authority**  
815 Quarrier Street, Suite 244  
Charleston, West Virginia 25301



Chapman Technical Group was commissioned by the Charleston Renaissance Corporation "to create a concrete plan, based on existing conditions, which suggests a strategy for the retention of existing viable businesses, the retention, improvement or relocation of marginal business, and the potential market for new businesses." With the assistance of an economic and real estate planner, CTG evaluated the existing physical and economic conditions of the area and public perceptions of the Shrewsbury Street Area. The Study presented the lack of recreational facilities, landscaping, cohesive appearance, and access into the area. A Conceptual Site Plan and Site Analysis Plan were a result of the study, as well as renderings to help the client visualize proposal information. CTG presented many long and short-term actions that would improve the aesthetics of the area, help attract business, and create a positive climate for growth. In 1994, this project received an Honor Award, the highest award available, from the West Virginia Chapter of the American Society of Landscape Architects.



**Seneca Rocks Visitors Center**

Seneca Rocks, West Virginia

Construction Cost: \$600,000 (sitework only)

Completion Date: 1997

Contact: Missy Maxwell (215) 985-4410

Working with architectural firm Susan Maxman Associates, Chapman Technical Group provided site development services for a new visitor's center that would provide visitors a unique experience of Seneca Rocks, a popular tourist attraction for the state. Pedestrian walkways and vehicular circulation were emphasized in the project as well as integration into the existing site. Susan Maxman Architects relied on Chapman Technical Group for site grading, drainage, utilities, and material selection. Visitors can walk existing trails and enter the new facility through a series of raised walkways, pedestrian bridges, and overlooks.

GSD126428

RFQ No. \_\_\_\_\_

STATE OF WEST VIRGINIA  
Purchasing Division

**PURCHASING AFFIDAVIT**

West Virginia Code §5A-3-10a states: No contract or renewal of any contract may be awarded by the state or any of its political subdivisions to any vendor or prospective vendor when the vendor or prospective vendor or a related party to the vendor or prospective vendor is a debtor and the debt owed is an amount greater than one thousand dollars in the aggregate.

**DEFINITIONS:**

"Debt" means any assessment, premium, penalty, fine, tax or other amount of money owed to the state or any of its political subdivisions because of a judgment, fine, permit violation, license assessment, defaulted workers' compensation premium, penalty or other assessment presently delinquent or due and required to be paid to the state or any of its political subdivisions, including any interest or additional penalties accrued thereon.

"Debtor" means any individual, corporation, partnership, association, limited liability company or any other form or business association owing a debt to the state or any of its political subdivisions. "Political subdivision" means any county commission; municipality; county board of education; any instrumentality established by a county or municipality; any separate corporation or instrumentality established by one or more counties or municipalities, as permitted by law; or any public body charged by law with the performance of a government function or whose jurisdiction is coextensive with one or more counties or municipalities. "Related party" means a party, whether an individual, corporation, partnership, association, limited liability company or any other form or business association or other entity whatsoever, related to any vendor by blood, marriage, ownership or contract through which the party has a relationship of ownership or other interest with the vendor so that the party will actually or by effect receive or control a portion of the benefit, profit or other consideration from performance of a vendor contract with the party receiving an amount that meets or exceed five percent of the total contract amount.

**EXCEPTION:** The prohibition of this section does not apply where a vendor has contested any tax administered pursuant to chapter eleven of this code, workers' compensation premium, permit fee or environmental fee or assessment and the matter has not become final or where the vendor has entered into a payment plan or agreement and the vendor is not in default of any of the provisions of such plan or agreement.

Under penalty of law for false swearing (*West Virginia Code* §61-5-3), it is hereby certified that the vendor affirms and acknowledges the information in this affidavit and is in compliance with the requirements as stated.

**WITNESS THE FOLLOWING SIGNATURE**

Vendor's Name: CMA Engineering

Authorized Signature: Daniel L. Elton Date: 2/09/2012

State of WV

County of KANAWHA, to-wit:

Taken, subscribed, and sworn to before me this 9 day of FEBRUARY, 2012

My Commission expires SEPTEMBER 16, 2020.

**AFFIX SEAL HERE**

NOTARY PUBLIC

Cindy L. Looney

