



**Expression of Interest**  
Archaeological Services for New Logan Site  
Logan County, West Virginia  
RFQ GSD126410  
September 19, 2011



RECEIVED

2011 SEP 19 AM 10: 22

WV PURCHASING  
DIVISION

**Prepared for:**  
State of West Virginia  
Department of Administration  
Purchasing Division  
P.O. Box 50130  
Charleston, WV 25305-0130

**Prepared by:**  
GAI Consultants, Inc.  
500 Summers Street, 3rd Floor  
Charleston, WV 25301  
304.926.8100 | [gaiconsultants.com](http://gaiconsultants.com)



**gai consultants**  
transforming ideas into reality.

September 16, 2011

Project C000034.60.300

Krista Ferrell  
State of West Virginia  
Department of Administration  
Purchasing Division, Bldg.15  
2019 Washington Street, East  
Charleston WV 25305-0130

RE: Expression of Interest GSD126410  
Archaeological Services for New Logan Site


Dear Ms. Ferrell,

The enclosed Expression of Interest demonstrates our related archaeological expertise, qualifications, and familiarity with recovery, analysis, and documentation at the significant New Logan Site project. As a result of archaeological monitoring, excavation, and recovery of prehistoric burials at the site of the new State Office Building construction, the Cultural Resources Group at GAI Consultants (GAI) has coordinated archaeological activities with the West Virginia General Services Division (GSD) and the West Virginia Division of Cultural and History (WVDCH), and is well aware of the sensitive and confidential nature of the project.

GAI has conducted engineering, environmental, and cultural resource projects in West Virginia for a variety of federal, state, and local entities since 1988, and for the West Virginia Department of Transportation-Division of Highways (WVDOH) since 1990, primarily under consecutive IDIQ contracts. GAI received a WVDOH Engineering Excellence award, primarily for our cultural resource management of sensitive consultations with Native American representatives. Our cultural resources investigations throughout the state of West Virginia have provided extensive experience in the history and prehistory of West Virginia.

Given GAI's established commitment to the New Logan Site to date and our understanding of the project scope and involved parties, we are especially prepared and interested in following through on this important and sensitive project. Your serious consideration is appreciated.

Sincerely,  
GAI Consultants, Inc.



Benjamin Resnick, M.A., RPA  
Manager, Cultural Resources Group



James A. Hemme, P.E., L.R.S.  
Senior Engineering Manager  
Charleston Office

BR:JAH/lms

Enclosures

## **Expression of Interest (RFQ GSD126410)**

Archaeological Services for New Logan Site  
Logan County, West Virginia

Submitted to:

Krista Ferrell, Buyer  
State of West Virginia  
Department of Administration  
Purchasing Division  
2019 Washington Street East  
Charleston, West Virginia 25305-0130

Submitted by:

GAI Consultants, Inc.  
Charleston Office  
500 Summers Street, 3<sup>rd</sup> Floor  
Charleston, West Virginia 25301

September 16, 2011

# Table of Contents

Expression of Interest .....	1
Archaeological Services for New Logan Site .....	1
RFQ GSD1264610.....	1
1. Concept.....	1
a. Project.....	1
b. Approach (anticipated concepts, methods and sequence) .....	1
<i>Parking Lot Approach</i> .....	2
<i>Building Site Approach</i> .....	3
c. Schedule .....	3
d. Similar Project Experience .....	3
<i>Prehistoric Site Excavation Experience</i> .....	3
<i>Burial Excavation Experience</i> .....	4
2. Team Qualifications .....	4
a. Point-of-Contact .....	4
b. Assigned Staff / Resumes .....	4
c. Other Team Members.....	5
d. Ability to Complete New Logan Site Project .....	5
e. Statement of Acceptance.....	5
f. Litigation or Arbitration Proceedings.....	5
3. Project Organization.....	6
a. Proposed Staff Assignments .....	6
GAI Offices.....	6
<i>Organization Chart</i> .....	6
b. Team Ability to Provide Services .....	6
4. Demonstrated Project Experience .....	7
a. Project Experience .....	7
b. References.....	12

## Appendices

- A Key Staff Resumes
- B Signed EOI Forms
- C Notarized Purchasing Affidavit

# Expression of Interest

## Archaeological Services for New Logan Site

RFQ GSD1264610

### 1. Concept

#### a. Project

West Virginia General Services Division (WVGSD) is constructing a new state office building and associated parking lot and utilities in Logan, Logan County, West Virginia. The construction site location falls within a previously recorded Native American village and cemetery site (Site 46LG4). The new office building and associated parking area is being constructed with State funding and is not required to comply with federal statutes, such as the National Historic Preservation Act of 1966, as amended.

During construction activities of the new state office building in January 2011, human skeletal remains were inadvertently exposed and the construction contractor immediately notified the WVGSD and coroner, pursuant to West Virginia State Code §29-1-8a and other state burial statutes. The West Virginia Division of Culture and History (WVDCH), which serves as the State Historic Preservation Office (SHPO), was notified of the discovery based on the probable prehistoric-era age of the remains. The Deputy State Historic Preservation Officer convened an ad hoc burial committee to determine a plan for excavation and removal of burials. Based on the approved burial plan, if a feature was determined to be a burial pit, the feature was excavated according to the agreed upon burial plan. GAI Consultants, Inc. (GAI) conducted the archaeological monitoring and excavation activities at the proposed office building site.

This RFQ covers archaeological services for a proposed approximately two-acre parking lot associated with the new state office building, and continued archaeological investigations for the proposed building site. The work will include: 1) a Phase I review to determine if historical/archaeological issues exist for the proposed parking area; 2) possible feature excavation and removal; 3) continued archaeological services on the building construction site, as necessary; and 4) analysis and preparation of artifacts for curation, interpretation of the findings, and preparation of a report that details the archaeological services for submission to WVGSD and SHPO for review and approval. This project may also include other related services.

Our goal for project completion is to provide the archaeological services in a manner that meets the needs of WVGSD's schedule, complies with the approved burial plan, provides a meaningful, yet cost effective approach to conducting archaeological field investigations, analyzing artifacts, and interprets the information in a report that is acceptable to the WVGSD and SHPO. It is understood that fieldwork will be coordinated with WVGSD and the existing building construction contractor. Weekly progress reports can be provided, if requested. These services will be conducted under the supervision of staff that meet or exceed the Secretary of Interior's *Standards and Guidelines for Archaeology and Historic Preservation (48 FR 44716-44742)*.

GAI understands that any changes to the work in the contract will only occur after receipt of a change order. Oral statements or commitments between a GAI representative and any State personnel that differ from the contract are not binding. If changes are necessary, a formal Change Order approved by Purchasing Division will be required prior to initiating any changes in the contract.

#### b. Approach (anticipated concepts, methods and sequence)

GAI will contact WVGSD to discuss the project workplan, develop the schedule for fieldwork and deliverables, and discuss any issues or concerns. The workplan, schedule, and labor rates will be submitted to WVGSD for final approval.

### *Parking Lot Approach*

Human remains have been identified within the proposed parking lot area during excavation for a utility line. This approximately two-acre lot is currently covered with a layer of gravel. For the parking lot, GAI will follow a sequence of four steps for the archaeological services that include: 1) a Phase I review to determine if archaeological issues exist; 2) identify and sample prehistoric cultural features to determine feature type (e.g. burial, fire pit, or storage pit); 3) excavate and remove burial features according to the approved burial treatment plan; and 4) analyze the artifacts and interpret the findings in a report submitted to WVGSD and SHPO for review and approval.

Step 1: Phase I review will include background research on previous archaeological studies of this site on file at WVDCH, review of maps indicating prior use of this 2-acre lot, and review of proposed project design maps indicating areas that will result in disturbances to intact soils beneath the (gravel) covered parking lot. This information can be used to determine the extent of the archaeological subsurface investigations.

Step 2: Feature identification and sampling focuses on removing burials from areas that will be disturbed by planned construction activities. Using the information obtained in Step 1, GAI will work with WVGSD to develop a plan to identify and excavate burial features that may be disturbed by WVGSD's proposed activities. This could potentially include machine trenching down to the surface of intact soils and/or the depth of the proposed ground disturbing activities. Based on GAI's previous experience on this project, we anticipate that the intact archaeological deposits, including potential burial features, if present, to be exposed within two feet of the existing ground surface. The machine excavations would be directed and monitored by an archaeologist. Once the intact surface is mechanically exposed, this would be followed by shovel skimming to expose archaeological features in advance of construction activities. For features large enough to possibly contain human remains, GAI will excavate a sample (typically one fourth of the feature). If there is no evidence of human remains, the feature will be documented with closing notes and photographs, but no additional excavation will be undertaken.

Step 3: If a burial feature is identified, GAI will notify its Point of Contact (POC) at WVGSD via e-mail on the day of discovery of a burial feature associated with this project. The feature will be excavated according to the approved burial plan. At the end of each week, GAI will deliver any recovered human remains to a WVGSD representative for secured storage until delivery to the Seneca Nation.

Step 4: Prehistoric artifacts retained from feature sampling and determined not to contain human remains will be processed at our archaeology laboratory. GAI will work with WVGSD to determine the level of analysis required. Our analytical approach will focus on artifacts recovered from non-burial features, but will also include the field description of burial-associated artifacts (grave goods). GAI personnel can perform lithic, ceramic, and faunal analysis. Historic-era artifacts reflect twentieth-century activities at the site, resulting from the growth and development of Logan; it is anticipated that these materials will not be retained or analyzed.

Prehistoric pottery is the most useful artifact type to provide information on temporal period of occupation and identification of cultural affinity. These sherds will be sorted by temper and surface finish and descriptive attributes of rim treatment, surface finish, form, and decoration will be recorded. Based on these characteristics, an attempt will be made to classify sherds into previously defined ceramic types.

Prehistoric projectile point types can also convey information on the date of the archaeological features in this portion of Site 46LG4. Analysis of stone tools and debitage provide insights into tool manufacture, lithic procurement (including through trade and exchange), and use activities at the site. To collect this data, GAI will sort lithic artifacts according to morphological classes and specific types, lithic raw material types, weight, size, cortex, and flake types (related to reduction activities or tool types). Fire-cracked rock (FCR) will be counted and weighed according to provenience.

Botanical remains, which can provide information regarding subsistence activities and the season of occupation, are typically recovered from flotation samples. Flotation samples will be collected from some of the sampled non-burial features. After drying, these samples will be rebagged and prepared for long-term curation, along with the other artifacts and field documents. If requested, GAI can process a portion of flotation samples and separate out the light fraction, which contains the botanical remains. GAI will submit the botanical samples to Justine Knight, a GAI subconsultant with years of experience in this field.

GAI will prepare a technical report for this project that synthesizes that information from GAI's archaeological services for this contract. Report contents will include an abstract, introduction, environmental setting, site-specific cultural overview, methodology, results, analysis, and conclusions, along with appropriate appendices, (artifact catalog and revised site form). The report will be well-illustrated with photographs, drawings of features (planviews and profiles), and site plan maps depicting the locations of both archaeological activities and identified features. The number of paper copies will be specified by WVGSD after contract award. GAI will also submit at least one electronic copy of the report to WVGSD.

The artifacts, field notes, and associated information for the project will be prepared for delivery to West Virginia Division of Culture and History.

#### *Building Site Approach*

GAI has previously conducted archaeological services including, monitoring, test unit excavations, feature sampling, burial excavations, and site mapping in the building site area and is very familiar with this work location. For the building site, GAI will follow a sequence of three steps for the archaeological services (as needed) that include: 1) locate prehistoric cultural features and identify feature type; 2) excavate and remove burial features according to the approved burial treatment plan; and 3) analyze the artifacts and interpret the findings in the report that also includes findings from the 2-acre parking lot area for review and approval by WVGSD and SHPO.

Feature identification at this location could potentially include monitoring excavations and investigating features, as they are identified. If a burial feature is identified, excavation would quickly proceed while construction work continued in other locations. Like Step 3 under *Parking Lot Approach*, GAI will notify its POC, excavate the burial according to the approved burial treatment plan, and deliver the human remains to a WVGSD representative at the end of the week for secure storage. The results of the fieldwork, laboratory analysis, and interpretations would be included in the report for this project.

#### *c. Schedule*

The schedule will be developed in consultation with WVGSD. Due to the nature and duration of the project, GAI is aware that the schedule has to be flexible. GAI has sufficient personnel to mobilize an archaeological field crew on short notice to meet the client's scheduling requirements.

#### *d. Similar Project Experience*

GAI has conducted numerous large-scale prehistoric site excavations that require feature excavations, artifact analysis, and preparation of a report, including several in West Virginia. GAI also has extensive experience in burial excavations. GAI's previous investigations at the new State Office building site in Logan resulted in the sampling over 80 features, of which 40 were burials that were excavated according to an approved burial treatment plan. Part 4 (Demonstrated Project Experience) below provides detailed information on several of these projects. Each of the projects presented in this Expression Of Interest required archaeological field excavation, laboratory analysis, and a technical report of the findings that was approved by SHPO.

#### *Prehistoric Site Excavation Experience*

GAI conducted Phase I/II archaeological investigations for the Romney Bridge Replacement project in Hampshire County, West Virginia. Phase II testing of Site 46Hm63 resulted in the identification and excavation of features for this occupation which dated to approximately 3,000 years ago. The features and artifacts were analyzed and resulted in a report that was submitted to and approved by the client (West Virginia Division of Highways) and WV SHPO.

GAI conducted Phase I/II/III archaeological excavations at Site 46Ni267, in Nicholas County, West Virginia. These investigations produced over 38,000 artifacts and resulted in the identification and excavation of 24 cultural features. Analysis determined that the site was occupied several times between 1,000 and 3,000 years ago. The results were presented in a report that was submitted to and approved by the client (West Virginia Division of Highways) and the WV SHPO.

Archaeological services were undertaken for Madison Coal and Supply Company for a project area along the edge of a riverbank in Mason County, West Virginia. The archaeological investigations identified and

tested two prehistoric sites. One of these sites (46Ms284) yielded features, which were excavated, and a range of prehistoric artifacts. Analysis of the artifacts enabled GAI to determine that the site had been occupied over five different times during the last eight thousand years. The report was submitted to and approved by WV SHPO.

#### *Burial Excavation Experience*

GAI conducted archaeological excavation and analysis of the Cotiga Mound, an Early Woodland (Adena) burial mound in southwestern West Virginia along the Tug Fork of the Big Sandy River. The mound contained a central log tomb surrounded by a rock ring of local sandstone cobbles. Excavations resulted in the identification, excavation, and repatriation of 19 cremated human remains, which dated to approximately 2,000 years ago. The results were presented in a report a report that was submitted to and approved by the client (West Virginia Division of Highways) and the WV SHPO.

Excavations were conducted by GAI at two Late Archaic (4000 B.P.) sites along on West Virginia Route 2 near the Ohio River in Brooke County, West Virginia. Both Native American sites indicated that people camped near the Ohio River and collected shellfish as a food source. Six Native American burials were excavated. Excavations also produced more than 70,000 artifacts. After completion of the fieldwork and analysis, the human remains were returned to Native Americans for reburial. GAI received the West Virginia Division of Highways 2001 Engineering and Excellence award for our work for this project. The report was reviewed and accepted by WV SHPO.

GAI completed archaeological investigations at selected sites impacted by the construction of the Interstate 279/579 project in the City of Pittsburgh. The project area included a forgotten Voegtly Church Cemetery that was used until capacity was reached in 1861. Mechanical stripping with Gradall was performed to delineate grave outlines then, GAI continued the excavation by hand. Surveyors used CADD systems to construct a site map of the burials. Each burial was assigned a number and all soil was sifted through quarter-inch mesh. GAI recorded data at each grave, including dimensions, excavation date, special orientation, coffin decoration, cultural associations and osteological data. GAI archeologists clocked 10 hour days, 6 days a week to uncover and analyze 727 burials.

## 2. Team Qualifications

### a. Point-of-Contact

Benjamin Resnick, M.A., RPA  
GAI Consultants, Inc.  
385 East Waterfront Drive  
Homestead, PA 15120-5005

Telephone: 412.476.2000 x1200

Email: [b.resnick@gaiconsultants.com](mailto:b.resnick@gaiconsultants.com)

  
Signature (Contract Authorization)

September 16, 2011  
Date

### b. Assigned Staff / Resumes

James Hemme  
Benjamin Resnick  
Lori A. Frye  
J. T. Sutton  
Marie Pokrant  
Marina Davis  
Colleen Dugan Madore

Advisor/Office Manager, Charleston Office  
Project Manager  
Principal Investigator  
Field Director  
Field Director  
Lithic Analyst  
Historic Materials Analyst

Resumes (see Appendix A)



### c. Other Team Members

Justine Woodard McKnight, Archaeobotany Consultant (MBE/DBE) (if needed). Ms. McKnight provides analytical and research services to archaeologists, historians and environmental consultants, including GAI Consultants. With over 16 years' experience performing paleoethnobotanical analysis and related services, McKnight is capable of handling a wide range of research issues in a wide variety of reporting formats.

### d. Ability to Complete New Logan Site Project

Based on our excavations and recovery at the New Logan Site, and our detailed knowledge of the artifact assemblage, GAI is exceptionally prepared and fully staffed for providing the required archaeological services (research, fieldwork, analysis, and documentation) through completion in its entirety. As noted above, GAI will only employ a subconsultant if WVGSD requires paleoethnobotanical analysis of botanical remains.



Of note, our Cultural Resources Group facilities include a 1,000-square foot laboratory, and office areas that provide a safe, secure environment for managing all aspects of contract requirements. An additional 1,500+-square foot facility is used for long-term artifact curation. The laboratory is both naturally and artificially lighted and contains storage cabinets and shelves, work tables, sinks, computers, flotation device, and a photographic darkroom.

### e. Statement of Acceptance

GAI Consultants, having conducted the fieldwork at the New Logan Site, fully understands the project and accepts that any work produced as a result will become General Services Division property to be used or shared by the Agency as deemed appropriate.

### f. Litigation or Arbitration Proceedings

GAI has been involved in a limited number of legal claims/disputes--none involving WVGSD or any West Virginia agencies. GAI is confident in its ability to successfully defend, or settle on favorable terms, all such outstanding claims. Furthermore, for the protection of GAI and its clients, GAI always maintains a comprehensive insurance program, which includes professional liability, workers' compensation, comprehensive general liability, automobile and umbrella policies, with limits sufficient to cover the defense and payment of all outstanding claims against GAI. In the opinion of GAI's management, no claim or lawsuit currently pending against GAI will materially affect GAI's ability to perform this project.

### 3. Project Organization

#### a. Proposed Staff Assignments

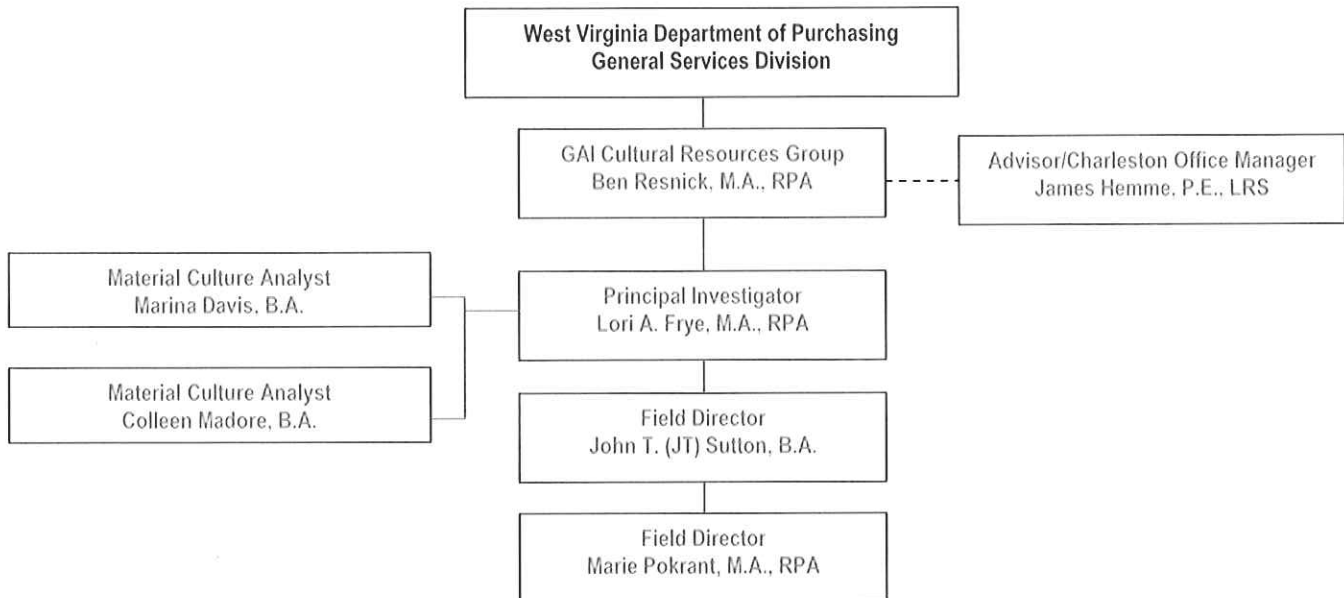
##### GAI Offices

Charleston Office (Management)  
500 Summers Street, 3<sup>rd</sup> Floor  
Charleston, WV 25301

Pittsburgh Office (Cultural Resources Laboratory)  
385 East Waterfront Drive  
Homestead, PA 15120-5005

#### Organization Chart

Organization Chart of Key Project Personnel



#### b. Team Ability to Provide Services

Of the GAI team members included in this Expression of Interest, Ben Resnick, M.A., RPA (Cultural Resources Manager/Project Manager), Lori Frye, M.A., RPA (Principal Investigator), JT Sutton, B.A. (Field Director/Project Archaeologist), Marie Pokrant, M.A., RPA (Field Director), Marina Davis (Material Culture Analyst), and Colleen Madore (Material Culture Analyst) participated in GAI's previous work at the New State Office Building in downtown Logan, West Virginia. Resnick, Frye, and Sutton participated in several conference calls with WVGSD personnel. GAI's key staff are especially qualified and experienced with West Virginia projects (particularly with the New Logan Site project), and are best suited to complete the artifact analysis and report preparation services required under this EOI.

## 4. Demonstrated Project Experience

### a. Project Experience

**Project Name:** New Logan Site (State Office Building)

**Project Location:** Logan County, West Virginia

**Project Description:** GAI conducted archaeological investigations between February and September 2011, for the West Virginia General Services Division in association with the construction of a New State Office Building in Logan, West Virginia.

Specific tasks included archaeological monitoring of construction activities, feature sampling and excavation, artifact analysis, and records of investigations. Progress was documented with updated feature tables, site feature maps, and progress reports provided to the client. The project involved conference calls with state and Native American representatives and removal of Native American burials in a manner identified by a burial committee. A management summary was provided to the client.



**Service Provided:** Archaeological Monitoring, Feature Excavations, Laboratory Analysis, and Management Summary

**Project Size:** Approximately 102 x 141 feet (36 x 43 meters)

**Project Owner:** Robert P. Krause, P.E., AIA Telephone: 304.558.9018

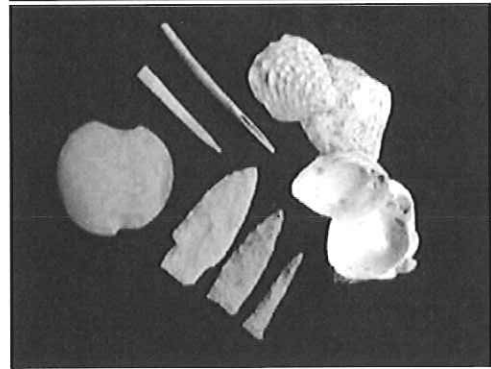
**Contract Data:** 85% complete. Per the guidance of WVGSD, we will continue to conduct archaeological monitoring for a proposed parking lot area at a future date.

**Project Name:** Follansbee-Weirton Road Upgrade: East Steubenville Site

**Project Location:** East Steubenville ridgespur overlooking the Ohio River (west) and the town of Follansbee (south)

**Project Description:** In advance of a roadway widening project on West Virginia Route 2, GAI conducted Phase III data recovery excavations at two Late Archaic (4000 B.P.) sites. Prehistoric Native Americans of the Panhandle Archaic culture camped on a steep ridgespur above the Ohio River 4,000 years ago. The shellfish these ancient people gathered from the Ohio River and carried 300 feet up the steep bluff produced a shell midden that preserved human burials and more than 70,000 artifacts for thousands of years, until recovered by GAI archeologists.

Data recovery excavations found five prehistoric human burials prompting consultation and a Memorandum of Agreement between the FHWA, WVDOT, WVSHPO, and interested parties to include Native American groups, to insure appropriate treatment of the human remains.



**Services Provided:** Phase III Data Recovery, NAGPRA, Memorandum of Agreement, Web Site

**Project Size:** 6,500 sq. meters (Steubenville Site)      6,000 sq. meters (Highland Hills Site)

**Project Owner:** WVDOT-DOH      Ben Hark      304 558-9670  
Building 5, Room 450  
1900 Kanawha Blvd E  
Charleston, WV 25305

**Contract Data:** Completed project, public outreach, and web site in 2002

**Additional Info:** The web site developed by GAI for this project was written and illustrated first for the layperson, then supplemented with detailed technical data and osteological, faunal, shell, and floral analyses reports. Watercolor illustrations depict the lifeways of the Panhandle Archaic culture.

GAI received the West Virginia Division of Highways, 2001 Engineering Excellence Award in the Planning & Environmental Category, primarily for managing sensitive consultations with Native American and interested agency parties, and for bringing this Phase I/II/III road upgrade project to successful completion.

---

**Project Name:** Welton Spring Substation, Potomac-Appalachian Transmission Highline (PATH) Project

**Project Location:** Moorfield Township, Hardy County, West Virginia

**Project Description:** Phase I archaeological studies were conducted to meet USACE Nationwide Permit Program General Condition 18 (historic properties). GAI excavated 2,017 shovel test pits (STPs), identified 19 precontact archaeological sites, 16 isolated finds, and recovering 440 artifacts. While the sites were recommended not eligible for listing in the National Register of Historic Places (NRHP), GAI recommended supplemental placement of up to three 1x1-meter<sup>2</sup> test units at Sites 1, 7, and 16 (given the recovery of Early Archaic diagnostic tools) if they could not be avoided by planned activities. Such test unit excavation would confirm the lack of features, patterning, and additional diagnostic materials and would thus support a recommendation to WVDCH that the sites are not eligible for NRHP listing.

**Service Provided:** Phase I Archaeological Investigation

**Project Size:** 123-acre APE

**Project Owner:** Linda Erdmann Telephone: 308.788.0548  
Power Engineers, Inc.  
3940 Glenbrook Drive  
Hailey, Idaho 83333

**Contract Data:** Completed 2009

**Additional Info:** None

---

**Project Name:** Hardy Transmission and Storage Project

**Project Location:** Hardy County, West Virginia and multiple counties in Virginia

**Project Description:** GAI Consultants conducted Phase I, II, and III cultural resources investigations of the 50-mile corridor Hardy Transmission and Storage project, identifying approximately 35 archaeological sites and 23 architectural resources in or near the project area. Two architectural resources were recommended eligible to be listed in the National Register of Historic Places, both of which were avoided. Of six potentially eligible NHRP sites, three were avoided during construction, while the remaining three, identified as occupied between the Late Archaic and Late Woodlands periods, required Phase II testing. GAI completed a Phase III data recovery of Site 44GN115, which was used by Native Americans between approximately 12,000 and 4,000 years ago.



GAI found that one site in particular contained a buried soil with prehistoric features, one of which included a radiocarbon date of about 6,000 years ago. While the portion of the site with the buried soil was recommended to contribute to the site's eligibility, portions of the site lacking the buried soil yielded lower prehistoric artifact densities from culturally mixed and often-disturbed contexts and was not recommended to contribute to the site's NRHP eligibility. The client was able to avoid NRHP-eligible portions of the

site by routing the pipeline away from the buried soil resulting in a No Adverse Effect to the NRHP-contributing portions of the site.

Service Provided: Phase I/II/III Cultural Resource Investigations  
Project Size: 50-mile corridor  
Project Owner: Rebekah Hovermale Telephone: 304.357.2965  
NiSource  
Natural Resource Permitting  
1700 MacCorkle Ave., SE  
Charleston WV 25314  
Contract Data: Completed 2009  
Additional Info: Geomorphological reconnaissance of the entire corridor assessed approximately 30 percent of the project area as having no potential for archaeological sites and, consequently, not subject to subsurface survey. This resulted in an expedited field approach as well as cost savings to the client.

---

**Project Name: MEMCO/AEP Riverbank Restoration**

Project Location: Mason County, West Virginia

Project Description: GAI conducted Phase I/II Archaeological Investigations on a terrace along the north bank of the Kanawha River to evaluate the National Register eligibility of Site 46Ms284 and to assess the potential eligibility of Site 46Ms298. Site 46Md284 excavations recovered 811 prehistoric artifacts and 287 historic specimens with evidence of Early Archaic, Middle Archaic, Late Archaic, Middle Woodland and Late Woodland occupations. Site 46Ms298 produced 23 prehistoric artifacts and 8 historic specimens.

Based on study results, GAI recommended project modifications to avoid impact to the prehistoric sites. Modifications suggested by the Corps of Engineers and agreed to by WVDCH were: 1) clear vegetation with hand tools, 2) leave failed soils in place, 3) place filter fabric on the slope, 4) construct the 2x2-foot keyway on top of the bank outside the vicinity of the archaeological resources, and 5) move the trench in the water away from the toe of the slope.



Service Provided: Phase I/II Archaeological Investigations  
Project Size: 4-8 meter-wide strip on riverbank  
Project Owner: Eddie Hammack Telephone: 304.926.1100  
Madison Coal and Supply Company  
2 Port Amherst Drive  
Charleston, West Virginia 25306-6699  
Contract Data: Completed 2006  
Additional Info: Tasks included Phase I survey, Phase II excavations, background research geomorphology, artifact analysis, botanical analysis, radiocarbon analysis, final report and recommendations.

---

**Project Name:** Dun Glen Hotel Site for the Fire Suppression System  
**Project Location:** Fayette County, West Virginia  
**Project Description:** The Dun Glen Hotel burned July 22, 1930. Some of the first story brick walls survived the fire and were later incorporated into new structures built on the ruins of the hotel. The SW corner of the hotel remains formed the SW corner of the country store and office of a white water rafting outfit, which now serves as the Ranger Station. GAI conducted Phase II investigations to document and evaluate cultural resources that may be affected by the proposed Dun Glen Fire Suppression System and develop mitigation and management strategies for these resources.  
**Service Provided:** Phase II Investigations  
**Project Size:** 290 ft (northwest to southeast) by 130 ft (northeast to southwest) area  
**Project Owner:** New River Gorge National River (NERI) and National Park Service (NPS)  
David Fuerst Telephone: 304.465.6530  
**Address:** New River Gorge National River  
104 Main Street  
Glen Jean, West Virginia 25846  
**Contract Data:** Completed 2009  
**Additional Info:** "We look forward to working with you and the GAI staff, hopefully in the near future. Thanks for all of the great work that you completed on the Dun Glen project for NERI." -- Michael Morelli, RLA, Project Manager, National Park Center  
"Like Nuttallburg, you and your team have done a very professional job [Dun Glen]. You work for an excellent CRM consulting firm, and you're part of the reason it is so." – Email: David N. Fuerst, Cultural Resource Manager, New River Gorge National River

---

**Project Name:** Nuttallburg Mine Conveyor  
**Project Location:** Fayette County, West Virginia  
**Project Description:** GAI conducted an archaeological data recovery at the New River Gorge National River for the National Park Service. The purpose of the data recovery was to mitigate the adverse effect of proposed footer installations on the Nuttall-era barn and trestle supports beneath the extant Ford-era mine conveyor.  
The project area, within the industrial portion of the Nuttallburg town and mine complex in Fayette County, West Virginia, is located under the 1920s-era coal mine conveyor constructed during Henry Ford's ownership of the mine. Tasks included an orientation meeting, historical research, field data recovery excavations, laboratory processing and analysis, and report.  
**Service Provided:** Archaeological Data Recovery  
**Project Size:** Trenches beneath mine conveyor  
**Project Owner:** David Fuerst Telephone: 304.465.6530  
**Address:** New River Gorge National River  
104 Main Street  
Glen Jean, West Virginia 25846  
**Contract Data:** Completed 2007

b. References

---

Contact Person: Ben Hark Telephone: 304 558-9670  
Address: WVDOT-DOH  
Building 5, Room 450  
1900 Kanawha Blvd E  
Charleston, West Virginia 25305  
Short Project Description: Phase III data recovery of prehistoric human burials at Follansbee

---

Contact Person: Rebekah Hovermale Telephone: (304) 357-2965  
Address: NiSource  
Natural Resource Permitting  
1700 MacCorkle Ave., SE  
Charleston, West Virginia 25314  
Short Project Description: Phase I/II/III Cultural Resources Investigations, Hardy Transmission Project

---

Contact Person: Robert Krause Telephone: 304.558.9018  
Address: WV General Services Division  
1900 Kanawha Blvd East  
Building 1, Room MB-60,  
Charleston, West Virginia 25305  
Short Project Description: Archaeological investigations, New Logan Site

---

Contact Person: Dimitri Lutchenkov, Dir., Env. Affairs Telephone: 410.470.5524  
Address: UniStar Nuclear Energy, LLC  
750 East Pratt Street  
Baltimore, Maryland 21202  
Short Project Description: Phase I/II cultural resources investigations, Bell Bend Nuclear Power Plant;  
900-acre Phase I project area and seven Phase II National Register  
evaluations, including both prehistoric- and historic-period sites.



APPENDIX A  
KEY STAFF RESUMES

# James A. Hemme, P.E., L.R.S.

*Senior Engineering Manager*

---

## Education

B.S. Civil Engineering 1989, West Virginia University Institute of Technology  
Marshall University Graduate College, Environmental Engineering Coursework

## Registrations/Certifications

West Virginia Professional Engineer No. 12195  
Kentucky Professional Engineer No. 25437  
Ohio Professional Engineer No. 72851  
Indiana Professional Engineer No. 10809277  
Pennsylvania Professional Engineer No. 75494  
New York Professional Engineer No. 85794  
West Virginia Licensed Remediation Specialist No. 003

## Relevant Training/Courses

Harvard Leadership Development Training, GAI Consultants, Inc. (In Progress)  
Advanced Project Management Training, GAI Consultants, Inc., 2009  
Leaders to Watch Program, GAI Consultants, Inc., May 2008  
OSHA 40 hour HAZWOPER Training  
NICET 1 Geosynthetics Installation Inspection (expired)  
Nuclear Density Gage Training, DOT and NRC (expired)  
MSHA Safety Training (expired)

## Previous Employment

Environmental Design Group (now Floyd Browne Group), 2000-2006  
Potesta and Associates, 1997-2000  
Terradon Corporation, 1995-1997  
Joyce Engineering, 1990-1995  
Dewberry and Davis, 1989-1990

## Summary

Mr. Hemme specializes in site engineering, including planning, permitting and stormwater management, with emphasis on parks and recreation areas and streetscapes. He brings a multi-disciplinary background to projects and this enables him to see the "big picture" of what will be needed to take a project from start to finish. Mr. Hemme is also competent in geotechnical engineering, environmental disciplines including NEPA compliance, and transportation services. He has worked extensively with private developers, architects, municipalities and government agencies.

Mr. Hemme has worked on landfills, quarries, mines, industrial and commercial sites and facilities. He has performed numerous Phase 1 Environmental Site Assessments (ESAs) providing solid waste, industrial waste, and Erosion and Sediment (E&S) control permitting. Mr. Hemme designs storm water management systems, site developments ranging from 1 acre to over 60 acres in size, and wetland mitigation areas. He prepares geotechnical reports, flood plain modeling, highway and roadway designs, right-of-way plans, detailed construction plans, and cost estimates for projects ranging from \$10,000 to over \$2 million in construction cost.

Mr. Hemme volunteered his time and knowledge to assist with preparation of the Greater Charleston Greenway Initiative by the West Virginia Land Trust Company in Charleston, West Virginia. He authored the analysis section of the report and peer-reviewed the entire document. Mr. Hemme is a current volunteer with the Riverside

South Committee, which is working with the Charleston Land Trust to beautify and possibly promote pedestrian access on the south side of the Kanawha River. He has developed schematic plans and reviewed narratives for inclusion into several progress updates to the Land Trust.

## Professional Experience

### Civil Engineering and Permitting

- Site Design for over 100 different projects throughout West Virginia, Ohio, Kentucky and Pennsylvania. NEPA compliance for wetlands, streams, cultural resources, and endangered species. Phase 1 Environmental Site Assessments for a wide range of facilities.
- Designed over 50 stormwater management systems including run-on and run-off control utilizing ditches, berms, sumps, sediment ditches, storm sewers, culverts, drop structures, ponds, energy dissipaters, etc. Work included technical specifications, cross sections, profiles, site grading detail development and hydrologic and hydraulic modeling.
- Developed detailed designs for over 100 different ponds at multiple sites throughout West Virginia and other states, including sediment ponds, treatment ponds, leachate storage ponds, and stormwater detention ponds. Work included hydrologic and hydraulic routing calculations, volume estimates, embankment design, treatment efficiency, dewatering calculations, etc.
- Prepared over 50 detailed Erosion and Sediment (E&S) Control Plans for various sites throughout West Virginia, including coal mines, quarries, highways, landfills and site developments. Work included technical specifications, re-vegetation plans, temporary control details and sequencing plans.
- Prepared numerous National Pollutant Discharge Elimination System (NPDES) Construction Stormwater Permit Applications for sites throughout West Virginia and Ohio.
- Prepared a complete set of construction plans and specifications consisting of a detailed grading plan, a storm sewer system consisting of 34 drop inlets and over 3,800 feet of piping, and parking lot layout.
- West Virginia State College. Design of a revised stormwater system around the student union to help alleviate basement flooding issues.
- Town of Buffalo. Phase I storm sewer design and construction administration for over 2,000 ft. of storm sewer with discharge to the Kanawha River, that included permitting work with the Corps of Engineers.
- Analyzed various culvert scenarios consisting of modeling existing culverts and potential new corrugated metal pipe, steel pipe, concrete pipe and concrete box culverts to prevent upstream flooding from fill placement for Marietta Industrial Enterprises, Parkersburg, West Virginia.
- Designed an extensive stormwater management system consisting of several thousand feet of ditch and storm sewers, and two sediment ponds designed to limit inflow to pre-existing conditions for the 2-, 10-, 50-, and 100-year storm events for Hanover County Sanitary Landfill, Virginia.
- Melinda Street Stormwater Improvements. Underground stormwater detention system and storm sewer improvements design for the City of Parkersburg, West Virginia.

### Site Development and Planning

- Coldwater Creek Distribution Center in Parkersburg, West Virginia. Wetland mitigation for a 7.5-acre area that required a detailed planting plan, pavement design and an engineers' cost estimate.
- Ft. Boreman Development in Parkersburg, West Virginia. Utility master planning, site preparation, roadway design, permitting, and stormwater management for the proposed 170-acre Fort Boreman mixed-use development near Martown Road interchange off U.S. Route 50 in Parkersburg.
- Chesapeake Energy Regional Headquarters in Charleston, West Virginia (LEED Project). Chesapeake Energy Field Offices in Jane Lew, West Virginia; Mount Morris, Pennsylvania; and Honey Branch, Kentucky.
- The Pines Country Club in Morgantown, West Virginia.
- Dow Chemical South Charleston Plant Entrance, Parking and Pedestrian Improvements in West Virginia.
- Tamarack Phase 2 Expansion in Beckley, West Virginia.
- Morgan County Courthouse Replacement in Berkeley Springs, West Virginia. Greenbrier County Courthouse Annex and Expansion in Lewisburg, West Virginia.
- Marshall University Clinical Outreach and Education Center, Huntington, West Virginia.

- Cheat Landing Office Park in Morgantown, West Virginia. The Villages at Cheat Landing in Morgantown, West Virginia
- Almost Heaven Habitat for Humanity, South Fork Crossing Subdivision, Pendleton County, West Virginia.
- Stonegate at Cranberry Development in Cranberry Township, Pennsylvania.

#### **Parks and Recreation Areas**

- April Dawn Sprayground and Park in Huntington, West Virginia. Lead Engineer for the continued development of the park consisting of an in-ground computer controlled fountain covered by suspended concrete pavers, a unique "Teays Valley Monster" concrete dragon over 8'-tall integrated into the design with slide and cool steam nostrils and a special soft surface design. The project won awards from the West Virginia Sections of the American Society of Landscape Architects and the American Consulting Engineers Council.
- Rotary Park Improvements Project in Huntington, West Virginia. Lead Engineer responsible for new parking areas, unique picnic shelter, utilities, and a new entrance that blended with existing facilities.
- Reviewed multiple playground components for compliance with the "Handbook for Public Playground Safety" published by the U.S. Consumer Product Safety Commission.
- Assisted with designing ballfields, park facilities, and a large parking lot incorporating Bio-Retention/Treatment swales for treatment of stormwater in Stark County, Ohio.
- Golf Club House and Lodge Site Development at Stonewall Jackson State Park in West Virginia. Project Manager for infrastructure including site design of the 100+-room lodge, parking, sewage lift station, extensive landscaping, and all aspects of construction administration.
- Cedar Creek State Park Camp Ground Expansion, Glenville, West Virginia. Dow Heritage Park in Charleston, West Virginia. Fort Boreman Historic Park in Parkersburg, West Virginia.
- Dupont 'Hyper' Plaza in Belle, West Virginia.

#### **Streetscape and Trails**

- Kanawha Trestle and Rail Trail Master Plan. Project Manager and Lead Engineer responsible for development. The plan covered the existing CSX trestle crossing the Kanawha River in Charleston and approximately 2 miles of Norfolk and Southern rail corridor through the West Side of Charleston.
- Project Manager or Design Engineer on multiple streetscape projects throughout West Virginia including Phase 1 Florida Street Streetscape, and Washington Street East Phase 2 and Pennsylvania Avenue streetscapes in Charleston, West Virginia.
- North Bend Rail Trail. Prepared construction documents to repair flood damage to almost 50 miles of trail.
- Florida Street Master Plan for the City of Charleston, West Side Neighborhood Association.
- City of Richwood, West Virginia Streetscape Master Plan and Phase 1 Construction.
- City of Charleston East End Design Cheret and "Think Tank" Design Cheret.

#### **Solid Waste Management and Engineering**

- Design and permitting for 50 different solid waste facilities in West Virginia, Virginia, and Ohio.
- Berkeley County Solid Waste Authority. Siting Study regarding suitability of property.
- North Fork Landfill. 50-acre landfill over previously deep mined area.
- Nicholas County Landfill. Small rural landfill expansion with special steep slope design.
- Disposal Service Landfill. Unique multi-stage expansion of a landfill including steep slope design.
- Boone County Commission. Permitting of various solid waste transfer stations.
- Page County, Virginia comprehensive countywide search for a regional landfill.
- Anker Energy Conceptual Study to determine feasibility of fly ash disposal facility.
- Elkem Metals fly ash landfill utilizing a geosynthetic clay liner and special slope design.

### **Waste Water and Potable Water Design**

- National Radio Astronomy Observatory. Designed unique, non-mechanical, award-winning treatment system that uses no electricity and treats the entire campus wastewater load.
- Manufactured Housing Development Waterline Replacement. Designed over 5 miles of water line within an existing 1000+-unit manufactured housing development.
- Huttonsville Correctional Facility. Provided retrofit design for temperature, grease and trash issues.
- Anthony Correctional Center. Designed package water treatment plant for correctional facility.
- St. Mary's Correctional Facility. Retrofit design to address trash and grease issues.
- Pocahontas County Landfill. Modular trickling sand filters with aeration pond and polishing wetland.
- Multiple Landfills. Pre-treatment system design to remove high BOD levels prior to WWTP.
- Storage Tank Design. Multiple bolted or welded steel tanks primarily for leachate storage.

### **Abandoned Mine Land (AML) Reclamation and Acid Mine Drainage (AMD) Treatment**

- Richard Mine Acid Mine Drainage. Treatment Alternatives Report, Monongalia County, West Virginia.
- Richard Mine Flow Monitoring Study. Design, installation, full time flow monitoring and reporting for a 1 year period on drainage from a substantial AMD discharge.
- East Branch Raccoon Creek Acid Mine Drainage (AMD) Treatment Design for the Ohio Department of Natural Resources.
- Vens Run Landslide Reclamation No. 2 Design and Permitting in Harrison County, West Virginia.
- Whites Run Reclamation Permitting in Randolph County, West Virginia.

### **Project Awards**

National Radio Astronomy Observatory (NRAO) Wastewater Treatment Plant Design, West Virginia ACEC Gold Award, Project Manager

Florida Street Streetscape Masterplan, West Virginia ASLA Honor Award, Senior Engineer

Dupont Hyper Plaza Design, West Virginia ASLA Honor Award, Senior Engineer

Kanawha Trestle Rail Trail Masterplan, West Virginia ASLA Merit Award and West Virginia ACEC Silver Award, Project Manager

April Dawn Park Sprayground "Teays Valley Monster," West Virginia ASLA Honor Award and West Virginia ACEC Gold Award, Senior Engineer

Coldwater Creek Distribution Center Site Preparation, West Virginia ACEC Gold Award, Project Manager

## Benjamin Resnick, M.A., RPA

Manager – Cultural Resources / Contract Manager

### Education

M.A. Anthropology/Public Service  
Archaeology 1984, University of South  
Carolina

B.A. Anthropology 1980, University of  
Maryland

### Registrations/Certifications

Register of Professional Archaeologists

### Relevant Training/Courses

Harvard Leadership Development  
Training, GAI Consultants, Inc., 2009  
Advanced Project Management Training,  
GAI Consultants, Inc., 2008  
ASFE Fundamentals of Professional  
Practice, 1999

### Affiliations

Society for Historical Archaeology (SHA)  
(Nominations and Elections Committee;  
Current Research Coordinator, SHA  
Newsletter)  
Council for Northeast Historical  
Archaeology  
Middle Atlantic Archaeology Conference  
Pennsylvania Archaeology Council, Vice  
President/Chair (Membership and Ethics  
Committee)

### Professional Employment History

Louis Berger & Associates, Inc., 1986-  
1989  
Archaeological Advisory Group, 1984-  
1986  
University of South Carolina, 1981-1984  
Scientific Research Surveys, Inc., 1980-  
1981



gai consultants

### Professional Summary

Mr. Resnick joined GAI in 1989 and has gained professional experience through his work on many GAI cultural resource projects, described below.

### Professional Experience

Project Manager/Group Manager  
2011

- + Phase I Cultural Resources Investigation (Addendum 1), Section 4 South Alternative Tank Site, 2010 PL 1 Retest and Replacement Project, Antrim, Hamilton, Fannett, St. Thomas, and Washington Townships, Franklin County, Pennsylvania, for Dominion Transmission, Inc.
- + Phase I Archaeological Investigation, Karthaus Pipeline, Centre and Clearfield Counties, Pennsylvania, for Superior Appalachian Pipeline, LLC.
- + Phase I Archaeological Survey, Negative Survey, Doeblner Route Natural Gas Pipeline, Penn and Franklin Townships, Lycoming County, Pennsylvania, for Chief Gathering, Inc.
- + Phase I Archaeological Survey, Negative Survey, Kerr to Noble Natural Gas Pipeline, Brooklyn and Lathrop Townships, Susquehanna County, Pennsylvania, for Chief Gathering, Inc.
- + Phase I Archaeological Survey, Negative Survey, Kerr to Squier Natural Gas Pipeline, Lathrop and Springville Townships, Susquehanna County, Pennsylvania, for Chief Gathering, Inc.
- + Phase I Archaeological Survey, Negative Survey, Oliver to Wilson Natural Gas Pipeline, Springville and Lemon Townships, Susquehanna and Wyoming Counties, Pennsylvania, for Chief Gathering, Inc.
- + Phase I Archaeological Survey, Negative Survey, Polovitch to Wilson Natural Gas Pipeline, Nicholson and Lemon Townships, Susquehanna and Wyoming Counties, Pennsylvania, for Chief Gathering, Inc.

2010

- + Phase I Cultural Resources Investigations for the Proposed Sand Hill to Warton Hill Transmission Line, Marshall County, West Virginia, for American Electric Power Company, Gahanna, Ohio
- + Phase I Archaeological Survey, Line N 20-inch Three-mile Replacement Project, Beaver County, Pennsylvania, for National Fuel Gas Supply Corporation.
- + Archaeological Overview and Sensitivity Models, Montezuma National Wildlife Refuge, Cayuga, Seneca and Wayne Counties, New York, for US Fish and Wildlife Service, Region 5, Hadley, Massachusetts.
- + Phase I Cultural Resources, Black Moshannon Pipeline Project, Centre County, Pennsylvania, for Superior Appalachian Pipeline, LLC.
- + Phase Ib, TL-590 Pipeline Project, Burch Ridge Compressor Station, Marshall County, West Virginia, for Dominion Transmission, Inc.

- + Phase I Cultural Resource Investigations and Phase II National Register Evaluations, Appalachian Gateway, Barbour, Doddridge, Harrison, Kanawha, Marshall, and Wetzel Counties, West Virginia, for Dominion Transmission, Inc.
- + Cultural Resources Consultation, Line 1278 Schuylkill Horizontal Directional Drill Project, Chester and Montgomery Counties, Pennsylvania, for Columbia Gas Transmission
- + Phase II National Register Site Evaluation, Glenda's Yard Site 18Fr984, Potomac-Appalachian Transmission Highline (PATH), Frederick County, Maryland, for Kenny Construction Company
- + Phase I Archaeological Investigation, Line K and Line 1278 Pipeline Replacement Project, Orange County, New York, for Columbia Gas Transmission
- + Cultural Resources Consultation, Lucas-Weaver-Ripley Abandonment Project, Ashland County, Ohio and Jackson County, West Virginia, for Columbia Gas Transmission, LLC
- + Phase III Data Recovery Excavations, Sites 46Ta23 and 46Ta24, Taylor County, West Virginia, for West Virginia Division of Highways.
- + Phase II National Register Site Evaluations, Nine Mile Point Nuclear Station, Proposed Unit 3 (NMP Unit 3), Oswego County, New York, for UniStar Nuclear Energy, LLC.
- + Phase III Archaeological Data Recovery at Site 46Ka622, TL-585/H-162 Pipeline Replacement Project, Kanawha County, West Virginia, for Dominion Transmission, Inc.
- + Phase I Cultural Resources Assessment, Upper Ohio Navigation Study, Ecosystem Restoration, Allegheny and Beaver Counties, Pennsylvania, for Aerostar and USACE Nashville District. 2010
- + Phase II National Register Evaluation of Sites 36Wm454 and 36Wm455, TL-591 Pipeline Portion of Appalachian Gateway Project, for Dominion Transmission.
- + Mitigation of NRHP-Eligible Architectural Resources, Documentation of Baltimore and Drum Point Railroad Mitigation Report, Calvert Cliffs 3 Nuclear Project, Calvert County, Maryland, for UniStar Nuclear Development, LLC.
- + Phase I Cultural Resources Survey, Lockhart 138kV Transmission Project, Dickenson County, Virginia, for American Electric Power Company.
- + Historic Resource Survey of the Murray Hill Neighborhood—Phase II, Jacksonville, Florida, for the City of Jacksonville Planning and Development Department.
- + Phase I Cultural Resources Investigation, Huttonsville Work Camp, Randolph County, West Virginia, for West Virginia Division of Corrections.
- + Phase I Cultural Resources Survey, Line 1528 Upgrade Project, Marshall County, West Virginia, for Columbia Gas Transmission, LLC.
- + Phase I Archaeological Investigation, Nanty Glo Waterline Transmission Main Replacement Project, Nanty Glo Borough, Blacklick Township, Cambria County, Pennsylvania, for Stiffler, McGraw & Associates and the Nanty Glo Water Authority.
- + Phase I Archaeological Survey, Huntington Court-Roanoke 138kV Transmission Line Project, City of Roanoke, Virginia, for Appalachian Power Company.

#### 2009

- + Phase I Archaeological Survey, State Route 3003, Section 450, Tunnelton Bridge Replacement, Conemaugh Township, Indiana County, Pennsylvania, for Pennsylvania Department of Transportation, Engineering District 10-0.
- + Phase III Analysis and Report of the McDaniel Site (44Gn115), Hardy Transmission Project, Greene County, Virginia for Columbia Gas Transmission.
- + Phase I Cultural Resources Assessment, Upper Ohio Navigation Study, Emsworth, Dashields, and Montgomery Locks and Dams, Allegheny & Beaver Counties, Pennsylvania, for Aerostar (USACE Pittsburgh District)
- + Phase Ib Archaeological Investigation, USA Storage Project, PL-1 Retest with Laydown Areas, Franklin County, Pennsylvania, for Dominion Transmission.

- + Phase I Archaeological Investigations, Interim Management Summary, Welton Spring Substation, Potomac-Appalachian Transmission Highline (PATH) Project, Hardy County, West Virginia.
- + Phase I Archaeological Survey, Addendum I, Project Design Modification, Line 1758 Upgrade Project, Marshall County, West Virginia, for Columbia Gas Transmission.
- + Phase Ib Cultural Resources Investigation, Lightburn Extraction Plant, (TL-593, TL-594, TL-595), Lewis County, West Virginia, for Dominion Resources Services, Inc.
- + Documentation of the Billips Family Farmstead and Cemetery, Tazewell County, Virginia, for American Electric Power, Inc. and the Virginia Department of Historic Resources.
- + Documentation of the Frazier Log House, Wythe County, Virginia, for American Electric Power, Inc. and the Virginia Department of Historic Resources.
- + Phase I Architectural Survey, Shepler Hill, Mitchell 138kV Transmission Line, Washington, Allegheny, and Westmoreland Counties, Pennsylvania, for Allegheny Power.
- + Architectural and Historic Resources Survey Report and Effects Assessment, Saltville-Kingsport 138kV Rebuild Transmission Line Project, City of Bristol and Washington County, Virginia, for Appalachian Power, a Unit of American Electric Power.
- + Phase I Archaeological and Architectural Survey and Phase II Archaeological Investigation, Ohio Storage Expansion Project, Crawford and Weaver Storage Fields, Fairfield, Hocking, Ashland, and Holmes Counties, Ohio, for Columbia Gas Transmission.
- + Phase I Archaeological Survey, Matt Funk 138 kV Transmission Line Project, Roanoke County, Virginia, for Appalachian Power, a Unit of American Electric Power.
- + Phase I Cultural Resources Survey, Kempton Substation, Potomac-Appalachian Transmission Highline (PATH), Frederick County, Maryland, for Power Engineers.
- + Phase I Archaeological Survey, USA Storage Project, PL-1 Pipeline Retest Sections, Antrim and Guilford Townships, Franklin County, Pennsylvania, for Dominion Transmission, Inc.
- + Islamorada Historical and Archaeological Survey, Islamorada, Village of Islands, Florida, for Islamorada, Village of Islands, Planning & Development Services.
- + Phase I Archaeological Survey, Line 1360 Upgrade Project, West Finley and Donegal Townships, Washington County, Pennsylvania, for Columbia Gas Transmission .
- + Phase I Cultural Resources Survey, Line 1570 Upgrade Project, Washington and Greene Counties, Pennsylvania, for Columbia Gas Transmission.
- + Supplemental Phase I Archaeological Survey, Messer Reef Pipeline Project (Northeast Storage), Cattaraugus County, New York, for Dominion Transmission.
- + Supplemental Phase I Archaeological and Geomorphological Survey, Areas II and III Water and Sewer Project, Bedford Township, Bedford County, Pennsylvania, for Bedford Township Municipal Authority and Stiffler, McGraw & Associates, Inc.
- + Phase I Archaeological Survey, NIJUS003 Pipeline Project, Center and Morris Townships, Greene County, Pennsylvania, for EQT Gathering, LLC.
- + Supplemental Phase Ib Cultural Resources Survey, NIJUS014 Pipeline Project, Morgan Township, Greene County, Pennsylvania, for EQT Gathering, LLC.
- + Supplemental Phase I Archaeological and Geomorphological Survey, Bedford Township Municipal Authority, Areas II and III Water and Sewer Project, Bedford Township, Bedford County, Pennsylvania.
- + Archeological Reconnaissance, R-700 Pipeline Replacement Project, Scioto County, Ohio, for Columbia Gas Transmission, Inc.
- + Phase I Archaeological Survey (Negative Survey Form), Pensyl Hollow Intersection, Bedford County, Pennsylvania, for Pennsylvania Department of Transportation, District 9-0 (Greenhorne & O'Mara).
- + Phase I Cultural Resources Survey, NIJUS005 Pipeline Project, Morgan Township, Greene County, Pennsylvania, for EQT Production Company.
- + Phase Ib Archaeological Survey, Rural Valley Pipeline Project, Armstrong, Westmoreland, Elk, and McKean Counties, Pennsylvania, for Dominion Transmission, Inc.



- + Phase I Cultural Resources Survey for the Ranger Pipeline Project, Floyd, Martin, and Pike Counties, Kentucky, for EQT Production Company .
- + Data Recovery Plan: Site 18Cv474, Calvert Cliffs Nuclear Power Plant, Calvert County, Maryland, for UniStar Nuclear Development, LLC.
- + Geomorphological Report, Linesville Pine Joint Municipal Authority, Sewerage Collection Facilities, Pine Township, Crawford County, PA (Negative Survey Form), for Lennon, Smith, Souleret Engineering.
- + Phase I Cultural Resources Survey, NIJUS005 Pipeline Project, Morgan Township, Greene County, Pennsylvania (Negative Survey Form), for EQT Production Company.
- + Phase Ib Archaeological Survey, NIJUS001 (MD-146) Pipeline Project, Amwell Township, Washington County, Pennsylvania, for EQT Production Company.
- + Phase I Cultural Resources Investigations and Phase II National Register Site Evaluations, Calvert Cliffs Nuclear Power Plant, Calvert County, Maryland, for UniStar Nuclear Development, LLC.
- + Phase I Archaeological & Geomorphological Survey, Glendale Valley Municipal Authority, Act 537 Wastewater Facility Plan Amend. (Negative Survey Form), for Keller Engineers.
- + Phase Ia / Ib Archaeological Investigation, Williamsport Central Plant and Central Plant Expansion, Williamsport (Negative Survey Form), for Malcolm Pirnie, Inc.
- + Supplemental Phase I Cultural Resources Survey (Addendum IV), USA Storage Project, Sabinsville Wells and Lines, Tioga County, Pennsylvania, for Dominion Transmission, Inc.
- + Phase I Archaeological and Geomorphological Survey, ROD, Linesville Pine Joint Municipal Authority, Sewerage Collection Facilities, Pine Township, Linesville Borough, Crawford County, Pennsylvania, for Lennon, Smith, Souleret Engineering, Inc.
- + Phase II Investigations of the Dun Glen Hotel Site for the Fire Suppression System, Fayette County, West Virginia, for National Park Service-NERI.
- + Supplemental Phase Ib Archaeological Survey, NIJUS-0002 MD-101 Pipeline Project, Morris Township, Greene County, Pennsylvania, for Equitable Gathering, LLC.
- + Phase I Cultural Resources Survey, Record of Disturbance (ROD) Form, D-500 Phase II Pipeline Relocation Project, North Sewickley Twp., Beaver County, Pennsylvania, for Columbia Gas of Pennsylvania.
- + Supplemental Phase I Cultural Resources Survey (Addendum 11), Keystone Station Water Pipeline Project, Armstrong County, Pennsylvania, for Reliant Energy Northeast Management Company.
- + Phase I Cultural Resources Survey for Segment 1 (Mt. Storm Power Station to WV-VA State Line) of TrAIL Project, Grant, Hampshire, Hardy Counties, West Virginia, for Power Engineers, Inc.

## 2008

- + Abbreviated Report. Phase Ib Archaeological Survey, H-150 Renewal and H-154 Retest Project, Center Township, Greene County, Pennsylvania, for Equitrans, L.P. in 2008
- + Archaeological Data Recovery at the Overby Site (46Wa112), US Route 52, Tolsia Highway Project, Wayne County, West Virginia, for Kimley-Horn and West Virginia Department of Transportation, Division of Highways in 2008.
- + Phase Ia Archaeological Reconnaissance, I-295 (SR-9A), Northwest Quadrant, Wetland Detention Pond Project, Duval County, Florida, for Florida Department of Transportation in 2008.
- + Phase Ib Archaeological Survey, MD-101 Pipeline Project, Morris Township, Greene County, Pennsylvania, for Equitable Gathering, LLC in 2008.
- + Supplemental Phase Ib Archaeological Investigation, Greensboro Sewage Collection and Treatment Facilities, Greene County, Pennsylvania, for Fayette Engineering Company, Inc. in 2008.
- + Phase III Archaeological Data Recovery at Site 33Wa797, Rockies Express Pipeline-East Project, Warren County, Ohio, for Caprock Environmental Services, LLC. in 2008.
- + Phase III Archaeological Data Recovery at Site 33Wa823, Rockies Express Pipeline-East, Warren County, Ohio, for Caprock Environmental Services, LLC in 2008.

- + Phase III Archaeological Data Recovery at Site 33PE174, Rockies Express Pipeline-East, Perry County, Ohio, for Caprock Environmental Services, LLC in 2008.
- + Phase I Cultural Resources Survey, Franklin 20-inch Storage Pipeline Project, Wayne and Summit Counties, Ohio, for Dominion East Ohio Gas in 2008.
- + Phase III Archaeological Data Recovery at Site 33Mo77, Rockies Express Pipeline-East, Monroe County, Ohio, for Caprock Environmental Services, LLC in 2008.
- + Phase III Archaeological Data Recovery at Site 33Pe362, Rockies Express Pipeline-East, Perry County, Ohio, for Caprock Environmental Services, LLC in 2008.
- + Phase Ib Archaeological and Geomorphological Survey, State Route 0119, Section 550, Punxsutawney Bridge Reevaluation, Borough of Punxsutawney, Jefferson County, Pennsylvania, for Pennsylvania Department of Transportation, Engineering District 10-0 in 2008.
- + Phase Ia Archaeological Reconnaissance, Pipeline #6123 Reroute Project, Stark County, Ohio, for Dominion East Ohio Gas in 2008.
- + Phase I Cultural Resources, Pursley Transmission Line, Center Township, Greene County, Pennsylvania, for Allegheny Power in 2008.
- + Phase I Cultural Resources Survey, VA State Line--Meadowbrook Substation and Meadowbrook Substation--Appalachian Trail Segments of the Trans-Allegheny Interstate Line (TrAIL) Project, Frederick and Warren Counties, Virginia for Power Engineers, Inc. in 2008.
- + Cultural Resource Efforts for the Kemptown Substation, Potomac-Appalachian Transmission Highline (PATH) Project, Frederick County, Maryland, for Power Engineers in 2008.
- + Phase Ia Archaeological Reconnaissance, I-295 (SR-9A), Northwest Quadrant, Wetland Detention Pond Project, Duval County, Florida, for the Florida Department of Transportation in 2008.
- + Phase I Archaeological and Geomorphological Survey, McKee Pump Station Abandonment and Sewer Line Project, Freedom Township, Blair County, Pennsylvania, for Stiffler, McGraw & Associates, Inc. in 2008.
- + Supplemental Phase I Archaeological Survey (Addendum III), USA Storage Project, Greenlick Wells and Lines, Potter County, Pennsylvania, for Dominion Transmission, Inc. in 2008.
- + Phase I Cultural Resources Survey, Cheat Lake 138kV Transmission Line and Substation Development Project, Monongalia County, West Virginia, for Allegheny Power. in 2008.
- + Phase I Archaeological Survey, SR 0954, Section 453, Smicksburg Bridge #1 Replacement, West Mahoning Township, Indiana County, Pennsylvania, for Pennsylvania Department of Transportation, Engineering District 10-0 in 2008.
- + Phase I Archaeological Survey, Proposed Barto-Kensinger Pipeline, Lycoming County, Pennsylvania, for Chief Oil and Gas, LLC in 2008.
- + Phase Ib Cultural Resources Investigation, Bell Bend Nuclear Power Plant, Luzerne County, Pennsylvania for UniStar Nuclear Development, LLC in 2008.
- + Phase I/II Cultural Resources Investigation, Clinch River-Possum Hollow Landfill, Russell County, Virginia, for American Electric Power Company (Lead Agency: USACOE-Norfolk) in 2008.
- + Phase I Cultural Resources Investigations and Phase II National Register Site Evaluations, Calvert Cliffs Nuclear Power Plant, Calvert County, Maryland, for UniStar Nuclear Development, LLC in 2008.
- + Phase I Archaeological Survey, S.R. 7401, Section WAT, Watson Street Bridge Replacement Project, Bedford County, Pennsylvania for Pennsylvania Department of Transportation District 9-0 as subconsultant to Greenhorne & O'Mara in 2008.
- + Architectural Survey of West Palm Beach Local Historic Districts of Prospect Park/Southland Park for the City of West Palm Beach Historic Preservation Division in 2008.
- + Historic Structure Survey, City of Bunnell, Flagler County, Florida for the City of Bunnell in 2008.
- + Phase I Cultural Resources Survey, PPL Option 1 for an 8-inch Diameter Gas Pipeline, Granville Township, Mifflin County, Pennsylvania for PPL Gas Utilities in 2008.
- + Cultural Resources Investigation, Proposed Expansion of Meadowbrook Substation, Frederick County, Virginia, for Power Engineers, Inc. in 2008.

- + Resurvey of Marina Historic District, City of Delray Beach, Palm Beach County, Florida, for City of Delray Beach Planning and Zoning Department in 2008.
- + Architectural and Historic Resources Survey Report and Effects Evaluation, Matt Funk 138kV Bus Tie #1 Project, Montgomery and Roanoke Counties, Virginia, for Appalachian Power, a Unit of American Electric Power in 2008.
- + Phase IA Cultural Resources Reconnaissance, Berwick PA NPP-1, Areas 6, 7, and 8, and Confers Lane Parcel, Luzerne County, Pennsylvania, for Areva NP, Inc. and UniStar Nuclear Development, LLC in 2008.
- + Tavernier Historic District Intensive Level Survey and Publication, for Monroe County Board of County Commissioners and Historic Florida Keys Foundation, Key West, Florida in 2008.
- + Phase Ia Cultural Resources Reconnaissance, Carrie Furnace Development Project, Allegheny County, Pennsylvania, for the Redevelopment Authority of Allegheny County in 2008.
- + Phase I Cultural Resources Survey, Limestone Compressor Station and Pipeline Project, Clarion County, Pennsylvania, for Equitable Gas in 2008.
- + Phase I Cultural Resources Survey and Geomorphology Investigation, Proposed V-382 Pipeline Project, Belmont County, Ohio. Client: Columbia Gas Transmission in 2008.
- + Cultural Resource Investigations, Naval Recreation Center, Calvert County, Solomons, Maryland. Client: TetraTech NUS, Inc. in 2008
- + Phase I/II Archaeological Investigations, North Shore Connector Project, City of Pittsburgh, Allegheny County, Pennsylvania. Client: North Shore Constructors (Obabyashi/Trumbull JV) and Port Authority of Allegheny County in 2008.
- + Principal Investigator, Phase I Archaeology and Geomorphology Survey, Proposed 502 Junction Substation, Trans-Allegheny Interstate Line, Dunkard Township, Greene County, Pennsylvania. Client: Power Engineers, Inc., Hailey, Idaho in 2008.
- + Archaeological Data Recovery, Philip's Meadow Site 18Ch654, Charles County, Maryland. Cove Point Expansion TL-532 Pipeline Project. Client: Dominion Cove Point, LNG, LP in 2008.
- + Phase IA Cultural Resources Reconnaissance, Susquehanna Steam Electric Station, Luzerne County, Pennsylvania. Client: Constellation Power Generation in 2008.
- + Phase I Archaeological Survey, S.R. 2018, Section 001, Mench Bridge Replacement Project, East and West Providence Townships, Bedford County, Pennsylvania. Client: PennDOT / Greenhorne & O'Mara in 2008.

#### 2007

- + Phase I Archaeology and Geomorphology Survey, Proposed 502 Junction Substation, Trans-Allegheny Interstate Line, Dunkard Township, Greene County, Pennsylvania for Power Engineers, Inc., Hailey, Idaho in 2007.
- + Phase Ia and Architectural Reconnaissance, M.P. 149.5 to 155.5, Preliminary Design, West Providence and Snake Spring Townships, Bedford County, Pennsylvania (2007) for Pennsylvania Turnpike Commission in 2007.
- + Phase I Archaeological Survey, SR 0049, 051 Bridge Replacement Project, Tioga County, Pennsylvania (2007) for PennDOT / Gannett Fleming in 2007.
- + Phase Ia Archaeological & Geomorphological Investigation, SR 3034, 001, South Branch of Blacklick Creek (Beula) Bridge Replacement, Cambria Township, Cambria County, Pennsylvania (2006) for PennDOT / Greenhorne & O'Mara in 2007.
- + Phase I Archaeological Survey, SR 0026, 11B, Eichelbergertown Bridge Replacement Project, Hopewell Township, Bedford County, Pennsylvania (2006) for PennDOT / Greenhorne & O'Mara in 2007.
- + Phase Ia Archaeological & Geomorphological Investigation, Proposed Wetland Mitigation Site (Jerry Fetter Site), SR 9900, FET, West Saint Clair Township, Bedford County, Pennsylvania (2006) for PennDOT / Greenhorne & O'Mara in 2007.
- + Phase I Archaeological Survey, SR 0204 Bridge Replacement Project, Snyder and Union Counties, Pennsylvania (2006) for PennDOT / Gannett Fleming in 2007.

- + Phase I-II Survey and Testing, Hardy Storage Project, Hampshire and Hardy Counties, West Virginia, Columbia Gas Transmission, Inc. in 2007.
- + Architectural survey and National Register and local historic register evaluations for 321 resources in the Brownsville Section of Pensacola, Escambia County, Florida, for the Escambia County Redevelopment Authority in 2007.
- + Historic structures survey and local historic register nominations for 1200+ buildings in four historic districts in Lake Worth, Palm Beach County, Florida, for the City of Lake Worth in 2007.
- + Phase I Survey, Cove Point Expansion Project, 80 Mile Transmission Line, Dominion Transmission, Inc., Huntingdon, Centre, Juniata, and Clinton Counties, Pennsylvania in 2007.
- + Phase I Survey, Cove Point Expansion Project, 40 Mile Transmission Line, Dominion Transmission, Inc., Calvert, Charles, and Prince George Counties, Maryland in 2007.
- + Phase II Testing and Evaluation, Sites 36PO34 and 36MC70, Northeast Storage Project, Dominion Transmission, Inc. Potter and McKean Counties, Pennsylvania in 2007.
- + Phase I Cultural Resources Survey, Fink Capacity Maintenance Project, Lewis County, West Virginia for Dominion Transmission, Inc. in 2007.
- + Soil Geomorphology/Phase I Archaeological Survey, SR 44, Spring Creek Bridge, Gregg Township, Union County, Pennsylvania (2005) for PennDOT / Gannett Fleming in 2007.
- + Phase I Archaeological Survey, SR 0042, 004 Bridge Replacement Project, Muncy Creek Township, Lycoming County, Pennsylvania (2005) for PennDOT / Gannett Fleming in 2007.
- + Phase I Archaeological Survey, SR 4015, 001 Bridge Replacement Project, Springfield Township, Bradford County, Pennsylvania (2005) for PennDOT / Gannett Fleming in 2007.
- + Phase I Archaeological Survey, SR 0044, 038 Bridge Replacement Project, Gregg Township, Union County, Pennsylvania (2005) for PennDOT / Gannett Fleming in 2007.
- + Phase I/II/III Archaeological Investigations, River Avenue Redevelopment Project, Pittsburgh, Allegheny County, Pennsylvania for the City of Pittsburgh in 2007.
- + Phase I Survey, Well 12367 Project, Kanawha County, West Virginia, Columbia Gas Transmission Corporation, Charleston, West Virginia in 2007.
- + Archaeological Site Testing/Excavation-Roads Rehabilitation Phase II, Gettysburg National Military Park, Adams County, Pennsylvania for the NPS in 2007.
- + Preparation of GIS Archaeological Protection Plan for the City of Pittsburgh, Pennsylvania for the Pittsburgh Department of City Planning in 2007.
- + Phase I-III archaeological data recovery, nineteenth-century urban occupations, Pittsburgh, Pennsylvania for the Pittsburgh Urban Redevelopment Authority in 2007.
- + Archaeological testing and data recovery at the Altoona Railroaders Memorial Museum, Altoona, Pennsylvania for the NPS in 2007.
- + Phase I archaeological survey for the US Air/R&P Coal Company Study, Blacklick, Indiana County, Pennsylvania for Kriebel Resources in 2007.
- + Archaeological overview and assessment investigations, Fort Necessity National Battlefield, Fayette County, Pennsylvania for the NPS in 2007.
- + Archaeological testing and mitigation, Phases I, II, and III, at the Saltsburg Canal Park, America's Industrial Heritage Project, Indiana County, Pennsylvania for the NPS in 2007.
- + Phase I Archaeological Survey, Charleston Ball Park, Charleston, West Virginia for the City of Charleston in 2007.
- + Phase I Survey, Loudoun-Leesburg Pipeline, Dominion Transmission, Inc., Loudoun County, Virginia in 2007.
- + Phase I Survey, Wolf Run Compressor Station and Pipeline, Northeast Storage Project, Dominion Transmission, Inc., Lewis County, West Virginia in 2007.
- + Phase I Survey, TL-263 Replacement Project, Kanawha, Boone, and Wyoming Counties, West Virginia, Dominion Transmission, Inc. in 2007.

- + Architectural survey, local and National Register evaluations, and boundary updates for 250 resources in Old School Square Historic District, Delray Beach, Florida, for the City of Delray Beach in 2007.
- + Architectural survey and local and National Register evaluations for 768 architectural resources in the City of Sarasota, Florida, for the City of Sarasota Planning and Redevelopment Department in 2007.
- + Architectural survey, local and National Register evaluation, and National Register district nomination for 248 architectural resources in the vicinity of the City of Sarasota, Florida, for Sarasota County in 2007.
- + Architectural survey, local and National Register evaluation, and local and National Register district nominations for 760 architectural resources in the City of Sarasota, Florida, for the City of Sarasota Planning and Redevelopment Department in 2007.
- + Architectural survey and National Register and local historic register evaluations for 300+ buildings in the unincorporated areas of the Florida Keys, Monroe County, Florida, for the Historic Florida Keys Foundation in 2007.
- + Phase I Survey, Northeast Storage Project, 21 Mile Pipeline, Quinlan Compressor Station and associated facilities, Dominion Transmission, Inc., Potter and McKean Counties, Pennsylvania, and Cattaraugus County, New York in 2007.
- + Phase I Archaeological Survey and Architectural and Historic Resources Survey, American Electric Power Wyoming-Jacksons Ferry 765 kV Transmission Line, Priority Section 4, Wyoming and McDowell Counties, West Virginia for American Electric Power in 2007.
- + Phase I Survey, Cove Point East Project, Loudoun and Fauquier Counties, Virginia for Dominion Transmission, Inc in 2007.
- + Phase I Survey, Mid-Atlantic Project, Quantico Compressor Station/Pipeline and Leesburg Compressor Station, Loudoun and Fauquier Counties, Virginia for Dominion Transmission, Inc. in 2007.
- + Categorical Exclusion Evaluation, Thurmond Bridge Replacement/Rehabilitation Project, Fayette County, West Virginia for the WVDOH in 2007.
- + Phase I and II Archaeological Survey of the Fayetteville Interchange, Fayette County, West Virginia as subconsultant to Kimley-Horn & Associates, Inc. (KHA) for WVDOH in 2006.
- + Phase II Archaeological Investigations (Historic Sites), Determination of Eligibility, Route 52 (Tolsia Highway) Construction Alternatives, Wayne and Mingo counties, West Virginia for WV DOH in 2006.
- + Historic structures reconnaissance survey and preparation of Criteria of Effects Report, Route 19/Corridor L, Braxton and Nicholas counties, West Virginia for WVDOH in 2006.
- + Phase I archaeological survey of the access roads to the proposed Federal Bureau of Investigation sites, Simpson and Clay districts, Harrison County, West Virginia for Johnson, Johnson & Roy in 2006.
- + North Carolina Statewide GIS Historic and Prehistoric Predictive Models (with ESI) for NC DOT in 2006.
- + Phase I/II Archaeological Investigations, Bridge Replacement Project T-319, Beaver County Bridge No. 36 (Links Bridge), Independence Township, Beaver County, Pennsylvania for PennDOT in 2006.
- + Phase II-III Data Recovery, the Coverts Bridge Site 36Lr228, Lawrence County, Pennsylvania for Frank B. Taylor Engineering and PennDOT in 2006.
- + Archaeological assessment of Quarters 124, United States Military Academy, West Point, Orange County, N.Y. as subconsultant to Fanning, Phillips, and Molnar (FPM) for USCOE New York District in 2006.
- + Cultural Resources Survey, Route Six Timber Harvest, U.S. Military Academy, West Point, Orange County, N.Y. as subconsultant to FPM for USCOE New York District in 2006.
- + Archaeological data recovery, Revolutionary War resources, Stony Lonesome II Housing Facility Project, United States Military Academy, West Point, Orange County, N.Y. as subconsultant to FPM for the USCOE New York District in 2006.
- + Historic structures survey and National Register evaluation of historic resources located within the proposed SR 0208-Grove City Interchange highway project near Grove City, Mercer County, Pennsylvania, for PennDOT in 2006.

- + Phase I Archaeological Testing, Proposed Mummasburg Road Underground Utility, Gettysburg College and Gettysburg National Military Park, Adams County, Pennsylvania for Friends of the National Parks at Gettysburg, Inc. in 2006.
- + Phase I Archaeological Testing (Storage Facility, Delaware Memorial, Mississippi Marker and Monument), Gettysburg National Military Park, Adams County, Pennsylvania for the National Park Service (NPS) in 2006
- + Phase I Archaeological Survey, Berkshire Business Park, Manchester Township, York County, Pennsylvania for LSC Design, Inc. in 2006.
- + Historical resources inventory and preparation of historic archaeological predictive model for the Southern Beltway Transportation Project, Allegheny and Washington counties, Pennsylvania for TriLine Assoc. Inc. and the Pennsylvania Turnpike Commission in 2006.
- + Historic cultural resources investigation for the Erie East Side Access Study, Erie, Pennsylvania for PennDOT in 2006.
- + Phase I cultural resources survey of alignment C-Prime, Kittanning By-Pass, State Route 6028, Section 015, Armstrong County, Pennsylvania for PennDOT in 2006.
- + Phase I Cultural Resources Study, Proposed Stonewall Jackson 69kV Substation Project, Lewis County, West Virginia for Allegheny Power in 2006.
- + Codori/Trostle Thicket Feasibility Study, Pollen and Soil Analysis, Gettysburg National Park, Adams County, Pennsylvania for the National Park Service and Eastern National Park and Monument Assn.
- + Revision to Environmental Assessment, Historical Resources, Phase I Martin Luther King, Jr. East Busway. Extension, Wilkinsburg, Edgewood, Swissvale, and Rankin Boroughs, Allegheny County, Pennsylvania for the Port Authority of Allegheny County in 2006.
- + Archaeological testing and data recovery of proposed 16-inch waterline, Eisenhower National Historic Site and Gettysburg National Military Park, Adams County, Pennsylvania for the Eastern National Park and Monument Association/ NPS in 2006.
- + Phase I and II Archaeological Investigations, proposed Gettysburg Museum and Visitor Center, Gettysburg National Military Park, Adams County, Pennsylvania for the Gettysburg National Battlefield Museum Foundation in 2006.
- + Archaeological testing and data recovery, Fire Suppression Project, Eisenhower National Historic Site at Gettysburg National Military Park, Adams County, Pennsylvania for the NPS in 2006.
- + Phase I-III Archaeological Data Recovery, 18th-20th Century, Cabbage Pond Mill Site (7S-C-61), Sussex County, Delaware for DelDOT in 2006.
- + Archaeological data recovery, proposed sewer utility, Gettysburg National Military Park and Eisenhower National Historic Site, Adams County, Pennsylvania for the NPS in 2006.
- + Phase I Archaeological Survey, State Road 82 Slope Stabilization Project, New Castle County, Delaware for DelDOT in 2006
- + Phase I Archaeological Investigations, Bridge 305 on 6th Street, Sussex County, Delaware for DelDOT in 2006.
- + Archaeological data recovery and monitoring, Lemon House, Allegheny Portage Railroad National Historic Site, Blair and Cambria counties, Pennsylvania for the NPS in 2006.
- + Archaeological testing and data recovery at the Altoona Railroaders Memorial Museum, Altoona, Pennsylvania for the NPS in 2006.
- + Phase I archaeological survey for the US Air/R&P Coal Company Study, Blacklick, Indiana County, Pennsylvania for Kriebel Resources in 2006.
- + Archaeological overview and assessment investigations, Fort Necessity National Battlefield, Fayette County, Pennsylvania for the NPS in 2006.
- + Archaeological testing and mitigation, Phases I, II, and III, at the Saltsburg Canal Park, America's Industrial Heritage Project, Indiana County, Pennsylvania for the NPS in 2006.
- + Phase I Cultural Resources Survey, Dry Run Road Access Study, Martinsburg, Berkeley County, West Virginia for WV DOH in 2006

- + Phase IB intensive archaeological investigation of East-West Boulevard, Anne Arundel County, Maryland for MD DOT in 2006.
- + Phase I cultural resources investigation of the North Branch of Newton Creek, Boroughs of Woodlynne and Collingswood, Camden County, New Jersey for US COE Philadelphia District in 2006.
- + Phase IB intensive archaeological investigations of the MD 100 wetland mitigation Buckingham Tree Nursery and Deep Run areas, Anne Arundel and Howard counties, Maryland for MD DOT in 2006.
- + Phase I and II archaeological investigations of MD 228 wetland mitigation area, Charles County, Maryland for MD DOT in 2006.
- + Literature search and Phase I archaeological survey of the proposed North Huntingdon Square, North Huntingdon Township, Westmoreland County, Pennsylvania for J. J. Gumberg Company in 2006
- + Phase II archaeological investigations at the Legionville site (36Bv33), Harmony Township, Beaver County, Pennsylvania for GenCorp in 2006.
- + Environmental assessment - Resource Report 5, proposed GPU/DQE 250-mile transmission line, Beaver Falls-Three-Mile Island, Pennsylvania for GPU in 2006.
- + Phase I cultural resources investigations of Tract 1037, Blue Marsh Lake project area, Jefferson Township, Berks County, Pennsylvania for US COE Philadelphia District in 2006.
- + Archaeological survey of the Colver Reservoir expansion, Barr and Cambria townships, Cambria County, Pennsylvania for Inter-Power of Pennsylvania, Inc. in 2006.
- + Phase IA archaeological assessment of proposed Ahoskie Combustion Turbines, Ahoskie, North Carolina for Virginia Electric Power Company in 2006.
- + Stage IA cultural resource investigation, Gateway Cathedral, Staten Island, New York for John W. Whitehead AIA and Associates in 2006.
- + Stage IA and Stage IB cultural resources study of proposed sewage improvements, Wayne Township, Passaic County, New Jersey for Township of Wayne, New Jersey in 2006.
- + Phase I cultural resource survey, GSA Distribution Center, Burlington Township, Burlington County, New Jersey for Burlington GSA Partnership in 2006.
- + Phase I archaeological assessment of the proposed Submarine Electromagnetic Systems Laboratory, Naval Underwater Systems Center, New London, Connecticut for Naval Facilities Engineering Command in 2006.
- + Phase IA archaeological assessment of the Flexivan site, Jersey City, New Jersey for U.S. Postal Service in 2006.
- + Phase IA archaeological assessment of proposed prison facility, Talladega, Ala. and Atlanta, Georgia for the Department of Justice in 2006.
- + Phase I testing, Lipari Landfill Superfund Offsite Remediation Area, New Jersey for the US COE Philadelphia District in 2006.
- + Phase I and II testing, Logan Lane Site, Beaver County, Pennsylvania for Beaver County Corporation for Economic Development in 2006.
- + Historic Structure Report, General Albert G. Jenkins House, Cabell County, West Virginia for West Virginia State University/U.S. Army Corps of Engineers, Huntington District in 2005.
- + Phase IA Cultural Resources Investigation, AEP IGCC Plant Siting Studies, Ohio, West Virginia, and Kentucky, for American Electric Power in 2005..
- + Phase IB Archaeological Investigation, Proposed IGCC Mountaineer Plant Site, Mason County, West Virginia, for American Electric Power in 2005.
- + Phase I Archaeological Investigation, SR 4015-001 Bridge Replacement Project (Work Order #3), Springfield Township, Bradford County, Pennsylvania for PENNDOT in 2005.
- + Phase IB Archaeological Investigation, Fairmont to I-79 Gateway and Interchange Project, Palatine Section, City of Fairmont, Marion County, West Virginia for HNTB/WVDOH in 2005.
- + Phase I/II Archaeological Investigation, MEMCO/AEP Riverbank Restoration Project, Mason County, West Virginia, for Madison Coal and Supply Company/American Electric Power in 2005.

- + Phase I Archaeological Investigation, SR 0442-004 Bridge Replacement Project (Work Order #4), Muncy Creek Township, Lycoming County, Pennsylvania for PENNDOT in 2005.
- + Phase I Archaeological Investigation, SR 0044-038 Bridge Replacement Project (Work Order #8), Gregg Township, Union County, Pennsylvania for PENNDOT in 2005.
- + North Carolina Statewide GIS Archaeological Predictive Model (with ESI), North Carolina Department of Transportation in 2002-2005.
- + Phase I Survey and Phase II Evaluation, Hardy Storage and Virginia Looping Projects, Columbia Gas Transmission, Hardy County, West Virginia, and Rockingham, Page, Greene, and Shenandoah Counties, Virginia in 2004-2005.
- + Creation of Artifact Display and Public Information Report, Phase III Data Recovery, the Voegtly Cemetery, I-279/I-579 Highway and S.R. 0028, Section A23 Interchange Project, Allegheny County, Pennsylvania for PennDOT in 2005.
- + Phase I Survey, Cove Point Expansion Project, 80 Mile Transmission Line, Dominion Transmission, Inc., Huntingdon, Centre, Juniata, and Clinton Counties, Pennsylvania in 2004.
- + Phase I Survey and Phase II Evaluation, Cove Point Expansion Project, 40 Mile Transmission Line, Dominion Transmission, Inc., Calvert, Charles, and Prince George Counties, Maryland in 2004-2005.
- + Phase II Testing and Evaluation, Sites 36PO34 and 36MC70, Northeast Storage Project, Dominion Transmission, Inc., Potter and McKean Counties, Pennsylvania in 2004.
- + Phase I Cultural Resources Survey, Fink Capacity Maintenance Project, Lewis County, West Virginia for Dominion Transmission, Inc. in 2003.
- + Phase I Survey, Well 12367 Project, Kanawha County, West Virginia, Columbia Gas Transmission Corporation, Charleston, West Virginia.
- + Phase I Archaeological Survey, Charleston Ball Park, Charleston, West Virginia for the City of Charleston.
- + Phase I Survey, Loudoun-Leesburg Pipeline, Dominion Transmission, Inc., Loudoun County, Virginia in 2003.
- + Phase I Survey, Wolf Run Compressor Station and Pipeline, Northeast Storage Project, Dominion Transmission, Inc., Lewis County, West Virginia in 2004.
- + Phase I Survey, TL-263 Replacement Project, Kanawha, Boone, and Wyoming Counties, West Virginia, Dominion Transmission, Inc. in 2004.
- + Phase I Survey, Northeast Storage Project, 21 Mile Pipeline, Quinlan Compressor Station and associated facilities, Dominion Transmission, Inc., Potter and McKean Counties, Pennsylvania, and Cattaraugus County, New York in 2003.
- + Phase I Archaeological Survey and Architectural and Historic Resources Survey, American Electric Power Wyoming-Jacksons Ferry 765 kV Transmission Line, Priority Section 4, Wyoming and McDowell Counties, West Virginia; and Tazewell, Bland, Pulaski, and Wythe Counties, Virginia for American Electric Power in 2003-2004.
- + Phase I Survey, Cove Point East Project, Loudoun and Fauquier Counties, Virginia for Dominion Transmission, Inc. in 2004.
- + Phase I Survey, Mid-Atlantic Project, Quantico Compressor Station/Pipeline and Leesburg Compressor Station, Loudoun and Fauquier Counties, Virginia for Dominion Transmission, Inc. in 2003.
- + Categorical Exclusion Evaluation, Thurmond Bridge Replacement/Rehabilitation Project, Fayette County, West Virginia for the WVDOH in 2000.
- + Phase I and II Archaeological Survey of the Fayetteville Interchange, Fayette County, West Virginia as subconsultant to Kimley-Horn & Associates, Inc. (KHA) for WVDOH in 1999.
- + Phase II Archaeological Investigations (Historic Sites), Determination of Eligibility, Route 52 (Tolsia Highway) Construction Alternatives, Wayne and Mingo counties, West Virginia for WV DOH in 1997.
- + Historic structures reconnaissance survey and preparation of Criteria of Effects Report, Route 19/Corridor L, Braxton and Nicholas counties, West Virginia for WVDOH in 1995.
- + Phase I archaeological survey of the access roads to the proposed Federal Bureau of Investigation sites, Simpson and Clay districts, Harrison County, West Virginia for Johnson, Johnson & Roy.



- + Phase I/II Archaeological Investigations, Bridge Replacement Project T-319, Beaver County Bridge No. 36 (Links Bridge), Independence Township, Beaver County, Pennsylvania for PennDOT.
- + Phase II-III Data Recovery, the Coverts Bridge Site 36Lr228 and Coverts Crossing Site 36Lr75, Lawrence County, Pennsylvania for Frank B. Taylor Engineering and PennDOT in 2002.
- + Archaeological assessment of Quarters 124, United States Military Academy, West Point, Orange County, N.Y. as subconsultant to Fanning, Phillips, and Molnar (FPM) for USCOE New York District in 1996.
- + Cultural Resources Survey, Route Six Timber Harvest, U.S. Military Academy, West Point, Orange County, N.Y. as subconsultant to Fanning, Phillips, and Molnar (FPM) for USCOE New York District in 1995
- + Archaeological data recovery, Revolutionary War resources, Stony Lonesome II Housing Facility Project, United States Military Academy, West Point, Orange County, N.Y. as subconsultant to Fanning, Phillips, and Molnar (FPM) for the USCOE New York District in 1995.
- + Historic structures survey and National Register evaluation of historic resources located within the proposed SR 0208-Grove City Interchange highway project near Grove City, Mercer County, Pennsylvania, for PennDOT in 2002.
- + Phase I Archaeological Testing, Proposed Mummasburg Road Underground Utility, Gettysburg College and Gettysburg National Military Park, Adams County, Pennsylvania for Friends of the National Parks at Gettysburg, Inc. in 1999.
- + Phase I/II/III Archaeological Investigations, River Avenue Redevelopment Project, Pittsburgh, Allegheny County, Pennsylvania for the City of Pittsburgh in 2000.
- + Phase I Archaeological Testing (Storage Facility, Delaware Memorial, Mississippi Marker and Monument), Gettysburg National Military Park, Adams County, Pennsylvania for the National Park Service (NPS) in 1999.
- + Phase I Archaeological Survey, Berkshire Business Park, Manchester Township, York County, Pennsylvania for LSC Design, Inc. in 2000.
- + Historical resources inventory and preparation of historic archaeological predictive model for the Southern Beltway Transportation Project, Allegheny and Washington counties, Pennsylvania for TriLine Assoc. Inc. and the Pennsylvania Turnpike Commission in 1995.
- + Historic cultural resources investigation for the Erie East Side Access Study, Erie, Pennsylvania for PennDOT, 1992.
- + Phase I cultural resources survey of alignment C-Prime, Kittanning By-Pass, State Route 6028, Section 015, Armstrong County, Pennsylvania for PennDOT in 1992.
- + Phase I Cultural Resources Study, Proposed Stonewall Jackson 69kV Substation Project, Lewis County, West Virginia for Allegheny Power in 2000.
- + Codori/Trostle Thicket Feasibility Study, Pollen and Soil Analysis, Gettysburg National Park, Adams County, Pennsylvania for the National Park Service and Eastern National Park and Monument Association in 2000
- + Archaeological Site Testing/Excavation-Roads Rehabilitation Phase II, Gettysburg National Military Park, Adams County, Pennsylvania for the NPS in 1999.
- + Preparation of GIS Archaeological Protection Plan for the City of Pittsburgh, Pennsylvania for the Pittsburgh Department of City Planning in 1994.
- + Phase I-III archaeological data recovery, nineteenth-century urban occupations, Pittsburgh, Pennsylvania for the Pittsburgh Urban Redevelopment Authority in 1997.
- + Revision to Environmental Assessment, Historical Resources, Phase I Martin Luther King, Jr. East Busway Extension, Wilksburg, Edgewood, Swissvale, and Rankin Boroughs, Allegheny County, Pennsylvania for the Port Authority of Allegheny County in 1999.
- + Archaeological testing and data recovery of proposed 16-inch waterline, Eisenhower National Historic Site and Gettysburg National Military Park, Adams County, Pennsylvania for the Eastern National Park and Monument Association/ NPS in 1999.
- + Phase I and II Archaeological Investigations, proposed Gettysburg Museum and Visitor Center, Gettysburg National Military Park, Adams County, Pennsylvania for the Gettysburg National Battlefield Museum Foundation in 1999.

- + Archaeological testing and data recovery, Fire Suppression Project, Eisenhower National Historic Site at Gettysburg National Military Park, Adams County, Pennsylvania for the NPS in 1999.
- + Phase I-III Archaeological Data Recovery, 18th-20th Century, Cabbage Pond Mill Site (7S-C-61), Sussex County, Delaware for DelDOT in 1999.
- + Archaeological data recovery, proposed sewer utility, Gettysburg National Military Park and Eisenhower National Historic Site, Adams County, Pennsylvania for the NPS in 1999.
- + Phase I Archaeological Survey, State Road 82 Slope Stabilization Project, New Castle County, Delaware for DelDOT in 1998.
- + Phase I Archaeological Investigations, Bridge 305 on 6th Street, Sussex County, Delaware for DelDOT in 1999.
- + Archaeological data recovery and monitoring, Lemon House, Allegheny Portage Railroad National Historic Site, Blair and Cambria counties, Pennsylvania for the NPS in 1997.
- + Archaeological testing and data recovery at the Altoona Railroaders Memorial Museum, Altoona, Pennsylvania for the NPS in 1995.
- + Phase I archaeological survey for the US Air/R&P Coal Company Study, Blacklick, Indiana County, Pennsylvania for Kriebel Resources in 1995.
- + Archaeological overview and assessment investigations, Fort Necessity National Battlefield, Fayette County, Pennsylvania for the NPS in 1995.
- + Archaeological testing and mitigation, Phases I, II, and III, at the Saltsburg Canal Park, America's Industrial Heritage Project, Indiana County, Pennsylvania for the NPS in 1995.
- + Phase I Cultural Resources Survey, Dry Run Road Access Study, Martinsburg, Berkeley County, West Virginia for WV DOH in 1999.
- + Phase IB intensive archaeological investigation of East-West Boulevard, Anne Arundel County, Maryland for MD DOT in 1992.
- + Phase I cultural resources investigation of the North Branch of Newton Creek, Boroughs of Woodlynne and Collingswood, Camden County, New Jersey for US COE Philadelphia District in 1993.
- + Phase IB intensive archaeological investigations of the MD 100 wetland mitigation Buckingham Tree Nursery and Deep Run areas, Anne Arundel and Howard counties, Maryland for MD DOT in 1991.
- + Phase I and II archaeological investigations of MD 228 wetland mitigation area, Charles County, Maryland for MD DOT.
- + Literature search and Phase I archaeological survey of the proposed North Huntingdon Square, North Huntingdon Township, Westmoreland County, Pennsylvania for J. J. Gumberg Company in 1992.
- + Phase II archaeological investigations at the Legionville site (36Bv33), Harmony Township, Beaver County, Pennsylvania for GenCorp in 1991.
- + Environmental assessment - Resource Report 5, proposed GPU/DQE 250-mile transmission line, Beaver Falls-Three-Mile Island, Pennsylvania for GPU in 1992.
- + Phase I cultural resources investigations of Tract 1037, Blue Marsh Lake project area, Jefferson Township, Berks County, Pennsylvania for US COE Philadelphia District in 1991.
- + Archaeological survey of the Colver Reservoir expansion, Barr and Cambria townships, Cambria County, Pennsylvania for Inter-Power of Pennsylvania, Inc. in 1990.
- + Phase IA archaeological assessment of proposed Ahoskie Combustion Turbines, Ahoskie, North Carolina for Virginia Electric Power Company in 1990.
- + Phase I testing, Lipari Landfill Superfund Offsite Remediation Area, New Jersey for the US COE Philadelphia District.
- + Phase I and II testing, Logan Lane Site, Beaver County, Pennsylvania for Beaver County Corporation for Economic Development in 1991.
- + Cultural resources investigation of the Delaware Bay Coastline, New Jersey-Delaware for USCOE Philadelphia District in 1990.

- + Phase I survey of a proposed boat landing facility, Millville Hydroelectric Station, Jefferson County, West Virginia for Allegheny Power Service Corporation.
- + Cultural resources investigation of the West Branch of Shabakunk Creek, Ewing Township, Mercer County, New Jersey for US COE Philadelphia District.
- + Phase I survey and testing, proposed Ford City Pipeline, Armstrong County, Pennsylvania for T. W. Phillips Gas and Oil Company.
- + Phase I survey and testing, proposed pipeyard in Latimore Township, Adams County, Pennsylvania for Texas Eastern Gas Pipeline Company.
- + Phase II testing, Heritage Heights Site, Howard County, Maryland for MD DOT.

Mr. Resnick has gained professional experience through his work on cultural resources projects while employed at other firms, as described below.

- + Stage IA cultural resource investigation, Gateway Cathedral, Staten Island, New York for John W. Whitehead AIA and Associates.
- + Stage IA and Stage IB cultural resources study of proposed sewage improvements, Wayne Township, Passaic County, New Jersey for Township of Wayne, New Jersey.
- + Phase I cultural resource survey, GSA Distribution Center, Burlington Township, Burlington County, New Jersey for Burlington GSA Partnership.
- + Phase I archaeological assessment of the proposed Submarine Electromagnetic Systems Laboratory, Naval Underwater Systems Center, New London, Connecticut for Naval Facilities Engineering Command.
- + Phase IA archaeological assessment of the Flexivan site, Jersey City, New Jersey for U.S. Postal Service.
- + Phase IA archaeological assessment of proposed prison facility, Talladega, Ala. and Atlanta, Georgia for the Department of Justice.
- + Phase II testing, Northampton Plantation slave quarters, Largo, Maryland for Porteen Sullivan Corporation/Maryland National Capital Park and Planning Commission.
- + Phase I survey and testing, proposed federal correctional institution, Estill, South Carolina for the Department of Justice.
- + Phases I and II testing at 10 farmsteads, Fort Drum Military Reservation, Watertown, New York for National Park Service, Mid-Atlantic Region and U S Army.
- + Phase I survey, proposed DMV Inspection Station, Winston, New Jersey for the NJ DMV.
- + Phase I survey and testing, Ninth Square, New Haven for City of New Haven, Connecticut
- + Phase I testing, proposed Rego Park Mall, Queens, New York for Trump Organization.
- + Phase III mitigative excavation, Block 1192, Wilmington for the City of Wilmington, Delaware.
- + Excavations at the Pio Pico Mansion State Historic Park, Whittier, California for Pio Pico Docents Committee.
- + Archaeological Research Service Goldpoint Mapping Project, Goldpoint, Nevada for Bureau of Land Management.
- + Phase I survey, Upper Santa Ana Upstream Alternatives Study, San Bernadino County, California for US COE Los Angeles District.
- + San Joaquin Hills Corridor Survey, Orange County, California for County of Orange.

### **Publications / Presentations**

2009 Resnick, B., J. Berkin and P. Trocki. Commentary. Special Section: A Model Applied Archaeology Curriculum. The SAA Archaeological Record, Volume 9(1):31-33.

2009 Resnick, B., D. Owsley and S. Frankenburg. For the Sake of the Living: A Civil War Battlefield Burial, Gettysburg National Military Park. Pennsylvania Historical and Museum Commission.

- 2006 Madry, S., M. Cole, S. Gould, B. Resnick, S. Seibel, and M. Wilkerson. A GIS-Based Archaeological Predictive Model and Decision Support System for the North Carolina Department of Transportation. In *GIS and Archaeological Site Location Modeling*, edited by Mark W. Mehrer and Konnie L. Wescott. CRC/Taylor & Francis, London.
- 2003 Madry, S., S. Gould, B. Resnick, and M. Wilkerson. A GIS-Based Archaeological Predictive Model for the North Carolina Department of Transportation. In *The Archeology of Landscape and Geographic Information Systems: Predictive Maps, Settlement Dynamics and Space and Territory in Prehistory*, edited by Jurgen Kunow and Johannes Muller. Brandenburgisches Landesamt für Denkmalpflege und Archäologisches Landesmuseum, Wunsdorf.
- 1996 Resnick, B. Archeological Testing, Mitigation, and Monitoring of the Proposed Comfort Station, Stewart Warehouse, Altman Mill and Saltsburg Glass Factory, Phase I Development - Saltsburg Canal Park, Saltsburg, Indiana County, Pennsylvania. Southwestern Pennsylvania Heritage Preservation Commission, Archeological Report No. 7.
- 1996 Resnick, B. Archeological Testing and Mitigation for Phase I Development at Saltsburg Canal Park, Saltsburg, Indiana County, Pennsylvania. Southwestern Pennsylvania Heritage Preservation Commission, Archeological Report No. 6.
- 1991 LeeDecker, C.L. and B. Resnick. Archeological Investigations at the Federal Correctional Institution, Estill, Hampton County, South Carolina. *South Carolina Antiquities* 23 (1 & 2): 1 18.
- 1990 Hasenstab, R.J. and B. Resnick. GIS in Historical Predictive Modeling: The Fort Drum Project. In *Interpreting Space: GIS in Archaeology*, edited by Stanton W. Green, Ezra B.W. Zubrow, and Kathleen M. Allen. Taylor & Francis, Ltd., London.
- 1988 Resnick, B. The Williams Place: A Scotch Irish Farmstead in the South Carolina Piedmont. In *Volumes in Historical Archaeology III*, edited by Stanley South. The South Carolina Institute of Archaeology and Anthropology, The University of South Carolina, Columbia, South Carolina.
- 1986 Resnick, B. San Jacinto Makes Aviation History. San Jacinto Community Information Directory, Creative Network. Newport Beach, California.

#### Presentations and Lectures

- 2010 A Gettysburg Battlefield Burial. Lecture Presented as a part of the Pennsylvania State Museum Bookstore Series, May 19, 2010, Harrisburg, Pennsylvania.
- 2009 Moderator, Where the Money Ain't: Cultural Resource Management and the Fiscal Crisis. The Statewide Conference on Heritage, May 19-22, 2009, Harrisburg, Pennsylvania.
- 2009 "...The Last Full Measure of Devotion..." -- Archaeological Investigations at Gettysburg National Military Park, Adams County, Pennsylvania. Paper presented as part of the Symposium: Doug Scott, Eastern Style: Military-Site Archaeology East of the Mississippi, Middle Atlantic Archaeological Conference, March 19-22, 2009, Ocean City, Maryland.
- 2003 The NCDOT GIS-Based Archaeological Predictive Model. Paper presented as part of the Symposium: GIS Applications in Historical Archaeology, 36th Annual Conference on Historical and Underwater Archaeology, Providence, Rhode Island.
- 2002 The Coverts Crossing Project: Prehistory and Public Involvement in Northwestern Pennsylvania. 2002 FHWA Historic Preservation Excellence Award. Paper presented with D. H. MacDonald at the 3rd Annual Byways to the Past Conference, Indiana University of Pennsylvania.

2002 Eruptions, Blotches, Boils, and Blood: Civil War Medicine in Downtown Pittsburgh, Pennsylvania. Paper presented as part of the Symposium: Urban Archaeology in Pennsylvania, Pennsylvania Archaeology Conference, April 26, 2002, Greensburg, Pennsylvania.

2001 The Coverts Crossing Project: A Public Outreach Model. Paper presented with D. H. MacDonald at the 2nd Annual Byways to the Past Conference, Indiana University of Pennsylvania.

2000 Archaeological Investigations at the Pittsburgh Wool Company/River Avenue Redevelopment Project. Paper presented as part of the symposium, Pittsburgh Wool Company History, Senator John Heinz History Center/Western Pennsylvania Historical Society, Pittsburgh, Pennsylvania.

2000 Pharmacy in History: A Mid-Nineteenth-Century Drug Store in Pittsburgh, Pennsylvania. Paper presented as part of the symposium, Deeply-Buried Urban Deposits, 33rd Annual Conference on Historical and Underwater Archaeology, Quebec, Canada.

1999 Public Education During Late Discovery: The Cabbage Pond Mill Site Mitigation, Sussex County, Delaware. Paper presented as part of the symposium, Open to the Public: Archaeology and Your Next Door Neighbor, Middle Atlantic Archaeological Conference, Harrisburg, Pennsylvania.

1999 Public Education During Late Discovery: The Cabbage Pond Mill Site Mitigation, Sussex County, Delaware. Poster Session Presented with D.L. Landers, and K. Cunningham: Public Outreach/Participation in Archaeology and Historic Preservation, 78th Annual Meetings, Washington, D.C.

1998 Rather for the Sake of the Living than of the Dead: A Civil War Battlefield Burial, Gettysburg National Military Park, Pennsylvania. Paper presented with D. Owsley, and S. Frankenberg as part of the symposium, Historical Archaeology of the American Civil War: Battlefields and the Artifacts of War, 31st Annual Conference on Historical and Underwater Archaeology, Atlanta, Georgia.

1997 Co-Organizer with E. Morin, Symposium, Archaeology and Tourism in Southwestern Pennsylvania. Council for Northeast Historical Archaeology Meetings, Altoona, Pennsylvania.

1997 Industrial Archaeology and Railroad Shop Design: A View from Altoona. Paper presented with J. Dzodin as part of the symposium, Archaeology and Tourism in Southwestern Pennsylvania. Council for Northeast Historical Archaeology Meetings, Altoona, Pennsylvania.

1996 Presenter, Data Collection. Workshop on the Status of Urban Archaeology in the United States: An Opportunity for Discussion. 29th Annual Meeting, Society for Historical Archaeology, Conference on Historical and Underwater Archaeology, Cincinnati, Ohio.

1995 Fort Necessity National Battlefield: New Light on the Great Meadows and the Mount Washington Tavern. Paper presented as part of the symposium, Beyond Section 106: Contributions from National Park Service Compliance Archeology, 28th Annual Meeting, Society for Historical Archaeology, Conference on Historical and Underwater Archaeology, Washington, D.C.

1994 The Use of GIS in Urban Contexts: Pittsburgh's Archaeological Resources Protection Plan. Paper presented with R. Blanc at the 27th Annual Conference on Historical and Underwater Archaeology, Vancouver, British Columbia, Canada.

1993 City of Pittsburgh Cultural Resources and GIS. Paper presented with R. Blanc at the 1993 Annual Conference of the Pennsylvania Planning Association, Pittsburgh, Pennsylvania.

1993 GIS and the Development of an Archaeological Resources Protection Plan for the City of Pittsburgh, Pennsylvania. Paper presented with R. Blanc as part of the symposium, Advanced Spatial Analysis in Historical Archaeology: Geographic Information Systems and Digital Image Analysis, 26th Annual Conference on Historical and Underwater Archaeology, Kansas City, Missouri.

1992 Managing Pittsburgh's Archaeological Resources: Basic Methods and Procedures for The City of Pittsburgh's Archaeological Resources Protection Plan. Paper presented at the Urban Archaeology Group Workshop, 57th Annual Society for American Archaeology Meetings, Pittsburgh, Pennsylvania.

1991 The Slave Quarters at Northampton: An Archaeological and Historical Community Park, Prince Georges County, Maryland. Paper presented with D.S. Creveling at the 24th Annual Society for Historical Archaeology Conference on Historical and Underwater Archaeology, Richmond, Virginia.

1990 Archaeology and History: Recent Investigations at the Northampton Plantation Slave Quarters. Paper presented as part of the symposium, From Plantation to Park: A Model for Preservation and Interpretation, American Association for State and Local History, Washington, D.C.

1989 Site Formation and Settlement of Nineteenth Century Farmsteads, Fort Drum, New York. Paper presented as part of the symposium, Examining 19th/20th century Rural Archaeological Sites: A Regional Example from Fort Drum, Jefferson and Lewis Counties, New York, First Joint Archaeological Congress, Baltimore, Maryland.

1988 Late 19th Century Contexts in Wilmington, Delaware. Paper presented at the 50th Annual Meetings of the Southeastern Archaeological Conference, New Orleans, Louisiana.

1985 Historical Archaeology of an Upland South Farmstead. Paper presented at the 18th Annual Society for Historical Archaeology Conference on Historical and Underwater Archaeology, Boston, Massachusetts.

1983 The Williams Place: an Initial Archaeological and Historical Investigation. Paper presented at the 7th Annual Language and Culture Conference, Columbia, South Carolina.

Education

B.A Anthropology Department, emphasis  
Archaeology 1976, University of  
Pittsburgh

M.A. Folk Studies Department, emphasis  
Historic Preservation 1982, Western  
Kentucky University

M.A. Anthropology Department, emphasis  
Archaeology 1982, Arizona State  
University

Registrations/Certifications

Registered Professional Archaeologist  
(RPA)

Relevant Training/Courses

Advanced Project Management Training,  
GAI Consultants, Inc., 2009

ASFE Fundamentals of Professional  
Practice, 2008

**Professional Summary**

Ms. Frye exceeds the minimum Secretary of Interior's Standards for a prehistoric archaeologist. She has dual masters' degrees, and more than 25 years' extensive experience in Southwest Pennsylvania and the Upper Ohio River Valley region, along with projects in Maryland, Virginia, West Virginia, and Ohio. Ms. Frye served as the Government Principal Investigator for the Leetsdale project and, as a result, has experience: (1) working with multiple contractors working on a stratified site along the Ohio River; (2) reviewing regional lithic and ceramic analysis, as well as faunal, paleoethnobotanical, geomorphological, and spatial analyses associated with this project. Ms. Frye also reviewed draft reports for three separate contractors for the Leetsdale site excavations( Area 1, Area 2, and Area 3), which were submitted by the contractors to the Pittsburgh District. Ms. Frye's current duties also entail managing fieldwork with multiple contractors; i.e., ongoing PI/PM duties at Fort Campbell with field crews from multiple firms, coordinating efforts with Fort Campbell, USCOE Louisville, and Aerostar and report preparation.

**Professional Experience**

Historical Archaeology Teaching Experience

- + Adjunct Faculty, Mt. St. Mary's College, History Department, Emmittsburg, Maryland
- + Fall 1999, Industrial Archaeology
- + Winter 2000, Industrial Archaeology Lab
- + Fall 2001, Historical Archaeology

Project Manager/Principal Investigator (Sample of Projects)

2011

- + Report Co-author. Phase I Cultural Resources Investigation (Addendum 1), Section 4 South Alternative Tank Site, 2010 PL 1 Retest and Replacement Project, Antrim, Hamilton, Fannett, St. Thomas, and Washington Townships, Franklin County, Pennsylvania, for Dominion Transmission, Inc.

2010

- + Archeological Investigation and Assessment of a Site associated with Antietam National Battlefield, Loudoun County, Virginia, for Northern Virginia Regional Park Authority.
- + Phase I Cultural Resource Investigations and Phase II National Register Site Evaluations, Bell Bend Nuclear Power Plant, Luzerne County, Pennsylvania, for UniStar Nuclear Energy, LLC.
- + Report: Historic Analysis. Phase II National Register Site Evaluations, Nine Mile Point Nuclear Station, Proposed Unit 3 (NMP Unit 3), Oswego County, New York, for UniStar Nuclear Energy, LLC.



- + Principal Investigator. Phase I Cultural Resources Assessment, Upper Ohio Navigation Study, Emsworth, Dashields, and Montgomery Locks and Dams, Allegheny County, Pennsylvania, for Aerostar and USACE Nashville District.
- + Principal Investigator. Resource Identification Study, Bushy Run Battlefield, Penn Township, Westmoreland County, Pennsylvania, for Pennsylvania Historical and Museum Commission and the National Park Service American Battlefield Protection Program.
- + Principal Investigator/Co-author. Phase II National Register Site Evaluation, Glenda's Yard Site 18Fr984, Potomac-Appalachian Transmission Highline (PATH), Frederick County, Maryland, for Kenny Construction Company.
- + Principal Investigator. Phase I Cultural Resources Assessment, Upper Ohio Navigation Study, Ecosystem Restoration, Allegheny and Beaver Counties, Pennsylvania, for Aerostar and USACE Nashville District.
- + Principal Investigator. Phase III Data Recovery Excavations, Sites 46Ta23 and 46Ta24, Taylor County, West Virginia.

## 2009

- + Principal Investigator. Data Recovery Plan: Site 18Cv474, Calvert Cliffs Nuclear Power Plant, Calvert County, Maryland, for UniStar Nuclear Development, LLC.
- + Co-Principal Investigator. Phase I Cultural Resources Investigations and Phase II National Register Site Evaluations, Calvert Cliffs Nuclear Power Plant, Calvert County, Maryland, for UniStar Nuclear Development, LLC.
- + Project Manager/Principal Investigator. Phase II Investigations of the Dun Glen Hotel Site for the Fire Suppression System, Fayette County, West Virginia, for National Park Service-NERI.

## 2008

- + Principal Investigator. Phase I Cultural Resources, Pursley Transmission Line, Center Township, Greene County, Pennsylvania, for Allegheny Power.
- + Lead Archaeologist. Phase I Cultural Resource and Geomorphology Survey, Proposed Prexy Substation, Trans-Allegheny Interstate Line (TrAIL), North Strabane Township.
- + Principal Investigator, Phase Ib/II Archaeological Investigations, Fairmont to I-79 Gateway Corridor and Interchange, Alternatives A and A1, City of Fairmont, Marion County, West Virginia, for HNTB and WVDOH.
- + Principal Investigator. Cultural Resource Investigations, Naval Recreation Center, Calvert County, Solomons, Maryland. Client: TetraTech NUS, Inc.
- + Principal Investigator, Phase I/II Archaeological Investigations, North Shore Connector Project, City of Pittsburgh, Allegheny County, Pennsylvania. Client: North Shore Constructors (Obabyashi/Trumbull JV) and Port Authority of Allegheny County.
- + Principal Investigator, Phase I Archaeology and Geomorphology Survey, Proposed 502 Junction Substation, Trans-Allegheny Interstate Line, Dunkard Township, Greene County, Pennsylvania. Client: Power Engineers, Inc., Hailey, Idaho.

## 2007

- + Lead Archaeologist, Phase IA Archaeological and Architectural Reconnaissance, M.P. 149.5-155.5, Preliminary Design, Bedford County, Pennsylvania, for Pennsylvania Turnpike Commission.
- + Phase III Data Recovery Excavations at Site 18Cv151 Calvert County, Maryland, Cove Point Expansion Project. Report prepared for Dominion Transmission, Inc., Clarksburg, West Virginia.
- + Fort Ethan Allen Cultural Landscape Documentation Report, Arlington, Virginia. Client: Arlington Heritage Alliance, Arlington, Virginia.
- + Archaeological Data Recovery at Nuttallburg Mine Conveyor, New River Gorge National River, Fayette County, West Virginia. Client: National Park Service, Denver Service Center, Denver, Colorado.
- + Phase I Cultural Resource Survey and Geomorphology Investigation for Proposed O-1821 New Pipeline Project, Cambridge, Guernsey County, Ohio. Client: Columbia Gas Transmission, Charleston, West Virginia.



## 2006

- + Phase IB Archaeological Survey for the Proposed Westmoreland Distribution Park II, Parcel B, East Huntingdon and Hempfield Townships, Westmoreland County, Pennsylvania. Client: Westmoreland County Industrial Development Corporation, Greensburg, Pennsylvania.
- + Phase I Cultural Resource Survey, Proposed SL 2057/SL 2492 Pipeline Replacement Project, Lagrange and Lagrange Township, Lorain County, Ohio. Client: Columbia Gas Transmission.
- + Phase I Archaeological Survey for the Proposed D-36 Pipeline Replacement Project, New Riegel, Seneca County, Ohio. Report prepared for Columbia Gas Transmission, Charleston, West Virginia.

## 2005

- + Phase Ib Archaeological Survey, 189-acre Parcel within Proposed Westmoreland Distribution Park, East Huntingdon Township, Westmoreland County, Pennsylvania. Client: Westmoreland County Industrial Development Corporation, Greensburg, Pennsylvania.
- + Phase I Archaeological Survey, Westmoreland Technology Park, Phase 2, Lot 19, Hempfield Township, Westmoreland County, Pennsylvania. Client: Westmoreland County Industrial Development Corporation, Greensburg, Pennsylvania.
- + Phase I Archaeological Survey, Cove Point Expansion Project, PL-1 Natural Gas Pipeline Replacement Section, Hamilton Township, Franklin County, Pennsylvania. Client: Dominion Transmission, Inc., Clarksburg, West Virginia.
- + Phase I Archaeological Survey for Proposed SR-513 Pipeline, Salt Creek Township, Hocking County, Ohio. Client: Columbia Gas Transmission, Charleston, West Virginia.
- + Phase IA Cultural Resources Investigation, AEP IGCC Plant Siting Studies, Ohio, West Virginia, and Kentucky. Client: American Electric Power.
- + Phase II Cultural Resource Assessment, Site 36Ju117, Petersheim Site, Cove Point Expansion Project, Perulack Compressor Station, Juniata County, Pennsylvania. Client: Dominion Transmission, Inc., Clarksburg, West Virginia.
- + Phase I Cultural Resource Survey, Proposed SL 2057/SL 2492 Pipeline Replacement Project, Lagrange and Lagrange Township, Lorain County, Ohio. Client: Columbia Gas Transmission in 2006.
- + Phase I Cultural Resource Survey, Proposed E-460 Pipeline Replacement Project, Starr Township, Hocking County, Ohio. Client: Columbia Gas Transmission in 2005.
- + Phase IA Cultural Resources Investigation, AEP IGCC Plant Siting Studies, Ohio, West Virginia, and Kentucky. Client: American Electric Power in 2005.
- + Phase IB Archaeological Investigation, Proposed IGCC Mountaineer Plant Site, Mason County, West Virginia. Client: American Electric Power in 2005.
- + Phase I Survey E-2 Pipeline Replacement, Starr Township, Hocking County, Ohio. Client: Columbia Gas Transmission in 2005.
- + Phase I Survey for SR 513 Pipeline Replacement, Salt Creek Township, Hocking County, Ohio. Client: Columbia Gas Transmission in 2005.
- + Phase I Survey, Westmoreland Technology Park, Phase 2, Lot 19, Hempfield Township, Westmoreland County, PA. Client: Westmoreland County Industrial Development Corporation, Greensburg, Pennsylvania in 2005.
- + Phase I and Phase II Investigations at Site 36Ju117, Cove Point Expansion Project, Perulack Compressor Station, Juniata County, Pennsylvania. Client: Dominion Transmission, Inc., Clarksburg, West Virginia in 2005.

## Principal Investigator (Report Author)

- + Phase III Archaeological Investigations for the Proposed Norfolk Southern Railway Company's Saltsburg to Clarksburg Rail Line, Armstrong Township, Indiana County, Pennsylvania: The Reed Site. Client: Norfolk Southern Railway Company in 2005.

2004

- + Phase I Survey, Grading Area and Haul Road Project. Client: Westmoreland County Industrial Development Corporation, Westmoreland County, PA.
- + Phase I Survey, BBH Site Location. Client: Kanawha Eagle Coal, Cabin Creek District, Kanawha County, West Virginia.
- + Phase IA Survey, Westmoreland Distribution Park Phase 2. Client: Westmoreland County Industrial Development Corporation, Westmoreland County, PA.
- + Phase I Survey, Cove Point Expansion Project, 40 Mile Transmission Line. Client: Dominion Transmission, Inc., St. Mary's, Charles, and Prince George Counties, Maryland.
- + Phase I Survey, Pipeline Corridor Project. Client: Great Lakes Energy Partners Pipeline Project, Oakland and Plum Townships, Venango County, Pennsylvania.
- + Phase I Survey, Pipeline Corridor Project. Client: Great Lakes Energy Partners Pipeline Project Cornplanter Township, Venango County, Pennsylvania.
- + Phase I Survey, Sewerline Survey Project. Client: Senate Engineering, Mahoning Township, Armstrong County, Pennsylvania.
- + Phase I Survey, Sewerline Survey Project. Client: Dana R. Boob Surveying and Engineering, Brockway Area Sewer Authority Project Horton Township, Snyder Township, and Brockway Borough, Elk and Jefferson County, Pennsylvania.
- + Phase I Survey, Sewer Facilities Project. Client: Hill Engineering, Inc., Borough of Ellwood City, Wayne Township, Lawrence County, Pennsylvania.
- + Phase I Survey, Sewerline Survey Project. Client: Stiffler, McGraw and Associates, Inc., Frankstown Township Blair County, Pennsylvania.
- + Phase I Survey, Trails End Re-Entry Project. Client: USDA, Allegheny National Forest, Wetmore and Hamlin Townships, McKean County, Pennsylvania.
- + Phase I Archaeological Investigations and Historical Structure Investigations. Client: Bentworth School District, Somerset Township, Washington County, Pennsylvania.
- + Phase I Survey, Allegheny Portage Trace Trail Corridor (6-10). Client: National Park Service, Allegheny Portage National Historic Site, Gallitzin, Pennsylvania.

Project Manager/Principal Investigator, 1994-2003 Examples

- + Report on Archaeological Excavations, Wager Farmstead Site 36Mg307, Pennsylvania Act 70 Project, Pennsylvania Bureau for Historic Preservation, Montgomery County, PA.
- + Effects Report and Recommended Data Recovery Plan, Site 36AL480, Locks and Dams 2, 3, and 4, Monongahela River Project, Leetsdale, Allegheny County, Pennsylvania, US Army Corps of Engineers, Pittsburgh District (co-author).
- + Reassessment of Archaeological Sites, Falls Lake Reservoir Cultural Resources Planning Project, US Army Corps of Engineers, Wilmington District, Durham, Granville, and Wake Counties, NC.
- + Archaeological Survey and Excavation at Site 46Jf245, a Civil War encampment, Cranes Meadow Housing Development Project, Cranes Meadow Limited Partnership, Jefferson County, WV.
- + Phase I Survey, Furnace Town Historic Site Visitor's Center Project, Furnace Town Foundation, Inc., Worcester County, MD. Determination of Eligibility Assessments, Bluestone Dam and County Route 23, Horizon Research Consultants, Summers County, WV.
- + Phase I/II Archaeological Investigations at Fenby Farm Quarry and Lime Kiln Site (18Cr163/CARR 260), Westminster, Carroll County, MD.
- + Phase I Intensive Survey, Proposed Western Elementary School #3, Howard County Public School System, Howard County, MD.
- + Phase I Survey, New Design Bridge and Road Modification Project, Frederick County Department of Public Works, Bureau of Highways and Transportation, Frederick County, Maryland.

- + Phase I Survey Juniata Woolen Mill, Bedford County. An archaeological Reconnaissance Survey north of the Juniata Woolen Mill, Snake Spring Township for Juniata Woolen Mill, Inc.
- + Phase I Survey, Lower Georges Creek, Grays Landing Lock and Dam Project, Woolpert Consultants, Springhill and Nicholson Townships, Fayette County, PA.
- + Phase II/III Excavations of Gallatin Sawmill site (36Fa428), Grays Landing Lock and Dam Project, Woolpert Consultants, Fayette County, PA.
- + Phase II Assessment Eight Historical Sites, Eastern Portion of Segment II of the Proposed U.S. 30 Relocation Project, Dansard, Grohnke, and Long, Ltd., Hancock and Wyandot Counties, Ohio.
- + Phase II Assessment of the Tile House Site, Eastern Portion of Segment I of the Proposed U.S. 30 Relocation Project, Dansard, Grohnke, and Long, Ltd., Hancock County, Ohio.
- + Phase III Excavations of Young Site 33At668, Proposed Bridge Crossing of Hamley Run on S.R. 691 Project, Ohio Department of Transportation, Athens County, OH.
- + Phase I Survey, Juniata Woolen Mill parking lot Project, Juniata Woolen Mill, Inc., Snake Spring Township, Bedford County, PA.
- + Phase I Survey, Proposed Riverview Terrace Property Development Project, Cuyahoga Metropolitan Housing Authority, Cleveland, Cuyahoga County, Ohio.
- + Phase I Survey, Proposed Relocation of U.S. Route 30 Project, McCoy and Associates, Inc., Crawford and Richland Counties, Ohio.
- + Phase I Survey, Mill Creek Mall Expansion Project, The Cafaro Company, Erie County, Pennsylvania.
- + Phase I Inventory Survey, Naval Submarine Base Cultural Resources Planning Project, Naval Facilities Engineering Command, San Diego, California.

### **Publications / Presentations**

2003 The Leetsdale Project. PAC Newsletter 24:3-7. Co-authored with Conrad Weiser.

1995 A Cultural Resource Survey and Geomorphological Investigation of Loci 3, 4, 5, and 6 along Lower Georges Creek in Springhill and Nicholson Townships, Fayette County, Pennsylvania. Co-authored with Ronald C. Carlisle and J. Steven Kite. US Army Corps of Engineers, Pittsburgh District.

1995 Archaeological Assessment and Data Recovery of the Gallatin Sawmill at 36 Fa 428: The Eberhart Grist Mill, Dam, and Gallatin Sawmill. Co-authored with Ronald C. Carlisle, J. Steven Kite, Paula Zitzler, and Eric Davis. US Army Corps of Engineers, Pittsburgh District.

1992 Phase I Historic Properties Investigations, Youghiogheny River Lake Project, Fayette and Somerset Counties, Pennsylvania and Garrett County, Maryland. Co-authored with John P. Nass, Jr., John Roger Wright, and Rory Krupp. U S Army Corps of Engineers, Pittsburgh District.

1991 Coding System Manual for the East Liverpool, Ohio Urban Archaeology Project. ODOT Archaeological Series, No. 1.

1990 1990 Volume: Investigations into southeastern Utah Archaic, Phase III Archaeological Investigations of Two Small Sites Located Along U.S. 191, Holy Oak Lane to Blue Hill, San Juan County, Utah. John W. Hohman and John A. Hotop (eds.). Contributor. Studies in Western Archaeology No. 2. Louis Berger, East Orange. Pt. i-xiii, 1-289.

1986 Radiocarbon Dating of Archaeological Samples from Maryland. Co-authored with Hettie L. Boyce. Department of Natural Resources, Maryland Geological Survey, Archeological Studies No. 4.

Education

Masters Program (IP) U.S. History, Kent State University  
American Studies, The Pennsylvania State University (9 hours)  
B.A. History and Anthropology 1988, Franciscan University of Steubenville

Registrations/Certifications

Certification in Secondary Education (7-12), Franciscan University of Steubenville (Ohio)  
Section 106 training, Ohio Historical Society, 2003  
State of Ohio Teaching Certification, 1995-2007  
Certified in First Aid, CPR and AED.

Affiliations

Ohio Historical Society  
Northeast Ohio Education Association  
West Virginia Archaeological Council

Professional Summary

Specialization in lithic analysis for Phase I, II and III archaeological projects in Pennsylvania, Ohio, Maryland, West Virginia, Virginia, and Kentucky, field crew supervision, prehistoric and historic archaeology, background research, curation, historic and prehistoric artifact illustrations, on-site interpretation of artifact distribution and site mapping with an emphasis on Prehistoric lithic analysis from Paleo to Late Woodland sites and artifact interpretation.

Professional Experience

2010

- + Prehistoric Lithic Analysis. Phase II National Register Site Evaluations, Nine Mile Point Nuclear Station, Proposed Unit 3 (NMP Unit 3), Oswego County, New York, for UniStar Nuclear Energy, LLC.
- + Prehistoric Lithic Analysis. Phase I Cultural Resources Survey, Lockhart 138kV Transmission Project, Dickenson County, Virginia, for American Electric Power Company.

2009

- + Prehistoric Lithic Analysis. Phase III Analysis and Report of the McDaniel Site (44Gn115), Hardy Transmission Project, Greene County, Virginia for Columbia Gas Transmission.
- + Prehistoric Artifact Analysis. Phase I Cultural Resources Survey, Kemptown Substation, Potomac-Appalachian Transmission Highline (PATH), Frederick County, Maryland, for Power Engineers.
- + Prehistoric Artifact Analysis. Phase I Cultural Resources Investigations and Phase II National Register Site Evaluations, Calvert Cliffs Nuclear Power Plant, Calvert County, Maryland, for UniStar Nuclear Development, LLC.
- + Hardy Storage Phase III Report. Responsible for writing the section on the Results of Lithic Analysis.
- + Scanning and documentation of artifacts for reports using the Epson Perfection 4490 Photo scanner and Photoshop Elements program.
- + Dominion Gas H-162 Pipeline Project..Analysis of prehistoric artifacts and scanning for the report.

2008

- + Hardy Storage (Site 44Gn115) Phase III Data Recovery for Columbia Gas, Greene County, Virginia. Responsible for the Lithic analysis and interpretation of 40,000 artifacts and tools from a multi-component site: Paleo to Late Woodland occupation.
- + Prexy Substation Phase I survey for Power Engineers, Inc. Washington County, PA. Lithic analysis.



- + Mt. Storm to VA Phase I tower and access road survey for Power Engineers, Eastern Panhandle, WV. Lithic analysis.
- + Big Sandy Pipeline. Phase I and II. Floyd, Carter, Lawrence and Johnson Counties, Kentucky for Equitable Resources. Rockshelters and Line surveys. Lithic analysis.
- + Crawford Storage Expansion Project. Phase I and II Survey for Columbia Gas. Lithic analysis.
- + Archaeological Data Recovery, Philip's Meadow Site 18Ch654, Charles County, Maryland. Cove Point Expansion TL-532 Pipeline Project. Client: Dominion Cove Point, LNG, LP. Lithic analysis.
- + Phase I Cultural Resources Survey, PPL Option 1 for an 8-inch Diameter Gas Pipeline, Granville Township, Mifflin County, Pennsylvania. Client: PPL Gas Utilities. Lithic analysis.
- + Phase I/II Archaeological Investigations, North Shore Connector Project, City of Pittsburgh, Allegheny County, Pennsylvania. Client: North Shore Constructors (Obabyashi/Trumbull JV) and Port Authority of Allegheny County. Lab technician.
- + Phase I Archaeological and Geomorphologic Survey, Dominion East Ohio Jefferson Compressor Station, New Philadelphia, Tuscarawas County, OH. Conducted Dominion Transmission, Inc. Lithic analysis.
- + Phase I Archaeological and Geomorphologic Survey, Dominion East Ohio Jefferson Compressor Station, New Philadelphia, Tuscarawas County, OH. Conducted Dominion Transmission, Inc. Lithic analysis.

#### 2007

- + Phase I Survey, Cove Point Expansion Project, 48 Mile Transmission Line, Calvert, Charles, and Prince George Counties, Maryland for Dominion Transmission, Inc. Lithic analysis.
- + Big Sandy Pipeline. Phase I and II. Floyd, Carter, Lawrence and Johnson Counties, Kentucky for Equitable Resources. Rockshelters and Line surveys. Lithic analysis.
- + Phase Ia Survey and Reconnaissance, Hub II—TL 587 Pipeline, Steuben and Chemung Counties, New York, for Dominion Transmission, Inc. Lithic analysis.
- + Curation of Pennsylvania Cove Point Expansion PL1 Ext 2.
- + Curation of KY Big Sandy Pipeline project for Equitable Gas in Kentucky

#### 2006

- + Phase I/II Survey and Evaluation of prehistoric and historic sites including 33Ms23, 33Ms385 and 33Ms391, a Paleo-Indian site, for the proposed IGCC Site, Great Bend, for American Electric Power (AEP) Meigs County, Ohio. Lithic analysis.
- + BPB Phase I and II Archaeological Survey, proposed particle board plant along the Ohio River, Moundsville, WV. Lithic analysis.

#### 2005

- + Phase Ib/II Survey of site 46Ms284, a deeply buried early archaic site near the confluence of the Ohio River and Kanawha River, Mason County, West Virginia for Madison Coal. Lithic analysis.
- + Phase Ib/II Survey and Evaluation of 22 prehistoric and/or historic sites for the Cove Point Expansion Project, 48-Mile Transmission Line, Calvert, Charles, and Prince George Counties, Maryland for Dominion Transmission, Inc. Lithic analysis and Crew Chief.
- + Phase I Survey SR 513 Pipeline Replacement, Salt Creek Township, Hocking County, Ohio for Columbia Gas Transmission.
- + Lab and Field (2005) Phase I/II Investigation at Site 36Ju117, Cove Point Expansion Project, Perulack Compressor Station, Juniata County, Pennsylvania for Dominion Transmission, Inc. Clarksburg, West Virginia.
- + Phase I Survey E-2 Pipeline Replacement, Starr Township, Hocking County, Ohio for Columbia Gas.
- + BPB Phase I and II Archaeological Survey, proposed particle board plant along the Ohio River, Moundsville, WV. Lithic analysis.

## 2004

- + Phase I Survey, Cove Point Expansion Project, 48 Mile Transmission Line, Calvert, Charles, and Prince George Counties, Maryland for Dominion Transmission, Inc. Crew Chief/Field Technician and lithic analysis.
- + Crew Chief. Survey of Historic Architectural Resources, Racket-Newberne Facility, Gilmer County, West Virginia, DTI-USA Project, for Dominion Transmission, Inc.
- + Lab Assistant. Survey of Historic Architectural Resources, Glade Run 138 kV Loop, Armstrong County, Pennsylvania, for Allegheny Power.
- + Big Blue Archaeological Resources (BBAR), Morgantown, WV. Field Director and Lab Director. Responsible for analyzing and processing Prehistoric and historic artifacts from Phase I, II and II archeological investigations, monitoring backhoes and directing field crews as needed.
- + BBAR. Phase I Archaeological Pipeline Survey for Columbia Gas, Pickaway County, Ohio. Field Director and Lithic Analyst. Also co-authored a Phase I Management Summary for this project.

## 2003

- + John Milner Associates (JMA) Field Technician, Phase I survey for Dulles International Airport, Chantilly, Va.
- + BBAR. Field Director and Lithic Analyst fir a Phase I survey for a sewer replacement line on and around Snowshoe Mountain, Pocahontas County, WV. Duties included mapping, project photography, landowner contact, assessing slope for testability according to state guidelines, lithic analysis and report preparation.

## 2002

- + BBAR. Phase III Data Recovery for Columbia Gas, Site 36Ch768, Exton, PA. Lithic analysis and database management of recovered artifacts.
- + BBAR. Backhoe monitoring and deep testing for Columbia Gas, Barboursville, WV.
- + BBAR. Backhoe monitoring and deep testing for Columbia Gas, Wetzel County, WV.
- + BBAR. Phase I Survey for Columbia Gas, Wayne County, WV. Field Director and Lithic Analyst.

## 2001

- + KCI Technologies, Inc. Field Director/Crew Chief/Lithic Analyst for Phase I, II and II projects in Pennsylvania and Maryland.

## 2000

- + GAI Consultants, Inc. Phase III Data Recovery of a Panhandle Archaic shell midden site, Follansbee-Weirton Road Project, for WV DOH. Field Technician.

## 1999

- + Field and Lab Technician Site 36Pe16, 36Pe60, and 36Pe61. Site ages range from 12,000 BP to 1,800 BP. (1999-2001), Perry County, PA.

## 1998-1979

- + Experience conducting archaeological fieldwork and lab work. Early laboratory experience was gained through work with the Ohio Historical Society, Cleveland Museum of Natural History, Kent State University, and the University of Steubenville.
- + Field School Supervisor and Lab Technician, Franciscan University, Steubenville, OH. Excavation of Archaic Red Ochre Cremations and Woodland sites in Jefferson County, OH.

Education

B.A. Anthropology, Minors in Sociology and History 2004, Indiana University of Pennsylvania

Relevant Training/Courses

AED/CPR/First Aid Training

2008 Council for Northeast Historical Archaeology workshop- An introduction to 17th Century Ceramics by Silas Hurry

2008 Council for Northeast Historical Archaeology workshop- Machine Made Bottles by George Miller

Affiliations

Chairperson of the Pittsburgh Office Environmental Health and Safety Committee 2010-2011

Member of the Pittsburgh Office Environmental Health and Safety Committee 2006-2011

**Professional Summary**

Ms. Madore specializes in artifact processing, curation, and historical artifact analysis. As part of her job, she enters artifact analysis data into Access database, photographs artifacts, and creates tables in excel for reports. Ms. Madore has analyzed artifacts on projects ranging from a Colonial era plantation to present day urban areas. Unique areas of experience include 17<sup>th</sup>-18<sup>th</sup> century ceramics, and 19<sup>th</sup> century bottle manufacturing techniques.

**Professional Experience**

2011

- + Historic analysis of Natural Resources Group Warren County Expansion Phase I, Virginia.
- + Final curation for the DTI TL 404 Conversion project Phase I, West Virginia.
- + Final Curation of the SR 56 South Brush Valley Bridge Replacement Phase I, Pennsylvania.
- + Final curation of the Monocacy-Ringgold-Carroll (MRC) 138-230kV Conversion Project Phase I, Maryland.
- + Historic Analysis for the West Virginia Department of Highways Hartland Bridge project Phase I, West Virginia.
- + Historic Analysis for the SR 56 South Brush Valley Bridge Replacement Phase I, Pennsylvania.
- + Final curation for the Line 1278/Line K Replacement project Phase I, New York.
- + Final curation for the Trans Allegheny Interstate Line (TrAIL) Phase I, West Virginia, Virginia, and Pennsylvania.
- + Laboratory Manager supervising and assisting in labeling, data entry, preparing data tables for reports, flotation, and preparing artifacts for museum curation. Projects include work in Kentucky, Virginia, West Virginia, Ohio, New York, Tennessee, Maryland, and Pennsylvania.
- + Conducting background research for various states including New York, Pennsylvania, and Maryland. As well as using online resources such as the Ohio Iform and Pennsylvania CRGIS.

2010

- + Historic analysis for the Phase 1 NRG Warren County Expansion Ph I, Virginia.
- + Historic Analysis of the Monocacy-Ringgold-Carroll (MRC) 138-230kV Conversion Project Phase I, Maryland.
- + Final curation for the Gateway TL 590 and TL 591 line Ph I & II, Pennsylvania.
- + Historic Analysis for the PL-1 pressure Test Ph I, Pennsylvania.



- + Final curation for H-162 Witcher Creek Phase III, West Virginia.
- + Historic Analysis for the NFG Line N Ph I, Pennsylvania.
- + Final Curation for Bell Bend Nuclear Power Plant power Block Relocation Phase I, Pennsylvania.
- + Historic Analysis of the DTI TL 404 Conversion project Ph I, West Virginia.
- + Historic Analysis of Superior Appalachian Phase I, Pennsylvania.
- + Historic Analysis Dominion Gateway TL 590 Ph II, Pennsylvania.
- + Historic Analysis of Dominion Gateway TL 591 Ph II, Pennsylvania.
- + Historic Analysis of the PATH Kemptown Station Phase I, Maryland.
- + Historic Analysis of the PATH Glenda's Yard Phase II, Maryland.
- + Final Curation for Fort Campbell Phase I, Tennessee/Kentucky.
- + Historic Analysis of for the Line 1278/Line K Replacement project Phase I, New York.
- + Historic Analysis of Bell Bend Nuclear Power Plant power Block Relocation Phase I, Pennsylvania.
- + Laboratory Manager supervising and assisting in labeling, data entry, preparing data tables for reports, flotation, and preparing artifacts for museum curation. Projects include work in Kentucky, Virginia, West Virginia, Ohio, New York, Tennessee, Maryland, and Pennsylvania.
- + Conducted background research for various states including New York, Pennsylvania, and Maryland. As well as using online resources such as the Ohio IForm and Pennsylvania CRGIS.

#### 2009

- + Historic analysis for the Phase I Bushy Run Battlefield, Pennsylvania.
- + Historic analysis for the Phase II Bell Bend Nuclear Power Plant, Pennsylvania.
- + Historic analysis for the Phase III of REX Site 33Wa823, Ohio.
- + Historic analysis for the Phase III of REX Site 33Mo77, Ohio.
- + Historic analysis for the Phase III of Pruntytown, West Virginia.
- + Historic analysis for the Phase I at Fort Campbell, Tennessee/Kentucky.
- + Historic analysis for the Phase II H-162, Maryland.
- + Historic analysis for the Phase I Ghent, Kentucky.
- + Historic analysis for the Dominion Retest project.
- + Historic analysis for the GatewayTI-591 line, Pennsylvania.
- + Laboratory Manager supervising and assisting in labeling, data entry, preparing data tables for reports, flotation, and preparing artifacts for museum curation. Projects include work in Kentucky, Virginia, West Virginia, Ohio, New York, Tennessee, Maryland, and Pennsylvania.
- + Conducted background research for various states including New York, Pennsylvania, and Maryland. As well as using online resources such as the Ohio IForm and Pennsylvania CRGIS.

#### 2008

- + Historic analysis for the Phase III of site 44Gn115, Virginia.
- + Historic analysis for the Phase I Fairmont Bridge Replacement, West Virginia.
- + Historic analysis for the Phase I PATH project, Maryland.
- + Historic analysis for the Phase I Bell Bend Nuclear Power Plant, Pennsylvania.
- + Historic analysis and Curation for Phase II Calvert Cliffs Nuclear Power Plant project, Maryland.
- + Historic analysis and Curation for the Phase II and Well feature of the Pittsburgh North Shore Tunnel project, Pennsylvania.
- + Historic analysis and Curation for Phase I Crawford Storage / Weaver project, Ohio.
- + Historic analysis for Phase I Farmers National Bank project, Pennsylvania.
- + Historic analysis and Field work for Phase I Hub II project, New York.
- + Monitoring Horizontal Drilling beneath a know Paleo site 44Gn115, Virginia.
- + Field work on Phase I Columbia pipeline project, Pennsylvania.



- + Historic analysis and Field work for Phase I Messer Reef, New York.
- + Laboratory Manager supervising and assisting in labeling, data entry, preparing data tables for reports, flotation, and preparing artifacts for museum curation. Projects include work in Kentucky, Virginia, West Virginia, Ohio, Maryland, New York, and Pennsylvania.
- + Conducted background research for various states including New York, Pennsylvania, and Maryland. As well as using online resources such as the Ohio IForm and Pennsylvania CRGIS.

## 2007

- + Curation of Romney Bridge Replacement project, West Virginia.
- + Historic analysis for Phase I Calvert Cliffs Nuclear Power Plant project in Maryland.
- + Curation of Cove Point Expansion PL1 Ext 2, Pennsylvania.
- + Curation of KY Big Sandy Pipeline project for Equitable Gas, Kentucky.
- + Historic artifact analysis for the Pittsburgh North Shore Tunnel project, Pennsylvania.
- + Historic analysis, Curation, and Field work for Raleigh St. Extension project in Martinsburg, WV.
- + Historic analysis and Curation for Fairmont, WV project.
- + Phase 1A/1B survey for Columbia Pipeline Messer Reef project in Olean, New York along with historic artifact analysis.
- + Historic artifact analysis for various Big Blue projects in PA, OH, and WV.
- + Background Research at Pennsylvania's BHP for a cultural resource project.
- + Laboratory Manager supervising and assisting in labeling, data entry, preparing data tables for reports, flotation, and preparing artifacts for museum curation. Projects include work in Kentucky, Virginia, West Virginia, Ohio, Maryland, New York, and Pennsylvania.
- + Conducted background research for various states including New York, Pennsylvania, and Maryland. As well as using online resources such as the Ohio IForm and Pennsylvania CRGIS.

## 2006

- + Historic Analysis for the KY Big Sandy Pipeline project for Equitable Gas in Kentucky.
- + Historic Analysis for Cove Point Expansion TL-532 site 18Cv151 Phase III, Maryland.
- + Historic Analysis for the Westmoreland County Industrial Center, Pennsylvania.
- + Background research in Maryland at MHT for a cultural resource project.
- + Background Research at Pennsylvania's BHP for a cultural resource project.
- + Background Research in New York at Historic Preservation Office for several cultural resource projects.
- + Historic analysis for Fort Ethan Allen project.
- + Historic analysis for Swan Wetlands project, Maryland.
- + Historic analysis for New Berlin/Penn's Creek project in Hopewell Township, Pennsylvania.
- + Phase I survey for Wal-Mart project in Washington Township, Pa. Assisted with fieldwork and mapping of structures and Historic artifacts analysis.
- + Historic analysis for Great Bend, Ohio AEP power plant project.
- + Phase I Survey for Alcoa Plant, Pa. Assisted with fieldwork.
- + Historic Structure Survey, Sarasota, Florida. Assisted with mapping and photography of 750 properties.
- + Laboratory Technician assisting in labeling, data entry, preparing data tables for reports, flotation, and preparing artifacts for museum curation. Projects include work in Kentucky, Virginia, West Virginia, Ohio, Maryland, and Pennsylvania.

## 2005

- + Phase II Historic Architecture Survey for the City of Leesburg, Florida. 400 building survey. Assisted with mapping and photography.

- + Laboratory technician, Cove Point Expansion Project, Maryland. Assisted in Historic artifact analysis, data entry, and preparing data tables for report.
- + Phase I BPB Mitchell Project, Proposed Particle Board Plant along Ohio River, Moundsville, West Virginia. Assisted in fieldwork and data entry.
- + Phase II Survey, Bridge Expansion, Fairmont, West Virginia. Assisted with fieldwork, and data entry.
- + Phase I Survey, SR-513 Pipeline, Salt Creek Township, Hocking County, Ohio. Assisted with fieldwork.
- + Joint Paper presented at 2005 SAA on "orphaned" or forgotten collections in Pennsylvania.

#### 2004

- + Museum intern at Bushy Run Battlefield( 13 weeks), responsible for cataloging and organizing all maps, photographs, and other graphic material held by the museum. Also assisted with providing tours and help with school programs, as well as assisting in the planning and implementation of the annual battle reenactment.
- + Penn DOT Curation Project, Student Supervisor, Assist in bringing Pa Archaeological artifacts to current curation standards for placement in the Pennsylvania State Museum. Tasks included artifact analysis, labeling, artifact photography, developing of contact sheets, and issuing of landowner gift agreements.
- + Phase II survey, Portage Railroad, Portage, Pennsylvania. Assisted in fieldwork as well as mapping of features.

#### 2003

- + Phase III survey, Oliver Site I-IV, Norfolk Southern Railroad, Indiana County, Pennsylvania. Assisted with fieldwork, data entry, and artifact analysis.
- + Phase III survey, Reed-Cribb Site, Norfolk Southern Railroad, Indiana County, Pennsylvania. Assisted with background research, fieldwork, data entry, and artifact analysis.
- + Penn DOT Curation Project, Student Supervisor, Assist in bringing Pa Archaeological artifacts to current curation standards for placement in the Pennsylvania State Museum. Tasks included artifact analysis, labeling, artifact photography, developing of contact sheets, and issuing of landowner gift agreements.

Education

M.A., Historical Archaeology 2001,  
University of West Florida

B.A., Anthropology 1997, University of  
West Florida

Registrations/Certifications

Register of Professional Archaeologist

Relevant Training/Courses

National Preservation Institute Seminar,  
Section 106: An Introduction, 2004

OSHA 10-hour Construction Safety  
Course, 2007

Section 106/National Register Eligibility  
Training, Ohio Department of  
Transportation, 2010

Affiliations

Society for Historical Archaeology  
Southeastern Archaeological Society

Professional Employment History

Earth Search, Inc., 2004-2008

R. Christopher Goodwin and Associates,  
Inc., 2003-2004

University of West Florida, Archaeology  
Institute, 2002-2003

**Professional Summary**

Ms. Pokrant specializes in both prehistoric and historic archaeology in the Southeast and Midwest. Her thesis work focused on the Spanish presidio, Santa María de Galve, in Pensacola, Florida. After receiving her Master's degree in 2001, she worked as staff archaeologist at the University of West Florida (UWF) Archaeology Institute where she field directed several prehistoric archaeology projects in Fort Walton Beach, Florida. After leaving UWF in 2003, she worked for two cultural resource management firms in New Orleans, Louisiana. In 2006 and 2007, she worked as a contract archaeologist to the Federal Emergency Management Agency (FEMA) recovery efforts for Hurricane Rita in southwest Louisiana and flood damage in New York State. After joining GAI in 2008, Ms. Pokrant field directed two Phase III data recovery projects in Warren County, Ohio for the Rockies Express pipeline project. These excavations consisted of a Middle Woodland habitation site (33WA797) and an early nineteenth-century farmstead (33WA823). Her recent field work experiences include Phase II testing in Marshall County, West Virginia, Phase II testing in Greene County, Pennsylvania, large-scale Phase I surveys in Kentucky and Tennessee and a historic cemetery relocation project in Carroll County, Kentucky.

**Professional Experience**

2010

- + Diuguid/Slack Cemetery Relocation for the Ghent Power Generating Station, Carroll County, Kentucky, for E.ON-US/LG&E. Field Director.
- + Phase II National Register Testing at Site 36GR209, TL-590 Pipeline Project, Appalachian Gateway, Greene County, Pennsylvania for Dominion Transmission, Inc. (DTI). Field Director.
- + Phase I Survey for Line #6123 Natural Gas Pipeline Replacement Project, Pike and Bethlehem Townships, Stark County, Ohio for Dominion East Ohio Gas. Field Director.
- + Phase II National Register Testing at Sites 15CL91 and 15CL92, Ghent Power Generating Station, Carroll County, Kentucky, for E.ON-US/LG&E. Field Director.

2009

- + Phase II National Register Testing at Site 46MR138, TL-590 Pipeline Project, Burch Ridge Compressor Station, Marshall County, West Virginia for Dominion Transmission, Inc. (DTI). Field Director.
- + Phase IA Reconnaissance of the Hawthorne Conservation Area for the Campbell County Conservancy, Campbell County, Kentucky. Field Director.



- + Phase I Survey for the Ghent Power Generating Station, Carroll County, Kentucky, for E.ON-US/LG&E. Field Director.
- + Phase I Survey at Ft. Campbell, Kentucky, for Aerostar Environmental Services, Inc. Field Director.
- + Phase II National Register Testing at Site 15CL88, Ghent Power Generating Station, Carroll County, Kentucky, for E.ON-US. Field Director.
- + Phase I Survey of Franklin 20-Inch Storage Pipeline Project, Wayne and Summit Counties, Ohio for Dominion East Ohio Gas. Field Director.
- + Archaeological Overview and Sensitivity Models, Montezuma National Wildlife Refuge, Cayuga, Seneca and Wayne Counties, New York, for US Fish and Wildlife Service, Region 5, Hadley, Massachusetts. Senior Archaeologist.

2008

- + Phase III Archaeological Evaluation of the Bailey Site (33Wa797) for the Rockies Express Pipeline-East (REX-East) Project, Warren County, Ohio, for Caprock Environmental Services, LLC. Field Director.
- + Phase III Archaeological Evaluation of the Crane/Blackburn House Site (33Wa823) for the Rockies Express Pipeline-East (REX-East) Project, Warren County, Ohio, for Caprock Environmental Services, LLC. Field Director.

### Publications and Technical Reports

- 2010 Breetzke, David E. and Marie E. Pokrant. Archaeological Investigation of the Diuguid/Slack Cemetery – Site 15CL87. Submitted to LG&E/Kentucky Utilities. Louisville, Kentucky.
- 2010 Breetzke, David E. and Marie E. Pokrant. Phase I Archaeological Survey, Ghent Generating Station Landfill Project. Submitted to E.ON-U.S./Kentucky Utilities. Louisville, Kentucky.
- 2010 Breetzke, David E. and Marie E. Pokrant. Phase II Archaeological Investigations of Sites 15CL91 and 15CL92: Phase I Survey of Site 15CL105, Ghent Generating Station Landfill Project. Submitted to E.ON-U.S./Kentucky Utilities. Louisville, Kentucky.
- 2010 Breetzke, David E. and Marie E. Pokrant. Phase III Archaeological Evaluation of the Crane/Blackburn House Site (33WA823) for the Rockies Express Pipeline-East (REX-East) Project, Warren County, Ohio. Submitted to Caprock Environmental Services, LLC. Bettendorf, Iowa.
- 2009 Breetzke, David E. and Marie E. Pokrant. Phase III Archaeological Evaluation of the Bailey Site (33WA797) for the Rockies Express Pipeline-East (REX-East) Project, Warren County, Ohio. Submitted to Caprock Environmental Services, LLC. Bettendorf, Iowa.
- 2009 Pokrant, Marie E. and David E. Breetzke. Phase IA Archaeological Reconnaissance, Hawthorne Crossing Conservation Area Campbell County, Kentucky. Submitted to Natural Resource Conservation Service, Alexandria, Kentucky.
- 2009 Breetzke, David E. and Marie E. Pokrant. Phase II Investigation of Site 15CL88 on the Ghent Generating Station Proposed Landfill Project. Submitted to Submitted to E.ON-U.S./Kentucky Utilities. Louisville, Kentucky.
- 2008 Pokrant, Marie E, Harriet Smith, ad Theres LeMoine, and Angele Montana. Phase I Archaeological Survey of 1500 acres on Red River Army Depot and Lone Star Army Ammunition Plant, Bowie County, Texas. Submitted to U.S. Army Corps of Engineers, Fort Worth District, Texas.
- 2007 Pokrant, Marie E. Phase I Cultural Resources Survey of Future I-49 South Corridor, SIU-1, Link 1B, Lafourche Parish, Louisiana. Submitted to DMJM+Harris, New Orleans, Louisiana.
- 2007 Pokrant, Marie E. Phase I Cultural Resource Survey, Jackson-Echelon, LLC Property, Jackson, Hines County, Mississippi. Submitted to Professional Service Industries, Jefferson, Louisiana.

- 2007 Pokrant, Marie E., and Michael Godzinski. Phase I Cultural Resource Assessment for Railroad Grade Separation, Route LA 46, St. Bernard Parish, Louisiana. Submitted to Volkert & Associates, Inc., Mobile, Alabama.
- 2007 Pokrant, Marie E. Reconnaissance Survey of the Proposed Churchill Farms Borrow Pit A and West Bank Borrow Pit G, Jefferson Parish, Louisiana. Submitted to U.S. Army Corps of Engineers, New Orleans District, Louisiana.
- 2006 Appollonio, Heather, Kathryn B. Lintott, Benjamin D. Maygarden, Angele Montana, Sara S. Orthon, Jessica Barton, Marie E. Pokrant, and Paul V. Heinrich. Intensive Cultural Resources Survey, Future I-49 South Corridor, SIU 1, Lafourche and St. Charles Parishes, Louisiana. Submitted to DMJM+Harris, New Orleans.
- 2006 Apollonio, Heather, Kathryn B. Lintott, Benjamin D. Maygarden, Angele Montana, Sara S. Orton, Rhonda L. Smith, Jessica Barton, Marie E. Pokrant, and Paul V. Heinrich. Intensive Cultural Resources Survey, Future I-49 South Corridor, SIU 2, Jefferson and St. Charles Parishes, Louisiana. Submitted to DMJM+Harris, New Orleans.
- 2006 Pokrant, Marie E., Paul LaHaye, and Christa Clement. Monitoring Report, Pecan Island, Vermilion Parish, Louisiana DR-1607. Submitted to the Federal Emergency Management Agency.
- 2006 Pokrant, Marie E., Christa Clement. Reconnaissance Level Survey, Niblett's Bluff Park, Calcasieu Parish, Louisiana DR-1607. Submitted to the Federal Emergency Management Agency.
- 2004 Pokrant, Marie E., William P. Athens and David George. Phase I Cultural Resources Survey and Archeological Inventory of the Proposed Logansport Pipeline Modification Project, Red River, and Bienville Parishes, Louisiana.. Submitted by R. Christopher Goodwin and Associates, Inc. to ENSR International.
- 2004 Pokrant, Marie E., William P. Athens, David George, Peter Croypley, Kari Krause, Jeremy Pincoske, and Ralph Draughon. Phase I Cultural Resources Survey and Archeological Inventory of a Proposed 7.87 km (4.89 mi) Long 36 in O.D. Compass Pass Pipeline Project, Mobile County, Alabama. Submitted by R. Christopher Goodwin and Associates, Inc. to ENSR International.
- 2004 Pokrant, Marie E., William P. Athens, Katy Coyle, Martin Handly, and Kerry Boutte. Phase IA Cultural Resources Investigation of Four Proposed Reservoir Sites, Allen Parish, Louisiana. Submitted by R. Christopher Goodwin and Associates, Inc. to Denmon Engineering.
- 2003 Pokrant, Marie E., David George, Catherine Labadia, and Jeremy Pincoske. Phase I Cultural Resources Survey and Archeological Inventory of a Proposed 1.12 ha (2.78 ac) Borrow Pit and an Associated Access Road, Ascension Parish, Louisiana. Submitted by R. Christopher Goodwin and Associates, Inc. to U.S. Army Corps of Engineers, New Orleans District, Louisiana.
- 2002 Pokrant, Marie E. and Norma Harris. Fort Walton Landing and Brooks Street Renovations. UWF Archaeology Institute, Report of Investigations 104.
- 2001 Pokrant, Marie E. and John Phillips. K&C Parking Lot Mitigation. UWF Archaeology Institute, Report of Investigations Number 98.
- 2000 Pokrant, Marie E. and Norma Harris. Fort Walton Beach Library Parcel Survey. UWF Archaeology Institute, Report of Investigations Number 90.
- 2000 Pokrant, Marie E. and Norma Harris. Fort Walton Beach Phase I Reconnaissance Survey. UWF Archaeology Institute, Report of Investigations Number 94.

### Professional Presentations

- 2011 The Pride of Red Lion: Early Settlement, Rural Traditions, and Community Status in Warren County, Ohio. Paper presented at the Society for Historical Archaeology Meeting, Austin, Texas.
- 2010 The Pride of Red Lion: Abner Crane and the Early Settlement of Warren County, Ohio. Paper presented at the 75th Annual Meeting of the Society for American Archaeology Meeting, St. Louis, Missouri.
- 2007 Stick this in Your Pipe (and Blow it): A Reinterpretation of the Presence of Clay Pipes on Nineteenth-century Domestic Sites. Paper presented at the Southeastern Archaeological Conference, Knoxville, Tennessee.
- 2002 The Village People: Life on the Eighteenth-Century Spanish Frontier. Paper presented at the Society for Historical Archaeology, Mobile, Alabama.
- 2000 Status, Power, Ethnicity, and Gender at the Presidio Santa María de Galve. Paper presented at the Society for Historical Archaeology, Quebec, Canada. (Pokrant, Marie E. and Harry J. Wilson)
- 1999 Death on the Frontier: Burials at Presidio Santa María de Galve. Paper presented at the Southeastern Archaeological Conference, Pensacola, Florida.
- 1999 The Burials at Presidio Santa María de Galve (1698-1719). Paper presented at the Florida Anthropological Society, Fort Walton Beach, Florida.
- 1998 Research at the Village of Presidio Santa María de Galve (1698-1719). Paper presented at the Southeastern Archaeological Conference, Baton Rouge, Louisiana.
- 1997 Presidio Beads: Status and Gender at the Presidio Santa María de Galve. Paper presented at the Florida Anthropological Society, Miami, Florida.
- 1997 Presidio Beads: Status and Gender at the Presidio Santa María de Galve. Paper presented at the Gulf Coast History and Humanities Conference, Pensacola Beach, Florida.

#### Education

B.A. Anthropology 1991, West Virginia University

#### Relevant Training/Courses

Introduction to Federal Projects and Historic Preservation Law. GSA Interagency Training Center

ODOT Section 106/National Register Eligibility Training. Ohio Department of Transportation.

Section 106 in the New Regulatory Environment. SRI Foundation.

HAZWOPER: 40-hour Hazardous Materials Training. Certified 2003, 2004, 2005 and 2008

Confined Space Entry and Awareness Training. Certified

Subpart S: Underground Construction and Cofferdams Training. Certified

ISO 9001:2000 KCI Technologies Inc. Internal Quality Management Systems Auditor.

Certified by Lloyd's Register Quality Services 2007

#### Affiliations

West Virginia Archaeological Society  
Society for Pennsylvania Archaeology

#### Professional Summary

Joining GAI Consultants in 2008, Mr. Sutton contributes more than 18 years of cultural resources experience in report writing and serving as survey archaeologist for the West Virginia State Historic Preservation Office, project crew chief, and field director for Phase I surveys, Phase II assessments, and Phase III data recoveries in Ohio, Pennsylvania, West Virginia, Georgia, and Maryland.

#### Professional Experience

2010

+ Project Archaeologist. Phase III Archaeological Data Recovery of Site 46KA622, H-162 Pipeline Replacement Project, Kanawha County, West Virginia, conducted for Dominion Transmission Incorporated.

+ Project Archaeologist. Phase I Archaeological Survey, TL-591: Appalachian Gateway Transmission Pipeline Project, Marshall County, West Virginia and Greene County, Pennsylvania, conducted for Dominion Transmission Incorporated.

+ Project Archaeologist. Phase III Archaeological Data Recovery at Site 46Ka622, TL-585/H-162 Pipeline Replacement Project, Kanawha County, West Virginia.

2009

+ Project Archaeologist. Phase II Archaeological Assessment of Site 46MR139, TL-590: Appalachian Gateway Transmission Pipeline Project, Marshall County, West Virginia, conducted for Dominion Transmission Incorporated.

+ Project Archaeologist. Phase I Archaeological Survey, Line-N Transmission Pipeline Replacement Project, Greene and Washington Counties, Pennsylvania, conducted for National Fuel.

+ Project Archaeologist. Phase I Archaeological Survey, TL-591: Appalachian Gateway Transmission Pipeline Project, Marshall County, West Virginia and Greene County, Pennsylvania, conducted for Dominion Transmission Incorporated.

+ Project Archaeologist. Phase II Archaeological Assessment, H-162 Pipeline Replacement Project, Kanawha County, West Virginia, conducted for Dominion Transmission Incorporated.

+ Project Archaeologist. Phase I Archaeological Survey, TL-590: Appalachian Gateway Transmission Pipeline Project, Greene and Washington Counties, Pennsylvania, conducted for Dominion Transmission Incorporated.

+ Project Archaeologist. Phase I Archaeological Survey, H-162 Pipeline Replacement Project, Kanawha and Clay Counties, West Virginia, conducted for Dominion Transmission Incorporated.



## 2008

- + Project Archaeologist. Phase I Cultural Resources Survey, VA State Line--Meadowbrook Substation and Meadowbrook Substation--Appalachian Trail Segments of the Trans-Allegheny Interstate Line (TrAIL) Project, Frederick and Warren Counties, Virginia for Power Engineers, Inc.
- + Field Director. Phase III Data Recovery of Site 33PE174 located in Perry County, Ohio, Rockies Express Pipeline East for Caprock.
- + Field Director. Phase III Data Recovery of Site 33PE362 located in Perry County, Ohio, Rockies Express Pipeline East for Caprock.
- + Field Director. Phase IB/Phase II of site 46CH7 investigated as part of the Corder Bridge Replacement Study located near Spencer in Calhoun County, West Virginia, for WVDOH.
- + Project Archaeologist. Phase I Survey CR 191 Ogeechee River Main Bridge Replacement, Phase II Assessment of Sites (9JS91) and (9JS92), Jenkins County, Georgia for Georgia Department of Transportation.
- + Project Archaeologist. Phase I Survey CR 251/Seven Islands Road at Big Indian Creek Bridge Replacement, Morgan County Georgia, for Georgia Department of Transportation.
- + Project Archaeologist. Phase II Assessment of Sites (9JS87) and (9JS88), Jenkins County, Georgia, for Georgia Department of Transportation.
- + Project Archaeologist. Phase I Survey SR 13/Memorial Park Drive Highway Improvements, Hall County, Georgia, for Georgia Department of Transportation.
- + Project Archaeologist. Phase I Survey SR 20 Highway Improvements, Cherokee County, Georgia, for Georgia Department of Transportation.

## 2007

- + Project Archaeologist. Phase I Survey SR 151 Highway Improvements, Catoosa County, Georgia, for Georgia Department of Transportation.
- + Field Director. Phase I Survey for Cabot Oil Natural Gas Wells and Pipeline Drilling Project (File No. ER 08-0217-115-A) located in Dimnock and Springhill Townships, Susquehanna County, Pennsylvania, for CTL Engineers of West Virginia, Inc.
- + Field Director. Phase I Survey STA-CR190-0.48 Applegrove Road Improvement Project, Stark County, Ohio, for Stark County Engineers.
- + Field Director. Phase I Survey of Proposed Refuse Disposal Area No. 1 near Graham Station, Mason County, West Virginia, for Gatling LLC.

## 2004-2006

- + Field Director. Phase I Survey of Proposed Incidental Boundary Revision No. 2 to existing Permit No.: U3016-05 near Hartford, Mason County, West Virginia, for Gatling LLC.
- + Field Director. Phase I Survey and Phase II Assessment of 46-Md-63 in Caretta, McDowell County, West Virginia, for D.D.S. Leasing, Inc.
- + Project Manager. Phase II Archaeological Assessment and Phase III Data Recovery Fort Hill Site (46-Mg-12), Morgantown, West Virginia, for Gateway Town Center, LLC.
- + Field Director. Phase I Survey for OH TRU-534-24.32 Improvement Project, Trumbull County, Ohio, for Ohio Department of Transportation, District 4.
- + Field Director. Phase III Data Recovery for Lick Run Bridge Replacement, Clearfield County, Pennsylvania, for Pennsylvania Department of Transportation, Engineering District 02.

## 2001-2003

- + Crew Chief and Safety Officer. Phase III Data Recovery for Leetsdale: Bradock Lock and Dam Replacement, Pittsburgh, Pennsylvania, for US Army Corps of Engineers (USACE): Pittsburgh District.
- + Field Director. Phase I Survey and Phase II Assessment Proposed Maintenance Facility, Mountain Line Public Transportation Authority, Morgantown, West Virginia.



- + Field Director. Cultural Resource Assessment of Fort Boreman, Parkersburg, West Virginia, for Wood County Development Authority.
- + Field Director. Phase I, Phase II and Phase III Investigations for Route 10 Logan to Man, Logan County, West Virginia, for West Virginia Department of Transportation.
- + Field Director and Crew Chief. Phase II Assessment and Phase III Data Recovery SR 0011/0015, Section 008, Transportation Improvement Project, Perry and Juniata Counties, Pennsylvania, for Pennsylvania Department of Transportation, Engineering District 8-0.
- + Field Technician. Phase I survey for SR 0068, Section 350, East Brady Bridge Replacement Project, Armstrong and Clarion Counties, Pennsylvania, for Pennsylvania Department of Transportation, Engineering District 10-0.

#### 1997-1998

- + Field Director. Phase III Data Recovery Excavations of two rockshelter sites (46-Mg-136 and 46 Mg 137), and Phase IIB excavation of Site 46-Mg-117, Mon/Fayette Transportation Project, Monongalia County, West Virginia, for West Virginia Department of Highways.
- + Field Technician. Phase I Survey and Phase II Resource Assessment for the Mon/Fayette Transportation Project, Fayette County, Pennsylvania and Monongalia County, West Virginia, for Pennsylvania Turnpike Commission and West Virginia Department of Highways.
- + Field Technician. Phase III data recovery excavations of the Clifton Site (18CH358) associated with MD Route 228 Wetland Mitigation, Charles County, Maryland, for Maryland Department of Transportation-SHA.
- + Field Director. Phase I Cultural Resources Survey of the Proposed Corders Crossing/Philippi Development Site, Barbour County, West Virginia for Barbour County Office for Economic Development.
- + Field Director. Phase I Cultural Resources Survey of the Consolidation Coal Company IBR # 32: Saint Leo Acid Mine Drainage Treatment Facility, Monongalia County, West Virginia, for Patriot Mining Company, Morgantown, WV.
- + Field Director. Phase I Cultural Resources Survey of the RIPX Pipeline Project in Jackson County, West Virginia, for Columbia Gas Transmission Corporation.
- + Field Director. Phase I Cultural Resources Survey of the Red Sulphur PSD/ Linside Sewer Project, Monroe County, West Virginia, for Red Sulphur Public Service District.
- + Field Director. Phase I Cultural Resources Survey of the Proposed Fountain Industrial Park, Monroe County, West Virginia, for Greenbrier Development Authority.
- + Field Director. Phase I Cultural Resources Survey of the Juliana Mining Company Coal Stockpile Extension Project, Erbacon, Webster County, West Virginia, for Juliana Mining Company.
- + Field Director. Phase I Cultural Resources Survey of the Campbelltown Addition Water Line Extension Project, Marlinton, Pocahontas County, West Virginia for Hannah and Associates, Inc.
- + Field Director. Phase I Cultural Resources Survey of the Bayer POD Project, Wetzel County, West Virginia for Columbia Gas Transmission Corporation.
- + Field Director. Phase I Cultural Resources Survey, Randolph County, West Virginia for Nella's, Inc.
- + Field Director. Phase I Cultural Resources Survey of the US Cellular Bolivar Communications Facility, Jefferson County, West Virginia, for United States Cellular Corporation, Chicago, IL.
- + Field Director. Phase I Cultural Resources Survey of the Line 9532 Extension Project, Marshall County, West Virginia for Columbia Gas Transmission Corporation.
- + Field Director. Phase I Cultural Resources Survey of the Proposed Bluefield Intermediate School in Bluefield, Mercer County, West Virginia, for Mercer Board of Education, Bluefield, WV.

#### Survey Archaeologist

- + West Virginia State Historic Preservation Office (WVSHPO)/Division of Environmental Protection (WVDEP). Survey Archaeologist. (March 1995 to April 1997) Within the WVSHPO, the Survey Archaeologist acted as a liaison responsible for conducting evaluations of impacts to cultural resources as a result of proposed mining-related activities throughout West Virginia. These impacts were associated with both proposed,

permit-related mining activities by private firms, as well as reclamation activities being conducted by the Abandoned Mine Lands Section of the West Virginia Department of Environmental Protections.

- + Incoming project documentation was originally reviewed to determine the potential for impacts to cultural resources within the project area. If determined necessary, project field visits were made to conduct limited archaeological surveys and historic structures inventories for areas to be impacted. Project reports were prepared addressing any cultural resources located within each proposed impact area.
- + In addition to the coal related assessments, the Survey Archaeologist also took part in various public education programs, training assignments and reviews of other incoming, non-DEP related projects. Though not officially a review and compliance position, it often required the performance of reviews for Phase I, Phase II and Phase III Project Reports as needed.

#### 1990-1995

- + Field Technician. Phase III Data Recovery of the Oriented Strandboard Mill Project in Braxton County, WV. Weyerhaeuser Company, Tacoma Washington. (Oct – Nov 1994).
- + Field Technician. Mapping an Archaic and Woodland Period Fish Weir Complex (ME 71-19), Along Sebasticook Lake, Central Maine. Maine Historic Preservation Commission. (December 1993).
- + Field Technician. Derby Bridge Replacement Project, Derby, Vermont. Vermont Agency of Transportation. Phase II Archaeological Assessment, (December 1993).
- + Field Technician. Woodstock Bridge Replacement Project, Woodstock, Vermont. Vermont Agency of Transportation. Phase I Archaeological Survey, (November 1993).
- + Field Technician. Chester Bridge Replacement Project, Chester, Vermont. Vermont Agency of Transportation. Phase I Archaeological Survey, (October 1993).
- + Field Technician. Stockbridge Bridge Replacement Project, Stockbridge, Vermont. Vermont Agency of Transportation. Phase I Archaeological Survey, (September 1993).
- + Field Technician. Phase I Archaeological Survey for Route 9 Expansion, Jefferson County, West Virginia. West Virginia Department of Highways, (September to October 1994).
- + Field Technician. Phase II Assessment for Route 19 Expansion: Summersville to I-79 (Corridor L), Nicholas County, West Virginia. West Virginia Department of Highways, District 9. (October to March 1995)
- + Field Technician. Phase I Archaeological Survey for Transportation Access for Federal Bureau of Investigations, Bridgeport, Harrison County, West Virginia. West Virginia Department of Highways, District 4, (July 1990).
- + Field Technician. Phase I Archaeological Survey for Route 30 Expansion Project in Columbiana and Carrol Counties, Ohio. Ohio Department of Transportation.
- + Field Technician. Phase III Data Recovery for Lehigh Valley Pipeline Expansion, Easton, Pennsylvania. Columbia Gas Transmission Corp. (January to February 1994).
- + Crew Chief. Phase I Archaeological Survey Arthurdale Water Treatment Project, Arthurdale, West Virginia, Monongalia County Public Service Commission (February 1994).
- + Crew Chief. Phase I Archaeological Survey for Osage Surface Mine Project, Osage, West Virginia. Patriot Mining Inc., (January 1994).
- + Field Technician. Moorefield Public Service District Water Pipeline Expansion Project, Moorefield, West Virginia. Moorefield Public Service District. Phase I Archaeological Survey, (October 1994).
- + Crew Chief. High Power Surface Mine Project, Nicholas County, West Virginia. High Power Mining Co. Phase I Archaeological Survey, (May 1990).
- + Field Technician. High Power Surface Mine Project, Nicholas County, West Virginia. High Power Mining Co. Phase II Archaeological Assessment, (April 1991).
- + Erbacon Mineral Prospecting Project, Erbacon, Webster County, West Virginia. Patriot Mining Company. Phase I Archaeological Survey, (March 1994) Field Technician.

### **Publications / Presentations**

John T. Sutton. Exploring the Monongahelas' southern margins: an overview of the Fort Hill Site (46Mg-12), a Middle Monongahela Village located in Morgantown, West Virginia. Paper presented at the Society for Pennsylvania Archaeology 78th Annual Meeting, 4/21/2007, Allentown, PA.

John T. Sutton. Phase III Data Recovery Excavations at the Fort Hill Site (46-Mg-12), Morgantown, West Virginia." Presentation at the 27th Annual WV Equipment, Technology and Design Exposition 2006, 3/22/06 Charleston, WV.

Patricia E. Miller, Daniel Hayes, John T. Sutton, and James T. Marine. Prehistoric Settlement on the Guyandotte River Floodplain. Paper Presented at the Annual Meeting of the West Virginia Archaeological Society, 10/2000 Charleston, WV

APPENDIX B  
SIGNED EOI FORMS



State of West Virginia  
 Department of Administration  
 Purchasing Division  
 2019 Washington Street East  
 Post Office Box 50130  
 Charleston, WV 25305-0130

# Request for Quotation

RFQ NUMBER
GSD126410

PAGE
1

ADDRESS CORRESPONDENCE TO ATTENTION OF:
KRISTA FERRELL 304-558-2596

\*709015504      304-926-8100  
 GAI CONSULTANTS INC  
 500 SUMMERS ST 3RD FLR  
 CHARLESTON WV 25301

VENDOR

DEPARTMENT OF ADMINISTRATION  
 GENERAL SERVICES DIVISION  
 JOBSITE  
 SEE SPECIFICATIONS

SHIP TO

304-558-2317

DATE PRINTED	TERMS OF SALE	SHIP VIA	F.O.B.	FREIGHT TERMS
09/07/2011				

BID OPENING DATE: 09/19/2011      BID OPENING TIME 01:30PM

LINE	QUANTITY	UOP	CAT. NO.	ITEM NUMBER	UNIT PRICE	AMOUNT
0001	1	HR		906-29		
ARCHAEOLOGICAL SERVICES FOR NEW LOGAN SITE  EXPRESSION OF INTEREST (EOI)  THE WEST VIRGINIA STATE PURCHASING DIVISION FOR THE AGENCY, THE WEST VIRGINIA DIVISION OF GENERAL SERVICES, IS SOLICITING EXPRESSIONS OF INTEREST FROM QUALIFIED ARCHITECTURAL AND ENGINEERING FIRMS TO PERFORM ARCHEOLOGICAL SERVICES IN LOGAN, WEST VIRGINIA IN CONJUNCTION WITH 1) DETERMINING IF HISTORICAL/ARCHAEOLOGICAL ISSUES EXIST FOR A PROPOSED VEHICULAR PARKING AREA, INCLUDING A PHASE 1 REVIEW OF THE APPROXIMATELY TWO ACRE SITE, 2) POSSIBLE FUTURE REMOVAL OF ARTIFACTS IF ENCOUNTERED, 3) IF NECESSARY, A CONTINUATION OF ARCHAEOLOGICAL SERVICES AT THE LOGAN BUILDING PROJECT SITE INCLUDING REMOVAL OF HUMAN REMAINS AND OTHER ARTIFACTS, AND 4) INTERPRETATION OF FINDINGS AT THE LOGAN SITE. ARCHAEOLOGICAL SERVICES WILL INCLUDE LABORATORY ANALYSIS AND PREPARATION OF A REPORT THAT WILL DETAIL THE ARCHAEOLOGICAL ARTIFACTS.SEE ATTACHED SPECIFICATIONS.  BANKRUPTCY: IN THE EVENT THE VENDOR/CONTRACTOR FILES FOR BANKRUPTCY PROTECTION, THE STATE MAY DEEM THE CONTRACT NULL AND VOID, AND TERMINATE SUCH CONTRACT WITHOUT FURTHER ORDER.  NOTICE  A SIGNED EOI MUST BE SUBMITTED TO:						

SEE REVERSE SIDE FOR TERMS AND CONDITIONS

SIGNATURE <i>Benjamin Ferrell</i>	TELEPHONE 412-476-2000	DATE 9/15/11
-----------------------------------	------------------------	--------------

TITLE Asst. V.P./Group Manager	FEIN 25-1260999	ADDRESS CHANGES TO BE NOTED ABOVE
--------------------------------	-----------------	-----------------------------------

WHEN RESPONDING TO RFQ, INSERT NAME AND ADDRESS IN SPACE ABOVE LABELED 'VENDOR'





State of West Virginia  
 Department of Administration  
 Purchasing Division  
 2019 Washington Street East  
 Post Office Box 50130  
 Charleston, WV 25305-0130

# Request for Quotation

RFQ NUMBER  
 GSD126410

PAGE  
 3

ADDRESS CORRESPONDENCE TO ATTENTION OF:  
 KRISTA FERRELL  
 304-558-2596

VENDOR

\*709015504      304-926-8100  
 GAI CONSULTANTS INC  
 500 SUMMERS ST 3RD FLR  
 CHARLESTON WV 25301

SHIP TO

DEPARTMENT OF ADMINISTRATION  
 GENERAL SERVICES DIVISION  
 JOBSITE  
 SEE SPECIFICATIONS  
 304-558-2317

DATE PRINTED	TERMS OF SALE	SHIP VIA	F.O.B.	FREIGHT TERMS
09/07/2011				

BID OPENING DATE: 09/19/2011      BID OPENING TIME 01:30PM

LINE	QUANTITY	UOP	CAT NO.	ITEM NUMBER	UNIT PRICE	AMOUNT
***** THIS IS THE END OF RFQ GSD126410 ***** TOTAL:						

SEE REVERSE SIDE FOR TERMS AND CONDITIONS

SIGNATURE: *Krista Ferrell*      TELEPHONE: 412-476-2000      DATE: 9/15/11

TITLE: *Asst. V.P./Group Manager*      FEIN: 25-1260999      ADDRESS CHANGES TO BE NOTED ABOVE

WHEN RESPONDING TO RFQ, INSERT NAME AND ADDRESS IN SPACE ABOVE LABELED 'VENDOR'



State of West Virginia  
 Department of Administration  
 Purchasing Division  
 2019 Washington Street East  
 Post Office Box 50130  
 Charleston, WV 25305-0130

WV PURCHASING ACT SECT Fax 304-558-4115

Sep 15 2011 12:19pm P001/017

**request for  
 Quotation**

RFQ NUMBER  
**GSD126410**

PAGE  
**1**

ADDRESS CORRESPONDENCE TO ATTENTION OF  
**KRISTA FERRELL  
 304-558-2596**

RFQ COPY

TYPE NAME/ADDRESS HERE

SHIP TO

DEPARTMENT OF ADMINISTRATION  
 GENERAL SERVICES DIVISION  
 JOBSITE  
 SEE SPECIFICATIONS

304-558-2317

DATE PRINTED	TERMS OF SALE	SHIP VIA	F.O.B.	FREIGHT TERMS
09/15/2011				

BID OPENING DATE: **09/19/2011** BID OPENING TIME **01:30PM**

LINE	QUANTITY	UOP	CAT NO	ITEM NUMBER	UNIT PRICE	AMOUNT
				ADDENDUM NO. 1		
				THIS ADDENDUM IS ISSUED TO:		
				1.) REISSUE THE SPECIFICATIONS FOR GSD126401 IN THEIR ENTIRETY,		
				2.) PROVIDE ANSWERS TO TECHNICAL QUESTION, AND		
				3.) PROVIDE A DRAWING OF CONSTRUCTION SITE		
				BOI OPENING DATE REMAINS: 09/19/2011		
				BOI OPENING TIME REMAINS: 1:30 PM		
				***** END ADDENDUM NO. 1 *****		
0001	1	HR		906-29		
				ARCHAEOLOGICAL SERVICES FOR NEW LOGAN SITE		
				***** THIS IS THE END OF RFQ GSD126410 ***** TOTAL:		

SEE REVERSE SIDE FOR TERMS AND CONDITIONS

SIGNATURE: *Bernie Rebeck* TELEPHONE: **412-436-2000** DATE: **9/16/11**  
 TITLE: **Asst. V.P./Group Manager** FEIN: **25-1260999** ADDRESS CHANGES TO BE NOTED ABOVE

WHEN RESPONDING TO RFQ, INSERT NAME AND ADDRESS IN SPACE ABOVE LABELED 'VENDOR'



APPENDIX C

NOTORIZED PURCHASING AFFIDAVIT

RFQ No. GSD126410

STATE OF WEST VIRGINIA  
Purchasing Division

**PURCHASING AFFIDAVIT**

**West Virginia Code §5A-3-10a states:** No contract or renewal of any contract may be awarded by the state or any of its political subdivisions to any vendor or prospective vendor when the vendor or prospective vendor or a related party to the vendor or prospective vendor is a debtor and the debt owed is an amount greater than one thousand dollars in the aggregate.

**DEFINITIONS:**

"Debt" means any assessment, premium, penalty, fine, tax or other amount of money owed to the state or any of its political subdivisions because of a judgment, fine, permit violation, license assessment, defaulted workers' compensation premium, penalty or other assessment presently delinquent or due and required to be paid to the state or any of its political subdivisions, including any interest or additional penalties accrued thereon.

"Debtor" means any individual, corporation, partnership, association, limited liability company or any other form or business association owing a debt to the state or any of its political subdivisions. "Political subdivision" means any county commission; municipality; county board of education; any instrumentality established by a county or municipality; any separate corporation or instrumentality established by one or more counties or municipalities, as permitted by law; or any public body charged by law with the performance of a government function or whose jurisdiction is coextensive with one or more counties or municipalities. "Related party" means a party, whether an individual, corporation, partnership, association, limited liability company or any other form or business association or other entity whatsoever, related to any vendor by blood, marriage, ownership or contract through which the party has a relationship of ownership or other interest with the vendor so that the party will actually or by effect receive or control a portion of the benefit, profit or other consideration from performance of a vendor contract with the party receiving an amount that meets or exceed five percent of the total contract amount.

**EXCEPTION:** The prohibition of this section does not apply where a vendor has contested any tax administered pursuant to chapter eleven of this code, workers' compensation premium, permit fee or environmental fee or assessment and the matter has not become final or where the vendor has entered into a payment plan or agreement and the vendor is not in default of any of the provisions of such plan or agreement.

Under penalty of law for false swearing (**West Virginia Code §61-5-3**), it is hereby certified that the vendor affirms and acknowledges the information in this affidavit and is in compliance with the requirements as stated.

**WITNESS THE FOLLOWING SIGNATURE**

Vendor's Name: GAI CONSULTANTS, INC.

Authorized Signature: *Benjamin Rednitz* Date: 9.14.2011

State of Pennsylvania

County of Allegheny, to-wit:

Taken, subscribed, and sworn to before me this 14<sup>th</sup> day of September, 2011.

My Commission expires Sept 4, 2012.

**AFFIX SEAL HERE**

NOTARY PUBLIC *Janet L. Toth*

